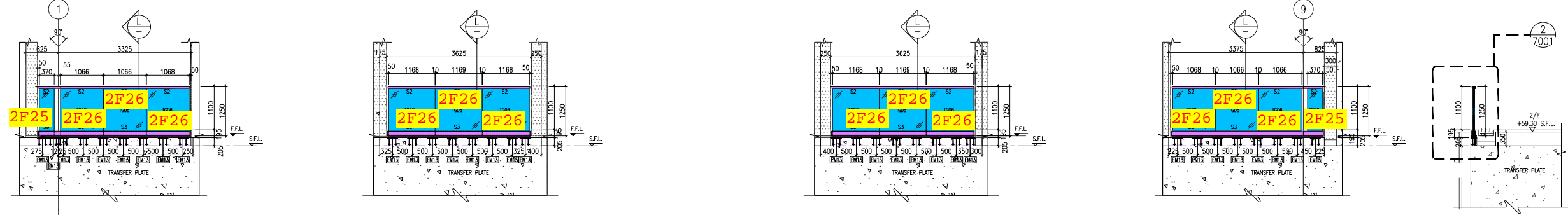
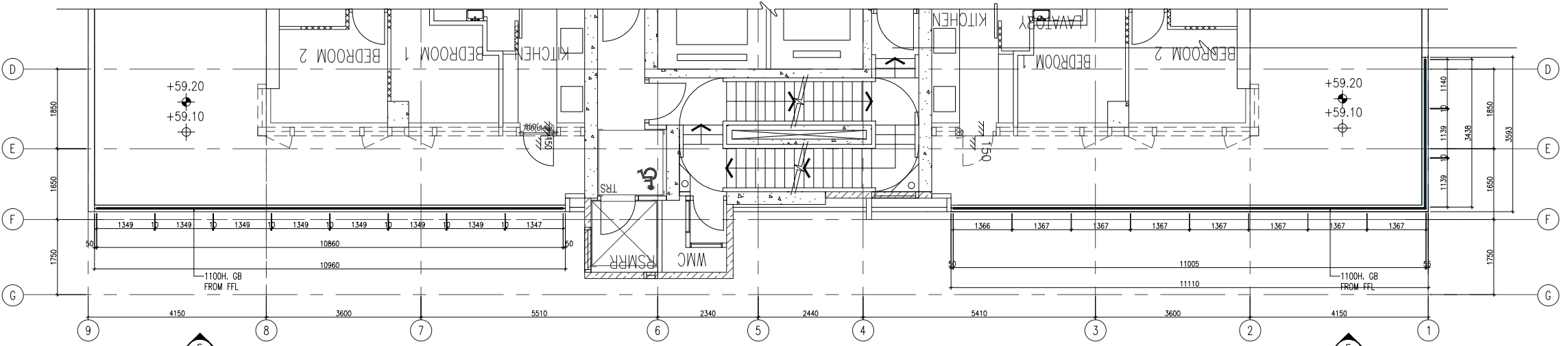


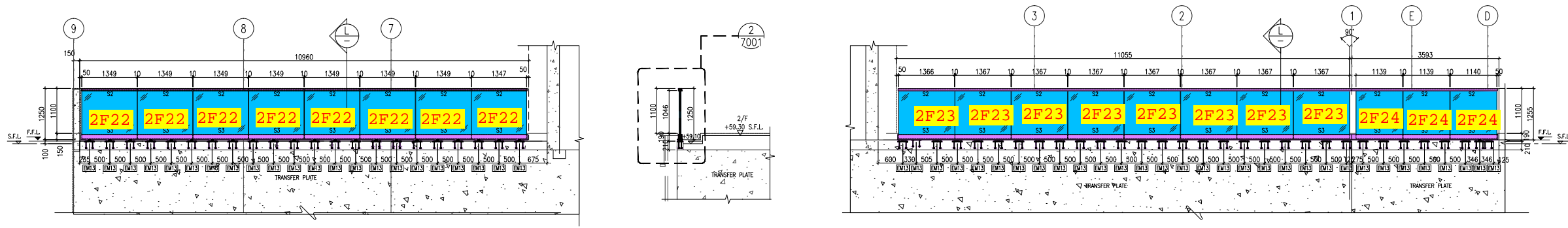
1 PART PLAN FOR GLASS BALUSTRADE (2/F) 2 PART PLAN FOR GLASS BALUSTRADE (2/F) 3 PART PLAN FOR GLASS BALUSTRADE (2/F) 4 PART PLAN FOR GLASS BALUSTRADE (2/F)



A PART ELEVATION FOR GLASS BALUSTRADE (2/F) B PART ELEVATION FOR GLASS BALUSTRADE (2/F) C PART ELEVATION FOR GLASS BALUSTRADE (2/F) D PART ELEVATION FOR GLASS BALUSTRADE (2/F) L SECTION FOR GB (2/F)



5 PART PLAN FOR GLASS BALUSTRADE (2/F) 6 PART PLAN FOR GLASS BALUSTRADE (2/F)



E PART ELEVATION FOR GLASS BALUSTRADE (2/F) L SECTION FOR GB (2/F) F PART ELEVATION FOR GLASS BALUSTRADE (2/F)

B.D. REF :

WONG TUNG & PARTNERS LTD.
APPROVED
APPROVED AS NOTED
APPROVED AS NOTED & RESUBMIT
RESUBMIT
NO COMMENT
REFER OTHER CONSULTANT'S COMMENTS
Reviewed for compliance with the design intent. Comments made shall apply to all similar conditions & details, not just the ones cited. The approval shall not be construed as relieving the contractor for compliance with the contract documents & requirements.
Reviewed By _____ Date _____

CLIENT :
MILLION BASE PROPERTIES LIMITED

ARCHITECT :
WONG TUNG & PARTNERS LIMITED
ARCHITECTS & PLANNERS

MAIN CONTRACTOR :
顯利工程有限公司
HIEN LEE ENGINEERING CO., LTD.

STRUCTURAL ENGINEER :
SYW & ASSOCIATES LTD.
STRUCTURAL ENGINEERS & PLANNERS

FAÇADE CONSULTANT:

NOTE :

- ALL DIMENSIONS ARE IN mm.
- ALL ELEVATIONS ARE VIEWED FROM OUTSIDE.
- ALL DIMENSIONS TO BE VERIFIED ON SITE BEFORE FABRICATION.

LEGEND :

X1 --- DETAIL MARK NO.
X001 --- REFER SHEET NO.

- F.F.L. --- FINISHED FLOOR LEVEL
- S.F.L. --- STRUCTURAL FLOOR LEVEL
- (R) --- REVERSED DETAIL

NO.	DATE	REVISED	BY

JOB NO. : J861

PROJECT :
PROPOSED RESIDENTIAL DEVELOPMENT AT NOS. 3-6 GLENEALY, CENTRAL, HONG KONG

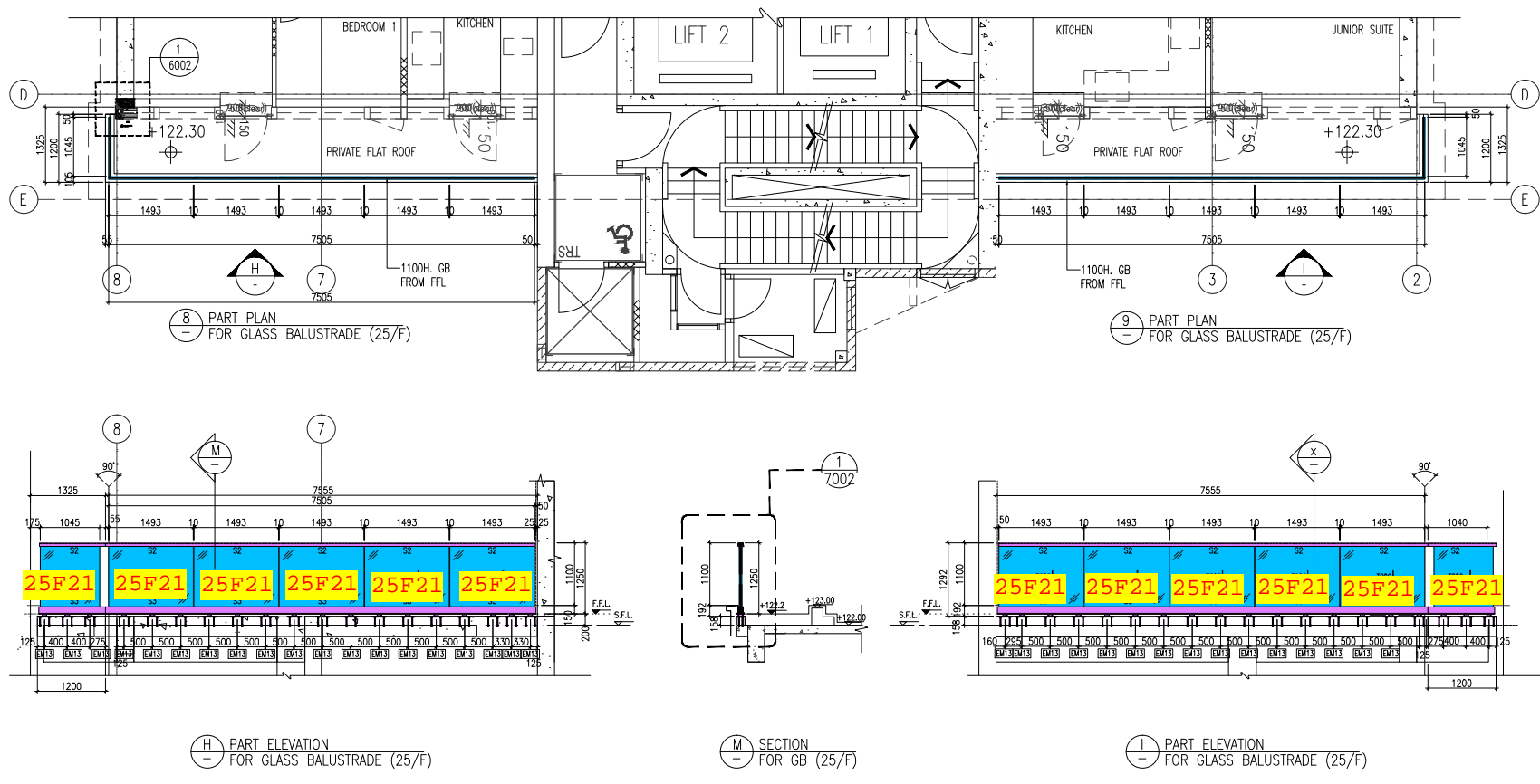
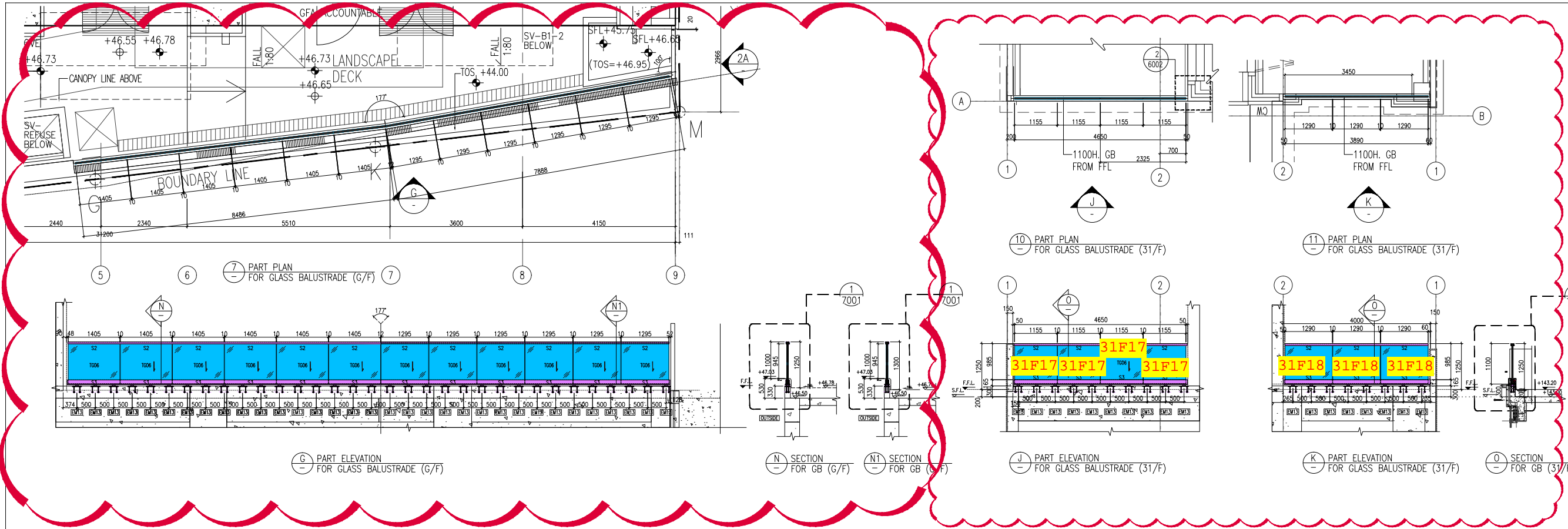
TITLE :
PLAN & ELEVATION FOR GLASS BALUSTRADE (FREE STANDING GLASS)

DATE : SCALE :

DRAWN BY : CHECKED BY :

美特鋁質有限公司
MIDI ALUMINIUM FABRICATOR LTD.
Units 6-8, Sunray Industrial Centre, 1/F
610 Cha Kwo Ling Road, Kowloon
Tel:23489211-4 Fax:(852)2727666

DWG NO. : J861-SD-GB-SE-5101 REV. :



B.D. REF :

WONG TUNG & PARTNERS LTD.	
APPROVED	
APPROVED AS NOTED	
APPROVED AS NOTED & RESUBMIT	
RESUBMIT	
NO COMMENT	
REFER OTHER CONSULTANT'S COMMENTS	
Reviewed for compliance with the design intent. Comments made shall apply to all similar conditions & details, not just the ones cited. The approval shall not be construed as relieving the contractor for compliance with the contract documents & requirements.	
Reviewed By	Date

CLIENT :
MILLION BASE PROPERTIES LIMITED

ARCHITECT :
WONG TUNG & PARTNERS LIMITED
ARCHITECTS & PLANNERS

MAIN CONTRACTOR :
顯利工程有限公司
HIEN LEE ENGINEERING CO., LTD.

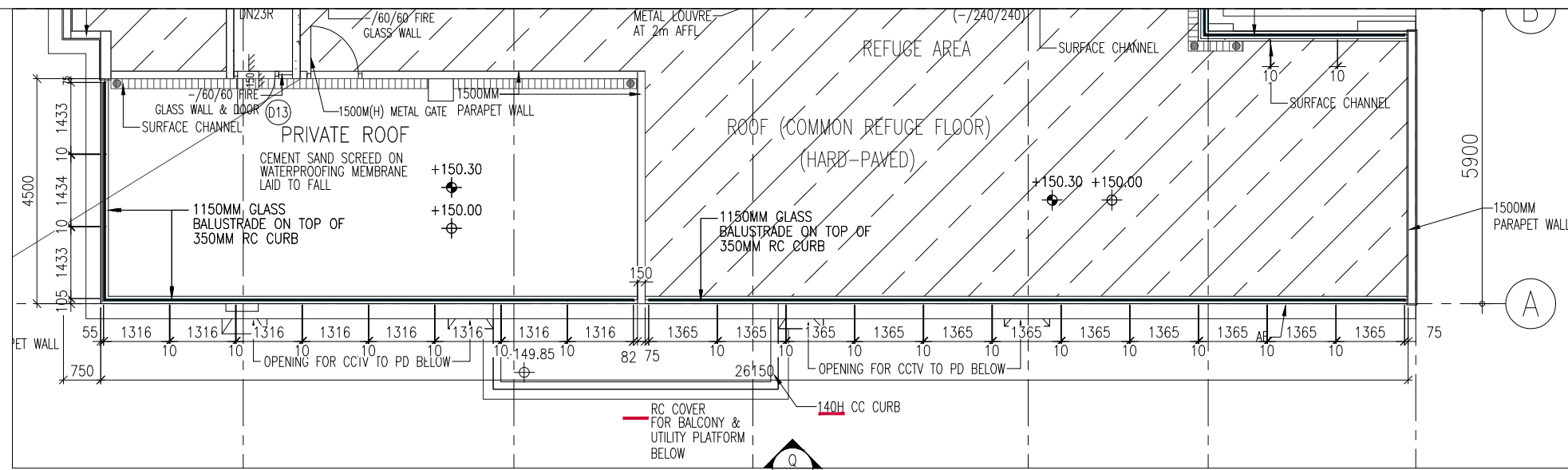
STRUCTURAL ENGINEER :
SYW & ASSOCIATES LTD.
STRUCTURAL ENGINEERS & AUTHORIZED PERSONNEL
邵賢偉建築工程師

FAÇADE CONSULTANT :

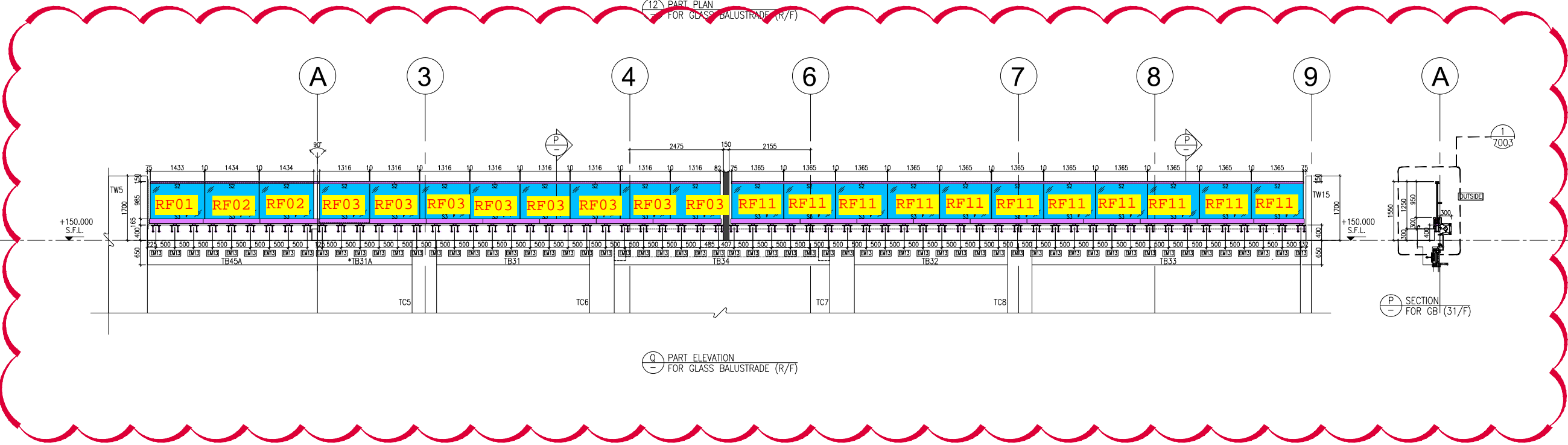
- NOTE :
- ALL DIMENSIONS ARE IN mm.
 - ALL ELEVATIONS ARE VIEWED FROM OUTSIDE.
 - ALL DIMENSIONS TO BE VERIFIED ON SITE BEFORE FABRICATION.
- LEGEND :
- x1 -- DETAIL MARK NO.
X001 -- REFER SHEET NO.
- F.F.L. -- FINISHED FLOOR LEVEL
 - S.F.L. -- STRUCTURAL FLOOR LEVEL
 - (R) -- REVERSED DETAIL

NO.	DATE	REVISED	BY
JOB NO. : J861			
PROJECT : PROPOSED RESIDENTIAL DEVELOPMENT AT NOS. 3-6 GLENEALY, CENTRAL, HONG KONG			
TITLE : PLAN & ELEVATION FOR GLASS BALUSTRADE (FREE STANDING GLASS)			
DATE :	SCALE :		
DRAWN BY :	CHECKED BY :		
<p>Units 6-8, Sunray Industrial Centre, 1/F 610 Cha Kwo Ling Road, Kowloon Tel:23489211-4 Fax:(852)2727666</p>			
DWG NO. : J861-SD-GB-SE-5102	REV. :		

C:\Users\136116\OneDrive\Desktop\136116_Submission1_1_Shop_Drawing\K_Glass_Balustrade (Free Standing)_Glass\CAD_20250804_working.dwg, 09/03/25, 15:09:11, DWG to PDF, p3



12 PART PLAN FOR GLASS BALUSTRADE (R/F)



Q PART ELEVATION FOR GLASS BALUSTRADE (R/F)

B.D. REF :

WONG TUNG & PARTNERS LTD.	
APPROVED	
APPROVED AS NOTED	
APPROVED AS NOTED & RESUBMIT	
RESUBMIT	
NO COMMENT	
REFER OTHER CONSULTANT'S COMMENTS	
Reviewed for compliance with the design intent. Comments made shall apply to all similar conditions & details, not just the ones cited. The approval shall not be construed as relieving the contractor for compliance with the contract documents & requirements.	
Reviewed By	Date
()	()

CLIENT :
MILLION BASE PROPERTIES LIMITED

ARCHITECT :
WONG TUNG & PARTNERS LIMITED
ARCHITECTS & PLANNERS

MAIN CONTRACTOR :
顯利工程有限公司
HIEN LEE ENGINEERING CO., LTD.

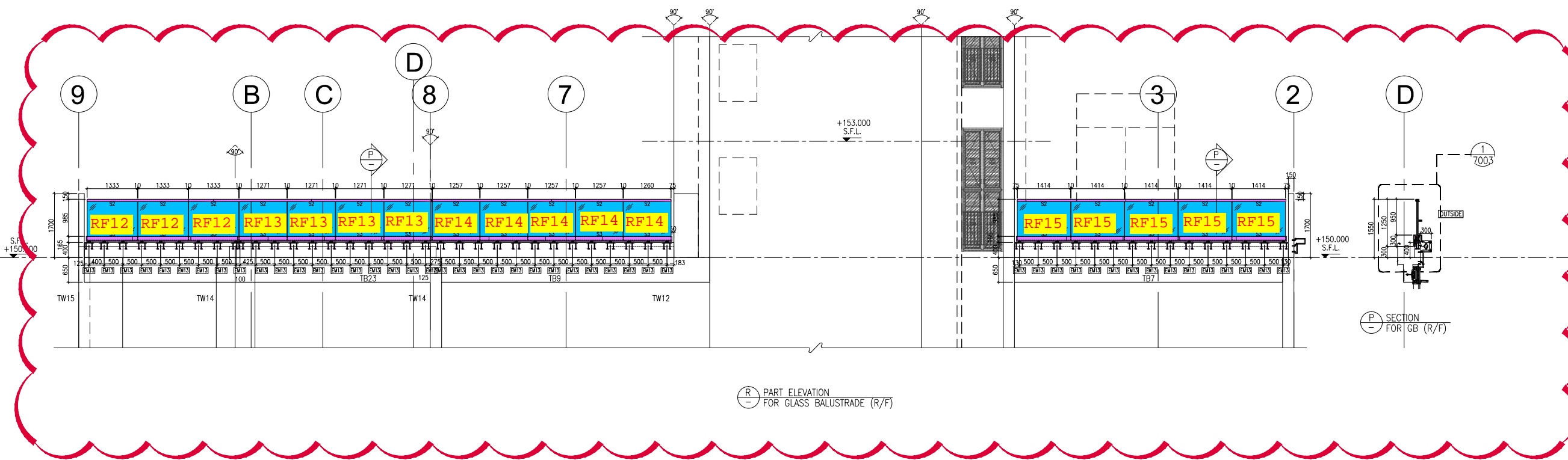
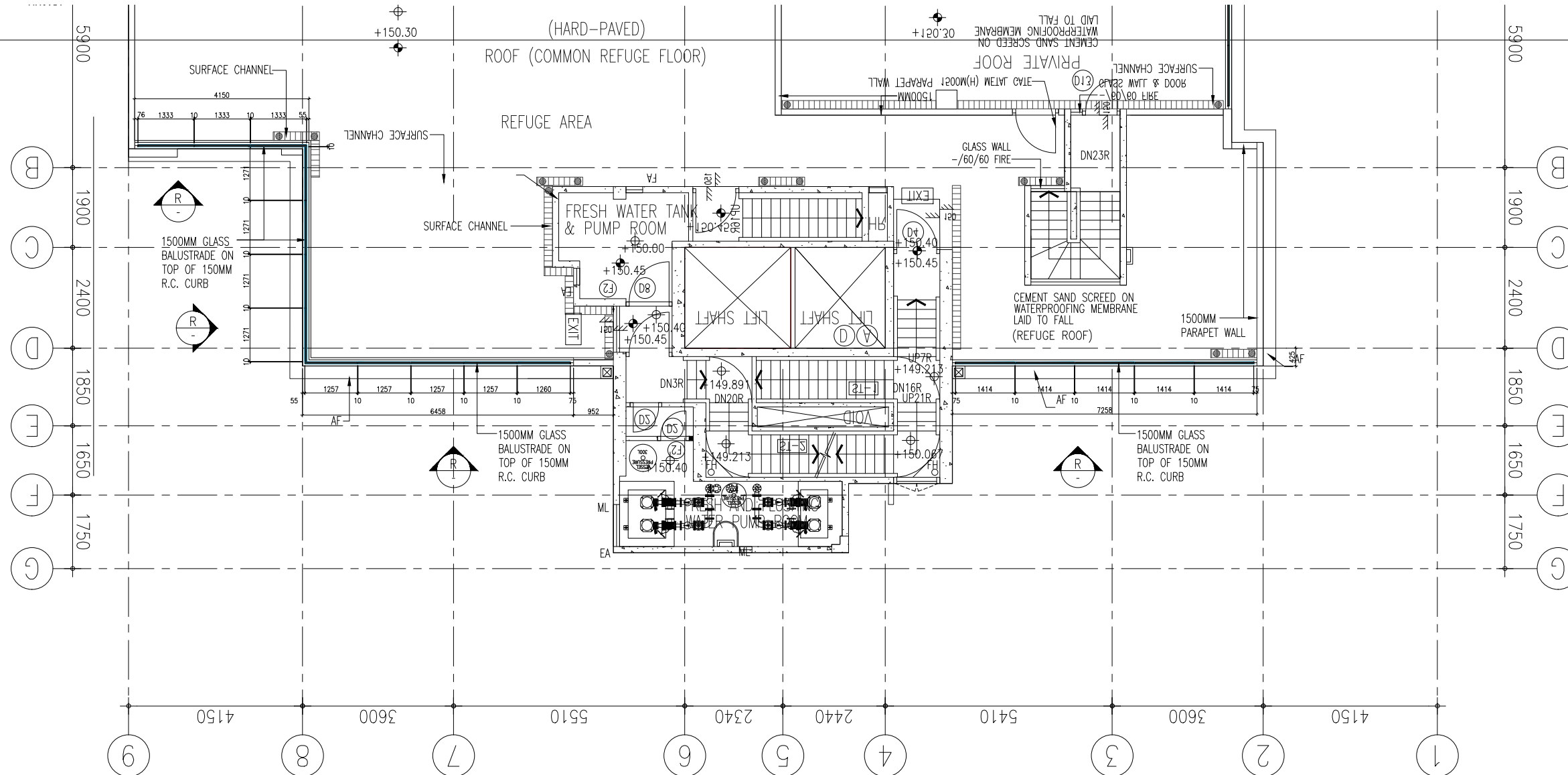
STRUCTURAL ENGINEER :
SYW & ASSOCIATES LTD.
SYW & ASSOCIATES LTD.

FAÇADE CONSULTANT:

- NOTE :
1. ALL DIMENSIONS ARE IN mm.
 2. ALL ELEVATIONS ARE VIEWED FROM OUTSIDE.
 3. ALL DIMENSIONS TO BE VERIFIED ON SITE BEFORE FABRICATION.
- LEGEND :
- X1 -- DETAIL MARK NO.
 - X001 -- REFER SHEET NO.
1. F.F.L. -- FINISHED FLOOR LEVEL
 2. S.F.L. -- STRUCTURAL FLOOR LEVEL
 3. (R) -- REVERSED DETAIL

NO.	DATE	REVISED	BY
JOB NO. : J861			
PROJECT : PROPOSED RESIDENTIAL DEVELOPMENT AT NOS. 3-6 GLENEALY, CENTRAL, HONG KONG			
TITLE : PLAN & ELEVATION FOR GLASS BALUSTRADE (FREE STANDING GLASS) AT R/F			
DATE :	SCALE :		
DRAWN BY :	CHECKED BY :		
<p>Units 6-8, Sunray Industrial Centre, 1/F 610 Cha Kwo Ling Road, Kowloon Tel:23489211-4 Fax:(852)2727666</p>			
DWG NO. : J861-SD-GB-SE-5103	REV. :		

K:\05\1786176_Submission\1_Shop Drawing\6_Glass Balustrade (Free Standing Glass)\CAD_20250804_working\5-SD_EL_20250822_working.dwg, 09/03/25, 11:48:50, DWG To PDF.pc3



B.D. REF :

WONG TUNG & PARTNERS LTD.	
APPROVED	
APPROVED AS NOTED	
APPROVED AS NOTED & RESUBMIT	
RESUBMIT	
NO COMMENT	
REFER OTHER CONSULTANT'S COMMENTS	
Reviewed for compliance with the design intent. Comments made shall apply to all similar conditions & details, not just the ones cited.	
The approval shall not be construed as relieving the contractor for compliance with the contract documents & requirements.	
Reviewed By	Date

CLIENT :
MILLTON BASE PROPERTIES LIMITED

ARCHITECT :
WONG TUNG & PARTNERS LIMITED
ARCHITECTS & PLANNERS

MAIN CONTRACTOR :
顯利工程有限公司
HIEN LEE ENGINEERING CO., LTD.

STRUCTURAL ENGINEER :
SYW & ASSOCIATES LTD.
STRUCTURAL ENGINEERS & CONSULTANTS

FAÇADE CONSULTANT:

- NOTE :
1. ALL DIMENSIONS ARE IN mm.
 2. ALL ELEVATIONS ARE VIEWED FROM OUTSIDE.
 3. ALL DIMENSIONS TO BE VERIFIED ON SITE BEFORE FABRICATION.
- LEGEND :
- (X1) --- DETAIL MARK NO.
 - (X001) --- REFER SHEET NO.
 - 1. F.F.L. --- FINISHED FLOOR LEVEL
 - 2. S.F.L. --- STRUCTURAL FLOOR LEVEL
 - 3. (R) --- REVERSED DETAIL

NO.	DATE	REVISED	BY

JOB NO. : J861
PROJECT :
PROPOSED RESIDENTIAL DEVELOPMENT AT NOS. 3-6 GLENEALY, CENTRAL, HONG KONG

TITLE :
PLAN & ELEVATION FOR GLASS BALUSTRADE (FREE STANDING GLASS) AT R/F

DATE : SCALE :
DRAWN BY : CHECKED BY :

美特鋁質有限公司
MIDI ALUMINIUM FABRICATOR LTD.
Units 6-8, Sunray Industrial Centre, 1/F
610 Cha Kwo Ling Road, Kowloon
Tel:23489211-4 Fax:(852)27727666

DWG NO. : J861-SD-GB-SE-5104 REV. :