



工程指示 / 要求簡箋 ENGINEER INSTRUCTIONS(E.I.)

工程指示編號:	EI- 9394	修改版本:	C
	HK- 0042		
工程編號:	J 861	工程名稱:	己連拿利
收件人:	生統/技術部	發件人:	細佬
工程項目:	幕牆設計修改	日期:	22/01/2026

<input type="checkbox"/> 原合約工程包	<input type="checkbox"/> 原合約工程加 / 減賬 QT-	<input type="checkbox"/> 新工程報價 QT-
---------------------------------	--	------------------------------------

信件批核號碼/圖紙參考編號:	批核模具圖紙編號:
客戶指示附件:	管理內部批簽署:

<input type="checkbox"/> 初步鋁料 B.M.	<input type="checkbox"/> 加工拆圖, 然後生產	<input type="checkbox"/> 尺寸表
<input type="checkbox"/> 正式鋁料 B.M.	<input type="checkbox"/> 技術上資料/指示	<input type="checkbox"/> 報價
<input type="checkbox"/> 配件 B.M.	<input type="checkbox"/> 樣辦或貨品說明書	<input type="checkbox"/> 分判合約
<input type="checkbox"/> 其他:		

內容: 給技術部: 請按附頁的資料修改有關的加工。 備注: 1月20日業主在群組通知
完成上列要求日期: 03/02/2026

國內

<input type="checkbox"/> 生產技術總監	<input type="checkbox"/> 連附件	<input checked="" type="checkbox"/> 技術部	<input checked="" type="checkbox"/> 連附件	<input type="checkbox"/> 生產部	<input type="checkbox"/> 連附件
<input type="checkbox"/> 採購部	<input type="checkbox"/> 連附件	<input type="checkbox"/> 生產統籌部	<input type="checkbox"/> 連附件	<input type="checkbox"/> 報關組	<input type="checkbox"/> 連附件
<input type="checkbox"/> 質檢部	<input type="checkbox"/> 連附件	<input type="checkbox"/> 會計部	<input type="checkbox"/> 連附件	<input type="checkbox"/> 機械設計部	<input type="checkbox"/> 連附件
<input type="checkbox"/> 香港辦	<input type="checkbox"/> 連附件	<input type="checkbox"/> 其他:			

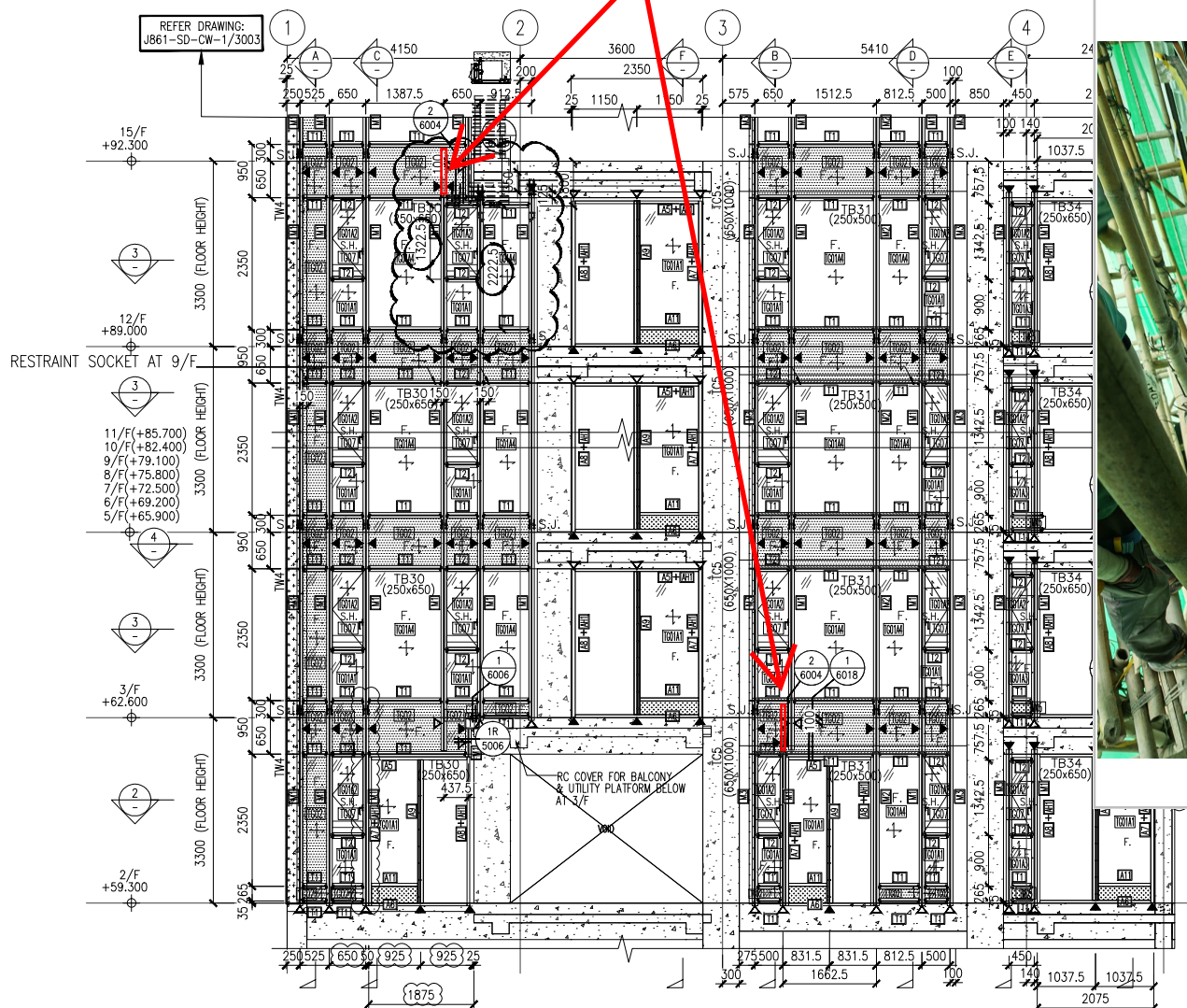
香港

<input type="checkbox"/> 行政部	<input type="checkbox"/> 連附件	<input type="checkbox"/> 會計部	<input type="checkbox"/> 連附件	<input type="checkbox"/> 統籌部	<input type="checkbox"/> 連附件	<input type="checkbox"/> 工程部	<input type="checkbox"/> 連附件
<input type="checkbox"/> 採購部	<input type="checkbox"/> 連附件	<input type="checkbox"/> QS部	<input type="checkbox"/> 連附件	<input type="checkbox"/> 地盤管理	<input type="checkbox"/> 連附件	<input type="checkbox"/> 維修部	<input type="checkbox"/> 連附件

*發件人簽署:	*組別成員批核簽署:
傳遞編號:	項目經理簽署: 

業主在1月20日在群組：要求鋁板的摺邊要直上至上層的橫料底，看以下業主12樓的草圖

● = RESTRAINT SOCKET



1 PART ELEVATION CURTAIN WALL



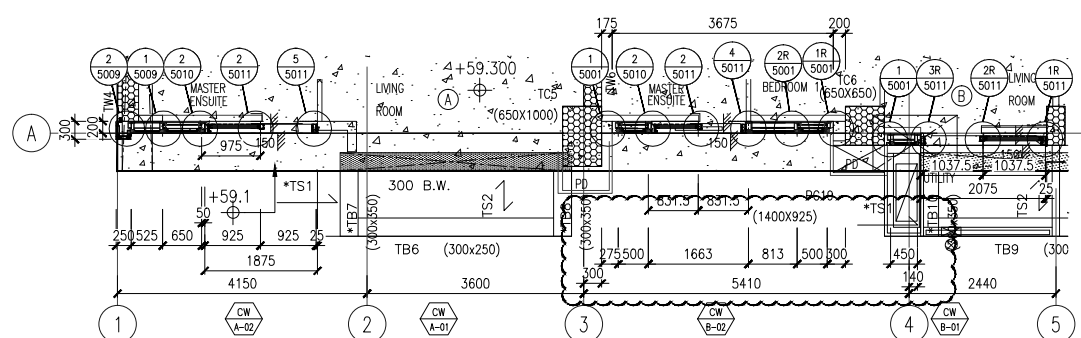
A TYPICAL SECTION CURTAIN WALL

B TYPICAL SECTION CURTAIN WALL

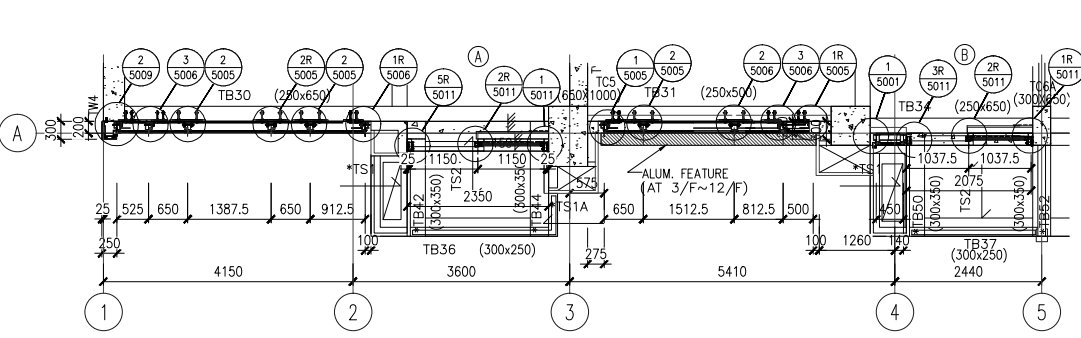
C TYPICAL SECTION CURTAIN WALL

D TYPICAL SECTION CURTAIN WALL

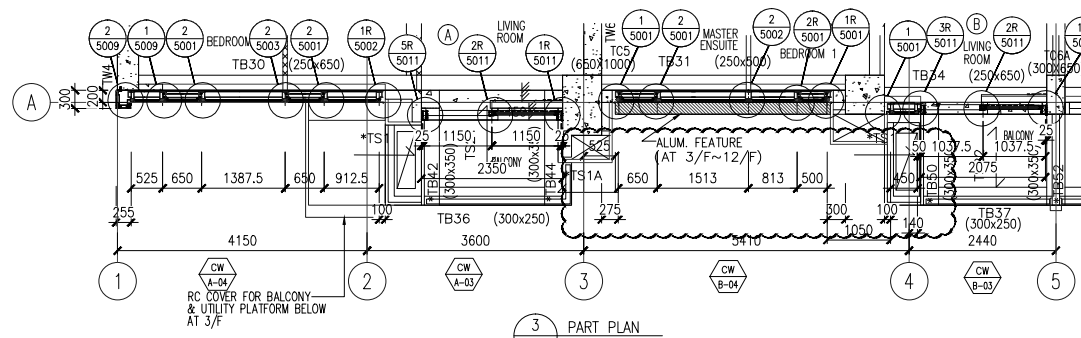
E TYPICAL SECTION CURTAIN WALL



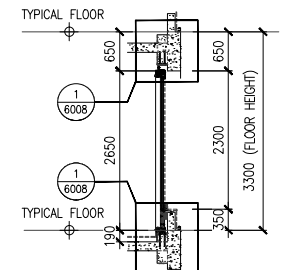
2 PART PLAN (2/F) CURTAIN WALL



4 PART PLAN CURTAIN WALL



3 PART PLAN CURTAIN WALL



F TYPICAL SECTION CURTAIN WALL

- LEGEND :
- TG01A1 8mm HEAT STRENGTHENED GLASS + 12mm AIR SPACE + 10mm TEMPERED GLASS (IGU)
  - TG01A2 8mm HEAT STRENGTHENED GLASS + 12mm AIR SPACE + 8mm TEMPERED GLASS (IGU)
  - TG01A3 8mm HEAT STRENGTHENED GLASS WITH (FROSTED) AT SURFACE #3 + 12mm AIR SPACE + 10mm TEMPERED GLASS (IGU)
  - TG01A4 8mm HEAT STRENGTHENED GLASS + 12mm AIR SPACE + 12mm TEMPERED GLASS (IGU)
  - TG02 12mm HEAT STRENGTHENED GLASS W/2mm THK. ALUM. BACK PANEL
  - TG07 10mm CLEAR TEMPERED GLASS
  - TM05 3mm THK ALUM. CLADDING DARK GREY COLOUR CODE: KM3E97023C (ALL CURTAIN WALL MULLION & TRANSOM FRAME IN DARK GREY COLOUR)
- F. - FIXED GLASS  
 S.H. - SIDE HUNG OPENABLE WINDOW  
 ▲ - SUPPORT POINT (WIND LOAD + DEAD LOAD)  
 ▲ - SUPPORT POINT (WIND LOAD)  
 S.J. - STACK JOINT REF TO J861-SD-CW-5016

NOTE :

- ALL DIMENSIONS ARE IN mm.
- ALL ELEVATIONS ARE VIEWED FROM OUTSIDE.
- ALL DIMENSIONS TO BE VERIFIED ON SITE BEFORE FABRICATION.

LEGEND :

- X1 - DETAIL MARK NO.
- X001 - REFER SHEET NO.

- F.F.L. --- FINISHED FLOOR LEVEL
- S.F.L. --- STRUCTURAL FLOOR LEVEL
- ⊗ --- REVERSED DETAIL

B	8/11/2024	GENERAL REVISED	
A	16/9/2024	GENERAL REVISED	
NO.	DATE	REVISED	BY

CLIENT :  
MILLION BASE PROPERTIES LIMITED

ARCHITECT :  
WONG TUNG & PARTNERS LIMITED  
ARCHITECTS & PLANNERS

STRUCTURAL ENGINEER :  
SWW & ASSOCIATES LTD.  
STRUCTURAL ENGINEERS & AUTHORIZED PERSONNEL

MAIN CONTRACTOR :  
顯利工程有限公司  
HIEN LEE ENGINEERING CO., LTD.

美特鋁質有限公司  
MIDI ALUMINIUM FABRICATOR LTD.  
Units 6-8, Sunray Industrial Centre, 1/F  
610 Cha Kwo Ling Road, Kowloon  
Tel: 23489211-4 Fax: (852) 2727666

JOB NO. : J-861

PROJECT :  
PROPOSED RESIDENTIAL DEVELOPMENT AT NOS. 3-6 GLENEALY, CENTRAL, HONG KONG

TITLE :  
PART ELEVATION FOR CURTAIN WALL

DATE : 06-Sep.-24 SCALE : 1:60(A1)

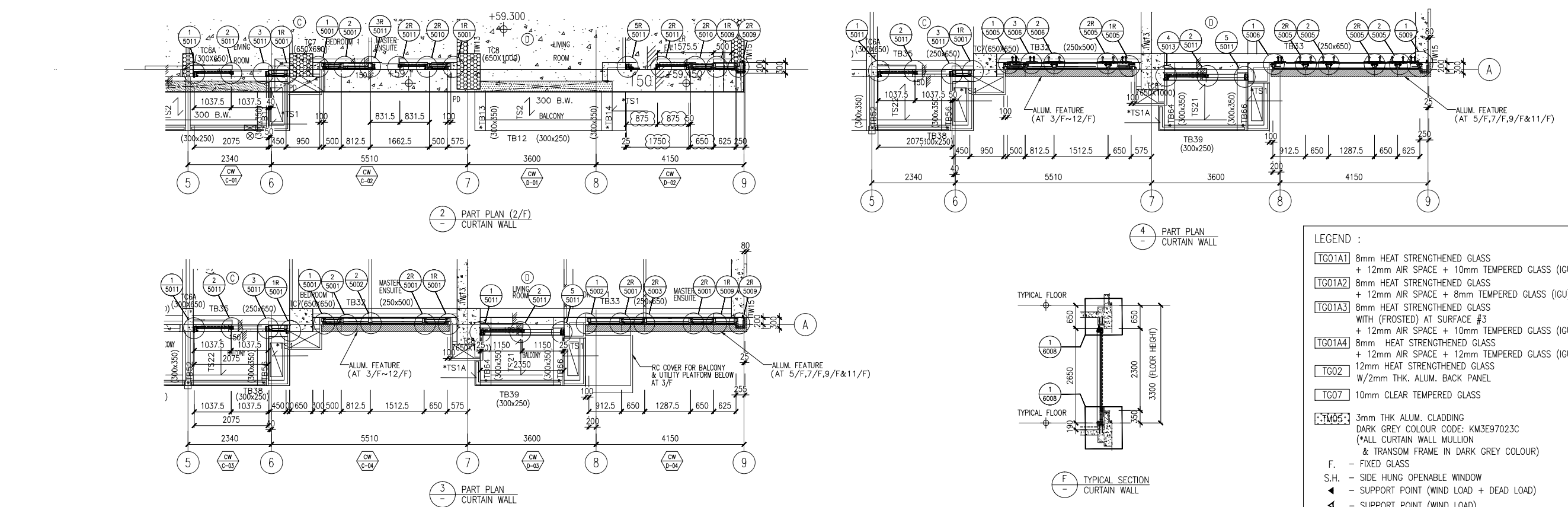
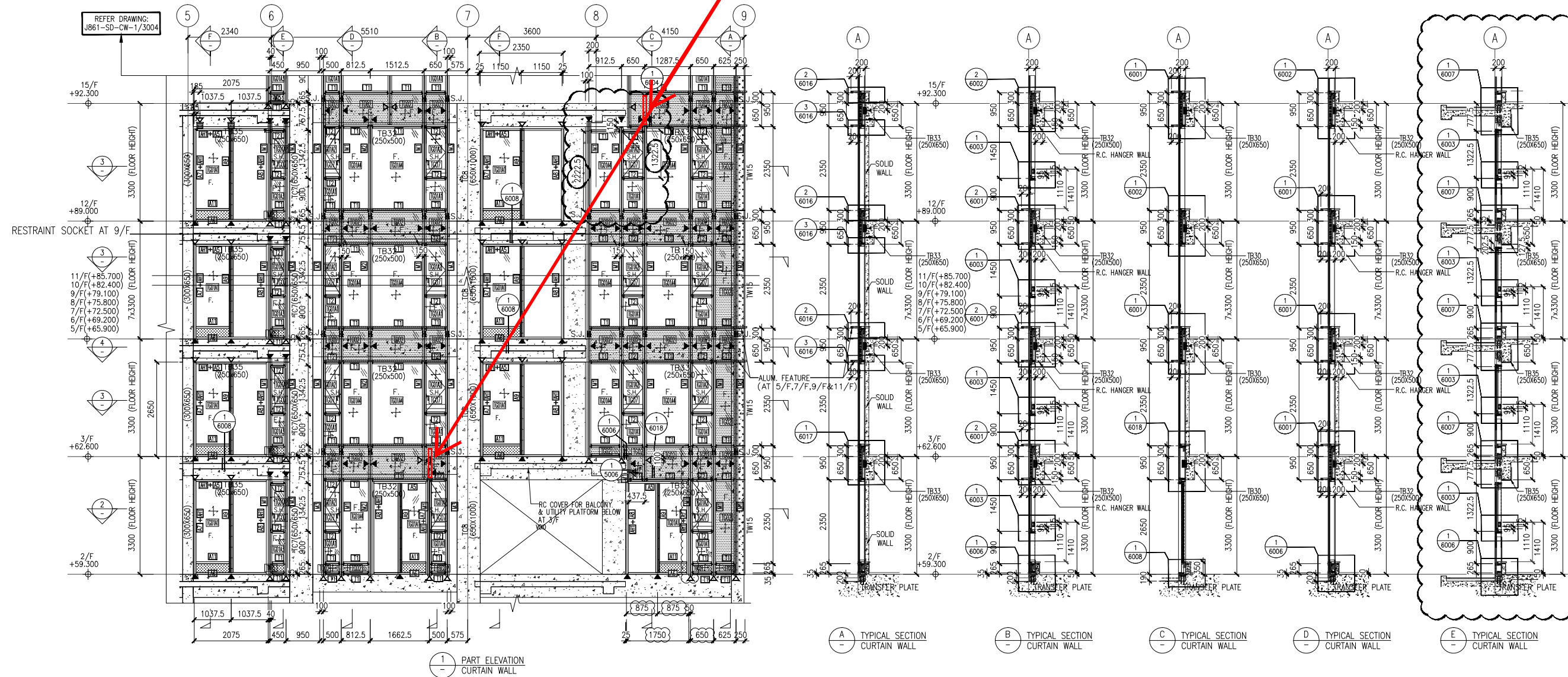
DRAWN BY : Asing CHECKED BY :

DWG NO. : J861-SD-CW-3001 REV. : B

WONG TUNG & PARTNERS LTD.	
APPROVED	
APPROVED AS NOTED	
APPROVED AS NOTED & RESUBMIT	
RESUBMIT	
NO COMMENT	
REFER OTHER CONSULTANT'S COMMENTS	
Reviewed for compliance with the design intent. Comments made shall apply to all similar conditions & details, not just the ones cited.	
The approval shall not be construed as relieving the contractor for compliance with the contract documents & requirements.	
Reviewed By	Date

要求鋁板的摺邊要直上至上層的橫料底,和圖號3001的修改一樣

● = RESTRAINT SOCKET



NOTE:  
 1. ALL DIMENSIONS ARE IN mm.  
 2. ALL ELEVATIONS ARE VIEWED FROM OUTSIDE.  
 3. ALL DIMENSIONS TO BE VERIFIED ON SITE BEFORE FABRICATION.

LEGEND:  
 (X1) - DETAIL MARK NO.  
 (X001) - REFER SHEET NO.

1. F.F.L. --- FINISHED FLOOR LEVEL  
 2. S.F.L. --- STRUCTURAL FLOOR LEVEL  
 3. (R) --- REVERSED DETAIL

B	8/11/2024	GENERAL REVISED	
A	16/9/2024	GENERAL REVISED	
NO.	DATE	REVISED	BY

CLIENT:  
 MILLION BASE PROPERTIES LIMITED

ARCHITECT:  
**WONG TUNG & PARTNERS LIMITED**  
 ARCHITECTS & PLANNERS

STRUCTURAL ENGINEER:  
**SWW & ASSOCIATES LTD.**  
 邵賢偉建築工程師

MAIN CONTRACTOR:  
**顯利工程有限公司**  
 HIEN LEE ENGINEERING CO., LTD.

**美特鋁質有限公司**  
 MIDI ALUMINIUM FABRICATOR LTD.  
 Units 6-8, Sunray Industrial Centre, 1/F  
 610 Cha Kwo Ling Road, Kowloon  
 Tel: 23489211-4 Fax: (852) 2727666

JOB NO.: J-861

PROJECT:  
 PROPOSED RESIDENTIAL  
 DEVELOPMENT AT NOS. 3-6  
 GLENEALY, CENTRAL, HONG KONG

TITLE:  
 PART ELEVATION  
 FOR CURTAIN WALL

DATE: 06-Sep.-24 SCALE: 1:60(A1)

DRAWN BY: Asing CHECKED BY:

DWG NO.: J861-SD-CW-3002 REV.: B

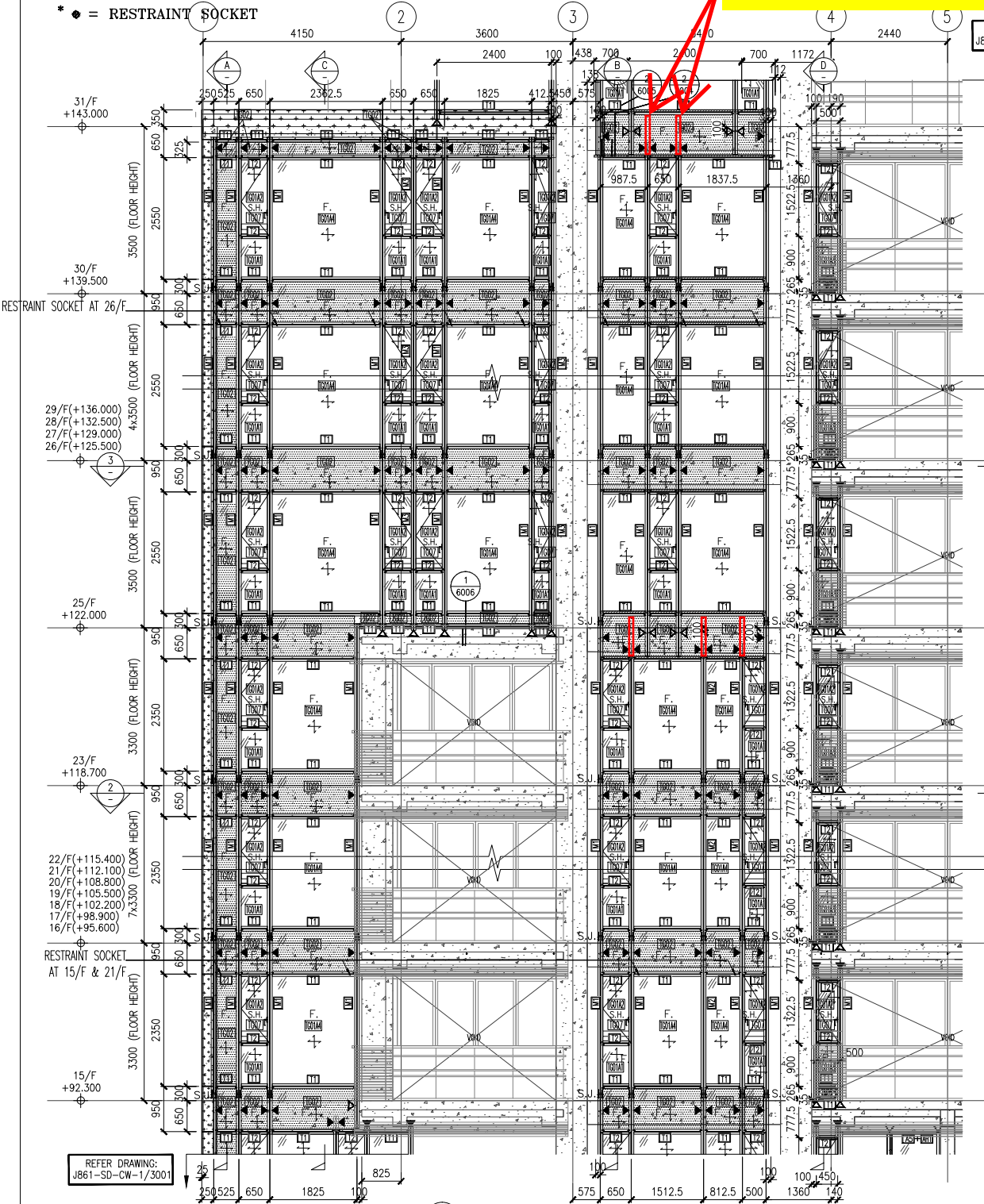
LEGEND:

- TG01A1 8mm HEAT STRENGTHENED GLASS + 12mm AIR SPACE + 10mm TEMPERED GLASS (IGU)
- TG01A2 8mm HEAT STRENGTHENED GLASS + 12mm AIR SPACE + 8mm TEMPERED GLASS (IGU)
- TG01A3 8mm HEAT STRENGTHENED GLASS WITH (FROSTED) AT SURFACE #3 + 12mm AIR SPACE + 10mm TEMPERED GLASS (IGU)
- TG01A4 8mm HEAT STRENGTHENED GLASS + 12mm AIR SPACE + 12mm TEMPERED GLASS (IGU)
- TG02 12mm HEAT STRENGTHENED GLASS W/2mm THK. ALUM. BACK PANEL
- TG07 10mm CLEAR TEMPERED GLASS
- FM05 3mm THK ALUM. CLADDING DARK GREY COLOUR CODE: KM3E97023C (ALL CURTAIN WALL MULLION & TRANSOM FRAME IN DARK GREY COLOUR)

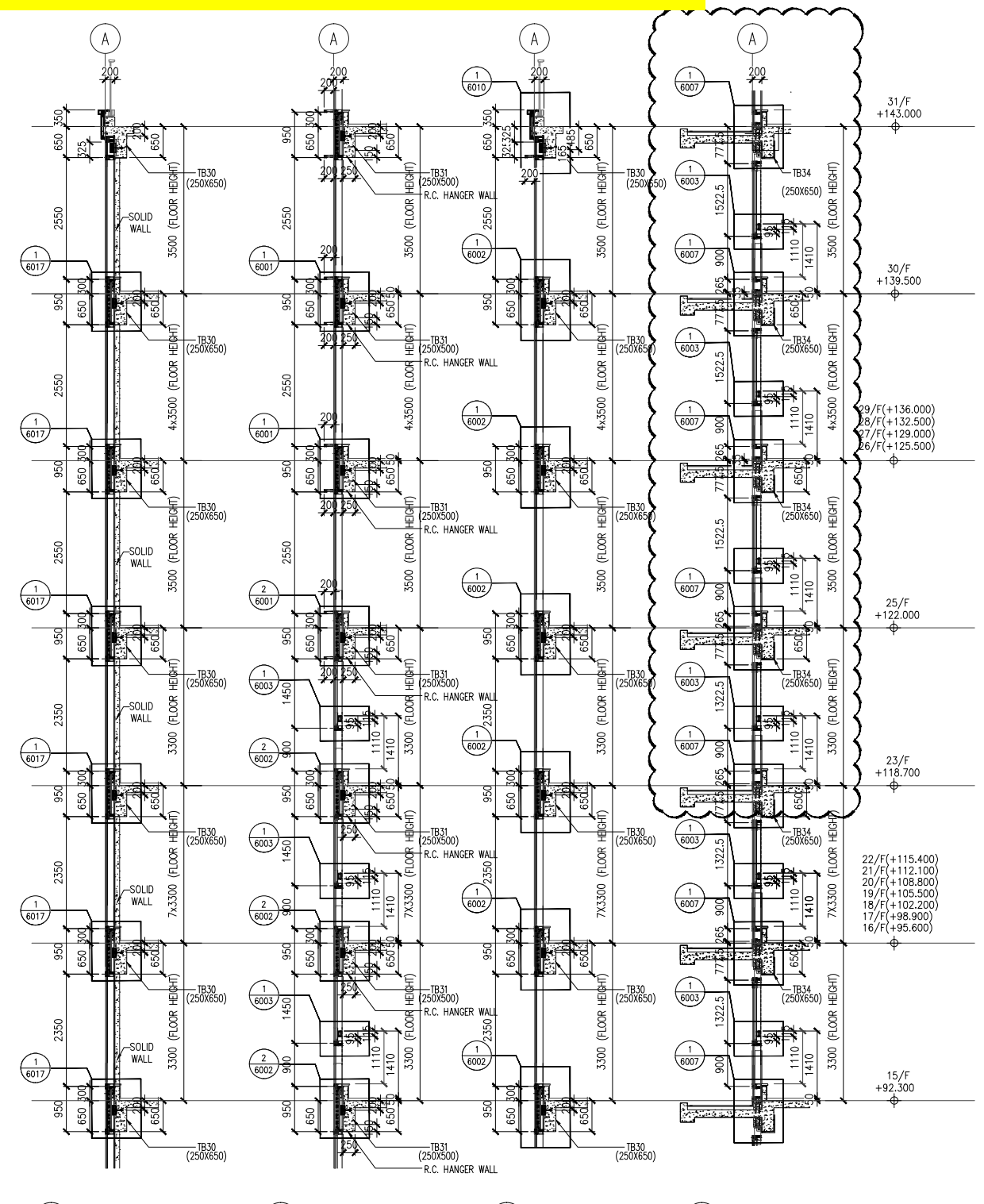
F. - FIXED GLASS  
 S.H. - SIDE HUNG OPENABLE WINDOW  
 ▲ - SUPPORT POINT (WIND LOAD + DEAD LOAD)  
 ▲ - SUPPORT POINT (WIND LOAD)  
 S.J. - STACK JOINT REF TO J861-SD-CW-5016

<b>WONG TUNG &amp; PARTNERS LTD.</b>	
APPROVED	
APPROVED AS NOTED	
APPROVED AS NOTED & RESUBMIT	
RESUBMIT	
NO COMMENT	
REFER OTHER CONSULTANT'S COMMENTS	
Reviewed for compliance with the design intent. Comments made shall apply to all similar conditions & details, not just the ones cited. The approval shall not be construed as relieving the contractor for compliance with the contract documents & requirements.	
Reviewed By	Date

要求鋁板的摺邊要直上至上層的橫料底,和圖號3001的修改一樣



1 PART ELEVATION CURTAIN WALL

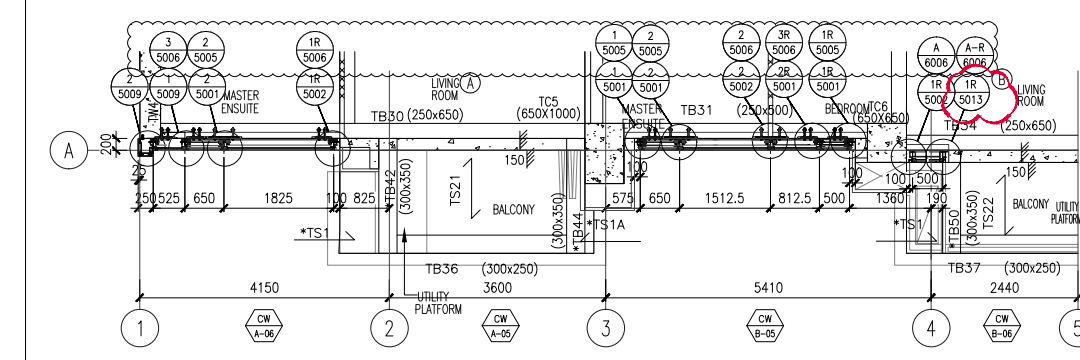


A TYPICAL SECTION CURTAIN WALL

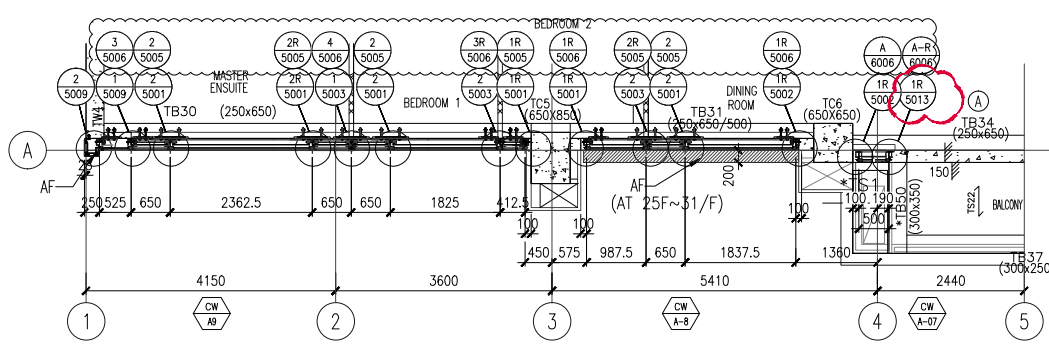
B TYPICAL SECTION CURTAIN WALL

C TYPICAL SECTION CURTAIN WALL

D TYPICAL SECTION CURTAIN WALL



2 PART PLAN CURTAIN WALL



3 PART PLAN CURTAIN WALL

- LEGEND :
- TG01A1 8mm HEAT STRENGTHENED GLASS + 12mm AIR SPACE + 10mm TEMPERED GLASS (IGU)
  - TG01A2 8mm HEAT STRENGTHENED GLASS + 12mm AIR SPACE + 8mm TEMPERED GLASS (IGU)
  - TG01A3 8mm HEAT STRENGTHENED GLASS WITH (FROSTED) AT SURFACE #3 + 12mm AIR SPACE + 10mm TEMPERED GLASS (IGU)
  - TG01A4 8mm HEAT STRENGTHENED GLASS + 12mm AIR SPACE + 12mm TEMPERED GLASS (IGU)
  - TG02 12mm HEAT STRENGTHENED GLASS W/2mm THK. ALUM. BACK PANEL
  - TG07 10mm CLEAR TEMPERED GLASS
  - TM05 3mm THK ALUM. CLADDING DARK GREY COLOUR CODE: KM3E97023C (\*ALL CURTAIN WALL MULLION & TRANSOM FRAME IN DARK GREY COLOUR)
- F. - FIXED GLASS  
 S.H. - SIDE HUNG OPENABLE WINDOW  
 ▲ - SUPPORT POINT (WIND LOAD + DEAD LOAD)  
 ◀ - SUPPORT POINT (WIND LOAD)  
 S.J. - STACK JOINT REF TO J861-SD-CW-5016

NOTE :

- ALL DIMENSIONS ARE IN mm.
- ALL ELEVATIONS ARE VIEWED FROM OUTSIDE.
- ALL DIMENSIONS TO BE VERIFIED ON SITE BEFORE FABRICATION.

LEGEND :

X1 - DETAIL MARK NO.  
 X001 - REFER SHEET NO.

- F.F.L. --- FINISHED FLOOR LEVEL
- S.F.L. --- STRUCTURAL FLOOR LEVEL
- ⊗ --- REVERSED DETAIL

B	8/11/2024	GENERAL REVISED	
A	16/9/2024	GENERAL REVISED	
NO.	DATE	REVISED	BY

CLIENT :  
 MILLION BASE PROPERTIES LIMITED

ARCHITECT :  
 WONG TUNG & PARTNERS LIMITED  
 ARCHITECTS & PLANNERS

STRUCTURAL ENGINEER :  
 SWW SYW & ASSOCIATES LTD.  
 鄧賢偉建築工程師

MAIN CONTRACTOR :  
 顯利工程有限公司  
 HIEN LEE ENGINEERING CO., LTD.

美特鋁質有限公司  
 MIDI ALUMINIUM FABRICATOR LTD.  
 Units 6-8, Sunray Industrial Centre, 1/F  
 610 Cha Kwo Ling Road, Kowloon  
 Tel: 23489211-4 Fax: (852) 2727666

JOB NO. : J-861

PROJECT :  
 PROPOSED RESIDENTIAL DEVELOPMENT AT NOS. 3-6 GLENEALY, CENTRAL, HONG KONG

TITLE :  
 PART ELEVATION FOR CURTAIN WALL

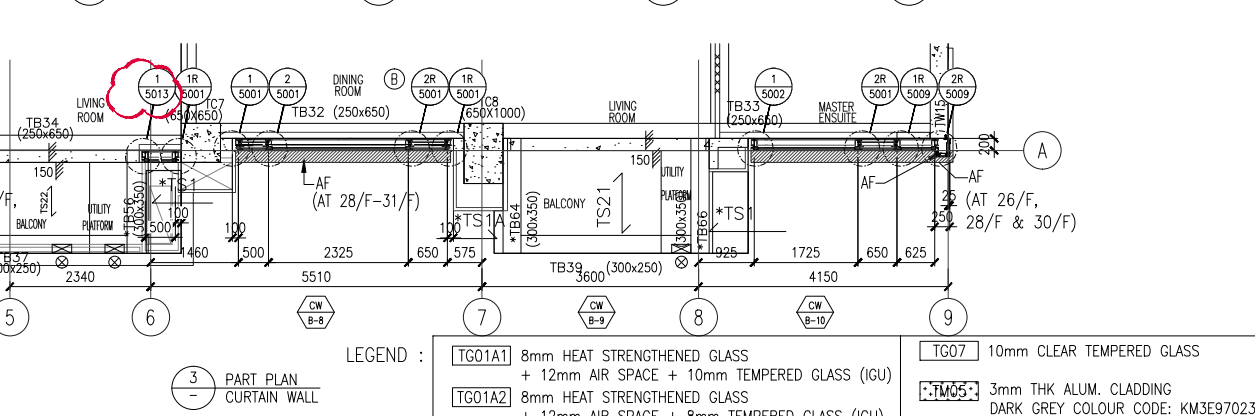
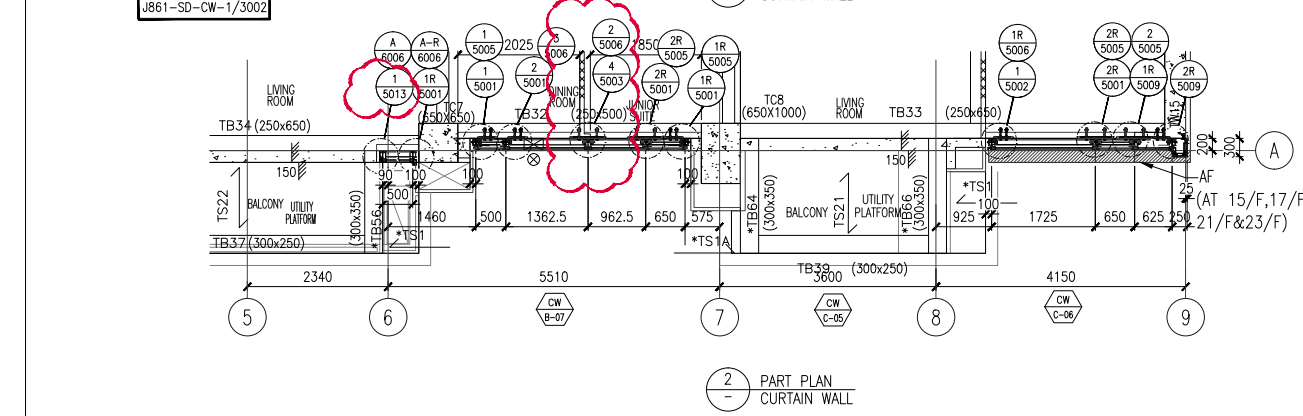
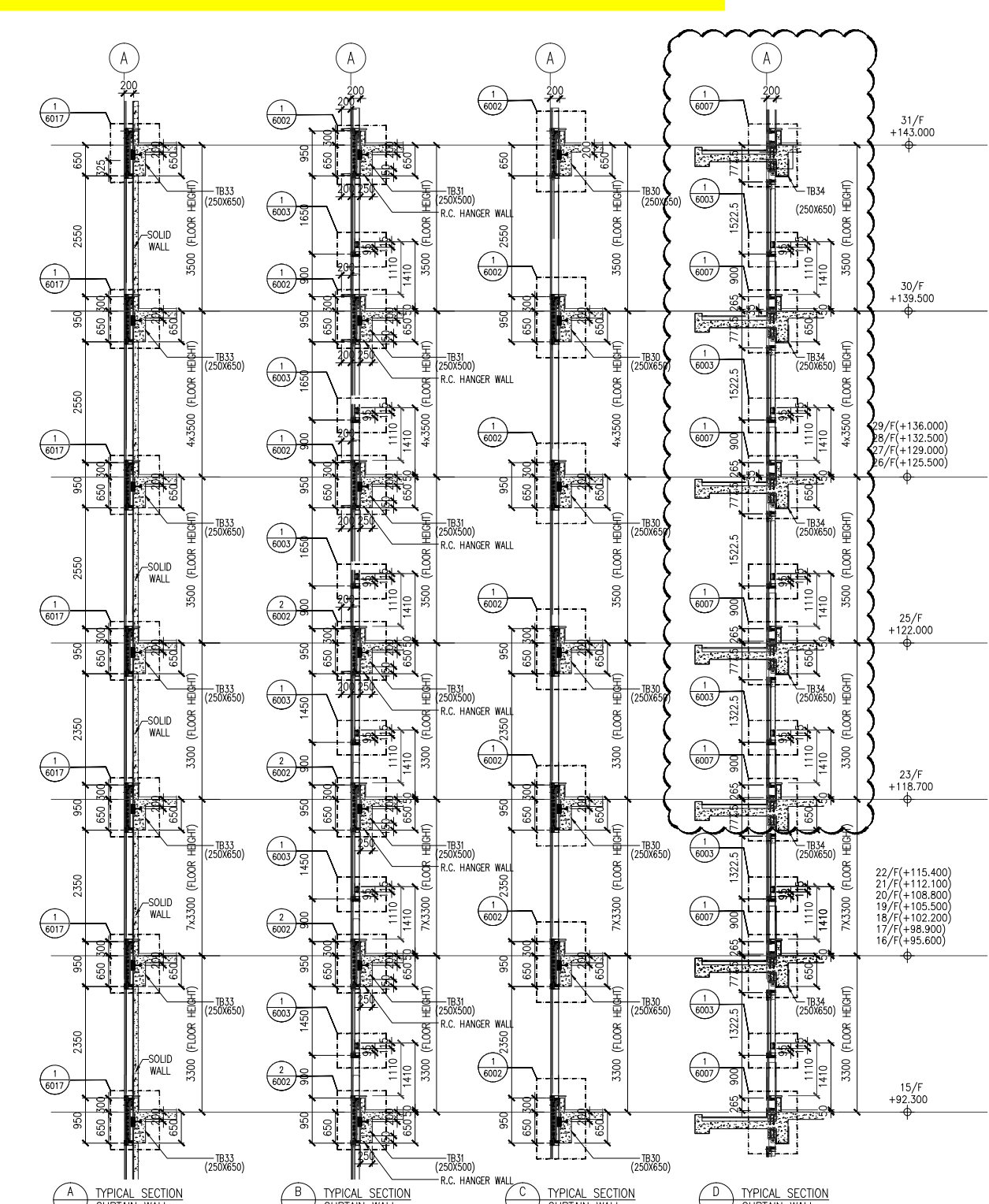
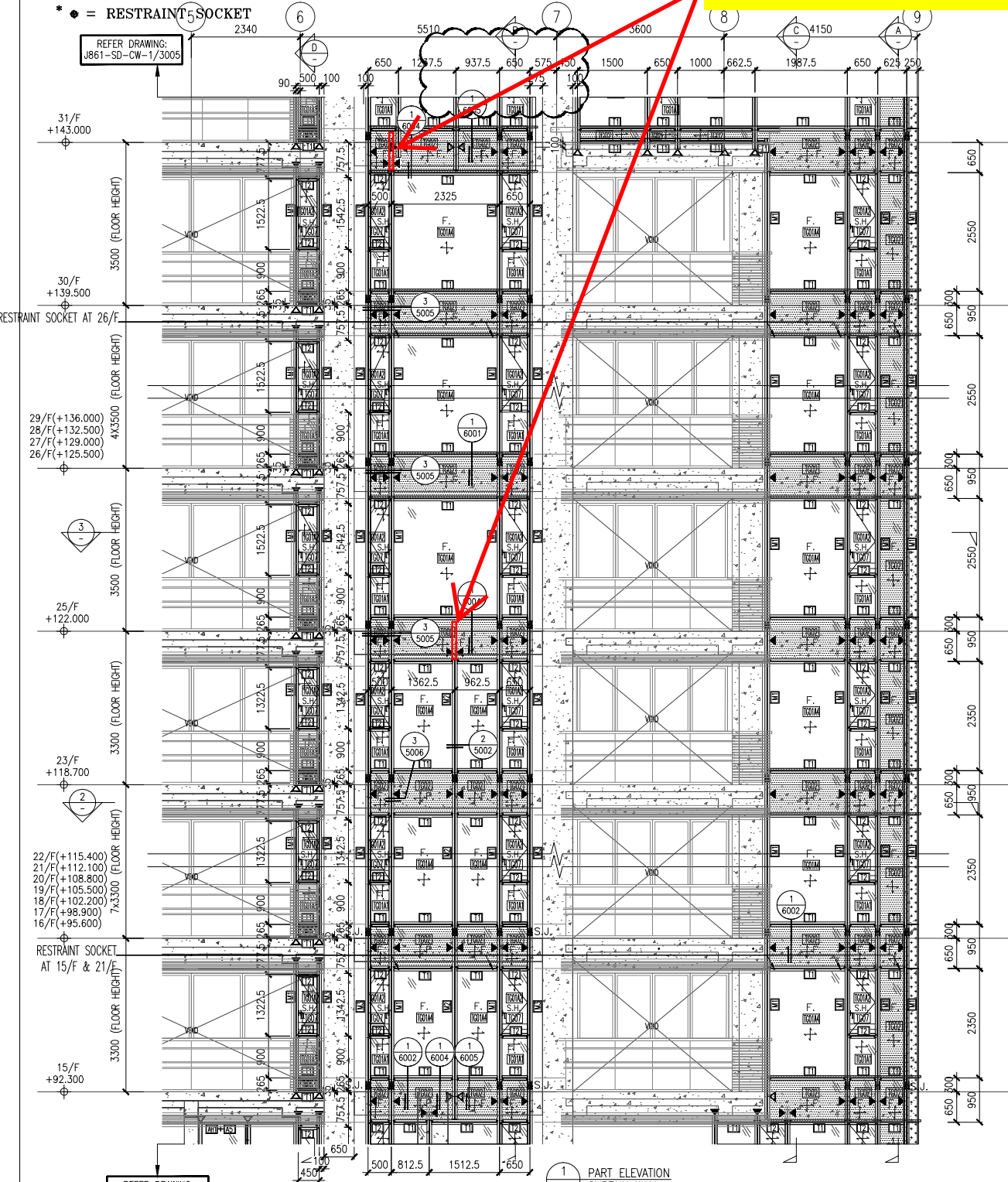
DATE : 06-Sep.-24	SCALE : 1:60(A1)
DRAWN BY : Asing	CHECKED BY :
DWG NO. : J861-SD-CW-3003	REV. : B

WONG TUNG & PARTNERS LTD.  
 APPROVED  
 APPROVED AS NOTED  
 APPROVED AS NOTED & RESUBMIT  
 RESUBMIT  
 NO COMMENT  
 REFER OTHER CONSULTANT'S COMMENTS

Reviewed for compliance with the design intent. Comments made shall apply to all similar conditions & details, not just the ones cited.  
 The approval shall not be construed as relieving the contractor for compliance with the contract documents & requirements.

Reviewed By \_\_\_\_\_ Date \_\_\_\_\_

要求鋁板的摺邊要直上至上層的橫料底,和圖號3001的修改一樣



- LEGEND :
- TG01A1 8mm HEAT STRENGTHENED GLASS + 12mm AIR SPACE + 10mm TEMPERED GLASS (IGU)
  - TG01A2 8mm HEAT STRENGTHENED GLASS + 12mm AIR SPACE + 8mm TEMPERED GLASS (IGU)
  - TG01A3 8mm HEAT STRENGTHENED GLASS WITH (FROSTED) AT SURFACE #3 + 12mm AIR SPACE + 10mm TEMPERED GLASS (IGU)
  - TG01A4 8mm HEAT STRENGTHENED GLASS + 12mm AIR SPACE + 12mm TEMPERED GLASS (IGU)
  - TG02 12mm HEAT STRENGTHENED GLASS W/2mm THK. ALUM. BACK PANEL
  - TG07 10mm CLEAR TEMPERED GLASS
  - TM05 3mm THK ALUM. CLADDING DARK GREY COLOUR CODE: KM3E97023C (ALL CURTAIN WALL MULLION & TRANSOM FRAME IN DARK GREY COLOUR)
- F. - FIXED GLASS  
 S.H. - SIDE HUNG OPENABLE WINDOW  
 ▲ - SUPPORT POINT (WIND LOAD + DEAD LOAD)  
 ▲ - SUPPORT POINT (WIND LOAD)  
 S.J. - STACK JOINT REF TO J861-SD-CW-5016

NOTE :

- ALL DIMENSIONS ARE IN mm.
- ALL ELEVATIONS ARE VIEWED FROM OUTSIDE.
- ALL DIMENSIONS TO BE VERIFIED ON SITE BEFORE FABRICATION.

LEGEND :

(X1) - DETAIL MARK NO.  
 (X001) - REFER SHEET NO.

- F.F.L. --- FINISHED FLOOR LEVEL
- S.F.L. --- STRUCTURAL FLOOR LEVEL
- (R) --- REVERSED DETAIL

B	8/11/2024	GENERAL REVISED	
A	16/9/2024	GENERAL REVISED	
NO.	DATE	REVISED	BY

CLIENT :  
MILLION BASE PROPERTIES LIMITED

ARCHITECT :  
WONG TUNG & PARTNERS LIMITED  
ARCHITECTS & PLANNERS

STRUCTURAL ENGINEER :  
SWW | SYW & ASSOCIATES LTD.  
鄧賢偉建築工程師

MAIN CONTRACTOR :  
顯利工程有限公司  
HIEN LEE ENGINEERING CO., LTD.

美特鋁質有限公司  
MIDI ALUMINIUM FABRICATOR LTD.  
Units 6-8, Sunray Industrial Centre, 1/F  
610 Cha Kwo Ling Road, Kowloon  
Tel:23489211-4 Fax:(852)2727666

JOB NO. : J-861

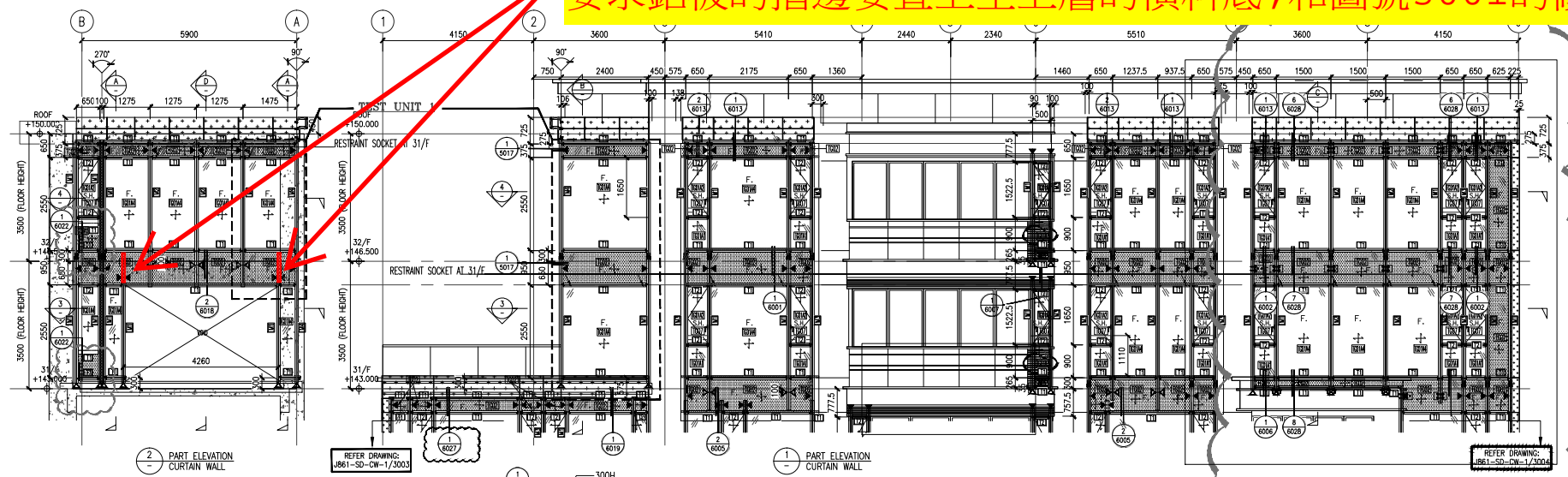
PROJECT :  
PROPOSED RESIDENTIAL DEVELOPMENT AT NOS. 3-6 GLENEALY, CENTRAL, HONG KONG

TITLE :  
PART ELEVATION FOR CURTAIN WALL

DATE : 06-Sep.-24	SCALE : 1:60(A1)
DRAWN BY : Asing	CHECKED BY :
DWG NO. : J861-SD-CW-3004	REV. : C

WONG TUNG & PARTNERS LTD.	
APPROVED	
APPROVED AS NOTED	
APPROVED AS NOTED & RESUBMIT	
RESUBMIT	
NO COMMENT	
REFER OTHER CONSULTANT'S COMMENTS	
Reviewed for compliance with the design intent. Comments made shall apply to all similar conditions & details, not just the ones cited. The approval shall not be construed as relieving the contractor for compliance with the contract documents & requirements.	
Reviewed By	Date

要求鋁板的摺邊要直上至上層的橫料底,和圖號3001的修改一樣



2. ALL ELEVATIONS ARE VIEWED FROM OUTSIDE.  
 3. ALL DIMENSIONS TO BE VERIFIED ON SITE BEFORE FABRICATION.

LEGEND :

X1 --- DETAIL MARK NO.  
 3001 --- REFER SHEET NO.

1. F.F.L. --- FINISHED FLOOR LEVEL  
 2. S.F.L. --- STRUCTURAL FLOOR LEVEL  
 3. (Z) --- REVERSED DETAIL

B	8/11/2024	GENERAL REVISED
A	16/9/2024	GENERAL REVISED
NO.	DATE	REVISED BY

CLIENT :  
 MILLION BASE PROPERTIES LIMITED

ARCHITECT :  
**WONG TUNG & PARTNERS LIMITED**  
 ARCHITECTURAL PLANNERS

STRUCTURAL ENGINEER :  
**SYW SYW & ASSOCIATED LTD.**  
 謝安祥建築工程事務所

MAIN CONTRACTOR :  
**顯利工程有限公司**  
 HIEN LEE ENGINEERING CO., LTD.

**MIDI ALUMINIUM FABRICATOR LTD.**  
 Units 6-8, Sunny Industrial Centre, 1/F  
 610 Chee Kwo Ling Road, Kowloon  
 Tel: 23489211-4 Fax: (852) 27727666

JOB NO. : J-861  
 PROJECT : PROPOSED RESIDENTIAL DEVELOPMENT AT NOS. 3-6 GLEANEALY, CENTRAL, HONG KONG

TITLE : PART ELEVATION FOR CURTAIN WALL

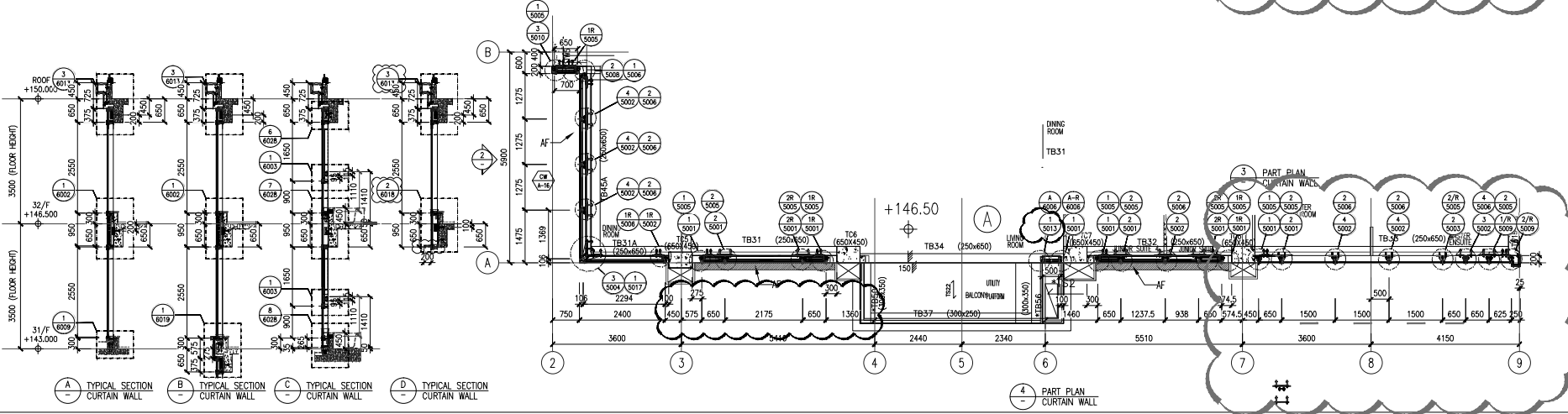
DATE : 06-Sep-24 SCALE : 1:60(A1)  
 DRAWN BY : Asing CHECKED BY :  
 DWG NO. : J861-SD-CW-3005 REV. : C

LEGEND :

TG01A1 8mm HEAT STRENGTHENED GLASS + 12mm AIR SPACE + 10mm TEMPERED GLASS (IGU)  
 TG01A2 8mm HEAT STRENGTHENED GLASS + 12mm AIR SPACE + 10mm TEMPERED GLASS (IGU)  
 TG01A3 8mm HEAT STRENGTHENED GLASS WITH (FROSTED) AT SURFACE #3 + 12mm AIR SPACE + 10mm TEMPERED GLASS (IGU)  
 TG01A4 8mm HEAT STRENGTHENED GLASS + 12mm AIR SPACE + 12mm TEMPERED GLASS (IGU)  
 TG02 12mm HEAT STRENGTHENED GLASS W/2mm THK. ALUM. BACK PANEL  
 TG07 10mm CLEAR TEMPERED GLASS

TM05 3mm THK. ALUM. CLADDING DARK GREY COLOUR CODE: KM3E97023C  
 (\*MIL CURTAIN WALL MULLION & TRANSOM FRAME IN DARK GREY COLOUR)

F. --- FIXED GLASS  
 S.H. --- SIDE HUNG OPENABLE WINDOW  
 ▲ --- SUPPORT POINT (WIND LOAD + DEAD LOAD)  
 ▲ --- SUPPORT POINT (WIND LOAD)  
 S.J. --- STACK JOINT REF TO J861-SD-CW-5016



WONG TUNG & PARTNERS LTD.  
 APPROVED  
 APPROVED AS NOTED  
 APPROVED AS NOTED & RESUBMIT  
 RESUBMIT  
 NO COMMENT  
 REFER OTHER CONSULTANT'S COMMENTS  
 Reviewed for compliance with the design intent. Comments made shall apply to all similar conditions & details, not just the one cited.  
 The approval shall not be construed as relieving the contractor for compliance with the contract documents & requirements.  
 Reviewed by ( ) Date ( )