



工程指示 / 要求簡箋 ENGINEER INSTRUCTIONS(E.I.)

工程指示編號:	EI- 8864	修改版本:	J
	HK- 0344		
工程編號:	J 861	工程名稱:	己連拿利
收件人:	生統/技術部	發件人:	細佬
工程項目:	幕牆	日期:	23/04/2025

<input type="checkbox"/> 原合約工程包	<input type="checkbox"/> 原合約工程加 / 減賬 QT-	<input type="checkbox"/> 新工程報價 QT-
---------------------------------	--	------------------------------------

信件批核號碼/圖紙參考編號:	批核模具圖紙編號:
客戶指示附件:	管理內部批簽署:

<input type="checkbox"/> 初步鋁料 B.M.	<input type="checkbox"/> 加工拆圖, 然後生產	<input type="checkbox"/> 尺寸表
<input type="checkbox"/> 正式鋁料 B.M.	<input type="checkbox"/> 技術上資料/指示	<input type="checkbox"/> 報價
<input type="checkbox"/> 配件 B.M.	<input type="checkbox"/> 樣辦或貨品說明書	<input type="checkbox"/> 分判合約
<input type="checkbox"/> 其他:		


內容: 給技術部: 看附頁回覆技術部的問題 另外試水場有安裝的問題, 請看附頁的相片
完成上列要求日期: 25/04/2025

國內

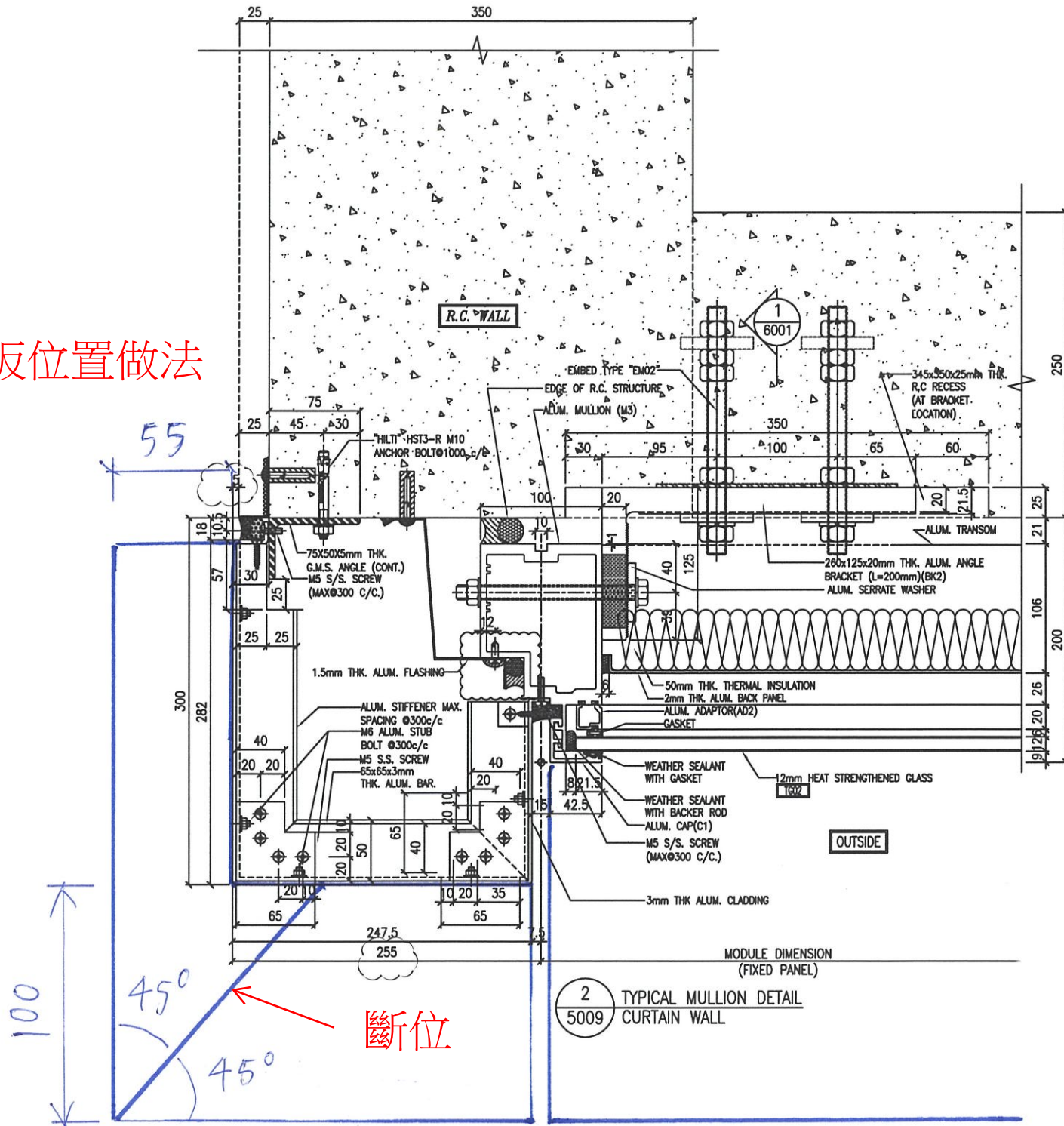
<input type="checkbox"/> 生產技術總監	<input type="checkbox"/> 連附件	<input checked="" type="checkbox"/> 技術部	<input checked="" type="checkbox"/> 連附件	<input type="checkbox"/> 生產部	<input type="checkbox"/> 連附件
<input type="checkbox"/> 採購部	<input type="checkbox"/> 連附件	<input type="checkbox"/> 生產統籌部	<input type="checkbox"/> 連附件	<input type="checkbox"/> 報關組	<input type="checkbox"/> 連附件
<input type="checkbox"/> 質檢部	<input type="checkbox"/> 連附件	<input type="checkbox"/> 會計部	<input type="checkbox"/> 連附件	<input type="checkbox"/> 機械設計部	<input type="checkbox"/> 連附件
<input type="checkbox"/> 香港辦	<input type="checkbox"/> 連附件	<input type="checkbox"/> 其他:			

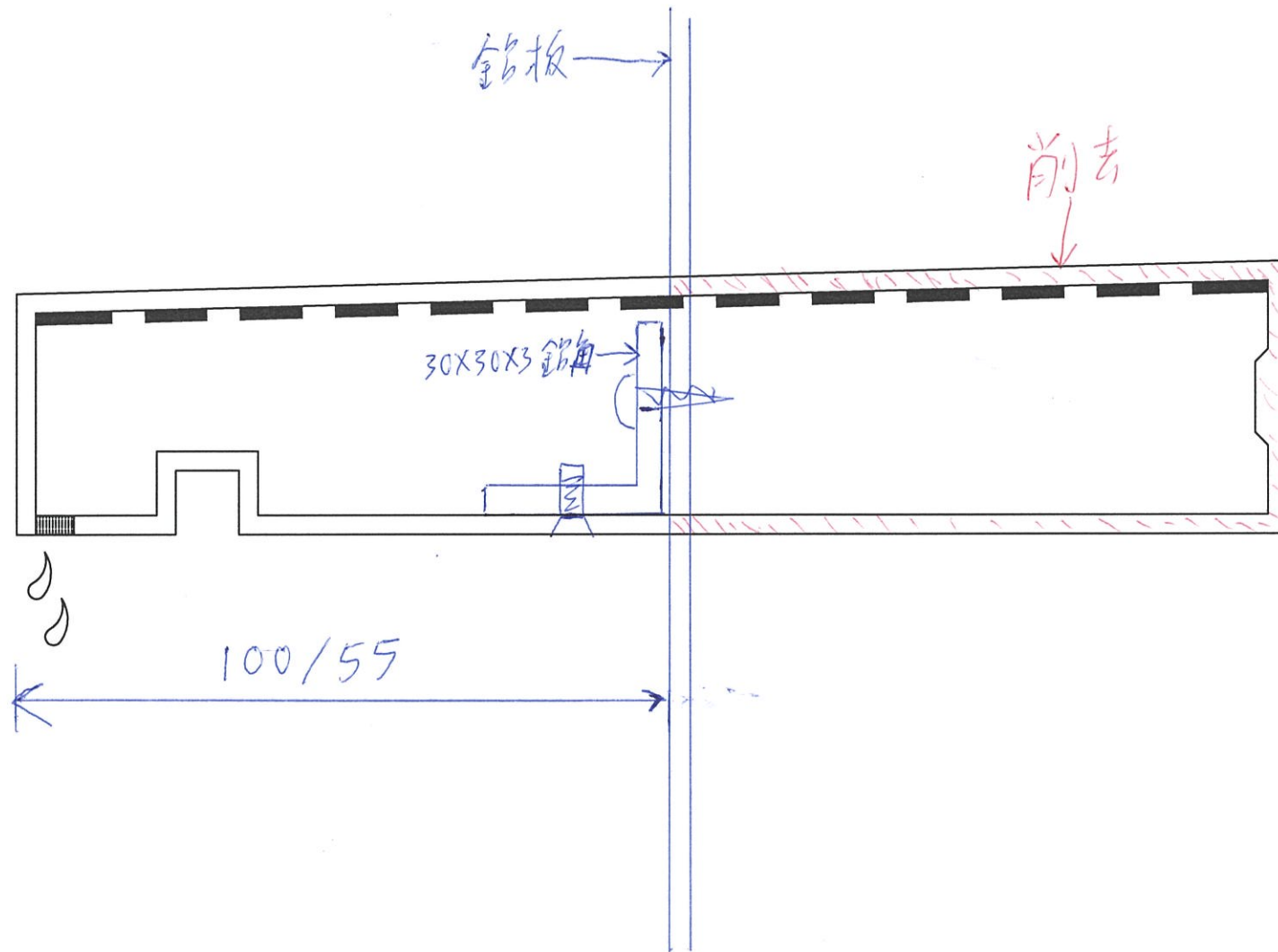
香港

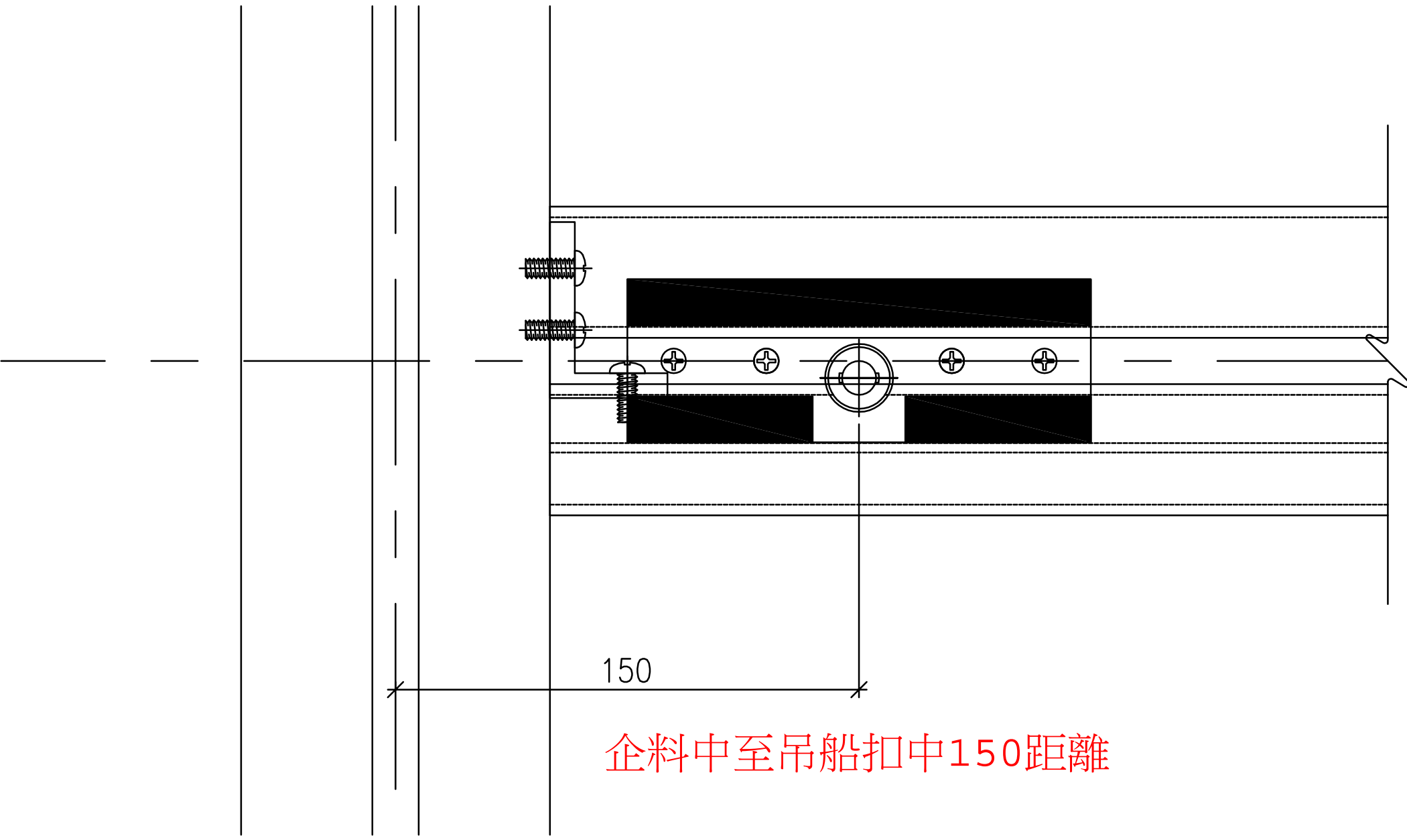
<input type="checkbox"/> 行政部	<input type="checkbox"/> 連附件	<input type="checkbox"/> 會計部	<input type="checkbox"/> 連附件	<input type="checkbox"/> 統籌部	<input type="checkbox"/> 連附件	<input type="checkbox"/> 工程部	<input type="checkbox"/> 連附件
<input type="checkbox"/> 採購部	<input type="checkbox"/> 連附件	<input type="checkbox"/> QS部	<input type="checkbox"/> 連附件	<input type="checkbox"/> 地盤管理	<input type="checkbox"/> 連附件	<input type="checkbox"/> 維修部	<input type="checkbox"/> 連附件

*發件人簽署:	*組別成員批核簽署:
傳遞編號: HK-0344	項目經理簽署: 

裝飾線在鋁板位置做法



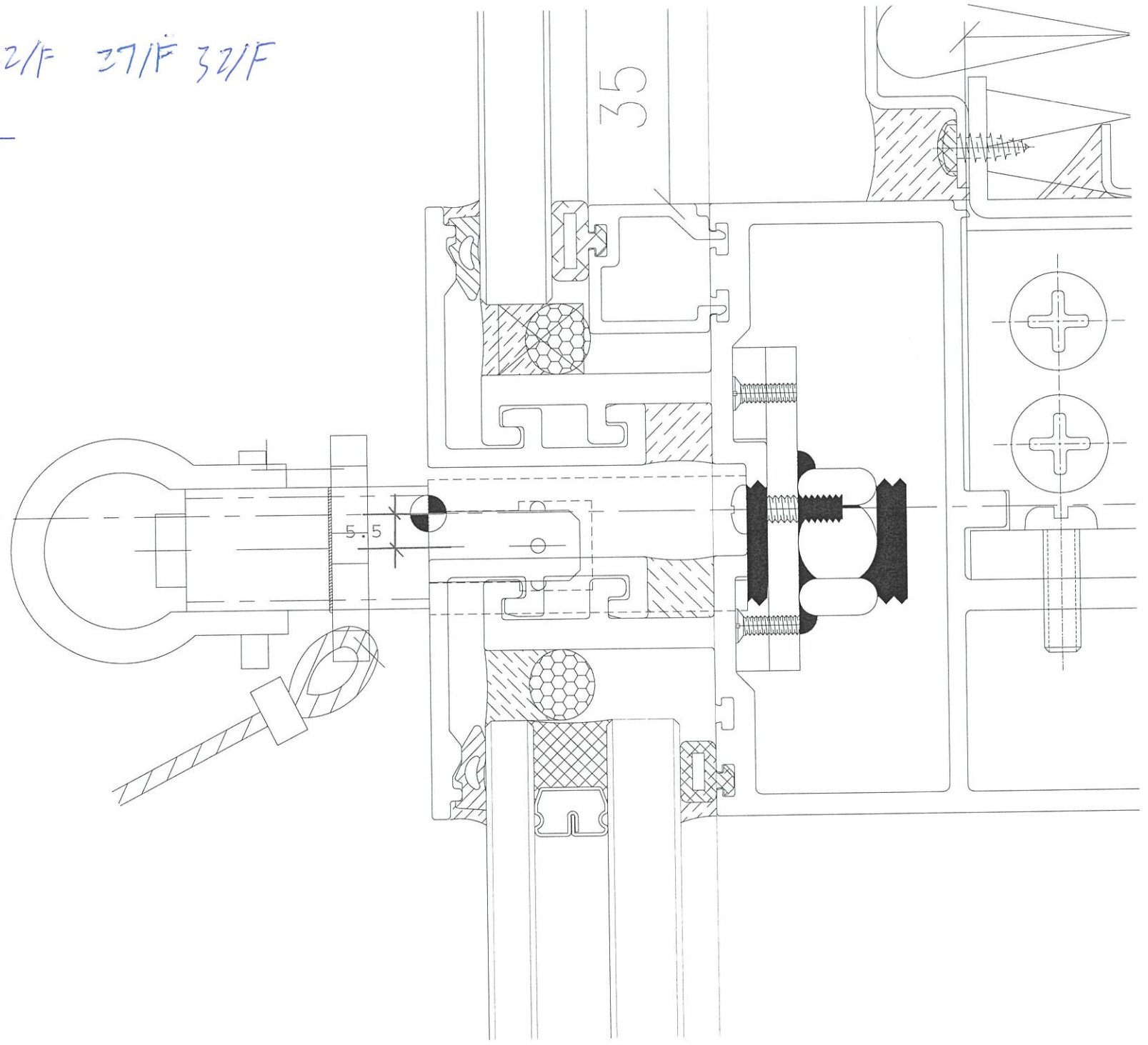
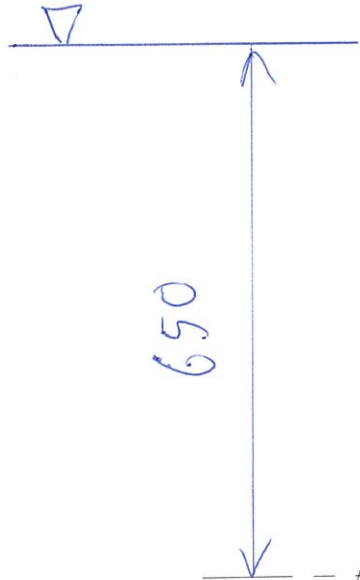




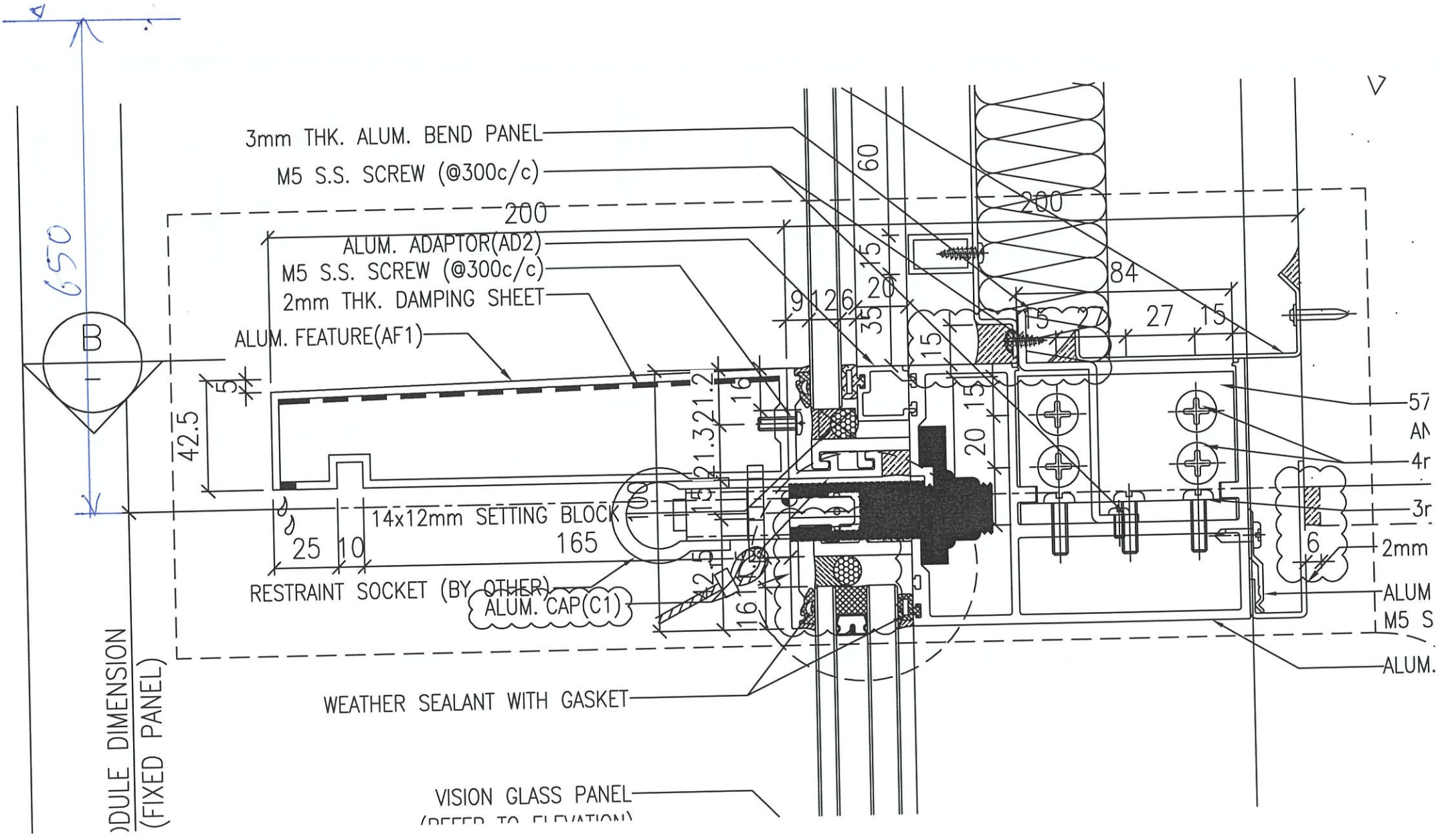
150

企料中至吊船扣中150距離

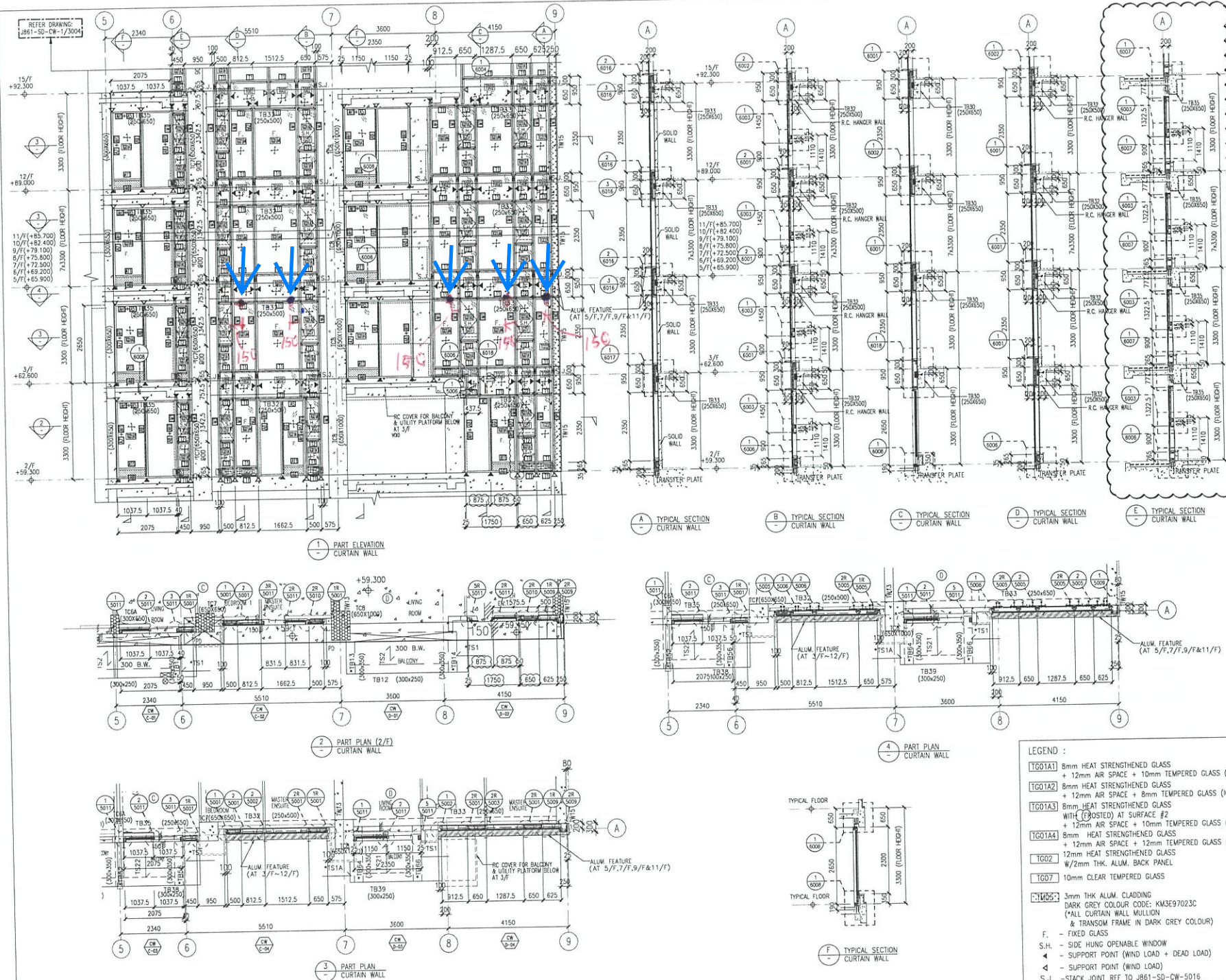
10/F 16/F 22/F 27/F 32/F



10/F 16/F 22/F 27/F 32/F



藍色箭嘴吊船扣的位置



NOTE:
 1. ALL DIMENSIONS ARE IN mm.
 2. ALL ELEVATIONS ARE VIEWED FROM OUTSIDE.
 3. ALL DIMENSIONS TO BE VERIFIED ON SITE BEFORE FABRICATION.

LEGEND:
 (M) DETAIL MARK NO.
 (R) FINISH SHEET NO.
 1. F.F.L. --- FINISHED FLOOR LEVEL
 2. S.F.L. --- STRUCTURAL FLOOR LEVEL
 3. (Z) --- REVERSED DETAIL

B	8/11/2024	GENERAL REVISION	
A	16/9/2024	GENERAL REVISION	
NO.	DATE	REVISION	BY

CLIENT:
MILLION BASE PROPERTIES LIMITED

ARCHITECT:
WONG TUNG & PARTNERS LIMITED
 ARCHITECTS & PLANNERS

STRUCTURAL ENGINEER:
SYW & ASSOCIATES LTD.
 邵賢偉建築工程顧問

MAIN CONTRACTOR:
顯利工程有限公司
 HIEN LEE ENGINEERING CO., LTD.

美特鋁質有限公司
MIDI ALUMINIUM FABRICATOR LTD.
 Units 6-8, Sunny Industrial Centre, 1/F
 610 Cha Kwo Ling Road, Kowloon
 Tel: 23489211-4 Fax: (852) 2727666

JOB NO.: J-B61
 PROJECT: PROPOSED RESIDENTIAL DEVELOPMENT AT NOS. 3-6 GLENEALEY, CENTRAL, HONG KONG

TITLE:
 PART ELEVATION FOR CURTAIN WALL

DATE: 06-Sep-24	SCALE: 1:60(A1)
DRAWN BY: Asing	CHECKED BY:
DWG NO.: J861-SD-CW-3002	REV.: B

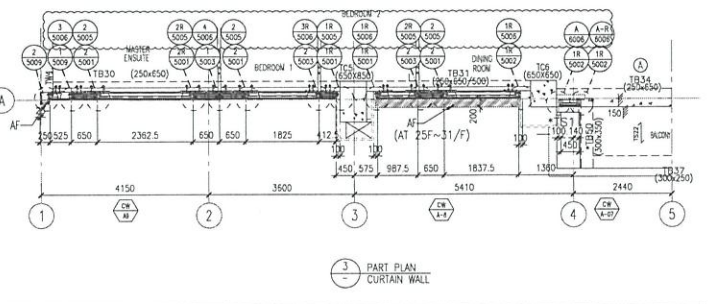
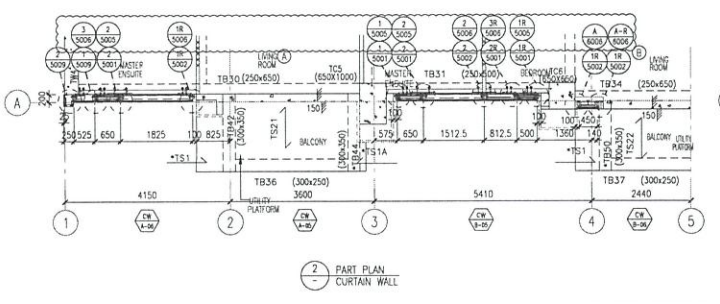
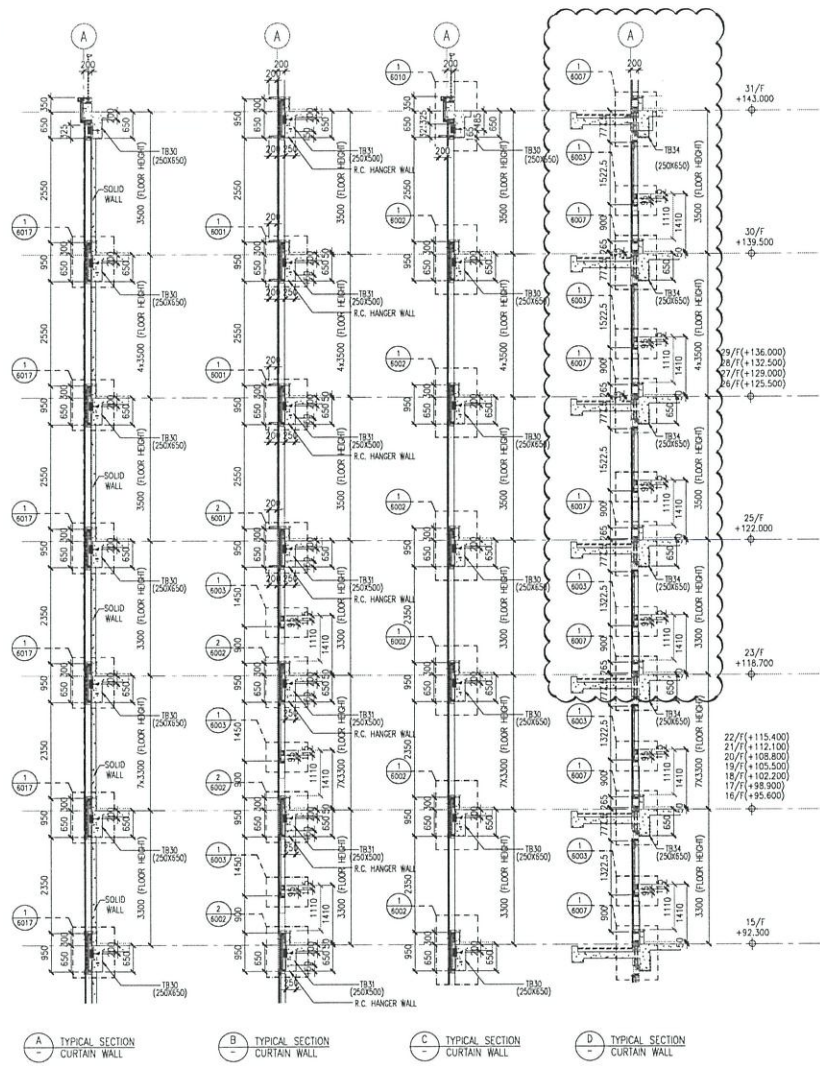
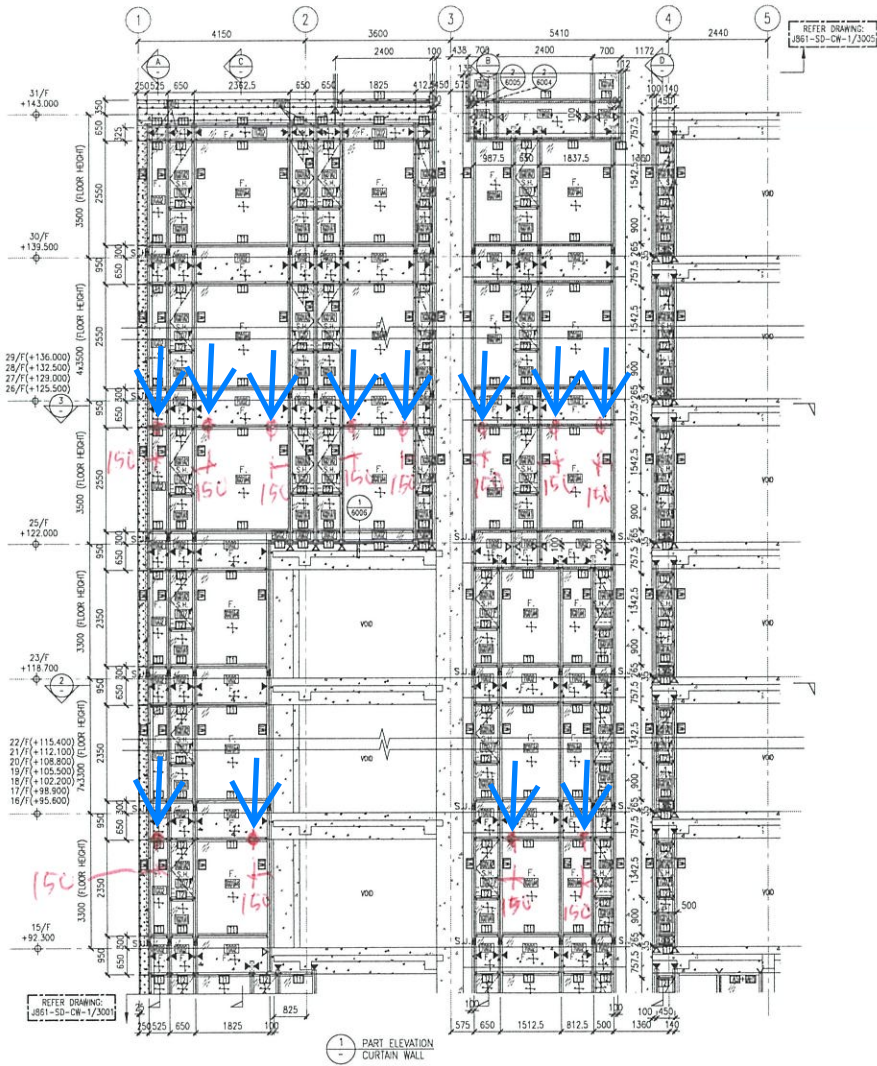
LEGEND:

- TCG01A1 8mm HEAT STRENGTHENED GLASS + 12mm AIR SPACE + 10mm TEMPERED GLASS (IGU)
- TCG01A2 8mm HEAT STRENGTHENED GLASS + 12mm AIR SPACE + 8mm TEMPERED GLASS (IGU)
- TCG01A3 8mm HEAT STRENGTHENED GLASS WITH (COATED) AT SURFACE #2 + 12mm AIR SPACE + 10mm TEMPERED GLASS (IGU)
- TCG01A4 8mm HEAT STRENGTHENED GLASS + 12mm AIR SPACE + 12mm TEMPERED GLASS (IGU)
- TCG02 12mm HEAT STRENGTHENED GLASS W/2mm THK. ALUM. BACK PANEL
- TCG07 10mm CLEAR TEMPERED GLASS
- TCG05 3mm THK ALUM. CLADDING DARK GREY COLOUR CODE: KM3E97023C (CALL CURTAIN WALL MULLION & TRANSOM FRAME IN DARK GREY COLOUR)

F. - FIXED GLASS
 S.H. - SIDE HUNG OPENABLE WINDOW
 ▲ - SUPPORT POINT (WIND LOAD + DEAD LOAD)
 ◀ - SUPPORT POINT (WIND LOAD)
 S.J. - STACK JOINT REF TO J861-SD-CW-5016

WONG TUNG & PARTNERS LTD.	
APPROVED	
APPROVED AS NOTED	
APPROVED AS NOTED & REAMEND	
REVISION	
NO COMMENT	
REFER OTHER CONSULTANTS' COMMENTS	
REVISION FOR CONSULTANTS' COMMENTS	
The structural shall not be undertaken without the contractor's approval in all the critical dimensions & quantities.	
Reviewed by:	Date

藍色箭嘴吊船扣的位置



- LEGEND :
- TG01A1 8mm HEAT STRENGTHENED GLASS + 12mm AIR SPACE + 10mm TEMPERED GLASS (IGU)
 - TG01A2 8mm HEAT STRENGTHENED GLASS + 12mm AIR SPACE + 8mm TEMPERED GLASS (IGU)
 - TG01A3 8mm HEAT STRENGTHENED GLASS WITH (FOSTED) AT SURFACE #2 + 12mm AIR SPACE + 10mm TEMPERED GLASS (IGU)
 - TG01A4 8mm HEAT STRENGTHENED GLASS + 12mm AIR SPACE + 12mm TEMPERED GLASS (IGU)
 - TG02 12mm HEAT STRENGTHENED GLASS
 - TG03 1/2mm THK. ALUM. BACK PANEL
 - TG07 10mm CLEAR TEMPERED GLASS
 - TW05 3mm THK ALUM. CLADDING DARK GREY COLOUR CODE: KM3E97023C (*ALL CURTAIN WALL MULLION & TRANSOM FRAME IN DARK GREY COLOUR)
- F. - FIXED GLASS
S.H. - SIDE HUNG OPENABLE WINDOW
▲ - SUPPORT POINT (WIND LOAD + DEAD LOAD)
◆ - SUPPORT POINT (WIND LOAD)
S.J. - STACK JOINT REF TO J861-SD-CW-5016

NOTE :

1. ALL DIMENSIONS ARE IN mm.
2. ALL ELEVATIONS ARE VIEWED FROM OUTSIDE.
3. ALL DIMENSIONS TO BE VERIFIED ON SITE BEFORE FABRICATION.

LEGEND :

- X1 - DETAIL MARK NO.
- X001 - REFER SHEET NO.
- F.F.L. - FINISHED FLOOR LEVEL
- S.F.L. - STRUCTURAL FLOOR LEVEL
- ⊖ - REVERSED DETAIL

B	8/11/2024	GENERAL REVISED	
A	16/9/2024	GENERAL REVISED	
N	DATE	REVISED	BY

CLIENT :
MILLION BASE PROPERTIES LIMITED

ARCHITECT :
HONG TUNG & PARTNERS LIMITED
ARCHITECTS & PLANNERS

STRUCTURAL ENGINEER :
SYW & ASSOCIATES LTD.
邵賢偉建築工程師

MAIN CONTRACTOR :
顯利工程有限公司
HIEN LEE ENGINEERING CO., LTD.

MIDI ALUMINIUM FABRICATOR LTD.
Units 6-8, Sunny Industrial Centre, 1/F
810 Che Kwo Ling Road, Kowloon
Tel: 23489211-4 Fax: (852) 27127656

JOB NO. : J-861

PROJECT :
PROPOSED RESIDENTIAL DEVELOPMENT AT NOS. 3-6 GLEANEY, CENTRAL, HONG KONG

TITLE :
PART ELEVATION FOR CURTAIN WALL

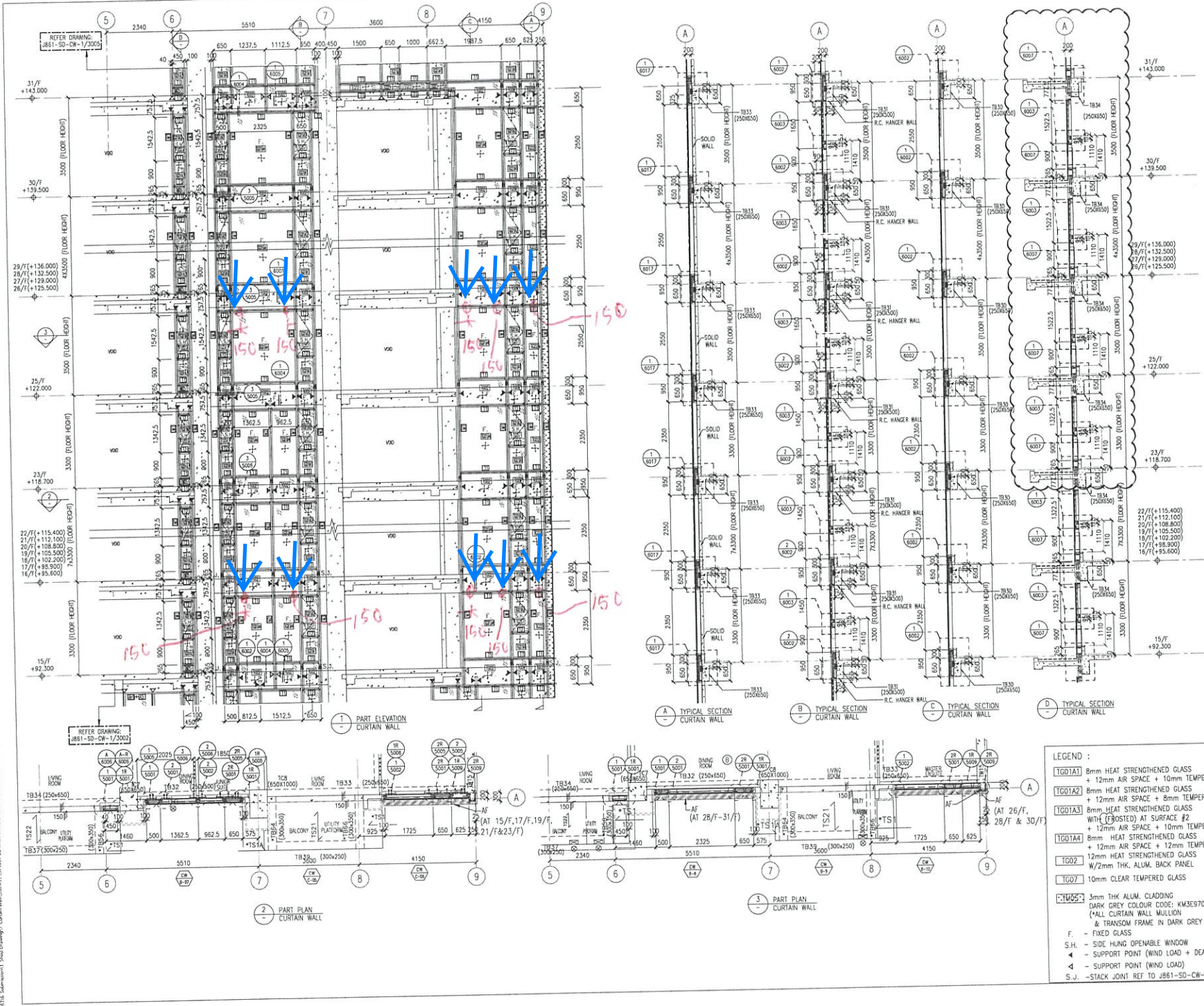
DATE : 06-Sep-24 SCALE : 1:60(A1)

DRAWN BY: Asing CHECKED BY:

DWG NO. : J861-SD-CW-3003 REV. : B

HONG TUNG & PARTNERS LTD.	
APPROVED:	
APPROVED AS NOTED:	
APPROVED AS NOTED & REVISION:	
REVISION:	
NO. COMMENT:	
REFER OTHER CONTRACTORS' EXHIBITS	
Approved for compliance with the contract documents. Comments made shall apply to all related conditions & drawings, not just the one sheet.	
The approval shall not be construed as relieving the contractor of compliance with the contract documents & specifications.	
Reviewed by:	13/08

藍色箭嘴吊船扣的位置



NOTE:
 1. ALL DIMENSIONS ARE IN mm.
 2. ALL ELEVATIONS ARE VIEWED FROM OUTSIDE.
 3. ALL DIMENSIONS TO BE VERIFIED ON SITE BEFORE FABRICATION.

LEGEND:
 (X1) DETAIL MARK NO. REFER SHEET NO.
 1. F.F.L. --- FINISHED FLOOR LEVEL
 2. S.F.L. --- STRUCTURAL FLOOR LEVEL
 3. (Z) --- REVERSED DETAIL

B	8/11/2024	GENERAL	REVISED	
A	16/9/2024	GENERAL	REVISED	
No.	DATE		REVISED	BY

CLIENT: MILLION BASE PROPERTIES LIMITED

ARCHITECT: WONG TUNG & PARTNERS LIMITED
 ARCHITECTS & PLANNERS

STRUCTURAL ENGINEER: SYW & ASSOCIATES LTD.
 邵賢偉建築工程師

MAIN CONTRACTOR: 顯利工程有限公司
 HIEN LEE ENGINEERING CO., LTD.

美特鋁質有限公司
 MIDT ALUMINIUM FABRICATOR LTD.
 Units 6-8, Sunray Industrial Centre, 1/F
 610 Cha Kwo Ling Road, Kowloon
 Tel: 23489211-4 Fax: (852) 27727666

JOB NO.: J-861
 PROJECT: PROPOSED RESIDENTIAL DEVELOPMENT AT NOS. 3-6 GLENEALEY, CENTRAL, HONG KONG

TITLE: PART ELEVATION FOR CURTAIN WALL

DATE: 06-Sep-24 SCALE: 1:60(A1)

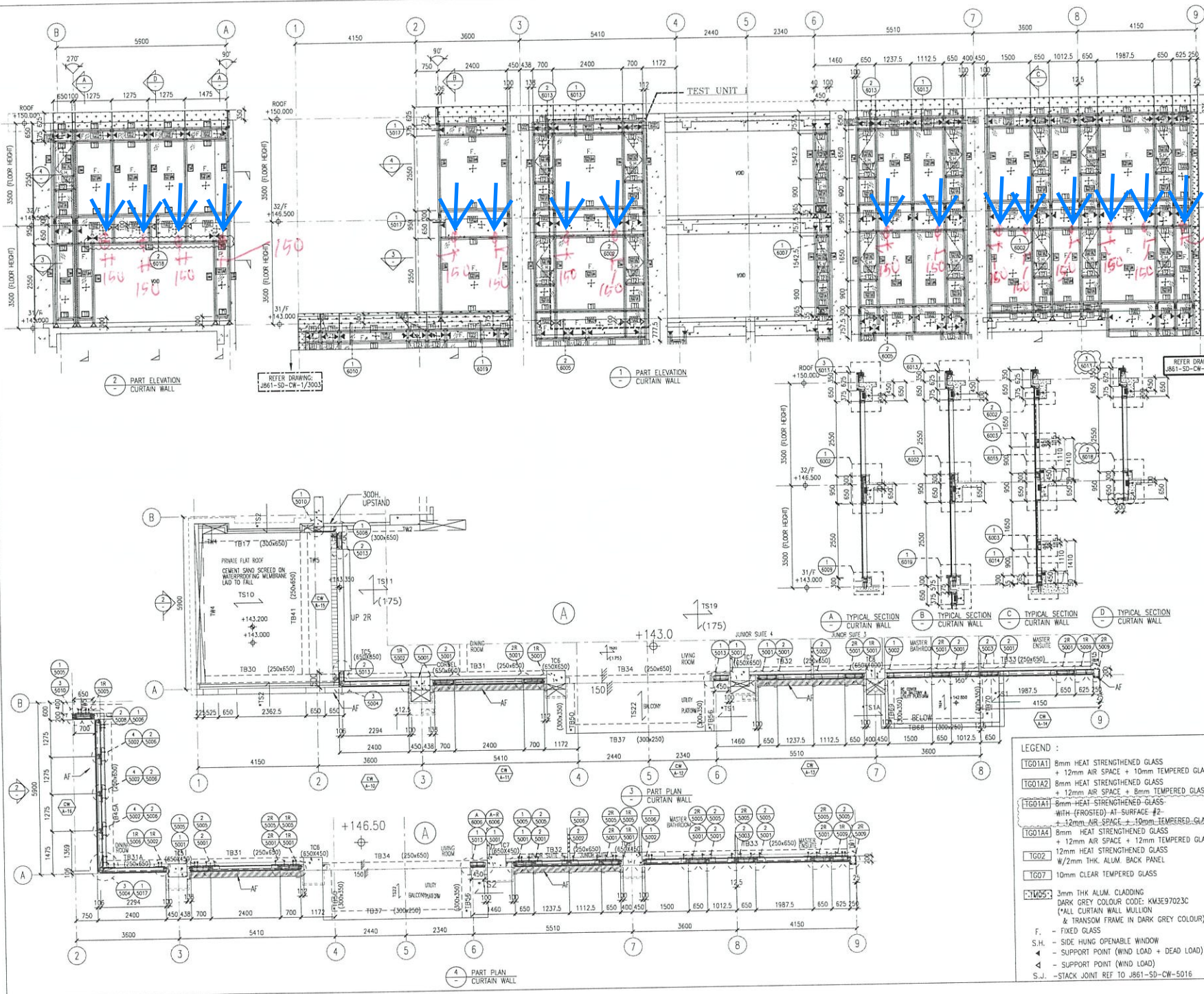
DRAWN BY: Asing CHECKED BY:

DWG NO.: J861-SD-CW-3004 REV: B

- LEGEND:
- TG01A1 8mm HEAT STRENGTHENED GLASS + 12mm AIR SPACE + 10mm TEMPERED GLASS (IGU)
 - TG01A2 8mm HEAT STRENGTHENED GLASS + 12mm AIR SPACE + 8mm TEMPERED GLASS (IGU)
 - TG01A3 8mm HEAT STRENGTHENED GLASS WITH (FOSTED) AT SURFACE #2 + 12mm AIR SPACE + 10mm TEMPERED GLASS (IGU)
 - TG01A4 8mm HEAT STRENGTHENED GLASS + 12mm AIR SPACE + 12mm TEMPERED GLASS (IGU)
 - TG02 W/2mm THK. ALUM. BACK PANEL
 - TG07 10mm CLEAR TEMPERED GLASS
 - TW052 3mm THK ALUM. GLASSING DARK GREY COLOUR CODE: KW3E97023C (*ALL CURTAIN WALL MULLION & TRANSOM FRAME IN DARK GREY COLOUR)
- F. - FIXED GLASS
 S.H. - SIDE HUNG OPENABLE WINDOW
 4 - SUPPORT POINT (WIND LOAD + DEAD LOAD)
 4 - SUPPORT POINT (WIND LOAD)
 S.J. - STACK JOINT REF TO J861-SD-CW-5016

WONG TUNG & PARTNERS LTD.	
APPROVED	
APPROVED AS NOTED	
APPROVED AS NOTED & REVISION	
REVISION	
TWO COMMENT	
REFER OTHER CONSULTANTS COMMENTS	
Approved for construction with the design as per comments. Comments should shall apply to all similar conditions & details, not just the one marked. The original shall not be amended as referring the approval for construction with the original drawings only.	
Reviewed By	Date

藍色箭嘴吊船扣的位置



NOTE:
 1. ALL DIMENSIONS ARE IN mm.
 2. ALL ELEVATIONS ARE VIEWED FROM OUTSIDE.
 3. ALL DIMENSIONS TO BE VERIFIED ON SITE BEFORE FABRICATION.

LEGEND:
 (A1) -- DETAIL MARK NO.
 X001 -- REFER SHEET NO.
 1. F.F.L. -- FINISHED FLOOR LEVEL
 2. S.F.L. -- STRUCTURAL FLOOR LEVEL
 3. (Z) -- REVERSED DETAIL

B	8/11/2024	GENERAL REVISED
A	16/9/2024	GENERAL REVISED
No.	DATE	REVISED BY

CLIENT :
MILLION BASE PROPERTIES LIMITED

ARCHITECT :
WONG TUNG & PARTNERS LIMITED
 ARCHITECTS & PLANNERS

STRUCTURAL ENGINEER :
SYW & ASSOCIATES LTD.
 邵賢偉建築工程師

MAIN CONTRACTOR :
顯利工程有限公司
HIEN LEE ENGINEERING CO., LTD.

美特鋁質有限公司
MIDI ALUMINIUM FABRICATOR LTD.
 Units 6-8, Sunray Industrial Centre, 1/F
 610 Cha Kwo Ling Road, Kowloon
 Tel: 23489211-4 Fax: (852) 27272666

JOB NO. : J-B61
 PROJECT : PROPOSED RESIDENTIAL DEVELOPMENT AT NOS. 3-6 GLENEALEY, CENTRAL, HONG KONG

TITLE : PART ELEVATION FOR CURTAIN WALL

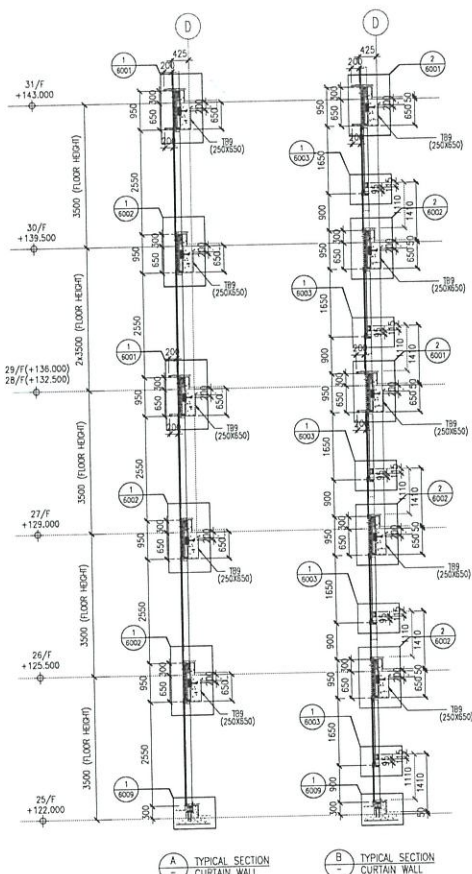
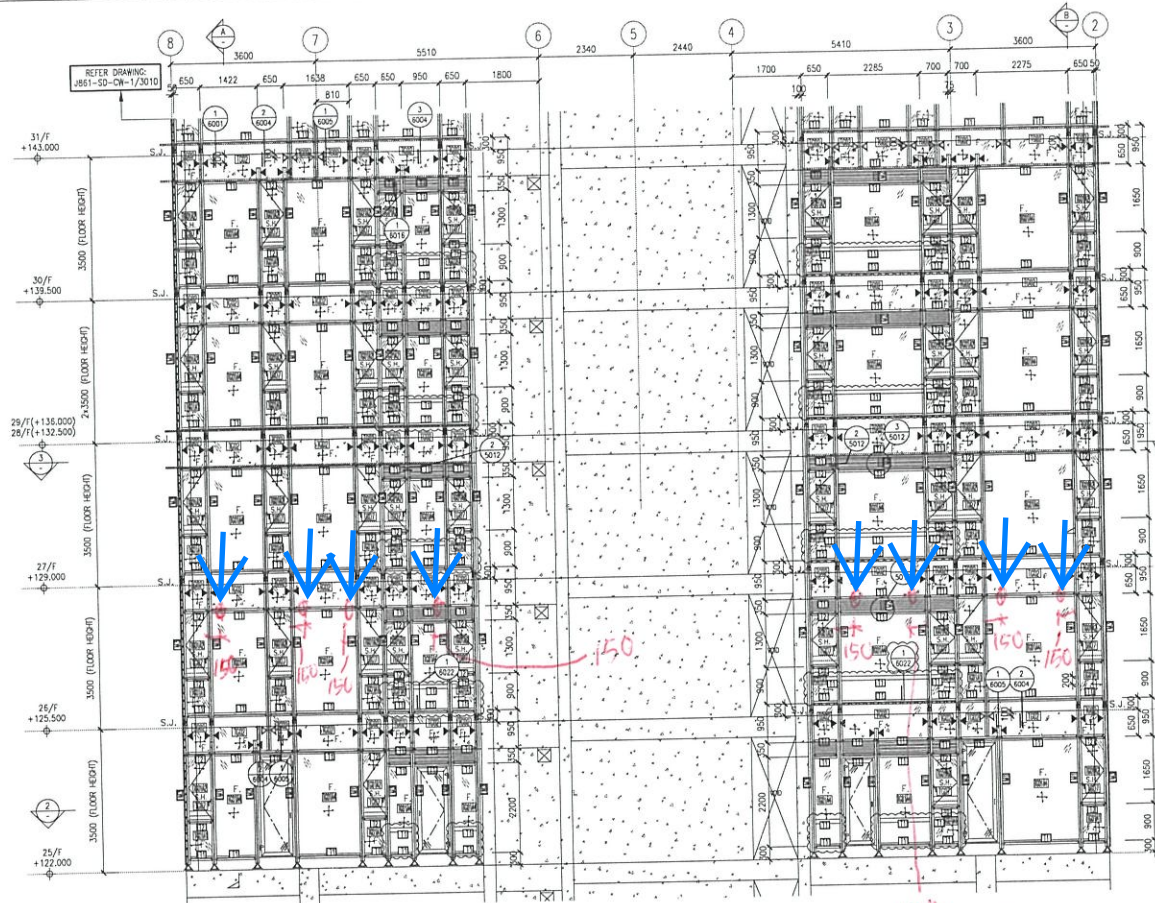
DATE : 06-Sep-24	SCALE : 1:60(A1)
DRAWN BY : Asing	CHECKED BY :
DWG NO. : J861-SD-CW-3005	REV. : B

WONG TUNG & PARTNERS LTD.	
APPROVED	
APPROVED AS NOTED	
APPROVED AS NOTED & BLANKET	
REMARKS	
NO COMMENT	
REFER OTHER CONSULTANTS' COMMENTS	
Approved as Noted	
The original shall not be returned as nothing is to be done.	
Reviewed By : [Signature]	

- LEGEND :**
- TG01A1] 8mm HEAT STRENGTHENED GLASS + 12mm AIR SPACE + 10mm TEMPERED GLASS (IGU)
 - TG01A2] 8mm HEAT STRENGTHENED GLASS + 12mm AIR SPACE + 8mm TEMPERED GLASS (IGU)
 - TG01A1] 8mm HEAT STRENGTHENED GLASS WITH (FROSTED) AT SURFACE #2 + 12mm AIR SPACE + 10mm TEMPERED GLASS (IGU)
 - TG01A4] 8mm HEAT STRENGTHENED GLASS + 12mm AIR SPACE + 12mm TEMPERED GLASS (IGU)
 - TG02] 12mm HEAT STRENGTHENED GLASS W/2mm THK. ALUM. BACK PANEL
 - TG07] 10mm CLEAR TEMPERED GLASS
 - TG05] 3mm THK ALUM. CLADDING DARK GREY COLOUR CODE: KM3E97023C (CALL CURTAIN WALL MULLION & TRANSOM FRAME IN DARK GREY COLOUR)
- F. - FIXED GLASS
 S.H. - SIDE HUNG OPENABLE WINDOW
 ◀ - SUPPORT POINT (WIND LOAD + DEAD LOAD)
 ▲ - SUPPORT POINT (WIND LOAD)
 S.J. - STAKE JOINT REF TO J861-SD-CW-5016

C:\Users\user\Desktop\J861-SD-CW-3005-REVISED\J861-SD-CW-3005-REVISED.dwg, 23/09/2024 11:05:41, DWG to PDF and

藍色箭嘴吊船扣的位置



NOTE :
 1. ALL DIMENSIONS ARE IN mm.
 2. ALL ELEVATIONS ARE VIEWED FROM OUTSIDE.
 3. ALL DIMENSIONS TO BE VERIFIED ON SITE BEFORE FABRICATION.

LEGEND :
 (X1) --- DETAIL MARK NO.
 (X001) --- REFER SHEET NO.

1. F.F.L. --- FINISHED FLOOR LEVEL
 2. S.F.L. --- STRUCTURAL FLOOR LEVEL
 3. (↔) --- REVERSED DETAIL

B	8/11/2024	GENERAL	REVISED	
A	16/9/2024	GENERAL	REVISED	
NO.	DATE	BY	REVISION	

CLIENT :
MILLION BASE PROPERTIES LIMITED

ARCHITECT :
WONG TUNG & PARTNERS LIMITED
 ARCHITECTS & PLANNERS

STRUCTURAL ENGINEER :
SYW SYW & ASSOCIATES LTD.
 邵賢偉建築工程顧問

MAIN CONTRACTOR :
顯利工程有限公司
HIEN LEE ENGINEERING CO., LTD.

美特鋁質有限公司
MIDI ALUMINIUM FABRICATOR LTD.
 Units 6-8, Sunray Industrial Centre, 1/F
 610 Cho Kwo Ling Road, Kowloon
 Tel: 23489211-4 Fax: (852) 27727666

JOB NO. : J-861

PROJECT :
 PROPOSED RESIDENTIAL DEVELOPMENT AT NOS. 3-6 GLEANEALY, CENTRAL, HONG KONG

TITLE :
 PART ELEVATION FOR CURTAIN WALL

DATE : 06-Sep-24 SCALE : 1:60(A1)

DRAWN BY : Asing CHECKED BY :

DWG NO. : JB61-SD-CW-3009 REV. : B

- LEGEND :
- TG01A1 8mm HEAT STRENGTHENED GLASS + 12mm AIR SPACE + 10mm TEMPERED GLASS (IGU)
 - TG01A2 8mm HEAT STRENGTHENED GLASS + 12mm AIR SPACE + 8mm TEMPERED GLASS (IGU)
 - TG01A1+ 8mm HEAT STRENGTHENED GLASS WITH (FROSTED) AT SURFACE #2
 - TG01A4 8mm HEAT STRENGTHENED GLASS + 12mm AIR SPACE + 10mm TEMPERED GLASS (IGU)
 - TG02 12mm HEAT STRENGTHENED GLASS W/2mm THK. ALUM. BACK PANEL
 - TG07 10mm CLEAR TEMPERED GLASS
 - TG09 3mm THK ALUM. CLADDING DARK GREY COLOUR CODE: KM3E97023C (ALL CURTAIN WALL MULLION & TRANSOM FRAME IN DARK GREY COLOUR)
 - F. --- FIXED GLASS
 - S.H. --- SIDE HUNG OPENABLE WINDOW
 - ▲ --- SUPPORT POINT (WIND LOAD + DEAD LOAD)
 - ◁ --- SUPPORT POINT (WIND LOAD)
 - S.J. --- STACK JOINT REF TO JB61-SD-CW-5016

WONG TUNG & PARTNERS LTD.	
APPROVED	
APPROVED AS NOTED	
APPROVED AS NOTED & REVISION	
REVISION	
NO COMMENT	
REFER OTHER COMMENTS	
I am hereby certifying that the design and construction of the above work has been carried out in accordance with the contract documents and the relevant codes of practice.	
Signature of	Date

