



工程指示 / 要求簡箋 ENGINEER INSTRUCTIONS(E.I.)

工程指示編號:	EI- 8777	修改版本:	-
	HK- 0138		
工程編號:	J 861	工程名稱:	己連拿利
收件人:	生統/技術部	發件人:	細佬
工程項目:	幕牆 Shop Drawing	日期:	18/02/2025

<input type="checkbox"/> 原合約工程包	<input type="checkbox"/> 原合約工程加 / 減賬 QT-	<input type="checkbox"/> 新工程報價 QT-
---------------------------------	--	------------------------------------

信件批核號碼/圖紙參考編號:	批核模具圖紙編號:
客戶指示附件:	管理內部批簽署:

<input type="checkbox"/> 初步鋁料 B.M.	<input type="checkbox"/> 加工拆圖, 然後生產	<input type="checkbox"/> 尺寸表
<input type="checkbox"/> 正式鋁料 B.M.	<input type="checkbox"/> 技術上資料/指示	<input type="checkbox"/> 報價
<input type="checkbox"/> 配件 B.M.	<input type="checkbox"/> 樣辦或貨品說明書	<input type="checkbox"/> 分判合約
<input type="checkbox"/> 其他:		


內容: 給技術部: 請收附頁幕牆ShopDrawing 取消了TG01A3玻璃, 用TG01A1代替 樣板層已出EI8776補訂
完成上列要求日期: 18/03/2025

國內

<input type="checkbox"/> 生產技術總監	<input type="checkbox"/> 連附件	<input checked="" type="checkbox"/> 技術部	<input checked="" type="checkbox"/> 連附件	<input type="checkbox"/> 生產部	<input type="checkbox"/> 連附件
<input type="checkbox"/> 採購部	<input type="checkbox"/> 連附件	<input checked="" type="checkbox"/> 生產統籌部	<input checked="" type="checkbox"/> 連附件	<input type="checkbox"/> 報關組	<input type="checkbox"/> 連附件
<input type="checkbox"/> 質檢部	<input type="checkbox"/> 連附件	<input type="checkbox"/> 會計部	<input type="checkbox"/> 連附件	<input type="checkbox"/> 機械設計部	<input type="checkbox"/> 連附件
<input type="checkbox"/> 香港辦	<input type="checkbox"/> 連附件	<input type="checkbox"/> 其他:			

香港

<input type="checkbox"/> 行政部	<input type="checkbox"/> 連附件	<input type="checkbox"/> 會計部	<input type="checkbox"/> 連附件	<input type="checkbox"/> 統籌部	<input type="checkbox"/> 連附件	<input type="checkbox"/> 工程部	<input type="checkbox"/> 連附件
<input type="checkbox"/> 採購部	<input type="checkbox"/> 連附件	<input type="checkbox"/> QS部	<input type="checkbox"/> 連附件	<input type="checkbox"/> 地盤管理	<input type="checkbox"/> 連附件	<input type="checkbox"/> 維修部	<input type="checkbox"/> 連附件

*發件人簽署:	*組別成員批核簽署:
傳遞編號: HK-0138	項目經理簽署: 

PROJECT :

PROPOSED RESIDENTIAL
DEVELOPMENT AT
NOS.3-6 GLENEALY, CENTRAL, HONG KONG

4

SHOPDRAWING SUBMISSION
FOR TOWER CURTAIN WALL

DATE: 17-Feb.-25

 美特鋁質有限公司
MIDI ALUMINIUM FABRICATOR LTD.

Units 6-8, Sunray Industrial Centre, 1/F
610 Cha Kwo Ling Road, Kowloon
Tel:23489211-4 Fax:(852)27727666

GENERAL NOTES FOR CURTAIN WALL

DESIGN STANDARD & CODES

- BUILDING (CONSTRUCTION) REGULATION, CHAPTER 123
- CODE OF PRACTICE ON WIND EFFECTS IN HONG KONG 2004.
- CODE OF PRACTICE FOR THE STRUCTURAL USE OF STEEL 2011
- CODE OF PRACTICE FOR THE STRUCTURAL USE OF CONCRETE 2013
- CODE OF PRACTICE DEAD AND IMPOSED LOADS 2011
- BS 8118 : 1991 - STRUCTURAL USE OF ALUMINIUM (PARTIAL LOAD FACTOR FOR WIND = 1.4 AS PER APP-053)
- CODE OF PRACTICE FOR THE STRUCTURAL USE OF GLASS 2018
- PNAP APP037 - CURTAIN WALL, WINDOW AND WINDOW WALL SYSTEM

DESIGN LOADS

- WIND LOAD
ACCORDING TO CODE OF PRACTICE ON WIND EFFECT IN HONG KONG 2004
HEIGHT ABOVE SITE GROUND LEVEL=(161.12-46.7)=114.42m
BASIC WIND PRESSURE = 2.915 kPa
TOPOGRAPHIC FACTOR $S_a = 1.0$

DESIGN WIND PRESSURE FOR CURTAIN WALL / ALUM. CLADDING
PRESSURE COEFFICIENT = +1.0/-1.4
DESIGN WIND LOAD = +1.0 x 2.915 kPa = + 2.915 kPa (FOR INWARD)
= -1.4 x 2.915 kPa = - 4.081 kPa (FOR OUTWARD)

- DESIGN WIND PRESSURE FOR ALUM FEATURE
PRESSURE COEFFICIENT = +2.0/-2.0
DESIGN WIND LOAD = +1.0 x 2.915 kPa = + 5.83 kPa (DOWNWARD)
= -2.0 x 2.915 kPa = - 5.83 kPa (UPWARD)

- HORIZONTAL IMPOSED LOAD (FOR DOMESTIC USED)
HORIZONTAL IMPOSED LOAD COMPLY WITH CODE OF PRACTICE FOR DEAD AND IMPOSED LOAD 2011 (AREAS WHERE CONGREGATION OF PEOPLE IS NOT EXPECTED)
- LINE LOAD APPLIED AT HEIGHT OF 1.1M ABOVE F.F.L. 0.75kN/m
- UDL APPLIED ON THE INFILL BETWEEN FLOOR AND TOP RAIL:
- CONCENTRATE LOAD APPLIED ON ANY PART ON INFILL BETWEEN FLOOR AND TOP RAIL: 0.5KN

- DEAD LOAD
DEAD LOAD COMPLY WITH CODE OF PRACTICE FOR DEAD AND IMPOSED LOAD 2011

DENSITY OF GLASS = 26kN/m³
DENSITY OF ALUMINIUM = 27.2kN/m³
DENSITY OF STEEL = 77kN/m³

MATERIALS

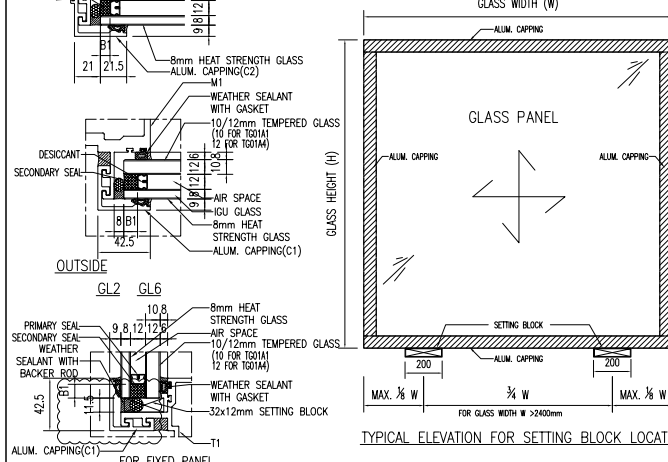
- GLASS

- a) GLASS TYPE FOR CURTAIN WALL
- TG01A1 - 8mm HEAT STRENGTHENED+12mm AIR+10mm TEMPERED IGU GLASS
 - TG01A2 - 8mm HEAT STRENGTHENED+12mm AIR+8mm TEMPERED IGU GLASS
 - TG01A3 - 8mm HEAT STRENGTHENED WITH (FROSTED) AT SURFACE #2 +12mm AIR+10mm TEMPERED IGU GLASS
 - TG01A4 - 8mm HEAT STRENGTHENED+12mm AIR+12mm TEMPERED IGU GLASS
 - TG02 - 12mm THK. HEAT STRENGTHENED SPANDREL GLASS
 - TG07 - 10mm THK. TEMPERED GLASS BARRIER GLASS
- *THE LOAD ON EACH GLASS PANEL OF THE IGU HAVE TO BE INCREASED BY 25% TO ACCOUNT FOR THE EFFECT DUE TO TEMPERATURE CHANGES AND ATMOSPHERIC PRESSURE CHANGE. NO COMPOSITE ACTION IS ADOPTED.
GLASS SURFACE TREATMENT REDUCTION FACTOR FOR FROSTED GLASS $\gamma_s = 0.5$

TYPICAL DETAIL OF IGU GLASS

	MAX(W)(mm)	MAX(H)(mm)	B1(mm)
TG01A1	1150	2350	8
TG01A3	515	900	7
TG01A2 (S.H.)	700	1650	7
TG02	2400	950	N/A
TG07	630	115	N/A
TG01A4	2400	2550	9

GLASS WIDTH (W)



- b) DESIGN OF GLASS COMPLY TO CODE OF PRACTICE FOR STRUCTURE USE OF GLASS 2018.
- LOAD DURATION : SHORT-TERM FACTOR = 1
 - ULTIMATE DESIGN STRENGTH (TEMPERED) = 80 MPa
 - ULTIMATE DESIGN STRENGTH (HEAT STRENGTHENED) = 40 MPa
 - YOUNG'S MODULUS = 70,000 N/mm²
 - TG07 LOAD DURATION REDUCTION FACTOR = LONG TERM 0.66
 - ULTIMATE DESIGN STRENGTH (TEMPERED) = 52.8MPa

- c) GLASS MATERIALS SHALL COMPLY TO BS 952:1995.
- d) ALL TEMPERED GLASS TO BE 100% HEAT-SOAK TEST TO CODE OF PRACTICE FOR STRUCTURAL USE OF GLASS 2018 & BS EN 14179-1:2016
- e) IMPACT TEST TO BE COMPLIED WITH BS EN12600. CLASS 1

2. SEALANT

STRUCTURAL SEALANT

- ALL IN SHOP APPLIED STRUCTURAL SEALANT TO BE 'DOW CORNING' DC983. (BD REF: BD-SS-001) ALLOWABLE STRESS 138kPa
- SECONDARY SEAL FOR IGU SHOULD BE ULTRAGLAZE SSG4400 SILICON STRUCTURAL SEALANT (BD REF : BD-SS-005) ALLOWABLE STRESS = 138kPa

WEATHER SEALANT

ALL WEATHER SEALANT TO BE 'DOW CORNING' DC791. (FOR INFORMATION ONLY)

3. GLAZING MATERIAL

- ALL GASKET SHOULD BE DENSE SILICON RUBBER WITH MINIMUM SHORE A HARDNESS OF 65±5 DUROMETER
- ALL SETTING BLOCKS SHOULD BE DENSE SILICON RUBBER WITH MINIMUM SHORE A HARDNESS OF 85±5 DUROMETER.
- A MIN. LENGTH OF 150mm AND A MIN. WIDTH CORRESPONDING TO THE GLASS THICKNESS AND LOCATED AT GLASS QUARTER POINT.

4. ALUMINIUM ALLOY :

ALL ALUMINIUM EXTRUSIONS TO BE GRADE 6063-T6 & 6061-T6 TO BS EN 755-2:2008 AND BS EN 573-3:2009
MODULUS OF ELASTICITY = 70000 MPa.

	6063-T6	6061-T6
0.2% PROOF STRENGTH	170 MPa	240 MPa
ULTIMATE TENSILE STRENGTH	215 MPa	260 MPa
LIMITING BENDING STRENGTH	160 MPa	240 MPa
LIMITING TENSILE STRENGTH	175 MPa	260 MPa
LIMITING SHEAR STRENGTH	95 MPa	145 MPa

5. ALUMINIUM SHEET

ALL ALUMINIUM SHEET TO BE GRADE 3003-H14 TO BS EN 485-2 AND BS EN 573-3 : 2009
MODULUS OF ELASTICITY = 70000 MPa.

	3003-H14
0.2% PROOF STRENGTH	125 MPa
ULTIMATE TENSILE STRENGTH	145 MPa
LIMITING BENDING STRENGTH	125 MPa
LIMITING TENSILE STRENGTH	135 MPa
LIMITING SHEAR STRENGTH	75 MPa

6. ALUMINIUM STUD BOLT

- ALL ALUMINIUM STUD BOLT TO BE GRADE EN-AN 5754-H14 WITH LIMITING STRESS OF STUD PAZ=100N/mm² TO BS EN 1999-1-1:2007+A2:2013. (PAZ=95N/mm² ADOPTED)
- THE ALUMINIUM STUD AND THE BASE PANELS SHALL BE CONNECTED BY DRAWN ARC STUD WELDING COMPLY WITH BS 8118 PART1:1991
- DESIGN AND QUALITY ASSURANCE OF DRAWN ARC STUD WELDING PROCESS SHALL FULLY SATISFY THE REQUIREMENTS OF BS EN ISO 14555:2017
- THE STUD SHALL FOLLOW THE DEFINED PROFILE M6 AS SPECIFIED UNDER TABLE 14 OF BS EN ISO 13918:2008

7. STRUCTURAL STEEL

ALL STRUCTURAL STEEL TO BE GRADE S275J0 (CLASS 1) COMPLY WITH BS EN 10025:2004.
ALL STEEL HOLLOW SECTION TO BE GRADE S275J0H (CLASS 1) COMPLY WITH BS EN 10210:2006.

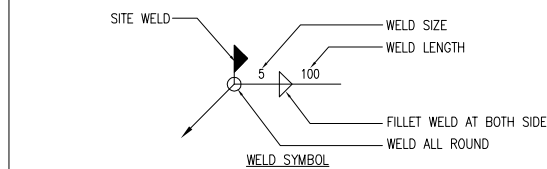
MODULES OF ELASTICITY 205,000 MPa
DESIGN STRENGTH (T≤16mm) 275 N/mm²
DESIGN STRENGTH (16mm<T≤40mm) 265 N/mm²

SURFACE TREATMENT TO BE HOT-DIP GALVANIZED AND SHALL COMPLY WITH BS EN ISO 1461 : 2009

BS EN ISO 1461:2009 (TABLE 3) COATING THICKNESS (MIN):	
STEEL THICKNESS (T)	AVERAGE COATING THICKNESS
T > 6mm	85 um
3mm < T ≤ 6mm	70 um
1.5mm < T ≤ 3mm	55 um
T ≤ 1.5mm	45 um

8. WELDING

- ALL WELDING TO BE COMPLIED WITH BS EN 1011-1 : 2009.
DESIGN WELD STRENGTH = 220 N/mm²
- UNLESS OTHERWISE INDICATED, ALL WELDS SHALL BE 5mm THICK FILLET WELD.
- ALL WELDING PROCEDURES TO COMPLY WITH BS EN ISO 15614 : PART 2 2005.
- ALL WELD SHOULD BE DONE BY QUALIFIED WELDED TESTED TO BS EN 287-1.
- ALL SITE WELDS SHALL BE RECEIVED 2 COATS OF ZINC CHROMATE PRIMER
- ALL WELD ELECTRODE CLASSIFICATION SHOULD BE E35 TO COP OF STEEL 2011



9. FASTENERS

ALL STAINLESS STEEL SCREW, BOLT & NUT TO BE GRADE A4-70 TO BS EN ISO 3506 : 2009.

A4-70

0.2% PROOF STRENGTH	450 MPa
ULTIMATE TENSILE STRENGTH	700 MPa

UNLESS OTHERWISE SPECIFIED, ALL SCREWS SHOULD BE M5 AT 300mm C/C.

10. ISOLATION FOR DISSIMILAR MATERIAL

PVC TAPE TO BE APPLIED BETWEEN DISSIMILAR METAL TO PREVENT BIMETALLIC CORROSION TO PD6484
PVC TAPE TO BE APPLIED BETWEEN METAL AND CONCRETE SURFACE

11. FIRE STOP

- FIRE STOP SHALL BE 135mm THK. "FIRESEAL BATTS" (BD REF: BD-FS-011) (DENSITY=60kg/m³) WITH 2 Hrs F.R.P.

11.1 SMOKE SEAL

- SMOKE SEAL SHALL BE 'MIDI ALUMINIUM FABRICATOR LIMITED' TO BE COMPLY WITH FIRE CODE C10.2

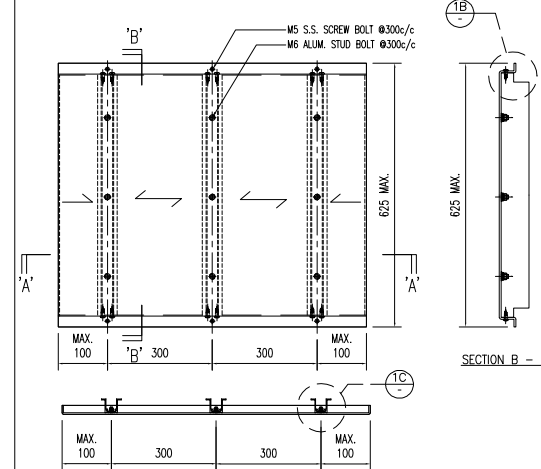
12. CONCRETE GRADE (FOR INFORMATION ONLY)

CONCRETE GRADE OF PARENT STRUCTURE = 45 MPa.

13. DEFLECTION LIMIT

- GLASS WITH 4-SIDE SUPPORT & 2-SIDE SUPPORT SPAN/60
- ALUM MULLION & TRANSOM SPAN/180 OR 20mm, WHICHEVER IS LESSER.

14. TYPICAL ALUM CLADDING STIFFENER LAYOUT



15. ANCHOR BOLT (FOR ALUM. CLADDING)

ANCHOR BOLT TO BE "HILT", DESIGN AND INSTALLATION TO BE IN ACCORDANCE WITH MANUFACTURER SPECIFICATION
STRENGTH TESTS FOR DRILLED IN ANCHORS SHOULD BE STRICTLY FOLLOWED PNAP APP-169 (APPENDIX A)

B.D. REF.	TYPE (FOR CRACKED CONCRETE)	MINIMUM CONCRETE THICKNESS (mm)	EFFECTIVE ANCHORAGE DEPTH (mm)	MINIMUM EDGE DISTANCE (mm)	MINIMUM SPACING (mm)	RECOMMENDED TENSILE FORCE (kN)	RECOMMENDED SHEAR FORCE (kN)	PULL-OUT TEST LOAD (kN)
BD-AF 149	"HILT" HST3-R M10	120	60	45	40	5.0	8.4	1.342x1.5x5=10.07

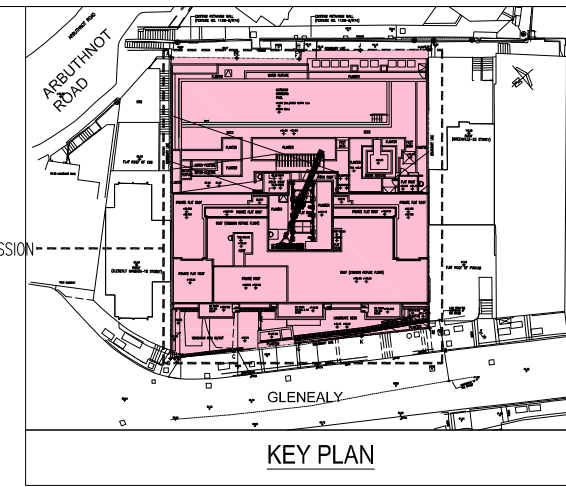
CONSIDER CONCRETE GRADE FACTOR: $\sqrt{\frac{45}{25}} = 1.342$ (FOR 45D)
FACTOR OF SAFETY = 3.0

16. CAST-IN EMBED

HOT-DIP GALVANIZED CAST-IN PLATE TO BE S275 J0 CLASS 1 STEEL PLATE TO BS EN 10025:2004
STEEL ROD FOR EMBED TO BE GRADE S275 J0 TO BS EN 10025 2004 (GALVANIZED SURFACE TREATMENT MIN. THICKNESS = 85µm)
HOLDING DOWN BOLT FOR EMBED SHOULD BE GRADE 8.8 BOLT COMPLY WITH CODE OF PRACTICE FOR THE STRUCTURAL OF STEEL 2011
AND DESIGN TO CODE OF PRACTICE FOR THE STRUCTURAL USE OF STEEL 2011.

GRADE 8.8

SHEAR STRENGTH	375 N/mm ²
TENSILE STRENGTH	560 N/mm ²
BEARING STRENGTH	1000 N/mm ²



NOTE :

- ALL DIMENSIONS ARE IN mm.
- ALL ELEVATIONS ARE VIEWED FROM OUTSIDE.
- ALL DIMENSIONS TO BE VERIFIED ON SITE BEFORE FABRICATION.

LEGEND :

- X1 - DETAIL MARK NO.
- X001 - REFER SHEET NO.

- F.F.L. -- FINISHED FLOOR LEVEL
- S.F.L. -- STRUCTURAL FLOOR LEVEL
- ⊙/⊚ -- REVERSED DETAIL

F. = FIXED GLASS
S.H. = SIDE HUNG OPENABLE WINDOW

C	17/02/2025	GENERAL REVISED	
B	06/11/2024	GENERAL REVISED	
A	20/9/2024	GENERAL REVISED	
NO.	DATE	REVISED	BY

CLIENT :

MILLION BASE PROPERTIES LIMITED

ARCHITECT :

WONG TUNG & PARTNERS LIMITED
ARCHITECTS & PLANNERS



STRUCTURAL ENGINEER :

SYW & ASSOCIATES LTD.
SYW & ASSOCIATES LTD. ARCHITECTS & PLANNERS
SYW & ASSOCIATES LTD. ARCHITECTS & PLANNERS

MAIN CONTRACTOR :

顯利工程有限公司
HIEN LEE ENGINEERING CO., LTD.

美特鋁質有限公司
MIDI ALUMINIUM FABRICATOR LTD.

Units 6-8, Sunray Industrial Centre, 1/F
610 Cha Kwo Ling Road, Kowloon
Tel:23489211-4 Fax:(852)27727666

JOB NO. : J-861

PROJECT :

PROPOSED RESIDENTIAL DEVELOPMENT AT NOS. 3-6 GLENEALY, CENTRAL, HONG KONG

TITLE :

GENERAL NOTES FOR CURTAIN WALL

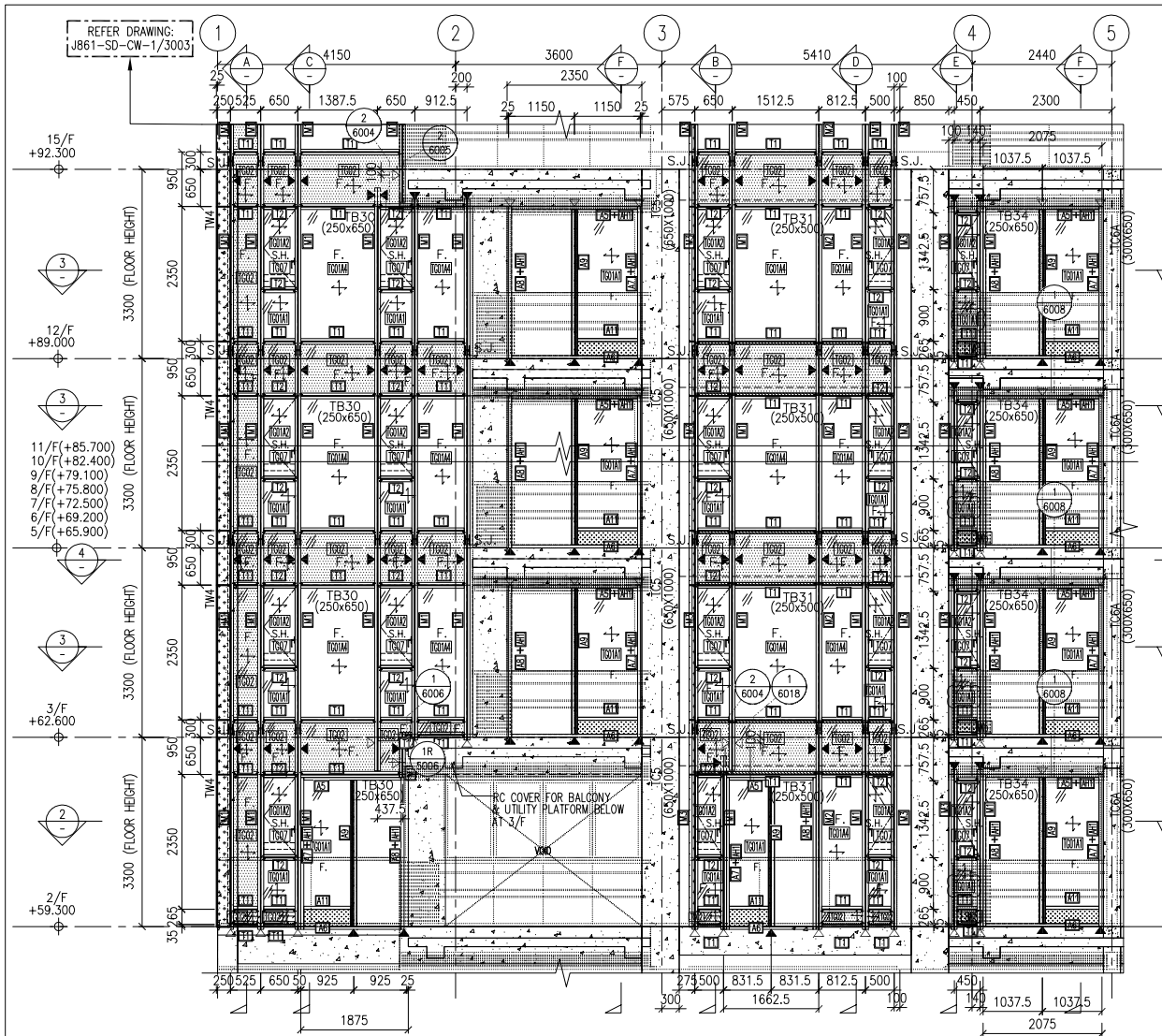
DATE : 06-SEP.-24 SCALE : N.T.S.

DRAWN BY : Asing CHECKED BY :

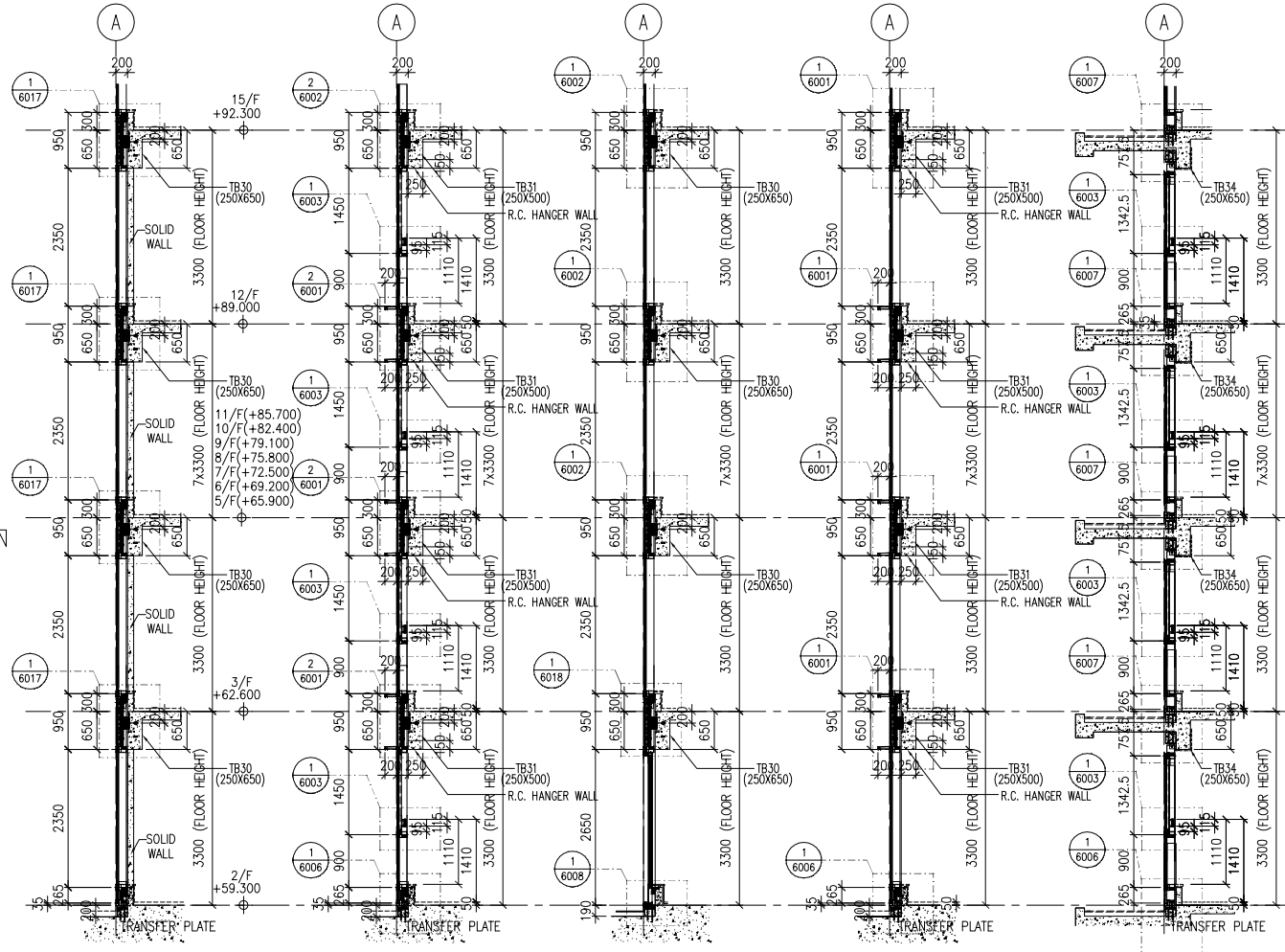
DWG NO. : J861-SD-CW-0005 REV. : C

WONG TUNG & PARTNERS LTD.

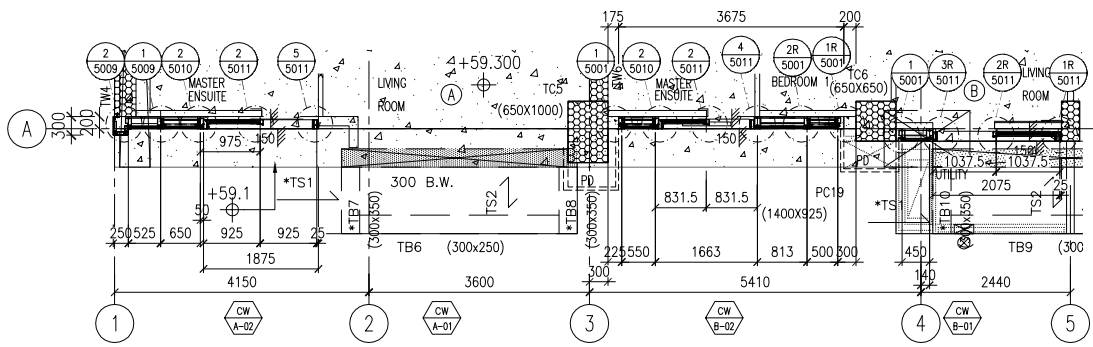
APPROVED	
APPROVED AS NOTED	
APPROVED AS NOTED & RESUBMIT	
RESUBMIT	
NO COMMENT	
REFER OTHER CONSULTANT'S COMMENTS	
Reviewed for compliance with the design intent. Comments made shall apply to all similar conditions & details, not just the ones cited. The approval shall not be construed as relieving the contractor for compliance with the contract documents & requirements.	
Reviewed By	Date



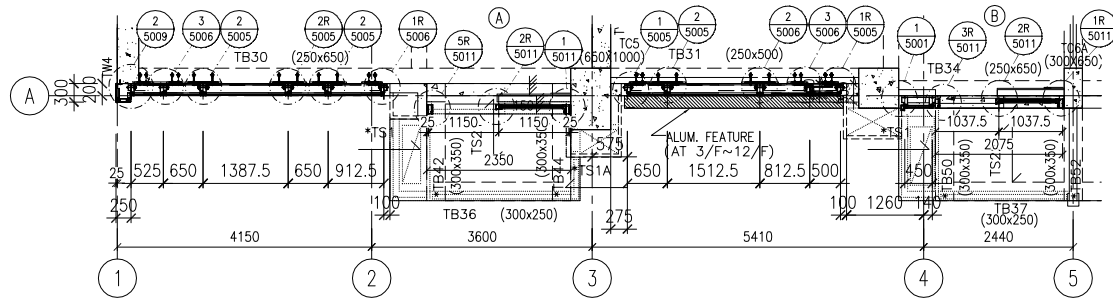
1 PART ELEVATION CURTAIN WALL



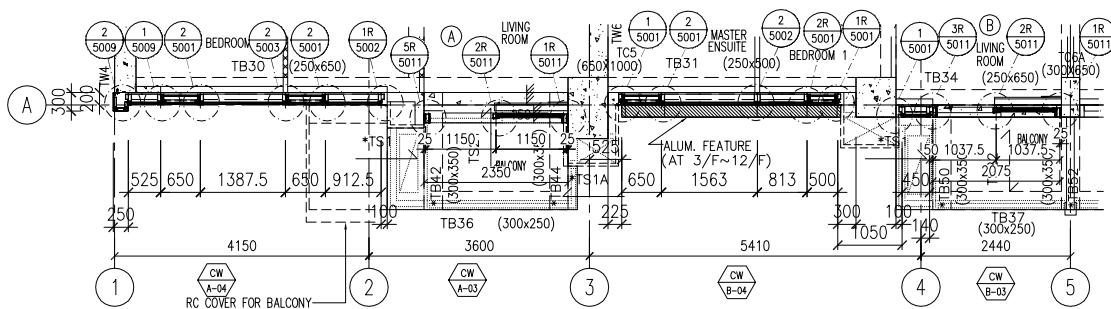
A TYPICAL SECTION CURTAIN WALL
B TYPICAL SECTION CURTAIN WALL
C TYPICAL SECTION CURTAIN WALL
D TYPICAL SECTION CURTAIN WALL
E TYPICAL SECTION CURTAIN WALL



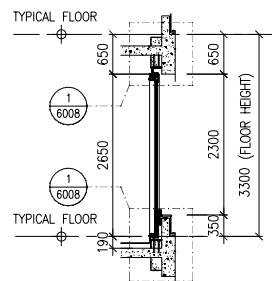
2 PART PLAN (2/F) CURTAIN WALL



4 PART PLAN CURTAIN WALL



3 PART PLAN CURTAIN WALL



F TYPICAL SECTION CURTAIN WALL

- LEGEND :
- TG01A1 8mm HEAT STRENGTHENED GLASS + 12mm AIR SPACE + 10mm TEMPERED GLASS (IGU)
 - TG01A2 8mm HEAT STRENGTHENED GLASS + 12mm AIR SPACE + 8mm TEMPERED GLASS (IGU)
 - TG01A3 8mm HEAT STRENGTHENED GLASS WITH (FROSTED) AT SURFACE #2 + 12mm AIR SPACE + 10mm TEMPERED GLASS (IGU)
 - TG01A4 8mm HEAT STRENGTHENED GLASS + 12mm AIR SPACE + 12mm TEMPERED GLASS (IGU)
 - TG02 12mm HEAT STRENGTHENED GLASS W/2mm THK. ALUM. BACK PANEL
 - TG07 10mm CLEAR TEMPERED GLASS
 - FM05 3mm THK ALUM. CLADDING DARK GREY COLOUR CODE: KM3E97023C (*ALL CURTAIN WALL MULLION & TRANSOM FRAME IN DARK GREY COLOUR)
 - F. - FIXED GLASS
 - S.H. - SIDE HUNG OPENABLE WINDOW
 - ◀ - SUPPORT POINT (WIND LOAD + DEAD LOAD)
 - ◁ - SUPPORT POINT (WIND LOAD)
 - S.J. - STACK JOINT REF TO J861-SD-CW-5016

- NOTE :
1. ALL DIMENSIONS ARE IN mm.
 2. ALL ELEVATIONS ARE VIEWED FROM OUTSIDE.
 3. ALL DIMENSIONS TO BE VERIFIED ON SITE BEFORE FABRICATION.

- LEGEND :
- X1 - DETAIL MARK NO.
 - X001 - REFER SHEET NO.
1. F.F.L. --- FINISHED FLOOR LEVEL
 2. S.F.L. --- STRUCTURAL FLOOR LEVEL
 3. (R) --- REVERSED DETAIL

NO.	DATE	REVISED	BY
C	17/02/2025	GENERAL REVISED	
B	8/11/2024	GENERAL REVISED	
A	16/9/2024	GENERAL REVISED	

CLIENT :
MILLION BASE PROPERTIES LIMITED

ARCHITECT :
WONG TUNG & PARTNERS LIMITED
ARCHITECTS & PLANNERS

STRUCTURAL ENGINEER :
SYW SYW & ASSOCIATES LTD.
CHARTERED ENGINEERS & AUTHORIZED PERSONS
邵賢偉建築工程師

MAIN CONTRACTOR :
顯利工程有限公司
HIEN LEE ENGINEERING CO., LTD.

美特鋁質有限公司
MIDI ALUMINIUM FABRICATOR LTD.
Units 6-8, Sunray Industrial Centre, 1/F
610 Cha Kwo Ling Road, Kowloon
Tel: 23489211-4 Fax: (852) 2727666

JOB NO. : J-861

PROJECT :
PROPOSED RESIDENTIAL
DEVELOPMENT AT NOS. 3-6
GLENEALY, CENTRAL, HONG KONG

TITLE :
PART ELEVATION
FOR CURTAIN WALL

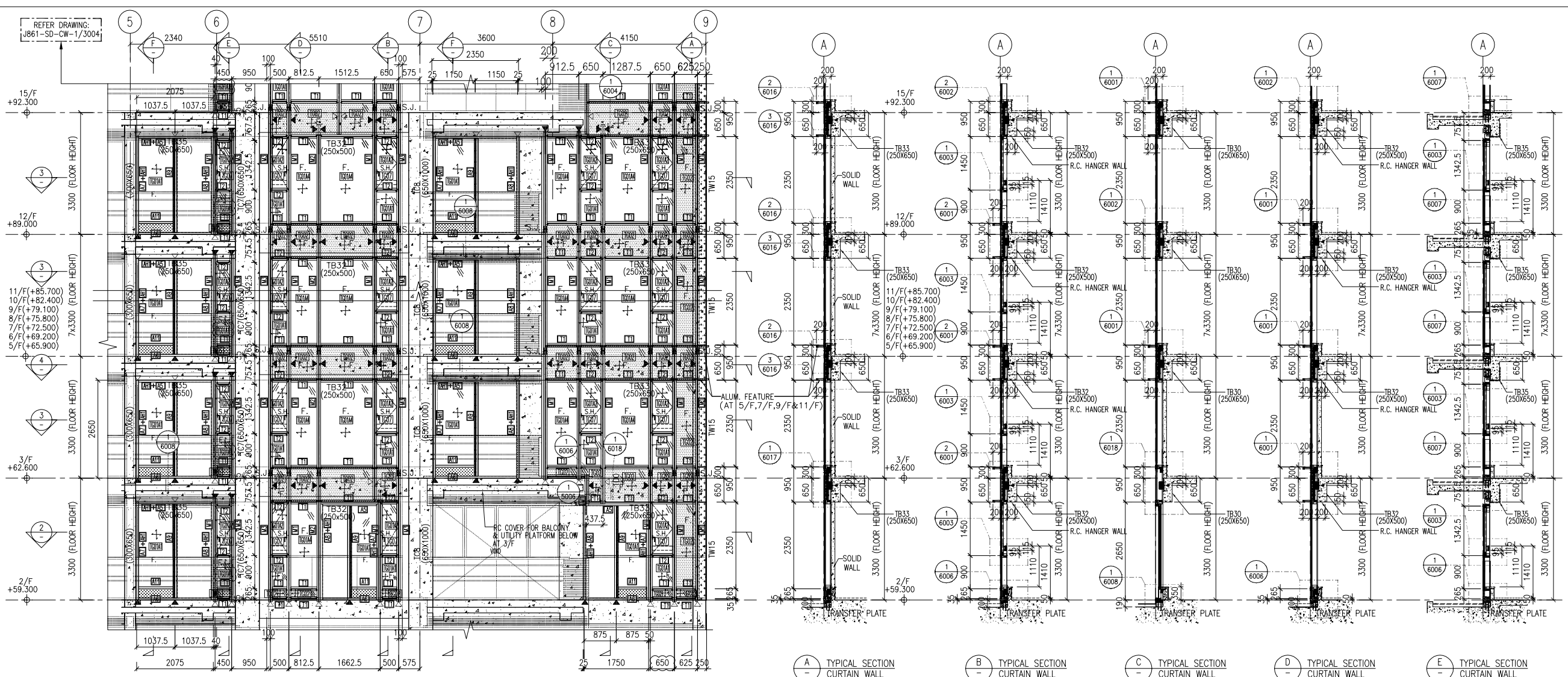
DATE : 06-Sep.-24 SCALE : 1:60(A1)

DRAWN BY : Asing CHECKED BY :

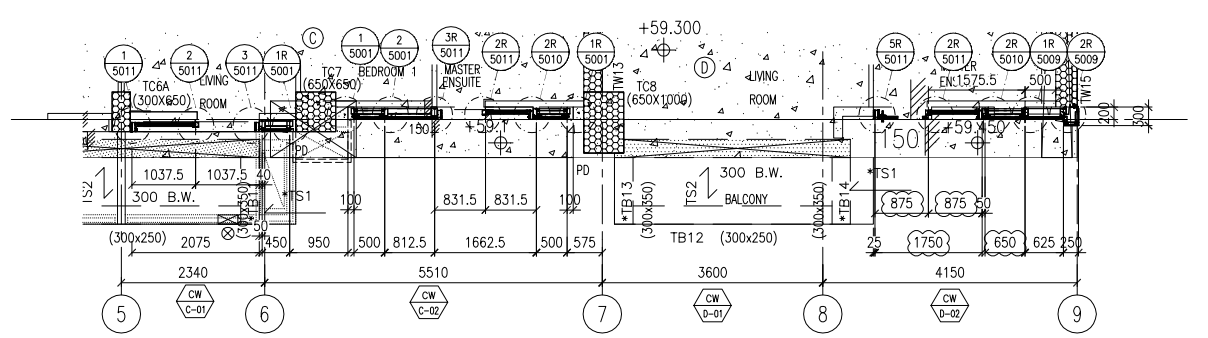
DWG NO. : J861-SD-CW-3001 REV. : C

WONG TUNG & PARTNERS LTD.	
APPROVED	
APPROVED AS NOTED	
APPROVED AS NOTED & RESUBMIT	
RESUBMIT	
NO COMMENT	
REFER OTHER CONSULTANT'S COMMENTS	
Reviewed for compliance with the design intent. Comments made shall apply to all similar conditions & details, not just the ones cited. The approval shall not be construed as relieving the contractor for compliance with the contract documents & requirements.	
Reviewed By	Date

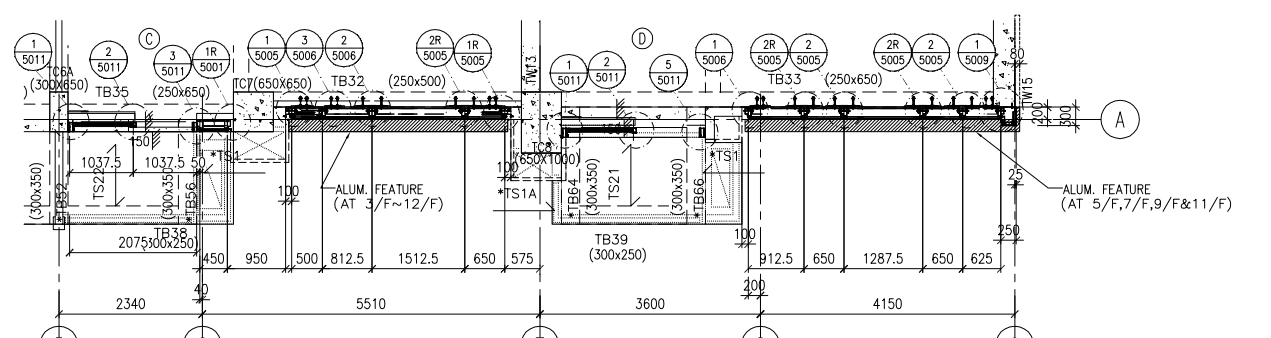
REFER DRAWING: J861-SD-CW-1/3004



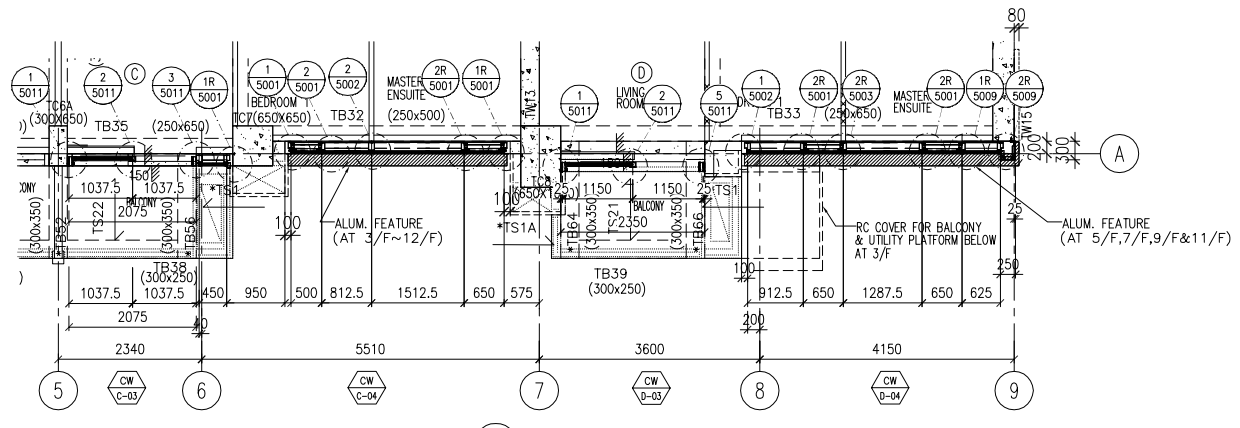
1 - PART ELEVATION CURTAIN WALL
A - TYPICAL SECTION CURTAIN WALL
B - TYPICAL SECTION CURTAIN WALL
C - TYPICAL SECTION CURTAIN WALL
D - TYPICAL SECTION CURTAIN WALL
E - TYPICAL SECTION CURTAIN WALL



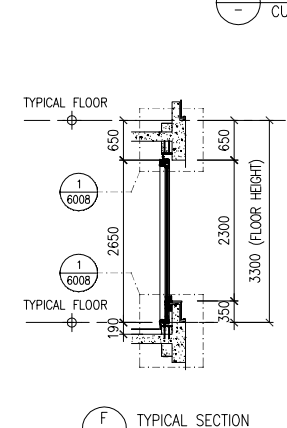
2 - PART PLAN (2/F) CURTAIN WALL



4 - PART PLAN CURTAIN WALL



3 - PART PLAN CURTAIN WALL



F - TYPICAL SECTION CURTAIN WALL

- NOTE:
1. ALL DIMENSIONS ARE IN mm.
 2. ALL ELEVATIONS ARE VIEWED FROM OUTSIDE.
 3. ALL DIMENSIONS TO BE VERIFIED ON SITE BEFORE FABRICATION.

- LEGEND:
- (X1) - DETAIL MARK NO.
 - (X001) - REFER SHEET NO.
1. F.L. --- FINISHED FLOOR LEVEL
 2. S.F.L. --- STRUCTURAL FLOOR LEVEL
 3. (R) --- REVERSED DETAIL

NO.	DATE	REVISED	BY
C	17/02/2025	GENERAL REVISED	
B	8/11/2024	GENERAL REVISED	
A	16/9/2024	GENERAL REVISED	

CLIENT: MILLION BASE PROPERTIES LIMITED

ARCHITECT: WONG TUNG & PARTNERS LIMITED ARCHITECTS & PLANNERS

STRUCTURAL ENGINEER: SYW & ASSOCIATES LTD. 邵賢偉建築工程師

MAIN CONTRACTOR: 顯利工程有限公司 HIEN LEE ENGINEERING CO., LTD.

美特鋁質有限公司 MIDI ALUMINIUM FABRICATOR LTD. Units 6-8, Sunny Industrial Centre, 1/F 610 Cha Kwo Ling Road, Kowloon Tel: 23489211-4 Fax: (852) 2727666

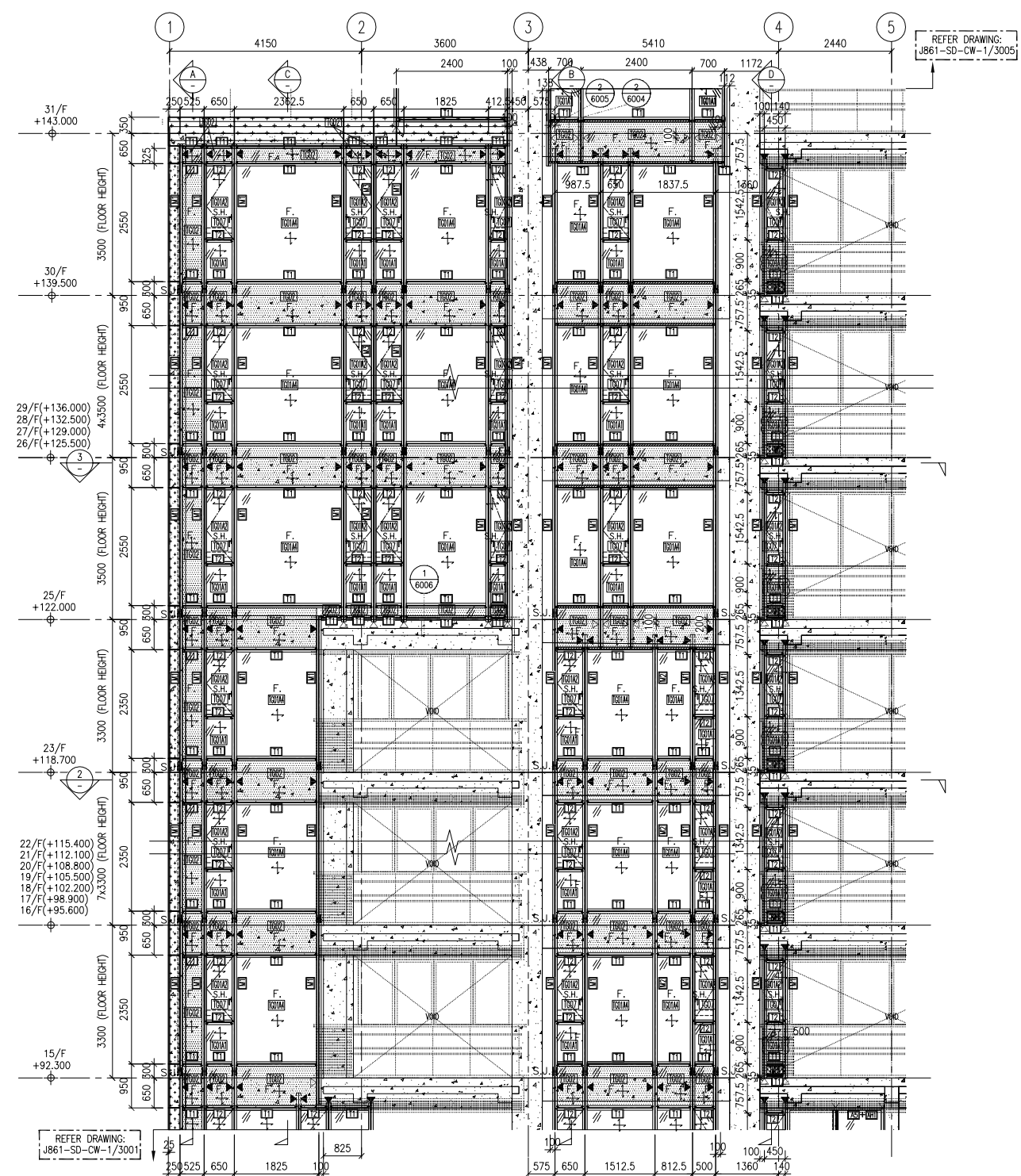
JOB NO.: J-861
PROJECT: PROPOSED RESIDENTIAL DEVELOPMENT AT NOS. 3-6 GLENEALY, CENTRAL, HONG KONG

TITLE: PART ELEVATION FOR CURTAIN WALL

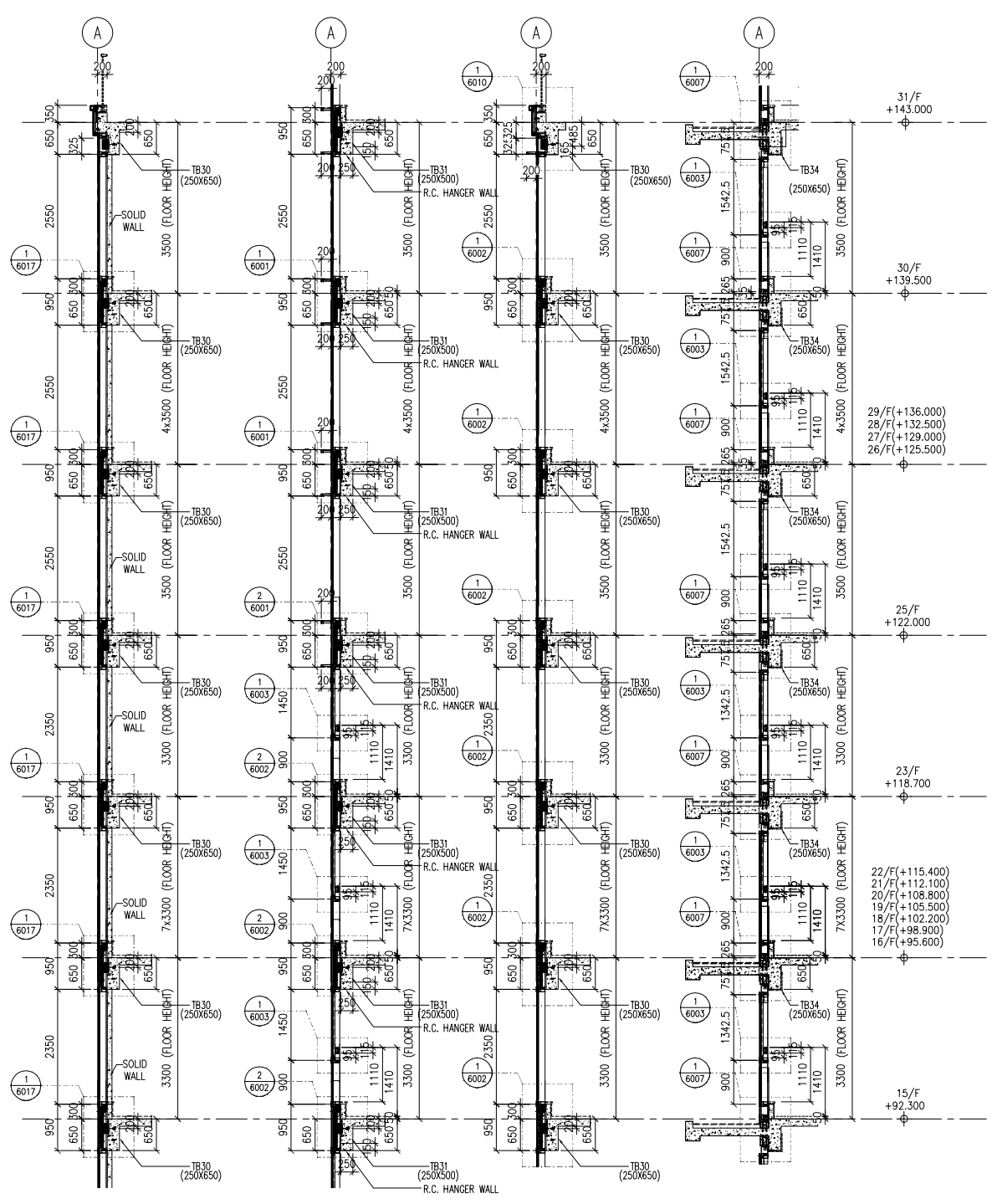
DATE: 06-Sep-24	SCALE: 1:60(A1)
DRAWN BY: Asing	CHECKED BY:
DWG NO.: J861-SD-CW-3002	REV.: C

- LEGEND:
- TG01A1 8mm HEAT STRENGTHENED GLASS + 12mm AIR SPACE + 10mm TEMPERED GLASS (IGU)
 - TG01A2 8mm HEAT STRENGTHENED GLASS + 12mm AIR SPACE + 8mm TEMPERED GLASS (IGU)
 - TG01A3 8mm HEAT STRENGTHENED GLASS WITH (FROSTED) AT SURFACE #2 + 12mm AIR SPACE + 10mm TEMPERED GLASS (IGU)
 - TG01A4 8mm HEAT STRENGTHENED GLASS + 12mm AIR SPACE + 12mm TEMPERED GLASS (IGU)
 - TG02 12mm HEAT STRENGTHENED GLASS W/2mm THK. ALUM. BACK PANEL
 - TG07 10mm CLEAR TEMPERED GLASS
 - FM05 3mm THK ALUM. CLADDING DARK GREY COLOUR CODE: KM3E97023C (*ALL CURTAIN WALL MULLION & TRANSOM FRAME IN DARK GREY COLOUR)
 - F. - FIXED GLASS
 - S.H. - SIDE HUNG OPENABLE WINDOW
 - ◀ - SUPPORT POINT (WIND LOAD + DEAD LOAD)
 - ◁ - SUPPORT POINT (WIND LOAD)
 - S.J. - STACK JOINT REF TO J861-SD-CW-5016

WONG TUNG & PARTNERS LTD.	
APPROVED	
APPROVED AS NOTED	
APPROVED AS NOTED & RESUBMIT	
RESUBMIT	
NO COMMENT	
REFER OTHER CONSULTANT'S COMMENTS	
Reviewed for compliance with the design intent. Comments made shall apply to all similar conditions & details, not just the ones cited. The approval shall not be construed as relieving the contractor for compliance with the contract documents & requirements.	
Reviewed By	Date



1 PART ELEVATION CURTAIN WALL

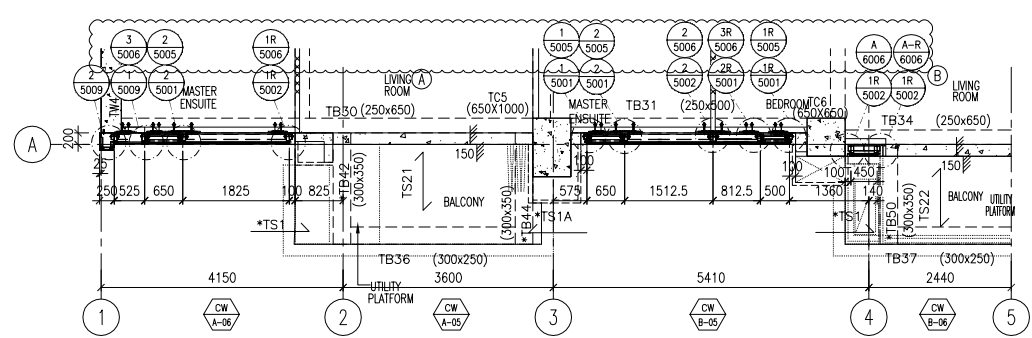


A TYPICAL SECTION CURTAIN WALL

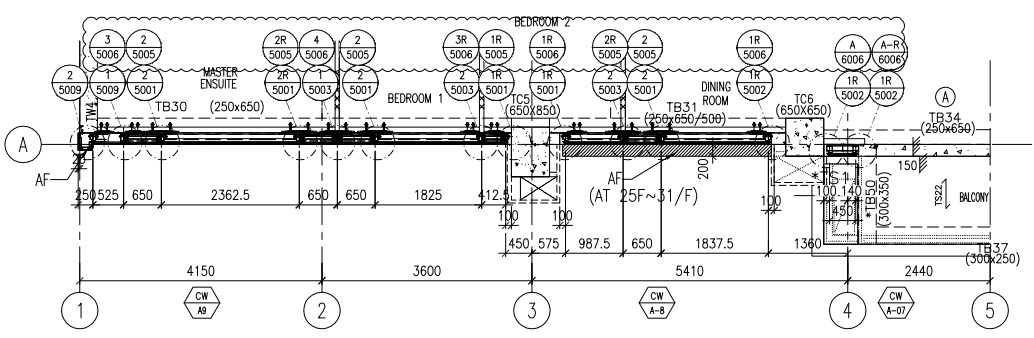
B TYPICAL SECTION CURTAIN WALL

C TYPICAL SECTION CURTAIN WALL

D TYPICAL SECTION CURTAIN WALL



2 PART PLAN CURTAIN WALL



3 PART PLAN CURTAIN WALL

- LEGEND :**
- TG01A1 8mm HEAT STRENGTHENED GLASS + 12mm AIR SPACE + 10mm TEMPERED GLASS (IGU)
 - TG01A2 8mm HEAT STRENGTHENED GLASS + 12mm AIR SPACE + 8mm TEMPERED GLASS (IGU)
 - TG01A3 8mm HEAT STRENGTHENED GLASS WITH (FROSTED) AT SURFACE #2 + 12mm AIR SPACE + 10mm TEMPERED GLASS (IGU)
 - TG01A4 8mm HEAT STRENGTHENED GLASS + 12mm AIR SPACE + 12mm TEMPERED GLASS (IGU)
 - TG02 12mm HEAT STRENGTHENED GLASS W/2mm THK. ALUM. BACK PANEL
 - TG07 10mm CLEAR TEMPERED GLASS
 - TM05 3mm THK ALUM. CLADDING DARK GREY COLOUR CODE: KM3E97023C (*ALL CURTAIN WALL MULLION & TRANSOM FRAME IN DARK GREY COLOUR)
- F. - FIXED GLASS
 S.H. - SIDE HUNG OPENABLE WINDOW
 ◀ - SUPPORT POINT (WIND LOAD + DEAD LOAD)
 ◁ - SUPPORT POINT (WIND LOAD)
 S.J. - STACK JOINT REF TO J861-SD-CW-5016

- NOTE :**
- ALL DIMENSIONS ARE IN mm.
 - ALL ELEVATIONS ARE VIEWED FROM OUTSIDE.
 - ALL DIMENSIONS TO BE VERIFIED ON SITE BEFORE FABRICATION.

- LEGEND :**
- (X1) - DETAIL MARK NO.
 - (X001) - REFER SHEET NO.
- F.F.L. -- FINISHED FLOOR LEVEL
 - S.F.L. -- STRUCTURAL FLOOR LEVEL
 - (R) -- REVERSED DETAIL

C	17/02/2025	GENERAL REVISED	
B	8/11/2024	GENERAL REVISED	
A	16/9/2024	GENERAL REVISED	
NO.	DATE	REVISED	BY

CLIENT :
MILLION BASE PROPERTIES LIMITED

ARCHITECT :
WONG TUNG & PARTNERS LIMITED
ARCHITECTS & PLANNERS

STRUCTURAL ENGINEER :
SYW & ASSOCIATES LTD.
CHARTERED ENGINEERS & AUTHORIZED PERSONS
邵賢偉建築工程師

MAIN CONTRACTOR :
顯利工程有限公司
HIEN LEE ENGINEERING CO., LTD.

美特鋁質有限公司
MIDI ALUMINIUM FABRICATOR LTD.
Units 6-8, Sunray Industrial Centre, 1/F
610 Cha Kwo Ling Road, Kowloon
Tel: 23489211-4 Fax: (852) 27727666

JOB NO. : J-861
PROJECT : PROPOSED RESIDENTIAL DEVELOPMENT AT NOS. 3-6 GLENEALY, CENTRAL, HONG KONG

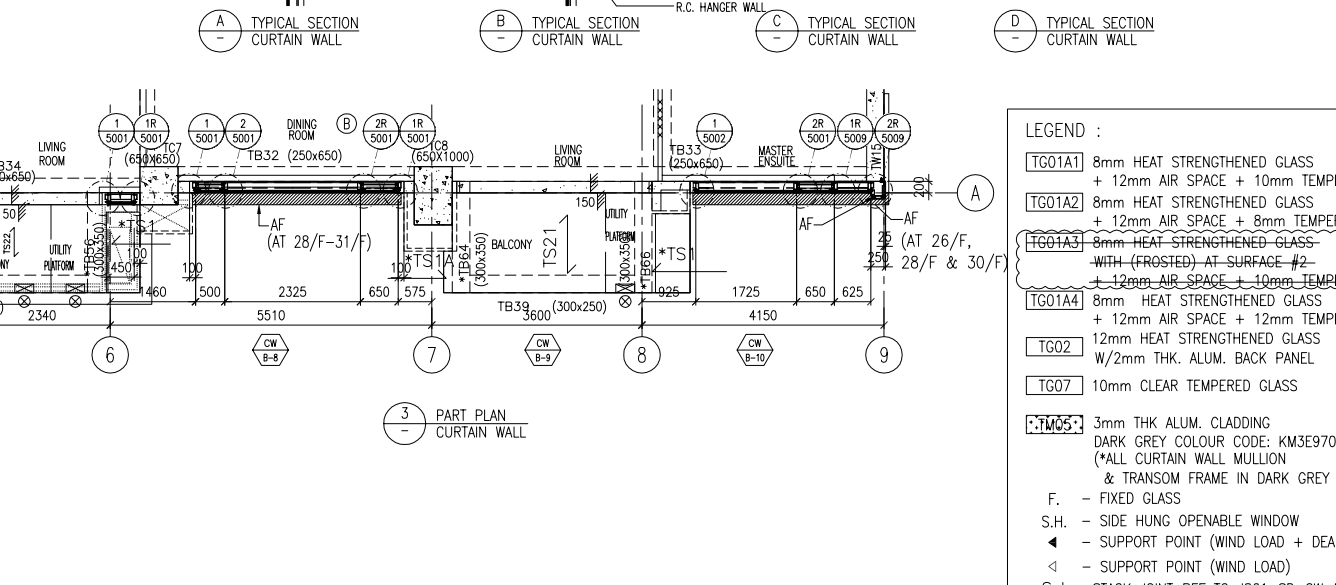
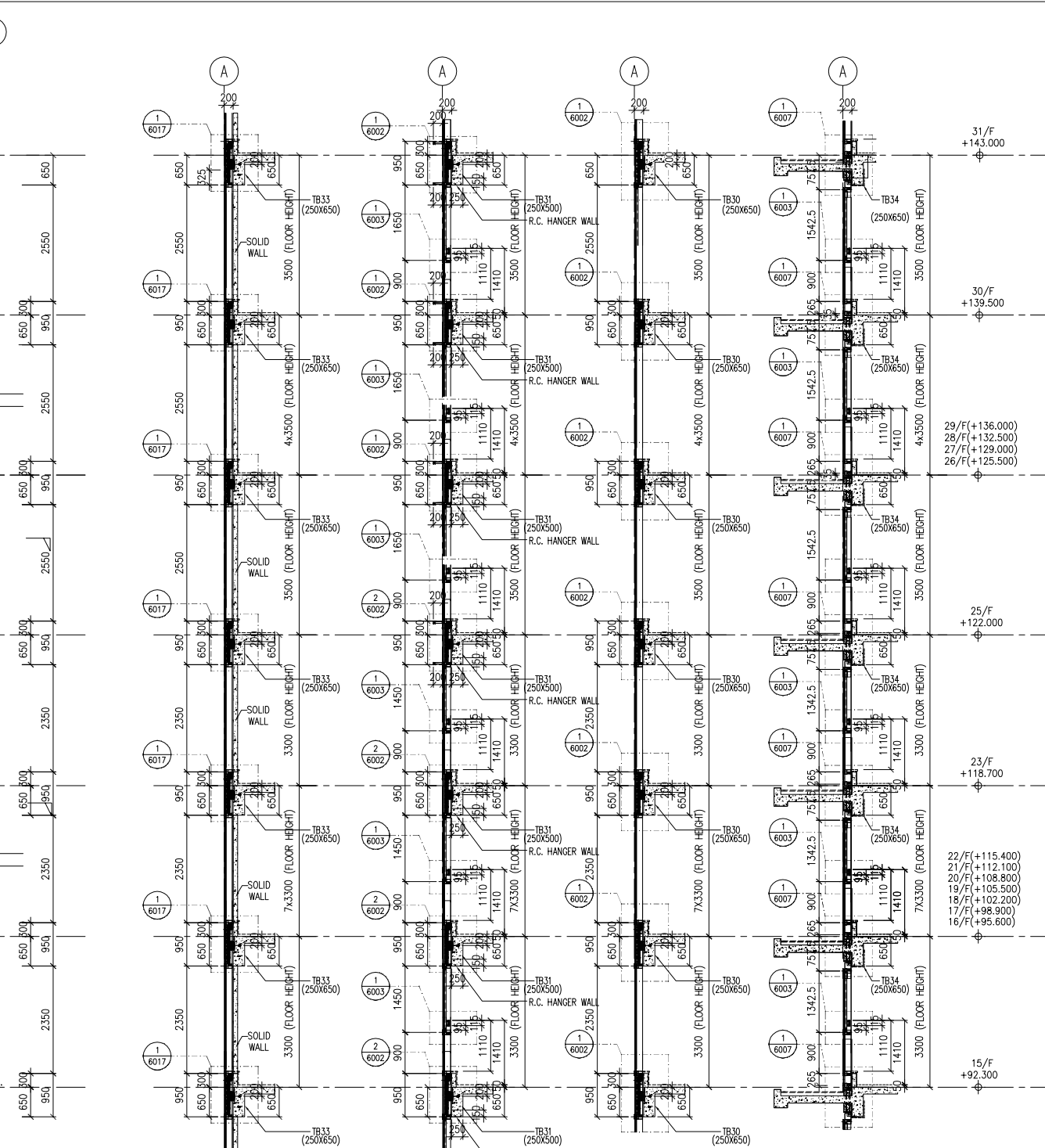
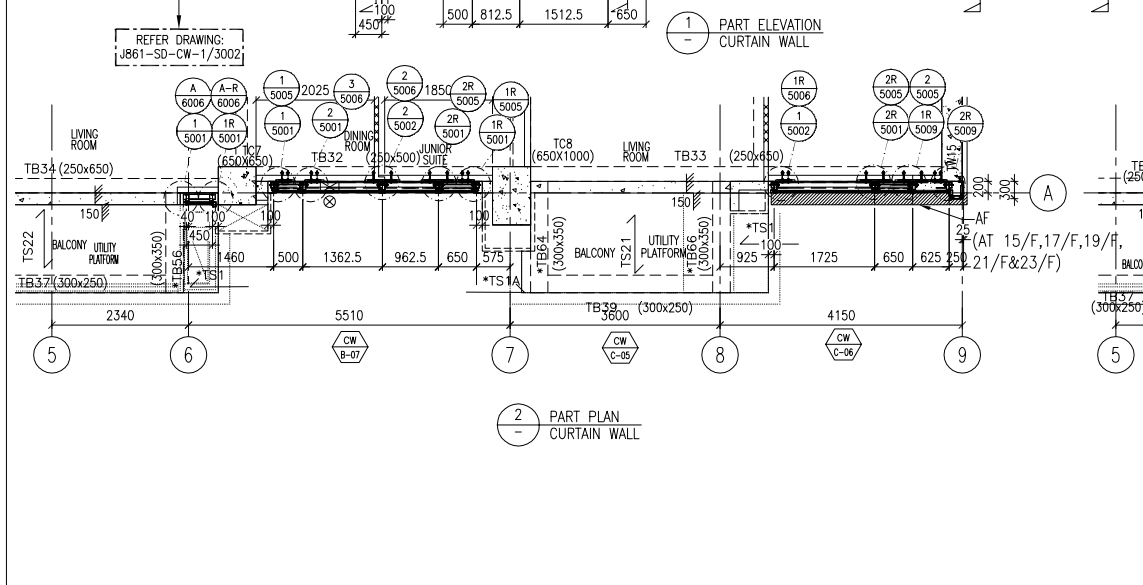
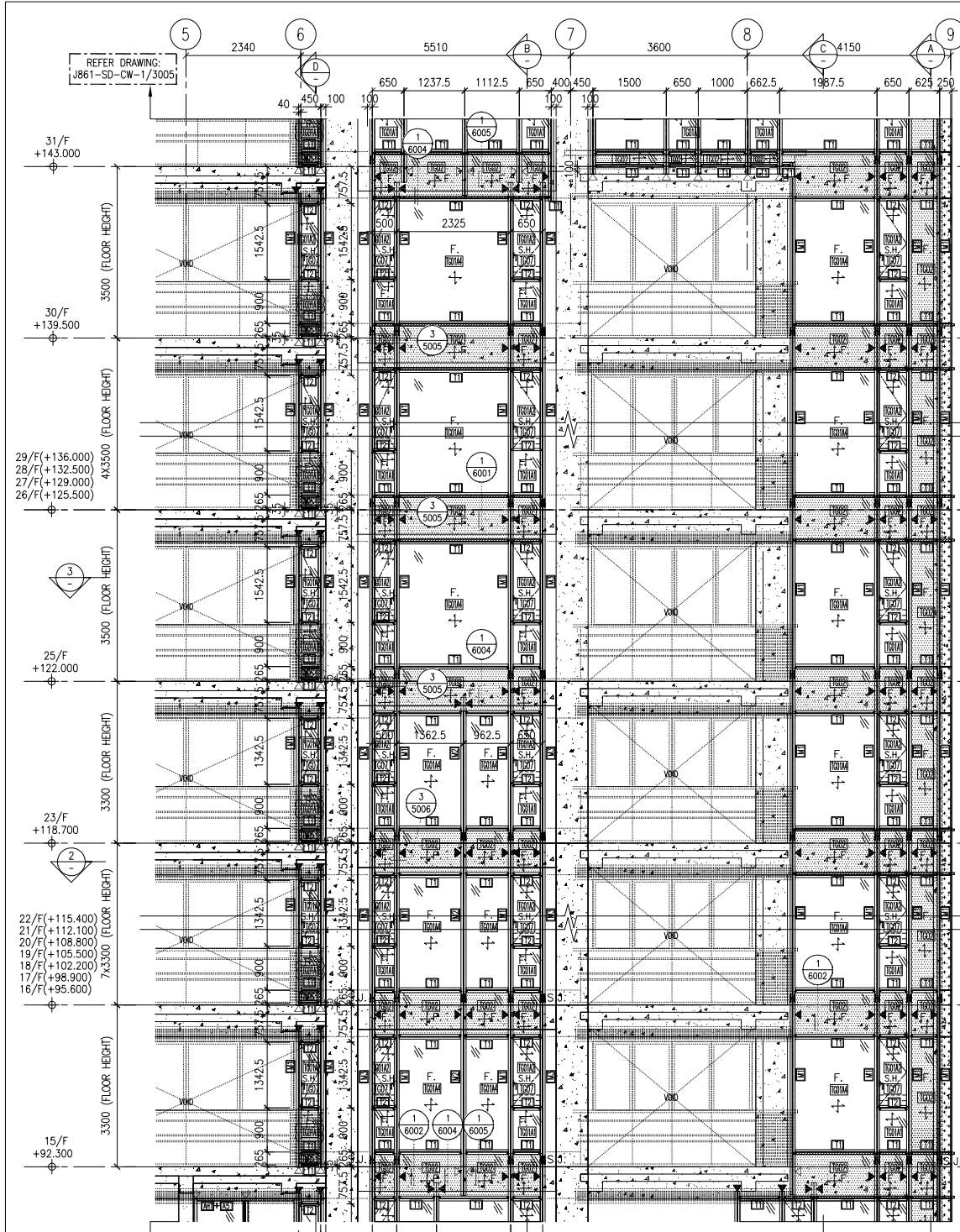
TITLE : PART ELEVATION FOR CURTAIN WALL

DATE : 06-Sep.-24 SCALE : 1:60(A1)

DRAWN BY : Asing CHECKED BY :

DWG NO. : J861-SD-CW-3003 REV. : C

WONG TUNG & PARTNERS LTD.	
APPROVED	
APPROVED AS NOTED	
APPROVED AS NOTED & RESUBMIT	
RESUBMIT	
NO COMMENT	
REFER OTHER CONSULTANT'S COMMENTS	
Reviewed for compliance with the design intent. Comments made shall apply to all similar conditions & details, not just the ones cited.	
The approval shall not be construed as relieving the contractor for compliance with the contract documents & requirements.	
Reviewed By	Date



LEGEND :

1	8mm HEAT STRENGTHENED GLASS + 12mm AIR SPACE + 10mm TEMPERED GLASS (IGU)
2	8mm HEAT STRENGTHENED GLASS + 12mm AIR SPACE + 8mm TEMPERED GLASS (IGU)
3	8mm HEAT STRENGTHENED GLASS WITH (FROSTED) AT SURFACE #2 + 12mm AIR SPACE + 10mm TEMPERED GLASS (IGU)
4	8mm HEAT STRENGTHENED GLASS + 12mm AIR SPACE + 12mm TEMPERED GLASS (IGU)
5	12mm HEAT STRENGTHENED GLASS W/2mm THK. ALUM. BACK PANEL
6	10mm CLEAR TEMPERED GLASS
7	3mm THK ALUM. CLADDING DARK GREY COLOUR CODE: KM3E97023C (*ALL CURTAIN WALL MULLION & TRANSOM FRAME IN DARK GREY COLOUR)
8	F. - FIXED GLASS
9	S.H. - SIDE HUNG OPENABLE WINDOW
10	▲ - SUPPORT POINT (WIND LOAD + DEAD LOAD)
11	◁ - SUPPORT POINT (WIND LOAD)
12	S.J. - STACK JOINT REF TO J861-SD-CW-5016

NOTE :
 1. ALL DIMENSIONS ARE IN mm.
 2. ALL ELEVATIONS ARE VIEWED FROM OUTSIDE.
 3. ALL DIMENSIONS TO BE VERIFIED ON SITE BEFORE FABRICATION.

LEGEND :
 (X1) - DETAIL MARK NO.
 (X001) - REFER SHEET NO.
 1. F.F.L. -- FINISHED FLOOR LEVEL
 2. S.F.L. -- STRUCTURAL FLOOR LEVEL
 3. (R) -- REVERSED DETAIL

NO.	DATE	REVISED	BY
C	17/02/2025	GENERAL REVISED	
B	8/11/2024	GENERAL REVISED	
A	16/9/2024	GENERAL REVISED	

CLIENT :
 MILLION BASE PROPERTIES LIMITED

ARCHITECT :
 WONG TUNG & PARTNERS LIMITED
 ARCHITECTS & PLANNERS

STRUCTURAL ENGINEER :
 SYW & ASSOCIATES LTD.
 邵賢偉建築工程師

MAIN CONTRACTOR :
 顯利工程有限公司
 HIEN LEE ENGINEERING CO., LTD.

MIDI ALUMINIUM FABRICATOR LTD.
 Units 6-8, Sunray Industrial Centre, 1/F
 610 Cha Kwo Ling Road, Kowloon
 Tel:23489211-4 Fax:(852)2727666

JOB NO. : J-861
PROJECT : PROPOSED RESIDENTIAL DEVELOPMENT AT NOS. 3-6 GLENEALY, CENTRAL, HONG KONG

TITLE : PART ELEVATION FOR CURTAIN WALL

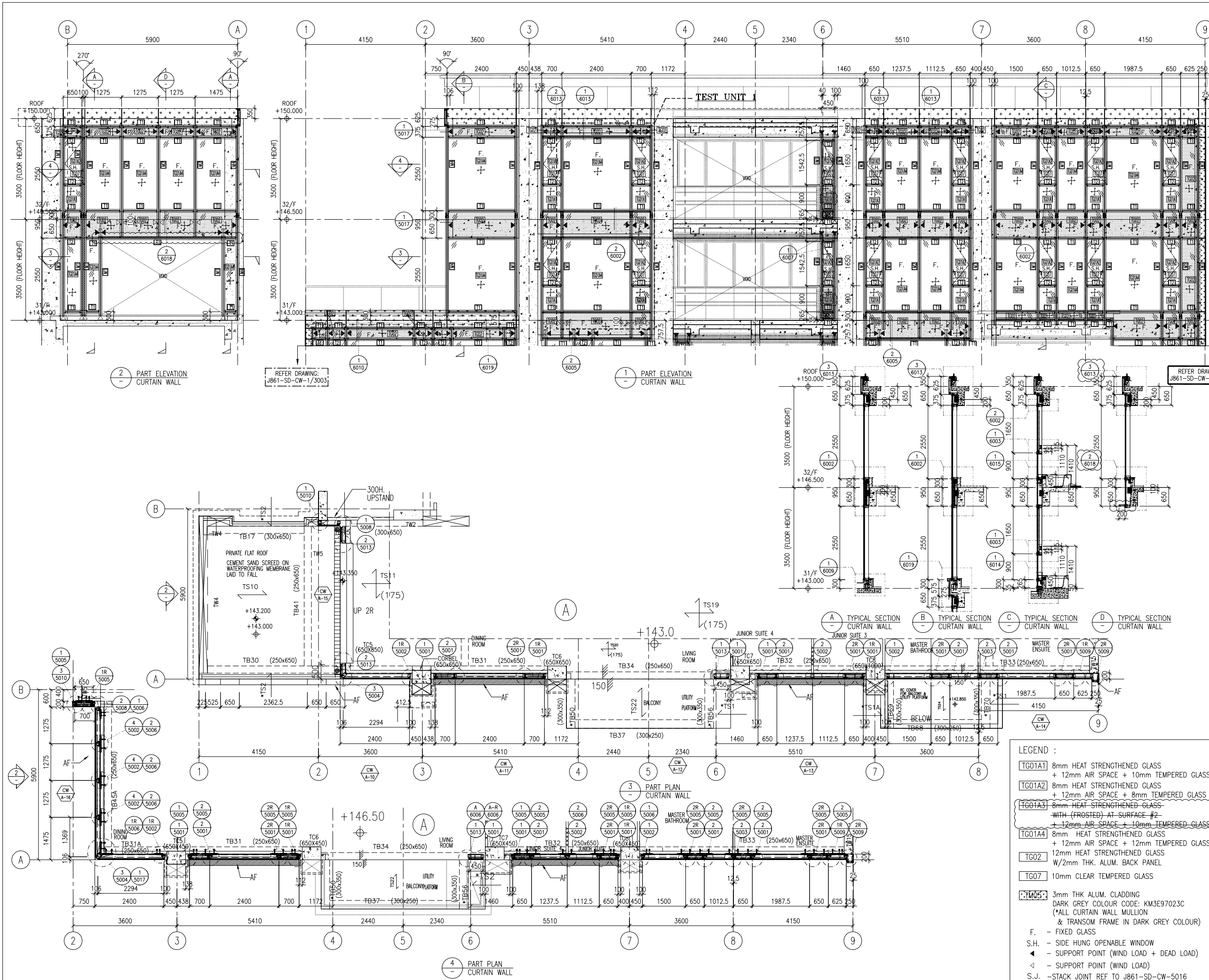
DATE : 06-Sep.-24 **SCALE :** 1:60(A1)
DRAWN BY : Asing **CHECKED BY :**
DWG NO. : J861-SD-CW-3004 **REV. :** C

WONG TUNG & PARTNERS LTD.

APPROVED	
APPROVED AS NOTED	
APPROVED AS NOTED & RESUBMIT	
RESUBMIT	
NO COMMENT	

REFER OTHER CONSULTANT'S COMMENTS
 Reviewed for compliance with the design intent. Comments made shall apply to all similar conditions & details, not just the ones cited.
 The approval shall not be construed as relieving the contractor for compliance with the contract documents & requirements.

Reviewed By: _____ Date: _____



NOTE:
 1. ALL DIMENSIONS ARE IN MM.
 2. ALL ELEVATIONS ARE VIEWED FROM OUTSIDE.
 3. ALL DIMENSIONS TO BE VERIFIED ON SITE BEFORE FABRICATION.

LEGEND:
 (X1) --- DETAIL MARK NO.
 X001 --- REFER SHEET NO.

1. F.F.L. --- FINISHED FLOOR LEVEL
 2. S.F.L. --- STRUCTURAL FLOOR LEVEL
 3. (R) --- REVERSED DETAIL

C	17/02/2025	GENERAL REVISED	
B	8/11/2024	GENERAL REVISED	
A	16/9/2024	GENERAL REVISED	
NO.	DATE	REVISED	BY

CLIENT:
 MILLION BASE PROPERTIES LIMITED

ARCHITECT:
 WONG TUNG & PARTNERS LIMITED
 ARCHITECTS & PLANNERS

STRUCTURAL ENGINEER:
 SYW SYW & ASSOCIATES LTD.
 邵賢偉建築工程師

MAIN CONTRACTOR:
 顯利工程有限公司
 HIEN LEE ENGINEERING CO., LTD.

美特鋁質有限公司
 MIDI ALUMINIUM FABRICATOR LTD.
 Units 6-8, Sunray Industrial Centre, 1/F
 610 Cha Kwo Ling Road, Kowloon
 Tel: 23489211-4 Fax: (852) 2727666

JOB NO.: J-861
PROJECT: PROPOSED RESIDENTIAL DEVELOPMENT AT NOS. 3-6 GLENEALY, CENTRAL, HONG KONG

TITLE: PART ELEVATION FOR CURTAIN WALL

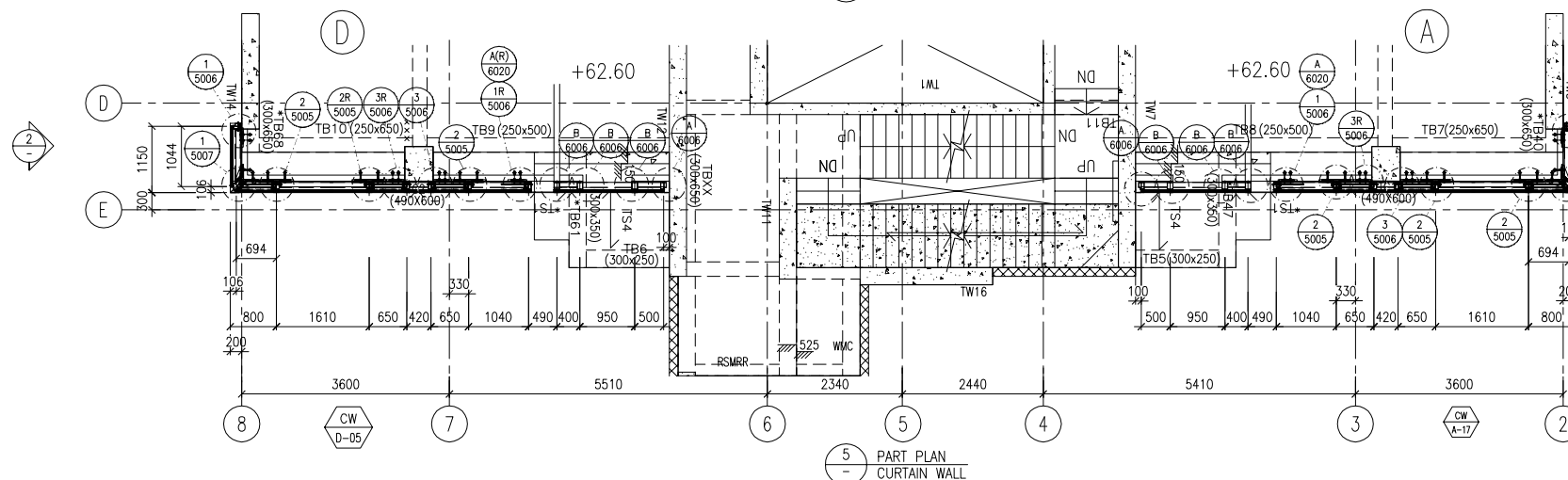
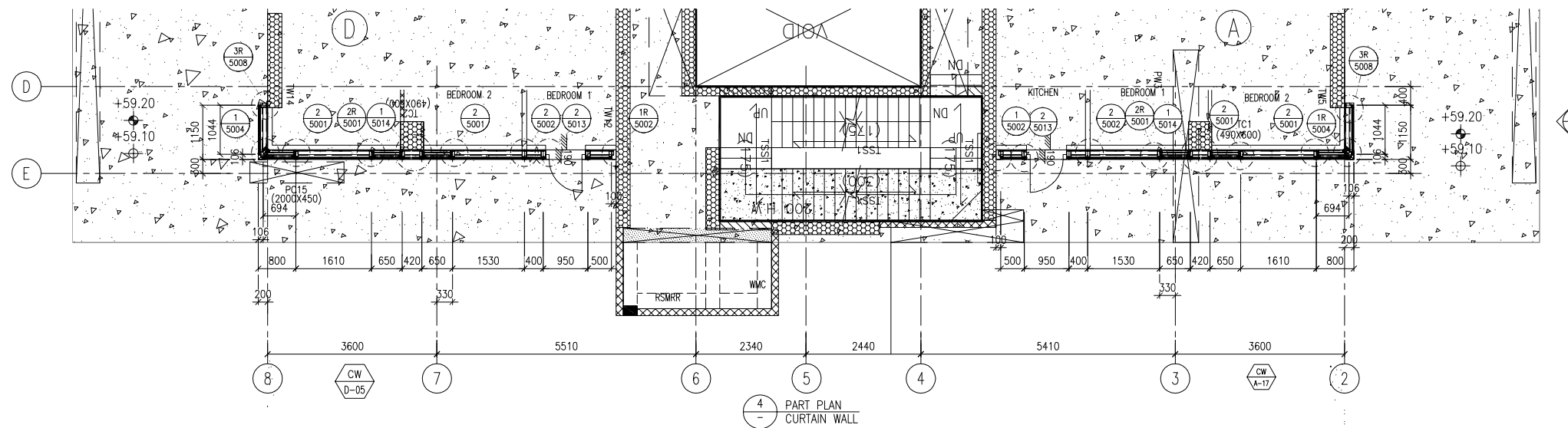
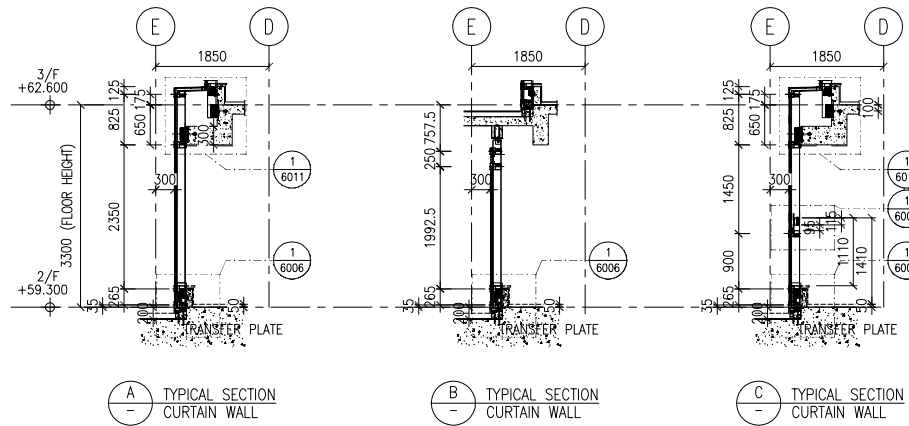
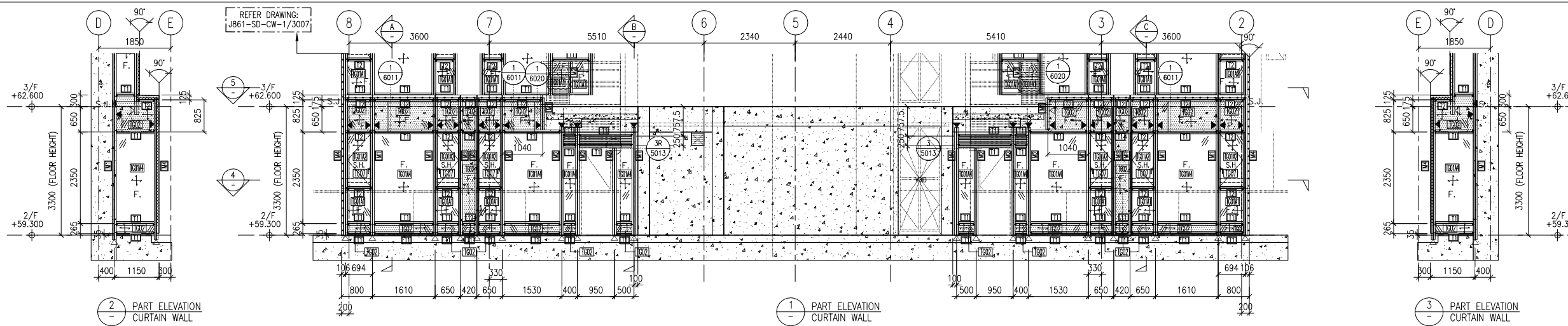
DATE: 06-Sep-24	SCALE: 1:60(A1)
DRAWN BY: Asing	CHECKED BY:
DWG NO.: J861-SD-CW-3005	REV.: C

LEGEND:

- TG01A1 8mm HEAT STRENGTHENED GLASS + 12mm AIR SPACE + 10mm TEMPERED GLASS (IGU)
- TG01A2 8mm HEAT STRENGTHENED GLASS + 12mm AIR SPACE + 8mm TEMPERED GLASS (IGU)
- TG01A3 8mm HEAT STRENGTHENED GLASS WITH (FROSTED) AT SURFACE #2 + 12mm AIR SPACE + 10mm TEMPERED GLASS (IGU)
- TG01A4 8mm HEAT STRENGTHENED GLASS + 12mm AIR SPACE + 12mm TEMPERED GLASS (IGU)
- TG02 12mm HEAT STRENGTHENED GLASS W/2mm THK. ALUM. BACK PANEL
- TG07 10mm CLEAR TEMPERED GLASS
- FM05 3mm THK ALUM. CLADDING DARK GREY COLOUR CODE: KM3E97023C (*ALL CURTAIN WALL MULLION & TRANSOM FRAME IN DARK GREY COLOUR)

F. - FIXED GLASS
 S.H. - SIDE HUNG OPENABLE WINDOW
 ◀ - SUPPORT POINT (WIND LOAD + DEAD LOAD)
 ◁ - SUPPORT POINT (WIND LOAD)
 S.J. - STACK JOINT REF TO J861-SD-CW-5016

WONG TUNG & PARTNERS LTD.	
APPROVED	
APPROVED AS NOTED	
APPROVED AS NOTED & RESUBMIT	
RESUBMIT	
NO COMMENT	
REFER OTHER CONSULTANTS' COMMENTS	
Reviewed for compliance with the design intent. Comments made shall apply to all similar conditions & details, not just the ones cited. The approval shall not be construed as relieving the contractor of compliance with the contract documents & requirements.	
Reviewed By	Date



- LEGEND :
- TG01A1 8mm HEAT STRENGTHENED GLASS + 12mm AIR SPACE + 10mm TEMPERED GLASS (IGU)
 - TG01A2 8mm HEAT STRENGTHENED GLASS + 12mm AIR SPACE + 8mm TEMPERED GLASS (IGU)
 - TG01A3 8mm HEAT STRENGTHENED GLASS WITH (FROSTED) AT SURFACE #2 + 12mm AIR SPACE + 10mm TEMPERED GLASS (IGU)
 - TG01A4 8mm HEAT STRENGTHENED GLASS + 12mm AIR SPACE + 12mm TEMPERED GLASS (IGU)
 - TG02 12mm HEAT STRENGTHENED GLASS W/2mm THK. ALUM. BACK PANEL
 - TG07 10mm CLEAR TEMPERED GLASS
 - FM05 3mm THK ALUM. CLADDING DARK GREY COLOUR CODE: KM3E97023C (*ALL CURTAIN WALL MULLION & TRANSOM FRAME IN DARK GREY COLOUR)
 - F. - FIXED GLASS
 - S.H. - SIDE HUNG OPENABLE WINDOW
 - ◀ - SUPPORT POINT (WIND LOAD + DEAD LOAD)
 - ◁ - SUPPORT POINT (WIND LOAD)
 - S.J. - STACK JOINT REF TO J861-SD-CW-5016

- NOTE :
1. ALL DIMENSIONS ARE IN mm.
 2. ALL ELEVATIONS ARE VIEWED FROM OUTSIDE.
 3. ALL DIMENSIONS TO BE VERIFIED ON SITE BEFORE FABRICATION.

- LEGEND :
- X1 - DETAIL MARK NO.
 - X001 - REFER SHEET NO.
1. F.F.L. -- FINISHED FLOOR LEVEL
 2. S.F.L. -- STRUCTURAL FLOOR LEVEL
 3. (R) -- REVERSED DETAIL

C	17/02/2025	GENERAL REVISED	
B	8/11/2024	GENERAL REVISED	
A	16/9/2024	GENERAL REVISED	
NO.	DATE	REVISED	BY

CLIENT :
MILLION BASE PROPERTIES LIMITED

ARCHITECT :
WONG TUNG & PARTNERS LIMITED
ARCHITECTS & PLANNERS

STRUCTURAL ENGINEER :
SYW SYW & ASSOCIATES LTD.
CHARTERED ENGINEERS & AUTHORIZED PERSONS
邵賢偉建築工程師

MAIN CONTRACTOR :
顯利工程有限公司
HIEN LEE ENGINEERING CO., LTD.

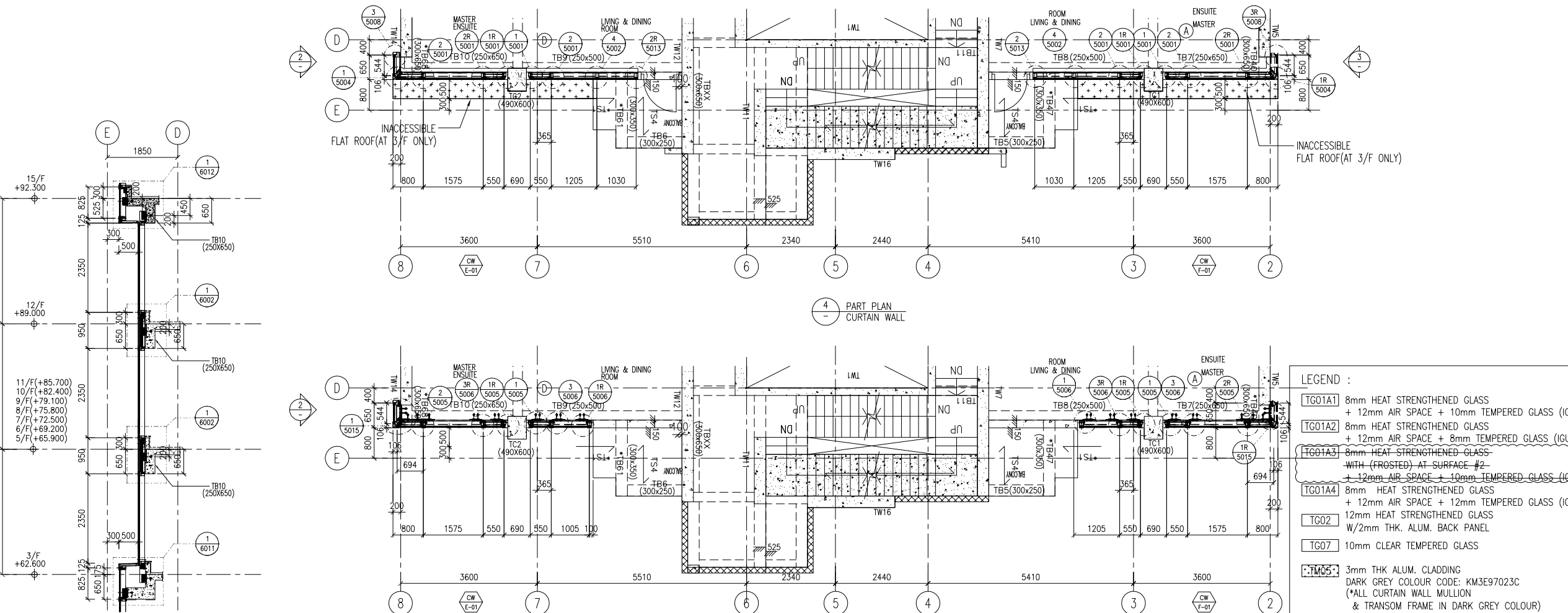
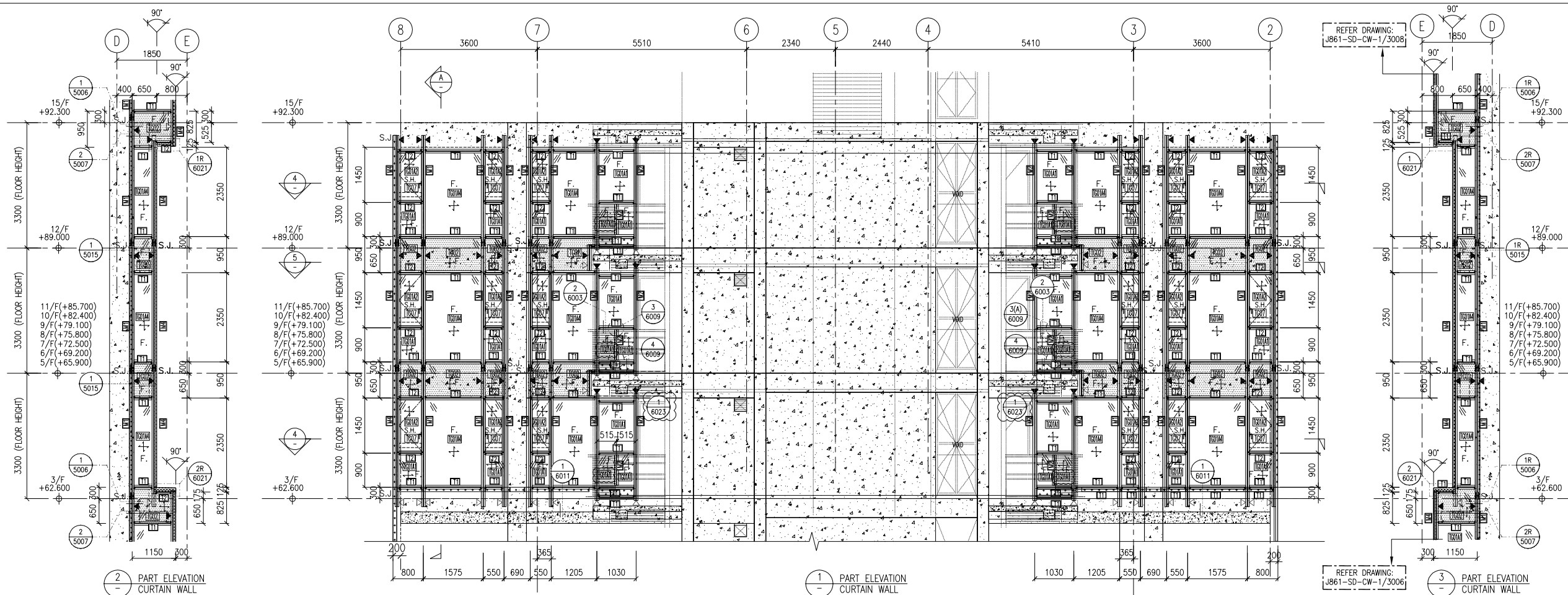
MIDI ALUMINIUM FABRICATOR LTD.
Units 6-8, Sunray Industrial Centre, 1/F
610 Cha Kwo Ling Road, Kowloon
Tel: 23489211-4 Fax: (852) 2772666

JOB NO. : J-861
PROJECT : PROPOSED RESIDENTIAL DEVELOPMENT AT NOS. 3-6 GLENEALY, CENTRAL, HONG KONG

TITLE : PART ELEVATION FOR CURTAIN WALL

DATE : 06-Sep.-24	SCALE : 1:60(A1)
DRAWN BY : Asing	CHECKED BY :
DWG NO. : J861-SD-CW-3006	REV. : C

WONG TUNG & PARTNERS LTD.	
APPROVED	
APPROVED AS NOTED	
APPROVED AS NOTED & RESUBMIT	
RESUBMIT	
NO COMMENT	
REFER OTHER CONSULTANT'S COMMENTS	
Reviewed for compliance with the design intent. Comments made shall apply to all similar conditions & details, not just the ones cited. The approval shall not be construed as relieving the contractor for compliance with the contract documents & requirements.	
Reviewed By	Date



2 - PART ELEVATION CURTAIN WALL

1 - PART ELEVATION CURTAIN WALL

4 - PART PLAN CURTAIN WALL

5 - PART PLAN CURTAIN WALL

NOTE:
 1. ALL DIMENSIONS ARE IN MM.
 2. ALL ELEVATIONS ARE VIEWED FROM OUTSIDE.
 3. ALL DIMENSIONS TO BE VERIFIED ON SITE BEFORE FABRICATION.

LEGEND:
 (X1) - DETAIL MARK NO.
 (X001) - REFER SHEET NO.
 1. F.F.L. --- FINISHED FLOOR LEVEL
 2. S.F.L. --- STRUCTURAL FLOOR LEVEL
 3. (R) --- REVERSED DETAIL

NO.	DATE	REVISED	BY
C	17/02/2025	GENERAL REVISED	
B	8/11/2024	GENERAL REVISED	
A	16/9/2024	GENERAL REVISED	

CLIENT:
 MILLION BASE PROPERTIES LIMITED

ARCHITECT:
WONG TUNG & PARTNERS LIMITED
 ARCHITECTS & PLANNERS

STRUCTURAL ENGINEER:
SYW SYW & ASSOCIATES LTD.
 CHARTERED ENGINEERS & AUTHORIZED PERSONS
 邵賢偉建築工程師

MAIN CONTRACTOR:
顯利工程有限公司
 HIEN LEE ENGINEERING CO., LTD.

美特鋁質有限公司
 MIDI ALUMINIUM FABRICATOR LTD.
 Units 6-8, Sunray Industrial Centre, 1/F
 610 Cha Kwo Ling Road, Kowloon
 Tel: 23489211-4 Fax: (852) 2727666

JOB NO.: J-861
 PROJECT:
 PROPOSED RESIDENTIAL DEVELOPMENT AT NOS. 3-6 GLENEALY, CENTRAL, HONG KONG

TITLE:
 PART ELEVATION FOR CURTAIN WALL

DATE: 06-Sep-24 SCALE: 1:60(A1)
 DRAWN BY: Asing CHECKED BY:
 DWG NO.: J861-SD-CW-3007 REV.: C

LEGEND:

- TG01A1 8mm HEAT STRENGTHENED GLASS + 12mm AIR SPACE + 10mm TEMPERED GLASS (IGU)
- TG01A2 8mm HEAT STRENGTHENED GLASS + 12mm AIR SPACE + 8mm TEMPERED GLASS (IGU)
- TG01A3 8mm HEAT STRENGTHENED GLASS - WITH (FROSTED) AT SURFACE #2 - 12mm AIR SPACE + 10mm TEMPERED GLASS (IGU)
- TG01A4 8mm HEAT STRENGTHENED GLASS + 12mm AIR SPACE + 12mm TEMPERED GLASS (IGU)
- TG02 12mm HEAT STRENGTHENED GLASS W/2mm THK. ALUM. BACK PANEL
- TG07 10mm CLEAR TEMPERED GLASS
- TM05 3mm THK ALUM. CLADDING DARK GREY COLOUR CODE: KM3E97023C (*ALL CURTAIN WALL MULLION & TRANSOM FRAME IN DARK GREY COLOUR)
- F. - FIXED GLASS
- S.H. - SIDE HUNG OPENABLE WINDOW
- ◀ - SUPPORT POINT (WIND LOAD + DEAD LOAD)
- ◁ - SUPPORT POINT (WIND LOAD)
- S.J. - STACK JOINT REF TO J861-SD-CW-5016


WONG TUNG & PARTNERS LTD.	
APPROVED	
APPROVED AS NOTED	
APPROVED AS NOTED & RESUBMIT	
RESUBMIT	
NO COMMENT	
REFER OTHER CONSULTANTS' COMMENTS	
Reviewed for compliance with the design intent. Comments made shall apply to all similar conditions & details, not just the ones cited. The approval shall not be construed as relieving the contractor for compliance with the contract documents & requirements.	
Reviewed By	Date

NOTE:
 1. ALL DIMENSIONS ARE IN mm.
 2. ALL ELEVATIONS ARE VIEWED FROM OUTSIDE.
 3. ALL DIMENSIONS TO BE VERIFIED ON SITE BEFORE FABRICATION.

LEGEND:
 (X1) --- DETAIL MARK NO.
 (X001) --- REFER SHEET NO.
 1. F.F.L. --- FINISHED FLOOR LEVEL
 2. S.F.L. --- STRUCTURAL FLOOR LEVEL
 3. (R) --- REVERSED DETAIL

C	17/02/2025	GENERAL REVISED	
B	8/11/2024	GENERAL REVISED	
A	16/9/2024	GENERAL REVISED	
NO.	DATE	REVISED	BY

CLIENT:
 MILLION BASE PROPERTIES LIMITED

ARCHITECT:
WONG TUNG & PARTNERS LIMITED
 ARCHITECTS & PLANNERS

 STRUCTURAL ENGINEER:
SYW & ASSOCIATES LTD.
 邵賢偉建築工程師

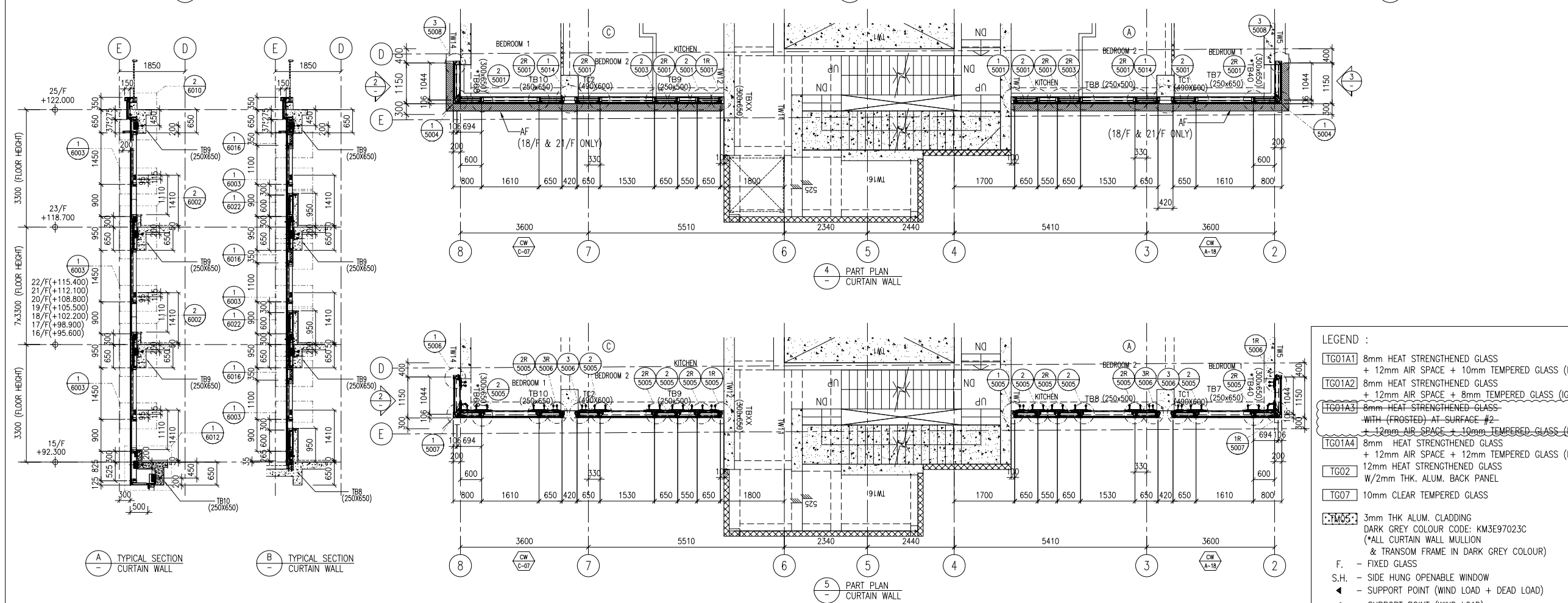
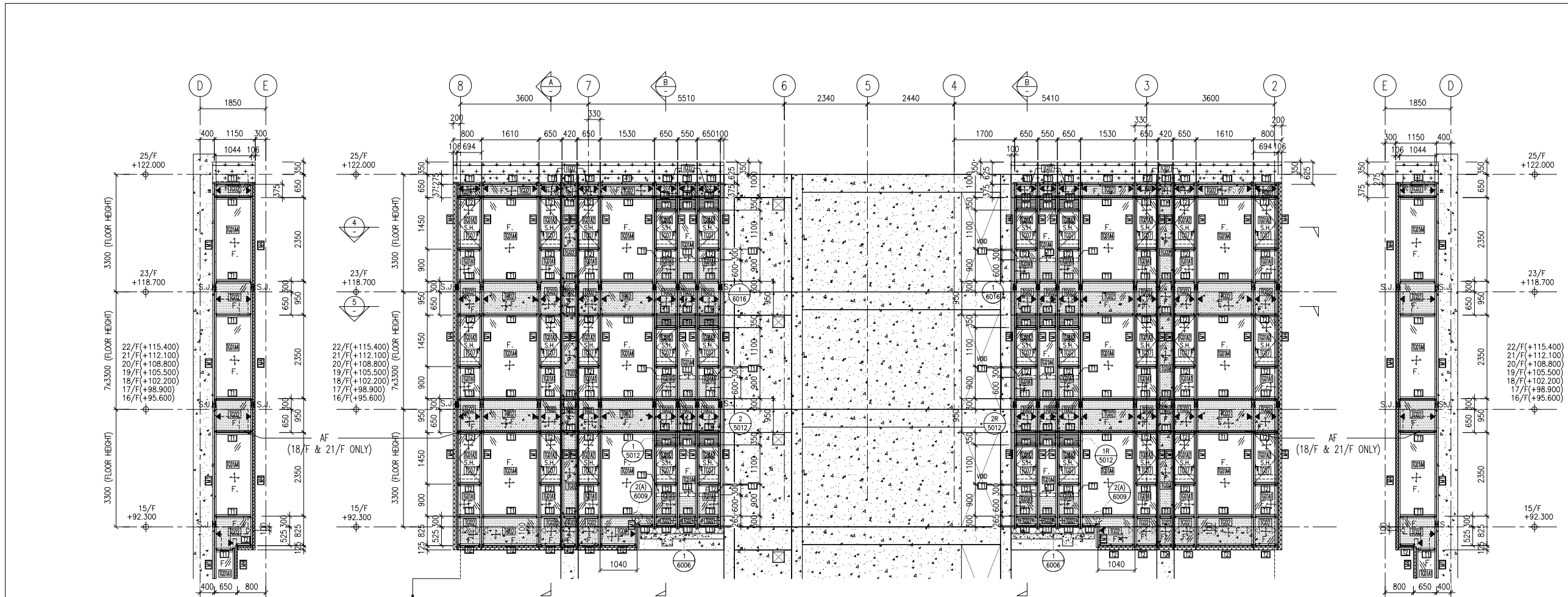
MAIN CONTRACTOR:
顯利工程有限公司
 HIEN LEE ENGINEERING CO., LTD.

 **美特鋁質有限公司**
 MIDI ALUMINIUM FABRICATOR LTD.
 Units 6-8, Sunray Industrial Centre, 1/F
 610 Cho Kwo Ling Road, Kowloon
 Tel: 23489211-4 Fax: (852) 2727666

JOB NO.: J-861
 PROJECT: PROPOSED RESIDENTIAL DEVELOPMENT AT NOS. 3-6 GLENEALY, CENTRAL, HONG KONG

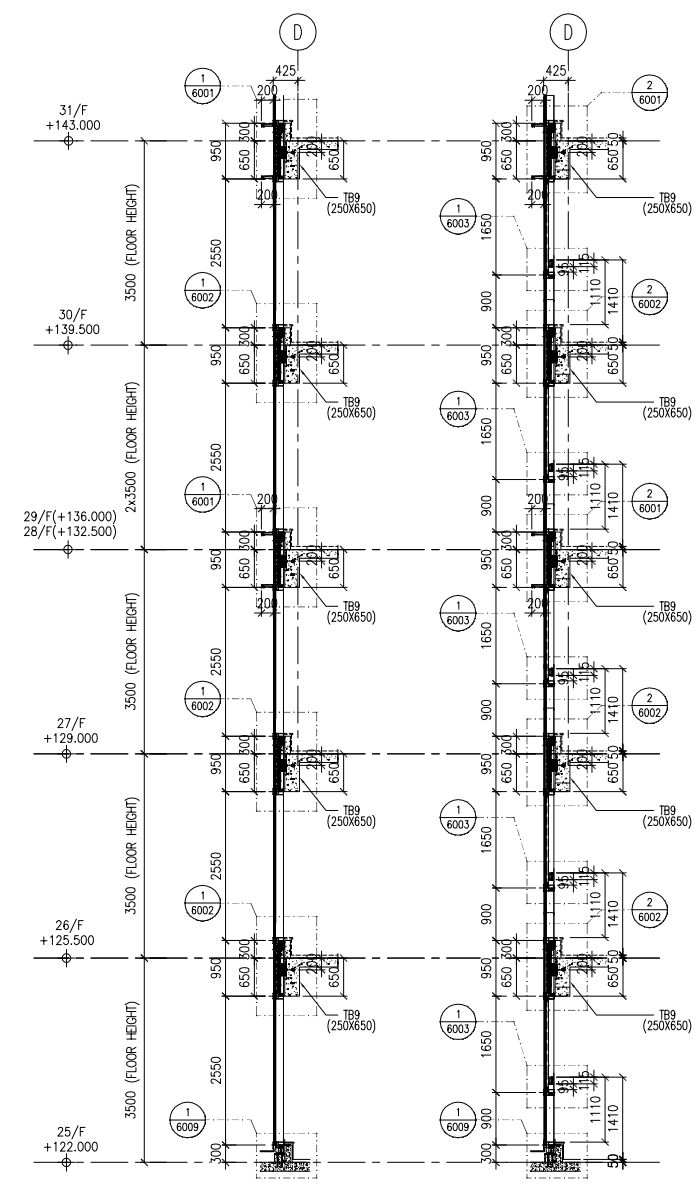
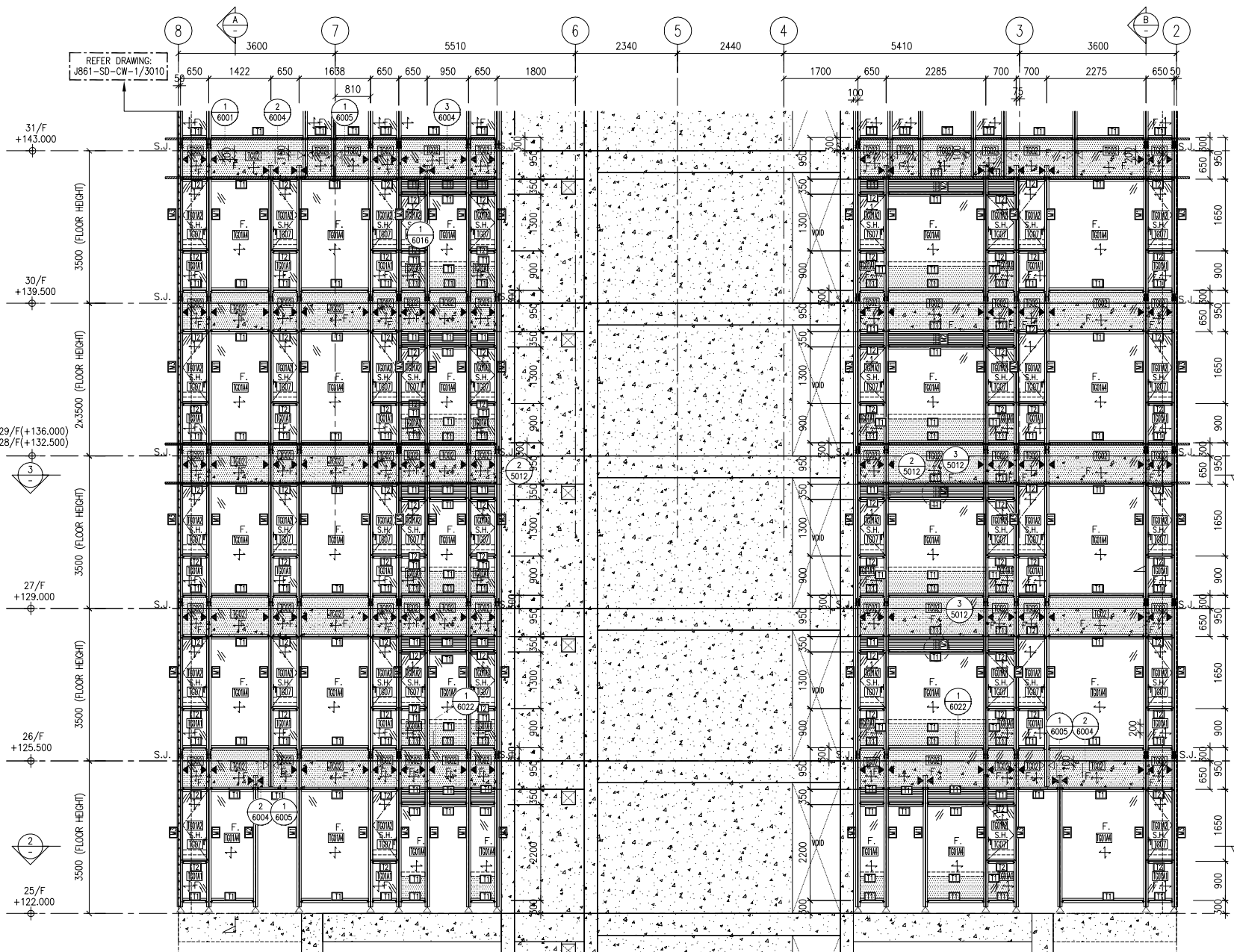
TITLE:
 PART ELEVATION FOR CURTAIN WALL

DATE: 06-Sep.-24 SCALE: 1:60(A1)
 DRAWN BY: Asing CHECKED BY:
 DWG NO.: J861-SD-CW-3008 REV.: C

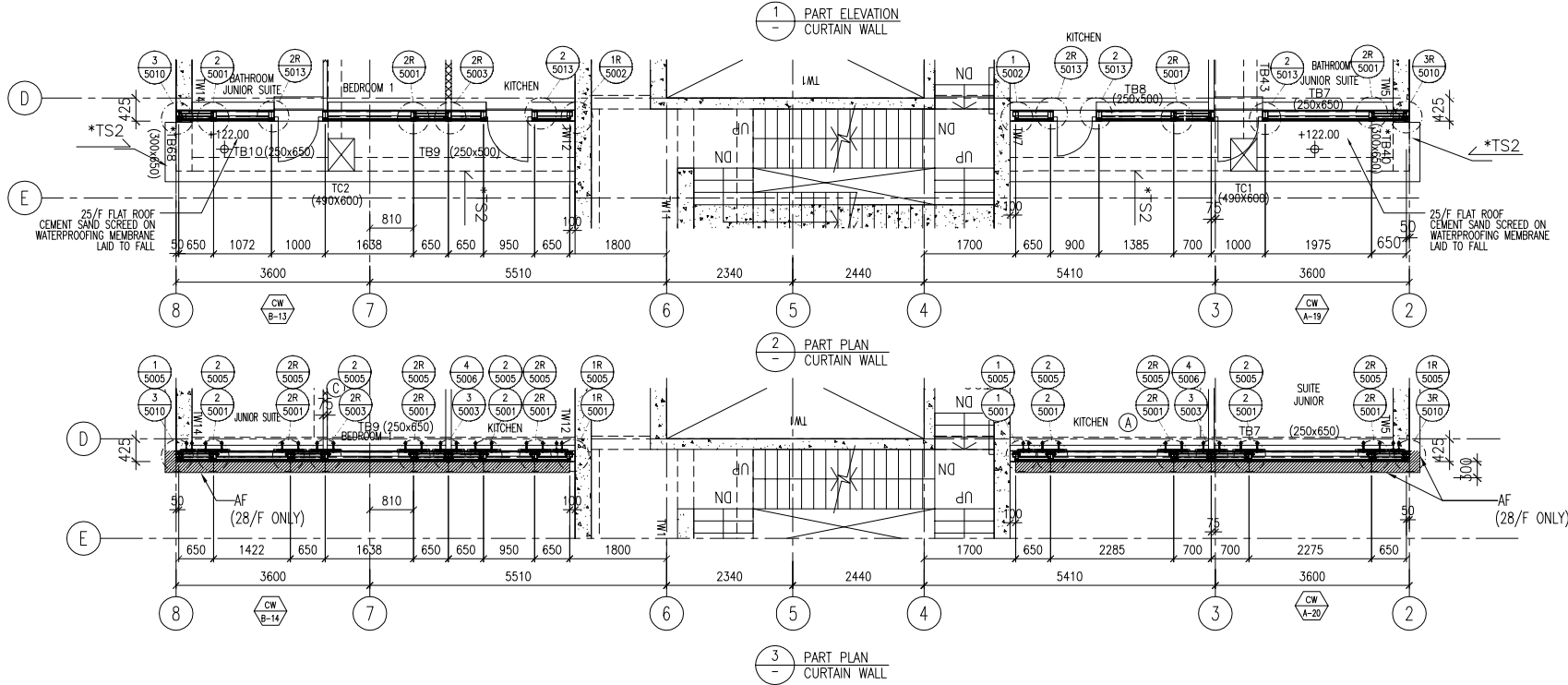


LEGEND:
 [TG01A1] 8mm HEAT STRENGTHENED GLASS + 12mm AIR SPACE + 10mm TEMPERED GLASS (IGU)
 [TG01A2] 8mm HEAT STRENGTHENED GLASS + 12mm AIR SPACE + 8mm TEMPERED GLASS (IGU)
 [TG01A3] 8mm HEAT STRENGTHENED GLASS WITH (FROSTED) AT SURFACE #2 + 12mm AIR SPACE + 10mm TEMPERED GLASS (IGU)
 [TG01A4] 8mm HEAT STRENGTHENED GLASS + 12mm AIR SPACE + 12mm TEMPERED GLASS (IGU)
 [TG02] 12mm HEAT STRENGTHENED GLASS W/2mm THK. ALUM. BACK PANEL
 [TG07] 10mm CLEAR TEMPERED GLASS
 [TM05] 3mm THK ALUM. CLADDING DARK GREY COLOUR CODE: KM3E97023C (*ALL CURTAIN WALL MULLION & TRANSOM FRAME IN DARK GREY COLOUR)
 F. - FIXED GLASS
 S.H. - SIDE HUNG OPENABLE WINDOW
 ◀ - SUPPORT POINT (WIND LOAD + DEAD LOAD)
 ◀ - SUPPORT POINT (WIND LOAD)
 S.J. - STACK JOINT REF TO J861-SD-CW-5016

WONG TUNG & PARTNERS LTD.	
APPROVED	
APPROVED AS NOTED	
APPROVED AS NOTED & RESUBMIT	
RESUBMIT	
NO COMMENT	
REFER OTHER CONSULTANT'S COMMENTS	
Reviewed for compliance with the design intent. Comments made shall apply to all similar conditions & details, not just the ones cited.	
The approval shall not be construed as relieving the contractor for compliance with the contract documents & requirements.	
Reviewed By	Date
()	()



A TYPICAL SECTION CURTAIN WALL
B TYPICAL SECTION CURTAIN WALL



1 PART ELEVATION CURTAIN WALL

2 PART PLAN CURTAIN WALL

3 PART PLAN CURTAIN WALL

NOTE :
1. ALL DIMENSIONS ARE IN mm.
2. ALL ELEVATIONS ARE VIEWED FROM OUTSIDE.
3. ALL DIMENSIONS TO BE VERIFIED ON SITE BEFORE FABRICATION.

LEGEND :
X1 - DETAIL MARK NO.
X001 - REFER SHEET NO.

1. F.F.L. -- FINISHED FLOOR LEVEL
2. S.F.L. -- STRUCTURAL FLOOR LEVEL
3. (R) -- REVERSED DETAIL

C	17/02/2025	GENERAL REVISED	
B	8/11/2024	GENERAL REVISED	
A	16/9/2024	GENERAL REVISED	
NO.	DATE	REVISED	BY

CLIENT :
MILLION BASE PROPERTIES LIMITED

ARCHITECT :
WONG TUNG & PARTNERS LIMITED
ARCHITECTS & PLANNERS

STRUCTURAL ENGINEER :
SWW & ASSOCIATES LTD.
STRUCTURAL ENGINEERING & AUTHORIZED PERSONNEL

MAIN CONTRACTOR :
顯利工程有限公司
HIEN LEE ENGINEERING CO., LTD.

美特鋁質有限公司
MIDI ALUMINIUM FABRICATOR LTD.
Units 6-8, Sunray Industrial Centre, 1/F
610 Cho Kwo Ling Road, Kowloon
Tel: 23489211-4 Fax: (852) 2727666

JOB NO. : J-861
PROJECT : PROPOSED RESIDENTIAL DEVELOPMENT AT NOS. 3-6 GLENEALY, CENTRAL, HONG KONG

TITLE : PART ELEVATION FOR CURTAIN WALL

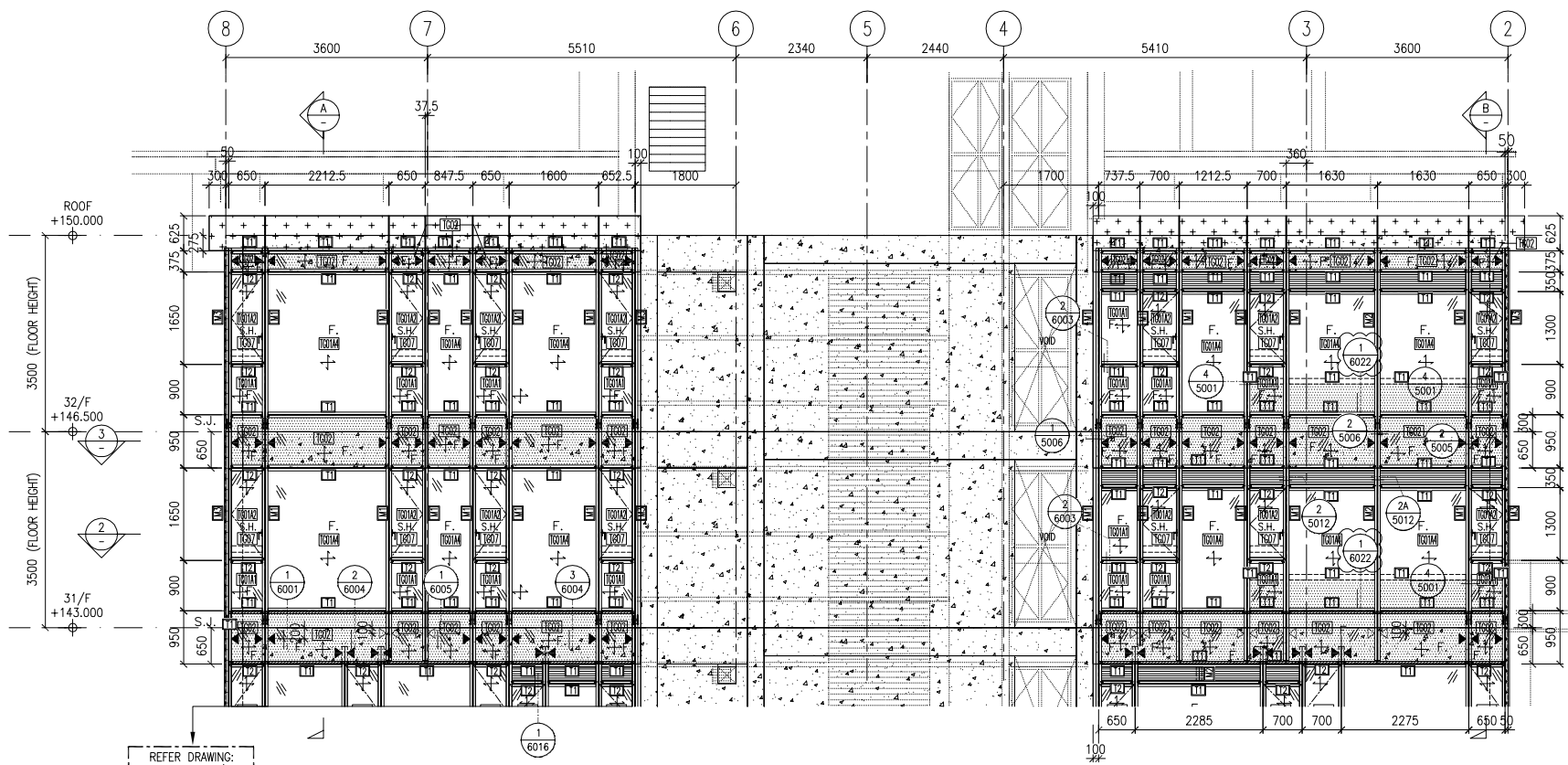
DATE : 06-Sep.-24 SCALE : 1:60(A1)
DRAWN BY : Asing CHECKED BY :
DWG NO. : J861-SD-CW-3009 REV. : C

LEGEND :

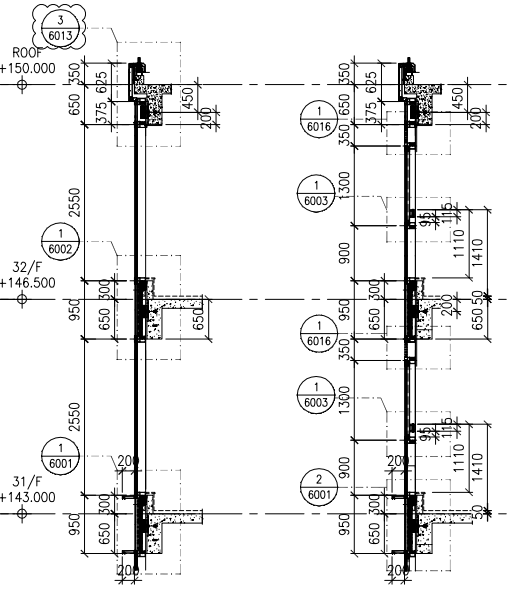
- TG01A1 8mm HEAT STRENGTHENED GLASS + 12mm AIR SPACE + 10mm TEMPERED GLASS (IGU)
- TG01A2 8mm HEAT STRENGTHENED GLASS + 12mm AIR SPACE + 8mm TEMPERED GLASS (IGU)
- TG01A3 8mm HEAT STRENGTHENED GLASS WITH (FROSTED) AT SURFACE #2 + 12mm AIR SPACE + 10mm TEMPERED GLASS (IGU)
- TG01A4 8mm HEAT STRENGTHENED GLASS + 12mm AIR SPACE + 12mm TEMPERED GLASS (IGU)
- TG02 12mm HEAT STRENGTHENED GLASS W/2mm THK. ALUM. BACK PANEL
- TG07 10mm CLEAR TEMPERED GLASS
- TM05 3mm THK ALUM. CLADDING DARK GREY COLOUR CODE: KM3E97023C (*ALL CURTAIN WALL MULLION & TRANSOM FRAME IN DARK GREY COLOUR)

F. - FIXED GLASS
S.H. - SIDE HUNG OPENABLE WINDOW
▲ - SUPPORT POINT (WIND LOAD + DEAD LOAD)
◄ - SUPPORT POINT (WIND LOAD)
S.J. - STACK JOINT REF TO J861-SD-CW-5016

WONG TUNG & PARTNERS LTD.	
APPROVED	
APPROVED AS NOTED	
APPROVED AS NOTED & RESUBMIT	
RESUBMIT	
NO COMMENT	
REFER OTHER CONSULTANTS' COMMENTS	
Reviewed for compliance with the design intent. Comments made shall apply to all similar conditions & details, not just the ones cited.	
The approval shall not be construed as relieving the contractor of compliance with the contract documents & requirements.	
Reviewed By	Date

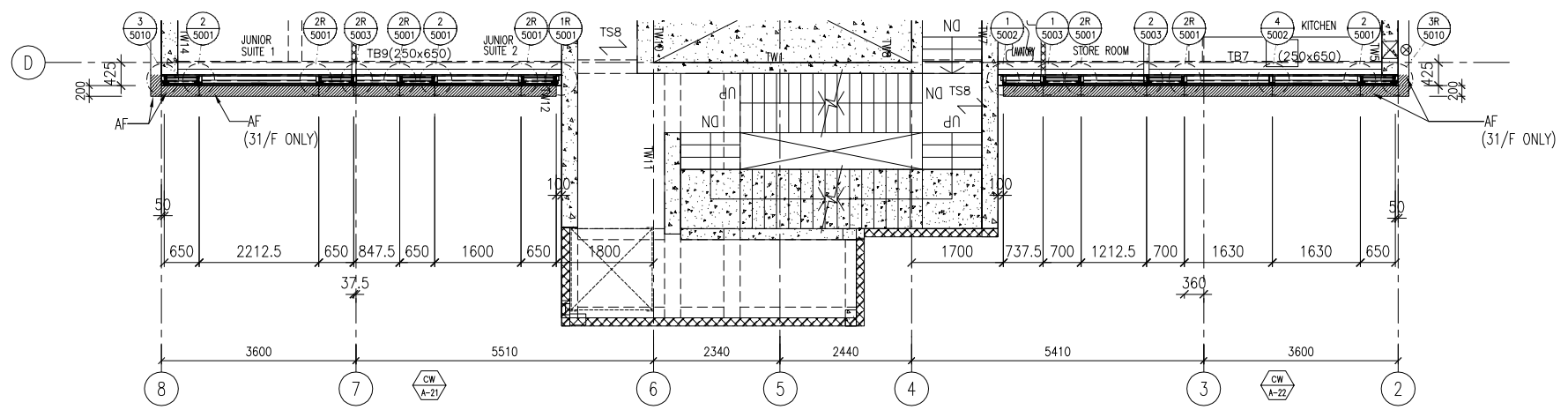


1 PART ELEVATION CURTAIN WALL

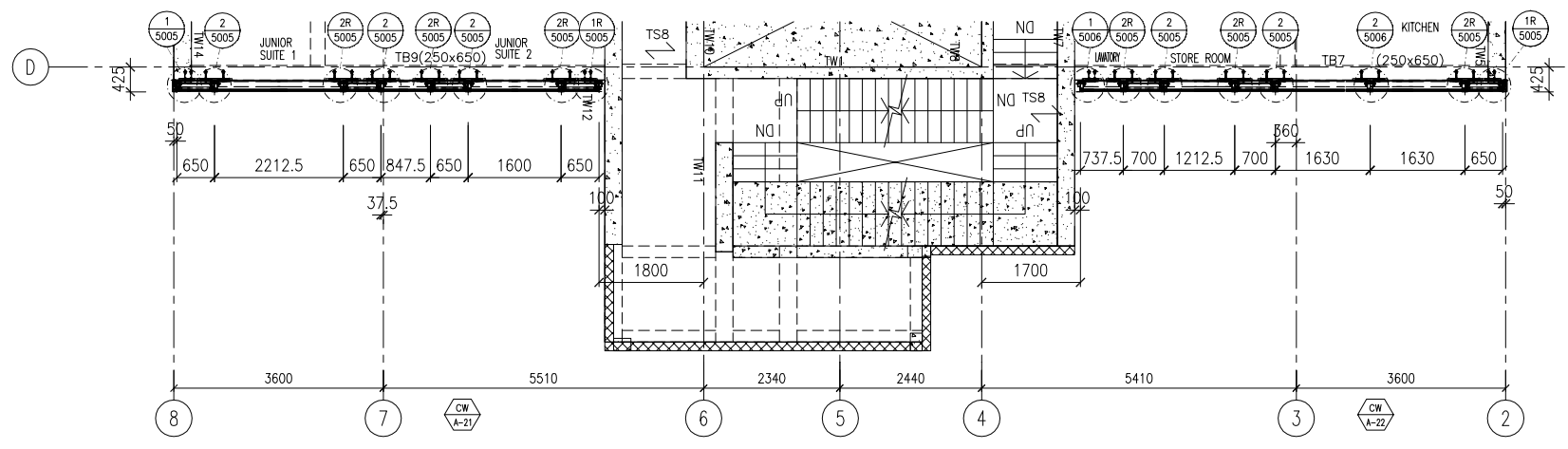


A TYPICAL SECTION CURTAIN WALL

B TYPICAL SECTION CURTAIN WALL



2 PART PLAN CURTAIN WALL



3 PART PLAN CURTAIN WALL

- LEGEND :
- TG01A1 8mm HEAT STRENGTHENED GLASS + 12mm AIR SPACE + 10mm TEMPERED GLASS (IGU)
 - TG01A2 8mm HEAT STRENGTHENED GLASS + 12mm AIR SPACE + 8mm TEMPERED GLASS (IGU)
 - TG01A3 8mm HEAT STRENGTHENED GLASS WITH (FROSTED) AT SURFACE #2 + 12mm AIR SPACE + 10mm TEMPERED GLASS (IGU)
 - TG01A4 8mm HEAT STRENGTHENED GLASS + 12mm AIR SPACE + 12mm TEMPERED GLASS (IGU)
 - TG02 12mm HEAT STRENGTHENED GLASS W/2mm THK. ALUM. BACK PANEL
 - TG07 10mm CLEAR TEMPERED GLASS
 - FM05 3mm THK ALUM. CLADDING DARK GREY COLOUR CODE: KM3E97023C (*ALL CURTAIN WALL MULLION & TRANSOM FRAME IN DARK GREY COLOUR)
 - F. - FIXED GLASS
 - S.H. - SIDE HUNG OPENABLE WINDOW
 - ◀ - SUPPORT POINT (WIND LOAD + DEAD LOAD)
 - ◁ - SUPPORT POINT (WIND LOAD)
 - S.J. - STACK JOINT REF TO J861-SD-CW-5016

- NOTE :
1. ALL DIMENSIONS ARE IN MM.
 2. ALL ELEVATIONS ARE VIEWED FROM OUTSIDE.
 3. ALL DIMENSIONS TO BE VERIFIED ON SITE BEFORE FABRICATION.

- LEGEND :
- X1 - DETAIL MARK NO.
 - X001 - REFER SHEET NO.
1. F.F.L. -- FINISHED FLOOR LEVEL
 2. S.F.L. -- STRUCTURAL FLOOR LEVEL
 3. (R) -- REVERSED DETAIL

C	17/02/2025	GENERAL REVISED	
B	8/11/2024	GENERAL REVISED	
A	16/9/2024	GENERAL REVISED	
NO.	DATE	REVISED	BY

CLIENT :
MILLION BASE PROPERTIES LIMITED

ARCHITECT :
WONG TUNG & PARTNERS LIMITED
ARCHITECTS & PLANNERS

STRUCTURAL ENGINEER :
SYW SYW & ASSOCIATES LTD.
CHARTERED ENGINEERS & AUTHORIZED PERSONS
邵賢偉建築工程師

MAIN CONTRACTOR :
顯利工程有限公司
HIEN LEE ENGINEERING CO., LTD.

美特鋁質有限公司
MIDI ALUMINIUM FABRICATOR LTD.
Units 6-8, Sunray Industrial Centre, 1/F
610 Cha Kwo Ling Road, Kowloon
Tel:23489211-4 Fax:(852)2772666

JOB NO. : J-861

PROJECT :
PROPOSED RESIDENTIAL DEVELOPMENT AT NOS. 3-6 GLENEALY, CENTRAL, HONG KONG

TITLE :
PART ELEVATION FOR CURTAIN WALL

DATE : 06-Sep.-24 SCALE : 1:60(A1)

DRAWN BY : Asing CHECKED BY :

DWG NO. : J861-SD-CW-3010 REV. : C

WONG TUNG & PARTNERS LTD.	
APPROVED	
APPROVED AS NOTED	
APPROVED AS NOTED & RESUBMIT	
RESUBMIT	
NO COMMENT	
REFER OTHER CONSULTANT'S COMMENTS	
Reviewed for compliance with the design intent. Comments made shall apply to all similar conditions & details, not just the ones cited. The approval shall not be construed as relieving the contractor for compliance with the contract documents & requirements.	
Reviewed By	Date