



工程指示 / 要求簡箋 ENGINEER INSTRUCTIONS(E.I.)

工程指示編號:	EI- 8777	修改版本:	C
	HK- 0164		
工程編號:	J 861	工程名稱:	己連拿利
收件人:	生統/技術部	發件人:	細佬
工程項目:	後裝窗 Shop Drawing	日期:	26/02/2025

<input type="checkbox"/> 原合約工程包	<input type="checkbox"/> 原合約工程加 / 減賬 QT-	<input type="checkbox"/> 新工程報價 QT-
---------------------------------	--	------------------------------------

信件批核號碼/圖紙參考編號:	批核模具圖紙編號:
客戶指示附件:	管理內部批簽署:

<input type="checkbox"/> 初步鋁料 B.M.	<input type="checkbox"/> 加工拆圖, 然後生產	<input type="checkbox"/> 尺寸表
<input type="checkbox"/> 正式鋁料 B.M.	<input type="checkbox"/> 技術上資料/指示	<input type="checkbox"/> 報價
<input type="checkbox"/> 配件 B.M.	<input type="checkbox"/> 樣辦或貨品說明書	<input type="checkbox"/> 分判合約
<input type="checkbox"/> 其他:		


內容:	給技術部: 請收附頁後裝窗更新ShopDrawing
	備注: 在2月26日收到細味修改
完成上列要求日期:	18/03/2025

國內

<input type="checkbox"/> 生產技術總監	<input type="checkbox"/> 連附件	<input checked="" type="checkbox"/> 技術部	<input checked="" type="checkbox"/> 連附件	<input type="checkbox"/> 生產部	<input type="checkbox"/> 連附件
<input type="checkbox"/> 採購部	<input type="checkbox"/> 連附件	<input checked="" type="checkbox"/> 生產統籌部	<input checked="" type="checkbox"/> 連附件	<input type="checkbox"/> 報關組	<input type="checkbox"/> 連附件
<input type="checkbox"/> 質檢部	<input type="checkbox"/> 連附件	<input type="checkbox"/> 會計部	<input type="checkbox"/> 連附件	<input type="checkbox"/> 機械設計部	<input type="checkbox"/> 連附件
<input type="checkbox"/> 香港辦	<input type="checkbox"/> 連附件	<input type="checkbox"/> 其他:			

香港

<input type="checkbox"/> 行政部	<input type="checkbox"/> 連附件	<input type="checkbox"/> 會計部	<input type="checkbox"/> 連附件	<input type="checkbox"/> 統籌部	<input type="checkbox"/> 連附件	<input type="checkbox"/> 工程部	<input type="checkbox"/> 連附件
<input type="checkbox"/> 採購部	<input type="checkbox"/> 連附件	<input type="checkbox"/> QS部	<input type="checkbox"/> 連附件	<input type="checkbox"/> 地盤管理	<input type="checkbox"/> 連附件	<input type="checkbox"/> 維修部	<input type="checkbox"/> 連附件

*發件人簽署:	*組別成員批核簽署:
傳遞編號: HK-0164	項目經理簽署: 

PROJECT :

PROPOSED RESIDENTIAL  
DEVELOPMENT AT  
NOS. 3-6 GLENEALY, CENTRAL, HONG KONG

6

SHOPDRAWING SUBMISSION  
IN-SITU ALUM. WINDOW , LOUVRE & BI-FOLDING DOOR

DATE: 27-FEB-2025

 美特鋁質有限公司  
MIDI ALUMINIUM FABRICATOR LTD.

Units 6-8, Sunray Industrial Centre, 1/F  
610 Cha Kwo Ling Road, Kowloon  
Tel:23489211-4 Fax:(852)27727666


DWG NO. : J861-SD-IW-0000

REV. : F

# DRAWING SUBMISSION REGISTER

<b>PROJECT:</b> PROPOSED RESIDENTIAL DEVELOPMENT AT NOS. 3-6 GLENEALY, CENTRAL, HONG KONG  <b>TITLE:</b> SHOPDRAWING SUBMISSION FOR IN-SITU ALUM. WINDOW, LOUVRE, BI-FOLDING DOOR & SLIDING DOOR	DATE OF ISSUE										SUBMISSION STATE (FOR B.D / A.S.D)			SUBMISSION STATE (FOR CLIENT / CONSULTANT)			SUBMISSION STATE (FOR ARCHITECT)			FABRICATION / CONSTRUCTION STATE						
	ISSUE	1	2	3	4	4a	5	6				AP - APPROVED			AP - APPROVED			AP - APPROVED			ISSUE TO CHINA OFFICE		ISSUE TO SITE		ISSUE TO SUB-CONTRACTOR	
	DAY	29	16	10	11	2	18	26				AC - APPROVED SUB. TO CONDITION			AC - APPROVED SUB. TO CONDITION			AC - APPROVED SUB. TO CONDITION								
	MONTH	7	8	10	11	12	2	2				NA - NOT APPROVED			NA - NOT APPROVED			NA - NOT APPROVED								
	YEAR	24	24	24	24	24	25	25																		
DRAWING TITLE	DWG. NO.	REVISIONS										COMMENT DATE	REV.	STATE	COMMENT DATE	REV.	STATE	COMMENT DATE	REV.	STATE	REV.	DATE	REV.	DATE	REV.	DATE
COVER PAGE	J861-SD-IW-0000	-	A	B	C	D	E	F																		
DRAWING REGISTER	J861-SD-IW-0001	-	A	B	C	D	E	F																		
DRAWING REGISTER	J861-SD-IW-0002	-	A	B	C	D	E	F																		
GENERAL NOTES FOR IN-SITU WINDOW	J861-SD-IW-0011		-	A	A	A	/	/																		
DIE LIST FOR IN-SITU WINDOW	J861-SD-IW-0021	-	-	-	-	-	/	/																		
DIE LIST FOR IN-SITU WINDOW	J861-SD-IW-0022	-	-	-	-	-	/	/																		
DIE LIST FOR IN-SITU WINDOW	J861-SD-IW-0023	-	-	-	-	-	/	/																		
DIE LIST FOR IN-SITU WINDOW	J861-SD-IW-0024	-	A	B	B	/	/																			
DIE LIST FOR IN-SITU WINDOW	J861-SD-IW-0025	-	A	B	B	/	/																			
WINDOW LOCATION PLAN FOR IN-SITU WINDOW AT TOWER (1F)	J861-SD-IW-0100		-	-	-	/	/																			
WINDOW LOCATION PLAN FOR IN-SITU WINDOW AT TOWER (2F)	J861-SD-IW-0101	-	A	B	B	C	/	/																		
WINDOW LOCATION PLAN FOR IN-SITU WINDOW AT TOWER (3F-12F)	J861-SD-IW-0102	-	A	A	A	A	/	/																		
WINDOW LOCATION PLAN FOR IN-SITU WINDOW AT TOWER (15F-21F)	J861-SD-IW-0103	-	-	A	A	B	/	/																		
WINDOW LOCATION PLAN FOR IN-SITU WINDOW AT TOWER (22F-23F)	J861-SD-IW-0104	-	-	A	A	B	/	/																		
WINDOW LOCATION PLAN FOR IN-SITU WINDOW AT TOWER (25F)	J861-SD-IW-0105	-	-	A	A	B	/	/																		
WINDOW LOCATION PLAN FOR IN-SITU WINDOW AT TOWER (26F-30F)	J861-SD-IW-0106	-	-	A	A	B	/	/																		
WINDOW LOCATION PLAN FOR IN-SITU WINDOW AT TOWER (31F)	J861-SD-IW-0107	-	-	A	A	B	/	/																		
WINDOW LOCATION PLAN FOR IN-SITU WINDOW AT TOWER (32F)	J861-SD-IW-0108	-	-	A	A	B	/	/																		
WINDOW LOCATION PLAN FOR IN-SITU WINDOW AT TOWER (TMR)	J861-SD-IW-0109	-	-	-	-	-	/	/																		
WINDOW LOCATION PLAN FOR IN-SITU WINDOW AT TOWER (LRF & IRF)	J861-SD-IW-0110	-	-	-	-	-	/	/																		
WINDOW SCHEDULE FOR IN-SITU WINDOW	J861-SD-IW-1001	-	-	A	B	B	/	/																		
WINDOW SCHEDULE FOR IN-SITU WINDOW	J861-SD-IW-1002	-	-	A	B	C	D	/																		
WINDOW SCHEDULE FOR IN-SITU WINDOW	J861-SD-IW-1003	-	-	A	B	C	D	/																		
WINDOW SCHEDULE FOR IN-SITU WINDOW	J861-SD-IW-1004	-	-	A	B	B	/	/																		
WINDOW SCHEDULE FOR IN-SITU WINDOW	J861-SD-IW-1005	-	-	A	A	A	/	/																		
WINDOW SCHEDULE FOR IN-SITU WINDOW	J861-SD-IW-1006	-	-	A	A	A	/	/																		
WINDOW SCHEDULE FOR IN-SITU WINDOW	J861-SD-IW-1007	-	-	-	-	-	/	/																		
WINDOW SCHEDULE FOR IN-SITU WINDOW	J861-SD-IW-1008	-	-	-	-	-	/	/																		
WINDOW SCHEDULE FOR IN-SITU WINDOW	J861-SD-IW-1009	-	-	-	-	-	/	/																		
WINDOW SCHEDULE FOR IN-SITU WINDOW	J861-SD-IW-1010	-	-	-	-	-	/	/																		
WINDOW SCHEDULE FOR IN-SITU WINDOW	J861-SD-IW-1011	-	-	-	-	-	/	/																		
WINDOW SCHEDULE FOR IN-SITU WINDOW	J861-SD-IW-1012	-	-	A	A	A	/	/																		
WINDOW SCHEDULE FOR IN-SITU WINDOW	J861-SD-IW-1013	-	-	A	A	A	/	/																		
WINDOW SCHEDULE FOR IN-SITU WINDOW	J861-SD-IW-1014	-	-	A	A	A	/	/																		
WINDOW SCHEDULE FOR IN-SITU WINDOW	J861-SD-IW-1015		-	-	-	/	/																			
WINDOW SCHEDULE FOR IN-SITU WINDOW	J861-SD-IW-1016		-	-	-	/	/																			
WINDOW SCHEDULE FOR IN-SITU WINDOW	J861-SD-IW-1101	-	-	A	A	/	/																			
WINDOW SCHEDULE FOR IN-SITU WINDOW	J861-SD-IW-1102	-	-	A	A	/	/																			
WINDOW SCHEDULE FOR IN-SITU WINDOW	J861-SD-IW-1103	-	-	A	B	/	C																			
WINDOW SCHEDULE FOR IN-SITU WINDOW	J861-SD-IW-1104	-	-	A	B	/	C																			
TYPICAL DETAILS FOR IN-SITU WINDOW	J861-SD-IW-2001	-	-	A	B	B	/	/																		
TYPICAL DETAILS FOR IN-SITU WINDOW	J861-SD-IW-2002	-	-	A	B	B	/	/																		
TYPICAL DETAILS FOR IN-SITU WINDOW	J861-SD-IW-2003	-	-	A	B	B	/	/																		
TYPICAL DETAILS FOR IN-SITU WINDOW	J861-SD-IW-2004	-	-	A	A	A	/	/																		

IN-HOUSE DESIGN CHECKER



Units 6-8, Sunray Industrial Centre, 1/F  
 610 Cha Kwo Ling Road, Kowloon  
 Tel:23489211-4 Fax:(852)27727666

DWG NO. : J861-SD-IW-0001    REV. : F

# DRAWING SUBMISSION REGISTER

<b>PROJECT:</b> PROPOSED RESIDENTIAL DEVELOPMENT AT NOS. 3-6 GLENEALY, CENTRAL, HONG KONG  <b>TITLE:</b> SHOPDRAWING SUBMISSION FOR IN-SITU ALUM. WINDOW , LOUVRE & BI-FOLDING DOOR	DATE OF ISSUE								SUBMISSION STATE (FOR B.D / A.S.D)			SUBMISSION STATE (FOR CLIENT / CONSULTANT)			SUBMISSION STATE (FOR ARCHITECT)			FABRICATION / CONSTRUCTION STATE							
	ISSUE	1	2	3	4	4a	5	6			AP - APPROVED			AP - APPROVED			AP - APPROVED			ISSUE TO CHINA OFFICE		ISSUE TO SITE		ISSUE TO SUB-CONTRACTOR	
	DAY	29	16	10	11	2	18	26			AC - APPROVED SUB. TO CONDITION			AC - APPROVED SUB. TO CONDITION			AC - APPROVED SUB. TO CONDITION								
	MONTH	7	8	10	11	12	2	2			NA - NOT APPROVED			NA - NOT APPROVED			NA - NOT APPROVED								
	YEAR	24	24	24	24	24	25	25																	
DRAWING TITLE	DWG. NO.	REVISIONS								COMMENT DATE	REV.	STATE	COMMENT DATE	REV.	STATE	COMMENT DATE	REV.	STATE	REV.	DATE	REV.	DATE	REV.	DATE	
TYPICAL DETAILS FOR IN-SITU WINDOW	J861-SD-IW-2005	-	-	A	A	A	/	/																	
TYPICAL DETAILS FOR IN-SITU WINDOW	J861-SD-IW-2006	-	-	A	A	A	/	/																	
TYPICAL DETAILS FOR IN-SITU WINDOW	J861-SD-IW-2007	-	-	-	-	-	/	/																	
TYPICAL DETAILS FOR IN-SITU WINDOW	J861-SD-IW-2008	-	-	-	-	-	/	/																	
TYPICAL DETAILS FOR IN-SITU WINDOW	J861-SD-IW-2009	-	-	A	A	A	/	/																	
TYPICAL DETAILS FOR IN-SITU WINDOW	J861-SD-IW-2010	-	-	A	A	A	/	/																	
TYPICAL DETAILS FOR IN-SITU WINDOW	J861-SD-IW-2011			-	-	-	/	/																	
TYPICAL DETAILS FOR IN-SITU WINDOW	J861-SD-IW-2012			-	-	-	/	/																	
TYPICAL DETAILS FOR IN-SITU WINDOW	J861-SD-IW-2101		-	A	B	B	/	/																	
TYPICAL DETAILS FOR IN-SITU WINDOW	J861-SD-IW-2101A		-	A	B	B	/	/																	
TYPICAL DETAILS FOR IN-SITU WINDOW	J861-SD-IW-2102		-	A	B	B	/	/																	
TYPICAL DETAILS FOR IN-SITU WINDOW	J861-SD-IW-3001	-	-	-	A	A	/	/																	
TYPICAL DETAILS FOR IN-SITU WINDOW	J861-SD-IW-3002	-	-	-	A	A	/	/																	
TYPICAL DETAILS FOR IN-SITU WINDOW	J861-SD-IW-3003	-	-	-	A	A	/	/																	
TYPICAL DETAILS FOR IN-SITU WINDOW	J861-SD-IW-3004	-	-	A	A	A	/	/																	
TYPICAL DETAILS FOR IN-SITU WINDOW	J861-SD-IW-3005	-	-	-	-	-	/	/																	
TYPICAL DETAILS FOR IN-SITU WINDOW	J861-SD-IW-3006	-	-	-	-	-	/	/																	
TYPICAL DETAILS FOR IN-SITU WINDOW	J861-SD-IW-3007	-	-	-	-	-	/	/																	
TYPICAL DETAILS FOR IN-SITU WINDOW	J861-SD-IW-3008	-	-	A	A	A	/	/																	
TYPICAL DETAILS FOR IN-SITU WINDOW	J861-SD-IW-3009	-	-	A	A	A	/	/																	
TYPICAL DETAILS FOR IN-SITU WINDOW	J861-SD-IW-3010			-	-	-	/	/																	
TYPICAL DETAILS FOR IN-SITU WINDOW	J861-SD-IW-3011			-	-	-	/	/																	
TYPICAL DETAILS FOR IN-SITU WINDOW	J861-SD-IW-3101		-	-	A	B	/	C																	
TYPICAL DETAILS FOR IN-SITU WINDOW	J861-SD-IW-3102		-	-	A	B	/	C																	
TYPICAL DETAILS FOR IN-SITU WINDOW	J861-SD-IW-3103		-	-	A	A	/	/																	
TYPICAL DETAILS FOR IN-SITU WINDOW	J861-SD-IW-4001	-	-	-	-	-	/	/																	

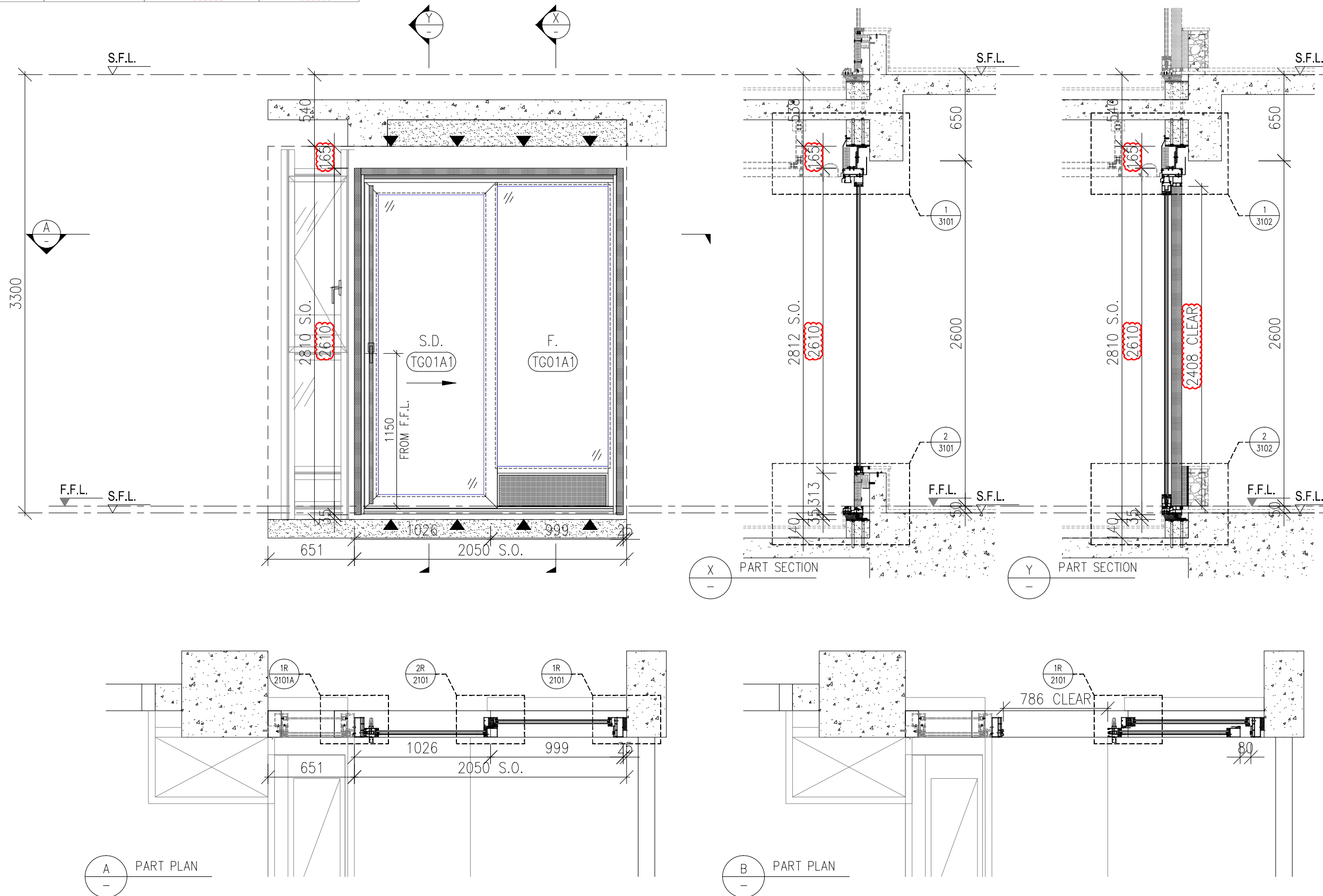
IN-HOUSE DESIGN CHECKER



Units 6-8, Sunray Industrial Centre, 1/F  
 610 Cha Kwo Ling Road, Kowloon  
 Tel:23489211-4 Fax:(852)27727666

DWG NO. : J861-SD-IW-0002    REV. : F

REQUIRE		PROVIDED	
OPENABLE AREA	GLAZING AREA	OPENABLE AREA	GLAZING AREA
-	-	1.610	3.550



B.D. REF :

WONG TUNG & PARTNERS LTD.	
APPROVED	
APPROVED AS NOTED	
APPROVED AS NOTED & RESUBMIT	
RESUBMIT	
NO COMMENT	
REFER OTHER CONSULTANT'S COMMENTS	
Reviewed for compliance with the design intent. Comments made shall apply to all similar conditions & details, not just the ones cited.	
The approval shall not be construed as relieving the contractor for compliance with the contract documents & requirements.	
Reviewed By	Date

CLIENT :

**Pacific Century**  
Premium Developments  
盈科大衍地產發展

ARCHITECT :

**WONG TUNG & PARTNERS LIMITED**  
ARCHITECTS & PLANNERS

MAIN CONTRACTOR :

**顯利工程有限公司**  
HIEN LEE ENGINEERING CO., LTD.

STRUCTURAL ENGINEER :

**SYW & ASSOCIATES LTD.**  
STRUCTURAL ENGINEERS & ARCHITECTS

FACADE CONSULTANT:

- NOTE :
- ALL DIMENSIONS ARE IN mm.
  - ALL ELEVATIONS ARE VIEWED FROM OUTSIDE.
  - ALL DIMENSIONS TO BE VERIFIED ON SITE BEFORE FABRICATION.
- LEGEND :
- x1 - DETAIL MARK NO.
  - x001 - REFER SHEET NO.
  - F.F.L. -- FINISHED FLOOR LEVEL
  - S.F.L. -- STRUCTURAL FLOOR LEVEL
  - (R) -- REVERSED DETAIL
  - F. -- FIXED WINDOW
  - S. -- SLIDING DOOR
  - GLASS LEGEND
  - TG01A1 -- SOUTH-EAST FACADE: LOW-E IGU-YKE0160J (#2)  
8mmHS CLEAR GLASS+12A+10mmT CLEAR GLASS

NO.	DATE	REVISION	BY
C	26-02-2025	REVISION TO ARCH. COMMENT	MN
B	07-01-2025	REVISION TO ARCH. COMMENT	MN
A	29-10-2024	DESIGN REVISED	MN

JOB NO. : J-861

PROJECT :  
PROPOSED RESIDENTIAL DEVELOPMENT AT NOS. 3-6 GLENEALY, CENTRAL, HONG KONG

TITLE :  
WINDOW SCHEDULE FOR IN-SITU WINDOW

DATE : 26-06-24 SCALE : 1:30 @A3

DRAWN BY : IVAN CHECKED BY :

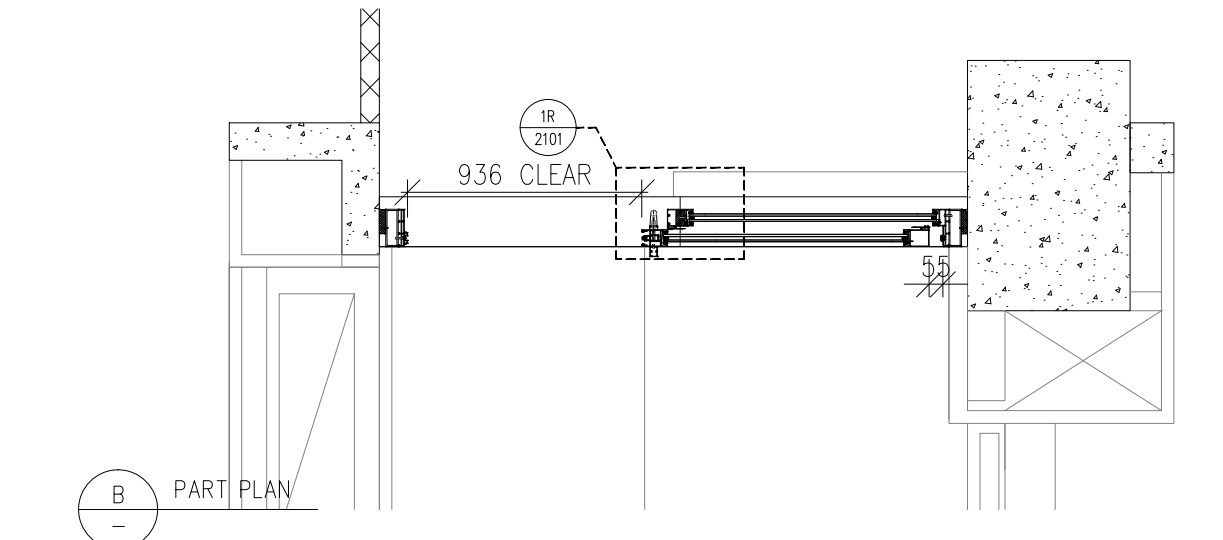
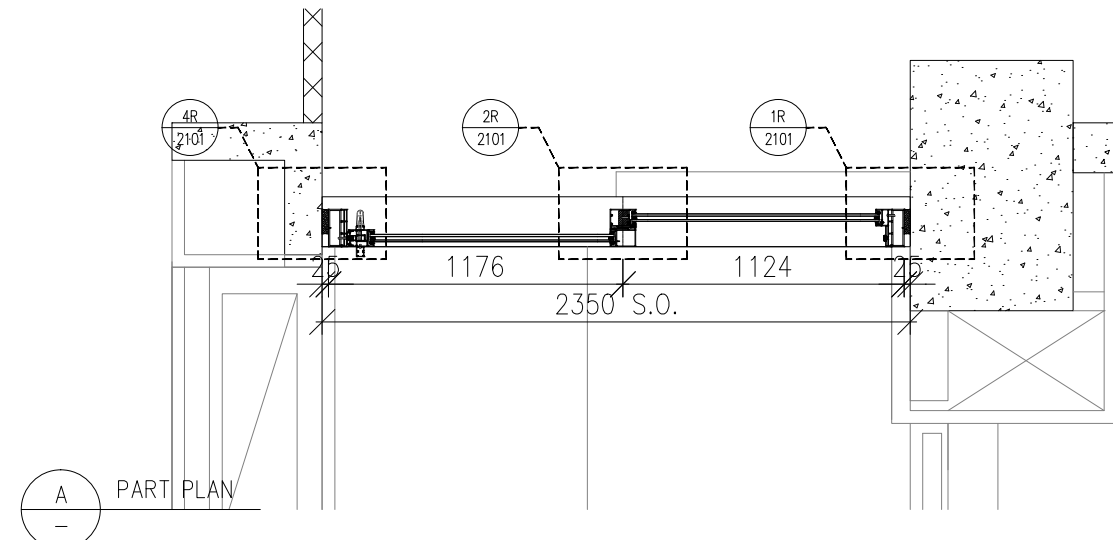
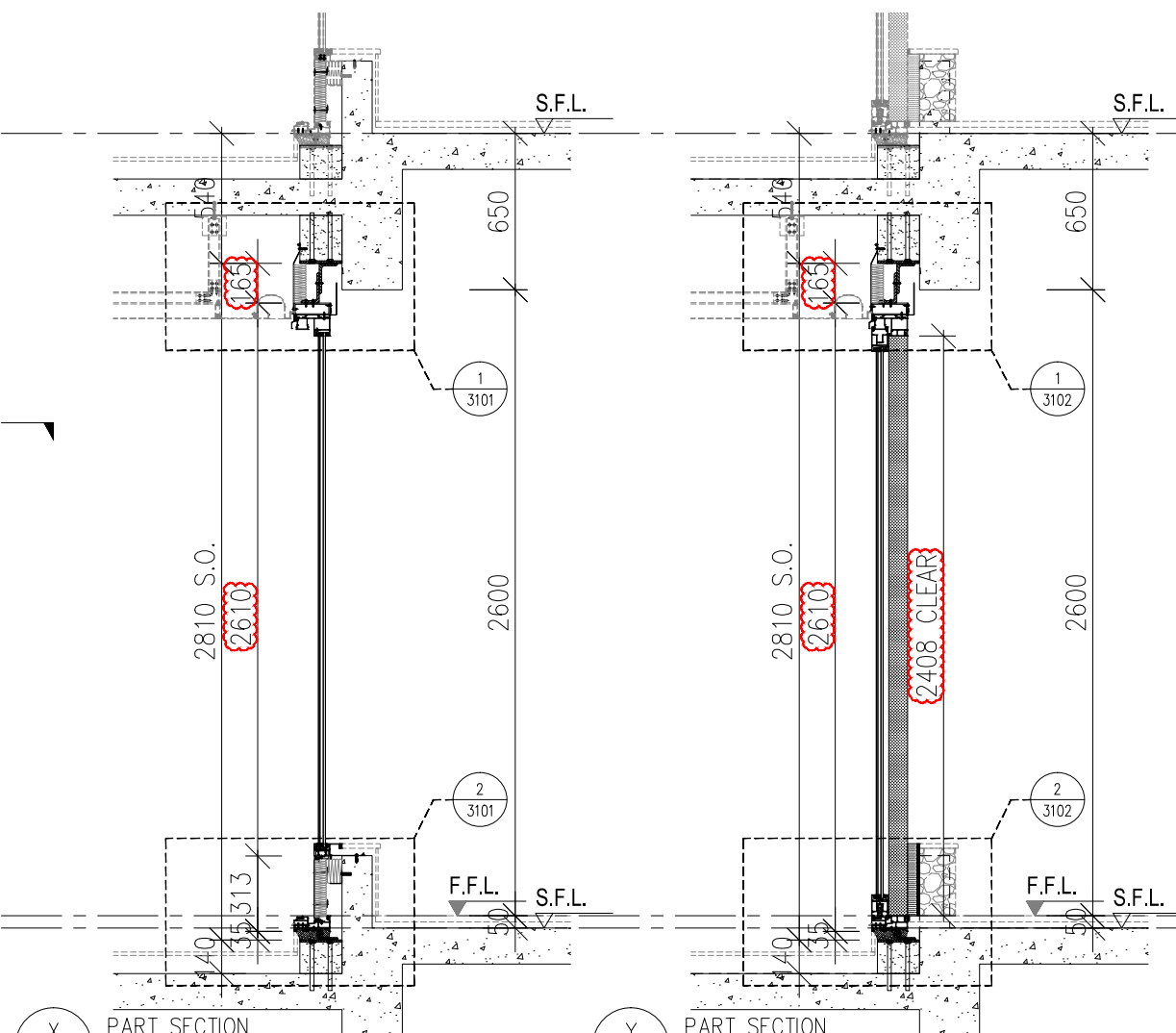
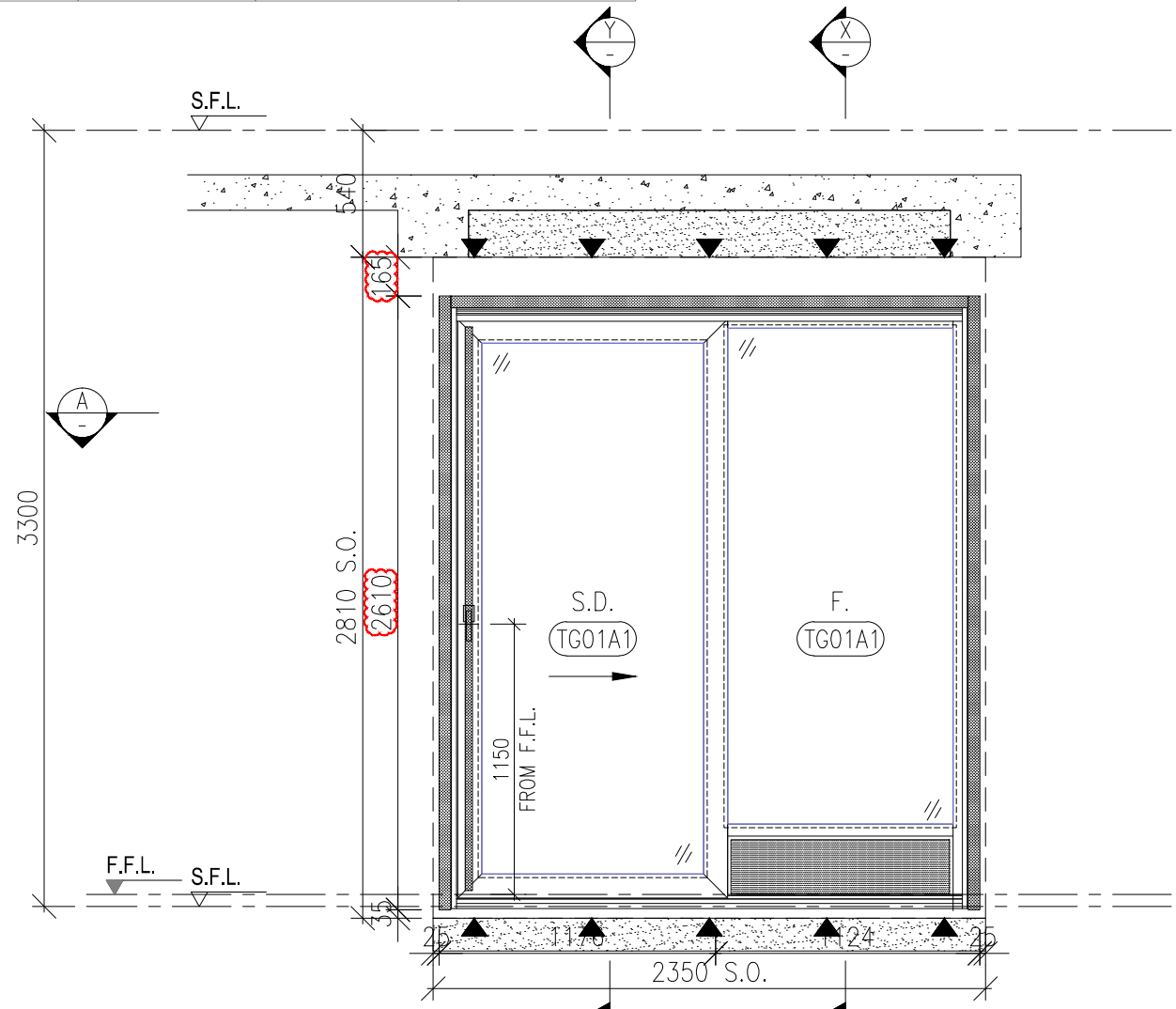
**美特鋁質有限公司**  
MIDI ALUMINIUM FABRICATOR LTD.  
Units 6-8, Sunray Industrial Centre, 1/F  
610 Cha Kwo Ling Road, Kowloon  
Tel:23489211-4 Fax:(852)2727666

DWG NO. : J861-SD-IW-1103 REV. : C

WINDOW MARK	10 nos.	REVERSE SLIDING DOOR 10 nos.
LOCATION	(FLAT B LIVING ROOM AT 2/F TO 12/F)	(FLAT C LIVING ROOM AT 2/F TO 12/F)
GLAZING	TG01A1	
WINDOW FRAME	150mm ALUM. SLIDING DOOR SECTION	

WINDOW MARK	10 nos.	REVERSE SLIDING DOOR 10 nos.
LOCATION	(FLAT B LIVING ROOM AT 2/F TO 12/F)	(FLAT C LIVING ROOM AT 2/F TO 12/F)
GLAZING	TG01A1	
WINDOW FRAME	150mm ALUM. SLIDING DOOR SECTION	

REQUIRE		PROVIDED	
OPENABLE AREA	GLAZING AREA	OPENABLE AREA	GLAZING AREA
-	-	1.917	4.152



B.D. REF :

WONG TUNG & PARTNERS LTD.
APPROVED
APPROVED AS NOTED
APPROVED AS NOTED & RESUBMIT
RESUBMIT
NO COMMENT
REFER OTHER CONSULTANT'S COMMENTS

Reviewed for compliance with the design intent. Comments made shall apply to all similar conditions & details, not just the ones cited.  
The approval shall not be construed as relieving the contractor for compliance with the contract documents & requirements.

Reviewed By \_\_\_\_\_ Date \_\_\_\_\_

CLIENT : Pacific Century Premium Developments  
盈科大衍地產發展

ARCHITECT : WONG TUNG & PARTNERS LIMITED  
ARCHITECTS & PLANNERS

MAIN CONTRACTOR : 顯利工程有限公司  
HIEN LEE ENGINEERING CO., LTD.

STRUCTURAL ENGINEER : SYW & ASSOCIATES LTD.  
SYW & ASSOCIATES LTD.  
SYW & ASSOCIATES LTD.

FACADE CONSULTANT:

- NOTE :
- ALL DIMENSIONS ARE IN mm.
  - ALL ELEVATIONS ARE VIEWED FROM OUTSIDE.
  - ALL DIMENSIONS TO BE VERIFIED ON SITE BEFORE FABRICATION.
- LEGEND :
- X1 - DETAIL MARK NO.
  - X001 - REFER SHEET NO.
  - F.F.L. -- FINISHED FLOOR LEVEL
  - S.F.L. -- STRUCTURAL FLOOR LEVEL
  - (R) -- REVERSED DETAIL
  - F. -- FIXED WINDOW
  - S. -- SLIDING DOOR
  - GLASS LEGEND
  - TG01A1 -- SOUTH-EAST FACADE: LOW-E IGU-YKE0160J (#2)  
8mmHS CLEAR GLASS+12A+10mmT CLEAR GLASS

NO.	DATE	REVISION	BY
C	26-02-2025	REVISION TO ARCH. COMMENT	MN
B	07-01-2025	REVISION TO ARCH. COMMENT	MN
A	29-10-2024	DESIGN REVISED	MN

JOB NO. : J-861

PROJECT : PROPOSED RESIDENTIAL DEVELOPMENT AT NOS. 3-6 GLENEALY, CENTRAL, HONG KONG

TITLE : WINDOW SCHEDULE FOR IN-SITU WINDOW

DATE : 26-06-24 SCALE : 1:30 @A3

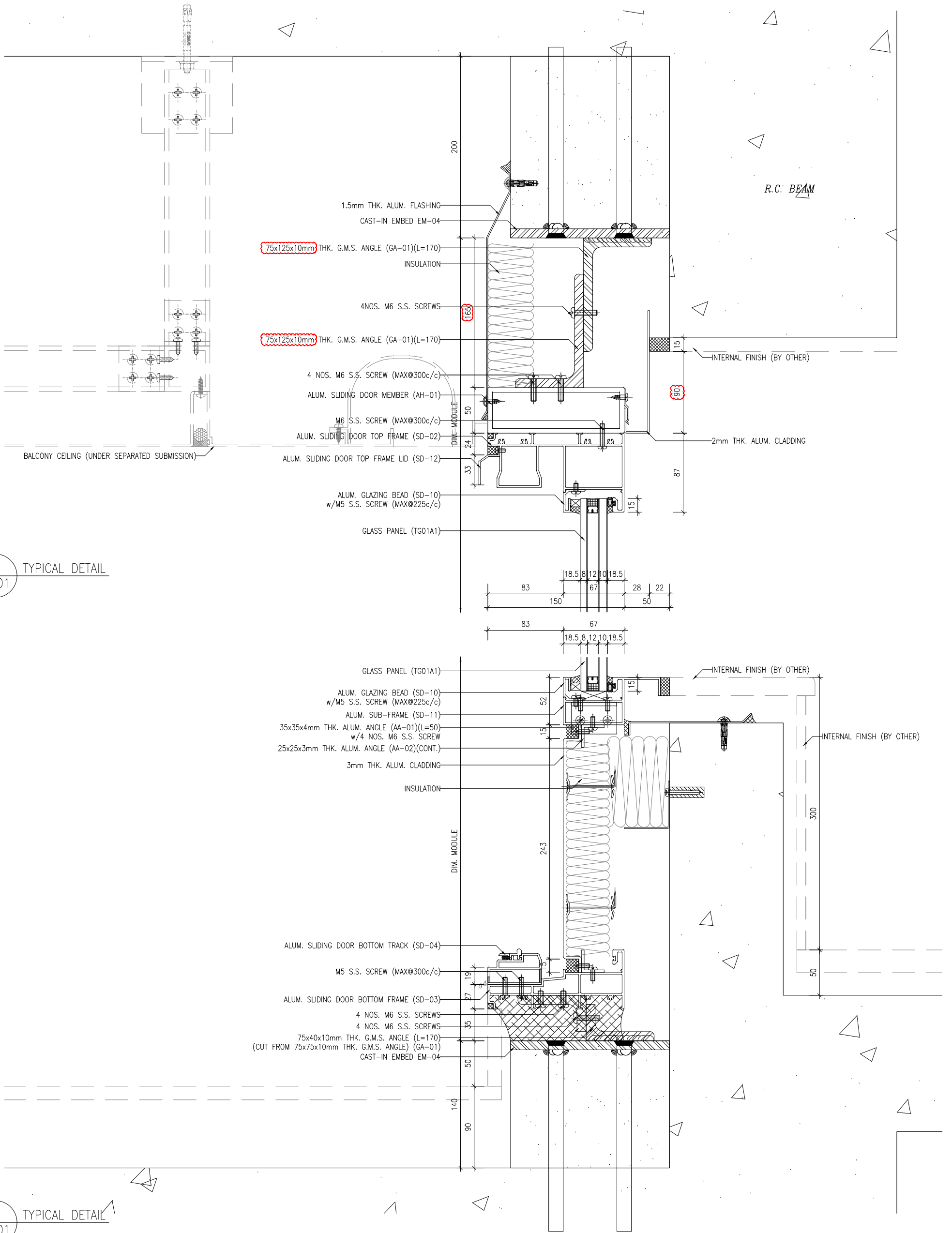
DRAWN BY : IVAN CHECKED BY :

美特鋁質有限公司  
MIDI ALUMINIUM FABRICATOR LTD.  
Units 6-8, Sunray Industrial Centre, 1/F  
610 Cha Kwo Ling Road, Kowloon  
Tel:23489211-4 Fax:(852)2727666

DWG NO. : J861-SD-IW-1104 REV. : C

WINDOW MARK	9 nos.	REVERSE SLIDING DOOR 9 nos.
LOCATION	(FLAT A LIVING ROOM AT 3/F-12/F)	(FLAT D LIVING ROOM AT 3/F-12/F)
GLAZING	TG01A1	
WINDOW FRAME	150mm ALUM. SLIDING DOOR SECTION	

WINDOW MARK	9 nos.	REVERSE SLIDING DOOR 9 nos.
LOCATION	(FLAT D LIVING ROOM AT 3/F-12/F)	(FLAT A LIVING ROOM AT 3/F-12/F)
GLAZING	TG01A1	
WINDOW FRAME	150mm ALUM. SLIDING DOOR SECTION	



1 TYPICAL DETAIL  
3101

2 TYPICAL DETAIL  
3101

B.D. REF :	
WONG TUNG & PARTNERS LTD.	
APPROVED	APPROVED AS NOTED
APPROVED AS NOTED	APPROVED AS NOTED & RESUBMIT
RESUBMIT	NO COMMENT
REFER OTHER CONSULTANT'S COMMENTS	
Reviewed for compliance with the design intent. Comments made shall apply to all similar conditions & details, not just the ones cited. shall not be construed as relieving the responsibility of the consultant with the contract documents & requirements.	
Reviewed By	Date

CLIENT :  
Pacific Century  
Premium Developments  
盈科大衍地產發展

ARCHITECT :  
WONG TUNG & PARTNERS LIMITED  
ARCHITECTS & PLANNERS

MAIN CONTRACTOR :  
顯利工程有限公司  
HIEN LEE ENGINEERING CO., LTD.

STRUCTURAL ENGINEER :  
SWW & ASSOCIATES LTD.  
SWW 結構建築工程

FAÇADE CONSULTANT :

NOTE :  
1. ALL DIMENSIONS ARE IN MM.  
2. ALL ELEVATIONS ARE VIEWED FROM OUTSIDE.  
3. ALL DIMENSIONS TO BE VERIFIED ON SITE BEFORE FABRICATION.

LEGEND :  
X1 DETAIL MARK NO.  
X001 REFER SHEET NO.

NO.	DATE	REVISION	BY
C	26-02-2025	REVISION TO ARCH. COMMENT	UN
B	07-01-2025	REVISION TO ARCH. COMMENT	UN
A	29-10-2024	DESIGN REVISION	UN

JOB NO. : J-861

PROJECT :  
PROPOSED RESIDENTIAL  
DEVELOPMENT AT NOS. 3-6  
GLENEALY, CENTRAL, HONG KONG

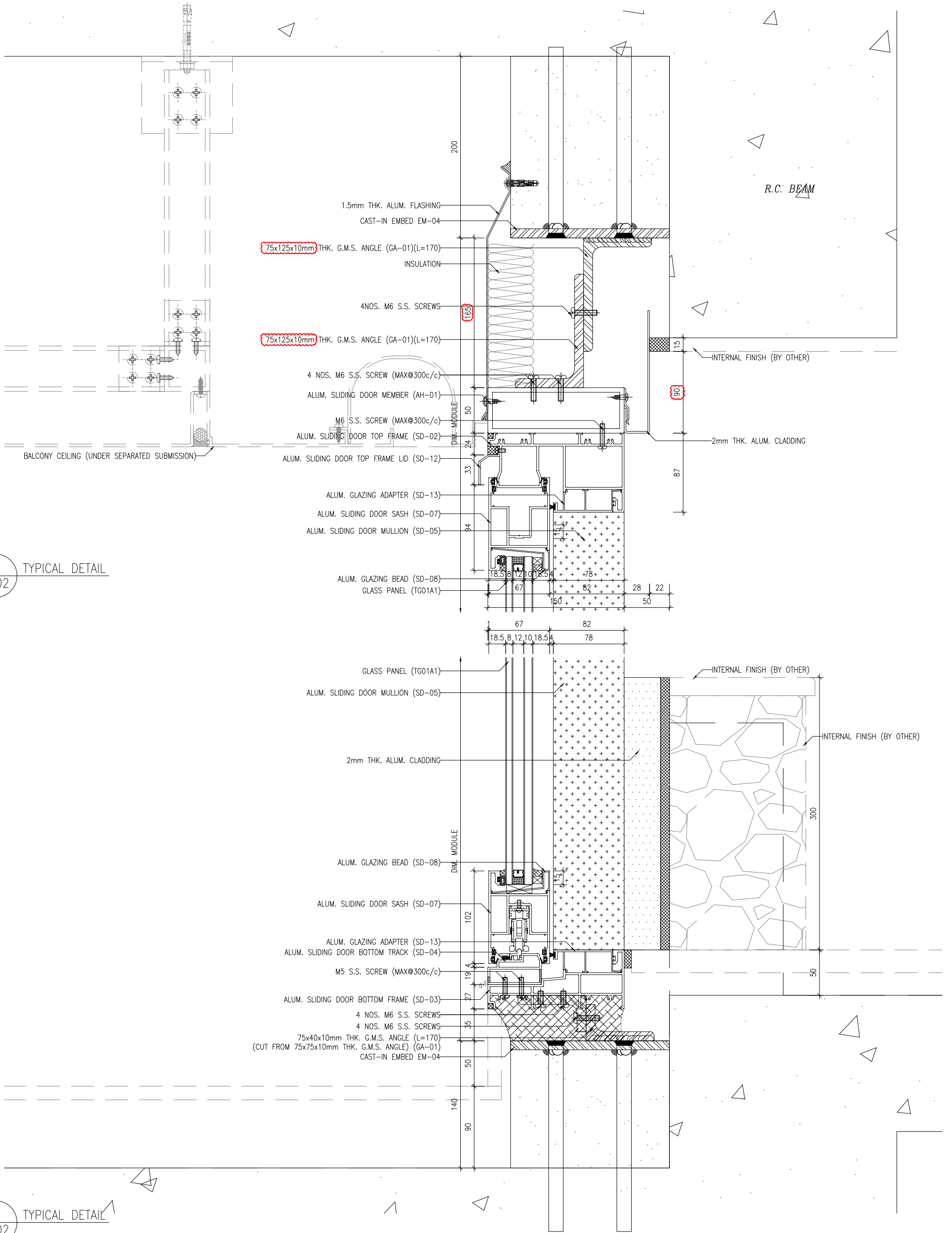
TITLE :  
TYPICAL DETAILS FOR  
IN-SITU WINDOW

DATE : 26-06-24 SCALE : 1:2 @A3

DRAWN BY : IVAN CHECKED BY :

UNIT 6-8, Sunray Industrial Centre, 1/F  
610 Cho Kwong Road, Kowloon  
Tel: 23489211-4 Fax: (852) 27727666  
DWG NO. : J861-SD-IW-3101 REV. : C

美特鋁業有限公司  
MIDI ALUMINIUM FABRICATOR LTD.



1 TYPICAL DETAIL  
3102

2 TYPICAL DETAIL  
3102

<b>WONG TUNG &amp; PARTNERS LTD.</b> APPROVED APPROVED AS NOTED APPROVED AS NOTED & RESUBMIT RESUBMIT NO COMMENT REFER OTHER CONSULTANT'S COMMENTS Reviewed for compliance with the design intent. Comments made shall apply to all similar conditions & details, not just the ones cited. shall not be construed as relieving the responsibility of the consultant with the contract documents & requirements. Reviewed By: _____ Date: _____	
<b>Pacific Century</b> Premium Developments 盈科大衍地產發展	
<b>WONG TUNG &amp; PARTNERS LIMITED</b> ARCHITECTS & PLANNERS	
CLIENT : <b>顯利工程有限公司</b> HIEN LEE ENGINEERING CO., LTD.	
MAIN CONTRACTOR : <b>SWW &amp; ASSOCIATES LTD.</b> STRUCTURAL ENGINEER : <b>SWW &amp; ASSOCIATES LTD.</b> FACADE CONSULTANT :	
NOTE : 1. ALL DIMENSIONS ARE IN MM. 2. ALL ELEVATIONS ARE VIEWED FROM OUTSIDE. 3. ALL DIMENSIONS TO BE VERIFIED ON SITE BEFORE FABRICATION.	
LEGEND : (X1) DETAIL MARK NO. (X00) REFER SHEET NO.	
JOB NO. : J-861 PROJECT : PROPOSED RESIDENTIAL DEVELOPMENT AT NOS. 3-6 GLENELLY, CENTRAL, HONG KONG	TITLE : TYPICAL DETAILS FOR IN-SITU WINDOW
DATE : 26-06-24 DRAWN BY : IVAN CHECKED BY :	SCALE : 1:2 @A3
UNITS : 6-8, Sunray Industrial Centre, 1/F 610 Cho Kwong Road, Kowloon Tel: 23489211-4 Fax: (852) 27727666 DWG NO. : J861-SD-IW-3102	REV. : C