



工程指示 / 要求簡箋 ENGINEER INSTRUCTIONS(E.I.)

工程指示編號:	EI- 6158 / 23	修改版本:	-
	HK- 1.4 / 23		
工程編號:	J 860	工程名稱:	馬灣
收件人:	生統	發件人:	nero
工程項目:	鋁梳子 - 施工圖	日期:	10/05/2023

<input type="checkbox"/> 原合約工程包	<input type="checkbox"/> 原合約工程加 / 減脹 QT-	<input type="checkbox"/> 新工程報價 QT-
---------------------------------	--	------------------------------------

信件批核號碼/圖紙參考編號:	批核模具圖紙編號:
客戶指示附件:	管理內部批簽署:

<input type="checkbox"/> 初步鋁料 B.M.	<input type="checkbox"/> 加工拆圖, 然後生產	<input type="checkbox"/> 尺寸表
<input type="checkbox"/> 正式鋁料 B.M.	<input type="checkbox"/> 技術上資料/指示	<input type="checkbox"/> 報價
<input type="checkbox"/> 配件 B.M.	<input type="checkbox"/> 樣辦或貨品說明書	<input type="checkbox"/> 分判合約
<input type="checkbox"/> 其他:		

內容:  
附件是目前最新版次的施工圖供廠參考。

完成上列要求日期: 10/05/2023

**國內**

<input type="checkbox"/> 生產技術總監	<input type="checkbox"/> 連附件	<input type="checkbox"/> 技術部	<input type="checkbox"/> 連附件	<input type="checkbox"/> 生產部	<input type="checkbox"/> 連附件
<input type="checkbox"/> 採購部	<input type="checkbox"/> 連附件	<input checked="" type="checkbox"/> 生產統籌部	<input checked="" type="checkbox"/> 連附件	<input type="checkbox"/> 報關組	<input type="checkbox"/> 連附件
<input type="checkbox"/> 質檢部	<input type="checkbox"/> 連附件	<input type="checkbox"/> 會計部	<input type="checkbox"/> 連附件	<input type="checkbox"/> 機械設計部	<input type="checkbox"/> 連附件
<input type="checkbox"/> 香港辦	<input type="checkbox"/> 連附件	<input type="checkbox"/> 其他:			

**香港**

<input type="checkbox"/> 行政部	<input type="checkbox"/> 連附件	<input type="checkbox"/> 會計部	<input type="checkbox"/> 連附件	<input type="checkbox"/> 統籌部	<input type="checkbox"/> 連附件	<input type="checkbox"/> 工程部	<input type="checkbox"/> 連附件
<input type="checkbox"/> 採購部	<input type="checkbox"/> 連附件	<input type="checkbox"/> QS部	<input type="checkbox"/> 連附件	<input type="checkbox"/> 地盤管理	<input type="checkbox"/> 連附件	<input type="checkbox"/> 維修部	<input type="checkbox"/> 連附件

*發件人簽署:		*組別成員批核簽署:	
傳遞編號:	HK 1204 / 23	項目經理簽署:	

**PROJECT :****PROPOSED DEVELOPMENT  
AT MA WAN PARK PHASE II, MA WAN  
(NOW KNOWN AS MA WAN LOT NO.684)  
NEW BUILDING****SHOP DRAWING FOR  
ALUM. GRILLE & ALUM. CLADDING  
(NEW BUILDING)****DATE : 15 - Mar. - 2023**

Units 6-8, Sunray Industrial Centre, 1/F  
610 Cha Kwo Ling Road, Kowloon  
Tel:23489211-4 Fax:(852)27727666

# DRAWING SUBMISSION REGISTER

<b>PROJECT:</b> PROPOSED DEVELOPMENT AT MA WAN PARK PHASE II, MA WAN (NOW KNOWN AS MA WAN LOT NO.684)  <b>TITLE:</b> SHOPDRAWING FOR ALUM. GRILLE & ALUM. CLADDING	DATE OF ISSUE										SUBMISSION STATE (FOR B.D / A.S.D)			SUBMISSION STATE (FOR CLIENT / CONSULTANT)			SUBMISSION STATE (FOR ARCHITECT)			FABRICATION / CONSTRUCTION STATE						
	ISSUE	01	02	03								AP - APPROVED			AP - APPROVED			AP - APPROVED			ISSUE TO CHINA OFFICE		ISSUE TO SITE		ISSUE TO SUB-CONTRACTOR	
	DAY	24	30	15							AC - APPROVED SUB. TO CONDITION			AC - APPROVED SUB. TO CONDITION			AC - APPROVED SUB. TO CONDITION									
	MONTH	10	11	03							NA - NOT APPROVED			NA - NOT APPROVED			NA - NOT APPROVED									
	YEAR	22	22	23																						
DRAWING TITLE	DWG. NO.	REVISIONS								COMMENT DATE	REV.	STATE	COMMENT DATE	REV.	STATE	COMMENT DATE	REV.	STATE	REV.	DATE	REV.	DATE	REV.	DATE		
COVERPAGE	J860-AG-0000	-	A	B																						
DRAWING SUBMISSION REGISTER	J860-AG-0001	-	A	B																						
GENERAL NOTES	J860-AG-0010	-	A	B																						
SECTION PROPERTIES	J860-AG-0011	-	A	A																						
FULL PLAN LAYOUT FOR ALUM. GRILLE & ALUM. CLADDING (GROUND FLOOR PLAN)	J860-AG-1001	-	A	B																						
FULL ELEVATION LAYOUT FOR ALUM. GRILLE & ALUM. CLADDING	J860-AG-1101	-	A	B																						
FULL ELEVATION LAYOUT FOR ALUM. GRILLE & ALUM. CLADDING	J860-AG-1102	-	A	B																						
FULL ELEVATION LAYOUT FOR ALUM. GRILLE & ALUM. CLADDING	J860-AG-1103	-	A	B																						
FULL ELEVATION LAYOUT FOR ALUM. GRILLE & ALUM. CLADDING	J860-AG-1104	-	A	B																						
PARTIAL ELEVATION FOR ALUM. GRILLE & ALUM. CLADDING	J860-AG-2001	-	A	B																						
PARTIAL ELEVATION FOR ALUM. GRILLE & ALUM. CLADDING	J860-AG-2002	-	A	B																						
HORIZONTAL DETAIL FOR ALUM. GRILLE & ALUM. CLADDING	J860-AG-5001	-	A	B																						
HORIZONTAL DETAIL FOR ALUM. GRILLE & ALUM. CLADDING	J860-AG-5002	-	A	B																						
HORIZONTAL DETAIL FOR ALUM. GRILLE & ALUM. CLADDING	J860-AG-5003	-	A	B																						
HORIZONTAL DETAIL FOR ALUM. GRILLE & ALUM. CLADDING	J860-AG-5004			-																						
VERTICAL DETAIL FOR ALUM. GRILLE & ALUM. CLADDING	J860-AG-6001	-	A	B																						
VERTICAL DETAIL FOR ALUM. GRILLE & ALUM. CLADDING	J860-AG-6002	-	A	B																						
VERTICAL DETAIL FOR ALUM. GRILLE & ALUM. CLADDING	J860-AG-6003	-	A	B																						
VERTICAL DETAIL FOR ALUM. GRILLE & ALUM. CLADDING	J860-AG-6004	-	A																							
VERTICAL DETAIL FOR ALUM. GRILLE & ALUM. CLADDING	J860-AG-6005	-	A																							

IN-HOUSE DESIGN CHECKER
 美特鋁質有限公司 MIDI ALUMINIUM FABRICATOR LTD. Units 6-8, Sunray Industrial Centre, 1/F 610 Cha Kwo Ling Road, Kowloon Tel:23489211-4 Fax:(852)27727666
DWG NO. : J860-AG-0001      REV. : B

# GENERAL NOTES FOR ALUM. GRILLE & ALUM. CLADDING

## 1. DESIGN CODES :

- BUILDING ( CONSTRUCTION ) REGULATIONS.
- CODE OF PRACTICE FOR THE STRUCTURAL USE OF STEEL 2011
- CODE OF PRACTICE FOR THE STRUCTURAL USE OF CONCRETE 2013
- CODE OF PRACTICE ON WIND EFFECTS IN HONG KONG 2019
- BS 8118 - THE STRUCTURAL USE OF ALUMINIUM , PART I - 1991. (PARTIAL LOAD FACTOR OF 1.4 FOR WIND LOAD)
- CODE OF PRACTICE FOR DEAD AND IMPOSED LOAD 2011

## 2. DESIGN LOADS :

- WIND LOAD : (ACCORDING TO CODE OF PRACTICE ON WIND EFFECTS IN HONG KONG 2019  
HEIGHT ABOVE GROUND LEVEL = 20m  
BASIC WIND PRESSURE : 2.22 KPa

DIRECTIONAL FACTOR :  $S=0.85$       SIZE FACTOR :  $S_s=1.3$

DESIGN WIND LOAD (  $C_p = +1.1/-1.4$  ) :  $2.22 \times (+1.1) \times 0.85 \times 1.3 = +2.7 \text{ KPa}$  (FOR INWARD)  
 $2.22 \times (-1.4) \times 0.85 \times 1.3 = -3.58 \text{ KPa}$  (FOR OUTWARD)

DESIGN WIND LOAD (  $C_p = +2.0/-2.0$  ) :  $2.22 \times (+2.0) \times 0.85 \times 1.3 = +4.9 \text{ KPa}$  (FOR INWARD)  
 $2.22 \times (-2.0) \times 0.85 \times 1.3 = -4.9 \text{ KPa}$  (FOR OUTWARD)

## b) DEAD LOAD :

STEEL WEIGHT: 77 kN/m<sup>3</sup>  
 ALUM. WEIGHT: 27.2 kN/m<sup>3</sup>

## 3. ALUMINIUM ALLOY :

- ALUMINIUM SHEET :  
 ALL ALUMINIUM SHEET TO BE ALLOY 3003-H14 TO ALUMINIUM DESIGN MANUAL: BS EN 485-2:2008  
 0.2% PROOF (YIELD) STRENGTH = 125 MPa  
 MINIMUM ULTIMATE TENSILE STRESS = 145 MPa  
 MODULUS OF ELASTICITY (E) = 70000 MPa.
- ALUMINIUM EXTRUSION : IN ACCORDANCE WITH DESIGN CODE BS: 8118-1:1991, COMPLY TO BS EN 755-2:2008
  - ALUMINIUM EXTRUSION - TO BE ALLOY 6063-T6  
 0.2% PROOF STRENGTH = 160 MPa  
 MINIMUM TENSILE STRENGTH = 175 MPa  
 MODULUS OF ELASTICITY = 70000 MPa.

## 4. STEEL :

- ALL STEEL MEMBERS SHALL MEET THE MINIMUM REQUIREMENTS OF BS EN10025 S275 JO AND CLASS 1 TO C.O.P. FOR THE STRUCTURAL USE OF STEEL 2011.
- SURFACE TREATMENT SHALL BE HOT-DIP GALVANIZED COMPLIED WITH BS EN ISO 1461, 2009.  
 ( MIN. THICKNESS = 85 MICRONS )  
 FOR THICKNESS "T" :  $T \leq 16 \text{ mm}$  (GRADE S275)  
 YOUNG'S MODULUS = 205,000 N/mm<sup>2</sup>  
 DENSITY = 77 kN/m<sup>3</sup>  
 YIELD STRENGTH = 275 N/mm<sup>2</sup>  
 TENSILE STRENGTH = 275 N/mm<sup>2</sup>  
 BENDING STRENGTH = 275 N/mm<sup>2</sup>  
 SHEAR STRENGTH = 158.8 N/mm<sup>2</sup>

## 5. WELDING :

- ALL WELDS SHALL COMPLY TO BS EN 1011 & BS EN 440 OR EQUIVALENT TO HKSC 2011.  
 DESIGN STRENGTH = 220 N/mm<sup>2</sup>
- UNLESS OTHERWISE INDICATED, ALL WELDS SHALL BE 5mm THICK FILLET WELD.
- ALL WELDING SHALL BE ELECTRODE PERFORMED BY QUALIFIED WELDERS, TO BE COMPLY WITH BS EN 1011.
- ALL SITE WELDS SHALL BE RECEIVED 2 COATS OF ZINC CHROMATE PRIMER.

## 6. SILICONE SEALANT :

- " DOW SIL - 791 " TO BE USED AS WEATHER SEALED & CAULKING SEALANT.  
 (BRONZE COLOUR)

## 7. FASTENERS

ALL FASTENERS, BOLTS & NUTS SHALL BE STAINLESS STEEL GRADE A4-70 COMPLYING WITH BS EN ISO 3506.

FOR GRADE A4-70	
MINIMUM YIELD STRENGTH, Ysb	= 450 MPa
ULTIMATE TENSILE STRENGTH, U <sub>sb</sub>	= 700 MPa
SHEAR STRENGTH, P <sub>sb</sub>	= 311 MPa
TENSILE STRENGTH, P <sub>tb</sub>	= 450 MPa
BEARING STRENGTH, P <sub>bb</sub>	= 828 MPa

UNLESS OTHER SPECIFIED, ALL SCREWS SHALL BE M6 AT 300 C/C GRADE A4-70 STAINLESS STEEL COMPLIED WITH BS EN ISO 3506.(FOR NON-EXPOSED AREA)

## 8. ISOLATION FOR METALS

BITUMEN PAINT BE PROVIDED BETWEEN CONTACT SURFACE OF ALUMINUM AND STEEL TO PREVENT DIRECT CONTACT BETWEEN DISSIMILAR METALS , TO PD 6484.  
 BITUMEN PAINT TO BE PROVIDED BETWEEN CONTACT SURFACE OF ALUMINUM/STEEL BRACKET AND CONCRETE SURFACE

## 9. CONCRETE GRADE

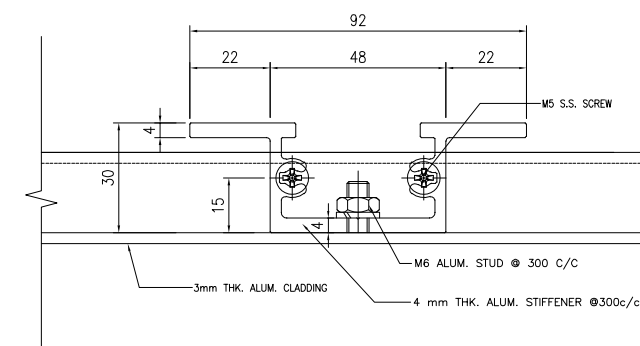
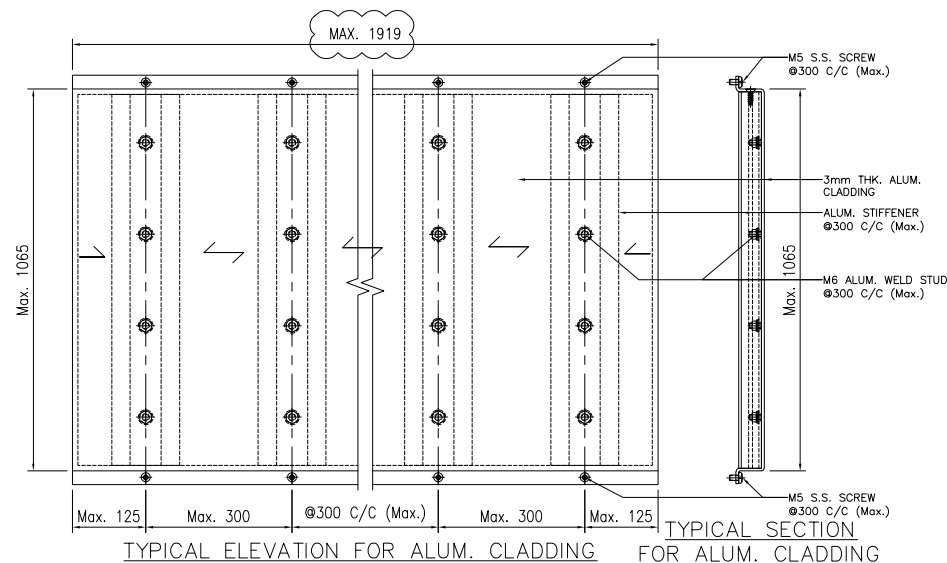
CONCRETE STRUCTURE SHOWN IN THE SUBMISSION SHALL BE OF GRADE 45D MINIMUM.

## 10. ANCHOR BOLT FOR ALUM. CLADDING

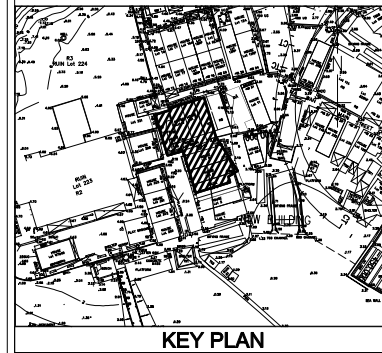
ANCHOR BOLT TO BE "HILTI" TYPE, DESIGN AND INSTALLATION TO BE IN ACCORDANCE (FOR CRACKED CONCRETE)

Anchor Type	BD REF. NO	Min. embedment depth (mm) into sound concrete	Minimum edge distance in concrete	Minimum spacing in concrete	Recommended Load		Test load (1.5 x recommended tensile load) (kN)
					Tensile (kN)	Shear (kN)	
M10 HST3-R	BD-AF151	60	45	40	1.342x5=6.71	3.42x8.4=11.1	=1.5x1.342x5=10.07

CONSIDER CONCRETE GRADE FACTOR:  $\sqrt{\frac{45}{25}} = 1.342$



B.D. REF :



CLIENT :

**SUN HUNG KAI**  
 REAL ESTATE AGENCY LTD.  
 42/F SUN HUNG KAI CENTRE, WANCHAI, HONGKONG

ARCHITECT :

**ARCHI+**  
 ARCHIPLUS INTERNATIONAL (HK) LIMITED

MAIN CONTRACTOR :

**新輝建築有限公司**  
 Sanfield Building Contractors Ltd.  
 Site : 11-29 Factory Street & 383-399 Shau Kei Wan Rd., Shau Kei Wan, Hong Kong

STRUCTURAL ENGINEER :

**SUN HUNG KAI**  
 ARCHITECTS AND ENGINEERS LTD.  
 22/F SUN HUNG KAI CENTRE, WANCHAI, HONGKONG

FACADE CONSULTANT:

NOTE :

- ALL DIMENSIONS ARE IN mm.
- ALL ELEVATIONS ARE VIEWED FROM OUTSIDE.
- ALL DIMENSIONS TO BE VERIFIED ON SITE BEFORE FABRICATION.

LEGEND :

- X1 --- DETAIL MARK NO.  
 X001 --- REFER SHEET NO.

- F.F.L. --- FINISHED FLOOR LEVEL
- S.F.L. --- STRUCTURAL FLOOR LEVEL
- (R) --- REVERSED DETAIL

NO.	DATE	REVISION	BY
B	22/12/2022	GENERAL REVISED	
A	28/11/2022	GENERAL REVISED	

JOB NO. : J-860

PROJECT : PROPOSED DEVELOPMENT  
 AT MA WAN PARK PHASE II, MA WAN  
 (NOW KNOWN AS MA WAN LOT NO.684)  
 NEW BUILDING

TITLE : GENERAL NOTES

DATE : 8-10-22

SCALE : 1:1.5(A3)

DRAWN BY : Asing

CHECKED BY :

**美特鋁質有限公司**  
 MIDI ALUMINIUM FABRICATOR LTD.  
 Units 6-8, Sunray Industrial Centre, 1/F  
 610 Cha Kwo Ling Road, Kowloon  
 Tel:23489211-4 Fax:(852)2727666

DWG NO. : J860-AG-0010

REV. : B

PROPERTIES		PROPERTIES		PROPERTIES	
MODEL NO.: FINISH: PVF2-3COATING ALUM. GRILLE	GRADE 6063-T6	MODEL NO.: FINISH: PVF2-3COATING 50x50x3mm HK. ALUM. HOLLOW	GRADE 6063-T6	MODEL NO.: FINISH: ALUM. STIFFENER	6063-T6
MASS PROPERTIES (UNIT)	VALUES	MASS PROPERTIES (UNIT)	VALUES	MASS PROPERTIES (UNIT)	VALUES
Area (mm <sup>2</sup> ):	276.6	Area (mm <sup>2</sup> ):	564.0	Area (mm <sup>2</sup> ):	639.5
Perimeter (mm):	195.9	Perimeter (mm):	376.0	Perimeter (mm):	358.5
Bounding Box - X (mm):	-12.5 to 12.5	Bounding Box - X (mm):	-25.0 to 25.0	Bounding Box - X (mm):	-46.0 to 46.0
Bounding Box - Y (mm):	-10.0 to 10.0	Bounding Box - Y (mm):	-25.0 to 25.0	Bounding Box - Y (mm):	-15.8 to 14.2
Centroid - X (mm):	0.0	Centroid - X (mm):	0.0	Centroid - X (mm):	0.0
Centroid - Y (mm):	0.0	Centroid - Y (mm):	0.0	Centroid - Y (mm):	0.0
Moments of inertia - X (mm <sup>4</sup> ):	13231.1	Moments of inertia - X (mm <sup>4</sup> ):	208492.0	Moments of inertia - X (mm <sup>4</sup> ):	78374.9
Moments of inertia - Y (mm <sup>4</sup> ):	18324.4	Moments of inertia - Y (mm <sup>4</sup> ):	208492.0	Moments of inertia - Y (mm <sup>4</sup> ):	376825.9
Product of inertia - XY (mm <sup>4</sup> ):	0.0	Product of inertia - XY (mm <sup>4</sup> ):	0.0	Product of inertia - XY (mm <sup>4</sup> ):	0.0
Radii of gyration - X (mm):	6.9	Radii of gyration - X (mm):	19.2	Radii of gyration - X (mm):	11.1
Radii of gyration - Y (mm):	8.1	Radii of gyration - Y (mm):	19.2	Radii of gyration - Y (mm):	24.3
Principal moments along X-Y (mm <sup>4</sup> ):	13231.1 along [1.0 0.0]	Principal moments along X-Y (mm <sup>4</sup> ):	208492.0 along [1.0 0.0]	Principal moments along X-Y (mm <sup>4</sup> ):	78374.9 along [1.0 0.0]
Principal moments along Y-X (mm <sup>4</sup> ):	18324.4 along [0.0 1.0]	Principal moments along Y-X (mm <sup>4</sup> ):	208492.0 along [0.0 1.0]	Principal moments along Y-X (mm <sup>4</sup> ):	376825.9 along [0.0 1.0]
Elastic Modulus - Zx (mm <sup>3</sup> ):	I / y-max= 1323.1	Elastic Modulus - Zx (mm <sup>3</sup> ):	I / y-max= 8339.7	Elastic Modulus - Zx (mm <sup>3</sup> ):	I / y-max= 4958.8
Elastic Modulus - Zy (mm <sup>3</sup> ):	J / x-max= 1465.8	Elastic Modulus - Zy (mm <sup>3</sup> ):	J / x-max= 8339.7	Elastic Modulus - Zy (mm <sup>3</sup> ):	J / x-max= 8191.9

B.D. REF :

CLIENT :  
**SUN HUNG KAI**  
REAL ESTATE AGENCY LTD.  
42/F SUN HUNG KAI CENTRE, WANCHAI, HONGKONG

ARCHITECT :  
**ARCHI+**  
ARCHIPLUS INTERNATIONAL (HK) LIMITED

MAIN CONTRACTOR :  
**新輝建築有限公司**  
Sanfield Building Contractors Ltd.  
Site : 11-29 Factory Street & 383-399 Shau Kei Wan Rd., Shau Kei Wan, Hong Kong

STRUCTURAL ENGINEER :  
**SUN HUNG KAI**  
ARCHITECTS AND ENGINEERS LTD.  
22/F SUN HUNG KAI CENTRE, WANCHAI, HONGKONG

FAÇADE CONSULTANT:

NOTE :  
1. ALL DIMENSIONS ARE IN mm.  
2. ALL ELEVATIONS ARE VIEWED FROM OUTSIDE.  
3. ALL DIMENSIONS TO BE VERIFIED ON SITE BEFORE FABRICATION.

LEGEND :  
X1 — DETAIL MARK NO.  
X001 — REFER SHEET NO.  
1. F.F.L. — FINISHED FLOOR LEVEL  
2. S.F.L. — STRUCTURAL FLOOR LEVEL  
3. (R) — REVERSED DETAIL

A	28/11/2022	GENERAL REVISED	
NO.	DATE	REVISED	BY

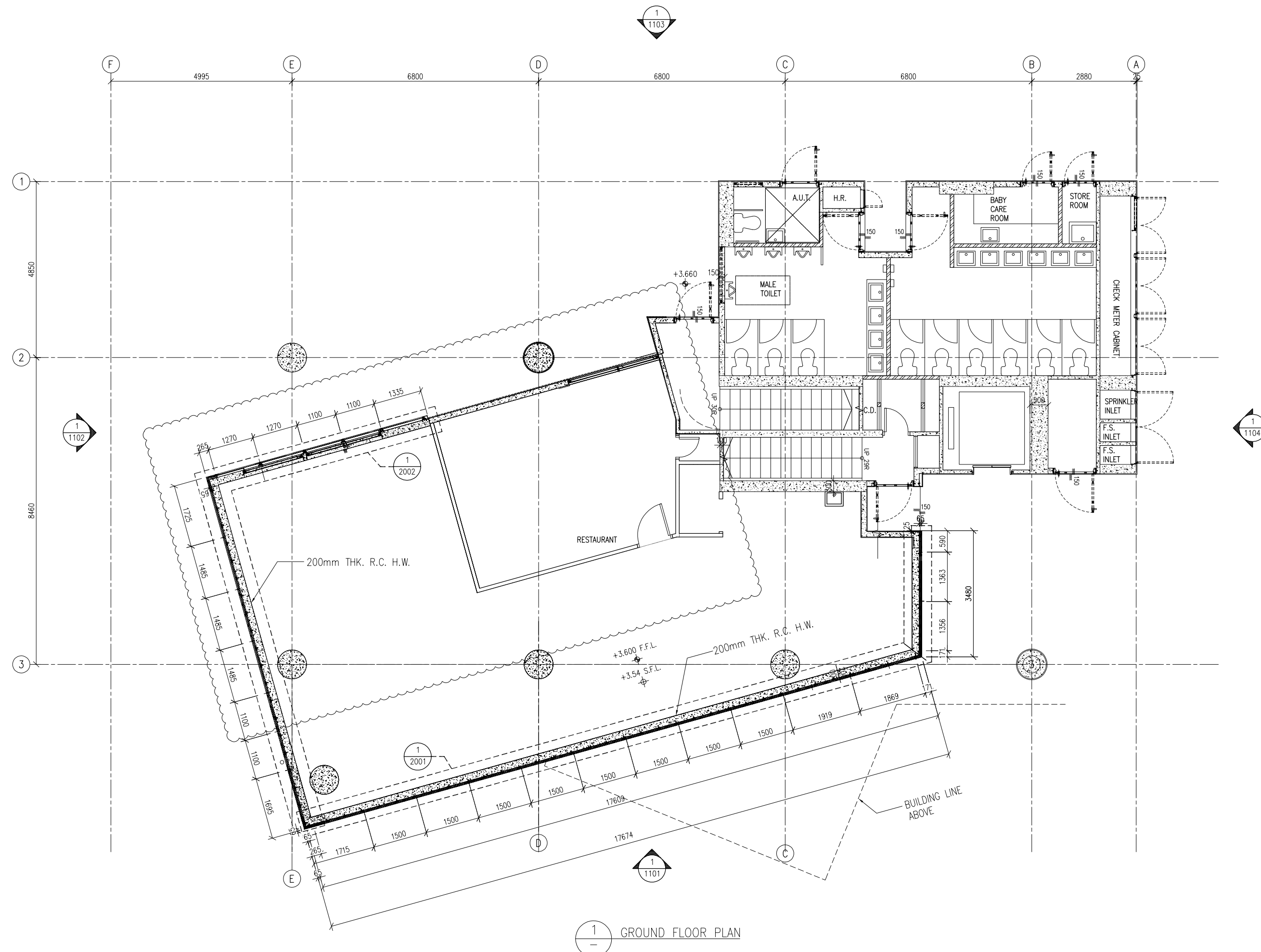
JOB NO. : J-860  
PROJECT : PROPOSED DEVELOPMENT  
AT MA WAN PARK PHASE II, MA WAN  
(NOW KNOWN AS MA WAN LOT NO.684)  
NEW BUILDING

TITLE : SECTION PROPERTIES

DATE : 8-10-22 SCALE : 1:1.5(A3)  
DRAWN BY : Asing CHECKED BY :

**美特鋁質有限公司**  
MIDI ALUMINUM FABRICATOR LTD.  
Units 6-8, Sunray Industrial Centre, 1/F  
610 Cha Kwo Ling Road, Kowloon  
Tel:23469211-4 Fax:(852)27727666

DWG NO. : J860-AG-0011 REV. : A



1  
—  
GROUND FLOOR PLAN

B.D. REF :



KEY PLAN

CLIENT :



ARCHITECT :



MAIN CONTRACTOR :



STRUCTURAL ENGINEER :



FAÇADE CONSULTANT :

NOTE :

1. ALL DIMENSIONS ARE IN mm.
2. ALL ELEVATIONS ARE VIEWED FROM OUTSIDE.
3. ALL DIMENSIONS TO BE VERIFIED ON SITE BEFORE FABRICATION.

LEGEND :

- (X1) — DETAIL MARK NO.
- (X001) — REFER SHEET NO.

1. F.F.L. — FINISHED FLOOR LEVEL
2. S.F.L. — STRUCTURAL FLOOR LEVEL
3. (R) — REVERSED DETAIL

B	15/3/2023	GENERAL REVISED	
A	28/11/2022	GENERAL REVISED	
NO.	DATE	REVISED	BY

JOB NO. : J-860

PROJECT : PROPOSED DEVELOPMENT  
AT MA WAN PARK PHASE II, MA WAN  
(NOW KNOWN AS MA WAN LOT NO.684)  
NEW BUILDING

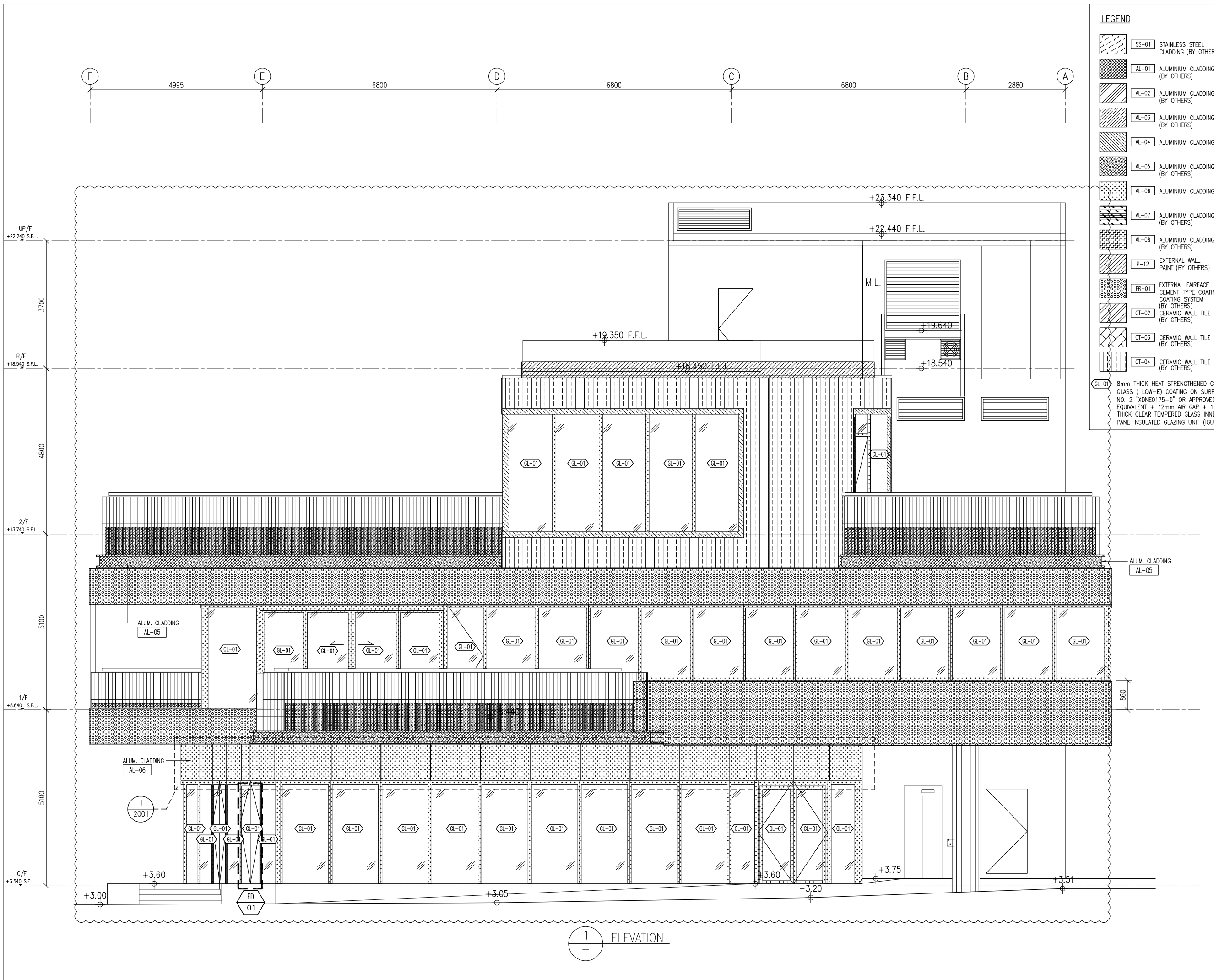
TITLE :  
GROUND FLOOR PLAN  
FOR ALUM. GRILLE & ALUM. CLADDING

DATE : 8-10-22 SCALE : 1:100(A3)

DRAWN BY : Asing CHECKED BY :



DWG NO. : J860-AG-1001 REV. : B



**LEGEND**

	SS-01 STAINLESS STEEL CLADDING (BY OTHERS)
	AL-01 ALUMINIUM CLADDING (BY OTHERS)
	AL-02 ALUMINIUM CLADDING (BY OTHERS)
	AL-03 ALUMINIUM CLADDING (BY OTHERS)
	AL-04 ALUMINIUM CLADDING (BY OTHERS)
	AL-05 ALUMINIUM CLADDING (BY OTHERS)
	AL-06 ALUMINIUM CLADDING (BY OTHERS)
	AL-07 ALUMINIUM CLADDING (BY OTHERS)
	AL-08 ALUMINIUM CLADDING (BY OTHERS)
	P-12 EXTERNAL WALL PAINT (BY OTHERS)
	FR-01 EXTERNAL FAIENCE CEMENT TYPE COATING SYSTEM (BY OTHERS)
	CT-02 CERAMIC WALL TILE (BY OTHERS)
	CT-03 CERAMIC WALL TILE (BY OTHERS)
	CT-04 CERAMIC WALL TILE (BY OTHERS)
	GL-01 8mm THICK HEAT STRENGTHENED CLEAR GLASS ( LOW-E) COATING ON SURFACE NO. 2 "XDNE175-D" OR APPROVED EQUIVALENT + 12mm AIR GAP + 12mm THICK CLEAR TEMPERED GLASS INNER PANE INSULATED GLAZING UNIT (IGU)

B.D. REF :

CLIENT :  
**SUN HUNG KAI REAL ESTATE AGENCY LTD.**  
 42/F SUN HUNG KAI CENTRE, WANCHAI, HONGKONG

ARCHITECT :  
**ARCHI+**  
 ARCHIPLUS INTERNATIONAL (HK) LIMITED

MAIN CONTRACTOR :  
**新輝建築有限公司 Sanfield Building Contractors Ltd.**  
 Site : 11-29 Factory Street & 383-399 Shau Kei Wan Rd., Shau Kei Wan, Hong Kong

STRUCTURAL ENGINEER :  
**SUN HUNG KAI ARCHITECTS AND ENGINEERS LTD.**  
 22/F SUN HUNG KAI CENTRE, WANCHAI, HONGKONG

FACADE CONSULTANT :

**NOTE :**

- ALL DIMENSIONS ARE IN mm.
- ALL ELEVATIONS ARE VIEWED FROM OUTSIDE.
- ALL DIMENSIONS TO BE VERIFIED ON SITE BEFORE FABRICATION.

**LEGEND :**

X1 — DETAIL MARK NO.  
 X001 — REFER SHEET NO.

- F.F.L. --- FINISHED FLOOR LEVEL
- S.F.L. --- STRUCTURAL FLOOR LEVEL
- (R) --- REVERSED DETAIL

NO.	DATE	REVISED	BY
B	15/3/2023	GENERAL REVISED	
A	28/11/2022	GENERAL REVISED	

JOB NO. : J-860

PROJECT : PROPOSED DEVELOPMENT AT MA WAN PARK PHASE II, MA WAN (NOW KNOWN AS MA WAN LOT NO.684) NEW BUILDING

TITLE : ELEVATIONS (1) FOR ALUM. GRILLE & ALUM. CLADDING

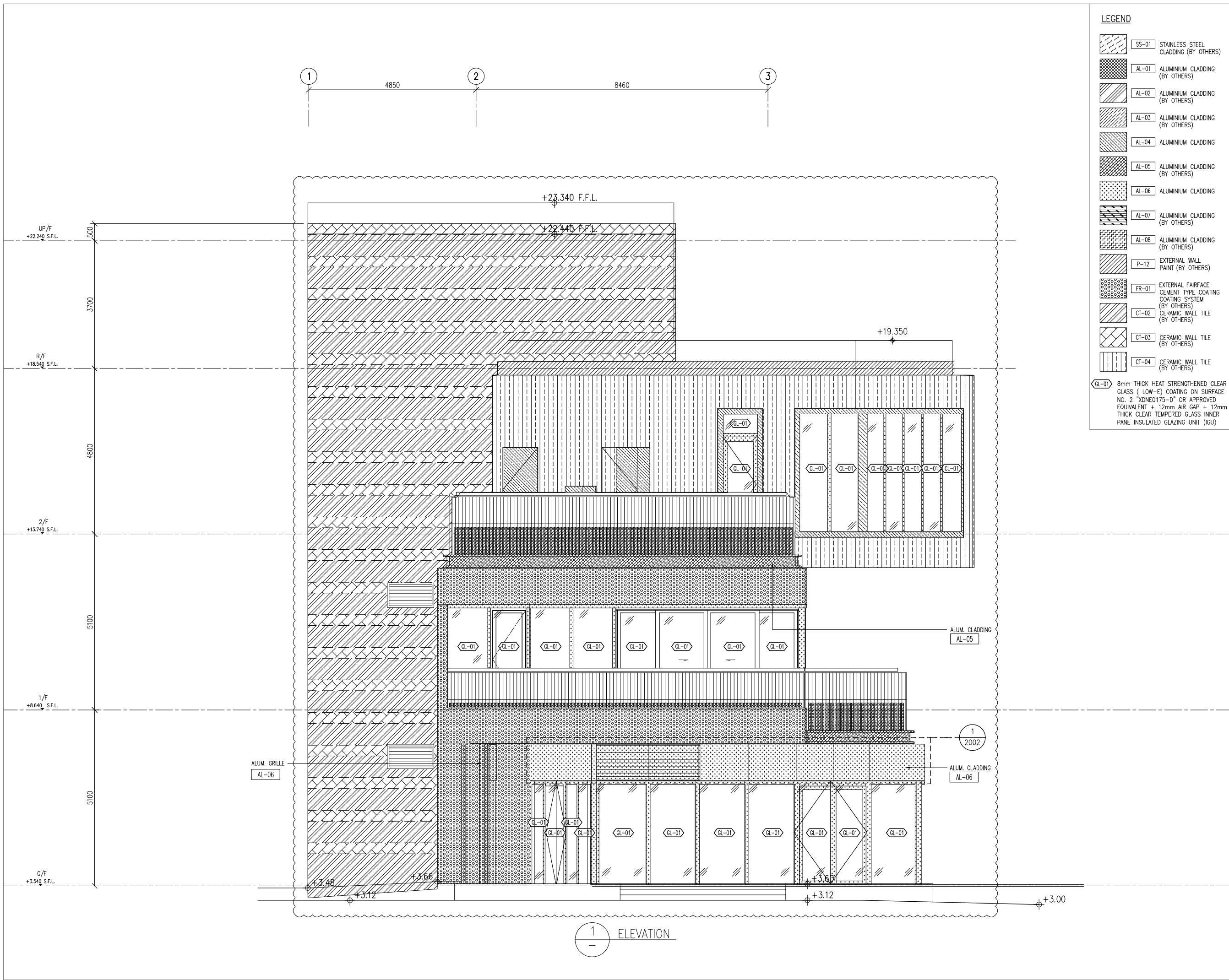
DATE : 8-10-22 SCALE : 1:100(A3)

DRAWN BY : Asing CHECKED BY :

**美特鋁質有限公司 MIDI ALUMINIUM FABRICATOR LTD.**  
 Units 6-8, Sunray Industrial Centre, 1/F  
 610 Cha Kwo Ling Road, Kowloon  
 Tel: 23489211-4 Fax: (852) 2727666

DWG NO. : J860-AG-1101 REV. : B

1 ELEVATION



1 ELEVATION

**LEGEND**

	SS-01	STAINLESS STEEL CLADDING (BY OTHERS)
	AL-01	ALUMINIUM CLADDING (BY OTHERS)
	AL-02	ALUMINIUM CLADDING (BY OTHERS)
	AL-03	ALUMINIUM CLADDING (BY OTHERS)
	AL-04	ALUMINIUM CLADDING (BY OTHERS)
	AL-05	ALUMINIUM CLADDING (BY OTHERS)
	AL-06	ALUMINIUM CLADDING (BY OTHERS)
	AL-07	ALUMINIUM CLADDING (BY OTHERS)
	AL-08	ALUMINIUM CLADDING (BY OTHERS)
	P-12	EXTERNAL WALL PAINT (BY OTHERS)
	FR-01	EXTERNAL FAIRFACE CEMENT TYPE COATING SYSTEM (BY OTHERS)
	CT-02	CERAMIC WALL TILE (BY OTHERS)
	CT-03	CERAMIC WALL TILE (BY OTHERS)
	CT-04	CERAMIC WALL TILE (BY OTHERS)
	GL-01	8mm THICK HEAT STRENGTHENED CLEAR GLASS ( LOW-E) COATING ON SURFACE NO. 2 "XDNE175-D" OR APPROVED EQUIVALENT + 12mm AIR GAP + 12mm THICK CLEAR TEMPERED GLASS INNER PANE INSULATED GLAZING UNIT (IGU)

B.D. REF :

CLIENT :

**SUN HUNG KAI REAL ESTATE AGENCY LTD.**  
42/F SUN HUNG KAI CENTRE, WANCHAI, HONGKONG

ARCHITECT :

**ARCHI+**  
ARCHIPLUS INTERNATIONAL (HK) LIMITED

MAIN CONTRACTOR :

**新輝建築有限公司 Sanfield Building Contractors Ltd.**  
Site : 11-29 Factory Street & 383-399 Shau Kei Wan Rd., Shau Kei Wan, Hong Kong

STRUCTURAL ENGINEER :

**SUN HUNG KAI ARCHITECTS AND ENGINEERS LTD.**  
22/F SUN HUNG KAI CENTRE, WANCHAI, HONGKONG

FACADE CONSULTANT:

**NOTE :**

- ALL DIMENSIONS ARE IN mm.
- ALL ELEVATIONS ARE VIEWED FROM OUTSIDE.
- ALL DIMENSIONS TO BE VERIFIED ON SITE BEFORE FABRICATION.

**LEGEND :**

X1 --- DETAIL MARK NO.  
X001 --- REFER SHEET NO.

- F.F.L. --- FINISHED FLOOR LEVEL
- S.F.L. --- STRUCTURAL FLOOR LEVEL
- (R) --- REVERSED DETAIL

B	15/3/2023	GENERAL REVISED	
A	28/11/2022	GENERAL REVISED	
NO.	DATE	REVISED	BY

JOB NO. : J-860

PROJECT : PROPOSED DEVELOPMENT AT MA WAN PARK PHASE II, MA WAN (NOW KNOWN AS MA WAN LOT NO.684) NEW BUILDING

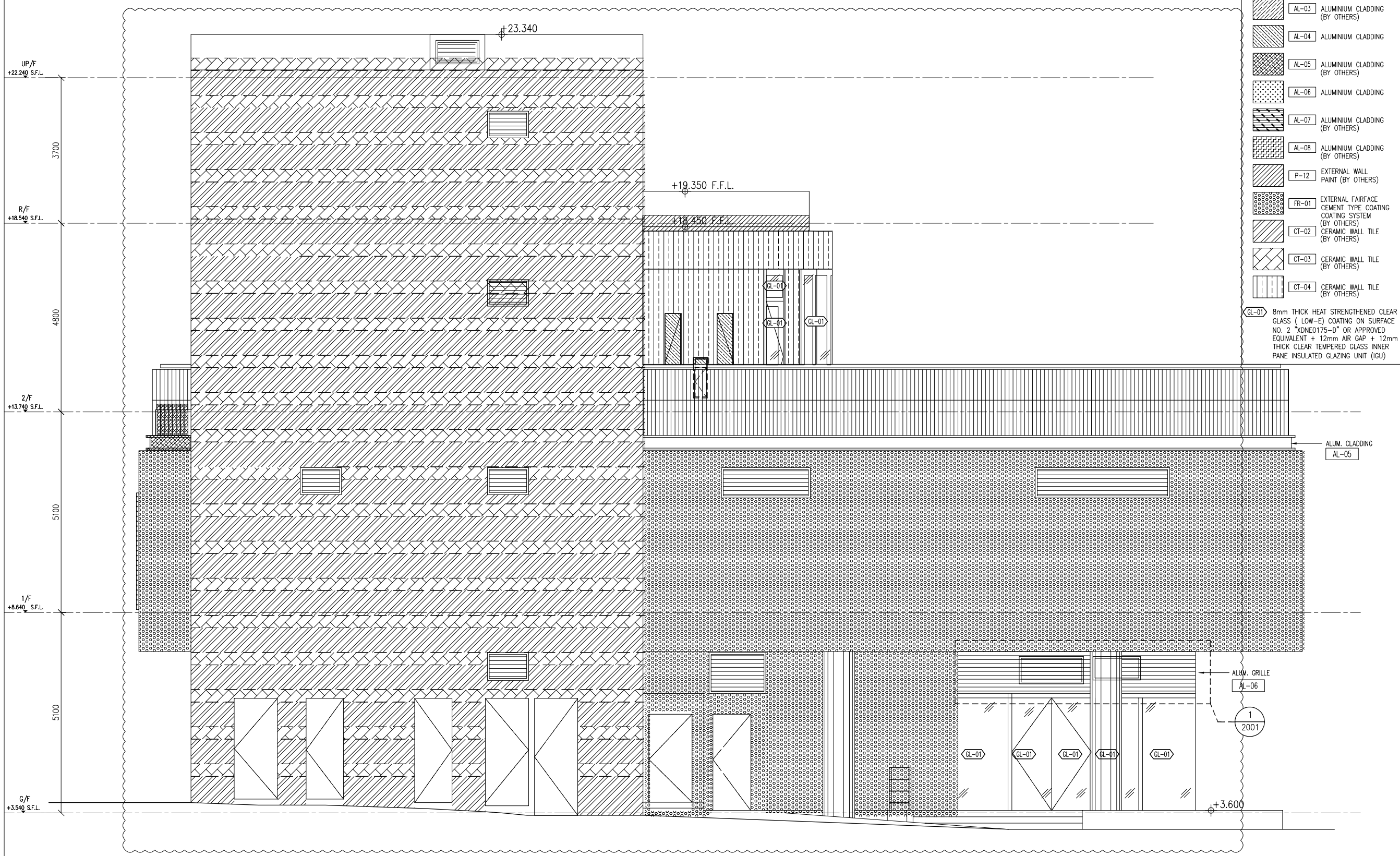
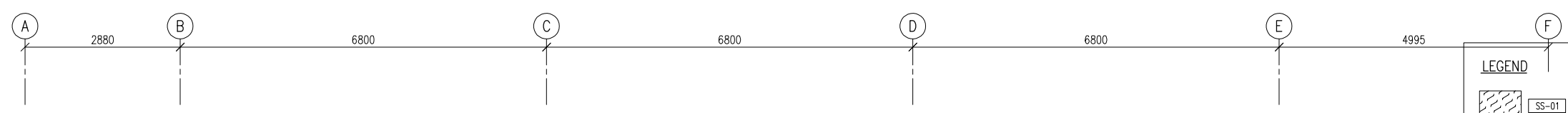
TITLE : ELEVATIONS (2) FOR ALUM. GRILLE & ALUM. CLADDING

DATE : 8-10-22 SCALE : 1:100(A3)

DRAWN BY : Asing CHECKED BY :

**美特鋁質有限公司**  
**MIDI ALUMINIUM FABRICATOR LTD.**  
Units 6-8, Sunray Industrial Centre, 1/F  
610 Cha Kwo Ling Road, Kowloon  
Tel: 23489211-4 Fax: (852) 2727666

DWG NO. : J860-AG-1102 REV. : B



- LEGEND**
- SS-01 STAINLESS STEEL CLADDING (BY OTHERS)
  - AL-01 ALUMINIUM CLADDING (BY OTHERS)
  - AL-02 ALUMINIUM CLADDING (BY OTHERS)
  - AL-03 ALUMINIUM CLADDING (BY OTHERS)
  - AL-04 ALUMINIUM CLADDING (BY OTHERS)
  - AL-05 ALUMINIUM CLADDING (BY OTHERS)
  - AL-06 ALUMINIUM CLADDING (BY OTHERS)
  - AL-07 ALUMINIUM CLADDING (BY OTHERS)
  - AL-08 ALUMINIUM CLADDING (BY OTHERS)
  - P-12 EXTERNAL WALL PAINT (BY OTHERS)
  - FR-01 EXTERNAL FAIRFACE CEMENT TYPE COATING SYSTEM (BY OTHERS)
  - CT-02 CERAMIC WALL TILE (BY OTHERS)
  - CT-03 CERAMIC WALL TILE (BY OTHERS)
  - CT-04 CERAMIC WALL TILE (BY OTHERS)
  - GL-01 8mm THICK HEAT STRENGTHENED CLEAR GLASS ( LOW-E) COATING ON SURFACE NO. 2 "XDNE175-0" OR APPROVED EQUIVALENT + 12mm AIR GAP + 12mm THICK CLEAR TEMPERED GLASS INNER PANE INSULATED GLAZING UNIT (IGU)

B.D. REF :

CLIENT :  
**SUN HUNG KAI REAL ESTATE AGENCY LTD.**  
 42/F SUN HUNG KAI CENTRE, WANCHAI, HONGKONG

ARCHITECT :  
**ARCHI+**  
 ARCHIPLUS INTERNATIONAL (HK) LIMITED

MAIN CONTRACTOR :  
**新輝建築有限公司 Sanfield Building Contractors Ltd.**  
 Site : 11-29 Factory Street & 383-399 Shau Kai Wan Rd., Shau Kai Wan, Hong Kong

STRUCTURAL ENGINEER :  
**SUN HUNG KAI ARCHITECTS AND ENGINEERS LTD.**  
 22/F SUN HUNG KAI CENTRE, WANCHAI, HONGKONG

FACADE CONSULTANT:

**NOTE :**

- ALL DIMENSIONS ARE IN mm.
- ALL ELEVATIONS ARE VIEWED FROM OUTSIDE.
- ALL DIMENSIONS TO BE VERIFIED ON SITE BEFORE FABRICATION.

**LEGEND :**

- X1 --DETAIL MARK NO.
- X001 --REFER SHEET NO.
- 1. F.F.L. --FINISHED FLOOR LEVEL
- 2. S.F.L. --STRUCTURAL FLOOR LEVEL
- 3. (R) --REVERSED DETAIL

B	15/3/2023	GENERAL REVISED	
A	28/11/2022	GENERAL REVISED	
NO.	DATE	REVISED	BY

JOB NO. : J-860

PROJECT : PROPOSED DEVELOPMENT AT MA WAN PARK PHASE II, MA WAN (NOW KNOWN AS MA WAN LOT NO.684) NEW BUILDING

TITLE : ELEVATIONS (3) FOR ALUM. GRILLE & ALUM. CLADDING

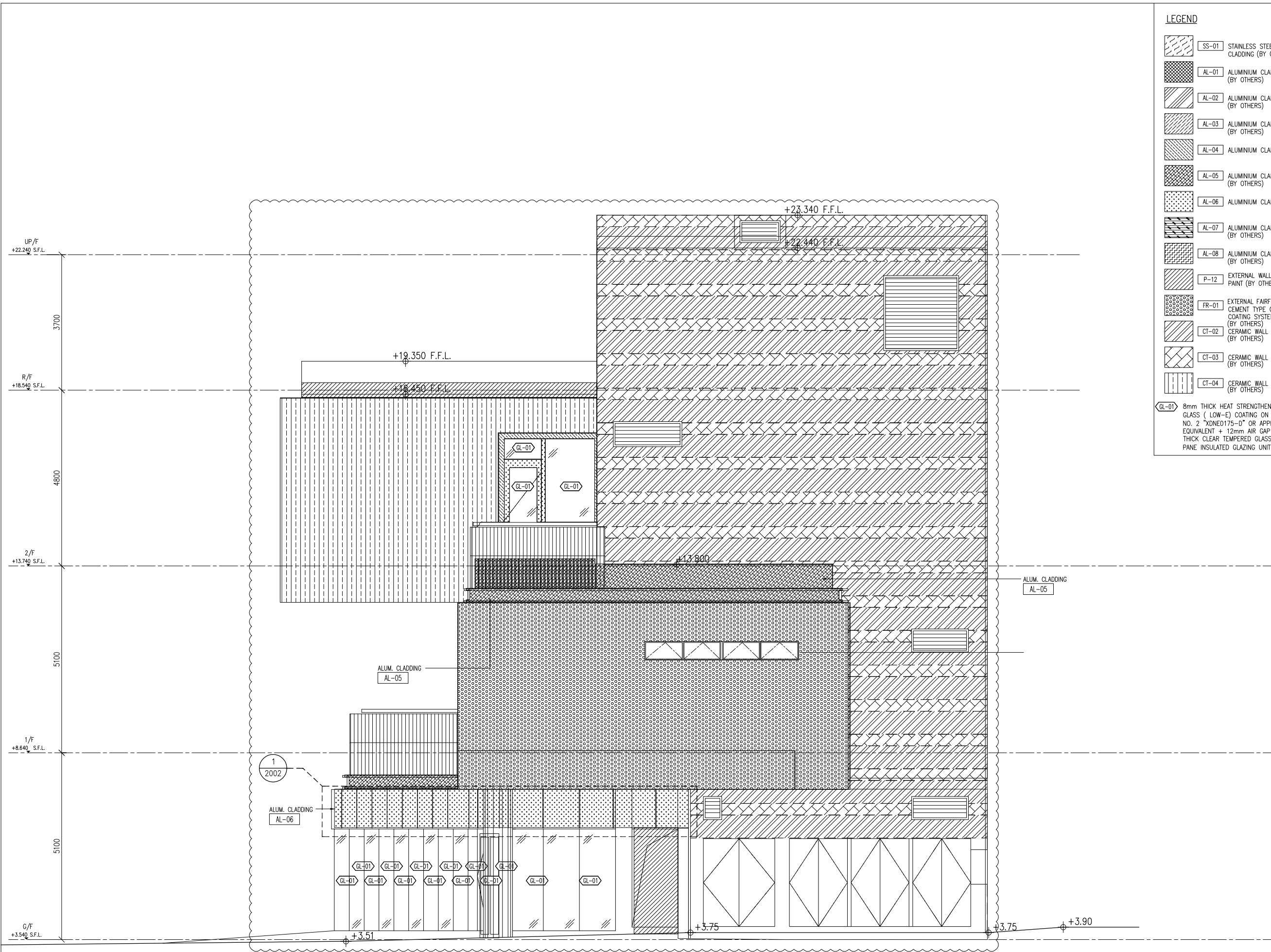
DATE : 8-10-22 SCALE : 1:100(A3)

DRAWN BY : Asing CHECKED BY :

**美特鋁質有限公司 MIDI ALUMINIUM FABRICATOR LTD.**  
 Units 6-8, Sunray Industrial Centre, 1/F  
 610 Cha Kwo Ling Road, Kowloon  
 Tel:23489211-4 Fax:(852)2727666

DWG NO. : J860-AG-1103 REV. : B

1 ELEVATION



**LEGEND**

	SS-01	STAINLESS STEEL CLADDING (BY OTHERS)
	AL-01	ALUMINIUM CLADDING (BY OTHERS)
	AL-02	ALUMINIUM CLADDING (BY OTHERS)
	AL-03	ALUMINIUM CLADDING (BY OTHERS)
	AL-04	ALUMINIUM CLADDING (BY OTHERS)
	AL-05	ALUMINIUM CLADDING (BY OTHERS)
	AL-06	ALUMINIUM CLADDING (BY OTHERS)
	AL-07	ALUMINIUM CLADDING (BY OTHERS)
	AL-08	ALUMINIUM CLADDING (BY OTHERS)
	P-12	EXTERNAL WALL PAINT (BY OTHERS)
	FR-01	EXTERNAL FAIRFACE CEMENT TYPE COATING SYSTEM (BY OTHERS)
	CT-02	CERAMIC WALL TILE (BY OTHERS)
	CT-03	CERAMIC WALL TILE (BY OTHERS)
	CT-04	CERAMIC WALL TILE (BY OTHERS)
	GL-01	8mm THICK HEAT STRENGTHENED CLEAR GLASS ( LOW-E) COATING ON SURFACE NO. 2 "XDNE175-D" OR APPROVED EQUIVALENT + 12mm AIR GAP + 12mm THICK CLEAR TEMPERED GLASS INNER PANE INSULATED GLAZING UNIT (IGU)

B.D. REF :

CLIENT :

**SUN HUNG KAI REAL ESTATE AGENCY LTD.**  
42/F SUN HUNG KAI CENTRE, WANCHAI, HONGKONG

ARCHITECT :

**ARCHI+**  
ARCHIPLUS INTERNATIONAL (HK) LIMITED

MAIN CONTRACTOR :

**新輝建築有限公司**  
**Sanfield Building Contractors Ltd.**  
Site : 11-29 Factory Street & 383-399 Shau Kei Wan Rd., Shau Kei Wan, Hong Kong

STRUCTURAL ENGINEER :

**SUN HUNG KAI ARCHITECTS AND ENGINEERS LTD.**  
22/F SUN HUNG KAI CENTRE, WANCHAI, HONGKONG

FACADE CONSULTANT :

- NOTE :**
- ALL DIMENSIONS ARE IN mm.
  - ALL ELEVATIONS ARE VIEWED FROM OUTSIDE.
  - ALL DIMENSIONS TO BE VERIFIED ON SITE BEFORE FABRICATION.
- LEGEND :**
- X1 — DETAIL MARK NO.  
X001 — REFER SHEET NO.
- F.F.L. -- FINISHED FLOOR LEVEL
  - S.F.L. -- STRUCTURAL FLOOR LEVEL
  - (R) -- REVERSED DETAIL

B	15/3/2023	GENERAL REVISED	
A	28/11/2022	GENERAL REVISED	
NO.	DATE	REVISED	BY

JOB NO. : J-860

PROJECT : PROPOSED DEVELOPMENT AT MA WAN PARK PHASE II, MA WAN (NOW KNOWN AS MA WAN LOT NO.684) NEW BUILDING

TITLE : ELEVATIONS (4) FOR ALUM. GRILLE & ALUM. CLADDING

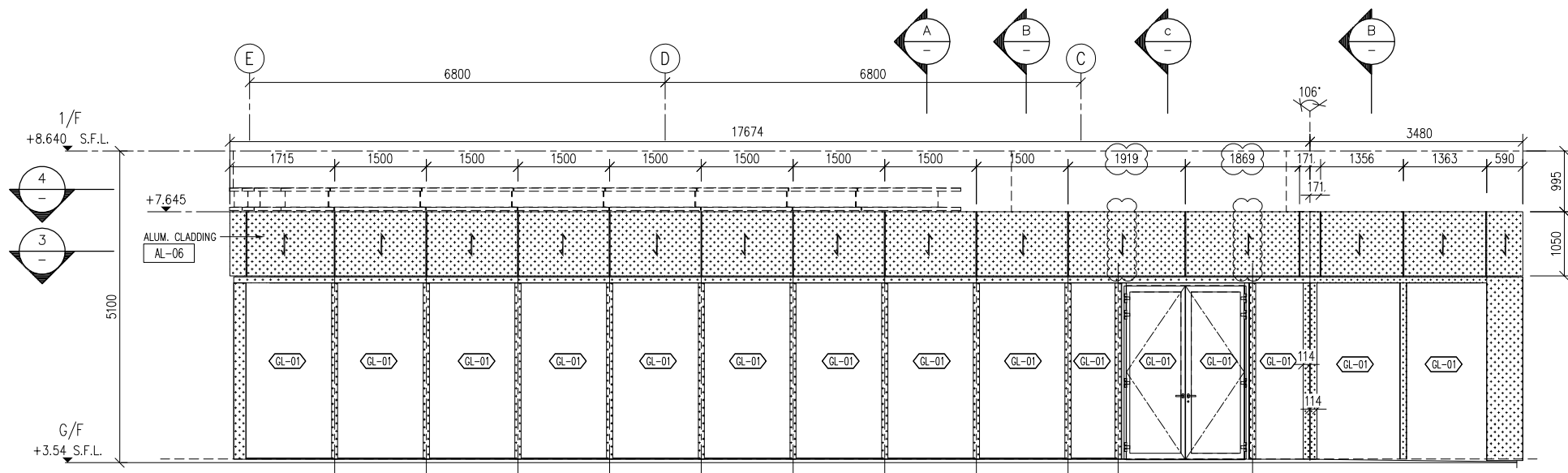
DATE : 8-10-22 SCALE : 1:100(A3)

DRAWN BY : Asing CHECKED BY :

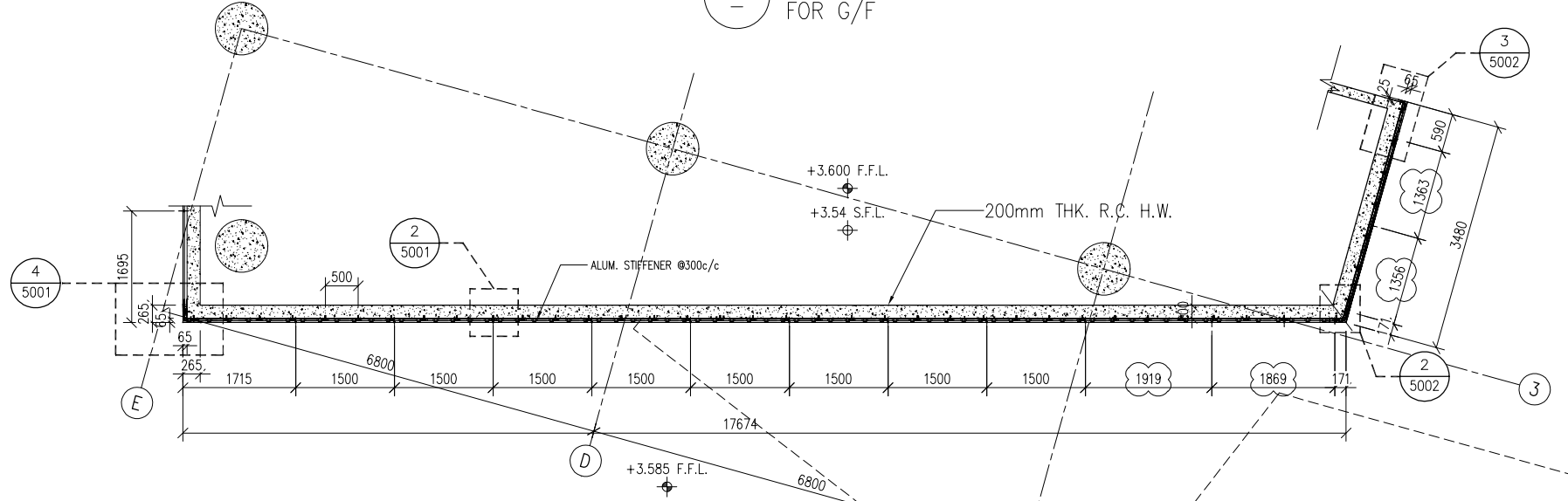
**美特鋁質有限公司**  
**MIDI ALUMINIUM FABRICATOR LTD.**  
Units 6-8, Sunray Industrial Centre, 1/F  
610 Cha Kwo Ling Road, Kowloon  
Tel: 23489211-4 Fax: (852) 2727666

DWG NO. : J860-AG-1104 REV. : B

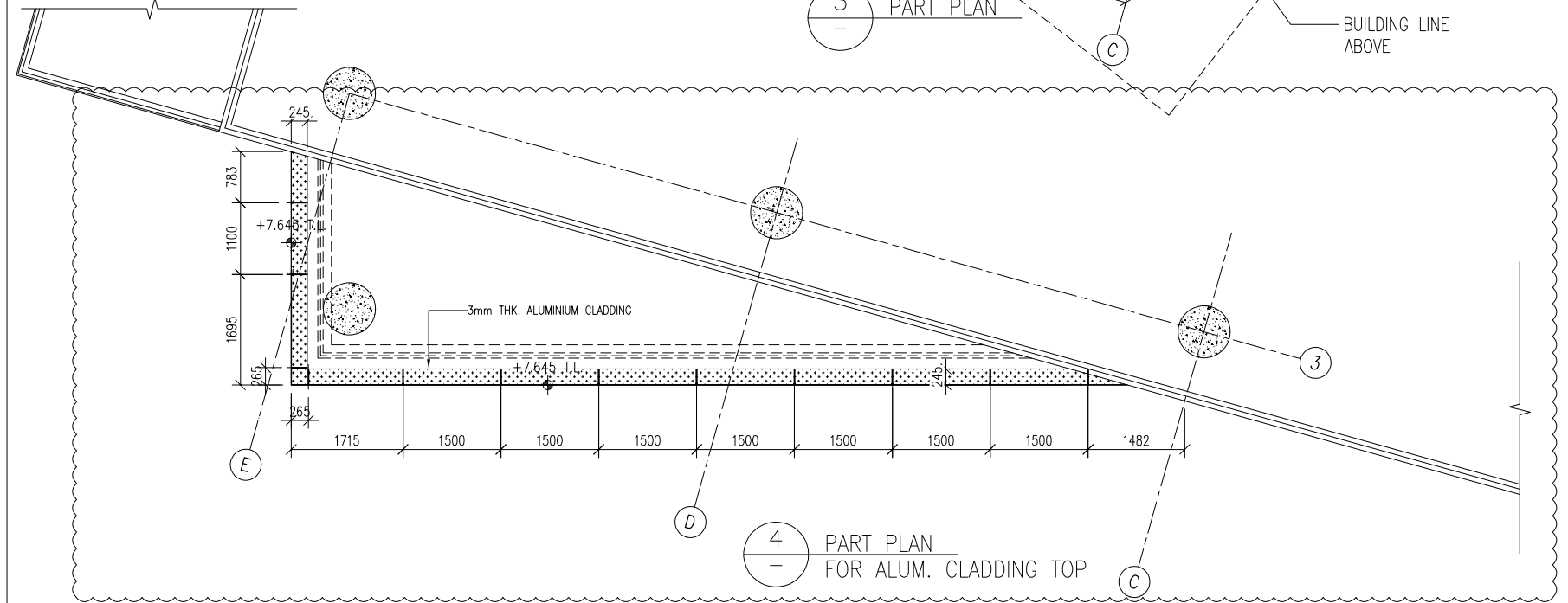
1 ELEVATION



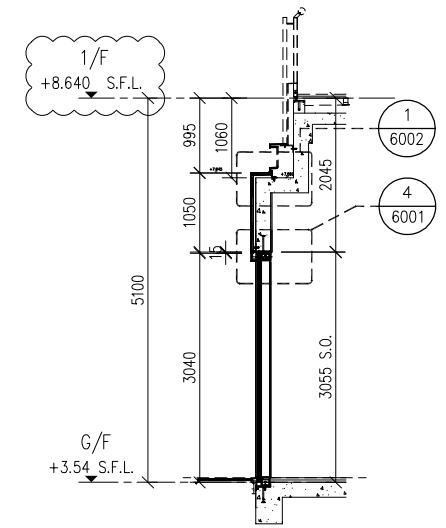
1 PARTIAL ELEVATION FOR G/F



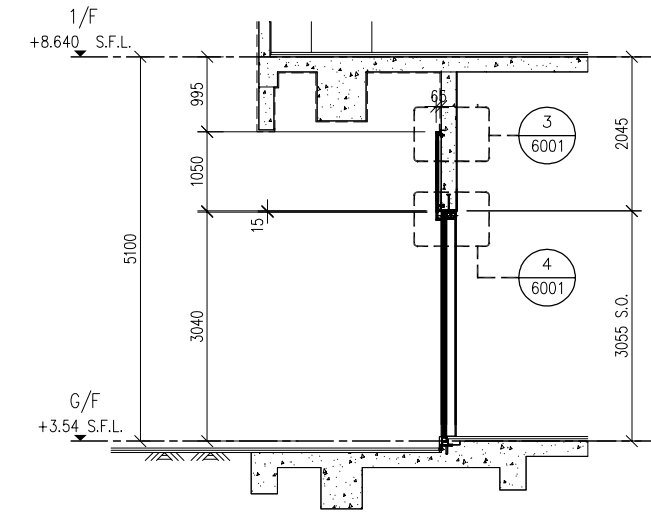
3 PART PLAN



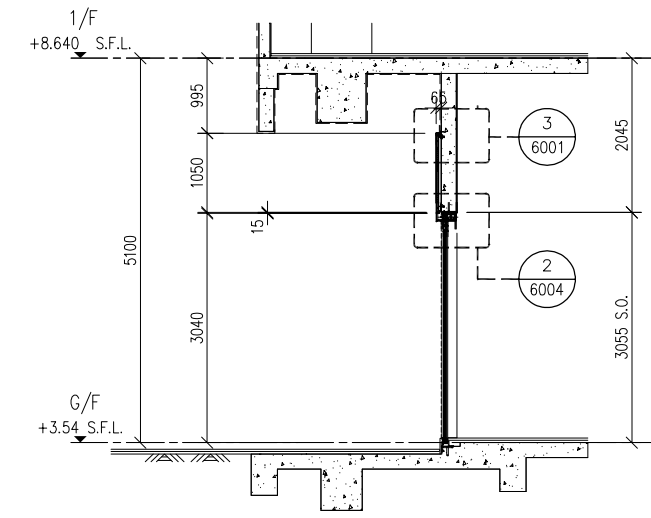
4 PART PLAN FOR ALUM. CLADDING TOP



A TYPICAL SECTION FOR G/F



B TYPICAL SECTION FOR G/F



C TYPICAL SECTION FOR G/F

B.D. REF :

**LEGEND**

	AL-06 ALUMINIUM CLADDING
	AL-06 ALUMINIUM GRILLE
	50x50x3mm THK. ALUM. HOLLOW

CLIENT :  
**SUN HUNG KAI REAL ESTATE AGENCY LTD.**  
 42/F SUN HUNG KAI CENTRE, WANCHAI, HONGKONG

ARCHITECT :  
**ARCHI+**  
 ARCHIPLUS INTERNATIONAL (HK) LIMITED

MAIN CONTRACTOR :  
**新輝建築有限公司**  
**Sanfield Building Contractors Ltd.**  
 Site : 11-29 Factory Street & 383-399 Shau Kei Wan Rd., Shau Kei Wan, Hong Kong

STRUCTURAL ENGINEER :  
**SUN HUNG KAI ARCHITECTS AND ENGINEERS LTD.**  
 22/F SUN HUNG KAI CENTRE, WANCHAI, HONGKONG

FAÇADE CONSULTANT :

**NOTE :**

- ALL DIMENSIONS ARE IN mm.
- ALL ELEVATIONS ARE VIEWED FROM OUTSIDE.
- ALL DIMENSIONS TO BE VERIFIED ON SITE BEFORE FABRICATION.

**LEGEND :**

X1 — DETAIL MARK NO.  
 X001 — REFER SHEET NO.

- F.F.L. — FINISHED FLOOR LEVEL
- S.F.L. — STRUCTURAL FLOOR LEVEL
- (R) — REVERSED DETAIL

B	17/03/2023	GENERAL REVISED	
A	28/11/2022	GENERAL REVISED	
NO.	DATE	REVISED	BY

JOB NO. : J-860

PROJECT : PROPOSED DEVELOPMENT AT MA WAN PARK PHASE II, MA WAN (NOW KNOWN AS MA WAN LOT NO.684) NEW BUILDING

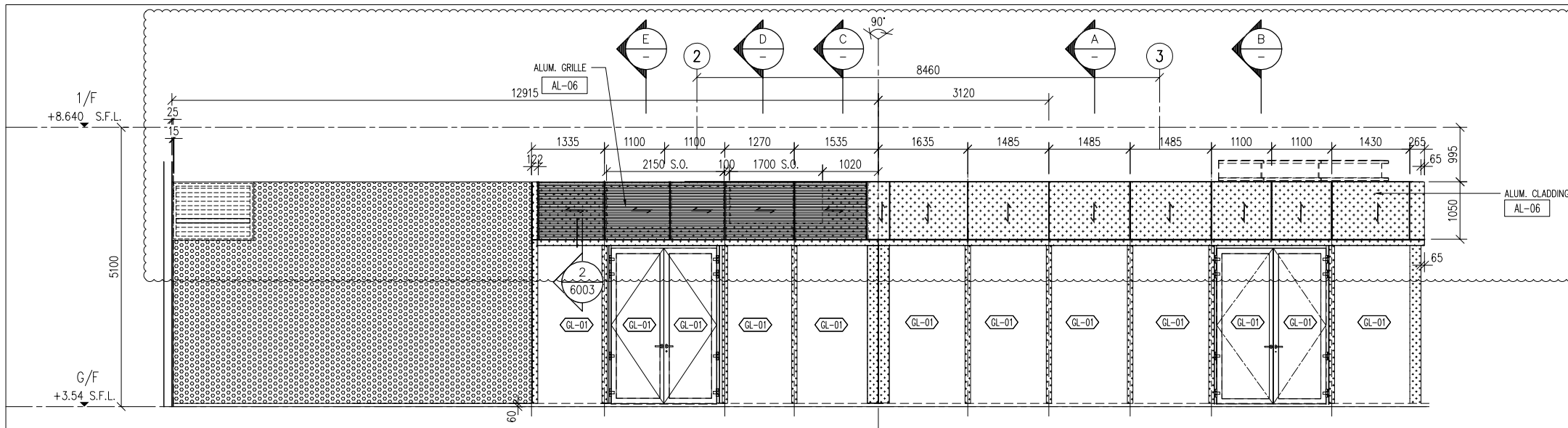
TITLE : PARTIAL ELEVATION FOR ALUM. GRILLE & ALUM. CLADDING

DATE : 15-10-22 SCALE : 1:100(A3)

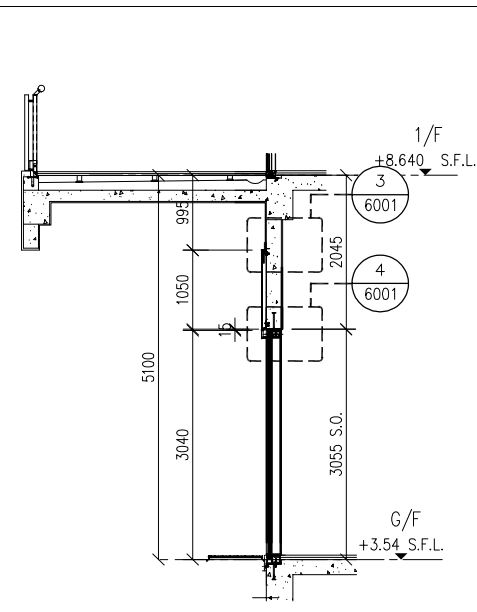
DRAWN BY : Asing CHECKED BY :

**美特鋁質有限公司**  
**MIDI ALUMINIUM FABRICATOR LTD.**  
 Units 6-8, Sunray Industrial Centre, 1/F  
 610 Cha Kwo Ling Road, Kowloon  
 Tel:23489211-4 Fax:(852)2727666

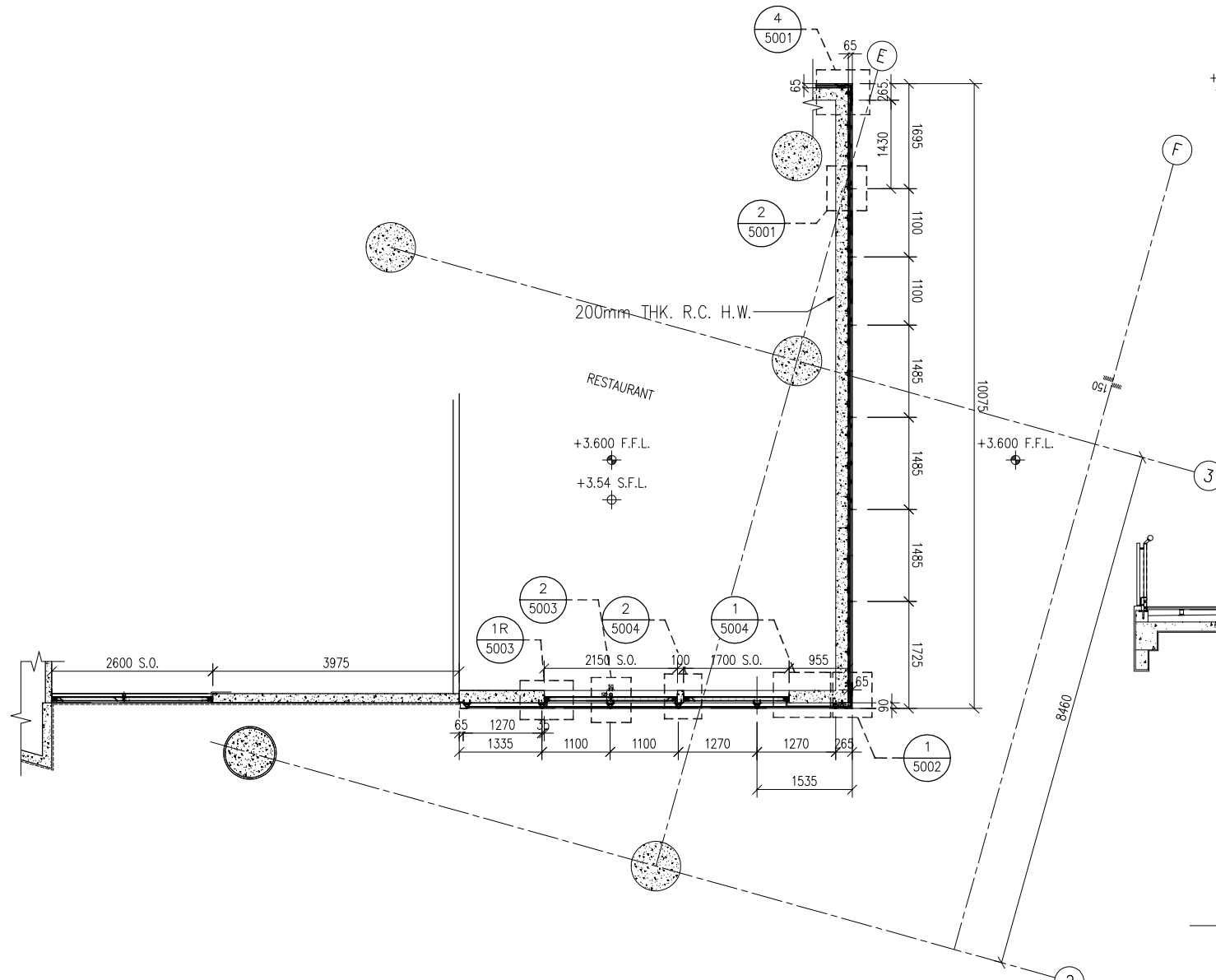
DWG NO. : J860-AG-2001 REV. : B



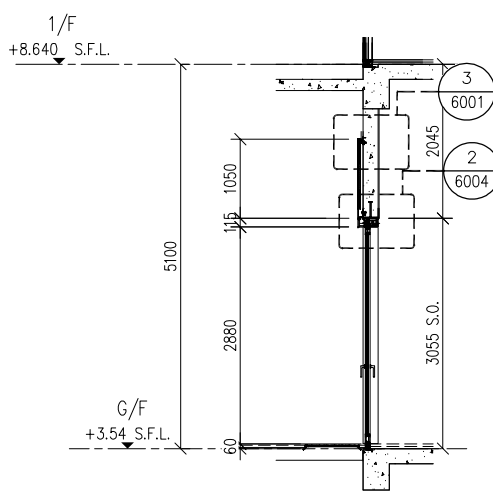
1 PARTIAL ELEVATION FOR G/F



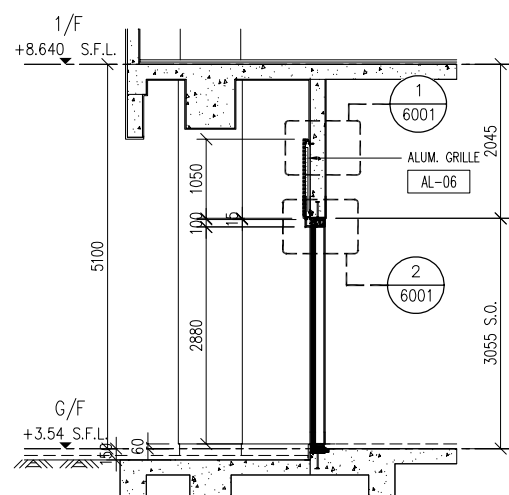
A TYPICAL SECTION FOR G/F



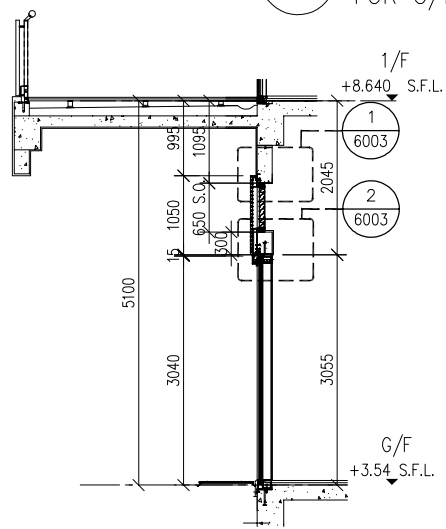
3 PART PLAN



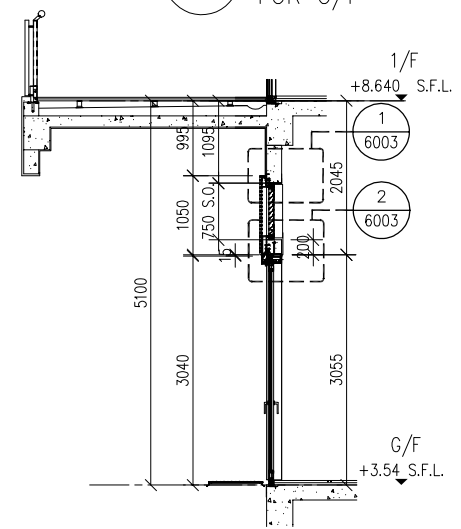
B TYPICAL SECTION FOR G/F



C TYPICAL SECTION FOR G/F



D TYPICAL SECTION FOR G/F



E TYPICAL SECTION FOR G/F

B.D. REF :

**LEGEND**

- AL-06 ALUMINIUM CLADDING
- AL-06 ALUMINIUM GRILLE
- 50x50x3mm THK. ALUM. HOLLOW

CLIENT :

**SUN HUNG KAI REAL ESTATE AGENCY LTD.**  
42/F SUN HUNG KAI CENTRE, WANCHAI, HONGKONG

ARCHITECT :

**ARCHI+**  
ARCHIPLUS INTERNATIONAL (HK) LIMITED

MAIN CONTRACTOR :

**新輝建築有限公司 Sanfield Building Contractors Ltd.**  
Site : 11-29 Factory Street & 383-399 Shau Kei Wan Rd., Shau Kei Wan, Hong Kong

STRUCTURAL ENGINEER :

**SUN HUNG KAI ARCHITECTS AND ENGINEERS LTD.**  
22/F SUN HUNG KAI CENTRE, WANCHAI, HONGKONG

FACADE CONSULTANT :

**NOTE :**

- ALL DIMENSIONS ARE IN mm.
- ALL ELEVATIONS ARE VIEWED FROM OUTSIDE.
- ALL DIMENSIONS TO BE VERIFIED ON SITE BEFORE FABRICATION.

**LEGEND :**

- X1 DETAIL MARK NO.
- X001 REFER SHEET NO.
- 1. F.F.L. -- FINISHED FLOOR LEVEL
- 2. S.F.L. -- STRUCTURAL FLOOR LEVEL
- 3. (R) -- REVERSED DETAIL

B	17/03/2023	GENERAL REVISED	
A	28/11/2022	GENERAL REVISED	
NO.	DATE	REVISED	BY

JOB NO. : J-860

PROJECT : PROPOSED DEVELOPMENT AT MA WAN PARK PHASE II, MA WAN (NOW KNOWN AS MA WAN LOT NO.684) NEW BUILDING

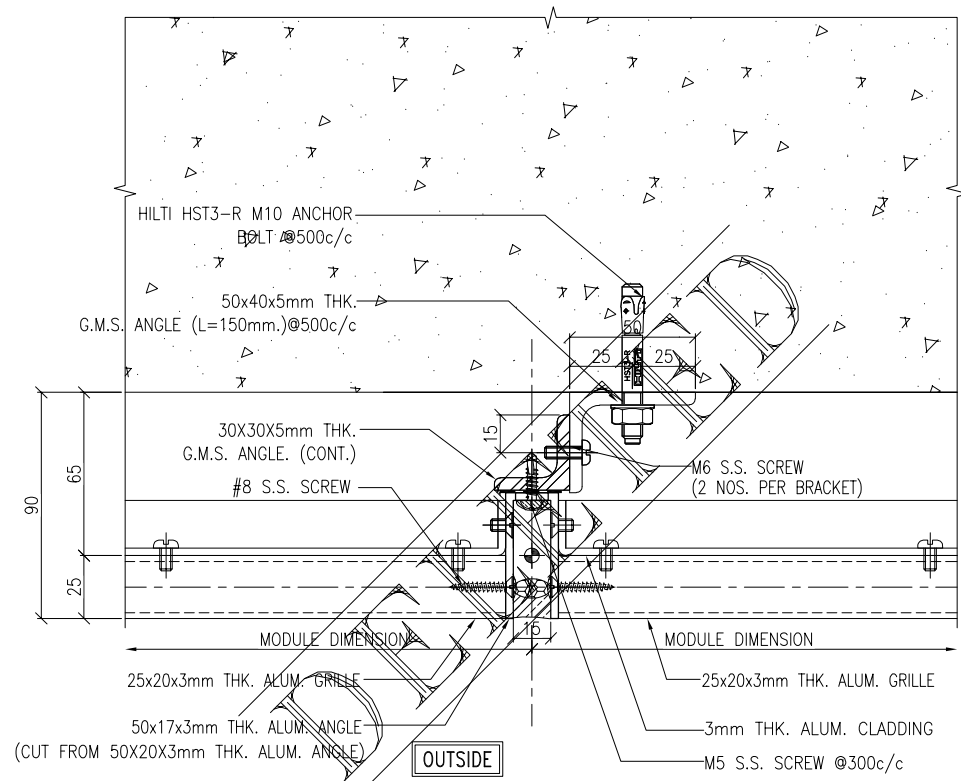
TITLE : PARTIAL ELEVATION FOR ALUM. GRILLE & ALUM. CLADDING

DATE : 15-10-22 SCALE : 1:100(A3)

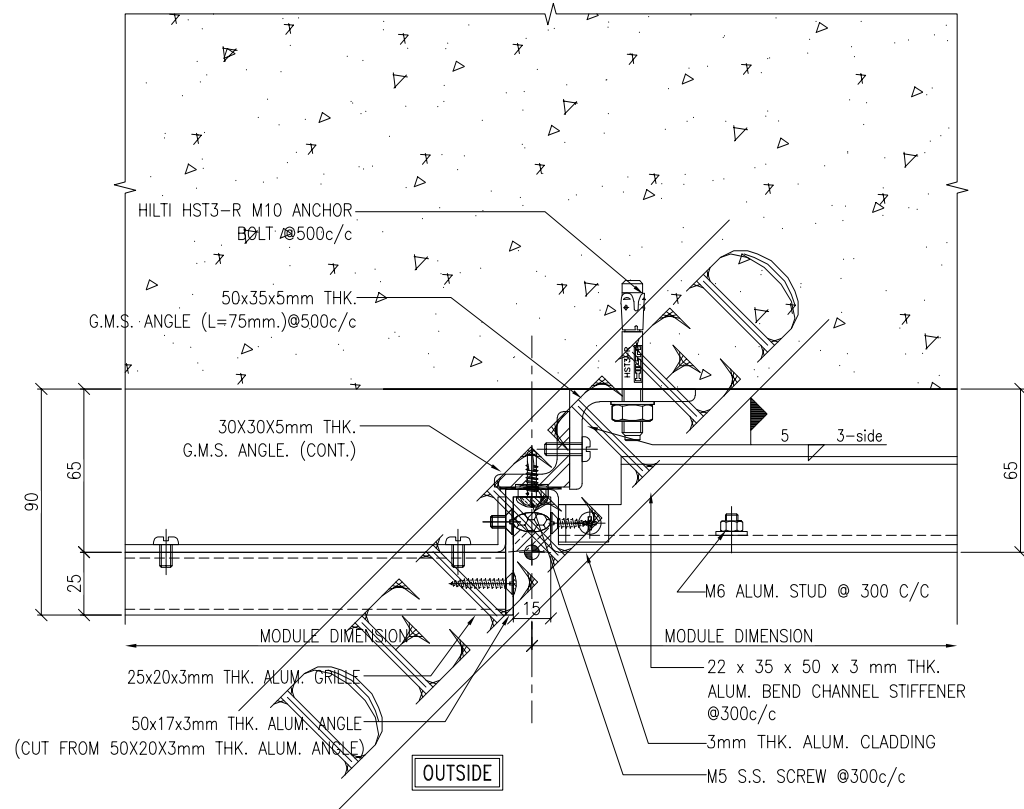
DRAWN BY : Asing CHECKED BY :

**美特鋁質有限公司**  
**MIDI ALUMINIUM FABRICATOR LTD.**  
Units 6-8, Sunray Industrial Centre, 1/F  
610 Cha Kwo Ling Road, Kowloon  
Tel: 23489211-4 Fax: (852) 27727666

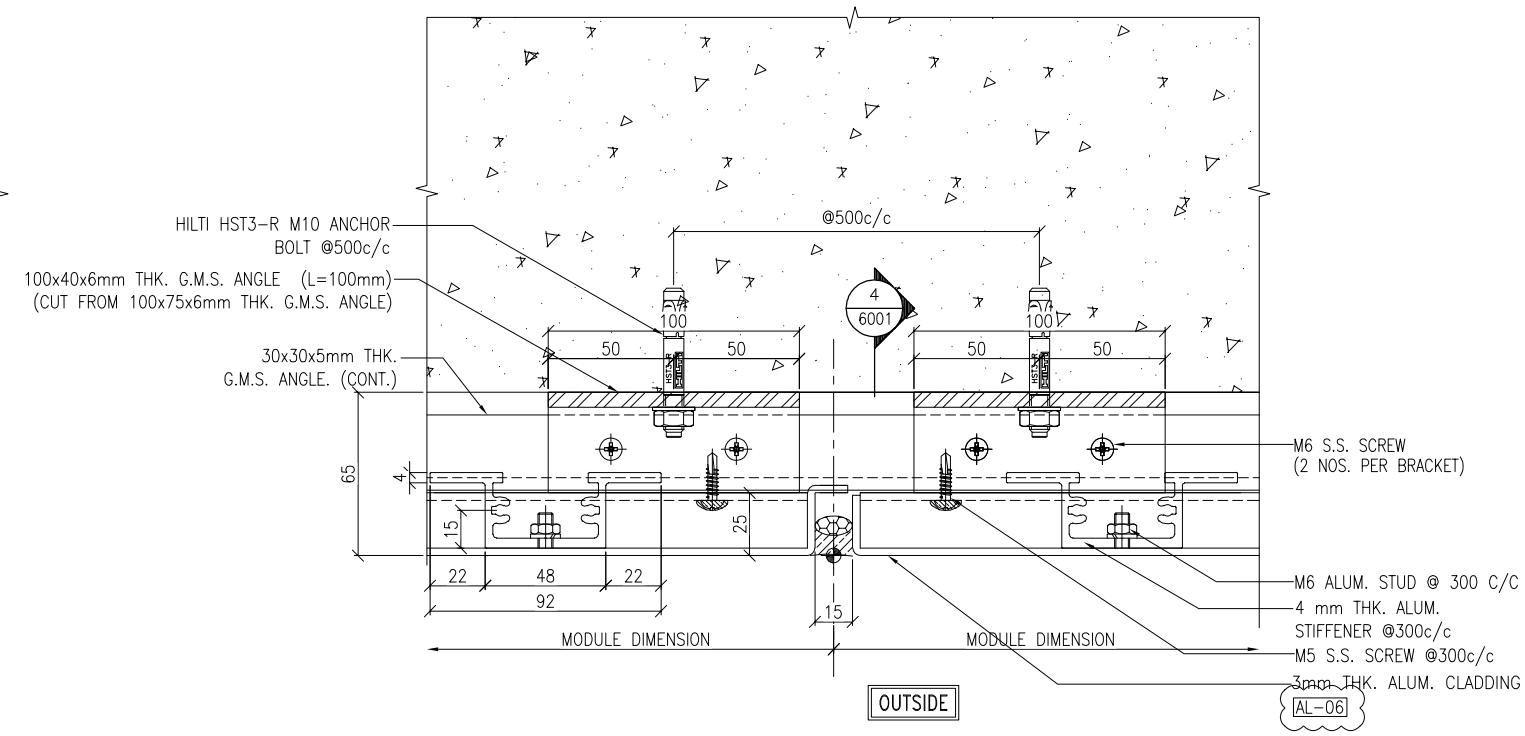
DWG NO. : J860-AG-2002 REV. : B



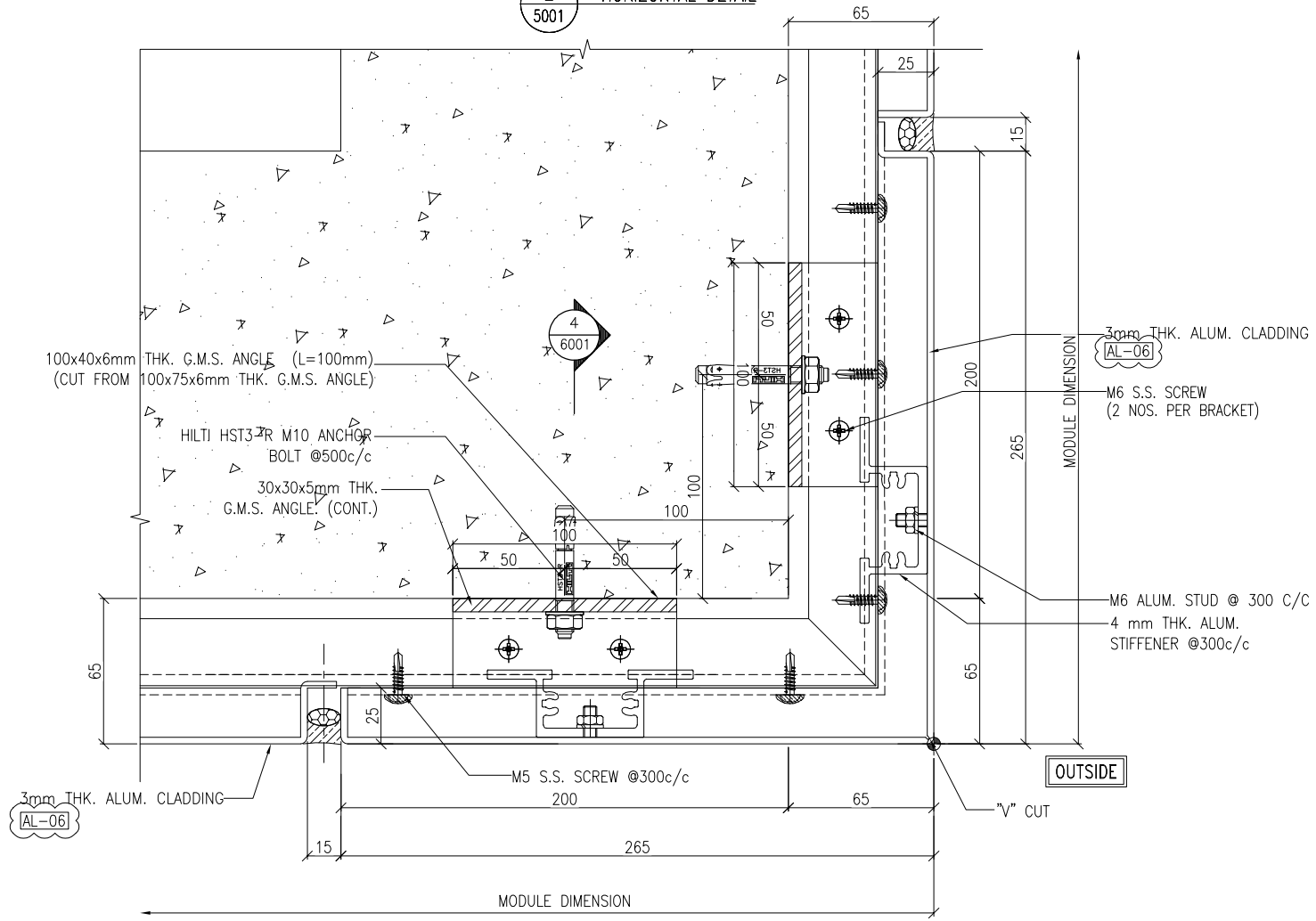
1 HORIZONTAL DETAIL  
5001



3 HORIZONTAL DETAIL  
5001



2 HORIZONTAL DETAIL  
5001



4 HORIZONTAL DETAIL  
5001

B.D. REF :

CLIENT :

**SUN HUNG KAI**  
REAL ESTATE AGENCY LTD.  
42/F SUN HUNG KAI CENTRE, WANCHAI, HONGKONG

ARCHITECT :  
**ARCHI+**  
ARCHIPLUS INTERNATIONAL (HK) LIMITED

MAIN CONTRACTOR :  
**新輝建築有限公司**  
Sanfield Building Contractors Ltd.  
Site : 11-29 Factory Street & 383-399 Shau Kei Wan Rd., Shau Kei Wan, Hong Kong

STRUCTURAL ENGINEER :  
**SUN HUNG KAI**  
ARCHITECTS AND ENGINEERS LTD.  
22/F SUN HUNG KAI CENTRE, WANCHAI, HONGKONG

FACADE CONSULTANT:

NOTE :  
1. ALL DIMENSIONS ARE IN mm.  
2. ALL ELEVATIONS ARE VIEWED FROM OUTSIDE.  
3. ALL DIMENSIONS TO BE VERIFIED ON SITE BEFORE FABRICATION.

LEGEND :  
X1 --- DETAIL MARK NO.  
X001 --- REFER SHEET NO.  
1. F.F.L. --- FINISHED FLOOR LEVEL  
2. S.F.L. --- STRUCTURAL FLOOR LEVEL  
3. (R) --- REVERSED DETAIL

[AL-06] 3-COAT BRONZE COLOUR FLUOROCARBON COATING METALLIC FINISH (PPG PVDF)

NO.	DATE	REVISED	BY
B	22/12/2022	GENERAL REVISED	
A	28/11/2022	GENERAL REVISED	

JOB NO. : J-860  
PROJECT : PROPOSED DEVELOPMENT AT MA WAN PARK PHASE II, MA WAN (NOW KNOWN AS MA WAN LOT NO.684) NEW BUILDING

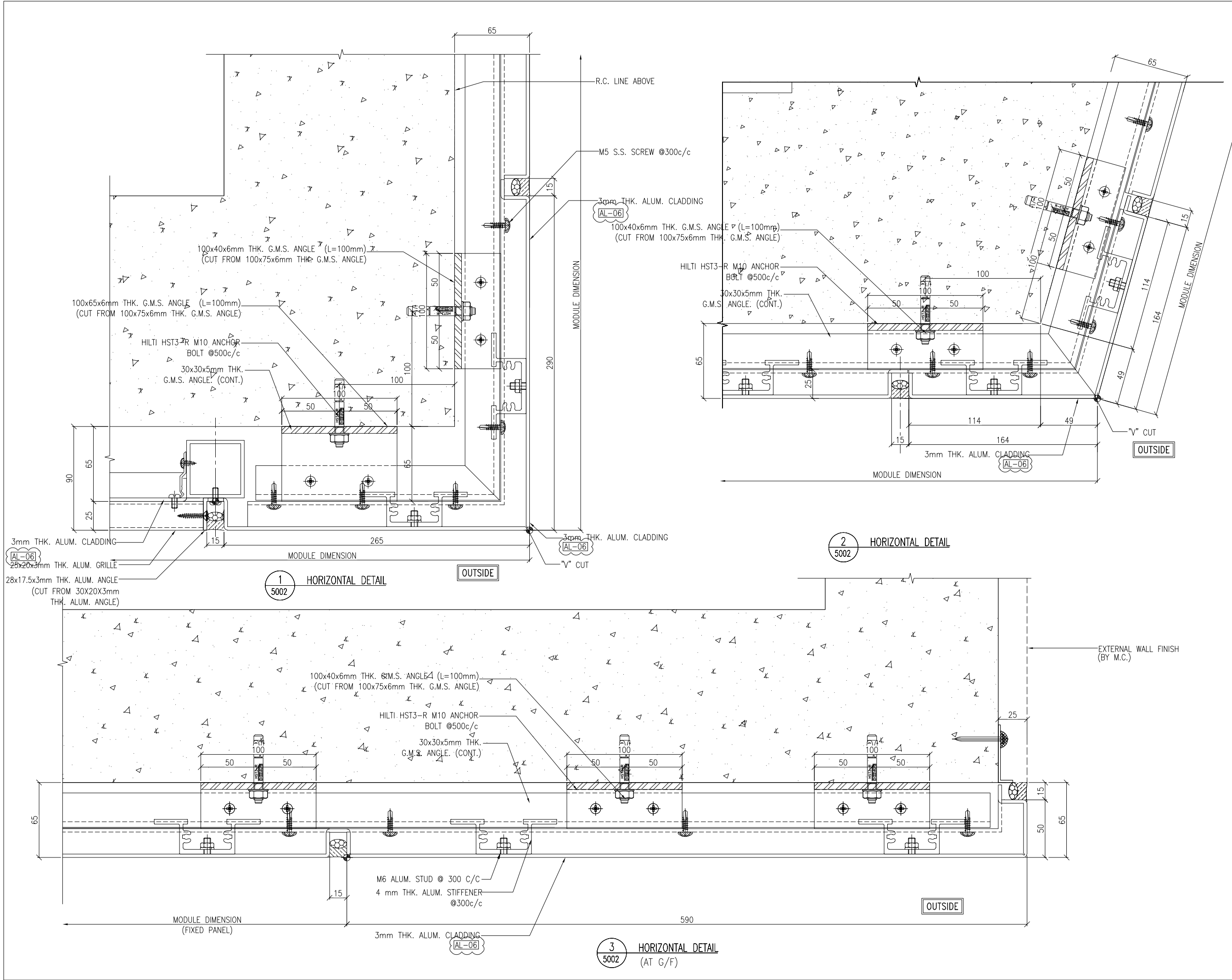
TITLE : TYPICAL DETAIL FOR ALUM. GRILLE & ALUM. CLADDING

DATE : 15-10-22 SCALE : 1:3(A3)

DRAWN BY : Asing CHECKED BY :

**美特鋁質有限公司**  
MIDI ALUMINIUM FABRICATOR LTD.  
Units 6-8, Sunray Industrial Centre, 1/F  
610 Cha Kwo Ling Road, Kowloon  
Tel:23489211-4 Fax:(852)2727666

DWG NO. : J860-AG-5001 REV. : B



B.D. REF :

CLIENT :  
**SUN HUNG KAI**  
 REAL ESTATE AGENCY LTD.  
 42/F SUN HUNG KAI CENTRE, WANCHAI, HONGKONG

ARCHITECT :  
**ARCHI+**  
 ARCHIPLUS INTERNATIONAL (HK) LIMITED

MAIN CONTRACTOR :  
**新輝建築有限公司**  
 Sanfield Building Contractors Ltd.  
 Site : 11-29 Factory Street & 383-399 Shau Kei Wan Rd., Shau Kei Wan, Hong Kong

STRUCTURAL ENGINEER :  
**SUN HUNG KAI**  
 ARCHITECTS AND ENGINEERS LTD.  
 22/F SUN HUNG KAI CENTRE, WANCHAI, HONGKONG

FACADE CONSULTANT:

NOTE :  
 1. ALL DIMENSIONS ARE IN mm.  
 2. ALL ELEVATIONS ARE VIEWED FROM OUTSIDE.  
 3. ALL DIMENSIONS TO BE VERIFIED ON SITE BEFORE FABRICATION.

LEGEND :  
 (X1) --- DETAIL MARK NO.  
 (X001) --- REFER SHEET NO.  
 1. F.F.L. --- FINISHED FLOOR LEVEL  
 2. S.F.L. --- STRUCTURAL FLOOR LEVEL  
 3. (R) --- REVERSED DETAIL

(AL-06) 3-COAT BRONZE COLOUR FLUOROCARBON COATING METALLIC FINISH (PPG PVDF)

B	22/12/2022	GENERAL REVISED	
A	28/11/2022	GENERAL REVISED	
NO.	DATE	REVISED	BY

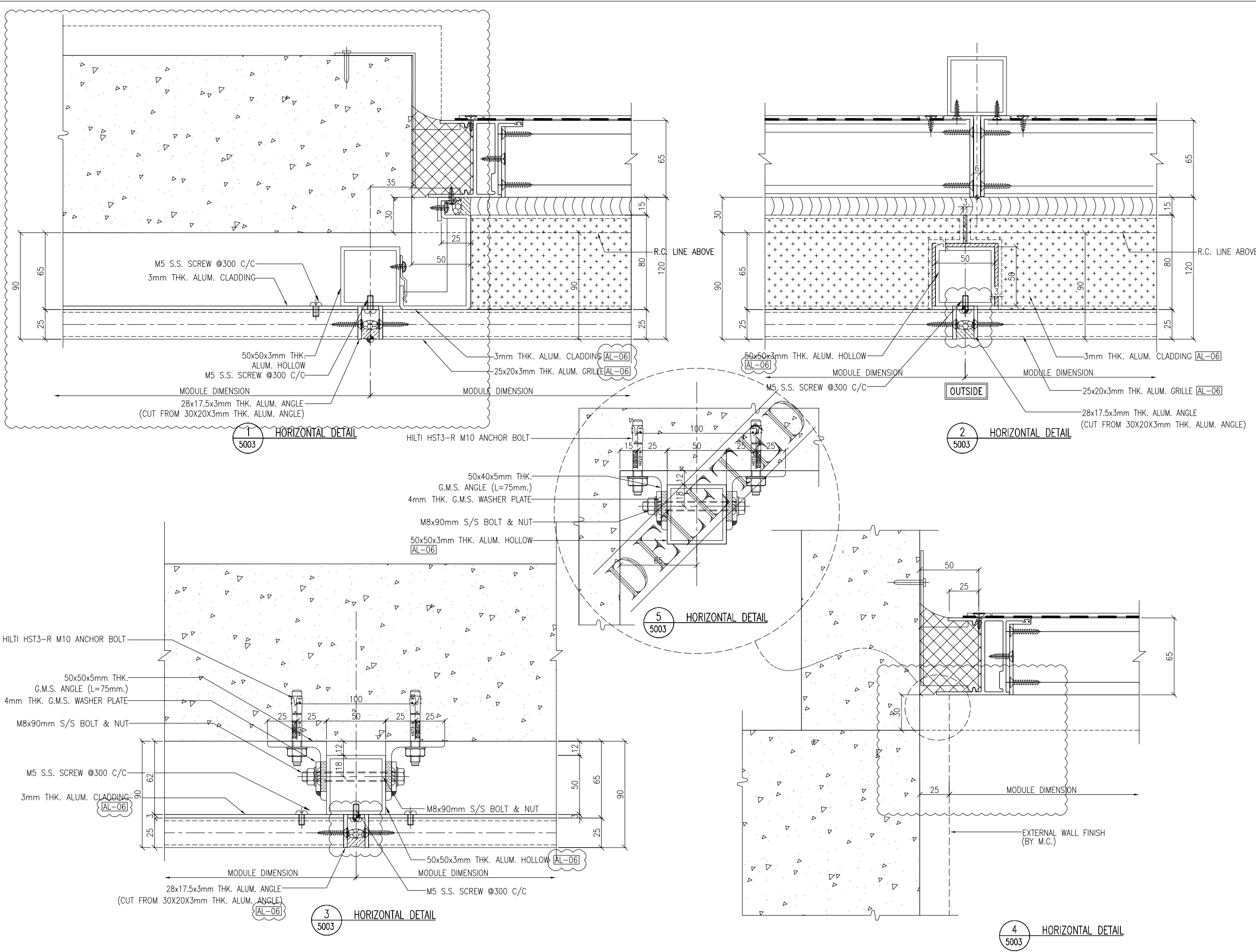
JOB NO. : J-860  
 PROJECT : PROPOSED DEVELOPMENT AT MA WAN PARK PHASE II, MA WAN (NOW KNOWN AS MA WAN LOT NO.684) NEW BUILDING

TITLE : TYPICAL DETAIL FOR ALUM. GRILLE & ALUM. CLADDING

DATE : 15-10-22 SCALE : 1:3(A3)  
 DRAWN BY : Asing CHECKED BY :

**美特鋁質有限公司**  
 MIDI ALUMINIUM FABRICATOR LTD.  
 Units 6-8, Sunray Industrial Centre, 1/F  
 610 Cha Kwo Ling Road, Kowloon  
 Tel: 23489211-4 Fax: (852) 2727666

DWG NO. : J860-AG-5002 REV. : B



B.D. REF :

CLIENT :  
**SUN HUNG KAI**  
 REAL ESTATE AGENCY LTD.  
 42/F SUN HUNG KAI CENTRE, WANCHAI, HONGKONG

ARCHITECT :  
**ARCHI+**  
 ARCHIPLUS INTERNATIONAL (HK) LIMITED

MAIN CONTRACTOR :  
**新輝建築有限公司**  
**Sanfield Building Contractors Ltd.**  
 Site : 11-29 Factory Street & 383-399 Shau Kei Wan Rd., Shau Kei Wan, Hong Kong

STRUCTURAL ENGINEER :  
**SUN HUNG KAI**  
 ARCHITECTS AND ENGINEERS LTD.  
 22/F SUN HUNG KAI CENTRE, WANCHAI, HONGKONG

FACADE CONSULTANT:

NOTE :  
 1. ALL DIMENSIONS ARE IN mm.  
 2. ALL ELEVATIONS ARE VIEWED FROM OUTSIDE.  
 3. ALL DIMENSIONS TO BE VERIFIED ON SITE BEFORE FABRICATION.

LEGEND :  
 (X1) — DETAIL MARK NO.  
 (X001) — REFER SHEET NO.  
 1. F.F.L. — FINISHED FLOOR LEVEL  
 2. S.F.L. — STRUCTURAL FLOOR LEVEL  
 3. (R) — REVERSED DETAIL

(AL-06) 3-COAT BRONZE COLOUR FLUOROCARBON COATING METALLIC FINISH (PPG PVDF)

NO.	DATE	REVISED	BY
B	22/12/2022	GENERAL REVISED	
A	28/11/2022	GENERAL REVISED	

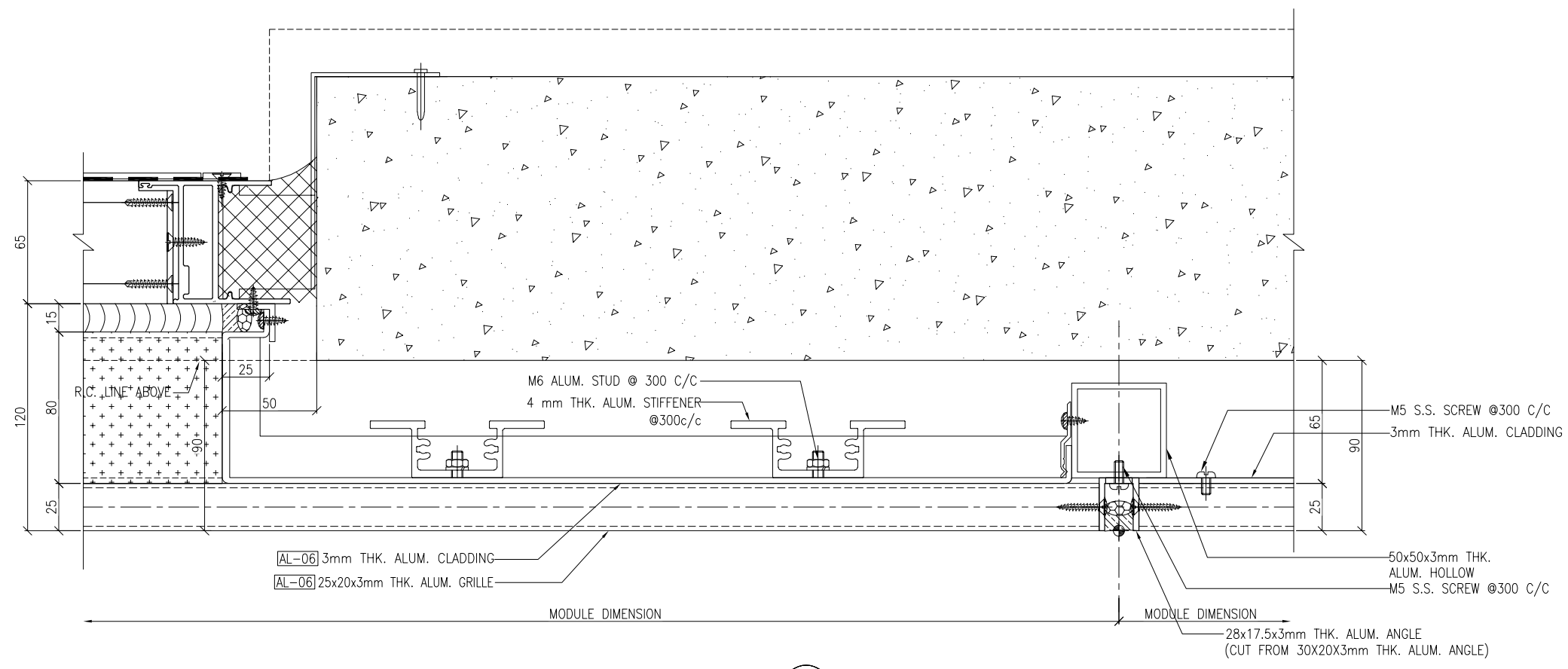
JOB NO. : J-860  
 PROJECT : PROPOSED DEVELOPMENT AT MA WAN PARK PHASE II, MA WAN (NOW KNOWN AS MA WAN LOT NO.684) NEW BUILDING

TITLE : TYPICAL DETAIL FOR ALUM. GRILLE & ALUM. CLADDING

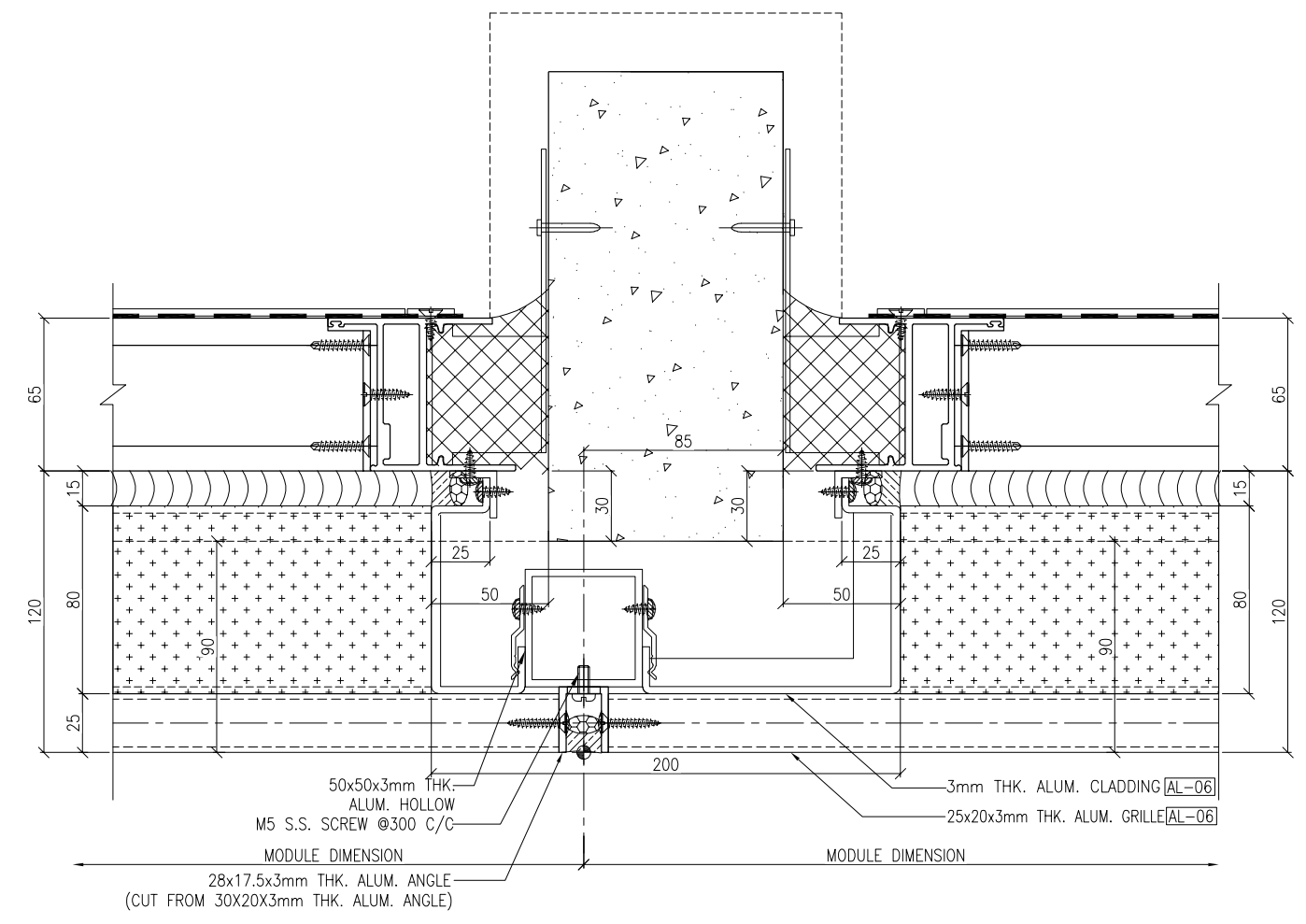
DATE : 15-10-22 SCALE : 1:3(A3)  
 DRAWN BY : Asing CHECKED BY :

**美特鋁質有限公司**  
**MIDI ALUMINIUM FABRICATOR LTD.**  
 Units 6-8, Sunray Industrial Centre, 1/F  
 610 Cha Kwo Ling Road, Kowloon  
 Tel:23489211-4 Fax:(852)2727666

DWG NO. : J860-AG-5003 REV. : B



1 HORIZONTAL DETAIL  
5004



2 HORIZONTAL DETAIL  
5004

B.D. REF :

CLIENT :



ARCHITECT :  
**ARCHI+**  
ARCHIPLUS INTERNATIONAL (HK) LIMITED

MAIN CONTRACTOR :  
**新輝建築有限公司**  
Sanfield Building Contractors Ltd.  
Site : 11-29 Factory Street & 383-399 Shau Kei Wan Rd., Shau Kei Wan, Hong Kong

STRUCTURAL ENGINEER :  
**SUN HUNG KAI**  
ARCHITECTS AND ENGINEERS LTD.  
22/F SUN HUNG KAI CENTRE, WANCHAI, HONGKONG

FAÇADE CONSULTANT:

NOTE :  
1. ALL DIMENSIONS ARE IN mm.  
2. ALL ELEVATIONS ARE VIEWED FROM OUTSIDE.  
3. ALL DIMENSIONS TO BE VERIFIED ON SITE BEFORE FABRICATION.

LEGEND :  
X1 — DETAIL MARK NO.  
X001 — REFER SHEET NO.  
1. F.F.L. -- FINISHED FLOOR LEVEL  
2. S.F.L. -- STRUCTURAL FLOOR LEVEL  
3. (R) -- REVERSED DETAIL

NO.	DATE	REVISED	BY

JOB NO. : J-860  
PROJECT : PROPOSED DEVELOPMENT AT MA WAN PARK PHASE II, MA WAN (NOW KNOWN AS MA WAN LOT NO.684) NEW BUILDING

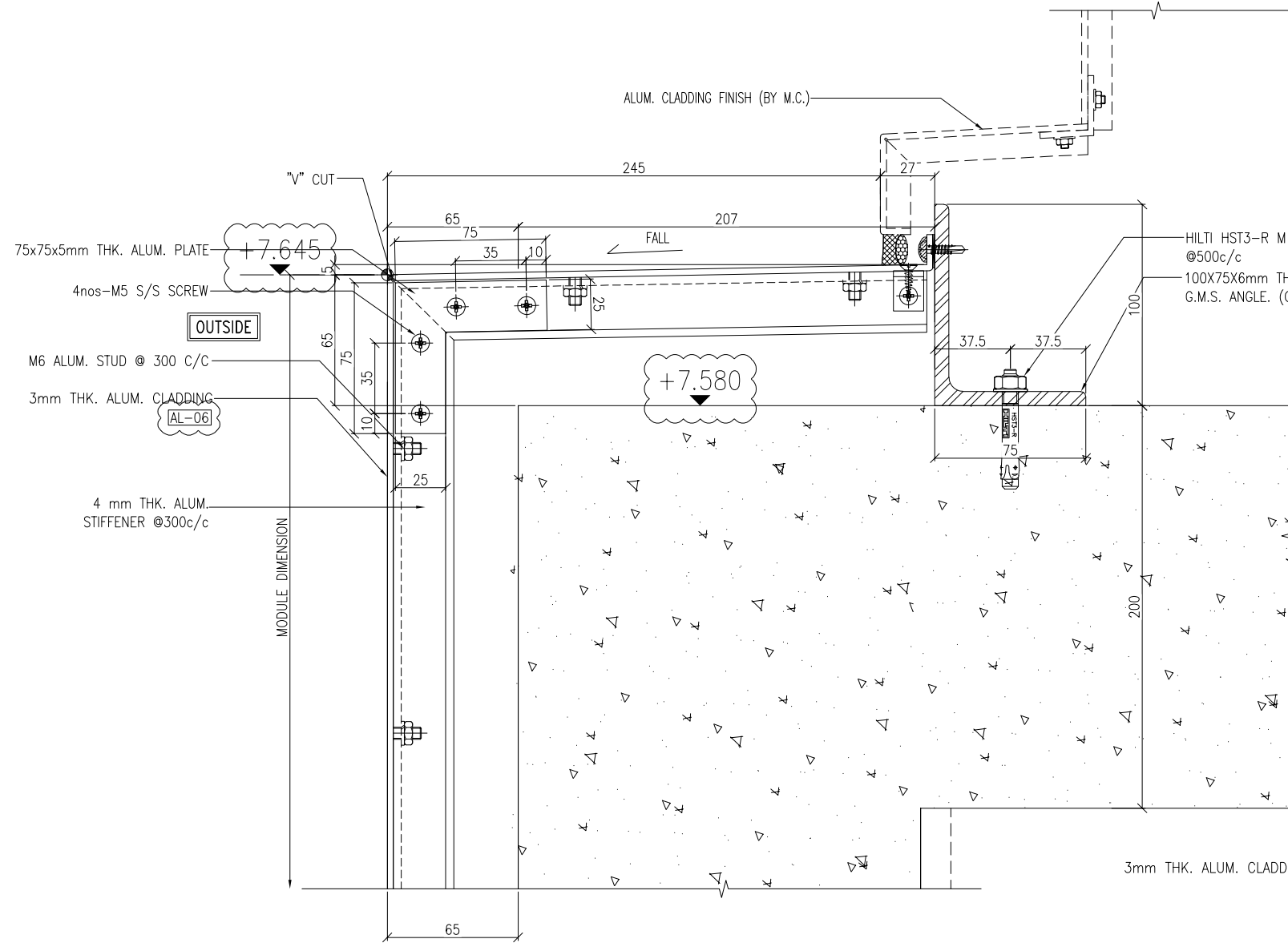
TITLE : TYPICAL DETAIL FOR ALUM. GRILLE & ALUM. CLADDING

DATE : 15-10-22 SCALE : 1:3(A3)  
DRAWN BY : Asing CHECKED BY :

**美特鋁質有限公司**  
MIDI ALUMINIUM FABRICATOR LTD.  
Units 6-8, Sunray Industrial Centre, 1/F  
610 Cha Kwo Ling Road, Kowloon  
Tel: 23489211-4 Fax: (852) 2727666

DWG NO. : J860-AG-5004 REV. : -





1 VERTICAL DETAIL  
6002

HILTI HST3-R M10 ANCHOR BOLT @500c/c  
100X75X6mm THK. G.M.S. ANGLE. (CONT.)

3mm THK. ALUM. CLADDING

HILTI HST3-R M10 ANCHOR BOLT @500c/c  
100x40x6mm THK. G.M.S. ANGLE (L=100mm)  
(CUT FROM 100x75x6mm THK. G.M.S. ANGLE)

25x20x3mm THK. ALUM. GRILLE  
AL-06

30x30x5mm THK. G.M.S. ANGLE. (CONT.)

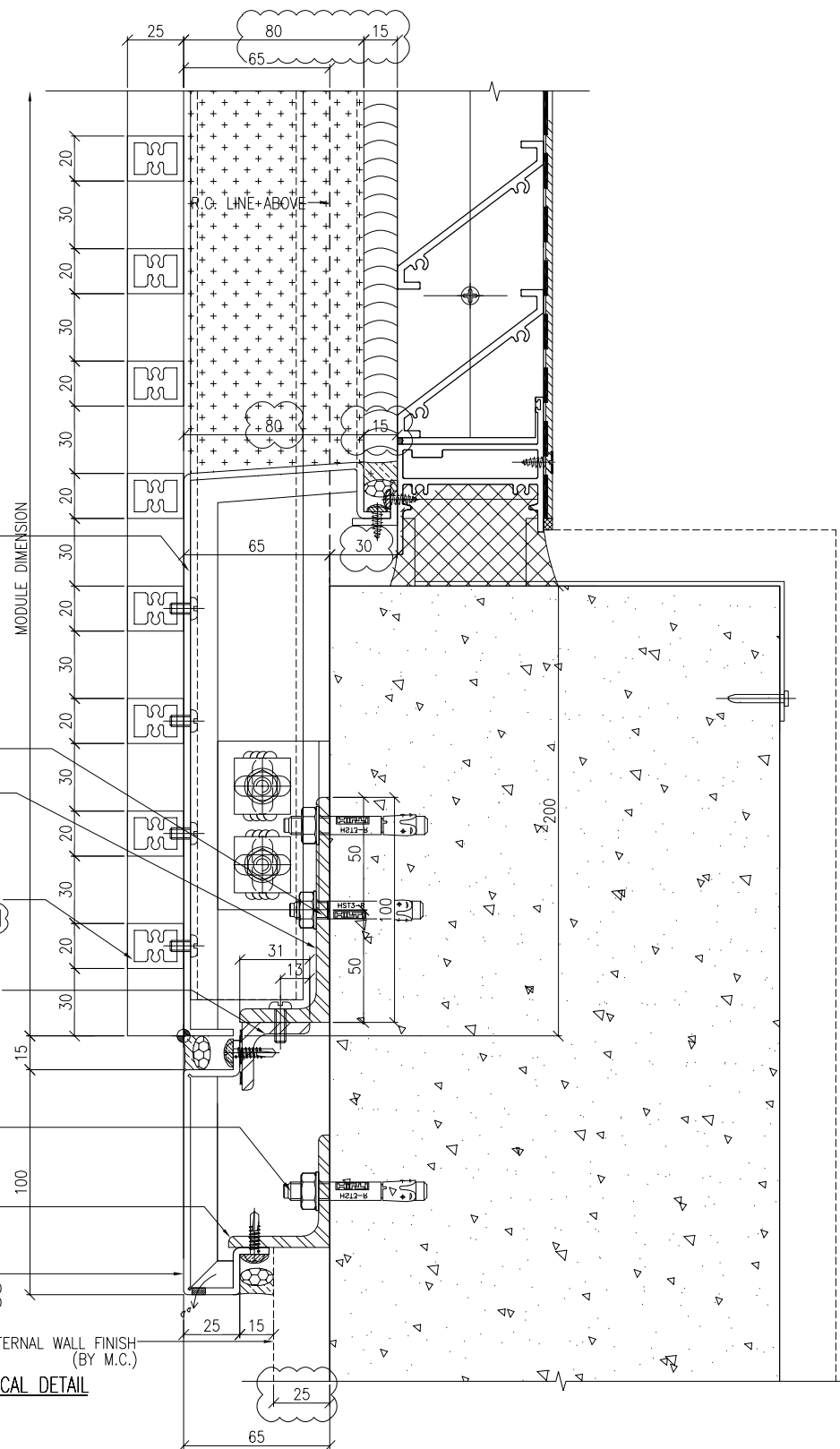
HILTI HST3-R M10 ANCHOR BOLT @500c/c

50X45X5mm THK. G.M.S. ANGLE. (CONT.)

3mm THK. ALUM. CLADDING  
AL-06

EXTERNAL WALL FINISH (BY M.C.)

2 VERTICAL DETAIL  
6002



B.D. REF :

CLIENT :  
**SUN HUNG KAI**  
REAL ESTATE AGENCY LTD.  
42/F SUN HUNG KAI CENTRE, WANCHAI, HONGKONG

ARCHITECT :  
**ARCHI+**  
ARCHIPLUS INTERNATIONAL (HK) LIMITED

MAIN CONTRACTOR :  
**新輝建築有限公司**  
Sanfield Building Contractors Ltd.  
Site : 11-29 Factory Street & 383-399 Shau Kei Wan Rd., Shau Kei Wan, Hong Kong

STRUCTURAL ENGINEER :  
**SUN HUNG KAI**  
ARCHITECTS AND ENGINEERS LTD.  
22/F SUN HUNG KAI CENTRE, WANCHAI, HONGKONG

FACADE CONSULTANT:

NOTE :  
1. ALL DIMENSIONS ARE IN mm.  
2. ALL ELEVATIONS ARE VIEWED FROM OUTSIDE.  
3. ALL DIMENSIONS TO BE VERIFIED ON SITE BEFORE FABRICATION.

LEGEND :  
X1 - DETAIL MARK NO.  
X001 - REFER SHEET NO.  
1. F.F.L. -- FINISHED FLOOR LEVEL  
2. S.F.L. -- STRUCTURAL FLOOR LEVEL  
3. (R) -- REVERSED DETAIL

AL-06 3-COAT BRONZE COLOUR FLUOROCARBON COATING METALLIC FINISH (PPG PVDF)

B	22/12/2022	GENERAL REVISED	
A	28/11/2022	GENERAL REVISED	
NO.	DATE	REVISED	BY

JOB NO. : J-860  
PROJECT : PROPOSED DEVELOPMENT AT MA WAN PARK PHASE II, MA WAN (NOW KNOWN AS MA WAN LOT NO.684) NEW BUILDING

TITLE : TYPICAL DETAIL FOR ALUM. GRILLE & ALUM. CLADDING

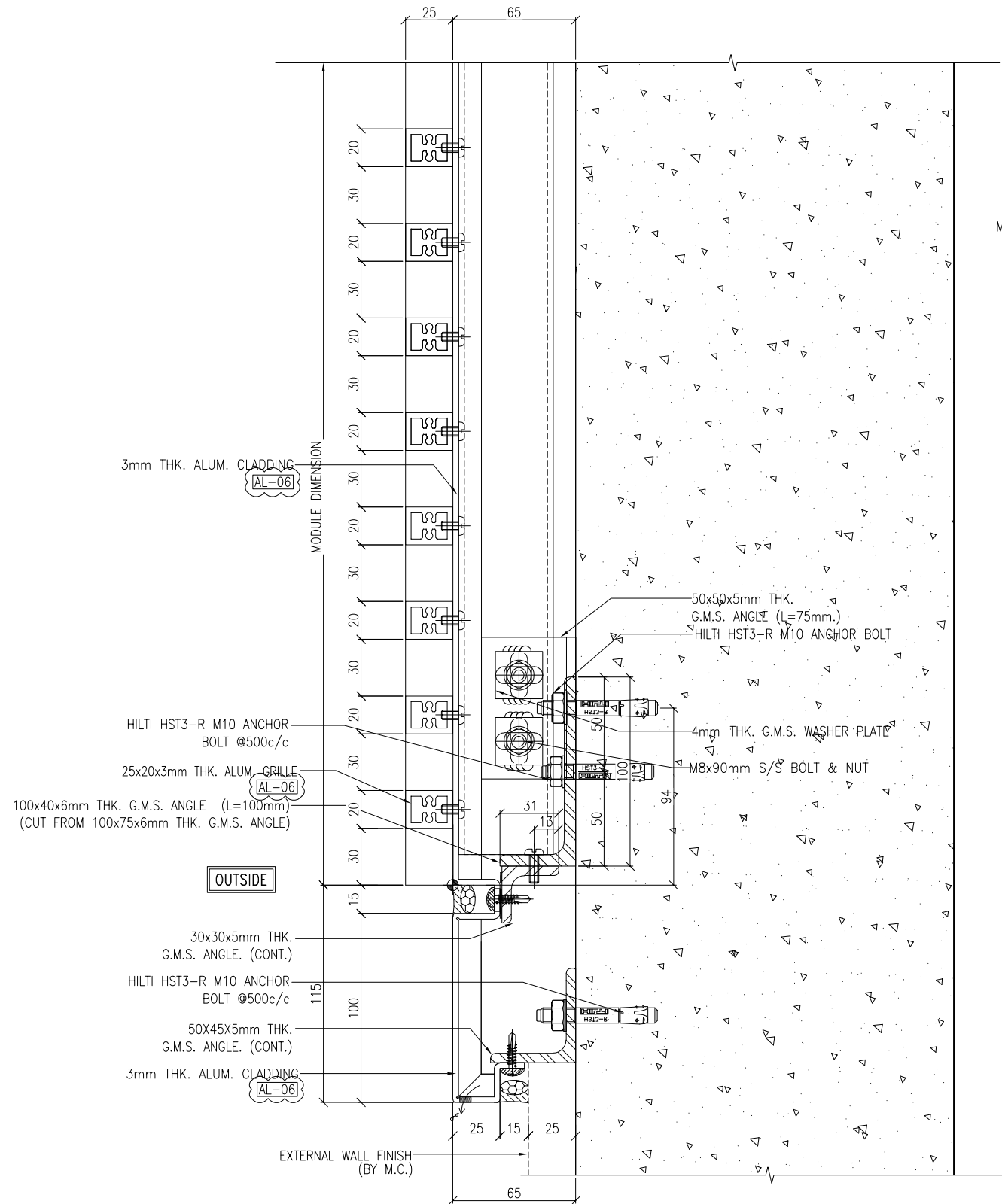
DATE : 15-10-22 SCALE : 1:3(A3)

DRAWN BY : Asing CHECKED BY :

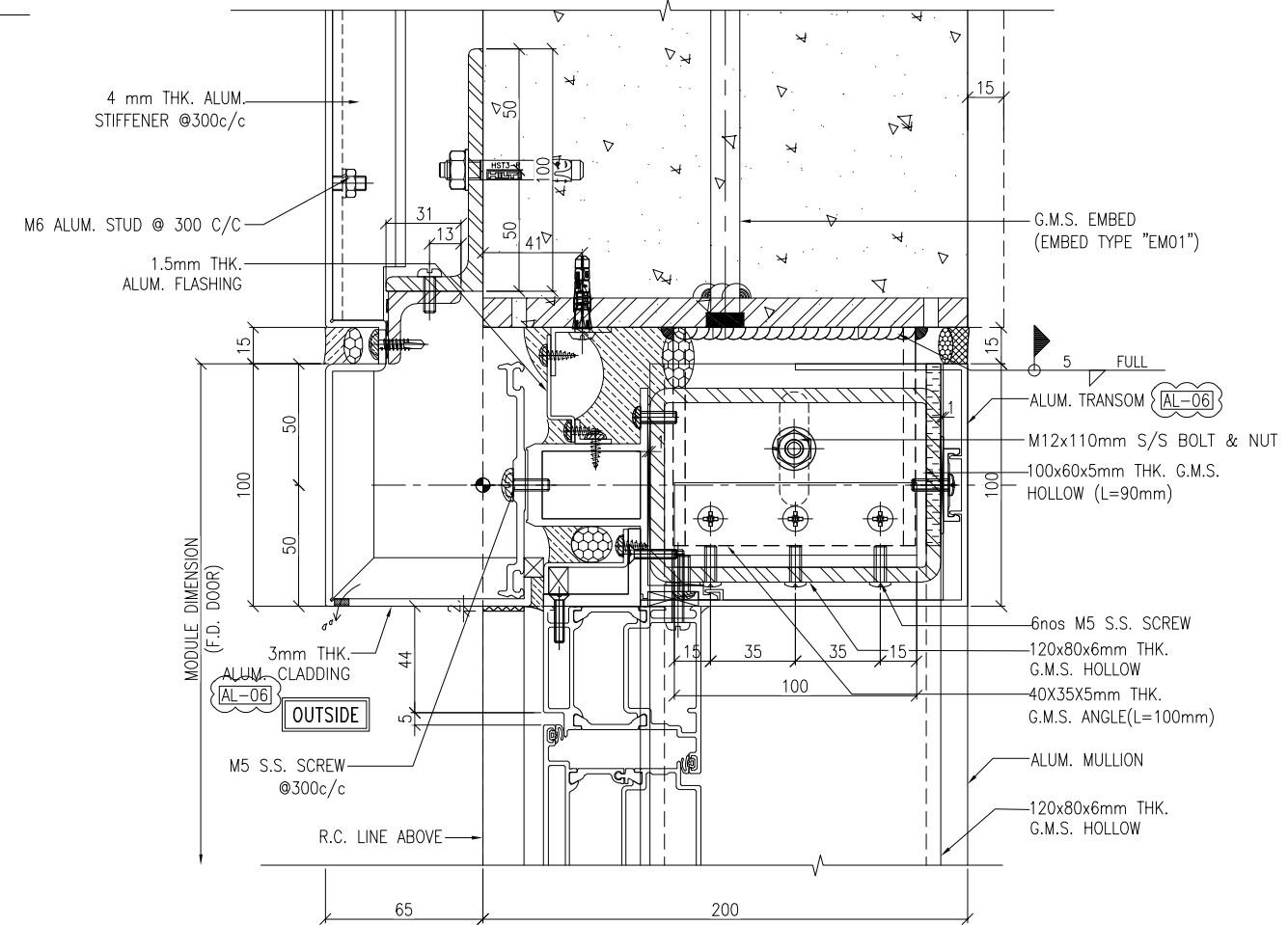
**美特鋁質有限公司**  
MIDI ALUMINIUM FABRICATOR LTD.  
Units 6-8, Sunray Industrial Centre, 1/F  
610 Cha Kwo Ling Road, Kowloon  
Tel:23489211-4 Fax:(852)2727666

DWG NO. : J860-AG-6002 REV. : B





1 VERTICAL DETAIL  
6004



2 VERTICAL DETAIL  
6004 FRENCH DOOR (AT G/F)

B.D. REF :

CLIENT :

**SUN HUNG KAI**  
REAL ESTATE AGENCY LTD.  
42/F SUN HUNG KAI CENTRE, WANCHAI, HONGKONG

ARCHITECT :

**ARCHI+**  
ARCHIPLUS INTERNATIONAL (HK) LIMITED

MAIN CONTRACTOR :

**新輝建築有限公司**  
Sanfield Building Contractors Ltd.  
Site : 11-29 Factory Street & 383-399 Shau Kei Wan Rd., Shau Kei Wan, Hong Kong

STRUCTURAL ENGINEER :

**SUN HUNG KAI**  
ARCHITECTS AND ENGINEERS LTD.  
22/F SUN HUNG KAI CENTRE, WANCHAI, HONGKONG

FACADE CONSULTANT :

- NOTE :
1. ALL DIMENSIONS ARE IN mm.
  2. ALL ELEVATIONS ARE VIEWED FROM OUTSIDE.
  3. ALL DIMENSIONS TO BE VERIFIED ON SITE BEFORE FABRICATION.

- LEGEND :
- (X1) --- DETAIL MARK NO.
  - (X001) --- REFER SHEET NO.

1. F.F.L. --- FINISHED FLOOR LEVEL
2. S.F.L. --- STRUCTURAL FLOOR LEVEL
3. (R) --- REVERSED DETAIL

(AL-06) 3-COAT BRONZE COLOUR  
FLUOROCARBON COATING  
METALLIC FINISH (PPG PVDF)

NO.	DATE	REVISED	BY
B	15/3/2023	GENERAL REVISED	
A	22/12/2022	GENERAL REVISED	

JOB NO. : J-860

PROJECT : PROPOSED DEVELOPMENT  
AT MA WAN PARK PHASE II, MA WAN  
(NOW KNOWN AS MA WAN LOT NO.684)  
NEW BUILDING

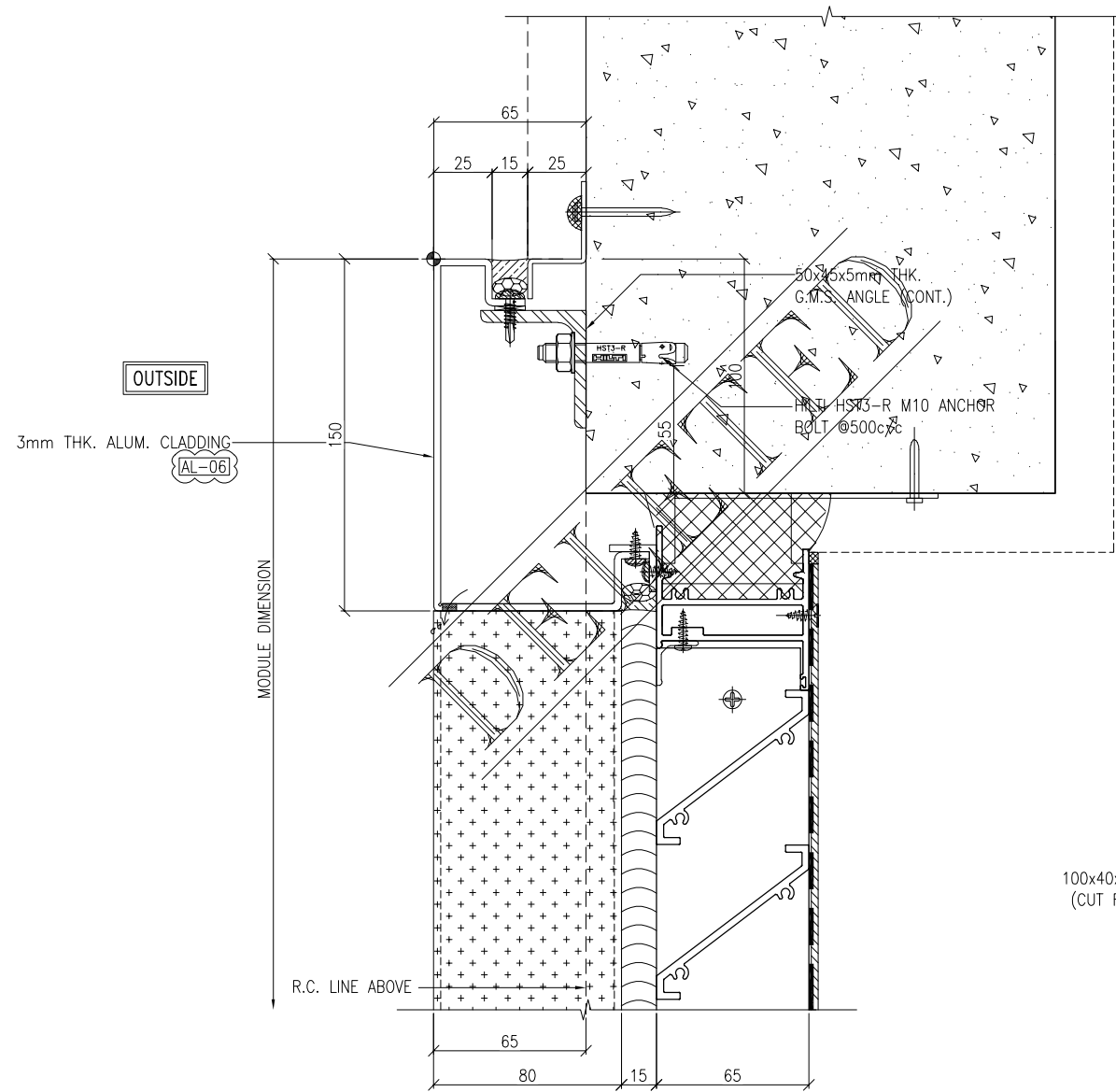
TITLE : TYPICAL DETAIL  
FOR ALUM. GRILLE & ALUM. CLADDING

DATE : 15-10-22 SCALE : 1:3(A3)

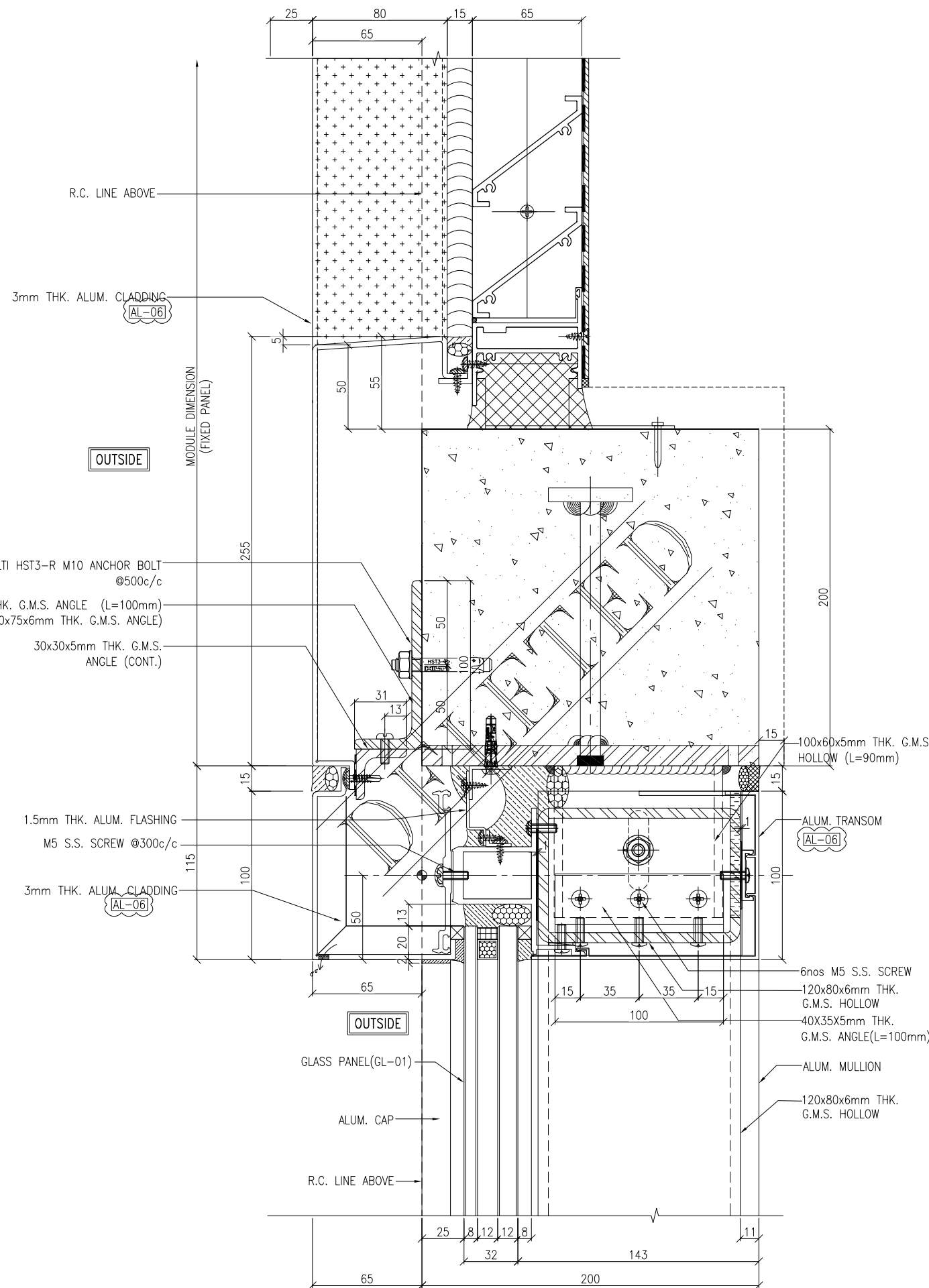
DRAWN BY : Asing CHECKED BY :

**美特鋁質有限公司**  
MIDI ALUMINIUM FABRICATOR LTD.  
Units 6-8, Sunray Industrial Centre, 1/F  
610 Cha Kwo Ling Road, Kowloon  
Tel: 23489211-4 Fax: (852) 2727666

DWG NO. : J860-AG-6004 REV. : B



1 VERTICAL DETAIL  
6005



2 VERTICAL DETAIL  
6005

B.D. REF :

CLIENT :

**SUN HUNG KAI**  
REAL ESTATE AGENCY LTD.  
42/F SUN HUNG KAI CENTRE, WANCHAI, HONGKONG

ARCHITECT :  
**ARCHI+**  
ARCHIPLUS INTERNATIONAL (HK) LIMITED

MAIN CONTRACTOR :  
**新輝建築有限公司**  
Sanfield Building Contractors Ltd.  
Site : 11-29 Factory Street & 383-399 Shau Kei Wan Rd., Shau Kei Wan, Hong Kong

STRUCTURAL ENGINEER :  
**SUN HUNG KAI**  
ARCHITECTS AND ENGINEERS LTD.  
22/F SUN HUNG KAI CENTRE, WANCHAI, HONGKONG

FACADE CONSULTANT:

NOTE :  
1. ALL DIMENSIONS ARE IN mm.  
2. ALL ELEVATIONS ARE VIEWED FROM OUTSIDE.  
3. ALL DIMENSIONS TO BE VERIFIED ON SITE BEFORE FABRICATION.

LEGEND :  
X1 — DETAIL MARK NO.  
X001 — REFER SHEET NO.  
1. F.F.L. — FINISHED FLOOR LEVEL  
2. S.F.L. — STRUCTURAL FLOOR LEVEL  
3. (R) — REVERSED DETAIL

AL-06 3-COAT BRONZE COLOUR FLUOROCARBON COATING METALLIC FINISH (PPG PVDF)

A	22/12/2022	GENERAL REVISED	
NO.	DATE	REVISED	BY

JOB NO. : J-860  
PROJECT : PROPOSED DEVELOPMENT AT MA WAN PARK PHASE II, MA WAN (NOW KNOWN AS MA WAN LOT NO.684) NEW BUILDING

TITLE : TYPICAL DETAIL FOR ALUM. GRILLE & ALUM. CLADDING

DATE : 15-10-22 SCALE : 1:3(A3)

DRAWN BY : Asing CHECKED BY :

**美特鋁質有限公司**  
MIDI ALUMINIUM FABRICATOR LTD.  
Units 6-8, Sunray Industrial Centre, 1/F  
610 Cha Kwo Ling Road, Kowloon  
Tel:23489211-4 Fax:(852)2727666

DWG NO. : J860-AG-6005 REV. : A