

工程指示編號：EI / 9270 / 25 修改版次：

工程編號：J - 858 工程名稱：將軍澳日出康城

工程項目：欄河玻璃 寶發訂購 154 件 地盤用 (2025-12-22)

收件人：Maggie 發件人：Jason 日期：22/12/2025

要求提供 / 確認 事項：

- | | | |
|------------------------------------|-------------------------------------|-------------------------------|
| <input type="checkbox"/> 初步鋁料 B.M. | <input type="checkbox"/> 加工拆圖，然後生產 | <input type="checkbox"/> 尺寸表 |
| <input type="checkbox"/> 正式鋁料 B.M. | <input type="checkbox"/> 技術上資料 / 指示 | <input type="checkbox"/> 報價 |
| <input type="checkbox"/> 配件 B.M. | <input type="checkbox"/> 樣辦或貨品說明書 | <input type="checkbox"/> 分判合約 |

內容：

按(2025-12-22) 信和要求訂玻璃，訂 154 件

1. 有欄河玻璃款式

- 10mmT + 1.52 PVB+ 10mmT
- 15mmT + 2.28 SGP+ 15mmT

2. 請玻璃廠，安排熱浸

3. 不要印上熱浸標籤。只給”可移除”的標籤。

4. 玻璃標籤請註明樓層，座，單位。 *分座包箱

5. 信和訂購，已安排報價。稍後附信。

6. 此份 BM 資料來源，信和代表 Kenny。

7. 出貨地盆，由信和代表 Kenny 收貨。

謝謝

請在 2026.01.21 前完成上列要求。

分發東莞各部門：

- | | | | | | | | |
|---------------------------------|------------------------------|--------------------------------|------------------------------|-------------------------------|------------------------------|--------------------------------|------------------------------------|
| <input type="checkbox"/> 生產技術總監 | <input type="checkbox"/> 連附件 | <input type="checkbox"/> 技術部 | <input type="checkbox"/> 連附件 | <input type="checkbox"/> 生產部 | <input type="checkbox"/> 連附件 | <input type="checkbox"/> 機械設計部 | <input type="checkbox"/> 連附件 |
| <input type="checkbox"/> 採購部 | <input type="checkbox"/> 連附件 | <input type="checkbox"/> 生產統籌部 | <input type="checkbox"/> 連附件 | <input type="checkbox"/> 小羅&清 | <input type="checkbox"/> 連附件 | | |
| <input type="checkbox"/> 質檢部 | <input type="checkbox"/> 連附件 | <input type="checkbox"/> 會計部 | <input type="checkbox"/> 連附件 | <input type="checkbox"/> 報關組 | <input type="checkbox"/> 連附件 | <input type="checkbox"/> 其他 | _____ <input type="checkbox"/> 連附件 |

分發香港各部門：

- | | | | | | | | |
|---|---|-------------------------------|------------------------------|------------------------------|------------------------------|----------------------------------|------------------------------------|
| <input type="checkbox"/> 行政部 | <input type="checkbox"/> 連附件 | <input type="checkbox"/> 會計部 | <input type="checkbox"/> 連附件 | <input type="checkbox"/> 統籌部 | <input type="checkbox"/> 連附件 | <input type="checkbox"/> 工程部地盤科文 | _____ <input type="checkbox"/> 連附件 |
| <input checked="" type="checkbox"/> 採購部 | <input checked="" type="checkbox"/> 連附件 | <input type="checkbox"/> QS 部 | <input type="checkbox"/> 連附件 | <input type="checkbox"/> 維修部 | <input type="checkbox"/> 連附件 | <input type="checkbox"/> 其他 | _____ <input type="checkbox"/> 連附件 |

傳遞編號：

HK

/ 25

發件人簽署：

項目經理簽署：

BOM LOG	TOWER	FLOOR/UIJNT	GLASS TYPE	GLASS NO.	SIZE	PIECE	DATE	EI9270
	1	9AB	15 CT + 2.28 SGP + 15 CT	S4-GS01-101-T1-9AB	1360 x 961 (H)	5	22/12/2025	EI9270
	1	9AB	15 CT + 2.28 SGP + 15 CT	S4-GS01-102-T1-9AB	1360 x 961 (H)	1	22/12/2025	EI9270
	1	9AC	15 CT + 2.28 SGP + 15 CT	S4-GS01-101-T1-9AC	1340 x 961 (H)	1	22/12/2025	EI9270
	1	9AD	15 CT + 2.28 SGP + 15 CT	S4-GS01-101-T1-9AD	1610 x 961 (H)	2	22/12/2025	EI9270
	1	9AE	15 CT + 2.28 SGP + 15 CT	S4-GS01-103-T1-9AE	1445 x 961 (H)	2	22/12/2025	EI9270
	1	9AG	15 CT + 2.28 SGP + 15 CT	S4-GS01-102-T1-9AG	1480 x 961 (H)	1	22/12/2025	EI9270
	1	9AG	15 CT + 2.28 SGP + 15 CT	S4-GS01-102-T1-9AG	1445 x 961 (H)	2	22/12/2025	EI9270
	1	9AG	15 CT + 2.28 SGP + 15 CT	S4-GS01-110-T1-9AG	658 x 961 (H)	1	22/12/2025	EI9270
	1	9BA	15 CT + 2.28 SGP + 15 CT	S4-GS01-101-T1-9BA	1262 x 961 (H)	3	22/12/2025	EI9270
	1	62BA	15 CT + 2.28 SGP + 15 CT	S1-G2-Z103-T1-62BA	740 x 1160 (H)	1	22/12/2025	EI9270
	1	9BC	15 CT + 2.28 SGP + 15 CT	S4-GS01-101-T1-9BC	1370 x 961 (H)	3	22/12/2025	EI9270
	1	9BC	15 CT + 2.28 SGP + 15 CT	S4-GS01-102-T1-9BC	1375 x 961 (H)	1	22/12/2025	EI9270
	1	9BD	15 CT + 2.28 SGP + 15 CT	S4-GS01-101-T1-9BD	1505 x 961 (H)	1	22/12/2025	EI9270
S1-GST2-LOG03	1	37AA	10 CT + 1.52PVB + 10 CT	S1-G1-TAG05	2210 x 1160 (H)	1	22/12/2025	EI9270
S1-GS-01	1	37AC	10 CT + 1.52PVB + 10 CT	S1-G1-TAG08	2330 x 1160 (H)	1	22/12/2025	EI9270
S1-GS-01	1	37AC	10 CT + 1.52PVB + 10 CT	S1-G1-TAG10	485 x 1160 (H)	1	22/12/2025	EI9270
	1	37AD	10 CT + 1.52PVB + 10 CT	S1-G1-TAG07	2150 x 1160 (H)	1	22/12/2025	EI9270
	1	37AE	10 CT + 1.52PVB + 10 CT	S1-G1-TAG07	2150 x 1160 (H)	1	22/12/2025	EI9270
	1	15AF	10 CT + 1.52PVB + 10 CT	S1-G1-TAG01	2175 x 1160 (H)	1	22/12/2025	EI9270
S1-GS-01	1	15BA	10 CT + 1.52PVB + 10 CT	S1-G1-TAG04	1875 x 1160 (H)	1	22/12/2025	EI9270
S1-GS-01	1	46BB	10 CT + 1.52PVB + 10 CT	S1-G1-TAG08	2330 X 1160 (H)	1	22/12/2025	EI9270
S1-GS-01	1	46BB	10 CT + 1.52PVB + 10 CT	S1-G1-TAG09	575 X 1160 (H)	1	22/12/2025	EI9270
S1-GS-01	1	35BB	10 CT + 1.52PVB + 10 CT	S1-G1-TAG08	2330 X 1160 (H)	1	22/12/2025	EI9270
S1-GS-01	1	35BB	10 CT + 1.52PVB + 10 CT	S1-G1-TAG09	575 X 1160 (H)	1	22/12/2025	EI9270
S1-GS-01	1	35BC	10 CT + 1.52PVB + 10 CT	S1-G1-TAG03	1800 x 1160 (H)	1	22/12/2025	EI9270
S1-GS-01	1	50BD	10 CT + 1.52PVB + 10 CT	S1-G1-TAG02	2055 x 1160 (H)	1	22/12/2025	EI9270
S1-GS-01	1	60BD	10 CT + 1.52PVB + 10 CT	S1-G1-TAG02	2055 x 1160 (H)	1	22/12/2025	EI9270
S1-GS-01	1	61BD	10 CT + 1.52PVB + 10 CT	S1-G1-TAG02	2055 x 1160 (H)	1	22/12/2025	EI9270
S1-GS-01	1	15BF	10 CT + 1.52PVB + 10 CT	S1-G1-TAG01	2175 x 1160 (H)	1	22/12/2025	EI9270
S4-GS-LOG06+08	2	9AB	15 CT + 2.28 SGP + 15 CT	S4-GS01-101-T2-9AB	1367 x 961 (H)	5	22/12/2025	EI9270
S4-GS-LOG06+08	2	9AB	15 CT + 2.28 SGP + 15 CT	S4-GS01-102-T2-9AB	690 x 961 (H)	1	22/12/2025	EI9270
S4-GS-LOG06+08	2	9AB	15 CT + 2.28 SGP + 15 CT	S4-GS01-103-T2-9AB	1365 x 961 (H)	1	22/12/2025	EI9270
S4-GS-LOG06+08	2	9BC	15 CT + 2.28 SGP + 15 CT	S1-G2-Z103-T2-9BC	1237 x 961 (H)	1	22/12/2025	EI9270
S4-GS-LOG06+08	2	9BC	15 CT + 2.28 SGP + 15 CT	S4-GS01-102-T2-9BC	945 x 961 (H)	1	22/12/2025	EI9270
S1-GST2-LOG03	2	66AC	10 CT + 1.52PVB + 10 CT	S1-G1-TAG107	2330 x 1160 (H)	1	22/12/2025	EI9270
S1-GST2-LOG03	2	66AC	10 CT + 1.52PVB + 10 CT	S1-G1-TAG109	535 X 1160 (H)	1	22/12/2025	EI9270
	2	66BE	10 CT + 1.52PVB + 10 CT	S1-G1-TAG101	2175 x 1160 (H)	1	22/12/2025	EI9270
	2	65BE	10 CT + 1.52PVB + 10 CT	S1-G1-TAG101	2175 x 1160 (H)	1	22/12/2025	EI9270
	2	63BE	10 CT + 1.52PVB + 10 CT	S1-G1-TAG101	2175 x 1160 (H)	1	22/12/2025	EI9270

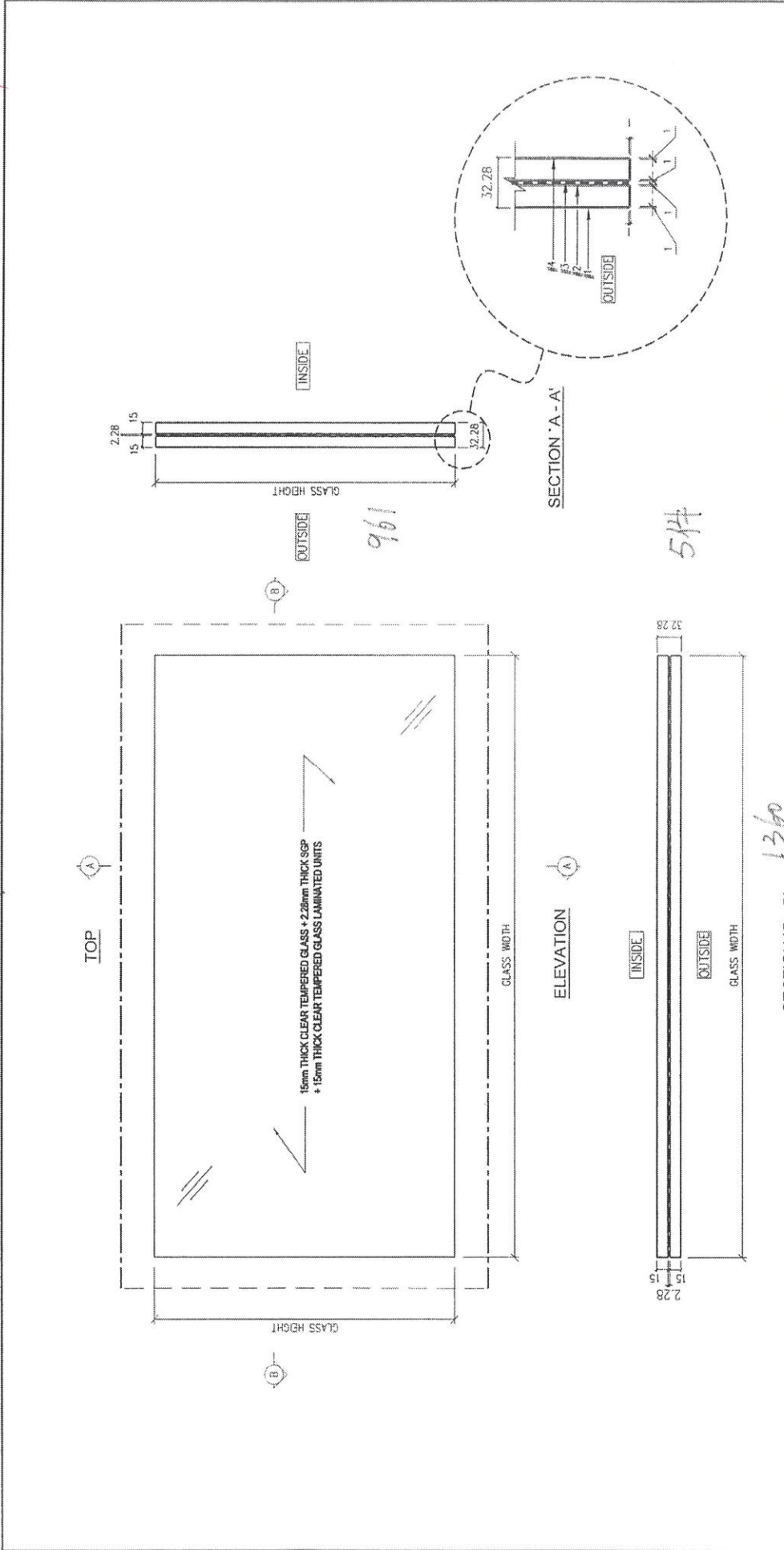
BOM LOG	TOWER	FLOOR/UIINT	GLASS TYPE	GLASS NO.	SIZE	PIECE	DATE	EI9270
S1-GST2-LOG03	2	62AD	10 CT + 1.52PVB + 10 CT	S1-G1-TAG101	2175 x 1160 (H)	1	22/12/2025	EI9270
S1-GST2-LOG03	2	62BB	10 CT + 1.52PVB + 10 CT	S1-G1-TAG108	575 X 1160 (H)	1	22/12/2025	EI9270
S1-GST2-LOG03	2	55BA	10 CT + 1.52PVB + 10 CT	S1-G1-TAG104	1875 x 1160 (H)	1	22/12/2025	EI9270
S1-GST2-LOG03	2	55BB	10 CT + 1.52PVB + 10 CT	S1-G1-TAG107	2330 x 1160 (H)	1	22/12/2025	EI9270
S1-GST2-LOG03	2	55BB	10 CT + 1.52PVB + 10 CT	S1-G1-TAG108	575 X 1160 (H)	1	22/12/2025	EI9270
S1-GST2-LOG03	2	53BD	10 CT + 1.52PVB + 10 CT	S1-G1-TAG102	2055 x 1160 (H)	1	22/12/2025	EI9270
S1-GST2-LOG03	2	50BD	10 CT + 1.52PVB + 10 CT	S1-G1-TAG102	2055 x 1160 (H)	1	22/12/2025	EI9270
S1-GST2-LOG03	2	48BD	10 CT + 1.52PVB + 10 CT	S1-G1-TAG102	2055 x 1160 (H)	1	22/12/2025	EI9270
S1-GST2-LOG03	2	47BC	10 CT + 1.52PVB + 10 CT	S1-G1-TAG103	1800 x 1160 (H)	1	22/12/2025	EI9270
S1-GS-01	2	46BA	10 CT + 1.52PVB + 10 CT	S1-G1-TAG104	1875 x 1160 (H)	1	22/12/2025	EI9270
S1-GST2-LOG03	2	46BB	10 CT + 1.52PVB + 10 CT	S1-G1-TAG107	2330 x 1160 (H)	1	22/12/2025	EI9270
S1-GST2-LOG03	2	46BB	10 CT + 1.52PVB + 10 CT	S1-G1-TAG108	575 X 1160 (H)	1	22/12/2025	EI9270
S1-GST2-LOG03	2	46BC	10 CT + 1.52PVB + 10 CT	S1-G1-TAG103	1800 x 1160 (H)	1	22/12/2025	EI9270
S1-GST2-LOG03	2	43BB	10 CT + 1.52PVB + 10 CT	S1-G1-TAG107	2330 x 1160 (H)	1	22/12/2025	EI9270
S1-GST2-LOG03	2	43BB	10 CT + 1.52PVB + 10 CT	S1-G1-TAG108	575 X 1160 (H)	1	22/12/2025	EI9270
S1-GST2-LOG03	2	42AC	10 CT + 1.52PVB + 10 CT	S1-G1-TAG109	535 X 1160 (H)	1	22/12/2025	EI9270
S1-GST2-LOG03	2	42AG	10 CT + 1.52PVB + 10 CT	S1-G1-TAG101	2175 x 1160 (H)	1	22/12/2025	EI9270
S1-GST2-LOG03	2	41AB	10 CT + 1.52PVB + 10 CT	S1-G1-TAG106	2160 x 1160 (H)	1	22/12/2025	EI9270
S1-GST2-LOG03	2	39AC	10 CT + 1.52PVB + 10 CT	S1-G1-TAG107	2330 x 1160 (H)	1	22/12/2025	EI9270
S1-GST2-LOG03	2	39AC	10 CT + 1.52PVB + 10 CT	S1-G1-TAG109	535 X 1160 (H)	1	22/12/2025	EI9270
S1-GST2-LOG03	2	39AD	10 CT + 1.52PVB + 10 CT	S1-G1-TAG101	2175 x 1160 (H)	1	22/12/2025	EI9270
S1-GST2-LOG03	2	38BB	10 CT + 1.52PVB + 10 CT	S1-G1-TAG107	2330 x 1160 (H)	1	22/12/2025	EI9270
S1-GST2-LOG03	2	38BB	10 CT + 1.52PVB + 10 CT	S1-G1-TAG108	575 X 1160 (H)	1	22/12/2025	EI9270
S1-GST2-LOG03	2	37AD	10 CT + 1.52PVB + 10 CT	S1-G1-TAG101	2175 x 1160 (H)	1	22/12/2025	EI9270
S1-GST2-LOG03	2	37AG	10 CT + 1.52PVB + 10 CT	S1-G1-TAG101	2175 x 1160 (H)	1	22/12/2025	EI9270
S1-GST2-LOG03	2	36BB	10 CT + 1.52PVB + 10 CT	S1-G1-TAG107	2330 x 1160 (H)	1	22/12/2025	EI9270
S1-GST2-LOG03	2	35AC	10 CT + 1.52PVB + 10 CT	S1-G1-TAG107	2330 x 1160 (H)	1	22/12/2025	EI9270
S1-GST2-LOG03	2	35AC	10 CT + 1.52PVB + 10 CT	S1-G1-TAG109	535 X 1160 (H)	1	22/12/2025	EI9270
S1-GST2-LOG03	2	35BB	10 CT + 1.52PVB + 10 CT	S1-G1-TAG107	2330 x 1160 (H)	1	22/12/2025	EI9270
S1-GST2-LOG03	2	35BC	10 CT + 1.52PVB + 10 CT	S1-G1-TAG103	1800 x 1160 (H)	1	22/12/2025	EI9270
S1-GST2-LOG03	2	33AC	10 CT + 1.52PVB + 10 CT	S1-G1-TAG107	2330 x 1160 (H)	1	22/12/2025	EI9270
S1-GST2-LOG03	2	33BB	10 CT + 1.52PVB + 10 CT	S1-G1-TAG107	2330 x 1160 (H)	1	22/12/2025	EI9270
S1-GST2-LOG03	2	32AC	10 CT + 1.52PVB + 10 CT	S1-G1-TAG109	535 X 1160 (H)	1	22/12/2025	EI9270
S1-GST2-LOG03	2	32AE	10 CT + 1.52PVB + 10 CT	S1-G1-TAG101	2175 X 1160	1	22/12/2025	EI9270
S1-GS-01	2	31AA	10 CT + 1.52PVB + 10 CT	S1-G1-TAG105	2210 x 1160 (H)	1	22/12/2025	EI9270
S1-GST2-LOG03	2	31AB	10 CT + 1.52PVB + 10 CT	S1-G1-TAG106	2160 x 1160 (H)	1	22/12/2025	EI9270
S1-GS-01	2	30AA	10 CT + 1.52PVB + 10 CT	S1-G1-TAG105	2210 x 1160 (H)	1	22/12/2025	EI9270
S1-GST2-LOG03	2	28AB	10 CT + 1.52PVB + 10 CT	S1-G1-TAG106	2160 x 1160 (H)	1	22/12/2025	EI9270
S1-GST2-LOG03	2	28AD	10 CT + 1.52PVB + 10 CT	S1-G1-TAG101	2175 x 1160 (H)	1	22/12/2025	EI9270
S1-GST2-LOG03	2	28BB	10 CT + 1.52PVB + 10 CT	S1-G1-TAG107	2330 x 1160 (H)	1	22/12/2025	EI9270

BOM LOG	TOWER	FLOOR/UI/INT	GLASS TYPE	GLASS NO.	SIZE	PIECE	DATE	EI9270
S1-GST2-LOG03	2	28BB	10 CT + 1.52PVB + 10 CT	S1-G1-TAG108	575 X 1160 (H)	1	22/12/2025	EI9270
S1-GS-01	2	26AA	10 CT + 1.52PVB + 10 CT	S1-G1-TAG105	2210 x 1160 (H)	1	22/12/2025	EI9270
S1-GST2-LOG03	2	25BB	10 CT + 1.52PVB + 10 CT	S1-G1-TAG107	2330 x 1160 (H)	1	22/12/2025	EI9270
S1-GST2-LOG03	2	25BB	10 CT + 1.52PVB + 10 CT	S1-G1-TAG108	575 X 1160 (H)	1	22/12/2025	EI9270
S1-GST2-LOG03	2	23AC	10 CT + 1.52PVB + 10 CT	S1-G1-TAG107	2330 x 1160 (H)	1	22/12/2025	EI9270
S1-GST2-LOG03	2	23AC	10 CT + 1.52PVB + 10 CT	S1-G1-TAG109	535 X 1160 (H)	1	22/12/2025	EI9270
S1-GST2-LOG03	2	23BB	10 CT + 1.52PVB + 10 CT	S1-G1-TAG107	2330 x 1160 (H)	1	22/12/2025	EI9270
S1-GST2-LOG03	2	23BB	10 CT + 1.52PVB + 10 CT	S1-G1-TAG108	575 X 1160 (H)	1	22/12/2025	EI9270
S1-GST2-LOG03	2	20BB	10 CT + 1.52PVB + 10 CT	S1-G1-TAG108	575 X 1160 (H)	1	22/12/2025	EI9270
S1-GST2-LOG03	2	19BB	10 CT + 1.52PVB + 10 CT	S1-G1-TAG108	575 X 1160 (H)	1	22/12/2025	EI9270
S1-GST2-LOG03	2	18BB	10 CT + 1.52PVB + 10 CT	S1-G1-TAG108	575 X 1160 (H)	1	22/12/2025	EI9270
S1-GST2-LOG03	2	18BF	10 CT + 1.52PVB + 10 CT	S1-G1-TAG101	2175 x 1160 (H)	1	22/12/2025	EI9270
S1-GST2-LOG03	2	16AF	10 CT + 1.52PVB + 10 CT	S1-G1-TAG101	2175 x 1160 (H)	1	22/12/2025	EI9270
S1-GST2-LOG03	2	16BF	10 CT + 1.52PVB + 10 CT	S1-G1-TAG101	2175 x 1160 (H)	1	22/12/2025	EI9270
S1-GST2-LOG03	2	16BB	10 CT + 1.52PVB + 10 CT	S1-G1-TAG107	2330 x 1160 (H)	1	22/12/2025	EI9270
S1-GST2-LOG03	2	16BB	10 CT + 1.52PVB + 10 CT	S1-G1-TAG108	575 X 1160 (H)	1	22/12/2025	EI9270
S1-GST2-LOG03	2	66AF	10 CT + 1.52PVB + 10 CT	S1-G1-TAG101	2175 x 1160 (H)	1	22/12/2025	EI9270
S1-GST2-LOG03	2	65AF	10 CT + 1.52PVB + 10 CT	S1-G1-TAG101	2175 x 1160 (H)	1	22/12/2025	EI9270
S1-GST2-LOG03	2	61AD	10 CT + 1.52PVB + 10 CT	S1-G1-TAG101	2175 x 1160 (H)	1	22/12/2025	EI9270
S1-GST2-LOG03	2	61BD	10 CT + 1.52PVB + 10 CT	S1-G1-TAG102	2055 x 1160 (H)	1	22/12/2025	EI9270
S1-GST2-LOG03	2	56BD	10 CT + 1.52PVB + 10 CT	S1-G1-TAG102	2055 x 1160 (H)	1	22/12/2025	EI9270
S1-GST2-LOG03	2	39AG	10 CT + 1.52PVB + 10 CT	S1-G1-TAG101	2175 x 1160 (H)	1	22/12/2025	EI9270
S1-GST2-LOG03	2	61AF	10 CT + 1.52PVB + 10 CT	S1-G1-TAG101	2175 x 1160 (H)	1	22/12/2025	EI9270
S1-GST2-LOG03	2	60AB	10 CT + 1.52PVB + 10 CT	S1-G1-TAG106	2160 x 1160 (H)	1	22/12/2025	EI9270
S1-GS-01	2	60AA	10 CT + 1.52PVB + 10 CT	S1-G1-TAG105	2210 x 1160 (H)	1	22/12/2025	EI9270
	2	60BE	10 CT + 1.52PVB + 10 CT	S1-G1-TAG101	2175 x 1160 (H)	1	22/12/2025	EI9270
S1-GST2-LOG03	2	56AE	10 CT + 1.52PVB + 10 CT	S1-G1-TAG101	2175 x 1160 (H)	1	22/12/2025	EI9270
S1-GST2-LOG03	2	56BB	10 CT + 1.52PVB + 10 CT	S1-G1-TAG108	575 X 1160 (H)	1	22/12/2025	EI9270
S1-GST2-LOG03	2	55BD	10 CT + 1.52PVB + 10 CT	S1-G1-TAG102	2055 x 1160 (H)	1	22/12/2025	EI9270
S1-GST2-LOG03	2	50AE	10 CT + 1.52PVB + 10 CT	S1-G1-TAG101	2175 x 1160 (H)	1	22/12/2025	EI9270
S1-GST2-LOG03	2	30AB	10 CT + 1.52PVB + 10 CT	S1-G1-TAG106	2160 x 1160 (H)	1	22/12/2025	EI9270
S1-GST2-LOG03	2	49AC	10 CT + 1.52PVB + 10 CT	S1-G1-TAG109	535 X 1160 (H)	1	22/12/2025	EI9270
S1-GS-01	2	48AA	10 CT + 1.52PVB + 10 CT	S1-G1-TAG105	2210 x 1160 (H)	1	22/12/2025	EI9270
S1-GST2-LOG03	2	41AE	10 CT + 1.52PVB + 10 CT	S1-G1-TAG101	2175 x 1160 (H)	1	22/12/2025	EI9270
S1-GST2-LOG03	2	45BC	10 CT + 1.52PVB + 10 CT	S1-G1-TAG103	1800 x 1160 (H)	1	22/12/2025	EI9270
S1-GST2-LOG03	2	41BC	10 CT + 1.52PVB + 10 CT	S1-G1-TAG103	1800 x 1160 (H)	1	22/12/2025	EI9270
S1-GST2-LOG03	2	38BC	10 CT + 1.52PVB + 10 CT	S1-G1-TAG103	1800 x 1160 (H)	1	22/12/2025	EI9270
S1-GST2-LOG03	2	37BC	10 CT + 1.52PVB + 10 CT	S1-G1-TAG103	1800 x 1160 (H)	1	22/12/2025	EI9270
S1-GS-01	2	21AA	10 CT + 1.52PVB + 10 CT	S1-G1-TAG105	2210 x 1160 (H)	1	22/12/2025	EI9270
S1-GST2-LOG03	2	60BD	10 CT + 1.52PVB + 10 CT	S1-G1-TAG102	2055 x 1160 (H)	1	22/12/2025	EI9270

BOM LOG	TOWER	FLOOR/UJINT	GLASS TYPE	GLASS NO.	SIZE	PIECE	DATE	EI9270
S1-GST2-LOG03	2	60AF	10 CT + 1.52PVB + 10 CT	S1-G1-TAG101	2175 x 1160 (H)	1	22/12/2025	EI9270
S1-GST2-LOG03	2	42AF	10 CT + 1.52PVB + 10 CT	S1-G1-TAG101	2175 x 1160 (H)	1	22/12/2025	EI9270
S1-GST2-LOG03	2	36BC	10 CT + 1.52PVB + 10 CT	S1-G1-TAG103	1800 x 1160 (H)	1	22/12/2025	EI9270
S1-GST2-LOG03	2	58BC	10 CT + 1.52PVB + 10 CT	S1-G1-TAG103	1800 x 1160 (H)	1	22/12/2025	EI9270
	3	9BC	15 CT + 2.28 SGP + 15 CT	S4-GS01-103-T3-9BC	1197 x 961 (H)	1	22/12/2025	EI9270
S1-GST3-LOG03	3	18AC	10 CT + 1.52PVB + 10 CT	S1-G1-TAG207	2330 X 1160 (H)	1	22/12/2025	EI9270
S1-GST3-LOG03	3	21AC	10 CT + 1.52PVB + 10 CT	S1-G1-TAG207	2330 X 1160 (H)	1	22/12/2025	EI9270
S1-GST3-LOG03	3	29AC	10 CT + 1.52PVB + 10 CT	S1-G1-TAG207	2330 X 1160 (H)	1	22/12/2025	EI9270
S1-GST3-LOG03	3	37AC	10 CT + 1.52PVB + 10 CT	S1-G1-TAG207	2330 X 1160 (H)	1	22/12/2025	EI9270
S1-GST3-LOG03	3	38AC	10 CT + 1.52PVB + 10 CT	S1-G1-TAG207	2330 X 1160 (H)	1	22/12/2025	EI9270
S1-GST3-LOG03	3	43AC	10 CT + 1.52PVB + 10 CT	S1-G1-TAG209	535 X 1160 (H)	1	22/12/2025	EI9270
S1-GST3-LOG03	3	61AC	10 CT + 1.52PVB + 10 CT	S1-G1-TAG207	2330 X 1160 (H)	1	22/12/2025	EI9270
S1-GST3-LOG03	3	29AD	10 CT + 1.52PVB + 10 CT	S1-G1-TAG201	2175 x 1160 (H)	1	22/12/2025	EI9270
S1-GST3-LOG03	3	57AF	10 CT + 1.52PVB + 10 CT	S1-G1-TAG201	2175 x 1160 (H)	1	22/12/2025	EI9270
S1-GST3-LOG03	3	29AG	10 CT + 1.52PVB + 10 CT	S1-G1-TAG201	2175 x 1160 (H)	1	22/12/2025	EI9270
S1-GST3-LOG03	3	42BA	10 CT + 1.52PVB + 10 CT	S1-G1-TAG204	1875 x 1160 (H)	1	22/12/2025	EI9270
S1-GST3-LOG03	3	49BA	10 CT + 1.52PVB + 10 CT	S1-G1-TAG204	1875 x 1160 (H)	1	22/12/2025	EI9270
S1-GST3-LOG03	3	508B	10 CT + 1.52PVB + 10 CT	S1-G1-TAG207	2330 x 1160 (H)	1	22/12/2025	EI9270
	3	508B	10 CT + 1.52PVB + 10 CT	S1-G1-TAG208	575 X 1160 (H)	1	22/12/2025	EI9270
S1-GST3-LOG03	3	208D	10 CT + 1.52PVB + 10 CT	S1-G1-TAG202	2055 x 1160 (H)	1	22/12/2025	EI9270

11/12

T1-9AB



圖號:	S4-SS01-101
工程編號:	PF-21006
比例:	1 : 5
修改:	T1-9AB

工程名稱:
 PROPOSED RESIDENTIAL DEVELOPMENT AT TROTLOPP, PHASE 11,
 LOMAS PARK, TSEUNG KUNAN Q. N. T.

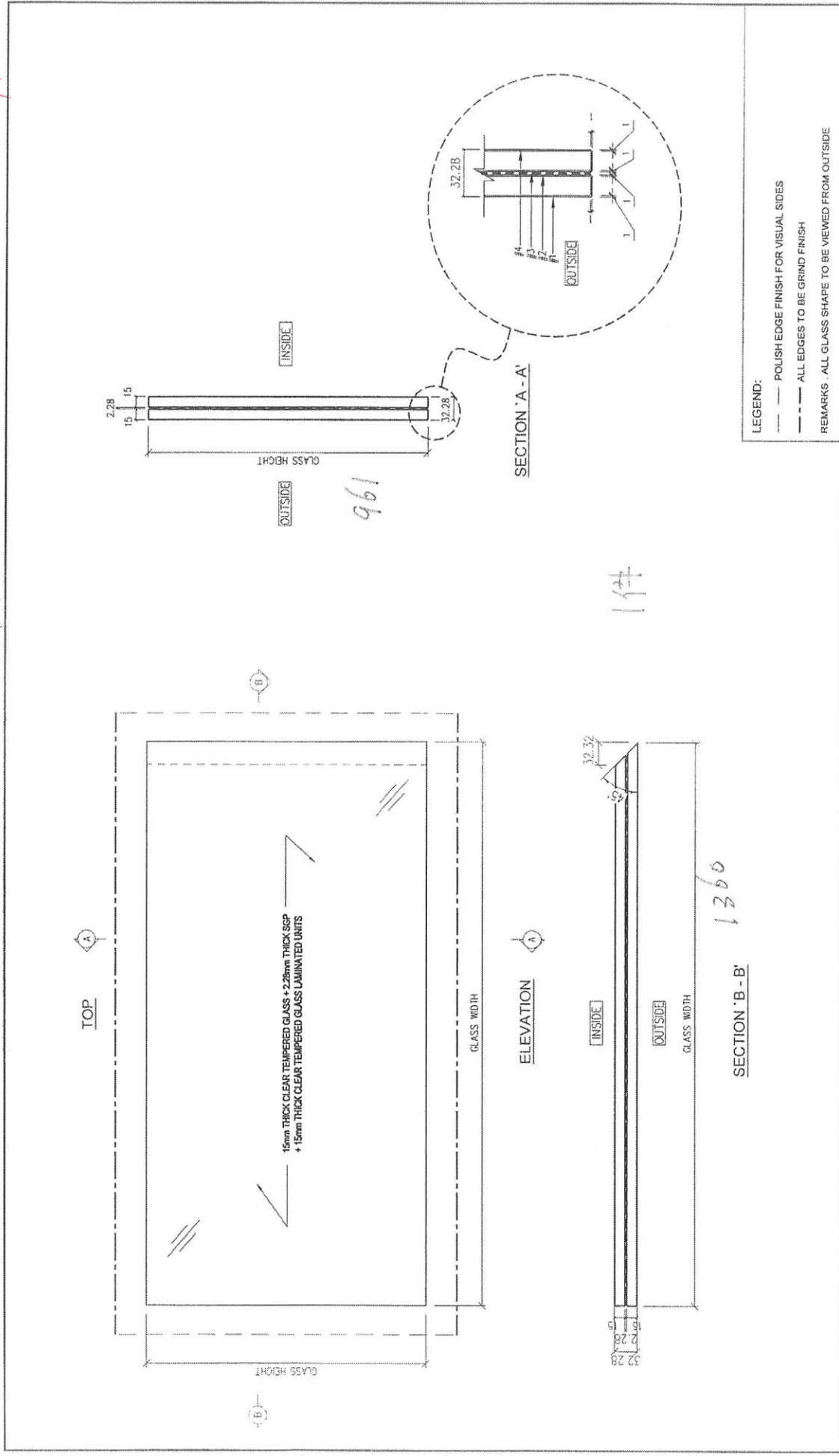
項目:
 FABRICATION DRAWING OF GLASS PANEL
 (FOR GLASS BALUSTRADE AT TRANSFER PLATE - 9/F LAYOUT PLAN (TOWER 1))

寶發建設工程有限公司
 Polyfair Construction
 & Engineering Ltd.

編號:	-
日期:	-
圖號:	SU
日期:	2023-09-19
材料:	15mm THICK CLEAR TEMPERED GLASS + 2.28mm THICK SGP + 15mm THICK CLEAR TEMPERED GLASS LAMINATED UNITS
表面處理:	-

11/12

T1-9AB



1件

1360

LEGEND:
 --- POLISH EDGE FINISH FOR VISUAL SIDES
 --- ALL EDGES TO BE GRIND FINISH
 REMARKS: ALL GLASS SHAPE TO BE VIEWED FROM OUTSIDE

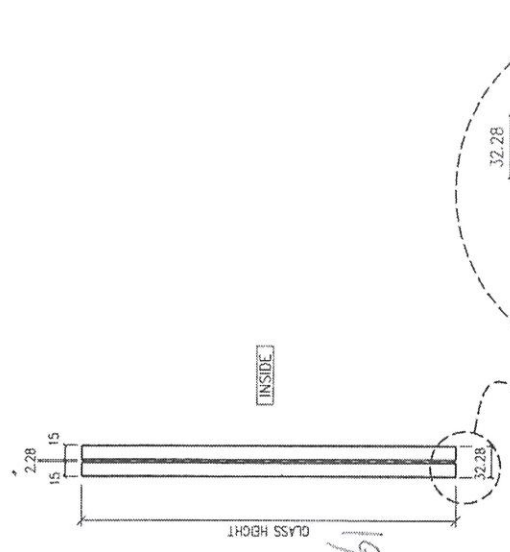
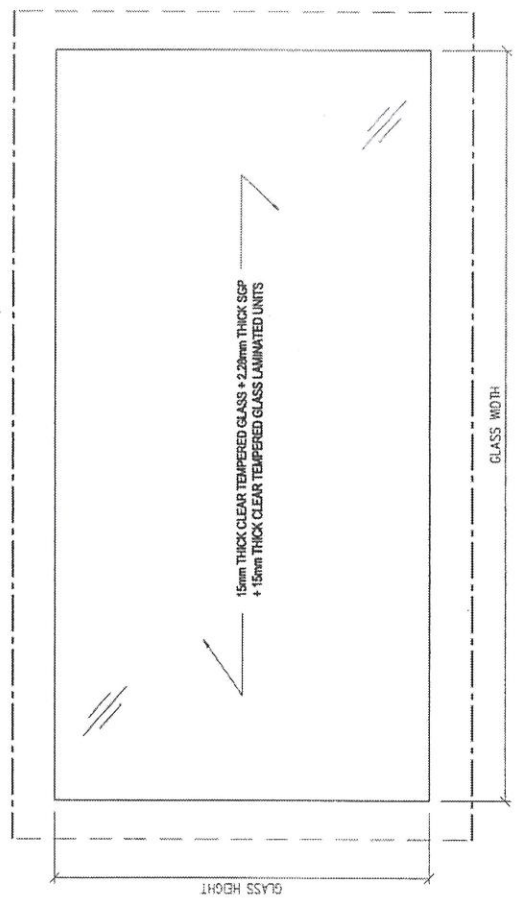
DISTRIBUTION TABLE		圖號: -	工程名稱: 寶發建設工程有限公司
編號: -	日期: -	圖號: -	PROPOSED RESIDENTIAL DEVELOPMENT AT TROTZ/WOP, PHASE 11, LOHAS PARK, TSEING KWAN Q. H. T.
材料: 15mm THICK CLEAR TEMPERED GLASS + 2.28mm THICK SSP + 15mm THICK CLEAR TEMPERED GLASS LAMINATED UNITS	圖號: SU	圖號: S4-GS01-102	工程編號: PF-210006
表面處理: -	日期: 2023-09-19	圖號: T1-9AB	比例: 1 : 5

PF 寶發建設工程有限公司
 Polyfair Construction
 & Engineering Ltd.

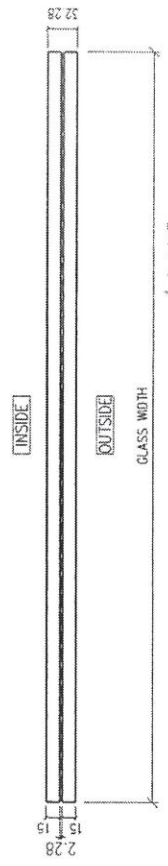
TI-9AC

21/11

TOP



ELEVATION



SECTION 'B-B'

LEGEND:
 - - - POLISH EDGE FINISH FOR VISUAL SIDES
 - - - ALL EDGES TO BE GRIND FINISH
 REMARKS: ALL GLASS SHAPE TO BE VIEWED FROM OUTSIDE

DISTRIBUTION TABLE	
編號:	-
材料:	15mm THICK CLEAR TEMPERED GLASS + 2.28mm THICK SGP + 15mm THICK CLEAR TEMPERED GLASS LAMINATED UNITS
表面處理:	-

寶發建設工程有限公司
 Polyfair Construction
 & Engineering Ltd.

DF

項目: FABRICATION DRAWING OF GLASS PANEL
 (FOR GLASS BALUSTRADE AT TRANSFER PLATE - 9/F LAYOUT PLAN (TOWER 1))

工程名稱: 寶發建設有限公司
 項目: FABRICATION DRAWING OF GLASS PANEL
 (FOR GLASS BALUSTRADE AT TRANSFER PLATE - 9/F LAYOUT PLAN (TOWER 1))

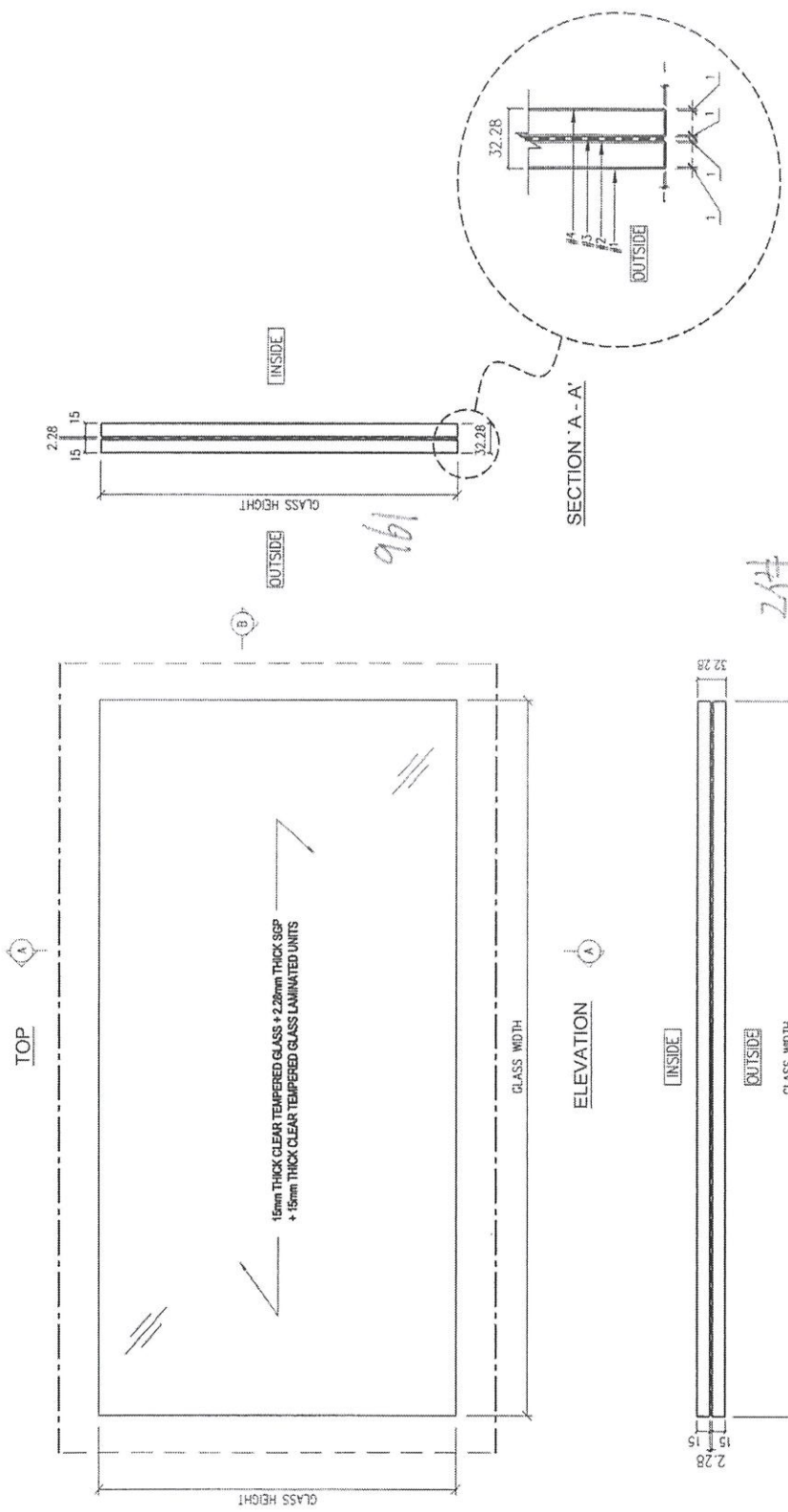
圖號:	SA-GSD1-101-71-9AC
工程編號:	PF-21006
比例:	1 : 5

71-9AC

1 零件

11/12

TI-9AD



LEGEND:
 - - - - POLISH EDGE FINISH FOR VISUAL SIDES
 - - - - ALL EDGES TO BE GRIND FINISH
REMARKS: ALL GLASS SHAPE TO BE VIEWED FROM OUTSIDE

圖號: SA-GSD1-101-11-9AD
 工程圖號: PF-21006
 比例: 1 : 5

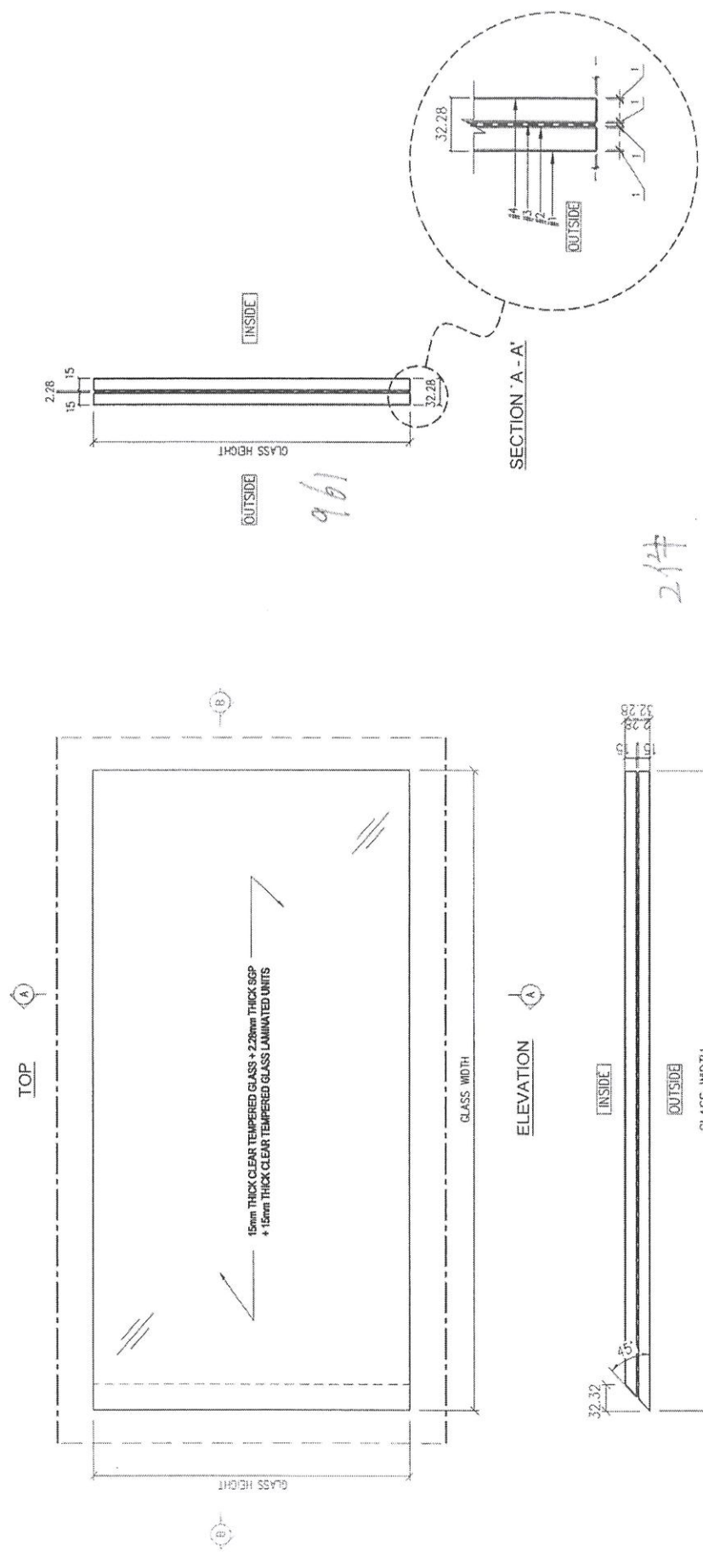
工程名稱: PROPOSED RESIDENTIAL DEVELOPMENT AT TROTTER, PHASE 11, LUNAS PARK, TSEUNG KUNAN O. N. T.
 項目: FABRICATION DRAWING OF GLASS PANEL (FOR GLASS BALUSTRADE AT TRANSFER PLATE - 9/F LAYOUT PLAN (TOWER 1))

寶發建設工程有限公司
 Polyfair Construction & Engineering Ltd.

DISTRIBUTION TABLE	
編號:	-
材料:	15mm THICK CLEAR TEMPERED GLASS + 2.28mm THICK SSP + 15mm THICK CLEAR TEMPERED GLASS LAMINATED UNITS
表面處理:	-
日期:	2023-09-19
圖號:	SU

11/12

T-9AE



961

2件

1445

LEGEND:

- POLISH EDGE FINISH FOR VISUAL SIDES
- - - ALL EDGES TO BE GRIND FINISH

REMARKS: ALL GLASS SHAPE TO BE VIEWED FROM OUTSIDE

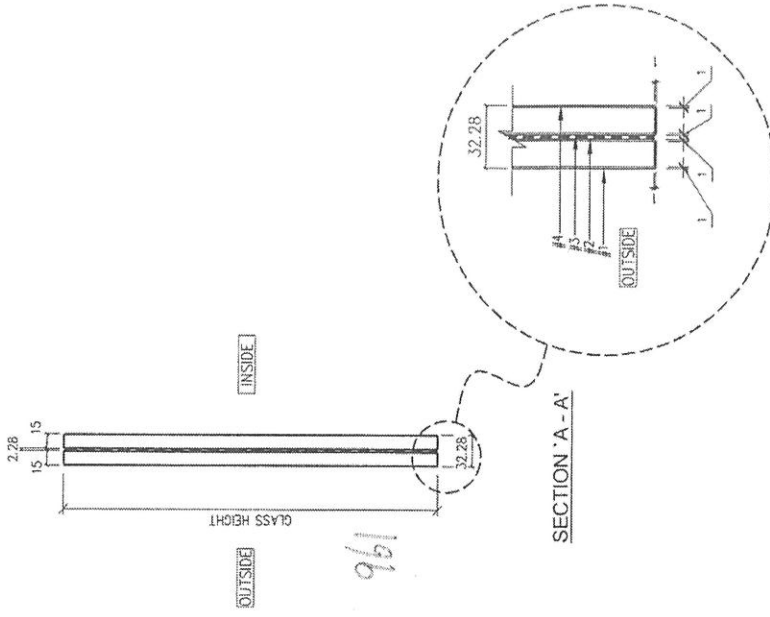
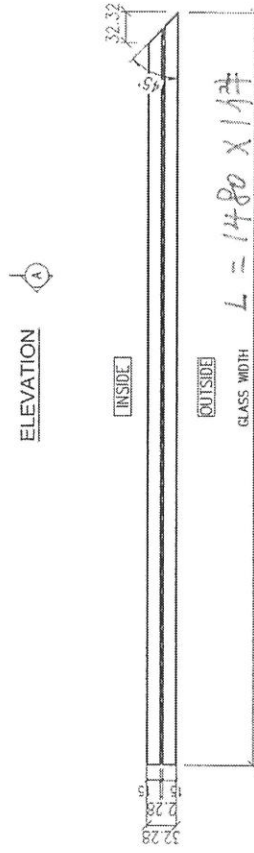
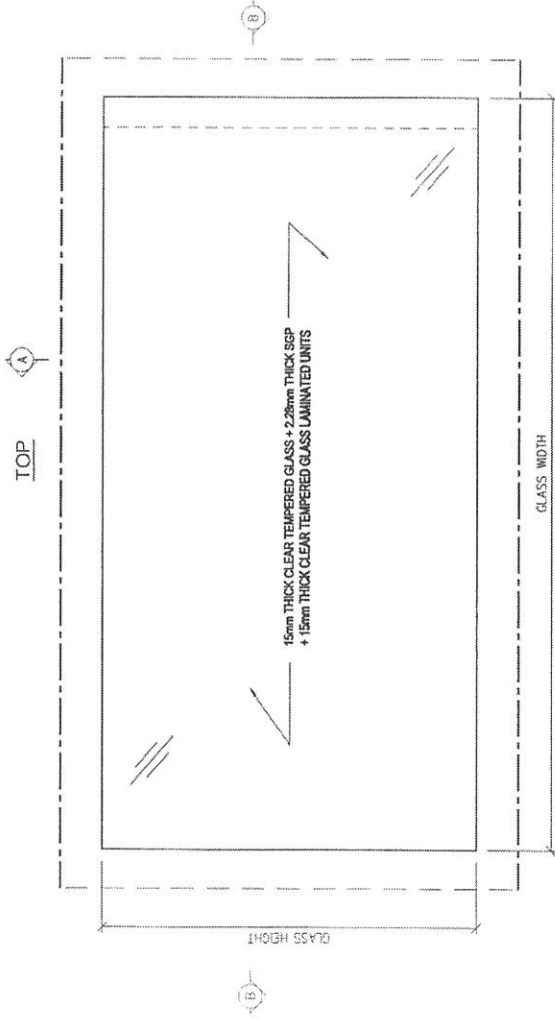
圖號:	S4-GS01-103-TI-9AE
工程編號:	PF-21006
比例:	1 : 5

工程名稱:		寶發建設工程有限公司 Polyfair Construction & Engineering Ltd.
圖名:		PROPOSED RESIDENTIAL DEVELOPMENT AT TROILTOPP, PHASE 11, LOWAS PARK, TSEUNG KUAN O, N. T.
圖號:		PF-21006
比例:		1 : 5
圖則:		FABRICATION DRAWING OF GLASS PANEL (FOR GLASS BALUSTRADE AT TRANSFER PLATE - 9/F LAYOUT PLAN (TOWER 1))
校對:	-	
日期:	-	
製圖:	SU	
日期:	2023-09-19	
編號:	-	
材料:	15mm THICK CLEAR TEMPERED GLASS + 2.2mm THICK SGP + 15mm THICK CLEAR TEMPERED GLASS LAMINATED UNITS	
表面處理:	-	

11/12

TI-9AG

TI-9AG



LEGEND:

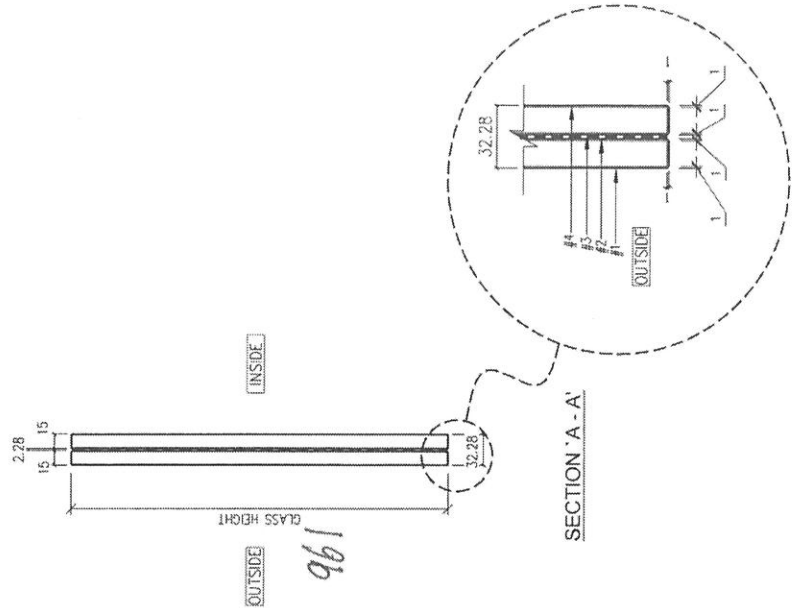
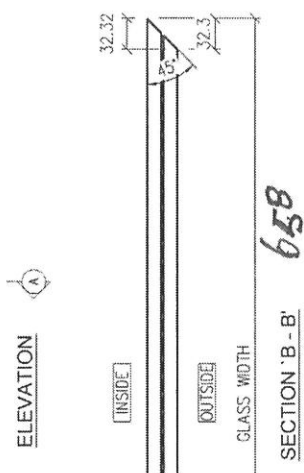
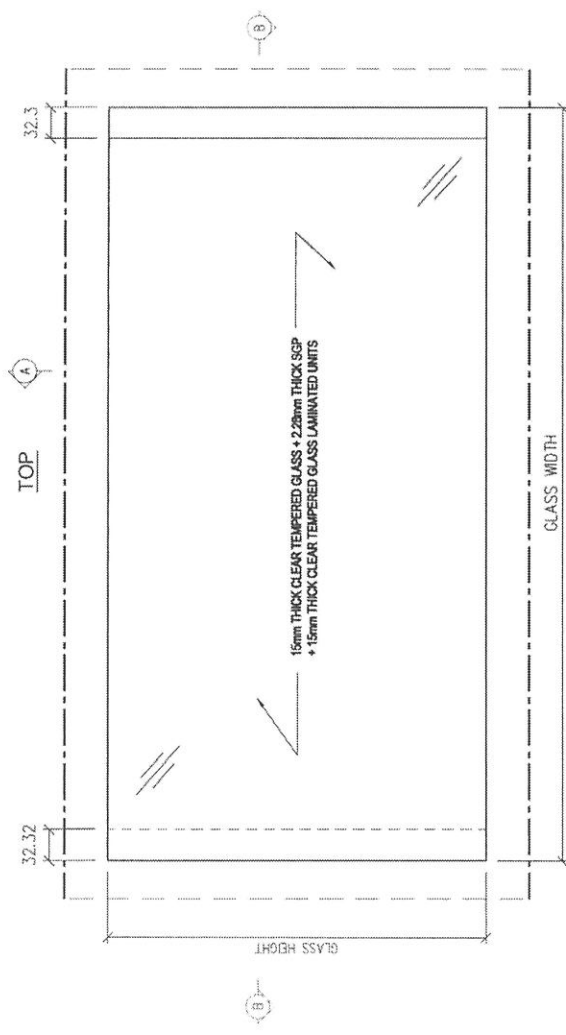
- POLISH EDGE FINISH FOR VISUAL SIDES
- ALL EDGES TO BE GRIND FINISH

REMARKS: ALL GLASS SHAPE TO BE VIEWED FROM OUTSIDE

DISTRIBUTION TABLE		圖號:	工程名稱:
編號:	-	S4-GS01-102	TI-9AG
材料:	15mm THICK CLEAR TEMPERED GLASS + 2.28mm THICK SSP + 15mm THICK CLEAR TEMPERED GLASS LAMINATED UNITS	工程編號:	PF-21006
表面處理:	-	比例:	1 : 5
日期:	2023-09-19	項目:	FABRICATION DRAWING OF GLASS PANEL (FOR GLASS BALUSTRADE AT TRANSFER PLATE - 9/F LAYOUT PLAN (TOWER 1))
		<p>寶發建設工程有限公司 Polyfair Construction & Engineering Ltd.</p> <p>PROPOSED RESIDENTIAL DEVELOPMENT AT TROTLOP, PHASE 11, LOHAS PARK, TSEING KWAN O, H. T.</p>	

T1-9AG

0/12



LEGEND:

- POLISH EDGE FINISH FOR VISUAL SIDES
- - - ALL EDGES TO BE GRIND FINISH

REMARKS: ALL GLASS SHAPE TO BE VIEWED FROM OUTSIDE

DISTRIBUTION TABLE		圖號: SA-6S01-110-11-9AG
編號: -	日期: -	圖號: SA-6S01-110-11-9AG
材料: 15mm THICK CLEAR TEMPERED GLASS + 2.28mm THICK SGP + 15mm THICK CLEAR TEMPERED GLASS LAMINATED UNITS	製圖: SU	工程編號: PF-21006
表面處理: -	日期: 2023-09-19	比例: 1 : 5

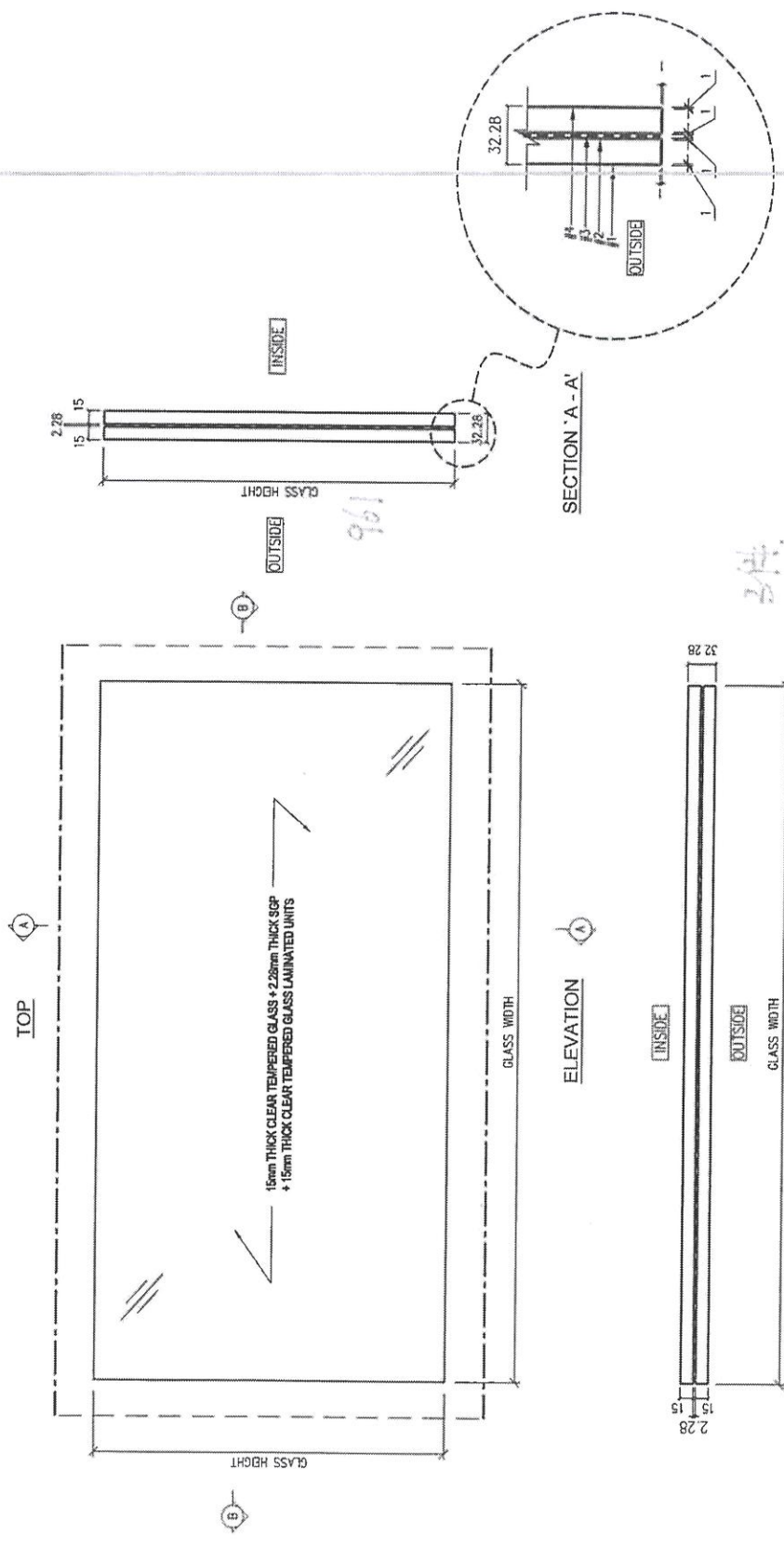
寶發建設工程有限公司
Polyfair Construction & Engineering Ltd.

工程名稱: PROPOSED RESIDENTIAL DEVELOPMENT AT TROTTEROP, PHASE 11, LONAS PARK, TSEUNG KWAN O, N. T.

圖名: FABRICATION DRAWING OF GLASS PANEL (FOR GLASS BALUSTRADE AT TRANSFER PLATE - 9/F LAYOUT PLAN (TOWER 1))

20/12

F1-98A



LEGEND:
 --- POLISH EDGE FINISH FOR VISUAL SIDES
 --- ALL EDGES TO BE GRIND FINISH
 REMARKS: ALL GLASS SHAPE TO BE VIEWED FROM OUTSIDE

1202

DISTRIBUTION TABLE		材料: -	工保名稱: 工保式:
編號:	-	材料: -	S4-SS01-101-F1-98A
材料:	15mm THICK CLEAR TEMPERED GLASS + 2.28mm THICK SSP + 15mm THICK CLEAR TEMPERED GLASS LAMINATED UNITS	算價: SU	工保編號: PF-21006
東西處理:	-	日期: 2023-09-19	說明: 1:5

寶發建設工程有限公司
Polyfair Construction & Engineering Ltd.

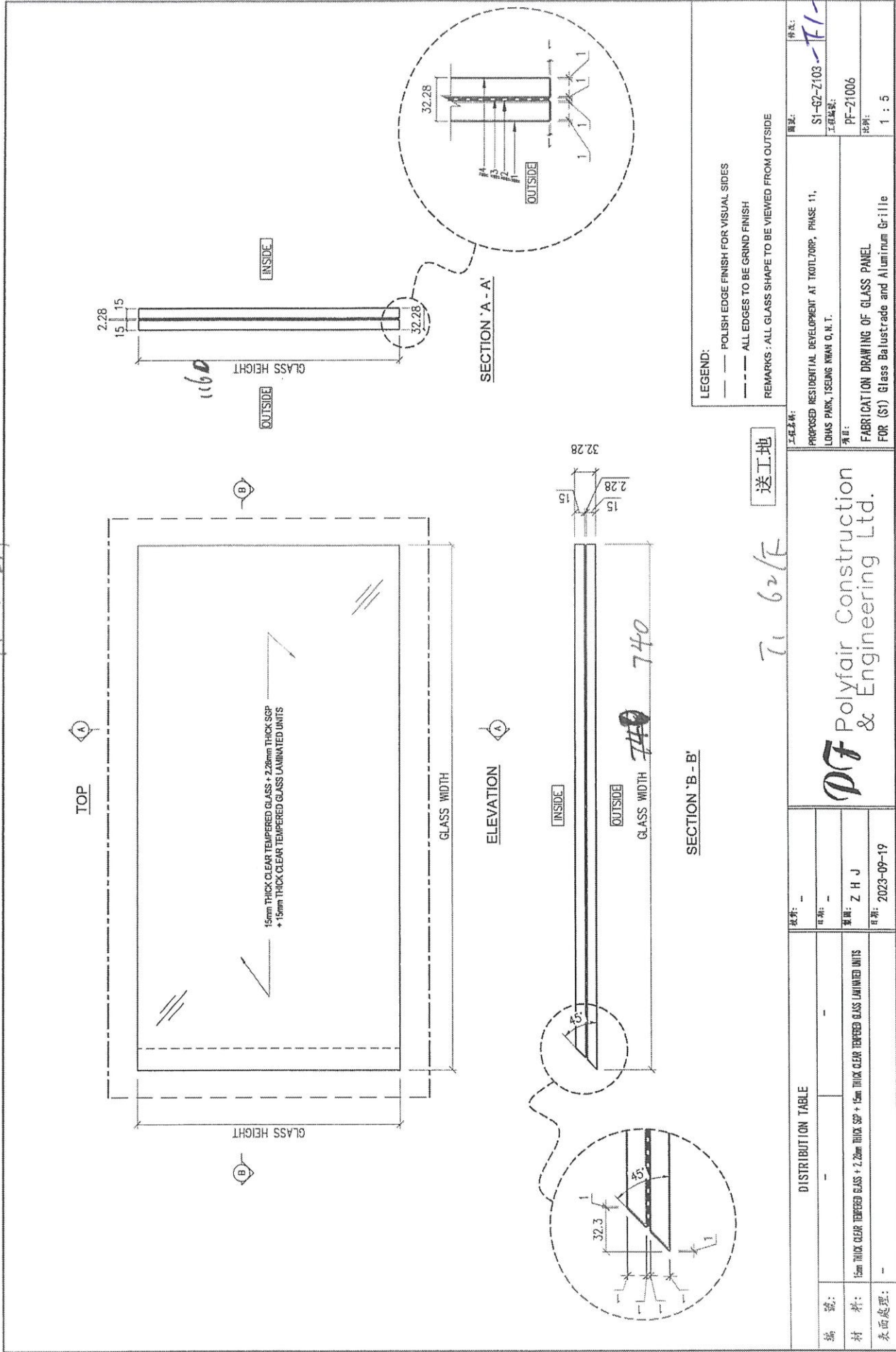
PROPOSED RESIDENTIAL DEVELOPMENT AT TROTLOPP, PHASE 11,
 LUNAS PARK, TSEUNG KWAN O, N.T.
 FABRICATION DRAWING OF GLASS PANEL
 (FOR GLASS BALUSTRADE AT TRANSFER PLATE - 9/F LAYOUT PLAN (OVER 1))

F1-98A

13/12

T1-62BA

62BA

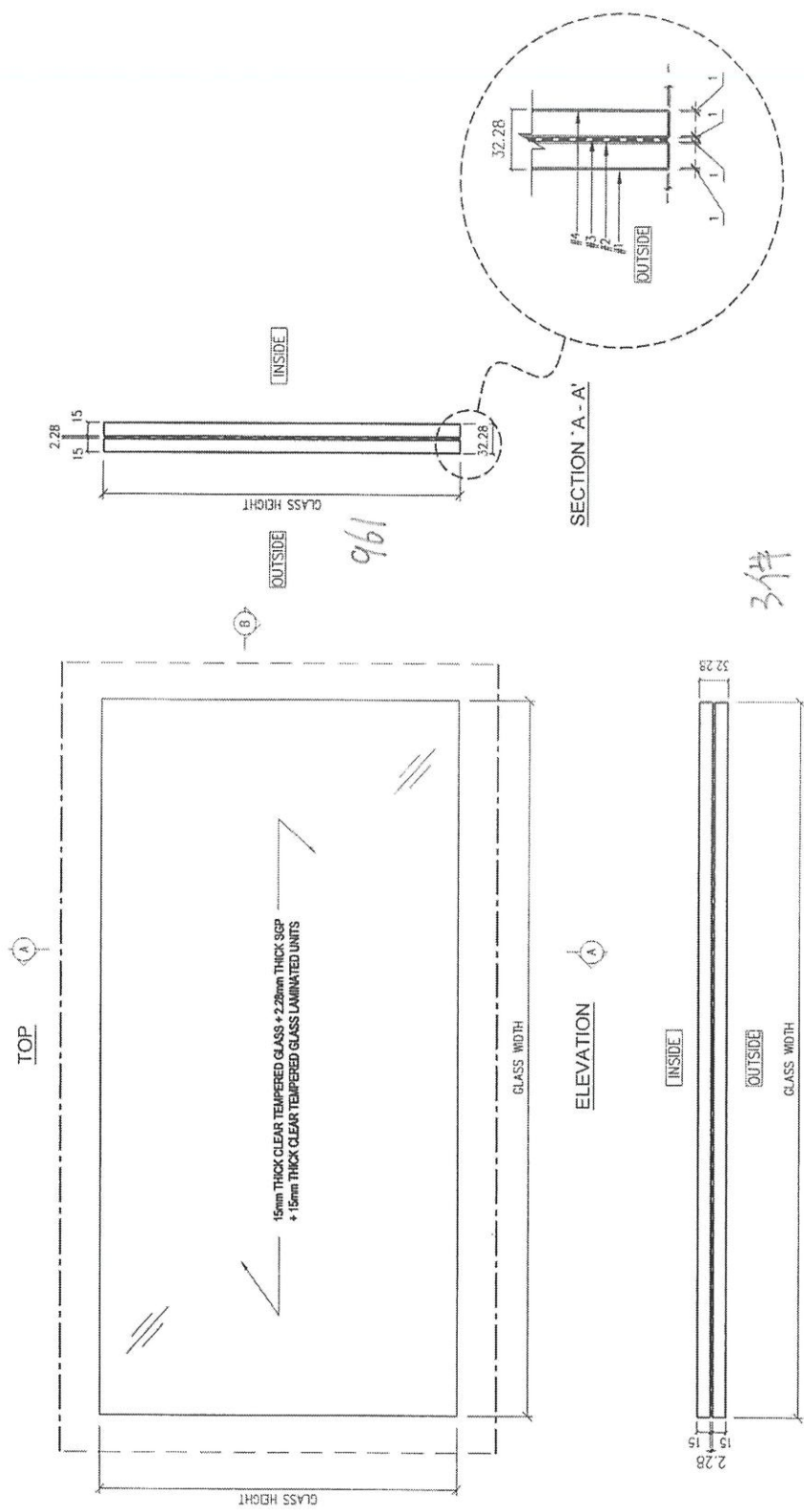


PF Polyfair Construction & Engineering Ltd.

11/12

T1-98C

98C



LEGEND:
 - - - POLISH EDGE FINISH FOR VISUAL SIDES
 - - - ALL EDGES TO BE GRIND FINISH
 REMARKS: ALL GLASS SHAPE TO BE VIEWED FROM OUTSIDE

工程名稱: 寶發建設工程有限公司 Polyfair Construction & Engineering Ltd.		圖號: SA-GS01-10L-T1-98C 工程圖號: PF-21006 比例: 1 : 5
樣式: - 日期: - 單價: SU 日期: 2023-09-19		工程名稱: 寶發建設工程有限公司 Polyfair Construction & Engineering Ltd.
編 號:	-	PROPOSED RESIDENTIAL DEVELOPMENT AT TKOIL700P, PHASE 11, LOHAS PARK, TSEUNG KWAN O, N.T.
材 料:	15mm THICK CLEAR TEMPERED GLASS + 2.28mm THICK SGP + 15mm THICK CLEAR TEMPERED GLASS LAMINATED UNITS	項 目: FABRICATION DRAWING OF GLASS PANEL (FOR GLASS BALUSTRADE AT TRANSFER PLATE - 9/F LAYOUT PLAN (WORK 1))
表面處理:	-	

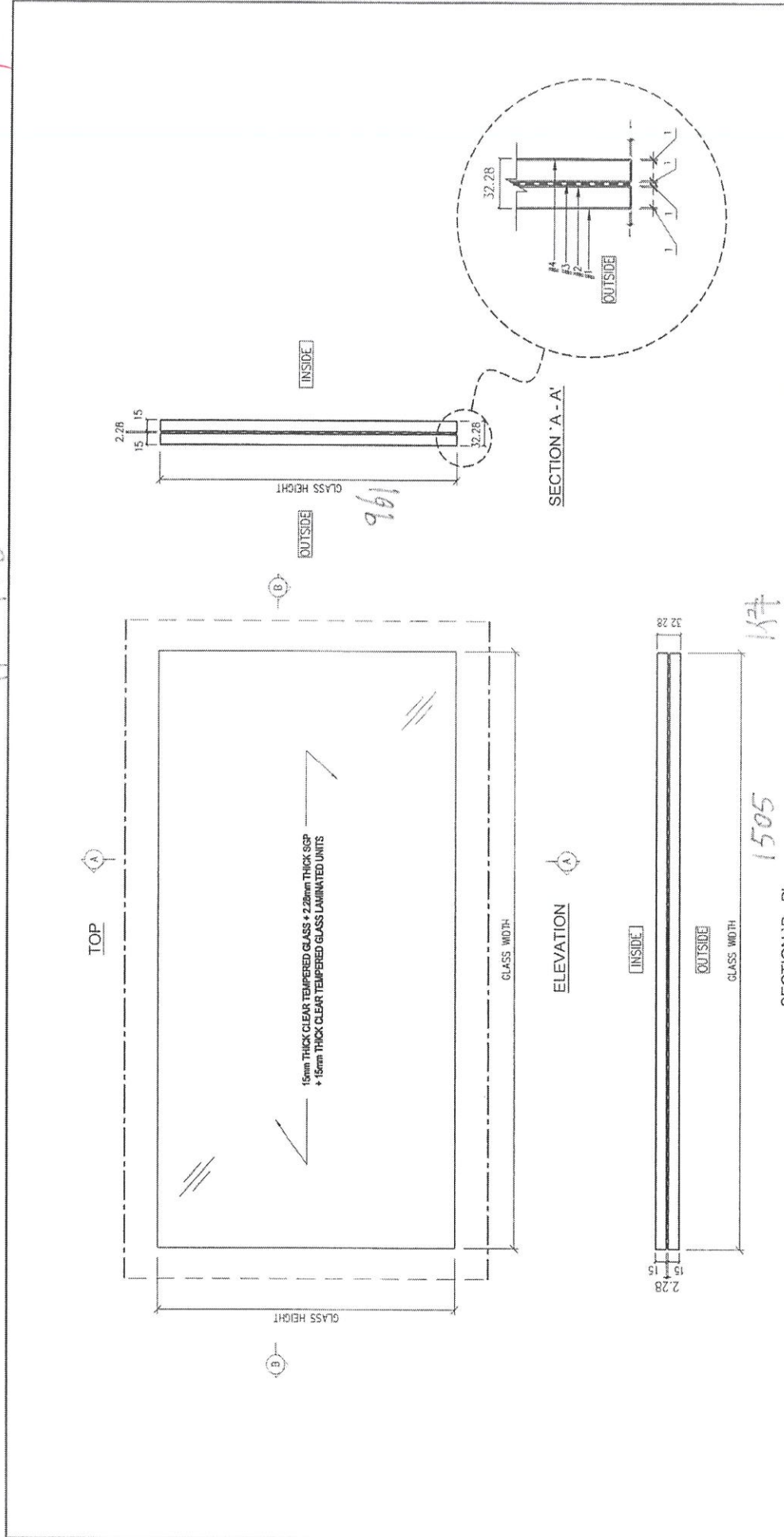
1370

SECTION 'B - B'

3件

11/12

11-9BD



LEGEND:
 - - - POLISH EDGE FINISH FOR VISUAL SIDES
 - - - ALL EDGES TO BE GRIND FINISH
 REMARKS: ALL GLASS SHAPE TO BE VIEWED FROM OUTSIDE

圖號:	S4-6S01-101
工程編號:	PF-21006
日期:	1 : 5

寶發建設工程有限公司
 Polyfair Construction
 & Engineering Ltd.

物料:	-
日期:	-
製圖:	SU
日期:	2023-09-19

編號:	-
材料:	15mm THICK CLEAR TEMPERED GLASS + 2.28mm THICK SSP + 15mm THICK CLEAR TEMPERED GLASS LAMINATED UNITS
表面處理:	-

DISTRIBUTION TABLE

PROPOSED RESIDENTIAL DEVELOPMENT AT TROTTERP, PHASE 11,
 LUNAS PARK, TSEUNG KWAN O, N. T.

FABRICATION DRAWING OF GLASS PANEL
 (FOR GLASS BALUSTRADE AT TRANSFER PLATE - 9/F LAYOUT PLAN (TOWER 1))

11-9BD

196

1505

32.28

32.28

1505

32.28

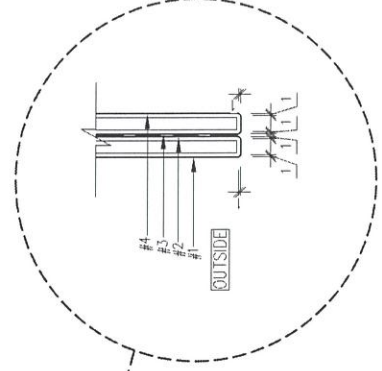
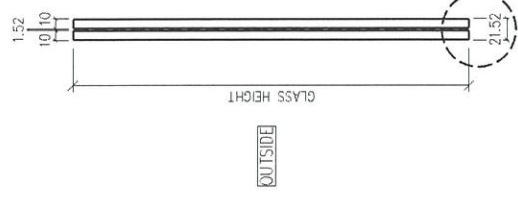
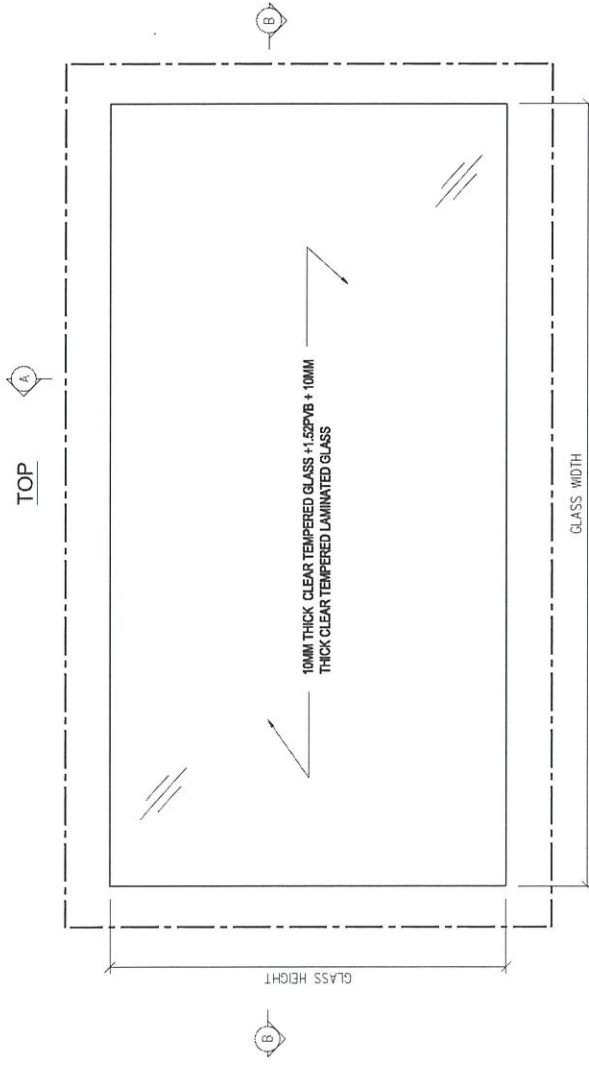
32.28

1505

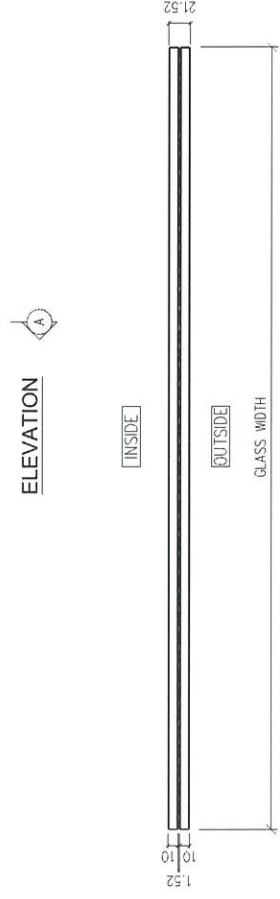
32.28

37AA	2210 x 1160 (H) 1件
37AC	2330 x 1160 (H) 1件
37AC	485 x 1160 (H) 1件
37AD	2150 x 1160 (H) 1件
37AE	2150 x 1160 (H) 1件
15AF	2175 x 1160 (H) 1件
15BA	1875 x 1160 (H) 1件
46BB	2330 X 1160 (H) 1件
46BB	575 X 1160 (H) 1件
35BB	2330 X 1160 (H) 1件
35BB	575 X 1160 (H) 1件
35BC	1800 x 1160 (H) 1件
50BD	2055 x 1160 (H) 1件
60BD	2055 x 1160 (H) 1件
61BD	2055 x 1160 (H) 1件
15BF	2175 x 1160 (H) 1件

T1



ELEVATION



SECTION 'B - B'

LEGEND:

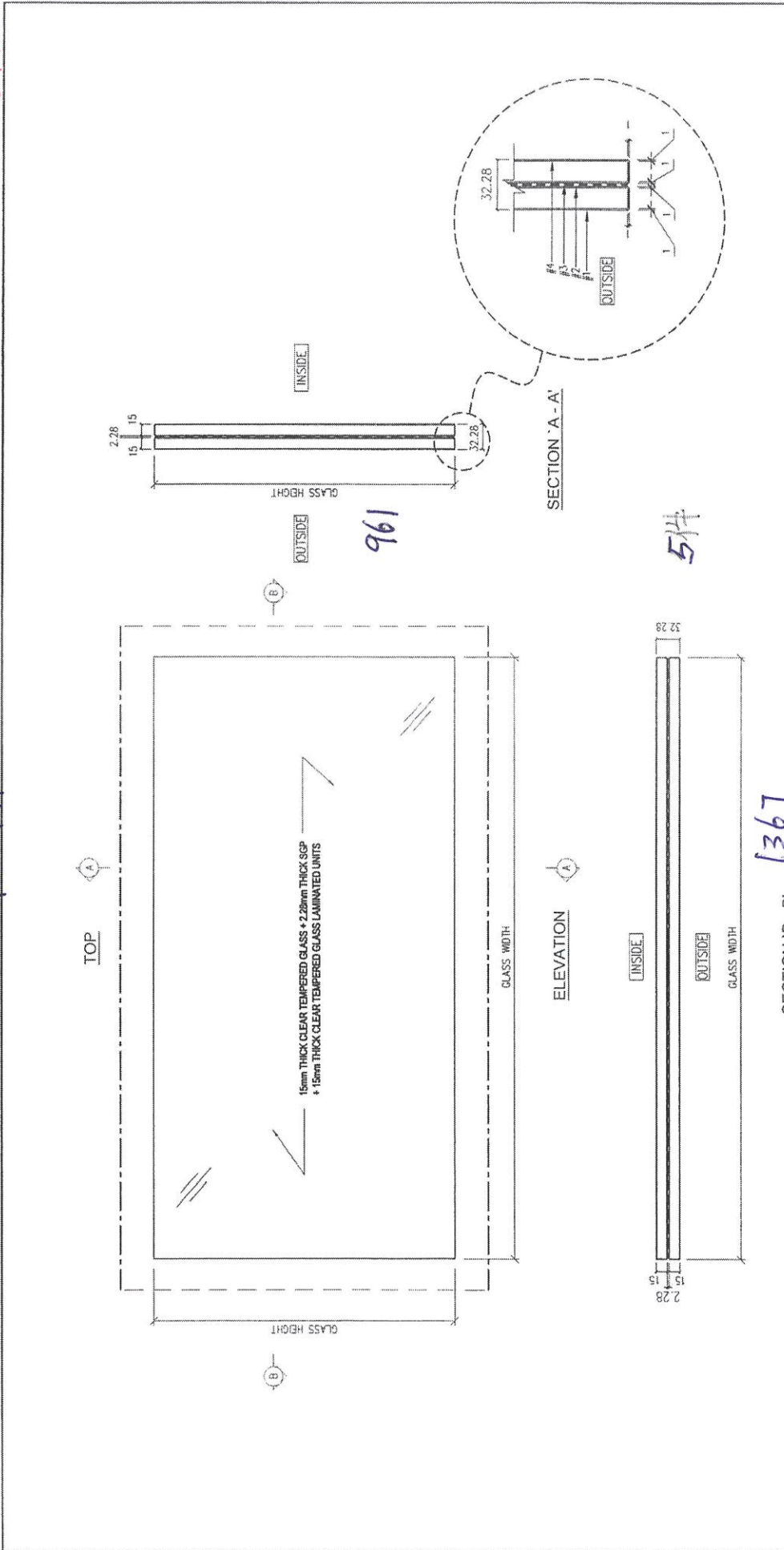
--- ALL EDGES TO BE GRIND FINISH

REMARKS : ALL GLASS SHAPE TO BE VIEWED FROM OUTSIDE

DISTRIBUTION TABLE		校對: -	圖號: S1-G1-001	款式: -
編號:	-	日期: -	工程編號: PF-21006	
材料:	10MM THICK CLEAR TEMPERED GLASS +1.52PVB + 10MM THICK CLEAR TEMPERED LAMINATED GLASS	製圖: LIN	比例: 1:5	
表面處理:	-	日期: 2022-06		
<p>工程名稱: 寶發建設工程有限公司 Polyfair Construction & Engineering Ltd.</p> <p>PROPOSED RESIDENTIAL DEVELOPMENT AT TKOTL70RP, PHASE 11, LOHAS PARK, TSEUNG KWAN O, N.T.</p> <p>項目: FABRICATION DRAWING OF GLASS PANEL (FOR S1) Glass Balustrade and Aluminum Grille</p>				

13/12

T2-9AB



1367

5件

SECTION 'B-B'

圖號:	S4-GS01-101
工程圖號:	PF-21006
比例:	1 : 5

寶發建設工程有限公司
Polyfair Construction & Engineering Ltd.

編 號:	-
材 料:	15mm THICK CLEAR TEMPERED GLASS + 2.28mm THICK SP + 15mm THICK CLEAR TEMPERED GLASS LAMINATED UNITS
表面處理:	-

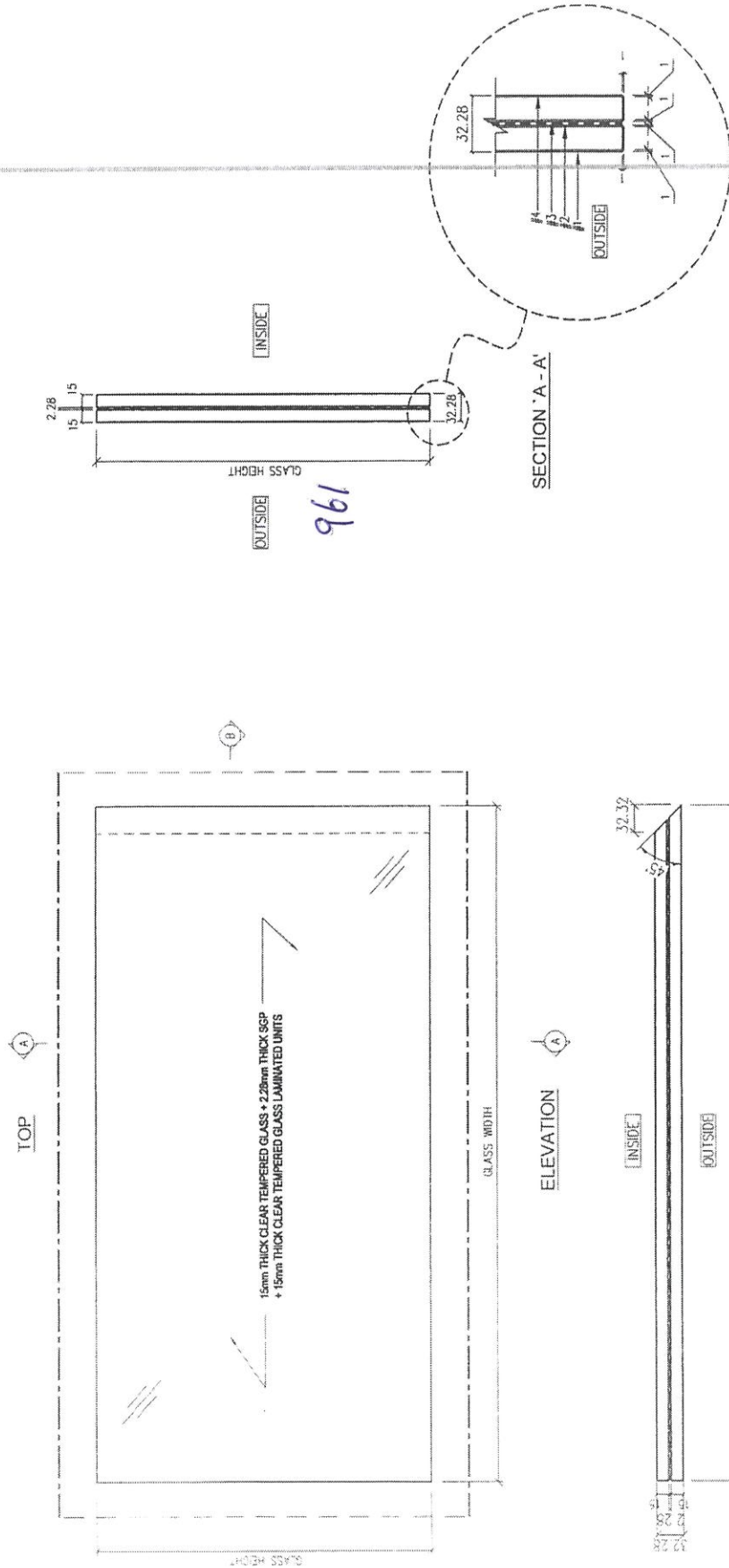
樣 本:	-
日 期:	-
單 位:	SU
日 期:	2023-09-19

工 程 名 稱:	PROPOSED RESIDENTIAL DEVELOPMENT AT TROTLOP, PHASE 11, LOHAS PARK, TSEUNG KWAN O, N. T.
項 目:	FABRICATION DRAWING OF GLASS PANEL (FOR GLASS BALUSTRADE AT TRANSFER PLATE - 9/F LAYOUT PLAN (TOWER 1))

T2-9AB

13/12

T2-9AB



961

117

690

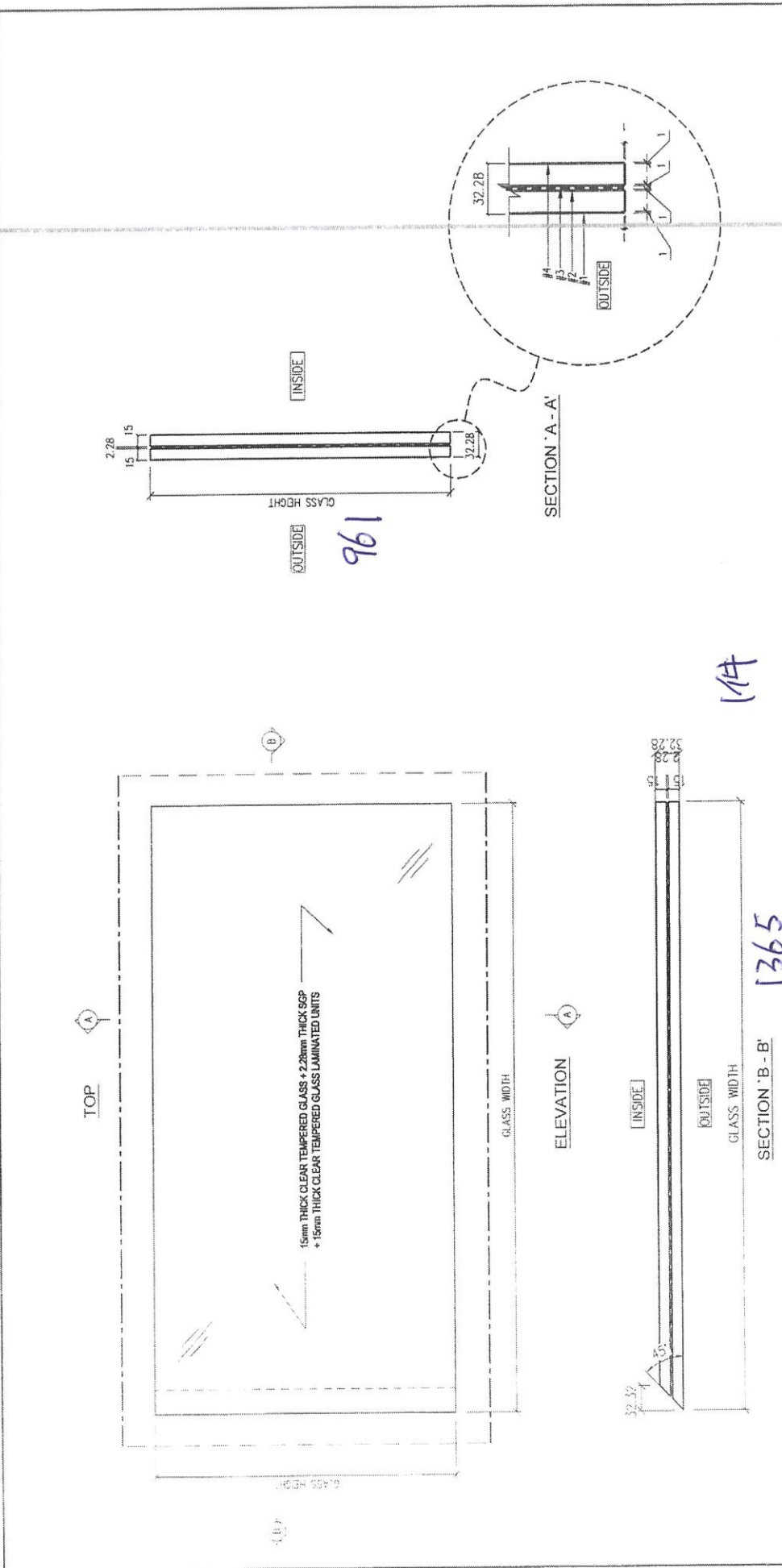
LEGEND:
 - - - POLISH EDGE FINISH FOR VISUAL SIDES
 - - - ALL EDGES TO BE GRIND FINISH
 REMARKS: ALL GLASS SHAPE TO BE VIEWED FROM OUTSIDE

DISTRIBUTION TABLE		校核: -	工程名称: 寶發建設工程有限公司
編號: -	日期: -	項目: -	PROPOSED RESIDENTIAL DEVELOPMENT AT TROTILORP, PHASE 11
材料: 15mm THICK CLEAR TEMPERED GLASS + 2.28mm THICK SGP + 15mm THICK CLEAR TEMPERED GLASS LAMINATED UNITS	製圖: SU	圖號: PF-21006	LUNAS PARK, TSEUNG KWAN O, N. T.
表面處理: -	日期: 2023-09-19	比例: 1 : 5	項目: FABRICATION DRAWING OF GLASS PANEL (FOR GLASS BALUSTRADE AT TRANSFER PLATE - 9/F LAYOUT PLAN (TOWER 1))

F2-9AB

TZ-9AB

13/12



LEGEND:
 - - - - - POLISH EDGE FINISH FOR VISUAL SIDES
 - - - - - ALL EDGES TO BE GRIND FINISH
 REMARKS: ALL GLASS SHAPE TO BE VIEWED FROM OUTSIDE

工程名稱: PROPOSED RESIDENTIAL DEVELOPMENT AT TROTLZORP, PHASE 11
 LONAS PARK, TSEUNG KWAN O, N. T.
 圖號: S4-GS01-103-TZ-9AB
 工程編號: PF-21006
 比例: 1 : 5
 繪圖: (TOWER 1)

工程名稱: 寶發建設工程有限公司
 Polyfair Construction & Engineering Ltd.
 圖號: SU
 日期: 2023-09-19

DISTRIBUTION TABLE	
編號:	-
材料:	15mm THICK CLEAR TEMPERED GLASS + 2.28mm THICK SGP + 15mm THICK CLEAR TEMPERED GLASS LAMINATED UNITS
表面處理:	-

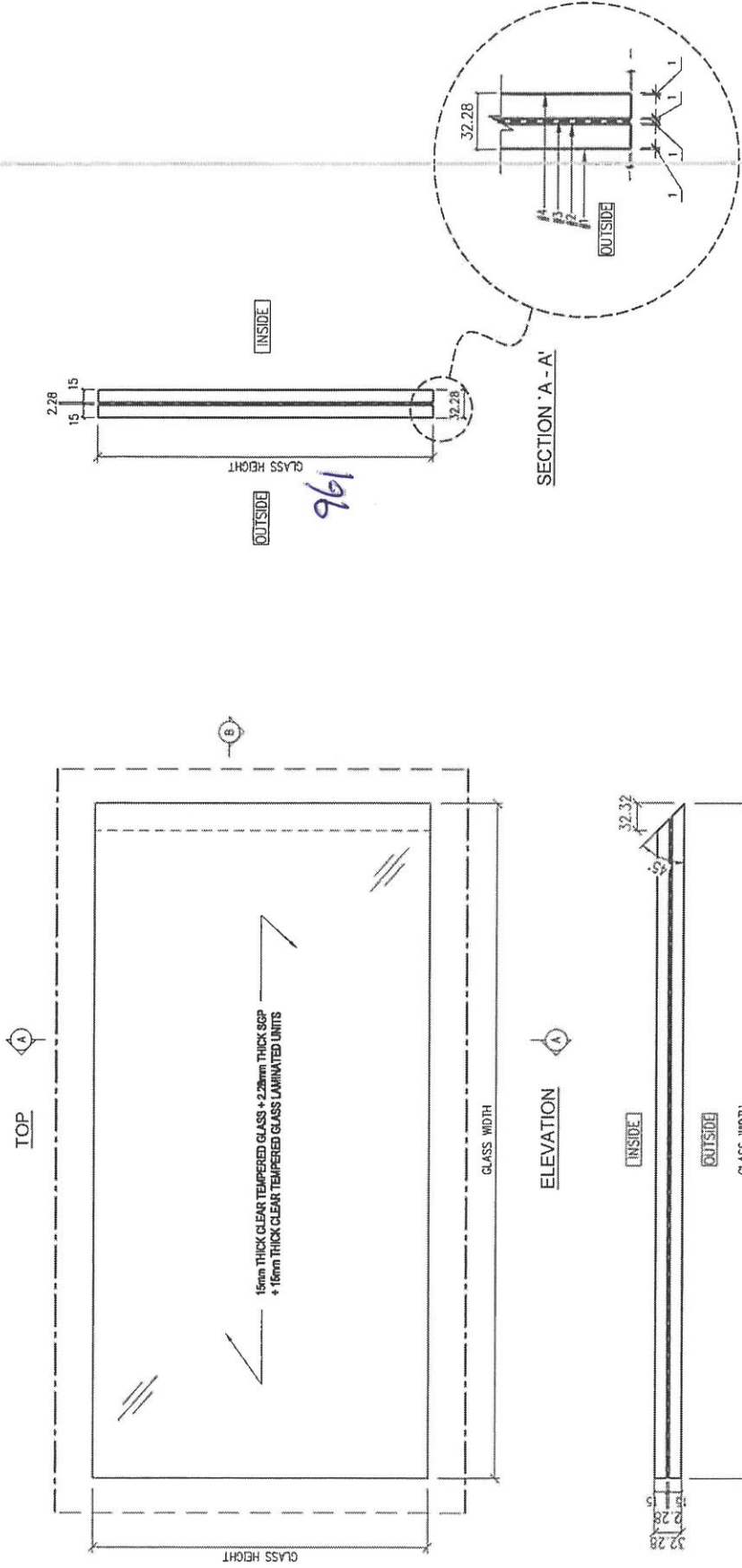
1件

1365

961

T2-9BC

20/12



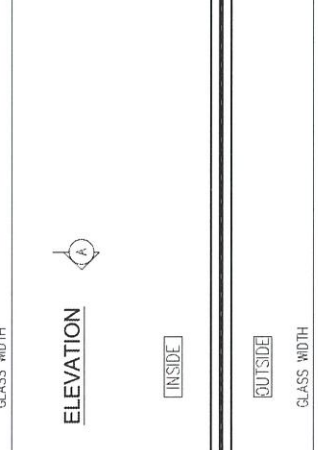
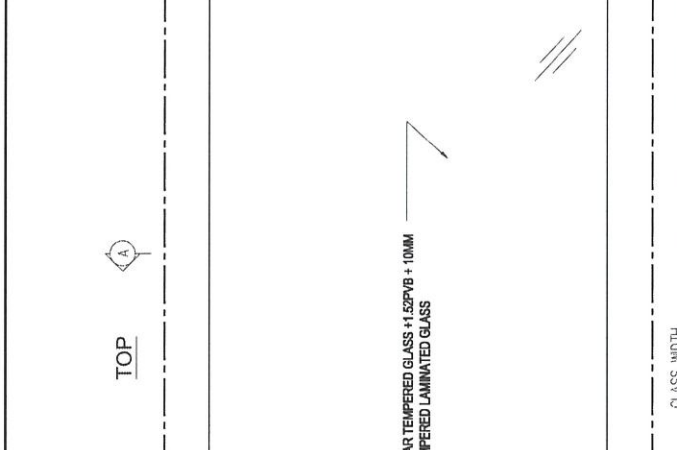
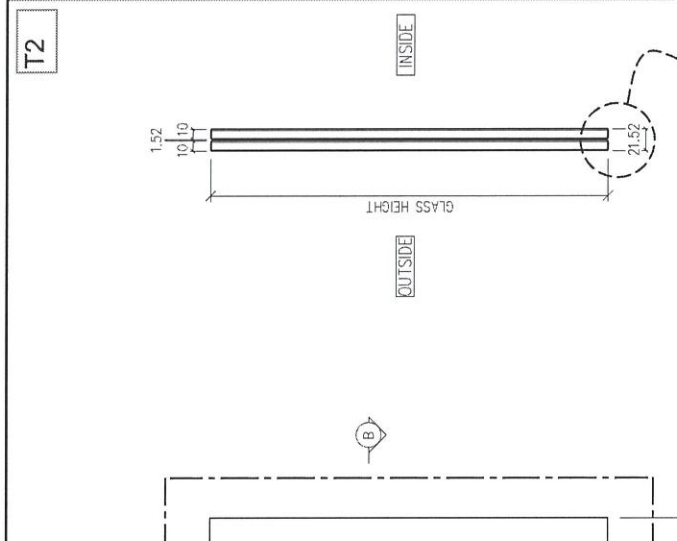
LEGEND:
 --- POLISH EDGE FINISH FOR VISUAL SIDES
 --- ALL EDGES TO BE GRIND FINISH
 REMARKS : ALL GLASS SHAPE TO BE VIEWED FROM OUTSIDE

工程名稱:	項目:
PROPOSED RESIDENTIAL DEVELOPMENT AT TROILTOPP, PHASE 11, LOHAS PARK, TSEUNG KWAN O, N. T.	S4-SS01-102-12-9BC
圖號:	工程圖號:
	PF-21006
比例:	比例:
	1 : 5

寶發建設工程有限公司
 Polyfair Construction
 & Engineering Ltd.

DISTRIBUTION TABLE	
編號:	-
材料:	15mm THICK CLEAR TEMPERED GLASS + 2.28mm THICK SGP + 15mm THICK CLEAR TEMPERED GLASS LAMINATED UNITS
表面處理:	-
日期:	2023-09-19

66AC	2330 x 1160 (H) 1件	39AC	2330 x 1160 (H) 1件
66AC	535 X 1160 (H) 1件	39AC	535 X 1160 (H) 1件
66BE	2175 x 1160 (H) 1件	39AD	2175 x 1160 (H) 1件
65BE	2175 x 1160 (H) 1件	38BB	2330 x 1160 (H) 1件
63BE	2175 x 1160 (H) 1件	38BB	575 X 1160 (H) 1件
62AD	2175 x 1160 (H) 1件	37AD	2175 x 1160 (H) 1件
62BB	575 X 1160 (H) 1件	37AG	2175 x 1160 (H) 1件
55BA	1875 x 1160 (H) 1件	36BB	2330 x 1160 (H) 1件
55BB	2330 x 1160 (H) 1件	35AC	2330 x 1160 (H) 1件
55BB	575 X 1160 (H) 1件	35AC	535 X 1160 (H) 1件
53BD	2055 x 1160 (H) 1件	35BB	2330 x 1160 (H) 1件
50BD	2055 x 1160 (H) 1件	35BC	1800 x 1160 (H) 1件
48BD	2055 x 1160 (H) 1件	33AC	2330 x 1160 (H) 1件
47BC	1800 x 1160 (H) 1件	33BB	2330 x 1160 (H) 1件
46BA	1875 x 1160 (H) 1件	32AC	535 X 1160 (H) 1件
46BB	2330 x 1160 (H) 1件	32AE	2175 x 1160 (H) 1件
46BB	575 X 1160 (H) 1件	31AA	2210 x 1160 (H) 1件
46BC	1800 x 1160 (H) 1件	31AB	2160 x 1160 (H) 1件
43BB	2330 x 1160 (H) 1件	30AA	2210 x 1160 (H) 1件
43BB	575 X 1160 (H) 1件	28AB	2160 x 1160 (H) 1件
42AC	535 X 1160 (H) 1件	28AD	2175 x 1160 (H) 1件
42AG	2175 x 1160 (H) 1件	28BB	2330 x 1160 (H) 1件
41AB	2160 x 1160 (H) 1件	28BB	575 X 1160 (H) 1件



LEGEND:
 - - - ALL EDGES TO BE GRIND FINISH
 REMARKS : ALL GLASS SHAPE TO BE VIEWED FROM OUTSIDE

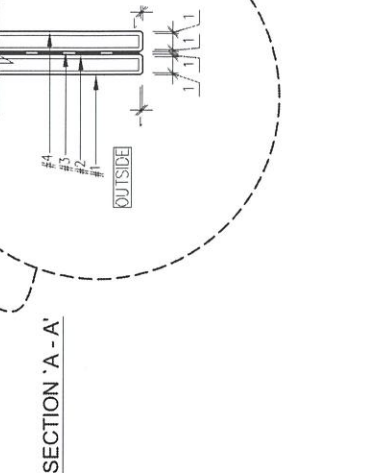
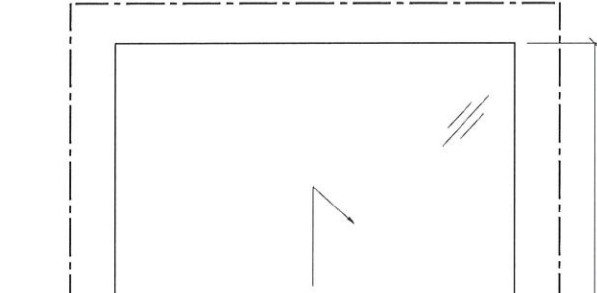
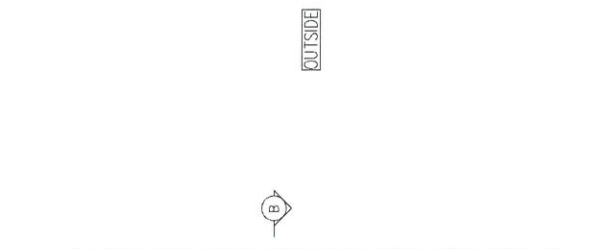
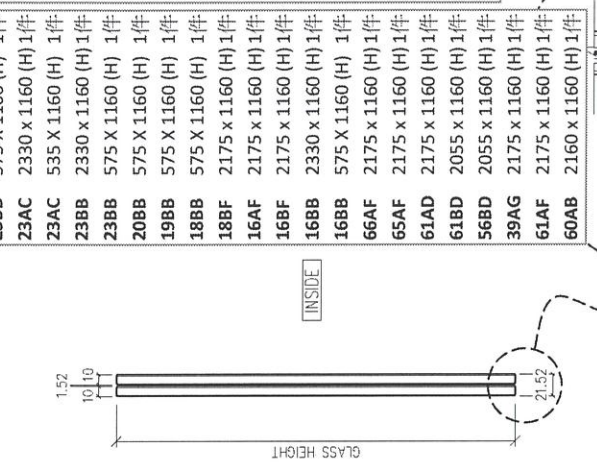
工程名稱: PROPOSED RESIDENTIAL DEVELOPMENT AT TKO TL70RP, PHASE '1', LOHAS PARK, TSEUNG KWAN O, N.T.
 項目: FABRICATION DRAWING OF GLASS PANEL (FOR (S1) Glass Balustrade and Aluminum Grille)
 圖號: S1-G1T2-001
 圖名: PF-21006
 比例: 1 : 5

寶發建設工程有限公司
DF Polyfair Construction & Engineering Ltd.

校對:	-
日期:	-
圖號:	LIN
日期:	2022-07

DISTRIBUTION TABLE	
編號:	-
材料:	10MM THICK CLEAR TEMPERED GLASS+1.52PVB+10MM THICK CLEAR TEMPERED LAMINATED GLASS
表面處理:	-

26AA	2210 x 1160 (H)	1件	60AA	2210 x 1160 (H)	1件
25BB	2330 x 1160 (H)	1件	60BE	2175 x 1160 (H)	1件
25BB	575 X 1160 (H)	1件	56AE	2175 x 1160 (H)	1件
23AC	2330 x 1160 (H)	1件	56BB	575 X 1160 (H)	1件
23AC	535 X 1160 (H)	1件	559D	2055 x 1160 (H)	1件
23BB	2330 x 1160 (H)	1件	50AE	2175 x 1160 (H)	1件
23BB	575 X 1160 (H)	1件	30AB	2160 x 1160 (H)	1件
20BB	575 X 1160 (H)	1件	49AC	535 X 1160 (H)	1件
19BB	575 X 1160 (H)	1件	48AA	2210 x 1160 (H)	1件
18BB	575 X 1160 (H)	1件	41AE	2175 x 1160 (H)	1件
18BF	2175 x 1160 (H)	1件	45BC	1800 x 1160 (H)	1件
16AF	2175 x 1160 (H)	1件	41BC	1800 x 1160 (H)	1件
16BF	2175 x 1160 (H)	1件	38BC	1800 x 1160 (H)	1件
16BB	2330 x 1160 (H)	1件	37BC	1800 x 1160 (H)	1件
16BB	575 X 1160 (H)	1件	21AA	2210 x 1160 (H)	1件
66AF	2175 x 1160 (H)	1件	60BD	2055 x 1160 (H)	1件
65AF	2175 x 1160 (H)	1件	60AF	2175 x 1160 (H)	1件
61AD	2175 x 1160 (H)	1件	42AF	2175 x 1160 (H)	1件
61BD	2055 x 1160 (H)	1件	36BC	1800 x 1160 (H)	1件
56BD	2055 x 1160 (H)	1件	58BC	1800 x 1160 (H)	1件
39AG	2175 x 1160 (H)	1件			
61AF	2175 x 1160 (H)	1件			
60AB	2160 x 1160 (H)	1件			



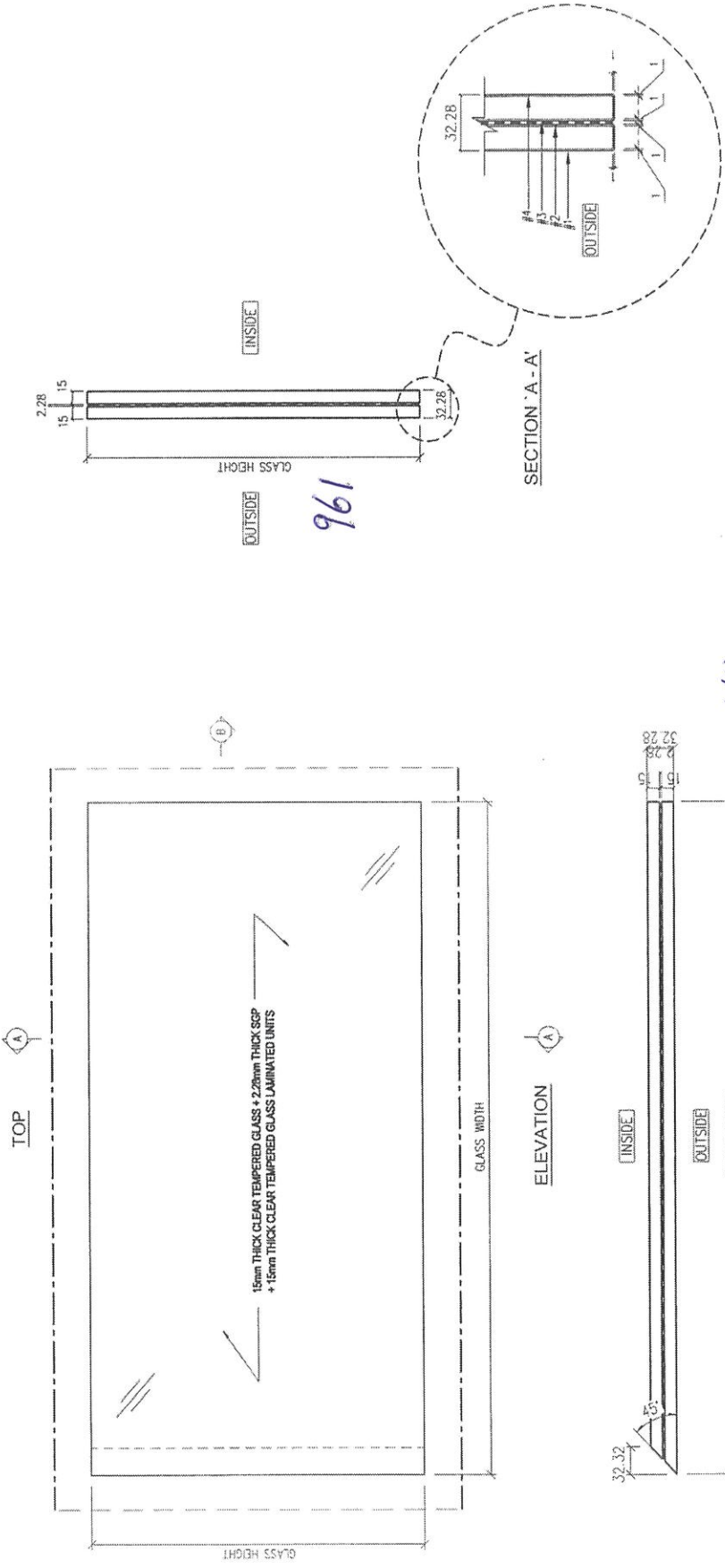
LEGEND:
 --- ALL EDGES TO BE GRIND FINISH
 - - - ALL GLASS SHAPE TO BE VIEWED FROM OUTSIDE

REMARKS : ALL GLASS SHAPE TO BE VIEWED FROM OUTSIDE

DISTRIBUTION TABLE		校對: -	工程名稱: 寶發建設工程有限公司 Polyfair Construction & Engineering Ltd.
編號:	-	日期: -	PROPOSED RESIDENTIAL DEVELOPMENT AT TKOTL70RP, PHASE 11, LOHAS PARK, TSEUNG KWAN O.N.T.
材料:	10MM THICK CLEAR TEMPERED GLASS + 1.52PVB + 10MM THICK CLEAR TEMPERED LAMINATED GLASS	數量: LIN	項目: PF-21006
表面處理:	-	日期: 2022-07	比例: 1:5

13/12

T3-9BC



LEGEND:
 - - - POLISH EDGE FINISH FOR VISUAL SIDES
 - - - ALL EDGES TO BE GRIND FINISH
 REMARKS: ALL GLASS SHAPE TO BE VIEWED FROM OUTSIDE

工程名稱:	PROPOSED RESIDENTIAL DEVELOPMENT AT TROTTER, PHASE 11, LOHAS PARK, TSEING WENH Q. N. T.	圖號:	S4-GS01-103- T3-9BC
項目:	FABRICATION DRAWING OF GLASS PANEL (FOR GLASS BALUSTRADE AT TRANSFER FLATE - 9/F LAYOUT PLAN (TOWER 1))	工程師號:	PF-21006
日期:	2023-09-19	比例:	1 : 5

寶發建設工程有限公司
 Polyfair Construction
 & Engineering Ltd.

DISTRIBUTION TABLE	
編號:	-
材料:	15mm THICK CLEAR TEMPERED GLASS + 2.28mm THICK SSP + 15mm THICK CLEAR TEMPERED GLASS LAMINATED UNITS
表面處理:	-

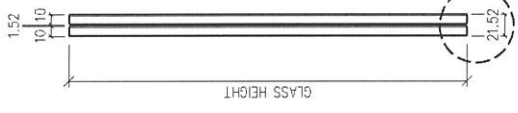
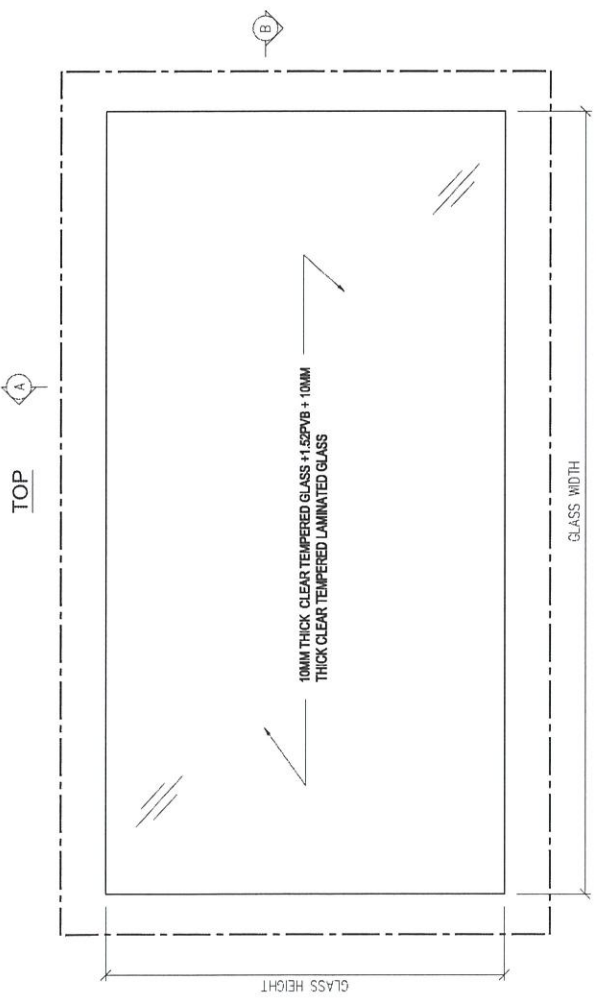
114

1197

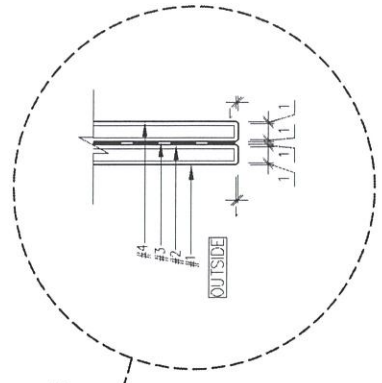
961

18AC	2330 X 1160 (H) 1件
21AC	2330 X 1160 (H) 1件
29AC	2330 X 1160 (H) 1件
37AC	2330 X 1160 (H) 1件
38AC	2330 X 1160 (H) 1件
43AC	535 X 1160 (H) 1件
61AC	2330 X 1160 (H) 1件
29AD	2175 x 1160 (H) 1件
57AF	2175 x 1160 (H) 1件
29AG	2175 x 1160 (H) 1件
42BA	1875 x 1160 (H) 1件
49BA	1875 x 1160 (H) 1件
50BB	2330 x 1160 (H) 1件
50BB	575 X 1160 (H) 1件
20BD	2055 x 1160 (H) 1件

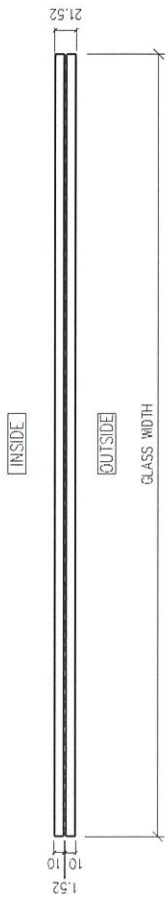
T3



ELEVATION



SECTION 'A - A'



SECTION 'B - B'

LEGEND:

- ALL EDGES TO BE GRIND FINISH
- REMARKS : ALL GLASS SHAPE TO BE VIEWED FROM OUTSIDE

DISTRIBUTION TABLE		校對: -	工程名稱: 寶發建設工程有限公司	圖號: S1-GTT3-001	冊次: -
編號:	-	日期: -	PROPOSED RESIDENTIAL DEVELOPMENT AT TKOT70RP, PHASE 11, LOHAS PARK, TSEUNG KWAN O.N.T.	工程圖號: PF-21006	
材料:	10MM THICK CLEAR TEMPERED GLASS +1.52PVB + 10MM THICK CLEAR TEMPERED LAMINATED GLASS	製圖: LIN	項目: FABRICATION DRAWING OF GLASS PANEL (FOR (S1) Glass Balustrade and Aluminum Grille)	比例: 1:5	
表面處理:	-	日期: 2022-07			

DF Polyfair Construction & Engineering Ltd.

業主單露台更換玻璃 執修進度表

業主單(件)	玻璃(正面)		玻璃(側面)	
	283	85%	50	15%
合標(件)	0	0.00%	0	0.00%
物料未訂(件)	168	59.36%	40	80%
物料已訂(件)	115	41%	10	20%
已安裝/完成(件)	69	24%	4	8%

明細 - 業主單露台玻璃執修進度表

Unit	玻璃(正面)				玻璃(側面)				Total(單位計)				
	合標	未訂	已訂	已安裝/完成	合標	未訂	已訂	已安裝/完成	總數	合標	未訂	已訂	已安裝/完成
T1_60AA	0	168	115	69	0	40	10	4	333	0	208	125	73
T1_57AA		1	1						1	0	1	0	0
T1_47AA			1	1					1	0	0	1	1
T1_35AA			1						1	0	0	1	0
T1_33AA			1	1					1	0	0	1	1
T1_37AA		1							1	0	1	0	0
T1_9AB		6							6	0	6	0	0
T1_10AB			1	1					1	0	0	1	1
T1_19AB			1						1	0	0	1	0
T1_22AB			1	1					1	0	0	1	1
T1_38AB(業主回覆不用更換)			1						1	0	0	1	0
T1_9AC		1							1	0	1	0	0
T1_10AC		1	1			1	1		2	0	2	0	0
T1_17AC			1	1					1	0	0	1	1
T1_35AC			1						1	0	0	1	0
T1_37AC		1				1			2	0	2	0	0
T1_43AC			1	1					1	0	0	1	1
T1_62AC		1	1						1	0	1	0	0
T1_9AD		2							2	0	2	0	0
T1_16AD			1						1	0	0	1	0
T1_37AD		1							1	0	1	0	0
T1_48AD			1						1	0	0	1	0
T1_9AE		2							2	0	2	0	0
T1_18AE			1	1					1	0	0	1	1
T1_19AE			1	1					1	0	0	1	1
T1_32AE			1	1					1	0	0	1	1
T1_37AE		1							1	0	1	0	0
T1_62AE		1	1	1					1	0	1	0	1
T1_20AF(業主回覆不用更換)			1						1	0	0	1	0
T1_28AF(業主回覆不用更換)			1						1	0	0	1	0
T1_15AF		1							1	0	1	0	0
T1_29AF			1	1					1	0	0	1	1
T1_39AF(業主回覆不用更換)			1						1	0	0	1	0
T1_53AF				1					0	0	0	0	1
T1_9AG		4							4	0	4	0	0
T1_32AG(業主回覆不用更換)			1						1	0	0	1	0
T1_39AG			1						1	0	0	1	0
T1_15BA		1							1	0	1	0	0
T1_27BA			1	1					1	0	0	1	1
T1_47BA			1	1					1	0	0	1	1
T1_61BA			1	1					1	0	0	1	1
T1_60BA		1	1						1	0	1	0	0
T1_62BA		1							1	0	1	0	0
T1_61BB		1						1	2	0	2	0	0
T1_60BB		1						1	2	0	2	0	0
T1_59BB		1						1	2	0	2	0	0
T1_58BB		1						1	2	0	2	0	0
T1_57BB		1						1	2	0	2	0	0
T1_56BB		1						1	2	0	2	0	0
T1_55BB		1						1	2	0	2	0	0
T1_53BB		1						1	2	0	2	0	0
T1_52BB		1						1	2	0	2	0	0
T1_51BB				1				1	0	0	0	0	2
T1_50BB				1				1	0	0	0	0	2
T1_49BB		1	1					1	2	0	2	0	0
T1_48BB		1	1					1	2	0	2	0	0
T1_47BB				1				1	0	0	0	0	2
T1_46BB		1						1	2	0	2	0	0
T1_18BB			1	1				1	1	0	0	1	1
T1_26BB		1	1					1	1	0	1	0	0
T1_33BB			1	1			1	1	2	0	0	2	2
T1_35BB		1						1	2	0	2	0	0
T1_41BC(業主回覆不用更換)			1					1	1	0	0	1	0
T1_9BC		4							4	0	4	0	0
T1_15BC			1						1	0	0	1	0
T1_28BC			1	1					1	0	0	1	1
T1_39BC			1	1					1	0	0	1	1
T1_46BC(業主回覆不用更換)			1						1	0	0	1	0
T1_47BC			1	1					1	0	0	1	1
T1_48BC			1						1	0	0	1	0
T1_35BC		1						1	2	0	2	0	0
T1_9BD		1						1	1	0	1	0	0
T1_21BD			1	1				1	1	0	0	1	1

T1-98A

E1 9245 已訂
 本次E1 訂
 E1 9270
 15/4/24

更新日期 20/12/2025

Kolm 29/12 通知

73	用後備玻璃更換	9	橙色7月內訂的玻璃, 9月底
5	黃色5月內訂的玻璃, 7月底前到		前到
#VALUE!	黃色6月內訂的玻璃, 8月底前到		橙色8月內訂的玻璃, 10月
73	已完成		底前到
0	安全玻璃已到貨		11月內訂玻璃, 1月底前到
	合標		

BC無
 候煙

1

Unit	玻璃(正面)				玻璃(側面)				Total (單位計)				
	合標	未訂	已訂	已安裝/完成	合標	未訂	已訂	已安裝/完成	總數	合標	未訂	已訂	已安裝/完成
T3_62AF		1	1	1					1	0	1	0	0
T3_16AG			1	1					1	0	0	1	1
T3_23AG		1		1					1	0	1	0	1
T3_29AG		1							1	0	1	0	0
T3_35AG			1						1	0	0	1	0
T3_50AG		1	1						1	0	1	0	0
T3_55AG			1						1	0	0	1	0
T3_62AG			1						1	0	0	1	0
T3_65AG			1						1	0	0	1	0
T3_28BA			1						1	0	0	1	0
T3_30BA		1	1						1	0	1	0	0
T3_20BA		1	1						1	0	1	0	0
T3_42BA		1							1	0	1	0	0
T3_49BA		1							1	0	1	0	0
T3_23BB		1	1						1	0	1	0	0
T3_35BB		1	1						1	0	1	0	0
T3_37BB			1						1	0	0	1	0
T3_42BB		1							1	0	1	0	0
T3_50BB		1					1		2	0	2	0	0
T3_57BB						1	1		1	0	1	0	0
T3_60BB			1				1		2	0	0	2	0
T3_65BB		1	1						1	0	1	0	0
T3_66BB		1	1						1	0	1	0	0
T3_67BB		3							3	0	3	0	0
T3_9BC		1	2	2					3	0	1	2	2
T3_20BD		1		1					1	0	1	0	1
T3_58BD		1	1						1	0	1	0	0
T3_59BD		1	1	1					1	0	1	0	1
T3_62BD			1						1	0	0	1	0
T3_21BE			1						1	0	0	1	0
T3_23BE			1	1					1	0	0	1	1
T3_38BE			1						1	0	0	1	0
T3_41BE			1						1	0	0	1	0
T3_12BF			1						1	0	0	1	0
T3_21BF			1						1	0	0	1	0
T3_23BF			1						1	0	0	1	0
T3_28BF			1						1	0	0	1	0
T3_33BF			1	1					1	0	0	1	1
T3_36BF			1						1	0	0	1	0
T3_38BF			1						1	0	0	1	0
T3_43BF			1						1	0	0	1	0
T3_52BF			1						1	0	0	1	0
T3_56BF			1						1	0	0	1	0

201

204
204

207

202

E1 9201 (E1)

6

(

)