

工程指示 / 要求簡箋(E.I.)

工程指示編號：EI / 9124 / 25 修改版次：

工程編號：J - 858 工程名稱：將軍澳日出康城

工程項目：幕牆 第 10 次 補玻璃 4 件 (小業主單)

收件人：Maggie 發件人：Jason 日期：11/09/2025

要求提供 / 確認 事項：

- () 初步鋁料 B.M. () 加工拆圖，然後生產 () 尺寸表
- () 正式鋁料 B.M. () 技術上資料 / 指示 () 報價
- () 配件 B.M. () 樣辦或貨品說明書 () 分判合約

內容：

由於地盤需要更換玻璃，請按玻璃 BM 生產玻璃，共 4 件 送地盤。
請安排熱浸

1. 不要印上熱浸標籤。只給”可移除”的標籤。
2. 依原 EI 4867, EI 4943, EI 4942 尺寸補，
3. *****玻璃標籤請註明座、樓層、單位。***** 請留意。
- 4.
- 5.
6. 地盆：更換幕牆玻璃，需用吊船。
7. 按芳姐 琮 資料

謝謝

請在 2025. 10.10 前完成上列要求。

分發東莞各部門：

- ()生產技術總監 連附件 ()技術部 連附件 ()生產部 連附件 ()機械設計部 連附件
- ()採購部 連附件 ()生產統籌部 連附件 ()小羅&清 連附件
- ()質檢部 連附件 ()會計部 連附件 ()報關組 連附件 ()其他 _____ 連附件

分發香港各部門：

- ()行政部 連附件 ()會計部 連附件 ()統籌部 連附件 (✓)工程部地盤科文 三寶 連附件
- (✓)採購部 連附件 ()QS 部 連附件 ()維修部 連附件 ()其他 _____ 連附件


傳遞編號：

HK / 25

發件人簽署：

項目經理簽署：

序號	EI	項目	座	樓層	單位	件數	玻璃編號		W (mm)	H (mm)	厚度(mm)	Letter
375	EI9124	CW	T1	55/F	AF	1	GI.02-08	主轉角生窗	655.5	1443	10mm THK. HEAT STRENGTHEN GLASS (OUTSIDE) W/LOW-E COATING ON SURFACE 3RT #2 + 12mm AIR SPACE + 12mm THK. CLEAR TEMPERED GLASS(INSIDE) K1 (R20220114001)	
376	EI9124	CW	T1	55/F	AF	1	GI.01-05	主轉角生下樑	678.5	832	10mm THK. HEAT STRENGTHEN GLASS (OUTSIDE) W/LOW-E COATING ON SURFACE 3RT #2 + 12mm THK. CLEAR TEMPERED GLASS(INSIDE) K1 (R20220114001)	
377	EI9124	CW	T1	52/F	BF	1	GI.01-12FG	主房大樑	738	2332	10mm THK. HEAT STRENGTHEN GLASS (OUTSIDE) W/LOW-E COATING ON SURFACE 3RT #2 + 12mm THK. CLEAR TEMPERED GLASS(INSIDE) K1 (R20220114001)	
378	EI9124	CW	T1	51/F	BF	1	GI.01-02	主生下樑	663	832	10mm THK. HEAT STRENGTHEN GLASS (OUTSIDE) W/LOW-E COATING ON SURFACE 3RT #2 + 12mm THK. CLEAR TEMPERED GLASS(INSIDE) K1 (R20220114001)	
			補玻璃總數				4					
	GI.01	=	10mm THK. HEAT STRENGTHEN GLASS (OUTSIDE) W/LOW-E COATING ON SURFACE 3RT #2 + 12mm AIR SPACE + 12mm THK. CLEAR TEMPERED GLASS(INSIDE) K1 (R20220114001)									
	GI.02	=	10mm THK. HEAT STRENGTHEN GLASS (OUTSIDE) W/LOW-E COATING ON SURFACE 3RT #2 + 12mm AIR SPACE + 10mm THK. CLEAR TEMPERED GLASS(INSIDE) K1 (R20220114003)									
	GI.03	=	12mm THK. HEAT STRENGTHEN GLASS, Reflective Glass SSC1-60T (R20220324054)									

OSR	聯檢代表
MIDI	盧國深
公司	姓名
日期	簽名
3-9-2025	



PROJECT: 康城11期凱柏峰
 MIDI ALUMINIUM FABRICATOR LTD.
 美特鋁質有限公司
 項目: 鋁窗, 鋁門及幕牆玻璃的驗收表格
 TOWER: 1A
 樓層: 55
 單位: F



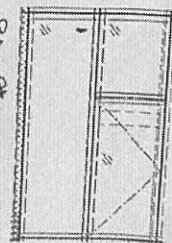
PROJECT: 康城11期凱柏峰

項目: 鋁窗, 鋁門及幕牆玻璃的驗收表格

TOWER: 1B

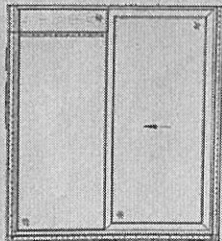
樓層: 52

單位: F



外窗
樣

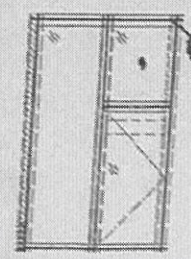
6201-1276



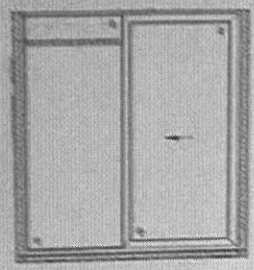
司	姓名	簽名	日期
DI	詹國深	✓	2-9-2025
R			

姓名	盧國深
簽名	(
日期	

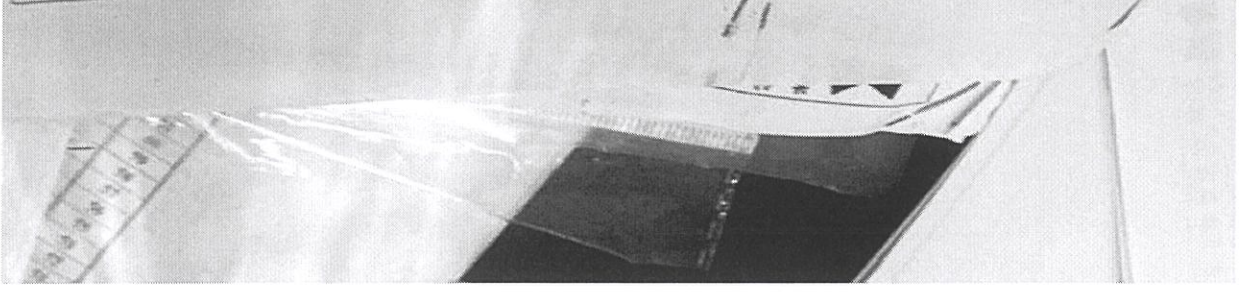
GL01-02



外窗



PROJECT: 康城11期凱柏峰
 英特經貿有限公司
 MIDI
 項目: 鋁窗, 鋁門及幕牆玻璃的驗收表格
 TOWER: 1B 樓層: 5/F 單位: F



B.D. REF : **T1AF**

CLIENT :
 Sino Land Company Limited
 信和置業有限公司

ARCHITECT :
 Ronald Lu & Partners (HK) Ltd.
 羅蘭路建築師事務所有限公司

MAIN CONTRACTOR :
 Gammon

STRUCTURAL ENGINEER :
 AECOM

FAÇADE CONSULTANT :
 AECOM

NOTE :
 1. ALL DIMENSIONS ARE IN mm.
 2. ALL ELEVATIONS ARE VIEWED FROM OUTSIDE.
 3. ALL DIMENSIONS TO BE VERIFIED ON SITE BEFORE FABRICATION.

LEGEND :
 1. REF. - REFERENCE SHEET NO.
 2. F.F.L. - FINISHED FLOOR LEVEL
 3. S.F.L. - STRUCTURAL FLOOR LEVEL
 4. R - REVERSED DENIAL

NO.	DATE	REVISION
1	13/02/21	ISSUED AS PER COMMENTS
2	15/02/21	ISSUED AS PER COMMENTS
3	18/02/21	ISSUED AS PER COMMENTS
4	20/02/21	ISSUED AS PER COMMENTS
5	13/02/21	ISSUED AS PER COMMENTS
6	13/02/21	ISSUED AS PER COMMENTS

JOB NO. : J-858
PROJECT : PROPOSED RESIDENTIAL DEVELOPMENT AT TOWER 10, PHASE 11, LOMAS PARK TSEUNG KWAN O, N.T.

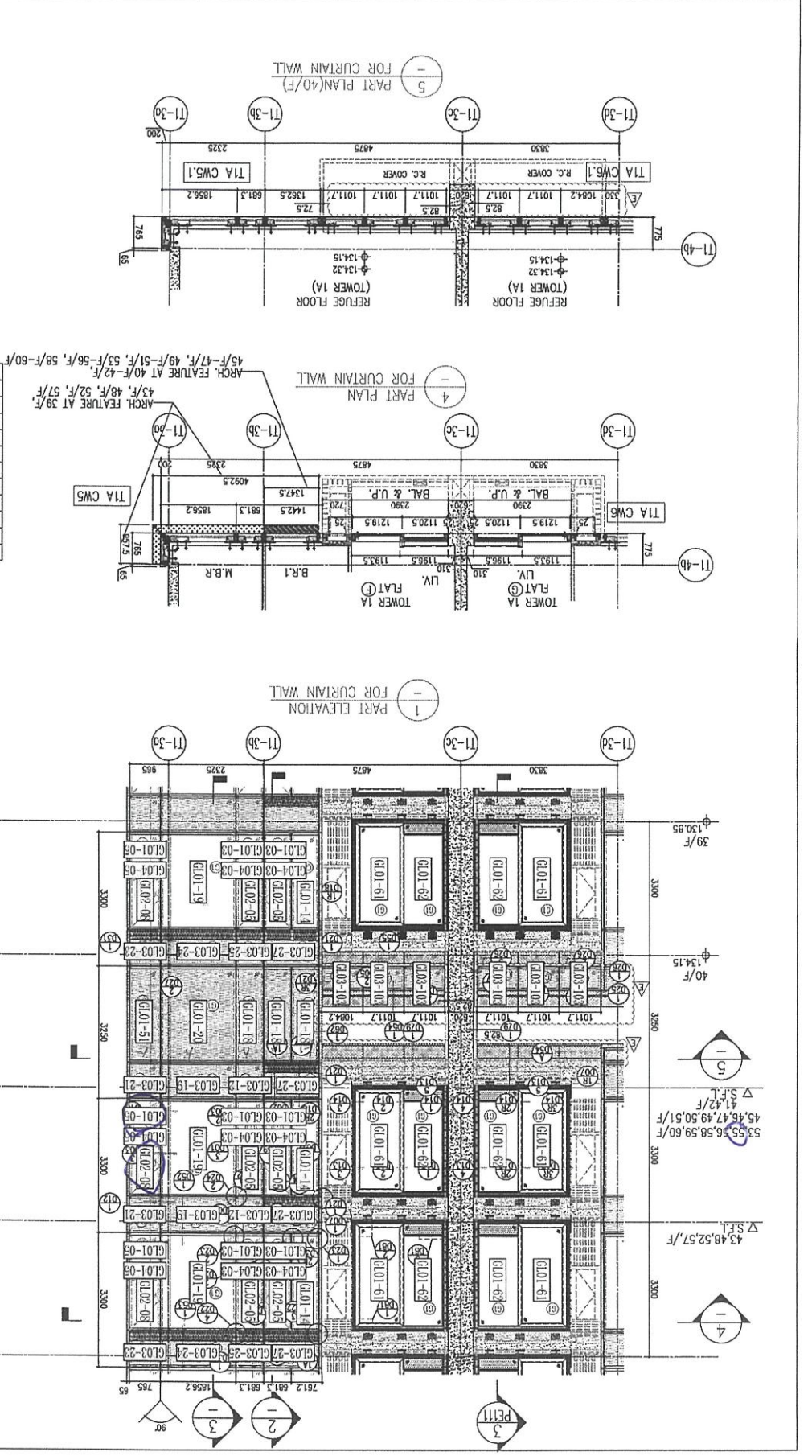
TITLE : TYPICAL FLOOR PARTIAL ELEVATION & SECTION, PLAN FOR CURTAIN WALL (TOWER 1)

DATE : 22-OCT-21
SCALE : 1:50(A1)
DRAWN BY :
CHECKED BY :
 MIDI Architecture & Interiors Ltd.
 610 Chee Kwoi Road, Kowloon
 Tel: 23439211-4 Fax: 6022727665
DWG NO. : J-858-CW-PE112
REV. : E

LEGEND :

- 10mm THK. HEAT STRENGTHENED GLASS (OUTSIDE) + 12mm AIR SPACE + 12mm THK. TEMPERED GLASS
- 12mm THK. HEAT STRENGTHENED GLASS (OUTSIDE) + 12mm AIR SPACE + 10mm THK. CLEAR STRENGTHENED GLASS
- 12mm THK. CLEAR STRENGTHENED GLASS (INTERNAL PROTECTIVE BARRIER)
- 12mm THK. CLEAR TEMPERED GLASS
- 12mm CLEAR STRENGTHENED GLASS
- 10mm THK. CLEAR TEMPERED GLASS
- 8mm THK. CLEAR STRENGTHENED GLASS
- 8mm THK. CLEAR TEMPERED GLASS
- GLASS + 15mm AIR SPACE + 8mm THK. CLEAR HEAT-STRENGTHENED GLASS
- 3 mm THK. ALUM. CLADDING
- 3 mm THK. ALUM. BACKPAN
- S.L. - STACK JOINT

26/F	+91.25	39/F	+130.85	52/F	+170.40
25/F	+87.95	38/F	+127.55	51/F	+167.10
23/F	+84.65	37/F	+124.25	50/F	+163.80
22/F	+81.35	36/F	+120.95	49/F	+160.50
21/F	+78.05	35/F	+117.65	48/F	+157.20
20/F	+74.75	33/F	+114.35	47/F	+153.90
19/F	+71.45	32/F	+111.05	46/F	+150.60
18/F	+68.15	31/F	+107.75	45/F	+147.30
17/F	+64.85	30/F	+104.45	43/F	+144.00
16/F	+61.55	29/F	+101.15	42/F	+140.70
15/F	+58.25	28/F	+97.85	41/F	+137.40
12/F	+54.95	27/F	+94.55	40/F	+134.15
53/F	+173.70	55/F	+177.00	56/F	+180.30
57/F	+183.60	58/F	+186.90	59/F	+190.20
60/F	+193.50	61/F	+196.80	62/F	+200.30
R/F	+203.80				



T1AG
T1BF

CLIENT: 德地有限公司
Sino Land Company Limited

ARCHITECT: Ronald Lu & Partners
Room 1101, 11/F, 110 Wing Lok Street, Kowloon
德地有限公司 (香港) 有限公司
MAIN CONTRACTOR: 德地有限公司 (香港) 有限公司

STRUCTURAL DESIGNER: Gammon
AECOM

FACE CONSULTANT: AECOM

NOTE:
1. ALL DIMENSIONS ARE IN MM.
2. ALL ELEVATIONS ARE VIEWED FROM OUTSIDE.
3. ALL DIMENSIONS TO BE CHECKED ON SITE BEFORE FABRICATION.

LEGEND:
① DETAIL MARK NO.
② REFER SHEET NO.
③ FINISHED FLOOR LEVEL
④ STRUCTURAL FLOOR LEVEL
⑤ REVERSED LEVEL

JOB NO.: J-058
PROJECT: PROPOSED RESIDENTIAL DEVELOPMENT AT TITOL WARP, PHASE 11, LUNAS PARK, TUNG HING O, N.T.

TITLE: TYPICAL FLOOR PARTIAL ELEVATION & SECTION, PLAN FOR CURTAIN WALL (TOWER 1)

DATE: 22-007-21
SCALE: 1:50(A1)

DRAWN BY: 美特鋁質有限公司
CHECKED BY: 美特鋁質有限公司

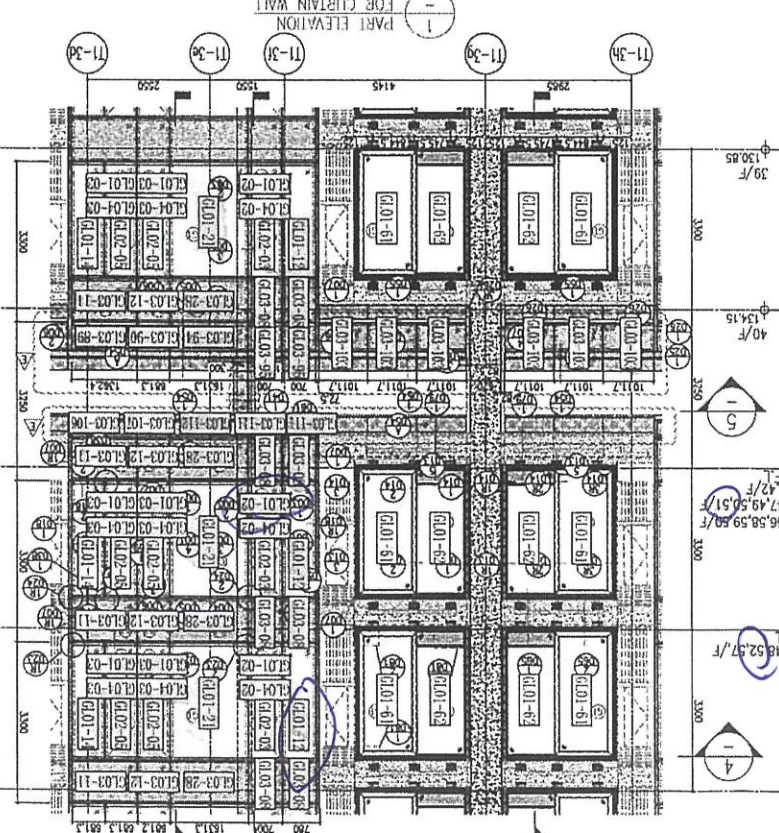
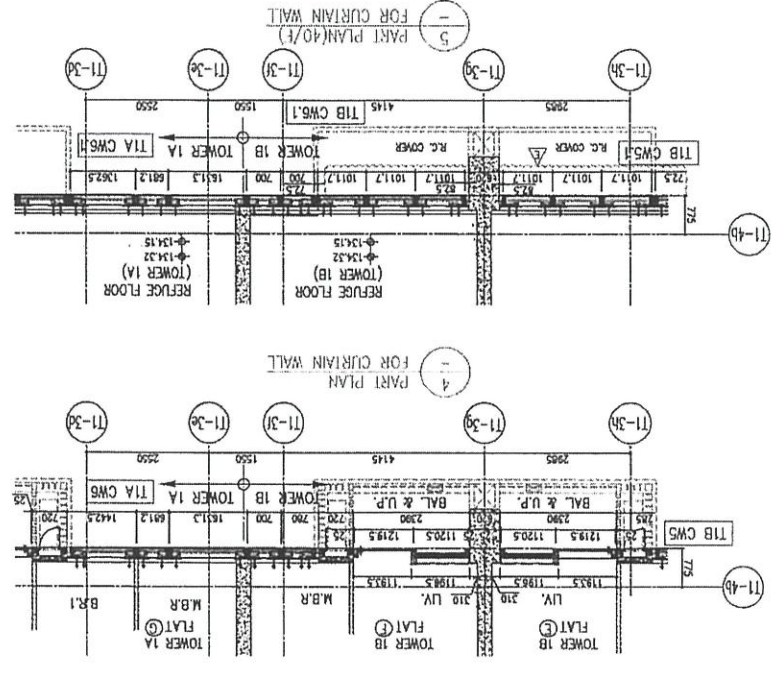
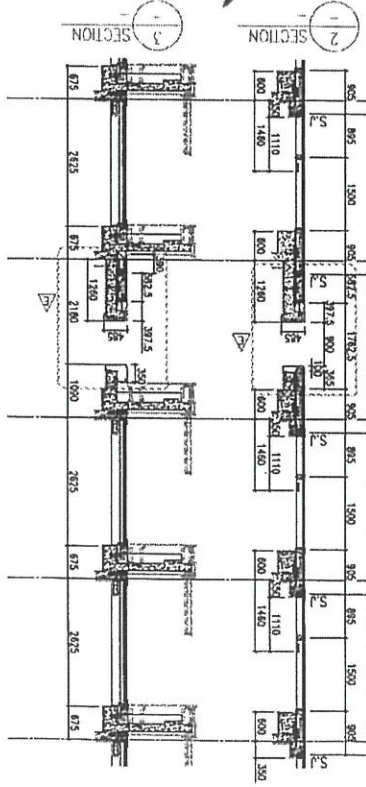
MDTI Architectural Aluminium Ltd.
1101, 11/F, Wing Lok Street, Kowloon
18-23489711-4, Fax: (853) 27721665
DWG NO.: J-0558-CW-PE113
REV.: E

LEGEND:

12mm THK HEAT STRENGTHENED GLASS (OUTSIDE) 12mm AIR SPACE 1	12mm THK HEAT STRENGTHENED GLASS (OUTSIDE) 12mm AIR SPACE 1
12mm THK HEAT STRENGTHENED GLASS (INTERNAL PROTECTIVE BARRIER)	12mm THK CLEAR STRENGTHENED GLASS
12mm THK CLEAR TEMPERED GLASS	10mm THK CLEAR TEMPERED GLASS
8mm THK CLEAR JELLY-STRENGTHENED GLASS + 52mm AIR SPACE + 8mm THK CLEAR HEAT-STRENGTHENED GLASS	5mm THK ALUM. CLADDING
5mm THK ALUM. BACKFIN	S.D. - STACK JOINT

26/F	+91.25	26/F	+170.40
25/F	+87.55	25/F	+167.10
23/F	+84.85	23/F	+163.80
22/F	+81.35	22/F	+160.50
20/F	+78.05	20/F	+156.80
19/F	+74.75	19/F	+153.50
18/F	+71.45	18/F	+150.20
17/F	+68.15	17/F	+147.00
16/F	+64.85	16/F	+143.80
15/F	+61.55	15/F	+140.70
14/F	+58.25	14/F	+137.40
12/F	+54.95	12/F	+134.15
R/F	+203.80	R/F	+203.80
62/F	+200.30	62/F	+198.80
60/F	+193.50	60/F	+193.50
59/F	+190.20	59/F	+190.20
58/F	+186.90	58/F	+186.90
57/F	+183.60	57/F	+183.60
56/F	+180.30	56/F	+180.30
55/F	+177.00	55/F	+177.00
53/F	+173.70	53/F	+173.70

T1A
T1B
T1C



43.48 @ 2.7/F
45.46 @ 4.9 @ 5.9 @ 6/F
41.42/F
134.15