



工程指示 / 要求簡箋(E.I.)

工程指示編號：EI / 8999 / 25 修改版次：A

工程編號：J - 858 工程名稱：將軍澳日出康城

工程項目：幕牆 第 5 次 補玻璃 20 件 (小業主單)

收件人：Maggie

發件人：Jason

日期：04/07/2025

□要求提供 / □確認 事項：

- | | | |
|---------------|----------------|----------|
| () 初步鋁料 B.M. | () 加工拆圖，然後生產 | () 尺寸表 |
| () 正式鋁料 B.M. | () 技術上資料 / 指示 | () 報價 |
| () 配件 B.M. | () 樣辦或貨品說明書 | () 分判合約 |

內容：

A 版次：增加至 20 件

由於地盤需要更換玻璃，請按玻璃 BM 生產玻璃，共 20 件 送地盤。
請安排熱浸

1. 不要印上熱浸標籤。只給”可移除”的標籤。
2. 依原 EI 4867, EI 4943, EI 4942 尺寸補，
3. *****分座包箱，玻璃標籤請註明樓層、單位。***** 請留意。
4. 第一次補 25 件 EI8938; 第 2 次補 35 件 EI8952; 第 3 次補 23 件 EI8974; 第 4 次補 72 件 EI8990; 第 5 次補 20 件本次 EI
5. 地盆：更換幕牆玻璃，需用吊船。
6. 按芳姐 二寶 資料

謝謝

請在 2025.08.03 前完成上列要求。

分發東莞各部門：

- | | | | | | |
|---------------|--------|--------------|---------|--------|----------------------|
| ()生產技術總監□連附件 | ()技術部 | □連附件 | ()生產部 | □連附件 | ()機械設計部□連附件 |
| ()採購部 | □連附件 | ()生產統籌部□連附件 | ()小羅&清 | □連附件 | |
| ()質檢部 | □連附件 | ()會計部 | □連附件 | ()報關組 | □連附件 ()其他 _____□連附件 |

分發香港各部門：

- | | | | | |
|------------|------------|------------|----------------------|-----------------|
| ()行政部□連附件 | ()會計部□連附件 | ()統籌部□連附件 | (✓)工程部地盤科文 <u>二寶</u> | ☑連附件 |
| (✓)採購部☑連附件 | ()QS 部 | □連附件 | ()維修部□連附件 | ()其他 _____□連附件 |

傳遞編號：

HK

/ 25

發件人簽署：

項目經理簽署：

| 序號 | EL | 項目 | 座 | 樓層 | 單位 | 件數 | 玻璃編號 | W (mm) | H (mm) | 厚度 (mm) | Letter | |
|-----|---------|-----------|---|------|----|----|---------|--------|--------|---|--------|--|
| 221 | E18999 | 27/5/小業主單 | T1 | 20/F | AE | 1 | GL01-53 | 513 | 832 | 10mm THK. HEAT STRENGTHEN GLASS (OUTSIDE) W/LOWE COATING ON SURFACE (AIR SPACE = 12mm THK. CLEAR TEMPERED GLASS(INSIDE)) (R(20220114001)) | | |
| 222 | E18999 | 27/5/小業主單 | T1 | 20/F | AE | 1 | GL02-15 | 513 | 1443 | 10mm THK. HEAT STRENGTHEN GLASS (OUTSIDE) W/LOWE COATING ON SURFACE (AIR SPACE = 12mm THK. CLEAR TEMPERED GLASS(INSIDE)) (R(20220114001)) | | |
| 223 | E18999 | 27/5/小業主單 | T1 | 25/F | BC | 1 | GL01-05 | 678.5 | 832 | 10mm THK. HEAT STRENGTHEN GLASS (OUTSIDE) W/LOWE COATING ON SURFACE (AIR SPACE = 12mm THK. CLEAR TEMPERED GLASS(INSIDE)) (R(20220114001)) | | |
| 224 | E18999 | 27/5/小業主單 | T1 | 49/F | BC | 1 | GL01-19 | 1770 | 2332 | 10mm THK. HEAT STRENGTHEN GLASS (OUTSIDE) W/LOWE COATING ON SURFACE (AIR SPACE = 12mm THK. CLEAR TEMPERED GLASS(INSIDE)) (R(20220114001)) | | |
| 225 | E18999 | 27/5/小業主單 | T2 | 12/F | BC | 1 | GL01-14 | 644 | 2332 | 10mm THK. HEAT STRENGTHEN GLASS (OUTSIDE) W/LOWE COATING ON SURFACE (AIR SPACE = 12mm THK. CLEAR TEMPERED GLASS(INSIDE)) (R(20220114001)) | | |
| 226 | E18999 | 27/5/小業主單 | T2 | 19/F | BA | 1 | GL01-14 | 644 | 2332 | 10mm THK. HEAT STRENGTHEN GLASS (OUTSIDE) W/LOWE COATING ON SURFACE (AIR SPACE = 12mm THK. CLEAR TEMPERED GLASS(INSIDE)) (R(20220114001)) | | |
| 227 | E18999 | 27/5/小業主單 | T2 | 22/F | BC | 1 | GL01-14 | 644 | 2332 | 10mm THK. HEAT STRENGTHEN GLASS (OUTSIDE) W/LOWE COATING ON SURFACE (AIR SPACE = 12mm THK. CLEAR TEMPERED GLASS(INSIDE)) (R(20220114001)) | | |
| 228 | E18999 | 27/5/小業主單 | T2 | 22/F | AD | 1 | GL01-43 | 713 | 2332 | 10mm THK. HEAT STRENGTHEN GLASS (OUTSIDE) W/LOWE COATING ON SURFACE (AIR SPACE = 12mm THK. CLEAR TEMPERED GLASS(INSIDE)) (R(20220114001)) | | |
| 229 | E18999 | 27/5/小業主單 | T2 | 25/F | BD | 1 | GL01-05 | 678.5 | 832 | 10mm THK. HEAT STRENGTHEN GLASS (OUTSIDE) W/LOWE COATING ON SURFACE (AIR SPACE = 12mm THK. CLEAR TEMPERED GLASS(INSIDE)) (R(20220114001)) | | |
| 230 | E18999 | 27/5/小業主單 | T2 | 30/F | BA | 1 | GL01-30 | 1687 | 2332 | 10mm THK. HEAT STRENGTHEN GLASS (OUTSIDE) W/LOWE COATING ON SURFACE (AIR SPACE = 12mm THK. CLEAR TEMPERED GLASS(INSIDE)) (R(20220114001)) | | |
| 231 | E18999 | 27/5/小業主單 | T2 | 30/F | BA | 1 | GL02-05 | 636 | 1443 | 10mm THK. HEAT STRENGTHEN GLASS (OUTSIDE) W/LOWE COATING ON SURFACE (AIR SPACE = 12mm THK. CLEAR TEMPERED GLASS(INSIDE)) (R(20220114001)) | | |
| 232 | E18999 | 27/5/小業主單 | T2 | 31/F | BC | 1 | GL01-14 | 644 | 2332 | 10mm THK. HEAT STRENGTHEN GLASS (OUTSIDE) W/LOWE COATING ON SURFACE (AIR SPACE = 12mm THK. CLEAR TEMPERED GLASS(INSIDE)) (R(20220114001)) | | |
| 233 | E18999 | 27/5/小業主單 | T2 | 31/F | BC | 1 | GL01-03 | 644 | 832 | 10mm THK. HEAT STRENGTHEN GLASS (OUTSIDE) W/LOWE COATING ON SURFACE (AIR SPACE = 12mm THK. CLEAR TEMPERED GLASS(INSIDE)) (R(20220114001)) | | |
| 234 | E18999 | 27/5/小業主單 | T2 | 32/F | BC | 1 | GL01-05 | 678.5 | 832 | 10mm THK. HEAT STRENGTHEN GLASS (OUTSIDE) W/LOWE COATING ON SURFACE (AIR SPACE = 12mm THK. CLEAR TEMPERED GLASS(INSIDE)) (R(20220114001)) | | |
| 236 | E18999A | 4/7/小業主單 | T2 | 37/F | AF | 1 | GL02-05 | 636 | 1443 | 10mm THK. HEAT STRENGTHEN GLASS (OUTSIDE) W/LOWE COATING ON SURFACE (AIR SPACE = 12mm THK. CLEAR TEMPERED GLASS(INSIDE)) (R(20220114001)) | | |
| 237 | E18999A | 4/7/小業主單 | T1 | 20/F | AE | 1 | GL01-27 | 1660 | 2332 | 10mm THK. HEAT STRENGTHEN GLASS (OUTSIDE) W/LOWE COATING ON SURFACE (AIR SPACE = 12mm THK. CLEAR TEMPERED GLASS(INSIDE)) (R(20220114001)) | | |
| 238 | E18999A | 4/7/小業主單 | T3 | 32/F | AA | 1 | GL01-14 | 644 | 2332 | 10mm THK. HEAT STRENGTHEN GLASS (OUTSIDE) W/LOWE COATING ON SURFACE (AIR SPACE = 12mm THK. CLEAR TEMPERED GLASS(INSIDE)) (R(20220114001)) | | |
| 239 | E18999A | 4/7/小業主單 | T3 | 32/F | AA | 1 | GL01-15 | 1272 | 2332 | 10mm THK. HEAT STRENGTHEN GLASS (OUTSIDE) W/LOWE COATING ON SURFACE (AIR SPACE = 12mm THK. CLEAR TEMPERED GLASS(INSIDE)) (R(20220114001)) | | |
| 240 | E18999A | 4/7/小業主單 | T3 | 52/F | BF | 1 | GL02-05 | 636 | 1443 | 10mm THK. HEAT STRENGTHEN GLASS (OUTSIDE) W/LOWE COATING ON SURFACE (AIR SPACE = 12mm THK. CLEAR TEMPERED GLASS(INSIDE)) (R(20220114001)) | | |
| 241 | E18999A | 4/7/小業主單 | T3 | 18/F | BC | 1 | GL01-14 | 644 | 2332 | 10mm THK. HEAT STRENGTHEN GLASS (OUTSIDE) W/LOWE COATING ON SURFACE (AIR SPACE = 12mm THK. CLEAR TEMPERED GLASS(INSIDE)) (R(20220114001)) | | |
| | | | 補玻璃總數 | | | | | 20 | | | | |
| | GL01 | = | 10mm THK. HEAT STRENGTHEN GLASS (OUTSIDE) W/LOWE COATING ON SURFACE SST #2 + 12 mm AIR SPACE + 12mm THK. CLEAR TEMPERED GLASS(INSIDE)) (R(20220114001)) | | | | | | | | | |
| | GL02 | = | 10mm THK. HEAT STRENGTHEN GLASS (OUTSIDE) W/LOWE COATING ON SURFACE SST #2 + 12 mm AIR SPACE + 10mm THK. CLEAR TEMPERED GLASS(INSIDE)) (R(20220114003)) | | | | | | | | | |
| | GL03 | = | 12mm THK. HEAT STRENGTHEN GLASS Reflective Glass SSC1-60T (R20220324054) | | | | | | | | | |

PROJECT: 康城11期凱柏峰

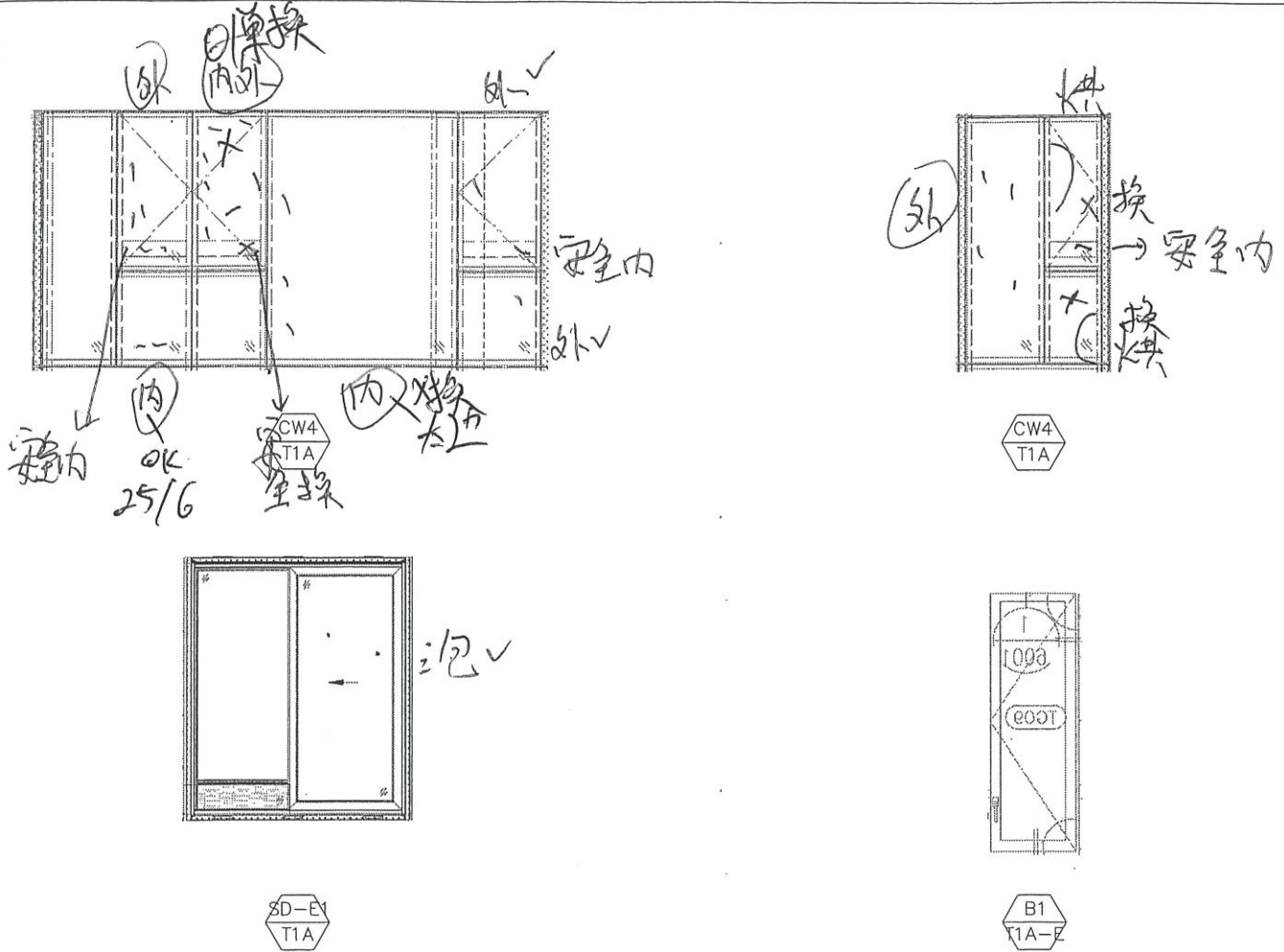
項目: 鋁窗, 鋁門及幕牆玻璃的驗收表格

02 打作

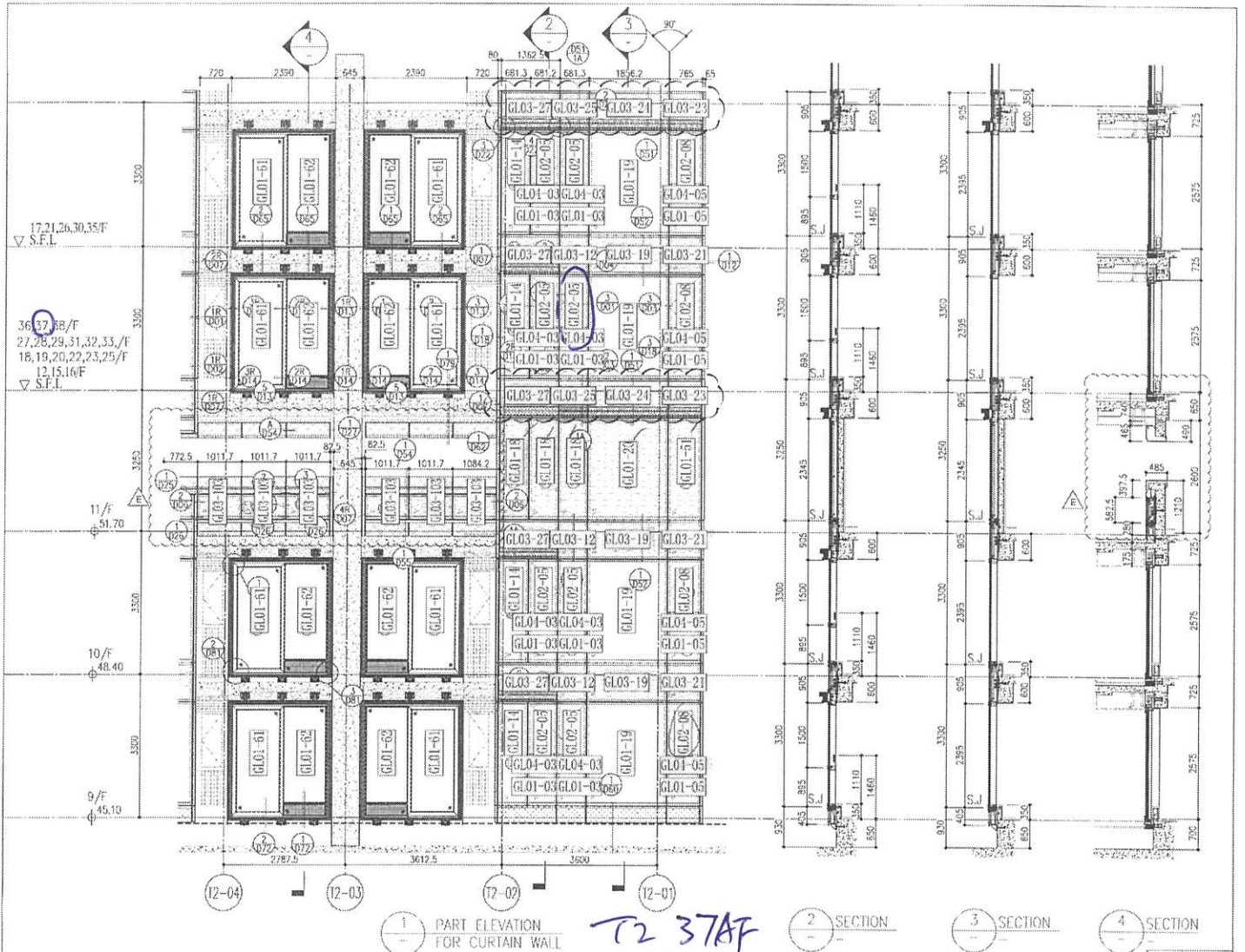
TOWER: 1A

樓層: 20

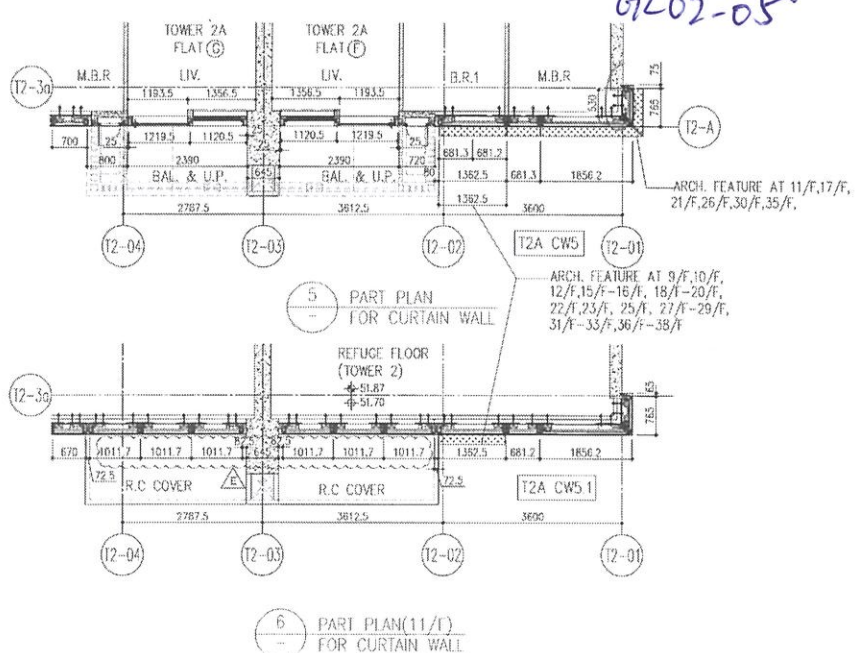
單位: E



| 聯檢代表 | 公司 | 姓名 | 簽名 | 日期 |
|------|------|-----|-------|-----------|
| | MIDI | 盧國深 | | 17-6-2025 |
| | OSR | | | |



T2 37AF
GLO2-05



| | | | | | |
|------|--------|------|---------|------|---------|
| | | | | R/F | +217.00 |
| | | | | 67/F | +213.50 |
| 26/F | +91.25 | 39/F | +130.85 | 52/F | +170.40 |
| 25/F | +87.95 | 38/F | +127.55 | 51/F | +167.10 |
| 23/F | +84.65 | 37/F | +124.25 | 50/F | +163.80 |
| 22/F | +81.35 | 36/F | +120.95 | 49/F | +160.50 |
| 21/F | +78.05 | 35/F | +117.65 | 48/F | +157.20 |
| 20/F | +74.75 | 33/F | +114.35 | 47/F | +153.90 |
| 19/F | +71.45 | 32/F | +111.05 | 46/F | +150.60 |
| 18/F | +68.15 | 31/F | +107.75 | 45/F | +147.30 |
| 17/F | +64.85 | 30/F | +104.45 | 43/F | +144.00 |
| 16/F | +61.55 | 29/F | +101.15 | 42/F | +140.70 |
| 15/F | +58.25 | 28/F | +97.85 | 41/F | +137.40 |
| 12/F | +54.95 | 27/F | +94.55 | 40/F | +134.10 |

- LEGEND:
- 10mm THK. HEAT STRENGTHENED GLASS (OUTSIDE) + 12mm AIR SPACE + 12mm THK. TEMPERED GLASS
 - 10mm THK. HEAT STRENGTHENED GLASS (OUTSIDE) + 12mm AIR SPACE + 10mm THK. TEMPERED GLASS
 - 12mm THK. CLEAR TEMPERED GLASS (INTERNAL PROTECTIVE BARRIER)
 - 10mm DELETED HEAT STRENGTHENED GLASS
 - 10mm DELETED CLEAR TEMPERED GLASS
 - 8mm THK. CLEAR HEAT-STRENGTHENED GLASS + 7mm PVB + 8mm THK. CLEAR HEAT-STRENGTHENED GLASS
 - 3 mm THK. ALUM. CLADDING
 - 3 mm THK. ALUM. BACKPAN
 - STACK JOINT

| | | | | |
|---|--|--|---|--|
| <p>PROJECT: PHOENIX RESIDENTIAL DEVELOPMENT AT TOWER 2A, PHASE 1A, LEWIS PARK RESIDUAL MAIN Q, N.T.</p> <p>TITLE: TYPICAL FLOOR PARTIAL ELEVATION & SECTION, PLAN FOR CURTAIN WALL (TOWER 2)</p> <p>DATE: 20-OCT-21 SCALE: 1:50(A1)</p> <p>DRAWN BY: [Name]</p> <p>CHECKED BY: [Name]</p> <p>DATE: 20-OCT-21 SCALE: 1:50(A1)</p> <p>PROJECT: PHOENIX RESIDENTIAL DEVELOPMENT AT TOWER 2A, PHASE 1A, LEWIS PARK RESIDUAL MAIN Q, N.T.</p> <p>TITLE: TYPICAL FLOOR PARTIAL ELEVATION & SECTION, PLAN FOR CURTAIN WALL (TOWER 2)</p> <p>DATE: 20-OCT-21 SCALE: 1:50(A1)</p> <p>DRAWN BY: [Name]</p> <p>CHECKED BY: [Name]</p> <p>DATE: 20-OCT-21 SCALE: 1:50(A1)</p> | <p>409 NO.: J-858</p> <p>PROJECT: PHOENIX RESIDENTIAL DEVELOPMENT AT TOWER 2A, PHASE 1A, LEWIS PARK RESIDUAL MAIN Q, N.T.</p> <p>TITLE: TYPICAL FLOOR PARTIAL ELEVATION & SECTION, PLAN FOR CURTAIN WALL (TOWER 2)</p> <p>DATE: 20-OCT-21 SCALE: 1:50(A1)</p> <p>DRAWN BY: [Name]</p> <p>CHECKED BY: [Name]</p> <p>DATE: 20-OCT-21 SCALE: 1:50(A1)</p> | <p>1. ALL DIMENSIONS ARE IN METERS.</p> <p>2. ALL DIMENSIONS ARE VERTICAL FROM OUTSIDE REFERENCE ELEVATION.</p> <p>3. ALL DIMENSIONS TO BE VERIFIED ON SITE BEFORE CONSTRUCTION.</p> <p>4. REFERENCE SHEET NO. [Number]</p> <p>5. REFERENCE SHEET NO. [Number]</p> <p>6. REFERENCE SHEET NO. [Number]</p> <p>7. REFERENCE SHEET NO. [Number]</p> <p>8. REFERENCE SHEET NO. [Number]</p> <p>9. REFERENCE SHEET NO. [Number]</p> <p>10. REFERENCE SHEET NO. [Number]</p> <p>11. REFERENCE SHEET NO. [Number]</p> <p>12. REFERENCE SHEET NO. [Number]</p> <p>13. REFERENCE SHEET NO. [Number]</p> <p>14. REFERENCE SHEET NO. [Number]</p> <p>15. REFERENCE SHEET NO. [Number]</p> | <p>PACKAGE CONSULTANT:</p> <p>STRUCTURAL ENGINEER:</p> <p>AECOM</p> <p>Gammou</p> <p>ARCHITECT:</p> <p>ronald lu</p> <p>Ronald Lu & Partners (HK) Ltd.</p> <p>ARCHITECT:</p> <p>信和實業有限公司</p> <p>Sino Lone Company Limited</p> | <p>B.S. REF: [Number]</p> <p>T2AF</p> |
|---|--|--|---|--|

紅單二合手標準
藍單二合手標準

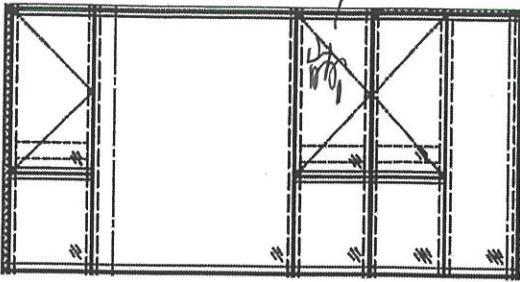
PROJECT: 康城11期凱柏峰

項目: 鋁窗, 鋁門及幕牆玻璃的驗收表格

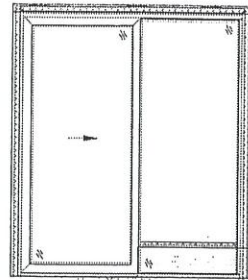
TOWER: 2A

樓層: 3X

單位: F

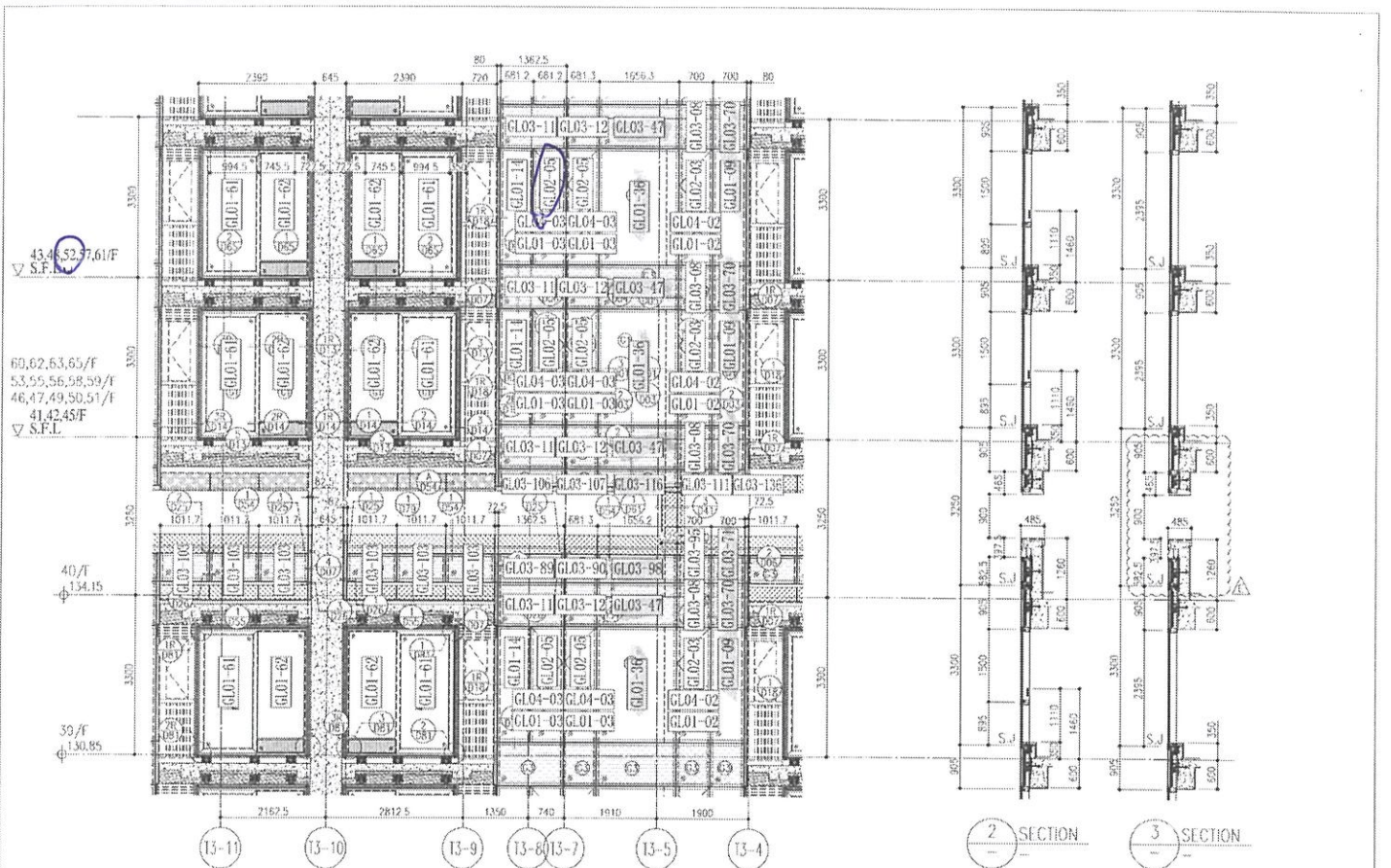


CW5
T2A



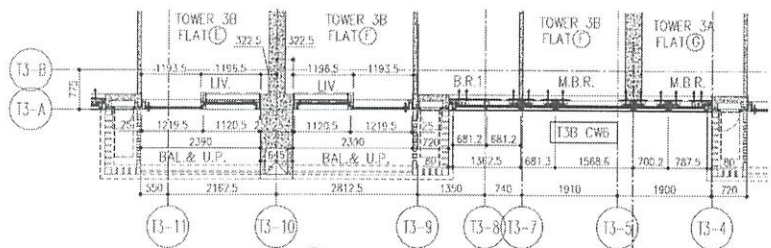
SD-F1
T2A

| 聯檢代表 | 公司 | 姓名 | 簽名 | 日期 |
|------|------|-----|----|----|
| | MIDI | 程國祥 | 程 | |
| | OSR | | | |

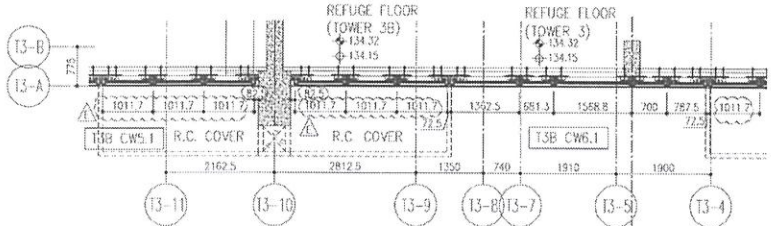


GLO2-05
T3
52BF

1 PART ELEVATION FOR CURTAIN WALL F G



4 PART PLAN FOR CURTAIN WALL TOWER 3B TOWER 3A



5 PART PLAN FOR CURTAIN WALL TOWER 3B TOWER 3A

| R/F | +217.00 | 67/F | +213.50 |
|------|---------|------|---------|
| 26/F | +91.25 | 39/F | +130.85 |
| 25/F | +87.95 | 38/F | +127.55 |
| 23/F | +84.65 | 37/F | +124.25 |
| 22/F | +81.35 | 36/F | +120.95 |
| 21/F | +78.05 | 35/F | +117.65 |
| 20/F | +74.75 | 33/F | +114.35 |
| 19/F | +71.45 | 32/F | +111.05 |
| 18/F | +68.15 | 31/F | +107.75 |
| 17/F | +64.85 | 30/F | +104.45 |
| 16/F | +61.55 | 29/F | +101.15 |
| 15/F | +58.25 | 28/F | +97.85 |
| 12/F | +54.95 | 27/F | +94.55 |
| | | 40/F | +134.15 |
| | | 53/F | +173.70 |

- LEGEND:
- 10mm THK HEAT STRENGTHENED GLASS (OUTSIDE) + 12mm AIR SPACE + 12mm THK. TEMPERED GLASS
 - 10mm THK. HEAT STRENGTHENED GLASS (OUTSIDE) + 12mm AIR SPACE + 10mm THK. TEMPERED GLASS
 - 12mm THK HEAT STRENGTHENED GLASS
 - 12mm THK. CLEAR TEMPERED GLASS (INTERNAL PROTECTIVE BARRIER)
 - 10mm THK. HEAT STRENGTHENED GLASS
 - 10mm THK. CLEAR TEMPERED GLASS
 - 8mm THK. CLEAR HEAT-STRENGTHENED GLASS + 2mm PVB + 8mm THK. CLEAR HEAT STRENGTHENED GLASS
 - 3 mm THK. ALUM. CLADDING
 - 3 mm THK. ALUM. BACKPAN
 - STACK JOINT

DATE: 22-06-21
SCALE: 1:50 (A1)
SHEET NO. 1

PROJECT: PROPOSED RESIDENTIAL DEVELOPMENT AT TOWER 3B, PHASE 11, LEONG PAW RESIDENCE, KOWLOON, H.K.

DESIGNED BY: J. BSE

CHECKED BY:

ARCHITECTURAL ENGINEER

AECOM

Gammou

STRUCTURAL ENGINEER

AECOM

Gammou

CLIENT: 德和置業有限公司
Siu Tung Company Limited

ARCHITECT: Ronald Lu & Partners (HK) Ltd.
Ronald Lu & Partners (香港) 有限公司

DATE: 22-06-21

REV. E

T3.

PROJECT: 康城11期凱柏峰

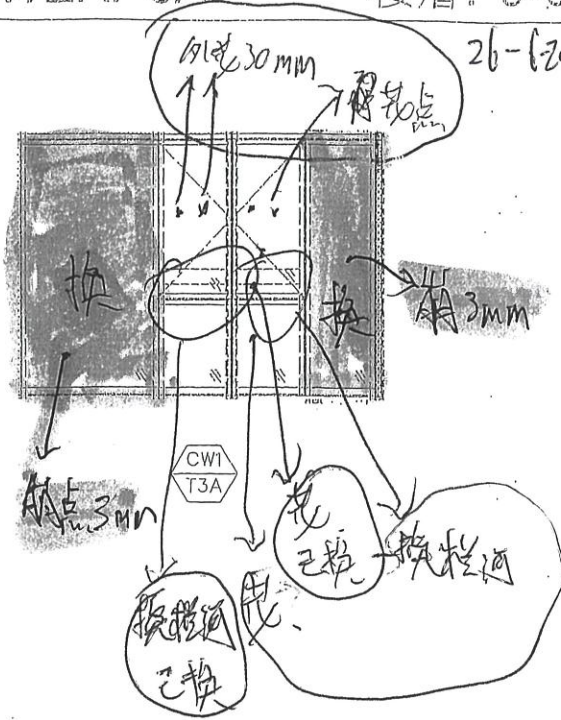
T3 32A, 第1次執修單

項目: 鋁窗, 鋁門及幕牆玻璃的驗收表格

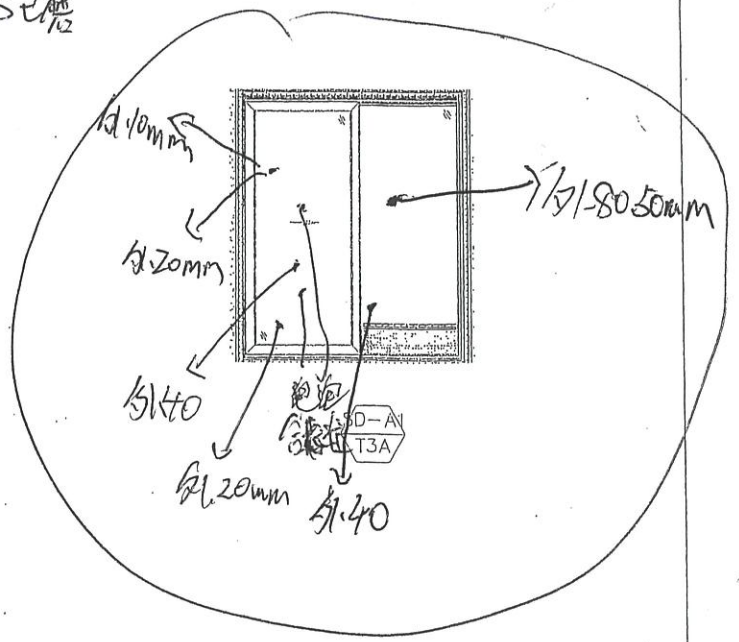
TOWER: 3A

樓層: 9-67

單位: A



26-6-2025 已磨



26-6-2025 已磨
Kehh
封框玻璃已換

26-6-2025 已磨
Kehh

| 聯檢代表 | 公司 | 姓名 | 簽名 | 日期 |
|------|------|-----|----|-----------|
| | MIDI | 西 漢 | | 25-8-2025 |
| | OSR | | | |



美特鋁質有限公司
MIDI ALUMINIUM FABRICATOR LTD.

PROJECT: 康城11期凱柏峰

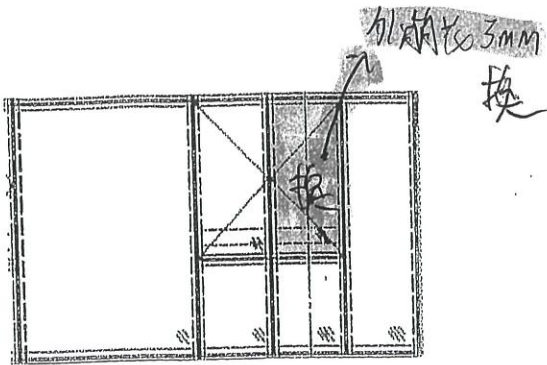
B-32 BF 第1次執修單

項目: 鋁窗, 鋁門及幕牆玻璃的驗收表格

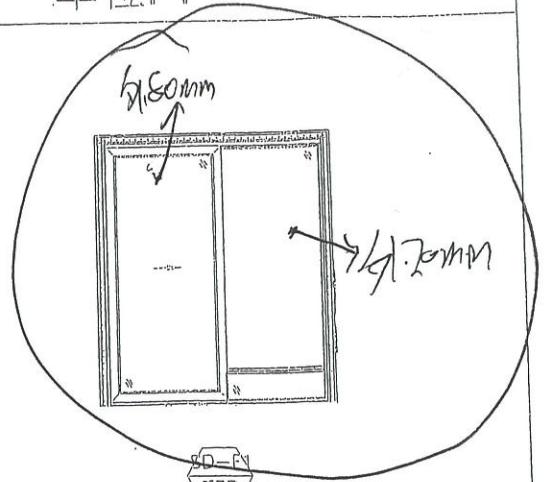
TOWER: 3B

樓層: 9-67

單位: F



CW6
T3B



SD-F1
T3B

26-6-2025 已修.
Kelan

| 聯檢代表 | 公司 | 姓名 | 簽名 | 日期 |
|------|------|----|----|-----------|
| | MIDI | 馬一 | 馬一 | 25-6-2025 |
| | OSR | | | |

T3 18BC

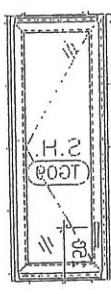
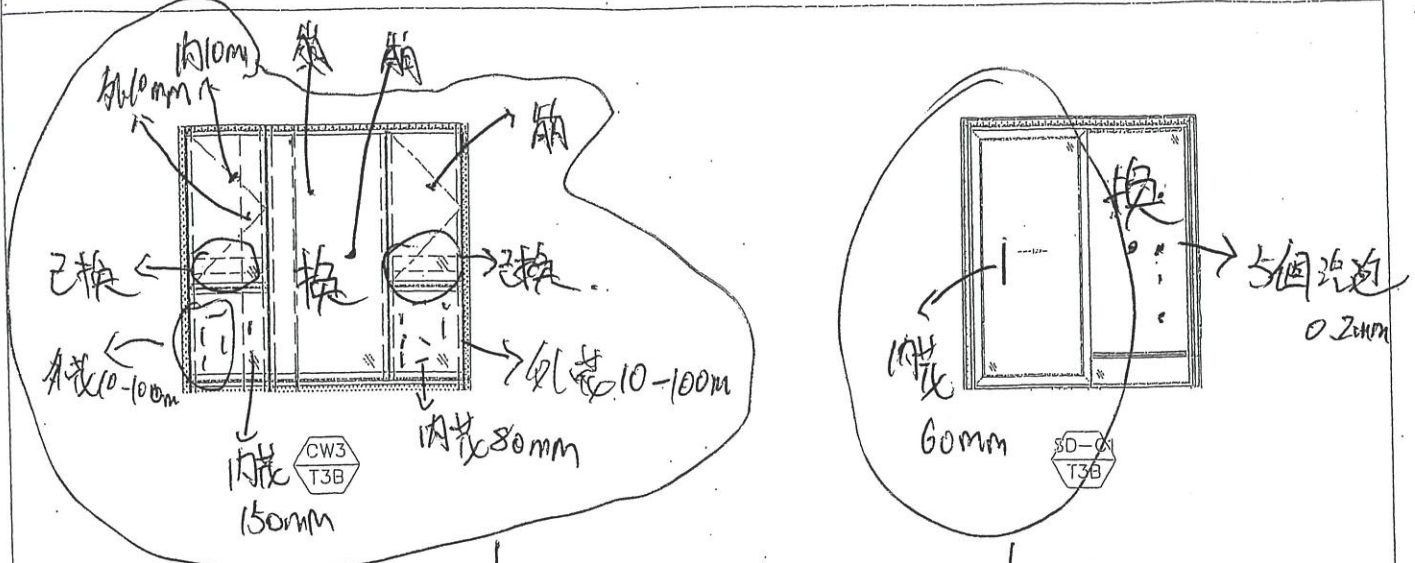
PROJECT: 康城11期凱柏峰

項目: 鋁窗, 鋁門及幕牆玻璃的驗收表格

TOWER: 3B

樓層: 9-67

單位: C



拆窗已換 30-6-2025
已磨 30-6-2025

已磨 30-6-2025

| 聯檢代表 | 公司 | 姓名 | 簽名 | 日期 |
|------|------|----|----|-----------|
| | MIDI | | | 28-6-2025 |
| | OSR | | | |