

工程指示 / 要求簡箋(E.I.)

工程指示編號：EI / 8952 / 25 修改版次： A

工程編號： J - 858 工程名稱：將軍澳日出康城

工程項目：幕牆 第 2 次 補玻璃 31 件 (小業主單)

收件人：Maggie 發件人：Jason 日期：27/05/2025

要求提供 / 確認 事項：

- () 初步鋁料 B.M. () 加工拆圖，然後生產 () 尺寸表
- () 正式鋁料 B.M. () 技術上資料 / 指示 () 報價
- () 配件 B.M. () 樣辦或貨品說明書 () 分判合約

內容：

A 版: 增加至 31 件

由於地盤需要更換玻璃，請按玻璃 BM 生產玻璃，共 31 件 送地盤。
請安排熱浸

1. 不要印上熱浸標籤。只給”可移除”的標籤。
2. 依原 EI 4867, EI 4943, EI 4942 尺寸補，
3. *****分座包箱，玻璃標籤請註明樓層、單位。***** 請留意。
4. 第一次補 25 件 EI8938; 第 2 次補 31 件本次;
5. 地盆：更換幕牆玻璃，需用吊船。
6. 按芳姐 二寶 資料

謝謝

請在 2025.06.30 前完成上列要求。

分發東莞各部門：

- ()生產技術總監 連附件 ()技術部 連附件 ()生產部 連附件 ()機械設計部 連附件
- ()採購部 連附件 ()生產統籌部 連附件 ()小羅&清 連附件
- ()質檢部 連附件 ()會計部 連附件 ()報關組 連附件 ()其他 _____ 連附件

分發香港各部門：

- ()行政部 連附件 ()會計部 連附件 ()統籌部 連附件 (✓)工程部地盤科文 二寶 連附件
- (✓)採購部 連附件 ()QS 部 連附件 ()維修部 連附件 ()其他 _____ 連附件

傳遞編號：

HK / 25

發件人簽署：

項目經理簽署：

| 序號 | 位 | 項目 | 座 | 樓層 | 單位 | 件數 | 玻璃編號 | W (mm) | H (mm) | 厚度(mm) | Letter |
|-----|---------|----------|----|------|----|----|---------|--------|--------|--------|--|
| 90 | 本次E | 20/5二樓 | T3 | 37/F | AF | 1 | GL01-14 | 644 | 2332 | 10 | Show THE HEAT STRENGTHEN GLASS (OPTIMISED W/L VISIBLE COATING ON SURFACE CLEAR TEMPERATURE (TEMPERED GLASS) (P2) (P20250116003)) |
| 91 | 本次E | 21/5小業主單 | T1 | 41/F | AE | 1 | GL01-54 | 713 | 2332 | 10 | Show THE HEAT STRENGTHEN GLASS (OPTIMISED W/L VISIBLE COATING ON SURFACE CLEAR TEMPERATURE (TEMPERED GLASS) (P2) (P20250116003)) |
| 92 | 本次E | 21/5小業主單 | T1 | 35/F | AB | 1 | GL01-06 | 903 | 2332 | 10 | Show THE HEAT STRENGTHEN GLASS (OPTIMISED W/L VISIBLE COATING ON SURFACE CLEAR TEMPERATURE (TEMPERED GLASS) (P2) (P20250116003)) |
| 93 | 本次E | 21/5小業主單 | T1 | 16/F | AB | 1 | GL02-03 | 663 | 1443 | 10 | Show THE HEAT STRENGTHEN GLASS (OPTIMISED W/L VISIBLE COATING ON SURFACE CLEAR TEMPERATURE (TEMPERED GLASS) (P2) (P20250116003)) |
| 94 | 本次E | 21/5小業主單 | T1 | 41/F | BD | 1 | GL01-23 | 1388 | 2332 | 10 | Show THE HEAT STRENGTHEN GLASS (OPTIMISED W/L VISIBLE COATING ON SURFACE CLEAR TEMPERATURE (TEMPERED GLASS) (P2) (P20250116003)) |
| 95 | 本次E | 21/5小業主單 | T1 | 27/F | BB | 1 | GL02-07 | 585 | 1443 | 10 | Show THE HEAT STRENGTHEN GLASS (OPTIMISED W/L VISIBLE COATING ON SURFACE CLEAR TEMPERATURE (TEMPERED GLASS) (P2) (P20250116003)) |
| 96 | 本次E | 21/5小業主單 | T1 | 36/F | BB | 1 | GL02-07 | 585 | 1443 | 10 | Show THE HEAT STRENGTHEN GLASS (OPTIMISED W/L VISIBLE COATING ON SURFACE CLEAR TEMPERATURE (TEMPERED GLASS) (P2) (P20250116003)) |
| 97 | 本次E | 21/5小業主單 | T1 | 43/F | BD | 1 | GL01-24 | 1751 | 2332 | 10 | Show THE HEAT STRENGTHEN GLASS (OPTIMISED W/L VISIBLE COATING ON SURFACE CLEAR TEMPERATURE (TEMPERED GLASS) (P2) (P20250116003)) |
| 98 | 本次E | 21/5小業主單 | T1 | 43/F | BD | 1 | GL02-08 | 655.5 | 1443 | 10 | Show THE HEAT STRENGTHEN GLASS (OPTIMISED W/L VISIBLE COATING ON SURFACE CLEAR TEMPERATURE (TEMPERED GLASS) (P2) (P20250116003)) |
| 99 | 本次E | 21/5小業主單 | T1 | 35/F | AD | 1 | GL01-02 | 663 | 832 | 10 | Show THE HEAT STRENGTHEN GLASS (OPTIMISED W/L VISIBLE COATING ON SURFACE CLEAR TEMPERATURE (TEMPERED GLASS) (P2) (P20250116003)) |
| 100 | 本次E | 21/5小業主單 | T1 | 33/F | AD | 1 | GL02-03 | 663 | 1443 | 10 | Show THE HEAT STRENGTHEN GLASS (OPTIMISED W/L VISIBLE COATING ON SURFACE CLEAR TEMPERATURE (TEMPERED GLASS) (P2) (P20250116003)) |
| 101 | 本次E | 21/5小業主單 | T1 | 32/F | BD | 1 | GL01-02 | 663 | 832 | 10 | Show THE HEAT STRENGTHEN GLASS (OPTIMISED W/L VISIBLE COATING ON SURFACE CLEAR TEMPERATURE (TEMPERED GLASS) (P2) (P20250116003)) |
| 102 | 本次E | 21/5小業主單 | T1 | 22/F | BC | 1 | GL01-03 | 644 | 832 | 10 | Show THE HEAT STRENGTHEN GLASS (OPTIMISED W/L VISIBLE COATING ON SURFACE CLEAR TEMPERATURE (TEMPERED GLASS) (P2) (P20250116003)) |
| 103 | 本次E | 21/5小業主單 | T1 | 20/F | AE | 1 | GL02-05 | 636 | 1443 | 10 | Show THE HEAT STRENGTHEN GLASS (OPTIMISED W/L VISIBLE COATING ON SURFACE CLEAR TEMPERATURE (TEMPERED GLASS) (P2) (P20250116003)) |
| 104 | 本次E | 21/5小業主單 | T1 | 39/F | AG | 1 | GL02-05 | 636 | 1443 | 10 | Show THE HEAT STRENGTHEN GLASS (OPTIMISED W/L VISIBLE COATING ON SURFACE CLEAR TEMPERATURE (TEMPERED GLASS) (P2) (P20250116003)) |
| 105 | 本次E | 21/5小業主單 | T1 | 17/F | AF | 1 | GL02-05 | 636 | 1443 | 10 | Show THE HEAT STRENGTHEN GLASS (OPTIMISED W/L VISIBLE COATING ON SURFACE CLEAR TEMPERATURE (TEMPERED GLASS) (P2) (P20250116003)) |
| 106 | 本次E | 21/5小業主單 | T1 | 20/F | AC | 1 | GL01-14 | 644 | 2332 | 10 | Show THE HEAT STRENGTHEN GLASS (OPTIMISED W/L VISIBLE COATING ON SURFACE CLEAR TEMPERATURE (TEMPERED GLASS) (P2) (P20250116003)) |
| 107 | 本次E | 21/5小業主單 | T1 | 20/F | AC | 2 | GL02-05 | 636 | 1443 | 10 | Show THE HEAT STRENGTHEN GLASS (OPTIMISED W/L VISIBLE COATING ON SURFACE CLEAR TEMPERATURE (TEMPERED GLASS) (P2) (P20250116003)) |
| 108 | 本次E | 21/5小業主單 | T1 | 18/F | AG | 1 | GL01-03 | 644 | 832 | 10 | Show THE HEAT STRENGTHEN GLASS (OPTIMISED W/L VISIBLE COATING ON SURFACE CLEAR TEMPERATURE (TEMPERED GLASS) (P2) (P20250116003)) |
| 109 | 本次E | 21/5小業主單 | T1 | 16/F | AE | 1 | GL01-03 | 644 | 832 | 10 | Show THE HEAT STRENGTHEN GLASS (OPTIMISED W/L VISIBLE COATING ON SURFACE CLEAR TEMPERATURE (TEMPERED GLASS) (P2) (P20250116003)) |
| 110 | 本次E | 21/5小業主單 | T1 | 12/F | BA | 1 | GL02-05 | 636 | 1443 | 10 | Show THE HEAT STRENGTHEN GLASS (OPTIMISED W/L VISIBLE COATING ON SURFACE CLEAR TEMPERATURE (TEMPERED GLASS) (P2) (P20250116003)) |
| 111 | 本次E | 21/5小業主單 | T1 | 30/F | BE | 1 | GL02-07 | 585 | 1443 | 10 | Show THE HEAT STRENGTHEN GLASS (OPTIMISED W/L VISIBLE COATING ON SURFACE CLEAR TEMPERATURE (TEMPERED GLASS) (P2) (P20250116003)) |
| 112 | 本次E | 21/5小業主單 | T1 | 29/F | BE | 1 | GL02-07 | 585 | 1443 | 10 | Show THE HEAT STRENGTHEN GLASS (OPTIMISED W/L VISIBLE COATING ON SURFACE CLEAR TEMPERATURE (TEMPERED GLASS) (P2) (P20250116003)) |
| 113 | 本次E | 21/5小業主單 | T1 | 29/F | BE | 1 | GL01-04 | 585 | 832 | 10 | Show THE HEAT STRENGTHEN GLASS (OPTIMISED W/L VISIBLE COATING ON SURFACE CLEAR TEMPERATURE (TEMPERED GLASS) (P2) (P20250116003)) |
| 114 | E18952A | 27/5小業主單 | T1 | 51/F | AA | 1 | GL01-03 | 644 | 832 | 10 | Show THE HEAT STRENGTHEN GLASS (OPTIMISED W/L VISIBLE COATING ON SURFACE CLEAR TEMPERATURE (TEMPERED GLASS) (P2) (P20250116003)) |
| 115 | E18952A | 27/5小業主單 | T1 | 32/F | AE | 1 | GL02-05 | 636 | 1443 | 10 | Show THE HEAT STRENGTHEN GLASS (OPTIMISED W/L VISIBLE COATING ON SURFACE CLEAR TEMPERATURE (TEMPERED GLASS) (P2) (P20250116003)) |
| 116 | E18952A | 27/5小業主單 | T1 | 33/F | AB | 1 | GL01-08 | 1793 | 2332 | 10 | Show THE HEAT STRENGTHEN GLASS (OPTIMISED W/L VISIBLE COATING ON SURFACE CLEAR TEMPERATURE (TEMPERED GLASS) (P2) (P20250116003)) |
| 117 | E18952A | 27/5小業主單 | T1 | 33/F | AB | 1 | GL02-01 | 638 | 1443 | 10 | Show THE HEAT STRENGTHEN GLASS (OPTIMISED W/L VISIBLE COATING ON SURFACE CLEAR TEMPERATURE (TEMPERED GLASS) (P2) (P20250116003)) |

氣泡

氣泡

| 序號 | EI | 項目 | 座 | 樓層 | 單位 | 件數 | 玻璃編號 | W (mm) | H (mm) | 厚度(mm) | Letter |
|-----|---------|----|----|------|---|----|-----------------|--------|--------|--|--------|
| 118 | EI8952A | CW | T1 | 36/F | BD | 1 | GL02-08 生窗 | 655.5 | 1443 | 10mm THK. HEAT STRENGTHEN GLASS (OUTSIDE) W/ LOW-E COATING ON SURFACE CLEAR TEMPERED GLASS(INSIDE) (E) (R2020114001) | |
| 119 | EI8952A | CW | T1 | 57/F | AD | 1 | GL01-03 主生下樓 | 644 | 832 | 10mm THK. HEAT STRENGTHEN GLASS (OUTSIDE) W/ LOW-E COATING ON SURFACE CLEAR TEMPERED GLASS(INSIDE) (E) (R2020114001) | |
| | | | | | 補玻璃總數 | | 31 | | | | |
| | GL01 | = | | | 10mm THK. HEAT STRENGTHEN GLASS (OUTSIDE) W/ LOW-E COATING ON SURFACE SRT #2 + 12 mm AIR SPACE + 12mm THK. CLEAR TEMPERED GLASS(INSIDE) (E) (R2020114001) | | | | | | |
| | GL02 | = | | | 10mm THK. HEAT STRENGTHEN GLASS (OUTSIDE) W/ LOW-E COATING ON SURFACE SRT #2 + 12 mm AIR SPACE + 10mm THK. CLEAR TEMPERED GLASS(INSIDE) (E) (R2020114003) | | | | | | |
| | GL03 | = | | | 12mm THK. HEAT STRENGTHEN GLASS. Relative Glass SSC1-60T (R2020124054) | | | | | | |

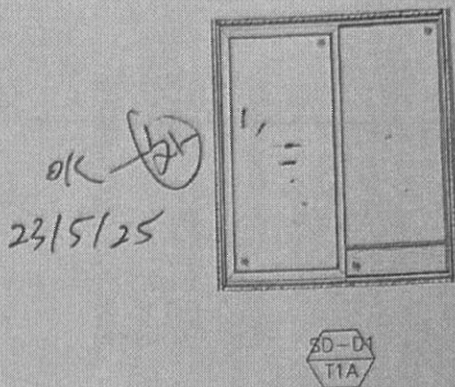
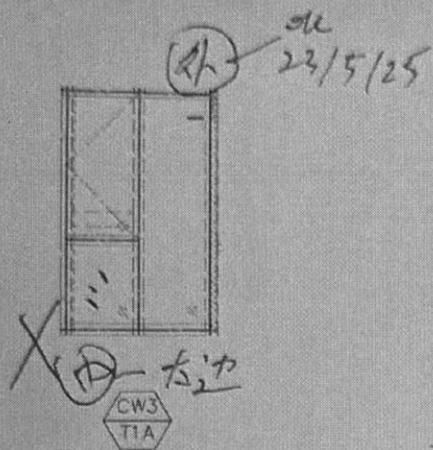
PROJECT: 康城11期凱柏峰

項目: 鋁窗, 鋁門及幕牆玻璃的驗收表格

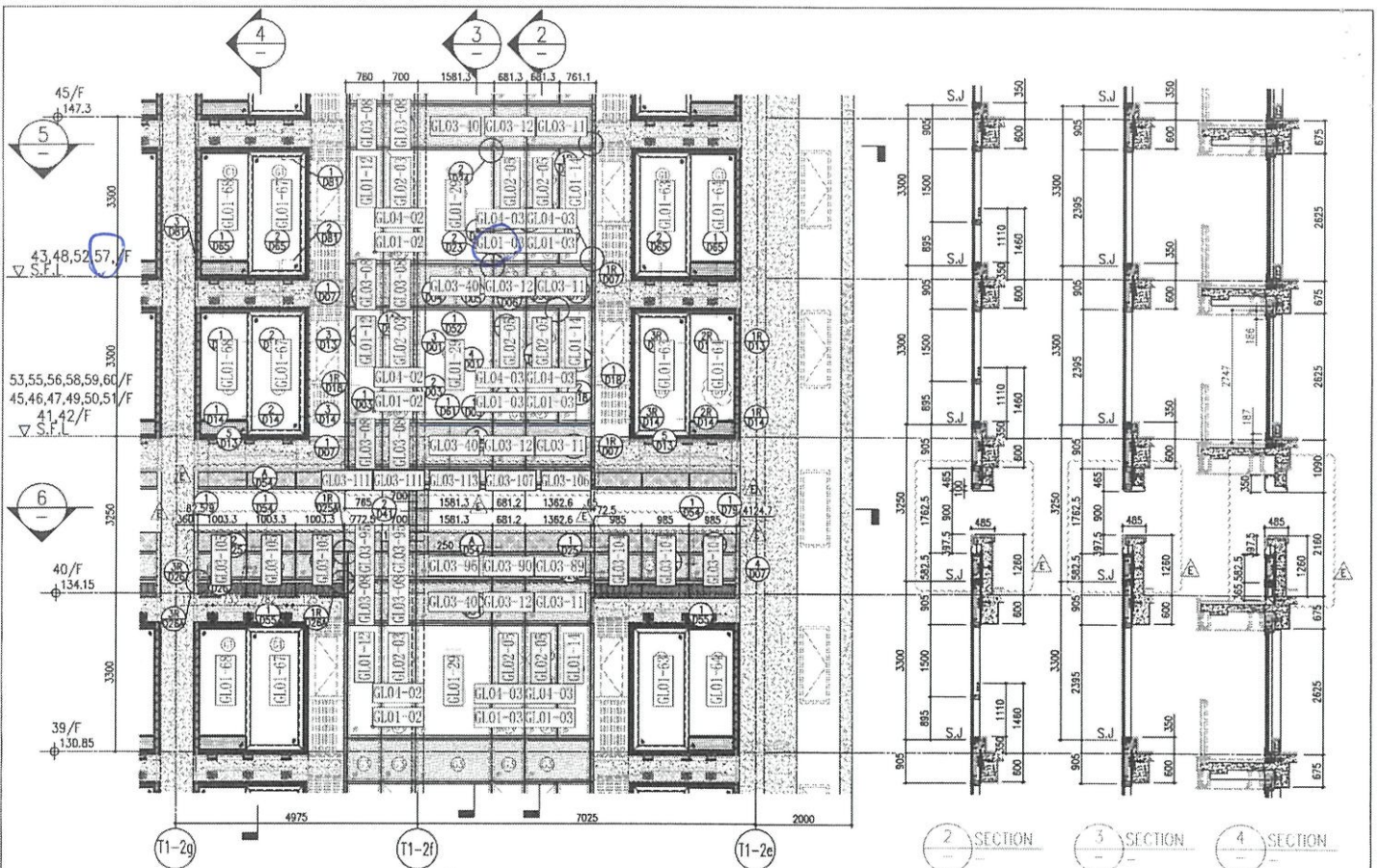
TOWER: 1A

樓層: 57

單位: D



| 聯檢代表 | 公司 | 姓名 | 簽名 | 日期 |
|------|------|-----|----|-----------|
| | MIDI | 盧國深 | L | 16-5-2025 |
| | OSR | | | |



1 PART ELEVATION FOR CURTAIN WALL

GL01-03
STAD

2 SECTION 3 SECTION 4 SECTION

5 PART PLAN FOR CURTAIN WALL

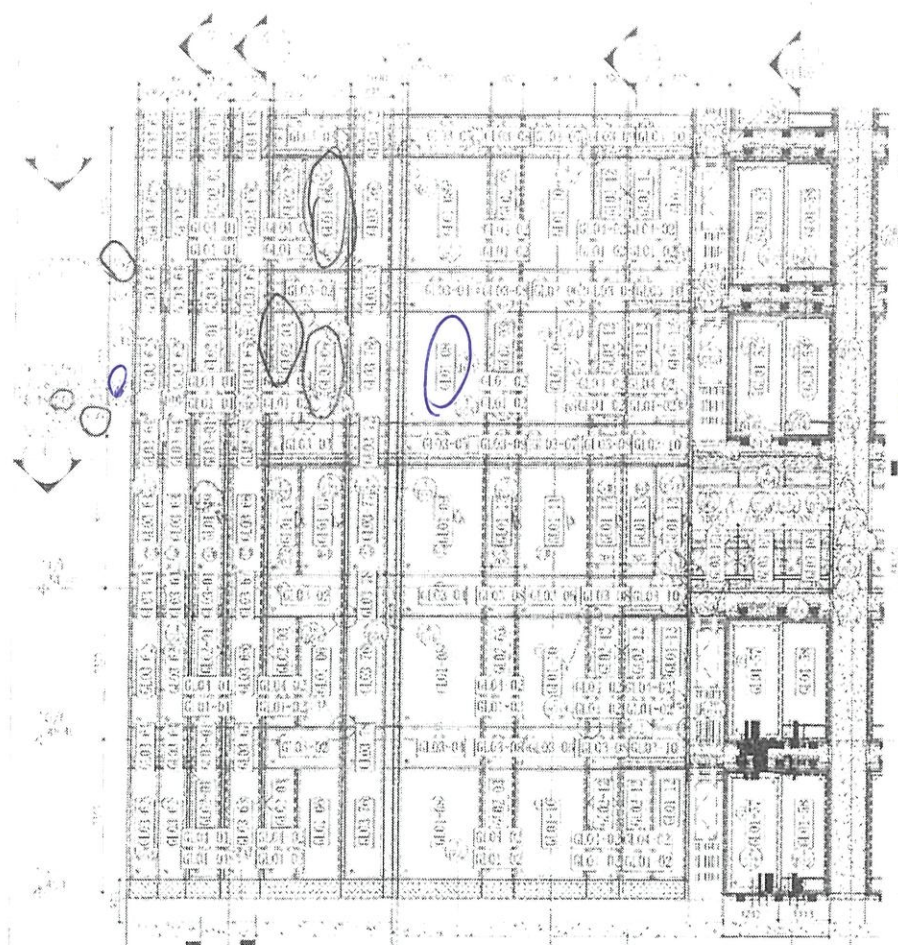
6 PART PLAN (40/F) FOR CURTAIN WALL

| | | | |
|-------------|--------------|--------------|--------------|
| 26/F +91.25 | 39/F +130.85 | 52/F +170.40 | |
| 25/F +87.95 | 38/F +127.55 | 51/F +167.10 | |
| 23/F +84.65 | 37/F +124.25 | 50/F +163.80 | R/F +203.80 |
| 22/F +81.35 | 36/F +120.95 | 49/F +160.50 | 62/F +200.30 |
| 21/F +78.05 | 35/F +117.65 | 48/F +157.20 | 61/F +196.80 |
| 20/F +74.75 | 33/F +114.35 | 47/F +153.90 | 60/F +193.50 |
| 19/F +71.45 | 32/F +111.05 | 46/F +150.60 | 59/F +190.20 |
| 18/F +68.15 | 31/F 107.75 | 45/F +147.30 | 58/F +186.90 |
| 17/F +64.85 | 30/F +104.45 | 43/F +144.00 | 57/F +183.60 |
| 16/F +61.55 | 29/F +101.15 | 42/F +140.70 | 56/F +180.30 |
| 15/F +58.25 | 28/F +97.85 | 41/F +137.40 | 55/F +177.00 |
| 12/F +54.95 | 27/F +94.55 | 40/F +134.15 | 53/F +173.70 |

LEGEND:

- 10mm THK HEAT STRENGTHENED GLASS (OUTSIDE) + 12mm AIR SPACE + 12mm THK TEMPERED GLASS
- 10mm THK HEAT STRENGTHENED GLASS (OUTSIDE) + 12mm AIR SPACE + 10mm THK TEMPERED GLASS
- 12mm THK HEAT STRENGTHENED GLASS
- 12mm THK CLEAR TEMPERED GLASS (INTERNAL PROTECTIVE BARRIER)
- 10mm BLUE TINTED HEAT STRENGTHENED GLASS
- 10mm THK CLEAR TEMPERED GLASS
- 8mm THK CLEAR HEAT-STRENGTHENED GLASS + 1.52 PVB + 8mm THK CLEAR HEAT-STRENGTHENED GLASS
- 3mm THK ALUM. CLADDING
- 3mm THK ALUM. BACKPAN
- STACK JOINT

| <p>REVISIONS:</p> <table border="1"> <tr> <th>NO.</th> <th>DATE</th> <th>REVISION</th> </tr> <tr> <td>1</td> <td>12/03/21</td> <td>REVISED AS PER COMMENTS</td> </tr> <tr> <td>2</td> <td>06/04/22</td> <td>REVISED AS PER COMMENTS</td> </tr> <tr> <td>3</td> <td>17/01/22</td> <td>REVISED AS PER COMMENTS</td> </tr> <tr> <td>4</td> <td>20/11/21</td> <td>REVISED AS PER COMMENTS</td> </tr> <tr> <td>5</td> <td>03/11/21</td> <td>REVISED AS PER COMMENTS</td> </tr> </table> | NO. | DATE | REVISION | 1 | 12/03/21 | REVISED AS PER COMMENTS | 2 | 06/04/22 | REVISED AS PER COMMENTS | 3 | 17/01/22 | REVISED AS PER COMMENTS | 4 | 20/11/21 | REVISED AS PER COMMENTS | 5 | 03/11/21 | REVISED AS PER COMMENTS | <p>JOB NO.: J-858</p> <p>PROJECT: PROPOSED RESIDENTIAL DEVELOPMENT AT NORTH TOWER, PHASE 11, LIONS PARK, TSEUNG KWAN O, N.T.</p> | <p>DATE: 22-07-21</p> <p>SCALE: 1:50(A4)</p> | <p>TITLE: TYPICAL FLOOR PARTIAL ELEVATION & SECTION, PLAN FOR CURTAIN WALL (TOWER 1)</p> | <p>DRAWN BY: [Name]</p> <p>CHECKED BY: [Name]</p> | <p>APPROVED: Ronald Lu & Partners (HK) Ltd. 呂定邦建築師事務所 (香港) 有限公司</p> | <p>CLIENT: 德和置业有限公司 Sino Land Company Limited</p> | <p>STRUCTURAL ENGINEER: Gammon</p> | <p>FAÇADE CONSULTANT: AECOM</p> | <p>MEET:</p> <ol style="list-style-type: none"> ALL DIMENSIONS ARE IN mm. ALL DIMENSIONS ARE TAKEN FROM OUTSIDE UNLESS OTHERWISE SPECIFIED. BEFORE FABRICATION. | <p>LEGEND:</p> <ol style="list-style-type: none"> 1. F.F.L. -- FINISHED FLOOR LEVEL. 2. S.F.L. -- STRUCTURAL FLOOR LEVEL. 3. -- REVERSED DETAIL. | <p>REVISIONS:</p> <ol style="list-style-type: none"> 1. ALL DIMENSIONS ARE IN mm. ALL DIMENSIONS ARE TAKEN FROM OUTSIDE UNLESS OTHERWISE SPECIFIED. BEFORE FABRICATION. | <p>LEGEND:</p> <ol style="list-style-type: none"> 1. F.F.L. -- FINISHED FLOOR LEVEL. 2. S.F.L. -- STRUCTURAL FLOOR LEVEL. 3. -- REVERSED DETAIL. | <p>REVISIONS:</p> <ol style="list-style-type: none"> 1. ALL DIMENSIONS ARE IN mm. ALL DIMENSIONS ARE TAKEN FROM OUTSIDE UNLESS OTHERWISE SPECIFIED. BEFORE FABRICATION. | <p>LEGEND:</p> <ol style="list-style-type: none"> 1. F.F.L. -- FINISHED FLOOR LEVEL. 2. S.F.L. -- STRUCTURAL FLOOR LEVEL. 3. -- REVERSED DETAIL. | <p>REVISIONS:</p> <ol style="list-style-type: none"> 1. ALL DIMENSIONS ARE IN mm. ALL DIMENSIONS ARE TAKEN FROM OUTSIDE UNLESS OTHERWISE SPECIFIED. BEFORE FABRICATION. |
|---|---|---|--|--|---|--|---|----------|-------------------------|---|----------|-------------------------|---|----------|-------------------------|---|----------|-------------------------|--|--|---|---|--|--|---|--|---|--|---|--|---|--|---|
| | NO. | DATE | REVISION | | | | | | | | | | | | | | | | | | | | | | | | | | | | | | |
| 1 | 12/03/21 | REVISED AS PER COMMENTS | | | | | | | | | | | | | | | | | | | | | | | | | | | | | | | |
| 2 | 06/04/22 | REVISED AS PER COMMENTS | | | | | | | | | | | | | | | | | | | | | | | | | | | | | | | |
| 3 | 17/01/22 | REVISED AS PER COMMENTS | | | | | | | | | | | | | | | | | | | | | | | | | | | | | | | |
| 4 | 20/11/21 | REVISED AS PER COMMENTS | | | | | | | | | | | | | | | | | | | | | | | | | | | | | | | |
| 5 | 03/11/21 | REVISED AS PER COMMENTS | | | | | | | | | | | | | | | | | | | | | | | | | | | | | | | |
| <p>DATE: 22-07-21</p> <p>SCALE: 1:50(A4)</p> | <p>TITLE: TYPICAL FLOOR PARTIAL ELEVATION & SECTION, PLAN FOR CURTAIN WALL (TOWER 1)</p> | <p>DRAWN BY: [Name]</p> <p>CHECKED BY: [Name]</p> | <p>APPROVED: Ronald Lu & Partners (HK) Ltd. 呂定邦建築師事務所 (香港) 有限公司</p> | <p>CLIENT: 德和置业有限公司 Sino Land Company Limited</p> | <p>STRUCTURAL ENGINEER: Gammon</p> | <p>FAÇADE CONSULTANT: AECOM</p> | | | | | | | | | | | | | | | | | | | | | | | | | | | |



6L01-08
33AB

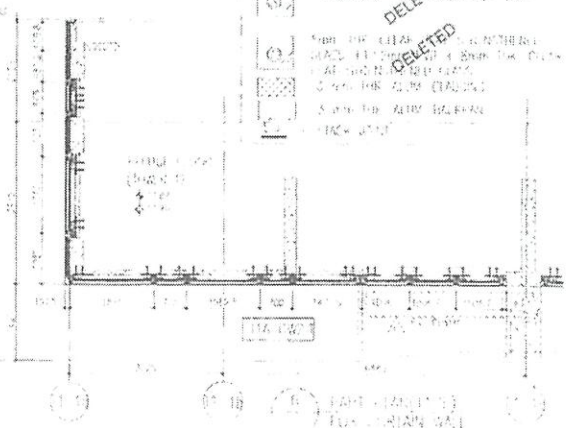
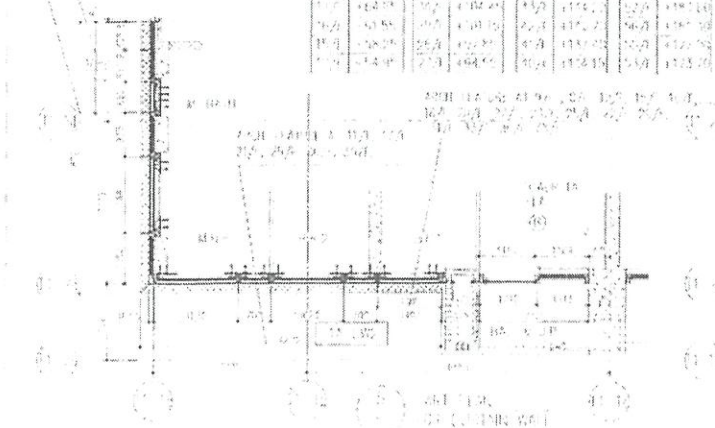
6L02-01
33AB

6L02-03
16KAB

6L01-06
20/F AB
35/F AB

117.36 x 117.138
2.729 x 2.991.191

| | | | | | |
|------|---------|-------|---------|-------|---------|
| 4.21 | 4.31.25 | 2.5.0 | 4.75.05 | 4.7.0 | 1.10.01 |
| 2.1 | 3.2.25 | 3.8 | 4.27.13 | 1.7 | 4.10.13 |
| 2.2 | 3.2.25 | 3.2 | 4.27.25 | 1.6 | 4.10.25 |
| 2.3 | 3.2.25 | 3.2 | 4.26.05 | 4.8 | 4.10.25 |
| 2.4 | 3.2.25 | 2.9 | 4.27.40 | 4.7 | 4.10.25 |
| 2.5 | 3.2.25 | 2.5 | 4.24.15 | 1.6 | 4.10.25 |
| 2.6 | 3.2.25 | 2.4 | 4.21.0 | 1.5 | 4.10.25 |
| 2.7 | 3.2.25 | 2.4 | 4.21.0 | 1.5 | 4.10.25 |
| 2.8 | 3.2.25 | 2.4 | 4.21.0 | 1.5 | 4.10.25 |
| 2.9 | 3.2.25 | 2.4 | 4.21.0 | 1.5 | 4.10.25 |
| 2.10 | 3.2.25 | 2.4 | 4.21.0 | 1.5 | 4.10.25 |
| 2.11 | 3.2.25 | 2.4 | 4.21.0 | 1.5 | 4.10.25 |
| 2.12 | 3.2.25 | 2.4 | 4.21.0 | 1.5 | 4.10.25 |
| 2.13 | 3.2.25 | 2.4 | 4.21.0 | 1.5 | 4.10.25 |
| 2.14 | 3.2.25 | 2.4 | 4.21.0 | 1.5 | 4.10.25 |
| 2.15 | 3.2.25 | 2.4 | 4.21.0 | 1.5 | 4.10.25 |
| 2.16 | 3.2.25 | 2.4 | 4.21.0 | 1.5 | 4.10.25 |
| 2.17 | 3.2.25 | 2.4 | 4.21.0 | 1.5 | 4.10.25 |
| 2.18 | 3.2.25 | 2.4 | 4.21.0 | 1.5 | 4.10.25 |
| 2.19 | 3.2.25 | 2.4 | 4.21.0 | 1.5 | 4.10.25 |
| 2.20 | 3.2.25 | 2.4 | 4.21.0 | 1.5 | 4.10.25 |
| 2.21 | 3.2.25 | 2.4 | 4.21.0 | 1.5 | 4.10.25 |
| 2.22 | 3.2.25 | 2.4 | 4.21.0 | 1.5 | 4.10.25 |
| 2.23 | 3.2.25 | 2.4 | 4.21.0 | 1.5 | 4.10.25 |
| 2.24 | 3.2.25 | 2.4 | 4.21.0 | 1.5 | 4.10.25 |
| 2.25 | 3.2.25 | 2.4 | 4.21.0 | 1.5 | 4.10.25 |
| 2.26 | 3.2.25 | 2.4 | 4.21.0 | 1.5 | 4.10.25 |
| 2.27 | 3.2.25 | 2.4 | 4.21.0 | 1.5 | 4.10.25 |
| 2.28 | 3.2.25 | 2.4 | 4.21.0 | 1.5 | 4.10.25 |
| 2.29 | 3.2.25 | 2.4 | 4.21.0 | 1.5 | 4.10.25 |
| 2.30 | 3.2.25 | 2.4 | 4.21.0 | 1.5 | 4.10.25 |



- ① 100mm THK. GYPSUM BOARD (1200x2400) SYSTEM FOR CEILING
- ② 100mm THK. GYPSUM BOARD (1200x2400) SYSTEM FOR CEILING
- ③ 100mm THK. GYPSUM BOARD (1200x2400) SYSTEM FOR CEILING
- ④ 100mm THK. GYPSUM BOARD (1200x2400) SYSTEM FOR CEILING
- ⑤ 100mm THK. GYPSUM BOARD (1200x2400) SYSTEM FOR CEILING
- ⑥ 100mm THK. GYPSUM BOARD (1200x2400) SYSTEM FOR CEILING
- ⑦ 100mm THK. GYPSUM BOARD (1200x2400) SYSTEM FOR CEILING
- ⑧ 100mm THK. GYPSUM BOARD (1200x2400) SYSTEM FOR CEILING
- ⑨ 100mm THK. GYPSUM BOARD (1200x2400) SYSTEM FOR CEILING
- ⑩ 100mm THK. GYPSUM BOARD (1200x2400) SYSTEM FOR CEILING
- ⑪ 100mm THK. GYPSUM BOARD (1200x2400) SYSTEM FOR CEILING
- ⑫ 100mm THK. GYPSUM BOARD (1200x2400) SYSTEM FOR CEILING
- ⑬ 100mm THK. GYPSUM BOARD (1200x2400) SYSTEM FOR CEILING
- ⑭ 100mm THK. GYPSUM BOARD (1200x2400) SYSTEM FOR CEILING
- ⑮ 100mm THK. GYPSUM BOARD (1200x2400) SYSTEM FOR CEILING
- ⑯ 100mm THK. GYPSUM BOARD (1200x2400) SYSTEM FOR CEILING
- ⑰ 100mm THK. GYPSUM BOARD (1200x2400) SYSTEM FOR CEILING
- ⑱ 100mm THK. GYPSUM BOARD (1200x2400) SYSTEM FOR CEILING
- ⑲ 100mm THK. GYPSUM BOARD (1200x2400) SYSTEM FOR CEILING
- ⑳ 100mm THK. GYPSUM BOARD (1200x2400) SYSTEM FOR CEILING
- ㉑ 100mm THK. GYPSUM BOARD (1200x2400) SYSTEM FOR CEILING
- ㉒ 100mm THK. GYPSUM BOARD (1200x2400) SYSTEM FOR CEILING
- ㉓ 100mm THK. GYPSUM BOARD (1200x2400) SYSTEM FOR CEILING
- ㉔ 100mm THK. GYPSUM BOARD (1200x2400) SYSTEM FOR CEILING
- ㉕ 100mm THK. GYPSUM BOARD (1200x2400) SYSTEM FOR CEILING
- ㉖ 100mm THK. GYPSUM BOARD (1200x2400) SYSTEM FOR CEILING
- ㉗ 100mm THK. GYPSUM BOARD (1200x2400) SYSTEM FOR CEILING
- ㉘ 100mm THK. GYPSUM BOARD (1200x2400) SYSTEM FOR CEILING
- ㉙ 100mm THK. GYPSUM BOARD (1200x2400) SYSTEM FOR CEILING
- ㉚ 100mm THK. GYPSUM BOARD (1200x2400) SYSTEM FOR CEILING
- ㉛ 100mm THK. GYPSUM BOARD (1200x2400) SYSTEM FOR CEILING
- ㉜ 100mm THK. GYPSUM BOARD (1200x2400) SYSTEM FOR CEILING
- ㉝ 100mm THK. GYPSUM BOARD (1200x2400) SYSTEM FOR CEILING
- ㉞ 100mm THK. GYPSUM BOARD (1200x2400) SYSTEM FOR CEILING
- ㉟ 100mm THK. GYPSUM BOARD (1200x2400) SYSTEM FOR CEILING
- ㊱ 100mm THK. GYPSUM BOARD (1200x2400) SYSTEM FOR CEILING
- ㊲ 100mm THK. GYPSUM BOARD (1200x2400) SYSTEM FOR CEILING
- ㊳ 100mm THK. GYPSUM BOARD (1200x2400) SYSTEM FOR CEILING
- ㊴ 100mm THK. GYPSUM BOARD (1200x2400) SYSTEM FOR CEILING
- ㊵ 100mm THK. GYPSUM BOARD (1200x2400) SYSTEM FOR CEILING
- ㊶ 100mm THK. GYPSUM BOARD (1200x2400) SYSTEM FOR CEILING
- ㊷ 100mm THK. GYPSUM BOARD (1200x2400) SYSTEM FOR CEILING
- ㊸ 100mm THK. GYPSUM BOARD (1200x2400) SYSTEM FOR CEILING
- ㊹ 100mm THK. GYPSUM BOARD (1200x2400) SYSTEM FOR CEILING
- ㊺ 100mm THK. GYPSUM BOARD (1200x2400) SYSTEM FOR CEILING
- ㊻ 100mm THK. GYPSUM BOARD (1200x2400) SYSTEM FOR CEILING
- ㊼ 100mm THK. GYPSUM BOARD (1200x2400) SYSTEM FOR CEILING
- ㊽ 100mm THK. GYPSUM BOARD (1200x2400) SYSTEM FOR CEILING
- ㊾ 100mm THK. GYPSUM BOARD (1200x2400) SYSTEM FOR CEILING
- ㊿ 100mm THK. GYPSUM BOARD (1200x2400) SYSTEM FOR CEILING

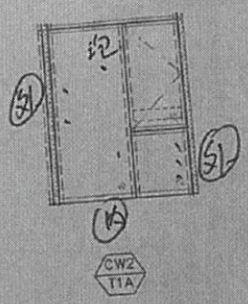
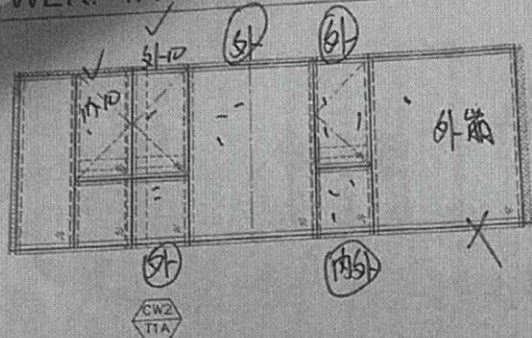
中建地产有限公司

AECOM
AECOM
Gammon

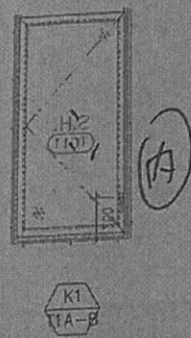
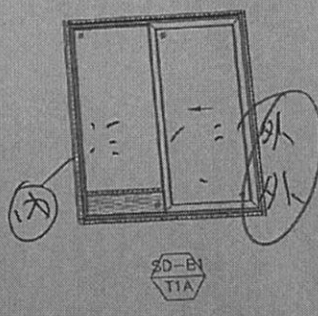
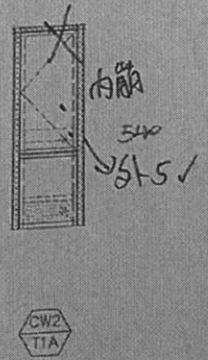
Consulting
Kwong Tin & Partners (HK) Ltd
Kwong Tin & Partners (HK) Ltd
Kwong Tin & Partners (HK) Ltd

中建地产有限公司

城11期凱柏峰
 鋁門及幕牆玻璃的驗收表格
 樓層: 33 單位: B



3AB



房2安全580
 剛 540

| 聯檢代表 | 公司 | 姓名 | 簽名 | 日期 |
|------|------|-----|----|-----------|
| | MIDI | 盧國深 | ✓ | 22-5-2025 |
| | OSR | | | |

GL 01-02
32BD

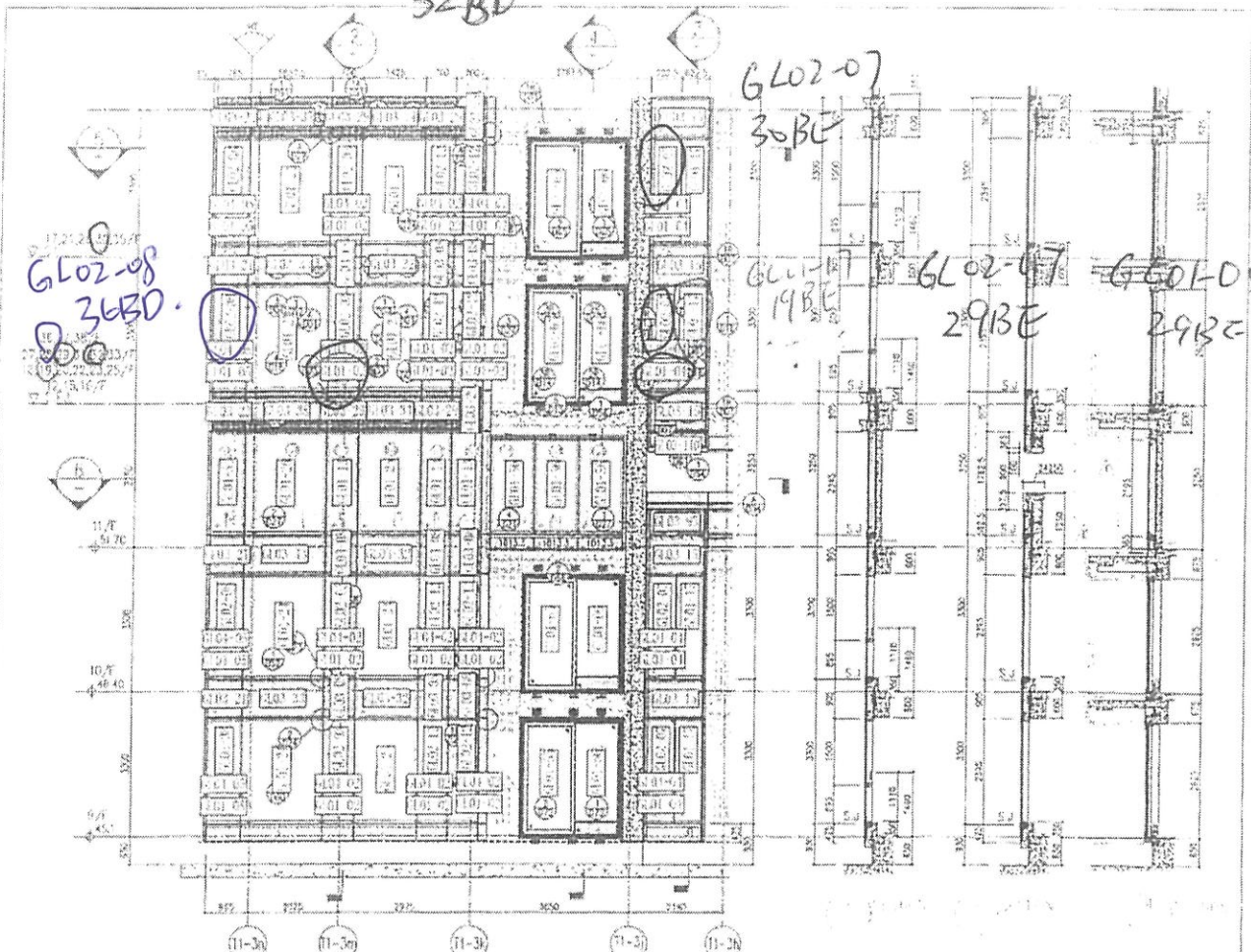
GL 02-07
30BC

GL 02-08
36BD

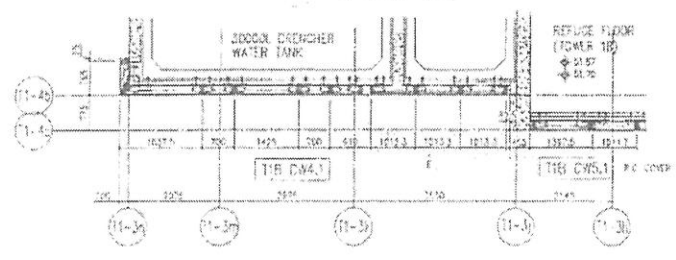
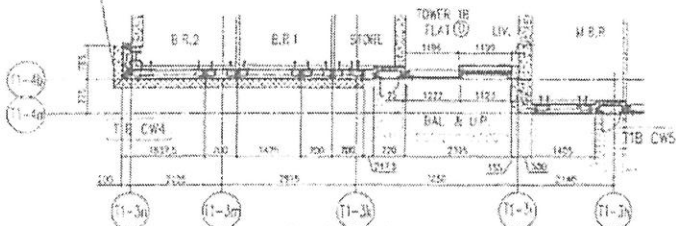
GL 01-07
19BC

GL 02-07
29BE

GL 01-04
29BC



ARCH. ELEVATION AT 11/1, 17/1,
21/1, 26/1, 30/1, 15/1



| | | | | | |
|------|--------|------|---------|------|---------|
| 26/F | +81.25 | 39/F | +138.89 | 52/F | +170.40 |
| 25/F | +87.95 | 38/F | +127.52 | 51/F | +167.10 |
| 23/F | +84.65 | 37/F | +124.24 | 50/F | +163.80 |
| 22/F | +81.35 | 36/F | +120.95 | 49/F | +160.50 |
| 21/F | +78.05 | 35/F | +117.65 | 48/F | +157.20 |
| 20/F | +74.75 | 34/F | +114.35 | 47/F | +153.90 |
| 19/F | +71.45 | 32/F | +111.05 | 46/F | +150.60 |
| 18/F | +68.15 | 31/F | +107.75 | 45/F | +147.30 |
| 17/F | +64.85 | 30/F | +104.45 | 43/F | +144.00 |
| 16/F | +61.55 | 29/F | +101.15 | 42/F | +140.70 |
| 15/F | +58.25 | 28/F | +97.85 | 41/F | +137.40 |
| 12/F | +54.95 | 27/F | +94.55 | 40/F | +134.10 |

LEGEND

- ...
- ...
- ...
- ...
- ...
- ...
- ...
- ...
- ...
- ...

DELETED
DELETED
DELETED

| | | | | | | | | | | | |
|--|--------------------|----------------------|------------------|-------------------|------------------------|------------------|-------------------|------------------------|------------------|-------------------|------------------------|
| <p>PROJECT: 2008A, 2008B, 2008C, 2008D, 2008E, 2008F, 2008G, 2008H, 2008I, 2008J, 2008K, 2008L, 2008M, 2008N, 2008O, 2008P, 2008Q, 2008R, 2008S, 2008T, 2008U, 2008V, 2008W, 2008X, 2008Y, 2008Z</p> | <p>CLIENT: ...</p> | <p>DESIGNER: ...</p> | <p>DATE: ...</p> | <p>SCALE: ...</p> | <p>PROJECT NO: ...</p> | <p>DATE: ...</p> | <p>SCALE: ...</p> | <p>PROJECT NO: ...</p> | <p>DATE: ...</p> | <p>SCALE: ...</p> | <p>PROJECT NO: ...</p> |
|--|--------------------|----------------------|------------------|-------------------|------------------------|------------------|-------------------|------------------------|------------------|-------------------|------------------------|

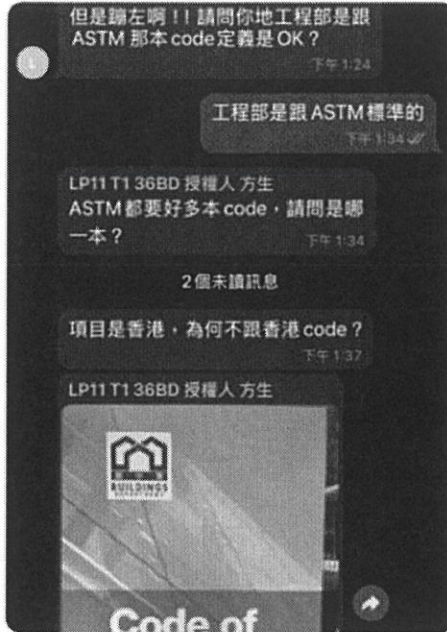
T1-Midi -小業主單位(...)
4人在線



Sino Kenny 2

Sino Kenny 2

36BD 客話主房右生窗驗樓師寫住換，
佢問係打磨咗定要換？



36BD.

@jason leung @Midi向玉芳

36BD個客唔接受

13:42

Sino Kenny 2

@jason leung @Midi向玉芳
36BD個客唔接受



照訂玻璃

13:44

Sino Kenny 2



36BD-主房右生窗

13:54

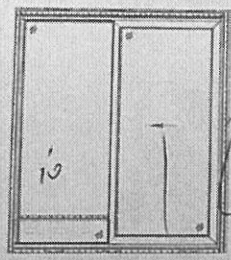
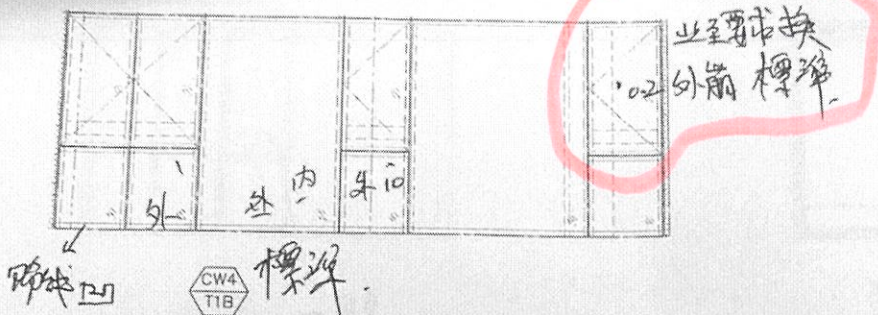
Sino Kenny 2

城11期凱柏峰
 站窗，鋁門及幕牆玻璃的驗收表格

TOWER: 1B

樓層: 36

單位: D



內 15/5/2025



SD-D
T1B

B1
T1B-D

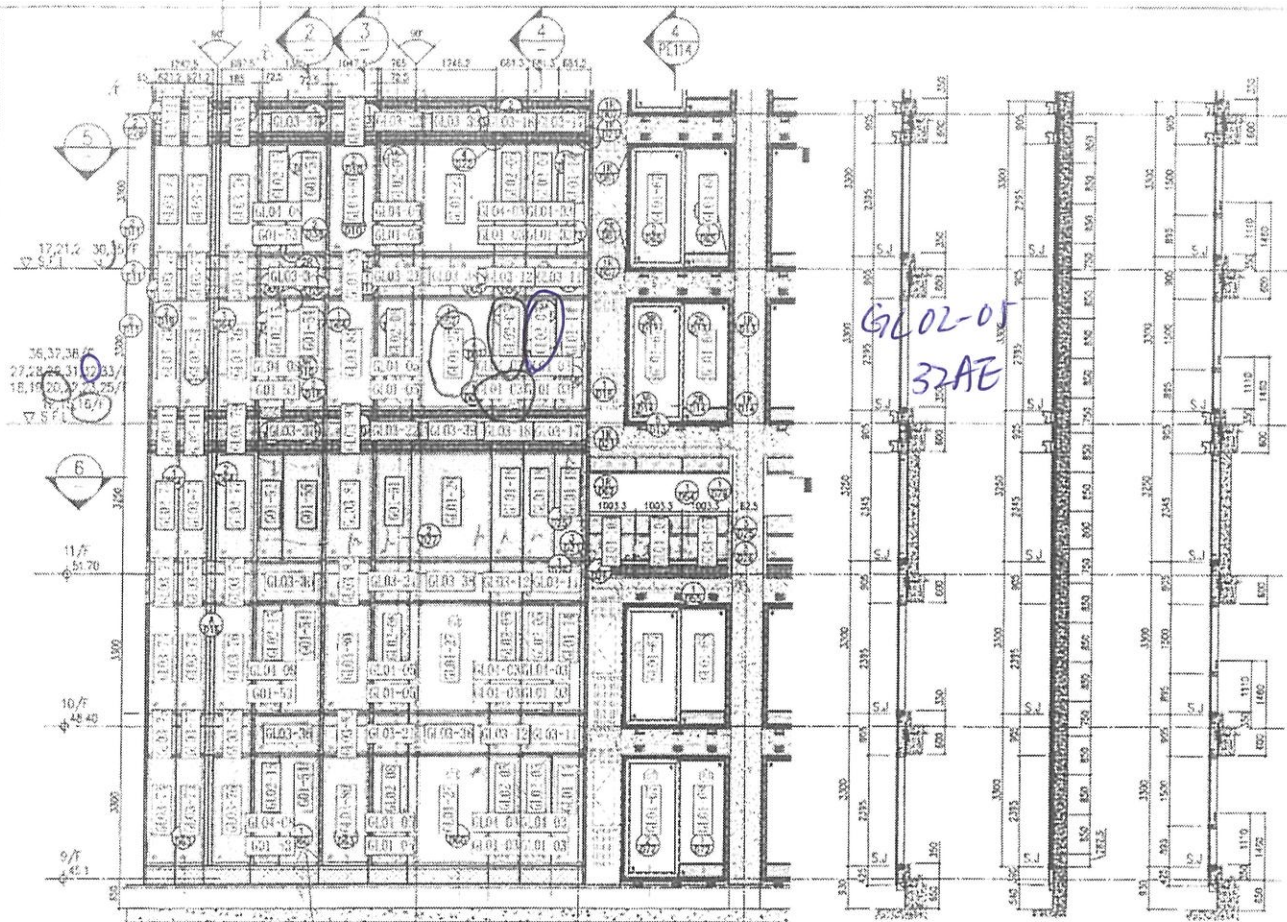


K1
T1B-D

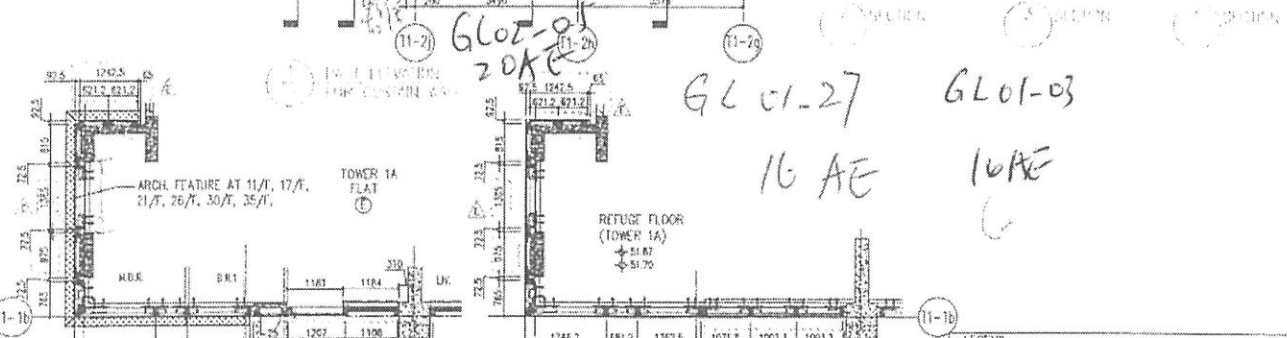
| 公司 | 姓名 | 簽名 | 日期 |
|------|-----|----|----------|
| MIDI | 盧國深 | ✓ | 9-5-2025 |
| OSR | | | |

聯檢代表

OS MIDI 公



GL02-05
32AE



GL02-05
20AE

GL01-27
16 AE

GL01-03
16AE

| | | | | | |
|------|--------|------|---------|------|---------|
| 28/F | +91.25 | 39/F | +130.53 | 52/F | +170.40 |
| 25/F | +87.95 | 36/F | +127.55 | 51/F | +167.30 |
| 23/F | +84.65 | 37/F | +124.25 | 50/F | +163.80 |
| 22/F | +81.35 | 36/F | +120.95 | 49/F | +160.50 |
| 21/F | +78.05 | 35/F | +117.65 | 48/F | +157.20 |
| 20/F | +74.75 | 33/F | +114.35 | 47/F | +153.90 |
| 19/F | +71.45 | 32/F | +111.05 | 46/F | +150.60 |
| 18/F | +68.15 | 31/F | +107.75 | 45/F | +147.30 |
| 17/F | +64.85 | 30/F | +104.45 | 43/F | +144.00 |
| 16/F | +61.55 | 29/F | +101.15 | 42/F | +140.70 |
| 15/F | +58.25 | 28/F | +97.85 | 41/F | +137.40 |
| 12/F | +54.95 | 27/F | +94.55 | 40/F | +134.10 |

LEGEND

- Glass Curtain Wall
- Glass Wall
- Glass Partition
- Glass Window
- Glass Door
- Glass Panel
- ~~Glass Panel~~
- ~~Glass Panel~~
- ~~Glass Panel~~

PROJECT
TOWER 1A FLAT
ELEVATION & SECTION, PLAN
FOR CURTAIN WALL (TOWER 1A)

DATE: 27-NOV-21
SCALE: 1:50 (A1)

DESIGNER: [Signature]

CHECKER: [Signature]

DATE: 27-NOV-21

CLIENT: [Logo]

PROJECT NO.: J-0018

DATE: 27-NOV-21

COMPANY
AECOM

COMPANY
Gammon

PROJECT NO.: J-0018

DATE: 27-NOV-21

SCALE: 1:50 (A1)

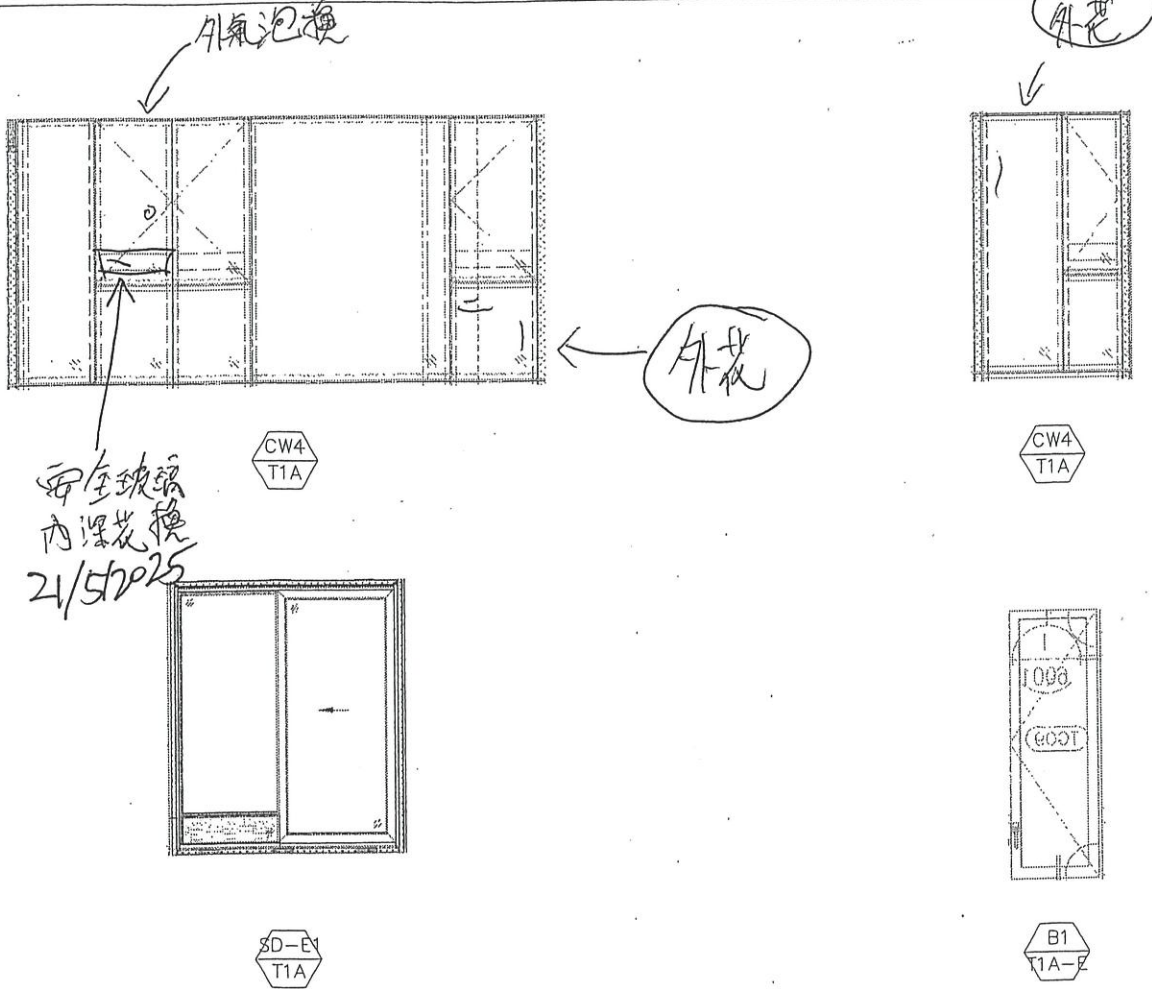
PROJECT: 康城11期凱柏峰

項目: 鋁窗, 鋁門及幕牆玻璃的驗收表格

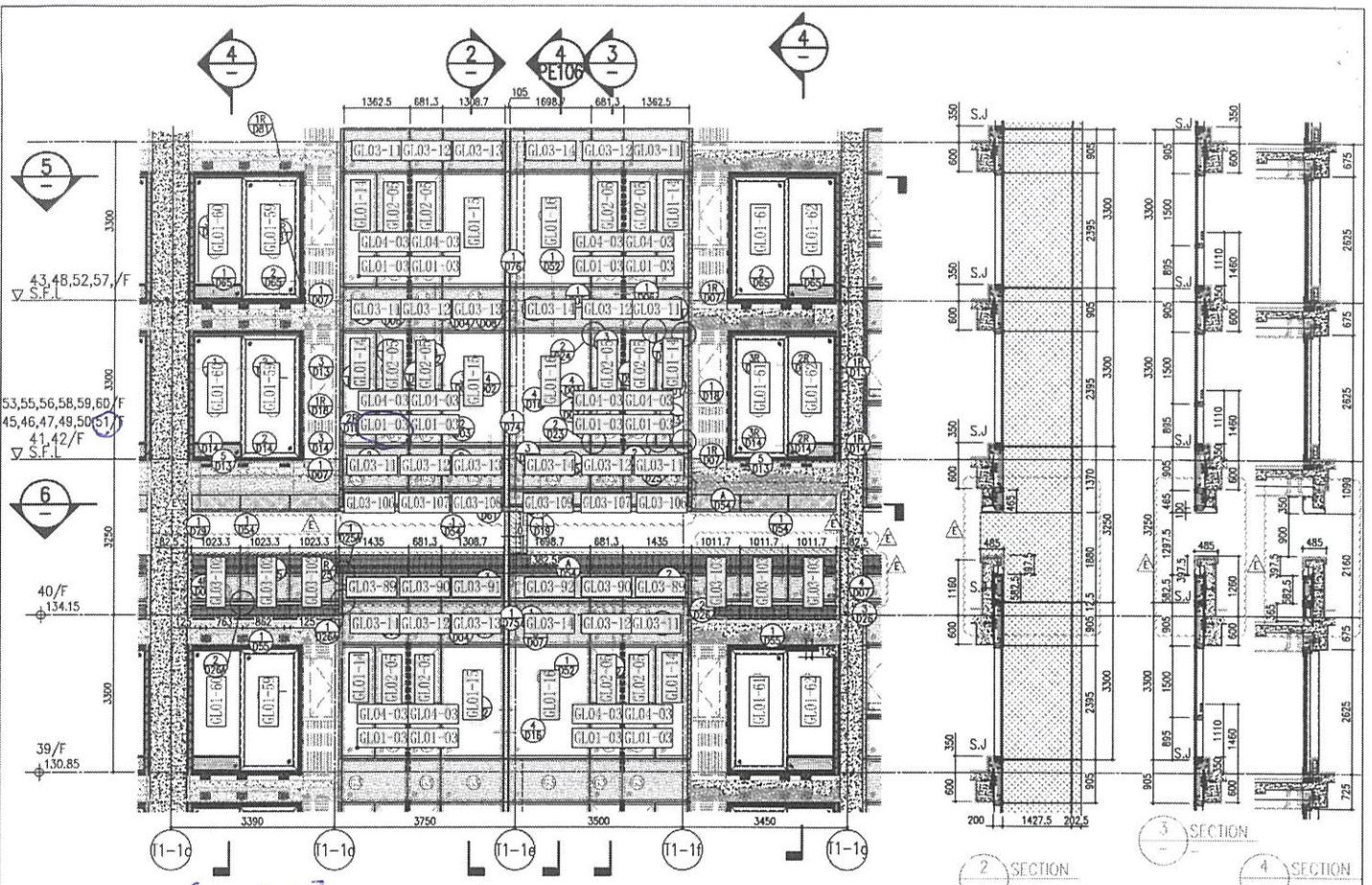
TOWER: 1A

樓層: 32

單位: E

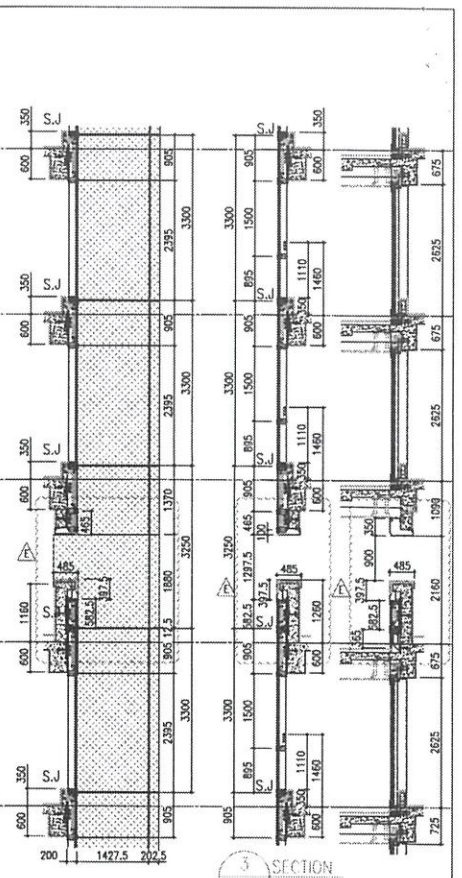


| 聯檢代表 | 公司 | 姓名 | 簽名 | 日期 |
|------|------|-----|-----|-----------|
| | MIDI | 盧國深 | ... | 19-5-2025 |
| | OSR | | | |

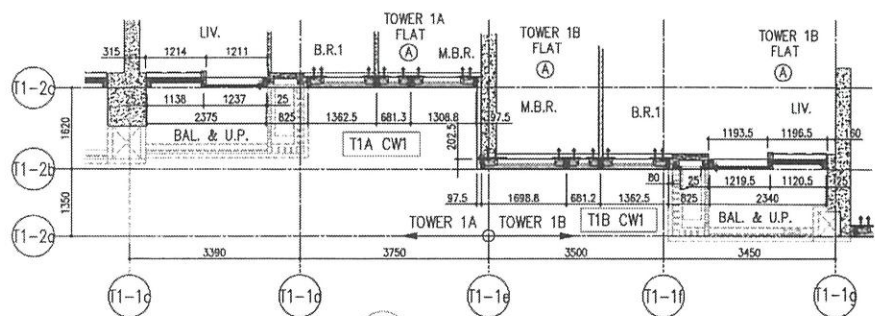


GLO1-03
SIAA

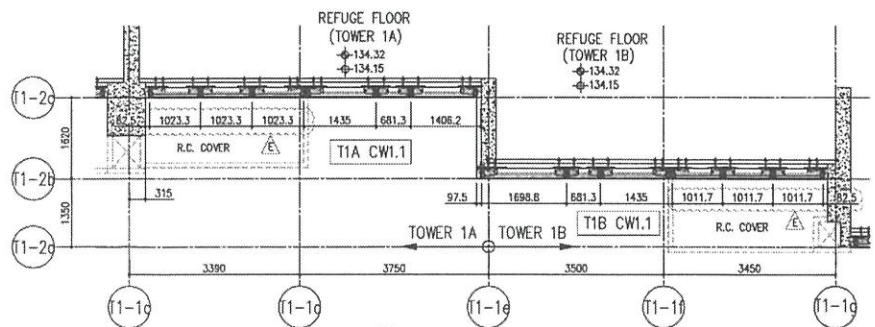
1 PART ELEVATION FOR CURTAIN WALL



2 SECTION
3 SECTION
4 SECTION



5 PART PLAN FOR CURTAIN WALL



6 PART PLAN (40/F) FOR CURTAIN WALL

| | | | | | | |
|------|--------|------|---------|------|---------|---------|
| 26/F | +91.25 | 39/F | +130.85 | 52/F | +170.40 | |
| 25/F | +87.95 | 38/F | +127.55 | 51/F | +167.10 | |
| 23/F | +84.65 | 37/F | +124.25 | 50/F | +163.80 | R/F |
| 22/F | +81.35 | 36/F | +120.95 | 49/F | +160.50 | +203.80 |
| 21/F | +78.05 | 35/F | +117.65 | 48/F | +157.20 | +196.80 |
| 20/F | +74.75 | 33/F | +114.35 | 47/F | +153.90 | +193.50 |
| 19/F | +71.45 | 32/F | +111.05 | 46/F | +150.60 | +190.20 |
| 18/F | +68.15 | 31/F | 107.75 | 45/F | +147.30 | +186.90 |
| 17/F | +64.85 | 30/F | +104.45 | 43/F | +144.00 | +183.60 |
| 16/F | +61.55 | 29/F | +101.15 | 42/F | +140.70 | +180.30 |
| 15/F | +58.25 | 28/F | +97.85 | 41/F | +137.40 | +177.00 |
| 12/F | +54.95 | 27/F | +94.55 | 40/F | +134.15 | +173.70 |

- LEGEND:
- 10mm THK HEAT STRENGTHENED GLASS (OUTSIDE) + 12mm AIR SPACE + 12mm THK TEMPERED GLASS
 - 10mm THK HEAT STRENGTHENED GLASS (OUTSIDE) + 12mm AIR SPACE + 10mm THK TEMPERED GLASS
 - 12mm THK HEAT STRENGTHENED GLASS
 - 12mm THK CLEAR TEMPERED GLASS (INTERNAL PROTECTIVE BARRIER)
 - 12mm CLEAR STRENGTHENED GLASS
 - 10mm THK TEMPERED GLASS
 - 8mm THK CLEAR HEAT-STRENGTHENED GLASS + 1.52mm PVB + 8mm THK CLEAR HEAT-STRENGTHENED GLASS
 - 5mm THK ALUM. GLAZING
 - 5mm THK ALUM. BACKPAN
 - STACK JOINT

INC NO.: 056-CW-FE105
REV: E

DATE: 22-07-21
SCALE: 1:50(A1)
CHECKED BY:
DRAWN BY:
PROJECT: 056090 RESIDENTIAL DEVELOPMENT AT NORTH 700P PHASE 1, LIONS PARK, TSEUNG KWAN O, N.T.
TITLE: TYPICAL FLOOR PARTIAL ELEVATION & SECTION, PLAN FOR CURTAIN WALL (TOWER 1)

| | | |
|-----|------|-------------------------|
| NO. | REV. | DESCRIPTION |
| 1 | | ISSUED FOR PER COMMENTS |
| 2 | | ISSUED FOR PER COMMENTS |
| 3 | | ISSUED FOR PER COMMENTS |
| 4 | | ISSUED FOR PER COMMENTS |
| 5 | | ISSUED FOR PER COMMENTS |

PROJ. NO.: J-856
REVISIONS:
1. F.F.L. -- FINISHED FLOOR LEVEL.
2. S.F.L. -- STRUCTURAL FLOOR LEVEL.
3. -- REVERSED DETAIL.

NOTE:
1. ALL DIMENSIONS ARE IN mm.
2. ALL ELEVATIONS ARE VIEWED FROM OUTSIDE UNLESS OTHERWISE SPECIFIED.
3. ALL DIMENSIONS TO BE VIEWED ON SITE BEFORE CONSTRUCTION.
LEGEND:
1. DETAIL MARK NO.
2. REFER SHEET NO.
3. REFER SHEET NO.

FACE CONSULTANT:
AECOM

STRUCTURAL ENGINEER:
Gammion

ARCHITECT:
Ronald Yu & Partners
Ronald Yu & Partners (HK) Ltd.
香港建築師學會 (香港) 有限公司

CLIENT:
信和置業有限公司
Sino Land Company Limited

B.O. REF:

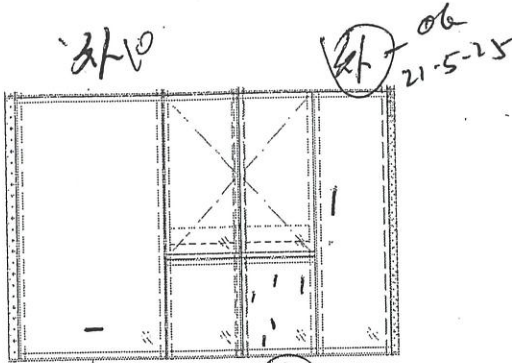
PROJECT: 康城11期凱柏峰

項目: 鋁窗, 鋁門及幕牆玻璃的驗收表格

TOWER: 1A

樓層: 51

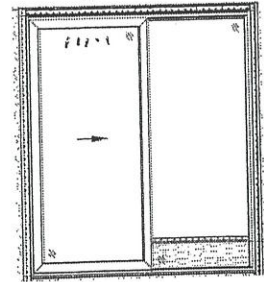
單位: A



GW1
T1A

外
21-5-25

GL01-03



SD-A1
T1A

| 聯檢代表 | 公司 | 姓名 | 簽名 | 日期 |
|------|------|-----|----|-----------|
| | MIDI | 盧國深 | ✓ | 16-5-2025 |
| | OSR | | | |