

工程指示 / 要求簡箋(E.I.)

工程指示編號：EI / 8938 / 25 修改版次：B

工程編號：J - 858

工程名稱：將軍澳日出康城

工程項目：幕牆 第 1 次 補玻璃 25 件 (小業主單)

收件人：Maggie

發件人：Jason

日期：19/05/2025

□要求提供 / □確認 事項：

- | | | |
|---------------|----------------|----------|
| () 初步鋁料 B.M. | () 加工拆圖，然後生產 | () 尺寸表 |
| () 正式鋁料 B.M. | () 技術上資料 / 指示 | () 報價 |
| () 配件 B.M. | () 樣辦或貨品說明書 | () 分判合約 |

內容：

B 版次 增加至 25 件A 版次 增加至 17 件序號 70 修改玻璃編號, 序號 69 修改位置, 序號 76 不合格氣泡由於地盤需要更換玻璃，請按玻璃 BM 生產玻璃，共 17 件 送地盤。請安排熱浸

1. 不要印上熱浸標籤。只給”可移除”的標籤。
2. 依原 EI 4867, EI 4943, EI 4942 尺寸補，
3. *****分座包箱， 玻璃標籤請註明樓層、單位。***** 請留意。
4. 第一次補 25 件本次
5. 地盆：更換幕牆玻璃，需用吊船。
6. 按芳姐 資料

謝謝請在 2025.06.17 前完成上列要求。

分發東莞各部門：

- | | | | | | |
|---------------|--------|--------------|---------|--------|----------------------|
| ()生產技術總監□連附件 | ()技術部 | □連附件 | ()生產部 | □連附件 | ()機械設計部□連附件 |
| ()採購部 | □連附件 | ()生產統籌部□連附件 | ()小羅&清 | □連附件 | |
| ()質檢部 | □連附件 | ()會計部 | □連附件 | ()報關組 | □連附件 ()其他 _____□連附件 |

分發香港各部門：

- | | | | | |
|------------|------------|------------|---------------|-----------------|
| ()行政部□連附件 | ()會計部□連附件 | ()統籌部□連附件 | (✓)工程部地盤科文 二寶 | ☑連附件 |
| (✓)採購部☑連附件 | ()QS 部 | □連附件 | ()維修部□連附件 | ()其他 _____□連附件 |

傳遞編號：

發件人簽署：

HK

/ 25

項目經理簽署：

序號	RI	項目	座	樓層	單位	戶數	玻璃編號	W (mm)	H (mm)	厚度 (mm)	Letter	
65	E8938	CW	T1	16/F	AE	1	GL01-27	1660	2332	10mm THK. HEAT STRENGTHEN GLASS (OUTSIDE) W/ LOW-E COATING ON SURFACE (CLEAR TEMPERED GLASS/INSIDE) (R20220114001)		
66	E8938	CW	T1	20/F	AB	1	GL01-46	903	2332	10mm THK. HEAT STRENGTHEN GLASS (OUTSIDE) W/ LOW-E COATING ON SURFACE (CLEAR TEMPERED GLASS/INSIDE) (R20220114001)		
67	E8938	CW	T1	35/F	AC	1	GL01-29	1544	2332	10mm THK. HEAT STRENGTHEN GLASS (OUTSIDE) W/ LOW-E COATING ON SURFACE (CLEAR TEMPERED GLASS/INSIDE) (R20220114001)		
68	E8938	CW	T1	29/F	BD	1	GL01-02	663	832	10mm THK. HEAT STRENGTHEN GLASS (OUTSIDE) W/ LOW-E COATING ON SURFACE (CLEAR TEMPERED GLASS/INSIDE) (R20220114001)		
修改玻璃編號	A區	CW	T1	35/F	AD	1	GL02-03	663	1443	10mm THK. HEAT STRENGTHEN GLASS (OUTSIDE) W/ LOW-E COATING ON SURFACE (CLEAR TEMPERED GLASS/INSIDE) (R20220114001)		
改位置	A區	CW	T1	17/F	AF	1	GL01-19	1770	X 2332	10mm THK. HEAT STRENGTHEN GLASS (OUTSIDE) W/ LOW-E COATING ON SURFACE (CLEAR TEMPERED GLASS/INSIDE) (R20220114001)		
71	E8938	CW	T1	41/F	AE	1	GL01-27	1660	2332	10mm THK. HEAT STRENGTHEN GLASS (OUTSIDE) W/ LOW-E COATING ON SURFACE (CLEAR TEMPERED GLASS/INSIDE) (R20220114001)		
72	E8938A	CW	T1	20/F	AC	1	GL01-03	644	832	10mm THK. HEAT STRENGTHEN GLASS (OUTSIDE) W/ LOW-E COATING ON SURFACE (CLEAR TEMPERED GLASS/INSIDE) (R20220114001)		
73	E8938A	CW	T1	27/F	BB	1	GL02-07	585.5	1443	10mm THK. HEAT STRENGTHEN GLASS (OUTSIDE) W/ LOW-E COATING ON SURFACE (CLEAR TEMPERED GLASS/INSIDE) (R20220114001)		
74	E8938A	CW	T1	21/F	BD	1	GL01-02	663	832	10mm THK. HEAT STRENGTHEN GLASS (OUTSIDE) W/ LOW-E COATING ON SURFACE (CLEAR TEMPERED GLASS/INSIDE) (R20220114001)		
75	E8938A	CW	T1	39/F	AG	1	GL02-05	636.5	1443	10mm THK. HEAT STRENGTHEN GLASS (OUTSIDE) W/ LOW-E COATING ON SURFACE (CLEAR TEMPERED GLASS/INSIDE) (R20220114001)		
76	E8938A	CW	T1	37/F	AF	1	GL01-03	644	832	10mm THK. HEAT STRENGTHEN GLASS (OUTSIDE) W/ LOW-E COATING ON SURFACE (CLEAR TEMPERED GLASS/INSIDE) (R20220114001)		
77	E8938A	CW	T1	29/F	AF	1	GL02-08	655.5	1443	10mm THK. HEAT STRENGTHEN GLASS (OUTSIDE) W/ LOW-E COATING ON SURFACE (CLEAR TEMPERED GLASS/INSIDE) (R20220114001)		
78	E8938A	CW	T1	27/F	AF	1	GL02-05	636.5	1443	10mm THK. HEAT STRENGTHEN GLASS (OUTSIDE) W/ LOW-E COATING ON SURFACE (CLEAR TEMPERED GLASS/INSIDE) (R20220114001)		
79	E8938A	CW	T1	22/F	AF	1	GL01-05	678.5	832	10mm THK. HEAT STRENGTHEN GLASS (OUTSIDE) W/ LOW-E COATING ON SURFACE (CLEAR TEMPERED GLASS/INSIDE) (R20220114001)		
80	E8938A	CW	T1	17/F	AF	1	GL02-05	636.5	1443	10mm THK. HEAT STRENGTHEN GLASS (OUTSIDE) W/ LOW-E COATING ON SURFACE (CLEAR TEMPERED GLASS/INSIDE) (R20220114001)		
81	E8938A	CW	T1	30/F	AF	1	GL01-03	644	832	10mm THK. HEAT STRENGTHEN GLASS (OUTSIDE) W/ LOW-E COATING ON SURFACE (CLEAR TEMPERED GLASS/INSIDE) (R20220114001)		
82	E8938B	CW	T1	41/F	BC	1	GL01-03	644	832	10mm THK. HEAT STRENGTHEN GLASS (OUTSIDE) W/ LOW-E COATING ON SURFACE (CLEAR TEMPERED GLASS/INSIDE) (R20220114001)		
83	E8938B	CW	T1	41/F	BC	1	GL01-19	1770	X 2332	10mm THK. HEAT STRENGTHEN GLASS (OUTSIDE) W/ LOW-E COATING ON SURFACE (CLEAR TEMPERED GLASS/INSIDE) (R20220114001)		
84	E8938B	CW	T1	26/F	AA	1	GL01-15	1272	2332	10mm THK. HEAT STRENGTHEN GLASS (OUTSIDE) W/ LOW-E COATING ON SURFACE (CLEAR TEMPERED GLASS/INSIDE) (R20220114001)		
85	E8938B	CW	T1	19/F	BE	1	GL01-17	585	2332	10mm THK. HEAT STRENGTHEN GLASS (OUTSIDE) W/ LOW-E COATING ON SURFACE (CLEAR TEMPERED GLASS/INSIDE) (R20220114001)		
86	E8938B	CW	T1	17/F	AD	1	GL01-12	663	2332	10mm THK. HEAT STRENGTHEN GLASS (OUTSIDE) W/ LOW-E COATING ON SURFACE (CLEAR TEMPERED GLASS/INSIDE) (R20220114001)		
87	E8938B	CW	T1	16/F	AD	1	GL02-03	663	1443	10mm THK. HEAT STRENGTHEN GLASS (OUTSIDE) W/ LOW-E COATING ON SURFACE (CLEAR TEMPERED GLASS/INSIDE) (R20220114001)		
88	E8938B	CW	T1	12/F	AF	1	GL02-05	636.5	1443	10mm THK. HEAT STRENGTHEN GLASS (OUTSIDE) W/ LOW-E COATING ON SURFACE (CLEAR TEMPERED GLASS/INSIDE) (R20220114001)		
89	E8938B	CW	T1	12/F	AF	1	GL01-03	644	832	10mm THK. HEAT STRENGTHEN GLASS (OUTSIDE) W/ LOW-E COATING ON SURFACE (CLEAR TEMPERED GLASS/INSIDE) (R20220114001)		
				補玻璃總數				25				
		=		10mm THK. HEAT STRENGTHEN GLASS (OUTSIDE) W/ LOW-E COATING ON SURFACE (R20220114001)								
		=		10mm THK. HEAT STRENGTHEN GLASS (OUTSIDE) W/ LOW-E COATING ON SURFACE (R20220114001)								
		=		12mm THK. HEAT STRENGTHEN GLASS (Reflective Glass SSC1-001 (R20220324054)								

玻璃記錄

地盤名稱：日出康城11期

日期	座數	單位	工作範圍	內/外	分類
E1 8842	T1	23 AD	房安全		575
E1 8938A		22 AF	主細梗	外崩	
E1 8842		20 AC	房1安全		
E1 8938A		"	房1細梗	外崩	
E1 8842		19BA	主安全 + 房安全		555 x 2
E1 8842	267	19BD	房2安全		
8938B		19BE	房大梗	外崩	
E1 8842		17BA	主安全		555
8938A		17AF	主大梗	外崩	
8938A		17AF	主生窗	外崩	
8943		17BF	厅门玉	外崩	
E1 8842	267	16AE	房1安全		
8938B		16AD	房生窗	外崩	
8938B		17AD	房大梗	外崩	
8943		17AD	厅门玉	内外花	
E1 8842		12AF	安全主		
8938B		"	房1生窗	外崩	
8938B		"	房1細梗	外崩	
8943		"	厅门梗	内人为破坏	
E1 8842		12BA	房安全		555
E18896	已訂貨	10BC	主大梗	外	

地盤代表簽名：_____

日期：_____

玻璃記錄

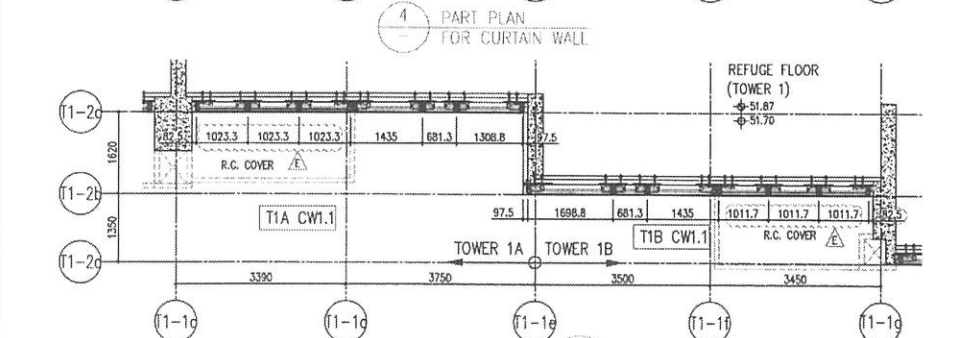
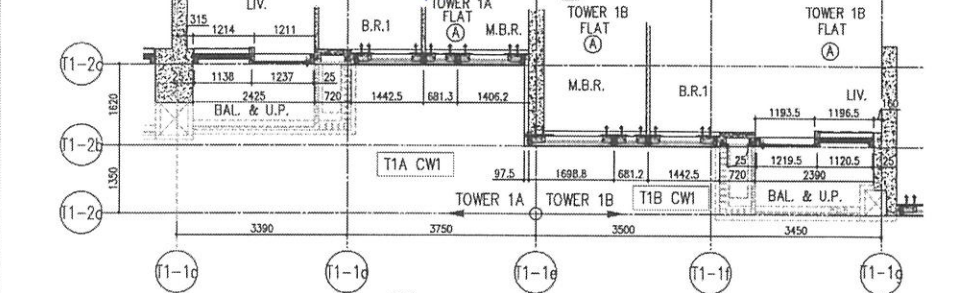
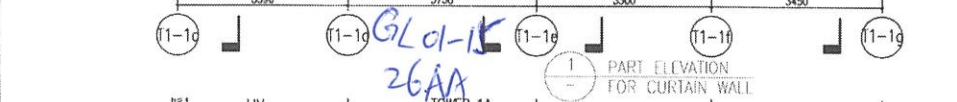
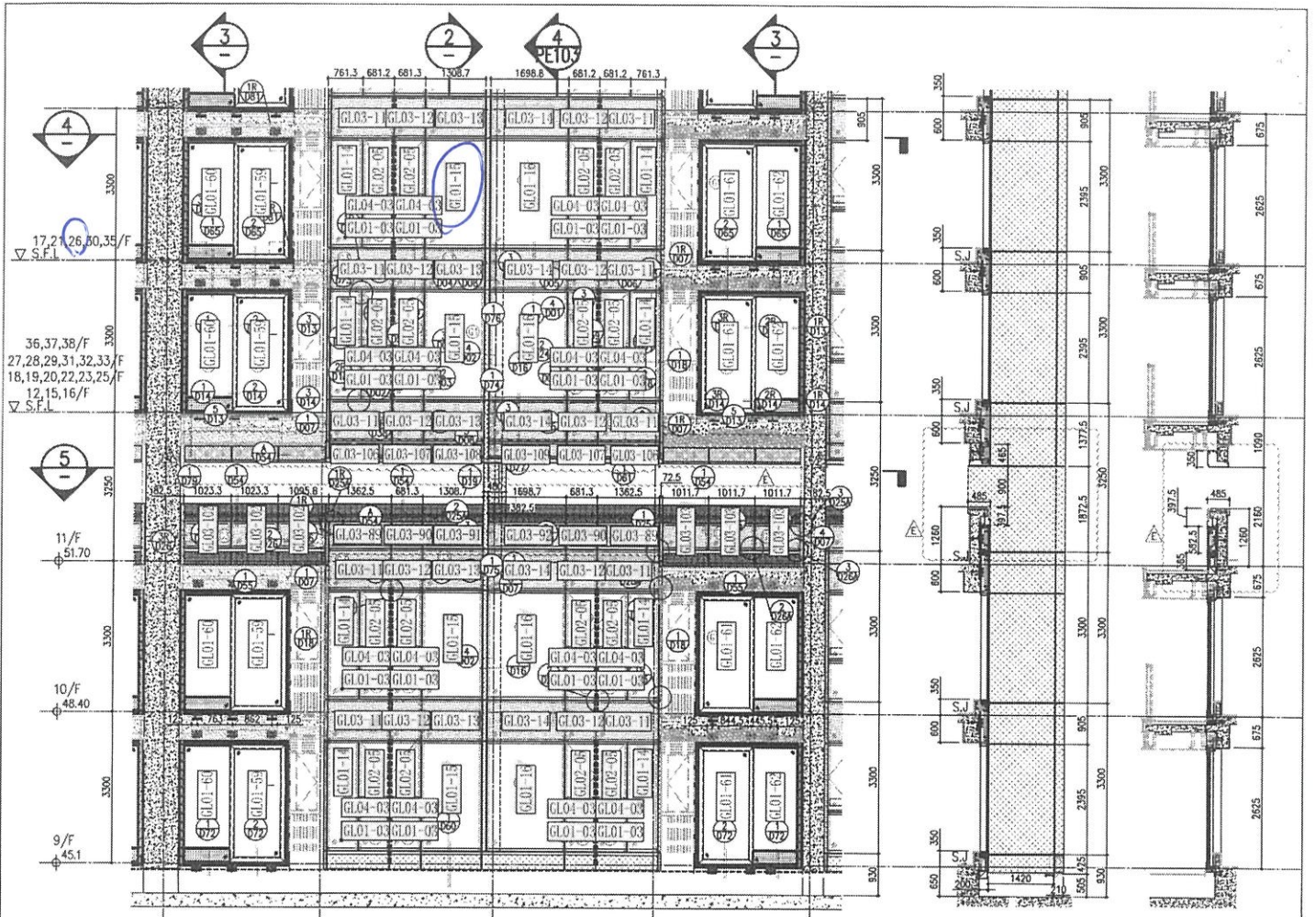
地盤名稱：日出康城11期

換
分類

日期	座數	單位	工作範圍	內/外	分類
88 42	T1	50AC	主安全		
88 42		47BD	主安全	深花	575
89 43		"	廚房	外崩	
89 43		42BB	厅門玉	內花	
E1 8938		41AZ	主則大梗	外崩	
8938B		41BC	主大梗	外崩	
8938B		"	房細梗	外崩	
88 42		39AF	主安全	崩	
89 38A		39AG	房生窗	冷	
89 38A		37AF	房細梗	冷	
88 42		36AC	主安全+房安全	崩	555 x 2
89 43		37BD	廚房	外崩	
8938 E1)	合標	業主要求換	主大梗	崩+2包	
8938 E2)	先磨	要求換	房生窗	外崩	
88 42	E1)	33AD	主安全		
8938A	E1)	33AF	主安全		
88 42	E1)	32BD	房細梗	外崩花	
89 38A		31BA	房安全		555
88 42		30AF	房細梗	外崩	
88 42		29AF	主安全		470
89 38A		"	主生窗	外崩	
88 42		"	房安全		
E1 8938	E1)	29BD	房細梗	外崩	
88 42		28BD	主安全		575
89 43		"	廚房	外崩	
89 38A	太邊磨不到	27AF	房生窗	內外花	
89 38A		27BB	房生窗	外崩	
8938B		26AA	主大梗	外崩	
88 42		26AF	主安全		470
88 42		26AG	房安全		
88 42		25AA	主安全+房安全		

地盤代表簽名： _____

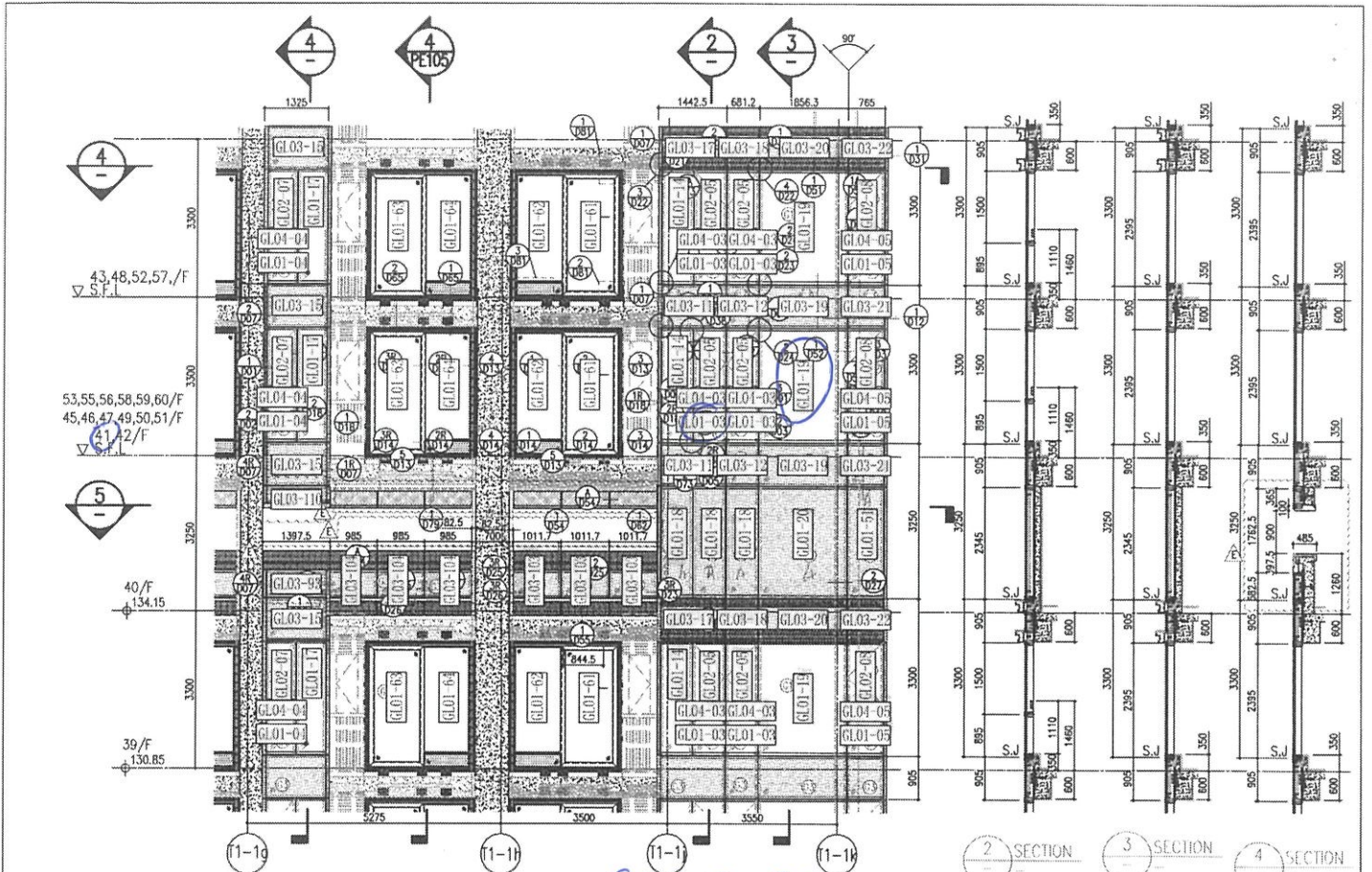
日期： _____



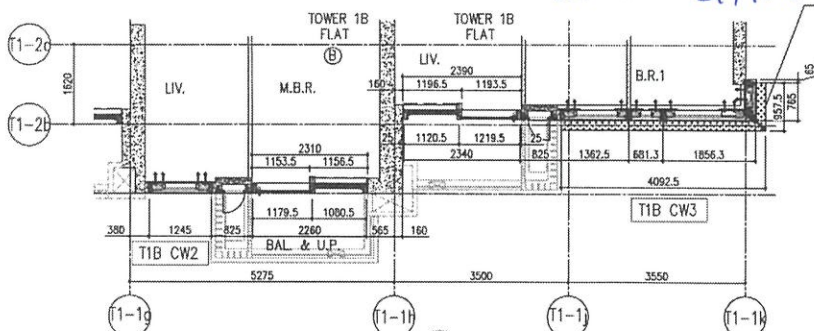
26/F +91.25	39/F +130.85	52/F +170.40	
25/F +87.95	38/F +127.55	51/F +167.10	
23/F +84.65	37/F +124.25	50/F +163.80	R/F +203.80
22/F +81.35	36/F +120.95	49/F +160.50	62/F +200.30
21/F +78.05	35/F +117.65	48/F +157.20	61/F +196.80
20/F +74.75	33/F +114.35	47/F +153.90	60/F +193.50
19/F +71.45	32/F +111.05	46/F +150.60	59/F +190.20
18/F +68.15	31/F 107.75	45/F +147.30	58/F +186.90
17/F +64.85	30/F +104.45	43/F +144.00	57/F +183.60
16/F +61.55	29/F +101.15	42/F +140.70	56/F +180.30
15/F +58.25	28/F +97.85	41/F +137.40	55/F +177.00
12/F +54.95	27/F +94.55	40/F +134.15	53/F +173.70

- LEGEND:**
- 10mm THK HEAT STRENGTHENED GLASS (OUTSIDE) +12mm AIR SPACE + 12mm THK. TEMPERED GLASS.
 - 10mm THK HEAT STRENGTHENED GLASS (OUTSIDE) +12mm AIR SPACE + 10mm THK. TEMPERED GLASS.
 - 12mm THK HEAT STRENGTHENED GLASS.
 - 12mm THK. CLEAR TEMPERED GLASS (INTERNAL PROTECTIVE BARRIER).
 - 12mm CLEAR HEAT STRENGTHENED GLASS.
 - 10mm THK. CLEAR TEMPERED GLASS.
 - 8mm THK. CLEAR HEAT STRENGTHENED GLASS +1.52mm AIR SPACE + 8mm THK. CLEAR HEAT-STRENGTHENED GLASS.
 - 3 mm THK ALUM. CLADDING.
 - 3 mm THK ALUM. BACKPAN.
 - STACK JOINT

<p>REVISIONS:</p> <table border="1"> <tr><th>NO.</th><th>DATE</th><th>DESCRIPTION</th></tr> <tr><td>1</td><td>22/10/21</td><td>ISSUED AS PER COMMENTS</td></tr> <tr><td>2</td><td>06/09/21</td><td>REVISED AS PER COMMENTS</td></tr> <tr><td>3</td><td>26/09/21</td><td>REVISED AS PER COMMENTS</td></tr> <tr><td>4</td><td>20/01/21</td><td>REVISED AS PER COMMENTS</td></tr> <tr><td>5</td><td>03/01/21</td><td>REVISED AS PER COMMENTS</td></tr> </table>	NO.	DATE	DESCRIPTION	1	22/10/21	ISSUED AS PER COMMENTS	2	06/09/21	REVISED AS PER COMMENTS	3	26/09/21	REVISED AS PER COMMENTS	4	20/01/21	REVISED AS PER COMMENTS	5	03/01/21	REVISED AS PER COMMENTS	<p>PROJECT: PROPOSED RESIDENTIAL DEVELOPMENT AT TOWER 708P, PHASE 11, LOHAS PARK TSIENING RWY 0, N.T.</p>	<p>CLIENT: 德安置業有限公司 Sino Land Company Limited</p>	<p>ARCHITECT: ronald lu & partners Ronald Lu & Partners (HK) Ltd. 呂定邦建築師事務所(香港)有限公司</p>	<p>STRUCTURAL ENGINEER: Gammron</p>	<p>FACE CONSULTANT: AECOM</p>	<p>DATE: 22/10/21</p> <p>SCALE: 1:150(A1)</p> <p>PROJECT: PROPOSED RESIDENTIAL DEVELOPMENT AT TOWER 708P, PHASE 11, LOHAS PARK TSIENING RWY 0, N.T.</p> <p>CLIENT: 德安置業有限公司 Sino Land Company Limited</p> <p>ARCHITECT: ronald lu & partners Ronald Lu & Partners (HK) Ltd. 呂定邦建築師事務所(香港)有限公司</p> <p>STRUCTURAL ENGINEER: Gammron</p> <p>FACE CONSULTANT: AECOM</p>
NO.	DATE	DESCRIPTION																						
1	22/10/21	ISSUED AS PER COMMENTS																						
2	06/09/21	REVISED AS PER COMMENTS																						
3	26/09/21	REVISED AS PER COMMENTS																						
4	20/01/21	REVISED AS PER COMMENTS																						
5	03/01/21	REVISED AS PER COMMENTS																						

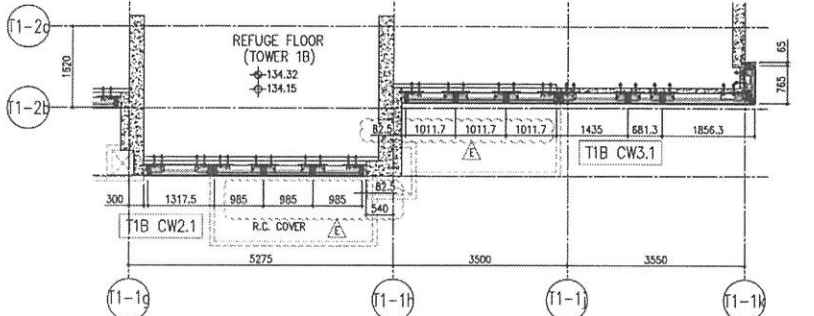


GLD-03
AIBC
GL01-19
AIBC



ARCH. FEATURE AT 39/F,
43/F, 48/F, 52/F, 57/F

26/F +91.25	39/F +130.85	52/F +170.40	
25/F +87.95	38/F +127.55	51/F +167.10	
23/F +84.65	37/F +124.25	50/F +163.80	R/F +203.80
22/F +81.35	36/F +120.95	49/F +160.50	62/F +200.30
21/F +78.05	35/F +117.65	48/F +157.20	61/F +196.80
20/F +74.75	33/F +114.35	47/F +153.90	60/F +193.50
19/F +71.45	32/F +111.05	46/F +150.60	59/F +190.20
18/F +68.15	31/F 107.75	45/F +147.30	58/F +186.90
17/F +64.85	30/F +104.45	43/F +144.00	57/F +183.60
16/F +61.55	29/F +101.15	42/F +140.70	56/F +180.30
15/F +58.25	28/F +97.85	41/F +137.40	55/F +177.00
12/F +54.95	27/F +94.55	40/F +134.15	53/F +173.70



- LEGEND:**
- 10mm THK HEAT STRENGTHENED GLASS (OUTSIDE) + 12mm AIR SPACE + 12mm THK TEMPERED GLASS
 - 10mm THK HEAT STRENGTHENED GLASS (OUTSIDE) + 12mm AIR SPACE + 10mm THK TEMPERED GLASS
 - 12mm THK HEAT STRENGTHENED GLASS
 - 12mm THK CLEAR TEMPERED GLASS (INTERNAL PROTECTIVE BARRIER)
 - 12mm CLEAR TEMPERED GLASS
 - 10mm THK CLEAR TEMPERED GLASS
 - 8mm THK CLEAR TEMPERED GLASS + 1.5mm PVB + 8mm THK CLEAR HEAT-STRENGTHENED GLASS
 - 3 mm THK ALUM. CLADDING
 - 3 mm THK ALUM. BACKPAN
 - STACK JOINT

<p>DATE: 22-01-21 SCALE: 1:50(A1)</p> <p>DRWN BY: [Signature]</p> <p>CHECKED BY: [Signature]</p> <p>PROJECT: PROPOSED RESIDENTIAL DEVELOPMENT AT TOWER 709P, PHASE 11, LOHAS PARK, TESHING WAI, N.T.</p> <p>TITLE: TYPICAL FLOOR PARTIAL ELEVATION & SECTION FOR CURTAIN WALL (TOWER 1)</p>	<p>JOB NO.: J-658</p> <p>REV. NO.: 1</p> <p>REV. 1: 23/09/22 REVISION AS PER COMMENTS</p> <p>2: 16/04/22 REVISION AS PER COMMENTS</p> <p>3: 27/01/22 REVISION AS PER COMMENTS</p> <p>4: 16/12/21 REVISION AS PER COMMENTS</p> <p>5: 15/12/21 REVISION AS PER COMMENTS</p> <p>6: 15/12/21 REVISION AS PER COMMENTS</p>	<p>NOTE: DIMENSIONS ARE IN mm.</p> <p>1. ALL DIMENSIONS ARE MEASURED FROM OUTSIDE UNLESS OTHERWISE SPECIFIED.</p> <p>2. ALL DIMENSIONS ARE TO BE VERIFIED ON SITE BEFORE PROCEEDING.</p> <p>LEGEND:</p> <p>(A) DETAIL MARK NO.</p> <p>(B) REFER SHEET NO.</p> <p>1. F.F.L. --- FINISHED FLOOR LEVEL</p> <p>2. S.F.L. --- STRUCTURAL FLOOR LEVEL</p> <p>3. --- REVERSED DETAIL</p>	<p>STRUCTURAL ENGINEER: Gammon</p> <p>ARCHITECT CONSULTANT: AECOM</p> <p>MECHANICAL ENGINEER: AECOM</p> <p>ELECTRICAL ENGINEER: AECOM</p> <p>MECHANICAL CONTRACTOR: ronald lu & partners</p> <p>MECHANICAL CONTRACTOR: Ronald Lu & Partners (HK) Ltd.</p> <p>MECHANICAL CONTRACTOR: 羅蘭路建築師事務所(香港)有限公司</p> <p>MECHANICAL CONTRACTOR: 羅蘭路建築師事務所(香港)有限公司</p>	<p>CLIENT: 信和置業有限公司</p> <p>CLIENT: Sino Land Company Limited</p>	<p>BA. REF.:</p>
---	---	---	---	--	------------------

