

工程指示 / 要求簡箋(E.I.)

工程指示編號：EI / 8784/25

修改版次： -

工程編號： J - 858

工程名稱：將軍澳日出康城 11

工程項目：幕牆 室內收口鋁料 地盤用 (補 T3) T3AF, BD

收件人：生統

發件人：Ant Yeung

日期：20/02/2025

要求提供 / 確認 事項：

內容：

因地盆表示：T3 需補收口料(標準層)，因安裝工差 T3AF, BD

轉向位。

原 EI 6389：X86457。

請工廠查有無餘料????

請工廠生產供地盆使用

1. 生統，請按此最後版本圖紙生產。
2. 阿二寶收貨。
3. 註明 T3 用
4. 地盆：留意廠內餘料，倉存已不多。
5. 如有多，請保留用作執更換料。。

請在 2025.2.28 前完成上列要求。

分發東莞各部門：

()生產技術總監 連附件 (✓)技術部 連附件 ()生產部 連附件 ()機械設計部 連附件
 ()採購部 連附件 (✓)生產統籌部 連附件 (✓)小羅&清 連附件
 ()質檢部 連附件 ()會計部 連附件 ()報關組 連附件 ()其他 _____ 連附件

分發香港各部門：

()行政部 連附件 ()會計部 連附件 ()統籌部 連附件 (✓)工程部地盤科文 連附件 二寶
 ()採購部 連附件 ()QS 部 連附件 ()維修部 連附件 ()其他 _____ 連附件

傳遞編號：

HK 0150 / 25

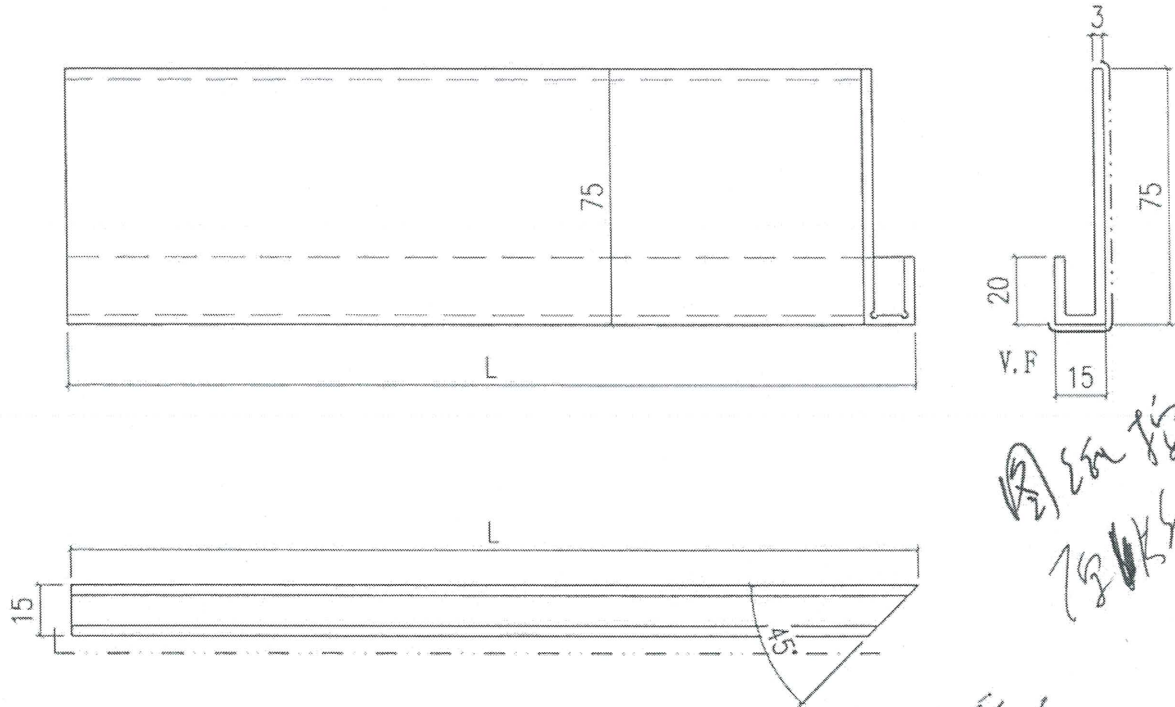
發件人簽署：

項目經理簽署：



美特鋁質有限公司
MIDI Aluminium Fabricator Ltd.

修改		採用工廠	地盤	✓	工程號	J858	類別		物料號	-	
日期		材料顏色	ECD3X1009 9S-XF1		地盤	康城11期	制圖	J.L.	2023-16-17	圖號	X86457-03
					圖紙名稱	幕牆陣底收口	復核	-	-	數量	-
					材料	X86457	批准	-	-	單件重量	- (KG)



圖紙指
改尺寸

幕牆轉台

物料編號

T3BD
x 86457-03-03

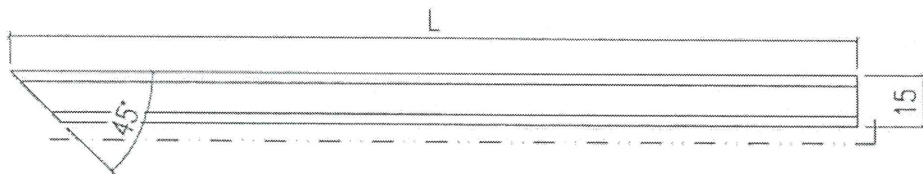
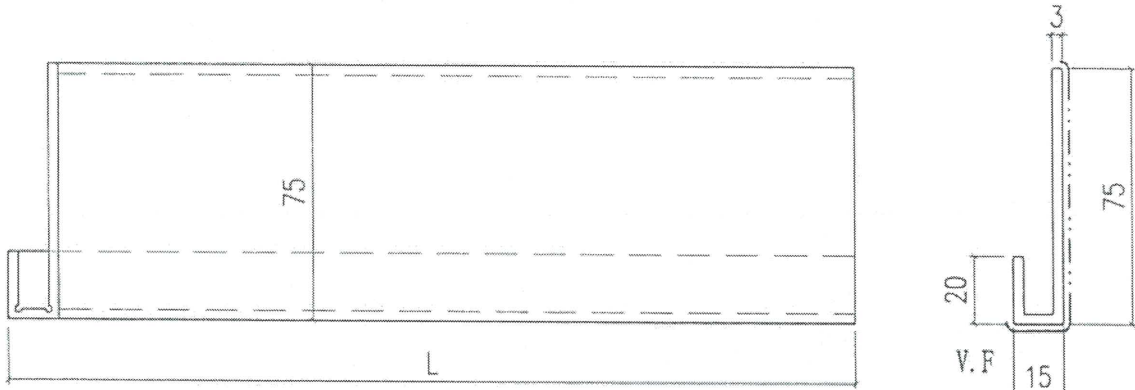
X86457-03-04	1568.5	44
X86457-03-03	1660	22
X86457-03-02	537.5	280
X86457-03-01	1679	48
編號	L	合計數量

L = 1665mm

20支

降底 8.5

 美特鋁質有限公司 MIDI Aluminium Fabricator Ltd.				工程號	J858	類別		物料號	-
修改		採用工廠	地盤	✓	地盤	康城11期	制圖	J.L.	2023-16-17
日期		材料顏色	ECD3X1009 9S-XF1		圖紙名稱	幕牆陣底收口	復核	-	-
					材料	X86457	批准	-	-
								圖號	X86457-02
								數量	-
								單件重量	- (KG)



圖紙指
厚板

轉角位

幕牆陣底

物料編號

73AF.

x ~~86457~~ 86457-02-01

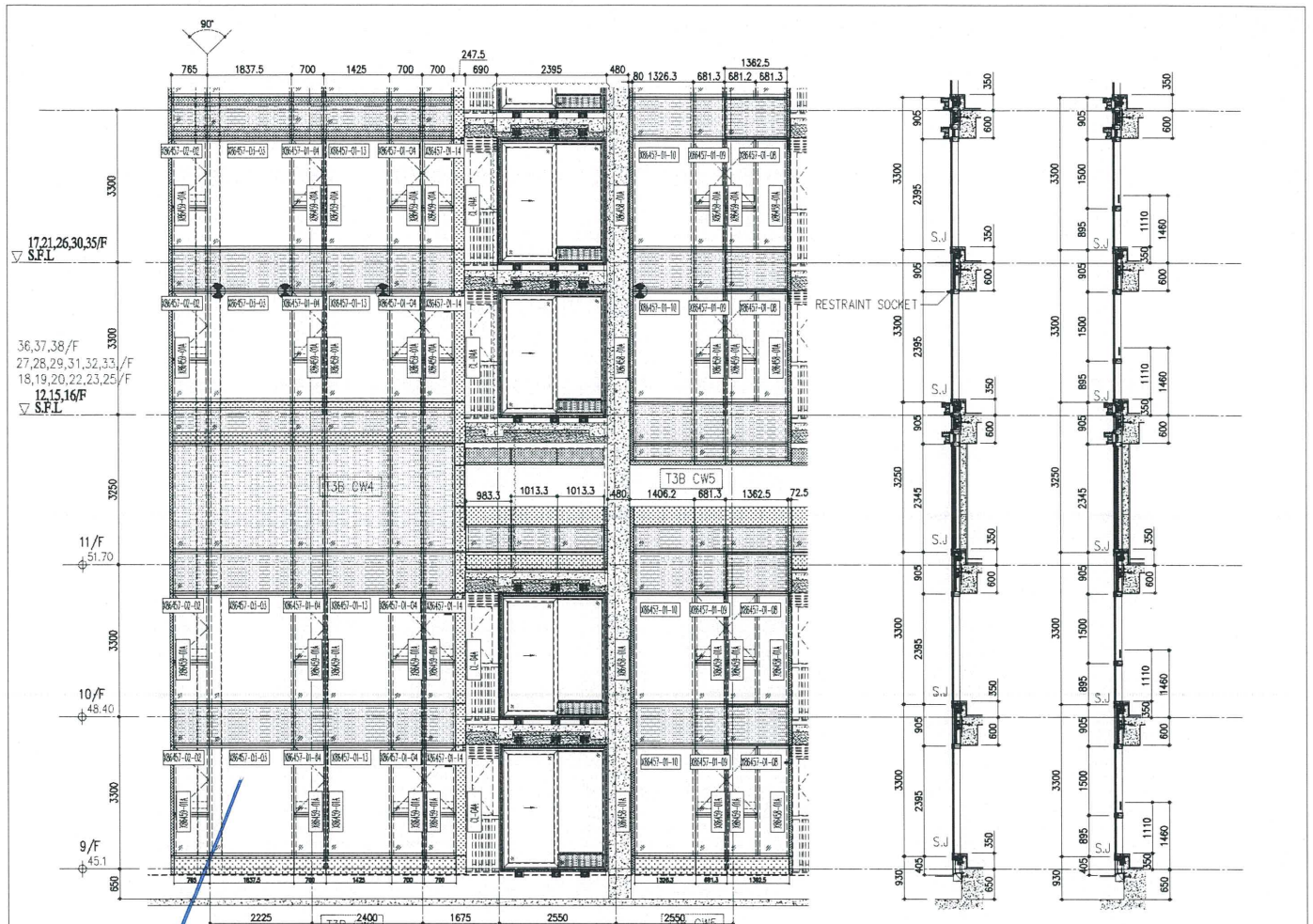
X86457-02-04	1703.5	48
X86457-02-03	643.5	44
X86457-02-02	537.5	140
X86457-02-01	1679	232
編號	L	合計數量

20支

L = 1684 mm

陣底

p.4



x86457-03-03

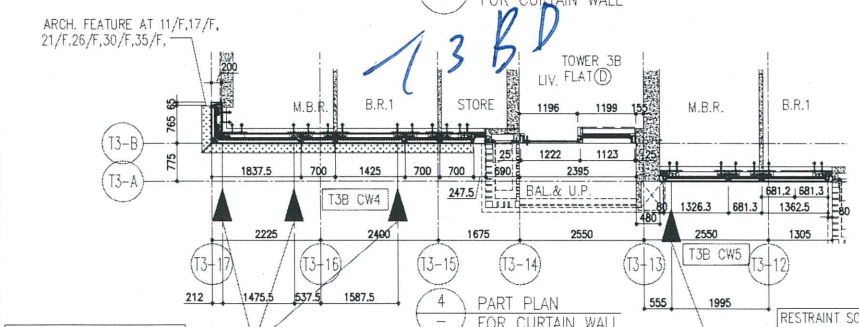
1 PART ELEVATION FOR CURTAIN WALL

2 SECTION

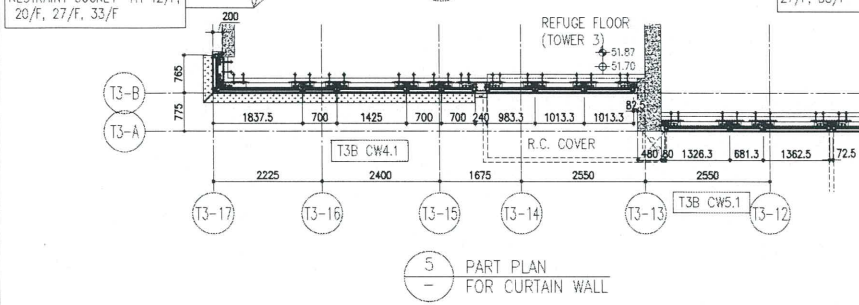
3 SECTION

R/F	+217.00
67/F	+213.50
66/F	+210.00
65/F	+206.70
63/F	+203.40
62/F	+200.10
61/F	+196.80
60/F	+193.50
59/F	+190.20
58/F	+186.90
57/F	+183.60
56/F	+180.30
55/F	+177.00
53/F	+173.70
52/F	+170.40
51/F	+167.10
50/F	+163.80
49/F	+160.50
48/F	+157.20
47/F	+153.90
46/F	+150.60
45/F	+147.30
44/F	+144.00
43/F	+140.70
42/F	+137.40
41/F	+134.10
40/F	+130.80
39/F	+127.50
38/F	+124.20
37/F	+120.90
36/F	+117.60
35/F	+114.30
34/F	+111.00
32/F	+107.70
31/F	+104.40
30/F	+101.10
29/F	+97.80
28/F	+94.50
27/F	+91.20
26/F	+87.90
25/F	+84.60
23/F	+81.30
22/F	+78.00
21/F	+74.70
20/F	+71.40
19/F	+68.10
18/F	+64.80
17/F	+61.50
16/F	+58.20
15/F	+54.90

- LEGEND:
- 10mm THK. HEAT STRENGTHENED GLASS (OUTSIDE) +12mm AIR SPACE + 12mm THK. TEMPERED GLASS
 - 10mm THK. HEAT STRENGTHENED GLASS (OUTSIDE) +12mm AIR SPACE + 10mm THK. TEMPERED GLASS
 - 12mm THK. HEAT STRENGTHENED GLASS
 - 12mm THK. CLEAR TEMPERED GLASS (INTERNAL PROTECTIVE BARRIER)
 - 10mm THK. HEAT STRENGTHENED GLASS (OUTSIDE) +12mm AIR SPACE + 12mm THK. TEMPERED GLASS WITH REFLECTIVE COATING
 - 10mm THK. CLEAR TEMPERED GLASS
 - 8mm THK. CLEAR HEAT-STRENGTHENED GLASS + 52mm PVB + 8mm THK. CLEAR HEAT-STRENGTHENED GLASS
 - 3 mm THK. ALUM. CLADDING
 - 3 mm THK. ALUM. BACKPAN
 - STACK JOINT
 - RESTRAINT SOCKET



4 PART PLAN FOR CURTAIN WALL



5 PART PLAN FOR CURTAIN WALL

PROJECT: PROPOSED RESIDENTIAL DEVELOPMENT AT TOWER 30PH, PHASE 11, LOMA'S PARK, TSEUNG KWAN O, N.T.

DATE: 22-OCT-21 **SCALE:** 1:50(A1)

DRAWN BY: [Signature]

CHECKED BY: [Signature]

PROJECT ENGINEER: [Signature]

STRUCTURAL ENGINEER: [Signature]

ARCHITECT: [Signature]

CLIENT: [Signature]

REVISIONS:

NO.	DESCRIPTION
1	REVISION AS PER COMMENTS
2	REVISION AS PER COMMENTS
3	REVISION AS PER COMMENTS
4	REVISION AS PER COMMENTS
5	REVISION AS PER COMMENTS
6	REVISION AS PER COMMENTS
7	REVISION AS PER COMMENTS
8	REVISION AS PER COMMENTS
9	REVISION AS PER COMMENTS
10	REVISION AS PER COMMENTS
11	REVISION AS PER COMMENTS
12	REVISION AS PER COMMENTS
13	REVISION AS PER COMMENTS
14	REVISION AS PER COMMENTS
15	REVISION AS PER COMMENTS

NOTES:

- ALL DIMENSIONS ARE IN MM.
- ALL ELEVATIONS ARE DIMED FROM OUTSIDE.
- ALL DIMENSIONS TO BE CHECKED ON SITE BEFORE FABRICATION.

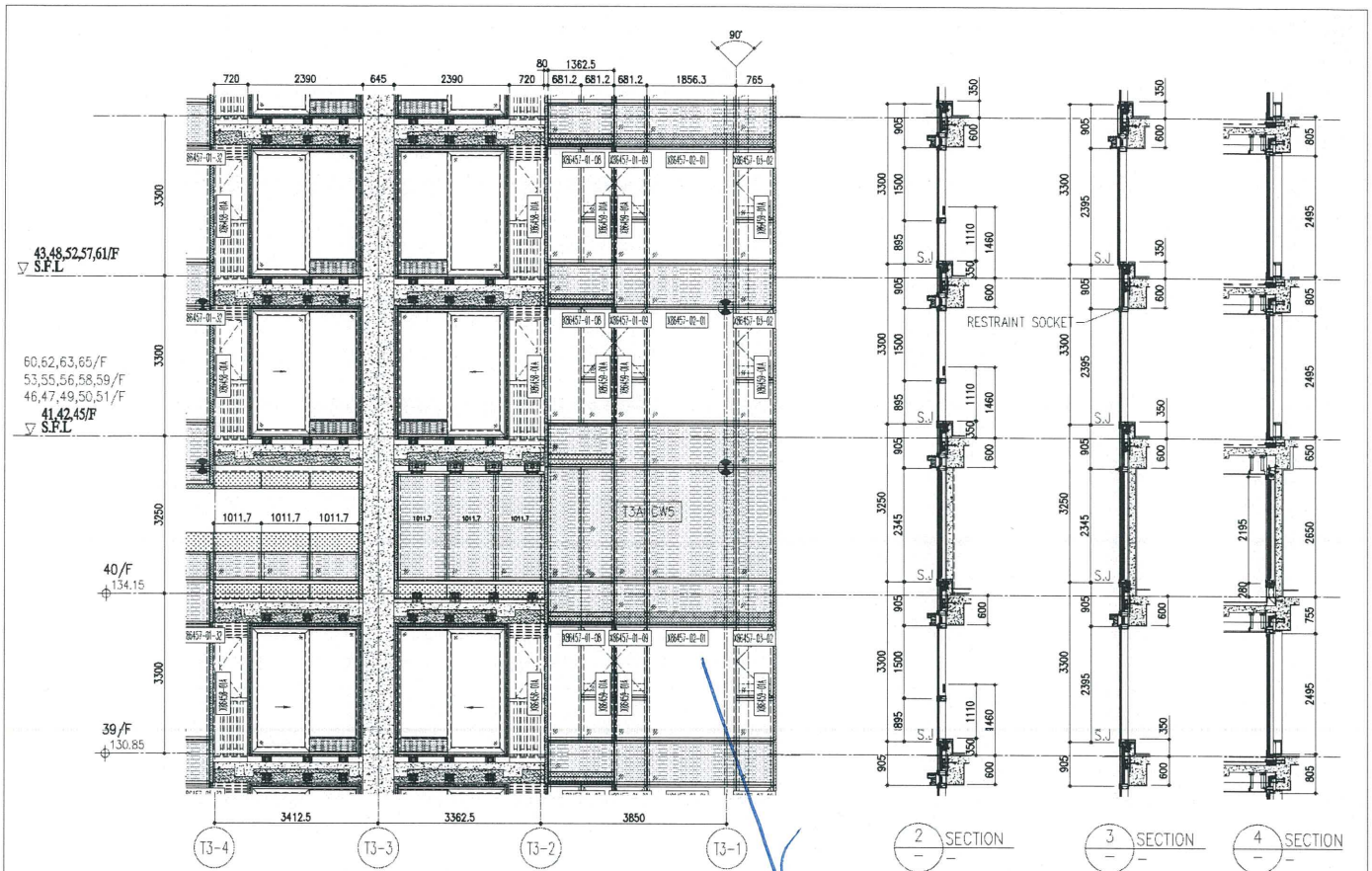
LEGEND:

- DETAIL MARK NO.
- REVISION SHEET NO.
- FINISHED FLOOR LEVEL
- STRUCTURAL FLOOR LEVEL
- REVISION DETAIL

COMPANIES:

- AECOM** (Facade Consultant)
- Gammou** (Structural Engineer)
- coroplast** (Architect)
- SHO LOMA COMPANY LIMITED** (Client)

DRG NO.: JB59-CW-PC507 **REV.:** G

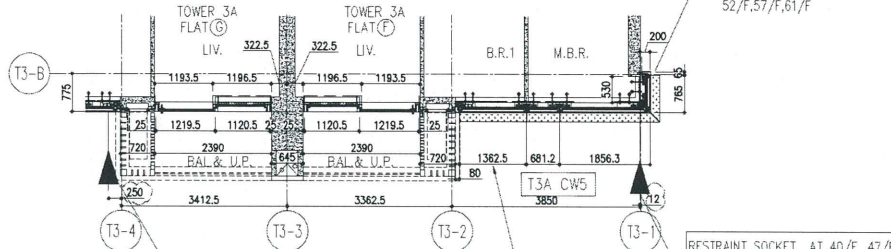


1 PART ELEVATION FOR CURTAIN WALL

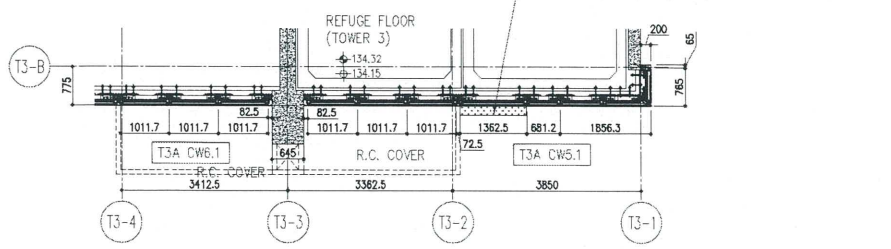
2 SECTION
3 SECTION
4 SECTION

x 86457-02-01

T3 AF



5 PART PLAN FOR CURTAIN WALL



6 PART PLAN FOR CURTAIN WALL

R/F	+217.00	R/F	+213.50
26/F	+91.25	39/F	+130.85
25/F	+87.95	38/F	+127.55
23/F	+84.65	37/F	+124.25
22/F	+81.35	36/F	+120.95
21/F	+78.05	35/F	+117.65
20/F	+74.75	33/F	+114.35
19/F	+71.45	32/F	+111.05
18/F	+68.15	31/F	+107.75
17/F	+64.85	30/F	+104.45
16/F	+61.55	29/F	+101.15
15/F	+58.25	28/F	+97.85
12/F	+54.95	27/F	+94.55
		40/F	+134.15
		52/F	+170.40
		51/F	+167.10
		63/F	+203.40
		49/F	+160.50
		62/F	+200.10
		48/F	+157.20
		61/F	+196.80
		60/F	+193.50
		59/F	+190.20
		58/F	+186.90
		57/F	+183.60
		56/F	+180.30
		55/F	+177.00
		53/F	+173.70

- LEGEND:
- ① 10mm THK. HEAT STRENGTHENED GLASS (OUTSIDE) +12mm AIR SPACE + 12mm THK. TEMPERED GLASS
 - ② 10mm THK. HEAT STRENGTHENED GLASS (OUTSIDE) +12mm AIR SPACE + 10mm THK. TEMPERED GLASS
 - ③ 12mm THK. HEAT STRENGTHENED GLASS
 - ④ 12mm THK. CLEAR TEMPERED GLASS (INTERNAL PROTECTIVE BARRIER)
 - ⑤ 10mm THK. HEAT STRENGTHENED GLASS (OUTSIDE) +12mm AIR SPACE + 12mm THK. TEMPERED GLASS WITH REFLECTIVE COATING
 - ⑥ 10mm THK. CLEAR TEMPERED GLASS
 - ⑦ 8mm THK. CLEAR HEAT-STRENGTHENED GLASS + 52mm PVB + 8mm THK. CLEAR HEAT-STRENGTHENED GLASS
 - ⑧ 3 mm THK. ALUM. CLADDING
 - ⑨ 3 mm THK. ALUM. BACKPAN
 - S.J. - STACK JOINT
 - RS - RESTRAINT SOCKET

<p>DATE: 22-07-21 SCALE: 1:50(A1)</p> <p>DRAWN BY: [Signature]</p> <p>CHECKED BY: [Signature]</p> <p>PROJECT: PROPOSED RESIDENTIAL DEVELOPMENT AT HONG KONG TRADE TOWER PARK (23/000 KWAN YU, N.Y.)</p> <p>TITLE: TYPICAL FLOOR PARTIAL ELEVATION & SECTION, PLAN FOR CURTAIN WALL (TOWER 3)</p>	<p>JOB NO.: J-858</p> <p>PROJECT: PROPOSED RESIDENTIAL DEVELOPMENT AT HONG KONG TRADE TOWER PARK (23/000 KWAN YU, N.Y.)</p>	<p>NO. 1. ALL DIMENSIONS ARE IN MM.</p> <p>2. ALL ELEVATIONS ARE SHOWN FROM OUTSIDE.</p> <p>3. BEFORE FABRICATION.</p> <p>LEGEND:</p> <p>(X1) - DETAIL WORK NO.</p> <p>(X2) - REFER SHEET NO.</p> <p>1. F.F.L. - FINISHED FLOOR LEVEL</p> <p>2. S.F.L. - STRUCTURAL FLOOR LEVEL</p> <p>3. (79) - REVERSED DETAIL</p>	<p>ARCHITECT: Ronald Lu & Partners (HK) Ltd. 羅國龍建築師事務所 (香港) 有限公司</p> <p>STRUCTURAL ENGINEER: Gammon</p> <p>FACEBOOK CONSULTANT: AECOM</p> <p>CLIENT: 怡和置業有限公司 Sino Land Company Limited</p>	<p>BLD. REF: [Blank]</p>
--	---	--	---	--------------------------