



工程指示 / 要求簡箋(E.I.)

工程指示編號：EI / 8740 / 25

修改版次：A

工程編號：J - 858

工程名稱：將軍澳日出康城

工程項目：幕牆 第五次 補玻璃 34 件 地盤執修用 (已搽膠紙)

收件人：Maggie

發件人：Ant Yeung

日期：12/02/2025

要求提供 / 確認 事項：

- |                                    |                                     |                               |
|------------------------------------|-------------------------------------|-------------------------------|
| <input type="checkbox"/> 初步鋁料 B.M. | <input type="checkbox"/> 加工拆圖，然後生產  | <input type="checkbox"/> 尺寸表  |
| <input type="checkbox"/> 正式鋁料 B.M. | <input type="checkbox"/> 技術上資料 / 指示 | <input type="checkbox"/> 報價   |
| <input type="checkbox"/> 配件 B.M.   | <input type="checkbox"/> 樣辦或貨品說明書   | <input type="checkbox"/> 分判合約 |

內容：

A 版：按地盆覆核：更正和增加。請以此版本生產，共 34 件 送地盤。  
由於地盤需要更換玻璃，請按玻璃 BM 生產玻璃。

請安排熱浸

1. 不要印上熱浸標籤。只給“可移除”的標籤。
2. 依原 EI 4867, EI 4943, EI 4942 尺寸補，
3. \*\*\*\*\*分座包箱，玻璃標籤請註明樓層、單位。\*\*\*\*\* 請留意。
4. 第一次補 1 件(EI 6628A)；第二次補 6 件(EI 6884)；第三次(ei-8315)補 3 件；第四次補 3 件；第五次補 34 件 (本 EI)
5. 地盆：更換幕牆玻璃，需用吊船。
6. 按二寶、勝哥、Sam, 威 資料

謝謝

請在 2025.03.21 前完成上列要求。

分發東莞各部門：

- |                                 |                              |                                |                              |                               |                              |                                |                              |
|---------------------------------|------------------------------|--------------------------------|------------------------------|-------------------------------|------------------------------|--------------------------------|------------------------------|
| <input type="checkbox"/> 生產技術總監 | <input type="checkbox"/> 連附件 | <input type="checkbox"/> 技術部   | <input type="checkbox"/> 連附件 | <input type="checkbox"/> 生產部  | <input type="checkbox"/> 連附件 | <input type="checkbox"/> 機械設計部 | <input type="checkbox"/> 連附件 |
| <input type="checkbox"/> 採購部    | <input type="checkbox"/> 連附件 | <input type="checkbox"/> 生產統籌部 | <input type="checkbox"/> 連附件 | <input type="checkbox"/> 小羅&清 | <input type="checkbox"/> 連附件 |                                |                              |
| <input type="checkbox"/> 質檢部    | <input type="checkbox"/> 連附件 | <input type="checkbox"/> 會計部   | <input type="checkbox"/> 連附件 | <input type="checkbox"/> 報關組  | <input type="checkbox"/> 連附件 | <input type="checkbox"/> 其他    | <input type="checkbox"/> 連附件 |


分發香港各部門：

- |   |   |                               |                              |                              |                              |  |   |
|---|---|-------------------------------|------------------------------|------------------------------|------------------------------|--|---|
| <input type="checkbox"/> 行政部            | <input type="checkbox"/> 連附件            | <input type="checkbox"/> 會計部  | <input type="checkbox"/> 連附件 | <input type="checkbox"/> 統籌部 | <input type="checkbox"/> 連附件 | <input checked="" type="checkbox"/> 工程部地盤科文 二寶 | <input checked="" type="checkbox"/> 連附件 |
| <input checked="" type="checkbox"/> 採購部 | <input checked="" type="checkbox"/> 連附件 | <input type="checkbox"/> QS 部 | <input type="checkbox"/> 連附件 | <input type="checkbox"/> 維修部 | <input type="checkbox"/> 連附件 | <input type="checkbox"/> 其他                    | <input type="checkbox"/> 連附件            |

傳遞編號：

HK / 25

發件人簽署：

項目經理簽署：

	序號	EI	項目	座	樓層	單位	件數	玻璃編號	W (mm)	H (mm)	厚度(mm)	Letter	
已賣單位	15	本訂單補	CW	T3	21/F	BE	1	GL03-11	死牆	1325	X 843	12mm THK. HEAT STRENGTHEN GLASS Reflective Glass SSC1-60T (R20220324054)	AM03 #3 T3B CW5
已賣單位	16	本訂單補	CW	T1	56/F	AA	1	GL01-03	生下梗見光	644	X 832	10mm THK. HEAT STRENGTHEN GLASS (OUTSIDE) W/ LOW-E COATING ON SURFACE 5RT #2 + 12 mm AIR SPACE + 12mm THK. CLEAR TEMPERED GLASS(INSIDE) IGU (R20220114001)	T1 56/F: T1A-CW1(AS-09 56F-#2)
/	17	本訂單補	CW	T3	38/F	AC	1	GL01-43	梗	713	X 2332	10mm THK. HEAT STRENGTHEN GLASS (OUTSIDE) W/ LOW-E COATING ON SURFACE 5RT #2 + 12 mm AIR SPACE + 12mm THK. CLEAR TEMPERED GLASS(INSIDE) IGU (R20220114001)	T3 38/F: T3A-CW3 (AF-050 #4)
已賣單位	18	本訂單補	GC	T1	12/F	AB	1	GL03-62	GC 梗	592	X 2331	12mm THK. HEAT STRENGTHEN GLASS Reflective Glass SSC1-60T (R20220324054)	GC-01細件
/	19	本訂單補	CW	T1	61/F	AF	1	GL01-R06	生下梗見光	678	X 832	10mm THK. HEAT STRENGTHEN GLASS (OUTSIDE) W/ LOW-E COATING ON SURFACE 5RT #2 + 12 mm AIR SPACE + 12mm THK. CLEAR TEMPERED GLASS(INSIDE) IGU (R20220114001)	#5
已賣單位	20	本訂單補	CW	T1	45/F	AF	1	GL01-03	生下梗	644	X 832	10mm THK. HEAT STRENGTHEN GLASS (OUTSIDE) W/ LOW-E COATING ON SURFACE 5RT #2 + 12 mm AIR SPACE + 12mm THK. CLEAR TEMPERED GLASS(INSIDE) IGU (R20220114001)	#1
已賣單位	22	本訂單補	CW	T1	48/F	AC	1	GL03-11	死牆	1325	X 843	12mm THK. HEAT STRENGTHEN GLASS Reflective Glass SSC1-60T (R20220324054)	#5
已賣單位	23	本訂單補	CW	T1	15/F	AC	1	GL03-11	死牆	1325	X 843	12mm THK. HEAT STRENGTHEN GLASS Reflective Glass SSC1-60T (R20220324054)	#5
/	24	本訂單補	CW	T1	60/F	AF	1	GL01-14	近露台梗	644	X 2332	10mm THK. HEAT STRENGTHEN GLASS (OUTSIDE) W/ LOW-E COATING ON SURFACE 5RT #2 + 12 mm AIR SPACE + 12mm THK. CLEAR TEMPERED GLASS(INSIDE) IGU (R20220114001)	#1
已賣單位	25	本訂單補	CW	T1	29/F	AF	1	GL01-19	主房大玻璃梗	1770	X 2332	10mm THK. HEAT STRENGTHEN GLASS (OUTSIDE) W/ LOW-E COATING ON SURFACE 5RT #2 + 12 mm AIR SPACE + 12mm THK. CLEAR TEMPERED GLASS(INSIDE) IGU (R20220114001)	#3
已賣單位	26	本訂單補	CW	T1	21/F	AF	1	GL03-27	飾線上死牆玻璃	1325	X 578	12mm THK. HEAT STRENGTHEN GLASS Reflective Glass SSC1-60T (R20220324054)	#1
已賣單位	27	更正位置	CW	T1	17/F	AF	1	GL03-27	飾線上死牆玻璃	1325	X 578	12mm THK. HEAT STRENGTHEN GLASS Reflective Glass SSC1-60T (R20220324054)	#1
已賣單位	28	本訂單補	CW	T1	41/F	BD	1	GL03-08	死牆頂	663	X 843	12mm THK. HEAT STRENGTHEN GLASS Reflective Glass SSC1-60T (R20220324054)	#5
已賣單位	30	本訂單補	GC	T1	16/F	AB	1	GL03-62 GC # 6 大玻璃	GC # 6 大玻璃	592	X 2331	12mm THK. HEAT STRENGTHEN GLASS Reflective Glass SSC1-60T (R20220324054)	
已賣單位	32	本訂單補	CW	T1	38/F	AB	1	GL01-10	大見光	1525	X 2332	10mm THK. HEAT STRENGTHEN GLASS (OUTSIDE) W/ LOW-E COATING ON SURFACE 5RT #2 + 12 mm AIR SPACE + 12mm THK. CLEAR TEMPERED GLASS(INSIDE) IGU (R20220114001)	#5
/	34	本訂單補	CW	T1	51/F	AG	1	GL01-14 #5	見光 梗	644	X 2332	10mm THK. HEAT STRENGTHEN GLASS (OUTSIDE) W/ LOW-E COATING ON SURFACE 5RT #2 + 12 mm AIR SPACE + 12mm THK. CLEAR TEMPERED GLASS(INSIDE) IGU (R20220114001)	#5
已賣單位	35	本訂單補	CW	T1	49/F	BF	1	GL01-21 #3	見光 梗	1519	X 2332	10mm THK. HEAT STRENGTHEN GLASS (OUTSIDE) W/ LOW-E COATING ON SURFACE 5RT #2 + 12 mm AIR SPACE + 12mm THK. CLEAR TEMPERED GLASS(INSIDE) IGU (R20220114001)	#3

	序號	EI	項目	座	樓層	單位	件數	玻璃編號	W (mm)	H (mm)	厚度(mm)	Letter	
/	36	本訂單補	CW	T1	59/F	BF	1	GL01-13 #1	見光 梗	738	X 2332	10mm THK. HEAT STRENGTHEN GLASS (OUTSIDE) W/ LOW-E COATING ON SURFACE 58T #2 + 12mm AIR SPACE + 12mm THK. CLEAR TEMPERED GLASS(INSIDE) IGU (R20220114001)	#1
已賣單位	37	本訂單補	CW	T1	38/F	AF	1	GL03-21	轉角頂 死牆	678	X 843	12mm THK. HEAT STRENGTHEN GLASS .Reflective Glass SSC1-60T (R20220324054)	#4
/	38	本訂單補	CW	T2	50/F	BD	1	GL01-19	主房見光大梗玻璃	1770	X 2332	10mm THK. HEAT STRENGTHEN GLASS (OUTSIDE) W/ LOW-E COATING ON SURFACE 58T #2 + 12mm AIR SPACE + 12mm THK. CLEAR TEMPERED GLASS(INSIDE) IGU (R20220114001)	#2
/	39	本訂單補	CW	T2	51/F	BC	1	GL01-03	客房生窗下梗	644	X 832	10mm THK. HEAT STRENGTHEN GLASS (OUTSIDE) W/ LOW-E COATING ON SURFACE 58T #2 + 12mm AIR SPACE + 12mm THK. CLEAR TEMPERED GLASS(INSIDE) IGU (R20220114001)	#1
/	40	本訂單補	CW	T3	12/F	BC	1	GL01-44	見光大梗#2	1038	X 2332	10mm THK. HEAT STRENGTHEN GLASS (OUTSIDE) W/ LOW-E COATING ON SURFACE 58T #2 + 12mm AIR SPACE + 12mm THK. CLEAR TEMPERED GLASS(INSIDE) IGU (R20220114001)	#1
已賣單位	41	修正・本訂單補	CW	T3	15/F	AB	1	GL01-31	正面#3大梗爛	1818	X 2332	10mm THK. HEAT STRENGTHEN GLASS (OUTSIDE) W/ LOW-E COATING ON SURFACE 58T #2 + 12mm AIR SPACE + 12mm THK. CLEAR TEMPERED GLASS(INSIDE) IGU (R20220114001)	#3
已賣單位	42	本訂單補	CW	T3	16/F	BC	1	GL02-03	正面碰露台生窗玻璃	663	X 1443	10mm THK. HEAT STRENGTHEN GLASS (OUTSIDE) W/ LOW-E COATING ON SURFACE 58T #2 + 12mm AIR SPACE + 10mm THK. CLEAR TEMPERED GLASS(INSIDE) IGU (R20220114003)	#1
已賣單位	43	本訂單補	CW	T3	15/F	AF	1	GL02-05	#1 生窗	636	X 1443	10mm THK. HEAT STRENGTHEN GLASS (OUTSIDE) W/ LOW-E COATING ON SURFACE 58T #2 + 12mm AIR SPACE + 10mm THK. CLEAR TEMPERED GLASS(INSIDE) IGU (R20220114003)	#1
已賣單位	44	本訂單補	CW	T3	37/F	BF	1	GL01-36	#3 大梗見光	1531	X 2332	10mm THK. HEAT STRENGTHEN GLASS (OUTSIDE) W/ LOW-E COATING ON SURFACE 58T #2 + 12mm AIR SPACE + 12mm THK. CLEAR TEMPERED GLASS(INSIDE) IGU (R20220114001)	#3
/	45	本訂單補	CW	T3	12/F	BC	1	GL01-02	#1細梗	663	X 832	10mm THK. HEAT STRENGTHEN GLASS (OUTSIDE) W/ LOW-E COATING ON SURFACE 58T #2 + 12mm AIR SPACE + 12mm THK. CLEAR TEMPERED GLASS(INSIDE) IGU (R20220114001)	#1
/	46	本訂單補	CW	T1	9/F	BC	1	GL03-19	#3 9/F頂死牆 大轉角	1770	X 843	12mm THK. HEAT STRENGTHEN GLASS .Reflective Glass SSC1-60T (R20220324054)	#3
/	47	本訂單補	CW	T3	15/F	AE	1	GL02-03	生窗	663	X 1443	10mm THK. HEAT STRENGTHEN GLASS (OUTSIDE) W/ LOW-E COATING ON SURFACE 58T #2 + 12mm AIR SPACE + 10mm THK. CLEAR TEMPERED GLASS(INSIDE) IGU (R20220114003)	#1
已賣單位	48	加訂・本訂單補	CW	T1	46/F	AE	1	GL03-21	死牆	678	x 843	12mm THK. HEAT STRENGTHEN GLASS .Reflective Glass SSC1-60T (R20220324054)	#2
已賣單位	49	加訂・本訂單補	CW	T3	19/F	BA	1	GL01-14	#3 大梗	644	x 2332	10mm THK. HEAT STRENGTHEN GLASS (OUTSIDE) W/ LOW-E COATING ON SURFACE 58T #2 + 12mm AIR SPACE + 12mm THK. CLEAR TEMPERED GLASS(INSIDE) IGU (R20220114001)	#3
/	50	加訂・本訂單補	CW	T3	20/F	BA	1	GL02-05	#3 生窗	636	z 1443	10mm THK. HEAT STRENGTHEN GLASS (OUTSIDE) W/ LOW-E COATING ON SURFACE 58T #2 + 12mm AIR SPACE + 10mm THK. CLEAR TEMPERED GLASS(INSIDE) IGU (R20220114003)	#3
/	51	加訂・本訂單補	CW	T3	20/F	BA	1	GL01-14	#3 大梗	644	x 2332	10mm THK. HEAT STRENGTHEN GLASS (OUTSIDE) W/ LOW-E COATING ON SURFACE 58T #2 + 12mm AIR SPACE + 12mm THK. CLEAR TEMPERED GLASS(INSIDE) IGU (R20220114001)	#3
已賣單位	52	加訂・本訂單補	CW	T3	12/F	AA	1	GL01-15	#3 大梗	1272	2332	10mm THK. HEAT STRENGTHEN GLASS (OUTSIDE) W/ LOW-E COATING ON SURFACE 58T #2 + 12mm AIR SPACE + 12mm THK. CLEAR TEMPERED GLASS(INSIDE) IGU (R20220114001)	#3
					補玻璃總數		34						
		GL01	=	10mm THK. HEAT STRENGTHEN GLASS (OUTSIDE) W/ LOW-E COATING ON SURFACE 58T #2 + 12mm AIR SPACE + 12mm THK. CLEAR TEMPERED GLASS(INSIDE) IGU (R20220114001)									
		GL02	=	10mm THK. HEAT STRENGTHEN GLASS (OUTSIDE) W/ LOW-E COATING ON SURFACE 58T #2 + 12mm AIR SPACE + 10mm THK. CLEAR TEMPERED GLASS(INSIDE) IGU (R20220114003)									
		GL03	=	12mm THK. HEAT STRENGTHEN GLASS .Reflective Glass SSC1-60T (R20220324054)									

GC  
16/F  
GC  
12/F

AB

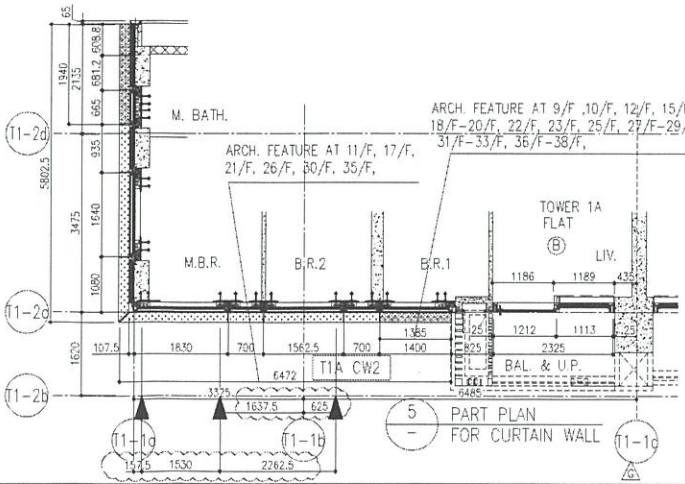


38/F

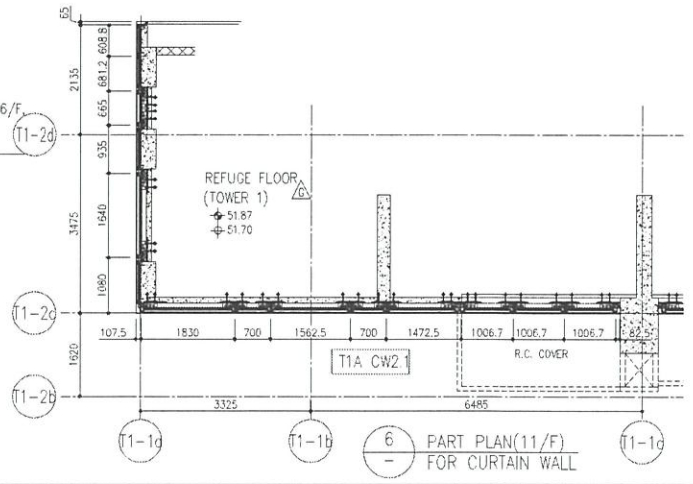
2200 3475 3325 6485

(T1-2d) (T1-2c) (T1-1c) (T1-1b) (T1-1c)

1 PART ELEVATION FOR CURTAIN WALL



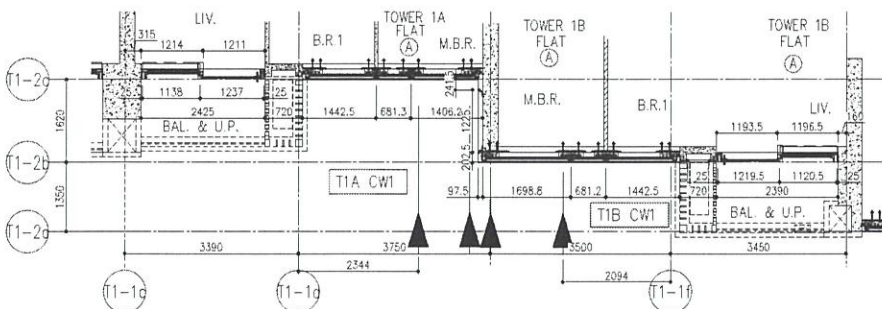
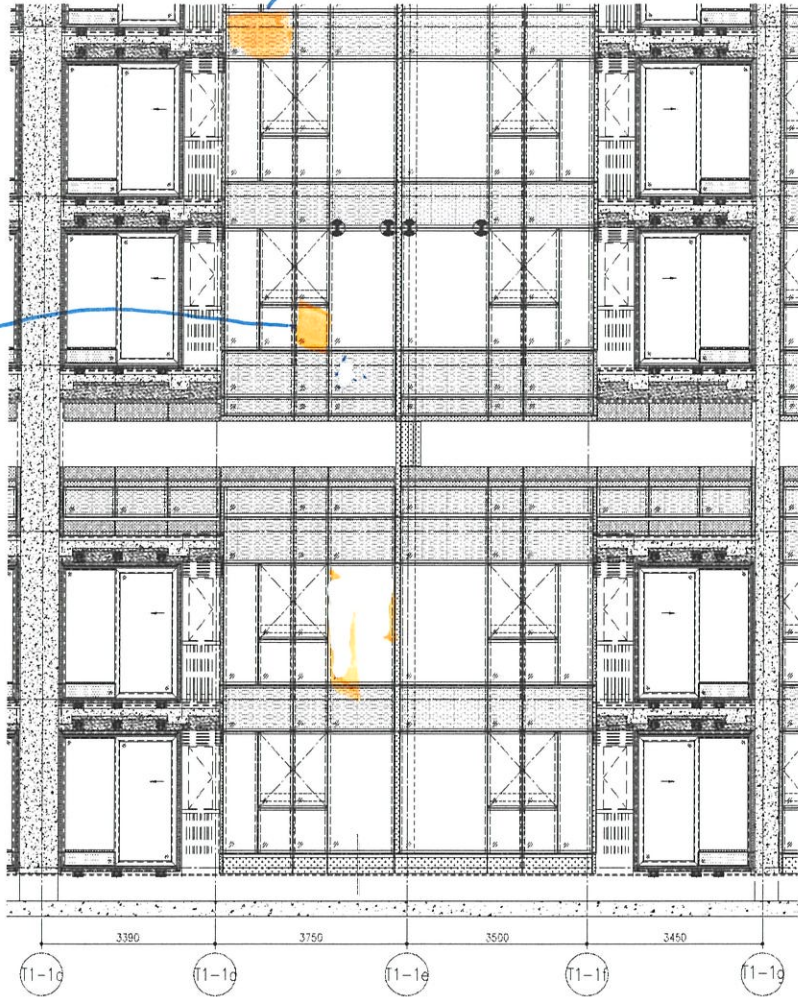
5 PART PLAN FOR CURTAIN WALL



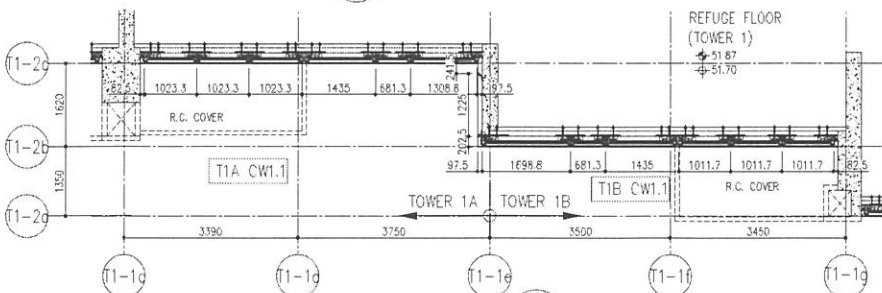
6 PART PLAN (11/F) FOR CURTAIN WALL

AA  
16/1

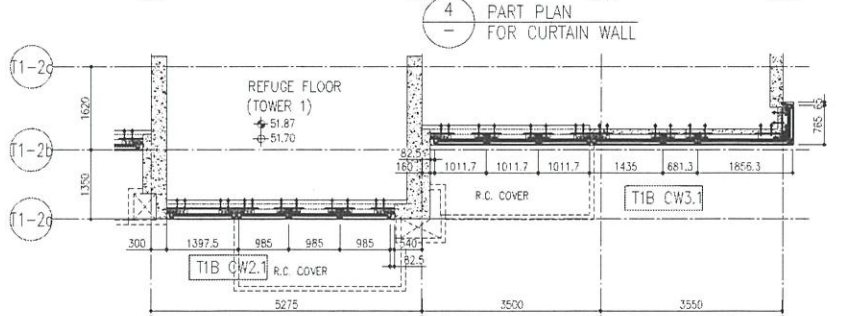
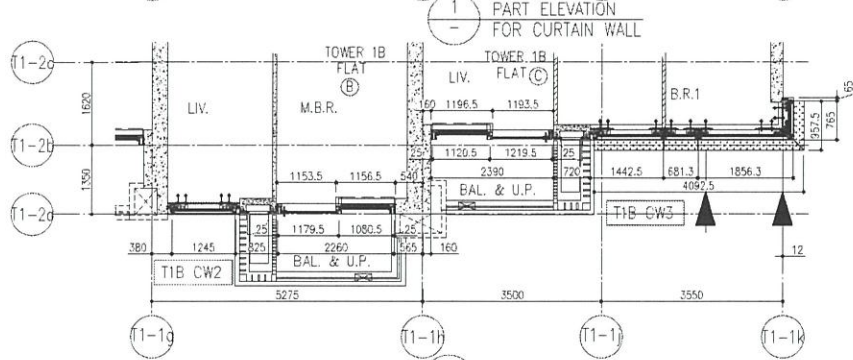
16/1

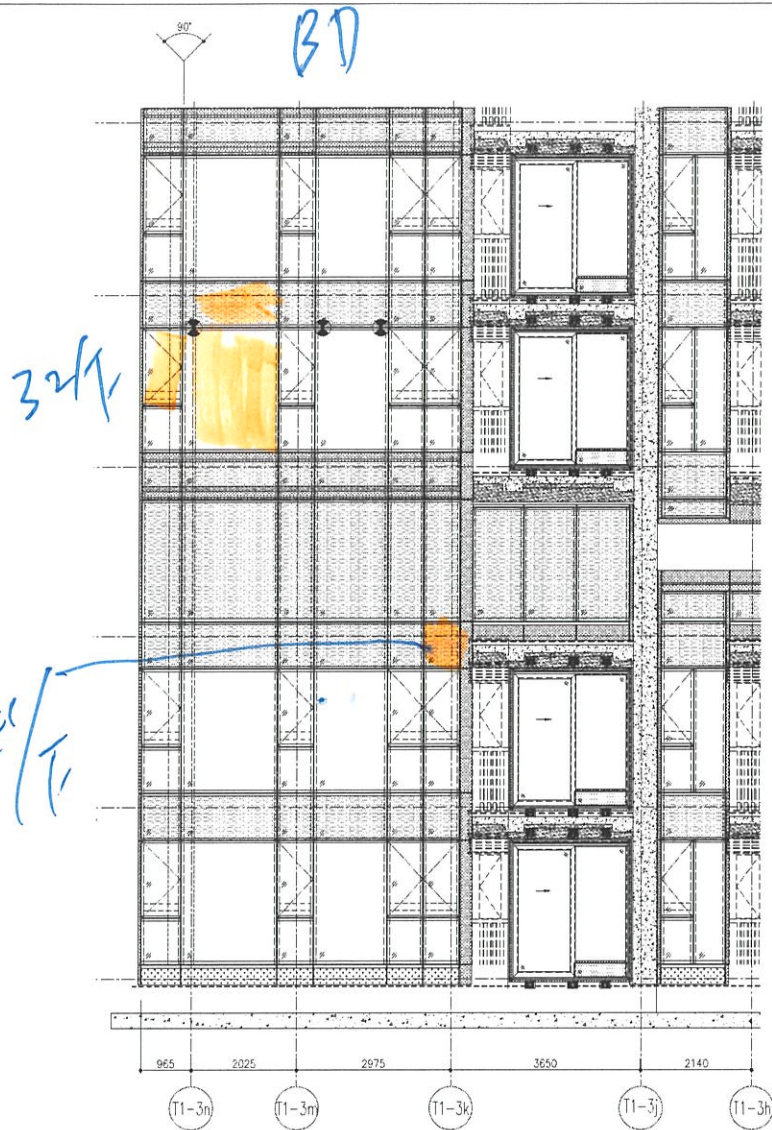


4 PART PLAN FOR CURTAIN WALL

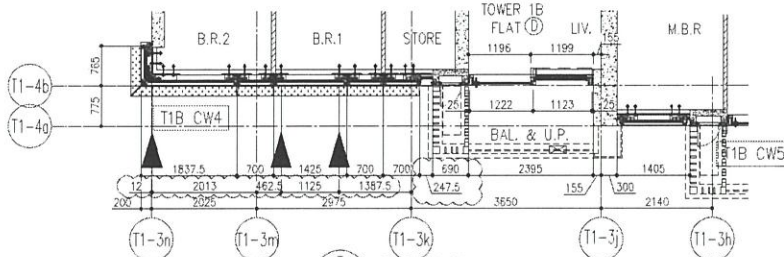


5 PART PLAN FOR CURTAIN WALL(11/F)

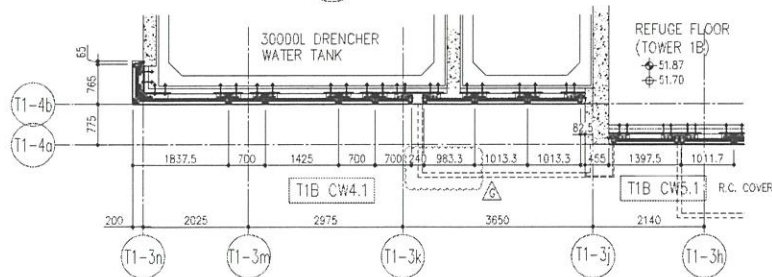




1 PART ELEVATION  
- FOR CURTAIN WALL



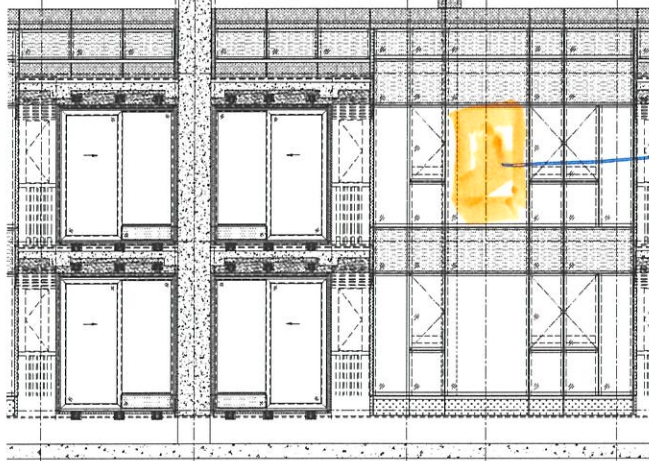
5 PART PLAN  
- FOR CURTAIN WALL



6 PART PLAN(11/F)  
- FOR CURTAIN WALL

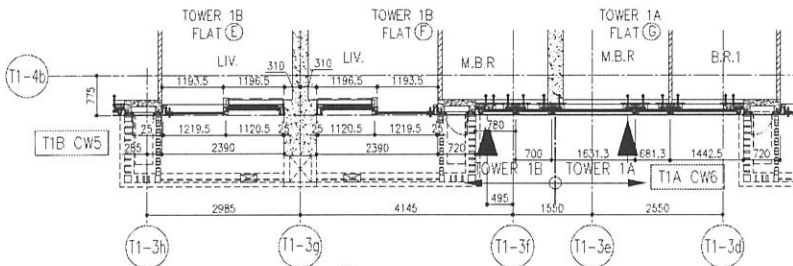
BF AG

T1 B/A座 AG/ BF單位

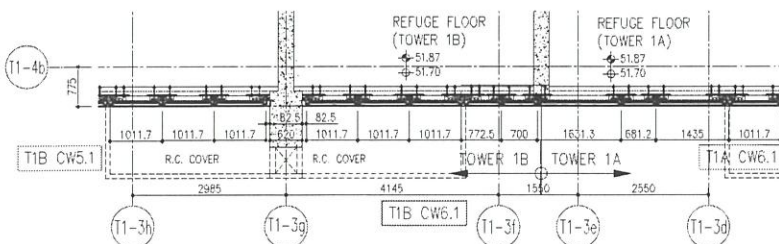


T1-3h T1-3g T1-3f T1-3e T1-3d

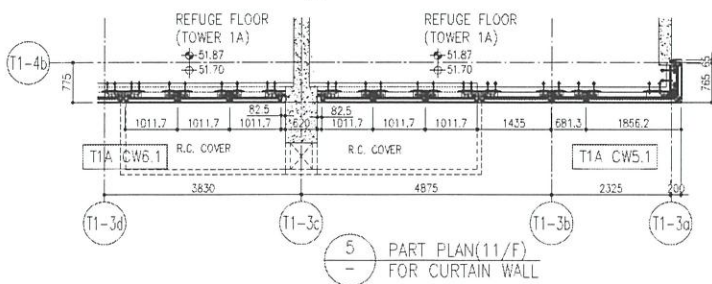
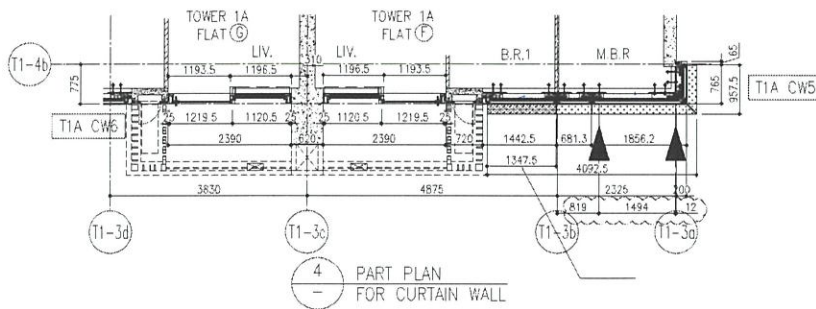
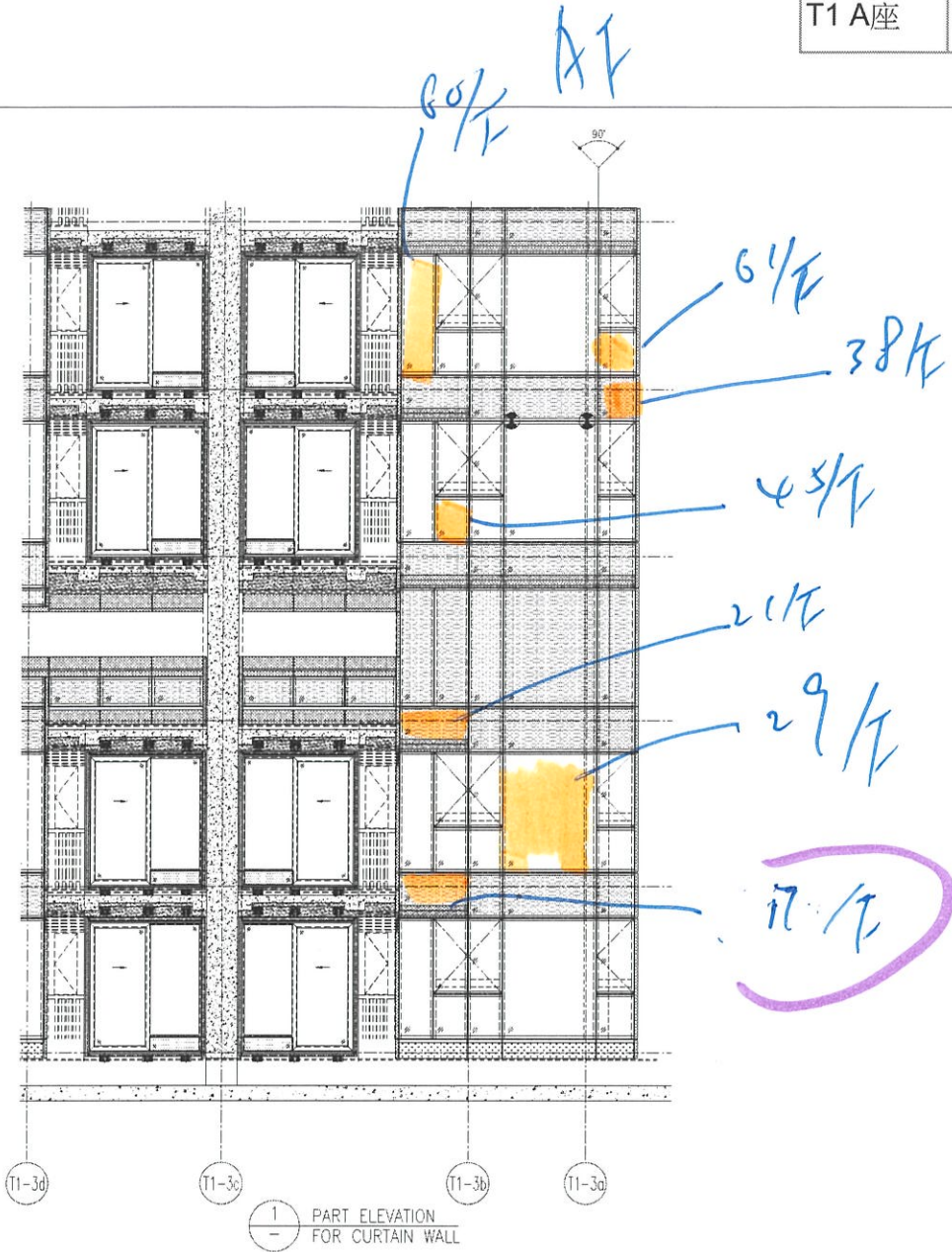
1 PART ELEVATION FOR CURTAIN WALL



4 PART PLAN FOR CURTAIN WALL

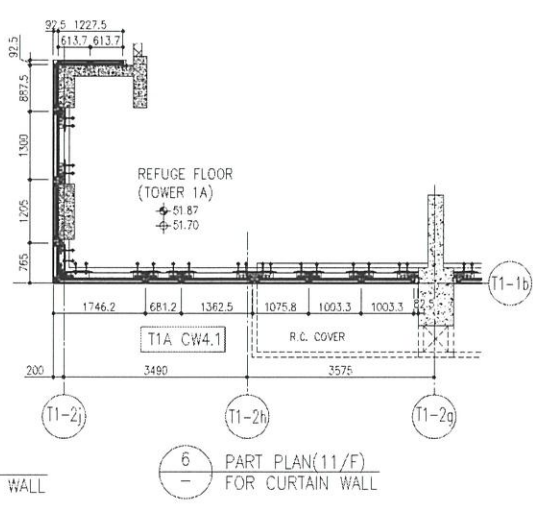
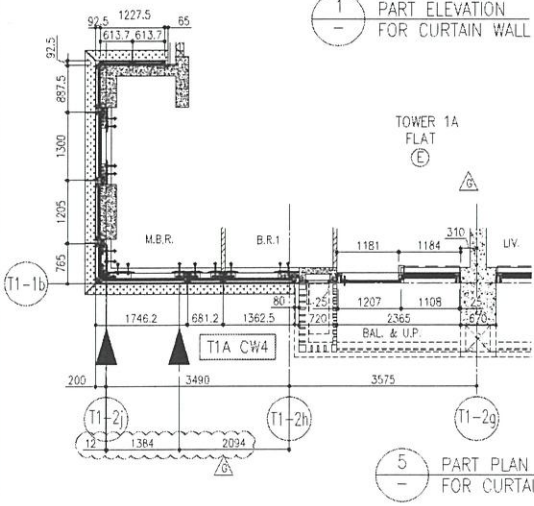


5 PART PLAN(11/F) FOR CURTAIN WALL





1 PART ELEVATION FOR CURTAIN WALL



AC

48/F

15/F

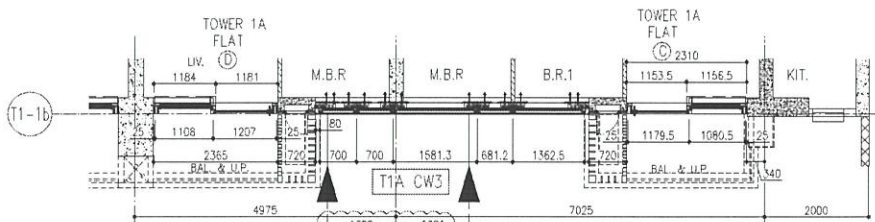


T1-2g

T1-2f

T1-2e

1 PART ELEVATION FOR CURTAIN WALL



T1-1b

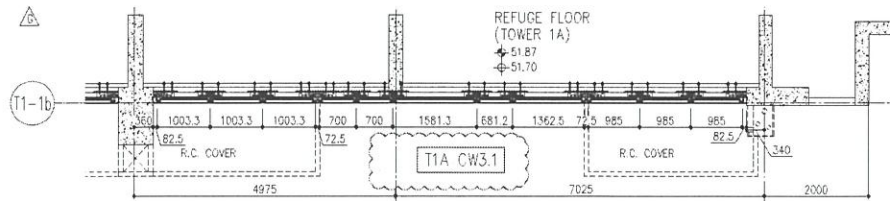
T1-2g

T1-2f

T1-2e

5 PART PLAN FOR CURTAIN WALL

29/f, 36/f.



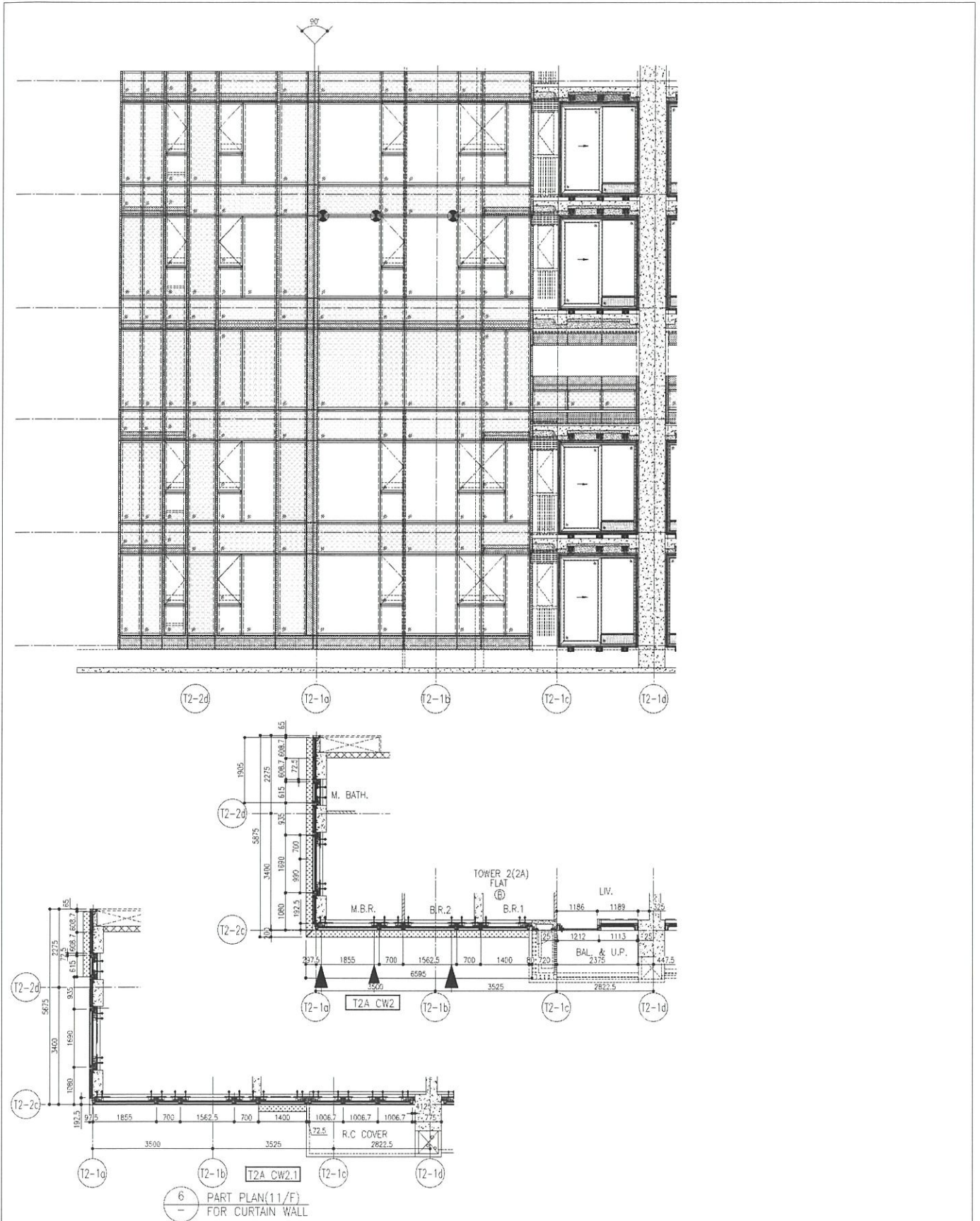
T1-1b

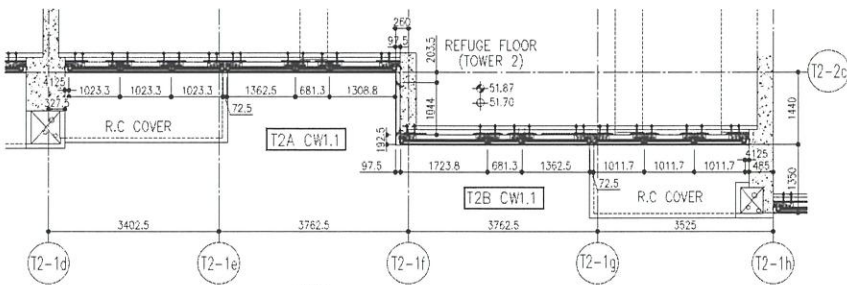
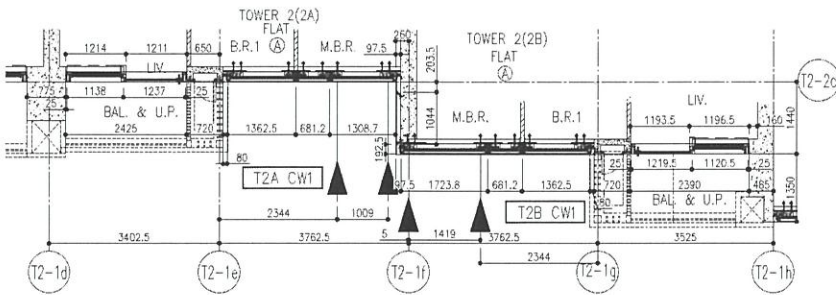
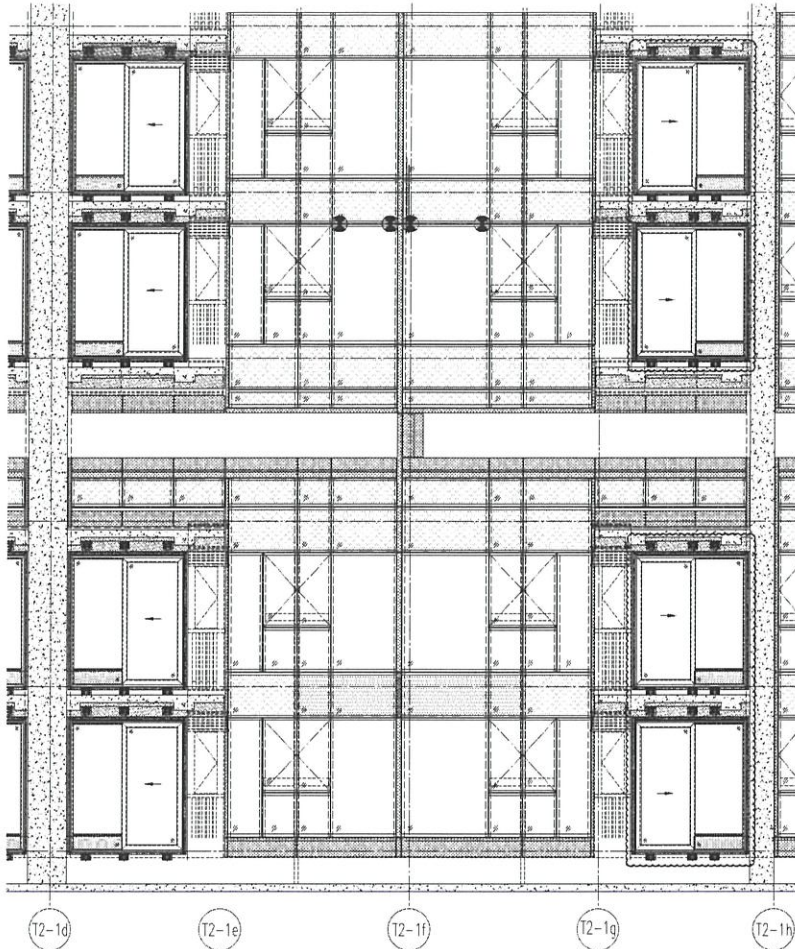
T1-2g

T1-2f

T1-2e

6 PART PLAN(11/F) FOR CURTAIN WALL

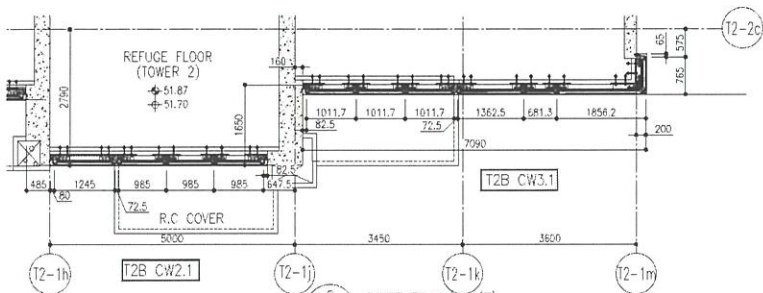
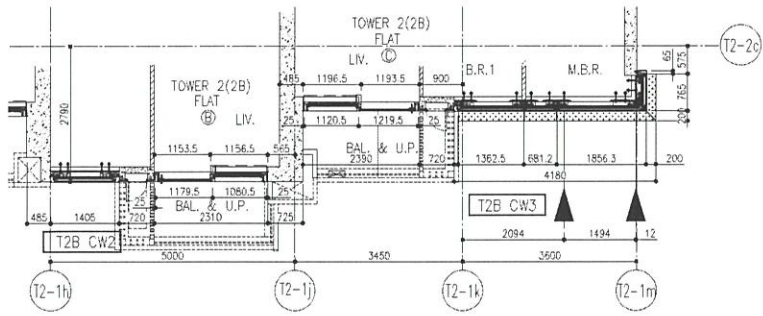
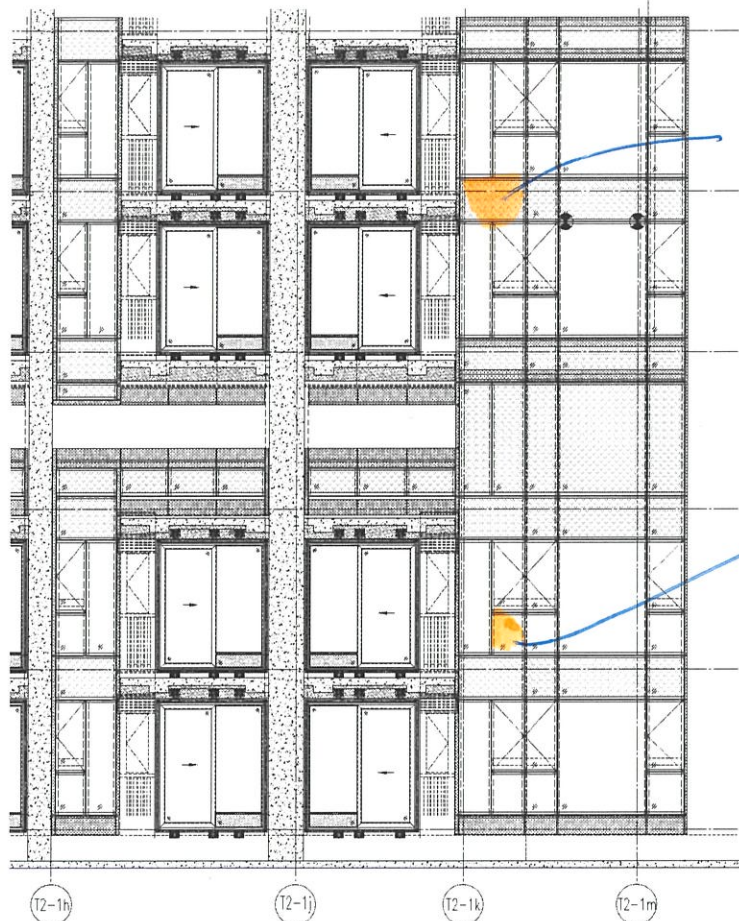




6 PART PLAN(11/F)  
FOR CURTAIN WALL

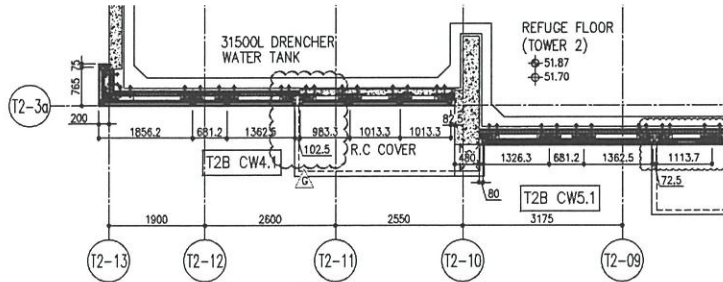
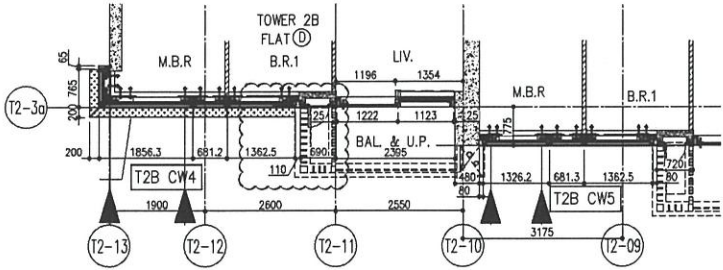
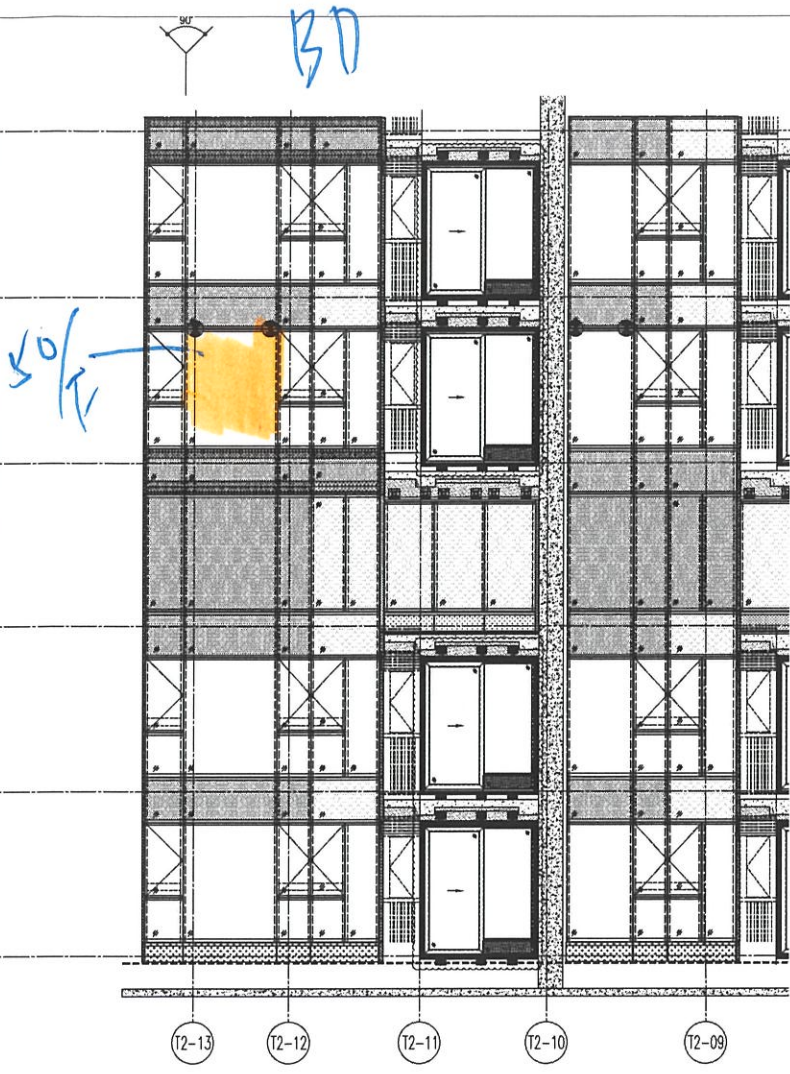
BC

T2 B Flat BB/BC

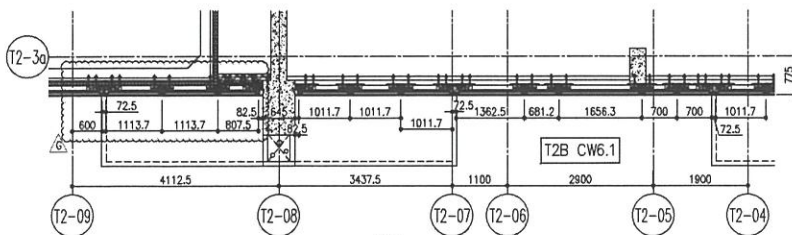
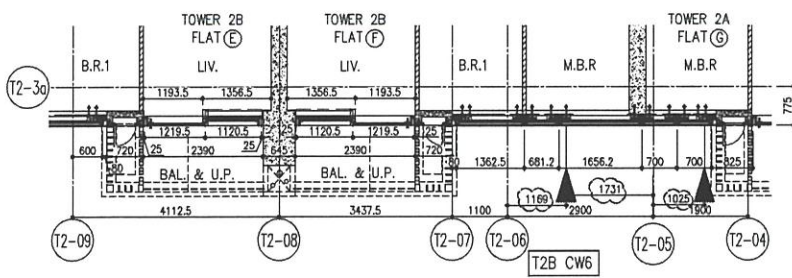
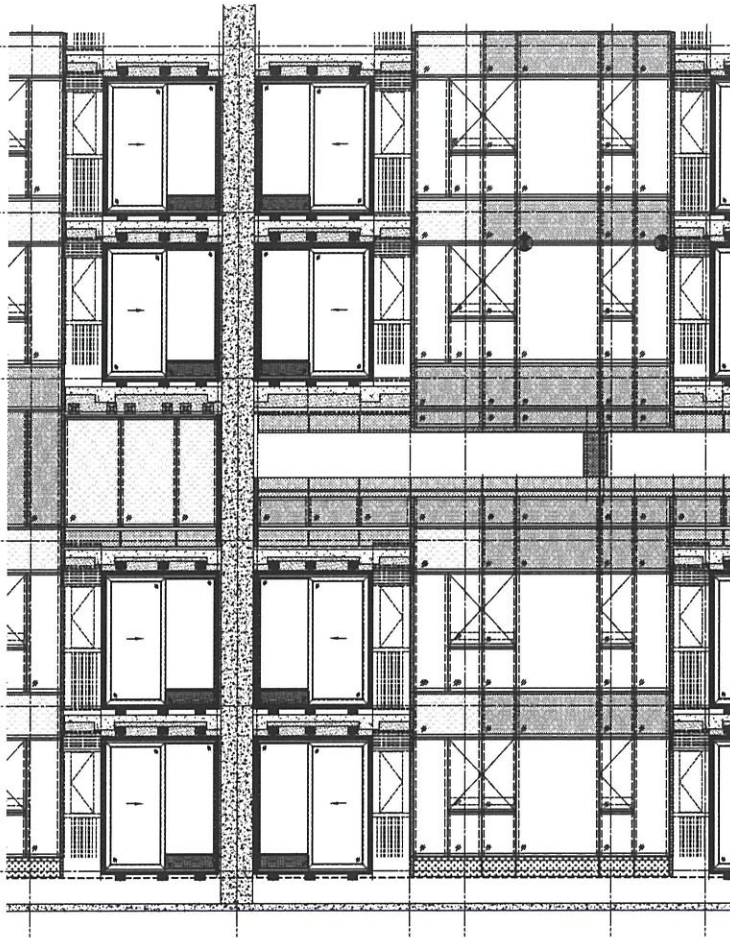


6 PART PLAN(11/F) FOR CURTAIN WALL

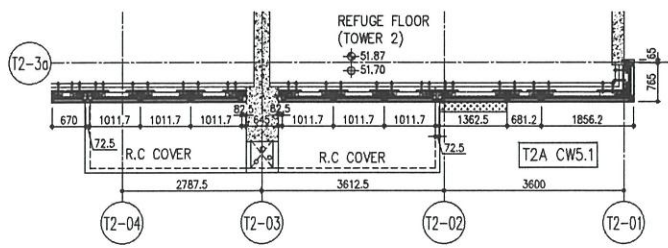
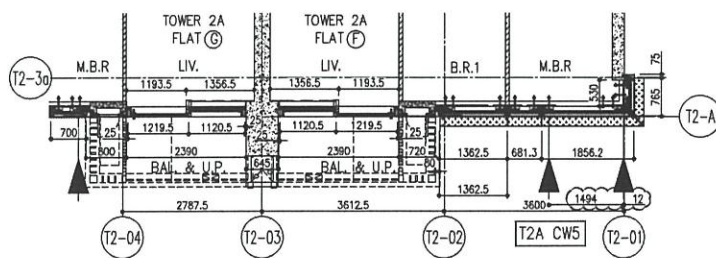
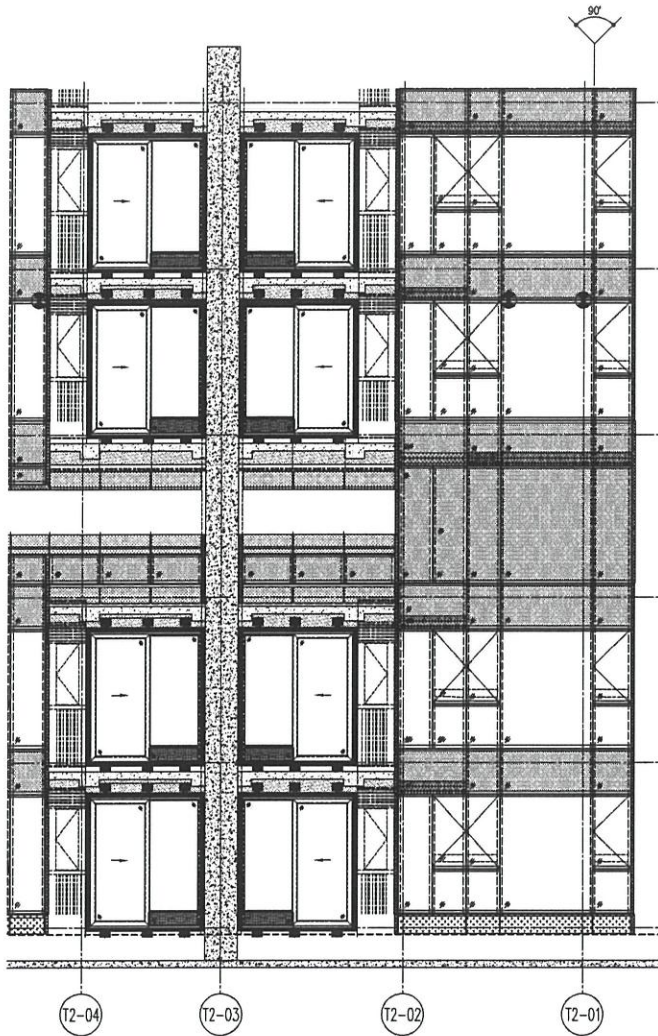
T2 B Flat BD/BE



8 PART PLAN (11/F) FOR CURTAIN WALL



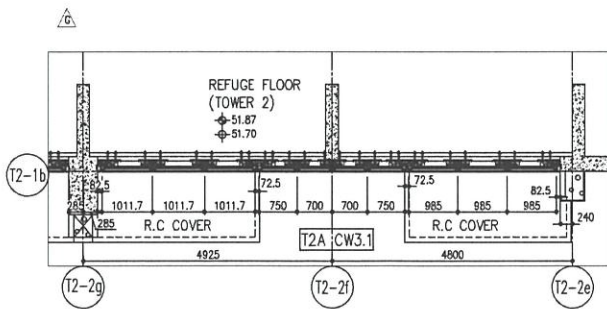
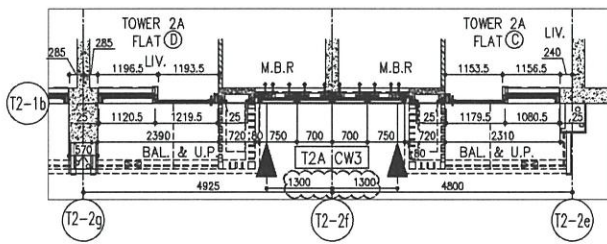
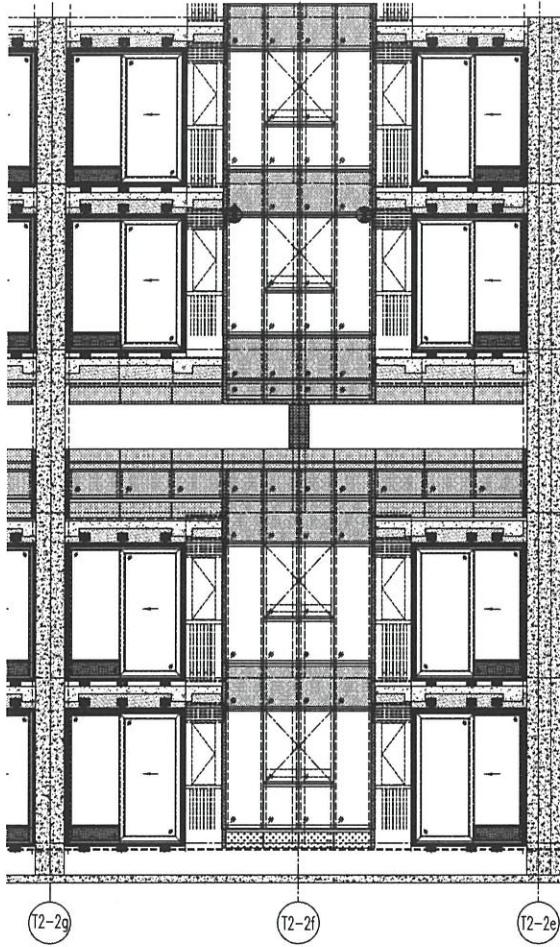
T2A Flat AF/AG



6 PART PLAN(11/F) FOR CURTAIN WALL



T2 A Flat AC/AD



AB

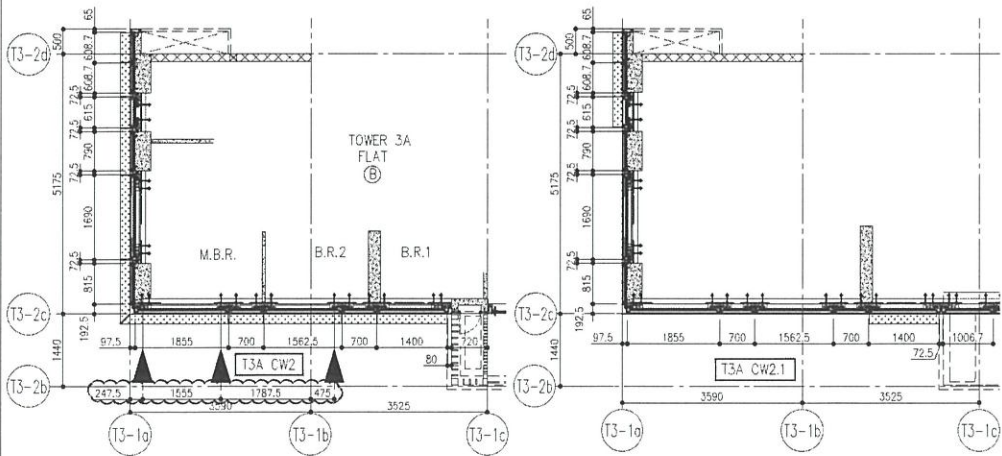
T3 A Flat AB



57/F

15/F

39/F

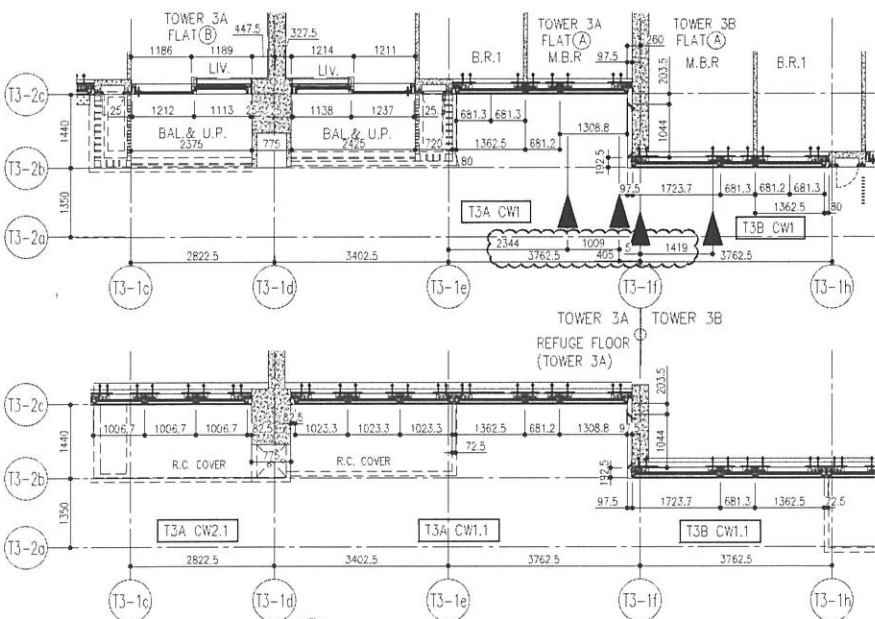


AA BA

T3 A/B Flat AA/BA



1 PART ELEVATION FOR CURTAIN WALL



6 PART PLAN FOR CURTAIN WALL

BU

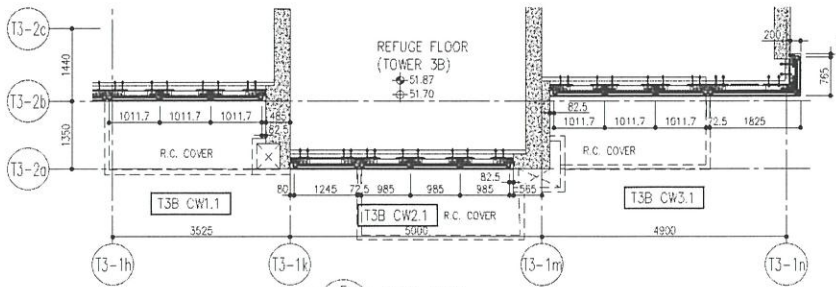
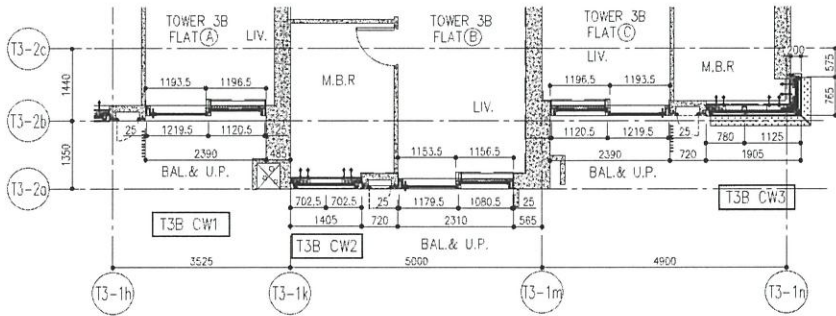
T3B Flat BA/BB/BC



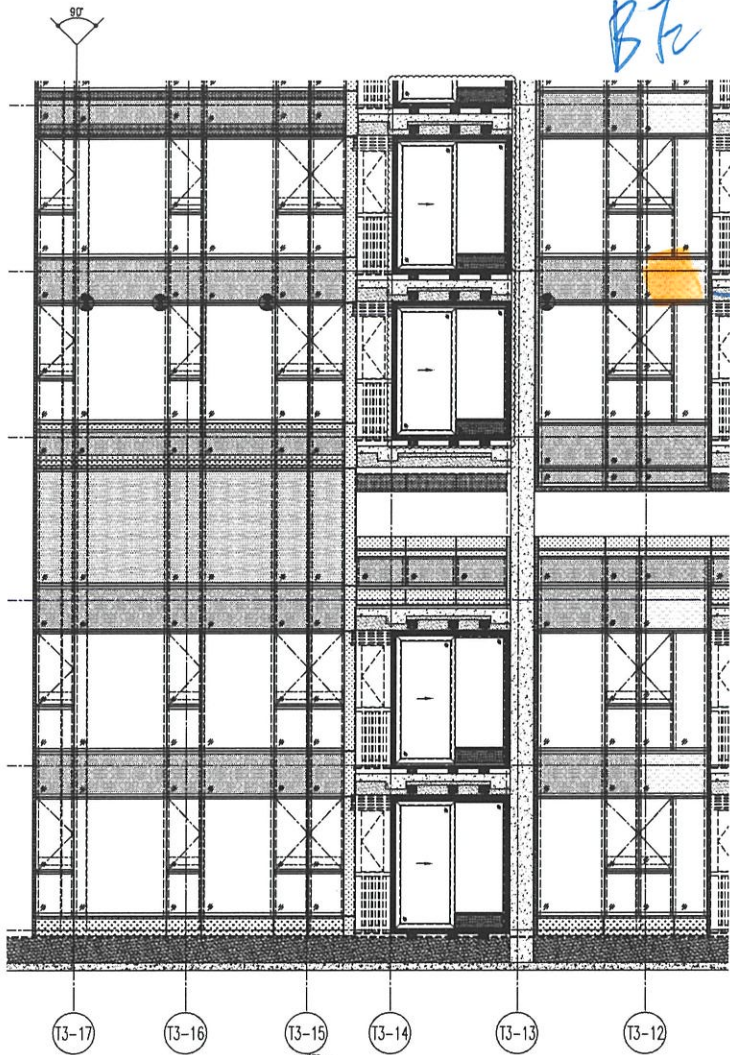
46/11

12/11

16/11



5 PART PLAN FOR CURTAIN WALL



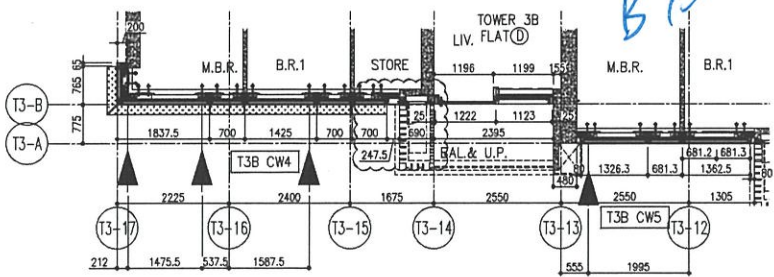
T3 B Flat BD

*BE*

*BE*

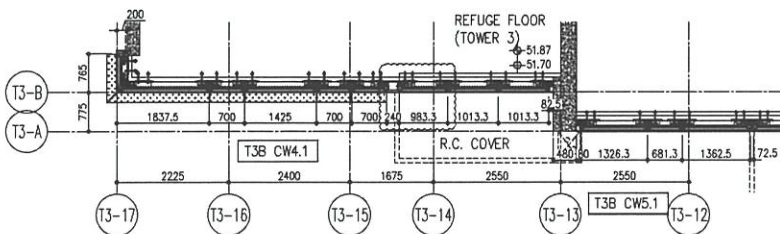
*2 1/2 F*

1 PART ELEVATION FOR CURTAIN WALL



*BE*

5 PART PLAN FOR CURTAIN WALL



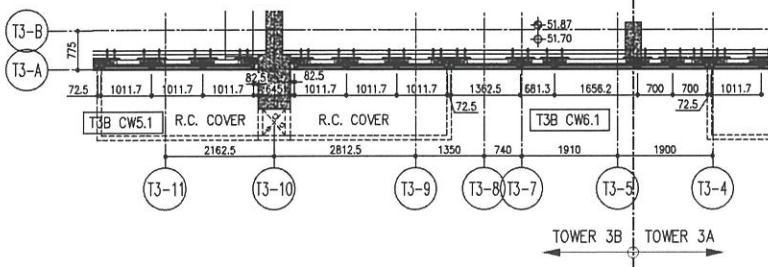
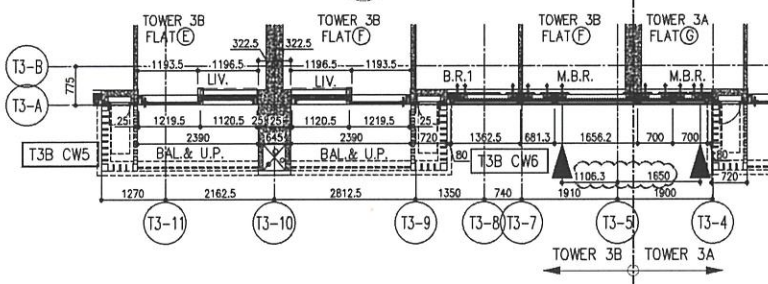
T3 A/B Flat BE/BF/AG

BT

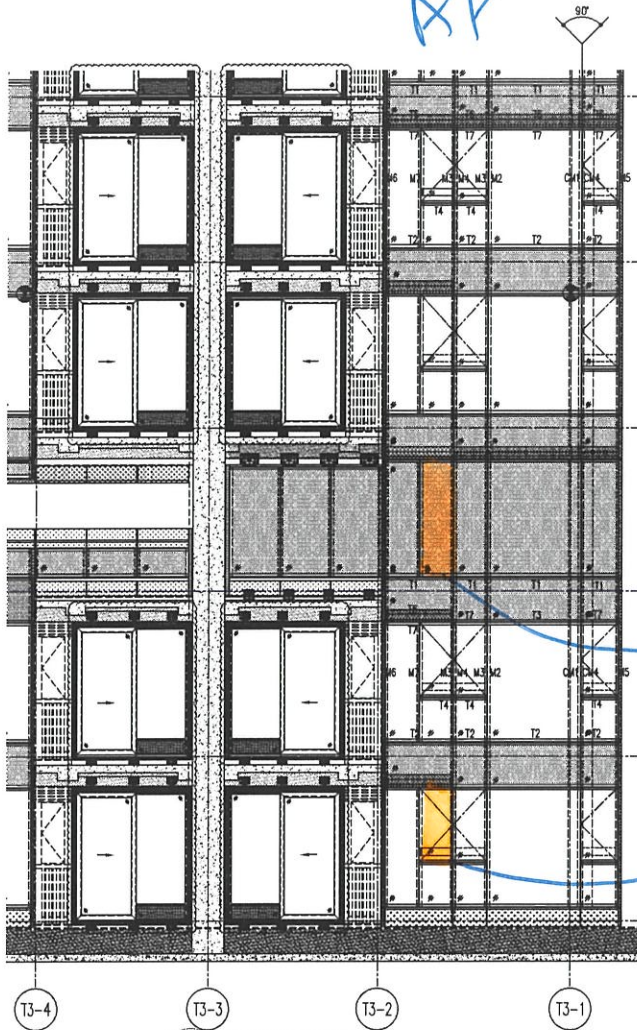
37F



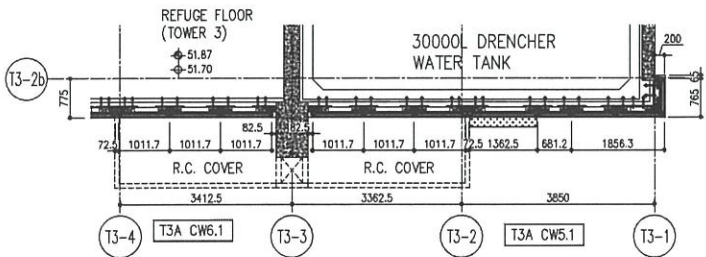
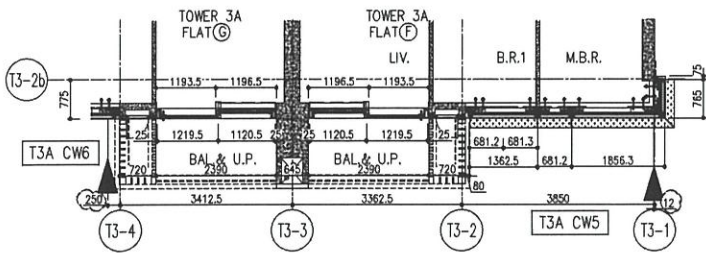
1 PART ELEVATION FOR CURTAIN WALL



T3 A Flat AF/AG



1 PART ELEVATION FOR CURTAIN WALL



6 PART PLAN FOR CURTAIN WALL

AE

AC

38/17

T3 A Flat AC/AD/AE

