

工程指示 / 要求簡箋(E.I.)

工程指示編號：EI / 1098 / 23

修改版次：-

工程編號：J - 858

工程名稱：將軍澳日出康城 11

工程項目：T1 (Remedial) 地盤用鐵件 AA AB AE Glass/Alum Cladding (47-57/F)

收件人：Maggie

發件人：Ant Yeung

日期：06/12/2023

要求提供 / 確認 事項：

- | | | |
|------------------------------------|-------------------------------------|-------------------------------|
| <input type="checkbox"/> 初步鋁料 B.M. | <input type="checkbox"/> 加工拆圖，然後生產 | <input type="checkbox"/> 尺寸表 |
| <input type="checkbox"/> 正式鋁料 B.M. | <input type="checkbox"/> 技術上資料 / 指示 | <input type="checkbox"/> 報價 |
| <input type="checkbox"/> 配件 B.M. | <input type="checkbox"/> 樣辦或貨品說明書 | <input type="checkbox"/> 分判合約 |
- 內容：

請按加工圖生產，送地盤安裝。(T1 remedial 用)

異型鐵碼仔 560 件 + 6mm 扁巴(企) 64 支+ 6mm 扁巴(橫)90 支

1. T1 (Remedial) 地盤用鐵件 AA AB AE Glass/Alum Cladding (47-57/F)
2. 異型鐵碼仔先出貨 200 隻(RM-25)
3. 需要 Butt weld 驗焊 (100% visual, 100% MPI, 100% Ultrasonic) For Curtain Wall
4. 出貨前，請給 Mill Cert 和熱浸 Cert
5. 沿水油厚度 符合 EI5136 指示 100um
6. 需油瀝青油
- 7. 附大判 Words order ISC/3010/0005
8. 地盆留意：碼仔中至中： Glass cladding 中至中 480mm / alum cladding 中至中 480mm

請在 2023.12.19 前完成上列要求。

附： 頁

以上項目為：

- 原合約工程包 原合約工程加 / 減賬 新工程報價

原因：-

分發東莞各部門：


- () 生產技術總監 連附件 () 技術部 連附件 () 生產部 連附件 () 機械設計部 連附件
 () 採購部 連附件 () 生產統籌部 連附件 () 小羅&清 連附件
 () 質檢部 連附件 () 會計部 連附件 () 報關組 連附件 () 其他 _____ 連附件

分發香港各部門：

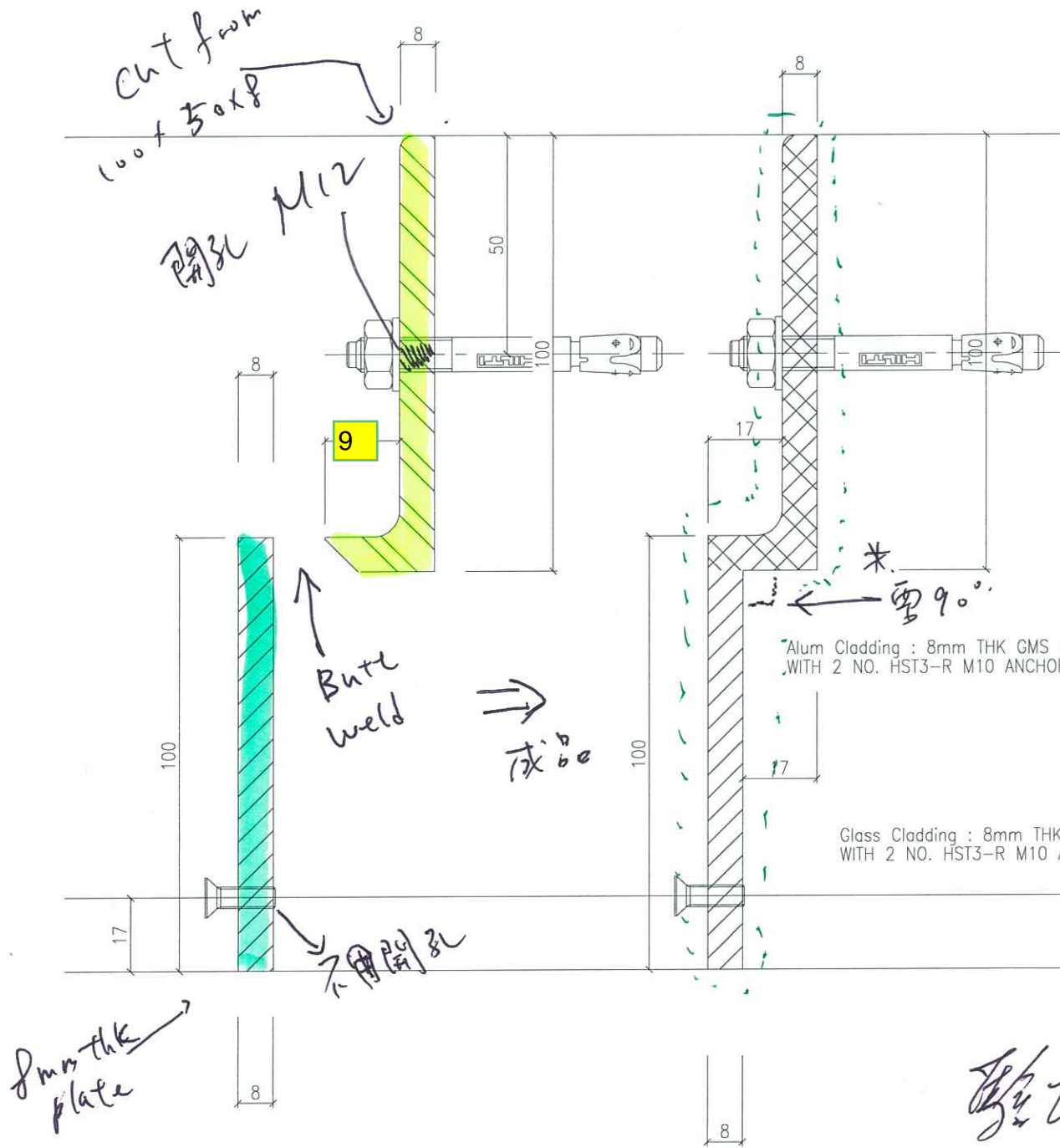
- () 行政部 連附件 () 會計部 連附件 () 統籌部 連附件 (✓) 工程部地盤科文 連附件 積哥/二寶
 (✓) 採購部 連附件 () QS 部 連附件 () 維修部 連附件 () 其他 _____ 連附件

傳遞編號：

HK / 23

發件人簽署：

項目經理簽署：



8mm plate + 100x25x8 angle.

L = 150mm.

物料编号: RM-25.

頂層
 中層
 底層

71 AA	8 x 2 x 8 = 128
AB	18 x 4 x 4 = 288
AE	18 x 4 x 2 = 144

* Alum Cladding : 8mm THK GMS BUILT UP BRACKET (L=150mm @440cc MAX) WITH 2 NO. HST3-R M10 ANCHOR WITH 100CC (MIN ANCHOR LENGTH 130mm)

Glass Cladding : 8mm THK GMS BUILT UP BRACKET (L=150mm @480cc MAX) WITH 2 NO. HST3-R M10 ANCHOR WITH 100CC (MIN ANCHOR LENGTH 110mm)

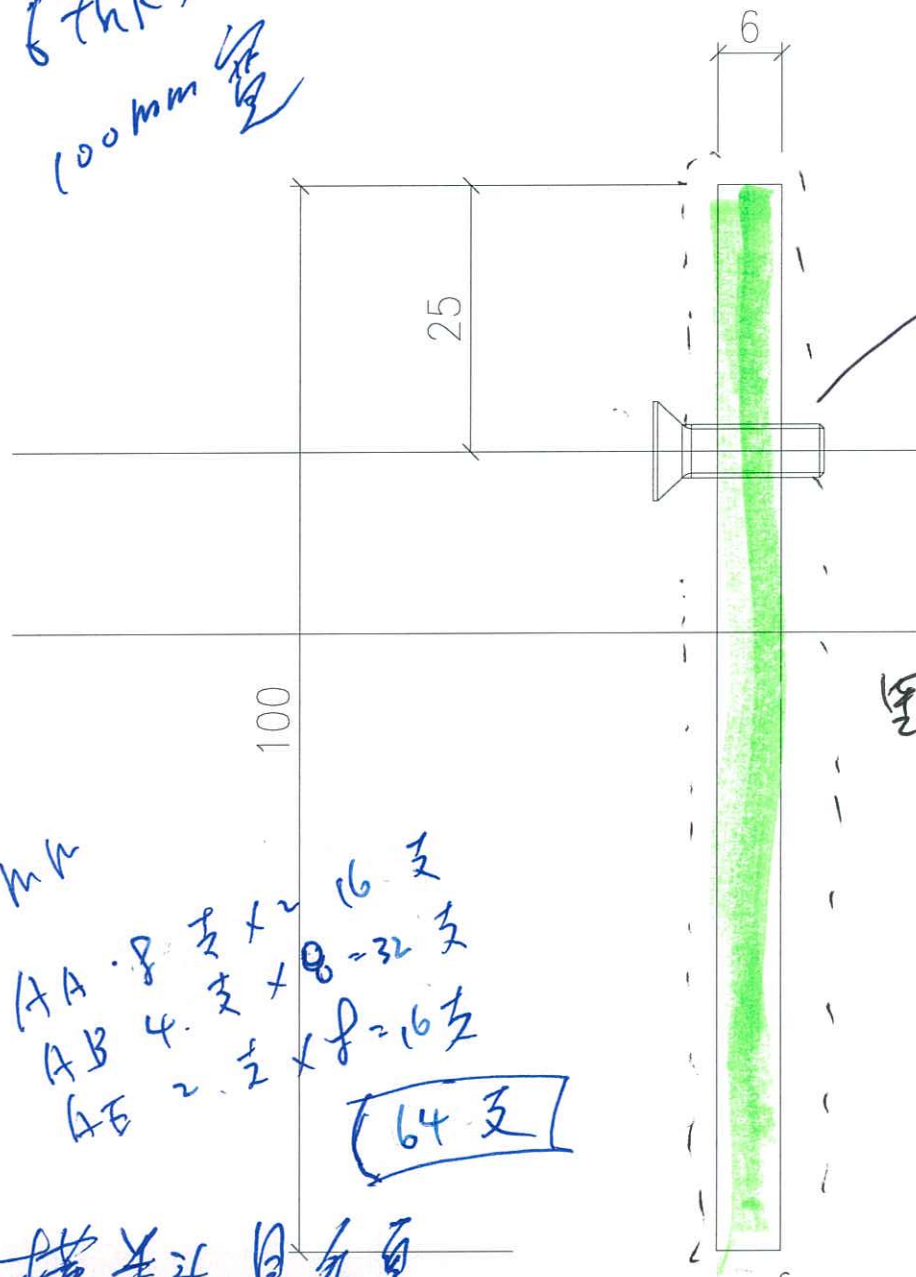
= 560
 17.

47 ~ 55/F

58
 x 3
 82
 51
 50
 49
 48
 47

Handwritten signature or initials.

6thk 扁包
100mm 宽



M5 螺孔
(平圆螺孔)

300 c/c

里侧

$L = 3300 \text{ mm}$

AA 8 支 \times 2 = 16 支
 AB 4 支 \times 8 = 32 支
 AE 2 支 \times 8 = 16 支

64 支

横养斗. 见右页

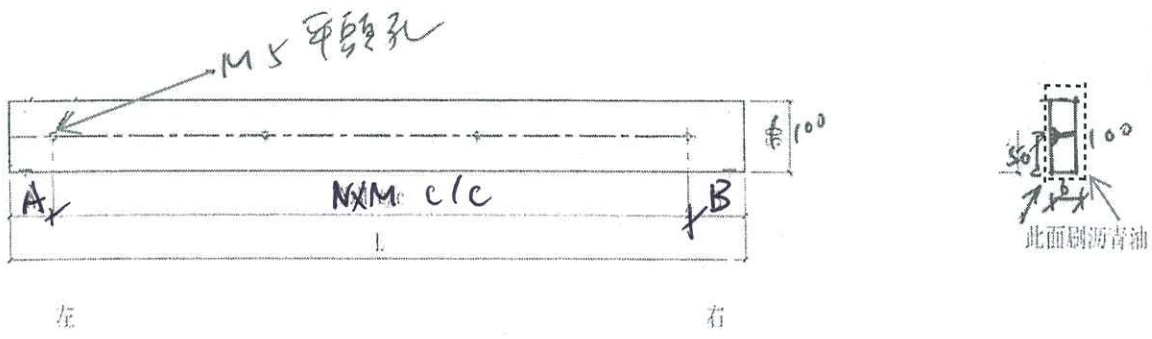
物料编号: RM-6

6mm plate

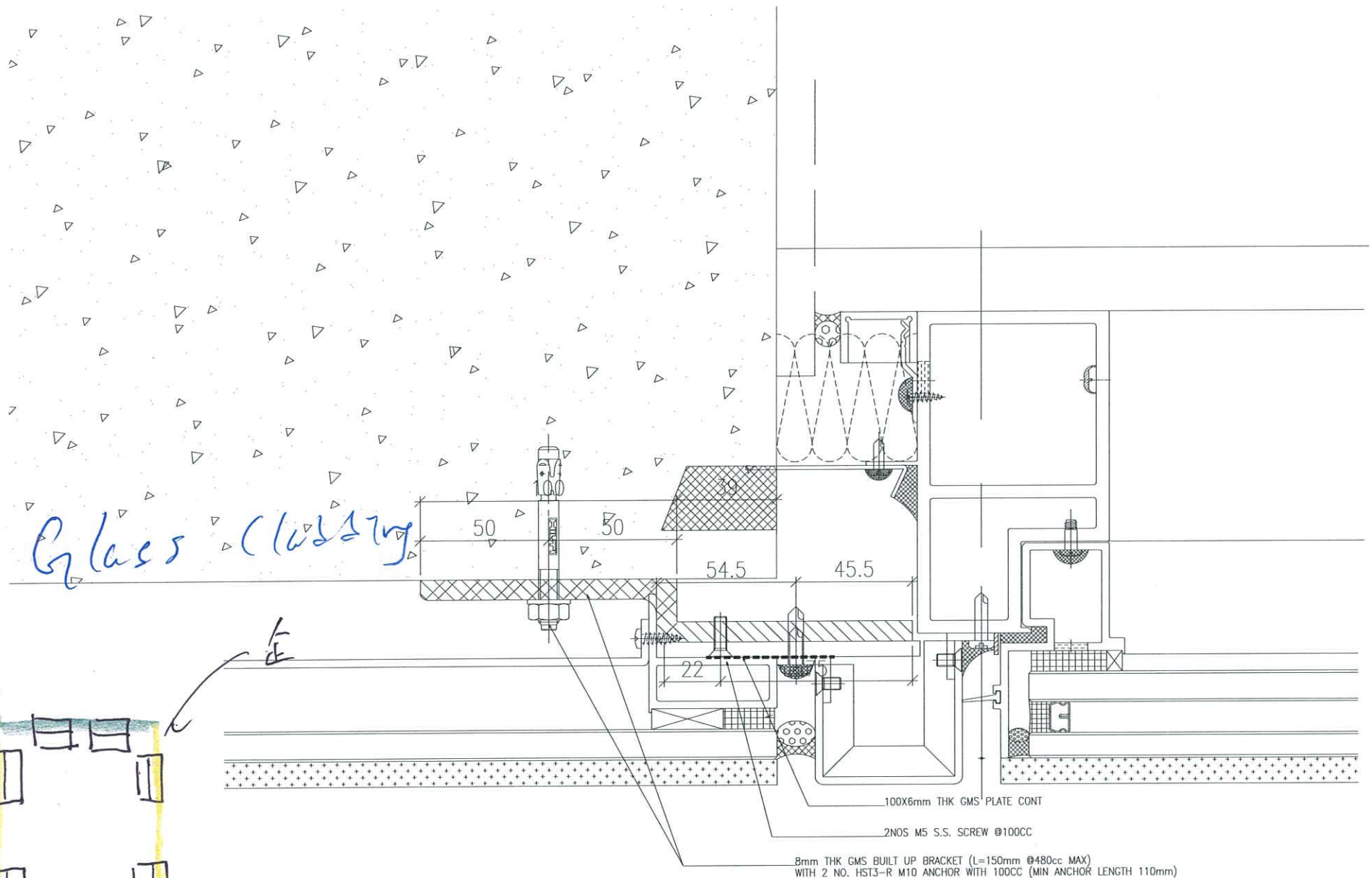
美特鋁質有限公司 MIDI Aluminium Fabricator Ltd.		工程號 1858	類別	物料號	RM ST-01	
地盤 康城11期		制圖 WCM	2022-08-15	圖號	ST-01	
修改 -	採用工廠	地盤 ✓	圖紙名稱 鐵料加工圖	復核 -	數量 -	
日期 -	材料顏色	材料 S-275	批准 -	單件重量 -	(KG)	

數量	編號	L	A	B	NxM c/c	位置
15	RM ST-01-1L	520.5	30.5	40	3x150 c/c	T1
						T2
						T3
15	RM ST-01-1R	520.5	40	30.5	3x150 c/c	T1
						T2
						T3
10	RM ST-01-2	692	46	46	4x150 c/c	T1
						T2
						T3
20	RM ST-01-3	717	58.5	58.5	4x150 c/c	T1
						T2
						T3
10	RM ST-01-4L	526	33	43	3x150 c/c	T1
10	RM ST-01-4R	526	43	33	3x150 c/c	T1
10	RM ST-01-5	962	106	106	5x150 c/c	T1
	ST-01-6	742	71	71	4x150 c/c	T2

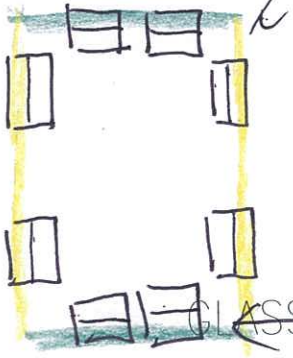
共90件



鐵料



Glass Cladding



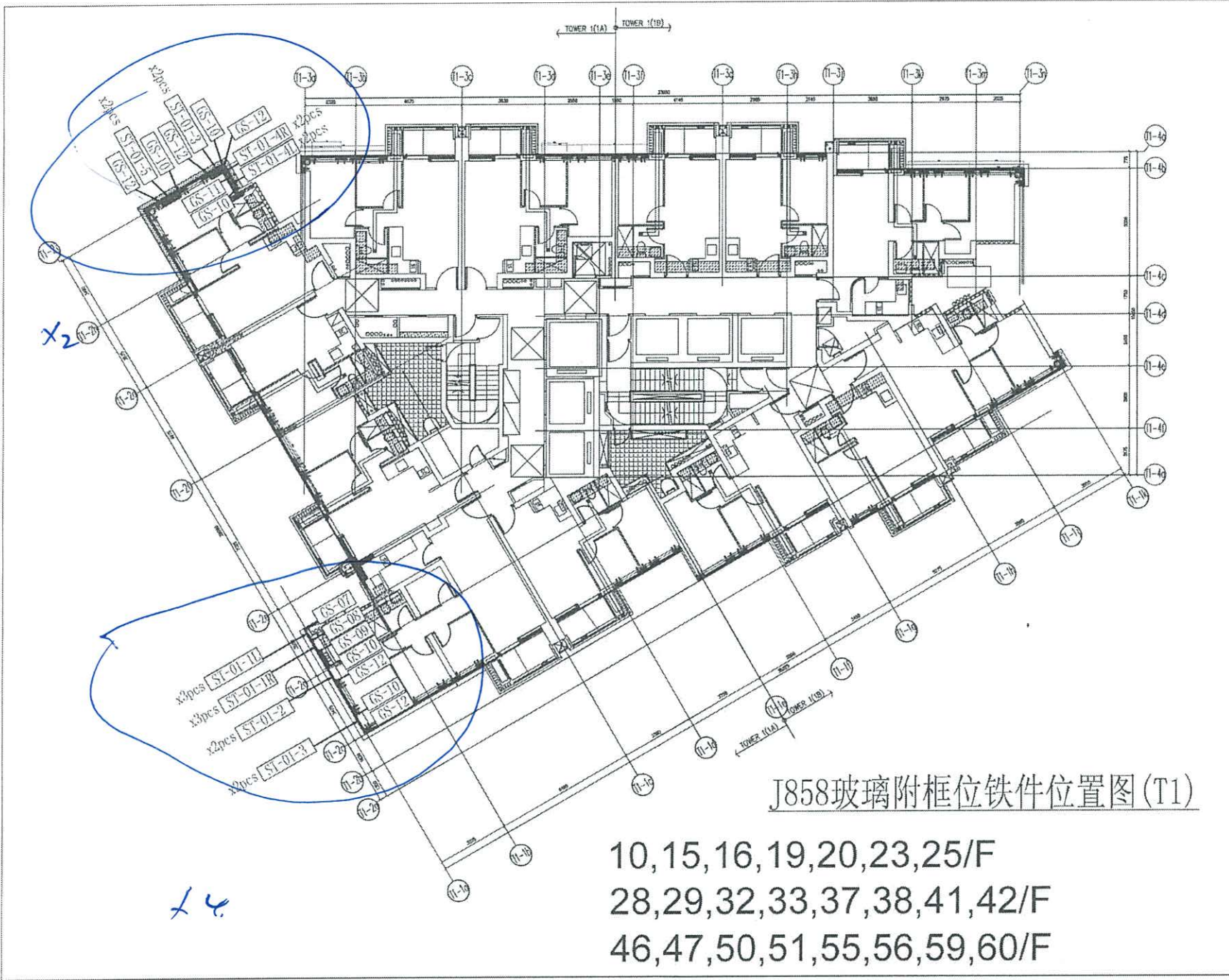
GLASS CLADDING REMEDIAL

橫 (仕架 U 槽)

8mm THK GMS BUILT UP BRACKET (L=150mm @480cc MAX)
WITH 2 NO. HST3-R M10 ANCHOR WITH 100CC (MIN ANCHOR LENGTH 110mm)

100X6mm THK GMS PLATE CONT

2 NOS M5 S.S. SCREW @100CC



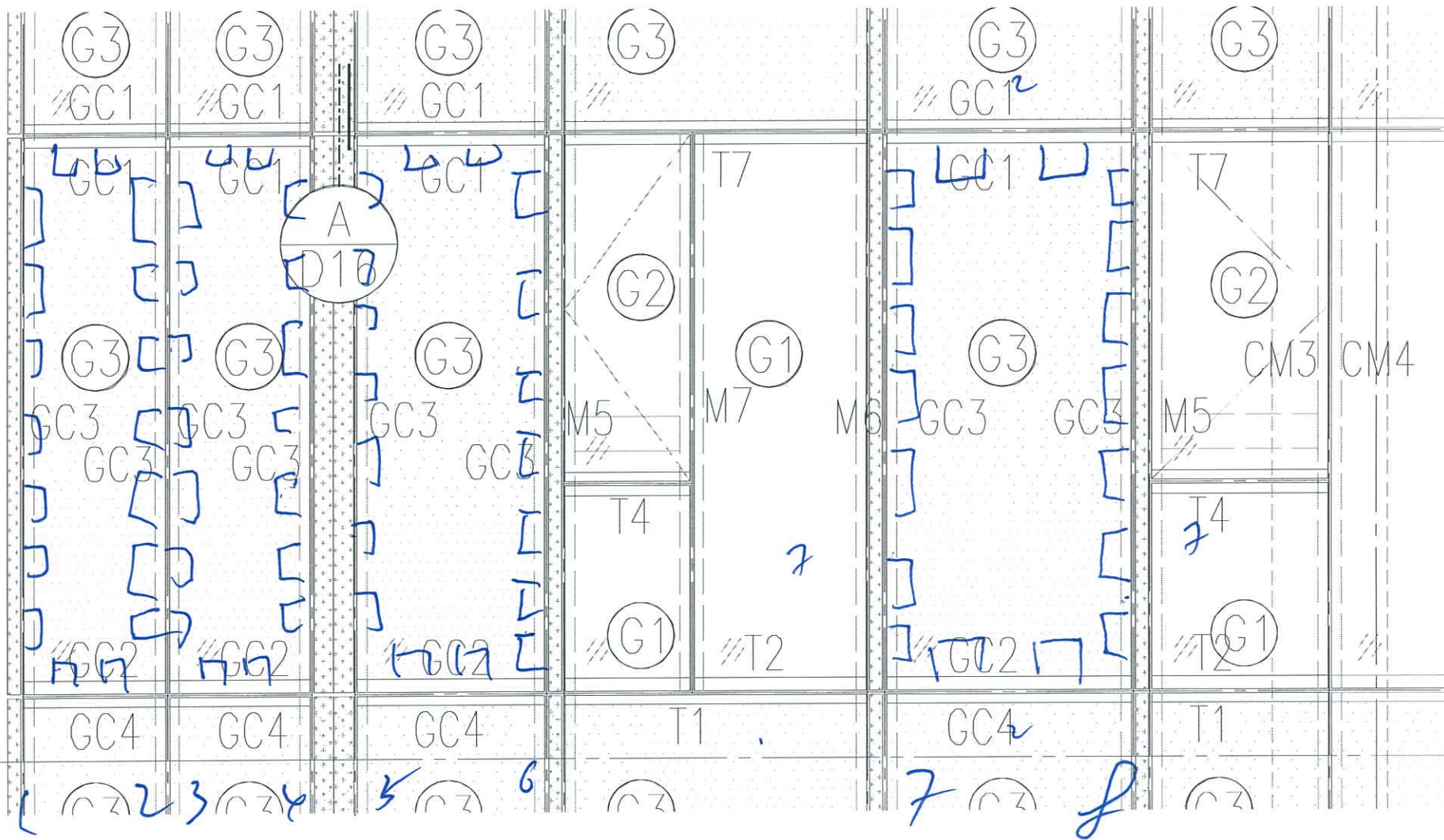
J858玻璃附框位铁件位置图(T1)

10,15,16,19,20,23,25/F
 28,29,32,33,37,38,41,42/F
 46,47,50,51,55,56,59,60/F

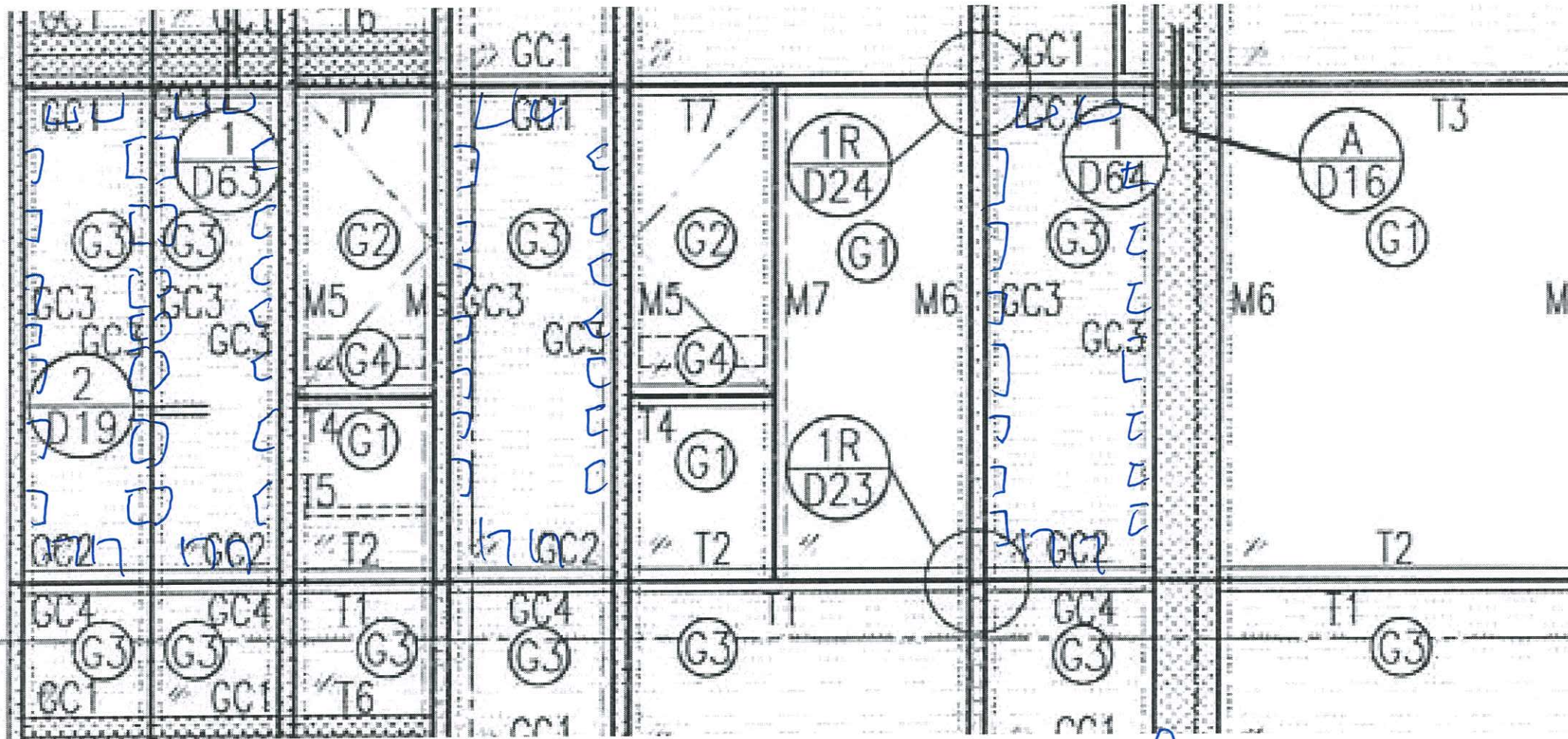
B.D. REF :			
CLIENT : 恒和置業有限公司 Sino Land Company Limited			
ARCHITECT : Ronald Lu & Partners 呂志偉建築師事務所 Ronald Lu & Partners (HK) Ltd. 呂志偉建築師事務所(香港)有限公司			
MAIN CONTRACTOR : Gammon			
STRUCTURAL ENGINEER : AE & M			
FACADE CONSULTANT: AE & M			
NOTE : 1. ALL DIMENSIONS ARE IN mm. 2. ALL ELEVATIONS ARE VIEWED FROM OUTSIDE. 3. ALL DIMENSIONS TO BE VERIFIED ON SITE BEFORE FABRICATION.			
LEGEND : X1 — DETAIL MARK NO. X201 — REFER SHEET NO. 1. F.F.L. — FINISHED FLOOR LEVEL 2. S.F.L. — STRUCTURAL FLOOR LEVEL 3. ② — REVERSED DETAIL			
NO.	DATE	REVISED	BY
JOB NO. : J-1858			
PROJECT : PROPOSED RESIDENTIAL DEVELOPMENT AT TKOIL ZORP, PHASE 11, LGHAS PARK TSEUNG KWAN O, N.T.			
TITLE : TYPICAL FLOOR PLAN AT TOWER 1			
DATE : 22-OCT-21	SCALE : 1:80(A1)		
DRAWN BY : NY	CHECKED BY : YB		
美特鋁質有限公司 MIDI ALUMINIUM FABRICATOR LTD. Units 6-8, Sunny Industrial Centre, 1/F 810 Cho Kwong Road, Kowloon Tel: 348811-4 Fax: (852) 2727666			
DWG NO. : J858-LP102	REV. :		

3300

40

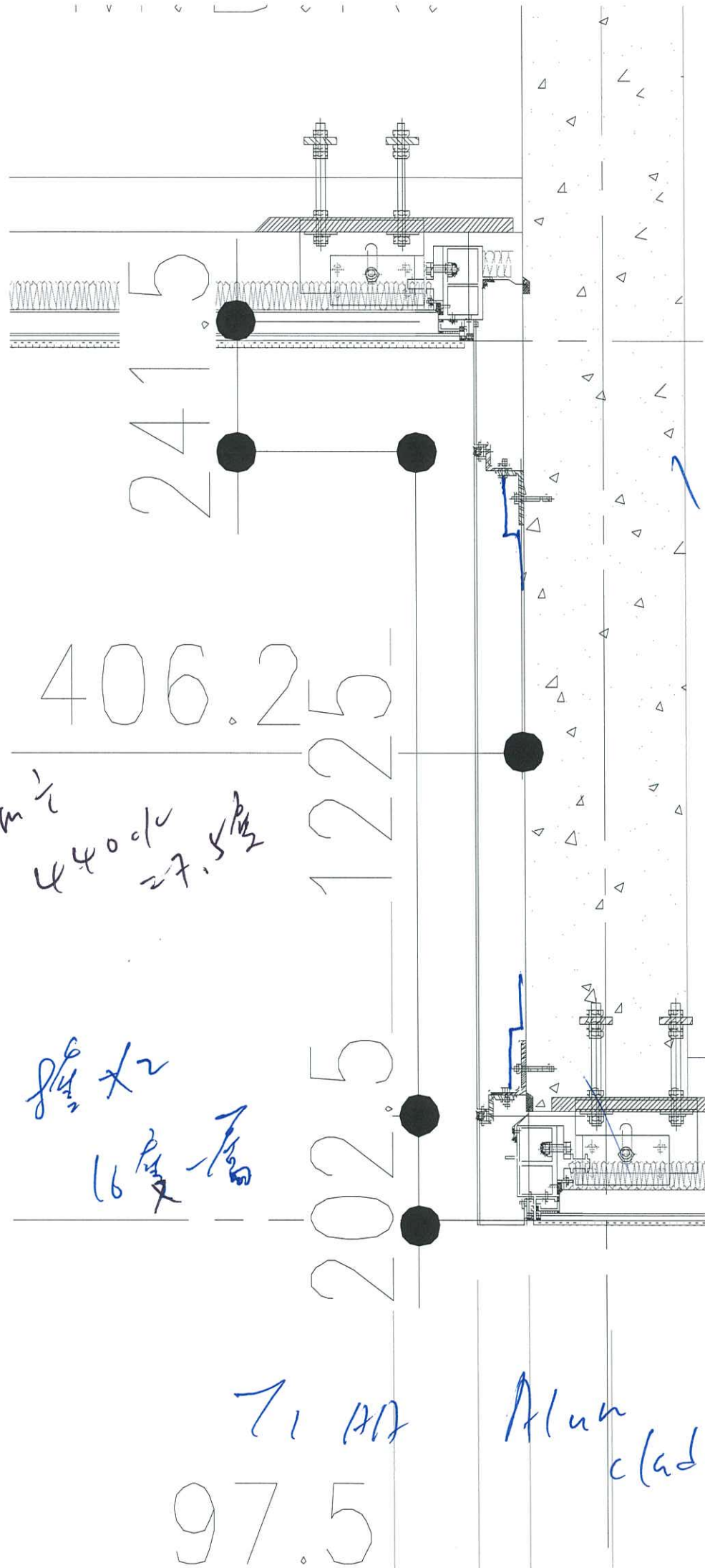


TI AE



1 2 3 4 5 6 7 8

T1 AB



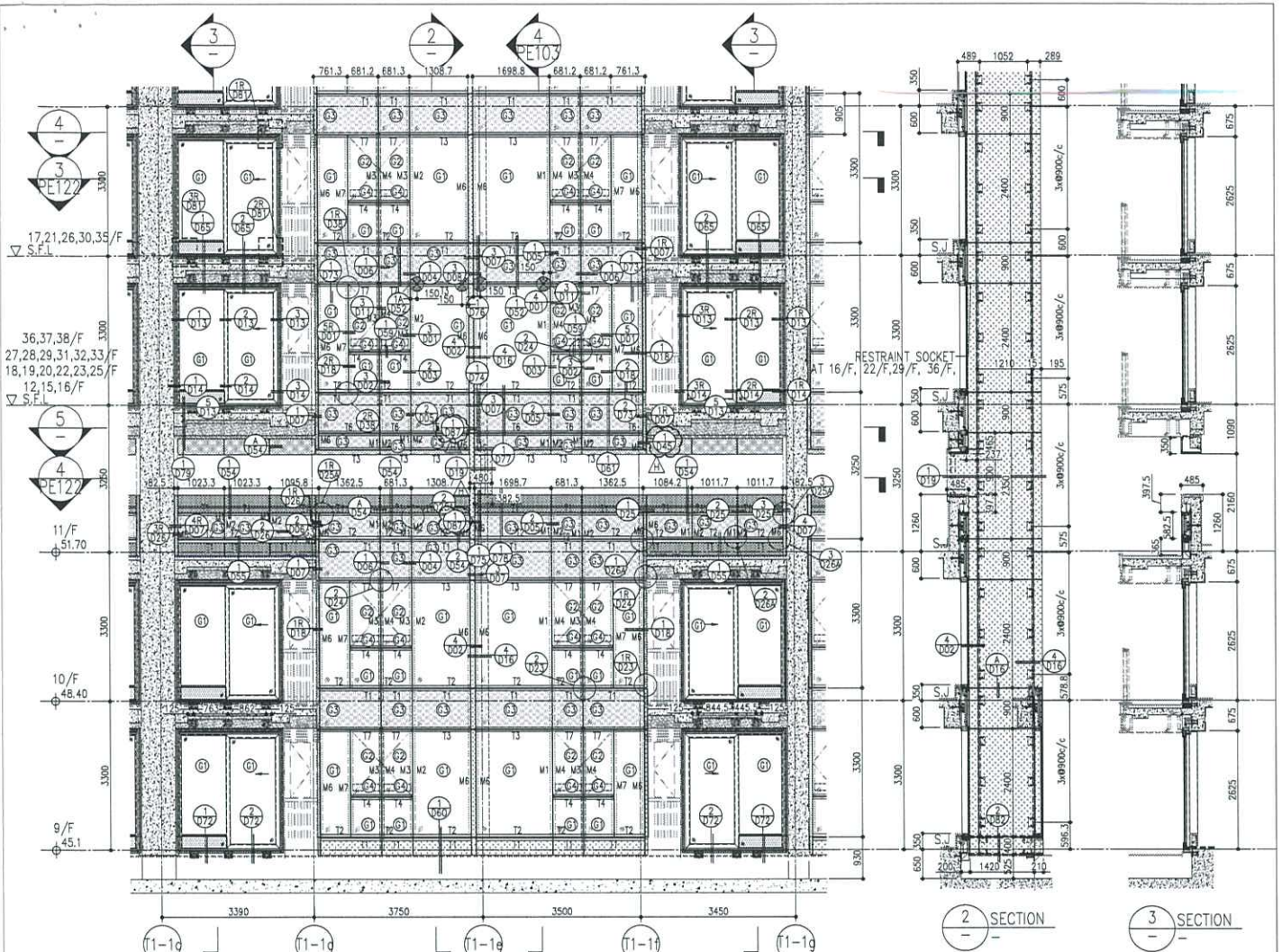
3300mm $\frac{1}{2}$
 4400 $\frac{1}{4}$
 27.5 $\frac{1}{2}$

8 $\frac{1}{2}$ x 2
 16 $\frac{1}{2}$ 層

71 117

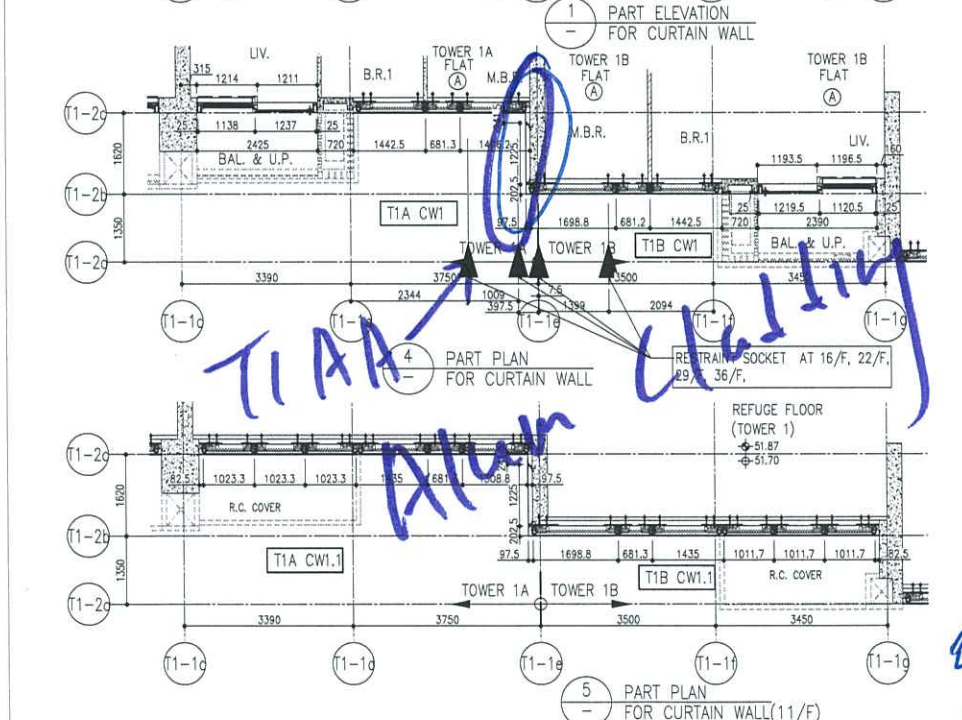
Alum
cladding

97.5



26/F +91.25	39/F +130.85	52/F +170.40	
25/F +87.95	38/F +127.55	51/F +167.10	
23/F +84.65	37/F +124.25	50/F +163.80	R/F +203.80
22/F +81.35	36/F +120.95	49/F +160.50	62/F +200.30
21/F +78.05	35/F +117.65	48/F +157.20	61/F +196.80
20/F +74.75	33/F +114.35	47/F +153.90	60/F +193.50
19/F +71.45	32/F +111.05	46/F +150.60	59/F +190.20
18/F +68.15	31/F 107.75	45/F +147.30	58/F +186.90
17/F +64.85	30/F +104.45	43/F +144.00	57/F +183.60
16/F +61.55	29/F +101.15	42/F +140.70	56/F +180.30
15/F +58.25	28/F +97.85	41/F +137.40	55/F +177.00
12/F +54.95	27/F +94.55	40/F +134.15	53/F +173.70

- LEGEND:
- 10mm THK. HEAT STRENGTHENED GLASS (OUTSIDE) +12mm AIR SPACE + 12mm THK. TEMPERED GLASS
 - 10mm THK. HEAT STRENGTHENED GLASS (OUTSIDE) +12mm AIR SPACE + 10mm THK. TEMPERED GLASS
 - 12mm THK. HEAT STRENGTHENED GLASS
 - 12mm THK. CLEAR TEMPERED GLASS (INTERNAL PROTECTIVE BARRIER)
 - 10mm THK. HEAT STRENGTHENED GLASS (OUTSIDE) +12mm AIR SPACE + 12mm THK. TEMPERED GLASS WITH REFLECTIVE COATING
 - 10mm THK. CLEAR TEMPERED GLASS
 - 8mm THK. CLEAR HEAT STRENGTHENED GLASS +1.52mm ALUM. CLADDING + 8mm THK. CLEAR HEAT-STRENGTHENED GLASS
 - 3 mm THK. ALUM. CLADDING
 - 3 mm THK. ALUM. BACKPAN
 - STACK JOINT
 - RESTRAINT SOCKET



CLIENT: 德和置業有限公司
Sino Land Company Limited

ARCHITECT: ronald lu & partners
Ronald Lu & Partners (HK) Ltd
香港建築師學會 (香港) 有限公司

STRUCTURAL ENGINEER: Gammon

FAHDC CONSULTANT: AECOM

NOTE:
1. ALL DIMENSIONS ARE IN mm.
2. ALL DIMENSIONS ARE VERIFIED FROM OUTSIDE BEFORE FABRICATION.
3. ALL DIMENSIONS TO BE VERIFIED ON SITE BEFORE FABRICATION.

REVISIONS:

NO.	DATE	REASON
1	12/17/22	REVISED AS PER COMMENTS
2	12/17/22	REVISED AS PER COMMENTS
3	12/17/22	REVISED AS PER COMMENTS
4	12/17/22	REVISED AS PER COMMENTS
5	12/17/22	REVISED AS PER COMMENTS
6	12/17/22	REVISED AS PER COMMENTS
7	12/17/22	REVISED AS PER COMMENTS
8	12/17/22	REVISED AS PER COMMENTS
9	12/17/22	REVISED AS PER COMMENTS
10	12/17/22	REVISED AS PER COMMENTS
11	12/17/22	REVISED AS PER COMMENTS
12	12/17/22	REVISED AS PER COMMENTS
13	12/17/22	REVISED AS PER COMMENTS
14	12/17/22	REVISED AS PER COMMENTS
15	12/17/22	REVISED AS PER COMMENTS
16	12/17/22	REVISED AS PER COMMENTS
17	12/17/22	REVISED AS PER COMMENTS
18	12/17/22	REVISED AS PER COMMENTS
19	12/17/22	REVISED AS PER COMMENTS
20	12/17/22	REVISED AS PER COMMENTS
21	12/17/22	REVISED AS PER COMMENTS
22	12/17/22	REVISED AS PER COMMENTS
23	12/17/22	REVISED AS PER COMMENTS
24	12/17/22	REVISED AS PER COMMENTS
25	12/17/22	REVISED AS PER COMMENTS
26	12/17/22	REVISED AS PER COMMENTS
27	12/17/22	REVISED AS PER COMMENTS
28	12/17/22	REVISED AS PER COMMENTS
29	12/17/22	REVISED AS PER COMMENTS
30	12/17/22	REVISED AS PER COMMENTS
31	12/17/22	REVISED AS PER COMMENTS
32	12/17/22	REVISED AS PER COMMENTS
33	12/17/22	REVISED AS PER COMMENTS
34	12/17/22	REVISED AS PER COMMENTS
35	12/17/22	REVISED AS PER COMMENTS
36	12/17/22	REVISED AS PER COMMENTS
37	12/17/22	REVISED AS PER COMMENTS
38	12/17/22	REVISED AS PER COMMENTS
39	12/17/22	REVISED AS PER COMMENTS
40	12/17/22	REVISED AS PER COMMENTS
41	12/17/22	REVISED AS PER COMMENTS
42	12/17/22	REVISED AS PER COMMENTS
43	12/17/22	REVISED AS PER COMMENTS
44	12/17/22	REVISED AS PER COMMENTS
45	12/17/22	REVISED AS PER COMMENTS
46	12/17/22	REVISED AS PER COMMENTS
47	12/17/22	REVISED AS PER COMMENTS
48	12/17/22	REVISED AS PER COMMENTS
49	12/17/22	REVISED AS PER COMMENTS
50	12/17/22	REVISED AS PER COMMENTS
51	12/17/22	REVISED AS PER COMMENTS
52	12/17/22	REVISED AS PER COMMENTS
53	12/17/22	REVISED AS PER COMMENTS
54	12/17/22	REVISED AS PER COMMENTS
55	12/17/22	REVISED AS PER COMMENTS
56	12/17/22	REVISED AS PER COMMENTS
57	12/17/22	REVISED AS PER COMMENTS
58	12/17/22	REVISED AS PER COMMENTS
59	12/17/22	REVISED AS PER COMMENTS
60	12/17/22	REVISED AS PER COMMENTS
61	12/17/22	REVISED AS PER COMMENTS
62	12/17/22	REVISED AS PER COMMENTS
63	12/17/22	REVISED AS PER COMMENTS
64	12/17/22	REVISED AS PER COMMENTS
65	12/17/22	REVISED AS PER COMMENTS
66	12/17/22	REVISED AS PER COMMENTS
67	12/17/22	REVISED AS PER COMMENTS
68	12/17/22	REVISED AS PER COMMENTS
69	12/17/22	REVISED AS PER COMMENTS
70	12/17/22	REVISED AS PER COMMENTS
71	12/17/22	REVISED AS PER COMMENTS
72	12/17/22	REVISED AS PER COMMENTS
73	12/17/22	REVISED AS PER COMMENTS
74	12/17/22	REVISED AS PER COMMENTS
75	12/17/22	REVISED AS PER COMMENTS
76	12/17/22	REVISED AS PER COMMENTS
77	12/17/22	REVISED AS PER COMMENTS
78	12/17/22	REVISED AS PER COMMENTS
79	12/17/22	REVISED AS PER COMMENTS
80	12/17/22	REVISED AS PER COMMENTS
81	12/17/22	REVISED AS PER COMMENTS
82	12/17/22	REVISED AS PER COMMENTS
83	12/17/22	REVISED AS PER COMMENTS
84	12/17/22	REVISED AS PER COMMENTS
85	12/17/22	REVISED AS PER COMMENTS
86	12/17/22	REVISED AS PER COMMENTS
87	12/17/22	REVISED AS PER COMMENTS
88	12/17/22	REVISED AS PER COMMENTS
89	12/17/22	REVISED AS PER COMMENTS
90	12/17/22	REVISED AS PER COMMENTS
91	12/17/22	REVISED AS PER COMMENTS
92	12/17/22	REVISED AS PER COMMENTS
93	12/17/22	REVISED AS PER COMMENTS
94	12/17/22	REVISED AS PER COMMENTS
95	12/17/22	REVISED AS PER COMMENTS
96	12/17/22	REVISED AS PER COMMENTS
97	12/17/22	REVISED AS PER COMMENTS
98	12/17/22	REVISED AS PER COMMENTS
99	12/17/22	REVISED AS PER COMMENTS
100	12/17/22	REVISED AS PER COMMENTS

PROJECT: PROPOSED RESIDENTIAL DEVELOPMENT AT 1001, 708P, PHASE 11, LOHAS PARK, TIANJIN, CHINA.

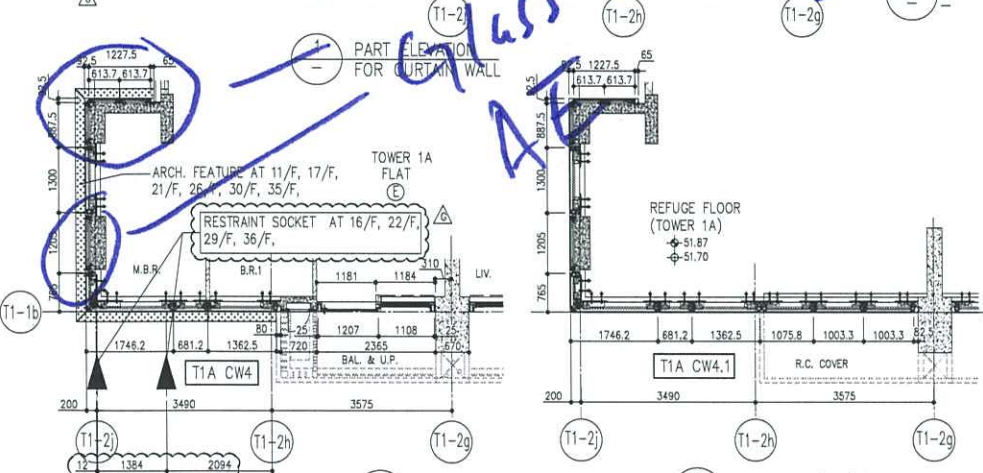
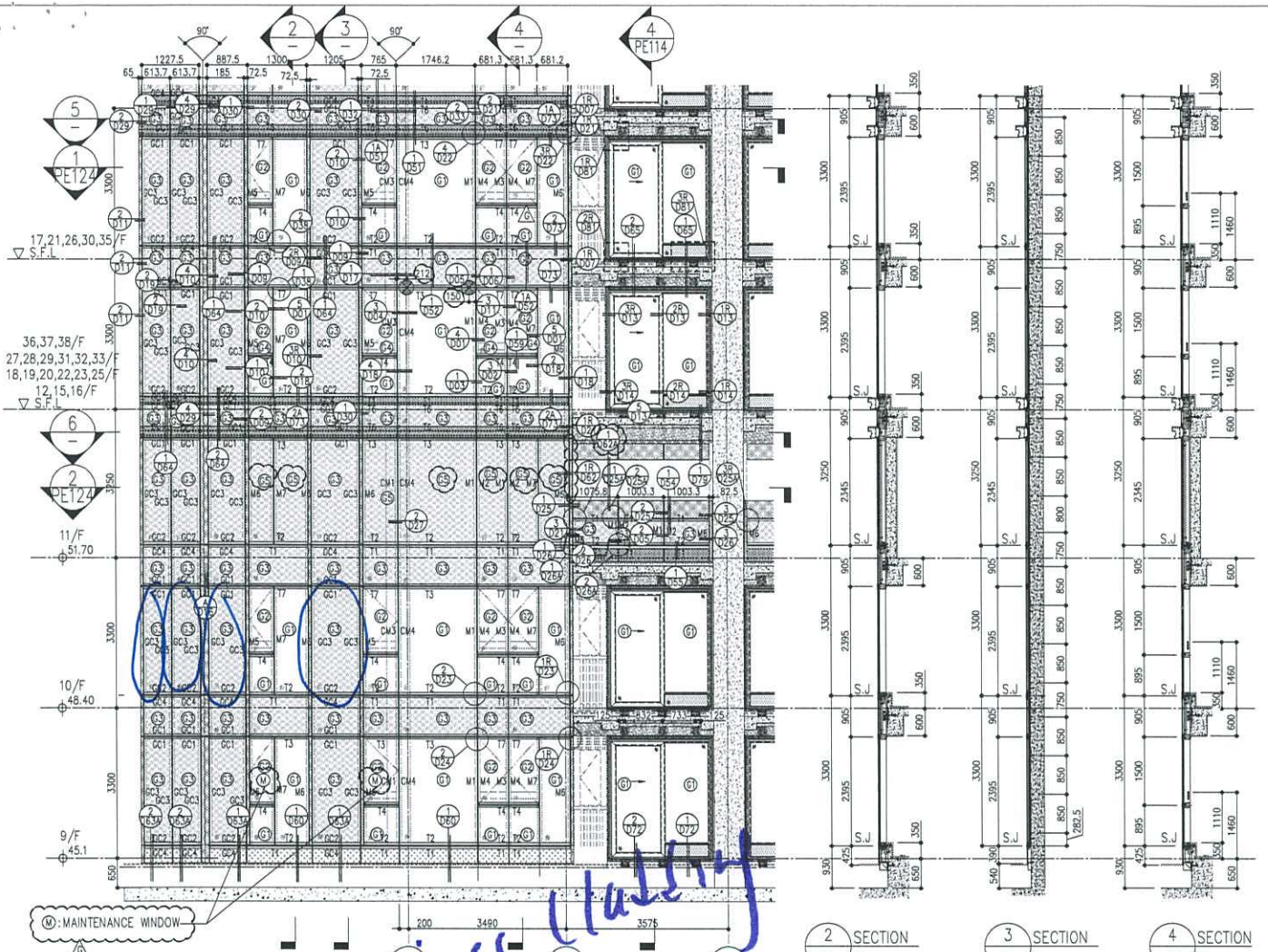
TITLE: TYPICAL FLOOR PARTIAL ELEVATION & SECTION (PLAN) FOR CURTAIN WALL (COWER 1)

DATE: 22-OCT-21
SCALE: 1:50(A1)

DESIGN BY: [Signature]
CHECKED BY: [Signature]

CLIENT: MIDLAND ASSURANCE COMPANY LTD.
610 One One Long Road, Kowloon
TEL: 27398211-4 | FAX: 27377066

REV: H



26/F +91.25	39/F +130.85	52/F +170.40	
25/F +87.95	38/F +127.55	51/F +167.10	
23/F +84.65	37/F +124.25	50/F +163.80	R/F +203.80
22/F +81.35	36/F +120.95	49/F +160.50	62/F +200.30
21/F +78.05	35/F +117.65	48/F +157.20	61/F +196.80
20/F +74.75	33/F +114.35	47/F +153.90	60/F +193.50
19/F +71.45	32/F +111.05	46/F +150.60	59/F +190.20
18/F +68.15	31/F 107.75	45/F +147.30	58/F +186.90
17/F +64.85	30/F +104.45	43/F +144.00	57/F +183.60
16/F +61.55	29/F +101.15	42/F +140.70	56/F +180.30
15/F +58.25	28/F +97.85	41/F +137.40	55/F +177.00
12/F +54.95	27/F +94.55	40/F +134.10	53/F +173.70

- LEGEND:**
- 10mm THK. HEAT STRENGTHENED GLASS (OUTSIDE) +12mm AIR SPACE + 12mm THK. TEMPERED GLASS
 - 10mm THK. HEAT STRENGTHENED GLASS (OUTSIDE) +12mm AIR SPACE + 10mm THK. TEMPERED GLASS
 - 12mm THK. HEAT STRENGTHENED GLASS
 - 12mm THK. CLEAR TEMPERED GLASS (INTERNAL PROTECTIVE BARRIER)
 - 10mm THK. HEAT STRENGTHENED GLASS (OUTSIDE) +12mm AIR SPACE + 12mm THK. TEMPERED GLASS WITH REFLECTIVE COATING
 - 10mm THK. CLEAR TEMPERED GLASS
 - 8mm THK. CLEAR HEAT-STRENGTHENED GLASS +1.52mm DELETED + 8mm THK. CLEAR HEAT-STRENGTHENED GLASS
 - 3 mm THK. ALUM. LEADING
 - 3 mm THK. DELETED. BACKPAN
 - STACK JOINT
 - RESTRAINT SOCKET

CLIENT: 德和置業有限公司
Sino Land Company Limited

ARCHITECT: ronaldi & partners
Ronald Li & Partners (HK) Ltd
利和建築師事務所 (香港) 有限公司

STRUCTURAL ENGINEER: AECOM

MECHANICAL ENGINEER: Gammorn

FACE CONSULTANT: AECOM

DATE: 22-OCT-21

TITLE: TYPICAL FLOOR PARTIAL ELEVATION & SECTION (PLAN FOR CURTAIN WALL (TOWER 1))

PROJECT: PROPOSED RESIDENTIAL DEVELOPMENT AT KOWLOON PARK, PHASE 11, LOHAS PARK, TSEUNG KWAN O, N.T.

JOB NO.: J-858

REVISIONS:

NO.	DATE	REVISION
1	17/09/22	REVISED AS PER COMMENTS
2	20/09/22	REVISED AS PER COMMENTS
3	22/09/22	REVISED AS PER COMMENTS
4	05/09/22	REVISED AS PER COMMENTS
5	20/07/21	REVISED AS PER COMMENTS
6	03/07/21	REVISED AS PER COMMENTS

NOTE:

- ALL DIMENSIONS ARE IN mm.
- ALL DIMENSIONS ARE VIEWED FROM OUTSIDE.
- ALL DIMENSIONS TO BE VERIFIED ON SITE BEFORE FABRICATION.

LEGEND:

- DETAILED MARK NO.
- REFER SHEET NO.
- F.F.L. - FINISHED FLOOR LEVEL
- S.F.L. - STRUCTURAL FLOOR LEVEL
- REVERSED DETAIL

SCALE: 1:150(A1)

DATE: 22-OCT-21

SCALE: 1:150(A1)


DATE: 22-OCT-21



SCALE: 1:150(A1)

B.D. REF :

CLIENT :
 信和置業有限公司
 Sino Land Company Limited

ARCHITECT :
 ronald lu & partners
 Ronald Lu & Partners (HK) Ltd.
 呂元深建築師事務所(香港)有限公司
 MAIN CONTRACTOR :

STRUCTURAL ENGINEER :
 Gammon

FAÇADE CONSULTANT:
 AECOM
 AECOM

NOTE:
 1. ALL DIMENSIONS ARE IN mm.
 2. ALL ELEVATIONS ARE VIEWED FROM OUTSIDE.
 3. ALL DIMENSIONS TO BE VERIFIED ON SITE BEFORE FABRICATION.

LEGEND:
 RETAIL MARK NO.
 REFER SHEET NO.
 FFEL - FINISHED FLOOR LEVEL
 S.F.L. - STRUCTURAL FLOOR LEVEL
 3. ② - REVERSED DETAIL

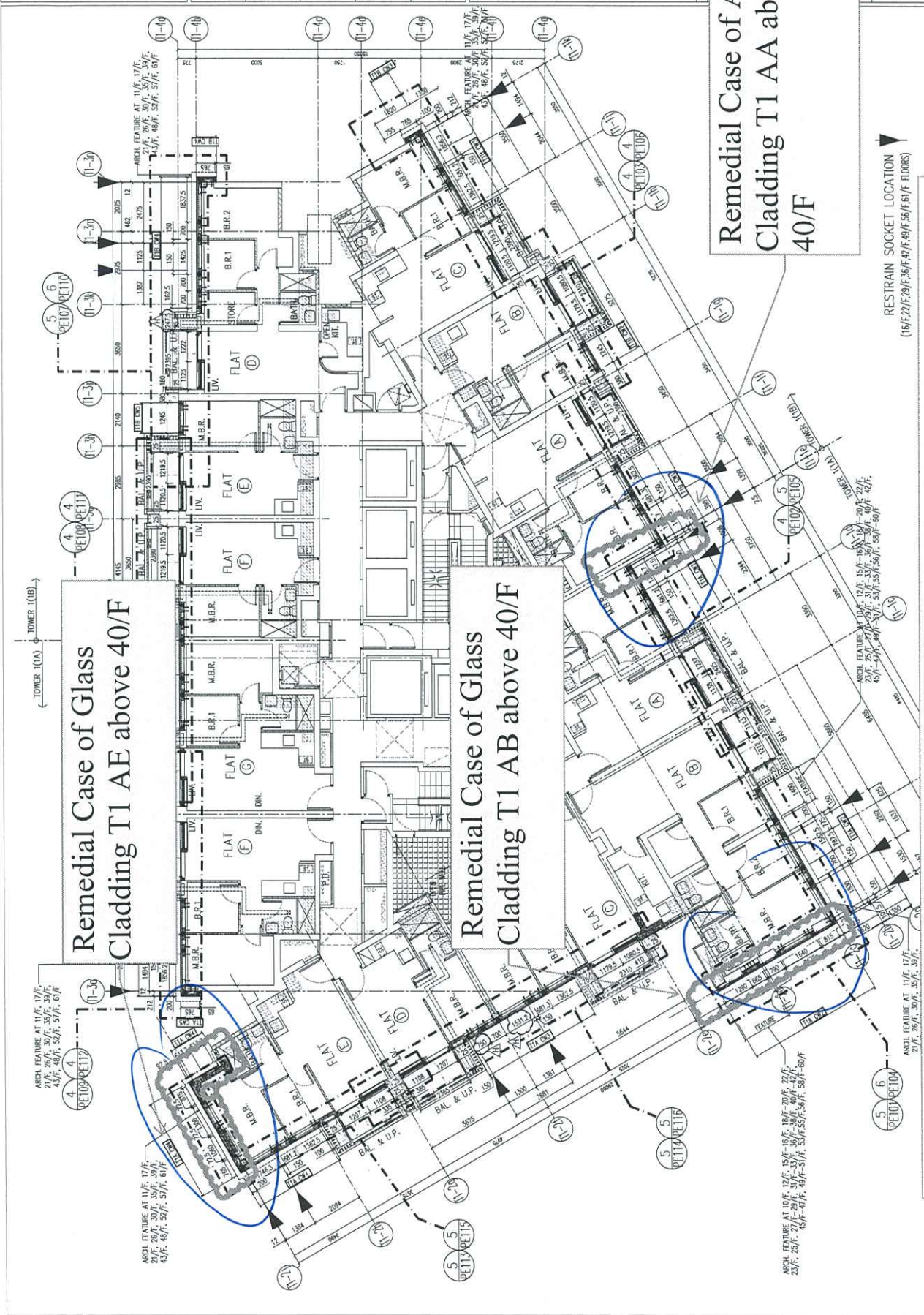
REVISED AS PER COMMENTS
 LS PER COMMENTS
 LS PER COMMENTS
 LS PER COMMENTS
 LS PER COMMENTS
 LS PER COMMENTS
 LS PER COMMENTS
 REVISED
 B55B

WORK DEVELOPMENT
 NO. 1, LOHAS PARK
 PHASE 2, N.T.
 TITLE :
 TYPICAL FLOOR PLAN
 AT TOWER 1

DATE : 22-OCT-21
 SCALE : 1/25(A1)
 DRAWN BY : KY
 CHECKED BY : YB

美特鋁質有限公司
 MTDI
 ALUMINIUM FABRICATOR LTD.
 1505 1/F, Sunny Road, Kowloon
 1505 1/F, Sunny Road, Kowloon
 Tel: (852) 27727655
 Fax: (852) 27727655

FWG NO. : B55B-CF-UP101
 REV. : H



Remedial Case of Alum.
 Cladding T1 AA above
 40/F

Remedial Case of Glass
 Cladding T1 AE above 40/F

Remedial Case of Glass
 Cladding T1 AB above 40/F

RESTRAIN SOCKET LOCATION
 (16/F, 21/F, 29/F, 36/F, 42/F, 49/F, 56/F, 63/F FLOORS)

Remedial Proposal for Aluminum Cladding and Glass Cladding at T1



13931 - Lohas Park Package 11

fly work order

INSTRUCTION TO SUB-CONTRACTOR (ISC)

Sub-Contractor	Midi Aluminium Fabricator Ltd	Sub-Contract No.	3010 - Design, Supply and Installation of Curtain Wall, Glass Wall, Aluminium Window, Aluminium Louvres and Glass Balustrade (Tender 2 - Works at Tower (Curtain Wall and Aluminium Windows))
SC Representative		ISC No.	13931/ISC/3010/0005

Dear Sir(s),
We hereby instruct you to undertake the following works:

Works Title: Instruction of Remedial Work for Glass Cladding at Tower 1 AA AB AE

Details of Scope of Works: You are instructed to arrange the Remedial Work for Glass Cladding at Tower 1 AA AB AE as the attached information.

Remarks:

The work will be measured and valued as follows:

For and on behalf of
GAMMON CONSTRUCTION LTD

Signature: _____
 Name: Billy Kin Pui Kan
 Position: Construction Manager
 Date: 16 Nov 2023



美特鋁質有限公司
MIDI ALUMINIUM FABRICATOR LTD.

Our ref. MC/42449/858

6th December 2023

Gammon Construction Ltd
22/F Tower 1, The Quayside,
77 Hoi Bun Road,
Kwun Tong, Kowloon.

By Email & Hand

Attn.: Mr. Billy Kan

Dear Sir,

**Re : Design, Supply & Installation of Curtain Wall, Glass Wall, Aluminium Window, Aluminum Cladding & Louvers at T.K.O.T.L 70 RP, Phase 11, LOHAS Park, Tseung Kwan O, N.T.
4th Submission of Remedial Proposal for Aluminum Cladding and Glass Cladding at T1 (TS122)**

As per comment on MC 42442, about Concrete hacking at T1 Aluminum Cladding and Glass Cladding, we would like to Submit Remedial Proposal for your review and comment. Detail are as follows:

- Attachment 1: Drawing Detail - RM model and Location (5 pages)
- Attachment 2: Check Remedial Case of Alum. Cladding (23 pages)
- Attachment 3: Check Remedial Case of Glass Cladding (23 pages)

Thank you for your kind attention.

Yours faithfully,

MIDI ALUMINIUM FABRICATOR LTD.

Francis Mau
Managing Director

Encl

cc. Gammon	- Mr. Billy Kan / Mr. Rick Chung	(w/e)
Sino	- Mr. Terry Wan / Mr. Andy Chan / Mr. Kenneth Leung	(w/e) (Email Only)
RLP	- Ms. Marina Tong / Ms. Ginny Chau	(w/e) (Email Only)
Aecom	- Mr. Ryan Ko / Mr. Dennis Chiu	(w/e) (Email Only)

FM / MT / JL / AY / PW / jc

