



工程指示 / 要求簡箋(E.I.)

工程指示編號：EI / 6590 / 23

修改版次： -

工程編號： J - 858

工程名稱：將軍澳日出康城 11

工程項目：幕牆 收口鋁板 AQ87-4 T2,T3 AG 用 補做 4 件 送地盤

收件人：生統

發件人：Paul Wong

日期：07/08/2023

內容

由於 EI5635 中 T2,T3 AG 單位的設計圖有錯誤，現補回 4 件 AQ87-4，送地盤。

米 T1 是沒有的

請在 2023.08.17 前完成上列要求。

附： 頁

分發東莞各部門：

- () 生產技術總監 連附件 (✓) 技術部 連附件 () 生產部 連附件 () 機械設計部 連附件
 () 採購部 連附件 (✓) 生產統籌部 連附件 (✓) 小羅&清 連附件
 () 質檢部 連附件 () 會計部 連附件 () 報關組 連附件 () 其他 _____ 連附件

分發香港各部門：

- () 行政部 連附件 () 會計部 連附件 () 統籌部 連附件 (✓) 工程部地盤科文 積哥 連附件
 () 採購部 連附件 () QS 部 連附件 () 維修部 連附件 () 其他 _____ 連附件

傳遞編號：

HK 1741 / 23

發件人簽署：

項目經理簽署：

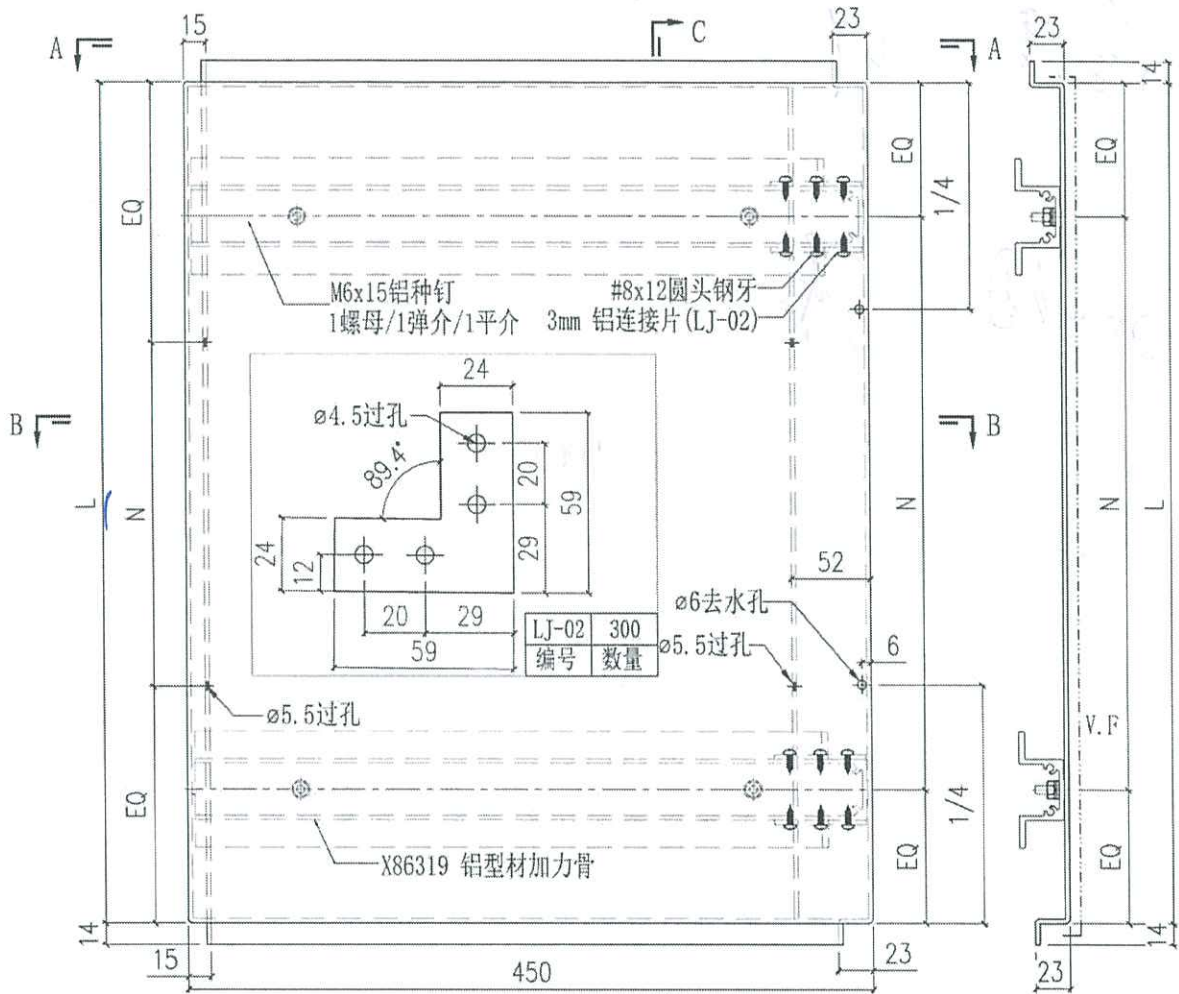
718

T2AG

PC208

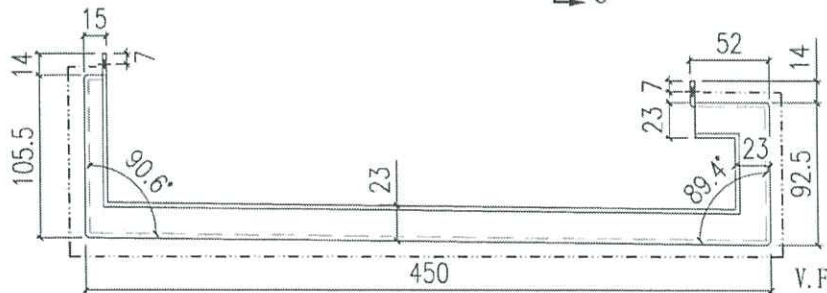
美特铝质有限公司 MIDI Aluminium Fabricator Ltd.		工程號	J858	類別		物料號	-		
修改		地盤	康城11期	制圖	W. E. X	2022-08-11	圖號	AQ-87-4	
日期		採用工廠	地盤 ✓	图纸名称	铝板加工图	復核	-	數量	-
		材料颜色	PVF2 (香槟金)	材料	3mm THK. 铝板	批准	-	單件重量	- (KG)

表面處理: PVF2 (香槟金ECD3X10099S-JF2)



LJ-02	300
编号	数量

SECTION C-C



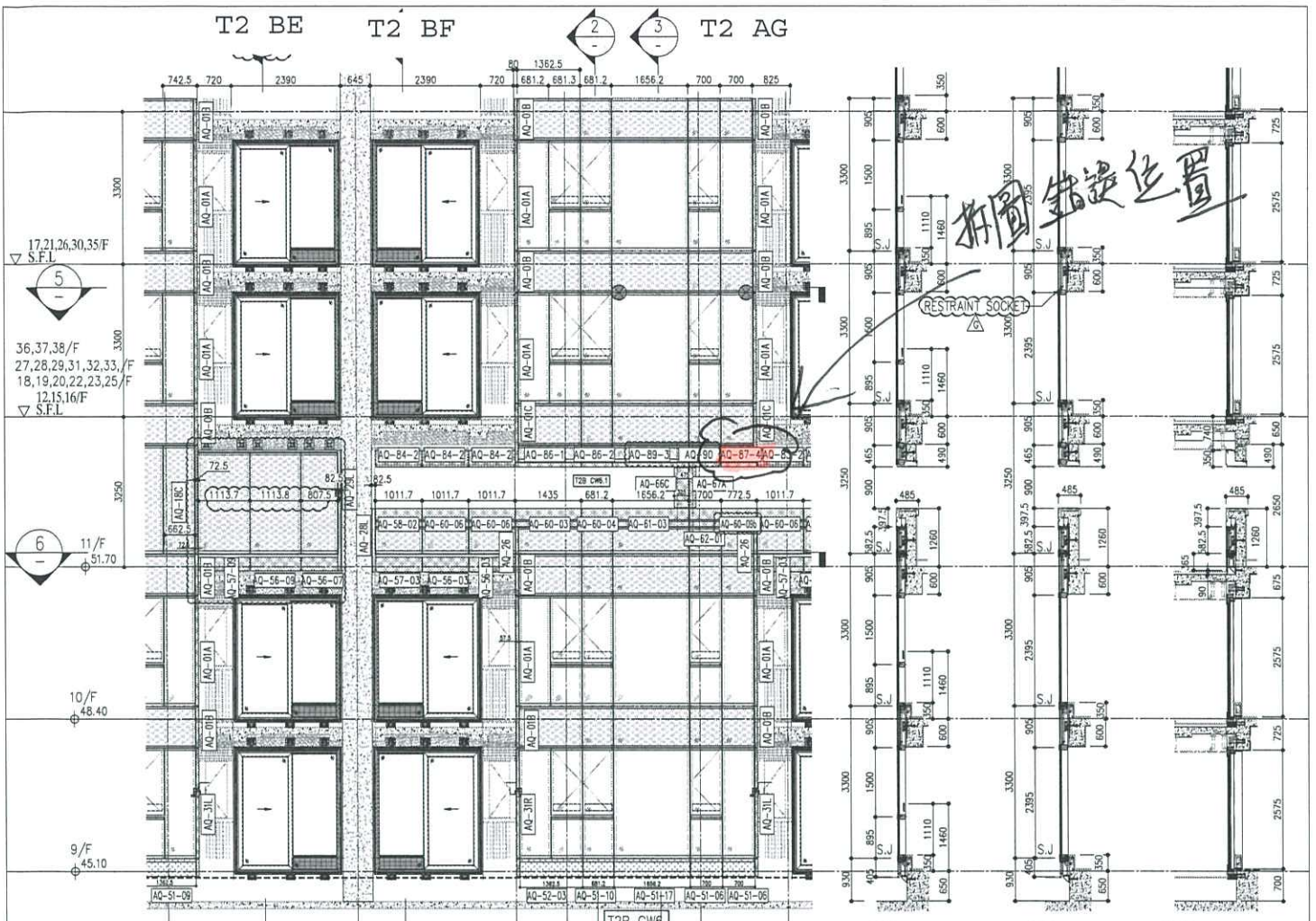
SECTION A-A



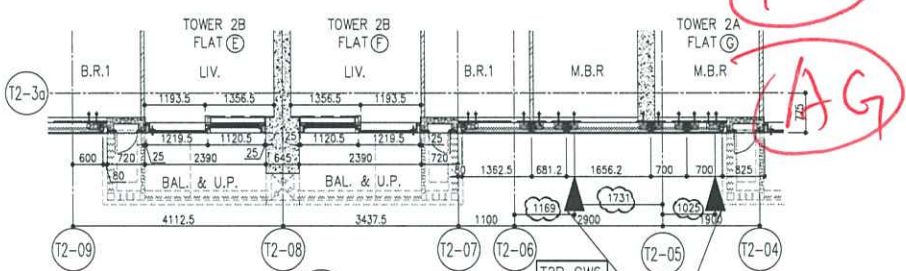
SECTION B-B

AQ-87-5	807.5	2x300 c/c	4	T2, T3
AQ-87-4	757.5	2x300 c/c	6	T1, T2, T3
AQ-87-3	1375	4x300 c/c	8	T1, T2, T3
AQ-87-2	1420	4x300 c/c	10	T1, T2, T3
AQ-87-1	1294	4x280 c/c	6	T1, T2, T3
编号	L	N	数量	位置

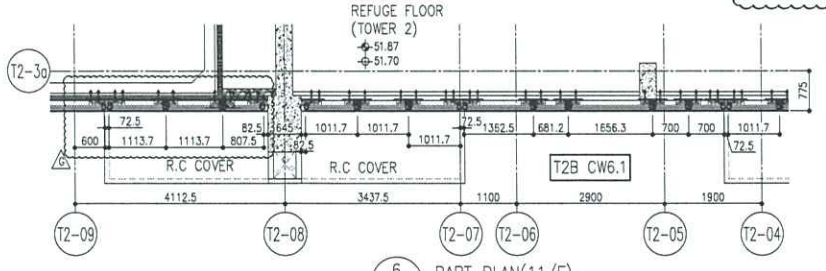
845
414



1 PART ELEVATION FOR CURTAIN WALL



5 PART PLAN FOR CURTAIN WALL



6 PART PLAN (11/F) FOR CURTAIN WALL

R/F	+217.00	R/F	+217.00
26/F	+91.25	39/F	+130.85
25/F	+87.95	38/F	+127.55
23/F	+84.65	37/F	+124.25
22/F	+81.35	36/F	+120.95
21/F	+78.05	35/F	+117.65
20/F	+74.75	33/F	+114.35
19/F	+71.45	32/F	+111.05
18/F	+68.15	31/F	+107.75
17/F	+64.85	30/F	+104.45
16/F	+61.55	29/F	+101.15
15/F	+58.25	28/F	+97.85
12/F	+54.95	27/F	+94.55
67/F	+213.50	65/F	+206.70
66/F	+210.00	63/F	+203.40
65/F	+206.70	62/F	+200.10
64/F	+203.40	61/F	+196.80
63/F	+200.10	60/F	+193.50
62/F	+196.80	59/F	+190.20
61/F	+193.50	58/F	+186.90
60/F	+190.20	57/F	+183.60
59/F	+186.90	56/F	+180.30
58/F	+183.60	55/F	+177.00
57/F	+180.30	53/F	+173.70

LEGEND:

- ① 10mm THK. HEAT STRENGTHENED GLASS (OUTSIDE) +12mm AIR SPACE + 12mm THK. TEMPERED GLASS
- ② 10mm THK. HEAT STRENGTHENED GLASS (OUTSIDE) +12mm AIR SPACE + 10mm THK. TEMPERED GLASS
- ③ 12mm THK. HEAT STRENGTHENED GLASS
- ④ 12mm THK. CLEAR TEMPERED GLASS (INTERNAL PROTECTIVE BARRIER)
- ⑤ 10mm THK. HEAT STRENGTHENED GLASS (OUTSIDE) +12mm AIR SPACE + 12mm THK. TEMPERED GLASS WITH REFLECTIVE COATING
- ⑥ 10mm THK. CLEAR TEMPERED GLASS
- ⑦ 8mm THK. CLEAR HEAT-STRENGTHENED GLASS +5.2mm PVB + 8mm THK. CLEAR HEAT-STRENGTHENED GLASS
- ⑧ 3 mm THK. ALUM. CLADDING
- ⑨ 3 mm THK. ALUM. BACKPAN
- S.J. - STACK JOINT
- ⊗ - RESTRAINT SOCKET

PE208

PROJECT: DEVELOPMENT AT 11 LOHNS PARK D, N.T.

DATE: 13/06/2011

DRAWN BY: [Name]

CHECKED BY: [Name]

SCALE: 1/1

REVISIONS:

NO.	DATE	REVISION
1	18/06/22	REVISED AS PER COMMENTS
2	24/07/22	REVISED AS PER COMMENTS
3	26/06/22	REVISED AS PER COMMENTS
4	06/04/22	REVISED AS PER COMMENTS
5	27/01/22	REVISED AS PER COMMENTS
6	29/12/21	REVISED AS PER COMMENTS
7	09/12/21	REVISED AS PER COMMENTS

AECOM

Gammom

STRUCTURAL ENGINEER:

PROJECT CONSULTANT:

NOTES:

1. ALL DIMENSIONS ARE IN mm.
2. ALL ELEVATIONS ARE VIEWED FROM OUTSIDE.
3. ALL DIMENSIONS TO BE VERIFIED ON SITE BEFORE FABRICATION.

LEGEND:

- (AT) DETAIL MARK NO.
- (R) REFER SHEET NO.
- (1) F.F.L. -- FINISHED FLOOR LEVEL
- (2) S.F.L. -- STRUCTURAL FLOOR LEVEL
- (3) -- REVERSED DETAIL

AECOM

Gammom

PROJECT CONSULTANT:

STRUCTURAL ENGINEER:

ronald lu & partners

Ronald Lu & Partners (HK) Ltd.

25/F, 250 Canton Road, Kowloon, Hong Kong

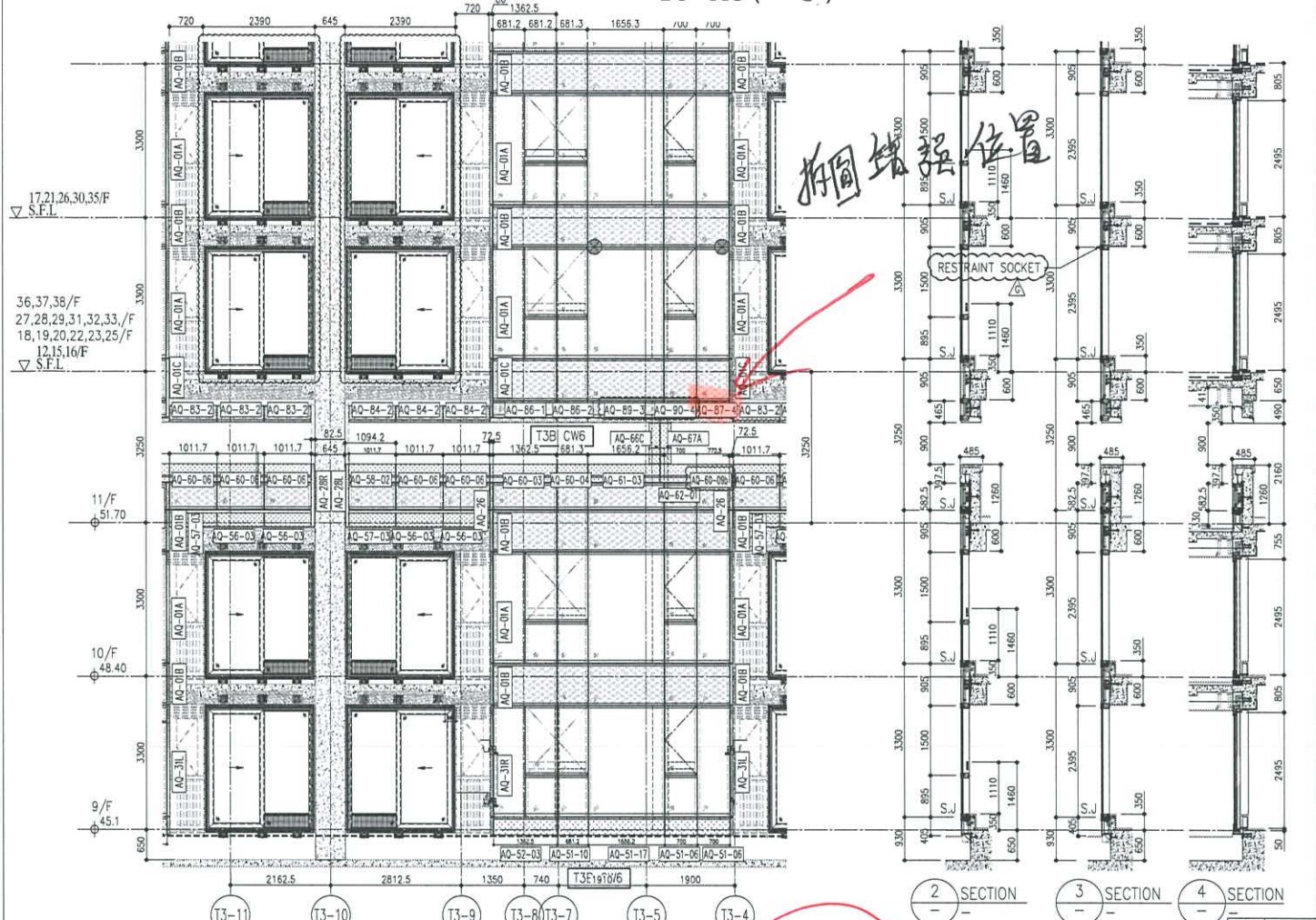
MEMBER OF THE

SHO LAND COMPANY LIMITED

SHO LAND COMPANY LIMITED

SHO LAND COMPANY LIMITED

T3 BE () T3 BF () T3 AG ()

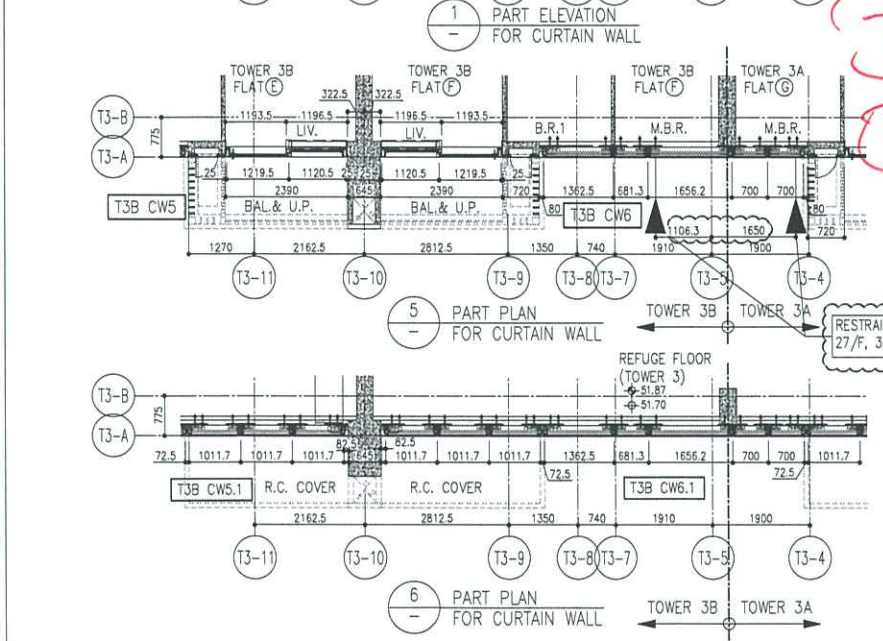


欄窗位置

T3
AG

R/F	+217.00	67/F	+213.50
26/F	+91.25	39/F	+130.85
25/F	+87.95	38/F	+127.55
23/F	+84.65	37/F	+124.25
22/F	+81.35	36/F	+120.95
21/F	+78.05	35/F	+117.65
20/F	+74.75	33/F	+114.35
19/F	+71.45	32/F	+111.05
18/F	+68.15	31/F	+107.75
17/F	+64.85	30/F	+104.45
16/F	+61.55	29/F	+101.15
15/F	+58.25	28/F	+97.85
12/F	+54.95	27/F	+94.55
		52/F	+170.40
		51/F	+167.10
		50/F	+163.80
		48/F	+157.20
		47/F	+153.90
		46/F	+150.60
		45/F	+147.30
		43/F	+144.00
		42/F	+140.70
		41/F	+137.40
		55/F	+177.00
		53/F	+173.70

- LEGEND:
- ① 10mm THK. HEAT STRENGTHENED GLASS (OUTSIDE) +12mm AIR SPACE + 12mm THK. TEMPERED GLASS
 - ② 10mm THK. HEAT STRENGTHENED GLASS (OUTSIDE) +12mm AIR SPACE + 10mm THK. TEMPERED GLASS
 - ③ 12mm THK. HEAT STRENGTHENED GLASS
 - ④ 12mm THK. CLEAR TEMPERED GLASS (INTERNAL PROTECTIVE BARRIER)
 - ⑤ 10mm THK. HEAT STRENGTHENED GLASS (OUTSIDE) +12mm AIR SPACE + 12mm THK. TEMPERED GLASS WITH REFLECTIVE COATING
 - ⑥ 10mm THK. CLEAR TEMPERED GLASS
 - ⑦ 8mm THK. CLEAR HEAT-STRENGTHENED GLASS @ 52mm PVB + 8mm THK. CLEAR HEAT-STRENGTHENED GLASS
 - ⑧ 3 mm THK. ALUM. CLADDING
 - ⑨ 3 mm THK. ALUM. BACKPAN
 - S.J. - STACK JOINT
 - ⊗ - RESTRAINT SOCKET



PE308

PROJECT: PARTIAL ON PLAN (TOWER 3)

DATE: 2023-11-01

SCALE: 1:500(A1)

DESIGNER: [Name]

DRAWN BY: [Name]

CHECKED BY: [Name]

DATE: 2023-11-01

SCALE: 1:500(A1)

DESIGNER: [Name]

DRAWN BY: [Name]

CHECKED BY: [Name]

REVISIONS:

NO.	DATE	REVISION
A	09/17/21	REVISION AS PER COMMENTS
B	20/10/21	REVISION AS PER COMMENTS
C	27/04/21	REVISION AS PER COMMENTS
D	27/04/21	REVISION AS PER COMMENTS
E	26/06/22	REVISION AS PER COMMENTS
F	26/07/22	REVISION AS PER COMMENTS
G	18/08/22	REVISION AS PER COMMENTS

NOTE:

- ALL DIMENSIONS ARE IN mm.
- ALL DIMENSIONS ARE VIEWED FROM OUTSIDE.
- ALL DIMENSIONS TO BE VERIFIED ON SITE BEFORE FABRICATION.

LEGEND:

- ① DETAIL MARK NO.
- ② REFER SHEET NO.
- ③ F.F.L. - FINISHED FLOOR LEVEL
- ④ S.F.L. - STRUCTURAL FLOOR LEVEL
- ⑤ R - REVERSED DETAIL

CLIENT: 信和置業有限公司
Sino Land Company Limited

ARCHITECT: Ronald Li & Partners (HK) Ltd.
Ronald Li & Partners (HK) Ltd.
52/F, 100, Nathan Road, Kowloon, Hong Kong

STRUCTURAL ENGINEER: AECOM

MECHANICAL ENGINEER: Gammon

FAÇADE CONSULTANT: AECOM

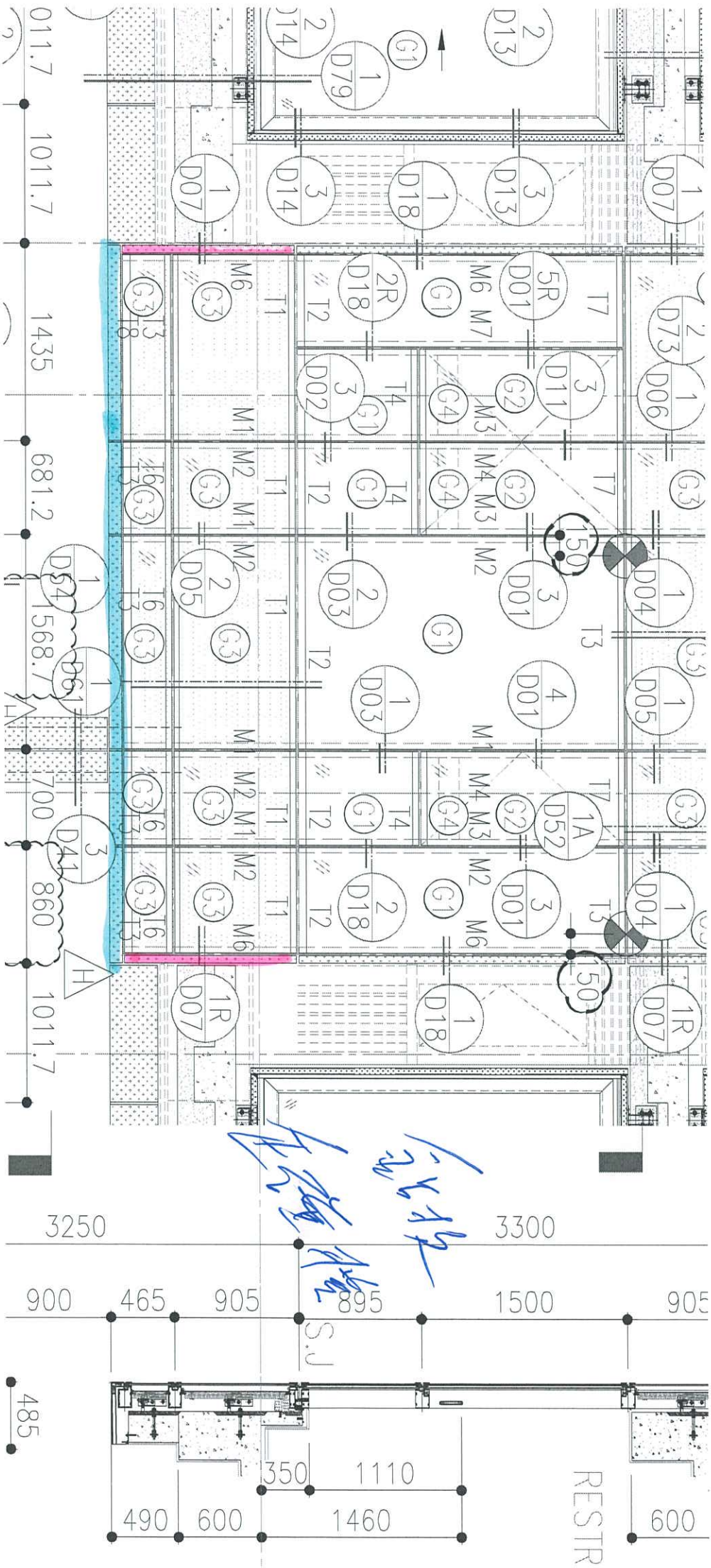
DATE: 2023-11-01

SCALE: 1:500(A1)

DESIGNER: [Name]

DRAWN BY: [Name]

CHECKED BY: [Name]



PT 208

Handwritten blue annotations: 1. A large scribble. 2. 'S.J.' written vertically. 3. 'RESTR' written horizontally.



AQ-82-4

L=757.5 X (88)

L=845 ✓