



工程指示 / 要求簡箋(E.I.)

工程指示編號：EI / 6291 / 23 修改版次：
 工程編號 : J - 858 工程名稱 : 將軍澳日出康城
 工程項目 : 上料台位置 地盤用鐵件 (8mm 鐵板) T1, 16 件
 收件人 : Maggie 發件人 : Ant Yeung 日期 : 31/05/2023

要求提供 / 確認 事項：

- | | | |
|------------------------------------|-------------------------------------|-------------------------------|
| <input type="checkbox"/> 初步鋁料 B.M. | <input type="checkbox"/> 加工拆圖，然後生產 | <input type="checkbox"/> 尺寸表 |
| <input type="checkbox"/> 正式鋁料 B.M. | <input type="checkbox"/> 技術上資料 / 指示 | <input type="checkbox"/> 報價 |
| <input type="checkbox"/> 配件 B.M. | <input type="checkbox"/> 樣辦或貨品說明書 | <input type="checkbox"/> 分判合約 |

內容：

上料台位置用 8mm 厚鐵板。訂 16 件
加力用

請在 2023. 06. 12 前完成上列要求。

附：

以上項目為：

- 原合約工程包 原合約工程加 / 減賬 新工程報價

分發東莞各部門：

- () 生產技術總監 連附件 () 技術部 連附件 () 生產部 連附件 () 機械設計部 連附件
 () 採購部 連附件 () 生產統籌部 連附件 () 小羅 & 清 連附件
 () 質檢部 連附件 () 會計部 連附件 () 報關組 連附件 () 其他 _____ 連附件

分發香港各部門：

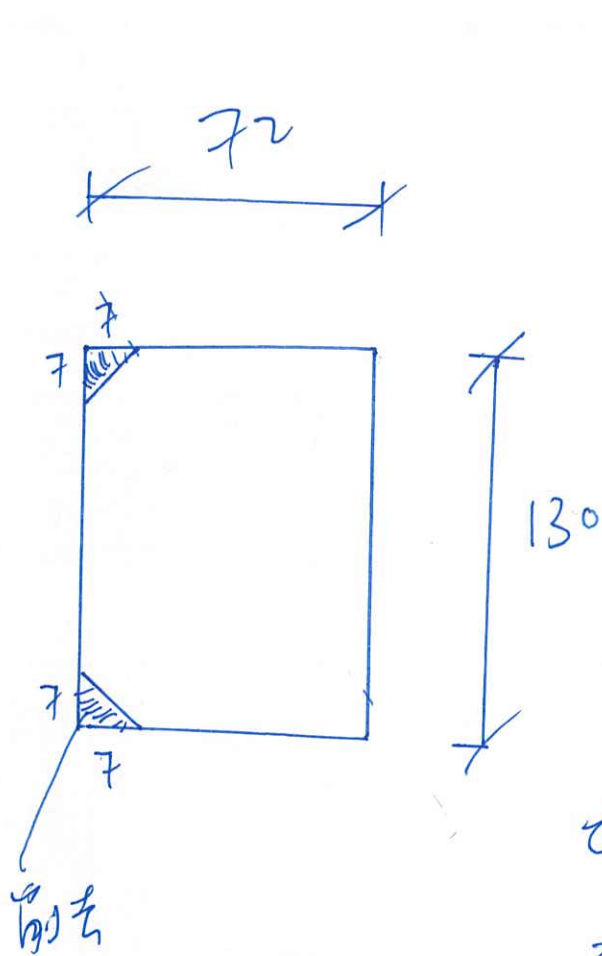
- () 行政部 連附件 () 會計部 連附件 () 統籌部 連附件 (✓) 工程部地盤科文 積哥 連附件
 (✓) 採購部 連附件 () QS 部 連附件 () 維修部 連附件 () 其他 _____ 連附件

傳遞編號：

HK / 23

發件人簽署：

項目經理簽署：



$$\frac{152.9 - 6.5}{2}$$

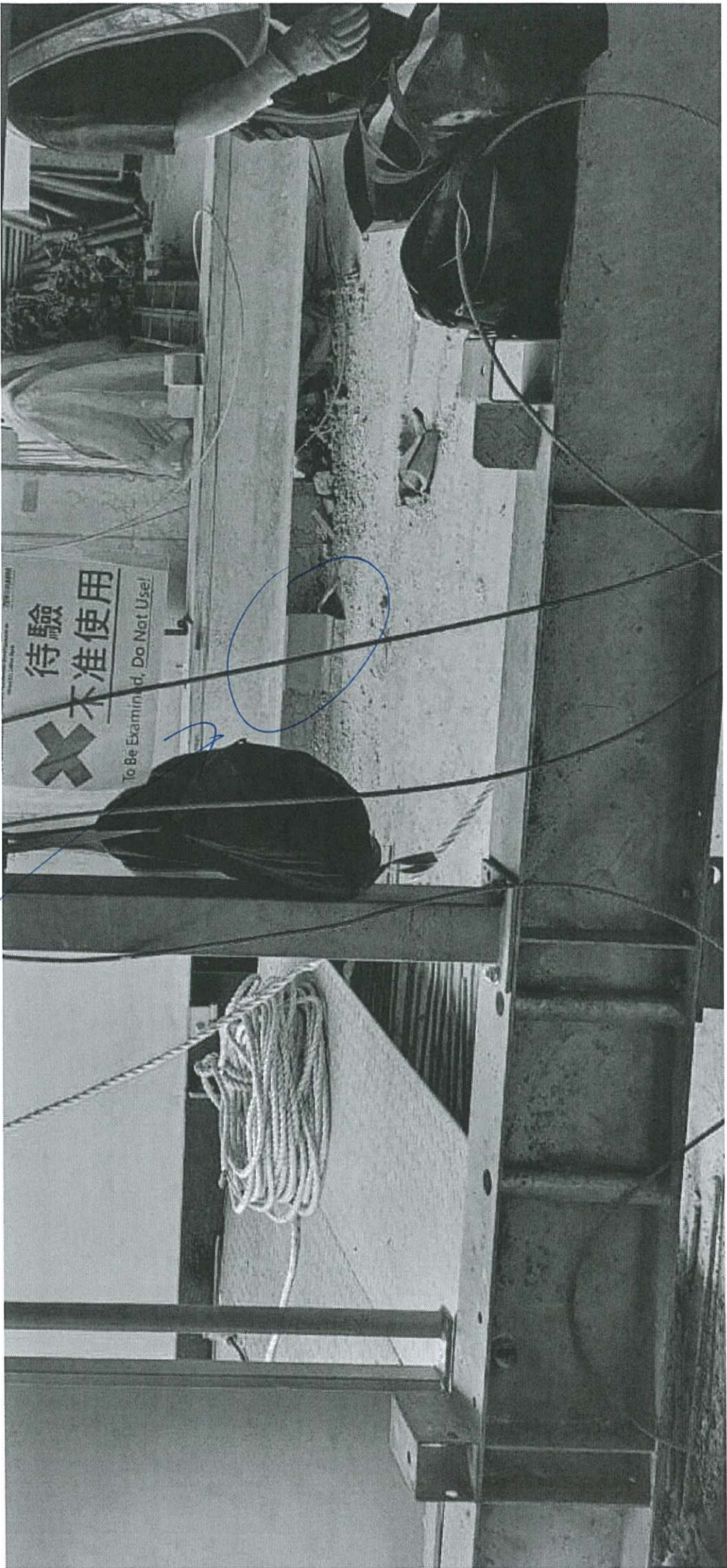
$$\frac{157. - 9.4 \times 2}{2}$$

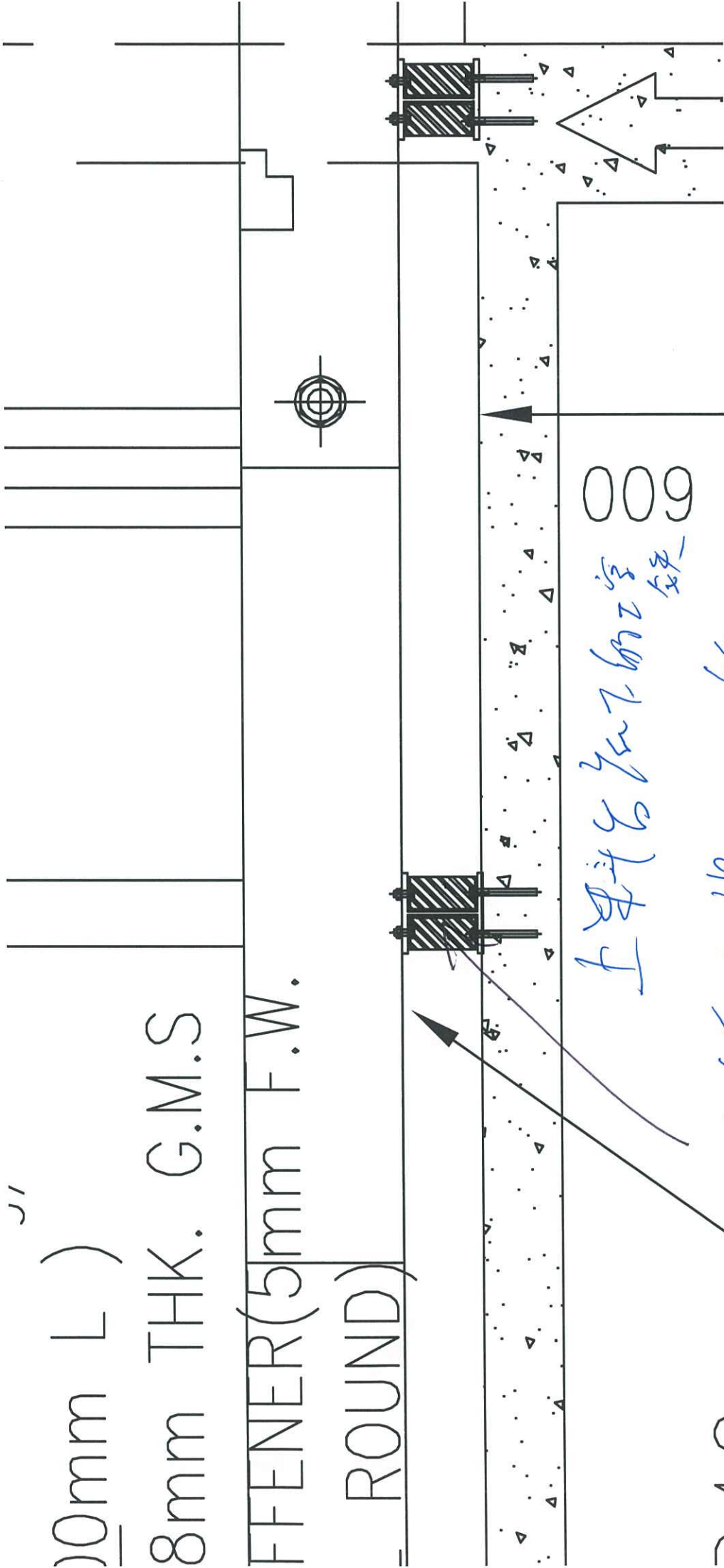
8mm厚

热轧板

71.16 件

此係吊加子器





10mm L)
 8mm THK. G.M.S
 FFENER(5mm F.W.
 ROUND)

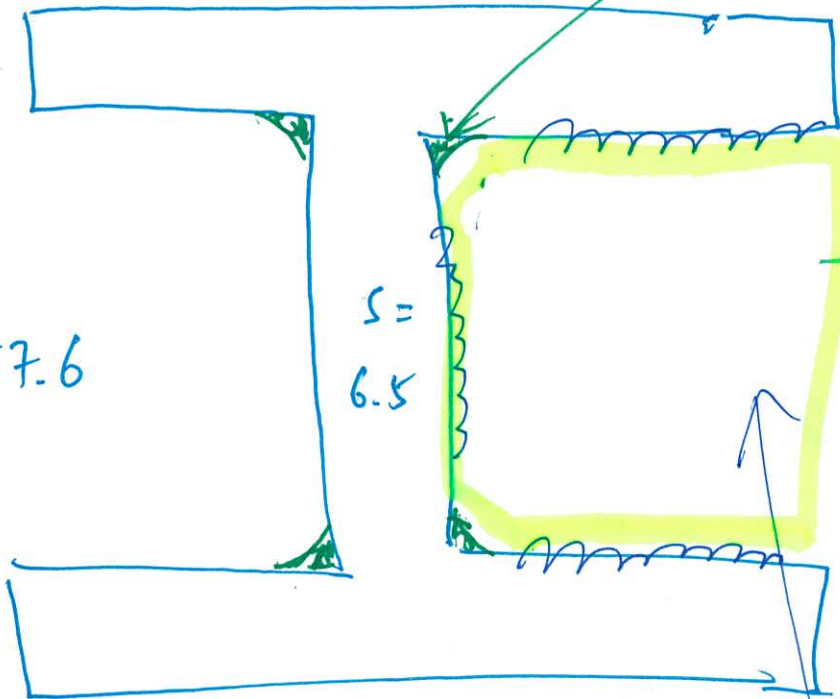
000
 上斗台工字铁

铁在两边上加工铁

152x152 30 kg/M

$b = 152.9$

$a = 157.6$



$t = 9.4$

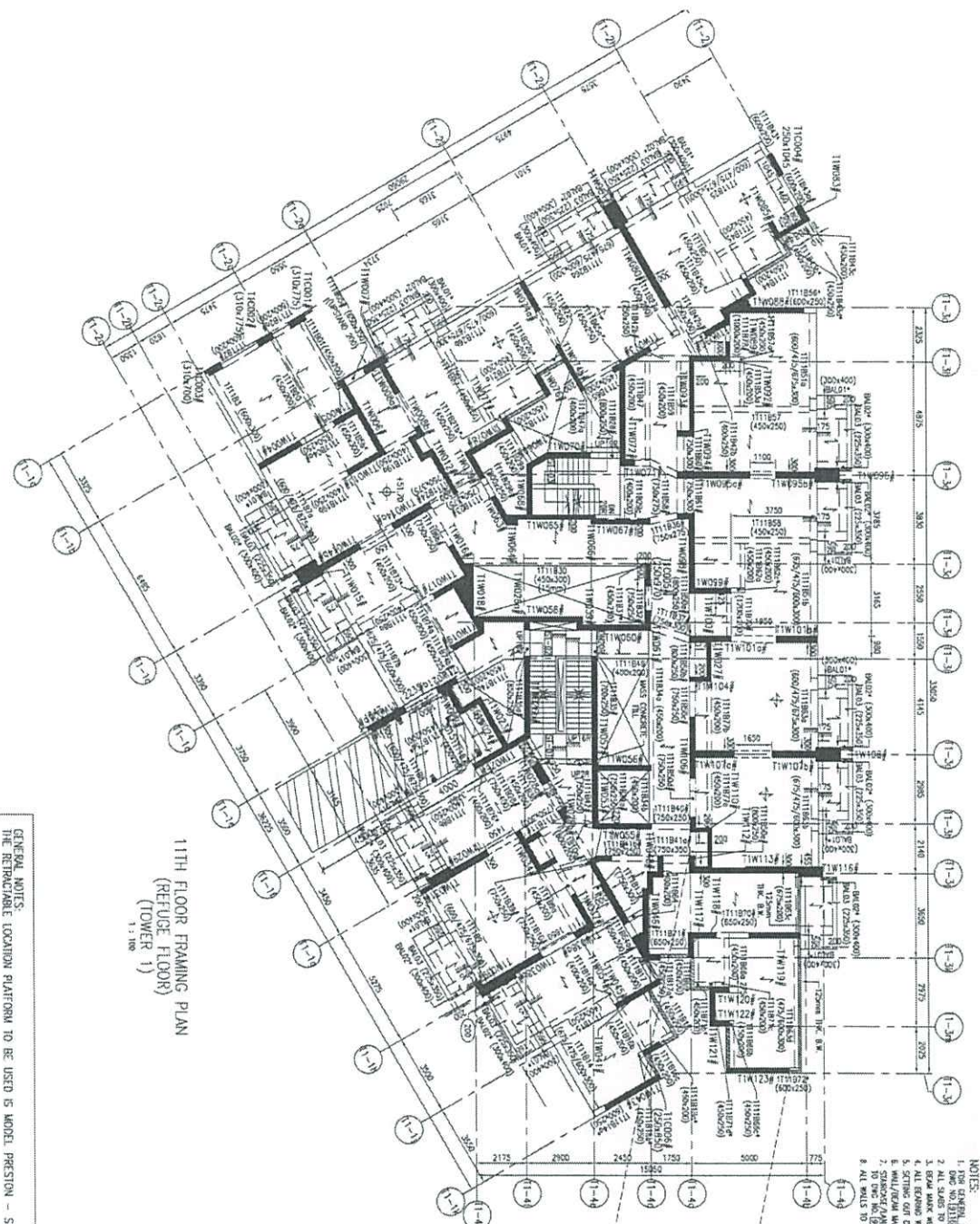
此處加力後



賢




今天下午1:22




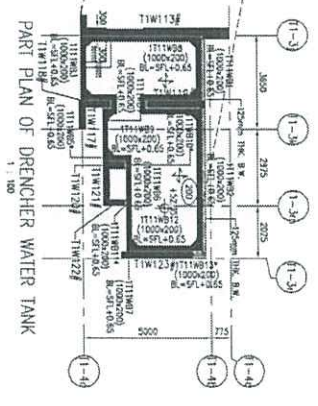


11TH FLOOR FRAMING PLAN
(REFUGE FLOOR)
(TOWER 1)
1:1

GENERAL NOTES:
THE RETRACTABLE LOADING PLATFORM TO BE USED IS MODEL PRESTON - SUPERDECK 3.2

-  RETRACTABLE LOADING PLATFORM
-  PROP OF RETRACTABLE LOADING PLATFORM
-  ADDITIONAL STEEL BEAM UNDER LOADING PLATFORM W/ SUFFERER

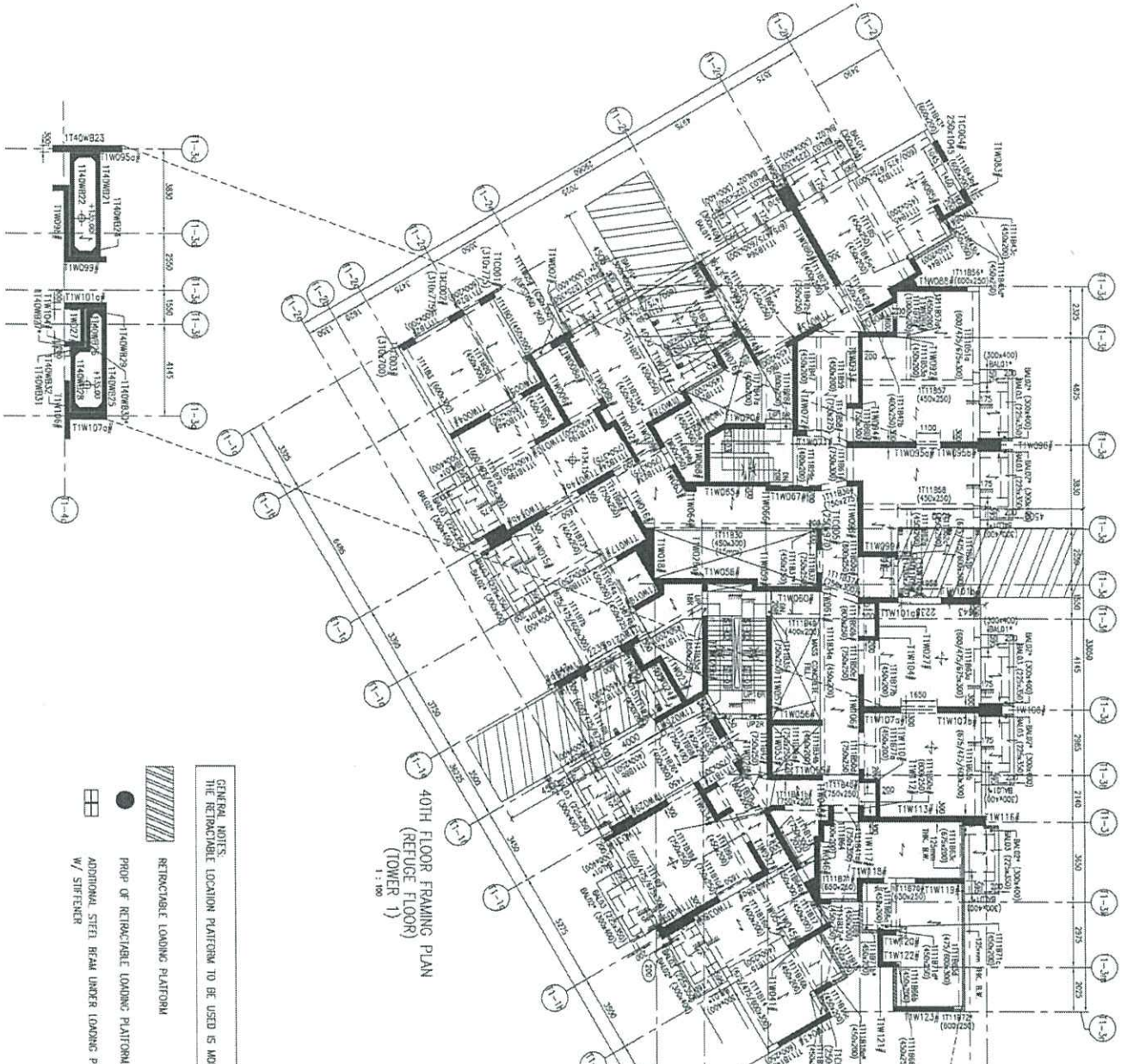
	111001	111001	111001
	111002	111002	111002
	111003	111003	111003
	111004	111004	111004
	111005	111005	111005
	111006	111006	111006
	111007	111007	111007
	111008	111008	111008



PART PLAN OF DRENCHER WATER TANK
1:1




- NOTES:
1. FOR ALL DIMENSIONS AND TYPICAL DETAILS REFER TO
 2. ALL SLABS TO BE 150mm THK UNO
 3. BEAM MARK WITH - - - GRINDT CONCRETE BEAMS
 4. ALL EXPOSED WALLS TO BE THINER THE UNO UNO BEING TO BE 150mm THK UNO
 5. SCILING FOR ALL WALLS TO BE THINER THE UNO UNO BEING TO BE 150mm THK UNO
 6. SCILING FOR ALL WALLS TO BE THINER THE UNO UNO BEING TO BE 150mm THK UNO
 7. SCILING FOR ALL WALLS TO BE THINER THE UNO UNO BEING TO BE 150mm THK UNO
 8. ALL WALLS TO BE 150mm THK UNO
- LEGEND:
-  STRUCTURE FLOOR LEVEL
 -  PRECAST FLOOR (150mm THK) (U.S.S.)
 -  BRICK WALL
 -  MASS CONCRETE FILL
 -  THINER BEAM
 -  STRUCTURE FLOOR LEVEL (cm)

PART PLAN OF FLUSHING WATER TANK



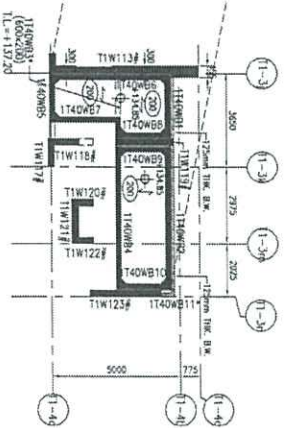
40TH FLOOR FRAMING PLAN
(TOWER 1)
1 : 100

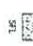
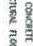


GENERAL NOTES:
THE RETRACTABLE LOADING PLATFORM TO BE USED IS MODEL PRESTON - SUPERDECK 3.2

-  RETRACTABLE LOADING PLATFORM
-  PROP OF RETRACTABLE LOADING PLATFORM
-  ADDITIONAL STEEL BEAM UNDER LOADING PLATFORM W/ STIFFENER

	STEEL SECTION		STEEL SECTION
	STEEL SECTION		STEEL SECTION
	STEEL SECTION		STEEL SECTION
	STEEL SECTION		STEEL SECTION

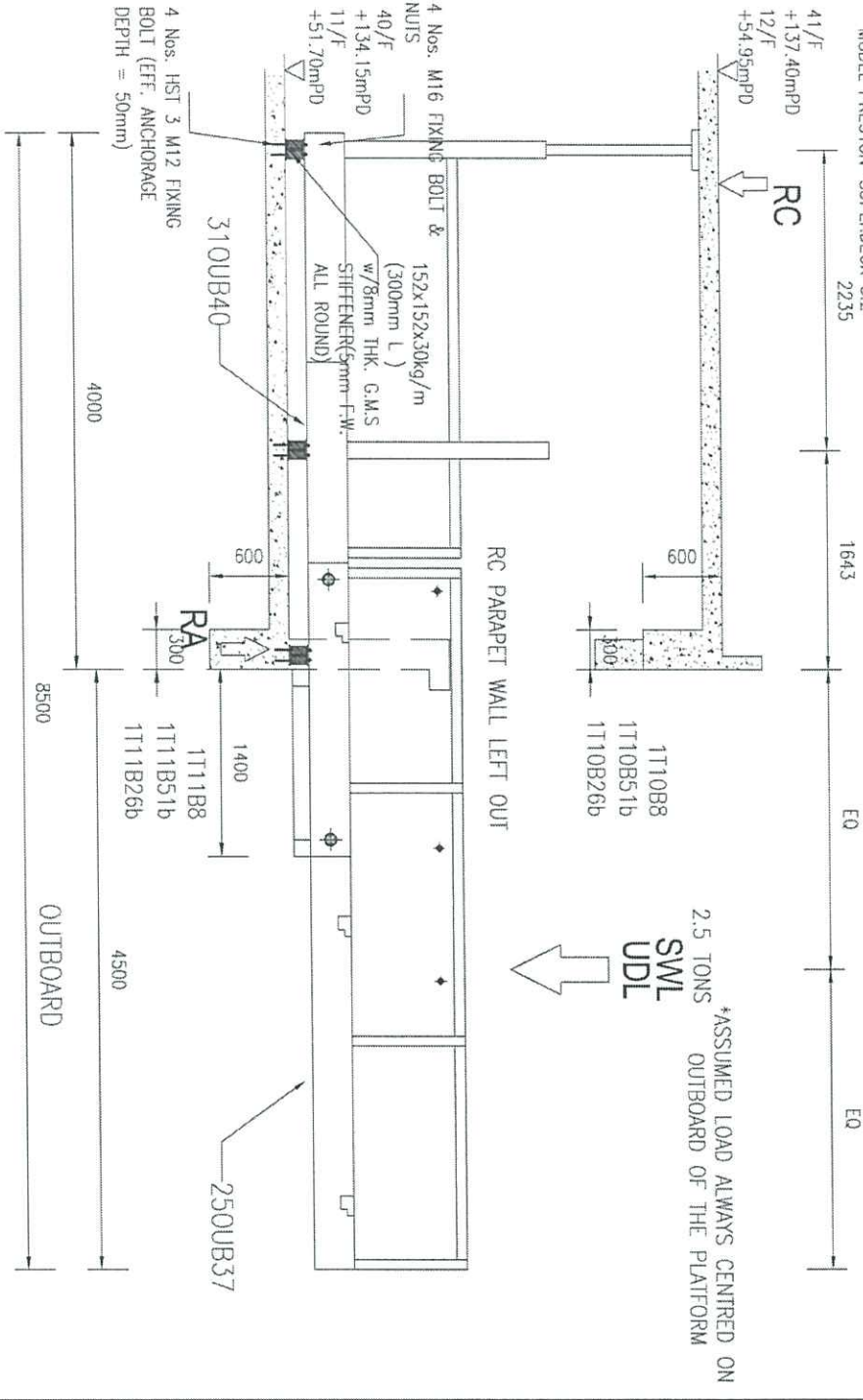
PART PLAN OF DRENCHER WATER TANK



- NOTES:
1. DIMENSIONS UNLESS OTHERWISE STATED ARE IN MILLIMETERS
 2. ALL STAIRS TO BE 1500mm WIDE UNLESS OTHERWISE STATED
 3. BEAM MARK WITH '•••' SHOWS CONCRETE BEAMS
 4. ALL BEARING WALLS TO BE 150mm THICK UNLESS OTHERWISE STATED
 5. ALL BEARING WALLS TO BE 150mm THICK UNLESS OTHERWISE STATED
 6. ALL BEARING WALLS TO BE 150mm THICK UNLESS OTHERWISE STATED
 7. SUPERDECK/PLATFORMS TO BE PRESTON MODEL 3.2 UNLESS OTHERWISE STATED
 8. ALL DIMENSIONS TO FACE UNLESS OTHERWISE STATED
 9. TYPICAL SECTION REFER TO THIS NO. 0272
- LEGEND:
-  STRUCTURAL FLOOR LEVEL
 -  PRECAST PANEL (150mm THICK) (I.S.S.)
 -  BRICKWORK
 -  MASS CONCRETE FILL
 -  STRUCTURAL FLOOR LEVEL (ANY)

GENERAL NOTES:
 THE RETRACTABLE LOADING PLATFORM TO BE USED IS
 MODEL PRESTON-SUPERDECK 3.2

Loading Platform at 11F - T1
 GL2b 1e-1f / GL1b 2e-2f / GL4a 3c-3e



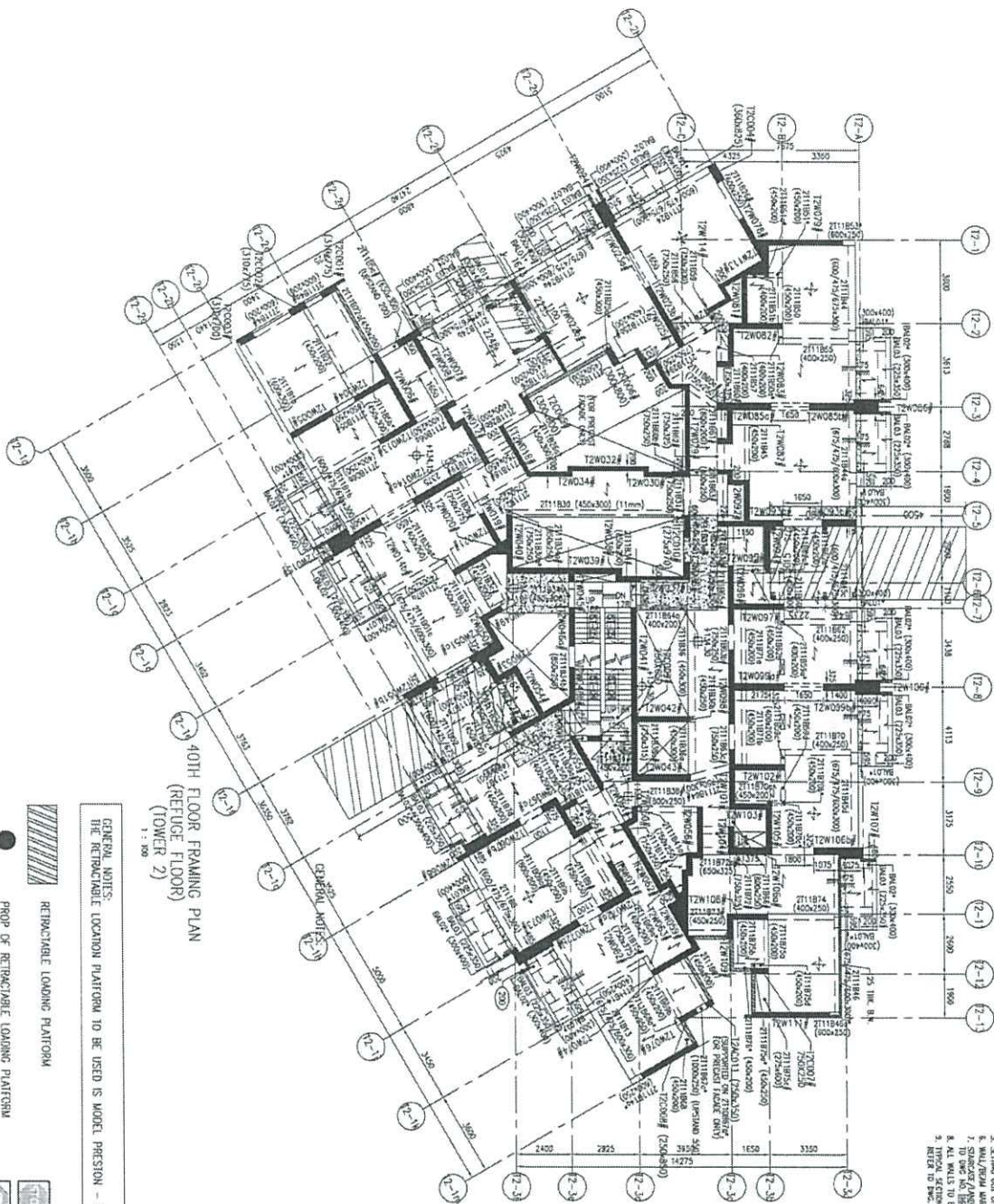
STOP	HOLD POINT
	CONCRETE STRENGTH FOR BEAMS AND SLAB SHALL ACHIEVE MIN 48MPa PRIOR TO LOADING PLATFORM INSTALLATION

停	施工管理點
	安裝轉盤出料台前，在梁及板面預埋土塊應必須達到最少 48MPa




STOP	HOLD POINT
	SETTING OUT OF THE RETRACTABLE LOADING PLATFORM MUST BE CHECKED BEFORE THE USE OF RETRACTABLE LOADING PLATFORM
停	施工管理點
	在使用可伸縮裝載平台之前，必須檢查可伸縮裝載平台於樓面上的標格。

STOP	HOLD POINT
	14. REFER TO CONCRETE LOADING ON RETRACTABLE LOADING PLATFORM ON TYPE & REINFORCEMENT AND SANITATION
停	施工管理點
	14C 及 14D 必須檢查系統可拉落架+樣才可出料台加裝運作。

STOP	HOLD POINT
	THE SUPPORTING & SET BASE OF THE RETRACTABLE LOADING PLATFORM SHALL BE IN CLOSE CONTACT WITH THE CONCRETE SURFACE BEFORE USE
停	施工管理點
	必須檢查出料台的支撐架與混凝土表面是否緊密接觸，才可應用出料台。






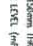


GENERAL NOTES:
 THE RETRACTABLE LOCATION PLATFORM TO BE USED IS MODEL PRESTON - CMC32 & CH.14
 1/8\"/>

-  RETRACTABLE LOADING PLATFORM
-  PROP OF RETRACTABLE LOADING PLATFORM
-  ADDITIONAL STEEL BEAM UNDER LOADING PLATFORM W/ STIFFENER

	1/2\"/>
---	---------

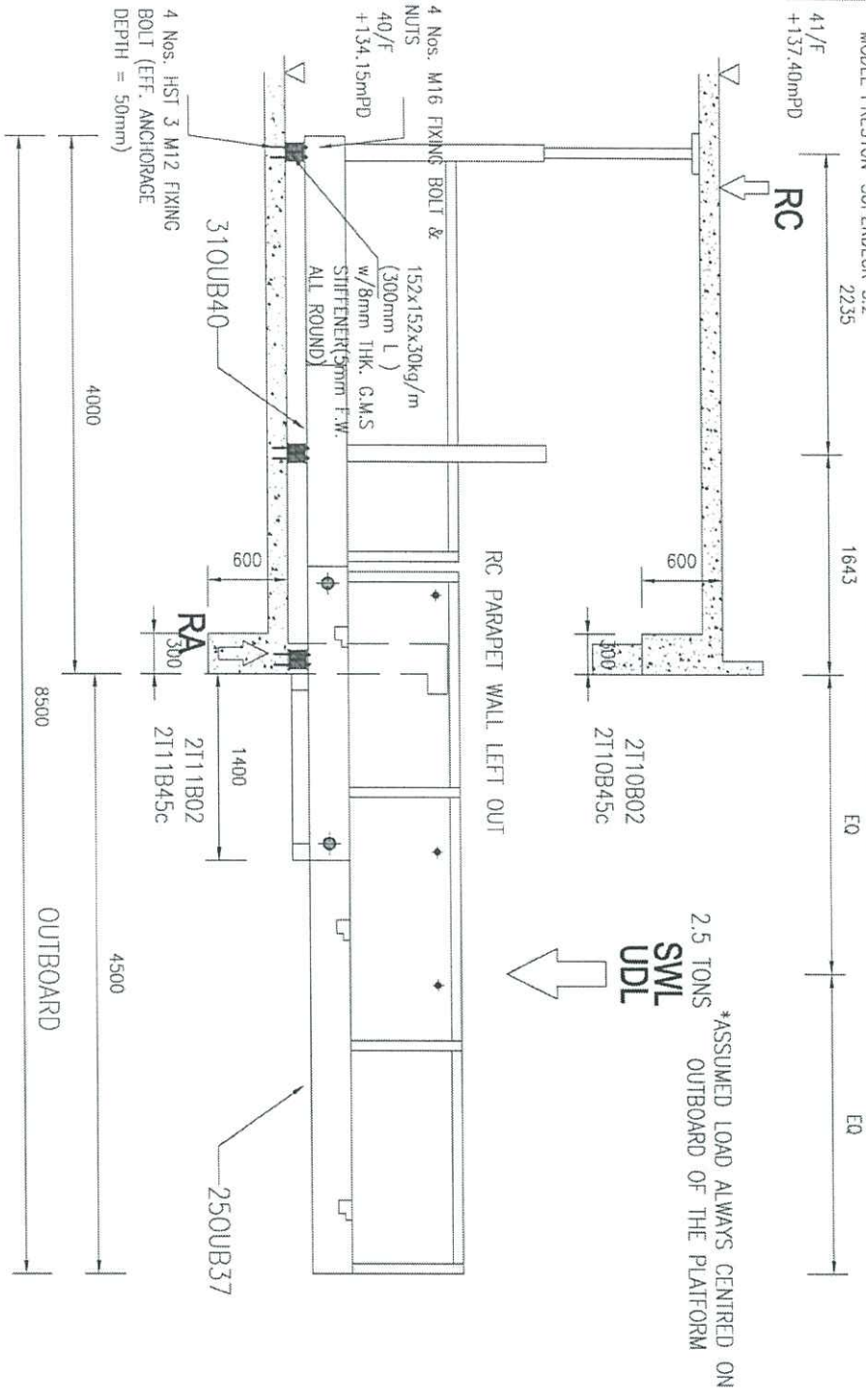
	1/2\"/>
---	---------

- NOTES:
1. FOR GENERAL NOTES, SEE PREVIOUS SHEETS.
 2. ALL STAYS TO BE 1/2\"/>

- LEGEND:
-  STRUCTURE FLOOR LEVEL
 -  MASS CONC. FILL TOP LEVEL
 -  PRECAST FRAME (TOWER 1&2) (U.S.S.)
 -  STRUCTURE FLOOR LEVEL (P-9)
 -  REINFORCING WALL
 -  MASS CONCRETE FILL

GENERAL NOTES:
THE RETRACTABLE LOADING PLATFORM TO BE USED IS
MODEL PRESTON-SUPERDECK 3.2

Loading Platform at 40F - T2
GL2b 1g-1f / GLA 5-6



*ASSUMED LOAD ALWAYS CENTRED ON
OUTBOARD OF THE PLATFORM

	<p>HOLD POINT CONCRETE STRENGTH FOR BEAM AND SLAB SHALL ACHIEVE MIN 45NPa PRIOR TO LOADING PLATFORM INSTALLATION</p>
	<p>施工暫停點 安裝鋼骨出射台前，若梁樓及樓面混凝土強度必須達到最少 45NPa</p>
	<p>T4 - HOLD POINT SETTING OUT OF THE RETRACTABLE LOAD MGR. PLATFORM MUST BE CHECKED BEFORE THE USE OF RETRACTABLE LOADING PLATFORM</p>
	<p>T4 - 預工暫停點 在便用可伸縮載重平台之前，必須檢查可伸縮載重平台於圖面上的擺佈。</p>
	<p>T4 - HOLD POINT T4 PERMIT TO COMMENCE LOADING ON RETRACTABLE LOADING PLATFORM UPON TWC & FIE INSPECTION AND SIGNATURE.</p>
	<p>T4 - 預工暫停點 TWC 及 FIE 必須檢查及認可並簽名 T4 後才可發出待檢加載單。</p>
	<p>T4 - HOLD POINT THE SUPPLEMENTARY BASE PLATE OF THE RETRACTABLE LOADING PLATFORM MUST BE IN CLOSE CONTACT AT THE CONCRETE SURFACE BEFORE USE</p>
	<p>T4 - 預工暫停點 必須將鋼骨出射台的支撐架與混凝土表面緊密接觸，才可便用出射台。</p>

GENERAL NOTES:

Loading Platform at 40F - T2
GL1b 2f-2e

THE RETRACTABLE LOADING PLATFORM TO BE USED IS
MODEL PRESTON-CML14 1600

41/F
+137.40mPD
RC

648

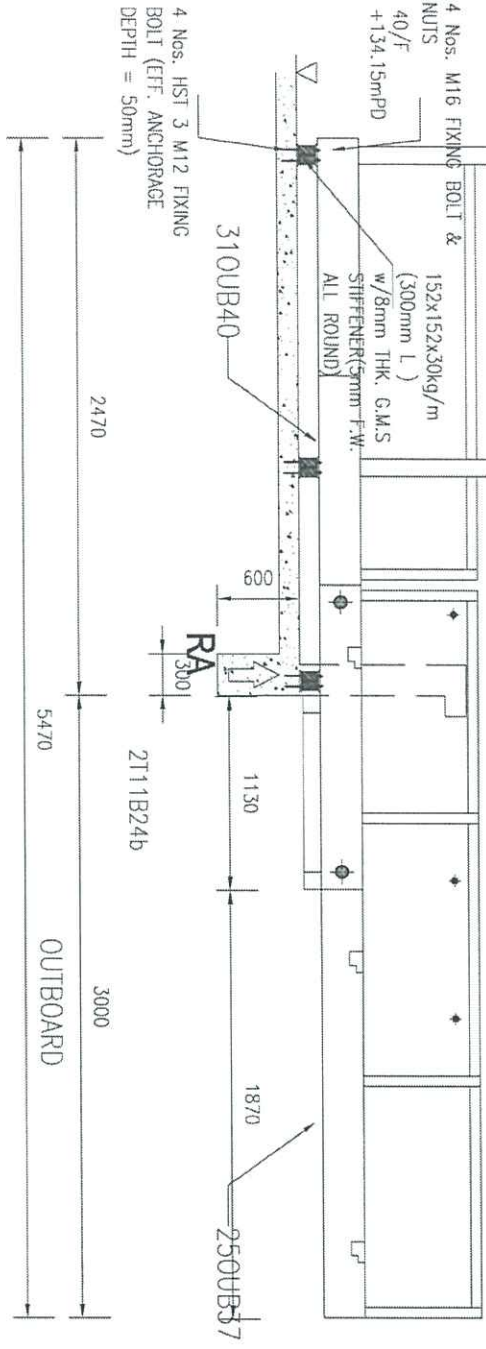
E0

E0

2110B24b

RC PARAPET WALL LEFT OUT

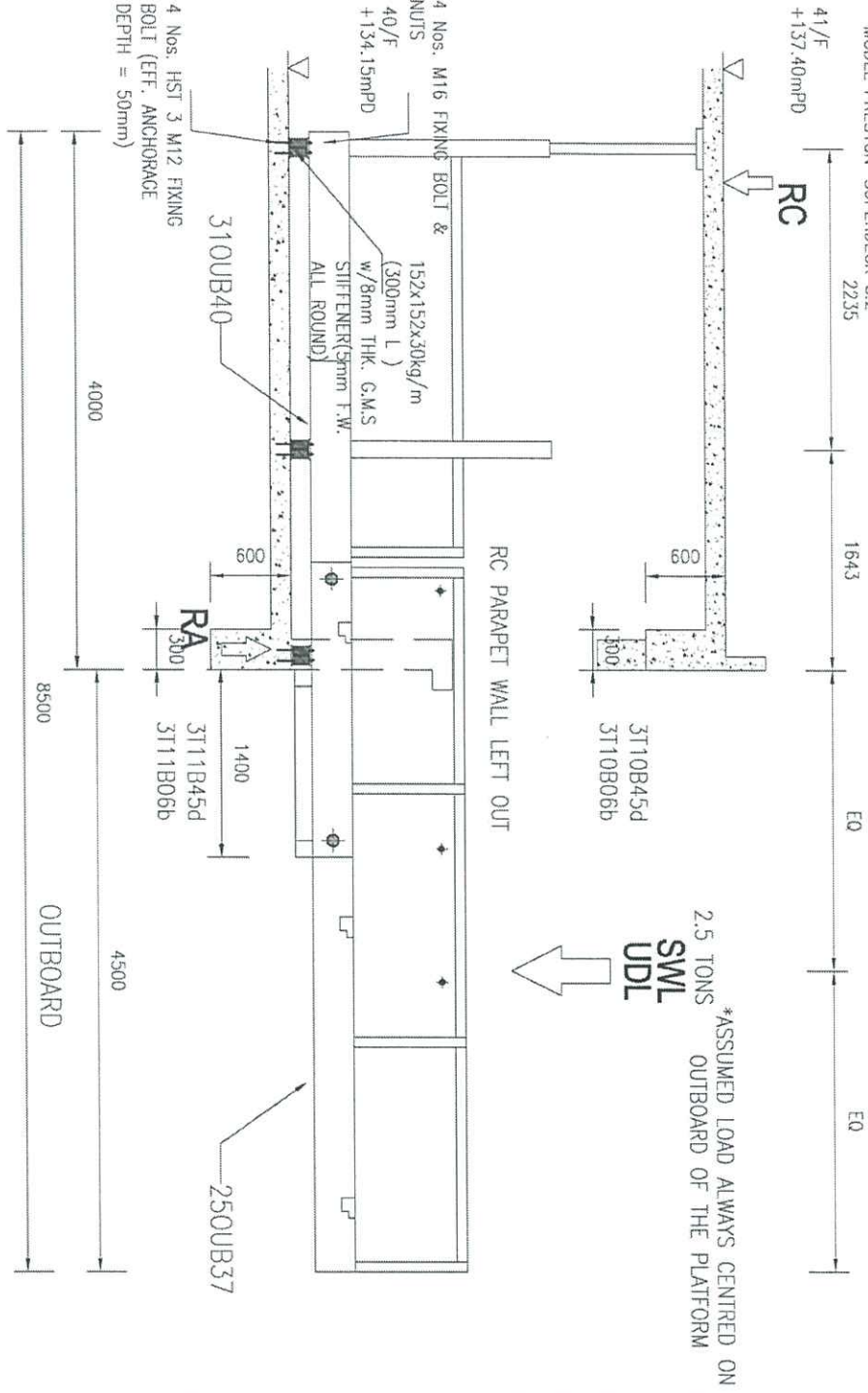
2.5 TONS
SWL
UDL
*ASSUMED LOAD ALWAYS CENTRED ON
OUTBOARD OF THE PLATFORM



STOP 停	HOLD POINT CONCRETE STRENGTH FOR BEAM AND SLAB SHALL ACHIEVE MIN 45MPa PRIOR TO LOADING PLATFORM INSTALLATION
STOP 停	施工暫停點 預製伸縮出料台前，在梁板及柱面其柱土銷置完且達到最少 45MPa
STOP 停	T4 - HOLD POINT SETTING OUT OF THE RETRACTABLE LOADING PLATFORM MUST BE CHECKED BEFORE THE USE OF RETRACTABLE LOADING PLATFORM.
STOP 停	T4 - 施工暫停點 在伸縮出料台位之設，必須檢查可伸縮載平台於地面上的準確。
STOP 停	T4 - HOLD POINT TA PERMIT TO COMMENCE LOADING ON RETRACTABLE LOADING PLATFORM UPON TWC & RPE INSPECTION AND SATISFACTORY.
STOP 停	T4 - 施工暫停點 TWC 及 RPE 必須檢查及認可滿意後才可於出料台加載重力。
STOP 停	T4 - HOLD POINT THE SUPPORTING BASE PLATE OF THE RETRACTABLE LOADING PLATFORM MUST BE IN CLOSE CONTACT AT THE CONCRETE SURFACE BEFORE USE.
STOP 停	T4 - 施工暫停點 必須檢查出料台的支撐架底座與完全貼緊石先結構，才可便用出料台。

GENERAL NOTES:
 THE RETRACTABLE LOADING PLATFORM TO BE USED IS
 MODEL PRESTON-SUPERDECK 3.2

Loading Platform at 40F - T3
 GL2b 1h-1f / GLA 12-13



*ASSUMED LOAD ALWAYS CENTRED ON
 OUTBOARD OF THE PLATFORM

STOP	<p>HOLD POINT</p> <p>CONCRETE STRENGTH FOR BEAM AND SLAB SHALL ACHIEVE MIN 45MPa PRIOR TO LOADING PLATFORM INSTALLATION</p>
停	<p>施工暫停點</p> <p>安裝伸縮出料台前，石年匯及橋面梁柱上須達到混凝土強度不少於45MPa</p>
STOP	<p>T4 - HOLD POINT</p> <p>SETTING OUT OF THE RETRACTABLE LOADING PLATFORM MUST BE CHECKED BEFORE THE USE OF RETRACTABLE LOADING PLATFORM</p>
停	<p>T4 - 預工暫停點</p> <p>若使用可伸縮裝載平台之前，必須檢查可伸縮裝載平台於樓面上的準確度。</p>
STOP	<p>T4 - HOLD POINT</p> <p>T4 PERMIT TO COMMENCE LOADING ON RETRACTABLE LOADING PLATFORM UPON TWC & IPE INSPECTION AND SATISFACTION.</p>
停	<p>T4 - 預工暫停點</p> <p>TWC 及 IPE 必須檢查及經認可簽字後才可於出料台加載重力。</p>
STOP	<p>T4 - HOLD POINT</p> <p>THE SUPPORTING BASE PLATE OF THE RETRACTABLE LOADING PLATFORM MUST BE IN CLOSE CONTACT AT THE CONCRETE SURFACE BEFORE USE</p>
停	<p>T4 - 預工暫停點</p> <p>必須檢查出料台的支撐板與樓面完全貼緊否完結後，才可使用出料台。</p>