

工程指示 / 要求簡箋(E.I.)

工程指示編號：EI / 5729 / 23

修改版次：

工程編號：J - 858

工程名稱：將軍澳日出康城 11

工程項目：幕牆 地盆用鋁板 轉角企加鋁摺件 T1 9/F 做樣板

收件人：生統

發件人：Ant Yeung

日期：16/02/2023

要求提供 / 確認 事項：

- | | | |
|------------------------------------|-------------------------------------|-------------------------------|
| <input type="checkbox"/> 初步鋁料 B.M. | <input type="checkbox"/> 加工拆圖，然後生產 | <input type="checkbox"/> 尺寸表 |
| <input type="checkbox"/> 正式鋁料 B.M. | <input type="checkbox"/> 技術上資料 / 指示 | <input type="checkbox"/> 報價 |
| <input type="checkbox"/> 配件 B.M. | <input type="checkbox"/> 樣辦或貨品說明書 | <input type="checkbox"/> 分判合約 |

內容：

按業主要求，生產摺鋁板 送地盆供幕牆轉角位用 T1 9/F 做 2 層樣板。

深銅色 ECD3XW04976XF-1

A 款 69.5x24x1.5mm 深銅色 ECD3XW04976XF-1

B 款 69.5x66x1.5mm 深銅色 ECD3XW04976XF-1

C 款 18x12x3mm Mill 謝謝

請在 2023.03.03 前完成上列要求。

附：1 頁

以上項目為：

- 原合約工程包 原合約工程加 / 減賬 新工程報價

原因：-

分發東莞各部門：

- | | | | | | | | |
|---------------------------------|------------------------------|---|------------------------------|-------------------------------|------------------------------|--------------------------------|------------------------------|
| <input type="checkbox"/> 生產技術總監 | <input type="checkbox"/> 連附件 | <input checked="" type="checkbox"/> 技術部 | <input type="checkbox"/> 連附件 | <input type="checkbox"/> 生產部 | <input type="checkbox"/> 連附件 | <input type="checkbox"/> 機械設計部 | <input type="checkbox"/> 連附件 |
| <input type="checkbox"/> 採購部 | <input type="checkbox"/> 連附件 | <input checked="" type="checkbox"/> 生產統籌部 | <input type="checkbox"/> 連附件 | <input type="checkbox"/> 小羅&清 | <input type="checkbox"/> 連附件 | | |
| <input type="checkbox"/> 質檢部 | <input type="checkbox"/> 連附件 | <input type="checkbox"/> 會計部 | <input type="checkbox"/> 連附件 | <input type="checkbox"/> 報關組 | <input type="checkbox"/> 連附件 | <input type="checkbox"/> 其他 | <input type="checkbox"/> 連附件 |

分發其他分判：

- 濱 連附件

分發香港各部門：

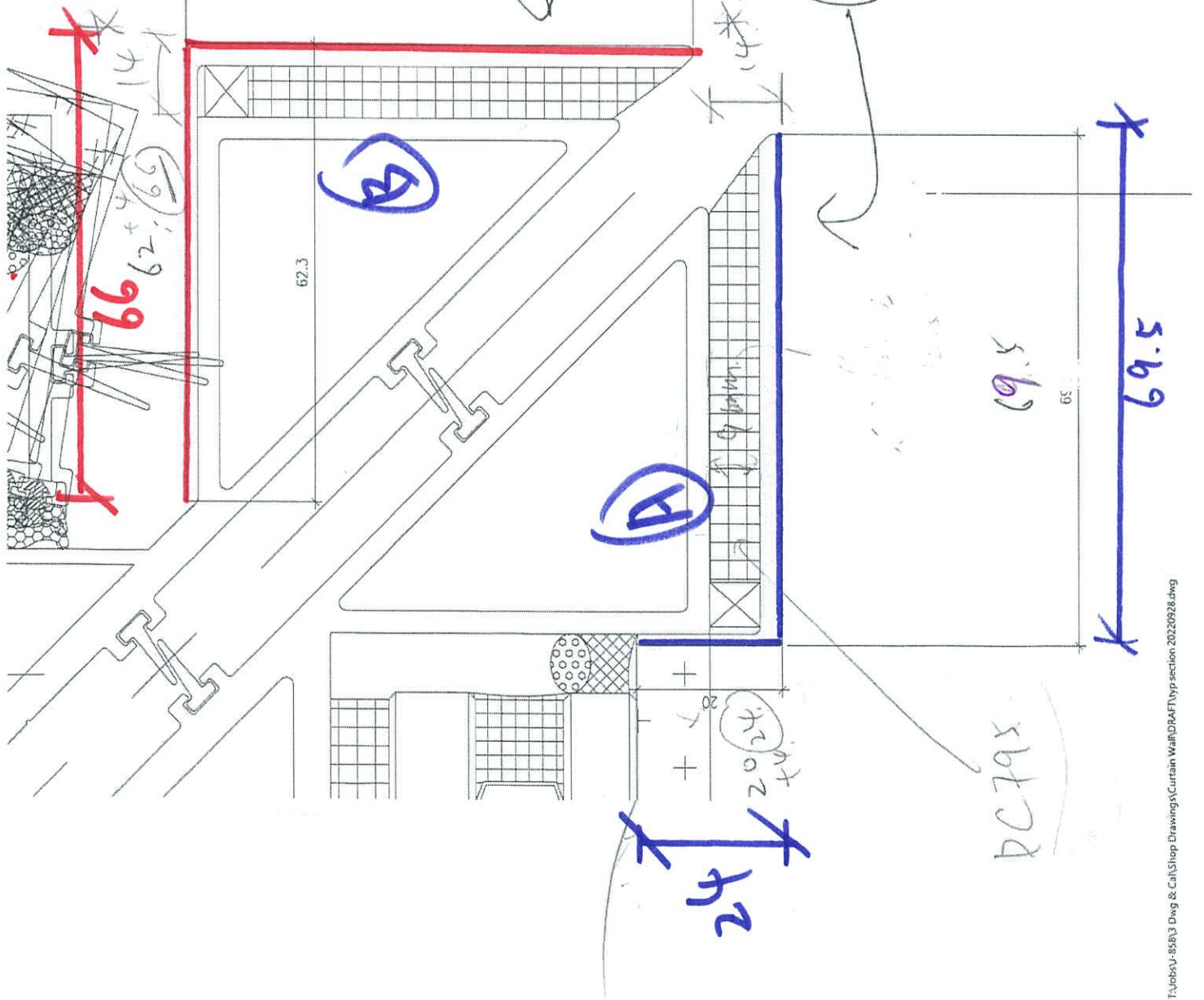
- | | | | | | | | |
|------------------------------|------------------------------|-------------------------------|------------------------------|------------------------------|------------------------------|---|---|
| <input type="checkbox"/> 行政部 | <input type="checkbox"/> 連附件 | <input type="checkbox"/> 會計部 | <input type="checkbox"/> 連附件 | <input type="checkbox"/> 統籌部 | <input type="checkbox"/> 連附件 | <input checked="" type="checkbox"/> 工程部地盤科文 | <input checked="" type="checkbox"/> 連附件 |
| <input type="checkbox"/> 採購部 | <input type="checkbox"/> 連附件 | <input type="checkbox"/> QS 部 | <input type="checkbox"/> 連附件 | <input type="checkbox"/> 維修部 | <input type="checkbox"/> 連附件 | <input type="checkbox"/> 其他 | <input type="checkbox"/> 連附件 |

傳遞編號：

HK247 / 23

發件人簽署：

項目經理簽署：



69.5

69.5

1.5 厚 mm 厚

型材见后图

9 厚

2 厚

A = 69.5 x 24 mm

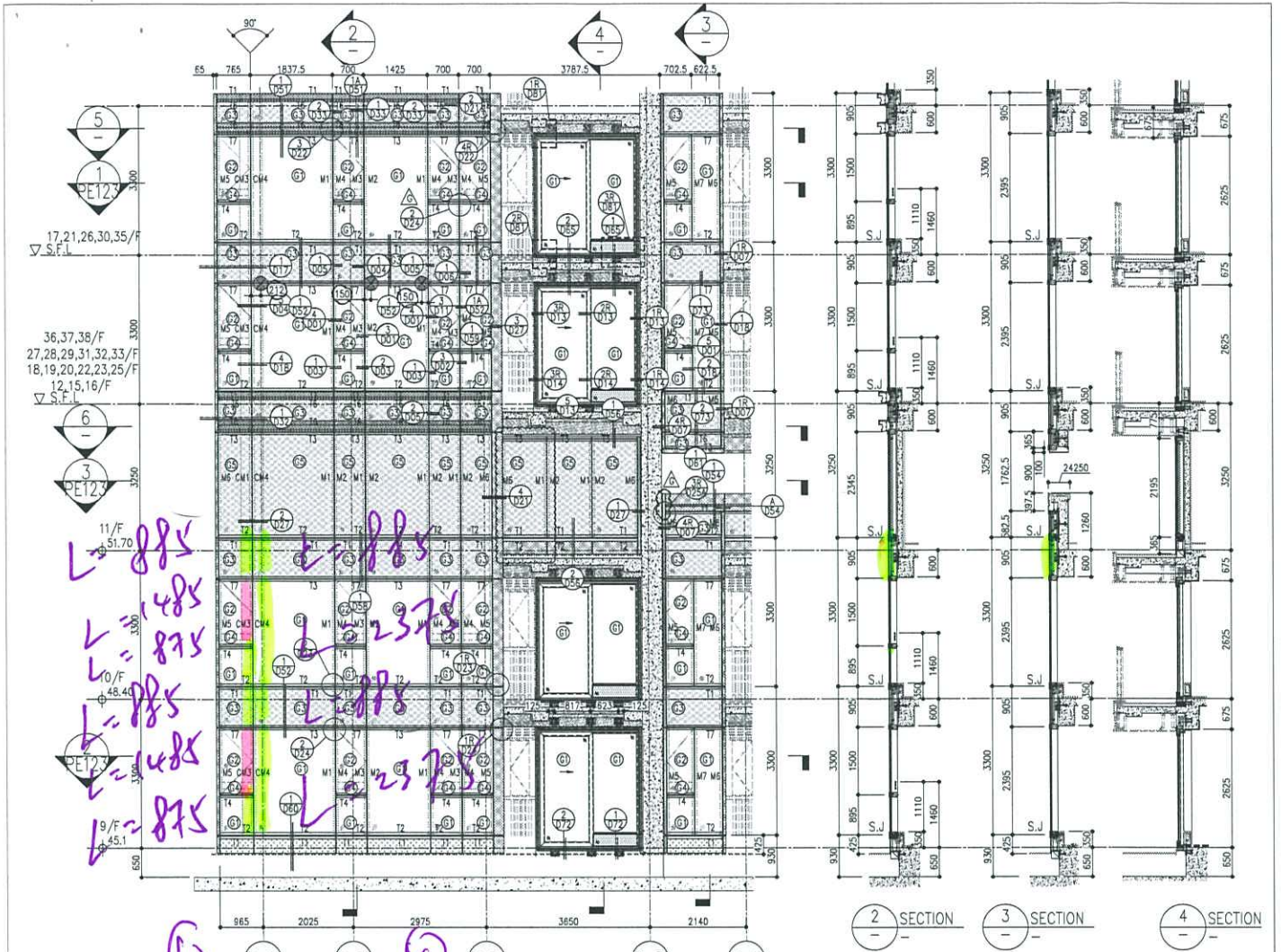
B = 69.5 x 66 mm

型材同色: ECD3X W04976XF-1

24

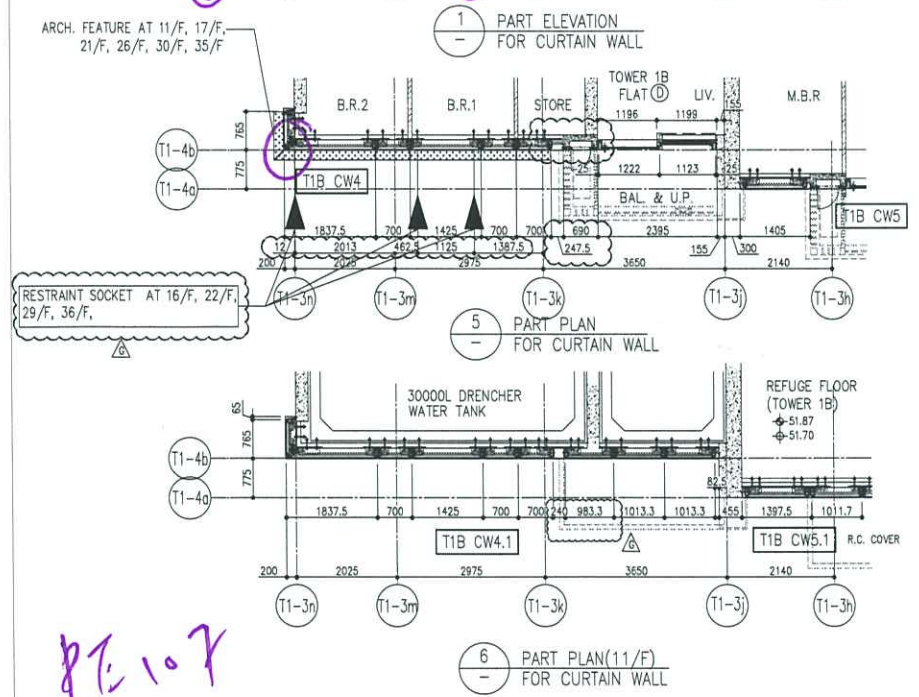
RC795

| | A | | | B | |
|------|----------------|---|-----|----------------|---|
| | | | | 生窗位 | |
| | 69.5x24x1.5mm厚 | | | 69.5x66x1.5mm厚 | |
| | L(mm) | 條 | | L(mm) | 條 |
| 死牆 | 885 | 4 | 生窗位 | 1485 | 2 |
| 大梗 | 2375 | 2 | | | |
| 生下梗 | 875 | 2 | | | |
| (後備) | 2400 | 1 | | | |
| | | | | | |
| | | | | | |
| | | 9 | | | 2 |



| | | | |
|-------------|--------------|--------------|--------------|
| 26/F +91.25 | 39/F +130.85 | 52/F +170.40 | R/F +203.80 |
| 25/F +87.95 | 38/F +127.55 | 51/F +167.10 | 62/F +200.30 |
| 23/F +84.65 | 37/F +124.25 | 50/F +163.80 | 61/F +196.80 |
| 22/F +81.35 | 36/F +120.95 | 49/F +160.50 | 60/F +193.50 |
| 21/F +78.05 | 35/F +117.65 | 48/F +157.20 | 59/F +190.20 |
| 20/F +74.75 | 33/F +114.35 | 47/F +153.90 | 58/F +186.90 |
| 19/F +71.45 | 32/F +111.05 | 46/F +150.60 | 57/F +183.60 |
| 18/F +68.15 | 31/F 107.75 | 45/F +147.30 | 56/F +180.30 |
| 17/F +64.85 | 30/F +104.45 | 44/F +144.00 | 55/F +177.00 |
| 16/F +61.55 | 29/F +101.15 | 42/F +140.70 | 53/F +173.70 |
| 15/F +58.25 | 28/F +97.85 | 41/F +137.40 | |
| 12/F +54.95 | 27/F +94.55 | 40/F +134.10 | |

- LEGEND:**
- 10mm THK. HEAT STRENGTHENED GLASS (OUTSIDE) +12mm AIR SPACE + 12mm THK. TEMPERED GLASS
 - 10mm THK. HEAT STRENGTHENED GLASS (OUTSIDE) +12mm AIR SPACE + 10mm THK. TEMPERED GLASS
 - 12mm THK. HEAT STRENGTHENED GLASS
 - 12mm THK. CLEAR TEMPERED GLASS (INTERNAL PROTECTIVE BARRIER)
 - 10mm THK. HEAT STRENGTHENED GLASS (OUTSIDE) +12mm AIR SPACE + 12mm THK. TEMPERED GLASS WITH REFLECTIVE COATING
 - 10mm THK. CLEAR TEMPERED GLASS
 - 8mm THK. CLEAR HEAT-STRENGTHENED GLASS +1.52mm PVB + 8mm THK. CLEAR HEAT-STRENGTHENED GLASS
 - 3 mm THK. ALUM. CLADDING
 - 3 mm THK. ALUM. BACKPAN
 - STACK JOINT
 - RESTRAINT SOCKET



REVISIONS:

| NO. | DATE | DESCRIPTION |
|-----|----------|-------------------------|
| 1 | 17/07/21 | REVISED AS PER COMMENTS |
| 2 | 20/07/21 | REVISED AS PER COMMENTS |
| 3 | 22/07/21 | REVISED AS PER COMMENTS |
| 4 | 23/07/21 | REVISED AS PER COMMENTS |
| 5 | 26/07/21 | REVISED AS PER COMMENTS |
| 6 | 28/07/21 | REVISED AS PER COMMENTS |
| 7 | 30/07/21 | REVISED AS PER COMMENTS |
| 8 | 01/08/21 | REVISED AS PER COMMENTS |
| 9 | 02/08/21 | REVISED AS PER COMMENTS |
| 10 | 03/08/21 | REVISED AS PER COMMENTS |

PROJECT: PROPOSED RESIDENTIAL DEVELOPMENT AT KOWLOON PARK, PHASE 11, LOKUIS PARK, TSEUNG KWAN O, N.T.

CLIENT: 信和置業有限公司
Sino Land Company Limited

ARCHITECT: Ronald Lu & Partners (HK) Ltd.
羅蘭路建築師事務所 (香港) 有限公司

STRUCTURAL ENGINEER: Gammon AECOM

FACE CONSULTANT: AECOM

DATE: 22-OCT-21

SCALE: 1:150(A1)

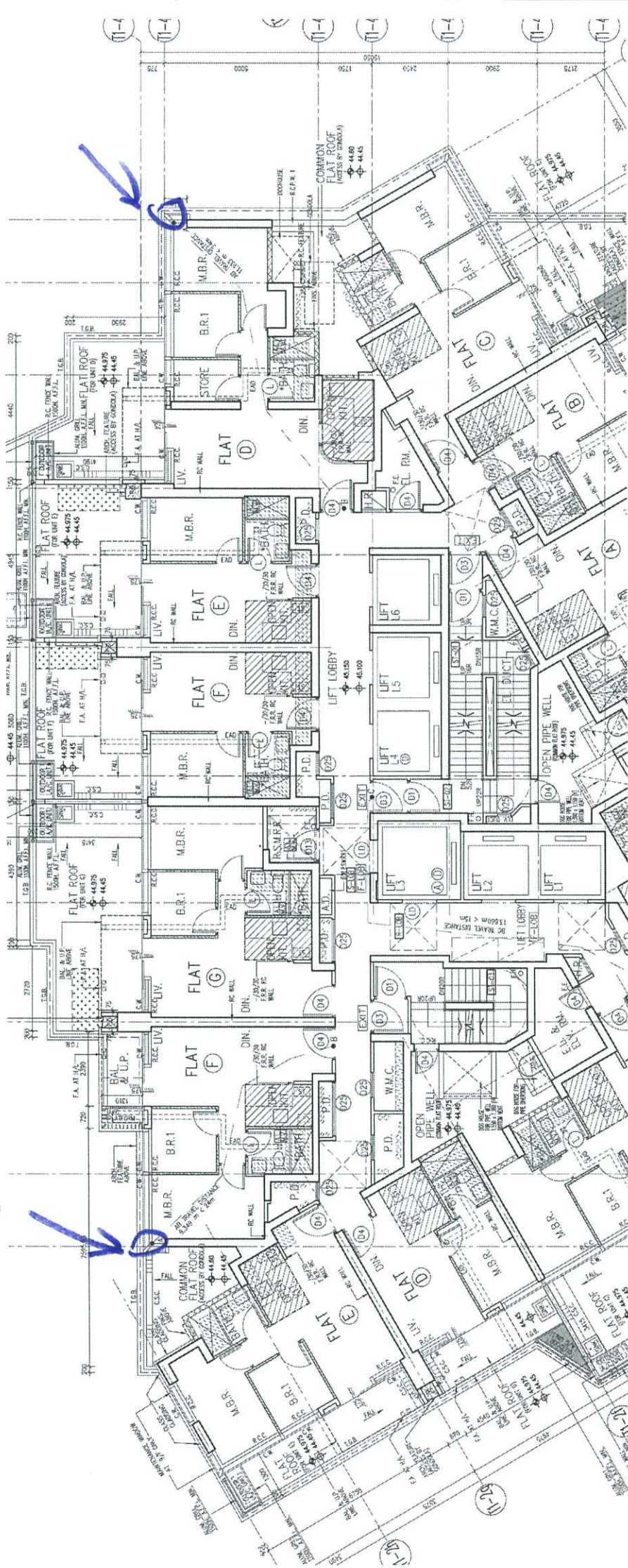
TITLE: TYPICAL FLOOR PARTIAL ELEVATION & SECTION, PLAN FOR CURTAIN WALL (TOWER 1)

JOB NO.: J-858

DRW. NO.: J858-CW-PE107

REV.: 6

圖一 建築平面圖



NOTE:
 1. ALL DIMENSIONS ARE IN MM.
 2. ALL ELEVATIONS ARE VIEWED FROM OUTSIDE.
 3. ALL DIMENSIONS TO BE VERIFIED ON SITE BEFORE FABRICATION.

LEGEND:

- ① - DETAIL MARK NO.
 ② - REFER SHEET NO.
 1. F.F.L. -- FINISHED FLOOR LEVEL
 2. S.F.L. -- STRUCTURAL FLOOR LEVEL
 3. (R) -- REVERSED DETAIL

B.D. AMENDMENT

THIS DOCUMENT IS THE PROPERTY OF AECOM. IT IS TO BE USED ONLY FOR THE PROJECT AND SITE SPECIFICALLY IDENTIFIED HEREIN. IT IS NOT TO BE REPRODUCED, COPIED, OR TRANSMITTED IN ANY FORM OR BY ANY MEANS, ELECTRONIC OR MECHANICAL, INCLUDING PHOTOCOPYING, RECORDING, OR BY ANY INFORMATION STORAGE AND RETRIEVAL SYSTEM, WITHOUT THE WRITTEN PERMISSION OF AECOM.

| | | | |
|----|----------|---------------|----|
| C | 07/02/23 | BD AMENDMENT | K |
| B | 09/12/22 | BD AMENDMENT | K |
| A | 28/12/21 | BD AMENDMENT | K |
| - | 30/09/20 | BD SUBMISSION | K |
| ML | DATE | REVISION | BY |

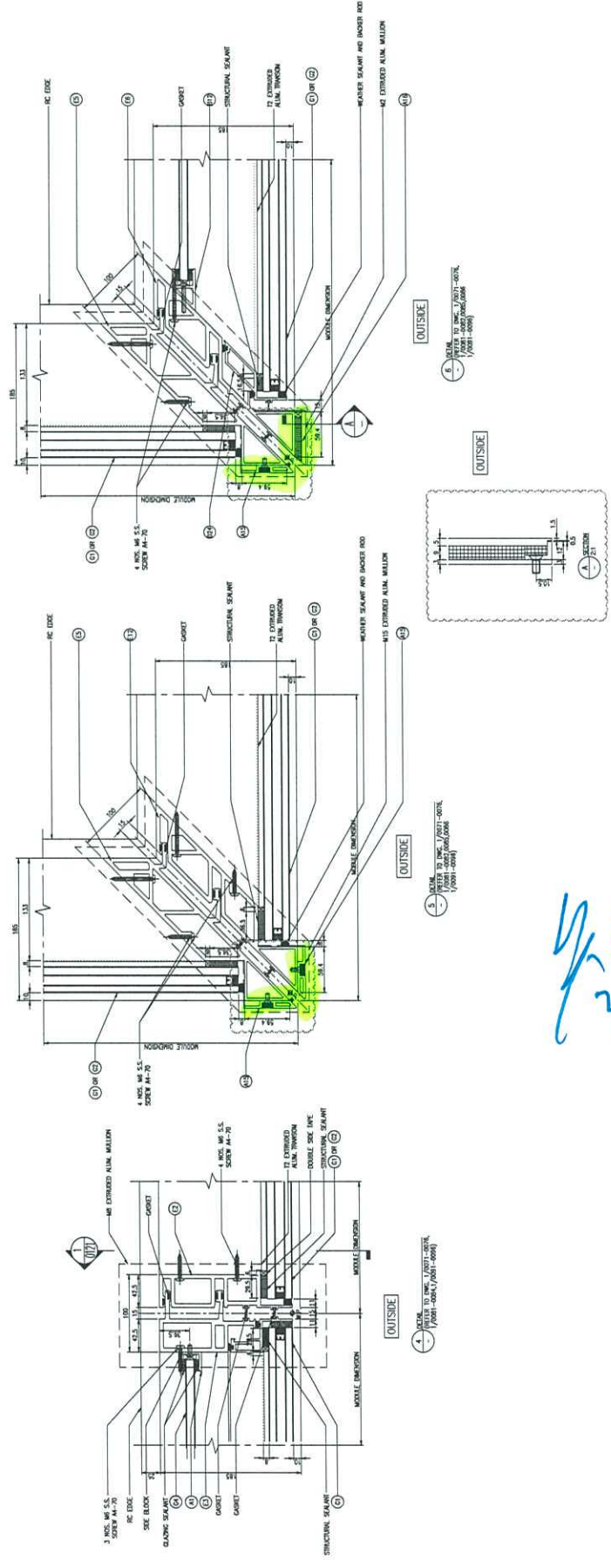
JOB NO. : J-858

PROJECT : PROPOSED RESIDENTIAL DEVELOPMENT AT 'MOON' 7089, PHASE 11, LOHAS PARK, TSEUNG KWAN O, N.T.

TITLE : FACADE DETAIL

DATE : 22-OCT-21 SCALE : 1:1(A1)
 DRAWN BY : KY CHECKED BY : YB

美特鋁質有限公司
 MIDALUMINA
 610 Che Kwo Ling Road, Kowloon
 Tel: 2489211-4 Fax: (852) 777665
 DMC NO. : LP11/0101 REV. : C



Handwritten signature in blue ink.

B.D. REF :

CLIENT :



信和置業有限公司
Sino Land Company Limited

ARCHITECT :



ronald lu & partners
RICKARD & PARTNERS
羅國強建築師事務所 (香港) 有限公司
MAIN CONTRACTOR :

STRUCTURAL ENGINEER :



Gammon
STRUCTURAL ENGINEER :

FAÇADE CONSULTANT :



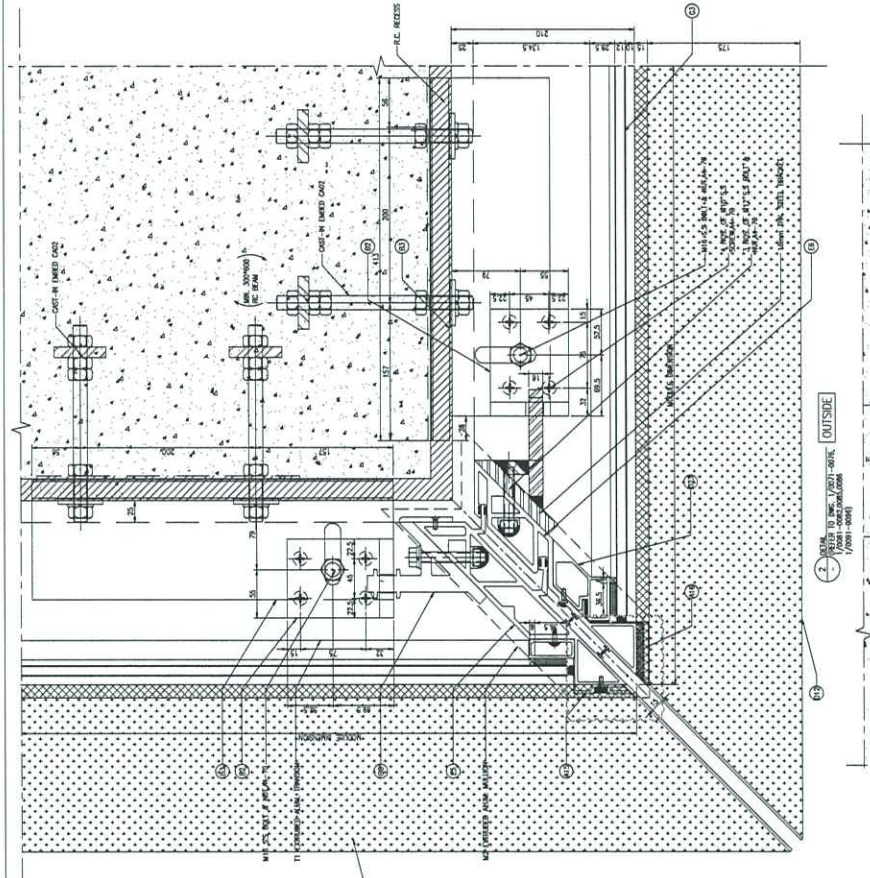
AECOM
FAÇADE CONSULTANT :

NOTE :

1. ALL DIMENSIONS ARE IN mm.
2. ALL ELEVATIONS ARE VIEWED FROM OUTSIDE.
3. ALL DIMENSIONS TO BE VERIFIED ON SITE BEFORE FABRICATION.

LEGEND :

- ① DETAIL MARK NO.
- ② REFER TO DWG. / 2011-0016
- ③ REFER TO DWG. / 2011-0016
- ④ REFER TO DWG. / 2011-0016
- ⑤ REFER TO DWG. / 2011-0016
- ⑥ REFER TO DWG. / 2011-0016
- ⑦ REFER TO DWG. / 2011-0016
- ⑧ REFER TO DWG. / 2011-0016
- ⑨ REFER TO DWG. / 2011-0016
- ⑩ REFER TO DWG. / 2011-0016
- ⑪ REFER TO DWG. / 2011-0016
- ⑫ REFER TO DWG. / 2011-0016
- ⑬ REFER TO DWG. / 2011-0016
- ⑭ REFER TO DWG. / 2011-0016
- ⑮ REFER TO DWG. / 2011-0016
- ⑯ REFER TO DWG. / 2011-0016
- ⑰ REFER TO DWG. / 2011-0016
- ⑱ REFER TO DWG. / 2011-0016
- ⑲ REFER TO DWG. / 2011-0016
- ⑳ REFER TO DWG. / 2011-0016
- ㉑ REFER TO DWG. / 2011-0016
- ㉒ REFER TO DWG. / 2011-0016
- ㉓ REFER TO DWG. / 2011-0016
- ㉔ REFER TO DWG. / 2011-0016
- ㉕ REFER TO DWG. / 2011-0016
- ㉖ REFER TO DWG. / 2011-0016
- ㉗ REFER TO DWG. / 2011-0016
- ㉘ REFER TO DWG. / 2011-0016
- ㉙ REFER TO DWG. / 2011-0016
- ㉚ REFER TO DWG. / 2011-0016
- ㉛ REFER TO DWG. / 2011-0016
- ㉜ REFER TO DWG. / 2011-0016
- ㉝ REFER TO DWG. / 2011-0016
- ㉞ REFER TO DWG. / 2011-0016
- ㉟ REFER TO DWG. / 2011-0016
- ㊱ REFER TO DWG. / 2011-0016
- ㊲ REFER TO DWG. / 2011-0016
- ㊳ REFER TO DWG. / 2011-0016
- ㊴ REFER TO DWG. / 2011-0016
- ㊵ REFER TO DWG. / 2011-0016
- ㊶ REFER TO DWG. / 2011-0016
- ㊷ REFER TO DWG. / 2011-0016
- ㊸ REFER TO DWG. / 2011-0016
- ㊹ REFER TO DWG. / 2011-0016
- ㊺ REFER TO DWG. / 2011-0016
- ㊻ REFER TO DWG. / 2011-0016
- ㊼ REFER TO DWG. / 2011-0016
- ㊽ REFER TO DWG. / 2011-0016
- ㊾ REFER TO DWG. / 2011-0016
- ㊿ REFER TO DWG. / 2011-0016

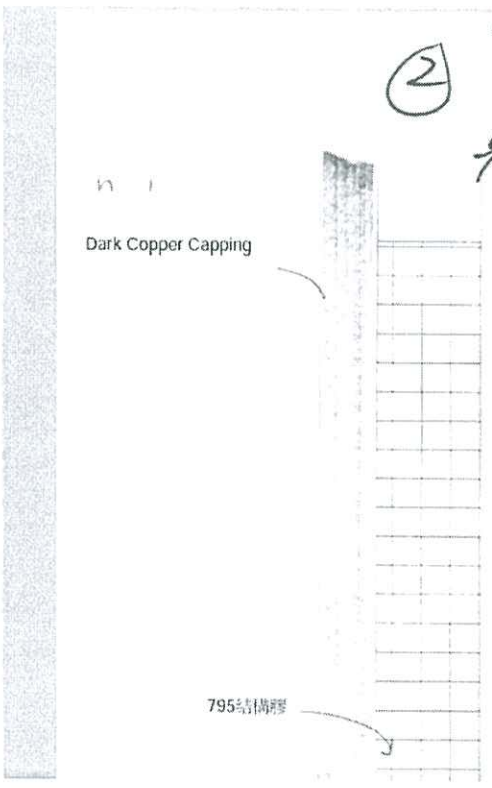
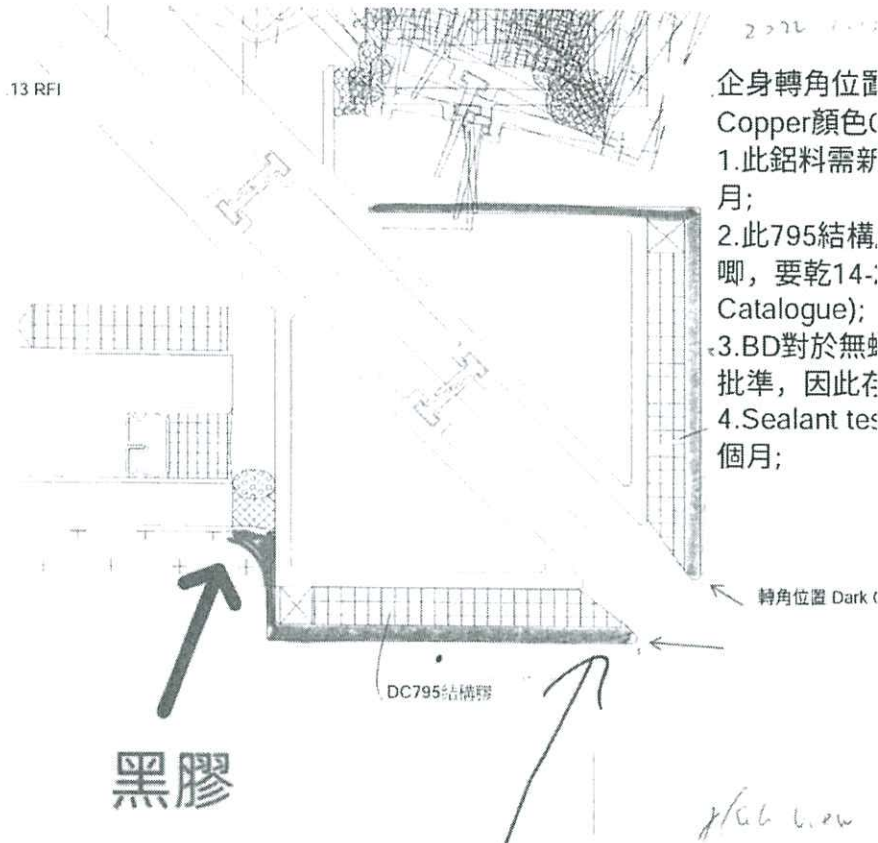




後加田企身通長膠



雙鋁角托底 design 有



轉角位置做深銅色
翻面

