



工程指示 / 要求簡箋(E.I.)

工程指示編號：EI / 4154 / 21 修改版次：-
 工程編號：J - 858 工程名稱：將軍澳日出康城 11
 工程項目：Show flat 用幕牆玻璃 (奧海城 showflat, 寶發用玻璃)
 收件人：Maggie 發件人：Eric Liu 日期：16/12/2021

要求提供 / 確認 事項：

- | | | |
|------------------------------------|-------------------------------------|-------------------------------|
| <input type="checkbox"/> 初步鋁料 B.M. | <input type="checkbox"/> 加工拆圖，然後生產 | <input type="checkbox"/> 尺寸表 |
| <input type="checkbox"/> 正式鋁料 B.M. | <input type="checkbox"/> 技術上資料 / 指示 | <input type="checkbox"/> 報價 |
| <input type="checkbox"/> 配件 B.M. | <input type="checkbox"/> 樣辦或貨品說明書 | <input type="checkbox"/> 分判合約 |

內容：

請按玻璃 BM 訂購玻璃送地盤

奧海城 showflat 用玻璃，只作供應玻璃，不包安裝，由寶發安裝，附上寶發提供玻璃資料

地址：奧海城 1 期 shop#101

聯絡人：Ken, 90629019

謝謝

寶發報價

請在 2021. 12. 30 前完成上列要求。

附：

以上項目為：

- 原合約工程包 原合約工程加 / 減賬 新工程報價

原因：-

分發東莞各部門：

- () 生產技術總監 連附件 () 技術部 連附件 () 生產部 連附件 () 機械設計部 連附件
 () 採購部 連附件 () 生產統籌部 連附件 () 小羅 & 清 連附件
 () 質檢部 連附件 () 會計部 連附件 () 報關組 連附件 () 其他 _____ 連附件

分發其他分判：

- () 水洪 連附件

分發香港各部門：

- () 行政部 連附件 () 會計部 連附件 () 統籌部 連附件 () 工程部地盤科文 連附件
 () 採購部 連附件 () QS 部 連附件 () 維修部 連附件 () 其他 _____ 連附件

傳遞編號：


發件人簽署：

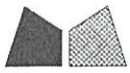
HK

12P

項目經理簽署：

美特鋁質 MIDI Aluminium Fabricator Ltd.		工程號: J-858	計算:	日期:	送呈:			
地盤名稱: 地盤用玻璃B.M.表		地盤名稱: 廣城11	核對:	日期:	副本:			
項目類別: 修改版次:		項目類別: Showflat幕牆玻璃	批准:	日期:	A/C Code:			
BM編號:		總計玻璃面積 (平方米): 39.649			此BM依據			
序號	修改內容	玻璃圖號	厚度 (mm)	寬度 (mm)	高度 (mm)	數量 (塊)	總面積 (平方米)	備注
1		3G1-01	34.0	626.5	2349.0	1	1.472	詳見加工圖858-VMU-BL01
2		3G1-02	34.0	1755.5	2349.0	2	8.247	詳見加工圖858-VMU-BL01
3		3G1-03	34.0	528.0	2349.0	2	2.481	詳見加工圖858-VMU-BL01
4		3G1-04	34.0	576.5	2349.0	1	1.354	詳見加工圖858-VMU-BL01
5		3G1-05	34.0	1476.5	2349.0	1	3.468	詳見加工圖858-VMU-BL01
6		3G1-06	34.0	801.5	2349.0	1	1.883	詳見加工圖858-VMU-BL01
7					合計	8	18.905	
8		3G2-01	32.0	664.0	1456.5	3	2.901	詳見加工圖858-VMU-BL02
9		3G2-02	32.0	564.0	1456.5	2	1.643	詳見加工圖858-VMU-BL02
10		3G2-03	32.0	596.5	1456.5	1	0.869	詳見加工圖858-VMU-BL02
11		3G2-04	32.0	576.5	1456.5	1	0.840	詳見加工圖858-VMU-BL02
12		3G2-05	32.0	664.0	849.5	3	1.692	詳見加工圖858-VMU-BL02
13		3G2-06	32.0	564.0	849.5	2	0.958	詳見加工圖858-VMU-BL02
14		3G2-07	32.0	596.5	849.5	1	0.507	詳見加工圖858-VMU-BL02
15		3G2-08	32.0	576.5	849.5	1	0.490	詳見加工圖858-VMU-BL02
16					合計	14	9.900	
17		3G3-01	12	626.5	362.5	1	0.227	詳見加工圖858-VMU-BL03
18		3G3-02	12	664.0	362.5	2	0.481	詳見加工圖858-VMU-BL03
19		3G3-03	12	664.0	577.5	1	0.383	詳見加工圖858-VMU-BL03
20		3G3-04	12	1755.5	577.5	1	1.014	詳見加工圖858-VMU-BL03
21		3G3-05	12	528.0	577.5	1	0.305	詳見加工圖858-VMU-BL03
22		3G3-06	12	564.0	577.5	1	0.326	詳見加工圖858-VMU-BL03
23		3G3-07	12	596.5	577.5	1	0.344	詳見加工圖858-VMU-BL03
24		3G3-08	12	576.5	577.5	1	0.333	詳見加工圖858-VMU-BL03
25		3G3-09	12	564.0	362.5	1	0.204	詳見加工圖858-VMU-BL03
26		3G3-10	12	528.0	362.5	1	0.191	詳見加工圖858-VMU-BL03
27		3G3-11	12	1755.5	362.5	1	0.636	詳見加工圖858-VMU-BL03
28		3G3-12	12	1476.5	362.5	1	0.535	詳見加工圖858-VMU-BL03
29		3G3-13	12	576.5	362.5	1	0.209	詳見加工圖858-VMU-BL03
30		3G3-14	12	801.5	362.5	1	0.291	詳見加工圖858-VMU-BL03
31		3G3-15	12	626.5	387.5	1	0.243	詳見加工圖858-VMU-BL03
32		3G3-16	12	664.0	387.5	3	0.772	詳見加工圖858-VMU-BL03
33		3G3-17	12	1755.5	387.5	2	1.361	詳見加工圖858-VMU-BL03
34		3G3-18	12	528.0	387.5	2	0.409	詳見加工圖858-VMU-BL03
35		3G3-19	12	564.0	387.5	2	0.437	詳見加工圖858-VMU-BL03
36		3G3-20	12	596.5	387.5	1	0.231	詳見加工圖858-VMU-BL03
37		3G3-21	12	576.5	387.5	2	0.447	詳見加工圖858-VMU-BL03
38		3G3-22	12	1476.5	387.5	1	0.572	詳見加工圖858-VMU-BL03
39		3G3-23	12	801.5	387.5	1	0.311	詳見加工圖858-VMU-BL03
40					合計	30	10.263	

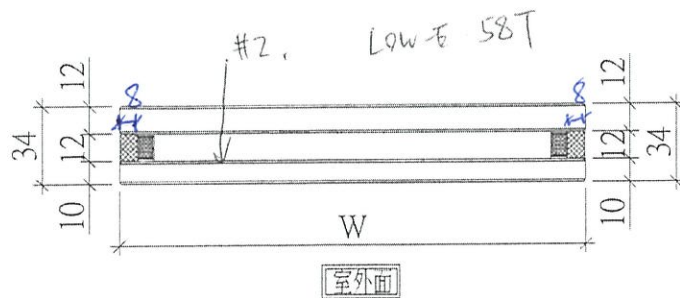
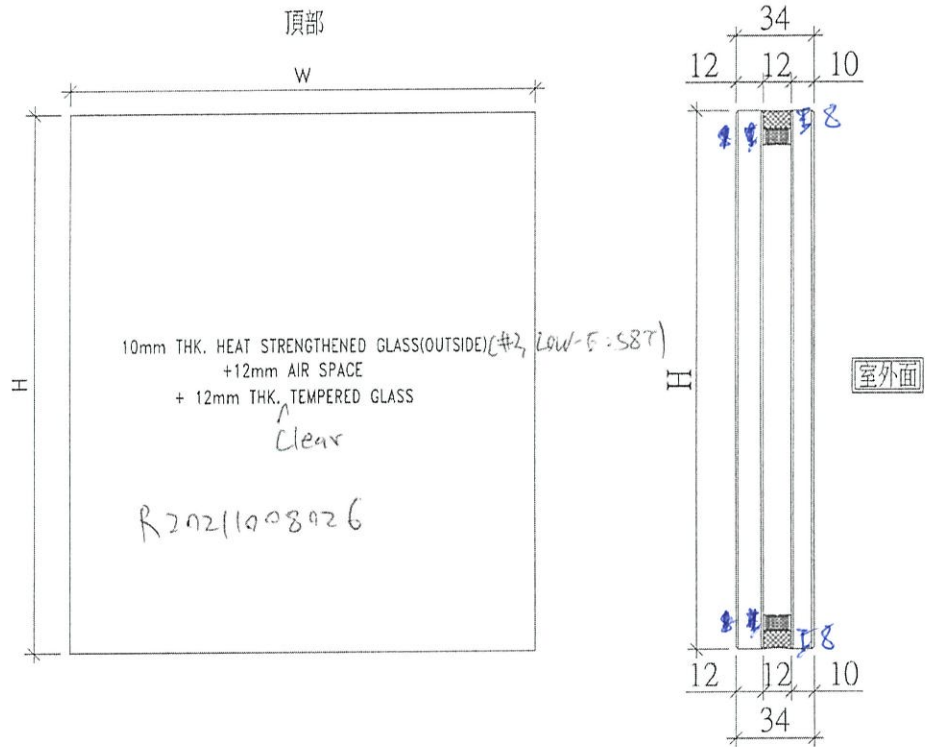
		工程號: J-858	計算:	日期:	送呈:				
地盤名稱: 康城11		核對:	日期:	副本:					
項目類別: Showflat 幕牆玻璃		批准:	日期:	A/C Code:					
修改版次:		總計玻璃面積 (平方米): 39.649		此BM依據					
BM編號:									
序號	修改內容	玻璃圖號	顏色與類型	厚度 (mm)	寬度 (mm)	高度 (mm)	數量 (塊)	總面積 (平方米)	備注
41		3G4-01		12.0	624.0	145.0	3	0.271	詳見加工圖858-YMU-BL04
42		3G4-02	G4: 12mm THK. CLEAR TEMPERED GLASS (INTERNAL PROTECTIVE BARRIER)	12.0	524.0	145.0	2	0.152	詳見加工圖858-YMU-BL04
43		3G4-03		12.0	556.5	145.0	1	0.081	詳見加工圖858-YMU-BL04
44		3G4-04		12.0	536.5	145.0	1	0.078	詳見加工圖858-YMU-BL04
45						合計	7	0.582	
46						總計	59	39.65	
1) 本表中所採用之玻璃為信義玻璃廠出品之玻璃原片 2) 本表中所有玻璃對角線尺寸偏差要求不超過±1.5mm。 3) 本表中所有玻璃要求粗糙處理並倒角。 4) 本表中不同種玻璃參照玻璃加工圖加工。 5) 本表中所有強化玻璃均須HEAT SOAK TEST。 6) 本表中所有強化玻璃之入牆方向均以寬度方向運入。 7) 本表中所有玻璃成品送交東莞美而特廠，每次交貨時須帶齊層、窗款、齊數量，每次來算之具體數量由美而特廠生產統籌部提供。 8) 本表中所有玻璃成品均需註明窗內外面積及其玻璃編號，以便識別。									
加工注意事項:									



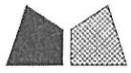
美特鋁質 有限公司
MIDI Aluminium Fabricator Ltd.

工程號	J858	地盤	荃灣
-----	------	----	----

玻璃編號	W	H	數量
A-1	659.5	2351.0	1
A-2	1764.5	2351.0	1
A-3	537.0	2351.0	1
合計	共3幅		



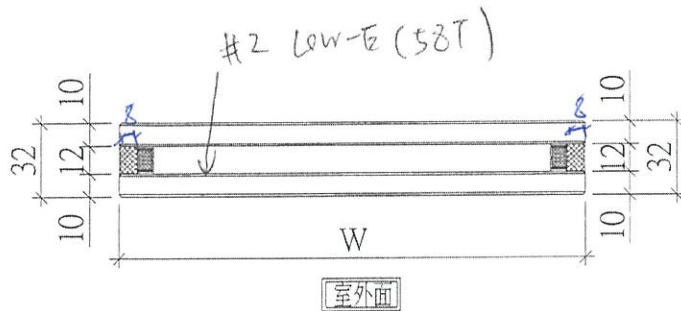
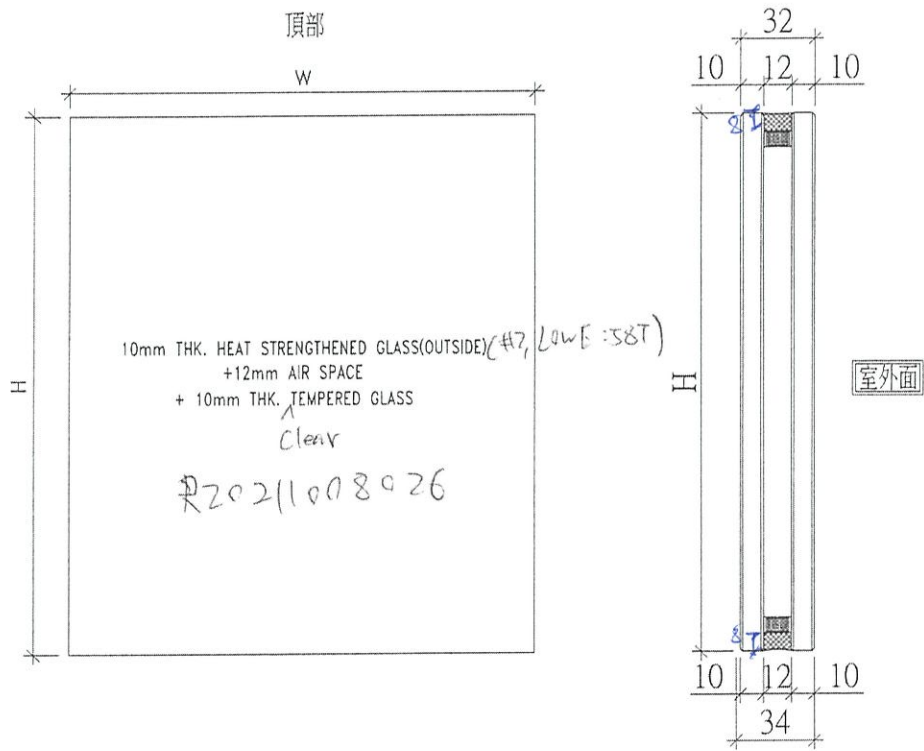
名稱	玻璃拆圖	制圖	WYY	2021.11.29	修改		
材料	-	復核			日期		
顏色	-	批准			圖號	858-VMU-BL01	



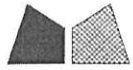
美特鋁質 有限公司
MIDI Aluminium Fabricator Ltd.

工程號 J858 地盤 荃灣

玻璃編號	W	H	數量
B-1	667.0	1756.0	2
B-2	667.0	556.0	2
B-3	582.0	1756.0	1
B-4	582.0	556.0	1
B-5	567.0	1756.0	1
B-6	567.0	556.0	1
合計	共8幅		



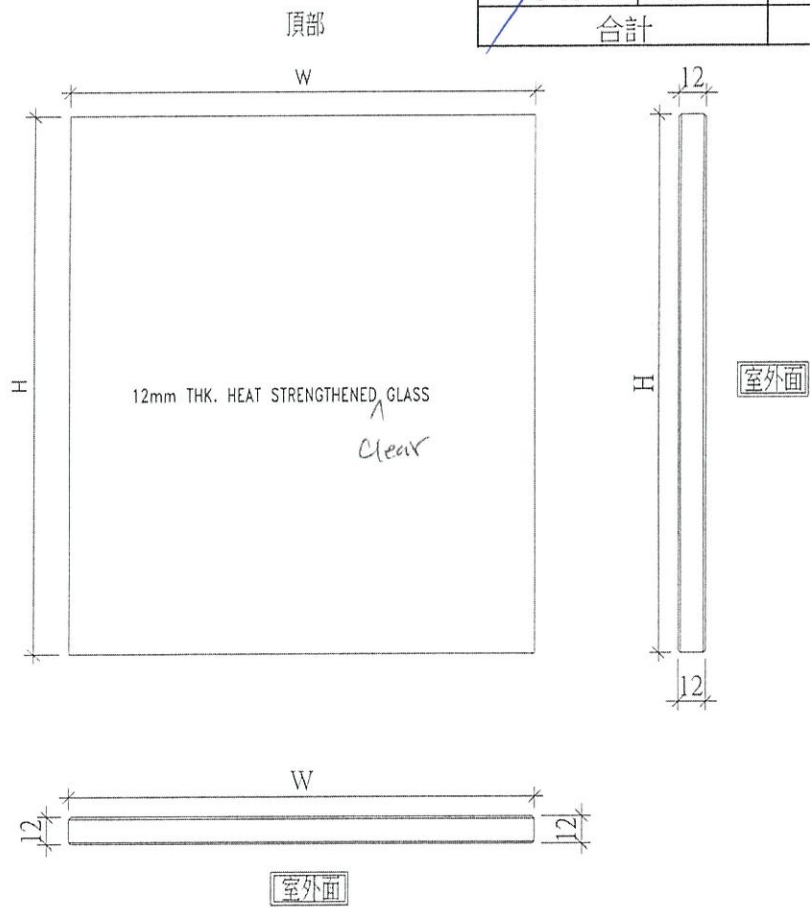
名稱	玻璃拆圖	制圖	WYY	2021.11.29	修改		
材料	-	復核			日期		
顏色	-	批准			圖號	858-VMU-BL02	



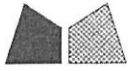
美特鋁質 有限公司
MIDI Aluminium Fabricator Ltd.

工程號	J858	地盤	荃灣
-----	------	----	----

玻璃編號	寬度W	高度H	數量
C-1	659.5	453.5	1
C-2	667.0	453.5	1
C-3	667.0	661.0	1
C-4	1764.5	661.0	1
C-5	537.0	661.0	1
C-6	582.0	453.5	1
C-7	659.5	311.0	1
C-8	667.0	311.0	2
C-9	1764.5	311.0	1
C-10	537.0	311.0	1
C-11	582.0	311.0	1
C-12	567.0	661.0	1
C-13	567.0	311.0	1
合計		共14幅	



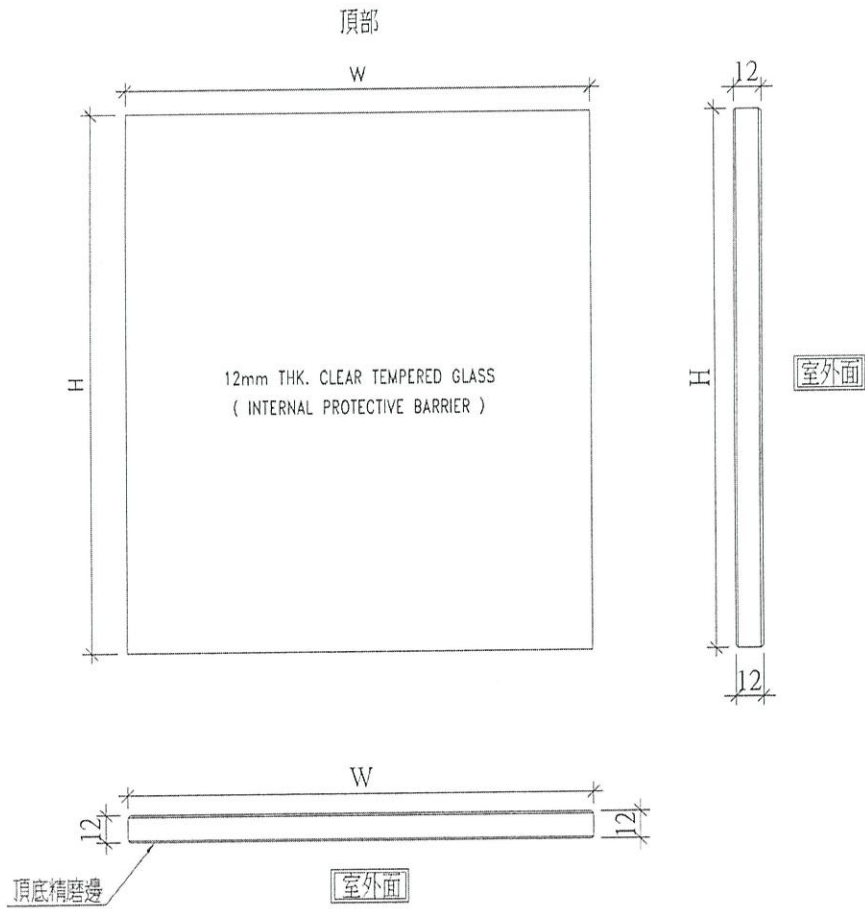
名稱	玻璃拆圖	制圖	WYY	2021.11.29	修改			
材料	-	復核			日期			
顏色	-	批准			圖號	858-VMU-BL03		



美特鋁質 有限公司
MIDI Aluminium Fabricator Ltd.

工程號	J858	地盤	荃灣
-----	------	----	----

玻璃編號	W	H	數量
D-1	616.0	430.0	2
D-2	516.0	430.0	1
D-3	531.0	430.0	1
合計	共4幅		



名稱	玻璃拆圖	制圖	WYY	2021.11.29	修改			
材料	-	復核			日期			
顏色	-	批准			圖號	858-VMU-BL04		

寶發記錄

POLYFAIR 寶發建設工程有限公司 POLYFAIR CONSTRUCTION & ENGINEERING LTD. (A member of Polyfair Holdings Limited)						Form No. : F3.2.3					
BOM LOG GROUP											
Project : PROPOSED RESIDENTIAL DEVELOPMENT AT TKOTL70RP, PHASE 11, LOHAS PARK, TSEUNG KWAN O,N.T. Job No.: PF21006 Title: (S3) SALES OFFICE MOCK UP Location: -								Current Ref. No.: S3-GS- 02 Submission Date: 16 December 2021			
								Previous submission Record		Status	
								S3-GS-01			
								Initial LOG No.			
Items	Description	Attachment		Complete Status (%)	Transmittal Reference	Remarks					
		Table no.	Drawing								
1	Glasss panel	YES	YES	100%	DT-10						
Fabrication Drawing List											
Drawing No.	QTY. (nos.)	Drawing No.	QTY. (nos.)	Drawing No.	QTY. (nos.)	Drawing No.	QTY. (nos.)	Drawing No.	QTY. (nos.)	Drawing No.	QTY. (nos.)
TABLE:											
PF21006-S3-GPL-01(a)											
LP11-S3-LP001(a)											
ACCESSORY PARTS										QUANTITY	
TAG NO.		DESCRIPTION								Site	Factory
Remarks:											
BOM Ref. No. :											
Purchase Order No. :											
Tracing No. :											
TSD comment <input checked="" type="checkbox"/> 必須工程部覆檢 <input type="checkbox"/> 建議不用工程部覆檢						PJD comment <input type="checkbox"/> 工程部要求覆檢					
Confirmation:		Follow up By: (Project Coordinator):				Sign: _____					
		Confirmed By: (Project Manager):				Sign: _____					

量尺
玻璃尺寸

Glass Panel Distribution Table

Project : PROPOSED RESIDENTIAL DEVELOPMENT AT TKOTL70RP, PHASE 11, LOHAS PARK, TSEUNG KWAN O, N.T.
Job No.: PF-21006
Title: (S3) VMU FOR SALES OFFICE MOCK-UP
Type:

Reference No.: S3-GPL-01
Date : 15/12/21
Revision No.: A
Date : 16/12/21

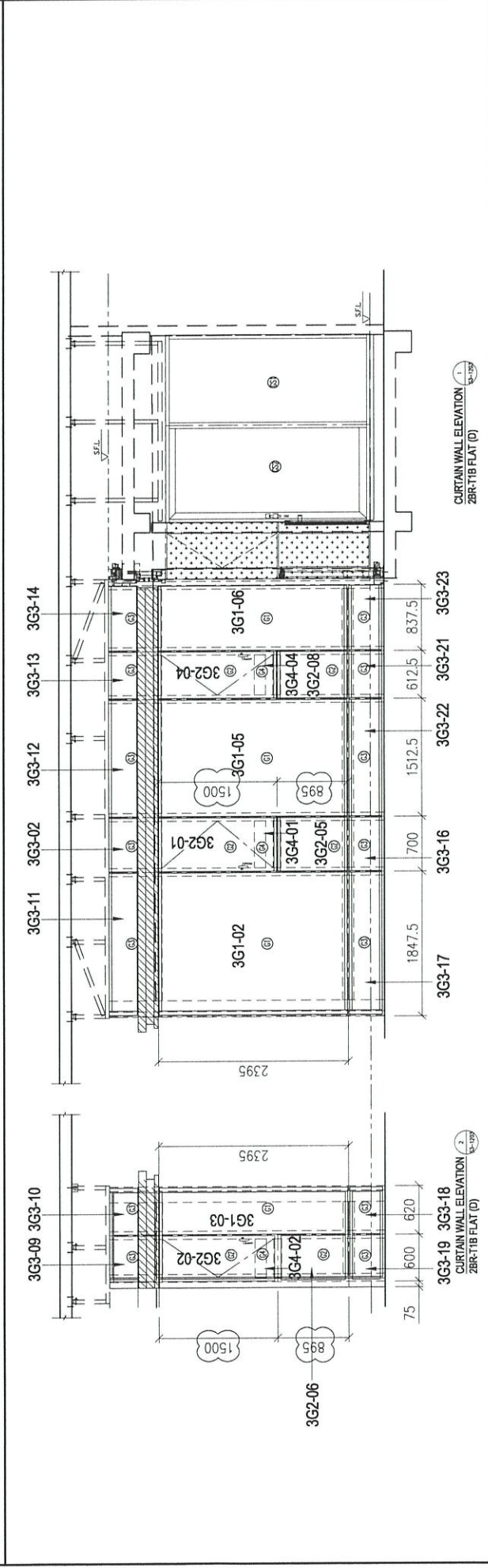
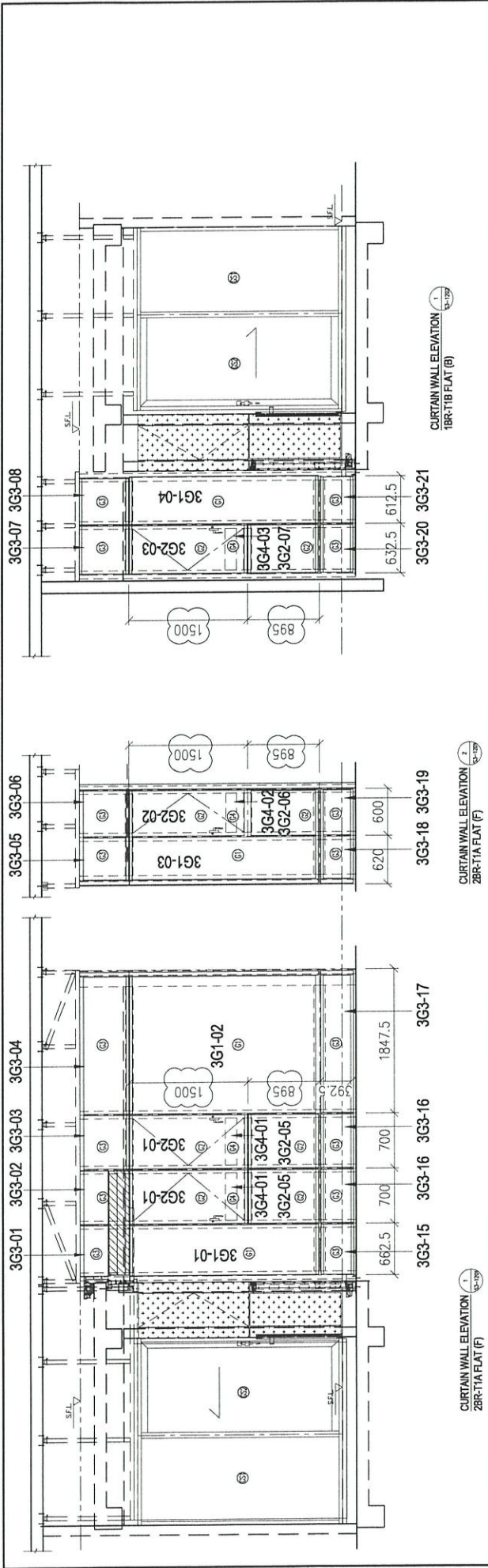
Tag No.	Glass Type	Panel Type	Module Dimension		Glass Panel Size		Glass Area (m ²)	Unit Weight (kg)	MOCK-UP	Total Quantity	Total Glass Area (m ²)	Revision	Glazing type ref. no.	Glazing frame ref. no.	Remarks (Ref. Fab. Drawing Of Glass Panel)
			Width (mm)	Height (mm)	Width (mm)	Height (mm)									
3G1-01	CW-G1	Fixed Vision	662.5	2395.0	626.5	2349.0	1.47	82.9	1	1	1.47				S3-G01-001
3G1-02	CW-G1	Fixed Vision(Corner)	1847.5	2395.0	1755.5	2349.0	4.12	232.2	2	2	8.25				S3-G01-001
3G1-03	CW-G1	Fixed Vision(Corner)	620.0	2395.0	528.0	2349.0	1.24	69.9	2	2	2.48				S3-G01-001
3G1-04	CW-G1	Fixed Vision	612.5	2395.0	576.5	2349.0	1.35	76.3	1	1	1.35				S3-G01-001
3G1-05	CW-G1	Fixed Vision	1512.5	2395.0	1476.5	2349.0	3.47	195.3	1	1	3.47				S3-G01-001
3G1-06	CW-G1	Fixed Vision	837.5	2395.0	801.5	2349.0	1.88	106.0	1	1	1.88				S3-G01-001
								Total :	8	8	18.90				
3G2-01	CW-G2	Openable Sash	700.0	1500.0	664.0	1456.5	0.97	49.5	3	3	2.90	A			S3-G02-001
3G2-02	CW-G2	Openable Sash	600.0	1500.0	564.0	1456.5	0.82	42.1	2	2	1.64	A			S3-G02-001
3G2-03	CW-G2	Openable Sash	632.5	1500.0	596.5	1456.5	0.87	44.5	1	1	0.87	A			S3-G02-001
3G2-04	CW-G2	Openable Sash	612.5	1500.0	576.5	1456.5	0.84	43.0	1	1	0.84	A			S3-G02-001
3G2-05	CW-G2	Fixed Vision	700.0	895.0	664.0	849.5	0.56	28.9	3	3	1.69	A			S3-G02-001
3G2-06	CW-G2	Fixed Vision	600.0	895.0	564.0	849.5	0.48	24.5	2	2	0.96	A			S3-G02-001
3G2-07	CW-G2	Fixed Vision	632.5	895.0	596.5	849.5	0.51	25.9	1	1	0.51	A			S3-G02-001
3G2-08	CW-G2	Fixed Vision	612.5	895.0	576.5	849.5	0.49	25.1	1	1	0.49	A			S3-G02-001
								Total :	14	14	9.90				
3G3-01	CW-G3	Fixed Spandrel	662.5	625.0	626.5	582.5	0.23	7.0	1	1	0.23	A			S3-G03-001
3G3-02	CW-G3	Fixed Spandrel	700.0	625.0	664.0	582.5	0.24	7.4	2	2	0.48	A			S3-G03-001
3G3-03	CW-G3	Fixed Spandrel	700.0	625.0	664.0	577.5	0.35	11.8	1	1	0.35	A			S3-G03-001
3G3-04	CW-G3	Fixed Spandrel(Corner)	1847.5	625.0	1755.5	577.5	1.01	33.1	1	1	1.01	A			S3-G03-001
3G3-05	CW-G3	Fixed Spandrel(Corner)	620.0	625.0	528.0	577.5	0.30	9.4	1	1	0.30	A			S3-G03-001
3G3-06	CW-G3	Fixed Spandrel	600.0	625.0	564.0	577.5	0.33	10.0	1	1	0.33	A			S3-G03-001
3G3-07	CW-G3	Fixed Spandrel	632.5	625.0	596.5	577.5	0.34	10.6	1	1	0.34	A			S3-G03-001
3G3-08	CW-G3	Fixed Spandrel	612.5	625.0	576.5	577.5	0.33	10.2	1	1	0.33	A			S3-G03-001
3G3-09	CW-G3	Fixed Spandrel	600.0	625.0	564.0	582.5	0.20	6.3	1	1	0.20	A			S3-G03-001
3G3-10	CW-G3	Fixed Spandrel(Corner)	620.0	625.0	528.0	582.5	0.10	5.9	1	1	0.10	A			S3-G03-001
3G3-11	CW-G3	Fixed Spandrel(Corner)	1847.5	625.0	1755.5	582.5	0.64	19.5	1	1	0.64	A			S3-G03-001
3G3-12	CW-G3	Fixed Spandrel	1512.5	625.0	1476.5	582.5	0.54	16.4	1	1	0.54	A			S3-G03-001
3G3-13	CW-G3	Fixed Spandrel	612.5	625.0	576.5	582.5	0.21	6.4	1	1	0.21	A			S3-G03-001
3G3-14	CW-G3	Fixed Spandrel	837.5	625.0	801.5	582.5	0.29	8.9	1	1	0.29	A			S3-G03-001
3G3-15	CW-G3	Fixed Spandrel	662.5	425.0	626.5	387.5	0.24	7.5	1	1	0.24				S3-G03-001
3G3-16	CW-G3	Fixed Spandrel	700.0	425.0	664.0	387.5	0.26	7.9	3	3	0.77				S3-G03-001
3G3-17	CW-G3	Fixed Spandrel(Corner)	1847.5	425.0	1755.5	387.5	0.88	20.9	2	2	1.36				S3-G03-001
3G3-18	CW-G3	Fixed Spandrel(Corner)	620.0	425.0	528.0	387.5	0.20	6.3	2	2	0.41				S3-G03-001
3G3-19	CW-G3	Fixed Spandrel	600.0	425.0	564.0	387.5	0.22	6.7	2	2	0.44				S3-G03-001
3G3-20	CW-G3	Fixed Spandrel	632.5	425.0	596.5	387.5	0.23	7.1	1	1	0.23				S3-G03-001
3G3-21	CW-G3	Fixed Spandrel	612.5	425.0	576.5	387.5	0.22	6.9	2	2	0.45				S3-G03-001
3G3-22	CW-G3	Fixed Spandrel	1512.5	425.0	1476.5	387.5	0.57	17.6	1	1	0.57				S3-G03-001
3G3-23	CW-G3	Fixed Spandrel	837.5	425.0	801.5	387.5	0.31	9.5	1	1	0.31				S3-G03-001
								Total :	30	30	10.26	A			
3G4-01	CW-G4	Fixed Vision	700.0	145.0	624.0	145.0	0.09	2.8	3	3	0.27	A			S3-G04-001
3G4-02	CW-G4	Fixed Vision	600.0	145.0	524.0	145.0	0.06	2.3	2	2	0.15	A			S3-G04-001
3G4-03	CW-G4	Fixed Vision	632.5	145.0	556.5	145.0	0.08	2.5	1	1	0.08	A			S3-G04-001
3G4-04	CW-G4	Fixed Vision	612.5	145.0	536.5	145.0	0.08	2.4	1	1	0.08	A			S3-G04-001
								Total :	7	7	0.58				
								Total Glass / Floor :	59	59	39.65	A			

Summary of glass type

Glass Type Schedule

CW-G1	10mm THK. HEAT STRENGTHENED GLASS (OUTSIDE) +12mm AIR SPACE +12mm THK. TEMPERED GLASS (IGU)(TYPICAL VISION PANEL)
CW-G2	10mm THK. HEAT STRENGTHENED GLASS (OUTSIDE) +12mm AIR SPACE +10mm THK. TEMPERED GLASS (IGU) (TYPICAL VISION PANEL)
CW-G3	12mm THK. HEAT STRENGTHENED GLASS (TYPICAL SPANDREL PANEL)
CW-G4	12mm THK. CLEAR TEMPERED GLASS

备注:所有玻璃参照签样样板.



DISTRIBUTION TABLE		製圖:	DENG	標本:	圖號:	標本:	
材料:		日期:	2021-12-16	圖號:	LP11-S3-LP001	標本:	A
表面處理:		修改日期:		項目:	工程編號: PF-21006	比例:	1:50
				工程名稱:	PROPOSED RESIDENTIAL DEVELOPMENT AT TKO TOWER, PHASE 11, LOHAS PARK, TSEUNG KWAN O.N.T.		
				項目:	LOCATION DRAWING OF GLASS PANEL (FOR SALES OFFICE MOCK-UP)		

寶發建設工程有限公司
Polyfair Construction & Engineering Ltd.



美特鋁質有限公司
MIDI ALUMINIUM FABRICATOR LTD.

Email = 2/12 15:31
Email M/c 15:34
2/12

Quotation

To : Polyfair Construction & Engineering Ltd. Email : kmw_pf@hotmail.com
 Attn : Man Contract Name : Show Flat Mock Up for LP 11
 Our Ref. : QT/10812/MD/1288 Instruction Ref. : E-mail
 Date : 2nd December, 2021 Instruction Date : 5-Oct-2021
 Subject : Quotation for **Supply and Delivery** Sliding Door and Glass Panel for Show Flat Mock Up of Lohas Park 11 at Olympic City

Copy Distribution: Client Architect Consultant Others

Item	Description	Rate Refer	Qty.	Unit	Rate	(HK\$) Amount
	<u>Quotation for Supply and Delivery Sliding Door and Glass Panel for Show Flat Mock Up of Lohas Park 11 at Olympic City</u>					
1.	Sliding Door system		4	No	20,000	\$80,000.00
2.	Glazing (for CW &SD) GL-01, GL-02, GL-03, GL-04, GL-05		100	Sup	1,500	\$150,000.00
3.	Transportation Cost		1	Item	10,000	\$10,000.00
<p><i>(All aluminium extrusion (transoms) included for Sliding System)</i></p>						
Total Amount:						\$240,000.00

Remarks:

- a) 30% of total Sub-Contract Sum for Deposit upon the sub-contract to be awarded.
- b) The frame and sash (散料) & Glass panel will be delivered to sales office street level only.
- c) Fabrication Drawing should be provide by Client.

MIDI ALUMINIUM FABRICATOR LTD
Signed:

[Signature]
Marco Tam
Director

Agreed by :
(with company chop)

[Signature]
Name : *Sun [unclear]*
Date : *2/12/2021*

Encl

FM/MT/DS/YL/yl
[Signature]



美特鋁質有限公司
MIDI ALUMINIUM FABRICATOR LTD.

Invoice (發票)

To: **Polyfair Construction & Engineering Ltd**
Room 1206-7, Fortress Tower,
250 King's Road, North Point, Hong Kong
Attn: Mr. Sum Kong

Invoice No : **J900 - 12-1414**
Date : **03 / 12 / 2021**

Quotation No : **QT/10812/MD/1288**

Tel : 3595 2227 / 6546 4318
Fax : 3595 2177

Quotation Price : \$

Subject: Lohas Park Phase 11
Supply and Delivery Sliding Door and Glass Panel for Show Flat Mock Up

Item	Description	Unit Rate (HK\$)	Applied (%)	Amount (HK\$)
1)	Supply and Delivery Sliding Door and Glass Panel for Show Flat Mock Up (30% deposit) (Detail as per quotation)		30%	
Accumulated Work Done:				
Less: Previously Paid				-
Amount Due : HK\$				

Yours faithfully,
MIDI ALUMINIUM FABRICATOR LTD.

Marco Tam
Director

FM\MT\DS\FL\GL\ms

第 1 頁，共 1 頁

九龍茶果嶺道610號生利工業中心1樓6-8號
Units 6-8, 1st Floor, Sunray Industrial Centre, 610 Cha Kwo Ling Road, Kln.
TEL. (電話) : 2348 9211 FAX. (傳真) : 2772 7666 E-mail Address (電郵) : midi@midiltd.com.hk.

E:\invoice\J900\MD-1288.xls (Invoice)



ISO 9001 : 2015
Certificate No: CC 1795

MIDI ALUMINIUM FABRICATOR LTD.

Duplicate Copy

LETTER OF TRANSMITTAL

To : Polyfair Construction & Engineering Ltd
Room 1206-7, Fortress Tower,
250 King's Road, North Point, Hong Kong
Attn: Mr. Sum Kong (Tel: 6546 4318)

No. : AC/TM/ 8278

Re : Lohas Park Phase 11
Supply and Delivery Sliding Door and Glass Panel for Show Flat Mock Up

Date : 03 / 12 / 2021
Our Job Ref.: J-900

Dear Sirs :

We enclose for your

approval

information

review & comment

proceeding

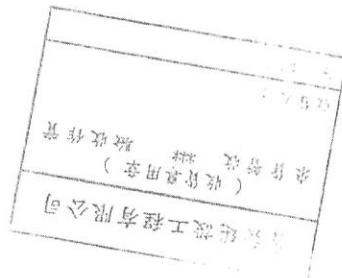
record

perusal

the following :

Copies	Date	Ref. No.	Description
1	03 / 12 / 2021	J900 -12-1414	Invoice
Remarks :			

We would appreciate your acknowledgment of receipt of this letter and its enclosure by signing and returning to us the copy (DUPLICATE) attached.



Units 6, 7 & 8, 1/F,
Sunray Industrial Centre,
610 Cha Kwo Ling Road, Kowloon

Tel.: 2348 9211 - 4

From: <tobylam@polyfair.corp.com.hk>
 To: <eric.lkw.midi@gmail.com>, <j858@midiltd.com.hk>, <jason.lcs.midi@gmail.com>
 Subject: RE: LP11 - Polyfair Drawing Submission - DT06 (S3) Sales Office Mock up 2nd submission
 Date sent: Fri, 17 Dec 2021 17:36:10 +0800
 Copies to: "Ginny Chau" <ginnychau@rlphk.com>, "florence cheung" <florencecheung@rlphk.com>, "Yuen Fun Wong" <yfwong@rlphk.com>, "Marina TONG [RLPHK]" <marinatong@rlphk.com>, "Monnie" <Monnie.lee@aecom.com>, "Chan Pui Huen" <chanpuihuen@sino.com>, "Wilson Cheng" <wilsoncheng@sino.com>, <herbertthung@sino.com>, "Francis Lai" <francislai@sino.com>, "Andy Chan Yan Wai" <andywchan@sino.com>, "Wilfred Tam" <wilfredtam@sino.com>, "Yung Sik Hon" <yungsikhon@sino.com>, "Eddy Zhang" <eddyzhang@sino.com>, "Janie Share" <janieshare@sino.com>, "johnny" <johnny@polyfair.corp.com.hk>, <clarence@polyfair.corp.com.hk>, <kmw@polyfair.corp.com.hk>, <jingochow@polyfair.corp.com.hk>, <kmw_pf@hotmail.com>, <may@fusion.com.hk>, "Crystal Cheng" <crystalcheng@fusion.com.hk>, <williamcheung@fusion.com.hk>, <midipur@midiltd.com.hk>, <cskong@polyfair.corp.com.hk>, <tobylam_polyfair@163.com>

字樣 confirm 玻璃

Dear Eric,

We have no adverse comment for the glass type if the glass type same as submitted & approved by Client/Architect, thank you.

Please also inform us once you received the any comment for this.

Thank you for your attention.

Best Regards,

Toby Lam
 Polyfair Construction & Engineering Ltd.
 Room 1206-7, 12/F., Fortress Tower,
 250 King's Road, North Point, Hong Kong
 P +852-3595 2227 | M +852-9347 6196
 F +852-3595 2177 | E tobylam@polyfair.corp.com.hk

From: cskong@polyfair.corp.com.hk <cskong@polyfair.corp.com.hk>
Sent: Thursday, December 16, 2021 5:30 PM
To: j858@midiltd.com.hk; jason.lcs.midi@gmail.com; tobylam@polyfair.corp.com.hk
Cc: 'Ginny Chau' <ginnychau@rlphk.com>; 'florence cheung' <florencecheung@rlphk.com>; 'Yuen Fun Wong' <yfwong@rlphk.com>; 'Marina TONG [RLPHK]' <marinatong@rlphk.com>; 'Monnie' <Monnie.lee@aecom.com>; 'Chan Pui Huen' <chanpuihuen@sino.com>; 'Wilson Cheng' <wilsoncheng@sino.com>; herbertthung@sino.com; 'Francis Lai' <francislai@sino.com>; 'Andy Chan Yan Wai' <andywchan@sino.com>; 'Wilfred Tam' <wilfredtam@sino.com>; 'Yung Sik Hon' <yungsikhon@sino.com>; 'Eddy Zhang' <eddyzhang@sino.com>; 'Janie Share' <janieshare@sino.com>; 'johnny' <johnny@polyfair.corp.com.hk>; clarence@polyfair.corp.com.hk; kmw@polyfair.corp.com.hk; jingochow@polyfair.corp.com.hk; kmw_pf@hotmail.com; may@fusion.com.hk; 'Crystal Cheng' <crystalcheng@fusion.com.hk>; williamcheung@fusion.com.hk;