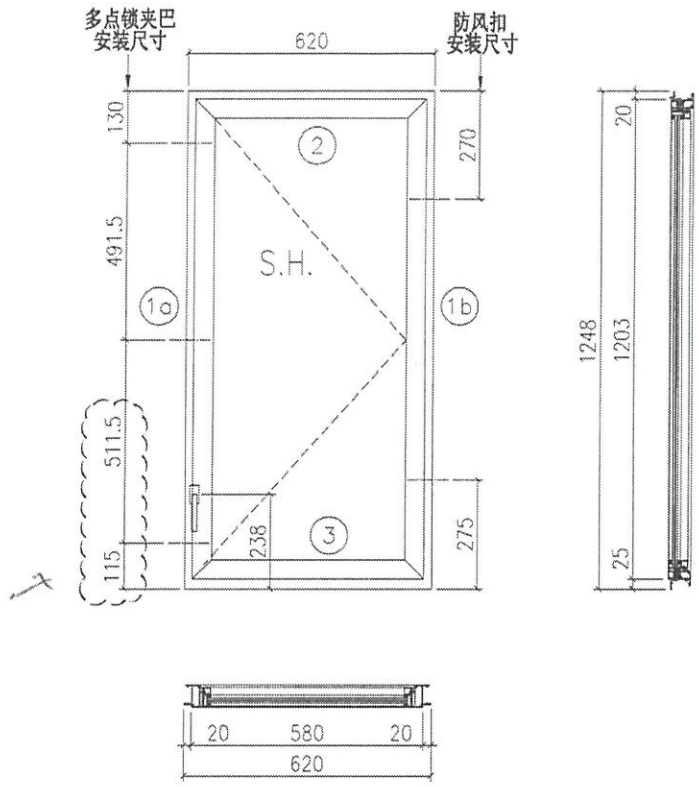


CI 4666

EG-DWG1

 美特鋁質有限公司 MIDI Aluminium Fabricator Ltd.	工程號	J858	拆圖	SHAW	2022.02.15
	地盤	康城1期	復核		
名稱	50地盤安裝窗	顏色	批准		



- 注:
- 1) 生窗底料需開15mm去水缺口2處;
 - 2) 窗玉搭位6mm;
 - 3) 滴水線比窗玉每頭長1mm;
 - 4) SH窗需裝2組TC903扣碼;
 - 5) 用東城產2021-A16"扇撐;
 - 6) 安裝201-10多點鎖夾巴3個;
 - 7) 框橫料兩端需切1x2mm切口打磨;
 - 8) 出貨摩爾16個;
 - 9) 底料安裝50-LC-04A窗沾1只;

序号	料号	名称	出荷	长度(mm)	支/幅	加工说明
1a	X862510	边企料		1248	1	X86251-03
1b	X862510	边企料		1248	1	X86251-02
2	X862520	生顶横	避位	582	1	X86252-01B
3	X862530	生底横	避位	574	1	X86253-01B

窗玉用料

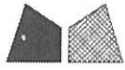
序号	料号	名称	出荷	长度(mm)	支/幅	加工说明
1a	X86163	窗玉企	45° 斜口	1203	1	X86163-05B
1b	X86163	窗玉企	45° 斜口	1203	1	X86163-07A
2a	X86163	窗玉横	45° 斜口	580	1	X86163-04LA
2b	X86163	窗玉横	45° 斜口	580	1	X86163-04RA
3a	X86171	窗玉玻璃线企	直口	1139	1	
3b	X86171	窗玉玻璃线企	直口	1139	1	X86171-03A
4a	X86171	窗玉玻璃线横	直口	484	1	X86171-04A
4b	X86171	窗玉玻璃线横	直口	484	1	
5a	X86153	撞角码	直口	45	1	J858-LM01L
5b	X86153	撞角码	直口	45	1	J858-LM01R
5c	X86153	撞角码	直口	45	2	J858-LM01
6	L065	16x12.5x3铝角	直口	140	9	J858-LM04
7a	X86154	拉巴用压板1	直口	80	2	J858-LM05A
7b	X86154	拉巴用压板1	直口	65	1	J858-LM05B
8	X86155	拉巴用压板2	直口	15	6	J858-LM06
9	X86237	14x3拉巴	直口	123	1	X86237-01C
10	X86237	14x3拉巴	直口	867	1	X86237-01E

加工细则

顶留	-	mm
底留	-	mm
企料底部开避位		mm
底横料防水巴锡去		mm
水线孔在企料---	顶	底
按装扣码		-
多点锁夹巴型号:		-
手柄型号:		-
限位撑型号:		-
T窗最大的开度:		-
窗玉搭位数:		-

大图版次	宽度	本图版	2
		日期	17-08-2022
窗号	宽度(W)	高度(H)	幅数 楼层数
T3B-C/B-1	620	1248	1 1
T2B-A/B-1	620	1248	1 1
图号			

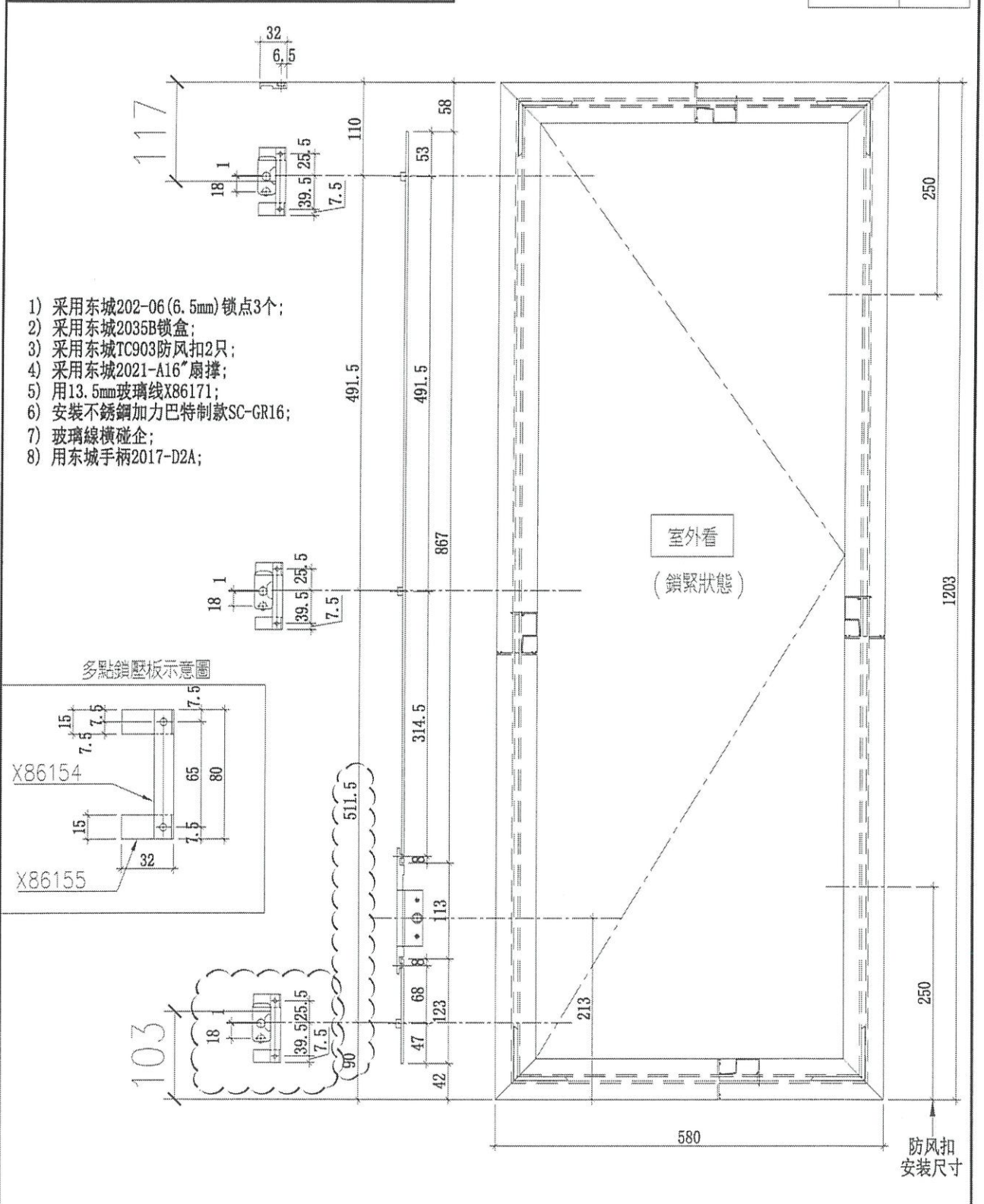
3只



美特鋁質有限公司
MIDI Aluminium Fabricator Ltd.

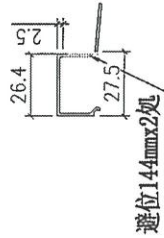
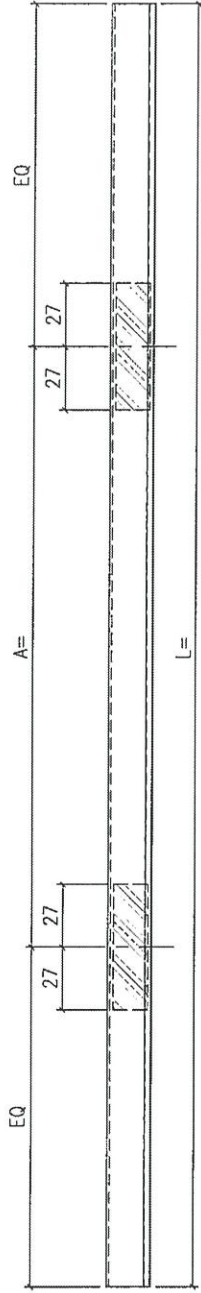
工程號 J858 地盤 康城1期

窗号	數量
T3B-C/B-1	49
T2B-1/B-1	1



名稱	多點鎖放樣圖	制圖	SHAW	2022.02.15	修改	2
材料	-	復核			日期	17-08-2022
顏色	-	批准			圖號	J858-SA08

FABRICATION DRAWING

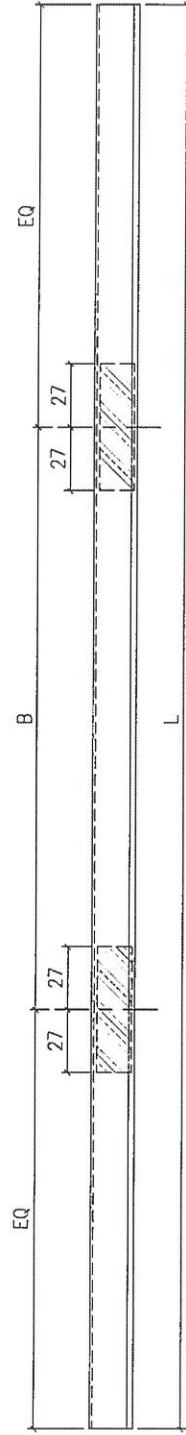
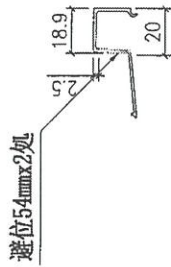
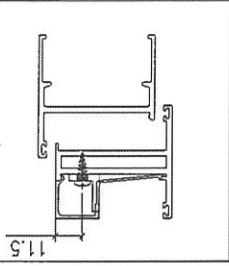


新图

4	X86164-06D	584	340	146
3	X86164-06C	364	210	6
2	X86164-06B	709	400	3
1	X86164-06A	1284.5	2x325c/c	146
序号	部件编号	L	A	数量

Remarks:		Checklist: KEN		Description: 6mm玻璃线		QTY: -		Delivery to Rev. Date		Amendments	
Project Name: 康城11期		Date: 22-12-2014		Material: 6061-T5		Tolerance: ±0.5		Factory			
Shop Drawing No. PRE-CAST ALUM. WINDOW & LOUVRE		Drawn: W.E.X		Finish: PVF2		Projection:		Site		Assembly No. X86164-06	
Project No. J858		Date: 22-12-2014								Rev. -	

FABRICATION DRAWING



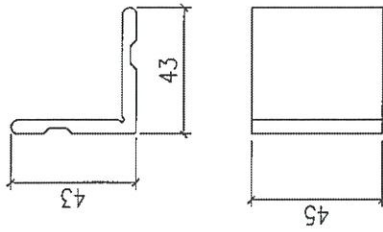
新图

4	X86171-06D	284	140	1
3	X86171-06C	309	150	49
2	X86171-06B	484	290	50
1	X86171-06A	1139	2x300c/c	100
序号	部件编号	L	B	数量

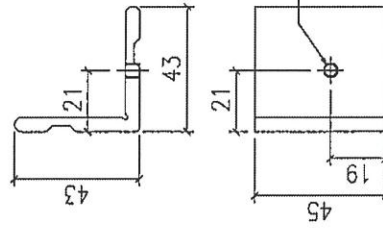
Remarks:		Checked: KEN	Description: 13.52mm玻璃线	QTY: -	Delivery to: (Factory)
Project Name: 康城11期		Date: 22-12-2014	Material: 6061-T5	Tolerance: ±0.5	Site: -
Shop Drawing No. PRE-CAST ALUM. WINDOW & LOUVRE		Drawn: W.E.X	Finish: PVF2	Projection:	Rev. -
Rev. 1		Date: 22-12-2014	Assembly No. X86171-06		

A

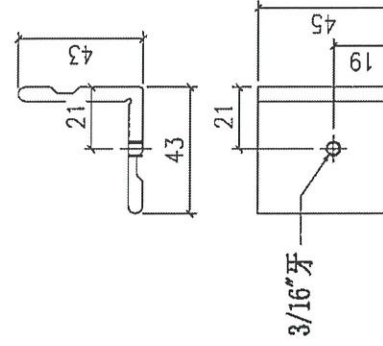
FABRICATION DRAWING



图号: J858-LM01
数量: 498只



图号: J858-LM01L
数量: 249只

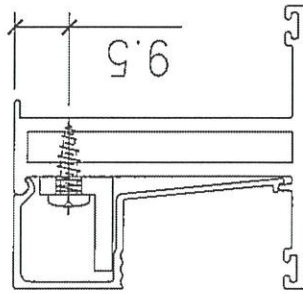
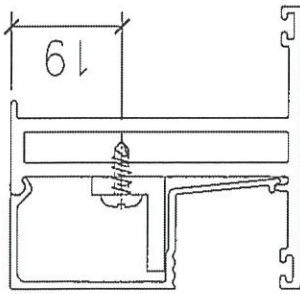


图号: J858-LM01R
数量: 249只

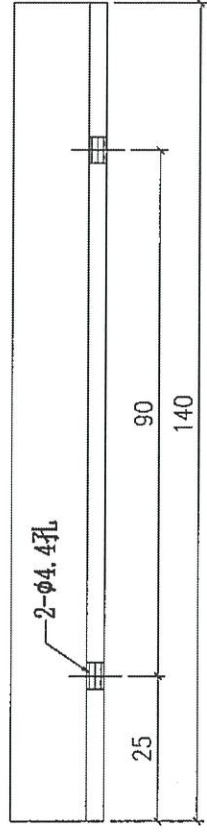
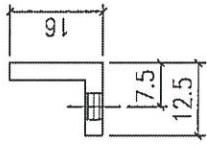
Remarks:		Checked: -		Description: 窗玉组角码		QTY: -		Delivery to Rev.		Date		Amendments	
Project No. J858		Date: 22-12-2014		Material: X86153		Tolerance: ±0.5		Factory					
Shop Drawing No. PRE-CAST ALUM. WINDOW & LOUVRE		Drawn: W.E.X		Finish: MILL		Projection:		Site		Assembly No. J858-LM01		Rev. -	
		Date: 17-02-2020											



FABRICATION DRAWING

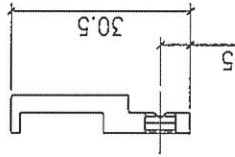
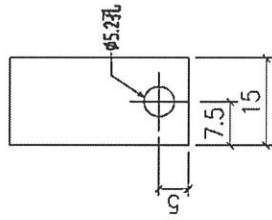


wylo x 1 = 7



Remarks:		Checked: --		Description:		QTY:		Delivery to Rev.		Date		Amendments	
Project Name:		Date: 22-12-2014		Material:		2384		Factory					
Project No. J858		Drawn: W.E.X		Finish:		Tolerance: ±0.5		Site		Assembly No.		Rev.	
Shop Drawing No. PRE-CAST ALUM. WINDOW & LOUVRE		Date: 17-02-2020		MILL		Projection:		J858-LM04				1	

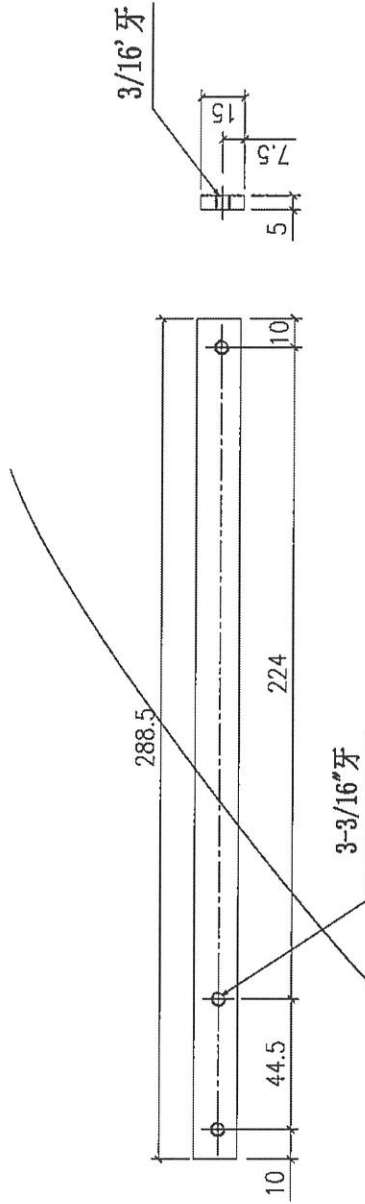
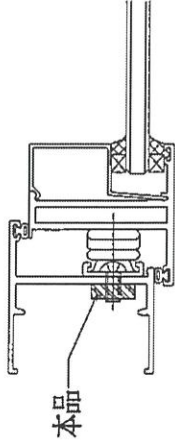
FABRICATION DRAWING



Remarks:		Checked: -		Description: 拉巴用压板2		QTY: 1488		Delivery to Rev.		Date		Amendments	
Project Name: 康城11期		Date: 22-12-2014		Material: X86155		Tolerance: ± 0.5		Factory					
Shop Drawing No. PRE-CAST ALUM. WINDOW & LOUVRE		Drawn: W.E.X		Finish: PVF2		Projection:		Site		Assembly No. J858-JM06		Rev. -	
		Date: 17-02-2020											

MIDI Aluminium Fabricator Ltd.

FABRICATION DRAWING



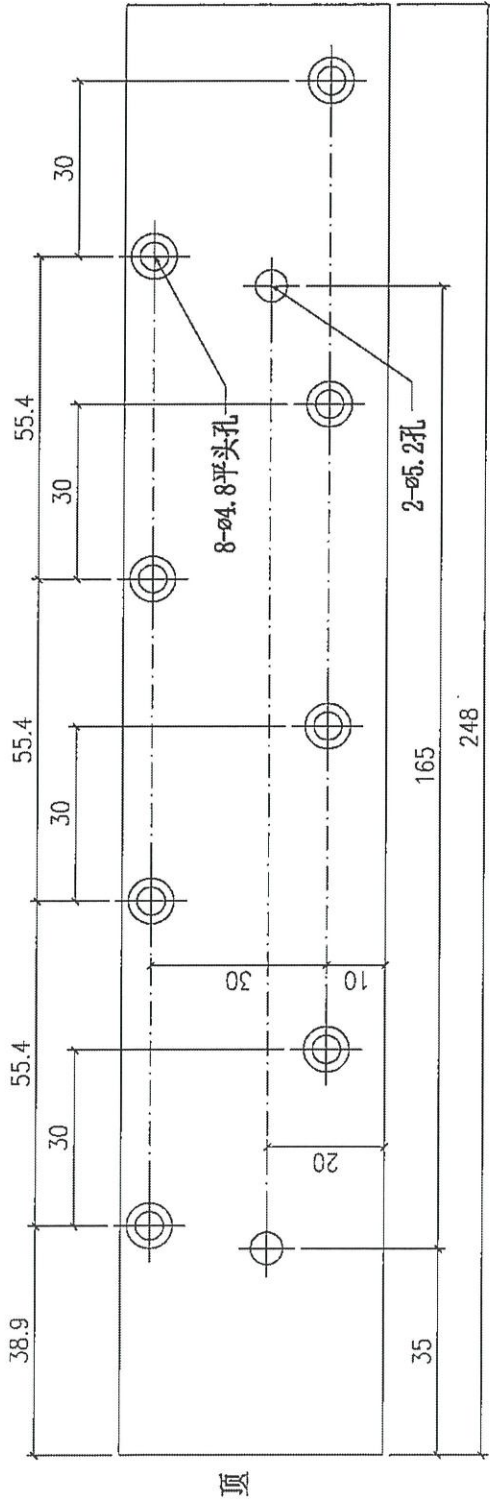
用 FZ 4601 TH-GR14.

FOR: 2021-A12" TH窗用

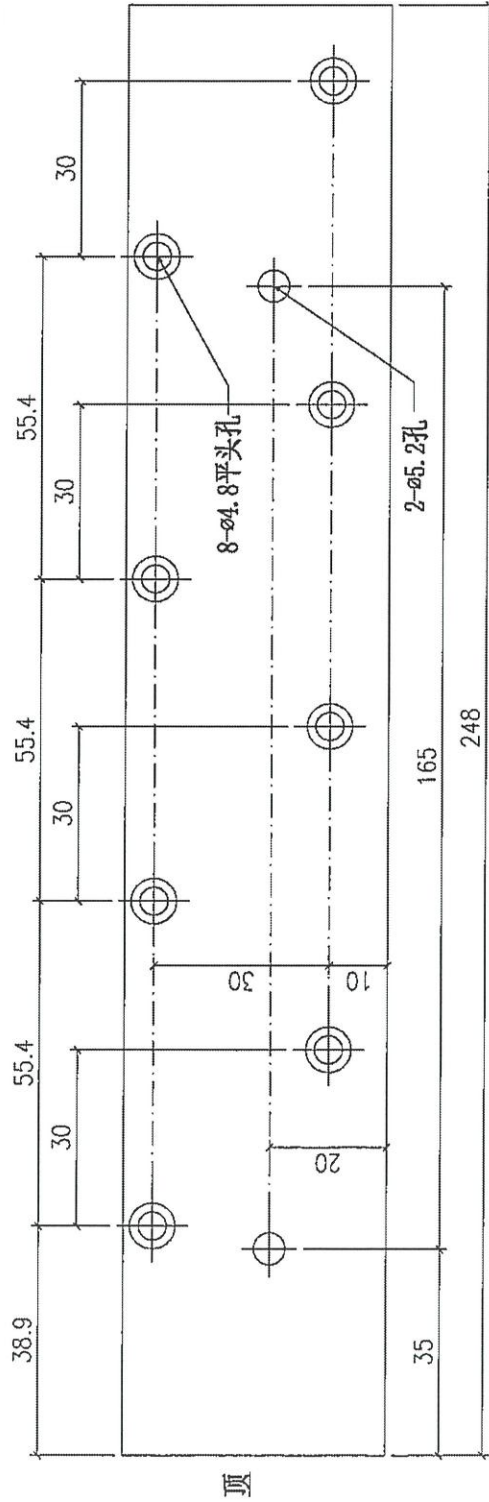
Remarks:		Checked: -		Description: TH窗框不锈钢加力巴		QTY: 6		Delivery to Rev. Date		Amendments	
Project Name: 康城11期		Date: 22-12-2014		Material: 15x5mm不锈钢		Tolerance: ±0.5		Factory			
Shop Drawing No. PRE-CAST ALUM. WINDOW & LOUVRE		Drawn: W.E.X		Finish: 304#不锈钢		Projection:		Site		Assembly No. J858-LM08	
Project No. J858		Date: 17-02-2020								Rev. 1	



FABRICATION DRAWING



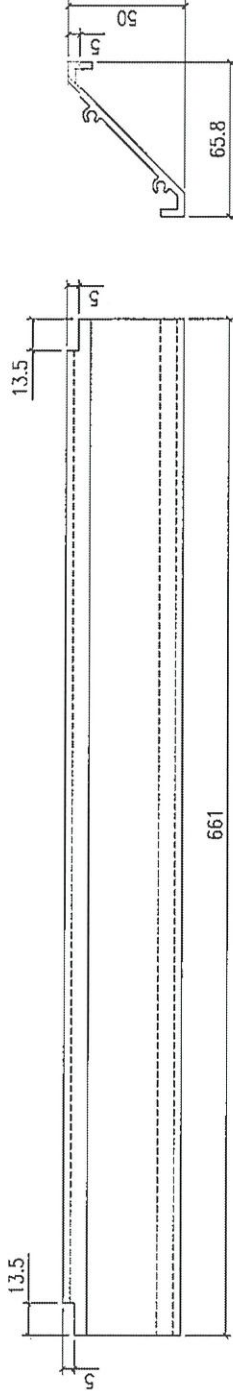
图号: J858-LM10R
数量: 146只



图号: J858-LM10L
数量: 146只

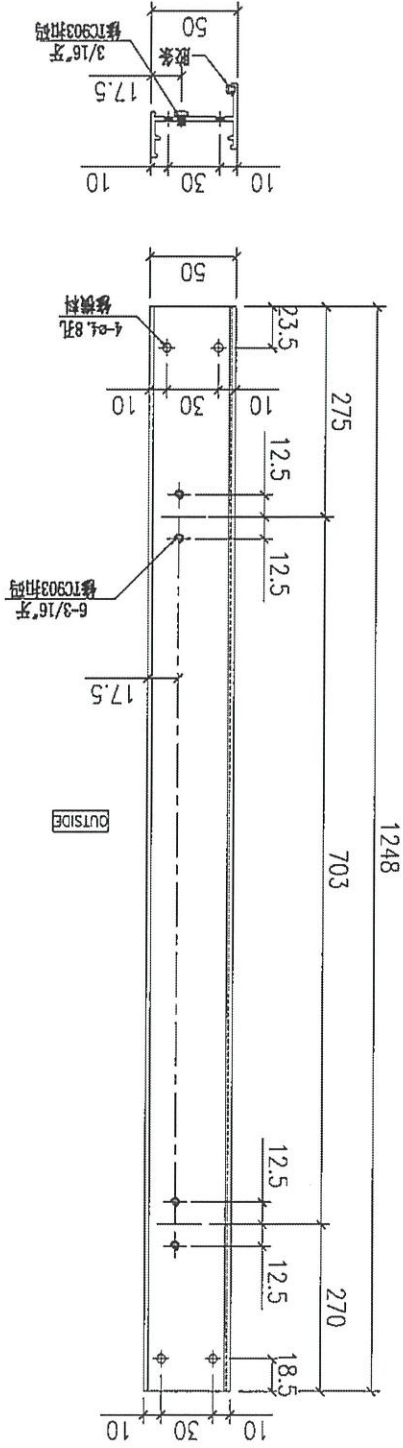
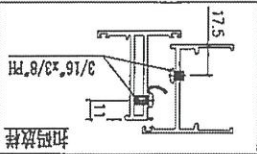
Remarks:		Checked: -		Description: 百叶巴		QTY: -		Delivery to Rev.:		Date:	
Project Name: 康城11期		Date: 22-12-2014		Material: B09056		Tolerance: ±0.5		Factory			
Shop Drawing No. PRE-CAST ALUM. WINDOW & LOUVRE		Drawn: W.L.X		Finish: PWFZ		Projection:		Site		Assembly No. J858-LM10	
Rev. -		Date: 17-02-2020								Rev. -	

FABRICATION DRAWING



Remarks:		Checked: KEN		Description: 百叶片		QTY: 584		Delivery to Rev. Date		Amendments	
Project Name: 康城二期		Date: 22-12-2014		Material: 6061-T5		Tolerance: ±0.5		Factory			
Shop Drawing No. PRE-CAST ALUM. WINDOW & LOUVRE		Drawn: W.E.X		Finish: PVF2		Projection:		Site		Assembly No. X86248-01	
Rev. --		Date: 22-12-2014								Rev. --	

FABRICATION DRAWING

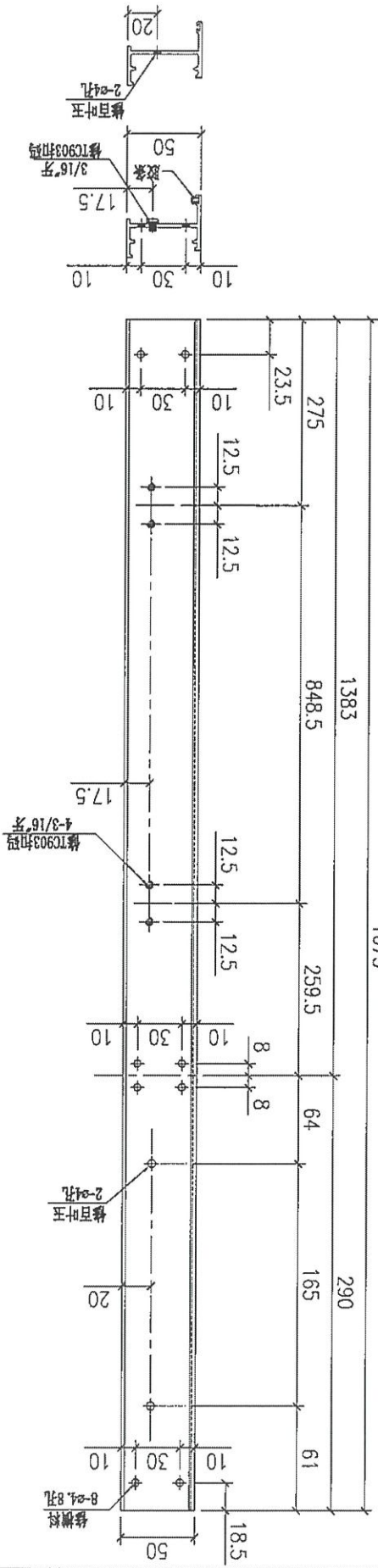
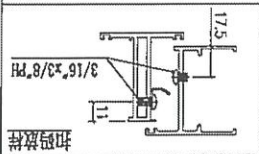


Remarks:		Created: KEN		Description: 生边企		Delivery to Rev.:		Date:		Amendments:	
Project No. J858		Date: 22-12-2014		Material: 6061-1905		Tolerance: ±0.5		Site: (Factory)		Rev.:	
Shop Drawing No. 康城二期		Drawn: W.E.X		Finish: PM1		QT: 100		Assembly No. XB6251-02		Rev.:	
Project Name: PRE-CAST ALUM. WINDOW & LOUVRE		Date: 22-12-2014		Material: 6061-1905		Tolerance: ±0.5		Site: (Factory)		Rev.:	
Shop Drawing No. 康城二期		Drawn: W.E.X		Finish: PM1		QT: 100		Assembly No. XB6251-02		Rev.:	
Project Name: PRE-CAST ALUM. WINDOW & LOUVRE		Date: 22-12-2014		Material: 6061-1905		Tolerance: ±0.5		Site: (Factory)		Rev.:	
Shop Drawing No. 康城二期		Drawn: W.E.X		Finish: PM1		QT: 100		Assembly No. XB6251-02		Rev.:	

MIDI Aluminium Fabricator Ltd.



FABRICATION DRAWING

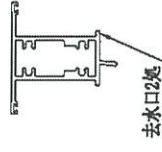
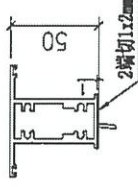
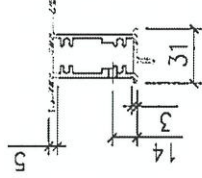
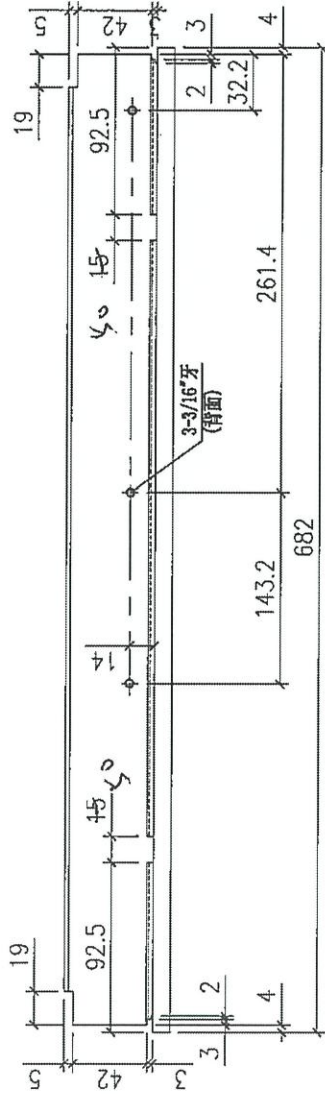


Remark:	Checked: NEN		Description: 生边企	QTY: 9+1	Delivery to Rev. (Factory)	Date	Amendments
Project No. J858	Date: 22-21-22	Material: X-ETW	Material: 51-1909	Tolerance: ±0.5	Site	Assembly No.	Rev. -
Shop Drawing No. 康城二期	Drawn: W	Finish: 1102-21-22	Finish: PMF2	Projection: 1:1			
PRE-CAST ALUM. WINDOW & LOUVRE	Rev. -						

MIDI Aluminium Fabricator Ltd.



FABRICATION DRAWING

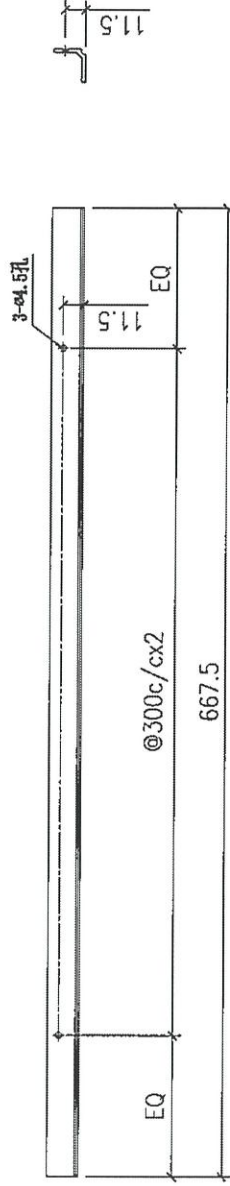


先水孔
W.M.P.S = 7

Remarks:		Checked: -	Description: 生中横	QTY: 146	Delivery to Rev.	Amendments	
Project Name: 康城11期		Date: -	Material: 6061-T5	Tolerance: ±0.5	Date		
Shop Drawing No. PRE-CAST ALUM. WINDOW & LOUVRE		Drawn: W.E.X	Finish: PVF2	Projection:	Site		
Project No. J858		Date: 15-02-2020			Assembly No. X86250-01	Rev. -	

BD

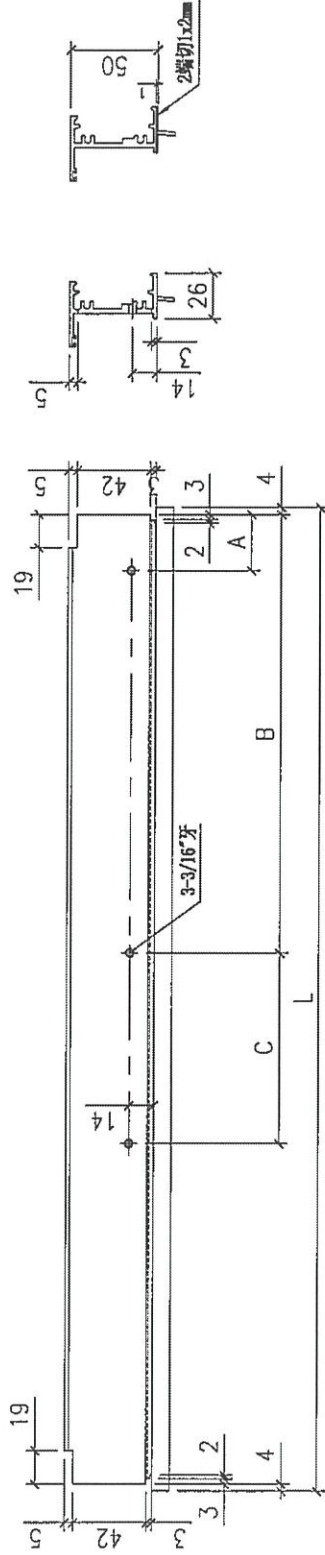
FABRICATION DRAWING



Remarks:		Checklist: -		Description: 上生下梗中横		QTY: 146		Delivery to Rev. Date		Amendments	
Project Name: 康城11期		Date: -		Material: 6061-T5		Tolerance: ±0.5		Factory			
Shop Drawing No. PRE-CAST ALUM. WINDOW & LOUVRE		Drawn: W.E.X		Finish: PVF2		Projection:		Site		Assembly No. X86249-01	
Project No. JB58		Date: 15-02-2020						Rev.		Rev.	



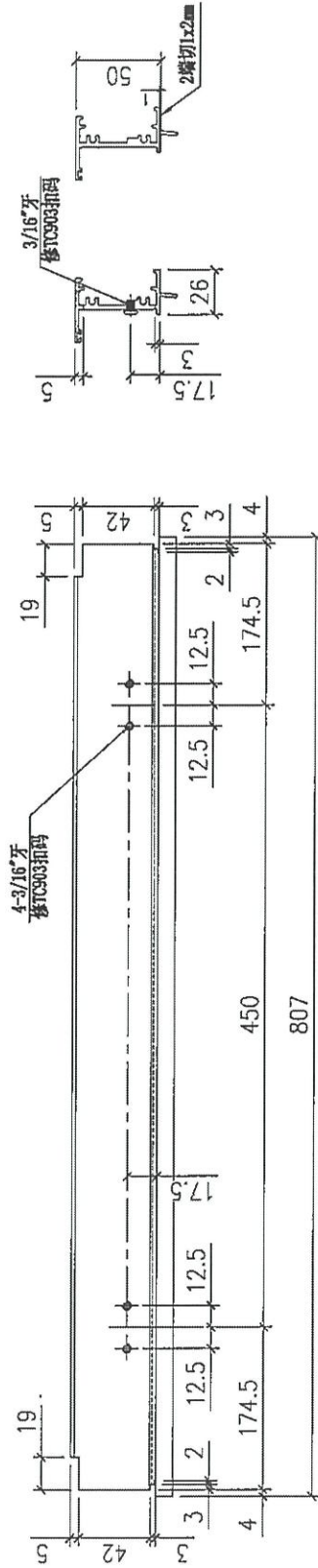
FABRICATION DRAWING



3	X86252-01C	382	35	259.2	44.5	12"	1
2	X86252-01B	582	32.2	261.4	143.2	16"	50
1	X86252-01A	407	35	259.2	44.5	12"	49
序号	部件编号	L	A	B	C	扇撑	数量

Remarks:		Checked: -		Description: 生顶横		Delivery to Rev.		Date		Amendments	
Project Name: 康城11期		Date: -		Material: 6061-T5		Factory					
Shop Drawing No. PRE-CAST ALUM. WINDOW & LOUVRE		Drawn: W.E.X		Finish: PVF2		Tolerance: ±0.5		Site		Assembly No. X86252-01	
Project No. J858		Date: 15-02-2020		Rev. -		Projection:		Rev.		-	

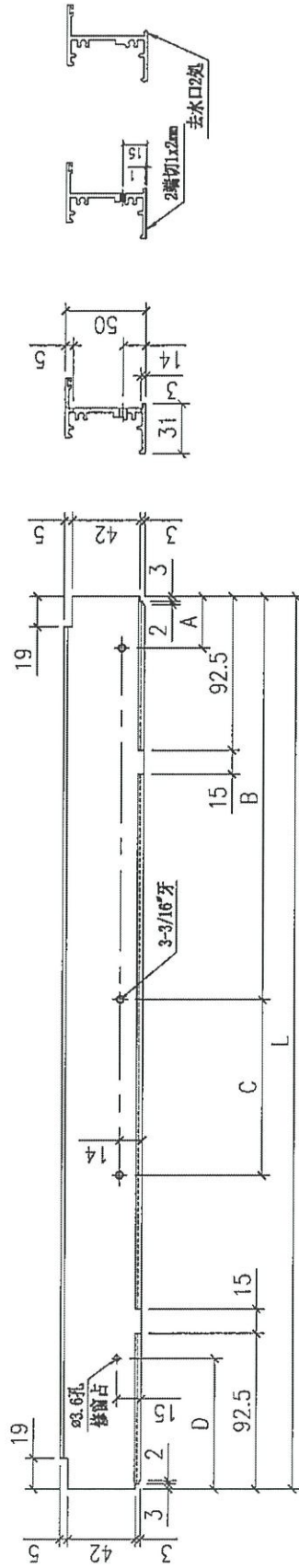
FABRICATION DRAWING



Remarks:	Checked: -	Description: 生顶横	QTY: 3	Delivery to Rev.	Date	Amendments
Project Name: 康城II期	Date: -	Material: 6061-T5	Tolerance: ±0.5	Factory		
Shop Drawing No. PRE-CAST ALUM. WINDOW & LOUVRE	Drawn: W.E.X	Finish: PVF2	Projection:	Site	Assembly No. X86252-02	Rev. -
	Date: 15-02-2020					



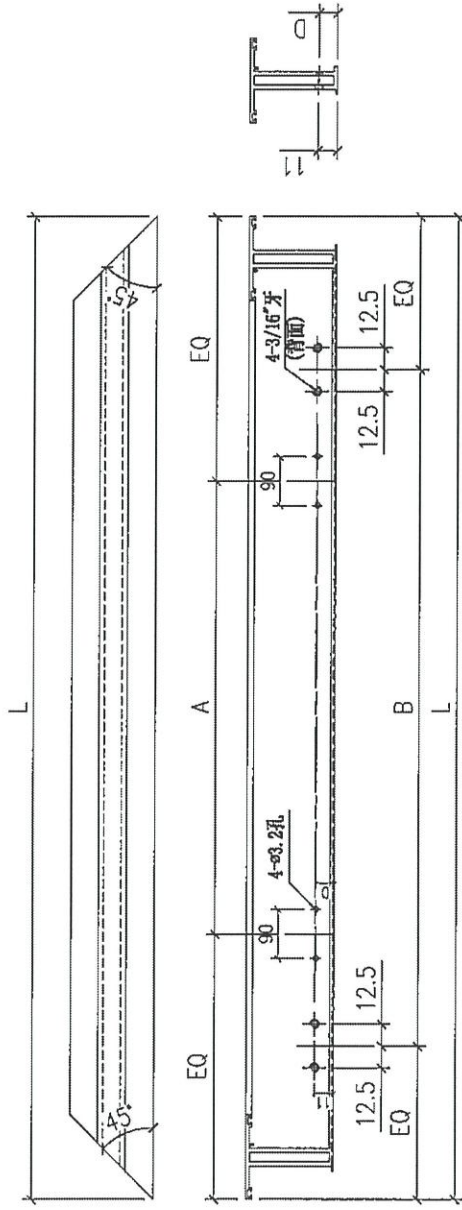
FABRICATION DRAWING



序号	部件编号	L	A	B	C	D	数量
4	X86253-01D	674	32.2	261.4	143.2	75	16"
3	X86253-01C	374	35	259.2	44.5	50	12"
2	X86253-01B	574	32.2	261.4	143.2	75	16"
1	X86253-01A	399	35	259.2	44.5	75	12"

Remarks:	Checked: -	Description: 上底横	QTY: -	Delivery to: Factory	Rev.:
Project Name: 康城11期	Date: -	Material: 6061-T5	Tolerance: ±0.5	Assembly No. X86253-01	Rev. -
Shop Drawing No. PRE-CAST ALUM. WINDOW & LOUVRE	Drawn: W.L.X	Finish: PVF2	Projection:	Site:	
	Date: 15-02-2020				

FABRICATION DRAWING



2	X86163-05C	1348.5	2x325c/c	848.5	19	146
2	X86163-05B	1203	2x300c/c	703	9.5	100
1	X86163-05A	805	400	450	19	3
序号	部件编号	L	A	B	D	数量
QTY:		Delivery to	Rev.	Date	Amendment's	
Tolerance:		Factory				
±0.5		Site				
Projection:		Assembly No. X86163-05				
Rev.		Rev.				

Remarks:

Checked: -

Date: -

Drawn: W.F.X

Date: 15-02-2020

Project No. J858

Rev. -

Project Name: 康城II期

PRE-CAST ALUM. WINDOW & LOUVRE

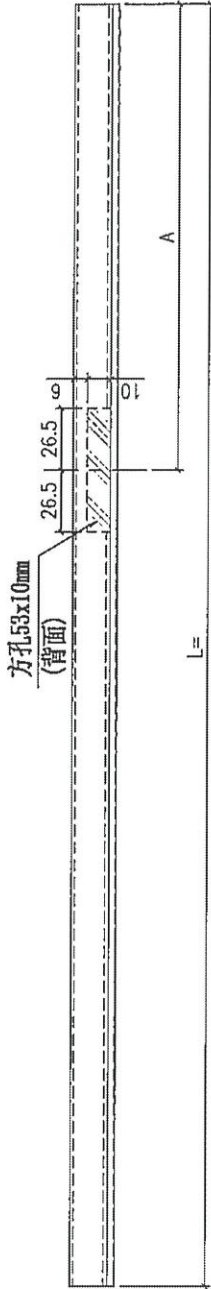
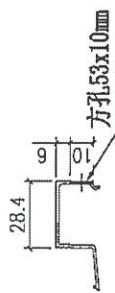
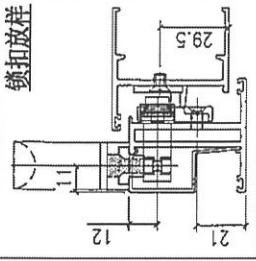
Description: 窗玉料

Material: 6061-T5

Finish: PVF2



FABRICATION DRAWING

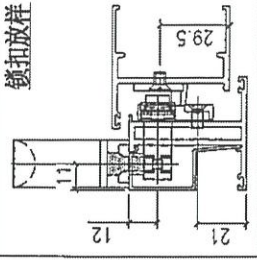


2	X86164-02B	1284.5	181	146
1	X86164-02A	-	-	-
序号	部件编号	L	A	数量

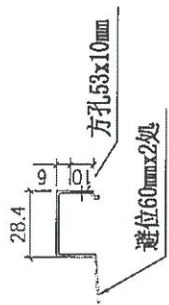
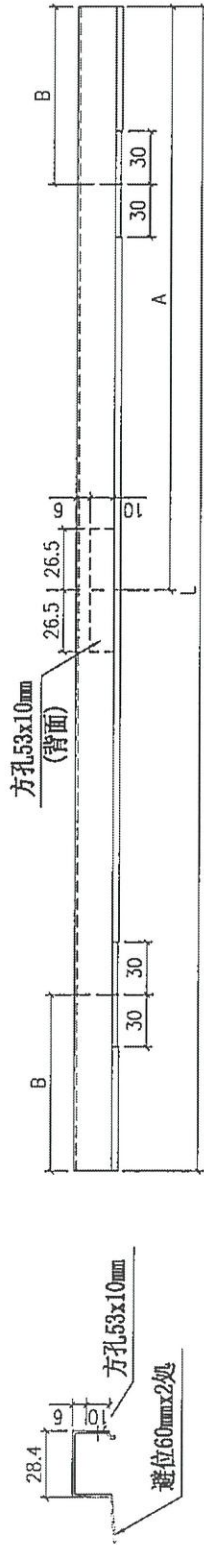
Remarks:		Checked: KEN		Description: 6mm玻璃线		Delivery to Rev.		Date		Amendments	
Project Name: 康城11期		Date: 22-12-2014		Material: 6061-T5		Tolerance: ±0.5		Tolerance: ±0.5		Rev.	
Ship Drawing No. PRE-CAST ALUM. WINDOW & LOUVRE		Drawn: W.E.X		Finish: PVF2		Projection:		Site		Assembly No. X86164-02	
Project No. JB58		Date: 22-12-2014		Rev. -		Qty: -		Factory		Rev. -	

(Handwritten mark)

FABRICATION DRAWING



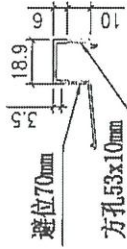
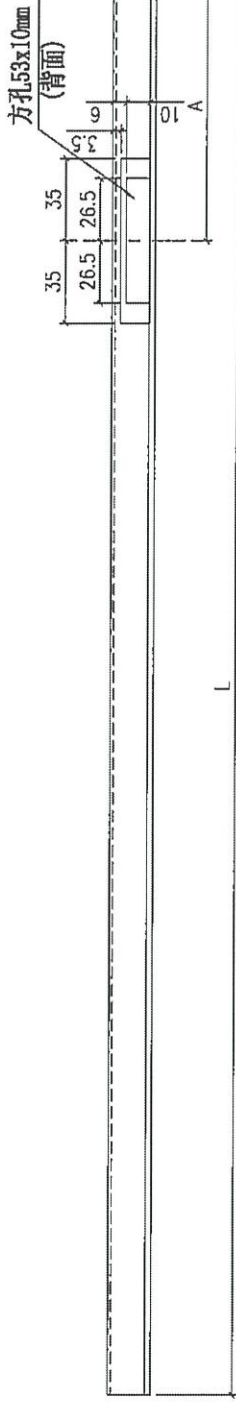
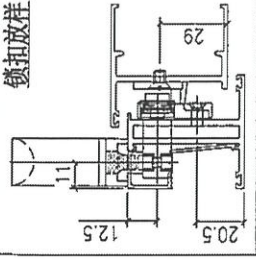
3/27
 60mm 2处



1	X86164-03A	709	354.5	175	3
序号	部件编号	L	A	B	数量

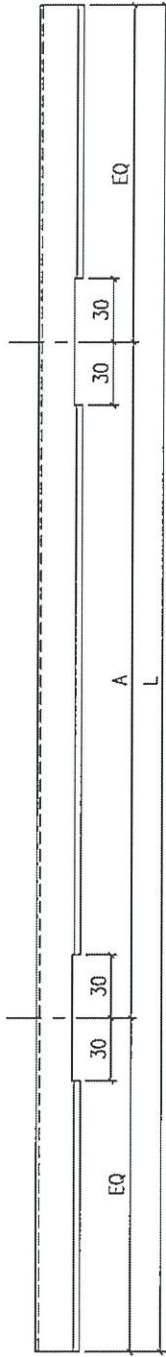
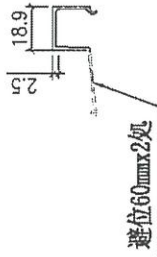
Remarks:	Checked: KEN		Description: 6mm玻璃线		QTY: -	Delivery to Rev.	Date	Amendments
Project Name: 康城11期	Project No. J858	Date: 22-12-2014	Material: 6061-T5	Tolerance: ±0.5	Factory			
Shop Drawing No. PRE-CAST ALUM. WINDOW & LOUVRE	Rev. -	Drawn: W.E.X	Finish: PVF2	Projection:	Site	Assembly No. X86164-03	Rev. -	

FABRICATION DRAWING



1	X86171-03A	1139	181	100
序号	部件编号	L	A	数量
Amendments				
Delivery to	Rev.			
Factory				
Site				
Assembly No.	X86171-03	Rev.		
Checked:	KEN	Description:	13.52mm玻璃线	
Date:	22-12-2014	Material:	6061-T5	
Drawn:	W.E.X	Finish:	PVF2	
Date:	22-12-2014			
Project No.	J858			
Rev.	-			
Shop Drawing No.	PRE-CAST ALUM. WINDOW & LOUVRE			
Remarks:				

FABRICATION DRAWING



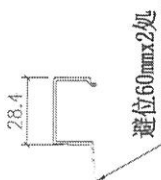
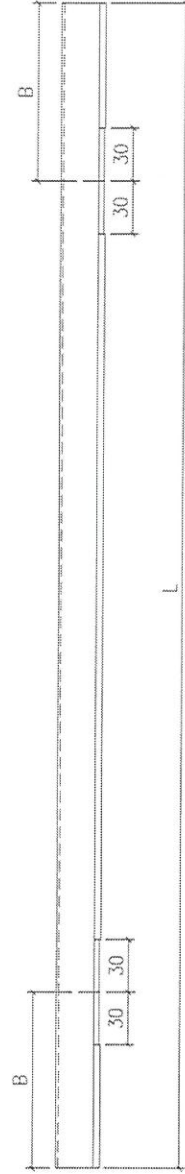
3	X86171-04C	284	70	1
2	X86171-04B	309	75	49
1	X86171-04A	484	120	50
序号	部件编号	L	A	数量

Remarks:		Checked: KEN		Description: 13.52mm玻璃线		QTY: -		Delivery to Rev.		Date		Amendments	
Project Name: 康城11期		Date: 22-12-2014		Material: 6061-T5		Tolerance: ±0.5		Factory					
Shop Drawing No. PRE-CAST ALUM. WINDOW & LOUVRE		Drawn: W.L.X		Finish: PVF2		Projection:		Site		Assembly No. X86171-04		Rev. -	

MIDI Aluminium Fabricator Ltd.



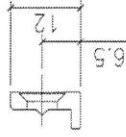
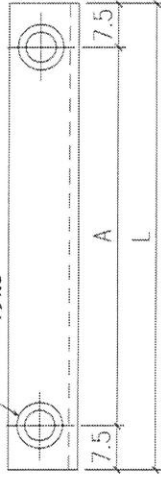
FABRICATION DRAWING



1	X86164-04A	584	145	146
序号	部件编号	L	B	数量

Remarks:		Checked: KEN		Description: 6mm玻璃线		QTY: --		Delivery to: (Factory)		Rev. 1		Date: 01-08-22		Amendments	
Project Name: 康城11期		Date: 22-12-2014		Material: 6061-T5		Tolerance: ±0.5		Site		Assembly No. X86164-04		Rev. --			
Shop Drawing No. PRE-CAST ALUM. WINDOW & LOUVRE		Drawn: W.E.X		Finish: PVF2		Projection:									
Project No. J858		Date: 22-12-2014													

2-φ5.2平头孔



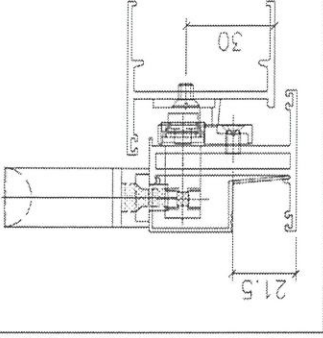
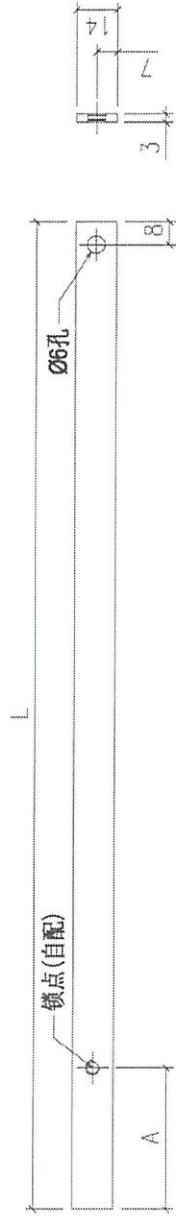
编号	L	A	数量
J858-LM05A	80	65	744

Remarks:		Checked: --		Description: 拉巴用压板1		QTY: --		Delivery to: (Factory)		Rev: 1		Date: 17-08-22		Amendments	
Project Name: 康城11期		Project No: J858		Material: X86154		Tolerance: ±0.5		Site: (Factory)		Assembly No:		Rev: 1		J858-LM05	
Ship Drawing No: PRE-CAST ALUM. WINDOW & LOUVRE		Date: 22-12-2014		Finish: PVF2		Projection: (Symbol)		Site: (Symbol)		Assembly No:		Rev: 1		MIDI Aluminium Fabricator Ltd.	
		Drawn: W.L.X													
		Date: 17-02-2020													

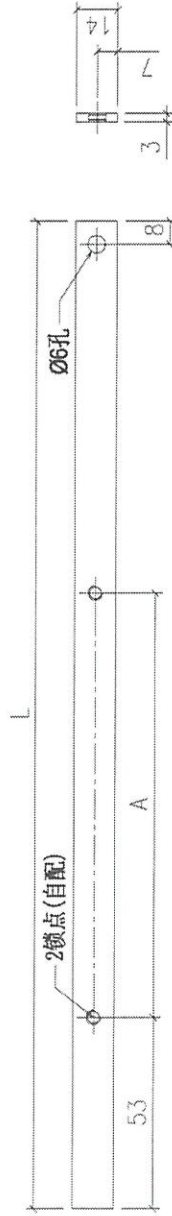


FABRICATION DRAWING

序号	部件编号	L	A	数量
1	X86237-01A	292.5	47	3
2	X86237-01B	279.5	53	3
3	X86237-01C	123	47	246



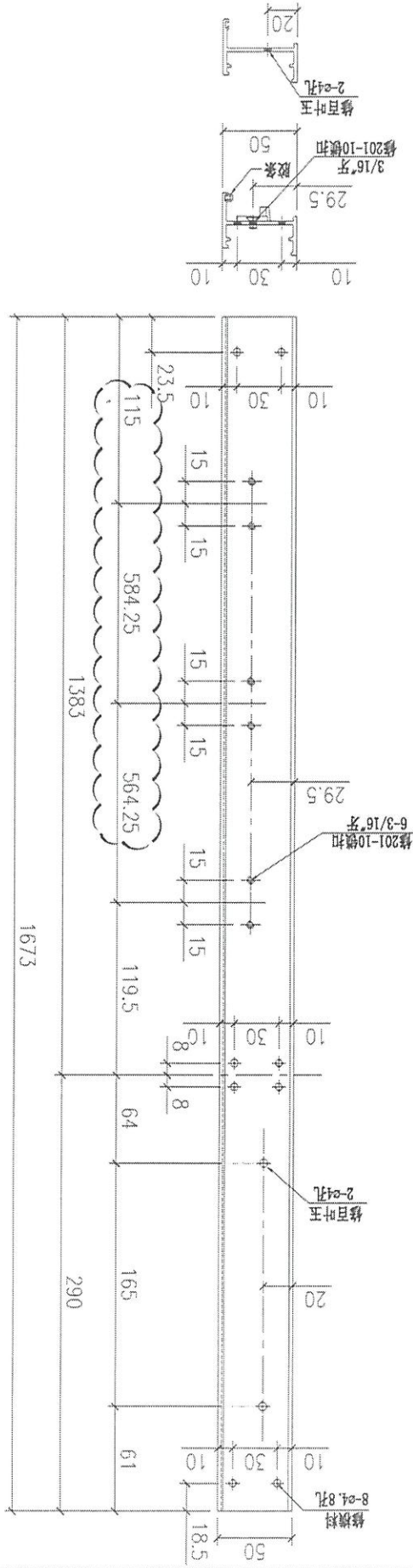
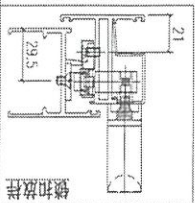
序号	部件编号	L	A	数量
1	X86237-01E	867	491.5	100
2	X86237-01F	1012.5	564.25	146



Remarks:		Checked: --		Description: 拉巴加工图		Delivery to Rev. 1		Date 17-08-22		Amendments	
Project Name: 康城11期		Project No. J858		Material: 14x3mm铝扁巴		Tolerance: ±0.5		Assembly No. X86237-01		Rev. 1	
Shop Drawing No. PRE-CAST ALUM. WINDOW & LOUVRE		Date: 22-12-2014		Finish: PVF2		Projection:		Site			
		Drawn: W.F.X									
		Date: 17-02-2020									

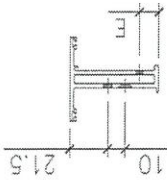
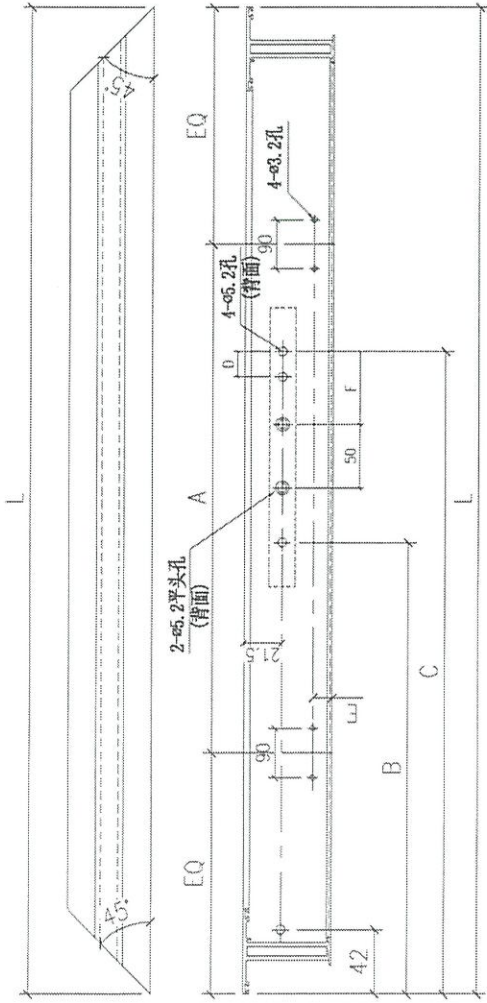
2

FABRICATION DRAWING

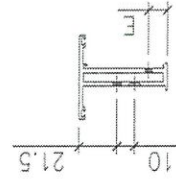
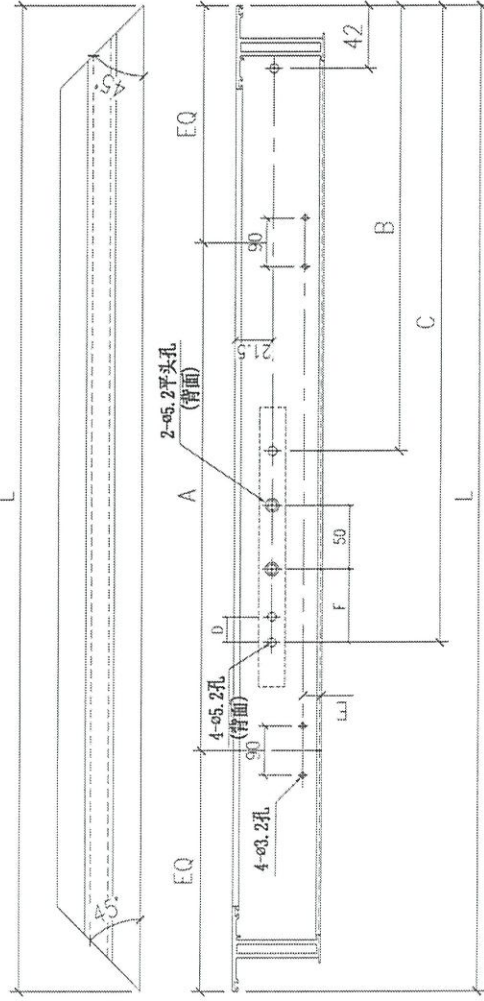


Remarks:		Checked: KEN		Description: 生边企		QTY: 146		Delivery to: factory		Rev: 1		Date: 17-08-22		Amendments:	
Project No. J858		Date: 22-12-2014		Material: 6061-T5		Tolerance: ±0.5		Site: factory		Assembly No. X86251-05		Rev. 1		MIDI Aluminium Fabricator Ltd.	
Project Name: 康城II期		Drawn: W.F.X.		Finish: PWF2		Projection:		Project: 146		Rev. 1		Date: 17-08-22		MIDI Aluminium Fabricator Ltd.	
Ship Drawing No. PRE-CAST ALUM. WINDOW & LOUVRE		Date: 22-12-2014		Material: 6061-T5		Tolerance: ±0.5		Site: factory		Assembly No. X86251-05		Rev. 1		MIDI Aluminium Fabricator Ltd.	

FABRICATION DRAWING



2	X86163-04LE	680	340	112	248.5	13.5	19	55	16"	146
1	X86163-04LA	580	290	112	248.5	13.5	9.5	55	16"	50
序号	部件编号	L	A	B	C	D	E	F	扇撑	数量



2	X86163-04RE	680	340	112	248.5	13.5	19	55	16"	146
1	X86163-04RA	580	290	112	248.5	13.5	9.5	55	16"	50
序号	部件编号	L	A	B	C	D	E	F	扇撑	数量

Remarks:

Project Name: 威城11期
 Project No.: J858
 Shop Drawing No.: PRE-CAST ALUM. WINDOW & LOUVRE

Check: _____ Date: _____
 Drawn: W.E.X
 Date: 15-02-2020

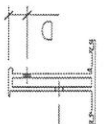
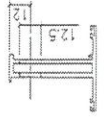
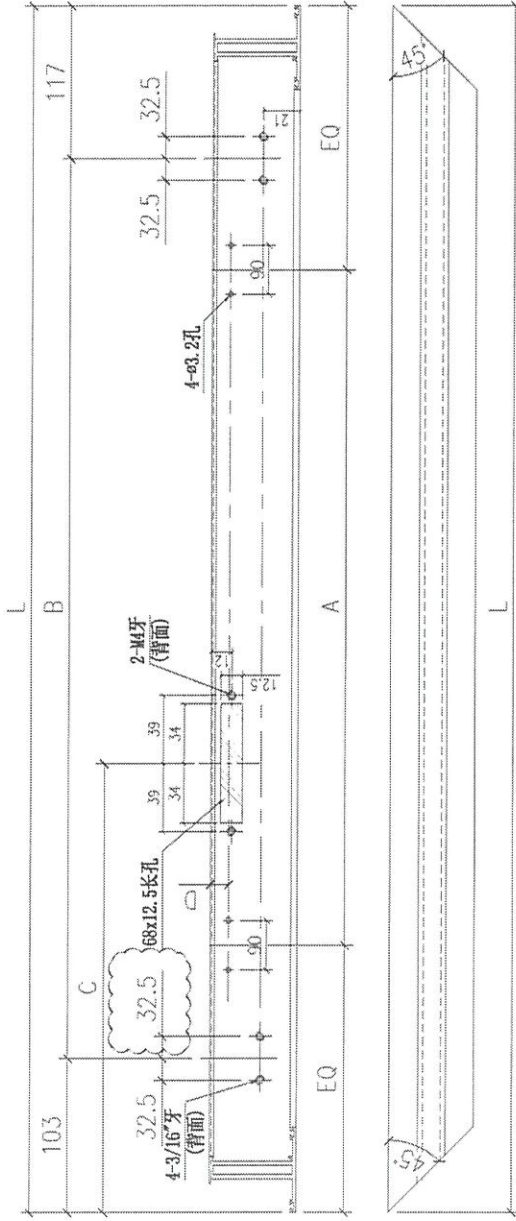
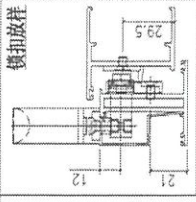
Description: 窗玉料
 Material: 6061-T5
 Finish: PVF2

Tolerance: ±0.5
 Projection:

Delivery: 1 17-08-22
 Factory:

Assembly No.: X86163-04
 Site: _____
 Rev.: 1

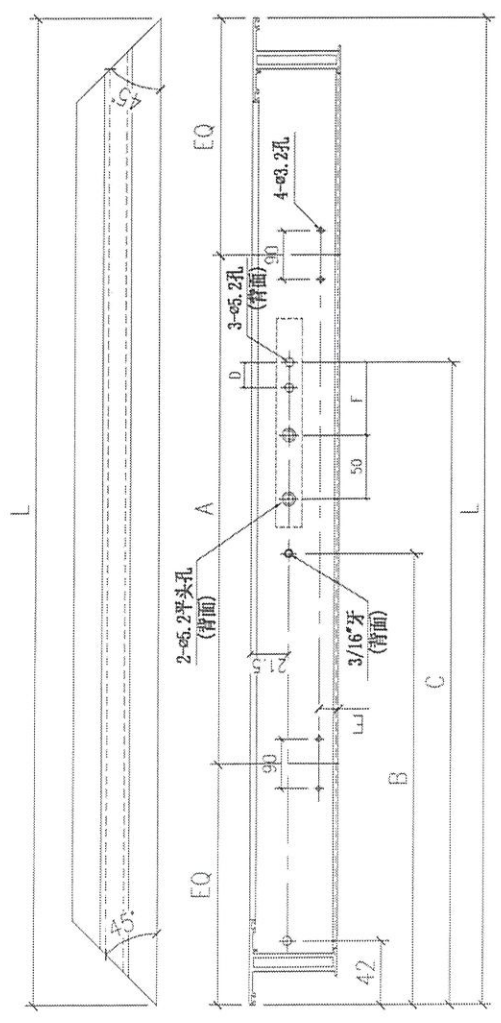
FABRICATION DRAWING



1	X86163-06A	805	400	585	402.5	19	3
序号	部件编号	L	A	B	C	D	数量
01:		Delivery to	Rev.	Amendments			
		(Factory)	2	17-08-22			
Inscription:		窗玉料					
Checked:		---					
Date:		---					
Material:		6061-T5					
Drawer:		W.L.X					
Date:		15-02-2020					
Project No.		J858					
Rev.		---					
Shop Drawing No.		PRE-CAST ALUM. WINDOW & LOUVRE					
Assembly No.		X86163-06				Rev.	
						2	

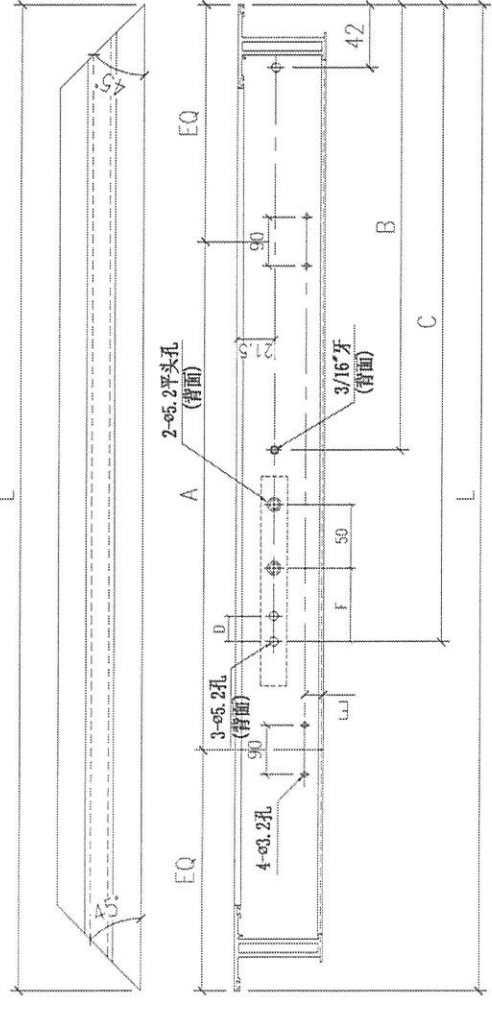
F

FABRICATION DRAWING



3	X86163-08LD	380	140	91.5	203.5	13.5	9.5	35	12"	1
2	X86163-08LC	405	150	91.5	203.5	13.5	9.5	35	12"	49
1	X86163-08LB	428	210	91.5	203.5	13.5	19	35	12"	3
序号	部件编号	L	A	B	C	D	E	F	扇撑	数量

新图



3	X86163-08RD	380	140	91.5	203.5	13.5	9.5	35	12"	1
2	X86163-08RC	405	150	91.5	203.5	13.5	9.5	35	12"	49
1	X86163-08RB	428	210	91.5	203.5	13.5	19	35	12"	3
序号	部件编号	L	A	B	C	D	E	F	扇撑	数量

Remarks:

Checkoff: _____

Date: _____

Drawn: W.L.X

Date: 15-02-2020

Project No. J858

Shop Drawing No. _____

PRE-CAST ALUM. WINDOW & LOUVER

窗玉料

Description: _____

Material: 6061-T5

Finish: PVF2

Delivery to Rev. (Factory)

Tolerance: ±0.5

Projection:

Site: _____

Assembly No. X86163-08

Rev. _____