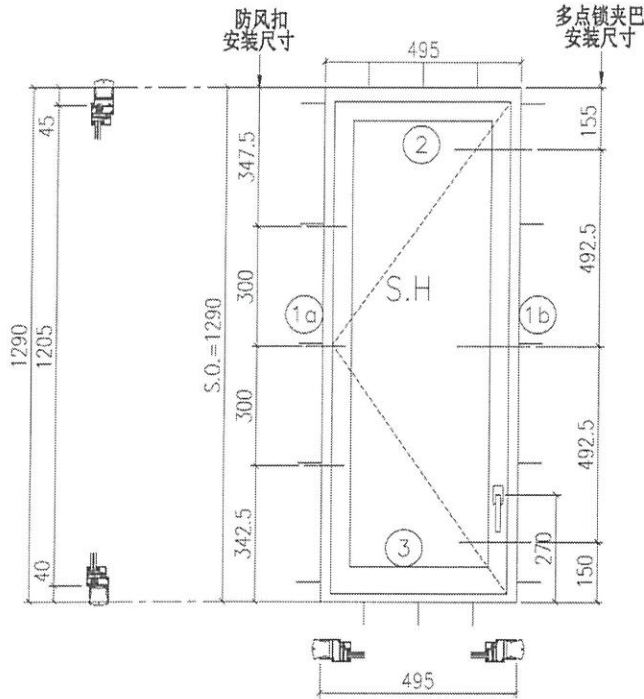


美特铝质有限公司 MIDI Aluminium Fabricator Ltd.	工程號	J858	拆圖	SHAW	2022.02.15
	地盤	康城1期	復核		
名稱	50係沙窗	顏色	批准		



- 注:
- 1) 生窗底料需開15mm去水缺口2處;
 - 2) 窗玉搭位6mm;
 - 3) 滴水線比窗玉每頭長1mm;
 - 4) TH窗需裝3組TC903扣碼;
 - 5) 用東坡產2021-A12"扇撐;
 - 6) 安裝201-10多点锁夹巴3个;
 - 7) 框橫料兩端需切1x2mm切口打磨;
 - 8) 摩尔16个;

参考J858-ST3/SA05详细图

序号	料号	名称	出荷	长度(mm)	支/幅	加工说明
1a	X86157	边企料		1290	1	X86157-02L
1b	X86157	边企料		1290	1	X86157-03R
2	X86161	生顶横 (空腔)	避位	437	1	X86161-01LC
3	X86158	生底横	避位	429	1	X86158-01LB

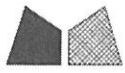
窗玉用料

序号	料号	名称	出荷	长度(mm)	支/幅	加工说明
1a	X86163	窗玉企	45° 斜口	1205	1	X86163-02B
1b	X86163	窗玉企	45° 斜口	1205	1	X86163-03RB
2a	X86163	窗玉横	45° 斜口	435	1	X86163-01LC
2b	X86163	窗玉横	45° 斜口	435	1	X86163-01RC
3a	X86171	窗玉玻璃线企	直口	1141	1	X86171-01A
3b	X86171	窗玉玻璃线企	直口	1141	1	X86171-02D
4a	X86171	窗玉玻璃线横	直口	339	1	X86171-02B
4b	X86171	窗玉玻璃线横	直口	339	1	X86171-02B
5a	X86153	撞角码	直口	45	1	J858-LM01L
5b	X86153	撞角码	直口	45	1	J858-LM01R
5c	X86153	撞角码	直口	45	2	J858-LM01
6	-	15x13x3铝角	直口	140	8	J858-LM04
7	X86154	拉巴用压板1	直口	80	3	J858-LM05
8	X86155	拉巴用压板2	直口	15	6	J858-LM06
9	X86237	14x3拉巴	直口	120	1	J858-LM07D
10	X86237	14x3拉巴	直口	865	1	J858-LM07H

加工细则

顶留	-	mm		
底留	-	mm		
企料底部开避位		mm		
底横料防水巴锯去		mm		
水线孔在企料---	顶	底		
按装扣码	-			
多点锁夹巴型号:	-			
手柄型号:	-			
限位撑型号:				
T窗最大的开度:				
窗玉搭位数:	-			
窗款	宽度	高度	支/幅	撑长
SLH	435	1205	1	14"

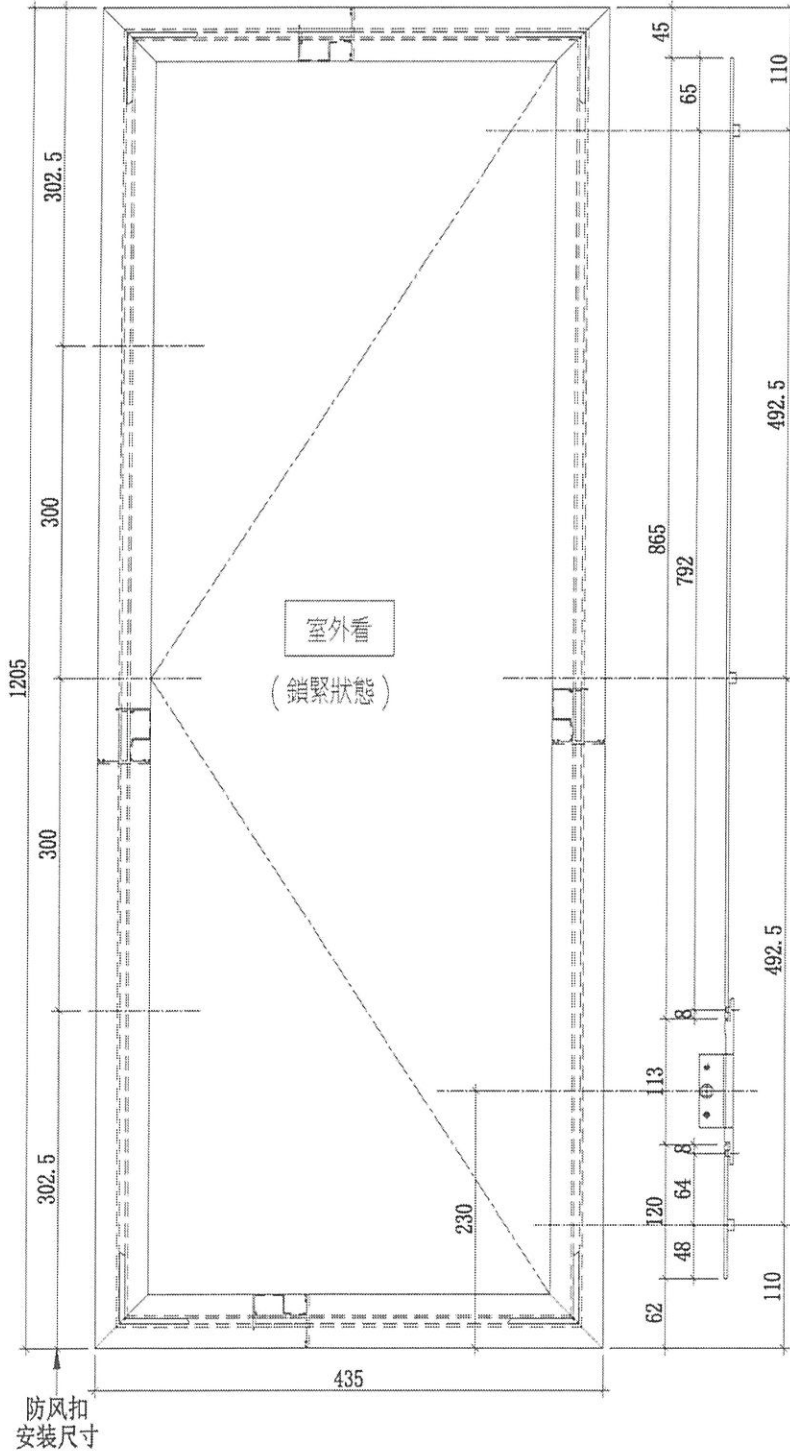
大图版次	宽度	本图版	Rev. 4	
		日期	08/24	
窗号	宽度(W)	高度(H)	幅数	楼层数
T3A-F/B-1	495	1290	4	X2R
图号				



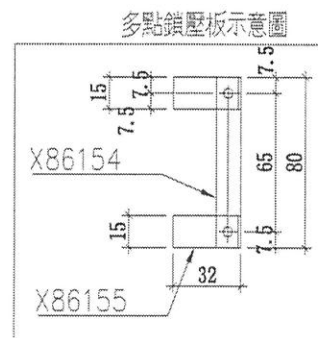
美特鋁質 有限公司
MIDI Aluminium Fabricator Ltd.

工程號 J858 地盤 康城1期

窗号	數量
T2B-D/B-1	49
T3A-F/B-1	49

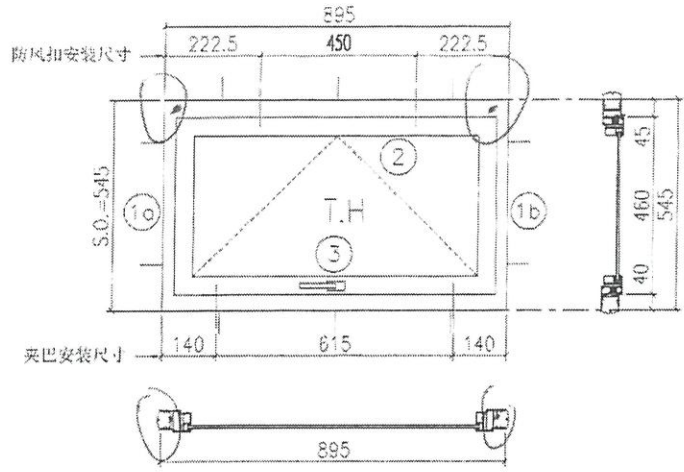


- 1) 采用东城202-06(6.5mm)锁点3个;
- 2) 采用东城2035B锁盒;
- 3) 采用东城TC903防风扣3只;
- 4) 采用东城2021-A14"扇撑;
- 5) 底料常规位置安装50-LC-04A窗拈1只;
- 6) 用13.5mm玻璃线X86171;
- 7) 安装不銹鋼加力巴特制款;
- 8) 玻璃線橫碰企;
- 9) 用东城手柄2017-D2A;



名稱	多點鎖安裝圖	制圖	WYY	2021.11.16	修改	Rev. 2	
材料	-	復核			日期	24/08	
顏色	-	批准			圖號	J858-SA05	

 美特铝质有限公司 MIDI Aluminium Fabricator Ltd.	工程號	J858	拆圖	SHAW	2022.02.15
	地盤	臺灣	復核		
	名稱	50佛紗窗	顏色	批准	



企料的
頂部向下 20mm
開水線孔左右各一

- 注:
- 1) 生窗底料需開15mm去水缺口2處;
 - 2) 窗玉拼位6mm;
 - 3) 滴水線比窗玉每頭長1mm;
 - 4) T.H.窗需裝2組TC903扣碼;
 - 5) 用東城產2021-A14"窗撐;
 - 6) 安裝201-10多点鎖夾巴2個;
 - 7) 框橫料兩端需切1x2mm切口打磨;
 - 8) 摩尔10個;

参考J858-ST2/SA01詳細圖

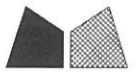
序号	料号	名称	出荷	长度(mm)	支/幅	加工说明
1a	X86157	边企料		545	1	X86157-01L
1b	X86157	边企料		545	1	X86157-01R
2	X86161	生頂橫 (空腔)	避位	837	1	X86161-02
3	X86158	生底橫	避位	829	1	X86158-02

窗玉用料

序号	料号	名称	出荷	长度(mm)	支/幅	加工说明
1a	X86163	窗玉企	45° 斜口	460	1	X86163-01LA
1b	X86163	窗玉企	45° 斜口	460	1	X86163-01RA
2a	X86163	窗玉橫	45° 斜口	835	1	X86163-02A
2b	X86163	窗玉橫	45° 斜口	835	1	X86163-03RA
3	X86164	窗玉玻璃綫企	直口	396	2	
4a	X86164	窗玉玻璃綫橫	直口	739	1	
4b	X86164	窗玉玻璃綫橫	直口	739	1	X86164-01
5a	X86153	撞角碼	直口	45	1	J858-LM01L
5b	X86153	撞角碼	直口	45	1	J858-LM01R
5c	X86153	撞角碼	直口	45	2	J858-LM01
6	-	15x15x2鋁角	直口	110	8	J858-LM04
7	X86154	拉巴用壓板1	直口	80	2	J858-LM05
8	X86155	拉巴用壓板2	直口	15	4	J858-LM06
9a	X86237	14x3拉巴	直口	307.5	1	J858-LM07A
9b	X86237	14x3拉巴	直口	307.5	1	J858-LM07B

加工細則				
頂留	-			mm
底留	-			mm
企料底部開避位				mm
底橫料防水巴錫去				mm
水線孔在企料——	頂	底		
按裝扣碼				
多点鎖夾巴型号:	-			
手柄型号:	-			
限位撐型号:				
T窗最大的開度:				
窗玉搭位數:				
窗款	寬度	高度	隻/幅	撐長
TH	835	460	1	14"
大圖版次	本圖版	Rev. 1		
	日期	03/08		
窗号	寬度(W)	高度(H)	幅数	楼层数
T1B-D/K-1	895	545	45	
X T2B-D/K-1	895	545	49	
X T3B-D/K-1	895	545	49	
圖号				

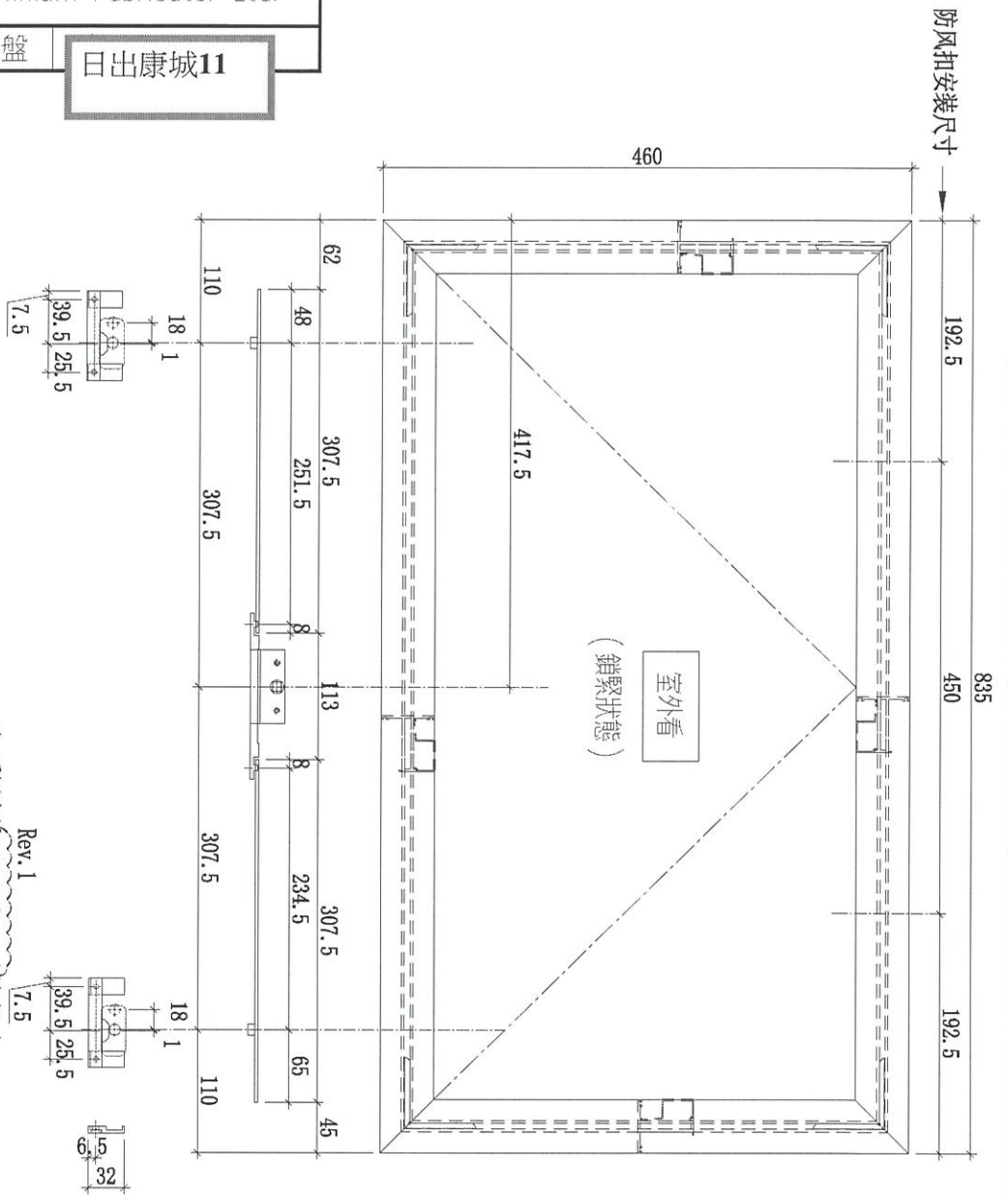
X1隻



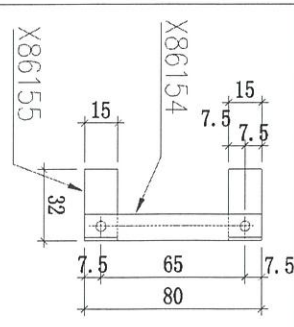
美特鋁質有限公司
MIDI Aluminium Fabricator Ltd.

工程號 J858 地盤 日出康城11

窗号	數量
T1B-D/K-1	45
T2B-D/K-1	49
T3B-D/K-1	49

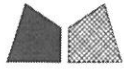


- Rev. 1
- 1) 采用东城202-06(6.5mm)锁点2个;
 - 2) 采用东城2035B锁盒;
 - 3) 采用东城TC903折风扣2只;
 - 4) 采用东城2021-A14'扇撑;
 - 5) 底料常规位置安装50-LC-04A窗扣2只;
 - 6) 用10mm玻璃线X86154;
 - 7) 安装不锈钢加力巴特制款;
 - 8) 玻璃線橫碰全;
 - 9) 用东城手柄2017-D2A;



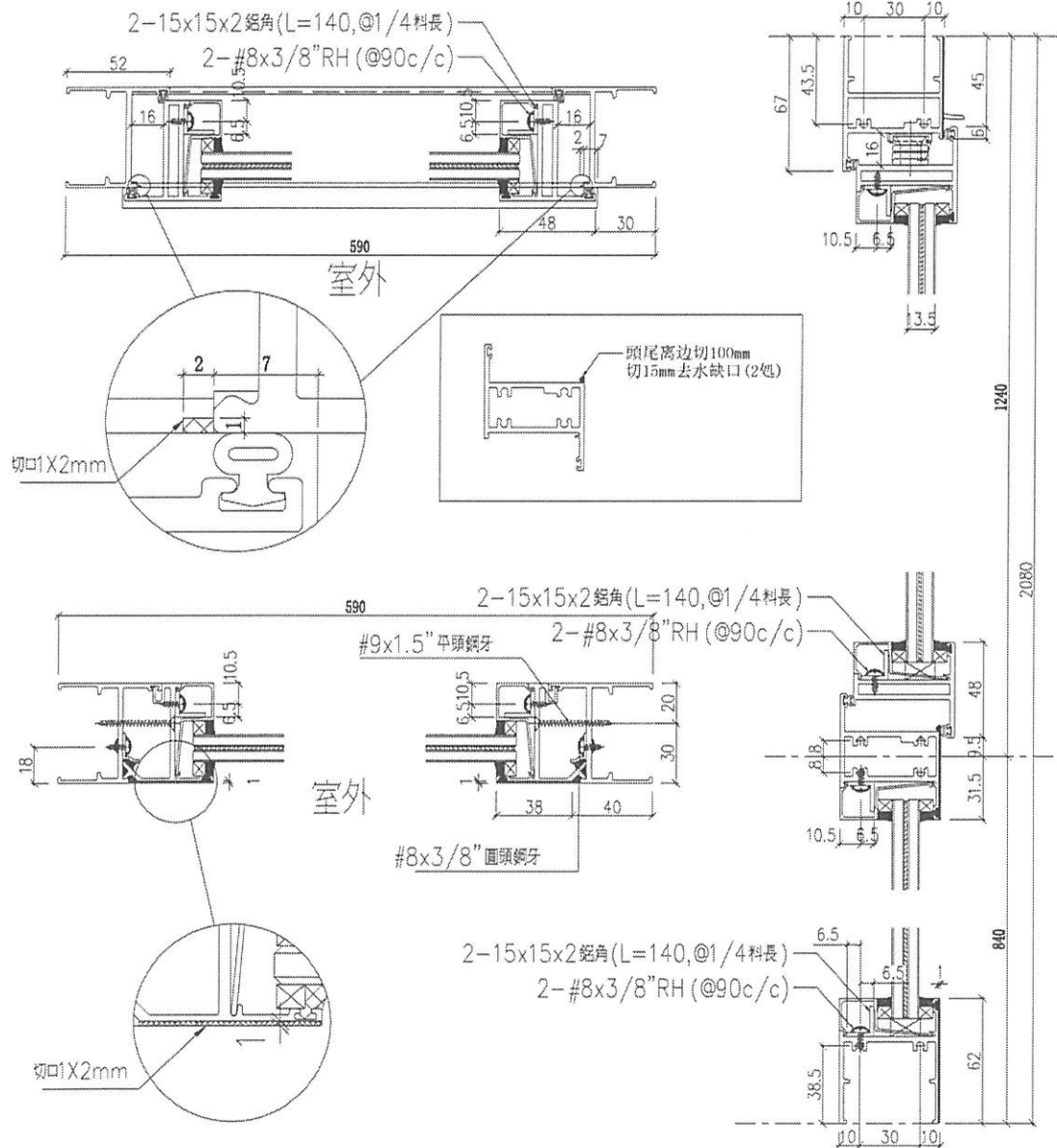
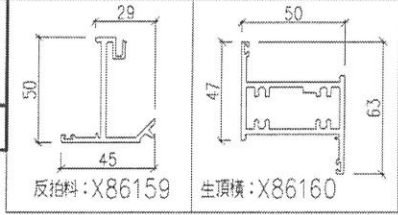
多點鎖壓板示意圖

名稱	多點鎖放樣圖	制圖	SHAW	2022.02.15	修改	Rev. 1	
材料	-	復核			日期	03/08	
顏色	-	批准			圖號	J858-SA01	

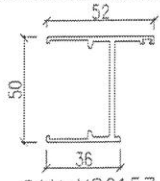
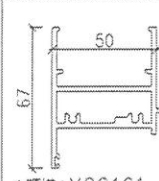
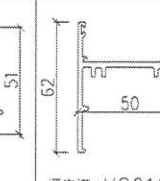
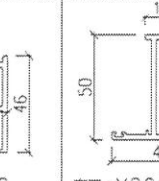
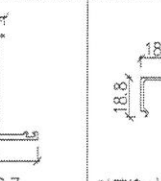
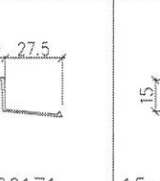


美特鋁質 有限公司
MIDI Aluminium Fabricator Ltd.

工程號 J858 地盤 荃灣

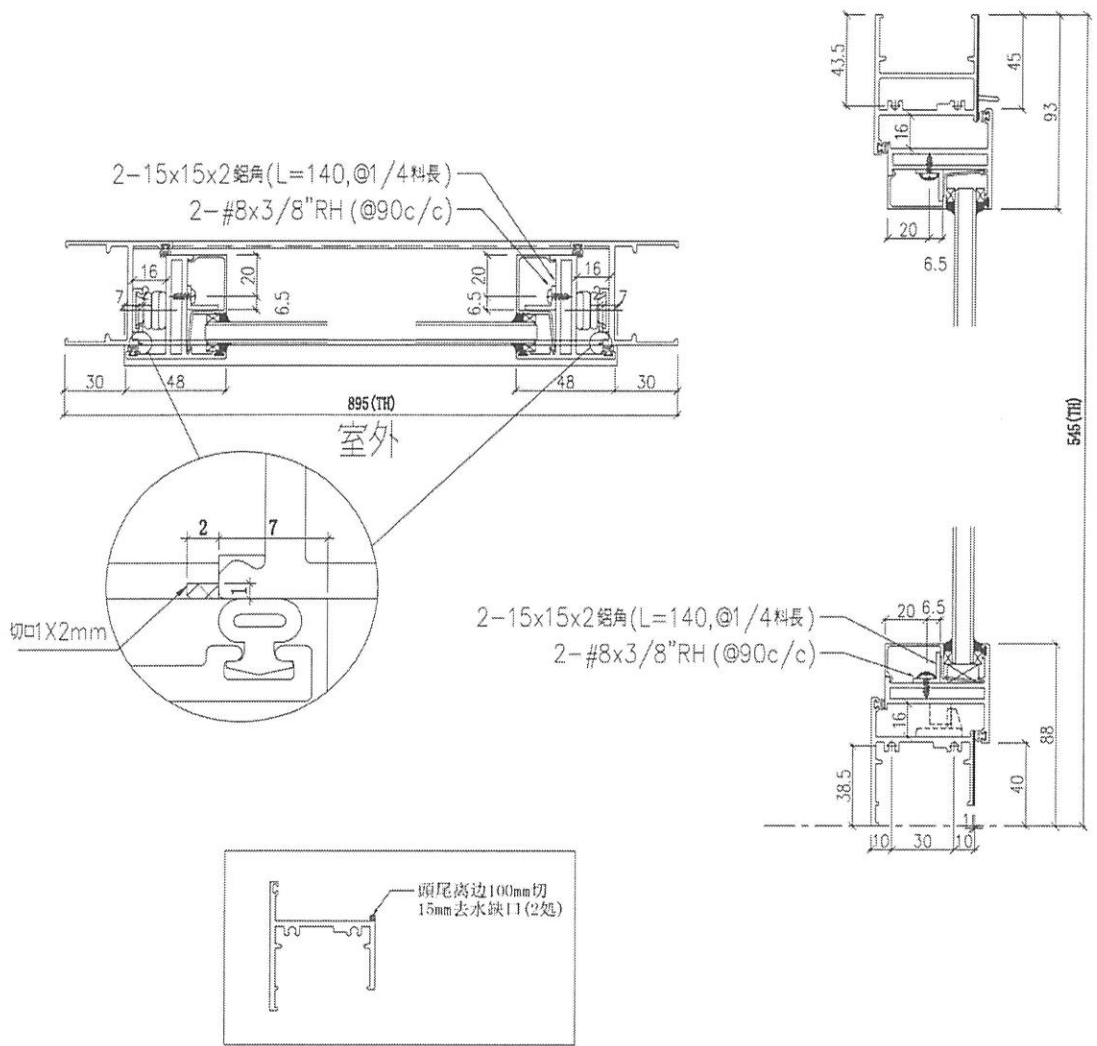


上生下梗窗详细图 (13.52mm夹胶玻璃)

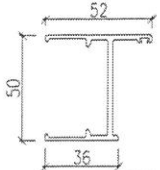
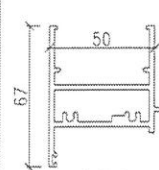
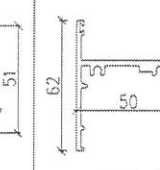
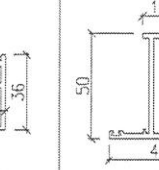
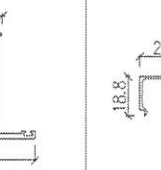
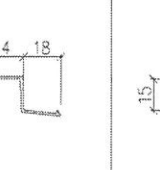
 邊企料: X86157	 生頂橫: X86161	 梗底橫: X86162	 窗玉: X86163	 玻璃線: X86171	 15x15x2mm 鋁角
--	--	--	---	---	---

名稱	50窗節點示意圖	制圖	SHAW	2021.11.16	修改		
材料	-	復核			日期		
顏色	-	批准			圖號	J858-ST1	

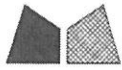
 美特鋁質有限公司 MIDI Aluminium Fabricator Ltd.		
工程號	J858	地盤 臺灣



单TH窗详细图 (10mm玻璃)

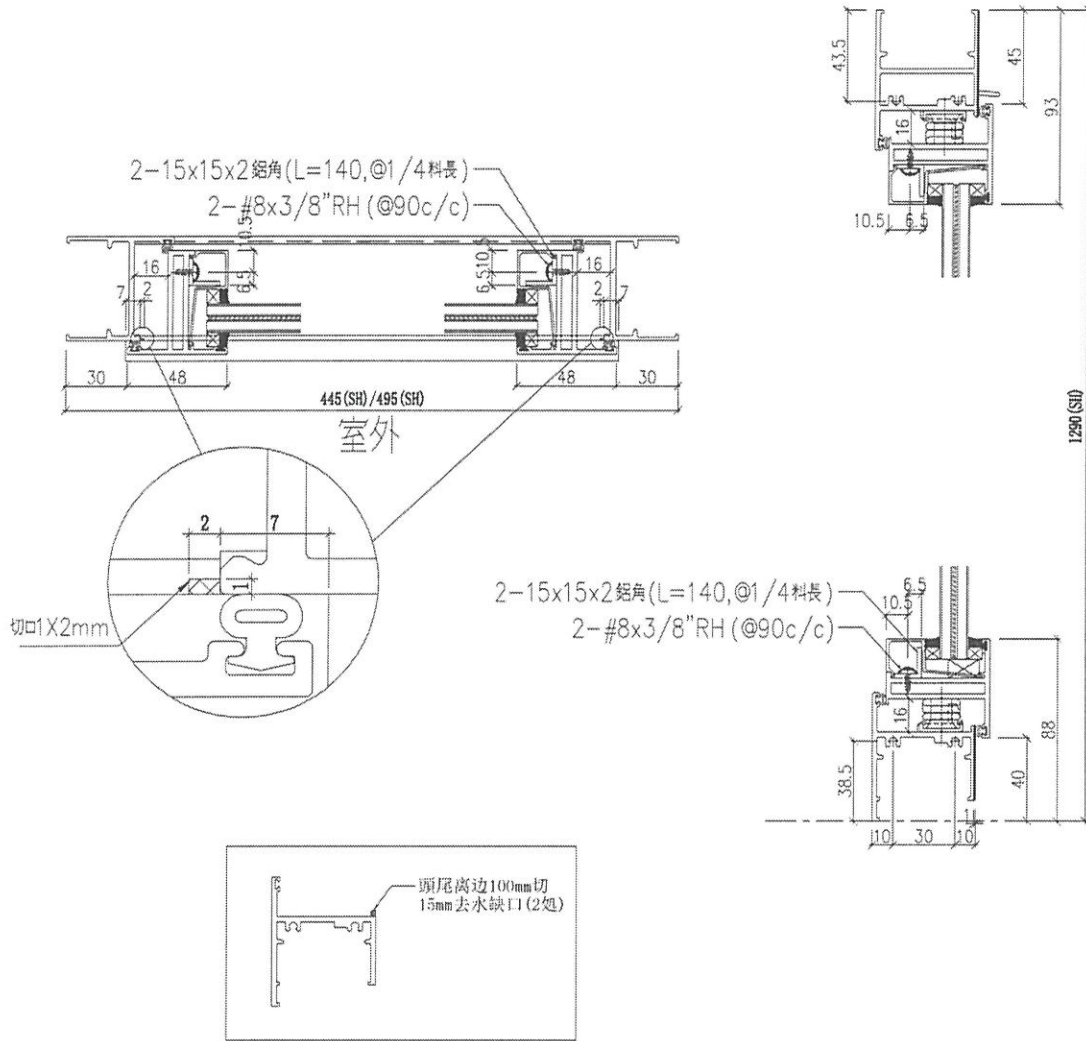
 邊金料: X86157	 生頭橫: X86161	 生底橫: X86158	 窗玉: X86163	 玻璃線: X86164	 15x15x2mm 鋁角
--	--	--	---	---	---

名稱	50窗節點示意圖	制圖	SHAW	2022.02.15	修改		
材料	-	復核			日期		
顏色	-	批准			圖號	J858-ST2	

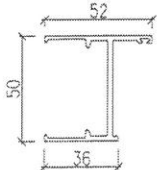
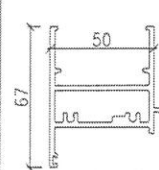
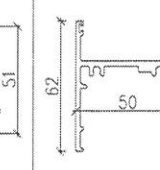
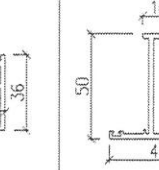
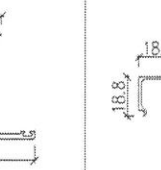
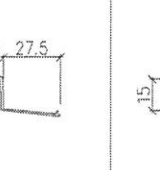


美特鋁質 有限公司
MIDI Aluminium Fabricator Ltd.

工程號 J858 地盤 荃灣



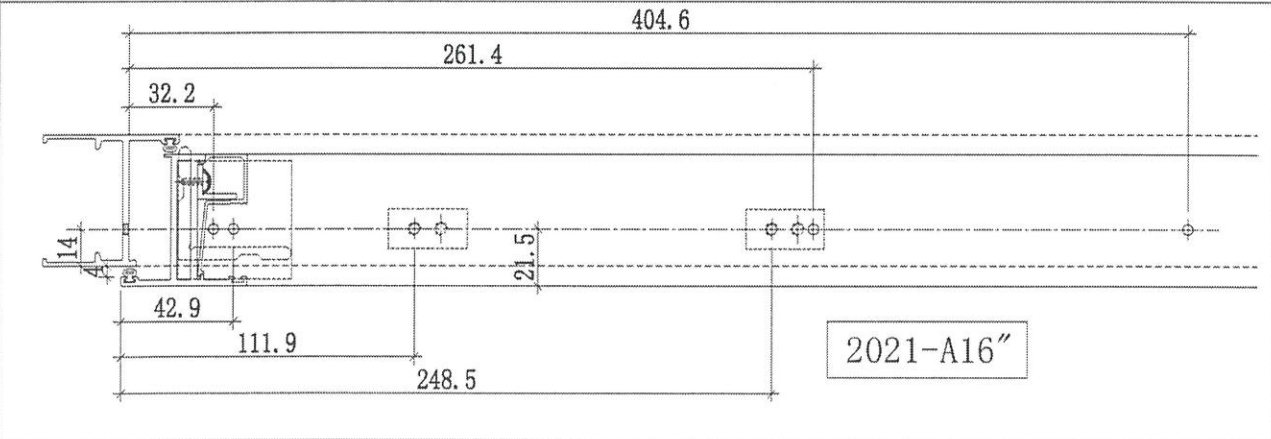
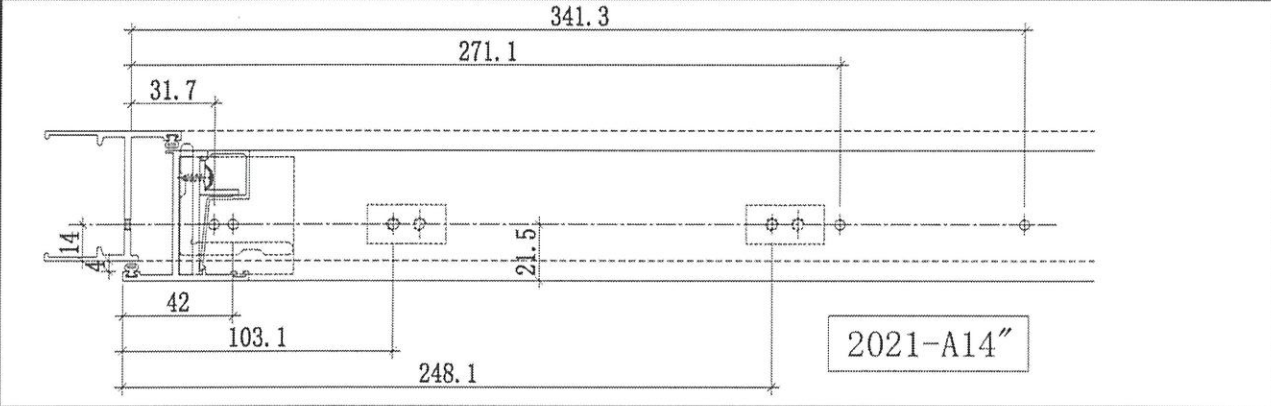
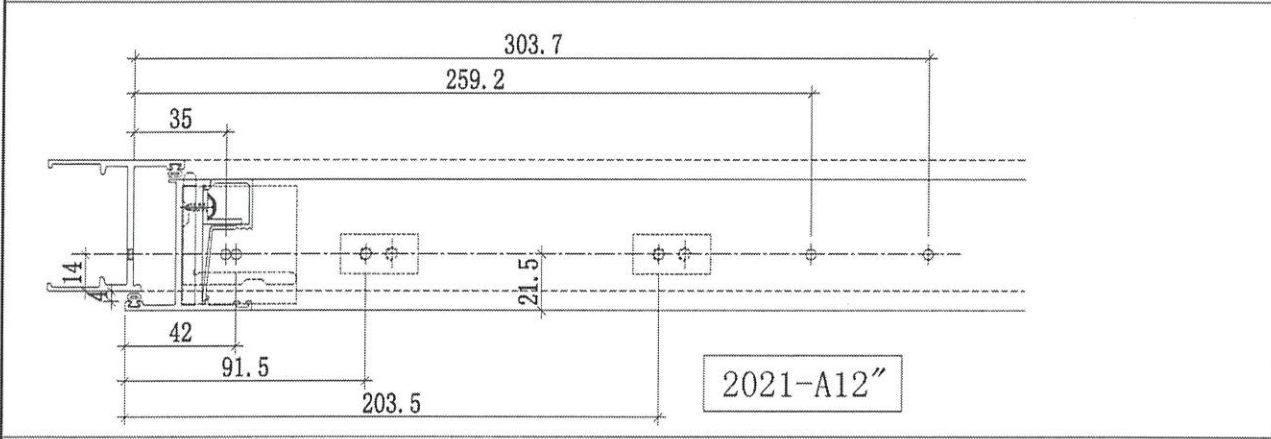
单SH窗详细图 (13.52mm夹胶玻璃)

 邊全料: X86157	 生頂橫: X86161	 生底橫: X86158	 窗豎: X86163	 玻璃線: X86171	 15x15x2mm 鋁角
--	--	--	---	---	---

名稱	50 窗節點示意圖	制圖	SHAW	2022.02.15	修改		
材料	-	復核			日期		
顏色	-	批准			圖號	J858-ST3	

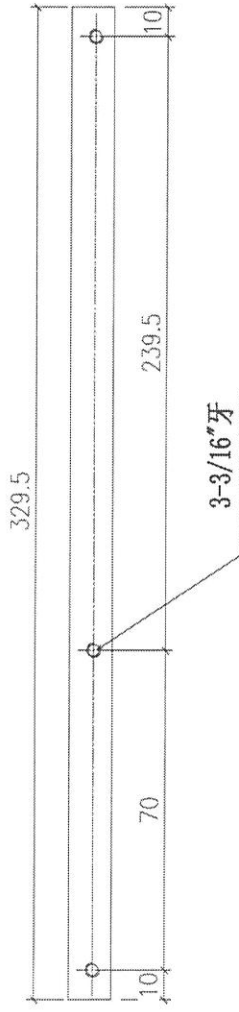
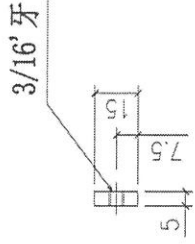
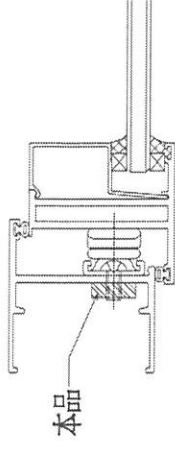
C

 美特鋁質 有限公司 MIDI Aluminium Fabricator Ltd.		
工程號	J858	地盤 臺灣



名稱	扇撐安裝尺寸圖	制圖	SHAW	2021.11.16	修改		
材料	-	復核			日期		
顏色	-	批准			圖號	J858-ST4	

FABRICATION DRAWING

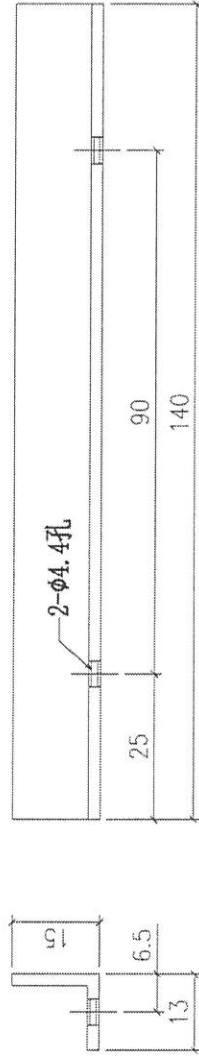


FOR: 2021-A14" TH窗用

Remarks:		Checked: ...		Description:		QTY: 286		Delivery to Rev: Factory		Date		Amendments	
Project Name: 康城11期		Date: 22-12-2014		Material: TH窗框不锈钢加力巴		Tolerance: ±0.5		Site		Assembly No.		Rev.	
Shop Drawing No. PRE-CAST ALUM. WINDOW & LOUVRE		Drawn: W.E.X		Finish: 15x5mm不锈钢		Projection:		J858-LM02		MIDI Aluminium Fabricator Ltd.			
		Date: 17-02-2020		30#不锈钢									

2

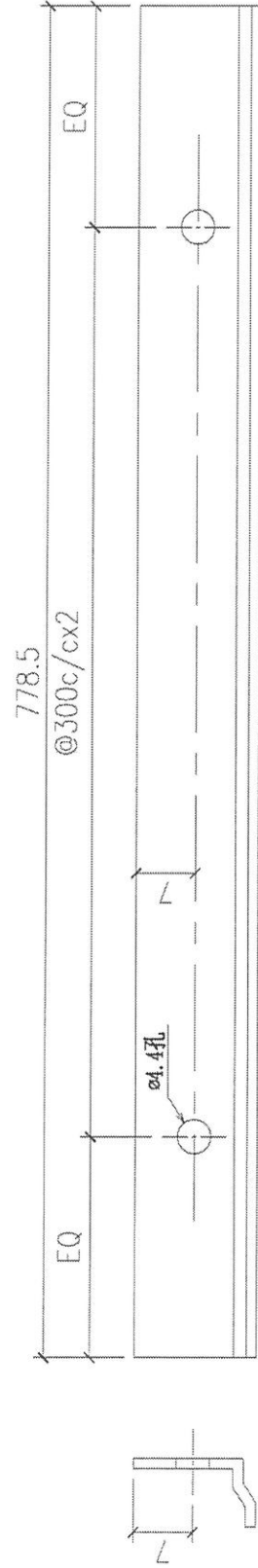
FABRICATION DRAWING



Remarks:		Checked: ---	Description:		QTY:	Delivery to:	Date:	Amendments:
Project No. J858		Date: 22-12-2014	玻璃线加力铝角		6608	Factory		
Shop Drawing No. PRE-CAST ALUM. WINDOW & LOUVRE		Drawn: W.L.X	Material: 13x15x2铝角		Tolerance: ±0.5			
Rev. ---		Date: 17-02-2020	Finish: MILL		Projection:	Site	Assembly No.	Rev. ---
							J858-LM04	
								MID Aluminium Fabricator Ltd.

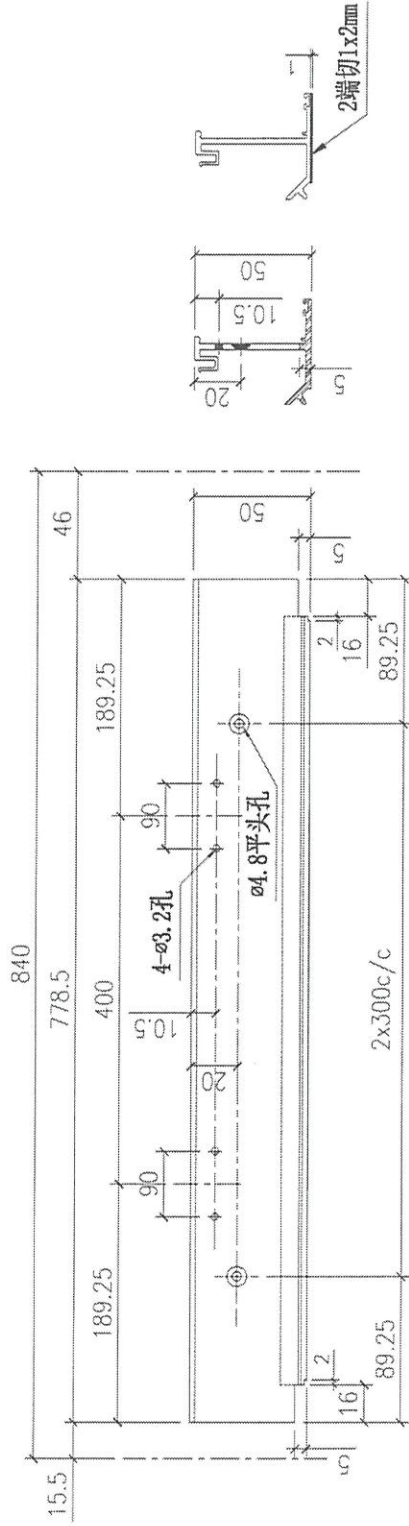


FABRICATION DRAWING



Remarks:		Checked: KEN		Description: 反拍线挡胶角		QTY: 400		Delivery to Rev. Factory		Date		Amendments	
Project Name: 康城11期		Date: 22-12-2014		Material: 6061-T6		Tolerance: ±0.5		Site		Assembly No.		Rev.	
Shop Drawing No. PRE-CAST ALUM. WINDOW & LOUVRE		Drawn: W.E.X		Finish: MILL		Projection:		X86156-01		MIDI Aluminium Fabricator Ltd.			

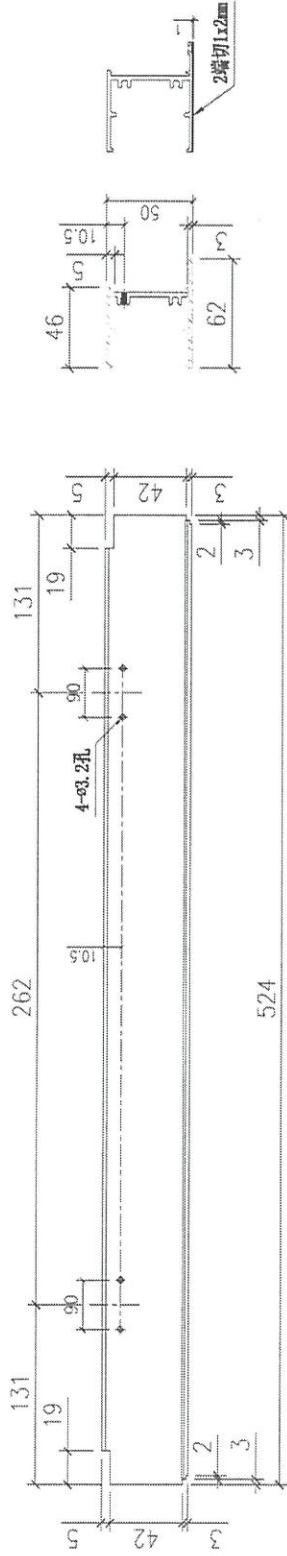
FABRICATION DRAWING



Remarks:		Checked: KEN		Description: 反拍线		QTY: 400		Delivery to Rev: (Factory)		Date		Amendments	
Project Name: 康城11期		Date: 22-12-2014		Material: 6061-T6		Tolerance: ±0.5		Site		Assembly No.		Rev.	
Project No. J858		Drawn: W.E.X		Finish: PVF2		Projection:		X86159-01					
Shop Drawing No. PRE-CAST ALUM. WINDOW & LOUVRE		Date: 22-12-2014											



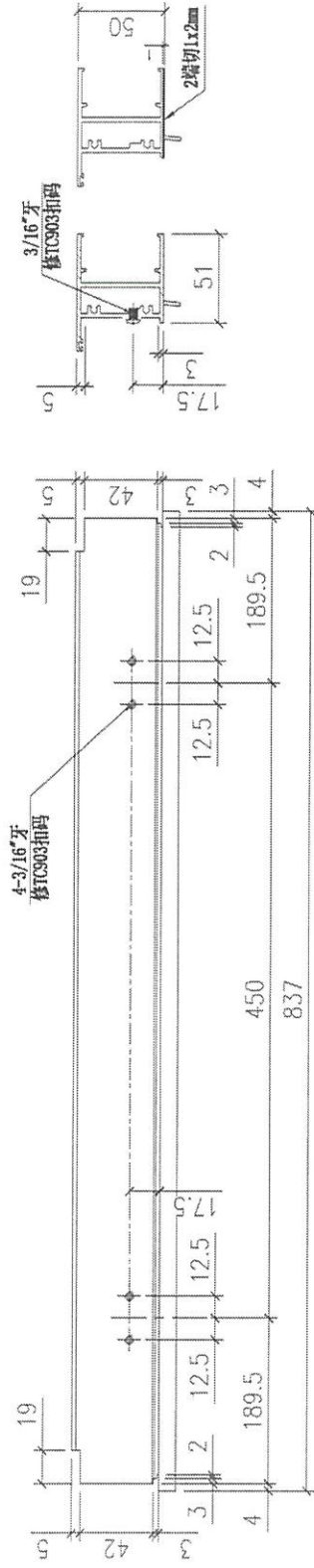
FABRICATION DRAWING



Remarks:	Checked: --	Description:	Qty:	Delivery to Rev.	Date	Amendments
Project Name:	Date: --	梗底横	200	(Factory)		
Project No.:	Drawn: W.E.X	Material:	Tolerance:			
8858	Date: 15-02-2020	6061-T6	±0.5			
Step Drawing No.:	Rev.:	Finish:	Projector:	Site	Assembly No.	Rev.
PRE-CAST ALUM. WINDOW & LOUVRE	--	PVF2	⊕		X86162-01	



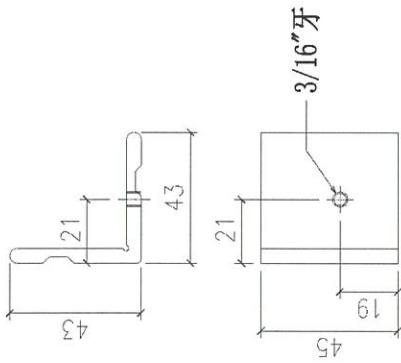
FABRICATION DRAWING



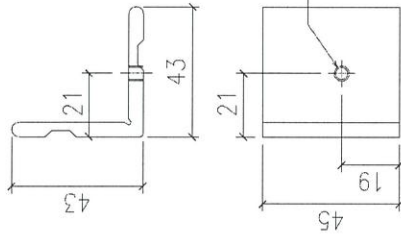
Remarks:		Checked: --		Description: 生顶横		OT: 14.3		Delivery to Rev. (Factory)		Date		Amendments	
Project Name: 康城11期		Date: --		Material: 6061-T6		Tolerance: ±0.5		Site		Assembly No.		Rev.	
Shop Drawing No. PRE-CAST ALUM. WINDOW & LOUVRE		Drawn: W.E.X		Finish: PVF2		Projection:		Site		Assembly No. X86161-02		Rev. --	
		Date: 15-02-2020											



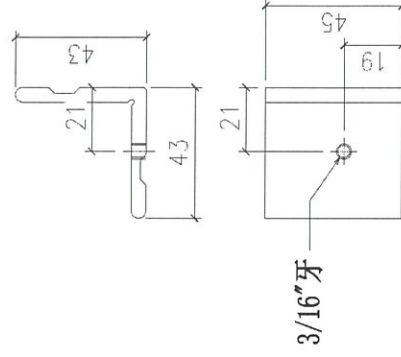
Rev. 1



图号: J858-LM01
数量: 1252只

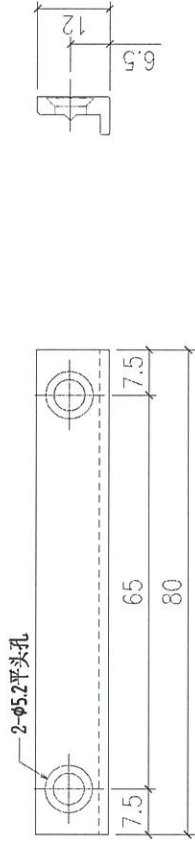


图号: J858-LM01L
数量: 626只



图号: J858-LM01R
数量: 626只

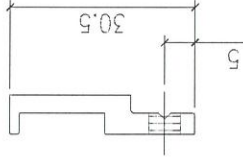
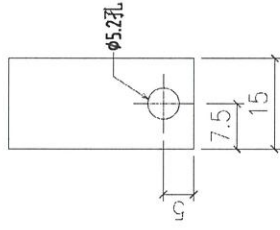
Remarks:		Checked: -		Description:		QTY: -		Delivery to: Rev. Date		Amendments	
Project Name: 康城11期		Date: 22-12-2014		Material: X86153		Tolerance: ±0.5		Factory			
Shop Drawing No. PRE-CAST ALUM. WINDOW & LOUVRE		Drawn: W.L.X		Finish: MILL		Projection: Third Angle		Site		Assembly No. J858-LM01	
Project No. J858		Date: 17-02-2020						Rev.		1	



新图

Remarks:		Checked: -		Description: 拉巴用压板1		QTY: 1735		Delivery to Rev.		Date		Amendments	
Project Name: 康城11期		Date: 22-12-2014		Material: X86154		Tolerance: ±0.5		Factory					
Shop Drawing No. PRE-CAST ALUM. WINDOW & LOUVRE		Drawn: W.E.X		Finish: PVF2		Projection:		Site		Assembly No.		Rev.	
Project No. J858		Date: 17-02-2020						J858-LM05					



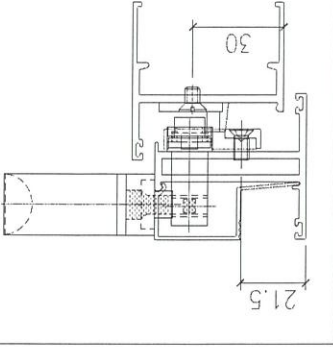
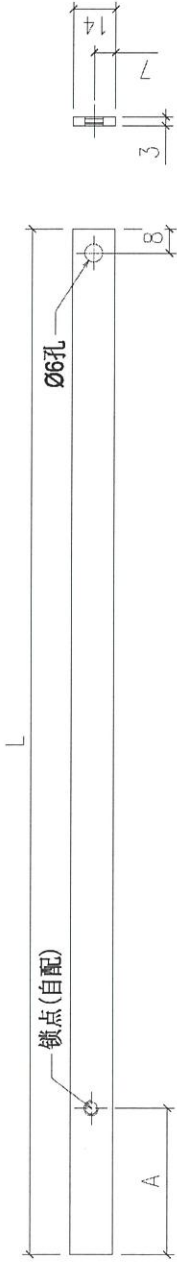


新图

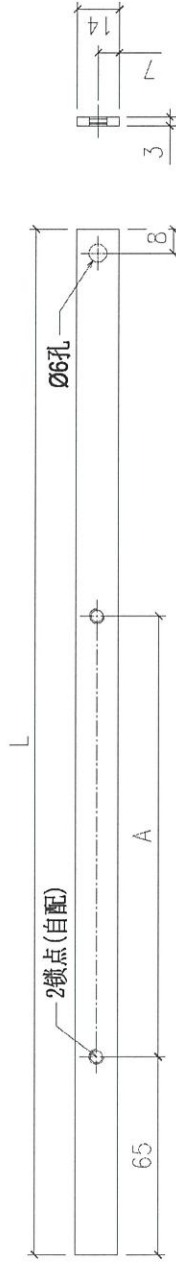
Remarks:		Checked: -	Description: 拉巴用压板2		QTY: 3470	Delivery to Rev. (Factory)	Date	Amendments
Project Name: 康城11期		Date: 22-12-2014	Material: X86155		Tolerance: ± 0.5			
Project No. J858		Drawn: W.E.X	Finish: PWF2		Projection:			
Shop Drawing No. PRE-CAST ALUM. WINDOW & LOUVRE		Date: 17-02-2020				Site	Assembly No. J858-LM06	Rev. -

FABRICATION DRAWING

序号	部件编号	L	A	数量
1	J858-LM07A	307.5	48	143
2	J858-LM07B	307.5	65	143
3	J858-LM07C	130.5	48	200
4	J858-LM07D	120	48	283



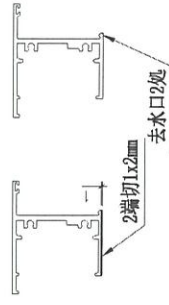
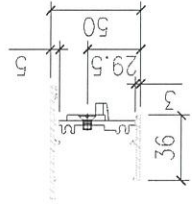
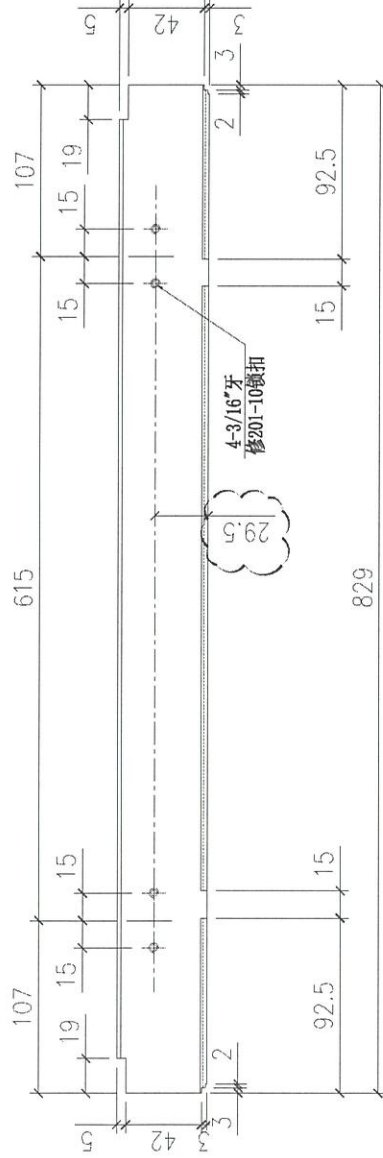
序号	部件编号	L	A	数量
1	J858-LM07G	835	482.75	200
2	J858-LM07H	865	492.5	283



新图

Remarks:		Checked: -	Description: 拉巴加工图	QTY: -	Delivery to Rev: Factory	Date	Amendments
Project Name: 康城11期	Project No. J858	Date: 22-12-2014	Material: 14x3mm铝扁巴	Tolerance: ±0.5	Site		
Shop Drawing No. PRE-CAST ALUM. WINDOW & LOUVRE	Rev. -	Drawn: W.E.X	Finish: PVF2	Projection:	Assembly No. J858-LM07		
		Date: 17-02-2020					

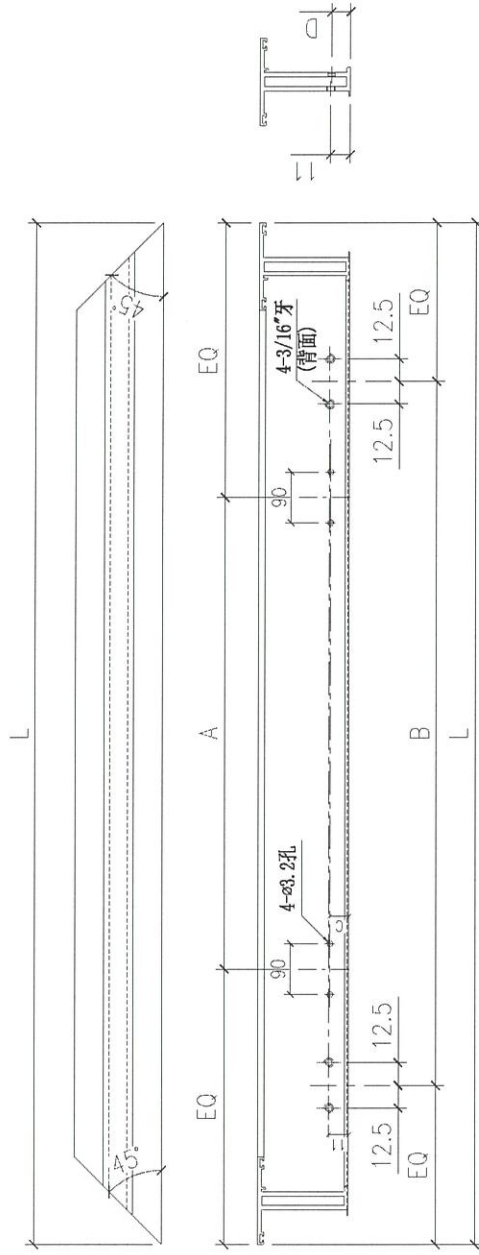
FABRICATION DRAWING



Remarks:		Checked: -	Description: 上底横	QTY: 143	Delivery to: Factory	Date	Amendments
Project Name: 康城11期	Project No. J858	Date: -	Material: 6061-T5	Tolerance: ±0.5	Site	Assembly No. X86158-02	Rev. 1
Shop Drawing No. PRE-CAST ALUM. WINDOW & LOUVRE	Rev. 1	Drawn: W.F.X	Finish: PVF2	Projection:			
		Date: 15-02-2020			MIDI Aluminium Fabricator Ltd.		



FABRICATION DRAWING



新图

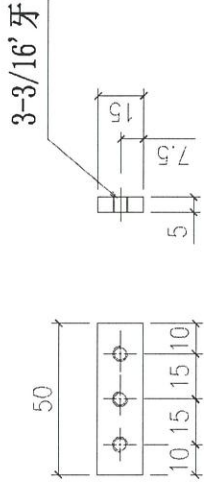
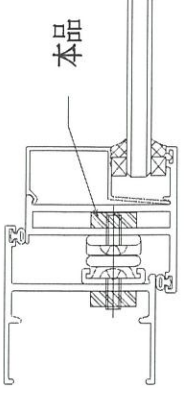
3	X86163-02C	1185.5	600	@300c/cx2	10.5	200
2	X86163-02B	1205	600	@300c/cx2	10.5	283
1	X86163-02A	835	450		20	143
序号	部件编号	L	A	B	C	数量

Remarks:	Checked: -	Description: 窗玉料	QTY:
Project Name: 康城11期	Date: -	Material: 6061-T5	Tolerance: ±0.5
Project No. J858	Drawn: W.E.X	Finish: PVF2	Factory
Shop Drawing No. -	Date: 15-02-2020	Site: X86163-02	Assembly No. -
Rev. -			Delivery to Rev. -
			Date -
			Amendments



FABRICATION DRAWING

本品



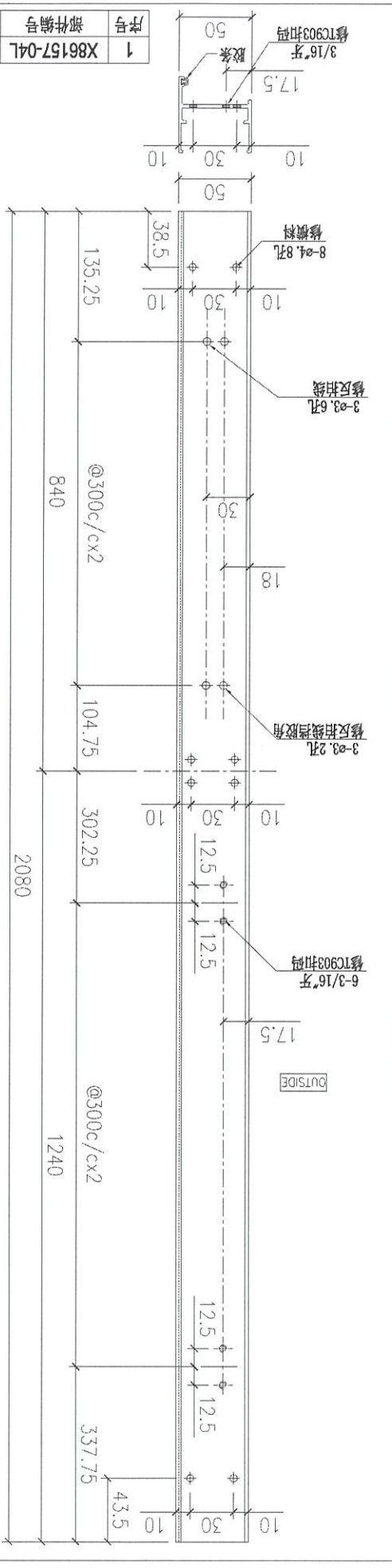
Remarks:		Checked: -	Description:		QTY:	Delivery to	Rev.	Date	Amendments
Project Name:		Date: 22-12-2014	窗玉不锈钢加力巴		2504	Factory			
Project No. J858		Material: W.L.X	15x5mm不锈钢		Tolerance: ±0.5				
Shop Drawing No. PRE-CAST ALUM. WINDOW & LOUVRE		Drawn: W.L.X	304#不锈钢		Projection:	Site	Assembly No.	Rev.	
		Date: 17-02-2020					J858-LM03	1	

MIDI Aluminium Fabricator Ltd.

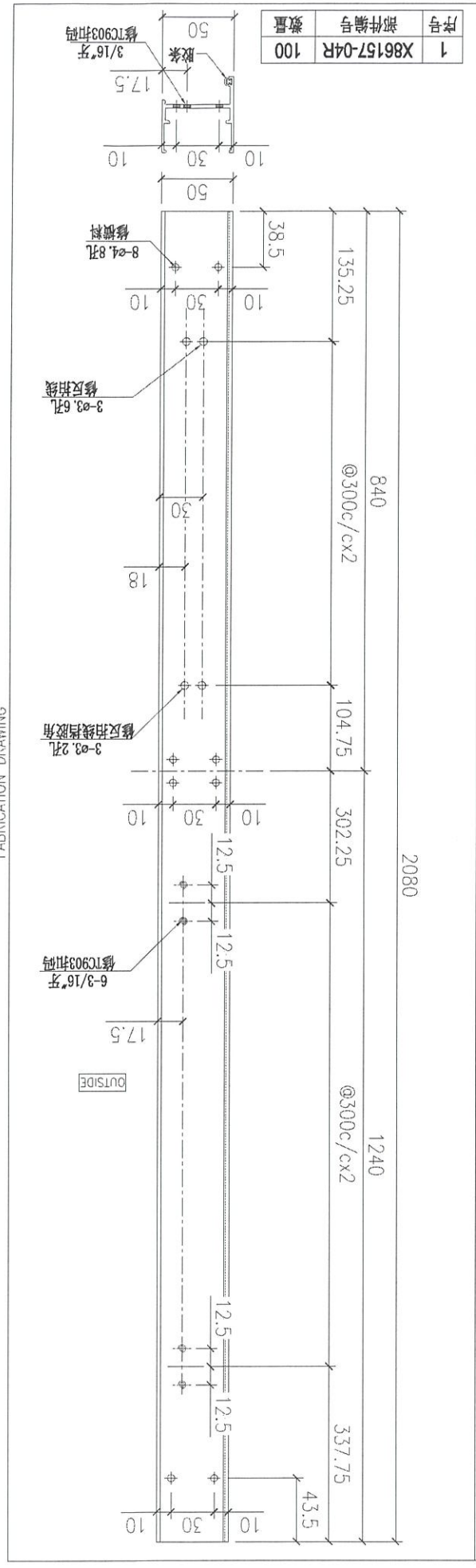


2

Rev. 1		Assembly No. X86157-04L		Site		Project: 2FMD		Date: 17-02-21-22		Rev. 1		PRE-CAST WINDOW LOUVER	
Amendments		Date		Delivery to Rev. Factory		Tolerance: 5.0 ±		Material: 5L-1909		Finish:		Project No. 858J	
Description:		Checked: KEN		Date: 17-02-21-22		Drawn: X.E.W		Date: 17-02-21-22		Project Name: 康城T1期		Shop Drawing No.	
Remarks:		Scale: 1:10		Projection: 1:10		Factory		Material: 5L-1909		Finish:		Project Name: 康城T1期	



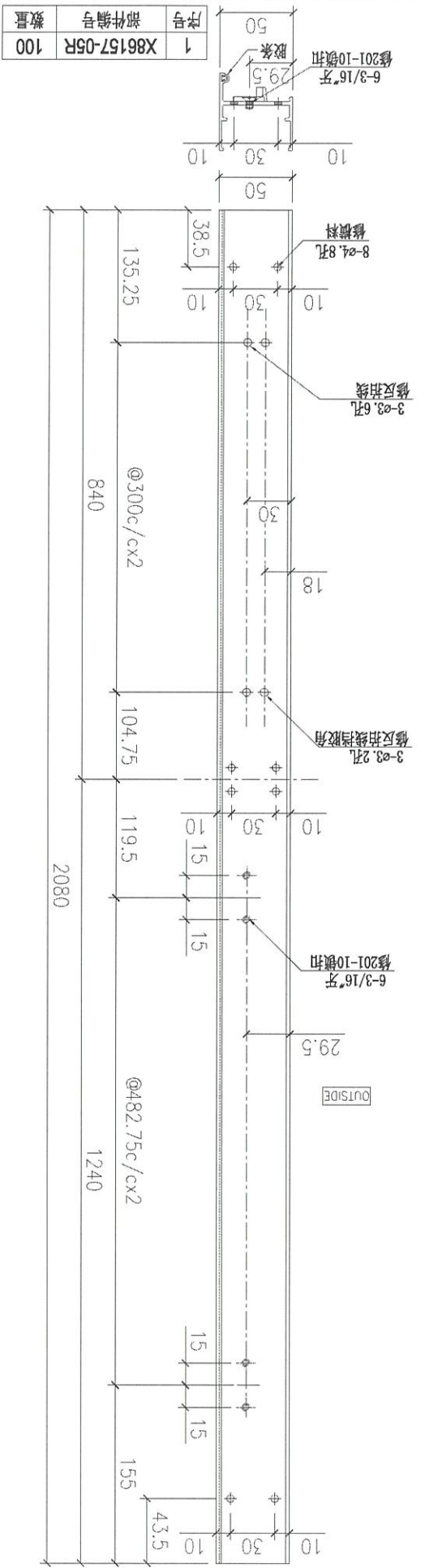
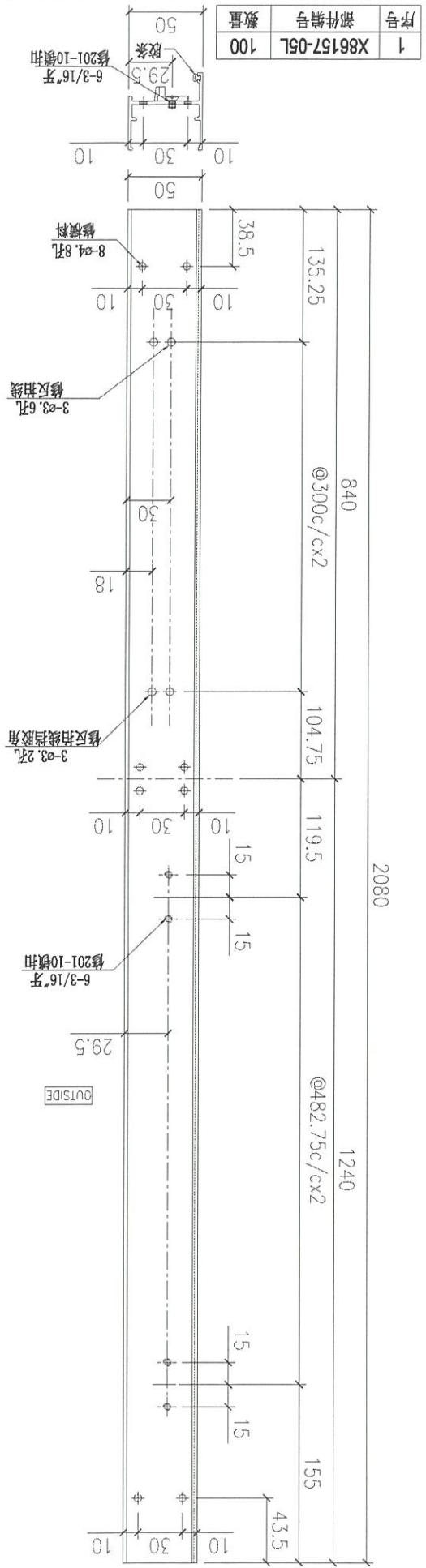
序号	部件编号	数量
1	X86157-04L	100



序号	部件编号	数量
1	X86157-04R	100

FABRICATION DRAWING

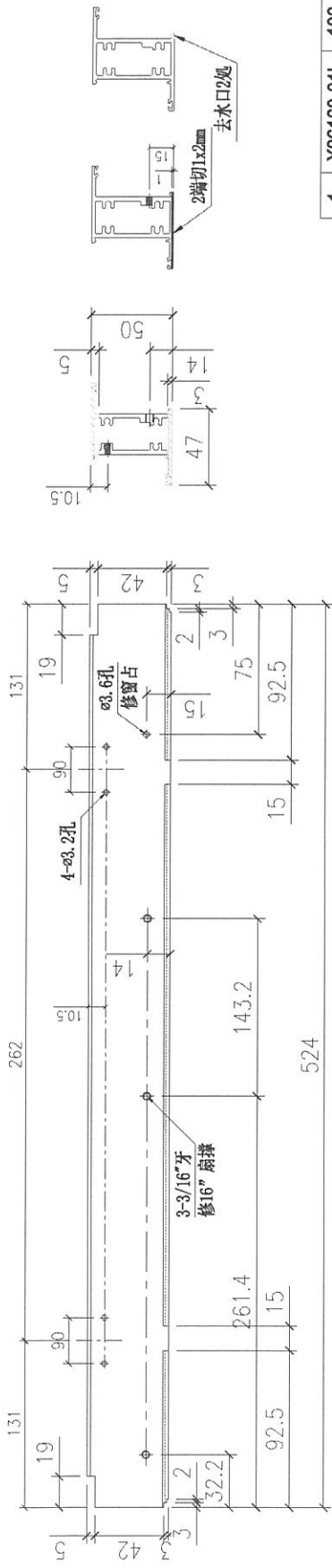
FABRICATION DRAWING



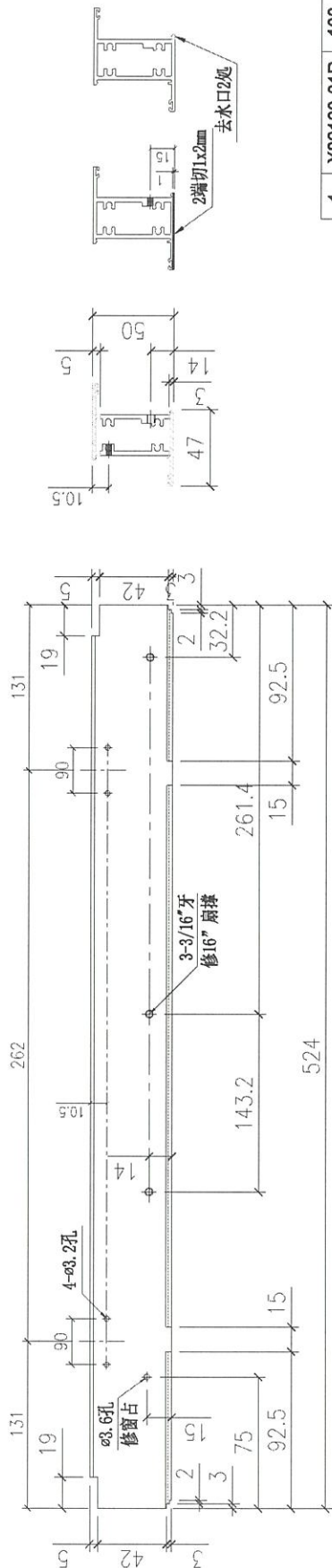
Remarks:		Checked: KEN		Description: 企边生		QTY: -		Delivery to Rev.:		Date:		Amendments:	
Project Name: 康城T1楼		Project No. 8581		Material: 4102-21-20		Tolerance: ±0.5		Factory		Site		Assembly No. X86157-05	
Shop Drawing No. PRE-CAST WINDOW		Rev. 1		Date: 22-21-22		Finish: 214		Material: 51-1909		Date:		Rev. 1	
Project Name: 康城T1楼		Project No. 8581		Date: 22-21-22		Finish: 214		Material: 51-1909		Date:		Rev. 1	



FABRICATION DRAWING



1	X86160-01L	100
序号	部件编号	数量



1	X86160-01R	100
序号	部件编号	数量

Remarks:

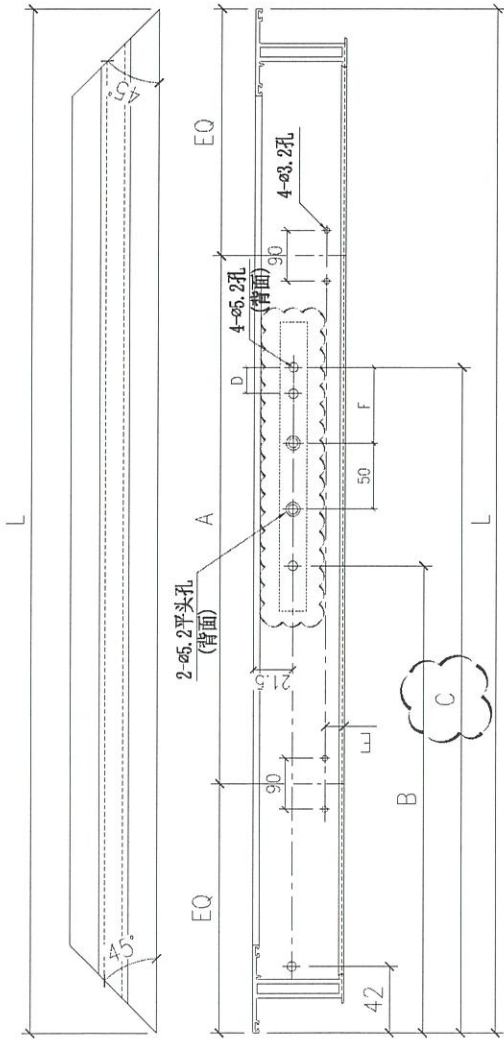
Checked:	-	Description:	上生下梗中横
Date:	-	Material:	6061-T5
Drawn:	W.E.X	Finish:	PVF2
Date:	15-02-2020	Project No.:	J858
Rev.:	1	Shop Drawing No.:	PRE-CAST ALUM. WINDOW & LOUVRE

QTY:	200	Delivery to:	Factory
Tolerance:	±0.5	Site:	
Projection:		Assembly No.:	X86160-01
Rev.:	1	Amendments:	

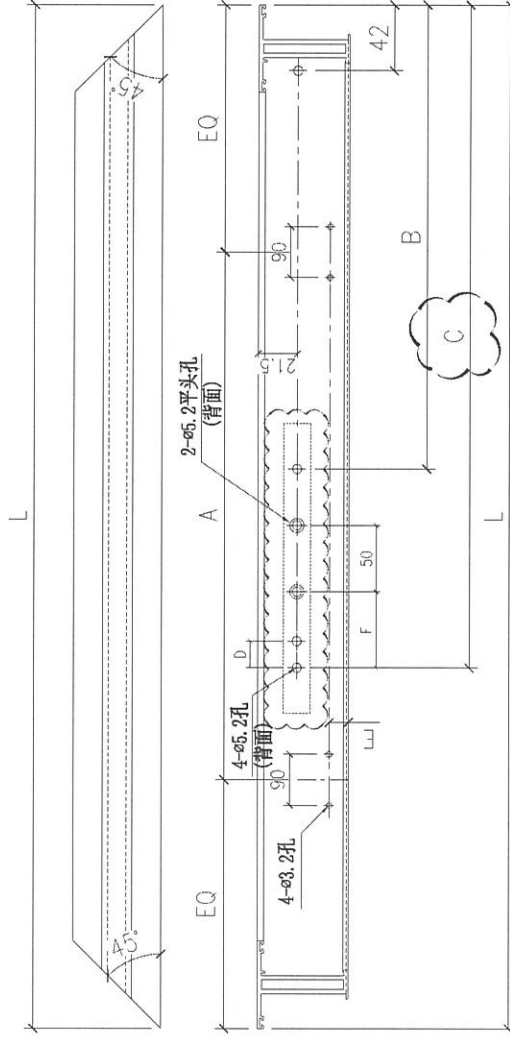
康城11期

PRE-CAST ALUM. WINDOW & LOUVRE

FABRICATION DRAWING



序号	部件编号	L	A	B	C	D	E	F	扇撑	数量
4	X86163-01LD	530	265	111.9	248.5	13.5	10.5	55	16"	200
3	X86163-01LC	435	185	103.1	248.1	14.5	10.5	55	14"	98
2	X86163-01LB	385	145	-	203.5	13.5	10.5	35	12"	185
1	X86163-01LA	460	200	103.1	248.1	14.5	20	55	14"	143



序号	部件编号	L	A	B	C	D	E	F	扇撑	数量
4	X86163-01RD	530	265	111.9	248.5	13.5	10.5	55	16"	200
3	X86163-01RC	435	185	103.1	248.1	14.5	10.5	55	14"	98
2	X86163-01RB	385	145	-	203.5	13.5	10.5	35	12"	185
1	X86163-01RA	460	200	103.1	248.1	14.5	20	55	14"	143

Remarks:

Checked: - Date: -

Project No. J858 Rev. -

Shop Drawing No. -

Project Name: 康城11期

Material: 6061-T5

Drawn: W.L.X

Finish: PVF2

Date: 15-02-2020

Description: 窗玉料

Factory: -

Tolerance: ±0.5

Projection:

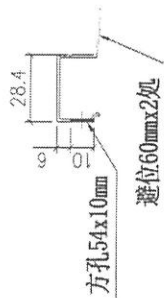
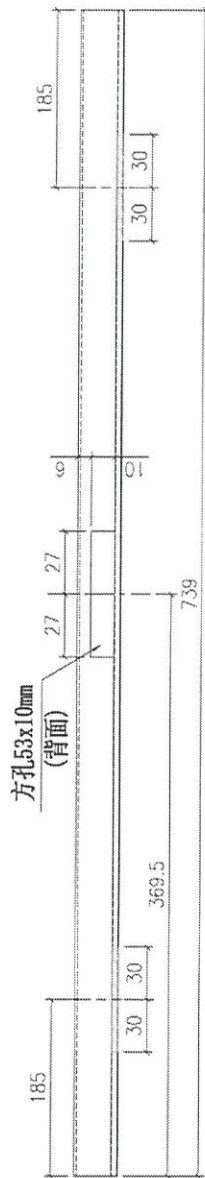
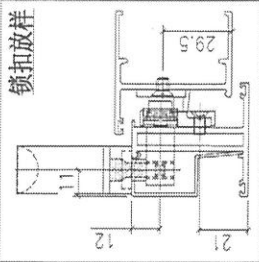
Site: X86163-01

Assembly No. -

Rev. 3

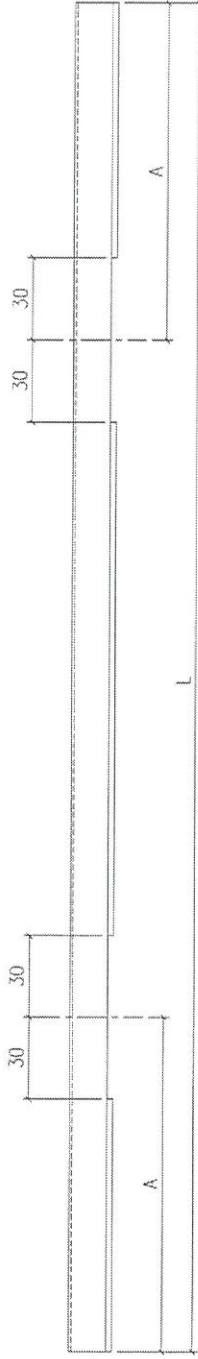


FABRICATION DRAWING



Remarks:		Checked: KEN	Description: 10mm玻璃线	QTY: 143	Delivery to: (Factory)	Date	Amendments
Project No. J858	Material: 6061-T5	Date: 22-12-2014	Material: 6061-T5	Tolerance: ±0.5	Site		
Step Drawing No. PRE-CAST ALUM. WINDOW & LOUVRE	Finish: PVF2	Drawn: W.E.X	Finish: PVF2	Projection:	Assembly No. X86164-01		Rev. 2

FABRICATION DRAWING



避位60mmx2处

2.3.
89
~~89~~
289

3	X86171-02C	434	100	400
2	X86171-02B	339	85	98
1	X86171-02A	289	70	185
序号	部件编号	L	A	数量

Remarks:		Checked: KEN		Description: 13.52mm玻璃线		QTY:		Delivery to: (Factory)		Amendments:	
Project No. J858		Date: 22-12-2014		Material: 6061-T5		Tolerance: ±0.5		Site:		Rev.:	
Shop Drawing No. 1		Drawn: W.E.X		Finish: PVF2		Projection:		Assembly No. X86171-02		Rev.:	
PRE-CAST ALUM. WINDOW & LOUVRE		Date: 22-12-2014									

新图

MIDI ALUMINIUM FABRICATOR LTD.

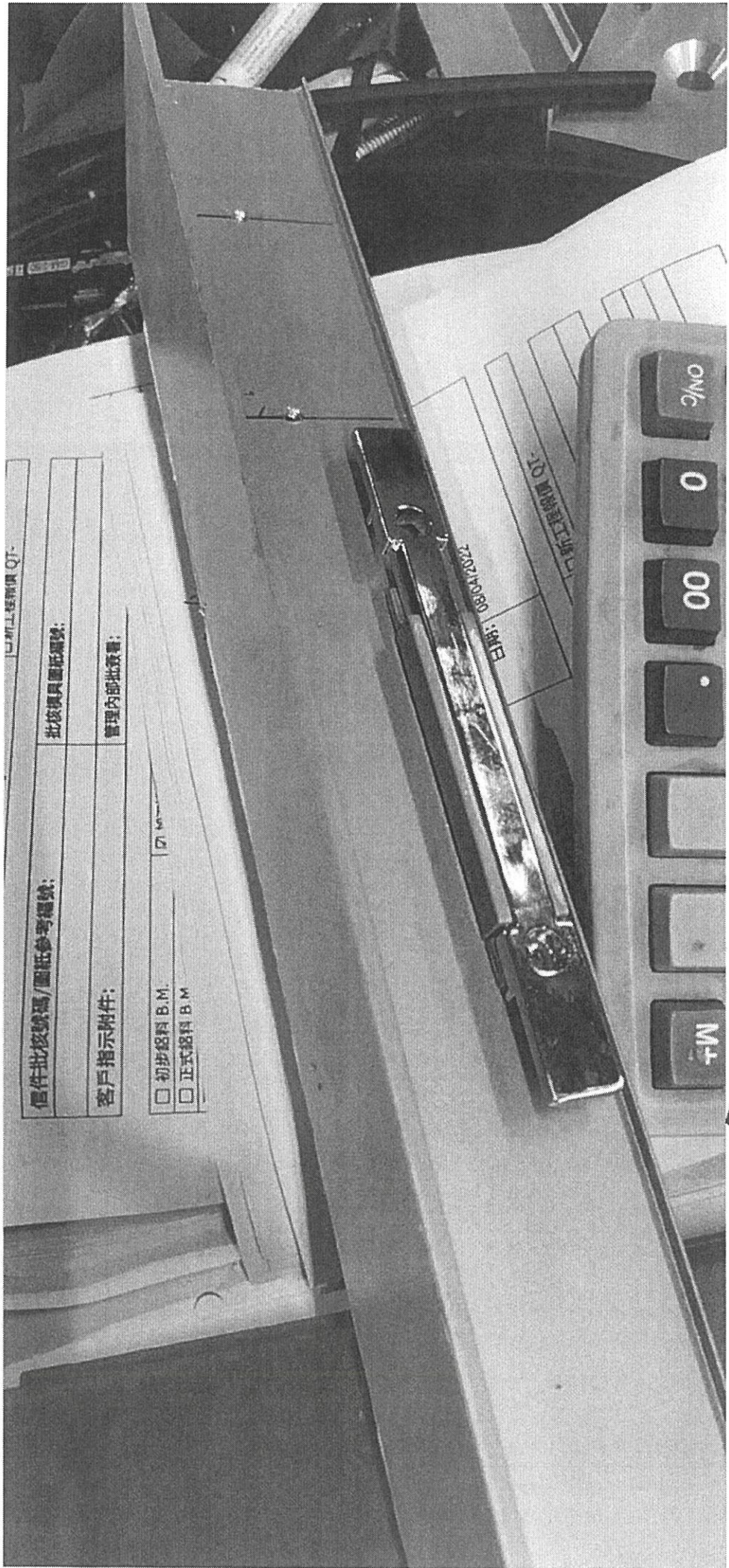
工程指示 / 要求簡箋 ENGINEER INSTRUCTIONS (E.I.)



工程指示編號:	EI- 4570	修改版本:	-
工程編號:	HK- 591	工程名稱:	亞雷老街中電
收件人:	J 852	發件人:	Eric Liu
工程項目:	佛沙及後裝窗 後加裝...		

25/11/11

K



品質保證書 QI-

信件批核號碼/圖紙參考編號:	批核樣品圖紙編號:
客戶指示附件:	管理內部批核書:

初步銘料 B.M.
 正式銘料 B.M.

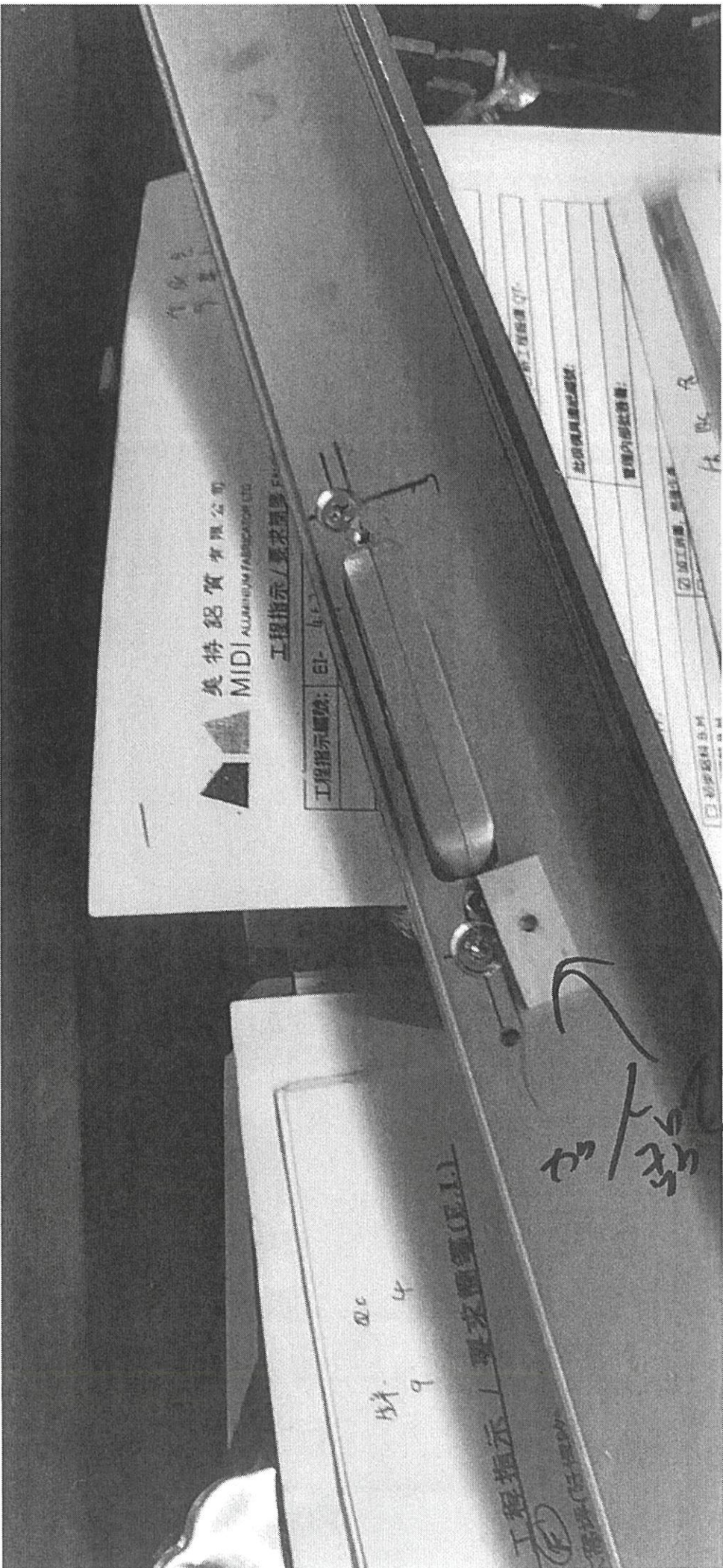
2004/03/08 18:45
B.M.

10 圖紙工程



Handwritten signature or initials.

K



美特鋁質有限公司
MIDI ALUMINIUM FABRICATOR LTD

工程指示 / 要求圖樣

工程指示編號: EI- 4-2

材料: 9
規格: 4

工程指示 / 要求圖樣 (E.I.)

加封

用此方案 ✓

K

此項圖樣經核准:	工程經理簽名:
管理內部批准:	日期:
訂加工日期: 2011年	
初版日期: 2011年	

K



已修在留料

已修在留料

鎖已修在

已修在留料

工程指示 (E1)

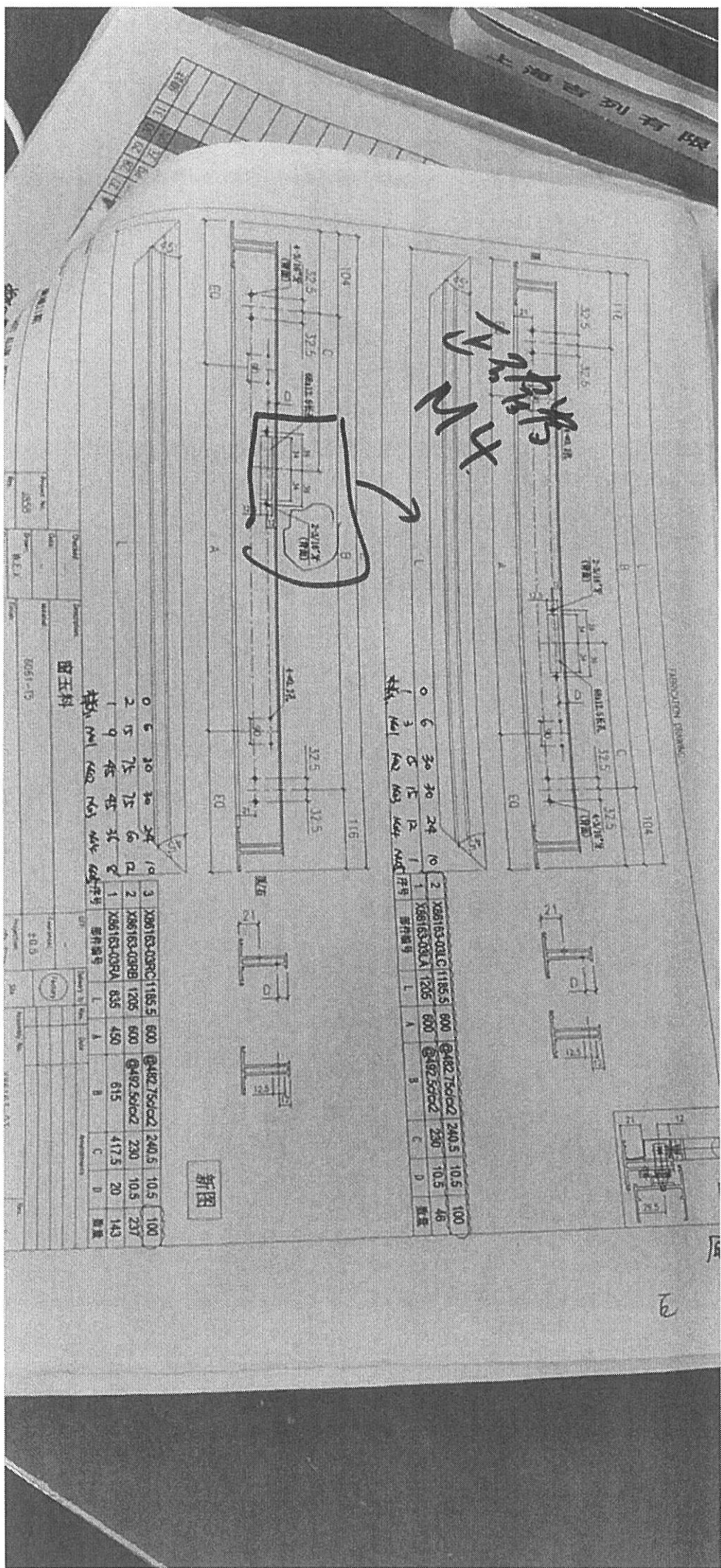
工程指示編號: E1

初步驗料 (P.M.)
正式驗料 (F.M.)
完成驗料 (F.M.)

工程指示編號 (E1)

K

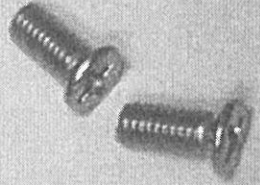
折图. 40 45 10 10 10 10



折图

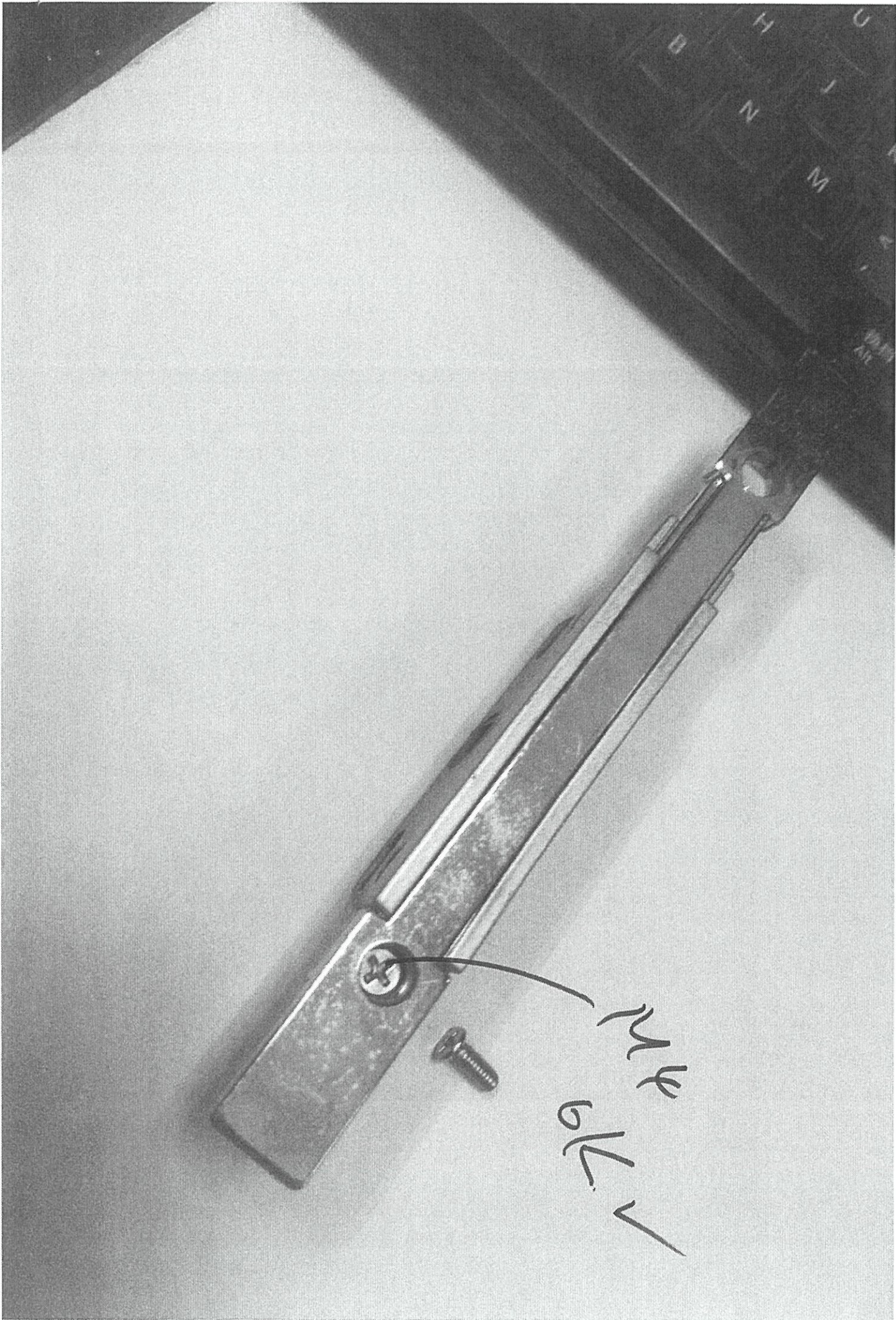
6

K



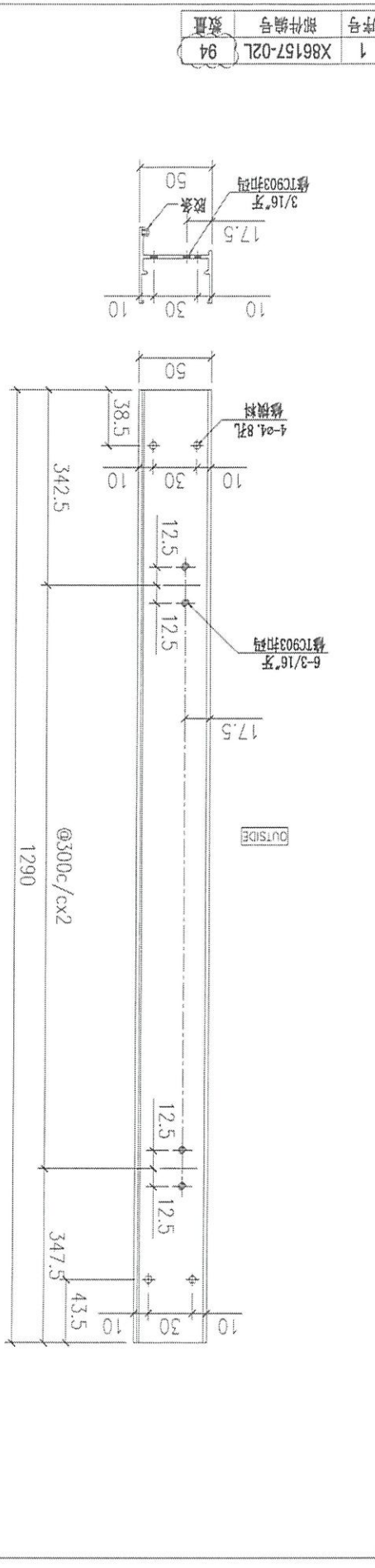
3/16

3/16 英寸
2 个 1 英寸

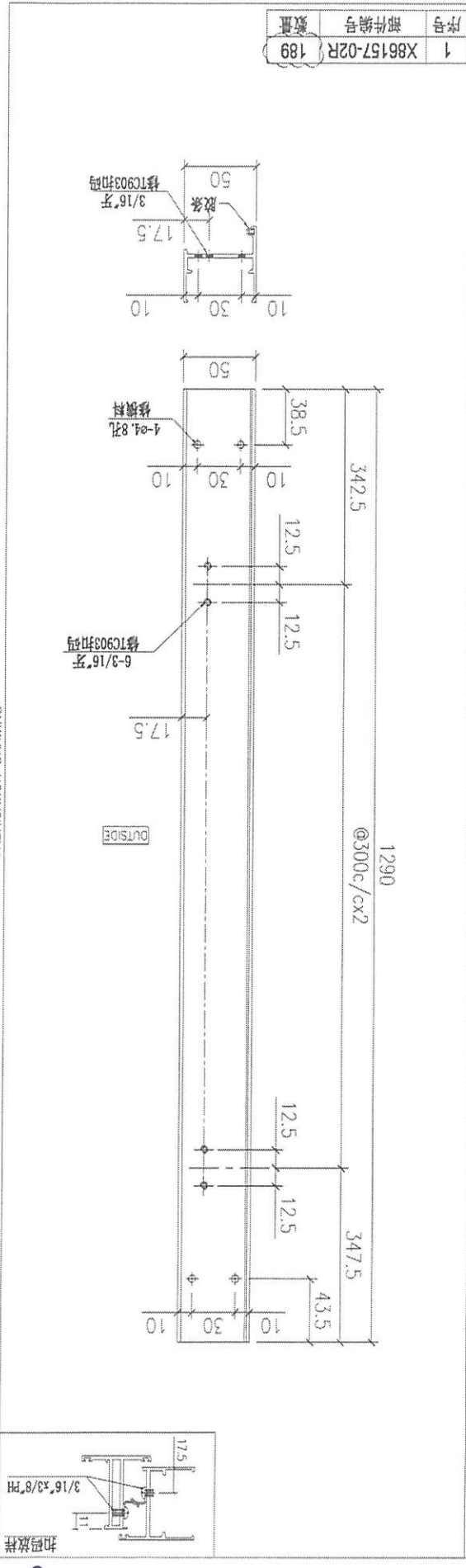


M4
6L

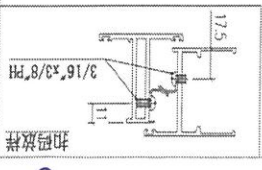
Remarks:		Project No. J858		Project Name: 康城11期		Shop Drawing No. PRE-CAST ALUMINUM WINDOW		LAI	
Checklist: KEN		Date: 22-22		Drawn: W.F.K		Date: 22-21		1102-21	
Description: 车边企		Material: 50-T		Finish: 51-1909		Projection: 50-T		Tolerance: 50-T	
Delivery to: (Factory)		Rev: 1		Date: 24/08/22		Assembly No. X86157-020		Rev: 1	



序号	部件编号	数量
1	X86157-02L	94

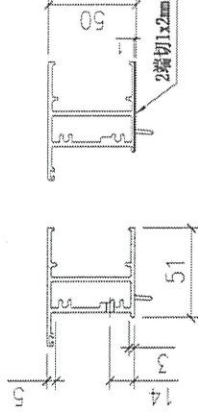
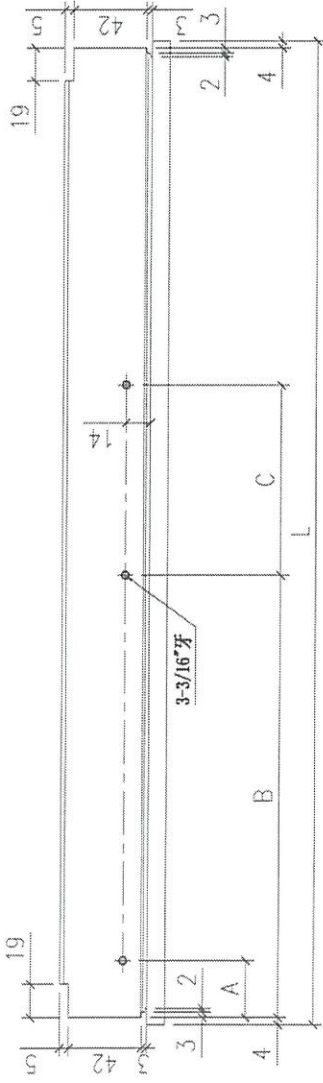


序号	部件编号	数量
1	X86157-02R	189

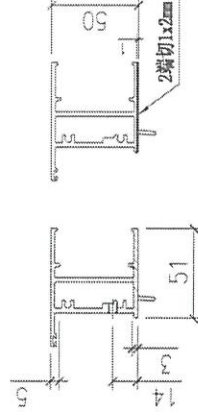
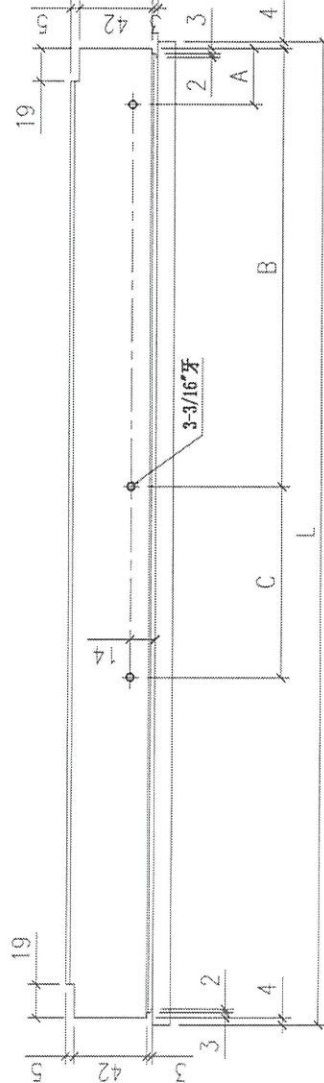


FABRICATION DRAWING

FABRICATION DRAWING



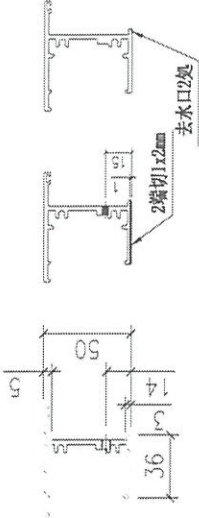
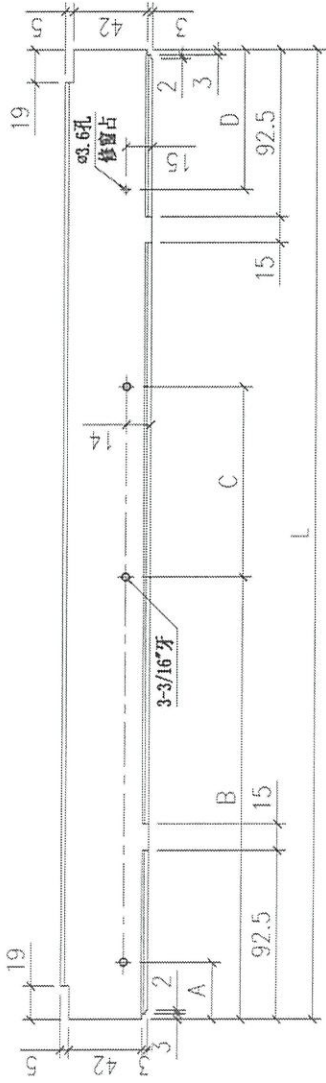
序号	部件编号	L	A	B	C	扇撑	数量
3	X86161-01LC	437	31.7	271.1	70.2	14"	49
2	X86161-01LB	387	35	259.2	44.4	12"	45
1	X86161-01LA	532	32.2	261.4	143.2	16"	100



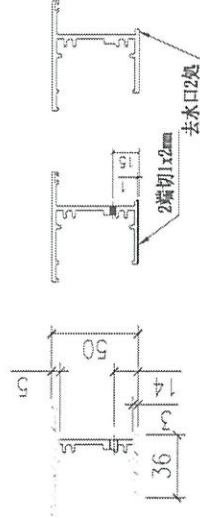
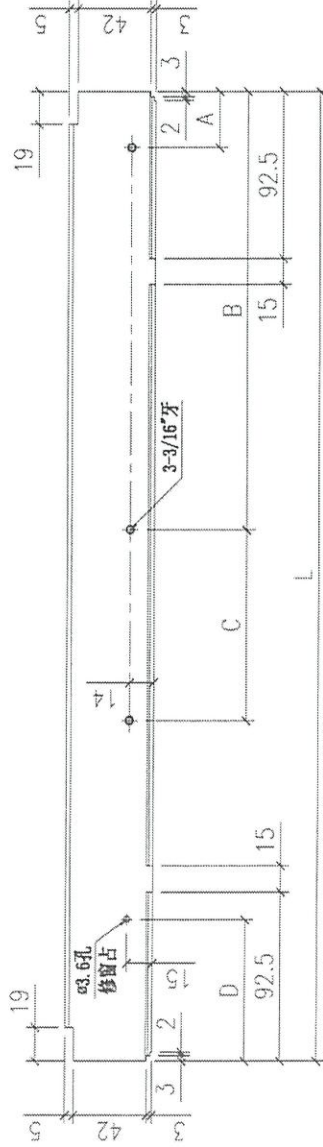
序号	部件编号	L	A	B	C	扇撑	数量
3	X86161-01RC	437	31.7	271.1	70.2	14"	49
2	X86161-01RB	387	35	259.2	44.4	12"	140
1	X86161-01RA	532	32.2	261.4	143.2	16"	100

Remarks:		Checked: ...		Description: 生顶横		Delivery to Rev. 2		Date 24/08/22		Amendments:	
Project Name: 威城11期		Date: ...		Material: 6061-T5		Tolerance: ±0.5		Factory			
Shop Drawing No. PRE-CAST ALUM. WINDOW & LOUVRE		Drawn: W.C.X		Finish: PVF2		Projection:		Site		Assembly No. X86161-01	
Rev. 1		Date: 15-02-2020								Rev. 2	

FABRICATION DRAWING



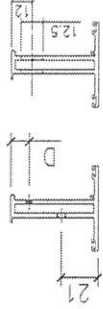
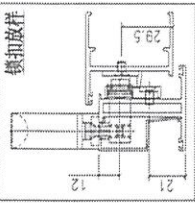
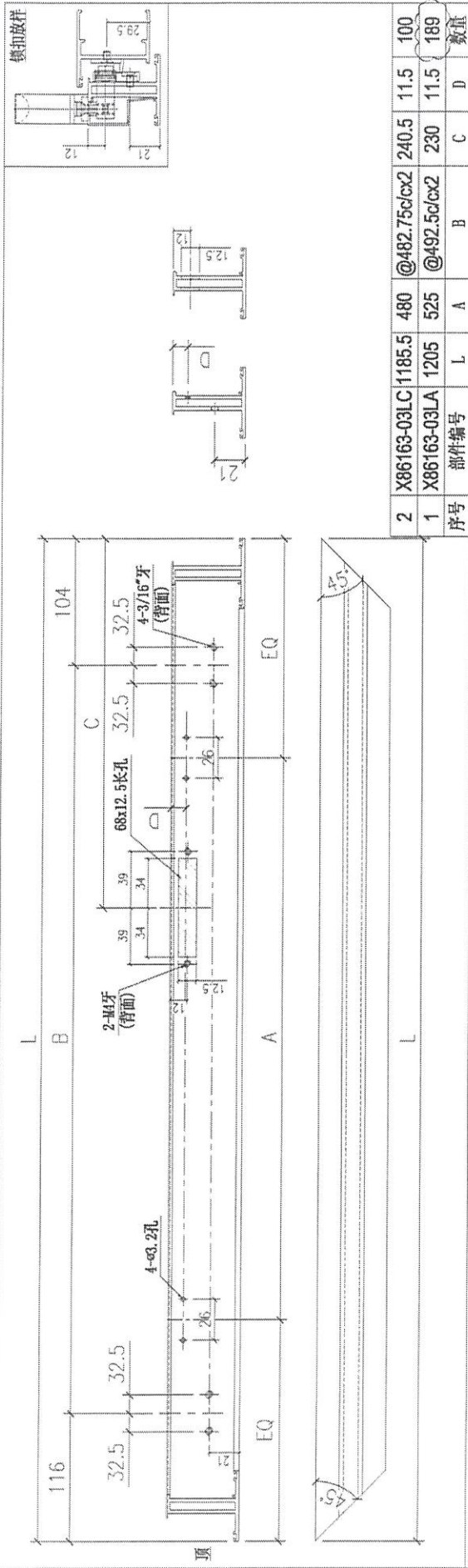
序号	部件编号	L	A	B	C	D	扇撑	数量
2	X86158-01LB	429	31.7	271.1	70.2	75	14"	49
1	X86158-01LA	379	35	259.2	44.4	55	12"	45



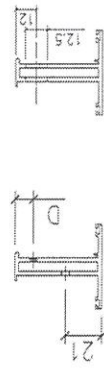
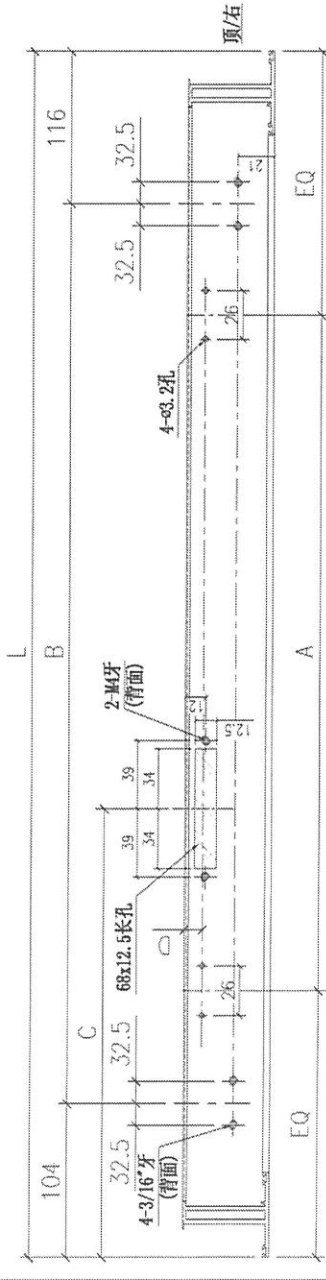
序号	部件编号	L	A	B	C	D	扇撑	数量
2	X86158-01RB	429	31.7	271.1	70.2	75	14"	49
1	X86158-01RA	379	35	259.2	44.4	55	12"	140

Remarks		Checked: ---		Description: 上底横		QTY: ---		Delivery to: (Factory)		Date: 24/08/22		Amendments	
Project Name: 康城11期		Date: ---		Material: 6061-T5		Tolerance: ±0.5		Site: ---		Assembly No. X86158-01		Rev. 2	
Shop Drawing No. PRE-CAST ALUM. WINDOW & LOUVRE		Drawn: W.E.X		Finish: PMF2		Projection: ---		---		---		---	
Project No. J858		Date: 15-02-2020		---		---		---		---		---	
Rev. 1		---		---		---		---		---		---	

FABRICATION DRAWING



序号	部件编号	L	A	B	C	D	数量
2	X86163-03LC	1185.5	480	@482.75c/cx2	240.5	11.5	100
1	X86163-03LA	1205	525	@492.5c/cx2	230	11.5	189



序号	部件编号	L	A	B	C	D	数量
3	X86163-03RC	1185.5	480	@482.75c/cx2	240.5	11.5	100
2	X86163-03RB	1205	525	@492.5c/cx2	230	11.5	94
1	X86163-03RA	835	450	615	417.5	21	143

Remarks:

Project Name: 康城II期
 Shop Drawing No.: PRE-CAST ALUM. WINDOW & LOUVRE

Project No.: J858
 Rev.: 1

Drawn: W.L.X
 Date: 15-02-2020

Material: 6061-T5
 Finish: PMF2

Description: 窗玉料

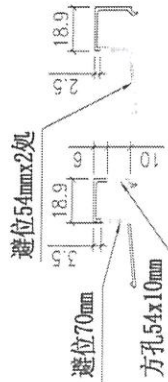
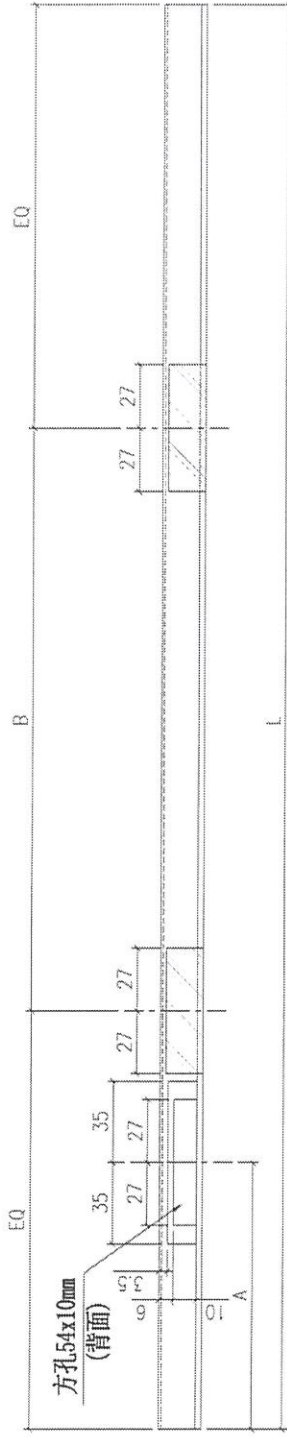
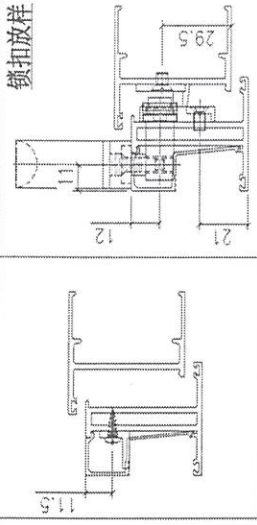
Checked: ---
 Date: ---

Delivery to Rev. Date: 4 24/08/22
 Factory: (factory icon)

Tolerance: ±0.5
 Proposition: (proposition icon)

Site: X86163-03
 Assembly No.:
 Rev.: 4

FABRICATION DRAWING



序号	Rev	部件编号	L	A	B	数量
4	X86171-01D	1121.5	913	480	100	
3	X86171-01C	1121.5	208.5	480	100	
2	X86171-01B	1141	943	525	189	
1	X86171-01A	1141	198	525	94	

Remarks:

Delivery to: Factory

Date: 24/08/22

Amendments:

Project Name: 康城11期

Project No.: J858

Shop Drawing No.: PRE-CAST ALUM. WINDOW & LOUVRE

Rev.: 1

Description: 13.52mm玻璃线

Material: 6061-T5

Finish: PVF2

Checked: KEN

Date: 22-12-2014

Drawn: W.L.X

Date: 22-12-2014

Site: X86171-01

Rev.: 4