



工程指示 / 要求簡箋 ENGINEER INSTRUCTIONS(E.I.)

工程指示編號:	EI- 5501 / 22	修改版本:	-
	HK- 2313 / 22		
工程編號:	J 857	工程名稱:	啟德6552
收件人:	生統	發件人:	nero ho
工程項目:	幕牆單元件 - 地盤用鋁板(棉插)(屋頂層)	日期:	19/12/2022

<input type="checkbox"/> 原合約工程包	<input type="checkbox"/> 原合約工程加 / 減賬 QT-	<input type="checkbox"/> 新工程報價 QT-
---------------------------------	--	------------------------------------

信件批核號碼/圖紙參考編號:	批核模具圖紙編號:
客戶指示附件:	管理內部批簽署:

<input type="checkbox"/> 初步鋁料 B.M.	<input type="checkbox"/> 加工拆圖, 然後生產	<input type="checkbox"/> 尺寸表
<input type="checkbox"/> 正式鋁料 B.M.	<input type="checkbox"/> 技術上資料/指示	<input type="checkbox"/> 報價
<input type="checkbox"/> 配件 B.M.	<input type="checkbox"/> 樣辦或貨品說明書	<input type="checkbox"/> 分判合約
<input type="checkbox"/> 其他:		

內容:
按附件資料生產加工, 分座送地盤。


完成上列要求日期: 28/12/2022

國內

<input type="checkbox"/> 生產技術總監	<input type="checkbox"/> 連附件	<input type="checkbox"/> 技術部	<input type="checkbox"/> 連附件	<input type="checkbox"/> 生產部	<input type="checkbox"/> 連附件
<input type="checkbox"/> 採購部	<input type="checkbox"/> 連附件	<input checked="" type="checkbox"/> 生產統籌部	<input checked="" type="checkbox"/> 連附件	<input type="checkbox"/> 報關組	<input type="checkbox"/> 連附件
<input type="checkbox"/> 質檢部	<input type="checkbox"/> 連附件	<input type="checkbox"/> 會計部	<input type="checkbox"/> 連附件	<input type="checkbox"/> 機械設計部	<input type="checkbox"/> 連附件
<input type="checkbox"/> 香港辦	<input type="checkbox"/> 連附件	<input type="checkbox"/> 其他:			

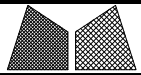
<input type="checkbox"/> 行政部	<input type="checkbox"/> 連附件	<input type="checkbox"/> 會計部	<input type="checkbox"/> 連附件	<input type="checkbox"/> 統籌部	<input type="checkbox"/> 連附件	<input type="checkbox"/> 工程部	<input type="checkbox"/> 連附件
<input type="checkbox"/> 採購部	<input type="checkbox"/> 連附件	<input type="checkbox"/> QS部	<input type="checkbox"/> 連附件	<input checked="" type="checkbox"/> 地盤管理	<input checked="" type="checkbox"/> 連附件	<input type="checkbox"/> 維修部	<input type="checkbox"/> 連附件

*發件人簽署:	<i>ner</i>	*組別成員批核簽署:	
傳遞編號:	41/e 22/13/22	項目經理簽署:	<i>[Signature]</i>

 美特鋁質 有限公司 MIDI Aluminium Fabricator Ltd.		工程號:	J-857	計算:	刘灿			日期:	2022.12.15		送呈:	施哥	
地盤名稱:		啟德6552	核對:	徐祥坤			日期:	2022.12.16		副本:	细佬		
地盤棉插B.M表		項目類別:	屋頂	批准:	林仁安			日期:	2022.12.16				
BM編號:		修改版次:		A/C Code:	2022.12.16			總V.F.:	0.000		總重量:	187.88	
序號	修改內容	鋁板圖號	鋁板名稱	顏色	實用	後備	總數	總重量	單件展開面積		單件V.F.	總V.F.	圖紙編號
									平方米				
1		FH-C001	1.5mm厚鋁板	CHROMATE	1	0	1	0.465	0.086	0.086	0.000	0.000	FH-L10
2		FH-C003	1.5mm厚鋁板	CHROMATE	1	0	1	1.524	0.281	0.281	0.000	0.000	FH-L10
3		FH-C004	1.5mm厚鋁板	CHROMATE	1	0	1	1.008	0.186	0.186	0.000	0.000	FH-L10
4		FH-C005	1.5mm厚鋁板	CHROMATE	1	0	1	0.274	0.051	0.051	0.000	0.000	FH-L10
5		FH-C006	1.5mm厚鋁板	CHROMATE	12	0	12	15.407	0.237	2.843	0.000	0.000	FH-L10
6		FH-C009	1.5mm厚鋁板	CHROMATE	12	0	12	8.336	0.128	1.538	0.000	0.000	FH-L10
7		FH-C010	1.5mm厚鋁板	CHROMATE	2	0	2	2.170	0.200	0.400	0.000	0.000	FH-L10
8		FH-C011	1.5mm厚鋁板	CHROMATE	2	0	2	1.574	0.145	0.290	0.000	0.000	FH-L10
9		FH-C012	1.5mm厚鋁板	CHROMATE	2	0	2	0.692	0.064	0.128	0.000	0.000	FH-L10
10		FH-C013	1.5mm厚鋁板	CHROMATE	2	0	2	1.160	0.107	0.214	0.000	0.000	FH-L10
11		FH-C014	1.5mm厚鋁板	CHROMATE	1	0	1	0.902	0.166	0.166	0.000	0.000	FH-L10
12		FH-C015	1.5mm厚鋁板	CHROMATE	2	0	2	0.471	0.043	0.087	0.000	0.000	FH-L10
13		FH-C016	1.5mm厚鋁板	CHROMATE	2	0	2	1.799	0.166	0.332	0.000	0.000	FH-L10
14		FH-C203	1.5mm厚鋁板	CHROMATE	1	0	1	0.613	0.113	0.113	0.000	0.000	FH-L10
15		FH-M001	1.5mm厚鋁板	CHROMATE	20	0	20	10.088	0.093	1.861	0.000	0.000	FH-L10
16		FH-M002	1.5mm厚鋁板	CHROMATE	1	0	1	1.519	0.280	0.280	0.000	0.000	FH-L10
17		FH-M003	1.5mm厚鋁板	CHROMATE	1	0	1	0.313	0.058	0.058	0.000	0.000	FH-L10
18		FH-M004	1.5mm厚鋁板	CHROMATE	1	0	1	0.818	0.151	0.151	0.000	0.000	FH-L10
19		FH-M006	1.5mm厚鋁板	CHROMATE	1	0	1	0.722	0.133	0.133	0.000	0.000	FH-L10
20		FH-M008	1.5mm厚鋁板	CHROMATE	6	0	6	5.727	0.176	1.057	0.000	0.000	FH-L10
21		FH-M009	1.5mm厚鋁板	CHROMATE	8	0	8	3.913	0.090	0.722	0.000	0.000	FH-L10
22		FH-M010	1.5mm厚鋁板	CHROMATE	5	0	5	3.515	0.130	0.649	0.000	0.000	FH-L10
23		FH-M011	1.5mm厚鋁板	CHROMATE	3	0	3	2.146	0.132	0.396	0.000	0.000	FH-L10
24		FH-M012	1.5mm厚鋁板	CHROMATE	25	0	25	7.833	0.058	1.445	0.000	0.000	FH-L10
25		FH-M012A	1.5mm厚鋁板	CHROMATE	2	0	2	0.562	0.052	0.104	0.000	0.000	FH-L10
26		FH-M013	1.5mm厚鋁板	CHROMATE	7	0	7	7.864	0.207	1.451	0.000	0.000	FH-L10

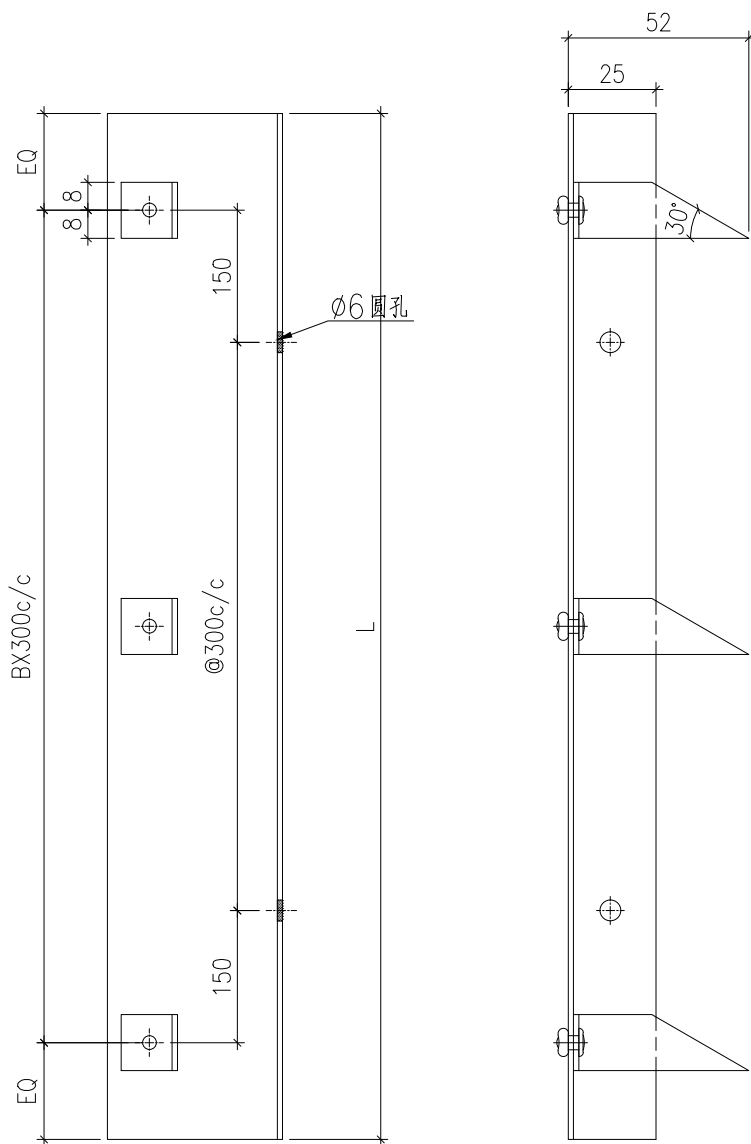
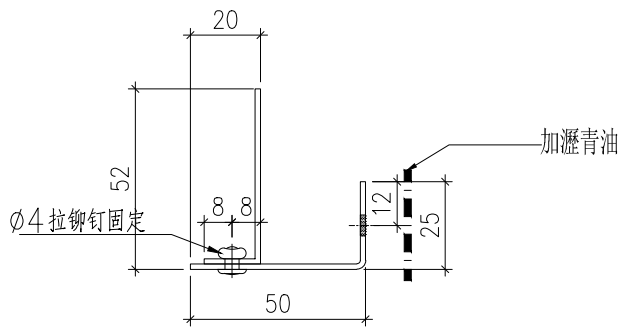
 美特鋁質 有限公司 MIDI Aluminium Fabricator Ltd.		工程號:	J-857	計算:	刘灿		日期:	2022.12.15		送呈:	施哥		
		地盤名稱:	啟德6552	核對:	徐祥坤		日期:	2022.12.16		副本:	细佬		
地盘棉插B.M表		項目類別:	屋顶	批准:	林仁安		日期:	2022.12.16					
BM編號:		修改版次:		A/C Code:	2022.12.16		總V.F.:	0.000		總重量:	187.88		
序號	修改內容	鋁板圖號	鋁板名稱	顏色	實用	後備	總數	總重量	單件展開面積	總展開面積	單件V.F.	總V.F.	圖紙編號
									平方米		平方米		
27		FH-M014	1.5mm厚鋁板	CHROMATE	3	0	3	2.302	0.142	0.425	0.000	0.000	FH-L10
28		FH-M016	1.5mm厚鋁板	CHROMATE	2	0	2	2.297	0.212	0.424	0.000	0.000	FH-L10
29		FH-M017	1.5mm厚鋁板	CHROMATE	4	0	4	5.985	0.276	1.104	0.000	0.000	FH-L10
30		FH-M018	1.5mm厚鋁板	CHROMATE	11	0	11	5.969	0.100	1.101	0.000	0.000	FH-L10
31		FH-M019	1.5mm厚鋁板	CHROMATE	4	0	4	3.604	0.166	0.665	0.000	0.000	FH-L10
32		FH-M021	1.5mm厚鋁板	CHROMATE	1	0	1	0.529	0.098	0.098	0.000	0.000	FH-L10
33		FH-M022	1.5mm厚鋁板	CHROMATE	3	0	3	1.126	0.069	0.208	0.000	0.000	FH-L10
34		FH-M023	1.5mm厚鋁板	CHROMATE	21	0	21	5.617	0.049	1.036	0.000	0.000	FH-L10
35		FH-M026	1.5mm厚鋁板	CHROMATE	1	0	1	0.724	0.134	0.134	0.000	0.000	FH-L10
36		FH-M028	1.5mm厚鋁板	CHROMATE	1	0	1	1.095	0.202	0.202	0.000	0.000	FH-L10
37		FH-M029	1.5mm厚鋁板	CHROMATE	2	0	2	0.841	0.078	0.155	0.000	0.000	FH-L10
38		FH-M031	1.5mm厚鋁板	CHROMATE	4	0	4	3.907	0.180	0.721	0.000	0.000	FH-L10
39		FH-M032	1.5mm厚鋁板	CHROMATE	4	0	4	1.186	0.055	0.219	0.000	0.000	FH-L10
40		FH-M035	1.5mm厚鋁板	CHROMATE	2	0	2	1.223	0.113	0.226	0.000	0.000	FH-L10
41		FH-M035A	1.5mm厚鋁板	CHROMATE	2	0	2	1.288	0.119	0.238	0.000	0.000	FH-L10
42		FH-M037	1.5mm厚鋁板	CHROMATE	2	0	2	1.898	0.175	0.350	0.000	0.000	FH-L10
43		FH-M038	1.5mm厚鋁板	CHROMATE	4	0	4	5.111	0.236	0.943	0.000	0.000	FH-L10
44		FH-M039	1.5mm厚鋁板	CHROMATE	4	0	4	3.430	0.158	0.633	0.000	0.000	FH-L10
45		FH-M042	1.5mm厚鋁板	CHROMATE	1	0	1	1.201	0.222	0.222	0.000	0.000	FH-L10
46		FH-M043A	1.5mm厚鋁板	CHROMATE	1	0	1	0.709	0.131	0.131	0.000	0.000	FH-L10
47		FH-M048	1.5mm厚鋁板	CHROMATE	1	0	1	1.116	0.206	0.206	0.000	0.000	FH-L10
48		FH-M049	1.5mm厚鋁板	CHROMATE	2	0	2	2.163	0.200	0.399	0.000	0.000	FH-L10

 美特鋁質 有限公司 MIDI Aluminium Fabricator Ltd.		工程號:	J-857	計算:	刘灿		日期:	2022.12.15		送呈:		施哥	
		地盤名稱:	啟德6552	核對:	徐祥坤		日期:	2022.12.16		副本:		细佬	
地盤棉插B.M表		項目類別:	屋頂	批准:	林仁安		日期:	2022.12.16					
BM編號:		修改版次:		A/C Code:	2022.12.16		總V.F.:	0.000		總重量:	187.88		
序號	修改內容	鋁板圖號	鋁板名稱	顏色	實用	後備	總數	總重量	單件展開面積		單件V.F.	總V.F.	圖紙編號
									平方米				
49		FH-M062	1.5mm厚鋁板	CHROMATE	34	0	34	12.992	0.071	2.397	0.000	0.000	FH-L10
50		FH-M080	1.5mm厚鋁板	CHROMATE	7	0	7	3.563	0.094	0.657	0.000	0.000	FH-L10
51		FH-M081	1.5mm厚鋁板	CHROMATE	3	0	3	2.160	0.133	0.398	0.000	0.000	FH-L10
52		FH-M082	1.5mm厚鋁板	CHROMATE	5	0	5	3.901	0.144	0.720	0.000	0.000	FH-L10
53		FH-M084	1.5mm厚鋁板	CHROMATE	2	0	2	2.293	0.212	0.423	0.000	0.000	FH-L10
54		FH-M099	1.5mm厚鋁板	CHROMATE	2	0	2	2.427	0.224	0.448	0.000	0.000	FH-L10
55		FH-M101	1.5mm厚鋁板	CHROMATE	4	0	4	2.262	0.104	0.417	0.000	0.000	FH-L10
56		FH-M102	1.5mm厚鋁板	CHROMATE	2	0	2	0.538	0.050	0.099	0.000	0.000	FH-L10
57		FH-M104	1.5mm厚鋁板	CHROMATE	4	0	4	6.419	0.296	1.184	0.000	0.000	FH-L10
58		FH-M105	1.5mm厚鋁板	CHROMATE	1	0	1	0.478	0.088	0.088	0.000	0.000	FH-L10
59		FH-M106	1.5mm厚鋁板	CHROMATE	2	0	2	1.856	0.171	0.342	0.000	0.000	FH-L10
60		FH-M107	1.5mm厚鋁板	CHROMATE	1	0	1	0.630	0.116	0.116	0.000	0.000	FH-L10
61		FH-M108	1.5mm厚鋁板	CHROMATE	1	0	1	1.558	0.287	0.287	0.000	0.000	FH-L10
62		FH-M109	1.5mm厚鋁板	CHROMATE	1	0	1	0.975	0.180	0.180	0.000	0.000	FH-L10
63		FH-M110	1.5mm厚鋁板	CHROMATE	1	0	1	1.109	0.205	0.205	0.000	0.000	FH-L10
64		FH-M111	1.5mm厚鋁板	CHROMATE	4	0	4	0.963	0.044	0.178	0.000	0.000	FH-L10
65		FH-M113	1.5mm厚鋁板	CHROMATE	2	0	2	2.013	0.186	0.371	0.000	0.000	FH-L10
66		FH-M114	1.5mm厚鋁板	CHROMATE	4	0	4	3.176	0.146	0.586	0.000	0.000	FH-L10
67		FH-M115	1.5mm厚鋁板	CHROMATE	2	0	2	0.894	0.082	0.165	0.000	0.000	FH-L10
68		FH-M116	1.5mm厚鋁板	CHROMATE	2	0	2	0.617	0.057	0.114	0.000	0.000	FH-L10
69		FH-M118	1.5mm厚鋁板	CHROMATE	1	0	1	0.311	0.057	0.057	0.000	0.000	FH-L10
70		FH-M118	1.5mm厚鋁板	CHROMATE	1	0	1	0.870	0.161	0.161	0.000	0.000	FH-L10
71		FH-M119	1.5mm厚鋁板	CHROMATE	1	0	1	0.661	0.122	0.122	0.000	0.000	FH-L10
72		FH-M120	1.5mm厚鋁板	CHROMATE	1	0	1	0.480	0.089	0.089	0.000	0.000	FH-L10
總計:					290		290	187.88	10.172	34.66	0.00	0.000	



美特鋁質有限公司
MIDI Aluminium Fabricator Ltd.

工程號	J857	類別		物料號	-			
地盘	啟德6552	制圖	刘灿	2022-12-15	圖號	FH-L10		
修改	-	採用工廠		復核	徐詳坤	2022-12-16	數量	-
日期	-	材料颜色	CHROMATE	批准	林仁安	2022-12-16	單件重量	- (KG)
图纸名称	防火棉托加工图		材料	1.5mm THK. 铝板				



棉插长宽数据見FH-L11

 美特鋁質有限公司 MIDI Aluminium Fabricator Ltd.				工程號	J857	類別		物料號	-					
				地盤	啟德6552	制圖	刘灿	2022-12-15	圖號	FH-L11				
修改	-	-	-	採用工廠		地盤	✓	图纸名称	防火棉托加工图	復核	徐詳坤	2022-12-16	數量	-
日期	-	-	-	材料颜色	CHROMATE	材料		批准	林仁安	2022-12-16	單件重量	-	(KG)	

序号	部件编号	长度 (L)	B	数量
1	FH-C001	609	1	1
2	FH-C003	1994	6	1
3	FH-C004	1319	4	1
4	FH-C005	359	1	1
5	FH-C006	1680	5	12
6	FH-C009	909	2	12
7	FH-C010	1420	4	2
8	FH-C011	1030	3	2
9	FH-C012	453	1	2
10	FH-C013	759	2	2
11	FH-C014	1180	3	1
12	FH-C015	308	1	2
13	FH-C016	1177	3	2
14	FH-C203	802	2	1
15	FH-M001	660	2	20
16	FH-M002	1988	6	1
17	FH-M003	409	1	1
18	FH-M004	1070	3	1
19	FH-M006	945	3	1
20	FH-M008	1249	4	6
21	FH-M009	640	2	8
22	FH-M010	920	2	5
23	FH-M011	936	3	3
24	FH-M012	410	1	25
25	FH-M012A	368	1	2
26	FH-M013	1470	3	7
27	FH-M014	1004	3	3
28	FH-M016	1503	4	2
29	FH-M017	1958	6	4
30	FH-M018	710	2	11
31	FH-M019	1179	3	4
32	FH-M021	692	2	1
33	FH-M022	491	1	3
34	FH-M023	350	1	21
35	FH-M026	947	3	1

序号	部件编号	长度 (L)	B	数量
36	FH-M028	1433	4	1
37	FH-M029	550	1	2
38	FH-M031	1278	4	4
39	FH-M032	388	1	4
40	FH-M035	800	2	2
41	FH-M035A	843	2	2
42	FH-M037	1242	4	2
43	FH-M038	1672	5	4
44	FH-M039	1122	3	4
45	FH-M042	1572	4	1
46	FH-M043A	928	3	1
47	FH-M048	1460	4	1
48	FH-M049	1415	4	2
49	FH-M062	500	1	34
50	FH-M080	666	2	7
51	FH-M081	942	3	3
52	FH-M082	1021	3	5
53	FH-M084	1500	4	2
54	FH-M099	1588	5	2
55	FH-M101	740	2	4
56	FH-M102	352	1	2
57	FH-M104	2100	6	4
58	FH-M105	625	1	1
59	FH-M106	1214	3	2
60	FH-M107	825	2	1
61	FH-M108	2039	6	1
62	FH-M109	1276	4	1
63	FH-M110	1451	4	1
64	FH-M111	315	1	4
65	FH-M113	1317	4	2
66	FH-M114	1039	3	4
67	FH-M115	585	1	2
68	FH-M116	404	1	2
69	FH-M118	407	1	1
70	FH-M118	1139	3	1
71	FH-M119	865	2	1
72	FH-M120	628	2	1

J857单元幕墙单元件派位图(1)

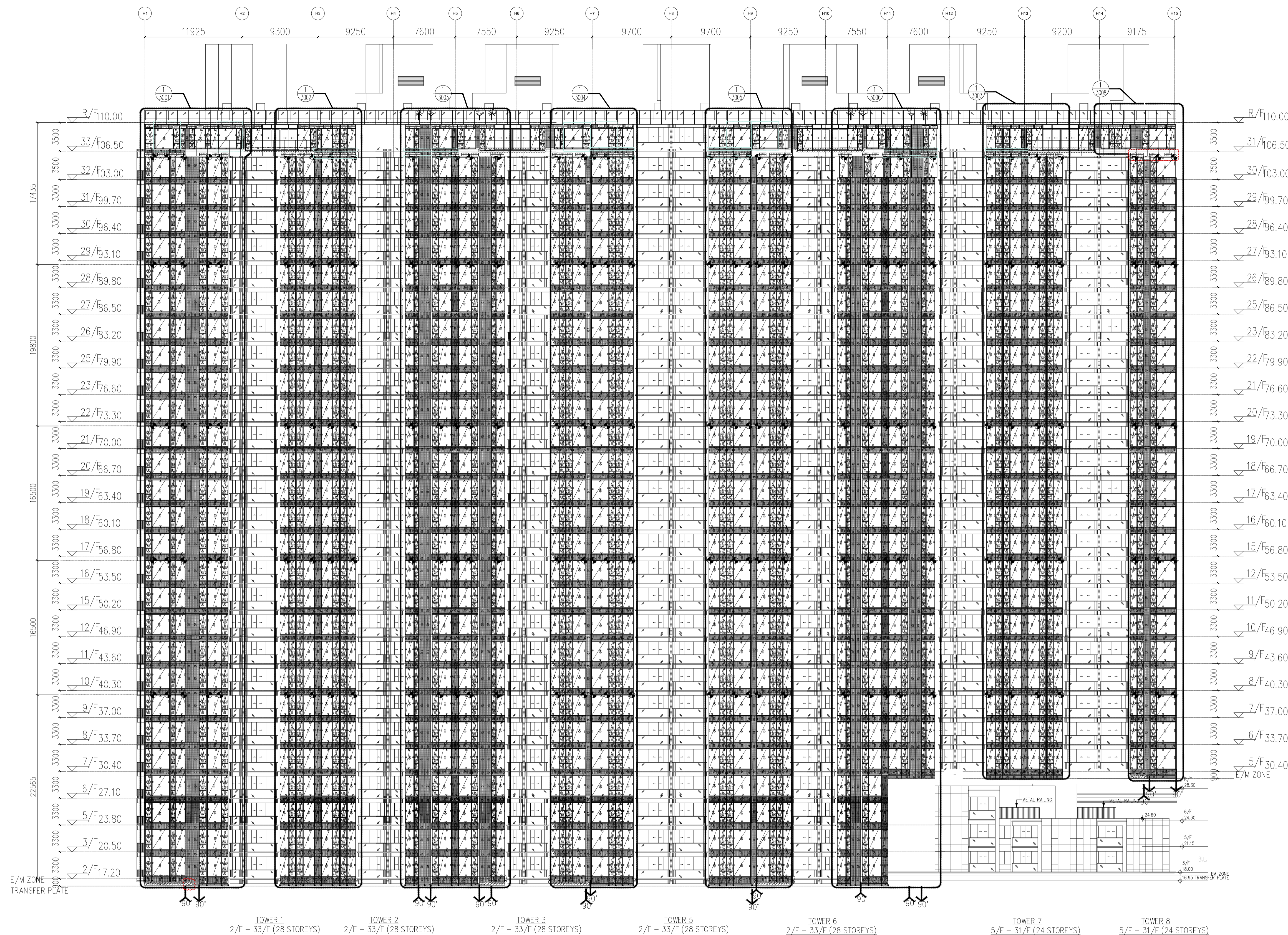
R/F	SD-PE-3001											R/F	SD-PE-3002								R/F	SD-PE-3003										
33F	CW-811	CW-812	CW-813	CW-814	CW-815	CW-816	CW-817	CW-818	CW-819	CW-820	CW-950	CW-821			CW-822	CW-951	CW-823	CW-824	CW-825	CW-826	CW-827			CW-828	CW-829	CW-830	CW-831	CW-832	CW-833	CW-834	CW-950	CW-835
	FH-M082	FH-M104	FH-M105	FH-M029	FH-M062	FH-M106	FH-M062	FH-M107	FH-M108	FH-M062	FH-M062	FH-M109			FH-M110	FH-M062	FH-M111	FH-M008	FH-M001	FH-M001	FH-M010			FH-M011	FH-M012	FH-M080	FH-M013	FH-M111	FH-M018	FH-M113	FH-M062	FH-M114
32F	CW-701	CW-702	CW-703	CW-704	CW-705	CW-706	CW-707						CW-708	CW-709	CW-710	CW-711	CW-712	CW-713	CW-750	CW-751	CW-714	CW-715	CW-716	CW-717	CW-718	CW-712C	CW-719	CW-720	CW-721	CW-722		
	FH-M001	FH-M002	FH-M003	FH-M004	FH-C001	FH-M013	FH-M001						FH-M006	FH-M001	FH-M001	FH-M008	FH-M009	FH-M008	FH-M001	FH-M001	FH-M010	FH-M011	FH-M012	FH-M080	FH-M013	FH-M009	FH-M013	FH-M080	FH-M012	FH-M081		

SD-PE-3004										SD-PE-3005										SD-PE-3006											
R/F	CW-835	CW-952	CW-836	CW-837	CW-838	CW-869	CW-840	CW-841	CW-842	CW-843	R/F	CW-844	CW-841	CW-842	CW-845	CW-870	CW-838	CW-846	CW-847	CW-950	CW-835	R/F	CW-835	CW-951	CW-848	CW-839	CW-849	CW-850	CW-851	CW-852	CW-853
33F	FH-M114	FH-M062	FH-M115	FH-M116	FH-M104	FH-M101	FH-M017	FH-M018	FH-M018	FH-M019	33F	FH-M019	FH-M018	FH-M018	FH-M017	FH-M101	FH-M104	FH-M116	FH-M115	FH-M062	FH-M114	33F	FH-M114	FH-M062	FH-M113	FH-M018	FH-M111	FH-M013	FH-M080	FH-M118	FH-M081
32F			CW-723	CW-724	CW-725	CW-726	CW-727	CW-728	CW-729	CW-730	32F	CW-731	CW-728	CW-729	CW-732	CW-733	CW-724	CW-725	CW-734			32F	CW-735	CW-755	CW-756	CW-757	CW-712C	CW-758	CW-759	CW-760	CW-736
			FH-M014	FH-M001	FH-M001	FH-M016	FH-M017	FH-M018	FH-M018	FH-M019		FH-M019	FH-M018	FH-M018	FH-M017	FH-M016	FH-M001	FH-M001	FH-M014				FH-M081	FH-M012	FH-M080	FH-M013	FH-M009	FH-M013	FH-M080	FH-M012	FH-M011

J857单元幕墙单元件派位图(2)

SD-PE-3007										SD-PE-3008										SD-PE-3021												
R/F	CW-854	CW-825	CW-826	CW-855	CW-956	CW-950	CW-857			R/F	CW-858	CW-953	CW-859	CW-860	CW-861	CW-862	CW-863	CW-812	CW-864	CW-865	CW-866	R/F	CW-867	CW-868								
31F	FH-M010	FH-M001	FH-M001	FH-M008	FH-M111	FH-M062	FH-M106			31F	FH-M118	FH-M062	FH-M119	FH-M062	FH-M018	FH-M014	FH-M120	FH-M104	FH-C203	FH-M099	FH-M062	FH-M099	FH-M062	31F	FH-M022	FH-M084						
30F	CW-737	CW-750	CW-751	CW-752	CW-712	CW-753	CW-709	CW-710	CW-754	30F						CW-738	CW-739	CW-740	CW-741	CW-742	CW-743	30F	CW-744	CW-745	CW-746	CW-747	CW-748	CW-749				
	FH-M010	FH-M001	FH-M001	FH-M008	FH-M009	FH-M008	FH-M001	FH-M001	FH-M010							FH-M021	FH-M001	FH-M080	FH-C003	FH-C004	FH-M022		FH-M022	FH-M084	FH-M062	FH-C014	FH-C005	FH-M023				

J857单元幕墙单元件派位图(3)



LEGEND :

S.F.L. = STRUCTURAL FLOOR LEVEL	GL2 = 8mm HEAT STRENGTHEN LOW IRON GLASS + 1.52 PVB INTERLAYER+ 8mm HEAT STRENGTHEN LOW IRON GLASS + 12mm AIR SPACE +12mm LOW IRON FULLY TEMPERED IGU LAMINATED CLEAR GLASS	S.J. = STACK JOINT	T1 = EXTRUDED ALUM. SILL STACK JOINT (AL11)
U = UNITIZED CURTAIN WALL (FOR BD APPROVAL)	GL3 = 8mm HEAT STRENGTHEN LOW IRON GLASS + 1.52 PVB INTERLAYER+ 8mm HEAT STRENGTHEN LOW IRON GLASS + 9mm AIR SPACE +8mm LOW IRON FULLY TEMPERED IGU LAMINATED CLEAR GLASS	M1 = EXTRUDED ALUM. MALE MULLION (AL03)	T2 = EXTRUDED ALUM. GUTTER STACK JOINT (AL12)
EM1 = WIND LOAD +DEAD LOAD FIXING LOCATION	GL4 = 8mm FULLY TEMPERED GLASS + 1.52 PVB INTERLAYER+ 8mm HEAT STRENGTHEN LOW IRON GLASS + 12mm AIR SPACE +10mm LOW IRON FULLY TEMPERED LAMINATED GLASS	M2 = EXTRUDED ALUM. MALE MULLION (AL03A)	T3 = EXTRUDED ALUM. INTERMEDIATE TRANSOM (AL13)
EM2 = WIND LOAD +DEAD LOAD FIXING LOCATION	GB = 10mm FULLY TEMPERED MONOLITHIC CLEAR GLASS (BARRIER)	M3 = EXTRUDED ALUM. FEMALE MULLION (AL04)	T4 = EXTRUDED ALUM. INTERMEDIATE TRANSOM (AL15)
EM3 = WIND LOAD FIXING LOCATION		M4 = EXTRUDED ALUM. FEMALE MULLION (AL04A)	T5 = EXTRUDED ALUM. INTERMEDIATE TRANSOM (AL14)
GL1 = 8mm HEAT STRENGTHEN LOW IRON GLASS + 1.52 PVB INTERLAYER 8mm HEAT STRENGTHEN LOW IRON GLASS + 12mm AIR SPACE +10mm LOW IRON FULLY TEMPERED IGU LAMINATED CLEAR GLASS		M7 = EXTRUDED ALUM. OUTER CORNER MALE MULLION (AL07)	T7 = EXTRUDED ALUM. TRANSOM (AL71)
		M8 = EXTRUDED ALUM. OUTER CORNER FEMALE MULLION (AL08)	T8 = EXTRUDED ALUM. TRANSOM (AL72)
		M9 = EXTRUDED ALUM. OUTER CORNER MALE MULLION (AL86)	T9 = EXTRUDED ALUM. TRANSOM (AL69)
		M10 = EXTRUDED ALUM. OUTER CORNER FEMALE MULLION (AL85)	T10 = EXTRUDED ALUM. TRANSOM (AL70)
		M13 = EXTRUDED ALUM. INTERMEDIATE MULLION (AL65)	T11 = EXTRUDED ALUM. INTERMEDIATE TRANSOM(AL106)
		M14 = EXTRUDED ALUM. INTERMEDIATE MULLION (AL66)	T12 = EXTRUDED ALUM. INTERMEDIATE TRANSOM(AL107)
		M15 = EXTRUDED ALUM. MALE MULLION (AL67)	T13 = EXTRUDED ALUM. GUTTER STACK JOINT (AL105)
		M16 = EXTRUDED ALUM. FEMALE MULLION (AL68)	
			BMU SOCKET(GLASS UNIT)

B.D. REF :
 F.S.D. REF :
 Note :
 1.All dimensions are in mm.
 2.All elevations are viewed from outside.
 3.All dimensions to be verified on site before fabrication.

GENERAL NOTES

Legend :

1. F.F.L.-- Finished Floor Level
 2. S.F.L.-- Structural Floor Level
 3. (R) -- Reversed Detail

X1 -- DETAIL MARK NO.
 X001 -- REFER SHEET NO.

REV.	DATE	DESCRIPTION	BY
E	16.Nov.2022	GENERAL REVISION	
D	04.FEB.2022	GENERAL REVISION	
C	04.JAN.2022	GENERAL REVISION	
B	22.Nov.2021	GENERAL REVISION	
A	10.Nov.2021	GENERAL REVISION	

CLIENT :
MARBLE EDGE INVESTMENT LTD.

ARCHITECT :
RONALD LU & PARTNERS
 ARCHITECTS | PLANNERS | INTERIOR DESIGNERS

STRUCTURAL ENGINEER :
CMA C M WONG & ASSOCIATES LTD
 CONSULTING ENGINEERS

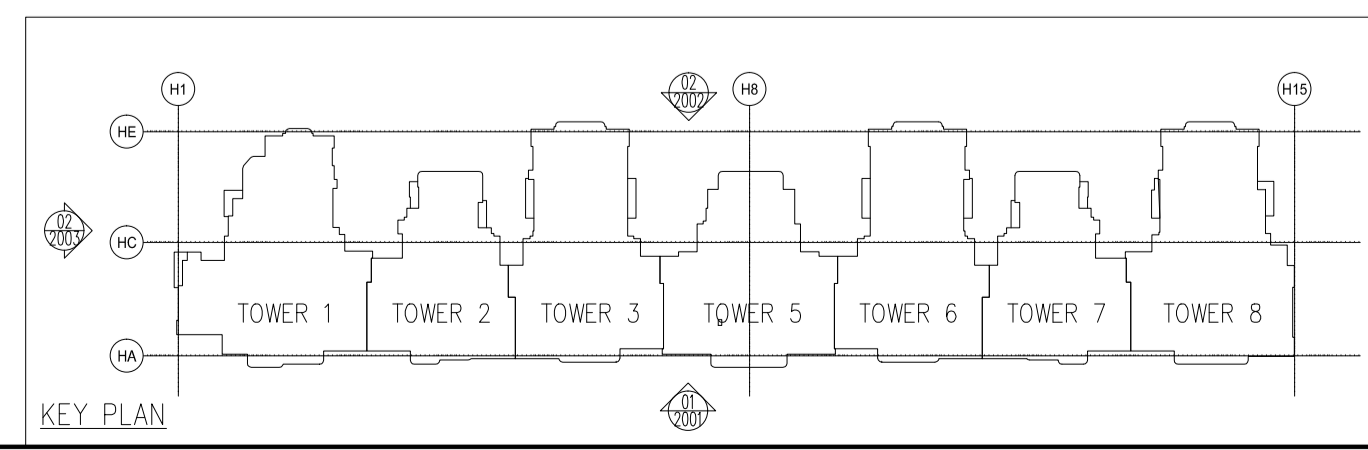
MAIN CONTRACTOR :
裕民建築有限公司

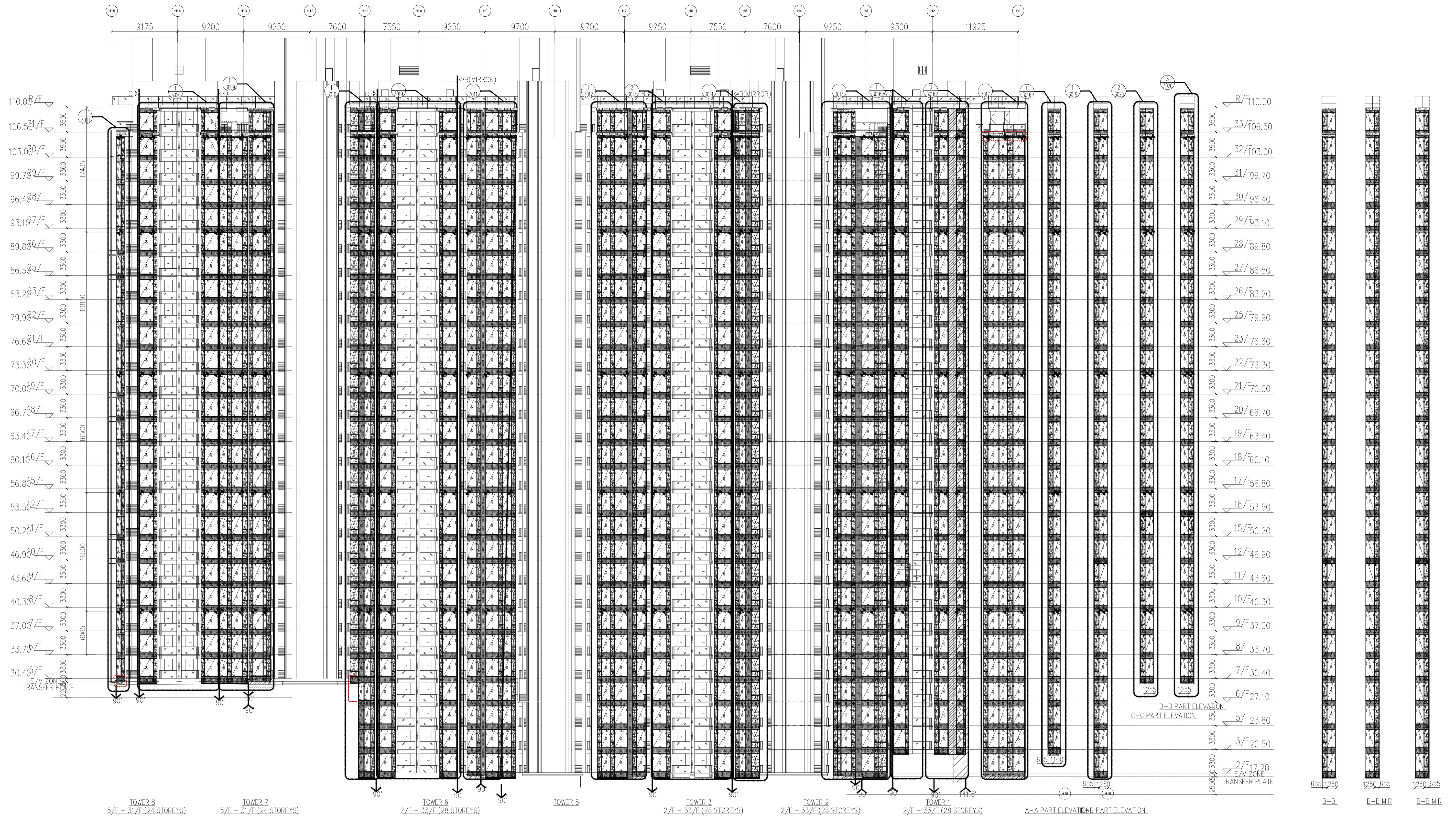
美特鋁質有限公司
 MIDI ALUMINIUM FABRICATOR LTD.
 Units 6-8, Sunray Industrial Centre, 1/F
 610 Cha Kwo Ling Road, Kowloon
 Tel:23489211-4 Fax:(852)27727666

PROJECT :
PROPOSED RESIDENTIAL DEVELOPMENT AT NEW KOWLOON INLAND LOT. NO.6552

TITLE :
TOWER ELEVATION "1" FOR TOWER 1-8

JOB NO. : J-857
 DRAWN BY : AN DATE : 18.Oct.2021
 CHKD BY : SCALE A1: 1:250 A3:
 DWG. NO. : SD-EL-2001 REV. : A





LEGEND :

S.F.L. = STRUCTURAL FLOOR LEVEL

C.W. = UNITIZED CURTAIN WALL (FOR BD APPROVAL)

◁EM1= WIND LOAD +DEAD LOAD FIXING LOCATION

◁EM2= WIND LOAD +DEAD LOAD FIXING LOCATION

◀EM3= WIND LOAD FIXING LOCATION

GL1 = 8mm HEAT STRENGTHEN LOW IRON GLASS + 1.52 PVB INTERLAYER

GL2 = 8mm HEAT STRENGTHEN LOW IRON GLASS + 12mm AIR SPACE +10mm LOW IRON FULLY TEMPERED IGU LAMINATED CLEAR GLASS

GL3 = 8mm HEAT STRENGTHEN LOW IRON GLASS + 1.52 PVB INTERLAYER

GL4 = 8mm FULLY TEMPERED LAMINATED GLASS + 1.52 PVB INTERLAYER + 8mm FULLY TEMPERED LAMINATED GLASS

GB = 10mm FULLY TEMPERED MONOLITHIC CLEAR GLASS (BARRIER)

GL2 = 8mm HEAT STRENGTHEN LOW IRON GLASS + 1.52 PVB INTERLAYER + 12mm AIR SPACE +12mm LOW IRON FULLY TEMPERED IGU LAMINATED CLEAR GLASS

GL3 = 8mm HEAT STRENGTHEN LOW IRON GLASS + 1.52 PVB INTERLAYER + 9mm AIR SPACE +8mm LOW IRON FULLY TEMPERED IGU LAMINATED CLEAR GLASS

GL4 = 8mm FULLY TEMPERED LAMINATED GLASS + 1.52 PVB INTERLAYER + 8mm FULLY TEMPERED LAMINATED GLASS

GB = 10mm FULLY TEMPERED MONOLITHIC CLEAR GLASS (BARRIER)

S.J. = STACK JOINT

M1 = EXTRUDED ALUM. MALE MULLION (AL03)

M2 = EXTRUDED ALUM. MALE MULLION (AL03A)

M3 = EXTRUDED ALUM. FEMALE MULLION (AL04)

M4 = EXTRUDED ALUM. FEMALE MULLION (AL04A)

M7 = EXTRUDED ALUM. OUTER CORNER MALE MULLION (AL07)

M8 = EXTRUDED ALUM. OUTER CORNER FEMALE MULLION (AL08)

M9 = EXTRUDED ALUM. OUTER CORNER MALE MULLION (AL86)

M10 = EXTRUDED ALUM. OUTER CORNER FEMALE MULLION (AL85)

M13 = EXTRUDED ALUM. INTERMEDIATE MULLION (AL65)

M14 = EXTRUDED ALUM. INTERMEDIATE MULLION (AL66)

M15 = EXTRUDED ALUM. MALE MULLION (AL67)

M16 = EXTRUDED ALUM. FEMALE MULLION (AL68)

TOWER 1-8-ELEVATION

SCALE 1:250

T1 = EXTRUDED ALUM. SILL STACK JOINT (AL11)

T2 = EXTRUDED ALUM. GUTTER STACK JOINT (AL12)

T3 = EXTRUDED ALUM. INTERMEDIATE TRANSOM (AL13)

T4 = EXTRUDED ALUM. INTERMEDIATE TRANSOM (AL15)

T5 = EXTRUDED ALUM. INTERMEDIATE TRANSOM (AL14)

T7 = EXTRUDED ALUM. TRANSOM (AL71)

T8 = EXTRUDED ALUM. TRANSOM (AL72)

T9 = EXTRUDED ALUM. TRANSOM (AL69)

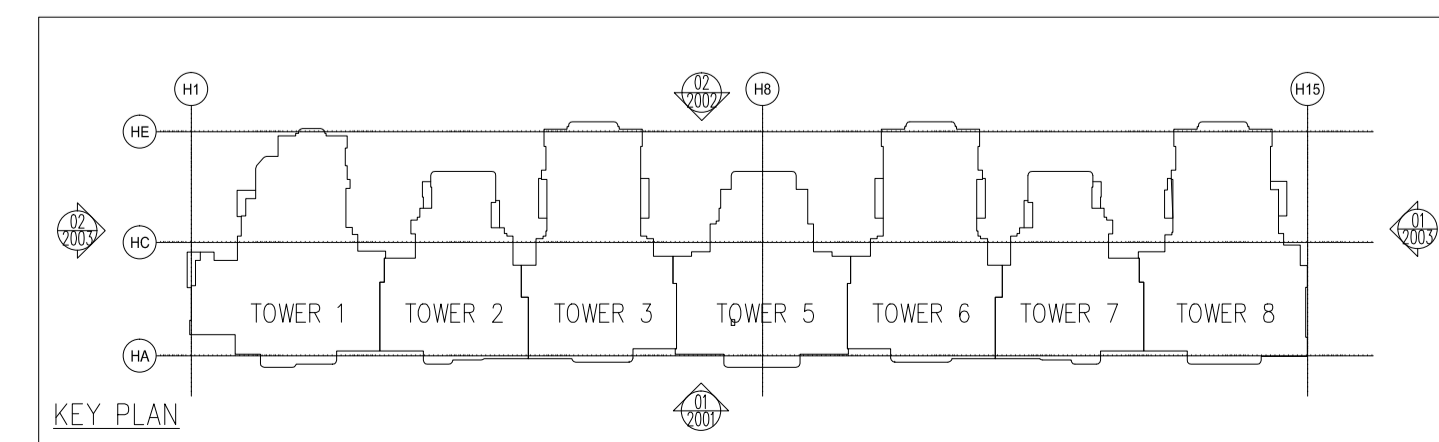
T10 = EXTRUDED ALUM. TRANSOM (AL70)

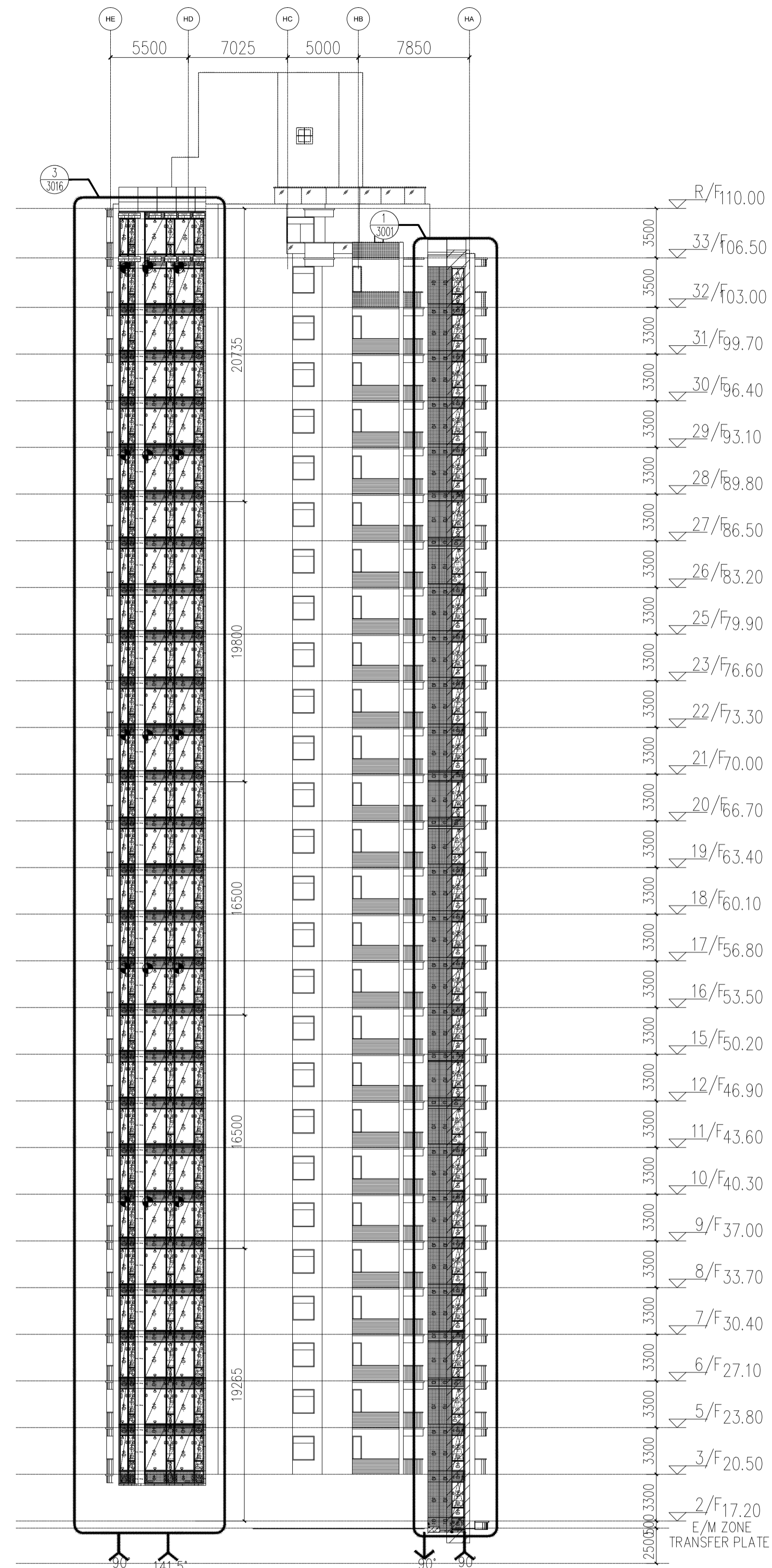
T11 = EXTRUDED ALUM. INTERMEDIATE TRANSOM(AL106)

T12 = EXTRUDED ALUM. INTERMEDIATE TRANSOM(AL107)

T13 = EXTRUDED ALUM. GUTTER STACK JOINT (AL105)

◐ = BMU SOCKET(GLASS UNIT)





01 TOWER 8-ELEVATION
SCALE 1:250

02 TOWER 8-ELEVATION
SCALE 1:250

LEGEND :

S.F.L. = STRUCTURAL FLOOR LEVEL

C.W. = UNITIZED CURTAIN WALL (FOR BD APPROVAL)

◁EM1= WIND LOAD +DEAD LOAD FIXING LOCATION

◁EM2= WIND LOAD +DEAD LOAD FIXING LOCATION

◀EM3= WIND LOAD FIXING LOCATION

GL1 = 8mm HEAT STRENGTHEN LOW IRON GLASS + 1.52 PVB INTERLAYER

GL2 = 8mm HEAT STRENGTHEN LOW IRON GLASS + 12mm AIR SPACE +10mm LOW IRON FULLY TEMPERED LAMINATED CLEAR GLASS

GL3 = 8mm HEAT STRENGTHEN LOW IRON GLASS + 1.52 PVB INTERLAYER+ 8mm HEAT STRENGTHEN LOW IRON GLASS + 9mm AIR SPACE +8mm LOW IRON FULLY TEMPERED LAMINATED CLEAR GLASS

GL4 = 8mm FULLY TEMPERED GLASS + 1.52 PVB INTERLAYER+ 8mm FULLY TEMPERED LAMINATED CLEAR GLASS

GB = 10mm FULLY TEMPERED MONOLITHIC CLEAR GLASS (BARRIER)

GL2 = 8mm HEAT STRENGTHEN LOW IRON GLASS + 1.52 PVB INTERLAYER+ 8mm HEAT STRENGTHEN LOW IRON GLASS + 12mm AIR SPACE +12mm LOW IRON FULLY TEMPERED IGU LAMINATED CLEAR GLASS

GL3 = 8mm HEAT STRENGTHEN LOW IRON GLASS + 1.52 PVB INTERLAYER+ 8mm HEAT STRENGTHEN LOW IRON GLASS + 9mm AIR SPACE +8mm LOW IRON FULLY TEMPERED IGU LAMINATED CLEAR GLASS

GL4 = 8mm FULLY TEMPERED GLASS + 1.52 PVB INTERLAYER+ 8mm FULLY TEMPERED LAMINATED CLEAR GLASS

GB = 10mm FULLY TEMPERED MONOLITHIC CLEAR GLASS (BARRIER)

S.J. = STACK JOINT

M1 = EXTRUDED ALUM. MALE MULLION (AL03)

M2 = EXTRUDED ALUM. MALE MULLION (AL03A)

M3 = EXTRUDED ALUM. FEMALE MULLION (AL04)

M4 = EXTRUDED ALUM. FEMALE MULLION (AL04A)

M7 = EXTRUDED ALUM. OUTER CORNER MALE MULLION (AL07)

M8 = EXTRUDED ALUM. OUTER CORNER FEMALE MULLION (AL08)

M9 = EXTRUDED ALUM. OUTER CORNER MALE MULLION (AL86)

M10 = EXTRUDED ALUM. OUTER CORNER FEMALE MULLION (AL85)

M13 = EXTRUDED ALUM. INTERMEDIATE MULLION (AL65)

M14 = EXTRUDED ALUM. INTERMEDIATE MULLION (AL66)

M15 = EXTRUDED ALUM. MALE MULLION (AL67)

M16 = EXTRUDED ALUM. FEMALE MULLION (AL68)

T1 = EXTRUDED ALUM. SILL STACK JOINT (AL11)

T2 = EXTRUDED ALUM. GUTTER STACK JOINT (AL12)

T3 = EXTRUDED ALUM. INTERMEDIATE TRANSOM (AL13)

T4 = EXTRUDED ALUM. INTERMEDIATE TRANSOM (AL15)

T5 = EXTRUDED ALUM. INTERMEDIATE TRANSOM (AL14)

T7 = EXTRUDED ALUM. TRANSOM (AL71)

T8 = EXTRUDED ALUM. TRANSOM (AL72)

T9 = EXTRUDED ALUM. TRANSOM (AL69)

T10 = EXTRUDED ALUM. TRANSOM (AL70)

T11 = EXTRUDED ALUM. INTERMEDIATE TRANSOM(AL106)

T12 = EXTRUDED ALUM. INTERMEDIATE TRANSOM(AL107)

T13 = EXTRUDED ALUM. GUTTER STACK JOINT (AL105)

☛ = BMU SOCKET(GLASS UNIT)

B.D. REF :

F.S.D. REF :

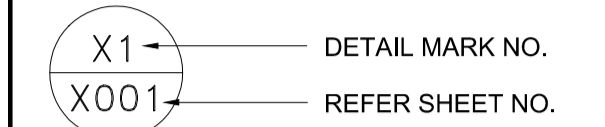
Note :

- All dimensions are in mm.
- All elevations are viewed from outside.
- All dimensions to be verified on site before fabrication.

GENERAL NOTES

Legend :

- F.F.L.-- Finished Floor Level
- S.F.L.-- Structural Floor Level
- (/R) -- Reversed Detail



REV.	DATE	DESCRIPTION	BY
E	16.Nov.2022	GENERAL REVISION	
D	04.FEB.2022	GENERAL REVISION	
C	04.JAN.2022	GENERAL REVISION	
B	22.Nov.2021	GENERAL REVISION	
A	10.Nov.2021	GENERAL REVISION	

CLIENT :

MARBLE EDGE INVESTMENT LTD.

ARCHITECT :



STRUCTURAL ENGINEER :



MAIN CONTRACTOR :

裕民建築有限公司



Units 6-8, Sunray Industrial Centre, 1/F
610 Cha Kwo Ling Road, Kowloon
Tel:23489211-4 Fax:(852)27727666

PROJECT :

PROPOSED RESIDENTIAL DEVELOPMENT AT NEW KOWLOON INLAND LOT. NO.6552

TITLE :

TOWER ELEVATION "3" FOR TOWER 1-8&L

JOB NO. : J-857

DRAWN BY : AN

DATE : 18.Oct.2021

CHKD BY :

SCALE A1: 1:250

A3:

DWG. NO. : SD-EL-2003

REV. : A

