



工程指示 / 要求簡箋 ENGINEER INSTRUCTIONS(E.I.)

工程指示編號:	EI- 5381 / m	修改版本:	-
	HK- 279 / m		
工程編號:	J 857	工程名稱:	啟德6552
收件人:	生統	發件人:	Nero HO
工程項目:	幕牆單元件 - 廠用鋁背板BM(特式層+L座廚房位置)	日期:	23/11/2022

<input type="checkbox"/> 原合約工程包	<input type="checkbox"/> 原合約工程加 / 減脹 QT-	<input type="checkbox"/> 新工程報價 QT-
---------------------------------	--	------------------------------------

信件批核號碼/圖紙參考編號:	批核模具圖紙編號:
客戶指示附件:	管理內部批簽署:

<input type="checkbox"/> 初步鋁料 B.M.	<input type="checkbox"/> 加工拆圖, 然後生產	<input type="checkbox"/> 尺寸表
<input type="checkbox"/> 正式鋁料 B.M.	<input type="checkbox"/> 技術上資料 / 指示	<input type="checkbox"/> 報價
<input type="checkbox"/> 配件 B.M.	<input type="checkbox"/> 樣辦或貨品說明書	<input type="checkbox"/> 分判合約
<input type="checkbox"/> 其他:		

內容:
請按附件資料生產加工。


完成上列要求日期: 12月

國內

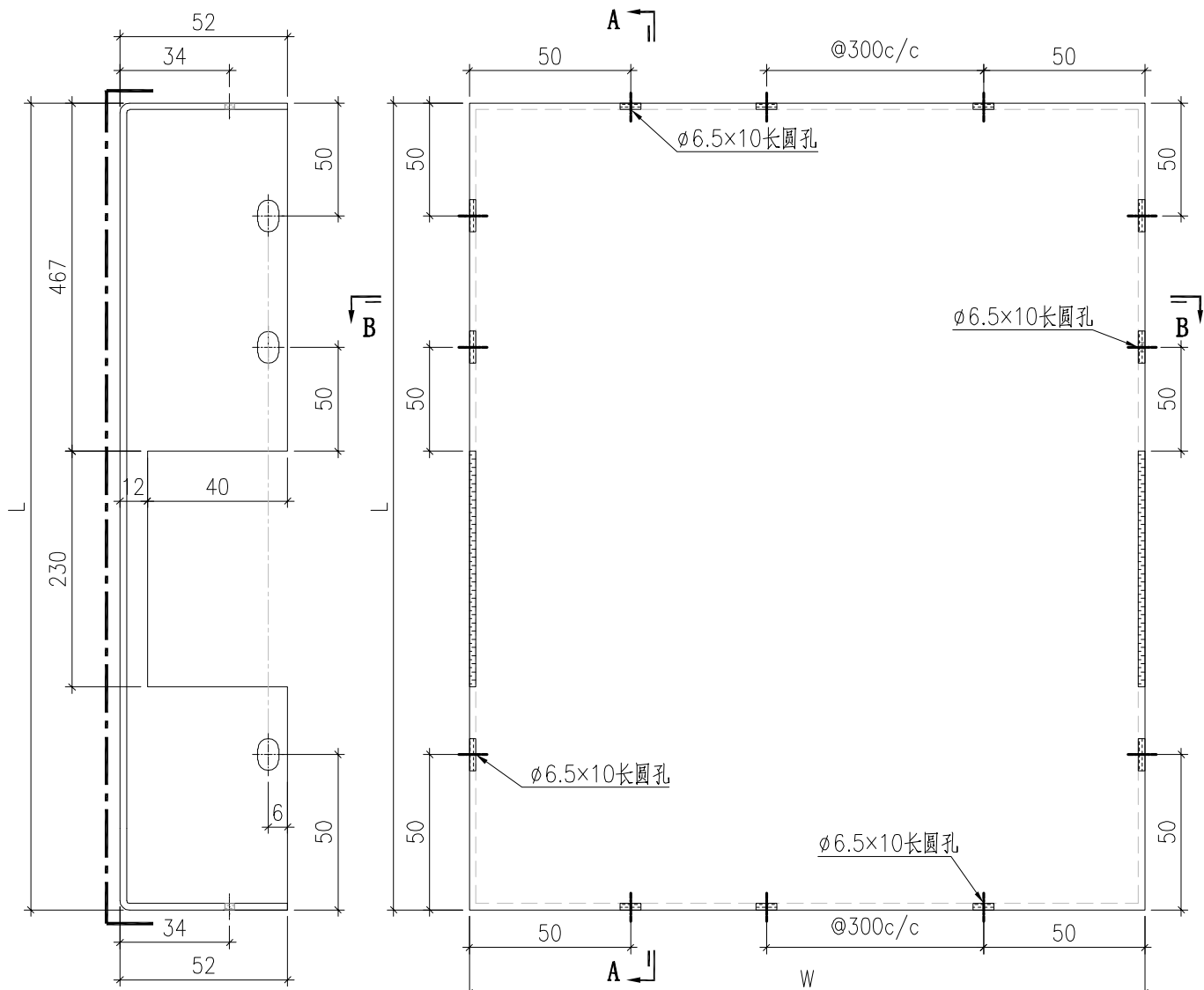
<input type="checkbox"/> 生產技術總監	<input type="checkbox"/> 連附件	<input type="checkbox"/> 技術部	<input type="checkbox"/> 連附件	<input type="checkbox"/> 生產部	<input type="checkbox"/> 連附件
<input type="checkbox"/> 採購部	<input type="checkbox"/> 連附件	<input checked="" type="checkbox"/> 生產統籌部	<input checked="" type="checkbox"/> 連附件	<input type="checkbox"/> 報關組	<input type="checkbox"/> 連附件
<input type="checkbox"/> 質檢部	<input type="checkbox"/> 連附件	<input type="checkbox"/> 會計部	<input type="checkbox"/> 連附件	<input type="checkbox"/> 機械設計部	<input type="checkbox"/> 連附件
<input checked="" type="checkbox"/> 香港辦	<input checked="" type="checkbox"/> 連附件	<input type="checkbox"/> 其他:			

<input type="checkbox"/> 行政部	<input type="checkbox"/> 連附件	<input type="checkbox"/> 會計部	<input type="checkbox"/> 連附件	<input type="checkbox"/> 統籌部	<input type="checkbox"/> 連附件	<input type="checkbox"/> 工程部	<input type="checkbox"/> 連附件
<input type="checkbox"/> 採購部	<input type="checkbox"/> 連附件	<input type="checkbox"/> QS部	<input type="checkbox"/> 連附件	<input type="checkbox"/> 地盤管理	<input type="checkbox"/> 連附件	<input type="checkbox"/> 維修部	<input type="checkbox"/> 連附件

*發件人簽署:	<i>[Signature]</i>	*組別成員批核簽署:	<i>[Signature]</i>
傳遞編號:	HK 2079 / m	項目經理簽署:	<i>[Signature]</i>

		工程號:	J-857	計算:	刘灿			日期:	2022.11.19		送呈:	施哥	
		地盤名稱:	啟德6552	核對:	徐祥坤			日期:	2022.11.20		副本:	细佬	
廠用鋁板B.M.表		項目類別:	幕牆單元件	批准:	林仁安			日期:	2022.11.21				
BM編號:		修改版次:		A/C Code:	2022.11.21			總V.F.:	29.348		總重量:	204.58	
序號	修改內容	鋁板圖號	鋁板名稱	顏色	實用	後備	總數	總重量	單件展開面積	總展開面積	單件V.F.	總V.F.	圖紙編號
									平方米		平方米		
1		BST-M407A	3mm厚鋁板	ECK3M96295S-ZD1	4	0	4	16.456	0.759	3.036	0.588	2.352	BST-M82
2		BST-M408A	3mm厚鋁板	ECK3M96295S-ZD1	2	0	2	14.304	1.320	2.639	1.087	2.174	BST-M82
3		BST-M409A	3mm厚鋁板	ECK3M96295S-ZD1	4	0	4	16.065	0.741	2.964	0.572	2.288	BST-M82
4		BST-M410A	3mm厚鋁板	ECK3M96295S-ZD1	2	0	2	10.916	1.007	2.014	0.809	1.618	BST-M82
5		BST-M411A	3mm厚鋁板	ECK3M96295S-ZD1	2	0	2	11.081	1.022	2.044	0.822	1.645	BST-M82
6		BST-M412A	3mm厚鋁板	ECK3M96295S-ZD1	2	0	2	5.664	0.523	1.045	0.377	0.755	BST-M82
7		BST-M413A	3mm厚鋁板	ECK3M96295S-ZD1	2	0	2	16.580	1.530	3.059	1.274	2.548	BST-M82
8		BST-M417A	3mm厚鋁板	ECK3M96295S-ZD1	2	0	2	21.605	1.993	3.986	1.687	3.374	BST-M82
9		BST-M418A	3mm厚鋁板	ECK3M96295S-ZD1	4	0	4	17.507	0.808	3.230	0.631	2.524	BST-M82
10		BST-M419A	3mm厚鋁板	ECK3M96295S-ZD1	2	0	2	13.583	1.253	2.506	1.028	2.056	BST-M82
11		BST-M480A	3mm厚鋁板	ECK3M96295S-ZD1	2	0	2	8.300	0.766	1.531	0.594	1.188	BST-M82
12		BST-M602A	3mm厚鋁板	ECK3M96295S-ZD1	4	0	4	22.242	1.026	4.104	0.756	3.025	BST-M84
13		BST-M603A	3mm厚鋁板	ECK3M96295S-ZD1	1	0	1	1.899	0.350	0.350	0.234	0.234	BST-M84
14		BST-M618A	3mm厚鋁板	ECK3M96295S-ZD1	2	0	2	4.364	0.403	0.805	0.274	0.549	BST-M84
15		BST-M631A	3mm厚鋁板	ECK3M96295S-ZD1	1	0	1	1.906	0.352	0.352	0.235	0.235	BST-M84
16		BST-M726A	3mm厚鋁板	ECK3M96295S-ZD1	1	0	1	2.410	0.445	0.445	0.300	0.300	BST-M84
17		BST-M748A	3mm厚鋁板	ECK3M96295S-ZD1	1	0	1	3.547	0.654	0.654	0.456	0.456	BST-M84
18		BST-M790A	3mm厚鋁板	ECK3M96295S-ZD1	1	0	1	2.368	0.437	0.437	0.294	0.294	BST-M84
19		BST-M805A	3mm厚鋁板	ECK3M96295S-ZD1	1	0	1	1.773	0.327	0.327	0.212	0.212	BST-M84
20		BST-M862A	3mm厚鋁板	ECK3M96295S-ZD1	1	0	1	1.419	0.262	0.262	0.163	0.163	BST-M84
21		BST-M412B	3mm厚鋁板	ECK3M96295S-ZD1	1	0	1	1.219	0.225	0.225	0.136	0.136	BST-M84
22	L座廚房	BST-M315A	3mm厚鋁板	ECK3M96295S-ZD1	2	0	2	5.154	0.475	0.951	0.342	0.683	BST-M86
23	L座廚房	BST-M316A	3mm厚鋁板	ECK3M96295S-ZD1	2	0	2	4.218	0.389	0.778	0.270	0.540	BST-M86
總計:					46		46	204.58	17.065	37.75	13.14	29.348	

 美特鋁質有限公司 MIDI Aluminium Fabricator Ltd.				工程號 J857	類別	物料號 -		
				地盘 啟德6552	制圖 刘灿	2022-11-19	圖號 BST-M82	
修改		採用工廠 ✓	地盘	图纸名称 铝板加工图	復核 徐詳坤	2022-11-20	數量 -	
日期		材料颜色 ECK3M96295S-ZD1		材料 3mm THK. 铝板	批准 林仁安	2022-11-21	單件重量 -	(KG)



SECTION A-A

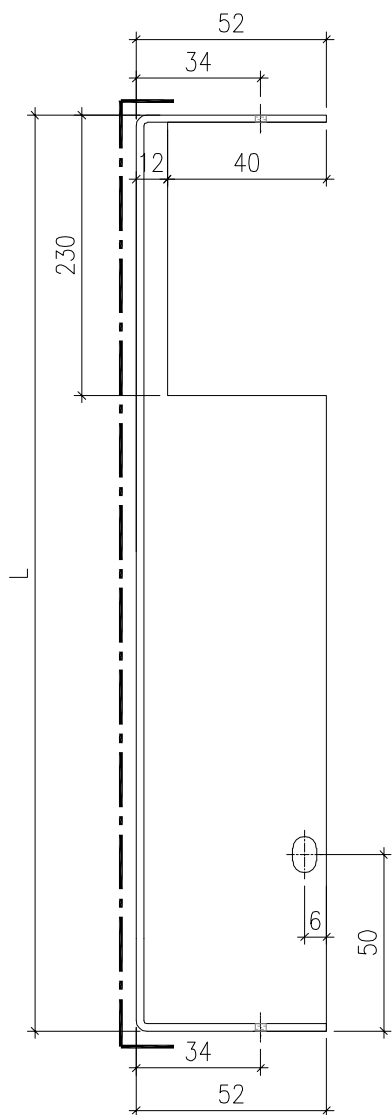
SECTION B-B

背板长宽数据見BST-M83

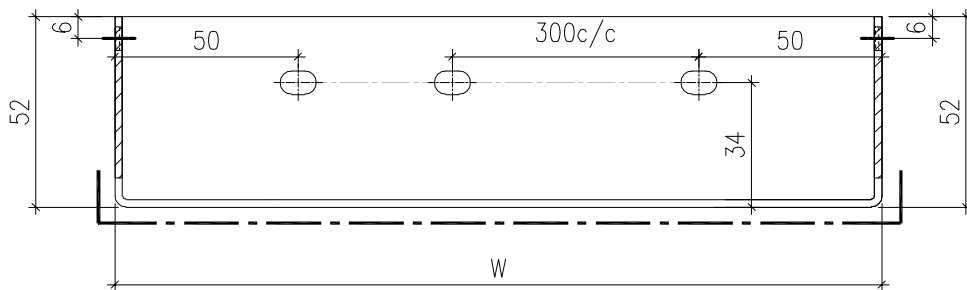
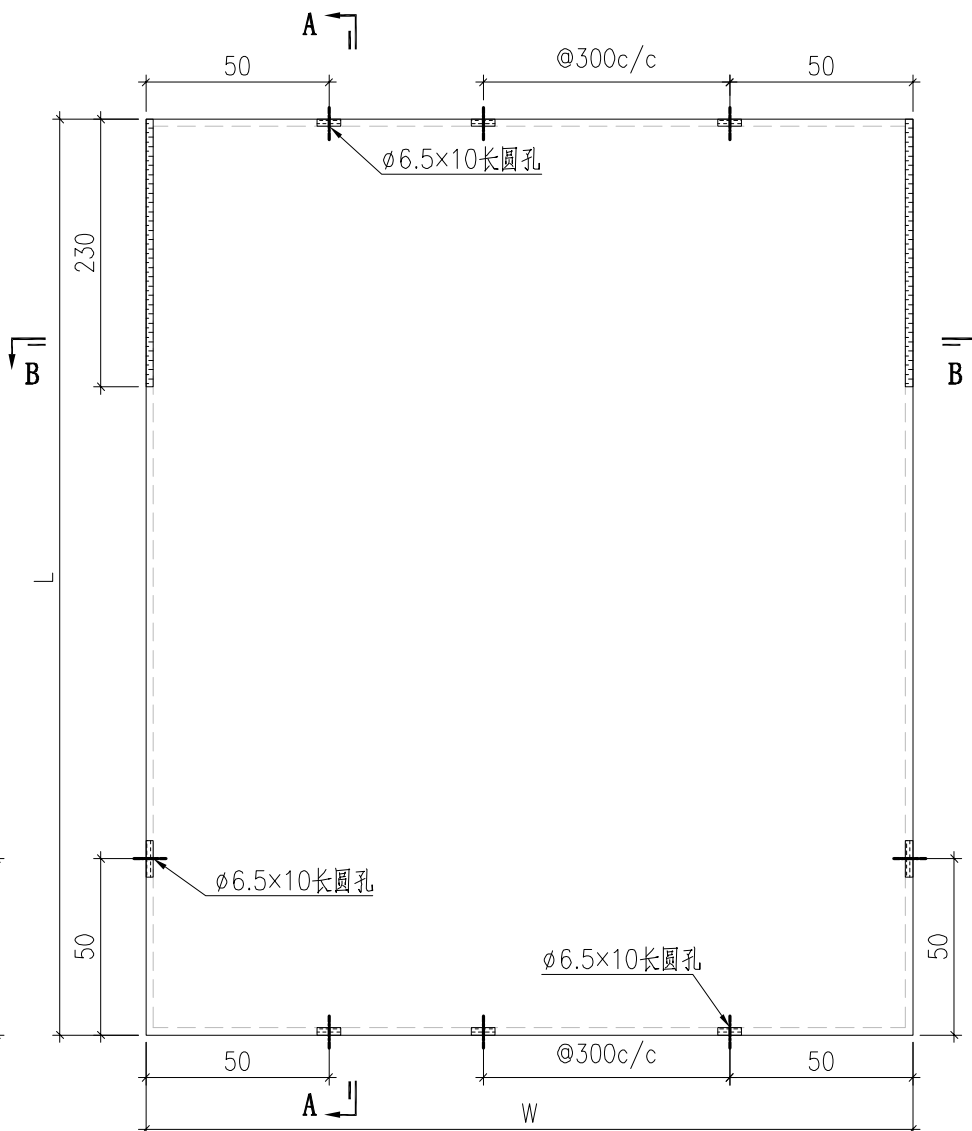
 美特鋁質有限公司 MIDI Aluminium Fabricator Ltd.				工程號	J857	類別		物料號	-			
				地盤	啟德6552	制圖	刘灿	2022-11-19	圖號	BST-M83		
修改		採用工廠	✓	地盤		圖紙名稱	铝板加工图	復核	徐詳坤	2022-11-20	數量	-
日期		材料颜色	ECK3M96295S-ZD1		材料	3mm THK. 铝板	批准	林仁安	2022-11-21	單件重量	-	(KG)

序號	鋁板編號	寬度 (W)	高度 (H)	數量	圖紙編號
1	BST-M407A	695	846	4	BST-M82
2	BST-M408A	1285	846	2	BST-M82
3	BST-M409A	676	846	4	BST-M82
4	BST-M410A	956	846	2	BST-M82
5	BST-M411A	972	846	2	BST-M82
6	BST-M412A	446	846	2	BST-M82
7	BST-M413A	1506	846	2	BST-M82
8	BST-M417A	1994	846	2	BST-M82
9	BST-M418A	746	846	4	BST-M82
10	BST-M419A	1215	846	2	BST-M82
11	BST-M480A	702	846	2	BST-M82

 美特鋁質有限公司 MIDI Aluminium Fabricator Ltd.				工程號 J857 地盘 啟德6552	類別 制圖 刘灿	物料號 - 2022-11-19	圖號 BST-M84
修改 - 日期 -	採用工廠 ✓ 材料颜色 BCK3M96295S-ZD1	图纸名称 铝板加工图 材料 3mm THK. 铝板	復核 徐詳坤 批准 林仁安	2022-11-20 2022-11-21	數量 - 單件重量 - (KG)		



SECTION A-A



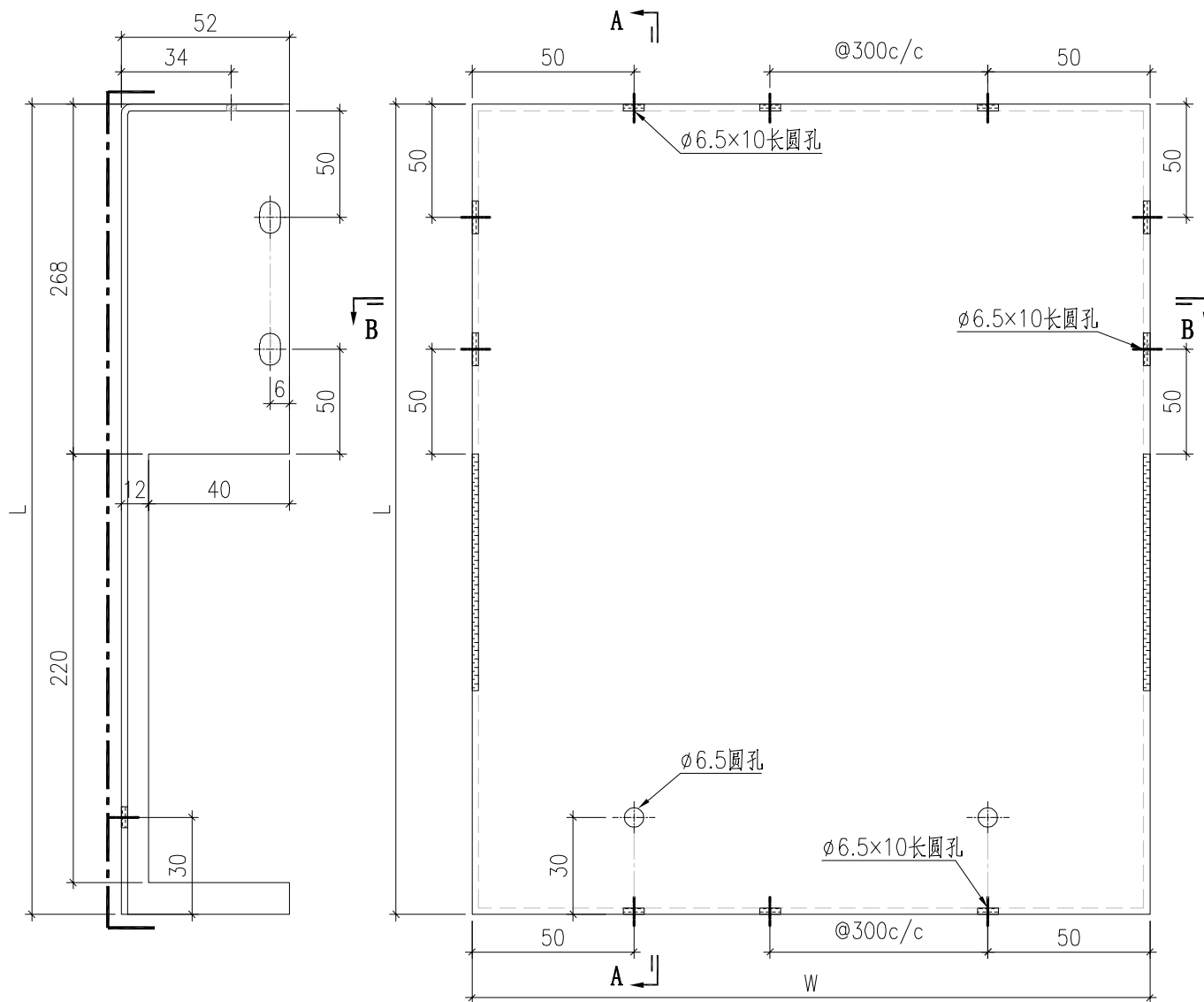
SECTION B-B

背板长宽数据見BST-M21

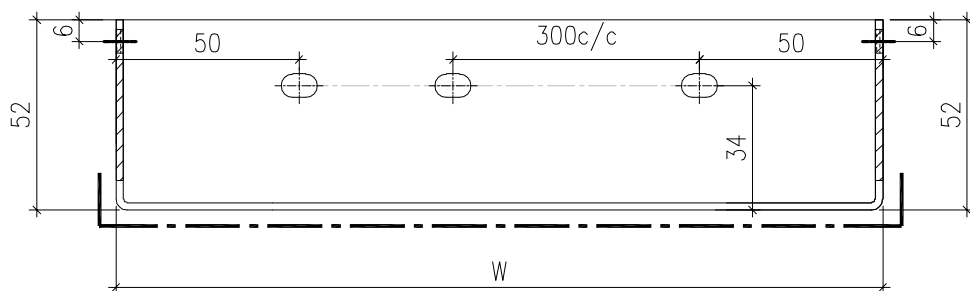
 美特鋁質有限公司 MIDI Aluminium Fabricator Ltd.				工程號	J857	類別		物料號	-					
				地盘	啟德6552	制圖	刘灿	2022-11-19	圖號	BST-M85				
修改	-	-	-	採用工廠	✓	地盤		图纸名称	铝板加工图	復核	徐詳坤	2022-11-20	數量	-
日期	-	-	-	材料颜色	BCK3M96295S-ZD1			材料	3mm THK. 铝板	批准	林仁安	2022-11-21	單件重量	- (KG)

序號	鋁板編號	寬度 (W)	高度 (H)	數量	图纸编号
1	BST-M602A	2136	354	4	BST-M84
2	BST-M603A	661	354	1	BST-M84
3	BST-M618A	775	354	2	BST-M84
4	BST-M631A	664	354	1	BST-M84
5	BST-M726A	983	305	1	BST-M84
6	BST-M748A	1496	305	1	BST-M84
7	BST-M790A	964	305	1	BST-M84
8	BST-M805A	696	305	1	BST-M84
9	BST-M862A	536	305	1	BST-M84
10	BST-M412B	446	305	1	BST-M84

 美特鋁質有限公司 MIDI Aluminium Fabricator Ltd.				工程號 J857 地盤 啟德6552	類別 制圖 刘灿	物料號 - 2022-11-19	圖號 BST-M86
修改 - 日期 -	採用工廠 ✓ 材料颜色 BCK3M96295S-ZD1	地盤 材料 3mm THK. 铝板	图纸名称 铝板加工图 材料	復核 徐詳坤 批准 林仁安	2022-11-20 2022-11-21	數量 - 單件重量 - (KG)	

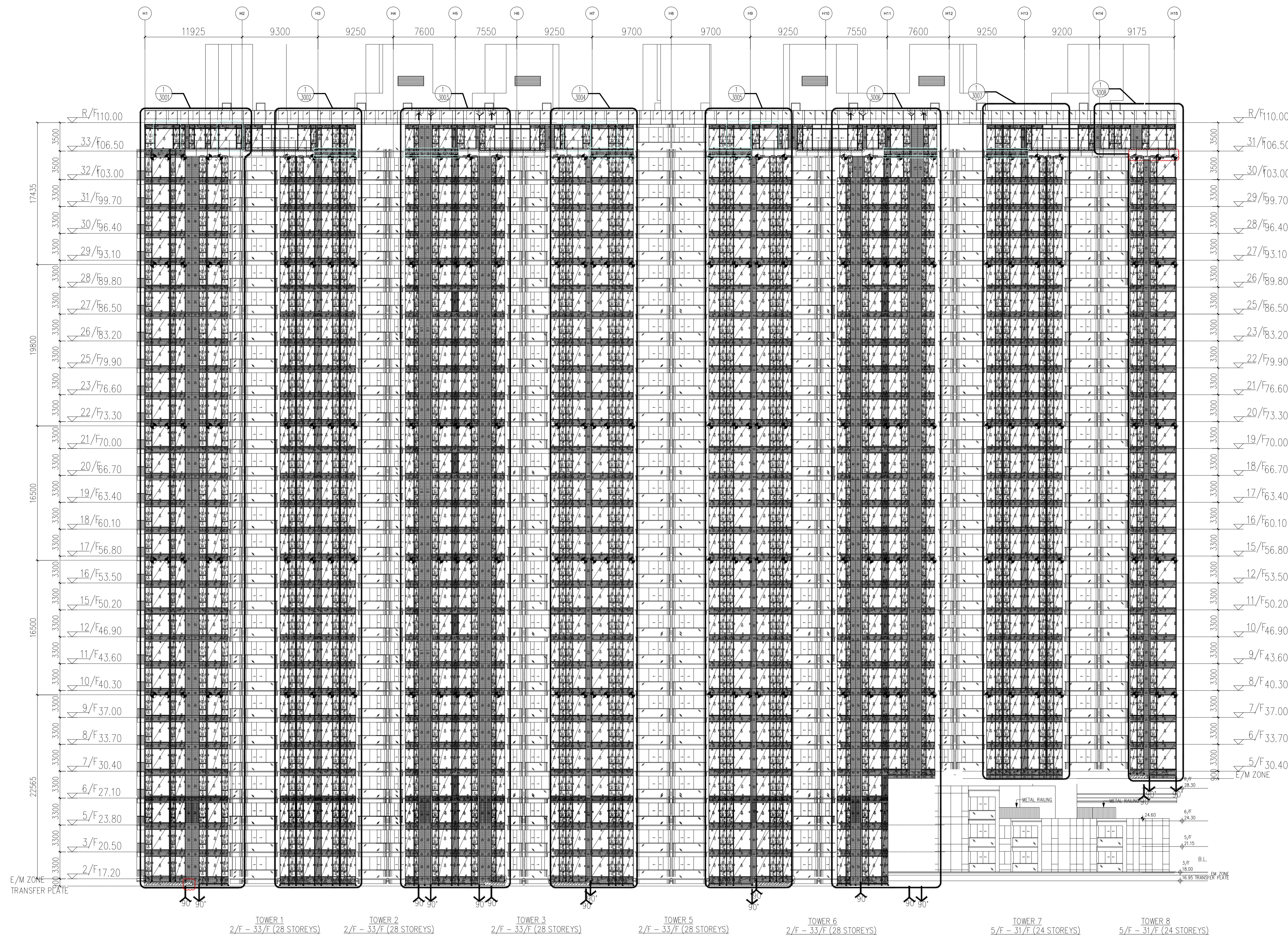


SECTION A-A



SECTION B-B

序號	鋁板編號	寬度 (W)	高度 (H)	數量	图纸编号
1	BST-M315A	678	504	2	BST-M86
2	BST-M316A	536	504	2	BST-M86



LEGEND :

S.F.L. = STRUCTURAL FLOOR LEVEL	GL2 = 8mm HEAT STRENGTHEN LOW IRON GLASS + 1.52 PVB INTERLAYER+ 8mm HEAT STRENGTHEN LOW IRON GLASS + 12mm AIR SPACE +12mm LOW IRON FULLY TEMPERED IGU LAMINATED CLEAR GLASS	S.J. = STACK JOINT	T1 = EXTRUDED ALUM. SILL STACK JOINT (AL11)
U = UNITIZED CURTAIN WALL (FOR BD APPROVAL)	GL3 = 8mm HEAT STRENGTHEN LOW IRON GLASS + 1.52 PVB INTERLAYER+ 8mm HEAT STRENGTHEN LOW IRON GLASS + 9mm AIR SPACE +8mm LOW IRON FULLY TEMPERED IGU LAMINATED CLEAR GLASS	M1 = EXTRUDED ALUM. MALE MULLION (AL03)	T2 = EXTRUDED ALUM. GUTTER STACK JOINT (AL12)
EM1 = WIND LOAD +DEAD LOAD FIXING LOCATION	GL4 = 8mm FULLY TEMPERED GLASS + 1.52 PVB INTERLAYER+ 8mm FULLY TEMPERED LAMINATED GLASS	M2 = EXTRUDED ALUM. MALE MULLION (AL03A)	T3 = EXTRUDED ALUM. INTERMEDIATE TRANSOM (AL13)
EM2 = WIND LOAD +DEAD LOAD FIXING LOCATION	GB = 10mm FULLY TEMPERED MONOLITHIC CLEAR GLASS (BARRIER)	M3 = EXTRUDED ALUM. FEMALE MULLION (AL04)	T4 = EXTRUDED ALUM. INTERMEDIATE TRANSOM (AL15)
EM3 = WIND LOAD FIXING LOCATION		M4 = EXTRUDED ALUM. FEMALE MULLION (AL04A)	T5 = EXTRUDED ALUM. INTERMEDIATE TRANSOM (AL14)
GL1 = 8mm HEAT STRENGTHEN LOW IRON GLASS + 1.52 PVB INTERLAYER 8mm HEAT STRENGTHEN LOW IRON GLASS + 12mm AIR SPACE +10mm LOW IRON FULLY TEMPERED IGU LAMINATED CLEAR GLASS		M7 = EXTRUDED ALUM. OUTER CORNER MALE MULLION (AL07)	T7 = EXTRUDED ALUM. TRANSOM (AL71)
		M8 = EXTRUDED ALUM. OUTER CORNER FEMALE MULLION (AL08)	T8 = EXTRUDED ALUM. TRANSOM (AL72)
		M9 = EXTRUDED ALUM. OUTER CORNER MALE MULLION (AL86)	T9 = EXTRUDED ALUM. TRANSOM (AL69)
		M10 = EXTRUDED ALUM. OUTER CORNER FEMALE MULLION (AL85)	T10 = EXTRUDED ALUM. TRANSOM (AL70)
		M13 = EXTRUDED ALUM. INTERMEDIATE MULLION (AL65)	T11 = EXTRUDED ALUM. INTERMEDIATE TRANSOM(AL106)
		M14 = EXTRUDED ALUM. INTERMEDIATE MULLION (AL66)	T12 = EXTRUDED ALUM. INTERMEDIATE TRANSOM(AL107)
		M15 = EXTRUDED ALUM. MALE MULLION (AL67)	T13 = EXTRUDED ALUM. GUTTER STACK JOINT (AL105)
		M16 = EXTRUDED ALUM. FEMALE MULLION (AL68)	

① = BMU SOCKET(GLASS UNIT)

B.D. REF :
 F.S.D. REF :
 Note :
 1.All dimensions are in mm.
 2.All elevations are viewed from outside.
 3.All dimensions to be verified on site before fabrication.

GENERAL NOTES

Legend :

- F.F.L.-- Finished Floor Level
- S.F.L.-- Structural Floor Level
- (R) -- Reversed Detail

X1 -- DETAIL MARK NO.
 X001 -- REFER SHEET NO.

REV.	DATE	DESCRIPTION	BY
E	16.Nov.2022	GENERAL REVISION	
D	04.FEB.2022	GENERAL REVISION	
C	04.JAN.2022	GENERAL REVISION	
B	22.Nov.2021	GENERAL REVISION	
A	10.Nov.2021	GENERAL REVISION	

CLIENT :
MARBLE EDGE INVESTMENT LTD.

ARCHITECT :
RONALD LU & PARTNERS
 ARCHITECTS | PLANNERS | INTERIOR DESIGNERS

STRUCTURAL ENGINEER :
CMA C M WONG & ASSOCIATES LTD
 CONSULTING ENGINEERS

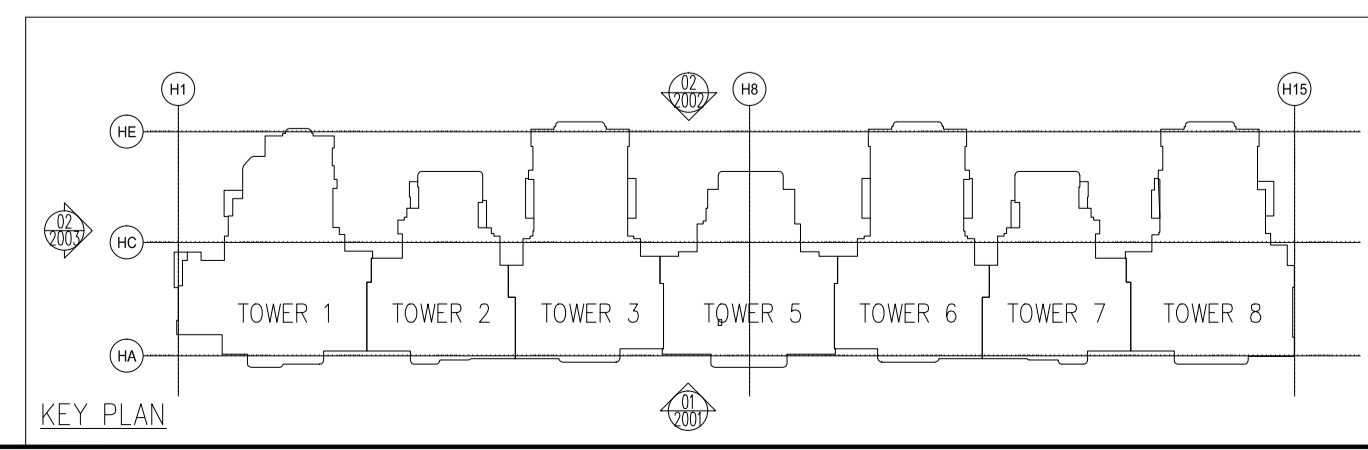
MAIN CONTRACTOR :
裕民建築有限公司

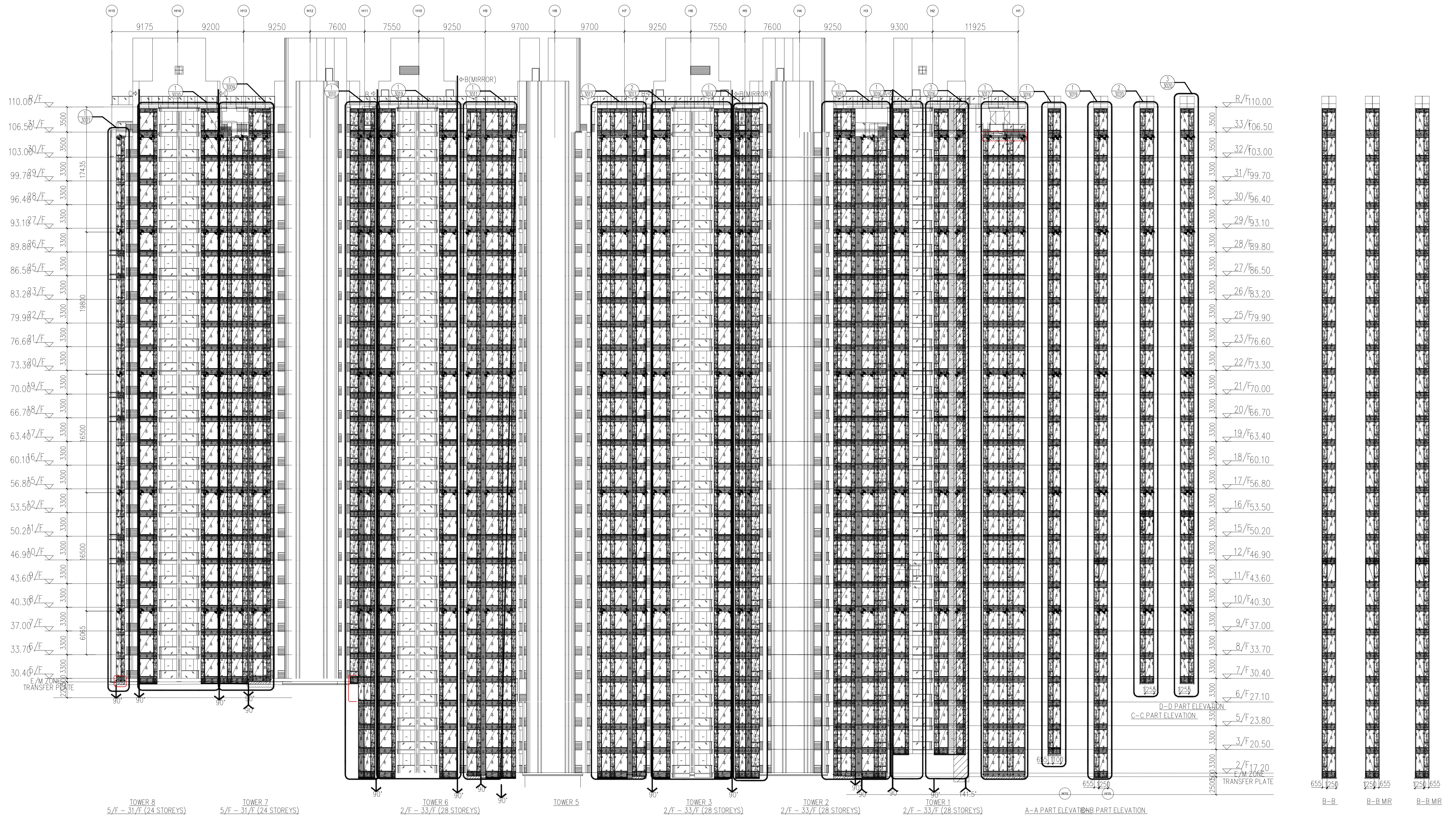
美特鋁質有限公司
 MIDI ALUMINIUM FABRICATOR LTD.
 Units 6-8, Sunray Industrial Centre, 1/F
 610 Cha Kwo Ling Road, Kowloon
 Tel:23489211-4 Fax:(852)27727666

PROJECT :
PROPOSED RESIDENTIAL DEVELOPMENT AT NEW KOWLOON INLAND LOT. NO.6552

TITLE :
TOWER ELEVATION "1" FOR TOWER 1-8

JOB NO. : J-857
 DRAWN BY : AN DATE : 18.Oct.2021
 CHKD BY : SCALE A1: 1:250 A3:
 DWG. NO. : SD-EL-2001 REV. : A





LEGEND :

S.F.L. = STRUCTURAL FLOOR LEVEL

C.W. = UNITIZED CURTAIN WALL (FOR BD APPROVAL)

◁EM1= WIND LOAD +DEAD LOAD FIXING LOCATION

◁EM2= WIND LOAD +DEAD LOAD FIXING LOCATION

◀EM3= WIND LOAD FIXING LOCATION

GL1 = 8mm HEAT STRENGTHEN LOW IRON GLASS + 1.52 PVB INTERLAYER

GL2 = 8mm HEAT STRENGTHEN LOW IRON GLASS + 12mm AIR SPACE +10mm LOW IRON FULLY TEMPERED IGU LAMINATED CLEAR GLASS

GL3 = 8mm HEAT STRENGTHEN LOW IRON GLASS + 1.52 PVB INTERLAYER+ 8mm HEAT STRENGTHEN LOW IRON GLASS + 9mm AIR SPACE +8mm LOW IRON FULLY TEMPERED IGU LAMINATED CLEAR GLASS

GL4 = 8mm FULLY TEMPERED GLASS + 1.52 PVB INTERLAYER+ 8mm FULLY TEMPERED LAMINATED GLASS

GB = 10mm FULLY TEMPERED MONOLITHIC CLEAR GLASS (BARRIER)

GL2 = 8mm HEAT STRENGTHEN LOW IRON GLASS + 1.52 PVB INTERLAYER+ 8mm HEAT STRENGTHEN LOW IRON GLASS + 12mm AIR SPACE +12mm LOW IRON FULLY TEMPERED IGU LAMINATED CLEAR GLASS

GL3 = 8mm HEAT STRENGTHEN LOW IRON GLASS + 1.52 PVB INTERLAYER+ 8mm HEAT STRENGTHEN LOW IRON GLASS + 9mm AIR SPACE +8mm LOW IRON FULLY TEMPERED IGU LAMINATED CLEAR GLASS

GL4 = 8mm FULLY TEMPERED GLASS + 1.52 PVB INTERLAYER+ 8mm FULLY TEMPERED LAMINATED GLASS

GB = 10mm FULLY TEMPERED MONOLITHIC CLEAR GLASS (BARRIER)

S.J. = STACK JOINT

M1 = EXTRUDED ALUM. MALE MULLION (AL03)

M2 = EXTRUDED ALUM. MALE MULLION (AL03A)

M3 = EXTRUDED ALUM. FEMALE MULLION (AL04)

M4 = EXTRUDED ALUM. FEMALE MULLION (AL04A)

M7 = EXTRUDED ALUM. OUTER CORNER MALE MULLION (AL07)

M8 = EXTRUDED ALUM. OUTER CORNER FEMALE MULLION (AL08)

M9 = EXTRUDED ALUM. OUTER CORNER MALE MULLION (AL86)

M10 = EXTRUDED ALUM. OUTER CORNER FEMALE MULLION (AL85)

M13 = EXTRUDED ALUM. INTERMEDIATE MULLION (AL65)

M14 = EXTRUDED ALUM. INTERMEDIATE MULLION (AL66)

M15 = EXTRUDED ALUM. MALE MULLION (AL67)

M16 = EXTRUDED ALUM. FEMALE MULLION (AL68)

TOWER 1-8-ELEVATION

SCALE 1:250

T1 = EXTRUDED ALUM. SILL STACK JOINT (AL11)

T2 = EXTRUDED ALUM. GUTTER STACK JOINT (AL12)

T3 = EXTRUDED ALUM. INTERMEDIATE TRANSOM (AL13)

T4 = EXTRUDED ALUM. INTERMEDIATE TRANSOM (AL15)

T5 = EXTRUDED ALUM. INTERMEDIATE TRANSOM (AL14)

T7 = EXTRUDED ALUM. TRANSOM (AL71)

T8 = EXTRUDED ALUM. TRANSOM (AL72)

T9 = EXTRUDED ALUM. TRANSOM (AL69)

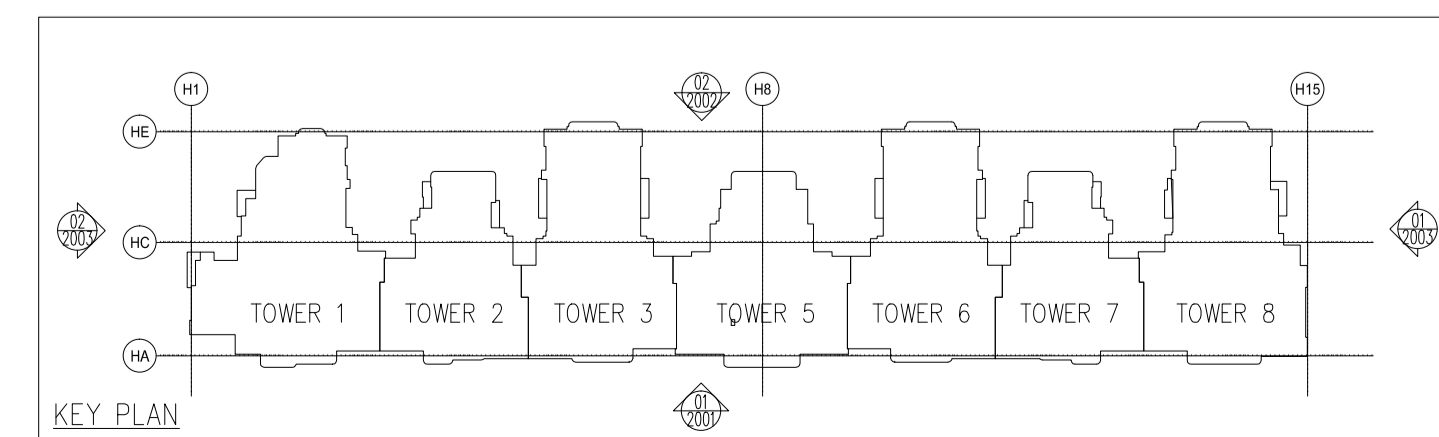
T10 = EXTRUDED ALUM. TRANSOM (AL70)

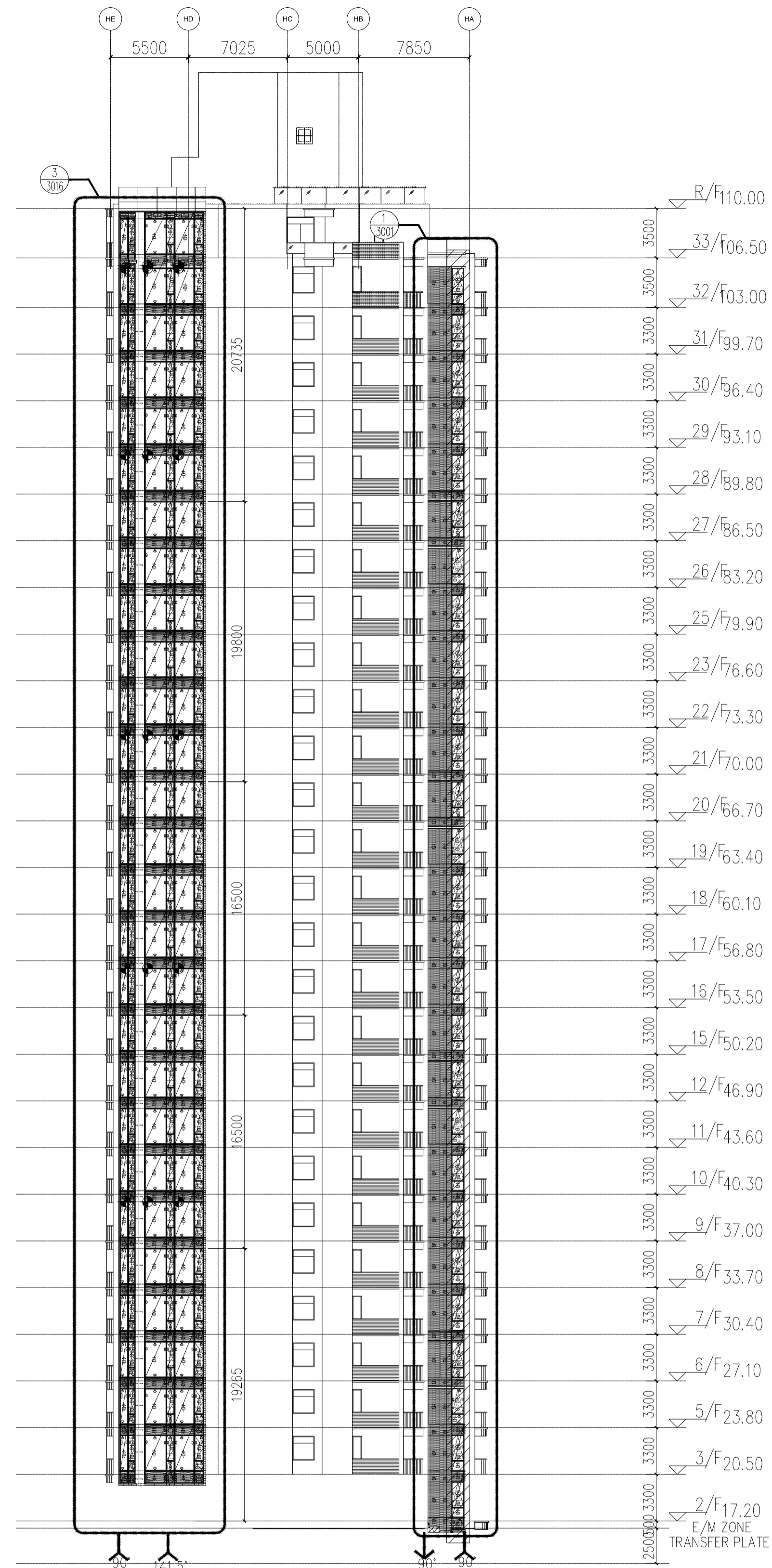
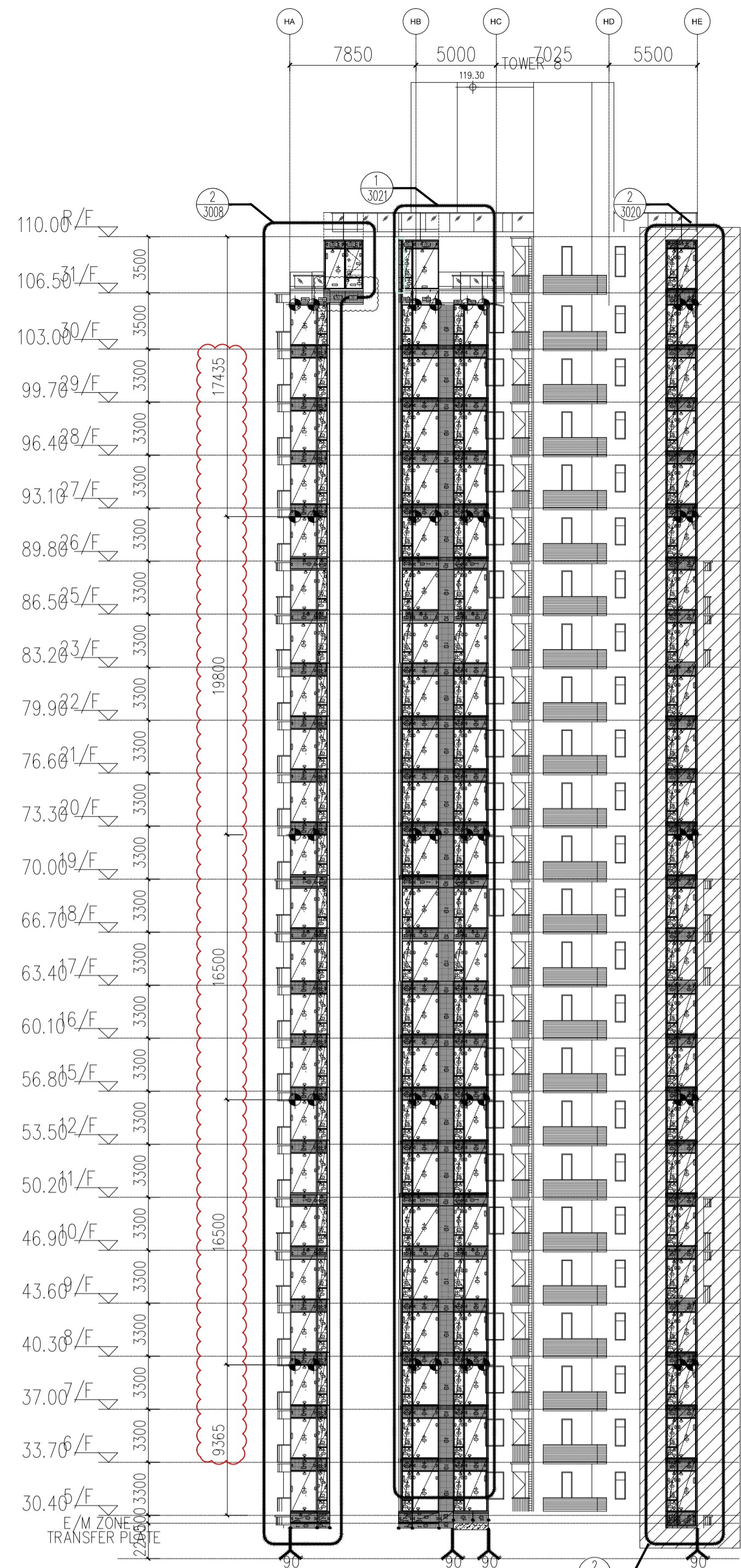
T11 = EXTRUDED ALUM. INTERMEDIATE TRANSOM(AL106)

T12 = EXTRUDED ALUM. INTERMEDIATE TRANSOM(AL107)

T13 = EXTRUDED ALUM. GUTTER STACK JOINT (AL105)

◐ = BMU SOCKET(GLASS UNIT)





01 TOWER 8-ELEVATION
SCALE 1:250

02 TOWER 8-ELEVATION
SCALE 1:250

LEGEND :

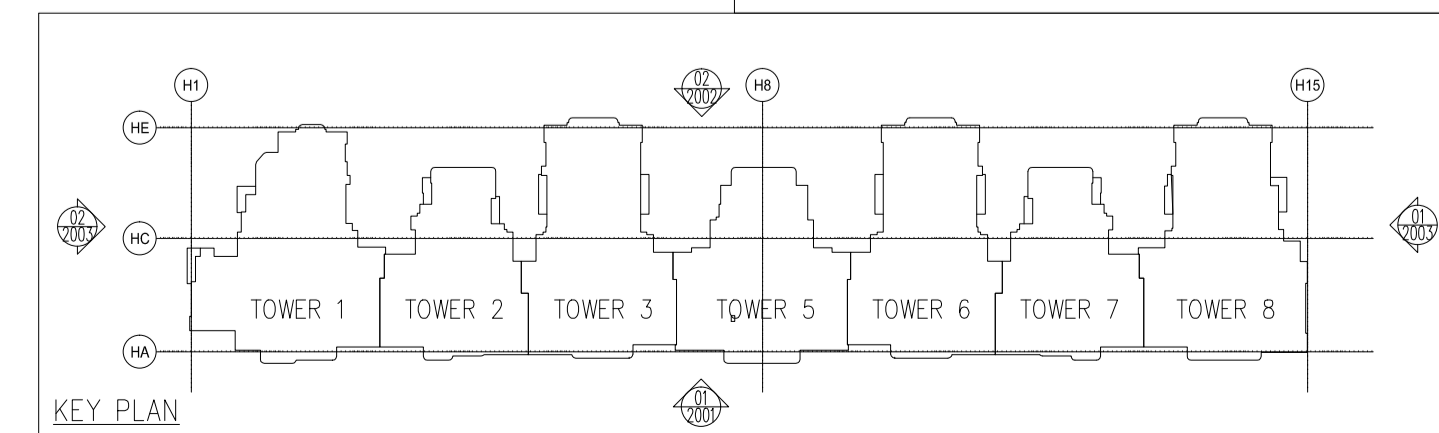
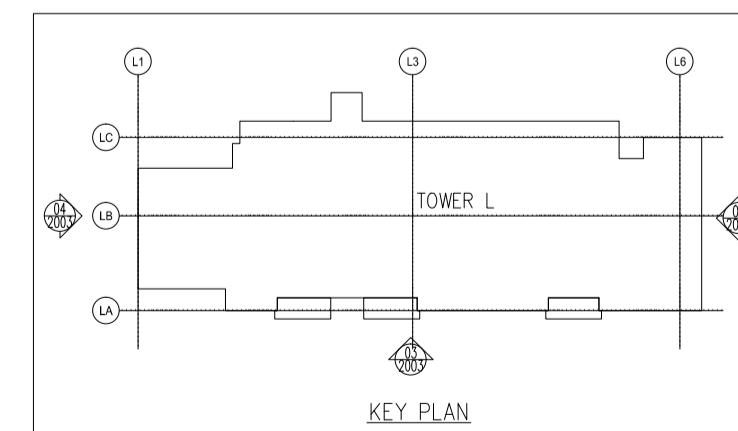
- S.F.L. = STRUCTURAL FLOOR LEVEL
- U = UNITIZED CURTAIN WALL (FOR BD APPROVAL)
- C.W. = CURTAIN WALL (FOR BD APPROVAL)
- ◁EM1= WIND LOAD +DEAD LOAD FIXING LOCATION
- ◁EM2= WIND LOAD +DEAD LOAD FIXING LOCATION
- ◀EM3= WIND LOAD FIXING LOCATION
- GL1 = 8mm HEAT STRENGTHEN LOW IRON GLASS + 1.52 PVB INTERLAYER
- GL2 = 8mm HEAT STRENGTHEN LOW IRON GLASS + 12mm AIR SPACE +10mm LOW IRON FULLY TEMPERED LAMINATED CLEAR GLASS
- GL3 = 8mm HEAT STRENGTHEN LOW IRON GLASS + 1.52 PVB INTERLAYER+ 8mm HEAT STRENGTHEN LOW IRON GLASS + 9mm AIR SPACE +8mm LOW IRON FULLY TEMPERED LAMINATED CLEAR GLASS
- GL4 = 8mm FULLY TEMPERED GLASS + 1.52 PVB INTERLAYER+ 8mm FULLY TEMPERED LAMINATED GLASS
- GB = 10mm FULLY TEMPERED MONOLITHIC CLEAR GLASS (BARRIER)

- GL2 = 8mm HEAT STRENGTHEN LOW IRON GLASS + 12mm AIR SPACE +12mm LOW IRON FULLY TEMPERED IGU LAMINATED CLEAR GLASS
- GL3 = 8mm HEAT STRENGTHEN LOW IRON GLASS + 1.52 PVB INTERLAYER+ 8mm HEAT STRENGTHEN LOW IRON GLASS + 9mm AIR SPACE +8mm LOW IRON FULLY TEMPERED LAMINATED CLEAR GLASS
- GL4 = 8mm FULLY TEMPERED GLASS + 1.52 PVB INTERLAYER+ 8mm FULLY TEMPERED LAMINATED GLASS
- GB = 10mm FULLY TEMPERED MONOLITHIC CLEAR GLASS (BARRIER)

- S.J. = STACK JOINT
- M1 = EXTRUDED ALUM. MALE MULLION (AL03)
- M2 = EXTRUDED ALUM. MALE MULLION (AL03A)
- M3 = EXTRUDED ALUM. FEMALE MULLION (AL04)
- M4 = EXTRUDED ALUM. FEMALE MULLION (AL04A)
- M7 = EXTRUDED ALUM. OUTER CORNER MALE MULLION (AL07)
- M8 = EXTRUDED ALUM. OUTER CORNER FEMALE MULLION (AL08)
- M9 = EXTRUDED ALUM. OUTER CORNER MALE MULLION (AL86)
- M10 = EXTRUDED ALUM. OUTER CORNER FEMALE MULLION (AL85)
- M13 = EXTRUDED ALUM. INTERMEDIATE MULLION (AL65)
- M14 = EXTRUDED ALUM. INTERMEDIATE MULLION (AL66)
- M15 = EXTRUDED ALUM. MALE MULLION (AL67)
- M16 = EXTRUDED ALUM. FEMALE MULLION (AL68)

- T1 = EXTRUDED ALUM. SILL STACK JOINT (AL11)
- T2 = EXTRUDED ALUM. GUTTER STACK JOINT (AL12)
- T3 = EXTRUDED ALUM. INTERMEDIATE TRANSOM (AL13)
- T4 = EXTRUDED ALUM. INTERMEDIATE TRANSOM (AL15)
- T5 = EXTRUDED ALUM. INTERMEDIATE TRANSOM (AL14)
- T7 = EXTRUDED ALUM. TRANSOM (AL71)
- T8 = EXTRUDED ALUM. TRANSOM (AL72)
- T9 = EXTRUDED ALUM. TRANSOM (AL69)
- T10 = EXTRUDED ALUM. TRANSOM (AL70)
- T11 = EXTRUDED ALUM. INTERMEDIATE TRANSOM(AL106)
- T12 = EXTRUDED ALUM. INTERMEDIATE TRANSOM(AL107)
- T13 = EXTRUDED ALUM. GUTTER STACK JOINT (AL105)

⬇ = BMU SOCKET(GLASS UNIT)

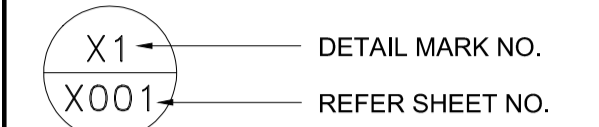


B.D. REF :
F.S.D. REF :
Note :
1.All dimensions are in mm.
2.All elevations are viewed from outside.
3.All dimensions to be verified on site before fabrication.

GENERAL NOTES

Legend :

- 1. F.F.L.-- Finished Floor Level
- 2. S.F.L.-- Structural Floor Level
- 3. (R) -- Reversed Detail



REV.	DATE	DESCRIPTION	BY
E	16.Nov.2022	GENERAL REVISION	
D	04.FEB.2022	GENERAL REVISION	
C	04.JAN.2022	GENERAL REVISION	
B	22.Nov.2021	GENERAL REVISION	
A	10.Nov.2021	GENERAL REVISION	

CLIENT :
MARBLE EDGE INVESTMENT LTD.

ARCHITECT :
RONALD LU & PARTNERS
ARCHITECTS | PLANNERS | INTERIOR DESIGNERS

STRUCTURAL ENGINEER :
CMA C M WONG & ASSOCIATES LTD
STRUCTURAL ENGINEERS

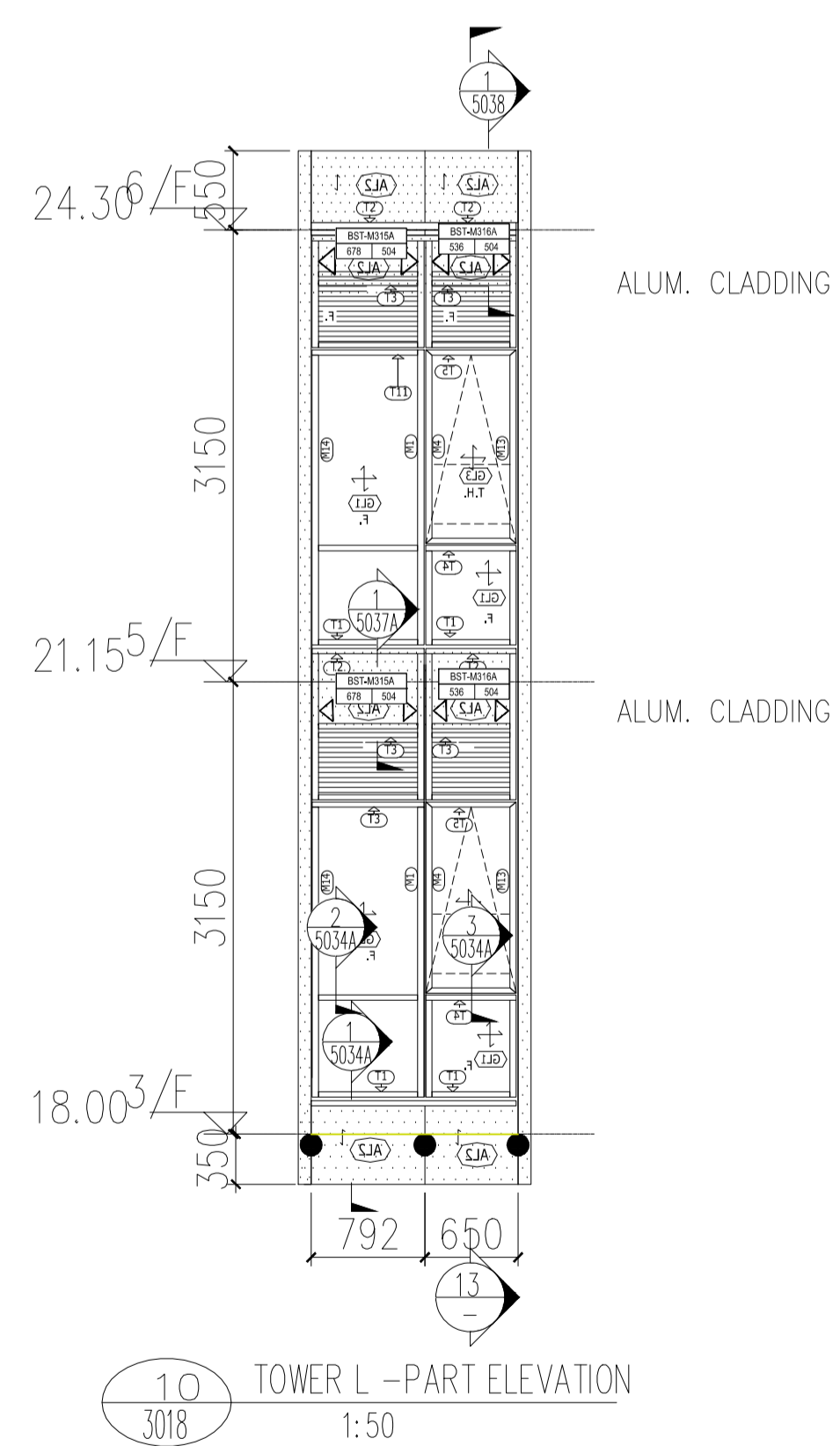
MAIN CONTRACTOR :
裕民建築有限公司

美特鋁質有限公司
MIDI ALUMINIUM FABRICATOR LTD.
Units 6-8, Sunray Industrial Centre, 1/F
610 Cha Kwo Ling Road, Kowloon
Tel:23489211-4 Fax:(852)27727666

PROJECT :
PROPOSED RESIDENTIAL DEVELOPMENT AT NEW KOWLOON INLAND LOT. NO.6552

TITLE :
TOWER ELEVATION "3" FOR TOWER 1-8&L

JOB NO. : J-857
DRAWN BY : AN DATE : 18.Oct.2021
CHKD BY : SCALE A1: 1:250 A3:
DWG. NO. : SD-EL-2003 REV. : A



B.D. REF :

F.S.D. REF :

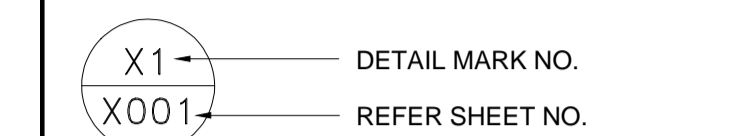
Note :

1. All dimensions are in mm.
2. All elevations are viewed from outside.
3. All dimensions to be verified on site before fabrication.

GENERAL NOTES

Legend :

1. F.F.L.-- Finished Floor Level
2. S.F.L.-- Structural Floor Level
3. (R) -- Reversed Detail



REV.	DATE	DESCRIPTION	BY
F	18.JUL.2022	GENERAL REVISION	
E	04.JAN.2022	GENERAL REVISION	
D	22.Nov.2021	GENERAL REVISION	
C	13.Nov.2021	GENERAL REVISION	
B	10.Nov.2021	GENERAL REVISION	
A	17.11.2022	GENERAL REVISION	

CLIENT :
MARBLE EDGE INVESTMENT LTD.

ARCHITECT :
RONALD LU & PARTNERS
ARCHITECTS | PLANNERS | INTERIOR DESIGNERS

STRUCTURAL ENGINEER :
CMA C M WONG & ASSOCIATES LTD
111, 113, 115, 117, 119, 121, 123, 125, 127, 129, 131, 133, 135, 137, 139, 141, 143, 145, 147, 149, 151, 153, 155, 157, 159, 161, 163, 165, 167, 169, 171, 173, 175, 177, 179, 181, 183, 185, 187, 189, 191, 193, 195, 197, 199, 201, 203, 205, 207, 209, 211, 213, 215, 217, 219, 221, 223, 225, 227, 229, 231, 233, 235, 237, 239, 241, 243, 245, 247, 249, 251, 253, 255, 257, 259, 261, 263, 265, 267, 269, 271, 273, 275, 277, 279, 281, 283, 285, 287, 289, 291, 293, 295, 297, 299, 301, 303, 305, 307, 309, 311, 313, 315, 317, 319, 321, 323, 325, 327, 329, 331, 333, 335, 337, 339, 341, 343, 345, 347, 349, 351, 353, 355, 357, 359, 361, 363, 365, 367, 369, 371, 373, 375, 377, 379, 381, 383, 385, 387, 389, 391, 393, 395, 397, 399, 401, 403, 405, 407, 409, 411, 413, 415, 417, 419, 421, 423, 425, 427, 429, 431, 433, 435, 437, 439, 441, 443, 445, 447, 449, 451, 453, 455, 457, 459, 461, 463, 465, 467, 469, 471, 473, 475, 477, 479, 481, 483, 485, 487, 489, 491, 493, 495, 497, 499, 501, 503, 505, 507, 509, 511, 513, 515, 517, 519, 521, 523, 525, 527, 529, 531, 533, 535, 537, 539, 541, 543, 545, 547, 549, 551, 553, 555, 557, 559, 561, 563, 565, 567, 569, 571, 573, 575, 577, 579, 581, 583, 585, 587, 589, 591, 593, 595, 597, 599, 601, 603, 605, 607, 609, 611, 613, 615, 617, 619, 621, 623, 625, 627, 629, 631, 633, 635, 637, 639, 641, 643, 645, 647, 649, 651, 653, 655, 657, 659, 661, 663, 665, 667, 669, 671, 673, 675, 677, 679, 681, 683, 685, 687, 689, 691, 693, 695, 697, 699, 701, 703, 705, 707, 709, 711, 713, 715, 717, 719, 721, 723, 725, 727, 729, 731, 733, 735, 737, 739, 741, 743, 745, 747, 749, 751, 753, 755, 757, 759, 761, 763, 765, 767, 769, 771, 773, 775, 777, 779, 781, 783, 785, 787, 789, 791, 793, 795, 797, 799, 801, 803, 805, 807, 809, 811, 813, 815, 817, 819, 821, 823, 825, 827, 829, 831, 833, 835, 837, 839, 841, 843, 845, 847, 849, 851, 853, 855, 857, 859, 861, 863, 865, 867, 869, 871, 873, 875, 877, 879, 881, 883, 885, 887, 889, 891, 893, 895, 897, 899, 901, 903, 905, 907, 909, 911, 913, 915, 917, 919, 921, 923, 925, 927, 929, 931, 933, 935, 937, 939, 941, 943, 945, 947, 949, 951, 953, 955, 957, 959, 961, 963, 965, 967, 969, 971, 973, 975, 977, 979, 981, 983, 985, 987, 989, 991, 993, 995, 997, 999, 1001, 1003, 1005, 1007, 1009, 1011, 1013, 1015, 1017, 1019, 1021, 1023, 1025, 1027, 1029, 1031, 1033, 1035, 1037, 1039, 1041, 1043, 1045, 1047, 1049, 1051, 1053, 1055, 1057, 1059, 1061, 1063, 1065, 1067, 1069, 1071, 1073, 1075, 1077, 1079, 1081, 1083, 1085, 1087, 1089, 1091, 1093, 1095, 1097, 1099, 1101, 1103, 1105, 1107, 1109, 1111, 1113, 1115, 1117, 1119, 1121, 1123, 1125, 1127, 1129, 1131, 1133, 1135, 1137, 1139, 1141, 1143, 1145, 1147, 1149, 1151, 1153, 1155, 1157, 1159, 1161, 1163, 1165, 1167, 1169, 1171, 1173, 1175, 1177, 1179, 1181, 1183, 1185, 1187, 1189, 1191, 1193, 1195, 1197, 1199, 1201, 1203, 1205, 1207, 1209, 1211, 1213, 1215, 1217, 1219, 1221, 1223, 1225, 1227, 1229, 1231, 1233, 1235, 1237, 1239, 1241, 1243, 1245, 1247, 1249, 1251, 1253, 1255, 1257, 1259, 1261, 1263, 1265, 1267, 1269, 1271, 1273, 1275, 1277, 1279, 1281, 1283, 1285, 1287, 1289, 1291, 1293, 1295, 1297, 1299, 1301, 1303, 1305, 1307, 1309, 1311, 1313, 1315, 1317, 1319, 1321, 1323, 1325, 1327, 1329, 1331, 1333, 1335, 1337, 1339, 1341, 1343, 1345, 1347, 1349, 1351, 1353, 1355, 1357, 1359, 1361, 1363, 1365, 1367, 1369, 1371, 1373, 1375, 1377, 1379, 1381, 1383, 1385, 1387, 1389, 1391, 1393, 1395, 1397, 1399, 1401, 1403, 1405, 1407, 1409, 1411, 1413, 1415, 1417, 1419, 1421, 1423, 1425, 1427, 1429, 1431, 1433, 1435, 1437, 1439, 1441, 1443, 1445, 1447, 1449, 1451, 1453, 1455, 1457, 1459, 1461, 1463, 1465, 1467, 1469, 1471, 1473, 1475, 1477, 1479, 1481, 1483, 1485, 1487, 1489, 1491, 1493, 1495, 1497, 1499, 1501, 1503, 1505, 1507, 1509, 1511, 1513, 1515, 1517, 1519, 1521, 1523, 1525, 1527, 1529, 1531, 1533, 1535, 1537, 1539, 1541, 1543, 1545, 1547, 1549, 1551, 1553, 1555, 1557, 1559, 1561, 1563, 1565, 1567, 1569, 1571, 1573, 1575, 1577, 1579, 1581, 1583, 1585, 1587, 1589, 1591, 1593, 1595, 1597, 1599, 1601, 1603, 1605, 1607, 1609, 1611, 1613, 1615, 1617, 1619, 1621, 1623, 1625, 1627, 1629, 1631, 1633, 1635, 1637, 1639, 1641, 1643, 1645, 1647, 1649, 1651, 1653, 1655, 1657, 1659, 1661, 1663, 1665, 1667, 1669, 1671, 1673, 1675, 1677, 1679, 1681, 1683, 1685, 1687, 1689, 1691, 1693, 1695, 1697, 1699, 1701, 1703, 1705, 1707, 1709, 1711, 1713, 1715, 1717, 1719, 1721, 1723, 1725, 1727, 1729, 1731, 1733, 1735, 1737, 1739, 1741, 1743, 1745, 1747, 1749, 1751, 1753, 1755, 1757, 1759, 1761, 1763, 1765, 1767, 1769, 1771, 1773, 1775, 1777, 1779, 1781, 1783, 1785, 1787, 1789, 1791, 1793, 1795, 1797, 1799, 1801, 1803, 1805, 1807, 1809, 1811, 1813, 1815, 1817, 1819, 1821, 1823, 1825, 1827, 1829, 1831, 1833, 1835, 1837, 1839, 1841, 1843, 1845, 1847, 1849, 1851, 1853, 1855, 1857, 1859, 1861, 1863, 1865, 1867, 1869, 1871, 1873, 1875, 1877, 1879, 1881, 1883, 1885, 1887, 1889, 1891, 1893, 1895, 1897, 1899, 1901, 1903, 1905, 1907, 1909, 1911, 1913, 1915, 1917, 1919, 1921, 1923, 1925, 1927, 1929, 1931, 1933, 1935, 1937, 1939, 1941, 1943, 1945, 1947, 1949, 1951, 1953, 1955, 1957, 1959, 1961, 1963, 1965, 1967, 1969, 1971, 1973, 1975, 1977, 1979, 1981, 1983, 1985, 1987, 1989, 1991, 1993, 1995, 1997, 1999, 2001, 2003, 2005, 2007, 2009, 2011, 2013, 2015, 2017, 2019, 2021, 2023, 2025, 2027, 2029, 2031, 2033, 2035, 2037, 2039, 2041, 2043, 2045, 2047, 2049, 2051, 2053, 2055, 2057, 2059, 2061, 2063, 2065, 2067, 2069, 2071, 2073, 2075, 2077, 2079, 2081, 2083, 2085, 2087, 2089, 2091, 2093, 2095, 2097, 2099, 2101, 2103, 2105, 2107, 2109, 2111, 2113, 2115, 2117, 2119, 2121, 2123, 2125, 2127, 2129, 2131, 2133, 2135, 2137, 2139, 2141, 2143, 2145, 2147, 2149, 2151, 2153, 2155, 2157, 2159, 2161, 2163, 2165, 2167, 2169, 2171, 2173, 2175, 2177, 2179, 2181, 2183, 2185, 2187, 2189, 2191, 2193, 2195, 2197, 2199, 2201, 2203, 2205, 2207, 2209, 2211, 2213, 2215, 2217, 2219, 2221, 2223, 2225, 2227, 2229, 2231, 2233, 2235, 2237, 2239, 2241, 2243, 2245, 2247, 2249, 2251, 2253, 2255, 2257, 2259, 2261, 2263, 2265, 2267, 2269, 2271, 2273, 2275, 2277, 2279, 2281, 2283, 2285, 2287, 2289, 2291, 2293, 2295, 2297, 2299, 2301, 2303, 2305, 2307, 2309, 2311, 2313, 2315, 2317, 2319, 2321, 2323, 2325, 2327, 2329, 2331, 2333, 2335, 2337, 2339, 2341, 2343, 2345, 2347, 2349, 2351, 2353, 2355, 2357, 2359, 2361, 2363, 2365, 2367, 2369, 2371, 2373, 2375, 2377, 2379, 2381, 2383, 2385, 2387, 2389, 2391, 2393, 2395, 2397, 2399, 2401, 2403, 2405, 2407, 2409, 2411, 2413, 2415, 2417, 2419, 2421, 2423, 2425, 2427, 2429, 2431, 2433, 2435, 2437, 2439, 2441, 2443, 2445, 2447, 2449, 2451, 2453, 2455, 2457, 2459, 2461, 2463, 2465, 2467, 2469, 2471, 2473, 2475, 2477, 2479, 2481, 2483, 2485, 2487, 2489, 2491, 2493, 2495, 2497, 2499, 2501, 2503, 2505, 2507, 2509, 2511, 2513, 2515, 2517, 2519, 2521, 2523, 2525, 2527, 2529, 2531, 2533, 2535, 2537, 2539, 2541, 2543, 2545, 2547, 2549, 2551, 2553, 2555, 2557, 2559, 2561, 2563, 2565, 2567, 2569, 2571, 2573, 2575, 2577, 2579, 2581, 2583, 2585, 2587, 2589, 2591, 2593, 2595, 2597, 2599, 2601, 2603, 2605, 2607, 2609, 2611, 2613, 2615, 2617, 2619, 2621, 2623, 2625, 2627, 2629, 2631, 2633, 2635, 2637, 2639, 2641, 2643, 2645, 2647, 2649, 2651, 2653, 2655, 2657, 2659, 2661, 2663, 2665, 2667, 2669, 2671, 2673, 2675, 2677, 2679, 2681, 2683, 2685, 2687, 2689, 2691, 2693, 2695, 2697, 2699, 2701, 2703, 2705, 2707, 2709, 2711, 2713, 2715, 2717, 2719, 2721, 2723, 2725, 2727, 2729, 2731, 2733, 2735, 2737, 2739, 2741, 2743, 2745, 2747, 2749, 2751, 2753, 2755, 2757, 2759, 2761, 2763, 2765, 2767, 2769, 2771, 2773, 2775, 2777, 2779, 2781, 2783, 2785, 2787, 2789, 2791, 2793, 2795, 2797, 2799, 2801, 2803, 2805, 2807, 2809, 2811, 2813, 2815, 2817, 2819, 2821, 2823, 2825, 2827, 2829, 2831, 2833, 2835, 2837, 2839, 2841, 2843, 2845, 2847, 2849, 2851, 2853, 2855, 2857, 2859, 2861, 2863, 2865, 2867, 2869, 2871, 2873, 2875, 2877, 2879, 2881, 2883, 2885, 2887, 2889, 2891, 2893, 2895, 2897, 2899, 2901, 2903, 2905, 2907, 2909, 2911, 2913, 2915, 2917, 2919, 2921, 2923, 2925, 2927, 2929, 2931, 2933, 2935, 2937, 2939, 2941, 2943, 2945, 2947, 2949, 2951, 2953, 2955, 2957, 2959, 2961, 2963, 2965, 2967, 2969, 2971, 2973, 2975, 2977, 2979, 2981, 2983, 2985, 2987, 2989, 2991, 2993, 2995, 2997, 2999, 3001, 3003, 3005, 3007, 3009, 3011, 3013, 3015, 3017, 3019, 3021, 3023, 3025, 3027, 3029, 3031, 3033, 3035, 3037, 3039, 3041, 3043, 3045, 3047, 3049, 3051, 3053, 3055, 3057, 3059, 3061, 3063, 3065, 3067, 3069, 3071, 3073, 3075, 3077, 3079, 3081, 3083, 3085, 3087, 3089, 3091, 3093, 3095, 3097, 3099, 3101, 3103, 3105, 3107, 3109, 3111, 3113, 3115, 3117, 3119, 3121, 3123, 3125, 3127, 3129, 3131, 3133, 3135, 3137, 3139, 3141, 3143, 3145, 3147, 3149, 3151, 3153, 3155, 3157, 3159, 3161, 3163, 3165, 3167, 3169, 3171, 3173, 3175, 3177, 3179, 3181, 3183, 3185, 3187, 3189, 3191, 3193, 3195, 3197, 3199, 3201, 3203, 3205, 3207, 3209, 3211, 3213, 3215, 3217, 3219, 3221, 3223, 3225, 3227, 3229, 3231, 3233, 3235, 3237, 3239, 3241, 3243, 3245, 3247, 3249, 3251, 3253, 3255, 3257, 3259, 3261, 3263, 3265, 3267, 3269, 3271, 3273, 3275, 3277, 3279, 3281, 3283, 3285, 3287, 3289, 3291, 3293, 3295, 3297, 3299, 3301, 3303, 3305, 3307, 3309, 3311, 3313, 3315, 3317, 3319, 3321, 3323, 3325, 3327, 3329, 3331, 3333, 3335, 3337, 3339, 3341, 3343, 3345, 3347, 3349, 3351, 3353, 3355, 3357, 3359, 3361, 3363, 3365, 3367, 3369, 3371, 3373, 3375, 3377, 3379, 3381, 3383, 3385, 3387, 3389, 3391, 3393, 3395, 3397, 3399, 3401, 3403, 3405, 3407, 3409, 3411, 3413, 3415, 3417, 3419, 3421, 3423, 3425, 3427, 3429, 3431, 3433, 3435, 3437, 3439, 3441, 3443, 3445, 3447, 3449, 3451, 3453, 3455, 3457, 3459, 3461, 3463, 3465, 3467, 3469, 3471, 3473, 3475, 3477, 3479, 3481, 3483, 3485, 3487, 3489, 3491, 3493, 3495, 3497, 3499, 3501, 3503, 3505, 3507, 3509, 3511, 3513, 3515, 3517, 3519, 3521, 3523, 3525, 3527, 3529, 3531, 3533, 3535, 3537, 3539, 3541, 3543, 3545, 3547, 3549, 3551, 3553, 3555, 3557, 3559, 3561, 3563, 3565, 3567, 3569, 3571, 3573, 3575, 3577, 3579, 3581, 3583, 3585, 3587, 3589, 3591, 3593, 3595, 3597, 3599, 3601, 3603, 3605, 3607, 3609, 3611, 3613, 3615, 3617, 3619, 3621, 3623, 3625, 3627, 3629, 3631, 3633, 3635, 3637, 3639, 3641, 3643, 3645, 3647, 3649, 3651, 3653, 3655, 3657, 3659, 3661, 3663, 3665, 3667, 3669, 3671, 3673, 3675, 3677, 3679, 3681, 3683, 3685, 3687, 3689, 3691, 3693, 3695, 3697, 3699, 3701, 3703, 3705, 3707, 3709, 3711, 3713, 3715, 3717, 3719, 3721, 3723, 3725, 3727, 3729, 3731, 3733, 3735, 3737, 3739, 3741, 3743, 3745, 3747, 3749, 3751, 3753, 3755, 3757, 3759, 3761, 3763, 3765, 3767, 3769, 3771, 3773, 3775, 3777, 3779, 3781, 3783, 3785, 3787, 3789, 3791, 3793, 3795, 3797, 3799, 3801, 3803, 3805, 3807, 3809, 3811, 3813, 3815, 3817, 3819, 3821, 3823, 3825, 3827, 3829, 3831, 3833, 3835, 3837, 3839, 3841, 3843, 3845, 3847, 3849, 3851, 3853, 3855, 3857, 3859, 3861, 3863, 3865, 3867, 3869, 3871, 3873, 3875, 3877, 3879, 3881, 3883, 3885, 3887, 3889, 3891, 3893, 3895, 3897, 3899, 3901, 3903, 3905, 3907, 3909, 3911, 3913, 3915, 3917, 3919, 3921, 3923, 3925, 3927, 3929, 3931, 3933, 3935, 3937, 3939, 3941, 3943, 3945, 3947, 3949, 3951, 3953, 3955, 3957, 3959, 3961, 3963, 3965, 3967, 3969, 3971, 3973, 3975,