



工程指示 / 要求簡箋 ENGINEER INSTRUCTIONS(E.I.)

工程指示編號:	EI- 4715/n	修改版本:	-
	HK- 1115/22		
工程編號:	J 857	工程名稱:	啟德6552
收件人:	maggie lor / 生統	發件人:	Nero HO
工程項目:	幕牆單元件 - 廠用玻璃BM(L座補料)	日期:	25/05/2022

<input type="checkbox"/> 原合約工程包	<input type="checkbox"/> 原合約工程加 / 減脹 QT-	<input type="checkbox"/> 新工程報價 QT-
---------------------------------	--	------------------------------------

信件批核號碼/圖紙參考編號:	批核模具圖紙編號:
客戶指示附件:	管理內部批簽署:

<input type="checkbox"/> 初步鋁料 B.M.	<input type="checkbox"/> 加工拆圖, 然後生產	<input type="checkbox"/> 尺寸表
<input type="checkbox"/> 正式鋁料 B.M.	<input type="checkbox"/> 技術上資料/指示	<input type="checkbox"/> 報價
<input type="checkbox"/> 配件 B.M.	<input type="checkbox"/> 樣辦或貨品說明書	<input type="checkbox"/> 分判合約
<input type="checkbox"/> 其他:		

內容:
請按附頁第 1 頁和第 3 頁(是L座玻璃補料)訂購玻璃。
附頁第 4 頁至第 6 頁是第二份BM是只供參考
請按BS EN 14179-1:2016標準, 做熱浸測試。
L座 訂補 一柱玻璃

完成上列要求日期:

國內

<input type="checkbox"/> 生產技術總監	<input type="checkbox"/> 連附件	<input type="checkbox"/> 技術部	<input type="checkbox"/> 連附件	<input type="checkbox"/> 生產部	<input type="checkbox"/> 連附件
<input type="checkbox"/> 採購部	<input type="checkbox"/> 連附件	<input checked="" type="checkbox"/> 生產統籌部	<input checked="" type="checkbox"/> 連附件	<input type="checkbox"/> 報關組	<input type="checkbox"/> 連附件
<input type="checkbox"/> 質檢部	<input type="checkbox"/> 連附件	<input type="checkbox"/> 會計部	<input type="checkbox"/> 連附件	<input type="checkbox"/> 機械設計部	<input type="checkbox"/> 連附件
<input type="checkbox"/> 香港辦	<input type="checkbox"/> 連附件	<input type="checkbox"/> 其他:			

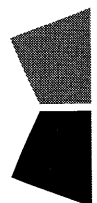
<input type="checkbox"/> 行政部	<input type="checkbox"/> 連附件	<input type="checkbox"/> 會計部	<input type="checkbox"/> 連附件	<input type="checkbox"/> 統籌部	<input type="checkbox"/> 連附件	<input type="checkbox"/> 工程部	<input type="checkbox"/> 連附件
<input type="checkbox"/> 採購部	<input type="checkbox"/> 連附件	<input type="checkbox"/> QS部	<input type="checkbox"/> 連附件	<input type="checkbox"/> 地盤管理	<input type="checkbox"/> 連附件	<input type="checkbox"/> 維修部	<input type="checkbox"/> 連附件


*發件人簽署:	<i>LM</i>	*組別成員批核簽署:	<i>JP</i>
傳遞編號:	<i>HK 1115/22</i>	項目經理簽署:	

訂貨玻璃

①

美特鋁質有限公司 MIDI Aluminium Fabricator Ltd.		工程號: J-857	計算: 李傳鵬	日期: 2022.5.22	送呈:						
廠用玻璃B.M.表		地盤名稱: 啟德6552	核對: 徐詳坤	日期: 2022.5.23	副本:						
BM編號:		項目類別: 單元幕牆 (L座補料)	批准: 林仁安	日期: 2022.5.24							
		A/C Code:	數量: 46	總計玻璃面積 (平方米): 43.678							
序號	修改標示	玻璃編號	顏色與名稱		厚度(mm)	玻璃尺寸		數量 (塊)	面積(平方米)		使用位置
			寬度(mm)	高度(mm)		寬度	高度		單件	總面積	
1		GL1-LZ01	GL1: Laminated IGU Vision Glass 8mm Heat Strengthen Low Iron +12 PVB + 8mm Heat Strengthen Low Iron+12AS+10mm Tempered Low Iron with Low-E Coating on Surface #4 (Sample Code : R20210930023)		39.52	1154	2308	1	2.663	2.663	L座
2		GL1-LZ02				1417	2308	1	3.270	3.270	L座
3		GL1-LZ03				804	2308	1	1.856	1.856	L座
4		GL1-LZ04				679	2308	1	1.567	1.567	L座
5		GL1-LZ05				1229	2308	1	2.837	2.837	L座
6		GL1-LZ06				822	2308	1	1.897	1.897	L座
7		GL1-LZ07				998	2308	2	2.303	4.607	L座
8		GL1-LZ08				1467	2308	1	3.386	3.386	L座
9		GL1-LZ09				438	634	2	0.278	0.555	L座
10		GL3-LZ01	GL3: Laminated IGU Vision Glass 8mm Heat Strengthen Low Iron +12 PVB + 8mm Heat Strengthen Low Iron+ 9AS+8mm Tempered Low Iron with Low-E Coating on Surface #4 for Openable Window (Sample Code : R2021112039)		34.52	742	1615	6	1.198	7.190	L座
11		GL3-LZ02				668	1615	1	1.079	1.079	L座
12		GL3-LZ03				662	1615	1	1.069	1.069	L座
13		GL3-LZ04				537	1615	1	0.867	0.867	L座
14		GL3-LZ05				438	1615	2	0.707	1.415	L座
15		GL3-LZ07				612	1615	1	0.988	0.988	L座
16		GL4-LZ01			1154	445	1	0.514	0.514	L座	
17		GL4-LZ02			742	445	6	0.330	1.981	L座	
18		GL4-LZ03			1417	445	1	0.631	0.631	L座	
19		GL4-LZ04			804	445	1	0.358	0.358	L座	
20		GL4-LZ05			668	445	1	0.297	0.297	L座	
21		GL4-LZ06			1229	445	1	0.547	0.547	L座	
22		GL4-LZ07			662	445	1	0.295	0.295	L座	
23		GL4-LZ08			822	445	1	0.366	0.366	L座	
24		GL4-LZ09			537	445	1	0.239	0.239	L座	
25		GL4-LZ10			438	718	1	0.314	0.314	L座	
26		GL4-LZ11			998	718	1	0.717	0.717	L座	
27		GL4-LZ12			438	445	1	0.195	0.195	L座	


		美特鋁質有限公司		工程號: J-857		計算: 李傳鵬		日期: 2022.5.22		送呈:	
MIDI Aluminium Fabricator Ltd.		地盤名稱: 啟德6552		核對: 徐詳坤		核對: 徐詳坤		日期: 2022.5.23		副本:	
廠用玻璃B.M.表		項目類別: 單元幕牆 (L座補料)		批准: 林仁安		批准: 林仁安		日期: 2022.5.24			
BM編號:		A/C Code:		數量: 46		數量: 46		總計玻璃面積 (平方米):		43.678	
序號	修改標示	玻璃編號	顏色與名稱	厚度(mm)	玻璃尺寸		數量 (塊)	面積(平方米)		使用位置	
					寬度(mm)	高度(mm)		單件	總面積		
28		GL4-LZ13	GL4 玻璃 8+8 Laminated Glass (Sample Code: R20210906045)		998	445	1	0.444	0.444	L座	
29		GL4-LZ14			1467	445	1	0.653	0.653	L座	
30		GL4-LZ15			612	445	1	0.272	0.272	L座	
31		GL4-LZ16			679	445	1	0.302	0.302	L座	
32		GB-LZ01	GB: Monolithic Glass 10mm Tempered Clear for Fixed Glass Barrier. (Sample Code: R20211112040)	10	416	370	2	0.154	0.308	L座	

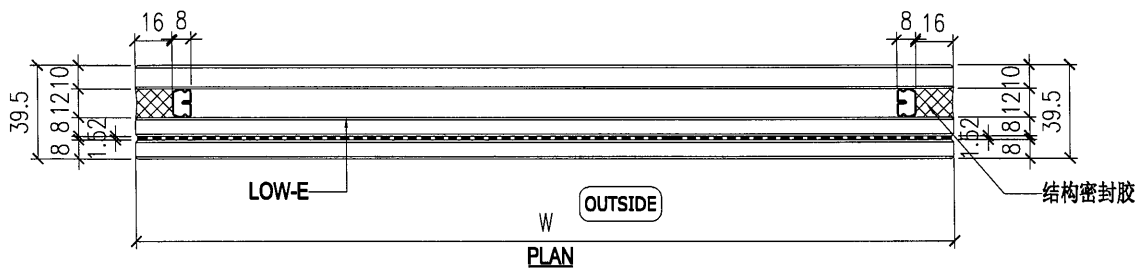
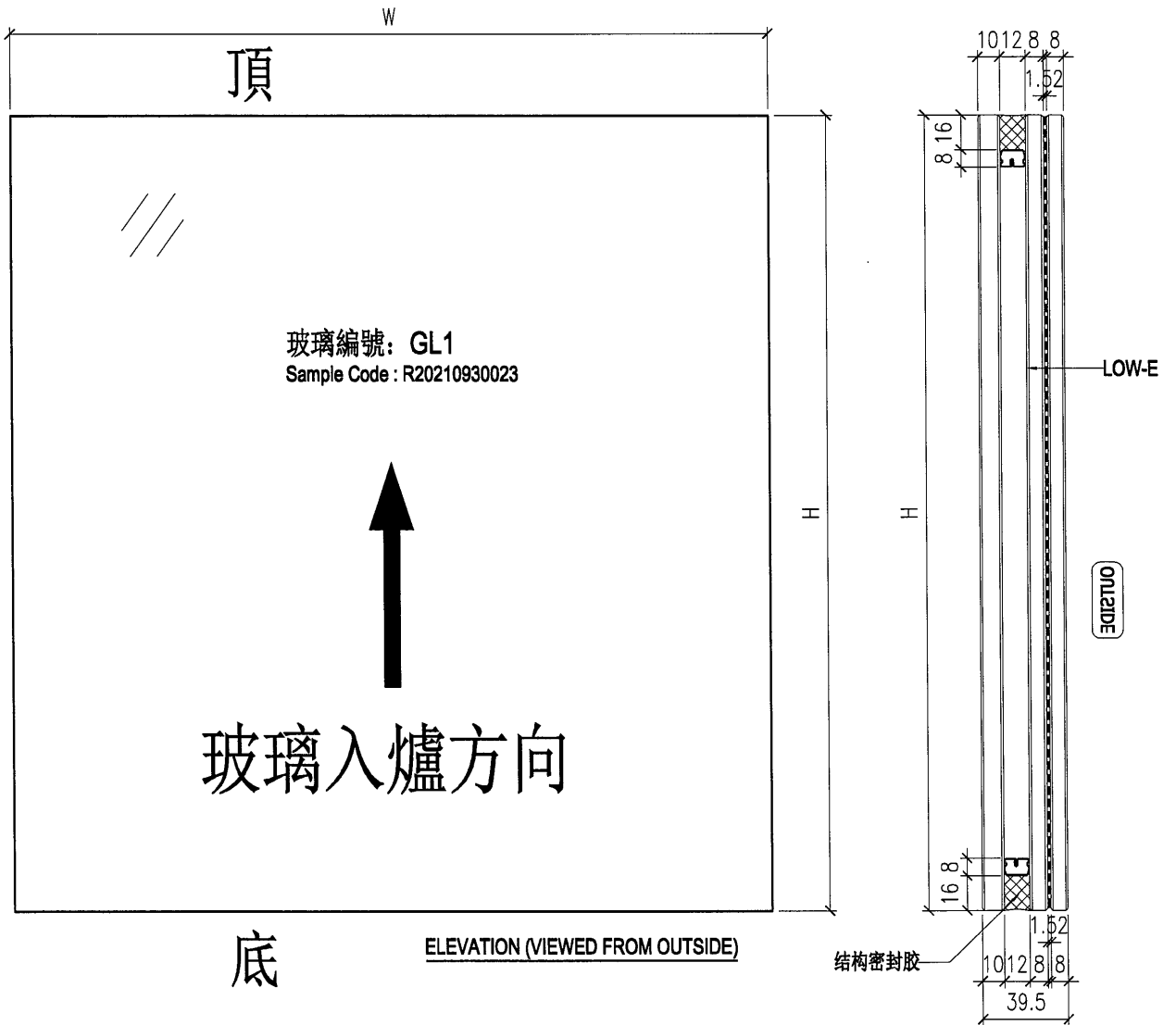
		美特鋁質有限公司		工程號:		J-857		計算:		劉燦		日期:		2022.5.22		送呈:	
MIDI Aluminium Fabricator Ltd.		啟德6552		地盤名稱:		啟德6552		核對:		徐詳坤		日期:		2022.5.23		副本:	
廠用玻璃B.M.表		單元幕牆 (L座补料)		項目類別:		單元幕牆 (L座补料)		批准:		林仁安		日期:		2022.5.24			
BM編號:		A/C Code:		數量:		46		總計玻璃面積 (平方米):						43.678			

序號	修改標示	玻璃編號	顏色與名稱	厚度(mm)	玻璃尺寸		數量 (塊)	面積(平方米)		使用位置
					寬度(mm)	高度(mm)		單件	總面積	
1		GL1-LZ01	GL1: Laminated IGU Vision Glass 8mm Heat Strengthen Low Iron +12 PVB + 8mm Heat Strengthen Low Iron+ 12AS+10mm Tempered Low Iron with Low-E Coating on Surface #4 (Sample Code : R20210930023)	39.52	1154	2308	1	2.663	2.663	L座
2		GL1-LZ02			1417	2308	1	3.270	3.270	L座
3		GL1-LZ03			804	2308	1	1.856	1.856	L座
4		GL1-LZ04			679	2308	1	1.567	1.567	L座
5		GL1-LZ05			1229	2308	1	2.837	2.837	L座
6		GL1-LZ06			822	2308	1	1.897	1.897	L座
7		GL1-LZ07			998	2308	2	2.303	4.607	L座
8		GL1-LZ08			1467	2308	1	3.386	3.386	L座
9		GL1-LZ09			438	634	2	0.278	0.555	L座
10		GL3-LZ01	GL3: Laminated IGU Vision Glass 8mm Heat Strengthen Low Iron +12 PVB + 8mm Heat Strengthen Low Iron+ 9AS+8mm Tempered Low Iron with Low-E Coating on Surface #4 for Openable Window (Sample Code : R2021112039)	34.52	742	1615	6	1.198	7.190	L座
11		GL3-LZ02			668	1615	1	1.079	1.079	L座
12		GL3-LZ03			662	1615	1	1.069	1.069	L座
13		GL3-LZ04			537	1615	1	0.867	0.867	L座
14		GL3-LZ05			438	1615	2	0.707	1.415	L座
15		GL3-LZ07	612	1615	1	0.988	0.988	L座		
16		GL4-LZ01	GL4: Laminated Glass 8mm Tempered Clear + 12 PVB+ 8mm Tempered Clear with Reflective Coating (to match with low-e coating colour) on Surface #2 (Sample Code : R20210906045)	17.52	1154	445	1	0.514	0.514	L座
17		GL4-LZ02			742	445	6	0.330	1.981	L座
18		GL4-LZ03			1417	445	1	0.631	0.631	L座
19		GL4-LZ04			804	445	1	0.358	0.358	L座
20		GL4-LZ05			668	445	1	0.297	0.297	L座
21		GL4-LZ06			1229	445	1	0.547	0.547	L座
22		GL4-LZ07			662	445	1	0.295	0.295	L座
23		GL4-LZ08			822	445	1	0.366	0.366	L座
24		GL4-LZ09			537	445	1	0.239	0.239	L座
25		GL4-LZ10			438	718	1	0.314	0.314	L座
26		GL4-LZ11			998	718	1	0.717	0.717	L座
27		GL4-LZ12			438	445	1	0.195	0.195	L座

		美特鋁質有限公司		工程號: J-857		計算: 劉燦		日期: 2022.5.22		送呈:	
MIDI Aluminium Fabricator Ltd.		地盤名稱: 啟德6552		核對: 徐詳坤		核對: 徐詳坤		日期: 2022.5.23		副本:	
廠用玻璃B.M.表		項目類別: 單元幕牆 (L座補料)		批准: 林仁安		批准: 林仁安		日期: 2022.5.24			
BM編號:		A/C Code:		數量: 46		數量: 46		總計玻璃面積 (平方米):		43.678	
序號	修改標示	玻璃編號	顏色與名稱	厚度(mm)		玻璃尺寸		數量 (塊)	面積(平方米)		使用位置
				寬度(mm)	高度(mm)	寬度(mm)	高度(mm)		單件	總面積	
28		GL4-LZ13		998	445	998	445	1	0.444	0.444	L座
29		GL4-LZ14		1467	445	1467	445	1	0.653	0.653	L座
30		GL4-LZ15		612	445	612	445	1	0.272	0.272	L座
31		GL4-LZ16		679	445	679	445	1	0.302	0.302	L座
32		GB-LZ01	GB: Monolithic Glass 10mm Tempered Clear for Fixed Glass Barrier. (Sample Code : R20211112040)	416	370	416	370	2	0.154	0.308	L座


		美特鋁質有限公司 MIDI Aluminum Fabricator Ltd.		工程號: J-857		計算: 劉燦		日期: 2022.5.22		送呈:	
		地盤名稱: 啟德6552		核對: 徐詳坤		日期: 2022.5.23		副本:			
廠用玻璃B.M.表		項目類別: 單元幕牆 (L座补料)		批准: 林仁安		日期: 2022.5.24					
BM編號:		A/C Code:		數量: 46		總計玻璃面積 (平方米):		43.678			
序號		修改標示		玻璃編號		顏色與名稱		厚度(mm)		玻璃尺寸	
						寬度(mm)		高度(mm)		數量 (塊)	
						寬度(mm)		高度(mm)		面積(平方米)	
						寬度(mm)		高度(mm)		單件	
						寬度(mm)		高度(mm)		總面積	
						寬度(mm)		高度(mm)		43.678	
						寬度(mm)		高度(mm)		總合計:	
						寬度(mm)		高度(mm)		46	
<p>1).本表中所有玻璃對角線尺寸偏差要求不超過正負2mm.</p> <p>2).本表中所有玻璃要求粗磨邊處理並倒棱角.</p> <p>3).本表中所有玻璃要求粗磨邊處理並倒棱角,攔河玻璃頂底要精磨邊,而所有玻璃之入爐方向需保持一致。</p> <p>4).本表中不同種類玻璃參照玻璃加工圖加工。</p> <p>5).本表中所有強化玻璃均需HEAT SOAK TEST。</p> <p>6).本表中所有玻璃均需注明室內外面及其玻璃編號,以便識別。</p>											
<p>加工注意事項:</p>											

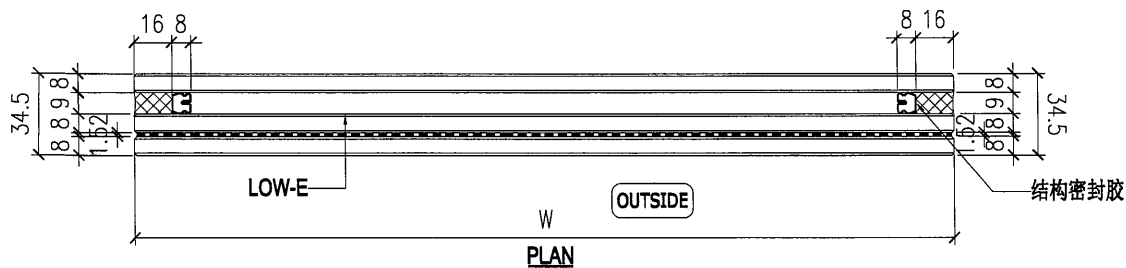
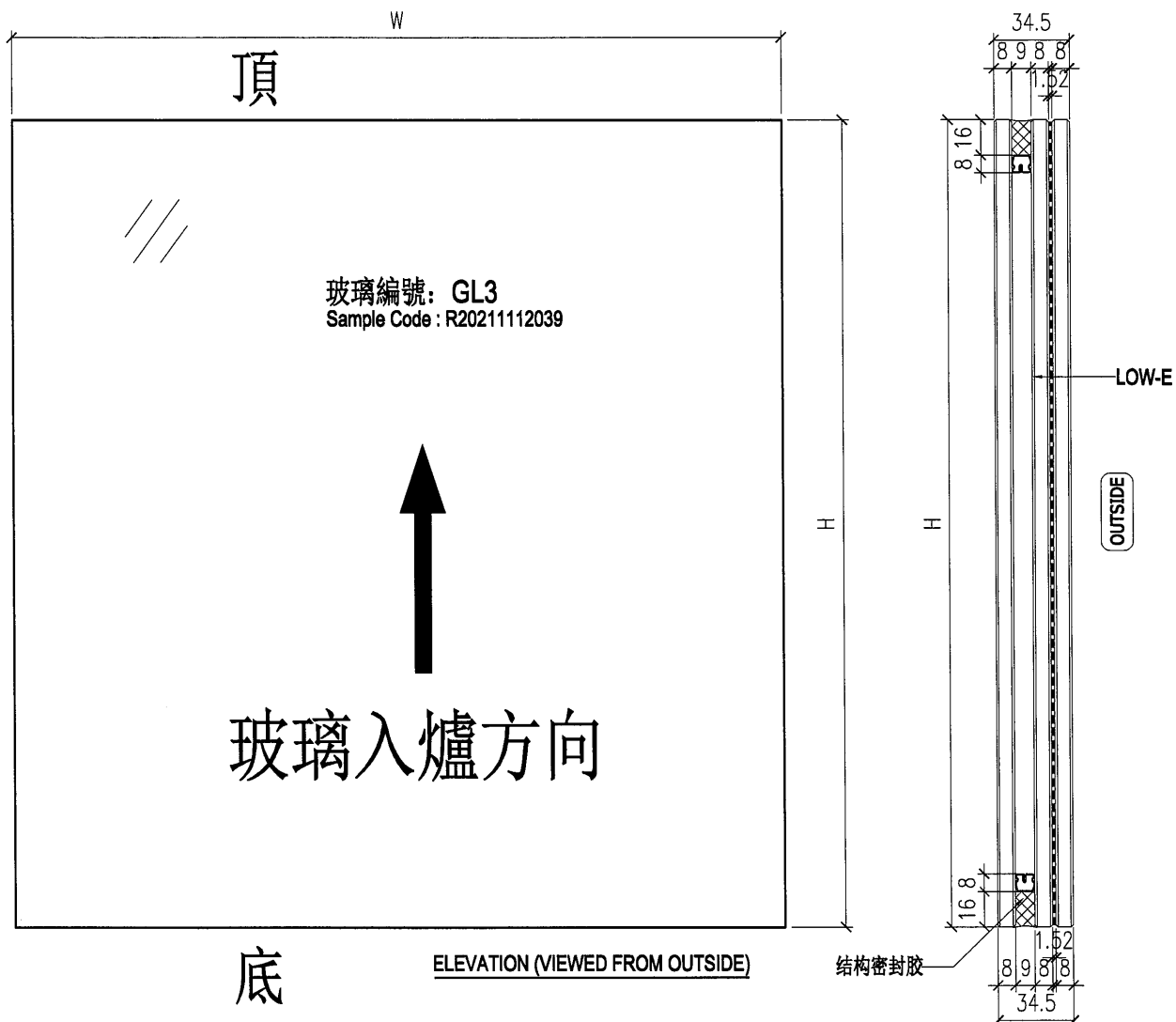
 美特鋁質有限公司 MIDI Aluminium Fabricator Ltd.				工程號 J857	類別 -	物料號 -	
地盤 啟德站				制圖 劉燦	2021-12-15	圖號 GL1-L01	
修改 -	-	-	採用工廠 <input checked="" type="checkbox"/> 地盤	图纸名称 玻璃加工图	復核 徐詳坤	2021-12-15	數量 -
日期 -	-	-	材料颜色 -	材料 GLASS	批准 林仁安	2021-12-15	單件重量 - (KG)



NOTES


1. ALL DIMENSION IN mm
2. ALL EDGE CHAMFER 1x1x45

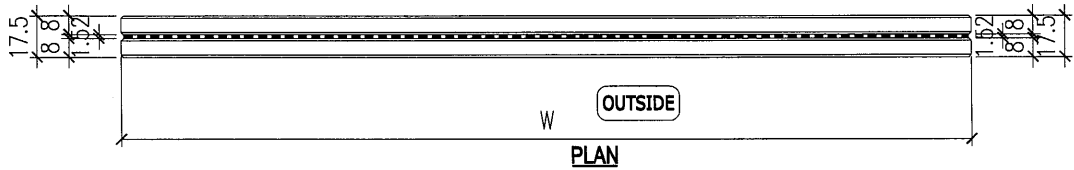
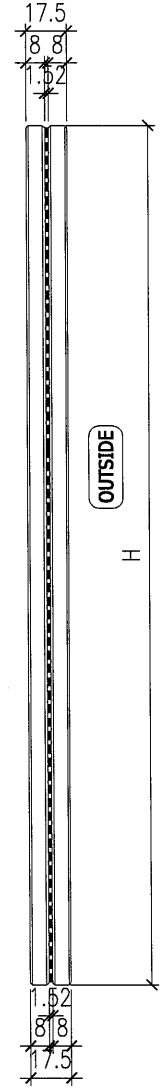
 美特鋁質有限公司 MIDI Aluminium Fabricator Ltd.				工程號 J857 地盘 啟德站	類別 制圖 劉燦	物料號 - 圖號 GL3-L01	
修改 - 日期 -	採用工廠 ✓ 材料颜色	地盤 材料 GLASS	图纸名称 玻璃加工图 材料 GLASS	復核 徐詳坤 批准 林仁安	2021-12-15 2021-12-15	數量 - 單件重量 - (KG)	




NOTES

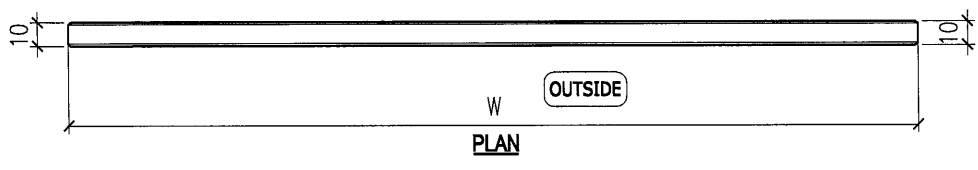
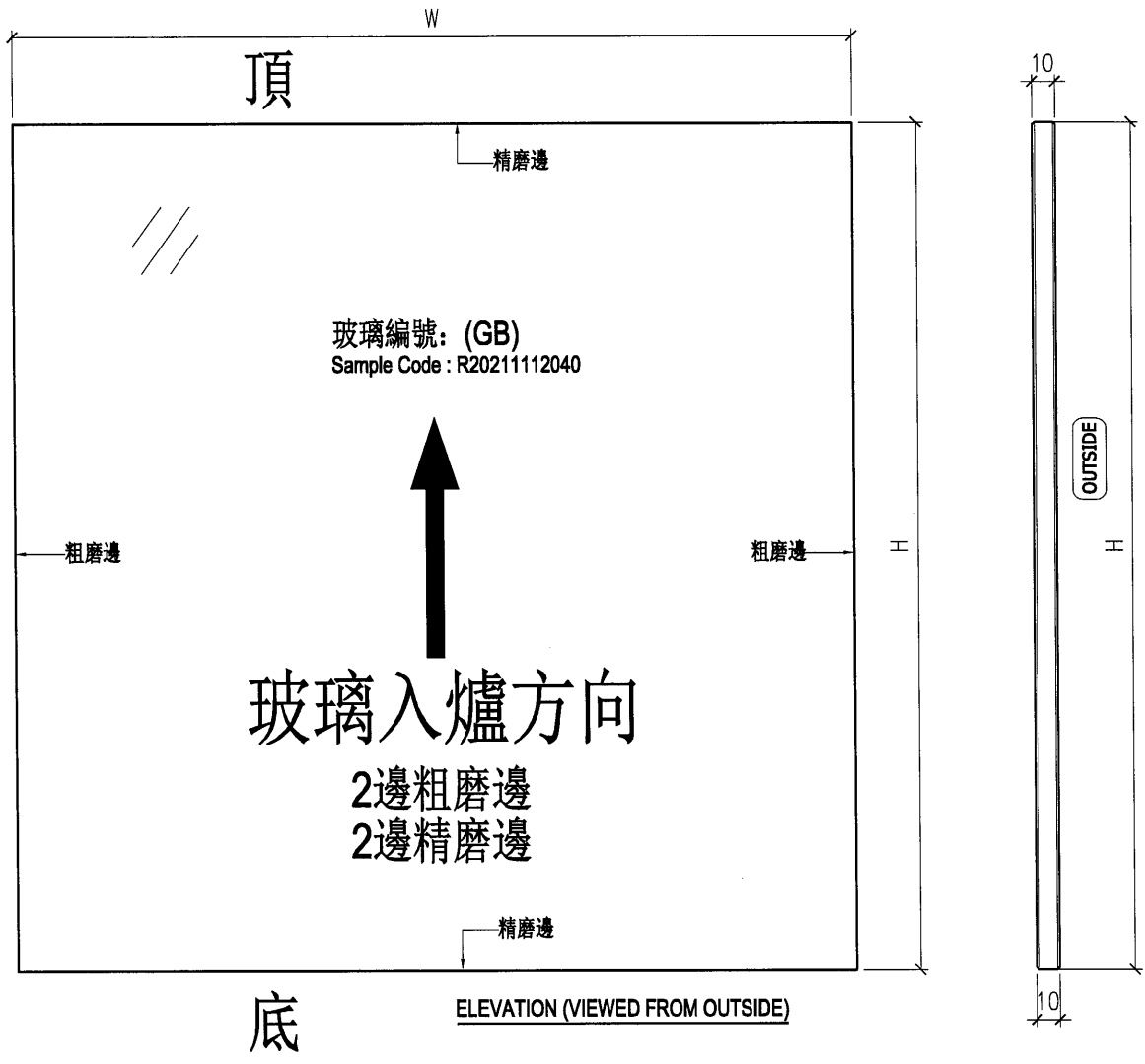
1. ALL DIMENSION IN mm
2. ALL EDGE CHAMFER 1x1x45

 美特鋁質有限公司 MIDI Aluminium Fabricator Ltd.				工程號 J857 地盘 啟德站	類別 制圖 劉燦	物料號 - 2021-12-15	圖號 GL4-L01
修改 - 日期 -	採用工廠 <input checked="" type="checkbox"/> 地盤	图纸名称 玻璃加工图	復核 徐詳坤 批准 林仁安	2021-12-15	數量 - 單件重量 - (KG)		
材料颜色		材料 GLASS					



NOTES
 1. ALL DIMENSION IN mm
 2. ALL EDGE CHAMFER 1x1x45

 美特鋁質有限公司 MIDI Aluminium Fabricator Ltd.				工程號 J857 地盤 啟德站	類別 制圖 劉燦	物料號 - 2021-12-15	圖號 GB-L01
修改 - - - 日期 - - -	採用工廠 <input checked="" type="checkbox"/> 地盤 材料顏色	图纸名称 玻璃加工图 材料 GLASS	復核 徐詳坤 批准 林仁安	2021-12-15 2021-12-15	數量 - 單件重量 - (KG)		



NOTES

1. ALL DIMENSION IN mm
2. ALL EDGE CHAMFER 1x1x45

B.D. REF :
 F.S.D. REF :
 Note:
 1. All dimensions are in mm.
 2. All elevations are viewed from outside.
 3. All dimensions to be verified on site before fabrication.

GENERAL NOTES
 Legend:
 1. FFL - Finished Floor Level
 2. SFL - Structural Floor Level
 3. RL - Revised Detail

DETAIL MARK NO.
 REFER SHEET NO.
 X1
 X001

NO.	DATE	DESCRIPTION	BY

CLIENT : **WARBLE EDGE INVESTMENT LTD.**
 ARCHITECT : **ROSEWOOD LU & PARTNERS**
 ARCHITECTS/FURNISHERS/INTERIOR DESIGNERS

STRUCTURAL ENGINEER : **ICMA**
INGENIERS & ASSOCIATES LTD

MAIN CONTRACTOR : **裕民建築有限公司**
MIDI ASSHURANCE FABRICATOR LTD.

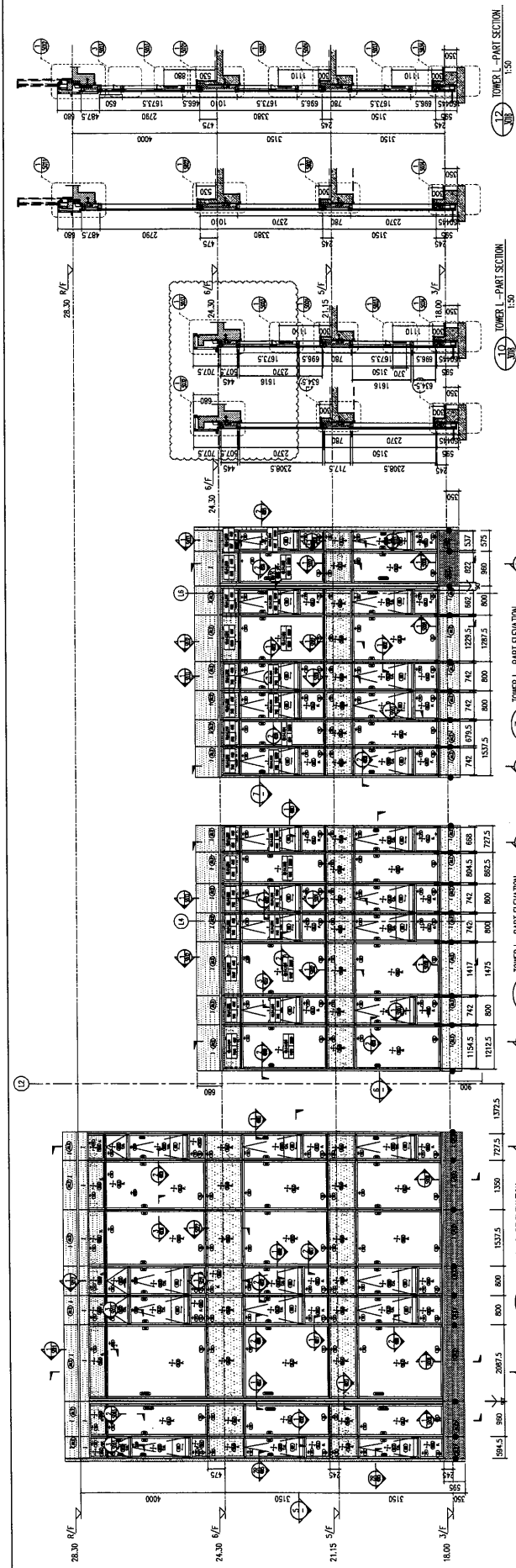
PROJECT : **PROPOSED RESIDENTIAL DEVELOPMENT AT NEW KOWLOON ISLAND LOT. NO.6652**

TITLE : **PARTIAL ELEVATION, PLAN, SECTION FOR TOWER L**

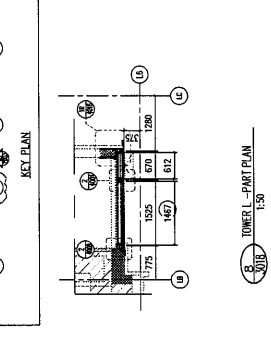
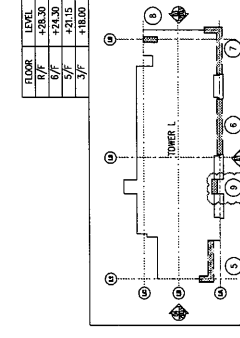
JOB NO. : **J-657**
 DRAWN BY : **AN**
 DATE : **18.Oct.2021**

CHD BY :
 SCALE : **A1:16.000000**
 AS

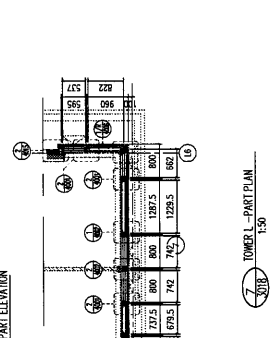
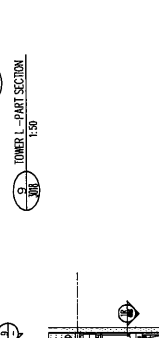
DWG. NO. : **SD-PE-3018**
 REV. : **B**



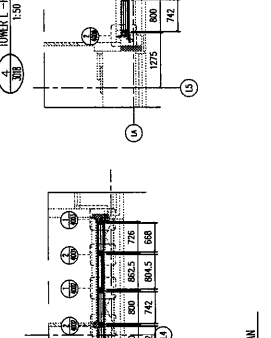
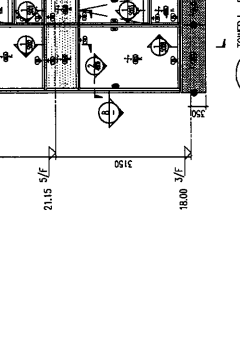
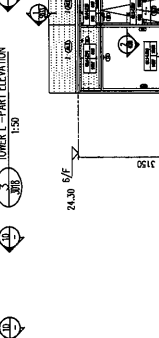
FLOOR	LEVEL
6/F	+24.30
5/F	+21.15
3/F	+18.00



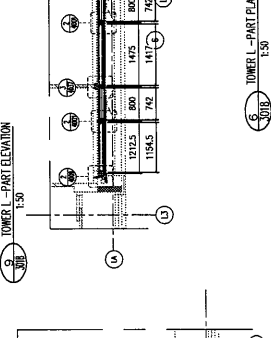
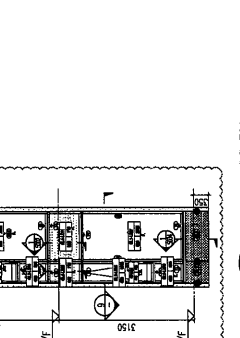
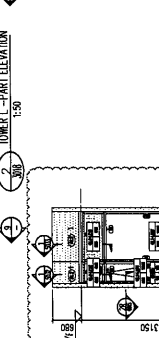
- T1 = EXTRUDED ALUM. SILL STICK JOINT (A1.1)
- T2 = EXTRUDED ALUM. SILL STICK JOINT (A1.2)
- T3 = EXTRUDED ALUM. INTERMEDIATE TRANSOM (A1.3)
- T4 = EXTRUDED ALUM. INTERMEDIATE TRANSOM (A1.4)
- T5 = EXTRUDED ALUM. INTERMEDIATE TRANSOM (A1.5)
- T6 = EXTRUDED ALUM. INTERMEDIATE TRANSOM (A1.6)
- T7 = EXTRUDED ALUM. INTERMEDIATE TRANSOM (A1.7)
- T8 = EXTRUDED ALUM. TRANSOM (A1.8)
- T9 = EXTRUDED ALUM. TRANSOM (A1.9)
- T10 = EXTRUDED ALUM. TRANSOM (A1.10)
- T11 = EXTRUDED ALUM. INTERMEDIATE TRANSOM (A1.11)
- T12 = EXTRUDED ALUM. INTERMEDIATE TRANSOM (A1.12)
- T13 = EXTRUDED ALUM. INTERMEDIATE TRANSOM JOINT (A1.13)
- T14 = 8MM SOCKET (GLASS UNIT)



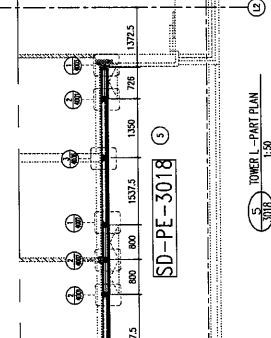
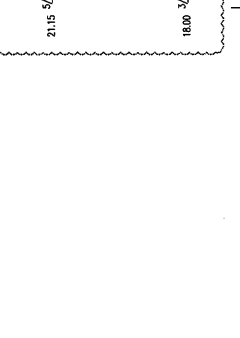
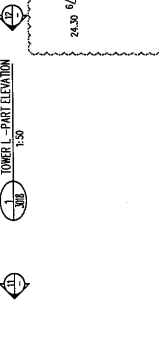
- S.1 = STICK JOINT
- S.2 = EXTRUDED ALUM. MALE MULLION (A1.0)
- S.3 = EXTRUDED ALUM. MALE MULLION (A1.0)
- S.4 = EXTRUDED ALUM. FEMALE MULLION (A1.0)
- S.5 = EXTRUDED ALUM. FEMALE MULLION (A1.0)
- S.6 = EXTRUDED ALUM. OUTER CORNER MALE MULLION (A1.0)
- S.7 = EXTRUDED ALUM. OUTER CORNER FEMALE MULLION (A1.0)
- S.8 = EXTRUDED ALUM. OUTER CORNER MALE MULLION (A1.0)
- S.9 = EXTRUDED ALUM. OUTER CORNER FEMALE MULLION (A1.0)
- S.10 = EXTRUDED ALUM. INTERMEDIATE MULLION (A1.0)
- S.11 = EXTRUDED ALUM. INTERMEDIATE MULLION (A1.0)
- S.12 = EXTRUDED ALUM. MALE MULLION (A1.0)
- S.13 = EXTRUDED ALUM. FEMALE MULLION (A1.0)
- S.14 = 8MM SOCKET (GLASS UNIT)



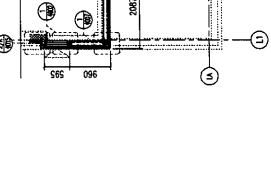
- G.1 = 8mm HEAT STRENGTHEN LOW IRON GLASS + 12mm AIR SPACE + 12mm LOW IRON + FULLY TEMPERED MONOLITHIC CLEAR GLASS (BARRIER)
- G.2 = 8mm HEAT STRENGTHEN LOW IRON GLASS + 12mm AIR SPACE + 12mm LOW IRON + FULLY TEMPERED MONOLITHIC CLEAR GLASS (BARRIER)
- G.3 = 8mm HEAT STRENGTHEN LOW IRON GLASS + 12mm AIR SPACE + 12mm LOW IRON + FULLY TEMPERED MONOLITHIC CLEAR GLASS (BARRIER)
- G.4 = 8mm HEAT STRENGTHEN LOW IRON GLASS + 12mm AIR SPACE + 12mm LOW IRON + FULLY TEMPERED MONOLITHIC CLEAR GLASS (BARRIER)
- G.5 = 8mm HEAT STRENGTHEN LOW IRON GLASS + 12mm AIR SPACE + 12mm LOW IRON + FULLY TEMPERED MONOLITHIC CLEAR GLASS (BARRIER)
- G.6 = 8mm HEAT STRENGTHEN LOW IRON GLASS + 12mm AIR SPACE + 12mm LOW IRON + FULLY TEMPERED MONOLITHIC CLEAR GLASS (BARRIER)
- G.7 = 8mm HEAT STRENGTHEN LOW IRON GLASS + 12mm AIR SPACE + 12mm LOW IRON + FULLY TEMPERED MONOLITHIC CLEAR GLASS (BARRIER)
- G.8 = 8mm HEAT STRENGTHEN LOW IRON GLASS + 12mm AIR SPACE + 12mm LOW IRON + FULLY TEMPERED MONOLITHIC CLEAR GLASS (BARRIER)



- S.F.L = STRUCTURAL FLOOR LEVEL
- C.M. = INTIZED CURRAIN WALL
- E.H1 = WIND LOAD +0.60 LOAD FRING LOCATION
- E.H2 = WIND LOAD +0.60 LOAD FRING LOCATION
- E.H3 = WIND LOAD +0.60 LOAD FRING LOCATION
- E.H4 = WIND LOAD +0.60 LOAD FRING LOCATION
- E.H5 = WIND LOAD +0.60 LOAD FRING LOCATION
- E.H6 = WIND LOAD +0.60 LOAD FRING LOCATION
- E.H7 = WIND LOAD +0.60 LOAD FRING LOCATION
- E.H8 = WIND LOAD +0.60 LOAD FRING LOCATION
- E.H9 = WIND LOAD +0.60 LOAD FRING LOCATION
- E.H10 = WIND LOAD +0.60 LOAD FRING LOCATION
- E.H11 = WIND LOAD +0.60 LOAD FRING LOCATION
- E.H12 = WIND LOAD +0.60 LOAD FRING LOCATION
- E.H13 = WIND LOAD +0.60 LOAD FRING LOCATION
- E.H14 = WIND LOAD +0.60 LOAD FRING LOCATION
- E.H15 = WIND LOAD +0.60 LOAD FRING LOCATION
- E.H16 = WIND LOAD +0.60 LOAD FRING LOCATION
- E.H17 = WIND LOAD +0.60 LOAD FRING LOCATION
- E.H18 = WIND LOAD +0.60 LOAD FRING LOCATION
- E.H19 = WIND LOAD +0.60 LOAD FRING LOCATION
- E.H20 = WIND LOAD +0.60 LOAD FRING LOCATION
- E.H21 = WIND LOAD +0.60 LOAD FRING LOCATION
- E.H22 = WIND LOAD +0.60 LOAD FRING LOCATION
- E.H23 = WIND LOAD +0.60 LOAD FRING LOCATION
- E.H24 = WIND LOAD +0.60 LOAD FRING LOCATION
- E.H25 = WIND LOAD +0.60 LOAD FRING LOCATION
- E.H26 = WIND LOAD +0.60 LOAD FRING LOCATION
- E.H27 = WIND LOAD +0.60 LOAD FRING LOCATION
- E.H28 = WIND LOAD +0.60 LOAD FRING LOCATION
- E.H29 = WIND LOAD +0.60 LOAD FRING LOCATION
- E.H30 = WIND LOAD +0.60 LOAD FRING LOCATION
- E.H31 = WIND LOAD +0.60 LOAD FRING LOCATION
- E.H32 = WIND LOAD +0.60 LOAD FRING LOCATION
- E.H33 = WIND LOAD +0.60 LOAD FRING LOCATION
- E.H34 = WIND LOAD +0.60 LOAD FRING LOCATION
- E.H35 = WIND LOAD +0.60 LOAD FRING LOCATION
- E.H36 = WIND LOAD +0.60 LOAD FRING LOCATION
- E.H37 = WIND LOAD +0.60 LOAD FRING LOCATION
- E.H38 = WIND LOAD +0.60 LOAD FRING LOCATION
- E.H39 = WIND LOAD +0.60 LOAD FRING LOCATION
- E.H40 = WIND LOAD +0.60 LOAD FRING LOCATION
- E.H41 = WIND LOAD +0.60 LOAD FRING LOCATION
- E.H42 = WIND LOAD +0.60 LOAD FRING LOCATION
- E.H43 = WIND LOAD +0.60 LOAD FRING LOCATION
- E.H44 = WIND LOAD +0.60 LOAD FRING LOCATION
- E.H45 = WIND LOAD +0.60 LOAD FRING LOCATION
- E.H46 = WIND LOAD +0.60 LOAD FRING LOCATION
- E.H47 = WIND LOAD +0.60 LOAD FRING LOCATION
- E.H48 = WIND LOAD +0.60 LOAD FRING LOCATION
- E.H49 = WIND LOAD +0.60 LOAD FRING LOCATION
- E.H50 = WIND LOAD +0.60 LOAD FRING LOCATION
- E.H51 = WIND LOAD +0.60 LOAD FRING LOCATION
- E.H52 = WIND LOAD +0.60 LOAD FRING LOCATION
- E.H53 = WIND LOAD +0.60 LOAD FRING LOCATION
- E.H54 = WIND LOAD +0.60 LOAD FRING LOCATION
- E.H55 = WIND LOAD +0.60 LOAD FRING LOCATION
- E.H56 = WIND LOAD +0.60 LOAD FRING LOCATION
- E.H57 = WIND LOAD +0.60 LOAD FRING LOCATION
- E.H58 = WIND LOAD +0.60 LOAD FRING LOCATION
- E.H59 = WIND LOAD +0.60 LOAD FRING LOCATION
- E.H60 = WIND LOAD +0.60 LOAD FRING LOCATION
- E.H61 = WIND LOAD +0.60 LOAD FRING LOCATION
- E.H62 = WIND LOAD +0.60 LOAD FRING LOCATION
- E.H63 = WIND LOAD +0.60 LOAD FRING LOCATION
- E.H64 = WIND LOAD +0.60 LOAD FRING LOCATION
- E.H65 = WIND LOAD +0.60 LOAD FRING LOCATION
- E.H66 = WIND LOAD +0.60 LOAD FRING LOCATION
- E.H67 = WIND LOAD +0.60 LOAD FRING LOCATION
- E.H68 = WIND LOAD +0.60 LOAD FRING LOCATION
- E.H69 = WIND LOAD +0.60 LOAD FRING LOCATION
- E.H70 = WIND LOAD +0.60 LOAD FRING LOCATION
- E.H71 = WIND LOAD +0.60 LOAD FRING LOCATION
- E.H72 = WIND LOAD +0.60 LOAD FRING LOCATION
- E.H73 = WIND LOAD +0.60 LOAD FRING LOCATION
- E.H74 = WIND LOAD +0.60 LOAD FRING LOCATION
- E.H75 = WIND LOAD +0.60 LOAD FRING LOCATION
- E.H76 = WIND LOAD +0.60 LOAD FRING LOCATION
- E.H77 = WIND LOAD +0.60 LOAD FRING LOCATION
- E.H78 = WIND LOAD +0.60 LOAD FRING LOCATION
- E.H79 = WIND LOAD +0.60 LOAD FRING LOCATION
- E.H80 = WIND LOAD +0.60 LOAD FRING LOCATION
- E.H81 = WIND LOAD +0.60 LOAD FRING LOCATION
- E.H82 = WIND LOAD +0.60 LOAD FRING LOCATION
- E.H83 = WIND LOAD +0.60 LOAD FRING LOCATION
- E.H84 = WIND LOAD +0.60 LOAD FRING LOCATION
- E.H85 = WIND LOAD +0.60 LOAD FRING LOCATION
- E.H86 = WIND LOAD +0.60 LOAD FRING LOCATION
- E.H87 = WIND LOAD +0.60 LOAD FRING LOCATION
- E.H88 = WIND LOAD +0.60 LOAD FRING LOCATION
- E.H89 = WIND LOAD +0.60 LOAD FRING LOCATION
- E.H90 = WIND LOAD +0.60 LOAD FRING LOCATION
- E.H91 = WIND LOAD +0.60 LOAD FRING LOCATION
- E.H92 = WIND LOAD +0.60 LOAD FRING LOCATION
- E.H93 = WIND LOAD +0.60 LOAD FRING LOCATION
- E.H94 = WIND LOAD +0.60 LOAD FRING LOCATION
- E.H95 = WIND LOAD +0.60 LOAD FRING LOCATION
- E.H96 = WIND LOAD +0.60 LOAD FRING LOCATION
- E.H97 = WIND LOAD +0.60 LOAD FRING LOCATION
- E.H98 = WIND LOAD +0.60 LOAD FRING LOCATION
- E.H99 = WIND LOAD +0.60 LOAD FRING LOCATION
- E.H100 = WIND LOAD +0.60 LOAD FRING LOCATION



- S.1 = STICK JOINT
- S.2 = EXTRUDED ALUM. MALE MULLION (A1.0)
- S.3 = EXTRUDED ALUM. MALE MULLION (A1.0)
- S.4 = EXTRUDED ALUM. FEMALE MULLION (A1.0)
- S.5 = EXTRUDED ALUM. FEMALE MULLION (A1.0)
- S.6 = EXTRUDED ALUM. OUTER CORNER MALE MULLION (A1.0)
- S.7 = EXTRUDED ALUM. OUTER CORNER FEMALE MULLION (A1.0)
- S.8 = EXTRUDED ALUM. OUTER CORNER MALE MULLION (A1.0)
- S.9 = EXTRUDED ALUM. OUTER CORNER FEMALE MULLION (A1.0)
- S.10 = EXTRUDED ALUM. INTERMEDIATE MULLION (A1.0)
- S.11 = EXTRUDED ALUM. INTERMEDIATE MULLION (A1.0)
- S.12 = EXTRUDED ALUM. MALE MULLION (A1.0)
- S.13 = EXTRUDED ALUM. FEMALE MULLION (A1.0)
- S.14 = 8MM SOCKET (GLASS UNIT)



- S.1 = STICK JOINT
- S.2 = EXTRUDED ALUM. MALE MULLION (A1.0)
- S.3 = EXTRUDED ALUM. MALE MULLION (A1.0)
- S.4 = EXTRUDED ALUM. FEMALE MULLION (A1.0)
- S.5 = EXTRUDED ALUM. FEMALE MULLION (A1.0)
- S.6 = EXTRUDED ALUM. OUTER CORNER MALE MULLION (A1.0)
- S.7 = EXTRUDED ALUM. OUTER CORNER FEMALE MULLION (A1.0)
- S.8 = EXTRUDED ALUM. OUTER CORNER MALE MULLION (A1.0)
- S.9 = EXTRUDED ALUM. OUTER CORNER FEMALE MULLION (A1.0)
- S.10 = EXTRUDED ALUM. INTERMEDIATE MULLION (A1.0)
- S.11 = EXTRUDED ALUM. INTERMEDIATE MULLION (A1.0)
- S.12 = EXTRUDED ALUM. MALE MULLION (A1.0)
- S.13 = EXTRUDED ALUM. FEMALE MULLION (A1.0)
- S.14 = 8MM SOCKET (GLASS UNIT)