



工程指示 / 要求簡箋 ENGINEER INSTRUCTIONS(E.I.)

工程指示編號:	EI- 4611	修改版本:	A
	HK- /		
工程編號:	J 857	工程名稱:	NKIL6552
收件人:	Maggie Lor	發件人:	Nero HO
工程項目:	後裝FD門和鋁窗 - 地盤用玻璃(樣辦層)	日期:	21/04/2022

<input type="checkbox"/> 原合約工程包	<input type="checkbox"/> 原合約工程加 / 減脹 QT-	<input type="checkbox"/> 新工程報價 QT-
---------------------------------	--	------------------------------------

信件批核號碼/圖紙參考編號:	批核模具圖紙編號:
客戶指示附件:	管理內部批簽署:

<input type="checkbox"/> 初步鋁料 B.M.	<input type="checkbox"/> 加工拆圖, 然後生產	<input type="checkbox"/> 尺寸表
<input type="checkbox"/> 正式鋁料 B.M.	<input type="checkbox"/> 技術上資料 / 指示	<input type="checkbox"/> 報價
<input type="checkbox"/> 配件 B.M.	<input type="checkbox"/> 樣辦或貨品說明書	<input type="checkbox"/> 分判合約
<input type="checkbox"/> 其他:		

內容: 收到大判通知 glass type有意見 所以先暫停有關玻璃加工 受影響玻璃見附件BM
完成上列要求日期: 五月中

國內


<input type="checkbox"/> 生產技術總監	<input type="checkbox"/> 連附件	<input type="checkbox"/> 技術部	<input type="checkbox"/> 連附件	<input type="checkbox"/> 生產部	<input type="checkbox"/> 連附件
<input type="checkbox"/> 採購部	<input type="checkbox"/> 連附件	<input type="checkbox"/> 生產統籌部	<input type="checkbox"/> 連附件	<input type="checkbox"/> 報關組	<input type="checkbox"/> 連附件
<input type="checkbox"/> 質檢部	<input type="checkbox"/> 連附件	<input type="checkbox"/> 會計部	<input type="checkbox"/> 連附件	<input type="checkbox"/> 機械設計部	<input type="checkbox"/> 連附件
<input type="checkbox"/> 其他:					

香港


<input type="checkbox"/> 行政部	<input type="checkbox"/> 連附件	<input type="checkbox"/> 會計部	<input type="checkbox"/> 連附件	<input type="checkbox"/> 統籌部	<input type="checkbox"/> 連附件	<input type="checkbox"/> 工程部	<input type="checkbox"/> 連附件
<input type="checkbox"/> 採購部	<input type="checkbox"/> 連附件	<input type="checkbox"/> QS部	<input type="checkbox"/> 連附件	<input type="checkbox"/> 地盤管理	<input type="checkbox"/> 連附件	<input type="checkbox"/> 維修部	<input type="checkbox"/> 連附件

*發件人簽署:	<i>ML</i>	*組別成員批核簽署:	<i>[Signature]</i>
傳遞編號:	/	項目經理簽署:	

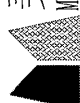
第一份 B.M.表

 美特鋁質 有限公司 MIDI Aluminium Fabricator Ltd.		工程號: J-857	計算: 黃汉卿	日期: 21/4/2022	送呈: 施哥			
地盤名稱: 啟德6552		核對:	日期:	副本:				
項目類別: 後裝窗		批准:	日期:	A/C Code:				
修改版次: A版 2022.04.21		總計玻璃面積 (平方米): 24.216		此BM依據				
序號	修改內容	玻璃圖號	顏色與類型	玻璃尺寸		數量 (塊)	總面積 (平方米)	備注
				厚度 (mm)	高度 (mm)			
1		AW1-G7-GL1	IGU VISION GLASS 6mm HEAT STRENGTHENED LOW IRON+12AS+10mm TEMPERED LOW IRON WITH LOW-E CLATING ON SURFACE #2 Sample No. R20210930026	28.00	2374.5	3	3.715	FD門玻璃
					小計	3	3.715	
2	A暫停	AW1-G8-GL1	LAMINATED GLASS 6mm TEMPEDED CLEAR+1.52PVB+6mm TEMPEDED CLEAR Sample No. R20210902041	13.52	521.5	3	3.715	FD門玻璃
3	A暫停	AW2-G8-GL1		13.52	521.5	3	3.715	FD門玻璃
4	A暫停	AW07-G8-GL1		13.52	496.5	3	3.537	FD門玻璃
5	A暫停	AW09-GL1		13.52	497.0	3	1.634	
6		AW08-GL1		13.52	472.0	3	1.829	
7	A暫停	AW19-GL1		13.52	432.5	3	1.944	
8	A暫停	AW19-GL2		13.52	426.5	3	1.917	
9	A暫停	AW19-GL3		13.52	924.0	3	1.746	
						小計	24	20.037


100 第一份BOM表

 美特鋁質 有限公司 MIDI Aluminium Fabricator Ltd.		工程號: J-857 地盤名稱: 啟德6552 項目類別: 後裝窗	計算: 黃汉卿 核對: 批准:	日期: 21/4/2022 日期: 日期:	送呈: 副本: A/C Code:	施哥
地盘用玻璃B.M.表		修改版次: A版 2022.04.21 顏色與類型	總計玻璃面積 (平方米): 24.216 厚度 (mm) 玻璃尺寸 寬度 (mm) 高度 (mm)	數量 (塊) 總面積 (平方米)	此BM依據 備注	
序號 10	修改內容 玻璃圖號 AW-GB-GL2	MONOLITHIC GLASS 12mm TEMPERED CLEAR FOR FIXED GLASS BARRIER Sample No. R20211028043	12.00 515.5 300.0	3 0.464	小計 3 0.464	
1).本表中所有玻璃對角線尺寸偏差要求不超過正負2mm。 2).本表中所有玻璃要求倒棱角。 3).本表中不同種類玻璃參照玻璃加工圖加工。 4).本表中所有強化玻璃均需HEAT SOAK TEST。 5).本表中所有強化玻璃之人爐方向均以寬度方向進入。 6).本表中所有玻璃成品送交香港地盤 7).本表中所有玻璃成品均需注明室內外面及其玻璃編號，以便識別。						

第二份BM表只供參考

 美特鋁質 有限公司 MIDI Aluminium Fabricator Ltd.		工程號: J-857 地盤名稱: 啟德6552 項目類別: 後裝窗	計算: 曾建平 核對: 批准:	日期: 21/4/2022 送呈: 施哥 副本: A/C Code:					
BM編號:		修改版次: A版 2022.04.21	總計玻璃面積 (平方米): 24.216 此BM依據						
序號	修改內容	玻璃圖號	顏色與類型	玻璃尺寸			數量 (塊)	總面積 (平方米)	備注
				厚度 (mm)	寬度 (mm)	高度 (mm)			
1		AW1-G7-GL1	IGU VISION GLASS 6mm HEAT STRENGTHENED LOW IRON+12AS+10mm TEMPERED LOW IRON WITH LOW-E CLATING ON SURFACE #2 Sample No. R20210930026	28.00	521.5	2374.5	3	3.715	FD門玻璃
						小計	3	3.715	
2	A暫停	AW1-G8-GL1	LAMINATED GLASS 6mm TEMPEDED CLEAR+1.52PVB+6mm TEMPEDED CLEAR Sample No. R20210902041	13.52	521.5	2374.5	3	3.715	FD門玻璃
3	A暫停	AW2-G8-GL1		13.52	521.5	2374.5	3	3.715	FD門玻璃
4	A暫停	AW07-G8-GL1		13.52	496.5	2374.5	3	3.537	FD門玻璃
5	A暫停	AW09-GL1		13.52	497.0	1096.0	3	1.634	
6		AW08-GL1		13.52	472.0	1292.0	3	1.829	
7	A暫停	AW19-GL1		13.52	432.5	1498.0	3	1.944	
8	A暫停	AW19-GL2		13.52	426.5	1498.0	3	1.917	
9	A暫停	AW19-GL3		13.52	924.0	630.0	3	1.746	
						小計	24	20.037	

第一份 B.M.表 只供參考

 美特鋁質 有限公司 MIDI Aluminium Fabricator Ltd.		工程號: J-857 地盤名稱: 啟德6552 項目類別: 後裝窗	計算: 曾建平 核對: 批准:	日期: 21/4/2022 日期: 日期:	送呈: 副本: A/C Code:	施哥
地盤用玻璃B.M.表		修改版次: A版 2022.04.21 總計玻璃面積(平方米): 24.216		玻璃尺寸 寬度(mm) 高度(mm) 數量(塊) 總面積(平方米)		此BM依據
BM編號: 序號	修改內容 玻璃圖號	顏色與類型	厚度(mm)	寬度(mm) 高度(mm) 數量(塊) 總面積(平方米)	備注	
10	AW-GB-GL2 MONOLITHIC GLASS 12mm TEMPERED CLEAR FOR FIXED GLASS BARRIER Sample No. R20211028043		12.00	515.5 300.0 3 0.464		
小計 3 0.464						
1). 本表中所有玻璃對角線尺寸偏差要求不超過正負2mm。 2). 本表中所有玻璃要求倒棱角。 3). 本表中不同種類玻璃參照玻璃加工圖加工。 4). 本表中所有強化玻璃均需HEAT SOAK TEST。 5). 本表中所有強化玻璃之入爐方向均以寬度方向進入。 6). 本表中所有玻璃成品送交香港地盤 7). 本表中所有玻璃成品均需注明室內外面及其玻璃編號，以便識別。						

From: "LAI Tsz Hin, Dante" <dante.lai@hld.com>
To: "j857@midiltd.com.hk" <j857@midiltd.com.hk>
Copies to: "sze@midiltd.com.hk" <sze@midiltd.com.hk>,
"midi@midiltd.com.hk"
<midi@midiltd.com.hk>,
"CHAN Chung Ting, Rachel" <rachel.chan@hld.com>,
"CHAN
Kai Yin, Gareth" <gareth.chan@hld.com>,
"CHAN Tsz Kin, Daniel"
<daniel.chan@hld.com>,
CHENG Chun Fat <fat.cheng@hld.com>,
"YIU Fa Kin,
Franklin" <franklin.yiu@hld.com>,
KWOK Chi Man <cm.kwok@hld.com>,
"LAM Chi
Chung, Nelson" <nelson.lam@hld.com>,
"LEE Ka Kei, Sarah" <kk.lee@hld.com>,
"LIU Hing Shing, Terry" <terry.liu@hld.com>,
"LIU Man Tat, Jeff"
<jeff.liu@hld.com>,
"SIN Chi Ming, Kevin" <kevin.sin@hld.com>,
"WONG Cheuk
Yee, Nicole" <nicole.wong@hld.com>,
"WONG Choi Kwong, Adam"
<adam.wong@hld.com>,
"WONG Kwai Yuk, Michael" <michael.wong@hld.com>,
"YEUNG
Ho Kwan, Vincent" <vincent.yeung@hld.com>
Subject: FW: Kai Tak 6552 Site 4C2 - Proposed Change on Glass Type
Date sent: Thu, 21 Apr 2022 03:09:04 +0000

Dear Midi,
Please find the attached information on change of glass type for your advance information. Please prepare sample for approval while CVI and SI will be prepared accordingly.
Regards,
DANTE LAI
Project Coordinator
M: 9866 7084
E Man Construction Co. Ltd.
NKIL6552, Area 4C, Site 2, Kai Tak, Kowloon

From: p19098 <p19098@rlphk.com>
Sent: Wednesday, April 20, 2022 8:50 PM
To: LAI Tsz Hin, Dante <dante.lai@hld.com>
Cc: WONG Kai Wah, Nelson <nelson.wong@hld.com>; CHAN Shuk Fun, Sophie <sophie.chan@hld.com>; 'lennonchan' <lennonchan@cmwal.com>; 'Kit Chan' <kitchan@cmwal.com>; 'Sam Lam' <samlamcma@gmail.com>; 'k6552' <k6552@cmwal.com>; eddieyeung@meinhardt.com.hk; jasonhung@meinhardt.com.hk; me2177@meinhardt.com.hk; 'Jovi Wong' <Jovi.Wong@inhabitgroup.com>; 'agnes.hung' <agnes.hung@inhabitgroup.com>; alex.lee@btr.com.hk; kinka.yau@btr.com.hk; tracy.wong@btr.com.hk; 19-1520-NKIL6552@btr.com.hk; 'Clara Au' <claraau@wtpkh.com>; 'Tony Cheng' <tonycheng@wtpkh.com>; 'Tiffany Lau' <tiffanylau@wtpkh.com>; WTPHK2246-NKIL6552KAITAK@wtpkh.com; WONG Choi Kwong, Adam <adam.wong@hld.com>; CHAN Tsz Kin, Daniel <daniel.chan@hld.com>; CHENG

Chun Fat <fat.cheng@hld.com>; CHAN Kai Yin, Gareth <gareth.chan@hld.com>;
WONG Kwai Yuk, Michael <michael.wong@hld.com>; YEUNG Ho Kwan, Vincent
<vincent.yeung@hld.com>; 'Simon Leung' <simonleung@concord-hk.net>;
rssmk lau@rlphk.com; rsssamlau@rlphk.com; Alfred WOO [RLPHK]
<alfredwoo@rlphk.com>; Frederick CHAN [RLPHK] <frederickchan@rlphk.com>;
Magenta KIETKHAJORN SIRI [RLPHK] <magentakiethajornsiri@rlphk.com>;
Stanley HUNG [RLPHK] <stanleyhung@rlphk.com>; Vanessa TAM [RLPHK]
<vanessatam@rlphk.com>; Eddie KWAN [RLPHK] <eddiekwan@rlphk.com>;
p19098@rlphk.com; midi@midiltd.com.hk; j857@midiltd.com.hk

Subject: Kai Tak 6552 Site 4C2 - Proposed Change on Glass Type

CAUTION: External email

Dear Hin (E Man),

As discussed in today's coordination workshop, please find the attached demarcation plan of our proposed change on glass type (precast and in-situ) for your further action. Please also prepare glass sample submission and performance data for our review.

Best Regards,

Stanley Hung Architectural Executive



ARCHITECTS | PLANNERS | INTERIOR DESIGNERS

Ronald Lu & Partners (Hong Kong) Ltd.

33/F, Wu Chung House, 213 Queen's Road East, Wanchai, Hong Kong

T +852 2891 2212

F +852 2833 6294

D +852 3189 9324

E stanleyhung@rlphk.com

www.rlphk.com

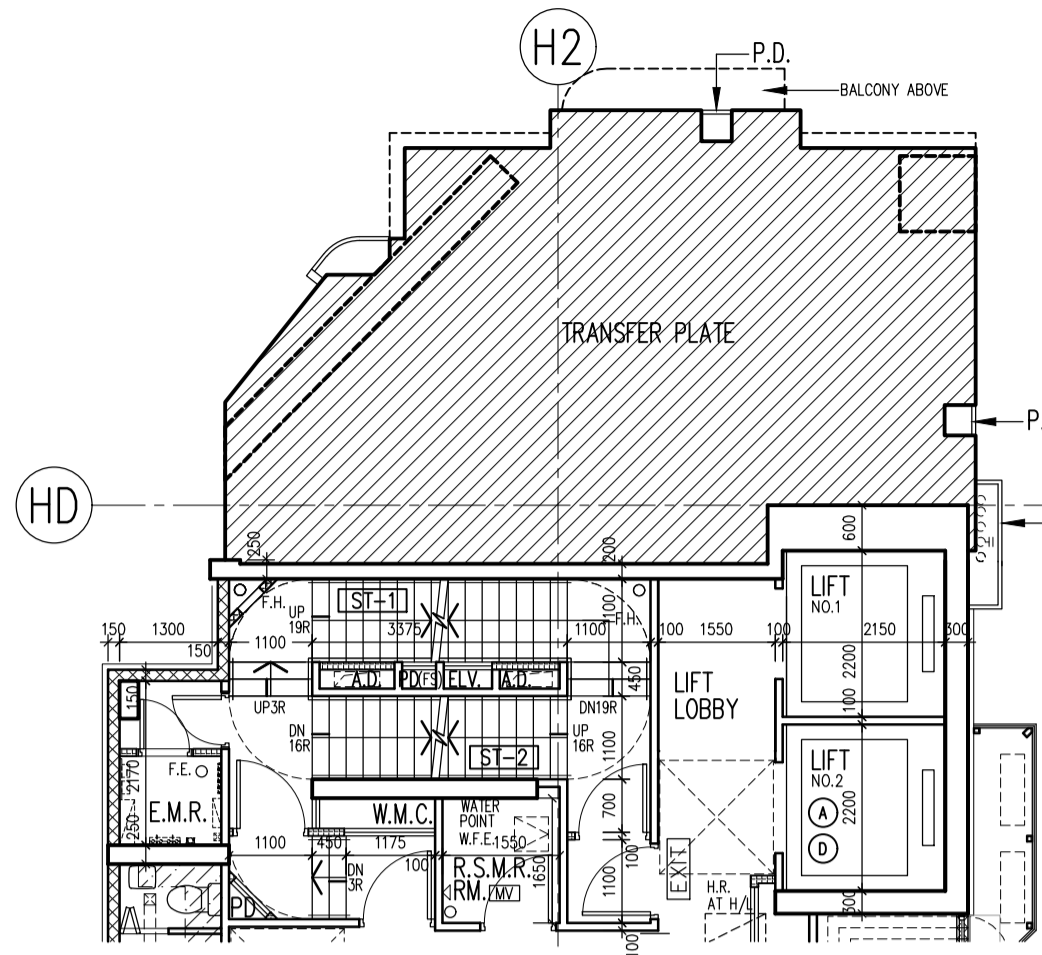


RLP : DESIGN FOR BETTER LIFE

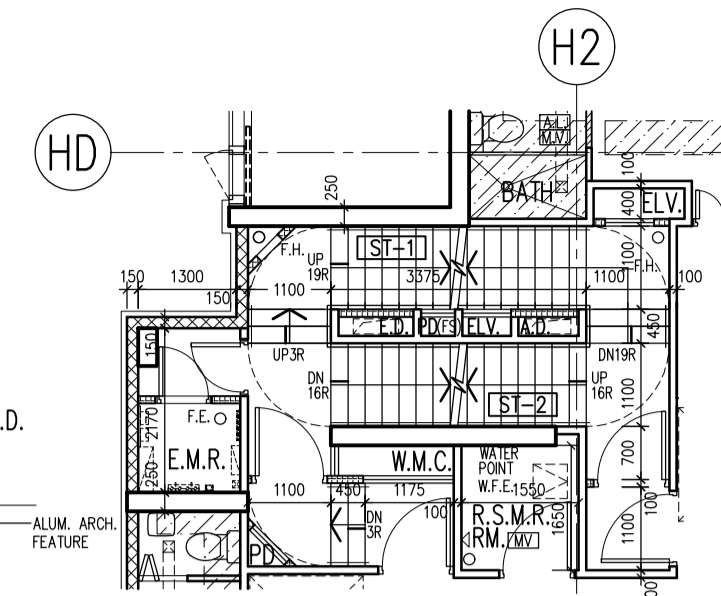
This e-mail (including its attachment(s) (if any)) is confidential and may be legally privileged. If you are not the intended recipient(s), you must not use, retain, disclose, copy, print, forward or disseminate this e-mail or its attachment(s) (if any). If you have received this e-mail by mistake, please notify us by e-mail or telephone immediately and delete it from your system.

E-mail transmission cannot be guaranteed to be completely secure or error free as information could have been intercepted, corrupted, lost, destroyed or incomplete. Any electronically transmitted advice or opinion, unless subsequently confirmed by fax or letter signed by Ronald Lu and Partners, may not be relied on by the recipient(s).

Visit [RLP Quality and Environmental Guidance Notes for Business Partners](#)

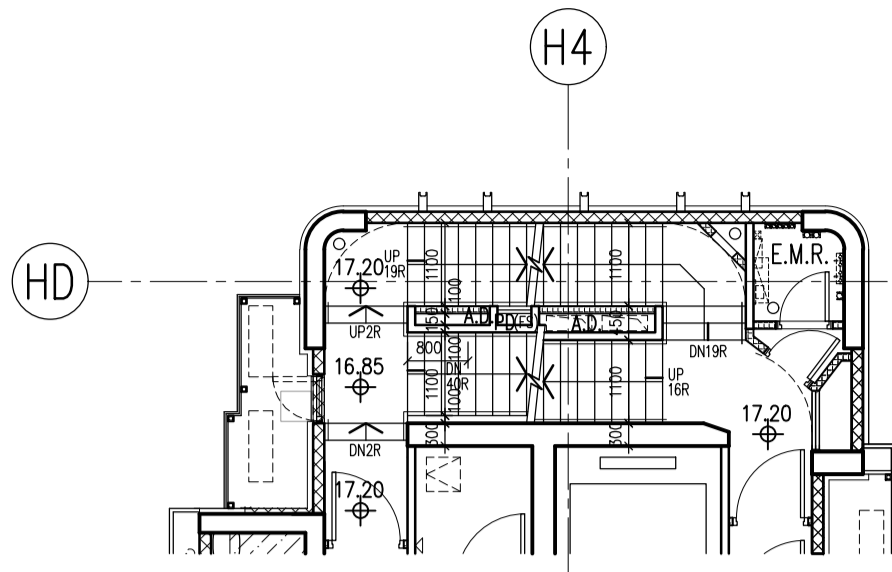


**TOWER 1
PART PLAN AT 3/F**



**TOWER 1
3/F - 32/F PLAN (FOR FLAT C)
(26 STOREYS)**

NOTE : BAL.(*) = ACOUSTIC BALCONY (BAFFLE TYPE) W/
MIN. 1200mmH. A.F.F.L. TEMPERED GLASS BALUSTRADE

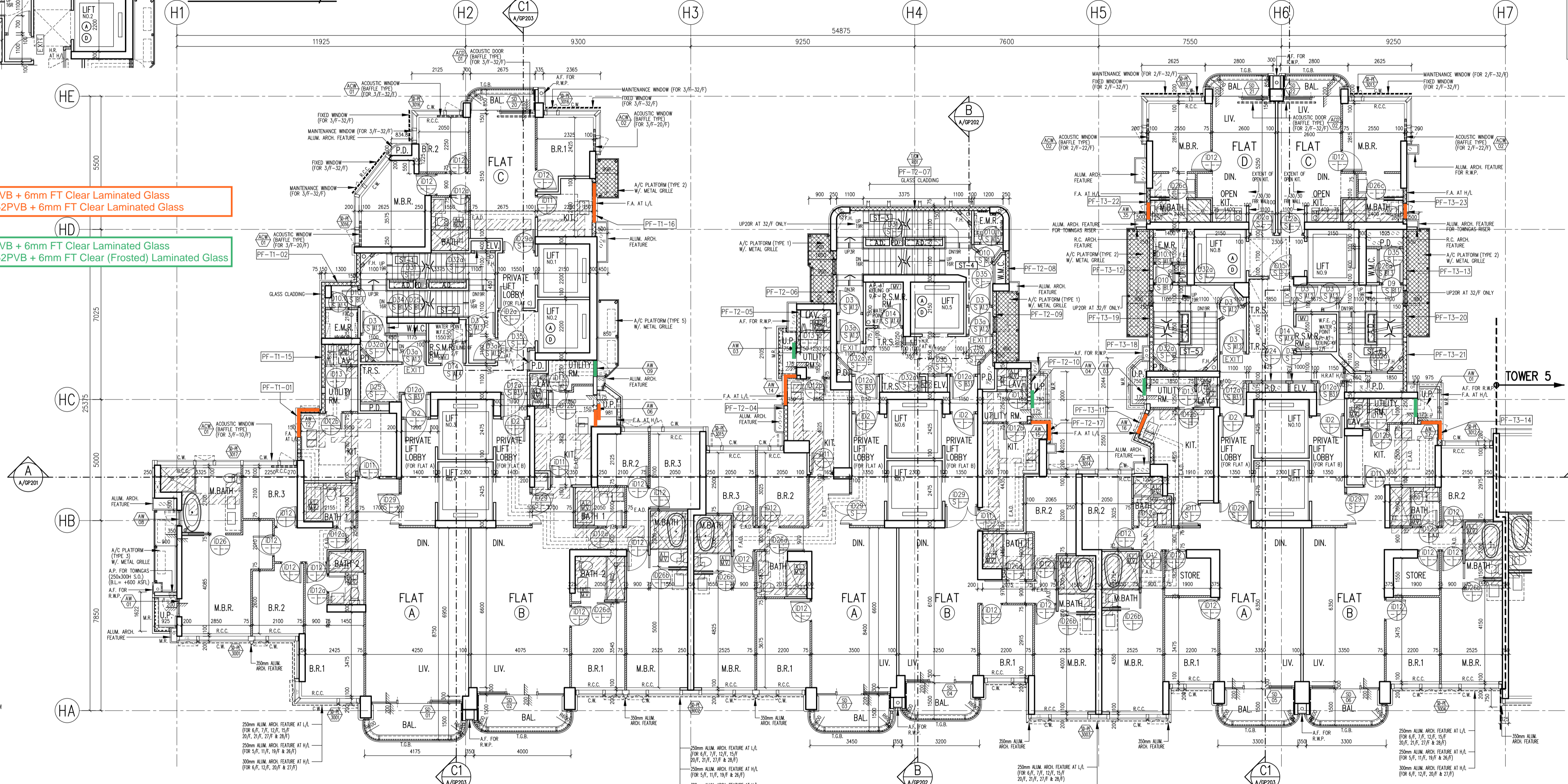


**TOWER 2
PART PLAN AT 2/F**

**TOWER 1
PART PLAN AT 2/F**

Original: 6mm FT Clear + 1.52PVB + 6mm FT Clear Laminated Glass
New: 6mm FT Grey Tinted + 1.52PVB + 6mm FT Clear Laminated Glass

Original: 6mm FT Clear + 1.52PVB + 6mm FT Clear Laminated Glass
New: 6mm FT Grey Tinted + 1.52PVB + 6mm FT Clear (Frosted) Laminated Glass



LEGEND :

- PREFABRICATED EXTERNAL WALL
- SOLID CONCRETE BLOCKS
- SOLID CONCRETE BLOCKS W/ F.R.R.

ABBREVIATIONS :

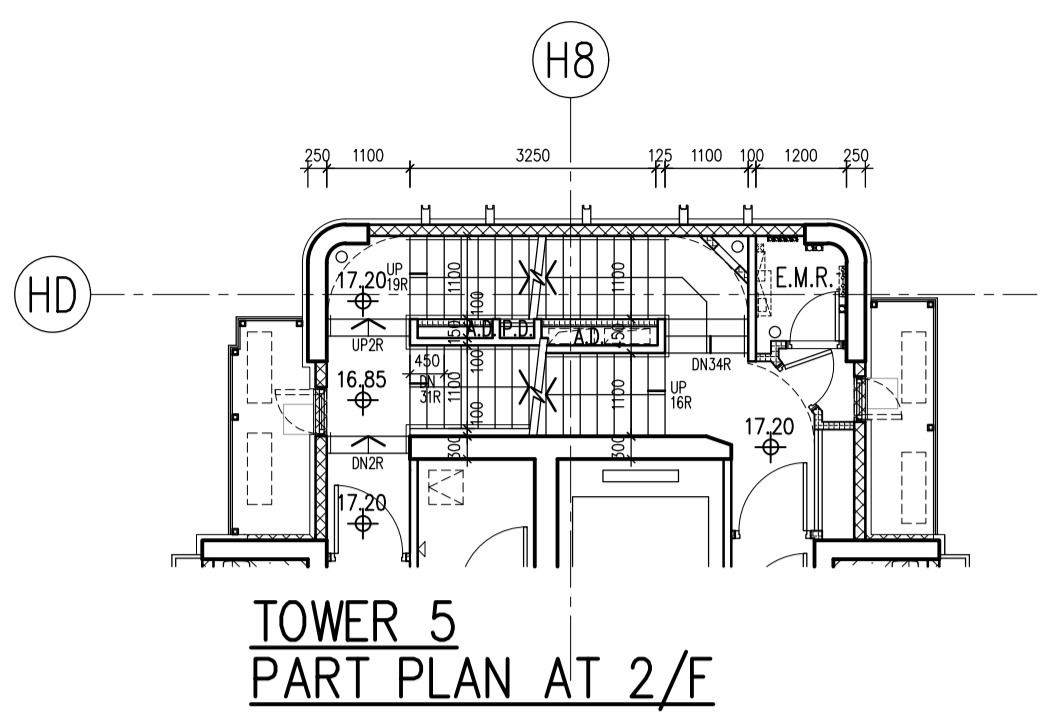
- BOUNDARY LINE
- R.C. REINFORCED CONCRETE
- A.F. ARCH. FEATURE
- C.W. CURTAIN WALL
- M.L. METAL LOUVRE
- KITCHEN
- ST. STORE ROOM
- DN. DOWN
- BAL. BALCONY
- UP. UTILITY PLATFORM
- mm MILLIMETRE
- A.F.F.L. ABOVE FINISHED FLOOR LEVEL
- A.S.F.L. ABOVE STRUCTURAL FLOOR LEVEL
- F.A. GAS FLUE APERTURE TO SUIT THE SELECTED GAS HEATER MODEL
- T.G.B. TEMPERED GLASS BALUSTRADE
- MIN. 1100mmH. A.F.F.L. / MIN. 1200mmH. A.F.F.L. FOR ACOUSTIC BALCONY
- R.S.M.R.R. REFUSE STORAGE AND MATERIAL RECOVERY ROOM
- M.R. METAL RAILING MIN. 1100mmH. A.F.F.L.
- M.R. MIN. 300mmH. R.C. CURB
- R.C.C. 2 MIN. 100mmH. R.C. CURB
- C.C.C. MIN. 150mmH. C.C. CURB
- W.M.C. WATER METER CABINET
- E.M.R. ELEC. METER ROOM
- H.R. HOSE REEL
- F.H. FIRE HYDRANT
- F.E. 4.5 kg CO₂ FIRE EXTINGUISHER
- W.F.E. 9 L. WATER FIRE EXTINGUISHER
- C.S.C. COVERED SURFACE CHANNEL W/ 2 DRAIN OUTLET
- EXIT SIGN
- FIREMAN'S LIFT
- ACCESSIBLE LIFT
- M.V. MECHANICAL VENTILATION
- ARTIFICIAL LIGHTING
- PROPOSED STRUCTURAL LEVEL IN METERS ABOVE P.D.
- FINISHED LEVEL IN METERS ABOVE P.D.
- F.S.A.P. FIRE SERVICE ACCESS POINT
- W.P.A.L. WEATHERPROOF EXHAUST AIR LOUVER
- F.L.O.B. FIREMAN'S LIFT LOBBY
- T.R.S. TEMPORARY REFUGE SPACE 1500mm X 1500mm OR 1500mm X 750mm

**TOWER 1
2/F - 32/F PLAN
(27 STOREYS)**

**TOWER 2
2/F - 32/F PLAN
(27 STOREYS)**

**TOWER 3
2/F - 32/F PLAN
(27 STOREYS)**

NOTE : BAL.(*) = ACOUSTIC BALCONY (BAFFLE TYPE) W/
MIN. 1200mmH. A.F.F.L. TEMPERED GLASS BALUSTRADE



LEGEND :

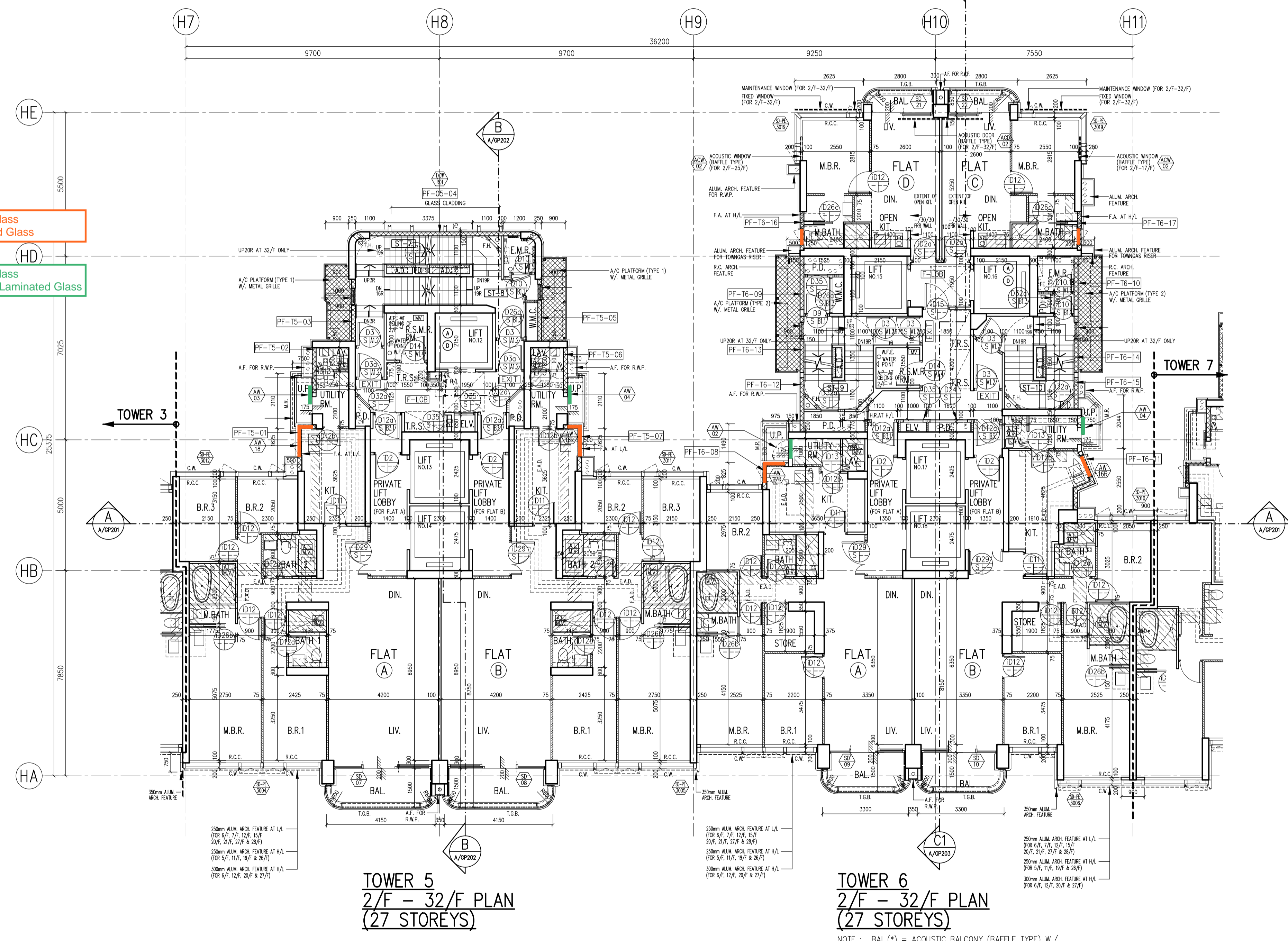
- PREFABRICATED EXTERNAL WALL
- SOLID CONCRETE BLOCKS
- SOLID CONCRETE BLOCKS W/ F.R.R.

Original: 6mm FT Clear + 1.52PVB + 6mm FT Clear Laminated Glass
 New: 6mm FT Grey Tinted + 1.52PVB + 6mm FT Clear Laminated Glass

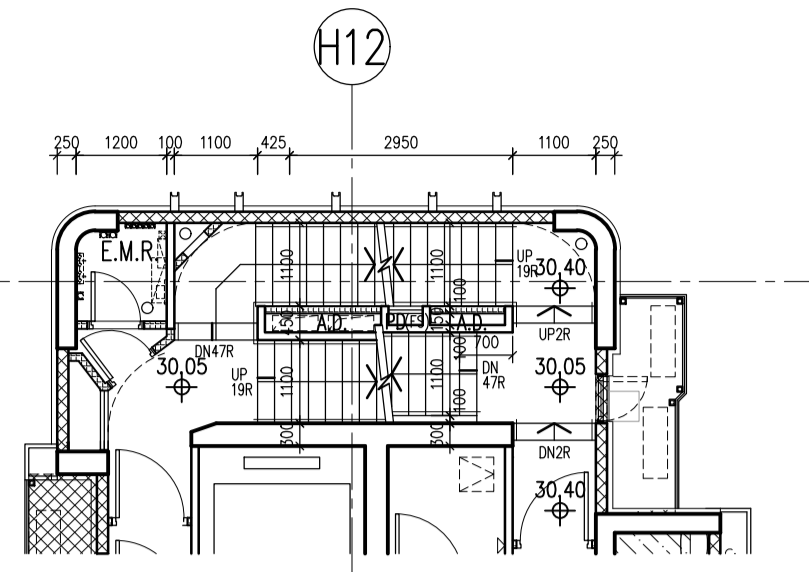
Original: 6mm FT Clear + 1.52PVB + 6mm FT Clear Laminated Glass
 New: 6mm FT Grey Tinted + 1.52PVB + 6mm FT Clear (Frosted) Laminated Glass

ABBREVIATIONS :

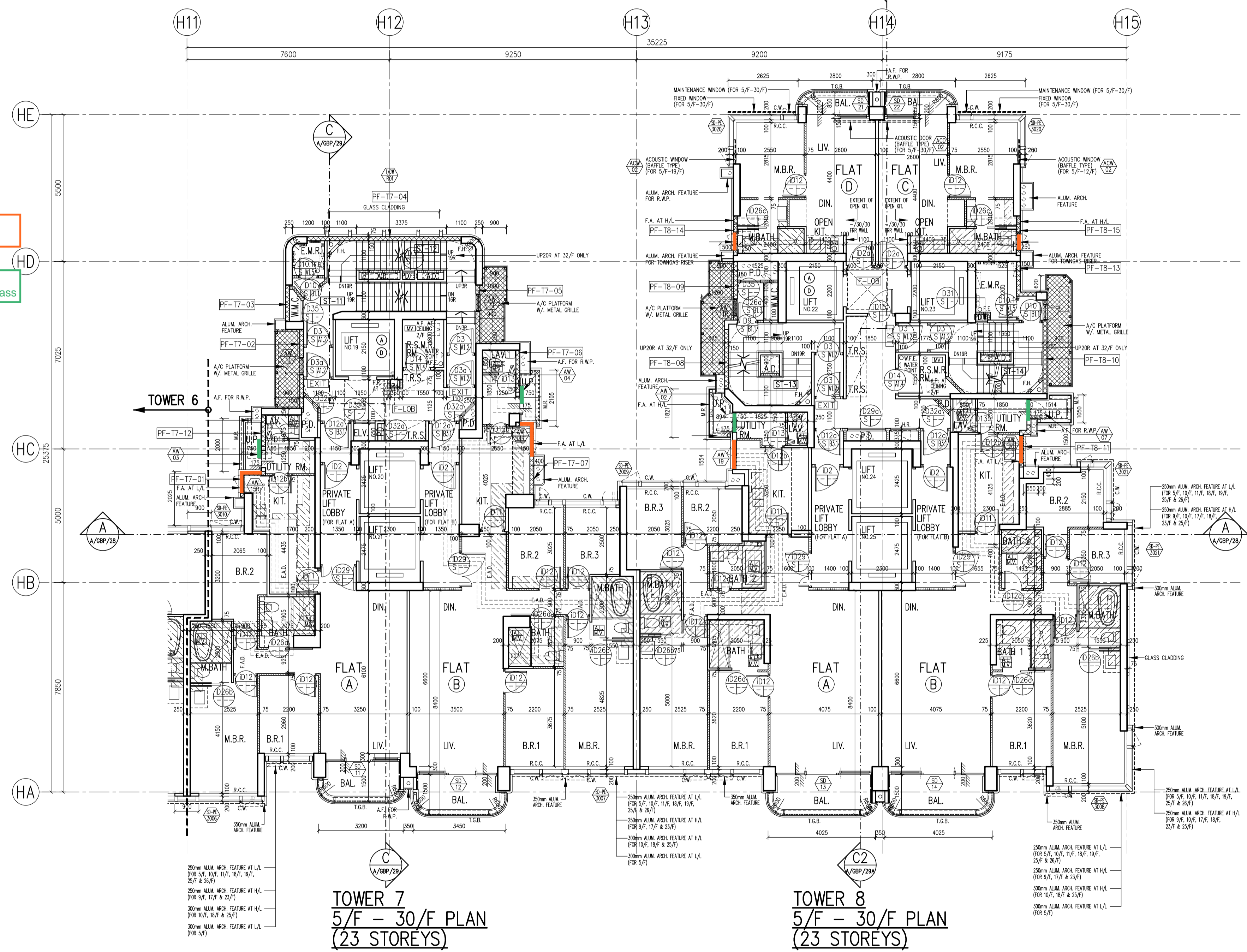
- BOUNDARY LINE
- R.C. REINFORCED CONCRETE
- A.F. ARCH. FEATURE
- C.W. CURTAIN WALL
- M.L. METAL LOUVRE
- KIT. KITCHEN
- ST. STORE ROOM
- DN. DOWN
- BAL. BALCONY
- U.P. UTILITY PLATFORM
- mm MILLIMETRE
- A.F.F.L. ABOVE FINISHED FLOOR LEVEL
- A.S.F.L. ABOVE STRUCTURAL FLOOR LEVEL
- F.A. 320x420 OR 240x240 GAS FLUE APERTURE TO SUIT THE SELECTED GAS HEATER MODEL
- T.G.B. TEMPERED GLASS BALUSTRADE
MIN. 1200mmH. A.F.F.L. / MIN. 1200mmH. A.F.F.L. FOR ACOUSTIC BALCONY
- R.S.M.R.R. REFUSE STORAGE AND MATERIAL RECOVERY ROOM
- M.R. METAL RAILING MIN. 1100mmH. A.F.F.L.
- R.C.C. MIN. 300mmH. R.C. CURB
- R.C.C. 2 MIN. 100mmH. R.C. CURB
- C.C.C. MIN. 150mmH. C.C. CURB
- W.M.C. WATER METER CABINET
- E.M.R. ELEC. METER ROOM
- H.R. HOSE REEL
- F.H. FIRE HYDRANT
- F.E. 4.5 kg CO₂ FIRE EXTINGUISHER
- W.F.E. 9 L. WATER FIRE EXTINGUISHER
- C.S.C. COVERED SURFACE CHANNEL W/ 2 DRAIN OUTLET
- EXIT SIGN
- FIREMAN'S LIFT
- ACCESSIBLE LIFT
- M.V. MECHANICAL VENTILATION
- ARTIFICIAL LIGHTING
- PROPOSED STRUCTURAL LEVEL IN METERS ABOVE P.D.
- FINISHED LEVEL IN METERS ABOVE P.D.
- FIRE SERVICE ACCESS POINT
- W.P.A.L. WEATHERPROOF EXHAUST AIR LOUVRE
- FIREMAN'S LIFT LOBBY
- TEMPORARY REFUGE SPACE
1500mm X 1500mm OR 1500mm X 750mm



NOTE : BAL(*) = ACOUSTIC BALCONY (BAFFLE TYPE) W/ MIN. 1200mmH. A.F.F.L. TEMPERED GLASS BALUSTRADE



**TOWER 7
PART PLAN AT 5/F**



**TOWER 7
5/F - 30/F PLAN
(23 STOREYS)**

**TOWER 8
5/F - 30/F PLAN
(23 STOREYS)**

NOTE : BAL(*) = ACOUSTIC BALCONY (BAFFLE TYPE)

LEGEND :

	PREFABRICATED EXTERNAL WALL
	SOLID CONCRETE BLOCKS
	SOLID CONCRETE BLOCKS W/ F.R.R.

- Original: 6mm FT Clear + 1.52PVB + 6mm FT Clear Laminated Glass
- New: 6mm FT Grey Tinted + 1.52PVB + 6mm FT Clear Laminated Glass
- Original: 6mm FT Clear + 1.52PVB + 6mm FT Clear Laminated Glass
- New: 6mm FT Grey Tinted + 1.52PVB + 6mm FT Clear (Frosted) Laminated Glass

ABBREVIATIONS :

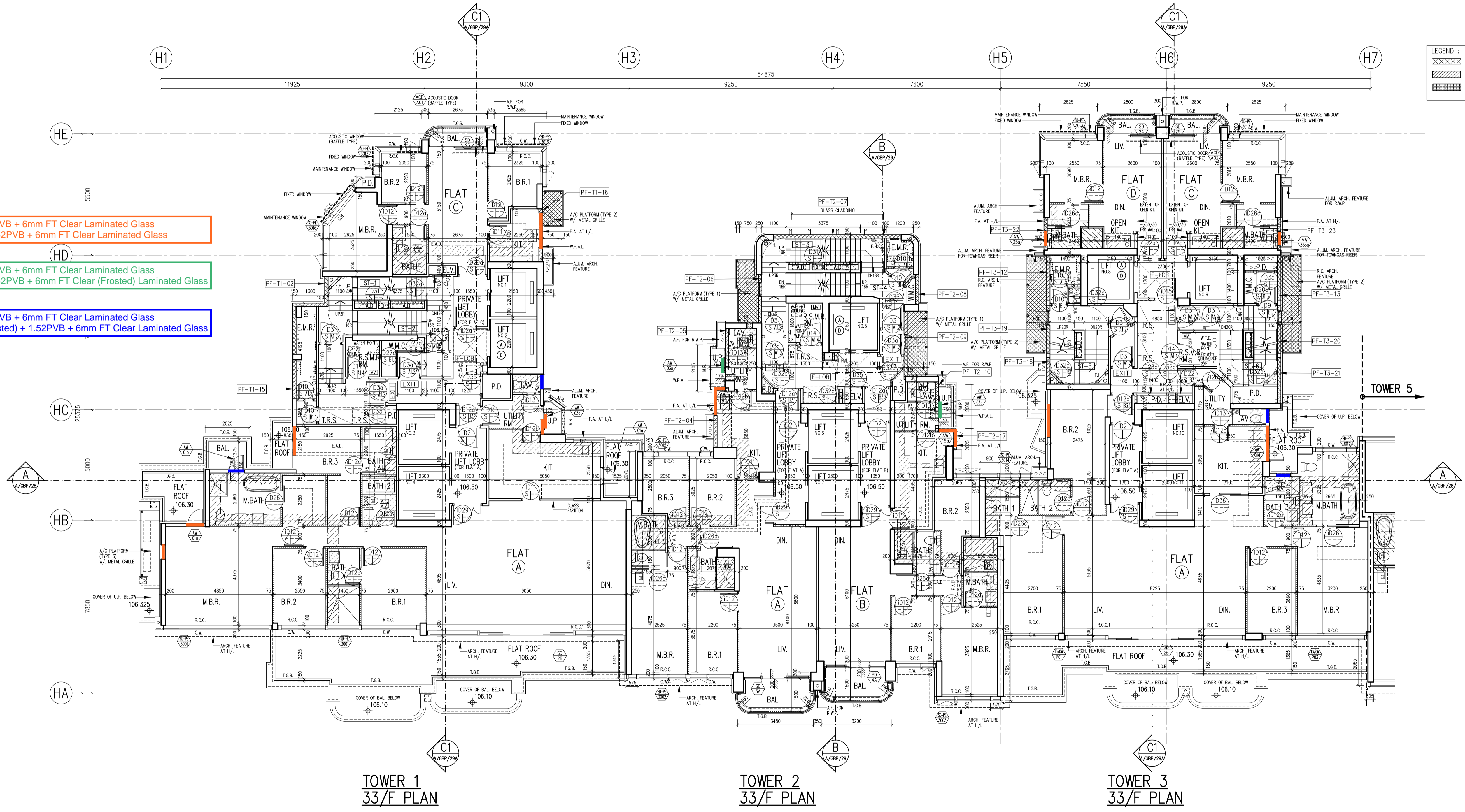
—	BOUNDARY LINE
R.C.	REINFORCED CONCRETE
A.F.	ARCH. FEATURE
C.W.	CURTAIN WALL
M.L.	METAL LOUVRE
KIT.	KITCHEN
ST.	STORE ROOM
DN	DOWN
BAL	BALCONY
U.P.	UTILITY PLATFORM
mm	MILLIMETRE
A.F.F.L.	ABOVE FINISHED FLOOR LEVEL
A.S.F.L.	ABOVE STRUCTURAL FLOOR LEVEL
F.A.	320x420 OR 240x240 GAS FLUE APERTURE TO SUIT THE SELECTED GAS HEATER MODEL
T.G.B.	TEMPERED GLASS BALUSTRADE
	MIN. 1100mmH. A.F.F.L. / MIN. 1200mmH. A.F.F.L. FOR ACOUSTIC BALCONY
R.S.M.R.R.	REFUSE STORAGE AND MATERIAL RECOVERY ROOM
M.R.	METAL RAILING MIN. 1100mmH. A.F.F.L.
R.C.C. 1	MIN. 300mmH. R.C. CURB
R.C.C. 2	MIN. 100mmH. R.C. CURB
C.C.C.	MIN. 150mmH. C.C. CURB
W.M.C.	WATER METER CABINET
E.M.R.	ELEC. METER ROOM
H.R.	HOSE REEL
F.H.	FIRE HYDRANT
F.E.	4.5 kg CO ₂ FIRE EXTINGUISHER
W.F.E.	9 L. WATER FIRE EXTINGUISHER
C.S.C.	COVERED SURFACE CHANNEL W/ 2 DRAIN OUTLET
EXIT	EXIT SIGN
Ⓜ	FIREMAN'S LIFT
Ⓜ	ACCESSIBLE LIFT
M.V.	MECHANICAL VENTILATION
AL	ARTIFICIAL LIGHTING
AL	PROPOSED STRUCTURAL LEVEL IN METERS ABOVE P.D.
+	FINISHED LEVEL IN METERS ABOVE P.D.
F.S.A.P.	FIRE SERVICE ACCESS POINT
W.P.A.L.	WEATHERPROOF EXHAUST AIR LOUVRE
F.L.O.B.	FIREMAN'S LIFT LOBBY
T.R.S.	TEMPORARY REFUGE SPACE 1500mm X 1500mm OR 1500mm X 750mm

Original: 6mm FT Clear + 1.52PVB + 6mm FT Clear Laminated Glass
New: 6mm FT Grey Tinted + 1.52PVB + 6mm FT Clear Laminated Glass

Original: 6mm FT Clear + 1.52PVB + 6mm FT Clear Laminated Glass
New: 6mm FT Grey Tinted + 1.52PVB + 6mm FT Clear (Frosted) Laminated Glass

Original: 6mm FT Clear + 1.52PVB + 6mm FT Clear Laminated Glass
New: 6mm FT Grey Tinted (Frosted) + 1.52PVB + 6mm FT Clear Laminated Glass

XXXXX	PREFABRICATED EXTERNAL WALL
▨	SOLID CONCRETE BLOCKS
▩	SOLID CONCRETE BLOCKS W/ F.R.R.

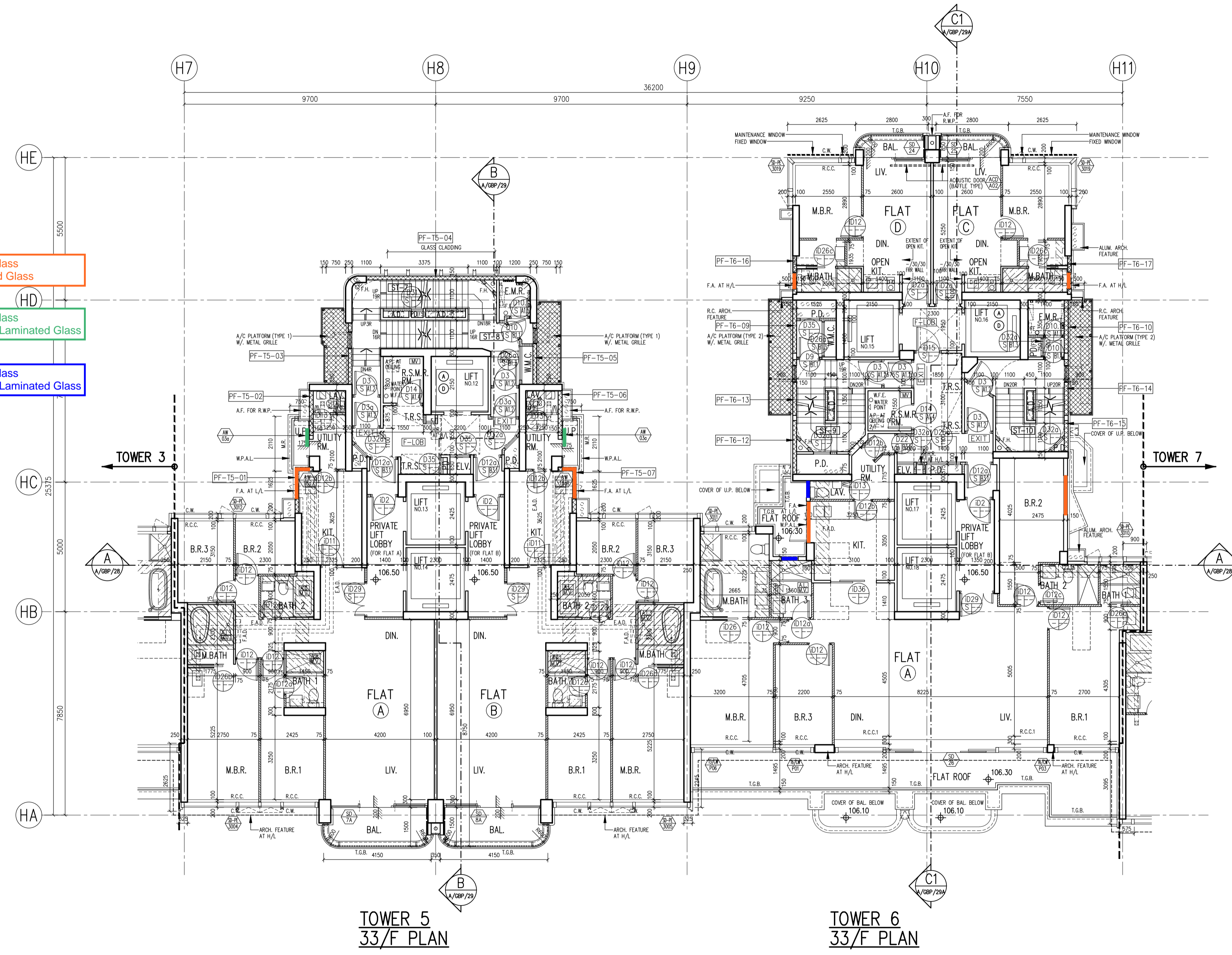


Original: 6mm FT Clear + 1.52PVB + 6mm FT Clear Laminated Glass
 New: 6mm FT Grey Tinted + 1.52PVB + 6mm FT Clear Laminated Glass

Original: 6mm FT Clear + 1.52PVB + 6mm FT Clear Laminated Glass
 New: 6mm FT Grey Tinted + 1.52PVB + 6mm FT Clear (Frosted) Laminated Glass

Original: 6mm FT Clear + 1.52PVB + 6mm FT Clear Laminated Glass
 New: 6mm FT Grey Tinted (Frosted) + 1.52PVB + 6mm FT Clear Laminated Glass

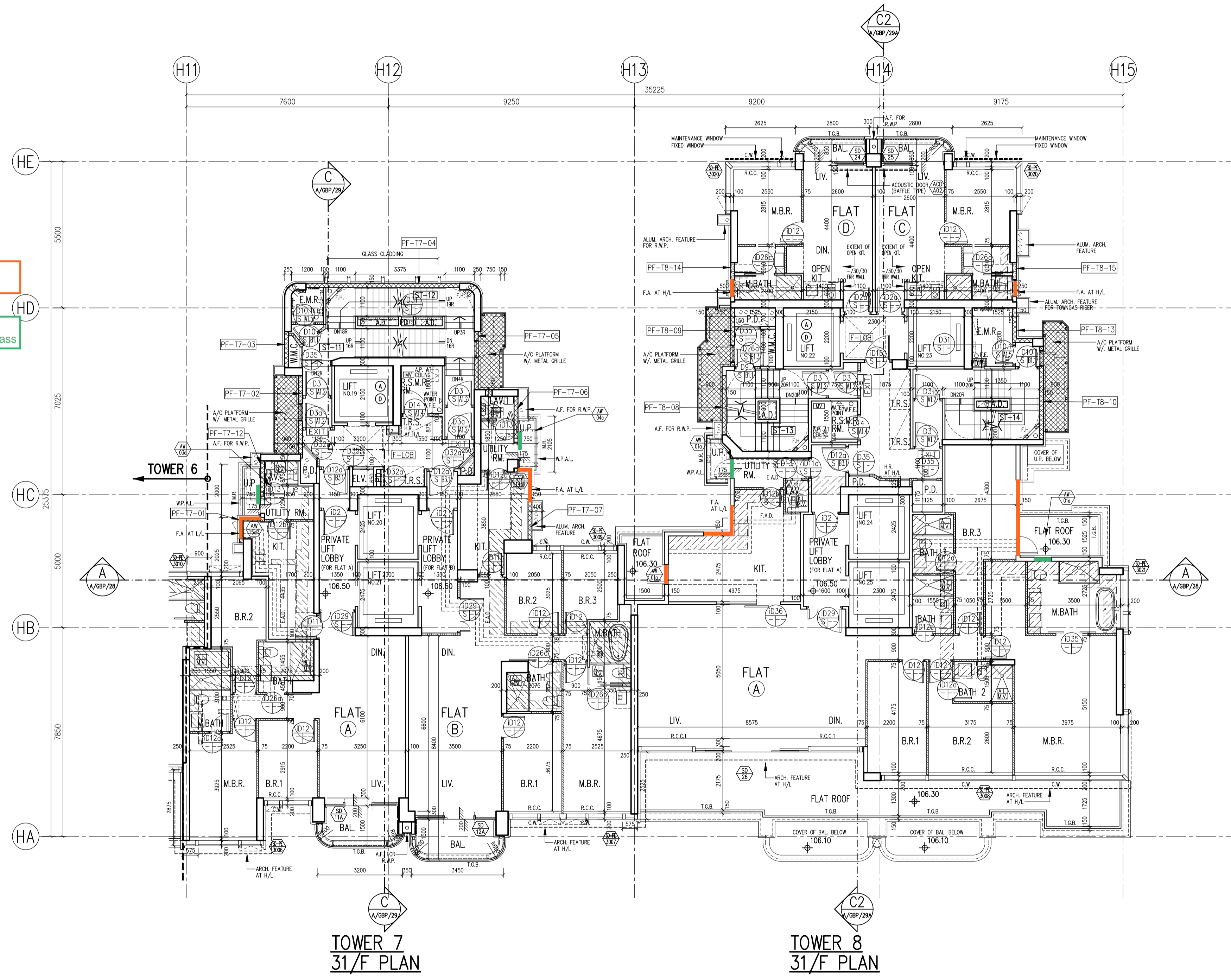
LEGEND :	
	PREFABRICATED EXTERNAL WALL
	SOLID CONCRETE BLOCKS
	SOLID CONCRETE BLOCKS W/ F.R.R.



Original: 6mm FT Clear + 1.52PVB + 6mm FT Clear Laminated Glass
 New: 6mm FT Grey Tinted + 1.52PVB + 6mm FT Clear Laminated Glass

Original: 6mm FT Clear + 1.52PVB + 6mm FT Clear Laminated Glass
 New: 6mm FT Grey Tinted + 1.52PVB + 6mm FT Clear (Frosted) Laminated Glass

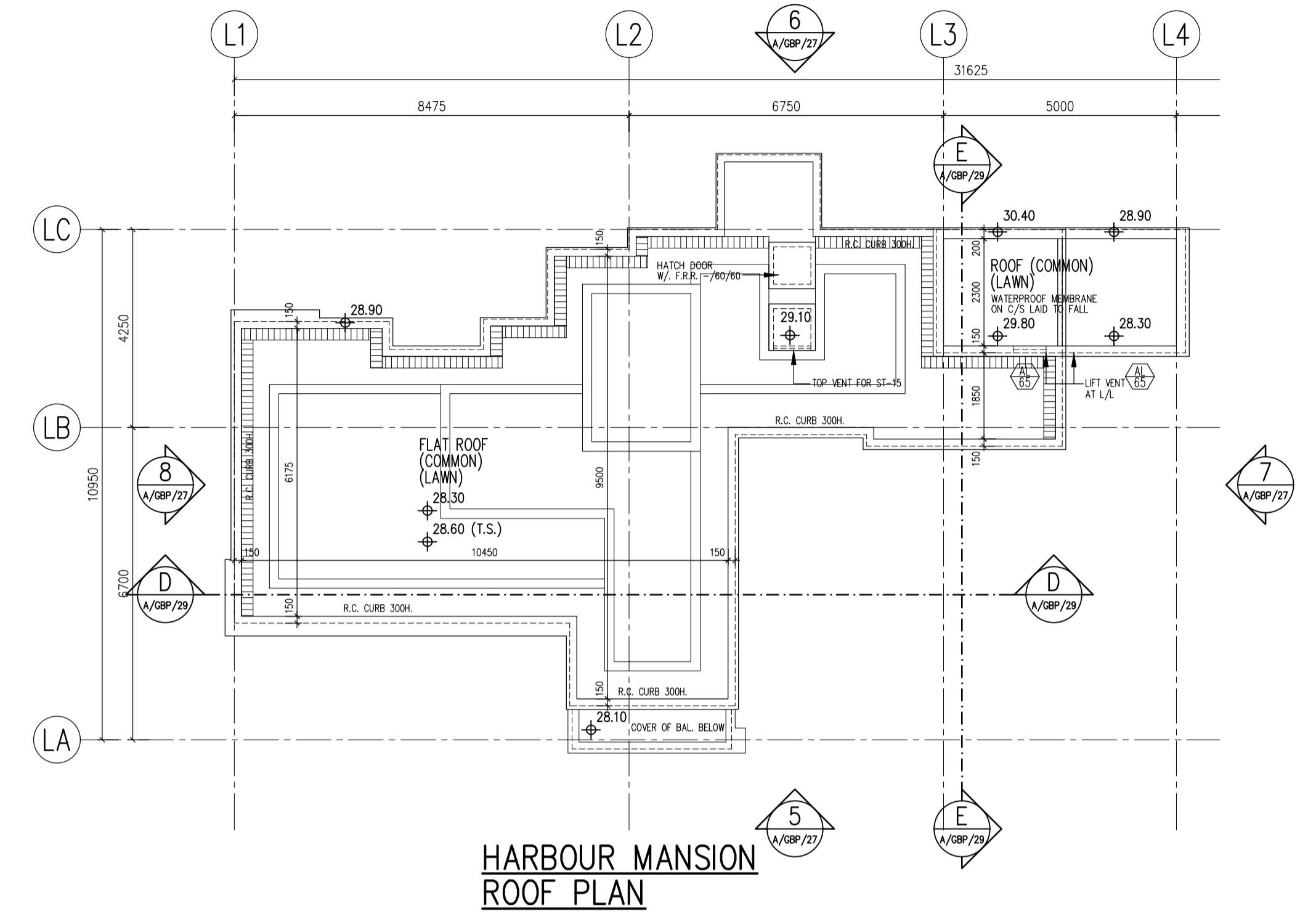
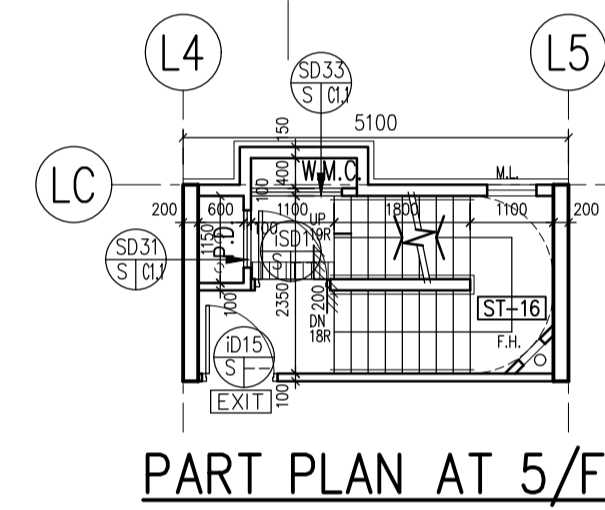
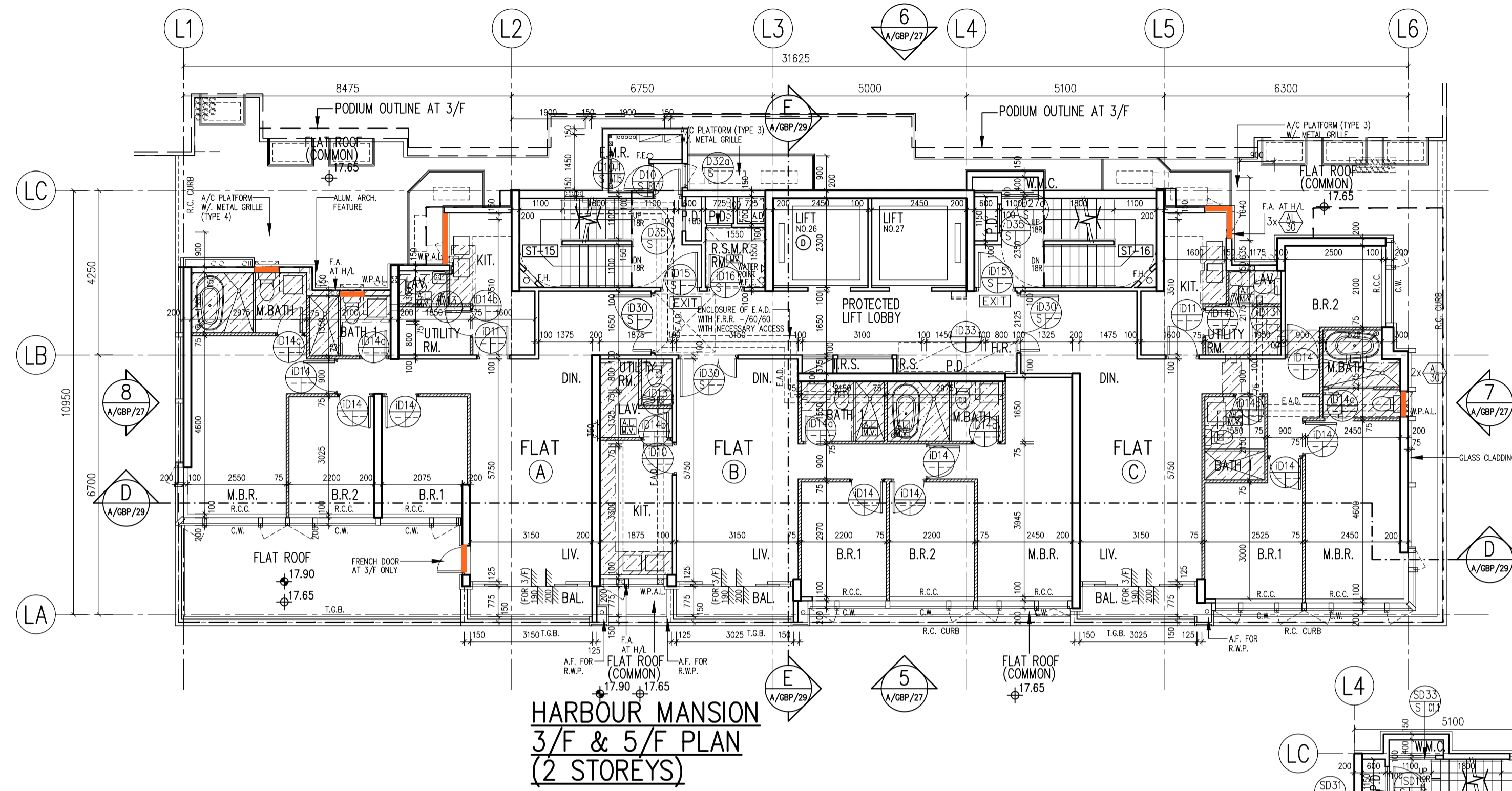
LEGEND :	
	PREFABRICATED EXTERNAL WALL
	SOLID CONCRETE BLOCKS
	SOLID CONCRETE BLOCKS W/ F.R.R.



TOWER 7
31/F PLAN

TOWER 8
31/F PLAN

Original: 6mm FT Clear + 1.52PVB + 6mm FT Clear Laminated Glass
 New: 6mm FT Grey Tinted + 1.52PVB + 6mm FT Clear Laminated Glass



ABBREVIATIONS :

- BOUNDARY LINE
- R.C. REINFORCED CONCRETE
- A.F. ARCH. FEATURE
- C.W. CURTAIN WALL
- M.L. METAL LOUVRE
- KIT. KITCHEN
- ST. STORE ROOM
- DN. DOWN
- BAL. BALCONY
- U.P. UTILITY PLATFORM
- mm MILLIMETRE
- A.F.F.L. ABOVE FINISHED FLOOR LEVEL
- A.S.F.L. ABOVE STRUCTURAL FLOOR LEVEL
- F.A. 320x420 OR 240x240 GAS FLUE APERTURE TO SUIT THE SELECTED GAS HEATER MODEL
- T.G.B. TEMPERED GLASS BALUSTRADE
MIN. 100mmH. A.F.F.L. / MIN. 120mmH. A.F.F.L. FOR ACOUSTIC BALCONY
- R.S.M.R.R. REFUSE STORAGE AND MATERIAL RECOVERY ROOM
- M.R. METAL RAILING MIN. 100mmH. A.F.F.L.
- R.C.C. MIN. 300mmH. R.C. CURB
- R.C.C. 2 MIN. 100mmH. R.C. CURB
- C.C.C. MIN. 150mmH. C.C. CURB
- W.M.C. WATER METER CABINET
- E.M.R. ELEC. METER ROOM
- H.R. HOSE REEL
- F.H. FIRE HYDRANT
- F.E. 4.5 kg CO₂ FIRE EXTINGUISHER
- W.F.E. 9 L. WATER FIRE EXTINGUISHER
- C.S.C. COVERED SURFACE CHANNEL W/ 2 DRAIN OUTLET
- EXIT EXIT SIGN
- Ⓜ FIREMAN'S LIFT
- Ⓜ ACCESSIBLE LIFT
- M.V. MECHANICAL VENTILATION
- AL ARTIFICIAL LIGHTING
- AL PROPOSED STRUCTURAL LEVEL IN METERS ABOVE P.D.
- Ⓜ FINISHED LEVEL IN METERS ABOVE P.D.
- F.S.A.P. FIRE SERVICE ACCESS POINT
- W.P.A.L. WEATHERPROOF EXHAUST AIR LOUVRE
- F.L.O.B. FIREMAN'S LIFT LOBBY
- [T.S.] TEMPORARY REFUGE SPACE
1500mm X 1500mm OR 1500mm X 750mm

