

工程指示編號：EI / 4333 / 22 修改版次：A

工程編號：J857 工程名稱：啟德 6552

工程項目：幕牆單元件 - 地盤用棉托鋁板 BM (第三批)

收件人：生統

發件人：Nero HO

日期：21/2/2022

要求提供 /  確認 事項：

- |                                    |                                     |                               |
|------------------------------------|-------------------------------------|-------------------------------|
| <input type="checkbox"/> 初步鋁料 B.M. | <input type="checkbox"/> 加工拆圖，然後生產  | <input type="checkbox"/> 尺寸表  |
| <input type="checkbox"/> 正式鋁料 B.M. | <input type="checkbox"/> 技術上資料 / 指示 | <input type="checkbox"/> 報價   |
| <input type="checkbox"/> 配件 B.M.   | <input type="checkbox"/> 樣辦或貨品說明書   | <input type="checkbox"/> 分判合約 |
| <input type="checkbox"/> 其他：_____  |                                     |                               |

內容：

根據地盤指示需要分座分批包裝出貨送地盤，另外附件棉插編號圖。

請在 20/5/2022 前完成上列要求。

附： 1 + 11 頁

以上項目為：

原合約工程包

原合約工程加 / 減賬

新工程報價

原因：-

分發東莞各部門：

- |  |   |   |  |
|--|---|---|--|
| <input type="checkbox"/> 生產技術總監 <input type="checkbox"/> 連附件 | <input type="checkbox"/> 技術部 <input type="checkbox"/> 連附件                         | <input type="checkbox"/> 生產部 <input type="checkbox"/> 連附件 | <input type="checkbox"/> 機械設計部 <input type="checkbox"/> 連附件                              |
| <input type="checkbox"/> 採購部 <input type="checkbox"/> 連附件    | <input checked="" type="checkbox"/> 生產統籌部 <input checked="" type="checkbox"/> 連附件 |   |  |
| <input type="checkbox"/> 質檢部 <input type="checkbox"/> 連附件    | <input type="checkbox"/> 會計部 <input type="checkbox"/> 連附件                         | <input type="checkbox"/> 報關組 <input type="checkbox"/> 連附件 | <input checked="" type="checkbox"/> 其他 <u>小羅</u> <input checked="" type="checkbox"/> 連附件 |

分發香港各部門：

- |   |  |   |   |
|---|--|---|---|
| <input type="checkbox"/> 行政部 <input type="checkbox"/> 連附件 | <input type="checkbox"/> 會計部 <input type="checkbox"/> 連附件  | <input type="checkbox"/> 統籌部 <input type="checkbox"/> 連附件 | <input checked="" type="checkbox"/> 工程部地盤科文 <input checked="" type="checkbox"/> 連附件 |
| <input type="checkbox"/> 採購部 <input type="checkbox"/> 連附件 | <input type="checkbox"/> QS 部 <input type="checkbox"/> 連附件 | <input type="checkbox"/> 維修部 <input type="checkbox"/> 連附件 | <input type="checkbox"/> 其他 _____ <input type="checkbox"/> 連附件                      |

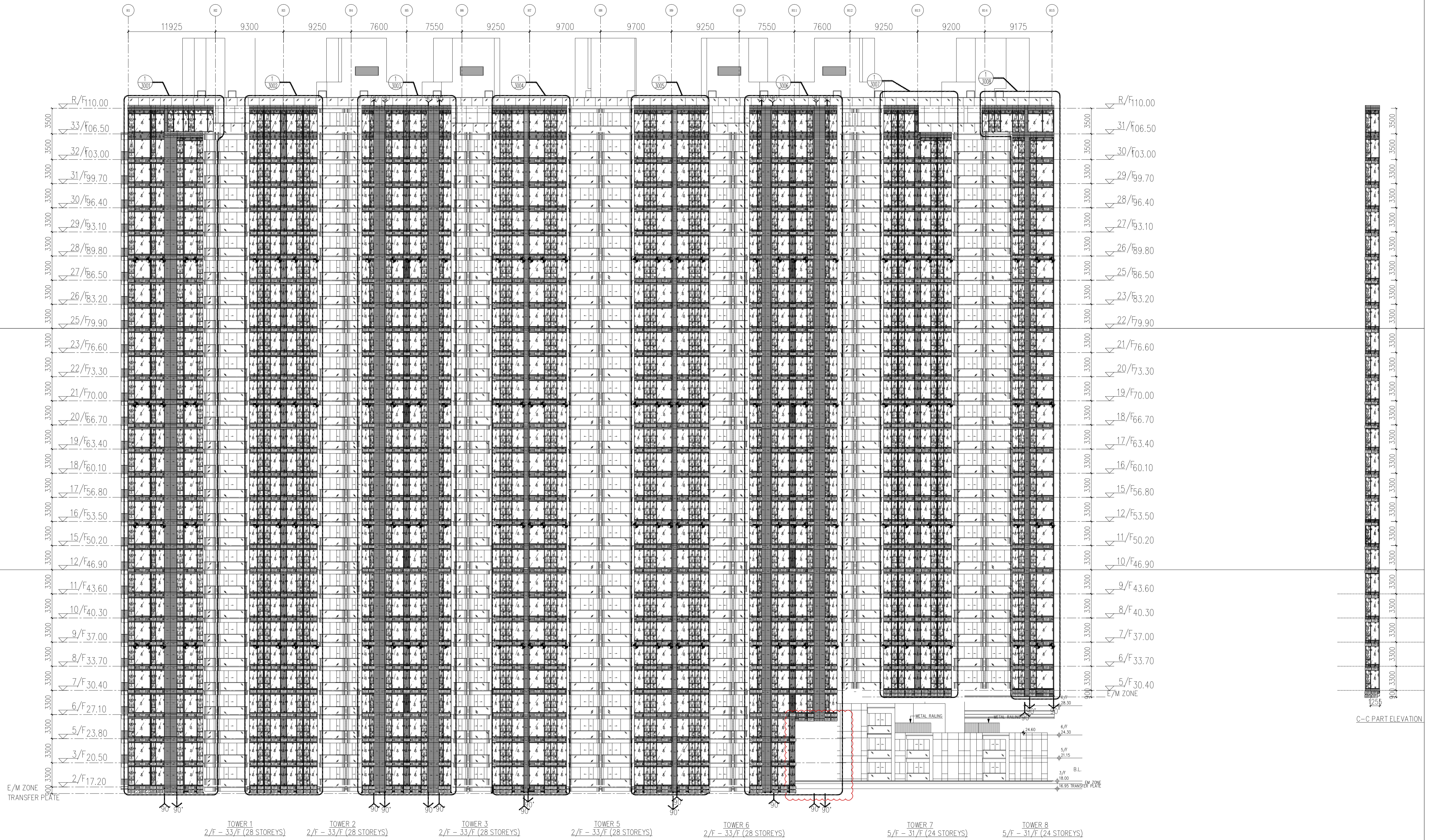
傳遞編號：

發件人簽署：

項目經理簽署：

Hk 0280 / 22

*mf*  
*if*



**LEGEND :**

S.F.L. = STRUCTURAL FLOOR LEVEL

C.W. = UNITIZED CURTAIN WALL (FOR BD APPROVAL)

◁EM1= WIND LOAD +DEAD LOAD FIXING LOCATION

◁EM2= WIND LOAD +DEAD LOAD FIXING LOCATION

◁EM3= WIND LOAD FIXING LOCATION

GL1 = 8mm HEAT STRENGTHEN LOW IRON GLASS + 1.52 PVB INTERLAYER + 8mm HEAT STRENGTHEN LOW IRON GLASS + 12mm AIR SPACE +10mm LOW IRON FULLY TEMPERED IGU LAMINATED CLEAR GLASS

GL2 = 8mm HEAT STRENGTHEN LOW IRON GLASS + 1.52 PVB INTERLAYER+ 8mm HEAT STRENGTHEN LOW IRON GLASS + 12mm AIR SPACE +12mm LOW IRON FULLY TEMPERED IGU LAMINATED CLEAR GLASS

GL3 = 8mm HEAT STRENGTHEN LOW IRON GLASS + 1.52 PVB INTERLAYER+ 8mm HEAT STRENGTHEN LOW IRON GLASS + 9mm AIR SPACE +8mm LOW IRON FULLY TEMPERED IGU LAMINATED CLEAR GLASS

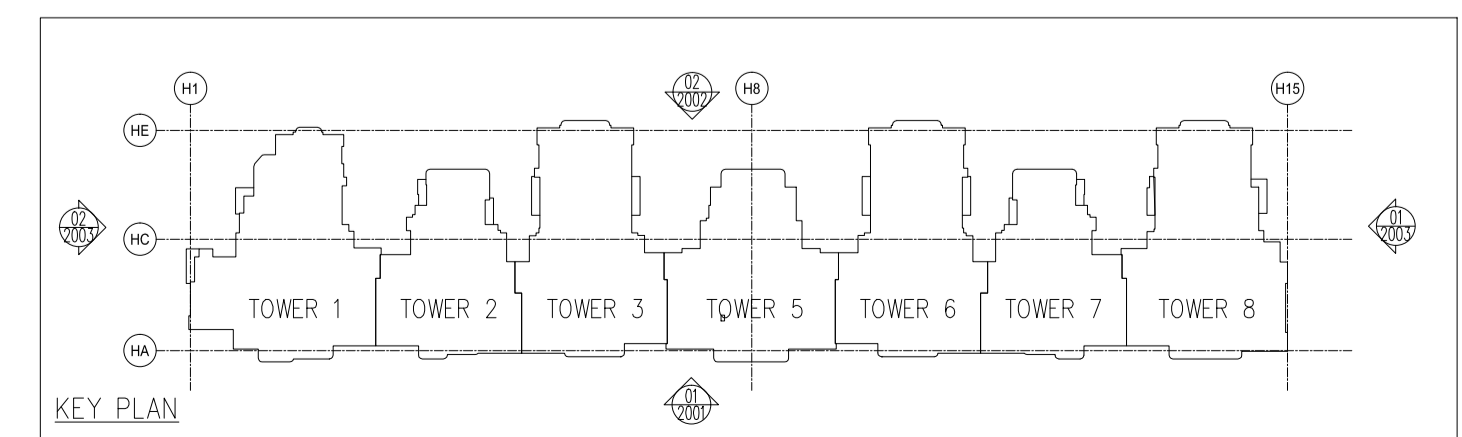
GL4 = 8mm FULLY TEMPERED GLASS + 1.52 PVB INTERLAYER+ 8mm HEAT STRENGTHEN LOW IRON GLASS + 12mm AIR SPACE +10mm LOW IRON FULLY TEMPERED IGU LAMINATED CLEAR GLASS

GB = 10mm FULLY TEMPERED MONOLITHIC CLEAR GLASS (BARRIER)

S.J. = STACK JOINT  
 M1 = EXTRUDED ALUM. MALE MULLION (AL03)  
 M2 = EXTRUDED ALUM. MALE MULLION (AL03A)  
 M3 = EXTRUDED ALUM. FEMALE MULLION (AL04)  
 M4 = EXTRUDED ALUM. FEMALE MULLION (AL04A)  
 M7 = EXTRUDED ALUM. OUTER CORNER MALE MULLION (AL07)  
 M8 = EXTRUDED ALUM. OUTER CORNER FEMALE MULLION (AL08)  
 M9 = EXTRUDED ALUM. OUTER CORNER MALE MULLION (AL86)  
 M10 = EXTRUDED ALUM. OUTER CORNER FEMALE MULLION (AL85)  
 M13 = EXTRUDED ALUM. INTERMEDIATE MULLION (AL65)  
 M14 = EXTRUDED ALUM. INTERMEDIATE MULLION (AL66)  
 M15 = EXTRUDED ALUM. MALE MULLION (AL67)  
 M16 = EXTRUDED ALUM. FEMALE MULLION (AL68)

T1 = EXTRUDED ALUM. SILL STACK JOINT (AL11)  
 T2 = EXTRUDED ALUM. GUTTER STACK JOINT (AL12)  
 T3 = EXTRUDED ALUM. INTERMEDIATE TRANSOM (AL13)  
 T4 = EXTRUDED ALUM. INTERMEDIATE TRANSOM (AL15)  
 T5 = EXTRUDED ALUM. INTERMEDIATE TRANSOM (AL14)  
 T7 = EXTRUDED ALUM. TRANSOM (AL71)  
 T8 = EXTRUDED ALUM. TRANSOM (AL72)  
 T9 = EXTRUDED ALUM. TRANSOM (AL69)  
 T10 = EXTRUDED ALUM. TRANSOM (AL70)  
 T11 = EXTRUDED ALUM. INTERMEDIATE TRANSOM(AL106)  
 T12 = EXTRUDED ALUM. INTERMEDIATE TRANSOM(AL107)  
 T13 = EXTRUDED ALUM. GUTTER STACK JOINT (AL105)

◁ = BMU SOCKET(GLASS UNIT)











**LEGEND :**

S.F.L. = STRUCTURAL FLOOR LEVEL  
 C.W. = UNITIZED CURTAIN WALL (FOR BD APPROVAL)

◁EM1= WIND LOAD +DEAD LOAD FIXING LOCATION  
 ▷EM2= WIND LOAD +DEAD LOAD FIXING LOCATION  
 ◀EM3= WIND LOAD FIXING LOCATION

GL1 = 8mm HEAT STRENGTHEN LOW IRON GLASS + 1.52 PVB INTERLAYER  
 8mm HEAT STRENGTHEN LOW IRON GLASS + 12mm AIR SPACE +10mm LOW IRON FULLY TEMPERED IGU LAMINATED CLEAR GLASS

GL2 = 8mm HEAT STRENGTHEN LOW IRON GLASS + 1.52 PVB INTERLAYER+ 12mm AIR SPACE +12mm LOW IRON FULLY TEMPERED IGU LAMINATED CLEAR GLASS

GL3 = 8mm HEAT STRENGTHEN LOW IRON GLASS + 1.52 PVB INTERLAYER+ 9mm AIR SPACE +8mm LOW IRON FULLY TEMPERED IGU LAMINATED CLEAR GLASS

GL4 = 8mm FULLY TEMPERED GLASS + 1.52 PVB INTERLAYER+ 8mm HEAT STRENGTHEN LOW IRON GLASS + 12mm AIR SPACE +10mm LOW IRON FULLY TEMPERED LAMINATED GLASS

GB = 10mm FULLY TEMPERED MONOLITHIC CLEAR GLASS (BARRIER)

S.J. = STACK JOINT  
 M1 = EXTRUDED ALUM. MALE MULLION (AL03)  
 M2 = EXTRUDED ALUM. MALE MULLION (AL03A)  
 M3 = EXTRUDED ALUM. FEMALE MULLION (AL04)  
 M4 = EXTRUDED ALUM. FEMALE MULLION (AL04A)  
 M7 = EXTRUDED ALUM. OUTER CORNER MALE MULLION (AL07)  
 M8 = EXTRUDED ALUM. OUTER CORNER FEMALE MULLION (AL08)  
 M9 = EXTRUDED ALUM. OUTER CORNER MALE MULLION (AL86)  
 M10 = EXTRUDED ALUM. OUTER CORNER FEMALE MULLION (AL85)  
 M13 = EXTRUDED ALUM. INTERMEDIATE MULLION (AL65)  
 M14 = EXTRUDED ALUM. INTERMEDIATE MULLION (AL66)  
 M15 = EXTRUDED ALUM. MALE MULLION (AL67)  
 M16 = EXTRUDED ALUM. FEMALE MULLION (AL68)

T1 = EXTRUDED ALUM. SILL STACK JOINT (AL11)  
 T2 = EXTRUDED ALUM. GUTTER STACK JOINT (AL12)  
 T3 = EXTRUDED ALUM. INTERMEDIATE TRANSOM (AL13)  
 T4 = EXTRUDED ALUM. INTERMEDIATE TRANSOM (AL15)  
 T5 = EXTRUDED ALUM. INTERMEDIATE TRANSOM (AL14)  
 T7 = EXTRUDED ALUM. TRANSOM (AL71)  
 T8 = EXTRUDED ALUM. TRANSOM (AL72)  
 T9 = EXTRUDED ALUM. TRANSOM (AL69)  
 T10 = EXTRUDED ALUM. TRANSOM (AL70)  
 T11 = EXTRUDED ALUM. INTERMEDIATE TRANSOM(AL106)  
 T12 = EXTRUDED ALUM. INTERMEDIATE TRANSOM(AL107)  
 T13 = EXTRUDED ALUM. GUTTER STACK JOINT (AL105)

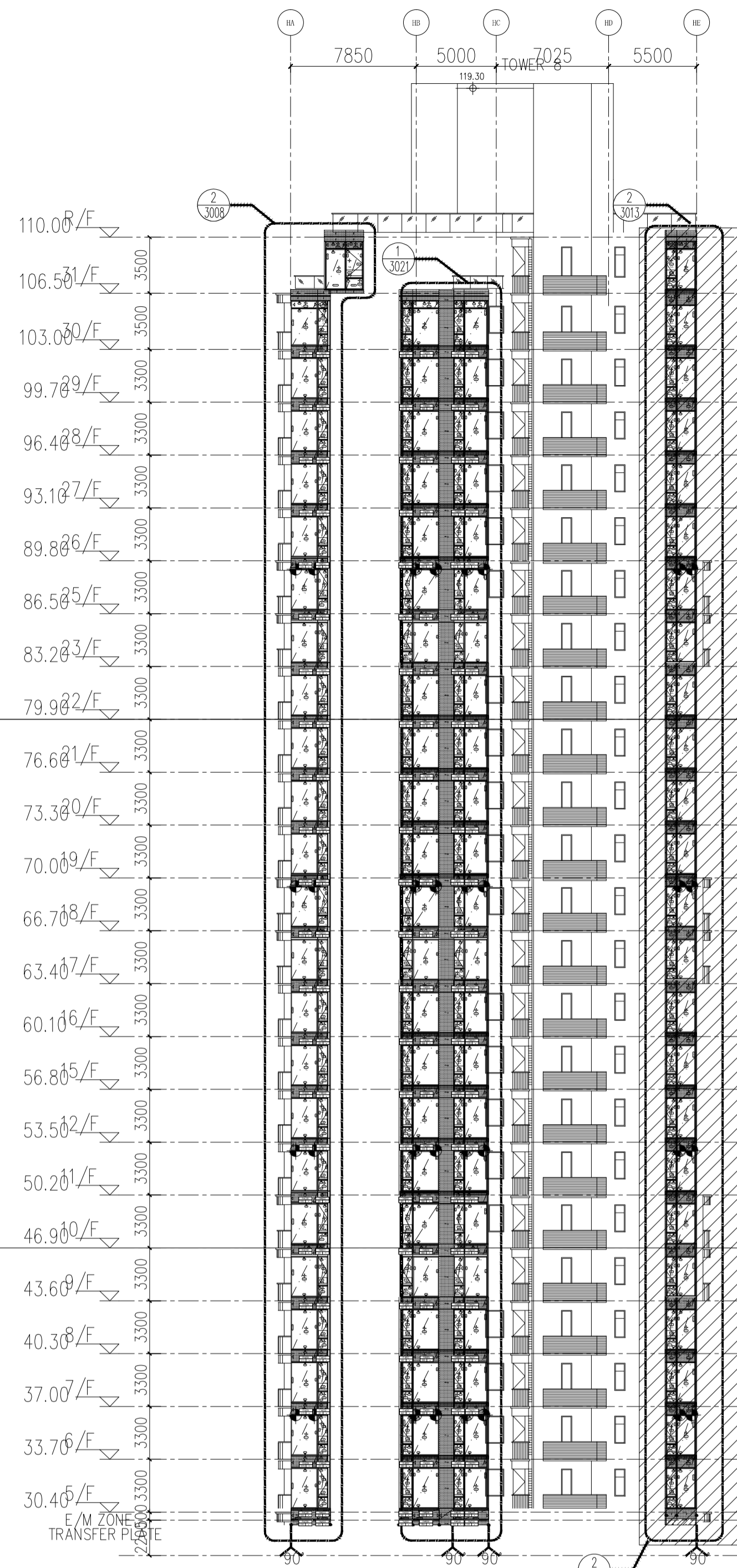
◻ = BMU SOCKET(GLASS UNIT)

A-A PART ELEVATION-B-B PART ELEVATION  
 B-B  
 B-B MIR  
 B-B MIR

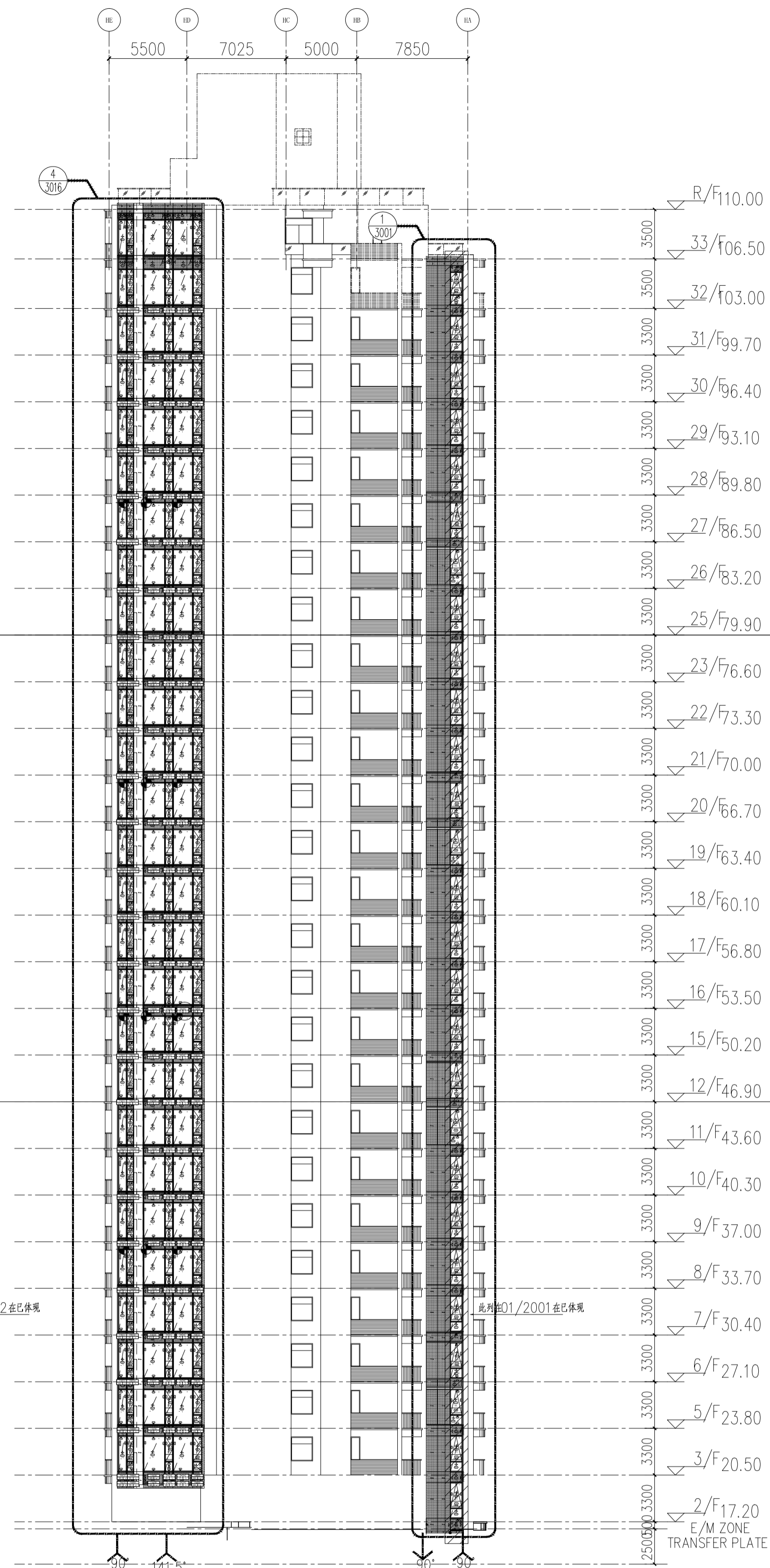




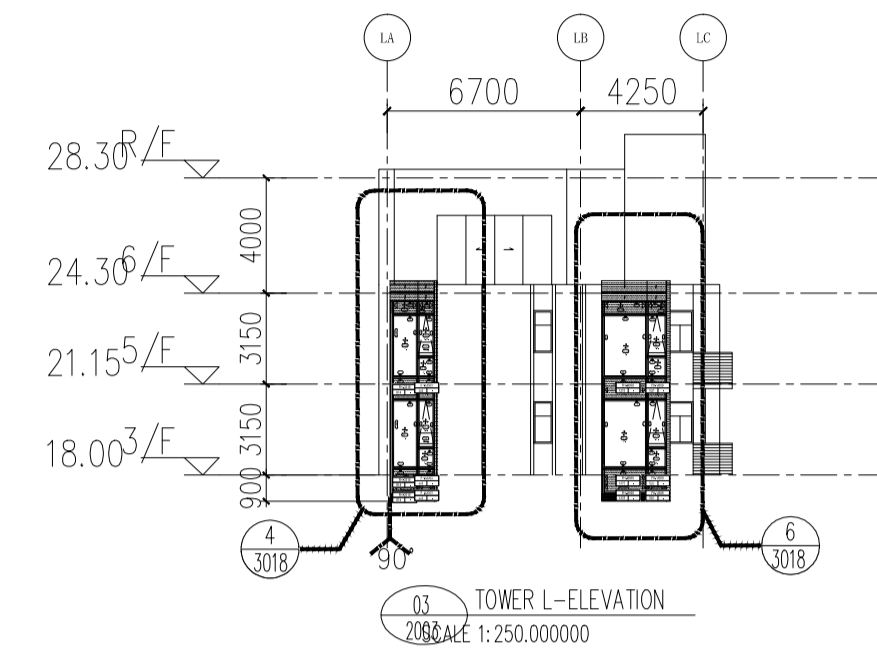




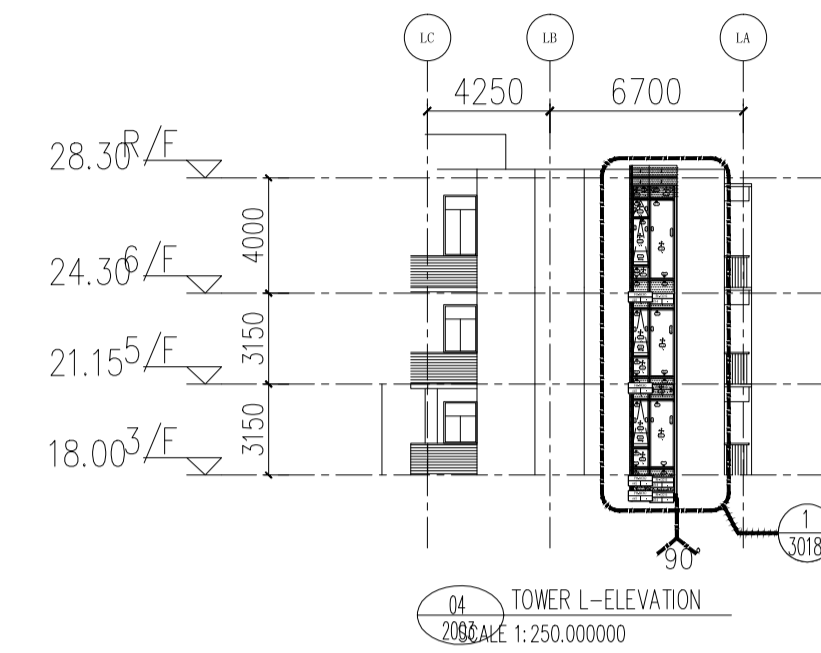
01 TOWER 8-ELEVATION  
SCALE 1:250.000000



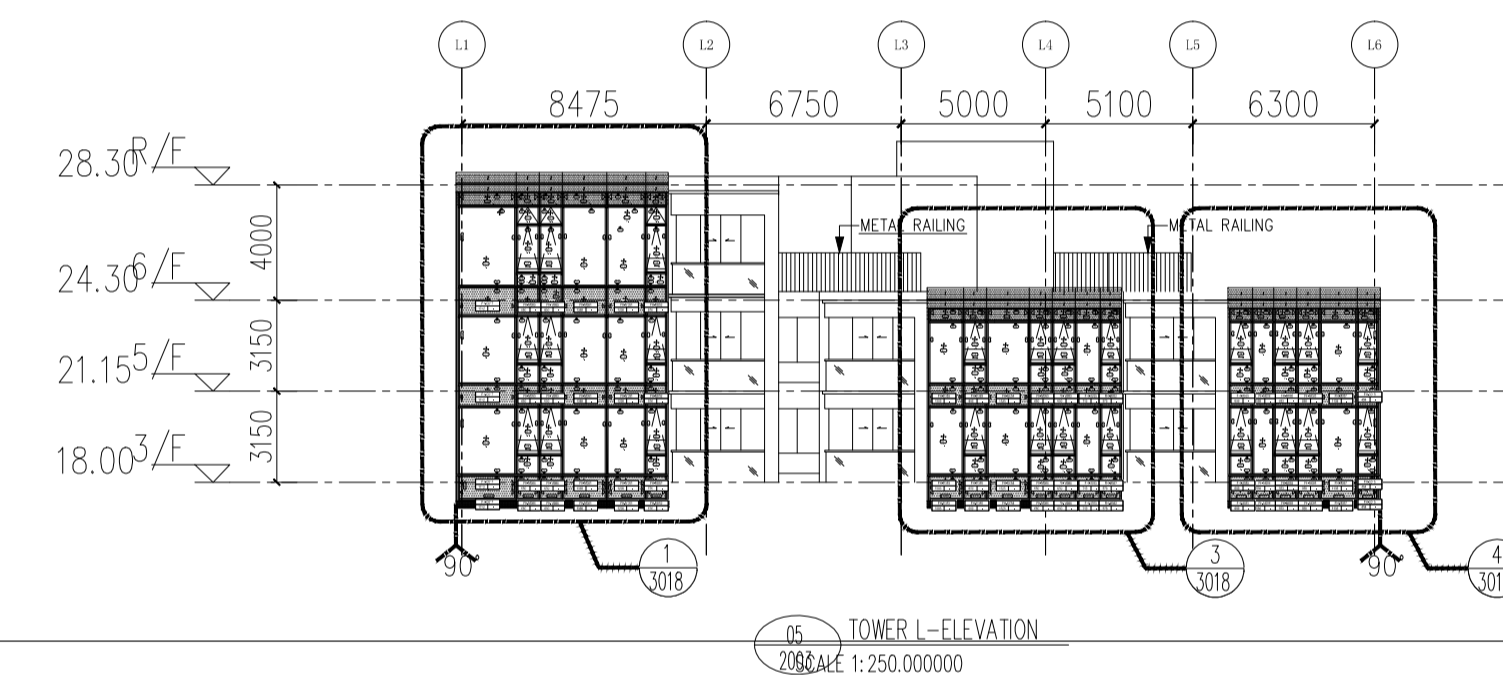
02 TOWER 8-ELEVATION  
SCALE 1:250.000000



03 TOWER L-ELEVATION  
SCALE 1:250.000000



04 TOWER L-ELEVATION  
SCALE 1:250.000000



05 TOWER L-ELEVATION  
SCALE 1:250.000000

LEGEND :

S.F.L. = STRUCTURAL FLOOR LEVEL

C.W. = UNITIZED CURTAIN WALL  
(FOR BD APPROVAL)

◁EM1= WIND LOAD +DEAD LOAD FIXING LOCATION

◁EM2= WIND LOAD +DEAD LOAD FIXING LOCATION

◁EM3= WIND LOAD FIXING LOCATION

GL1 = 8mm HEAT STRENGTHEN LOW IRON GLASS +  
1.52 PVB INTERLAYER  
8mm HEAT STRENGTHEN LOW IRON GLASS +  
12mm AIR SPACE +10mm LOW IRON  
FULLY TEMPERED IGU LAMINATED CLEAR GLASS

GL2 = 8mm HEAT STRENGTHEN LOW IRON GLASS +  
1.52 PVB INTERLAYER+  
8mm HEAT STRENGTHEN LOW IRON GLASS +  
12mm AIR SPACE +12mm LOW IRON  
FULLY TEMPERED IGU LAMINATED CLEAR GLASS

GL3 = 8mm HEAT STRENGTHEN LOW IRON GLASS +  
1.52 PVB INTERLAYER+  
8mm HEAT STRENGTHEN LOW IRON GLASS +  
9mm AIR SPACE +8mm LOW IRON  
FULLY TEMPERED IGU LAMINATED CLEAR GLASS

GL4 = 8mm FULLY TEMPERED GLASS +  
1.52 PVB INTERLAYER+  
8mm FULLY TEMPERED LAMINATED GLASS

GB = 10mm FULLY TEMPERED MONOLITHIC  
CLEAR GLASS (BARRIER)

S.J. = STACK JOINT

M1 = EXTRUDED ALUM. MALE MULLION (AL03)

M2 = EXTRUDED ALUM. MALE MULLION (AL03A)

M3 = EXTRUDED ALUM. FEMALE MULLION (AL04)

M4 = EXTRUDED ALUM. FEMALE MULLION (AL04A)

M7 = EXTRUDED ALUM. OUTER CORNER MALE MULLION (AL07)

M8 = EXTRUDED ALUM. OUTER CORNER FEMALE MULLION (AL08)

M9 = EXTRUDED ALUM. OUTER CORNER MALE MULLION (AL86)

M10 = EXTRUDED ALUM. OUTER CORNER FEMALE MULLION (AL85)

M13 = EXTRUDED ALUM. INTERMEDIATE MULLION (AL65)

M14 = EXTRUDED ALUM. INTERMEDIATE MULLION (AL66)

M15 = EXTRUDED ALUM. MALE MULLION (AL67)

M16 = EXTRUDED ALUM. FEMALE MULLION (AL68)

T1 = EXTRUDED ALUM. SILL STACK JOINT (AL11)

T2 = EXTRUDED ALUM. GUTTER STACK JOINT (AL12)

T3 = EXTRUDED ALUM. INTERMEDIATE TRANSOM (AL13)

T4 = EXTRUDED ALUM. INTERMEDIATE TRANSOM (AL15)

T5 = EXTRUDED ALUM. INTERMEDIATE TRANSOM (AL14)

T7 = EXTRUDED ALUM. TRANSOM (AL71)

T8 = EXTRUDED ALUM. TRANSOM (AL72)

T9 = EXTRUDED ALUM. TRANSOM (AL69)

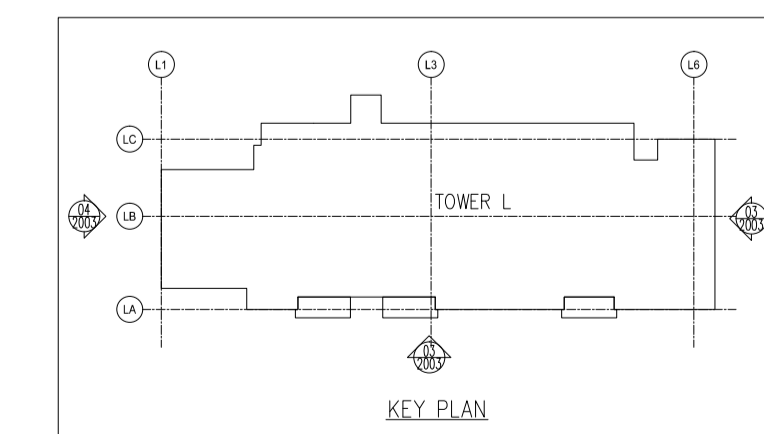
T10 = EXTRUDED ALUM. TRANSOM (AL70)

T11 = EXTRUDED ALUM. INTERMEDIATE TRANSOM(AL106)

T12 = EXTRUDED ALUM. INTERMEDIATE TRANSOM(AL107)

T13 = EXTRUDED ALUM. GUTTER STACK JOINT (AL105)

⊕ = BMU SOCKET(GLASS UNIT)



### J857 - 棉插編號圖(7)

R/F	HA	HB	HC	HD	HE	HE	HD	HC	HB	HA	R/F
31/F											33/F
30/F	FH-C004 1319 - 491 -	FH-M022 - - -	FH-C006 1680 - 350 - 350 - 1680 -	FH-M023 - - -	FH-M023 - - -	FH-C006 - - -					32/F
29/F	FH-C004 1319 - 491 -	FH-M022 - - -	FH-C006 1680 - 350 - 350 - 1680 -	FH-M023 - - -	FH-M023 - - -	FH-C006 - - -					31/F
28/F	FH-C004 1319 - 491 -	FH-M022 - - -	FH-C006 1680 - 350 - 350 - 1680 -	FH-M023 - - -	FH-M023 - - -	FH-C006 - - -					30/F
27/F	FH-C004 1319 - 491 -	FH-M022 - - -	FH-C006 1680 - 350 - 350 - 1680 -	FH-M023 - - -	FH-M023 - - -	FH-C006 - - -					29/F
26/F	FH-C004 1319 - 491 -	FH-M022 - - -	FH-C006 1680 - 350 - 350 - 1680 -	FH-M023 - - -	FH-M023 - - -	FH-C006 - - -					28/F
25/F	FH-C004 1319 - 491 -	FH-M022 - - -	FH-C006 1680 - 350 - 350 - 1680 -	FH-M023 - - -	FH-M023 - - -	FH-C006 - - -					27/F
23/F	FH-C004 1319 - 491 -	FH-M022 - - -	FH-C006 1680 - 350 - 350 - 1680 -	FH-M023 - - -	FH-M023 - - -	FH-C006 - - -					26/F
22/F	FH-C004 1319 - 491 -	FH-M022 - - -	FH-C006 1680 - 350 - 350 - 1680 -	FH-M023 - - -	FH-M023 - - -	FH-C006 - - -					25/F
21/F	FH-C004 1319 - 491 -	FH-M022 - - -	FH-C006 1680 - 350 - 350 - 1680 -	FH-M023 - - -	FH-M023 - - -	FH-C006 - - -					23/F
20/F	FH-C004 1319 - 491 -	FH-M022 - - -	FH-C006 1680 - 350 - 350 - 1680 -	FH-M023 - - -	FH-M023 - - -	FH-C006 - - -					22/F
19/F	FH-C004 1319 - 491 -	FH-M022 - - -	FH-C006 1680 - 350 - 350 - 1680 -	FH-M023 - - -	FH-M023 - - -	FH-C006 - - -					21/F
18/F	FH-C004 1319 - 491 -	FH-M022 - - -	FH-C006 1680 - 350 - 350 - 1680 -	FH-M023 - - -	FH-M023 - - -	FH-C006 - - -					20/F
17/F	FH-C004 1319 - 491 -	FH-M022 - - -	FH-C006 1680 - 350 - 350 - 1680 -	FH-M023 - - -	FH-M023 - - -	FH-C006 - - -					19/F
16/F	FH-C004 1319 - 491 -	FH-M022 - - -	FH-C006 1680 - 350 - 350 - 1680 -	FH-M023 - - -	FH-M023 - - -	FH-C006 - - -					18/F
15/F	FH-C004 1319 - 491 -	FH-M022 - - -	FH-C006 1680 - 350 - 350 - 1680 -	FH-M023 - - -	FH-M023 - - -	FH-C006 - - -					17/F
13/F	FH-C004 1319 - 491 -	FH-M022 - - -	FH-C006 1680 - 350 - 350 - 1680 -	FH-M023 - - -	FH-M023 - - -	FH-C006 - - -					16/F
12/F	FH-C004 1319 - 491 -	FH-M022 - - -	FH-C006 1680 - 350 - 350 - 1680 -	FH-M023 - - -	FH-M023 - - -	FH-C006 - - -					15/F
11/F	FH-C004 1319 - 491 -	FH-M022 - - -	FH-C006 1680 - 350 - 350 - 1680 -	FH-M023 - - -	FH-M023 - - -	FH-C006 - - -					13/F
10/F	FH-C004 1319 - 491 -	FH-M022 - - -	FH-C006 1680 - 350 - 350 - 1680 -	FH-M023 - - -	FH-M023 - - -	FH-C006 - - -					12/F
9/F	FH-C004 1319 - 491 -	FH-M022 - - -	FH-C006 1680 - 350 - 350 - 1680 -	FH-M023 - - -	FH-M023 - - -	FH-C006 - - -					11/F
8/F	FH-C004 1319 - 491 -	FH-M022 - - -	FH-C006 1680 - 350 - 350 - 1680 -	FH-M023 - - -	FH-M023 - - -	FH-C006 - - -					10/F
7/F	FH-C004 1319 - 491 -	FH-M022 - - -	FH-C006 1680 - 350 - 350 - 1680 -	FH-M023 - - -	FH-M023 - - -	FH-C006 - - -					9/F
6/F	FH-C004 1319 - 491 -	FH-M022 - - -	FH-C006 1680 - 350 - 350 - 1680 -	FH-M023 - - -	FH-M023 - - -	FH-C006 - - -					8/F
5/F	FH-C004 1319 - 491 -	FH-M022 - - -	FH-C006 1680 - 350 - 350 - 1680 -	FH-M023 - - -	FH-M023 - - -	FH-C006 - - -					7/F
E/M ZONE TRANSFER PLATE	FH-C004 1319 - 491 -	FH-M022 - - -	FH-M022 491 - 1500 - 500 - 1180 -	FH-M084 - - -	FH-M062 - - -	FH-C014 - - -					6/F
											5/F
											3/F
											2/F
											E/M ZONE TRANSFER PLATE

此列在01/2002在已體現

此列在01/2001在已體現

