

工程指示 / 要求簡箋(E.I.)

工程指示編號：EI / 4332 / 22 修改版次：A

工程編號：J857 工程名稱：啟德 6552

工程項目：幕牆單元件 - 地盤用棉托鋁板 BM (第二批)

收件人：生統 發件人：Nero HO 日期：21/2/2022

要求提供 / 確認 事項：

- | | | |
|------------------------------------|-------------------------------------|-------------------------------|
| <input type="checkbox"/> 初步鋁料 B.M. | <input type="checkbox"/> 加工拆圖，然後生產 | <input type="checkbox"/> 尺寸表 |
| <input type="checkbox"/> 正式鋁料 B.M. | <input type="checkbox"/> 技術上資料 / 指示 | <input type="checkbox"/> 報價 |
| <input type="checkbox"/> 配件 B.M. | <input type="checkbox"/> 樣辦或貨品說明書 | <input type="checkbox"/> 分判合約 |
| <input type="checkbox"/> 其他：_____ | | |

內容：

根據地盤指示需要分座分批包裝出貨送地盤，另外附件棉插編號圖。

請在 20/4/2022 前完成上列要求。

附： 1 + 11 頁

以上項目為：

原合約工程包 原合約工程加 / 減賬 新工程報價

原因：-

分發東莞各部門：

- () 生產技術總監 連附件 () 技術部 連附件 () 生產部 連附件 () 機械設計部 連附件
 () 採購部 連附件 (/) 生產統籌部 連附件
 () 質檢部 連附件 () 會計部 連附件 () 報關組 連附件 (/) 其他 小羅 連附件

分發香港各部門：

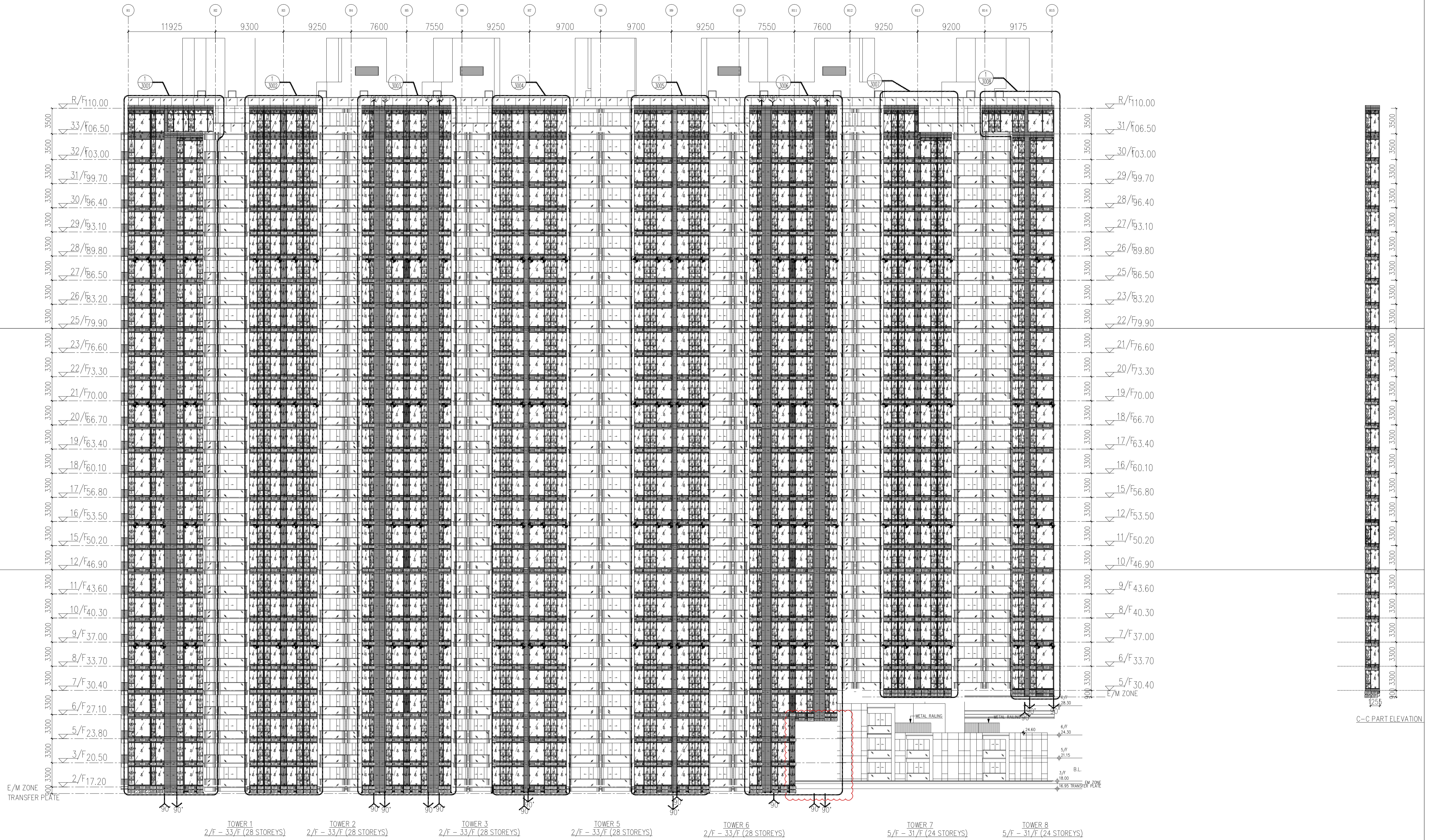
- () 行政部 連附件 () 會計部 連附件 () 統籌部 連附件 (/) 工程部地盤科文 連附件
 () 採購部 連附件 () QS 部 連附件 () 維修部 連附件 () 其他 _____ 連附件

傳遞編號：

發件人簽署：

項目經理簽署：

HK 0279/22



E/M ZONE
TRANSFER PLATE

C-C PART ELEVATION

LEGEND :

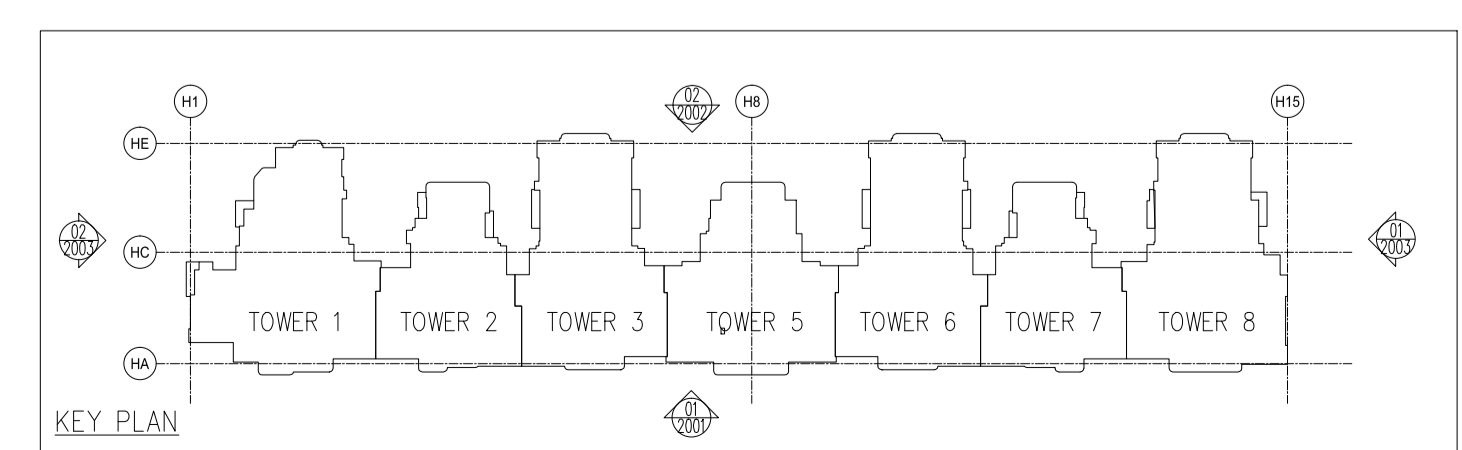
- S.F.L. = STRUCTURAL FLOOR LEVEL
- C.W. = UNITIZED CURTAIN WALL (FOR BD APPROVAL)
- ◁EM1= WIND LOAD +DEAD LOAD FIXING LOCATION
- ◁EM2= WIND LOAD +DEAD LOAD FIXING LOCATION
- ◁EM3= WIND LOAD FIXING LOCATION
- GL1 = 8mm HEAT STRENGTHEN LOW IRON GLASS + 1.52 PVB INTERLAYER
- GL2 = 8mm HEAT STRENGTHEN LOW IRON GLASS + 12mm AIR SPACE +12mm LOW IRON FULLY TEMPERED IGU LAMINATED CLEAR GLASS
- GL3 = 8mm HEAT STRENGTHEN LOW IRON GLASS + 1.52 PVB INTERLAYER+ 8mm HEAT STRENGTHEN LOW IRON GLASS + 9mm AIR SPACE +8mm LOW IRON FULLY TEMPERED IGU LAMINATED CLEAR GLASS
- GL4 = 8mm FULLY TEMPERED GLASS + 1.52 PVB INTERLAYER+ 8mm HEAT STRENGTHEN LOW IRON GLASS + 12mm AIR SPACE +10mm LOW IRON FULLY TEMPERED IGU LAMINATED CLEAR GLASS
- GB = 10mm FULLY TEMPERED MONOLITHIC CLEAR GLASS (BARRIER)

- GL2 = 8mm HEAT STRENGTHEN LOW IRON GLASS + 1.52 PVB INTERLAYER+ 8mm HEAT STRENGTHEN LOW IRON GLASS + 12mm AIR SPACE +12mm LOW IRON FULLY TEMPERED IGU LAMINATED CLEAR GLASS
- GL3 = 8mm HEAT STRENGTHEN LOW IRON GLASS + 1.52 PVB INTERLAYER+ 8mm HEAT STRENGTHEN LOW IRON GLASS + 9mm AIR SPACE +8mm LOW IRON FULLY TEMPERED IGU LAMINATED CLEAR GLASS
- GL4 = 8mm FULLY TEMPERED GLASS + 1.52 PVB INTERLAYER+ 8mm HEAT STRENGTHEN LOW IRON GLASS + 12mm AIR SPACE +10mm LOW IRON FULLY TEMPERED IGU LAMINATED CLEAR GLASS
- GB = 10mm FULLY TEMPERED MONOLITHIC CLEAR GLASS (BARRIER)

- S.J. = STACK JOINT
- M1 = EXTRUDED ALUM. MALE MULLION (AL03)
- M2 = EXTRUDED ALUM. MALE MULLION (AL03A)
- M3 = EXTRUDED ALUM. FEMALE MULLION (AL04)
- M4 = EXTRUDED ALUM. FEMALE MULLION (AL04A)
- M7 = EXTRUDED ALUM. OUTER CORNER MALE MULLION (AL07)
- M8 = EXTRUDED ALUM. OUTER CORNER FEMALE MULLION (AL08)
- M9 = EXTRUDED ALUM. OUTER CORNER MALE MULLION (AL08)
- M10 = EXTRUDED ALUM. OUTER CORNER FEMALE MULLION (AL85)
- M13 = EXTRUDED ALUM. INTERMEDIATE MULLION (AL65)
- M14 = EXTRUDED ALUM. INTERMEDIATE MULLION (AL66)
- M15 = EXTRUDED ALUM. MALE MULLION (AL67)
- M16 = EXTRUDED ALUM. FEMALE MULLION (AL68)

- T1 = EXTRUDED ALUM. SILL STACK JOINT (AL11)
- T2 = EXTRUDED ALUM. GUTTER STACK JOINT (AL12)
- T3 = EXTRUDED ALUM. INTERMEDIATE TRANSOM (AL13)
- T4 = EXTRUDED ALUM. INTERMEDIATE TRANSOM (AL15)
- T5 = EXTRUDED ALUM. INTERMEDIATE TRANSOM (AL14)
- T7 = EXTRUDED ALUM. TRANSOM (AL71)
- T8 = EXTRUDED ALUM. TRANSOM (AL72)
- T9 = EXTRUDED ALUM. TRANSOM (AL69)
- T10 = EXTRUDED ALUM. TRANSOM (AL70)
- T11 = EXTRUDED ALUM. INTERMEDIATE TRANSOM(AL106)
- T12 = EXTRUDED ALUM. INTERMEDIATE TRANSOM(AL107)
- T13 = EXTRUDED ALUM. GUTTER STACK JOINT (AL105)

◁ = BMU SOCKET(GLASS UNIT)



KEY PLAN



LEGEND :

S.F.L. = STRUCTURAL FLOOR LEVEL
 C.W. = UNITIZED CURTAIN WALL (FOR BD APPROVAL)

◁EM1= WIND LOAD +DEAD LOAD FIXING LOCATION
 ▷EM2= WIND LOAD +DEAD LOAD FIXING LOCATION
 ◀EM3= WIND LOAD FIXING LOCATION

GL1 = 8mm HEAT STRENGTHEN LOW IRON GLASS + 1.52 PVB INTERLAYER
 8mm HEAT STRENGTHEN LOW IRON GLASS + 12mm AIR SPACE +10mm LOW IRON FULLY TEMPERED IGU LAMINATED CLEAR GLASS

GL2 = 8mm HEAT STRENGTHEN LOW IRON GLASS + 1.52 PVB INTERLAYER+ 12mm AIR SPACE +12mm LOW IRON FULLY TEMPERED IGU LAMINATED CLEAR GLASS

GL3 = 8mm HEAT STRENGTHEN LOW IRON GLASS + 1.52 PVB INTERLAYER+ 9mm AIR SPACE +8mm LOW IRON FULLY TEMPERED IGU LAMINATED CLEAR GLASS

GL4 = 8mm FULLY TEMPERED GLASS + 1.52 PVB INTERLAYER+ 8mm HEAT STRENGTHEN LOW IRON GLASS + 12mm AIR SPACE +10mm LOW IRON FULLY TEMPERED LAMINATED GLASS

GB = 10mm FULLY TEMPERED MONOLITHIC CLEAR GLASS (BARRIER)

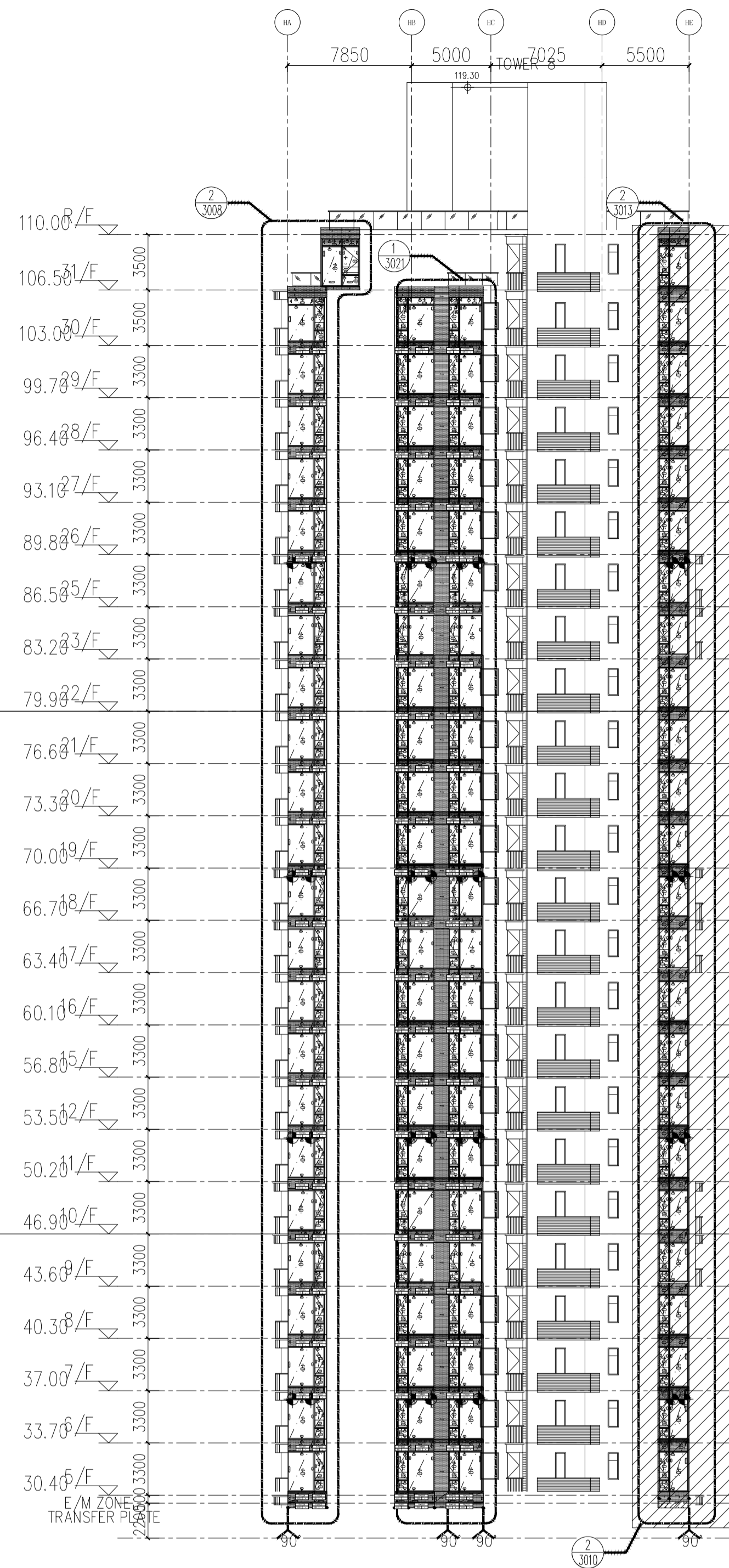
S.J. = STACK JOINT
 M1 = EXTRUDED ALUM. MALE MULLION (AL03)
 M2 = EXTRUDED ALUM. MALE MULLION (AL03A)
 M3 = EXTRUDED ALUM. FEMALE MULLION (AL04)
 M4 = EXTRUDED ALUM. FEMALE MULLION (AL04A)
 M7 = EXTRUDED ALUM. OUTER CORNER MALE MULLION (AL07)
 M8 = EXTRUDED ALUM. OUTER CORNER FEMALE MULLION (AL08)
 M9 = EXTRUDED ALUM. OUTER CORNER MALE MULLION (AL86)
 M10 = EXTRUDED ALUM. OUTER CORNER FEMALE MULLION (AL85)
 M13 = EXTRUDED ALUM. INTERMEDIATE MULLION (AL65)
 M14 = EXTRUDED ALUM. INTERMEDIATE MULLION (AL66)
 M15 = EXTRUDED ALUM. MALE MULLION (AL67)
 M16 = EXTRUDED ALUM. FEMALE MULLION (AL68)

T1 = EXTRUDED ALUM. SILL STACK JOINT (AL11)
 T2 = EXTRUDED ALUM. GUTTER STACK JOINT (AL12)
 T3 = EXTRUDED ALUM. INTERMEDIATE TRANSOM (AL13)
 T4 = EXTRUDED ALUM. INTERMEDIATE TRANSOM (AL15)
 T5 = EXTRUDED ALUM. INTERMEDIATE TRANSOM (AL14)
 T7 = EXTRUDED ALUM. TRANSOM (AL71)
 T8 = EXTRUDED ALUM. TRANSOM (AL72)
 T9 = EXTRUDED ALUM. TRANSOM (AL69)
 T10 = EXTRUDED ALUM. TRANSOM (AL70)
 T11 = EXTRUDED ALUM. INTERMEDIATE TRANSOM(AL106)
 T12 = EXTRUDED ALUM. INTERMEDIATE TRANSOM(AL107)
 T13 = EXTRUDED ALUM. GUTTER STACK JOINT (AL105)

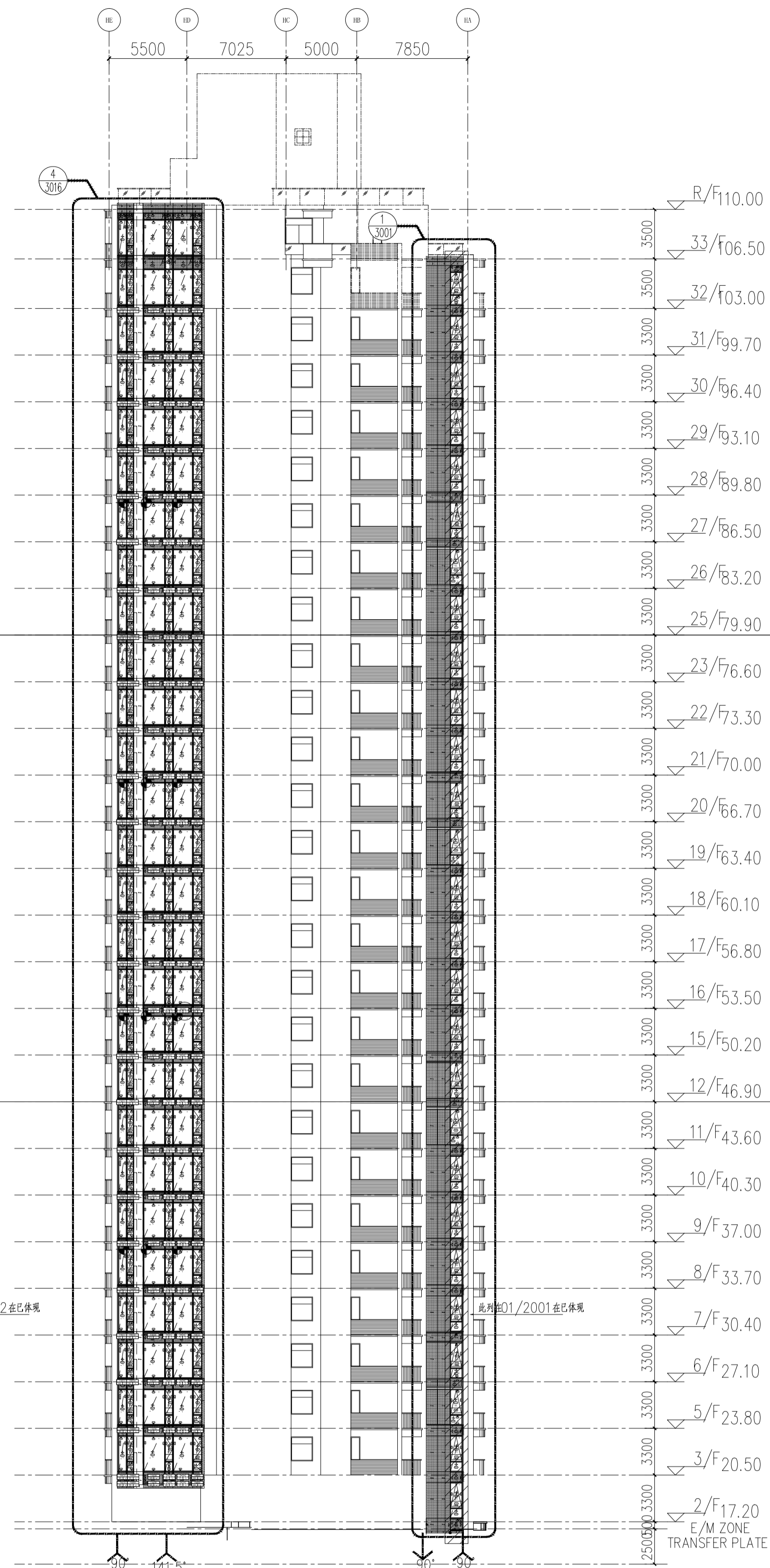
◻ = BMU SOCKET(GLASS UNIT)

A-A PART ELEVATION-B-B PART ELEVATION
 B-B
 B-B MIR
 B-B MIR

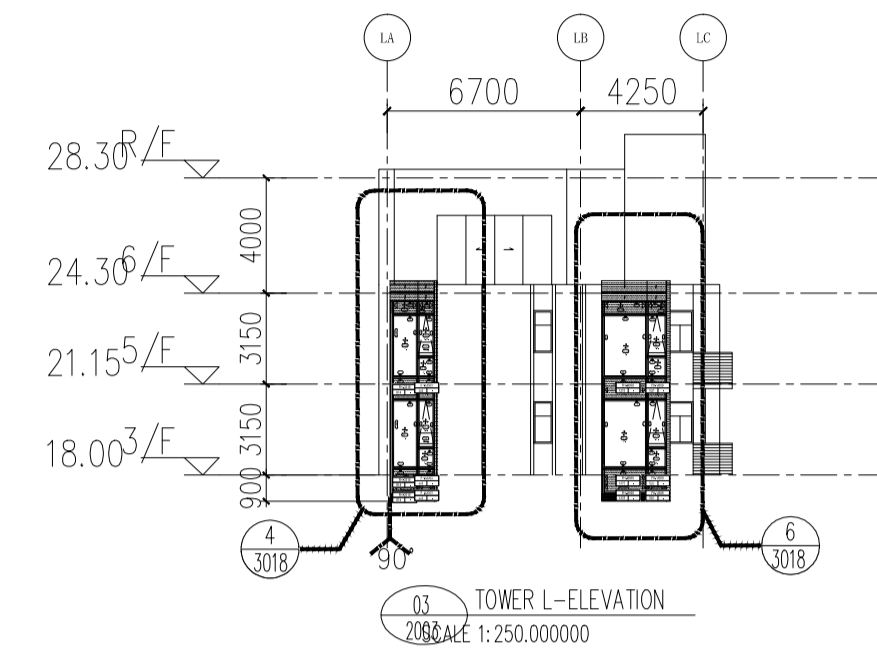
TOWER 1-8-ELEVATION
 SCALE 1:250.000000



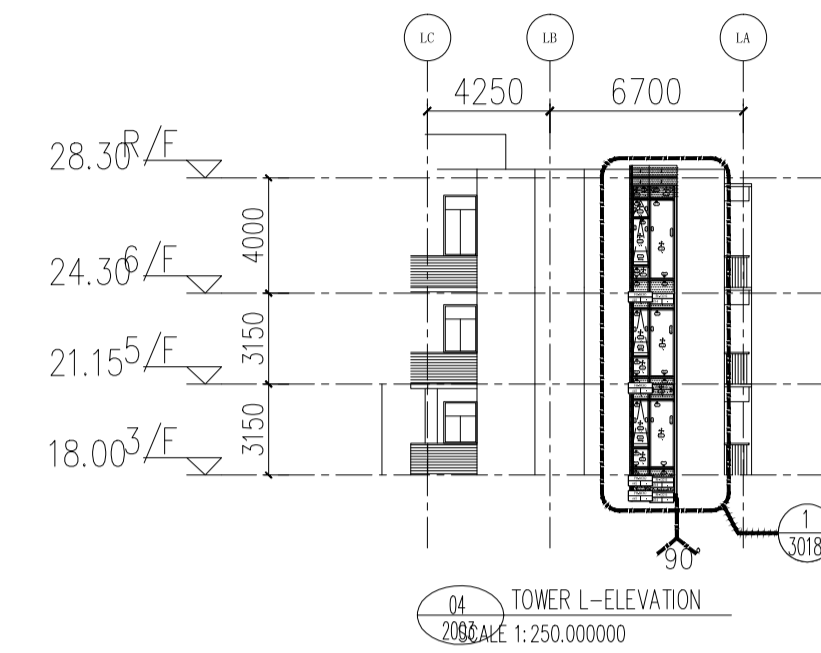
01 TOWER 8-ELEVATION
SCALE 1:250.000000



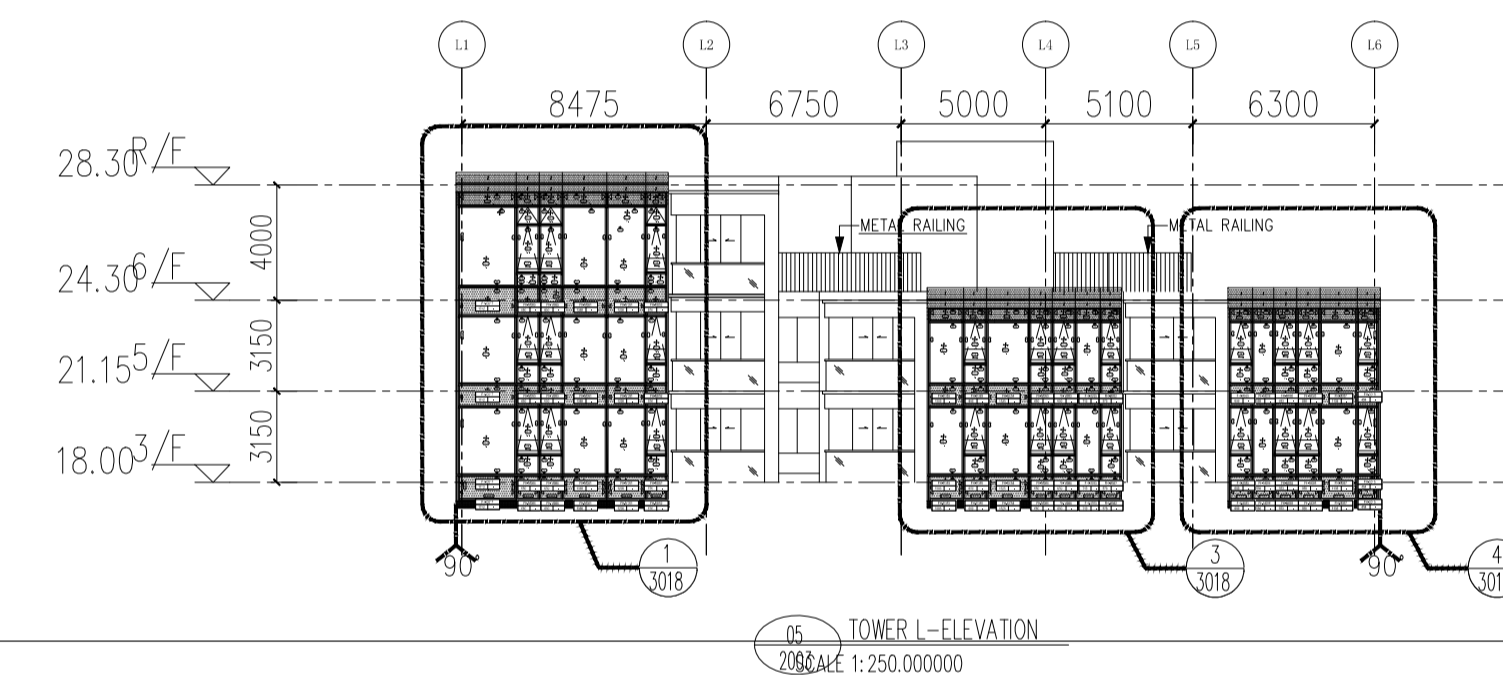
02 TOWER 8-ELEVATION
SCALE 1:250.000000



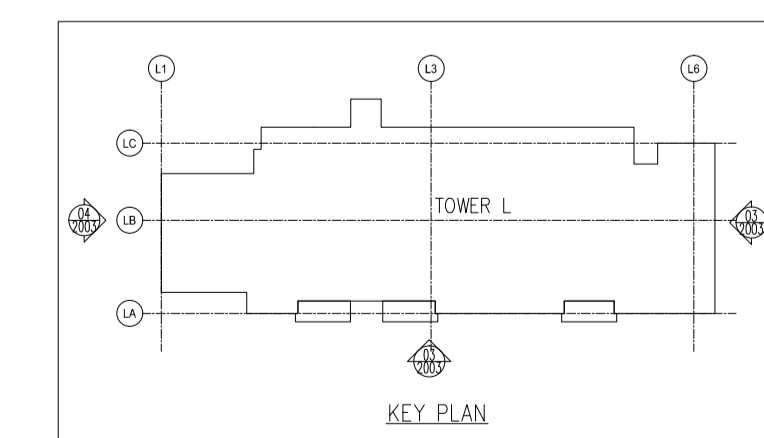
03 TOWER L-ELEVATION
SCALE 1:250.000000



04 TOWER L-ELEVATION
SCALE 1:250.000000



05 TOWER L-ELEVATION
SCALE 1:250.000000



LEGEND :

S.F.L. = STRUCTURAL FLOOR LEVEL

C.W. = UNITIZED CURTAIN WALL (FOR BD APPROVAL)

◁EM1= WIND LOAD +DEAD LOAD FIXING LOCATION

◁EM2= WIND LOAD +DEAD LOAD FIXING LOCATION

◁EM3= WIND LOAD FIXING LOCATION

GL1 = 8mm HEAT STRENGTHEN LOW IRON GLASS + 1.52 PVB INTERLAYER
8mm HEAT STRENGTHEN LOW IRON GLASS + 12mm AIR SPACE +10mm LOW IRON FULLY TEMPERED IGU LAMINATED CLEAR GLASS

GL2 = 8mm HEAT STRENGTHEN LOW IRON GLASS + 1.52 PVB INTERLAYER+ 12mm AIR SPACE +12mm LOW IRON FULLY TEMPERED IGU LAMINATED CLEAR GLASS

GL3 = 8mm HEAT STRENGTHEN LOW IRON GLASS + 1.52 PVB INTERLAYER+ 9mm AIR SPACE +8mm LOW IRON FULLY TEMPERED IGU LAMINATED CLEAR GLASS

GL4 = 8mm FULLY TEMPERED GLASS + 1.52 PVB INTERLAYER+ 8mm FULLY TEMPERED LAMINATED GLASS

GB = 10mm FULLY TEMPERED MONOLITHIC CLEAR GLASS (BARRIER)

S.J. = STACK JOINT

M1 = EXTRUDED ALUM. MALE MULLION (AL03)

M2 = EXTRUDED ALUM. MALE MULLION (AL03A)

M3 = EXTRUDED ALUM. FEMALE MULLION (AL04)

M4 = EXTRUDED ALUM. FEMALE MULLION (AL04A)

M7 = EXTRUDED ALUM. OUTER CORNER MALE MULLION (AL07)

M8 = EXTRUDED ALUM. OUTER CORNER FEMALE MULLION (AL08)

M9 = EXTRUDED ALUM. OUTER CORNER MALE MULLION (AL86)

M10 = EXTRUDED ALUM. OUTER CORNER FEMALE MULLION (AL85)

M13 = EXTRUDED ALUM. INTERMEDIATE MULLION (AL65)

M14 = EXTRUDED ALUM. INTERMEDIATE MULLION (AL66)

M15 = EXTRUDED ALUM. MALE MULLION (AL67)

M16 = EXTRUDED ALUM. FEMALE MULLION (AL68)

T1 = EXTRUDED ALUM. SILL STACK JOINT (AL11)

T2 = EXTRUDED ALUM. GUTTER STACK JOINT (AL12)

T3 = EXTRUDED ALUM. INTERMEDIATE TRANSOM (AL13)

T4 = EXTRUDED ALUM. INTERMEDIATE TRANSOM (AL15)

T5 = EXTRUDED ALUM. INTERMEDIATE TRANSOM (AL14)

T7 = EXTRUDED ALUM. TRANSOM (AL71)

T8 = EXTRUDED ALUM. TRANSOM (AL72)

T9 = EXTRUDED ALUM. TRANSOM (AL69)

T10 = EXTRUDED ALUM. TRANSOM (AL70)

T11 = EXTRUDED ALUM. INTERMEDIATE TRANSOM(AL106)

T12 = EXTRUDED ALUM. INTERMEDIATE TRANSOM(AL107)

T13 = EXTRUDED ALUM. GUTTER STACK JOINT (AL105)

⊕ = BMU SOCKET(GLASS UNIT)

J857 - 棉插編號圖(7)

R/F	HA	HB	HC	HD	HE	HE	HD	HC	HB	HA	R/F
31/F											33/F
30/F	FH-C004 1319 - 491 -	FH-M022 - - - -	FH-C006 1680 - 350 - 350 - 1680 -	FH-M023 - - - -	FH-M023 - - - -	FH-C006 - - - -					32/F
29/F	FH-C004 1319 - 491 -	FH-M022 - - - -	FH-C006 1680 - 350 - 350 - 1680 -	FH-M023 - - - -	FH-M023 - - - -	FH-C006 - - - -					31/F
28/F	FH-C004 1319 - 491 -	FH-M022 - - - -	FH-C006 1680 - 350 - 350 - 1680 -	FH-M023 - - - -	FH-M023 - - - -	FH-C006 - - - -					30/F
27/F	FH-C004 1319 - 491 -	FH-M022 - - - -	FH-C006 1680 - 350 - 350 - 1680 -	FH-M023 - - - -	FH-M023 - - - -	FH-C006 - - - -					29/F
26/F	FH-C004 1319 - 491 -	FH-M022 - - - -	FH-C006 1680 - 350 - 350 - 1680 -	FH-M023 - - - -	FH-M023 - - - -	FH-C006 - - - -					28/F
25/F	FH-C004 1319 - 491 -	FH-M022 - - - -	FH-C006 1680 - 350 - 350 - 1680 -	FH-M023 - - - -	FH-M023 - - - -	FH-C006 - - - -					27/F
23/F	FH-C004 1319 - 491 -	FH-M022 - - - -	FH-C006 1680 - 350 - 350 - 1680 -	FH-M023 - - - -	FH-M023 - - - -	FH-C006 - - - -					26/F
22/F	FH-C004 1319 - 491 -	FH-M022 - - - -	FH-C006 1680 - 350 - 350 - 1680 -	FH-M023 - - - -	FH-M023 - - - -	FH-C006 - - - -					25/F
21/F	FH-C004 1319 - 491 -	FH-M022 - - - -	FH-C006 1680 - 350 - 350 - 1680 -	FH-M023 - - - -	FH-M023 - - - -	FH-C006 - - - -					23/F
20/F	FH-C004 1319 - 491 -	FH-M022 - - - -	FH-C006 1680 - 350 - 350 - 1680 -	FH-M023 - - - -	FH-M023 - - - -	FH-C006 - - - -					22/F
19/F	FH-C004 1319 - 491 -	FH-M022 - - - -	FH-C006 1680 - 350 - 350 - 1680 -	FH-M023 - - - -	FH-M023 - - - -	FH-C006 - - - -					21/F
18/F	FH-C004 1319 - 491 -	FH-M022 - - - -	FH-C006 1680 - 350 - 350 - 1680 -	FH-M023 - - - -	FH-M023 - - - -	FH-C006 - - - -					20/F
17/F	FH-C004 1319 - 491 -	FH-M022 - - - -	FH-C006 1680 - 350 - 350 - 1680 -	FH-M023 - - - -	FH-M023 - - - -	FH-C006 - - - -					19/F
16/F	FH-C004 1319 - 491 -	FH-M022 - - - -	FH-C006 1680 - 350 - 350 - 1680 -	FH-M023 - - - -	FH-M023 - - - -	FH-C006 - - - -					18/F
15/F	FH-C004 1319 - 491 -	FH-M022 - - - -	FH-C006 1680 - 350 - 350 - 1680 -	FH-M023 - - - -	FH-M023 - - - -	FH-C006 - - - -					17/F
13/F	FH-C004 1319 - 491 -	FH-M022 - - - -	FH-C006 1680 - 350 - 350 - 1680 -	FH-M023 - - - -	FH-M023 - - - -	FH-C006 - - - -					16/F
12/F	FH-C004 1319 - 491 -	FH-M022 - - - -	FH-C006 1680 - 350 - 350 - 1680 -	FH-M023 - - - -	FH-M023 - - - -	FH-C006 - - - -					15/F
11/F	FH-C004 1319 - 491 -	FH-M022 - - - -	FH-C006 1680 - 350 - 350 - 1680 -	FH-M023 - - - -	FH-M023 - - - -	FH-C006 - - - -					13/F
10/F	FH-C004 1319 - 491 -	FH-M022 - - - -	FH-C006 1680 - 350 - 350 - 1680 -	FH-M023 - - - -	FH-M023 - - - -	FH-C006 - - - -					12/F
9/F	FH-C004 1319 - 491 -	FH-M022 - - - -	FH-C006 1680 - 350 - 350 - 1680 -	FH-M023 - - - -	FH-M023 - - - -	FH-C006 - - - -					11/F
8/F	FH-C004 1319 - 491 -	FH-M022 - - - -	FH-C006 1680 - 350 - 350 - 1680 -	FH-M023 - - - -	FH-M023 - - - -	FH-C006 - - - -					10/F
7/F	FH-C004 1319 - 491 -	FH-M022 - - - -	FH-C006 1680 - 350 - 350 - 1680 -	FH-M023 - - - -	FH-M023 - - - -	FH-C006 - - - -					9/F
6/F	FH-C004 1319 - 491 -	FH-M022 - - - -	FH-C006 1680 - 350 - 350 - 1680 -	FH-M023 - - - -	FH-M023 - - - -	FH-C006 - - - -					8/F
5/F	FH-C004 1319 - 491 -	FH-M022 - - - -	FH-C006 1680 - 350 - 350 - 1680 -	FH-M023 - - - -	FH-M023 - - - -	FH-C006 - - - -					7/F
E/M ZONE TRANSFER PLATE	FH-C004 1319 - 491 -	FH-M022 - - - -	FH-M022 491 - 1500 - 500 - 1180 -	FH-M084 - - - -	FH-M062 - - - -	FH-C014 - - - -					6/F
											5/F
											3/F
											2/F
											E/M ZONE TRANSFER PLATE

此列在01/2002在已體現

此列在01/2001在已體現

J857 - 棉插編號圖(8)

	LA	LB	LC	LC	LB	LA	
R/F							
6/F							
5/F							
3/F							
R/F							R/F
6/F							6/F
5/F							5/F
3/F							3/F

	L1	L2	L3	L4	L5	L6	
R/F							
6/F							
5/F							
3/F							

Tower L