

工程指示 / 要求簡箋(E.I.)

工程指示編號：EI / 425 / 21

修改版次：-

工程編號：J857

工程名稱：啟德 6552

工程項目：Monorail 物料及 Gondola 吊船報價

收件人：Maggie Lor (羅小姐)

發件人：Jerry Kwan

日期：10/12/2021

要求提供 /  確認 事項：

- ( ) 初步鋁料 B.M.                      ( ) 加工拆圖，然後生產                      ( ) 尺寸表
- ( ) 正式鋁料 B.M.                      ( ) 技術上資料 / 指示                      (X) 報價
- ( ) 配件 B.M.                              ( ) 樣辦或貨品說明書                      ( ) 分判合約
- ( ) 其他：\_\_\_\_\_

內容：

請按附件 monorail 物料及 gondola 吊船之預算數量總表安排報價。

請在 10/1/2022 前完成上列要求。

附：EI cover + 9 頁，共 10 頁

以上項目為：

- 原合約工程包                       原合約工程加 / 減賬                       新工程報價

原因：-

分發東莞各部門：

- ( ) 生產技術總監  連附件    ( ) 技術部     連附件    ( ) 生產部     連附件    ( ) 機械設計部  連附件
- ( ) 採購部     連附件    ( ) 生產統籌部  連附件
- ( ) 質檢部     連附件    ( ) 會計部     連附件    ( ) 報關組     連附件    ( ) 其他 \_\_\_\_\_  連附件

分發香港各部門：

- ( ) 行政部  連附件    ( ) 會計部  連附件    ( ) 統籌部  連附件    ( / ) 工程部地盤科文     連附件 <sup>AM</sup>
- ( ) 採購部  連附件    ( ) QS 部     連附件    ( ) 維修部  連附件    ( ) 其他 \_\_\_\_\_  連附件

傳遞編號：

發件人簽署：

項目經理簽署：

*(Handwritten signature: Jerry Kwan)*  
*(Handwritten signature: [unclear])*

## **J857 - NKIL 6552 Kai Tak**

Required material for lifting curtain wall (Monorail system)

### **工程資料 (for reference only):**

- 1) 工作鉄台約有 25 個.
- 2) 共 8 座樓. (1 至 6 座-由 2 至 33 樓 / 7 至 8 座-由 5 至 31 樓 / L 座-由 3 至 6 樓)
- 3) 地下 Ground 至天台 Roof 樓高約 105 米高 max.
- 4) 每工作鉄台各需 2 套電動 chain block 及 2 套手動 chain block.
- 5) 每套電動及手動各需 1 條 wire.
- 6) 預計 8 樓, 28 樓及天面 Roof 落 monorail.

### **Monorail 物料數量預算:**

- 1) 100 條 wire
- 2) 50 個電動 chain block
- 3) 50 個手動 chain block
- 4) Monorail (標準層路軌長度) = 約 300 直米
- 5) Monorail (天面層高架路軌長度) = 約 200 直米

### **Gondola 吊船數量預算:**

- 1) 50 套

### **天面車仔架數量預算 (optional):**

- 1) 50 套



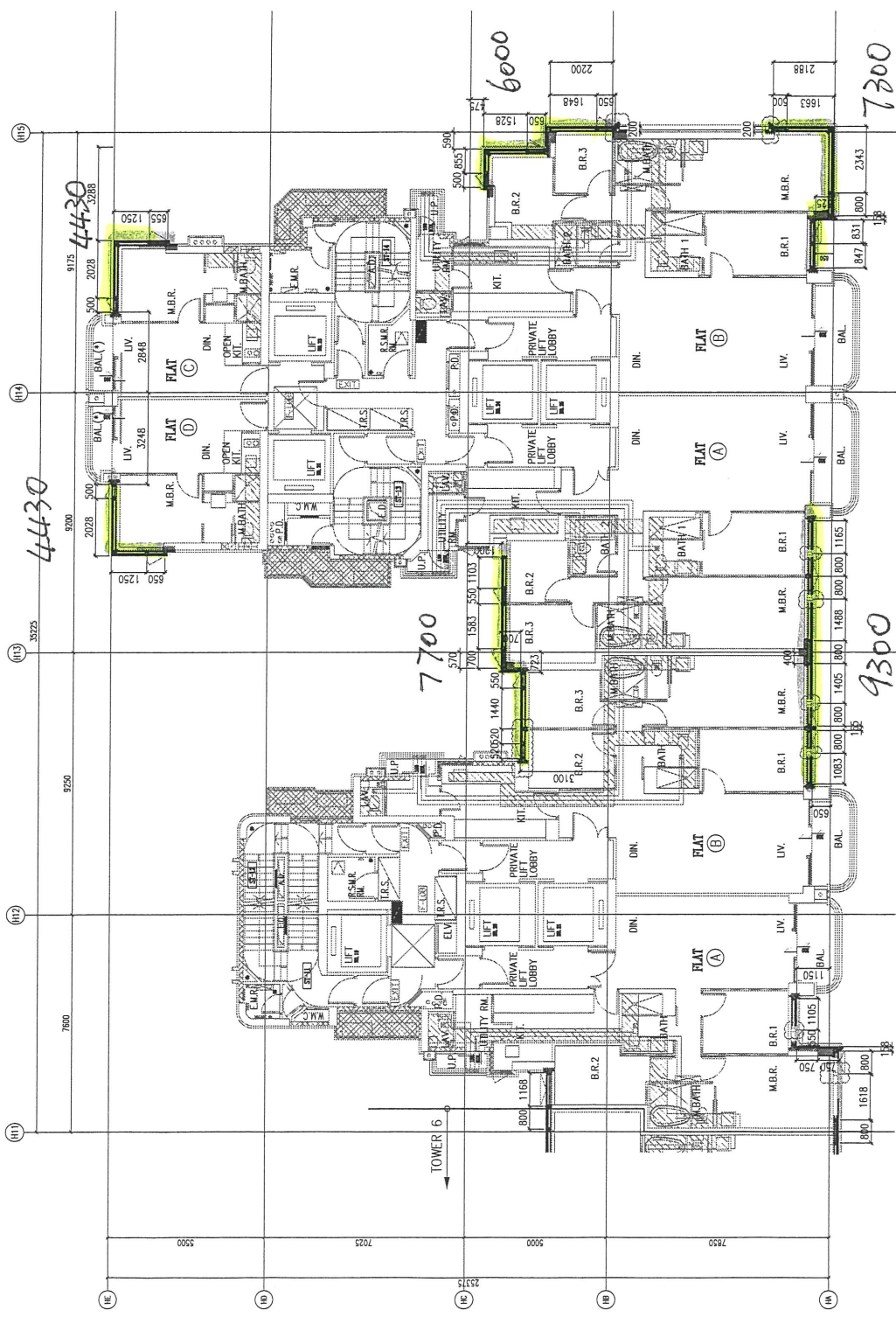


B.D. REF :  
 F.S.D. REF :  
 Note:  
 1. All dimensions are in mm.  
 2. All elevations are viewed from outside.  
 3. All dimensions to be verified on site before fabrication.

GENERAL NOTES  
 Legend:  
 1. FFL— Finished Floor Level  
 2. SFL— Structural Floor Level  
 3. ( ) — Reversed Detail  
 X1 — DETAIL MARK NO.  
 X001 — REFER SHEET NO.

ARCHITECT :  
 MARBLE EDGE INVESTMENT LTD.  
 ARCHITECTS PARTNER | INTERIOR DESIGNERS  
 STRUCTURAL ENGINEER :  
 ICMA  
 MAIN CONTRACTOR :  
 裕民建築有限公司  
 美特鋁質有限公司  
 MIDJI ALUMINIUM FABRICATOR LTD.  
 Unit 6-8, Sunny Industrial Centre, 1/F  
 60, Sunny Industrial Estate, Sunnyvale  
 Tel: 22488211-4 Fax: (853) 2727666

PROJECT :  
 PROPOSED RESIDENTIAL DEVELOPMENT AT NEW KOWLOON INLAND LOT. NO. 0552  
 TITLE :  
 TOWER 7 AND 8 TYPICAL FLOOR FOR CURTAIN WALL PLAN  
 JOB NO. : J-857  
 DRAWN BY : AN DATE : 18.Oct.2021  
 CHECK BY : SCALE : A1: 1/80  
 DWG. NO. : SD-PL-1005 REV. : -



7700 + 4430 + 4430 + 7300 + 6000 + 7300 + 9300 = 39160m

E.D. REF :  
 F.S.D. REF :  
 Note :  
 1. All dimensions are in mm.  
 2. All dimensions are viewed from outside.  
 3. All dimensions to be verified on site before fabrication.

GENERAL NOTES

Legend :  
 1. F.F.L. --- Finished Floor Level  
 2. S.F.L. --- Structural Floor Level  
 3. (R) --- Reversed Detail

DETAIL MARK NO. :  
 REFER SHEET NO. :  
 X1  
 X001

REV. :  
 DATE : 10-Nov-2021  
 GENERAL REVISION DESCRIPTION BY

CLIENT :  
**MARBLE EDGE INVESTMENT LTD.**

ARCHITECT :  
**RONALD LUI & PARTNERS**  
 ARCHITECTS PLANNERS INTERIORS DESIGNERS

STRUCTURAL ENGINEER :  
**GMA**  
**GOH MONG & ASSOCIATES LTD**

MAIN CONTRACTOR :  
**裕民建築有限公司**

**美特鋁質有限公司**  
**MIDI ALUMINIUM FABRICATOR LTD.**  
 Unit 6-8, Sunway Industrial Centre, 1/F  
 16, Jalan Sunway Prima, Sunway Velocity, 47500  
 Tel: 23488211-4 Fax: (650) 7272666

PROJECT :  
 PROPOSED RESIDENTIAL DEVELOPMENT AT NEW KOWLOON INLAND LOT. NO.6552

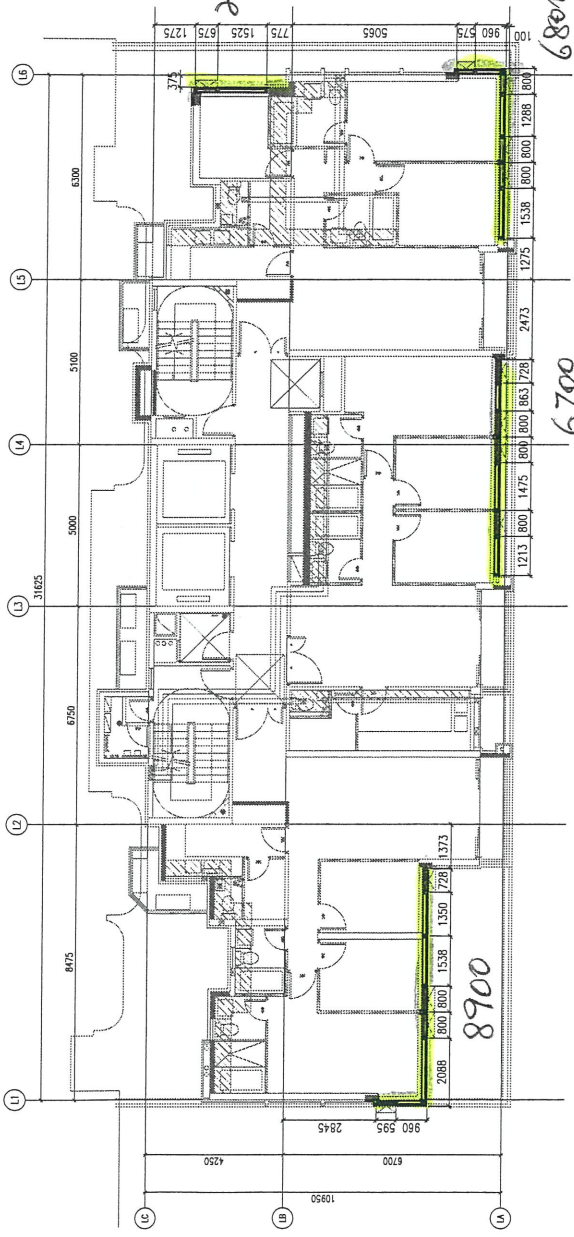
TITLE :  
 TOWER L 3&5 6/F TO ROOF FOR CURTAIN WALL PLAN

JOB NO. : J-857

DRAWN BY : AN DATE : 18.Oct.2021

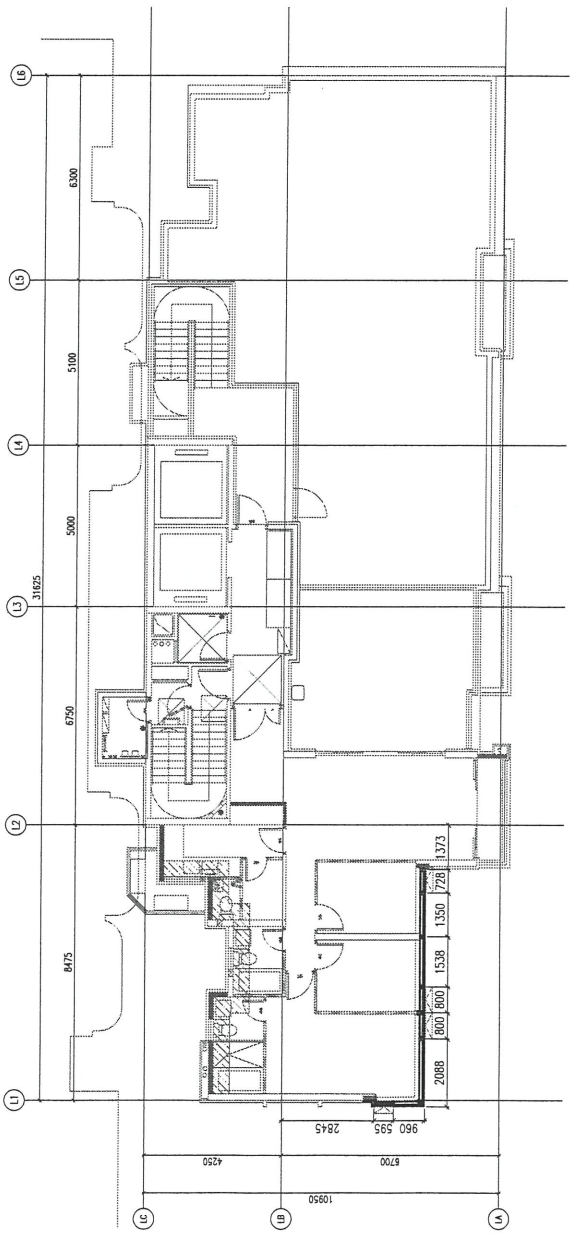
CHECK BY : SCALE AT: 1:80 AS:

DWG. NO. : SD-PL-1007 REV. : -



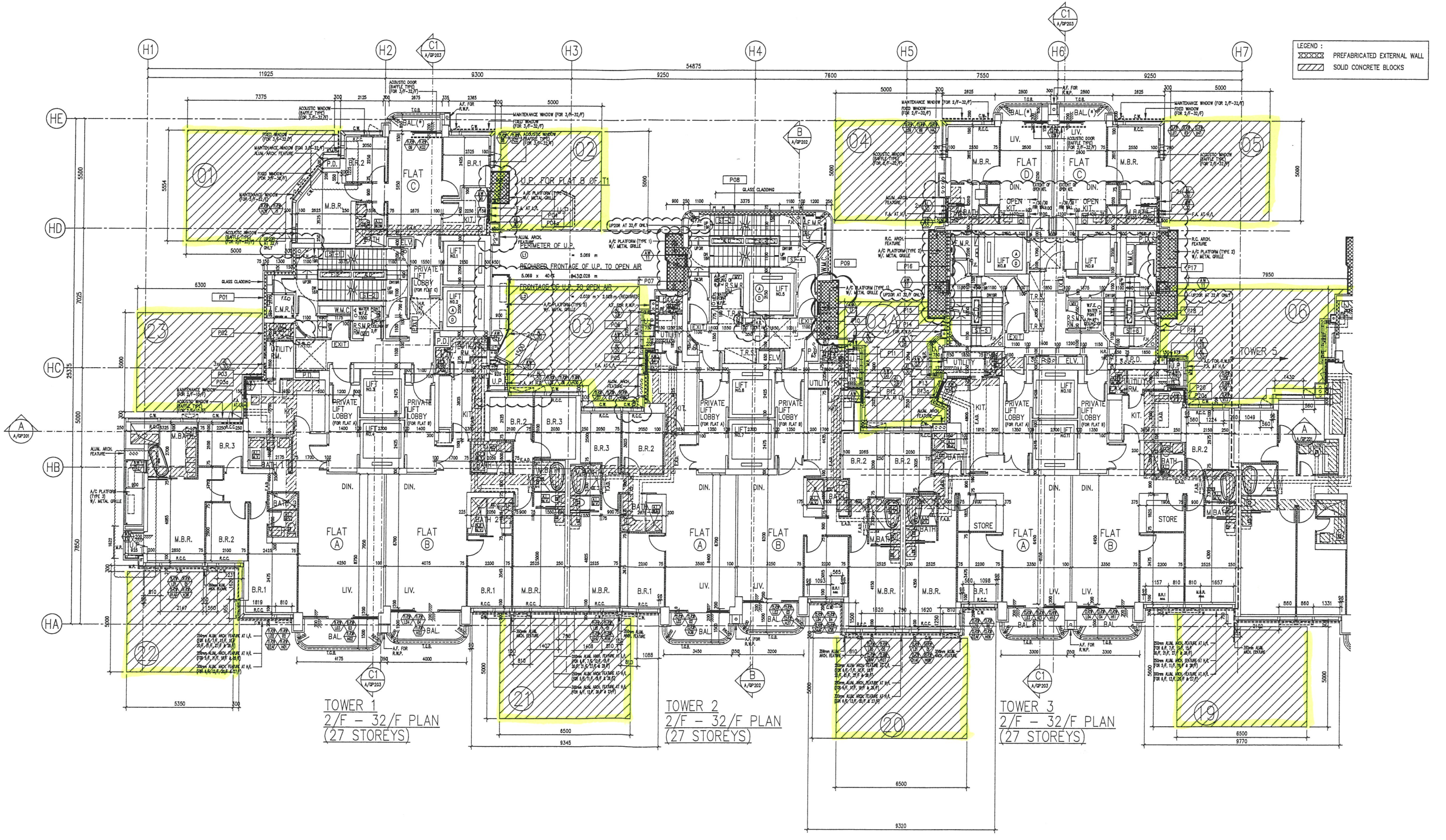
TOWER L 3&5 6/F FRAMING PLAN FOR CURTAIN WALL

Handwritten calculation:  $8900 + 6700 + 6800 + 2600 = 25.00 \text{ m}$



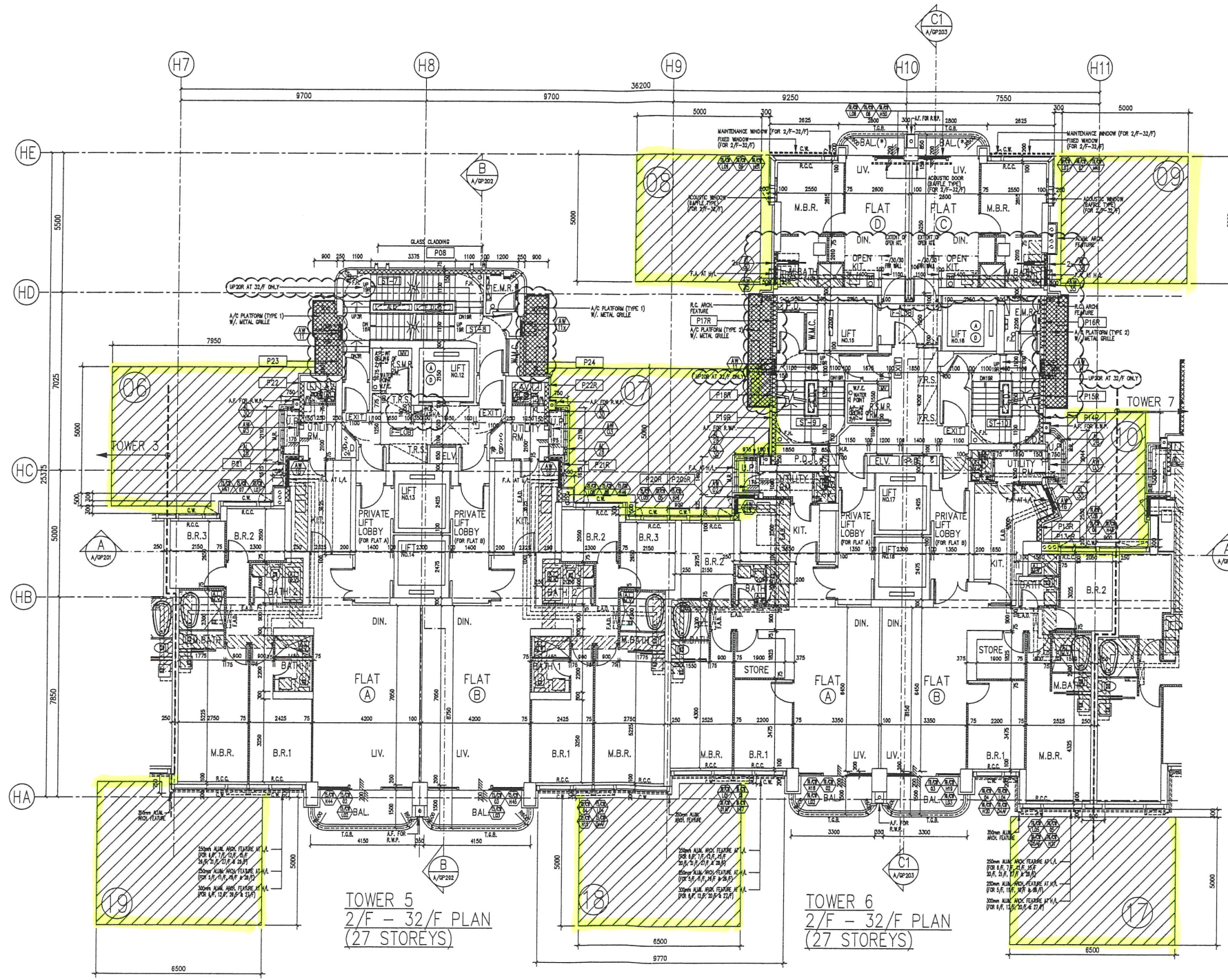
TOWER L 3&5 6/F FRAMING PLAN FOR CURTAIN WALL

WORKING PLATFORM TYPE 1 5m x 5m (LOADING: 5000KG)  
 WORKING PLATFORM TYPE 2 6.5m x 5m (LOADING: 8000KG)



- ABBREVIATIONS :**
- BOUNDARY LINE
  - R.C. REINFORCED CONCRETE
  - A.F. ARCH. FEATURE
  - C.W. CURTAIN WALL
  - M.L. METAL LOUVRE
  - KIT. KITCHEN
  - S.T. STORE ROOM
  - DN. DOWN
  - BAL. BALCONY
  - U.P. UTILITY PLATFORM
  - mm. MILLIMETRE
  - A.F.F.L. ABOVE FINISHED FLOOR LEVEL
  - A.S.F.L. ABOVE STRUCTURAL FLOOR LEVEL
  - F.A. 320x420 OR 240x240 GAS FLUE APERTURE TO SUIT THE SELECTED GAS HEATER MODEL
  - T.O.B. TEMPERED GLASS BALUSTRADE MIN. 1100mm AFF.L. / MIN. 1200mm AFF.L. FOR ACOUSTIC BALCONY
  - R.S.N.R.R. REFUSE STORAGE AND MATERIAL RECOVERY ROOM
  - M.P. METAL RAILING MIN. 1100mm AFF.L.
  - R.C.C. MIN. 300mmH. R.C. CURB
  - R.C.C. 2 MIN. 100mmH. R.C. CURB
  - C.C.C. MIN. 150mmH. C.C. CURB
  - W.M.C. WATER METER CABINET
  - E.M.R. ELEC. METER ROOM
  - H.R. HOSE REEL
  - F.H. FIRE HYDRANT
  - F.E. 4.5 kg CO<sub>2</sub> FIRE EXTINGUISHER
  - W.F.E. 9 L. WATER FIRE EXTINGUISHER
  - C.S.C. COVERED SURFACE CHANNEL W/ 2 DRAIN OUTLET
  - EXIT SIGN FIREMAN'S LIFT
  - ACCESSIBLE LIFT
  - MECHANICAL VENTILATION
  - ARTIFICIAL LIGHTING
  - PROPOSED STRUCTURAL LEVEL
  - IN METERS ABOVE P.D.
  - FINISHED LEVEL IN METERS ABOVE P.D.
  - FIRE SERVICE ACCESS POINT
  - W.P.A.L. WEATHERPROOF EXHAUST AIR LOUVRE
  - FIREMAN'S LIFT LOBBY
  - TEMPORARY REFUSE SPACE 1500mm x 1500mm OR 1500mm x 750mm

WORKING PLATFORM TYPE 1 5m x 5m (LOADING: 5000KG)  
 WORKING PLATFORM TYPE 2 6.5m x 5m (LOADING: 8000KG)



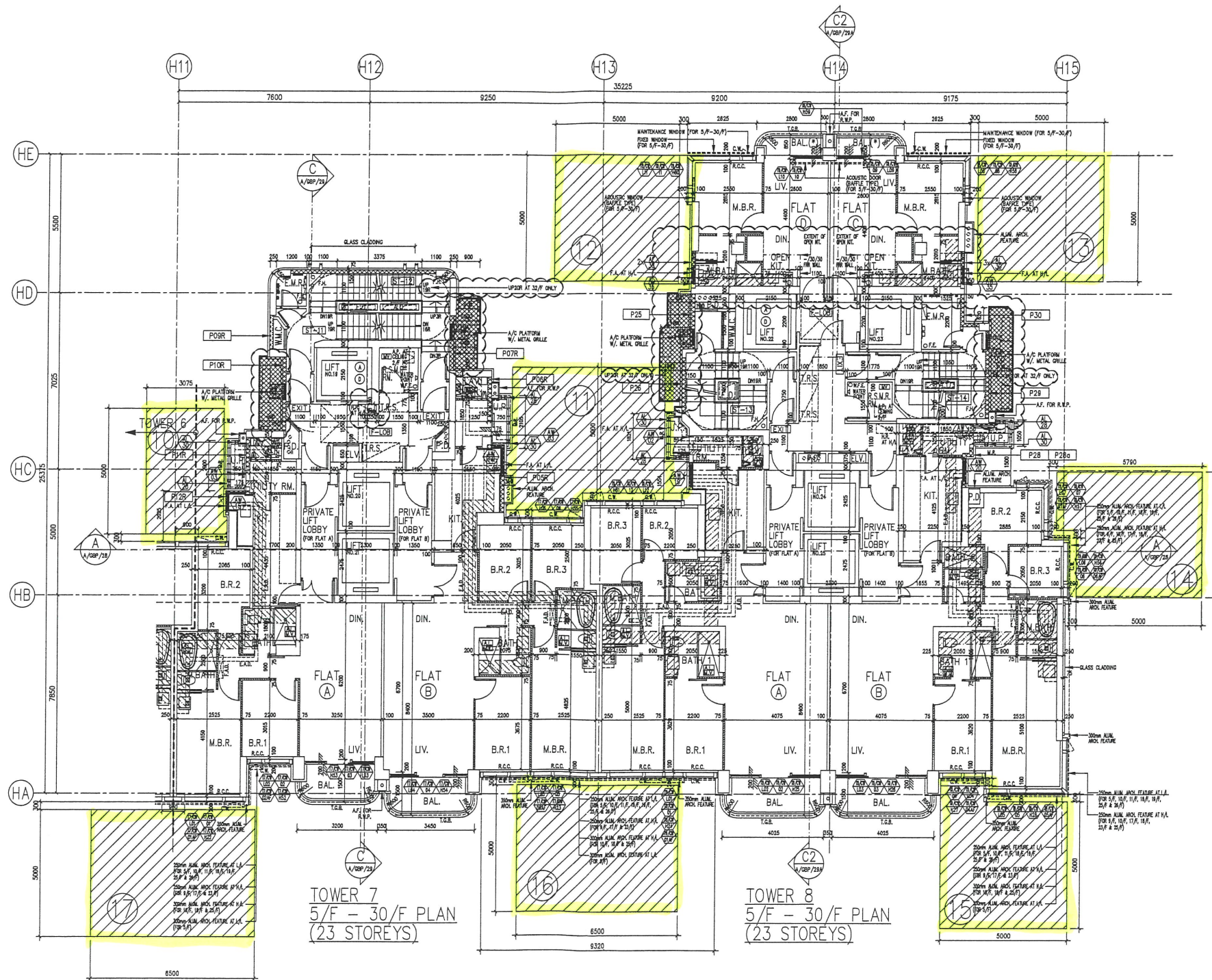
LEGEND:  
 PREFABRICATED EXTERNAL WALL  
 SOLID CONCRETE BLOCKS


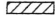
- ABBREVIATIONS :
- BOUNDARY LINE
  - R.C. REINFORCED CONCRETE
  - A.F. ARCH. FEATURE
  - C.W. CURTAIN WALL
  - M.L. METAL LOUVER
  - KIT. KITCHEN
  - ST. STORE ROOM
  - DN DOWN
  - BAL BALCONY
  - U.P. UTILITY PLATFORM
  - mm MILLIMETRE
  - A.F.F.L. ABOVE FINISHED FLOOR LEVEL
  - A.S.F.L. ABOVE STRUCTURAL FLOOR LEVEL
  - F.A. 320x430 OR 240x240 GAS FLUE APERTURE TO SUIT THE SELECTED GAS HEATER MODEL
  - T.G.B. TEMPERED GLASS BALUSTRADE MIN. 1100mm, A.F.F.L. / MIN. 1200mm, A.F.F.L. FOR ACOUSTIC BALCONY
  - R.S.M.R.R. REFUSE STORAGE AND MATERIAL RECOVERY ROOM
  - M.R. METAL RAILING MIN. 1000mm, A.F.F.L.
  - R.C.C. MIN. 300mmH, R.C. CURB
  - R.C.C. 2 MIN. 100mmH, R.C. CURB
  - C.C.C. MIN. 150mmH, C.C. CURB
  - W.M.C. WATER METER CABINET
  - E.M.R. ELEC. METER ROOM
  - H.R. HOSE REEL
  - F.H. FIRE HYDRANT
  - F.E. 4.5 kg CO<sub>2</sub> FIRE EXTINGUISHER
  - W.F.E. 9 L WATER FIRE EXTINGUISHER
  - C.S.C. COVERED SURFACE CHANNEL W/ 2 DRAIN OUTLET
  - EXIT SIGN
  - FIREMAN'S LIFT
  - ACCESSIBLE LIFT
  - M.V. MECHANICAL VENTILATION
  - ARTIFICIAL LIGHTING
  - PROPOSED STRUCTURAL LEVEL IN METERS ABOVE P.D.
  - FINISHED LEVEL IN METERS ABOVE P.D.
  - FIRE SERVICE ACCESS POINT
  - W.P.A.L. WEATHERPROOF EXHAUST AIR LOUVER
  - FIREMAN'S LIFT LOBBY
  - TEMPORARY REFUGE SPACE 1500mm X 1500mm OR 1500mm X 750mm

TOWER 5  
 2/F - 32/F PLAN  
 (27 STOREYS)

TOWER 6  
 2/F - 32/F PLAN  
 (27 STOREYS)

WORKING PLATFORM TYPE 1 5m x 5m (LOADING: 5000KG)  
 WORKING PLATFORM TYPE 2 6.5m x 5m (LOADING: 8000KG)



LEGEND:  
 PREFABRICATED EXTERNAL WALL  
 SOLID CONCRETE BLOCKS

ABBREVIATIONS :

- BOUNDARY LINE
- R.C. REINFORCED CONCRETE
- A.F. ARCH. FEATURE
- C.W. CURTAIN WALL
- M.L. METAL LOUVRE
- KIT. KITCHEN
- ST. STORE ROOM
- DN. DOWN
- BAL. BALCONY
- U.P. UTILITY PLATFORM
- mm MILLIMETRE
- A.F.F.L. ABOVE FINISHED FLOOR LEVEL
- A.S.F.L. ABOVE STRUCTURAL FLOOR LEVEL
- F.A. 320x420 OR 240x240 GAS FLUE APERTURE TO SUIT THE SELECTED GAS HEATER MODEL
- T.G.B. TEMPERED GLASS BALUSTRADE MIN. 1100mmH. A.F.F.L. / MIN. 1200mmH. A.F.F.L. FOR ACOUSTIC BALCONY
- R.S.M.R.R. REFUSE STORAGE AND MATERIAL RECOVERY ROOM
- M.R. METAL RAILING MIN. 1100mmH. A.F.F.L.
- R.C.C. MIN. 300mmH. R.C. CURB
- R.C.C. 2 MIN. 100mmH. R.C. CURB
- C.C.C. MIN. 150mmH. C.C. CURB
- W.M.C. WATER METER CABINET
- E.M.R. ELEC. METER ROOM
- H.R. HOSE REEL
- F.H. FIRE HYDRANT
- F.E. 4.5 kg CO<sub>2</sub> FIRE EXTINGUISHER
- W.F.E. 9 L. WATER FIRE EXTINGUISHER
- C.S.C. COVERED SURFACE CHANNEL W/ 2 DRAIN OUTLET
- EXIT SIGN
- FIREMAN'S LIFT
- ACCESSIBLE LIFT
- MECHANICAL VENTILATION
- ARTIFICIAL LIGHTING
- PROPOSED STRUCTURAL LEVEL IN METERS ABOVE P.D.
- FINISHED LEVEL IN METERS ABOVE P.D.
- FIRE SERVICE ACCESS POINT
- W.P.A.L. WEATHERPROOF EXHAUST AIR LOUVER
- FIREMAN'S LIFT LOBBY
- TEMPORARY REFUGE SPACE 1500mm x 1500mm OR 1500mm x 750mm

B.D. REF :  
 F.S.D. REF :  
 Note :  
 1.All dimensions are in mm.  
 2.All elevations are viewed from outside.  
 3.All dimensions to be verified on site before fabrication.

GENERAL NOTES  
**Legend :**  
 1. F.F.L.-- Finished Floor Level  
 2. S.F.L.-- Structural Floor Level  
 3. (R) -- Reversed Detail  
 X1 -- DETAIL MARK NO.  
 X001 -- REFER SHEET NO.

REV.	DATE	DESCRIPTION	BY
------	------	-------------	----

CLIENT :  
**MARBLE EDGE INVESTMENT LTD.**

ARCHITECT :  
**RONALD LU & PARTNERS**  
 ARCHITECTS | PLANNERS | INTERIOR DESIGNERS

STRUCTURAL ENGINEER :  
**ICMA C-M WONG & ASSOCIATES LTD**  
 (Professional Seal)

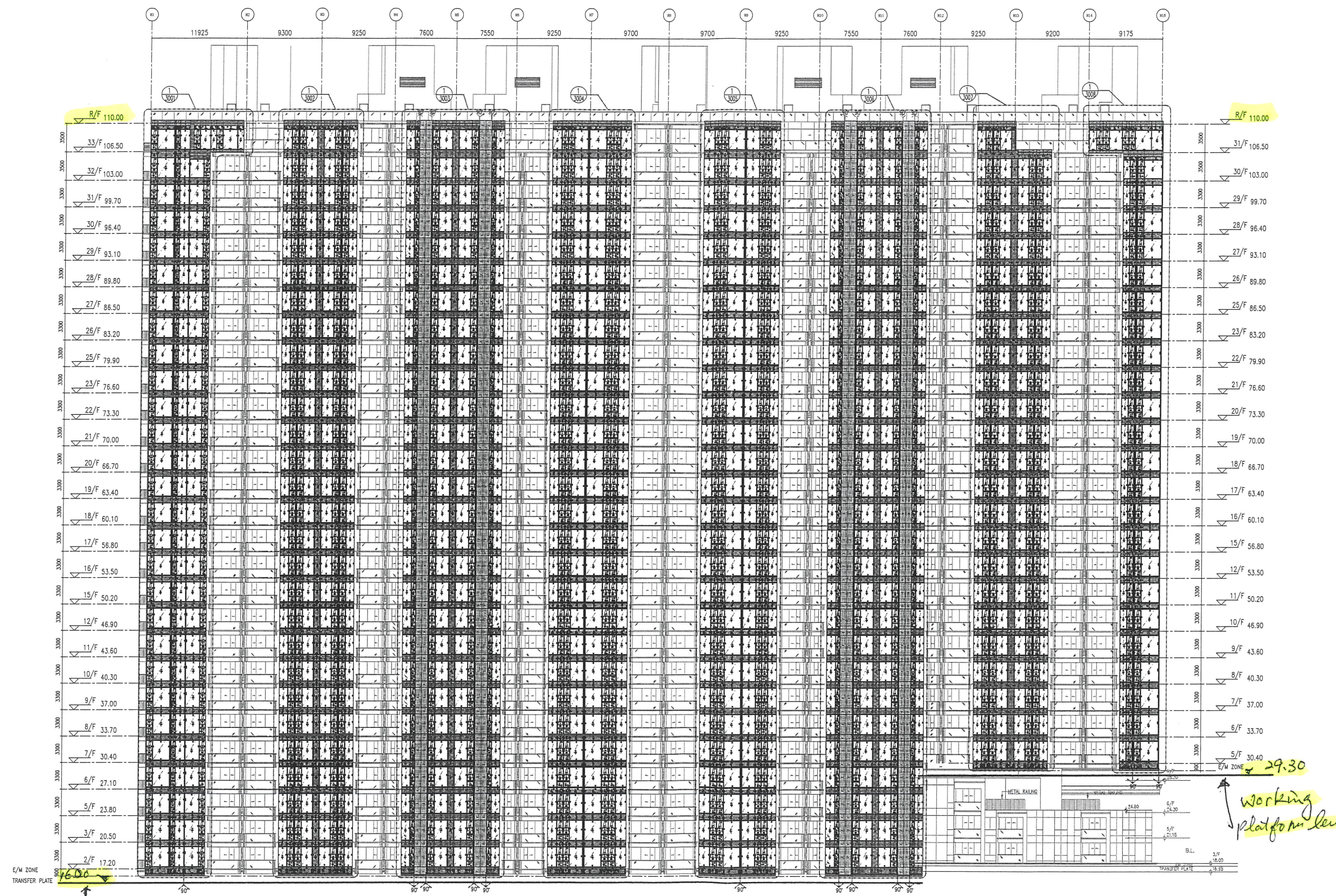
MAIN CONTRACTOR :  
**裕民建築有限公司**

**美特鋁質有限公司**  
 MIDI ALUMINIUM FABRICATOR LTD.  
 Units 6-8, Sunray Industrial Centre, 1/F  
 610 Cha Kwo Ling Road, Kowloon  
 Tel:23489211-4 Fax:(852)27727666

PROJECT :  
**PROPOSED RESIDENTIAL DEVELOPMENT AT NEW KOWLOON INLAND LOT. NO.6552**

TITLE :  
**TOWER ELEVATION "1" FOR TOWER 1-8**

JOB NO. : J-857  
 DRAWN BY : AN DATE : 18.Oct.2021  
 CHKD BY : SCALE A1: 1:250 A3:  
 DWG. NO. : SD-EL-2001 REV. : -



Working platform level.

**LEGEND :**  
 S.F.L. = STRUCTURAL FLOOR LEVEL  
 C.W. = UNITIZED CURTAIN WALL (FOR BD APPROVAL)  
 <EM1 = WIND LOAD +DEAD LOAD FIXING LOCATION  
 <EM2 = WIND LOAD +DEAD LOAD FIXING LOCATION  
 <EM3 = WIND LOAD FIXING LOCATION  
 GL1 = 8mm HEAT STRENGTHEN LOW IRON GLASS + 1.52 PVB INTERLAYER  
 8mm HEAT STRENGTHEN LOW IRON GLASS + 12mm AIR SPACE + 10mm LOW IRON GLASS FULLY TEMPERED IGU LAMINATED CLEAR GLASS

GL2 = 8mm HEAT STRENGTHEN LOW IRON GLASS + 12mm AIR SPACE + 12mm LOW IRON FULLY TEMPERED IGU LAMINATED CLEAR GLASS  
 6mm HEAT STRENGTHEN LOW IRON GLASS + 1.52 PVB INTERLAYER  
 GL3 = 8mm HEAT STRENGTHEN LOW IRON GLASS + 1.52 PVB INTERLAYER + 8mm LOW IRON FULLY TEMPERED IGU LAMINATED CLEAR GLASS+ 9mm AIR SPACE +  
 GL4 = 8mm LOW IRON FULLY TEMPERED IGU LAMINATED CLEAR GLASS 1.52 PVB INTERLAYER  
 8mm FULLY TEMPERED LAMINATED GLASS  
 GB = 8mm FULLY TEMPERED MONOLITHIC CLEAR GLASS (BARRIER)

S.J. = STACK JOINT  
 M1 = EXTRUDED ALUM. MALE MULLION (AL03)  
 M2 = EXTRUDED ALUM. MALE MULLION (AL03A)  
 M3 = EXTRUDED ALUM. FEMALE MULLION (AL04)  
 M4 = EXTRUDED ALUM. FEMALE MULLION (AL04A)  
 M7 = EXTRUDED ALUM. OUTER CORNER MALE MULLION (AL07)  
 M8 = EXTRUDED ALUM. OUTER CORNER FEMALE MULLION (AL08)  
 M9 = EXTRUDED ALUM. OUTER CORNER MALE MULLION (AL86)  
 M10 = EXTRUDED ALUM. OUTER CORNER FEMALE MULLION (AL85)  
 M13 = EXTRUDED ALUM. INTERMEDIATE MULLION (AL65)  
 M14 = EXTRUDED ALUM. INTERMEDIATE MULLION (AL66)  
 M15 = EXTRUDED ALUM. MALE MULLION (AL67)  
 M16 = EXTRUDED ALUM. FEMALE MULLION (AL68)

T1 = EXTRUDED ALUM. SILL STACK JOINT (AL11)  
 T2 = EXTRUDED ALUM. GUTTER STACK JOINT (AL12)  
 T3 = EXTRUDED ALUM. INTERMEDIATE TRANSOM (AL13)  
 T4 = EXTRUDED ALUM. INTERMEDIATE TRANSOM (AL15)  
 T5 = EXTRUDED ALUM. INTERMEDIATE TRANSOM (AL14)  
 T7 = EXTRUDED ALUM. TRANSOM (AL69)  
 T8 = EXTRUDED ALUM. TRANSOM (AL70)  
 T9 = EXTRUDED ALUM. TRANSOM (AL71)  
 T10 = EXTRUDED ALUM. TRANSOM (AL72)  
 T11 = EXTRUDED ALUM. INTERMEDIATE TRANSOM(AL106)  
 T12 = EXTRUDED ALUM. INTERMEDIATE TRANSOM(AL107)  
 T13 = EXTRUDED ALUM. GUTTER STACK JOINT (AL105)

