

美特鋁質有限公司

MIDI ALUMINIUM FABRICATOR LTD.



工程指示 / 要求簡箋 ENGINEER INSTRUCTIONS(E.I.)

工程指示編號:	EI- 7219	修改版本:	-
	HK- 0029		
工程編號:	J 856	工程名稱:	天榮站
收件人:	生統//Maggie/謝永林	發件人:	Iris
工程項目:	T1-T3 地盤用46F門窗 趟門大貨 鐵件(B.M表+圖則表+加工圖+位置圖) 補出	日期:	10/01/2024

<input checked="" type="checkbox"/> 原合約工程包	<input type="checkbox"/> 原合約工程加 / 減脹 QT-	<input type="checkbox"/> 新工程報價 QT-
--	--	------------------------------------

信件批核號碼/圖紙參考編號:	批核模具圖紙編號:
客戶指示附件:	管理內部批簽署:

<input type="checkbox"/> 初步鋁料 B.M.	<input type="checkbox"/> 加工拆圖, 然後生產	<input type="checkbox"/> 尺寸表
<input type="checkbox"/> 正式鋁料 B.M.	<input type="checkbox"/> 技術上資料/指示	<input type="checkbox"/> 報價
<input type="checkbox"/> 配件 B.M.	<input type="checkbox"/> 樣辦或貨品說明書	<input type="checkbox"/> 分判合約
<input type="checkbox"/> 其他:		

內容:
T1-T3 46F地盤用門窗 趟門大貨 鐵件(B.M表+圖則表+加工圖+位置圖) 補出
要做熱浸鋅處理 (稍後提供證書)
驗焊比率: VISUAL 100%, MPI 20%
T1-T3: 2024年1月內出貨 (實際時間代打指示)
完成上列要求日期: 24/01/2024

國內

<input type="checkbox"/> 生產技術總監	<input type="checkbox"/> 連附件	<input checked="" type="checkbox"/> 技術部	<input checked="" type="checkbox"/> 連附件	<input type="checkbox"/> 生產部	<input type="checkbox"/> 連附件
<input type="checkbox"/> 採購部	<input type="checkbox"/> 連附件	<input checked="" type="checkbox"/> 生產統籌部	<input checked="" type="checkbox"/> 連附件	<input type="checkbox"/> 報關組	<input type="checkbox"/> 連附件
<input type="checkbox"/> 質檢部	<input type="checkbox"/> 連附件	<input type="checkbox"/> 會計部	<input type="checkbox"/> 連附件	<input type="checkbox"/> 機械設計部	<input type="checkbox"/> 連附件
<input type="checkbox"/> 香港辦	<input type="checkbox"/> 連附件	<input type="checkbox"/> 其他:			

香港

<input type="checkbox"/> 行政部	<input type="checkbox"/> 連附件	<input type="checkbox"/> 會計部	<input type="checkbox"/> 連附件	<input type="checkbox"/> 統籌部	<input type="checkbox"/> 連附件	<input type="checkbox"/> 工程部	<input type="checkbox"/> 連附件
<input checked="" type="checkbox"/> 採購部	<input checked="" type="checkbox"/> 連附件	<input type="checkbox"/> QS部	<input type="checkbox"/> 連附件	<input checked="" type="checkbox"/> 地盤管理	<input checked="" type="checkbox"/> 連附件	<input type="checkbox"/> 維修部	<input type="checkbox"/> 連附件

*發件人簽署: Iris	*組別成員批核簽署:
傳遞編號:	項目經理簽署:


*[Handwritten signatures and date 12/1/24]*

圖則登記表  
DRAWING REGISTER

圖則編號 Drg. No.		圖則名稱 Drawing Title				接收日期 Receiving Date (適用於客戶圖則)								
工程名稱 Project Title: 天水圍天榮站		46F-后裝門窗鐵件拆圖 (地盤用)		年										
工程編號 Project No: J-856		分發予 Distributed To		月										
				日										
				年	23									
				月	10									
				日	17									
				修訂編號 Revision No.										
BK1-T	角鐵拆圖	1	-											
BK1-T2	角鐵拆圖	2	-											
BK1-B	角鐵拆圖	3	-											
BK1-B2	角鐵拆圖	4	-											
BK1-Q	角鐵拆圖	5	-											
BK2-T	角鐵拆圖	6	-											
BK2-B	角鐵拆圖	7	-											
BK2-Q	角鐵拆圖	8	-											
BT3A	鐵件固定碼拆圖	9	-											
BB3B	鐵件固定碼拆圖	10	-											
BT4A	鐵件固定碼拆圖	11	-											
BB4B	鐵件固定碼拆圖	12	-											
BT5A	鐵件固定碼拆圖	13	-											
BB5B	鐵件固定碼拆圖	14	-											
J856-IW-BT1	鐵件拆圖	15	-											
J856-IW-BB1	鐵件拆圖	16	-											
J856-IW-BB1(1)	鐵件拆圖	17	-											
J856-IW-BT3	鐵件拆圖	18	-											
J856-IW-BB3	鐵件拆圖	19	-											
J856-IW-BB2	鐵件拆圖	20	-											
J856-SD-IW-5143	鐵件位置圖	21	-											
J856-SD-IW-5153	鐵件位置圖	22	-											
J856-SD-IW-5156	鐵件位置圖	23	-											
J856-SD-IW-5164	鐵件位置圖	24	-											
J856-SD-IW-5165	鐵件位置圖	25	-											

圖則登記表  
DRAWING REGISTER

接收日期 Receiving Date (適用於客戶圖則)									
工程名稱 Project Title: 天水圍天榮站		年							
46F-后裝門窗鐵件拆圖 (地盤用)		月							
工程編號 Project No: J-856		日							
分發予 Distributed To									
		年	23						
		月	10						
		日	17						
圖則編號 Drg. No.	圖則名稱 Drawing Title		修訂編號 Revision No.						
J856-SD-IW-5249	鐵件位置圖	26	-						
J856-SD-IW-5254	鐵件位置圖	27	-						
J856-SD-IW-5259	鐵件位置圖	28	-						
J856-SD-IW-5260	鐵件位置圖	29	-						
J856-SD-IW-5347	鐵件位置圖	30	-						
J856-SD-IW-5350	鐵件位置圖	31	-						
J856-SD-IW-5351	鐵件位置圖	32	-						
J856-SD-IW-5352	鐵件位置圖	33	-						
J856-SD-IW-5353	鐵件位置圖	34	-						
J856-SD-IW-5355	鐵件位置圖	35	-						
J856-SD-IW-5356	鐵件位置圖	36	-						
J856-SD-IW-5361	鐵件位置圖	37	-						
J856-SD-IW-5363	鐵件位置圖	38	-						
J856-SD-IW-5364	鐵件位置圖	39	-						
J856-SD-IW-5365	鐵件位置圖	40	-						

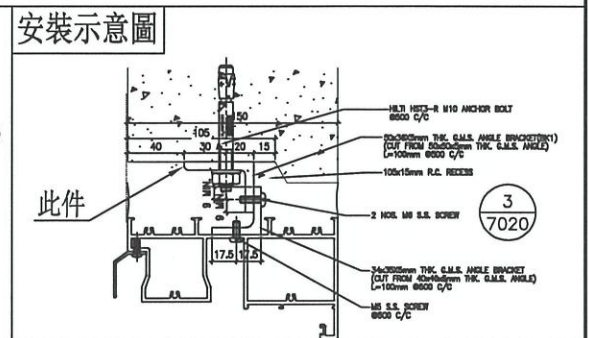
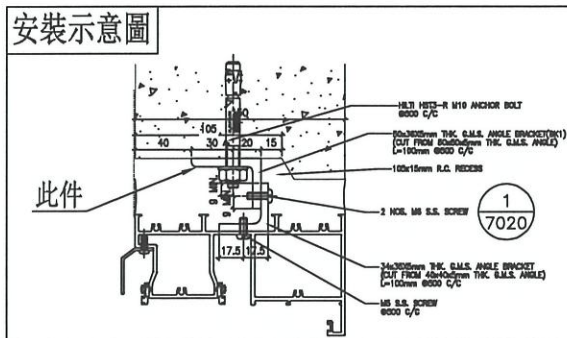
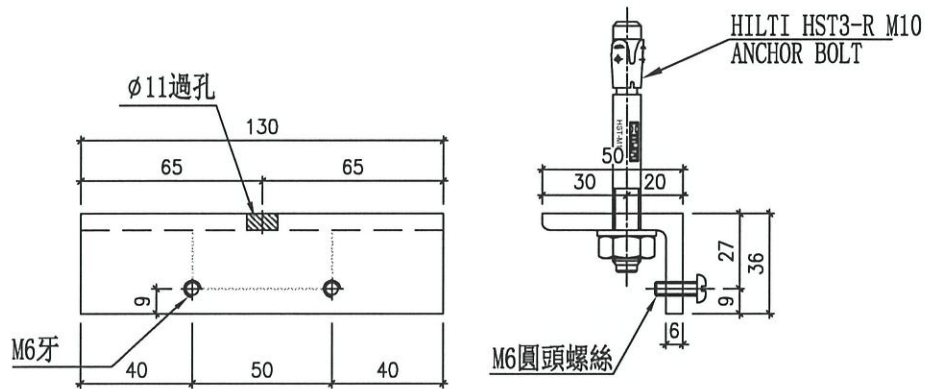
 <b>美特鋁質有限公司</b> MIDI Aluminium Fabricator Ltd 地盤用鐵件B.M.表		<b>工程號：J-856</b> 地盤名稱：天榮站 項目類別：46F-門窗用鐵件 A/C Code：		<b>計算：謝永林/劉龍浩</b> <b>核對：謝永林</b> <b>批准：</b>		<b>日期：2023.8.31</b> <b>日期：2023.10.17</b> <b>日期：</b>		<b>送呈：胡哥</b> <b>副本：</b> <b>總重量： 328.14 KG</b> <b>此BM依據拆圖資料計算</b>		
序號	修改標示	物料編號	配件名稱	顏色	實用	後備	總數	單件重量		備注
								單位	KG	
1		BK1-T	角鐵拆圖	熱浸鋅/涂瀝青油	28	0	28	件	0.490	13.716
2		BK1-T2	角鐵拆圖	熱浸鋅/涂瀝青油	20	0	20	件	0.490	9.797
3		BK1-B	角鐵拆圖	熱浸鋅/涂瀝青油	28	0	28	件	0.490	13.716
4		BK1-B2	角鐵拆圖	熱浸鋅/涂瀝青油	20	0	20	件	0.490	9.797
5		BK1-Q	角鐵拆圖	熱浸鋅/涂瀝青油	60	0	60	件	0.490	29.390
6		BK2-T	角鐵拆圖	熱浸鋅/涂瀝青油	19	0	19	件	0.490	9.307
7		BK2-B	角鐵拆圖	熱浸鋅/涂瀝青油	19	0	19	件	0.490	9.307
8		BK2-Q	角鐵拆圖	熱浸鋅/涂瀝青油	20	0	20	件	0.490	9.797
9		BT3A	鐵件固定碼拆圖	熱浸鋅/涂瀝青油	8	0	8	件	3.454	27.632
10		BT3B	鐵件固定碼拆圖	熱浸鋅/涂瀝青油	8	0	8	件	3.395	27.161
11		BT4A	鐵件固定碼拆圖	熱浸鋅/涂瀝青油	4	0	4	件	3.454	13.816
12		BB4B	鐵件固定碼拆圖	熱浸鋅/涂瀝青油	4	0	4	件	3.395	13.581
13		BT5A	鐵件固定碼拆圖	熱浸鋅/涂瀝青油	4	0	4	件	3.454	13.816
14		BT5B	鐵件固定碼拆圖	熱浸鋅/涂瀝青油	4	0	4	件	3.395	13.581
15		J856-IW-BT1	中企固定鐵件	熱浸鋅/涂瀝青油	21	0	21	件	2.410	50.620
16		J856-IW-BB1	中企固定鐵件	熱浸鋅/涂瀝青油	3	0	3	件	2.445	7.335
17		J856-IW-BB1(1)	中企固定鐵件	熱浸鋅/涂瀝青油	18	0	18	件	2.445	44.009
18		J856-IW-BT3	中企固定鐵件	熱浸鋅/涂瀝青油	2	0	2	件	2.357	4.714
19		J856-IW-BB3	中企固定鐵件	熱浸鋅/涂瀝青油	2	0	2	件	2.357	4.714
20		J856-IW-BB2	中企固定鐵件	熱浸鋅/涂瀝青油	1	0	1	件	2.334	2.334
						<b>合計：</b>	<b>293</b>	<b>件</b>	<b>合計：</b>	<b>328.14</b>

**美特鋁質** 有限公司  
MIDI Aluminium Fabricator Ltd.

工程號 J-856 | 地盤 天榮站



物料編號	數量	樓層	使用窗號	座數
BK1-T	4	46/F	AW301	T3
BK1-T	12	46/F	AW302	T3
BK1-T	4	46/F	AW303	T3
BK1-T	8	46/F	AW306	T3
合計	28			



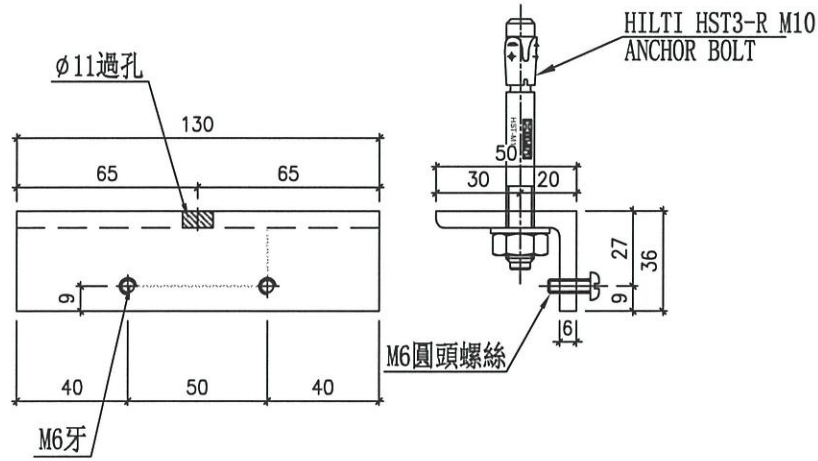
名稱	角鐵拆圖	制圖	黃瓊玉	2023.08.28	修改		
材料	50x36x6mm角鐵	復核	謝永林	2023.09.07	日期		
顏色	熱浸鋅/塗瀝青油	批准			圖號	BK1-T	



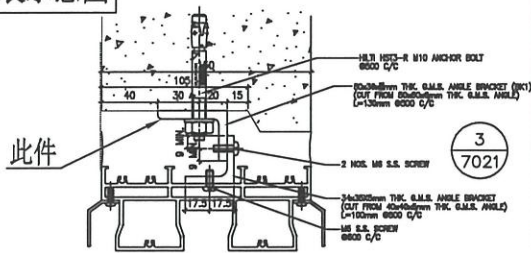
工程號 J-856 地盤 天榮站



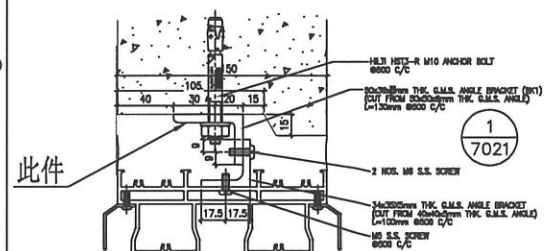
物料編號	數量	樓層	使用窗號	座數
BK1-T2	4	46/F	AW103	T1
BK1-T2	6	46/F	AW106	T1
BK1-T2	6	46/F	AW204	T2
BK1-T2	4	46/F	AW305	T3
合計	20			



安裝示意圖



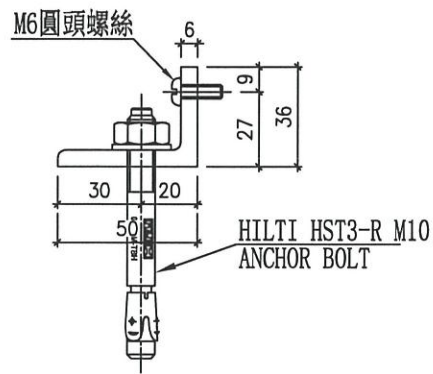
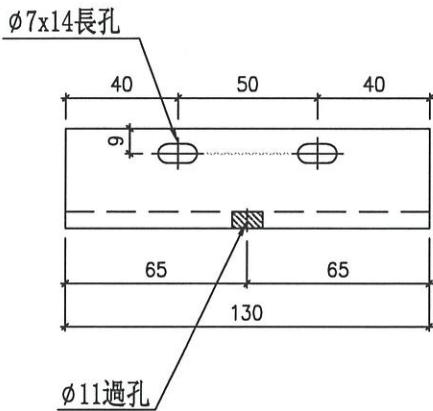
安裝示意圖



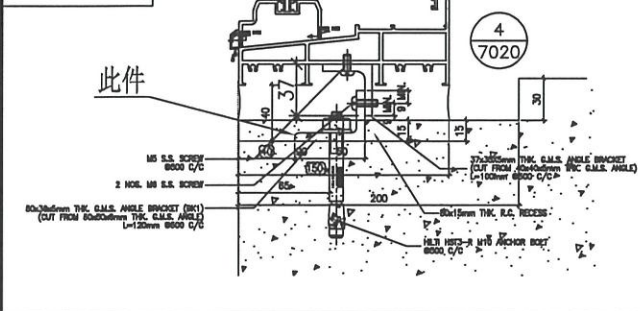
名稱	角鐵拆圖	制圖	黃瓊玉	2023.08.28	修改			
材料	50x36x6mm角鐵	復核	謝永林	2023.09.07	日期			
顏色	熱浸鋅/塗瀝青油	批准			圖號	BK1-T2		

 <b>美特鋁質</b> 有限公司 MIDI Aluminium Fabricator Ltd.			
工程號	J-856	地盤	天榮站

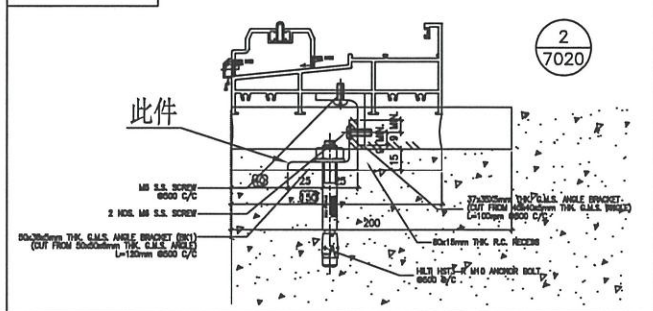
物料編號	數量	樓層	使用窗號	座數
BK1 - B	4	46/F	AW301	T3
BK1 - B	12	46/F	AW302	T3
BK1 - B	4	46/F	AW303	T3
BK1 - B	8	46/F	AW306	T3
合計	28			



安裝示意圖



安裝示意圖

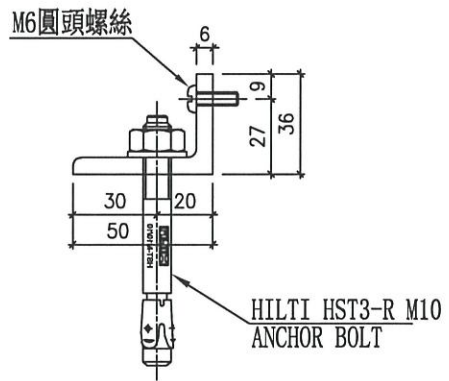
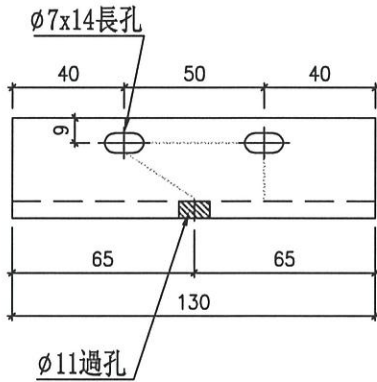


名稱	角鐵拆圖	制圖	黃瓊玉	2023.08.28	修改		
材料	50x36x6mm角鐵	復核	謝永林	2023.09.07	日期		
顏色	熱浸鋅/塗瀝青油	批准			圖號	BK1-B	

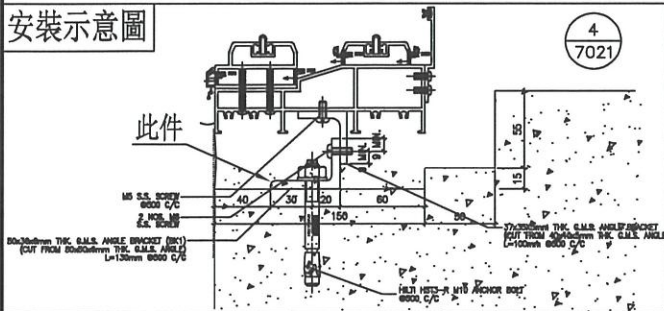
**美特鋁質** 有限公司  
MIDI Aluminium Fabricator Ltd.

工程號 J-856 | 地盤 | 天榮站

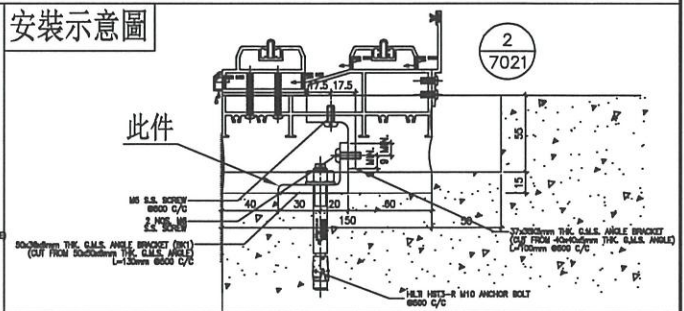
物料編號	數量	樓層	使用窗號	座數
BK1-B2	4	46/F	AW103	T1
BK1-B2	6	46/F	AW106	T1
BK1-B2	6	46/F	AW204	T2
BK1-B2	4	46/F	AW305	T3
合計	20			



安裝示意圖



安裝示意圖

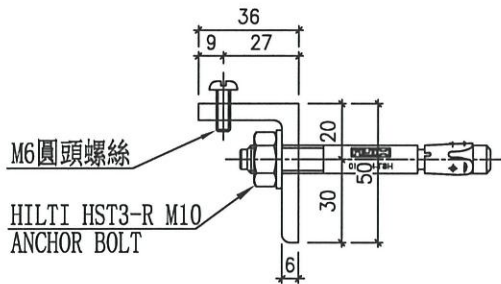
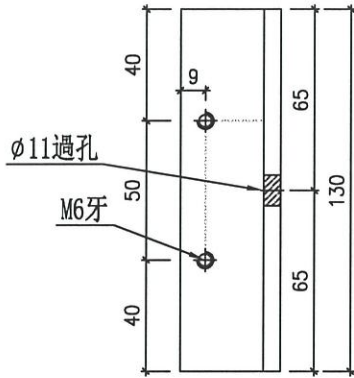


名稱	角鐵拆圖	制圖	黃瓊玉	2023.08.28	修改		
材料	50x36x6mm角鐵	復核	謝永林	2023.09.07	日期		
顏色	熱浸鋅/塗瀝青油	批准			圖號	BK1-B2	



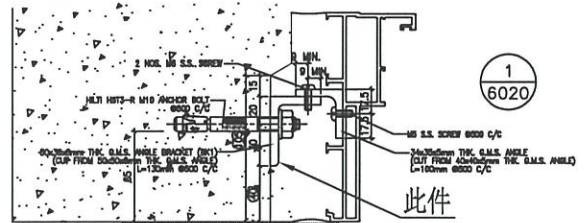
工程號 J-856 | 地盤 天榮站

地盤用

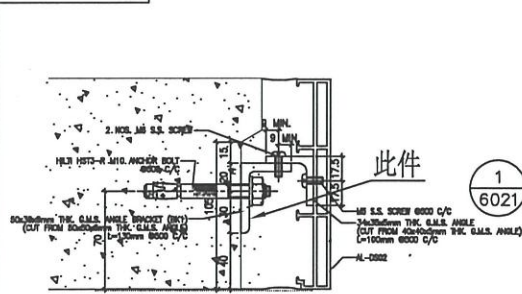


物料編號	數量	樓層	使用窗號	座數
BK1-Q	5	46/F	AW103	T1
BK1-Q	10	46/F	AW106	T1
BK1-Q	10	46/F	AW204	T2
BK1-Q	5	46/F	AW301	T3
BK1-Q	10	46/F	AW302	T3
BK1-Q	5	46/F	AW303	T3
BK1-Q	5	46/F	AW305	T3
BK1-Q	10	46/F	AW306	T3
合計	60			

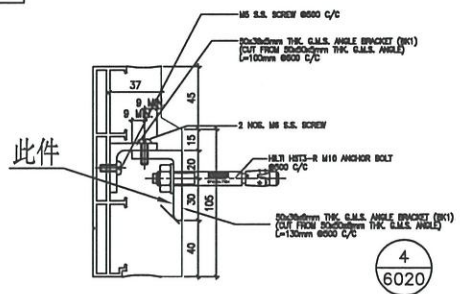
安裝示意圖



安裝示意圖



安裝示意圖



名稱	角鐵拆圖	制圖	黃瓊玉	2023.08.28	修改		
材料	50x36x6mm角鐵	復核	謝永林	2023.09.07	日期		
顏色	熱浸鋅/塗瀝青油	批准			圖號	BK1-Q	

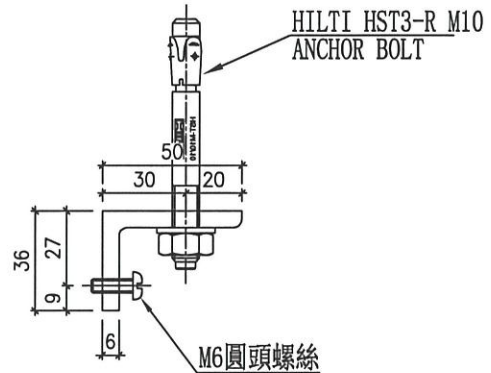
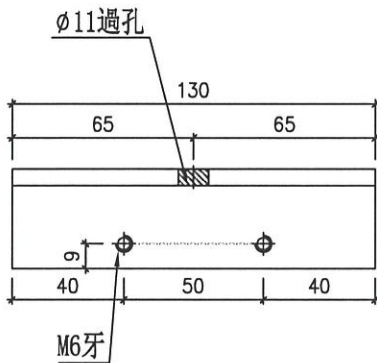


美特鋁質 有限公司  
MIDI Aluminium Fabricator Ltd.

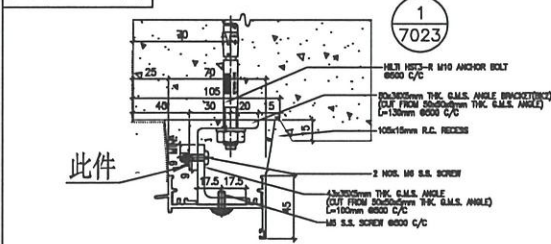
工程號 J-856 | 地盤 | 天榮站



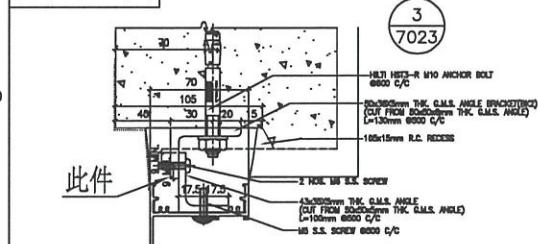
物料編號	數量	樓層	使用窗號	座數
BK2-T	5	46/F	AW103	T1
BK2-T	5	46/F	AW301	T3
BK2-T	5	46/F	AW303	T3
BK2-T	4	46/F	AW305	T3
合計	19			



安裝示意圖



安裝示意圖



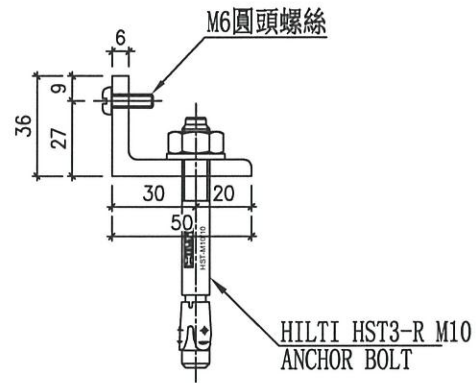
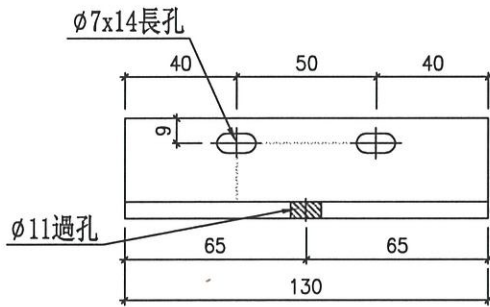
名稱	角鐵拆圖	制圖	黃瓊玉	2023.08.28	修改		
材料	50x36x6mm角鐵	復核	謝永林	2023.09.07	日期		
顏色	熱浸鋅/塗瀝青油	批准			圖號	BK2-T	



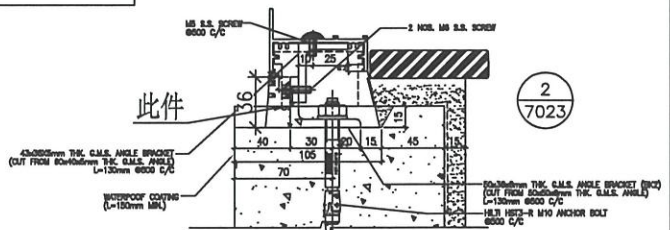
工程號 J-856 | 地盤 | 天榮站



物料編號	數量	樓層	使用窗號	座數
BK2-B	5	46/F	AW103	T1
BK2-B	5	46/F	AW301	T3
BK2-B	5	46/F	AW303	T3
BK2-B	4	46/F	AW305	T3
合計	19			



安裝示意圖



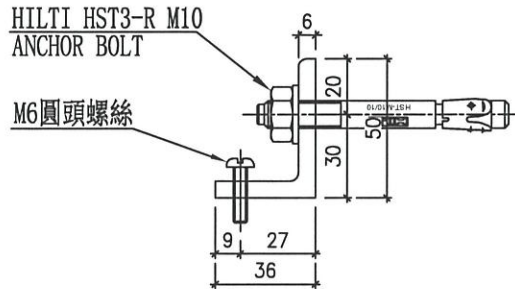
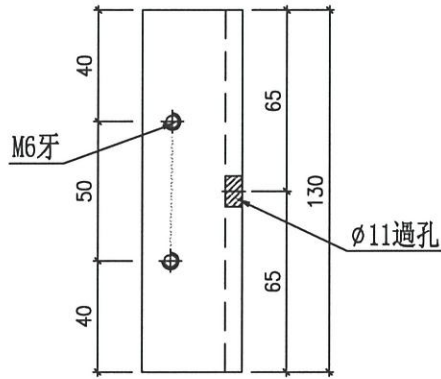
名稱	角鐵拆圖	制圖	黃瓊玉	2023.08.28	修改		
材料	50x36x6mm角鐵	復核	謝永林	2023.09.07	日期		
顏色	熱浸鋅/塗瀝青油	批准			圖號	BK2-B	



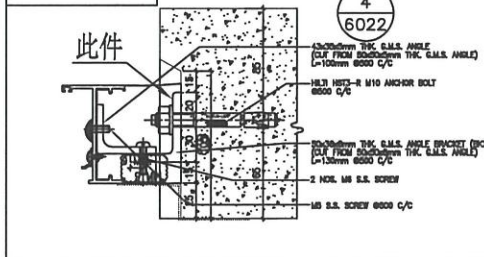
美特鋁質 有限公司  
MIDI Aluminium Fabricator Ltd.

工程號 J-856 | 地盤 天榮站

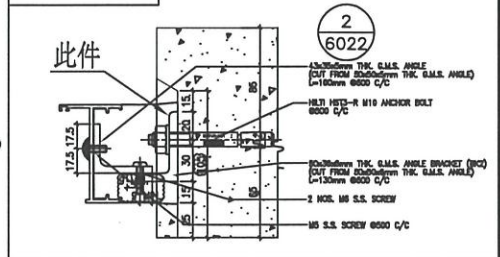
物料編號	數量	樓層	使用窗號	座數
BK2-Q	5	46/F	AW103	T1
BK2-Q	5	46/F	AW301	T3
BK2-Q	5	46/F	AW303	T3
BK2-Q	5	46/F	AW305	T3
合計	20			



安裝示意圖



安裝示意圖



名稱	角鐵拆圖	制圖	黃瓊玉	2023. 08. 28	修改			
材料	50x36x6mm角鐵	復核	謝永林	2023. 09. 07	日期			
顏色	熱浸鋅/塗瀝青油	批准			圖號	BK2-Q		

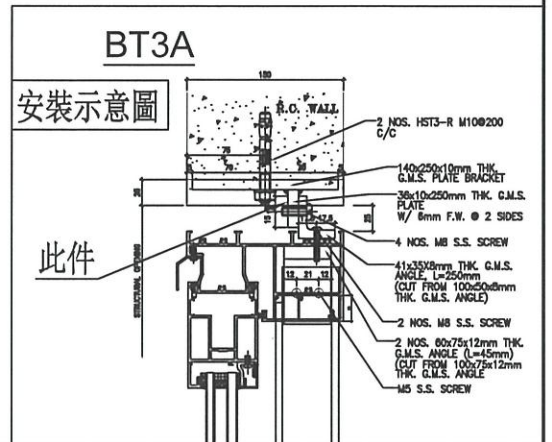
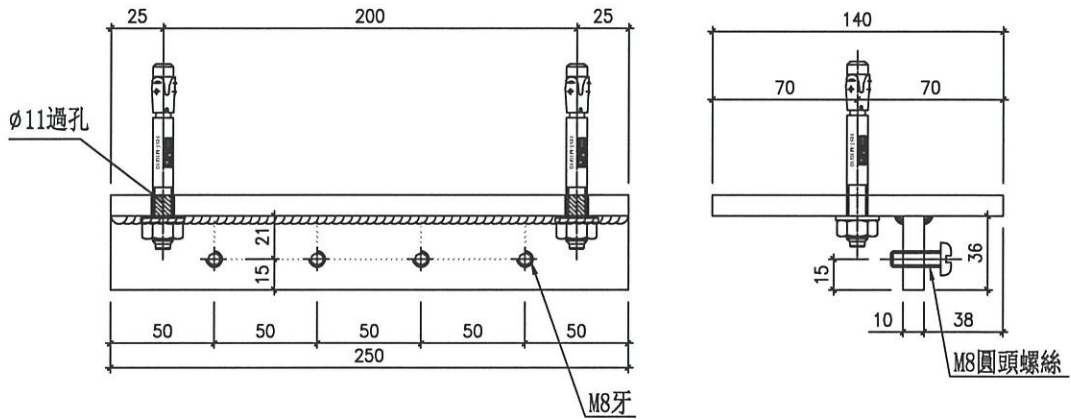


美特鋁質 有限公司  
MIDI Aluminium Fabricator Ltd.

工程號 J-856 | 地盤 | 天榮站



數量	樓層	使用窗號	座數
2	46/F	AW301	T3
2	46/F	AW302	T3
2	46/F	AW303	T3
2	46/F	AW306	T3
8	合計		



名稱	鐵件固定碼拆圖	制圖	黃瓊玉	2023. 08. 28	修改		
材料	10mm鐵板	復核	謝永林	2023. 09. 07	日期		
顏色	熱浸鋅/塗瀝青油	批准			圖號	BT3A	

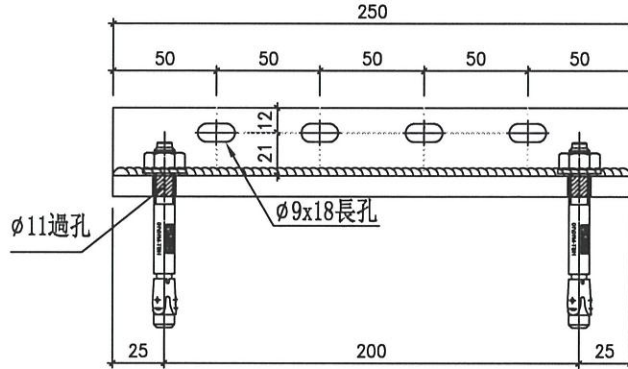
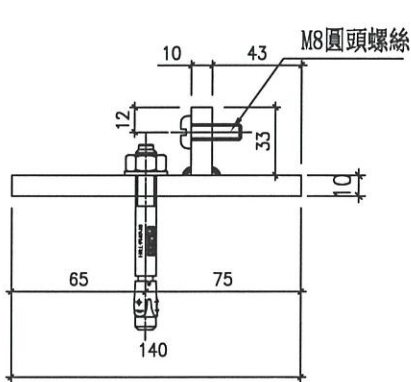


美特鋁質 有限公司  
MIDI Aluminium Fabricator Ltd.

工程號 J-856 | 地盤 | 天榮站

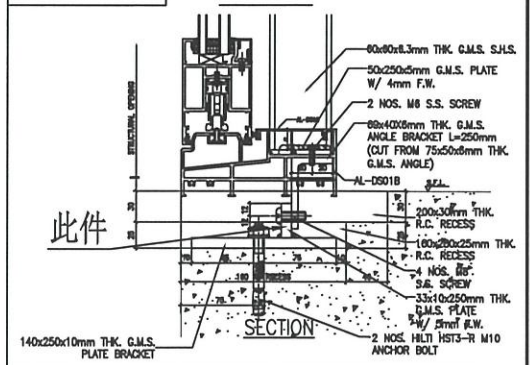


數量	樓層	使用窗號	座數
2	46/F	AW301	T3
2	46/F	AW302	T3
2	46/F	AW303	T3
2	46/F	AW306	T3
8	合計		



安裝示意圖

BB3B



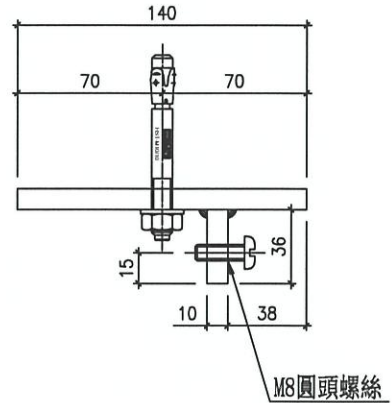
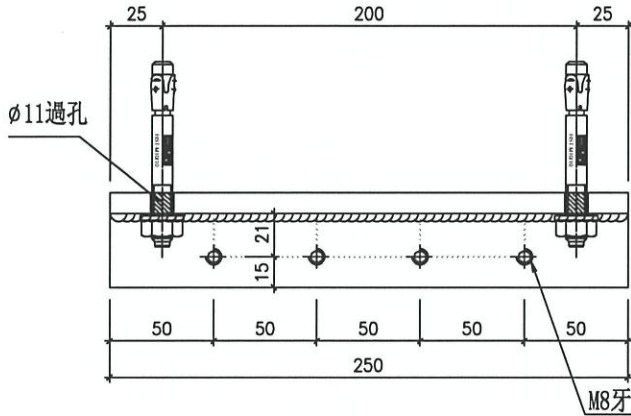
名稱	鐵件固定碼拆圖	制圖	黃瓊玉	2023.08.28	修改			
材料	10mm鐵板	復核	謝永林	2023.09.07	日期			
顏色	熱浸鋅/塗瀝青油	批准			圖號	BB3B		



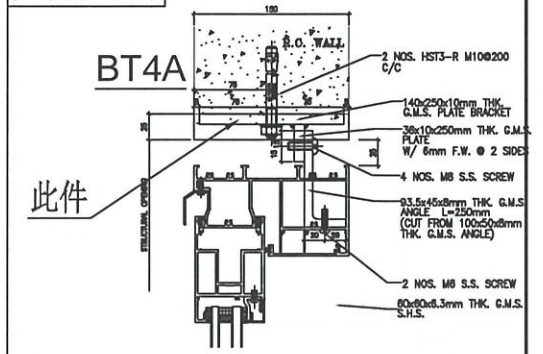
工程號 J-856 | 地盤 | 天榮站



數量	樓層	使用窗號	座數
1	46/F	AW301	T3
1	46/F	AW302	T3
1	46/F	AW303	T3
1	46/F	AW306	T3
4	合計		



安裝示意圖



名稱	鐵件固定碼拆圖	制圖	黃瓊玉	2023. 08. 28	修改		
材料	10mm鐵板	復核	謝永林	2023. 09. 07	日期		
顏色	熱浸鋅/塗瀝青油	批准			圖號	BT4A	

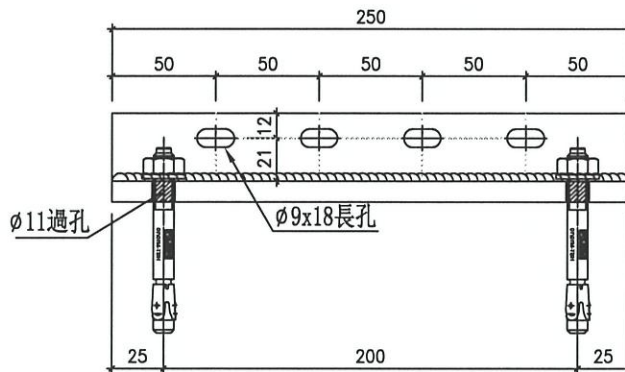
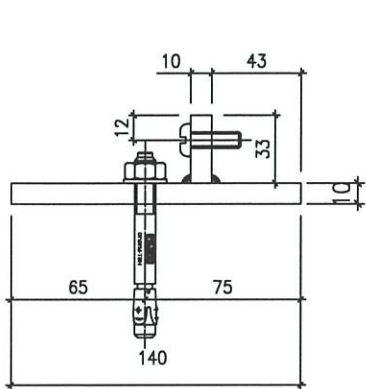


美特鋁質 有限公司  
MIDI Aluminium Fabricator Ltd.

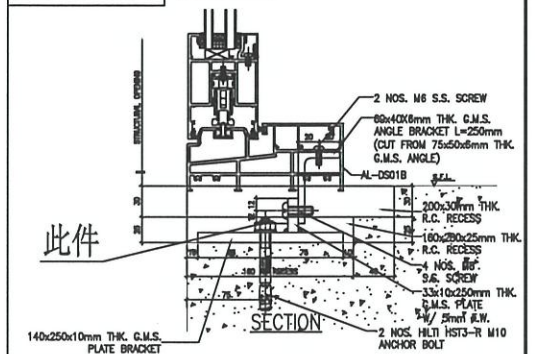
工程號 J-856 | 地盤 | 天榮站



數量	樓層	使用窗號	座數
1	46/F	AW301	T3
1	46/F	AW302	T3
1	46/F	AW303	T3
1	46/F	AW306	T3
4	合計		



安裝示意圖 BB4B



名稱	鐵件固定碼拆圖	制圖	黃瓊玉	2023. 08. 28	修改		
材料	10mm鐵板	復核	謝永林	2023. 09. 07	日期		
顏色	熱浸鋅/塗瀝青油	批准			圖號	BB4B	

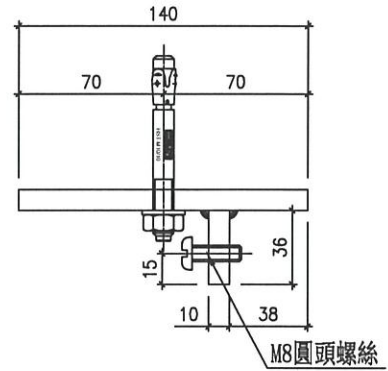
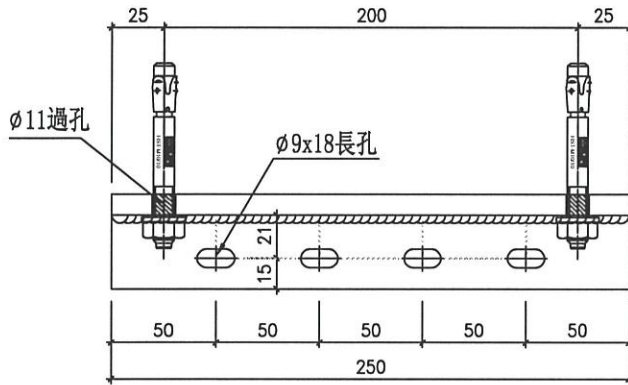


美特鋁質 有限公司  
MIDI Aluminium Fabricator Ltd.

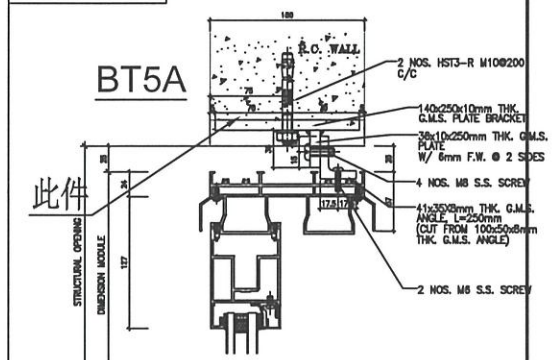
工程號 J-856 | 地盤 | 天榮站



數量	樓層	使用窗號	座數
1	46/F	AW103	T1
1	46/F	AW106	T1
1	46/F	AW204	T2
1	46/F	AW305	T3
4	合計		



安裝示意圖



名稱	鐵件固定碼拆圖	制圖	黃瓊玉	2023.08.28	修改	
材料	10mm鐵板	復核	謝永林	2023.09.07	日期	
顏色	熱浸鋅/塗瀝青油	批准			圖號	BT5A

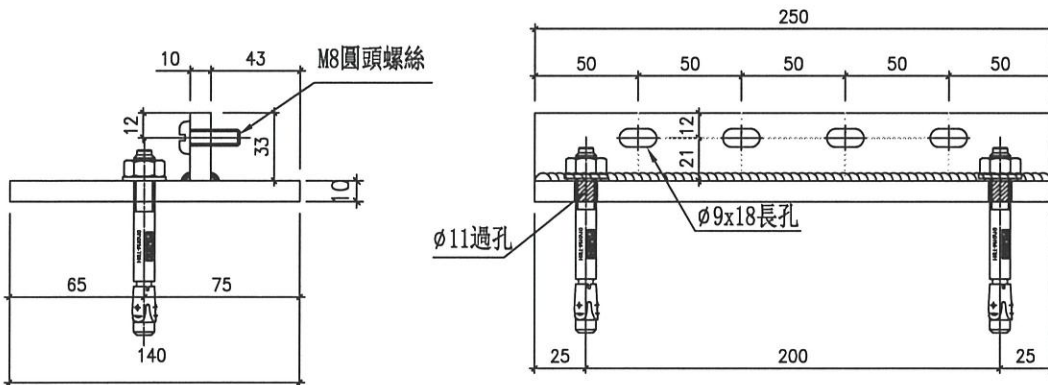


美特鋁質 有限公司  
MIDI Aluminium Fabricator Ltd.

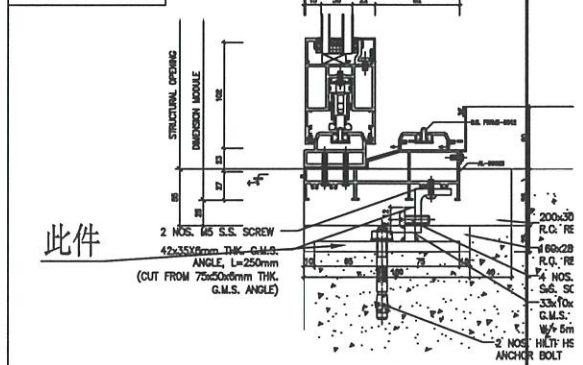
工程號 J-856 | 地盤 | 天榮站



數量	樓層	使用窗號	座數
1	46/F	AW103	T1
1	46/F	AW106	T1
1	46/F	AW204	T2
1	46/F	AW305	T3
4	合計		



安裝示意圖 BB5B



名稱	鐵件固定碼拆圖	制圖	黃瓊玉	2023.08.28	修改		
材料	10mm鐵板	復核	謝永林	2023.09.07	日期		
顏色	熱浸鋅/塗瀝青油	批准			圖號	BB5B	



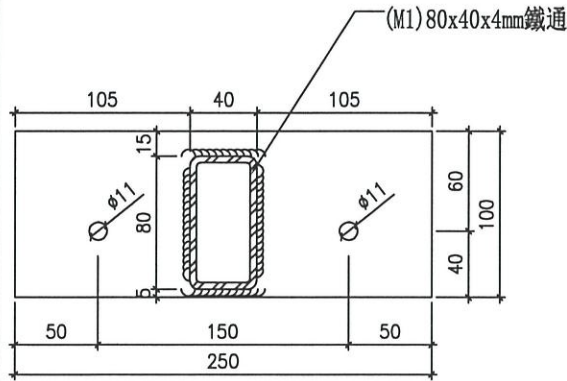
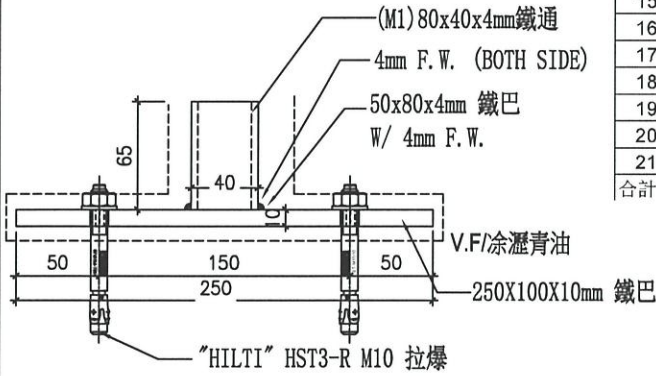
美特鋁質 有限公司  
MIDI Aluminium Fabricator Ltd.

工程號 J-856 | 地盤 | 天榮站

焊接示意件出地盤

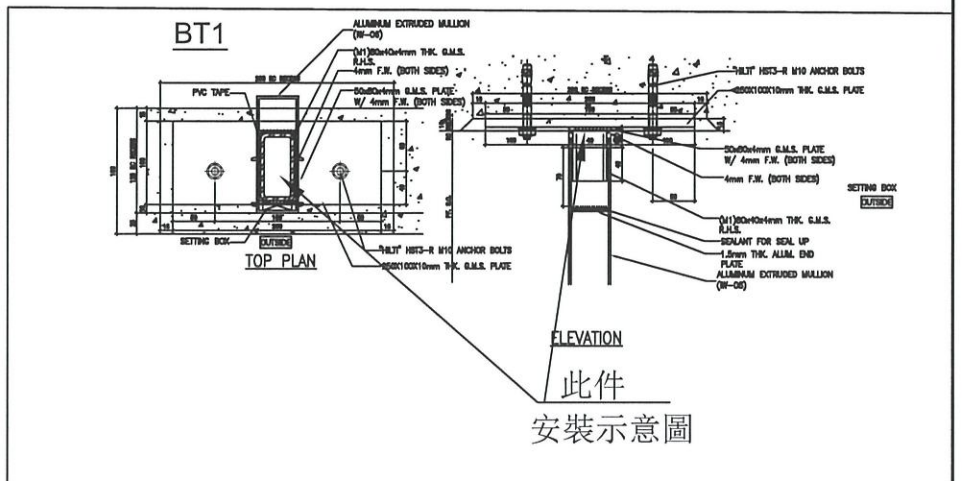
地盤用

序號	數量	座數	單位	樓層位置	窗號	圖號
1	1	T1	SIMPLEX 2A MBR	46/F	AW103	J856-SD-IW-5153
2	1	T1	SIMPLEX 2B MBR	46/F	AW14R	J856-SD-IW-5164
3	1	T1	SIMPLEX 2A LV./DIN	46/F	AW14iR	J856-SD-IW-5165
4	1	T2	B5	46/F	AW03i	J856-SD-IW-5249
5	1	T2	SIMPLEX 1B LIV	46/F	AW14aR	J856-SD-IW-5259
6	1	T2	SIMPLEX 2B KIT	46/F	AW15	J856-SD-IW-5260
7	1	T3	B3	46/F	AW03i	J856-SD-IW-5347
8	1	T3	A9	46/F	AW04i	J856-SD-IW-5350
9	1	T3	SIMPLEX 2B LIV	46/F	AW301	J856-SD-IW-5351
10	1	T3	SIMPLEX 2A LIV	46/F	AW303	J856-SD-IW-5353
11	1	T3	SIMPLEX 1A MBR	46/F	AW305	J856-SD-IW-5355
12	1	T3	SIMPLEX 1A LIV	46/F	AW12R	J856-SD-IW-5361
13	1	T3	SIMPLEX 2B MBR	46/F	AW14	J856-SD-IW-5363
14	1	T3	SIMPLEX 2B BR2	46/F	AW16	J856-SD-IW-5364
15	1	T3	SIMPLEX 2A BR2	46/F	AW16	J856-SD-IW-5364
16	1	T3	SIMPLEX 1A BR3	46/F	AW16	J856-SD-IW-5364
17	1	T3	SIMPLEX 1A BR4	46/F	AW16	J856-SD-IW-5364
18	1	T3	SIMPLEX 2B BR4	46/F	AW16R	J856-SD-IW-5364
19	1	T3	SIMPLEX 2A BR3	46/F	AW16R	J856-SD-IW-5364
20	1	T3	SIMPLEX 1A BR2	46/F	AW16R	J856-SD-IW-5364
21	1	T3	SIMPLEX 2B BR3	46/F	AW16aR	J856-SD-IW-5365
合計	21.0					



OUTSIDE

TOP PLAN



此件  
安裝示意圖

名稱	中企固定鐵件	制圖	謝永林	2023. 08. 28	修改		
材料	80x40x4mm鐵通/10mm鐵巴	復核	謝永林	2023. 09. 07	日期		
顏色	熱浸鋅/塗瀝青油	批准			圖號	J856-IW-BT1	



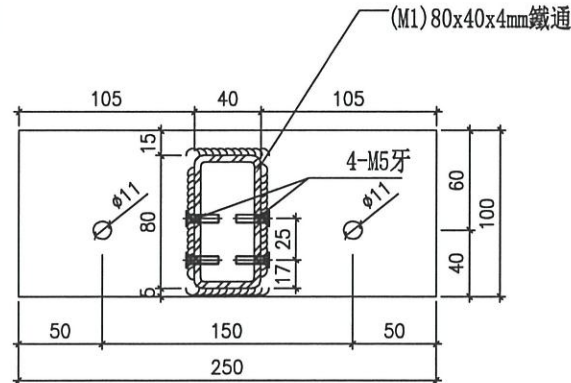
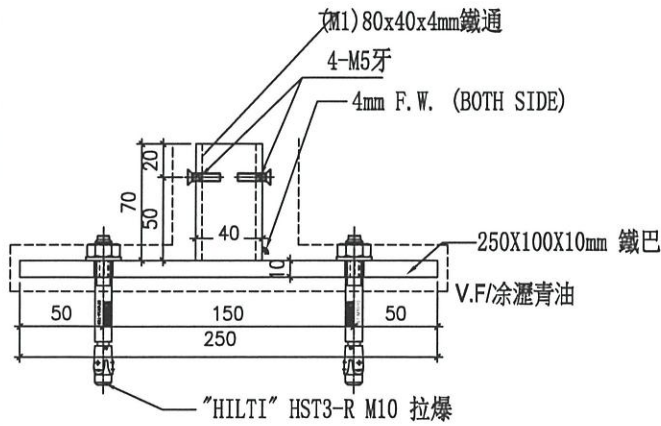
美特鋁質 有限公司  
MIDI Aluminium Fabricator Ltd.

序號	數量	座數	單位	樓層位置	窗號	圖號
1	1	T2	B5	46/F	AW03i	J856-SD-IW-5249
2	1	T3	B3	46/F	AW03i	J856-SD-IW-5347
3	1	T3	A9	46/F	AW04i	J856-SD-IW-5350
合計	3.0					

工程號 J-856 地盤 天榮站

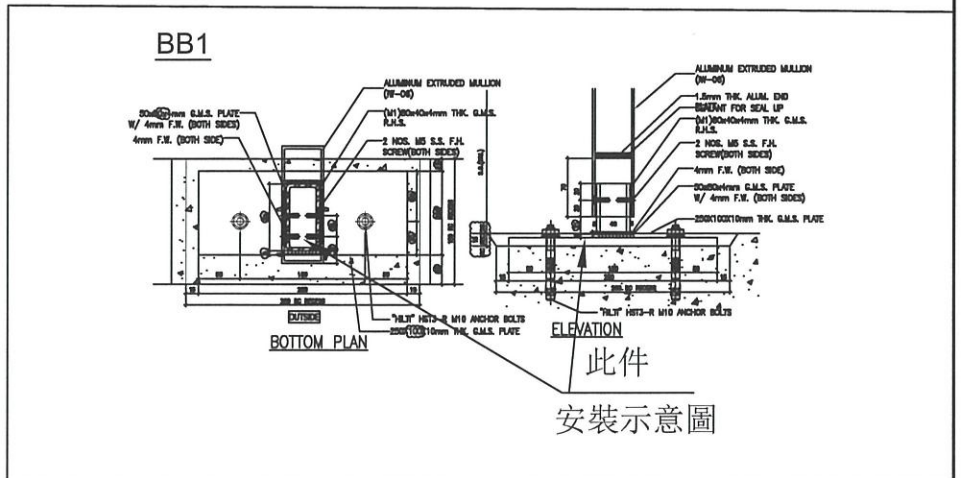
焊接示意件出地盤

地盤用



OUTSIDE

BOTTOM PLAN



名稱	中企固定鐵件	制圖	謝永林	2023. 08. 28	修改			
材料	80x40x4mm鐵通/10mm鐵巴	復核	謝永林	2023. 09. 07	日期			
顏色	熱浸鋅/塗瀝青油	批准			圖號	J856-IW-BB1		



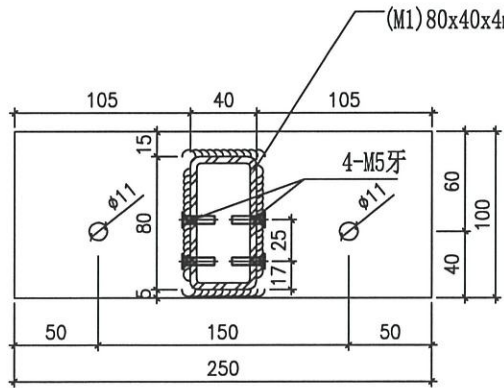
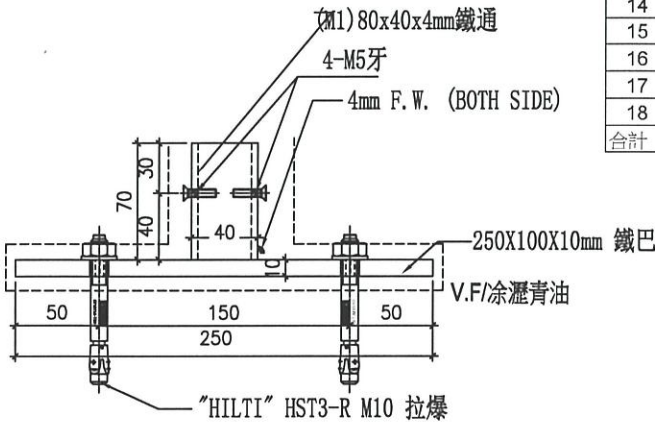
美特鋁質 有限公司  
MIDI Aluminium Fabricator Ltd.

工程號 J-856 | 地盤 | 天榮站

焊接示意件出地盤

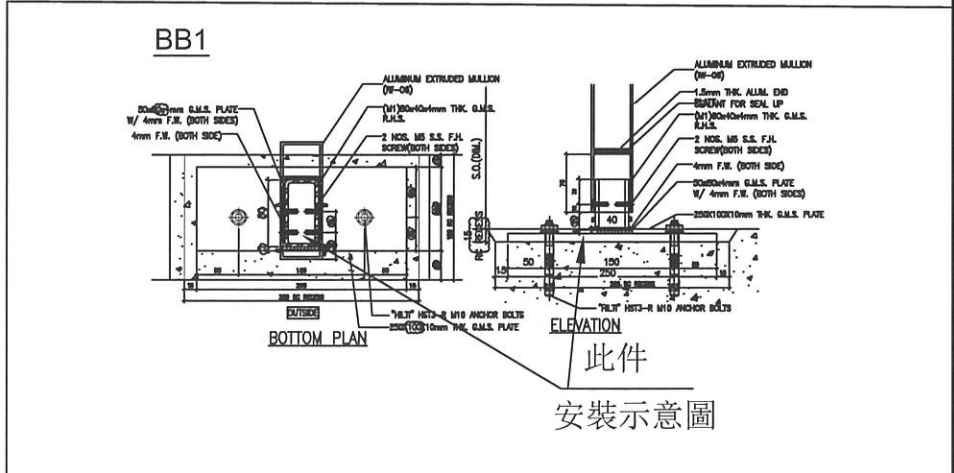
地盤用

序號	數量	座數	單位	樓層位置	窗號	圖號
1	1	T1	SIMPLEX 2A MBR	46/F	AW103	J856-SD-W-5153
2	1	T1	SIMPLEX 2B MBR	46/F	AW14R	J856-SD-W-5164
3	1	T1	SIMPLEX 2A LV/DIN	46/F	AW14tR	J856-SD-W-5165
4	1	T2	SIMPLEX 1B LV	46/F	AW14aR	J856-SD-W-5259
5	1	T2	SIMPLEX 2B KIT	46/F	AW15	J856-SD-W-5260
6	1	T3	SIMPLEX 2B LV	46/F	AW301	J856-SD-W-5351
7	1	T3	SIMPLEX 2A LV	46/F	AW303	J856-SD-W-5353
8	1	T3	SIMPLEX 1A MBR	46/F	AW305	J856-SD-W-5355
9	1	T3	SIMPLEX 1A LV	46/F	AW12R	J856-SD-W-5361
10	1	T3	SIMPLEX 2B MBR	46/F	AW14	J856-SD-W-5363
11	1	T3	SIMPLEX 2B BR2	46/F	AW16	J856-SD-W-5364
12	1	T3	SIMPLEX 2A BR2	46/F	AW16	J856-SD-W-5364
13	1	T3	SIMPLEX 1A BR3	46/F	AW16	J856-SD-W-5364
14	1	T3	SIMPLEX 1A BR4	46/F	AW16	J856-SD-W-5364
15	1	T3	SIMPLEX 2B BR4	46/F	AW16R	J856-SD-W-5364
16	1	T3	SIMPLEX 2A BR3	46/F	AW16R	J856-SD-W-5364
17	1	T3	SIMPLEX 1A BR2	46/F	AW16R	J856-SD-W-5364
18	1	T3	SIMPLEX 2B BR3	46/F	AW16aR	J856-SD-W-5365
合計	18.0					



OUTSIDE

BOTTOM PLAN



此件  
安裝示意圖

名稱	中企固定鐵件	制圖	謝永林	2023. 08. 28	修改		
材料	80x40x4mm鐵通/10mm鐵巴	復核	謝永林	2023. 09. 07	日期		
顏色	熱浸鋅/塗瀝青油	批准			圖號	J856-IW-BB1(1)	



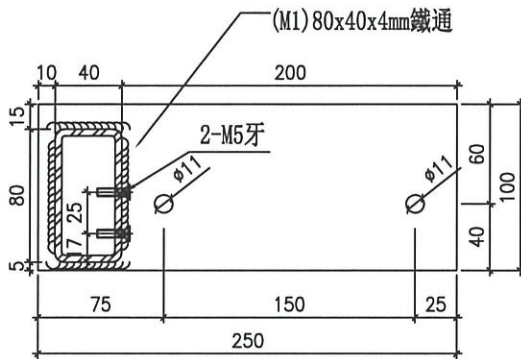
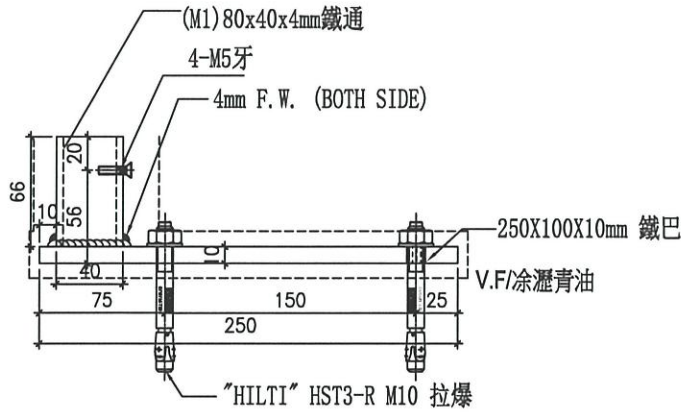
美特鋁質 有限公司  
MIDI Aluminium Fabricator Ltd.

序號	數量	座數	單位	樓層位置	窗號	圖號
1	1	T2	SIMPLEX 2B KIT	46/F	AW15	J856-SD-IW-5260

工程號 J-856 | 地盤 | 天榮站

焊接示意件出地盤

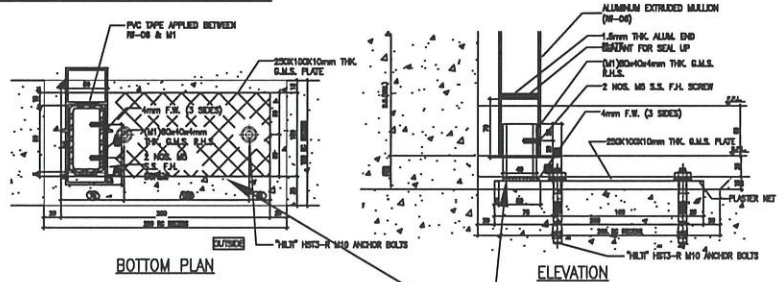
地盤用



OUTSIDE

BOTTOM PLAN

BB2 FOR 46F ONLY



BOTTOM PLAN

ELEVATION

此件  
安裝示意圖

名稱	中企固定鐵件	制圖	謝永林	2023.08.28	修改		
材料	80x40x4mm鐵通/10mm鐵巴	復核	謝永林	2023.09.07	日期		
顏色	熱浸鋅/塗瀝青油	批准			圖號	J856-IW-BB2	



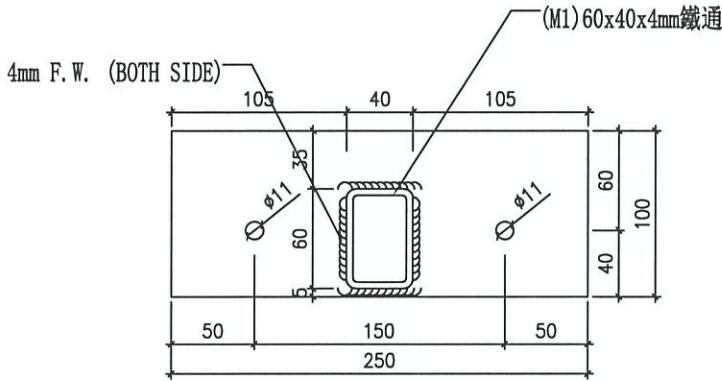
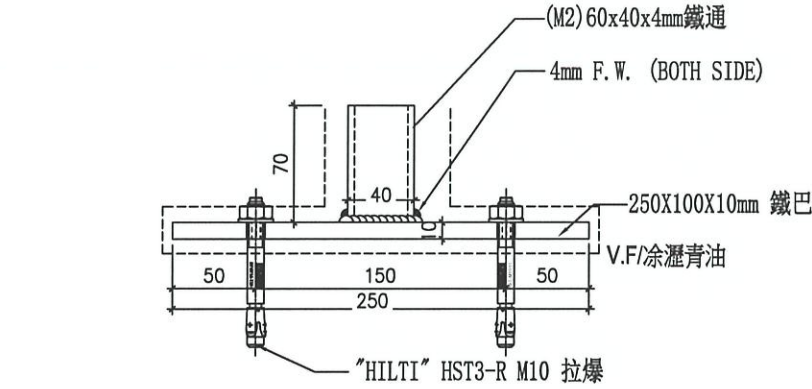
美特鋁質 有限公司  
MIDI Aluminium Fabricator Ltd.

序號	數量	座數	單位	樓層位置	窗號	施工圖圖號
1	1	T1	B5	46/F	AW04	J856-SD-IW-5143
2	1	T1	SIMPLEX 2A KIT	46/F	AW19	J856-SD-IW-5166
合計	2.0					

工程號 J-856 地盤 天榮站

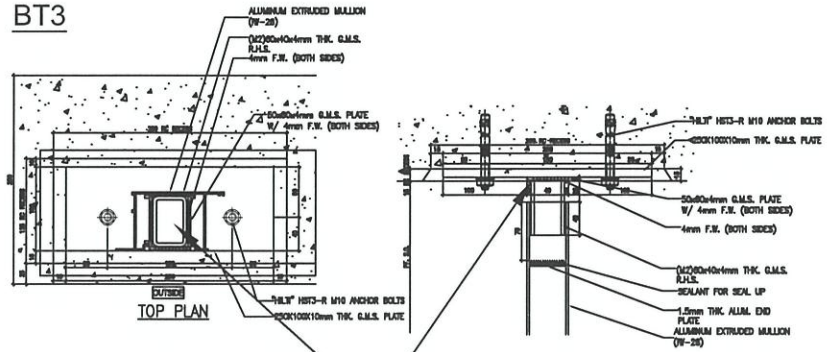
焊接示意件出地盤

地盤用



OUTSIDE  
TOP PLAN

BT3



此件  
ELEVATION  
安裝示意圖

名稱	中企固定鐵件	制圖	謝永林	2023. 08. 28	修改		
材料	60x40x4mm鐵通/10mm鐵巴	復核	謝永林	2023. 09. 07	日期		
顏色	熱浸鋅/塗瀝青油	批准			圖號	J856-IW-BT3	



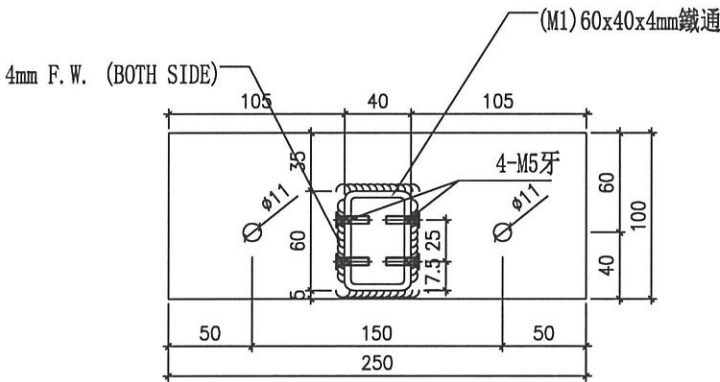
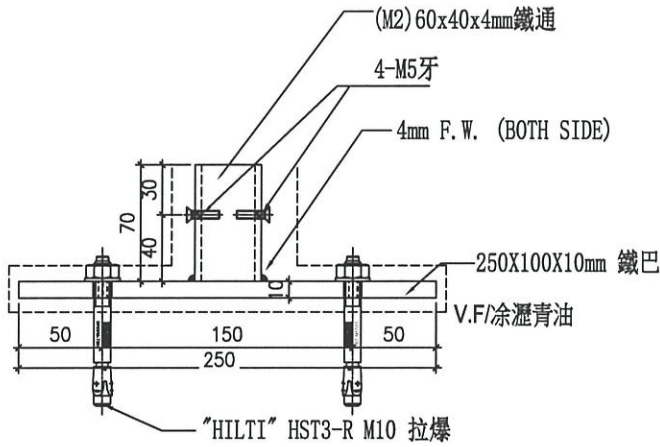
美特鋁質 有限公司  
MIDI Aluminium Fabricator Ltd.

序號	數量	座數	單位	樓層位置	窗號	施工圖圖號
1	1	T1	B5	46/F	AW04	J856-SD-IW-5143
2	1	T1	SIMPLEX 2A KIT	46/F	AW19	J856-SD-IW-5166
合計		2.0				

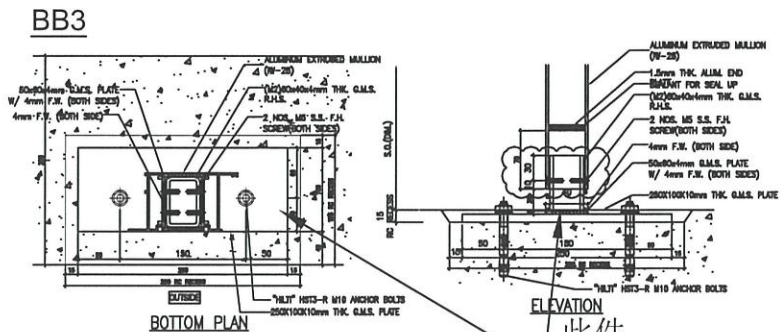
工程號 J-856 地盤 天榮站

焊接示意件出地盤

地盤用



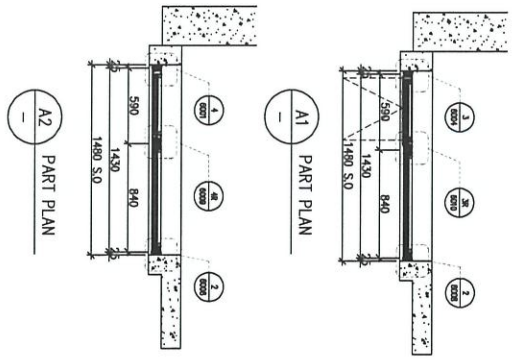
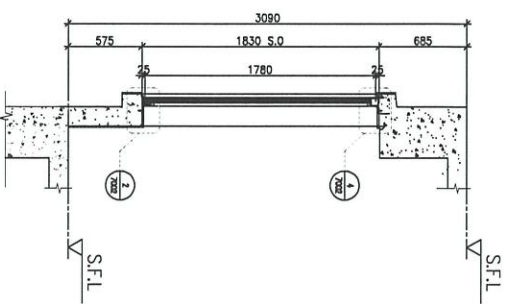
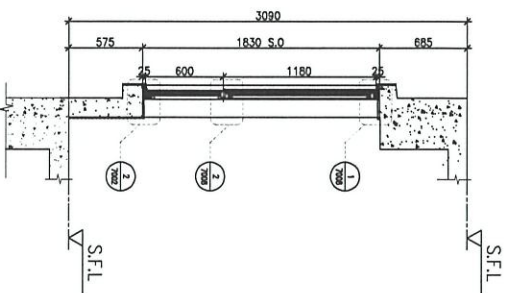
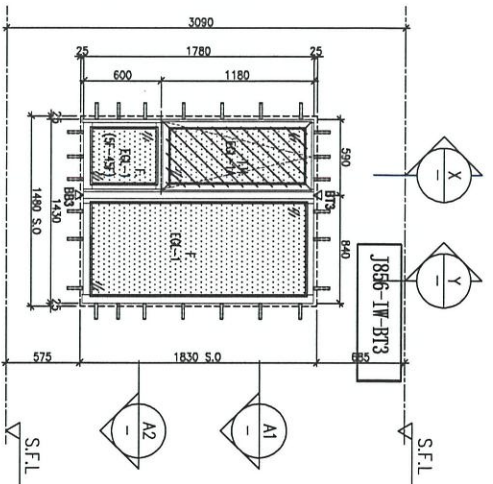
OUTSIDE  
BOTTOM PLAN



ELEVATION  
此件  
安裝示意圖

名稱	中企固定鐵件	制圖	謝永林	2023. 08. 28	修改		
材料	60x40x4mm鐵通/10mm鐵巴	復核	謝永林	2023. 09. 07	日期		
顏色	熱浸鋅/塗瀝青油	批准			圖號	J856-IW-BB3	

REQUIRE	PROVIDED			
LOCATION	OPERABLE AREA	GLAZING AREA	OPERABLE AREA	GLAZING AREA
BS-MBR	0.295	0.472	0.525	1.815



ELEVATION

WINDOW MARK	J856-1W-BR3
LOCATION	46/F UNIT BS MBR
SECTION	70mm ALUM. SECTION
GLAZING	EGL-1 / EGL-1A
QUANTITY	1 No.
REMARKS	70mm ALUM. WINDOW SECTION, 4 BAR HINGE-LIP HING (HHMT-14)

B.O. REF :

CLIENT :

**SUN HUNG KAI**  
REAL ESTATE AGENCY LTD.  
42/F SUN HUNG KAI CENTRE, MANDALAY AVENUE, HONGKONG

ARCHITECT :

**hw&partners**  
H O N G K O N G

MAIN CONTRACTOR :

**怡輝建築有限公司**  
Yee Hei Building Construction Ltd.

STRUCTURAL ENGINEER :

**ARUP**

PROJECT CONSULTANT :

**ALPHA CONSULTING LIMITED**  
Steel Structures & Facade Specialist

NOTE:  
1. ALL DIMENSIONS ARE IN mm.  
2. ALL ELEVATIONS ARE VIEWED FROM OUTSIDE.  
3. ALL DIMENSIONS TO BE VERIFIED ON SITE BEFORE FABRICATION.  
LEGEND:  
A1 - DETAIL MARK NO.  
BS-1 - REFER SHEET NO.

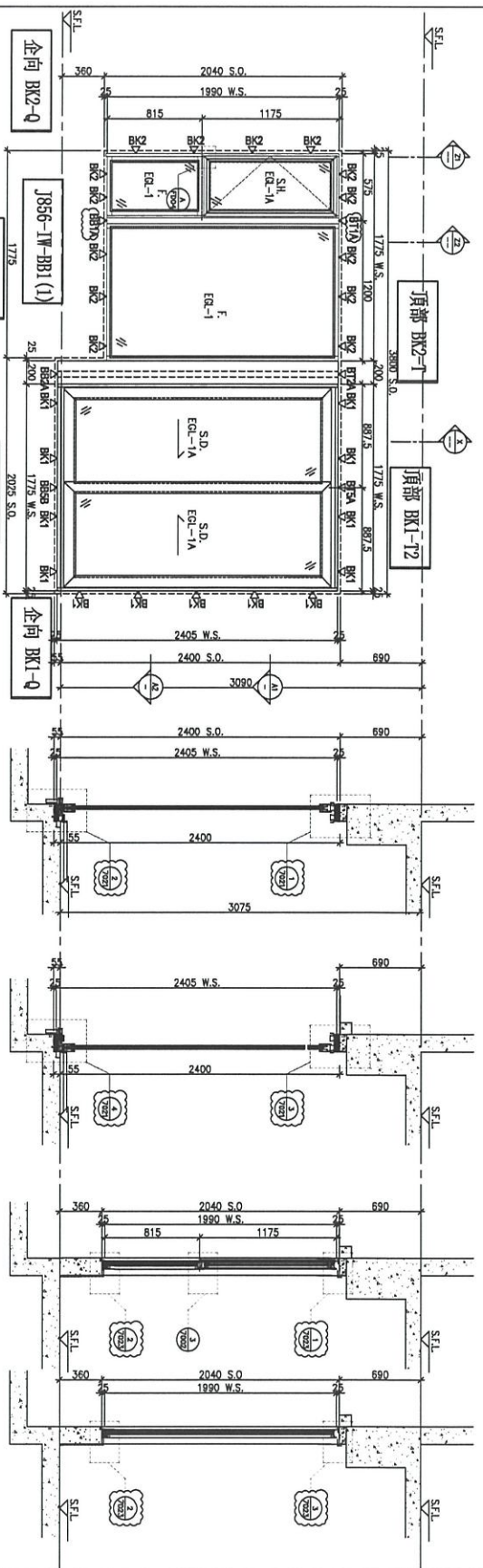
1. F.F.L. --- FINISHED FLOOR LEVEL  
2. S.F.L. --- STRUCTURAL FLOOR LEVEL  
3. ⊕ --- REVERSED LEVEL  
4. GLASS LEGEND  
EGL-1 --- 6mm+12mm AIR GAP+10mmTP THK LGGL  
EGL-2 --- 10mm THK CRISTAL GRAY TARGED GLASS  
EGL-1A --- 10mm THK CRISTAL TARGED AND ESPAD GLASS  
B17/B81 --- 12mm AIR GAP+6mmTP THK LGGL  
B82 --- 10mm CRISTAL TARGED AND ESPAD GLASS  
GLAZING AREA  
OPERABLE AREA  
REFER TO 6011 & 7011 TO 7008A DETAILS  
REFER TO 3-44F INSITU WINDOW SCHEDULE

TITLE : WINDOW SCHEDULE FOR TOWER 1 IN-SITU WINDOW  
DATE : 22-Jun-22 SCALE : 1:40  
DRAWN BY : hcm CHECKED BY :  
JOB NO. : J-856  
PROJECT : PROPOSED DEVELOPMENT ABOVE LIGHT RAIL TIN WING STOP-TSVAL NO.23AREA, 33,TIN SHUI WA, N.T.

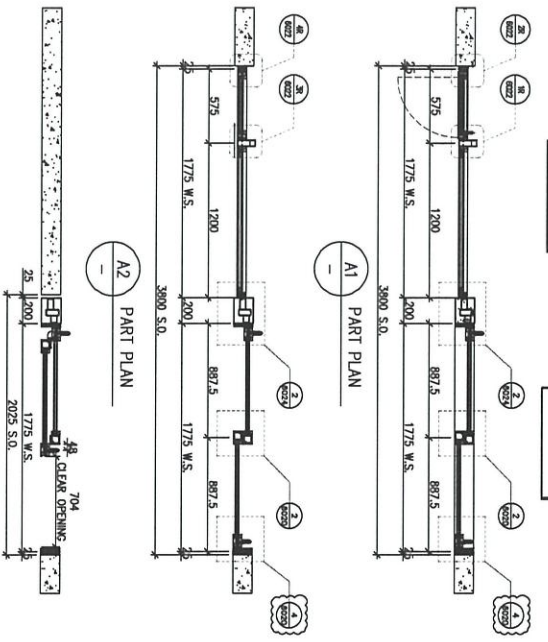
**美特堅實有限公司**  
MIDI Aluminium Fabrication Ltd.  
Unit 6-8, Sunny Industrial Centre, V/F  
610 Che Kwo Ling Road, Kowloon  
Tel: (852) 2711-4 Fax: (852) 2777855  
DNC NO. : J856-SD-W-5143 REV. : -

LOCATION	OPERABLE AREA	GLAZING AREA	OPERABLE AREA	GLAZING AREA
SM 2A LIV/DW	0.713	1.141	2.094	5.735

PROVIDED



ELEVATION



WINDOW MARK



LOCATION	46/F UNIT SIMPLEX 2A MBR
SECTION	70mm ALUM. SECTION
GLAZING	EGL-1 & EGL-1A
QUANTITY	1 NO.
REMARKS	-

BD. REF. :

CLIENT :



4/F, Sun Hung Kai Centre, 100, Nathan Road, Kowloon

ARCHITECT :



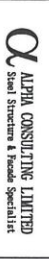
UNIT CONTRACTOR :



STRUCTURAL ENGINEER :



FRACSE CONSULTANT:



Steel Structure & Bridge Specialist

NOTE: 1. ALL DIMENSIONS ARE IN mm. 2. ALL DIMENSIONS ARE VERIFIED FROM OUTSIDE BEFORE FABRICATION. 3. ALL DIMENSIONS TO BE VERIFIED ON SITE.

LEGEND:

- (X1) DETAIL WORK NO.
- (S1) BEST SHEET NO.
- 1. F.F.L. --- FINISHED FLOOR LEVEL
- 2. S.F.L. --- STRUCTURAL FLOOR LEVEL
- 3. (R) --- REVERSED KEY
- 4. GLASS LEGEND

EGL-1 --- 6mm/12mm AR 0P4/10mmP TPK LG/LI  
 EGL-2 --- 10mm TPK COPOL. GRAY TINTED CLASS  
 EGL-1A --- 6mm/12mm AR 0P4/10mmP TPK LG/LI  
 B1/B1-T/10mm DETAIL (DWS. NO. 1001)  
 B2-T/10mm DETAIL (DWS. NO. 1002)

GLAZING AREA

OPERABLE AREA

0001 TO 0011 & 7001 TO 7004A DETAILS REFER TO S-449 INSITU WINDOW SCHEDULE

NO.	DATE	REVISION SUBJECT TO AMENDMENT	BY
1	30/07/2023	REVISION SUBJECT TO AMENDMENT	BY

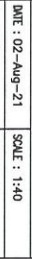
JOB NO. : J-856

PROJECT : PROPOSED DEVELOPMENT ABOVE LIGHT RAIL TIN WING STOP-TSMTL NO.23A/B/C/D 33, JIN SHUI WAI, N.T.

TITLE : WINDOW SCHEDULE FOR TOWER 1 IN-SITU WINDOW

DATE : 02-Aug-21 SCALE : 1:40

DRAWN BY : Jhen CHECKED BY :



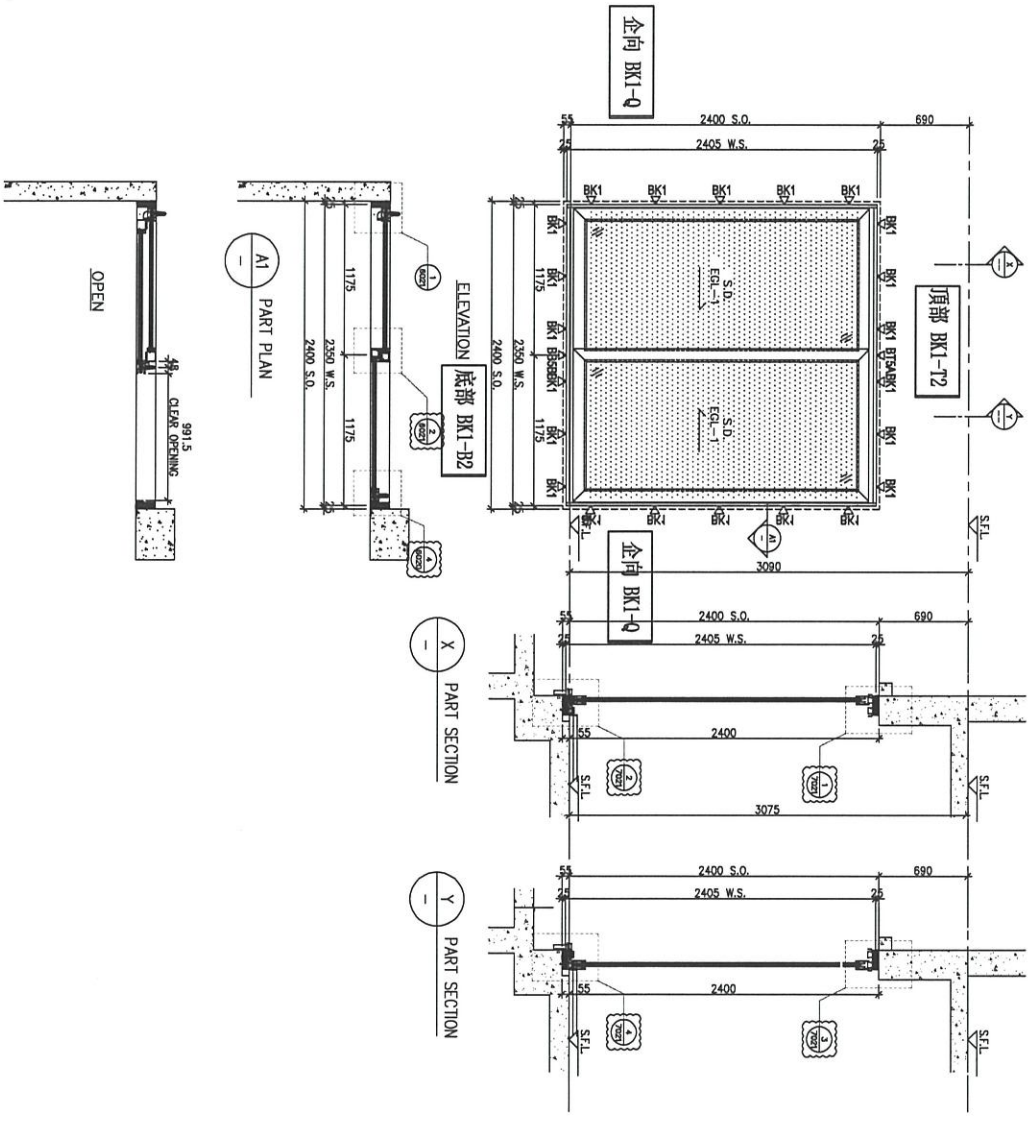
香港鐵路有限公司  
 MTR Corporation Limited  
 810 Cheong Cheong Road, Kowloon  
 Tel: 34292211-4 Fax: (852) 2777855

REV. : A

DWG NO. : 1856-S0-W-5153

LOCATION	OPERABLE AREA	GLAZING AREA	OPERABLE AREA	GLAZING AREA
SIM. 1B LV./DIN	1.895	3.033	2.236	4.167

REQUIRED      PROVIDED



ELEVATION

WINDOW MARK	AM 105/
LOCATION	46/F UNIT SIMPLEX 1B LV./DIN
SECTION	70mm ALUM. SECTION
GLAZING	EG1-1A
QUANTITY	1 NO.
REMARKS	SIEMENSA SLIDING DOOR SYSTEM

B.O. REF.:

CLIENT:

**SUN HUNG KAI**  
REAL ESTATE AGENCY LTD.  
47/F SUN HUNG HUI CENTRE, WING LOK, HONGKONG

ARCHITECT:

**lwk&partners**  
11/F, 110, NASSAU ST., HONGKONG

MAIN CONTRACTOR:

**Yee Fai** Building Construction Ltd.  
怡輝建築有限公司

STRUCTURAL ENGINEER:

**ARUP**  
ALPHA CONSULTING LIMITED  
Steel Structures & Facade Specialist

FAÇADE CONSULTANT:

**ARUP**  
ALPHA CONSULTING LIMITED  
Steel Structures & Facade Specialist

NOTE:

1. ALL DIMENSIONS ARE IN MM.
2. ALL ELEVATIONS ARE VIEWED FROM OUTSIDE.
3. ALL DIMENSIONS TO BE VERIFIED ON SITE BEFORE FABRICATION.

LEGEND:

① - SEAL MARK NO.  
② - REFER SHEET NO.

1. F.F.L. - FINISHED FLOOR LEVEL.
2. S.F.L. - STRUCTURAL FLOOR LEVEL.
3. Ⓢ - REVERSED DETAIL.
4. GLASS LEGEND

- EG1-1 - 6mm+12mm AIR GAP+10mm TP. TPK. LGLU
- EG1-2 - 10mm TPK. COPOLY. GRAY TINTED+5mm GRASS
- EG1-3 - 10mm TPK. COPOLY. TINTED+5mm GRASS
- EG1-4 - 10mm TPK. COPOLY. TINTED+5mm GRASS
- EG1-5 - 10mm TPK. COPOLY. TINTED+5mm GRASS
- EG1-6 - 10mm TPK. COPOLY. TINTED+5mm GRASS
- EG1-7 - 10mm TPK. COPOLY. TINTED+5mm GRASS
- EG1-8 - 10mm TPK. COPOLY. TINTED+5mm GRASS
- EG1-9 - 10mm TPK. COPOLY. TINTED+5mm GRASS
- EG1-10 - 10mm TPK. COPOLY. TINTED+5mm GRASS
- EG1-11 - 10mm TPK. COPOLY. TINTED+5mm GRASS
- EG1-12 - 10mm TPK. COPOLY. TINTED+5mm GRASS
- EG1-13 - 10mm TPK. COPOLY. TINTED+5mm GRASS
- EG1-14 - 10mm TPK. COPOLY. TINTED+5mm GRASS
- EG1-15 - 10mm TPK. COPOLY. TINTED+5mm GRASS
- EG1-16 - 10mm TPK. COPOLY. TINTED+5mm GRASS
- EG1-17 - 10mm TPK. COPOLY. TINTED+5mm GRASS
- EG1-18 - 10mm TPK. COPOLY. TINTED+5mm GRASS
- EG1-19 - 10mm TPK. COPOLY. TINTED+5mm GRASS
- EG1-20 - 10mm TPK. COPOLY. TINTED+5mm GRASS
- EG1-21 - 10mm TPK. COPOLY. TINTED+5mm GRASS
- EG1-22 - 10mm TPK. COPOLY. TINTED+5mm GRASS
- EG1-23 - 10mm TPK. COPOLY. TINTED+5mm GRASS
- EG1-24 - 10mm TPK. COPOLY. TINTED+5mm GRASS
- EG1-25 - 10mm TPK. COPOLY. TINTED+5mm GRASS
- EG1-26 - 10mm TPK. COPOLY. TINTED+5mm GRASS
- EG1-27 - 10mm TPK. COPOLY. TINTED+5mm GRASS
- EG1-28 - 10mm TPK. COPOLY. TINTED+5mm GRASS
- EG1-29 - 10mm TPK. COPOLY. TINTED+5mm GRASS
- EG1-30 - 10mm TPK. COPOLY. TINTED+5mm GRASS
- EG1-31 - 10mm TPK. COPOLY. TINTED+5mm GRASS
- EG1-32 - 10mm TPK. COPOLY. TINTED+5mm GRASS
- EG1-33 - 10mm TPK. COPOLY. TINTED+5mm GRASS
- EG1-34 - 10mm TPK. COPOLY. TINTED+5mm GRASS
- EG1-35 - 10mm TPK. COPOLY. TINTED+5mm GRASS
- EG1-36 - 10mm TPK. COPOLY. TINTED+5mm GRASS
- EG1-37 - 10mm TPK. COPOLY. TINTED+5mm GRASS
- EG1-38 - 10mm TPK. COPOLY. TINTED+5mm GRASS
- EG1-39 - 10mm TPK. COPOLY. TINTED+5mm GRASS
- EG1-40 - 10mm TPK. COPOLY. TINTED+5mm GRASS
- EG1-41 - 10mm TPK. COPOLY. TINTED+5mm GRASS
- EG1-42 - 10mm TPK. COPOLY. TINTED+5mm GRASS
- EG1-43 - 10mm TPK. COPOLY. TINTED+5mm GRASS
- EG1-44 - 10mm TPK. COPOLY. TINTED+5mm GRASS
- EG1-45 - 10mm TPK. COPOLY. TINTED+5mm GRASS
- EG1-46 - 10mm TPK. COPOLY. TINTED+5mm GRASS
- EG1-47 - 10mm TPK. COPOLY. TINTED+5mm GRASS
- EG1-48 - 10mm TPK. COPOLY. TINTED+5mm GRASS
- EG1-49 - 10mm TPK. COPOLY. TINTED+5mm GRASS
- EG1-50 - 10mm TPK. COPOLY. TINTED+5mm GRASS
- EG1-51 - 10mm TPK. COPOLY. TINTED+5mm GRASS
- EG1-52 - 10mm TPK. COPOLY. TINTED+5mm GRASS
- EG1-53 - 10mm TPK. COPOLY. TINTED+5mm GRASS
- EG1-54 - 10mm TPK. COPOLY. TINTED+5mm GRASS
- EG1-55 - 10mm TPK. COPOLY. TINTED+5mm GRASS
- EG1-56 - 10mm TPK. COPOLY. TINTED+5mm GRASS
- EG1-57 - 10mm TPK. COPOLY. TINTED+5mm GRASS
- EG1-58 - 10mm TPK. COPOLY. TINTED+5mm GRASS
- EG1-59 - 10mm TPK. COPOLY. TINTED+5mm GRASS
- EG1-60 - 10mm TPK. COPOLY. TINTED+5mm GRASS
- EG1-61 - 10mm TPK. COPOLY. TINTED+5mm GRASS
- EG1-62 - 10mm TPK. COPOLY. TINTED+5mm GRASS
- EG1-63 - 10mm TPK. COPOLY. TINTED+5mm GRASS
- EG1-64 - 10mm TPK. COPOLY. TINTED+5mm GRASS
- EG1-65 - 10mm TPK. COPOLY. TINTED+5mm GRASS
- EG1-66 - 10mm TPK. COPOLY. TINTED+5mm GRASS
- EG1-67 - 10mm TPK. COPOLY. TINTED+5mm GRASS
- EG1-68 - 10mm TPK. COPOLY. TINTED+5mm GRASS
- EG1-69 - 10mm TPK. COPOLY. TINTED+5mm GRASS
- EG1-70 - 10mm TPK. COPOLY. TINTED+5mm GRASS
- EG1-71 - 10mm TPK. COPOLY. TINTED+5mm GRASS
- EG1-72 - 10mm TPK. COPOLY. TINTED+5mm GRASS
- EG1-73 - 10mm TPK. COPOLY. TINTED+5mm GRASS
- EG1-74 - 10mm TPK. COPOLY. TINTED+5mm GRASS
- EG1-75 - 10mm TPK. COPOLY. TINTED+5mm GRASS
- EG1-76 - 10mm TPK. COPOLY. TINTED+5mm GRASS
- EG1-77 - 10mm TPK. COPOLY. TINTED+5mm GRASS
- EG1-78 - 10mm TPK. COPOLY. TINTED+5mm GRASS
- EG1-79 - 10mm TPK. COPOLY. TINTED+5mm GRASS
- EG1-80 - 10mm TPK. COPOLY. TINTED+5mm GRASS
- EG1-81 - 10mm TPK. COPOLY. TINTED+5mm GRASS
- EG1-82 - 10mm TPK. COPOLY. TINTED+5mm GRASS
- EG1-83 - 10mm TPK. COPOLY. TINTED+5mm GRASS
- EG1-84 - 10mm TPK. COPOLY. TINTED+5mm GRASS
- EG1-85 - 10mm TPK. COPOLY. TINTED+5mm GRASS
- EG1-86 - 10mm TPK. COPOLY. TINTED+5mm GRASS
- EG1-87 - 10mm TPK. COPOLY. TINTED+5mm GRASS
- EG1-88 - 10mm TPK. COPOLY. TINTED+5mm GRASS
- EG1-89 - 10mm TPK. COPOLY. TINTED+5mm GRASS
- EG1-90 - 10mm TPK. COPOLY. TINTED+5mm GRASS
- EG1-91 - 10mm TPK. COPOLY. TINTED+5mm GRASS
- EG1-92 - 10mm TPK. COPOLY. TINTED+5mm GRASS
- EG1-93 - 10mm TPK. COPOLY. TINTED+5mm GRASS
- EG1-94 - 10mm TPK. COPOLY. TINTED+5mm GRASS
- EG1-95 - 10mm TPK. COPOLY. TINTED+5mm GRASS
- EG1-96 - 10mm TPK. COPOLY. TINTED+5mm GRASS
- EG1-97 - 10mm TPK. COPOLY. TINTED+5mm GRASS
- EG1-98 - 10mm TPK. COPOLY. TINTED+5mm GRASS
- EG1-99 - 10mm TPK. COPOLY. TINTED+5mm GRASS
- EG1-100 - 10mm TPK. COPOLY. TINTED+5mm GRASS

GLAZING AREA

OPERABLE AREA

GO TO TO 0011 & 7001 TO 7006A DETAILS REFER TO 3-4/F INSITU WINDOW SCHEDULE

NO.	REV.	DESCRIPTION	DATE
1		REVISION SUBJECT TO APPROVAL	
2		REVISION SUBJECT TO APPROVAL	
3		REVISION SUBJECT TO APPROVAL	

JOB NO. : J-656

PROJECT :

PROPOSED DEVELOPMENT ABOVE LIGHT RAIL TIN WING STOP/SWMT NO.23/AREA 33, TIN SHUI WAH, N.T.

TITLE :

WINDOW SCHEDULE FOR TOWER 1 IN-SITU WINDOW

DATE : 02-AUG-21 SCALE : 1:40

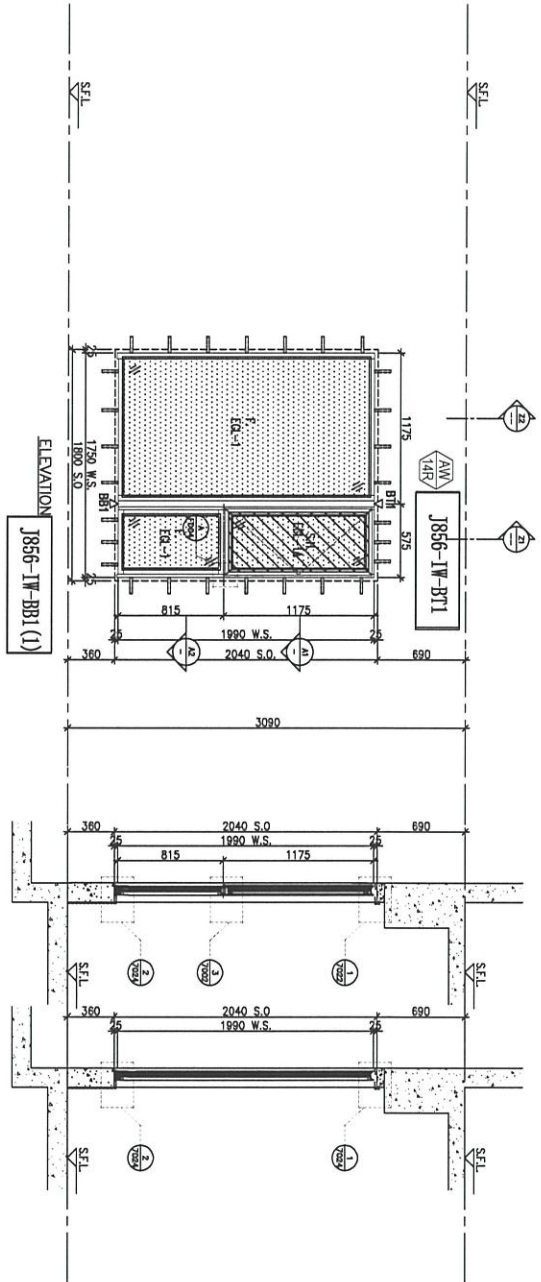
DESIGNED BY : YAN

CHECKED BY :

**美特堅有限公司**  
MIDI Architecture & Interiors  
810 Cho Kwoi Ling Road, Kowloon  
Tel: 23498211-4 Fax: (852) 27271656

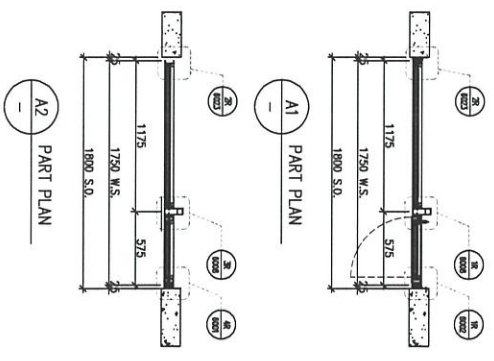
REV. : A

LOCATION	OPENABLE AREA	GLAZING AREA	OPENABLE AREA	GLAZING AREA	OPENABLE AREA	GLAZING AREA
SM. 2B LIV.	1.087	1.739	0.507	2.737	1.387	1.213



ELEVATION

Z1 PART SECTION Z2 PART SECTION



WINDOW MARK	AW-148
LOCATION	46/F UNIT SIMPLEX 2B MBR.
SECTION	70mm ALUM. SECTION
GLAZING	EG1-1, EG1-1A
QUANTITY	1 NO.
REMARKS	4 BAR HINGE-LIP HING (HHMS-N14)

B.O. REF :

CLIENT :  
**SUN HUNG KAI**  
 REAL ESTATE AGENCY LTD.  
 4/F, 5/F, 6/F, 7/F, 8/F, 9/F, 10/F, 11/F, 12/F, 13/F, 14/F, 15/F, 16/F, 17/F, 18/F, 19/F, 20/F, 21/F, 22/F, 23/F, 24/F, 25/F, 26/F, 27/F, 28/F, 29/F, 30/F, 31/F, 32/F, 33/F, 34/F, 35/F, 36/F, 37/F, 38/F, 39/F, 40/F, 41/F, 42/F, 43/F, 44/F, 45/F, 46/F, 47/F, 48/F, 49/F, 50/F, 51/F, 52/F, 53/F, 54/F, 55/F, 56/F, 57/F, 58/F, 59/F, 60/F, 61/F, 62/F, 63/F, 64/F, 65/F, 66/F, 67/F, 68/F, 69/F, 70/F, 71/F, 72/F, 73/F, 74/F, 75/F, 76/F, 77/F, 78/F, 79/F, 80/F, 81/F, 82/F, 83/F, 84/F, 85/F, 86/F, 87/F, 88/F, 89/F, 90/F, 91/F, 92/F, 93/F, 94/F, 95/F, 96/F, 97/F, 98/F, 99/F, 100/F

ARCHITECT :  
**hwk&partners**  
 ARCHITECTS

MAIN CONTRACTOR :  
**怡和建築有限公司**  
 IFC Building Construction Ltd.

STRUCTURAL ENGINEER :  
**ARUP**

FAÇADE CONSULTANT :  
**ALPHA CONSULTING LIMITED**  
 Steel Structure & Facade Specialist

NOTE :  
 1. ALL DIMENSIONS ARE IN mm.  
 2. ALL ELEVATIONS ARE VENDED FROM OUTSIDE.  
 3. ALL DIMENSIONS TO BE VENDED ON SITE BEFORE FABRICATION.

LEGEND :  
 (X1) SEAL MARK NO.  
 (X2) REFER SHEET NO.

1. F.F.L. --- FINISHED FLOOR LEVEL  
 2. S.F.L. --- STRUCTURAL FLOOR LEVEL  
 3. --- REVERSED DETAIL  
 4. GLASS LEGEND

EG-1 --- 6mm+12mm AR 6P+10mmTP TIK. 1(L)I  
 EG-2 --- 10mm TIK. CRISTAL. GRW THERPED GLASS  
 EG-1A --- 6mm+12mm AR 6P+10mmTP TIK. 1(L)I  
 BT/BSI-SPRING DETAIL (PNC. NO. T100)

BS2-TYPING DETAIL (PNC. NO. T100Z)  
 GLAZING AREA  
 OPENABLE AREA

6001 TO 6011 & 7001 TO 7004 DETAILS REFER TO 3-4/F IN-SITU WINDOW SCHEDULE

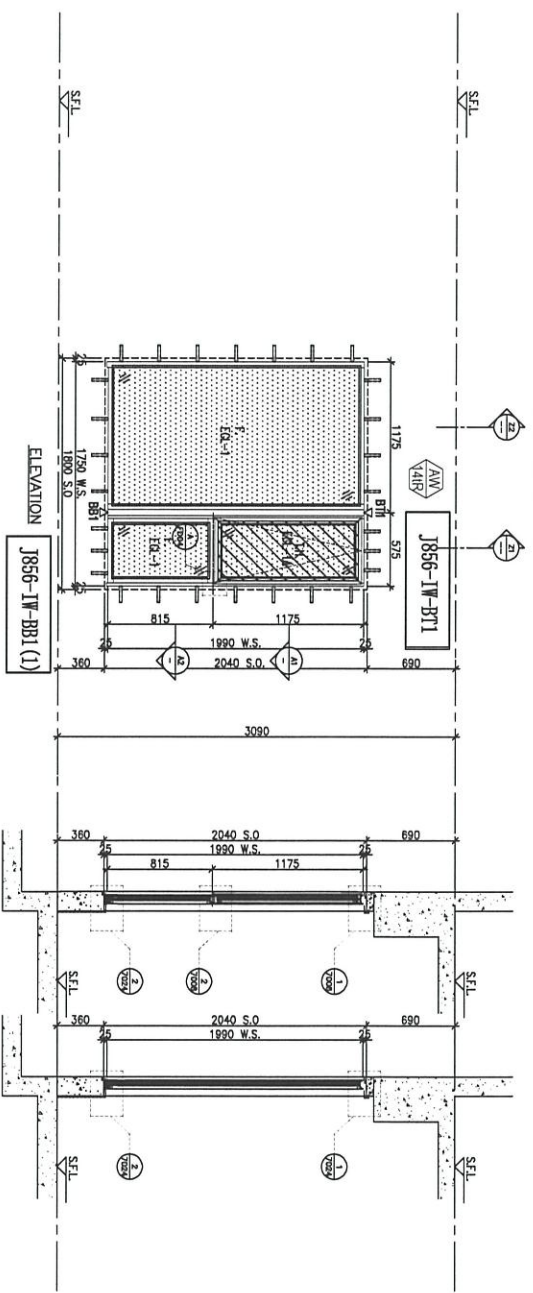
JOB NO. : J-856  
 PROJECT : PROPOSED DEVELOPMENT ABOVE LIGHT RAIL TUN WING STOP/STW/L NO.23/A6EA.33, TIN SHUI WAN, N.T.

TITLE : WINDOW SCHEDULE FOR TOWER 1 IN-SITU WINDOW

DATE : 02-Aug-21 SCALE : 1:40  
 DRAWN BY : JYAN CHECKED BY :

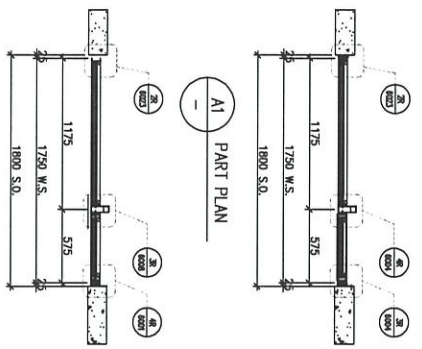
**建持**  
 MIDT Architecture & Interiors Ltd.  
 Unit 8-9, Sunny Industrial Centre, 1/F  
 610 Cho Kwo Ling Road, Kowloon  
 Tel: 23482211-4 Fax: (852) 2777855  
 PNC NO. : J856-SD-W-5164 REV : -

LOCATION	REQUIRE	AW-141 PROMISED	AW-18 PROMISED
SM. 2B LIV.	OPENABLE AREA 1.363 GLAZING AREA 2.18	OPENABLE AREA 0.507 GLAZING AREA 2.737	OPENABLE AREA 1.559 GLAZING AREA 2.908



ELEVATION

Z1 PART SECTION Z2 PART SECTION



A1 PART PLAN A2 PART PLAN

WINDOW MARK	AW 141B
LOCATION	46/F UNIT SIMPLEX 2A LIV./DIN.
SECTION	70mm ALUM. SECTION
GLAZING	EGL-1, EGL-1A
QUANTITY	1 NO.
REMARKS	4 BAR HINGE-LIP HING (HHMT-14)

B.O. REF. :

CLIENT :

**SUN HUNG KAI**  
REAL ESTATE AGENCY LTD.  
4/F SUN HUNG KAI CENTRE, MANDALAY, HONGKONG

ARCHITECT :

**lwk&partners**  
I N T E R I O R S

MAIN CONTRACTOR :

**Yoo Fei Building Construction Ltd.**  
怡輝建築有限公司

STRUCTURAL ENGINEER :

**ARUP**

FAÇADE CONSULTANT :

**ALPHA CONSULTING LIMITED**  
Steel Structures & Façade Specialist

NOTE :

1. ALL DIMENSIONS ARE IN mm.
2. ALL ELEVATIONS ARE VIEWED FROM OUTSIDE.
3. ALL DIMENSIONS TO BE VERIFIED ON SITE BEFORE FABRICATION.

LEGEND :

- 21 DETAIL WORK NO.
- 22 BETA SHEET NO.
- 1. F.F.L. --- FINISHED FLOOR LEVEL
- 2. S.F.L. --- STRUCTURAL FLOOR LEVEL
- 3. (Symbol) --- REVERSED DETAIL
- 4. GLASS LEGEND

EGL-1 --- 6mm/15.12mm AR 04P+10mmP TPK LG.LL  
EGL-2 --- 10mm TPK CRISTAL GRAY TAPERED GLASS  
EGL-4 --- 10mm TPK CRISTAL TAPERED AND BEYED GLASS  
BT1/BT1-BETA 12mm AR 04P+6mmP TPK LG.LL  
BT2-BETA 12mm AR 04P+6mmP TPK LG.LL  
GLAZING AREA  
OPENABLE AREA  
600 TO 6011 & 7701 TO 7708A DETAILS REFER TO 3-44F IN-SITU WINDOW SCHEDULE

JOB NO. : J-856

PROJECT :

PROPOSED DEVELOPMENT ABOVE LIGHT RAIL TIN WING STOP-TSMTL NO.23AREA 33, TIN SHUI WAN, N.T.

TITLE :

WINDOW SCHEDULE FOR TOWER 1 IN-SITU WINDOW

DATE : 02-Aug-21 SCALE : 1:40

DRAWN BY : hkm CHECKED BY :

**lwk&partners**  
Interior Design  
Unit 1001, 10/F, Suning Industrial Centre, 1/F  
610 Che Kwo Ling Road, Kowloon  
Tel: (852) 2777-1144 Fax: (852) 2777-8855

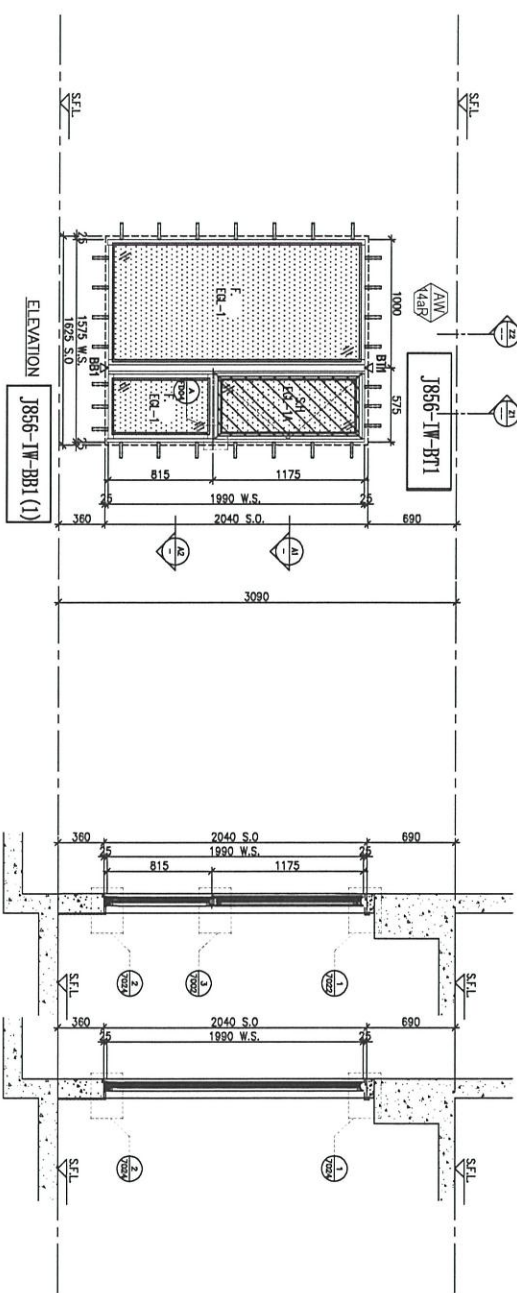
JOB NO. : J-856-D-W-5165

REV. : -

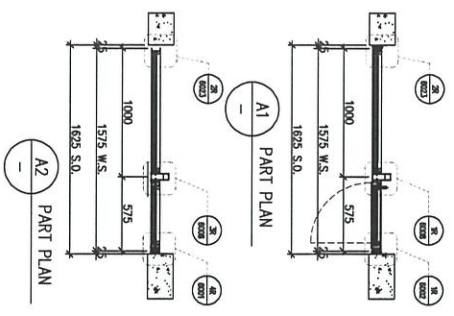




LOCATION	OPERABLE AREA	GLAZING AREA	OPERABLE AREA	GLAZING AREA	OPERABLE AREA	GLAZING AREA	OPERABLE AREA	GLAZING AREA
SM. 2B LV/DIN	1,463	2,340	0,507	2,405	1,559	2,908	1,587	1,123



ELEVATION



WINDOW MARK	AM 1463
LOCATION	46/F UNIT SIMPLEX 2B LV./DIN
SECTION	70mm ALUM. SECTION
GLAZING	EG1-1
QUANTITY	1 NO.
REMARKS	4 BAR HINGE-LIP HING (HHMS-N14)

B.L. REF :

CLIENT :

SUN HUNG KAI  
REAL ESTATE AGENCY LTD.  
4/F, SUN HUNG KAI CENTRE, WING LOK, HONG KONG

ARCHITECT :

hwk&partners  
H W K & P A R T N E R S

MAIN CONTRACTOR :

Yoo Fui  
Yoo Fui Building Construction Ltd.

STRUCTURAL ENGINEER :

ARUP

FRAME CONSULTANT :

ALPHA CONSULTING LIMITED  
Steel Structure & Bridge Specialist

NOTE :

1. ALL DIMENSIONS ARE IN MM.
2. ALL ELEVATIONS ARE VENDED FROM OUTSIDE.
3. ALL DIMENSIONS TO BE VENDED ON SITE BEFORE FABRICATION.

LEGEND :

- ST1 - DETAIL MARK NO.
- REF - REFER SHEET NO.
- 1. F.F.L. - FINISHED FLOOR LEVEL
- 2. S.F.L. - STRUCTURAL FLOOR LEVEL
- 3. REVERSED DETAIL
- 4. GLASS LEREND

EG-1 - 12mm+12mm AIR GP+10mmP TPK, LGU  
EG-2 - 10mm TPK, CRYSAL, GRAY TINTED GLASS  
EG-1A - 12mm+12mm AIR GP+10mmP TPK, LGU  
BT1/BT1 - FRAMING DETAIL (Dwg. NO. T300)  
BS2 - FRAMING DETAIL (Dwg. NO. T302)  
GLAZING AREA

OPENABLE AREA

600110 0011 & 700110 TO TDK&A DETAILS  
REFER TO 344F INS-SITU WINDOW SCHEDULE

NO.	DATE	REVISION SUBJECT TO APPROVAL/COMMENT
1	25/07/2023	REVISION SUBJECT TO APPROVAL/COMMENT
2		
3		
4		

DWG NO. : J-856

PROJECT :

PROPOSED DEVELOPMENT ABOVE  
LIGHT RAIL TBM WING STOP/STWTL  
NO.23A/GEA.33, TIN SHUI WAN, N.T.

TITLE :

WINDOW SCHEDULE FOR  
TOWER 2 IN-SITU WINDOW

DATE : 02-Aug-21

SCALE : 1:40

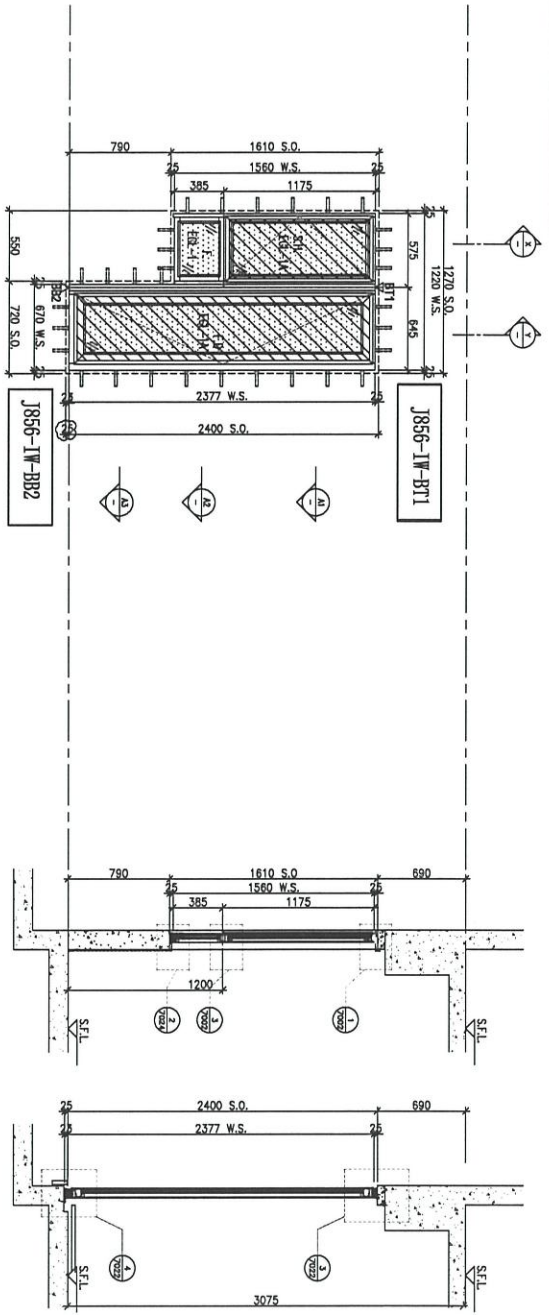
DRAWN BY : Ivan

CHECKED BY :

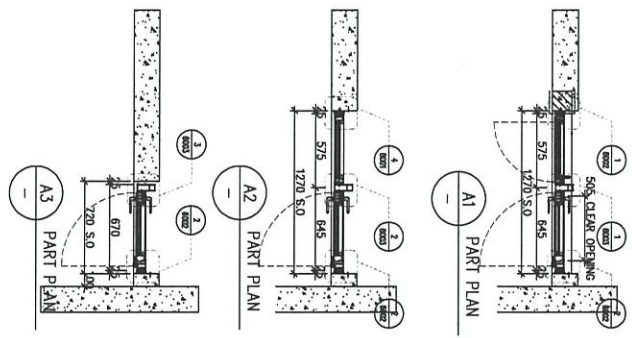
Unit 8-B, Sunny Industrial Centre, 1/F,  
610 Cheong Cheong Road, Kowloon  
Tel: 23482711-4 Fax: (852) 7771855  
DWG NO. : J856-SD-W-2559

REV. : B

LOCATION	REQUIRE	PROVIDED
SM. 2B KIT:	OPENABLE AREA (0.478)	OPENABLE AREA 1.637
	GLAZING AREA (0.764)	GLAZING AREA 1.32



ELEVATION



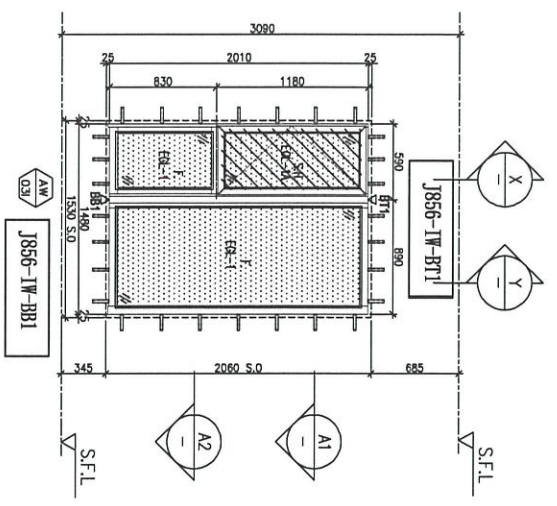
X PART SECTION

Y PART SECTION

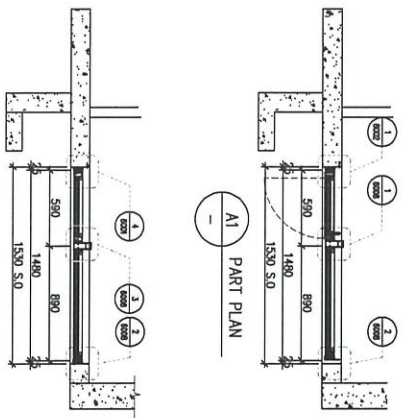
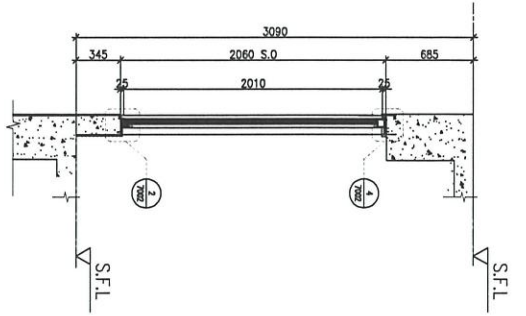
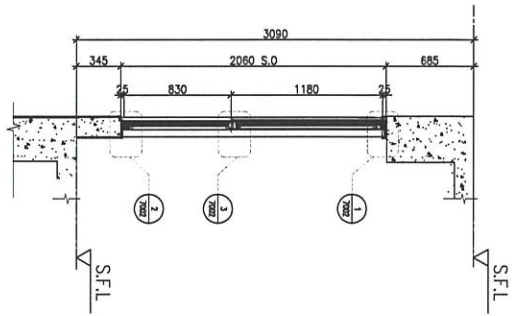
WINDOW MARK	J856-1W-BT1
LOCATION	46/F UNIT SIMPLEX 2B KIT
SECTION	70mm ALUM. SECTION
GLAZING	EG1-1/EG1-1A
QUANTITY	1 NO.
REMARKS	4 BAR HINGE-LIP HING (HHMS-N14)

B.D. REF. :																
CLIENT :	SUN HUNG KAI REAL ESTATE AGENCY LTD. 47/F SUN HUNG WAH CENTRE, WING LOK, HONGKONG															
ARCHITECT :	iwk&partners i w k & p a r t n e r s															
MAIN CONTRACTOR :	怡輝建築有限公司 Yoo Fui Building Contractors Ltd.															
STRUCTURAL ENGINEER :	ARUP ALPHA CONSULTING LIMITED Steel Structure & Bridge Specialist															
NOTE :	1. ALL DIMENSIONS ARE IN MM. 2. ALL ELEVATIONS ARE VENDED FROM OUTSIDE. 3. ALL DIMENSIONS TO BE VENDED ON SITE BEFORE FABRICATION. LEGEND :															
<ul style="list-style-type: none"> <li>21 DETAIL MARK NO.</li> <li>1000 REFER SHEET NO.</li> <li>1. F.F.L. --- FINISHED FLOOR LEVEL</li> <li>2. S.F.L. --- STRUCTURAL FLOOR LEVEL</li> <li>3. --- REVERSED DETAIL</li> <li>4. GLASS LENSURE</li> </ul>	<ul style="list-style-type: none"> <li>EG-1-1---6mmx12mm AR 6P+10mmP TIK. LGL</li> <li>EG-2-2---10mm TIK. CRISTAL, GRAY TEmPERED GLASS</li> <li>EG-3-1A---6mmx12-12mm AR 6P+10mmP TIK. LGL</li> <li>BT1/BT1-TRIMING DETAIL (Dwg. NO. T300)</li> <li>EG-1-TRIMING DETAIL (Dwg. NO. T300)</li> </ul>															
<ul style="list-style-type: none"> <li>OPENABLE AREA</li> </ul>	<p>600X110 0011 &amp; 700 X110 TORMA DETAILS REFER TO 3-4/F INS-SITU WINDOW SCHEDULE</p>															
<table border="1"> <tr> <th>NO.</th> <th>DATE</th> <th>REVISION SUBJECT TO APPROVAL/COMMENT</th> </tr> <tr> <td>1</td> <td>25/07/2023</td> <td>REVISION SUBJECT TO APPROVAL/COMMENT</td> </tr> <tr> <td>2</td> <td></td> <td></td> </tr> <tr> <td>3</td> <td></td> <td></td> </tr> <tr> <td>4</td> <td></td> <td></td> </tr> </table>	NO.	DATE	REVISION SUBJECT TO APPROVAL/COMMENT	1	25/07/2023	REVISION SUBJECT TO APPROVAL/COMMENT	2			3			4			<p>PROJECT : PROPOSED DEVELOPMENT ABOVE LIGHT RAIL TBM WING STOP-7/SMTL NO.23/A06A, 33,1IN SHUI WAN, N.T.</p> <p>JOB NO. : J-856</p>
NO.	DATE	REVISION SUBJECT TO APPROVAL/COMMENT														
1	25/07/2023	REVISION SUBJECT TO APPROVAL/COMMENT														
2																
3																
4																
<p>DATE : 02-Aug-21</p> <p>SCALE : 1:40</p> <p>DRAWN BY : hcm</p> <p>CHECKED BY :</p>	<p>TITLE : WINDOW SCHEDULE FOR TOWER 2 IN-SITU WINDOW</p>															
<p>UNIT 5-B-8, Sunny Industrial Centre, 1/F, 610 Cho Kwong Road, Kowloon</p> <p>Tel: 23489211-4 Fax: (852) 27771856</p> <p>DWG NO. : J856-SD-W-5260</p>	<p>REV. : B</p>															

LOCATION	BS-MBR	REQUIRED	PROVIDED
OPENABLE AREA	0.295	GLAZING AREA	0.472
		OPENABLE AREA	0.525
		GLAZING AREA	2.169



ELEVATION



A2 PART PLAN

WINDOW MARK	AW 03/
LOCATION	46/F UNIT B3
SECTION	70mm ALUM. SECTION
GLAZING	EGL-1 / EGL-1A
QUANTITY	1 No.
REMARKS	70mm ALUM. WINDOW SECTION , 4 BAR HINGE-LIP HING (HMS-N16)

B.O. REF :

CLIENT :

**SUN HUNG KAI**  
REAL ESTATE AGENCY LTD.  
477 SUN HING RD CENTRAL, HONGKONG

ARCHITECT :

**IWK&partners**  
11/F, 110, NASSAU ST, HONGKONG

MAIN CONTRACTOR :

**Yeo Fui** Building Construction Ltd.  
Yeo Fui Building Construction Ltd.

STRUCTURAL ENGINEER :

**ARUP**  
ALPHA CONSULTING LIMITED  
Steel Structures & Bridge Specialist

FAÇADE CONSULTANT:

**ARUP**  
ALPHA CONSULTING LIMITED  
Steel Structures & Bridge Specialist

NOTE:

1. ALL DIMENSIONS ARE IN MM.
2. ALL ELEVATIONS ARE VIEWED FROM OUTSIDE.
3. ALL DIMENSIONS TO BE VERIFIED ON SITE BEFORE FABRICATION.

LEGEND:

- 21 DETAIL MARK NO.
- ENTER SHEET NO.
- 1. F.F.L. -- FINISHED FLOOR LEVEL
- 2. S.F.L. -- STRUCTURAL FLOOR LEVEL
- 3. -- REVERSED DETAIL
- 4. GLASS LEAD

- EGL-1 -- 6mm/12mm AIR OPERATED TPK LGLU
- EGL-2 -- 10mm TPK CERGLAZ GRAY TAPERED GLASS
- EGL-3 -- 10mm TPK CERGLAZ TAPERED AND TYPED GLASS
- BT1/BT1-TRANS DETAIL (DWC. NO. 1901)
- BT2-TRANS DETAIL (DWC. NO. 1902)
- GLAZING AREA
- OPENABLE AREA

GO TO 6011 & 7011 TO 700A DETAILS REFER TO 3-4-FR FINISH WINDOW SCHEDULE

NO.	REV.	REVISION
J-856		

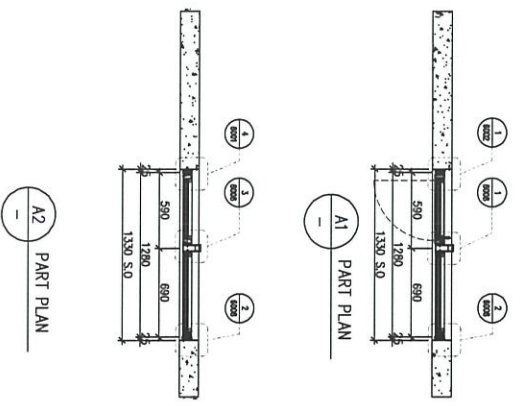
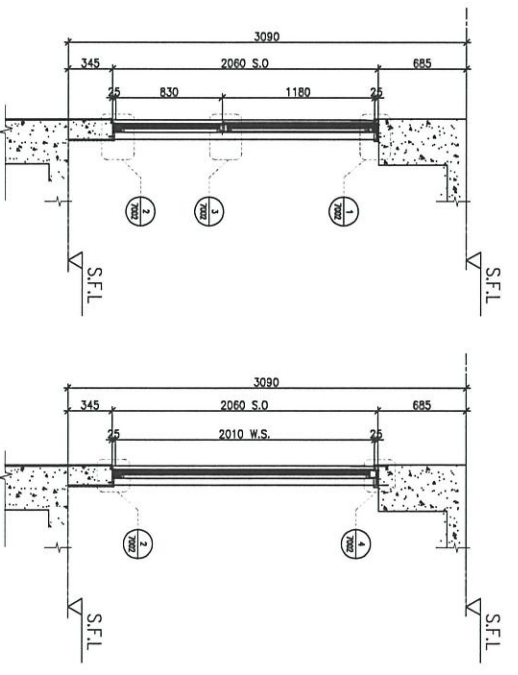
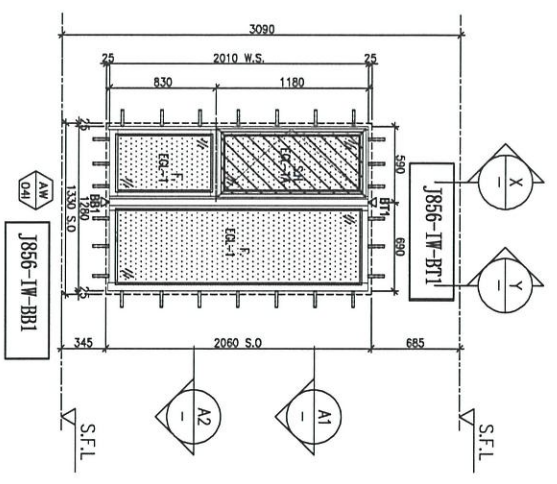
PROJECT : PROPOSED DEVELOPMENT ABOVE LIGHT RAIL TIN WING STOP, SYML NO.23, ARCA 33, TIN SHUI WAI, N.T.

TITLE : WINDOW SCHEDULE FOR TOWER 3 IN-SITU WINDOW

DATE : 21-Jun-22 SCALE : 1:40  
DRAWN BY : Ivan CHECKED BY :

**美特堅有限公司**  
MIDI Architectural Associates Ltd.  
810 Che Kwo Ling Road, Kowloon  
Tel: 23498211-4 Fax: 23272186  
DWC NO. : J856-SP-W-5347 REV. : -

LOCATION	OPENABLE AREA	GLAZING AREA	OPENABLE AREA	GLAZING AREA
A9-MBR	0.295	0.472	0.504	1.719



WINDOW MARK	J856-1W-BB1
LOCATION	46/F UNIT A9
SECTION	70mm ALUM. SECTION
GLAZING	EGL-1 / EGL-1A
QUANTITY	1 No.
REMARKS	70mm ALUM. WINDOW SECTION , 4 BAR HINGE-LIP HING (HHMS-N16)

B.O. REF :

CLIENT :

SUN HUNG KAI  
REAL ESTATE AGENT LTD.  
477 SUN HUNG KAI CENTRE, WINGLOK, HONGKONG

ARCHITECT :

hw&partners  
H O N G K O N G

MAIN CONTRACTOR :

怡和建築有限公司  
Yee Hee Building Construction Ltd.

STRUCTURAL ENGINEER :

ARUP

FAÇADE CONSULTANT:

ALPHA CONSULTING LIMITED  
Steel Structures & Façade Specialist

NOTE:  
1. ALL DIMENSIONS ARE IN mm.  
2. ALL DIMENSIONS ARE VIEWED FROM OUTSIDE.  
3. ALL DIMENSIONS TO BE VERIFIED ON SITE BEFORE FABRICATION.  
LEGEND:

- (A1) DETAIL MARK NO.
- (A2) DETAIL MARK NO.
- 1. F.F.L. -- FINISHED FLOOR LEVEL
- 2. S.F.L. -- STRUCTURAL FLOOR LEVEL
- 3. (R) -- REVERSED DETAIL
- 4. GLASS LEGEND
- EG-1 -- 6mmx152mmx12mm AR, 9PG+10mmP<sup>2</sup> TPK, LGUL
- EG-2 -- 10mm TPK, CRYSAL, GRAY TEmBERED GLASS
- EG-3 -- 10mm TPK, CRYSAL, GRAY TEmBERED AND SEmBED GLASS
- EG-4 -- 14mmx152mmx12mm AR, 9PG+10mmP<sup>2</sup> TPK, LGUL
- BT1/BT1 -- FRINGE DETAIL (DMC NO. F001)
- BS2 -- FRINGE DETAIL (DMC NO. F002)
- GLAZING AREA
- OPENABLE AREA

6007 TO 6011 & 7001 TO 7006A DETAILS REFER TO 3-48 INSITU WINDOW SCHEDULE

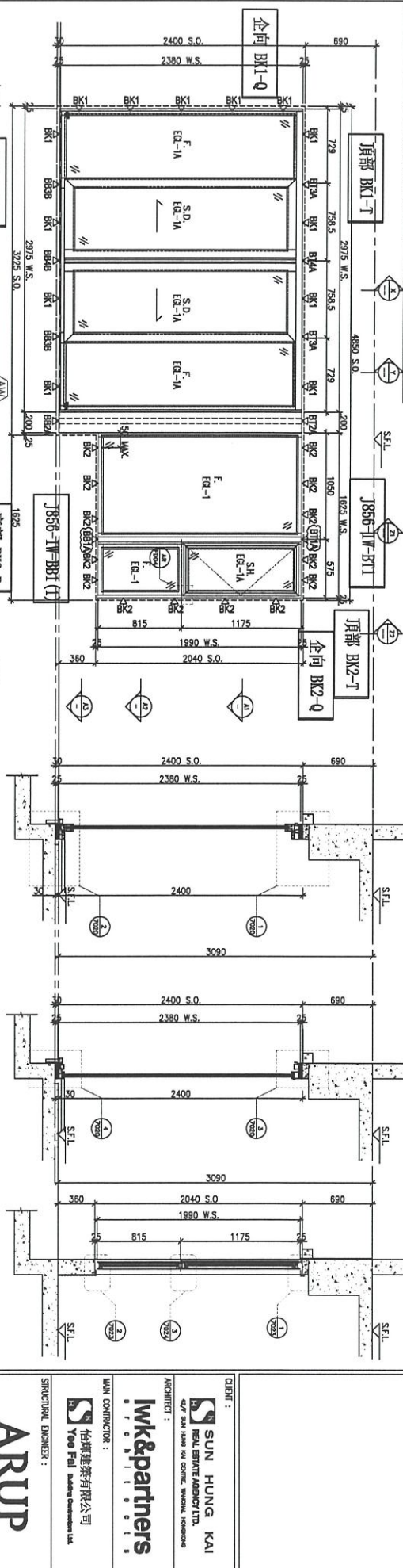
NO.	DATE	REVISION	BY

J856 NO. : J-856  
PROJECT : PROPOSED DEVELOPMENT ABOVE LIGHT RAIL TIN WING STOP, TSMW, NO.25, AREA 33, TIN SHUI WAI, N.T.  
TITLE : WINDOW SCHEDULE FOR TOWER 3 IN-SITU WINDOW

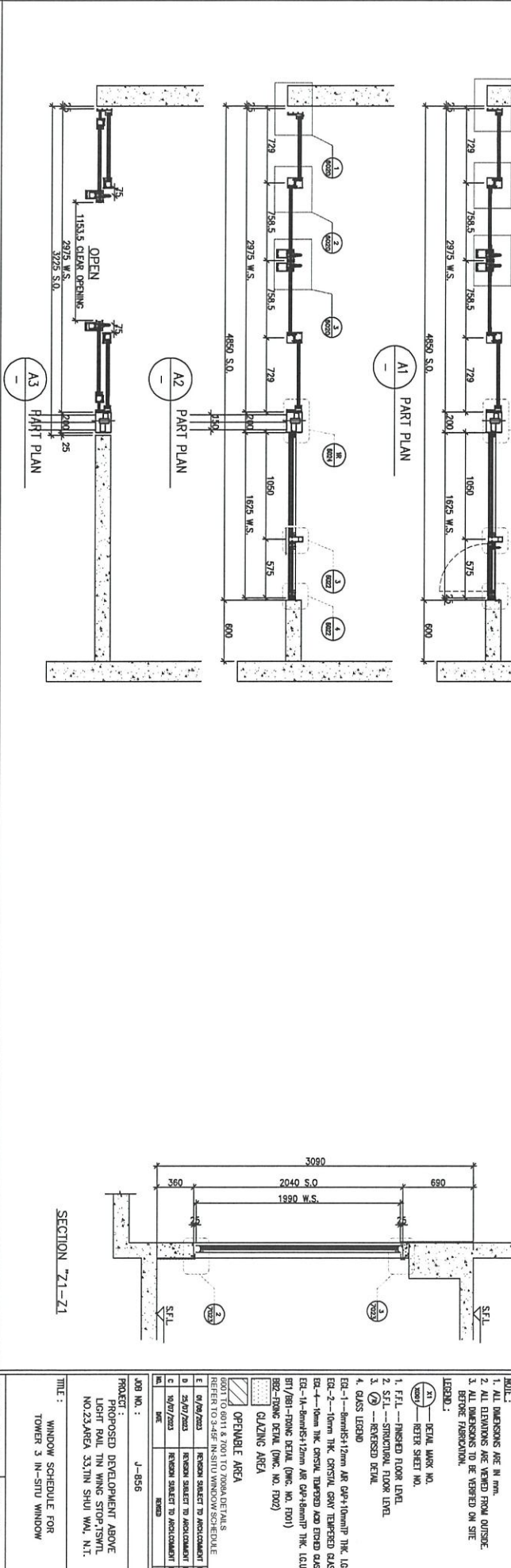
DATE : 21-Jun-22 SCALE : 1:40  
DRAWN BY : chen CHECKED BY :

HW&PARTNERS  
Unit 6-8, Sunny Industrial Centre, 1/F  
610 Chee Koon Ling Road, Kowloon  
Tel: 23498211-4 Fax: 65027271666  
DMC NO. : J856-SI-W-5350 REV : -

LOCATION	OPENABLE AREA	GLAZING AREA	OPENABLE AREA	GLAZING AREA
2B LV./DIN	13,886	3,018	3,075	7,744
REQUIRE	PROVIDED			



ELEVATION



WINDOW MARK	AM / 3017 / OPENED
SECTION	46/F UNIT SIMPLEX 2B LV./DIN.
LOCATION	70mm ALUM. SECTION
GLAZING	EGL-1 & EGL-1A
QUANTITY	1 NO.
REMARKS	SEGMENTA SLIDING DOOR SYSTEM 4 BAR HINGE-LIP HING (HHMS-N14)

B.O. REF :

CLIENT :  
**SUN HUNG KAI**  
 REAL ESTATE AGENCY LTD.  
 4/F, SUN HUNG KAI CENTRAL, WING LOK, HONG KONG

ARCHITECT :  
**lwk&partners**  
 11/F, 111, WING LOK STREET, HONG KONG

MAIN CONTRACTOR :  
**怡和建築有限公司**  
 Yee Fui Building Contractors Ltd.

STRUCTURAL ENGINEER :  
**ARUP**

FRAME CONSULTANT :  
**ALPHA CONSULTING LIMITED**  
 Steel Structures & Frame Specialist

NOTE :  
 1. ALL DIMENSIONS ARE IN MM.  
 2. ALL DIMENSIONS ARE VERIFIED FROM OUTSIDE BEFORE FABRICATION.  
 3. ALL DIMENSIONS TO BE VERIFIED ON SITE BEFORE FABRICATION.

LEGEND :  
 1. F.F.L. -- FINISHED FLOOR LEVEL  
 2. S.F.L. -- STRUCTURAL FLOOR LEVEL  
 3. R.F.L. -- REVERSED DETAIL  
 4. GLASS LEGEND

EGL-1 -- 6mm clear 12mm air gap 10mm TPK LGL  
 EGL-2 -- 6mm clear 12mm air gap 10mm TPK LGL  
 EGL-3 -- 6mm clear 12mm air gap 10mm TPK LGL  
 EGL-4 -- 6mm clear 12mm air gap 10mm TPK LGL  
 EGL-5 -- 6mm clear 12mm air gap 10mm TPK LGL  
 EGL-6 -- 6mm clear 12mm air gap 10mm TPK LGL  
 EGL-7 -- 6mm clear 12mm air gap 10mm TPK LGL  
 EGL-8 -- 6mm clear 12mm air gap 10mm TPK LGL  
 EGL-9 -- 6mm clear 12mm air gap 10mm TPK LGL  
 EGL-10 -- 6mm clear 12mm air gap 10mm TPK LGL  
 EGL-11 -- 6mm clear 12mm air gap 10mm TPK LGL  
 EGL-12 -- 6mm clear 12mm air gap 10mm TPK LGL  
 EGL-13 -- 6mm clear 12mm air gap 10mm TPK LGL  
 EGL-14 -- 6mm clear 12mm air gap 10mm TPK LGL  
 EGL-15 -- 6mm clear 12mm air gap 10mm TPK LGL  
 EGL-16 -- 6mm clear 12mm air gap 10mm TPK LGL  
 EGL-17 -- 6mm clear 12mm air gap 10mm TPK LGL  
 EGL-18 -- 6mm clear 12mm air gap 10mm TPK LGL  
 EGL-19 -- 6mm clear 12mm air gap 10mm TPK LGL  
 EGL-20 -- 6mm clear 12mm air gap 10mm TPK LGL  
 EGL-21 -- 6mm clear 12mm air gap 10mm TPK LGL  
 EGL-22 -- 6mm clear 12mm air gap 10mm TPK LGL  
 EGL-23 -- 6mm clear 12mm air gap 10mm TPK LGL  
 EGL-24 -- 6mm clear 12mm air gap 10mm TPK LGL  
 EGL-25 -- 6mm clear 12mm air gap 10mm TPK LGL  
 EGL-26 -- 6mm clear 12mm air gap 10mm TPK LGL  
 EGL-27 -- 6mm clear 12mm air gap 10mm TPK LGL  
 EGL-28 -- 6mm clear 12mm air gap 10mm TPK LGL  
 EGL-29 -- 6mm clear 12mm air gap 10mm TPK LGL  
 EGL-30 -- 6mm clear 12mm air gap 10mm TPK LGL  
 EGL-31 -- 6mm clear 12mm air gap 10mm TPK LGL  
 EGL-32 -- 6mm clear 12mm air gap 10mm TPK LGL  
 EGL-33 -- 6mm clear 12mm air gap 10mm TPK LGL  
 EGL-34 -- 6mm clear 12mm air gap 10mm TPK LGL  
 EGL-35 -- 6mm clear 12mm air gap 10mm TPK LGL  
 EGL-36 -- 6mm clear 12mm air gap 10mm TPK LGL  
 EGL-37 -- 6mm clear 12mm air gap 10mm TPK LGL  
 EGL-38 -- 6mm clear 12mm air gap 10mm TPK LGL  
 EGL-39 -- 6mm clear 12mm air gap 10mm TPK LGL  
 EGL-40 -- 6mm clear 12mm air gap 10mm TPK LGL  
 EGL-41 -- 6mm clear 12mm air gap 10mm TPK LGL  
 EGL-42 -- 6mm clear 12mm air gap 10mm TPK LGL  
 EGL-43 -- 6mm clear 12mm air gap 10mm TPK LGL  
 EGL-44 -- 6mm clear 12mm air gap 10mm TPK LGL  
 EGL-45 -- 6mm clear 12mm air gap 10mm TPK LGL  
 EGL-46 -- 6mm clear 12mm air gap 10mm TPK LGL  
 EGL-47 -- 6mm clear 12mm air gap 10mm TPK LGL  
 EGL-48 -- 6mm clear 12mm air gap 10mm TPK LGL  
 EGL-49 -- 6mm clear 12mm air gap 10mm TPK LGL  
 EGL-50 -- 6mm clear 12mm air gap 10mm TPK LGL  
 EGL-51 -- 6mm clear 12mm air gap 10mm TPK LGL  
 EGL-52 -- 6mm clear 12mm air gap 10mm TPK LGL  
 EGL-53 -- 6mm clear 12mm air gap 10mm TPK LGL  
 EGL-54 -- 6mm clear 12mm air gap 10mm TPK LGL  
 EGL-55 -- 6mm clear 12mm air gap 10mm TPK LGL  
 EGL-56 -- 6mm clear 12mm air gap 10mm TPK LGL  
 EGL-57 -- 6mm clear 12mm air gap 10mm TPK LGL  
 EGL-58 -- 6mm clear 12mm air gap 10mm TPK LGL  
 EGL-59 -- 6mm clear 12mm air gap 10mm TPK LGL  
 EGL-60 -- 6mm clear 12mm air gap 10mm TPK LGL  
 EGL-61 -- 6mm clear 12mm air gap 10mm TPK LGL  
 EGL-62 -- 6mm clear 12mm air gap 10mm TPK LGL  
 EGL-63 -- 6mm clear 12mm air gap 10mm TPK LGL  
 EGL-64 -- 6mm clear 12mm air gap 10mm TPK LGL  
 EGL-65 -- 6mm clear 12mm air gap 10mm TPK LGL  
 EGL-66 -- 6mm clear 12mm air gap 10mm TPK LGL  
 EGL-67 -- 6mm clear 12mm air gap 10mm TPK LGL  
 EGL-68 -- 6mm clear 12mm air gap 10mm TPK LGL  
 EGL-69 -- 6mm clear 12mm air gap 10mm TPK LGL  
 EGL-70 -- 6mm clear 12mm air gap 10mm TPK LGL  
 EGL-71 -- 6mm clear 12mm air gap 10mm TPK LGL  
 EGL-72 -- 6mm clear 12mm air gap 10mm TPK LGL  
 EGL-73 -- 6mm clear 12mm air gap 10mm TPK LGL  
 EGL-74 -- 6mm clear 12mm air gap 10mm TPK LGL  
 EGL-75 -- 6mm clear 12mm air gap 10mm TPK LGL  
 EGL-76 -- 6mm clear 12mm air gap 10mm TPK LGL  
 EGL-77 -- 6mm clear 12mm air gap 10mm TPK LGL  
 EGL-78 -- 6mm clear 12mm air gap 10mm TPK LGL  
 EGL-79 -- 6mm clear 12mm air gap 10mm TPK LGL  
 EGL-80 -- 6mm clear 12mm air gap 10mm TPK LGL  
 EGL-81 -- 6mm clear 12mm air gap 10mm TPK LGL  
 EGL-82 -- 6mm clear 12mm air gap 10mm TPK LGL  
 EGL-83 -- 6mm clear 12mm air gap 10mm TPK LGL  
 EGL-84 -- 6mm clear 12mm air gap 10mm TPK LGL  
 EGL-85 -- 6mm clear 12mm air gap 10mm TPK LGL  
 EGL-86 -- 6mm clear 12mm air gap 10mm TPK LGL  
 EGL-87 -- 6mm clear 12mm air gap 10mm TPK LGL  
 EGL-88 -- 6mm clear 12mm air gap 10mm TPK LGL  
 EGL-89 -- 6mm clear 12mm air gap 10mm TPK LGL  
 EGL-90 -- 6mm clear 12mm air gap 10mm TPK LGL  
 EGL-91 -- 6mm clear 12mm air gap 10mm TPK LGL  
 EGL-92 -- 6mm clear 12mm air gap 10mm TPK LGL  
 EGL-93 -- 6mm clear 12mm air gap 10mm TPK LGL  
 EGL-94 -- 6mm clear 12mm air gap 10mm TPK LGL  
 EGL-95 -- 6mm clear 12mm air gap 10mm TPK LGL  
 EGL-96 -- 6mm clear 12mm air gap 10mm TPK LGL  
 EGL-97 -- 6mm clear 12mm air gap 10mm TPK LGL  
 EGL-98 -- 6mm clear 12mm air gap 10mm TPK LGL  
 EGL-99 -- 6mm clear 12mm air gap 10mm TPK LGL  
 EGL-100 -- 6mm clear 12mm air gap 10mm TPK LGL

OPENABLE AREA  
 REFER TO 2.4.4.4 IN S110 WINDOW SCHEDULE

PROJECT :  
 PROPOSED DEVELOPMENT ABOVE  
 LIGHT RAIL TUN WING STOP/SWTL  
 NO.23, AREA 33, TIN SHUI WAI, N.T.

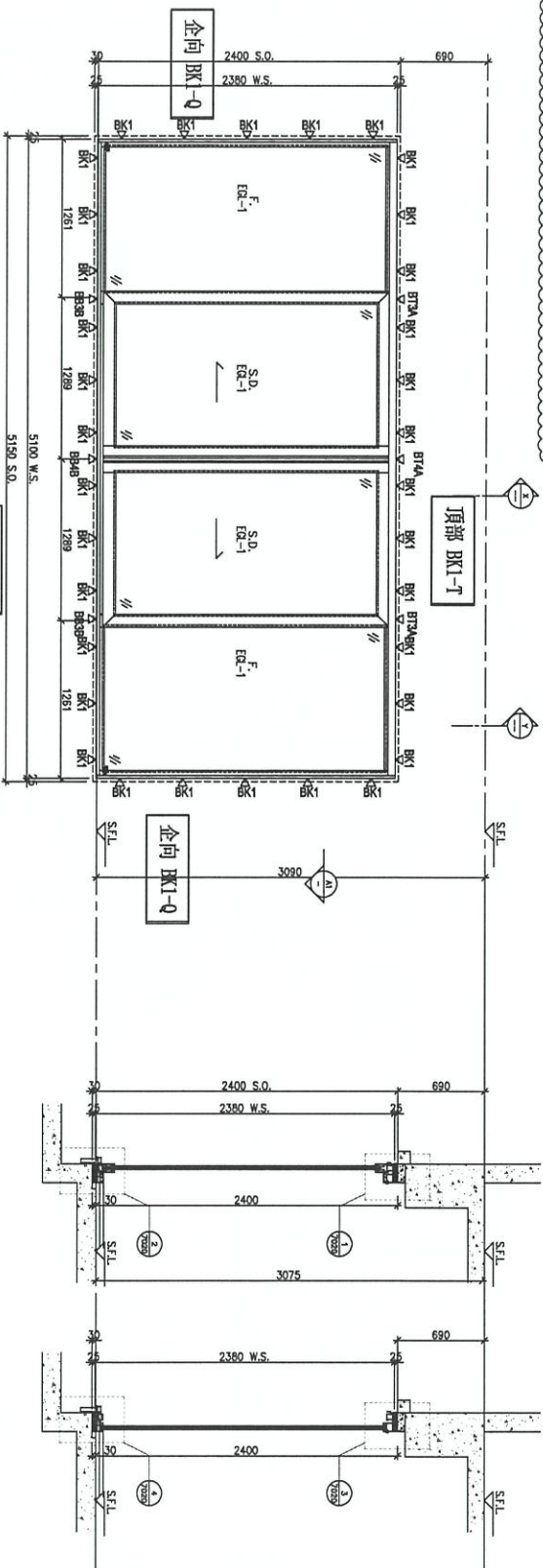
TITLE :  
 WINDOW SCHEDULE FOR  
 TOWER 3 IN-S110 WINDOW

JOB NO. : J-8556  
 DATE : 02-AUG-21  
 SCALE : 1:40  
 DRAWN BY : Ivan  
 CHECKED BY :

REVISIONS  
 NO. DATE BY DESCRIPTION

UNITED STATES OF AMERICA  
 610 Cha Kwo Ling Road, Kowloon  
 Tel: (852) 2911-4 Fax: (852) 2717186  
 DMC NO. : 4856-SP-W-5351 REV. : E

REQUIRE	PROVIDED
LOCATION	OPERABLE AREA
SHL 1B LV./D/M	GLAZING AREA
1.941	3.105
	OPERABLE AREA
	GLAZING AREA
	4.934
	9.81

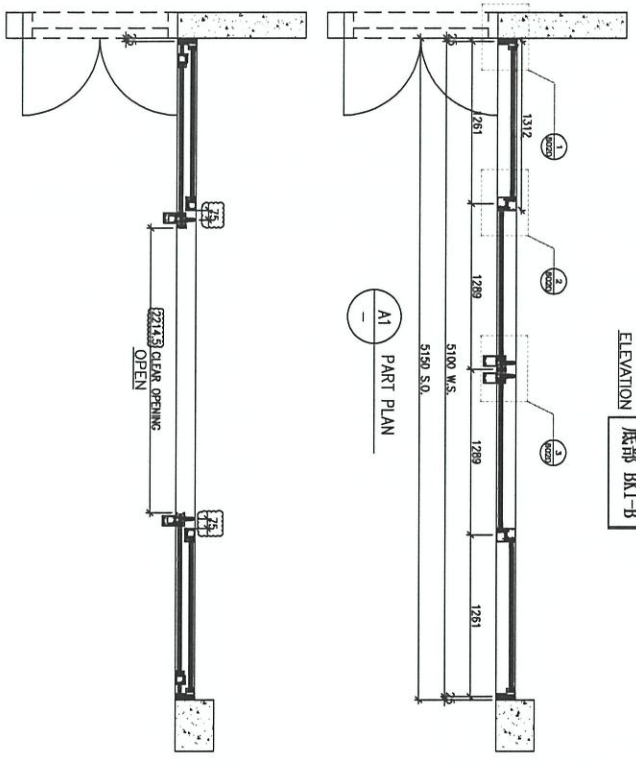


ELEVATION

ELEVATION 底部 BK1-B

PART SECTION X

PART SECTION Y



WINDOW MARK

AM 302

SECTION 46/F UNIT SIMPLEX 1B LV./D/M

GLAZING EGI-1A

QUANTITY 1 NO.

REMARKS SIGENMA SLIDING DOOR SYSTEM

B.O. REF :

CLIENT :

SUN HUNG KAI  
REAL ESTATE AGENCY LTD.  
4/F, SUN HUNG KAI CENTRE, WING LOK MIDDLE  
MONG HONG

ARCHITECT :

iwk&partners  
INTERNATIONAL CONSULTANTS LTD.

MAIN CONTRACTOR :

Yee Fai Building Contractors Ltd.

STRUCTURAL ENGINEER :

ARUP

FAVOUR CONSULTANT:  
ALPHA CONSULTING LIMITED  
Steel Structures & Frame Specialist

NOTE:  
1. ALL DIMENSIONS ARE IN mm.  
2. ALL ELEVATIONS ARE VIEWED FROM OUTSIDE.  
3. ALL DIMENSIONS TO BE VERIFIED ON SITE BEFORE FABRICATION.  
LEGEND:

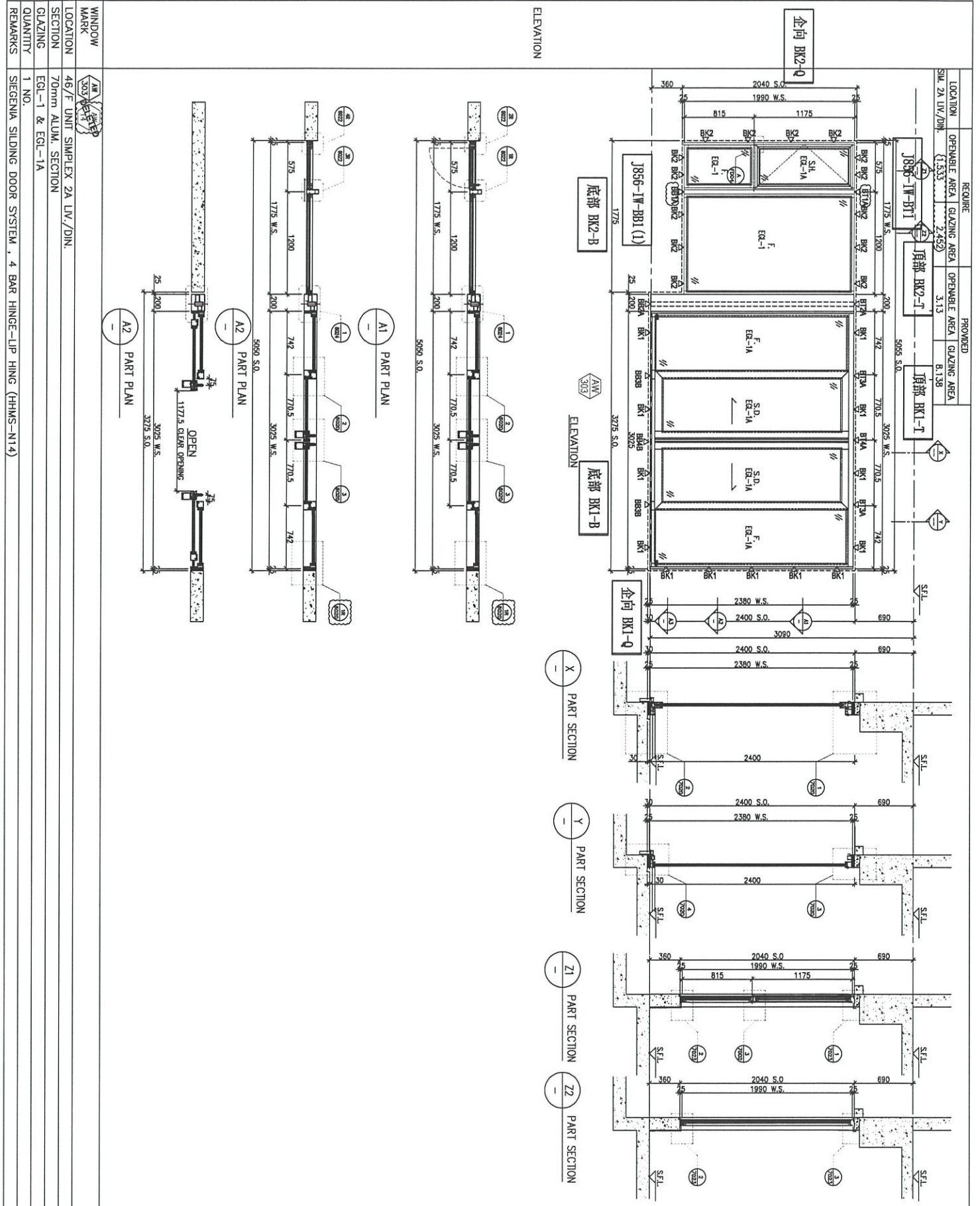
- 21 DETAIL MARK NO.
- 21-1 REFER SHEET NO.
- 1. F.F.L. -- FINISHED FLOOR LEVEL
- 2. S.F.L. -- STRUCTURAL FLOOR LEVEL
- 3. ① -- REVERSED DETAIL
- 4. GLASS LEGEND
- EQ-1 -- 6mm/12mm AIR GAP/10mm/17K LGL
- EQ-2 -- 10mm 17K CERGLA GRAY TINTED/5mm 17K CERGLA TINTED AND TREATED GLASS
- EQ-1+2 -- 10mm 17K CERGLA TINTED AND TREATED GLASS
- EQ-1+2+3 -- 12mm AIR GAP/10mm/17K LGL
- BT/BB1 -- FRAME DETAIL (DWG. NO. 1301)
- BT/BB2 -- FRAME DETAIL (DWG. NO. 1302)
- GLAZING AREA
- OPERABLE AREA

NO.	REV.	DATE	DESCRIPTION
1		19/07/2023	REVISION SUBJECT TO APPROVAL
2		24/07/2023	REVISION SUBJECT TO APPROVAL
3		01/08/2023	REVISION SUBJECT TO APPROVAL

JOB NO. : J-6556  
PROJECT : PROPOSED DEVELOPMENT ABOVE LIGHT RAIL, TIN WING STOP/STMT NO.23, AREA 33, TIN SHUI WAL, N.T.  
TITLE : WINDOW SCHEDULE FOR TOWER 3 IN-SITU WINDOW

DATE : 02-AUG-21 SCALE : 1:40  
DRAWN BY : YUAN CHECKED BY :

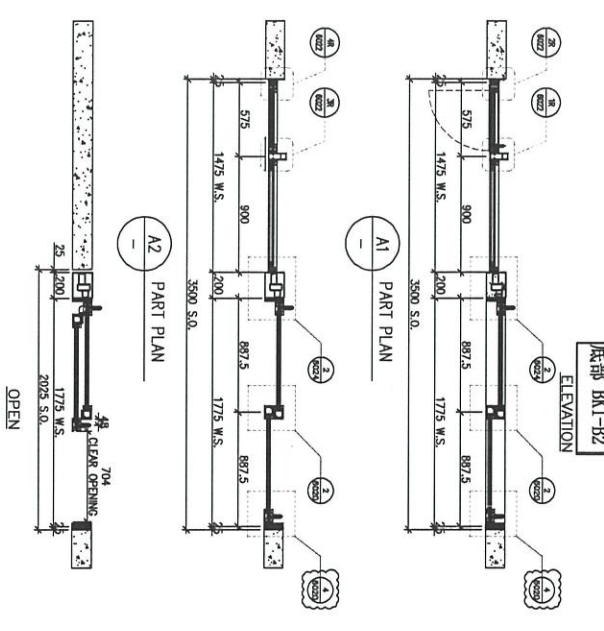
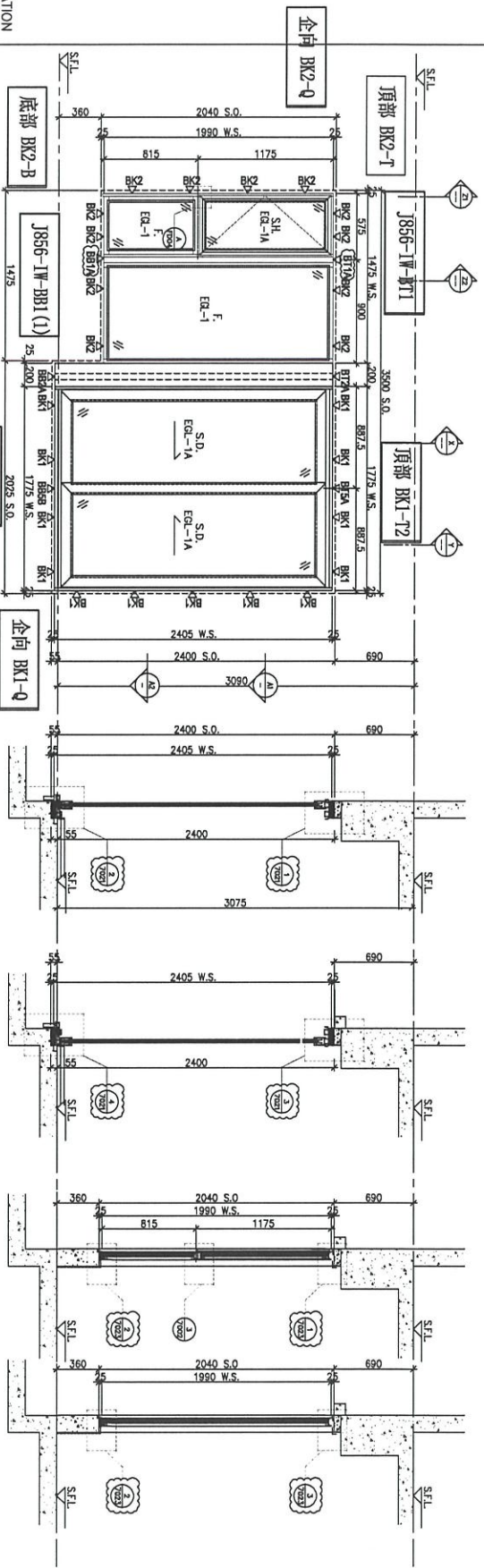
**美特 投资有限公司**  
 MIDI Architecture  
 18/A, Chee Koo Ling Road, Kowloon  
 Tel: 29891211-4 Fax: 29891217/1886  
 DMC NO. : 1856-SI-W-5352 REV. : C



<p>REQUIRED</p> <p>OPENABLE AREA GLAZING AREA</p> <p>PROVIDED</p> <p>OPENABLE AREA GLAZING AREA</p> <p>LOC. 2A LV./DIN. (1,533) 2,452 3,13 8,138</p> <p>1886-1W-BT1 頂部 BK2-T</p> <p>1856-1W-BB1 (1) 頂部 BK1-T</p> <p>企向 BK2-Q</p> <p>企向 BK1-Q</p>	<p>DATE: 02-AUG-21</p> <p>SCALE: 1:40</p> <p>DRAWN BY: IYON</p> <p>CHECKED BY:</p>	<p>PROJECT: PROPOSED DEVELOPMENT ABOVE LIGHT RAIL TIN WING STOP/SWTL NO.23, AREA 53, TIN SHUI WAI, N.T.</p> <p>TITLE: WINDOW SCHEDULE FOR TOWER 3 IN-SITU WINDOW</p>	<p>CLIENT: SUN HUNG KAI REAL ESTATE AGENCY LTD. 4/F, SUN HUNG KAI CENTRE, WING LOK, HONGKONG</p> <p>ARCHITECT: IWK&amp;partners</p> <p>MAIN CONTRACTOR: 怡和建築有限公司 Yee Fui Building Contractors Ltd.</p> <p>STRUCTURAL ENGINEER: ARUP</p> <p>FRAME CONSULTANT: ALPHA CONSULTING LIMITED Steel Structures &amp; Frame Specialist</p>	<p>NOTE:</p> <ol style="list-style-type: none"> <li>1. ALL DIMENSIONS ARE IN MM.</li> <li>2. ALL ELEVATIONS ARE VIEWED FROM OUTSIDE.</li> <li>3. ALL DIMENSIONS TO BE VERIFIED ON SITE BEFORE FABRICATION.</li> </ol> <p>LEGEND:</p> <p>(X1) DETAIL MARK NO.</p> <p>(REF) REFER SHEET NO.</p> <p>1. F.F.L. FINISHED FLOOR LEVEL.</p> <p>2. S.F.L. STRUCTURAL FLOOR LEVEL.</p> <p>3. --- REVERSED DETAIL.</p> <p>4. GLASS LEGEND</p> <p>EA-1-12mm-tinted-12mm AR OPT-10mmTP THK. LGLL</p> <p>EA-2-10mm THK. CRISTAL. GRAY TEMPERED GLASS</p> <p>EA-4-10mm THK. CRISTAL. TAMPSON AND STYED GLASS</p> <p>EA-14-10mm-tinted-12mm AR OPT-10mmTP THK. LGLL</p> <p>BT1/BT1-12mm DETAIL (PKS. NO. T001)</p> <p>BT2-12mm DETAIL (PKS. NO. T002)</p> <p>GLAZING AREA</p> <p>OPENABLE AREA</p> <p>ROBOT TO 0011 &amp; T001 TO 7008A DETAILS</p> <p>REVISED WORKSHEET</p> <p>REVISED WORKSHEET</p> <p>REVISED WORKSHEET</p> <p>REVISED WORKSHEET</p> <p>REVISED WORKSHEET</p> <p>REVISED WORKSHEET</p>	<p>JOB NO.: J-856</p> <p>DATE: 02-AUG-21</p> <p>SCALE: 1:40</p> <p>DRAWN BY: IYON</p> <p>CHECKED BY:</p>
--	--	--	---	--	--

<p>WINDOW MARK</p> <p>LOCATION</p> <p>SECTION</p> <p>GLAZING</p> <p>QUANTITY</p> <p>REMARKS</p>	<p>46/F UNIT SIMPLEX 2A LV./DIN.</p> <p>70mm ALUM. SECTION</p> <p>EGL-1 &amp; EGL-1A</p> <p>1 NO.</p> <p>SIGENMA SLIDING DOOR SYSTEM, 4 BAR HINGE-LIP HING (HMS-N14)</p>
---	--

LOCATION	OPENABLE AREA	GLAZING AREA	OPENABLE AREA	GLAZING AREA
SIM. 1A MBR	1,319	1,319	2,094	5,185



WINDOW MARK	AM 305
LOCATION	46/F UNIT SIMPLEX 1A MBR
SECTION	70mm ALUM. SECTION
GLAZING	EGL-1/EGL-1A
QUANTITY	1 NO.
REMARKS	SIEMENSL SLIDING DOOR SYSTEM, 4 BAR HINGE-LIP HING (HHMS-N14)

B.O. REF :

CLIENT :  
**SUN HUNG KAI**  
 REAL ESTATE AGENCY LTD.  
 427, 5th Floor, Wai Yee Centre, Wai Yee Centre, Kowloon

ARCHITECT :  
**lwk&partners**  
 11/F, 111, Des Voeux Road West, Hong Kong

MAIN CONTRACTOR :  
**怡和建築有限公司**  
 Yee Fui Building Contractors Ltd.

STRUCTURAL ENGINEER :  
**ARUP**

FAÇADE CONSULTANT :  
**ALPHA CONSULTING LIMITED**  
 Steel Structures & Façade Specialist Ltd.

NOTE:  
 1. ALL DIMENSIONS ARE IN MM.  
 2. ALL ELEVATIONS ARE VIEWED FROM OUTSIDE BEFORE FABRICATION.  
 3. ALL DIMENSIONS TO BE VERIFIED ON SITE.

LEGEND:  
 (A1) DETAIL MARK NO.  
 (A2) DETAIL SHEET NO.  
 1. F.F.L. FINISHED FLOOR LEVEL.  
 2. S.F.L. STRUCTURAL FLOOR LEVEL.  
 3. (R) REVERSED DETAIL.  
 4. GLASS LEGEND

EQ-1—frame:112mm AR 60P+10mmTP TIK, LULU  
 EQ-2—10mm TIK, CRISTAL, GRAY TEmPERED GLASS  
 EQ-1A—frame:112mm AR 60P+10mmTP TIK, LULU  
 EQ-1B—10mm TIK, CRISTAL, GRAY TEmPERED GLASS  
 EQ-1C—10mm TIK, CRISTAL, GRAY TEmPERED GLASS  
 EQ-1D—10mm TIK, CRISTAL, GRAY TEmPERED GLASS  
 EQ-1E—10mm TIK, CRISTAL, GRAY TEmPERED GLASS  
 EQ-1F—10mm TIK, CRISTAL, GRAY TEmPERED GLASS  
 EQ-1G—10mm TIK, CRISTAL, GRAY TEmPERED GLASS  
 EQ-1H—10mm TIK, CRISTAL, GRAY TEmPERED GLASS  
 EQ-1I—10mm TIK, CRISTAL, GRAY TEmPERED GLASS  
 EQ-1J—10mm TIK, CRISTAL, GRAY TEmPERED GLASS  
 EQ-1K—10mm TIK, CRISTAL, GRAY TEmPERED GLASS  
 EQ-1L—10mm TIK, CRISTAL, GRAY TEmPERED GLASS  
 EQ-1M—10mm TIK, CRISTAL, GRAY TEmPERED GLASS  
 EQ-1N—10mm TIK, CRISTAL, GRAY TEmPERED GLASS  
 EQ-1O—10mm TIK, CRISTAL, GRAY TEmPERED GLASS  
 EQ-1P—10mm TIK, CRISTAL, GRAY TEmPERED GLASS  
 EQ-1Q—10mm TIK, CRISTAL, GRAY TEmPERED GLASS  
 EQ-1R—10mm TIK, CRISTAL, GRAY TEmPERED GLASS  
 EQ-1S—10mm TIK, CRISTAL, GRAY TEmPERED GLASS  
 EQ-1T—10mm TIK, CRISTAL, GRAY TEmPERED GLASS  
 EQ-1U—10mm TIK, CRISTAL, GRAY TEmPERED GLASS  
 EQ-1V—10mm TIK, CRISTAL, GRAY TEmPERED GLASS  
 EQ-1W—10mm TIK, CRISTAL, GRAY TEmPERED GLASS  
 EQ-1X—10mm TIK, CRISTAL, GRAY TEmPERED GLASS  
 EQ-1Y—10mm TIK, CRISTAL, GRAY TEmPERED GLASS  
 EQ-1Z—10mm TIK, CRISTAL, GRAY TEmPERED GLASS

OPENABLE AREA  
 GOINT TO 0011 & 7001 TO 7004 DETAILS  
 REFER TO 348P INSISTU WINDOW SCHEDULE

REVISION  

NO.	DATE	REVISION
1	01/09/2022	REVISION SELECT TO ARCHITECTMENT
2	02/09/2022	REVISION SELECT TO ARCHITECTMENT
3	03/09/2022	REVISION SELECT TO ARCHITECTMENT
4	04/09/2022	REVISION SELECT TO ARCHITECTMENT

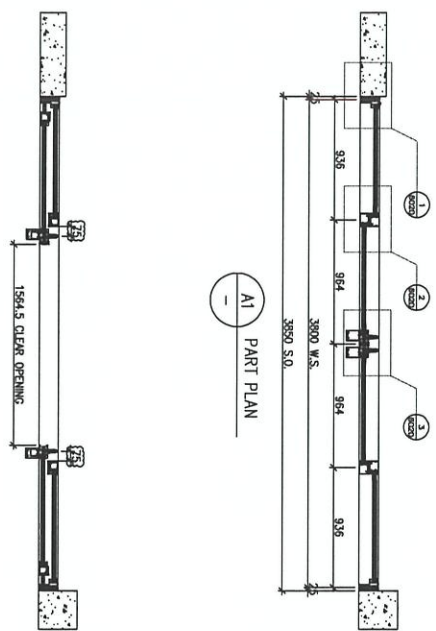
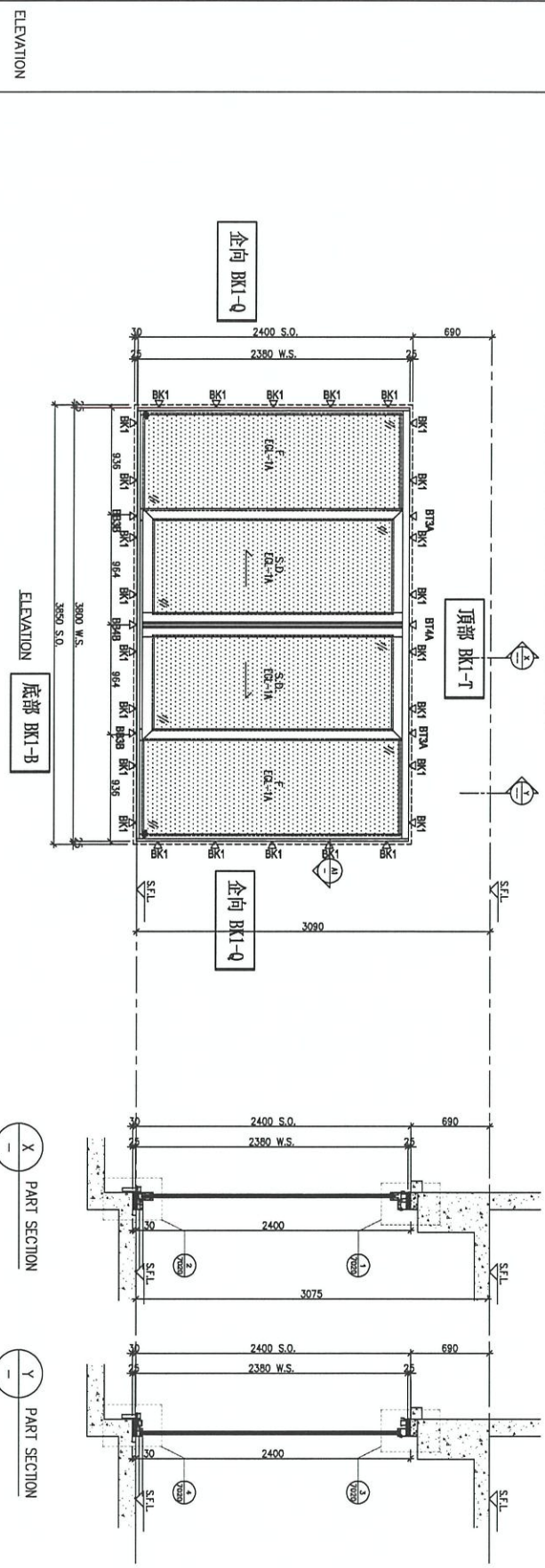
PROJECT :  
 PROPOSED DEVELOPMENT ABOVE  
 LIGHT RAIL TUNNINGS STOP, SIMPL  
 NO.22, AREA 33, 31N SHUI WAH, N.T.

TITLE :  
 WINDOW SCHEDULE FOR  
 TOWER 3 IN-SITU WINDOW

DATE : 02-Aug-21 SCALE : 1:40  
 DRAWN BY : lion CHECKED BY :  
**美特鋁質有限公司**  
 MIDT Aluminium Fabrication Ltd.  
 Unit 5-8, Sunny Industrial Centre, 1/F  
 610 Cheong King Road, Kowloon  
 HK23489211-4 Fax: (852) 27277885  
 DMC NO. : 1856-SD-W-5385 REV : 0

JOB NO. : J-856

LOCATION	OPENABLE AREA	GLAZING AREA	OPENABLE AREA	GLAZING AREA	OPENABLE AREA	GLAZING AREA
SIM. 1A LIV./DIN.	2,090	3,344	3,496	7,012	0,507	2,452



WINDOW MARK	AM 306
LOCATION	46/F UNIT SIMPLEX 1A LIV./DIN.
SECTION	70mm ALUM. SECTION
GLAZING	EGL-1A
QUANTITY	1 NO.
REMARKS	SIEMENSA SLIDING DOOR SYSTEM

B.D. REF :	
------------	--

CLIENT :  
**SUN HUNG KAI**  
 REAL ESTATE DEVELOPMENT LTD.  
 47/F, SUN HUNG KAI CENTRAL, WING LOK, HONG KONG

ARCHITECT :  
**hw&partners**  
 H O N G K O N G

MAIN CONTRACTOR :  
**怡輝建築有限公司**  
 Yee Hei Building Contractors Ltd.

STRUCTURAL ENGINEER :  
**ARUP**

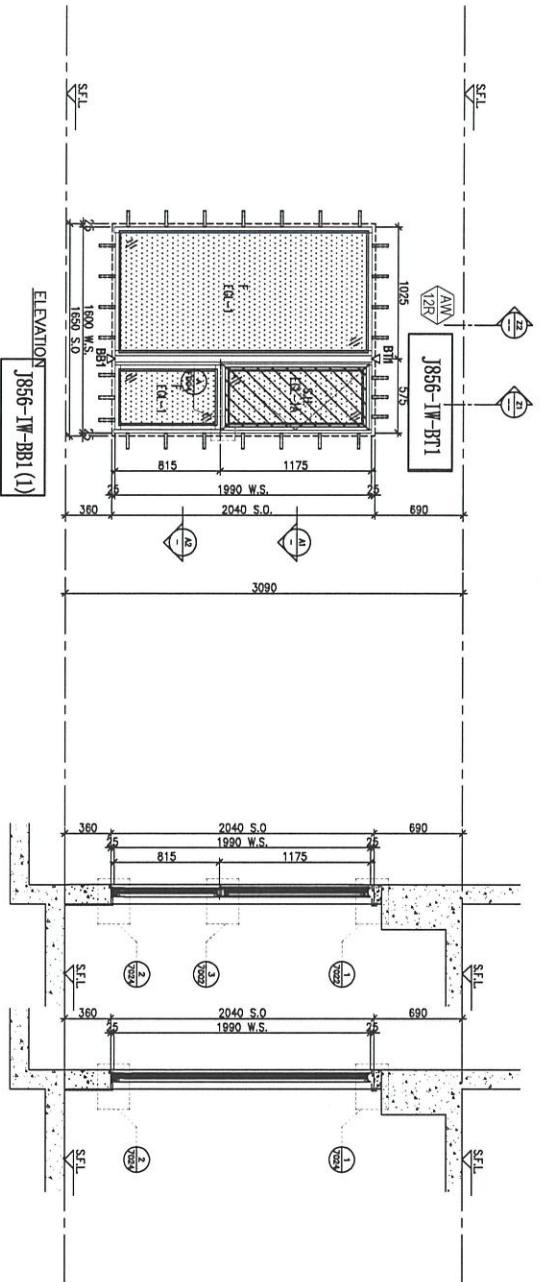
NOTE:  
 1. ALL DIMENSIONS ARE IN MM.  
 2. ALL DIMENSIONS ARE VERIED FROM OUTSIDE.  
 3. ALL DIMENSIONS TO BE VERIED ON SITE BEFORE FABRICATION.

LEGEND:  
 1. F.F.L. --- FINISHED FLOOR LEVEL.  
 2. S.F.L. --- STRUCTURAL FLOOR LEVEL.  
 3. --- REVERSED DETAIL.  
 4. GLASS LEGEND  
 EG-1 --- 6mm15+12mm AIR GAP+10mmTP TRK LGGL  
 EG-2 --- 10mm TRK CRYSAL, GRAY TEmPERED GLASS  
 EG-4 --- 10mm TRK CRYSAL TEmPERED AND SHED GLASS  
 EG-14 --- 6mm15+12mm AIR GAP+10mmTP TRK LGGL  
 BR1/BR1 --- FRINGE DETAIL (DWG. NO. F101)  
 BR2 --- FRINGE DETAIL (DWG. NO. F102)  
 --- GLAZING AREA

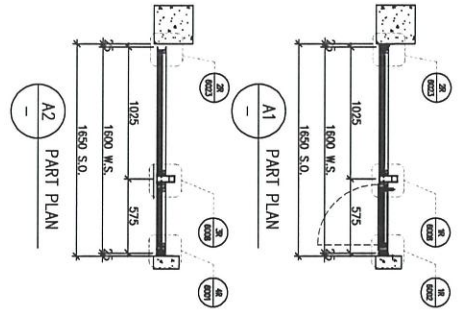
JOB NO. :	J-856
PROJECT :	PROPOSED DEVELOPMENT ABOVE LIGHT ROLL TIN WING STOPP./SMTL NO.25,AREA 33,3TH SHUI WAU, N.T.
TITLE :	WINDOW SCHEDULE FOR TOWER 3 IN-SITU WINDOW
DATE :	02-Aug-21
SCALE :	1:40
DRAWN BY :	Yvon
CHECKED BY :	
DATE :	

UNITED STATES OF AMERICA  
 510 Cho Kwo Ling Road, Kowloon  
 Tel: (852) 27717666 Fax: (852) 27717668  
 DWG NO. : 1956-SI-W-5356 REV. : D

LOCATION	OPENABLE AREA	GLAZING AREA	OPENABLE AREA	GLAZING AREA	OPENABLE AREA	GLAZING AREA
SH. 1A LV/DN	(2,090)	(3,344)	0.507	2.452	3.486	7.012



ELEVATION



Z1 PART SECTION Z2 PART SECTION

WINDOW MARK	AW 12R
LOCATION	46/F UNIT SIMPLEX 1A LV/DN
SECTION	70mm ALUM. SECTION
GLAZING	EGL-1, EGL-1A
QUANTITY	1 NO.
REMARKS	4 BAR HINGE-UP HING (HHMS-N14)

B.O. REF :

CLIENT :

**SUN HUNG KAI**  
REAL ESTATE AGENCY LTD.  
4/F, SUN HUNG KAI CENTRE, WING LOK MONG MONG

ARCHITECT :

**lwk&partners**  
L I N K & P A R T N E R S

MAIN CONTRACTOR :

**Yee Kai** 怡輝建築有限公司  
Building Construction Ltd.

STRUCTURAL ENGINEER :

**ARUP**

FAÇADE CONSULTANT :

**ALPHA CONSULTING LIMITED**  
Steel Structures & Façade Specialist

- NOTE :
- ALL DIMENSIONS ARE IN mm.
  - ALL ELEVATIONS ARE VIEWED FROM OUTSIDE.
  - ALL DIMENSIONS TO BE VERIFIED ON SITE BEFORE FABRICATION.

LEGEND :

- Z1 - DETAIL MARK NO.
- ENTER SHEET NO.
- F.F.L. - FINISHED FLOOR LEVEL
- S.F.L. - STRUCTURAL FLOOR LEVEL
- REVERSED DETAIL
- GLASS LEGEND

- EGL-1 - 12mm-thick AR-GPA-10mm TPK LGLU
- EGL-2 - 10mm TPK, CRITICAL, GRAY TINTED GLASS
- EGL-3 - 10mm TPK, CRITICAL, TINTED AND TONED GLASS
- EGL-4 - 10mm TPK, CRITICAL, TINTED AND TONED GLASS
- BR1/BR1-FRAME DETAIL (DWG. NO. F1001)
- BR2-FRAME DETAIL (DWG. NO. F1002)
- GLAZING AREA
- OPENABLE AREA

GO TO TO 0011 & 7001 TO 7004A DETAILS REFER TO 3-4-8 INSITU WINDOW SCHEDULE

NO.	DATE	REVISION SUBJECT TO APPROVAL/COMMENT
A	29/07/2023	REVISION SUBJECT TO APPROVAL/COMMENT
B		

JOB NO. : J-6556

PROJECT :

PROPOSED DEVELOPMENT ABOVE LIGHT RAIL TIN MING STOP, S/W TL NO.23, AREA 33, TIN SHUI WAI, N.T.

TITLE :

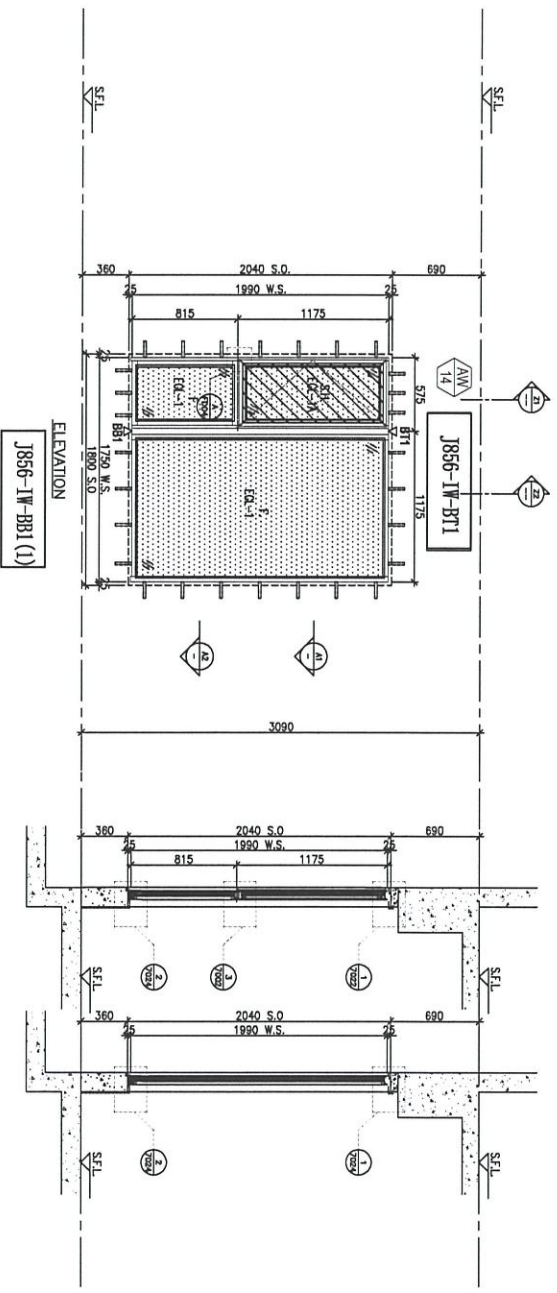
WINDOW SCHEDULE FOR TOWER 3 IN-SITU WINDOW

DATE : 02-AUG-21 SCALE : 1:40

DRAWN BY : XION CHECKED BY :

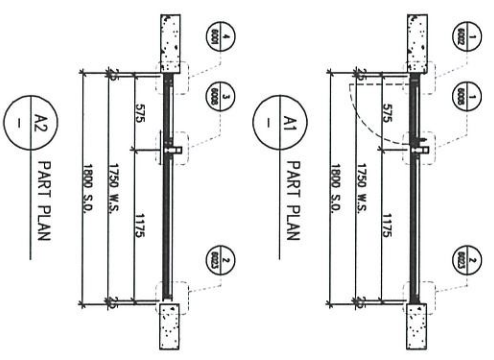
**美特堅有限公司**  
MIDI Architecture  
Unit 6-8, Suning Industrial Centre, 1/1, 610 Cha Kwo Ling Road, Kowloon  
Tel: 23498211-4 Fax: (852) 27217656  
DWC NO. : 1656-SI-W-5361 REV. : B

REQUIRE	AM-14 PROVIDED	AM-10R PROVIDED
LOCATION	GLAZING AREA	GLAZING AREA
SM. 2B MBR.	0.747	1.195
	OPENABLE AREA	OPENABLE AREA
	0.507	2.737
	GLAZING AREA	GLAZING AREA
	1.587	1.213



ELEVATION

Z1 PART SECTION Z2 PART SECTION



A1 PART PLAN A2 PART PLAN

WINDOW MARK	AM 14
LOCATION	46/F UNIT SIMPLEX 2B MBR.
SECTION	70mm ALUM. SECTION
GLAZING	EGL-1, EGL-1A
QUANTITY	1 NO.
REMARKS	4 BAR HINGE-LIP HING (HHMS-N14)

E.D. REF :

CLIENT :

SUN HUNG KAI REAL ESTATE AGENT LTD.  
4/F, SUN HUNG WA CENTER, WANG KWAI, HONGKONG

ARCHITECT : IWK&partners

MAIN CONTRACTOR : 怡和建築有限公司  
Yee Hee Building Construction Ltd.

STRUCTURAL ENGINEER : ARUP

FAÇADE CONSULTANT : ALPHA CONSULTING LIMITED  
Steel Structures & Façade Specialist

NOTE:  
1. ALL DIMENSIONS ARE IN mm.  
2. ALL ELEVATIONS ARE VIEWED FROM OUTSIDE.  
3. ALL DIMENSIONS TO BE VERIFIED ON SITE BEFORE FABRICATION.

LEGEND:  
Z1 DETAIL MARK NO. REFER SHEET NO.  
Z2 DETAIL MARK NO. REFER SHEET NO.  
1. F.F.L. FINISHED FLOOR LEVEL.  
2. S.F.L. STRUCTURAL FLOOR LEVEL.  
3. @ REVERSED DETAIL.  
4. GLASS LEGEND

EGL-1—6mmx12mm AR OPT+10mmP THK GLAZING  
EGL-2—10mm THK OPTICAL CLEAR TEMPERED GLASS  
EGL-1A—6mmx12mm AR OPT+10mmP THK GLAZING  
BB1-TYPING DETAIL (DWG. NO. 1302)

GLAZING AREA  
OPENABLE AREA

REFER TO 3.4.4F IN-SITU WINDOW SCHEDULE  
65001 TO 65011 & 7001 TO 7006A DETAILS

NO.	DATE	REVISION SUBJECT TO ARCHITECT/ENGINEER	BY
1	25/07/2022	REVISION SUBJECT TO ARCHITECT/ENGINEER	REVISION

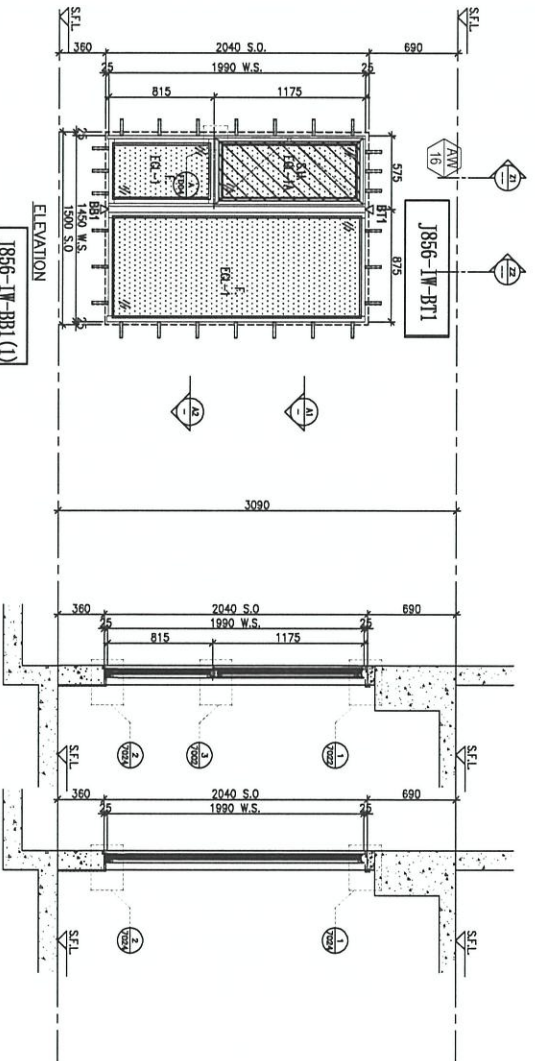
JOB NO. : J-856  
PROJECT : PROPOSED DEVELOPMENT ABOVE LIGHT RAIL TUN WING STOP, TSWHL NO.25, AREA 33, TIN SHUI WAI, N.T.

TITLE : WINDOW SCHEDULE FOR TOWER 3 IN-SITU WINDOW

DATE : 02-AUG-21 SCALE : 1:40  
DRAWN BY : Ivoon CHECKED BY :

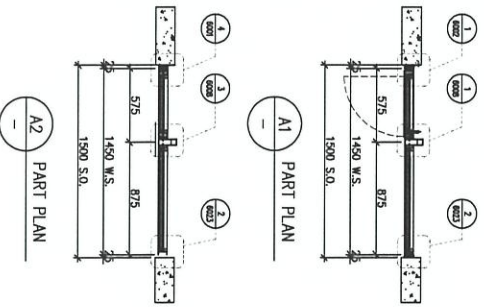
UNITED SHANGHAI INTERNATIONAL TRADING COMPANY LTD.  
510 Cho Koo Ling Road, Kowloon  
Tel: 23488211-4 Fax: 2327271666  
DWC NO. : 1956-SI-W-5363 REV. : B

LOCATION	OPENABLE AREA	GLAZING AREA	REQUIRED	PROVIDED
SM. 1A BR2.	{ 0.276 }	{ 0.441 }	{ 0.441 }	{ 0.507 }
SM. 1A BR3.	{ 0.276 }	{ 0.441 }	{ 0.441 }	{ 2.167 }
SM. 1A BR4.	{ 0.463 }	{ 0.741 }	{ 0.741 }	
SM. 2A BR2.	{ 0.276 }	{ 0.441 }	{ 0.441 }	
SM. 2A BR3.	{ 0.276 }	{ 0.441 }	{ 0.441 }	
SM. 2B BR2.	{ 0.276 }	{ 0.441 }	{ 0.441 }	
SM. 2B BR4.	{ 0.328 }	{ 0.525 }	{ 0.525 }	



ELEVATION

Z1 PART SECTION  
Z2 PART SECTION



WINDOW MARK	REQUIRE	PROVIDED
J856-IW-BB1(1)		
46/F UNIT SIMPLEX 2B BR2, SIMPLEX 2A BR2, SIMPLEX 1A BR3 & BR4		
70mm ALUM. SECTION		
EGL-1, EGL-1A		
QUANTITY		
4 NOS.		
REMARKS		
4 BAR HINGE-UP HING (HHMS-N14)		

WINDOW MARK	REQUIRE	PROVIDED
J856-IW-BB1(1)		
46/F UNIT SIMPLEX 2B BR4, SIMPLEX 2A BR3, SIMPLEX 1A BR2		
70mm ALUM. SECTION		
EGL-1, EGL-1A		
QUANTITY		
3 Nos.		
REMARKS		

B.O. REF :

CLIENT :

SUN HUNG KAI  
REAL ESTATE DEVELOPMENT LTD.  
4/F, SUN HUNG KAI CENTRE, WANCHAI, HONGKONG

ARCHITECT :

hwk&partners  
HONG KONG ARCHITECTS LIMITED

MAIN CONTRACTOR :

Yee Fui Building Contractors Ltd.

STRUCTURAL ENGINEER :

ARUP  
ALPHA CONSULTING LIMITED  
Steel Structures & Facade Specialist

NOTE:  
1. ALL DIMENSIONS ARE IN MM.  
2. ALL DIMENSIONS ARE VIEWED FROM OUTSIDE.  
3. ALL DIMENSIONS TO BE VERIFIED ON SITE BEFORE FABRICATION.  
LEGEND:

- 1. F.F.L. --- FINISHED FLOOR LEVEL.
- 2. S.F.L. --- STRUCTURAL FLOOR LEVEL.
- 3. --- REVERSED DETAIL.
- 4. GLASS LEGEND
- EGL-1 --- 6mmES+12mm AIR GAP+10mmP<sup>2</sup> TPK LGSL
- EGL-2 --- 10mm TPK CENTRAL GLAZING THERMO BREAKED GLASS
- ED-1 --- 10mm TPK CENTRAL THERMO BREAKED GLASS
- ED-1A --- 10mmES+12mm AIR GAP+10mmP<sup>2</sup> TPK LGSL
- BR1/BR1 --- FRONIC DETAIL (DWG. NO. F001)
- BR2 --- FRONIC DETAIL (DWG. NO. F002)

- 1. DETAIL MARK NO.
- 2. REFER SHEET NO.
- 3. S.F.L. --- STRUCTURAL FLOOR LEVEL.
- 4. GLASS LEGEND
- EGL-1 --- 6mmES+12mm AIR GAP+10mmP<sup>2</sup> TPK LGSL
- EGL-2 --- 10mm TPK CENTRAL GLAZING THERMO BREAKED GLASS
- ED-1 --- 10mm TPK CENTRAL THERMO BREAKED GLASS
- ED-1A --- 10mmES+12mm AIR GAP+10mmP<sup>2</sup> TPK LGSL
- BR1/BR1 --- FRONIC DETAIL (DWG. NO. F001)
- BR2 --- FRONIC DETAIL (DWG. NO. F002)

OPENABLE AREA  
REFER TO 3-4/F INS-SIU WINDOW SCHEDULE

NO.	DATE	REVISION	REVISION SUBJECT TO ARCHITECT/ENGINEER
1	25/07/2023	REVISION SUBJECT TO ARCHITECT/ENGINEER	
2	02/08/2023	REVISION SUBJECT TO ARCHITECT/ENGINEER	

PROJECT :  
PROPOSED DEVELOPMENT ABOVE  
LIGHT ROLL TIN WING STOP/TSMVL  
NO.23,AREA 33,33IN SHUI WAH, N.T.

TITLE :  
WINDOW SCHEDULE FOR  
TOWER 3 IN-SIU WINDOW

DATE : 02-Aug-21  
SCALE : 1:40  
DRAWN BY : Iuan  
CHECKED BY :  
UNIT 5-8, Sunny Industrial Centre, 1/F  
610 Che Kwo Ling Road, Kowloon  
Tel: 23488211-4 Fax: 23488217  
DWC NO. : J856-SI-IW-5364  
REV. : B

