

CLIENT :

SUN HUNG KAI
REAL ESTATE AGENCY LTD.
 42/F SUN HUNG KAI CENTRE, WANGHUA, HONGKONG

ARCHITECT :
IWK&partners
 a r c h i t e c t s

MAIN CONTRACTOR :
怡輝建築有限公司
Yee Fai Building Contractors Ltd.

STRUCTURAL ENGINEER :
ARUP

FAÇADE CONSULTANT :
ALPHA CONSULTING LIMITED
 Steel Structure & Façade Specialist

NOTE :
 1. ALL DIMENSIONS ARE IN MM.
 2. ALL ELEVATIONS ARE VIEWED FROM OUTSIDE.
 3. ALL DIMENSIONS TO BE VERIFIED ON SITE BEFORE FABRICATION.

LEGEND :
 (X1) DETAIL MARK NO.
 (X001) REFER SHEET NO.

1. F.F.L. -- FINISHED FLOOR LEVEL
 2. S.F.L. -- STRUCTURAL FLOOR LEVEL
 3. (R) -- REVERSED DETAIL

LEGEND :

	GLASS FROM HEAT STRENGTHENED (HS)
	12mm AIR GAP HEAT STRENGTHENED (HS) GLASS
	12mm AIR GAP HEAT STRENGTHENED (HS) GLASS WITH 12mm LEAD STRENGTHENED GLASS
	TEMPERED GLASS
	LAMINATED GLASS
	GLASS CURTAIN WALL / ALUM BOX PANEL
	2MM LEAD HEAT (HHS)
	12mm AIR GAP HEAT STRENGTHENED (HS) GLASS WITH 2MM LEAD HEAT (HHS)

REINFORCING SOCKET ONLY APPLY AT:
 7/F, 15/F, 21/F, 28/F, 35/F AND 41/F ONLY

MINI LOOP & DEAD LOCK MECHANISM CODE: HCH4293X1-3

JOB NO. : J-856

PROJECT : PROPOSED DEVELOPMENT ABOVE LIGHT RAIL TIN WING STOP-TSWTL NO.23, AREA 33, TIN SHUI WAI, N.T.

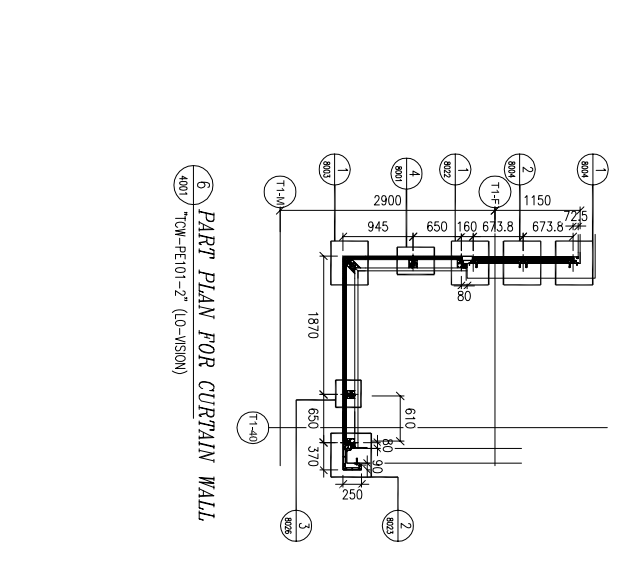
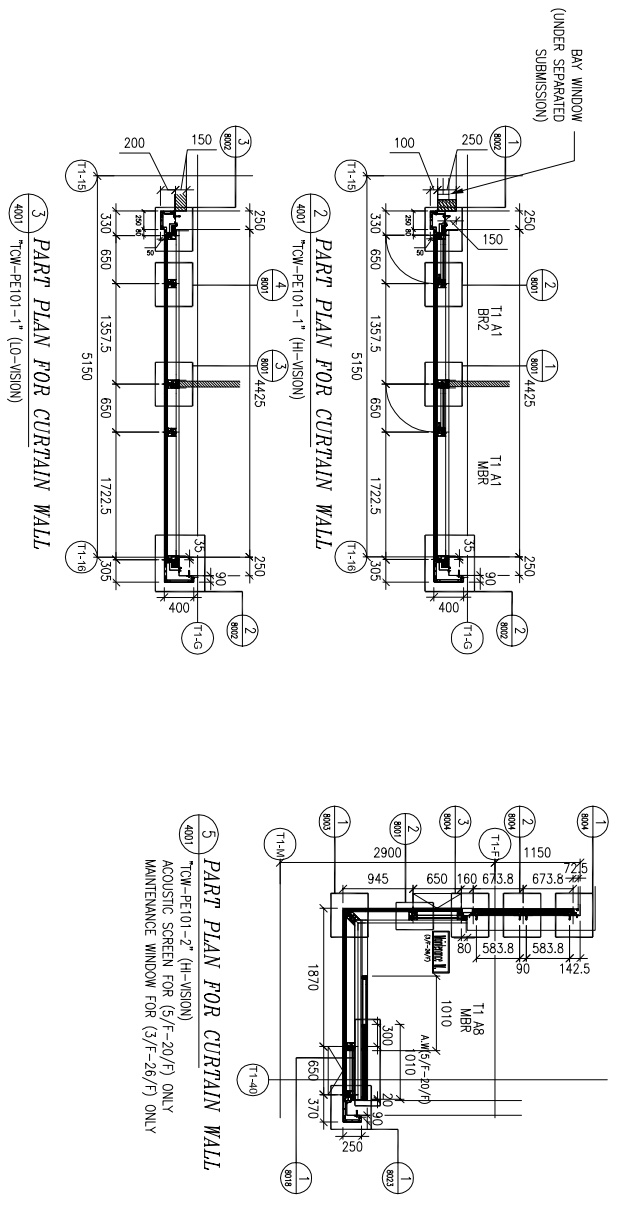
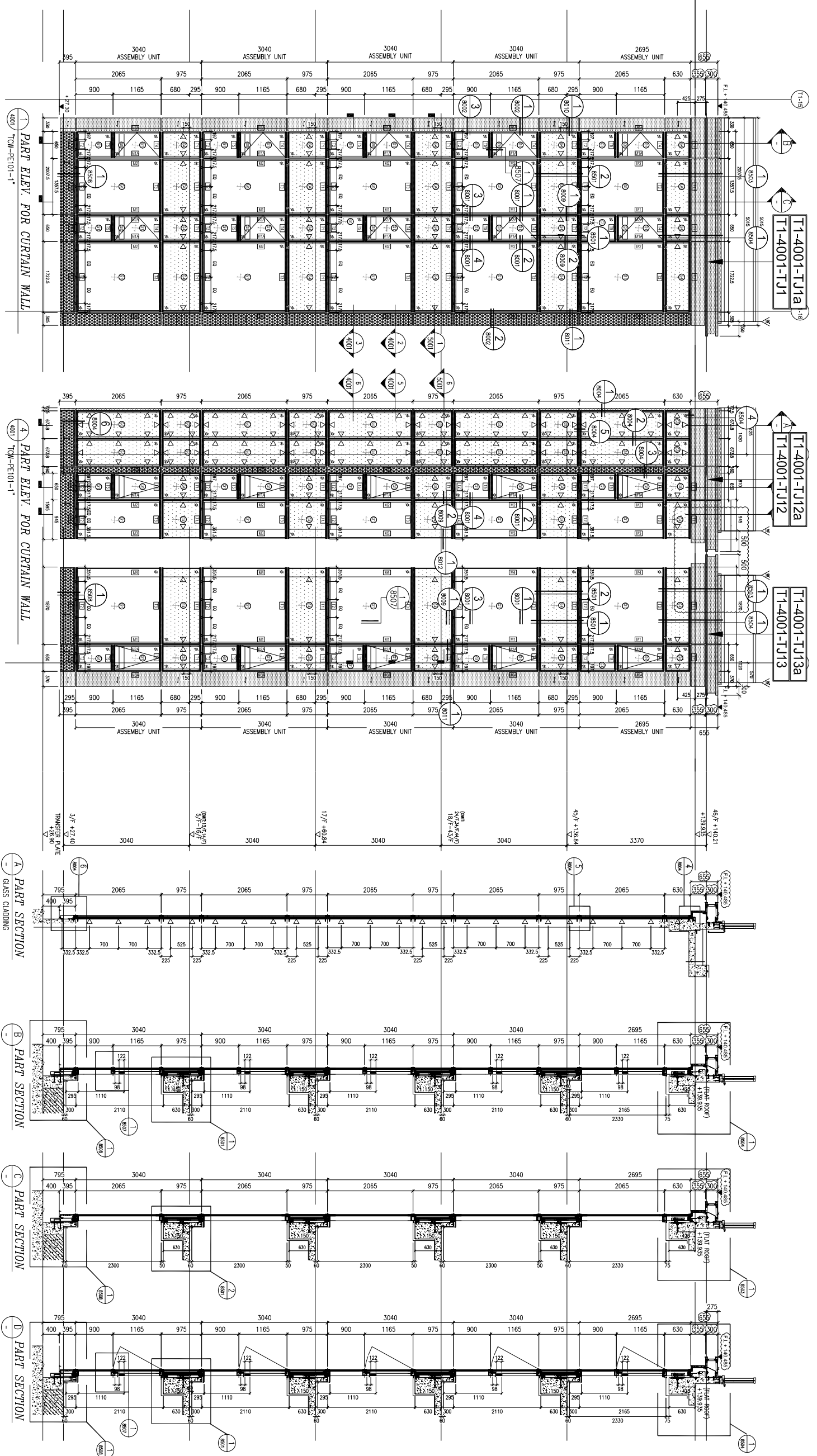
NO.	DATE	REVISION
E	20-APR-2023	SHI SUBMISSION
D	21-FEB-2023	4TH SUBMISSION
C	13-JAN-2023	3TH SUBMISSION
A	28-DEC-2022	2ND SUBMISSION
NO.		REVISION

TITLE : PART ELEV & PLAN & SECTION FOR CURTAIN WALL @ TOWER 1 (TYPICAL)

DATE : 31-OCT-22 SCALE : 1:100

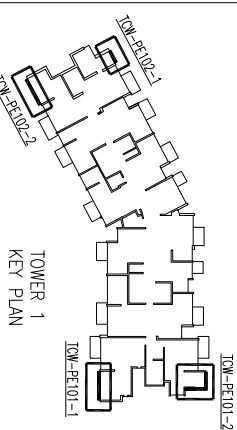
DRAWN BY : C.F. CHECKED BY :

美特鋁質有限公司
MIDI ALUMINIUM FABRICATOR LTD.
 Units 6-8, Sunny Industrial Centre, 1/F
 610 Cho Kwong Road, Kowloon
 Tel: 23489211-4 Fax: (852) 27277666
 DWG NO. : J856-SD-CW-4001 REV. : E



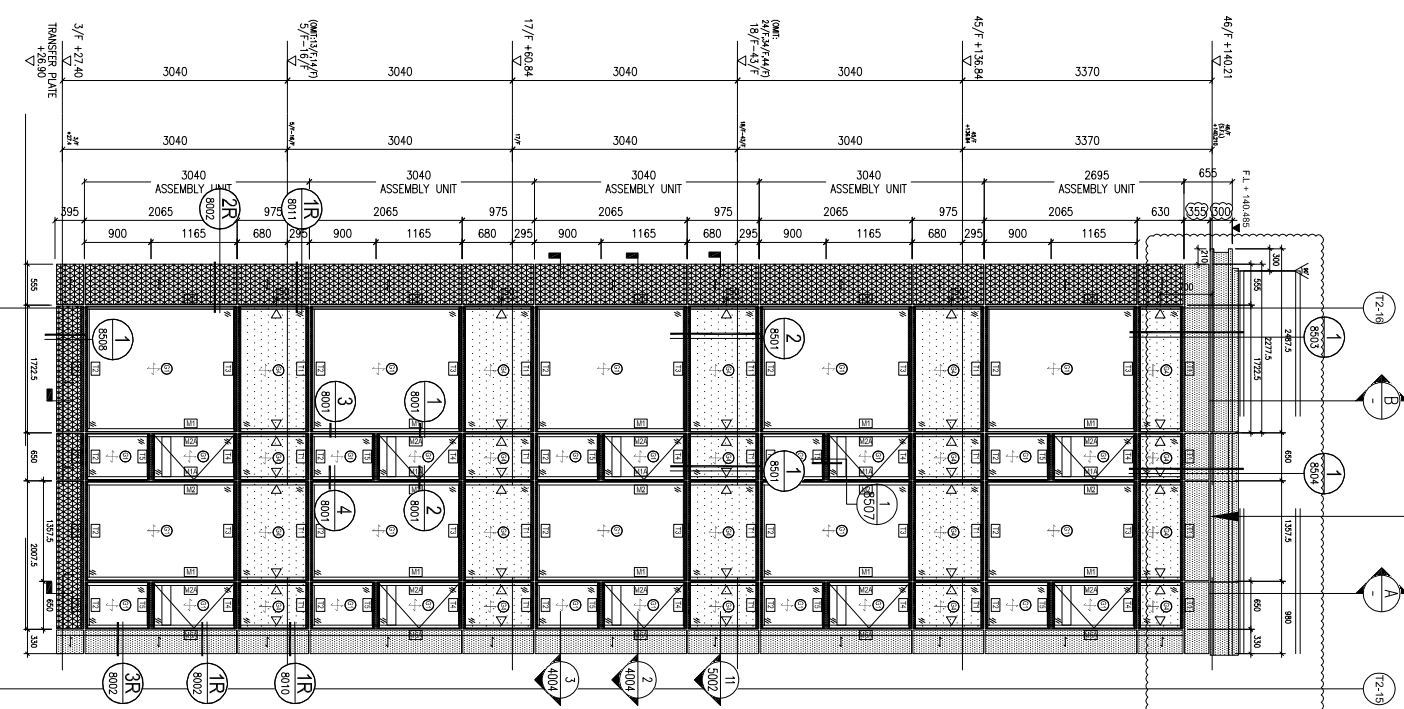
LIGHTING AND OPERABLE AREA

TOWER FLAT ROOM	REQUIRED LIGHTING	PROVIDED LIGHTING	REQUIRED OPERABLE AREA	PROVIDED OPERABLE AREA	REFER DWG
T1	MER	0.793 M ²	0.475 M ²	0.496 M ²	TOM-PE101-1
T1	BRZ	0.722 M ²	3.352 M ²	0.283 M ²	TOM-PE101-1
T1	MER	0.696 M ²	6.293 M ²	0.309 M ²	TOM-PE101-2



R/F: +14.30

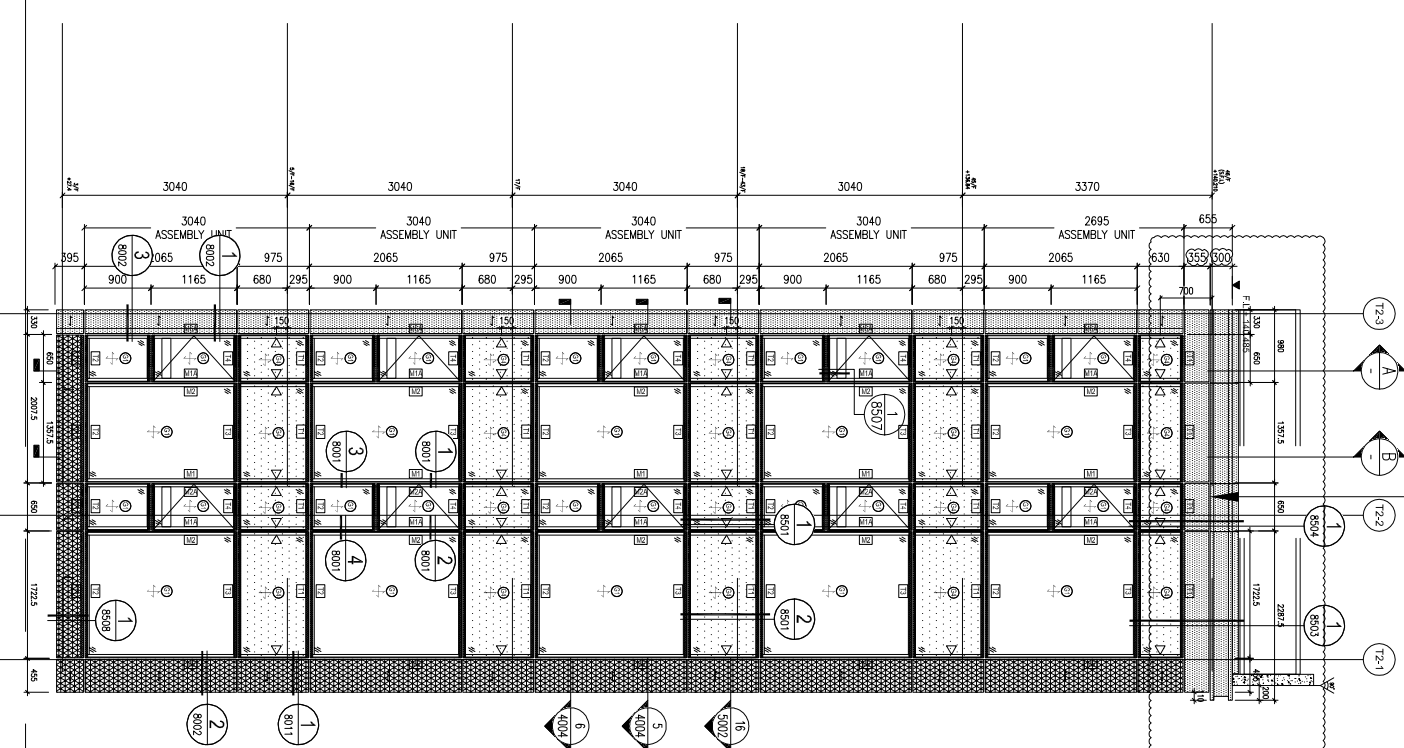
T2-4004-TJ1
T2-4004-TJ1a



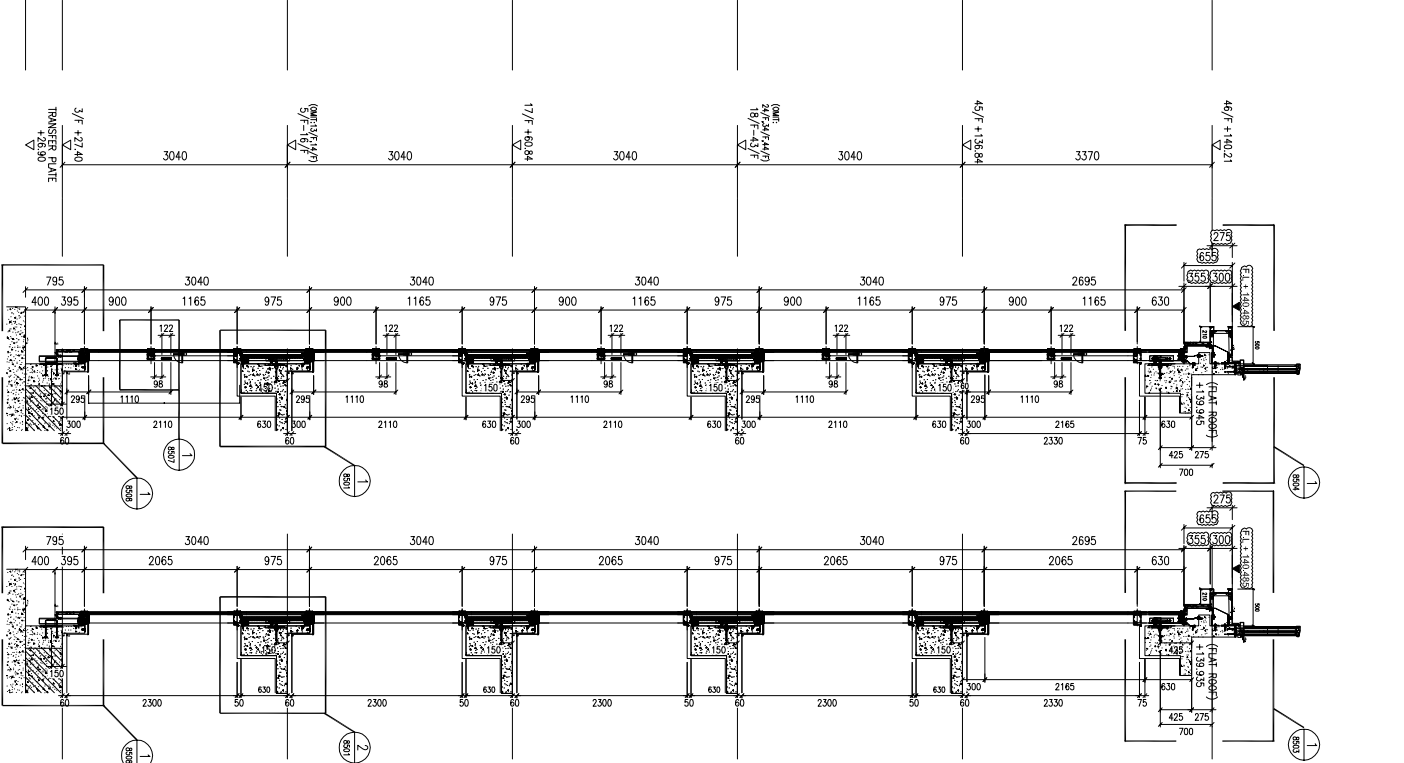
1 PART ELEV. FOR CURTAIN WALL
T2-4004 / T2-4004-TJ1a

R/F: +14.30

T2-4004-TJ6
T2-4004-TJ6a

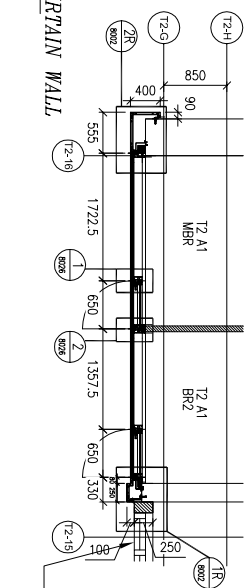


4 PART ELEV. FOR CURTAIN WALL
T2-4004 / T2-4004-TJ6

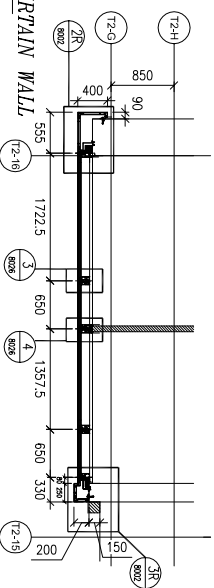


A PART SECTION
B PART SECTION

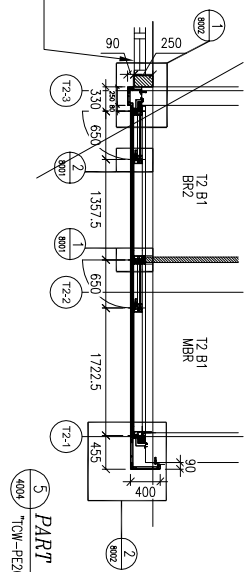
2 PART PLAN FOR CURTAIN WALL
T2-4004 / T2-4004-TJ1a



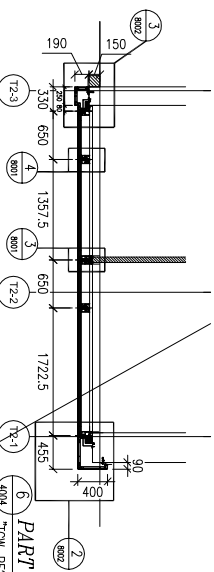
3 PART PLAN FOR CURTAIN WALL
T2-4004 / T2-4004-TJ1a



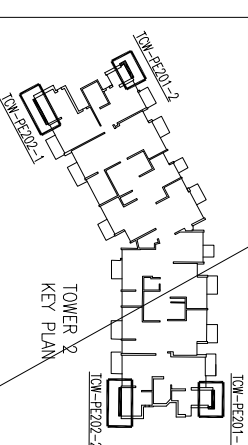
4 PART PLAN FOR CURTAIN WALL
T2-4004 / T2-4004-TJ6



5 PART PLAN FOR CURTAIN WALL
T2-4004 / T2-4004-TJ6



LIGHTING AND OPENABLE AREA		REQUIRED		PROVIDED		REFER CW	
TOWER	FLOOR	ROOM	AREA (M ²)	AREA (M ²)	AREA (M ²)	AREA (M ²)	AREA (M ²)
TOWER 2	A1	MER	0.293	4.143	0.496	0.509	T2-4004-TJ1a
		MR	0.420	3.432	0.263	0.509	T2-4004-TJ1a
	B1	MER	0.295	4.143	0.497	0.509	T2-4004-TJ6
		MR	0.420	3.432	0.263	0.509	T2-4004-TJ6



B.O. REF :

CLIENT :

SUN HUNG KAI
REAL ESTATE AGENCY LTD.
42/F SUN HUNG KAI CENTRE, WINGHAI, HONGKONG

ARCHITECT :

IWK&partners
A R C H I T E C T S

MAIN CONTRACTOR :

怡輝建築有限公司
Yee Fai Building Contractors Ltd.

STRUCTURAL ENGINEER :

ARUP
ALPHA CONSULTING LIMITED
Steel Structure & Facade Specialist

FAÇADE CONSULTANT :

ALPHA CONSULTING LIMITED
Steel Structure & Facade Specialist

NOTE :

- ALL DIMENSIONS ARE IN MM.
- ALL ELEVATIONS ARE VIEWED FROM OUTSIDE.
- ALL DIMENSIONS TO BE VERIFIED ON SITE BEFORE FABRICATION.

LEGEND :

X1 --- DETAIL MARK NO.
X001 --- REFER SHEET NO.

- F.F.L. --- FINISHED FLOOR LEVEL
- S.F.L. --- STRUCTURAL FLOOR LEVEL
- R --- REVERSED DETAIL

JOB NO. : J-856

PROJECT : PROPOSED DEVELOPMENT ABOVE LIGHT RAIL TIN WING STOP-TSMTL NO.23, AREA 33, TIN SHUI WAI, N.T.

TITLE : PART ELEV & PLAN & SECTION FOR CURTAIN WALL @ TOWER 2 (TYPICAL)

DATE : 31-OCT-22 SCALE : 1:10

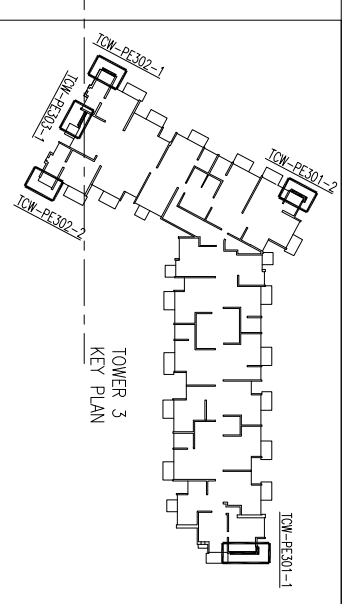
DRAWN BY : C.F. CHECKED BY :

NO.	DATE	REVISION
A	22-DEC-2022	2ND SUBMISSION
B	13-JAN-2023	3TH SUBMISSION
C	21-FEB-2023	4TH SUBMISSION
D	03-MAR-2023	5TH SUBMISSION
E		7TH SUBMISSION

UNITED STATES OF AMERICA

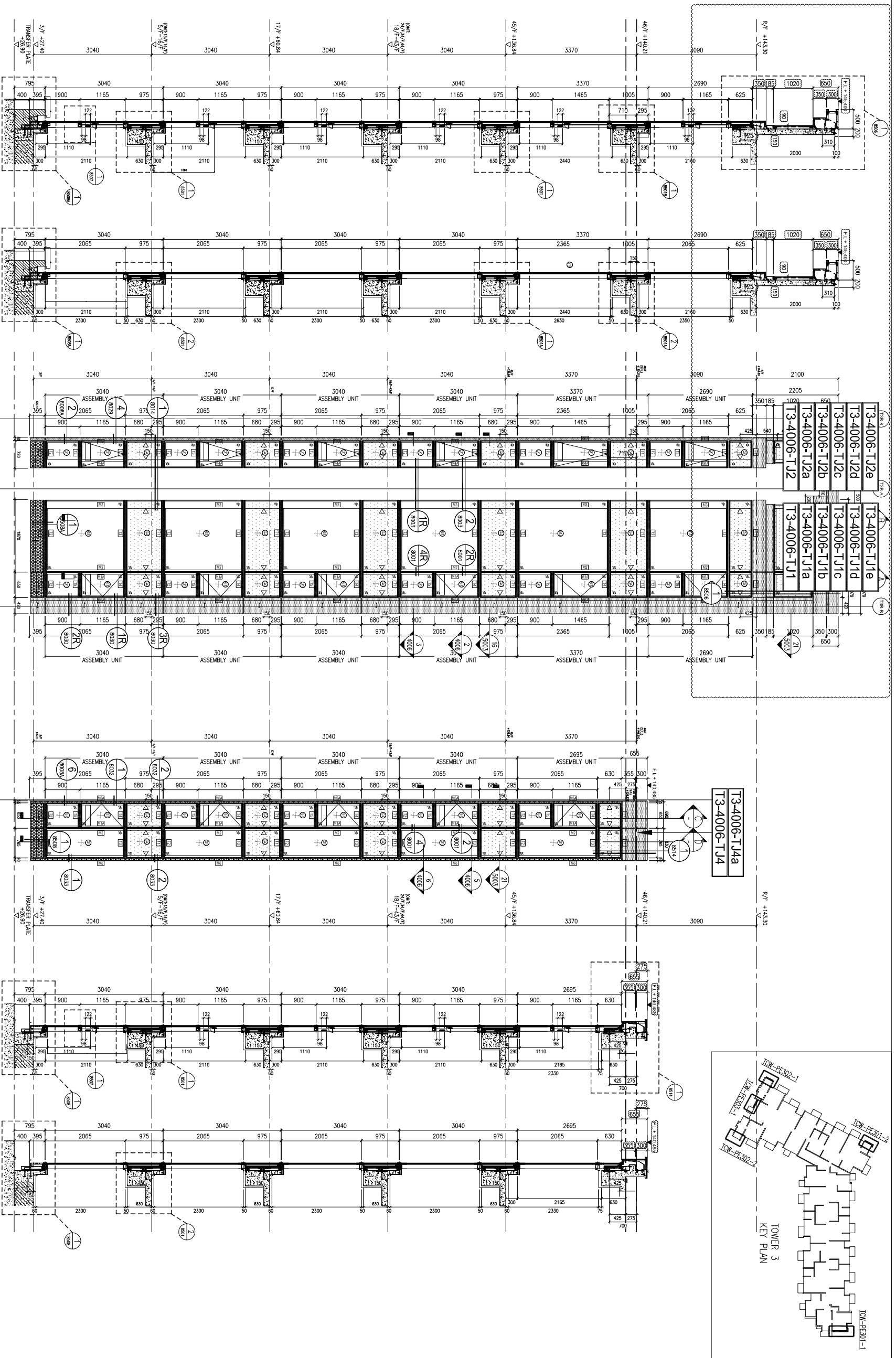
MDI ALUMINUM FABRICATOR LTD.
610 Ono Kwong Road, Kowloon
Tel: 23489211-4 Fax: (852) 27277866

DWG NO. : J856-SD-CW-4004 REV. : E



TOWER 3
KEY PLAN

TOW-PE301-1
TOW-PE301-2
TOW-PE302-1
TOW-PE302-2



A PART SECTION

B PART SECTION

1 PART ELEV. FOR CURTAIN WALL
TOW-PE302-2'

4 PART ELEV. FOR CURTAIN WALL
TOW-PE303-1'

C PART SECTION

D PART SECTION

3 PART PLAN FOR CURTAIN WALL
TOW-PE302-2' (U-VISION)

2 PART PLAN FOR CURTAIN WALL
TOW-PE302-2' (H-VISION)

5 PART PLAN FOR CURTAIN WALL
TOW-PE303-1' (H-VISION)
MAINTENANCE WINDOW FOR (7'-10"/F) ONLY

6 PART PLAN FOR CURTAIN WALL
TOW-PE303-1' (U-VISION)

LIGHTING AND OPENABLE AREA		OPENABLE		REFER CW	
TOWER	FLAT ROOM	REQUIRED	REQUIRED	REQUIRED	PROVIDED
13	B1	MHR	0.742 M ²	4.866 M ²	0.466 M ²
13	B11	SIO	11.592 M ²	2.276 M ²	1.286 M ²

B.O. REF :

CLIENT :

SUN HUNG KAI
REAL ESTATE AGENCY LTD.
42/F, SUN HUNG KAI CENTRE, WINGLOHA, HONGKONG

ARCHITECT :

IWK&partners
A T C H I T E C T S

MAIN CONTRACTOR :

Yee Fai Building Contractors Ltd.

STRUCTURAL ENGINEER :

ARUP
ALPHA CONSULTING LIMITED
Steel Structure & Facade Specialist

FAÇADE CONSULTANT :

ARUP
ALPHA CONSULTING LIMITED
Steel Structure & Facade Specialist

NOTE :

- ALL DIMENSIONS ARE IN MM.
- ALL ELEVATIONS ARE VIEWED FROM OUTSIDE.
- ALL DIMENSIONS TO BE VERIFIED ON SITE BEFORE FABRICATION.

LEGEND :

X1 - DETAIL MARK NO.
X001 - REFER SHEET NO.

- F.F.L. - FINISHED FLOOR LEVEL
- S.F.L. - STRUCTURAL FLOOR LEVEL
- R - REVERSED DETAIL

LEGEND :

① GLASS FROM W/4 STEEL JOINTS
② 12mm ALU + 10mm THERMO (VISION)
③ 12mm ALU + 10mm THERMO (VISION)
④ 12mm ALU + 10mm THERMO (VISION)
⑤ 12mm ALU + 10mm THERMO (VISION)
⑥ 12mm ALU + 10mm THERMO (VISION)
⑦ 12mm ALU + 10mm THERMO (VISION)
⑧ 12mm ALU + 10mm THERMO (VISION)
⑨ 12mm ALU + 10mm THERMO (VISION)
⑩ 12mm ALU + 10mm THERMO (VISION)
⑪ 12mm ALU + 10mm THERMO (VISION)
⑫ 12mm ALU + 10mm THERMO (VISION)
⑬ 12mm ALU + 10mm THERMO (VISION)
⑭ 12mm ALU + 10mm THERMO (VISION)
⑮ 12mm ALU + 10mm THERMO (VISION)
⑯ 12mm ALU + 10mm THERMO (VISION)
⑰ 12mm ALU + 10mm THERMO (VISION)
⑱ 12mm ALU + 10mm THERMO (VISION)
⑲ 12mm ALU + 10mm THERMO (VISION)
⑳ 12mm ALU + 10mm THERMO (VISION)
㉑ 12mm ALU + 10mm THERMO (VISION)
㉒ 12mm ALU + 10mm THERMO (VISION)
㉓ 12mm ALU + 10mm THERMO (VISION)
㉔ 12mm ALU + 10mm THERMO (VISION)
㉕ 12mm ALU + 10mm THERMO (VISION)
㉖ 12mm ALU + 10mm THERMO (VISION)
㉗ 12mm ALU + 10mm THERMO (VISION)
㉘ 12mm ALU + 10mm THERMO (VISION)
㉙ 12mm ALU + 10mm THERMO (VISION)
㉚ 12mm ALU + 10mm THERMO (VISION)
㉛ 12mm ALU + 10mm THERMO (VISION)
㉜ 12mm ALU + 10mm THERMO (VISION)
㉝ 12mm ALU + 10mm THERMO (VISION)
㉞ 12mm ALU + 10mm THERMO (VISION)
㉟ 12mm ALU + 10mm THERMO (VISION)
㊱ 12mm ALU + 10mm THERMO (VISION)
㊲ 12mm ALU + 10mm THERMO (VISION)
㊳ 12mm ALU + 10mm THERMO (VISION)
㊴ 12mm ALU + 10mm THERMO (VISION)
㊵ 12mm ALU + 10mm THERMO (VISION)
㊶ 12mm ALU + 10mm THERMO (VISION)
㊷ 12mm ALU + 10mm THERMO (VISION)
㊸ 12mm ALU + 10mm THERMO (VISION)
㊹ 12mm ALU + 10mm THERMO (VISION)
㊺ 12mm ALU + 10mm THERMO (VISION)
㊻ 12mm ALU + 10mm THERMO (VISION)
㊼ 12mm ALU + 10mm THERMO (VISION)
㊽ 12mm ALU + 10mm THERMO (VISION)
㊾ 12mm ALU + 10mm THERMO (VISION)
㊿ 12mm ALU + 10mm THERMO (VISION)

JOB NO. : J-856

PROJECT : PROPOSED DEVELOPMENT ABOVE LIGHT RAIL TIN WING STOP-TSMTL NO.23, AREA 33, TIN SHUI WAI, N.T.

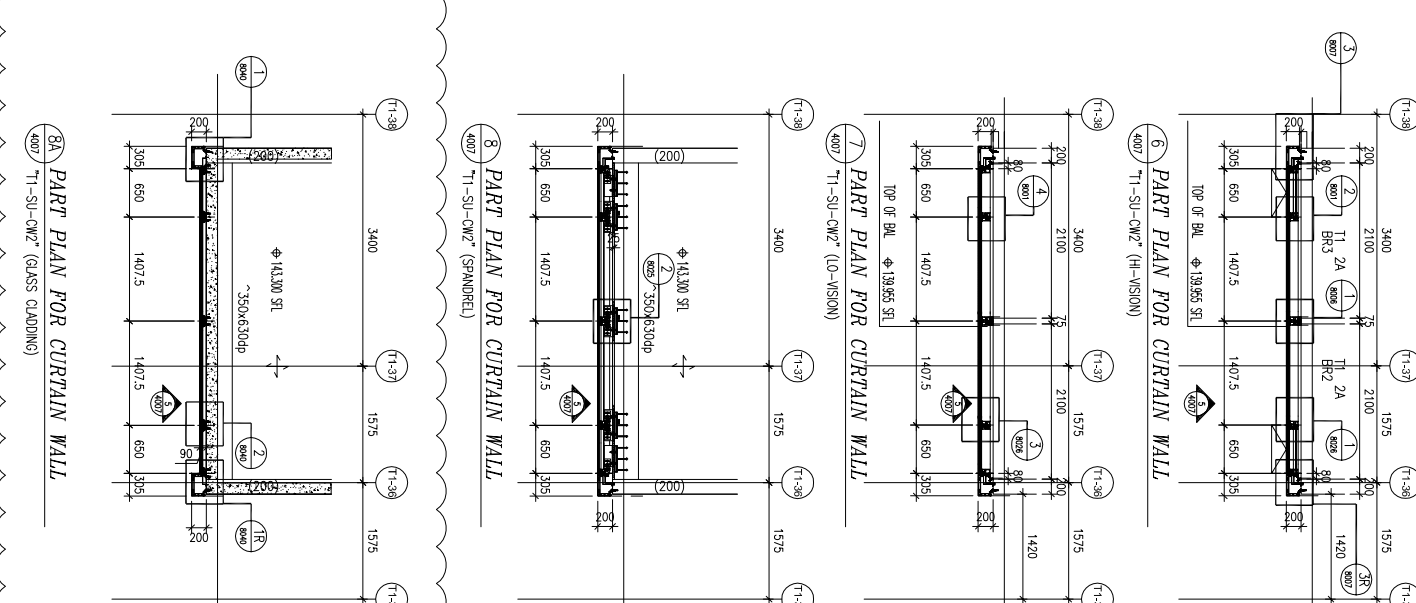
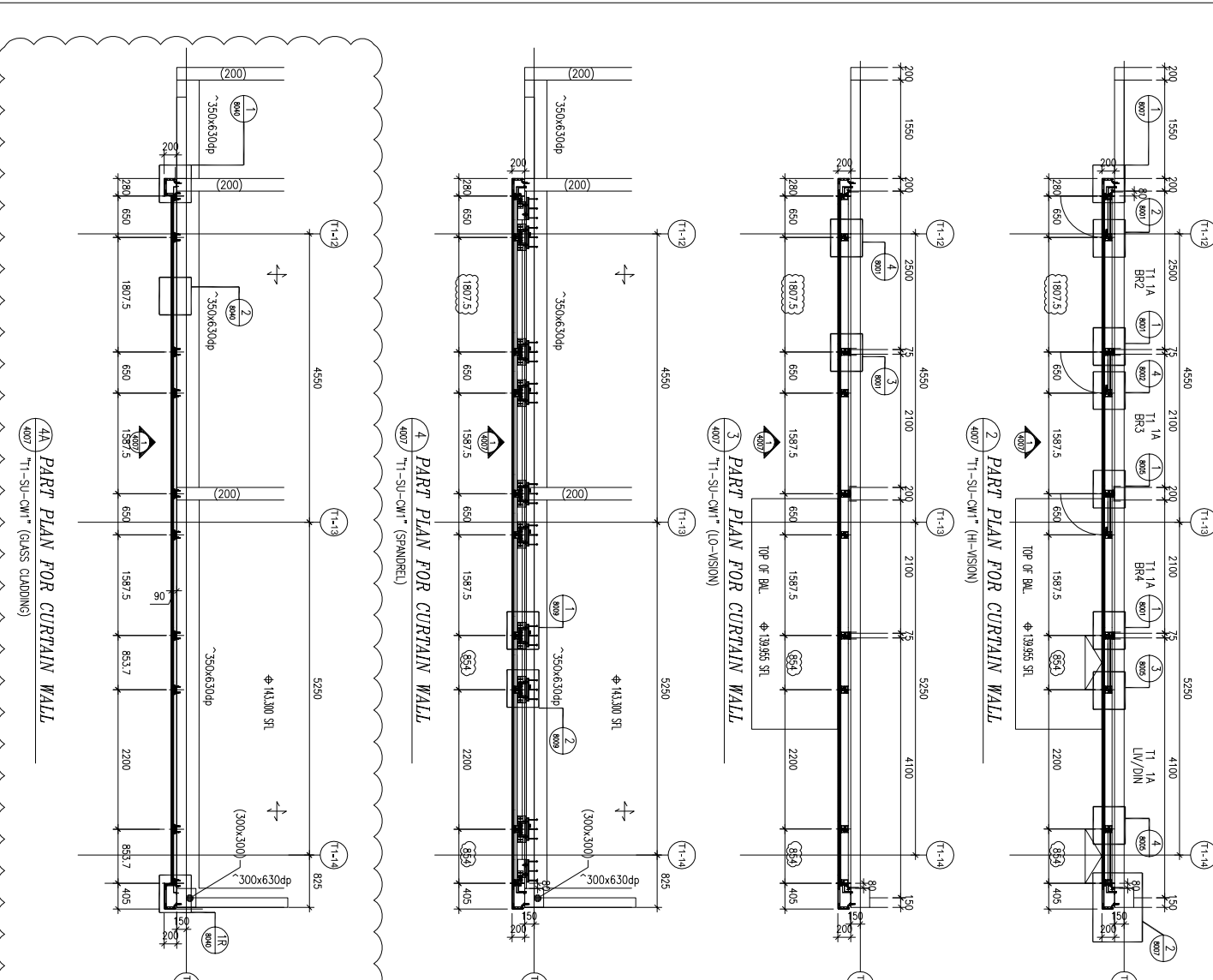
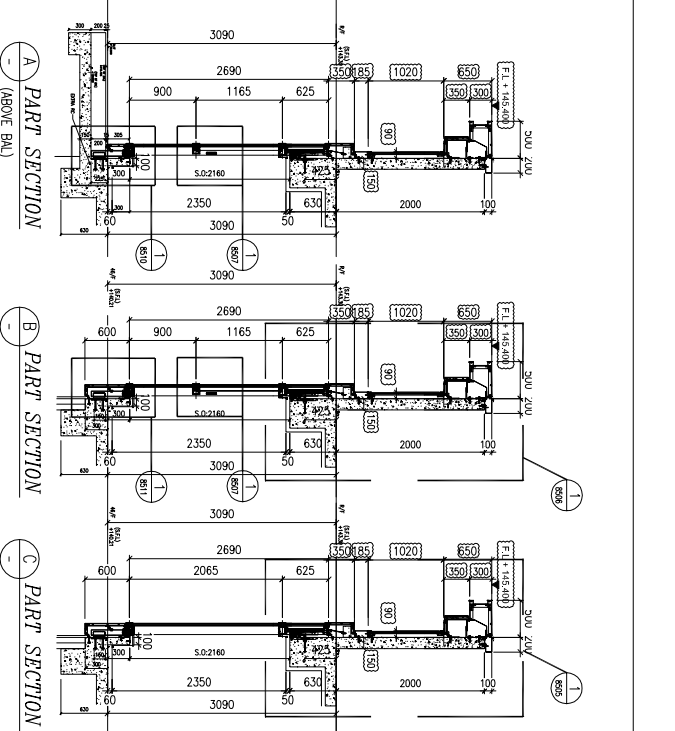
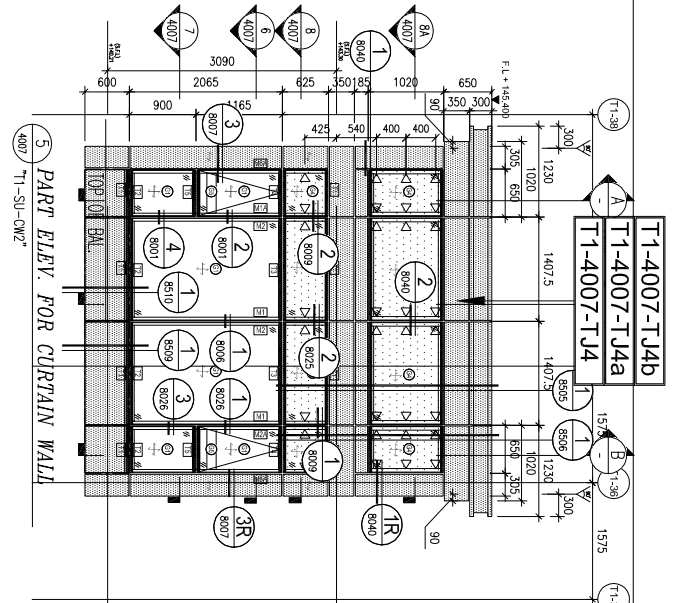
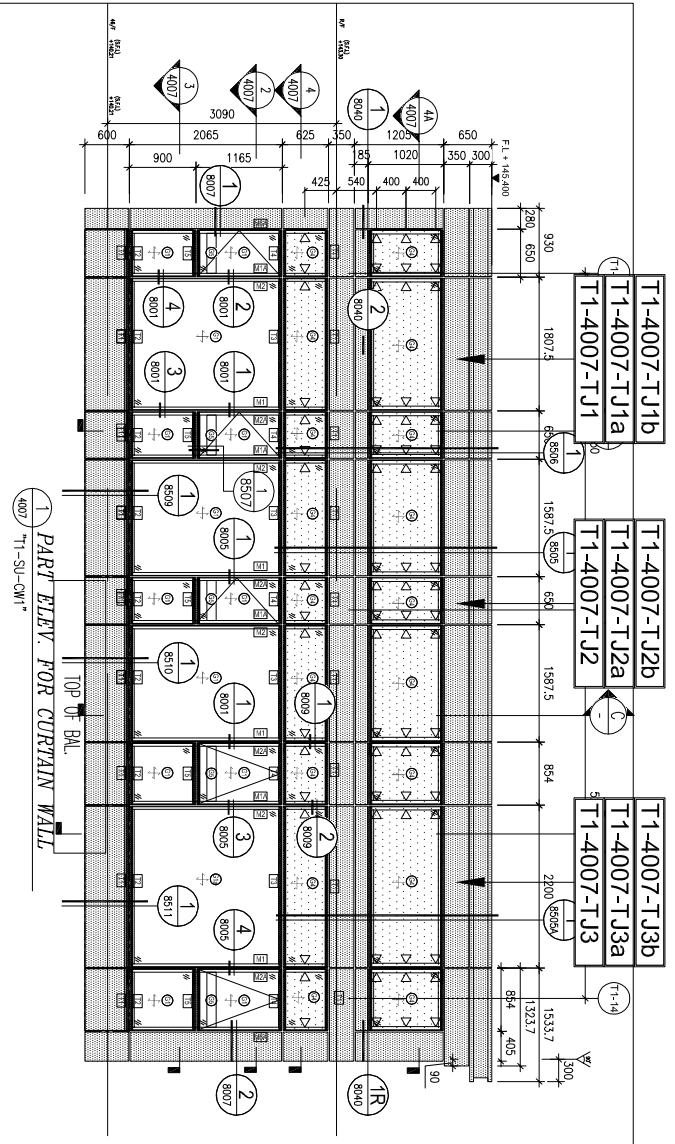
TITLE : PART ELEV & PLAN & SECTION FOR CURTAIN WALL @ TOWER 3 (TYPICAL)

DATE : 31-OCT-22 SCALE : 1:100

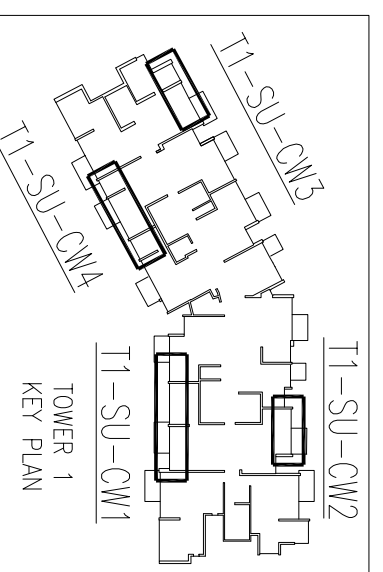
DRAWN BY : C.F. CHECKED BY :

Units 6-8, Sunray Industrial Centre, 1/F
1610 Ona Kwong Road, Kowloon
Tel: 23489211-4 Fax: (852) 27277866
DWG NO. : J856-SD-CW-4006 REV. : E

美特铝业有限公司
MIDI ALUMINIUM FABRICATOR LTD.



LIGHTING AND OPENABLE AREA		REQUIRED	PROVIDED	REFER
TOWER FLAT	ROOM	REQUIRED	PROVIDED	CW
TSU	1A	LV/DIN 1.079 M ² 6.827 M ² 2.242 M ² 1.403(CW)+1.320(CD)=2.723 M ²		T1-SU-CW1
TSU	1A	BB2 0.525 M ² 4.310 M ² 0.328 M ² 0.509 M ²		T1-SU-CW1
TSU	1A	BB3 0.441 M ² 3.880 M ² 0.276 M ² 0.509 M ²		T1-SU-CW1
TSU	1A	BB4 0.441 M ² 3.880 M ² 0.276 M ² 0.509 M ²		T1-SU-CW1
TSU	2A	BB2 0.441 M ² 3.529 M ² 0.276 M ² 0.509 M ²		T1-SU-CW2
TSU	2A	BB3 0.441 M ² 3.529 M ² 0.276 M ² 0.509 M ²		T1-SU-CW2



B.O. REF :

CLIENT : **SUN HUNG KAI REAL ESTATE AGENCY LTD.**
42/F SUN HUNG KAI CENTRE, WINGHUA, HONGKONG

ARCHITECT : **IWK&partners**
A R C H I T E C T S

MAIN CONTRACTOR : **怡輝建築有限公司 Yee Fai Building Contractors Ltd.**

STRUCTURAL ENGINEER : **ARUP**
ALPHA CONSULTING LIMITED
Steel Structure & Facade Specialist

FAÇADE CONSULTANT :

NOTE :

- ALL DIMENSIONS ARE IN mm.
- ALL ELEVATIONS ARE VIEWED FROM OUTSIDE.
- ALL DIMENSIONS TO BE VERIFIED ON SITE BEFORE FABRICATION.

LEGEND :

- X1 - DETAIL MARK NO.
- X001 - REFER SHEET NO.
- 1. F.F.L. -- FINISHED FLOOR LEVEL
- 2. S.F.L. -- STRUCTURAL FLOOR LEVEL
- 3. R/R -- REVERSED DETAIL

LEND :

- RIU GLASS: 8mm HEAT STRENGTHENED +12mm AIR +10mm TEMPERED (VISION)
- RII GLASS: 8mm HEAT STRENGTHENED +12mm AIR +12mm TEMPERED (VISION)
- 12mm HEAT STRENGTHENED GLASS (SPANDREL) / W/ 2MM BACK PANEL (PROTECTIVE BARBER)
- 12mm TEMPERED GLASS
- 3mm ALUM. CLADDING
- WIND LOAD + DEAD LOAD BRACKET WITH SHAN 1 (10MM)

JOB NO. : J-856

PROJECT : PROPOSED DEVELOPMENT ABOVE LIGHT RAIL TIN WING STOP-TSWTL NO.23, AREA 33, TIN SHUI WAI, N.T.

TITLE : PART ELEV & PLAN & SECTION FOR CURTAIN WALL @ TOWER 1 SU (46/F)

DATE : 31-OCT-22 SCALE : 1:100

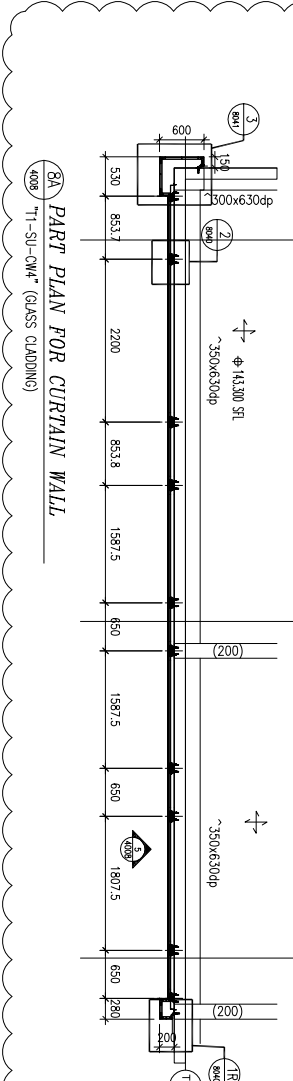
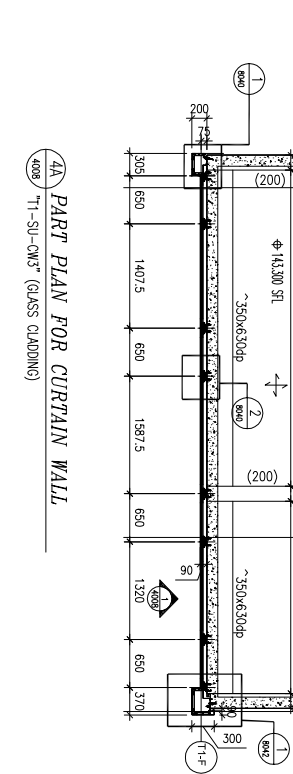
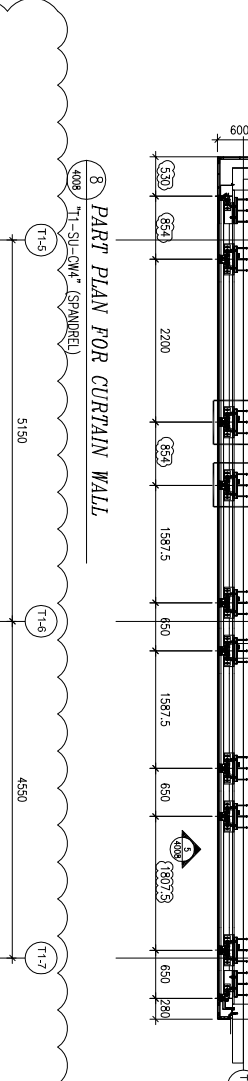
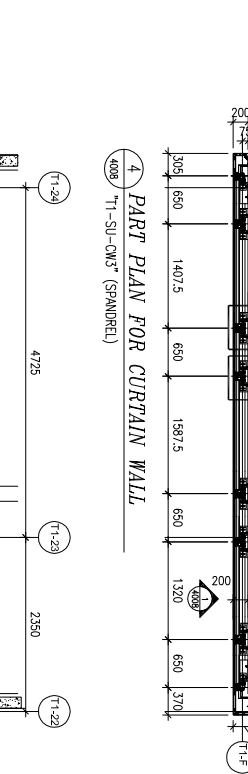
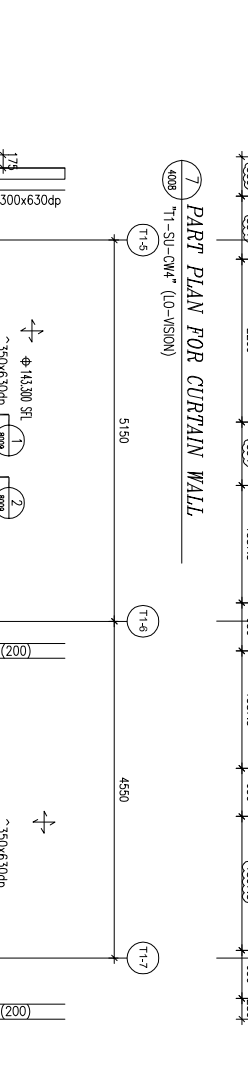
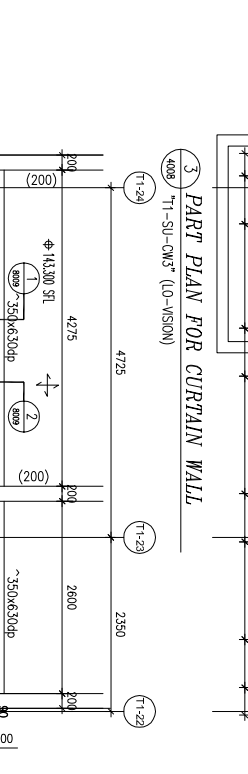
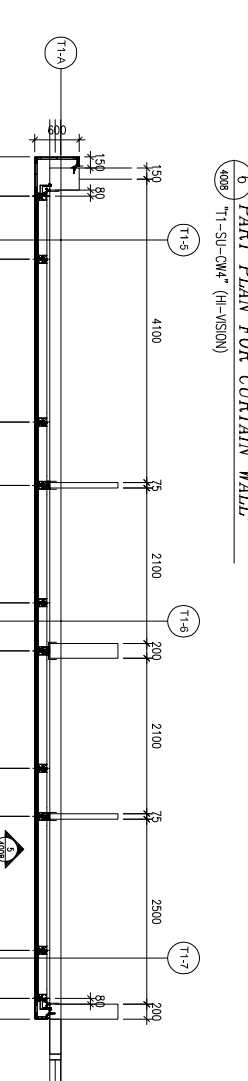
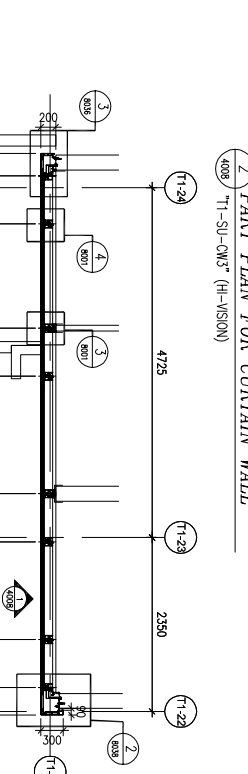
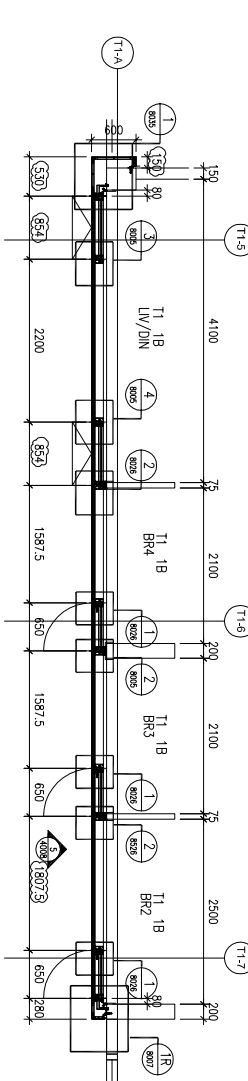
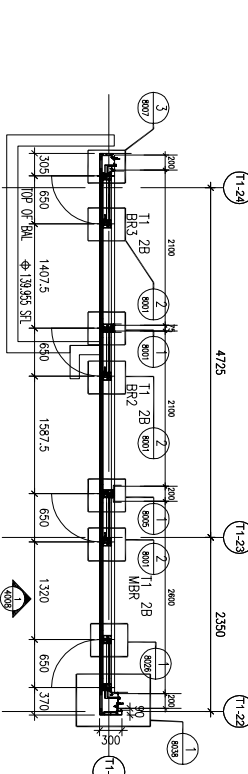
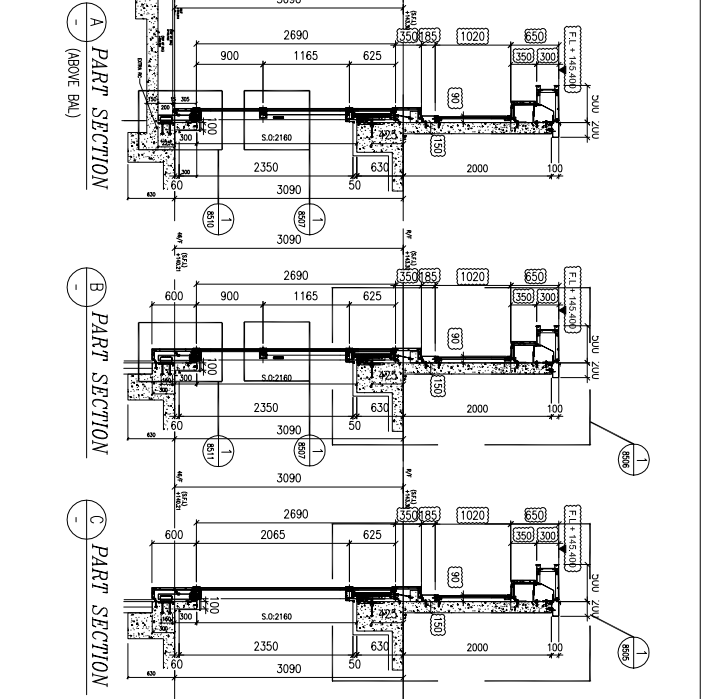
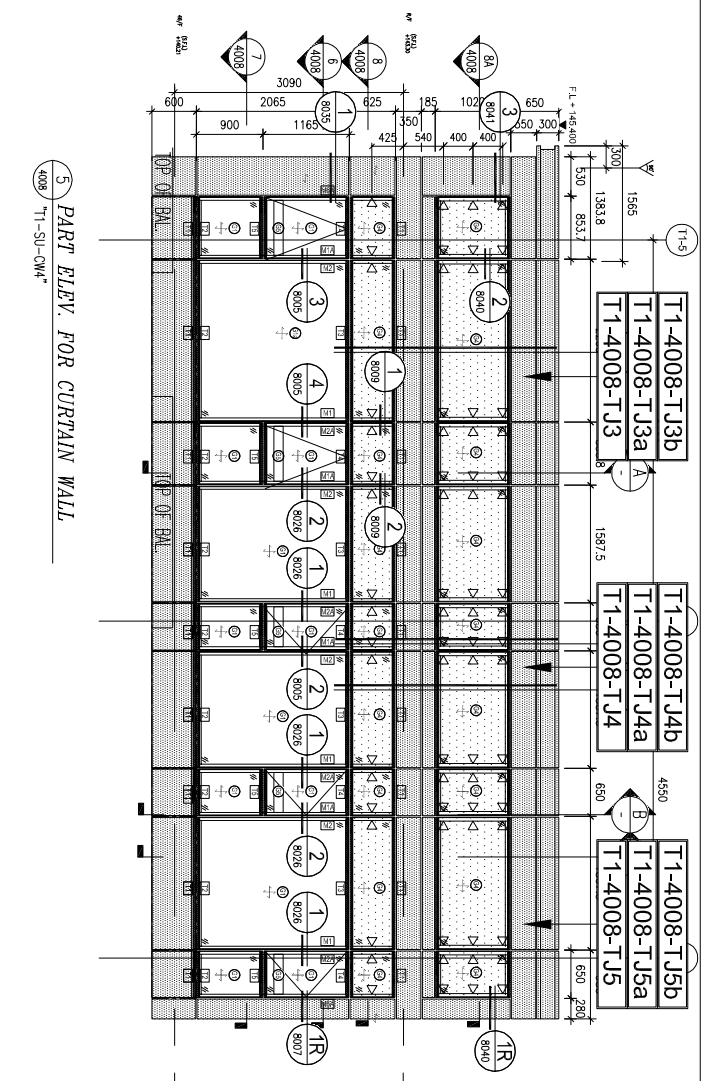
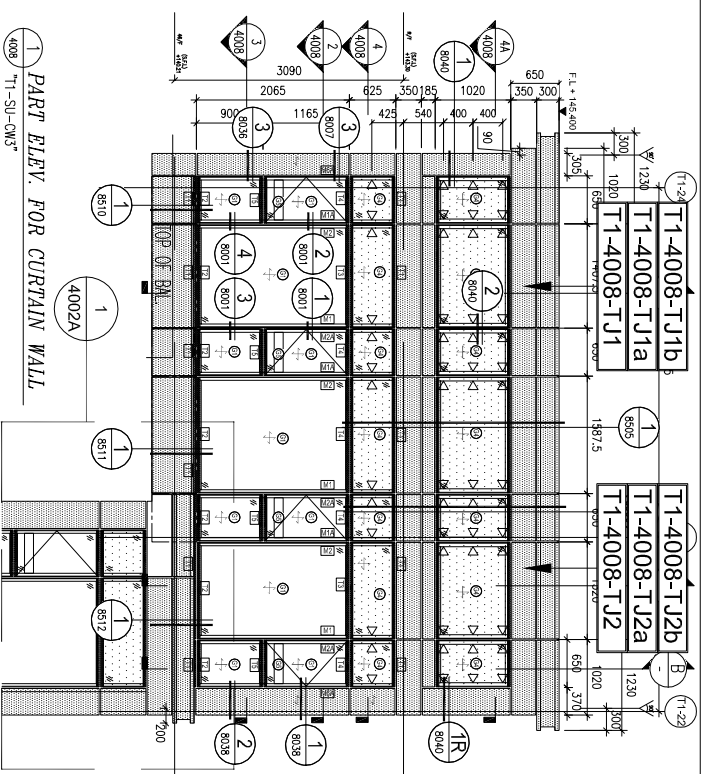
DRAWN BY : C.F. CHECKED BY :

C	22-AUG-2023	7TH SUBMISSION	CF
B	21-FEB-2023	4TH SUBMISSION	CF
A	22-DEC-2022	2ND SUBMISSION	CF
NO.	DATE	REVISION	BY

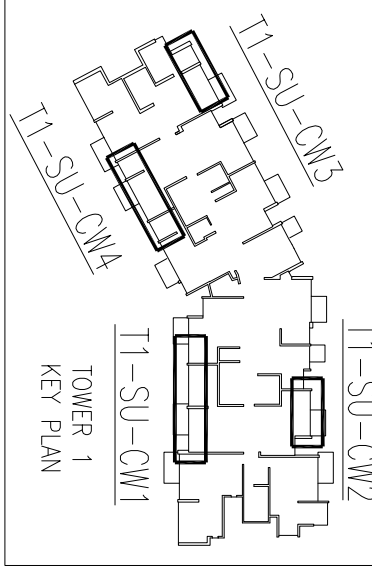
Units 6-8, Suning Industrial Centre, 1/F
610 Chiu Kwong Road, Kowloon
Tel: 23489211-4 Fax: (852) 2727866

美特鋁質有限公司
MIDI ALUMINIUM FABRICATOR LTD.

DWG NO. : J856-SD-CW-4007 REV. : C



LIGHTING AND OPENABLE AREA	
TOWER FLAT	ROOM
BR2	BR2
BR3	BR3
MR	MR
LIV/DIN	LIV/DIN
BR2	BR2
BR3	BR3
BR4	BR4



B.O. REF :
 CLIENT : SUN HUNG KAI REAL ESTATE AGENCY LTD.
 ARCHITECT : Iw&partners
 MAIN CONTRACTOR : 怡輝建築有限公司 Yee Fai Building Contractors Ltd.
 STRUCTURAL ENGINEER : ARUP
 FACADE CONSULTANT : ALPHA CONSULTING LIMITED

NOTE:
 1. ALL DIMENSIONS ARE IN mm.
 2. ALL ELEVATIONS ARE VIEWED FROM OUTSIDE.
 3. ALL DIMENSIONS TO BE VERIFIED ON SITE BEFORE FABRICATION.

LEGEND:
 (X1) DETAIL MARK NO.
 (X001) REFER SHEET NO.
 1. F.F.L. -- FINISHED FLOOR LEVEL
 2. S.F.L. -- STRUCTURAL FLOOR LEVEL
 3. (R) -- REVERSED DETAIL

LEGEND:
 (R) 12mm HEAT STRENGTHENED GLASS (SPANDREL) / 12mm BACK PANEL (PROTECTIVE BARBER)
 (S) 12mm HEAT STRENGTHENED GLASS (VISION)
 (V) 12mm HEAT STRENGTHENED GLASS (VISION)
 (W) 3mm ALUM. CLADDING
 (B) WIND LOAD + DEAD LOAD BRACKET WITH "SPAN" (100MM) FOR GLASS CLADDING

JOB NO. : J-856
 PROPOSED DEVELOPMENT ABOVE LIGHT RAIL TIN WING STOP-TSMTL NO.23, AREA 33, TIN SHUI WAI, N.T.

TITLE : PART ELEV & PLAN & SECTION FOR CURTAIN WALL @ TOWER 1 SU (46/F)

DATE : 31-OCT-22 SCALE : 1:100
 DRAWN BY : C.F. CHECKED BY :
 美特 銘實有限公司 MTDI ALUMINIUM FABRICATOR LTD.
 Units 6-8, Sunray Industrial Centre, 1/F
 610 Cho Kwong Road, Kowloon
 Tel: 23489211-4 Fax: (852) 27277866
 DWG NO. : J856-SD-CW-4008 REV. : C

B.O. REF :

CLIENT :

SUN HUNG KAI
REAL ESTATE AGENCY LTD.
42/F SUN HUNG KAI CENTRE, WINGHAI, HONGKONG

ARCHITECT :
lwk&partners
A R C H I T E C T S

MAIN CONTRACTOR :
怡輝建築有限公司
Yee Fai Building Contractors Ltd.

STRUCTURAL ENGINEER :

ALPHA CONSULTING LIMITED
Steel Structure & Facade Specialist

FAÇADE CONSULTANT:

ARUP

NOTE:
1. ALL DIMENSIONS ARE IN mm.
2. ALL ELEVATIONS ARE VIEWED FROM OUTSIDE.
3. ALL DIMENSIONS TO BE VERIFIED ON SITE BEFORE FABRICATION.

LEGEND:

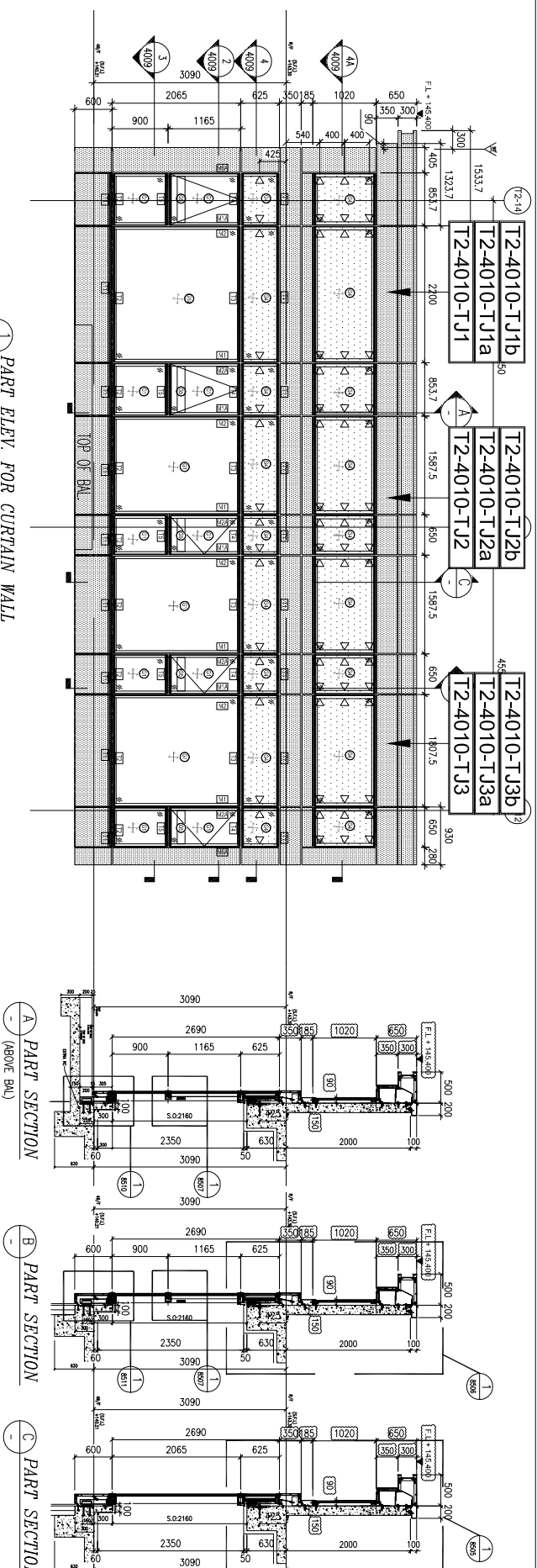
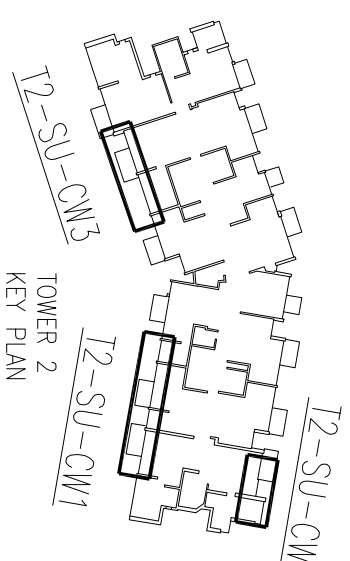
X1 --- DETAIL MARK NO.
X001 --- REFER SHEET NO.

1. F.F.L. --- FINISHED FLOOR LEVEL
2. S.F.L. --- STRUCTURAL FLOOR LEVEL
3. R --- REVERSED DETAIL

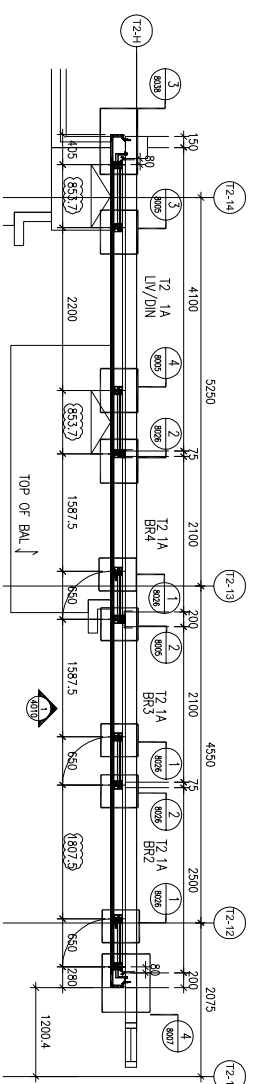
LEGEND:
IGL GLASS, 8mm HEAT STRENGTHENED, +12mm AIR, +10mm TAPERED (VISION)
IGL GLASS, 8mm HEAT STRENGTHENED, +12mm AIR, +10mm TAPERED (VISION)
12mm TEMPERED GLASS (PROTECTIVE BARBER)
3mm ALUM. CLADDING
WIND LOAD + DEQD LOAD BRACKET
CAST-IN-PLACE (EMG) FOR GLASS CLADDING
MINI SPAN > 1100MM

TOWER	Floor	Room	REQUIRED LIGHTING	REQUIRED OPENABLE	REFER CW		
TOWER 2	SU 1A	LV/DIN	3,079 W	2,242 W	1,403 (CW)+1,210 (SU)=2,613 W	T2-SU-CW3	
		BR2	0,525 W	4,309 W	0,328 W	0,509 W	T2-SU-CW3
		BR3	3,860 W	0,276 W	0,509 W		T2-SU-CW3
		BR4	0,441 W	3,880 W	0,276 W	0,509 W	T2-SU-CW3

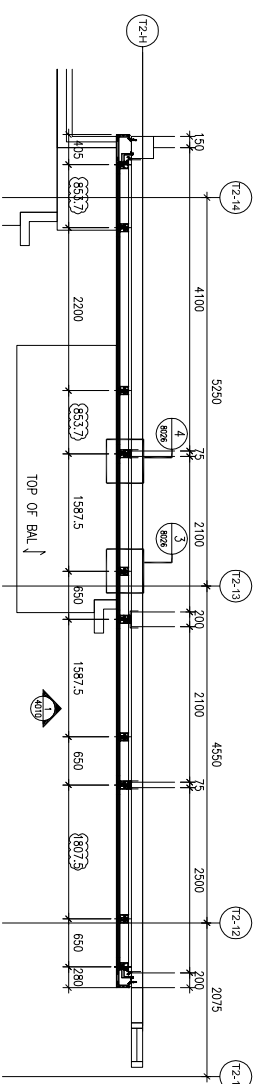
TOWER	Floor	Room	REQUIRED LIGHTING	REQUIRED OPENABLE	REFER CW		
TOWER 2	SU 1A	LV/DIN	3,079 W	2,242 W	1,403 (CW)+1,210 (SU)=2,613 W	T2-SU-CW3	
		BR2	0,525 W	4,309 W	0,328 W	0,509 W	T2-SU-CW3
		BR3	3,860 W	0,276 W	0,509 W		T2-SU-CW3
		BR4	0,441 W	3,880 W	0,276 W	0,509 W	T2-SU-CW3



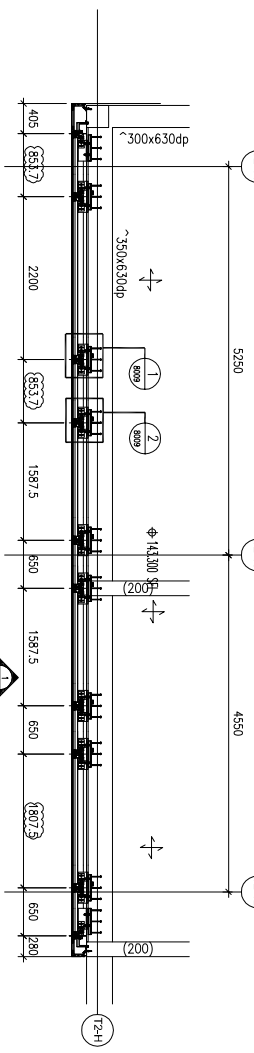
1 PART ELEV. FOR CURTAIN WALL
410/ T2-SU-CW3



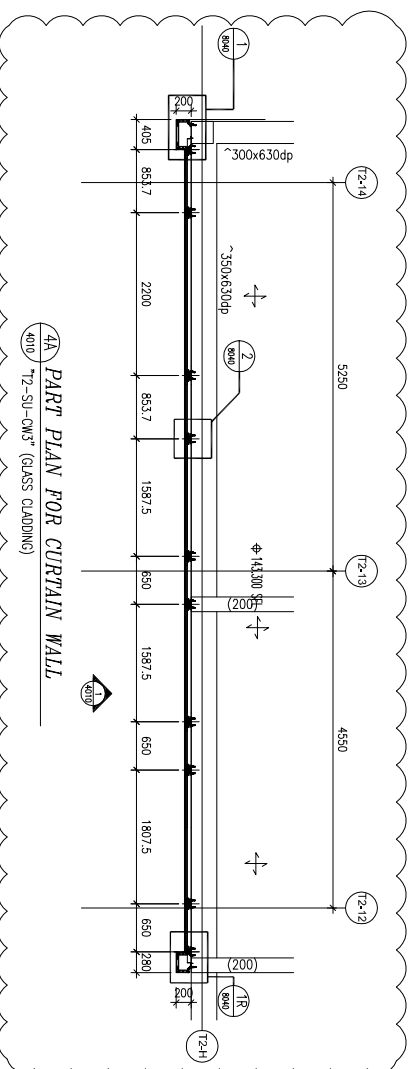
2 PART PLAN FOR CURTAIN WALL
410/ T2-SU-CW3 (H-VISION)



3 PART PLAN FOR CURTAIN WALL
410/ T2-SU-CW3 (O-VISION)



4 PART PLAN FOR CURTAIN WALL
410/ T2-SU-CW3 (SPAN/REL)



4A PART PLAN FOR CURTAIN WALL
410/ T2-SU-CW3 (GLASS CLADDING)

TITLE :
PART ELEV & PLAN & SECTION
FOR CURTAIN WALL
TOWER 2 SU (46/F)

DATE : 31-OCT-22 SCALE : 1:100
DRAWN BY : C.F. CHECKED BY :

PROJECT :
PROPOSED DEVELOPMENT ABOVE
LIGHT RAIL TIN WING STOP-TSWTL
NO.23.AREA 33, TIN SHUI WAI, N.T.

JOB NO. : J-856
MIDI ALUMINUM FABRICATOR LTD.
Units 6-8, Sunray Industrial Centre, 1/F
610 On Kwong Road, Kowloon
Tel:23489211-4 Fax:(852)27277866
DWG NO. : J856-SD-CW-4010 REV. : C

B.O. REF :

CLIENT :

SUN HUNG KAI
REAL ESTATE AGENCY LTD.
42/F SUN HUNG KAI CENTRE, WINGHAI, HONGKONG

ARCHITECT :
IWK&partners
A R C H I T E C T S

MAIN CONTRACTOR :
怡輝建築有限公司
Yee Fai Building Contractors Ltd.

STRUCTURAL ENGINEER :

ARUP
ALPHA CONSULTING LIMITED
Steel Structure & Facade Specialist

FAÇADE CONSULTANT:

NOTE:
1. ALL DIMENSIONS ARE IN mm.
2. ALL ELEVATIONS ARE VIEWED FROM OUTSIDE.
3. ALL DIMENSIONS TO BE VERIFIED ON SITE BEFORE FABRICATION.

LEGEND:

⊗11—DETAIL MARK NO.
⊗001—REFER SHEET NO.

1. F.F.L.—FINISHED FLOOR LEVEL
2. S.F.L.—STRUCTURAL FLOOR LEVEL
3. Ⓡ—REVERSED DETAIL

LEGEND:
① 12mm HEAT STRENGTHENED IGU GLASS, 8mm HEAT STRENGTHENED +12mm AR +10mm TEmERED (VISION)
② 12mm HEAT STRENGTHENED IGU GLASS, 8mm HEAT STRENGTHENED +12mm AR +12mm TEmERED (VISION)
③ 12mm TEmERED GLASS (PROTECTIVE BARBER)
④ 3mm ALUM. CLADDING
⑤ WIND LOAD + DEAD LOAD BRACKET
⑥ CAST-IN-PLACE (CIP) FOR GLASS CLADDING
⑦ MDDI SNA > 100MM

NO.	DATE	REVISION
1	22-AUG-2023	THE SUBMISSION
2	21-FEB-2023	4TH SUBMISSION
3	11-FEB-2022	2ND SUBMISSION
4	22-DEC-2022	REVISED

JOB NO. : J-856

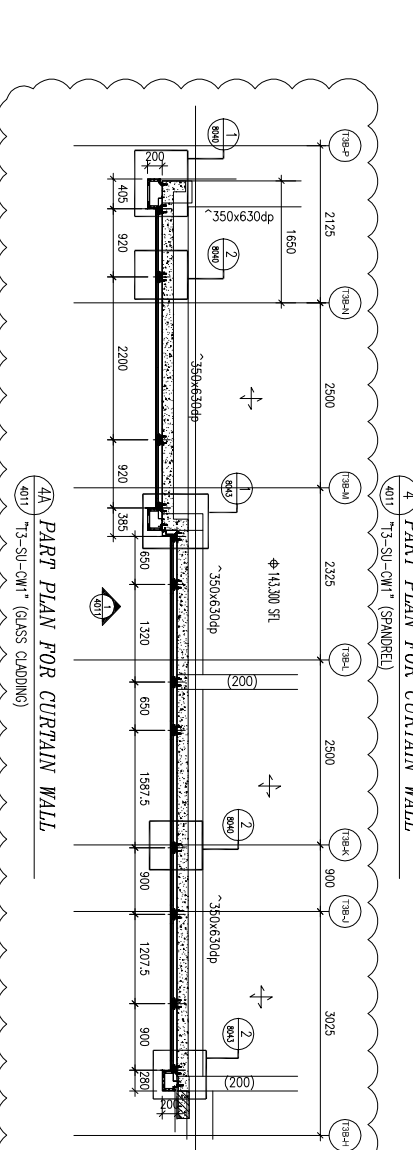
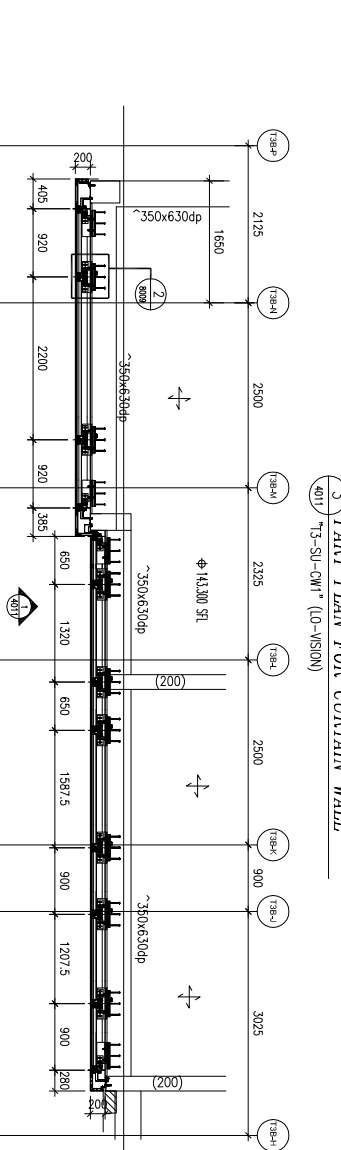
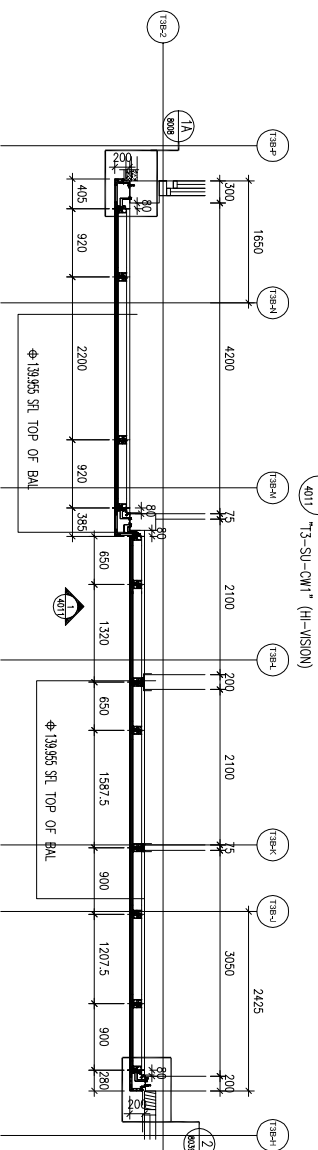
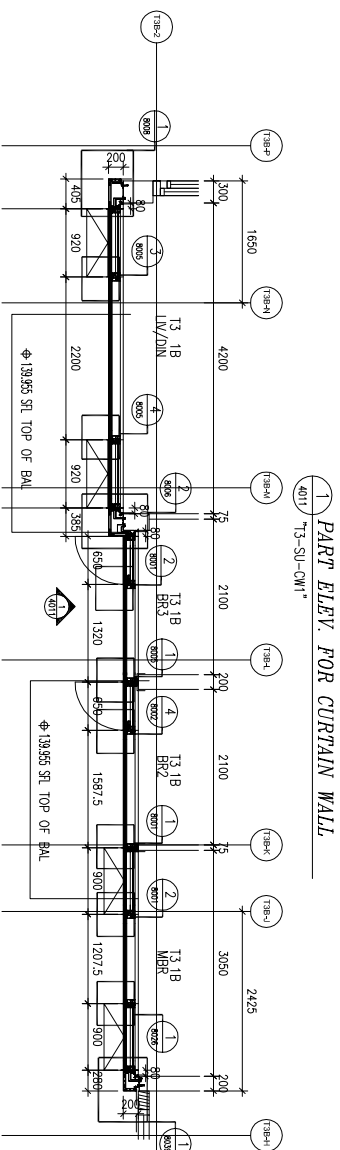
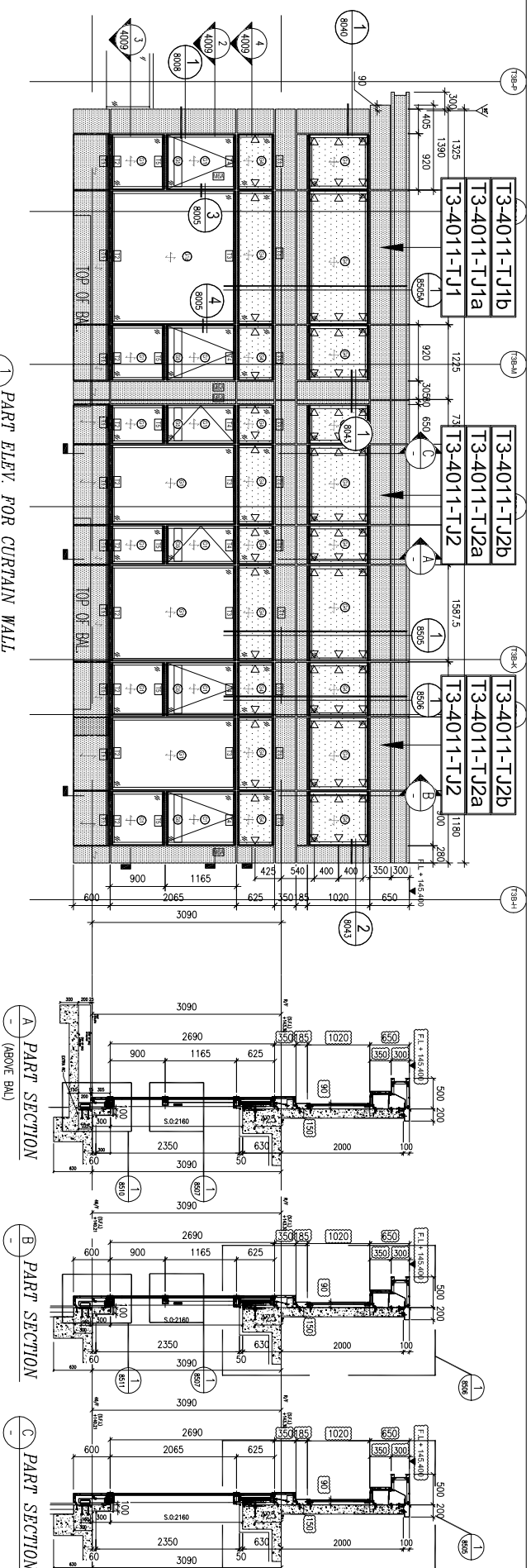
PROJECT : PROPOSED DEVELOPMENT ABOVE LIGHT RAIL TIN WING STOP TSWTL NO.23, AREA 33, TIN SHUI WAI, N.T.

TITLE : PART ELEV & PLAN & SECTION FOR CURTAIN WALL
@ TOWER 3 SU (46/F)

DATE : 31-OCT-22 SCALE : 1:100

DRAWN BY : C.F CHECKED BY :

美特鋁質有限公司
MIDI ALUMINIUM FABRICATOR LTD.
Units 6-8, Sunray Industrial Centre, 1/F
610 Cho Kwong Road, Kowloon
Tel: 23489211-4 Fax: (852) 27277866
DWG NO. : JB56-SD-CW-4011 REV. : C



TOWER	FLOOR	ROOM	REQUIRED LIGHTING	PROVIDED LIGHTING	REQUIRED OPENABLE	PROVIDED OPENABLE	REFER CW
T3(SU)	1B	LV/DIN	3.106 M ²	7.073 M ²	2.259 M ²	1.528(CW)+5.335(SD)=6.863M ²	T3-SU-CW1
T3(SU)	1B	BB2	0.441 M ²	3.880 M ²	0.276 M ²	0.509 M ²	T3-SU-CW1
T3(SU)	1B	BB3	0.440 M ²	3.880 M ²	0.275 M ²	0.509 M ²	T3-SU-CW1
T3(SU)	1B	MGR	1.505 M ²	5.130 M ²	1.458 M ²	1.490 M ²	T3-SU-CW1

