

參考用

CERT. NO. PMB-190320-36

FORM 6 正本
表格六 ORIGINAL

[reg. 18(1)(d)]

[規例第 18(1)(d)條]

FACTORIES AND INDUSTRIAL UNDERTAKINGS (LIFTING APPLIANCES AND LIFTING GEAR) REGULATIONS

CERTIFICATE OF TEST AND THOROUGH EXAMINATION OF CHAINS, ROPES AND LIFTING GEAR

Form approved by the Commissioner for Labour for the purposes of regulation 18(1)&(d) of the Factories and Industrial Undertakings (Lifting Appliances and Lifting Gear) Regulations

工廠及工業經營 (起重機械及起重裝置) 規例

鏈條、纜索及起重裝置的測試及徹底檢驗結果證明書

本表格乃由勞工處處長就工廠及工業經營 (起重機械及起重裝置) 規例第 18 (1) (d) 條的需要而認可

Name of owner and address of installation of the chain, rope or lifting gear tested and examined.
接受測試及檢驗的鏈條、纜索或起重裝置的擁有人姓名及安裝地址

LIXIL CORPORATION
Hong Kong Branch

Description of chain, rope or lifting gear tested and distinguishing mark 接受測試的鏈條、纜索或起重裝置的說明及識別標誌	Test load applied (tonnes) 測試時所使用的負荷 (以公噸為單位)	Safe working load (tonnes) 安全操作負荷 (以公噸為單位)	Defects noted If none, enter "None" and state whether in safe working order. 註明所發現的毛病，如無不妥，則填「無」字並註明是否處於安全操作狀態。
" Lifting Frame " 鐵架篇號 Owner's Mark : J-01-36 Lifting Frame made of 120mm x 62mm and 100mm x 50mm steel channel and 70mm x 70mm x 5mm thk. and 50mm x 50mm x 4mm thk. SHS as mainframe members, made of 20mm thk. four nos. lifting eyes at top and four nos. lifting eyes at bottom for lifting purpose. Size : 3,000mm(L) x 1,950mm(W) x 1,260mm(H) 鐵架尺寸 Quantity : 1 set	6.4 T	3.2 T	駿富 請提供資料 None In Safe Working Order
Remarks : Four nos. lifting eyes at top or bottom to be used at the same time, when lifting.			

I hereby certify that on March 20, 2019 the gear described in this certificate was tested and thoroughly examined by me in accordance with the First Schedule and that the above particulars are correct.
茲證明本人曾於 年 月 日 依照附表 1 的規定測試及徹底檢驗本證書所指的起重裝置，且上述各項均屬確實無訛。

Signature of Registered Professional Engineer
註冊專業工程師簽署

Qualification R.P.E.
註冊資格
Discipline MECHANICAL
註冊界別

T. C. Fung (RP0560170)



Person or firm by whom person conducting the test and examination is employed
僱用執行此項測試及檢驗的人士或商號

泰豐 (11) 顧問有限公司
Time Pacific (11) Consultants Ltd.
P.O. Box No. 183,
Tsuen Wan Post Office,
Tsuen Wan, N.T.
Tel : 2498 6130 Fax : 2498 6160

Date of certificate March 20, 2019
簽發日期

Any competent examiner or competent person who delivers to an owner a certificate or makes a report which is to his knowledge false as to a material particular shall be guilty of an offence and shall be liable on conviction to a fine of \$200,000 and to imprisonment for 12 months.

任何合資格檢驗員或合資格的人，如向擁有人交付他明知有任何要項屬虛假的證明書或作出他明知有任何要項屬虛假的報告，即屬犯罪；一經定罪，可處罰款二十萬元及監禁十二個月。

參考用

Name of owner

擁有人姓名

LIXIL CORPORATION

Hong Kong Branch

Address of installation

安裝地址

FORM 7

表格七

[reg. 18(1)(e)]

[規例第 18(1)(e)條]

Factories and Industrial Undertakings (Lifting Appliances and Lifting Gear) Regulations

CHAINS, ROPES AND LIFTING GEAR

CERTIFICATE OF RESULTS OF THOROUGH EXAMINATION IN THE PRECEDING SIX MONTHS

Form approved by the Commissioner for Labour for the purposes of regulation 18(1)(e) of the Factories and Industrial Undertakings (Lifting Appliances and Lifting Gear) Regulations

正本 ORIGINAL

工廠及工業經營 (起重機械及起重裝置) 規例

關於鏈條、纜索及起重裝置

在過往六個月內進行的徹底檢驗結果證明書

CERT NO. PMB-190320-36

本表格乃由勞工處處長就工廠及工業經營 (起重機械及起重裝置) 規例第 18(1)(e) 條的需要而認可

Description of chain, rope or gear, e.g. type, size and identification mark 鏈條、纜索及起重裝置的說明 例如：類別、尺寸及識別標誌 (1)	Date of examination 檢驗日期 (2)	Safe working load (tonnes) 安全操作負荷 (以公噸為單位) (3)	Result of examination. Enter details of repairs required or defects. If none enter "None" and state whether in safe working order. 檢驗結果，註明所需進行的修理或毛病的詳情 如無不妥，則填「無」字並註明是否處於安全操作狀態 (4)
" Lifting Frame " Owner's Mark : J-01-36 鐵架篇號			
Lifting Frame made of 120mm x 62mm and 100mm x 50mm steel channel and 70mm x 70mm x 5mm thk. and 50mm x 50mm x 4mm thk. SHS as mainframe members, made of 20mm thk. four nos. lifting eyes at top and four nos. lifting eyes at bottom for lifting purpose. Size : 3,000mm(L) x 1,050mm(W) x 1,260mm(H) 鐵架尺寸	March 20, 2019	3.2 T	None In Safe Working Order
Quantity : 1 set			
Remarks : Four nos. lifting eyes at top or bottom to be used at the same time, when lifting.			

駁富請提供資料

I hereby certify that the gear described in this certificate was thoroughly examined by me on March 20, 2019 and that the above particulars are correct.

茲證明本人曾於 年 月 日 徹底檢驗本證書所指的起重裝置，且上述各項均屬確實無訛。

Signature of Registered Professional Engineer

註冊專業工程師簽署

T. C. Fung (RP0560170)

Date of certificate

簽發日期 March 20, 2019



Qualification

R.P.E.

註冊資格

Discipline

MECHANICAL

註冊界別

Any competent examiner or competent person who delivers to an owner a certificate or makes a report which is to his knowledge false as to a material particular shall be guilty of an offence and shall be liable on conviction to a fine of \$200,000 and to imprisonment for 12 months.

任何合資格檢驗員或合資格的人，如向擁有人交付他明知有任何要項屬虛假的證明書或作出他明知有任何要項屬虛假的報告，即屬犯罪；一經定罪，可處罰款二十萬元及監禁十二個月。

MIDI Aluminum Fabricator Ltd

Transportation and warehousing

Warehousing

Midi needs to be notice to the main contractor in advance before the site, and after obtaining the consent of the main contractor and instructions in the storage area, according to the on-site environment and the proper cover protection. The material needs to separation by other parties.

請提供有單元架資
料及可承重資料

The glass curtain wall is installed in unit components. Each unit is processed and assembled in the Midi factory, and it is equipped with an independent number. The glass curtain wall unit will be placed in the steel rack, which is shipped directly from the lifting vehicle to the site, and it is stored in the temporary storage area specified by the main contractor.

Internal Transportation

Unitized panels will be stored on the steel rack, which are transported by 24 ton truck-mounted with crane to the site. The total height of the vehicle does not exceed 4M. **The typical steel rack will be ~2300mm x 3500mm x 1200mm. With the unitized panels stored on the steel racks, the overall length with the panels will be maximized at approximately 3040mm with protection.** The largest unitized panel dimension 3040mm x 2690mm at 46/F and has a weight of ~470kg. As these steel racks are modularized system, we can increase the width and length as needed for atypical unitized panels as needed for the transportation of the panels. Each steel rack can store approximately 4-6 panels and will be secured to the steel rack via fabric strap with rachets locks. **Each rack weighs approximately 2 tons** depending on size and length the individual track. On each rack, there will be an attached summary and location plan for the panels including project name, identification number, tower and floor location.

Midi and Main Contractor coordinate and arrange a truck-mounted crane to the site. For internal transportation units, and transport the unit parts stored in the storage area to the corresponding construction location.

Midi will can and arrange delivering 2 trucks per day with 6 steel racks on each truck.

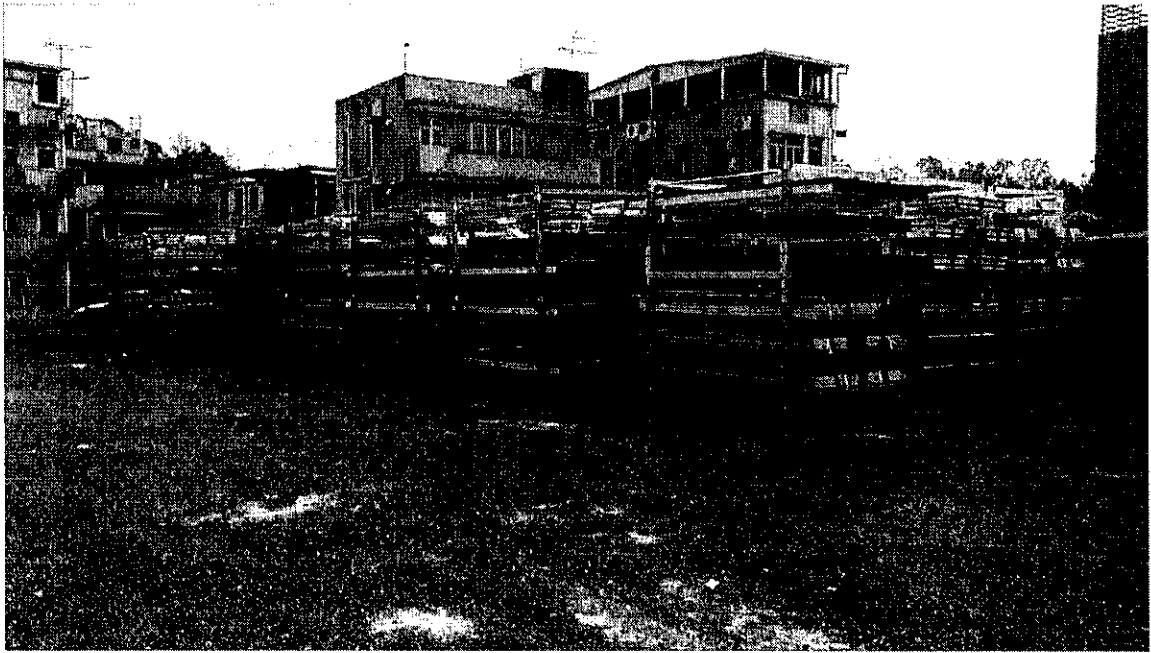
Since the site G/F has no area to place unit components. when the unit arrives, we need to transport the unitized panels from 2/F temporary storage area by monorail or the aid of crane truck, and tower crane.



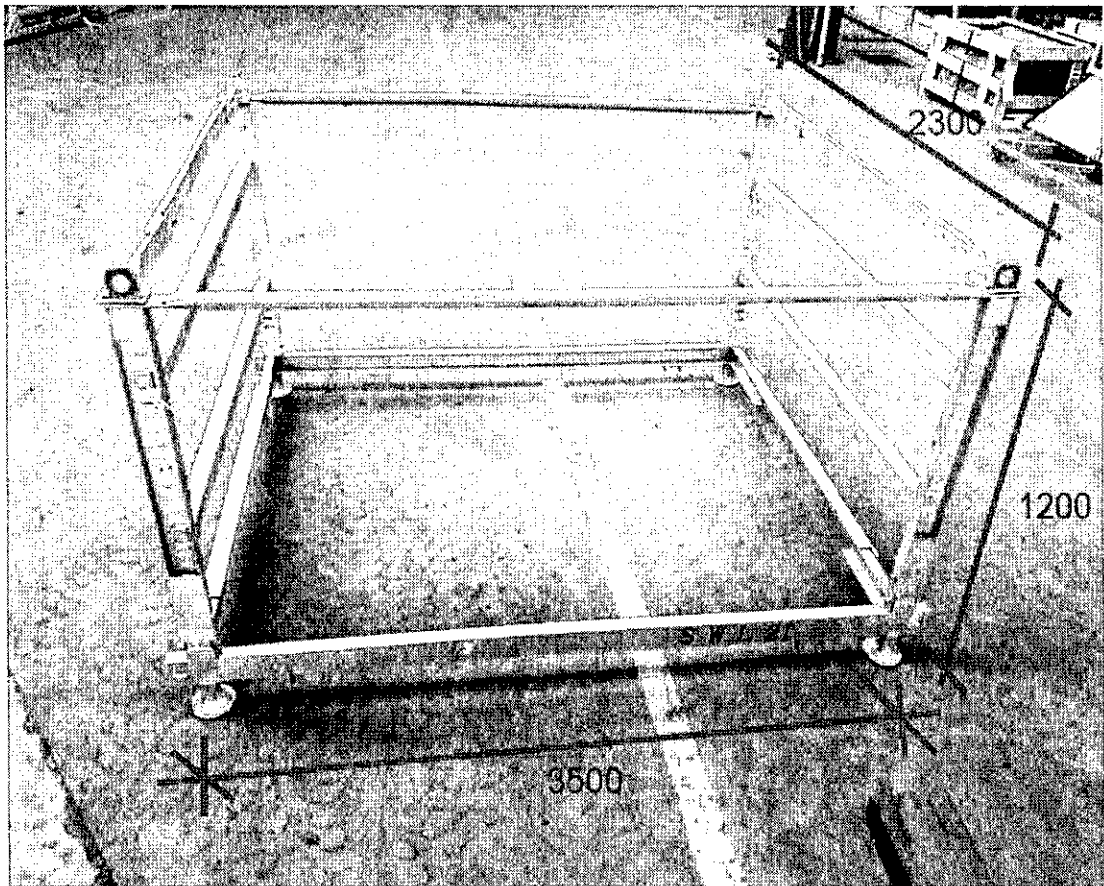
參考用



MIDI Aluminum Fabricator Ltd

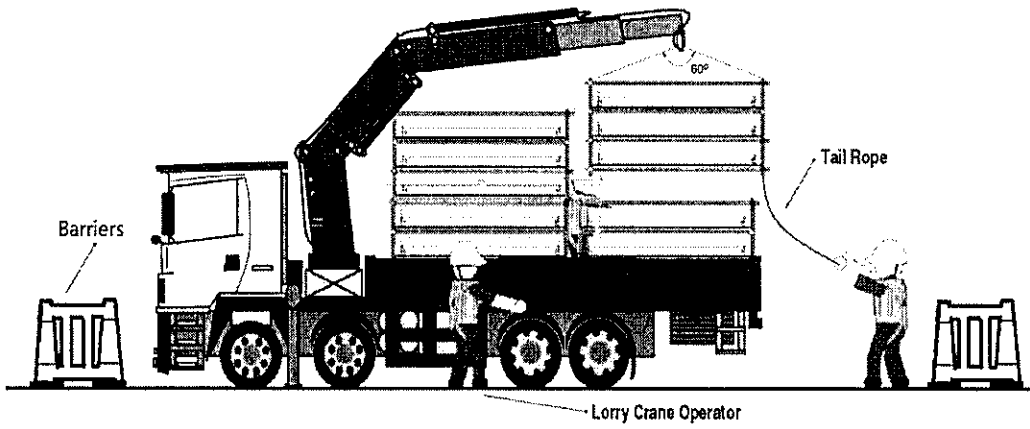


Steel rack storage for unitized panel transportation from factory to site

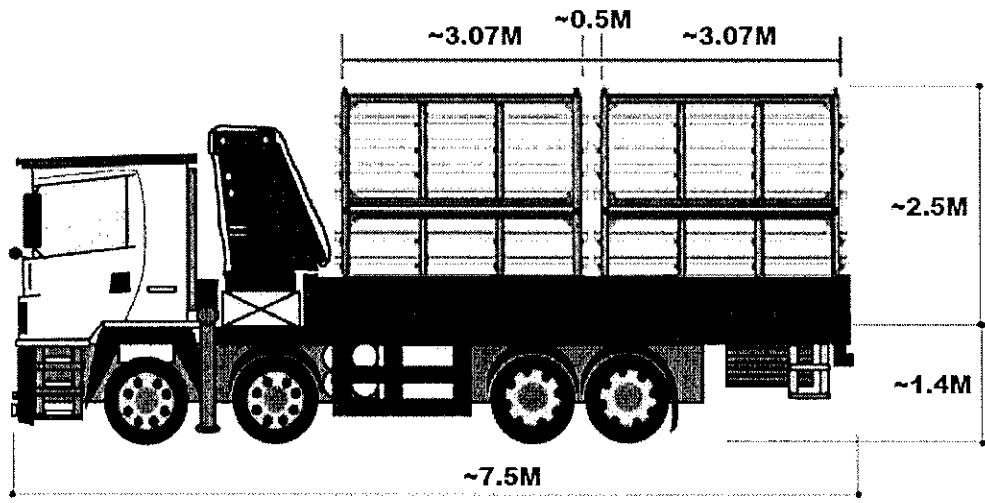


幕牆單元件載運 - 平架
安全負荷: 2000KG

Dimensions of typical steel rack storage



Crane truck for unloading steel racks to temporary storage



C.W. Units Delivery by Lorry Crane

Dimensions for the typical crane truck