



工程指示 / 要求簡箋 ENGINEER INSTRUCTIONS (E.I.)

工程指示編號:	EI- 5650	修改版本:	-
	HK-		
工程編號:	J 856	工程名稱:	TSWTL23
收件人:	偉哥 / 林哥	發件人:	BearLam
工程項目:	幕牆用料頭辦箱	日期:	16/01/2023

<input type="checkbox"/> 原合約工程包	<input type="checkbox"/> 原合約工程加 / 減賬 QT-	<input type="checkbox"/> 新工程報價 QT-
---------------------------------	--	------------------------------------

信件批核號碼/圖紙參考編號:	批核模具圖紙編號:
客戶指示附件:	管理內部批簽署:

<input type="checkbox"/> 初步鋁料 B.M.	<input type="checkbox"/> 加工拆圖, 然後生產	<input type="checkbox"/> 尺寸表
<input type="checkbox"/> 正式鋁料 B.M.	<input type="checkbox"/> 技術上資料 / 指示	<input type="checkbox"/> 報價
<input type="checkbox"/> 配件 B.M.	<input type="checkbox"/> 樣辦或貨品說明書	<input type="checkbox"/> 分判合約
<input type="checkbox"/> 其他:		

內容: 請根據附件資料制作有關於幕牆用料頭辦箱一套
完成上列要求日期: 20/01/2023

國內

<input type="checkbox"/> 生產技術總監	<input type="checkbox"/> 連附件	<input type="checkbox"/> 技術部	<input type="checkbox"/> 連附件	<input type="checkbox"/> 生產部	<input type="checkbox"/> 連附件
<input type="checkbox"/> 採購部	<input type="checkbox"/> 連附件	<input type="checkbox"/> 生產統籌部	<input type="checkbox"/> 連附件	<input type="checkbox"/> 報關組	<input type="checkbox"/> 連附件
<input type="checkbox"/> 質檢部	<input type="checkbox"/> 連附件	<input type="checkbox"/> 會計部	<input type="checkbox"/> 連附件	<input type="checkbox"/> 機械設計部	<input type="checkbox"/> 連附件
<input type="checkbox"/> 香港辦	<input type="checkbox"/> 連附件	<input type="checkbox"/> 其他:			

香港

<input type="checkbox"/> 行政部	<input type="checkbox"/> 連附件	<input type="checkbox"/> 會計部	<input type="checkbox"/> 連附件	<input type="checkbox"/> 統籌部	<input type="checkbox"/> 連附件	<input type="checkbox"/> 工程部	<input type="checkbox"/> 連附件
<input type="checkbox"/> 採購部	<input type="checkbox"/> 連附件	<input type="checkbox"/> QS部	<input type="checkbox"/> 連附件	<input type="checkbox"/> 地盤管理	<input type="checkbox"/> 連附件	<input checked="" type="checkbox"/> 維修部	<input checked="" type="checkbox"/> 連附件

*發件人簽署: <i>Bear Lam</i>	*組別成員批核簽署: <i>[Signature]</i> 17/1/2023
傳遞編號:	項目經理簽署: <i>[Signature]</i>

BO REF: 00 J/7601/09 (PL. W)

B.D. AMENDMENT

"This sketch is subject to Urban Design and Type B studies. Superstructure (Curtain Wall).
 The design of each material is subject to the approval of the relevant authorities. The design is subject to the approval of the relevant authorities.
 The design is subject to the approval of the relevant authorities."

REV	DESCRIPTION	DATE	BY
1	AS BUILT APPROVAL	2020-08-31	BT
2	2nd ED. APPROVAL	2020-08-13	BT
3	1st ED. SUBMISSION	2018-11-28	BT

TSUN HUNG KAI
 REAL ESTATE DEVELOPER LTD.

IWK&partners

ARUP

SUN HUNG KAI
 ARCHITECTS AND ENGINEERS LTD.

ALPHA CONSULTING LIMITED
 Steel Structure & Trade Specialist

YEE FAI CONSTRUCTION CO., LTD.

美特經貿有限公司
 MIDT Economic Development Ltd.
 Unit 6-9, Sunny Industrial Centre, 1/F
 610 Dao Kwai Tong Road, Kowloon
 Tel: 23392211-4 Fax: (853) 2727889

PROPOSED COMPREHENSIVE DEVELOPMENT AT LRT TIN WING STOP AT TIN SHUI WAI ON LOT NO. TSWTL23

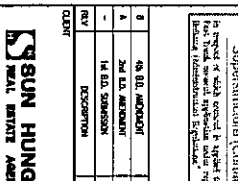
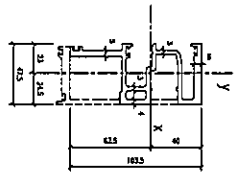
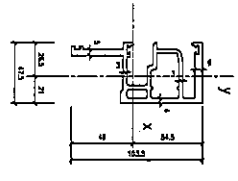
SECTION PROPERTIES OF ALUMINIUM EXTRUSION

SCALE	DATE
1:2 (A1)	2018-11-18

DESIGN BY	CHECKED BY
KF	JH

DATE: 2018-11-18
 DRAWING NO: J6371
 SHEET: (7th Spawning)

PROJECT: BD-TQW-SP03



ALUM. SECTION W/0

ALUM. SECTION W/0	1487/12
ALUM. SECTION (OUT FROM W/0)	1381/24
ALUM. SECTION W/2	1231/57
ALUM. SECTION (OUT FROM W/2)	1164/09

ALUM. SECTION (OUT FROM W/0)

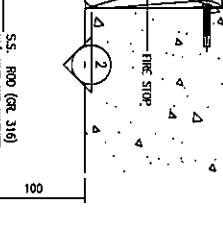
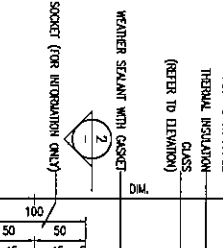
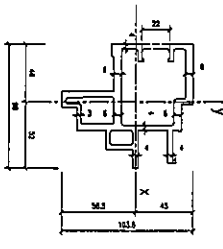
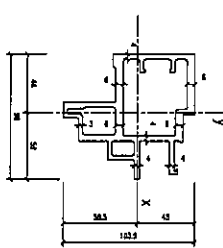
ALUM. SECTION (OUT FROM W/0)	1381/24
ALUM. SECTION W/2	1098/72
ALUM. SECTION (OUT FROM W/2)	1038/43
ALUM. SECTION W/0	1018/107
ALUM. SECTION (OUT FROM W/0)	961/107
ALUM. SECTION W/2	909/88/28
ALUM. SECTION (OUT FROM W/2)	851/107
ALUM. SECTION W/0	7781/06
ALUM. SECTION (OUT FROM W/0)	7623/00
ALUM. SECTION W/2	7390/10
ALUM. SECTION (OUT FROM W/2)	7262/00
ALUM. SECTION W/0	6063-16
ALUM. SECTION (OUT FROM W/0)	6063-16

ALUM. SECTION W/2

ALUM. SECTION W/2	1231/57
ALUM. SECTION (OUT FROM W/2)	1164/09
ALUM. SECTION W/0	1098/72
ALUM. SECTION (OUT FROM W/0)	1038/43
ALUM. SECTION W/2	1018/107
ALUM. SECTION (OUT FROM W/2)	961/107
ALUM. SECTION W/0	909/88/28
ALUM. SECTION (OUT FROM W/0)	851/107
ALUM. SECTION W/2	7781/06
ALUM. SECTION (OUT FROM W/2)	7623/00
ALUM. SECTION W/0	7390/10
ALUM. SECTION (OUT FROM W/0)	7262/00
ALUM. SECTION W/2	6063-16
ALUM. SECTION (OUT FROM W/2)	6063-16

ALUM. SECTION (OUT FROM W/2)

ALUM. SECTION (OUT FROM W/2)	1164/09
ALUM. SECTION W/0	1038/43
ALUM. SECTION (OUT FROM W/0)	961/107
ALUM. SECTION W/2	909/88/28
ALUM. SECTION (OUT FROM W/2)	851/107
ALUM. SECTION W/0	7781/06
ALUM. SECTION (OUT FROM W/0)	7623/00
ALUM. SECTION W/2	7390/10
ALUM. SECTION (OUT FROM W/2)	7262/00
ALUM. SECTION W/0	6063-16
ALUM. SECTION (OUT FROM W/0)	6063-16



ALUM. SECTION W/0

ALUM. SECTION W/0	2082/33
ALUM. SECTION (OUT FROM W/0)	1992/35
ALUM. SECTION W/2	1747/25/27
ALUM. SECTION (OUT FROM W/2)	1722/17/25
ALUM. SECTION W/0	152/88/2/2
ALUM. SECTION (OUT FROM W/0)	138/80/1/20
ALUM. SECTION W/2	28/116/14
ALUM. SECTION (OUT FROM W/2)	25/53/16/3
ALUM. SECTION W/0	2817/63
ALUM. SECTION (OUT FROM W/0)	2662/16
ALUM. SECTION W/2	6063-16
ALUM. SECTION (OUT FROM W/2)	6063-16

ALUM. SECTION (OUT FROM W/0)

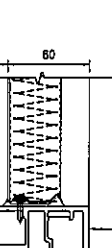
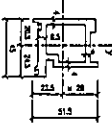
ALUM. SECTION (OUT FROM W/0)	1992/35
ALUM. SECTION W/2	1722/17/25
ALUM. SECTION (OUT FROM W/2)	168/80/1/20
ALUM. SECTION W/0	152/88/2/2
ALUM. SECTION (OUT FROM W/0)	138/80/1/20
ALUM. SECTION W/2	28/116/14
ALUM. SECTION (OUT FROM W/2)	25/53/16/3
ALUM. SECTION W/0	2817/63
ALUM. SECTION (OUT FROM W/0)	2662/16
ALUM. SECTION W/2	6063-16
ALUM. SECTION (OUT FROM W/2)	6063-16

ALUM. SECTION W/2

ALUM. SECTION W/2	1747/25/27
ALUM. SECTION (OUT FROM W/2)	1722/17/25
ALUM. SECTION W/0	152/88/2/2
ALUM. SECTION (OUT FROM W/0)	138/80/1/20
ALUM. SECTION W/2	28/116/14
ALUM. SECTION (OUT FROM W/2)	25/53/16/3
ALUM. SECTION W/0	2817/63
ALUM. SECTION (OUT FROM W/0)	2662/16
ALUM. SECTION W/2	6063-16
ALUM. SECTION (OUT FROM W/2)	6063-16

ALUM. SECTION (OUT FROM W/2)

ALUM. SECTION (OUT FROM W/2)	1722/17/25
ALUM. SECTION W/0	168/80/1/20
ALUM. SECTION (OUT FROM W/0)	152/88/2/2
ALUM. SECTION W/2	138/80/1/20
ALUM. SECTION (OUT FROM W/2)	122/17/25
ALUM. SECTION W/0	116/16/14
ALUM. SECTION (OUT FROM W/0)	105/3/16/3
ALUM. SECTION W/2	2817/63
ALUM. SECTION (OUT FROM W/2)	2662/16
ALUM. SECTION W/0	6063-16
ALUM. SECTION (OUT FROM W/0)	6063-16



ALUM. SECTION W/0

ALUM. SECTION W/0	788/50
ALUM. SECTION (OUT FROM W/0)	2033/238
ALUM. SECTION W/2	1384/12/46
ALUM. SECTION (OUT FROM W/2)	728
ALUM. SECTION W/0	643
ALUM. SECTION (OUT FROM W/0)	6063-16

ALUM. SECTION (OUT FROM W/0)

ALUM. SECTION (OUT FROM W/0)	2033/238
ALUM. SECTION W/2	1384/12/46
ALUM. SECTION (OUT FROM W/2)	728
ALUM. SECTION W/0	643
ALUM. SECTION (OUT FROM W/0)	6063-16

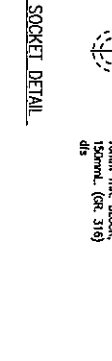
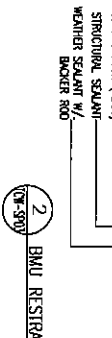
ALUM. SECTION W/2

ALUM. SECTION W/2	788/50
ALUM. SECTION (OUT FROM W/2)	2033/238
ALUM. SECTION W/0	1384/12/46
ALUM. SECTION (OUT FROM W/0)	728
ALUM. SECTION W/2	643
ALUM. SECTION (OUT FROM W/2)	6063-16

ALUM. SECTION (OUT FROM W/2)

ALUM. SECTION (OUT FROM W/2)	2033/238
ALUM. SECTION W/0	1384/12/46
ALUM. SECTION (OUT FROM W/0)	728
ALUM. SECTION W/2	643
ALUM. SECTION (OUT FROM W/2)	6063-16

1 BMU RESTRAIN SOCKET DETAIL



2 BMU RESTRAIN SOCKET DETAIL

BO REF: 80 Y/780/05 (PL W)

B.I.D. AMENDMENT

The work under an amended B.I.D. is to be carried out by the contractor named in the amended B.I.D. and the contractor named in the original B.I.D. shall be responsible for the work under the original B.I.D. The contractor named in the amended B.I.D. shall be responsible for the work under the amended B.I.D. and the contractor named in the original B.I.D. shall be responsible for the work under the original B.I.D.

REV	DESCRIPTION	DATE	BY
1	IN ALL AMENDMENT	2022-10-11	SM
2	2nd B.I.D. AMENDMENT	2022-06-13	SM
3	REVISION	DATE	BY

CSUN HUNG KAI
REAL ESTATE AGENT LTD.

Iw&partners
a c h i t e c t s

ARUP

STRUCTURAL DESIGNER

CSUN HUNG KAI
ARCHITECTS AND ENGINEERS LTD.

ALPHA CONSULTING LIMITED
Steel Structure & Frame Specialist

YEE FAI CONSTRUCTION CO., LTD.

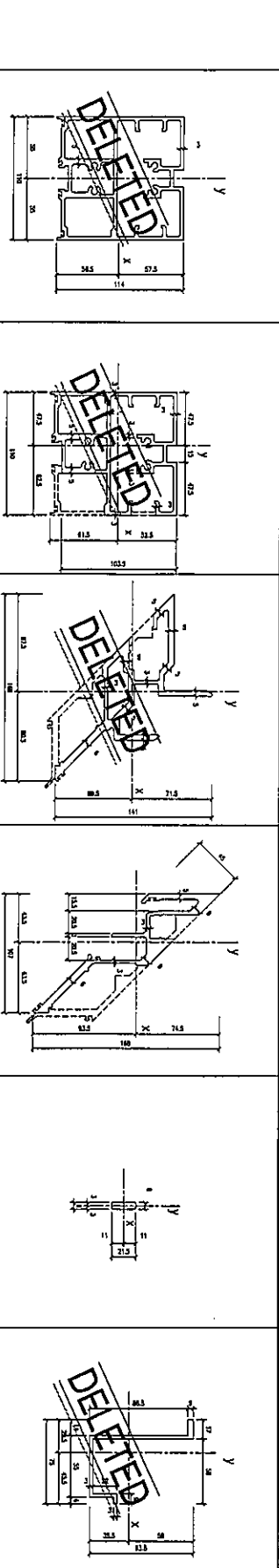
美特鋁業有限公司
MIDI Aluminium Extrusion Ltd.

PROPOSED COMPREHENSIVE DEVELOPMENT AT LRT11N WINGS STOP AT TIN SHUI WAI ON LOT NO. TSW123

SECTION PROPERTIES OF ALUMINIUM EXTRUSION

SCALE	DATE
1:2 (A1)	2022-06-13
Drawn BY	CHECKED BY
JF	JH
DESIGNED BY	
JBS371	
DATE	
2022-06-13	

NO.	REVISION	DATE
1	ISSUED FOR TENDER	2022-06-13
2	FOR CONSTRUCTION	



NO.	AREA (sqm)	NO.	AREA (sqm)	NO.	AREA (sqm)	NO.	AREA (sqm)	NO.	AREA (sqm)
M01	172.70	M02	227.69	M03	293.68	M04	227.69	M05	736.92
M06	486.13	M07	592.84	M08	1812.03	M09	1812.03	M10	7591.70
M11	375.75	M12	1962.81	M13	1202.14	M14	1202.14	M15	5291.46
M16	449.09	M17	1167.05	M18	937.79	M19	937.79	M20	937.79
M21	124.00	M22	691.16	M23	693.16	M24	693.16	M25	693.16

NO.	AREA (sqm)	NO.	AREA (sqm)	NO.	AREA (sqm)	NO.	AREA (sqm)	NO.	AREA (sqm)
M26	141.37	M27	70.52	M28	442.43	M29	293.68	M30	736.92
M31	1898.97	M32	7213.19	M33	70291.37	M34	59284.32	M35	181203.03
M36	6930.31	M37	6949.47	M38	81384.11	M39	196281.15	M40	120214.14
M41	843.32	M42	384.28	M43	2994.70	M44	2613	M45	5291.46
M46	2778.82	M47	131.84	M48	24121.77	M49	937.79	M50	937.79
M51	6933.15	M52	6933.15	M53	6933.16	M54	6933.16	M55	6933.16

BD REF: 80/3/7801/09 (P. 01)

B.I.D. AMENDMENT

For work items to show items for type B work
 Superstructure (Curtain Wall)
 In the event of any discrepancy between the drawings and the Bill of Materials, the Bill of Materials shall prevail. The Bill of Materials is an integral part of the contract documents and shall be read in conjunction with the drawings and specifications.

NO.	REV.	DESCRIPTION	DATE	BY
1	A	4th ILL. AMENDMENT	2022-06-13	AM
2	B	5th ILL. AMENDMENT	2022-06-13	AM

SUN HUNG KAI
 REAL ESTATE DEVELOPMENT LTD.

IWK&partners
 a t c h i t e c t s
 10/F, 100, Des Voeux Road West, Hong Kong
 香港中環德輔道西100號10樓
 10/F, 100, Des Voeux Road West, Hong Kong
 香港中環德輔道西100號10樓

ARUP

SUN HUNG KAI
 ARCHITECTS AND ENGINEERS LTD.

ALPHA CONSULTING LIMITED
 Steel Structure & Façade Specialist

YEE FAI CONSTRUCTION CO., LTD.

美特經貿有限公司
 MIDJ Aluminium Extrusion Ltd.
 Unit 6-8, Sunny Industrial Centre, 1/F
 100 Des Voeux Road West, Hong Kong
 香港中環德輔道西100號1-3樓

PROPOSED COMPREHENSIVE DEVELOPMENT AT LRT TIN WING STOP AT TM SHUI WAI ON LOT NO. TSWWT23

DRAWING TITLE

SECTION PROPERTIES OF ALUMINIUM EXTRUSION

SCALE: 1:2 (A1)

DATE: 2022-06-13

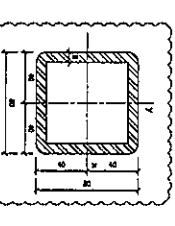
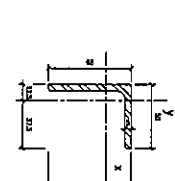
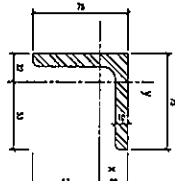
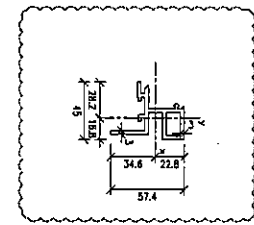
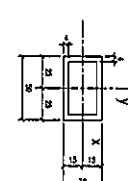
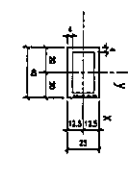
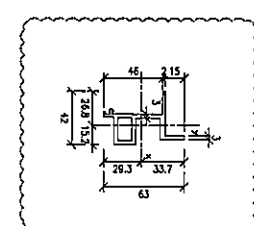
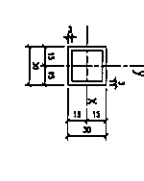
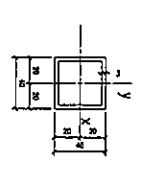
DRAWN BY: YF

CHECKED BY: JH

ZEB NO.: J6371

ISE: (FOR SOUNING)

MEMBER MARK	AREA (mm ²)	PERIMETER (mm)	SECTION PROPERTIES
MEMBER MARK	1410.73	555.25	MEMBER MARK
MEMBER MARK	117176.58	212931.17	MEMBER MARK
MEMBER MARK	117176.58	123201.25	MEMBER MARK
MEMBER MARK	134572.51	51082.88	MEMBER MARK
MEMBER MARK	134572.51	32143.72	MEMBER MARK
MEMBER MARK	572.501	572.501	MEMBER MARK



MEMBER MARK	4th ILL. AMENDMENT	5th ILL. AMENDMENT	6th ILL. AMENDMENT	7th ILL. AMENDMENT	8th ILL. AMENDMENT
MEMBER MARK	441.00	334.00	453.42	435.9	512.297
Area (mm ²)	103583.48	39845.77	17263.05	39201	11005.270
Perim (mm)	103583.48	39845.77	39818.80	86891.3	69071.60
Y1 (mm)	298.17	259.28	1.792	317.8	3180
Z1 (mm)	528.17	259.28	4.58	434.1	2192
REMARK	606-16	606-16	606-16	606-16	606-16