



工程指示 / 要求簡箋 ENGINEER INSTRUCTIONS(E.I.)

工程指示編號:	EI- 5139	修改版本:	-
	HK- 1653		
工程編號:	J 856	工程名稱:	天榮站
收件人:	生統 / 峰少	發件人:	Lai Sik Hung
工程項目:	旭格ASS50-NI推拉提升趟門樣辦生產 (共2幅)	日期:	23/09/2022

<input type="checkbox"/> 原合約工程包	<input type="checkbox"/> 原合約工程加 / 減賬 QT-	<input type="checkbox"/> 新工程報價 QT-
---------------------------------	--	------------------------------------

信件批核號碼/圖紙參考編號:	批核模具圖紙編號:
客戶指示附件:	管理內部批簽署:

<input type="checkbox"/> 初步鋁料 B.M.	<input type="checkbox"/> 加工拆圖, 然後生產	<input type="checkbox"/> 尺寸表
<input type="checkbox"/> 正式鋁料 B.M.	<input type="checkbox"/> 技術上資料 / 指示	<input type="checkbox"/> 報價
<input type="checkbox"/> 配件 B.M.	<input type="checkbox"/> 樣辦或貨品說明書	<input type="checkbox"/> 分判合約
<input type="checkbox"/> 其他:		

內容: 請根據附件的AW01(Flat A5)x1幅及AW01(Flat A6)x1幅,
共2幅ASS50NI推拉提升趟門到沙埔辦房安裝

完成上列要求日期: 01/11/2022

國內

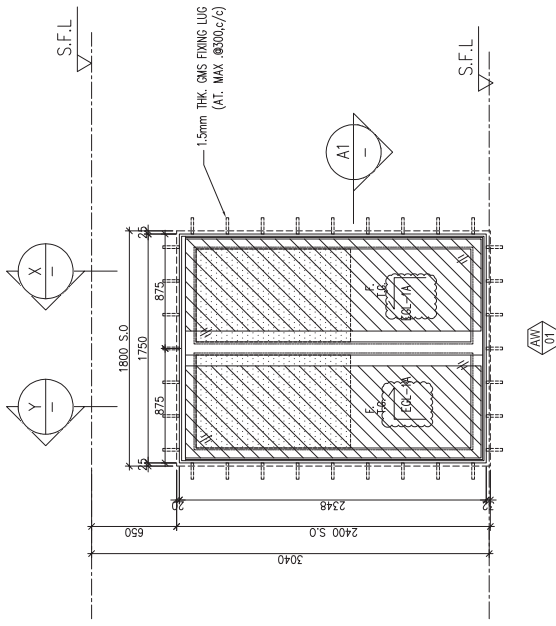
<input type="checkbox"/> 生產技術總監	<input type="checkbox"/> 連附件	<input checked="" type="checkbox"/> 技術部	<input checked="" type="checkbox"/> 連附件	<input type="checkbox"/> 生產部	<input type="checkbox"/> 連附件
<input type="checkbox"/> 採購部	<input type="checkbox"/> 連附件	<input checked="" type="checkbox"/> 生產統籌部	<input checked="" type="checkbox"/> 連附件	<input type="checkbox"/> 報關組	<input type="checkbox"/> 連附件
<input type="checkbox"/> 質檢部	<input type="checkbox"/> 連附件	<input type="checkbox"/> 會計部	<input type="checkbox"/> 連附件	<input type="checkbox"/> 機械設計部	<input type="checkbox"/> 連附件
<input checked="" type="checkbox"/> 香港辦	<input checked="" type="checkbox"/> 連附件	<input type="checkbox"/> 其他:			

<input type="checkbox"/> 行政部	<input type="checkbox"/> 連附件	<input type="checkbox"/> 會計部	<input type="checkbox"/> 連附件	<input type="checkbox"/> 統籌部	<input type="checkbox"/> 連附件	<input type="checkbox"/> 工程部	<input type="checkbox"/> 連附件
<input type="checkbox"/> 採購部	<input type="checkbox"/> 連附件	<input type="checkbox"/> QS部	<input type="checkbox"/> 連附件	<input type="checkbox"/> 地盤管理	<input type="checkbox"/> 連附件	<input type="checkbox"/> 維修部	<input type="checkbox"/> 連附件

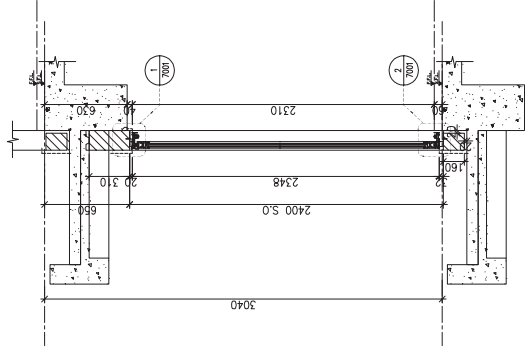
*發件人簽署:		*組別成員批核簽署:	23/9/2022
傳遞編號:		項目經理簽署:	

PROVIDED	GLAZING AREA	OPENABLE AREA	GLAZING AREA
1,591	1,681		

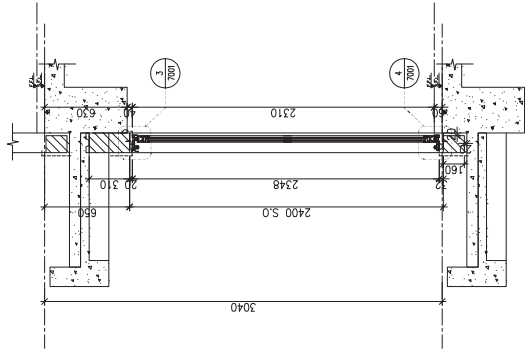
REQUIRE



ELEVATION



PART SECTION



PART SECTION

NOTE:
 1. ALL DIMENSIONS ARE IN mm.
 2. ALL ELEVATIONS ARE VIEWED FROM OUTSIDE.
 3. ALL DIMENSIONS TO BE VERIFIED ON SITE BEFORE FABRICATION.

LEGEND:
 (X1) DETAIL MARK NO.
 (X207) REFER SHEET NO.

1. F.F.L. -- FINISHED FLOOR LEVEL
 2. S.F.L. -- STRUCTURAL FLOOR LEVEL
 3. (X) -- REVERSED DETAIL
 4. GLASS LEGEND
- EGL-1 -- 8mmHS+12mm AIR GAP+10mmIP THK. I.G.U.
 EGL-2 -- 10mm THK. CLEAR TEMPERED GLASS
 EGL-4 -- 10mm THK. TEMPERED ACID ETCHED GLASS
 EGL-1A -- 8mmHS+12mm AIR GAP+16mmIP THK. I.G.U.
 BBT (B9) -- FIXING DETAIL (DWG. NO. F001)
 BBT-FIXING DETAIL (DWG. NO. F002)

請根據此呎吋做一幅AW01 (Flat A6)
 ASS50NI推拉提升趟門到沙埔辦房安裝

NO.	DATE	DESCRIPTION
E	26/09/2022	REVISION SUBJECT TO APPROVEMENT
D	26/07/2022	REVISION SUBJECT TO APPROVEMENT
C	22/06/2022	REVISION SUBJECT TO APPROVEMENT
B	23/11/2021	REVISION SUBJECT TO APPROVEMENT
A	10/11/2021	REVISION SUBJECT TO APPROVEMENT
NO.	DATE	REVISION

JOB NO.: J-856
 PROJECT: PROPOSED DEVELOPMENT ABOVE LIGHT RAIL TIN WING STOP-TS/WIL NO.23, AREA 33, TIN SHUI WAI, N.T.

TITLE: WINDOW SCHEDULE FOR TOWER 3 IN-SITU WINDOW

DATE: 02-Aug-21
 SCALE: 1:40
 DRAWN BY: Iwon
 CHECKED BY:

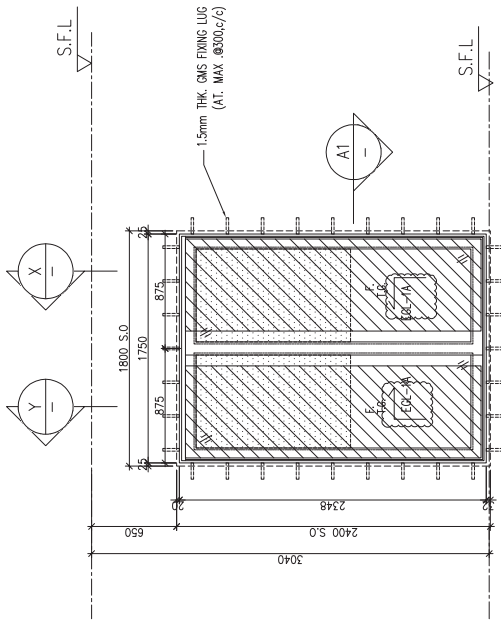
業特鋸質有限公司
 YED
 610 Che Kwo Ling Road, Kowloon
 Tel: 24821-4 Fax: (852) 2727666
 DWG NO.: J856-SD-W-5302 REV.: E

WINDOW MARK	SECTION	LOCATION	QUANTITY	REMARKS
AW 01	70mm ALUM. SECTION EGL-1A	3/F-42/F (4/F, 13/F, 14/F, 24/F, 34/F OMITTED) UNIT A11, A13, B11	35 Nos/35 Nos/35 Nos/35 Nos/35 Nos/35 Nos	AW 01 70mm ALUM. SECTION EGL-1A 35 Nos/35 Nos/35 Nos/35 Nos/35 Nos/35 Nos FACADE (TYPE T3PF04 FOR 3/F-42/F)

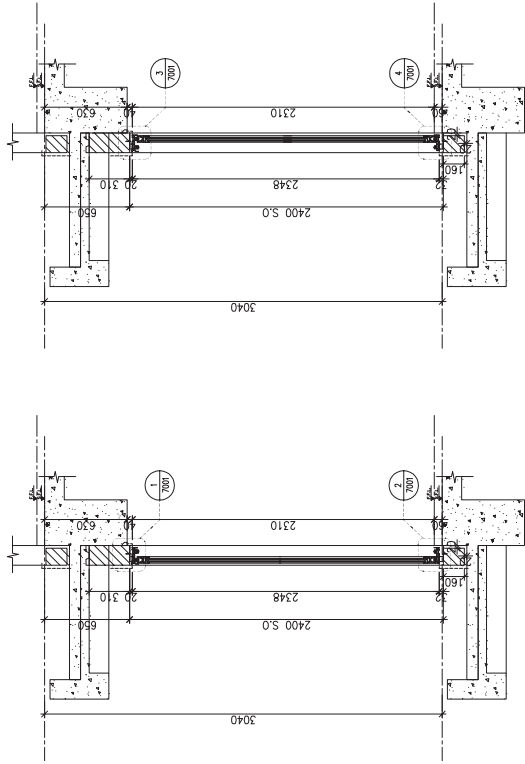
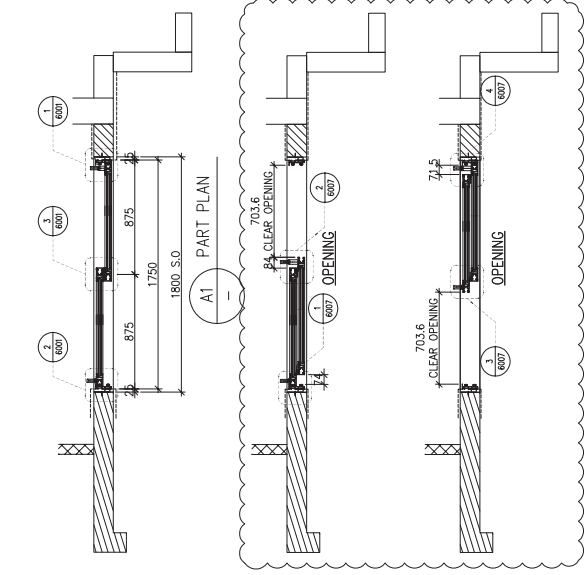
DELETE

PROVIDED	GLAZING AREA	OPENABLE AREA	GLAZING AREA
	1,591	1,681	

REQUIRE



ELEVATION



PART SECTION

PART SECTION

請根據此呎吋做一幅AW01 (Flat A5)
ASS50NI推拉提升趟門到沙埔辦房安裝

B.D. REF :

CLIENT : **SUN HUNG KAI**
REAL ESTATE AGENCY LTD.
42/F SUN HUNG KAI CENTRE, WINDYVALE, HONGKONG

ARCHITECT : **lwk&partners**
ARCHITECTS

MAIN CONTRACTOR : **Yee Fat**
柏輝建築有限公司
Building Contractors Ltd.

STRUCTURAL ENGINEER : **ARUP**

FAÇADE CONSULTANT : **ALPHA CONSULTING LIMITED**
Steel Structure & Façade Specialist

- NOTE :
- ALL DIMENSIONS ARE IN mm.
 - ALL ELEVATIONS ARE VIEWED FROM OUTSIDE.
 - ALL DIMENSIONS TO BE VERIFIED ON SITE BEFORE FABRICATION.
- LEGEND :
- (X1) DETAIL MARK NO.
 - (X200) REFER SHEET NO.
- F.F.L. -- FINISHED FLOOR LEVEL
 - S.F.L. -- STRUCTURAL FLOOR LEVEL
 - (⊗) -- REVERSED DETAIL
4. GLASS LEGEND
- EGL-1 -- 8mmHS+12mm AIR GAP+10mmIP THK. I.G.U.
 - EGL-2 -- 10mm THK. CLEAR TEMPERED GLASS
 - EGL-3 -- 10mm THK. TEMPERED ACID ETCHED GLASS
 - EGL-4 -- 10mm THK. CLEAR TEMPERED GLASS
 - EGL-5 -- 10mm THK. CLEAR TEMPERED GLASS
 - EGL-6 -- 10mm THK. CLEAR TEMPERED GLASS
 - EGL-7 -- 10mm THK. CLEAR TEMPERED GLASS
 - EGL-8 -- 10mm THK. CLEAR TEMPERED GLASS
 - EGL-9 -- 10mm THK. CLEAR TEMPERED GLASS
 - EGL-10 -- 10mm THK. CLEAR TEMPERED GLASS
 - EGL-11 -- 10mm THK. CLEAR TEMPERED GLASS
 - EGL-12 -- 10mm THK. CLEAR TEMPERED GLASS
 - EGL-13 -- 10mm THK. CLEAR TEMPERED GLASS
 - EGL-14 -- 10mm THK. CLEAR TEMPERED GLASS
 - EGL-15 -- 10mm THK. CLEAR TEMPERED GLASS
 - EGL-16 -- 10mm THK. CLEAR TEMPERED GLASS
 - EGL-17 -- 10mm THK. CLEAR TEMPERED GLASS
 - EGL-18 -- 10mm THK. CLEAR TEMPERED GLASS
 - EGL-19 -- 10mm THK. CLEAR TEMPERED GLASS
 - EGL-20 -- 10mm THK. CLEAR TEMPERED GLASS
 - EGL-21 -- 10mm THK. CLEAR TEMPERED GLASS
 - EGL-22 -- 10mm THK. CLEAR TEMPERED GLASS
 - EGL-23 -- 10mm THK. CLEAR TEMPERED GLASS
 - EGL-24 -- 10mm THK. CLEAR TEMPERED GLASS
 - EGL-25 -- 10mm THK. CLEAR TEMPERED GLASS
 - EGL-26 -- 10mm THK. CLEAR TEMPERED GLASS
 - EGL-27 -- 10mm THK. CLEAR TEMPERED GLASS
 - EGL-28 -- 10mm THK. CLEAR TEMPERED GLASS
 - EGL-29 -- 10mm THK. CLEAR TEMPERED GLASS
 - EGL-30 -- 10mm THK. CLEAR TEMPERED GLASS
 - EGL-31 -- 10mm THK. CLEAR TEMPERED GLASS
 - EGL-32 -- 10mm THK. CLEAR TEMPERED GLASS
 - EGL-33 -- 10mm THK. CLEAR TEMPERED GLASS
 - EGL-34 -- 10mm THK. CLEAR TEMPERED GLASS
 - EGL-35 -- 10mm THK. CLEAR TEMPERED GLASS
 - EGL-36 -- 10mm THK. CLEAR TEMPERED GLASS
 - EGL-37 -- 10mm THK. CLEAR TEMPERED GLASS
 - EGL-38 -- 10mm THK. CLEAR TEMPERED GLASS
 - EGL-39 -- 10mm THK. CLEAR TEMPERED GLASS
 - EGL-40 -- 10mm THK. CLEAR TEMPERED GLASS
 - EGL-41 -- 10mm THK. CLEAR TEMPERED GLASS
 - EGL-42 -- 10mm THK. CLEAR TEMPERED GLASS
 - EGL-43 -- 10mm THK. CLEAR TEMPERED GLASS
 - EGL-44 -- 10mm THK. CLEAR TEMPERED GLASS
 - EGL-45 -- 10mm THK. CLEAR TEMPERED GLASS
 - EGL-46 -- 10mm THK. CLEAR TEMPERED GLASS
 - EGL-47 -- 10mm THK. CLEAR TEMPERED GLASS
 - EGL-48 -- 10mm THK. CLEAR TEMPERED GLASS
 - EGL-49 -- 10mm THK. CLEAR TEMPERED GLASS
 - EGL-50 -- 10mm THK. CLEAR TEMPERED GLASS
 - EGL-51 -- 10mm THK. CLEAR TEMPERED GLASS
 - EGL-52 -- 10mm THK. CLEAR TEMPERED GLASS
 - EGL-53 -- 10mm THK. CLEAR TEMPERED GLASS
 - EGL-54 -- 10mm THK. CLEAR TEMPERED GLASS
 - EGL-55 -- 10mm THK. CLEAR TEMPERED GLASS
 - EGL-56 -- 10mm THK. CLEAR TEMPERED GLASS
 - EGL-57 -- 10mm THK. CLEAR TEMPERED GLASS
 - EGL-58 -- 10mm THK. CLEAR TEMPERED GLASS
 - EGL-59 -- 10mm THK. CLEAR TEMPERED GLASS
 - EGL-60 -- 10mm THK. CLEAR TEMPERED GLASS
 - EGL-61 -- 10mm THK. CLEAR TEMPERED GLASS
 - EGL-62 -- 10mm THK. CLEAR TEMPERED GLASS
 - EGL-63 -- 10mm THK. CLEAR TEMPERED GLASS
 - EGL-64 -- 10mm THK. CLEAR TEMPERED GLASS
 - EGL-65 -- 10mm THK. CLEAR TEMPERED GLASS
 - EGL-66 -- 10mm THK. CLEAR TEMPERED GLASS
 - EGL-67 -- 10mm THK. CLEAR TEMPERED GLASS
 - EGL-68 -- 10mm THK. CLEAR TEMPERED GLASS
 - EGL-69 -- 10mm THK. CLEAR TEMPERED GLASS
 - EGL-70 -- 10mm THK. CLEAR TEMPERED GLASS
 - EGL-71 -- 10mm THK. CLEAR TEMPERED GLASS
 - EGL-72 -- 10mm THK. CLEAR TEMPERED GLASS
 - EGL-73 -- 10mm THK. CLEAR TEMPERED GLASS
 - EGL-74 -- 10mm THK. CLEAR TEMPERED GLASS
 - EGL-75 -- 10mm THK. CLEAR TEMPERED GLASS
 - EGL-76 -- 10mm THK. CLEAR TEMPERED GLASS
 - EGL-77 -- 10mm THK. CLEAR TEMPERED GLASS
 - EGL-78 -- 10mm THK. CLEAR TEMPERED GLASS
 - EGL-79 -- 10mm THK. CLEAR TEMPERED GLASS
 - EGL-80 -- 10mm THK. CLEAR TEMPERED GLASS
 - EGL-81 -- 10mm THK. CLEAR TEMPERED GLASS
 - EGL-82 -- 10mm THK. CLEAR TEMPERED GLASS
 - EGL-83 -- 10mm THK. CLEAR TEMPERED GLASS
 - EGL-84 -- 10mm THK. CLEAR TEMPERED GLASS
 - EGL-85 -- 10mm THK. CLEAR TEMPERED GLASS
 - EGL-86 -- 10mm THK. CLEAR TEMPERED GLASS
 - EGL-87 -- 10mm THK. CLEAR TEMPERED GLASS
 - EGL-88 -- 10mm THK. CLEAR TEMPERED GLASS
 - EGL-89 -- 10mm THK. CLEAR TEMPERED GLASS
 - EGL-90 -- 10mm THK. CLEAR TEMPERED GLASS
 - EGL-91 -- 10mm THK. CLEAR TEMPERED GLASS
 - EGL-92 -- 10mm THK. CLEAR TEMPERED GLASS
 - EGL-93 -- 10mm THK. CLEAR TEMPERED GLASS
 - EGL-94 -- 10mm THK. CLEAR TEMPERED GLASS
 - EGL-95 -- 10mm THK. CLEAR TEMPERED GLASS
 - EGL-96 -- 10mm THK. CLEAR TEMPERED GLASS
 - EGL-97 -- 10mm THK. CLEAR TEMPERED GLASS
 - EGL-98 -- 10mm THK. CLEAR TEMPERED GLASS
 - EGL-99 -- 10mm THK. CLEAR TEMPERED GLASS
 - EGL-100 -- 10mm THK. CLEAR TEMPERED GLASS

REV	NO.	DATE	DESCRIPTION
E	26/09/2022	26/09/2022	REVISION SUBJECT TO APPROVALMENT
D	26/07/2022	26/07/2022	REVISION SUBJECT TO APPROVALMENT
C	22/06/2022	22/06/2022	REVISION SUBJECT TO APPROVALMENT
B	23/11/2021	23/11/2021	REVISION SUBJECT TO APPROVALMENT
A	10/11/2021	10/11/2021	REVISION SUBJECT TO APPROVALMENT
NO.	ONE	ONE	REVISED

JOB NO. : J-856

PROJECT : PROPOSED DEVELOPMENT ABOVE LIGHT RAIL TIN WING STOP-TS/WIL NO.23, AREA 33.1IN SHUI WAI, N.T.

TITLE : WINDOW SCHEDULE FOR TOWER 3 IN-SITU WINDOW

DATE : 02-Aug-21	SCALE : 1:40
DRAWN BY : Ivan	CHECKED BY :
葉特建築有限公司 YEE FAT BUILDING CONTRACTORS LTD. Units 6-8, Sunway Industrial Centre, Phase 1, Yee Fat Building 610 Chee Kwo Ling Road, Kowloon Tel: 2348211-4 Fax: (852) 2727666	
DWG NO. : JB56-SD-W-5304	REV. : E

WINDOW MARK	AW 01
LOCATION	3/F-42/F (4/F, 14/F, 24/F, 34/F OMITTED) UNIT B3
SECTION	70mm ALUM. SECTION
GLAZING	EGL-1A
QUANTITY	35 Nos/35 Nos/35 Nos/35 Nos
REMARKS	FAÇADE (TYPE T3PF08 FOR 3/F-42/F)

DEFECT