

工程指示 / 要求簡箋 ENGINEER INSTRUCTIONS(E.I.)

工程指示編號:	EI- 8407	修改版本:	-
	HK-1805		
工程編號:	J 853	工程名稱:	延坪道
收件人:	生統	發件人:	Joe Chan
工程項目:	大樓平台天花補窿 鋁板.	日期:	4/10/2024

<input checked="" type="checkbox"/> 原合約工程包	<input type="checkbox"/> 原合約工程加 / 減脹 QT-	<input type="checkbox"/> 新工程報價 QT-
--	--	------------------------------------

信件批核號碼/圖紙參考編號:	批核模具圖紙編號:
客戶指示附件:	管理內部批簽署:

<input type="checkbox"/> 初步鋁料 B.M.	<input type="checkbox"/> 加工拆圖, 然後生產	<input type="checkbox"/> 尺寸表
<input type="checkbox"/> 正式鋁料 B.M.	<input type="checkbox"/> 技術上資料 / 指示	<input type="checkbox"/> 報價
<input type="checkbox"/> 配件 B.M.	<input type="checkbox"/> 樣辦或貨品說明書	<input type="checkbox"/> 分判合約
<input type="checkbox"/> 其他:		

內容:	請依附件資料, 生產鋁板, 送地盤.
完成上列要求日期:	20/10/2024 ASAP

國內

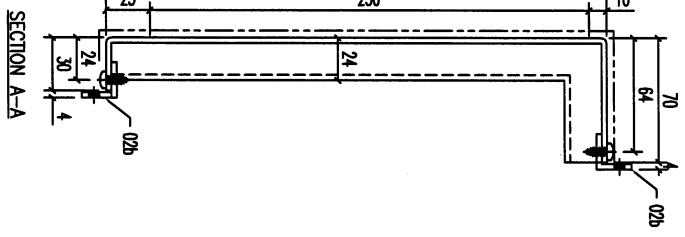
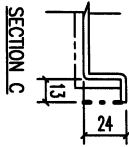
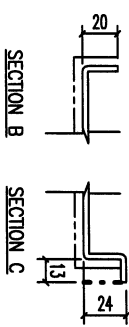
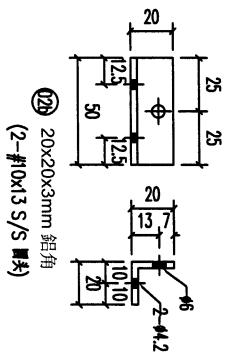
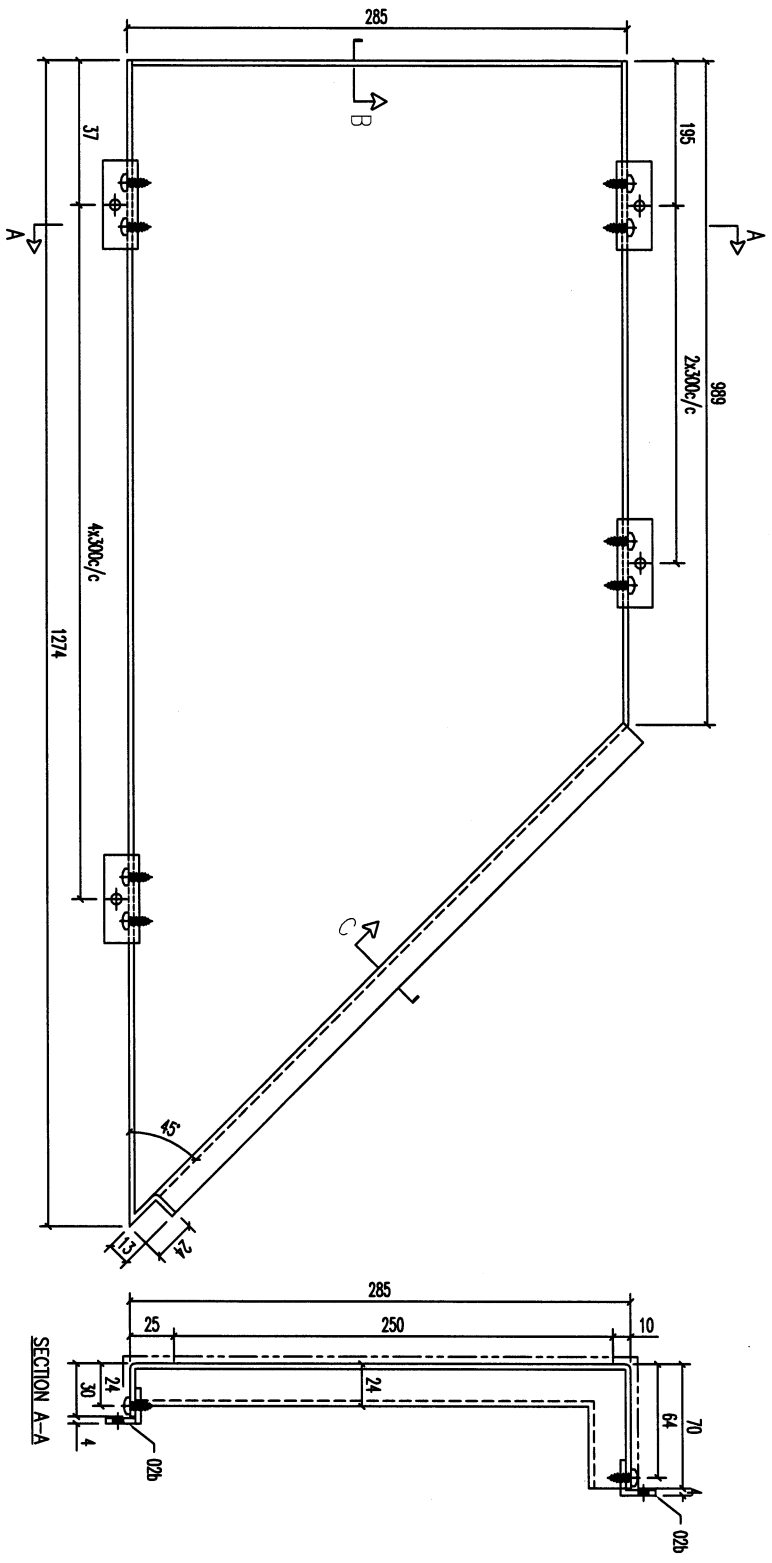
<input type="checkbox"/> 生產技術總監	<input type="checkbox"/> 連附件	<input type="checkbox"/> 技術部	<input type="checkbox"/> 連附件	<input type="checkbox"/> 生產部	<input type="checkbox"/> 連附件
<input type="checkbox"/> 採購部	<input type="checkbox"/> 連附件	<input checked="" type="checkbox"/> 生產統籌部	<input checked="" type="checkbox"/> 連附件	<input type="checkbox"/> 報關組	<input type="checkbox"/> 連附件
<input type="checkbox"/> 質檢部	<input type="checkbox"/> 連附件	<input type="checkbox"/> 會計部	<input type="checkbox"/> 連附件	<input type="checkbox"/> 機械設計部	<input type="checkbox"/> 連附件
<input type="checkbox"/> 香港辦	<input type="checkbox"/> 連附件	<input type="checkbox"/> 其他:			

香港

<input type="checkbox"/> 行政部	<input type="checkbox"/> 連附件	<input type="checkbox"/> 會計部	<input type="checkbox"/> 連附件	<input type="checkbox"/> 統籌部	<input type="checkbox"/> 連附件	<input type="checkbox"/> 工程部	<input type="checkbox"/> 連附件
<input type="checkbox"/> 採購部	<input type="checkbox"/> 連附件	<input type="checkbox"/> QS部	<input type="checkbox"/> 連附件	<input checked="" type="checkbox"/> 地盤管理	<input checked="" type="checkbox"/> 連附件	<input type="checkbox"/> 維修部	<input type="checkbox"/> 連附件

*發件人簽署:		*組別成員批核簽署:	
傳遞編號:	HK1805/24	項目經理簽署:	

REV.	ORDERED BY	PART NUMBER	Dim. A	Dim. B	Dim. C	Dim. D	Dim. E	Dim. F	Dim. G	QTY	Inv. Code	EXTR. DRAWING
-	T5-CE02-04									1		PART DRAWING



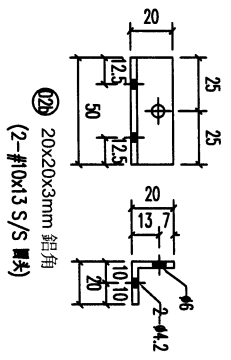
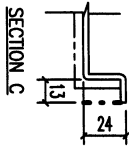
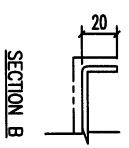
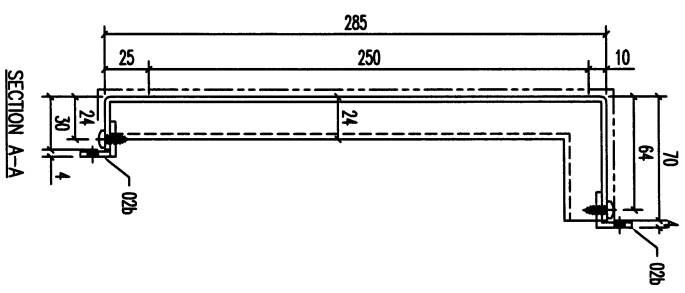
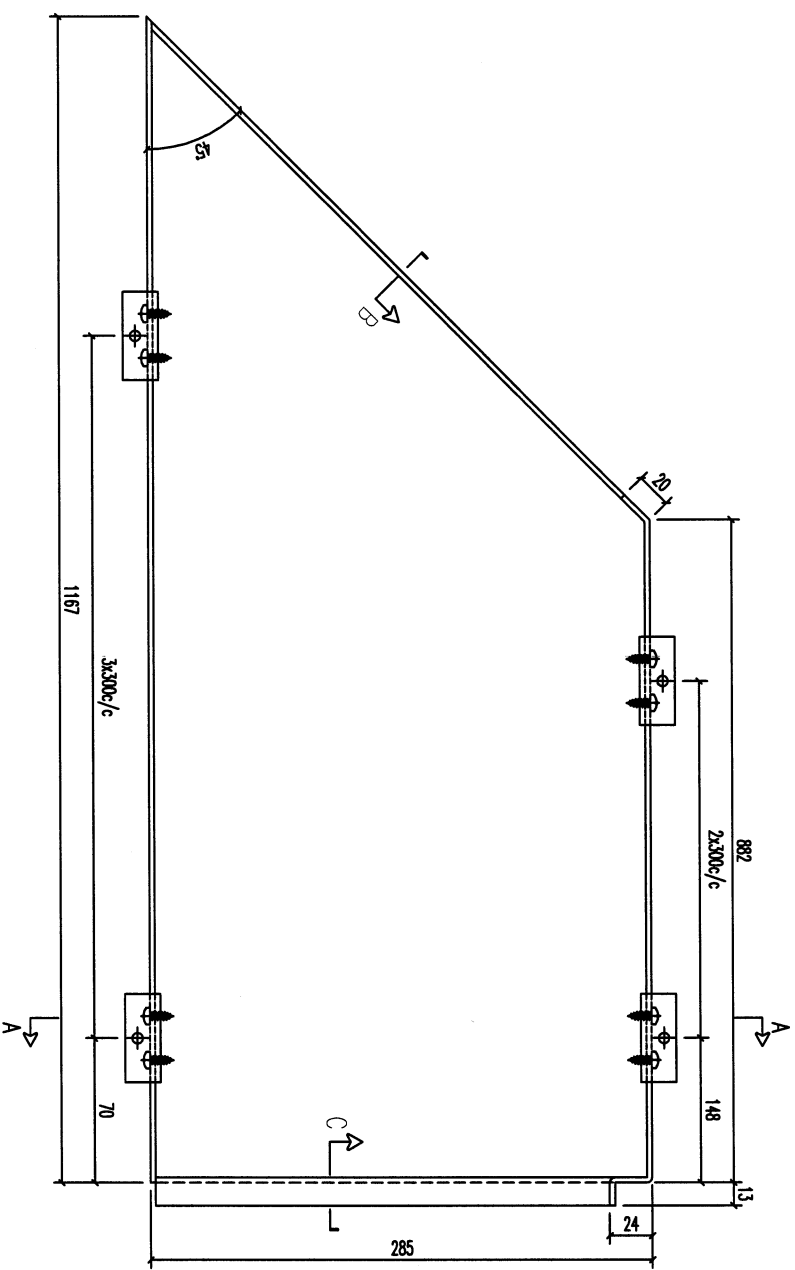
序號	20x20x3mm 鋁角	50	開精	8	備註
02b	20x20x3mm 鋁角	50	開精	8	備註

REV.	DATE	AMENDMENT	REVISED BY	PROJECT	JOB NO.	DRAWING TITLE	DRAWING NO.	SHT.	REV.
				美特鋁質有限公司 MIDI ALUMINIUM FABRICATOR LTD. Units 6-8, Sunroy Industrial Centre, 1/F 610 Cha Kwo Ling Road, Kowloon Tel:23489211-4 Fax:(852)27727866	1853	鋁板天花加工圖 3mm THK. ALUM. PLATE	T5-CE02-04	-/-	-

美特鋁質有限公司
MIDI ALUMINIUM FABRICATOR LTD.
Units 6-8, Sunroy Industrial Centre, 1/F
610 Cha Kwo Ling Road, Kowloon
Tel:23489211-4 Fax:(852)27727866

FACTORY	01	W/CENTRE	MADE/SCDA/FAB	CUT ENDS	ANGLE	±1°	DATE	6/30/2024	FINISH	EC-DG-D334232-2D1(AL1)	POST PAINT	SCALE	1:3	PART	TRACK TYPE
Standard	X X .				Squareness	±1°			噴塗						S.....
Tolerances	X X . X								噴塗						

REV.	CHANGED PART BY	PART NUMBER	Dim. A	Dim. B	Dim. C	Dim. D	Dim. E	Dim. F	Dim. G	QTY	Inv. Code	EXTR. DRAWING PART DRAWING
-		T5-CE02-05								1		



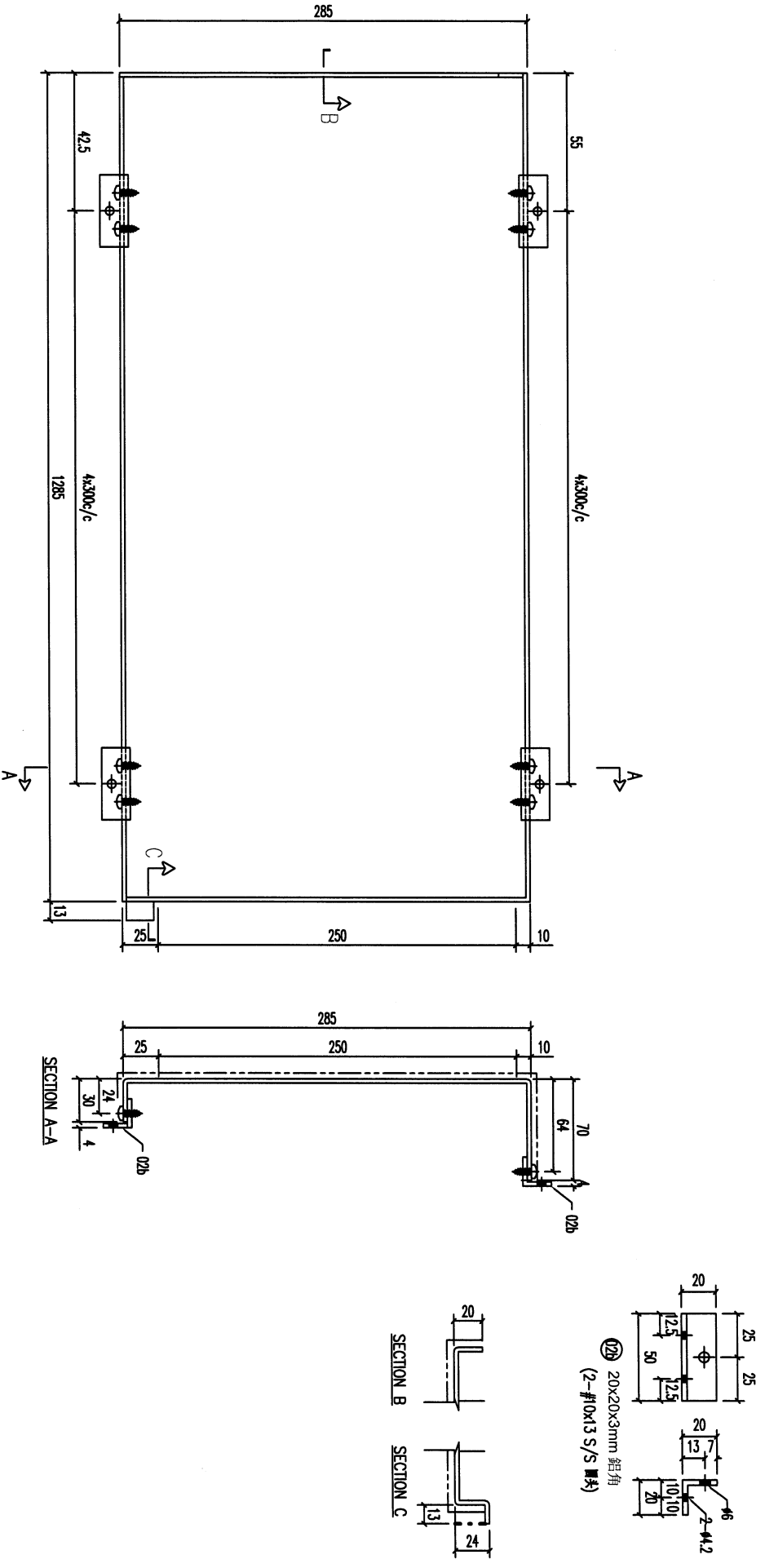
REV.	DATE	AMENDMENT	REVISION BY	JOB NO.	DRAWING TITLE	DRAWING NO.	SHT.	REV.
				1853	鋁板天花加工圖 3mm THK ALUM. PLATE	T5-CE02-05	-	-

美特鋁質有限公司
MIDI ALUMINIUM FABRICATOR LTD.
 Units 6-8, Sunray Industrial Centre, 1/F
 610 Cha Kwo Ling Road, Kowloon
 Tel:23489211-4 Fax:(852)27727666

FACTORY	W/CENTRE	CUT ENDS	FINISH	POST PAINT	PART
01	M/DK/S/DK/FAB	Angle	EC-DG-D334232-ZD1(AL1)	噴塗	噴塗
Standard	X X . = ±1	Squareness ±1°	DATE	SCALE	TRACK TYPE
Tolerances	X X . X = ±05		6/30/2024	1:3	S.....

02b	20x20x3mm 鋁角	50	7	7
材料	材料	長度	開梯	數量
林林	林林	林林	林林	林林

REV.	CHANGED PART NO.	PART NUMBER	Dim. A	Dim. B	Dim. C	Dim. D	Dim. E	Dim. F	Dim. G	QTY	Inv. Code	EXTR. DRAWING PART DRAWING
-	T5-CE02-62									1		



REV.	DATE	AMENDMENT	REVISED BY	JOB NO.	DRAWING TITLE	DRAWING NO.	SHT.	REV.
				1853	鋁板天花加工圖 3mm THK. ALUM. PLATE	T5-CE02-62	-/-	-


美特鋁質有限公司
 ALUMINIUM FABRICATOR LTD.
 Units 6-8, Sunroy Industrial Centre, 1/F
 610 Cha Kwo Ling Road, Kowloon
 Tel: 23489211-4 Fax: (852) 27727666

02b	20x20x3mm 鋁角	50	5	
料號	材料描述	長度	開料	數量
			零件描述	備註

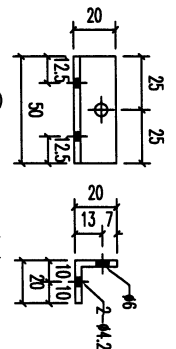
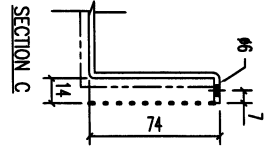
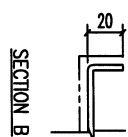
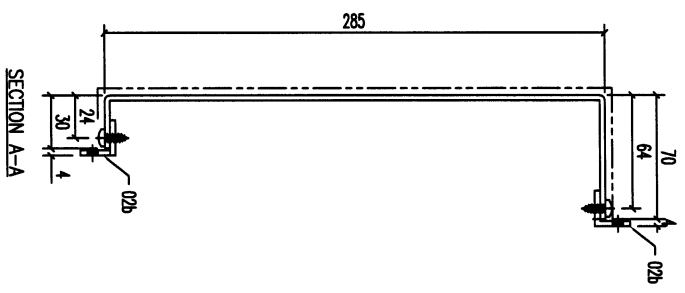
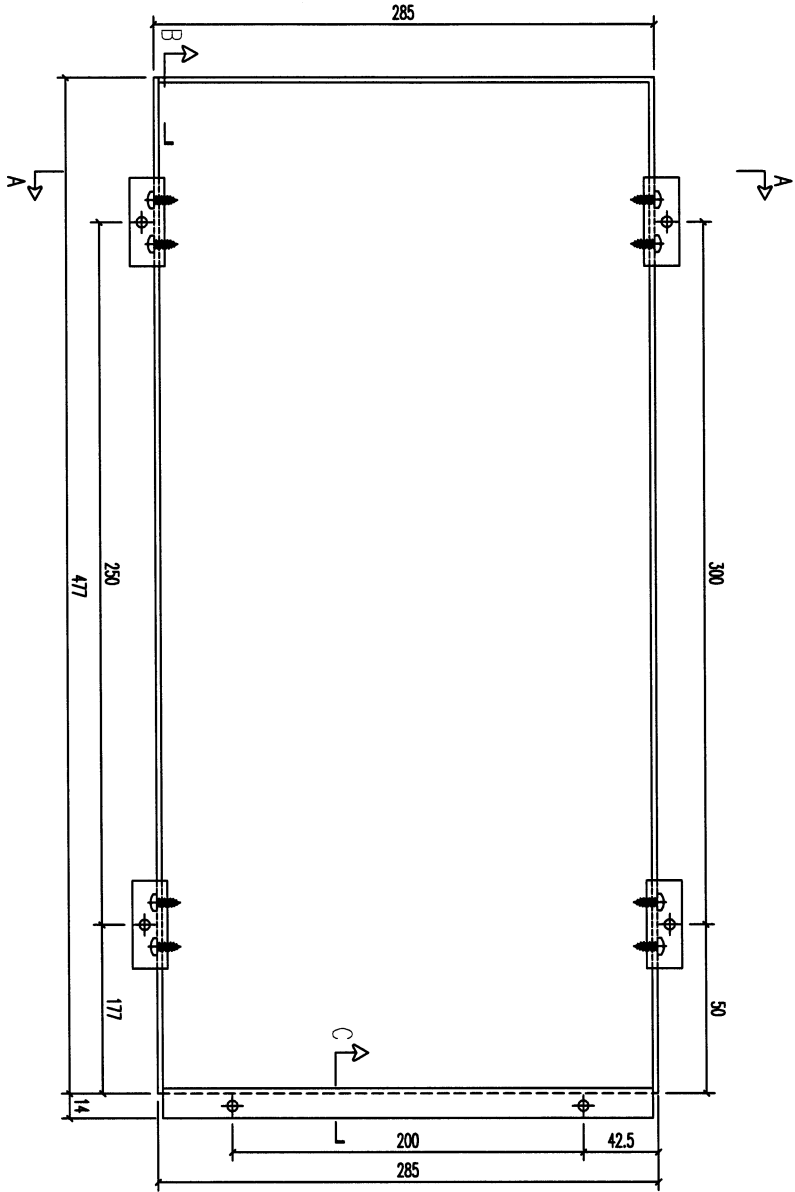
FACTORY	W/CENTRE	CUT ENDS	FINISH	DATE	DRAWN	SCALE	PART
01	MM/84/S/DX4/FAB		EC-DG-D334232-ZD(Al1)	6/30/2024	YEUNG	1:3	TRACK TYPE
Standard	X X . = ±1	Angle	±1°				S.....
Tolerances	X X . X = ±05	Squareness	±1°				

PROJECT
 噴塗
 PRE PAINT
 POST PAINT
 SUB ASSEM.
 TRACK TYPE
 S.....

REV.	CHANGED PART BY	PART NUMBER	Dim. A	Dim. B	Dim. C	Dim. D	Dim. E	Dim. F	Dim. G	QTY	Inv. Code	EXTR. DRAWING
-		T5-CE02-39								1		<input checked="" type="checkbox"/>

ASSEMBLE ON PARTS

PART DRAWING



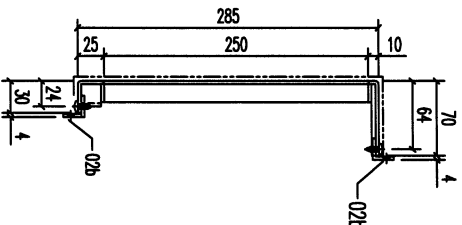
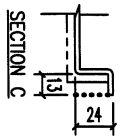
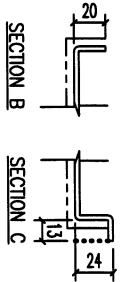
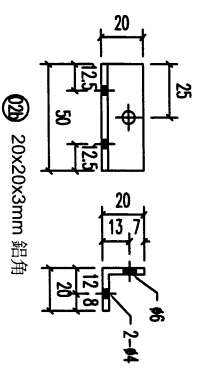
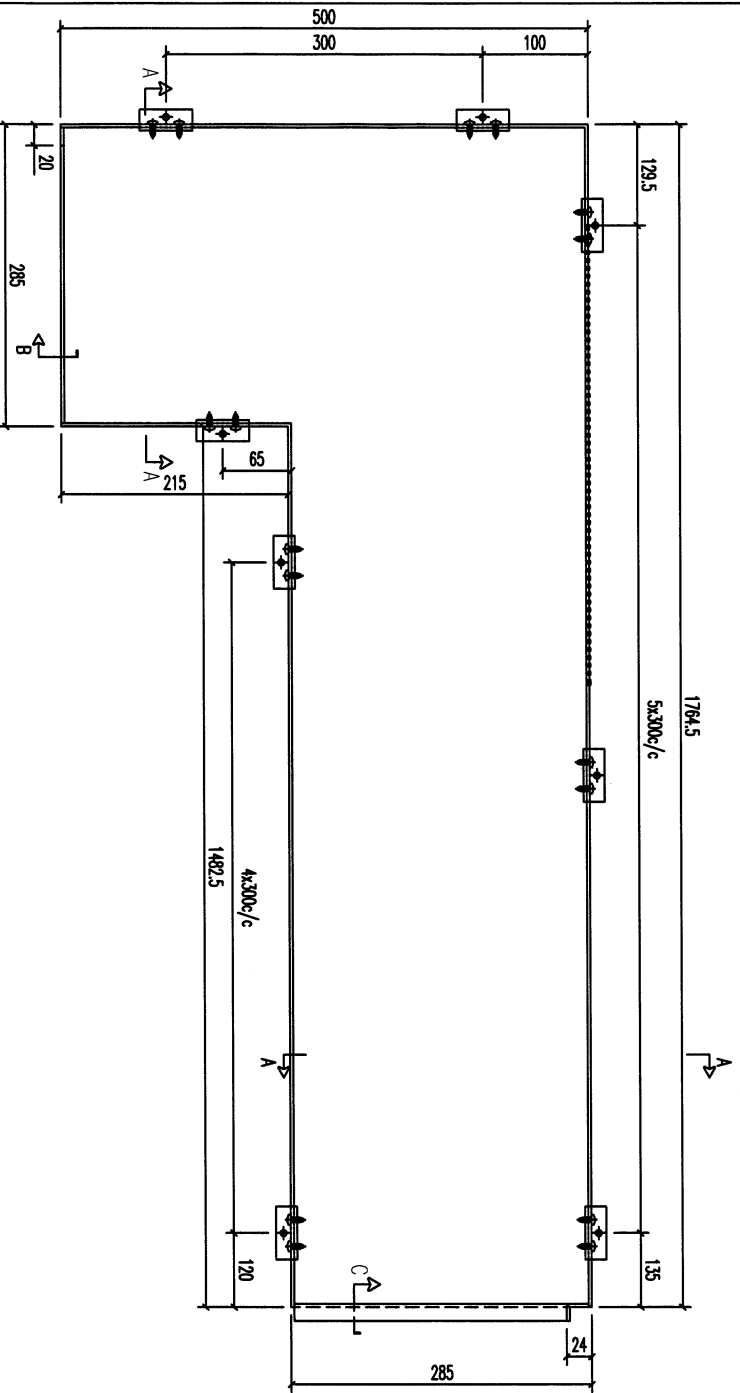
20x20x3mm 鋁角
(2-#10x13 S/S 螺絲)

序號	02b	20x20x3mm 鋁角	50	開精	4	備註
		材料規格	長度	配合辦法	數量	

美特鋁質有限公司
MIDI ALUMINIUM FABRICATOR LTD.
Units 6-8, Sunroy Industrial Centre, 1/F
610 Cha Kwo Ling Road, Kowloon
Tel:23489211-4 Fax:(852)27727666

REV.	DATE	AMENDMENT	REVISED BY	JOB NO. 1853	DRAWING TITLE 鋁板天花加工圖 3mm THK. ALUM. PLATE	DRAWING NO. T5-CE02-39	SHT. -/-	REV.
					FACTORY 01	FINISH EC-DG-0334232-2D(Al1)		
					W/CENTRE MARK/SIDE/FAB	DATE 6/30/2024		
					CUT ENDS	DRAWN YEUNG		
					Standard X X . = ±1	SCALE 1:3		
					Tolerances X X . X = ±05	POST PAINT		
					Angle ±1°	PRE PAINT		
					Squareness ±1°	PART		
						TRACK TYPE		
						SUB ASSEM.		
						RAK TYPE		
						S.....		

REV.	ORDERED PART NO.	PART NUMBER	Dim. A	Dim. B	Dim. C	Dim. D	Dim. E	Dim. F	Dim. G	QTY	Inv. Code	ASSEMBLE ON PARTS	EXTR. DRAWING PART DRAWING
-		T5-CE02-36								1			



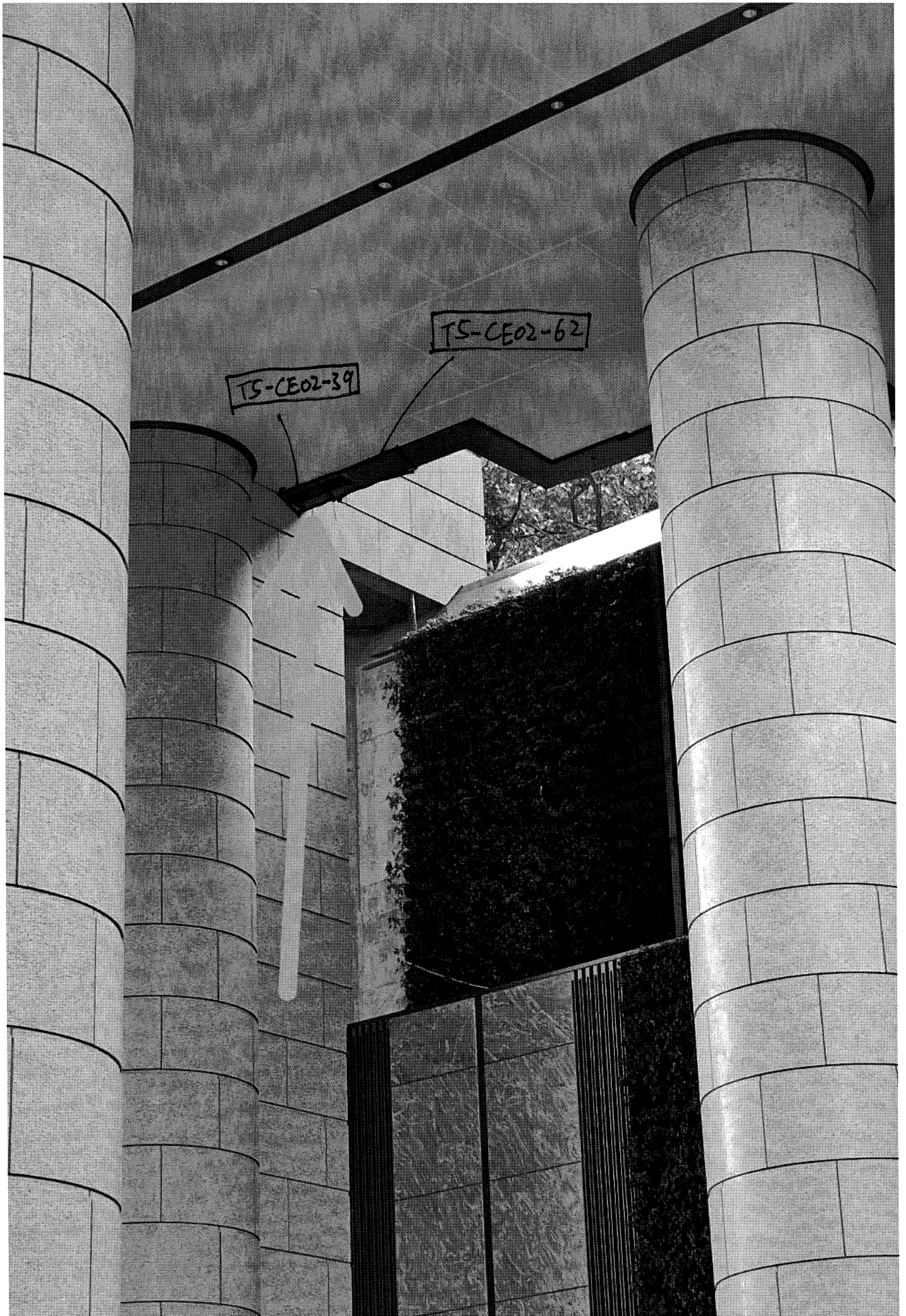
REV.	DATE	AMENDMENT	REVISED BY	PROJECT	JOB NO.	DRAWING TITLE	DRAWING NO.	SHT.	REV.
				美特鋁質有限公司 MIDI ALUMINIUM FABRICATOR LTD. Units 6-8, Sunray Industrial Centre, 1/F 610 Cha Kwo Ling Road, Kowloon Tel:23489211-4 Fax:(852)27727666	J853	鋁板天花加工圖 3mm THK. ALUM. PLATE	T5-CE02-36	-/-	-

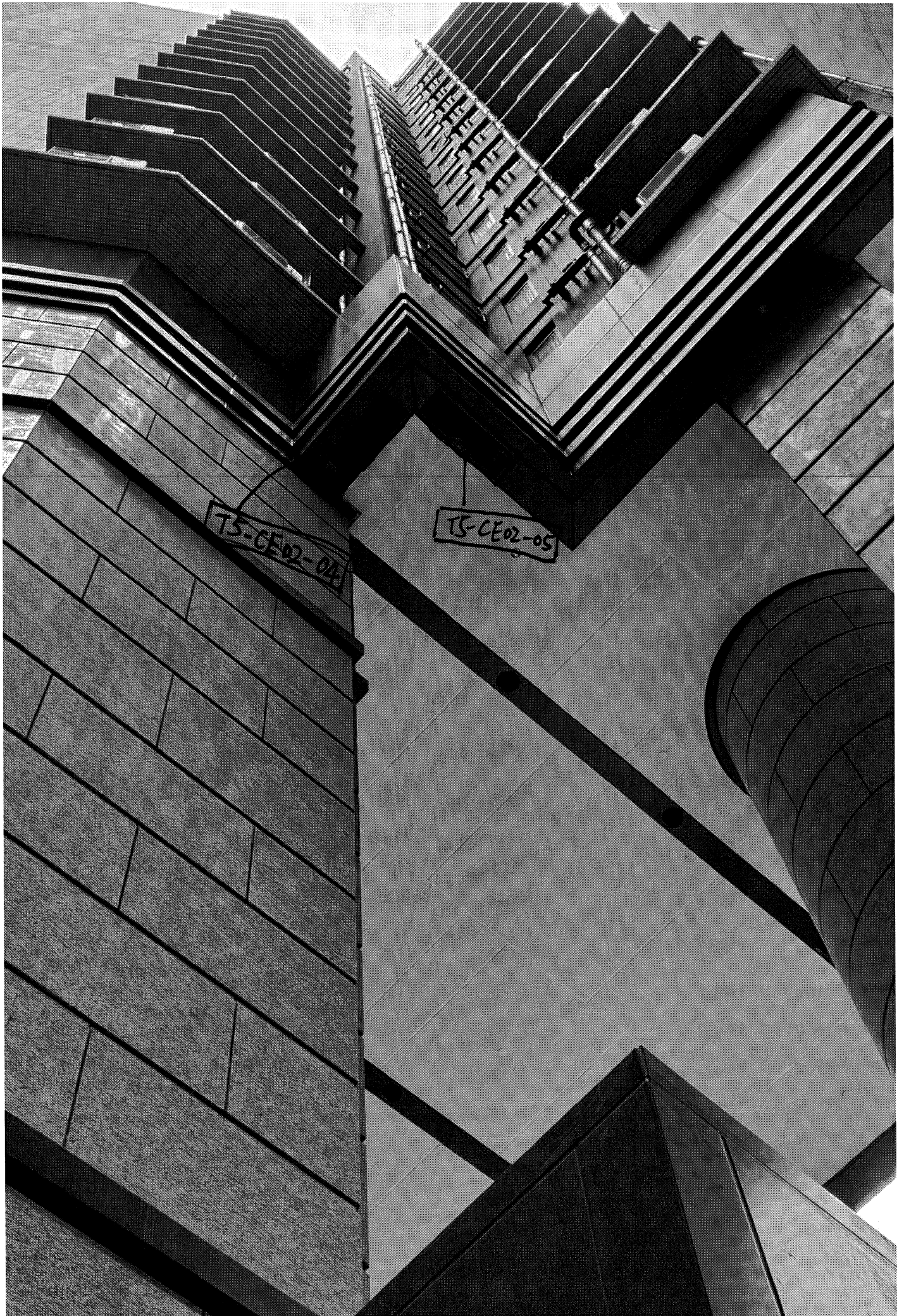
02b	20x20x3mm 鋁角	50	12	50	12
材料描述	長度	開料	數量	備註	備註

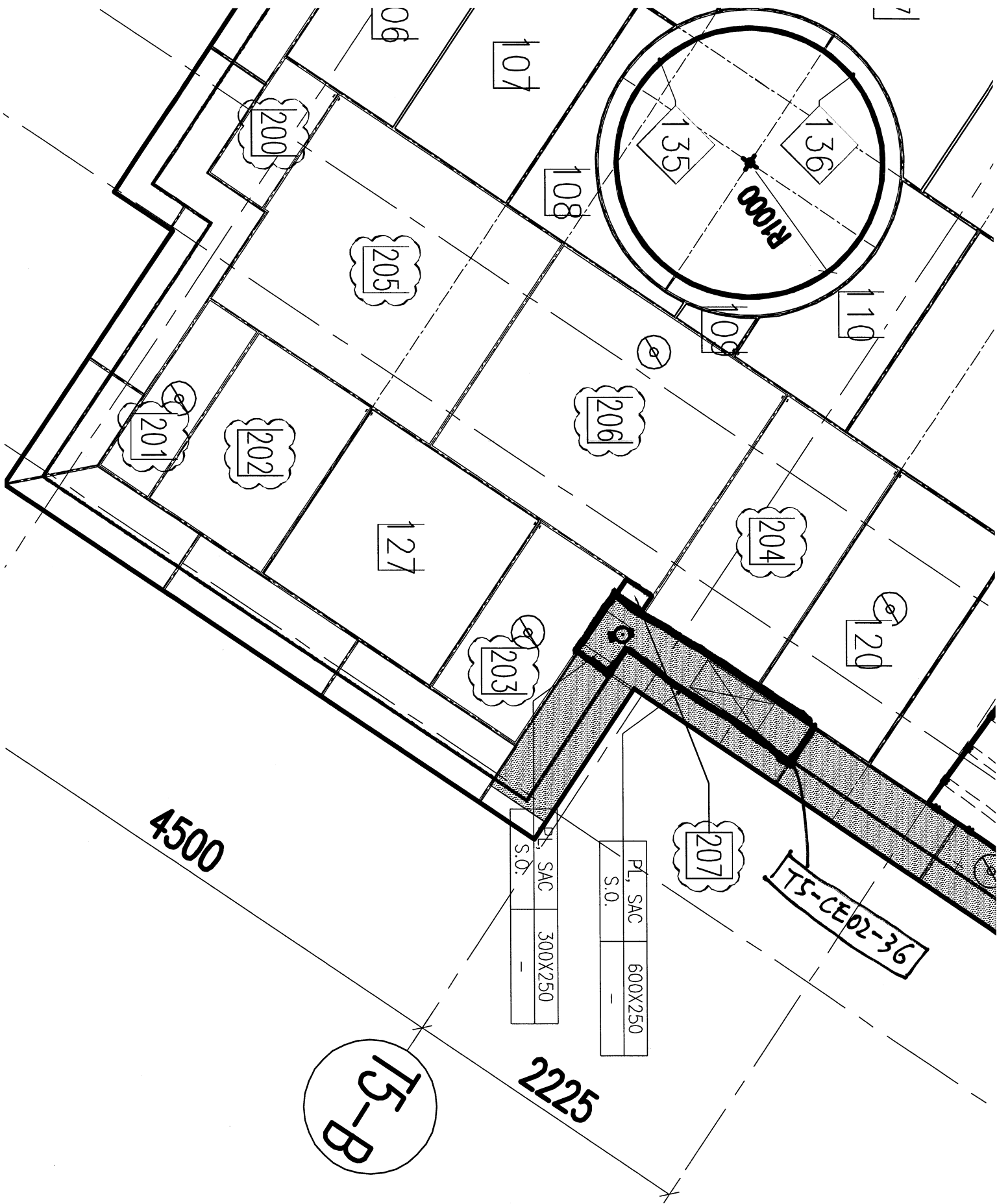
FACTORY	W/CENTRE	CUT ENDS	FINISH	DATE	SCALE	PART
01	MARK/SQRA/FAB	Angle	EC-DG-0334232-ZD1 (AL1)	6/30/2024	1:3	TRACK TYPE
Standard	X X . = ±1	Squareness ±1°	噴塗			S.....
Tolerances	X X . X = ±05		噴塗			

DRAWN	YEUNG	POST PAINT	PRE PAINT	SCALE	PART
				1:3	TRACK TYPE

FACTORY	W/CENTRE	CUT ENDS	FINISH	DATE	SCALE	PART
01	MARK/SQRA/FAB	Angle	EC-DG-0334232-ZD1 (AL1)	6/30/2024	1:3	TRACK TYPE
Standard	X X . = ±1	Squareness ±1°	噴塗			S.....
Tolerances	X X . X = ±05		噴塗			







4500

TS-B

2225

PL, SAC	600X250
S.O.	-

PL, SAC	300X250
S.O.	-

TS-CE02-36

207

20

204

206

205

201

202

127

203

110

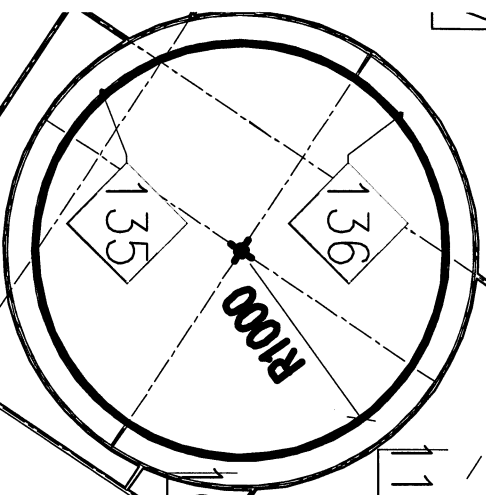
109

108

107

200

06



已補料

缺料

TS-CE01-130

