

工程指示 / 要求簡箋 ENGINEER INSTRUCTIONS (E.I.)

工程指示編號:	EI- 6583	修改版本:	-
	HK- /		
工程編號:	J 853	工程名稱:	延坪道
收件人:	Maggie Lor	發件人:	Joe Chan
工程項目:	平台天花 T7 (時光隧道) 位置用鐵件	日期:	07/08/2023

<input checked="" type="checkbox"/> 原合約工程包	<input type="checkbox"/> 原合約工程加 / 減賬 QT-	<input type="checkbox"/> 新工程報價 QT-
--	--	------------------------------------

信件批核號碼/圖紙參考編號:	批核模具圖紙編號:
客戶指示附件:	管理內部批簽署:

<input type="checkbox"/> 初步鋁料 B.M.	<input type="checkbox"/> 加工拆圖, 然後生產	<input type="checkbox"/> 尺寸表
<input type="checkbox"/> 正式鋁料 B.M.	<input type="checkbox"/> 技術上資料/指示	<input type="checkbox"/> 報價
<input type="checkbox"/> 配件 B.M.	<input type="checkbox"/> 樣辦或貨品說明書	<input type="checkbox"/> 分判合約
<input type="checkbox"/> 其他:		

內容: 請依附件資料, 生產 GMS 鐵件, 送地盤.

完成上列要求日期: 15/8/2023 ASAP

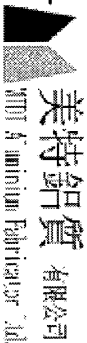
國內

<input type="checkbox"/> 生產技術總監	<input type="checkbox"/> 連附件	<input type="checkbox"/> 技術部	<input type="checkbox"/> 連附件	<input type="checkbox"/> 生產部	<input type="checkbox"/> 連附件
<input type="checkbox"/> 採購部	<input type="checkbox"/> 連附件	<input type="checkbox"/> 生產統籌部	<input type="checkbox"/> 連附件	<input type="checkbox"/> 報關組	<input type="checkbox"/> 連附件
<input type="checkbox"/> 質檢部	<input type="checkbox"/> 連附件	<input type="checkbox"/> 會計部	<input type="checkbox"/> 連附件	<input type="checkbox"/> 機械設計部	<input type="checkbox"/> 連附件
<input type="checkbox"/> 香港辦	<input type="checkbox"/> 連附件	<input type="checkbox"/> 其他:			

香港

<input type="checkbox"/> 行政部	<input type="checkbox"/> 連附件	<input type="checkbox"/> 會計部	<input type="checkbox"/> 連附件	<input type="checkbox"/> 統籌部	<input type="checkbox"/> 連附件	<input type="checkbox"/> 工程部	<input type="checkbox"/> 連附件
<input type="checkbox"/> 採購部	<input type="checkbox"/> 連附件	<input type="checkbox"/> QS部	<input type="checkbox"/> 連附件	<input checked="" type="checkbox"/> 地盤管理	<input checked="" type="checkbox"/> 連附件	<input type="checkbox"/> 維修部	<input type="checkbox"/> 連附件

*發件人簽署:		*組別成員批核簽署:	
傳遞編號:	—	項目經理簽署:	



工程號: J853 T7 6/F

地盤名稱: 香港延坪道

項目類別: 天花

計算: 李傳鵬

核對: 練松文

批准: 陳梓豪

A/C Code: 2023/02/14

日期: 2023/2/14

日期: 2023/2/14

日期: 2023/2/14

送呈: 施哥

副本: 細佬

地盤鐵件BM表

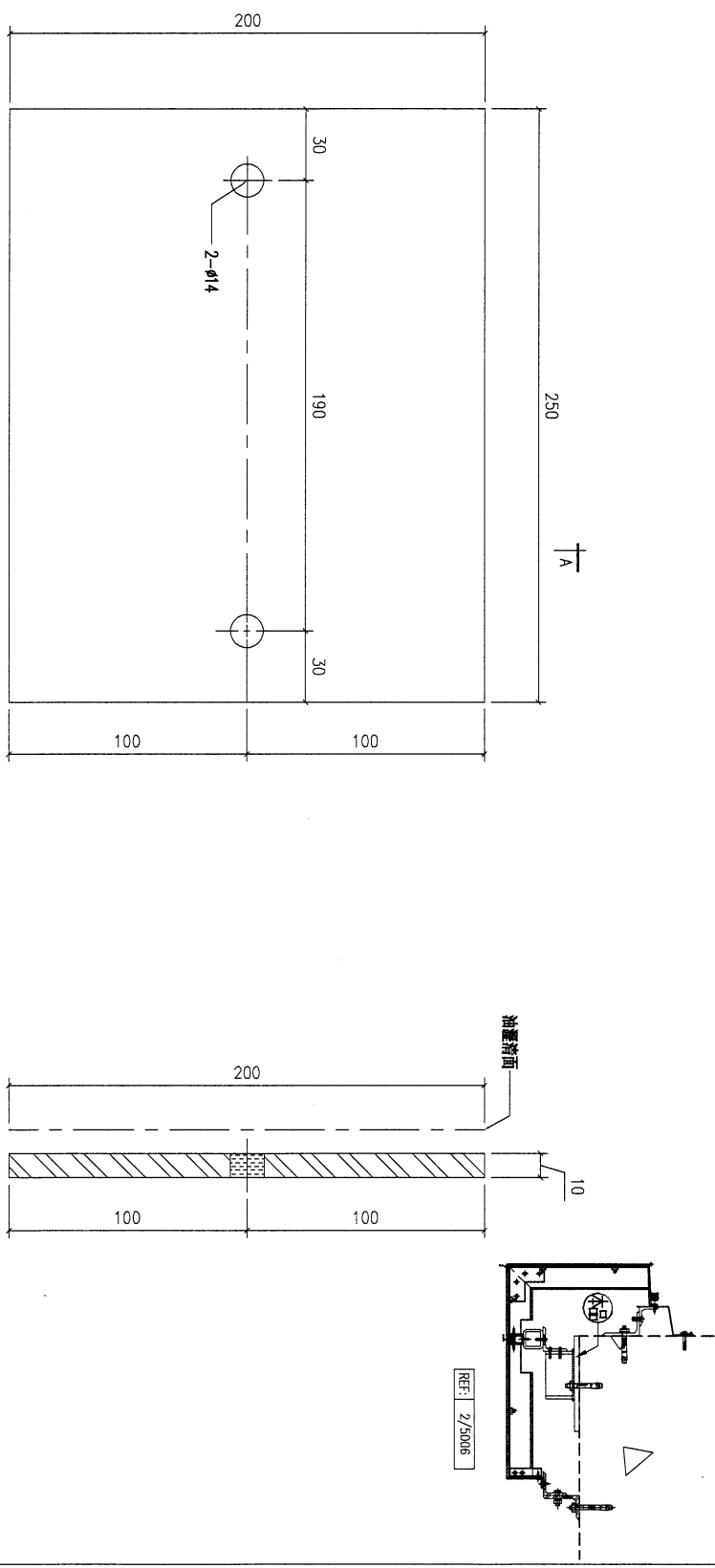
BM編號:

修改版次:

鐵件總重量KG: 912.05

序號	修改內容	鐵件圖號	鐵件名稱	顏色	實用	後備	總數	單位	單件 (kg)	總重量 (kg)	備注
1		T7-BK41-01	200*250*10鋼板	熱浸鋅	6	0	6	件	3.930	23.580	
2		T7-LA01-01	100*50*6角鋼	熱浸鋅	21	0	21	件	16.406	344.521	
3		T7-LA01-02	40*40*5角鋼	熱浸鋅	13	0	13	件	7.065	91.848	
4		T7-LA01-03	50*50*5角鋼	熱浸鋅	5	0	5	件	9.029	45.146	
5		T7-LA01-04	75*50*5角鋼	熱浸鋅	5	0	5	件	11.376	56.881	
6		T7-LA02-01	75*50*5角鋼	熱浸鋅	23	0	23	件	1.963	45.149	
7		T7-LA02-02	75*50*5角鋼	熱浸鋅	39	0	39	件	1.963	76.557	
8		T7-LA02-03	75*50*5角鋼	熱浸鋅	4	0	4	件	1.963	7.852	
9		T7-LA02-04	75*50*5角鋼	熱浸鋅	1	0	1	件	14.725	14.725	
10		T7-LA03-01	125*75*5角鋼	熱浸鋅	36	0	36	件	1.605	57.780	
11		T7-LA03-02	50*50*5角鋼	熱浸鋅	12	0	12	件	8.784	105.409	
12		T7-ST41-01	100*100*6.3 鋼通+50*50*5角鋼	熱浸鋅	6	0	6	件	3.000	18.000	
13		T7-ST41-02	40*40*5 鋼通	熱浸鋅	2	0	2	件	12.302	24.605	
14							173			912	

REV.	CHECKED DATE BY	PART NUMBER	Dim. A	Dim. B	Dim. C	Dim. D	Dim. E	Dim. F	Dim. G	QTY	Inv. Code	ASSEMBLE ON PARTS	EXTR. DRAWING PART DRAWING
-		T7-BK41-01								6			



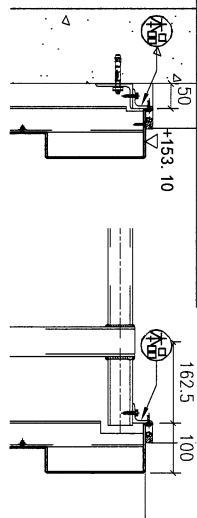
1/A

SECTION A-A

VS = VISIBLE SURFACE
ALL DIMENSIONS IN MILLIMETRES

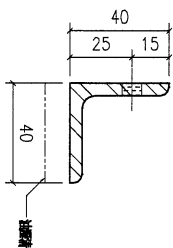
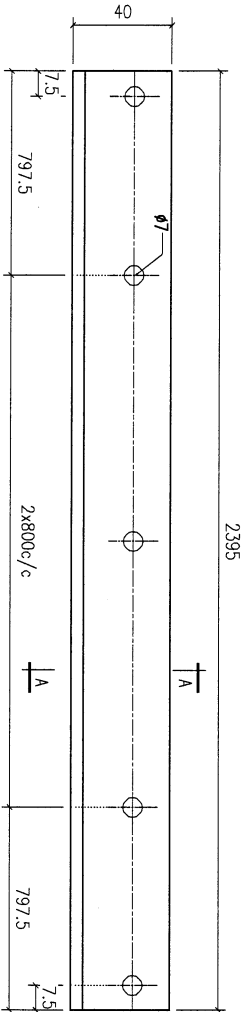
REV.	DATE	AMENDMENT	REVISED BY	美特鋁質有限公司 MIDI ALUMINIUM FABRICATOR LTD. Units 6-8, Sunray Industrial Centre, 1/F 610 Cha Kwo Ling Road, Kowloon Tel: 23469211-4 Fax: (852) 2727666				JOB NO.	J853	FACTORY	01	W/CENTRE	MOK/SONG/FAB	CUT ENDS	N/A	FINISH	Standard X X . = ±1 Tolerances X X . X = ±0.5	DATE	2/14/2023	DRAWN	YEUNG	POST PAINT	SCALE	1:2	PART	SUB ASSEM.	SHT.	1 of 1	REV.	-
				PROJECT J853-PODIUM ALUM CEILING & FEATURE CLADDING T7 7/F																										
				DRAWING TITLE 鐵料加工圖 250x200x10mm THK. GMS. PLATE																										
				DRAWING NO. T7-BK41																										

REV. CHECKED BY	PART NUMBER	Dim. A	Dim. B	Dim. C	Dim. D	Dim. E	Dim. F	Dim. G	QTY	Inv. Code	ASSEMBLE ON PARTS	EXTR. DRAWING PART DRAWING
-	T7-LA01-02								13			



REF: 18/6004

REF: 19/6004

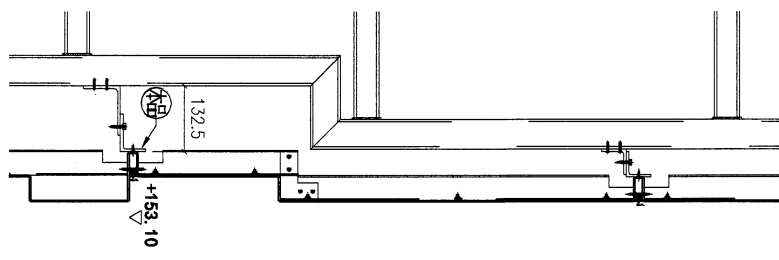
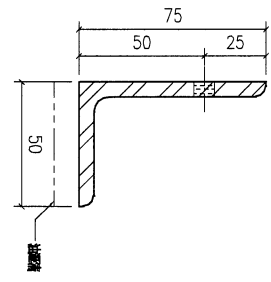
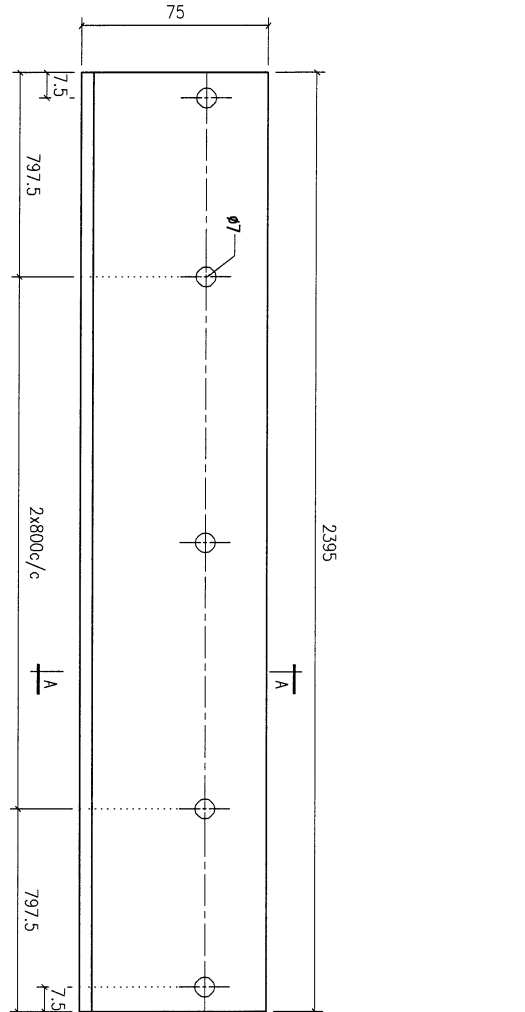


SECTION A-A

VS = VISIBLE SURFACE
ALL DIMENSIONS IN MILLIMETRES

REV.	DATE	AMENDMENT	REVISED BY	 美特鋁質有限公司 MIDI ALUMINIUM FABRICATORS LTD. Units 6-8, Sunray Industrial Centre, 1/F 610 Cha Kwo Ling Road, Kowloon Tel: 23489211-4 Fax: (852) 2727666				JOB NO.	DRAWING TITLE		FINISH	POST PAINT	PART	REV.
-	-	-	-	FACTORY	W/CENTRE	CUT ENDS	DATE	DRAWN	SCALE	熱浸	PRE PAINT	SUB ASSEM.	2 of 4	
				01	WOKI/SOKI/FAB	N/A	2/15/2023	YEUNG	1:2	浸			-	
				Standard	X X X = ±1	Angle	±1°							
				Tolerances	X X X = ±0.5	Squareness	±1°							
				PROJECT 1853-PODIUM ALUM CEILING & FEATURE CLADDING T7 7/F		鐵料加工圖		40x40x5mm THK. GMS. ANGLE: (S9)		DRAWING NO. T7-LA01		SHT.	-	
				JOB NO. 1853		GMS. ANGLE: (S9)								

REV.	CHECKED DATE BY	PART NUMBER	Dim. A	Dim. B	Dim. C	Dim. D	Dim. E	Dim. F	Dim. G	QTY	Inv. Code	ASSEMBLE ON PARTS	EXTR. DRAWING PART DRAWING
-		T7-LA01-04								5			

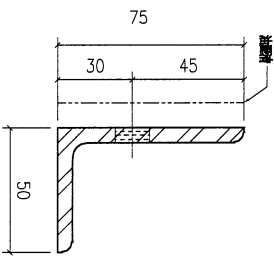
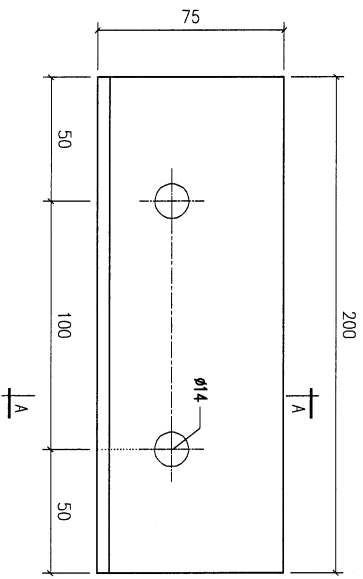


REF: 21/6004
REV: 16/6004

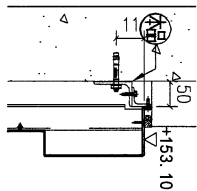
VS = VISIBLE SURFACE
ALL DIMENSIONS IN MILLIMETRES

REV.	DATE	AMENDMENT	REVISED BY	PROJECT	JOB NO.	DRAWING TITLE	FACTORY	W/CENTRE	CUT ENDS	FINISH	DRAWN	POST PAINT	PART	SHIT	REV.
-	-	-	-	J853-PODIUM ALUM CEILING & FEATURE CLADDING T7 7/F	J853	鐵料加工圖 75x50x5mm THK. GMS. ANGLE. (S7)	01	MM/SM/FAB	N/A	2/15/2023	YEUNG	SCALE 1:2	TRACK TYPE S....	4 of 4	-
				Units: 6-8, Sunroy Industrial Centre, 1/F 610 Cho Kwo Ling Road, Kowloon Tel: 23489211-4 Fax: (852) 2727666			Standard	X X . = ±1	Angle	±1'		PRE PAINT			
				Units: 6-8, Sunroy Industrial Centre, 1/F 610 Cho Kwo Ling Road, Kowloon Tel: 23489211-4 Fax: (852) 2727666			Tolerances	X X . X = ±0.5	Squareness	±1'		SCALE			
				Units: 6-8, Sunroy Industrial Centre, 1/F 610 Cho Kwo Ling Road, Kowloon Tel: 23489211-4 Fax: (852) 2727666											

REV.	CHECKED BY	PART NUMBER	Dim. A	Dim. B	Dim. C	Dim. D	Dim. E	Dim. F	Dim. G	QTY	Inv. Code	ASSEMBLE ON PARTS	EXTR. DRAWING PART DRAWING
-		T7-LA02-01								23			



SECTION A-A



REF: 18/6004
REF: 2/5006

VS = VISIBLE SURFACE
ALL DIMENSIONS IN MILLIMETRES

REV.	DATE	AMENDMENT	REVISED BY	PROJECT	JOB NO.	FACTORY	W/CENTRE	CUT ENDS	FINISH	POST PAINT	PART	SHT.	REV.
-	-	-	-	J853-PODIUM ALUM CEILING & FEATURE CLADDING T7 7/F	J853	01	M001/5006/FAB	N/A	2/14/2023	YELUNG	1:2	1 of 3	-

美特鋁業有限公司
MIDI ALUMINIUM FABRICATOR LTD.
Units 6-8, Sunray Industrial Centre, 1/F
610 Cha Kwo Ling Road, Kowloon
Tel: 23489211-4 Fax: (852) 27727666

Standard X X . = ±1
Tolerances X X . X = ±0.5
Angle ±1°
Squariness ±1°
DATE 2/14/2023

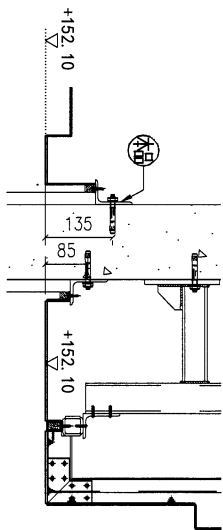
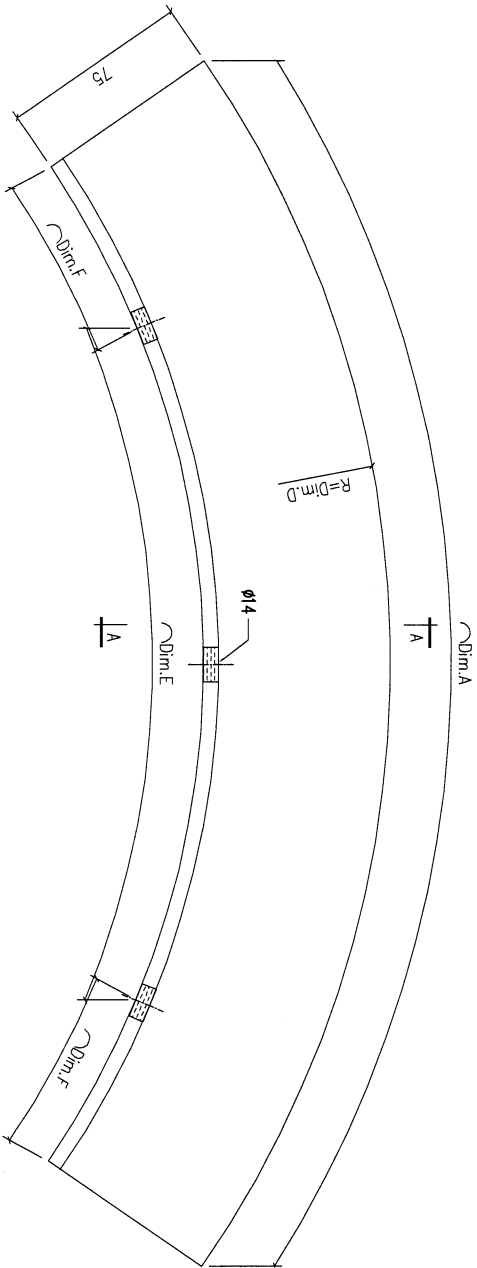
DRIVING TITLE: 鐵料加工圖
75x50x5mm THK. GMS. ANGLE: (S7)

DRIVING NO.: T7-LA02

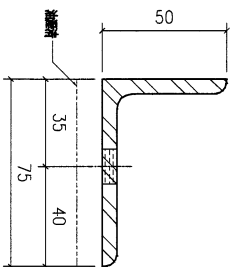
SCALE: 1:2

TRACK TYPE: S.....

REV.	ORDERED BY	PART NUMBER	Dim. A	Dim. B	Dim. C	Dim. D	Dim. E	Dim. F	Dim. G	QTY	Inv. Code	ASSEMBLE ON PARTS	EXTR. DRAWING PART DRAWING
-		T7-LA02-03	W	2590.0		750	3x750c/±170.0			4			
-		T7-LA02-04	W	3100.0		800	4x750c/±50.0			1			



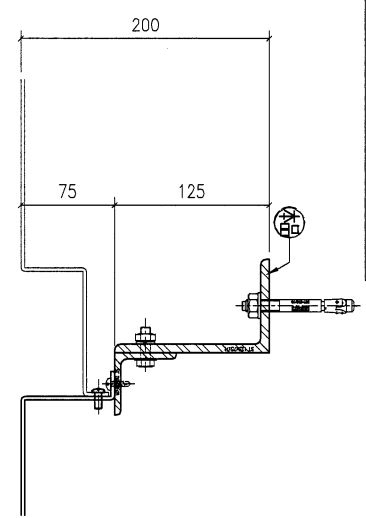
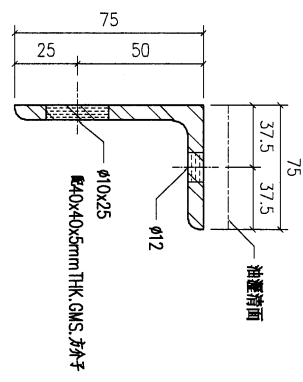
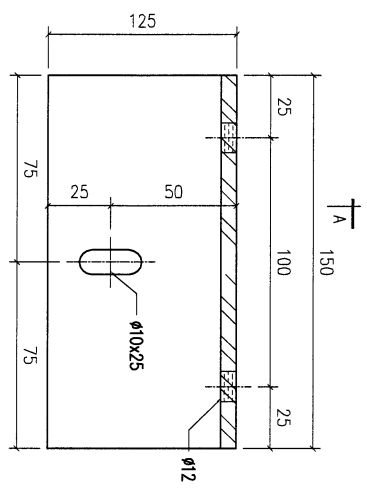
REF: 18/6004
REF: 17/6004
REF: 16/6004



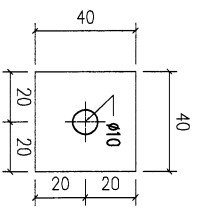
VS = VISIBLE SURFACE
ALL DIMENSIONS IN MILLIMETRES

REV.	DATE	AMENDMENT	REVISED BY	 美特鋁質有限公司 MIDI ALUMINUM FABRICATOR LTD. Units 6-8, Sunray Industrial Centre, 1/F 610, Cha Kwo Ling Road, Kowloon Tel: 23489211-4 Fax: (852) 2727666				JOB NO.	DRAWING TITLE		FACTORY	W/CENTRE	CUT ENDS	FINISH	DRAWN	POST PAINT	PART	SHT.	REV.
-	-	-	-	PROJECT	J853-PODIUM ALUM CEILING & FEATURE CLADDING T7 7/F	J853	鐵料加工圖	01	MOCK/5006/FAB	N/A	±1'	2/14/2023	YEUNG	SCALE	1:2	3 of 3	-		
Standard X X . = ±1 Tolerances X X . X = ±0.5 Angle Squareness ±1'																			

CHKD BY	PART NUMBER	Dim. A	Dim. B	Dim. C	Dim. D	Dim. E	Dim. F	Dim. G	QTY	Inv. Code	ASSEMBLE ON PARTS	EXTR. DRAWING PART DRAWING
-	T7-LA03-01								36			



REF: 2/5006



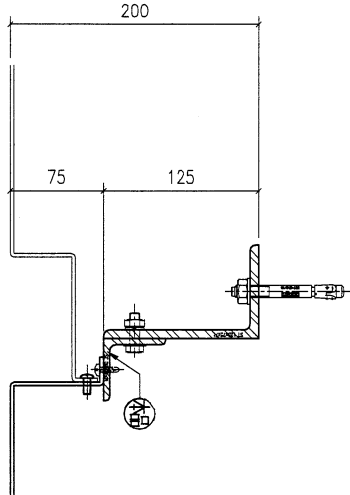
VS = VISIBLE SURFACE
ALL DIMENSIONS IN MILLIMETRES

美特鋁質有限公司
MIDI ALUMINIUM FABRICATOR LTD.
Units 6-8, Sunray Industrial Centre, 1/F
610 Cho Kwong Road, Kowloon
Tel: 23489211-4 Fax: (852) 27727666

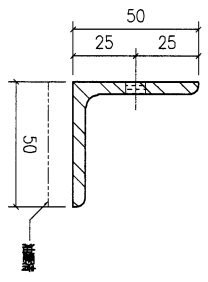
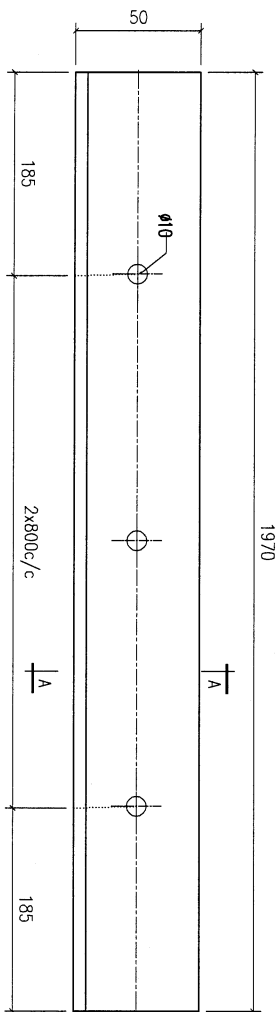
REV.	DATE	AMENDMENT	REVISED BY	PROJECT	JOB NO.	DRAWING TITLE	DRAWING NO.	SHT.	REV.
-	-	-	-	J853-PODIUM ALUM CEILING & FEATURE CLADDING T7 7/F	J853	材料加工圖 125x75x7mm THK. GMS. ANGLE: (S1)	T7-LA03	1 of 2	-

FACTORY	W/CENTRE	CUT ENDS	FINISH	POST PAINT	PART
01	M008/S008/FAB	N/A			
Standard	X X . = ±1	Angle	DATE	PRE PAINT	SUB ASSEM.
Tolerances	X X . X = ±0.5	Squareness	2/15/2023	SCALE	TRACK TYPE
				1:2	S.....

REV. / QTY	CHANGED BY / QTY	PART NUMBER	Dim. A	Dim. B	Dim. C	Dim. D	Dim. E	Dim. F	Dim. G	QTY	Inv. Code	ASSEMBLE ON PARTS	EXTR. DRAWING PART DRAWING
-	12	T7-LA03-02											



REF: 2/5006



SECTION A-A

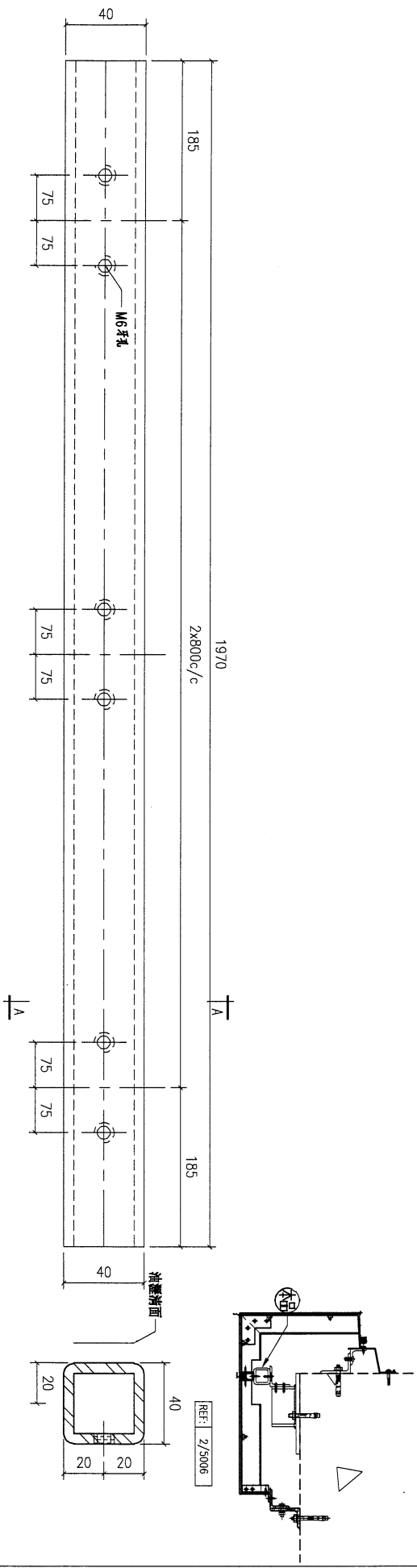
VS = VISIBLE SURFACE
ALL DIMENSIONS IN MILLIMETRES

REV.	DATE	AMENDMENT	REVISED BY	PROJECT	JOB NO.	DRAWING TITLE	DRAWING NO.	SHT.	REV.
-	-	-	-	J853-PODIUM ALUM CEILING & FEATURE CLADDING T7 7/F	J853	50x30x5mm THK. GMS. ANGLE. (S8)	T7-LA03	2 of 2	-

美特鋁質有限公司
MIDI ALUMINIUM FABRICATOR LTD.
Units 6-8, Sunray Industrial Centre, 1/F
610, Cho Kwo Ling Road, Kowloon
Tel: 23489211-4 Fax: (852) 2727666

FACTORY	W/CENTRE	CUT ENDS	FINISH	POST PAINT	PART
01	M001/3004/FAB	N/A	熱浸	PRE PAINT	SUB ASSEM.
Standard	X X . = ±1	Angle	±1°	SCALE	TRACK TYPE
Tolerances	X X . X = ±0.5	Squareness	±1°	1:2	S....
			DATE		
			2/15/2023		
			DRAWN		
			YEUNG		

REV.	ORDERED PART NO.	PART NUMBER	Dim. A	Dim. B	Dim. C	Dim. D	Dim. E	Dim. F	Dim. G	QTY	Inv. Code	ASSEMBLE ON PARTS	EXTR. DRAWING PART DRAWING
-		T7-ST02-02								2			



SECTION A-A

VS = VISIBLE SURFACE
ALL DIMENSIONS IN MILLIMETRES

REV.	DATE	AMENDMENT	REVISED BY	美特鋁寶有限公司 MIDI ALUMINUM FABRICATOR LTD. Units 6-8, Sunray Industrial Centre, 1/F 610 Cho Kwo Ling Road, Kowloon Tel: 23469211-4 Fax: (852) 2727666				JOB NO.	DRAWING TITLE		DATE	DRAWN	SCALE	PART	SHT.	REV.
-	-	-	-	PROJECT J853-PODIUM ALUM CEILING & FEATURE CLADDING (T7 7/F)				J853	鐵料加工圖 40x40x5mm THK. GMS. SHS.		2/15/2023	YEUNG	1:2	TRACK TYPE	2 of 3	-
				FACTORY	W/CENTRE	CUT ENDS	FINISH	POST PAINT	熱浸 PRE PAINT			SUB ASSEM. TRACK TYPE				
				01	MOKI/SOKI/FAB	N/A			熱浸 PRE PAINT			SUB ASSEM. TRACK TYPE				
				Standard	X X . = ±1	Angle	±1°		熱浸 PRE PAINT			SUB ASSEM. TRACK TYPE				
				Tolerances	X X . X = ±0.5	Squareness	±1°		熱浸 PRE PAINT			SUB ASSEM. TRACK TYPE				

