

工程指示 / 要求簡箋 ENGINEER INSTRUCTIONS (E.I.)

工程指示編號:	EI- 6469	修改版本:	-
	HK-1551		
工程編號:	J 853	工程名稱:	延坪道
收件人:	生統	發件人:	Joe Chan
工程項目:	Feature Wall 地盤用 鋁板 (第3批)	日期:	10/07/2023

<input checked="" type="checkbox"/> 原合約工程包	<input type="checkbox"/> 原合約工程加 / 減賬 QT-	<input type="checkbox"/> 新工程報價 QT-
--	--	------------------------------------

信件批核號碼/圖紙參考編號:	批核模具圖紙編號:
客戶指示附件:	管理內部批簽署:

<input type="checkbox"/> 初步鋁料 B.M.	<input type="checkbox"/> 加工拆圖, 然後生產	<input type="checkbox"/> 尺寸表
<input type="checkbox"/> 正式鋁料 B.M.	<input type="checkbox"/> 技術上資料/指示	<input type="checkbox"/> 報價
<input type="checkbox"/> 配件 B.M.	<input type="checkbox"/> 樣辦或貨品說明書	<input type="checkbox"/> 分判合約
<input type="checkbox"/> 其他:		

內容: 請依附件資料, 生產鋁板, 這地盤.
(特別位用轉曲位置)

極急用

完成上列要求日期: 20/7/2023 ASAP

國內

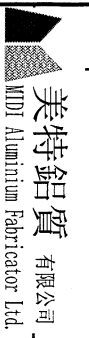
<input type="checkbox"/> 生產技術總監	<input type="checkbox"/> 連附件	<input type="checkbox"/> 技術部	<input type="checkbox"/> 連附件	<input type="checkbox"/> 生產部	<input type="checkbox"/> 連附件
<input type="checkbox"/> 採購部	<input type="checkbox"/> 連附件	<input checked="" type="checkbox"/> 生產統籌部	<input checked="" type="checkbox"/> 連附件	<input type="checkbox"/> 報關組	<input type="checkbox"/> 連附件
<input type="checkbox"/> 質檢部	<input type="checkbox"/> 連附件	<input type="checkbox"/> 會計部	<input type="checkbox"/> 連附件	<input type="checkbox"/> 機械設計部	<input type="checkbox"/> 連附件
<input type="checkbox"/> 香港辦	<input type="checkbox"/> 連附件	<input type="checkbox"/> 其他:			

香港

<input type="checkbox"/> 行政部	<input type="checkbox"/> 連附件	<input type="checkbox"/> 會計部	<input type="checkbox"/> 連附件	<input type="checkbox"/> 統籌部	<input type="checkbox"/> 連附件	<input type="checkbox"/> 工程部	<input type="checkbox"/> 連附件
<input type="checkbox"/> 採購部	<input type="checkbox"/> 連附件	<input type="checkbox"/> QS部	<input type="checkbox"/> 連附件	<input checked="" type="checkbox"/> 地盤管理	<input checked="" type="checkbox"/> 連附件	<input type="checkbox"/> 維修部	<input type="checkbox"/> 連附件

*發件人簽署:		*組別成員批核簽署:	
傳遞編號:	HK	項目經理簽署:	

11




美特鋁質有限公司 MIDI Aluminium Fabricator Ltd.	工程號: J-853	計算: ming	日期: 2023.07.06	送呈: JOE
地盤名稱: 延坪路	項目類別: 特征牆(1區)	核對: 批准:	日期: 日期:	副本:

B.M.編號:	修改版次:	A/C Code:	總V.F.:	44.272	總重量:	359.93
---------	-------	-----------	--------	--------	------	--------

序號	修改內容	鋁板圖號	鋁板名稱	顏色	實用	後備	總數	總重量	平方米		平方米		圖紙編號
									單件展開面積	總展開面積	單件V.F.	總V.F.	
1		FW1-AP150	3mm厚鋁板	EC-DG-D334232-ZD1 (SS-01)	1	0	1	0.846	0.104	0.104	0.104	0.104	
2		FW1-AP151	3mm厚鋁板	EC-DG-D334232-ZD1 (SS-01)	1	0	1	2.939	0.362	0.362	0.362	0.362	
3		FW1-AP152	3mm厚鋁板	EC-DG-D334232-ZD1 (SS-01)	1	0	1	4.802	0.591	0.591	0.591	0.591	
4		FW1-AP153	3mm厚鋁板	EC-DG-D334232-ZD1 (SS-01)	1	0	1	6.181	0.760	0.760	0.760	0.760	
5		FW1-AP154	3mm厚鋁板	EC-DG-D334232-ZD1 (SS-01)	1	0	1	10.621	1.306	1.306	1.306	1.306	
6		FW1-AP155	3mm厚鋁板	EC-DG-D334232-ZD1 (SS-01)	1	0	1	16.565	2.037	2.037	2.037	2.037	
7		FW1-AP156	3mm厚鋁板	EC-DG-D334232-ZD1 (SS-01)	1	0	1	8.448	1.039	1.039	1.039	1.039	
8		FW1-AP157A	3mm厚鋁板	EC-DG-D334232-ZD1 (SS-01)	1	0	1	5.657	0.696	0.696	0.696	0.696	
9		FW1-AP157B	3mm厚鋁板	EC-DG-D334232-ZD1 (SS-01)	1	0	1	9.186	1.130	1.130	1.130	1.130	
10		FW1-AP158	3mm厚鋁板	EC-DG-D334232-ZD1 (SS-01)	2	0	2	12.118	0.745	1.491	0.745	1.491	
11		FW1-AP159	3mm厚鋁板	EC-DG-D334232-ZD1 (SS-01)	1	0	1	4.929	0.606	0.606	0.606	0.606	
12		FW1-AP160A	3mm厚鋁板	EC-DG-D334232-ZD1 (SS-01)	1	0	1	4.868	0.599	0.599	0.599	0.599	
13		FW1-AP160B	3mm厚鋁板	EC-DG-D334232-ZD1 (SS-01)	1	0	1	3.444	0.424	0.424	0.424	0.424	
14		FW1-AP161	3mm厚鋁板	EC-DG-D334232-ZD1 (SS-01)	1	0	1	3.683	0.453	0.453	0.453	0.453	
15		FW1-AP162	3mm厚鋁板	EC-DG-D334232-ZD1 (SS-01)	1	0	1	5.405	0.665	0.665	0.665	0.665	
16		FW1-AP163	3mm厚鋁板	EC-DG-D334232-ZD1 (SS-01)	1	0	1	1.419	0.175	0.175	0.175	0.175	
17		FW1-AP164	3mm厚鋁板	EC-DG-D334232-ZD1 (SS-01)	1	0	1	4.272	0.525	0.525	0.525	0.525	
18		FW1-AP165	3mm厚鋁板	EC-DG-D334232-ZD1 (SS-01)	1	0	1	0.895	0.110	0.110	0.110	0.110	
19		FW1-AP166	3mm厚鋁板	EC-DG-D334232-ZD1 (SS-01)	1	0	1	8.085	0.995	0.995	0.995	0.995	
20		FW1-AP167	3mm厚鋁板	EC-DG-D334232-ZD1 (SS-01)	1	0	1	1.945	0.239	0.239	0.239	0.239	
21		FW1-AP168	3mm厚鋁板	EC-DG-D334232-ZD1 (SS-01)	1	0	1	15.749	1.937	1.937	1.937	1.937	
22		FW1-AP169	3mm厚鋁板	EC-DG-D334232-ZD1 (SS-01)	1	0	1	8.568	1.054	1.054	1.054	1.054	

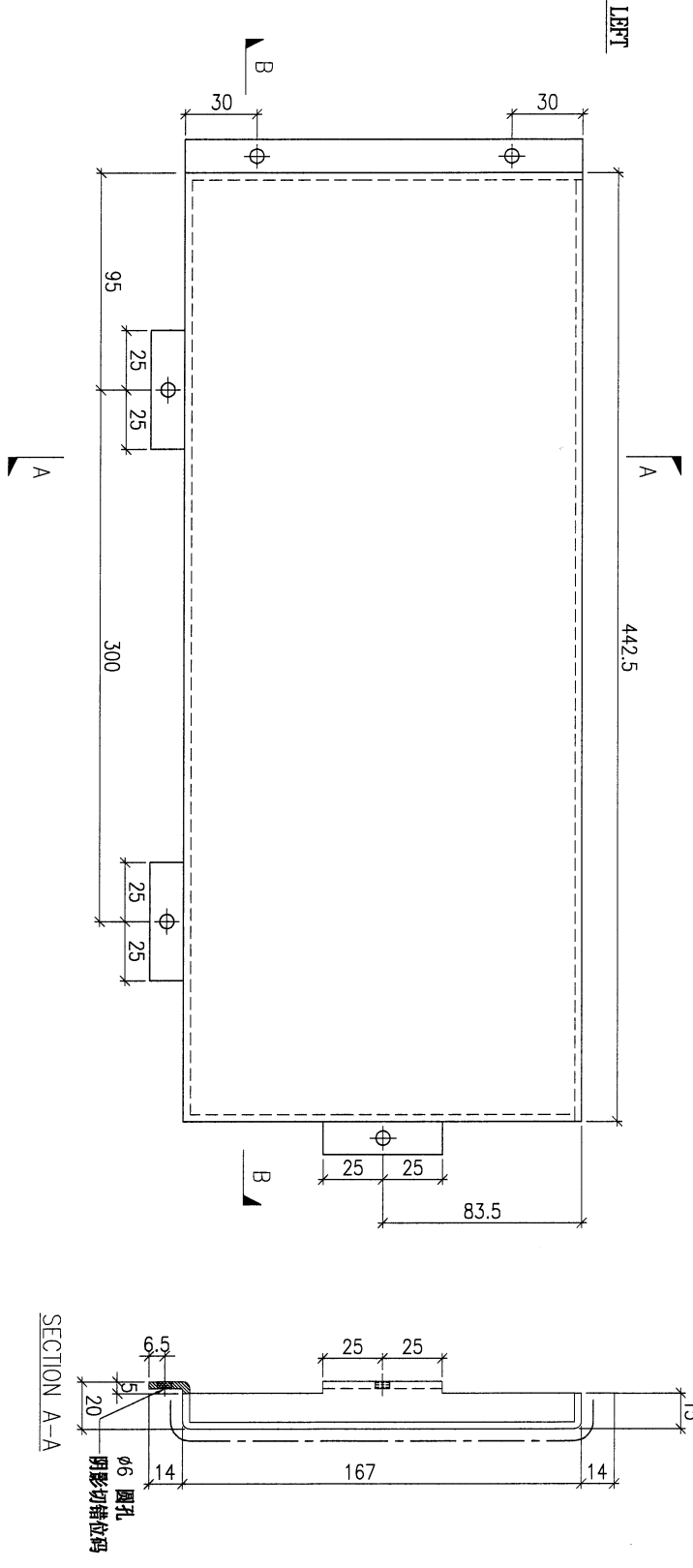
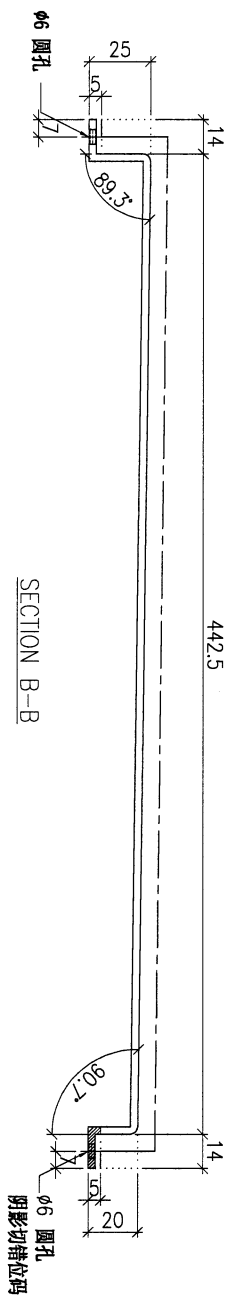
2

 美特鋁質有限公司 MTD Aluminum Fabricator Ltd.	工程號: J-853	計算: ming	日期: 2023.07.06	送呈: 副本:	JOE
地盤用鋁板B.M.表 (part3)	地盤名稱: 延坪路	核對: 批准:	日期:		
項目類別: 特征牆(1區)					

序號	修改內容	鋁板圖號	鋁板名稱	顏色	實用	後備	總數	總重量	44.272		總重量:	359.93	圖紙編號
									單件展開面積	總展開面積			
23		FW1-AP170	3mm厚鋁板	EC-DG-D334232-ZD1 (SS-01)	1	0	1	4.640	0.571	0.571	0.571	0.571	
24		FW1-AP171	3mm厚鋁板	EC-DG-D334232-ZD1 (SS-01)	1	0	1	8.777	1.080	1.080	1.080	1.080	
25		FW1-AP172	3mm厚鋁板	EC-DG-D334232-ZD1 (SS-01)	1	0	1	8.915	1.097	1.097	1.097	1.097	
26		FW1-AP173	3mm厚鋁板	EC-DG-D334232-ZD1 (SS-01)	1	0	1	8.407	1.034	1.034	1.034	1.034	
27		FW1-AP174	3mm厚鋁板	EC-DG-D334232-ZD1 (SS-01)	1	0	1	12.178	1.498	1.498	1.498	1.498	
28		FW1-AP175	3mm厚鋁板	EC-DG-D334232-ZD1 (SS-01)	1	0	1	6.799	0.836	0.836	0.836	0.836	
1423		FW1-AP176	3mm厚鋁板	EC-DG-D334232-ZD1 (SS-01)	1	0	1	12.441	1.530	1.530	1.530	1.530	
30		FW1-AP177	3mm厚鋁板	EC-DG-D334232-ZD1 (SS-01)	1	0	1	6.840	0.841	0.841	0.841	0.841	
31		FW1-AP178	3mm厚鋁板	EC-DG-D334232-ZD1 (SS-01)	50	0	50	77.972	0.192	9.591	0.192	9.591	
32		FW1-AP179	3mm厚鋁板	EC-DG-D334232-ZD1 (SS-01)	1	0	1	23.052	2.835	2.835	2.835	2.835	
33		FW1-AP180	3mm厚鋁板	EC-DG-D334232-ZD1 (SS-01)	1	0	1	24.123	2.967	2.967	2.967	2.967	
34		FW1-AP181	3mm厚鋁板	EC-DG-D334232-ZD1 (SS-01)	1	0	1	12.560	1.545	1.545	1.545	1.545	
35		FW1-AP182	3mm厚鋁板	EC-DG-D334232-ZD1 (SS-01)	1	0	1	12.602	1.550	1.550	1.550	1.550	
36													
37													
38													
總計:					85	0	85	360	34	44	34	44	

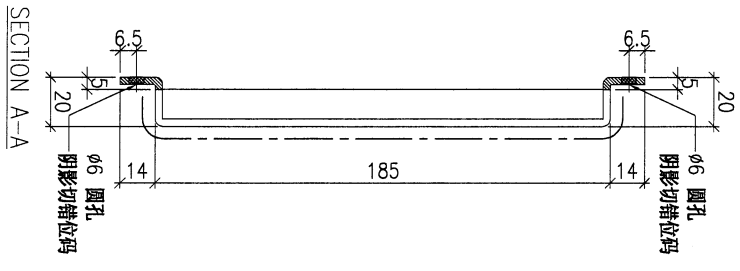
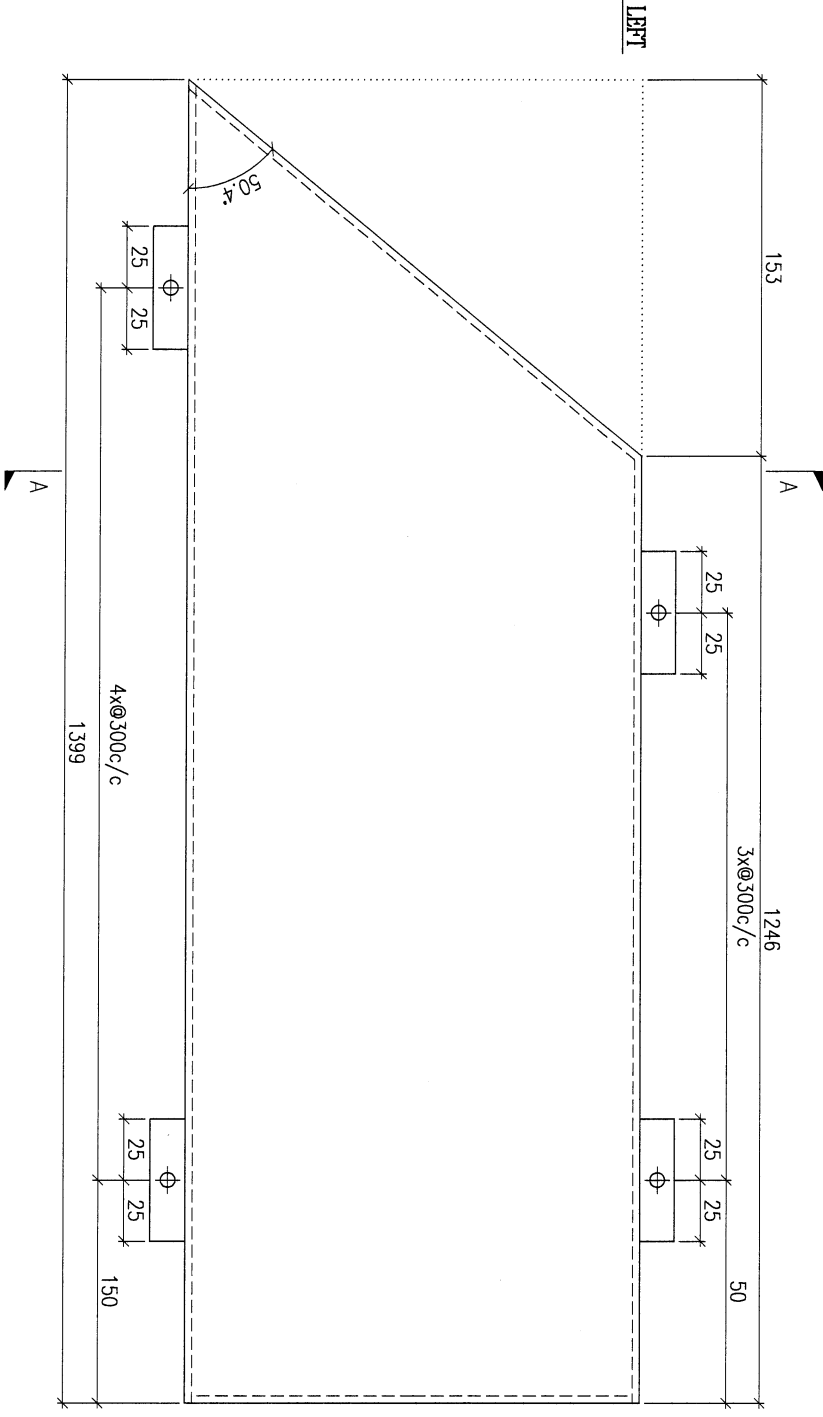
3

PROJECT				MATERIAL				COATING				COLOUR		MARK. NO.		QTY.	
YIN PING ROAD KOWLOON FEATURE WALL (PHASE 1)				3mm 铝板				PVF2				EC-DG-D334232-ZD1(SS-01)		-		-	
REV.	ORDERED DATE BY	PART NUMBER	Dim. A	Dim. B	Dim. C	Dim. D	Dim. E	Dim. F	Dim. G	Dim. H	QTY.	Inv. Code	ASSEMBLE ON PARTS				
-		FW1-AP150	-	-	-	-	-	-	-	-	1						
													注: 地盘用		注: 工地复尺		



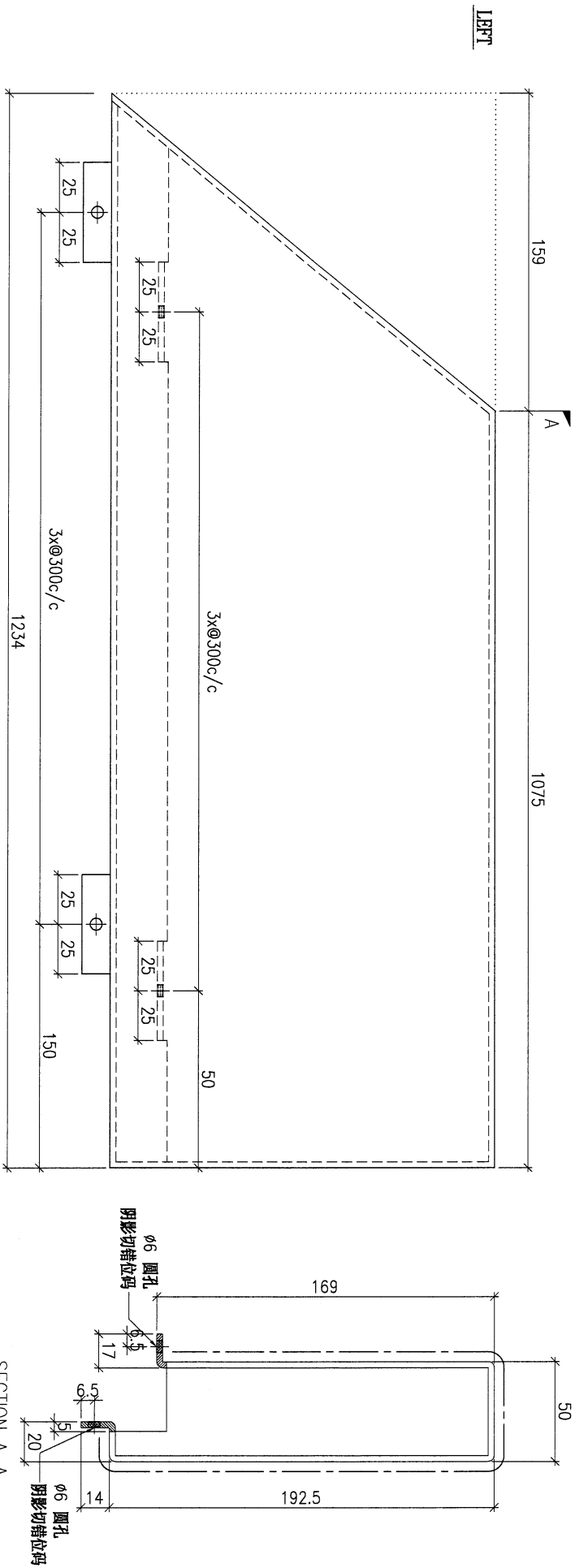
DWG. NO.		REV.		SCALE		DATE		DRAWN BY		APPROVED BY	
FW1-AP150		-		-		15-06-2023		-		-	

PROJECT				YIN PING ROAD KOWLOON FEATURE WALL (PHASE 1)				MATERIAL				COATING				COLOUR				MARK. NO.				QTY.			
				3mm 铝板				PVF2				EC-DG-D334232-ZD1 (SS-01)				-				-							
REV.	CHECKED	PART NUMBER	Dim. A	Dim. B	Dim. C	Dim. D	Dim. E	Dim. F	Dim. G	Dim. H	QTY.	Inv. Code	ASSEMBLE ON PARTS														
-	BY	FW1-AP151	-	-	-	-	-	-	-	-	1																
												注: 地盘用															
												注: 工地复尺															



DWG. NO.		REV.		SCALE		DATE		DRAWN BY		APPROVED BY	
FW1-AP151		-		-		15-06-2023		-		-	

PROJECT				MATERIAL				COATING		COLOUR		MARK. NO.	QTY.
YIN PING ROAD KOWLOON FEATURE WALL (PHASE 1)				3mm 铝板				PVF2		EC-DG-D334232-ZD1(SS-01)		-	-
REV. / SHEET NO.	PART NUMBER	Dim. A	Dim. B	Dim. C	Dim. D	Dim. E	Dim. F	Dim. G	Dim. H	QTY.	Inv. Code	ASSEMBLE ON PARTS	
-	FW1-AP152	-	-	-	-	-	-	-	-	1	-	-	
												注: 地盘用	
												注: 工地复尺	

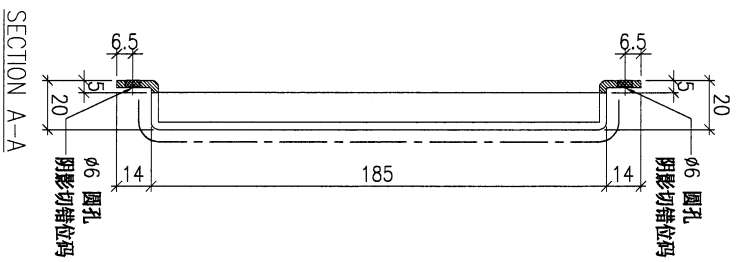
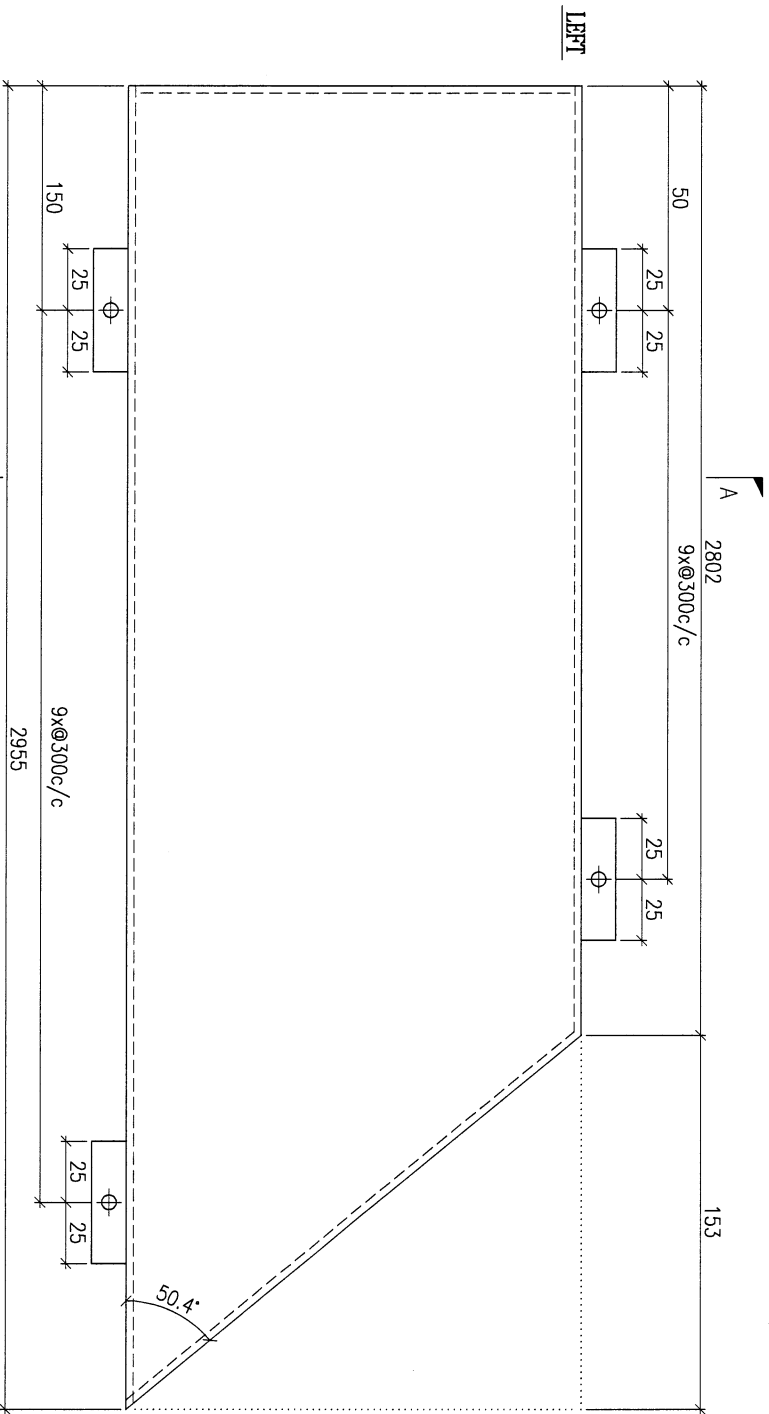


5

DWG. NO.		REV.		SCALE		DATE		DRAWN BY		APPROVED BY	
FW1-AP152		-		-		15-06-2023		-		-	

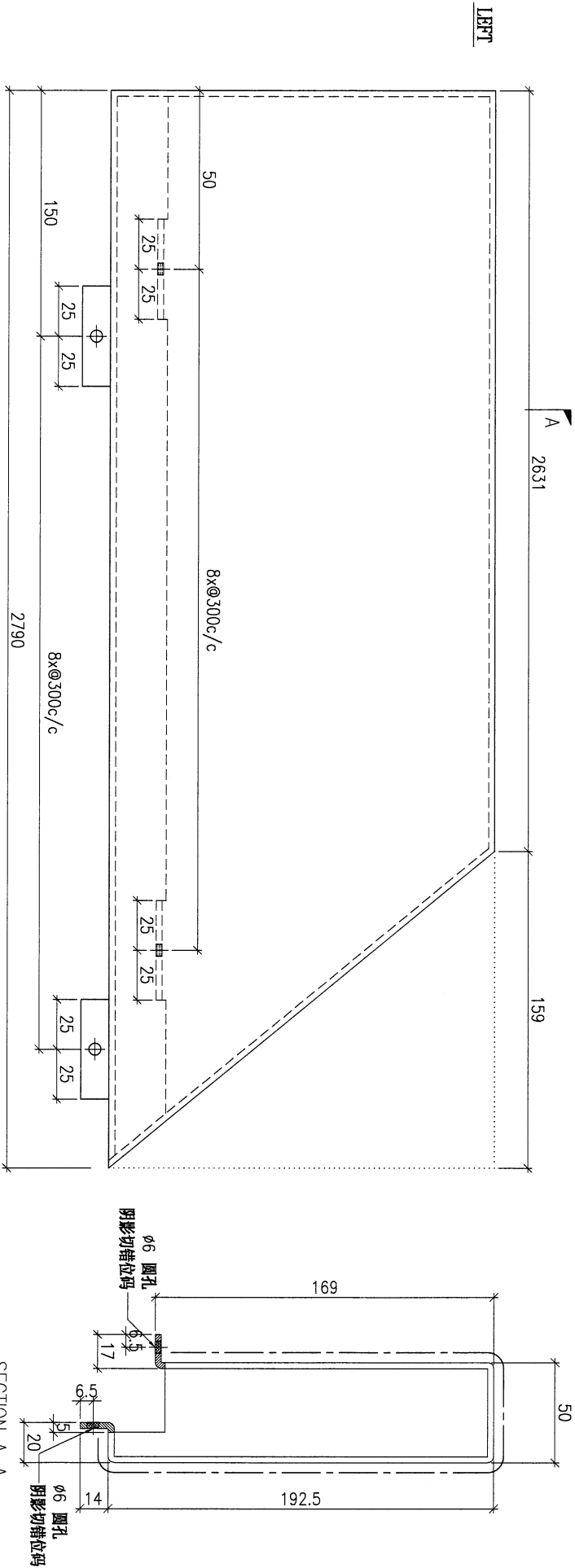
6

PROJECT				YIN PING ROAD KOWLOON FEATURE WALL (PHASE 1)				MATERIAL				COATING		COLOUR		MARK. NO.		QTY.	
				3mm 铝板				PVF2		EC-DG-D334232-ZD1 (SS-01)									
REV. CHECKED	PART NUMBER	Dim. A	Dim. B	Dim. C	Dim. D	Dim. E	Dim. F	Dim. G	Dim. H	QTY.	Inv. Code	ASSEMBLE ON PARTS							
-	FW1-AP153	-	-	-	-	-	-	-	-	1									
												注: 地盘用							
												注: 工地复尺							



DWG. NO.		REV.		SCALE		DATE		DRAWN BY		APPROVED BY	
FW1-AP153		-		-		15-06-2023		-		-	

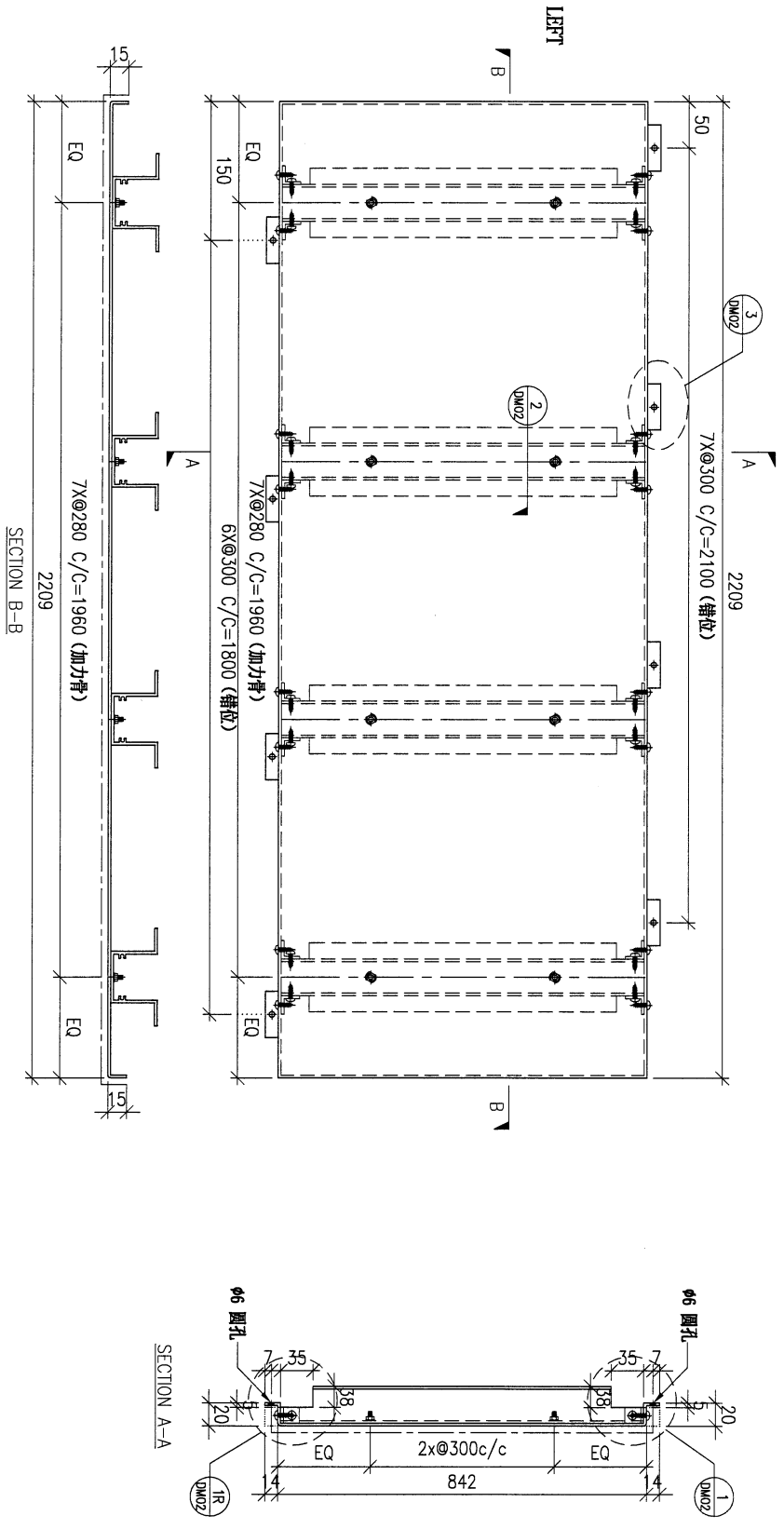
PROJECT				MATERIAL				COATING		COLOUR		MARK. NO.		QTY.	
YIN PING ROAD KOWLOON FEATURE WALL (PHASE 1)				3mm 铝板				PVF2		EC-DG-D334232-ZD1(SS-01)		-		-	
REV.	QTY/NO	PART NUMBER	Dim. A	Dim. B	Dim. C	Dim. D	Dim. E	Dim. F	Dim. G	Dim. H	QTY.	Inv. Code	ASSEMBLE ON PARTS		
-		FW1-AP154	-	-	-	-	-	-	-	-	1				
													注: 地盘用		
													注: 工地复尺		



DWG. NO.		REV.		SCALE		DATE		DRAWN BY		APPROVED BY	
FW1-AP154		-		-		15-06-2023		-		-	

②

PROJECT				MATERIAL				COATING		COLOUR		MARK. NO.		QTY.	
YIN PING ROAD KOWLOON FEATURE WALL (PHASE 1)				3mm铝板				PVF2		EC-DG-D334232-ZD1(SS-01)		-		-	
REV. / 更改号	PART NUMBER	Dim. A	Dim. B	Dim. C	Dim. D	Dim. E	Dim. F	Dim. G	Dim. H	QTY.	Inv. Code	ASSEMBLE ON PARTS			
-	FW1-AP155	-	-	-	-	-	-	-	-	1					
													注: 地盘用		
													注: 工地复尺		



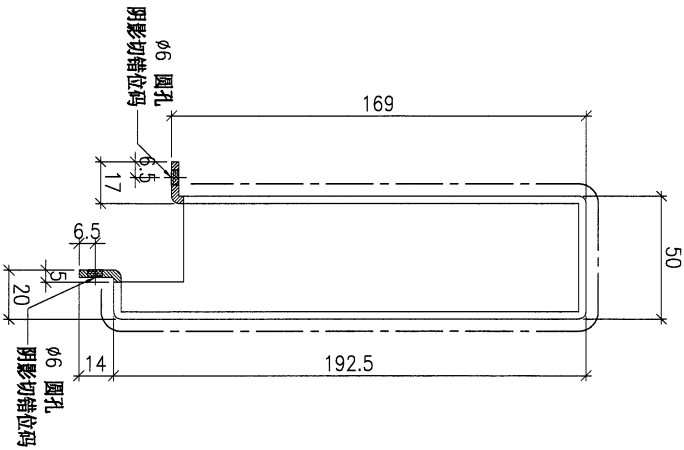
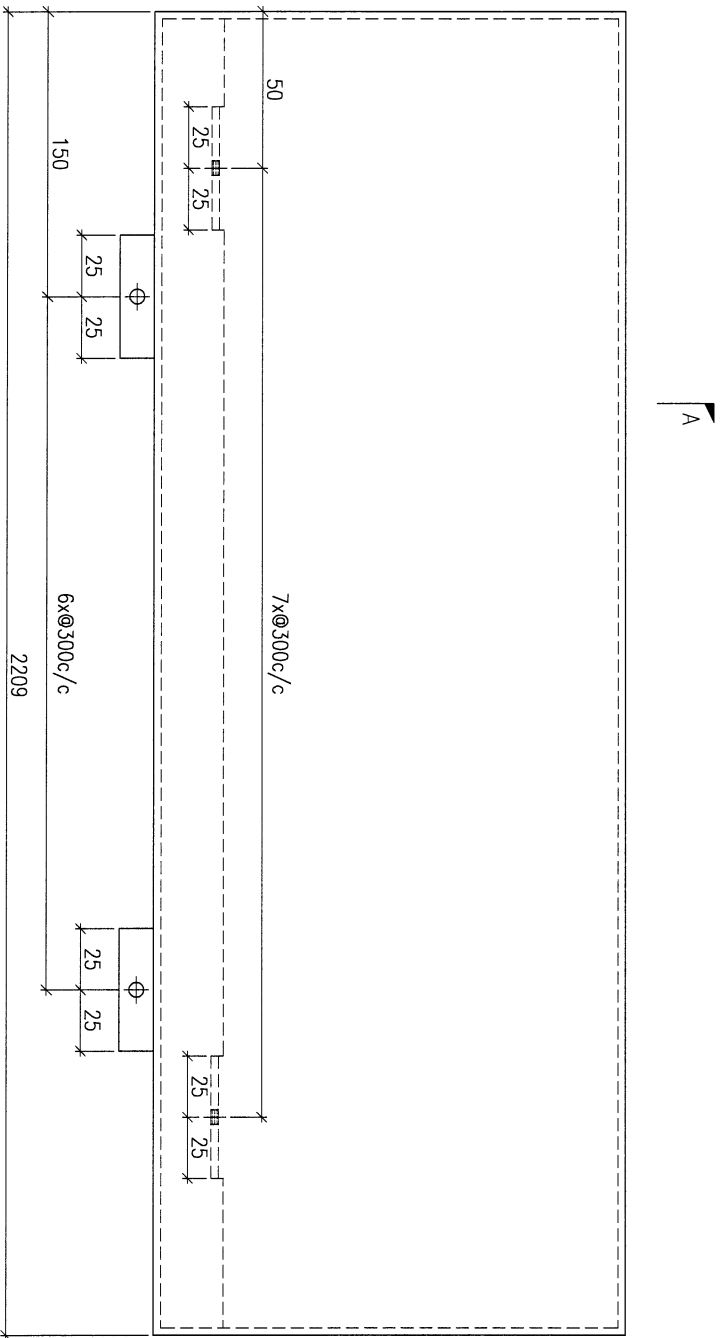
②

DWG. NO.		REV.		SCALE		DATE		DRAWN BY		APPROVED BY	
FW1-AP155		-		-		15-06-2023		-		-	

9

PROJECT		YIN PING ROAD KOWLOON FEATURE WALL (PHASE 1)				MATERIAL				COATING				COLOUR		MARK. NO.		QTY.	
		3mm 铝板				PVF2				EC-DG-D334232-ZD1(SS-01)		-		-		-			
REV. ORIGIN	PART NUMBER	Dim. A	Dim. B	Dim. C	Dim. D	Dim. E	Dim. F	Dim. G	Dim. H	QTY.	Inv. Code	ASSEMBLE ON PARTS							
-	FW1-AP156	-	-	-	-	-	-	-	-	1									

注：地盘用
注：工地复尺

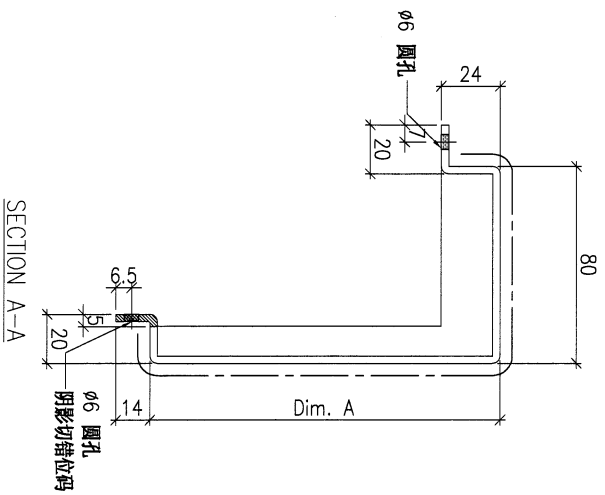
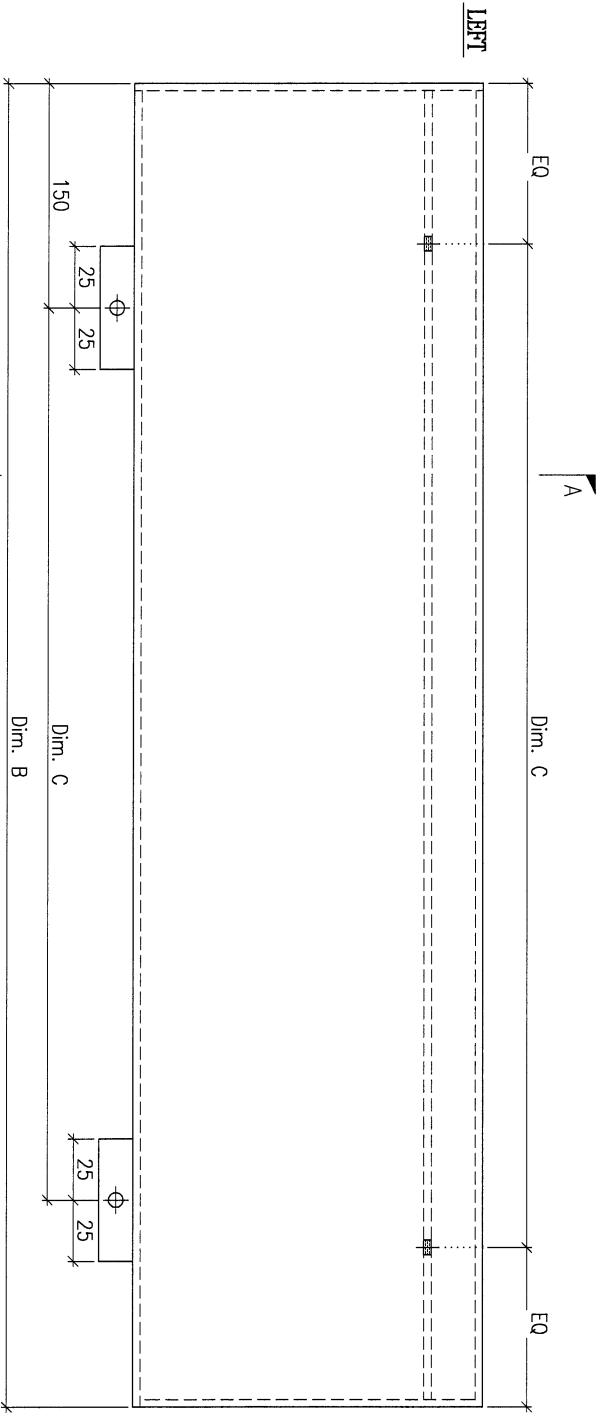


SECTION A-A

DWG. NO.	REV.	SCALE	DATE	DRAWN BY	APPROVED BY
FW1-AP156	-	-	15-06-2023	-	-

PROJECT				MATERIAL				COATING				COLOUR		MARK. NO.		QTY.	
YIN PING ROAD KOWLOON FEATURE WALL (PHASE 1)				3mm 铝板				PVF2				EC-DG-D334232-ZD1(SS-01)		-		-	
REV.	ORDERED PART BY	PART NUMBER	Dim. A	Dim. B	Dim. C	Dim. D	Dim. E	Dim. F	Dim. G	Dim. H	QTY.	Inv. Code	ASSEMBLE ON PARTS				
-	-	FW1-AP157A	157.5	2179	6xØ300c/c						1						
-	-	FW1-AP157B	157.5	3557	11xØ300c/d						1						

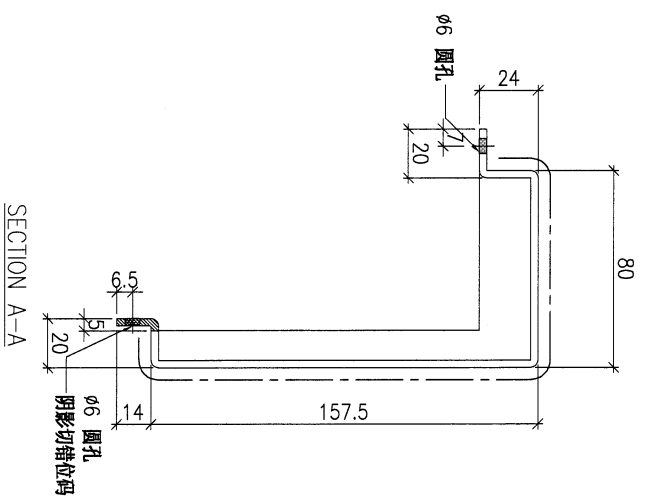
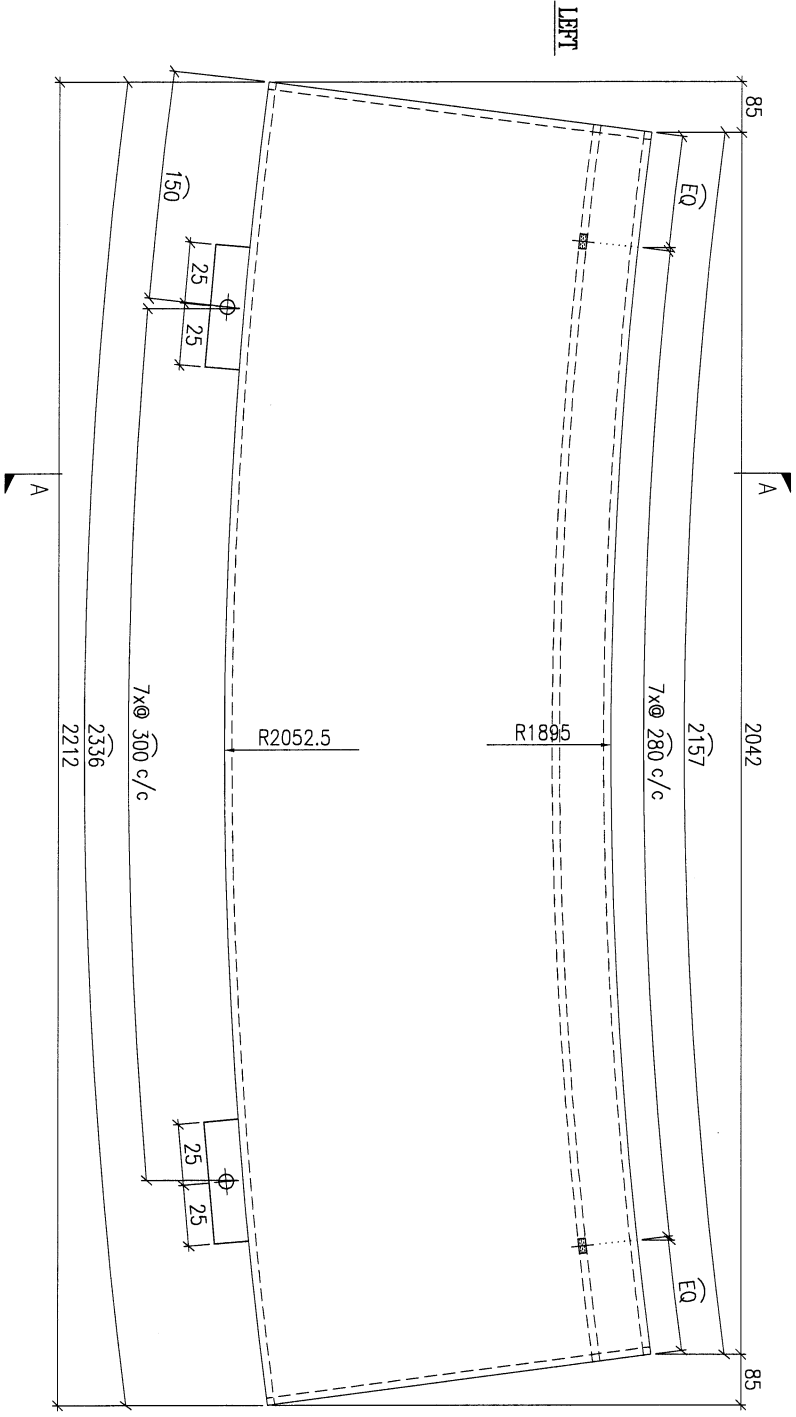
注：地盘用
注：工地复尺



DWG. NO.		REV.		SCALE		DATE		DRAWN BY		APPROVED BY	
FW1-AP157		-		-		15-06-2023		-		-	

PROJECT				MATERIAL				COATING		COLOUR		MARK. NO.		QTY.	
YIN PING ROAD KOWLOON FEATURE WALL (PHASE 1)				3mm 铝板				PVF2		EC-DG-D334232-ZD1(SS-01)		-		-	
REV. ORIGIN DATE	PART NUMBER	Dim. A	Dim. B	Dim. C	Dim. D	Dim. E	Dim. F	Dim. G	Dim. H	QTY.	Inv. Code	ASSEMBLE ON PARTS			
-	FW1-AP158	-	-	-	-	-	-	-	-	2					

注：地盘用
注：工地复尺

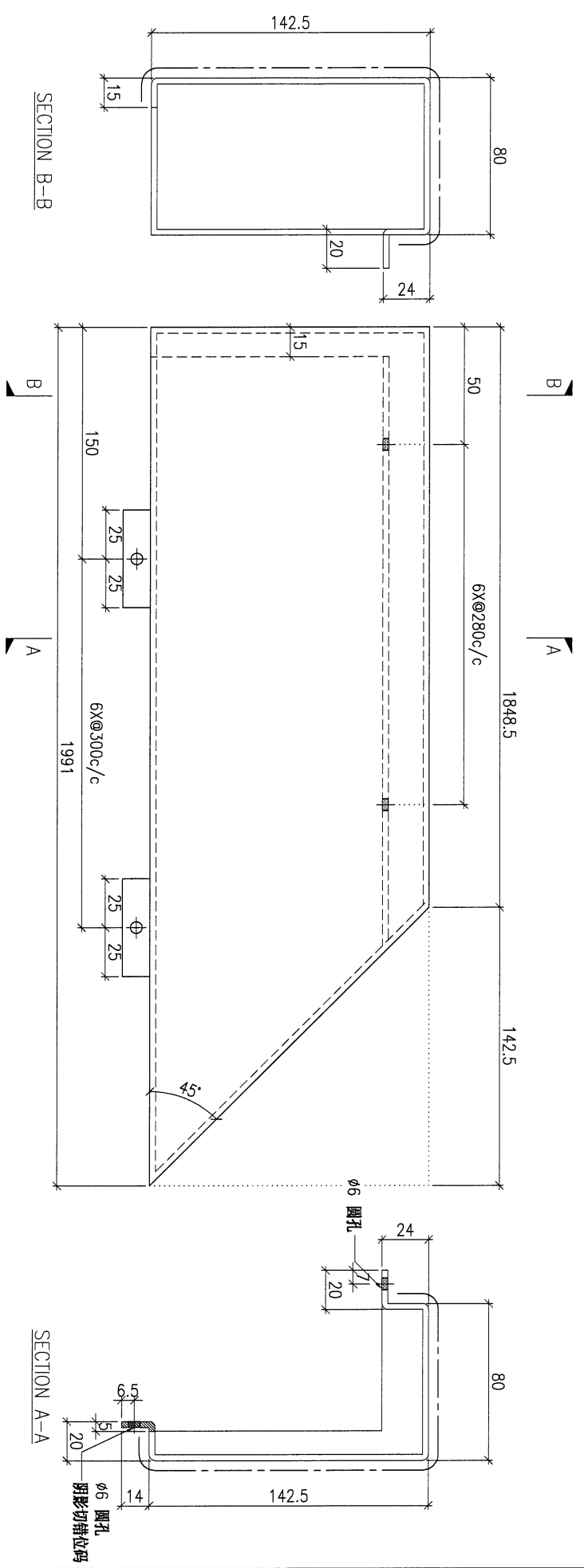


DWG. NO.	REV.	SCALE	DATE	DRAWN BY	APPROVED BY
FW1-AP158	-	-	15-06-2023	-	-



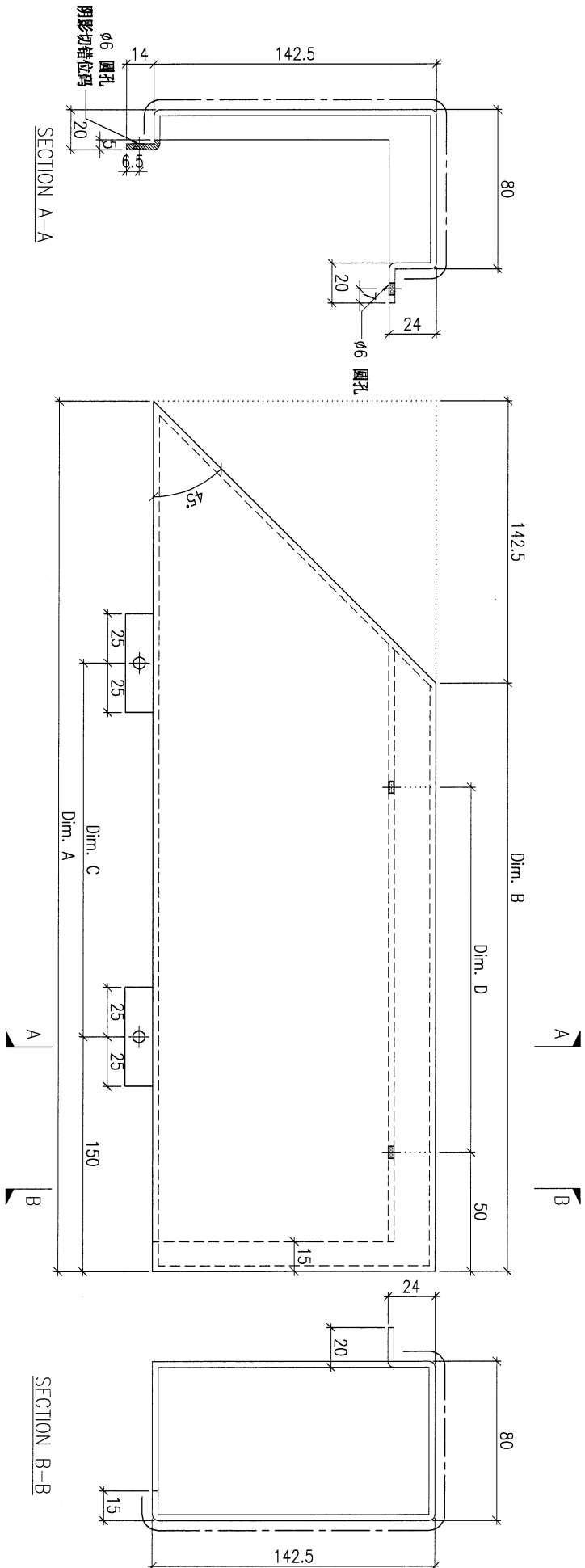
12

PROJECT				MATERIAL				COATING		COLOUR		MARK. NO.	QTY.
YIN PING ROAD KOWLOON FEATURE WALL (PHASE 1)				3mm 铝板				PVF2		EC-DG-D334232-ZD1(SS-01)		-	-
REV. CHANGED DATE	PART NUMBER	Dim. A	Dim. B	Dim. C	Dim. D	Dim. E	Dim. F	Dim. G	Dim. H	QTY.	Inv. Code	ASSEMBLE ON PARTS	
-	FW1-AP159	-	-	-	-	-	-	-	-	1	-	-	
												注: 地盘用	
												注: 工地复尺	



DWG. NO.		REV.		SCALE		DATE		DRAWN BY		APPROVED BY	
FW1-AP159		-		-		15-06-2023		-		-	

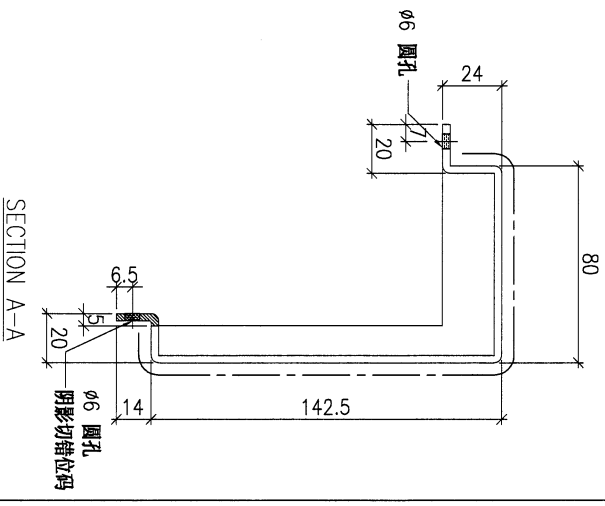
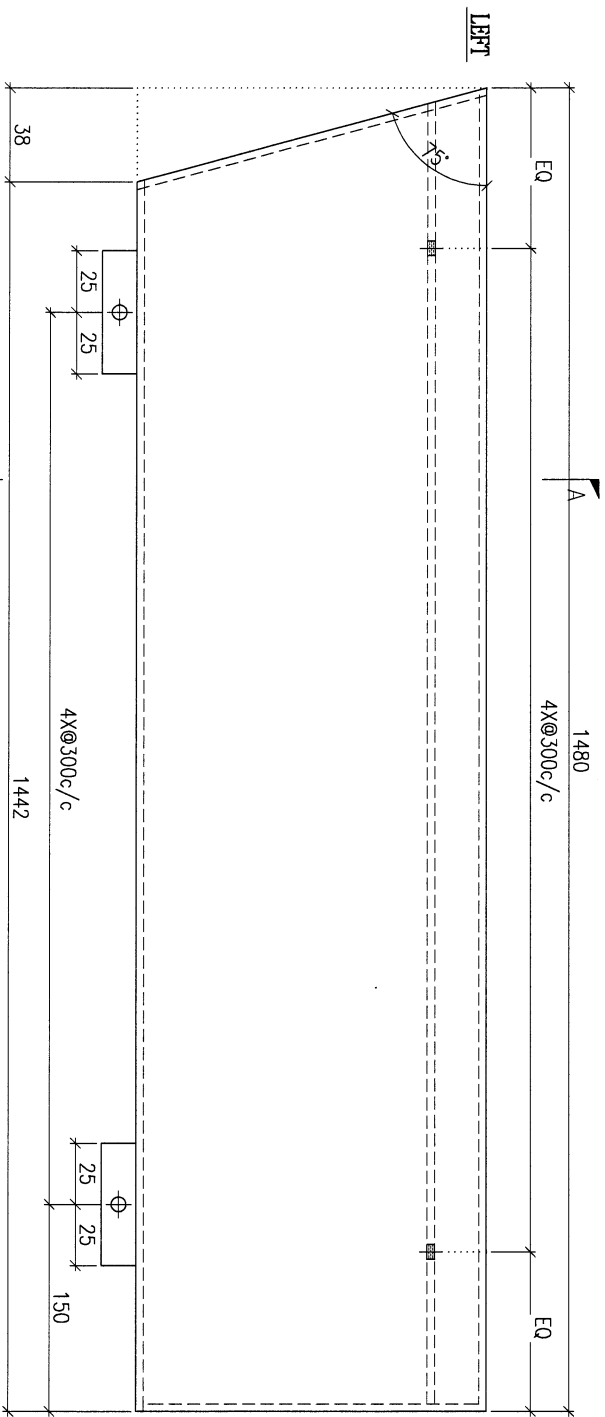
PROJECT				MATERIAL				COATING		COLOUR		MARK. NO.	QTY.
YIN PING ROAD KOWLOON FEATURE WALL (PHASE 1)				3mm 铝板				PVF2		EC-DG-0334232-ZD1 (SS-01)		-	-
REV. DATE	PART NUMBER	Dim. A	Dim. B	Dim. C	Dim. D	Dim. E	Dim. F	Dim. G	Dim. H	QTY.	Inv. Code	ASSEMBLE ON PARTS	
-	FW1-AP160A	1966	1823.5	6X@300c/c	6X@280c/c					1			
-	FW1-AP160B	1381.5	1239	4X@300c/c	4X@280c/c					1			
												注: 地盘用 注: 工地复尺	



DWG. NO.		REV.		SCALE		DATE		DRAWN BY		APPROVED BY	
FW1-AP160		-		-		15-06-2023		-		-	

PROJECT				MATERIAL				COATING		COLOUR		MARK. NO.		QTY.	
YIN PING ROAD KOWLOON FEATURE WALL (PHASE 1)				3mm 铝板				PVF2		EG-DG-D334232-ZD1(SS-011)		-		-	
REV.	CHECKED DATE BY	PART NUMBER	Dim. A	Dim. B	Dim. C	Dim. D	Dim. E	Dim. F	Dim. G	Dim. H	QTY.	Inv. Code	ASSEMBLE ON PARTS		
-		FW1-AP161	-	-	-	-	-	-	-	-	1				

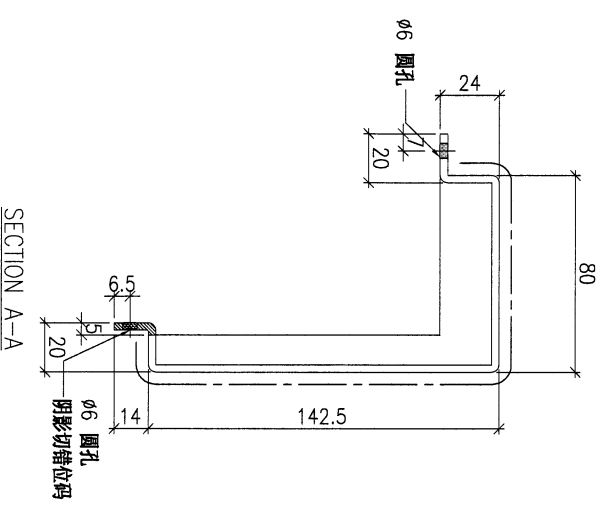
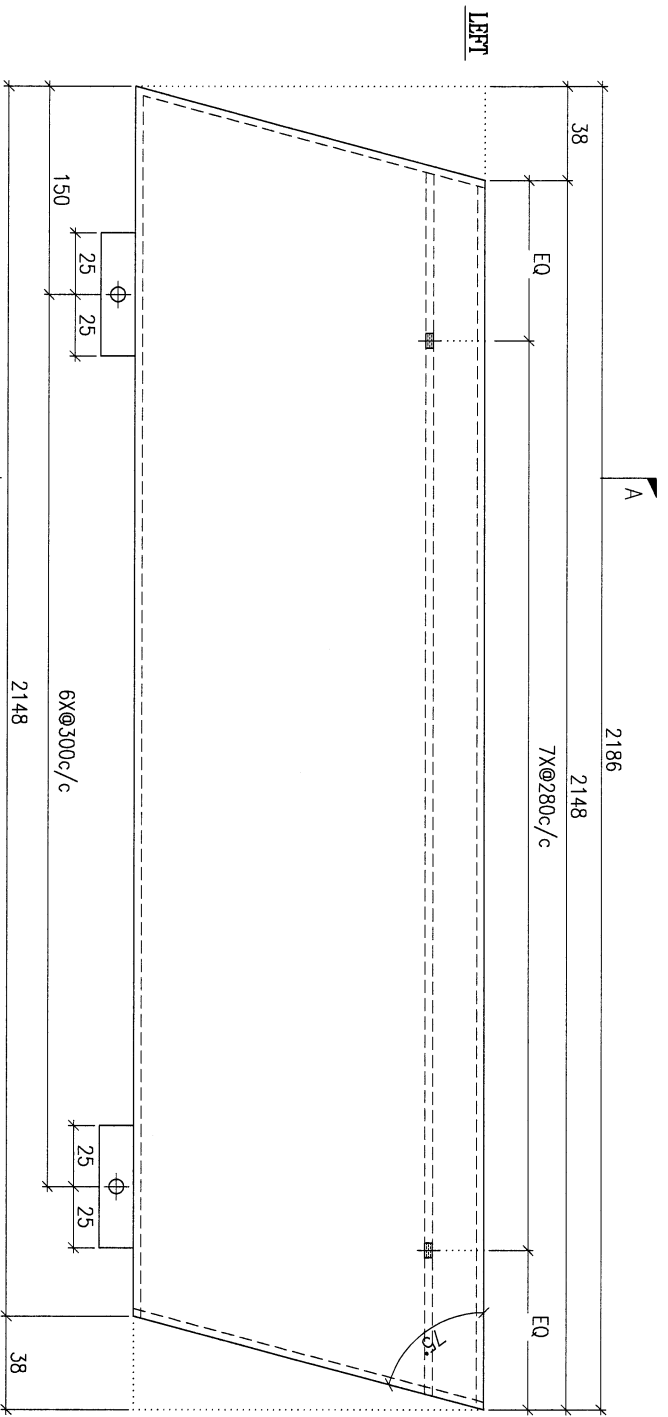
注：地盤用
注：工地复尺



DWG. NO.	REV.	SCALE	DATE	DRAWN BY	APPROVED BY
FW1-AP161	-	-	15-06-2023	-	-

15

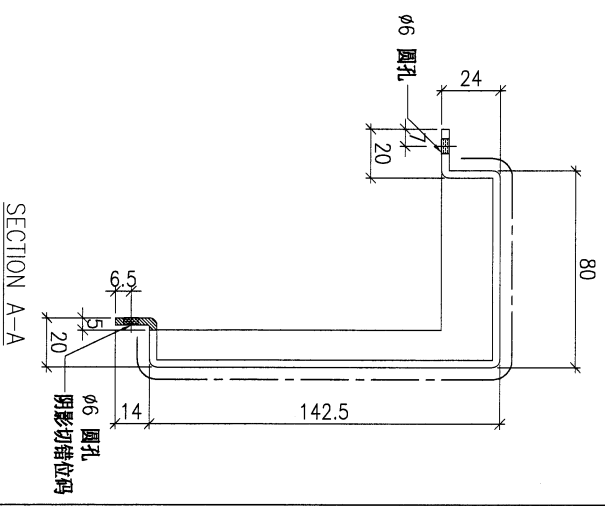
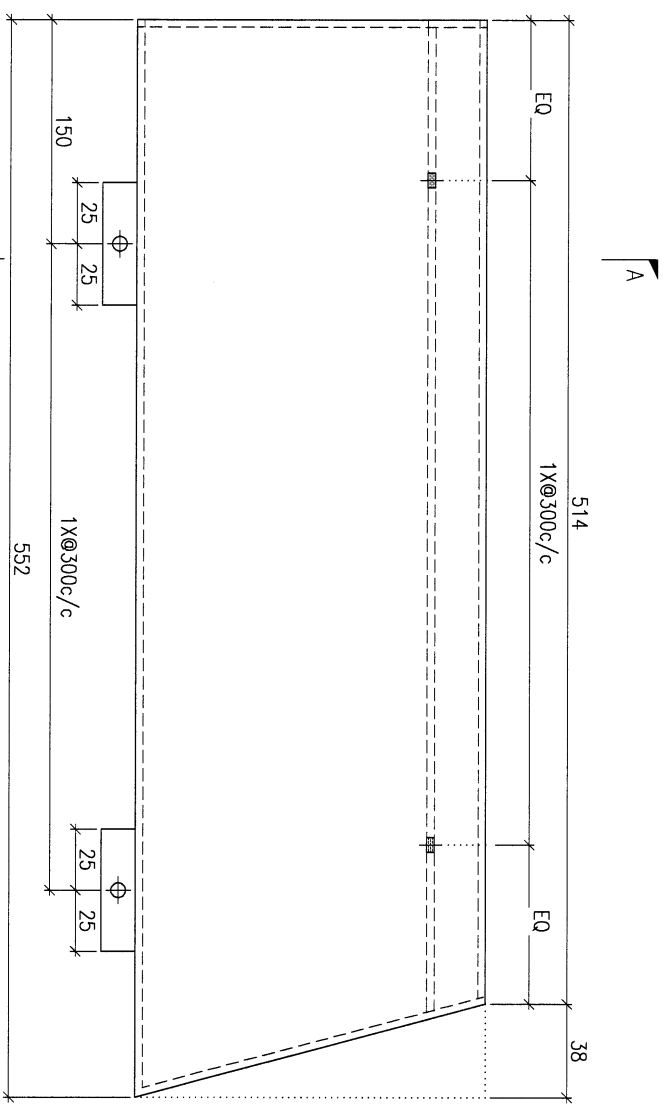
PROJECT				MATERIAL				COATING		COLOUR		MARK. NO.	QTY.
YIN PING ROAD KOWLOON FEATURE WALL (PHASE 1)				3mm 铝板				PVF2		EC-DG-D334232-ZD1(SS-011)		-	-
REV.	CHECKED DATE BY	PART NUMBER	Dim. A	Dim. B	Dim. C	Dim. D	Dim. E	Dim. F	Dim. G	Dim. H	QTY.	Inv. Code	ASSEMBLE ON PARTS
-		FW1-AP162	-	-	-	-	-	-	-	-	1		
注: 地盘用													
注: 工地复尺													



DWG. NO.		REV.		SCALE		DATE		DRAWN BY		APPROVED BY	
FW1-AP162		-		-		15-06-2023		-		-	

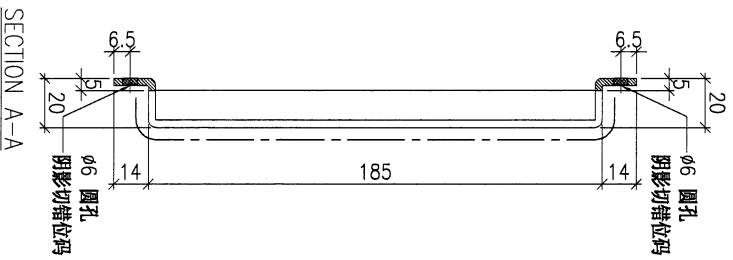
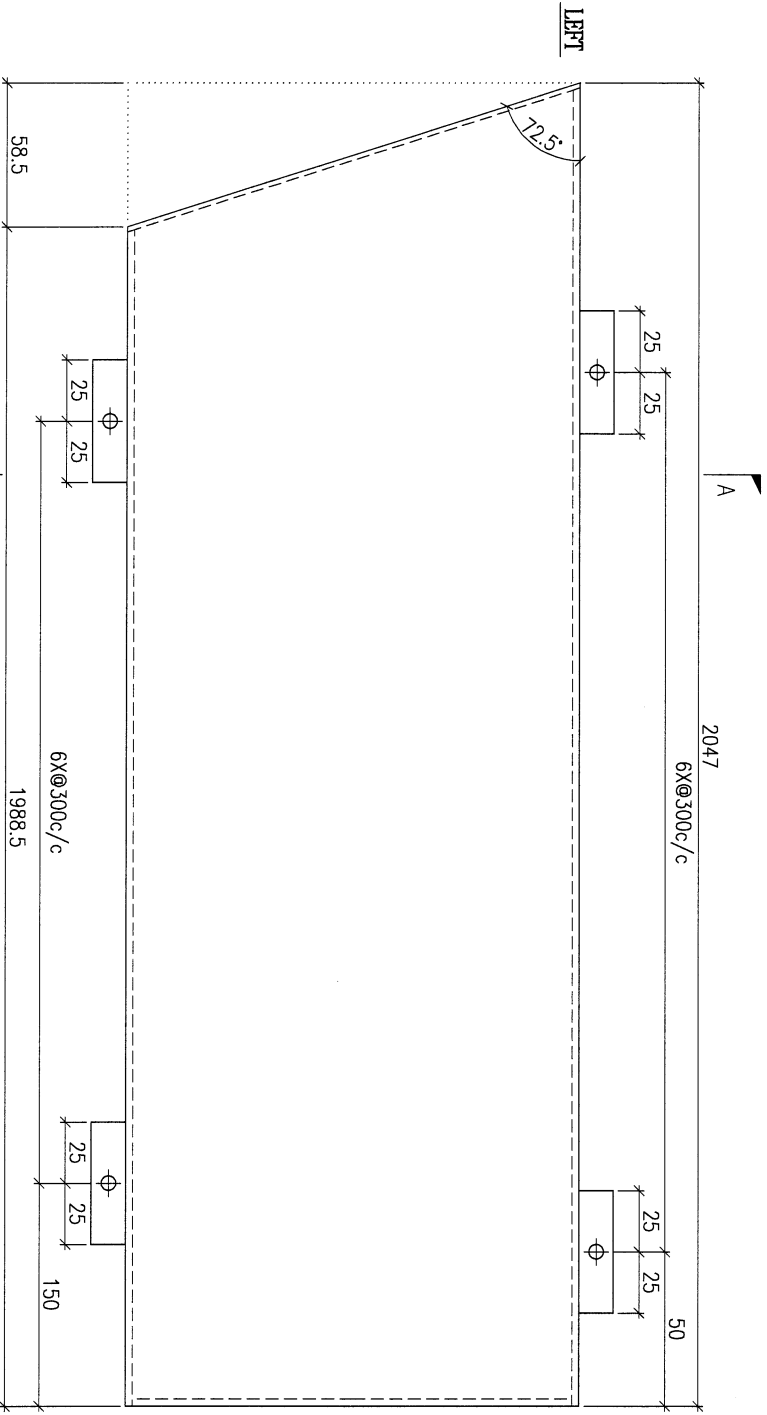
PROJECT				YIN PING ROAD KOWLOON FEATURE WALL (PHASE 1)				MATERIAL				3mm 铝板				COATING				PVF2				COLOUR				EC-DG-D334232-ZD1(SS-01)				MARK. NO.				-				QTY.				-			
REV.	CHANGED BY	PART NUMBER	Dim. A	Dim. B	Dim. C	Dim. D	Dim. E	Dim. F	Dim. G	Dim. H	QTY.	Inv. Code	ASSEMBLE ON PARTS																																		
-		FW1-AP163	-	-	-	-	-	-	-	-	1																																				

注：地盘用
注：工地复尺



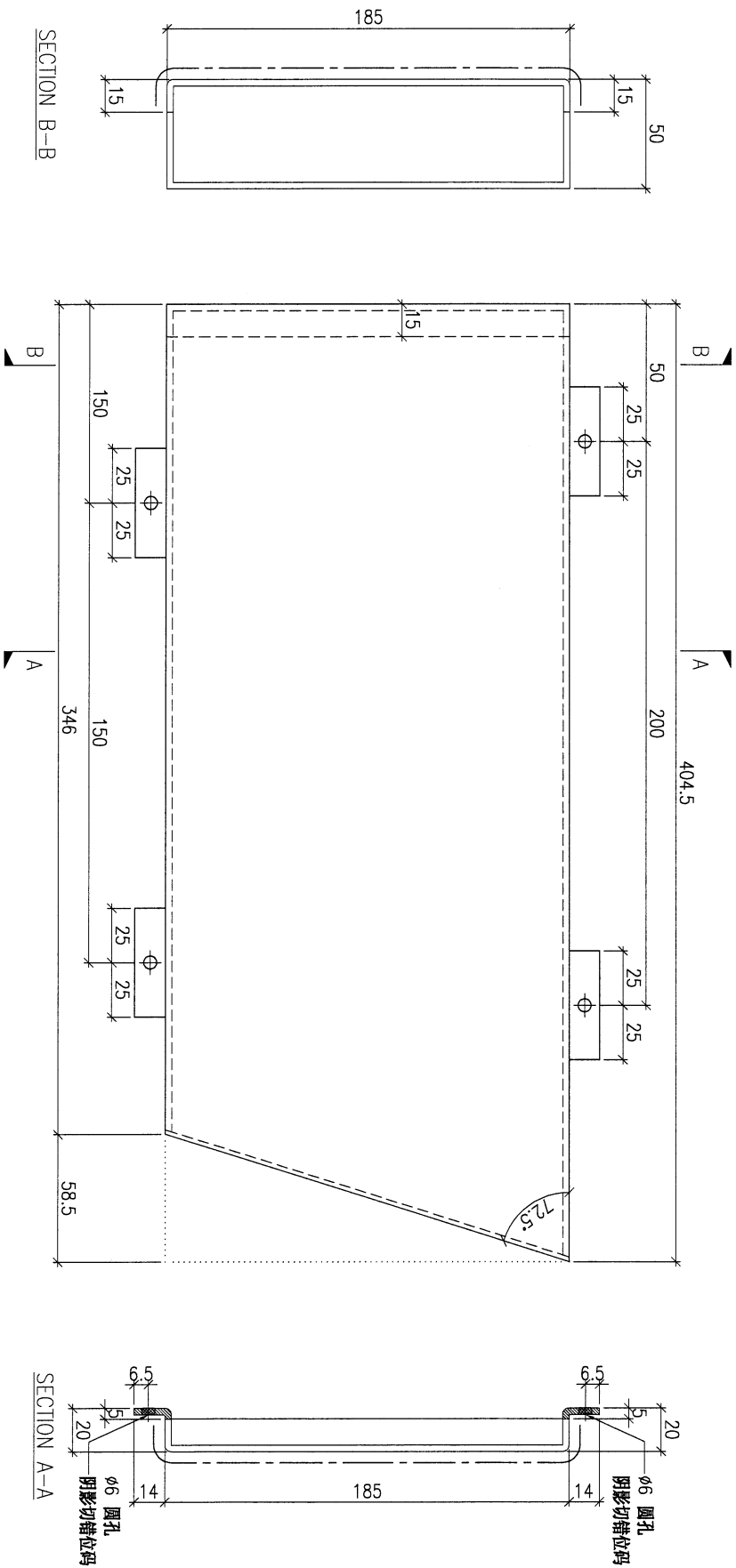
DWG. NO.	FW1-AP163	REV.	-	SCALE	-	DATE	15-06-2023	DRAWN BY	-	APPROVED BY	-
----------	-----------	------	---	-------	---	------	------------	----------	---	-------------	---

PROJECT				MATERIAL				COATING				COLOUR		MARK. NO.		QTY.	
YIN PING ROAD KOWLOON FEATURE WALL (PHASE 1)				3mm 铝板				PVF2				EC-DG-D334232-ZD1(SS-01)		-		-	
REV.	CHANGED DATE BY	PART NUMBER	Dim. A	Dim. B	Dim. C	Dim. D	Dim. E	Dim. F	Dim. G	Dim. H	QTY.	Inv. Code	ASSEMBLE ON PARTS				
-		FW1-AP164	-	-	-	-	-	-	-	-	1						
注：地盘用 注：工地复尺																	



DWG. NO.		REV.		SCALE		DATE		DRAWN BY		APPROVED BY	
FW1-AP164		-		-		15-06-2023		-		-	

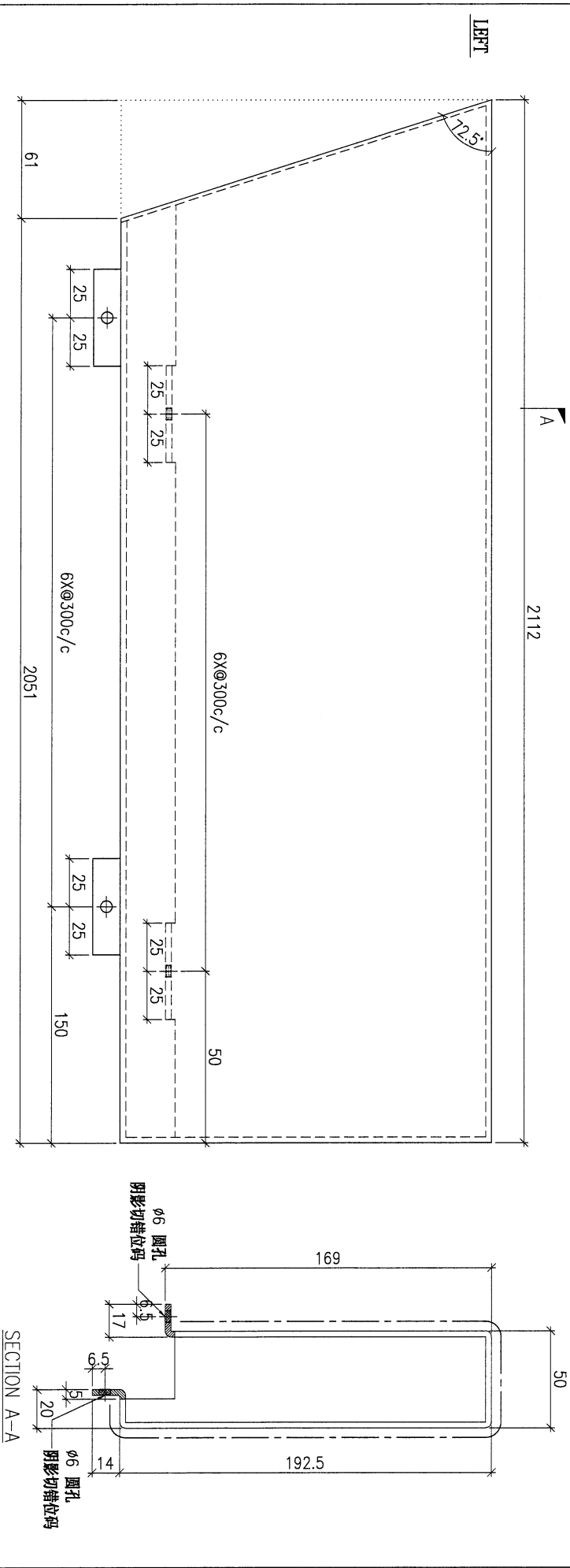
PROJECT				YIN PING ROAD KOWLOON FEATURE WALL (PHASE 1)				MATERIAL				3mm 铝板				COATING				PVF2				COLOUR				EC-DG-D334232-ZD1(SS-01)				MARK. NO.				-				QTY.				-			
REV.	QUANTITY	PART NUMBER	Dim. A	Dim. B	Dim. C	Dim. D	Dim. E	Dim. F	Dim. G	Dim. H	QTY.	Inv. Code	ASSEMBLE ON PARTS																																		
-		FW1-AP165	-	-	-	-	-	-	-	-	1																																				
												注: 地盘用												注: 工地复尺																							



18

DWG. NO.		FW1-AP165		REV.		-		SCALE		-		DATE		15-06-2023		DRAWN BY		-		APPROVED BY		-	
----------	--	-----------	--	------	--	---	--	-------	--	---	--	------	--	------------	--	----------	--	---	--	-------------	--	---	--

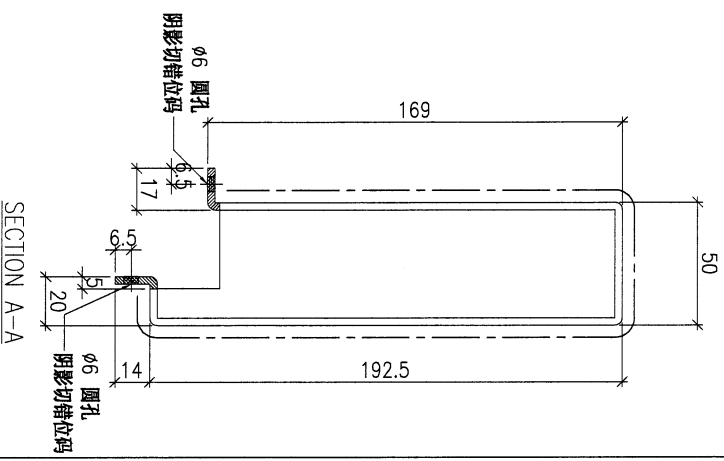
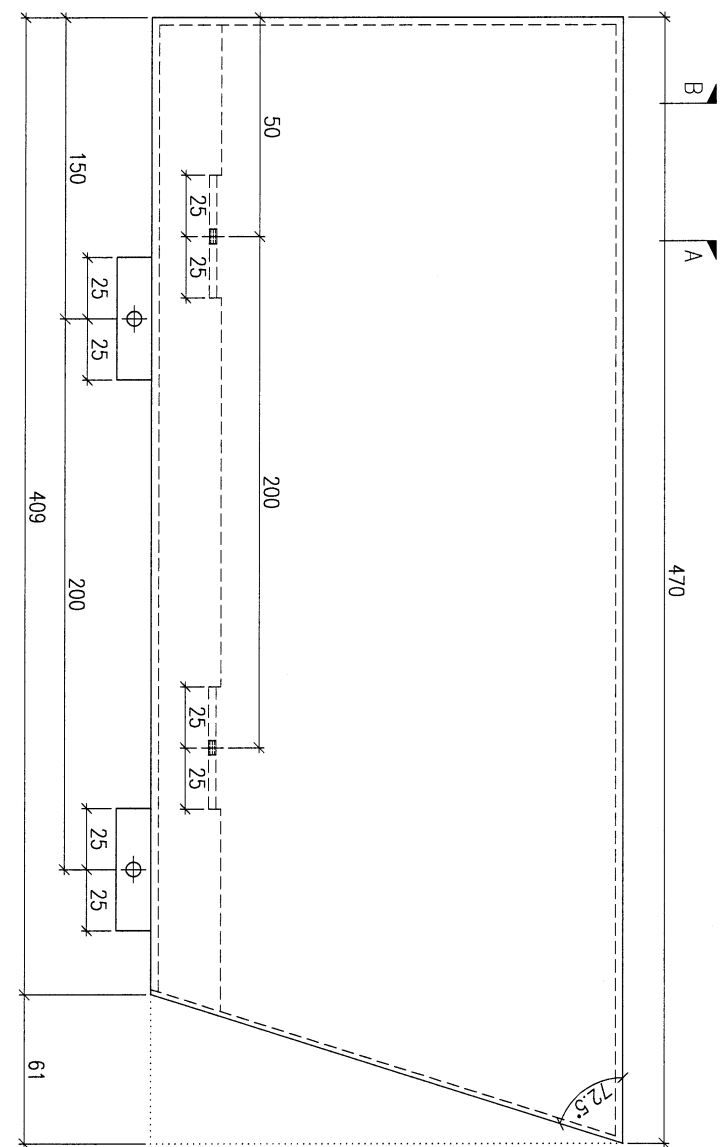
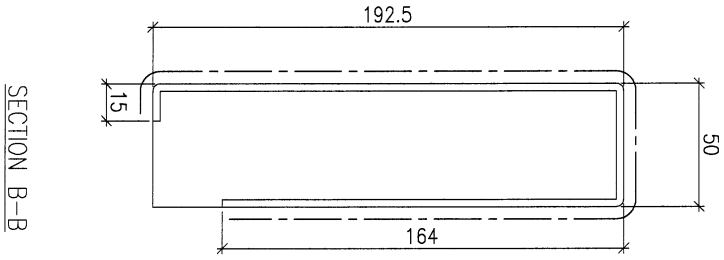
PROJECT				MATERIAL				COATING				COLOUR				MARK. NO.		QTY.	
YIN PING ROAD KOWLOON FEATURE WALL (PHASE 1)				3mm 铝板				PVF2				EC-DG-D334232-ZD1(SS-01)				-		-	
REV.	CHANGED DATE BY	PART NUMBER	Dim. A	Dim. B	Dim. C	Dim. D	Dim. E	Dim. F	Dim. G	Dim. H	QTY.	Inv. Code	ASSEMBLE ON PARTS						
-		FW1-AP166	-	-	-	-	-	-	-	-	1								
注：地盘用																			
注：工地复尺																			



DWG. NO.		REV.		SCALE		DATE		DRAWN BY		APPROVED BY	
FW1-AP166		-		-		15-06-2023		-		-	

PROJECT				MATERIAL				COATING				COLOUR				MARK. NO.		QTY.	
YIN PING ROAD KOWLOON FEATURE WALL (PHASE 1)				3mm 铝板				PVF2				EC-DG-D334232-ZD1(SS-01)				-		-	
REV.	CHECKED DATE	PART NUMBER	Dim. A	Dim. B	Dim. C	Dim. D	Dim. E	Dim. F	Dim. G	Dim. H	QTY.	Inv. Code	ASSEMBLE ON PARTS						
-		FW1-AP167	-	-	-	-	-	-	-	-	1								

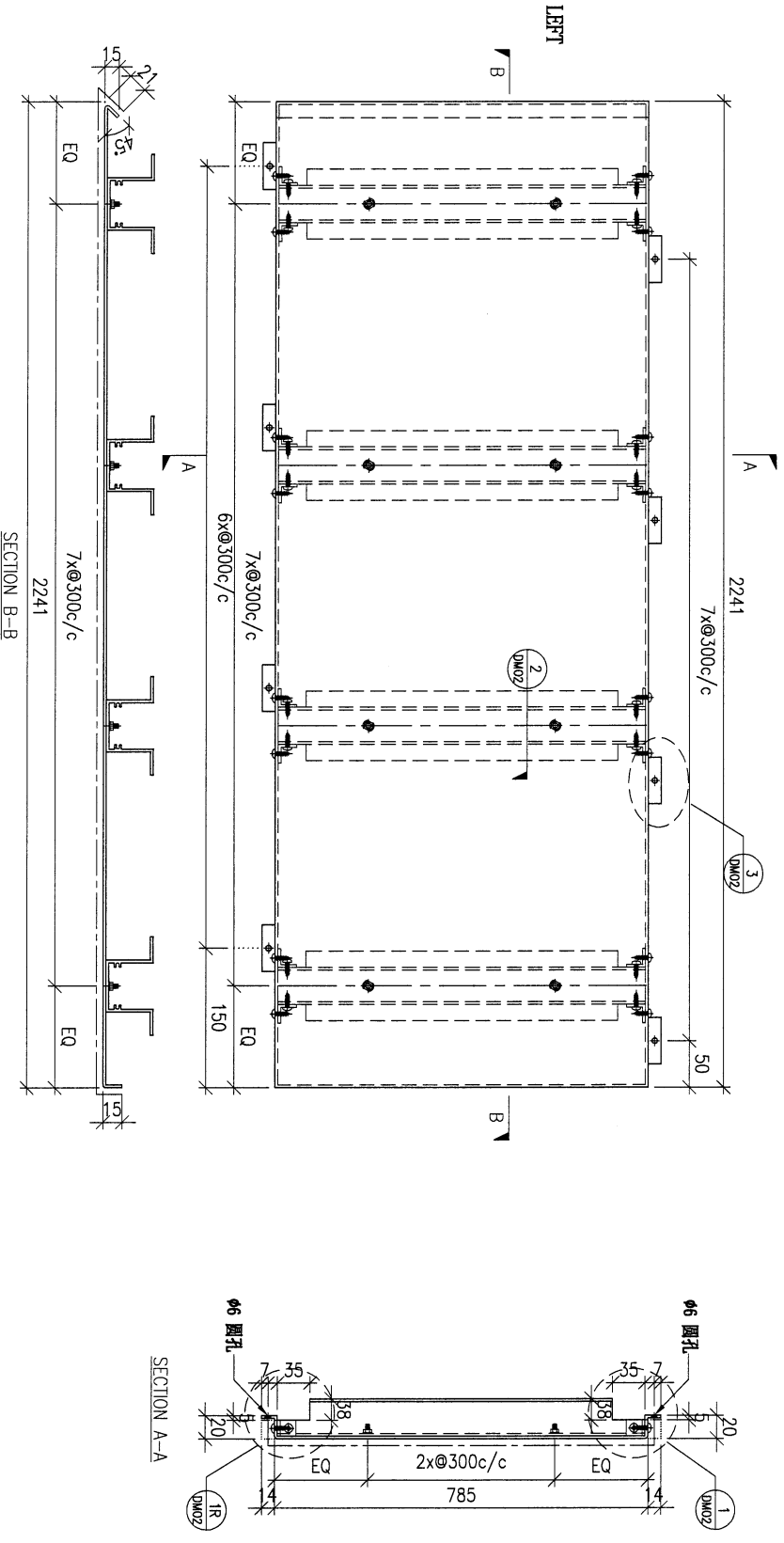
注：地盘用
注：工地复尺



DWG. NO.		REV.		SCALE		DATE		DRAWN BY		APPROVED BY	
FW1-AP167		-		-		15-06-2023		-		-	

PROJECT				MATERIAL				COATING				COLOUR		MARK. NO.		QTY.	
YIN PING ROAD KOWLOON FEATURE WALL (PHASE 1)				3mm铝板				PVF2				EC-DG-D334232-ZD1(SS-01)		-		-	
REV.	CHANGED DATE BY	PART NUMBER	Dim. A	Dim. B	Dim. C	Dim. D	Dim. E	Dim. F	Dim. G	Dim. H	QTY.	Inv. Code	ASSEMBLE ON PARTS				
-		FW1-AP168	-	-	-	-	-	-	-	-	1						

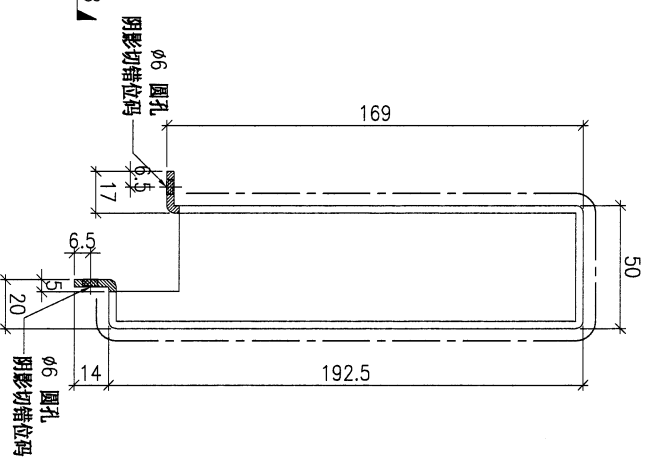
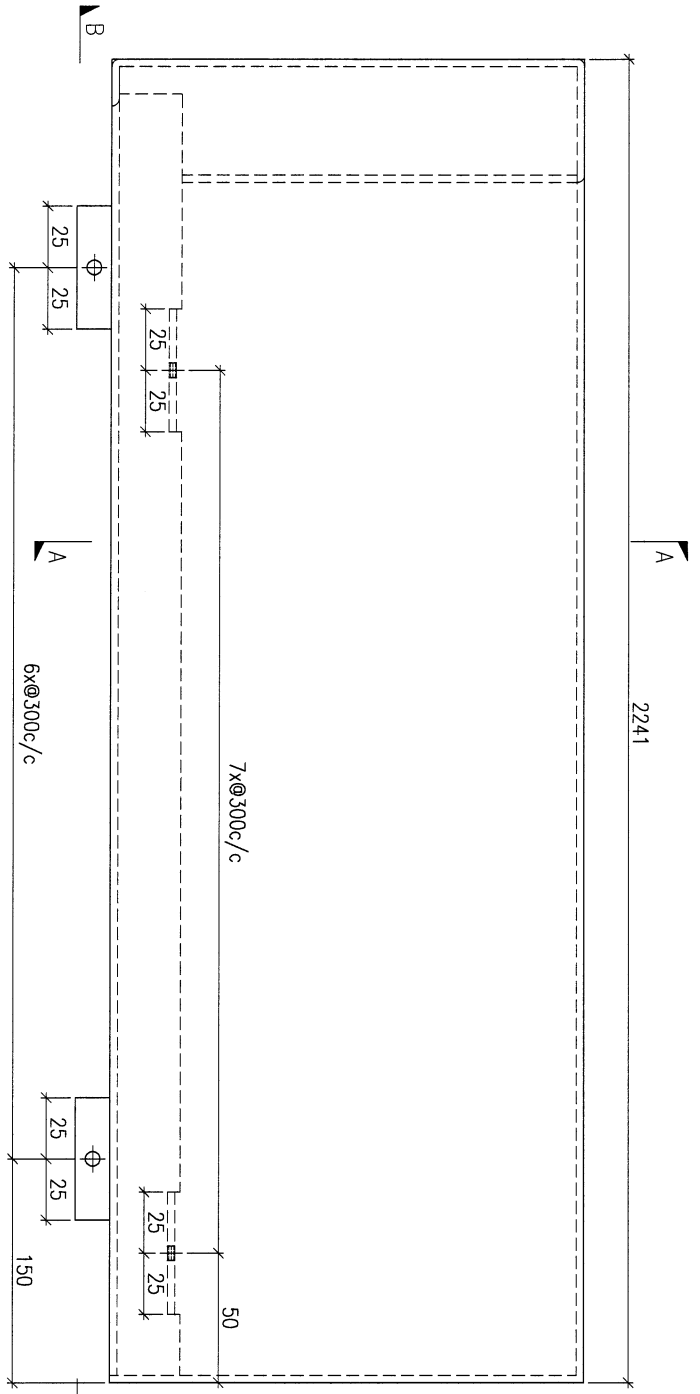
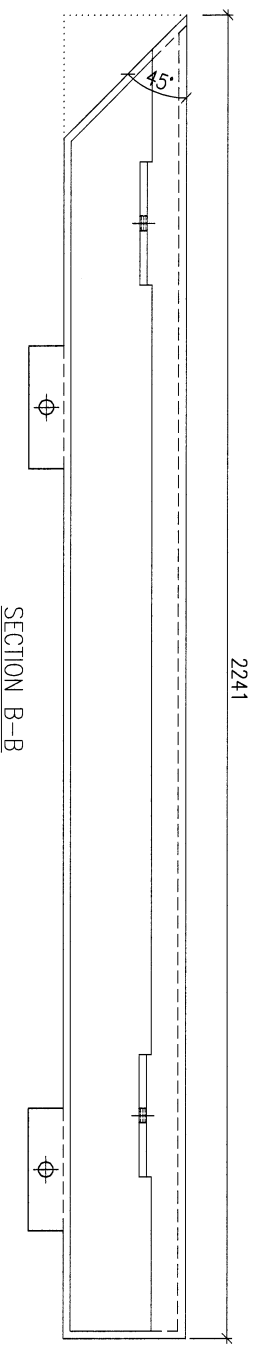
注：地盘用
注：工地复尺



DWG. NO.		REV.		SCALE		DATE		DRAWN BY		APPROVED BY	
FW1-AP168		-		-		15-06-2023		-		-	

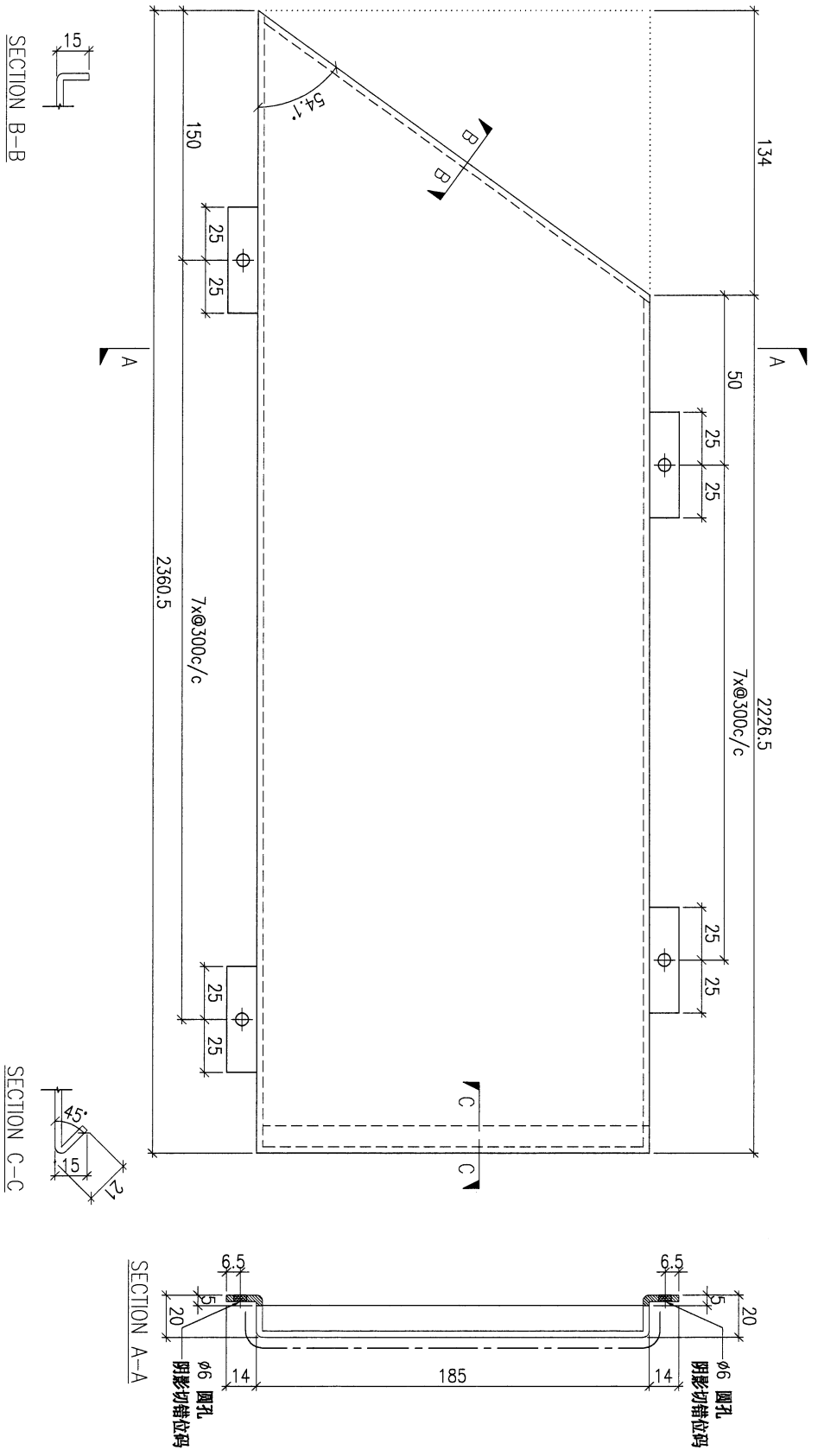
PROJECT				YIN PING ROAD KOWLOON FEATURE WALL (PHASE 1)				MATERIAL				3mm 铝板				COATING				PVF2				COLOUR				EC-DG-D334232-ZD1(SS-01)				MARK. NO.				QTY.			
REV.	ORDERED BY	PART NUMBER	Dim. A	Dim. B	Dim. C	Dim. D	Dim. E	Dim. F	Dim. G	Dim. H	QTY.	Inv. Code	ASSEMBLE ON PARTS				-				-																		
		FW1-AP169	-	-	-	-	-	-	-	-	1																												

注：地盘用
注：工地复尺



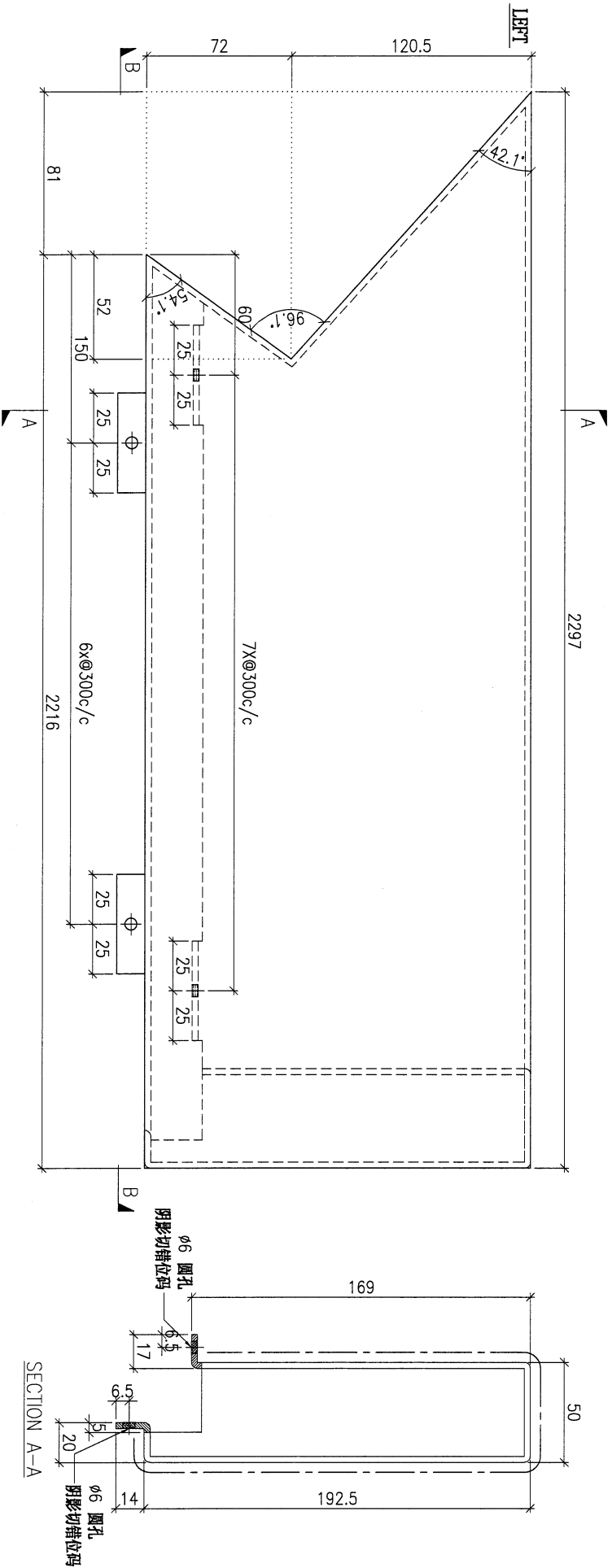
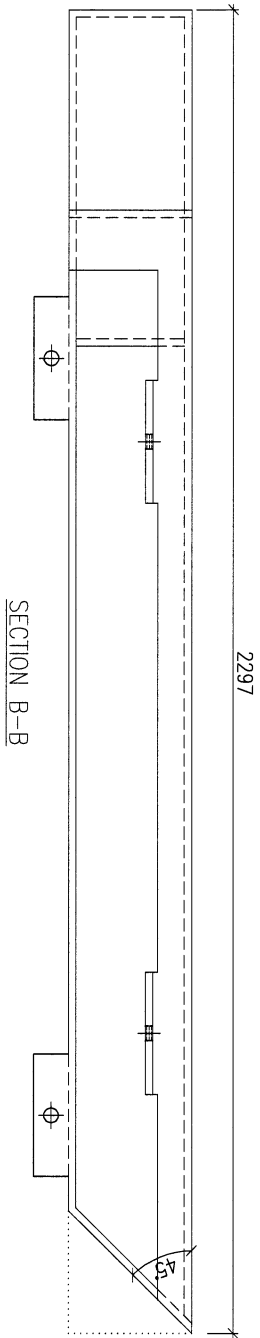
DWG. NO.		FW1-AP169		REV.		SCALE		DATE		DRAWN BY		APPROVED BY	
				-		-		15-06-2023		-		-	

PROJECT				YIN PING ROAD KOWLOON FEATURE WALL (PHASE 1)				MATERIAL				3mm 铝板				COATING				PVF2				COLOUR				EC-DG-D334232-ZD1(SS-01)				MARK. NO.				-				QTY.				-			
REV.		CHANGED BY		PART NUMBER		Dim. A		Dim. B		Dim. C		Dim. D		Dim. E		Dim. F		Dim. G		Dim. H		QTY.		Inv. Code		ASSEMBLE ON PARTS				注: 地盘用																	
-				FW1-AP170		-		-		-		-		-		-		-		-		1								注: 工地复尺																	



DWG. NO.		FW1-AP170		REV.		-		SCALE		-		DATE		15-06-2023		DRAWN BY		-		APPROVED BY		-	
----------	--	-----------	--	------	--	---	--	-------	--	---	--	------	--	------------	--	----------	--	---	--	-------------	--	---	--

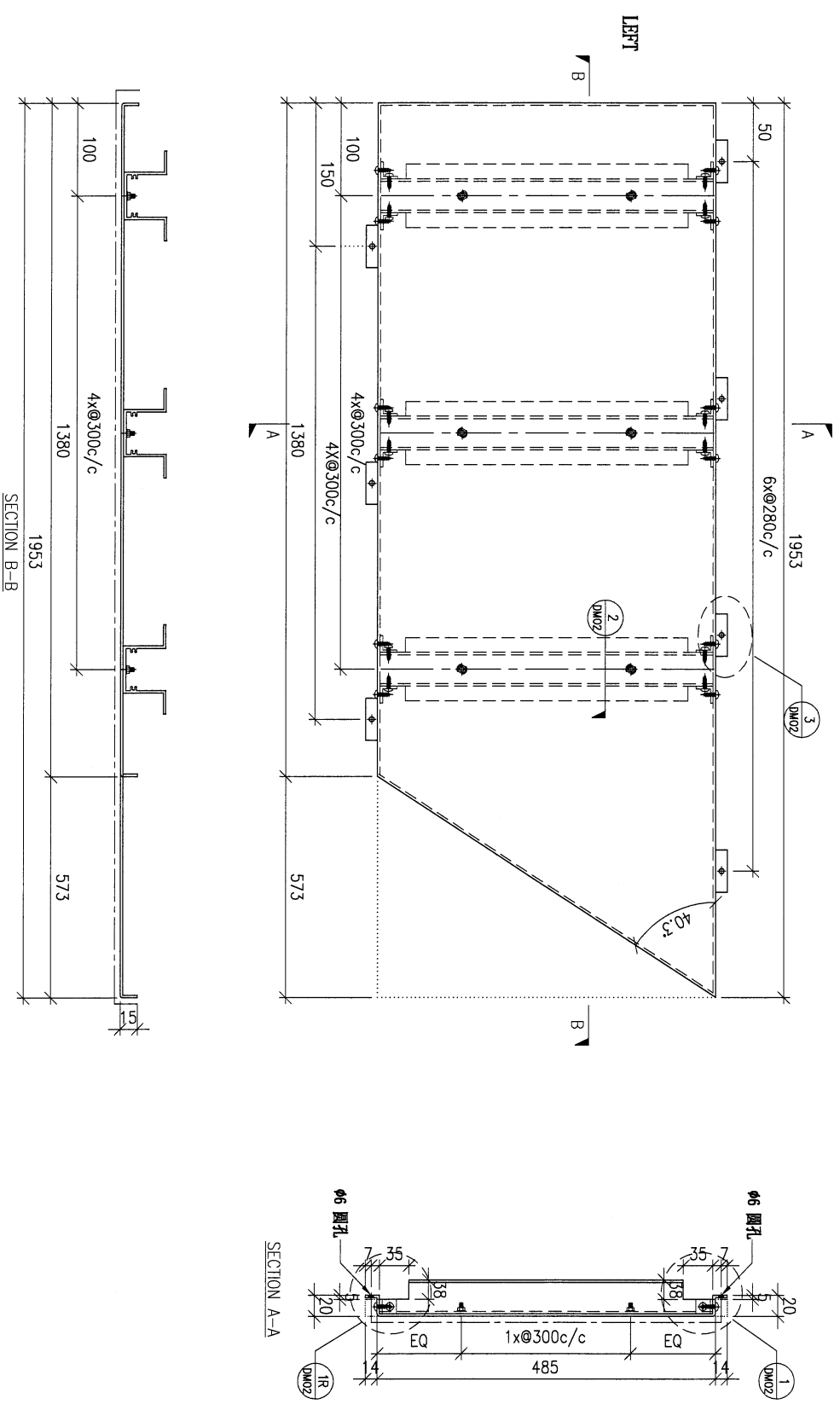
PROJECT				MATERIAL				COATING		COLOUR		MARK. NO.	QTY.
YIN PING ROAD KOWLOON FEATURE WALL (PHASE 1)				3mm 铝板				PVF2		EC-DG-D334232-ZD1(SS-01)		-	-
REV.	DESCRIBED DATE BY	PART NUMBER	Dim. A	Dim. B	Dim. C	Dim. D	Dim. E	Dim. F	Dim. G	Dim. H	QTY.	Inv. Code	
-		FW1-AP171	-	-	-	-	-	-	-	-	1		
										ASSEMBLE ON PARTS			
注: 地盘用													
注: 工地复尺													



DWG. NO.		REV.		SCALE		DATE		DRAWN BY		APPROVED BY	
FW1-AP171		-		-		15-06-2023		-		-	

PROJECT				YIN PING ROAD KOWLOON FEATURE WALL (PHASE 1)				MATERIAL				COATING		COLOUR		MARK. NO.		QTY.															
PART NUMBER				Dim. A				Dim. B				Dim. C		Dim. D		Dim. E		Dim. F		Dim. G		Dim. H		QTY.		Inv. Code		ASSEMBLE ON PARTS		-		-	
FW1-AP172				-				-				-		-		-		-		-		-		1									
REV. CHANGED BY				-				-				-		-		-		-		-		-		-		-		-		-		-	

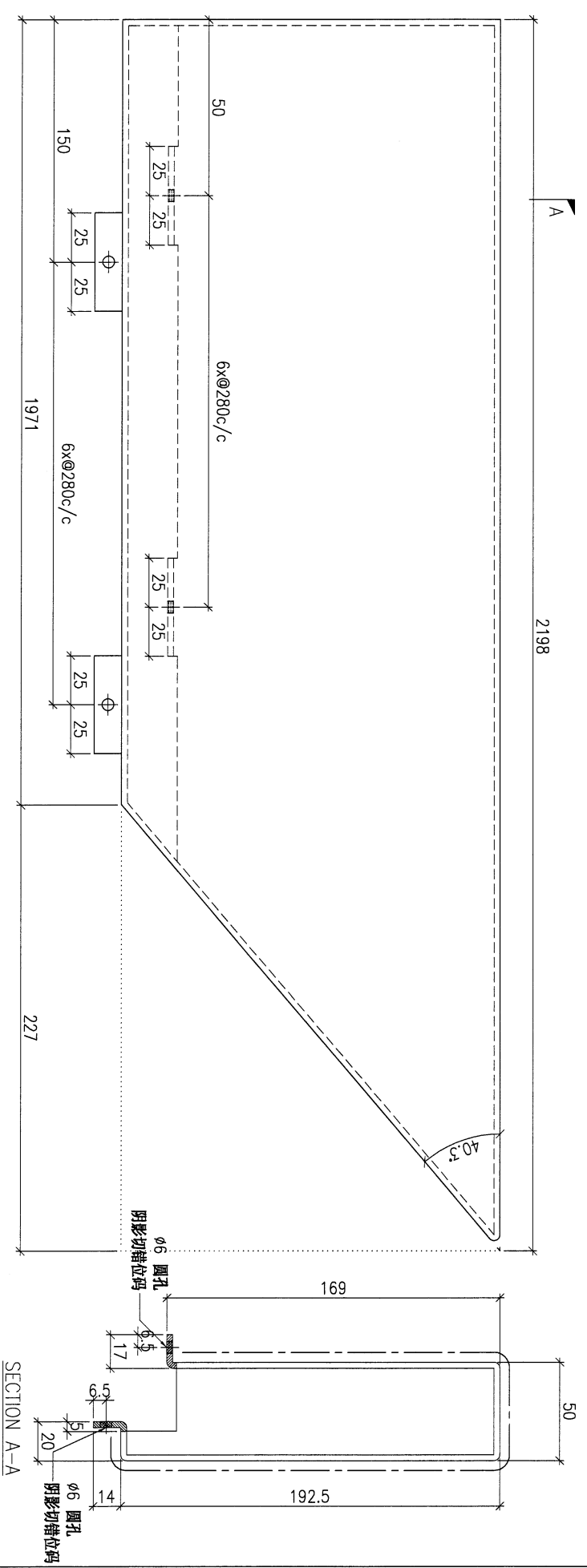
注：地盘用
注：工地复尺



DWG. NO.		FW1-AP172		REV.		-		SCALE		-		DATE		15-06-2023		DRAWN BY		-		APPROVED BY		-	
----------	--	-----------	--	------	--	---	--	-------	--	---	--	------	--	------------	--	----------	--	---	--	-------------	--	---	--

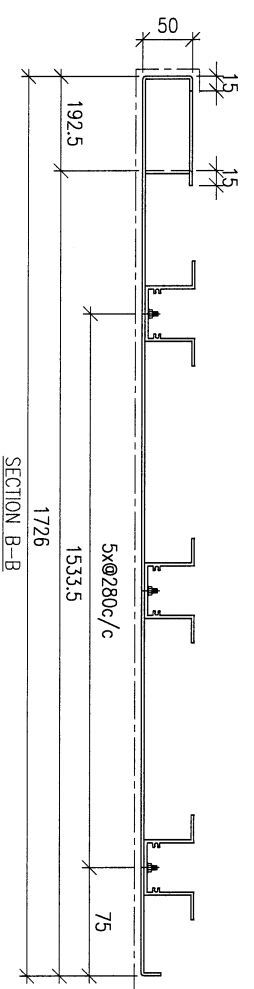
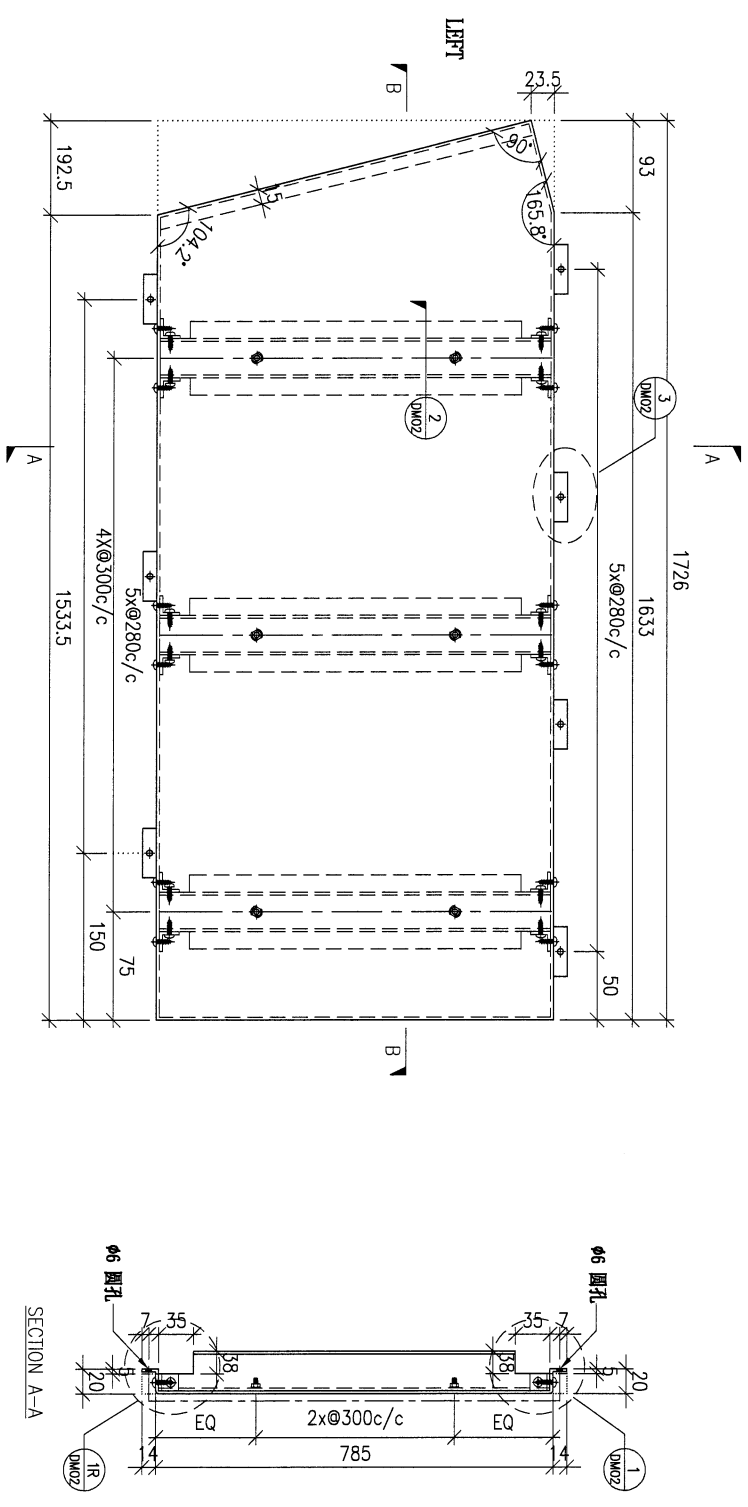
PROJECT YIN PING ROAD KOWLOON FEATURE WALL (PHASE 1)				MATERIAL 3mm 铝板				COATING PVF2		COLOUR EC-DG-D334232-ZD1(SS-01)		MARK. NO. -	QTY. -
REV.	CHANGED DATE	PART NUMBER	Dim. A	Dim. B	Dim. C	Dim. D	Dim. E	Dim. F	Dim. G	Dim. H	QTY.	Inv. Code	ASSEMBLE ON PARTS
-		FW1-AP173	-	-	-	-	-	-	-	-	1		

注：地盘用
注：工地复尺



DWG. NO. FW1-AP173		REV. -	SCALE -	DATE 15-06-2023	DRAWN BY -	APPROVED BY -
-----------------------	--	-----------	------------	--------------------	---------------	------------------

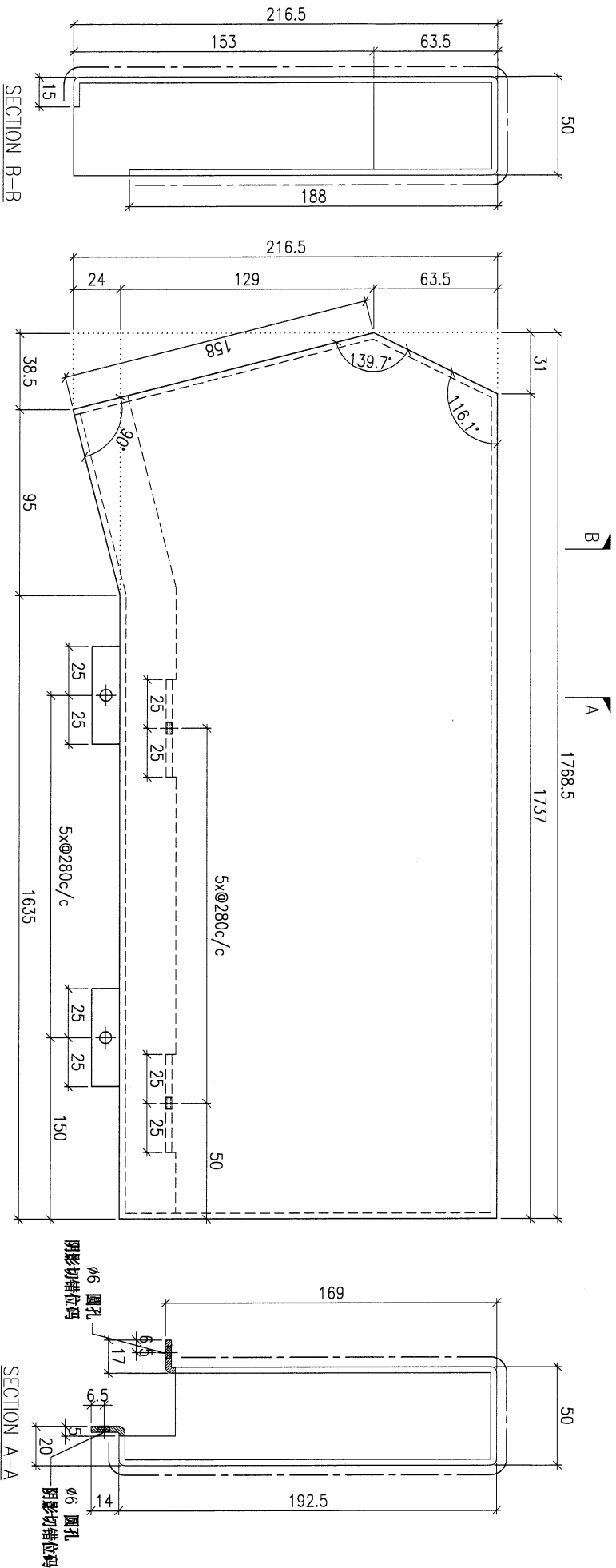
PROJECT				MATERIAL				COATING		COLOUR		MARK. NO.	QTY.
YIN PING ROAD KOWLOON FEATURE WALL (PHASE 1)				3mm铝板				PVF2		EC-DG-D334232-ZD1(SS-01)		-	-
REV.	DESCRIPTION	PART NUMBER	Dim. A	Dim. B	Dim. C	Dim. D	Dim. E	Dim. F	Dim. G	Dim. H	QTY.	Inv. Code	ASSEMBLE ON PARTS
-		FW1-AP174	-	-	-	-	-	-	-	-	1		
注: 地盘用 注: 工地复尺													



DWG. NO.		REV.		SCALE		DATE		DRAWN BY		APPROVED BY	
FW1-AP174		-		-		15-06-2023		-		-	

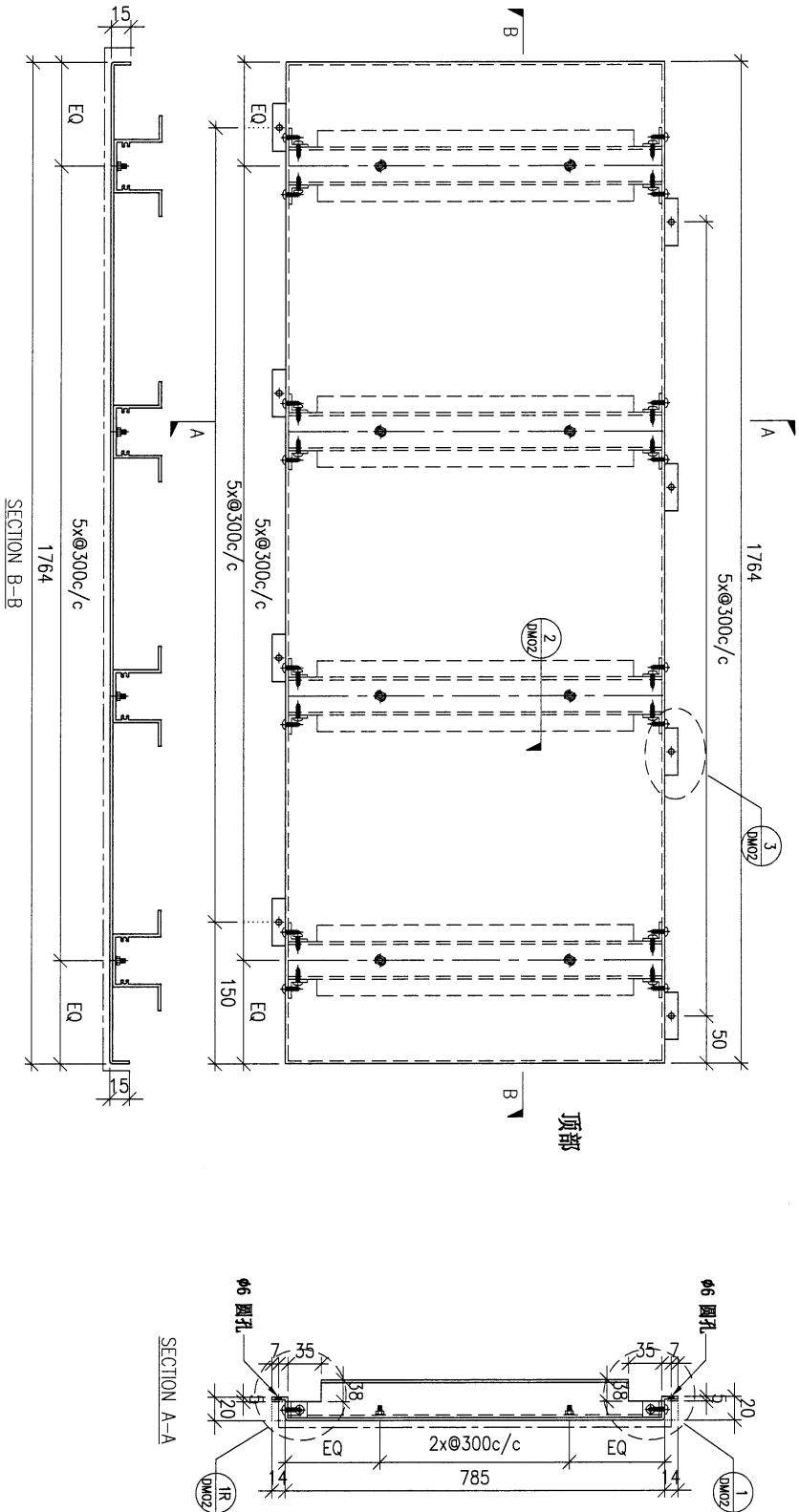
28

PROJECT YIN PING ROAD KOWLOON FEATURE WALL (PHASE 1)				MATERIAL 3mm 铝板				COATING PVF2		COLOUR EC-DG-D334232-ZD1(SS-01)		MARK. NO. -	QTY. -
REV.	DESCRIPTION	PART NUMBER	Dim. A	Dim. B	Dim. C	Dim. D	Dim. E	Dim. F	Dim. G	Dim. H	QTY.	Inv. Code	
-		FW1-AP175	-	-	-	-	-	-	-	-	1		
ASSEMBLE ON PARTS										注: 地盘用 注: 工地复尺			



DWG. NO. FW1-AP175		REV. -		SCALE -		DATE 15-06-2023		DRAWN BY -		APPROVED BY -	
-----------------------	--	-----------	--	------------	--	--------------------	--	---------------	--	------------------	--

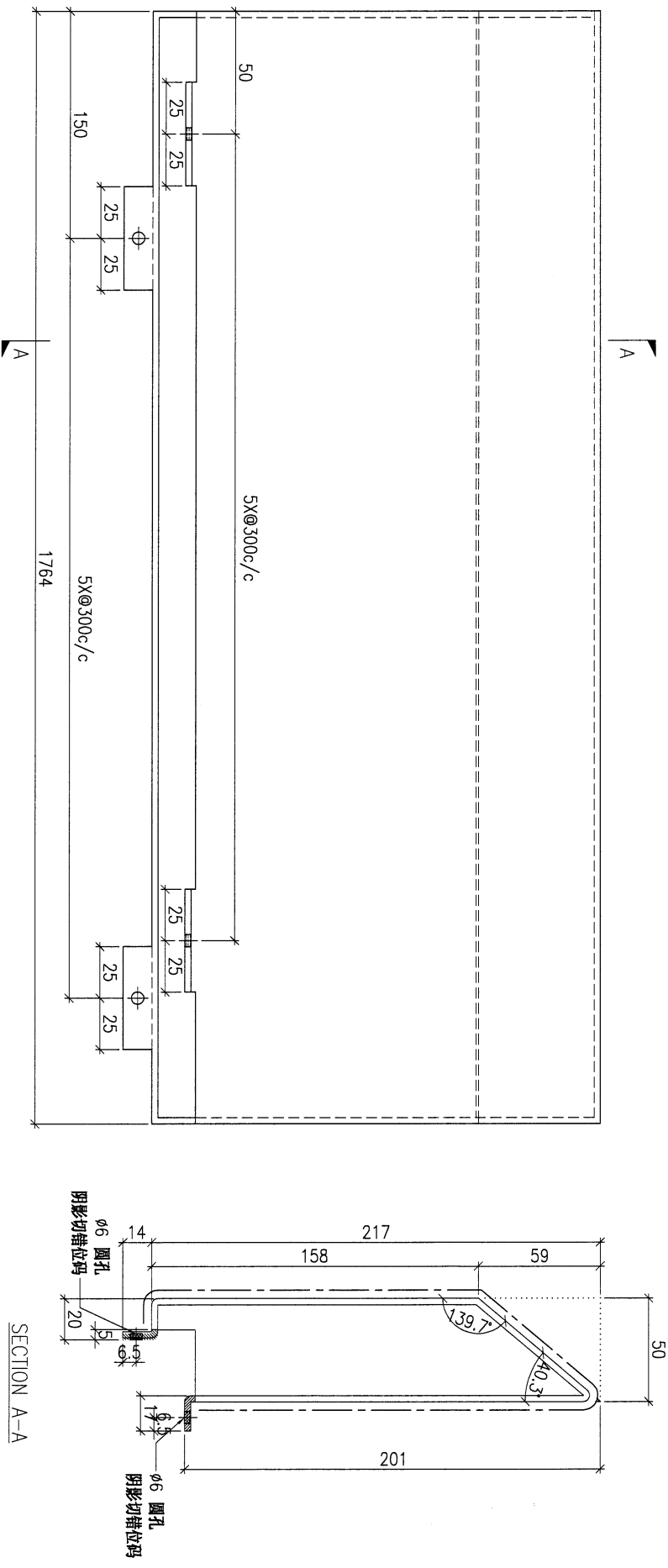
PROJECT YIN PING ROAD KOWLOON FEATURE WALL (PHASE 1)				MATERIAL 3mm铝板				COATING PVF2		COLOUR EC-DG-D334232-ZD1(SS-01)		MARK. NO. -	QTY. -	
REV.	CHECKED DATE	PART NUMBER	Dim. A	Dim. B	Dim. C	Dim. D	Dim. E	Dim. F	Dim. G	Dim. H	QTY.	Inv. Code	ASSEMBLE ON PARTS	
-		FW1-AP176	-	-	-	-	-	-	-	-	1			



注：地盘用
注：工地复尺

DWG. NO. FW1-AP176		REV. -		SCALE -		DATE 15-06-2023		DRAWN BY -		APPROVED BY -	
-----------------------	--	-----------	--	------------	--	--------------------	--	---------------	--	------------------	--

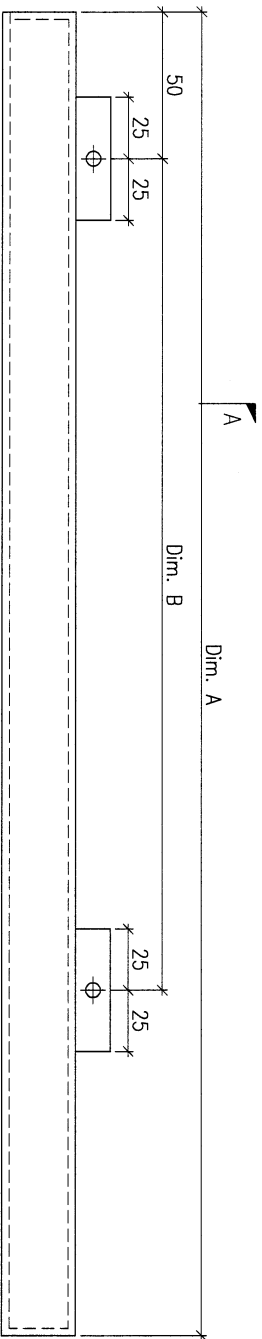
PROJECT				MATERIAL				COATING				COLOUR				MARK. NO.		QTY.	
YIN PING ROAD KOWLOON FEATURE WALL (PHASE 1)				3mm 铝板				PVF2				EC-DG-D334232-ZD1(SS-01)				-		-	
REV.	QTY	PART NUMBER	Dim. A	Dim. B	Dim. C	Dim. D	Dim. E	Dim. F	Dim. G	Dim. H	QTY.	Inv. Code	ASSEMBLE ON PARTS						
-	-	FW1-AP177	-	-	-	-	-	-	-	-	1	-							
注：地盘用																			
注：工地复尺																			



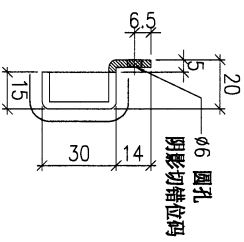
DWG. NO.		REV.		SCALE		DATE		DRAWN BY		APPROVED BY	
FW1-AP177		-		-		15-06-2023		-		-	

31

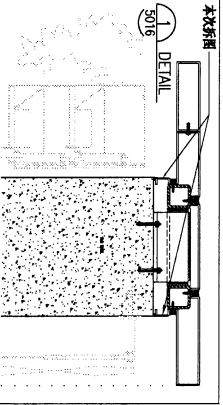
PROJECT YIN PING ROAD KOWLOON FEATURE WALL (PHASE 1)				MATERIAL 3mm 铝板				COATING PVF2		COLOUR EC-DG-D334232-ZD1(SS-01)		MARK. NO. -	QTY. -
REV.	CHECKED DATE	PART NUMBER	Dim. A	Dim. B	Dim. C	Dim. D	Dim. E	Dim. F	Dim. G	Dim. H	QTY.	Inv. Code	ASSEMBLE ON PARTS
-	-	FW1-AP178	2398	7xø300/c-							50		
注：地盘用													



A



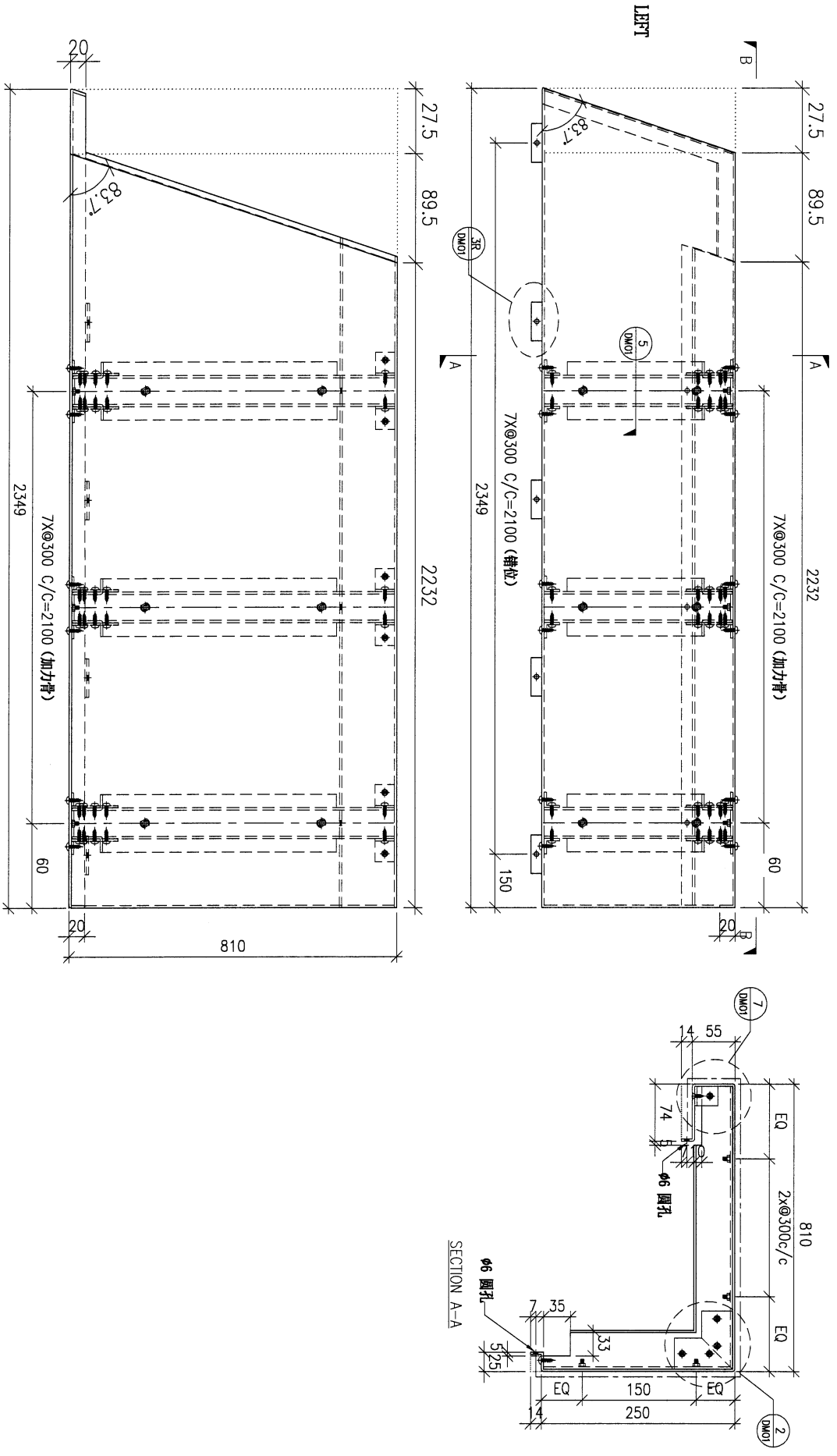
SECTION A-A



DWG. NO.	FW1-AP07AC	REV.	-	SCALE	-	DATE	22-03-2023	DRAWN BY	-	APPROVED BY	-
----------	------------	------	---	-------	---	------	------------	----------	---	-------------	---

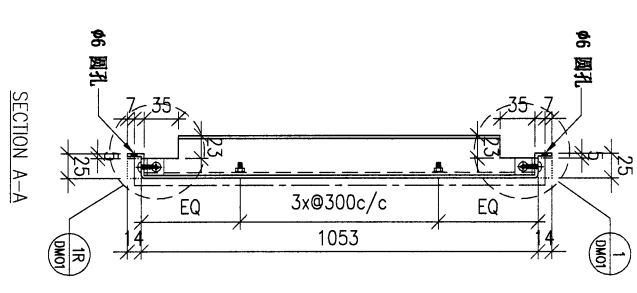
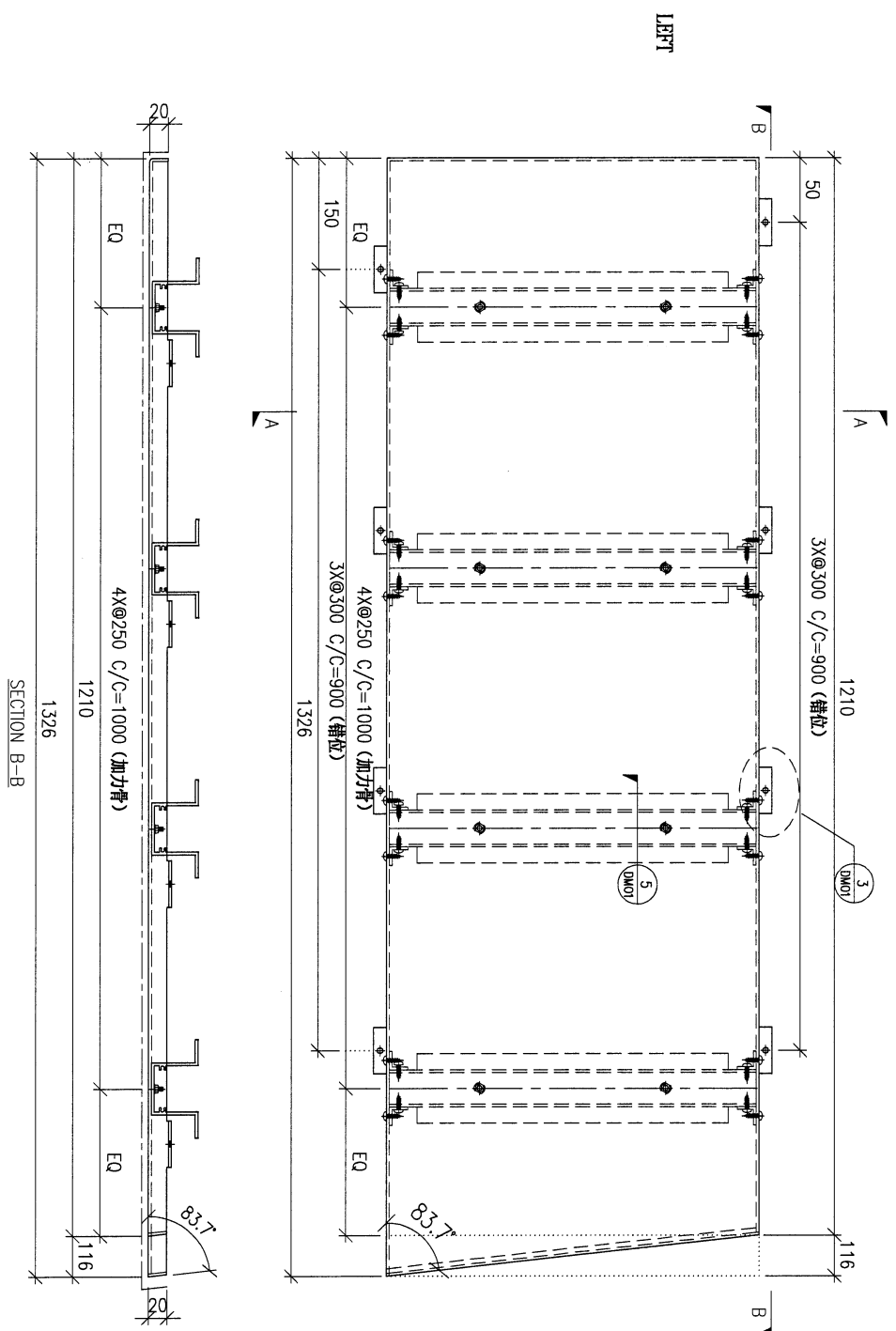
PROJECT				MATERIAL				COATING		COLOUR		MARK. NO.	QTY.
YIN PING ROAD KOWLOON FEATURE WALL (PHASE 1)				3mm铝板				PVF2		EC-DG-D334232-ZD1(SS-01)		-	-
REV.	CHANGED DATE BY	PART NUMBER	Dim. A	Dim. B	Dim. C	Dim. D	Dim. E	Dim. F	Dim. G	Dim. H	QTY.	Inv. Code	ASSEMBLE ON PARTS
-		FW1-AP180	-	-	-	-	-	-	-	-	1		

注：地盘用
注：工地复尺



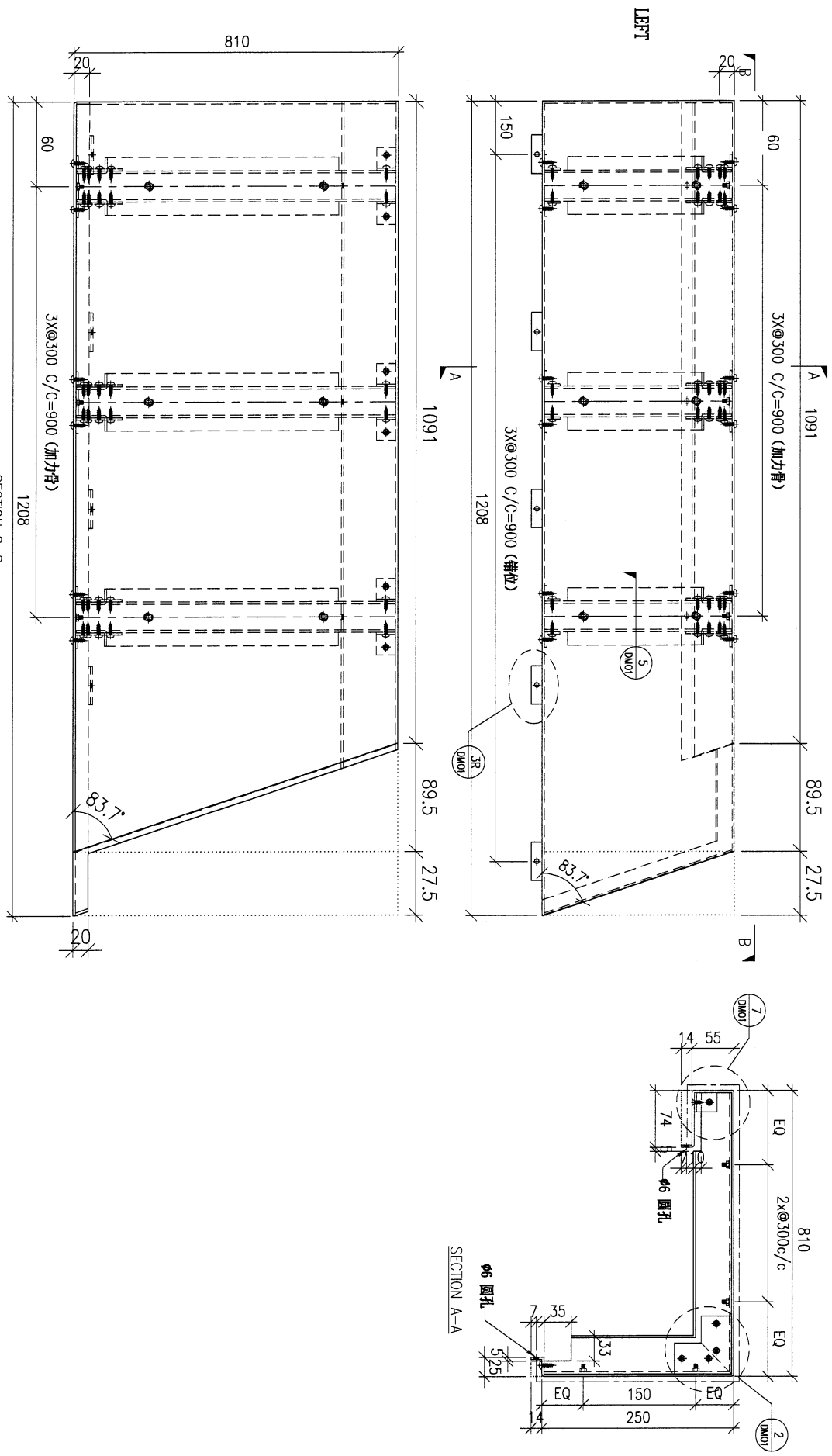
DWG. NO.		REV.		SCALE		DATE		DRAWN BY		APPROVED BY	
FW1-AP180		-		-		01-04-2022		-		-	

PROJECT				MATERIAL				COATING		COLOUR		MARK. NO.		QTY.	
YIN PING ROAD KOWLOON FEATURE WALL (PHASE 1)				3mm铝板				PVF2		EC-DG-D334232-ZD1(SS-01)		-		-	
REV.	CHANGED DATE BY	PART NUMBER	Dim. A	Dim. B	Dim. C	Dim. D	Dim. E	Dim. F	Dim. G	Dim. H	QTY.	Inv. Code	ASSEMBLE ON PARTS		
-		FW1-AP181	-	-	-	-	-	-	-	-	1				
													注: 地盘用		
													注: 工地复尺		

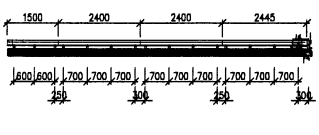
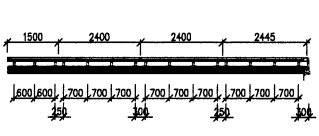
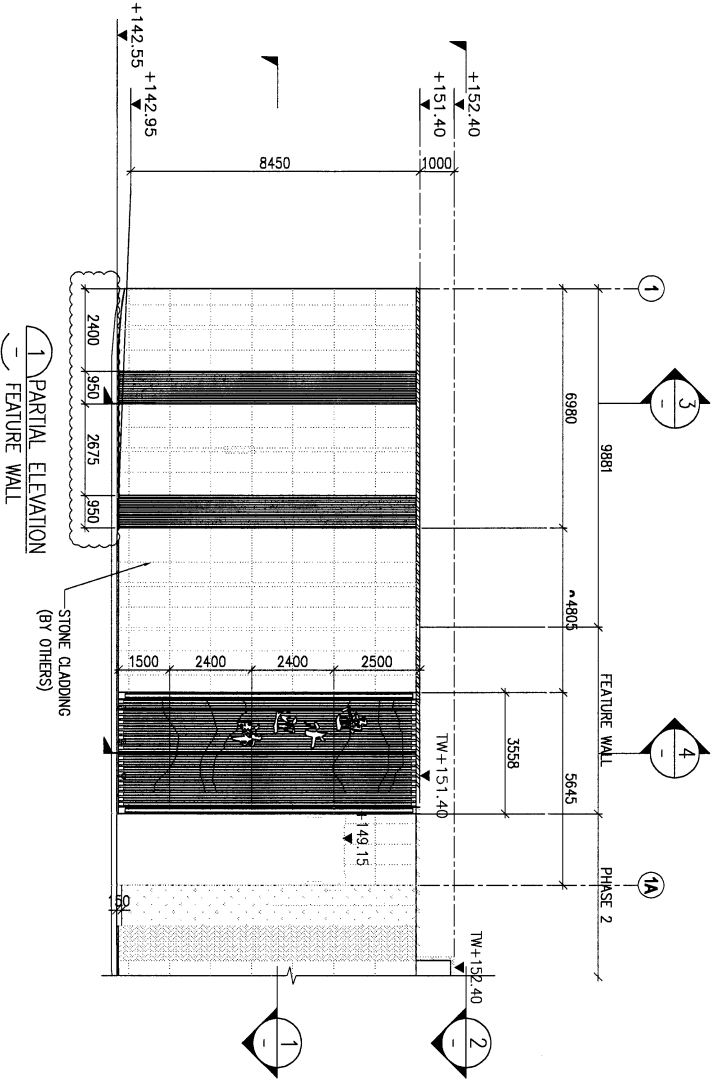


DWG. NO.		REV.		SCALE		DATE		DRAWN BY		APPROVED BY	
FW1-AP181		-		-		01-04-2022		-		-	

PROJECT				MATERIAL				COATING		COLOUR		MARK. NO.		QTY.	
YIN PING ROAD KOWLOON FEATURE WALL (PHASE 1)				3mm铝板				PVF2		EC-DG-D334232-ZD1 (SS-011)		-		-	
REV. OR REV. BY	PART NUMBER	Dim. A	Dim. B	Dim. C	Dim. D	Dim. E	Dim. F	Dim. G	Dim. H	QTY.	Inv. Code	ASSEMBLE ON PARTS			
-	FW1-AP182	-	-	-	-	-	-	-	-	1					
													注: 地盘用		
													注: 工地复尺		

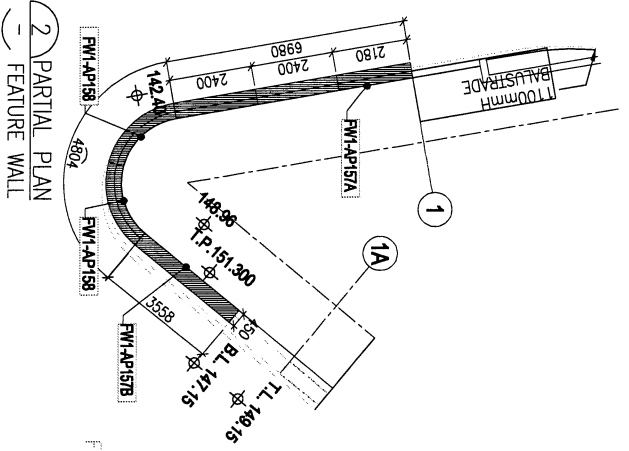
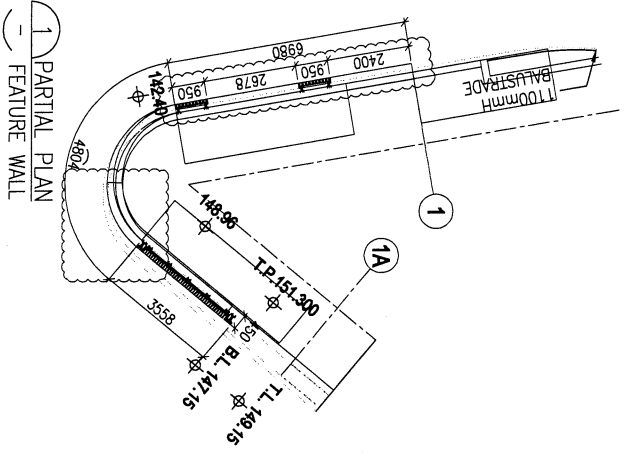


DWG. NO.	REV.	SCALE	DATE	DRAWN BY	APPROVED BY
FW1-AP182	-	-	01-04-2022	-	-



3 SECTION
- FEATURE WALL

4 SECTION
- FEATURE WALL



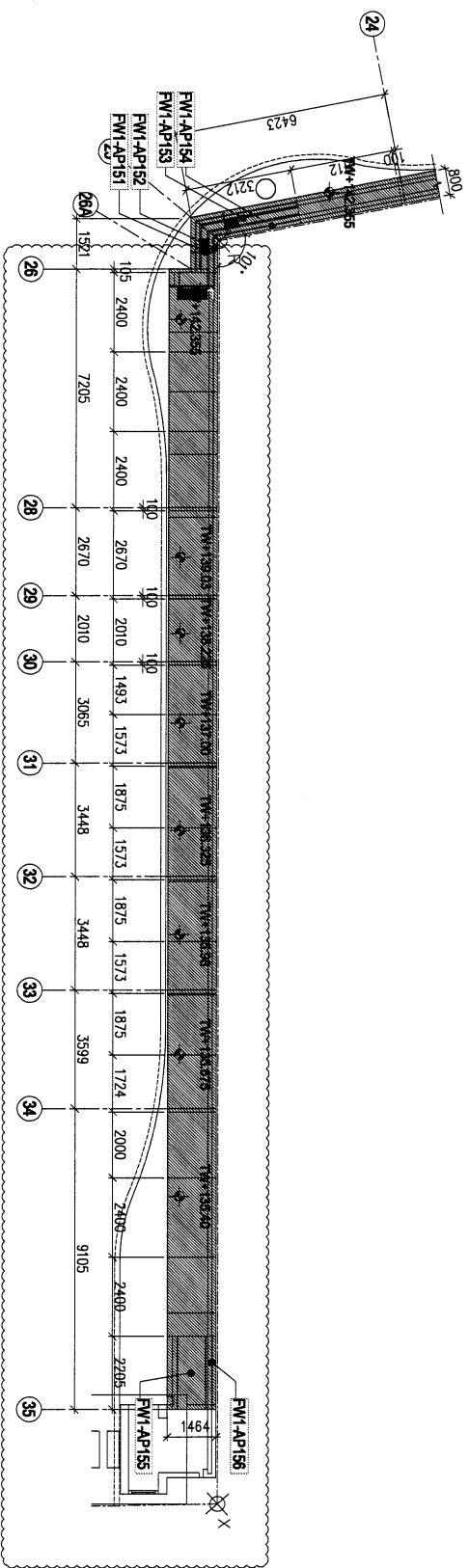
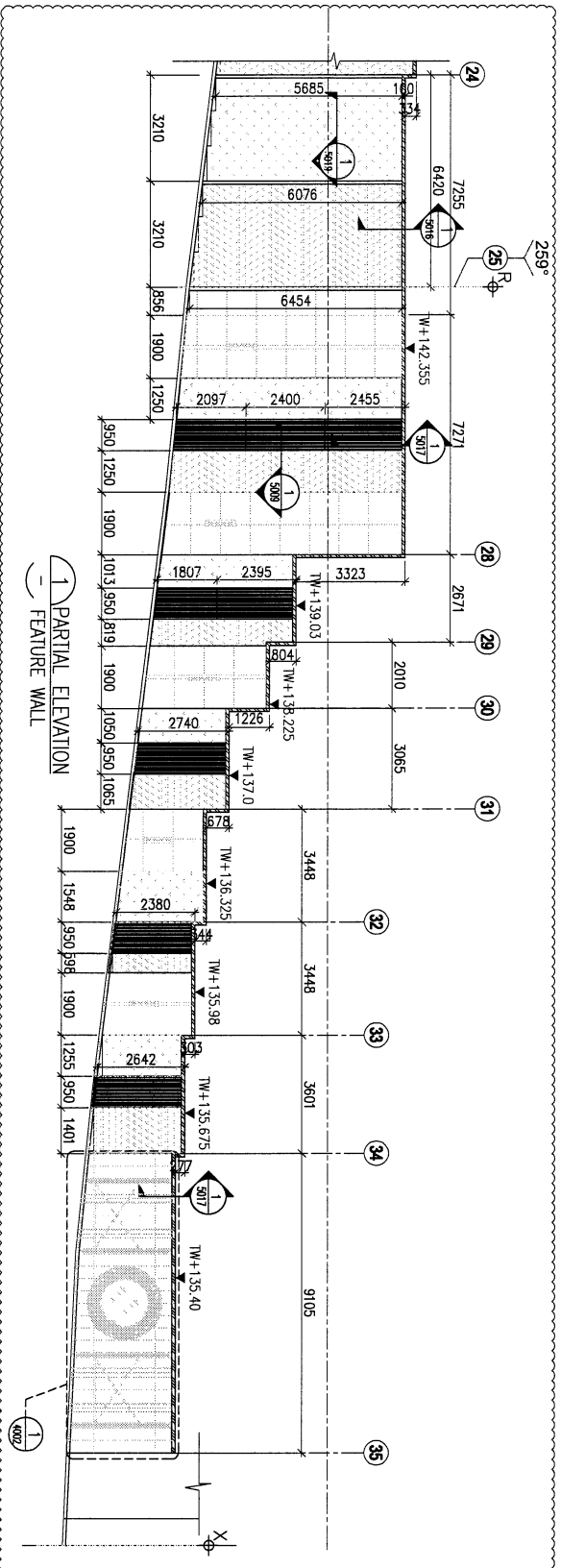
LEGEND:

ALUM. GRILLE

3mm THK. ALUM. CLADDING

FEATURE WALL 柱板位置圖 (part 3)

<p>DATE: 19-Apr-23 SCALE: 1:150 (A3)</p> <p>DRAWN BY: LHR CHECKED BY:</p>		<p>DATE: 19-Apr-23</p> <p>DWG NO.: 0853-FW-3007E</p>	
<p>PROJECT: PROPOSED RESIDENTIAL DEVELOPMENT AT N.K.K.L. 6542 YIN PING ROAD KOWLOON</p>		<p>JOB NO.: J-853</p>	
<p>TITLE: PARTIAL ELEVATION & PLAN OF FEATURE WALL (PHASE 1)</p>		<p>REV. NO.: 0853-FW-3007E</p>	
<p>CLIENT: SHIMAO GROUP HOLDINGS LIMITED</p>		<p>ARCHITECT: YONG TUNG & PARTNERS LIMITED</p>	
<p>MAIN CONTRACTOR: 協興建築有限公司 HIP HING CONSTRUCTION CO LTD</p>		<p>STRUCTURAL ENGINEER: C.M.WONG & ASSOCIATES LTD</p>	
<p>FAÇADE CONSULTANT: MENYHARDT</p>		<p>NOTE:</p> <ol style="list-style-type: none"> 1. ALL DIMENSIONS ARE IN mm. 2. ALL ELEVATIONS ARE VIEWED FROM OUTSIDE. 3. ALL DIMENSIONS TO BE VIEWED ON SITE. 4. ALL DIMENSIONS TO BE VIEWED ON SITE. 	
<p>LEGEND:</p> <p>1. DETAIL MARK NO.</p> <p>2. REFER SHEET NO.</p> <p>3. 1. F.F.L. — FINISHED FLOOR LEVEL.</p> <p>2. S.F.L. — STRUCTURAL FLOOR LEVEL.</p> <p>3. — REVERSED DETAIL.</p>		<p>DATE: 19-Apr-23</p> <p>DWG NO.: 0853-FW-3007E</p>	



2 PARTIAL PLAN
FEATURE WALL

FEATURE WALL 特征墙位图 (part 13)

- LEGEND:
- ALUM. GRILLE
 - 3mm THK. ALUM. CLADDING

<p>BO. REF. :</p> <p>CLIENT : SHIMAO GROUP HOLDINGS LIMITED</p> <p>ARCHITECT : HONG TUNG & PARTNERS LIMITED</p> <p>MAIN CONTRACTOR : 協興建築有限公司 HIP HING CONSTRUCTION CO LTD</p> <p>STRUCTURAL ENGINEER : C M WONG & ASSOCIATES LTD 黃志明建築工程師有限公司</p> <p>FAÇADE CONSULTANT : MENYARDT</p>		<p>NOTE:</p> <ol style="list-style-type: none"> ALL DIMENSIONS ARE IN mm. ALL ELEVATIONS ARE VIEWED FROM OUTSIDE. ALL DIMENSIONS TO BE FORMED ON SITE. ALL OVER FINISHES. <p>LEGEND:</p> <ul style="list-style-type: none"> DETAIL WORK NO. REFER SHEET NO. 1. F.F.L. — FINISHED FLOOR LEVEL. 2. S.F.L. — STRUCTURAL FLOOR LEVEL. 3. — REVERSED DETAIL. 	
<p>JOB NO. : J-853</p> <p>PROJECT : PROPOSED RESIDENTIAL DEVELOPMENT AT N.K.L.L. 6542 YIN PING ROAD KOWLOON</p> <p>TITLE : PARTIAL ELEVATION & PLAN OF FEATURE WALL (PHASE 1)</p> <p>DATE : 19-Apr-23 SCALE : 1:150 (A3)</p> <p>DRAWN BY : LHR CHECKED BY :</p>	<p>DATE 8-8-2023 MIDI Architectural Visualization Ltd. Tel: 34388211-4 Fax: (852) 2777856</p> <p>HWK NO. : J853-FW-3003E REV. : 0</p>	<p>DATE : 19-Apr-23</p> <p>SCALE : 1:150 (A3)</p> <p>DRAWN BY : LHR CHECKED BY :</p>	<p>DATE 8-8-2023 MIDI Architectural Visualization Ltd. Tel: 34388211-4 Fax: (852) 2777856</p> <p>HWK NO. : J853-FW-3003E REV. : 0</p>