

工程指示 / 要求簡箋 ENGINEER INSTRUCTIONS(E.I.)

工程指示編號:	EI- 6443	修改版本:	-
	HK-1510		
工程編號:	J 853	工程名稱:	延坪道
收件人:	生統	發件人:	Joe Chan
工程項目:	非標準GB欄河 補拆圖	日期:	06/07/2023

<input checked="" type="checkbox"/> 原合約工程包	<input type="checkbox"/> 原合約工程加 / 減賬 QT-	<input type="checkbox"/> 新工程報價 QT-
--	--	------------------------------------

信件批核號碼/圖紙參考編號:	批核模具圖紙編號:
客戶指示附件:	管理內部批簽署:

<input type="checkbox"/> 初步鋁料 B.M.	<input type="checkbox"/> 加工拆圖, 然後生產	<input type="checkbox"/> 尺寸表
<input type="checkbox"/> 正式鋁料 B.M.	<input type="checkbox"/> 技術上資料/指示	<input type="checkbox"/> 報價
<input type="checkbox"/> 配件 B.M.	<input type="checkbox"/> 樣辦或貨品說明書	<input type="checkbox"/> 分判合約
<input type="checkbox"/> 其他:		

內容: 現發現非標欄河有達漏, 請按 EI5944 之資料, 安排拆圖. 附上拆圖之位置資料.

① T1, 23/F, A & T1, 23/F, B

② T7, 26/F, B (2幅).

完成上列要求日期: 13/7/2023 ASAP

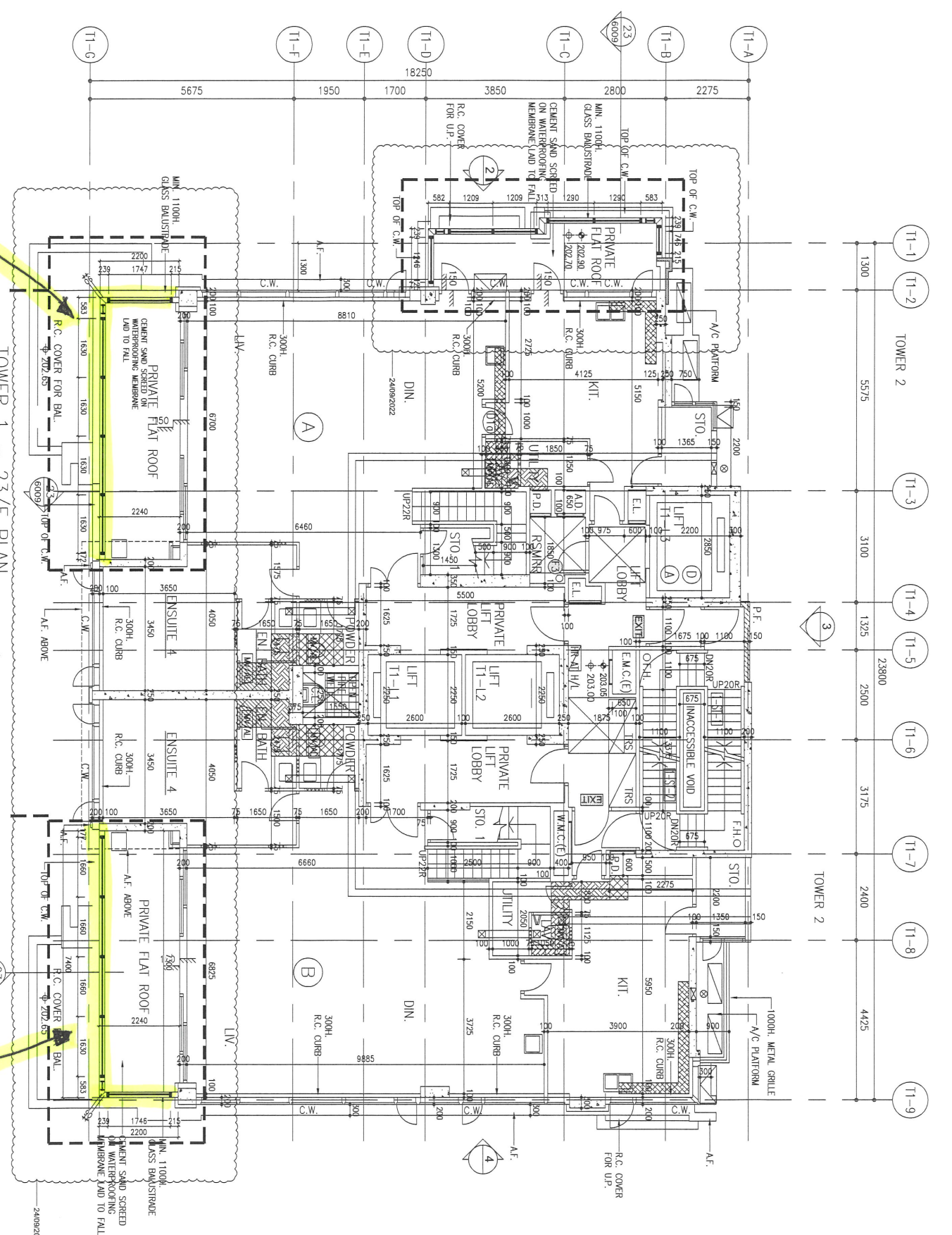
國內

<input type="checkbox"/> 生產技術總監	<input type="checkbox"/> 連附件	<input type="checkbox"/> 技術部	<input type="checkbox"/> 連附件	<input type="checkbox"/> 生產部	<input type="checkbox"/> 連附件
<input type="checkbox"/> 採購部	<input type="checkbox"/> 連附件	<input checked="" type="checkbox"/> 生產統籌部	<input checked="" type="checkbox"/> 連附件	<input type="checkbox"/> 報關組	<input type="checkbox"/> 連附件
<input type="checkbox"/> 質檢部	<input type="checkbox"/> 連附件	<input type="checkbox"/> 會計部	<input type="checkbox"/> 連附件	<input type="checkbox"/> 機械設計部	<input type="checkbox"/> 連附件
<input type="checkbox"/> 香港辦	<input type="checkbox"/> 連附件	<input type="checkbox"/> 其他:			

香港

<input type="checkbox"/> 行政部	<input type="checkbox"/> 連附件	<input type="checkbox"/> 會計部	<input type="checkbox"/> 連附件	<input type="checkbox"/> 統籌部	<input type="checkbox"/> 連附件	<input type="checkbox"/> 工程部	<input type="checkbox"/> 連附件
<input type="checkbox"/> 採購部	<input type="checkbox"/> 連附件	<input type="checkbox"/> QS部	<input type="checkbox"/> 連附件	<input type="checkbox"/> 地盤管理	<input type="checkbox"/> 連附件	<input type="checkbox"/> 維修部	<input type="checkbox"/> 連附件

*發件人簽署:		*組別成員批核簽署:	
傳遞編號:	HK1510/23	項目經理簽署:	



TOWER 1 - 23/F PLAN  
(LOWER LEVEL OF PENTHOUSE DUPLEX)

T1, 23A

T1, 23B, B

B.O. REF :

CLIENT :  
**SHIMAO GROUP HOLDINGS LIMITED**

ARCHITECT :  
**WONG TUNG & PARTNERS LIMITED**

MAIN CONTRACTOR :  
**HIP HING CONSTRUCTION CO LTD**

STRUCTURAL ENGINEER :  
**ICMA C M WONG & ASSOCIATES LTD**

FAÇADE CONSULTANT :  
**WENHARDT**

NOTE :  
1. ALL DIMENSIONS ARE IN MM.  
2. ALL ELEVATIONS ARE VIEWED FROM OUTSIDE.  
3. ALL DIMENSIONS TO BE VERIFIED ON SITE BEFORE FABRICATION.

LEGEND :  
① - CENTER MARK NO.  
② - CENTER SHEET NO.  
1. F.F.L. - FINISHED FLOOR LEVEL  
2. S.F.L. - STRUCTURAL FLOOR LEVEL  
3. Ⓜ - REVERSED DETAIL

NO.	DATE	REVISION
1	J-853	

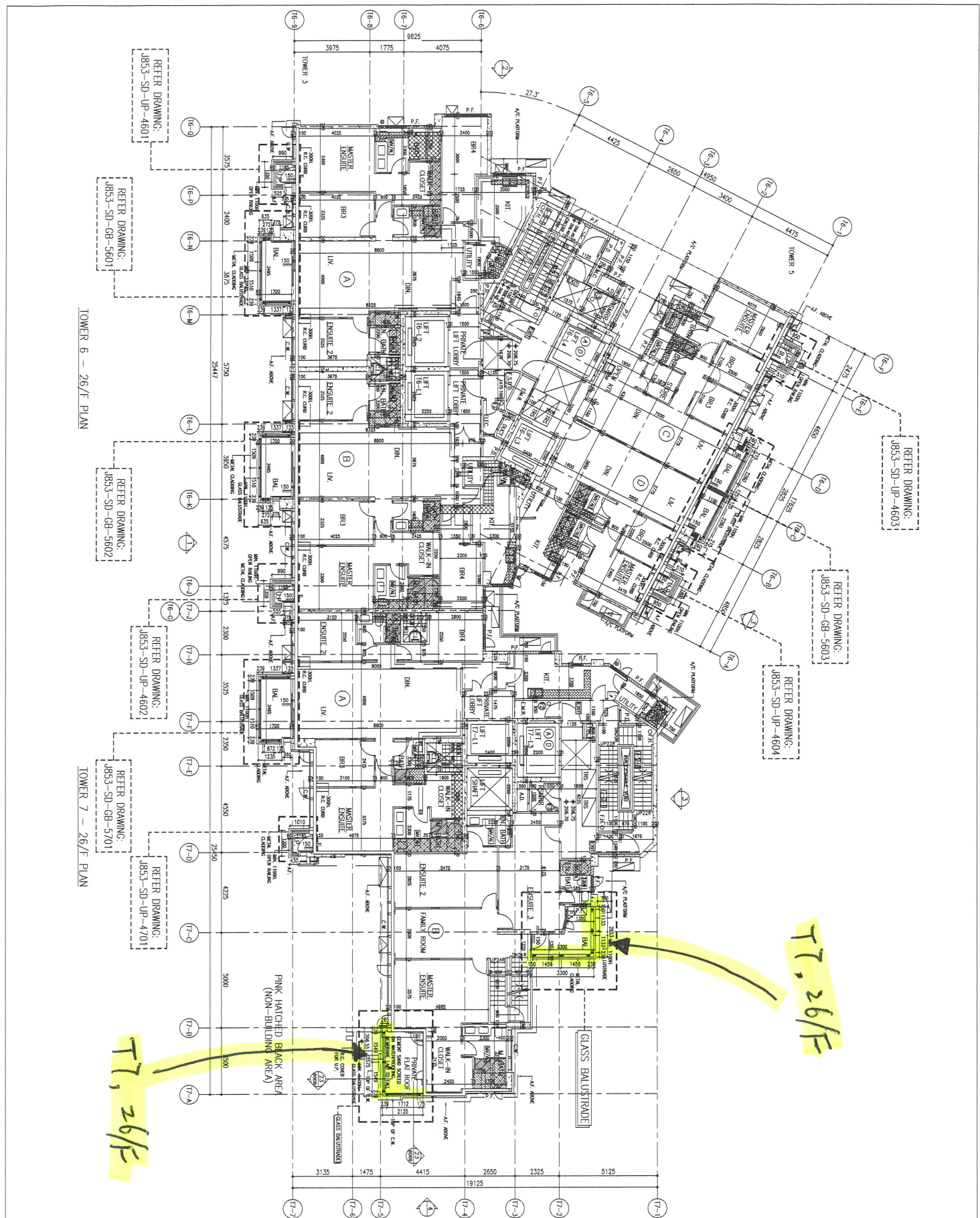
PROJECT : PROPOSED RESIDENTIAL DEVELOPMENT AT NIKILL, 6542 TN PING ROAD, KOWLOON

TITLE : LOCATION PLAN FOR BALUSTRADE AT TOWER 1 (23/F)

DATE : 17-May-2021 SCALE : 1:100

DRAWN BY : Ivan CHECKED BY :

美特經貿有限公司  
MIDI ADVANCED FABRICATION LTD.  
Unit 5-8, Sunny Industrial Centre, 1/F  
610 Chee Koo Ling Road, Kowloon  
Tel: (853) 27272865 Fax: (853) 27272865  
DWG NO. : 853-S0-09-PL-3103 REV. : A



TOWER 6 - 26/F PLAN

TOWER 7 - 26/F PLAN

T7, 26/F

T7, 26/F

B.D. REF: . . . . .

CLIENT: SHIMAO GROUP HOLDINGS LIMITED

ARCHITECT: WONG TUNG & PARTNERS LIMITED

MAIN CONTRACTOR: 亨達有限公司  
HIP HING CONSTRUCTION CO LTD

STRUCTURAL ENGINEER: ICMA C M WONG & ASSOCIATES LTD  
香港測量師工程師有限公司

FAÇADE CONSULTANT: MENHARDT

NOTE: 1. ALL DIMENSIONS ARE IN mm.  
2. ALL ELEVATIONS ARE VIEWED FROM OUTSIDE.  
3. ALL DIMENSIONS TO BE VERIFIED ON SITE BEFORE FABRICATION.

LEGEND: 1. F.F.L. --- FINISHED FLOOR LEVEL  
2. S.F.L. --- STRUCTURAL FLOOR LEVEL  
3. (R) --- REVERSED DETAIL

NO.	DATE	REVISION
1	15/03/2011	ISSUED FOR PERMIT
2	15/03/2011	ISSUED FOR CONSTRUCTION
3	15/03/2011	ISSUED FOR CONSTRUCTION
4	15/03/2011	ISSUED FOR CONSTRUCTION
5	15/03/2011	ISSUED FOR CONSTRUCTION
6	15/03/2011	ISSUED FOR CONSTRUCTION
7	15/03/2011	ISSUED FOR CONSTRUCTION
8	15/03/2011	ISSUED FOR CONSTRUCTION
9	15/03/2011	ISSUED FOR CONSTRUCTION
10	15/03/2011	ISSUED FOR CONSTRUCTION
11	15/03/2011	ISSUED FOR CONSTRUCTION
12	15/03/2011	ISSUED FOR CONSTRUCTION
13	15/03/2011	ISSUED FOR CONSTRUCTION
14	15/03/2011	ISSUED FOR CONSTRUCTION
15	15/03/2011	ISSUED FOR CONSTRUCTION
16	15/03/2011	ISSUED FOR CONSTRUCTION
17	15/03/2011	ISSUED FOR CONSTRUCTION
18	15/03/2011	ISSUED FOR CONSTRUCTION
19	15/03/2011	ISSUED FOR CONSTRUCTION
20	15/03/2011	ISSUED FOR CONSTRUCTION
21	15/03/2011	ISSUED FOR CONSTRUCTION
22	15/03/2011	ISSUED FOR CONSTRUCTION
23	15/03/2011	ISSUED FOR CONSTRUCTION
24	15/03/2011	ISSUED FOR CONSTRUCTION
25	15/03/2011	ISSUED FOR CONSTRUCTION
26	15/03/2011	ISSUED FOR CONSTRUCTION
27	15/03/2011	ISSUED FOR CONSTRUCTION
28	15/03/2011	ISSUED FOR CONSTRUCTION
29	15/03/2011	ISSUED FOR CONSTRUCTION
30	15/03/2011	ISSUED FOR CONSTRUCTION
31	15/03/2011	ISSUED FOR CONSTRUCTION
32	15/03/2011	ISSUED FOR CONSTRUCTION
33	15/03/2011	ISSUED FOR CONSTRUCTION
34	15/03/2011	ISSUED FOR CONSTRUCTION
35	15/03/2011	ISSUED FOR CONSTRUCTION
36	15/03/2011	ISSUED FOR CONSTRUCTION
37	15/03/2011	ISSUED FOR CONSTRUCTION
38	15/03/2011	ISSUED FOR CONSTRUCTION
39	15/03/2011	ISSUED FOR CONSTRUCTION
40	15/03/2011	ISSUED FOR CONSTRUCTION
41	15/03/2011	ISSUED FOR CONSTRUCTION
42	15/03/2011	ISSUED FOR CONSTRUCTION
43	15/03/2011	ISSUED FOR CONSTRUCTION
44	15/03/2011	ISSUED FOR CONSTRUCTION
45	15/03/2011	ISSUED FOR CONSTRUCTION
46	15/03/2011	ISSUED FOR CONSTRUCTION
47	15/03/2011	ISSUED FOR CONSTRUCTION
48	15/03/2011	ISSUED FOR CONSTRUCTION
49	15/03/2011	ISSUED FOR CONSTRUCTION
50	15/03/2011	ISSUED FOR CONSTRUCTION
51	15/03/2011	ISSUED FOR CONSTRUCTION
52	15/03/2011	ISSUED FOR CONSTRUCTION
53	15/03/2011	ISSUED FOR CONSTRUCTION
54	15/03/2011	ISSUED FOR CONSTRUCTION
55	15/03/2011	ISSUED FOR CONSTRUCTION
56	15/03/2011	ISSUED FOR CONSTRUCTION
57	15/03/2011	ISSUED FOR CONSTRUCTION
58	15/03/2011	ISSUED FOR CONSTRUCTION
59	15/03/2011	ISSUED FOR CONSTRUCTION
60	15/03/2011	ISSUED FOR CONSTRUCTION
61	15/03/2011	ISSUED FOR CONSTRUCTION
62	15/03/2011	ISSUED FOR CONSTRUCTION
63	15/03/2011	ISSUED FOR CONSTRUCTION
64	15/03/2011	ISSUED FOR CONSTRUCTION
65	15/03/2011	ISSUED FOR CONSTRUCTION
66	15/03/2011	ISSUED FOR CONSTRUCTION
67	15/03/2011	ISSUED FOR CONSTRUCTION
68	15/03/2011	ISSUED FOR CONSTRUCTION
69	15/03/2011	ISSUED FOR CONSTRUCTION
70	15/03/2011	ISSUED FOR CONSTRUCTION
71	15/03/2011	ISSUED FOR CONSTRUCTION
72	15/03/2011	ISSUED FOR CONSTRUCTION
73	15/03/2011	ISSUED FOR CONSTRUCTION
74	15/03/2011	ISSUED FOR CONSTRUCTION
75	15/03/2011	ISSUED FOR CONSTRUCTION
76	15/03/2011	ISSUED FOR CONSTRUCTION
77	15/03/2011	ISSUED FOR CONSTRUCTION
78	15/03/2011	ISSUED FOR CONSTRUCTION
79	15/03/2011	ISSUED FOR CONSTRUCTION
80	15/03/2011	ISSUED FOR CONSTRUCTION
81	15/03/2011	ISSUED FOR CONSTRUCTION
82	15/03/2011	ISSUED FOR CONSTRUCTION
83	15/03/2011	ISSUED FOR CONSTRUCTION
84	15/03/2011	ISSUED FOR CONSTRUCTION
85	15/03/2011	ISSUED FOR CONSTRUCTION
86	15/03/2011	ISSUED FOR CONSTRUCTION
87	15/03/2011	ISSUED FOR CONSTRUCTION
88	15/03/2011	ISSUED FOR CONSTRUCTION
89	15/03/2011	ISSUED FOR CONSTRUCTION
90	15/03/2011	ISSUED FOR CONSTRUCTION
91	15/03/2011	ISSUED FOR CONSTRUCTION
92	15/03/2011	ISSUED FOR CONSTRUCTION
93	15/03/2011	ISSUED FOR CONSTRUCTION
94	15/03/2011	ISSUED FOR CONSTRUCTION
95	15/03/2011	ISSUED FOR CONSTRUCTION
96	15/03/2011	ISSUED FOR CONSTRUCTION
97	15/03/2011	ISSUED FOR CONSTRUCTION
98	15/03/2011	ISSUED FOR CONSTRUCTION
99	15/03/2011	ISSUED FOR CONSTRUCTION
100	15/03/2011	ISSUED FOR CONSTRUCTION