

工程指示 / 要求簡箋 ENGINEER INSTRUCTIONS(E.I.)

工程指示編號:	EI- 6386	修改版本:	-
	HK-1407		
工程編號:	J 853	工程名稱:	延坪道
收件人:	生統	發件人:	Joe Chan
工程項目:	Feature Wall 廠用鋁板 (第二批)	日期:	26/06/2023

<input checked="" type="checkbox"/> 原合約工程包	<input type="checkbox"/> 原合約工程加 / 減賬 QT-	<input type="checkbox"/> 新工程報價 QT-
--	--	------------------------------------

信件批核號碼/圖紙參考編號:	批核模具圖紙編號:
客戶指示附件:	管理內部批簽署:

<input type="checkbox"/> 初步鋁料 B.M.	<input type="checkbox"/> 加工拆圖, 然後生產	<input type="checkbox"/> 尺寸表
<input type="checkbox"/> 正式鋁料 B.M.	<input type="checkbox"/> 技術上資料/指示	<input type="checkbox"/> 報價
<input type="checkbox"/> 配件 B.M.	<input type="checkbox"/> 樣辦或貨品說明書	<input type="checkbox"/> 分判合約
<input checked="" type="checkbox"/> 其他: 鋁板 .		

內容: 請依附件資料, 生產鋁板  
(用於 EI 6387)

完成上列要求日期: 15/7/2023 ASAP

國內

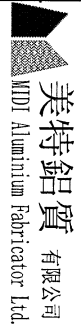
<input type="checkbox"/> 生產技術總監	<input type="checkbox"/> 連附件	<input type="checkbox"/> 技術部	<input type="checkbox"/> 連附件	<input type="checkbox"/> 生產部	<input type="checkbox"/> 連附件
<input type="checkbox"/> 採購部	<input type="checkbox"/> 連附件	<input checked="" type="checkbox"/> 生產統籌部	<input checked="" type="checkbox"/> 連附件	<input type="checkbox"/> 報關組	<input type="checkbox"/> 連附件
<input type="checkbox"/> 質檢部	<input type="checkbox"/> 連附件	<input type="checkbox"/> 會計部	<input type="checkbox"/> 連附件	<input type="checkbox"/> 機械設計部	<input type="checkbox"/> 連附件
<input type="checkbox"/> 香港辦	<input type="checkbox"/> 連附件	<input type="checkbox"/> 其他:			

香港

<input type="checkbox"/> 行政部	<input type="checkbox"/> 連附件	<input type="checkbox"/> 會計部	<input type="checkbox"/> 連附件	<input type="checkbox"/> 統籌部	<input type="checkbox"/> 連附件	<input type="checkbox"/> 工程部	<input type="checkbox"/> 連附件
<input type="checkbox"/> 採購部	<input type="checkbox"/> 連附件	<input type="checkbox"/> QS部	<input type="checkbox"/> 連附件	<input type="checkbox"/> 地盤管理	<input type="checkbox"/> 連附件	<input type="checkbox"/> 維修部	<input type="checkbox"/> 連附件

*發件人簽署:		*組別成員批核簽署:	
傳遞編號:	HK 1407 / 23	項目經理簽署:	

廠用鋁板

 美特鋁質有限公司 MOT Aluminum Fabricator Ltd.		工程號: J-853 地盤名稱: 延坪路 項目類別: 特征牆(1區)	計算: ming 核對: 批准:	日期: 2023.06.15 日期: 日期:	送呈: 副本: 日期:	JOE						
廠用鋁板B.M.表 (part2)		修改版次:	A/C Code:	總V.F.:	總重量: 884.48	圖紙編號						
BM編號:					126,900							
序號	修改內容	鋁板圖號	鋁板名稱	顏色	實用	後備	總數	總重量	平方米		總V.F.	
									單件展開面積	總展開面積		
1		FW1-AP59A	3mm厚鋁板	EC-DG-D334232-ZD1 (SS-01)	2	0	2	14.170	0.871	1.743	0.871	1.743
2		FW1-AP59B	3mm厚鋁板	EC-DG-D334232-ZD1 (SS-01)	1	0	1	3.899	0.480	0.480	0.480	0.480
3		FW1-AP60A	3mm厚鋁板	EC-DG-D334232-ZD1 (SS-01)	14	0	14	99.193	0.871	12.201	0.871	12.201
4		FW1-AP60B	3mm厚鋁板	EC-DG-D334232-ZD1 (SS-01)	4	0	4	27.183	0.836	3.344	0.836	3.344
5		FW1-AP60C	3mm厚鋁板	EC-DG-D334232-ZD1 (SS-01)	4	0	4	30.367	0.934	3.735	0.934	3.735
6		FW1-AP61A	3mm厚鋁板	EC-DG-D334232-ZD1 (SS-01)	1	0	1	7.878	0.969	0.969	0.969	0.969
7		FW1-AP61AR	3mm厚鋁板	EC-DG-D334232-ZD1 (SS-01)	1	0	1	7.878	0.969	0.969	0.969	0.969
8		FW1-AP61BR	3mm厚鋁板	EC-DG-D334232-ZD1 (SS-01)	1	0	1	4.564	0.561	0.561	0.561	0.561
9		FW1-AP62A	3mm厚鋁板	EC-DG-D334232-ZD1 (SS-01)	1	0	1	7.103	0.874	0.874	0.874	0.874
10		FW1-AP62B	3mm厚鋁板	EC-DG-D334232-ZD1 (SS-01)	1	0	1	8.411	1.035	1.035	1.035	1.035
11		FW1-AP62C	3mm厚鋁板	EC-DG-D334232-ZD1 (SS-01)	2	0	2	17.400	1.070	2.140	1.070	2.140
12		FW1-AP62D	3mm厚鋁板	EC-DG-D334232-ZD1 (SS-01)	1	0	1	7.082	0.871	0.871	0.871	0.871
13		FW1-AP62E	3mm厚鋁板	EC-DG-D334232-ZD1 (SS-01)	4	0	4	20.503	0.630	2.522	0.630	2.522
14		FW1-AP62F	3mm厚鋁板	EC-DG-D334232-ZD1 (SS-01)	1	0	1	7.210	0.887	0.887	0.887	0.887
15		FW1-AP64A	3mm厚鋁板	EC-DG-D334232-ZD1 (SS-01)	1	0	1	7.444	0.916	0.916	0.916	0.916
16		FW1-AP64B	3mm厚鋁板	EC-DG-D334232-ZD1 (SS-01)	2	0	2	16.532	1.017	2.033	1.017	2.033
17		FW1-AP64C	3mm厚鋁板	EC-DG-D334232-ZD1 (SS-01)	1	0	1	9.288	1.142	1.142	1.142	1.142
18		FW1-AP64D	3mm厚鋁板	EC-DG-D334232-ZD1 (SS-01)	1	0	1	4.168	0.513	0.513	0.513	0.513
19		FW1-AP64E	3mm厚鋁板	EC-DG-D334232-ZD1 (SS-01)	3	0	3	15.811	0.648	1.945	0.648	1.945
20		FW1-AP64F	3mm厚鋁板	EC-DG-D334232-ZD1 (SS-01)	1	0	1	6.069	0.747	0.747	0.747	0.747
21		FW1-AP66A	3mm厚鋁板	EC-DG-D334232-ZD1 (SS-01)	1	0	1	8.008	0.985	0.985	0.985	0.985
22		FW1-AP66B	3mm厚鋁板	EC-DG-D334232-ZD1 (SS-01)	1	0	1	6.098	0.750	0.750	0.750	0.750

工程號:	J-853	計算:	ming	日期:	<b>2023.06.15</b>	送呈:	JOE
地盤名稱:	延坪路	核對:		日期:		副本:	
項目類別:	特征牆 (1区)	批准:		日期:			

序號	修改內容	鋁板圖號	鋁板名稱	顏色	實用	後備	總數	總重量	126,900		總重量:	884.48	圖紙編號
									總V.F.:	總V.F.:			
				A/C Code:					單件展開面積	總展開面積	單件V.F.	總V.F.	
				修改版本:					平方米	平方米	平方米	平方米	
23		FW1-AP68A	3mm厚鋁板	EC-DG-D334232-ZD1 (SS-01)	1	0	1	1.438	0.177	0.177	0.177	0.177	
24		FW1-AP68B	3mm厚鋁板	EC-DG-D334232-ZD1 (SS-01)	3	0	3	6.703	0.275	0.824	0.275	0.824	
25		FW1-AP68C	3mm厚鋁板	EC-DG-D334232-ZD1 (SS-01)	1	0	1	9.615	1.183	1.183	1.183	1.183	
26		FW1-AP68D	3mm厚鋁板	EC-DG-D334232-ZD1 (SS-01)	1	0	1	2.900	0.357	0.357	0.357	0.357	
27		FW1-AP68E	3mm厚鋁板	EC-DG-D334232-ZD1 (SS-01)	1	0	1	3.826	0.471	0.471	0.471	0.471	
28		FW1-AP68F	3mm厚鋁板	EC-DG-D334232-ZD1 (SS-01)	1	0	1	2.234	0.275	0.275	0.275	0.275	
29		FW1-AP68G	3mm厚鋁板	EC-DG-D334232-ZD1 (SS-01)	1	0	1	1.279	0.157	0.157	0.157	0.157	
30		FW1-AP68H	3mm厚鋁板	EC-DG-D334232-ZD1 (SS-01)	1	0	1	1.169	0.144	0.144	0.144	0.144	
31		FW1-AP68J	3mm厚鋁板	EC-DG-D334232-ZD1 (SS-01)	1	0	1	1.071	0.132	0.132	0.132	0.132	
32		FW1-AP71	3mm厚鋁板	EC-DG-D334232-ZD1 (SS-01)	1	0	1	9.074	1.116	1.116	1.116	1.116	
33		FW1-AP72A	3mm厚鋁板	EC-DG-D334232-ZD1 (SS-01)	1	0	1	3.696	0.455	0.455	0.455	0.455	
34		FW1-AP72B	3mm厚鋁板	EC-DG-D334232-ZD1 (SS-01)	1	0	1	2.932	0.361	0.361	0.361	0.361	
35		FW1-AP72C	3mm厚鋁板	EC-DG-D334232-ZD1 (SS-01)	1	0	1	6.645	0.817	0.817	0.817	0.817	
36		FW1-AP75A	3mm厚鋁板	EC-DG-D334232-ZD1 (SS-01)	1	0	1	6.940	0.854	0.854	0.854	0.854	
37		FW1-AP75B	3mm厚鋁板	EC-DG-D334232-ZD1 (SS-01)	1	0	1	6.072	0.747	0.747	0.747	0.747	
38		FW1-AP100L	3mm厚鋁板	EC-DG-D334232-ZD1 (SS-01)	1	0	1	9.636	1.185	1.185	1.185	1.185	
39		FW1-AP100R	3mm厚鋁板	EC-DG-D334232-ZD1 (SS-01)	1	0	1	9.636	1.185	1.185	1.185	1.185	
40		FW1-AP101L	3mm厚鋁板	EC-DG-D334232-ZD1 (SS-01)	2	0	2	18.918	1.163	2.327	1.163	2.327	
41		FW1-AP101R	3mm厚鋁板	EC-DG-D334232-ZD1 (SS-01)	2	0	2	18.918	1.163	2.327	1.163	2.327	
42		FW1-AP102L	3mm厚鋁板	EC-DG-D334232-ZD1 (SS-01)	1	0	1	5.956	0.733	0.733	0.733	0.733	
43		FW1-AP102R	3mm厚鋁板	EC-DG-D334232-ZD1 (SS-01)	1	0	1	5.956	0.733	0.733	0.733	0.733	
44		FKP-M11	2mm厚鋁板	EC-DG-D334232-ZD1 (SS-01)	85	0	85	5.183	0.008	0.638	0.008	0.638	

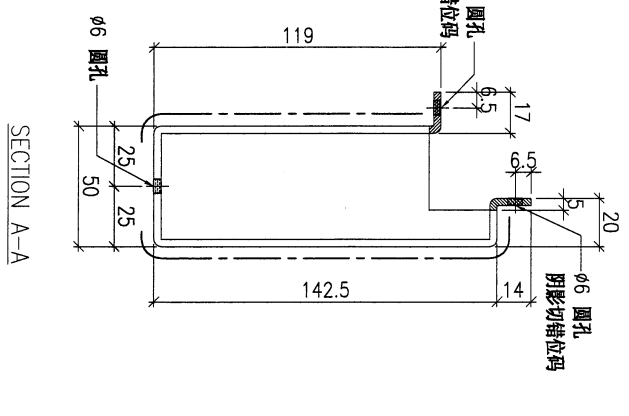
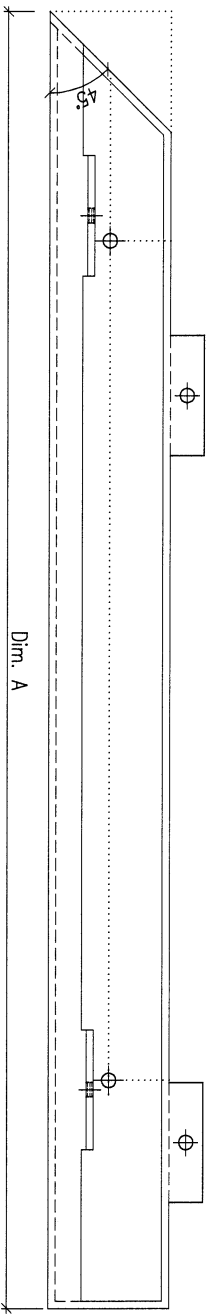
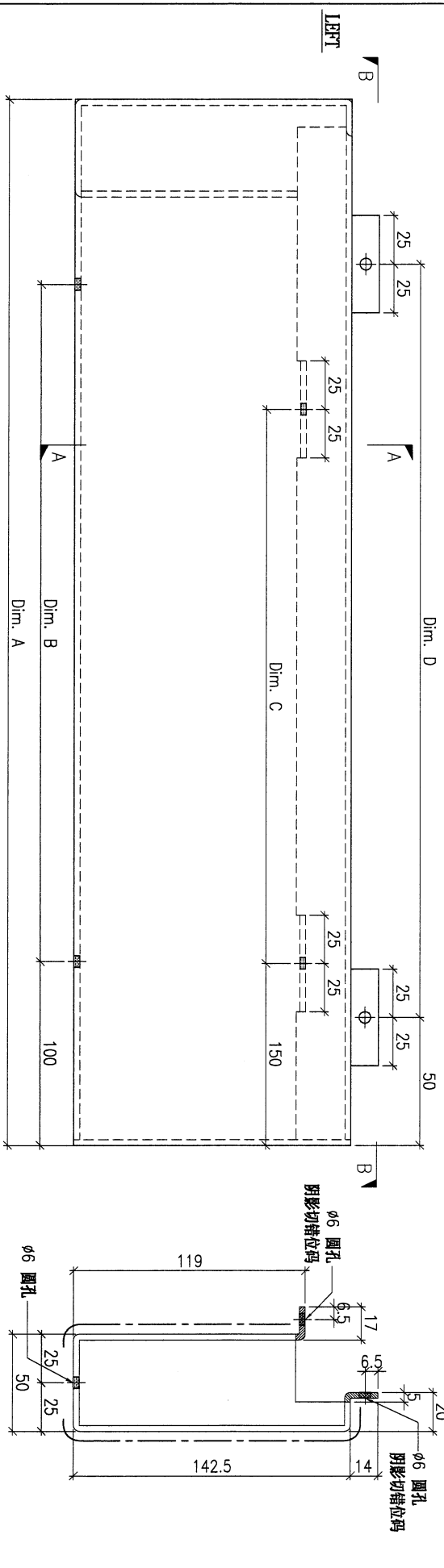
廠用鋁板B.M.表 (part2) 修改版本: A/C Code: 總V.F.: 總重量: 884.48

序號	修改內容	鋁板圖號	鋁板名稱	顏色	實用	後備	總數	總重量	126,900		總重量:		圖紙編號
									單件展開面積	總展開面積	單件V.F.	總V.F.	
									平方米	平方米	平方米	平方米	
45		FKP-M12	2mm厚鋁板	EC-DG-D334232-ZD1 (SS-01)	3	0	3	0.261	0.011	0.032	0.011	0.032	
46		FKP-M13	2mm厚鋁板	EC-DG-D334232-ZD1 (SS-01)	60	0	60	5.305	0.011	0.653	0.011	0.653	
47		FKP-M14	2mm厚鋁板	TUC106699FXLJBA-3 (SS-03)	222	0	222	18.049	0.010	2.220	0.010	2.220	
48		FKP-M15	2mm厚鋁板	TUC106699FXLJBA-3 (SS-03)	62	0	62	5.091	0.010	0.626	0.010	0.626	
49		FKP-M16	2mm厚鋁板	TUC106699FXLJBA-3 (SS-03)	84	0	84	15.366	0.023	1.890	0.023	1.890	
51		AP-G98	2mm厚鋁板	鍍化	24	0	24	1.220	0.006	0.150	0.000	0.000	
52		AP-G99	2mm厚鋁板	鍍化	24	0	24	1.107	0.006	0.136	0.000	0.000	
53		AP-G100	3mm厚鋁板	鍍化	36	0	36	0.585	0.002	0.072	0.000	0.000	
54		AP-G101	3mm厚鋁板	EC-DG-D334232-ZD1 (SS-01)	2	0	2	37.919	2.332	4.664	2.332	4.664	
55		AP-G102	3mm厚鋁板	EC-DG-D334232-ZD1 (SS-01)	2	0	2	23.260	1.431	2.861	1.431	2.861	
56		AP-G103	3mm厚鋁板	EC-DG-D334232-ZD1 (SS-01)	4	0	4	49.618	2.289	9.155	2.289	9.155	
57		AP-G104	3mm厚鋁板	EC-DG-D334232-ZD1 (SS-01)	1	0	1	12.404	2.289	2.289	2.289	2.289	
58		AP-G105	3mm厚鋁板	EC-DG-D334232-ZD1 (SS-01)	1	0	1	12.099	2.232	2.232	2.232	2.232	
59		AP-G106	3mm厚鋁板	EC-DG-D334232-ZD1 (SS-01)	1	0	1	12.404	2.289	2.289	2.289	2.289	
60		AP-G109	3mm厚鋁板	EC-DG-D334232-ZD1 (SS-01)	1	0	1	11.670	2.153	2.153	2.153	2.153	
61		AP-G110	3mm厚鋁板	EC-DG-D334232-ZD1 (SS-01)	1	0	1	10.672	1.969	1.969	1.969	1.969	
62		AP-G111	3mm厚鋁板	EC-DG-D334232-ZD1 (SS-01)	1	0	1	14.773	2.726	2.726	2.726	2.726	
63		AP-G112	3mm厚鋁板	EC-DG-D334232-ZD1 (SS-01)	1	0	1	12.911	2.382	2.382	2.382	2.382	
64		AP-G113	3mm厚鋁板	EC-DG-D334232-ZD1 (SS-01)	1	0	1	14.214	2.623	2.623	2.623	2.623	
65		AP-G115	3mm厚鋁板	EC-DG-D334232-ZD1 (SS-01)	1	0	1	19.582	3.613	3.613	3.613	3.613	
66		AP-G116	3mm厚鋁板	EC-DG-D334232-ZD1 (SS-01)	1	0	1	12.012	2.216	2.216	2.216	2.216	
66		AP-G117	3mm厚鋁板	EC-DG-D334232-ZD1 (SS-01)	2	0	2	38.436	3.546	7.091	3.546	7.091	

工程號:	J-853	計算:	ming	日期:	2023.06.15	送呈:	JOE
地盤名稱:	延坪路	校對:		日期:		副本:	
項目類別:	特征牆 (1区)	批准:		日期:			

序號	修改內容	鋁板圖號	鋁板名稱	顏色	實用	後備	總數	總重量	126,900		總重量:	884.48	圖紙編號
									單件展開面積	總展開面積			
67		AP-G118	3mm厚鋁板	EC-DG-D334232-ZD1 (SS-01)	1	0	1	22.219	4.099	4.099	4.099	4.099	
68		AP-G119	3mm厚鋁板	EC-DG-D334232-ZD1 (SS-01)	1	0	1	13.629	2.515	2.515	2.515	2.515	
69		AP-G120	3mm厚鋁板	EC-DG-D334232-ZD1 (SS-01)	2	0	2	43.611	4.023	8.046	4.023	8.046	
70													
71													
72													
總計:					698	0	698	884	77	127	77	127	

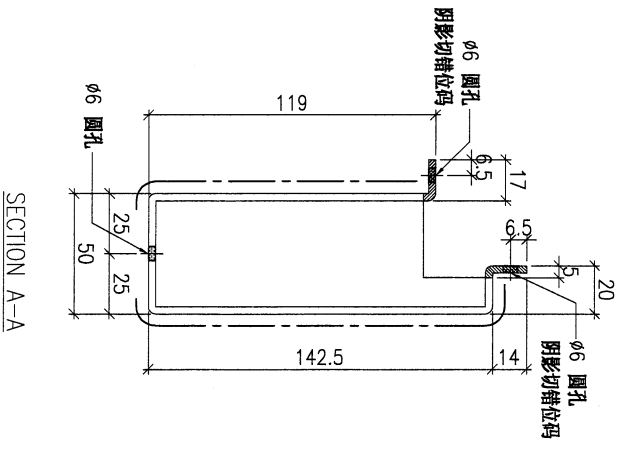
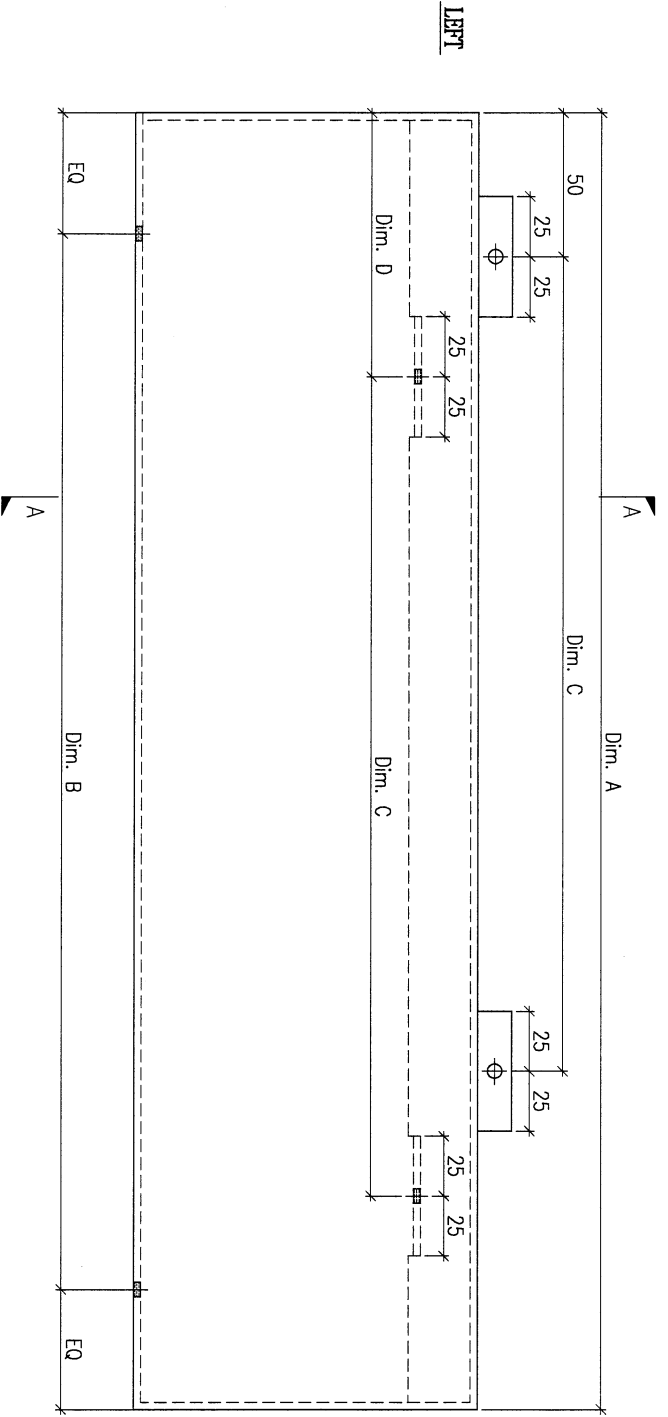
PROJECT				YIN PING ROAD KOWLOON FEATURE WALL (PHASE 1)				MATERIAL				3mm 铝板				COATING				PVF2				COLOUR				EC-DG-D334232-ZD1(SS-01)				MARK. NO.				-				QTY.				-			
CHECKED		PART NUMBER		Dim. A		Dim. B		Dim. C		Dim. D		Dim. E		Dim. F		Dim. G		Dim. H		QTY.		Inv. Code		ASSEMBLE ON PARTS				注: 工厂用																			
BMC/BP		FW1-AP59A		2397		8@280c/d		7@300c/e		7@300c/e		7@300c/e								2								注: 工地复尺																			
		FW1-AP59B		1297		4@280c/d		3@300c/e		4@300c/e										1																											



DWG. NO.		FW1-AP59		REV.		-		SCALE		-		DATE		15-06-2023		DRAWN BY		-		APPROVED BY		-	
----------	--	----------	--	------	--	---	--	-------	--	---	--	------	--	------------	--	----------	--	---	--	-------------	--	---	--

PROJECT				MATERIAL				COATING				COLOUR				MARK. NO.				QTY.			
YIN PING ROAD KOWLOON FEATURE WALL (PHASE 1)				3mm 铝板				PVF2				EC-DG-D334232-ZD1(SS-01)				-				-			
REV.	CHECKED DATE BY	PART NUMBER	Dim. A	Dim. B	Dim. C	Dim. D	Dim. E	Dim. F	Dim. G	Dim. H	QTY.	Inv. Code	ASSEMBLE ON PARTS										
-		FW1-AP60A	2398	8X@300/c	7X@300/c	150					14												
-		FW1-AP60B	2298	7X@300/c	7X@300/c	150					4												
-		FW1-AP60C	2573	8X@300/c	8X@300/c	145					4												

注：工厂用  
注：工地复尺



DWG. NO.	FW1-AP60	REV.	-	SCALE	-	DATE	15-06-2023	DRAWN BY	-	APPROVED BY	-
----------	----------	------	---	-------	---	------	------------	----------	---	-------------	---

PROJECT  
YIN PING ROAD KOWLOON  
FEATURE WALL (PHASE 1)

MATERIAL  
3mm 铝板

COATING  
PVF2

COLOUR  
EC-DG-D334232-ZD1(SS-011)

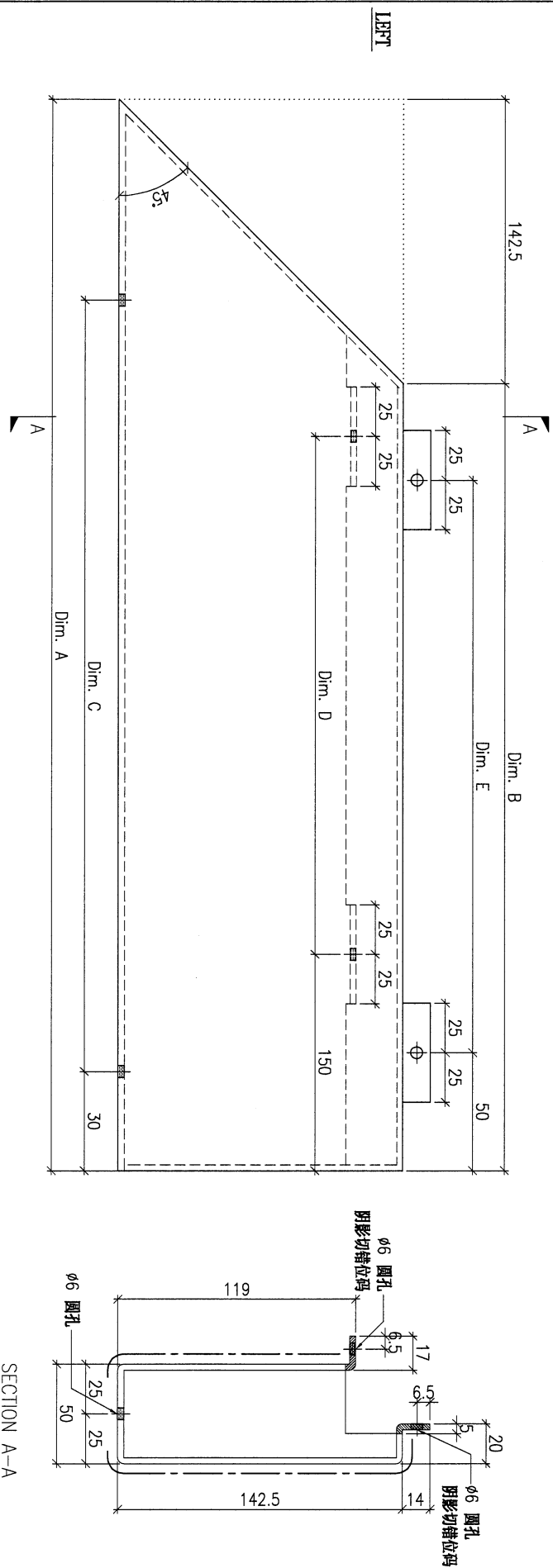
MARK. NO.  
-

QTY.  
-

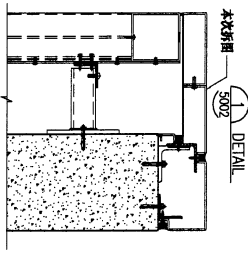
REV.	CHECKED DATE BY	PART NUMBER	Dim. A	Dim. B	Dim. C	Dim. D	Dim. E	Dim. F	Dim. G	Dim. H	QTY.	Inv. Code	ASSEMBLE ON PARTS
-		FW1-AP61A	2672	2529.5	9x@290c/c	7x@300c/4	8x@300c/c				1		注: 如图加工
-		FW1-AP61AR	2672	2529.5	9x@290c/c	7x@300c/4	8x@300c/c				1		注: 相反加工
-		FW1-AP61BR	1527	1384.5	5x@290c/c	4x@300c/4	4x@300c/c				1		注: 相反加工

注: 工厂用

注: 工地复尺



SECTION A-A



DWG. NO.	FW1-AP52	REV.	-	SCALE	-	DATE	15-06-2023	DRAWN BY	-	APPROVED BY	-
----------	----------	------	---	-------	---	------	------------	----------	---	-------------	---

PROJECT  
YIN PING ROAD KOWLOON  
FEATURE WALL (PHASE 1)

MATERIAL  
3mm 铝板

COATING  
PVF2

COLOUR  
EC-DG-D334232-ZD1 (SS-01)

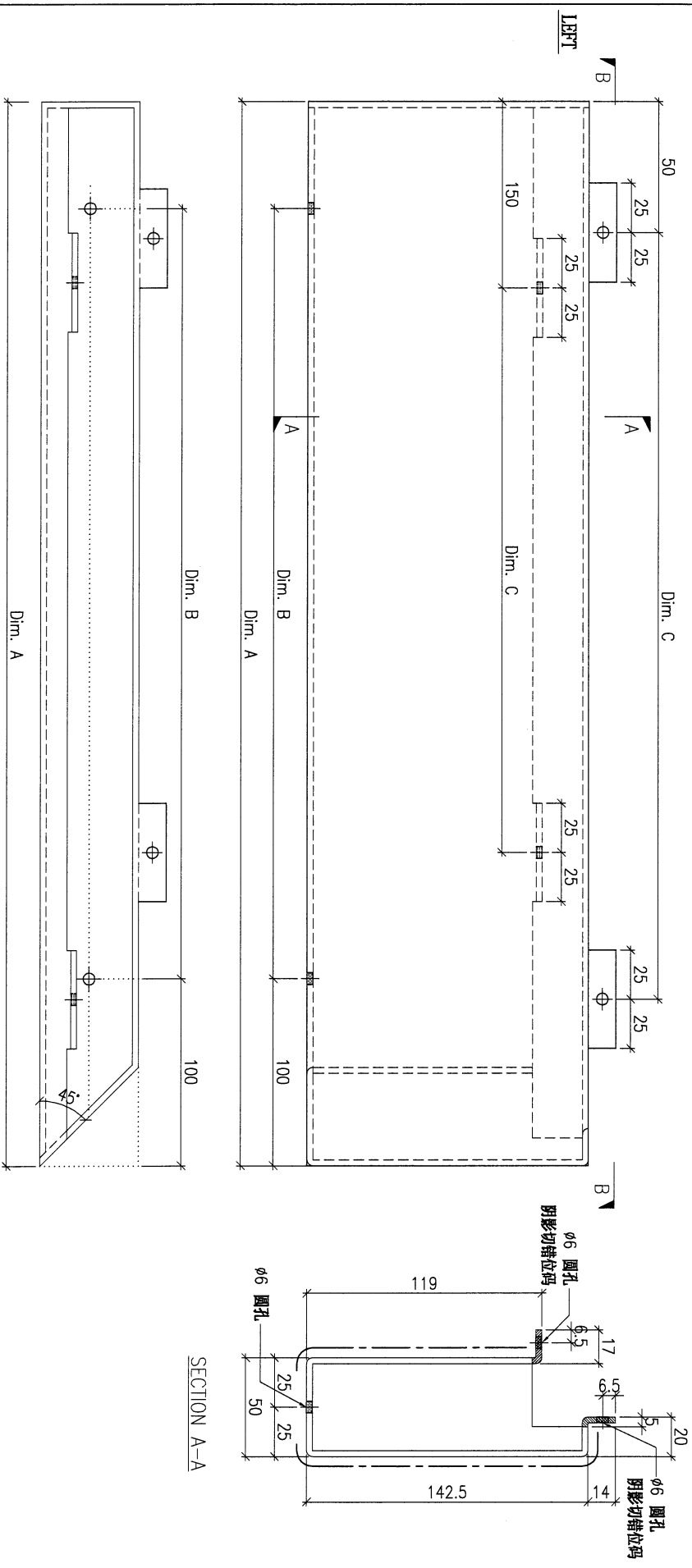
MARK. NO.  
-

QTY.  
-

REV. CHECKED DATE	PART NUMBER	Dim. A	Dim. B	Dim. C	Dim. D	Dim. E	Dim. F	Dim. G	Dim. H	QTY.	Inv. Code	ASSEMBLE ON PARTS
-	FW1-AP62A	2404	8x@280c/c	7x@300c/c	7x@300c/d					1		
-	FW1-AP62B	2856	9x@300c/c	8x@300c/c	9x@300c/d					1		
-	FW1-AP62C	2956	10x@280c/d	9x@300c/c	9x@300c/d					2		
-	FW1-AP62D	2397	8x@280c/c	7x@300c/d	7x@300c/d					1		
-	FW1-AP62E	1721	5x@260c/c	5x@300c/d	5x@300c/d					4		
-	FW1-AP62F	2441	8x@290c/c	7x@300c/d	7x@300c/d					1		

注：工厂用

注：工地复尺



DWG. NO.	FW1-AP62	REV.	-	SCALE	-	DATE	15-06-2023	DRAWN BY	-	APPROVED BY	-
----------	----------	------	---	-------	---	------	------------	----------	---	-------------	---

PROJECT  
YIN PING ROAD KOWLOON  
FEATURE WALL (PHASE 1)

MATERIAL  
3mm 铝板

COATING  
PVF2

COLOUR  
EC-DG-D334232-ZD1(SS-011)

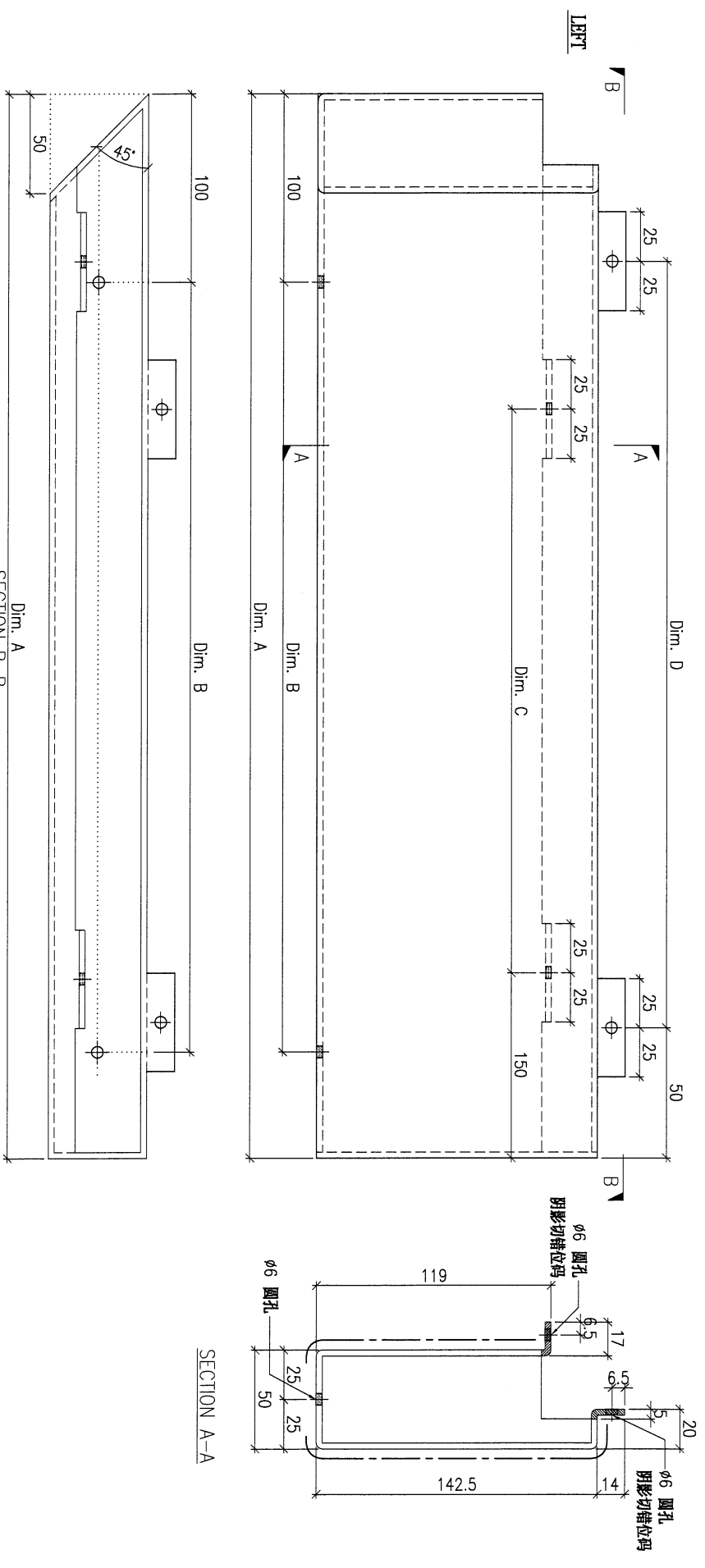
MARK. NO.  
-

QTY.  
-

REV. OR BR	CHECKED	PART NUMBER	Dim. A	Dim. B	Dim. C	Dim. D	Dim. E	Dim. F	Dim. G	Dim. H	QTY.	Inv. Code	ASSEMBLE ON PARTS
-		FW1-AP64A	2522	8x@300c/c	7x@300c/c	8x@300c/d					1		
-		FW1-AP64B	2806	9x@290c/c	8x@300c/c	9x@300c/d					2		
-		FW1-AP64C	3159	10x@300c/d	9x@300c/c	10x@300c/e					1		
-		FW1-AP64D	1390	4x@300c/c	4x@300c/d	4x@300c/d					1		
-		FW1-AP64E	1771	6x@70c/c	5x@300c/d	5x@300c/d					3		
-		FW1-AP64F	2047	7x@70c/c	6x@300c/d	6x@300c/d					1		

注：工厂用

注：工地复尺



DWG. NO.	FW1-AP64	REV.	-	SCALE	-	DATE	15-06-2023	DRAWN BY	-	APPROVED BY	-
----------	----------	------	---	-------	---	------	------------	----------	---	-------------	---

PROJECT  
YIN PING ROAD KOWLOON  
FEATURE WALL (PHASE 1)

MATERIAL  
3mm 铝板

COATING  
PVF2

COLOUR  
EC-DG-D334232-ZD1(SS-011)

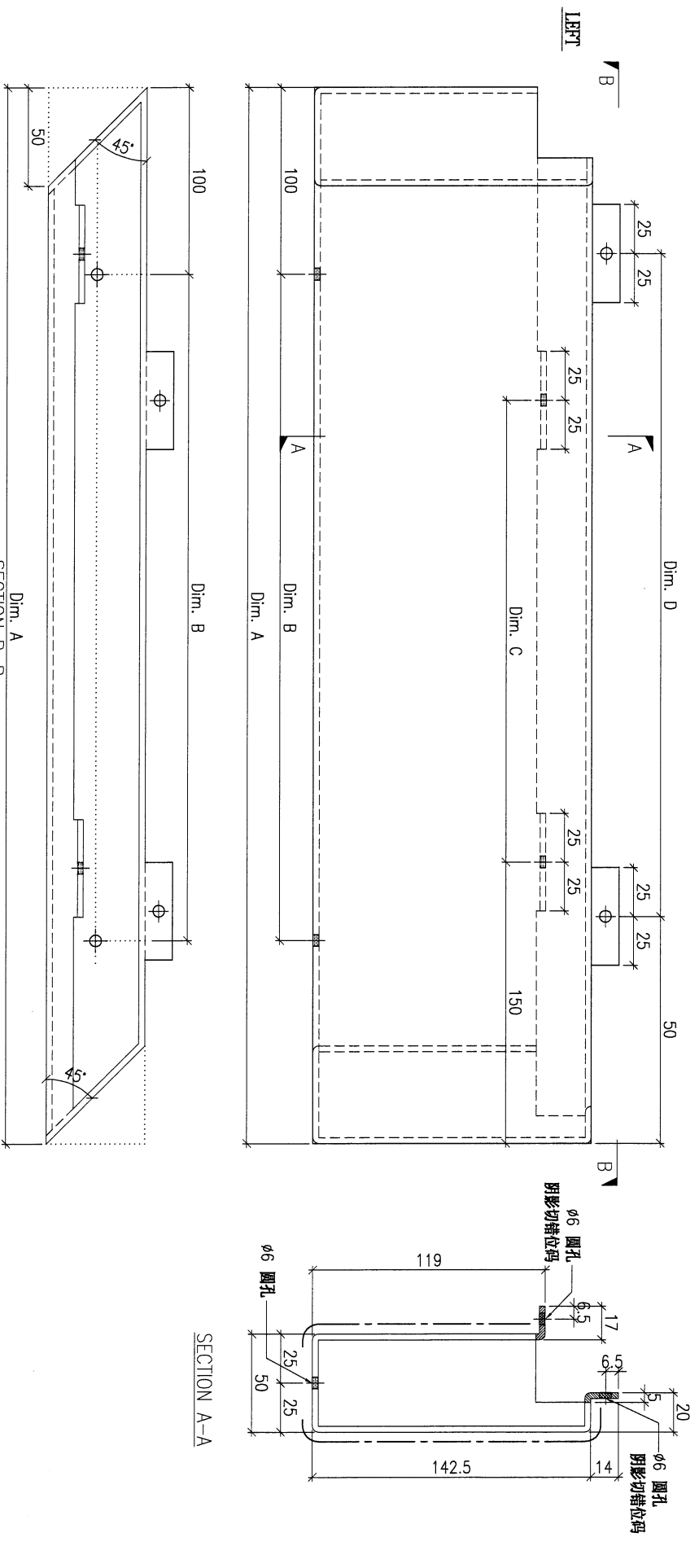
MARK. NO.  
-

QTY.  
-

REV.	CHECKED DATE BY	PART NUMBER	Dim. A	Dim. B	Dim. C	Dim. D	Dim. E	Dim. F	Dim. G	Dim. H	QTY.	Inv. Code
-		FW1-AP66A	2717	8x@280c/c	8x@300c/c	8x@300c/c					1	
-		FW1-AP66B	2057	7x@70c/c	6x@300c/c	6x@300c/c					1	

注: 工厂用

注: 工地复尺



DWG. NO.	FW1-AP66	REV.	-	SCALE	-	DATE	15-06-2023	DRAWN BY	-	APPROVED BY	-
----------	----------	------	---	-------	---	------	------------	----------	---	-------------	---

PROJECT  
YIN PING ROAD KOWLOON  
FEATURE WALL (PHASE 1)

MATERIAL  
3mm 铝板

COATING  
PVF2

COLOUR  
EC-DG-D334232-ZD11(SS-011)

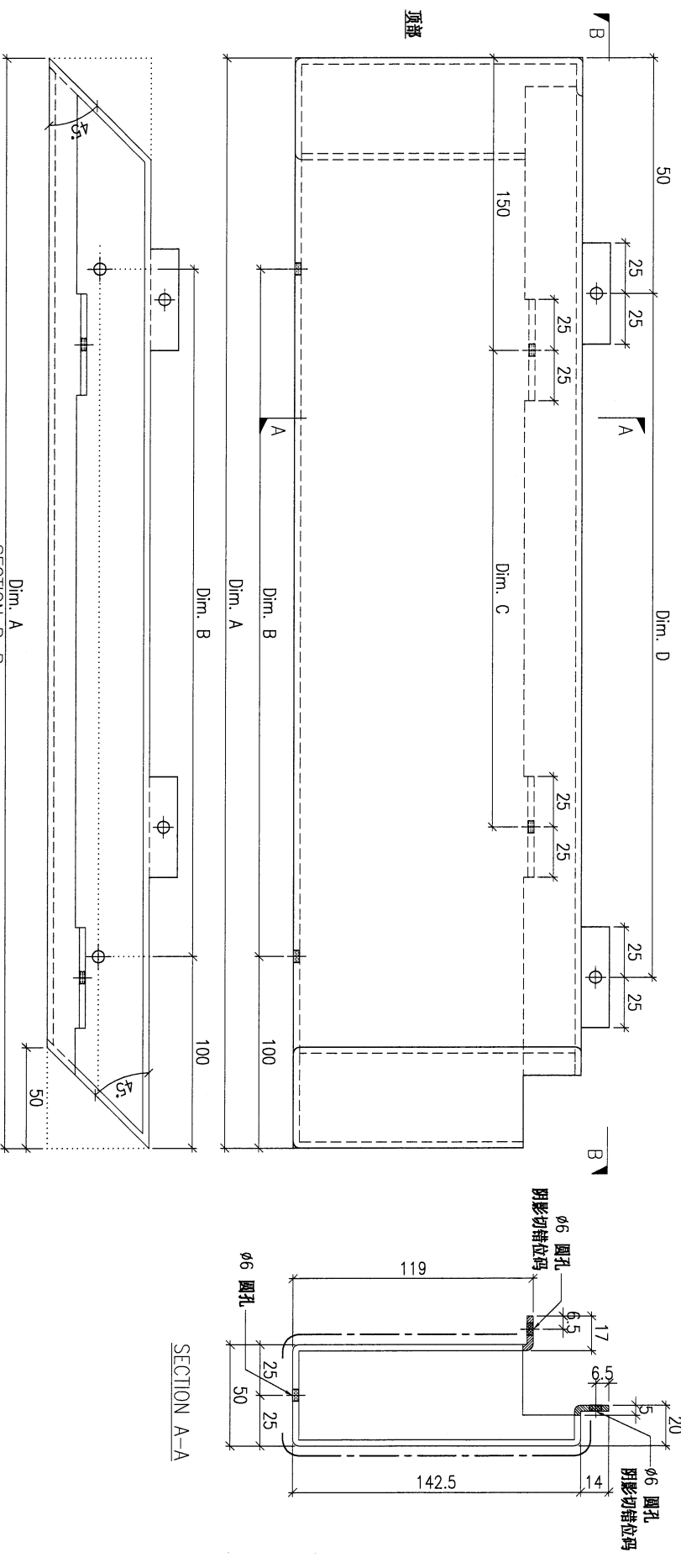
MARK. NO.  
-

QTY.  
-

REV.	CHECKED BY	PART NUMBER	Dim. A	Dim. B	Dim. C	Dim. D	Dim. E	Dim. F	Dim. G	Dim. H	QTY.	Inv. Code	ASSEMBLY ON PARTS
-		FW1-AP68A	447	1x $\phi$ 280c/c	1x $\phi$ 300c/c	1x $\phi$ 300c/c					1		
-		FW1-AP68B	722	2x $\phi$ 280c/c	1x $\phi$ 300c/c	2x $\phi$ 300c/c					3		
-		FW1-AP68C	3272	11x $\phi$ 280c/c	10x $\phi$ 300c/c	11x $\phi$ 300c/c					1		
-		FW1-AP68D	952	3x $\phi$ 250c/c	3x $\phi$ 250c/c	3x $\phi$ 250c/c					1		
-		FW1-AP68E	1272	4x $\phi$ 270c/c	4x $\phi$ 270c/c	4x $\phi$ 270c/c					1		
-		FW1-AP68F	722	2x $\phi$ 280c/c	2x $\phi$ 300c/c	2x $\phi$ 300c/c					1		
-		FW1-AP68G	392	1x $\phi$ 250c/c	1x $\phi$ 200c/c	1x $\phi$ 200c/c					1		
-		FW1-AP68H	354	1x $\phi$ 200c/c	1x $\phi$ 170c/c	1x $\phi$ 170c/c					1		
-		FW1-AP68J	320	1x $\phi$ 150c/c	1x $\phi$ 140c/c	1x $\phi$ 140c/c					1		

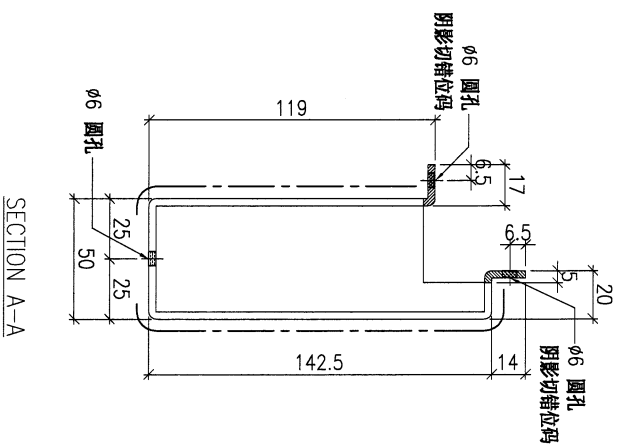
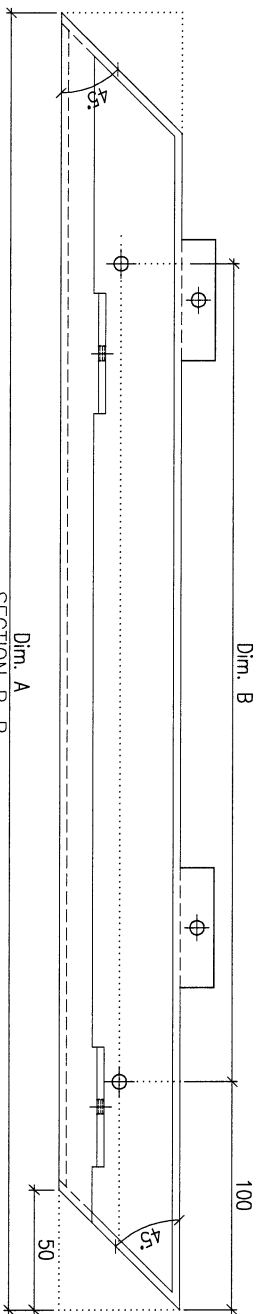
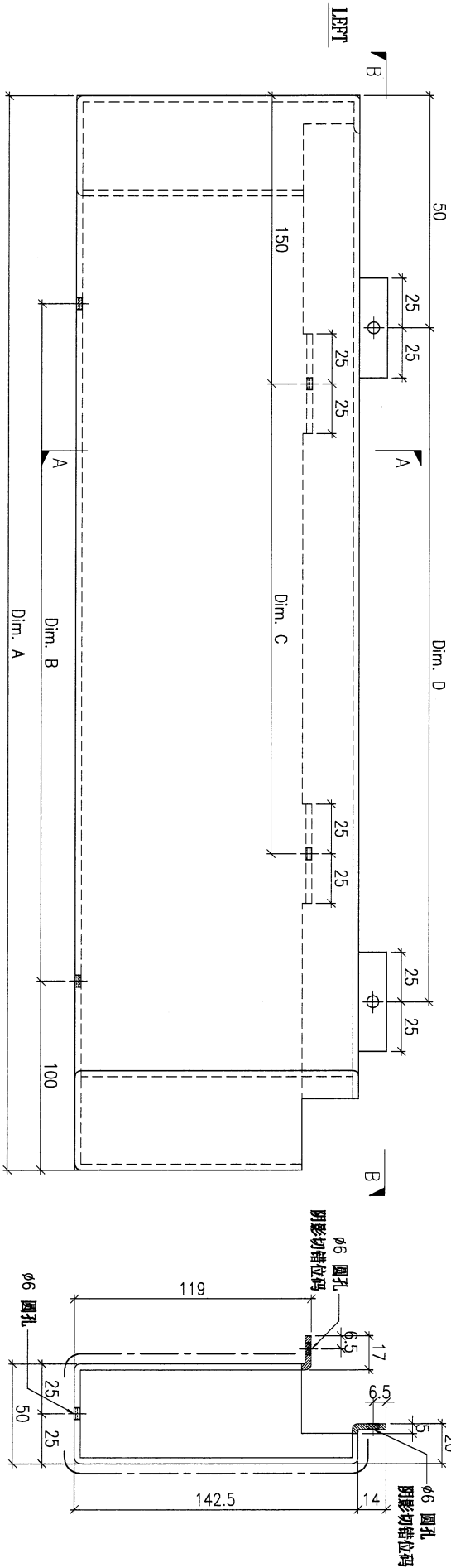
注：工厂用

注：工地复尺



DWG. NO.	FW1-AP68	REV.	-	SCALE	-	DATE	15-06-2023	DRAWN BY	-	APPROVED BY	-
----------	----------	------	---	-------	---	------	------------	----------	---	-------------	---

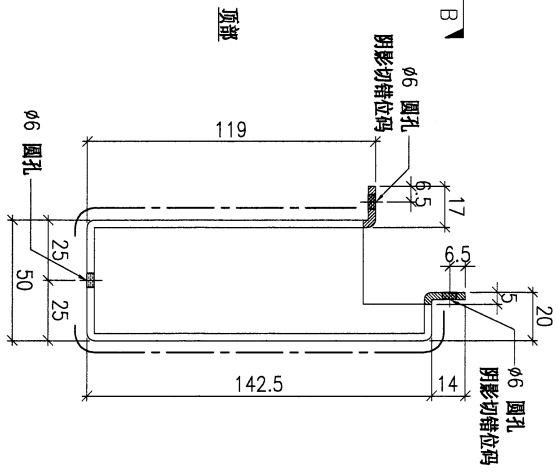
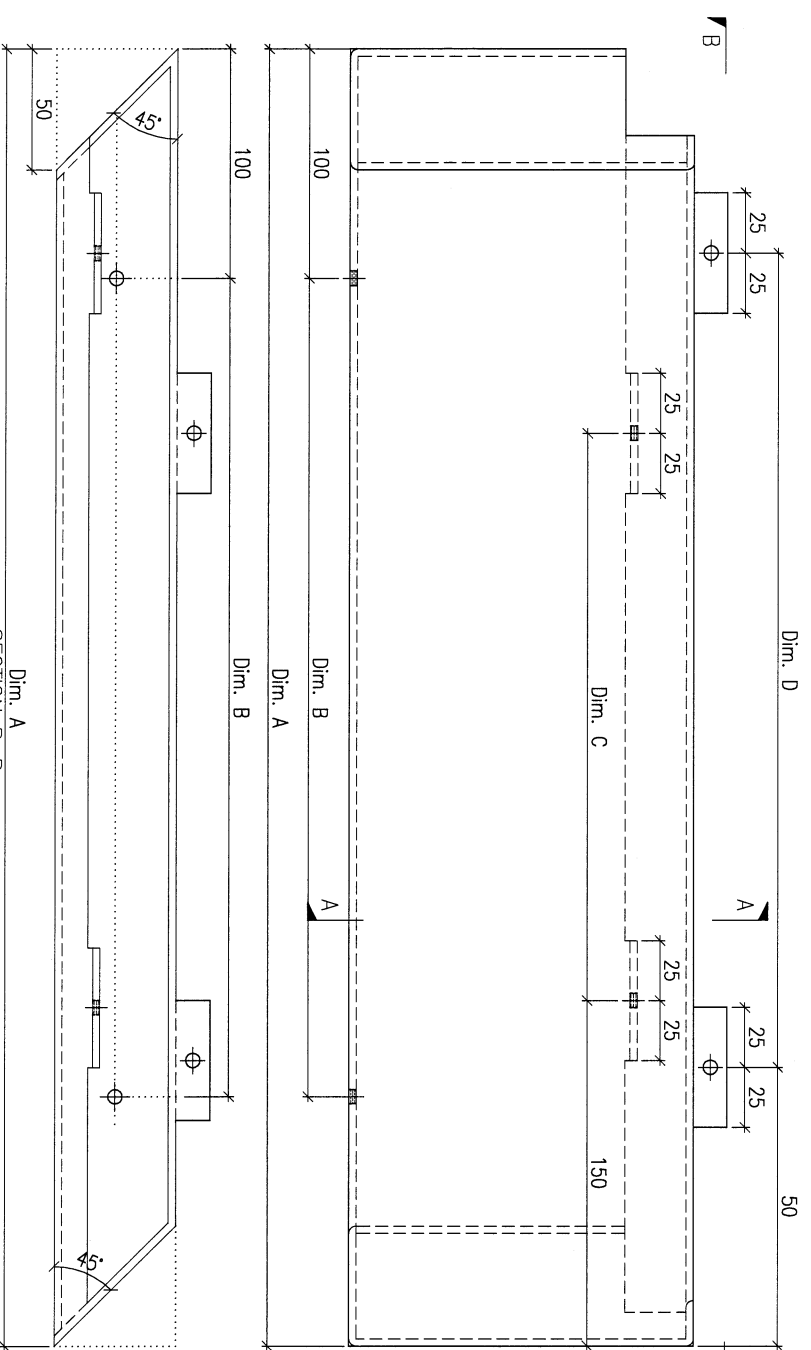
PROJECT				MATERIAL				COATING				COLOUR		MARK. NO.		QTY.	
YIN PING ROAD KOWLOON FEATURE WALL (PHASE 1)				3mm 铝板				PVF2				EC-DG-D334232-ZD1(SS-01)		-		-	
checked date by	PART NUMBER	Dim. A	Dim. B	Dim. C	Dim. D	Dim. E	Dim. F	Dim. G	Dim. H	QTY.	Inv. Code	ASSEMBLE ON PARTS					
-	FW1-AP71	3085	10x@290c/d	9x@300c/d	10x@300c/c					1							
<div style="display: flex; justify-content: space-between;"> <span>注: 工厂用</span> <span>注: 工地复尺</span> </div>																	



DWG. NO.	REV.	SCALE	DATE	DRAWN BY	APPROVED BY
FW1-AP71	-	-	15-06-2023	-	-

PROJECT				MATERIAL				COATING				COLOUR				MARK. NO.		QTY.	
YIN PING ROAD KOWLOON FEATURE WALL (PHASE 1)				3mm 铝板				PVF2				EC-DG-D334232-ZD1(SS-011)				-		-	
REV.	CHECKED DATE BY	PART NUMBER	Dim. A	Dim. B	Dim. C	Dim. D	Dim. E	Dim. F	Dim. G	Dim. H	QTY.	Inv. Code	ASSEMBLE ON PARTS						
-		FW1-AP72A	1227	4x@260c/c	4x@250c/c	4x@250c/c					1								
-		FW1-AP72B	963	5x@260c/c	3x@240c/c	3x@240c/c					1								
-		FW1-AP72C	2246	6x@260c/c	6x@300c/c	7x@300c/c					1								

注：工厂用  
注：工地复尺



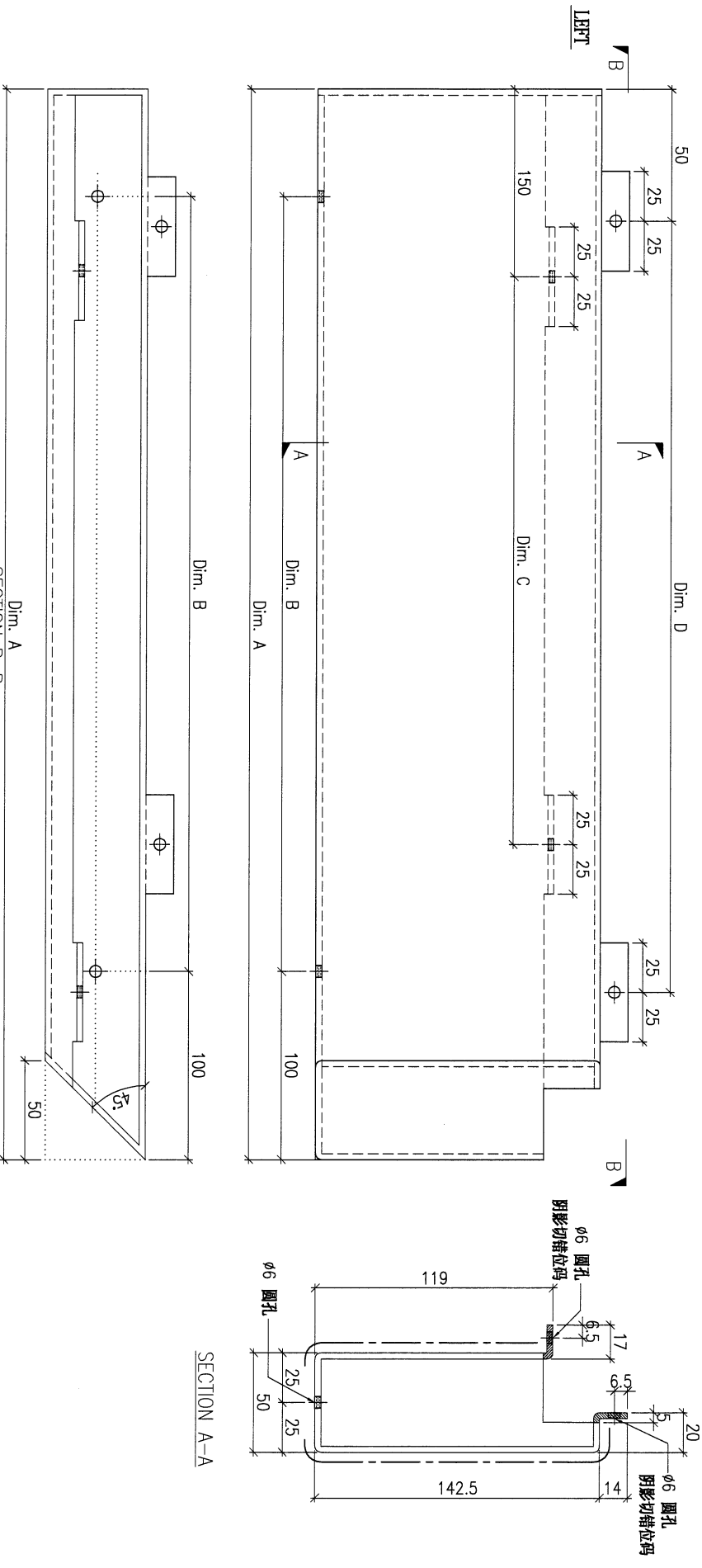
Dim. A  
SECTION B-B

DWG. NO.		REV.		SCALE		DATE		DRAWN BY		APPROVED BY	
FW1-AP72		-		-		15-06-2023		-		-	

PROJECT				YIN PING ROAD KOWLOON FEATURE WALL (PHASE 1)				MATERIAL				3mm 铝板				COATING				PVF2				COLOUR				EC-DG-D334232-ZD1(SS-01)				MARK. NO.				-				QTY.				-			
REV.	CHKD BY	PART NUMBER	Dim. A	Dim. B	Dim. C	Dim. D	Dim. E	Dim. F	Dim. G	Dim. H	QTY.	Inv. Code	ASSEMBLE ON PARTS																																		
-		FW1-AP75A	2348	8x@270c/c	7x@300c/c	7x@300c/c					1																																				
-		FW1-AP75B	2048	7x@270c/c	6x@300c/c	6x@300c/c					1																																				

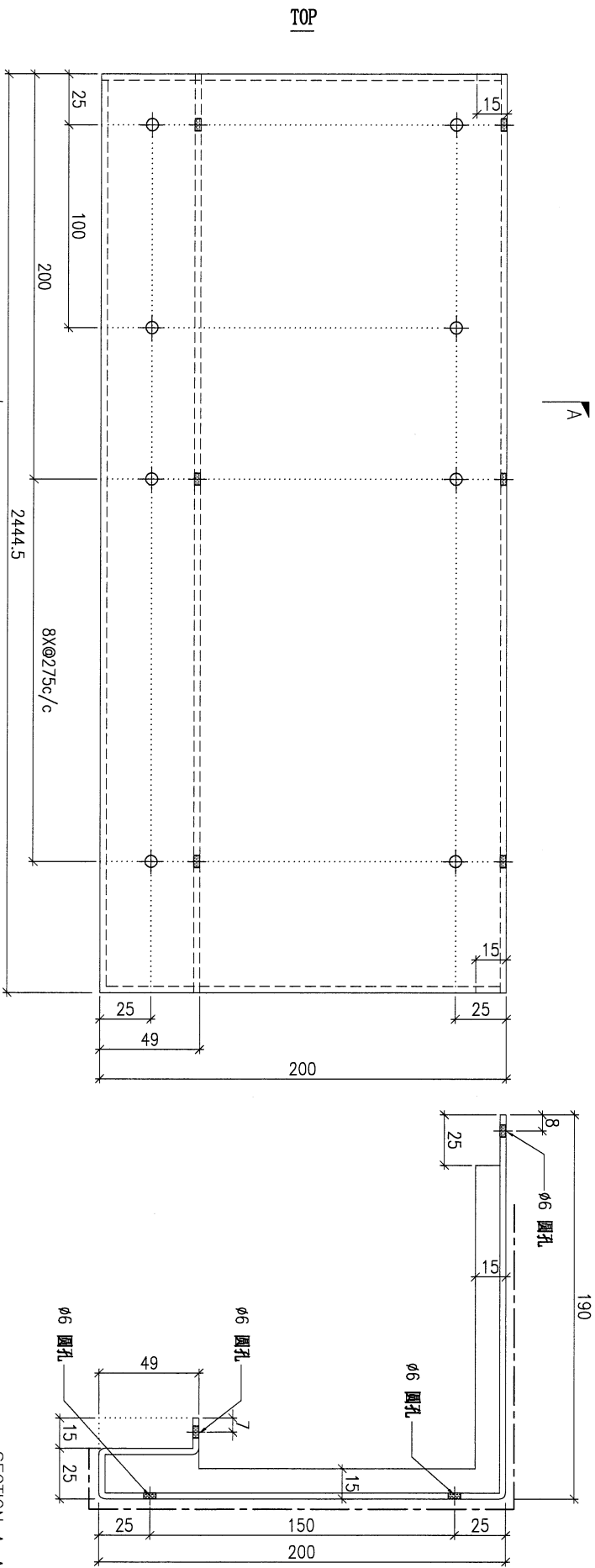
注: 工厂用

注: 工地复尺



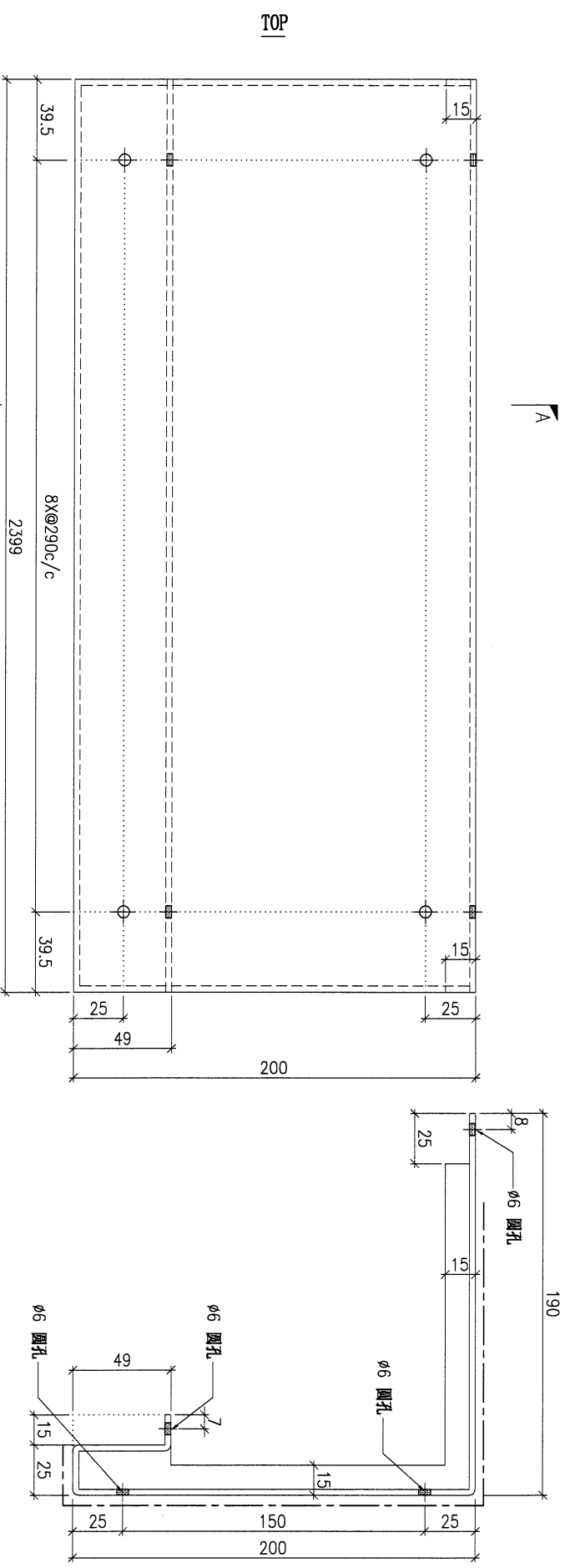
DWG. NO.		FW1-AP75		REV.		SCALE		DATE		DRAWN BY		APPROVED BY	
----------	--	----------	--	------	--	-------	--	------	--	----------	--	-------------	--

PROJECT				MATERIAL				COATING				COLOUR		MARK. NO.		QTY.	
YIN PING ROAD KOWLOON FEATURE WALL (PHASE 1)				3mm 铝板				PVF2				EC-DG-D334232-ZD1(SS-01)		-		-	
REV.	CHECKED DATE BY	PART NUMBER	Dim. A	Dim. B	Dim. C	Dim. D	Dim. E	Dim. F	Dim. G	Dim. H	QTY.	Inv. Code	ASSEMBLE ON PARTS				
-	-	FW1-AP100L	-	-	-	-	-	-	-	-	1	-	注: 如图加工				
-	-	FW1-AP100R	-	-	-	-	-	-	-	-	1	-	注: 相反加工				



DWG. NO.		REV.		SCALE		DATE		DRAWN BY		APPROVED BY	
FW1-AP100		-		-		15-06-2023		-		-	

PROJECT				MATERIAL				COATING				COLOUR				MARK. NO.		QTY.	
YIN PING ROAD KOWLOON FEATURE WALL (PHASE 1)				3mm 铝板				PVF2				EC-DG-D334232-ZD1(SS-01)				-		-	
checked date by	PART NUMBER	Dim. A	Dim. B	Dim. C	Dim. D	Dim. E	Dim. F	Dim. G	Dim. H	QTY.	Inv. Code	ASSEMBLE ON PARTS				注: 工厂用			
-	FW1-AP101L	-	-	-	-	-	-	-	-	2	-	注: 如图加工							
-	FW1-AP101R	-	-	-	-	-	-	-	-	2	-	注: 相反加工							



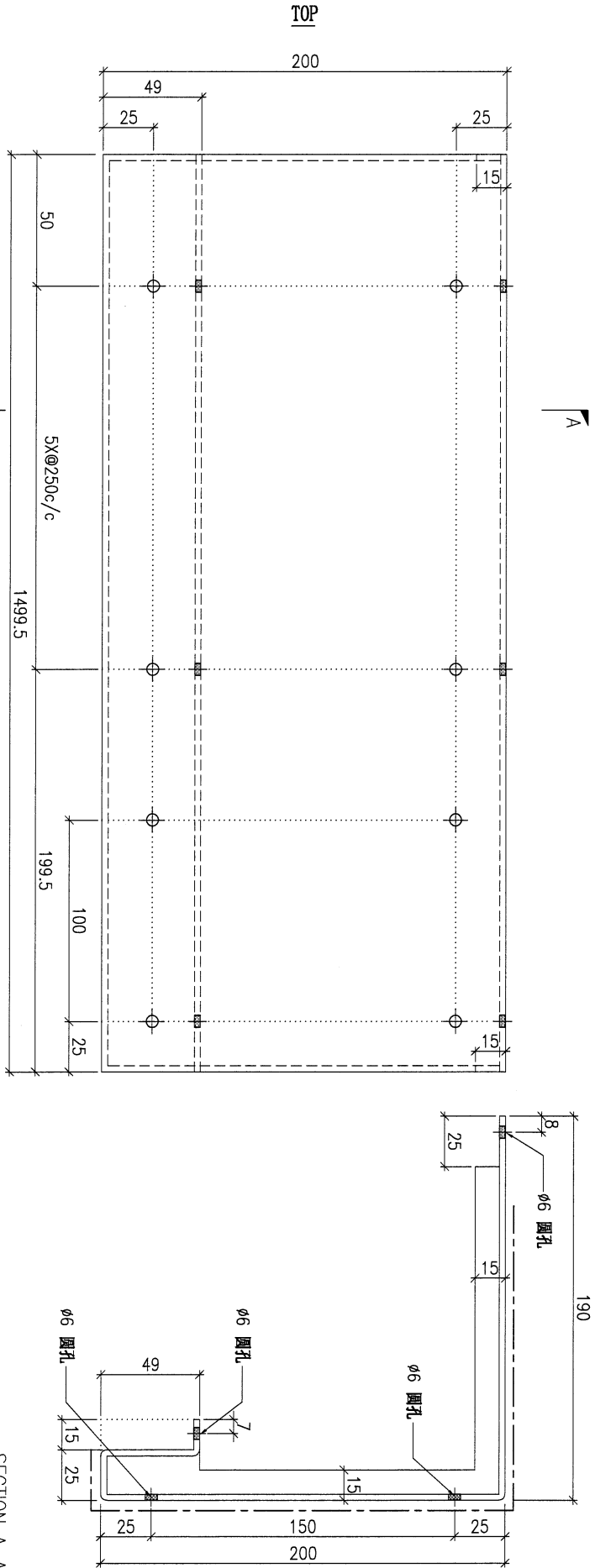
A

SECTION A-A

TOP

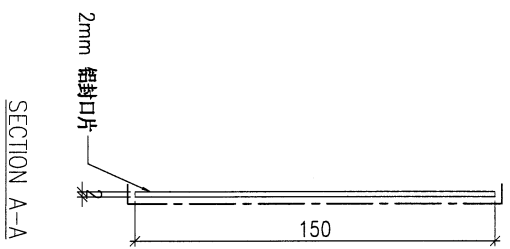
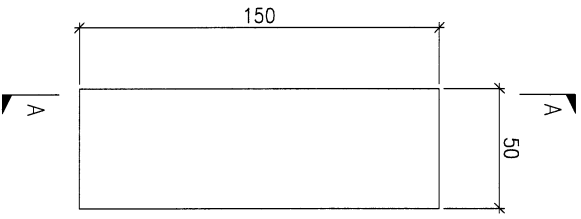
DWG. NO.	REV.	SCALE	DATE	DRAWN BY	APPROVED BY
FW1-AP101	-	-	15-06-2023	-	-

PROJECT		YIN PING ROAD KOWLOON FEATURE WALL (PHASE 1)						MATERIAL		3mm 铝板		COATING		PVF2		COLOUR		EC-DG-D334232-ZD1(SS-01)		MARK. NO.		QTY.	
CHECKED DATE BY		PART NUMBER		Dim. A		Dim. B		Dim. C		Dim. D		Dim. E		Dim. F		Dim. G		Dim. H		QTY.		Inv. Code	
-		FW1-AP102L		-		-		-		-		-		-		-		-		1		-	
-		FW1-AP102R		-		-		-		-		-		-		-		-		1		-	
												ASSEMBLE ON PARTS		注: 如圖加工		注: 相反加工						注: 工厂用	



DWG. NO.		FW1-AP102		REV.		-		SCALE		-		DATE		15-06-2023		DRAWN BY		-		APPROVED BY		-	
----------	--	-----------	--	------	--	---	--	-------	--	---	--	------	--	------------	--	----------	--	---	--	-------------	--	---	--

PROJECT				MATERIAL				COATING				COLOUR				MARK. NO.		QTY.	
YIN PING ROAD KOWLOON FEATURE WALL (PHASE 1)				2mm 铝封口片				PVF2				EC-DG-D334232-ZD1(SS-01)				-		-	
checked date by	PART NUMBER	Dim. A	Dim. B	Dim. C	Dim. D	Dim. E	Dim. F	Dim. G	Dim. H	QTY.	Inv. Code	ASSEMBLE ON PARTS				注: 工厂用			
-	FKP-M11	-	-	-	-	-	-	-	-	85	-								



DWG. NO.		REV.		SCALE		DATE		DRAWN BY		APPROVED BY	
FKP-M11		-		-		15-06-2023		-		-	

PROJECT  
YIN PING ROAD KOWLOON  
FEATURE WALL (PHASE 1)

MATERIAL  
2mm 铝封口片

COATING  
PVF2

COLOUR  
EC-DG-D334232-ZD1(SS-011)

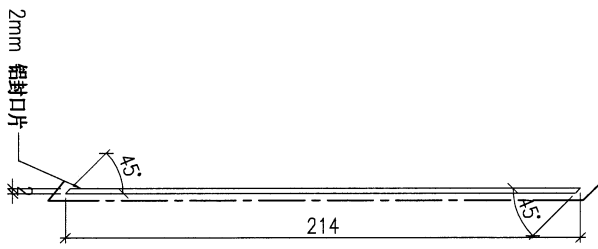
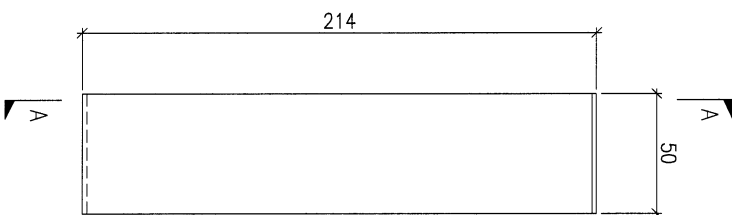
MARK. NO.  
-

QTY.  
-

NO.	CHECKED DATE BY	PART NUMBER	Dim. A	Dim. B	Dim. C	Dim. D	Dim. E	Dim. F	Dim. G	Dim. H	QTY.	Inv. Code
-		FKP-M12	-	-	-						3	

注: 工厂用

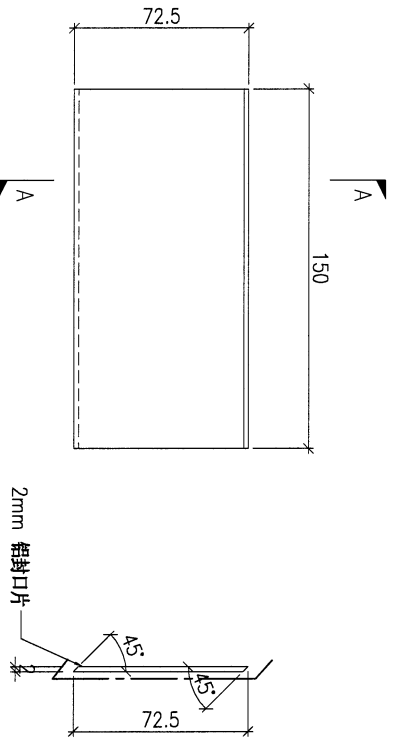
ASSEMBLE ON PARTS



SECTION A-A

DWG. NO.	FKP-M12	REV.	-	SCALE	-	DATE	15-06-2023	DRAWN BY	-	APPROVED BY	-
----------	---------	------	---	-------	---	------	------------	----------	---	-------------	---

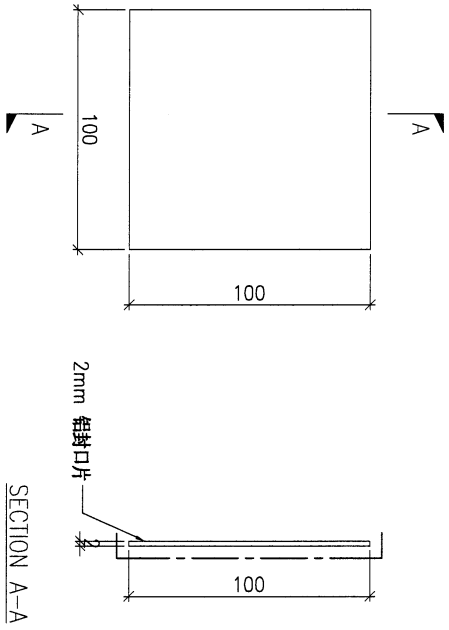
PROJECT				MATERIAL				COATING				COLOUR				MARK. NO.		QTY.	
YIN PING ROAD KOWLOON FEATURE WALL (PHASE 1)				2mm 铝封口片				PVF2				EC-DG-D334232-ZD1(SS-011)				-		-	
REV.	CHECKED CHK BY	PART NUMBER	Dim. A	Dim. B	Dim. C	Dim. D	Dim. E	Dim. F	Dim. G	Dim. H	QTY.	Inv. Code	ASSEMBLE ON PARTS				注: 工厂用		
-		FKP-M13	-	-	-						60								



SECTION A-A

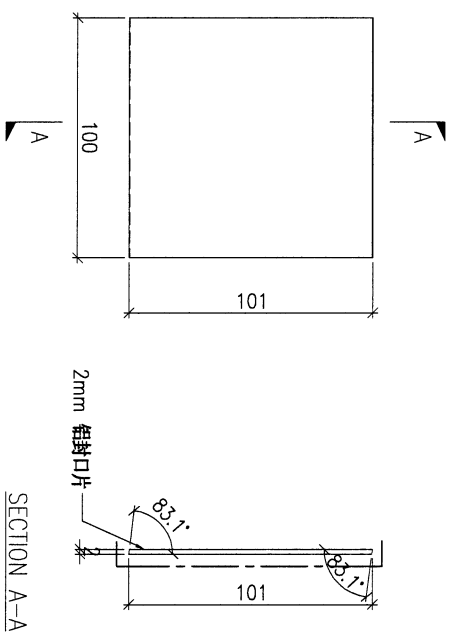
DWG. NO.		REV.		SCALE		DATE		DRAWN BY		APPROVED BY	
FKP-M13		-		-		15-06-2023		-		-	

PROJECT				MATERIAL				COATING				COLOUR				MARK. NO.		QTY.	
YIN PING ROAD KOWLOON FEATURE WALL (PHASE 1)				2mm 铝封口片				PVF2				TUC106699FXLJBA-3(SS-03)				-		-	
REV.	CHECKED DATE BY	PART NUMBER	Dim. A	Dim. B	Dim. C	Dim. D	Dim. E	Dim. F	Dim. G	Dim. H	QTY.	Inv. Code	ASSEMBLE ON PARTS				注: 工厂用		
-		FKP-M14	-	-	-						222								



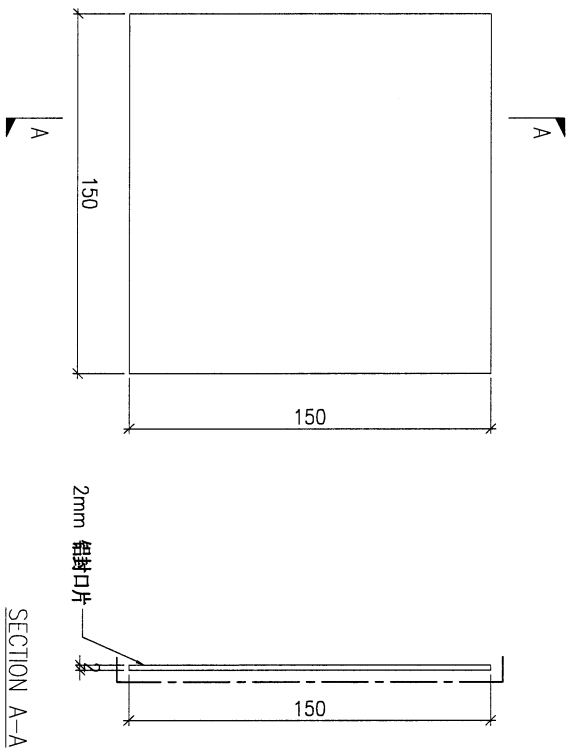
DWG. NO.		REV.		SCALE		DATE		DRAWN BY		APPROVED BY	
FKP-M14		-		-		15-06-2023		-		-	

PROJECT		YIN PING ROAD KOWLOON FEATURE WALL (PHASE 1)										MATERIAL		COATING		COLOUR		MARK. NO.		QTY.	
		2mm 铝封口片										PVF2		TUC106699FXLBA-3(SS-03)		-		-			
REV.	CHECKED DATE	PART NUMBER	Dim. A	Dim. B	Dim. C	Dim. D	Dim. E	Dim. F	Dim. G	Dim. H	QTY.	Inv. Code	ASSEMBLE ON PARTS								
-		FKP-M15	-	-	-	-	-	-	-	-	62		注: 工厂用								



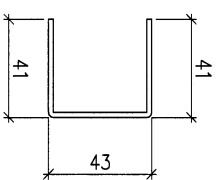
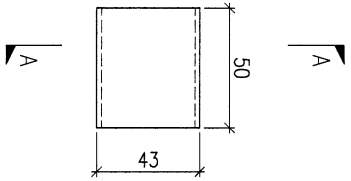
DWG. NO.		REV.		SCALE		DATE		DRAWN BY		APPROVED BY	
FKP-M15		-		-		15-06-2023		-		-	

PROJECT				YIN PING ROAD KOWLOON FEATURE WALL (PHASE 1)				MATERIAL				2mm 铝封口片				COATING				PVF2				COLOUR				TUC106699FXLJBA-3(SS-03)				MARK. NO.				QTY.																			
checked DATE BY				PART NUMBER				Dim. A				Dim. B				Dim. C				Dim. D				Dim. E				Dim. F				Dim. G				Dim. H				QTY.				Inv. Code				ASSEMBLE ON PARTS				注: 工厂用			
-				FKP-M16				-				-				-				-				-				-				-				84																			



DWG. NO.		FKP-M16		REV.		-		SCALE		-		DATE		15-06-2023		DRAWN BY		-		APPROVED BY		-	
----------	--	---------	--	------	--	---	--	-------	--	---	--	------	--	------------	--	----------	--	---	--	-------------	--	---	--

PROJECT		YIN PING ROAD KOWLOON FEATURE WALL (PHASE 1)								MATERIAL		2mm 铝板		COATING		铬化		COLOUR		-		MARK. NO.		-		QTY.		-	
REV.	CHECKED DATE	PART NUMBER	Dim. A	Dim. B	Dim. C	Dim. D	Dim. E	Dim. F	Dim. G	Dim. H	QTY.	Inv. Code	ASSEMBLE ON PARTS										注: 工厂用						
-		AP-G98	-	-	-						24																		



SECTION A-A

DWG. NO.		AP-G98		REV.		-		SCALE		-		DATE		15-06-2023		DRAWN BY		-		APPROVED BY		-	
----------	--	--------	--	------	--	---	--	-------	--	---	--	------	--	------------	--	----------	--	---	--	-------------	--	---	--

PROJECT  
YIN PING ROAD KOWLOON  
FEATURE WALL (PHASE 1)

MATERIAL  
3mm 铝板

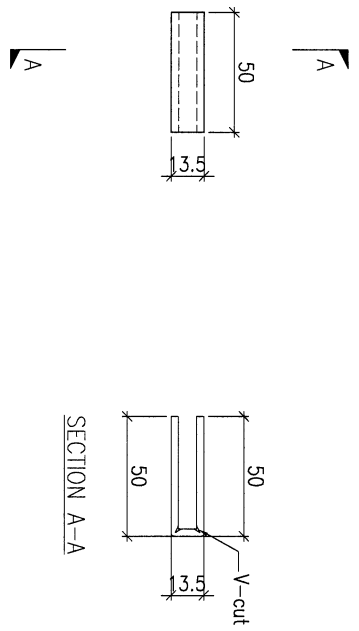
COATING  
铬化

COLOUR

MARK. NO.

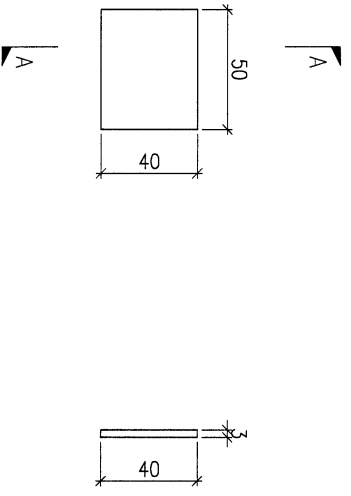
QTY.

REV. / MARK BY	PART NUMBER	Dim. A	Dim. B	Dim. C	Dim. D	Dim. E	Dim. F	Dim. G	Dim. H	QTY.	Inv. Code	ASSEMBLE ON PARTS	工厂用
-	AP-G99	-	-	-	-	-	-	-	-	24	-	-	-



DWG. NO.	REV.	SCALE	DATE	DRAWN BY	APPROVED BY
AP-G99	-	-	15-06-2023	-	-

PROJECT				YIN PING ROAD KOWLOON FEATURE WALL (PHASE 1)				MATERIAL				COATING		COLOUR		MARK. NO.		QTY.	
				3mm 铝板				氧化		-		-		-		-		-	
REV.	CHECKED DATE BY	PART NUMBER	Dim. A	Dim. B	Dim. C	Dim. D	Dim. E	Dim. F	Dim. G	Dim. H	QTY.	Inv. Code	ASSEMBLE ON PARTS						
-		AP-G100	-	-	-						36								
注: 工厂用																			

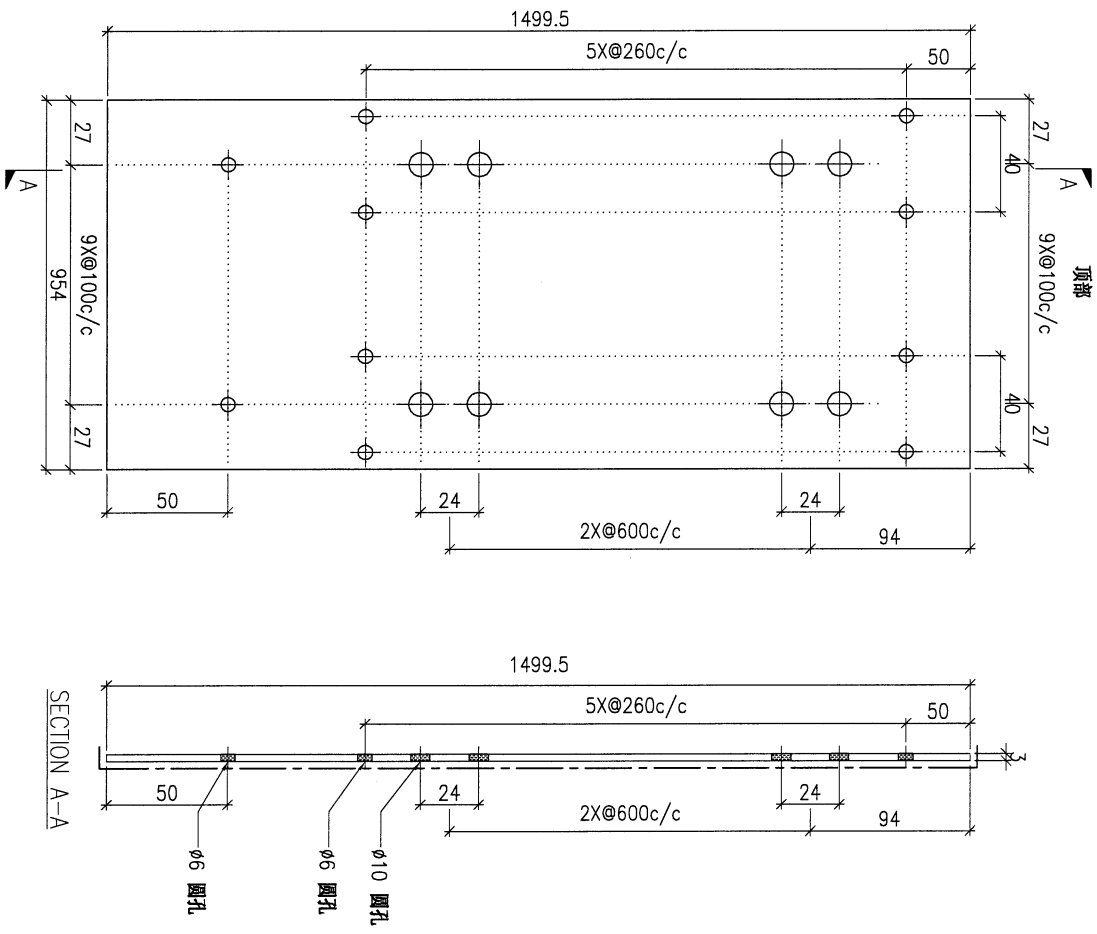


SECTION A-A

DWG. NO.		REV.		SCALE		DATE		DRAWN BY		APPROVED BY	
AP-G100		-		-		15-06-2023		-		-	

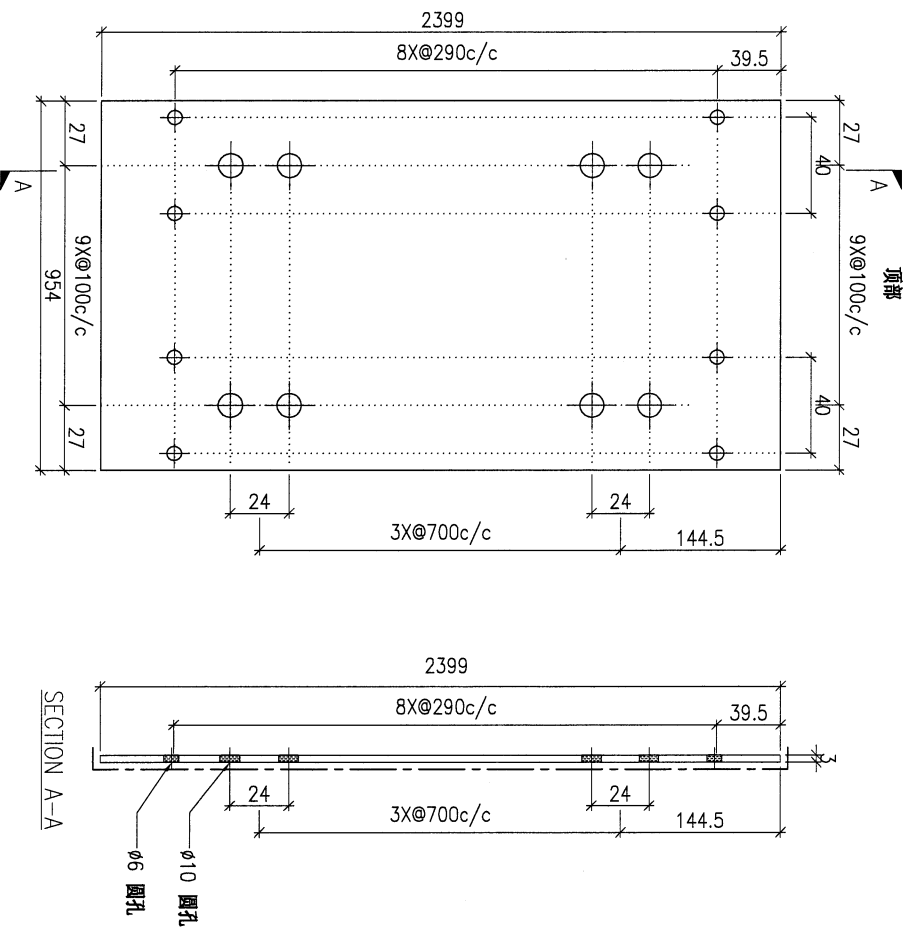


PROJECT				MATERIAL				COATING				COLOUR				MARK. NO.		QTY.	
YIN PING ROAD KOWLOON FEATURE WALL (PHASE 1)				3mm 铝板				PVF2				EC-DG-D334232-ZD1(SS-01)				-		-	
REV.	CHECKED DATE BY	PART NUMBER	Dim. A	Dim. B	Dim. C	Dim. D	Dim. E	Dim. F	Dim. G	Dim. H	QTY.	Inv. Code	ASSEMBLE ON PARTS				注: 工厂用		
-		AP-G102	-	-	-	-	-	-	-	-	2								



DWG. NO.		REV.		SCALE		DATE		DRAWN BY		APPROVED BY	
AP-G102		-		-		15-06-2023		-		-	

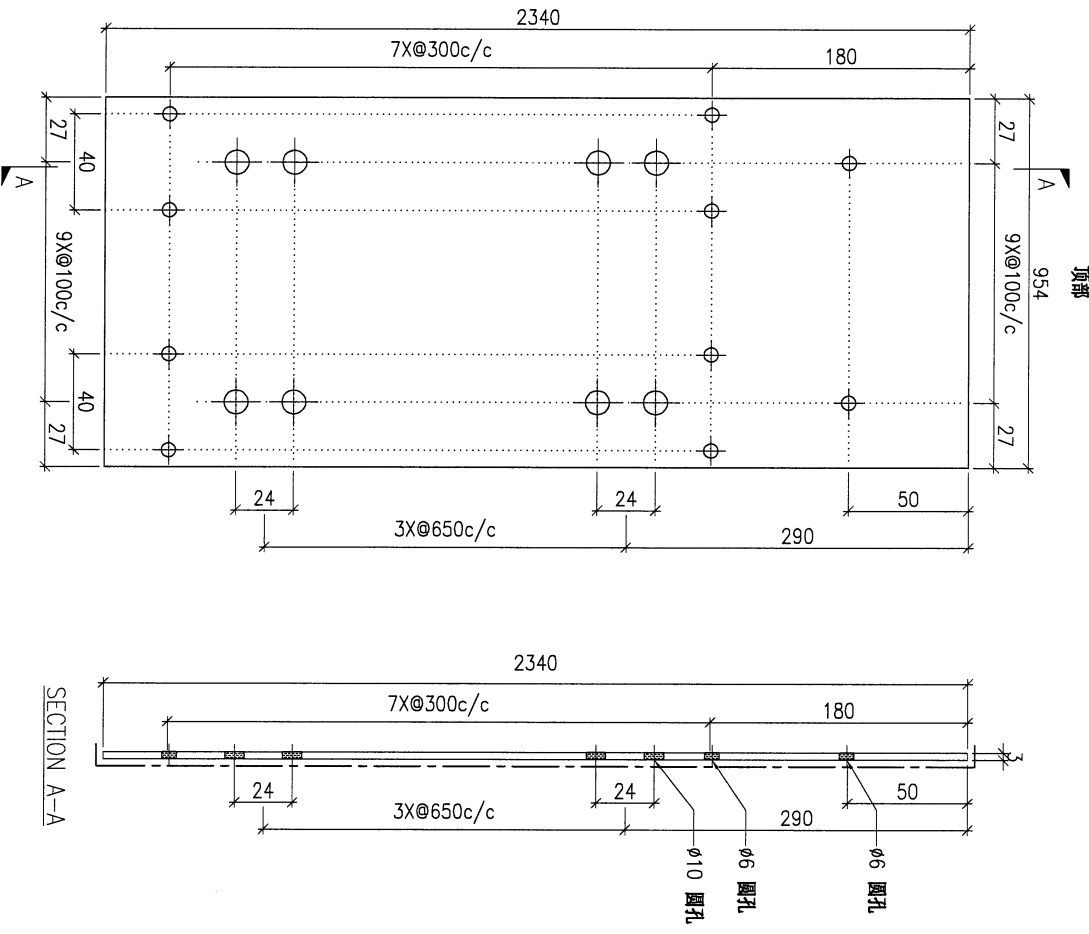
PROJECT				MATERIAL				COATING				COLOUR		MARK. NO.		QTY.	
YIN PING ROAD KOWLOON FEATURE WALL (PHASE 1)				3mm 铝板				PVF2				EC-DG-D334232-ZD1(SS-01)		-		-	
REV.	CHECKED DATE BY	PART NUMBER	Dim. A	Dim. B	Dim. C	Dim. D	Dim. E	Dim. F	Dim. G	Dim. H	QTY.	Inv. Code	ASSEMBLE ON PARTS				
-		AP-G103	-	-	-	-	-	-	-	-	4						
注: 工厂用																	



DWG. NO.		REV.		SCALE		DATE		DRAWN BY		APPROVED BY	
AP-G103		-		-		15-06-2023		-		-	

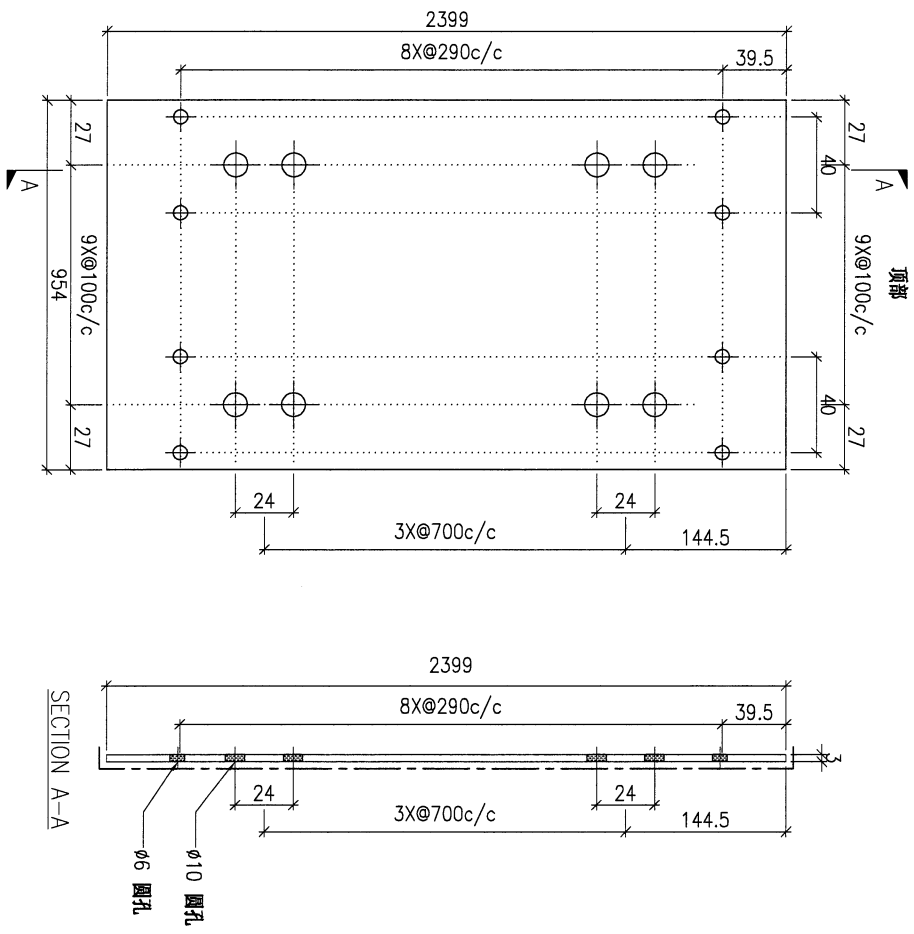


PROJECT				YIN PING ROAD KOWLOON FEATURE WALL (PHASE 1)				MATERIAL				3mm 铝板				COATING				PVF2				COLOUR				EC-DG-0334232-ZD1(SS-01)				MARK. NO.				-				QTY.				-			
REV.	CHECKED BY	PART NUMBER	Dim. A	Dim. B	Dim. C	Dim. D	Dim. E	Dim. F	Dim. G	Dim. H	QTY.	Inv. Code	ASSEMBLE ON PARTS												注: 工厂用																						
-		AP-G105	-	-	-	-	-	-	-	-	1																																				



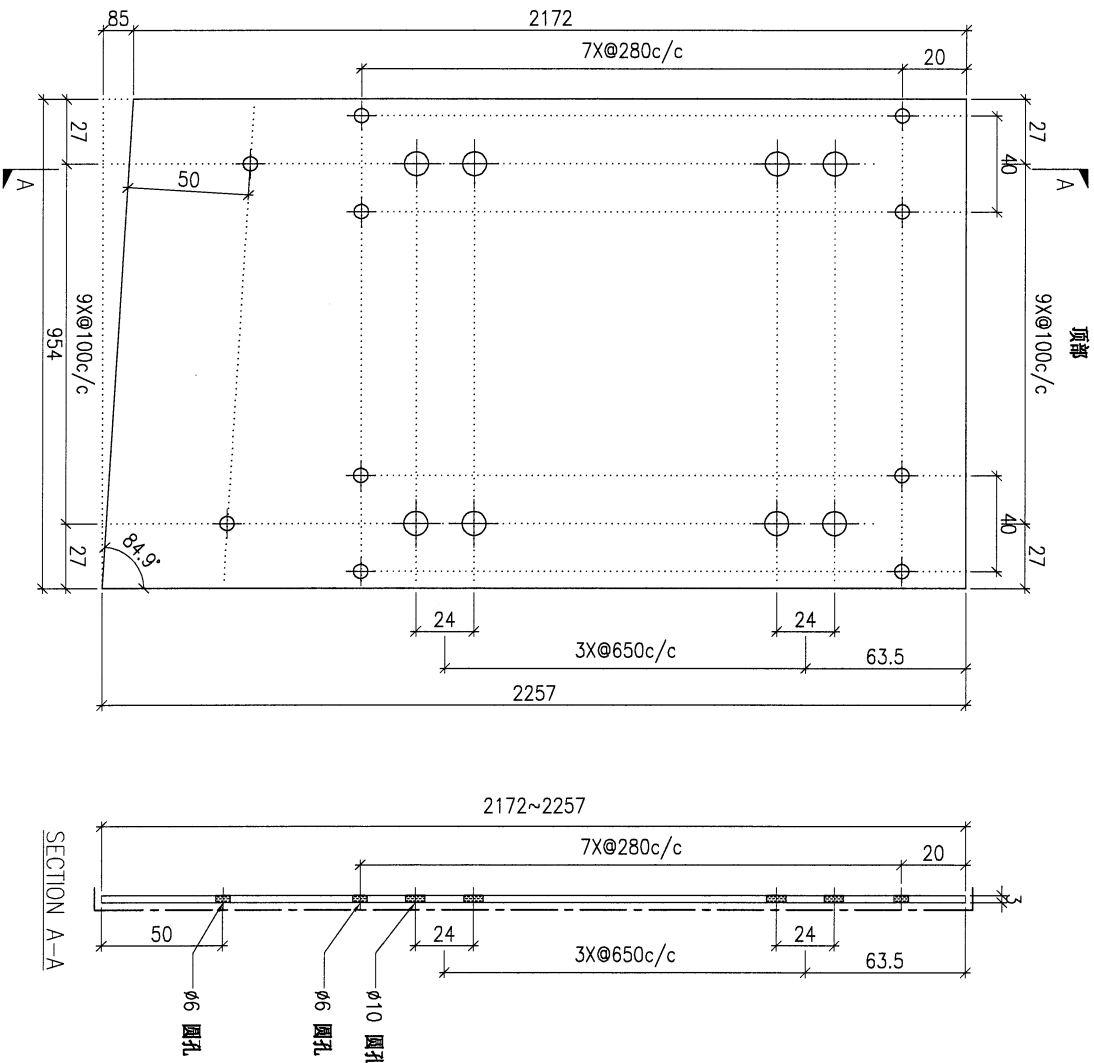
DWG. NO.		AP-G105		REV.		-		SCALE		-		DATE		15-06-2023		DRAWN BY		-		APPROVED BY		-	
----------	--	---------	--	------	--	---	--	-------	--	---	--	------	--	------------	--	----------	--	---	--	-------------	--	---	--

PROJECT				YIN PING ROAD KOWLOON FEATURE WALL (PHASE 1)				MATERIAL				3mm 铝板				COATING				PVF2				COLOUR				EC-DG-D334232-ZD1(SS-01)				MARK. NO.				-				QTY.				-			
REV.	CHECKED BY	PART NUMBER	Dim. A	Dim. B	Dim. C	Dim. D	Dim. E	Dim. F	Dim. G	Dim. H	QTY.	Inv. Code	ASSEMBLE ON PARTS												注: 工厂用																						
-		AP-G106	-	-	-	-	-	-	-	-	1																																				



DWG. NO.		AP-G106		REV.		-		SCALE		-		DATE		15-06-2023		DRAWN BY		-		APPROVED BY		-	
----------	--	---------	--	------	--	---	--	-------	--	---	--	------	--	------------	--	----------	--	---	--	-------------	--	---	--

PROJECT				MATERIAL				COATING				COLOUR				MARK. NO.		QTY.	
YIN PING ROAD KOWLOON FEATURE WALL (PHASE 1)				3mm 鋁板				PVF2				EC-DG-D334232-ZD1(SS-01)				-		-	
checked DATE BY	PART NUMBER	Dim. A	Dim. B	Dim. C	Dim. D	Dim. E	Dim. F	Dim. G	Dim. H	QTY.	Inv. Code	ASSEMBLE ON PARTS							
-	AP-G109	-	-	-	-	-	-	-	-	1									



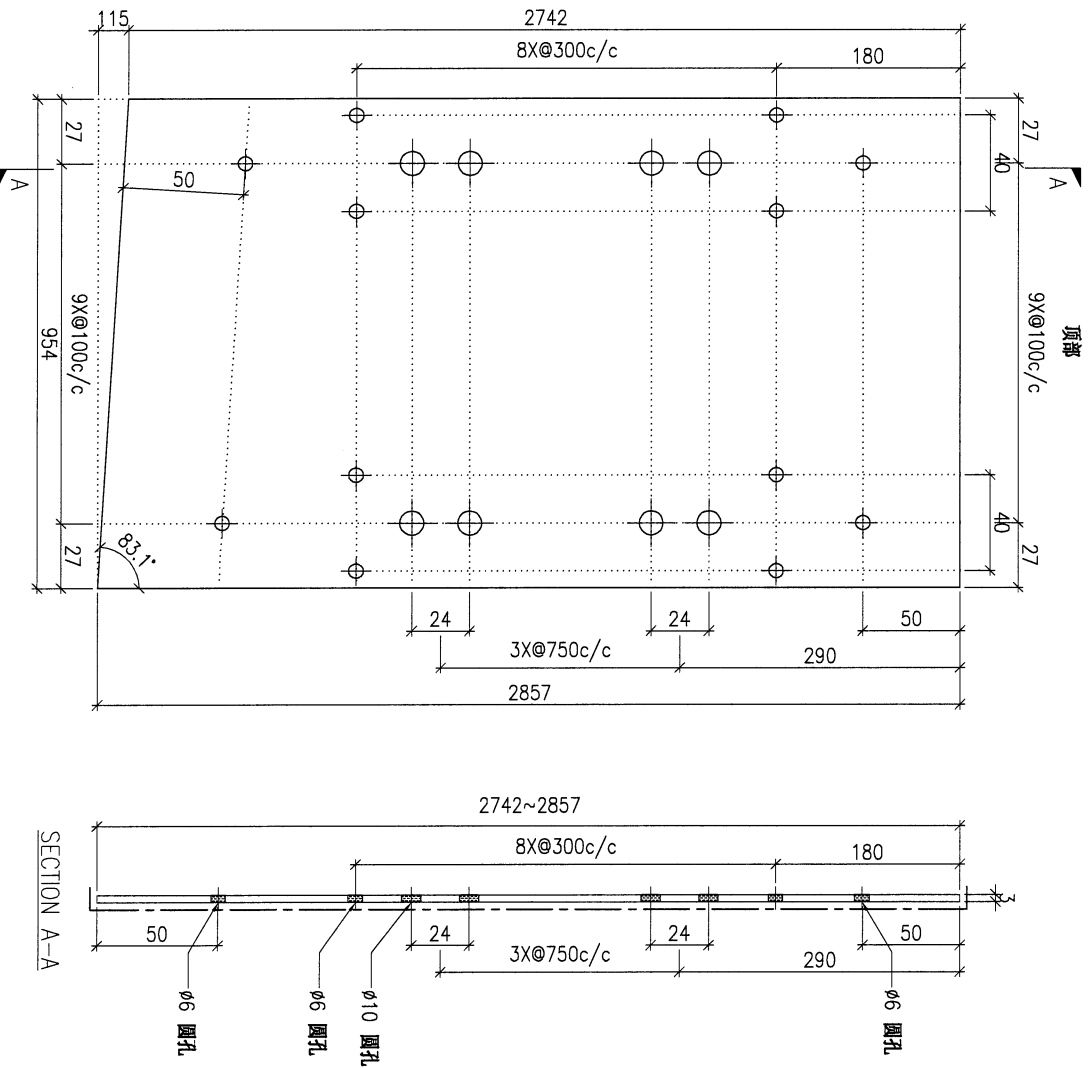
注：工厂用

注：工地复尺

DWG. NO.	REV.	SCALE	DATE	DRAWN BY	APPROVED BY
AP-G109	-	-	15-06-2023	-	-

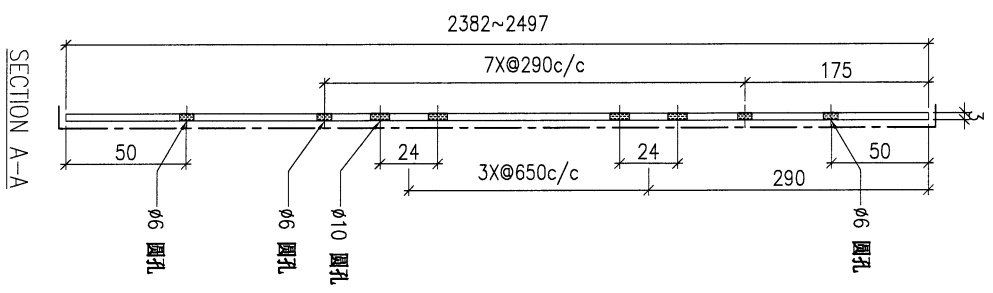
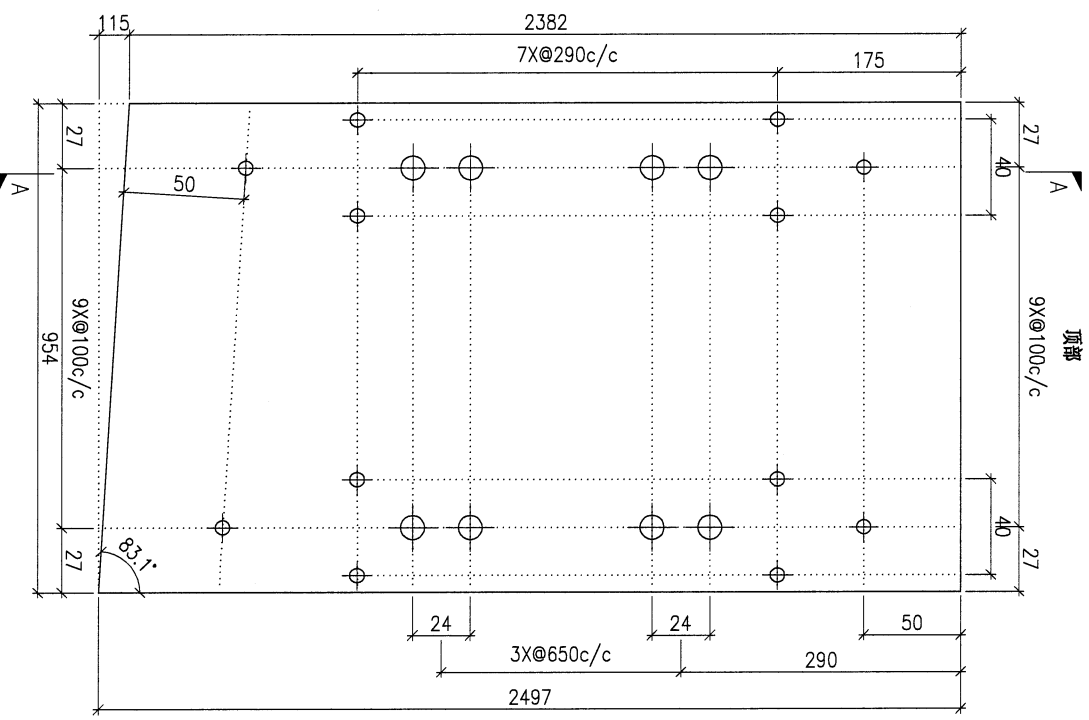


PROJECT				MATERIAL				COATING				COLOUR				MARK. NO.				QTY.			
YIN PING ROAD KOWLOON FEATURE WALL (PHASE 1)				3mm 铝板				PVF2				EC-DG-D334232-ZD1(SS-01)				-				-			
REV.	CHECKED BY	PART NUMBER	Dim. A	Dim. B	Dim. C	Dim. D	Dim. E	Dim. F	Dim. G	Dim. H	QTY.	Inv. Code	ASSEMBLE ON PARTS				注: 工厂用						
-		AP-G111	-	-	-	-	-	-	-	-	1						注: 工地复尺						



DWG. NO.		REV.		SCALE		DATE		DRAWN BY		APPROVED BY	
AP-G111		-		-		15-06-2023		-		-	

PROJECT				MATERIAL				COATING				COLOUR				MARK. NO.		QTY.	
YIN PING ROAD KOWLOON FEATURE WALL (PHASE 1)				3mm 铝板				PVF2				EC-DG-D334232-ZD1(SS-01)				-		-	
REV.	CHANGED DATE BY	PART NUMBER	Dim. A	Dim. B	Dim. C	Dim. D	Dim. E	Dim. F	Dim. G	Dim. H	QTY.	Inv. Code	ASSEMBLE ON PARTS						
-		AP-G112	-	-	-	-	-	-	-	-	1								



注：工厂用  
注：工地复尺

DWG. NO.		REV.		SCALE		DATE		DRAWN BY		APPROVED BY	
AP-G112		-		-		15-06-2023		-		-	

PROJECT  
YIN PING ROAD KOWLOON  
FEATURE WALL (PHASE 1)

MATERIAL  
3mm 铝板

COATING  
PVF2

COLOUR  
EC-DG-D334232-ZD1(SS-01)

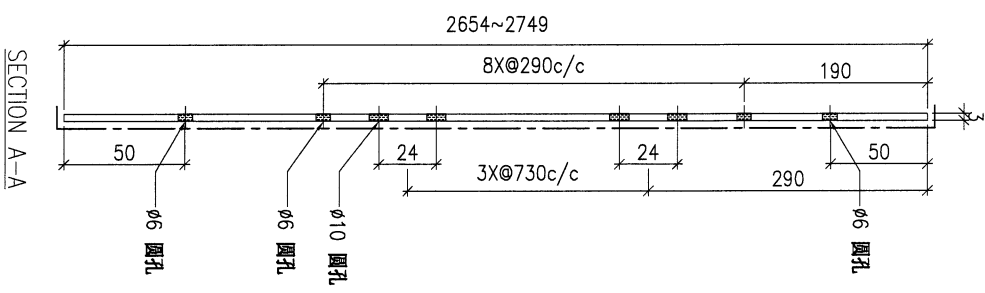
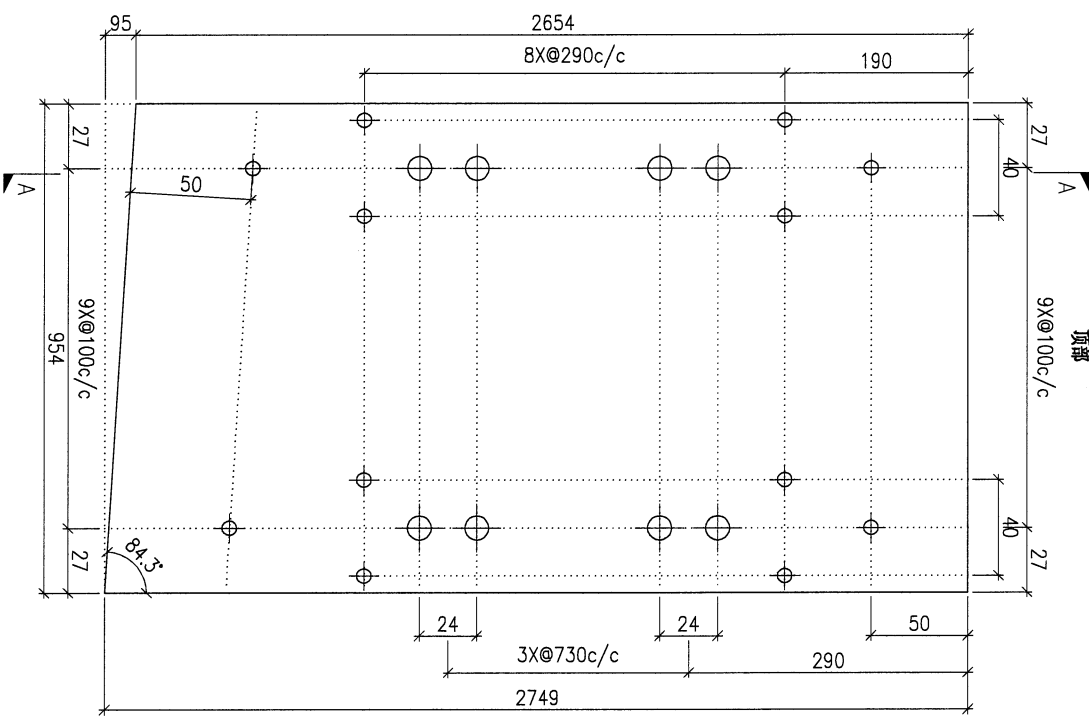
MARK. NO.  
-

QTY.  
-

REV.	CHANGED BY	PART NUMBER	Dim. A	Dim. B	Dim. C	Dim. D	Dim. E	Dim. F	Dim. G	Dim. H	QTY.	Inv. Code
-		AP-G113	-	-	-	-	-	-	-	-	1	

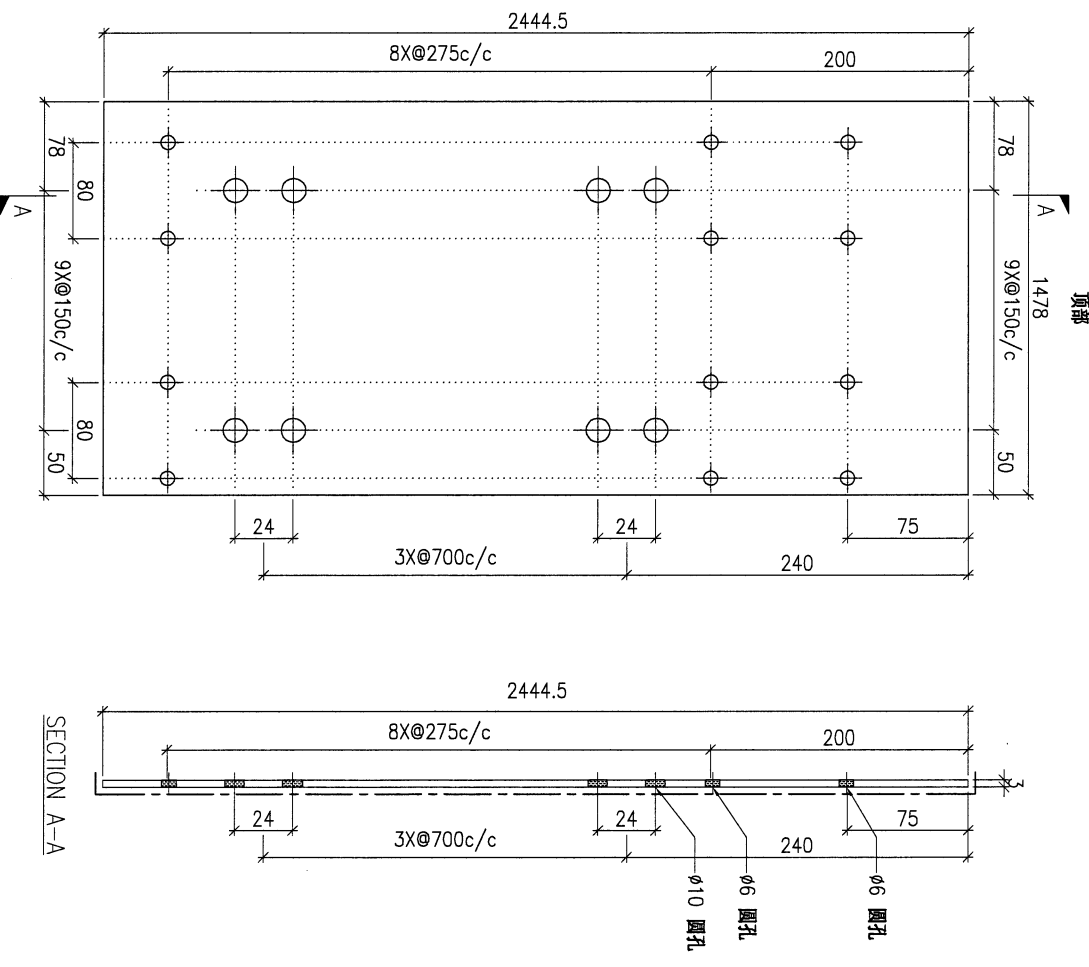
注：工厂用

注：工地复尺



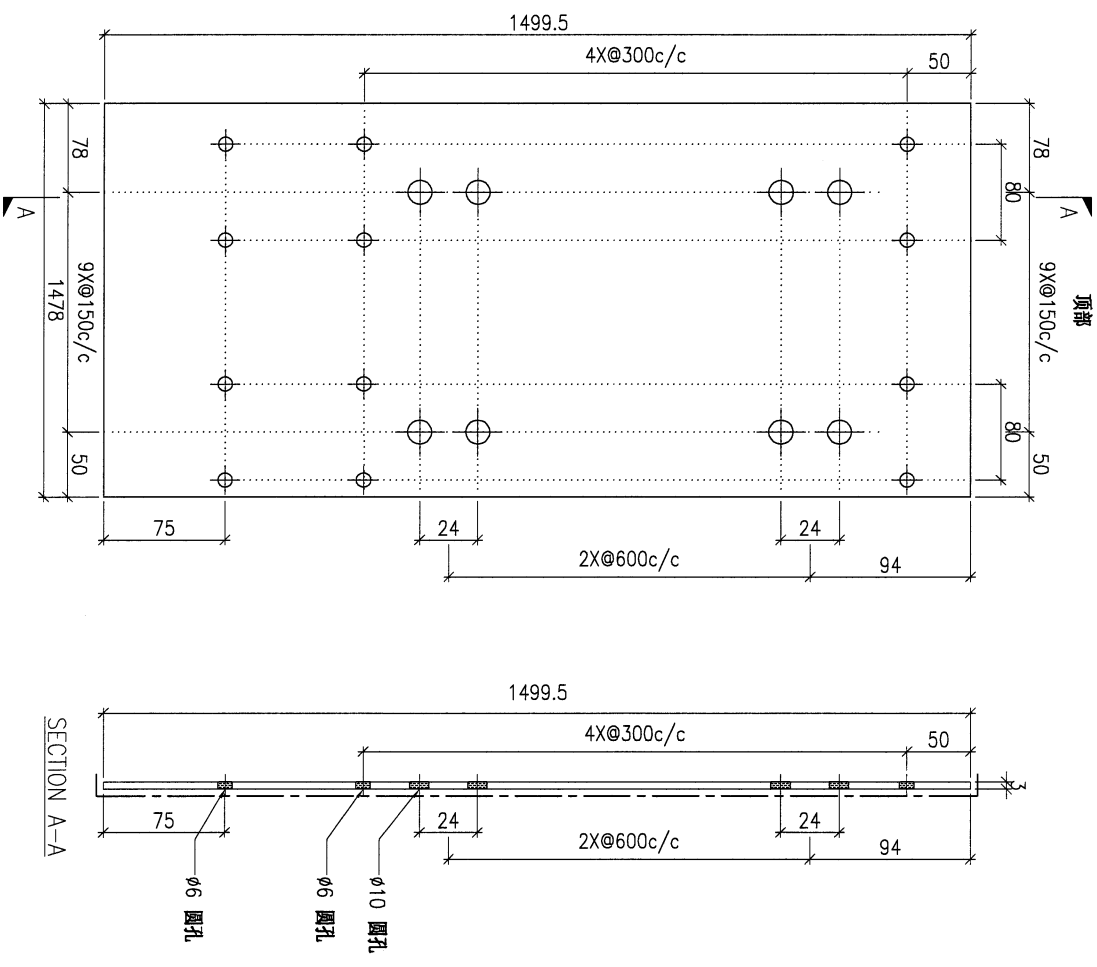
DWG. NO.	AP-G113	REV.	-	SCALE	-	DATE	15-06-2023	DRAWN BY	-	APPROVED BY	-
----------	---------	------	---	-------	---	------	------------	----------	---	-------------	---

PROJECT				YIN PING ROAD KOWLOON FEATURE WALL (PHASE 1)				MATERIAL				3mm 铝板				COATING				PVF2				COLOUR				EC-DG-D334232-ZD1(SS-01)				MARK. NO.				-				QTY.				-			
REV.	CHANGED BY	PART NUMBER	Dim. A	Dim. B	Dim. C	Dim. D	Dim. E	Dim. F	Dim. G	Dim. H	QTY.	Inv. Code	ASSEMBLE ON PARTS																																		
-		AP-G115	-	-	-	-	-	-	-	-	1																																				
注: 工厂用																																															



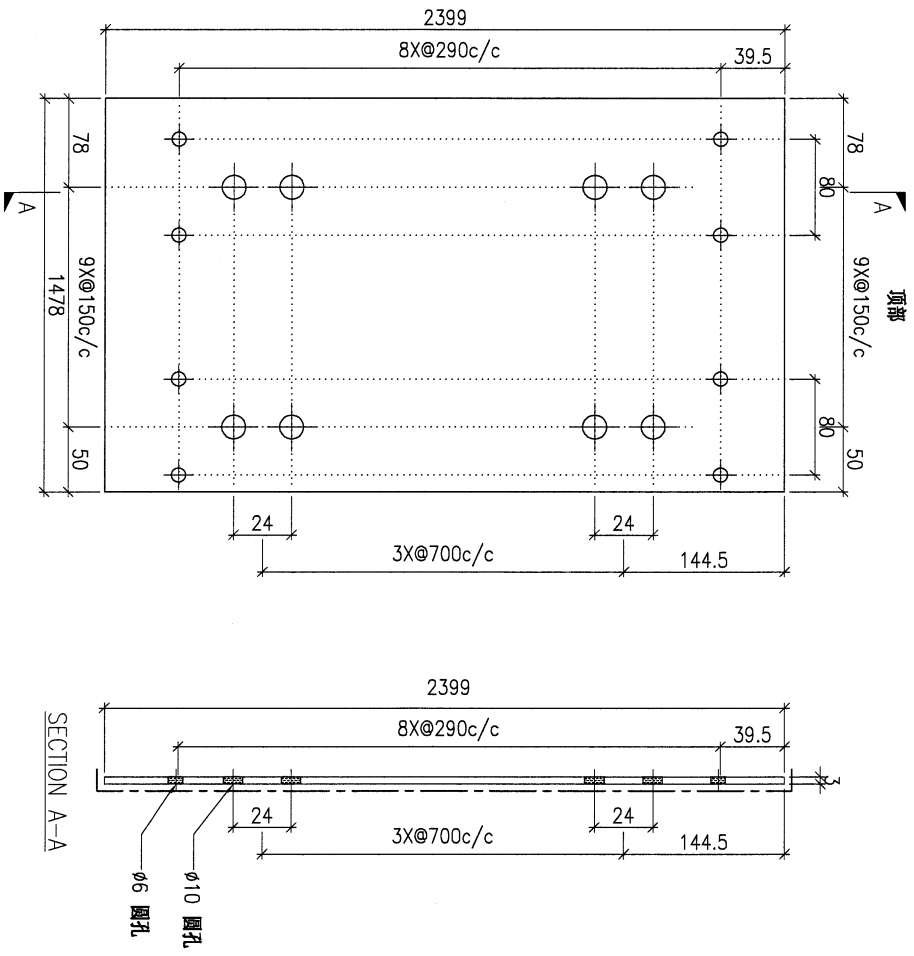
DWG. NO.		AP-G115		REV.		-		SCALE		-		DATE		15-06-2023		DRAWN BY		-		APPROVED BY		-	
----------	--	---------	--	------	--	---	--	-------	--	---	--	------	--	------------	--	----------	--	---	--	-------------	--	---	--

PROJECT				YIN PING ROAD KOWLOON FEATURE WALL (PHASE 1)				MATERIAL				3mm 铝板				COATING				PVF2				COLOUR				EG-DG-D334232-ZD1(SS-01)				MARK. NO.				QTY.																			
PART NUMBER				Dim. A				Dim. B				Dim. C				Dim. D				Dim. E				Dim. F				Dim. G				Dim. H				QTY.				Inv. Code				ASSEMBLE ON PARTS				注: 工厂用							
AP-G116				-				-				-				-				-				-				-				1																							
REV. / CHECKED BY																																																							



DWG. NO.		AP-G116		REV.		-		SCALE		-		DATE		15-06-2023		DRAWN BY		-		APPROVED BY		-	
----------	--	---------	--	------	--	---	--	-------	--	---	--	------	--	------------	--	----------	--	---	--	-------------	--	---	--

PROJECT				YIN PING ROAD KOWLOON FEATURE WALL (PHASE 1)				MATERIAL				3mm 铝板				COATING				PVF2				COLOUR				EC-DG-D334232-ZD1(SS-01)				MARK. NO.				-				QTY.				-			
REV.	CHECKED	PART NUMBER	Dim. A	Dim. B	Dim. C	Dim. D	Dim. E	Dim. F	Dim. G	Dim. H	QTY.	Inv. Code	ASSEMBLE ON PARTS												注: 工厂用																						
-	AP-G117	-	-	-	-	-	-	-	-	-	2	-																																			



DWG. NO.		AP-G117		REV.		-		SCALE		-		DATE		15-06-2023		DRAWN BY		-		APPROVED BY		-	
----------	--	---------	--	------	--	---	--	-------	--	---	--	------	--	------------	--	----------	--	---	--	-------------	--	---	--

PROJECT  
YIN PING ROAD KOWLOON  
FEATURE WALL (PHASE 1)

MATERIAL  
3mm 铝板

COATING  
PVF2

COLOUR  
EC-DG-D334232-ZD1(SS-01)

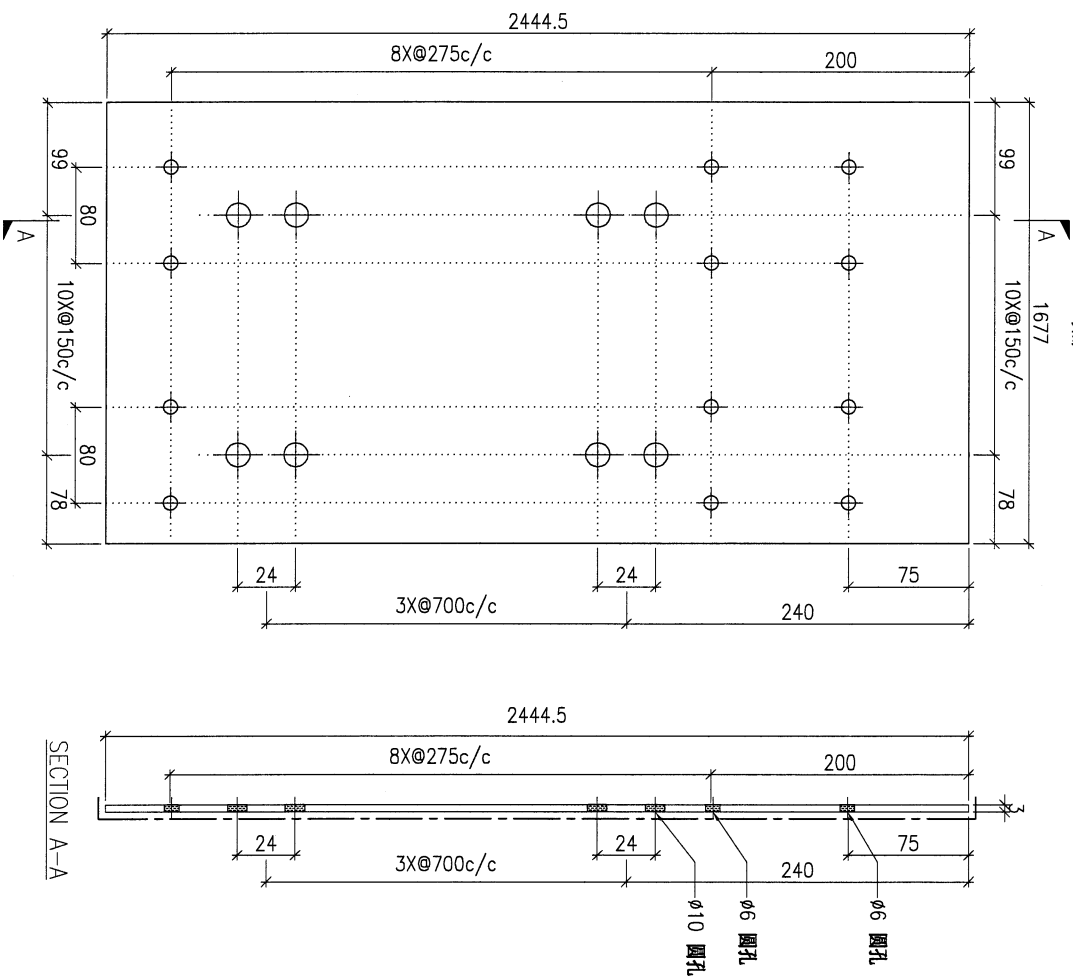
MARK. NO.  
-

QTY.  
-

REV. OR SHEET NO.	PART NUMBER	Dim. A	Dim. B	Dim. C	Dim. D	Dim. E	Dim. F	Dim. G	Dim. H	QTY.	Inv. Code
-	AP-G118	-	-	-	-	-	-	-	-	1	-

ASSEMBLE ON PARTS

注: 工厂用



DWG. NO.

AP-G118

REV. -

SCALE -

DATE  
15-06-2023

DRAWN BY -

APPROVED BY

PROJECT  
YIN PING ROAD KOWLOON  
FEATURE WALL (PHASE 1)

MATERIAL  
3mm 铝板

COATING  
PVF2

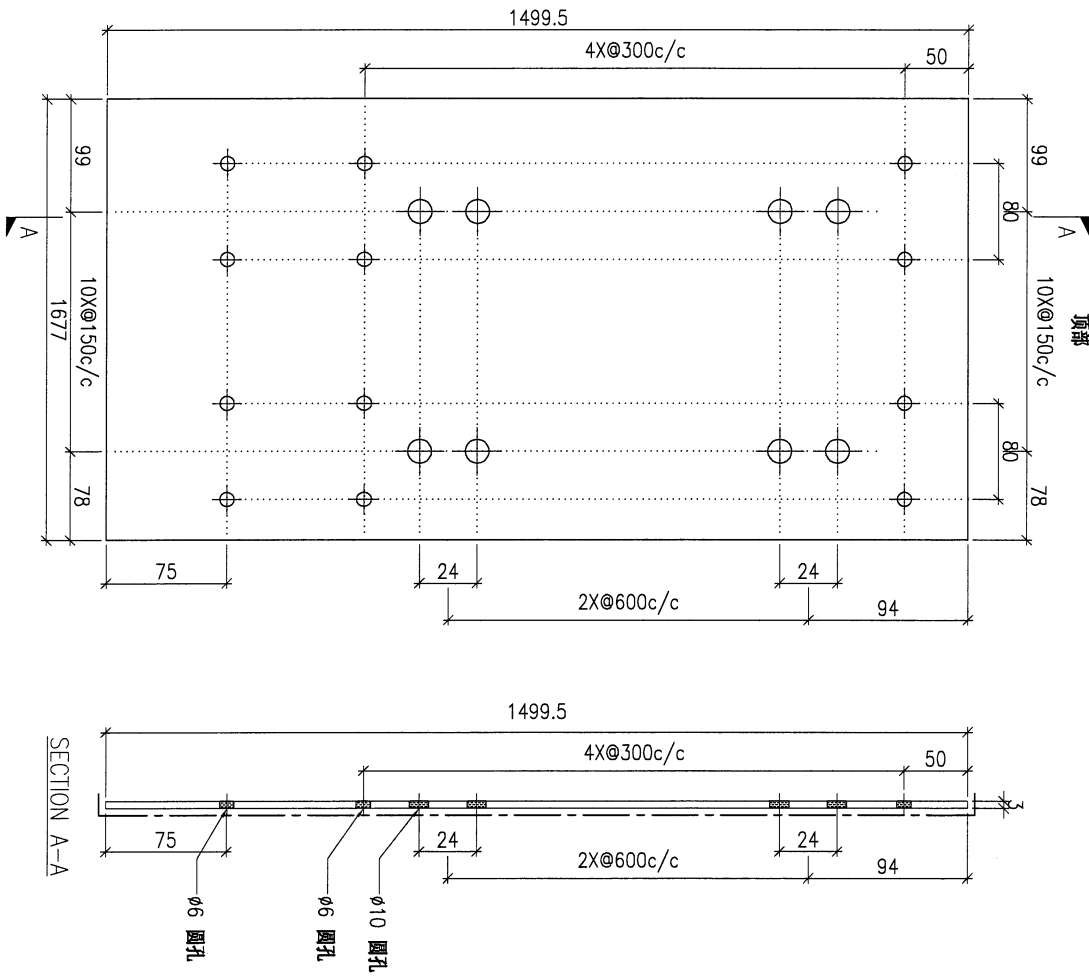
COLOUR  
EC-DG-D334232-ZD1(SS-01)

MARK. NO.  
-

QTY.  
-

REV.	CHANGED BY	PART NUMBER	Dim. A	Dim. B	Dim. C	Dim. D	Dim. E	Dim. F	Dim. G	Dim. H	QTY.	Inv. Code
-		AP-G119	-	-	-	-	-	-	-	-	1	

注: 工厂用



DWG. NO.	REV.	SCALE	DATE	DRAWN BY	APPROVED BY
AP-G119	-	-	15-06-2023	-	-

PROJECT  
YIN PING ROAD KOWLOON  
FEATURE WALL (PHASE 1)

MATERIAL  
3mm 铝板

COATING  
PVF2

COLOUR  
EC-DG-D334232-ZD1(SS-01)

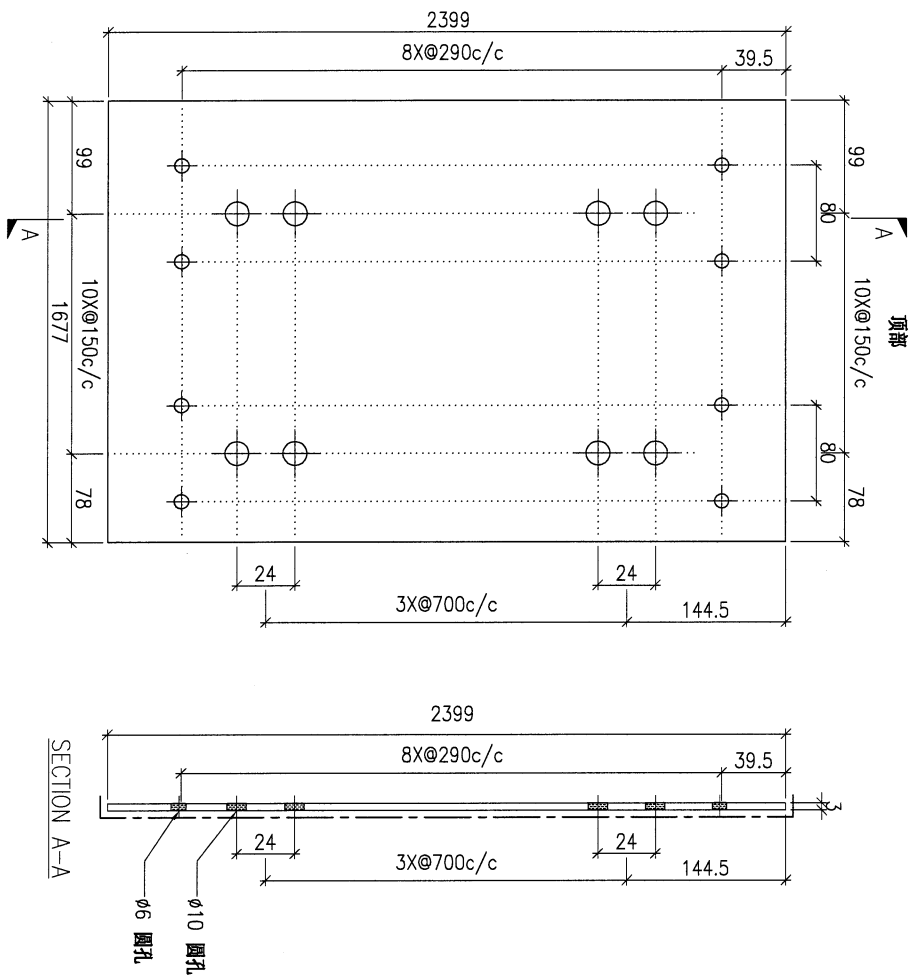
MARK. NO.  
-

QTY.  
-

REV. / CHECKED BY	PART NUMBER	Dim. A	Dim. B	Dim. C	Dim. D	Dim. E	Dim. F	Dim. G	Dim. H	QTY.	Inv. Code
-	AP-G120	-	-	-	-	-	-	-	-	2	-

ASSEMBLE ON PARTS

注: 工厂用



DWG. NO.	AP-G120	REV.	-	SCALE	-	DATE	15-06-2023	DRAWN BY	-	APPROVED BY	-
----------	---------	------	---	-------	---	------	------------	----------	---	-------------	---