

工程指示 / 要求簡箋 ENGINEER INSTRUCTIONS (E.I.)

工程指示編號:	EI- 6386	修改版本:	A
	HK-1440		
工程編號:	J 853	工程名稱:	延坪道
收件人:	生統	發件人:	Joe Chan
工程項目:	Feature Wall 廠用 鋁板 (第二批)	日期:	28/06/2023

<input checked="" type="checkbox"/> 原合約工程包	<input type="checkbox"/> 原合約工程加 / 減賬 QT-	<input type="checkbox"/> 新工程報價 QT-
--	--	------------------------------------

信件批核號碼/圖紙參考編號:	批核模具圖紙編號:
客戶指示附件:	管理內部批簽署:

<input type="checkbox"/> 初步鋁料 B.M.	<input type="checkbox"/> 加工拆圖, 然後生產	<input type="checkbox"/> 尺寸表
<input type="checkbox"/> 正式鋁料 B.M.	<input type="checkbox"/> 技術上資料/指示	<input type="checkbox"/> 報價
<input type="checkbox"/> 配件 B.M.	<input type="checkbox"/> 樣辦或貨品說明書	<input type="checkbox"/> 分判合約
<input checked="" type="checkbox"/> 其他: 鋁板		

內容: 請依附件資料, 生產鋁板.
(請以此版本為準, 前版本EI不用看)

(1+43頁)

完成上列要求日期: 15/7/2023 ASAP

國內

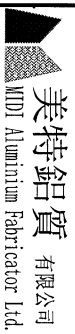
<input type="checkbox"/> 生產技術總監	<input type="checkbox"/> 連附件	<input type="checkbox"/> 技術部	<input type="checkbox"/> 連附件	<input type="checkbox"/> 生產部	<input type="checkbox"/> 連附件
<input type="checkbox"/> 採購部	<input type="checkbox"/> 連附件	<input checked="" type="checkbox"/> 生產統籌部	<input checked="" type="checkbox"/> 連附件	<input type="checkbox"/> 報關組	<input type="checkbox"/> 連附件
<input type="checkbox"/> 質檢部	<input type="checkbox"/> 連附件	<input type="checkbox"/> 會計部	<input type="checkbox"/> 連附件	<input type="checkbox"/> 機械設計部	<input type="checkbox"/> 連附件
<input type="checkbox"/> 香港辦	<input type="checkbox"/> 連附件	<input type="checkbox"/> 其他:			

香港

<input type="checkbox"/> 行政部	<input type="checkbox"/> 連附件	<input type="checkbox"/> 會計部	<input type="checkbox"/> 連附件	<input type="checkbox"/> 統籌部	<input type="checkbox"/> 連附件	<input type="checkbox"/> 工程部	<input type="checkbox"/> 連附件
<input type="checkbox"/> 採購部	<input type="checkbox"/> 連附件	<input type="checkbox"/> QS部	<input type="checkbox"/> 連附件	<input checked="" type="checkbox"/> 地盤管理	<input checked="" type="checkbox"/> 連附件	<input type="checkbox"/> 維修部	<input type="checkbox"/> 連附件

*發件人簽署:		*組別成員批核簽署:	
傳遞編號:	HK 1440 / 23	項目經理簽署:	

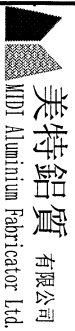
①



工程號:	J-853	計算:	ming	日期:	2023.06.25	送呈:	JOE
地盘名稱:	廷坪路	核對:		日期:		副本:	
廠用鋁板B.M.表 (part2)	項目類別:	特征牆(1區)	批准:	日期:			

序號	修改內容	鋁板圖號	鋁板名稱	顏色	實用	後備	總數	總重量	127.869		總重量:	892.69	圖紙編號
									總V.F.:	總展開面積			
1		FW1-AP59A	3mm厚鋁板	EC-DG-D334232-ZD1 (SS-01)		1	1	7.085	0.871	0.871	0.871	0.871	
2		FW1-AP59B	3mm厚鋁板	EC-DG-D334232-ZD1 (SS-01)		1	1	3.899	0.480	0.480	0.480	0.480	
3		FW1-AP60A	3mm厚鋁板	EC-DG-D334232-ZD1 (SS-01)		16	16	113.363	0.871	13.944	0.871	13.944	
4		FW1-AP60B	3mm厚鋁板	EC-DG-D334232-ZD1 (SS-01)		3	3	19.458	0.798	2.393	0.798	2.393	
5		FW1-AP60C	3mm厚鋁板	EC-DG-D334232-ZD1 (SS-01)		2	2	15.183	0.934	1.868	0.934	1.868	
6		FW1-AP61A	3mm厚鋁板	EC-DG-D334232-ZD1 (SS-01)		1	1	7.878	0.969	0.969	0.969	0.969	
7		FW1-AP61AR	3mm厚鋁板	EC-DG-D334232-ZD1 (SS-01)		1	1	7.878	0.969	0.969	0.969	0.969	
8		FW1-AP61BR	3mm厚鋁板	EC-DG-D334232-ZD1 (SS-01)		1	1	4.564	0.561	0.561	0.561	0.561	
9		FW1-AP62A	3mm厚鋁板	EC-DG-D334232-ZD1 (SS-01)		3	3	19.424	0.796	2.389	0.796	2.389	
10		FW1-AP62B	3mm厚鋁板	EC-DG-D334232-ZD1 (SS-01)		1	1	8.411	1.035	1.035	1.035	1.035	
11		FW1-AP62C	3mm厚鋁板	EC-DG-D334232-ZD1 (SS-01)		2	2	16.272	1.001	2.001	1.001	2.001	
12		FW1-AP62D	3mm厚鋁板	EC-DG-D334232-ZD1 (SS-01)		1	1	7.082	0.871	0.871	0.871	0.871	
13		FW1-AP62E	3mm厚鋁板	EC-DG-D334232-ZD1 (SS-01)		4	4	20.503	0.630	2.522	0.630	2.522	
14		FW1-AP62F	3mm厚鋁板	EC-DG-D334232-ZD1 (SS-01)		1	1	7.210	0.887	0.887	0.887	0.887	
15		FW1-AP64A	3mm厚鋁板	EC-DG-D334232-ZD1 (SS-01)		4	4	26.488	0.815	3.258	0.815	3.258	
16		FW1-AP64B	3mm厚鋁板	EC-DG-D334232-ZD1 (SS-01)		2	2	16.555	1.018	2.036	1.018	2.036	
17		FW1-AP64C	3mm厚鋁板	EC-DG-D334232-ZD1 (SS-01)		1	1	9.288	1.142	1.142	1.142	1.142	
18		FW1-AP64D	3mm厚鋁板	EC-DG-D334232-ZD1 (SS-01)		1	1	4.168	0.513	0.513	0.513	0.513	
19		FW1-AP64E	3mm厚鋁板	EC-DG-D334232-ZD1 (SS-01)		2	2	10.541	0.648	1.297	0.648	1.297	
20		FW1-AP64F	3mm厚鋁板	EC-DG-D334232-ZD1 (SS-01)		1	1	6.069	0.747	0.747	0.747	0.747	
21		FW1-AP64G	3mm厚鋁板	EC-DG-D334232-ZD1 (SS-01)		1	1	5.713	0.703	0.703	0.703	0.703	
22		FW1-AP66A	3mm厚鋁板	EC-DG-D334232-ZD1 (SS-01)		1	1	8.008	0.985	0.985	0.985	0.985	

2

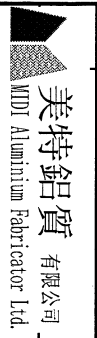


美特鋁質 有限公司
MTD Aluminum Fabricator Ltd.

工程號:	J-853	計算:	ming	日期:	2023.06.25	送呈:	JOE
地盤名稱:	延坪路	核對:		日期:		副本:	
項目類別:	特征牆(1區)	批准:		日期:			

序號	修改內容	鋁板圖號	鋁板名稱	顏色	實用	後備	總數	總重量	127.869		總重量:	892.69	圖紙編號
									A/C Code:	總V.F.:			
23		FW1-AP66B	3mm厚鋁板	EC-DG-D334232-ZD1 (SS-01)		1	1	6.098	0.750	0.750	0.750	0.750	
24		FW1-AP68A	3mm厚鋁板	EC-DG-D334232-ZD1 (SS-01)		3	3	4.437	0.182	0.546	0.182	0.546	
25		FW1-AP68B	3mm厚鋁板	EC-DG-D334232-ZD1 (SS-01)		3	3	3.742	0.153	0.460	0.153	0.460	
26		FW1-AP68C	3mm厚鋁板	EC-DG-D334232-ZD1 (SS-01)		1	1	9.904	1.218	1.218	1.218	1.218	
27		FW1-AP68D	3mm厚鋁板	EC-DG-D334232-ZD1 (SS-01)		2	2	5.221	0.321	0.642	0.321	0.642	
28		FW1-AP68E	3mm厚鋁板	EC-DG-D334232-ZD1 (SS-01)		1	1	3.826	0.471	0.471	0.471	0.471	
29		FW1-AP68F	3mm厚鋁板	EC-DG-D334232-ZD1 (SS-01)		1	1	2.234	0.275	0.275	0.275	0.275	
30		FW1-AP68G	3mm厚鋁板	EC-DG-D334232-ZD1 (SS-01)		1	1	1.279	0.157	0.157	0.157	0.157	
31		FW1-AP68H	3mm厚鋁板	EC-DG-D334232-ZD1 (SS-01)		1	1	1.169	0.144	0.144	0.144	0.144	
32		FW1-AP68J	3mm厚鋁板	EC-DG-D334232-ZD1 (SS-01)		1	1	1.071	0.132	0.132	0.132	0.132	
33		FW1-AP71	3mm厚鋁板	EC-DG-D334232-ZD1 (SS-01)		1	1	4.119	0.507	0.507	0.507	0.507	
34		FW1-AP72B	3mm厚鋁板	EC-DG-D334232-ZD1 (SS-01)		1	1	2.932	0.361	0.361	0.361	0.361	
35		FW1-AP72C	3mm厚鋁板	EC-DG-D334232-ZD1 (SS-01)		1	1	6.645	0.817	0.817	0.817	0.817	
36		FW1-AP75A	3mm厚鋁板	EC-DG-D334232-ZD1 (SS-01)		1	1	6.940	0.854	0.854	0.854	0.854	
37		FW1-AP75B	3mm厚鋁板	EC-DG-D334232-ZD1 (SS-01)		1	1	6.072	0.747	0.747	0.747	0.747	
38		FW1-AP100L	3mm厚鋁板	EC-DG-D334232-ZD1 (SS-01)		1	1	9.636	1.185	1.185	1.185	1.185	
39		FW1-AP100R	3mm厚鋁板	EC-DG-D334232-ZD1 (SS-01)		1	1	9.636	1.185	1.185	1.185	1.185	
40		FW1-AP101L	3mm厚鋁板	EC-DG-D334232-ZD1 (SS-01)		2	2	18.918	1.163	2.327	1.163	2.327	
41		FW1-AP101R	3mm厚鋁板	EC-DG-D334232-ZD1 (SS-01)		2	2	18.918	1.163	2.327	1.163	2.327	
42		FW1-AP102L	3mm厚鋁板	EC-DG-D334232-ZD1 (SS-01)		1	1	5.956	0.733	0.733	0.733	0.733	
43		FW1-AP102R	3mm厚鋁板	EC-DG-D334232-ZD1 (SS-01)		1	1	5.956	0.733	0.733	0.733	0.733	
44		FKP-M11	2mm厚鋁板	EC-DG-D334232-ZD1 (SS-01)		85	85	5.183	0.008	0.638	0.008	0.638	

3




工程號:	J-853	計算:	ming	日期:	2023.06.25	送呈:	JOE
地盤名稱:	延坪路	核對:		日期:		副本:	
項目類別:	特征牆(1區)	批准:		日期:			

BM編號:	修改版次:	A/C Code:	總V.F.:	127.869	總重量:	892.69
-------	-------	-----------	--------	---------	------	--------

序號	修改內容	鋁板圖號	鋁板名稱	顏色	實用	後備	總數	總重量	平方米		平方米		圖紙編號
									單件展開面積	總展開面積	單件V.F.	總V.F.	
45		FKP-M12	2mm厚鋁板	EC-DG-D334232-ZD1 (SS-01)		3	3	0.261	0.011	0.032	0.011	0.032	
46		FKP-M13	2mm厚鋁板	EC-DG-D334232-ZD1 (SS-01)		60	60	5.305	0.011	0.653	0.011	0.653	
47		FKP-M14	2mm厚鋁板	TUC106699FXLJBA-3 (SS-03)		222	222	18.049	0.010	2.220	0.010	2.220	
48		FKP-M15	2mm厚鋁板	TUC106699FXLJBA-3 (SS-03)		62	62	5.091	0.010	0.626	0.010	0.626	
49		FKP-M16	2mm厚鋁板	TUC106699FXLJBA-3 (SS-03)		84	84	15.366	0.023	1.890	0.023	1.890	
51		AP-G98	2mm厚鋁板	鍍化		24	24	1.220	0.006	0.150	0.000	0.000	
52		AP-G99	2mm厚鋁板	鍍化		24	24	1.107	0.006	0.136	0.000	0.000	
53		AP-G100	3mm厚鋁板	鍍化		36	36	0.585	0.002	0.072	0.000	0.000	
54		AP-G101	3mm厚鋁板	EC-DG-D334232-ZD1 (SS-01)		2	2	37.919	2.332	4.664	2.332	4.664	
55		AP-G102	3mm厚鋁板	EC-DG-D334232-ZD1 (SS-01)		2	2	23.260	1.431	2.861	1.431	2.861	
56		AP-G103	3mm厚鋁板	EC-DG-D334232-ZD1 (SS-01)		4	4	49.618	2.289	9.155	2.289	9.155	
57		AP-G104	3mm厚鋁板	EC-DG-D334232-ZD1 (SS-01)		1	1	12.404	2.289	2.289	2.289	2.289	
58		AP-G105	3mm厚鋁板	EC-DG-D334232-ZD1 (SS-01)		1	1	12.099	2.232	2.232	2.232	2.232	
59		AP-G106	3mm厚鋁板	EC-DG-D334232-ZD1 (SS-01)		1	1	12.404	2.289	2.289	2.289	2.289	
60		AP-G109	3mm厚鋁板	EC-DG-D334232-ZD1 (SS-01)		1	1	11.593	2.139	2.139	2.139	2.139	
61		AP-G110	3mm厚鋁板	EC-DG-D334232-ZD1 (SS-01)		1	1	10.191	1.880	1.880	1.880	1.880	
62		AP-G111	3mm厚鋁板	EC-DG-D334232-ZD1 (SS-01)		1	1	14.736	2.719	2.719	2.719	2.719	
63		AP-G112	3mm厚鋁板	EC-DG-D334232-ZD1 (SS-01)		1	1	12.875	2.375	2.375	2.375	2.375	
64		AP-G113	3mm厚鋁板	EC-DG-D334232-ZD1 (SS-01)		1	1	14.178	2.616	2.616	2.616	2.616	
65		AP-G115	3mm厚鋁板	EC-DG-D334232-ZD1 (SS-01)		1	1	19.582	3.613	3.613	3.613	3.613	
66		AP-G116	3mm厚鋁板	EC-DG-D334232-ZD1 (SS-01)		1	1	12.012	2.216	2.216	2.216	2.216	
66		AP-G117	3mm厚鋁板	EC-DG-D334232-ZD1 (SS-01)		2	2	38.436	3.546	7.091	3.546	7.091	

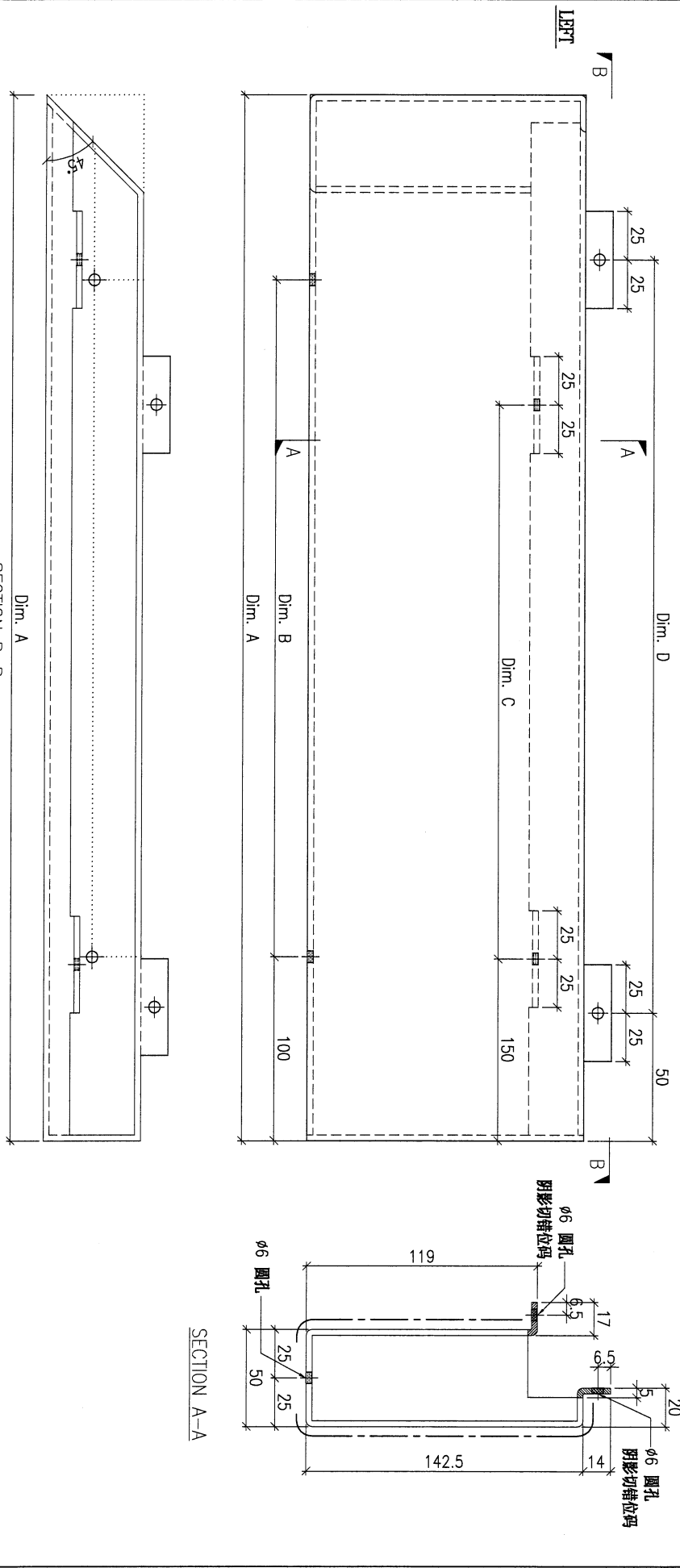
④

 美特鋁質 有限公司 MIDI Aluminum Fabricator Ltd.		工程號: J-853 地盤名稱: 延坪路 項目類別: 特征牆(1區)	計算: ming 核對: 批准:	日期: 2023.06.25 日期: 日期:	送呈: 副本:	JOE						
廠用鋁板B.M.表 (part2)	BM編號:	修改版本:	A/C Code:	總V.F.: 127.869	總重量: 892.69							
序號	修改內容	鋁板圖號	鋁板名稱	顏色	實用	後備	總數	總重量	平方米		圖紙編號	
									單件展開面積	總展開面積		單件V.F.
67		AP-G118	3mm厚鋁板	EC-DG-D334232-ZD1 (SS-01)	1	1	22.219	4.099	4.099	4.099	4.099	
68		AP-G119	3mm厚鋁板	EC-DG-D334232-ZD1 (SS-01)	1	1	13.629	2.515	2.515	2.515	2.515	
69		AP-G120	3mm厚鋁板	EC-DG-D334232-ZD1 (SS-01)	2	2	43.611	4.023	8.046	4.023	8.046	
70												
71												
72												
總計:					0	703	703	893	76	128	76	128

5

PROJECT				YIN PING ROAD KOWLOON FEATURE WALL (PHASE 1)				MATERIAL				3mm 铝板				COATING				PVF2				COLOUR				EC-DG-D334232-ZD11(SS-01)				MARK. NO.				-				QTY.				-			
CHECKED DWG BY		PART NUMBER		Dim. A		Dim. B		Dim. C		Dim. D		Dim. E		Dim. F		Dim. G		Dim. H		QTY.		Inv. Code		ASSEMBLE ON PARTS				-				-															
-		FW1-AP59A		2397		8x@280c/4		7x@300c/c		7x@300c/c		-		-		-		-		1		-		-				-																			
-		FW1-AP59B		1297		4x@280c/4		3x@300c/c		4x@300c/c		-		-		-		-		1		-		-				-																			

注：工厂用
注：工地复尺



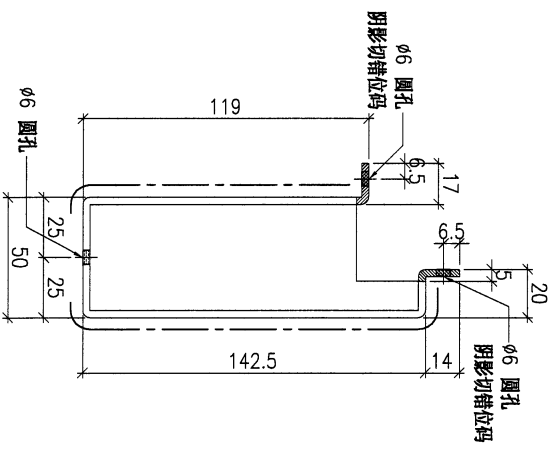
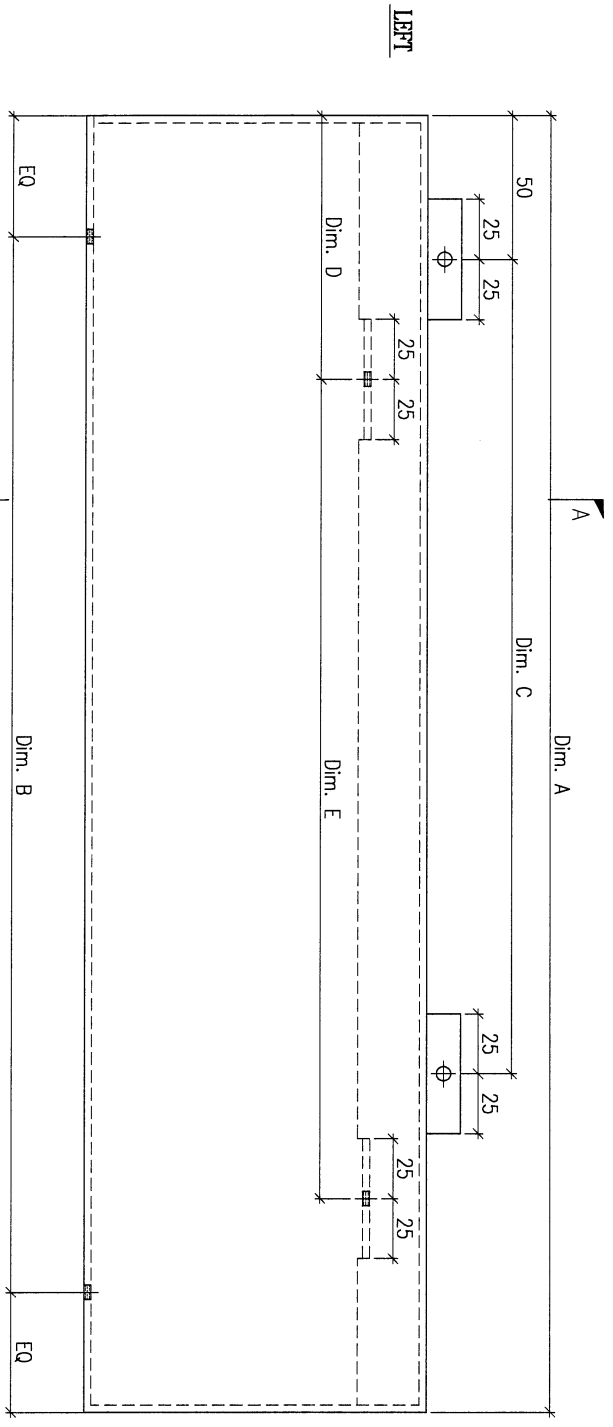
DWG. NO.		FW1-AP59		REV.		-		SCALE		-		DATE		15-06-2023		DRAWN BY		-		APPROVED BY		-	
----------	--	----------	--	------	--	---	--	-------	--	---	--	------	--	------------	--	----------	--	---	--	-------------	--	---	--

⑥

PROJECT		YIN PING ROAD KOWLOON FEATURE WALL (PHASE 1)				MATERIAL		COATING		COLOUR		MARK. NO.		QTY.	
						3mm 铝板		PVF2		EC-DG-D334232-ZD1(SS-01)					
REV.	CHANGED BY	PART NUMBER	Dim. A	Dim. B	Dim. C	Dim. D	Dim. E	Dim. F	Dim. G	Dim. H	QTY.	Inv. Code	ASSEMBLE ON PARTS		QTY.
-		FW1-AP60A	2398	8X@200/c	7X@300/c	150	7X@300/c				16				
-		FW1-AP60B	2191	7X@300/c	7X@300/c	150	6X@300/c				3				
-		FW1-AP60C	2573	8X@300/c	8X@300/c	145	8X@300/c				2				

注：工厂用

注：工地复尺



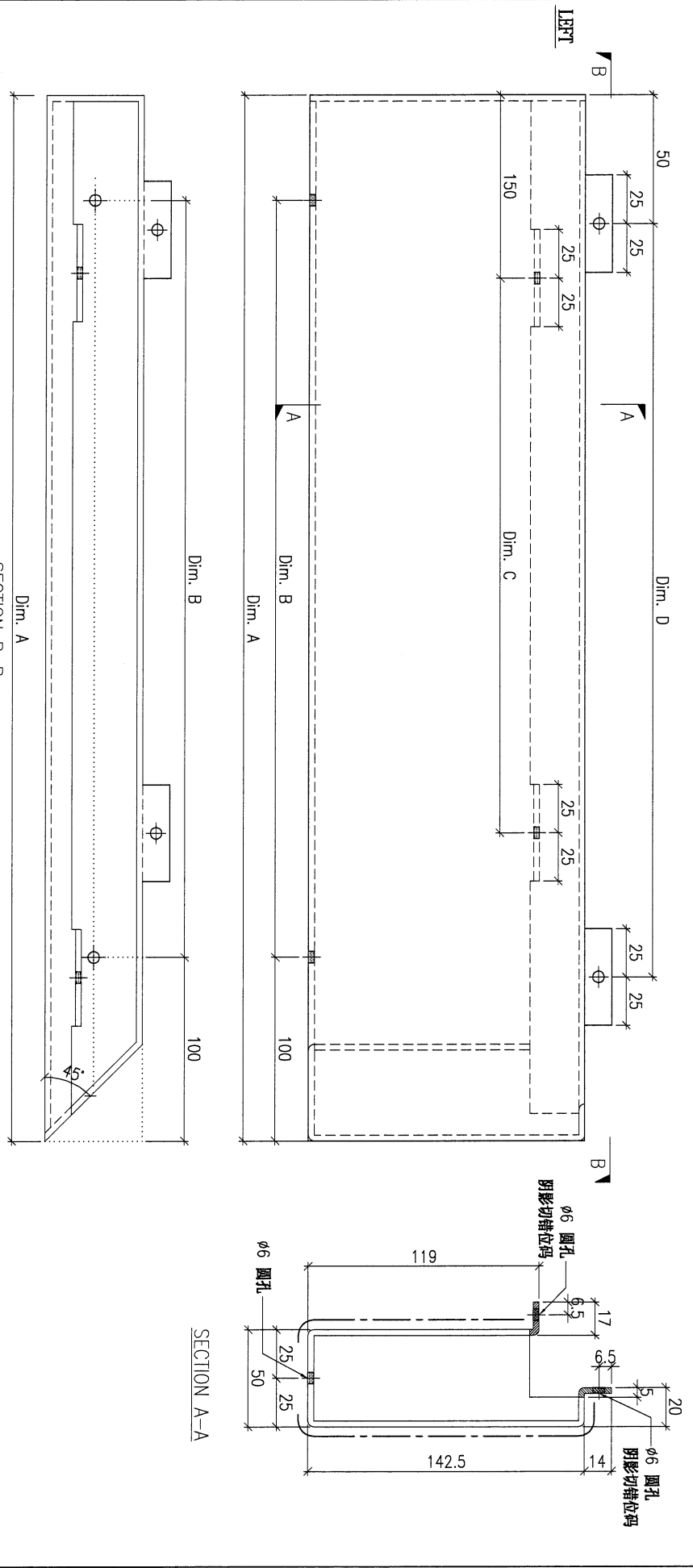
SECTION A-A

DWG. NO.	FW1-AP60	REV.	-	SCALE	-	DATE	15-06-2023	DRAWN BY	-	APPROVED BY	-
----------	----------	------	---	-------	---	------	------------	----------	---	-------------	---

PROJECT		YIN PING ROAD KOWLOON FEATURE WALL (PHASE 1)				MATERIAL		3mm 铝板		COATING		PVF2		COLOUR		EC-DG-D34232-2D1(SS-01)		MARK. NO.		QTY.	
REV.	QTY.	PART NUMBER	Dim. A	Dim. B	Dim. C	Dim. D	Dim. E	Dim. F	Dim. G	Dim. H	QTY.	Inv. Code	ASSEMBLE ON PARTS								
—	—	FW1-AP62A	2187	7x@290c/c	6x@300c/c	7x@300c/d					3										
—	—	FW1-AP62B	2856	9x@300c/c	8x@300c/c	9x@300c/c					1										
—	—	FW1-AP62C	2761	9x@290c/c	8x@290c/c	9x@290c/c					2										
—	—	FW1-AP62D	2397	8x@280c/c	7x@300c/d	7x@300c/d					1										
—	—	FW1-AP62E	1721	6x@260c/c	5x@300c/d	5x@300c/d					4										
—	—	FW1-AP62F	2441	8x@290c/c	7x@300c/d	7x@300c/d					1										

注：工厂用

注：工地复尺



DWG. NO.	FW1-AP62	REV.	—	SCALE	—	DATE	15-06-2023	DRAWN BY	—	APPROVED BY	—
----------	----------	------	---	-------	---	------	------------	----------	---	-------------	---

PROJECT
YIN PING ROAD KOWLOON
FEATURE WALL (PHASE 1)

MATERIAL
3mm 铝板

COATING
PVF2

COLOUR
EC-DG-D334232-ZD1(SS-011)

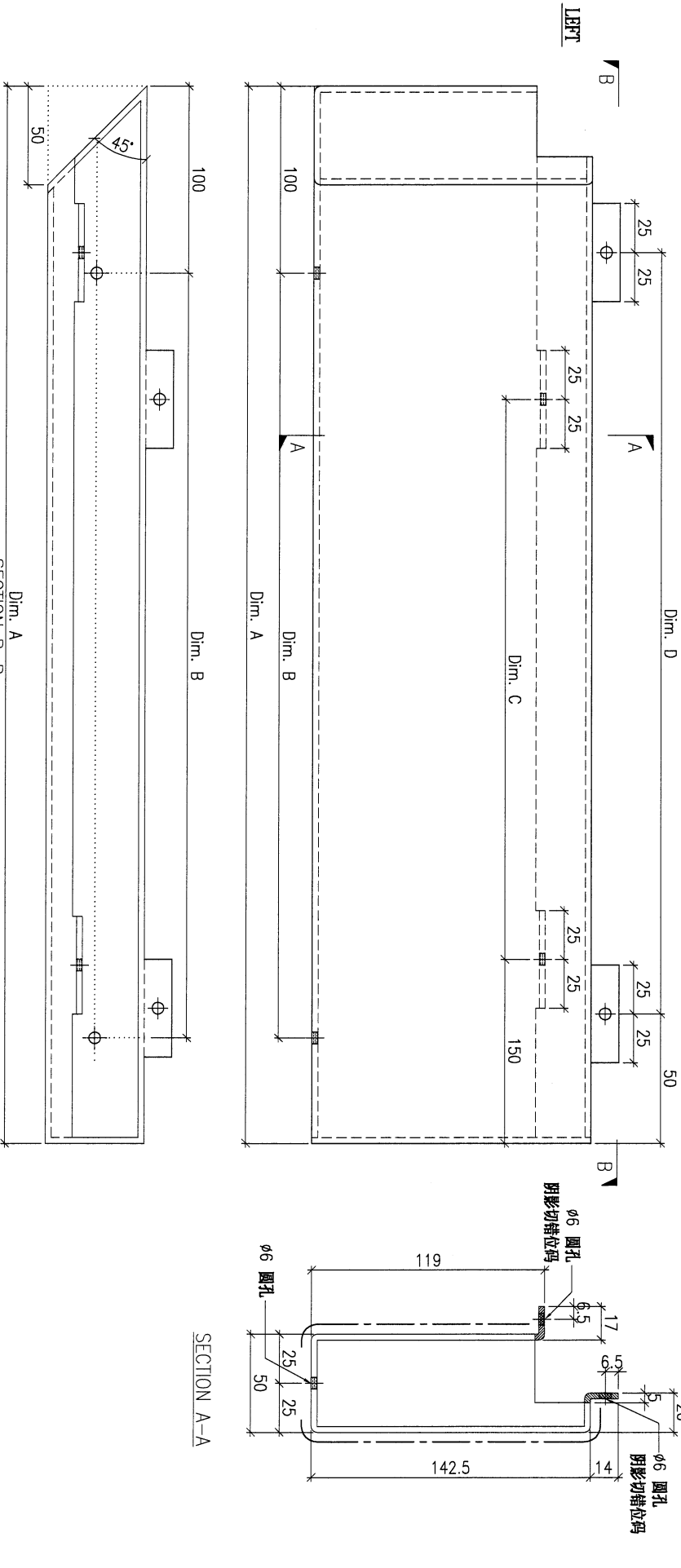
MARK. NO.
-

QTY.
-

注：工厂用

注：工地复尺

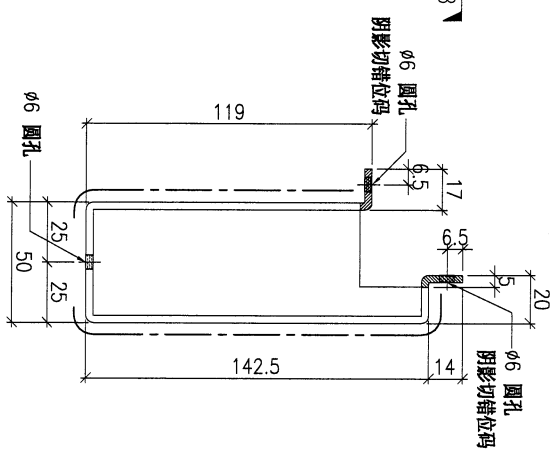
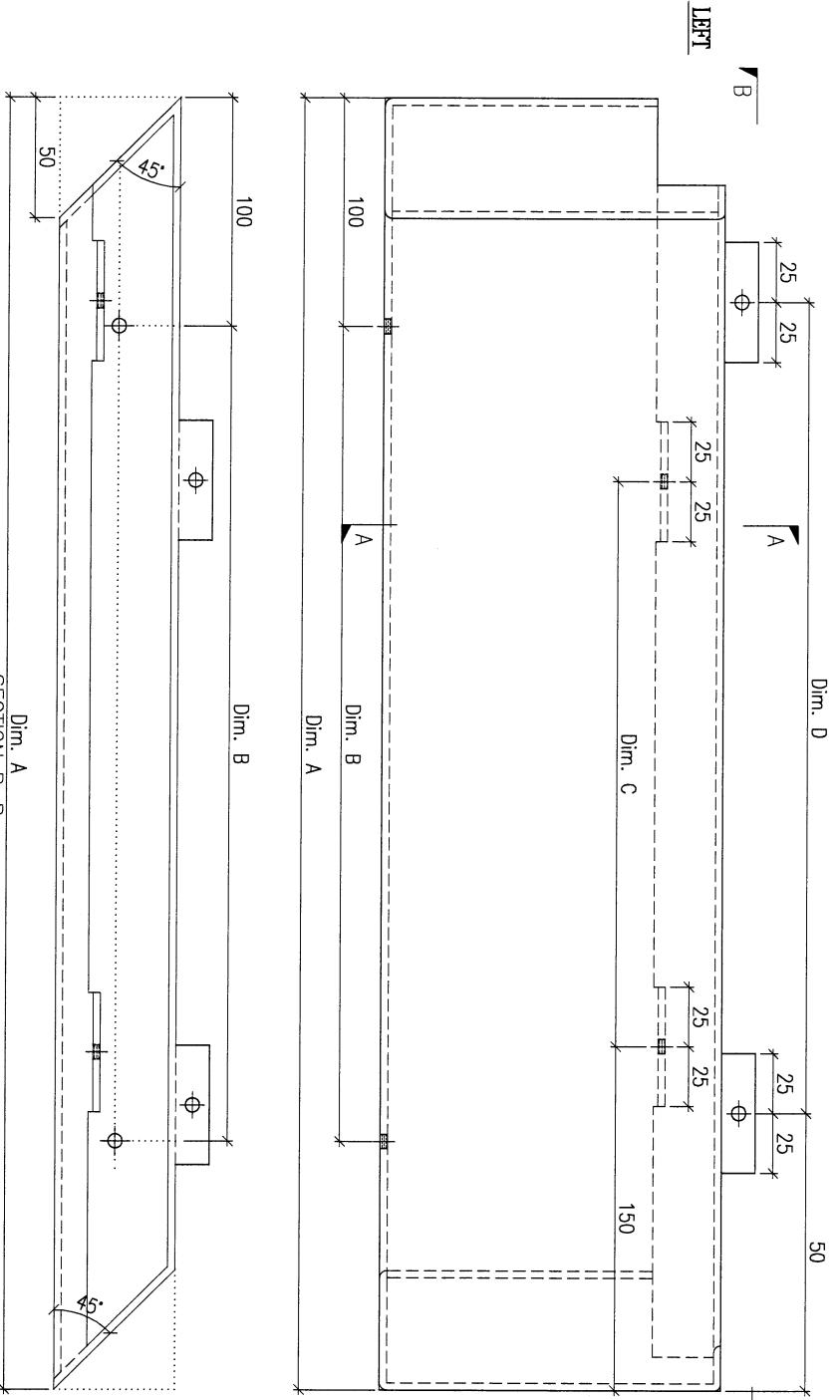
CHKD REV BY	PART NUMBER	Dim. A	Dim. B	Dim. C	Dim. D	Dim. E	Dim. F	Dim. G	Dim. H	QTY.	Inv. Code	ASSEMBLE ON PARTS
-	FW1-AP64A	2238	7x@300c/c	6x@300c/c	7x@300c/c					4		
-	FW1-AP64B	2810	9x@290c/c	8x@300c/c	9x@300c/c					2		
-	FW1-AP64C	3159	10x@300c/c	9x@300c/c	10x@300c/c					1		
-	FW1-AP64D	1390	4x@300c/c	4x@300c/c	4x@300c/c					1		
-	FW1-AP64E	1771	6x@270c/c	5x@300c/c	5x@300c/c					2		
-	FW1-AP64F	2047	7x@270c/c	6x@300c/c	6x@300c/c					1		
-	FW1-AP64G	1924	6x@300c/c	5x@300c/c	6x@300c/c					1		



DWG. NO. FW1-AP64
REV. -
SCALE -
DATE 15-06-2023
DRAWN BY -
APPROVED BY -

PROJECT				MATERIAL				COATING				COLOUR		MARK. NO.		QTY.	
YIN PING ROAD KOWLOON FEATURE WALL (PHASE 1)				3mm 铝板				PVF2				EC-DG-D334232-ZD1(SS-01)		-		-	
REV.	CHECKED BY	PART NUMBER	Dim. A	Dim. B	Dim. C	Dim. D	Dim. E	Dim. F	Dim. G	Dim. H	QTY.	Inv. Code	ASSEMBLE ON PARTS				
-		FW1-AP66A	2717	6x@280c/c	8x@300c/c	8x@300c/c					1						
-		FW1-AP66B	2057	7x@270c/c	6x@300c/c	6x@300c/c					1						

注：工厂用
注：工地复尺

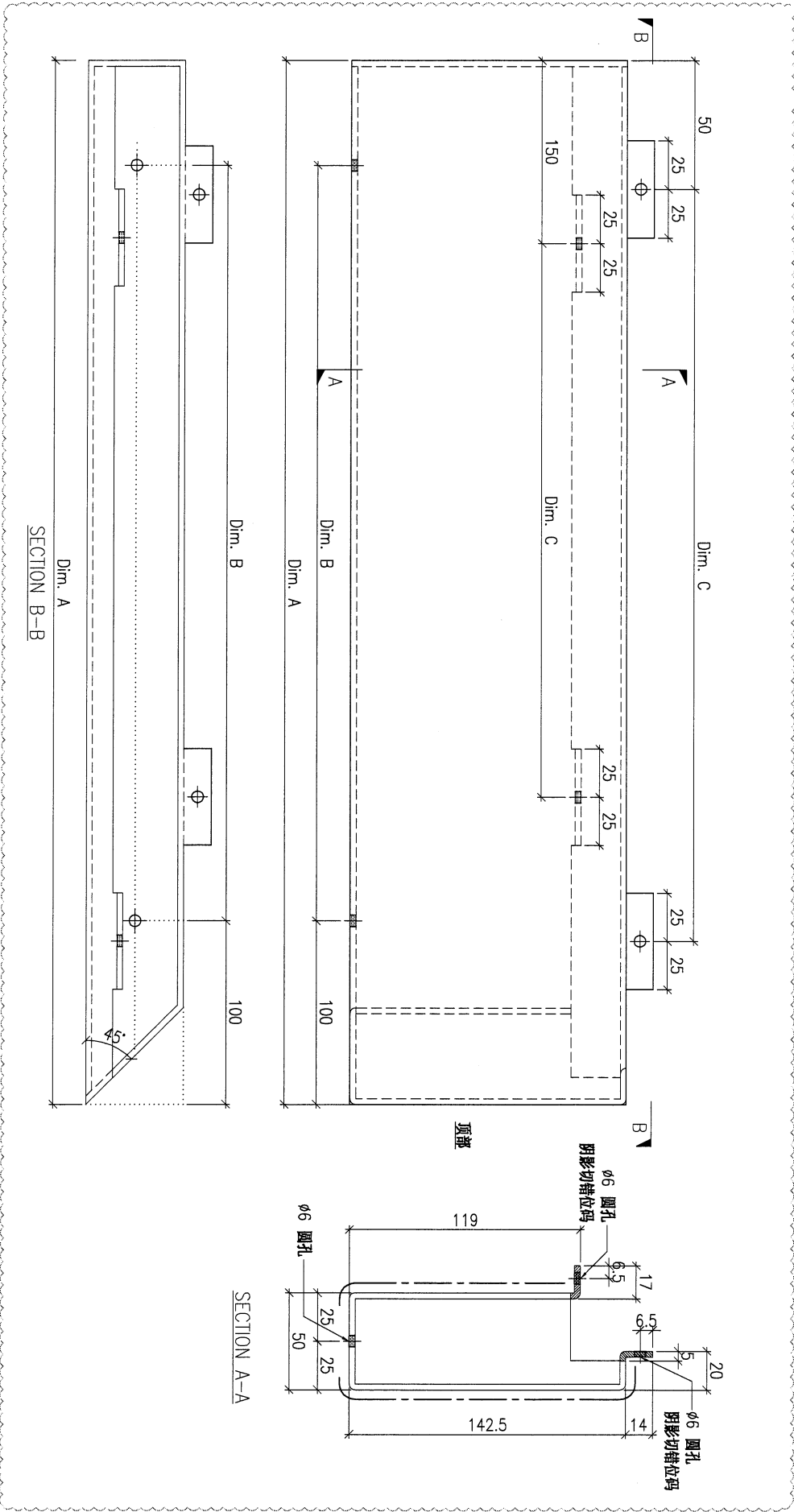


Dim. A
SECTION B-B

SECTION A-A

DWG. NO.		REV.		SCALE		DATE		DRAWN BY		APPROVED BY	
FW1-AP66		-		-		15-06-2023		-		-	

PROJECT				YIN PING ROAD KOWLOON FEATURE WALL (PHASE 1)				MATERIAL				3mm 铝板				COATING				PVF2				COLOUR				EC-DG-D334232-ZD11 (SS-011)				MARK. NO.				-				QTY.				-			
CHECKED DWG BY		PART NUMBER		Dim. A		Dim. B		Dim. C		Dim. D		Dim. E		Dim. F		Dim. G		Dim. H		QTY.		Inv. Code		ASSEMBLE ON PARTS				注: 工厂用																			
-		FW1-AP71		1373		4x@300c/c		4x@300c/c		4x@300c/c										1								注: 工地复尺																			



DWG. NO.		FW1-AP71		REV.		-		SCALE		-		DATE		15-06-2023		DRAWN BY		-		APPROVED BY		-	
----------	--	----------	--	------	--	---	--	-------	--	---	--	------	--	------------	--	----------	--	---	--	-------------	--	---	--

PROJECT
YIN PING ROAD KOWLOON
FEATURE WALL (PHASE 1)

MATERIAL
3mm 铝板

COATING
PVF2

COLOUR
EC-DG-D334232-ZD1(SS-011)

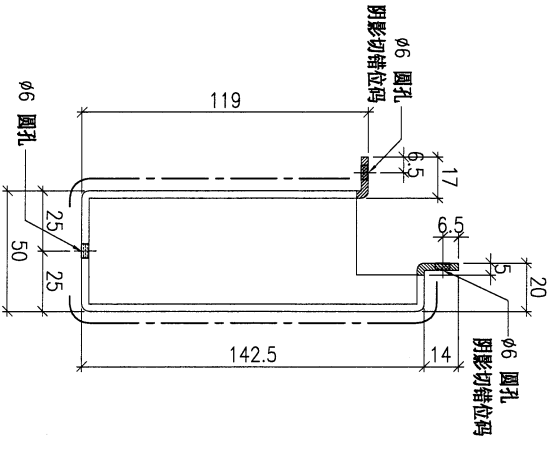
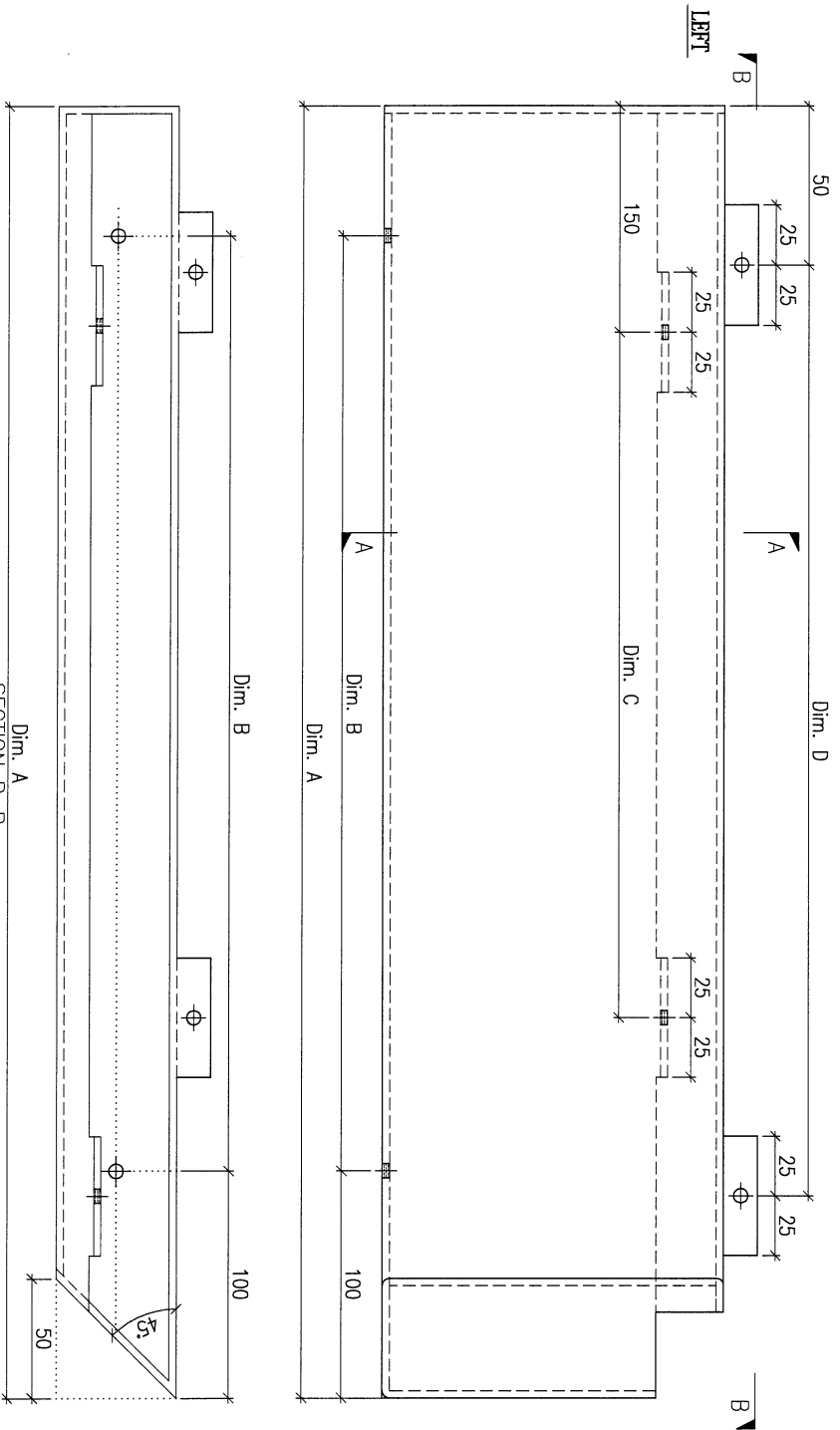
MARK. NO.
-

QTY.
-

REV. / CHECKED BY	PART NUMBER	Dim. A	Dim. B	Dim. C	Dim. D	Dim. E	Dim. F	Dim. G	Dim. H	QTY.	Inv. Code	ASSEMBLE ON PARTS
-	FW1-AP75A	2348	8x@270c/c	7x@300c/c	7x@300c/c					1		
-	FW1-AP75B	2048	7x@270c/c	6x@300c/c	6x@300c/c					1		

注：工厂用

注：工地复尺



Dim. A
SECTION B-B

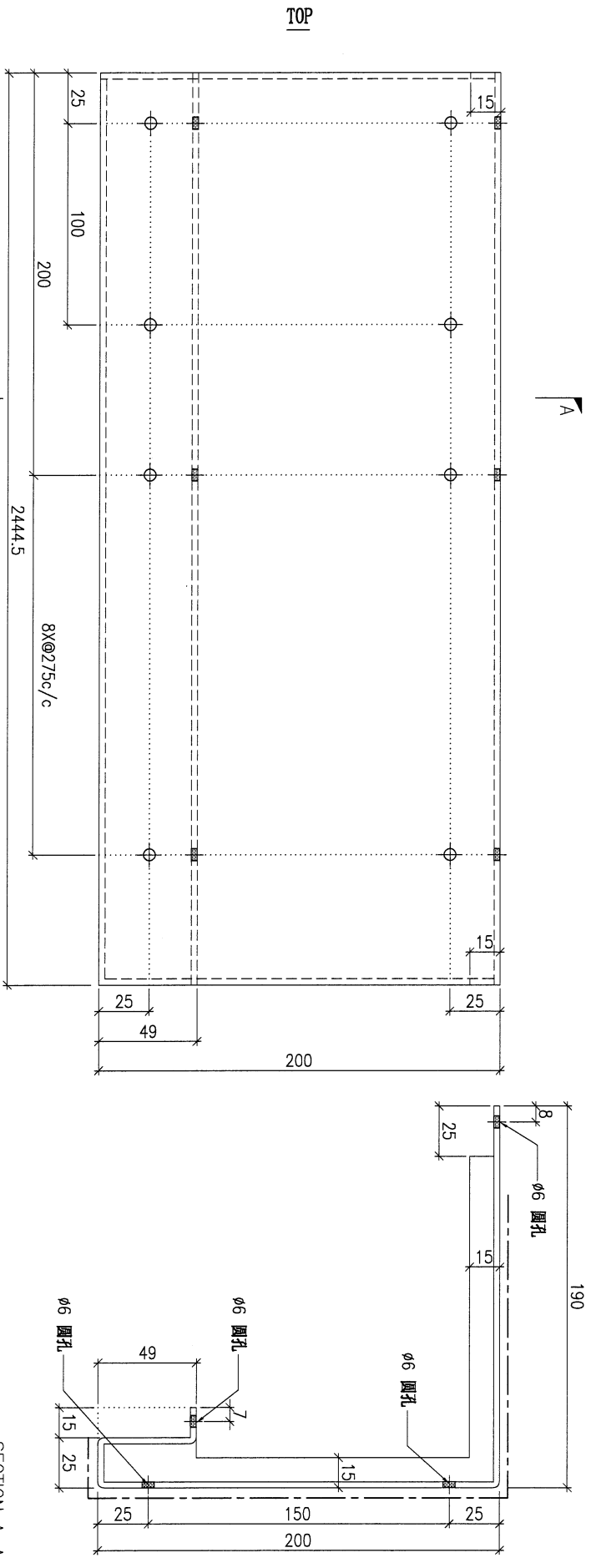
Dim. B

SECTION A-A

DWG. NO.	FW1-AP75	REV.	-	SCALE	-	DATE	15-06-2023	DRAWN BY	-	APPROVED BY	-
----------	----------	------	---	-------	---	------	------------	----------	---	-------------	---

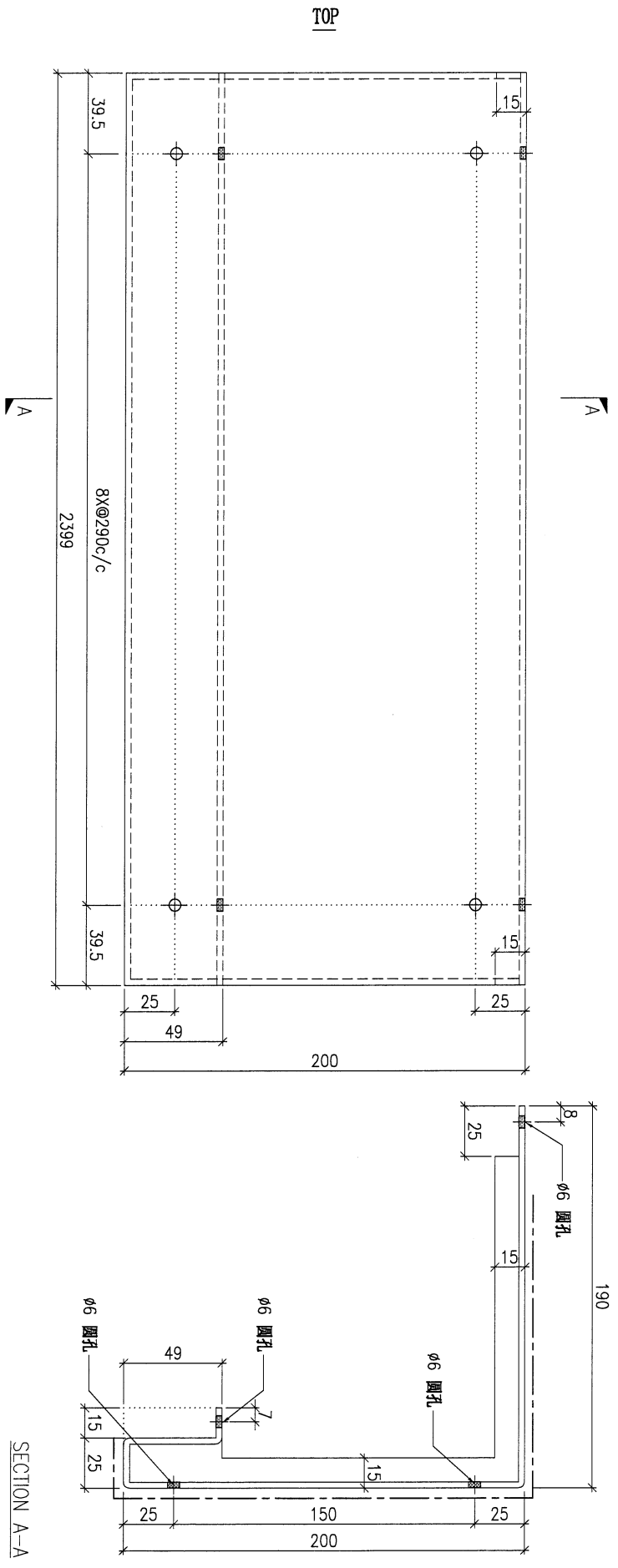
15

PROJECT				YIN PING ROAD KOWLOON FEATURE WALL (PHASE 1)				MATERIAL				COATING				COLOUR				MARK. NO.				QTY.			
				3mm 铝板				PVF2				EC-DG-D334232-ZD1(SS-011)				-				-							
REQ. NO.	CHECKED BY	PART NUMBER	Dim. A	Dim. B	Dim. C	Dim. D	Dim. E	Dim. F	Dim. G	Dim. H	QTY.	Inv. Code	ASSEMBLE ON PARTS				注: 工厂用										
-	-	FW1-AP100L	-	-	-	-	-	-	-	-	1	-	注: 如圖加工				注: 相反加工										
-	-	FW1-AP100R	-	-	-	-	-	-	-	-	1	-															



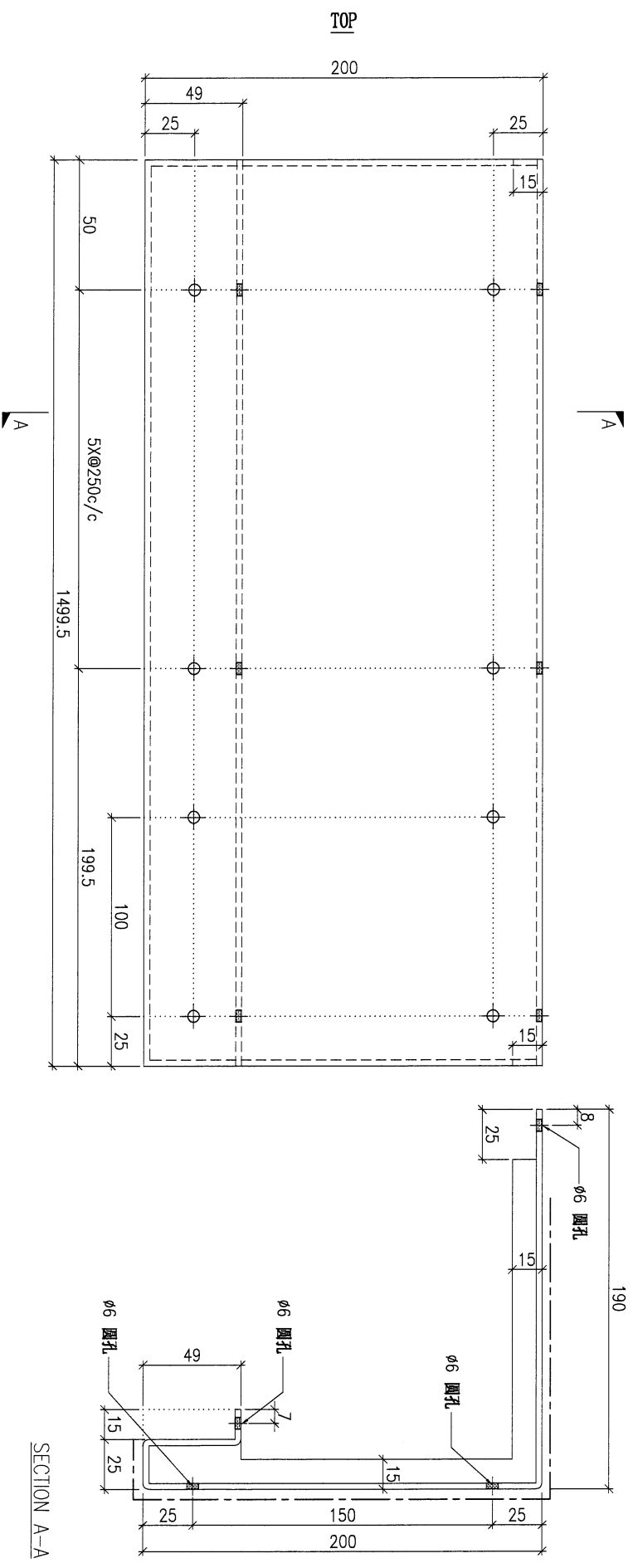
DWG. NO.		REV.		SCALE		DATE		DRAWN BY		APPROVED BY	
FW1-AP100		-		-		15-06-2023		-		-	

PROJECT				YIN PING ROAD KOWLOON FEATURE WALL (PHASE 1)				MATERIAL				COATING				COLOUR				MARK. NO.				QTY.			
				3mm 铝板				PVF2				EC-DG-D334232-ZD1(SS-011)				-				-							
REV.	CHECKED DATE BY	PART NUMBER	Dim. A	Dim. B	Dim. C	Dim. D	Dim. E	Dim. F	Dim. G	Dim. H	QTY.	Inv. Code	ASSEMBLE ON PARTS				注: 工厂用										
-		FW1-AP101L	-	-	-	-	-	-	-	-	2		注: 如圖加工														
-		FW1-AP101R	-	-	-	-	-	-	-	-	2		注: 相反加工														



DWG. NO.		REV.		SCALE		DATE		DRAWN BY		APPROVED BY	
FW1-AP101		-		-		15-06-2023		-		-	

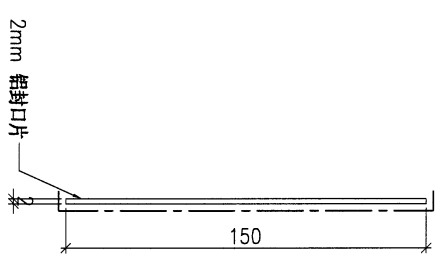
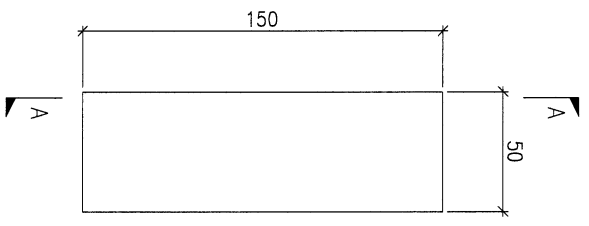
PROJECT		YIN PING ROAD KOWLOON FEATURE WALL (PHASE 1)						MATERIAL		3mm 铝板						COATING		PVF2		COLOUR		EC-DG-D334232-ZD1(SS-011)		MARK. NO.		QTY.	
REV.	CHECKED DATE BY	PART NUMBER		Dim. A	Dim. B	Dim. C	Dim. D	Dim. E	Dim. F	Dim. G	Dim. H	QTY.	Inv. Code	ASSEMBLE ON PARTS		QTY.		-		-		-					
-	-	FW1-AP102L		-	-	-	-	-	-	-	-	1	-	注: 如圖加工		-		-		-		-					
-	-	FW1-AP102R		-	-	-	-	-	-	-	-	1	-	注: 相反加工		-		-		-		-					



DWG. NO.		FW1-AP102		REV.		-		SCALE		-		DATE		15-06-2023		DRAWN BY		-		APPROVED BY		-	
----------	--	-----------	--	------	--	---	--	-------	--	---	--	------	--	------------	--	----------	--	---	--	-------------	--	---	--

注: 工厂用

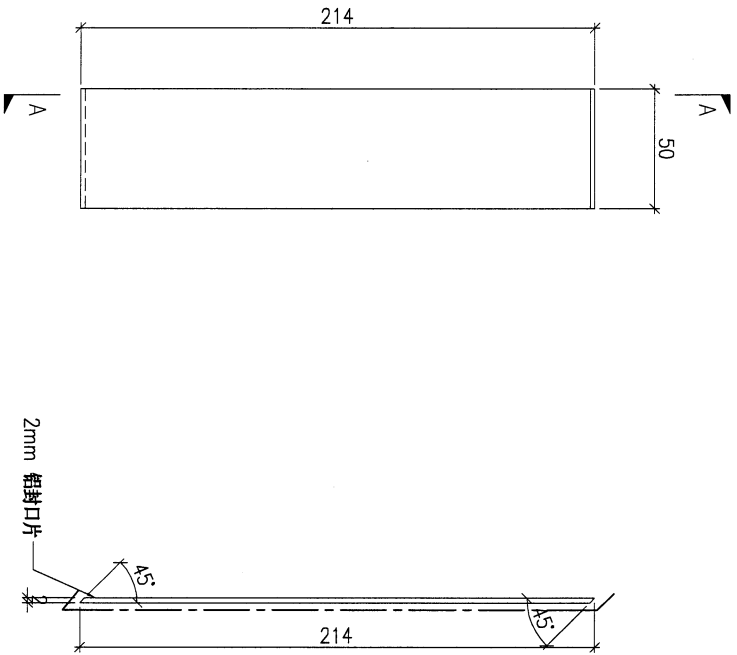
PROJECT				YIN PING ROAD KOWLOON FEATURE WALL (PHASE 1)				MATERIAL				COATING				COLOUR				MARK. NO.				QTY.			
				2mm 铝封口片				PVF2				EC-DG-D334232-ZD1(SS-01)				-				-							
REV.	CHANGED BY	PART NUMBER	Dim. A	Dim. B	Dim. C	Dim. D	Dim. E	Dim. F	Dim. G	Dim. H	QTY.	Inv. Code	ASSEMBLE ON PARTS								注: 工厂用						
-		FKP-M11	-	-	-						85																



DWG. NO.		REV.		SCALE		DATE		DRAWN BY		APPROVED BY	
FKP-M11		-		-		15-06-2023		-		-	

PROJECT YIN PING ROAD KOWLOON FEATURE WALL (PHASE 1)				MATERIAL 2mm 铝封口片				COATING PVF2		COLOUR EC-DG-D334232-ZD1(SS-01)		MARK. NO. -	QTY. -
REV. CHKD BY	PART NUMBER	Dim. A	Dim. B	Dim. C	Dim. D	Dim. E	Dim. F	Dim. G	Dim. H	QTY.	Inv. Code	ASSEMBLE ON PARTS	
-	FKP-M12	-	-	-						3			

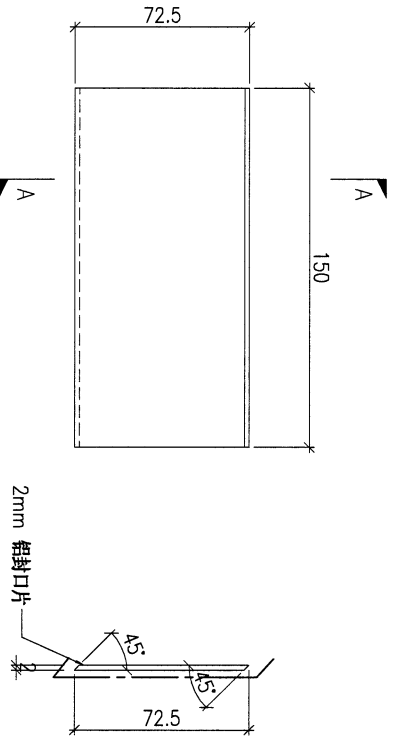
注：工厂用



SECTION A-A

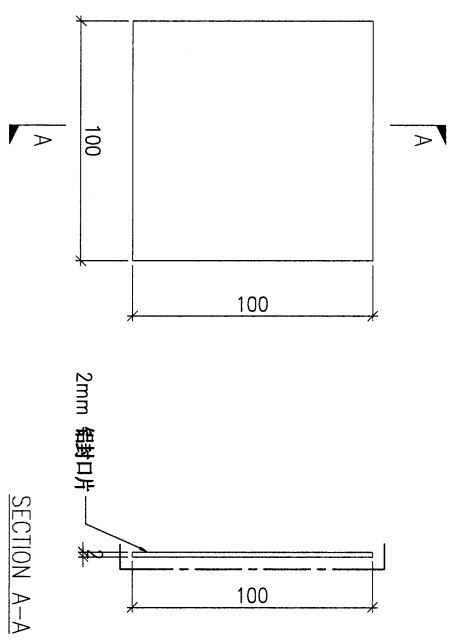
DWG. NO. FKP-M12		REV. -	SCALE -	DATE 15-06-2023	DRAWN BY -	APPROVED BY -
---------------------	--	-----------	------------	--------------------	---------------	------------------

PROJECT				YIN PING ROAD KOWLOON FEATURE WALL (PHASE 1)				MATERIAL				COATING				COLOUR				MARK. NO.				QTY.			
				2mm 铝封口片				PVF2				EC-DG-0334232-ZD1(SS-01)				-				-							
REV.	CHECKED	PART NUMBER	Dim. A	Dim. B	Dim. C	Dim. D	Dim. E	Dim. F	Dim. G	Dim. H	QTY.	Inv. Code	ASSEMBLE ON PARTS														
-	BY: BT	FKP-M13	-	-	-	-	-	-	-	-	60																
												注: 工厂用															



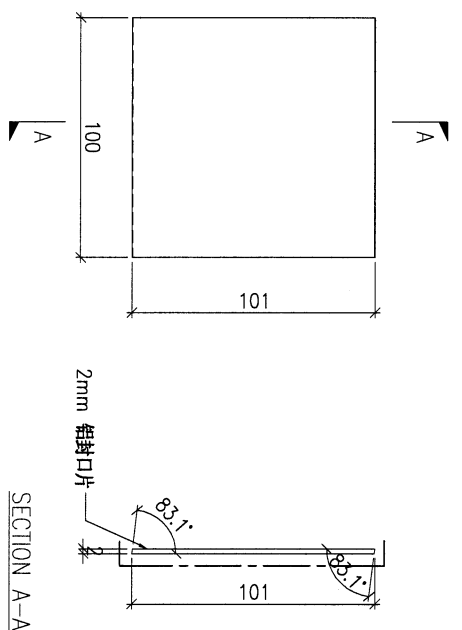
DWG. NO.		FKP-M13		REV.		-		SCALE		-		DATE		15-06-2023		DRAWN BY		-		APPROVED BY		-	
----------	--	---------	--	------	--	---	--	-------	--	---	--	------	--	------------	--	----------	--	---	--	-------------	--	---	--

PROJECT				MATERIAL				COATING				COLOUR				MARK. NO.		QTY.	
YIN PING ROAD KOWLOON FEATURE WALL (PHASE 1)				2mm 铝封口片				PVF2				TUC106699FXLJBA-3(SS-03)				-		-	
REV.	CHECKED DATE BY	PART NUMBER	Dim. A	Dim. B	Dim. C	Dim. D	Dim. E	Dim. F	Dim. G	Dim. H	QTY.	Inv. Code	ASSEMBLE ON PARTS				注: 工厂用		
-		FKP-M14	-	-	-	-	-	-	-	-	222								



DWG. NO.		REV.		SCALE		DATE		DRAWN BY		APPROVED BY	
FKP-M14		-		-		15-06-2023		-		-	

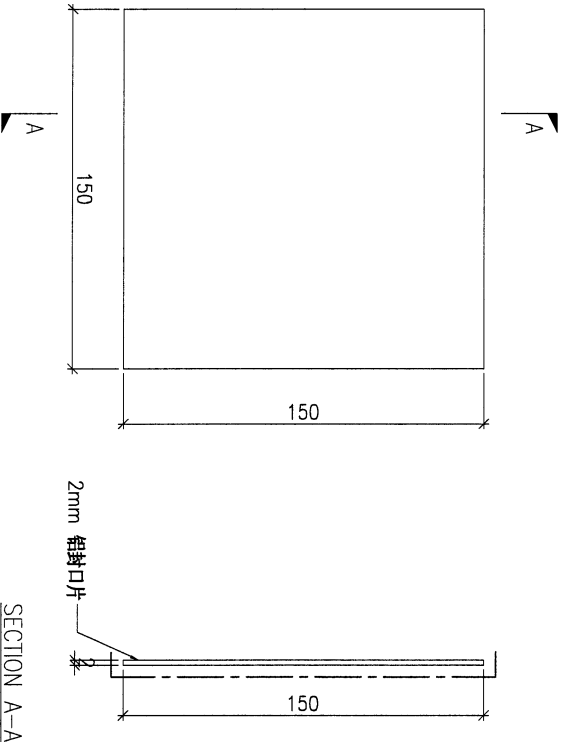
PROJECT				YIN PING ROAD KOWLOON FEATURE WALL (PHASE 1)				MATERIAL				2mm 铝封口片				COATING				PVF2				COLOUR				TUC106699FXLJBA-3(SS-03)				MARK. NO.				-				QTY.				-			
REV.	CHANGED BY	PART NUMBER	Dim. A	Dim. B	Dim. C	Dim. D	Dim. E	Dim. F	Dim. G	Dim. H	QTY.	Inv. Code	ASSEMBLE ON PARTS												注: 工厂用																						
-		FKP-M15	-	-	-	-	-	-	-	-	62																																				



DWG. NO.		FKP-M15		REV.		-		SCALE		-		DATE		15-06-2023		DRAWN BY		-		APPROVED BY		-	
----------	--	---------	--	------	--	---	--	-------	--	---	--	------	--	------------	--	----------	--	---	--	-------------	--	---	--

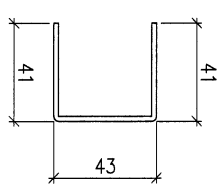
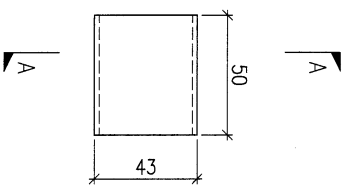
23

PROJECT				YIN PING ROAD KOWLOON FEATURE WALL (PHASE 1)				MATERIAL				COATING		COLOUR		MARK. NO.	QTY.
				2mm 铝封口片				PVF2		TUC106699FXLJBA-3(SS-03)		-	-				
REV.	CHECKED BY	PART NUMBER	Dim. A	Dim. B	Dim. C	Dim. D	Dim. E	Dim. F	Dim. G	Dim. H	QTY.	Inv. Code	ASSEMBLE ON PARTS				
-		FKP-M16	-	-	-						84						
													注: 工厂用				



DWG. NO.		FKP-M16		REV.		SCALE		DATE		DRAWN BY		APPROVED BY	
				-		-		15-06-2023		-			

PROJECT				YIN PING ROAD KOWLOON FEATURE WALL (PHASE 1)				MATERIAL				COATING		COLOUR		MARK. NO.		QTY.	
				2mm 铝板				氧化		-		-		-		-		-	
REV.	CHECKED DATE BY	PART NUMBER	Dim. A	Dim. B	Dim. C	Dim. D	Dim. E	Dim. F	Dim. G	Dim. H	QTY.	Inv. Code	ASSEMBLE ON PARTS						
-		AP-G98	-	-	-						24								
													注: 工厂用						

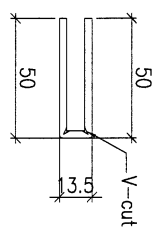
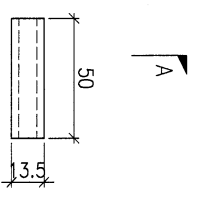


SECTION A-A

DWG. NO.		REV.		SCALE		DATE		DRAWN BY		APPROVED BY	
AP-G98		-		-		15-06-2023		-		-	

25

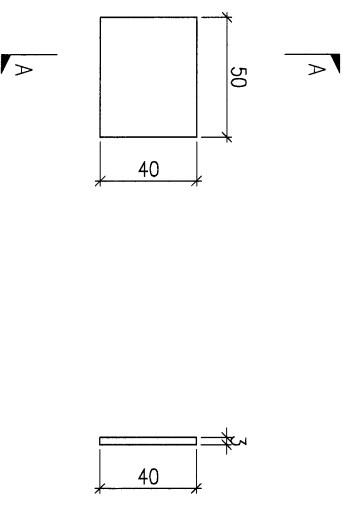
PROJECT		YIN PING ROAD KOWLOON FEATURE WALL (PHASE 1)								MATERIAL		COATING		COLOUR		MARK. NO.		QTY.	
REV.	CHANGED BY	PART NUMBER	Dim. A	Dim. B	Dim. C	Dim. D	Dim. E	Dim. F	Dim. G	Dim. H	QTY.	Inv. Code	ASSEMBLE ON PARTS						
-		AP-G99	-	-	-						24								
注：工厂用																			



SECTION A-A

DWG. NO.		REV.		SCALE		DATE		DRAWN BY		APPROVED BY	
AP-G99		-		-		15-06-2023		-		-	

PROJECT				YIN PING ROAD KOWLOON FEATURE WALL (PHASE 1)				MATERIAL				COATING		COLOUR		MARK. NO.		QTY.	
				3mm 铝板				铝化		-		-		-		-		-	
REV.	CHANGED BY	PART NUMBER	Dim. A	Dim. B	Dim. C	Dim. D	Dim. E	Dim. F	Dim. G	Dim. H	QTY.	Inv. Code	ASSEMBLE ON PARTS				注: 工厂用		
-		AP-G100	-	-	-						36								



SECTION A-A

DWG. NO.		REV.		SCALE		DATE		DRAWN BY		APPROVED BY	
AP-G100		-		-		15-06-2023		-		-	

57

PROJECT
YIN PING ROAD KOWLOON
FEATURE WALL (PHASE 1)

MATERIAL
3mm 鋁板

COATING
PVF2

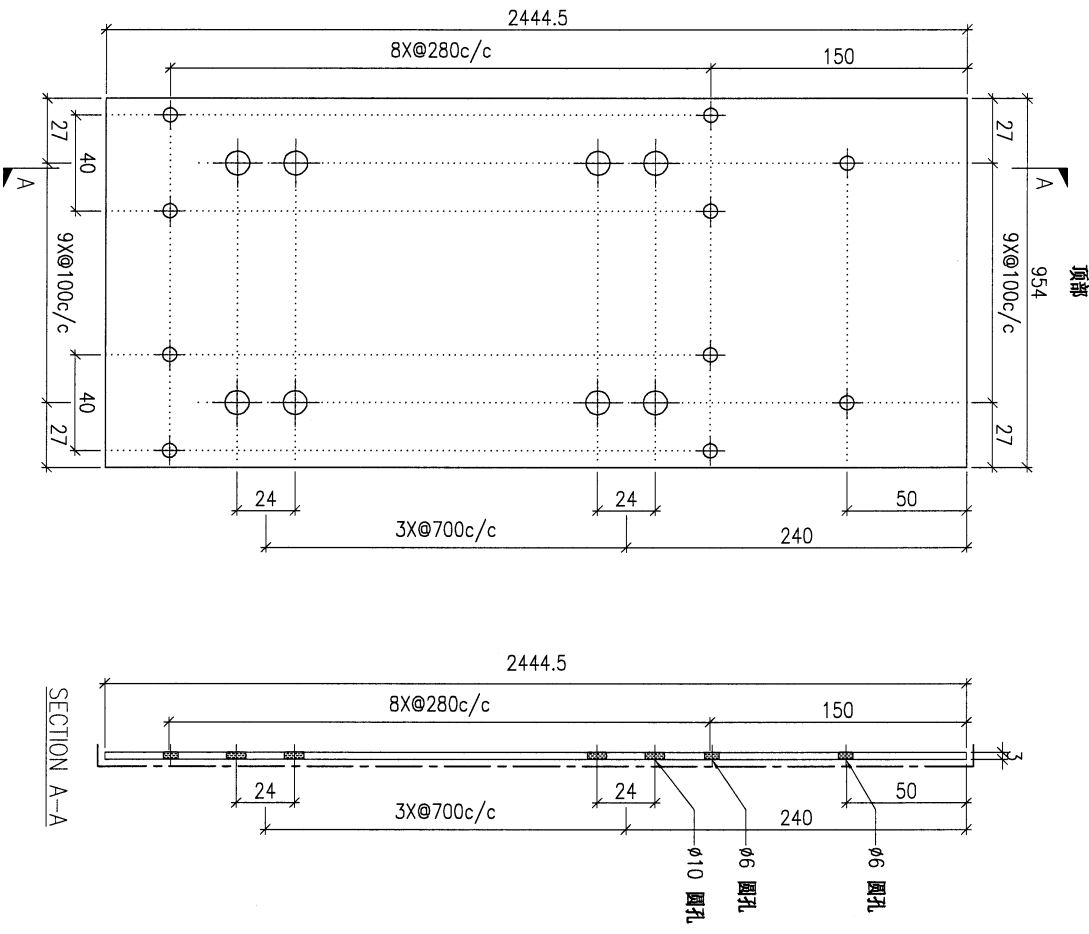
COLOUR
EC-DG-D334232-ZD1 (SS-01)

MARK. NO.
-

QTY.
-

Checked By	Part Number	Dim. A	Dim. B	Dim. C	Dim. D	Dim. E	Dim. F	Dim. G	Dim. H	QTY.	Inv. Code
-	AP-G101	-	-	-	-	-	-	-	-	2	-

注：工厂用



DWG. NO.	AP-G101	REV.	-	SCALE	-	DATE	15-06-2023	DRAWN BY	-	APPROVED BY	-
----------	---------	------	---	-------	---	------	------------	----------	---	-------------	---

28

PROJECT: YIN PING ROAD KOWLOON FEATURE WALL (PHASE 1)

MATERIAL: 3mm 铝板

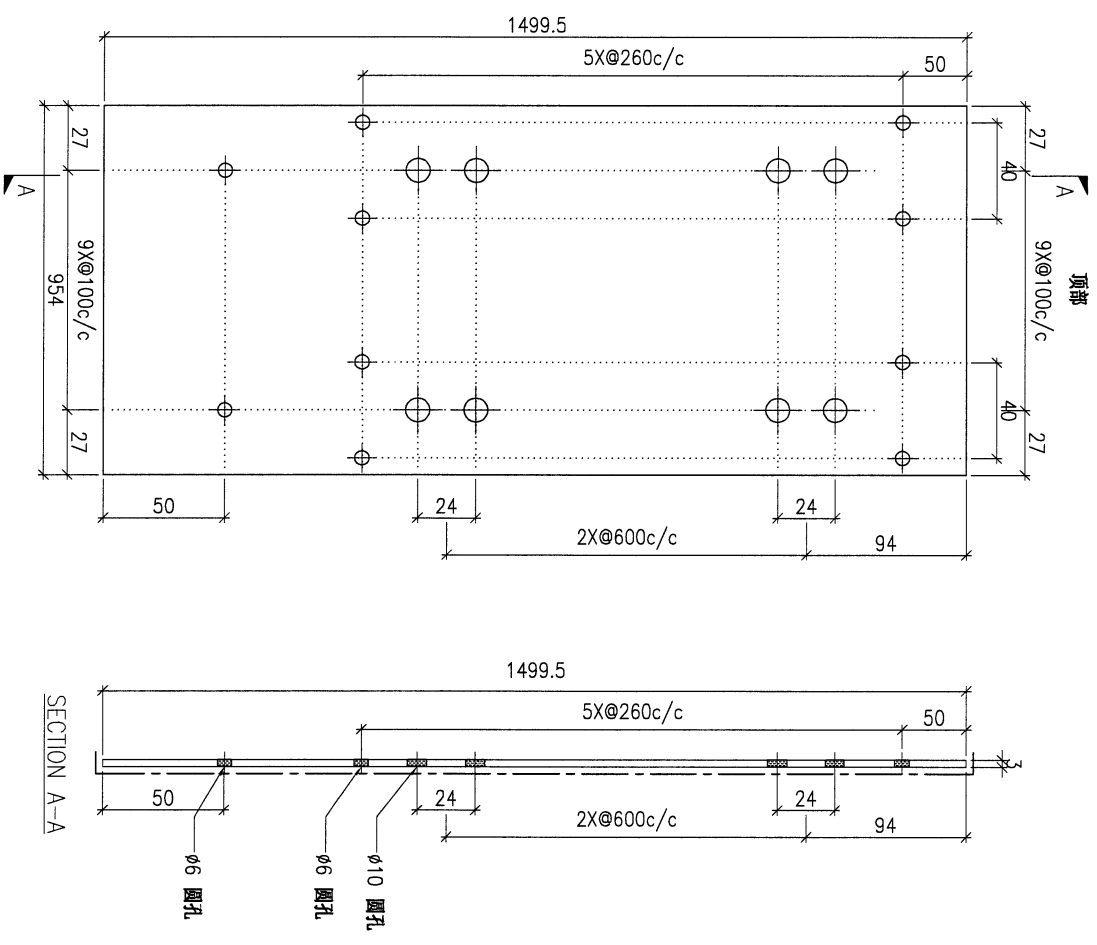
COATING: PVF2

COLOUR: EC-DG-D334232-ZD1(SS-01)

MARK. NO.: -

QTY.: -

REV.	CHECKED BY	PART NUMBER	Dim. A	Dim. B	Dim. C	Dim. D	Dim. E	Dim. F	Dim. G	Dim. H	QTY.	Inv. Code	ASSEMBLY ON PARTS
-		AP-G102	-	-	-	-	-	-	-	-	2		



DWG. NO.: AP-G102

REV.: -

SCALE: -

DATE: 15-06-2023

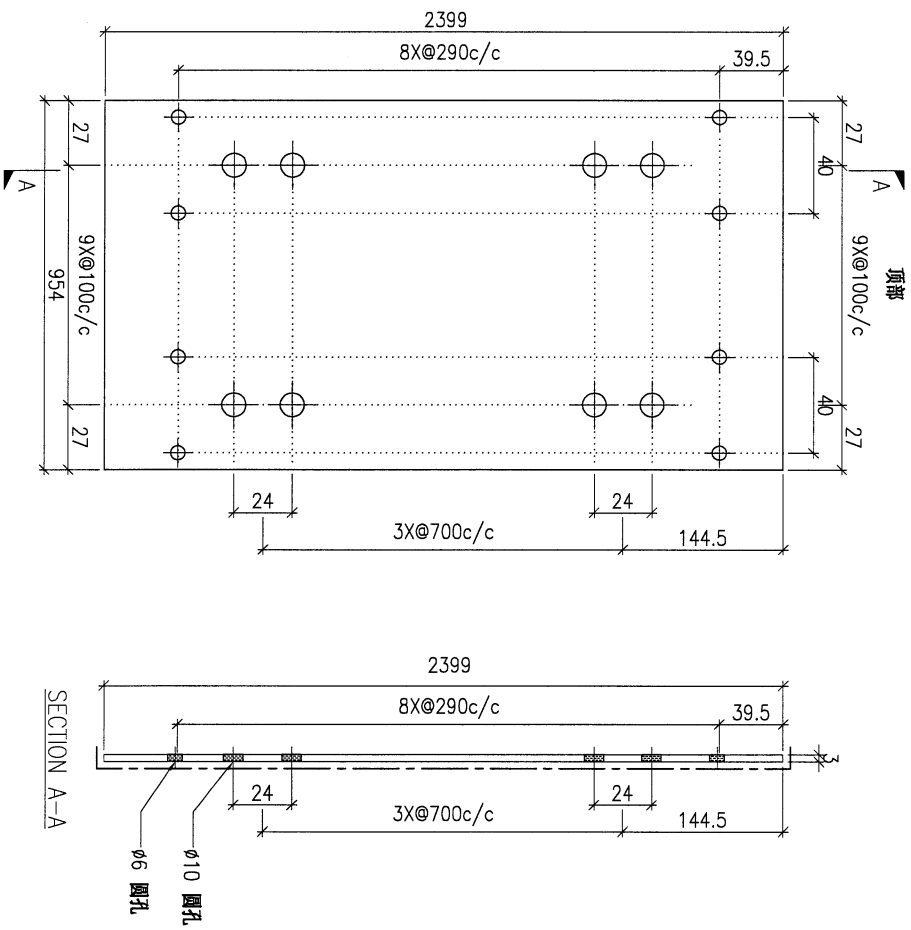
DRAWN BY: -

APPROVED BY: -

注: 工厂用

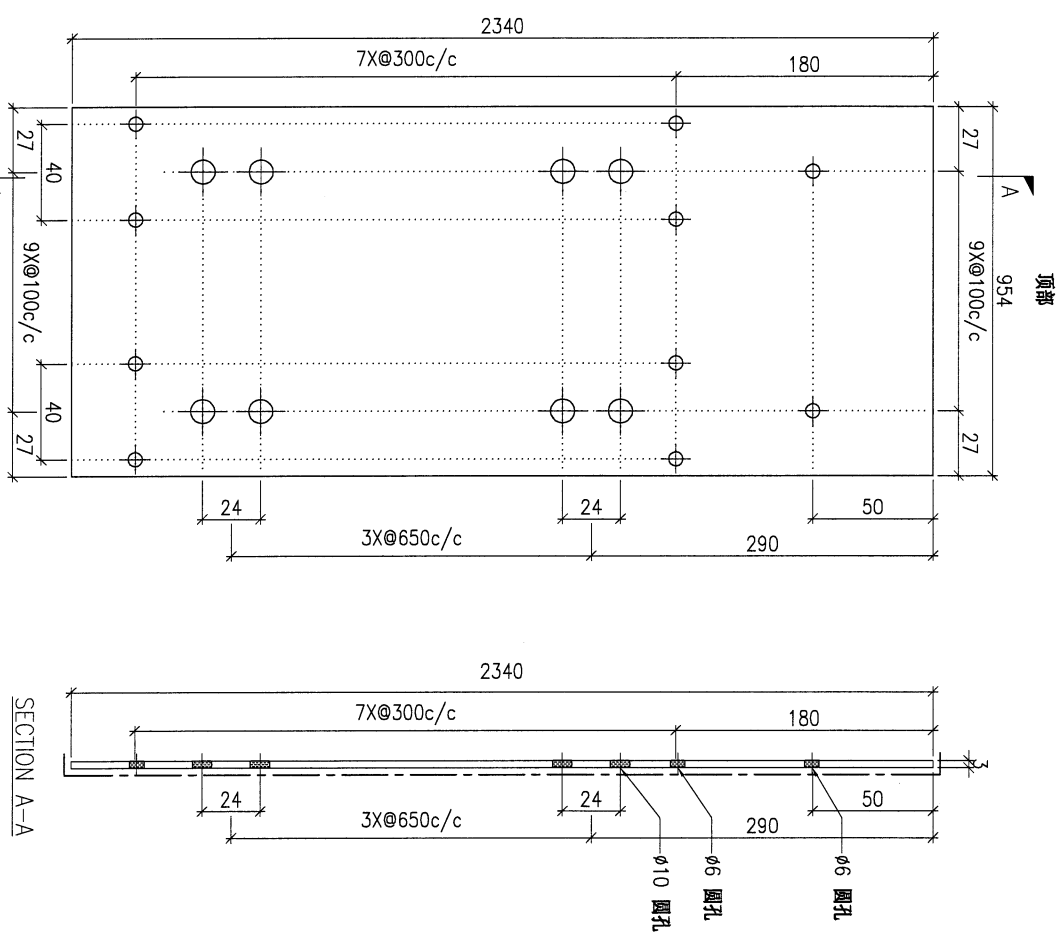
29

PROJECT				MATERIAL				COATING				COLOUR				MARK. NO.		QTY.	
YIN PING ROAD KOWLOON FEATURE WALL (PHASE 1)				3mm 铝板				PVF2				EC-DG-D334232-ZD1(SS-01)				-		-	
REV.	CHECKED DATE BY	PART NUMBER	Dim. A	Dim. B	Dim. C	Dim. D	Dim. E	Dim. F	Dim. G	Dim. H	QTY.	Inv. Code	ASSEMBLE ON PARTS				注: 工厂用		
-		AP-G103	-	-	-	-	-	-	-	-	4								



DWG. NO.		REV.		SCALE		DATE		DRAWN BY		APPROVED BY	
AP-G103		-		-		15-06-2023		-		-	

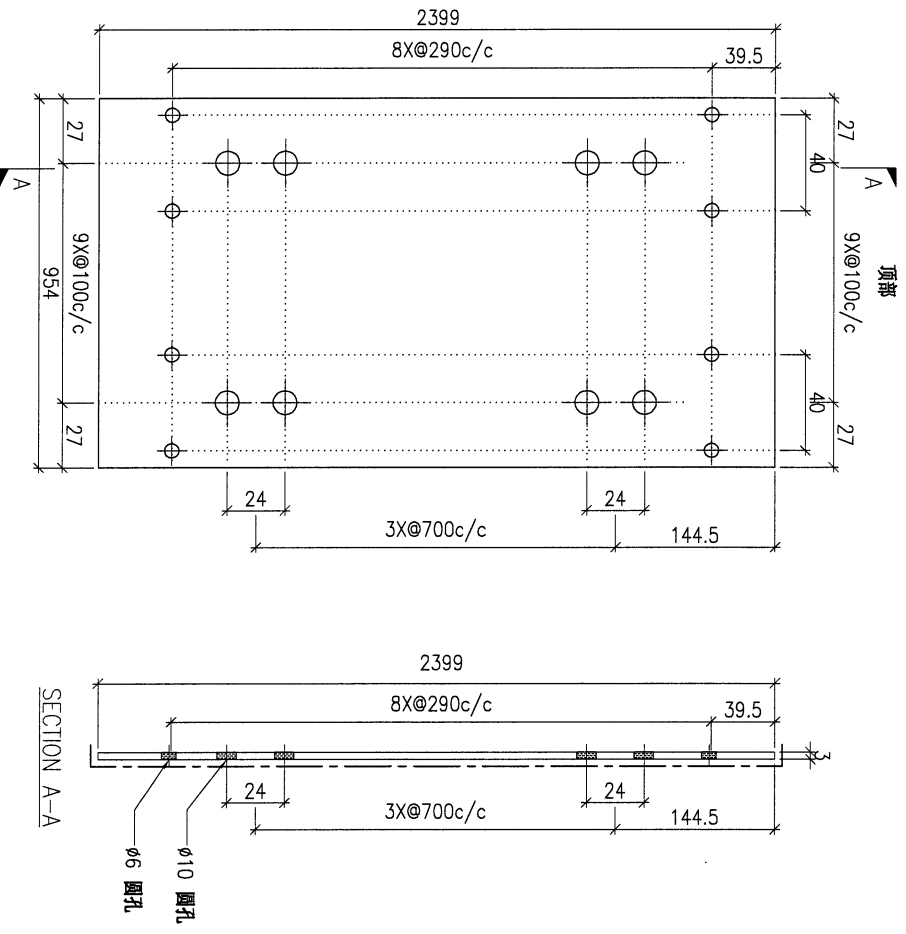
PROJECT				MATERIAL				COATING				COLOUR				MARK. NO.		QTY.	
YIN PING ROAD KOWLOON FEATURE WALL (PHASE 1)				3mm 铝板				PVF2				EC-DG-D334232-ZD1(SS-01)				-		-	
REV.	CHANGED DATE BY	PART NUMBER	Dim. A	Dim. B	Dim. C	Dim. D	Dim. E	Dim. F	Dim. G	Dim. H	QTY.	Inv. Code	ASSEMBLE ON PARTS				注: 工厂用		
-		AP-G105	-	-	-	-	-	-	-	-	1								



DWG. NO.		REV.		SCALE		DATE		DRAWN BY		APPROVED BY	
AP-G105		-		-		15-06-2023		-		-	

(32)

PROJECT				YIN PING ROAD KOWLOON FEATURE WALL (PHASE 1)				MATERIAL				3mm 铝板				COATING				PVF2				COLOUR				EC-DG-D334232-ZD1(SS-01)				MARK. NO.				-				QTY.				-			
REV.	CHKD BY	PART NUMBER	Dim. A	Dim. B	Dim. C	Dim. D	Dim. E	Dim. F	Dim. G	Dim. H	QTY.	Inv. Code	ASSEMBLE ON PARTS												注: 工厂用																						
-		AP-G106	-	-	-	-	-	-	-	-	1																																				

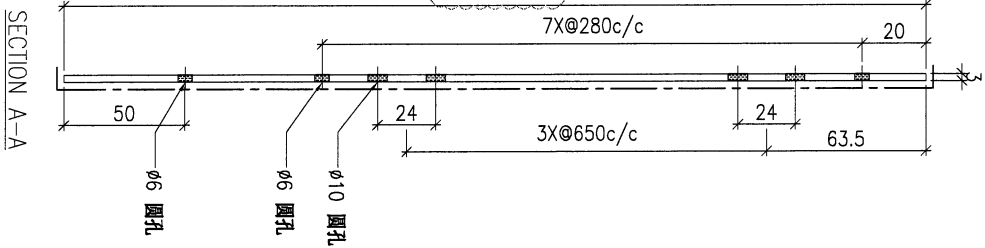
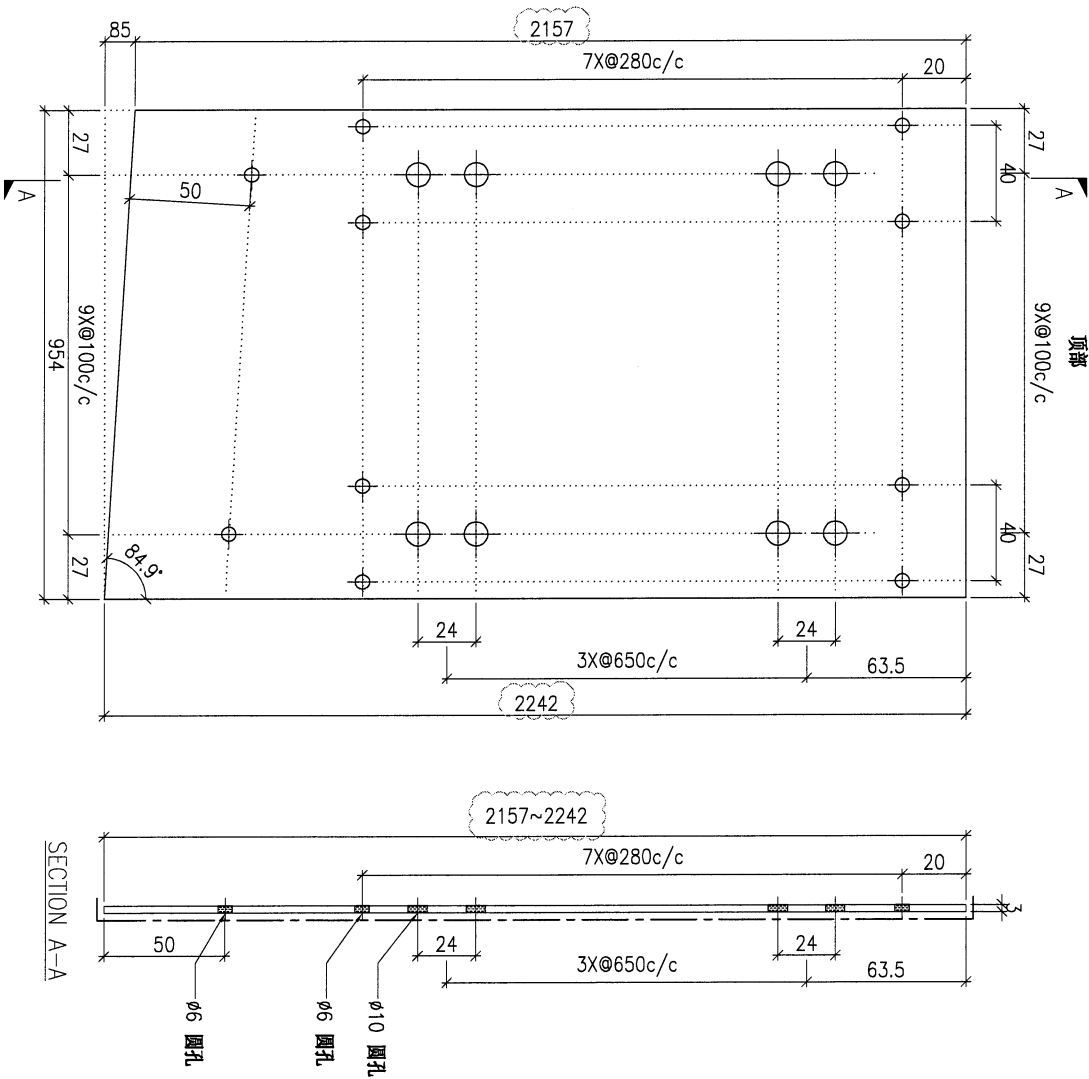


DWG. NO.		AP-G106		REV.		-		SCALE		-		DATE		15-06-2023		DRAWN BY		-		APPROVED BY		-	
----------	--	---------	--	------	--	---	--	-------	--	---	--	------	--	------------	--	----------	--	---	--	-------------	--	---	--

PROJECT				MATERIAL				COATING				COLOUR				MARK. NO.		QTY.	
YIN PING ROAD KOWLOON FEATURE WALL (PHASE 1)				3mm 铝板				PVF2				EC-DG-D334232-ZD1(SS-01)				-		-	
REV.	CHANGED BY	PART NUMBER	Dim. A	Dim. B	Dim. C	Dim. D	Dim. E	Dim. F	Dim. G	Dim. H	QTY.	Inv. Code	ASSEMBLE ON PARTS				-		
-		AP-G109	-	-	-	-	-	-	-	-	1								

注：工厂用

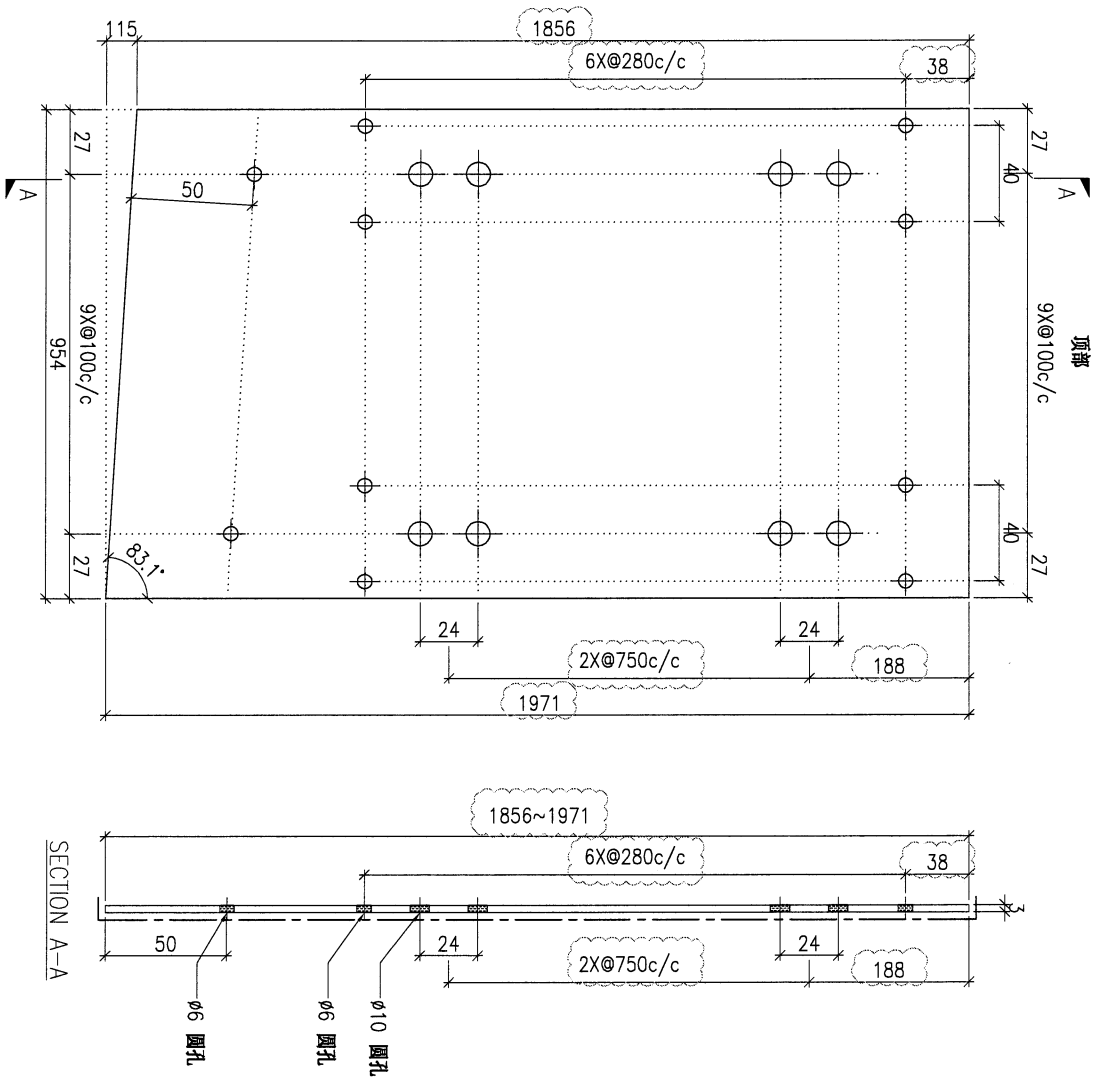
注：工地复尺



DWG. NO.		REV.		SCALE		DATE		DRAWN BY		APPROVED BY	
AP-G109		-		-		15-06-2023		-		-	

PROJECT				YIN PING ROAD KOWLOON FEATURE WALL (PHASE 1)				MATERIAL				3mm 铝板				COATING				PVF2				COLOUR				EC-DG-D334232-ZD1(SS-01)				MARK. NO.				-				QTY.				-			
REV.	CHANGED BY	PART NUMBER	Dim. A	Dim. B	Dim. C	Dim. D	Dim. E	Dim. F	Dim. G	Dim. H	QTY.	Inv. Code	ASSEMBLE ON PARTS																																		
-		AP-G110	-	-	-	-	-	-	-	-	1																																				

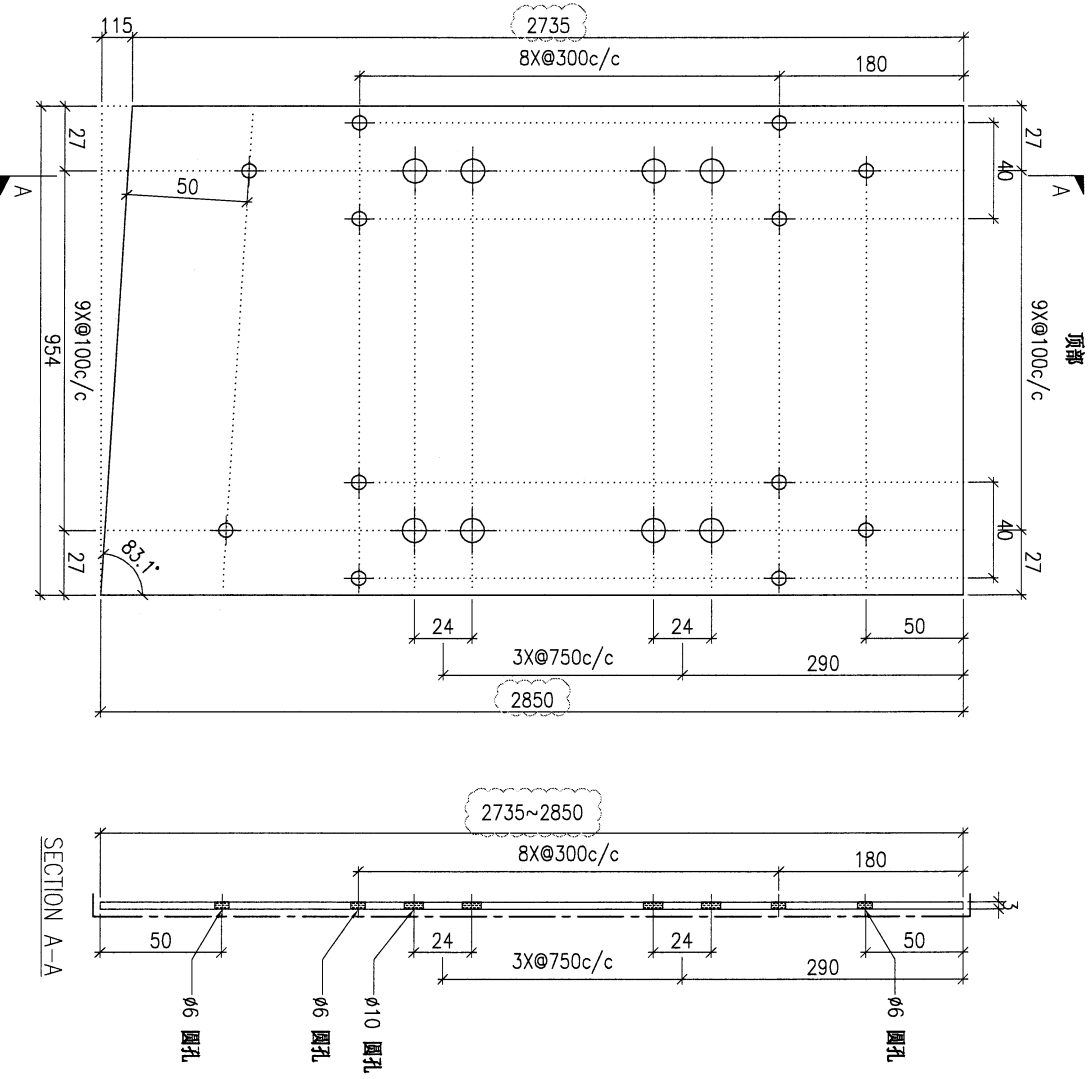
注：工厂用
注：工地复尺



DWG. NO.		AP-G110		REV.		-		SCALE		-		DATE		15-06-2023		DRAWN BY		-		APPROVED BY		-	
----------	--	---------	--	------	--	---	--	-------	--	---	--	------	--	------------	--	----------	--	---	--	-------------	--	---	--

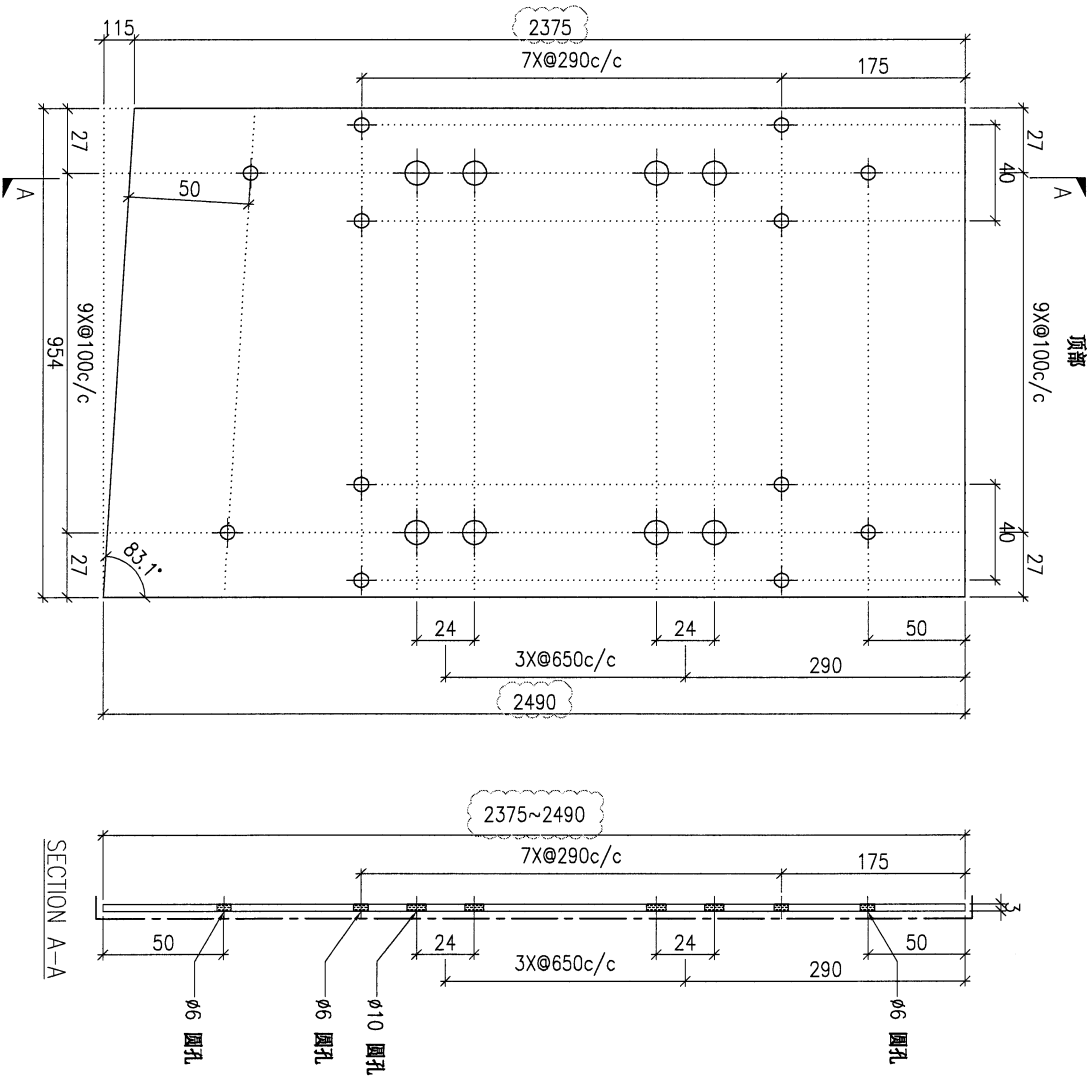
35

PROJECT				MATERIAL				COATING				COLOUR				MARK. NO.		QTY.	
YIN PING ROAD KOWLOON FEATURE WALL (PHASE 1)				3mm 铝板				PVF2				EC-DG-D334232-ZD1(SS-01)				-		-	
REV.	CHECKED DATE	PART NUMBER	Dim. A	Dim. B	Dim. C	Dim. D	Dim. E	Dim. F	Dim. G	Dim. H	QTY.	Inv. Code	ASSEMBLE ON PARTS						
-		AP-G111	-	-	-						1								
												注: 工厂用							
												注: 工地复尺							



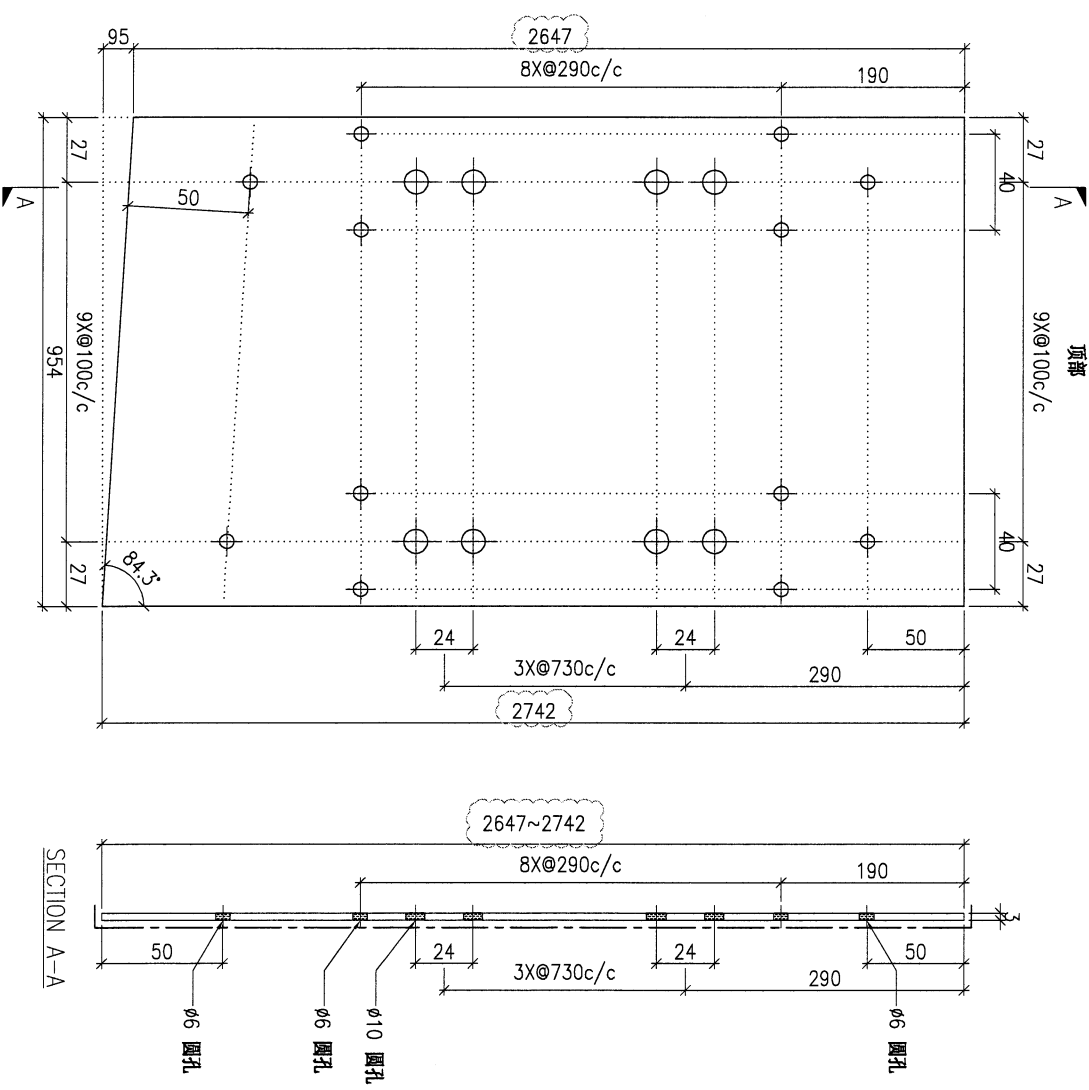
DWG. NO.		REV.		SCALE		DATE		DRAWN BY		APPROVED BY	
AP-G111		-		-		15-06-2023		-		-	

PROJECT				MATERIAL				COATING				COLOUR				MARK. NO.				QTY.			
YIN PING ROAD KOWLOON FEATURE WALL (PHASE 1)				3mm 铝板				PVF2				EC-DG-D334232-ZD1(SS-01)				-				-			
REV.	CHANGED BY	PART NUMBER	Dim. A	Dim. B	Dim. C	Dim. D	Dim. E	Dim. F	Dim. G	Dim. H	QTY.	Inv. Code	ASSEMBLE ON PARTS				注: 工厂用						
-		AP-G112	-	-	-	-	-	-	-	-	1						注: 工地复尺						



DWG. NO.		REV.		SCALE		DATE		DRAWN BY		APPROVED BY	
AP-G112		-		-		15-06-2023		-		-	

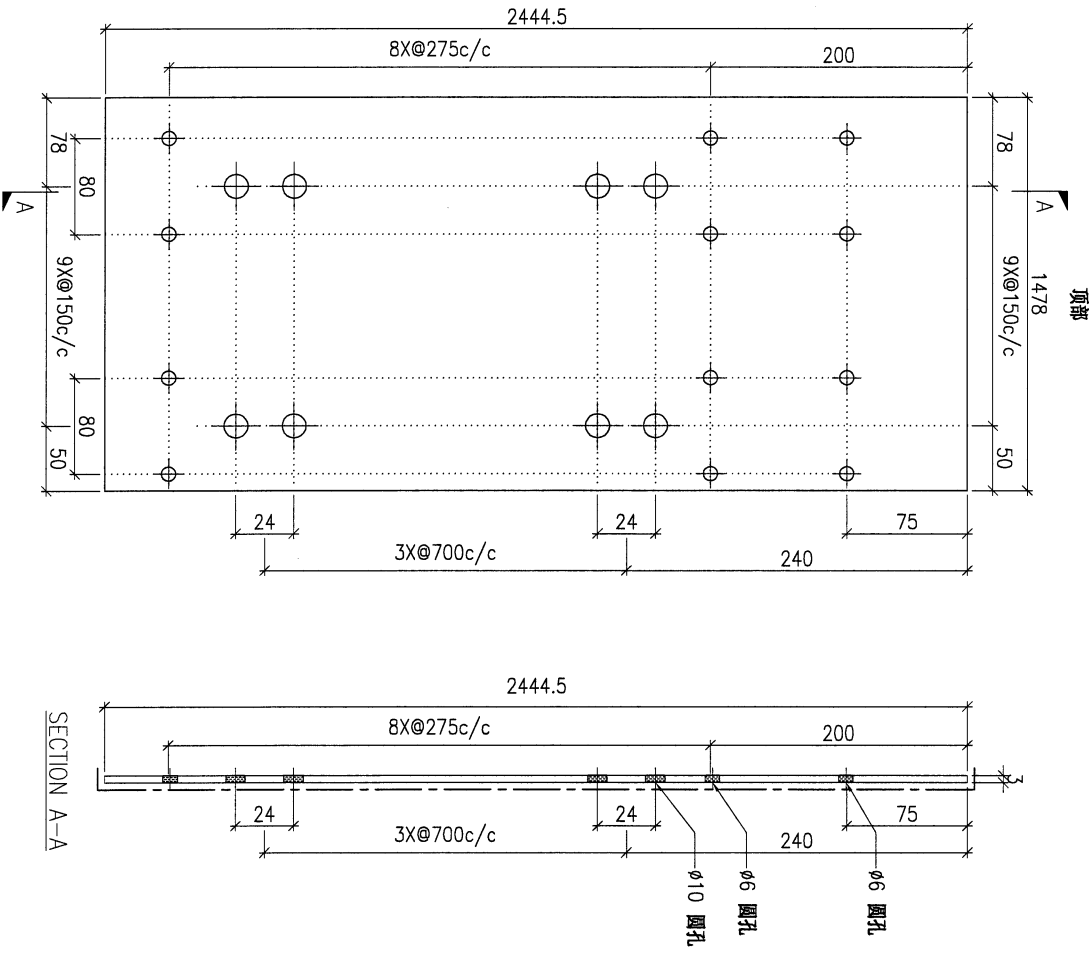
PROJECT				MATERIAL				COATING				COLOUR				MARK. NO.				QTY.			
YIN PING ROAD KOWLOON FEATURE WALL (PHASE 1)				3mm 铝板				PVF2				EC-DG-D334232-ZD1(SS-01)				-				-			
REV.	CHANGED BY	PART NUMBER	Dim. A	Dim. B	Dim. C	Dim. D	Dim. E	Dim. F	Dim. G	Dim. H	QTY.	Inv. Code	ASSEMBLE ON PARTS				注: 工厂用						
-		AP-G113	-	-	-	-	-	-	-	-	1						注: 工地复尺						



DWG. NO.		REV.		SCALE		DATE		DRAWN BY		APPROVED BY	
AP-G113		-		-		15-06-2023		-		-	

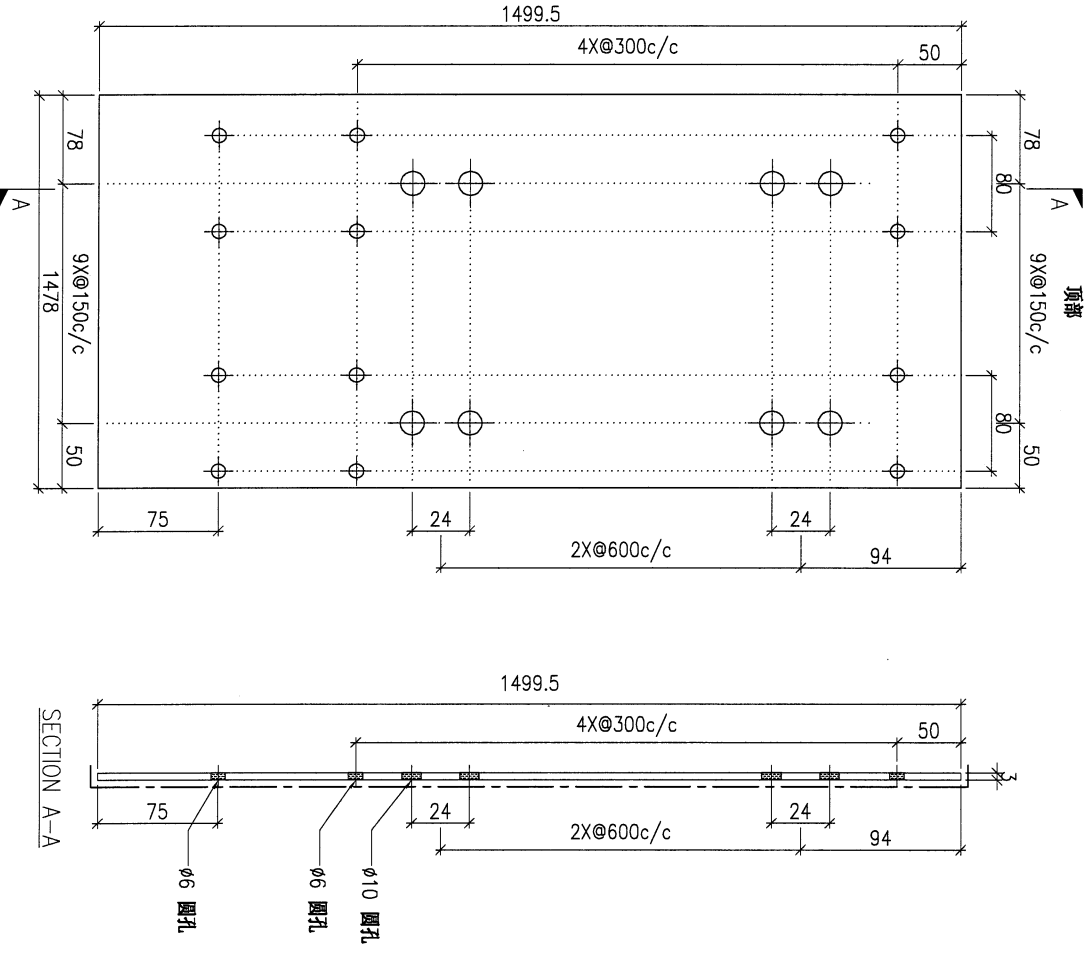
38

PROJECT YIN PING ROAD KOWLOON FEATURE WALL (PHASE 1)				MATERIAL 3mm 铝板				COATING PVF2				COLOUR EC-DG-D334232-ZD1(SS-01)		MARK. NO. -		QTY. -	
REV. CHKD BY DATE	PART NUMBER	Dim. A	Dim. B	Dim. C	Dim. D	Dim. E	Dim. F	Dim. G	Dim. H	QTY.	Inv. Code	ASSEMBLE ON PARTS					
-	AP-G115	-	-	-	-	-	-	-	-	1							
													注: 工厂用				



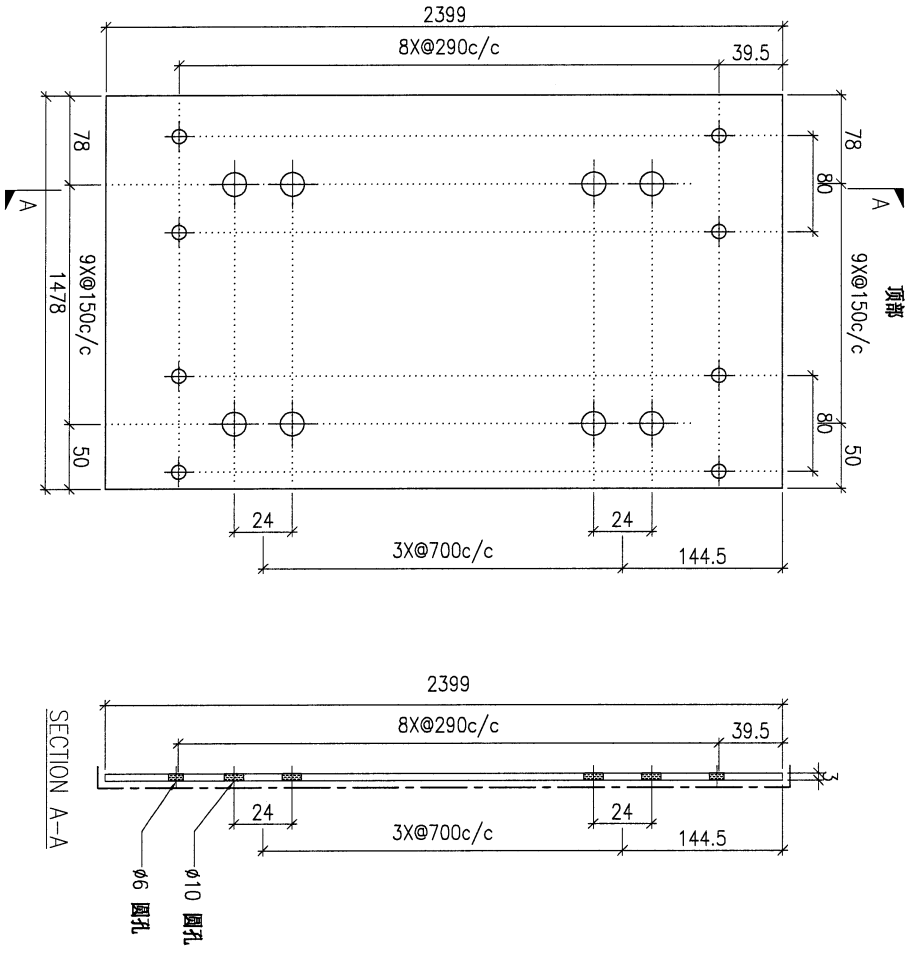
DWG. NO. AP-G115		REV. -		SCALE -		DATE 15-06-2023		DRAWN BY -		APPROVED BY -	
---------------------	--	-----------	--	------------	--	--------------------	--	---------------	--	------------------	--

PROJECT				YIN PING ROAD KOWLOON FEATURE WALL (PHASE 1)				MATERIAL				3mm 铝板				COATING				PVF2				COLOUR				EC-DG-D334232-ZD1(SS-01)				MARK. NO.				-				QTY.				-			
REV.	CHANGED BY	PART NUMBER	Dim. A	Dim. B	Dim. C	Dim. D	Dim. E	Dim. F	Dim. G	Dim. H	QTY.	Inv. Code	ASSEMBLE ON PARTS												注: 工厂用																						
-		AP-G116	-	-	-	-	-	-	-	-	1																																				



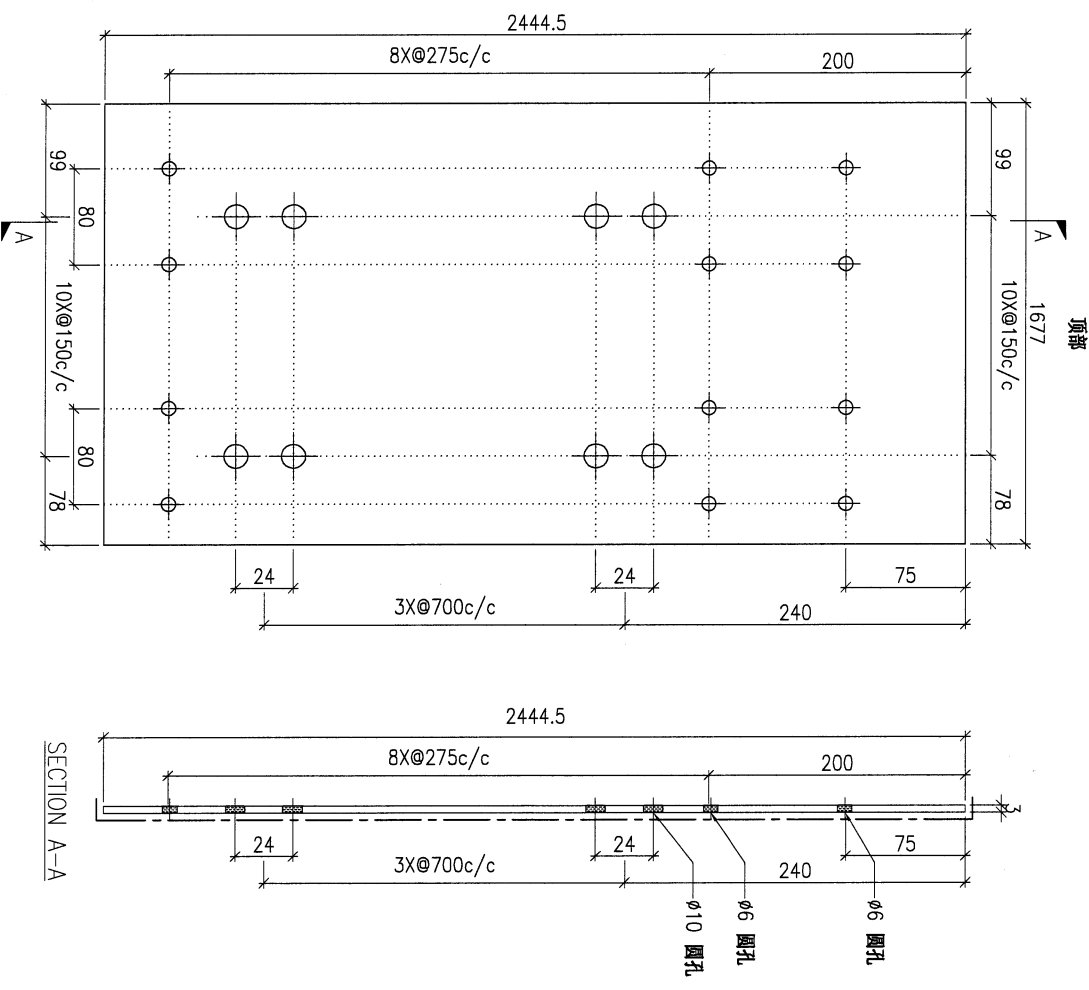
DWG. NO.		AP-G116		REV.		-		SCALE		-		DATE		15-06-2023		DRAWN BY		-		APPROVED BY		-	
----------	--	---------	--	------	--	---	--	-------	--	---	--	------	--	------------	--	----------	--	---	--	-------------	--	---	--

PROJECT				MATERIAL				COATING				COLOUR				MARK. NO.		QTY.	
YIN PING ROAD KOWLOON FEATURE WALL (PHASE 1)				3mm 铝板				PVF2				EC-DG-D334232-ZD1(SS-01)				-		-	
REV.	CHECKED BY	PART NUMBER	Dim. A	Dim. B	Dim. C	Dim. D	Dim. E	Dim. F	Dim. G	Dim. H	QTY.	Inv. Code	ASSEMBLE ON PARTS				注: 工厂用		
-		AP-G117	-	-	-	-	-	-	-	-	2								



DWG. NO.		REV.		SCALE		DATE		DRAWN BY		APPROVED BY	
AP-G117		-		-		15-06-2023		-		-	

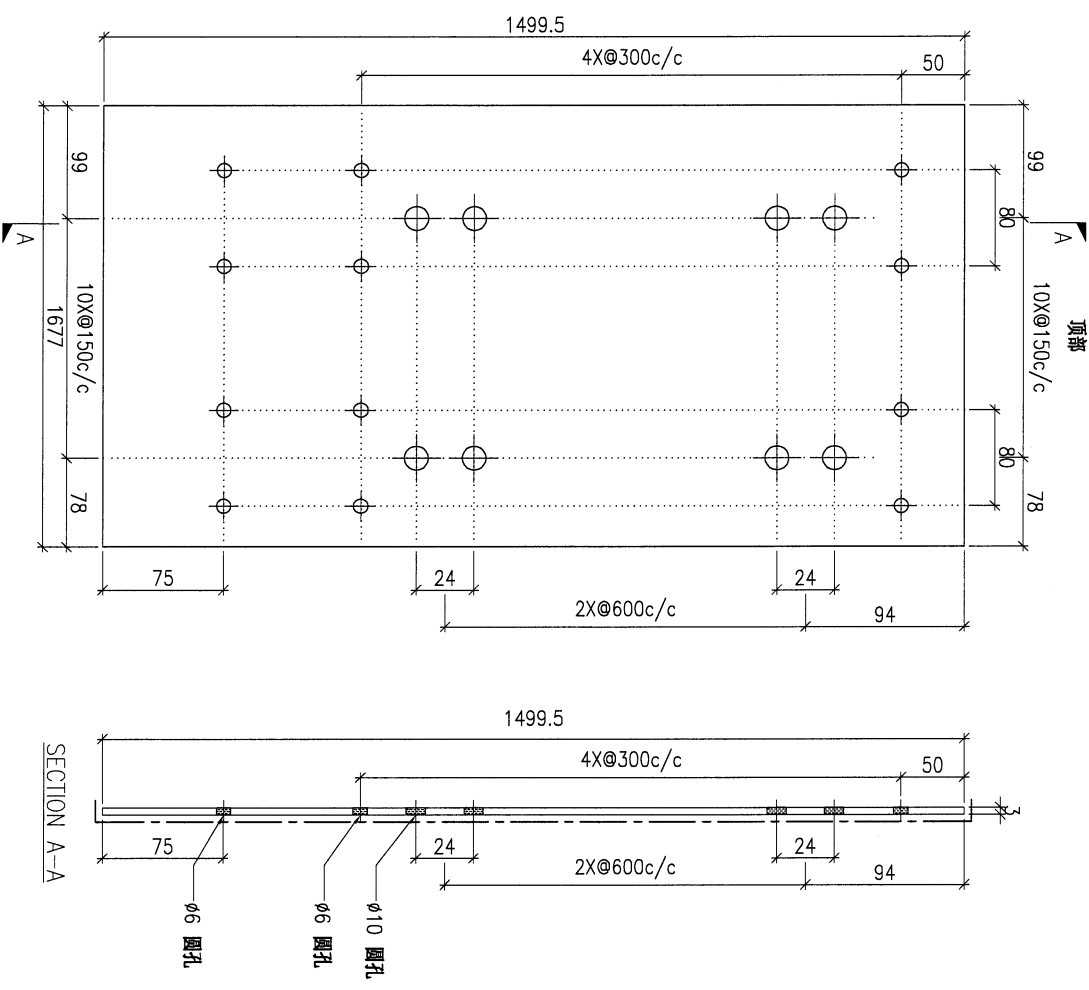
PROJECT				MATERIAL				COATING				COLOUR				MARK. NO.		QTY.	
YIN PING ROAD KOWLOON FEATURE WALL (PHASE 1)				3mm 铝板				PVF2				EC-DG-D334232-ZD1(SS-01)				-		-	
REV.	CHECKED DATE	PART NUMBER	Dim. A	Dim. B	Dim. C	Dim. D	Dim. E	Dim. F	Dim. G	Dim. H	QTY.	Inv. Code	ASSEMBLE ON PARTS				注: 工厂用		
-		AP-G118	-	-	-	-	-	-	-	-	1								



DWG. NO.		REV.		SCALE		DATE		DRAWN BY		APPROVED BY	
AP-G118		-		-		15-06-2023		-		-	

42

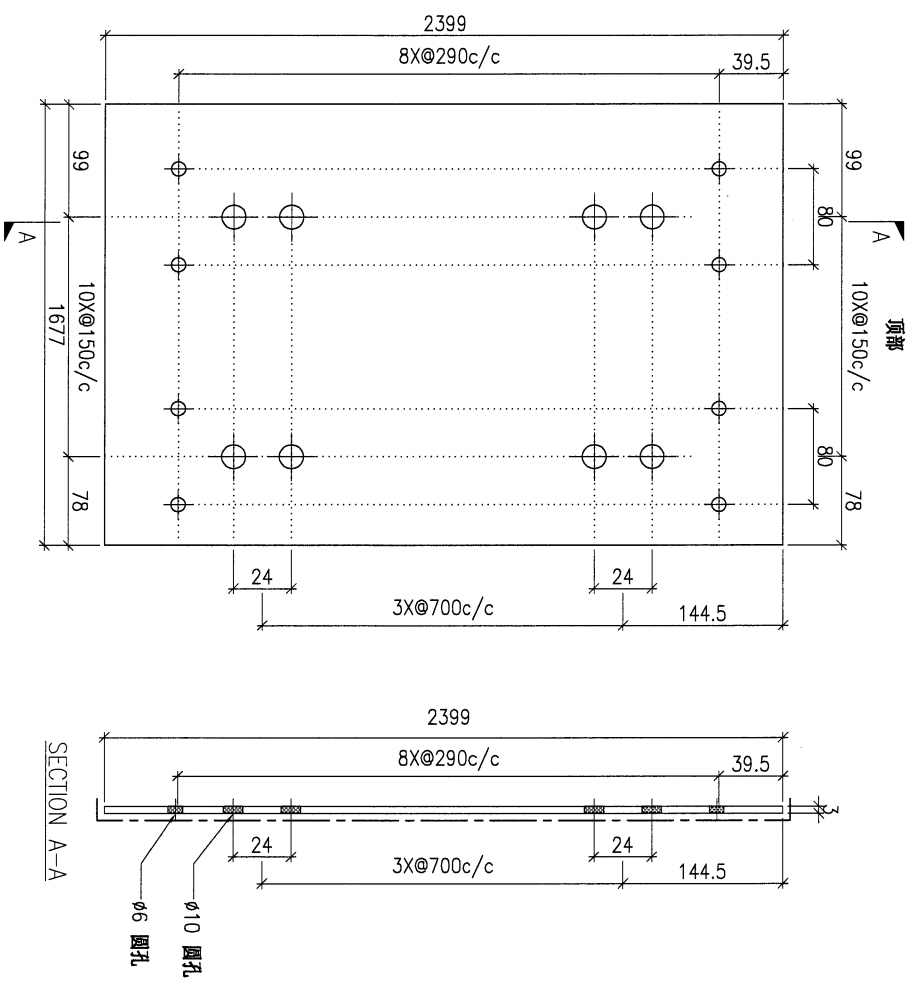
PROJECT				MATERIAL				COATING				COLOUR		MARK. NO.		QTY.	
YIN PING ROAD KOWLOON FEATURE WALL (PHASE 1)				3mm 铝板				PVF2				EC-DG-D334232-ZD1(SS-01)		-		-	
REV.	CHANGED DATE BY	PART NUMBER	Dim. A	Dim. B	Dim. C	Dim. D	Dim. E	Dim. F	Dim. G	Dim. H	QTY.	Inv. Code	ASSEMBLE ON PARTS				
-		AP-G119	-	-	-	-	-	-	-	-	1						
													注: 工厂用				



DWG. NO.		REV.		SCALE		DATE		DRAWN BY		APPROVED BY	
AP-G119		-		-		15-06-2023		-		-	

43

PROJECT				YIN PING ROAD KOWLOON FEATURE WALL (PHASE 1)				MATERIAL				3mm 铝板				COATING				PVF2				COLOUR				EC-DG-D334232-ZD1(SS-01)				MARK. NO.				-				QTY.				-			
REV. / 更改		PART NUMBER		Dim. A		Dim. B		Dim. C		Dim. D		Dim. E		Dim. F		Dim. G		Dim. H		QTY.		Inv. Code		ASSEMBLE ON PARTS				注: 工厂用																			
-		AP-G120		-		-		-		-		-		-		-		-		2																											



DWG. NO.		AP-G120		REV.		-		SCALE		-		DATE		15-06-2023		DRAWN BY		-		APPROVED BY		-	
----------	--	---------	--	------	--	---	--	-------	--	---	--	------	--	------------	--	----------	--	---	--	-------------	--	---	--