

工程指示 / 要求簡箋 ENGINEER INSTRUCTIONS (E.I.)

工程指示編號:	EI- 6382	修改版本:	-
	HK-1405		
工程編號:	J 853	工程名稱:	延坪道
收件人:	全統	發件人:	Joe Chan
工程項目:	Feature Wall 地盤用 鋁板第二批	日期:	24/06/2023

<input checked="" type="checkbox"/> 原合約工程包	<input type="checkbox"/> 原合約工程加 / 減賬 QT-	<input type="checkbox"/> 新工程報價 QT-
--	--	------------------------------------

信件批核號碼/圖紙參考編號:	批核模具圖紙編號:
客戶指示附件:	管理內部批簽署:

<input type="checkbox"/> 初步鋁料 B.M.	<input type="checkbox"/> 加工拆圖, 然後生產	<input type="checkbox"/> 尺寸表
<input type="checkbox"/> 正式鋁料 B.M.	<input type="checkbox"/> 技術上資料 / 指示	<input type="checkbox"/> 報價
<input type="checkbox"/> 配件 B.M.	<input type="checkbox"/> 樣辦或貨品說明書	<input type="checkbox"/> 分判合約
<input checked="" type="checkbox"/> 其他: 鋁板.		

內容: 請依附件資料, 生產鋁板, 送地盤.
(2~3線, 121A線, 19~35線 & 47~53線之位置)

急

完成上列要求日期: 15/7/2023 ASAP

國內

<input type="checkbox"/> 生產技術總監	<input type="checkbox"/> 連附件	<input type="checkbox"/> 技術部	<input type="checkbox"/> 連附件	<input type="checkbox"/> 生產部	<input type="checkbox"/> 連附件
<input type="checkbox"/> 採購部	<input type="checkbox"/> 連附件	<input checked="" type="checkbox"/> 生產統籌部	<input checked="" type="checkbox"/> 連附件	<input type="checkbox"/> 報關組	<input type="checkbox"/> 連附件
<input type="checkbox"/> 質檢部	<input type="checkbox"/> 連附件	<input type="checkbox"/> 會計部	<input type="checkbox"/> 連附件	<input type="checkbox"/> 機械設計部	<input type="checkbox"/> 連附件
<input type="checkbox"/> 香港辦	<input type="checkbox"/> 連附件	<input type="checkbox"/> 其他:			

香港

<input type="checkbox"/> 行政部	<input type="checkbox"/> 連附件	<input type="checkbox"/> 會計部	<input type="checkbox"/> 連附件	<input type="checkbox"/> 統籌部	<input type="checkbox"/> 連附件	<input type="checkbox"/> 工程部	<input type="checkbox"/> 連附件
<input type="checkbox"/> 採購部	<input type="checkbox"/> 連附件	<input type="checkbox"/> QS部	<input type="checkbox"/> 連附件	<input checked="" type="checkbox"/> 地盤管理	<input checked="" type="checkbox"/> 連附件	<input type="checkbox"/> 維修部	<input type="checkbox"/> 連附件

*發件人簽署:		*組別成員批核簽署:	
傳遞編號:	HK1405/23	項目經理簽署:	

地盤用鋁板B.M.表 (part2)

修改版本: A/C Code:

總V.F.: 總重量: 977.23

序號	修改內容	鋁板圖號	鋁板名稱	顏色	實用	後備	總數	總重量	119.331		總重量:	977.23	圖紙編號	
									單件展開面積	總展開面積				單件V.F.
										平方米		平方米		
1		FW1-AP58	3mm厚鋁板	EC-DG-D334232-ZD1 (SS-01)	2	0	2	18.303	1.126	2.251	1.126	2.251		
2		FW1-AP63A	3mm厚鋁板	EC-DG-D334232-ZD1 (SS-01)	1	0	1	9.177	1.129	1.129	1.129	1.129		
3		FW1-AP63B	3mm厚鋁板	EC-DG-D334232-ZD1 (SS-01)	1	0	1	10.868	1.337	1.337	1.337	1.337		
4		FW1-AP63C	3mm厚鋁板	EC-DG-D334232-ZD1 (SS-01)	2	0	2	22.484	1.383	2.766	1.383	2.766		
5		FW1-AP63D	3mm厚鋁板	EC-DG-D334232-ZD1 (SS-01)	1	0	1	9.151	1.126	1.126	1.126	1.126		
6		FW1-AP63E	3mm厚鋁板	EC-DG-D334232-ZD1 (SS-01)	4	0	4	26.493	0.815	3.259	0.815	3.259		
7		FW1-AP63F	3mm厚鋁板	EC-DG-D334232-ZD1 (SS-01)	1	0	1	9.316	1.146	1.146	1.146	1.146		
8		FW1-AP65A	3mm厚鋁板	EC-DG-D334232-ZD1 (SS-01)	1	0	1	9.619	1.183	1.183	1.183	1.183		
9		FW1-AP65B	3mm厚鋁板	EC-DG-D334232-ZD1 (SS-01)	2	0	2	21.362	1.314	2.628	1.314	2.628		
10		FW1-AP65C	3mm厚鋁板	EC-DG-D334232-ZD1 (SS-01)	1	0	1	12.001	1.476	1.476	1.476	1.476		
11		FW1-AP65D	3mm厚鋁板	EC-DG-D334232-ZD1 (SS-01)	1	0	1	5.385	0.662	0.662	0.662	0.662		
12		FW1-AP65E	3mm厚鋁板	EC-DG-D334232-ZD1 (SS-01)	3	0	3	20.431	0.838	2.513	0.838	2.513		
13		FW1-AP65F	3mm厚鋁板	EC-DG-D334232-ZD1 (SS-01)	1	0	1	7.842	0.965	0.965	0.965	0.965		
14		FW1-AP67A	3mm厚鋁板	EC-DG-D334232-ZD1 (SS-01)	1	0	1	10.348	1.273	1.273	1.273	1.273		
15		FW1-AP67B	3mm厚鋁板	EC-DG-D334232-ZD1 (SS-01)	1	0	1	7.880	0.969	0.969	0.969	0.969		
16		FW1-AP69A	3mm厚鋁板	EC-DG-D334232-ZD1 (SS-01)	1	0	1	1.859	0.229	0.229	0.229	0.229		
17		FW1-AP69B	3mm厚鋁板	EC-DG-D334232-ZD1 (SS-01)	3	0	3	8.661	0.355	1.065	0.355	1.065		
18		FW1-AP69C	3mm厚鋁板	EC-DG-D334232-ZD1 (SS-01)	1	0	1	12.424	1.528	1.528	1.528	1.528		
19		FW1-AP69D	3mm厚鋁板	EC-DG-D334232-ZD1 (SS-01)	1	0	1	3.747	0.461	0.461	0.461	0.461		
20		FW1-AP69E	3mm厚鋁板	EC-DG-D334232-ZD1 (SS-01)	1	0	1	4.944	0.608	0.608	0.608	0.608		
21		FW1-AP69F	3mm厚鋁板	EC-DG-D334232-ZD1 (SS-01)	1	0	1	2.887	0.355	0.355	0.355	0.355		
22		FW1-AP69G	3mm厚鋁板	EC-DG-D334232-ZD1 (SS-01)	1	0	1	1.653	0.203	0.203	0.203	0.203		

地盤用鋁板B.M.表 (part2)

BM編號:	修改版次:	A/C Code:	總V.F.:	總重量:	977.23
-------	-------	-----------	--------	------	--------

序號	修改內容	鋁板圖號	鋁板名稱	顏色	實用	後備	總數	總重量	119.331		總重量:	977.23	圖紙編號
									單件展開面積	總展開面積			
									平方米	平方米	平方米		
23		FW1-AP69H	3mm厚鋁板	EC-DG-D334232-ZD1 (SS-01)	1	0	1	1.511	0.186	0.186	0.186	0.186	
24		FW1-AP69J	3mm厚鋁板	EC-DG-D334232-ZD1 (SS-01)	1	0	1	1.384	0.170	0.170	0.170	0.170	
25		FW1-AP70A	3mm厚鋁板	EC-DG-D334232-ZD1 (SS-01)	7	0	7	64.085	1.126	7.883	1.126	7.883	
26		FW1-AP70B	3mm厚鋁板	EC-DG-D334232-ZD1 (SS-01)	4	0	4	35.124	1.080	4.320	1.080	4.320	
27		FW1-AP70C	3mm厚鋁板	EC-DG-D334232-ZD1 (SS-01)	4	0	4	39.238	1.207	4.826	1.207	4.826	
28		FW1-AP73	3mm厚鋁板	EC-DG-D334232-ZD1 (SS-01)	1	0	1	11.724	1.442	1.442	1.442	1.442	
29		FW1-AP74A	3mm厚鋁板	EC-DG-D334232-ZD1 (SS-01)	1	0	1	4.776	0.587	0.587	0.587	0.587	
30		FW1-AP74B	3mm厚鋁板	EC-DG-D334232-ZD1 (SS-01)	1	0	1	3.788	0.466	0.466	0.466	0.466	
31		FW1-AP76	3mm厚鋁板	EC-DG-D334232-ZD1 (SS-01)	1	0	1	8.968	1.103	1.103	1.103	1.103	
32		FW1-AP77A	3mm厚鋁板	鍍化	6	0	6	5.854	0.120	0.720	0.000	0.000	
33		FW1-AP77B	3mm厚鋁板	鍍化	2	0	2	1.220	0.075	0.150	0.000	0.000	
34		FW1-AP80	3mm厚鋁板	EC-DG-D334232-ZD1 (SS-01)	2	0	2	10.029	0.617	1.234	0.617	1.234	
35		FW1-AP81	3mm厚鋁板	EC-DG-D334232-ZD1 (SS-01)	4	0	4	19.236	0.592	2.366	0.592	2.366	
36		FW1-AP82	3mm厚鋁板	EC-DG-D334232-ZD1 (SS-01)	4	0	4	21.499	0.661	2.644	0.661	2.644	
37		FW1-AP83	3mm厚鋁板	EC-DG-D334232-ZD1 (SS-01)	1	0	1	16.907	2.080	2.080	2.080	2.080	
38		FW1-AP84	3mm厚鋁板	EC-DG-D334232-ZD1 (SS-01)	4	0	4	72.148	2.219	8.874	2.219	8.874	
39		FW1-AP85A	3mm厚鋁板	EC-DG-D334232-ZD1 (SS-01)	1	0	1	5.887	0.724	0.724	0.724	0.724	
40		FW1-AP85B	3mm厚鋁板	EC-DG-D334232-ZD1 (SS-01)	2	0	2	12.368	0.761	1.521	0.761	1.521	
41		FW1-AP85C	3mm厚鋁板	EC-DG-D334232-ZD1 (SS-01)	4	0	4	23.547	0.724	2.896	0.724	2.896	
42		FW1-AP86A	3mm厚鋁板	EC-DG-D334232-ZD1 (SS-01)	1	0	1	6.169	0.759	0.759	0.759	0.759	
43		FW1-AP86AR	3mm厚鋁板	EC-DG-D334232-ZD1 (SS-01)	1	0	1	6.169	0.759	0.759	0.759	0.759	
44		FW1-AP86BR	3mm厚鋁板	EC-DG-D334232-ZD1 (SS-01)	1	0	1	3.405	0.419	0.419	0.419	0.419	
45		FW1-AP87A	3mm厚鋁板	EC-DG-D334232-ZD1 (SS-01)	1	0	1	5.103	0.628	0.628	0.628	0.628	

地盤用鋁板B.M.表 (part2)

修改版本:

A/C Code:

總V.F.:

119.331

總重量: 977.23

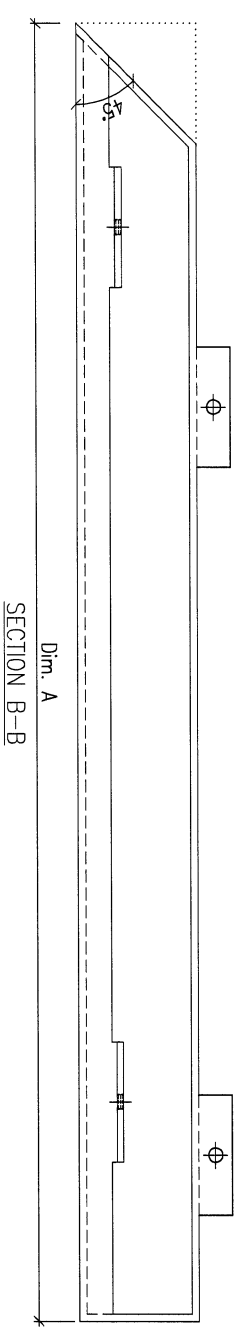
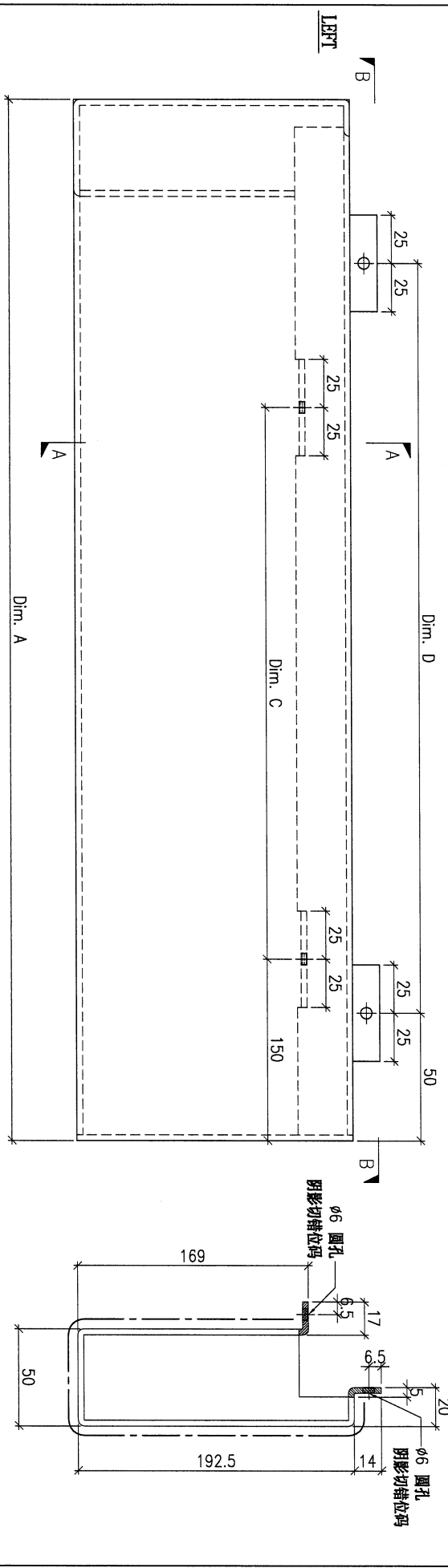
序號	修改內容	鋁板圖號	鋁板名稱	顏色	實用	後備	總數	總重量	119.331		總重量:	977.23	圖紙編號
									單件展開面積	總展開面積			
									平方米		平方米		
46		FW1-AP87B	3mm厚鋁板	EC-DG-D334232-ZD1 (SS-01)	1	0	1	5.027	0.618	0.618	0.618	0.618	
47		FW1-AP87C	3mm厚鋁板	EC-DG-D334232-ZD1 (SS-01)	1	0	1	5.957	0.733	0.733	0.733	0.733	
48		FW1-AP87D	3mm厚鋁板	EC-DG-D334232-ZD1 (SS-01)	2	0	2	12.325	0.758	1.516	0.758	1.516	
49		FW1-AP88A	3mm厚鋁板	EC-DG-D334232-ZD1 (SS-01)	1	0	1	5.013	0.617	0.617	0.617	0.617	
50		FW1-AP88B	3mm厚鋁板	EC-DG-D334232-ZD1 (SS-01)	1	0	1	18.030	2.218	2.218	2.218	2.218	
51		FW1-AP89A	3mm厚鋁板	EC-DG-D334232-ZD1 (SS-01)	1	0	1	18.030	2.218	2.218	2.218	2.218	
52		FW1-AP89B	3mm厚鋁板	EC-DG-D334232-ZD1 (SS-01)	4	0	4	52.114	1.603	6.410	1.603	6.410	
53		FW1-AP90	3mm厚鋁板	EC-DG-D334232-ZD1 (SS-01)	1	0	1	3.228	0.397	0.397	0.397	0.397	
54		FW1-AP91A	3mm厚鋁板	EC-DG-D334232-ZD1 (SS-01)	1	0	1	5.167	0.636	0.636	0.636	0.636	
55		FW1-AP91B	3mm厚鋁板	EC-DG-D334232-ZD1 (SS-01)	2	0	2	11.502	0.707	1.415	0.707	1.415	
56		FW1-AP91C	3mm厚鋁板	EC-DG-D334232-ZD1 (SS-01)	1	0	1	6.477	0.797	0.797	0.797	0.797	
57		FW1-AP92A	3mm厚鋁板	EC-DG-D334232-ZD1 (SS-01)	1	0	1	10.210	1.256	1.256	1.256	1.256	
58		FW1-AP92B	3mm厚鋁板	EC-DG-D334232-ZD1 (SS-01)	3	0	3	39.085	1.603	4.808	1.603	4.808	
59		FW1-AP92C	3mm厚鋁板	EC-DG-D334232-ZD1 (SS-01)	1	0	1	15.070	1.854	1.854	1.854	1.854	
60		FW1-AP93A	3mm厚鋁板	EC-DG-D334232-ZD1 (SS-01)	1	0	1	20.027	2.463	2.463	2.463	2.463	
61		FW1-AP93B	3mm厚鋁板	EC-DG-D334232-ZD1 (SS-01)	1	0	1	15.144	1.863	1.863	1.863	1.863	
62		FW1-AP94A	3mm厚鋁板	EC-DG-D334232-ZD1 (SS-01)	1	0	1	0.899	0.111	0.111	0.111	0.111	
63		FW1-AP94B	3mm厚鋁板	EC-DG-D334232-ZD1 (SS-01)	3	0	3	4.394	0.180	0.540	0.180	0.540	
64		FW1-AP95A	3mm厚鋁板	EC-DG-D334232-ZD1 (SS-01)	1	0	1	24.133	2.968	2.968	2.968	2.968	
65		FW1-AP95B	3mm厚鋁板	EC-DG-D334232-ZD1 (SS-01)	1	0	1	6.969	0.857	0.857	0.857	0.857	
66		FW1-AP95C	3mm厚鋁板	EC-DG-D334232-ZD1 (SS-01)	1	0	1	9.337	1.148	1.148	1.148	1.148	
67		FW1-AP95D	3mm厚鋁板	EC-DG-D334232-ZD1 (SS-01)	1	0	1	5.268	0.648	0.648	0.648	0.648	
68		FW1-AP95E	3mm厚鋁板	EC-DG-D334232-ZD1 (SS-01)	1	0	1	2.826	0.348	0.348	0.348	0.348	
69		FW1-AP95F	3mm厚鋁板	EC-DG-D334232-ZD1 (SS-01)	1	0	1	2.545	0.313	0.313	0.313	0.313	

工程號:	J-853	計算:	ming	日期:	2023.06.15	送呈:	JOE
地盤名稱:	廷坪路	核對:		日期:		副本:	

地盤用鋁板B.M.表 (part2) 項目類別: 特征牆(1區) 批准: A/C Code: 總V.F.: 總重量: 977.23

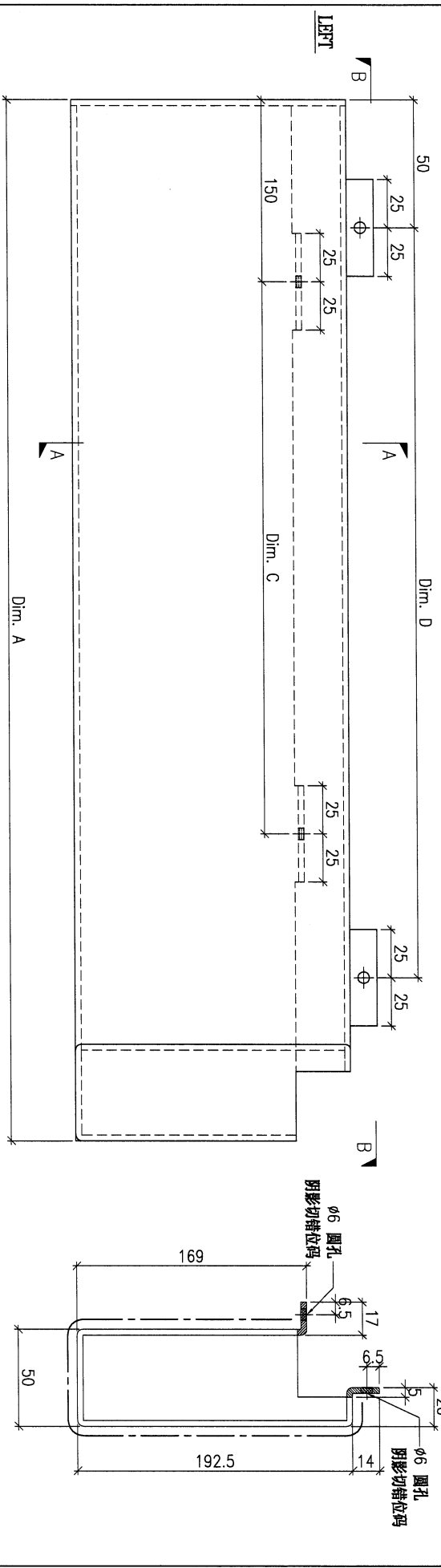
序號	修改內容	鋁板圖號	鋁板名稱	顏色	實用	後備	總數	總重量	119.331		總重量: 977.23		圖紙編號
									單件展開面積	總展開面積	單件V.F.	總V.F.	
70		FW1-AP95G	3mm厚鋁板	EC-DG-D334232-ZD1 (SS-01)	1	0	1	2.293	0.282	0.282	0.282	0.282	
71		FW1-AP96	3mm厚鋁板	EC-DG-D334232-ZD1 (SS-01)	1	0	1	21.325	2.623	2.623	2.623	2.623	
72		FW1-AP97A	3mm厚鋁板	EC-DG-D334232-ZD1 (SS-01)	1	0	1	8.440	1.038	1.038	1.038	1.038	
73		FW1-AP97B	3mm厚鋁板	EC-DG-D334232-ZD1 (SS-01)	1	0	1	6.609	0.813	0.813	0.813	0.813	
74		FW1-AP98	3mm厚鋁板	EC-DG-D334232-ZD1 (SS-01)	1	0	1	17.297	2.128	2.128	2.128	2.128	
75		FW1-AP99	3mm厚鋁板	EC-DG-D334232-ZD1 (SS-01)	1	0	1	5.520	0.679	0.679	0.679	0.679	
76													
總計:					126	0	126	977	73	120	73	119	

PROJECT				MATERIAL				COATING				COLOUR				MARK. NO.		QTY.	
YIN PING ROAD KOWLOON FEATURE WALL (PHASE 1)				3mm 铝板				PVF2				EC-DG-D334232-ZD1(SS-01)				-		-	
REV.	Checked Mark By	PART NUMBER	Dim. A	Dim. B	Dim. C	Dim. D	Dim. E	Dim. F	Dim. G	Dim. H	QTY.	Inv. Code	ASSEMBLE ON PARTS				注: 地盘用		
-		FW1-AP63A	2404	-	7x@300c/d	7x@300c/d	-	-	-	-	1	-							
-		FW1-AP63B	2856	-	8x@300c/d	9x@300c/d	-	-	-	-	1	-							
-		FW1-AP63C	2956	-	9x@300c/d	9x@300c/d	-	-	-	-	2	-							
-		FW1-AP63D	2397	-	7x@300c/d	7x@300c/d	-	-	-	-	1	-							
-		FW1-AP63E	1721	-	5x@300c/d	5x@300c/d	-	-	-	-	4	-							
-		FW1-AP63F	2441	-	7x@300c/d	7x@300c/d	-	-	-	-	1	-							



DWG. NO.		REV.		SCALE		DATE		DRAWN BY		APPROVED BY	
FW1-AP63		-		-		15-06-2023		-		-	

PROJECT				MATERIAL				COATING				COLOUR				MARK. NO.		QTY.	
YIN PING ROAD KOWLOON FEATURE WALL (PHASE 1)				3mm 铝板				PVF2				EC-DG-D334232-ZD1(SS-01)				-		-	
REV.	CHANGED DATE BY	PART NUMBER	Dim. A	Dim. B	Dim. C	Dim. D	Dim. E	Dim. F	Dim. G	Dim. H	QTY.	Inv. Code	ASSEMBLE ON PARTS				注: 地盘用		
-		FW1-AP65A	2522	-	7x@300c/d	8x@300c/d	-	-	-	-	1	-							
-		FW1-AP65B	2806	-	8x@300c/d	9x@300c/d	-	-	-	-	2	-							
-		FW1-AP65C	3159	-	9x@300c/d	10x@300c/d	-	-	-	-	1	-							
-		FW1-AP65D	1390	-	4x@300c/d	4x@300c/d	-	-	-	-	1	-							
-		FW1-AP65E	1771	-	5x@300c/d	5x@300c/d	-	-	-	-	3	-							
-		FW1-AP65F	2047	-	6x@300c/d	6x@300c/d	-	-	-	-	1	-							



DWG. NO.		REV.		SCALE		DATE		DRAWN BY		APPROVED BY	
FW1-AP65		-		-		15-06-2023		-		-	

PROJECT
YIN PING ROAD KOWLOON
FEATURE WALL (PHASE 1)

MATERIAL
3mm 铝板

COATING
PVF2

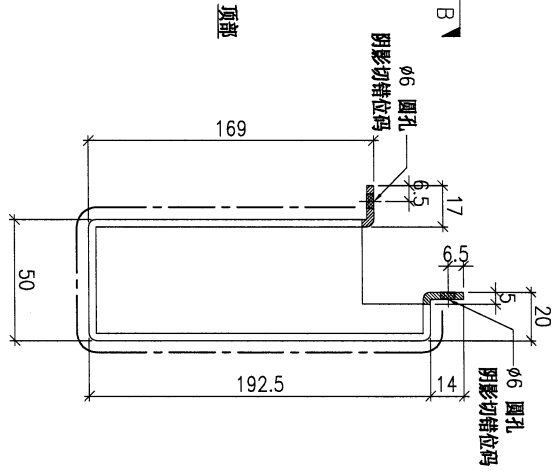
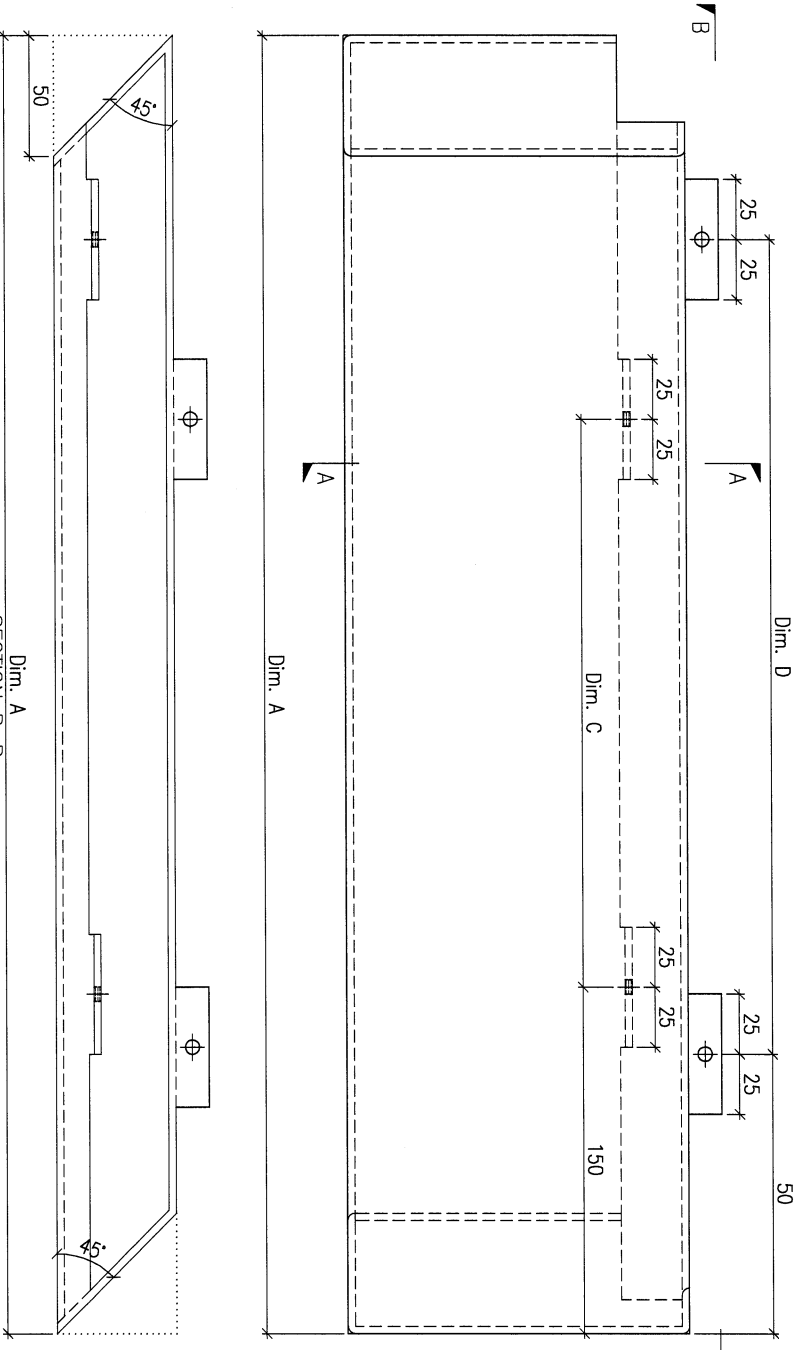
COLOUR
EC-DG-D334232-ZD1(SS-01)

MARK. NO.
-

QTY.
-

REV.	CHECKED DATE BY	PART NUMBER	Dim. A	Dim. B	Dim. C	Dim. D	Dim. E	Dim. F	Dim. G	Dim. H	QTY.	Inv. Code	ASSEMBLE ON PARTS
-		FW1-AP69A	447	-	1xØ300/c	1xØ300/c	-	-	-	-	1	-	-
-		FW1-AP69B	722	-	1xØ300/c/2	2xØ300/c	-	-	-	-	3	-	-
-		FW1-AP69C	3272	-	10xØ300/c/10	Ø300-c/10	-	-	-	-	1	-	-
-		FW1-AP69D	952	-	3xØ250/c	3xØ250/c	-	-	-	-	1	-	-
-		FW1-AP69E	1272	-	4xØ270/c	4xØ270/c	-	-	-	-	1	-	-
-		FW1-AP69F	722	-	2xØ300/c	2xØ300/c	-	-	-	-	1	-	-
-		FW1-AP69G	392	-	1xØ200/c	1xØ200/c	-	-	-	-	1	-	-
-		FW1-AP69H	354	-	1xØ170/c	1xØ170/c	-	-	-	-	1	-	-
-		FW1-AP69J	320	-	1xØ140/c	1xØ140/c	-	-	-	-	1	-	-

注：地盘用



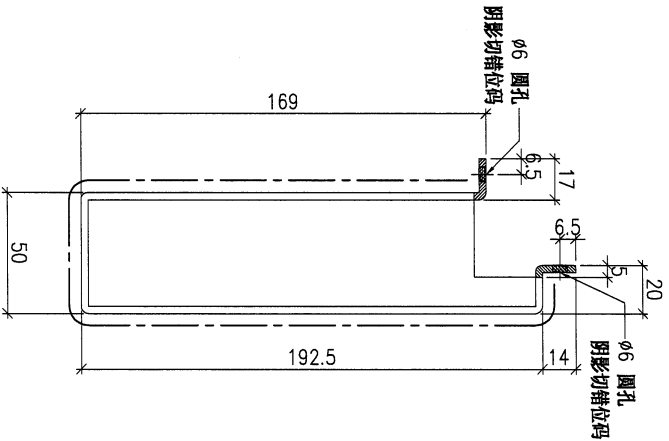
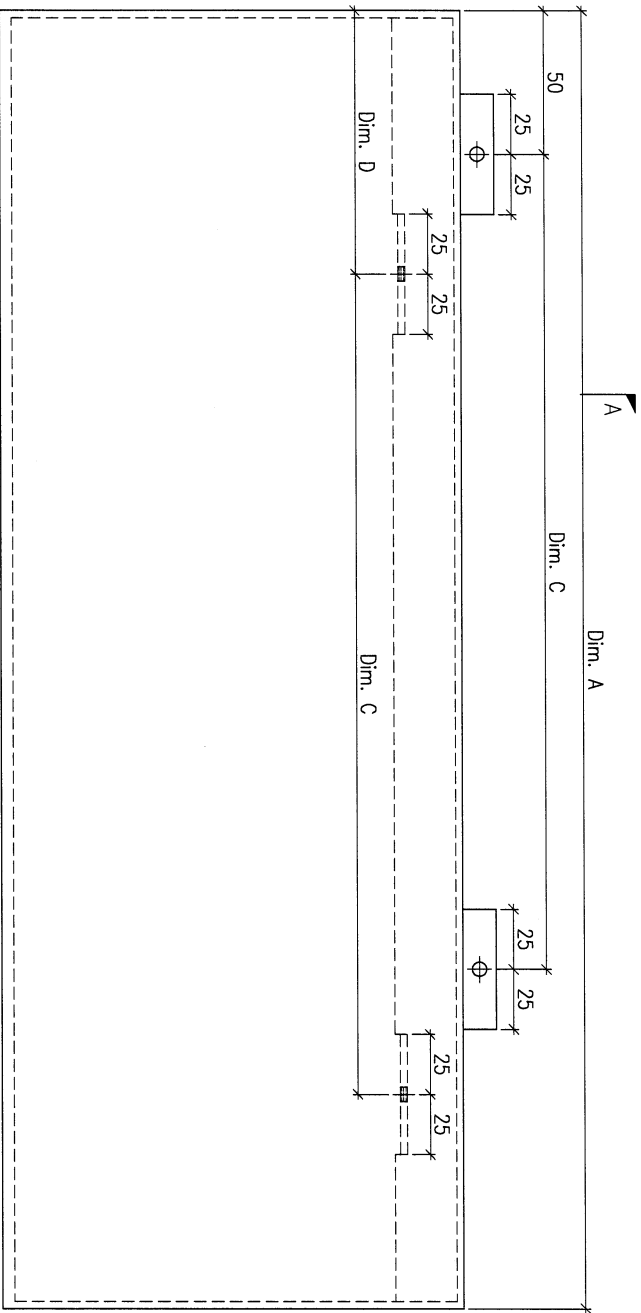
Dim. A
SECTION B-B

SECTION A-A

DWG. NO.	FW1-AP69	REV.	-	SCALE	-	DATE	15-06-2023	DRAWN BY	-	APPROVED BY	-
----------	----------	------	---	-------	---	------	------------	----------	---	-------------	---

PROJECT				MATERIAL				COATING				COLOUR		MARK. NO.		QTY.	
YIN PING ROAD KOWLOON FEATURE WALL (PHASE 1)				3mm 铝板				PVF2				EC-DG-D334232-ZD1(SS-01)		-		-	
REV.	REVISION REV. NO.	PART NUMBER	Dim. A	Dim. B	Dim. C	Dim. D	Dim. E	Dim. F	Dim. G	Dim. H	QTY.	Inv. Code	ASSEMBLE ON PARTS				
-		FW1-AP70A	2398	8X@290/c	7X@300/c	150					7						
-		FW1-AP70B	2298	7X@300/c	7X@300/c	150					4						
-		FW1-AP70C	2573	8X@300/c	8X@300/c	145					4						

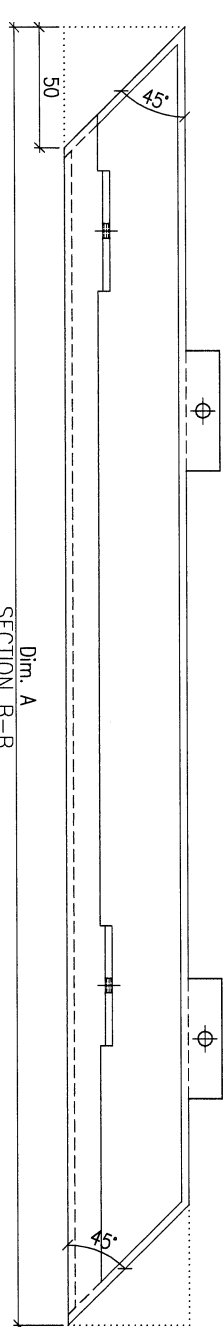
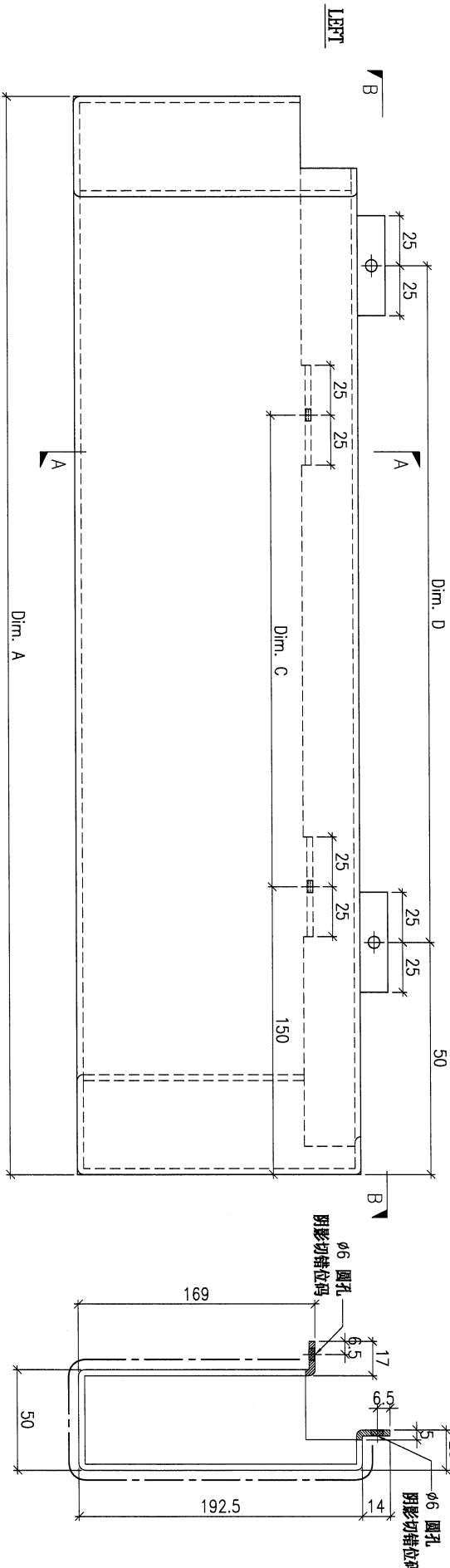
注：地盘用



SECTION A-A

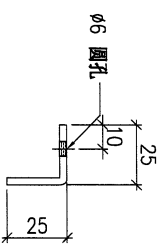
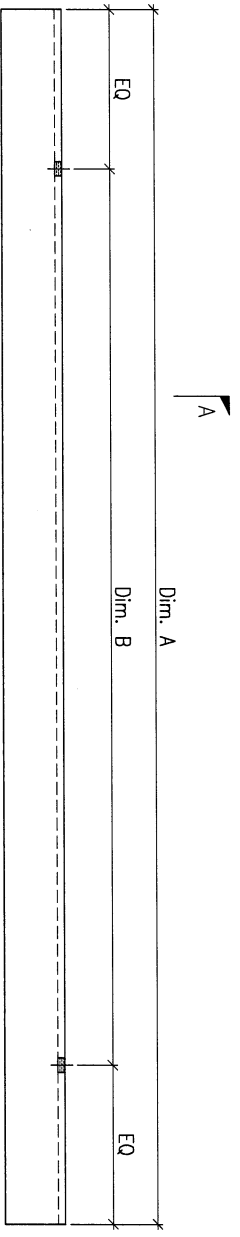
DWG. NO.		REV.		SCALE		DATE		DRAWN BY		APPROVED BY	
FW1-AP70		-		-		15-06-2023		-		-	

PROJECT				YIN PING ROAD KOWLOON FEATURE WALL (PHASE 1)				MATERIAL				3mm 铝板				COATING				PVF2				COLOUR				EC-DG-D334232-ZD1(SS-01)				MARK. NO.				-				QTY.				-			
REV.	DESCRIPTION	PART NUMBER	Dim. A	Dim. B	Dim. C	Dim. D	Dim. E	Dim. F	Dim. G	Dim. H	QTY.	Inv. Code	ASSEMBLE ON PARTS												注: 地盘用																						
-		FW1-AP73	3085	-	9x@300c/c	10x@300c/c					1																																				

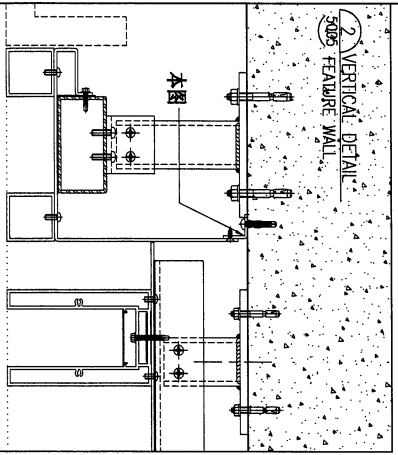


DWG. NO.		FW1-AP73		REV.		SCALE		DATE		DRAWN BY		APPROVED BY	
----------	--	----------	--	------	--	-------	--	------	--	----------	--	-------------	--

PROJECT				YIN PING ROAD KOWLOON FEATURE WALL (PHASE 1)				MATERIAL				3mm 铝板				COATING				铬化				COLOUR				-				MARK. NO.				-				QTY.				-			
REV.	ORDERED BY	PART NUMBER	Dim. A	Dim. B	Dim. C	Dim. D	Dim. E	Dim. F	Dim. G	Dim. H	QTY.	Inv. Code	ASSEMBLE ON PARTS												注: 地盘用																						
-		FW1-AP77A	2400	7x@300/c	-	-	-	-	-	-	6																																				
-		FW1-AP77B	1500	4x@300/c	-	-	-	-	-	-	2																																				



SECTION A-A



DWG. NO.		FW1-AP77		REV.		-		SCALE		-		DATE		15-06-2023		DRAWN BY		-		APPROVED BY		-	
----------	--	----------	--	------	--	---	--	-------	--	---	--	------	--	------------	--	----------	--	---	--	-------------	--	---	--

PROJECT: YIN PING ROAD KOWLOON FEATURE WALL (PHASE 1)

REV.	CHANGED BY	PART NUMBER	Dim. A	Dim. B	Dim. C	Dim. D	Dim. E	Dim. F	Dim. G	Dim. H	QTY.	Inv. Code	ASSEMBLE ON PARTS	MARK. NO.	QTY.

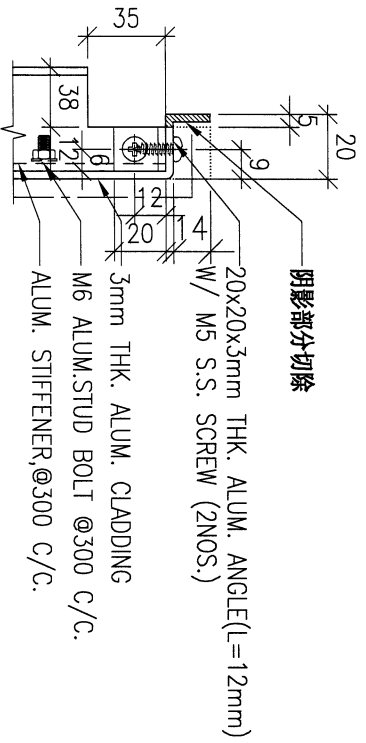
MATERIAL: 细节放大图

COATING: -

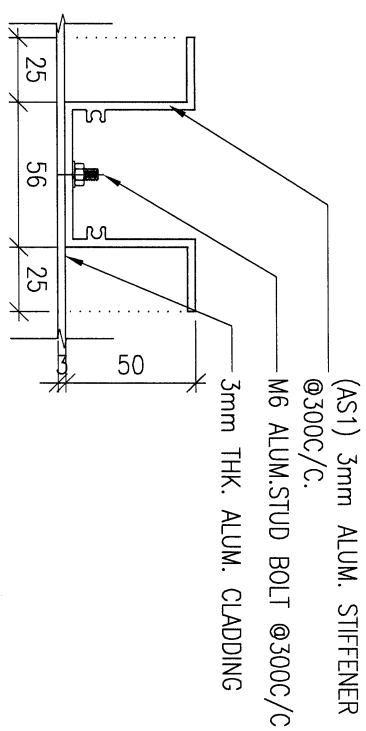
COLOUR: -

MARK. NO.: -

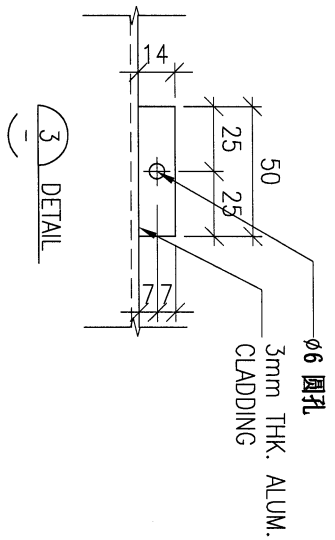
QTY.: -



1) DETAIL



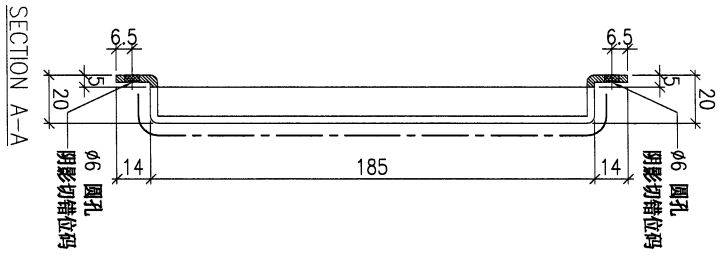
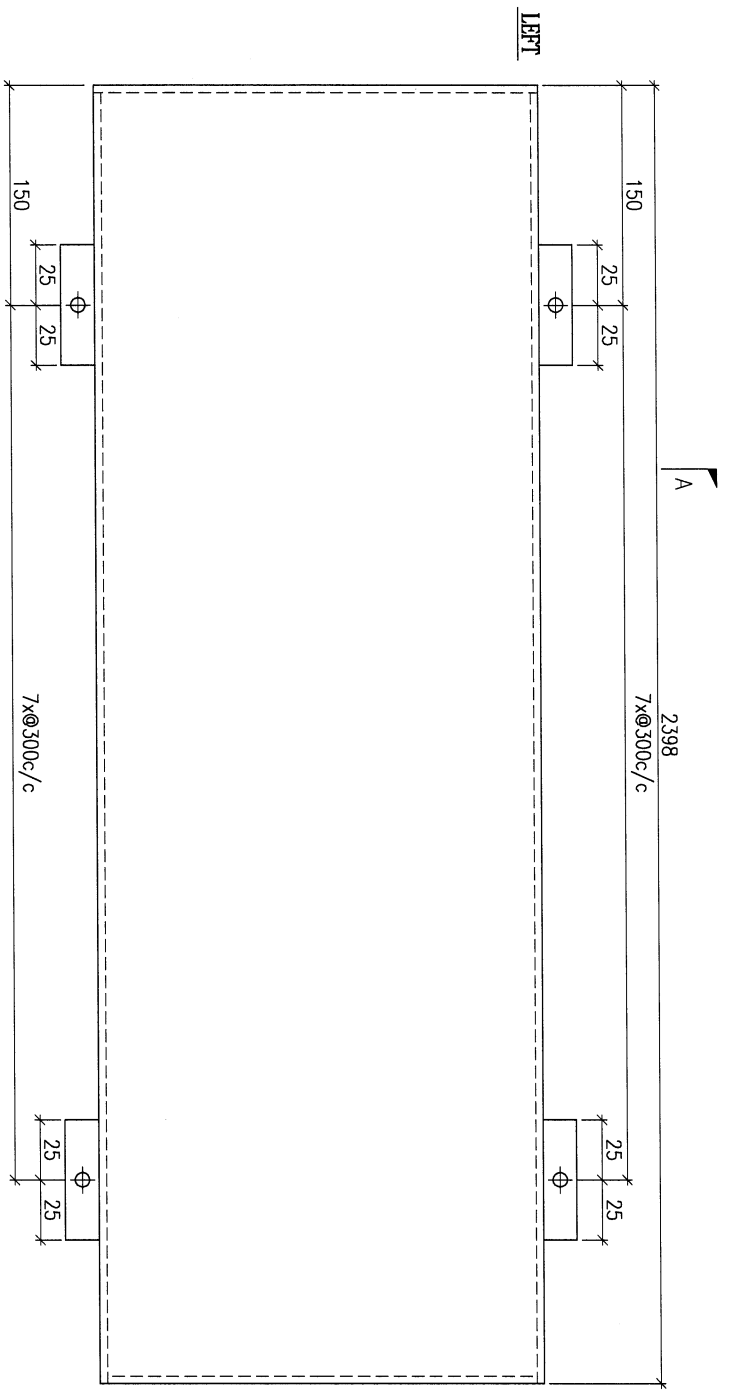
2) DETAIL



3) DETAIL

DWG. NO.	REV.	SCALE	DATE	DRAWN BY	APPROVED BY
DM02	-	-	15-06-2023	-	-

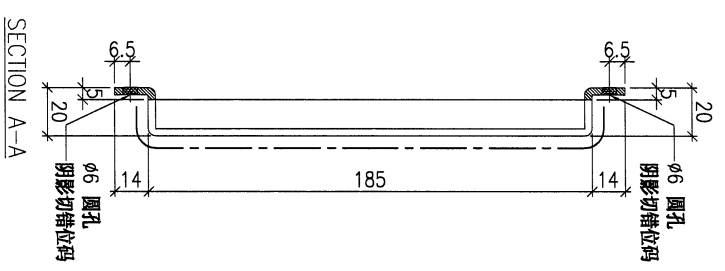
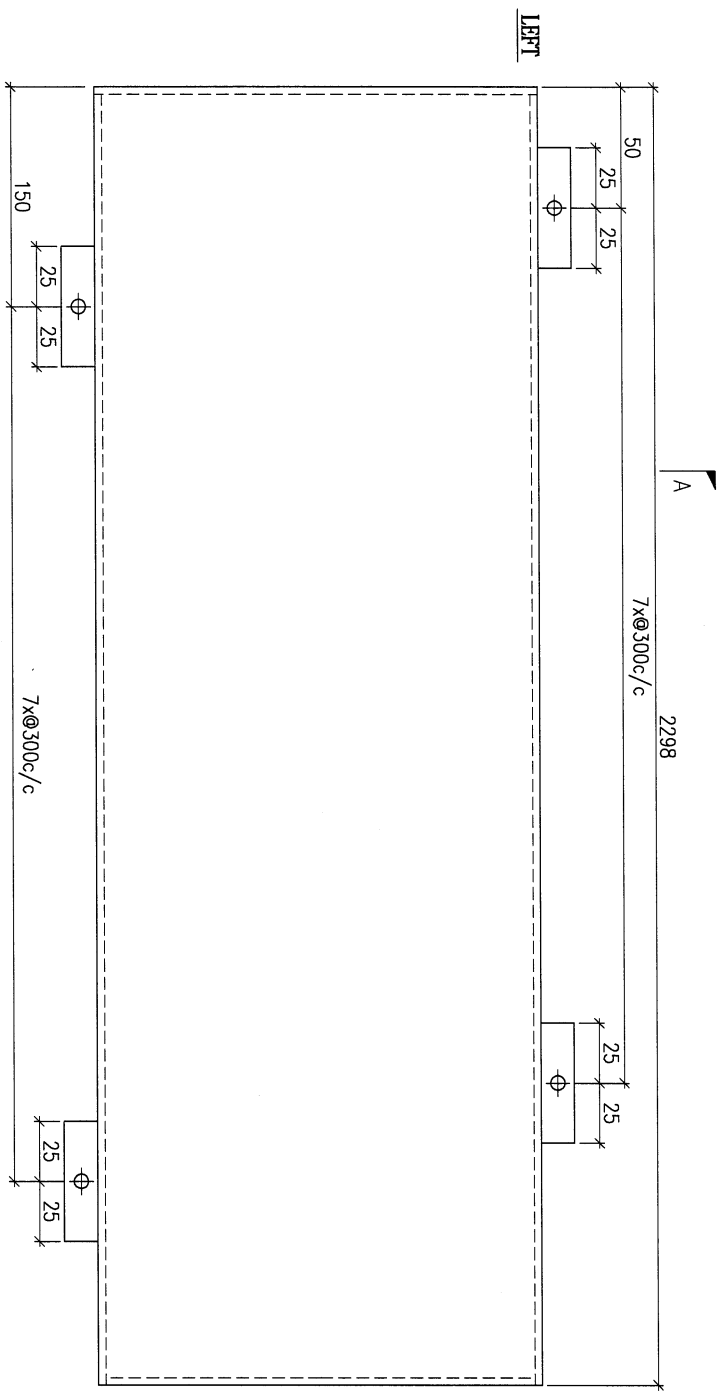
PROJECT				MATERIAL				COATING				COLOUR		MARK. NO.		QTY.	
YIN PING ROAD KOWLOON FEATURE WALL (PHASE 1)				3mm 铝板				PVF2				EC-DG-D334232-ZD1(SS-01)		-		-	
REV.	DATE	PART NUMBER	Dim. A	Dim. B	Dim. C	Dim. D	Dim. E	Dim. F	Dim. G	Dim. H	QTY.	Inv. Code	ASSEMBLE ON PARTS				
-		FW1-AP80	-	-	-	-	-	-	-	-	2						
													注: 地盘用				



DWG. NO.		REV.		SCALE		DATE		DRAWN BY		APPROVED BY	
FW1-AP80		-		-		15-06-2023		-		-	

PROJECT				MATERIAL				COATING				COLOUR				MARK. NO.		QTY.	
YIN PING ROAD KOWLOON FEATURE WALL (PHASE 1)				3mm 铝板				PVF2				EC-DG-D34232-ZD1(SS-01)				-		-	
REV.	DESCRIPTION	PART NUMBER	Dim. A	Dim. B	Dim. C	Dim. D	Dim. E	Dim. F	Dim. G	Dim. H	QTY.	Inv. Code	ASSEMBLE ON PARTS				注: 地盘用		
-		FW1-AP81	-	-	-	-	-	-	-	-	4								

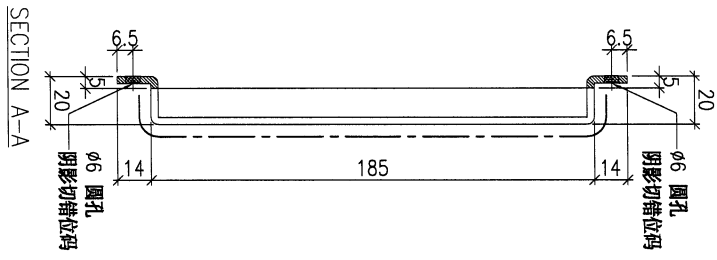
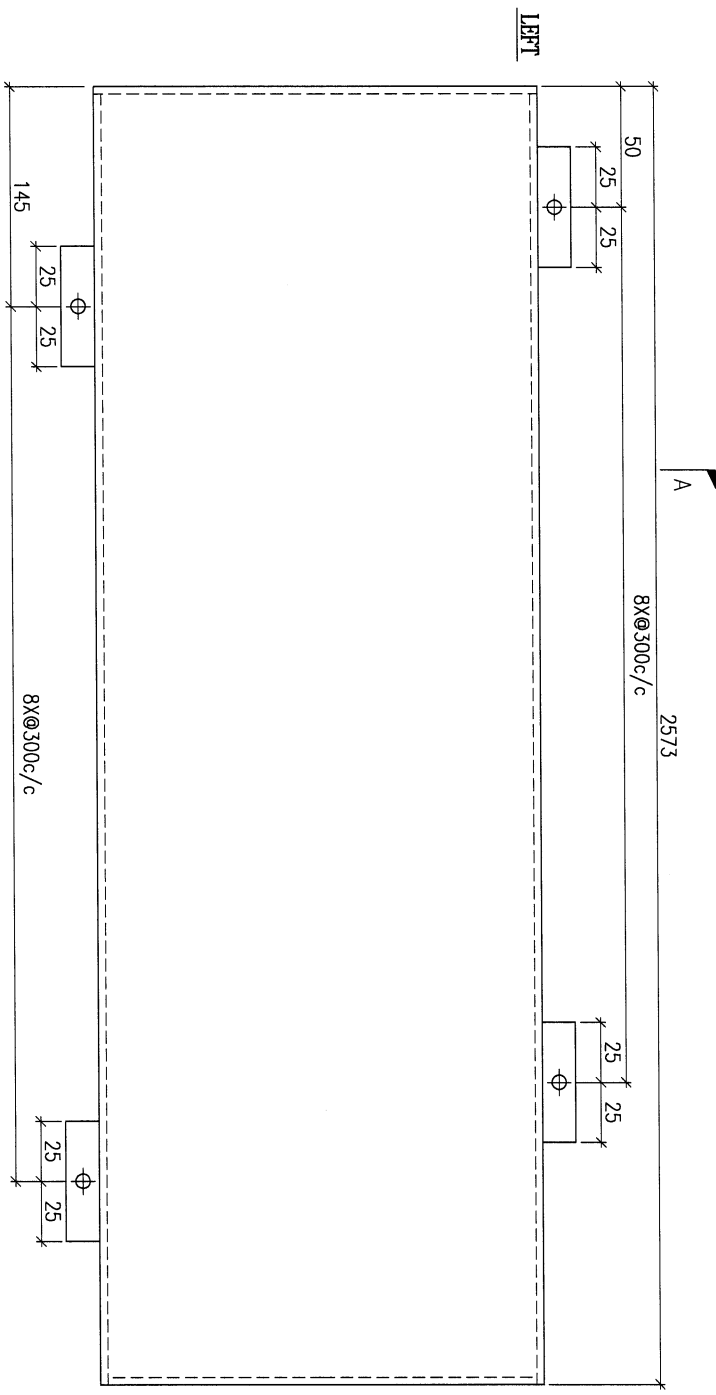
注: 工地复尺



DWG. NO.		REV.		SCALE		DATE		DRAWN BY		APPROVED BY	
FW1-AP81		-		-		15-06-2023		-		-	

PROJECT		YIN PING ROAD KOWLOON FEATURE WALL (PHASE 1)				MATERIAL				3mm 铝板				COATING		PVF2		COLOUR		EC-DG-D334232-ZD1(SS-01)		MARK. NO.		-		QTY.		-	
REV. CHANGED BY	PART NUMBER	Dim. A	Dim. B	Dim. C	Dim. D	Dim. E	Dim. F	Dim. G	Dim. H	QTY.	Inv. Code	ASSEMBLE ON PARTS																	
-	FW1-AP82	-	-	-	-	-	-	-	-	4	-																		
												注: 地盘用																	

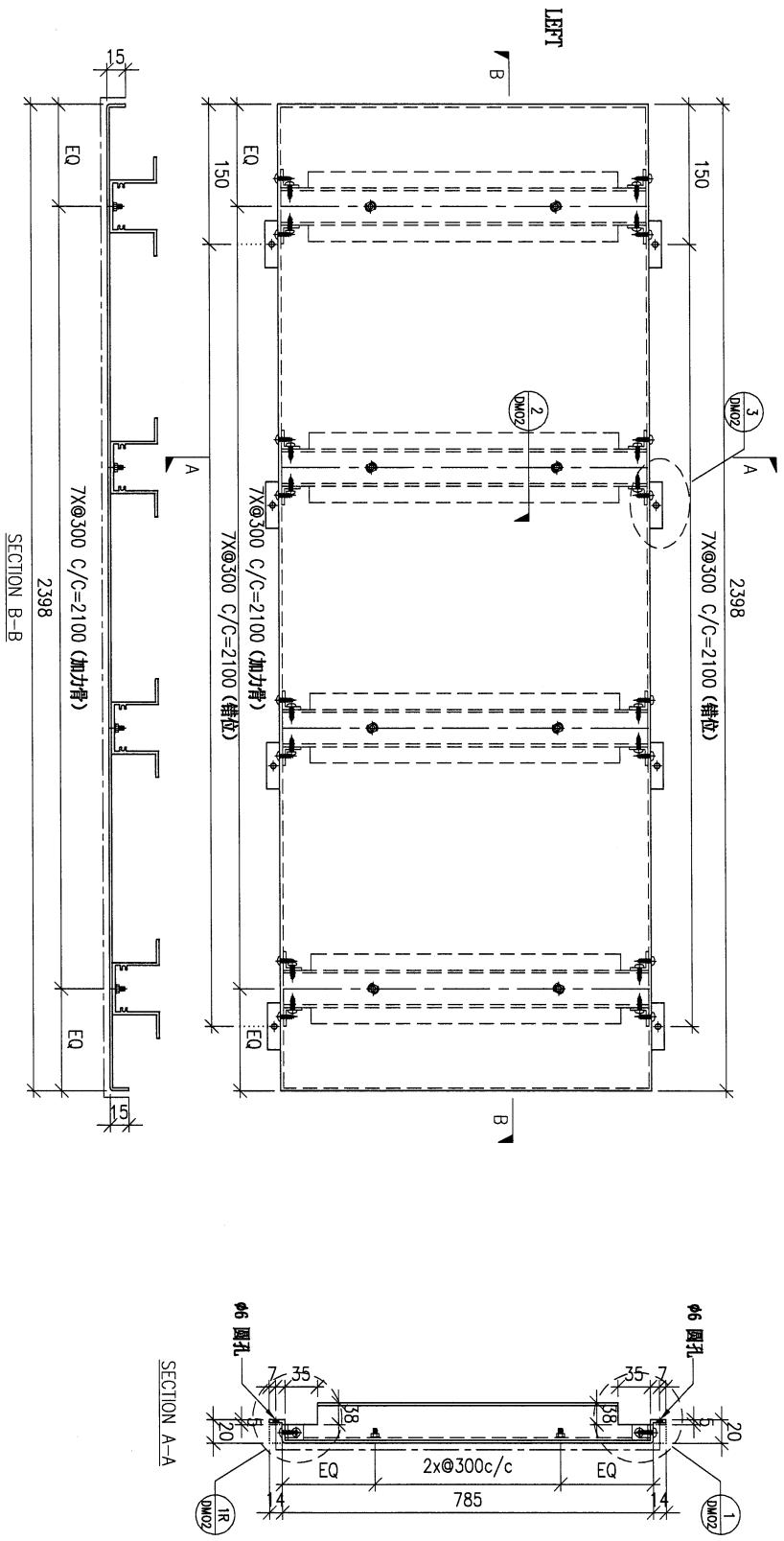
注: 工地复尺



DWG. NO.	FW1-AP82	REV.	-	SCALE	-	DATE	15-06-2023	DRAWN BY	-	APPROVED BY	-
----------	----------	------	---	-------	---	------	------------	----------	---	-------------	---

PROJECT				MATERIAL				COATING				COLOUR		MARK. NO.		QTY.	
YIN PING ROAD KOWLOON FEATURE WALL (PHASE 1)				3mm鋁板				PVF2				EC-DG-D334232-ZD1(SS-01)		-		-	
REV. CHANGED BY	PART NUMBER	Dim. A	Dim. B	Dim. C	Dim. D	Dim. E	Dim. F	Dim. G	Dim. H	QTY.	Inv. Code	ASSEMBLE ON PARTS					
-	FW1-AP83	-	-	-	-	-	-	-	-	1	-						
													注：地盤用				

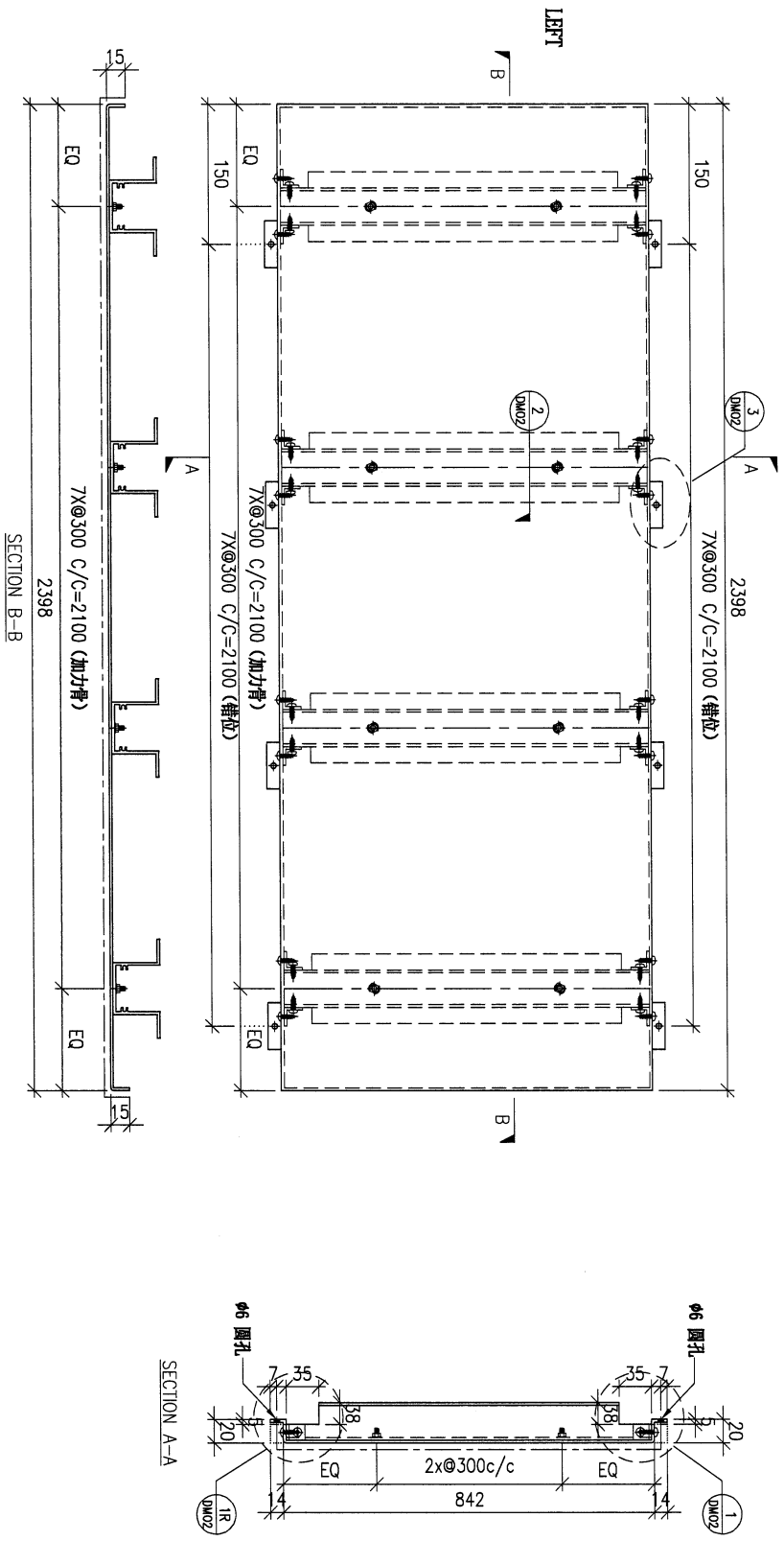
注：工地復尺



DWG. NO.		REV.		SCALE		DATE		DRAWN BY		APPROVED BY	
FW1-AP83		-		-		15-06-2023		-		-	

PROJECT				MATERIAL				COATING				COLOUR		MARK. NO.		QTY.	
YIN PING ROAD KOWLOON FEATURE WALL (PHASE 1)				3mm铝板				PVF2				EC-DG-D334232-ZD1(SS-01)		-		-	
REV.	CHANGED BY	PART NUMBER	Dim. A	Dim. B	Dim. C	Dim. D	Dim. E	Dim. F	Dim. G	Dim. H	QTY.	Inv. Code	ASSEMBLE ON PARTS				
-		FW1-AP84	-	-	-	-	-	-	-	-	4						
													注: 地盘用				

注: 工地复尺

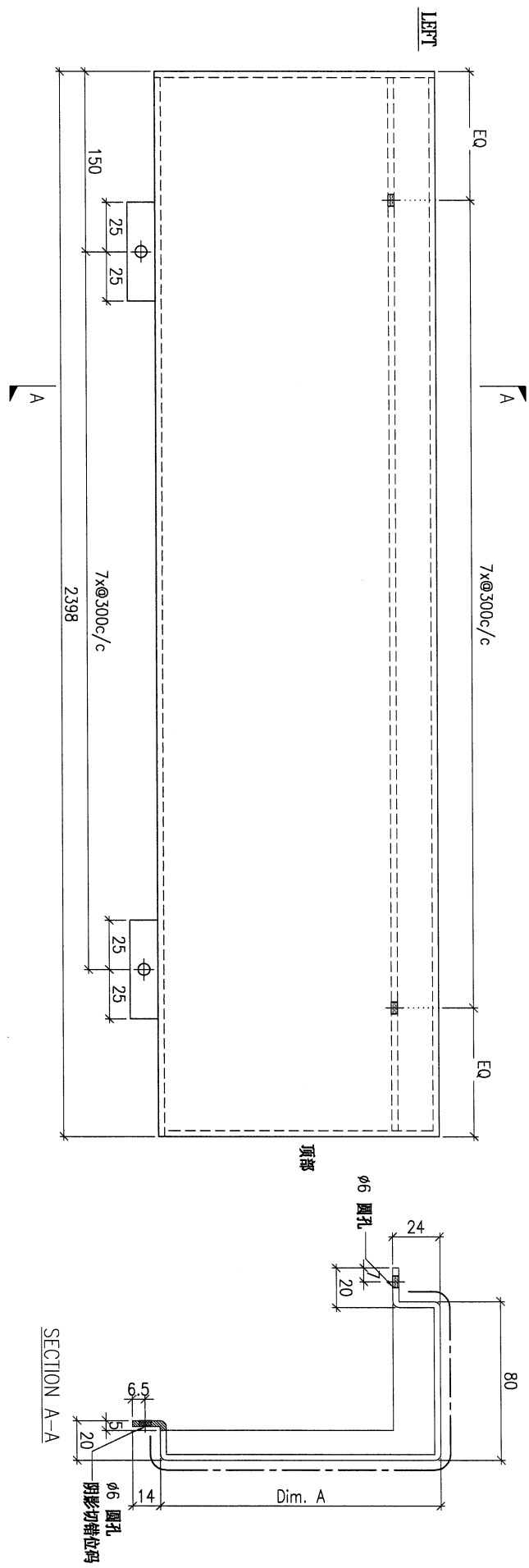


DWG. NO.		REV.		SCALE		DATE		DRAWN BY		APPROVED BY	
FW1-AP84		-		-		15-06-2023		-		-	

PROJECT		YIN PING ROAD KOWLOON FEATURE WALL (PHASE 1)				MATERIAL				COATING				COLOUR		MARK. NO.		QTY.	
		3mm 铝板				PVF2				EC-DG-D334232-ZD1(SS-01)									
REV.	DESCRIPTION	PART NUMBER	Dim. A	Dim. B	Dim. C	Dim. D	Dim. E	Dim. F	Dim. G	Dim. H	QTY.	Inv. Code	ASSEMBLE ON PARTS						
-		FW1-AP85A	142.5	-	-	-	-	-	-	-	1								
-		FW1-AP85B	157.5	-	-	-	-	-	-	-	2								
-		FW1-AP85C	142.5	-	-	-	-	-	-	-	4								

注：地盘用

注：工地复尺



DWG. NO.		REV.		SCALE		DATE		DRAWN BY		APPROVED BY	
FW1-AP85		-		-		15-06-2023		-		-	

PROJECT
YIN PING ROAD KOWLOON
FEATURE WALL (PHASE 1)

MATERIAL
3mm 铝板

COATING
PVF2

COLOUR
EG-DG-D334232-ZD1(SS-01)

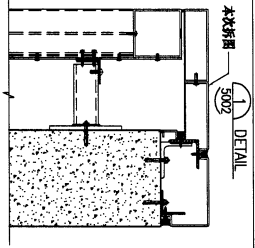
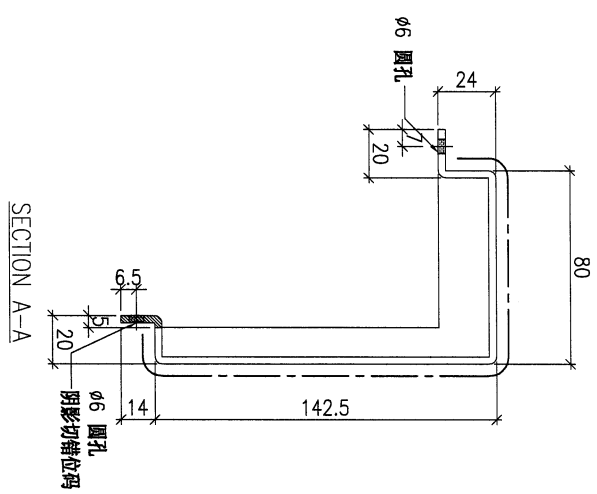
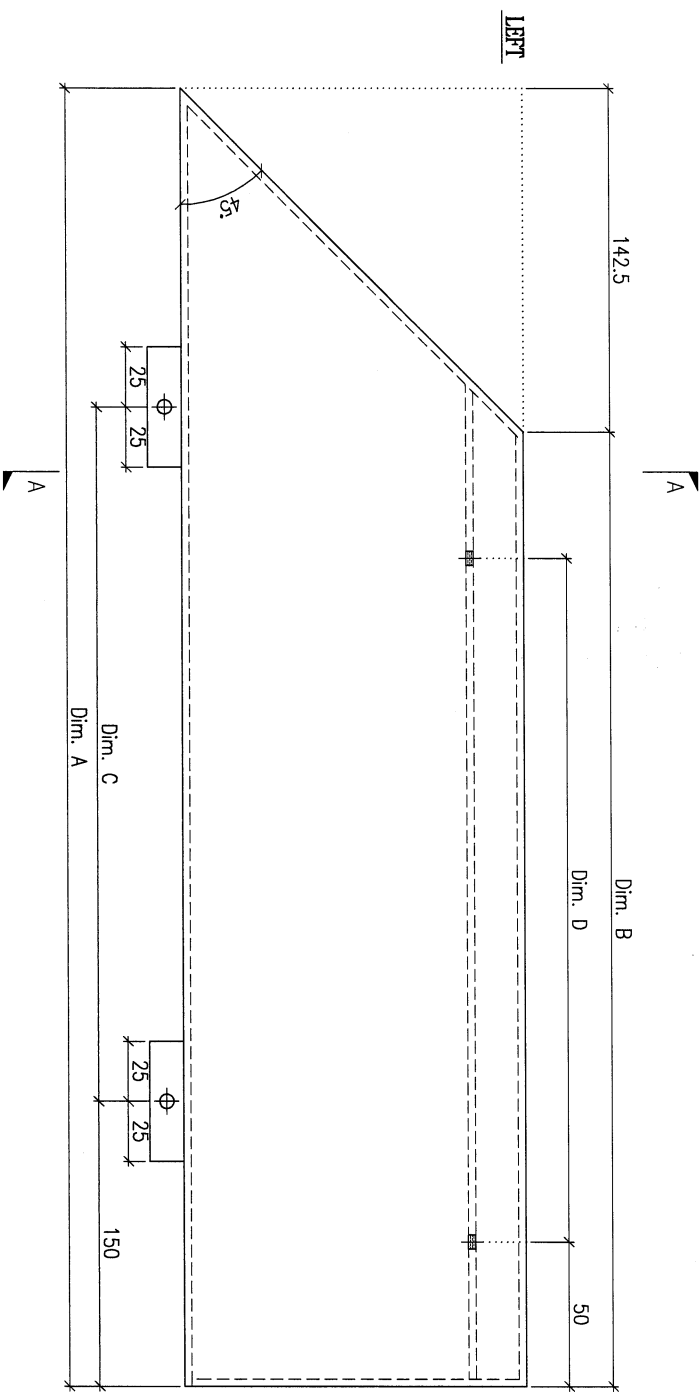
MARK. NO.
-

QTY.
-

REV.	DESCRIPTION	PART NUMBER	Dim. A	Dim. B	Dim. C	Dim. D	Dim. E	Dim. F	Dim. G	Dim. H	QTY.	Inv. Code	ASSEMBLE ON PARTS
-		FW1-AP86A	2515	2372.5	7X@300c/c	7X@300c/c					1		注: 如图加工
-		FW1-AP86AR	2515	2372.5	7X@300c/c	7X@300c/c					1		注: 相反加工
-		FW1-AP86BR	1370	1227.5	4X@300c/c	4X@280c/c					1		注: 相反加工

注: 地盘用

注: 工地复尺

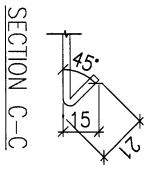
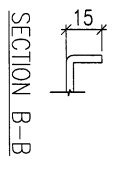
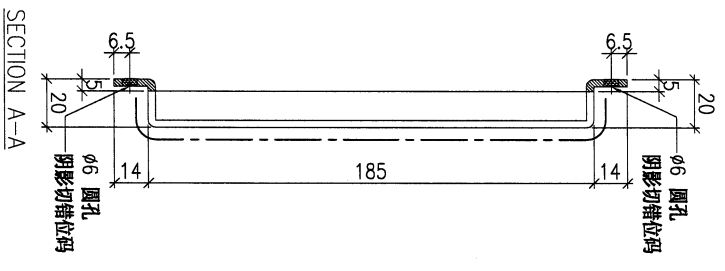
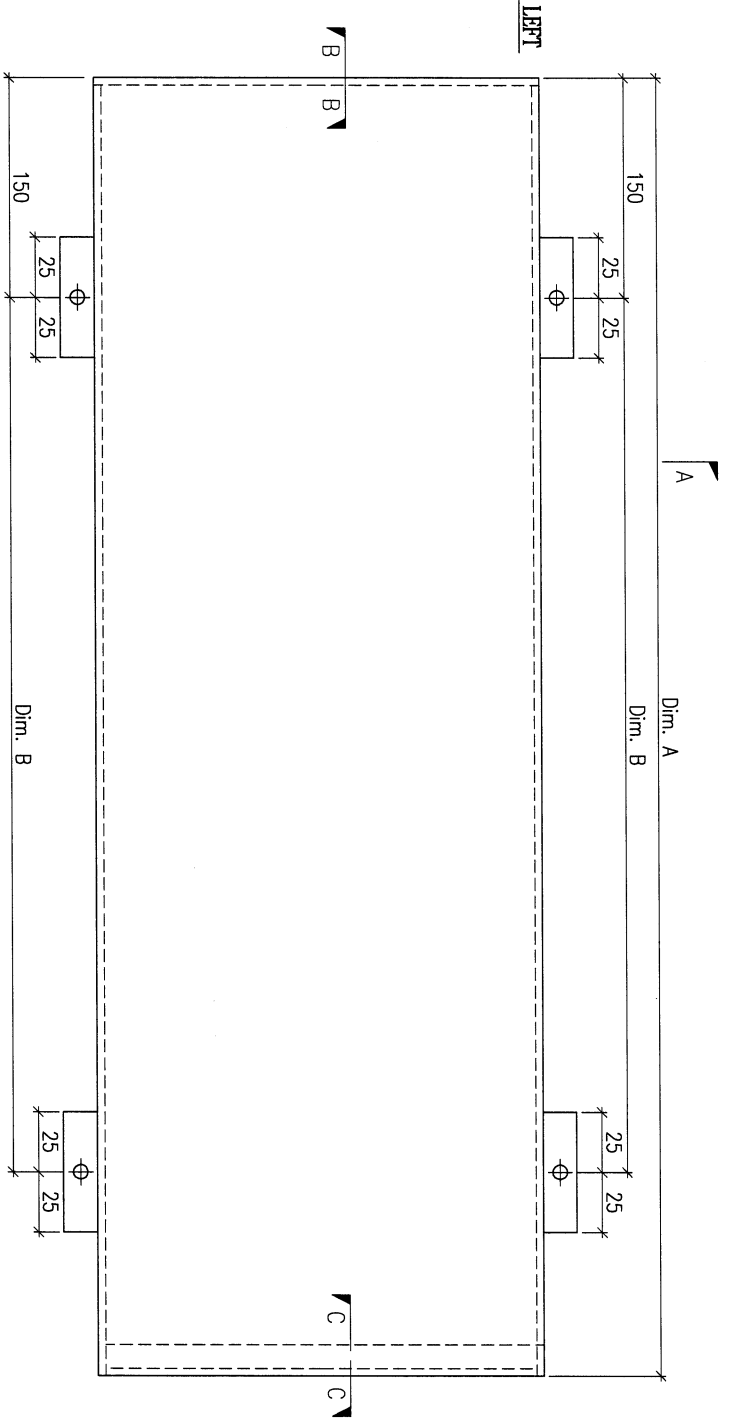


DWG. NO. FW1-AP86 REV. - SCALE - DATE 15-06-2023 DRAWN BY - APPROVED BY -

PROJECT				MATERIAL				COATING				COLOUR		MARK. NO.		QTY.	
YIN PING ROAD KOWLOON FEATURE WALL (PHASE 1)				3mm 铝板				PVF2				EC-DG-D334232-ZD1(SS-01)		-		-	
REV. OR SHEET NO.	PART NUMBER	Dim. A	Dim. B	Dim. C	Dim. D	Dim. E	Dim. F	Dim. G	Dim. H	QTY.	Inv. Code	ASSEMBLE ON PARTS					
-	FW1-AP87A	2441	7xø300c/c	-	-	-	-	-	-	1	-						
-	FW1-AP87B	2404	7xø300c/c	-	-	-	-	-	-	1	-						
-	FW1-AP87C	2856	8xø300c/c	-	-	-	-	-	-	1	-						
-	FW1-AP87D	2956	9xø300c/c	-	-	-	-	-	-	2	-						

注：工地复尺

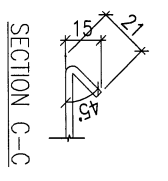
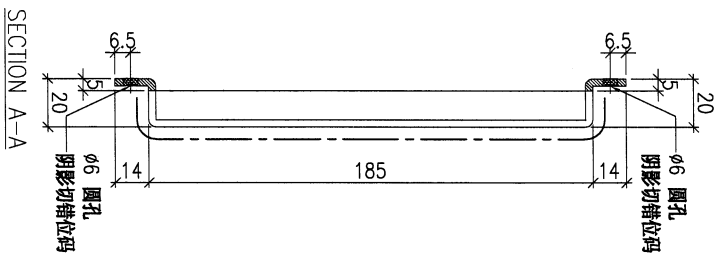
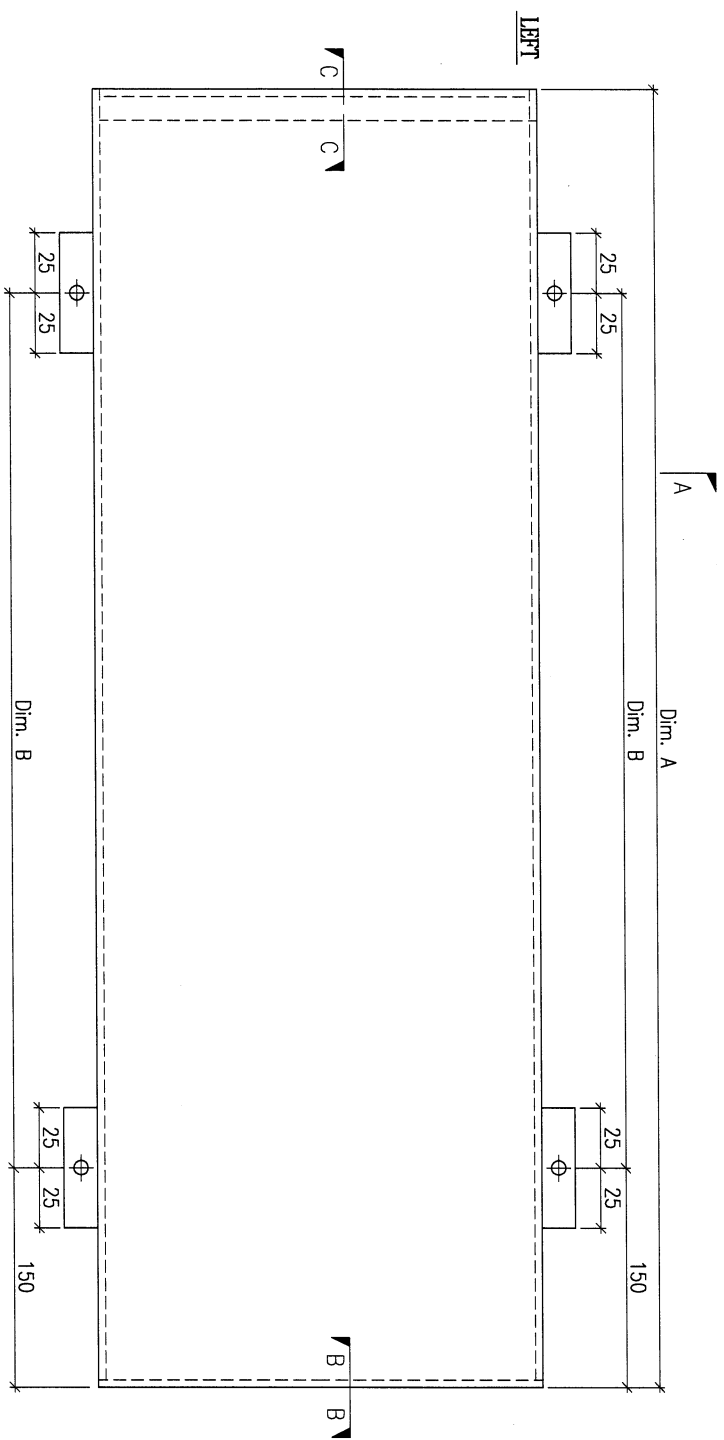
注：地盘用



DWG. NO.	FW1-AP87	REV.	-	SCALE	-	DATE	15-06-2023	DRAWN BY	-	APPROVED BY	-
----------	----------	------	---	-------	---	------	------------	----------	---	-------------	---

PROJECT				MATERIAL				COATING				COLOUR		MARK. NO.		QTY.	
YIN PING ROAD KOWLOON FEATURE WALL (PHASE 1)				3mm 铝板				PVF2				EC-DG-D334232-ZD1(SS-01)		-		-	
REV.	DESCRIPTION	PART NUMBER	Dim. A	Dim. B	Dim. C	Dim. D	Dim. E	Dim. F	Dim. G	Dim. H	QTY.	Inv. Code	ASSEMBLE ON PARTS				
-		FW1-AP88A	2397	7xø300c/c	-						1						
													注: 地盘用				

注: 工地复尺

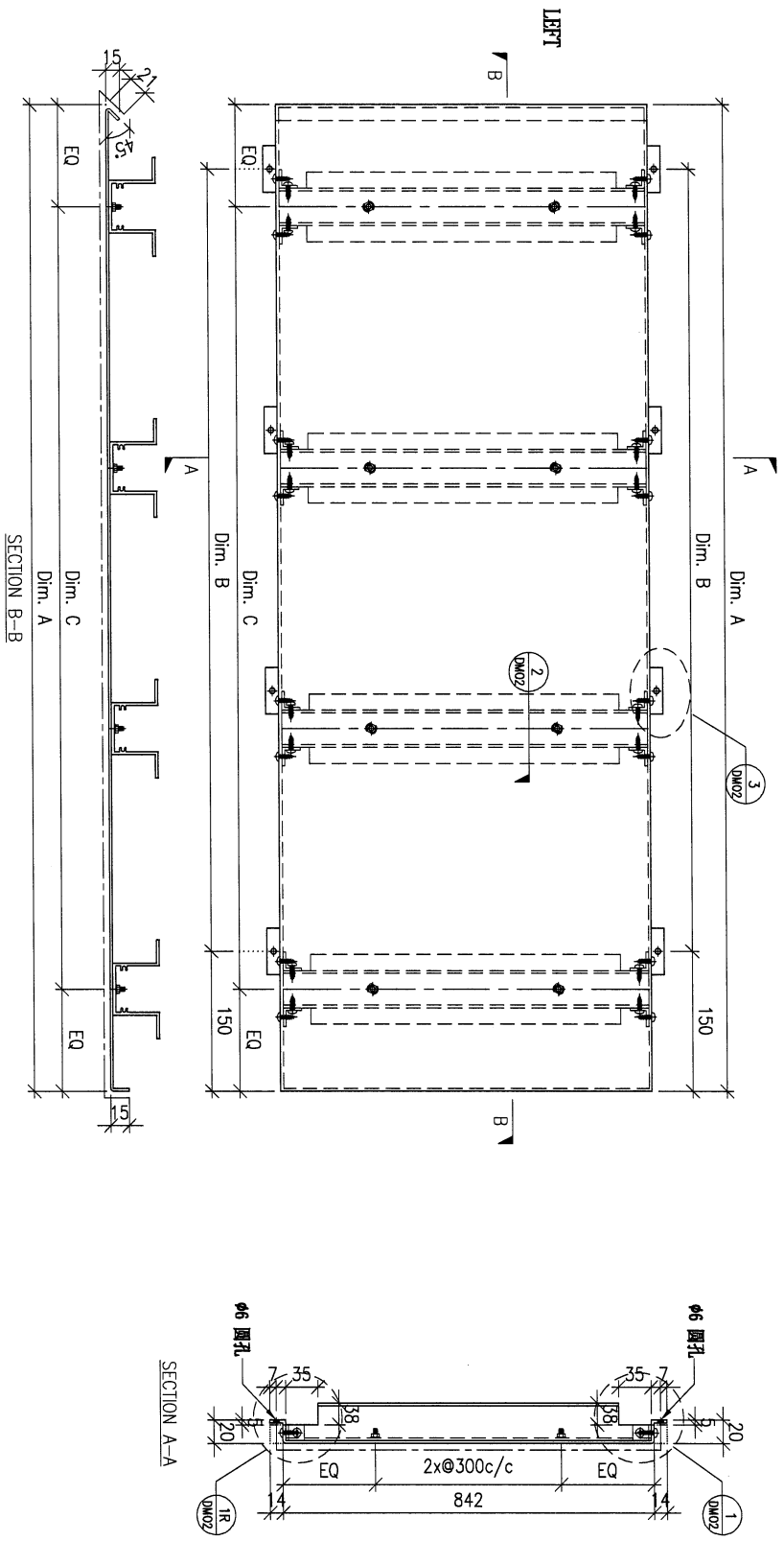


DWG. NO.	FW1-AP88A	REV.	-	SCALE	-	DATE	15-06-2023	DRAWN BY	-	APPROVED BY	-
----------	-----------	------	---	-------	---	------	------------	----------	---	-------------	---

PROJECT				MATERIAL				COATING				COLOUR				MARK. NO.		QTY.	
YIN PING ROAD KOWLOON FEATURE WALL (PHASE 1)				3mm铝板				PVF2				EC-DG-D34232-ZD1(SS-01)				-		-	
REV.	ORDERED BY	PART NUMBER	Dim. A	Dim. B	Dim. C	Dim. D	Dim. E	Dim. F	Dim. G	Dim. H	QTY.	Inv. Code	ASSEMBLE ON PARTS						
-		FW1-AP88B	2397	7x@300c/c	8x@280c/d	-					1								

注：地盘用

注：工地复尺



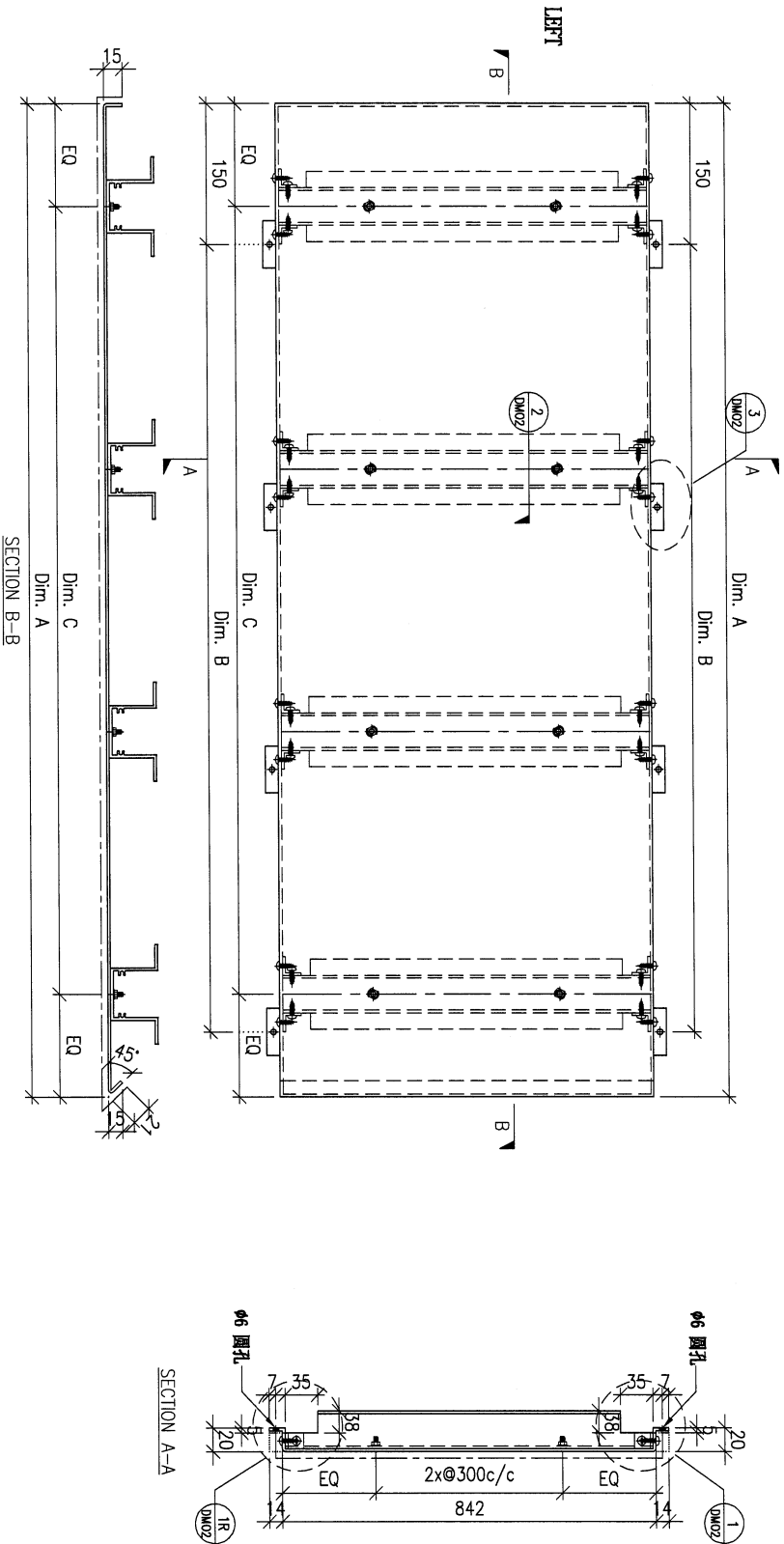
SECTION A-A

SECTION B-B

DWG. NO.		REV.		SCALE		DATE		DRAWN BY		APPROVED BY	
FW1-AP88B		-		-		15-06-2023		-		-	

PROJECT YIN PING ROAD KOWLOON FEATURE WALL (PHASE 1)				MATERIAL 3mm铝板				COATING PVF2		COLOUR EG-DG-D34232-ZD1(SS-01)		MARK. NO. -	QTY. -
REV. ORIGIN DATE	PART NUMBER	Dim. A	Dim. B	Dim. C	Dim. D	Dim. E	Dim. F	Dim. G	Dim. H	QTY.	Inv. Code	ASSEMBLE ON PARTS	
-	FW1-AP89A	2397	7x@300c/c	8x@280c/d	-					1			
-	FW1-AP89B	1721	5x@300c/c	5x@300c/d	-					4			
												注: 地盘用	

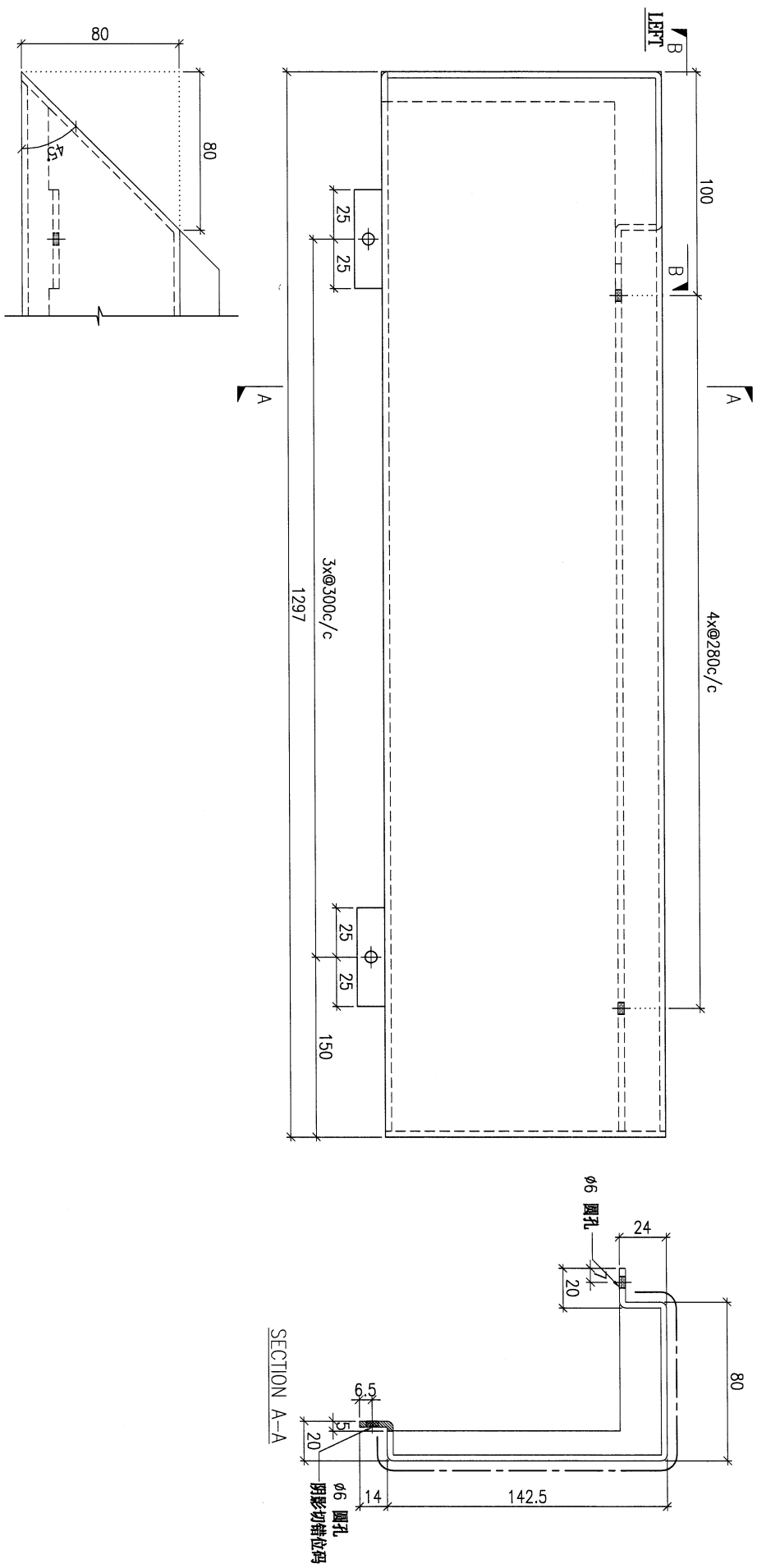
注: 工地复尺



DWG. NO. FW1-AP89		REV. -		SCALE -		DATE 15-06-2023		DRAWN BY -		APPROVED BY -	
----------------------	--	-----------	--	------------	--	--------------------	--	---------------	--	------------------	--

PROJECT				MATERIAL				COATING				COLOUR				MARK. NO.		QTY.	
YIN PING ROAD KOWLOON FEATURE WALL (PHASE 1)				3mm 铝板				PVF2				EC-DG-D334232-ZD1(SS-01)				-		-	
REV.	ORDERED DATE	PART NUMBER	Dim. A	Dim. B	Dim. C	Dim. D	Dim. E	Dim. F	Dim. G	Dim. H	QTY.	Inv. Code	ASSEMBLE ON PARTS				注: 地盘用		
-		FW1-AP90	-	-	-	-	-	-	-	-	1								

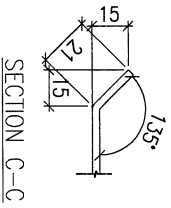
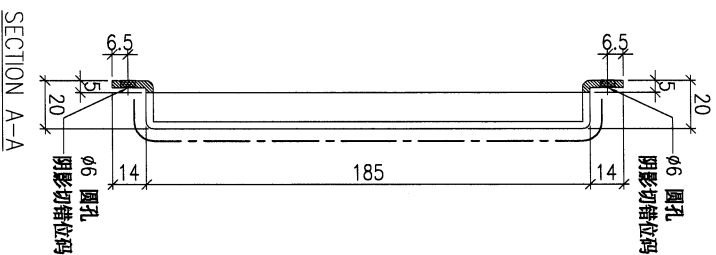
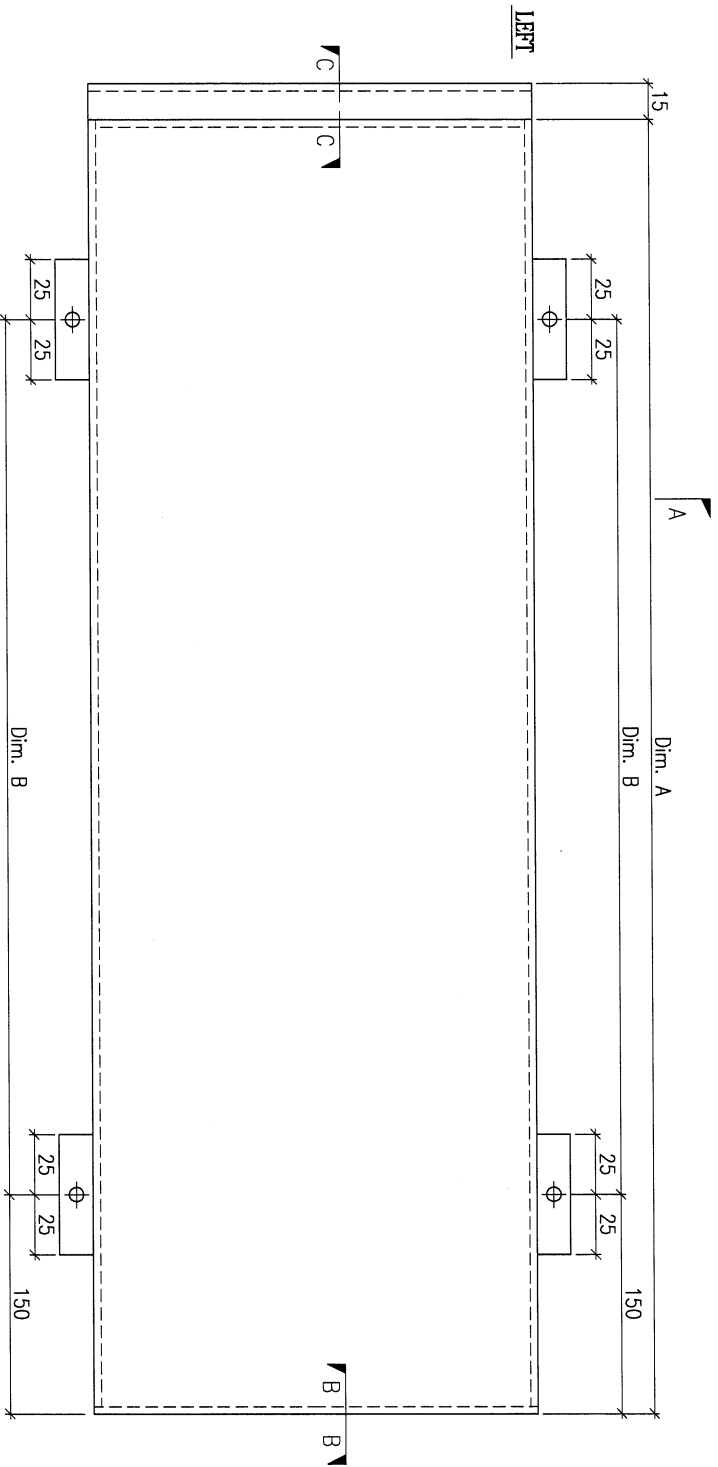
注: 工地复尺



DWG. NO.		REV.		SCALE		DATE		DRAWN BY		APPROVED BY	
FW1-AP90		-		-		15-06-2023		-		-	

PROJECT				MATERIAL				COATING				COLOUR		MARK. NO.		QTY.	
YIN PING ROAD KOWLOON FEATURE WALL (PHASE 1)				3mm 铝板				PVF2				EC-DG-D334232-ZD1(SS-01)		-		-	
REV. OR CHANGED BY	PART NUMBER	Dim. A	Dim. B	Dim. C	Dim. D	Dim. E	Dim. F	Dim. G	Dim. H	QTY.	Inv. Code	ASSEMBLE ON PARTS					
-	FW1-AP91A	2472	7x ϕ 300/c	-	-	-	-	-	-	1	-	注: 地盘用					
-	FW1-AP91B	2756	8x ϕ 300/c	-	-	-	-	-	-	2	-						
-	FW1-AP91C	3109	9x ϕ 300/c	-	-	-	-	-	-	1	-						

注: 工地复尺



SECTION C-C

SECTION B-B



SECTION A-A

DWG. NO.	FW1-AP91	REV.	-	SCALE	-	DATE	15-06-2023	DRAWN BY	-	APPROVED BY	-
----------	----------	------	---	-------	---	------	------------	----------	---	-------------	---

PROJECT
YIN PING ROAD KOWLOON
FEATURE WALL (PHASE 1)

MATERIAL
3mm鋁板

COATING
PVF2

COLOUR
EG-DG-D334232-ZD1(SS-01)

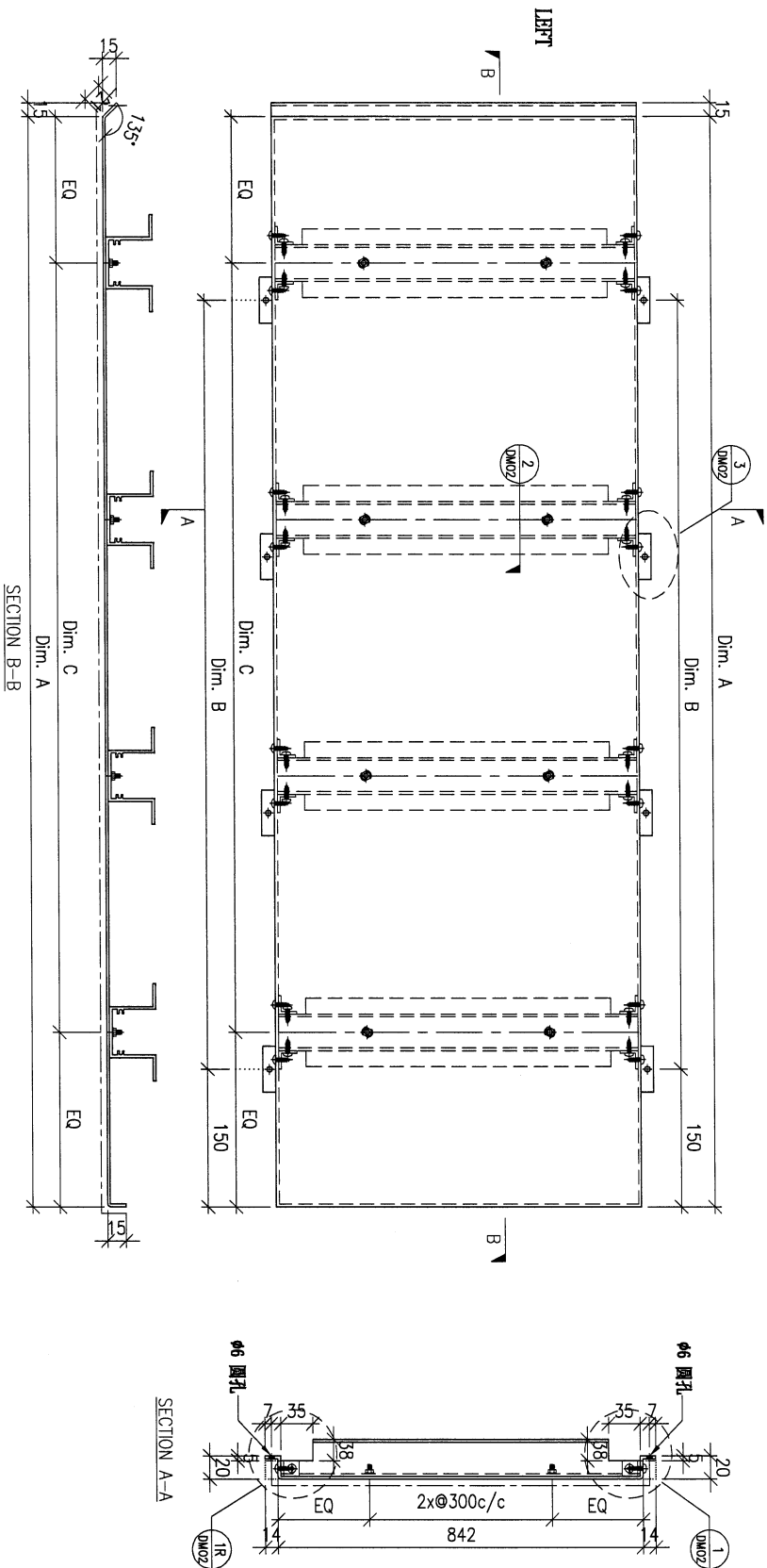
MARK. NO.
-

QTY.
-

REV. ORIGIN OR BY	PART NUMBER	Dim. A	Dim. B	Dim. C	Dim. D	Dim. E	Dim. F	Dim. G	Dim. H	QTY.	Inv. Code	ASSEMBLE ON PARTS
-	FW1-AP92A	1340	3x@300c/c	4x@300c/d	-	-	-	-	-	1	-	-
-	FW1-AP92B	1721	5x@300c/c	5x@300c/d	-	-	-	-	-	3	-	-
-	FW1-AP92C	1997	6x@300c/c	6x@300c/d	-	-	-	-	-	1	-	-

注：地盘用

注：工地复尺



DWG. NO.

FW1-AP92

REV. -

SCALE -

DATE
15-06-2023

DRAWN BY -

APPROVED BY

PROJECT
YIN PING ROAD KOWLOON
FEATURE WALL (PHASE 1)

MATERIAL
3mm铝板

COATING
PVF2

COLOUR
EG-DG-D334232-ZD1(SS-01)

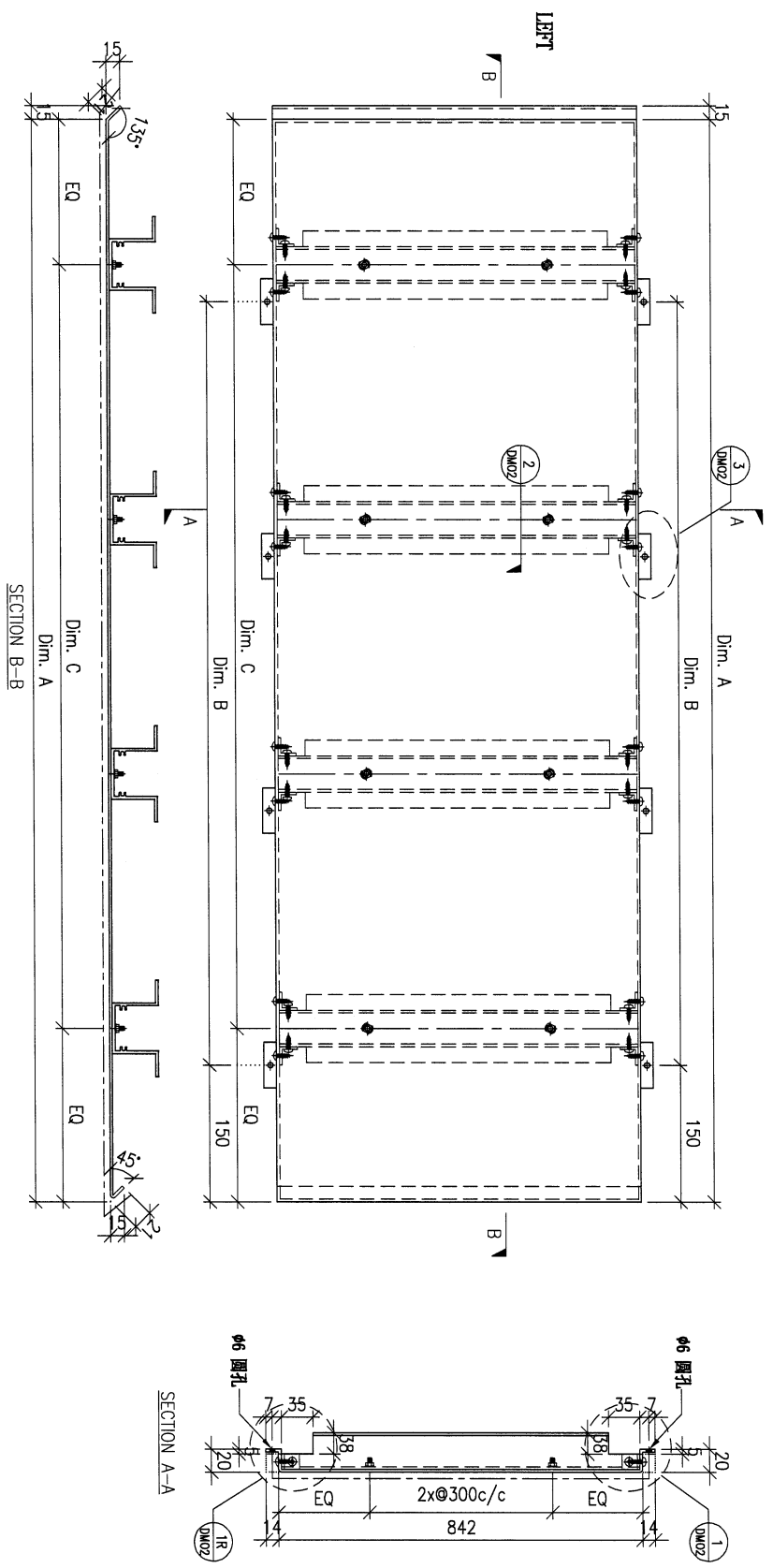
MARK. NO.
-

QTY.
-

REV. OR CHANGED BAR NO.	PART NUMBER	Dim. A	Dim. B	Dim. C	Dim. D	Dim. E	Dim. F	Dim. G	Dim. H	QTY.	Inv. Code	ASSEMBLE ON PARTS
-	FW1-AP93A	2667	8x@300c/c	8x@300c/d	-	-	-	-	-	1	-	-
-	FW1-AP93B	2007	6x@300c/c	6x@300c/d	-	-	-	-	-	1	-	-

注: 地盘用

注: 工地复尺

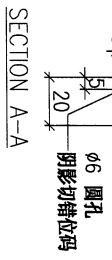
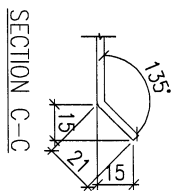
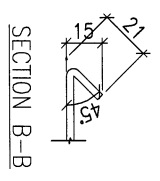
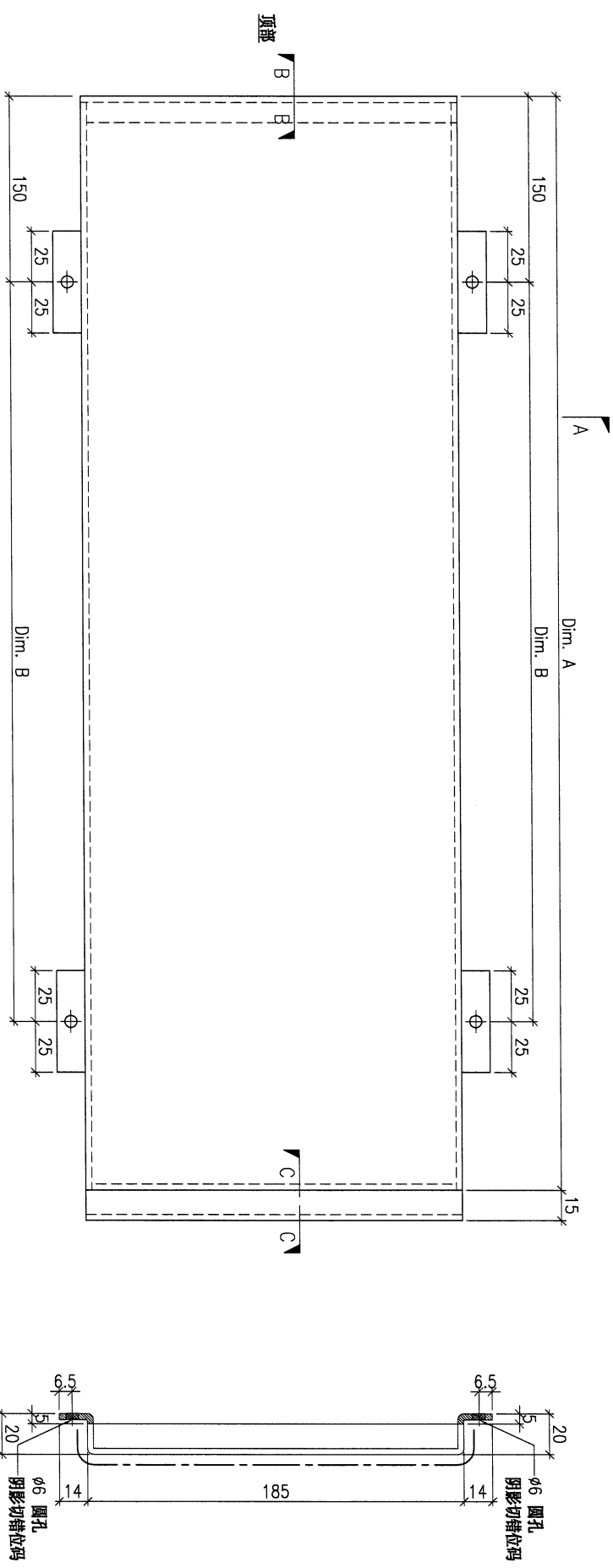


DWG. NO.	FW1-AP93	REV.	-	SCALE	-	DATE	15-06-2023	DRAWN BY	-	APPROVED BY	-
----------	----------	------	---	-------	---	------	------------	----------	---	-------------	---

PROJECT				MATERIAL				COATING				COLOUR		MARK. NO.		QTY.	
YIN PING ROAD KOWLOON FEATURE WALL (PHASE 1)				3mm 铝板				PVF2				EC-DG-D334232-ZD1 (SS-01)		-		-	
REV.	ORDERED BY	PART NUMBER	Dim. A	Dim. B	Dim. C	Dim. D	Dim. E	Dim. F	Dim. G	Dim. H	QTY.	Inv. Code	ASSEMBLE ON PARTS				
-		FW1-AP94A	397	1x@300c/c	-						1						
-		FW1-AP94B	672	1x@300c/c	-						3						

注：工地复尺

注：地盘用



DWG. NO.		REV.		SCALE		DATE		DRAWN BY		APPROVED BY	
FW1-AP94		-		-		15-06-2023		-		-	

PROJECT
YIN PING ROAD KOWLOON
FEATURE WALL (PHASE 1)

MATERIAL
3mm鋁板

COATING
PVF2

COLOUR
EG-DG-D34232-ZD1(SS-01)

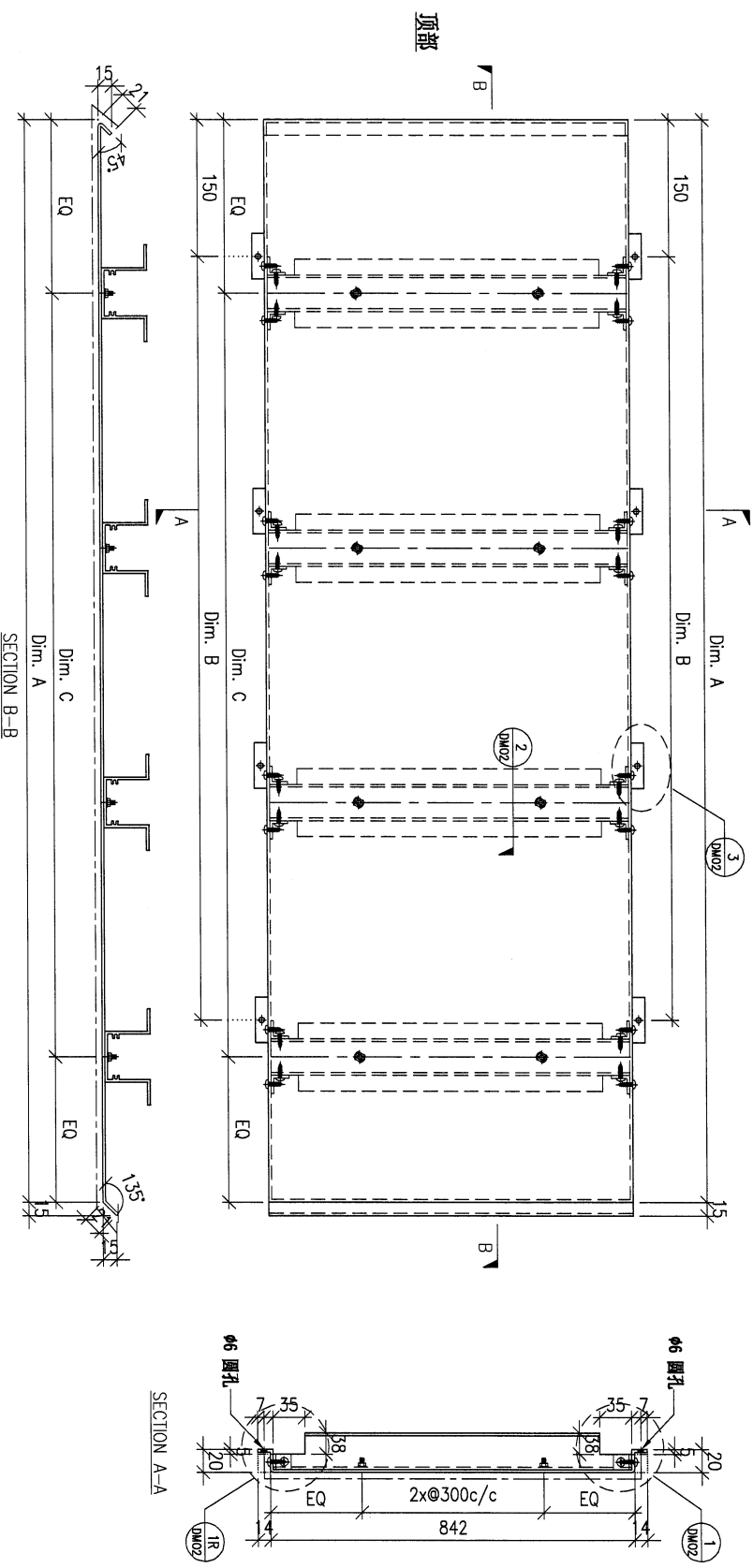
MARK. NO.
-

QTY.
-

REV. OR CHANGED BY	PART NUMBER	Dim. A	Dim. B	Dim. C	Dim. D	Dim. E	Dim. F	Dim. G	Dim. H	QTY.	Inv. Code	ASSEMBLE ON PARTS
-	FW1-AP95A	3222	10x@300c/d	10x@300c/d	-	-	-	-	-	1	-	-
-	FW1-AP95B	902	3x@250c/c	3x@250c/d	-	-	-	-	-	1	-	-
-	FW1-AP95C	1222	4x@270c/c	4x@270c/d	-	-	-	-	-	1	-	-
-	FW1-AP95D	672	2x@250c/c	2x@250c/d	-	-	-	-	-	1	-	-
-	FW1-AP95E	342	1x@200c/c	1x@200c/d	-	-	-	-	-	1	-	-
-	FW1-AP95F	304	1x@170c/c	1x@170c/d	-	-	-	-	-	1	-	-
-	FW1-AP95G	270	1x@140c/c	1x@140c/d	-	-	-	-	-	1	-	-

注：地盘用

注：工地复尺

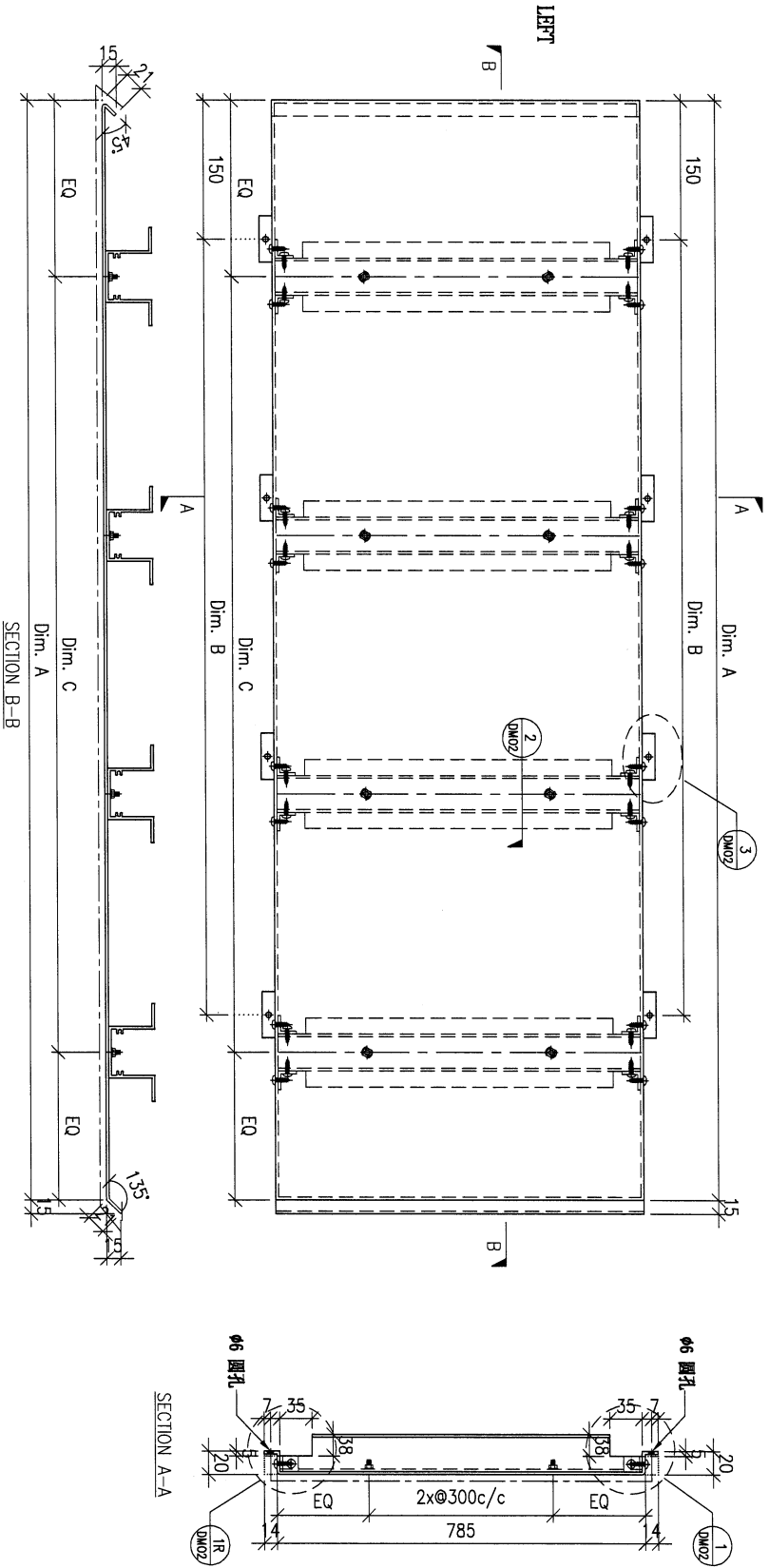


DWG. NO.	FW1-AP95	REV.	-	SCALE	-	DATE	15-06-2023	DRAWN BY	-	APPROVED BY	-
----------	----------	------	---	-------	---	------	------------	----------	---	-------------	---

PROJECT				MATERIAL				COATING				COLOUR		MARK. NO.		QTY.	
YIN PING ROAD KOWLOON FEATURE WALL (PHASE 1)				3mm铝板				PVF2				EG-DG-D334232-ZD1(SS-01)		-		-	
REV. CHANGED DATE BY	PART NUMBER	Dim. A	Dim. B	Dim. C	Dim. D	Dim. E	Dim. F	Dim. G	Dim. H	QTY.	Inv. Code	ASSEMBLE ON PARTS					
-	FW1-AP96	3035	9x@300c/c	10x@290c/c-						1							

注：工地复尺

注：地盘用

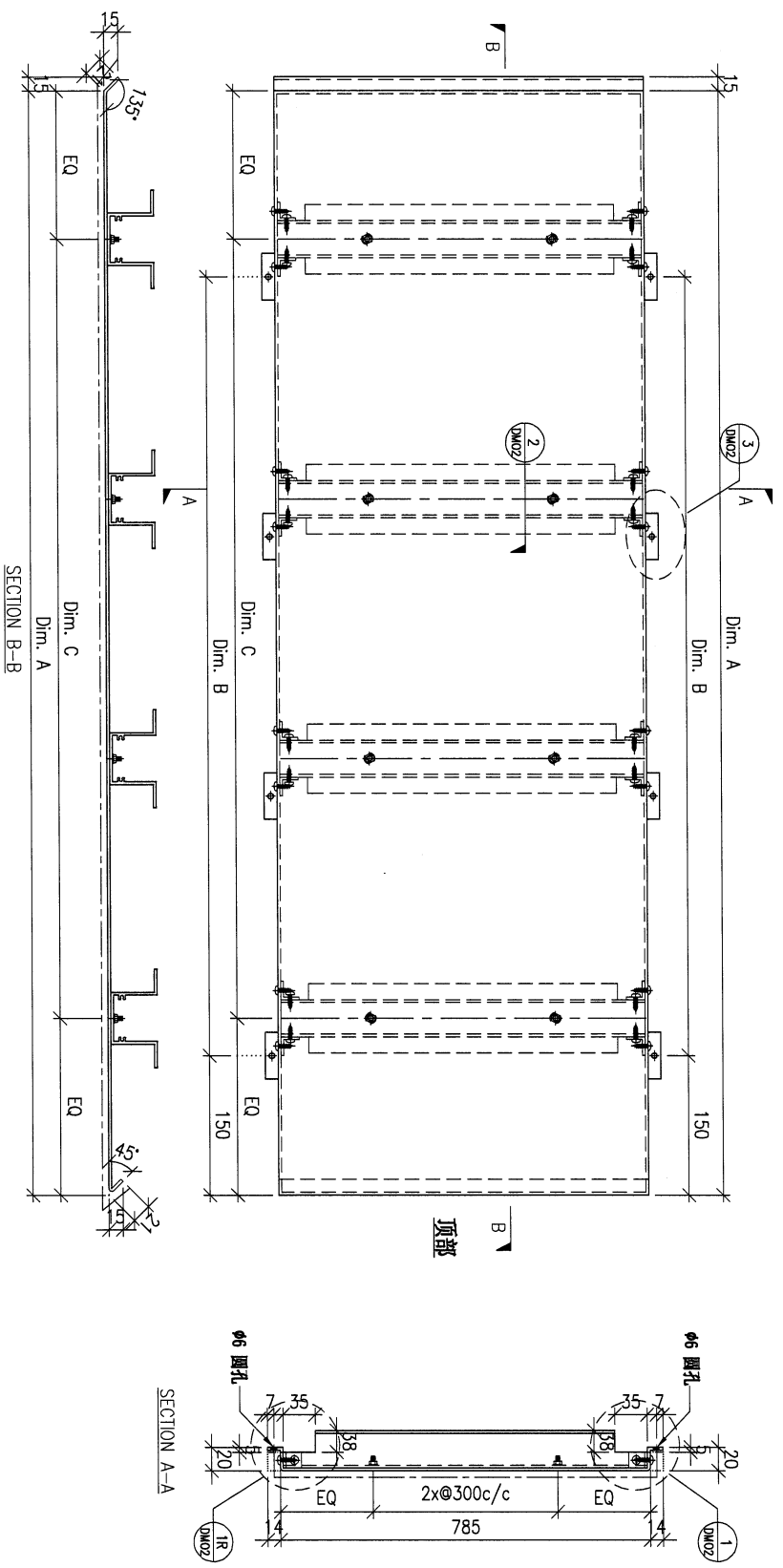


DWG. NO.	REV.	SCALE	DATE	DRAWN BY	APPROVED BY
FW1-AP96	-	-	15-06-2023	-	-

PROJECT		YIN PING ROAD KOWLOON FEATURE WALL (PHASE 1)		MATERIAL		3mm铝板		COATING		PVF2		COLOUR		EC-DG-D334232-ZD1(SS-01)		MARK. NO.		QTY.		
REV.	DESCRIPTION	PART NUMBER	Dim. A	Dim. B	Dim. C	Dim. D	Dim. E	Dim. F	Dim. G	Dim. H	QTY.	Inv. Code	ASSEMBLE ON PARTS				-		-	
-		FW1-AP97A	1177	4x@250c/c	4x@250c/d	-	-	-	-	-	1									
-		FW1-AP97B	913	3x@240c/c	3x@250c/d	-	-	-	-	-	1									

注：工地复尺

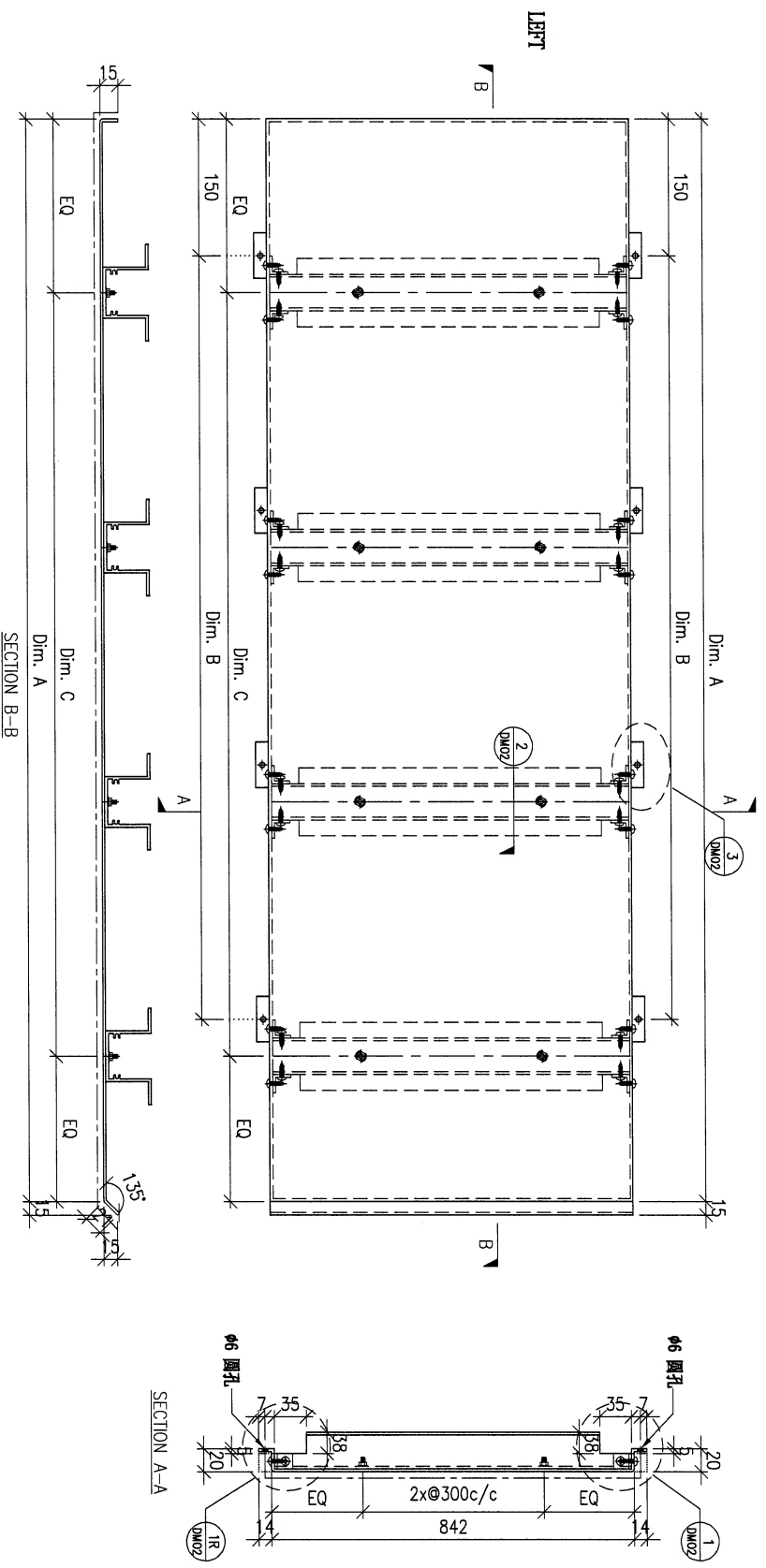
注：地盘用



DWG. NO.	FW1-AP97	REV.	-	SCALE	-	DATE	15-06-2023	DRAWN BY	-	APPROVED BY	-
----------	----------	------	---	-------	---	------	------------	----------	---	-------------	---

PROJECT		YIN PING ROAD KOWLOON FEATURE WALL (PHASE 1)						MATERIAL		COATING		COLOUR		MARK. NO.		QTY.	
		3mm铝板						PVF2		EC-DG-D334232-ZD1(SS-01)							
REV.	CHANGED BY	PART NUMBER	Dim. A	Dim. B	Dim. C	Dim. D	Dim. E	Dim. F	Dim. G	Dim. H	QTY.	Inv. Code	ASSEMBLE ON PARTS				
-		FW1-AP98	2298	7x@500c/c	7x@500c/c	-	-	-	-	-	1						
													注: 地盘用				

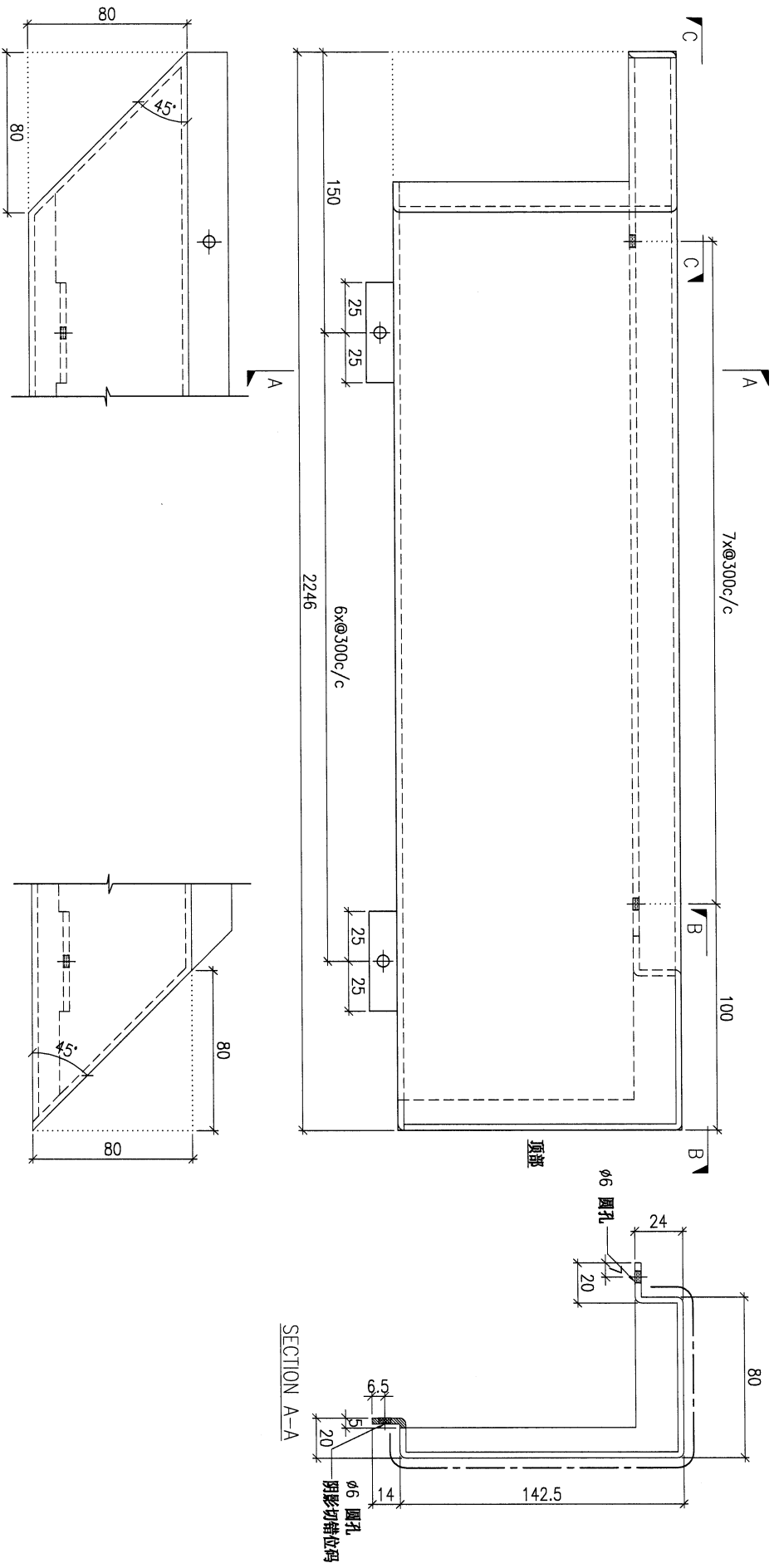
注: 工地复尺



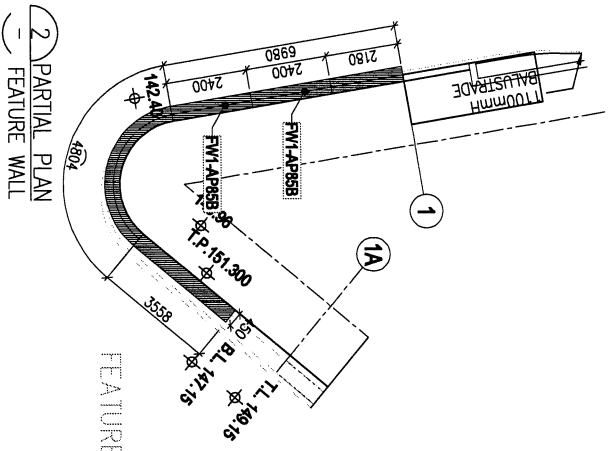
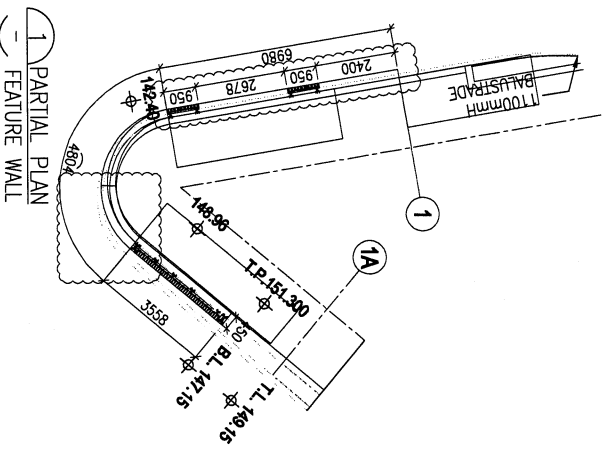
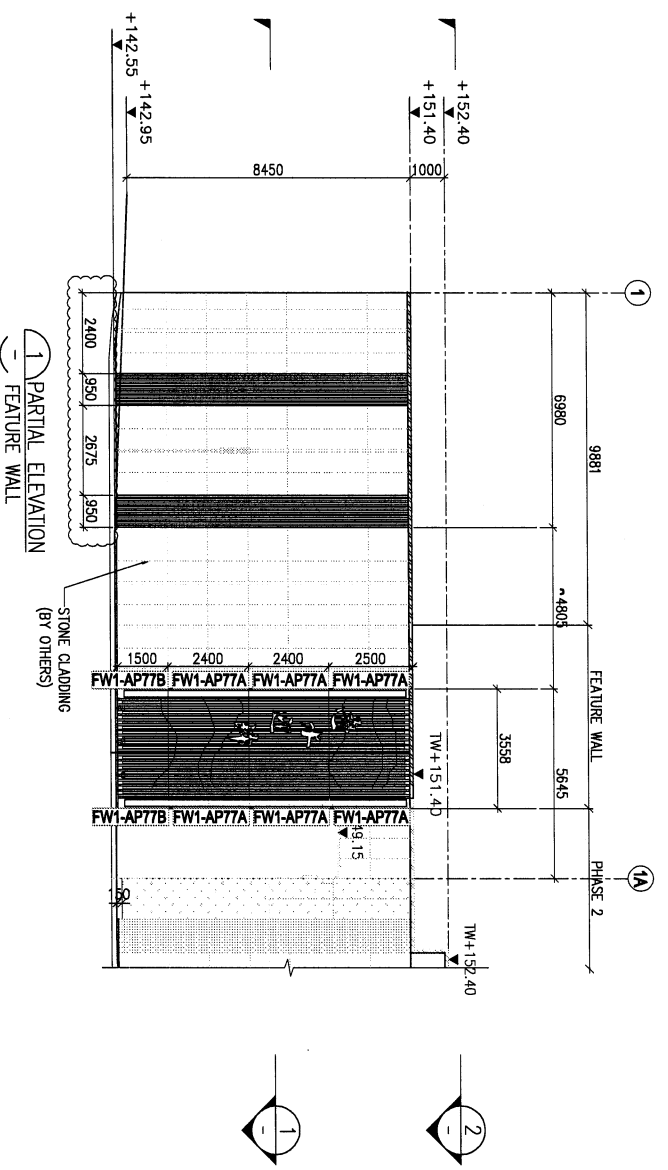
DWG. NO.		REV.		SCALE		DATE		DRAWN BY		APPROVED BY	
FW1-AP98		-		-		15-06-2023		-		-	

PROJECT				MATERIAL				COATING		COLOUR		MARK. NO.	QTY.	
YIN PING ROAD KOWLOON FEATURE WALL (PHASE 1)				3mm 铝板				PVF2		EC-DG-D334232-ZD1(SS-01)		-	-	
REV.	ORDERED BY	PART NUMBER	Dim. A	Dim. B	Dim. C	Dim. D	Dim. E	Dim. F	Dim. G	Dim. H	QTY.	Inv. Code	ASSEMBLE ON PARTS	
-		FW1-AP99	-	-	-	-	-	-	-	-	1		注: 地盘用	

注: 工地复尺



DWG. NO.		REV.		SCALE		DATE		DRAWN BY		APPROVED BY	
FW1-AP99		-		-		15-06-2023		-		-	



FEATURE WALL铝板派位图 (Part2)

LEGEND:

	ALUM. GRILLE
	3mm THK. ALUM. CLADDING

<p>D.B. REF : -</p>	
<p>CLIENT : SHIMAO GROUP HOLDINGS LIMITED</p>	
<p>ARCHITECT : YONG TUNG & PARTNERS LIMITED</p>	
<p>MAIN CONTRACTOR : 協興建築有限公司 HP HING CONSTRUCTION CO LTD</p>	
<p>STRUCTURAL ENGINEER : C.M.WONG & ASSOCIATES LTD 黃志明建築工程師有限公司</p>	
<p>FAÇADE CONSULTANT : MENHARDT</p>	
<p>NOTE : 1. ALL DIMENSIONS ARE IN MM. 2. ALL ELEVATIONS ARE VIEWED FROM OUTSIDE. 3. ALL DIMENSIONS TO BE VERIFIED ON SITE BEFORE FABRICATION.</p>	
<p>LEGEND : ① - DETAIL MARK NO. ② - REFER SHEET NO.</p>	
<p>1. F.F.L. - FINISHED FLOOR LEVEL. 2. S.F.L. - STRUCTURAL FLOOR LEVEL. 3. Ⓜ - REVERSED DETAIL.</p>	
<p>DATE : 19-Apr-23</p>	<p>SCALE : 1:150 (A3)</p>
<p>TITLE : PARTIAL ELEVATION & PLAN OF FEATURE WALL (PHASE 1)</p>	<p>PROJECT : PROPOSED RESIDENTIAL DEVELOPMENT AT N.KILL 6542 YIN PING ROAD KOWLOON</p>
<p>JOB NO. : J-853</p>	<p>DATE : 19-Apr-23</p>
<p>DRAWN BY : LHR</p>	<p>CHECKED BY :</p>
<p>DATE : 19-Apr-23</p>	<p>SCALE : 1:150 (A3)</p>
<p>REV : -</p>	

M&T
 M&T International Centre
 510 Chee Chee Road, Singapore
 Tel: 65 63277768
 Fax: 65 63277768
 Email: info@mt.com.sg
 Website: www.mt.com.sg