

工程指示 / 要求簡箋 ENGINEER INSTRUCTIONS (E.I.)

工程指示編號:	EI- 6382	修改版本:	A
	HK-1453		
工程編號:	J 853	工程名稱:	延坪道
收件人:	生統	發件人:	Joe Chan
工程項目:	Feature Wall 地盤用 鋁板 (第二批)	日期:	2 /06/2023

<input checked="" type="checkbox"/> 原合約工程包	<input type="checkbox"/> 原合約工程加 / 減賬 QT-	<input type="checkbox"/> 新工程報價 QT-
--	--	------------------------------------

信件批核號碼/圖紙參考編號:	批核模具圖紙編號:
客戶指示附件:	管理內部批簽署:

<input type="checkbox"/> 初步鋁料 B.M.	<input type="checkbox"/> 加工拆圖, 然後生產	<input type="checkbox"/> 尺寸表
<input type="checkbox"/> 正式鋁料 B.M.	<input type="checkbox"/> 技術上資料 / 指示	<input type="checkbox"/> 報價
<input type="checkbox"/> 配件 B.M.	<input type="checkbox"/> 樣辦或貨品說明書	<input type="checkbox"/> 分判合約
<input checked="" type="checkbox"/> 其他: 鋁板		

內容: 請依附件資料, 生產鋁板, 送地盤.

請以此版本為準, 前版本E.I.不用看

(位置: 2~3線, 1x1A線, 19~35線 & 47~53線)

完成上列要求日期: 15/7/2023 ASAP

國內

<input type="checkbox"/> 生產技術總監	<input type="checkbox"/> 連附件	<input type="checkbox"/> 技術部	<input type="checkbox"/> 連附件	<input type="checkbox"/> 生產部	<input type="checkbox"/> 連附件
<input type="checkbox"/> 採購部	<input type="checkbox"/> 連附件	<input checked="" type="checkbox"/> 生產統籌部	<input checked="" type="checkbox"/> 連附件	<input type="checkbox"/> 報關組	<input type="checkbox"/> 連附件
<input type="checkbox"/> 質檢部	<input type="checkbox"/> 連附件	<input type="checkbox"/> 會計部	<input type="checkbox"/> 連附件	<input type="checkbox"/> 機械設計部	<input type="checkbox"/> 連附件
<input type="checkbox"/> 香港辦	<input type="checkbox"/> 連附件	<input type="checkbox"/> 其他:			

香港

<input type="checkbox"/> 行政部	<input type="checkbox"/> 連附件	<input type="checkbox"/> 會計部	<input type="checkbox"/> 連附件	<input type="checkbox"/> 統籌部	<input type="checkbox"/> 連附件	<input type="checkbox"/> 工程部	<input type="checkbox"/> 連附件
<input type="checkbox"/> 採購部	<input type="checkbox"/> 連附件	<input type="checkbox"/> QS部	<input type="checkbox"/> 連附件	<input checked="" type="checkbox"/> 地盤管理	<input checked="" type="checkbox"/> 連附件	<input type="checkbox"/> 維修部	<input type="checkbox"/> 連附件

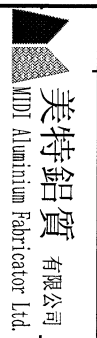
*發件人簽署:		*組別成員批核簽署:	
傳遞編號:	HK1453 / 23	項目經理簽署:	

工程號:	J-853	計算:	ming	日期:	2023.06.25	送呈:	JOE
地盤名稱:	延坪路	核對:		日期:		副本:	
項目類別:	特征牆(1區)	批准:		日期:			

序號	修改內容	鋁板圖號	鋁板名稱	顏色	實用	後備	總數	總重量	124.611		總重量:	1020.16	圖紙編號		
									總V.F.:	總V.F.:					
										A/C Code:					
										修改版本:					
										BM編號:					
										單件展開面積	總展開面積	單件V.F.	總V.F.		
										平方米	平方米	平方米	平方米		
1		FW1-AP58	3mm/厚铝板	EC-DG-D334232-ZD1 (SS-01)	2	0	2	18.303	1.126	2.251	1.126	2.251			
2		FW1-AP63A	3mm/厚铝板	EC-DG-D334232-ZD1 (SS-01)	3	0	3	25.098	1.029	3.087	1.029	3.087			
3		FW1-AP63B	3mm/厚铝板	EC-DG-D334232-ZD1 (SS-01)	1	0	1	10.868	1.337	1.337	1.337	1.337			
4		FW1-AP63C	3mm/厚铝板	EC-DG-D334232-ZD1 (SS-01)	2	0	2	21.025	1.293	2.586	1.293	2.586			
5		FW1-AP63D	3mm/厚铝板	EC-DG-D334232-ZD1 (SS-01)	1	0	1	9.151	1.126	1.126	1.126	1.126			
6		FW1-AP63E	3mm/厚铝板	EC-DG-D334232-ZD1 (SS-01)	4	0	4	26.493	0.815	3.259	0.815	3.259			
7		FW1-AP63F	3mm/厚铝板	EC-DG-D334232-ZD1 (SS-01)	1	0	1	9.316	1.146	1.146	1.146	1.146			
8		FW1-AP65A	3mm/厚铝板	EC-DG-D334232-ZD1 (SS-01)	4	0	4	34.227	1.052	4.210	1.052	4.210			
9		FW1-AP65B	3mm/厚铝板	EC-DG-D334232-ZD1 (SS-01)	2	0	2	21.392	1.316	2.631	1.316	2.631			
10		FW1-AP65C	3mm/厚铝板	EC-DG-D334232-ZD1 (SS-01)	1	0	1	12.001	1.476	1.476	1.476	1.476			
11		FW1-AP65D	3mm/厚铝板	EC-DG-D334232-ZD1 (SS-01)	1	0	1	5.385	0.662	0.662	0.662	0.662			
12		FW1-AP65E	3mm/厚铝板	EC-DG-D334232-ZD1 (SS-01)	2	0	2	13.620	0.838	1.675	0.838	1.675			
13		FW1-AP65F	3mm/厚铝板	EC-DG-D334232-ZD1 (SS-01)	1	0	1	7.842	0.965	0.965	0.965	0.965			
14		FW1-AP65G	3mm/厚铝板	EC-DG-D334232-ZD1 (SS-01)	1	0	1	7.382	0.908	0.908	0.908	0.908			
15		FW1-AP67A	3mm/厚铝板	EC-DG-D334232-ZD1 (SS-01)	1	0	1	10.348	1.273	1.273	1.273	1.273			
16		FW1-AP67B	3mm/厚铝板	EC-DG-D334232-ZD1 (SS-01)	1	0	1	7.880	0.969	0.969	0.969	0.969			
17		FW1-AP69A	3mm/厚铝板	EC-DG-D334232-ZD1 (SS-01)	3	0	3	5.733	0.235	0.705	0.235	0.705			
18		FW1-AP69B	3mm/厚铝板	EC-DG-D334232-ZD1 (SS-01)	3	0	3	4.836	0.198	0.595	0.198	0.595			
19		FW1-AP69C	3mm/厚铝板	EC-DG-D334232-ZD1 (SS-01)	1	0	1	12.798	1.574	1.574	1.574	1.574			
20		FW1-AP69D	3mm/厚铝板	EC-DG-D334232-ZD1 (SS-01)	2	0	2	6.747	0.415	0.830	0.415	0.830			
21		FW1-AP69E	3mm/厚铝板	EC-DG-D334232-ZD1 (SS-01)	1	0	1	4.944	0.608	0.608	0.608	0.608			
22		FW1-AP69F	3mm/厚铝板	EC-DG-D334232-ZD1 (SS-01)	1	0	1	2.887	0.355	0.355	0.355	0.355			

地盤用鋁板B.M.表 (part2) 修改版次: A/C Code: 總V.F.:

序號	修改內容	鋁板圖號	鋁板名稱	顏色	實用	後備	總數	總重量	124.611		總重量:	1020.16	圖紙編號
									總V.F.:	總V.F.:			
									單件展開面積	總展開面積	單件V.F.	總V.F.	
									平方米	平方米	平方米	平方米	
23		FW1-AP69G	3mm厚鋁板	EC-DG-D334232-ZD1 (SS-01)	1	0	1	1.653	0.203	0.203	0.203	0.203	
24		FW1-AP69H	3mm厚鋁板	EC-DG-D334232-ZD1 (SS-01)	1	0	1	1.511	0.186	0.186	0.186	0.186	
25		FW1-AP69J	3mm厚鋁板	EC-DG-D334232-ZD1 (SS-01)	1	0	1	1.384	0.170	0.170	0.170	0.170	
26		FW1-AP70A	3mm厚鋁板	EC-DG-D334232-ZD1 (SS-01)	9	0	9	82.395	1.126	10.135	1.126	10.135	
27		FW1-AP70B	3mm厚鋁板	EC-DG-D334232-ZD1 (SS-01)	3	0	3	25.120	1.030	3.090	1.030	3.090	
28		FW1-AP70C	3mm厚鋁板	EC-DG-D334232-ZD1 (SS-01)	2	0	2	19.619	1.207	2.413	1.207	2.413	
1423		FW1-AP73	3mm厚鋁板	EC-DG-D334232-ZD1 (SS-01)	1	0	1	5.322	0.655	0.655	0.655	0.655	
30		FW1-AP74B	3mm厚鋁板	EC-DG-D334232-ZD1 (SS-01)	1	0	1	3.788	0.466	0.466	0.466	0.466	
31		FW1-AP76	3mm厚鋁板	EC-DG-D334232-ZD1 (SS-01)	1	0	1	8.968	1.103	1.103	1.103	1.103	
32		FW1-AP77A	3mm厚鋁板	鍍化	6	0	6	5.854	0.120	0.720	0.000	0.000	
33		FW1-AP77B	3mm厚鋁板	鍍化	2	0	2	1.220	0.075	0.150	0.000	0.000	
34		FW1-AP80	3mm厚鋁板	EC-DG-D334232-ZD1 (SS-01)	2	0	2	10.029	0.617	1.234	0.617	1.234	
2239		FW1-AP81	3mm厚鋁板	EC-DG-D334232-ZD1 (SS-01)	3	0	3	13.816	0.566	1.699	0.566	1.699	
36		FW1-AP82	3mm厚鋁板	EC-DG-D334232-ZD1 (SS-01)	2	0	2	10.749	0.661	1.322	0.661	1.322	
37		FW1-AP83	3mm厚鋁板	EC-DG-D334232-ZD1 (SS-01)	3	0	3	50.722	2.080	6.239	2.080	6.239	
38		FW1-AP84	3mm厚鋁板	EC-DG-D334232-ZD1 (SS-01)	4	0	4	72.148	2.219	8.874	2.219	8.874	
39		FW1-AP85A	3mm厚鋁板	EC-DG-D334232-ZD1 (SS-01)	1	0	1	5.887	0.724	0.724	0.724	0.724	
40		FW1-AP85B	3mm厚鋁板	EC-DG-D334232-ZD1 (SS-01)	2	0	2	12.368	0.761	1.521	0.761	1.521	
41		FW1-AP85C	3mm厚鋁板	EC-DG-D334232-ZD1 (SS-01)	4	0	4	23.547	0.724	2.896	0.724	2.896	
42		FW1-AP86A	3mm厚鋁板	EC-DG-D334232-ZD1 (SS-01)	1	0	1	6.169	0.759	0.759	0.759	0.759	
43		FW1-AP86AR	3mm厚鋁板	EC-DG-D334232-ZD1 (SS-01)	1	0	1	6.169	0.759	0.759	0.759	0.759	
44		FW1-AP86BR	3mm厚鋁板	EC-DG-D334232-ZD1 (SS-01)	1	0	1	3.405	0.419	0.419	0.419	0.419	
45		FW1-AP87A	3mm厚鋁板	EC-DG-D334232-ZD1 (SS-01)	1	0	1	5.103	0.628	0.628	0.628	0.628	



美特鋁質 有限公司
MTD Aluminium Fabricator Ltd

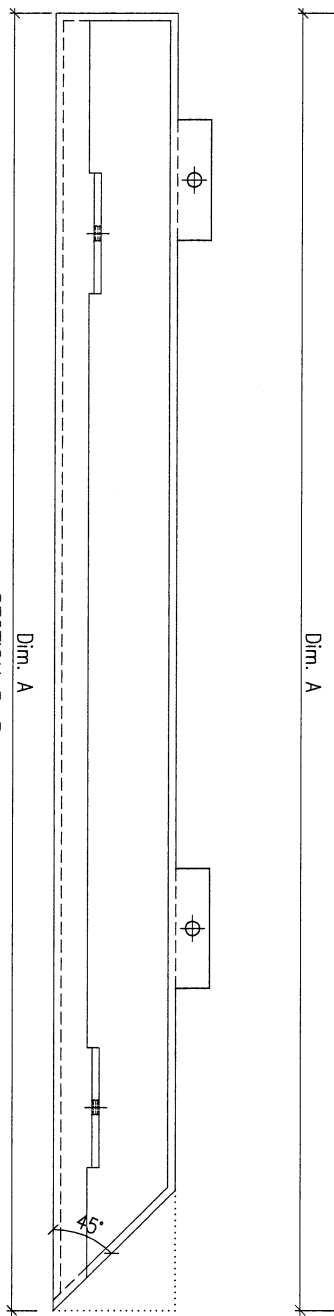
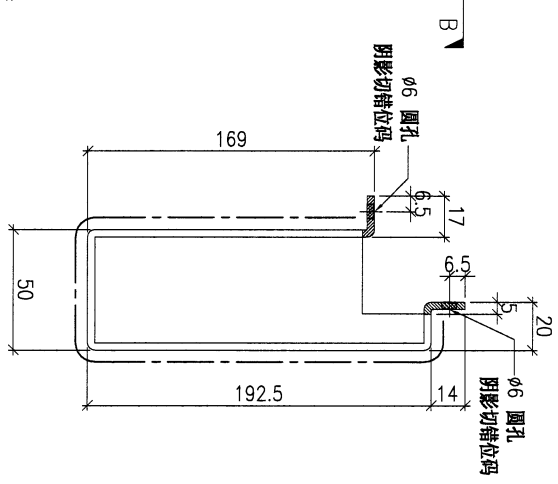
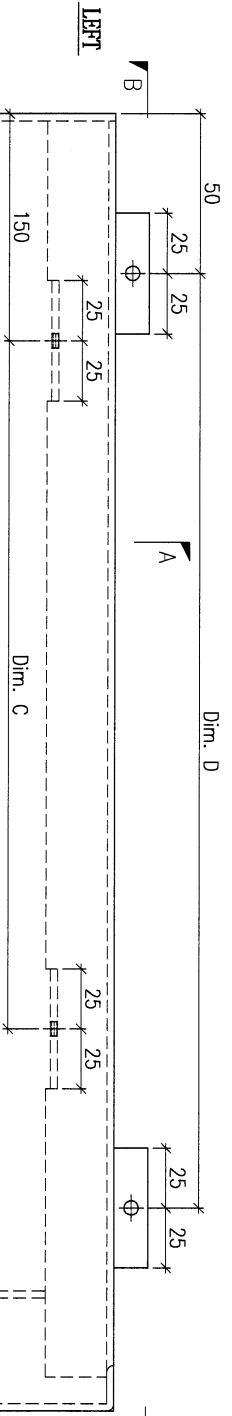
工程號:	J-853	計算:	ming	日期:	2023.06.25	送呈:	JOE
地盤名稱:	延坪路	核對:		日期:		副本:	
項目類別:	特征牆(1區)	批准:		日期:			

序號	修改內容	鋁板圖號	鋁板名稱	顏色	實用	後備	總數	總重量	124.611		總重量:	1020.16	圖紙編號
									總V.F.:	總展開面積			
46		FW1-AP87B	3mm/厚鋁板	EC-DG-D334232-ZD1 (SS-01)	3	0	3	13.804	0.566	1.698	0.566	1.698	
47		FW1-AP87C	3mm/厚鋁板	EC-DG-D334232-ZD1 (SS-01)	1	0	1	5.957	0.733	0.733	0.733	0.733	
48		FW1-AP87D	3mm/厚鋁板	EC-DG-D334232-ZD1 (SS-01)	2	0	2	11.564	0.711	1.422	0.711	1.422	
49		FW1-AP88A	3mm/厚鋁板	EC-DG-D334232-ZD1 (SS-01)	1	0	1	5.013	0.617	0.617	0.617	0.617	
50		FW1-AP88B	3mm/厚鋁板	EC-DG-D334232-ZD1 (SS-01)	1	0	1	18.030	2.218	2.218	2.218	2.218	
51		FW1-AP89A	3mm/厚鋁板	EC-DG-D334232-ZD1 (SS-01)	1	0	1	18.030	2.218	2.218	2.218	2.218	
52		FW1-AP89B	3mm/厚鋁板	EC-DG-D334232-ZD1 (SS-01)	4	0	4	52.114	1.603	6.410	1.603	6.410	
53		FW1-AP90	3mm/厚鋁板	EC-DG-D334232-ZD1 (SS-01)	1	0	1	3.228	0.397	0.397	0.397	0.397	
54		FW1-AP91A	3mm/厚鋁板	EC-DG-D334232-ZD1 (SS-01)	4	0	4	18.413	0.566	2.265	0.566	2.265	
55		FW1-AP91B	3mm/厚鋁板	EC-DG-D334232-ZD1 (SS-01)	2	0	2	11.560	0.711	1.422	0.711	1.422	
56		FW1-AP91C	3mm/厚鋁板	EC-DG-D334232-ZD1 (SS-01)	1	0	1	6.477	0.797	0.797	0.797	0.797	
57		FW1-AP92A	3mm/厚鋁板	EC-DG-D334232-ZD1 (SS-01)	1	0	1	10.210	1.256	1.256	1.256	1.256	
58		FW1-AP92B	3mm/厚鋁板	EC-DG-D334232-ZD1 (SS-01)	2	0	2	26.057	1.603	3.205	1.603	3.205	
59		FW1-AP92C	3mm/厚鋁板	EC-DG-D334232-ZD1 (SS-01)	1	0	1	15.070	1.854	1.854	1.854	1.854	
60		FW1-AP92D	3mm/厚鋁板	EC-DG-D334232-ZD1 (SS-01)	1	0	1	14.234	1.751	1.751	1.751	1.751	
61		FW1-AP93A	3mm/厚鋁板	EC-DG-D334232-ZD1 (SS-01)	1	0	1	20.027	2.463	2.463	2.463	2.463	
62		FW1-AP93B	3mm/厚鋁板	EC-DG-D334232-ZD1 (SS-01)	1	0	1	15.144	1.863	1.863	1.863	1.863	
63		FW1-AP94A	3mm/厚鋁板	EC-DG-D334232-ZD1 (SS-01)	3	0	3	2.956	0.121	0.364	0.121	0.364	
64		FW1-AP94B	3mm/厚鋁板	EC-DG-D334232-ZD1 (SS-01)	3	0	3	2.468	0.101	0.304	0.101	0.304	
65		FW1-AP94C	3mm/厚鋁板	EC-DG-D334232-ZD1 (SS-01)	1	0	1	1.789	0.220	0.220	0.220	0.220	
66		FW1-AP95A	3mm/厚鋁板	EC-DG-D334232-ZD1 (SS-01)	1	0	1	24.873	3.059	3.059	3.059	3.059	
67		FW1-AP95B	3mm/厚鋁板	EC-DG-D334232-ZD1 (SS-01)	1	0	1	6.229	0.766	0.766	0.766	0.766	
68		FW1-AP95C	3mm/厚鋁板	EC-DG-D334232-ZD1 (SS-01)	1	0	1	9.337	1.148	1.148	1.148	1.148	
69		FW1-AP95D	3mm/厚鋁板	EC-DG-D334232-ZD1 (SS-01)	1	0	1	5.268	0.648	0.648	0.648	0.648	

工程號:	J-853	計算:	ming	日期:	2023.06.25	送呈:	JOE
地盤名稱:	延坪路	核對:		日期:		副本:	
項目類別:	特征牆(1區)	批准:		日期:			

序號	修改內容	鋁板圖號	鋁板名稱	顏色	實用	後備	總數	總重量	124.611		總重量:	1020.16	圖紙編號
									單件展開面積	總展開面積			
70		FW1-AP95E	3mm厚鋁板	EC-DG-D334232-ZD1 (SS-01)	1	0	1	2.826	0.348	0.348	0.348	0.348	
71		FW1-AP95F	3mm厚鋁板	EC-DG-D334232-ZD1 (SS-01)	1	0	1	2.545	0.313	0.313	0.313	0.313	
72		FW1-AP95G	3mm厚鋁板	EC-DG-D334232-ZD1 (SS-01)	1	0	1	2.293	0.282	0.282	0.282	0.282	
73		FW1-AP96	3mm厚鋁板	EC-DG-D334232-ZD1 (SS-01)	1	0	1	9.993	1.229	1.229	1.229	1.229	
74		FW1-AP97B	3mm厚鋁板	EC-DG-D334232-ZD1 (SS-01)	1	0	1	6.609	0.813	0.813	0.813	0.813	
75		FW1-AP98	3mm厚鋁板	EC-DG-D334232-ZD1 (SS-01)	1	0	1	17.297	2.128	2.128	2.128	2.128	
76		FW1-AP99	3mm厚鋁板	EC-DG-D334232-ZD1 (SS-01)	1	0	1	5.520	0.679	0.679	0.679	0.679	
77													
總計:					138	0	138	1020	72	125	72	125	

PROJECT				YIN PING ROAD KOWLOON FEATURE WALL (PHASE 1)				MATERIAL				3mm 铝板				COATING				PVF2				COLOUR				EC-DG-D334232-ZD1(SS-01)				MARK. NO.				-				QTY.				-			
REV.	CHANGED BY	PART NUMBER	Dim. A	Dim. B	Dim. C	Dim. D	Dim. E	Dim. F	Dim. G	Dim. H	QTY.	Inv. Code	ASSEMBLE ON PARTS																																		
-		FW1-AP58	2397	8x280c/c	7x300c/c	7x300c/c					2		注：地盘用 注：工地复尺																																		



DWG. NO.		FW1-AP58		REV.		-		SCALE		-		DATE		15-06-2023		DRAWN BY		-		APPROVED BY		-	
----------	--	----------	--	------	--	---	--	-------	--	---	--	------	--	------------	--	----------	--	---	--	-------------	--	---	--

PROJECT
YIN PING ROAD KOWLOON
FEATURE WALL (PHASE 1)

MATERIAL
3mm 铝板

COATING
PVF2

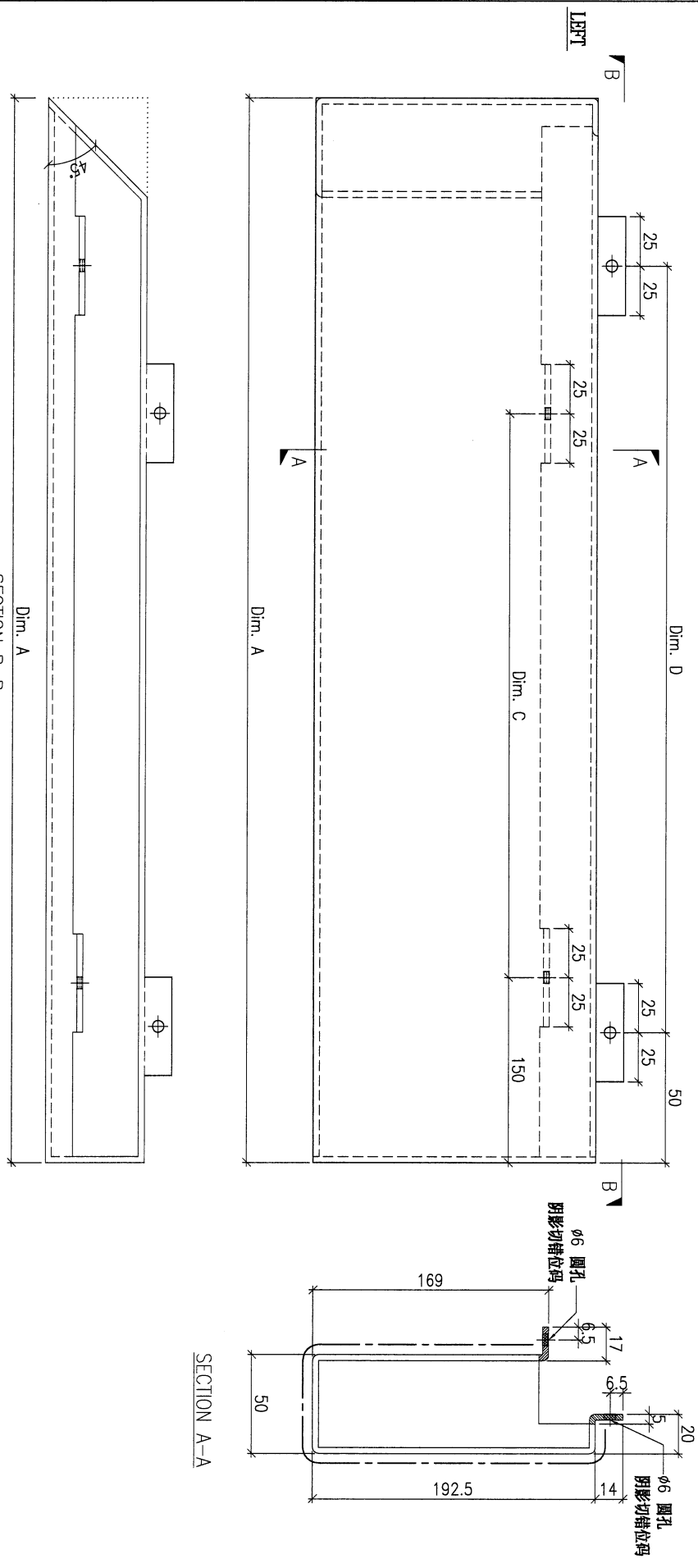
COLOUR
EC-DG-D334232-ZD1(SS-011)

MARK. NO.
-

QTY.
-

CHKD PART BY	PART NUMBER	Dim. A	Dim. B	Dim. C	Dim. D	Dim. E	Dim. F	Dim. G	Dim. H	QTY.	Inv. Code	ASSEMBLE ON PARTS
-	FW1-AP63A	2187	-	6x300c/d	7x300c/d	-	-	-	-	3	-	-
-	FW1-AP63B	2856	-	8x300c/d	9x300c/d	-	-	-	-	1	-	-
-	FW1-AP63C	2761	-	8x290c/d	9x290c/d	-	-	-	-	2	-	-
-	FW1-AP63D	2397	-	7x300c/d	7x300c/d	-	-	-	-	1	-	-
-	FW1-AP63E	1721	-	5x300c/d	5x300c/d	-	-	-	-	4	-	-
-	FW1-AP63F	2441	-	7x300c/d	7x300c/d	-	-	-	-	1	-	-

注: 地盘用
注: 工地复尺



DWG. NO.	FW1-AP63	REV.	-	SCALE	-	DATE	15-06-2023	DRAWN BY	-	APPROVED BY	-
----------	----------	------	---	-------	---	------	------------	----------	---	-------------	---

PROJECT
YIN PING ROAD KOWLOON
FEATURE WALL (PHASE 1)

MATERIAL
3mm 铝板

COATING
PVF2

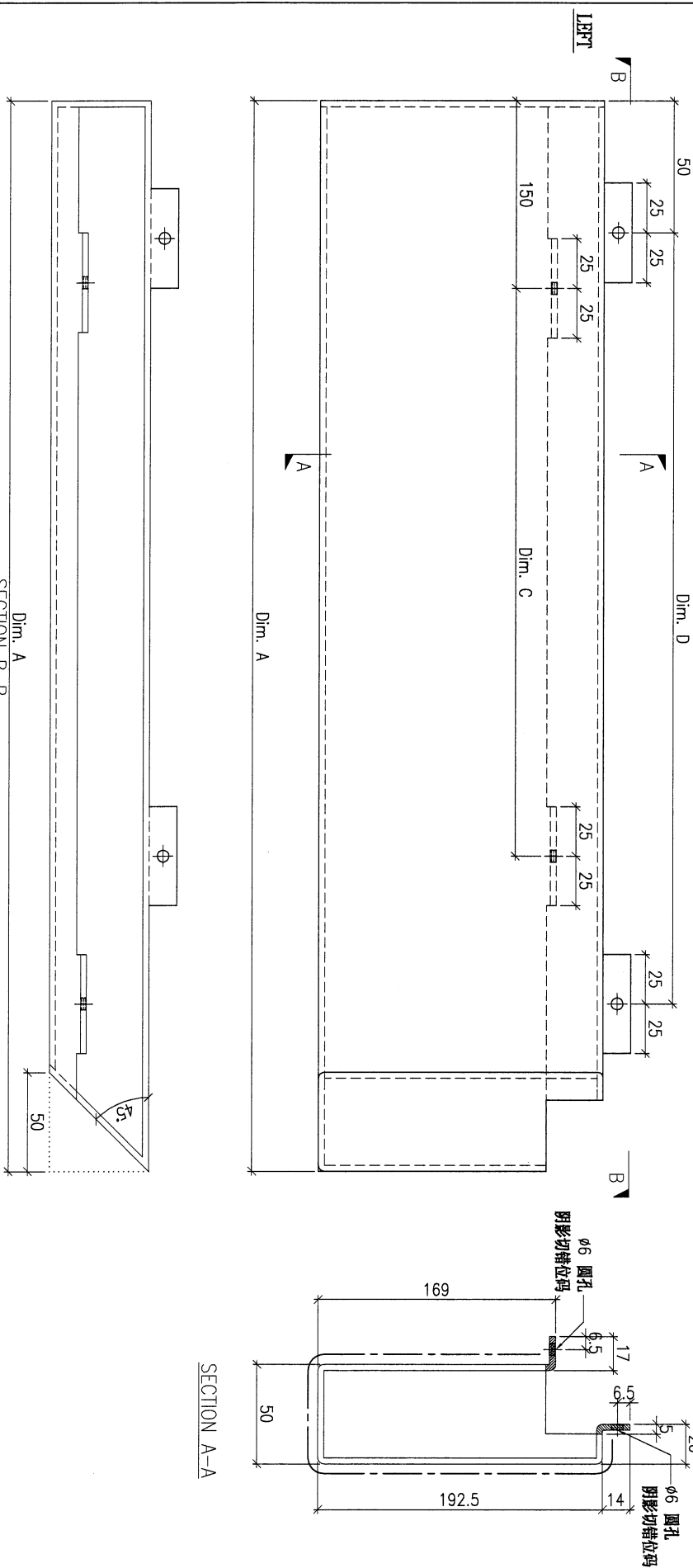
COLOUR
EG-DG-D34232-ZD1(SS-01)

MARK. NO.
-

QTY.
-

REV.	CHECKED BY	PART NUMBER	Dim. A	Dim. B	Dim. C	Dim. D	Dim. E	Dim. F	Dim. G	Dim. H	QTY.	Inv. Code	ASSEMBLE ON PARTS
-		FW1-AP65A	2238	-	6x@300c/d	7x@300c/d	-	-	-	-	4	-	-
-		FW1-AP65B	2810	-	8x@300c/d	9x@300c/d	-	-	-	-	2	-	-
-		FW1-AP65C	3159	-	9x@300c/d	10x@300c/d	-	-	-	-	1	-	-
-		FW1-AP65D	1390	-	4x@300c/d	4x@300c/d	-	-	-	-	1	-	-
-		FW1-AP65E	1771	-	5x@300c/d	5x@300c/d	-	-	-	-	2	-	-
-		FW1-AP65F	2047	-	6x@300c/d	6x@300c/d	-	-	-	-	1	-	-
-		FW1-AP65G	1924	-	5x@300c/d	6x@300c/d	-	-	-	-	1	-	-

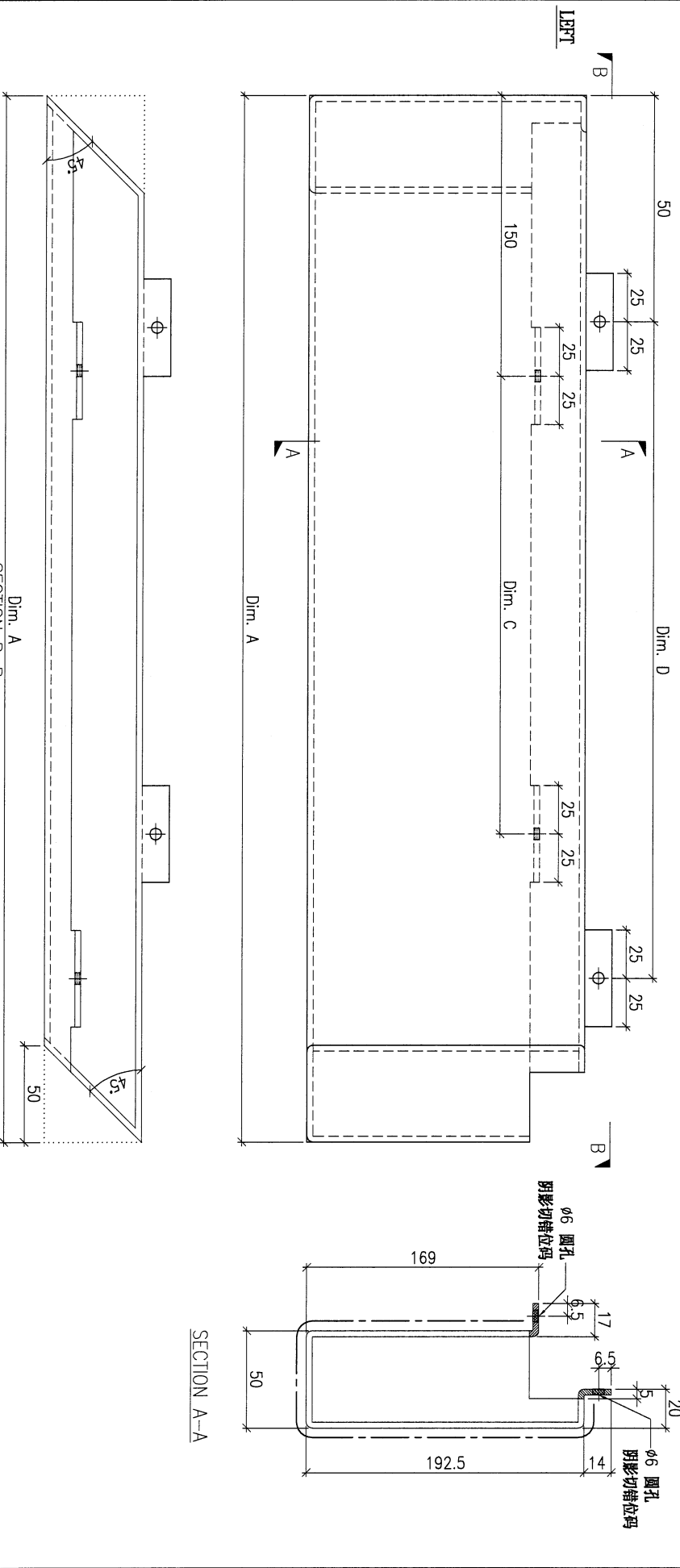
注：地盘用
注：工地复尺



DWG. NO.	FW1-AP65	REV.	-	SCALE	-	DATE	15-06-2023	DRAWN BY	-	APPROVED BY	-
----------	----------	------	---	-------	---	------	------------	----------	---	-------------	---

PROJECT				YIN PING ROAD KOWLOON FEATURE WALL (PHASE 1)				MATERIAL				3mm 铝板				COATING				PVF2				COLOUR				EC-DG-D334232-ZD1(SS-01)				MARK. NO.				-				QTY.				-			
REV.	CHECKED DATE	PART NUMBER	Dim. A	Dim. B	Dim. C	Dim. D	Dim. E	Dim. F	Dim. G	Dim. H	QTY.	Inv. Code	ASSEMBLE ON PARTS																																		
-		FW1-AP67A	2717	-	8x@300c/c	8x@300c/d					1																																				
-		FW1-AP67B	2057	-	6x@300c/c	6x@300c/d					1																																				

注：地盘用
注：工地复尺



DWG. NO.	FW1-AP67	REV.	-	SCALE	-	DATE	15-06-2023	DRAWN BY	-	APPROVED BY	-
----------	----------	------	---	-------	---	------	------------	----------	---	-------------	---

PROJECT
YIN PING ROAD KOWLOON
FEATURE WALL (PHASE 1)

MATERIAL
3mm 铝板

COATING
PVF2

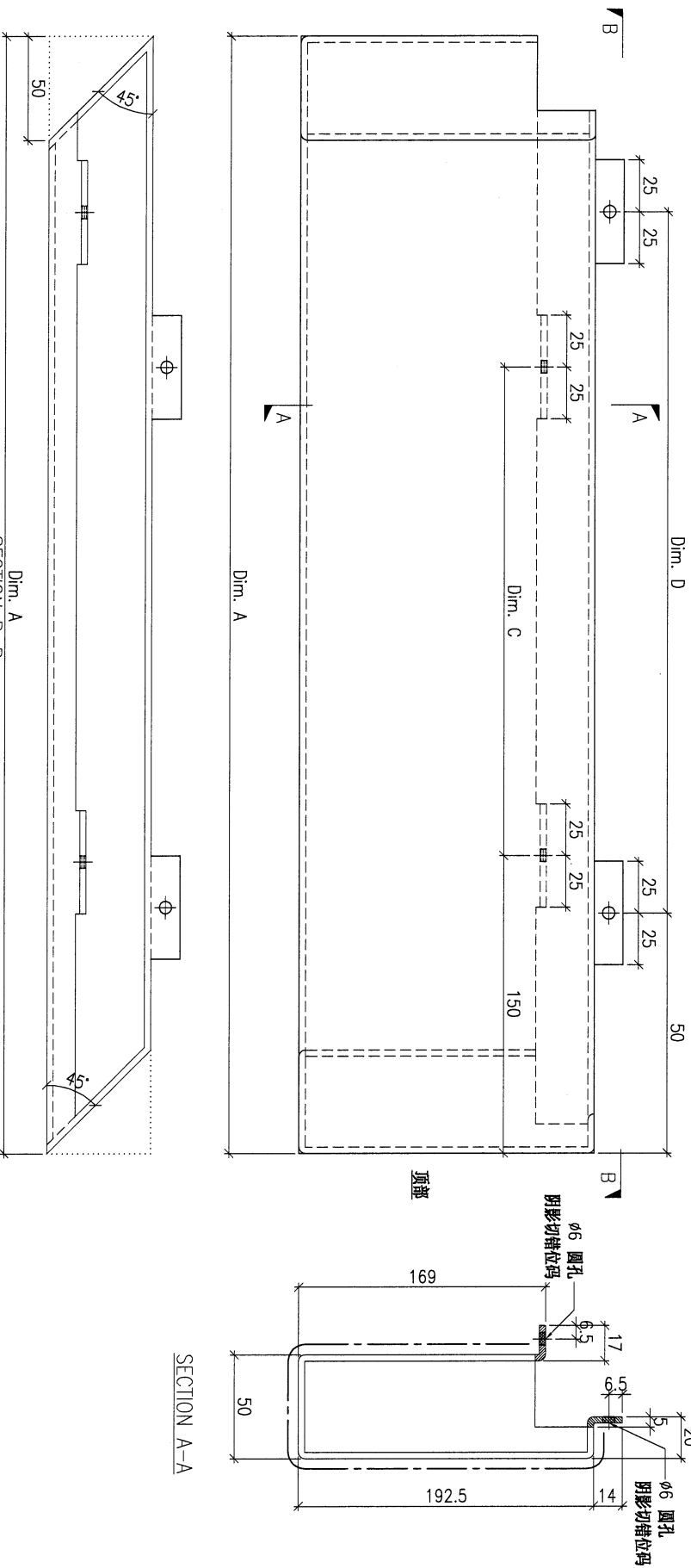
COLOUR
EC-DG-D334232-ZD1(SS-01)

MARK. NO.
-

QTY.
-

REV.	CHECKED DATE BY	PART NUMBER	Dim. A	Dim. B	Dim. C	Dim. D	Dim. E	Dim. F	Dim. G	Dim. H	QTY.	Inv. Code	ASSEMBLE ON PARTS
-		FW1-AP69A	461	-	1xØ280c/c	1xØ280c/c	-	-	-	-	3	-	-
-		FW1-AP69B	381	-	1xØ200c/c	1xØ200c/c	-	-	-	-	3	-	-
-		FW1-AP69C	3372	-	10xØ300c/c	10xØ300c/c	-	-	-	-	1	-	-
-		FW1-AP69D	852	-	2xØ250c/c	3xØ250c/c	-	-	-	-	2	-	-
-		FW1-AP69E	1272	-	4xØ270c/c	4xØ270c/c	-	-	-	-	1	-	-
-		FW1-AP69F	725	-	2xØ300c/c	2xØ300c/c	-	-	-	-	1	-	-
-		FW1-AP69G	392	-	1xØ200c/c	1xØ200c/c	-	-	-	-	1	-	-
-		FW1-AP69H	350	-	1xØ170c/c	1xØ170c/c	-	-	-	-	1	-	-
-		FW1-AP69J	324	-	1xØ140c/c	1xØ140c/c	-	-	-	-	1	-	-

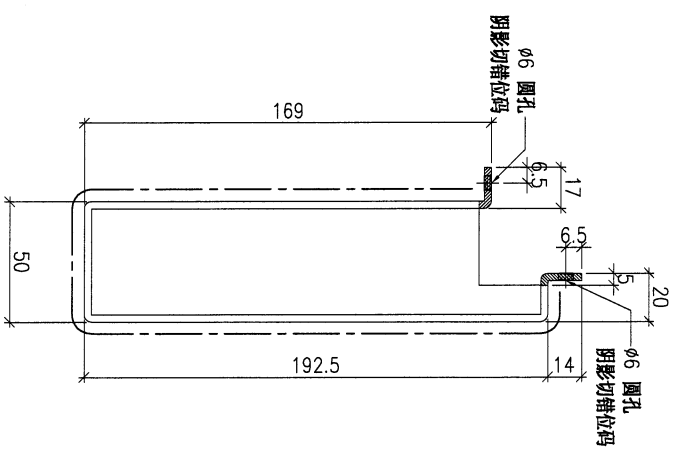
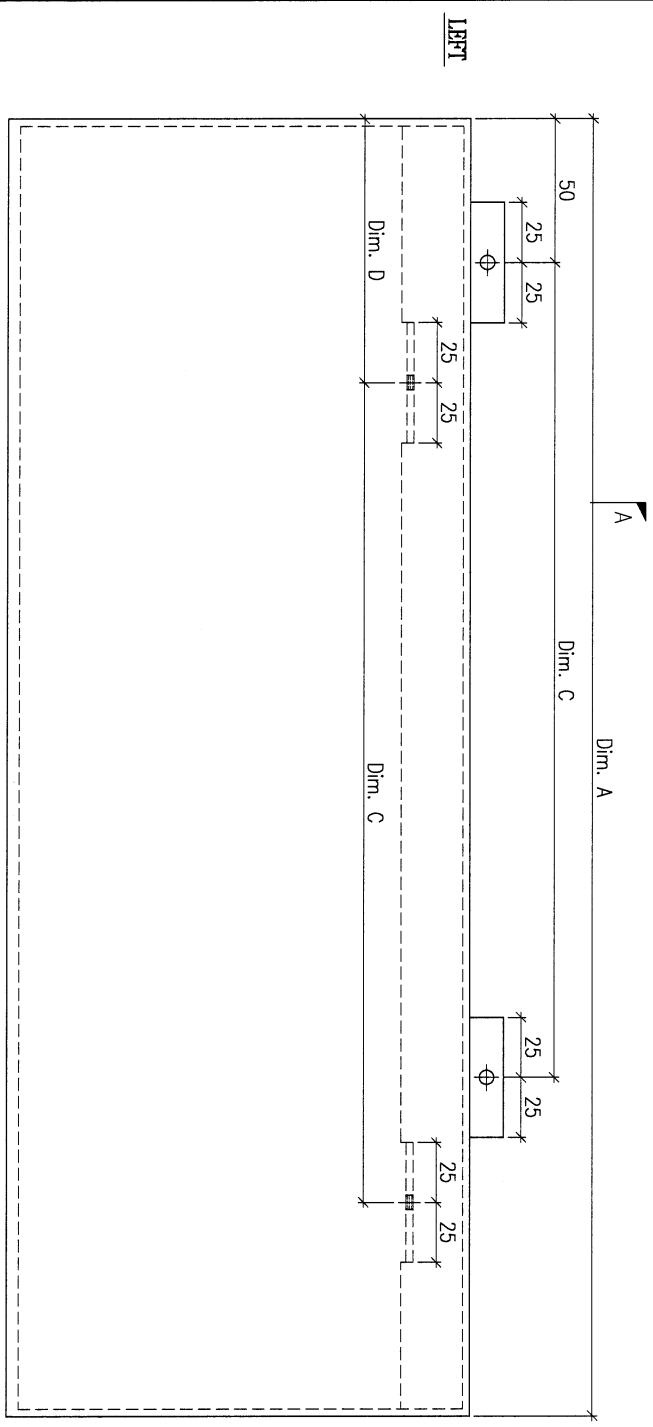
注：地盘用
注：工地复尺



DWG. NO.	FW1-AP69	REV.	-	SCALE	-	DATE	15-06-2023	DRAWN BY	-	APPROVED BY	-
----------	----------	------	---	-------	---	------	------------	----------	---	-------------	---

PROJECT				YIN PING ROAD KOWLOON FEATURE WALL (PHASE 1)				MATERIAL				3mm 铝板				COATING				PVF2				COLOUR				EC-DG-D334232-ZD11 (SS-01)				MARK. NO.				-				QTY.				-			
REV.	CHECKED DATE BY	PART NUMBER	Dim. A	Dim. B	Dim. C	Dim. D	Dim. E	Dim. F	Dim. G	Dim. H	QTY.	Inv. Code	ASSEMBLE ON PARTS																																		
-		FW1-AP70A	2398	8X@290c/c	7X@300c/c	150	7X@300c/c				9																																				
-		FW1-AP70B	2189	7X@300c/c	7X@300c/c	150	6X@300c/c				3																																				
-		FW1-AP70C	2573	8X@300c/c	8X@300c/c	145	8X@300c/c				2																																				

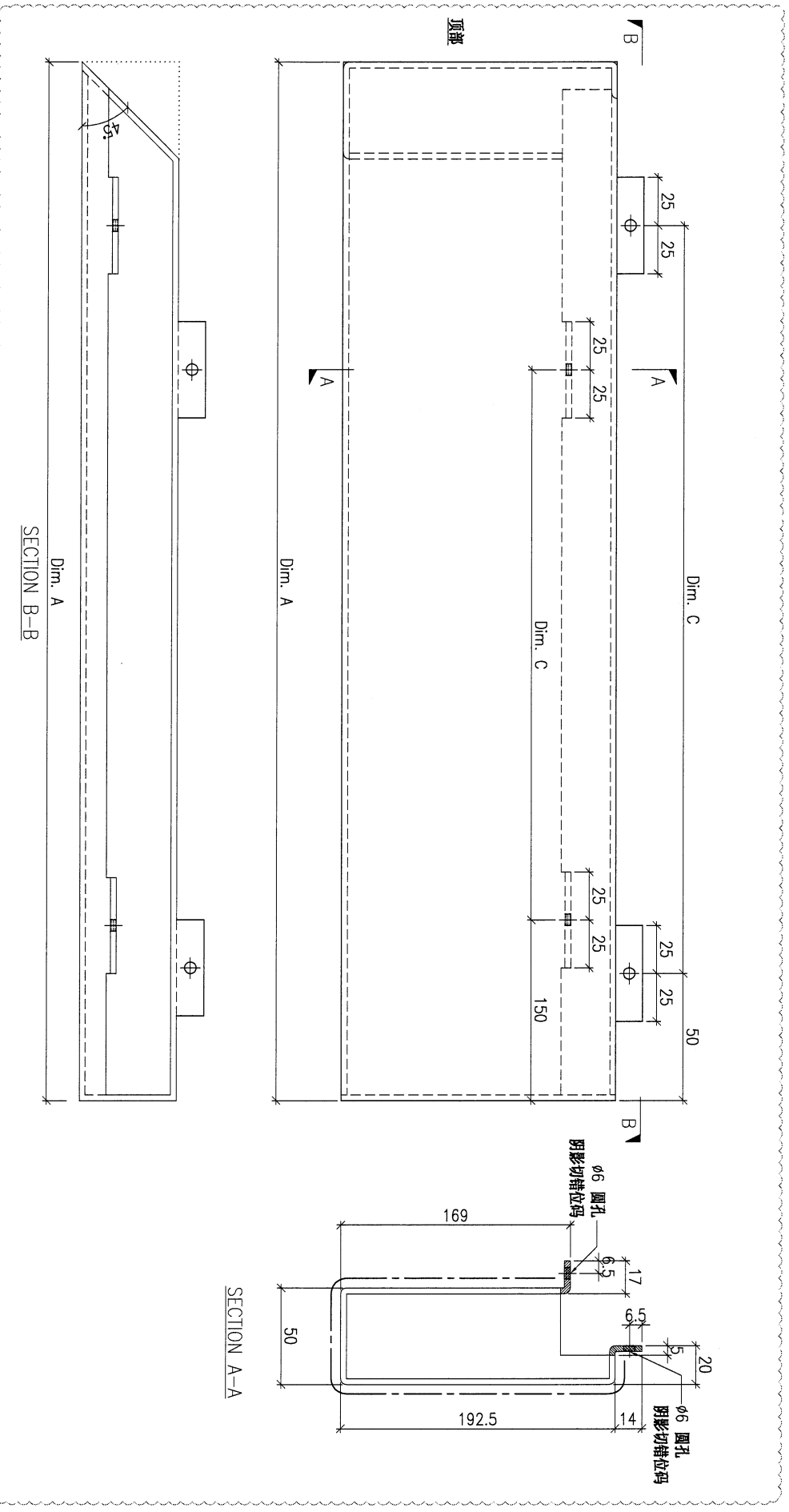
注：地盘用
注：工地复尺



SECTION A-A

DWG. NO.	FW1-AP70	REV.	-	SCALE	-	DATE	15-06-2023	DRAWN BY	-	APPROVED BY	-
----------	----------	------	---	-------	---	------	------------	----------	---	-------------	---

PROJECT				MATERIAL				COATING				COLOUR		MARK. NO.		QTY.	
YIN PING ROAD KOWLOON FEATURE WALL (PHASE 1)				3mm 铝板				PVF2				EC-DG-D334232-ZD1(SS-01)		-		-	
REV.	CHECKED DATE BY	PART NUMBER	Dim. A	Dim. B	Dim. C	Dim. D	Dim. E	Dim. F	Dim. G	Dim. H	QTY.	Inv. Code	ASSEMBLE ON PARTS				
-		FW1-AP73	1373			4x@300c/c	4x@300c/d				1						
注：地盘用																	



DWG. NO.		REV.		SCALE		DATE		DRAWN BY		APPROVED BY	
FW1-AP73		-		-		15-06-2023		-		-	

PROJECT
YIN PING ROAD KOWLOON
FEATURE WALL (PHASE 1)

MATERIAL
3mm 铝板

COATING
PVF2

COLOUR
EC-DG-D334232-ZD1(SS-011)

MARK. NO.
-

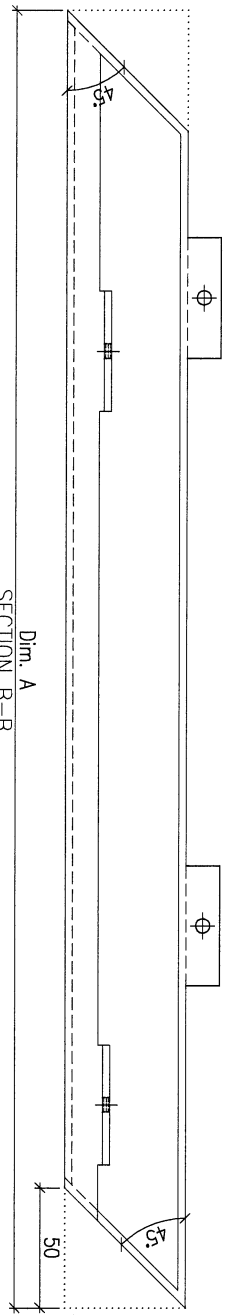
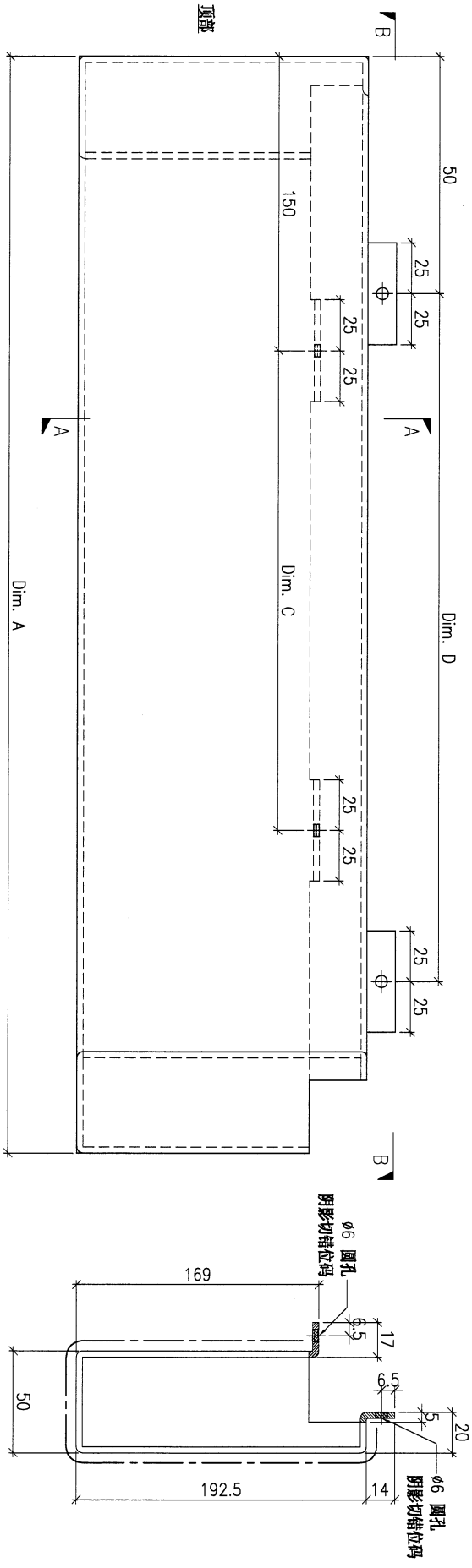
QTY.
-

REV. / CHECKED BY	PART NUMBER	Dim. A	Dim. B	Dim. C	Dim. D	Dim. E	Dim. F	Dim. G	Dim. H	QTY.	Inv. Code
-	FW1-AP74A-	-	-	-	-	-	-	-	-	-	-
-	FW1-AP74B	963	-	3x ϕ 240c/d	3x ϕ 240c/d	-	-	-	-	1	-

注: 地盤用

注: 刪除編號

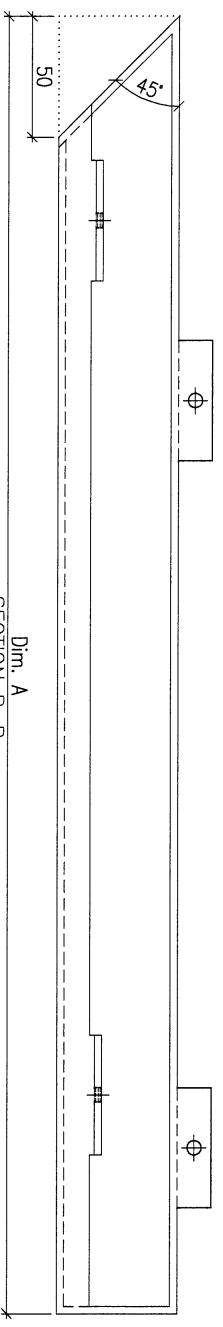
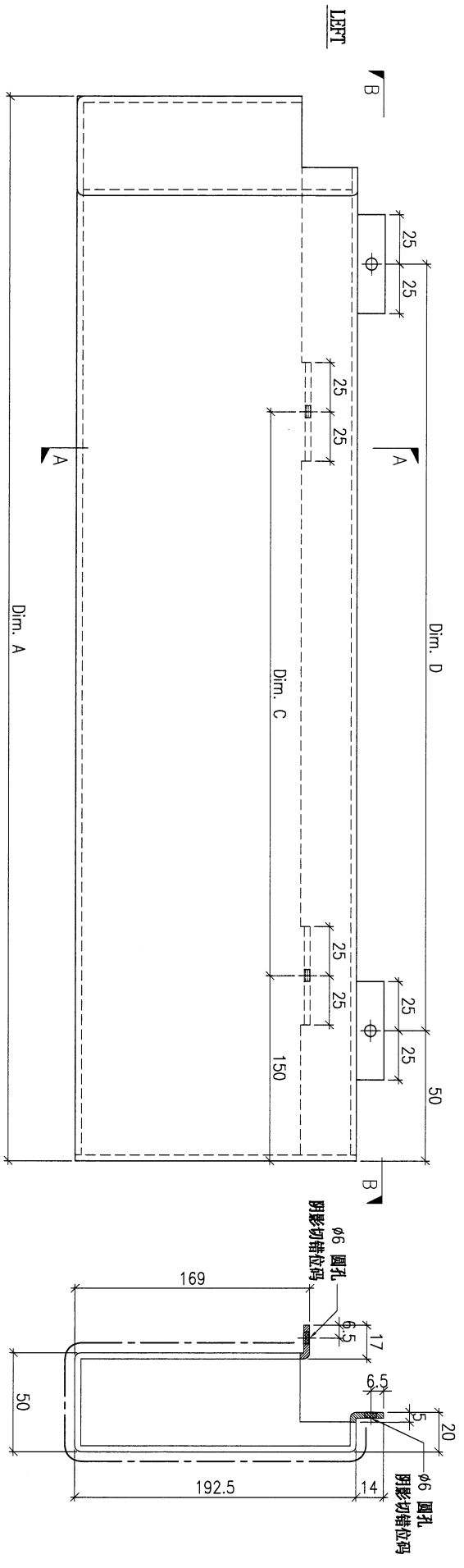
ASSEMBLE ON PARTS



SECTION A-A

DWG. NO.	FW1-AP74	REV.	-	SCALE	-	DATE	15-06-2023	DRAWN BY	-	APPROVED BY	-
----------	----------	------	---	-------	---	------	------------	----------	---	-------------	---

PROJECT				MATERIAL				COATING				COLOUR				MARK. NO.		QTY.	
YIN PING ROAD KOWLOON FEATURE WALL (PHASE 1)				3mm 铝板				PVF2				EC-DG-D334232-ZD1(SS-01)				-		-	
REV.	CHECKED BY	PART NUMBER	Dim. A	Dim. B	Dim. C	Dim. D	Dim. E	Dim. F	Dim. G	Dim. H	QTY.	Inv. Code	ASSEMBLE ON PARTS						
-		FW1-AP76	2348		7x300/c	7x300/d					1								
注：地盘用																			



DWG. NO.		REV.		SCALE		DATE		DRAWN BY		APPROVED BY	
FW1-AP76		-		-		15-06-2023		-		-	

PROJECT
YIN PING ROAD KOWLOON
FEATURE WALL (PHASE 1)

MATERIAL
3mm 铝板

COATING
钝化

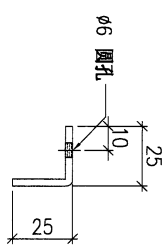
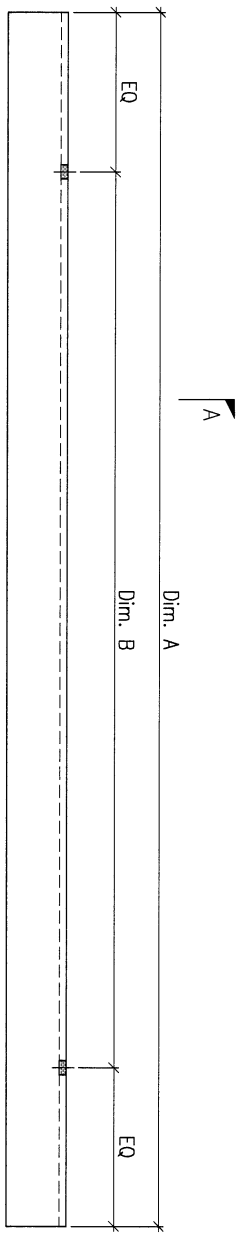
COLOUR

MARK. NO.

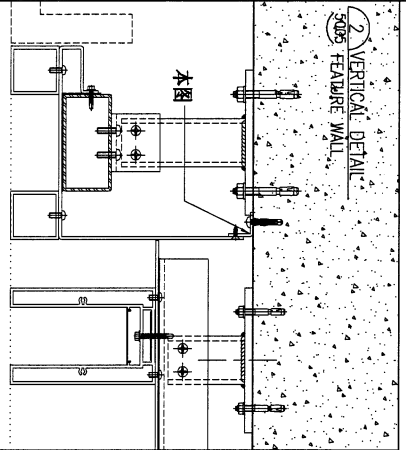
QTY.

注: 地盘用

REV.	CHECKED PART BY	PART NUMBER	Dim. A	Dim. B	Dim. C	Dim. D	Dim. E	Dim. F	Dim. G	Dim. H	QTY.	Inv. Code	ASSEMBLE ON PARTS
-		FW1-AP77A	2400	1x@300c/c	-	-	-	-	-	-	6		
-		FW1-AP77B	1500	4x@300c/c	-	-	-	-	-	-	2		

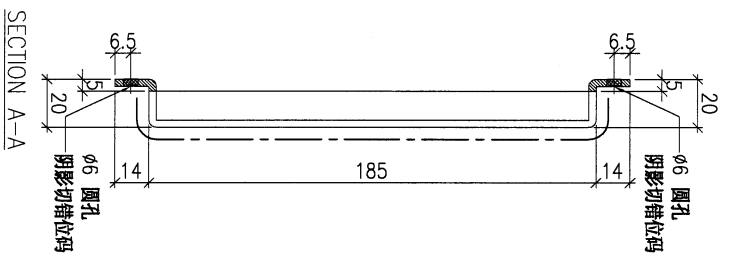
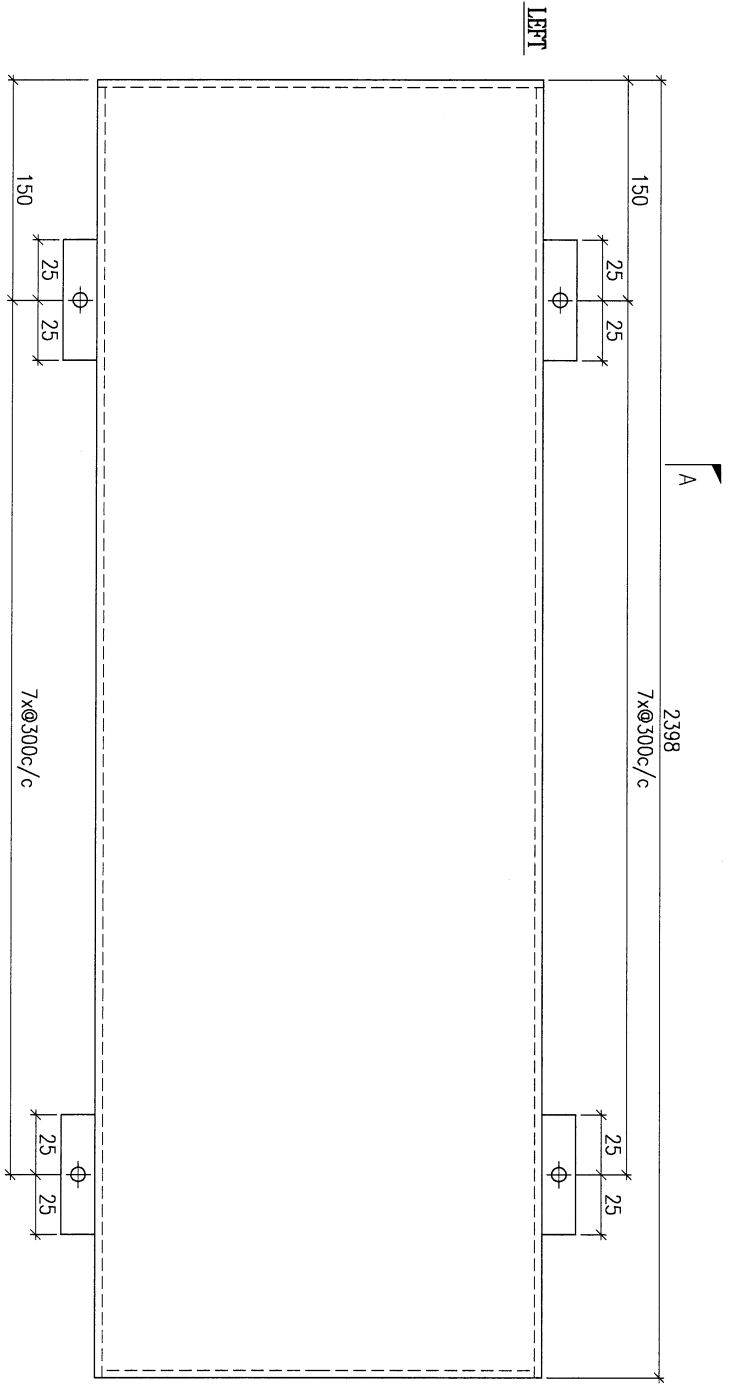


SECTION A-A



DWG. NO.	FW1-AP77	REV.	-	SCALE	-	DATE	15-06-2023	DRAWN BY	-	APPROVED BY	-
----------	----------	------	---	-------	---	------	------------	----------	---	-------------	---

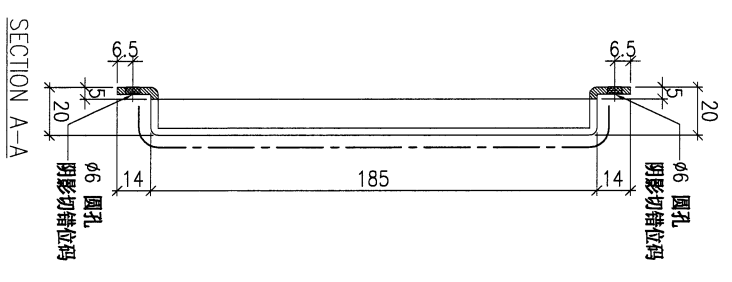
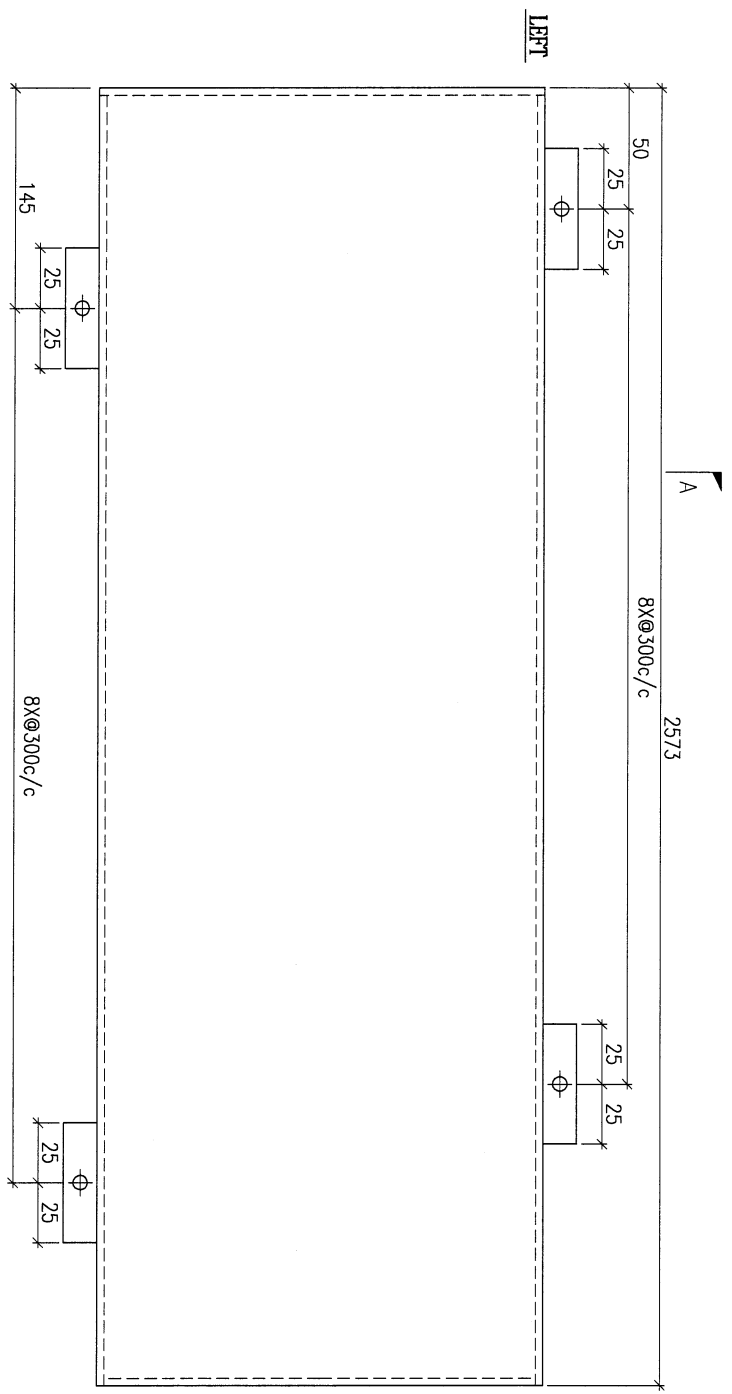
PROJECT		YIN PING ROAD KOWLOON FEATURE WALL (PHASE 1)				MATERIAL		3mm 铝板		COATING		PVF2		COLOUR		EC-DG-D334232-ZD1(SS-01)		MARK. NO.		QTY.	
REV.	CHECKED DATE BY	PART NUMBER	Dim. A	Dim. B	Dim. C	Dim. D	Dim. E	Dim. F	Dim. G	Dim. H	QTY.	Inv. Code	ASSEMBLE ON PARTS								
-		FW1-AP80	-	-	-	-	-	-	-	-	2										
												注: 地盘用									
												注: 工地复尺									



DWG. NO.		FW1-AP80		REV.		-		SCALE		-		DATE		15-06-2023		DRAWN BY		-		APPROVED BY	
----------	--	----------	--	------	--	---	--	-------	--	---	--	------	--	------------	--	----------	--	---	--	-------------	--

PROJECT				MATERIAL				COATING				COLOUR				MARK. NO.				QTY.																																																																											
YIN PING ROAD KOWLOON																3mm 铝板																PVF2																EC-DG-D334232-ZD1(SS-011)																-																-															
FEATURE WALL (PHASE 1)																																																																																															
REV.	CHECKED	PART NUMBER	Dim. A	Dim. B	Dim. C	Dim. D	Dim. E	Dim. F	Dim. G	Dim. H	QTY.	Inv. Code	ASSEMBLE ON PARTS																																																																																		
-	BY	FW1-AP82	-	-	-	-	-	-	-	-	2																																																																																				

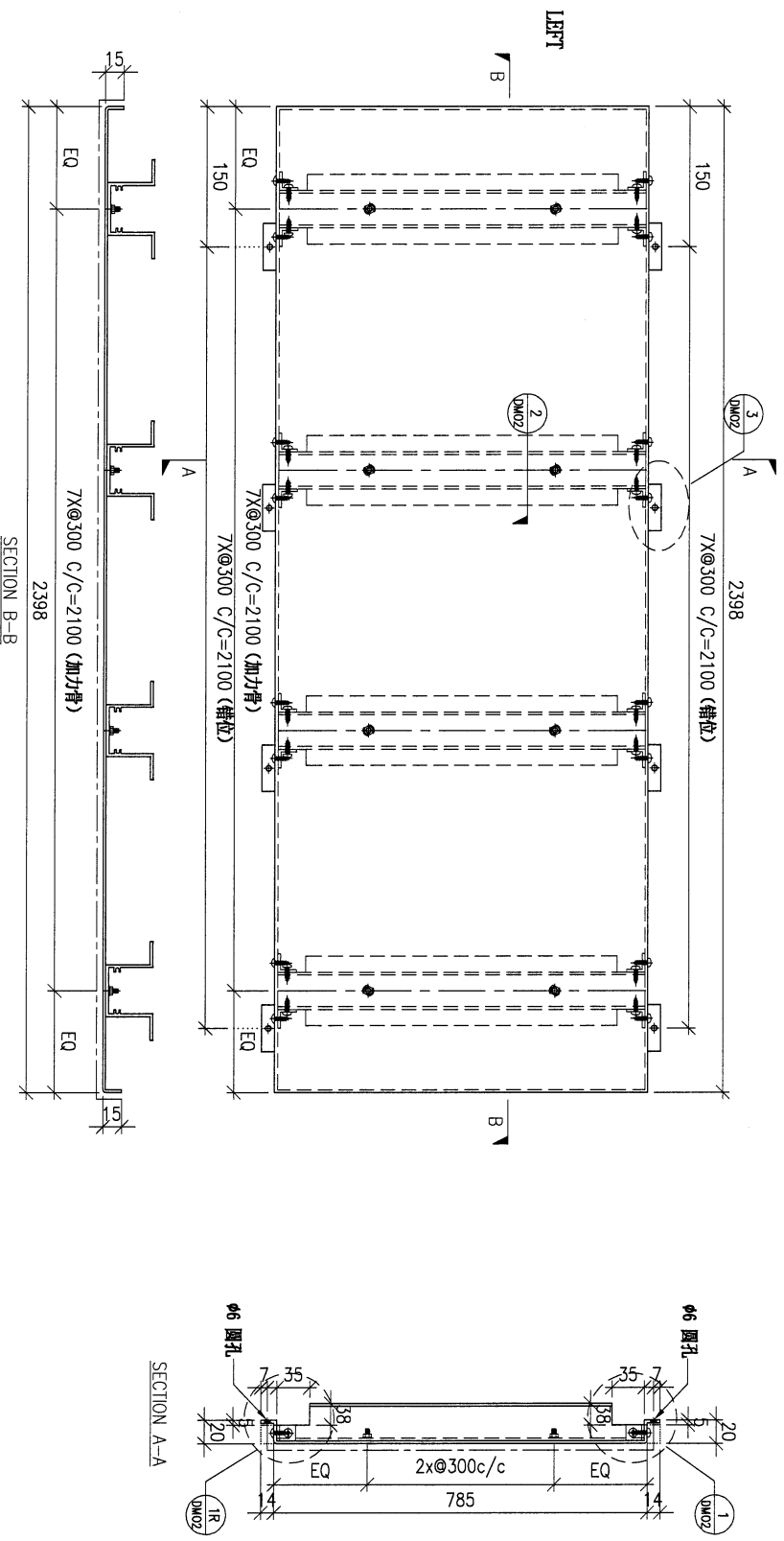
注：地盘用
注：工地复尺



DWG. NO.	REV.	SCALE	DATE	DRAWN BY	APPROVED BY
FW1-AP82	-	-	15-06-2023	-	-

PROJECT				YIN PING ROAD KOWLOON FEATURE WALL (PHASE 1)				MATERIAL				3mm铝板				COATING				PVF2				COLOUR				EC-DG-D334232-ZD1(SS-011)				MARK. NO.				-				QTY.				-			
CHECKED CHK BY		PART NUMBER		Dim. A		Dim. B		Dim. C		Dim. D		Dim. E		Dim. F		Dim. G		Dim. H		QTY.		Inv. Code		ASSEMBLE ON PARTS																							
-		FW1-AP83		-		-		-		-		-		-		-		-		3																											

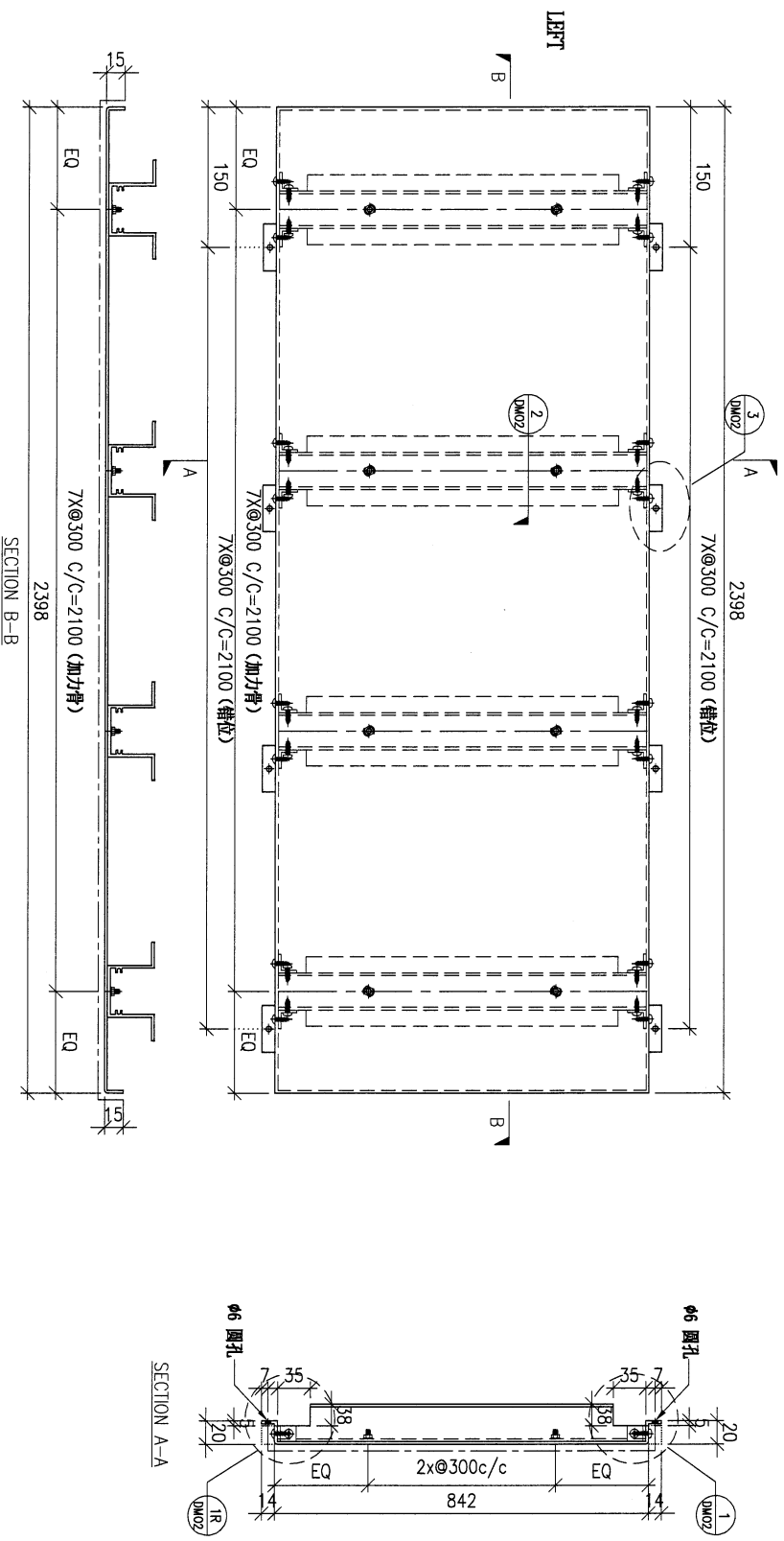
注：地盘用
注：工地复尺



DWG. NO.		FW1-AP83		REV.		-		SCALE		-		DATE		15-06-2023		DRAWN BY		-		APPROVED BY		-	
----------	--	----------	--	------	--	---	--	-------	--	---	--	------	--	------------	--	----------	--	---	--	-------------	--	---	--

PROJECT				YIN PING ROAD KOWLOON FEATURE WALL (PHASE 1)				MATERIAL				3mm铝板				COATING				PVF2				COLOUR				EC-DG-D334232-ZD1(SS-01)				MARK. NO.				-				QTY.				-			
CHECKED BY		PART NUMBER		Dim. A		Dim. B		Dim. C		Dim. D		Dim. E		Dim. F		Dim. G		Dim. H		QTY.		Inv. Code		ASSEMBLE ON PARTS				-				-															
-		FW1-AP84		-		-		-		-		-		-		-		-		4		-		-				-																			

注：地盘用
注：工地复尺



DWG. NO.		FW1-AP84		REV.		-		SCALE		-		DATE		15-06-2023		DRAWN BY		-		APPROVED BY		-	
----------	--	----------	--	------	--	---	--	-------	--	---	--	------	--	------------	--	----------	--	---	--	-------------	--	---	--

PROJECT
YIN PING ROAD KOWLOON
FEATURE WALL (PHASE 1)

MATERIAL
3mm 铝板

COATING
PVF2

COLOUR
EC-DG-D334232-ZD1(SS-011)

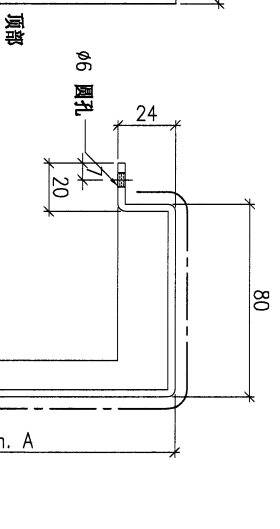
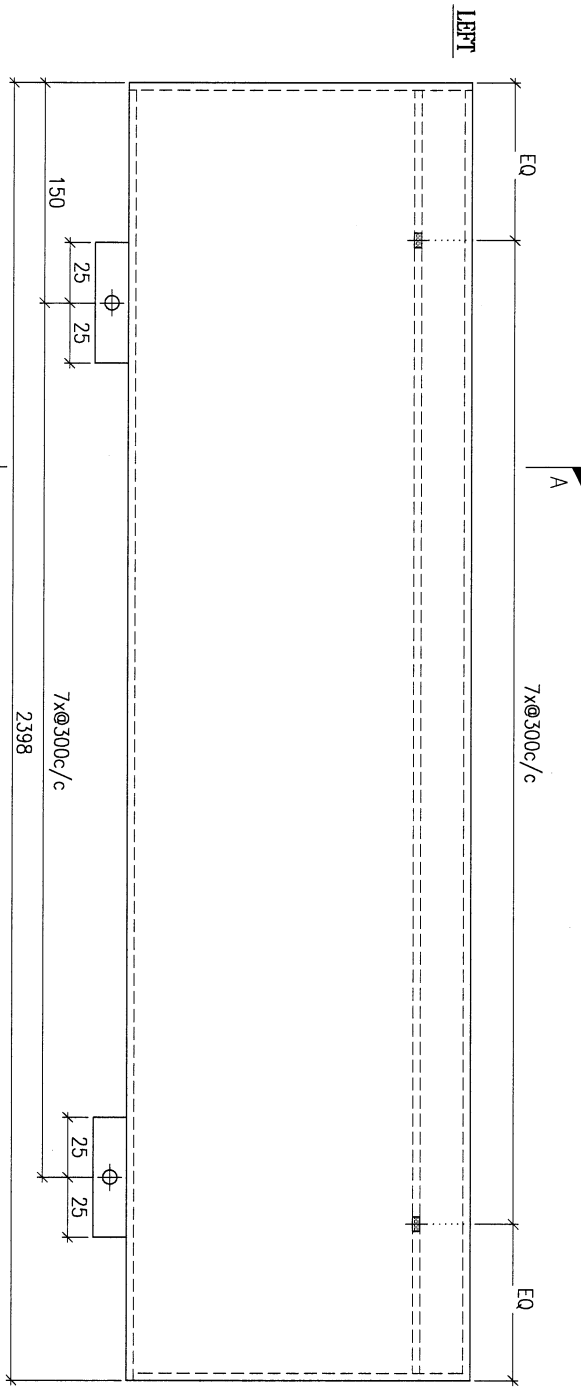
MARK. NO.
-

QTY.
-

REV.	CHECKED DATE BY	PART NUMBER	Dim. A	Dim. B	Dim. C	Dim. D	Dim. E	Dim. F	Dim. G	Dim. H	QTY.	Inv. Code
-		FW1-AP85A	142.5	-	-	-	-	-	-	-	1	
-		FW1-AP85B	157.5	-	-	-	-	-	-	-	2	
-		FW1-AP85C	142.5	-	-	-	-	-	-	-	4	

注：地盘用

注：工地复尺



SECTION A-A

DWG. NO.	FW1-AP85	REV.	-	SCALE	-	DATE	15-06-2023	DRAWN BY	-	APPROVED BY	-
----------	----------	------	---	-------	---	------	------------	----------	---	-------------	---

PROJECT
YIN PING ROAD KOWLOON
FEATURE WALL (PHASE 1)

MATERIAL
3mm 铝板

COATING
PVF2

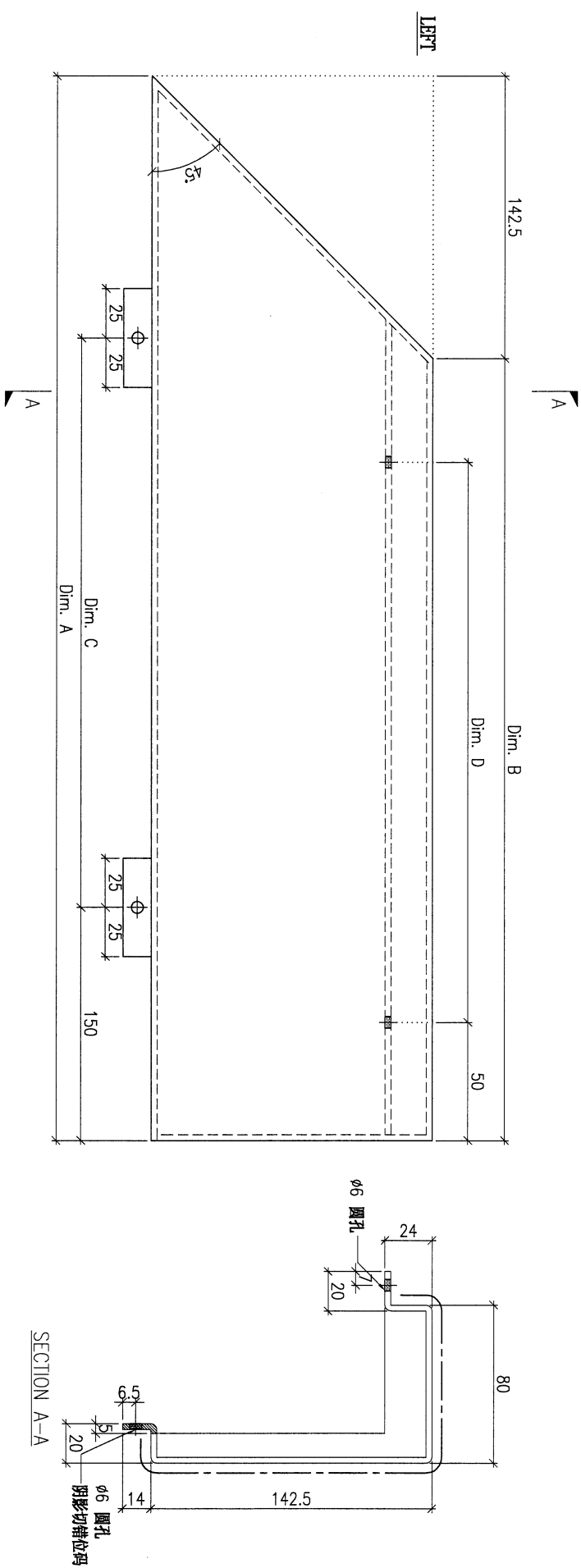
COLOUR
EC-DG-0334232-ZD1(SS-01)

MARK. NO.
-

QTY.
-

REV.	CHECKED BY	PART NUMBER	Dim. A	Dim. B	Dim. C	Dim. D	Dim. E	Dim. F	Dim. G	Dim. H	QTY.	Inv. Code	ASSEMBLE ON PARTS
-		FW1-AP86A	2515	2372.5	7xØ300c/c	7xØ300c/c					1		注: 如图加工
-		FW1-AP86AR	2515	2372.5	7xØ300c/c	7xØ300c/c					1		注: 相反加工
-		FW1-AP86BR	1370	1227.5	4xØ300c/c	4xØ280c/c					1		注: 相反加工

注: 地盘用
注: 工地复尺



DWG. NO.	FW1-AP86	REV.	-	SCALE	-	DATE	15-06-2023	DRAWN BY	-	APPROVED BY	-
----------	----------	------	---	-------	---	------	------------	----------	---	-------------	---

PROJECT
YIN PING ROAD KOWLOON
FEATURE WALL (PHASE 1)

MATERIAL
3mm 铝板

COATING
PVF2

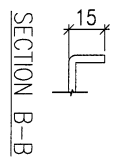
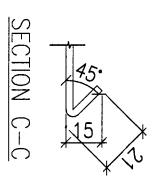
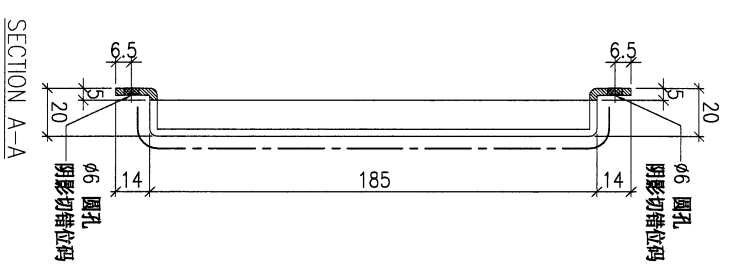
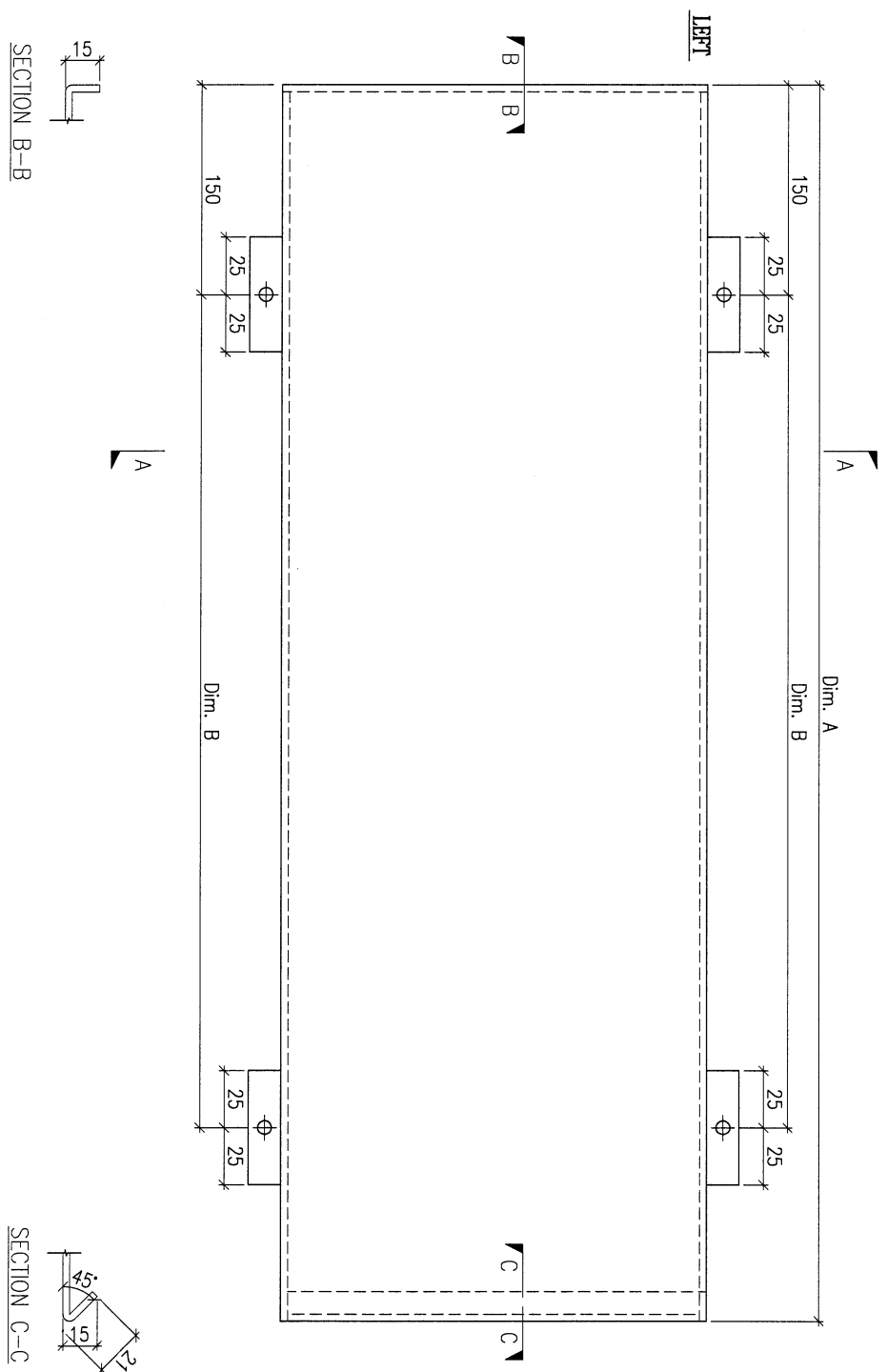
COLOUR
EC-DG-D334232-ZD1(SS-01)

MARK. NO.
-

QTY.
-

REV. / CHECKED BY	PART NUMBER	Dim. A	Dim. B	Dim. C	Dim. D	Dim. E	Dim. F	Dim. G	Dim. H	QTY.	Inv. Code	ASSEMBLE ON PARTS
-	FW1-AP87A	2441	1x@300c/c	-						1		
-	FW1-AP87B	2187	6x@300c/c	-						3		
-	FW1-AP87C	2856	8x@300c/c	-						1		
-	FW1-AP87D	2761	8x@290c/c	-						2		

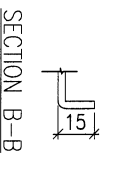
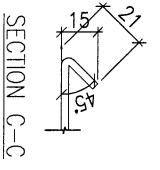
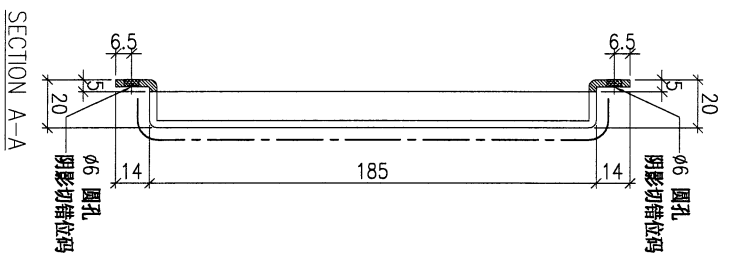
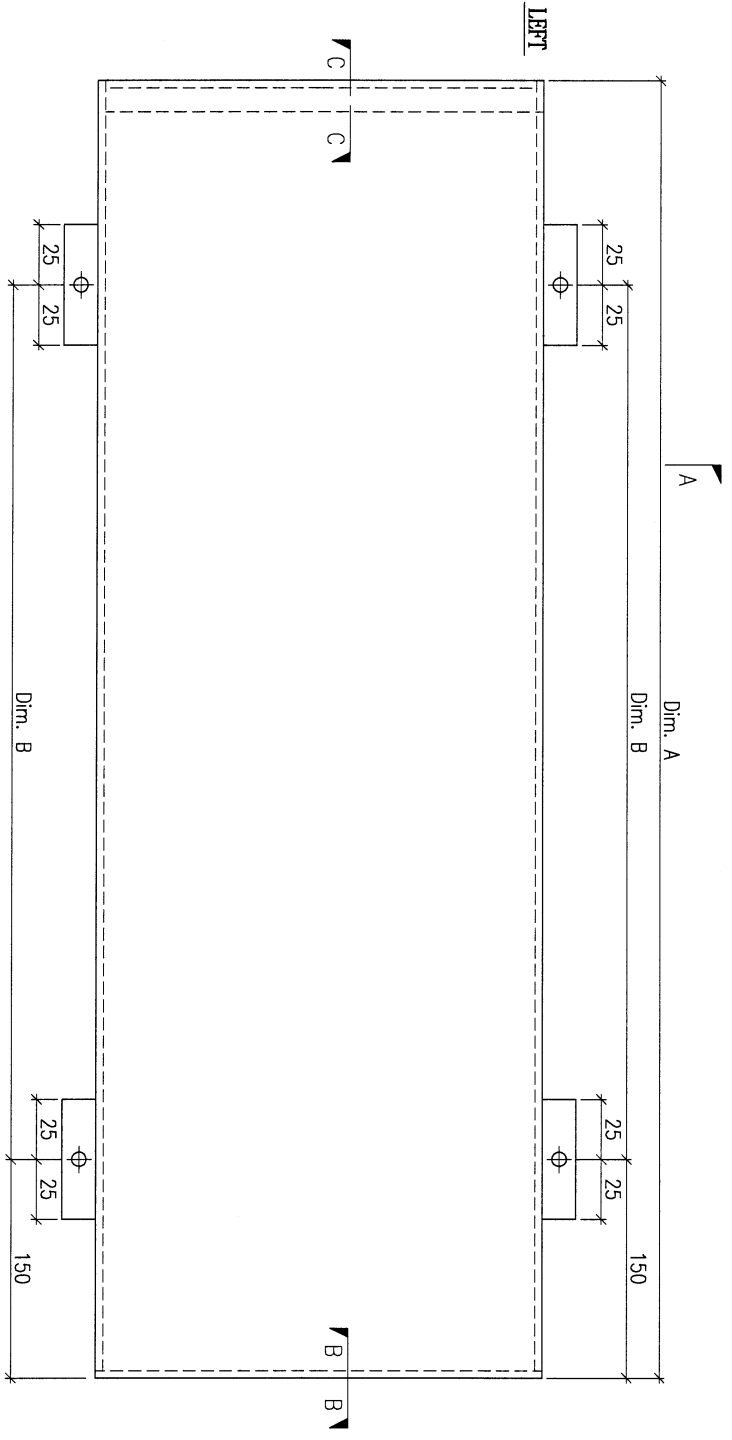
注：地盘用
注：工地复尺



DWG. NO.	FW1-AP87	REV.	-	SCALE	-	DATE	15-06-2023	DRAWN BY	-	APPROVED BY	-
----------	----------	------	---	-------	---	------	------------	----------	---	-------------	---

PROJECT				YIN PING ROAD KOWLOON FEATURE WALL (PHASE 1)				MATERIAL				COATING				COLOUR				MARK. NO.				QTY.			
				3mm 铝板				PVF2				EC-DG-D334232-ZD1(SS-01)				-				-							
REV.	CHECKED BAR BY	PART NUMBER	Dim. A	Dim. B	Dim. C	Dim. D	Dim. E	Dim. F	Dim. G	Dim. H	QTY.	Inv. Code	ASSEMBLE ON PARTS														
-		FW1-AP88A	2397	1x@300c/c	-						1																

注：地盘用
注：工地复尺



DWG. NO.	REV.	SCALE	DATE	DRAWN BY	APPROVED BY
FW1-AP88A	-	-	15-06-2023	-	-

PROJECT
YIN PING ROAD KOWLOON
FEATURE WALL (PHASE 1)

MATERIAL
3mm鋁板

COATING
PVF2

COLOUR
EC-DG-D334232-ZD1(SS-011)

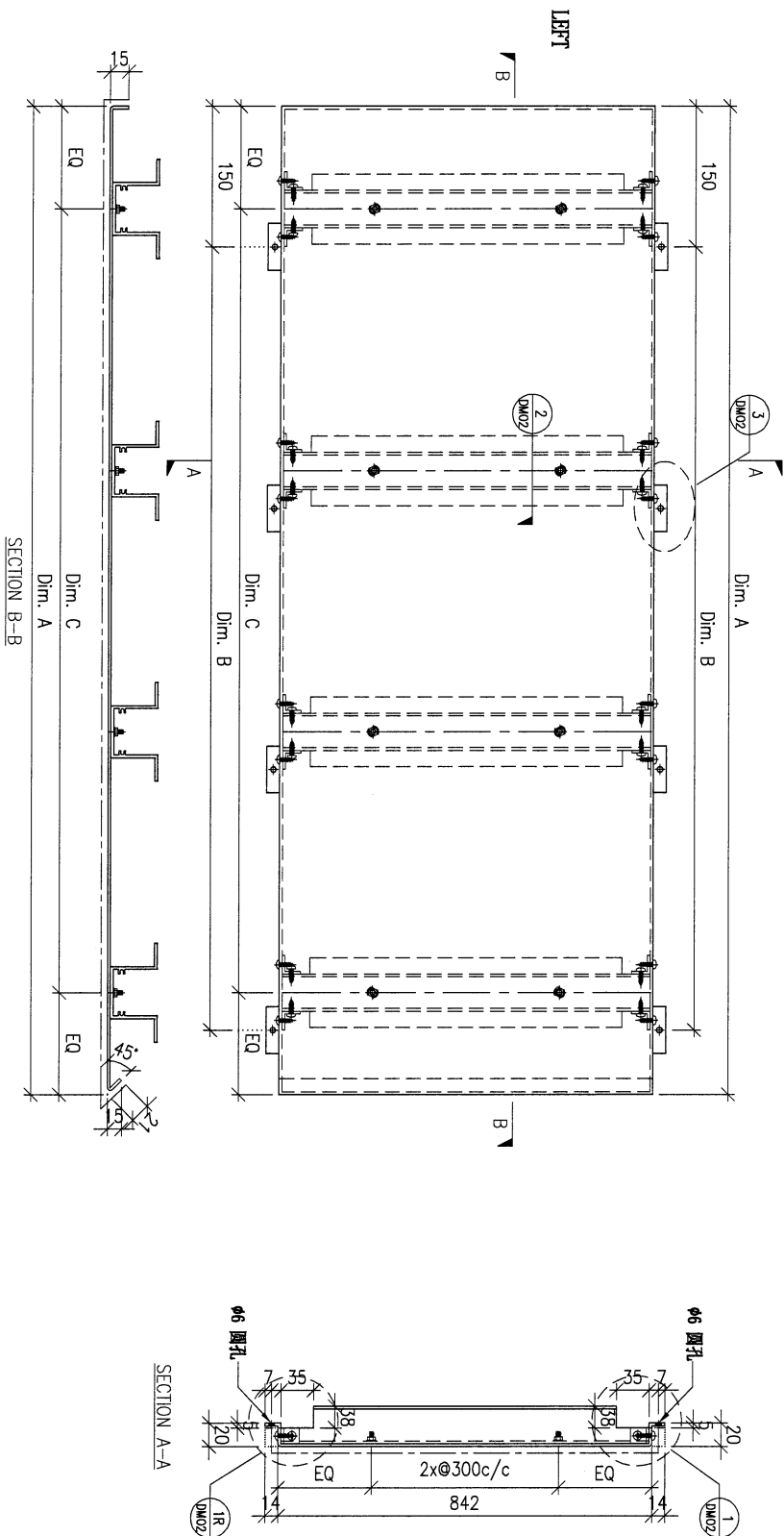
MARK. NO.
-

QTY.
-

CHKD REV BY	PART NUMBER	Dim. A	Dim. B	Dim. C	Dim. D	Dim. E	Dim. F	Dim. G	Dim. H	QTY.	Inv. Code	ASSEMBLE ON PARTS
-	FW1-AP89A	2397	7x@300c/c	8x@280c/d	-	-	-	-	-	1	-	-
-	FW1-AP89B	1721	5x@300c/c	5x@300c/d	-	-	-	-	-	4	-	-

注：地盘用

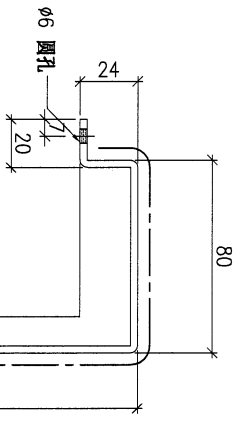
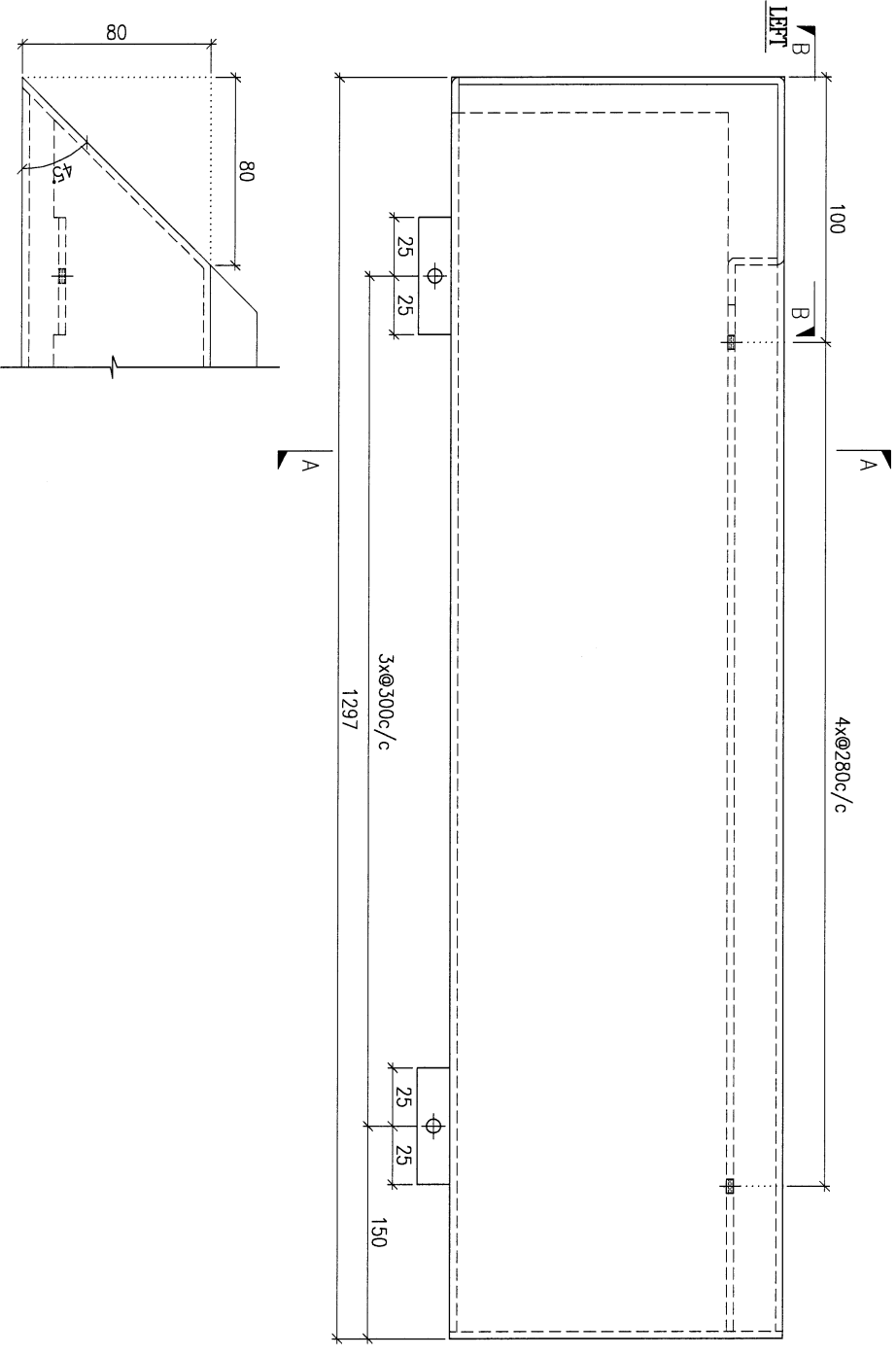
注：工地复尺



DWG. NO.	FW1-AP89	REV.	-	SCALE	-	DATE	15-06-2023	DRAWN BY	-	APPROVED BY	-
----------	----------	------	---	-------	---	------	------------	----------	---	-------------	---

PROJECT				YIN PING ROAD KOWLOON FEATURE WALL (PHASE 1)				MATERIAL				3mm 铝板				COATING				PVF2				COLOUR				EC-DG-D334232-ZD1(SS-01)				MARK. NO.				-				QTY.				-			
REV.	CHECKED DATE BY	PART NUMBER	Dim. A	Dim. B	Dim. C	Dim. D	Dim. E	Dim. F	Dim. G	Dim. H	QTY.	Inv. Code	ASSEMBLE ON PARTS																																		
-		FW1-AP90	-	-	-	-	-	-	-	-	1																																				

注：地盘用
注：工地复尺



SECTION B-B

SECTION A-A

DWG. NO.		FW1-AP90		REV.		-		SCALE		-		DATE		15-06-2023		DRAWN BY		-		APPROVED BY		-	
----------	--	----------	--	------	--	---	--	-------	--	---	--	------	--	------------	--	----------	--	---	--	-------------	--	---	--

PROJECT
YIN PING ROAD KOWLOON
FEATURE WALL (PHASE 1)

MATERIAL
3mm 铝板

COATING
PVF2

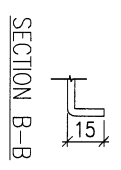
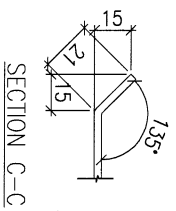
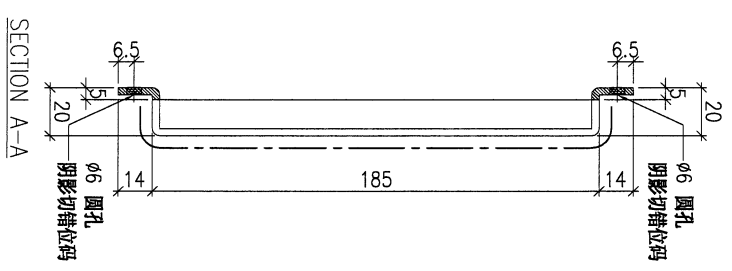
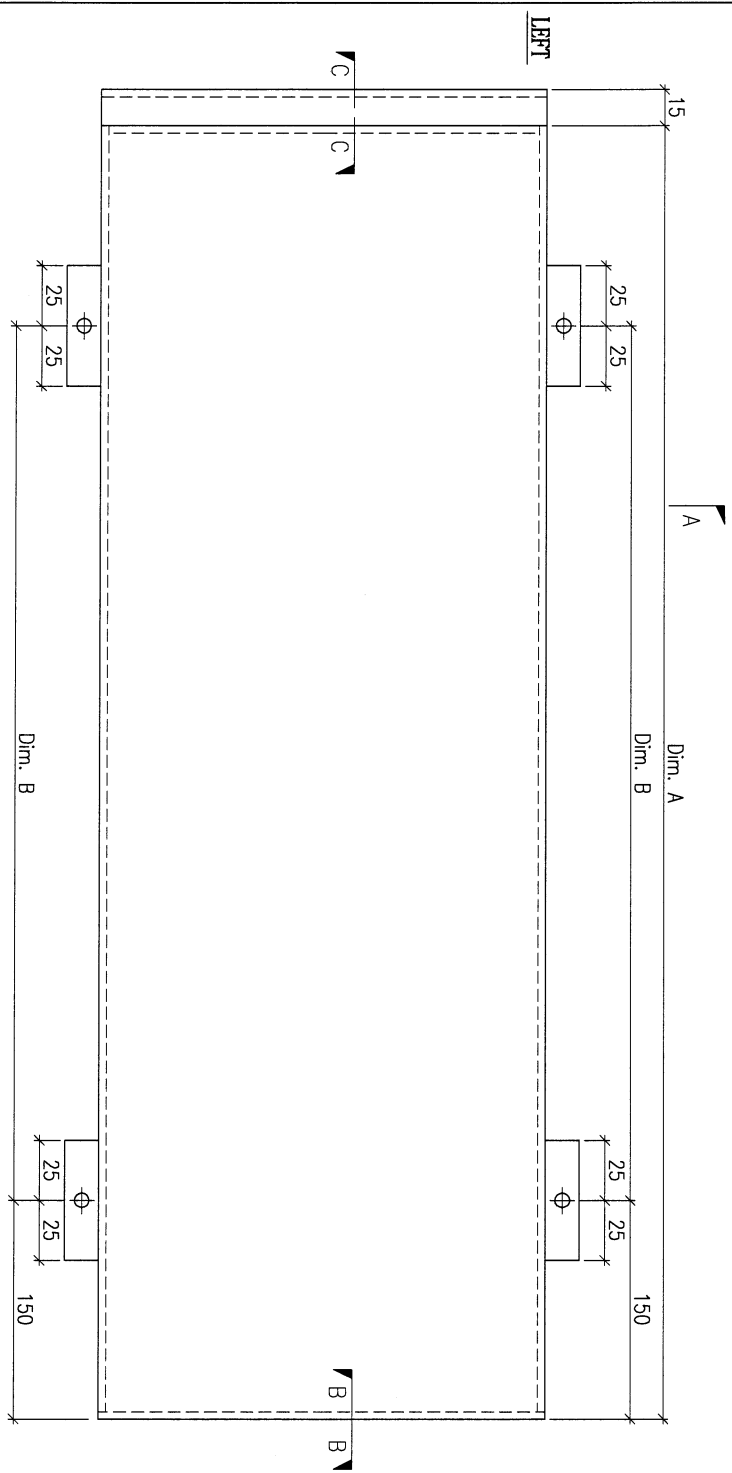
COLOUR
EC-DG-D334232-ZD1(SS-011)

MARK. NO.
-

QTY.
-

REV. / MARK BY	PART NUMBER	Dim. A	Dim. B	Dim. C	Dim. D	Dim. E	Dim. F	Dim. G	Dim. H	QTY.	Inv. Code	ASSEMBLE ON PARTS
-	FW1-AP91A	2138	6x@300/c	-	-	-	-	-	-	4	-	-
-	FW1-AP91B	2760	6x@300/c	-	-	-	-	-	-	2	-	-
-	FW1-AP91C	3109	9x@300/c	-	-	-	-	-	-	1	-	-

注：地盘用
注：工地复尺



DWG. NO.	FW1-AP91	REV.	-	SCALE	-	DATE	15-06-2023	DRAWN BY	-	APPROVED BY	-
----------	----------	------	---	-------	---	------	------------	----------	---	-------------	---

PROJECT
YIN PING ROAD KOWLOON
FEATURE WALL (PHASE 1)

MATERIAL
3mm铝板

COATING
PVF2

COLOUR
EC-DG-D334232-ZD1(SS-01)

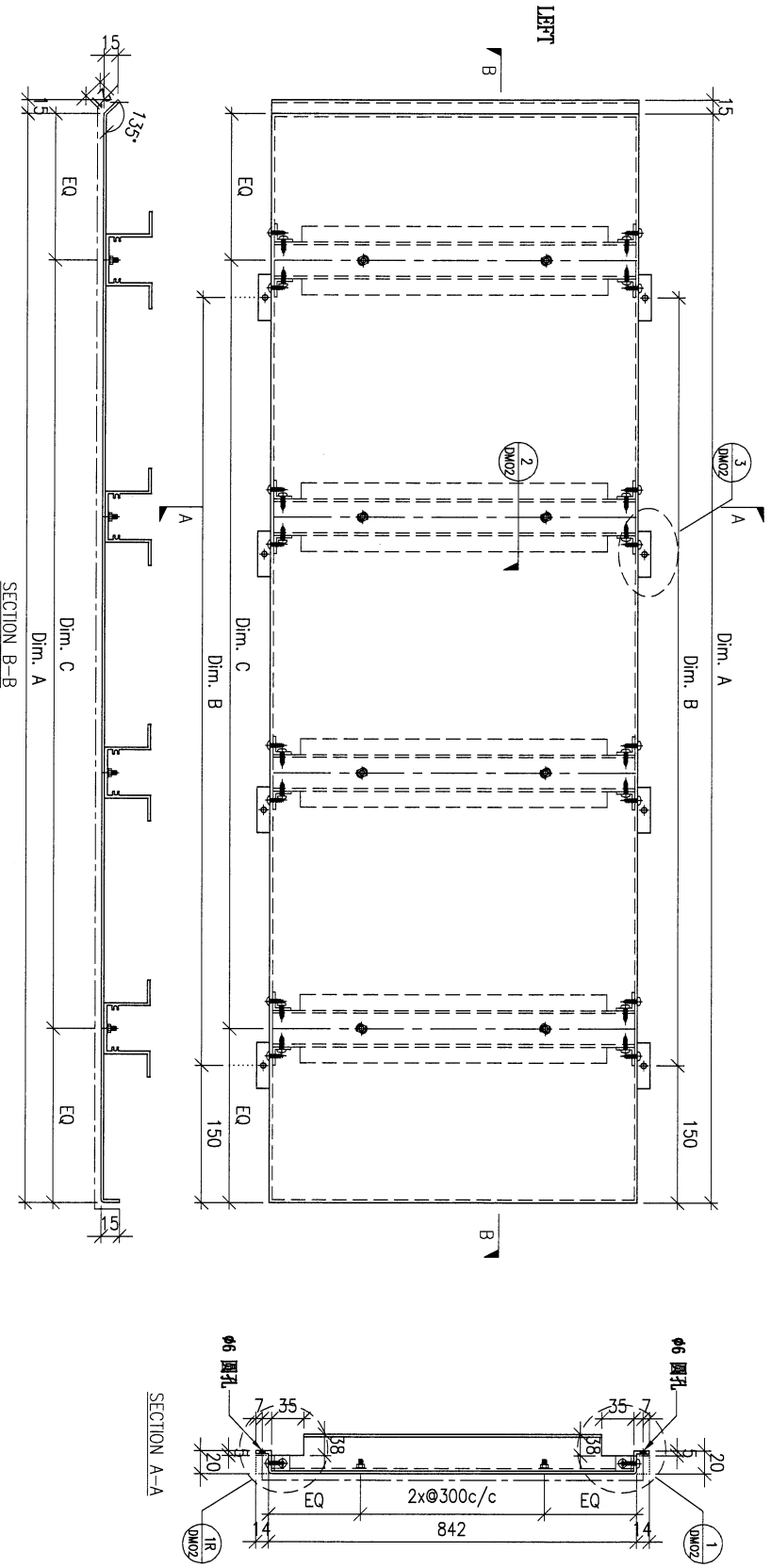
MARK. NO.
-

QTY.
-

REV. / CHECKED DATE BY	PART NUMBER	Dim. A	Dim. B	Dim. C	Dim. D	Dim. E	Dim. F	Dim. G	Dim. H	QTY.	Inv. Code	ASSEMBLE ON PARTS
-	FW1-AP92A	1340	5x@300c/c	4x@300c/c	-	-	-	-	-	1	-	-
-	FW1-AP92B	1721	5x@300c/c	5x@300c/c	-	-	-	-	-	2	-	-
-	FW1-AP92C	1997	6x@300c/c	6x@300c/c	-	-	-	-	-	1	-	-
-	FW1-AP92D	1874	5x@300c/c	5x@300c/c	-	-	-	-	-	1	-	-

注：地盘用

注：工地复尺



DWG. NO.	FW1-AP92	REV.	-	SCALE	-	DATE	15-06-2023	DRAWN BY	-	APPROVED BY	-
----------	----------	------	---	-------	---	------	------------	----------	---	-------------	---

PROJECT
YIN PING ROAD KOWLOON
FEATURE WALL (PHASE 1)

MATERIAL
3mm鋁板

COATING
PVF2

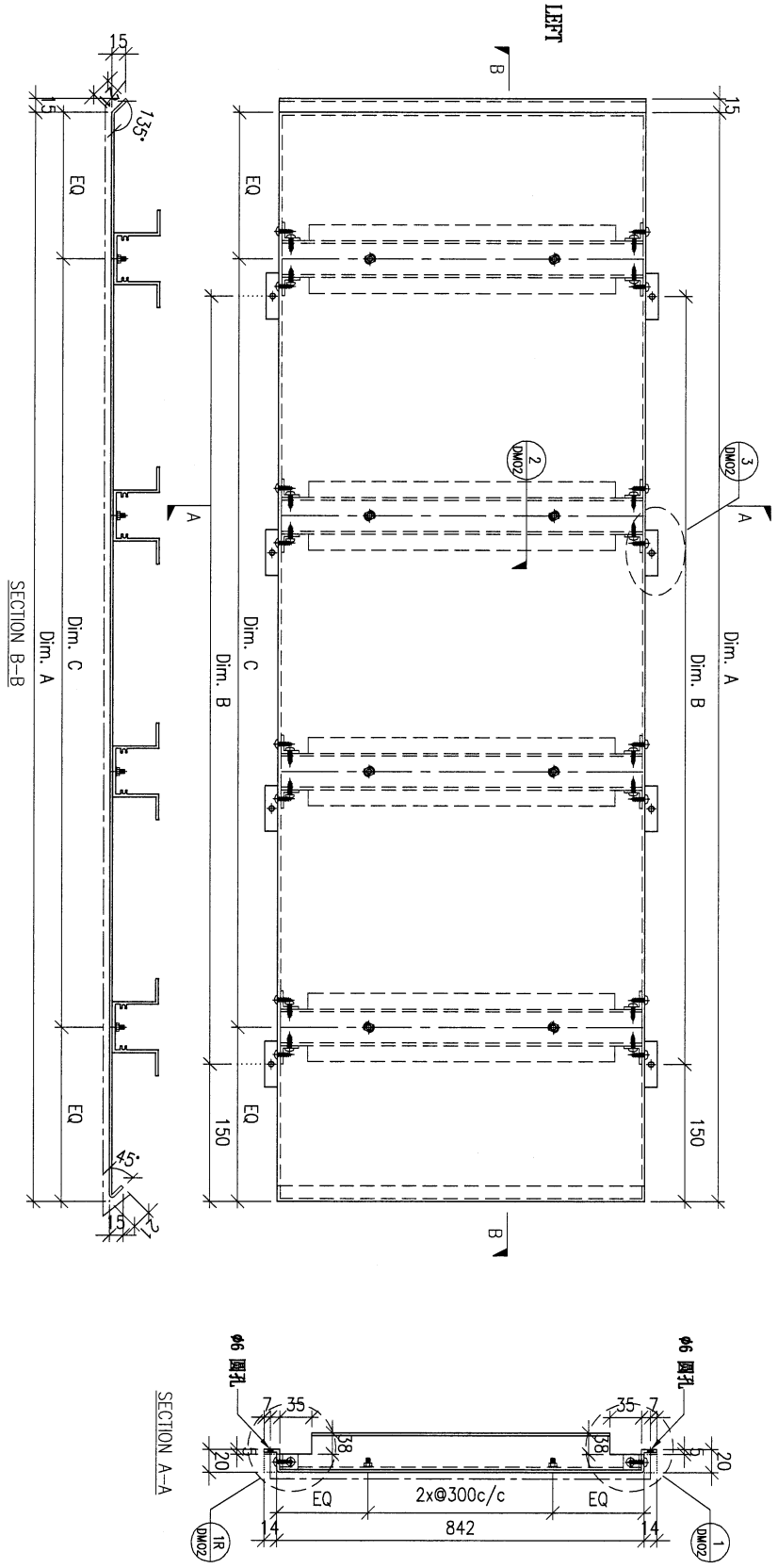
COLOUR
EC-DG-D334232-ZD1(SS-01)

MARK. NO.
-

QTY.
-

REV. / CHECKED BY	PART NUMBER	Dim. A	Dim. B	Dim. C	Dim. D	Dim. E	Dim. F	Dim. G	Dim. H	QTY.	Inv. Code	ASSEMBLE ON PARTS
-	FW1-AP93A	2667	6x@300c/c	6x@300c/d	-	-	-	-	-	1	-	-
-	FW1-AP93B	2007	6x@300c/c	6x@300c/d	-	-	-	-	-	1	-	-

注：地盘用



DWG. NO.	FW1-AP93	REV.	-	SCALE	-	DATE	15-06-2023	DRAWN BY	-	APPROVED BY	-
----------	----------	------	---	-------	---	------	------------	----------	---	-------------	---

PROJECT
YIN PING ROAD KOWLOON
FEATURE WALL (PHASE 1)

MATERIAL
3mm 铝板

COATING
PVF2

COLOUR
EC-DG-0334232-ZD1(SS-01)

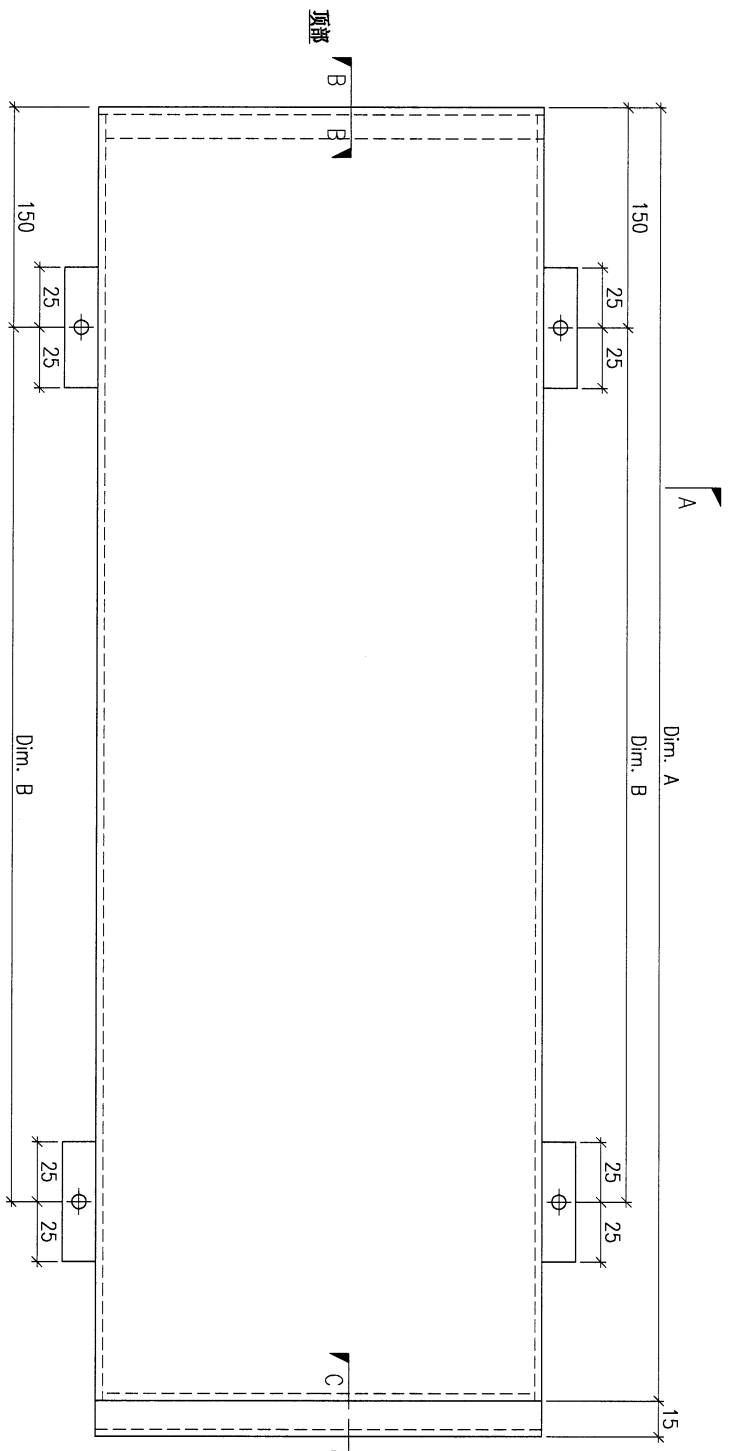
MARK. NO.
-

QTY.
-

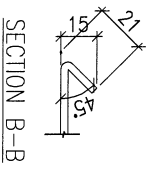
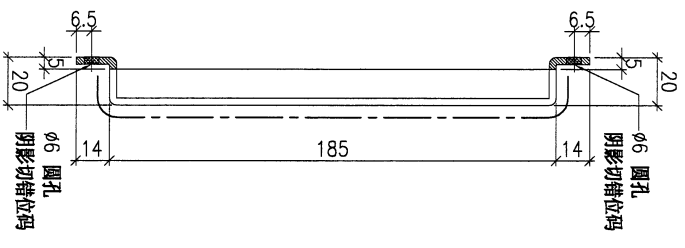
REV.	CHECKED BAR BY	PART NUMBER	Dim. A	Dim. B	Dim. C	Dim. D	Dim. E	Dim. F	Dim. G	Dim. H	QTY.	Inv. Code
-		FW1-AP94A	411	1x@280c/c	-	-	-	-	-	-	3	
-		FW1-AP94B	331	1x@200c/c	-	-	-	-	-	-	3	
-		FW1-AP94C	802	2x@250c/c	-	-	-	-	-	-	1	

注: 地盘用

注: 工地复尺

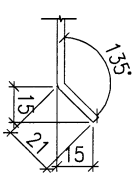


SECTION A-A



SECTION B-B

SECTION C-C



DWG. NO.	FW1-AP94	REV.	-	SCALE	-	DATE	15-06-2023	DRAWN BY	-	APPROVED BY	-
----------	----------	------	---	-------	---	------	------------	----------	---	-------------	---

PROJECT
YIN PING ROAD KOWLOON
FEATURE WALL (PHASE 1)

MATERIAL
3mm鋁板

COATING
PVF2

COLOUR
EC-DG-D334232-ZD1(SS-01)

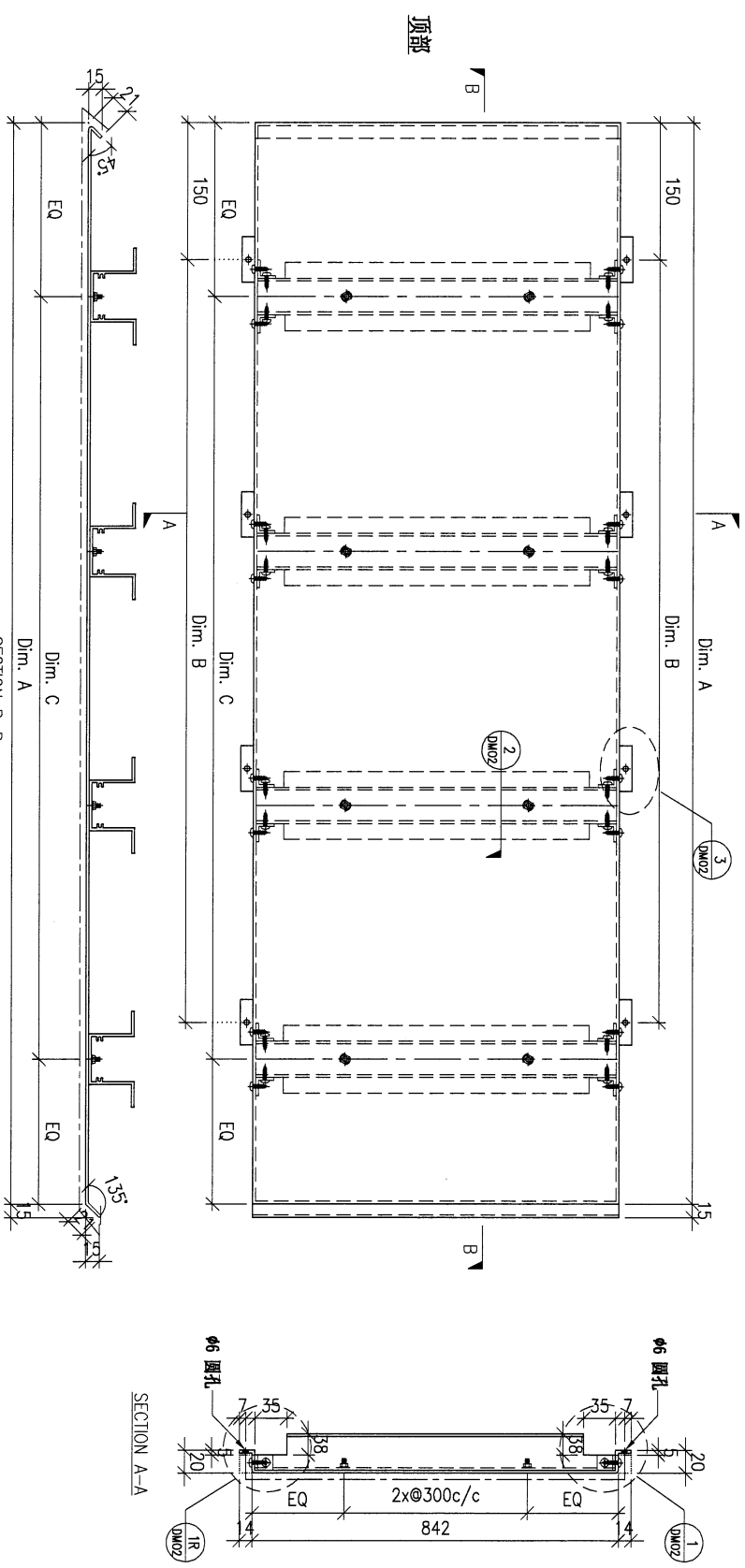
MARK. NO.
-

QTY.
-

REV. CHECKED BY	PART NUMBER	Dim. A	Dim. B	Dim. C	Dim. D	Dim. E	Dim. F	Dim. G	Dim. H	QTY.	Inv. Code	ASSEMBLE ON PARTS
-	FW1-AP95A	3322	10x@300c/110x@300c/d	-	-	-	-	-	-	1	-	-
-	FW1-AP95B	802	2x@250c/c	3x@250c/d	-	-	-	-	-	1	-	-
-	FW1-AP95C	1222	4x@270c/c	4x@270c/d	-	-	-	-	-	1	-	-
-	FW1-AP95D	675	2x@250c/c	2x@250c/d	-	-	-	-	-	1	-	-
-	FW1-AP95E	342	1x@200c/c	1x@200c/d	-	-	-	-	-	1	-	-
-	FW1-AP95F	300	1x@170c/c	1x@170c/d	-	-	-	-	-	1	-	-
-	FW1-AP95G	274	1x@140c/c	1x@140c/d	-	-	-	-	-	1	-	-

注：地盘用

注：工地复尺



頂部

DWG. NO.

FW1-AP95

REV.

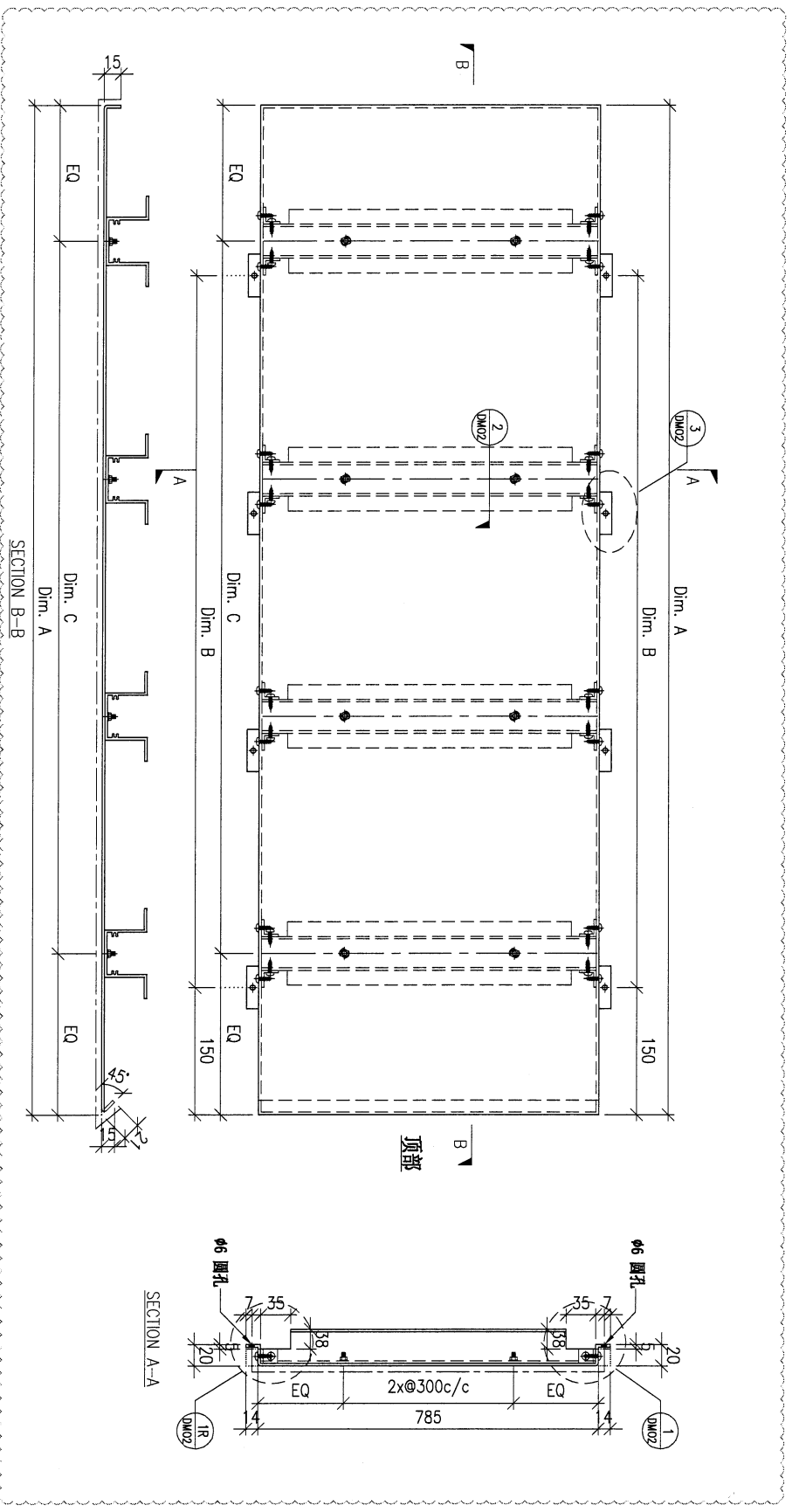
SCALE

DATE
15-06-2023

DRAWN BY

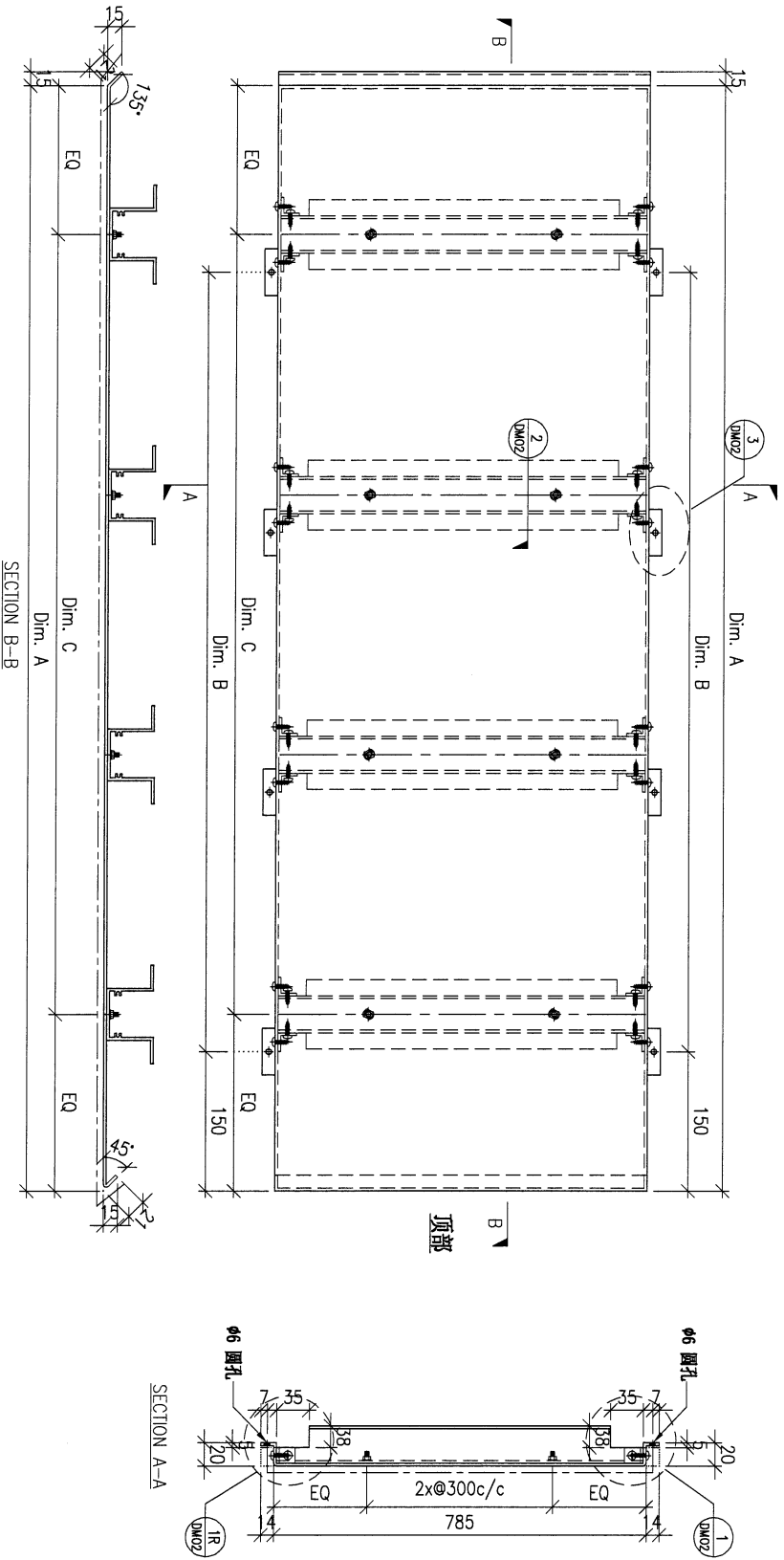
APPROVED BY

PROJECT				YIN PING ROAD KOWLOON FEATURE WALL (PHASE 1)				MATERIAL				3mm铝板				COATING				PVF2				COLOUR				EC-DG-D334232-ZD1(SS-01)				MARK. NO.				-				QTY.				-			
checked DATE BY	PART NUMBER	Dim. A	Dim. B	Dim. C	Dim. D	Dim. E	Dim. F	Dim. G	Dim. H	QTY.	Inv. Code	ASSEMBLE ON PARTS																																			
-	FW1-AP96	1373	4x@300c/c	4x@300c/c	-					1		注: 地盘用 注: 工地复尺																																			



DWG. NO.		FW1-AP96		REV.		SCALE		DATE		DRAWN BY		APPROVED BY	
								15-06-2023					

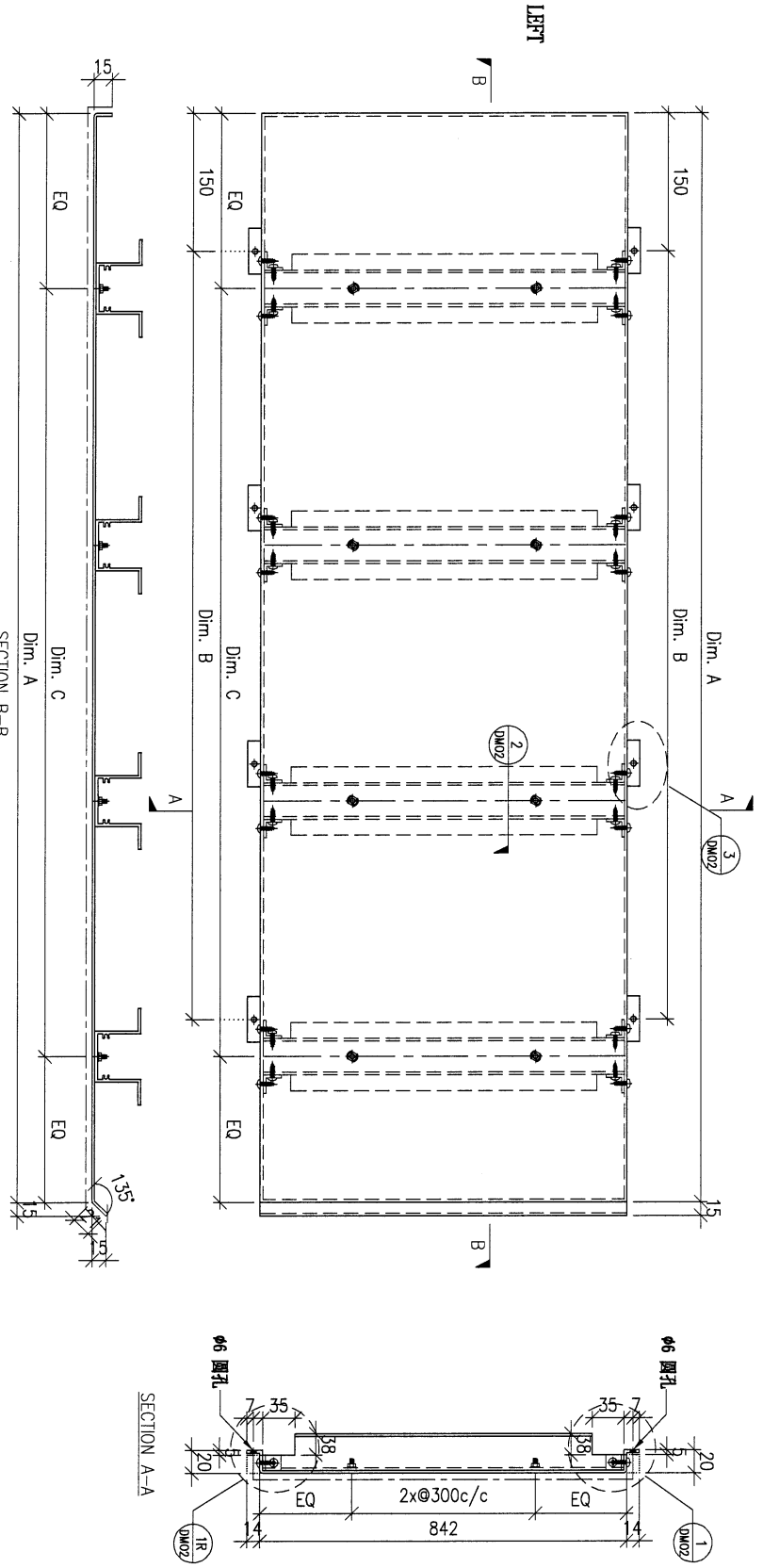
PROJECT				MATERIAL				COATING				COLOUR		MARK. NO.		QTY.	
YIN PING ROAD KOWLOON FEATURE WALL (PHASE 1)				3mm铝板				PVF2				EC-DG-0334232-ZD1(SS-01)		-		-	
REV.	CHECKED DATE BY	PART NUMBER	Dim. A	Dim. B	Dim. C	Dim. D	Dim. E	Dim. F	Dim. G	Dim. H	QTY.	Inv. Code	ASSEMBLE ON PARTS				
-	-	FW1-AP97A	-	-	-	-	-	-	-	-	-	-	注: 删除编号				
-	-	FW1-AP97B	913	3x@240c/c	3x@250c/c	-	-	-	-	-	1	-	注: 地盘用				



DWG. NO.		REV.		SCALE		DATE		DRAWN BY		APPROVED BY	
FW1-AP97		-		-		15-06-2023		-		-	

PROJECT				YIN PING ROAD KOWLOON FEATURE WALL (PHASE 1)				MATERIAL				COATING				COLOUR				MARK. NO.				QTY.			
				3mm铝板				PVF2				EC-DG-D334232-ZD1(SS-01)				-				-							
checked REV BY	PART NUMBER	Dim. A	Dim. B	Dim. C	Dim. D	Dim. E	Dim. F	Dim. G	Dim. H	QTY.	Inv. Code	ASSEMBLE ON PARTS															
-	FW1-AP98	2298	7x@300c/c	7x@300c/c	-	-	-	-	-	1																	

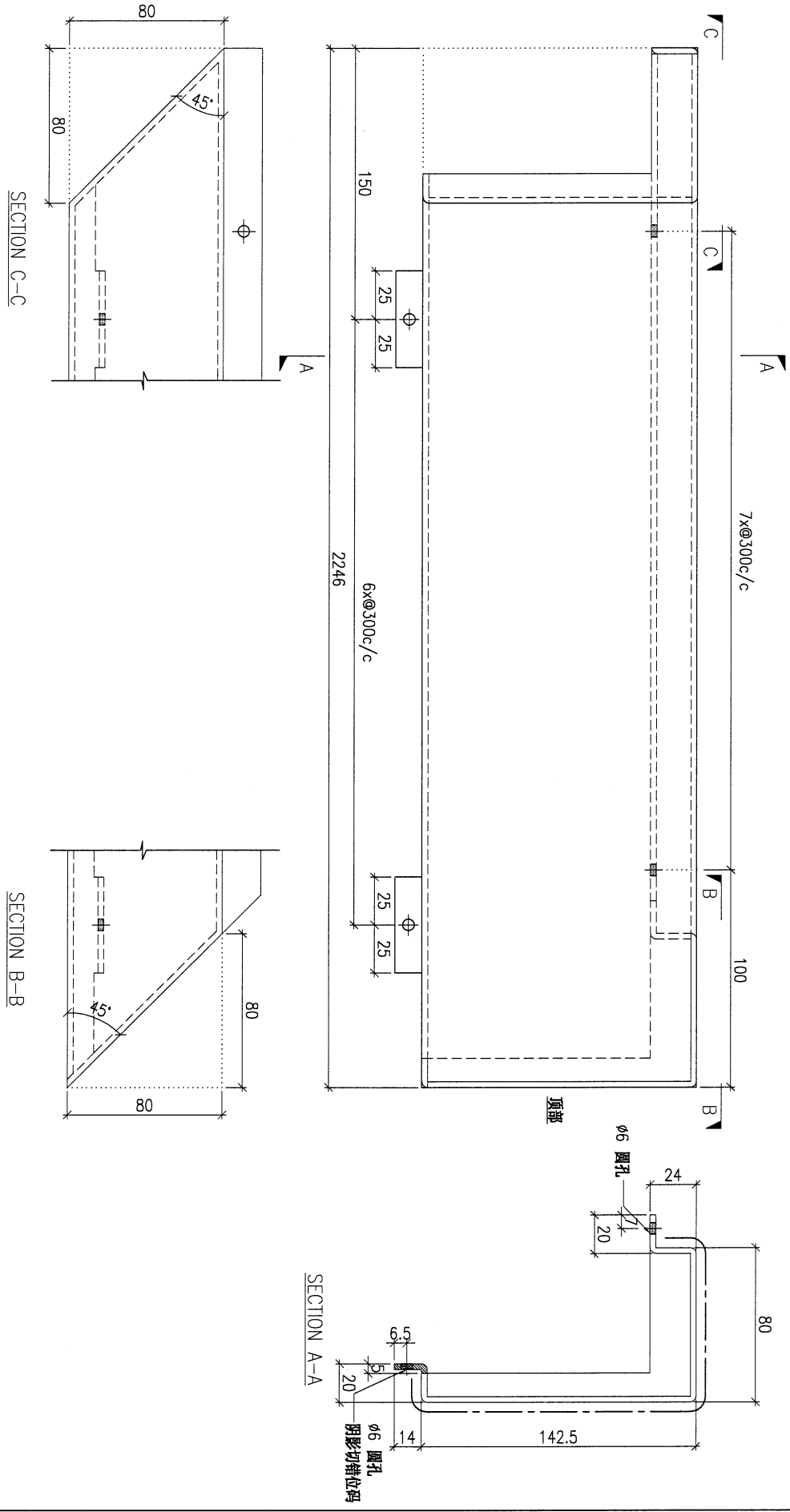
注：地盘用
注：工地复尺



DWG. NO.		REV.		SCALE		DATE		DRAWN BY		APPROVED BY	
FW1-AP98		-		-		15-06-2023		-		-	

PROJECT				YIN PING ROAD KOWLOON FEATURE WALL (PHASE 1)				MATERIAL				COATING				COLOUR				MARK. NO.				QTY.			
				3mm 铝板				PVF2				EC-DG-D334232-ZD1(SS-01)															
REV.	CHECKED BY	PART NUMBER	Dim. A	Dim. B	Dim. C	Dim. D	Dim. E	Dim. F	Dim. G	Dim. H	QTY.	Inv. Code	ASSEMBLE ON PARTS														
-		FW1-AP99	-	-	-	-	-	-	-	-	1																

注：地盘用
注：工地复尺



DWG. NO.		REV.		SCALE		DATE		DRAWN BY		APPROVED BY	
FW1-AP99		-		-		15-06-2023		-		-	

