

工程指示 / 要求簡箋 ENGINEER INSTRUCTIONS(E.I.)

工程指示編號:	EI- 6296	修改版本:	-
	HK-1246		
工程編號:	J 853	工程名稱:	延坪道
收件人:	生統	發件人:	Joe Chan
工程項目:	Feature Wall 項目 地盤用鋁板生產 (第1批)	日期:	1/6/2023

<input checked="" type="checkbox"/> 原合約工程包	<input type="checkbox"/> 原合約工程加 / 減脹 QT-	<input type="checkbox"/> 新工程報價 QT-
--	--	------------------------------------

信件批核號碼/圖紙參考編號:	批核模具圖紙編號:
客戶指示附件:	管理內部批簽署:

<input type="checkbox"/> 初步鋁料 B.M.	<input type="checkbox"/> 加工拆圖, 然後生產	<input type="checkbox"/> 尺寸表
<input type="checkbox"/> 正式鋁料 B.M.	<input type="checkbox"/> 技術上資料/指示	<input type="checkbox"/> 報價
<input type="checkbox"/> 配件 B.M.	<input type="checkbox"/> 樣辦或貨品說明書	<input type="checkbox"/> 分判合約
<input type="checkbox"/> 其他:		

內容: 請依附件資料, 生產鋁板, 送地盤.
(G.L. 1 ~ G.L. 17 位置之鋁板).
(1+25頁)

完成上列要求日期: 20/6/2023 ASAP

國內

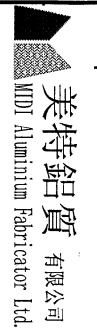
<input type="checkbox"/> 生產技術總監	<input type="checkbox"/> 連附件	<input type="checkbox"/> 技術部	<input type="checkbox"/> 連附件	<input type="checkbox"/> 生產部	<input type="checkbox"/> 連附件
<input type="checkbox"/> 採購部	<input type="checkbox"/> 連附件	<input checked="" type="checkbox"/> 生產統籌部	<input checked="" type="checkbox"/> 連附件	<input type="checkbox"/> 報關組	<input type="checkbox"/> 連附件
<input type="checkbox"/> 質檢部	<input type="checkbox"/> 連附件	<input type="checkbox"/> 會計部	<input type="checkbox"/> 連附件	<input type="checkbox"/> 機械設計部	<input type="checkbox"/> 連附件
<input type="checkbox"/> 香港辦	<input type="checkbox"/> 連附件	<input type="checkbox"/> 其他:			

香港

<input type="checkbox"/> 行政部	<input type="checkbox"/> 連附件	<input type="checkbox"/> 會計部	<input type="checkbox"/> 連附件	<input type="checkbox"/> 統籌部	<input type="checkbox"/> 連附件	<input type="checkbox"/> 工程部	<input type="checkbox"/> 連附件
<input type="checkbox"/> 採購部	<input type="checkbox"/> 連附件	<input type="checkbox"/> QS部	<input type="checkbox"/> 連附件	<input checked="" type="checkbox"/> 地盤管理	<input checked="" type="checkbox"/> 連附件	<input type="checkbox"/> 維修部	<input type="checkbox"/> 連附件

*發件人簽署:		*組別成員批核簽署:	
傳遞編號:	HK 1246 / 23	項目經理簽署:	

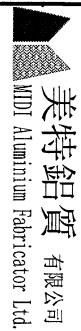
11



美特鋁質有限公司 MTD Aluminum Fabricator Ltd.	工程號: J-853	計算: ming	日期: 2023.05.30	送呈: JOE
地盤名稱: 延坪路	核對:	日期:	副本:	
項目類別: 特征牆 (1区)	批准:	日期:		

序號	修改內容	鋁板圖號	鋁板名稱	顏色	實用	後備	總數	總重量	247,484		總重量:	2012.05	圖紙編號
									單件展開面 積	總展開面積			
													A/C Code:
													修改版次:
1		FW1-AP07A	3mm 厚鋁板	EC-DG-D334232-ZD1 (SS-01)	25	0	25	38,504	0.189	4,736	0.189	4,736	
2		FW1-AP07B	3mm 厚鋁板	EC-DG-D334232-ZD1 (SS-01)	1	0	1	1,229	0.151	0.151	0.151	0.151	
3		FW1-AP10A	3mm 厚鋁板	EC-DG-D334232-ZD1 (SS-01)	12	0	12	252,360	2,587	31,041	2,587	31,041	
4		FW1-AP10B	3mm 厚鋁板	EC-DG-D334232-ZD1 (SS-01)	6	0	6	140,451	2,879	17,276	2,879	17,276	
5		FW1-AP10C	3mm 厚鋁板	EC-DG-D334232-ZD1 (SS-01)	1	0	1	24,003	2,952	2,952	2,952	2,952	
6		FW1-AP10D	3mm 厚鋁板	EC-DG-D334232-ZD1 (SS-01)	1	0	1	21,426	2,635	2,635	2,635	2,635	
7		FW1-AP10E	3mm 厚鋁板	EC-DG-D334232-ZD1 (SS-01)	3	0	3	67,252	2,757	8,272	2,757	8,272	
8		FW1-AP11A	3mm 厚鋁板	EC-DG-D334232-ZD1 (SS-01)	18	0	18	443,117	3,028	54,504	3,028	54,504	
9		FW1-AP11B	3mm 厚鋁板	EC-DG-D334232-ZD1 (SS-01)	4	0	4	100,056	3,077	12,307	3,077	12,307	
10		FW1-AP11C	3mm 厚鋁板	EC-DG-D334232-ZD1 (SS-01)	4	0	4	104,813	3,223	12,892	3,223	12,892	
11		FW1-AP11D	3mm 厚鋁板	EC-DG-D334232-ZD1 (SS-01)	1	0	1	25,212	3,101	3,101	3,101	3,101	
12		FW1-AP13	3mm 厚鋁板	EC-DG-D334232-ZD1 (SS-01)	8	0	8	150,163	2,309	18,470	2,309	18,470	
13		FW1-AP14	3mm 厚鋁板	EC-DG-D334232-ZD1 (SS-01)	2	0	2	20,455	1,258	2,516	1,258	2,516	
14		FW1-AP15	3mm 厚鋁板	EC-DG-D334232-ZD1 (SS-01)	4	0	4	80,552	2,477	9,908	2,477	9,908	
15		FW1-AP16	3mm 厚鋁板	EC-DG-D334232-ZD1 (SS-01)	14	0	14	226,434	1,989	27,852	1,989	27,852	
16		FW1-AP17	3mm 厚鋁板	EC-DG-D334232-ZD1 (SS-01)	2	0	2	34,415	2,117	4,233	2,117	4,233	
17		FW1-AP18	3mm 厚鋁板	EC-DG-D334232-ZD1 (SS-01)	1	0	1	22,931	2,821	2,821	2,821	2,821	
18		FW1-AP20A	3mm 厚鋁板	EC-DG-D334232-ZD1 (SS-01)	1	0	1	26,020	3,201	3,201	3,201	3,201	
19		FW1-AP20B	3mm 厚鋁板	EC-DG-D334232-ZD1 (SS-01)	1	0	1	26,453	3,254	3,254	3,254	3,254	
20		FW1-AP20C	3mm 厚鋁板	EC-DG-D334232-ZD1 (SS-01)	1	0	1	24,958	3,070	3,070	3,070	3,070	
21		FW1-AP21A	3mm 厚鋁板	EC-DG-D334232-ZD1 (SS-01)	1	0	1	19,185	2,360	2,360	2,360	2,360	
22		FW1-AP21B	3mm 厚鋁板	EC-DG-D334232-ZD1 (SS-01)	1	0	1	22,214	2,732	2,732	2,732	2,732	

2

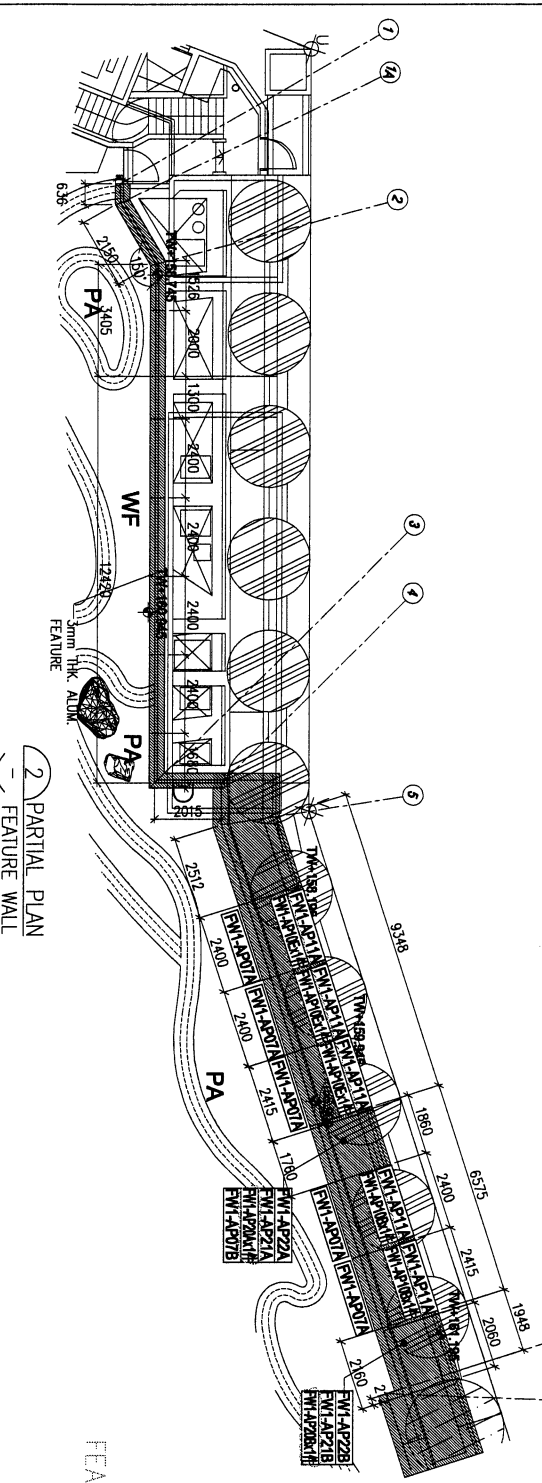
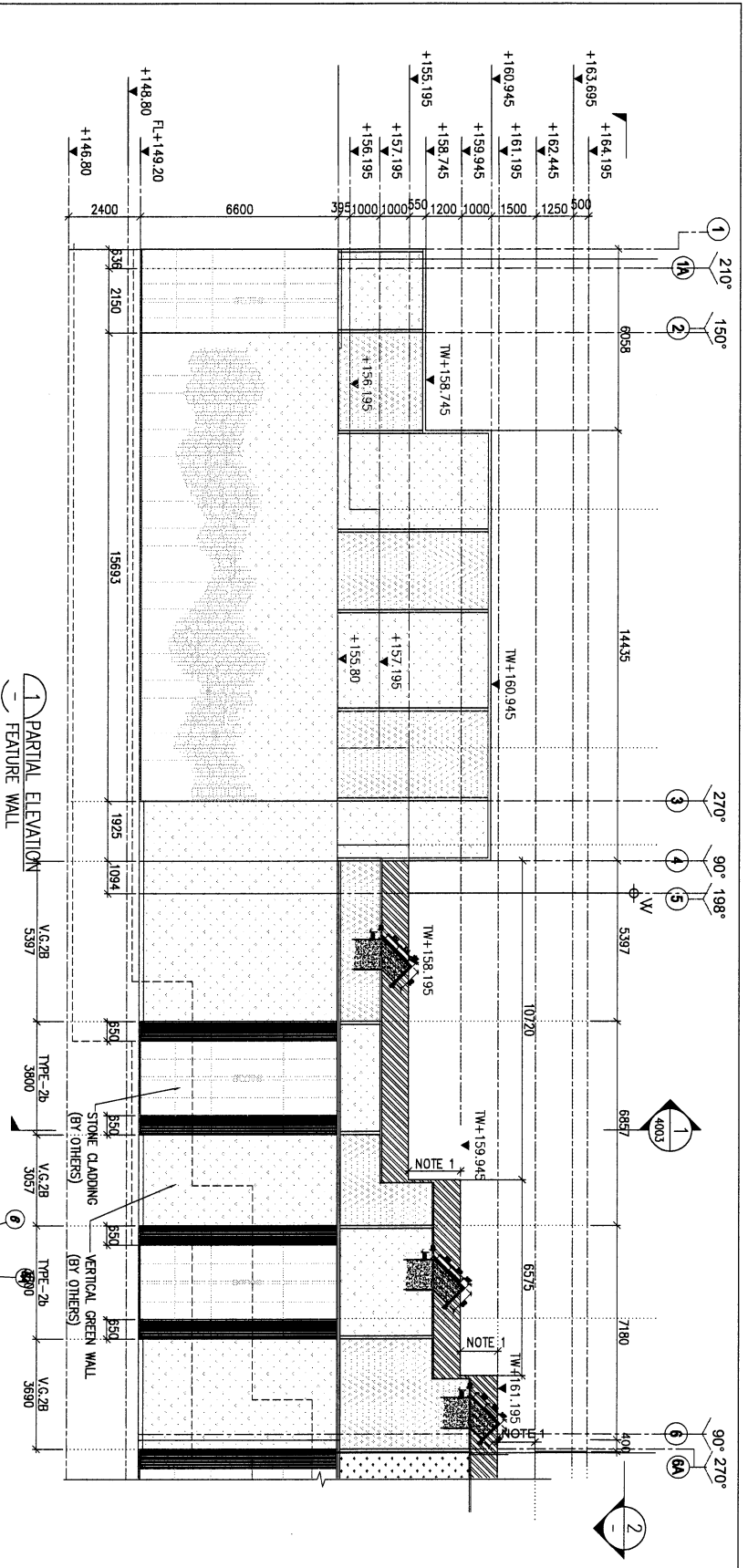


美特鋁質有限公司
MDT Aluminium Fabricator Ltd.

工程號:	J-853	計算:	ming	日期:	2023.05.30	送呈:	JOE
地盤名稱:	延坪路	核對:		日期:		副本:	
項目類別:	特征牆(1区)	批准:		日期:			

序號	修改內容	鋁板圖號	鋁板名稱	顏色	實用	後備	總數	總重量	247,484		總重量:	2012.05	圖紙編號
									單件展開面積	總展開面積			
A/C Code:													
修改版本:													
23		FW1-AP21C	3mm厚鋁板	EC-DG-D334232-ZD1 (SS-01)	1	0	1	17.529	2.156	2.156	2.156	2.156	
24		FW1-AP23	3mm厚鋁板	EC-DG-D334232-ZD1 (SS-01)	1	0	1	9.714	1.195	1.195	1.195	1.195	
25		FW1-AP25	3mm厚鋁板	EC-DG-D334232-ZD1 (SS-01)	1	0	1	21.467	2.640	2.640	2.640	2.640	
26		FW1-AP27	3mm厚鋁板	EC-DG-D334232-ZD1 (SS-01)	1	0	1	17.859	2.197	2.197	2.197	2.197	
27		FW1-AP28	3mm厚鋁板	EC-DG-D334232-ZD1 (SS-01)	1	0	1	13.874	1.707	1.707	1.707	1.707	
28		FW1-AP29	3mm厚鋁板	EC-DG-D334232-ZD1 (SS-01)	1	0	1	24.183	2.975	2.975	2.975	2.975	
29		FW1-AP30	3mm厚鋁板	EC-DG-D334232-ZD1 (SS-01)	1	0	1	10.124	1.245	1.245	1.245	1.245	
30		FW1-AP31	3mm厚鋁板	EC-DG-D334232-ZD1 (SS-01)	1	0	1	11.688	1.438	1.438	1.438	1.438	
31		FW1-AP32	3mm厚鋁板	EC-DG-D334232-ZD1 (SS-01)	1	0	1	13.401	1.648	1.648	1.648	1.648	
32													
33													
34													
總計:					121	0	121	2012	71	247	71	247	

3



2 PARTIAL PLAN
- FEATURE WALL

FEATURE WALL 铝板派位图

LEGEND:
ALUM. GRILLE
3mm THK. ALUM. CLADDING

BD. REF. :

CLIENT :

SHIMAO GROUP HOLDINGS LIMITED
SHIMAO TONG & PARTNERS LIMITED
WTF ARCHITECTS & PLANNERS

MAIN CONTRACTOR :
WONG TUNG & ASSOCIATES LTD
HYP HING CONSTRUCTION CO LTD

STRUCTURAL ENGINEER :
C.M. WONG & ASSOCIATES LTD
C.M. WONG 梁志明建築工程師有限公司

PROJECT :
PROPOSED RESIDENTIAL DEVELOPMENT AT N.K.L.L. 6542 YIN PING ROAD KOWLOON

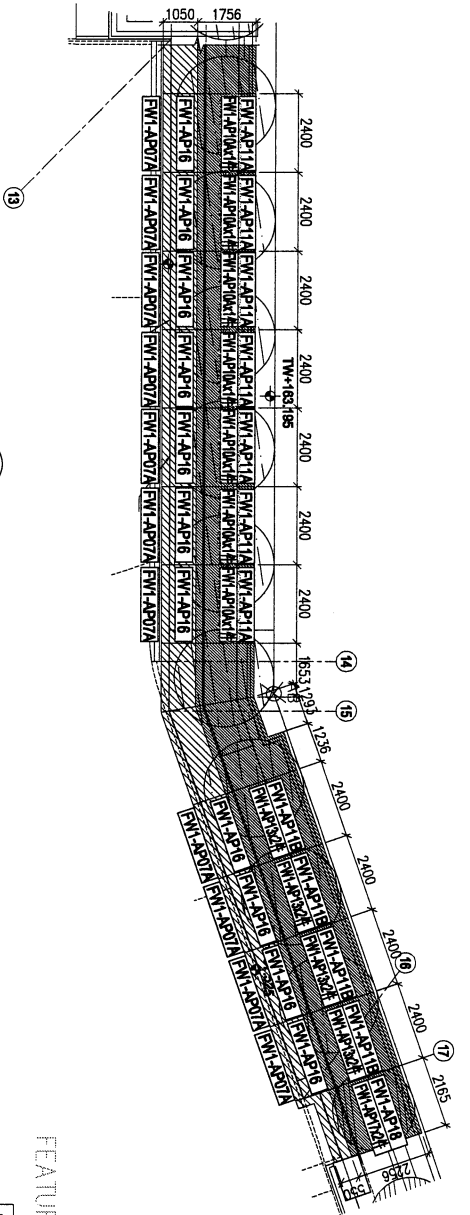
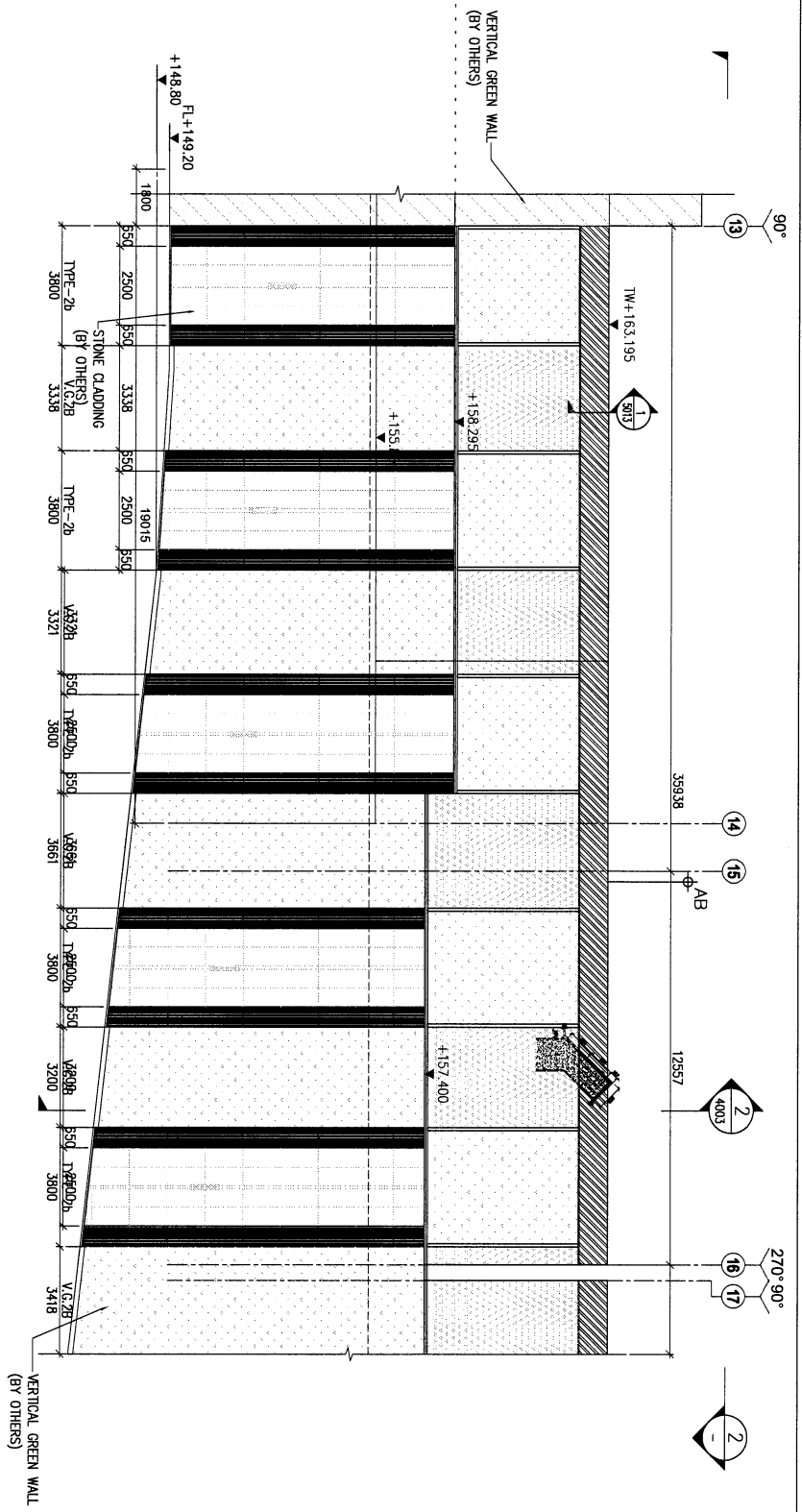
DATE : 29-Mar-23 SCALE : 1:150 (A3)
DRAWN BY : LHR CHECKED BY :
DATE : 29-Mar-23 SCALE : 1:150 (A3)
DRAWN BY : LHR CHECKED BY :

UNIT : 5-8, Sunny Industrial Centre, 1/F
910 Sun Yee Road, Kowloon
MIDI Architecture Associates Ltd.
Tel: (852) 2521 1114 Fax: (852) 2521 7186
DWG NO. : 0553-SU-FW-3004 REV. : A

NOTE:
1. ALL DIMENSIONS ARE IN MM.
2. ALL DIMENSIONS ARE VIEWED FROM OUTSIDE.
3. ALL DIMENSIONS TO BE VIEWED ON SITE.
4. REVERSE DIMENSION.
LEGEND:
DETAIL MARK NO.
REFER SHEET NO.
1. F.F.L. -- FINISHED FLOOR LEVEL.
2. S.F.L. -- STRUCTURAL FLOOR LEVEL.
3. -- REVERSED DETAIL.

DATE : 29-Mar-23 SCALE : 1:150 (A3)
DRAWN BY : LHR CHECKED BY :
DATE : 29-Mar-23 SCALE : 1:150 (A3)
DRAWN BY : LHR CHECKED BY :

5



2 PARTIAL PLAN FEATURE WALL

FEATURE WALL 铝板派位图

LEGEND:
 ALUM. GRILLE
 3mm THK. ALUM. CLADDING

DLA REF :

CLIENT :
SHIMAO GROUP HOLDINGS LIMITED

ARCHITECT :
WONG TUNG & PARTNERS LIMITED
 ARCHITECTS & PLANNERS

MAIN CONTRACTOR :
協興建築有限公司
HIP HING CONSTRUCTION CO LTD

STRUCTURAL ENGINEER :
C M WONG & ASSOCIATES LTD
 葉志明建築工程師有限公司

FAÇADE CONSULTANT:
MENHARDT

NOTE:
 1. ALL DIMENSIONS ARE IN mm.
 2. ALL ELEVATIONS ARE VIEWED FROM OUTSIDE.
 3. ALL DIMENSIONS TO BE VIEWED ON SITE BEFORE FABRICATION.

LEGEND:
 DETAIL WORK NO.
 REFER SHEET NO.
 1. F.F.L. -- FINISHED FLOOR LEVEL
 2. S.F.L. -- STRUCTURAL FLOOR LEVEL
 3. (R) -- REVERSED DETAIL

NO.	REV.	REASON	BY
1	0		
2	1		

JOB NO. : J-8553
 PROJECT : PROPOSED RESIDENTIAL DEVELOPMENT AT N.K.L.L. 8542 YIN PING ROAD KOWLOON

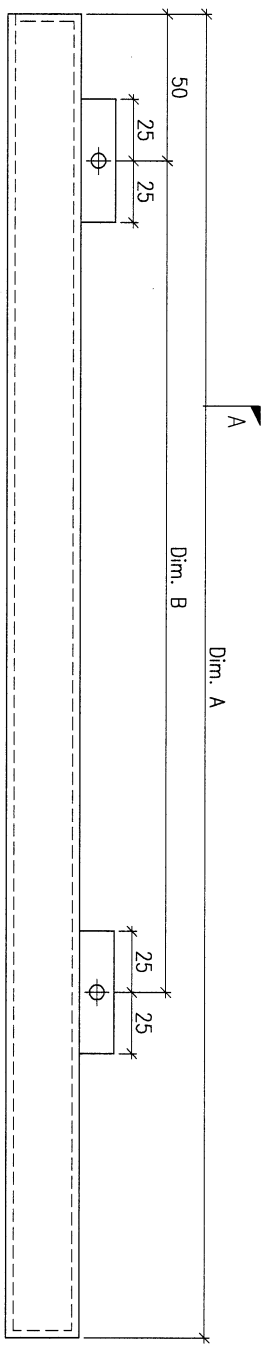
TITLE : PARTIAL ELEVATION & PLAN OF FEATURE WALL (PHASE 1)
 DATE : 29-Mar-23 SCALE : 1:150 (AS)
 DRAWN BY : LHR CHECKED BY :

LEGEND:
 ALUM. GRILLE
 3mm THK. ALUM. CLADDING

UNIT 6-4, Sunny Industrial Centre, 7/F
 810 Chee Yee Ling Road, Kowloon
MWDI ARCHITECTURAL ENGINEERING LTD.
 TEL: 23682111-4 FAX: (852) 2727885
 DMC NO. : 0653-SI-FW-3006 REV. : A

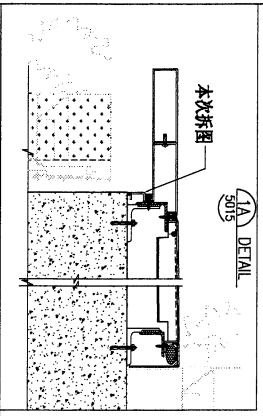
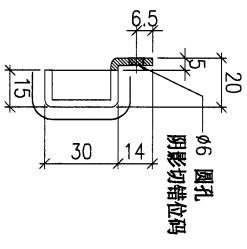
PROJECT		YIN PING ROAD KOWLOON FEATURE WALL (PHASE 1)										MATERIAL		COATING		COLOUR		MARK. NO.	QTY.
												3mm 铝板		PVF2		EC-DG-D334232-ZD1(SS-01)		-	-
REV.	CHANGED BY/REV BY	PART NUMBER	Dim. A	Dim. B	Dim. C	Dim. D	Dim. E	Dim. F	Dim. G	Dim. H	QTY.	Inv. Code	ASSEMBLE ON PARTS						
-		FW1-AP07A	2398	7x@300c/c	-	-	-	-	-	-	25	-							
-		FW1-AP07B	1874	5x@300c/c	-	-	-	-	-	-	1	-							

注：地盤用



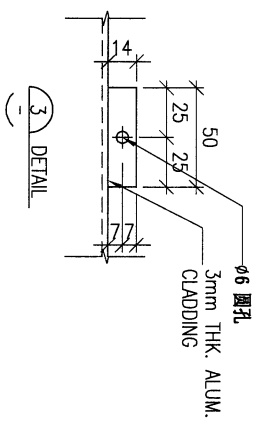
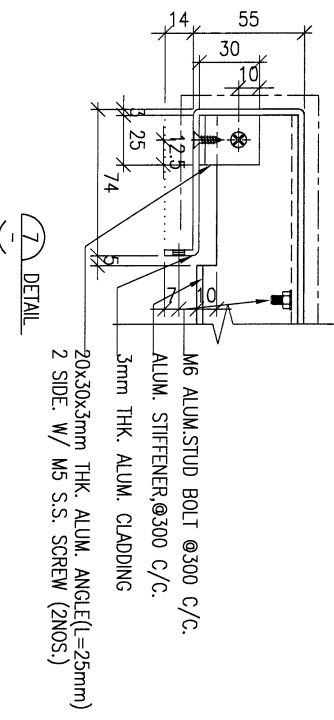
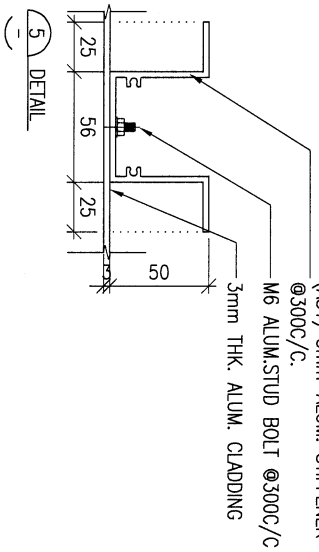
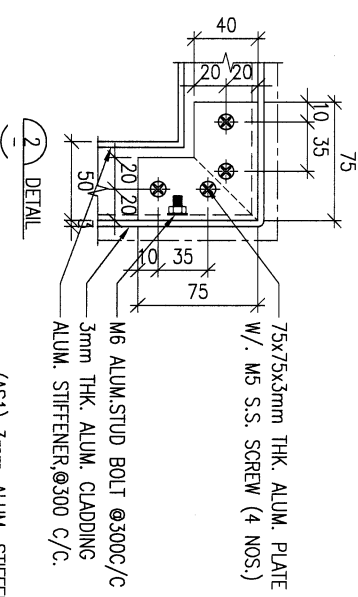
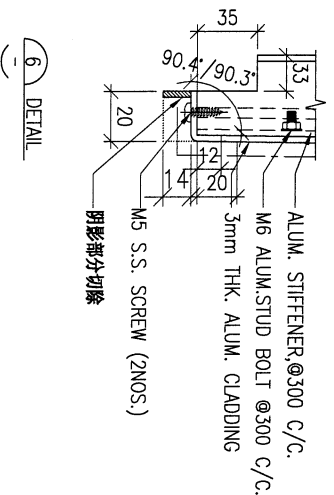
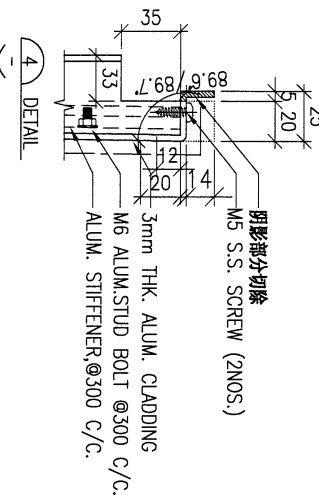
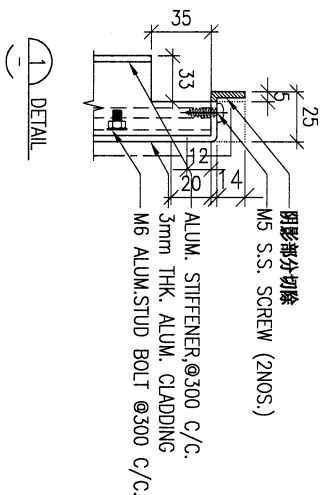
A

SECTION A-A



DWG. NO.		FW1-AP07AC		REV.		-		SCALE		-		DATE		22-03-2023		DRAWN BY		-		APPROVED BY	
----------	--	------------	--	------	--	---	--	-------	--	---	--	------	--	------------	--	----------	--	---	--	-------------	--

PROJECT				MATERIAL				COATING		COLOUR		MARK. NO.		QTY.	
YIN PING ROAD KOWLOON FEATURE WALL (PHASE 1)				细节放大图				-		-		-		-	
REV.	CHECKED BAR BY	PART NUMBER	Dim. A	Dim. B	Dim. C	Dim. D	Dim. E	Dim. F	Dim. G	Dim. H	QTY.	Inv. Code	ASSEMBLE ON PARTS		



DWG. NO.		REV.		SCALE		DATE		DRAWN BY		APPROVED BY	
DM01		-		-		01-04-2022		-		-	

8

PROJECT
YIN PING ROAD KOWLOON
FEATURE WALL (PHASE 1)

MATERIAL
3mm铝板

COATING
PVF2

COLOR
EC-DG-D334232-ZD1(SS-01)

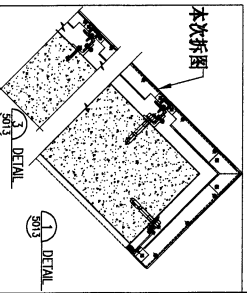
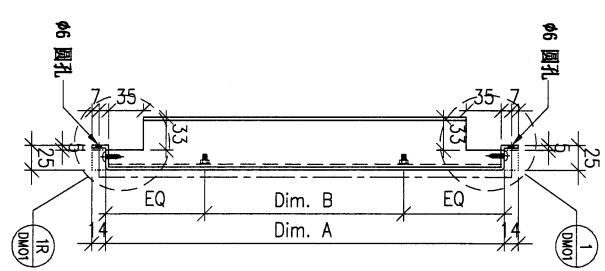
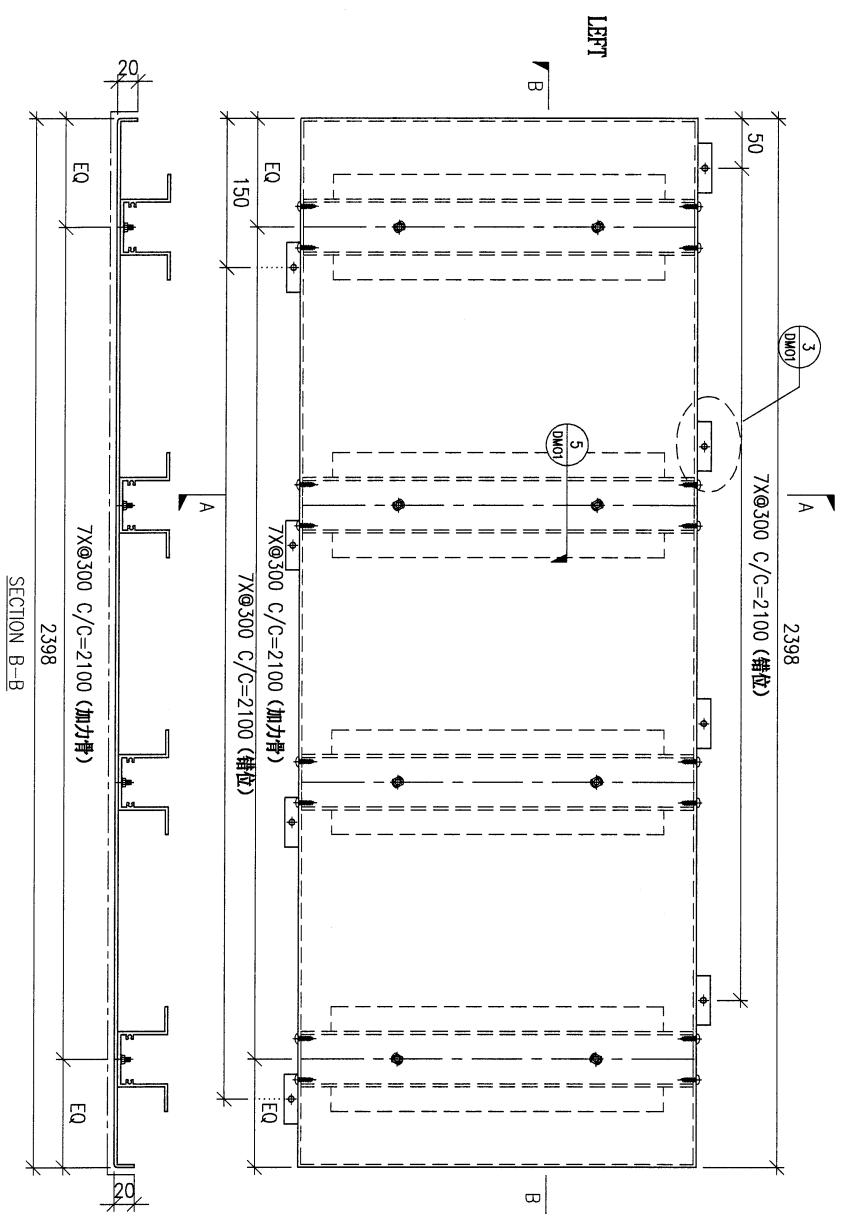
MARK. NO.
-

QTY.
-

CHKD BY	PART NUMBER	Dim. A	Dim. B	Dim. C	Dim. D	Dim. E	Dim. F	Dim. G	Dim. H	QTY.	Inv. Code	ASSEMBLE ON PARTS
-	FW1-AP10A	983	3x@250/c	-	-	-	-	-	-	12	-	-
-	FW1-AP10B	1103	4x@250/c	-	-	-	-	-	-	6	-	-
-	FW1-AP10C	1133	4x@250/c	-	-	-	-	-	-	1	-	-
-	FW1-AP10D	1003	3x@300/c	-	-	-	-	-	-	1	-	-
-	FW1-AP10E	1053	3x@300/c	-	-	-	-	-	-	3	-	-

注：地盤用

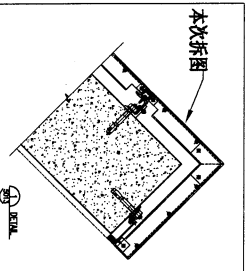
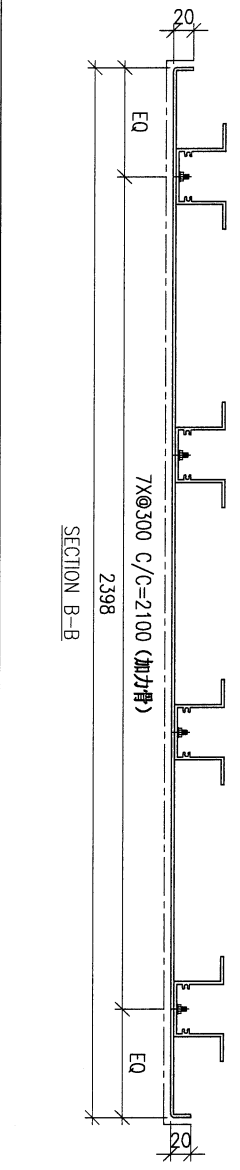
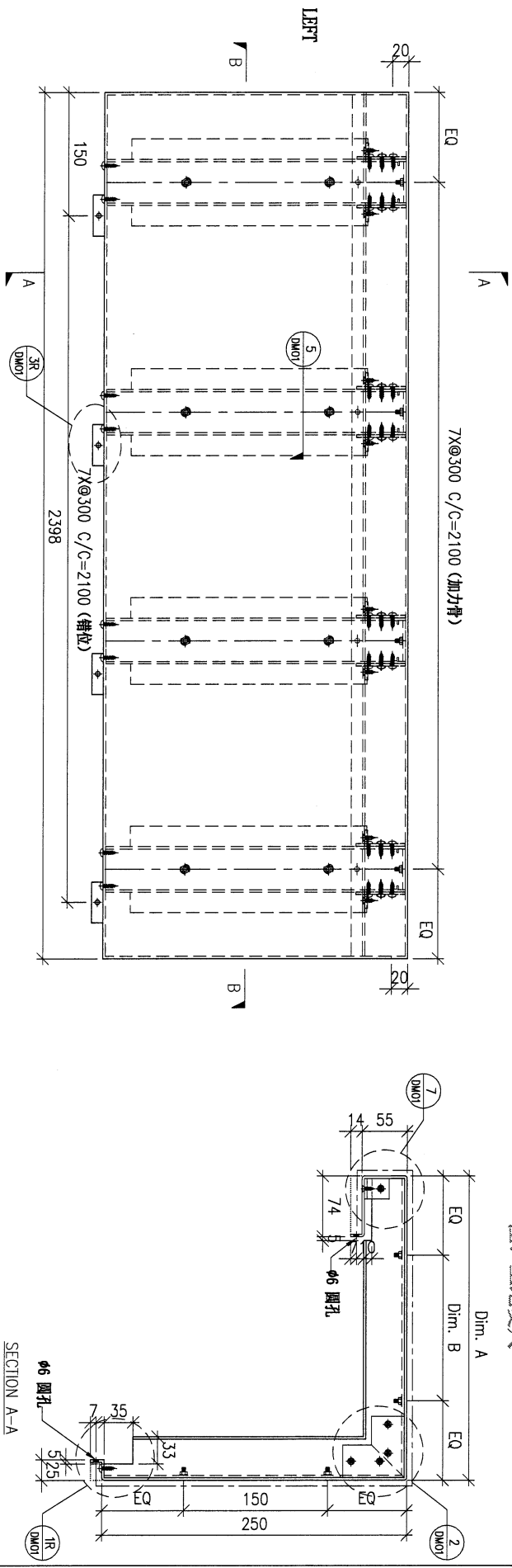
注：工地复尺



DWG. NO.	FW1-AP10	REV.	A	SCALE	-	DATE	01-04-2022	DRAWN BY	-	APPROVED BY	-
----------	----------	------	---	-------	---	------	------------	----------	---	-------------	---

PROJECT				MATERIAL				COATING				COLOUR		MARK. NO.		QTY.	
YIN PING ROAD KOWLOON FEATURE WALL (PHASE 1)				3mm铝板				PVF2				EC-DG-D334232-ZD1(SS-01)		-		-	
REV.	CHANGED BY	PART NUMBER	Dim. A	Dim. B	Dim. C	Dim. D	Dim. E	Dim. F	Dim. G	Dim. H	QTY.	Inv. Code	ASSEMBLE ON PARTS				
-		FW1-AP11A	810	2x@300c/c	-						18						
-		FW1-AP11B	830	2x@300c/c	-						4						
-		FW1-AP11C	890	2x@300c/c	-						4						
-		FW1-AP11D	840	2x@300c/c	-						1						

注：地盤用

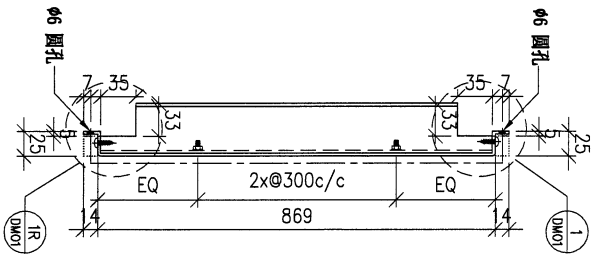
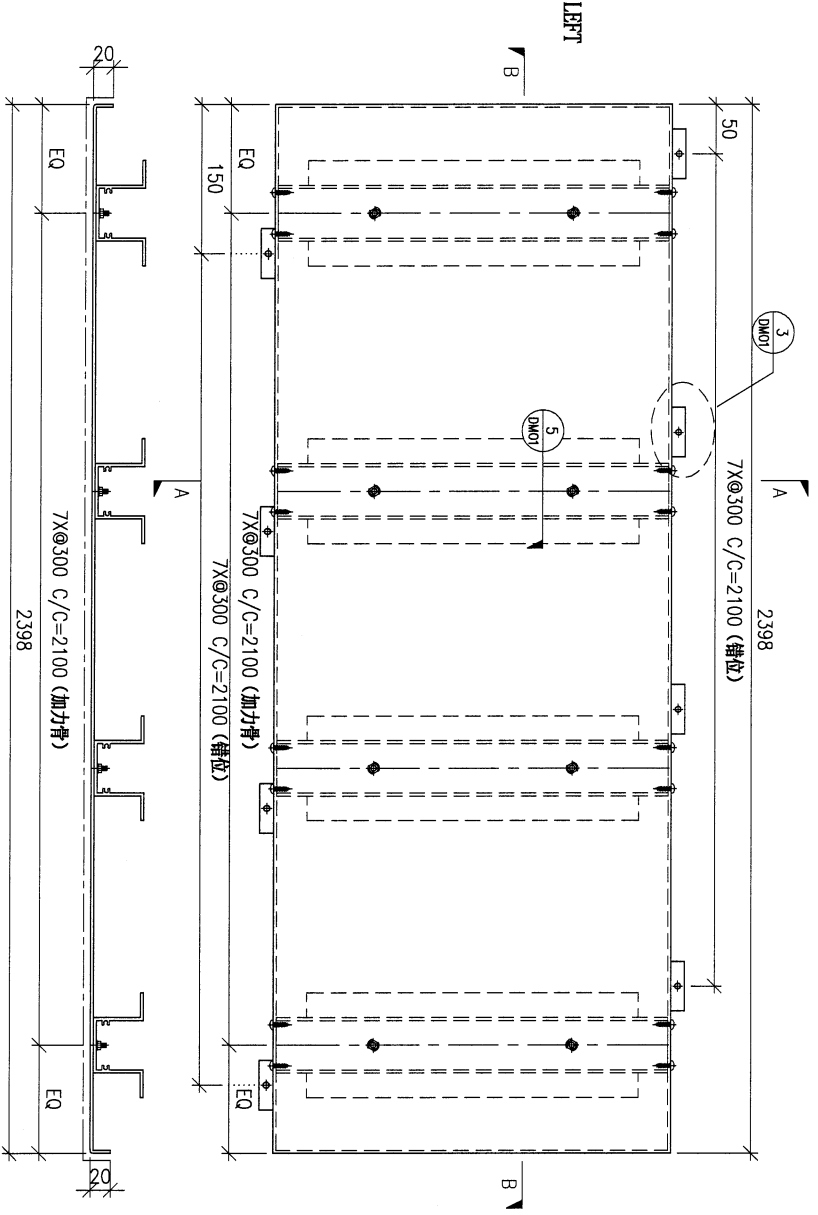


DWG. NO.	FW1-AP11	REV.	-	SCALE	-	DATE	01-04-2022	DRAWN BY	-	APPROVED BY	-
----------	----------	------	---	-------	---	------	------------	----------	---	-------------	---

10

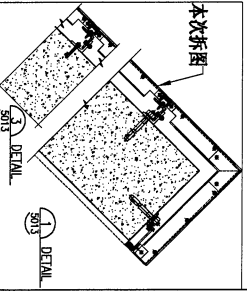
PROJECT				MATERIAL				COATING		COLOUR		MARK. NO.		QTY.	
YIN PING ROAD KOWLOON FEATURE WALL (PHASE 1)				3mm 铝板				PVF2		EC-DG-D334232-ZD1(SS-01)		-		-	
REV.	CHECKED DATE BY	PART NUMBER	Dim. A	Dim. B	Dim. C	Dim. D	Dim. E	Dim. F	Dim. G	Dim. H	QTY.	Inv. Code	ASSEMBLE ON PARTS		
-		FW1-AP13	-	-	-	-	-	-	-	-	8				
													注: 地盤用		

注: 工地复尺



SECTION B-B

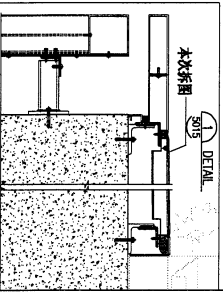
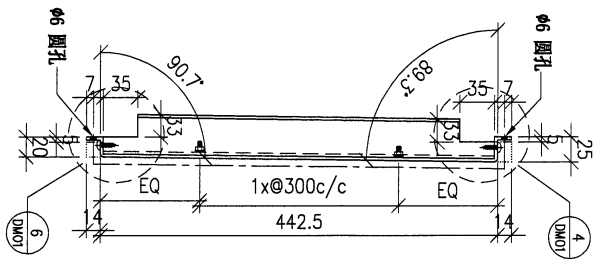
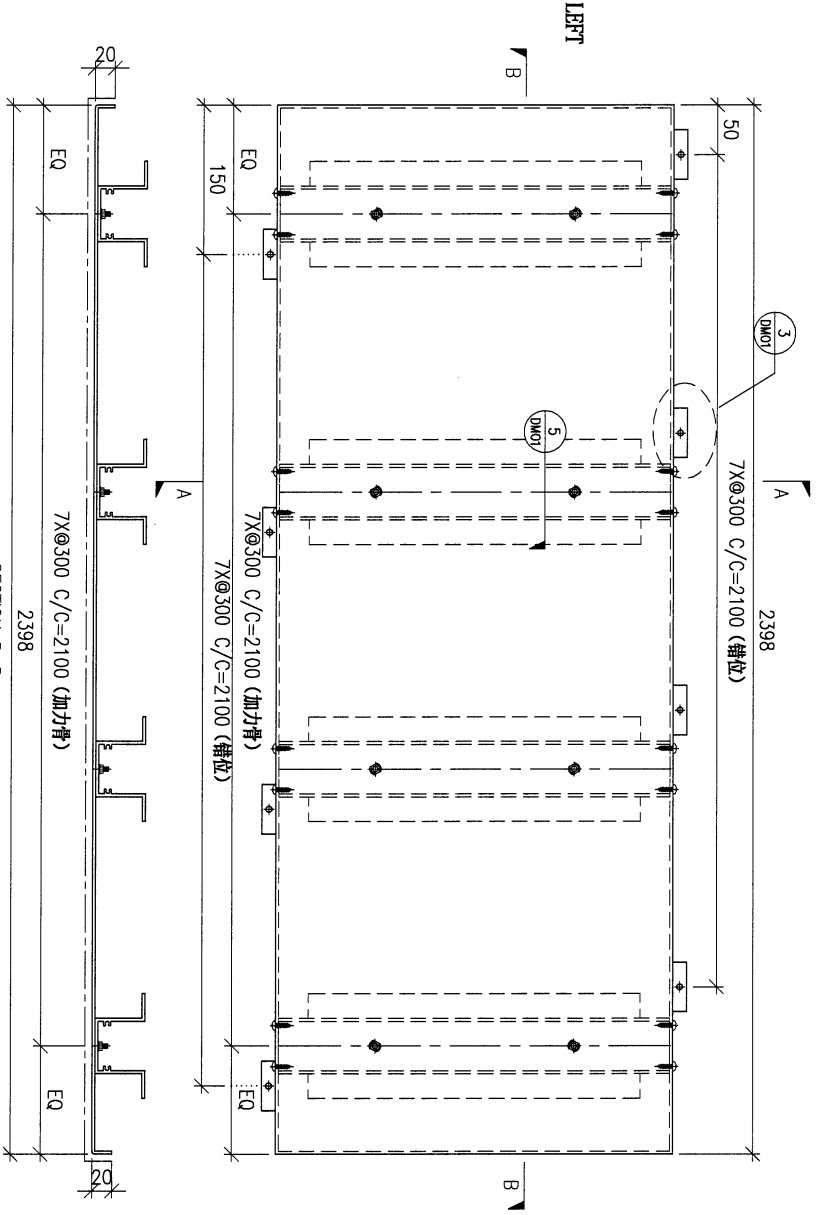
SECTION A-A



DWG. NO.		REV.		SCALE		DATE		DRAWN BY		APPROVED BY	
FW1-AP13		-		-		01-04-2022		-		-	

PROJECT				MATERIAL				COATING		COLOUR		MARK. NO.	QTY.
YIN PING ROAD KOWLOON FEATURE WALL (PHASE 1)				3mm铝板				PVF2		EC-DG-D334232-ZD1(SS-01)		-	-
REV.	CHECKED DATE BY	PART NUMBER	Dim. A	Dim. B	Dim. C	Dim. D	Dim. E	Dim. F	Dim. G	Dim. H	QTY.	Inv. Code	ASSEMBLE ON PARTS
-		FW1-AP14	-	-	-	-	-	-	-	-	2		
注：地盤用													

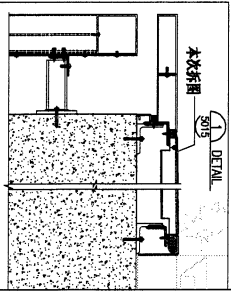
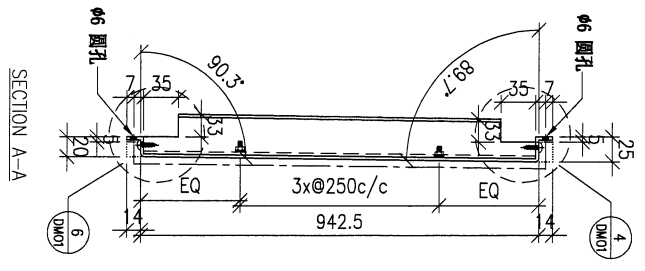
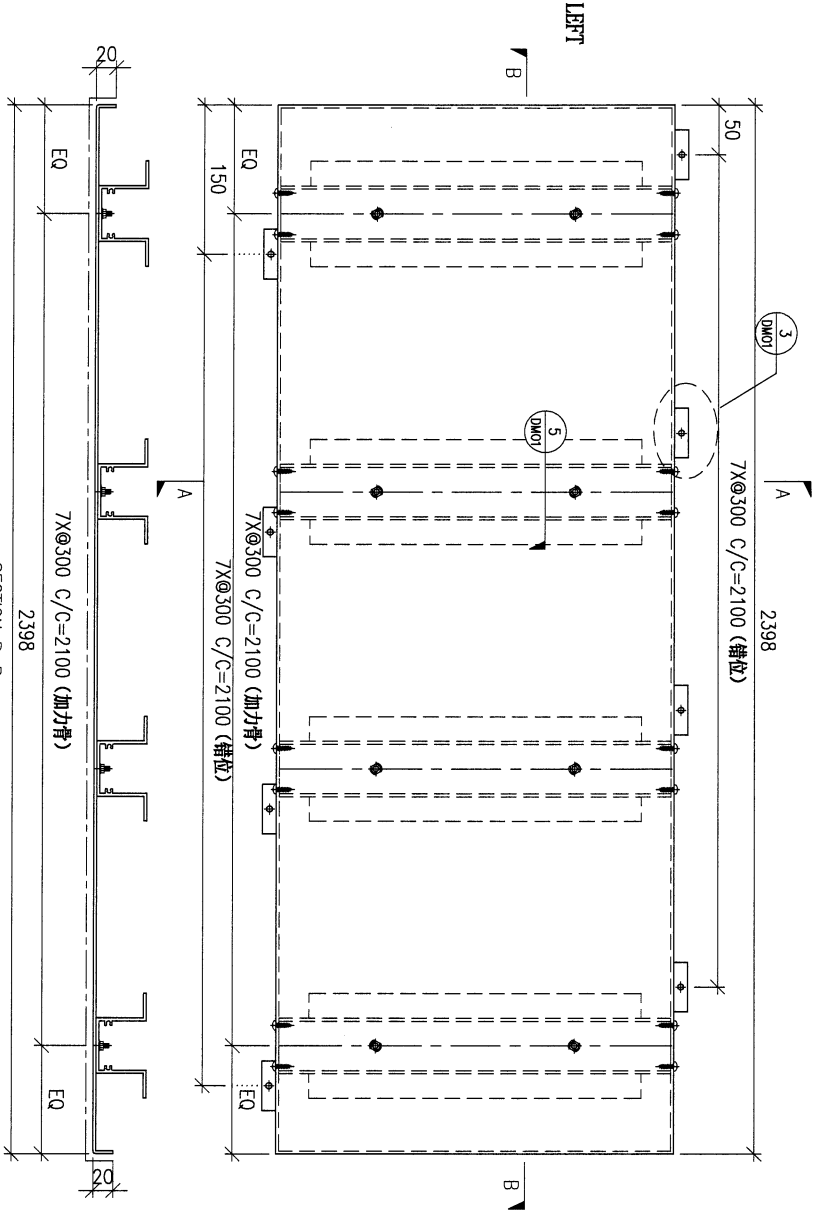
注：工地复尺



DWG. NO.		REV.		SCALE		DATE		DRAWN BY		APPROVED BY	
FW1-AP14		-		-		01-04-2022		-		-	

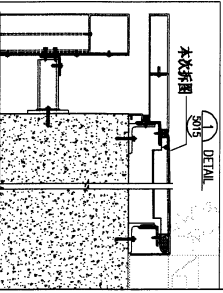
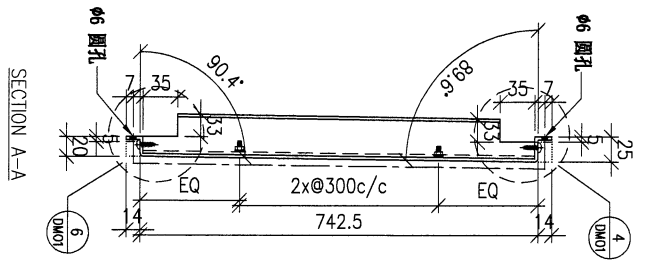
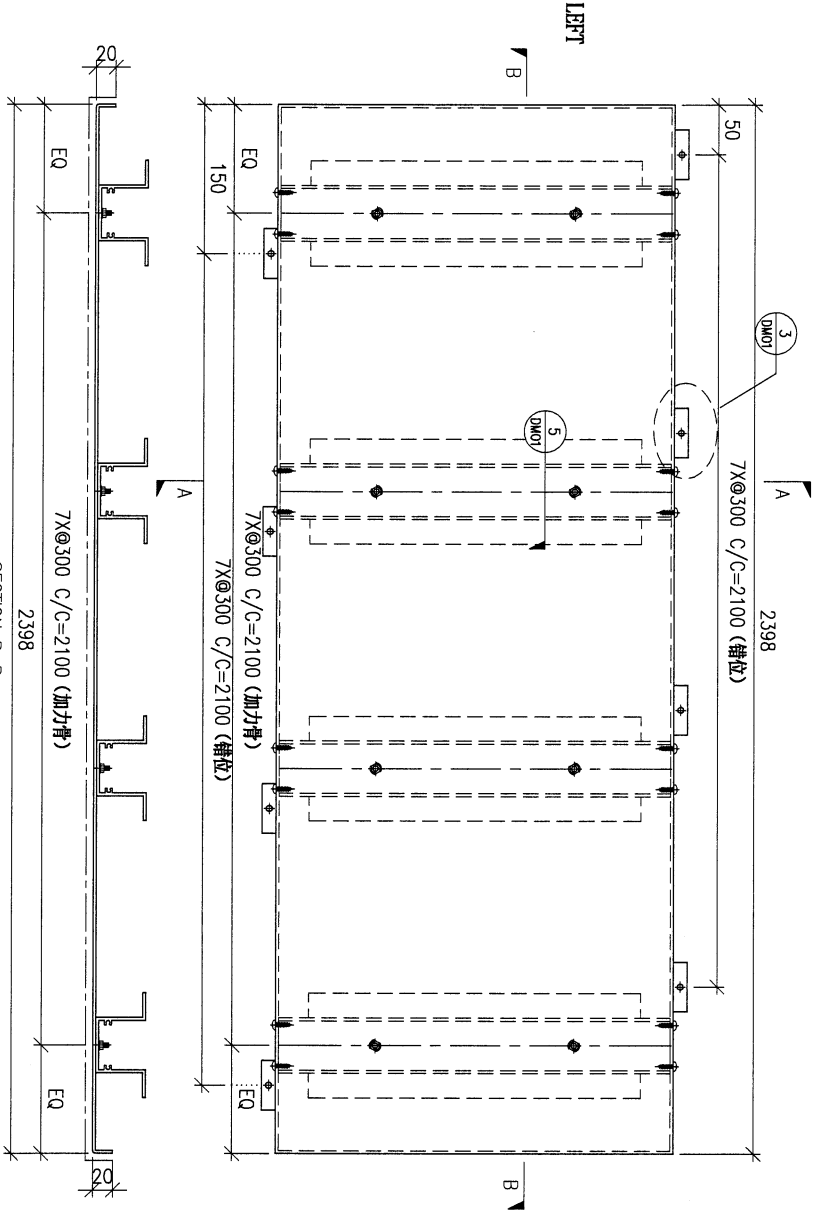
PROJECT				MATERIAL				COATING		COLOUR		MARK. NO.		QTY.	
YIN PING ROAD KOWLOON FEATURE WALL (PHASE 1)				3mm铝板				PVF2		EG-DG-D334232-ZD1(SS-01)		-		-	
REV.	CHECKED	PART NUMBER	Dim. A	Dim. B	Dim. C	Dim. D	Dim. E	Dim. F	Dim. G	Dim. H	QTY.	Inv. Code	ASSEMBLE ON PARTS		
-	BAR BY	FW1-AP15	-	-	-	-	-	-	-	-	4	-	注：地盤用		

注：工地复尺



DWG. NO.		REV.		SCALE		DATE		DRAWN BY		APPROVED BY	
FW1-AP15		-		-		01-04-2022		-		-	

PROJECT				MATERIAL				COATING		COLOUR		MARK. NO.		QTY.	
YIN PING ROAD KOWLOON FEATURE WALL (PHASE 1)				3mm铝板				PVF2		EG-DG-D334232-ZD1(SS-01)		-		-	
REV.	CHECKED BY	PART NUMBER	Dim. A	Dim. B	Dim. C	Dim. D	Dim. E	Dim. F	Dim. G	Dim. H	QTY.	Inv. Code	ASSEMBLE ON PARTS		
-		FW1-AP16	-	-	-	-	-	-	-	-	14				
													注：地盤用		

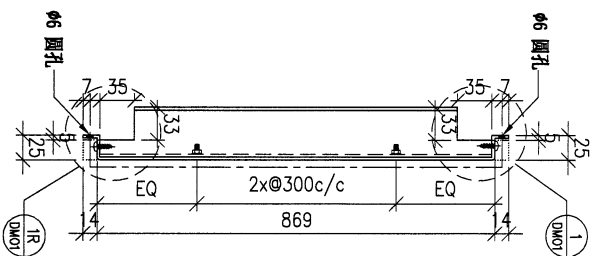
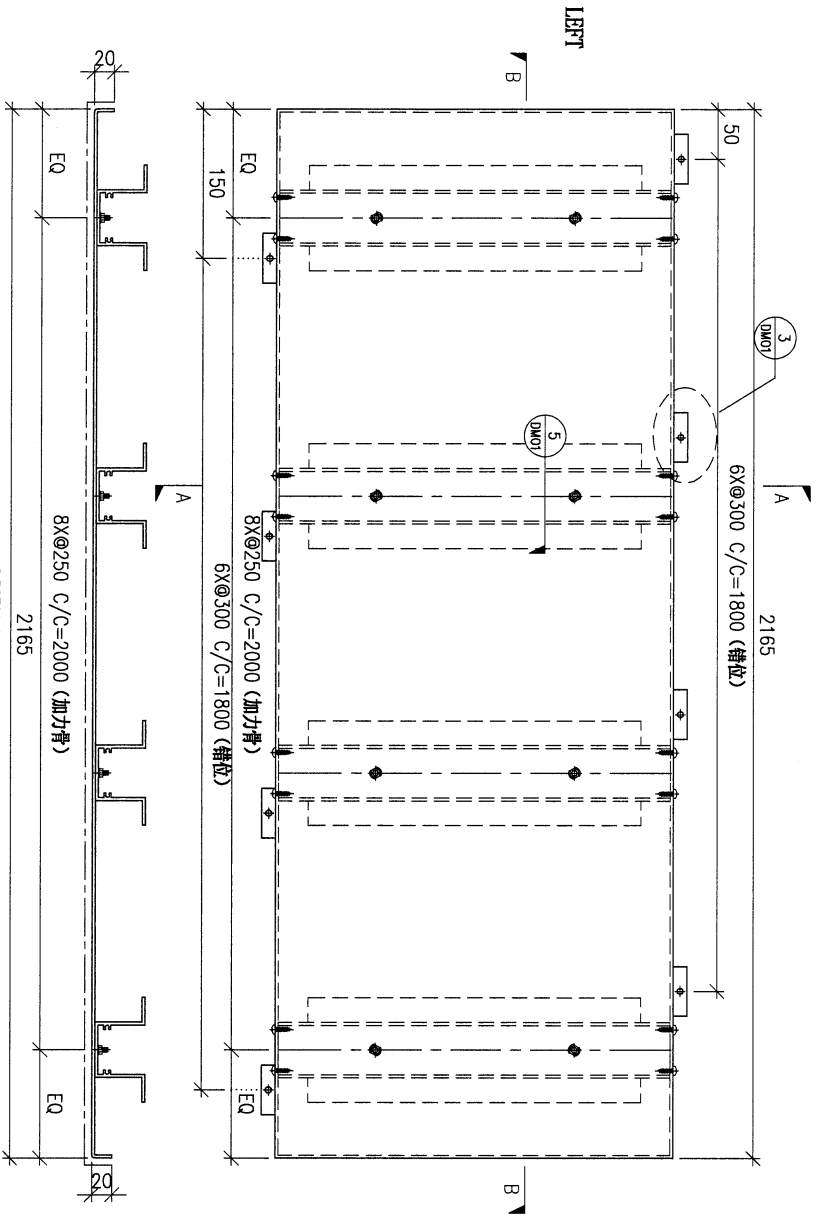


注：工地复尺

DWG. NO.		REV.		SCALE		DATE		DRAWN BY		APPROVED BY	
FW1-AP16		-		-		01-04-2022		-		-	

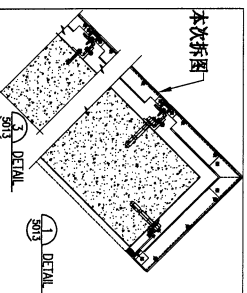
PROJECT YIN PING ROAD KOWLOON FEATURE WALL (PHASE 1)				MATERIAL 3mm铝板				COATING PVF2		COLOUR EC-DG-D334232-ZD1(SS-01)		MARK. NO. -	QTY. -
REV. CHKD DATE	PART NUMBER	Dim. A	Dim. B	Dim. C	Dim. D	Dim. E	Dim. F	Dim. G	Dim. H	QTY.	Inv. Code	ASSEMBLE ON PARTS	
-	FW1-AP17	-	-	-	-	-	-	-	-	2	-	注：地盤用	

注：工地复尺



SECTION B-B

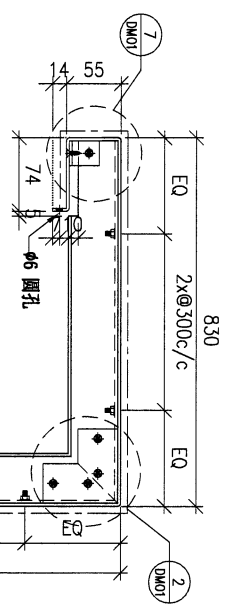
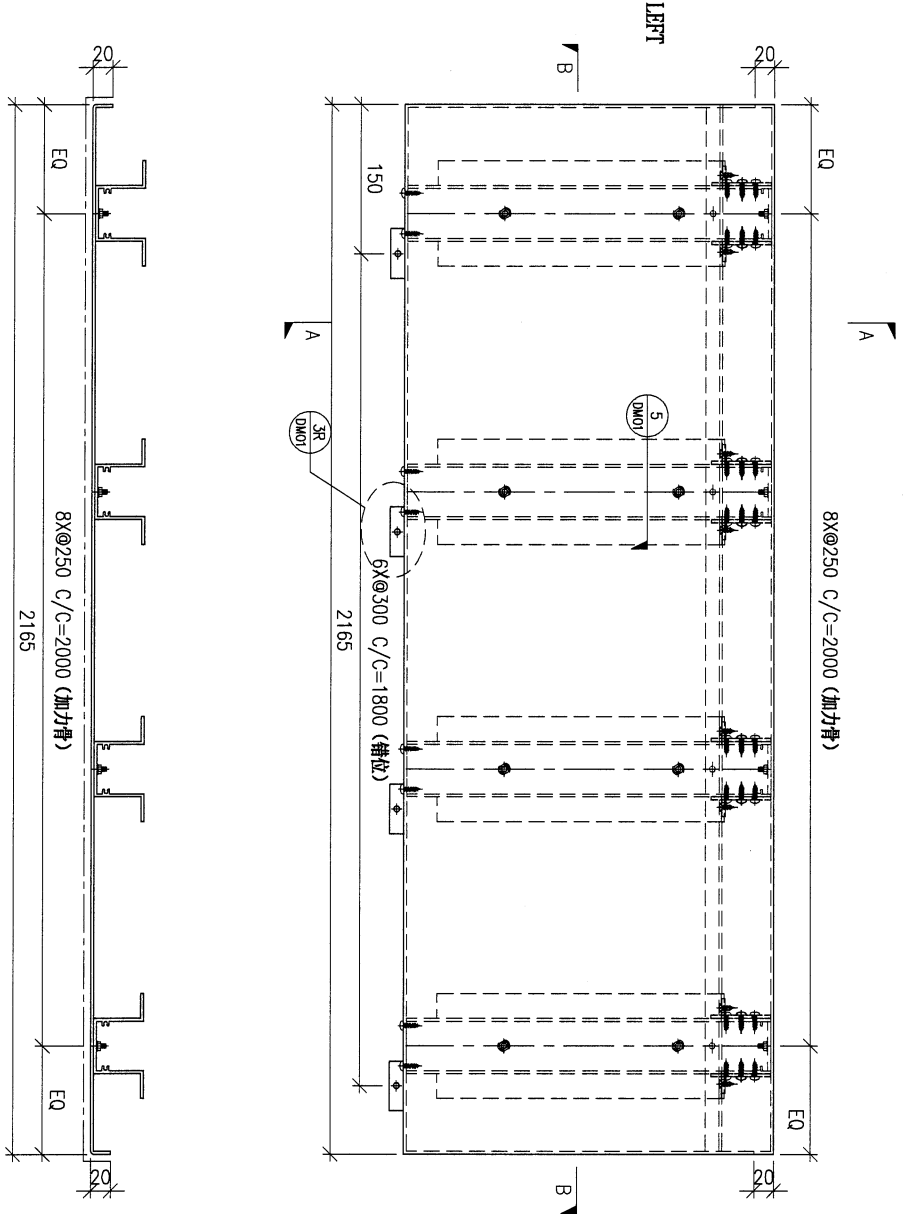
SECTION A-A



DWG. NO. FW1-AP17	REV. A	SCALE -	DATE 01-04-2022	DRAWN BY -	APPROVED BY
----------------------	-----------	------------	--------------------	---------------	-------------

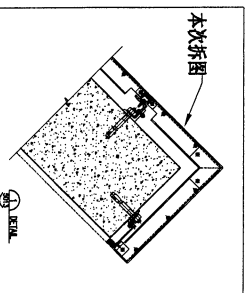
PROJECT				MATERIAL				COATING				COLOUR		MARK. NO.		QTY.	
YIN PING ROAD KOWILLOON FEATURE WALL (PHASE 1)				3mm铝板				PVF2				EC-DG-D334232-ZD1(SS-01)		-		-	
REV.	CHECKED BY	PART NUMBER	Dim. A	Dim. B	Dim. C	Dim. D	Dim. E	Dim. F	Dim. G	Dim. H	QTY.	Inv. Code	ASSEMBLE ON PARTS				
-		FW1-AP18	-	-	-	-	-	-	-	-	1						
													注: 地盤用				

注: 工地复尺



SECTION A-A

SECTION B-B



DWG. NO.		REV.		SCALE		DATE		DRAWN BY		APPROVED BY	
FW1-AP18		-		-		01-04-2022		-		-	

PROJECT
YIN PING ROAD KOWLOON
FEATURE WALL (PHASE 1)

MATERIAL
3mm铝板

COATING
PVF2

COLOUR
EC-DG-D334232-ZD1(SS-01)

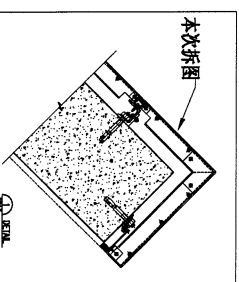
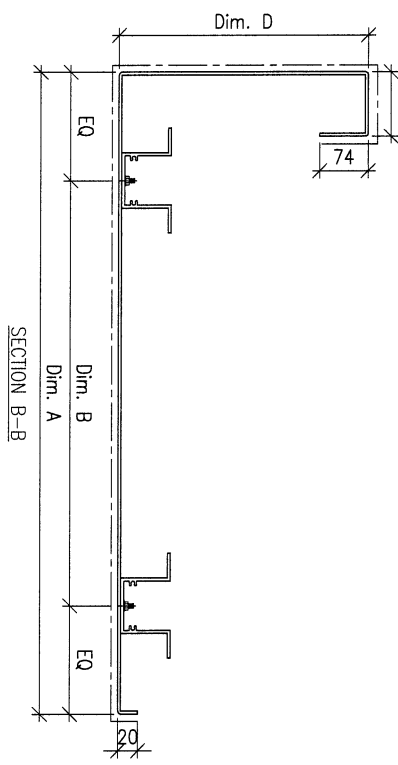
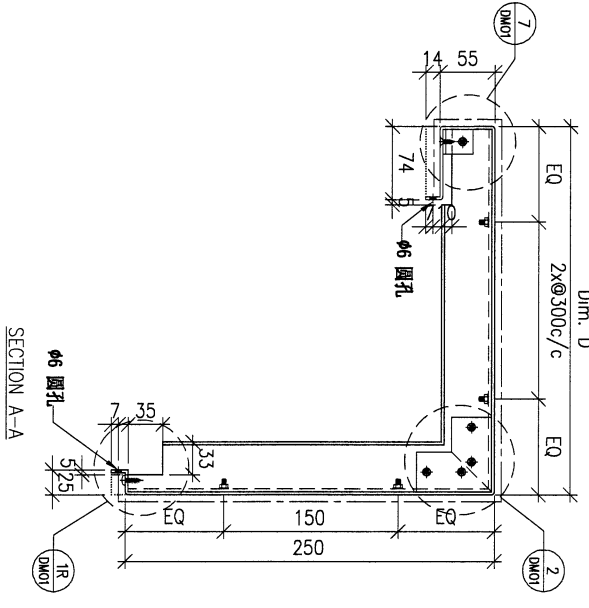
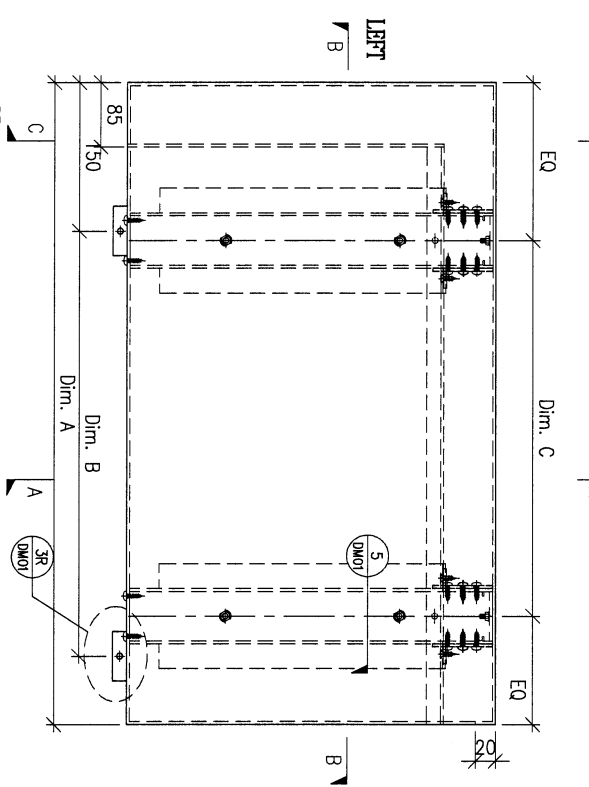
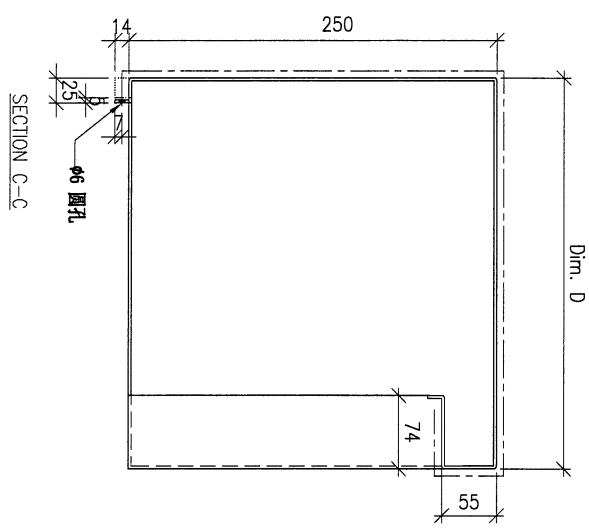
MARK. NO.
-

QTY.
-

REV.	CHECKED DATE BY	PART NUMBER	Dim. A	Dim. B	Dim. C	Dim. D	Dim. E	Dim. F	Dim. G	Dim. H	QTY.	Inv. Code	ASSEMBLE ON PARTS
-		FW1-AP21A	1860	5x@300c/c	6x@280c/c	810					1		
-		FW1-AP21B	2160	6x@300c/c	8x@250c/c	810					1		
-		FW1-AP21C	1655	4x@300c/c	4x@300c/c	840					1		

注：地盤用

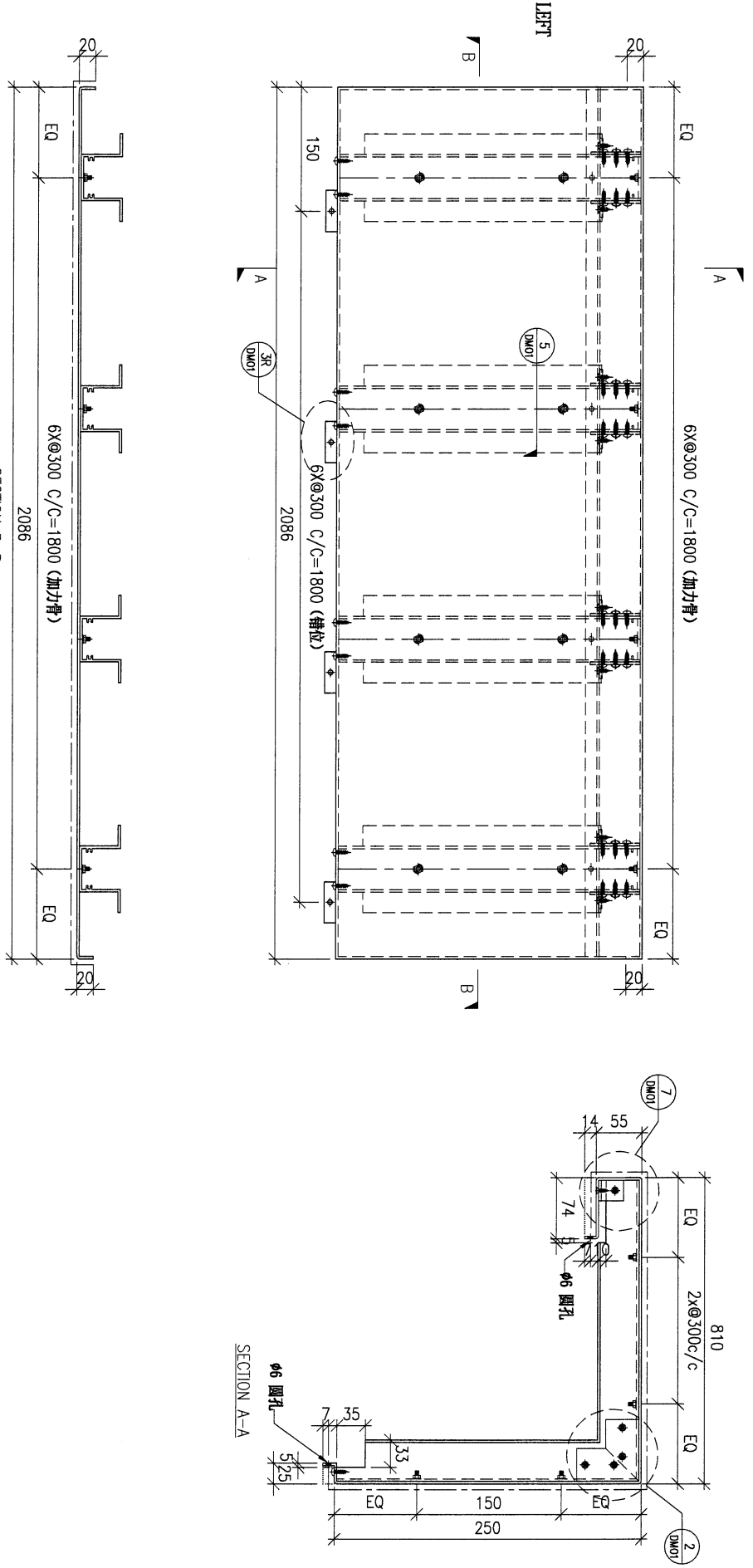
注：工地復尺
Dim. D



DWG. NO.	FW1-AP21	REV.	-	SCALE	-	DATE	01-04-2022	DRAWN BY	-	APPROVED BY	-
----------	----------	------	---	-------	---	------	------------	----------	---	-------------	---

PROJECT				MATERIAL				COATING				COLOUR		MARK. NO.		QTY.	
YIN PING ROAD KOWLOON FEATURE WALL (PHASE 1)				3mm鋁板				PVF2				EC-DG-D334232-ZD1(SS-01)		-		-	
REV.	CHANGED BY	PART NUMBER	Dim. A	Dim. B	Dim. C	Dim. D	Dim. E	Dim. F	Dim. G	Dim. H	QTY.	Inv. Code	ASSEMBLE ON PARTS				
-		MU-AP25	-	-	-	-	-	-	-	-	1		注: 地盤用				

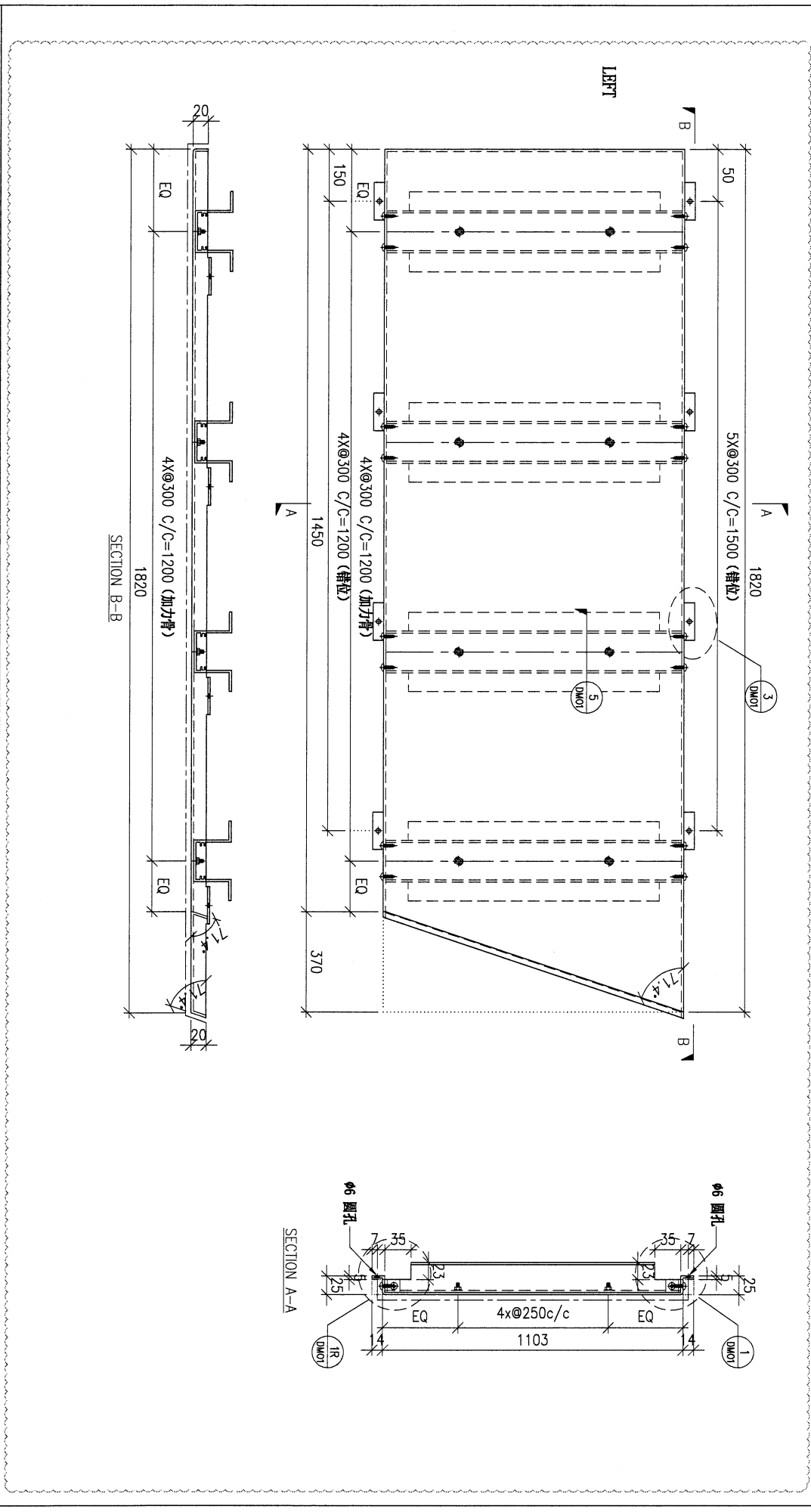
注: 工地复尺, 转角工厂试装



DWG. NO.		REV.		SCALE		DATE		DRAWN BY		APPROVED BY	
MU-AP25		A		-		01-04-2022		-		-	

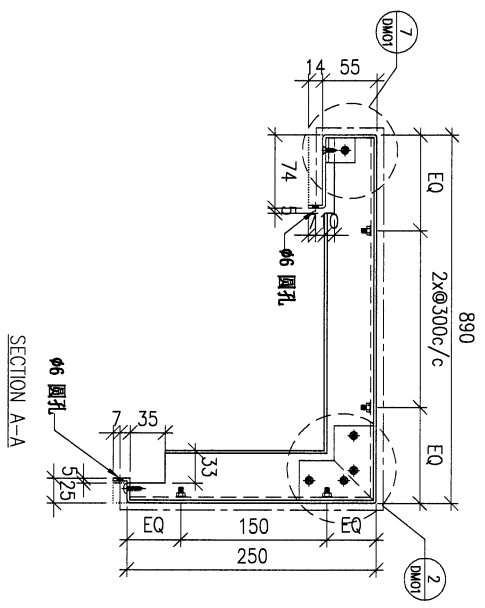
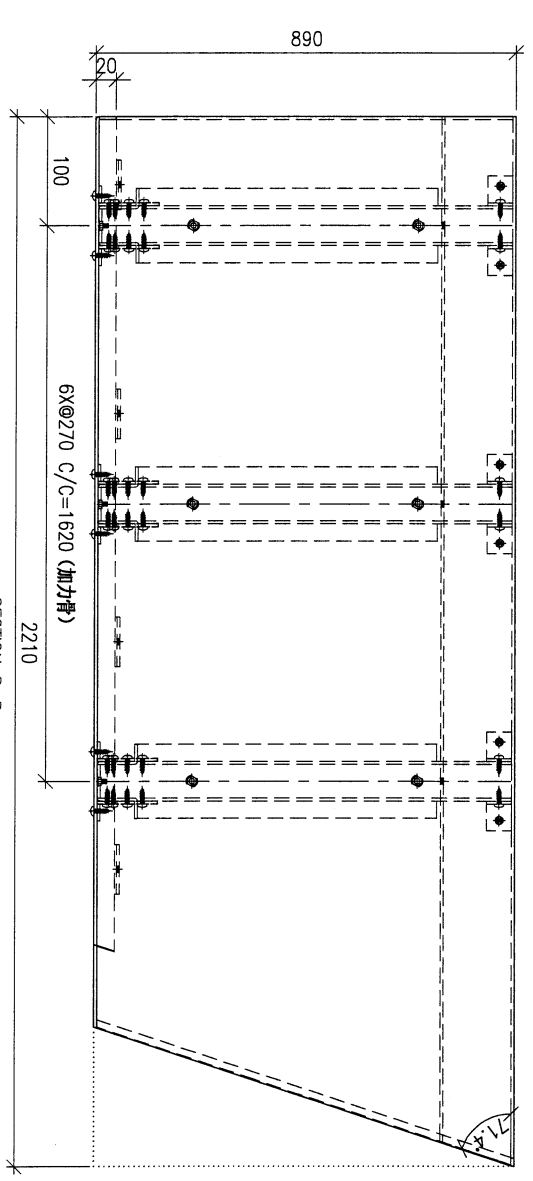
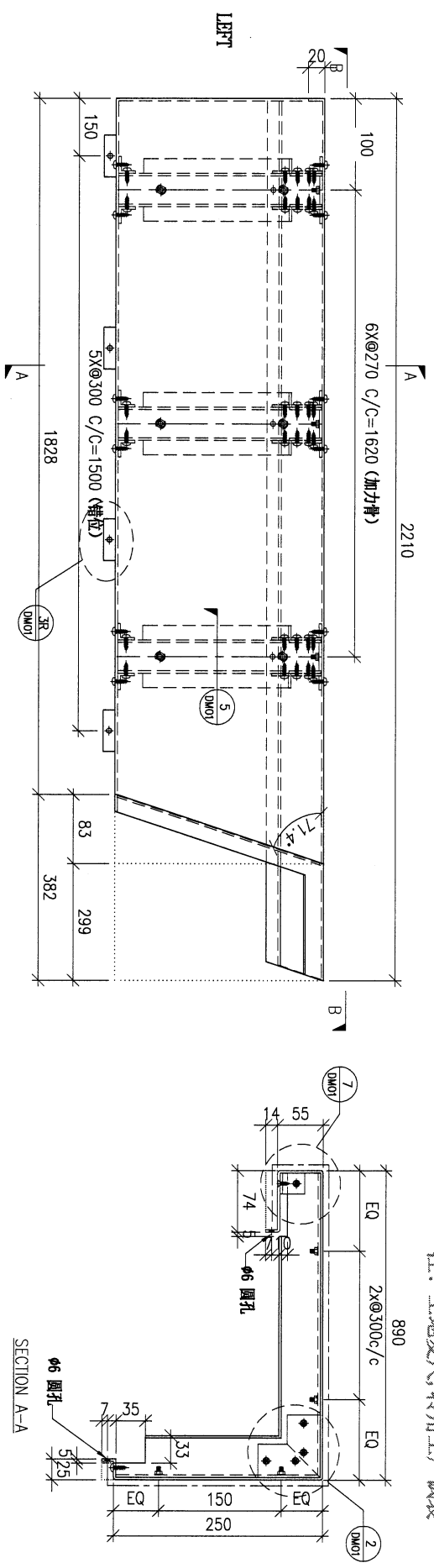
PROJECT				MATERIAL				COATING				COLOUR		MARK. NO.		QTY.	
YIN PING ROAD KOWILUON FEATURE WALL (PHASE 1)				3mm铝板				PVF2				EC-DG-D334232-ZD1(SS-01)		-		-	
REV.	CHANGED BY	PART NUMBER	Dim. A	Dim. B	Dim. C	Dim. D	Dim. E	Dim. F	Dim. G	Dim. H	QTY.	Inv. Code	ASSEMBLE ON PARTS				
-		MU-AP27	-	-	-	-	-	-	-	-	1						
													注: 地盤用				

注: 工地复尺, 转角工厂试装



DWG. NO.		REV.		SCALE		DATE		DRAWN BY		APPROVED BY	
MU-AP27		A		-		01-04-2022		-		-	

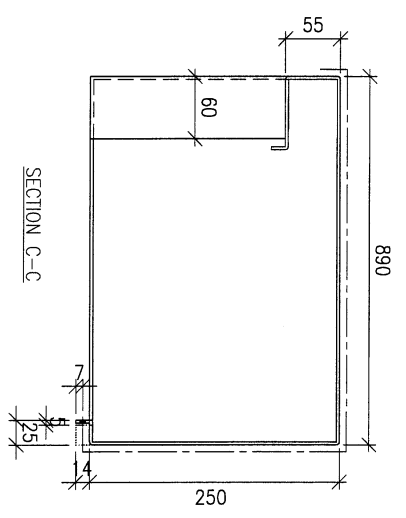
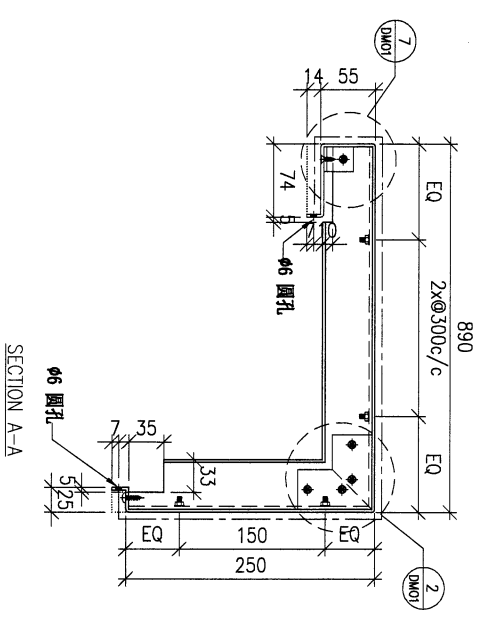
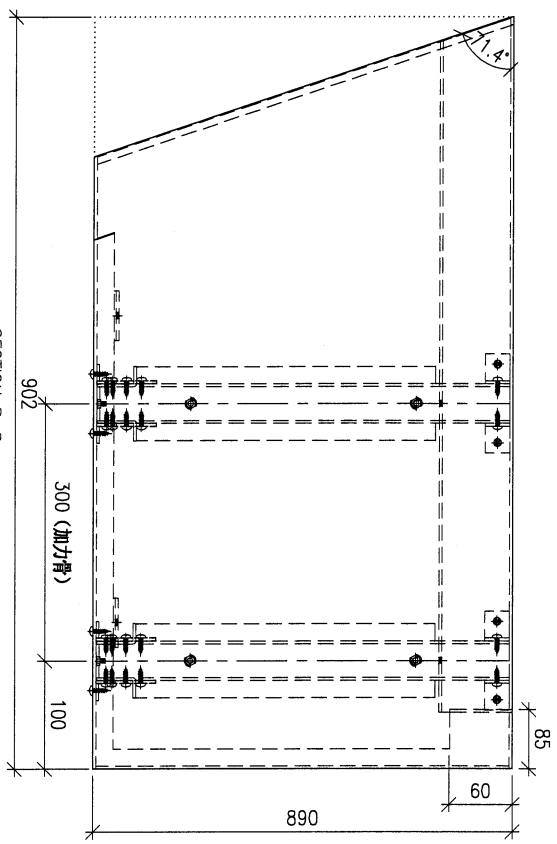
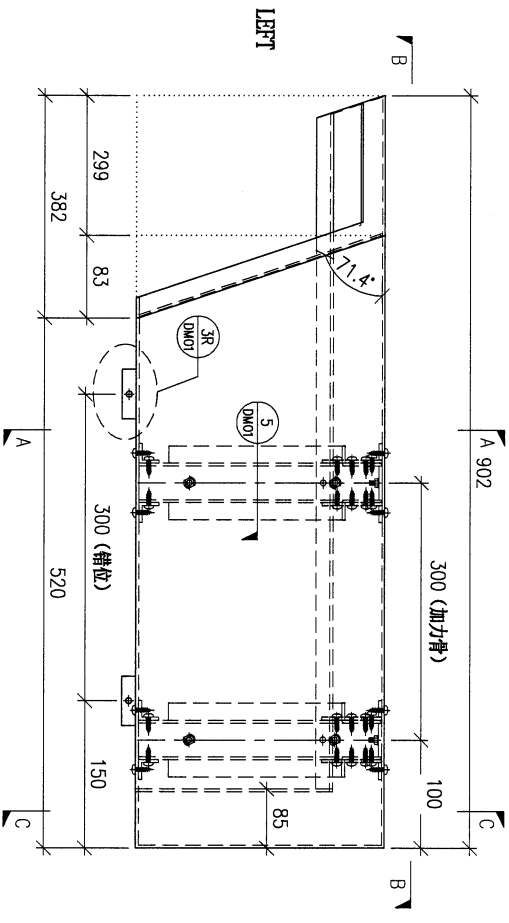
PROJECT				YIN PING ROAD KOWLOON FEATURE WALL (PHASE 1)				MATERIAL				3mm鋁板		COATING		PVF2		COLOUR		EC-DG-D334232-ZD1(SS-01)		MARK. NO.		-		QTY.		-	
REV.	CHANGED BY	PART NUMBER	Dim. A	Dim. B	Dim. C	Dim. D	Dim. E	Dim. F	Dim. G	Dim. H	QTY.	Inv. Code	ASSEMBLE ON PARTS				注：地盤用												
-		MU-AP29	-	-	-	-	-	-	-	-	1																		



注：工地復尺，轉角工 試裝

DWG. NO.		MU-AP29		REV.		A		SCALE		-		DATE		01-04-2022		DRAWN BY		-		APPROVED BY		-	
SECTION B-B																							

PROJECT				MATERIAL				COATING				COLOUR		MARK. NO.		QTY.	
YIN PING ROAD KOWLOON FEATURE WALL (PHASE 1)				3mm鋅板				PVF2				EC-DG-D334232-ZD1(SS-01)		-		-	
REV.	CHECKED BY	PART NUMBER	Dim. A	Dim. B	Dim. C	Dim. D	Dim. E	Dim. F	Dim. G	Dim. H	QTY.	Inv. Code	ASSEMBLE ON PARTS				
-		MU-AP30	-	-	-	-	-	-	-	-	1		注：地盤用				



注：新增圖紙

注：地盤用

DWG. NO.		REV.		SCALE		DATE		DRAWN BY		APPROVED BY	
MU-AP30		-		-		01-04-2022		-		-	

55

PROJECT
YIN PING ROAD KOWLOON
FEATURE WALL (PHASE 1)

MATERIAL
3mm铝板

COATING
PVF2

COLOUR
EC-DG-D334232-ZD1(SS-01)

MARK. NO.
-

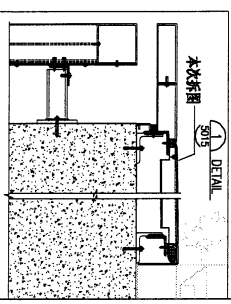
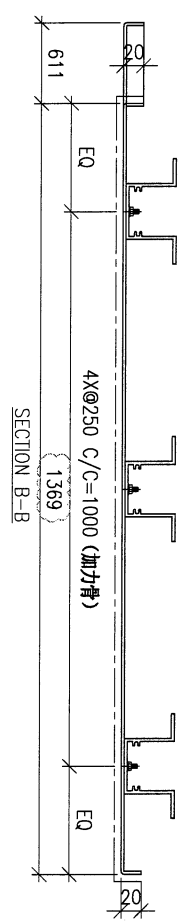
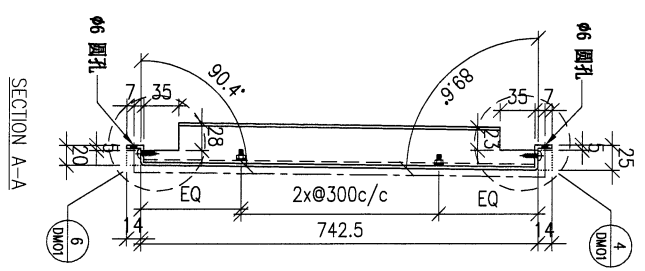
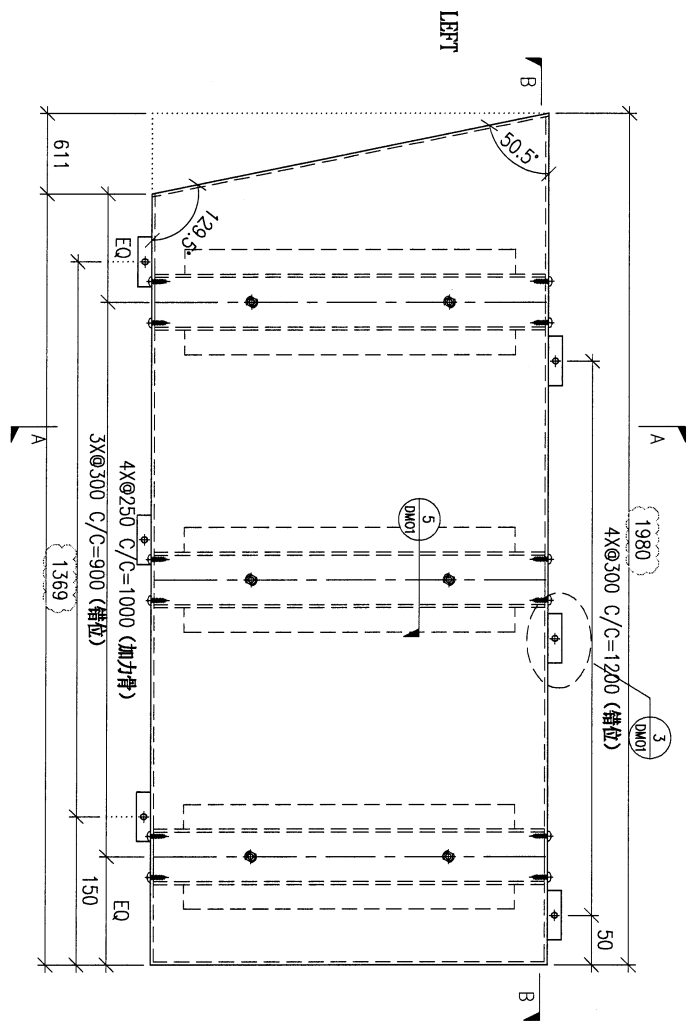
QTY.
-

REV.	CHECKED DATE BY	PART NUMBER	Dim. A	Dim. B	Dim. C	Dim. D	Dim. E	Dim. F	Dim. G	Dim. H	QTY.	Inv. Code
-		FW1-AP32	-	-	-	-	-	-	-	-	1	

ASSEMBLE ON PARTS

注：地盤用

注：工地复尺



DWG. NO.	FW1-AP32	REV.	A	SCALE	-	DATE	01-04-2022	DRAWN BY	-	APPROVED BY	-
----------	----------	------	---	-------	---	------	------------	----------	---	-------------	---