

工程指示 / 要求簡箋 ENGINEER INSTRUCTIONS(E.I.)

工程指示編號:	EI- 6295	修改版本:	-
	HK-1245		
工程編號:	J 853	工程名稱:	延坪道
收件人:	生統	發件人:	Joe Chan
工程項目:	Feature Wall 項目 廠用鋁板生產	日期:	1/6/2023

<input checked="" type="checkbox"/> 原合約工程包	<input type="checkbox"/> 原合約工程加 / 減脹 QT-	<input type="checkbox"/> 新工程報價 QT-
--------------------------------------------	------------------------------------------	------------------------------------

信件批核號碼/圖紙參考編號:	批核模具圖紙編號:
客戶指示附件:	管理內部批簽署:

<input type="checkbox"/> 初步鋁料 B.M.	<input type="checkbox"/> 加工拆圖, 然後生產	<input type="checkbox"/> 尺寸表
<input type="checkbox"/> 正式鋁料 B.M.	<input type="checkbox"/> 技術上資料/指示	<input type="checkbox"/> 報價
<input type="checkbox"/> 配件 B.M.	<input type="checkbox"/> 樣辦或貨品說明書	<input type="checkbox"/> 分判合約
<input type="checkbox"/> 其他:		

內容: 請依附件資料, 生產鋁板
(用於 EI6294 & EI 6293 之鋁料組裝)
(1+36員)

完成上列要求日期: 15/6/2023 ASAP

國內

<input type="checkbox"/> 生產技術總監	<input type="checkbox"/> 連附件	<input type="checkbox"/> 技術部	<input type="checkbox"/> 連附件	<input type="checkbox"/> 生產部	<input type="checkbox"/> 連附件
<input type="checkbox"/> 採購部	<input type="checkbox"/> 連附件	<input checked="" type="checkbox"/> 生產統籌部	<input checked="" type="checkbox"/> 連附件	<input type="checkbox"/> 報關組	<input type="checkbox"/> 連附件
<input type="checkbox"/> 質檢部	<input type="checkbox"/> 連附件	<input type="checkbox"/> 會計部	<input type="checkbox"/> 連附件	<input type="checkbox"/> 機械設計部	<input type="checkbox"/> 連附件
<input type="checkbox"/> 香港辦	<input type="checkbox"/> 連附件	<input type="checkbox"/> 其他:			

香港

<input type="checkbox"/> 行政部	<input type="checkbox"/> 連附件	<input type="checkbox"/> 會計部	<input type="checkbox"/> 連附件	<input type="checkbox"/> 統籌部	<input type="checkbox"/> 連附件	<input type="checkbox"/> 工程部	<input type="checkbox"/> 連附件
<input type="checkbox"/> 採購部	<input type="checkbox"/> 連附件	<input type="checkbox"/> QS部	<input type="checkbox"/> 連附件	<input type="checkbox"/> 地盤管理	<input type="checkbox"/> 連附件	<input type="checkbox"/> 維修部	<input type="checkbox"/> 連附件


*發件人簽署:		*組別成員批核簽署:	
傳遞編號:	HK 1245/23	項目經理簽署:	

廠用鋁板B.M.表

序號	修改內容	鋁板圖號	鋁板名稱	顏色	實用	後備	總數	總重量	180.790		總重量:	1180.35	圖紙編號
									單件展開面積	總展開面積			
BM編號:													A/C Code:
修改版次:													A/C Code:
工程號: J-853				計算: ming				日期: 2023.05.30				送呈: JOE	
地盤名稱: 廷坪路				核對:				日期:				副本:	
項目類別: 特征牆(1區)				批准:				日期:					
1		FW1-AP01	3mm厚鋁板	EC-DG-D334232-ZD1 (SS-01)	20	0	20	141.704	0.871	17.430	0.871	17.430	
2		FW1-AP02	3mm厚鋁板	EC-DG-D334232-ZD1 (SS-01)	27	0	27	161.208	0.734	19.829	0.734	19.829	
3		FW1-AP03	3mm厚鋁板	EC-DG-D334232-ZD1 (SS-01)	5	0	5	32.242	0.793	3.966	0.793	3.966	
4		FW1-AP04A	3mm厚鋁板	EC-DG-D334232-ZD1 (SS-01)	1	0	1	6.610	0.813	0.813	0.813	0.813	
5		FW1-AP04B	3mm厚鋁板	EC-DG-D334232-ZD1 (SS-01)	1	0	1	7.341	0.903	0.903	0.903	0.903	
6		FW1-AP04C	3mm厚鋁板	EC-DG-D334232-ZD1 (SS-01)	1	0	1	6.183	0.761	0.761	0.761	0.761	
7		FW1-AP05A	3mm厚鋁板	EC-DG-D334232-ZD1 (SS-01)	1	0	1	4.818	0.593	0.593	0.593	0.593	
8		FW1-AP06A	3mm厚鋁板	EC-DG-D334232-ZD1 (SS-01)	1	0	1	5.378	0.662	0.662	0.662	0.662	
9		FW1-AP08	3mm厚鋁板	EC-DG-D334232-ZD1 (SS-01)	1	0	1	5.185	0.638	0.638	0.638	0.638	
10		FW1-AP09	3mm厚鋁板	EC-DG-D334232-ZD1 (SS-01)	1	0	1	3.968	0.488	0.488	0.488	0.488	
11		FW1-AP50	3mm厚鋁板	EC-DG-D334232-ZD1 (SS-01)	1	0	1	4.061	0.499	0.499	0.499	0.499	
12		FW1-AP51	3mm厚鋁板	EC-DG-D334232-ZD1 (SS-01)	1	0	1	3.418	0.420	0.420	0.420	0.420	
13		FKP-M01	2mm厚鋁板	EC-DG-D334232-ZD1 (SS-01)	120	0	120	7.317	0.008	0.900	0.008	0.900	
14		FKP-M02	2mm厚鋁板	EC-DG-D334232-ZD1 (SS-01)	2	0	2	0.136	0.008	0.017	0.008	0.017	
15		FKP-M03	2mm厚鋁板	EC-DG-D334232-ZD1 (SS-01)	1	0	1	0.046	0.006	0.006	0.006	0.006	
16		FKP-M04	2mm厚鋁板	TUC106699FXLJBA-3 (SS-03)	540	0	540	43.902	0.010	5.400	0.010	5.400	
17		FKP-M05	2mm厚鋁板	TUC106699FXLJBA-3 (SS-03)	84	0	84	6.897	0.010	0.848	0.010	0.848	
18		FKP-M06	2mm厚鋁板	EC-DG-D334232-ZD1 (SS-01)	100	0	100	4.065	0.005	0.500	0.005	0.500	
19		FKP-M07	2mm厚鋁板	EC-DG-D334232-ZD1 (SS-01)	10	0	10	0.413	0.005	0.051	0.005	0.051	
20		FKP-M08	2mm厚鋁板	EC-DG-D334232-ZD1 (SS-01)	1	0	1	0.044	0.005	0.005	0.005	0.005	
21		AP-G01	2mm厚鋁板	鍍化	45	0	45	3.329	0.009	0.410	0.000	0.000	
22		AP-G50	3mm厚鋁板	鍍化	260	0	260	4.228	0.002	0.520	0.000	0.000	

①

2

 美特鋁質有限公司 MTDI Aluminum Fabricator Ltd.	工程號: J-853	計算: ming	日期: 2023.05.30	送呈: JOE
	地盤名稱: 廷坪路	核對:	日期:	副本:
廠用鋁板B.M.表	項目類別: 特征牆(1區)	批准:	日期:	

序號	修改內容	鋁板圖號	鋁板名稱	顏色	實用	後備	總數	總重量	180.790		總重量: 1180.35	圖紙編號	
									單件展開面積	總展開面積			單件V.F.
BM編號:									修改版次:		A/C Code:	總V.F.:	
23		AP-G51	3mm厚鋁板	EC-DG-D334232-ZD1 (SS-01)	6	0	6	58.843	1.206	7.238	1.206	7.238	
24		AP-G52	3mm厚鋁板	EC-DG-D334232-ZD1 (SS-01)	6	0	6	74.954	1.537	9.219	1.537	9.219	
25		AP-G55	3mm厚鋁板	EC-DG-D334232-ZD1 (SS-01)	42	0	42	357.155	1.569	65.896	1.569	65.896	
26		AP-G57	3mm厚鋁板	EC-DG-D334232-ZD1 (SS-01)	12	0	12	82.499	1.268	15.221	1.268	15.221	
27		AP-G58	3mm厚鋁板	EC-DG-D334232-ZD1 (SS-01)	8	0	8	66.626	1.537	12.293	1.537	12.293	
28		AP-G60	3mm厚鋁板	EC-DG-D334232-ZD1 (SS-01)	4	0	4	14.817	0.683	2.734	0.683	2.734	
29		AP-G63	3mm厚鋁板	EC-DG-D334232-ZD1 (SS-01)	1	0	1	9.032	1.666	1.666	1.666	1.666	
30		AP-G64	3mm厚鋁板	EC-DG-D334232-ZD1 (SS-01)	1	0	1	9.720	1.793	1.793	1.793	1.793	
31		AP-G65	3mm厚鋁板	EC-DG-D334232-ZD1 (SS-01)	1	0	1	11.244	2.074	2.074	2.074	2.074	
32		AP-G66	3mm厚鋁板	EC-DG-D334232-ZD1 (SS-01)	1	0	1	12.472	2.301	2.301	2.301	2.301	
33		AP-G67	3mm厚鋁板	EC-DG-D334232-ZD1 (SS-01)	1	0	1	5.647	1.042	1.042	1.042	1.042	
34		AP-G68	3mm厚鋁板	EC-DG-D334232-ZD1 (SS-01)	1	0	1	6.875	1.268	1.268	1.268	1.268	
35		AP-G69	3mm厚鋁板	EC-DG-D334232-ZD1 (SS-01)	1	0	1	8.373	1.545	1.545	1.545	1.545	
36		AP-G70	3mm厚鋁板	EC-DG-D334232-ZD1 (SS-01)	1	0	1	9.601	1.771	1.771	1.771	1.771	
37													
38													
39													
總計:					1310	0	1310	1180	30	182	29	181	

PROJECT
YIN PING ROAD KOWLOON
FEATURE WALL (PHASE 1)

MATERIAL
3mm 铝板

COATING
PVF2

COLOUR
EC-DG-D334232-ZD1(SS-01)

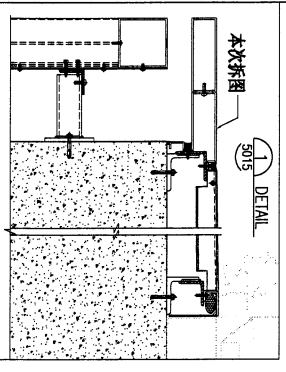
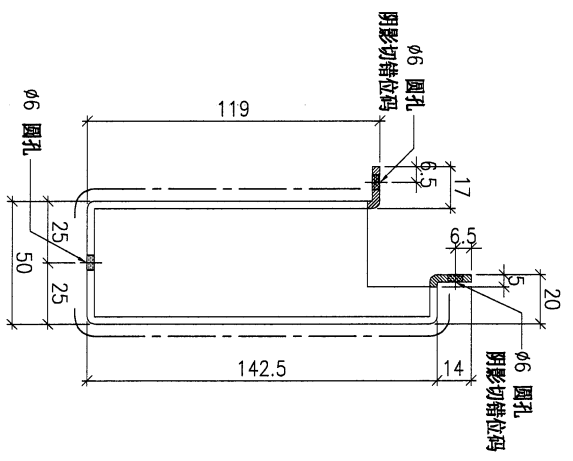
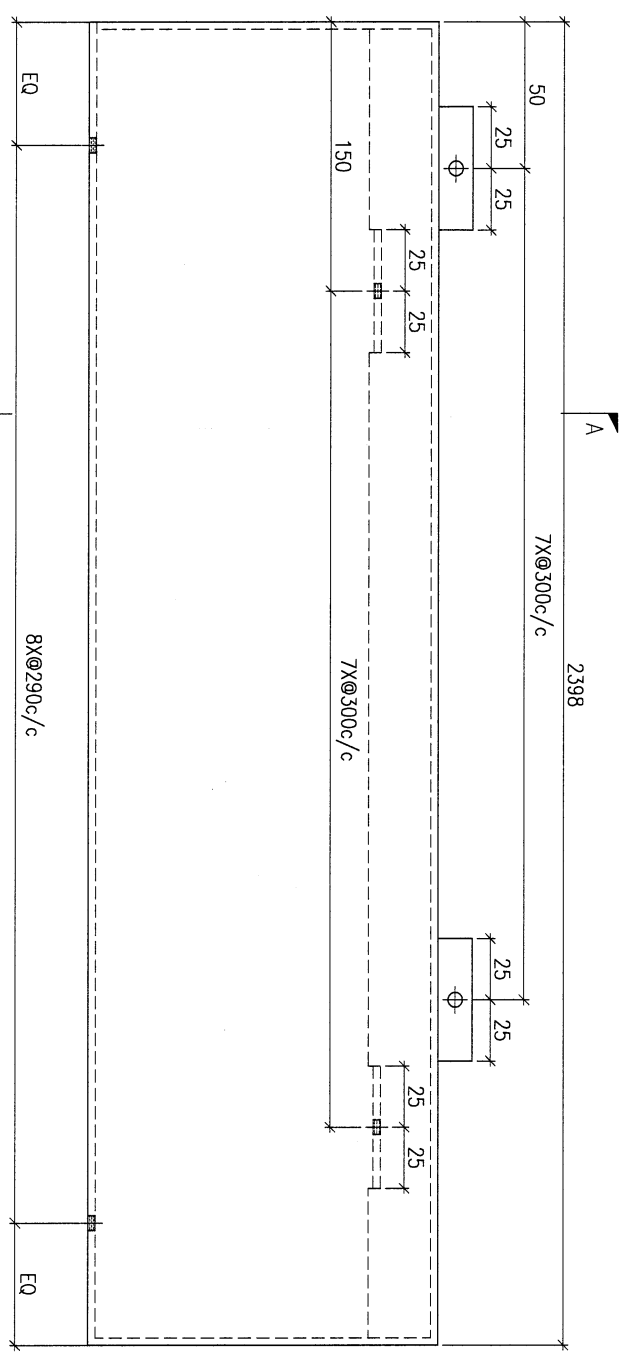
MARK. NO.
-

QTY.
-

REV. / CHANGED BY	PART NUMBER	Dim. A	Dim. B	Dim. C	Dim. D	Dim. E	Dim. F	Dim. G	Dim. H	QTY.	Inv. Code
-	FW1-AP01	-	-	-	-	-	-	-	-	20	-

ASSEMBLE ON PARTS

注：工厂用



DWG. NO.	FW1-AP01	REV.	-	SCALE	-	DATE	22-03-2023	DRAWN BY	-	APPROVED BY	-
----------	----------	------	---	-------	---	------	------------	----------	---	-------------	---

PROJECT
YIN PING ROAD KOWLOON
FEATURE WALL (PHASE 1)

MATERIAL
3mm 铝板

COATING
PVF2

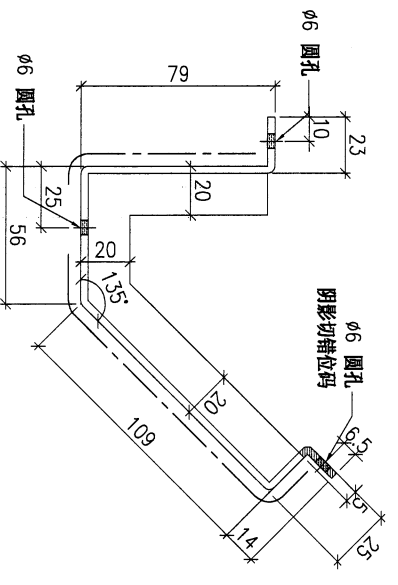
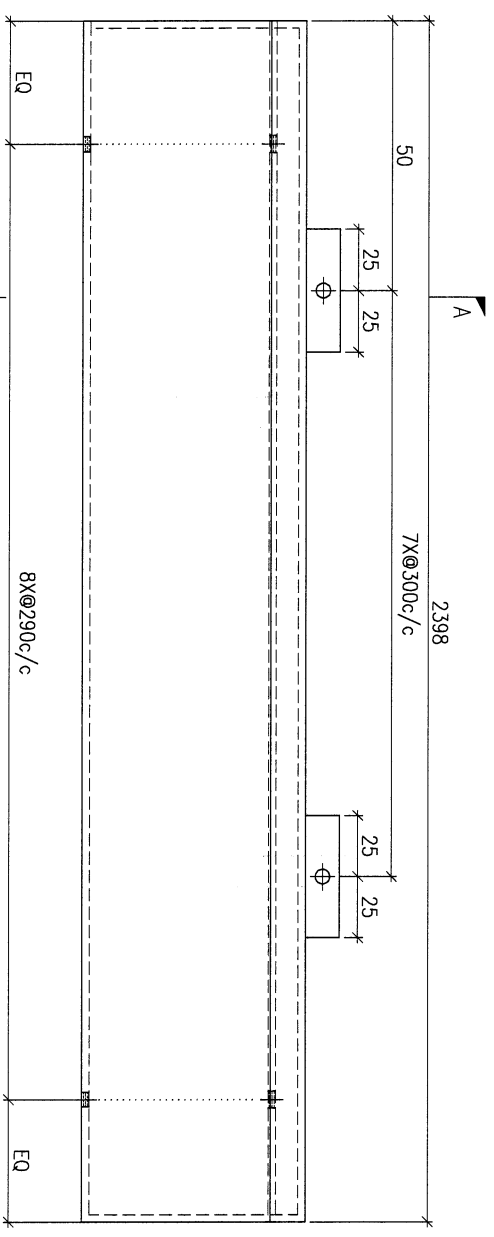
COLOUR
EC-DG-D334232-ZD1(SS-01)

MARK. NO.
-

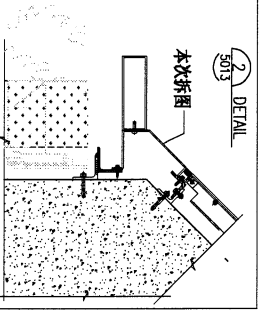
QTY.
-

REV.	CHK'D BY	PART NUMBER	Dim. A	Dim. B	Dim. C	Dim. D	Dim. E	Dim. F	Dim. G	Dim. H	QTY.	Inv. Code	ASSEMBLE ON PARTS	QTY.
-		FW1-AP02	-	-	-	-	-	-	-	-	27			

注：工厂用



SECTION A-A



DWG. NO.	FW1-AP02	REV.	-	SCALE	-	DATE	22-03-2023	DRAWN BY	-	APPROVED BY	-
----------	----------	------	---	-------	---	------	------------	----------	---	-------------	---

5

PROJECT
YIN PING ROAD KOWLOON
FEATURE WALL (PHASE 1)

MATERIAL
3mm 铝板

COATING
PVF2

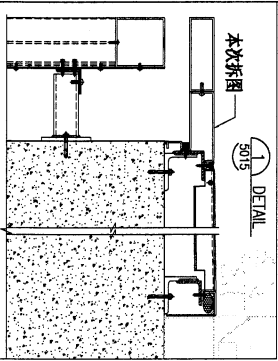
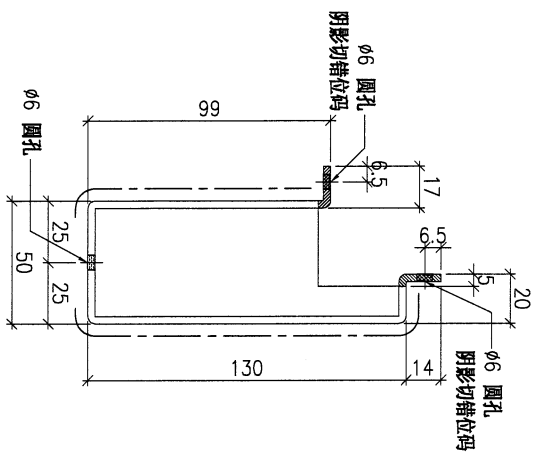
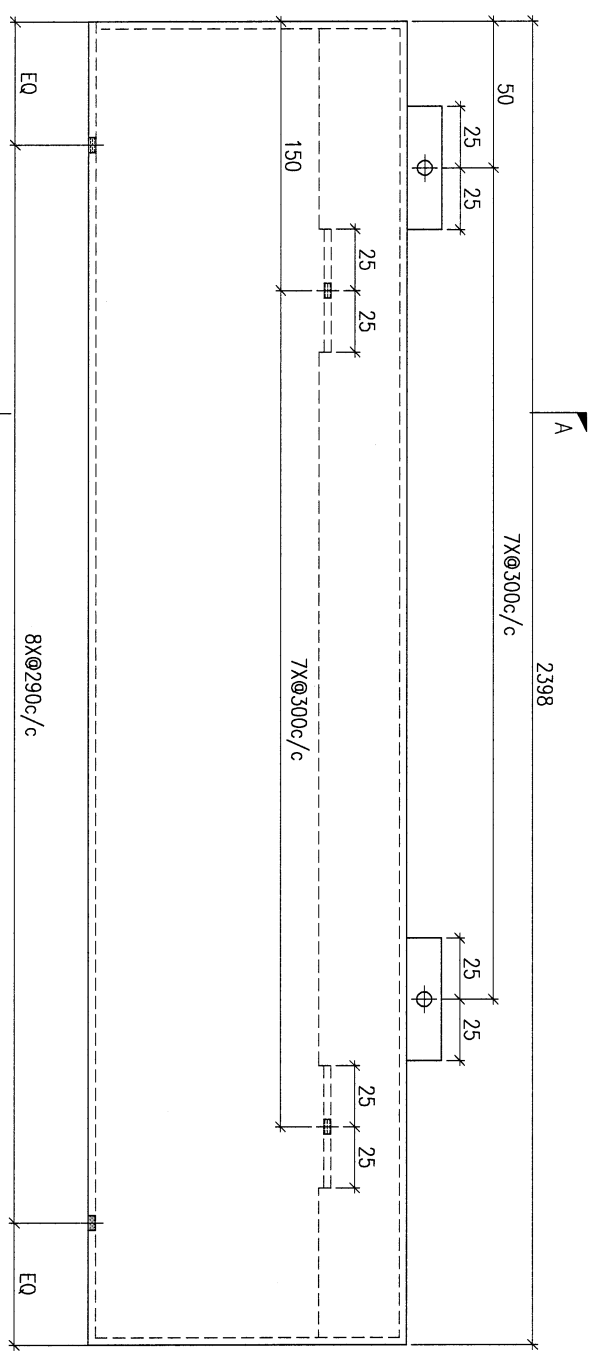
COLOUR
EC-DG-D334232-ZD1(SS-01)

MARK. NO.
-

QTY.
-

REV.	CHECKED BY	PART NUMBER	Dim. A	Dim. B	Dim. C	Dim. D	Dim. E	Dim. F	Dim. G	Dim. H	QTY.	Inv. Code
-		FW1-AP03	-	-	-	-	-	-	-	-	5	

注：工厂用



DWG. NO. FW1-AP03
REV. -
SCALE -
DATE 22-03-2023
DRAWN BY -
APPROVED BY -

6

PROJECT
YIN PING ROAD KOWLOON
FEATURE WALL (PHASE 1)

MATERIAL
3mm 铝板

COATING
PVF2

COLOUR
EC-DG-D334232-ZD1(SS-01)

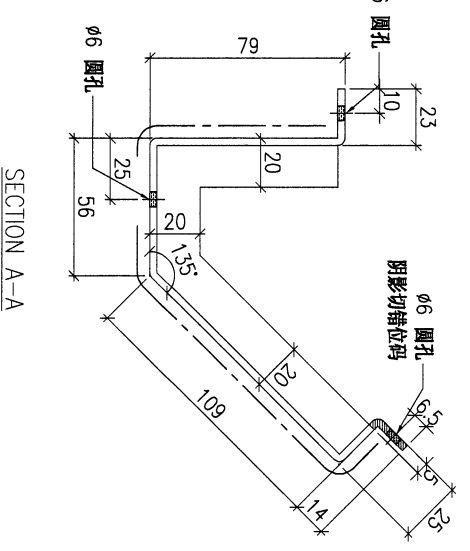
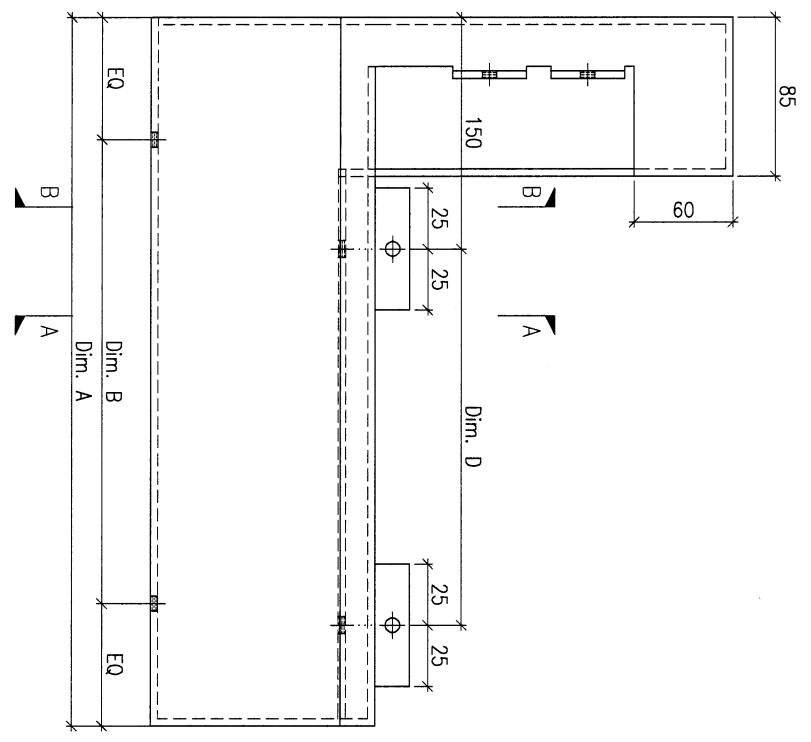
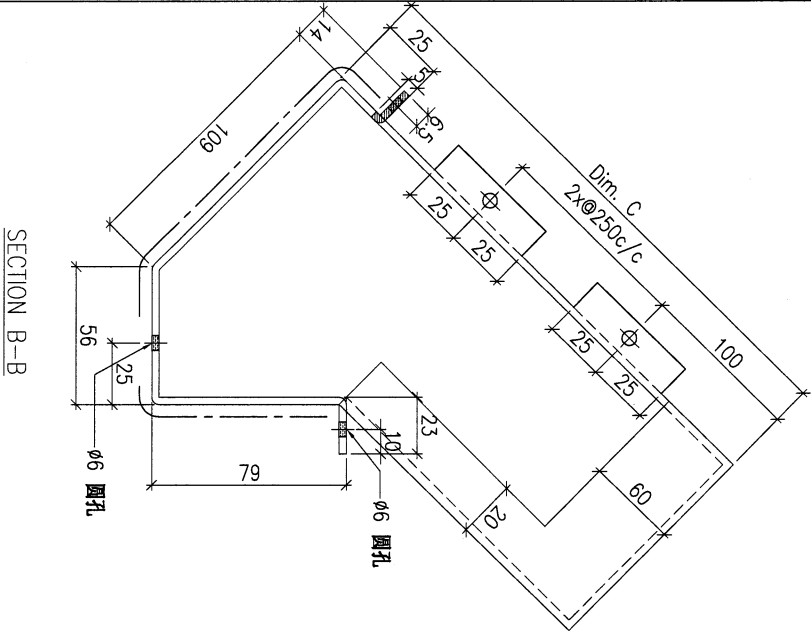
MARK. NO.
-

QTY.
-

REV. / CHECKED BY	PART NUMBER	Dim. A	Dim. B	Dim. C	Dim. D	Dim. E	Dim. F	Dim. G	Dim. H	QTY.	Inv. Code
-	FW1-AP04A	1860	6x@290c/c	810	5x@300c/c					1	
-	FW1-AP04B	2160	8x@250c/c	810	6x@300c/c					1	
-	FW1-AP04C	1655	5x@300c/c	840	4x@300c/c					1	

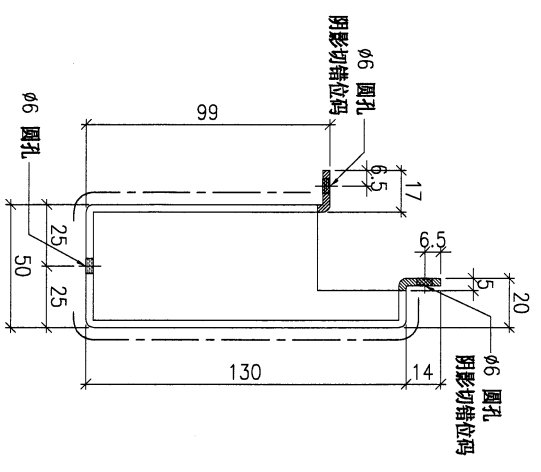
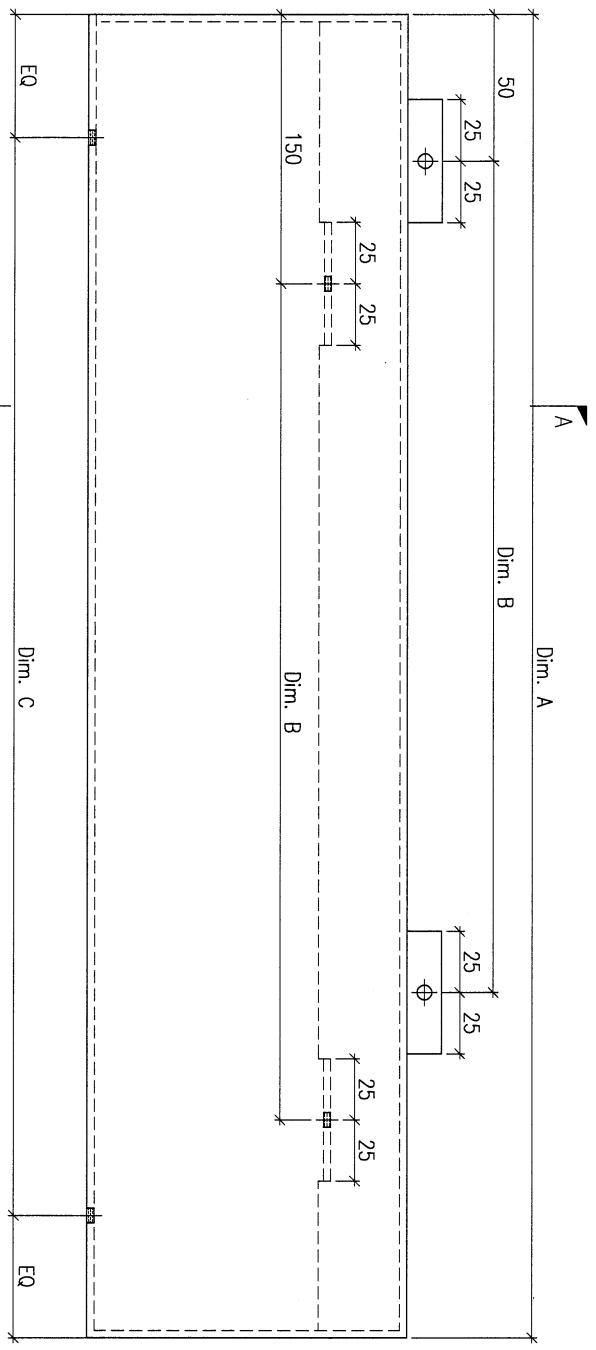
ASSEMBLE ON PARTS

注：工厂用



DWG. NO.	FW1-AP04	REV.	A	SCALE	-	DATE	22-03-2023	DRAWN BY	-	APPROVED BY	-
----------	----------	------	---	-------	---	------	------------	----------	---	-------------	---

PROJECT				YIN PING ROAD KOWLOON FEATURE WALL (PHASE 1)				MATERIAL				3mm 铝板				COATING				PVF2				COLOUR				EC-DG-D334232-ZD1(SS-01)				MARK. NO.				-				QTY.				-			
REL. DWG. BY		PART NUMBER		Dim. A		Dim. B		Dim. C		Dim. D		Dim. E		Dim. F		Dim. G		Dim. H		QTY.		Inv. Code		ASSEMBLE ON PARTS				注: 工厂用																			
-		FW1-AP05A		1774		5x@300c/		5x@280c/												1																											



DWG. NO.		FW1-AP05		REV.		A		SCALE		-		DATE		22-03-2023		DRAWN BY		-		APPROVED BY		-	
----------	--	----------	--	------	--	---	--	-------	--	---	--	------	--	------------	--	----------	--	---	--	-------------	--	---	--

8

PROJECT
YIN PING ROAD KOWLOON
FEATURE WALL (PHASE 1)

MATERIAL

3mm 铝板

COATING

PVF2

COLOUR

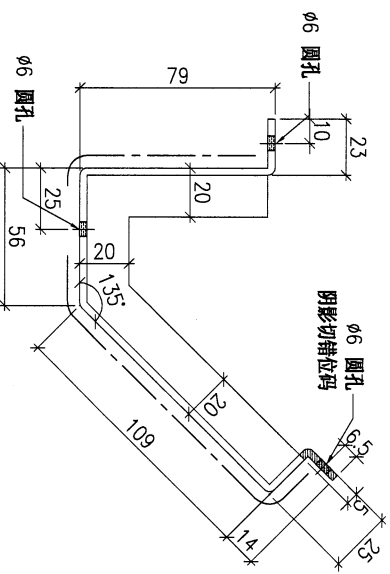
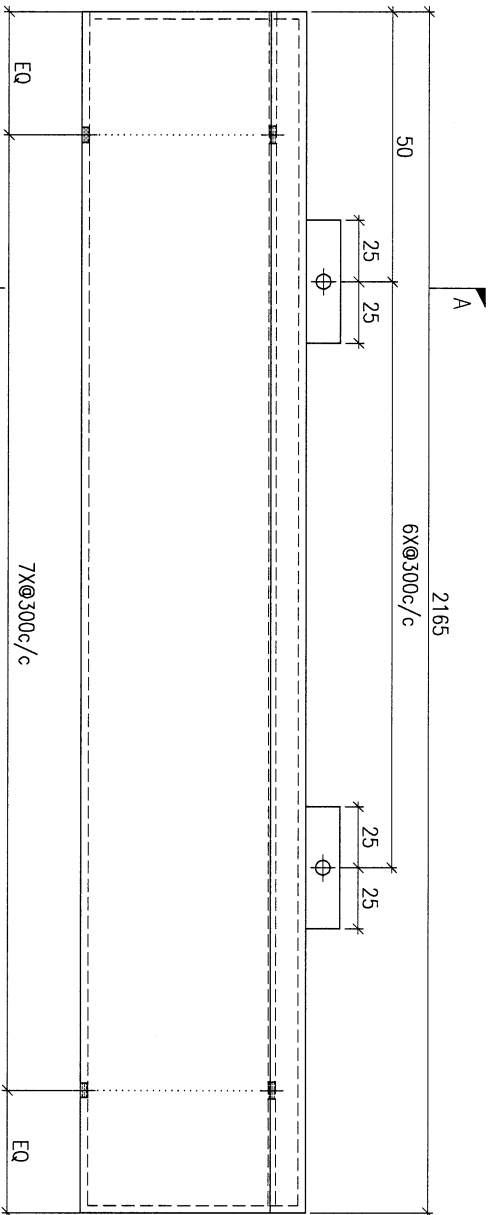
EC-DG-D334232-ZD1(SS-01)

MARK. NO.

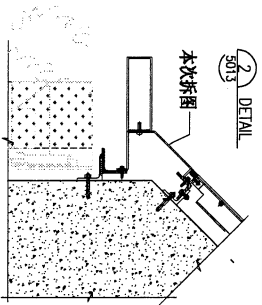
QTY.

REV. / CHANGED BY	PART NUMBER	Dim. A	Dim. B	Dim. C	Dim. D	Dim. E	Dim. F	Dim. G	Dim. H	QTY.	Inv. Code	ASSEMBLE ON PARTS	MARK. NO.	QTY.
-	FW1-AP06A	-	-	-	-	-	-	-	-	1	-	-	-	-

注: 工厂用



SECTION A-A



DWG. NO.	REV.	SCALE	DATE	DRAWN BY	APPROVED BY
FW1-AP06	-	-	22-03-2023	-	-

19

PROJECT
YIN PING ROAD KOWLOON
FEATURE WALL (PHASE 1)

MATERIAL
3mm 铝板

COATING
PVF2

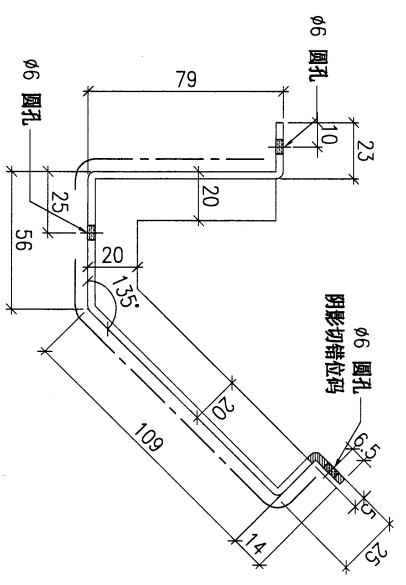
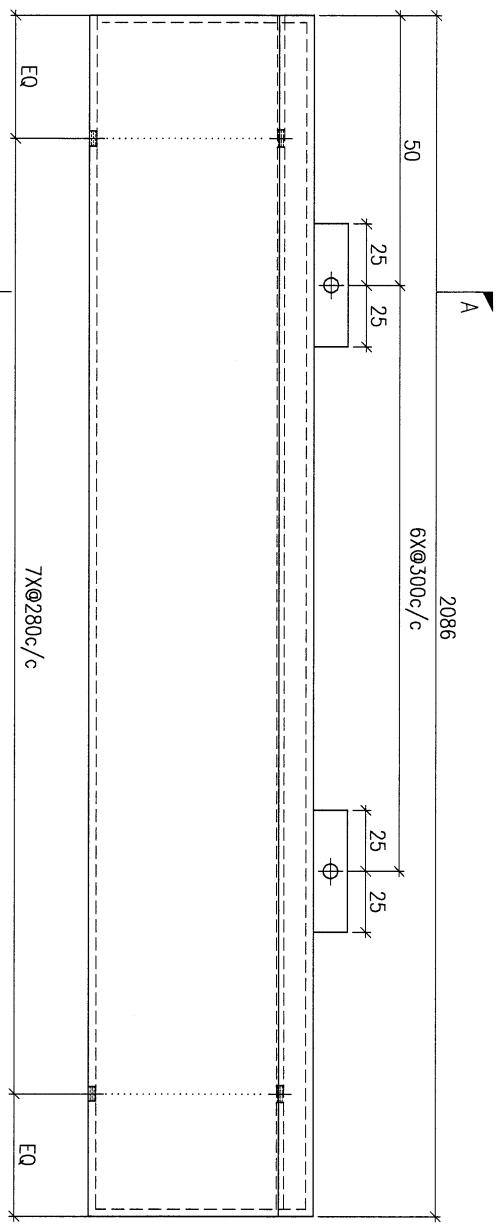
COLOUR
EC-DG-D334232-ZD1 (SS-01)

MARK. NO.
-

QTY.
-

REV.	CHECKED DATE BY	PART NUMBER	Dim. A	Dim. B	Dim. C	Dim. D	Dim. E	Dim. F	Dim. G	Dim. H	QTY.	Inv. Code	ASSEMBLE ON PARTS	工厂用
-		FW1-AP08	-	-	-	-	-	-	-	-	1			

注: 工地复尺, 转角工厂试装



SECTION A-A

DWG. NO.	FW1-AP08	REV.	-	SCALE	-	DATE	22-03-2023	DRAWN BY	-	APPROVED BY	-
----------	----------	------	---	-------	---	------	------------	----------	---	-------------	---

PROJECT
YIN PING ROAD KOWLOON
FEATURE WALL (PHASE 1)

MATERIAL
3mm 铝板

COATING
PVF2

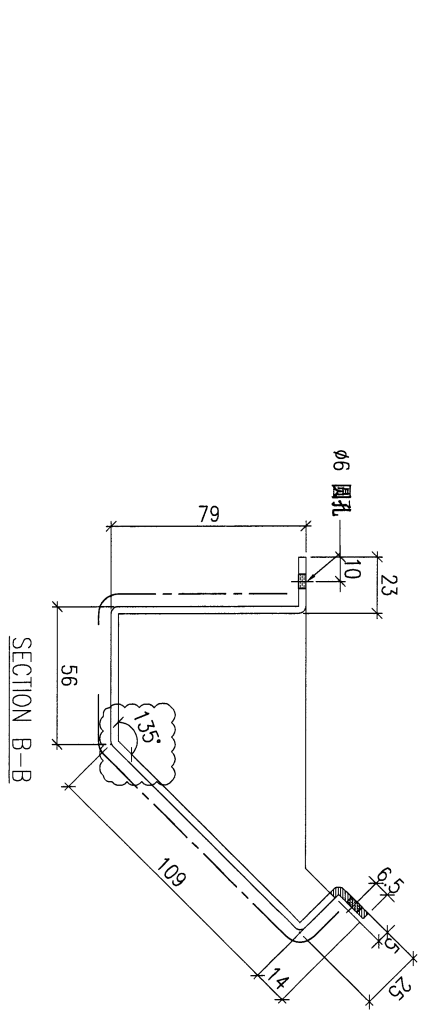
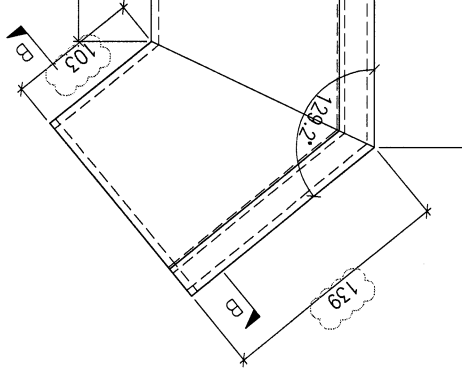
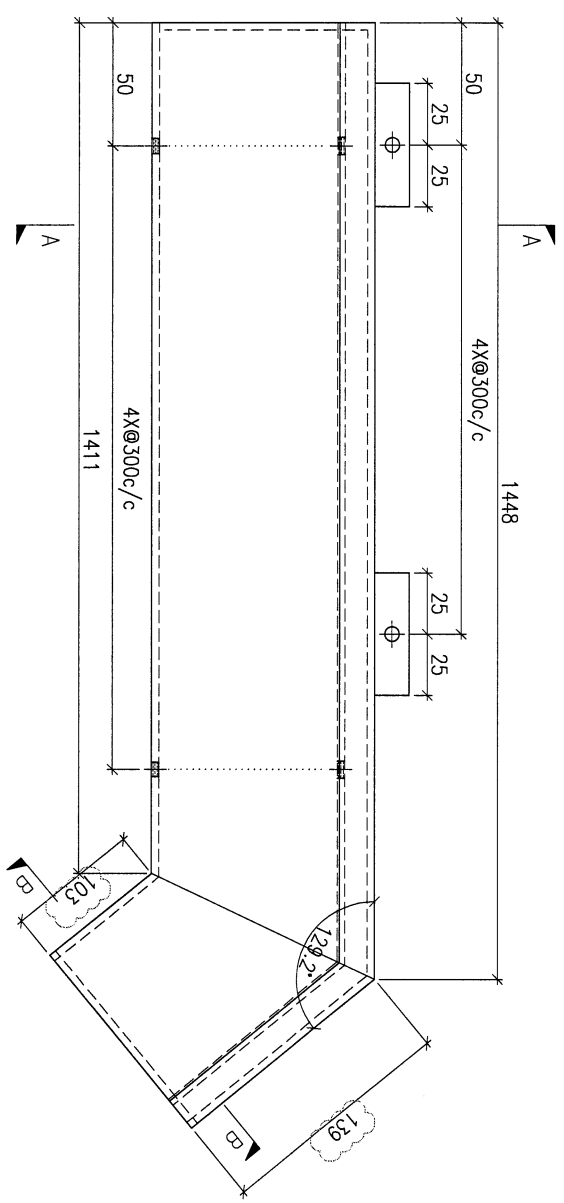
COLOUR
EC-DG-0334232-ZD1(SS-01)

MARK. NO.
-

QTY.
-

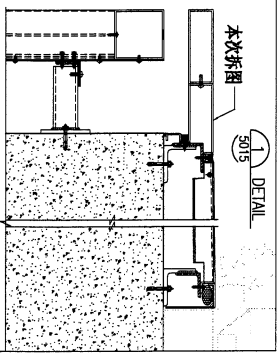
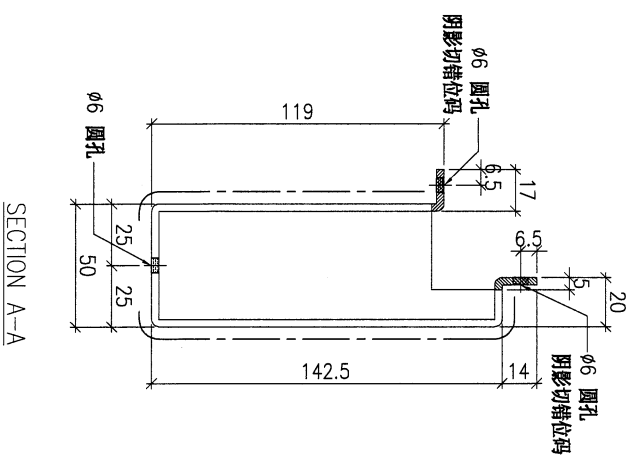
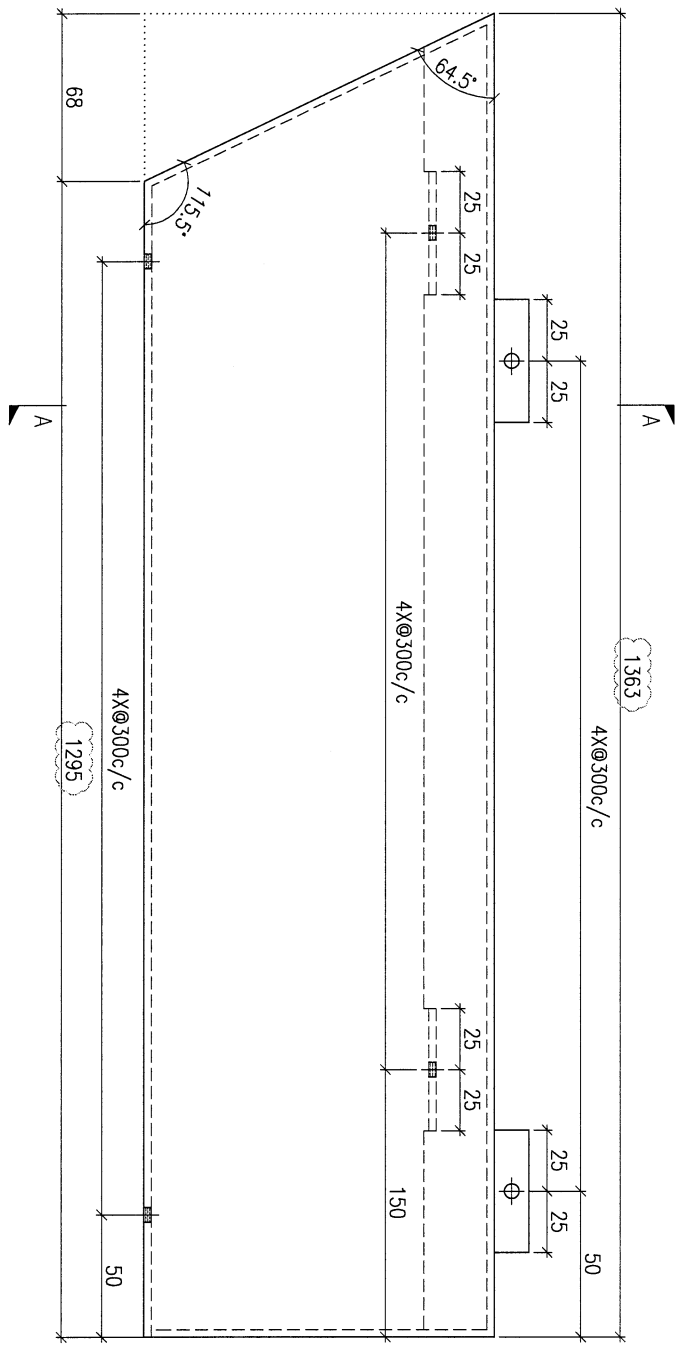
REV. OR/CHKD BY	PART NUMBER	Dim. A	Dim. B	Dim. C	Dim. D	Dim. E	Dim. F	Dim. G	Dim. H	QTY.	Inv. Code	ASSEMBLE ON PARTS	QTY.
-	FW1-AP09	-	-	-	-	-	-	-	-	1	-	工厂用	-

注：工地复尺，转角工厂试装



DWG. NO.	FW1-AP09	REV.	A	SCALE	-	DATE	22-03-2023	DRAWN BY	-	APPROVED BY	-
----------	----------	------	---	-------	---	------	------------	----------	---	-------------	---

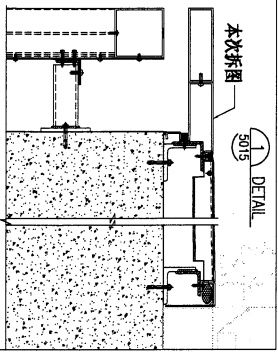
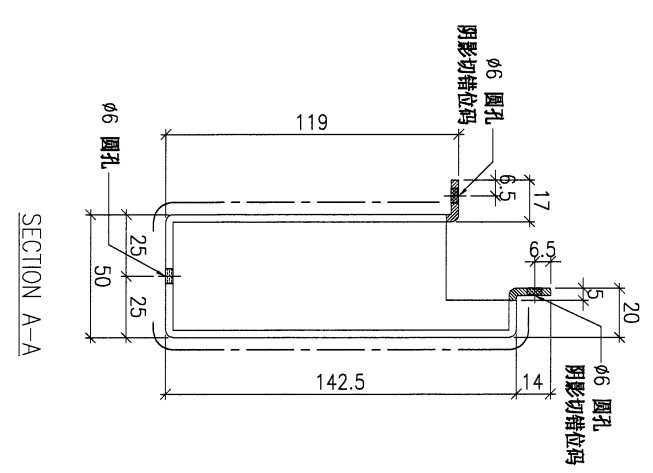
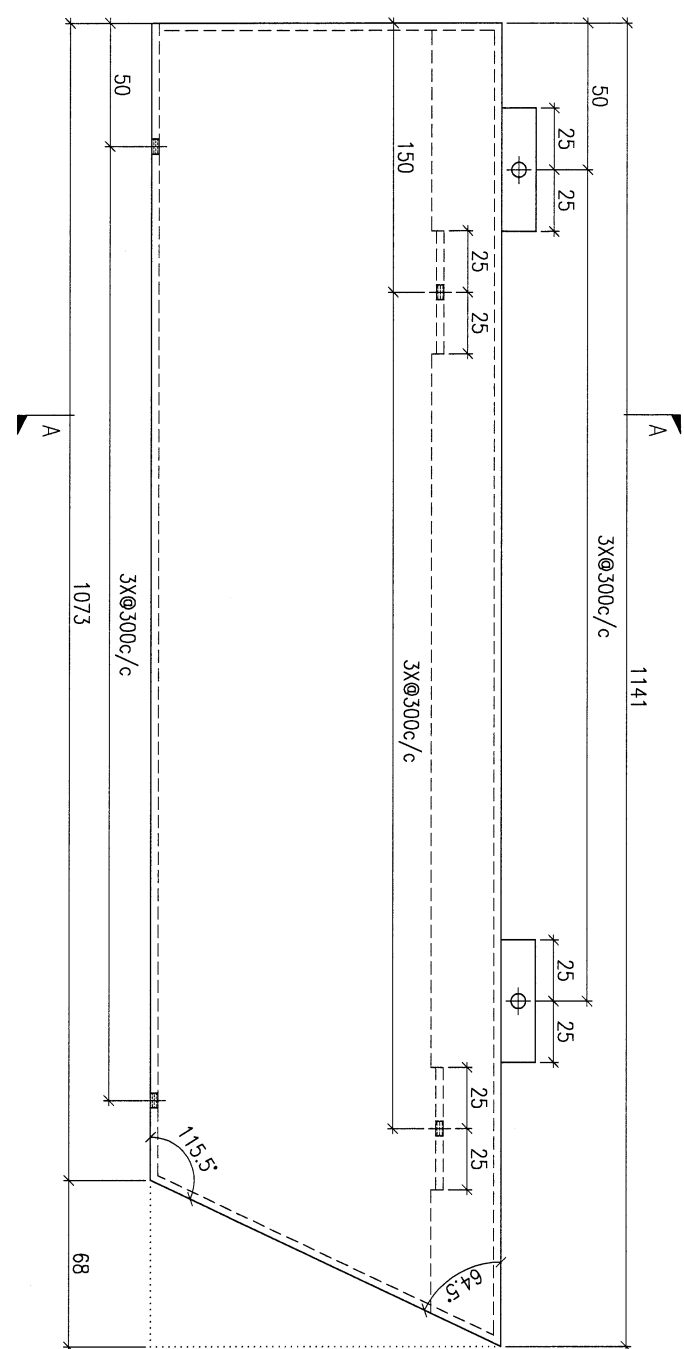
PROJECT				MATERIAL				COATING				COLOUR		MARK. NO.		QTY.	
YIN PING ROAD KOWLOON FEATURE WALL (PHASE 1)				3mm 铝板				PVF2				EC-DG-D334232-ZD1(SS-01)		-		-	
REV.	CHECKED DATE BY	PART NUMBER	Dim. A	Dim. B	Dim. C	Dim. D	Dim. E	Dim. F	Dim. G	Dim. H	QTY.	Inv. Code	ASSEMBLE ON PARTS				
-		FW1-AP50	-	-	-	-	-	-	-	-	1						
													注: 工厂用				



DWG. NO.		REV.		SCALE		DATE		DRAWN BY		APPROVED BY	
FW1-AP50		A		-		22-03-2023		-		-	

PROJECT				MATERIAL				COATING				COLOUR				MARK. NO.		QTY.	
YIN PING ROAD KOWLOON FEATURE WALL (PHASE 1)				3mm 铝板				PVF2				EC-DG-D334232-ZD1(SS-01)				-		-	
REV.	CHANGED BY	PART NUMBER	Dim. A	Dim. B	Dim. C	Dim. D	Dim. E	Dim. F	Dim. G	Dim. H	QTY.	Inv. Code	ASSEMBLE ON PARTS				-		
-		FW1-AP51	-	-	-	-	-	-	-	-	1								

注：工厂用



DWG. NO.		REV.		SCALE		DATE		DRAWN BY		APPROVED BY	
FW1-AP51		-		-		22-03-2023		-		-	

13

PROJECT
YIN PING ROAD KOWLOON
FEATURE WALL (PHASE 1)

MATERIAL
2mm 铝封口片

COATING
PVF2

COLOR
EC-DG-D334232-ZD1(SS-01)

MARK. NO.
-

QTY.
-

REL. CHECKED
DWG. BY

PART NUMBER
FKP-M01

Dim. A

Dim. B

Dim. C

Dim. D

Dim. E

Dim. F

Dim. G

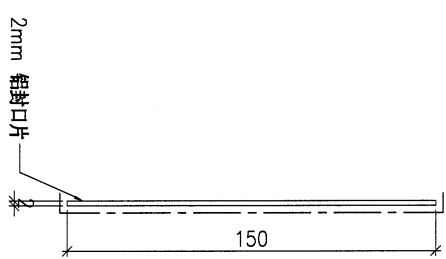
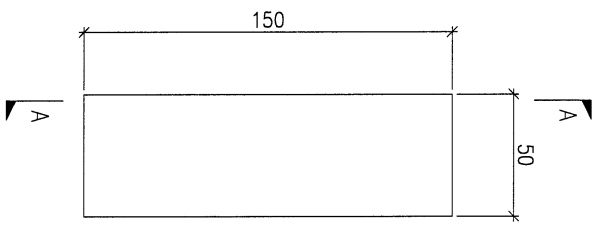
Dim. H

QTY.
120

Inv. Code

ASSEMBLE ON PARTS

注: 工厂用



DWG. NO.

FKP-M01

REV.
-

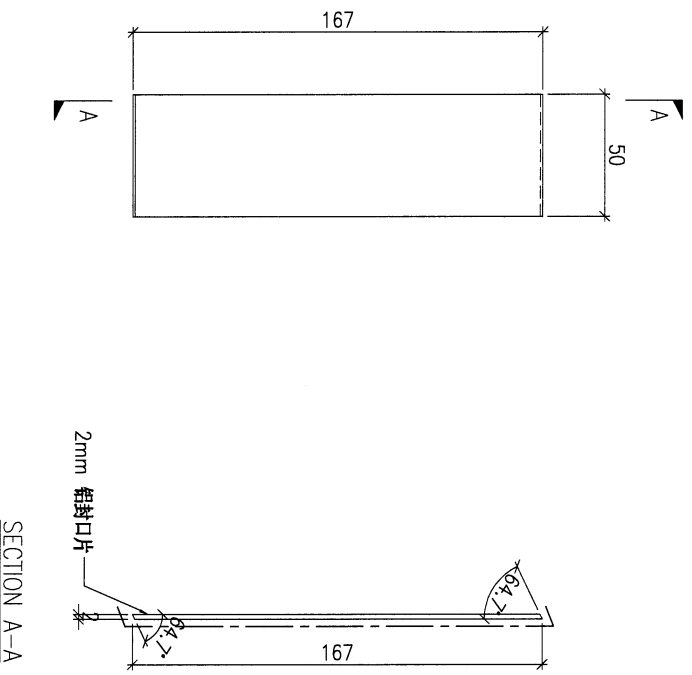
SCALE
-

DATE
22-03-2023

DRAWN BY
-

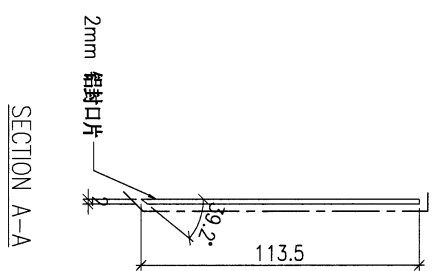
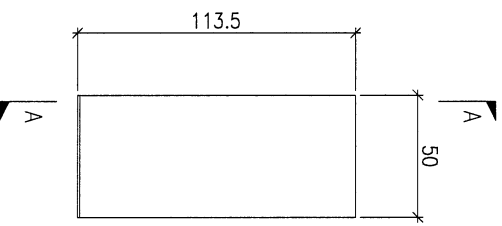
APPROVED BY

PROJECT				YIN PING ROAD KOWLOON FEATURE WALL (PHASE 1)				MATERIAL				2mm 铝封口片				COATING				PVF2				COLOUR				EC-DG-0334232-ZD1(SS-01)				MARK. NO.				-				QTY.				-			
REV. / CHKD BY		PART NUMBER		Dim. A		Dim. B		Dim. C		Dim. D		Dim. E		Dim. F		Dim. G		Dim. H		QTY.		Inv. Code		ASSEMBLE ON PARTS				注: 工厂用																			
-		FKP-M02		-		-		-		-		-		-		-		-		2																											



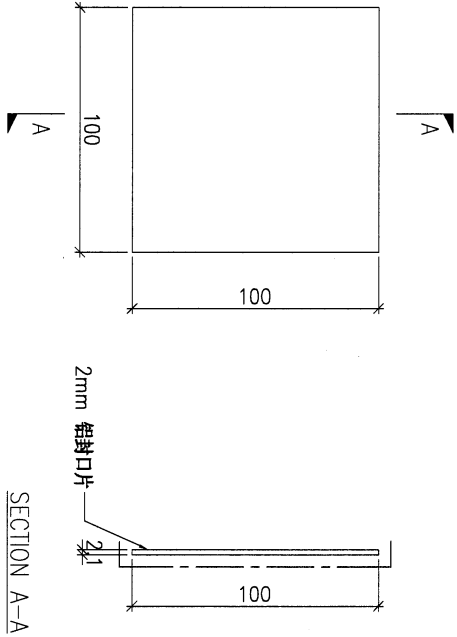
DWG. NO.		FKP-M02		REV.		-		SCALE		-		DATE		22-03-2023		DRAWN BY		-		APPROVED BY		-	
----------	--	---------	--	------	--	---	--	-------	--	---	--	------	--	------------	--	----------	--	---	--	-------------	--	---	--

PROJECT				YIN PING ROAD KOWLOON FEATURE WALL (PHASE 1)				MATERIAL				COATING				COLOUR				MARK. NO.				QTY.			
				2mm 铝封口片				PVF2				EC-DG-D334232-ZD1(SS-01)				-				-							
REV.	PART NUMBER	Dim. A	Dim. B	Dim. C	Dim. D	Dim. E	Dim. F	Dim. G	Dim. H	QTY.	Inv. Code	ASSEMBLE ON PARTS								注: 工厂用							
-	FKP-M03	-	-	-	-	-	-	-	-	1																	



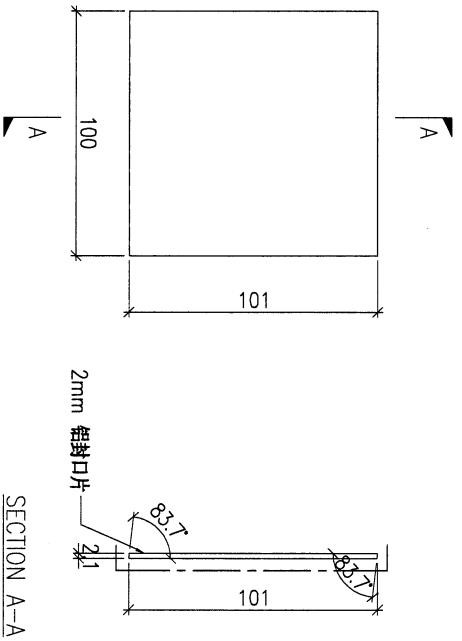
DWG. NO.		REV.		SCALE		DATE		DRAWN BY		APPROVED BY	
FKP-M03		-		-		22-03-2023		-		-	

PROJECT				YIN PING ROAD KOWLOON FEATURE WALL (PHASE 1)				MATERIAL				2mm 铝封口片		COATING		PVF2		COLOUR		TUC106699FXLJBA-3(SS-03)		MARK. NO.		QTY.																															
REL. DWG. BY				PART NUMBER				Dim. A				Dim. B				Dim. C				Dim. D				Dim. E				Dim. F				Dim. G				Dim. H				QTY.				Inv. Code				ASSEMBLE ON PARTS				注: 工厂用			
-				FKP-M04				-				-				-				-				-				-				-				-				540															



DWG. NO.		FKP-M04		REV.		-		SCALE		-		DATE		22-03-2023		DRAWN BY		-		APPROVED BY		-	
----------	--	---------	--	------	--	---	--	-------	--	---	--	------	--	------------	--	----------	--	---	--	-------------	--	---	--

PROJECT		YIN PING ROAD KOWLOON FEATURE WALL (PHASE 1)								MATERIAL		COATING		COLOUR		MARK. NO.	QTY.
		2mm 铝封口片								PVF2		TUC106699FXLJBA-3(SS-03)		-	-		
REV.	CHECKED	PART NUMBER	Dim. A	Dim. B	Dim. C	Dim. D	Dim. E	Dim. F	Dim. G	Dim. H	QTY.	Inv. Code	ASSEMBLE ON PARTS				
-	BY	FKP-M05	-	-	-	-	-	-	-	-	84						
注: 工厂用																	



DWG. NO.		FKP-M05		REV.		SCALE		DATE		DRAWN BY		APPROVED BY	
				-		-		22-03-2023		-		-	

18

PROJECT
YIN PING ROAD KOWLOON
FEATURE WALL (PHASE 1)

MATERIAL
2mm 铝封口片

COATING
PVF2

COLOUR
EC-DG-D334232-ZD1 (SS-011)

MARK. NO.
-

QTY.
-

checked
DWG BY

PART NUMBER
FKP-M06

Dim. A

Dim. B

Dim. C

Dim. D

Dim. E

Dim. F

Dim. G

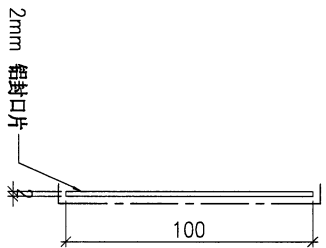
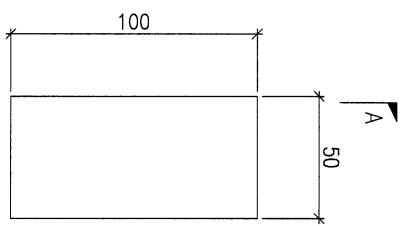
Dim. H

QTY.
100

Inv. Code

ASSEMBLE ON PARTS

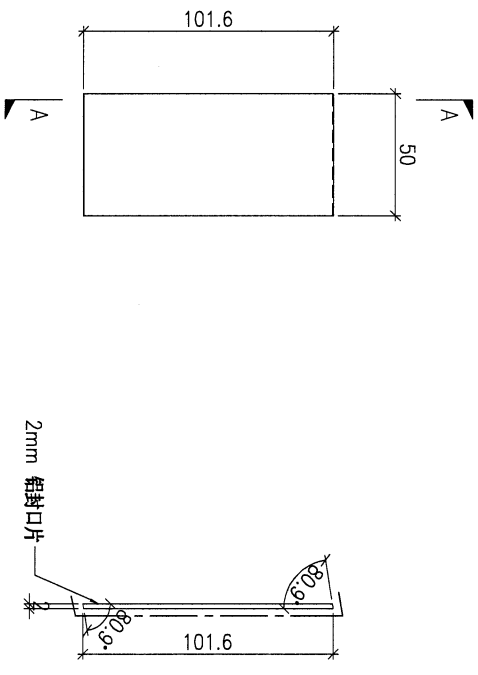
注: 工厂用



SECTION A-A

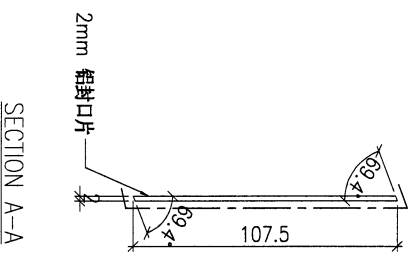
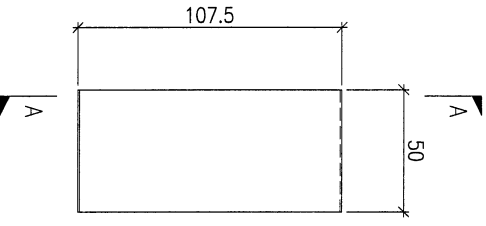
DWG. NO.	FKP-M06	REV.	-	SCALE	-	DATE	22-03-2023	DRAWN BY	-	APPROVED BY	
----------	---------	------	---	-------	---	------	------------	----------	---	-------------	--

PROJECT				YIN PING ROAD KOWLOON FEATURE WALL (PHASE 1)				MATERIAL				2mm 铝封口片		COATING		PVF2		COLOUR		EC-DG-D334232-ZD1(SS-01)		MARK. NO.		QTY.																															
PART NUMBER				Dim. A				Dim. B				Dim. C				Dim. D				Dim. E				Dim. F				Dim. G				Dim. H				QTY.				Inv. Code				ASSEMBLE ON PARTS				注: 工厂用							
REL. CHKD DWG. BY				FKP-M07				-				-				-				-				-				-				-				-				10															



DWG. NO.		FKP-M07		REV.		-		SCALE		-		DATE		22-03-2023		DRAWN BY		-		APPROVED BY		-	
----------	--	---------	--	------	--	---	--	-------	--	---	--	------	--	------------	--	----------	--	---	--	-------------	--	---	--

PROJECT				YIN PING ROAD KOWLOON FEATURE WALL (PHASE 1)				MATERIAL				COATING				COLOUR				MARK. NO.				QTY.			
				2mm 铝封口片				PVF2				EC-DG-D334232-ZD1(SS-01)				-				-							
REV.	CHECKED	PART NUMBER	Dim. A	Dim. B	Dim. C	Dim. D	Dim. E	Dim. F	Dim. G	Dim. H	QTY.	Inv. Code	ASSEMBLE ON PARTS								注: 工厂用						
-		FKP-M08	-	-	-	-	-	-	-	-	1																



DWG. NO.		REV.		SCALE		DATE		DRAWN BY		APPROVED BY	
FKP-M08		-		-		22-03-2023		-		-	

PROJECT
YIN PING ROAD KOWLOON
FEATURE WALL (PHASE 1)

MATERIAL
2mm 铝板

COATING
钝化

COLOUR
-

MARK. NO.
-

QTY.
-

REL. CHECKED
DATE BY

PART NUMBER
AP-G01

Dim. A

Dim. B

Dim. C

Dim. D

Dim. E

Dim. F

Dim. G

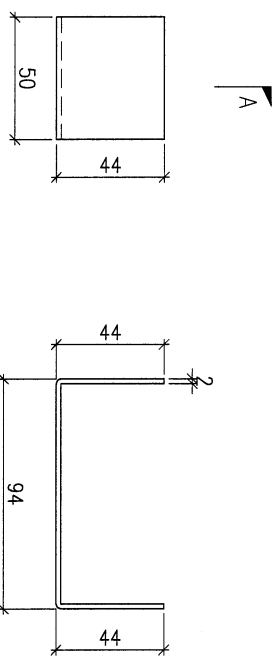
Dim. H

QTY.
45

Inv. Code

ASSEMBLE ON PARTS

注: 工厂用



SECTION A-A

DWG. NO.

AP-G01

REV.

-

SCALE

-

DATE

22-03-2023

DRAWN BY

-

APPROVED BY

-

22

PROJECT
YIN PING ROAD KOWLOON
FEATURE WALL (PHASE 1)

MATERIAL
3mm 铝板

COATING
钝化

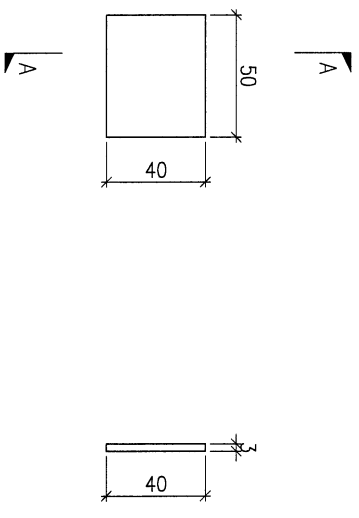
COLOUR
-

MARK. NO.
-

QTY.
-

REV.	CHECKED DATE BY	PART NUMBER	Dim. A	Dim. B	Dim. C	Dim. D	Dim. E	Dim. F	Dim. G	Dim. H	QTY.	Inv. Code	ASSEMBLE ON PARTS	QTY.
-		AP-G50	-	-	-	-	-	-	-	-	260			

注: 工厂用



SECTION A-A

DWG. NO.	AP-G50	REV.	-	SCALE	-	DATE	22-03-2023	DRAWN BY	-	APPROVED BY	
----------	--------	------	---	-------	---	------	------------	----------	---	-------------	--

23

PROJECT
YIN PING ROAD KOWLOON
FEATURE WALL (PHASE 1)

MATERIAL
3mm 铝板

COATING
PVF2

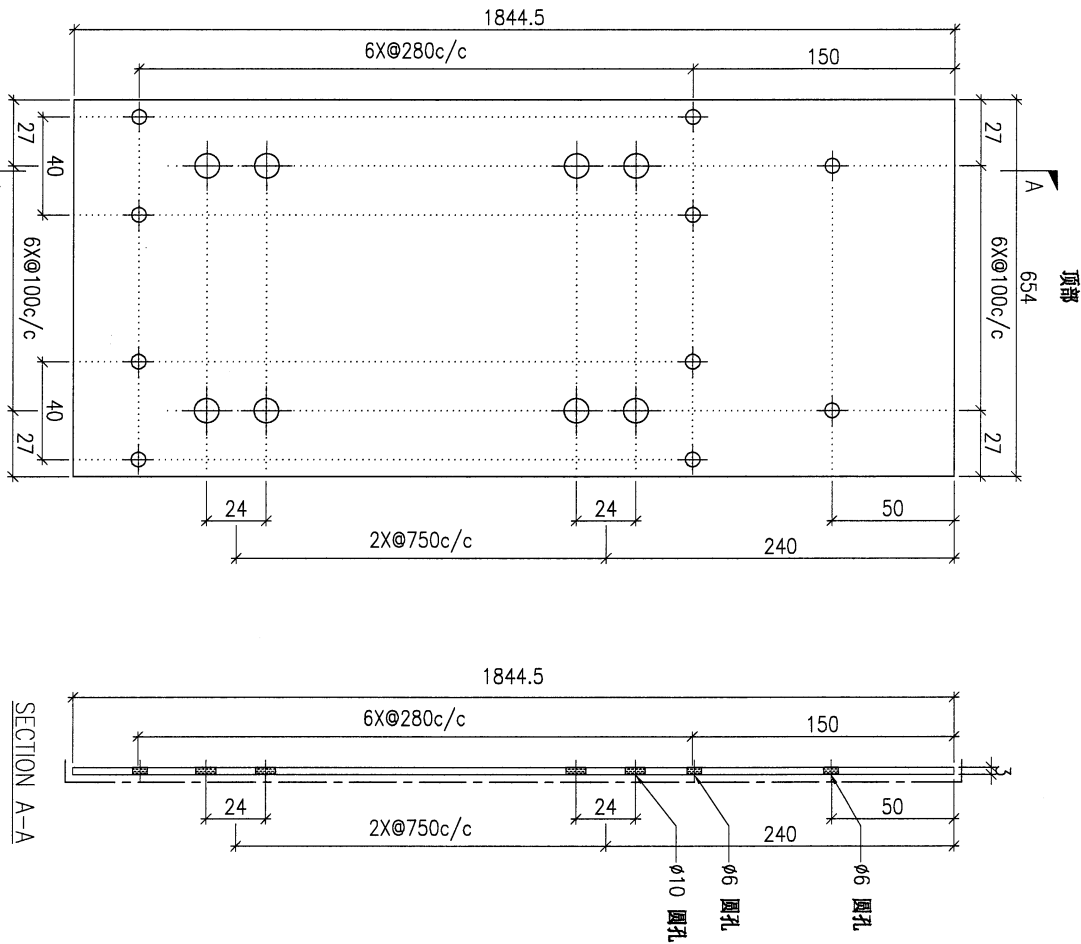
COLOUR
EC-DG-D334232-ZD1(SS-01)

MARK. NO.
-

QTY.
-

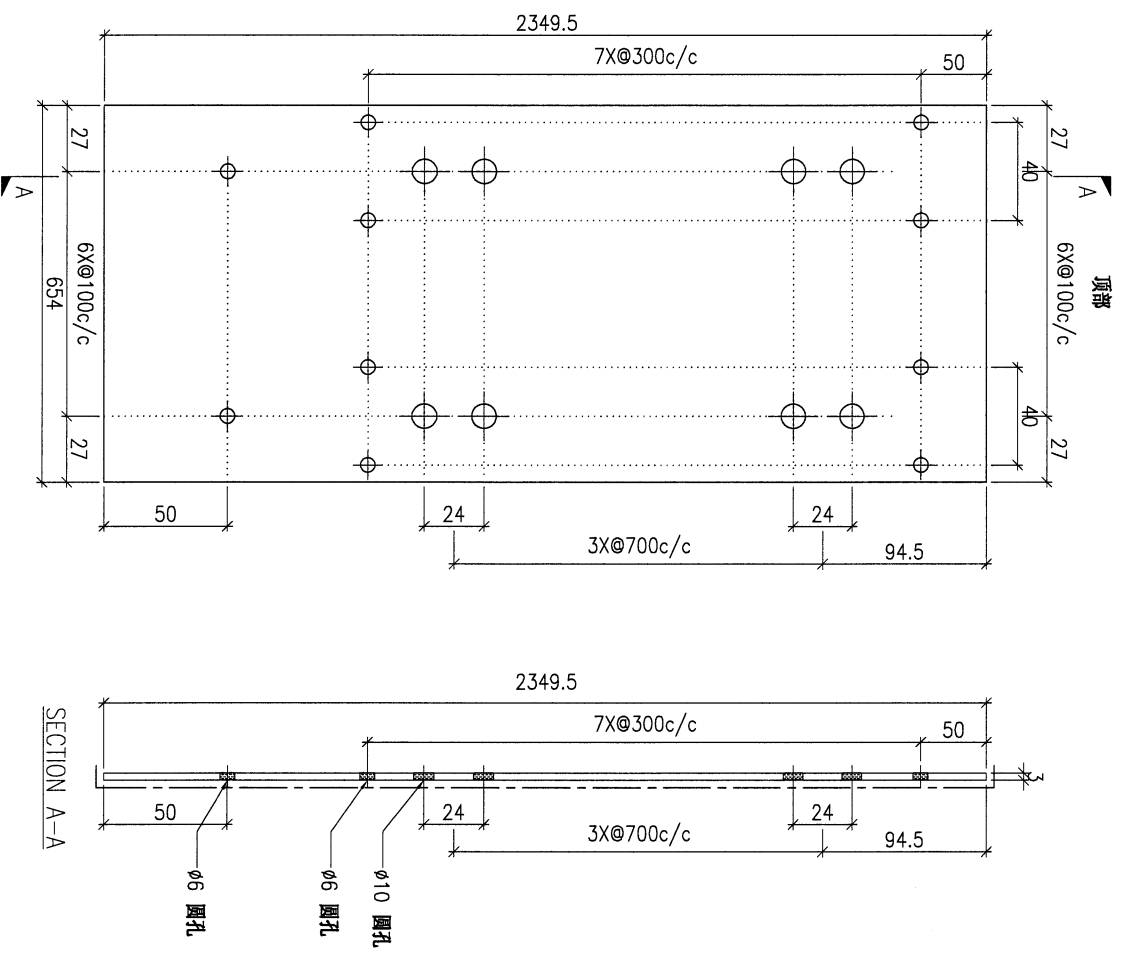
REV.	CHANGED BY	PART NUMBER	Dim. A	Dim. B	Dim. C	Dim. D	Dim. E	Dim. F	Dim. G	Dim. H	QTY.	Inv. Code	ASSEMBLE ON PARTS
-		AP-G51	-	-	-	-	-	-	-	-	6		

注: 工厂用



DWG. NO.	AP-G51	REV.	-	SCALE	-	DATE	22-03-2023	DRAWN BY	-	APPROVED BY	-
----------	--------	------	---	-------	---	------	------------	----------	---	-------------	---

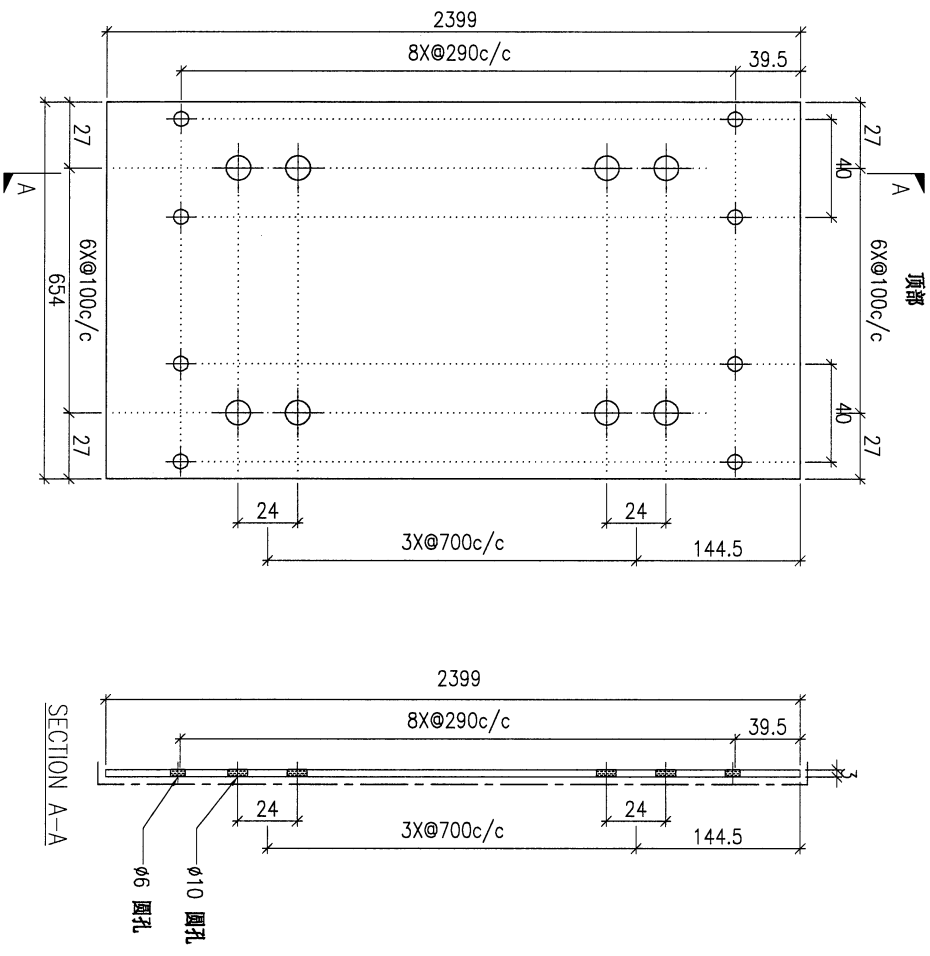
PROJECT				MATERIAL				COATING				COLOUR		MARK. NO.		QTY.	
YIN PING ROAD KOWLOON FEATURE WALL (PHASE 1)				3mm 铝板				PVF2				EC-DG-D334232-ZD1(SS-01)		-		-	
REL. QTY.	CHECKED	PART NUMBER	Dim. A	Dim. B	Dim. C	Dim. D	Dim. E	Dim. F	Dim. G	Dim. H	QTY.	Inv. Code	ASSEMBLE ON PARTS				
-	SWR BY	AP-G52	-	-	-	-	-	-	-	-	6	-	注: 工厂用				



DWG. NO.		REV.		SCALE		DATE		DRAWN BY		APPROVED BY	
AP-G52		-		-		22-03-2023		-		-	

25

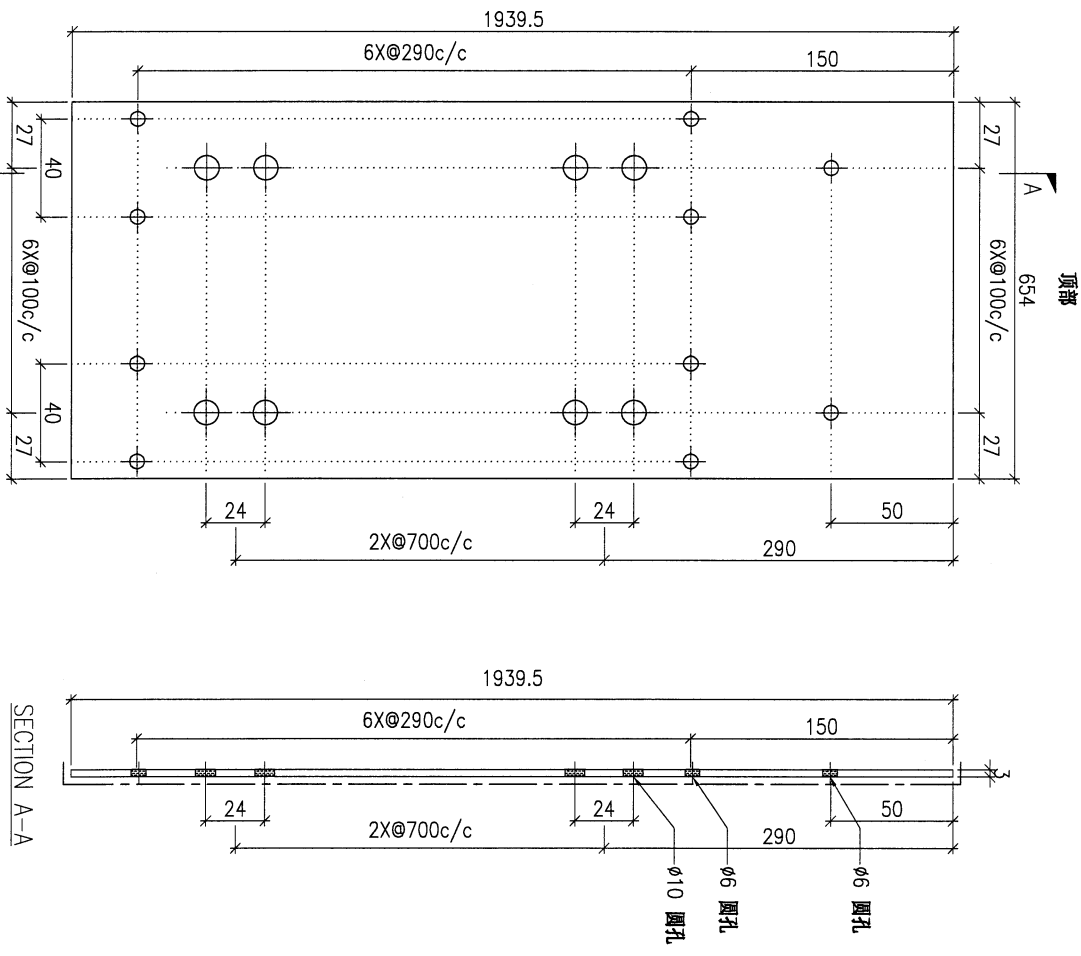
PROJECT				MATERIAL				COATING				COLOUR		MARK. NO.		QTY.	
YIN PING ROAD KOWLOON FEATURE WALL (PHASE 1)				3mm 铝板				PVF2				EC-DG-D334232-ZD1(SS-01)		-		-	
REV.	CHECKED DATE	PART NUMBER	Dim. A	Dim. B	Dim. C	Dim. D	Dim. E	Dim. F	Dim. G	Dim. H	QTY.	Inv. Code	ASSEMBLE ON PARTS				
-		AP-G55	-	-	-	-	-	-	-	-	42						
注: 工厂用																	



DWG. NO.		REV.		SCALE		DATE		DRAWN BY		APPROVED BY	
AP-G55		-		-		22-03-2023		-		-	

26

PROJECT				YIN PING ROAD KOWLOON FEATURE WALL (PHASE 1)				MATERIAL				COATING				COLOUR				MARK. NO.				QTY.			
3mm 铝板				PVF2				EC-DG-0334232-ZD1(SS-01)				ASSEMBLE ON PARTS				-				-							
REV.	CHKD BY	PART NUMBER	Dim. A	Dim. B	Dim. C	Dim. D	Dim. E	Dim. F	Dim. G	Dim. H	QTY.	Inv. Code															
-		AP-G57	-	-	-	-	-	-	-	-	12																
												注: 工厂用															



DWG. NO.		REV.		SCALE		DATE		DRAWN BY		APPROVED BY	
AP-G57		-		-		22-03-2023		-		-	

27

PROJECT
YIN PING ROAD KOWLOON
FEATURE WALL (PHASE 1)

MATERIAL
3mm 铝板

COATING
PVF2

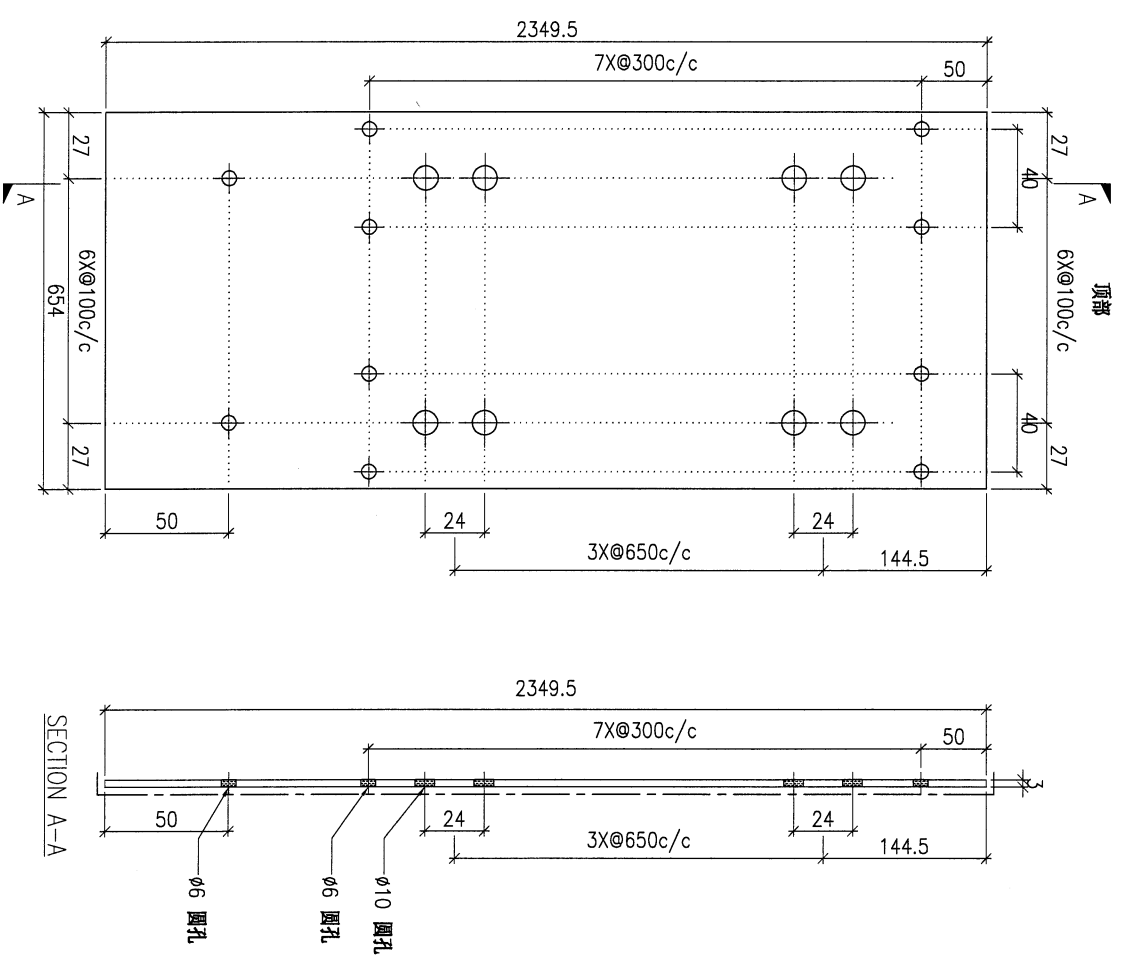
COLOUR
EC-DG-D334232-ZD1(SS-01)

MARK. NO.
-

QTY.
-

REV. / CHECKED BY	PART NUMBER	Dim. A	Dim. B	Dim. C	Dim. D	Dim. E	Dim. F	Dim. G	Dim. H	QTY.	Inv. Code	ASSEMBLE ON PARTS
-	AP-G58	-	-	-	-	-	-	-	-	8	-	

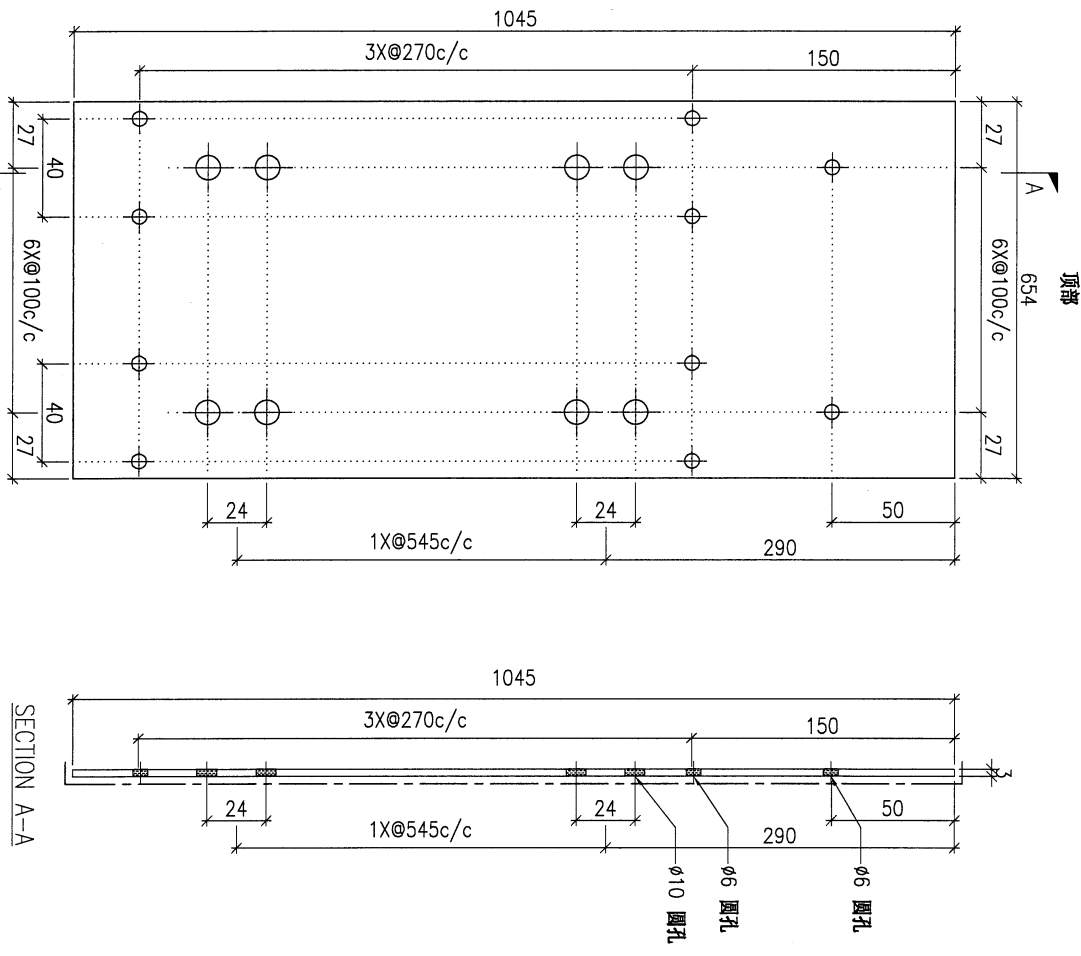
注：工厂用



DWG. NO.	AP-G58	REV.	-	SCALE	-	DATE	22-03-2023	DRAWN BY	-	APPROVED BY	-
----------	--------	------	---	-------	---	------	------------	----------	---	-------------	---

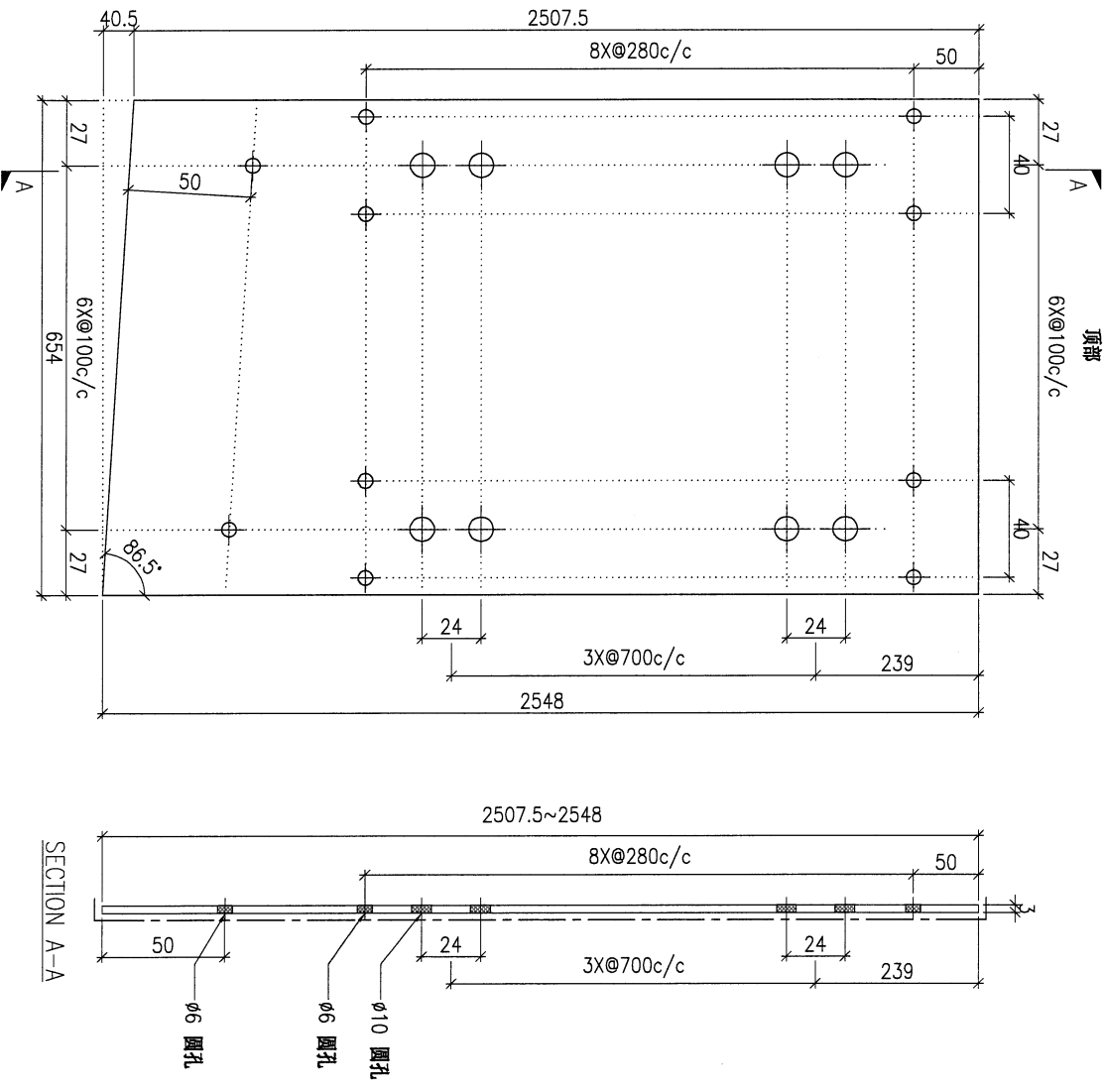
28

PROJECT				MATERIAL				COATING				COLOUR				MARK. NO.		QTY.	
YIN PING ROAD KOWLOON FEATURE WALL (PHASE 1)				3mm 铝板				PVF2				EC-DG-D334232-ZD1(SS-01)				-		-	
REV.	CHANGED BY	PART NUMBER	Dim. A	Dim. B	Dim. C	Dim. D	Dim. E	Dim. F	Dim. G	Dim. H	QTY.	Inv. Code	ASSEMBLE ON PARTS				注: 工厂用		
-		AP-G60	-	-	-	-	-	-	-	-	4								



DWG. NO.		REV.		SCALE		DATE		DRAWN BY		APPROVED BY	
AP-G60		-		-		22-03-2023		-		-	

PROJECT				MATERIAL				COATING				COLOUR		MARK. NO.		QTY.	
YIN PING ROAD KOWLOON FEATURE WALL (PHASE 1)				3mm 铝板				PVF2				EC-DG-D334232-ZD1(SS-01)		-		-	
REV.	CHANGED BY	PART NUMBER	Dim. A	Dim. B	Dim. C	Dim. D	Dim. E	Dim. F	Dim. G	Dim. H	QTY.	Inv. Code	ASSEMBLE ON PARTS				
-		AP-G63	-	-	-	-	-	-	-	-	1						
													注: 工厂用				



DWG. NO.		REV.		SCALE		DATE		DRAWN BY		APPROVED BY	
AP-G63		-		-		22-03-2023		-		-	

50

PROJECT
YIN PING ROAD KOWLOON
FEATURE WALL (PHASE 1)

MATERIAL
3mm 铝板

COATING
PVF2

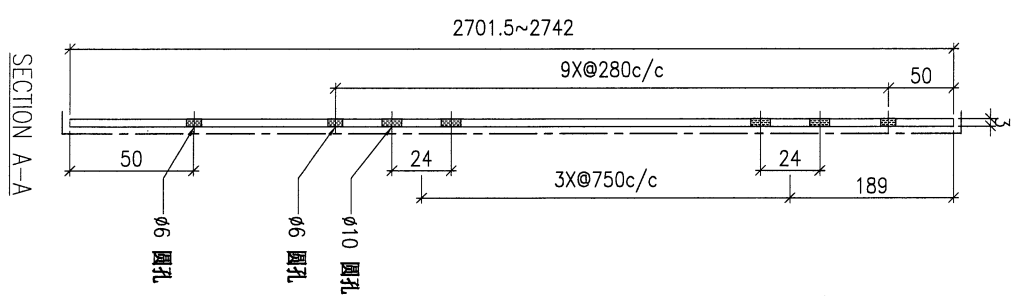
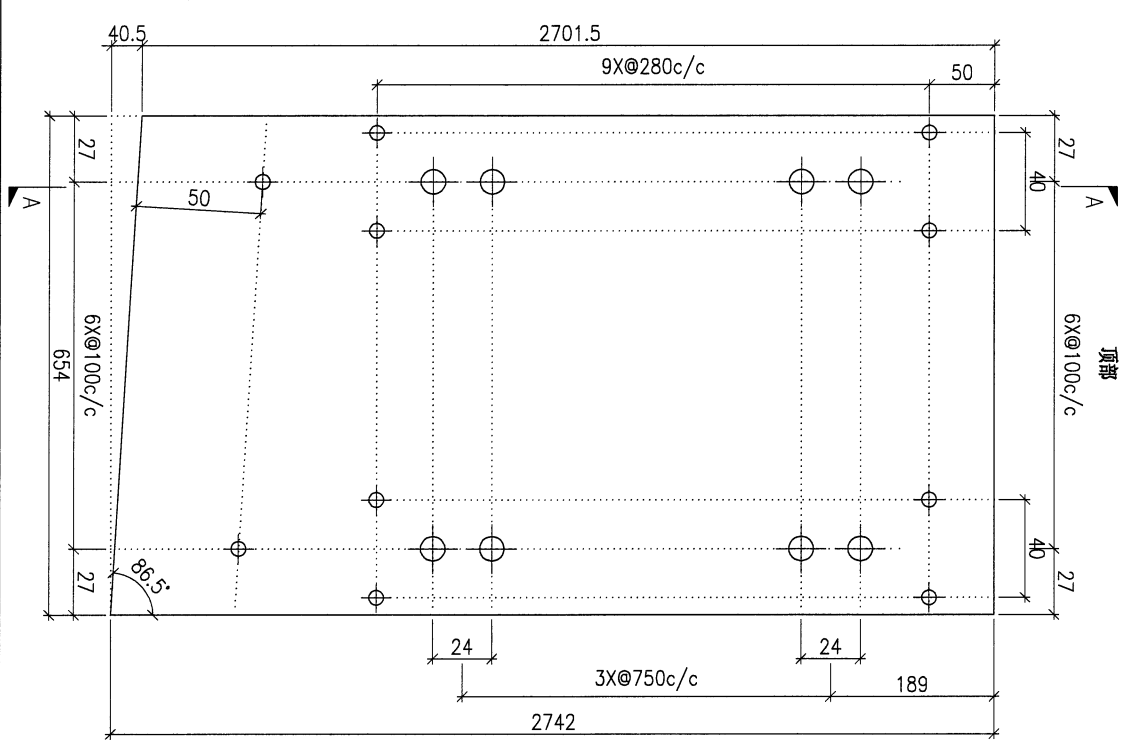
COLOUR
EC-DG-D334232-ZD1(SS-01)

MARK. NO.
-

QTY.
-

REV.	CHECKED DATE BY	PART NUMBER	Dim. A	Dim. B	Dim. C	Dim. D	Dim. E	Dim. F	Dim. G	Dim. H	QTY.	Inv. Code
-		AP-G64	-	-	-	-	-	-	-	-	1	

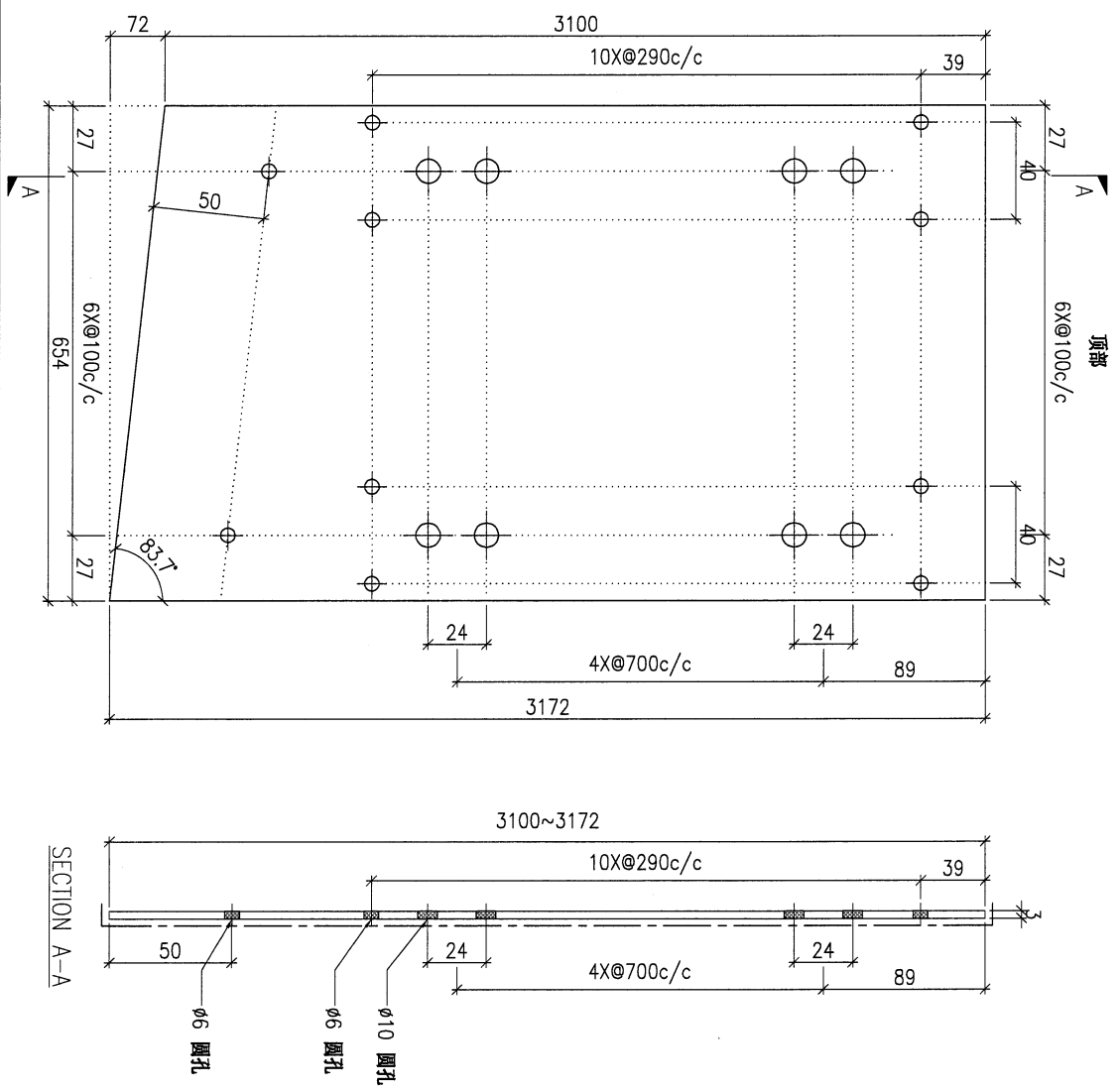
注：工厂用



DWG. NO.	REV.	SCALE	DATE	DRAWN BY	APPROVED BY
AP-G64	-	-	22-03-2023	-	-

(21)

PROJECT				MATERIAL				COATING				COLOUR		MARK. NO.		QTY.	
YIN PING ROAD KOWLOON FEATURE WALL (PHASE 1)				3mm 铝板				PVF2				EC-DG-D334232-ZD1(SS-01)		-		-	
REV. ORG. BY	PART NUMBER	Dim. A	Dim. B	Dim. C	Dim. D	Dim. E	Dim. F	Dim. G	Dim. H	QTY.	Inv. Code	ASSEMBLE ON PARTS					
-	AP-G65	-	-	-	-	-	-	-	-	1							
												注: 工厂用					



DWG. NO.		REV.		SCALE		DATE		DRAWN BY		APPROVED BY	
AP-G65		-		-		22-03-2023		-		-	

PROJECT
YIN PING ROAD KOWLOON
FEATURE WALL (PHASE 1)

MATERIAL
3mm 铝板

COATING
PVF2

COLOUR
EC-DG-D334232-ZD1(SS-01)

MARK. NO.
-

QTY.
-

checked
part by

PART NUMBER
AP-G69

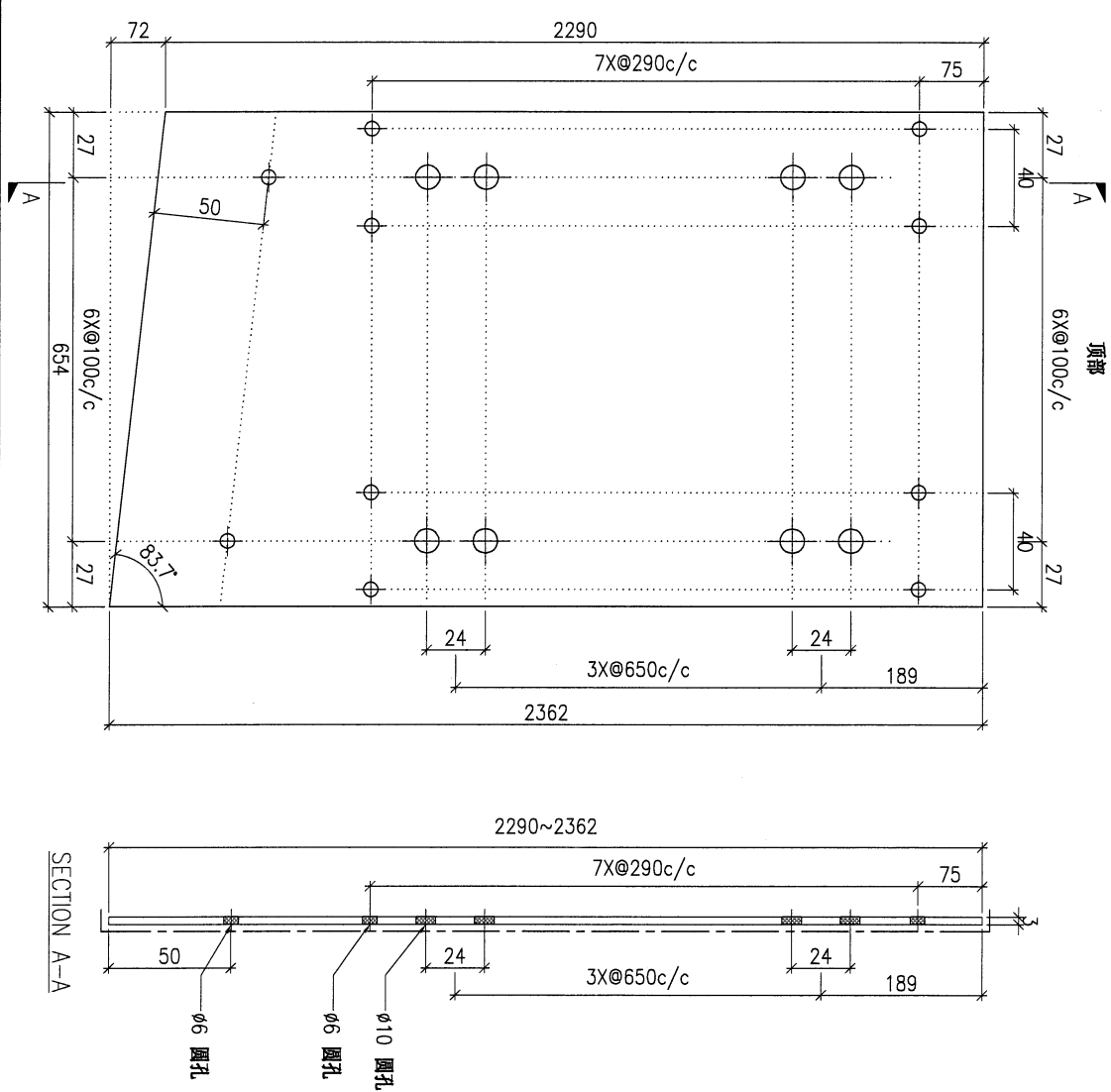
Dim. A Dim. B Dim. C Dim. D Dim. E Dim. F Dim. G Dim. H

QTY.
1

Inv. Code

ASSEMBLE ON PARTS

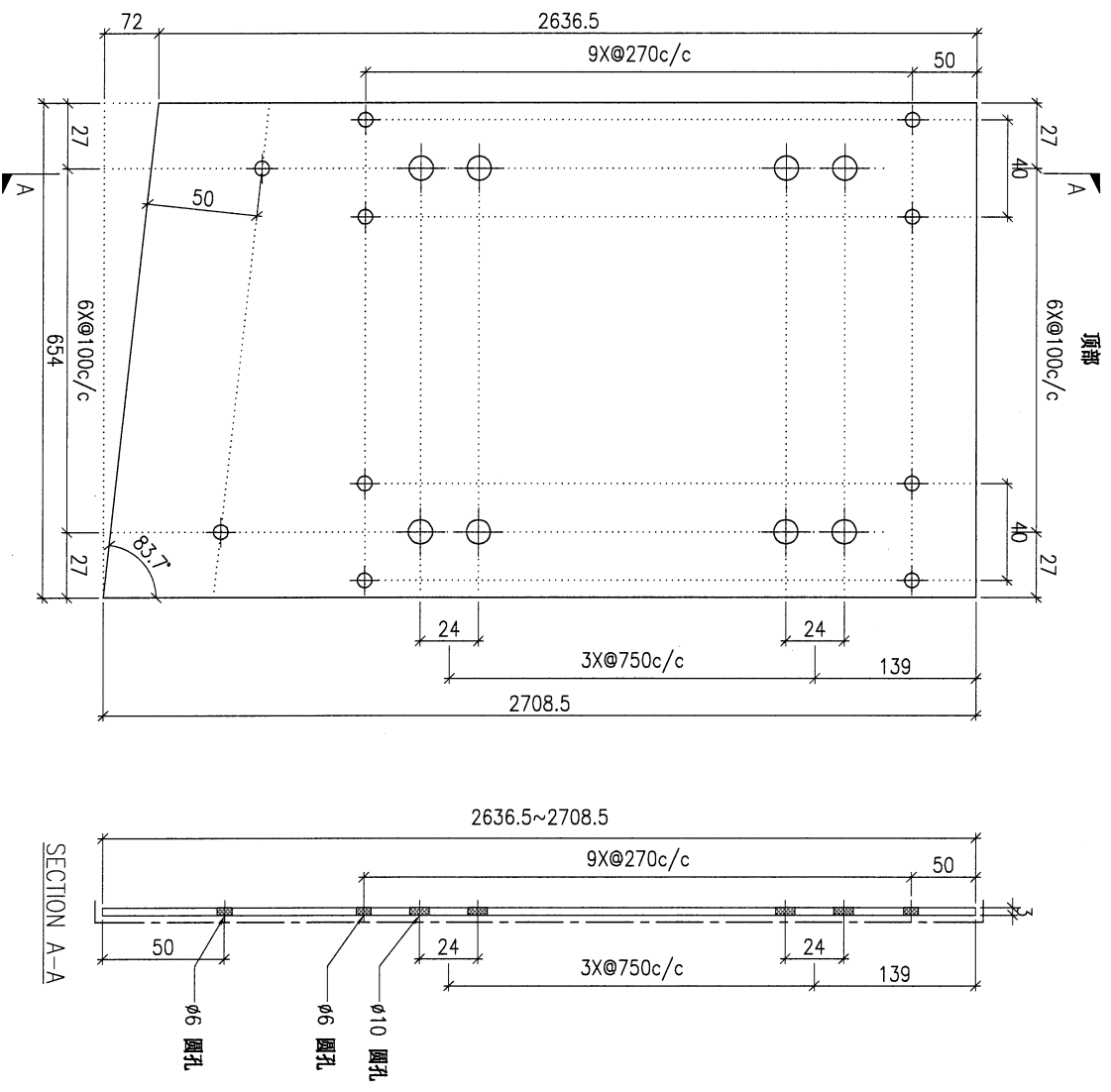
注：工厂用



DWG. NO. AP-G69	REV. -	SCALE -	DATE 22-03-2023	DRAWN BY -	APPROVED BY -
--------------------	-----------	------------	--------------------	---------------	------------------

36

PROJECT				MATERIAL				COATING				COLOUR				MARK. NO.		QTY.	
YIN PING ROAD KOWLOON FEATURE WALL (PHASE 1)				3mm 铝板				PUF2				EC-DG-D34232-ZD1(SS-01)				-		-	
REV.	CHECKED DATE BY	PART NUMBER	Dim. A	Dim. B	Dim. C	Dim. D	Dim. E	Dim. F	Dim. G	Dim. H	QTY.	Inv. Code	ASSEMBLE ON PARTS				注: 工厂用		
-		AP-G70	-	-	-	-	-	-	-	-	1								



DWG. NO.		REV.		SCALE		DATE		DRAWN BY		APPROVED BY	
AP-G70		-		-		22-03-2023		-		-	