

工程指示 / 要求簡箋 ENGINEER INSTRUCTIONS(E.I.)

工程指示編號:	EI- 6293	修改版本:	-
	HK-1243		
工程編號:	J 853	工程名稱:	延坪道
收件人:	生統	發件人:	Joe Chan
工程項目:	Feature Wall 項目 企飾線生產	日期:	1/6/2023

<input checked="" type="checkbox"/> 原合約工程包	<input type="checkbox"/> 原合約工程加 / 減賬 QT-	<input type="checkbox"/> 新工程報價 QT-
--	--	------------------------------------

信件批核號碼/圖紙參考編號:	批核模具圖紙編號:
客戶指示附件:	管理內部批簽署:

<input type="checkbox"/> 初步鋁料 B.M.	<input type="checkbox"/> 加工拆圖, 然後生產	<input type="checkbox"/> 尺寸表
<input type="checkbox"/> 正式鋁料 B.M.	<input type="checkbox"/> 技術上資料 / 指示	<input type="checkbox"/> 報價
<input type="checkbox"/> 配件 B.M.	<input type="checkbox"/> 樣辦或貨品說明書	<input type="checkbox"/> 分判合約
<input type="checkbox"/> 其他:		

內容: 請依附件資料, 加工企身飾線, 送地盤.
(全項目數量).
(1438頁)

完成上列要求日期: 25/6/2023 ASAP

國內

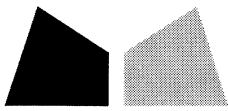
<input type="checkbox"/> 生產技術總監	<input type="checkbox"/> 連附件	<input type="checkbox"/> 技術部	<input type="checkbox"/> 連附件	<input type="checkbox"/> 生產部	<input type="checkbox"/> 連附件
<input type="checkbox"/> 採購部	<input type="checkbox"/> 連附件	<input checked="" type="checkbox"/> 生產統籌部	<input checked="" type="checkbox"/> 連附件	<input type="checkbox"/> 報關組	<input type="checkbox"/> 連附件
<input type="checkbox"/> 質檢部	<input type="checkbox"/> 連附件	<input type="checkbox"/> 會計部	<input type="checkbox"/> 連附件	<input type="checkbox"/> 機械設計部	<input type="checkbox"/> 連附件
<input type="checkbox"/> 香港辦	<input type="checkbox"/> 連附件	<input type="checkbox"/> 其他:			

香港

<input type="checkbox"/> 行政部	<input type="checkbox"/> 連附件	<input type="checkbox"/> 會計部	<input type="checkbox"/> 連附件	<input type="checkbox"/> 統籌部	<input type="checkbox"/> 連附件	<input type="checkbox"/> 工程部	<input type="checkbox"/> 連附件
<input type="checkbox"/> 採購部	<input type="checkbox"/> 連附件	<input type="checkbox"/> QS部	<input type="checkbox"/> 連附件	<input checked="" type="checkbox"/> 地盤管理	<input checked="" type="checkbox"/> 連附件	<input type="checkbox"/> 維修部	<input type="checkbox"/> 連附件

炳哥

*發件人簽署:		*組別成員批核簽署:	
傳遞編號:	HK1243/23	項目經理簽署:	



鋁材開料總表

工程號碼: J853 工程名稱: 延坪道

序號	鋁料編號	名稱	表面處理		開料長度	實用長料總數量		浪費率(%)
			顏色	層厚		支數	長度	
1	JM1061(47.5x2 5x3鋁角)				6000	16	96000	3.25
2	JMFG0032 (SS01色)				6000	47	282000	6.48

送至: _____

由: _____

日期: _____

簡短說明: _____

工程號碼:J853, 工程名稱:延坪道

開料長度:6000, 總長料支數:47, 總開料支數:102

鋸片厚度(mm):4, 料頭尾總切除(mm):20, 浪費率(%):6.48

鋁材開料清單 JMFG0032 (SS01)

窗號	編號(用料狀況)	實用長度(長料開數)	需要支數	開料支數	長料支數	餘料支數	編號(剩餘長度)
AL-G13B	1	3616.0	1	1	1	0	1@(2360)x1
AL-G12	2	3561.5	1	1	1	0	2@(2414.5)x1
AL-G11H	3	3426.5	1	1	1	0	3@(2549.5)x1
AL-G10H	4	3389.5	1	1	1	0	4@(2586.5)x1
AL-G11F	5	3378.5	1	1	1	0	5@(2597.5)x1
AL-G11B	6	3377.5	1	1	1	0	6@(2598.5)x1
AL-G11D	7	3372.0	1	1	1	0	7@(2604)x1
AL-G06F	8-9	3370.5	2	2	2	0	8-9@(2605.5)x2
AL-G02C	10-11	3281.0	2	2	2	0	10-11@(2695)x2
AL-G14B	12	3260.5	1	1	1	0	12@(2715.5)x1
AL-G13A	13	3247.5	1	1	1	0	13@(2728.5)x1
AL-G08B	14	3246.0	1	1	1	0	14@(2730)x1
AL-G07B	15	3201.0	1	1	1	0	15@(2775)x1
AL-G06D	16	3141.0	1	1	1	0	16@(2835)x1
AL-G11A	17	3049.0	1	1	1	0	17@(2927)x1
AL-G11G	18	3044.0	1	1	1	0	18@(2932)x1
AL-G11E	19	3037.5	1	1	1	0	19@(2938.5)x1
AL-G11C	20	3031.0	1	1	1	0	20@(2945)x1
AL-G08F	21-35	2992.5	15	15	15	0	21-35@(2983.5)x15
AL-G10G	(餘料)21	2977.0	1	1	0	1	21@(2.5)x1
AL-G06E	(餘料)17-18	2886.0	2	2	0	2	17@(37)x1 18@(42)x1
AL-G08C	(餘料)19	2845.5	1	1	0	1	19@(89)x1
AL-G03B	(餘料)16	2819.5	1	1	0	1	16@(11.5)x1
AL-G09	(餘料)20	2801.0	1	1	0	1	20@(140)x1
AL-G07C	(餘料)22	2800.0	1	1	0	1	22@(179.5)x1
AL-G04B	(餘料)23	2789.5	1	1	0	1	23@(190)x1
AL-G06C	(餘料)15, 24	2735.0	2	2	0	2	15@(36)x1 24@(244.5)x1
AL-G14A	(餘料)25	2733.5	1	1	0	1	25@(246)x1
AL-G06B	(餘料)13	2722.0	1	1	0	1	13@(2.5)x1
AL-G06A	(餘料)12	2711.0	1	1	0	1	12@(0.5)x1
AL-G08A	(餘料)10	2645.0	1	1	0	1	10@(46)x1
AL-G07A	(餘料)7	2600.0	1	1	0	1	7@(0)x1
AL-G08D, AL-G10F	(餘料)4-6, 8-9	2565.0	5	5	0	5	4@(17.5)x1 5@(28.5)x1 6@(29.5)x1 8-9@(36.5)x2
AL-G07D	(餘料)3, 11, 14, 26	2520.0	4	4	0	4	3@(25.5)x1 11@(171)x1 14@(206)x1 26@(459.5)x1
AL-G03C	36-38	2447.5	15	6	3	0	36-38@(1077)x3
AL-G03C	(餘料)27-35	2447.5		9	0	9	27-35@(532)x9
AL-G04C	39	2392.5	3	2	1	0	39@(1187)x1
AL-G04C	(餘料)2	2392.5		1	0	1	2@(18)x1
AL-G10B	(餘料)1	2334.0	1	1	0	1	1@(22)x1
AL-G03A	40	2194.5	1	1	1	0	40@(3781.5)x1
AL-G04A	(餘料)40	2184.5	1	1	0	1	40@(1593)x1
AL-G10E	41	2152.5	1	1	1	0	41@(3823.5)x1
AL-G08E	42	2017.5	2	1	1	0	42@(3958.5)x1

工程號碼: J853, 工程名稱: 延坪道

開料長度: 6000, 總長料支數: 47, 總開料支數: 102

鋸片厚度(mm): 4, 料頭尾總切除(mm): 20, 浪費率(%): 6.48

鋁材開料清單 JMFG0032 (SS01)

窗號	編號(用料狀況)	實用長度(長料開數)	需要 支數	開料 支數	長料 支數	餘料 支數	編號(剩餘長度)
AL-G08E	(餘料)41	2017.5		1	0	1	41@(1802)x1
AL-G15	(餘料)42	1990.5	1	1	0	1	42@(1964)x1
AL-G10A	43	1965.5	1	1	1	0	43@(4010.5)x1
AL-G04F	44	1822.5	4	1	1	0	44@(4153.5)x1
AL-G04F	(餘料)42-43	1822.5		3	0	2	42@(137.5)x1
AL-G10D	(餘料)41	1740.5	1	1	0	1	41@(57.5)x1
AL-G02A	(餘料)44	1681.0	1	1	0	1	44@(2468.5)x1
AL-G02B	(餘料)40, 44	1581.0	2	2	0	2	40@(8)x1 44@(883.5)x1
AL-G04D, AL-G04E	45-46	1407.5	8	6	2	0	45@(3157)x1 46@(334)x1
AL-G04E	(餘料)45	1407.5		2	0	1	45@(334)x1
AL-G10C	47	1328.0	1	1	1	0	47@(4648)x1

工程號碼: J853, 工程名稱: 延坪道

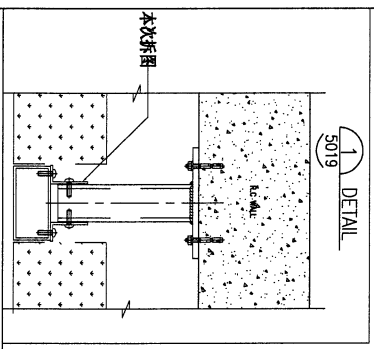
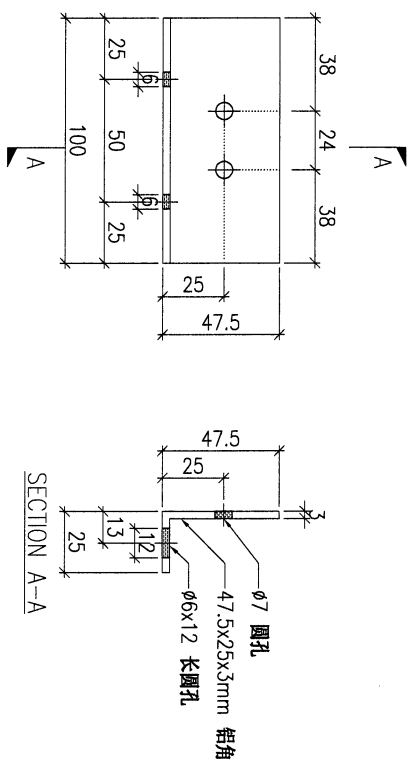
開料長度: 6000, 總長料支數: 16, 總開料支數: 890

鋸片厚度(mm): 4, 料頭尾總切除(mm): 20, 浪費率(%): 3.25

鋁材開料清單 JM1061(47.5x2:

窗號	編號(用料狀況)	實用長度(長料開數)	需要支數	開料支數	長料支數	餘料支數	編號(剩餘長度)
AL-G01	1-16	100.0	890	890	16	0	1-15@(52)x15 16@(2340)x1

PROJECT				YIN PING ROAD KOWLOON FEATURE WALL (PHASE 1)				MATERIAL				3mm 铝角(JM1061)				COATING				氧化				COLOUR				-				MARK. NO.				-				QTY.				-			
REV.	CHECKED	PART NUMBER	Dim. A	Dim. B	Dim. C	Dim. D	Dim. E	Dim. F	Dim. G	Dim. H	QTY.	Inv. Code	ASSEMBLE ON PARTS												注: 工厂用																						
-	SHR BY	AL-G01	-	-	-	-	-	-	-	-	890																																				



DWG. NO.		AL-G01		REV.		-		SCALE		-		DATE		22-03-2023		DRAWN BY		-		APPROVED BY		-	
----------	--	--------	--	------	--	---	--	-------	--	---	--	------	--	------------	--	----------	--	---	--	-------------	--	---	--

7

PROJECT
YIN PING ROAD KOWLOON
FEATURE WALL (PHASE 1)

MATERIAL
100x50x2.5mm铝通(JMF G0032)

COATING
PVF2

COLOUR
SS-01

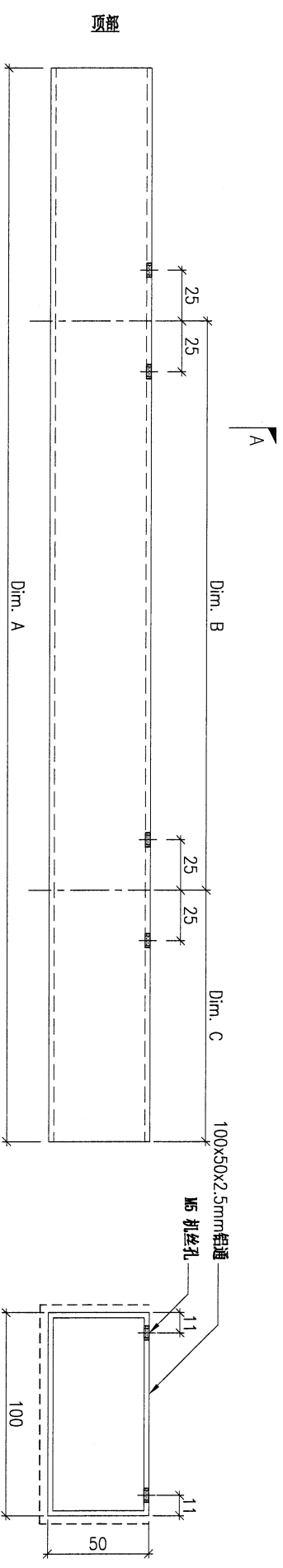
MARK. NO.
-

QTY.
-

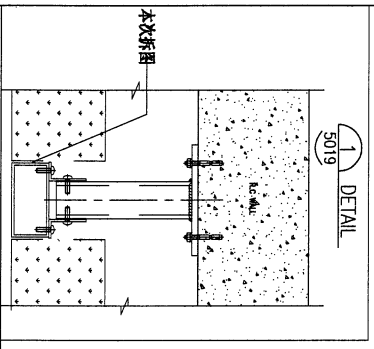
REV. / CHECKED BY	PART NUMBER	Dim. A	Dim. B	Dim. C	Dim. D	Dim. E	Dim. F	Dim. G	Dim. H	QTY.	Inv. Code	ASSEMBLE ON PARTS
-	AL-G02A	1681	2xø600c/c	293						1		
-	AL-G02B	1581	2xø600c/c	193						2		
-	AL-G02C	3281	5xø550c/c	193						2		

注: 工厂用

注: 地盘复尺



SECTION A-A



DWG. NO.	AL-G02	REV.	-	SCALE	-	DATE	22-03-2023	DRAWN BY	-	APPROVED BY	-
----------	--------	------	---	-------	---	------	------------	----------	---	-------------	---

PROJECT
YIN PING ROAD KOWLOON
FEATURE WALL (PHASE 1)

MATERIAL
100x50x2.5mm铝通(JMF G0032)

COATING
PVF2

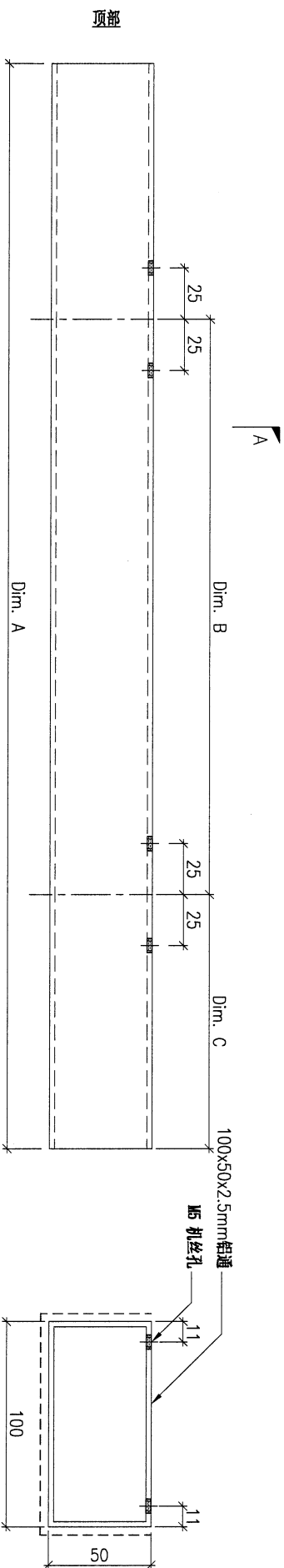
COLOUR
SS-01

MARK. NO.
-

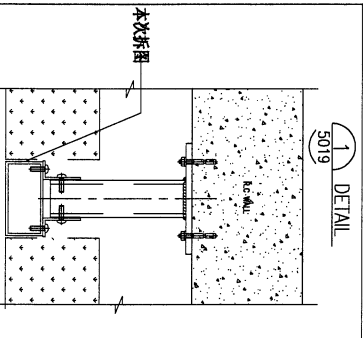
QTY.
-

REV.	CHECKED DATE BY	PART NUMBER	Dim. A	Dim. B	Dim. C	Dim. D	Dim. E	Dim. F	Dim. G	Dim. H	QTY.	Inv. Code	ASSEMBLE ON PARTS	注: 工厂用
-		AL-G03A	2194.5	3x@600c/c	246						1			
-		AL-G03B	2819.5	4x@600c/c	246						1			
-		AL-G03C	2447.5	3x@700c/c	198						15			

注: 地盘复尺



SECTION A-A



DWG. NO.

AL-G03

REV.

SCALE

DATE
22-03-2023

DRAWN BY

APPROVED BY

8

9

PROJECT
YIN PING ROAD KOWLOON
FEATURE WALL (PHASE 1)

MATERIAL
100x50x2.5mm铝通(JMFG0032)

COATING
PVF2

COLOUR
SS-01

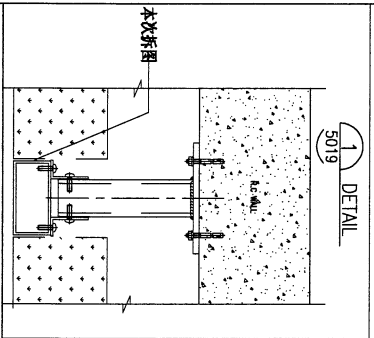
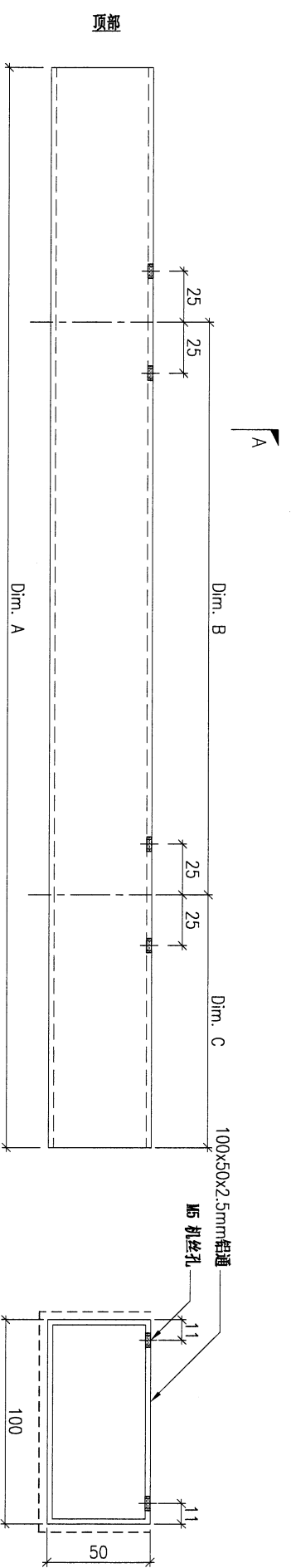
MARK. NO.
-

QTY.
-

REV.	CHECKED DATE BY	PART NUMBER	Dim. A	Dim. B	Dim. C	Dim. D	Dim. E	Dim. F	Dim. G	Dim. H	QTY.	Inv. Code	ASSEMBLE ON PARTS
-		AL-G04A	2184.5	3xø600c/c	197						1		
-		AL-G04B	2789.5	4xø600c/c	222						1		
-		AL-G04C	2392.5	3xø700c/c	149.5						3		
-		AL-G04D	1407.5	2xø550c/c	149.5						2		
-		AL-G04E	1407.5	2xø550c/c	149.5						6		
-		AL-G04F	1822.5	3xø550c/c	149.5						4		

注: 工厂用

注: 地盘复尺



DWG. NO.	AL-G04	REV.	-	SCALE	-	DATE	22-03-2023	DRAWN BY	-	APPROVED BY	-
----------	--------	------	---	-------	---	------	------------	----------	---	-------------	---

PROJECT YIN PING ROAD KOWLOON FEATURE WALL (PHASE 1)

MATERIAL 100x50x2.5mm铝通(JMF-G0032)

COATING PVF2

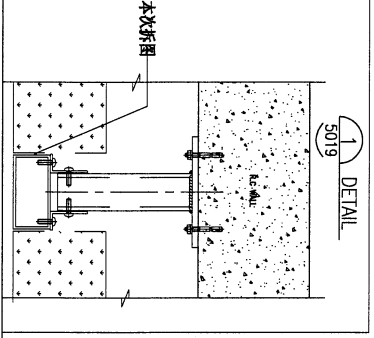
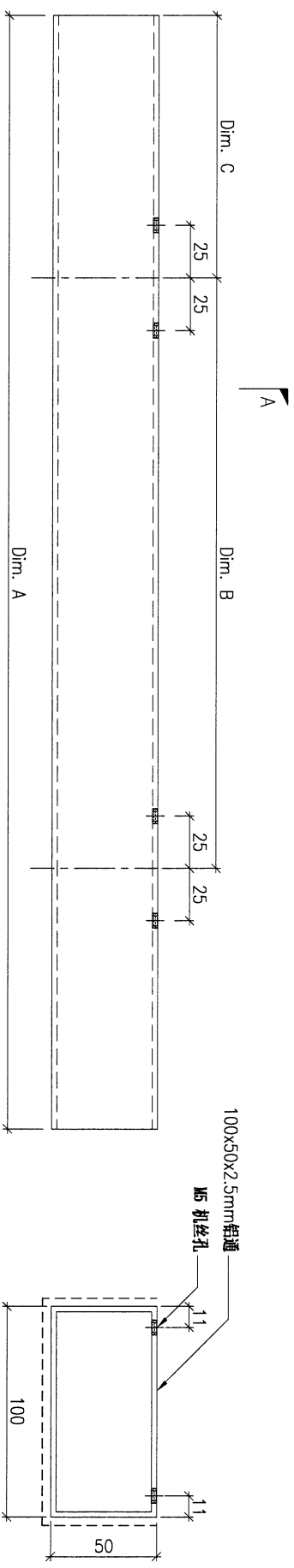
COLOUR SS-01

MARK. NO. -

QTY. -

REV. / CHECKED BY	PART NUMBER	Dim. A	Dim. B	Dim. C	Dim. D	Dim. E	Dim. F	Dim. G	Dim. H	QTY.	Inv. Code	ASSEMBLE ON PARTS
-	AL-G06A	2711	3xØ750c/c	192.5						1		
-	AL-G06B	2722	3xØ750c/c	192.5						1		
-	AL-G06C	2735	3xØ750c/c	192.5						2		
-	AL-G06D	3141	4xØ700c/c	192.5						1		
-	AL-G06E	2886	4xØ600c/c	192.5						2		
-	AL-G06F	3370.5	4xØ750c/c	192.5						2		

注：地盘复尺



DWG. NO. AL-G06

REV. -

SCALE -

DATE 22-03-2023

DRAWN BY -

APPROVED BY -

注：工厂用

PROJECT
YIN PING ROAD KOWLOON
FEATURE WALL (PHASE 1)

MATERIAL
100x50x2.5mm铝通(JMF-G0032)

COATING
PVF2

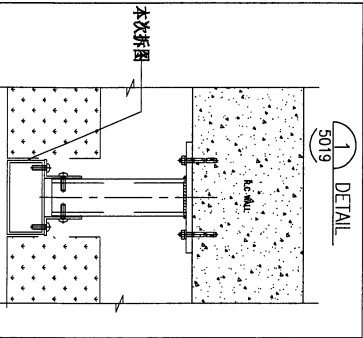
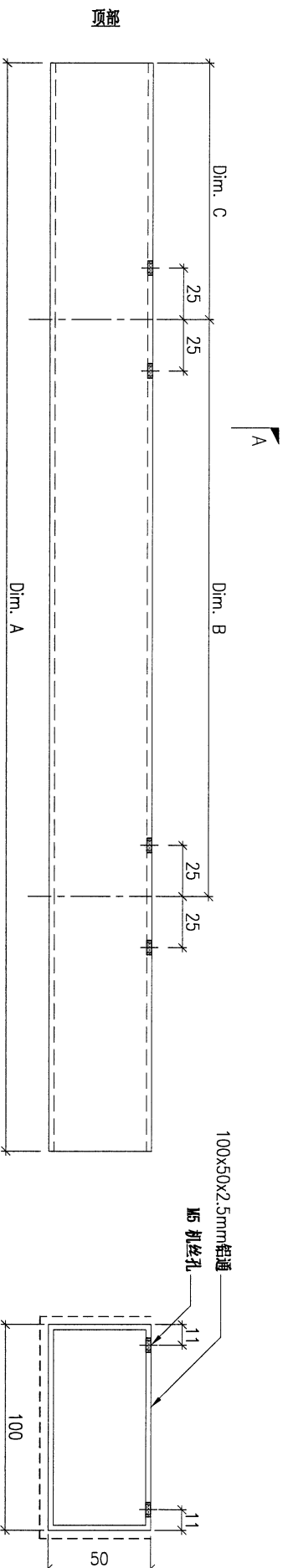
COLOUR
SS-01

MARK. NO.
-

QTY.
-

REV.	CHECKED DATE BY	PART NUMBER	Dim. A	Dim. B	Dim. C	Dim. D	Dim. E	Dim. F	Dim. G	Dim. H	QTY.	Inv. Code	ASSEMBLE ON PARTS	注: 工厂用
-		AL-G07A	2600	5x@750c/c	149.5						1			
-		AL-G07B	3201	4x@700c/c	149.5						1			
-		AL-G07C	2800	4x@600c/c	149.5						1			
-		AL-G07D	2520	5x@750c/c	149.5						4			

注: 地盘复尺



DWG. NO.

AL-G07

REV.

SCALE

DATE
22-03-2023

DRAWN BY

APPROVED BY

PROJECT YIN PING ROAD KOWLOON FEATURE WALL (PHASE 1)

MATERIAL 100x50x2.5mm铝通(JMF-G0032)

COATING PVF2

COLOUR SS-01

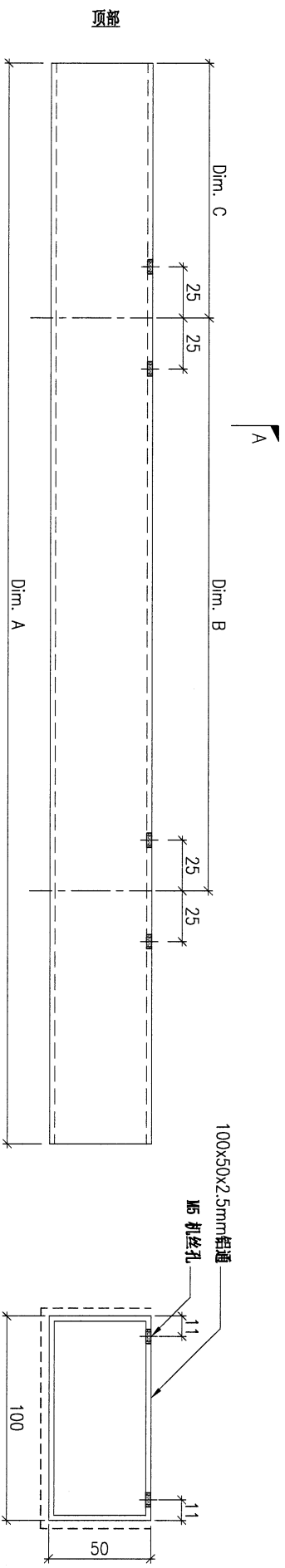
MARK. NO. -

QTY. -

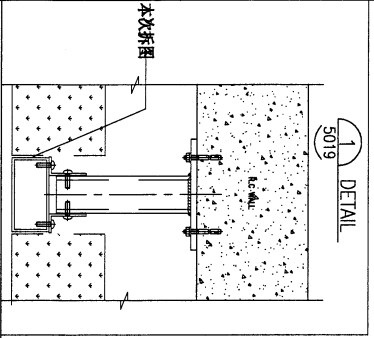
REV. / CHECKED BY / DATE	PART NUMBER	Dim. A	Dim. B	Dim. C	Dim. D	Dim. E	Dim. F	Dim. G	Dim. H	QTY.	Inv. Code	ASSEMBLE ON PARTS	QTY.
-	AL-G08A	2645	3x@750c/c	192.5						1			-
-	AL-G08B	3246	4x@700c/c	192.5						1			-
-	AL-G08C	2845.5	4x@600c/c	192.5						1			-
-	AL-G08D	2565	3x@750c/c	192.5						4			-
-	AL-G08E	2017.5	3x@550c/c	192.5						2			-
-	AL-G08F	2992.5	4x@650c/c	192.5						15			-

注：工厂用

注：地盘复尺



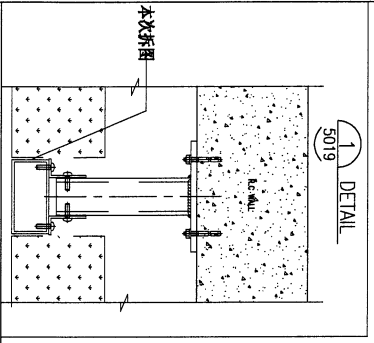
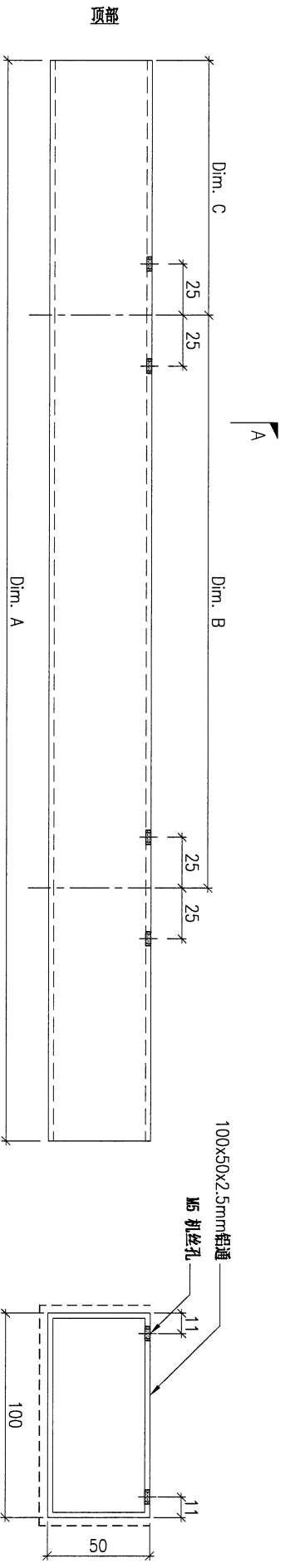
SECTION A-A



DWG. NO.	AL-G08	REV.	-	SCALE	-	DATE	22-03-2023	DRAWN BY	-	APPROVED BY	-
----------	--------	------	---	-------	---	------	------------	----------	---	-------------	---

PROJECT				YIN PING ROAD KOWLOON FEATURE WALL (PHASE 1)				MATERIAL				100x50x2.5mm 铝通 (JMF-G0032)				COATING		PVF2		COLOUR		SS-01		MARK. NO.		-		QTY.		-	
REV.	CHANGED	PART NUMBER	Dim. A	Dim. B	Dim. C	Dim. D	Dim. E	Dim. F	Dim. G	Dim. H	QTY.	Inv. Code	ASSEMBLE ON PARTS				注: 工厂用														
-	-	AL-G09	2801	4x@600/c	149.5						1																				

注: 地盘复尺



DWG. NO.		AL-G09		REV.		-		SCALE		-		DATE		22-03-2023		DRAWN BY		-		APPROVED BY		-	
----------	--	--------	--	------	--	---	--	-------	--	---	--	------	--	------------	--	----------	--	---	--	-------------	--	---	--

PROJECT
YIN PING ROAD KOWLOON
FEATURE WALL (PHASE 1)

MATERIAL
100x50x2.5mm 铝通 (JMF-G0032)

COATING
PVF2

COLOUR
SS-01

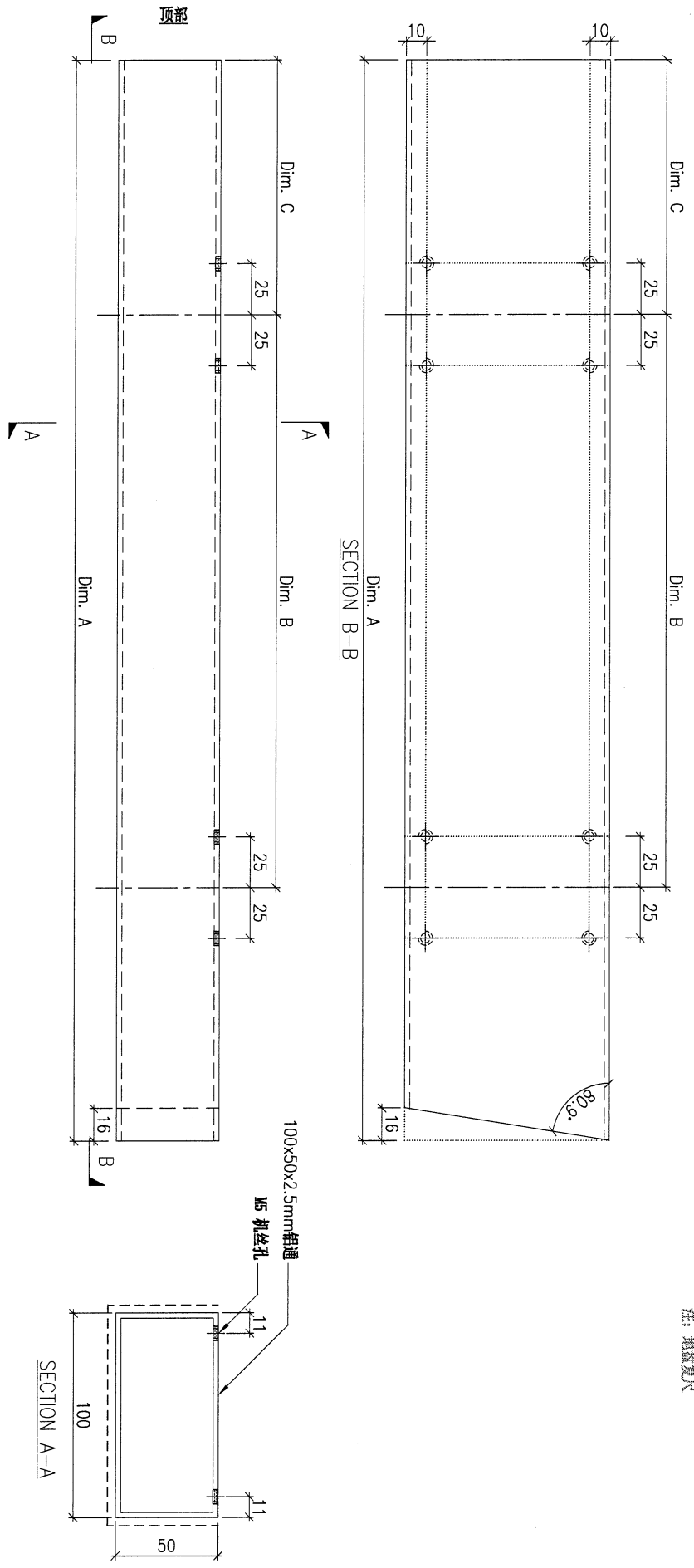
MARK. NO.
-

QTY.
-

REV. / CHECKED BY	PART NUMBER	Dim. A	Dim. B	Dim. C	Dim. D	Dim. E	Dim. F	Dim. G	Dim. H	QTY.	Inv. Code	ASSEMBLE ON PARTS
-	AL-G10A	1965.5	2xØ750c/c	174.5						1		
-	AL-G10B	2334	3xØ650c/c	174.5						1		
-	AL-G10C	1328	2xØ500c/c	199.5						1		
-	AL-G10D	1740.5	2xØ700c/c	199.5						1		
-	AL-G10E	2152.5	3xØ550c/c	199.5						1		
-	AL-G10F	2565	4xØ550c/c	199.5						1		
-	AL-G10G	2977	4xØ650c/c	199.5						1		
-	AL-G10H	3389.5	4xØ750c/c	199.5						1		

注：工厂用

注：地盤复尺



DWG. NO.	AL-G10	REV.	-	SCALE	-	DATE	22-03-2023	DRAWN BY	-	APPROVED BY	-
----------	--------	------	---	-------	---	------	------------	----------	---	-------------	---

PROJECT: YIN PING ROAD KOWLOON FEATURE WALL (PHASE 1)

MATERIAL: 100x50x2.5mm铝通(JMF-G0032)

COATING: PVF2

COLOUR: SS-01

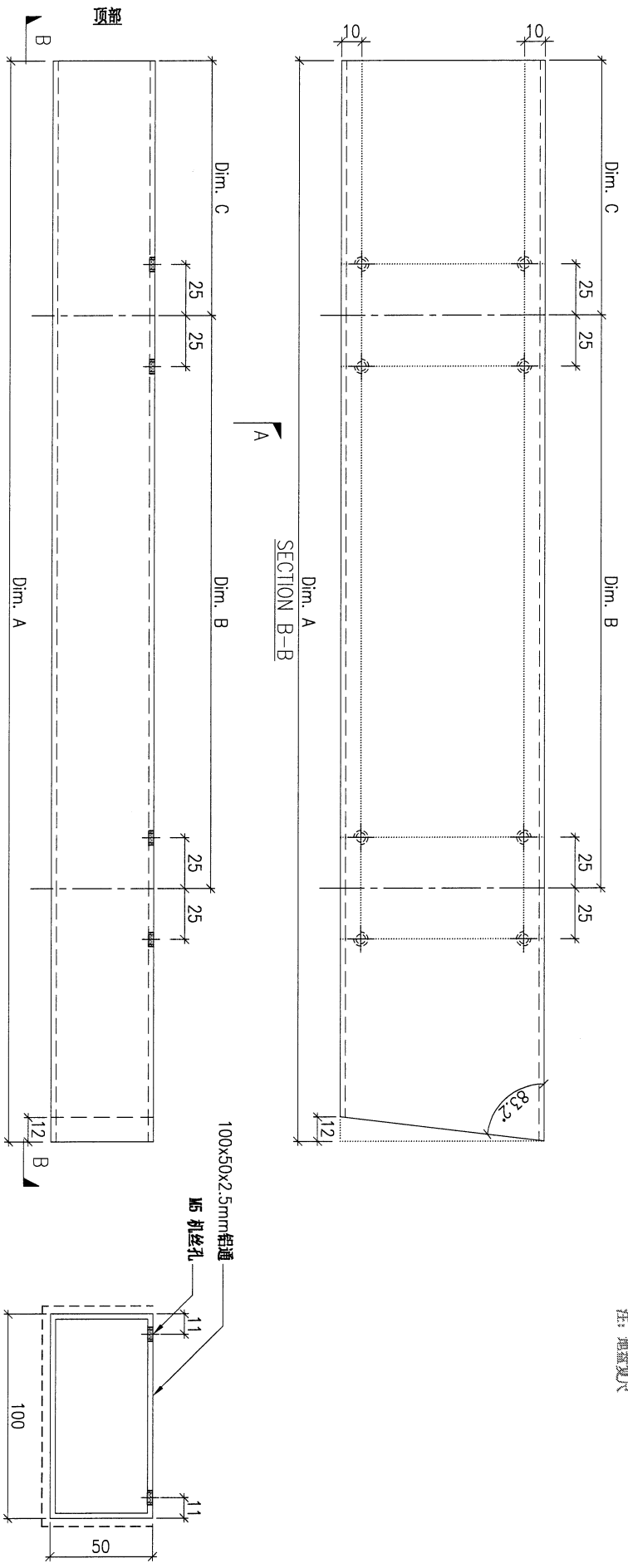
MARK. NO.:

QTY.:

REV. / CHECKED BY	PART NUMBER	Dim. A	Dim. B	Dim. C	Dim. D	Dim. E	Dim. F	Dim. G	Dim. H	QTY.	Inv. Code	ASSEMBLE ON PARTS	MARK. NO.	QTY.
-	AL-G11A	3049	4x@50c/c	199.5						1			-	-
-	AL-G11B	3377.5	4x@750c/c	199.5						1			-	-
-	AL-G11C	3031	4x@50c/c	199.5						1			-	-
-	AL-G11D	3372	4x@750c/c	199.5						1			-	-
-	AL-G11E	3037.5	4x@50c/c	199.5						1			-	-
-	AL-G11F	3378.5	4x@750c/c	199.5						1			-	-
-	AL-G11G	3044	4x@50c/c	199.5						1			-	-
-	AL-G11H	3426.5	4x@750c/c	199.5						1			-	-

注：地盘复尺

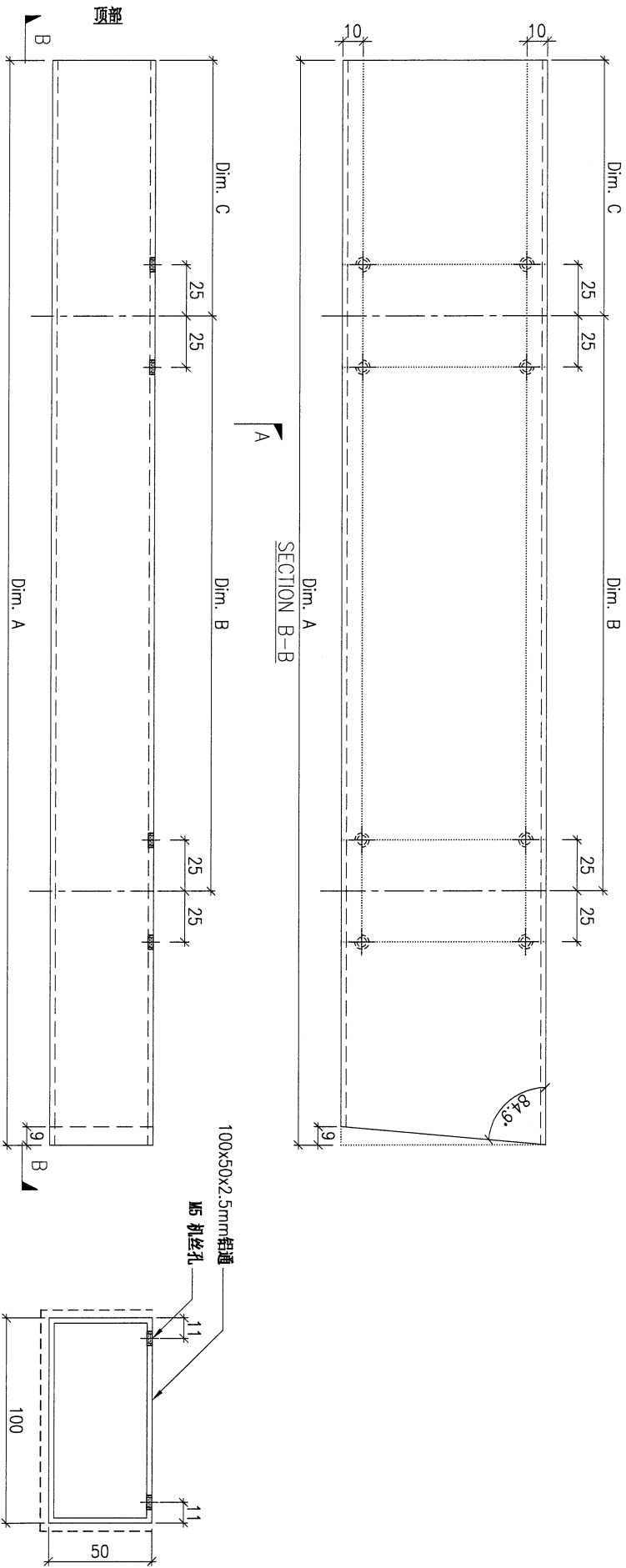
注：工厂用



DWG. NO.	AL-G11	REV.	-	SCALE	-	DATE	22-03-2023	DRAWN BY	-	APPROVED BY	-
----------	--------	------	---	-------	---	------	------------	----------	---	-------------	---

PROJECT				YIN PING ROAD KOWLOON FEATURE WALL (PHASE 1)				MATERIAL				100x50x2.5mm 铝通 (JMF-G0032)				COATING				PVF2				COLOUR				SS-01				MARK. NO.				-				QTY.				-			
REV.	CHANGED BY	PART NUMBER	Dim. A	Dim. B	Dim. C	Dim. D	Dim. E	Dim. F	Dim. G	Dim. H	QTY.	Inv. Code	ASSEMBLE ON PARTS												注: 工厂用																						
-		AL-G12	3561.5	4x@50c/c	269.5						1																																				

注: 地盘算尺



DWG. NO.		AL-G12		REV.		-		SCALE		-		DATE		22-03-2023		DRAWN BY		-		APPROVED BY		-	
----------	--	--------	--	------	--	---	--	-------	--	---	--	------	--	------------	--	----------	--	---	--	-------------	--	---	--

PROJECT
YIN PING ROAD KOWLOON
FEATURE WALL (PHASE 1)

MATERIAL
100x50x2.5mm铝通(JMF G0032)

COATING
PVF2

COLOUR
SS-01

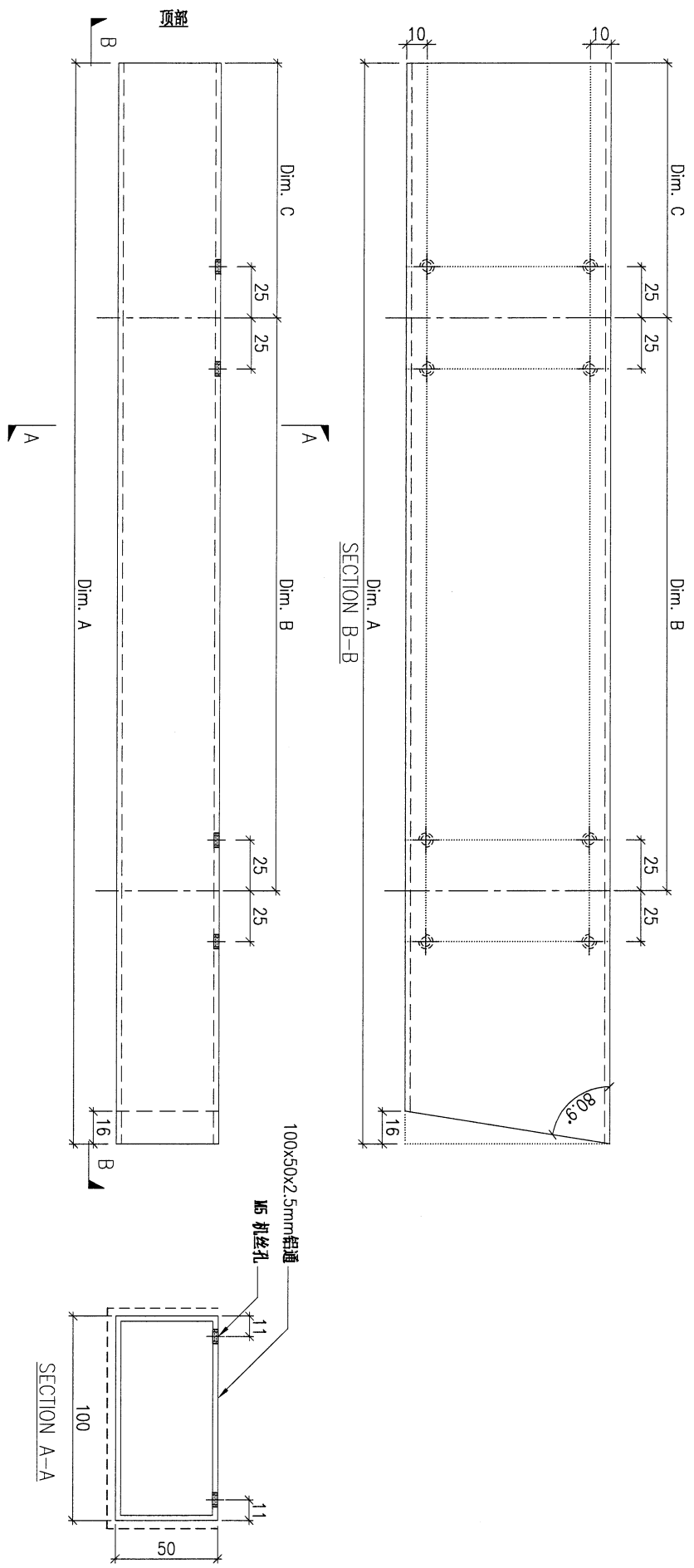
MARK. NO.
-

QTY.
-

REV. / CHECKED / DATE BY	PART NUMBER	Dim. A	Dim. B	Dim. C	Dim. D	Dim. E	Dim. F	Dim. G	Dim. H	QTY.	Inv. Code	ASSEMBLE ON PARTS
-	AL-G13A	3247.5	4xø700c/c	192.5						1		
-	AL-G13B	3616	6xø550c/c	192.5						1		

注: 工厂用

注: 地盘复尺



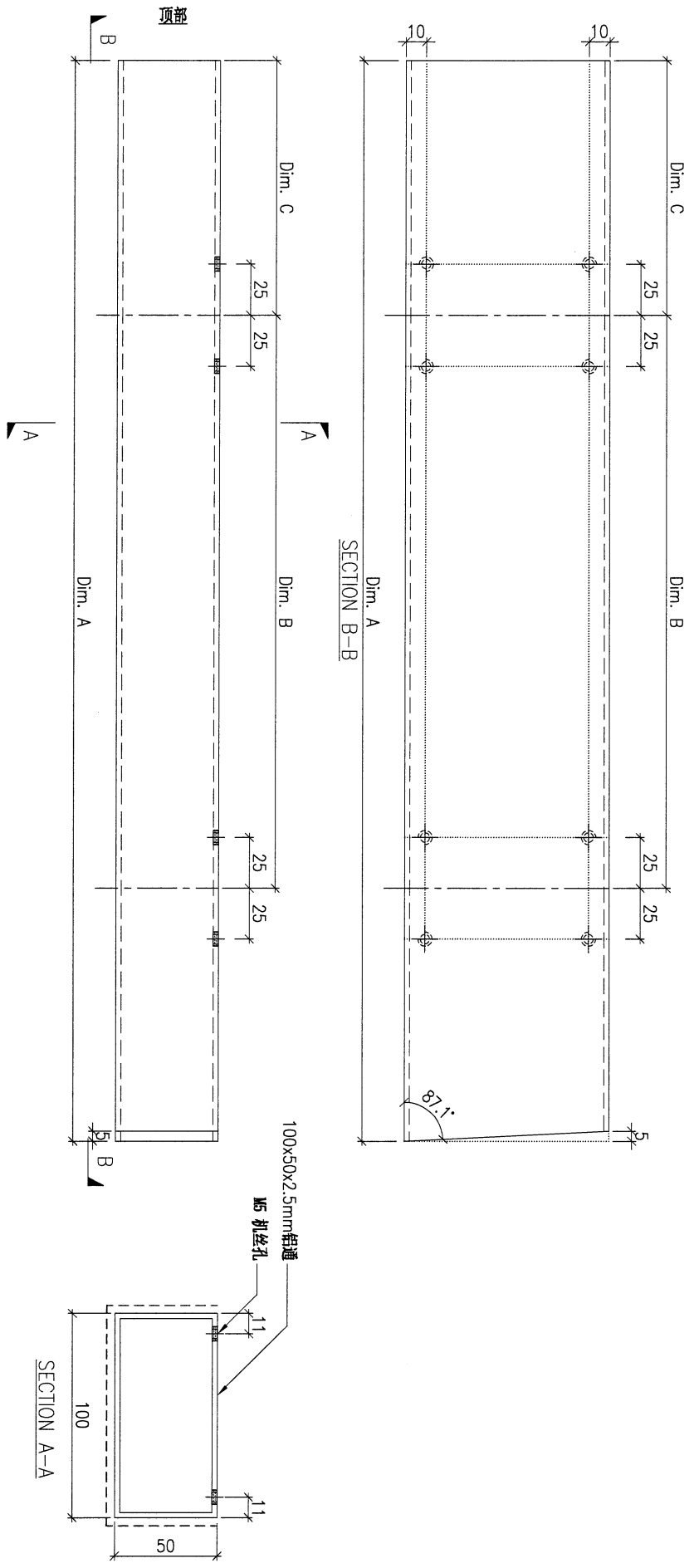
DWG. NO.	AL-G13	REV.	-	SCALE	-	DATE	22-03-2023	DRAWN BY	-	APPROVED BY	-
----------	--------	------	---	-------	---	------	------------	----------	---	-------------	---

18

PROJECT				MATERIAL				COATING				COLOUR		MARK. NO.		QTY.	
YIN PING ROAD KOWLOON FEATURE WALL (PHASE 1)				100x50x2.5mm 铝通 (JMF-G0032)				PVF2				SS-01		-		-	
REV.	CHANGED PART NO.	PART NUMBER	Dim. A	Dim. B	Dim. C	Dim. D	Dim. E	Dim. F	Dim. G	Dim. H	QTY.	Inv. Code	ASSEMBLE ON PARTS				
-	-	AL-G14A	2733.5	5x@750c/c	192.5						1						
-	-	AL-G14B	3260.5	4x@100c/c	192.5						1						

注: 地盘复尺

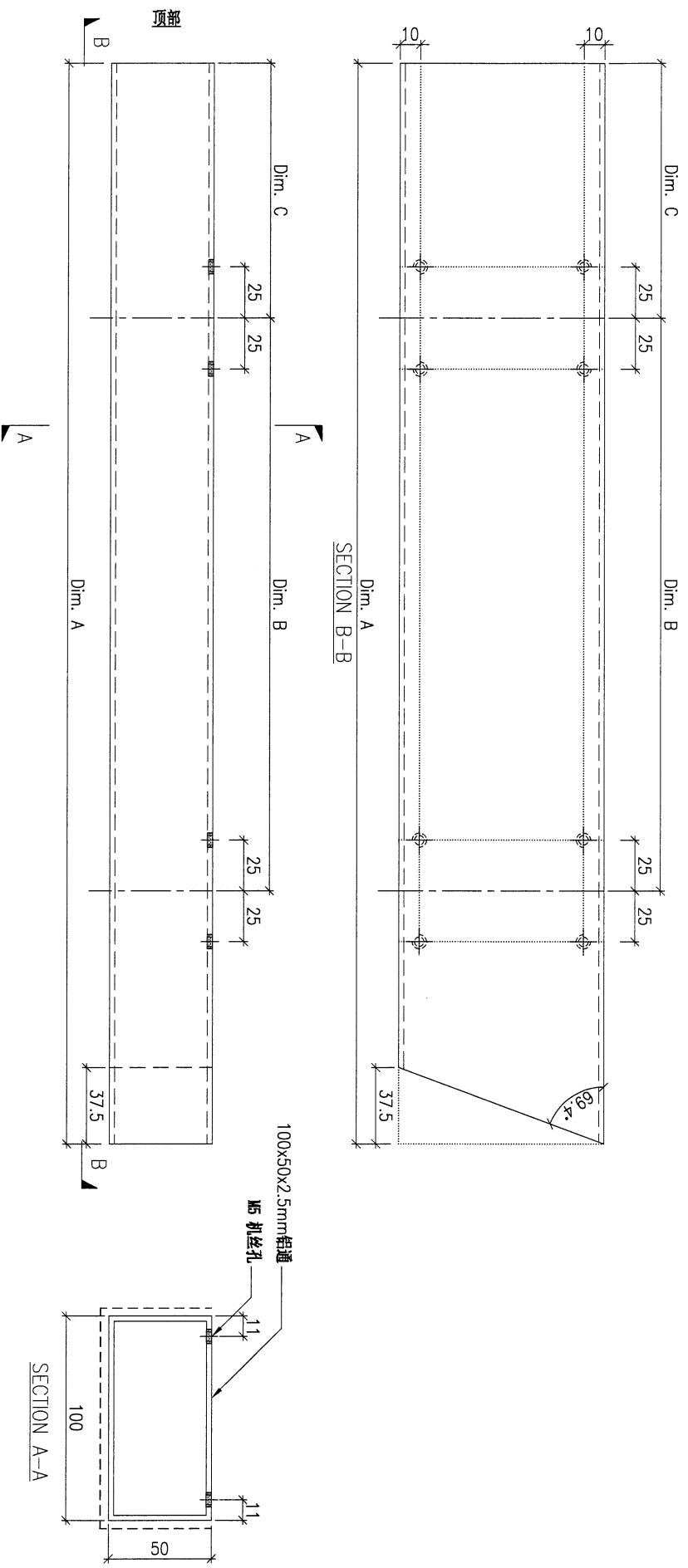
注: 工厂用



DWG. NO.		REV.		SCALE		DATE		DRAWN BY		APPROVED BY	
AL-G14		-		-		22-03-2023		-		-	

PROJECT				YIN PING ROAD KOWLOON FEATURE WALL (PHASE 1)				MATERIAL				100x50x2.5mm铝通(JMF-G0032)				COATING				PVF2				COLOUR				SS-01				MARK. NO.				-				QTY.				-			
REL. DWG. NO.	PART NUMBER	Dim. A	Dim. B	Dim. C	Dim. D	Dim. E	Dim. F	Dim. G	Dim. H	QTY.	Inv. Code	ASSEMBLE ON PARTS												注: 工厂用																							
-	AL-G15	1990.5	2x@/50c/c	192.5						1																																					

注: 抛盘复尺



DWG. NO.		AL-G15		REV.		-		SCALE		-		DATE		22-03-2023		DRAWN BY		-		APPROVED BY		-	
----------	--	--------	--	------	--	---	--	-------	--	---	--	------	--	------------	--	----------	--	---	--	-------------	--	---	--

PROJECT YIN PING ROAD KOWLOON
FEATURE WALL (PHASE 1)

MATERIAL 铝通组裝图

COATING

COLOUR -

MARK. NO. -

QTY. -

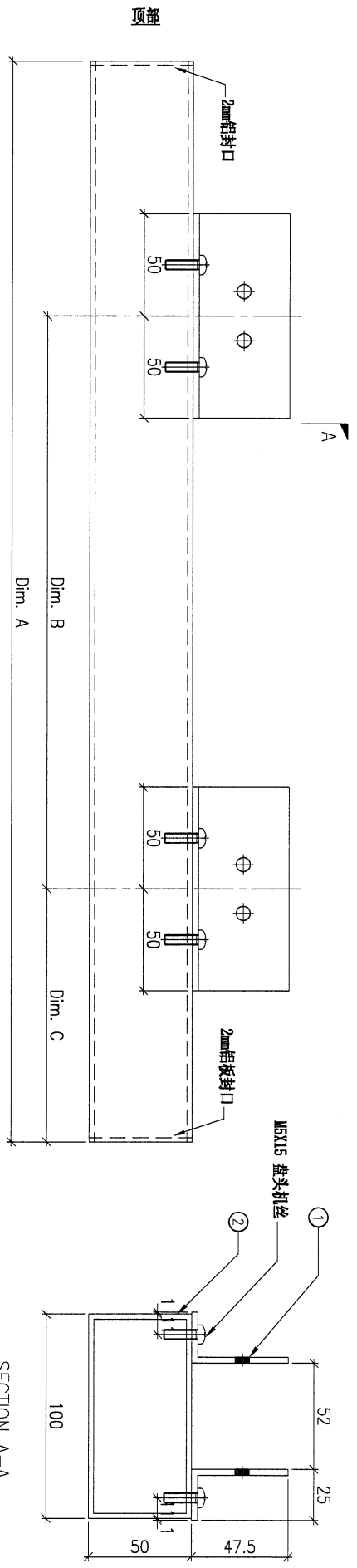
REV. OR CHG BY	PART NUMBER	Dim. A	Dim. B	Dim. C	Dim. D	Dim. E	Dim. F	Dim. G	Dim. H	QTY.	Inv. Code
-	UN-G02A	1685	2x@500c/c	295						1	
-	UN-G02B	1585	2x@500c/c	195						2	
-	UN-G02C	3285	6x@550c/c	195						2	

注：地盘用

注：地盘复尺

ASSEMBLE ON PARTS

- 注：构件编号 ①AL-G01 6件 ②AL-G02A 1件
- 注：构件编号 ①AL-G01 6件 ②AL-G02B 1件
- 注：构件编号 ①AL-G01 12件 ②AL-G02C 1件



SECTION A-A

DWG. NO.	UN-G02	REV.	-	SCALE	-	DATE	13-04-2023	DRAWN BY	-	APPROVED BY	-
----------	--------	------	---	-------	---	------	------------	----------	---	-------------	---

PROJECT YIN PING ROAD KOWLOON FEATURE WALL (PHASE 1)

MATERIAL 铝通组装图

COATING

COLOUR -

MARK. NO. -

QTY. -

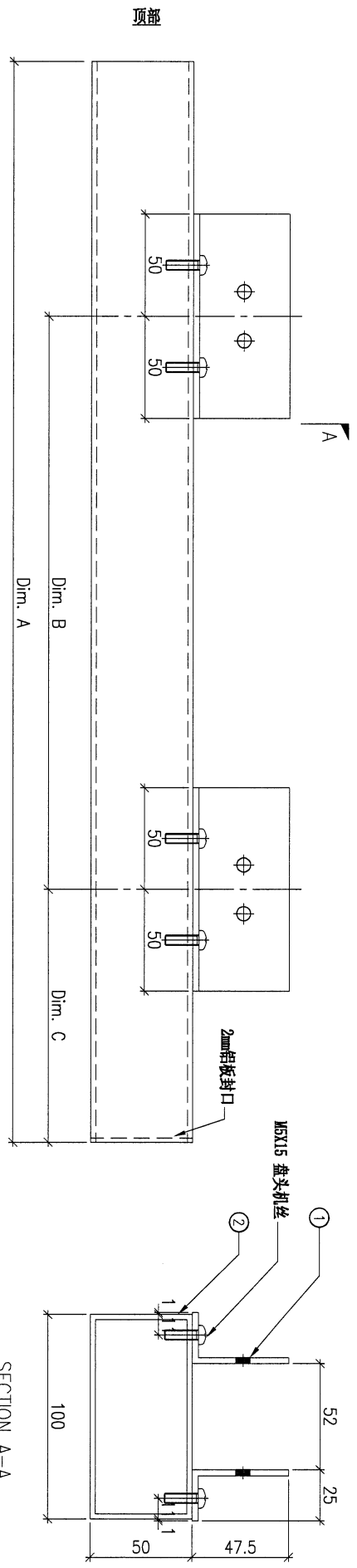
REV. OR CHANGED BY	PART NUMBER	Dim. A	Dim. B	Dim. C	Dim. D	Dim. E	Dim. F	Dim. G	Dim. H	QTY.	Inv. Code
-	UN-G03A	2196.5	5x@600/c	248						1	
-	UN-G03B	2821.5	4x@600/c	248						1	
-	UN-G03C	2449.5	3x@700/c	200						15	

注：地盘用

注：地盘复尺

ASSEMBLE ON PARTS

- 注：构件编号 ①AL-G01 8件 ②AL-G03A 1件
- 注：构件编号 ①AL-G01 10件 ②AL-G03B 1件
- 注：构件编号 ①AL-G01 8件 ②AL-G03C 1件



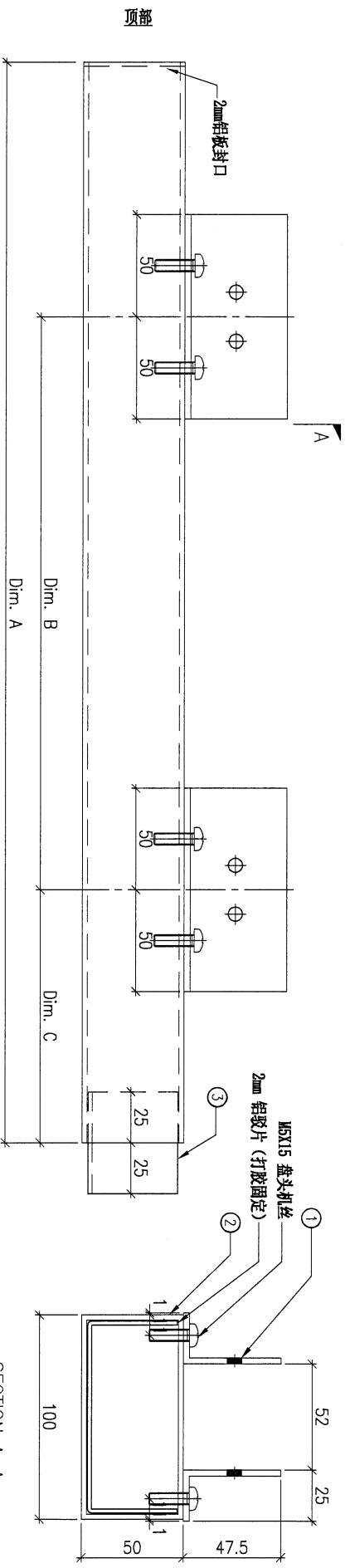
DWG. NO.	UN-G03	REV.	-	SCALE	-	DATE	13-04-2023	DRAWN BY	-	APPROVED BY	-
----------	--------	------	---	-------	---	------	------------	----------	---	-------------	---

PROJECT YIN PING ROAD KOWLOON FEATURE WALL (PHASE 1)			MATERIAL 铝通组装图			COATING			COLOUR			MARK. NO.			QTY.		
--	--	--	-------------------	--	--	---------	--	--	--------	--	--	-----------	--	--	------	--	--

REV.	CHECKED DATE BY	PART NUMBER	Dim. A	Dim. B	Dim. C	Dim. D	Dim. E	Dim. F	Dim. G	Dim. H	QTY.	Inv. Code	ASSEMBLE ON PARTS		
-		UN-G04A	2186.5	3xØ600c/c	197						1		注: 构件编号 ①AL-G01 8件 ②AL-G04A 1件 ③AP-G01 1件		
-		UN-G04B	2791.5	4xØ600c/c	222						1		注: 构件编号 ①AL-G01 10件 ②AL-G04B 1件 ③AP-G01 1件		
-		UN-G04C	2394.5	3xØ700c/c	149.5						3		注: 构件编号 ①AL-G01 8件 ②AL-G04C 1件 ③AP-G01 1件		
-		UN-G04D	1409.5	2xØ550c/c	149.5						2		注: 构件编号 ①AL-G01 6件 ②AL-G04D 1件 ③AP-G01 1件		
-		UN-G04E	1409.5	2xØ550c/c	149.5						6		注: 构件编号 ①AL-G01 6件 ②AL-G04E 1件 ③AP-G01 1件		
-		UN-G04F	1824.5	3xØ550c/c	149.5						4		注: 构件编号 ①AL-G01 8件 ②AL-G04F 1件 ③AP-G01 1件		

注: 地盘用

注: 地盘复尺



SECTION A-A

DWG. NO.	UN-G04	REV.	-	SCALE	-	DATE	13-04-2023	DRAWN BY	-	APPROVED BY	-
----------	--------	------	---	-------	---	------	------------	----------	---	-------------	---

PROJECT: YIN PING ROAD KOWLOON FEATURE WALL (PHASE 1)

MATERIAL: 铝通组裝图

COATING: -

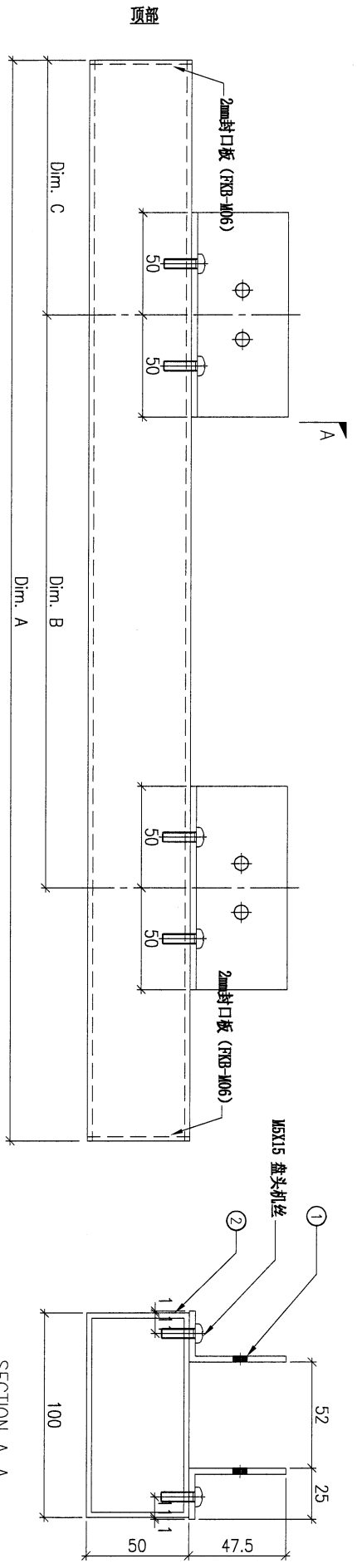
COLOUR: -

MARK. NO.: -

QTY.: -

REV. OR CHANGED BY	PART NUMBER	Dim. A	Dim. B	Dim. C	Dim. D	Dim. E	Dim. F	Dim. G	Dim. H	QTY.	Inv. Code	ASSEMBLE ON PARTS
-	UN-G06A	2715	3x@750c/c	194.5						1		注: 构件编号 ①AL-G01 8件 ②AL-G06A 1件
-	UN-G06B	2726	3x@750c/c	194.5						1		注: 构件编号 ①AL-G01 8件 ②AL-G06B 1件
-	UN-G06C	2739	3x@750c/c	194.5						2		注: 构件编号 ①AL-G01 8件 ②AL-G06C 1件
-	UN-G06D	3145	4x@700c/c	194.5						1		注: 构件编号 ①AL-G01 10件 ②AL-G06D 1件
-	UN-G06E	2890	4x@600c/c	194.5						2		注: 构件编号 ①AL-G01 10件 ②AL-G06E 1件
-	UN-G06F	3374.5	4x@750c/c	194.5						2		注: 构件编号 ①AL-G01 10件 ②AL-G06F 1件

注: 地盘复尺



SECTION A-A

DWG. NO.	UN-G06	REV.	-	SCALE	-	DATE	13-04-2023	DRAWN BY	-	APPROVED BY	-
----------	--------	------	---	-------	---	------	------------	----------	---	-------------	---

24

PROJECT YIN PING ROAD KOWLOON FEATURE WALL (PHASE 1)

MATERIAL 铝通组装图

COATING

COLOUR -

MARK. NO. -

QTY. -

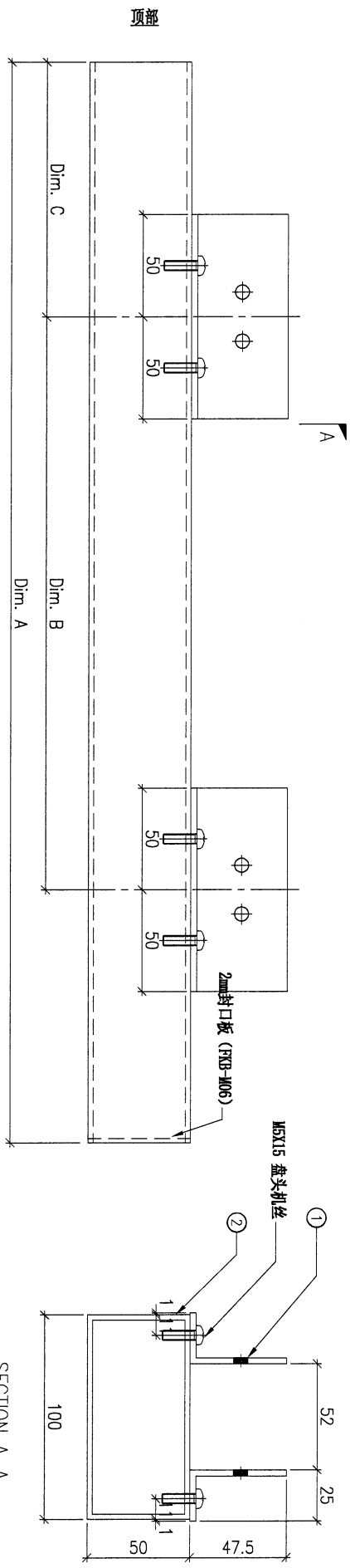
REV. OR CHG. BY	PART NUMBER	Dim. A	Dim. B	Dim. C	Dim. D	Dim. E	Dim. F	Dim. G	Dim. H	QTY.	Inv. Code
-	UN-G07A	2602	3xØ750c/c	149.5						1	
-	UN-G07B	3203	4xØ700c/c	149.5						1	
-	UN-G07C	2802	4xØ600c/c	149.5						1	
-	UN-G07D	2522	3xØ750c/c	149.5						4	

注：地盘用

注：地盘复尺

ASSEMBLE ON PARTS

- 注：构件编号 ①AL-G01 8件 ②AL-G07A 1件
- 注：构件编号 ①AL-G01 10件 ②AL-G07B 1件
- 注：构件编号 ①AL-G01 10件 ②AL-G07C 1件
- 注：构件编号 ①AL-G01 8件 ②AL-G07D 1件



SECTION A-A

DWG. NO.	UN-G07	REV.	-	SCALE	-	DATE	13-04-2023	DRAWN BY	-	APPROVED BY	-
----------	--------	------	---	-------	---	------	------------	----------	---	-------------	---

25

PROJECT: YIN PING ROAD KOWILUON FEATURE WALL (PHASE 1)

MATERIAL: 铝通组裝图

COATING: -

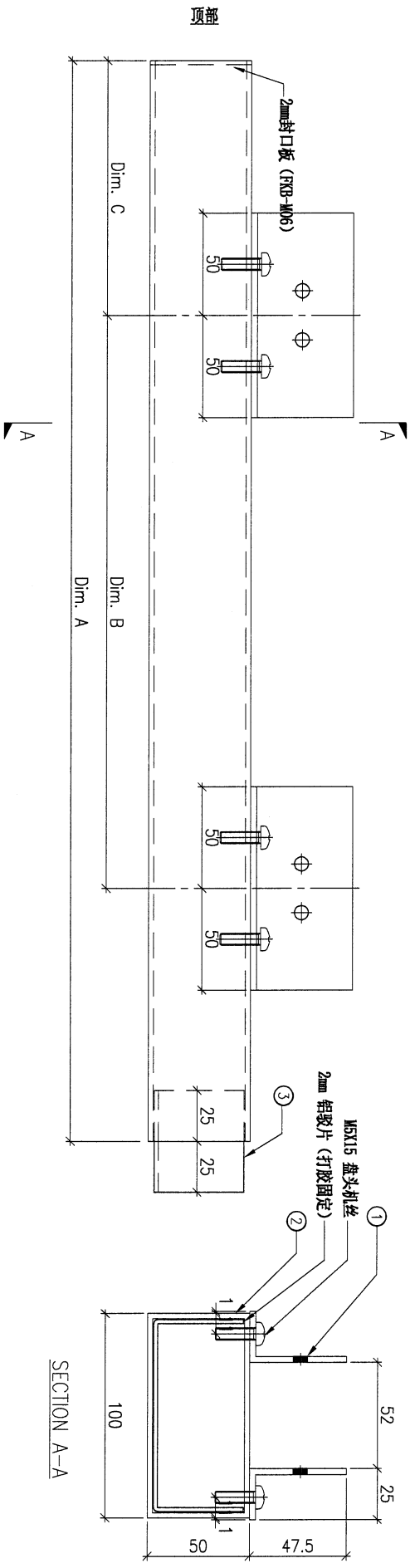
COLOUR: -

MARK. NO.: -

QTY.: -

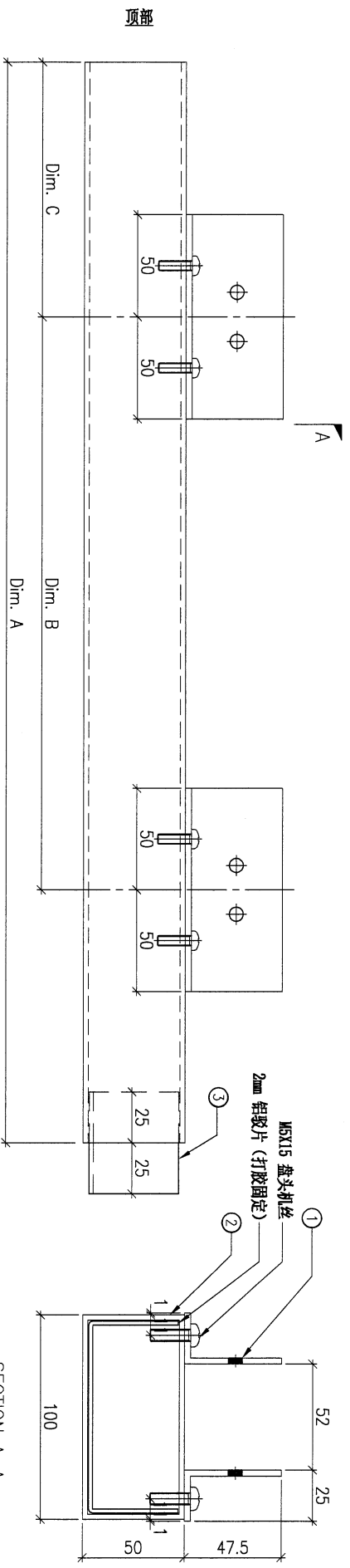
REV. / CHECKED BY	PART NUMBER	Dim. A	Dim. B	Dim. C	Dim. D	Dim. E	Dim. F	Dim. G	Dim. H	QTY.	Inv. Code	ASSEMBLE ON PARTS	注: 地盘用
-	UN-G08A	2647	5x@750c/c	194.5						1		注: 构件编号 ①AL-G01 8件 ②AL-G08A 1件 ③AP-G01 1件	
-	UN-G08B	3248	4x@700c/c	194.5						1		注: 构件编号 ①AL-G01 10件 ②AL-G08B 1件 ③AP-G01 1件	
-	UN-G08C	2847.5	4x@800c/c	194.5						1		注: 构件编号 ①AL-G01 10件 ②AL-G08C 1件 ③AP-G01 1件	
-	UN-G08D	2567	5x@750c/c	194.5						4		注: 构件编号 ①AL-G01 8件 ②AL-G08D 1件 ③AP-G01 1件	
-	UN-G08E	2019.5	5x@500c/c	194.5						2		注: 构件编号 ①AL-G01 8件 ②AL-G08E 1件 ③AP-G01 1件	
-	UN-G08F	2994.5	4x@650c/c	194.5						15		注: 构件编号 ①AL-G01 10件 ②AL-G08F 1件 ③AP-G01 1件	

注: 地盘复尺



DWG. NO.	UN-G08	REV.	-	SCALE	-	DATE	13-04-2023	DRAWN BY	-	APPROVED BY	-
----------	--------	------	---	-------	---	------	------------	----------	---	-------------	---

PROJECT				MATERIAL				COATING				COLOUR		MARK. NO.		QTY.	
YIN PING ROAD KOWLOON FEATURE WALL (PHASE 1)				铝通组装图								-		-		-	
REV.	CHANGED BY	PART NUMBER	Dim. A	Dim. B	Dim. C	Dim. D	Dim. E	Dim. F	Dim. G	Dim. H	QTY.	Inv. Code	ASSEMBLE ON PARTS				
-		UN-G09	2801	4x@50c/c	149.5						1		注：构件编号 ①AL-G01 8件 ②AL-G09 1件 ③AP-G01 1件				
													注：地盘用				



注：地盘复尺

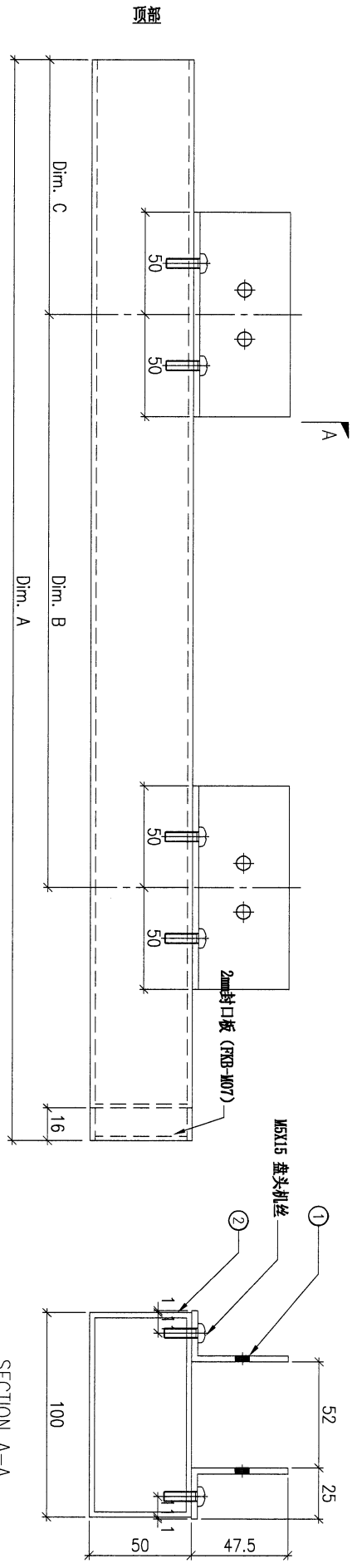
DWG. NO.	UN-G09	REV.	-	SCALE	-	DATE	13-04-2023	DRAWN BY	-	APPROVED BY	-
----------	--------	------	---	-------	---	------	------------	----------	---	-------------	---

PROJECT	YIN PING ROAD KOWLOON FEATURE WALL (PHASE 1)		MATERIAL	铝通组装图	COATING		COLOUR	-	MARK. NO.	-	QTY.	-
---------	--	--	----------	-------	---------	--	--------	---	-----------	---	------	---

REV.	CHECKED BY	PART NUMBER	Dim. A	Dim. B	Dim. C	Dim. D	Dim. E	Dim. F	Dim. G	Dim. H	QTY.	Inv. Code	ASSEMBLE ON PARTS
-		UN-G10A	1967.5	2x@750c/c	174.5						1		注: 构件编号 ①AL-G01 6件 ②AL-G10A 1件
-		UN-G10B	2336	3x@550c/c	174.5						1		注: 构件编号 ①AL-G01 8件 ②AL-G10B 1件
-		UN-G10C	1330	2x@500c/c	199.5						1		注: 构件编号 ①AL-G01 6件 ②AL-G10C 1件
-		UN-G10D	1742.5	2x@700c/c	199.5						1		注: 构件编号 ①AL-G01 6件 ②AL-G10D 1件
-		UN-G10E	2154.5	3x@550c/c	199.5						1		注: 构件编号 ①AL-G01 8件 ②AL-G10E 1件
-		UN-G10F	2567	4x@550c/c	199.5						1		注: 构件编号 ①AL-G01 10件 ②AL-G10F 1件
-		UN-G10G	2979	4x@550c/c	199.5						1		注: 构件编号 ①AL-G01 10件 ②AL-G10G 1件
-		UN-G10H	3391.5	4x@750c/c	199.5						1		注: 构件编号 ①AL-G01 10件 ②AL-G10H 1件

注: 地盘复尺

注: 地盘用



DWG. NO.	UN-G10	REV.	-	SCALE	-	DATE	13-04-2023	DRAWN BY	-	APPROVED BY	-
----------	--------	------	---	-------	---	------	------------	----------	---	-------------	---

22

PROJECT YIN PING ROAD KOWLOON FEATURE WALL (PHASE 1)

MATERIAL 铝通组裝图

COATING

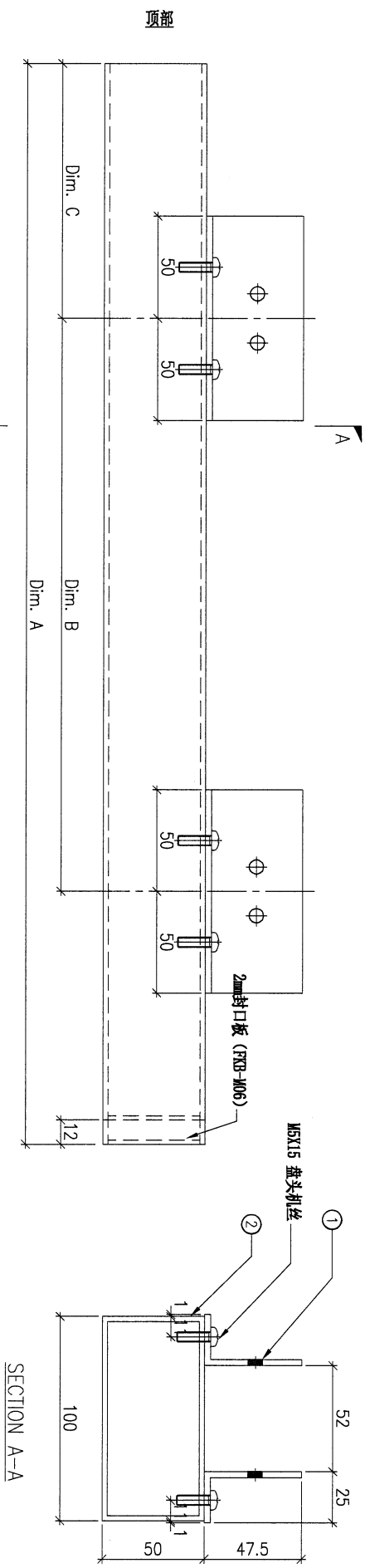
COLOUR -

MARK. NO. -

QTY. -

REV. / CHECKED BY / DATE	PART NUMBER	Dim. A	Dim. B	Dim. C	Dim. D	Dim. E	Dim. F	Dim. G	Dim. H	QTY.	Inv. Code	ASSEMBLE ON PARTS
-	UN-G11A	3051	4x@530c/c	199.5						1		注: 构件编号 ①AL-601 10件 ②AL-G11A 1件
-	UN-G11B	3379.5	4x@750c/c	199.5						1		注: 构件编号 ①AL-601 10件 ②AL-G11B 1件
-	UN-G11C	3033	4x@550c/c	199.5						1		注: 构件编号 ①AL-601 10件 ②AL-G11C 1件
-	UN-G11D	3374	4x@750c/c	199.5						1		注: 构件编号 ①AL-601 10件 ②AL-G11D 1件
-	UN-G11E	3039.5	4x@550c/c	199.5						1		注: 构件编号 ①AL-601 10件 ②AL-G11E 1件
-	UN-G11F	3380.5	4x@750c/c	199.5						1		注: 构件编号 ①AL-601 10件 ②AL-G11F 1件
-	UN-G11G	3046	4x@530c/c	199.5						1		注: 构件编号 ①AL-601 10件 ②AL-G11G 1件
-	UN-G11H	3428.5	4x@750c/c	199.5						1		注: 构件编号 ①AL-601 10件 ②AL-G11H 1件

注: 地盘复尺



DWG. NO. UN-G11

REV. -

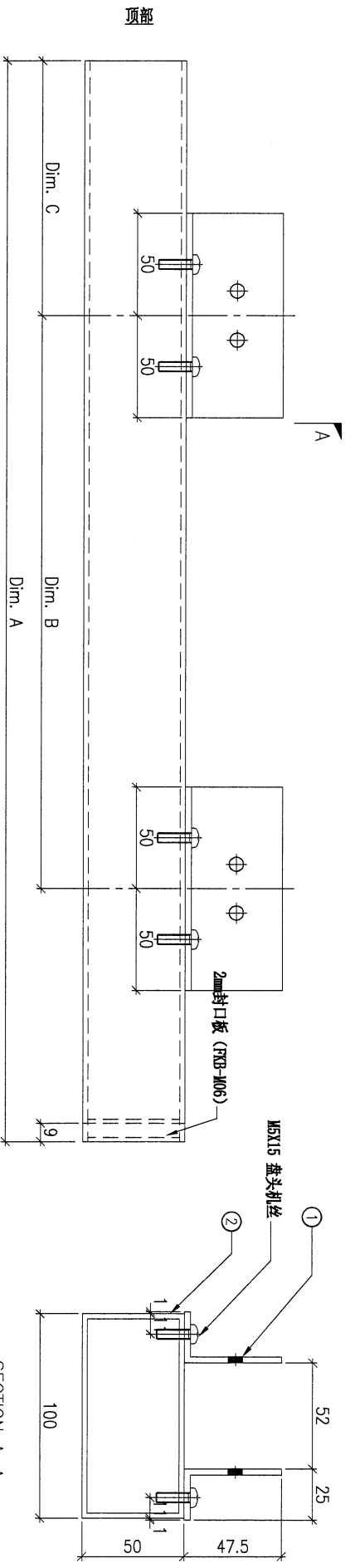
SCALE -

DATE 13-04-2023

DRAWN BY

APPROVED BY

PROJECT				YIN PING ROAD KOWLOON FEATURE WALL (PHASE 1)				MATERIAL				COATING				COLOUR				MARK. NO.				QTY.			
铝通组裝图																											
REV. / CHANGED BY	PART NUMBER	Dim. A	Dim. B	Dim. C	Dim. D	Dim. E	Dim. F	Dim. G	Dim. H	QTY.	Inv. Code	ASSEMBLE ON PARTS				注：地盤用											
-	UN-G12	3563.5	4xØ750c/c	269.5						1		注：构件编号 ①AL-601 10件 ②AL-G12 1件															



注：地盤复尺

DWG. NO.	UN-G12	REV.	-	SCALE	-	DATE	13-04-2023	DRAWN BY	-	APPROVED BY	-
----------	--------	------	---	-------	---	------	------------	----------	---	-------------	---

PROJECT YIN PING ROAD KOWLOON
FEATURE WALL (PHASE 1)

MATERIAL 铝通组裝图

COATING

COLOUR -

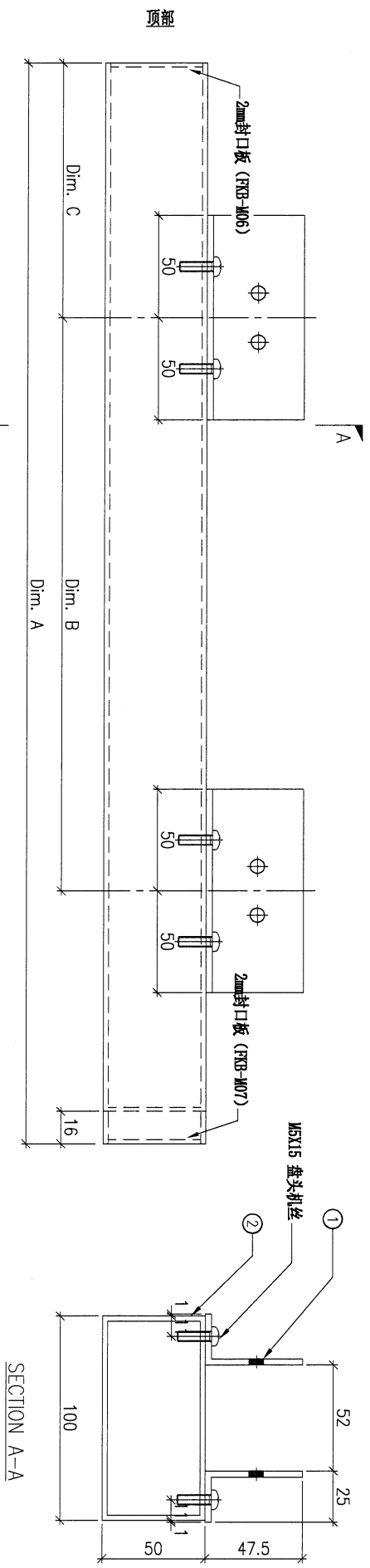
MARK. NO. -

QTY. -

REV. / DWG. BY	PART NUMBER	Dim. A	Dim. B	Dim. C	Dim. D	Dim. E	Dim. F	Dim. G	Dim. H	QTY.	Inv. Code	ASSEMBLE ON PARTS
-	UN-G13A	3251.5	4x@700c/c	194.5						1		注: 构件编号 ①AL-G01 10件 ②AL-G13A 1件
-	UN-G13B	3620	6x@650c/c	194.5						1		注: 构件编号 ①AL-G01 12件 ②AL-G13B 1件

注: 地盘用

注: 地盘复尺



DWG. NO.	UN-G13	REV.	-	SCALE	-	DATE	13-04-2023	DRAWN BY	-	APPROVED BY	-
----------	--------	------	---	-------	---	------	------------	----------	---	-------------	---

PROJECT: YIN PING ROAD KOWLOON FEATURE WALL (PHASE 1)

MATERIAL: 铝通组裝图

COATING: -

COLOUR: -

MARK. NO.: -

QTY.: -

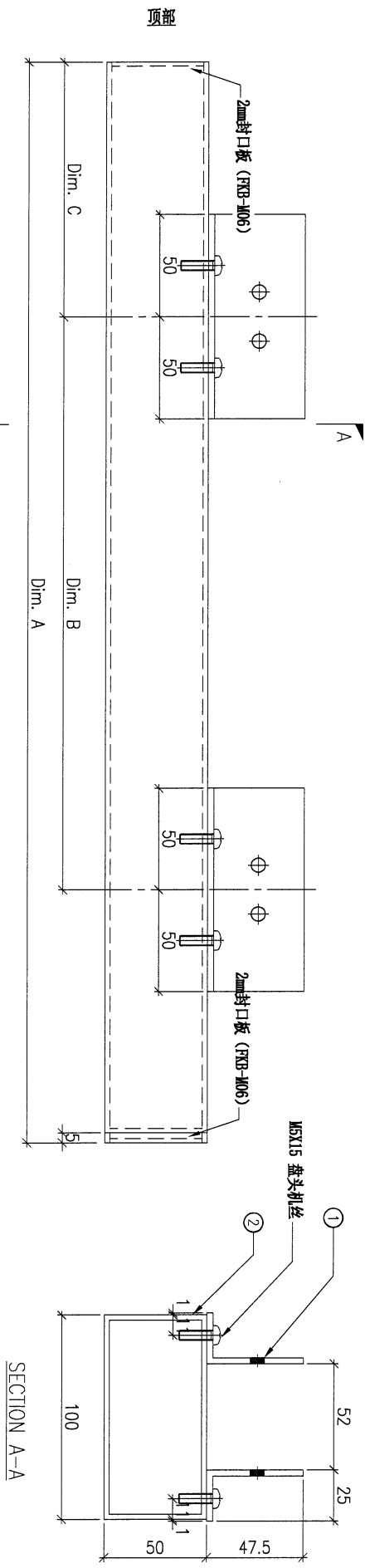
REV. / CHECKED DATE BY	PART NUMBER	Dim. A	Dim. B	Dim. C	Dim. D	Dim. E	Dim. F	Dim. G	Dim. H	QTY.	Inv. Code
-	UN-G14A	2737.5	5xØ750c/c	194.5						1	
-	UN-G14B	3264.5	4xØ700c/c	194.5						1	

ASSEMBLE ON PARTS

- 注: 构件编号 ①AL-G01 8件 ②AL-G14A 1件
- 注: 构件编号 ①AL-G01 10件 ②AL-G14B 1件

注: 地盘用

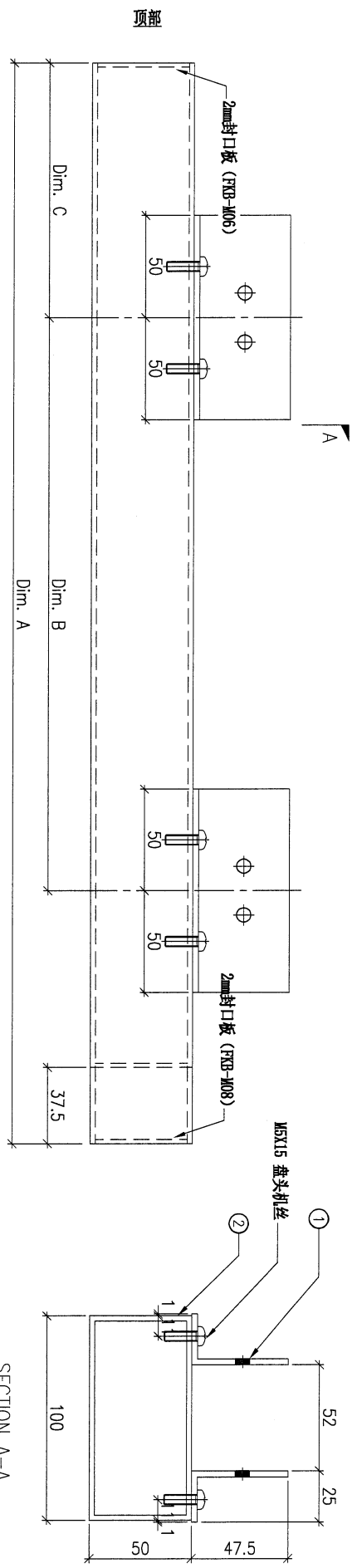
注: 地盘复尺



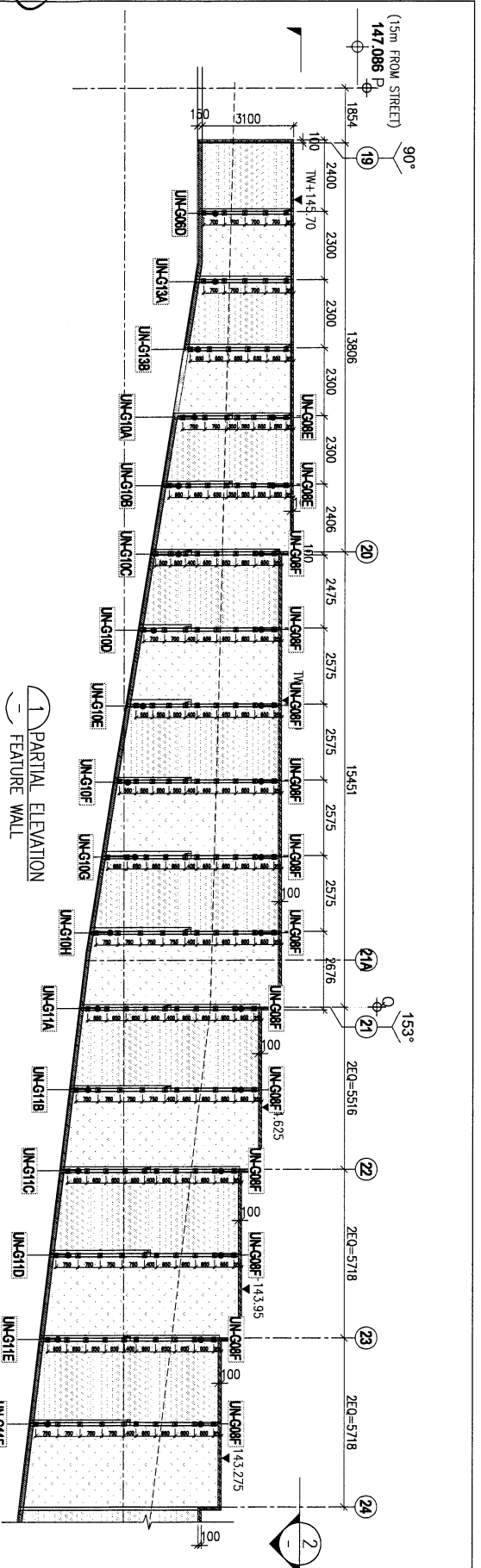
DWG. NO.	UN-G14	REV.	-	SCALE	-	DATE	13-04-2023	DRAWN BY	-	APPROVED BY	-
----------	--------	------	---	-------	---	------	------------	----------	---	-------------	---

PROJECT				YIN PING ROAD KOWLOON FEATURE WALL (PHASE 1)				MATERIAL				铝通组裝图				COATING				COLOUR				MARK. NO.				QTY.			
CHECKED DATE BY		PART NUMBER		Dim. A		Dim. B		Dim. C		Dim. D		Dim. E		Dim. F		Dim. G		Dim. H		QTY.		Inv. Code		ASSEMBLE ON PARTS							
-		UN-G15		1994.5		2xØ750c/c		194.5												1				注: 构件编号 ①AL-601 6件 ②AL-G15 1件							
																								注: 地盘用							

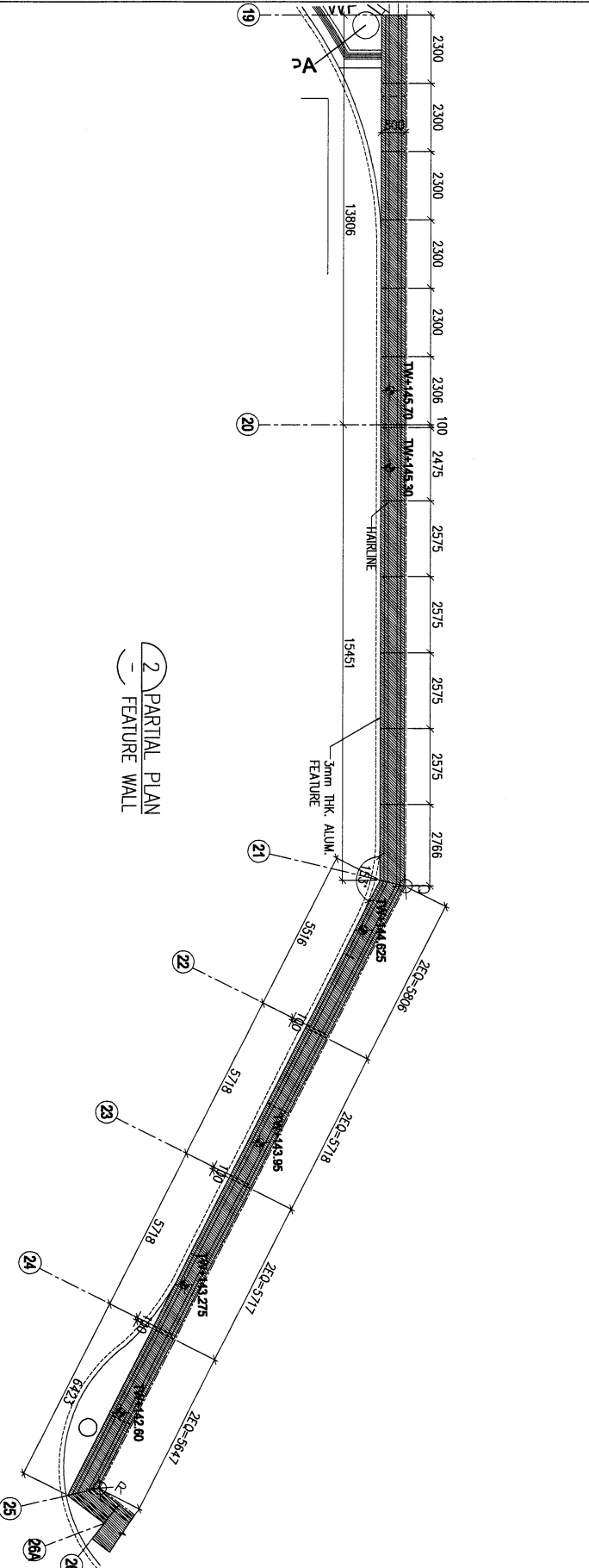
注: 地盘复尺



DWG. NO.		UN-G15		REV.		SCALE		DATE		DRAWN BY		APPROVED BY	
				-		-		13-04-2023		-		-	



1 PARTIAL ELEVATION
- FEATURE WALL



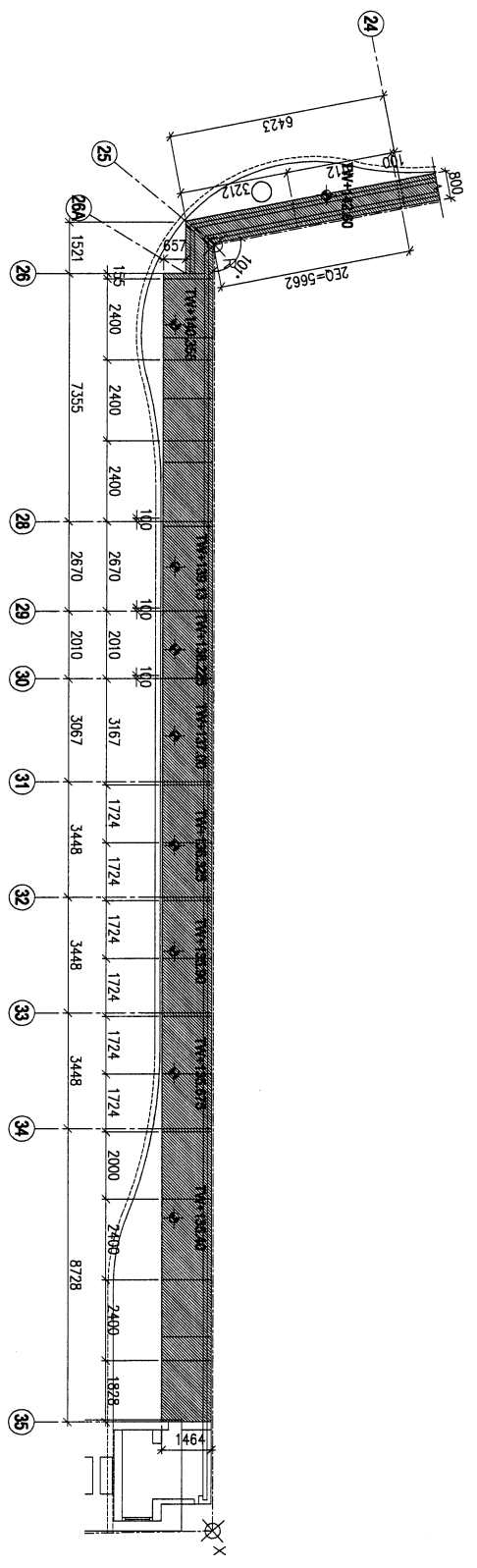
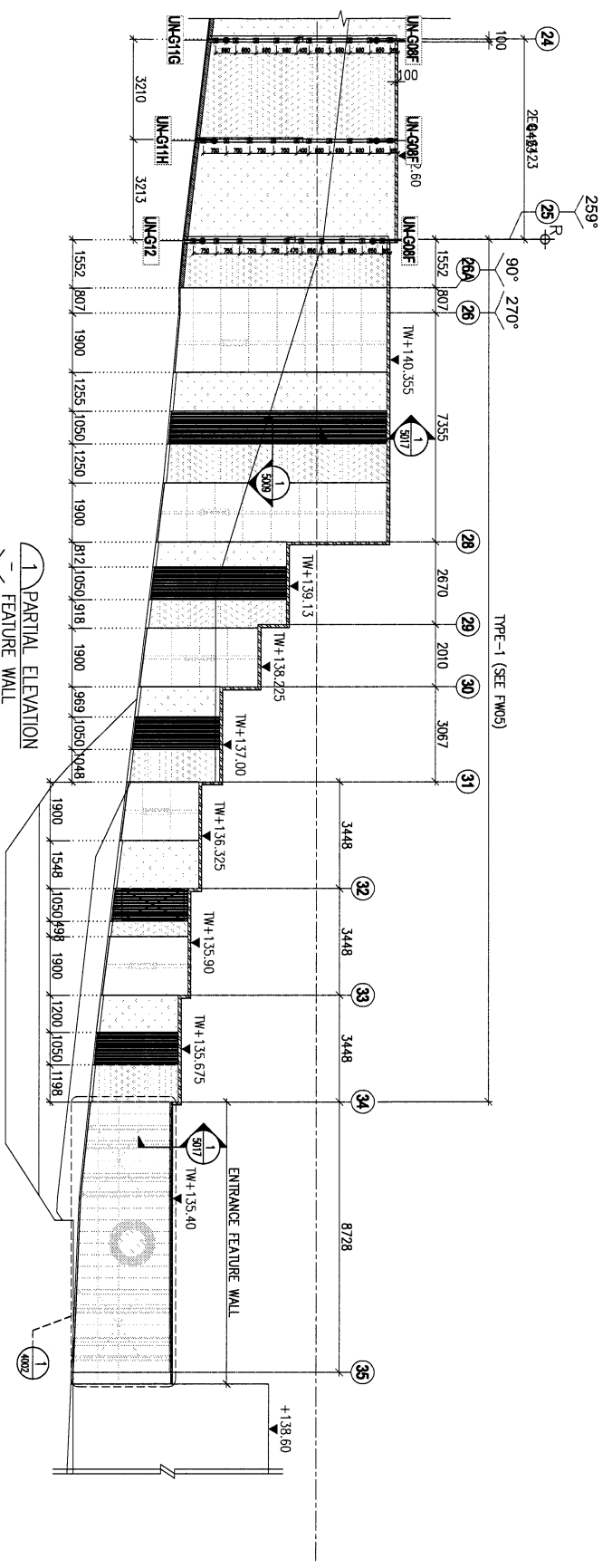
2 PARTIAL PLAN
- FEATURE WALL

铁件详位图 Part. 4
日期: 2023-04-26

LEGEND:

- ALUM. GRILLE
- 3mm THK. ALUM. CLADDING

<p>BLD. REF. :</p>	<p>CLIENT :</p> <p>SHIMAO GROUP HOLDINGS LIMITED</p>	<p>ARCHITECT :</p> <p>WTF WONG TUNG & PARTNERS LIMITED</p>	<p>MAIN CONTRACTOR :</p> <p>HPH HING CONSTRUCTION CO LTD</p>	<p>STRUCTURAL ENGINEER :</p> <p>CMA C M WONG & ASSOCIATES LTD 英志明建築工程師有限公司</p>	<p>FAÇADE CONSULTANT:</p> <p>MENYARD</p>
<p>NOTE:</p> <ol style="list-style-type: none"> 1. ALL DIMENSIONS ARE IN MM. 2. ALL ELEVATIONS ARE VIEWED FROM OUTSIDE. 3. BEFORE FABRICATION, BE VIEWED ON SITE. <p>LEGEND:</p> <ul style="list-style-type: none"> DETAIL MARK NO. REFER SHEET NO. 1. F.F.L. — FINISHED FLOOR LEVEL. 2. S.F.L. — STRUCTURAL FLOOR LEVEL. 3. — REVERSED DETAIL. 					
<p>JOB NO. : J-853</p> <p>PROJECT : PROPOSED RESIDENTIAL DEVELOPMENT AT N.K.I.L. 6542 YIN PING ROAD KOWLOON</p> <p>TITLE : PARTIAL ELEVATION & PLAN OF FEATURE WALL (PHASE 1)</p> <p>DATE : 19-Apr-23 SCALE : 1:150 (A3)</p> <p>DRAWN BY : LHR CHECKED BY :</p> <p>美特堅實有限公司 MTDI Architecture & Interiors Ltd. Units 6-8, Sunny Industrial Centre, V/F No. 225, 225A, 225B, 225C, 225D, 225E, 225F, 225G, 225H, 225I, 225J, 225K, 225L, 225M, 225N, 225O, 225P, 225Q, 225R, 225S, 225T, 225U, 225V, 225W, 225X, 225Y, 225Z, 225AA, 225AB, 225AC, 225AD, 225AE, 225AF, 225AG, 225AH, 225AI, 225AJ, 225AK, 225AL, 225AM, 225AN, 225AO, 225AP, 225AQ, 225AR, 225AS, 225AT, 225AU, 225AV, 225AW, 225AX, 225AY, 225AZ, 225BA, 225BB, 225BC, 225BD, 225BE, 225BF, 225BG, 225BH, 225BI, 225BJ, 225BK, 225BL, 225BM, 225BN, 225BO, 225BP, 225BQ, 225BR, 225BS, 225BT, 225BU, 225BV, 225BW, 225BX, 225BY, 225BZ, 225CA, 225CB, 225CC, 225CD, 225CE, 225CF, 225CG, 225CH, 225CI, 225CJ, 225CK, 225CL, 225CM, 225CN, 225CO, 225CP, 225CQ, 225CR, 225CS, 225CT, 225CU, 225CV, 225CW, 225CX, 225CY, 225CZ, 225DA, 225DB, 225DC, 225DD, 225DE, 225DF, 225DG, 225DH, 225DI, 225DJ, 225DK, 225DL, 225DM, 225DN, 225DO, 225DP, 225DQ, 225DR, 225DS, 225DT, 225DU, 225DV, 225DW, 225DX, 225DY, 225DZ, 225EA, 225EB, 225EC, 225ED, 225EE, 225EF, 225EG, 225EH, 225EI, 225EJ, 225EK, 225EL, 225EM, 225EN, 225EO, 225EP, 225EQ, 225ER, 225ES, 225ET, 225EU, 225EV, 225EW, 225EX, 225EY, 225EZ, 225FA, 225FB, 225FC, 225FD, 225FE, 225FF, 225FG, 225FH, 225FI, 225FJ, 225FK, 225FL, 225FM, 225FN, 225FO, 225FP, 225FQ, 225FR, 225FS, 225FT, 225FU, 225FV, 225FW, 225FX, 225FY, 225FZ, 225GA, 225GB, 225GC, 225GD, 225GE, 225GF, 225GG, 225GH, 225GI, 225GJ, 225GK, 225GL, 225GM, 225GN, 225GO, 225GP, 225GQ, 225GR, 225GS, 225GT, 225GU, 225GV, 225GW, 225GX, 225GY, 225GZ, 225HA, 225HB, 225HC, 225HD, 225HE, 225HF, 225HG, 225HH, 225HI, 225HJ, 225HK, 225HL, 225HM, 225HN, 225HO, 225HP, 225HQ, 225HR, 225HS, 225HT, 225HU, 225HV, 225HW, 225HX, 225HY, 225HZ, 225IA, 225IB, 225IC, 225ID, 225IE, 225IF, 225IG, 225IH, 225II, 225IJ, 225IK, 225IL, 225IM, 225IN, 225IO, 225IP, 225IQ, 225IR, 225IS, 225IT, 225IU, 225IV, 225IW, 225IX, 225IY, 225IZ, 225JA, 225JB, 225JC, 225JD, 225JE, 225JF, 225JG, 225JH, 225JI, 225JJ, 225JK, 225JL, 225JM, 225JN, 225JO, 225JP, 225JQ, 225JR, 225JS, 225JT, 225JU, 225JV, 225JW, 225JX, 225JY, 225JZ, 225KA, 225KB, 225KC, 225KD, 225KE, 225KF, 225KG, 225KH, 225KI, 225KJ, 225KL, 225KM, 225KN, 225KO, 225KP, 225KQ, 225KR, 225KS, 225KT, 225KU, 225KV, 225KW, 225KX, 225KY, 225KZ, 225LA, 225LB, 225LC, 225LD, 225LE, 225LF, 225LG, 225LH, 225LI, 225LJ, 225LK, 225LL, 225LM, 225LN, 225LO, 225LP, 225LQ, 225LR, 225LS, 225LT, 225LU, 225LV, 225LW, 225LX, 225LY, 225LZ, 225MA, 225MB, 225MC, 225MD, 225ME, 225MF, 225MG, 225MH, 225MI, 225MJ, 225MK, 225ML, 225MN, 225MO, 225MP, 225MQ, 225MR, 225MS, 225MT, 225MU, 225MV, 225MW, 225MX, 225MY, 225MZ, 225NA, 225NB, 225NC, 225ND, 225NE, 225NF, 225NG, 225NH, 225NI, 225NJ, 225NK, 225NL, 225NM, 225NO, 225NP, 225NQ, 225NR, 225NS, 225NT, 225NU, 225NV, 225NW, 225NX, 225NY, 225NZ, 225OA, 225OB, 225OC, 225OD, 225OE, 225OF, 225OG, 225OH, 225OI, 225OJ, 225OK, 225OL, 225OM, 225ON, 225OO, 225OP, 225OQ, 225OR, 225OS, 225OT, 225OU, 225OV, 225OW, 225OX, 225OY, 225OZ, 225PA, 225PB, 225PC, 225PD, 225PE, 225PF, 225PG, 225PH, 225PI, 225PJ, 225PK, 225PL, 225PM, 225PN, 225PO, 225PP, 225PQ, 225PR, 225PS, 225PT, 225PU, 225PV, 225PW, 225PX, 225PY, 225PZ, 225QA, 225QB, 225QC, 225QD, 225QE, 225QF, 225QG, 225QH, 225QI, 225QJ, 225QK, 225QL, 225QM, 225QN, 225QO, 225QP, 225QQ, 225QR, 225QS, 225QT, 225QU, 225QV, 225QW, 225QX, 225QY, 225QZ, 225RA, 225RB, 225RC, 225RD, 225RE, 225RF, 225RG, 225RH, 225RI, 225RJ, 225RK, 225RL, 225RM, 225RN, 225RO, 225RP, 225RQ, 225RR, 225RS, 225RT, 225RU, 225RV, 225RW, 225RX, 225RY, 225RZ, 225SA, 225SB, 225SC, 225SD, 225SE, 225SF, 225SG, 225SH, 225SI, 225SJ, 225SK, 225SL, 225SM, 225SN, 225SO, 225SP, 225SQ, 225SR, 225SS, 225ST, 225SU, 225SV, 225SW, 225SX, 225SY, 225SZ, 225TA, 225TB, 225TC, 225TD, 225TE, 225TF, 225TG, 225TH, 225TI, 225TJ, 225TK, 225TL, 225TM, 225TN, 225TO, 225TP, 225TQ, 225TR, 225TS, 225TT, 225TU, 225TV, 225TW, 225TX, 225TY, 225TZ, 225UA, 225UB, 225UC, 225UD, 225UE, 225UF, 225UG, 225UH, 225UI, 225UJ, 225UK, 225UL, 225UM, 225UN, 225UO, 225UP, 225UQ, 225UR, 225US, 225UT, 225UU, 225UV, 225UW, 225UX, 225UY, 225UZ, 225VA, 225VB, 225VC, 225VD, 225VE, 225VF, 225VG, 225VH, 225VI, 225VJ, 225VK, 225VL, 225VM, 225VN, 225VO, 225VP, 225VQ, 225VR, 225VS, 225VT, 225VU, 225VV, 225VW, 225VX, 225VY, 225VZ, 225WA, 225WB, 225WC, 225WD, 225WE, 225WF, 225WG, 225WH, 225WI, 225WJ, 225WK, 225WL, 225WM, 225WN, 225WO, 225WP, 225WQ, 225WR, 225WS, 225WT, 225WU, 225WV, 225WW, 225WX, 225WY, 225WZ, 225XA, 225XB, 225XC, 225XD, 225XE, 225XF, 225XG, 225XH, 225XI, 225XJ, 225XK, 225XL, 225XM, 225XN, 225XO, 225XP, 225XQ, 225XR, 225XS, 225XT, 225XU, 225XV, 225XW, 225XX, 225XY, 225XZ, 225YA, 225YB, 225YC, 225YD, 225YE, 225YF, 225YG, 225YH, 225YI, 225YJ, 225YK, 225YL, 225YM, 225YN, 225YO, 225YP, 225YQ, 225YR, 225YS, 225YT, 225YU, 225YV, 225YW, 225YX, 225YY, 225YZ, 225ZA, 225ZB, 225ZC, 225ZD, 225ZE, 225ZF, 225ZG, 225ZH, 225ZI, 225ZJ, 225ZK, 225ZL, 225ZM, 225ZN, 225ZO, 225ZP, 225ZQ, 225ZR, 225ZS, 225ZT, 225ZU, 225ZV, 225ZW, 225ZX, 225ZY, 225ZZ</p>					



2 PARTIAL PLAN
- FEATURE WALL

铁件详位图 Part. 4
日期: 2023-04-26

LEGEND:

	3mm THK. ALUM. CLADDING
	ALUM. GRILLE

<p>DATE: 19-Apr-23 SCALE: 1:150 (A3)</p> <p>DRAWN BY: LHR CHECKED BY:</p>	<p>JOB NO.: J-853</p> <p>PROJECT: PROPOSED RESIDENTIAL DEVELOPMENT AT N.K.I.L. 6542 YIN PING ROAD KOWLOON</p> <p>TITLE: PARTIAL ELEVATION & PLAN OF FEATURE WALL (PHASE 1)</p>	<p>CLIENT: SHIMAO GROUP HOLDINGS LIMITED</p> <p>ARCHITECT: HONG TUNG & PARTNERS LIMITED</p> <p>MAIN CONTRACTOR: 協興建築有限公司 HP HING CONSTRUCTION CO LTD</p> <p>STRUCTURAL ENGINEER: C WONG & ASSOCIATES LTD 黃志明建築工程師有限公司</p> <p>FAÇADE CONSULTANT: WENHARDT</p>	<p>NO. REF:</p>
<p>DATE: 19-Apr-23 SCALE: 1:150 (A3)</p> <p>DRAWN BY: LHR CHECKED BY:</p>	<p>JOB NO.: J-853</p> <p>PROJECT: PROPOSED RESIDENTIAL DEVELOPMENT AT N.K.I.L. 6542 YIN PING ROAD KOWLOON</p> <p>TITLE: PARTIAL ELEVATION & PLAN OF FEATURE WALL (PHASE 1)</p>	<p>CLIENT: SHIMAO GROUP HOLDINGS LIMITED</p> <p>ARCHITECT: HONG TUNG & PARTNERS LIMITED</p> <p>MAIN CONTRACTOR: 協興建築有限公司 HP HING CONSTRUCTION CO LTD</p> <p>STRUCTURAL ENGINEER: C WONG & ASSOCIATES LTD 黃志明建築工程師有限公司</p> <p>FAÇADE CONSULTANT: WENHARDT</p>	<p>NO. REF:</p>

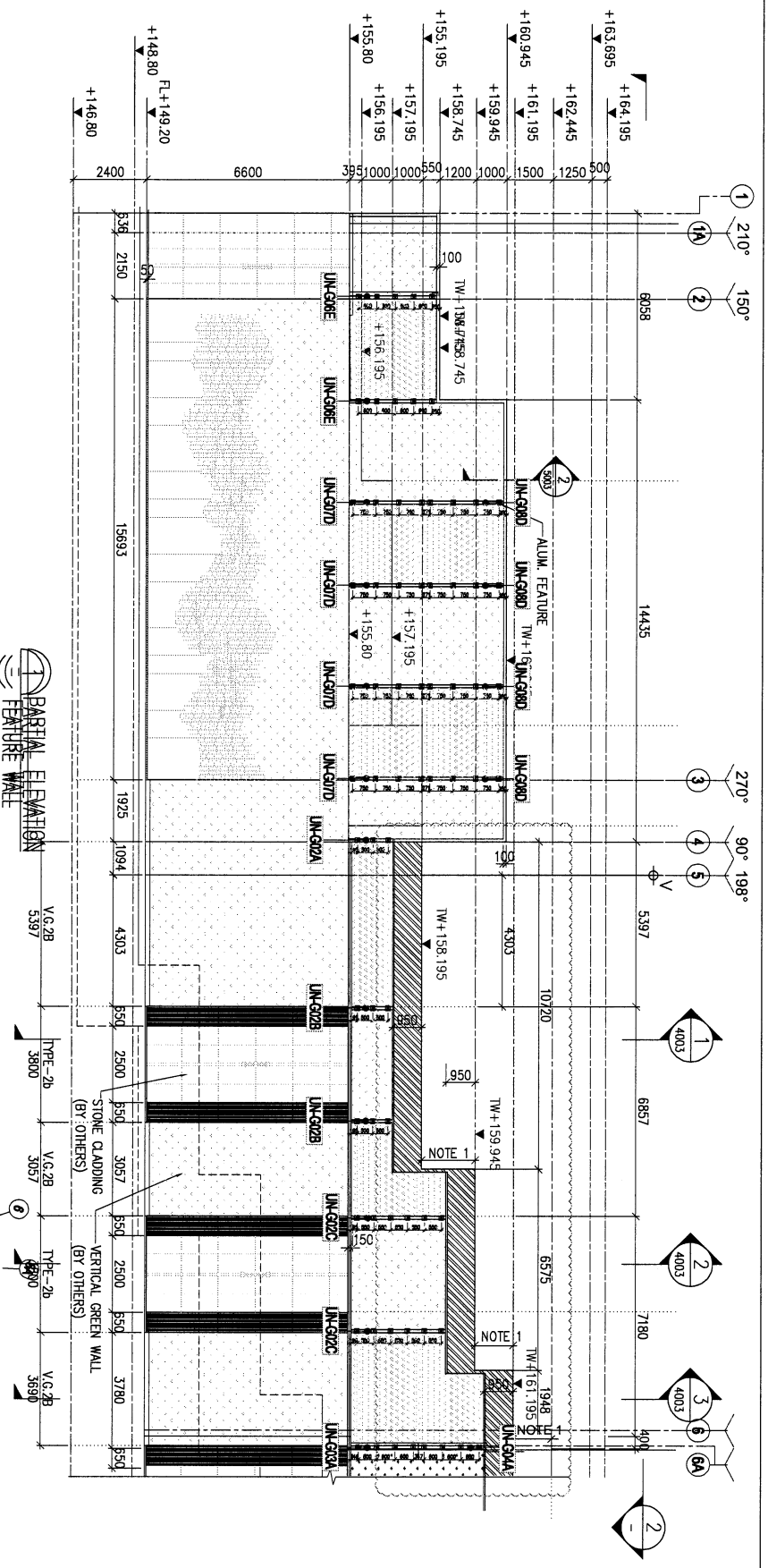
Legend:
3mm THK. ALUM. CLADDING
ALUM. GRILLE

DATE: 19-Apr-23 SCALE: 1:150 (A3)
DRAWN BY: LHR CHECKED BY:

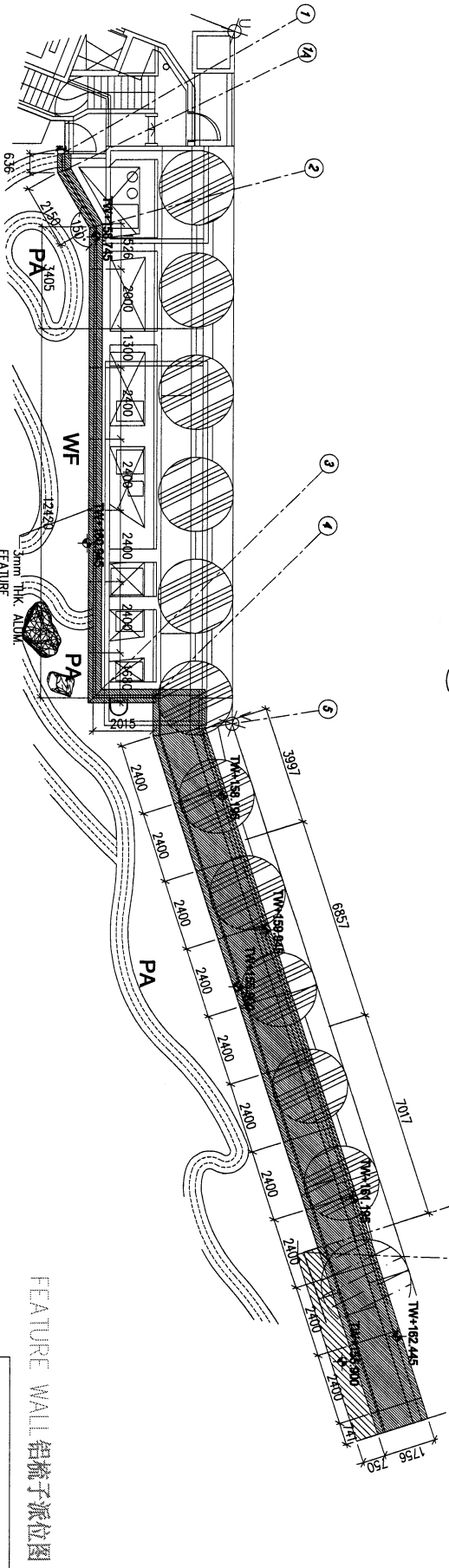
JOB NO.: J-853
PROJECT: PROPOSED RESIDENTIAL DEVELOPMENT AT N.K.I.L. 6542 YIN PING ROAD KOWLOON
TITLE: PARTIAL ELEVATION & PLAN OF FEATURE WALL (PHASE 1)

CLIENT: SHIMAO GROUP HOLDINGS LIMITED
ARCHITECT: HONG TUNG & PARTNERS LIMITED
MAIN CONTRACTOR: 協興建築有限公司
HP HING CONSTRUCTION CO LTD
STRUCTURAL ENGINEER: C WONG & ASSOCIATES LTD
黃志明建築工程師有限公司
FAÇADE CONSULTANT: WENHARDT

NO. REF:



2 PARTIAL PLAN
- FEATURE WALL



FEATURE WALL 铝梳子派位图

LEGEND:

 ALUM. GRILLE
 3mm THK ALUM. CLADDING

<p>BLD. REF :</p> <p>CLIENT :</p> <p>SHIMAO GROUP HOLDINGS LIMITED</p> <p>ARCHITECT :</p> <p>WONG TUNG & PARTNERS LIMITED</p> <p>MAIN CONTRACTOR :</p> <p>WY</p> <p>STRUCTURAL ENGINEER :</p> <p>C M WONG & ASSOCIATES LTD</p> <p>FAÇADE CONSULTANT :</p> <p>WENYARD</p>	<p>NOTE :</p> <p>1. ALL DIMENSIONS ARE IN MM.</p> <p>2. ALL DIMENSIONS ARE TYPED FROM OUTSIDE BEFORE REVISION.</p> <p>3. BEFORE REVISION.</p> <p>LEGEND :</p> <p>(X) DETAIL MARK NO.</p> <p>(R) REFER SHEET NO.</p> <p>1. FEL - FINISHED FLOOR LEVEL.</p> <p>2. SEL - STRUCTURAL FLOOR LEVEL.</p> <p>3. (R) - REVERSED DETAIL.</p>	<p>JOB NO. : J-853</p> <p>PROJECT : PROPOSED RESIDENTIAL DEVELOPMENT AT NKILL 6542 YIN PING ROAD KOWLOON</p> <p>TITLE : PARTIAL ELEVATION & PLAN OF FEATURE WALL (PHASE 1)</p> <p>DWG. NO. : 29-M01-23</p> <p>SCALE : 1:150 (A3)</p> <p>DRAWN BY : LHR</p> <p>CHECKED BY :</p>	<p>DATE : 29-M01-23</p> <p>SCALE : 1:150 (A3)</p> <p>DRAWN BY : LHR</p> <p>CHECKED BY :</p>
---	--	--	---

Unit 6-4, Sunny Industrial Centre, 1/F
 610 Shek Kwoi Road, Kowloon
 HONG KONG
 TEL: (852) 2727888
 FAX: (852) 2727889
 DWE NO.: 9853-TW-3004B

美特顿有限公司
MTDI ARCHITECTURE ASSOCIATES LTD.

