

美特鋁質有限公司

MIDI ALUMINIUM FABRICATOR LTD.



工程指示 / 要求簡箋 ENGINEER INSTRUCTIONS(E.I.)

工程指示編號:	EI- 6219	修改版本:	-
	HK-1122		
工程編號:	J 853	工程名稱:	延坪道
收件人:	生統	發件人:	Joe Chan
工程項目:	Feature Wall 項目 地盤用 Gille 生產 (Mock up)	日期:	19/05/2023

<input checked="" type="checkbox"/> 原合約工程包	<input type="checkbox"/> 原合約工程加 / 減賬 QT-	<input type="checkbox"/> 新工程報價 QT-
--	--	------------------------------------

信件批核號碼/圖紙參考編號:	批核模具圖紙編號:
客戶指示附件:	管理內部批簽署:

<input type="checkbox"/> 初步鋁料 B.M.	<input type="checkbox"/> 加工拆圖, 然後生產	<input type="checkbox"/> 尺寸表
<input type="checkbox"/> 正式鋁料 B.M.	<input type="checkbox"/> 技術上資料/指示	<input type="checkbox"/> 報價
<input type="checkbox"/> 配件 B.M.	<input type="checkbox"/> 樣辦或貨品說明書	<input type="checkbox"/> 分判合約
<input type="checkbox"/> 其他:		

內容: 請依附件資料, 加工疏子, 送地盤. 急

此為地盤 Mock up 用疏子, 由於鋁料未達廠, 此 EI 使用鋁摺件組合成疏子, 倉存料做.

完成上列要求日期: 30/5/2023 ASAP

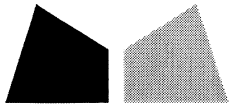
國內

<input type="checkbox"/> 生產技術總監	<input type="checkbox"/> 連附件	<input type="checkbox"/> 技術部	<input type="checkbox"/> 連附件	<input type="checkbox"/> 生產部	<input type="checkbox"/> 連附件
<input type="checkbox"/> 採購部	<input type="checkbox"/> 連附件	<input checked="" type="checkbox"/> 生產統籌部	<input checked="" type="checkbox"/> 連附件	<input type="checkbox"/> 報關組	<input type="checkbox"/> 連附件
<input type="checkbox"/> 質檢部	<input type="checkbox"/> 連附件	<input type="checkbox"/> 會計部	<input type="checkbox"/> 連附件	<input type="checkbox"/> 機械設計部	<input type="checkbox"/> 連附件
<input type="checkbox"/> 香港辦	<input type="checkbox"/> 連附件	<input type="checkbox"/> 其他:			

香港

<input type="checkbox"/> 行政部	<input type="checkbox"/> 連附件	<input type="checkbox"/> 會計部	<input type="checkbox"/> 連附件	<input type="checkbox"/> 統籌部	<input type="checkbox"/> 連附件	<input type="checkbox"/> 工程部	<input type="checkbox"/> 連附件
<input type="checkbox"/> 採購部	<input type="checkbox"/> 連附件	<input type="checkbox"/> QS部	<input type="checkbox"/> 連附件	<input checked="" type="checkbox"/> 地盤管理	<input checked="" type="checkbox"/> 連附件	<input type="checkbox"/> 維修部	<input type="checkbox"/> 連附件

*發件人簽署:		*組別成員批核簽署:	
傳遞編號:	HK1122/23	項目經理簽署:	



鋁材開料總表

工程號碼: J853 工程名稱: 延坪道

序號	鋁料編號	名稱	表面處理		開料長度	實用長料總數量		浪費率(%)
			顏色	層厚		支數	長度	
1	100x50通 (倉 存料)				6000	4	24000	27.01
2	100x100通 (倉 存料)				6000	1	6000	49.27

送至: _____

由: _____

日期: _____

簡短說明: _____

共3頁 第1頁

打印日期: 19/5/2023 打印時間: 16:04



工程號碼:J853, 工程名稱:延坪道

開料長度:6000, 總長料支數:1, 總開料支數:56

鋸片厚度(mm):4, 料頭尾總切除(mm):20, 浪費率(%):49.27

鋁材開料清單 100x100通 (倉)

窗號	編號(用料狀況)	實用長度(長料開數)	需要 支數	開料 支數	長料 支數	餘料 支數	編號(剩餘長度)
MU-AL50	1	50.0		56			2956

工程號碼:J853, 工程名稱:延坪道


開料長度:6000, 總長料支數:4, 總開料支數:8

鋸片厚度(mm):4, 料頭尾總切除(mm):20, 浪費率(%):27.01

鋁材開料清單 100x50通 (倉存)

窗號	編號(用料狀況)	實用長度(長料開數)	需要 支數	開料 支數	長料 支數	餘料 支數	編號(剩餘長度)
MU-AL61	1-2	2449.5	4	4	2	0	1-2@(1073)x2
MU-AL62A	3	2394.5	2	2	1	0	3@(1183)x1
MU-AL62B	4	1409.5	2	2	1	0	4@(3153)x1

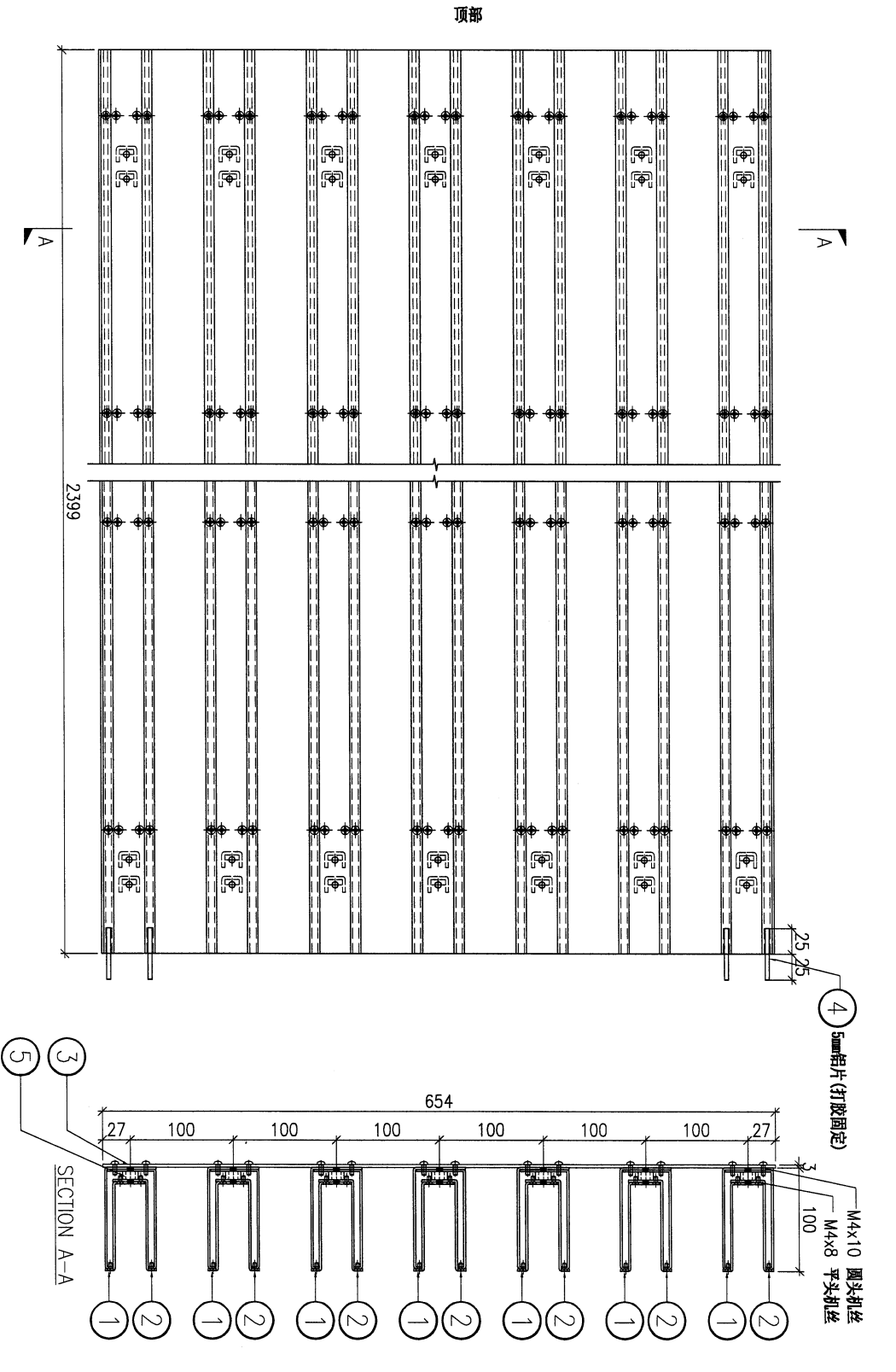
(4)

 美特鋁質有限公司 MIDI Aluminium Fabricator Ltd.		工程號: J-853	計算: ming	日期: 2023.05.18	送呈: JOE								
廠用鋁板B.M.表		地盤名稱: 廷坪路	核對:	日期:	副本:								
BM編號:		項目類別: MOCK UP (part2)	批准:	日期:									
修改內容		修改版次:	A/C Code:	總V.F.:	總重量: 1456.73								
序號	修改內容	鋁板圖號	鋁板名稱	顏色	實用	後備	總數	總重量	135.215		總重量:	1456.73	圖紙編號
									單件展開面積	總展開面積			
1		MU-AI51	2mm厚鋁板	TUC1066699FXLJBA-3(SS-03)	56	0	56	308.005	0.677	37.885	0.470	26.331	
2		MU-AI52	2mm厚鋁板	TUC1066699FXLJBA-3(SS-03)	56	0	56	306.913	0.674	37.751	0.470	26.331	
3		MU-AI53	2mm厚鋁板	TUC1066699FXLJBA-3(SS-03)	28	0	28	124.505	0.547	15.314	0.380	10.644	
4		MU-AI54	2mm厚鋁板	TUC1066699FXLJBA-3(SS-03)	28	0	28	124.064	0.545	15.260	0.380	10.644	
5		MU-AI55	2mm厚鋁板	TUC1066699FXLJBA-3(SS-03)	28	0	28	150.825	0.663	18.552	0.461	12.894	
6		MU-AI56	2mm厚鋁板	TUC1066699FXLJBA-3(SS-03)	28	0	28	150.290	0.660	18.486	0.461	12.894	
7		MU-AP49	3mm厚鋁板	鍍化	840	0	840	2.732	0.000	0.336	0.000	0.000	
8		MU-AP50	5mm厚鋁板	鍍化	48	0	48	0.780	0.002	0.096	0.000	0.000	
9		MU-AP51	3mm厚鋁板	EC-DG-D334232-ZD1(SS-01)	8	0	8	102.044	1.569	12.552	1.569	12.552	
10		MU-AP52	3mm厚鋁板	EC-DG-D334232-ZD1(SS-01)	4	0	4	41.249	1.268	5.074	1.268	5.074	
11		MU-AP53	3mm厚鋁板	EC-DG-D334232-ZD1(SS-01)	4	0	4	49.969	1.537	6.146	1.537	6.146	
12		MU-AP54A	1mm厚鋁板	EC-DG-D334232-ZD1(SS-01)	56	0	56	50.242	0.110	6.180	0.110	6.180	
13		MU-AP54B	1mm厚鋁板	EC-DG-D334232-ZD1(SS-01)	28	0	28	20.309	0.089	2.498	0.089	2.498	
14		MU-AP54C	1mm厚鋁板	EC-DG-D334232-ZD1(SS-01)	28	0	28	24.603	0.108	3.026	0.108	3.026	
15		MU-AP60	2mm厚鋁板	鍍化	4	0	4	0.197	0.009	0.036	0.000	0.000	
16													
17													
18													
19													
20													
總計:					1244	0	1244	1457	8	179	7	135	

PROJECT YIN PING ROAD KOWLOON
FEATURE WALL (PHASE 1)

REV. ORIGIN	PART NUMBER	Dim. A	Dim. B	Dim. C	Dim. D	Dim. E	Dim. F	Dim. G	Dim. H	QTY.	Inv. Code	ASSEMBLE ON PARTS	MARK. NO.	QTY.
-	MU-UN51	-	-	-	-	-	-	-	-	8			-	-

序号	编号	数量
①	MU-AL51	7
②	MU-AL52	7
③	MU-AP51	1
④	MU-AP50	4
⑤	MU-AP49	56



注：送工地

DWG. NO.	MU-UN51	REV.	-	SCALE	-	DATE	13-04-2023	DRAWN BY	-	APPROVED BY	-
----------	---------	------	---	-------	---	------	------------	----------	---	-------------	---

PROJECT
YIN PING ROAD KOWLOON
FEATURE WALL (PHASE 1)

MATERIAL
格栅组裝图

COATING

COLOUR

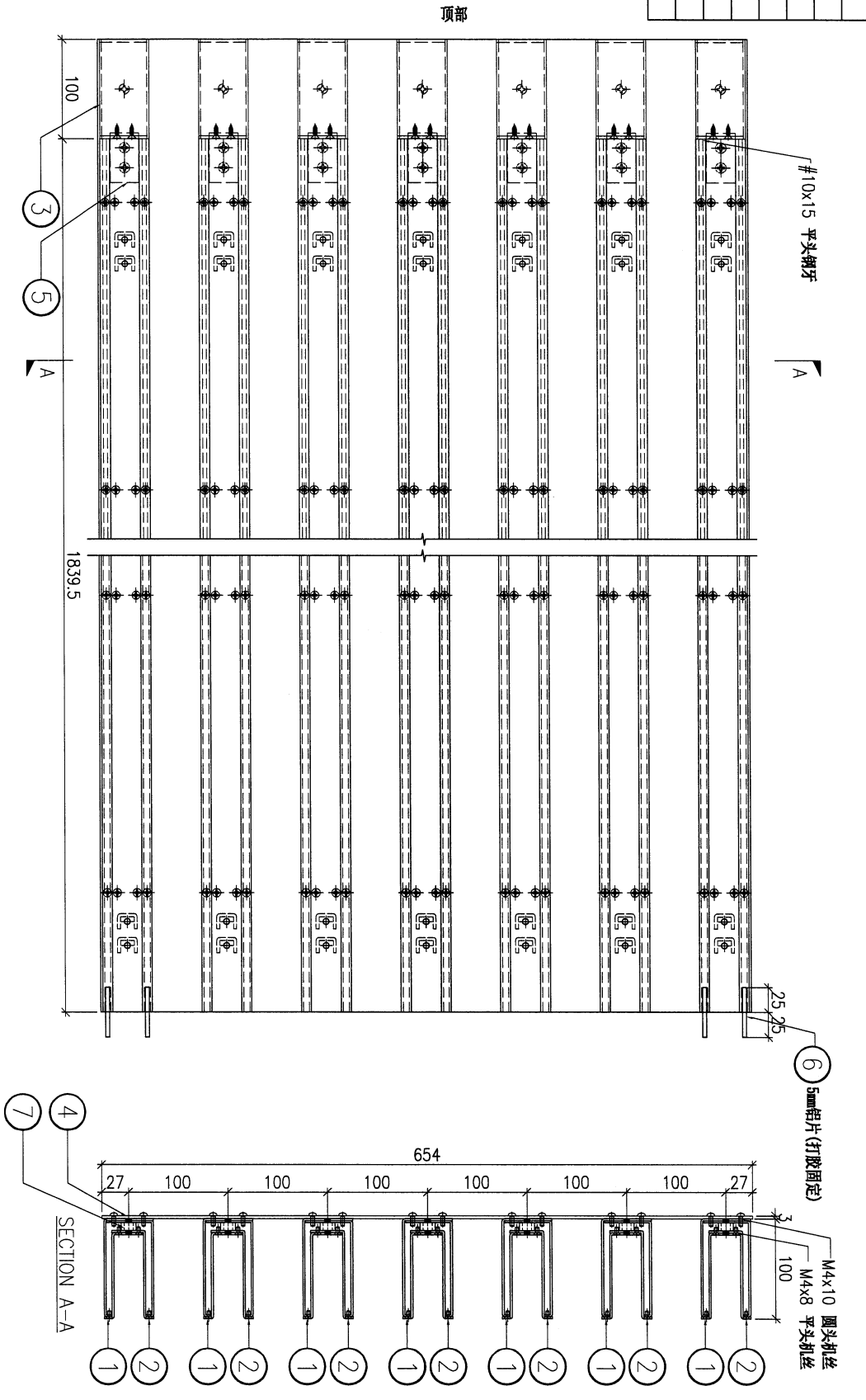
MARK. NO.

QTY.

注：送工地

REV. OR CHANGED DATE	PART NUMBER	Dim. A	Dim. B	Dim. C	Dim. D	Dim. E	Dim. F	Dim. G	Dim. H	QTY.	Inv. Code	ASSEMBLE ON PARTS
-	MU-UN52	-	-	-	-	-	-	-	-	4		

序号	编号	数量
①	MU-AL53	7
②	MU-AL54	7
③	MU-AL50	7
④	MU-AP52	1
⑤	MU-AL49	7
⑥	MU-AP50	4
⑦	MU-AP49	42



DWG. NO.	REV.	SCALE	DATE	DRAWN BY	APPROVED BY
MU-UN52	-	-	13-04-2023	-	-

8

PROJECT
YIN PING ROAD KOWLOON
FEATURE WALL (PHASE 1)

MATERIAL
格栅组装图

COATING

COLOUR

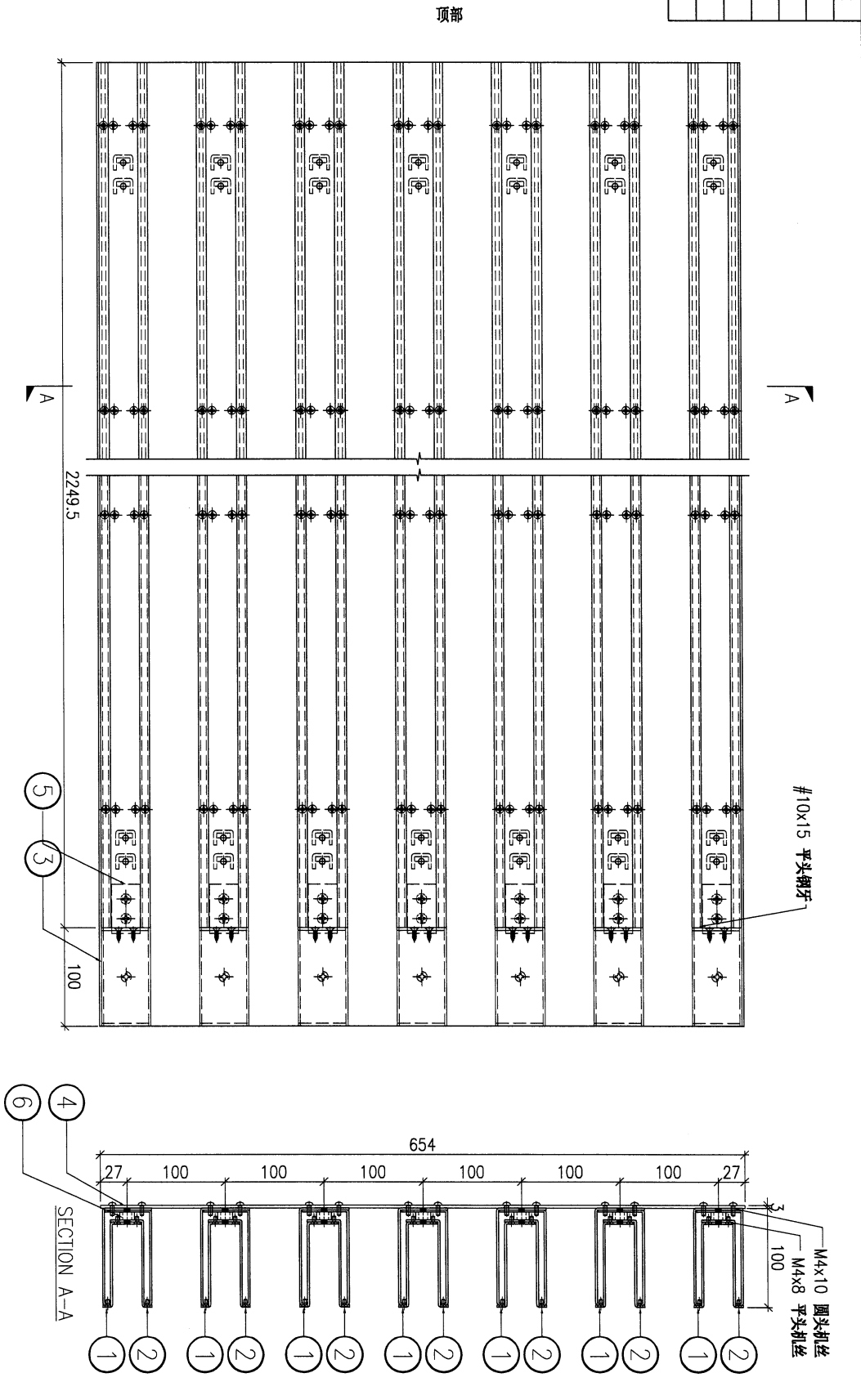
MARK. NO.

QTY.

注：送工地

REV. / CHANGED PART BY	PART NUMBER	Dim. A	Dim. B	Dim. C	Dim. D	Dim. E	Dim. F	Dim. G	Dim. H	QTY.	Inv. Code
-	MU-UN53	-	-	-	-	-	-	-	-	4	

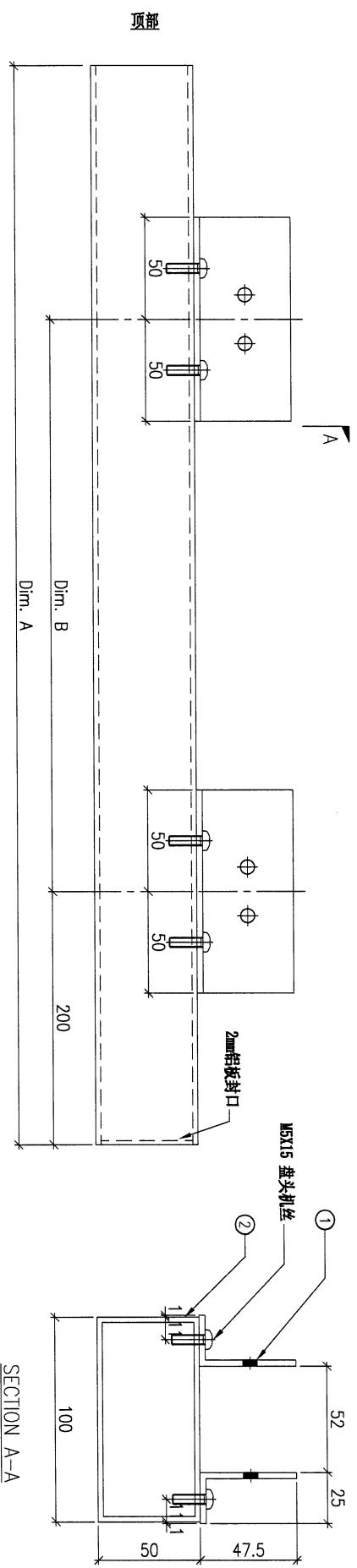
序号	编号	数量
①	MU-AL55	7
②	MU-AL56	7
③	MU-AL50	7
④	MU-AP53	1
⑤	MU-AL49	7
⑥	MU-AP49	56



DWG. NO.	REV.	SCALE	DATE	DRAWN BY	APPROVED BY
MU-UN53	-	-	13-04-2023		

9

PROJECT		YIN PING ROAD KOWLOON FEATURE WALL (PHASE 1)				MATERIAL				格柵組裝圖				COATING		COLOUR		MARK. NO.		QTY.	
REV.	CHANGED BY	PART NUMBER	Dim. A	Dim. B	Dim. C	Dim. D	Dim. E	Dim. F	Dim. G	Dim. H	QTY.	Inv. Code	ASSEMBLE ON PARTS								
-		MU-UN61	2449.5	3xØ700c/c	-						4		注: 構件編號 ①MU-AL63 8件 ②MU-AL61 1件								
													注: 送工地								



DWG. NO.		REV.		SCALE		DATE		DRAWN BY		APPROVED BY	
MU-UN61		-		-		13-04-2023		-		-	

10

PROJECT YIN PING ROAD KOWLOON FEATURE WALL (PHASE 1)

MATERIAL 格栅组装图

COATING

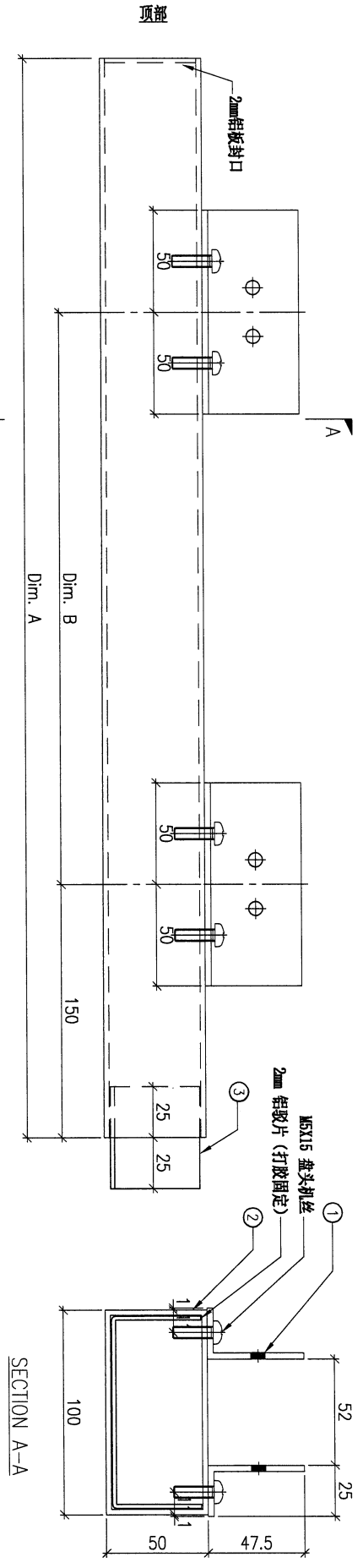
COLOUR

MARK. NO.

QTY.

REV. ORDER NO.	PART NUMBER	Dim. A	Dim. B	Dim. C	Dim. D	Dim. E	Dim. F	Dim. G	Dim. H	QTY.	Inv. Code	ASSEMBLE ON PARTS
-	UN-G62A	2394.5	3x@700/c	-	-	-	-	-	-	2	-	注: 构件编号 ①MU-AL63 8件 ②MU-AL62A 1件 ③MU-AP60 1件
-	UN-G62B	1409.5	2x@550/c	-	-	-	-	-	-	2	-	注: 构件编号 ①MU-AL63 6件 ②MU-AL62B 1件 ③MU-AP60 1件

注: 送工地



DWG. NO.

UN-G62

REV. -

SCALE -

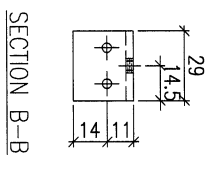
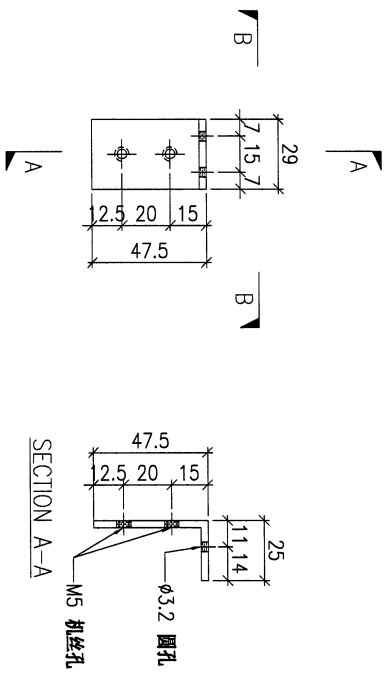
DATE 13-04-2023

DRAWN BY

APPROVED BY

W

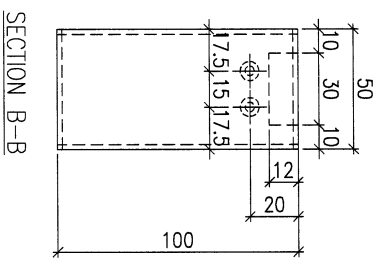
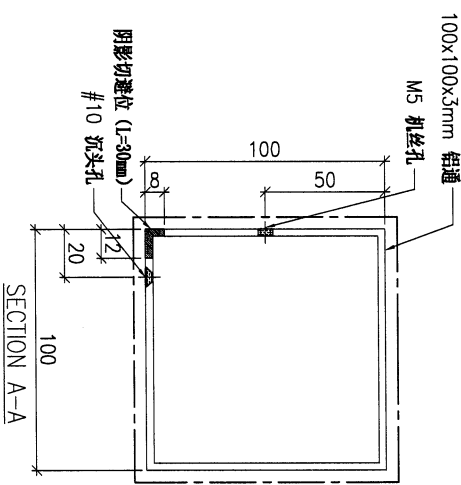
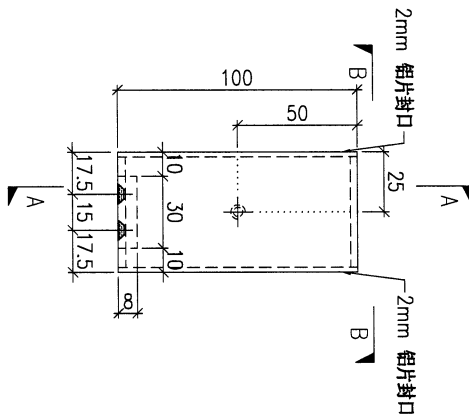
PROJECT				MATERIAL				COATING		COLOUR		MARK. NO.		QTY.	
YIN PING ROAD KOWLOON FEATURE WALL (PHASE 1)				3mm 铝角(JM1061)				氧化		-		-		-	
REV.	CHANGED BY	PART NUMBER	Dim. A	Dim. B	Dim. C	Dim. D	Dim. E	Dim. F	Dim. G	Dim. H	QTY.	Inv. Code	ASSEMBLE ON PARTS		
-		MU-AL49	-	-	-	-	-	-	-	-	56				
													注: 送工厂		



DWG. NO.		REV.		SCALE		DATE		DRAWN BY		APPROVED BY	
MU-AL49		-		-		22-03-2023		-		-	

12

PROJECT				MATERIAL				COATING				COLOUR		MARK. NO.		QTY.	
YIN PING ROAD KOWLOON FEATURE WALL (PHASE 1)				铝型材 (A14)				PVF2				SS-03		-		-	
REV.	CHECKED BY	PART NUMBER	Dim. A	Dim. B	Dim. C	Dim. D	Dim. E	Dim. F	Dim. G	Dim. H	QTY.	Inv. Code	ASSEMBLE ON PARTS				
-		MU-AL50	-	-	-	-	-	-	-	-	56						
注: 送工厂																	

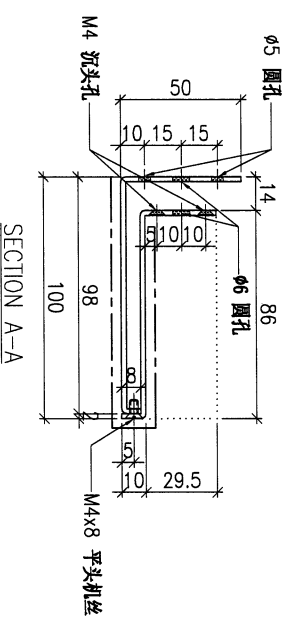
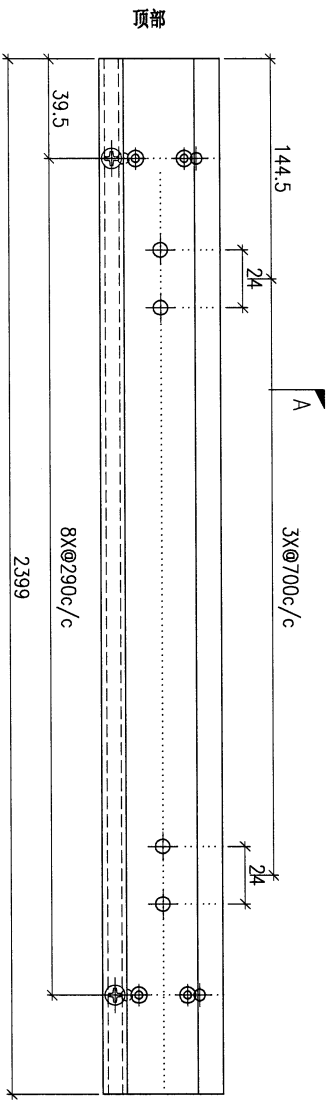


使用各存料 100X100 通
送黄透 EC-DG-D334232-2D1

DWG. NO.		REV.		SCALE		DATE		DRAWN BY		APPROVED BY	
MU-AL50		-		-		22-03-2023		-		-	

13

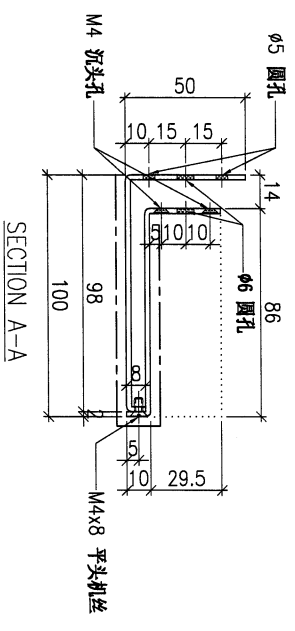
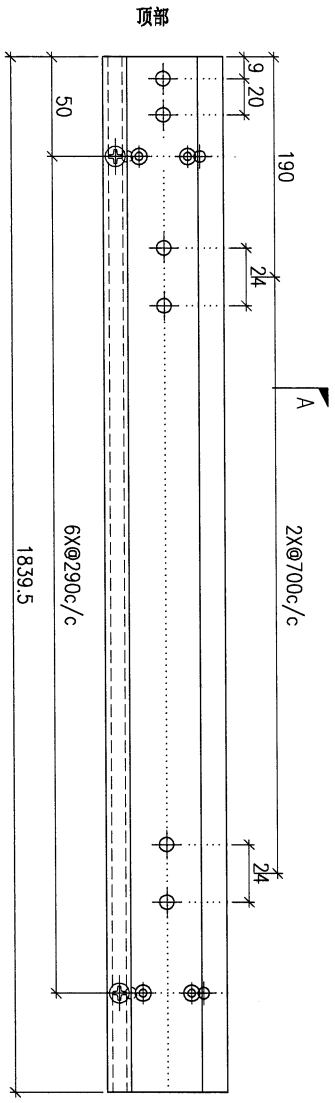
PROJECT				MATERIAL				COATING		COLOUR		MARK. NO.		QTY.	
YIN PING ROAD KOWLOON FEATURE WALL (PHASE 1)				2mm铝板				PVF2		TUC106699FXLJBA-3(SS-03)		-		-	
rev. / CHK BY	PART NUMBER	Dim. A	Dim. B	Dim. C	Dim. D	Dim. E	Dim. F	Dim. G	Dim. H	QTY.	Inv. Code	ASSEMBLE ON PARTS		注: 送工厂	
-	MU-AL51	-	-	-	-	-	-	-	-	56	-				



用 2 mm 铝板 铝件 组装

DWG. NO.	REV.	SCALE	DATE	DRAWN BY	APPROVED BY
MU-AL51	-	-	22-03-2023	-	-

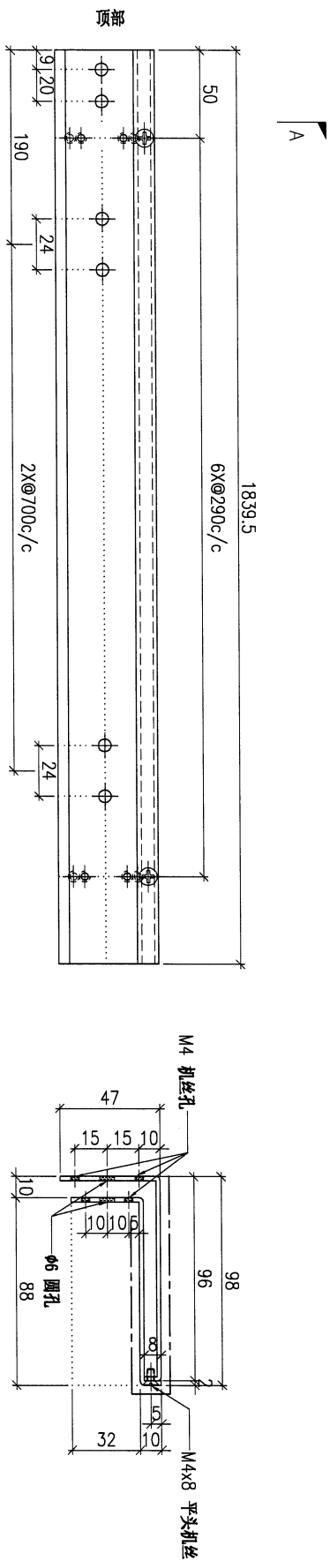
PROJECT				MATERIAL				COATING				COLOUR		MARK. NO.		QTY.	
YIN PING ROAD KOWLOON FEATURE WALL (PHASE 1)				2mm铝板				PVF2				TUC106699FXLJBA-3(SS-03)		-		-	
REV. SHEET NO.	PART NUMBER	Dim. A	Dim. B	Dim. C	Dim. D	Dim. E	Dim. F	Dim. G	Dim. H	QTY.	Inv. Code	ASSEMBLE ON PARTS					
-	MU-AL53	-	-	-	-	-	-	-	-	28	-						
													注: 送工厂				



用 2mm 铝板 摺件 组装

DWG. NO.		REV.		SCALE		DATE		DRAWN BY		APPROVED BY	
MU-AL53		-		-		22-03-2023		-		-	

PROJECT				MATERIAL				COATING				COLOUR				MARK. NO.		QTY.	
YIN PING ROAD KOWLOON FEATURE WALL (PHASE 1)				2mm铝板				PVF2				TUC106699FXLJBA-3(SS-03)				-		-	
REV. / SHEET NO.	PART NUMBER	Dim. A	Dim. B	Dim. C	Dim. D	Dim. E	Dim. F	Dim. G	Dim. H	QTY.	Inv. Code	ASSEMBLE ON PARTS							
-	MU-AL54	-	-	-	-	-	-	-	-	28									
注: 送工厂																			

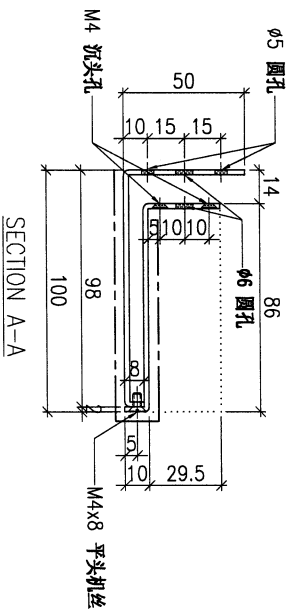
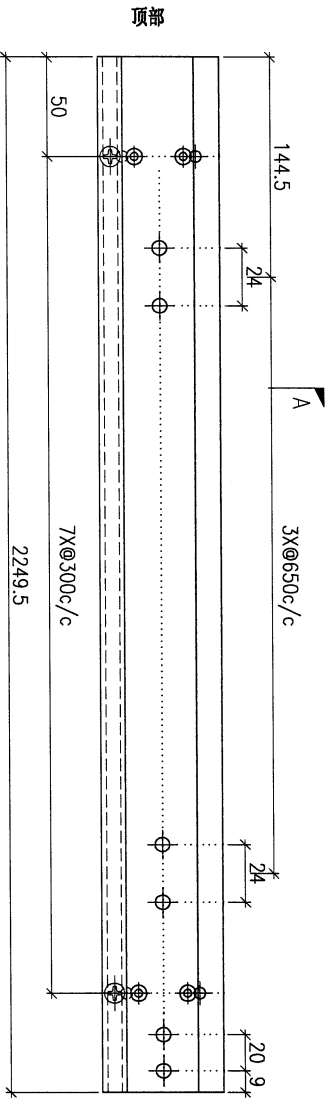


用 2mm 铝板 零件 组装

DWG. NO.	REV.	SCALE	DATE	DRAWN BY	APPROVED BY
MU-AL54	-	-	22-03-2023	-	-

PROJECT				MATERIAL				COATING				COLOUR		MARK. NO.		QTY.	
YIN PING ROAD KOWLOON FEATURE WALL (PHASE 1)				2mm鋁板				PVF2				TUC106699FXLJBA-3(SS-03)		-		-	
REV. / PART NO.	PART NUMBER	Dim. A	Dim. B	Dim. C	Dim. D	Dim. E	Dim. F	Dim. G	Dim. H	QTY.	Inv. Code	ASSEMBLE ON PARTS					
-	MU-AL55	-	-	-	-	-	-	-	-	28	-						

注：送工厂

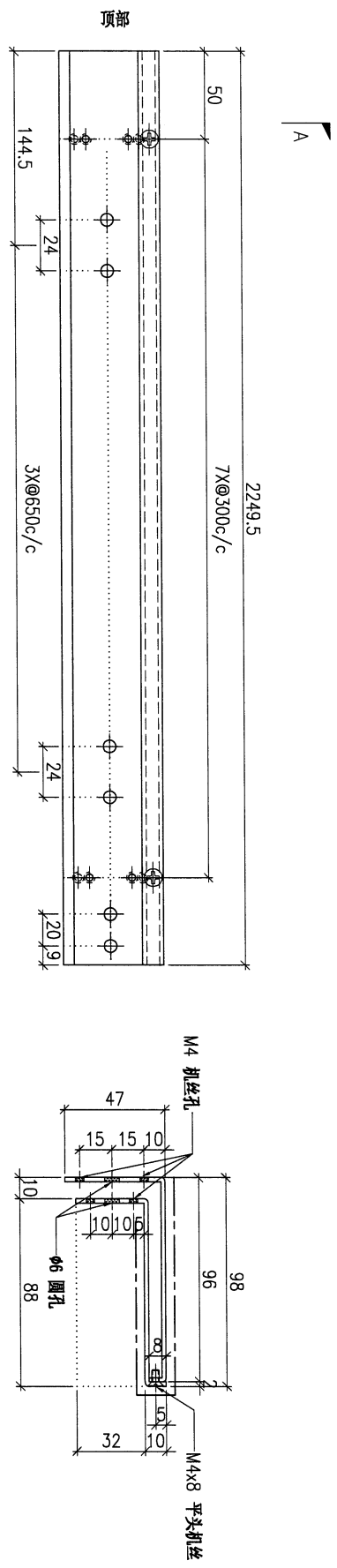


用 2mm 鋁板 摺件 組裝

DWG. NO.	REV.	SCALE	DATE	DRAWN BY	APPROVED BY
MU-AL55	-	-	22-03-2023	-	-

(18)

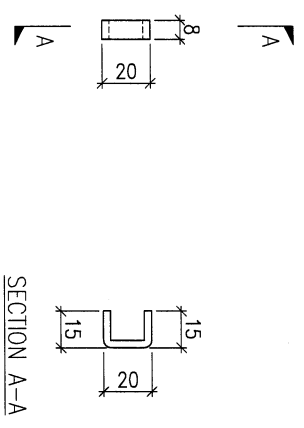
PROJECT				MATERIAL				COATING		COLOUR		MARK. NO.	QTY.
YIN PING ROAD KOWLOON FEATURE WALL (PHASE 1)				2mm 铝板				PVF2		TUC106699FXLJBA-3(SS-03)		-	-
REV. / 更改 BY	PART NUMBER	Dim. A	Dim. B	Dim. C	Dim. D	Dim. E	Dim. F	Dim. G	Dim. H	QTY.	Inv. Code	ASSEMBLE ON PARTS	
-	MU-AL56	-	-	-	-	-	-	-	-	28	-	注: 送工厂	



用 2mm 铝板 附件 组装

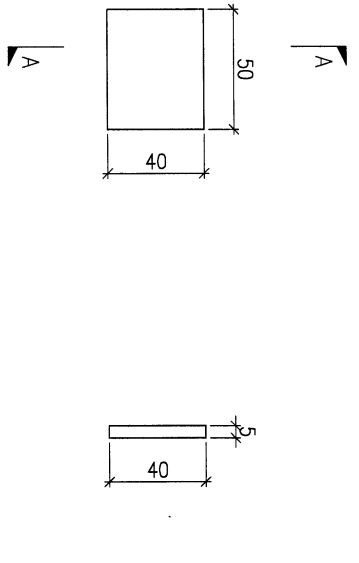
DWG. NO.		REV.		SCALE		DATE		DRAWN BY		APPROVED BY	
MU-AL56		-		-		22-03-2023		-		-	

PROJECT				MATERIAL				COATING				COLOUR				MARK. NO.				QTY.			
YIN PING ROAD KOWLOON FEATURE WALL (PHASE 1)				3mm 铝板				钝化				-				-				-			
REV.	CHANGED BY	PART NUMBER	Dim. A	Dim. B	Dim. C	Dim. D	Dim. E	Dim. F	Dim. G	Dim. H	QTY.	Inv. Code	ASSEMBLE ON PARTS										
-		MU-AP49	-	-	-						840												
																注: 送工厂							



DWG. NO.		REV.		SCALE		DATE		DRAWN BY		APPROVED BY	
MU-AP49		-		-		22-03-2023		-		-	

PROJECT				MATERIAL				COATING		COLOUR		MARK. NO.		QTY.	
YIN PING ROAD KOWLOON FEATURE WALL (PHASE 1)				5mm 铝板				阳极		-		-		-	
REV. OR REV. BY	PART NUMBER	Dim. A	Dim. B	Dim. C	Dim. D	Dim. E	Dim. F	Dim. G	Dim. H	QTY.	Inv. Code	ASSEMBLE ON PARTS			
-	MU-AP50	-	-	-	-	-	-	-	-	48	-				
													注: 送工厂		

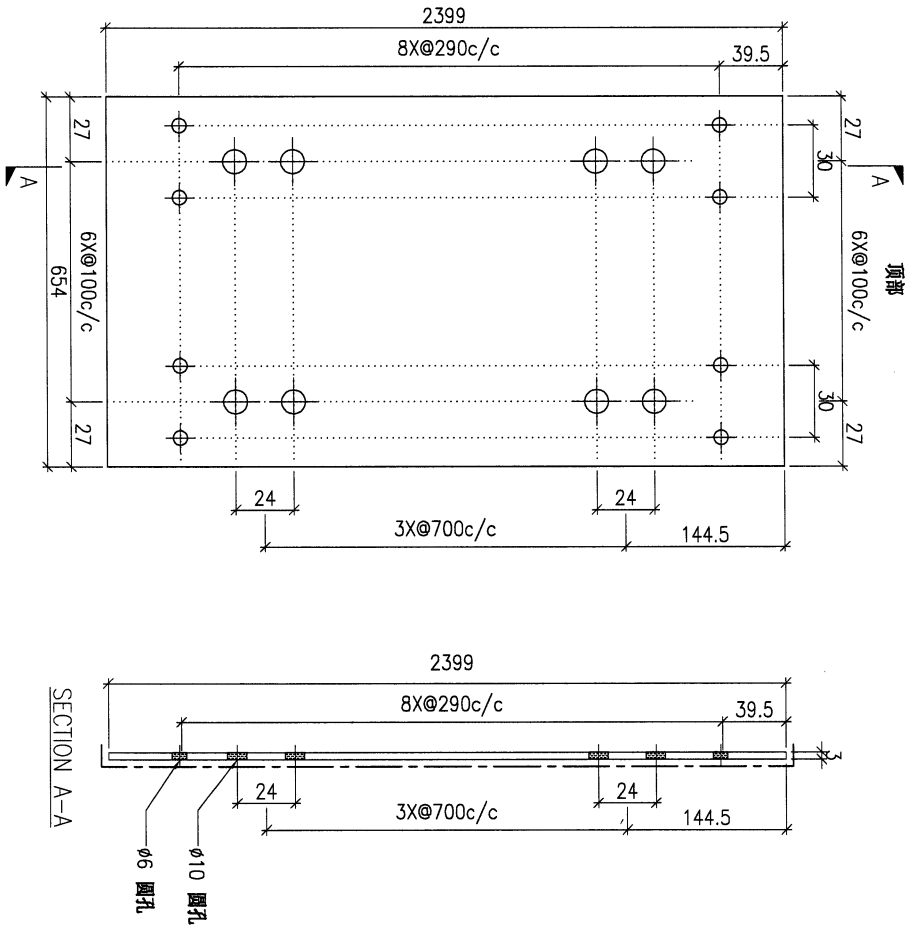


SECTION A-A

DWG. NO.	REV.	SCALE	DATE	DRAWN BY	APPROVED BY
MU-AP50	-	-	22-03-2023	-	-

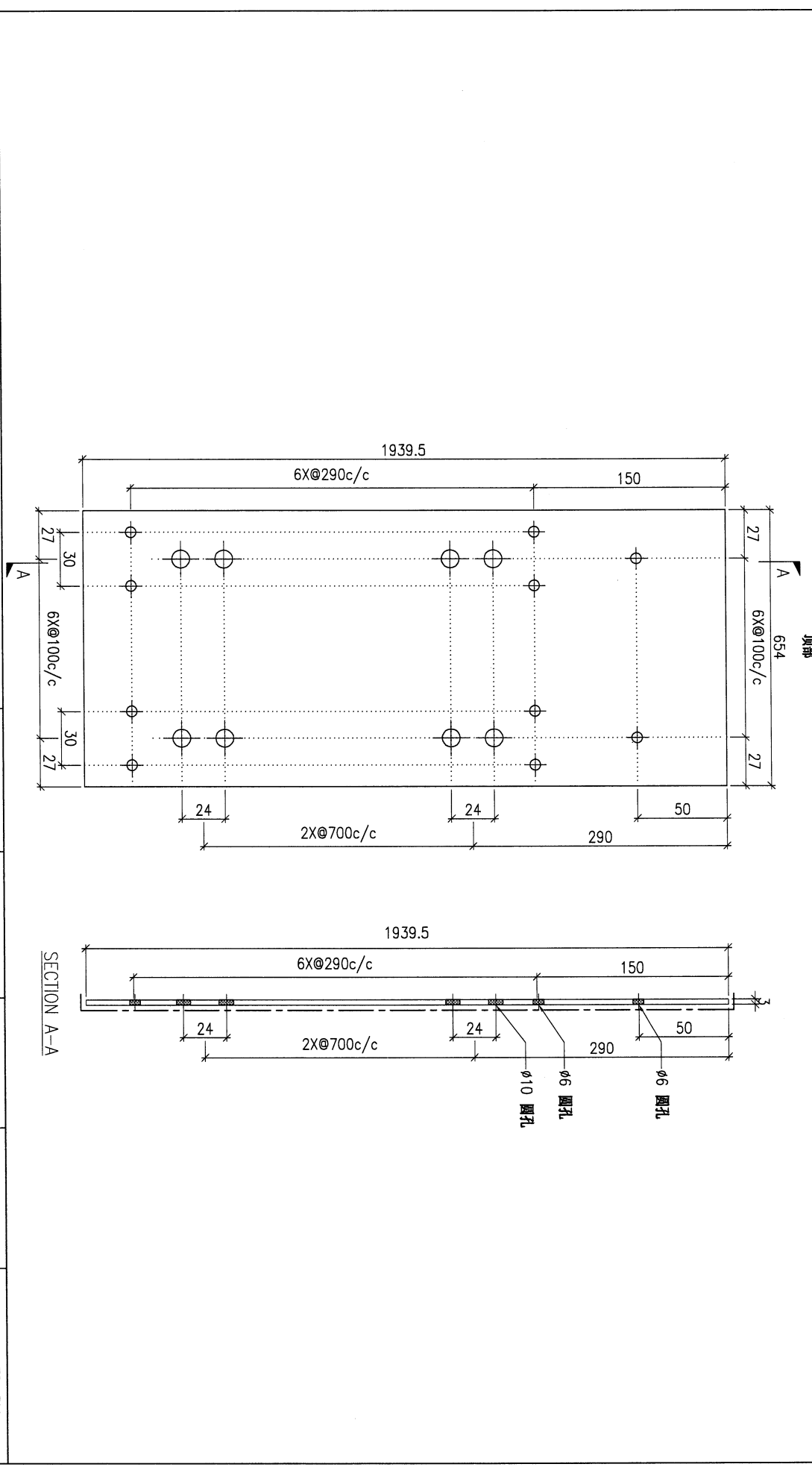
(21)

PROJECT				MATERIAL				COATING		COLOUR		MARK. NO.		QTY.	
YIN PING ROAD KOWLOON FEATURE WALL (PHASE 1)				3mm 铝板				PVF2		EG-DG-0334232-ZD1(SS-01)		-		-	
REV. / CHANGED SHEET BY	PART NUMBER	Dim. A	Dim. B	Dim. C	Dim. D	Dim. E	Dim. F	Dim. G	Dim. H	QTY.	Inv. Code	ASSEMBLE ON PARTS		注: 送工厂	
-	MU-AP51	-	-	-	-	-	-	-	-	8	-				



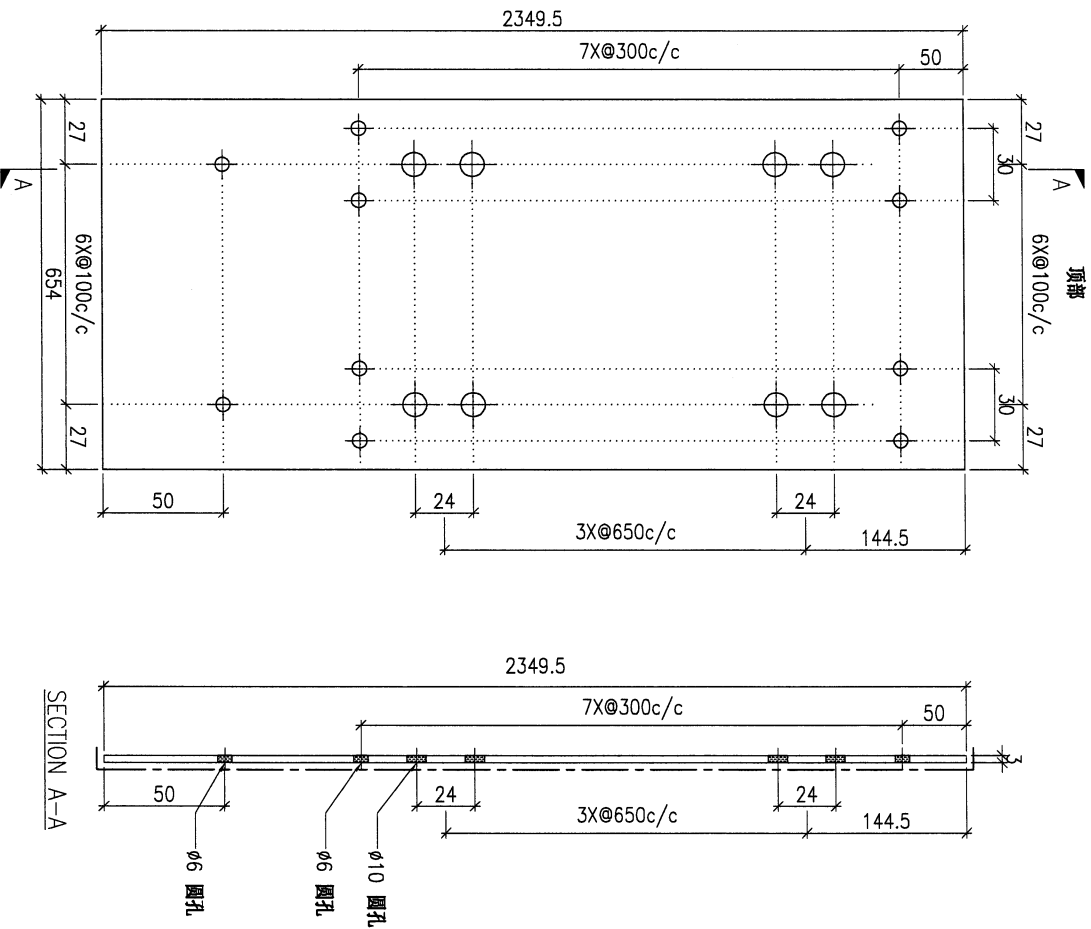
DWG. NO.		REV.		SCALE		DATE		DRAWN BY		APPROVED BY	
MU-AP51		-		-		22-03-2023		-		-	

PROJECT				MATERIAL				COATING				COLOUR				MARK. NO.		QTY.	
YIN PING ROAD KOWLOON FEATURE WALL (PHASE 1)				3mm 铝板				PVF2				EC-DG-D334232-ZD1(SS-01)				-		-	
REV.	CHANGED DATE BY	PART NUMBER	Dim. A	Dim. B	Dim. C	Dim. D	Dim. E	Dim. F	Dim. G	Dim. H	QTY.	Inv. Code	ASSEMBLE ON PARTS				注: 送工厂		
-		MU-AP52	-	-	-	-	-	-	-	-	4								



DWG. NO.		REV.		SCALE		DATE		DRAWN BY		APPROVED BY	
MU-AP52		-		-		22-03-2023		-		-	

PROJECT				MATERIAL				COATING				COLOUR				MARK. NO.		QTY.	
YIN PING ROAD KOWLOON FEATURE WALL (PHASE 1)				3mm 铝板				PVF2				EC-DG-D334232-ZD1(SS-01)				-		-	
REV. ORDER NO.	PART NUMBER	Dim. A	Dim. B	Dim. C	Dim. D	Dim. E	Dim. F	Dim. G	Dim. H	QTY.	Inv. Code	ASSEMBLY ON PARTS							
-	MU-AP53	-	-	-	-	-	-	-	-	4	-	注: 送工厂							

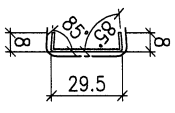
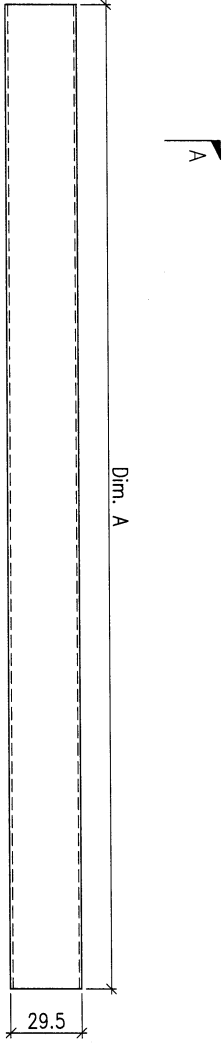


DWG. NO.		REV.		SCALE		DATE		DRAWN BY		APPROVED BY	
MU-AP53		-		-		22-03-2023		-		-	

24

PROJECT				MATERIAL				COATING				COLOUR				MARK. NO.				QTY.			
YIN PING ROAD KOWLOON FEATURE WALL (PHASE 1)				1mm 铝板				EC-DG-D334232-ZD1(SS-01)				-				-				-			
REV. ORDER NO.	PART NUMBER	Dim. A	Dim. B	Dim. C	Dim. D	Dim. E	Dim. F	Dim. G	Dim. H	QTY.	Inv. Code	ASSEMBLE ON PARTS											
-	MU-AP54A	2399	-	-	-	-	-	-	-	56		注: 安装于2400分格扣盖											
-	MU-AP54B	1839.5	-	-	-	-	-	-	-	28		注: 安装于1940分格扣盖											
-	MU-AP54C	2249.5	-	-	-	-	-	-	-	28		注: 安装于2350分格扣盖											

注: 送工地

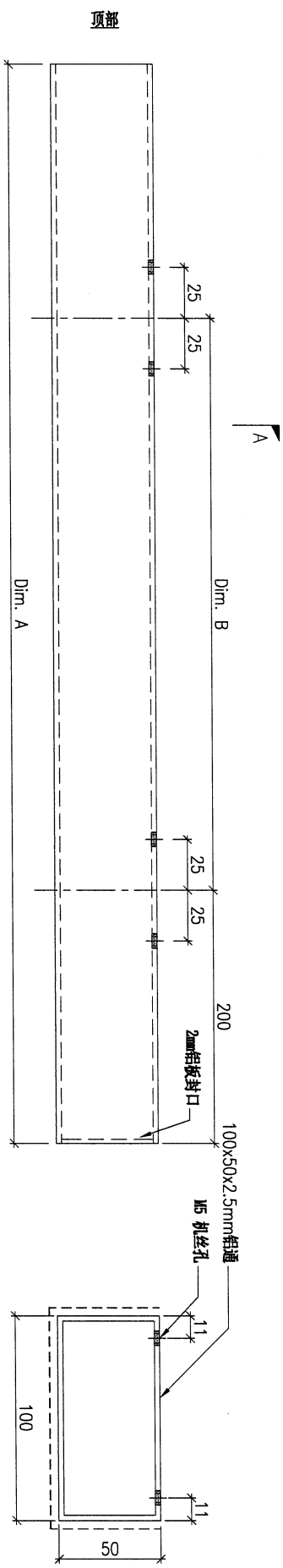


SECTION A-A

DWG. NO.	REV.	SCALE	DATE	DRAWN BY	APPROVED BY
MU-AP54	-	-	22-03-2023	-	-

25

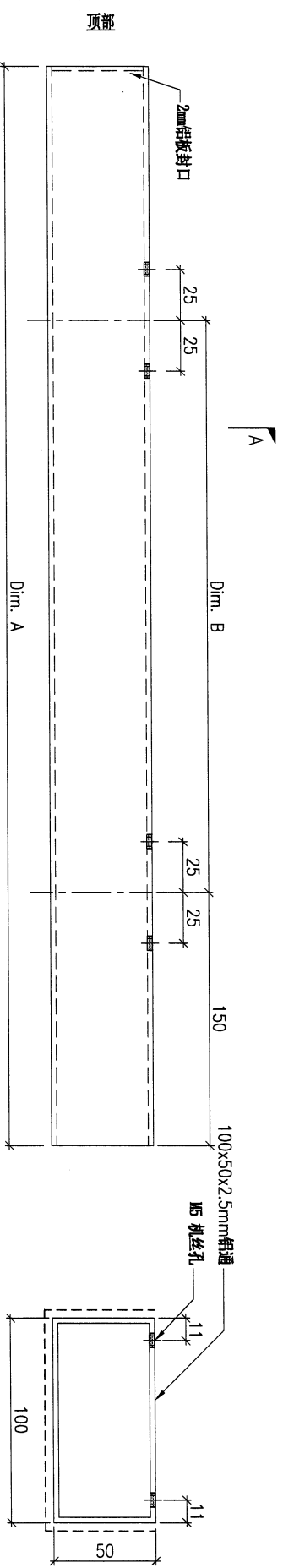
PROJECT				YIN PING ROAD KOWLOON FEATURE WALL (PHASE 1)				MATERIAL				100x50x2.5mm铝通(JMF G0032)				COATING		PVF2		COLOUR		SS-01		MARK. NO.		QTY.	
PART NUMBER		Dim. A		Dim. B		Dim. C		Dim. D		Dim. E		Dim. F		Dim. G		Dim. H		QTY.		Inv. Code		ASSEMBLE ON PARTS		注: 送工厂			
MU-AL61		2449.5		3x@700c/c		-		-		-		-		-		-		4		-		-		-			



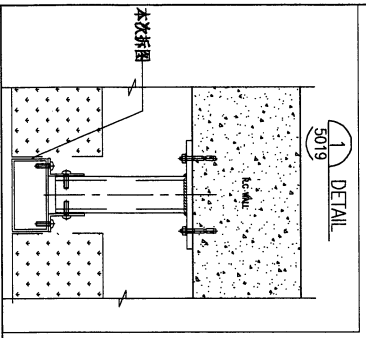
用倉存料 100x50扁通
送噴塗 EC-DG-D334232-ZD1

DWG. NO.		MU-AL61		REV.		SCALE		DATE		DRAWN BY		APPROVED BY	
				-		-		22-03-2023		-		-	

PROJECT				MATERIAL				COATING				COLOUR				MARK. NO.				QTY.			
YIN PING ROAD KOWLOON FEATURE WALL (PHASE 1)				100x50x2.5mm铝通(JMFG0032)				PVF2				SS-01				-				-			
REV. NO.	PART NUMBER	Dim. A	Dim. B	Dim. C	Dim. D	Dim. E	Dim. F	Dim. G	Dim. H	QTY.	Inv. Code	ASSEMBLE ON PARTS				注: 送工厂							
-	MU-AL62A	2394.5	1x@700/c	-						2													
-	MU-AL62B	1409.5	2x@550/c	-						2													



用倉存料 100x50扁通
送噴塗 EC-DG-D334232-2D1

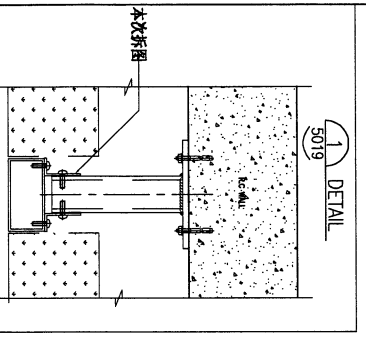
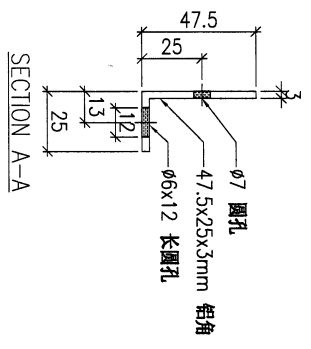
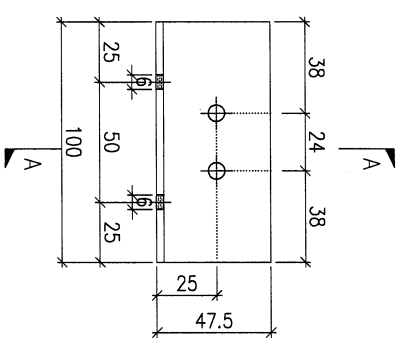


DWG. NO.		REV.		SCALE		DATE		DRAWN BY		APPROVED BY	
MU-AL62		-		-		22-03-2023		-		-	

27

PROJECT				MATERIAL				COATING				COLOUR				MARK. NO.		QTY.	
YIN PING ROAD KOWLOON FEATURE WALL (PHASE 1)				3mm 铝角(JM1061)				氧化				-				-		-	
REV. / DATE BY	PART NUMBER	Dim. A	Dim. B	Dim. C	Dim. D	Dim. E	Dim. F	Dim. G	Dim. H	QTY.	Inv. Code	ASSEMBLE ON PARTS							
-	MU-AL63	-	-	-	-	-	-	-	-	60									
注: 送工厂																			

可用 3mm 铝板
代替

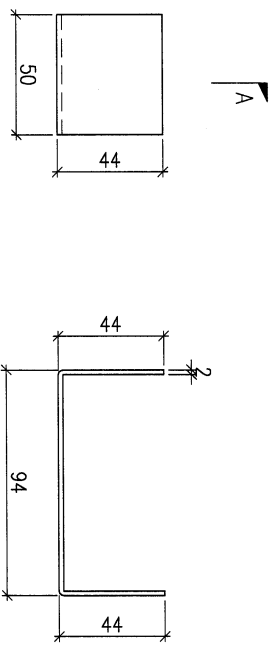


DWG. NO.		REV.		SCALE		DATE		DRAWN BY		APPROVED BY	
MU-AL63		-		-		22-03-2023		-		-	

28

PROJECT				YIN PING ROAD KOWLOON FEATURE WALL (PHASE 1)				MATERIAL				COATING		COLOUR		MARK. NO.	QTY.
				2mm 铝板				氧化		-		-	-	-	-	-	-
REV. ORIGIN BY	PART NUMBER	Dim. A	Dim. B	Dim. C	Dim. D	Dim. E	Dim. F	Dim. G	Dim. H	QTY.	Inv. Code	ASSEMBLE ON PARTS					
-	MU-AP60	-	-	-	-	-	-	-	-	4	-						

注: 送工厂



SECTION A-A

DWG. NO.		REV.		SCALE		DATE		DRAWN BY		APPROVED BY	
MU-AP60		-		-		22-03-2023		-		-	