

工程指示 / 要求簡箋 ENGINEER INSTRUCTIONS(E.I.)

工程指示編號:	EI- 6118	修改版本:	-
	HK- /		
工程編號:	J 853	工程名稱:	延坪道
收件人:	Maggie Lo	發件人:	Joe Chan
工程項目:	Podium Ceiling Cladding Feature (T6, 3F) 新增鐵件.	日期:	3/5/2023

<input checked="" type="checkbox"/> 原合約工程包	<input type="checkbox"/> 原合約工程加 / 減賬 QT-	<input type="checkbox"/> 新工程報價 QT-
--	--	------------------------------------

信件批核號碼/圖紙參考編號:	批核模具圖紙編號:
客戶指示附件:	管理內部批簽署:

<input type="checkbox"/> 初步鋁料 B.M.	<input type="checkbox"/> 加工拆圖, 然後生產	<input type="checkbox"/> 尺寸表
<input type="checkbox"/> 正式鋁料 B.M.	<input type="checkbox"/> 技術上資料/指示	<input type="checkbox"/> 報價
<input type="checkbox"/> 配件 B.M.	<input type="checkbox"/> 樣辦或貨品說明書	<input type="checkbox"/> 分判合約
<input type="checkbox"/> 其他:		

內容: 請依附件資料, 生產 GMS 鐵件, 送地盤.
 驗焊報告名稱: Superstructure - Aluminium Cladding at Transfer Plate
 廠驗焊: 10% 磁粉, 100% 目測

完成上列要求日期: ASAP

國內

<input type="checkbox"/> 生產技術總監	<input type="checkbox"/> 連附件	<input type="checkbox"/> 技術部	<input type="checkbox"/> 連附件	<input type="checkbox"/> 生產部	<input type="checkbox"/> 連附件
<input type="checkbox"/> 採購部	<input type="checkbox"/> 連附件	<input type="checkbox"/> 生產統籌部	<input type="checkbox"/> 連附件	<input type="checkbox"/> 報關組	<input type="checkbox"/> 連附件
<input type="checkbox"/> 質檢部	<input type="checkbox"/> 連附件	<input type="checkbox"/> 會計部	<input type="checkbox"/> 連附件	<input type="checkbox"/> 機械設計部	<input type="checkbox"/> 連附件
<input type="checkbox"/> 香港辦	<input type="checkbox"/> 連附件	<input type="checkbox"/> 其他:			

香港

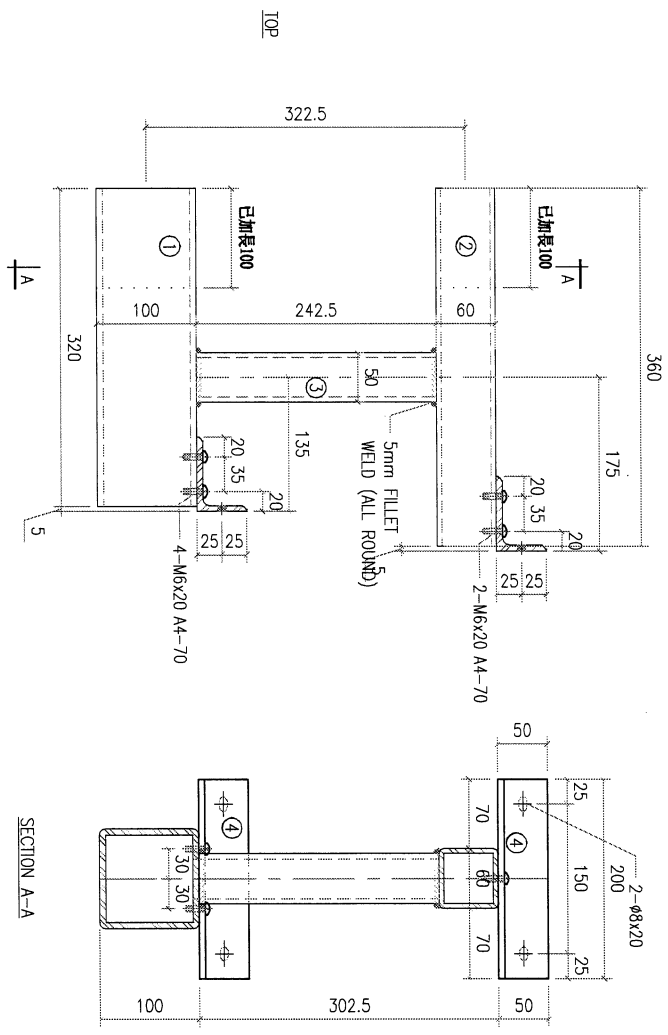
<input type="checkbox"/> 行政部	<input type="checkbox"/> 連附件	<input type="checkbox"/> 會計部	<input type="checkbox"/> 連附件	<input type="checkbox"/> 統籌部	<input type="checkbox"/> 連附件	<input type="checkbox"/> 工程部	<input type="checkbox"/> 連附件
<input type="checkbox"/> 採購部	<input type="checkbox"/> 連附件	<input type="checkbox"/> QS部	<input type="checkbox"/> 連附件	<input checked="" type="checkbox"/> 地盤管理	<input checked="" type="checkbox"/> 連附件	<input type="checkbox"/> 維修部	<input type="checkbox"/> 連附件

炳哥

*發件人簽署:		*組別成員批核簽署:	
傳遞編號:		項目經理簽署:	

3

REV. CHECKED DATE BY	PART NUMBER	Dim. A	Dim. B	Dim. C	Dim. D	Dim. E	Dim. F	Dim. G	QTY	Inv. Code	ASSEMBLY ON PARTS	EXTR. DRAWING PART DRAWING
-	T6-3F-ST02A-01								9			



VS = VISIBLE SURFACE
ALL DIMENSIONS IN MILLIMETRES

REV.	DATE	AMENDMENT	REVISED BY	PROJECT	JOB NO.	DRAWING TITLE	DRAWING NO.	SHT.	REV.
-	-	-	-	J853-PODIUM ALUM CEILING & FEATURE CLADDING (T6 3/F)	J853	鐵料加工圖	T6-3F-ST02A	1 of 2	-

美特鋁質有限公司
MIDI ALUMINIUM FABRICATOR LTD.
Units 6-8, Sunny Industrial Centre, 1/F
610 Cha Kwo Ling Road, Kowloon
Tel: 23489211-4 Fax: (852) 2727666

FACTORY	W/CENTRE	CUT ENDS	FINISH
01	MMX/SX/FA	N/A	4/27/2023

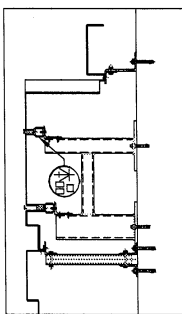
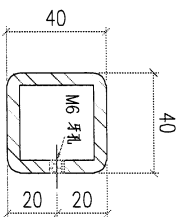
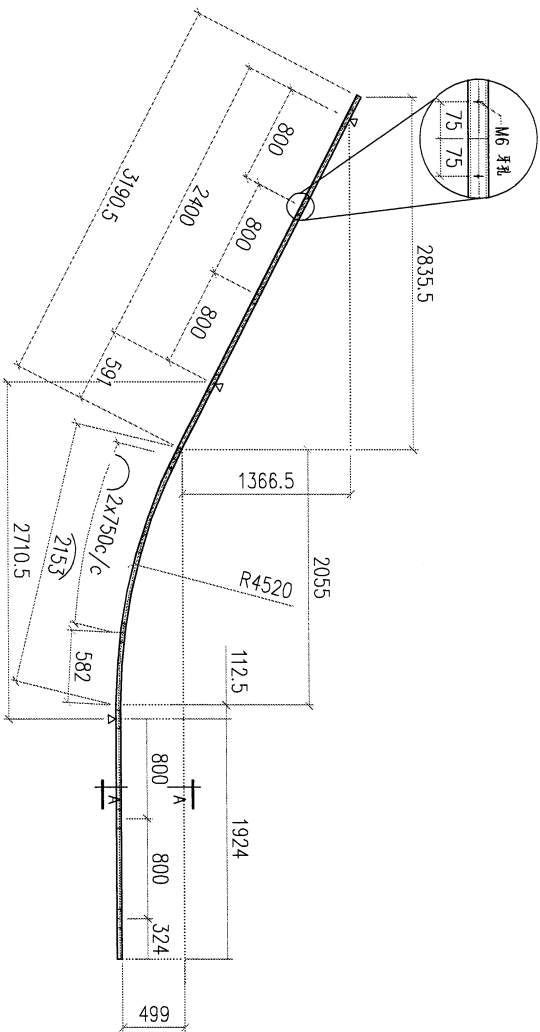
DATE	SCALE	POST PAINT	PART
4/27/2023	1:5	<input checked="" type="checkbox"/>	<input checked="" type="checkbox"/>

NO.	DESCRIPTION	QTY	UNIT	REMARKS
1	100x100x6.3mm THK. GALV. HOLLOW	320	片	材料規格
2	60x60x6mm THK. GALV. HOLLOW	360	片	材料規格
3	50x50x6mm THK. GALV. HOLLOW	242.5	片	材料規格
4	75x50x6mm THK. GALV. ANGLE	200	片	材料規格

4

CHKD BY	PART NUMBER	Dim. A	Dim. B	Dim. C	Dim. D	Dim. E	Dim. F	Dim. G	QTY	Inv. Code	ASSEMBLE ON PARTS	EXTR. DRAWING PART DRAWING
-	T6-3F-MS11A-04								1			

△ 分段處



VS = VISIBLE SURFACE
ALL DIMENSIONS IN MILLIMETRES

REV.	DATE	AMENDMENT	REVISED BY	PROJECT	JOB NO.	DRAWING TITLE	DRAWING NO.	SHT.	REV.
-	-	-	-	PROJECT 1853-PODIUM ALUM CEILING & FEATURE CLADDING T6 3/F	1853	鐵料加工圖 40x40x5mm THK. GMS.SHS.	T6-3F-MS11A	3 of 3	-

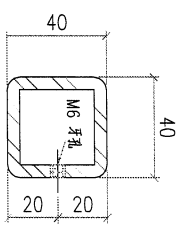
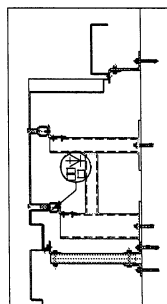
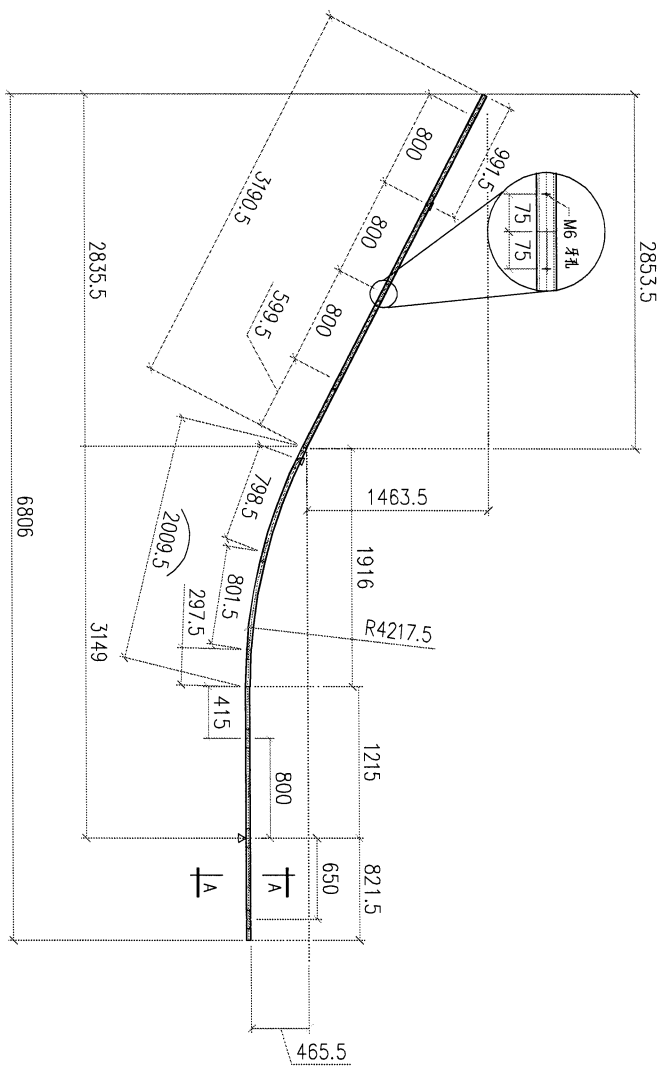
FACTORY	W/CENTRE	CUT ENDS	FINISH	POST PAINT	PART
01	MAX/S&D/A/FAB	N/A	熱浸	PRE PAINT	TRACK TYPE
Standard	X X . = ±1	Angle	DATE	SCALE	S.....
Tolerances	X X . X = ±0.5	Squareness ±1'	4/28/2023	1:40	

Units 6-8, Sunroy Industrial Centre, 1/F	MIDI ALUMINIUM FABRICATOR LTD.	熱浸	熱浸	熱浸
610 Cha Kwo Ling Road, Kowloon		YEUNG	YEUNG	YEUNG
Tel:23489211-4 Fax:(852)2727666				

5

checked date by	PART NUMBER	Dim. A	Dim. B	Dim. C	Dim. D	Dim. E	Dim. F	Dim. G	QTY	Inv. Code	ASSEMBLE ON PARTS	EXTR. DRAWING PART DRAWING
-	T6-3F-MS11A-03								1			

△ 分段號

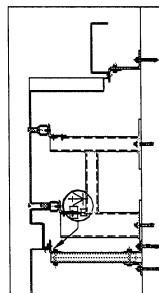
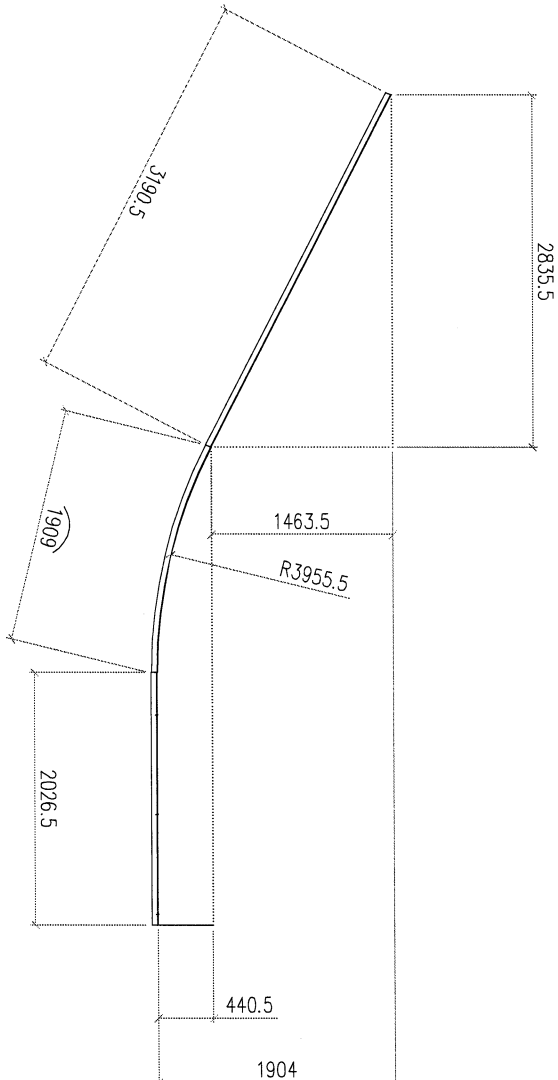


VS = VISIBLE SURFACE
ALL DIMENSIONS IN MILLIMETRES

REV.	DATE	AMENDMENT	REVISED BY	美特鋁質有限公司 MIDI ALUMINIUM FABRICATOR LTD. Units 6-8, Sunray Industrial Centre, 1/F 610 Cha Kwo Ling Road, Kowloon Tel:23489211-4 Fax:(852)27272666				PROJECT	J853-PODIUM ALUM CEILING & FEATURE CLADDING T6 3/F	JOB NO.	J853	DRAWING TITLE	鐵料加工圖 40x40x5mm THK. GMS.SHS.	DRAWING NO.	T6-3F-MS11A	SHT.	2 of 3	REV.	-
				FACTORY	01	W/CENTRE	MACH/SDBA/FAB	CUT ENDS	N/A	FINISH	熱浸	POST PAINT	PRE PAINT	SCALE	1:40	PART	TRACK TYPE	S.....	
				Standard	X X .	= ±1	Angle	±1'	DATE	4/28/2023	DRAWN	YEUNG							
				Tolerances	X X . X	= ±0.5	Squareness	±1'											

6

REV	CHECKED DATE BY	PART NUMBER	Dim. A	Dim. B	Dim. C	Dim. D	Dim. E	Dim. F	Dim. G	QTY	Inv. Code	ASSEMBLE ON PARTS	EXTR. DRAWING PART DRAWING
-		T6-3F-MS11B-03								1			
△ 分段處													



REF: 19/6004

SECTION A-A

VS = VISIBLE SURFACE
ALL DIMENSIONS IN MILLIMETRES

REV.	DATE	AMENDMENT	REVISED BY	美特鋁質有限公司 MIDI ALUMINIUM FABRICATOR LTD. Units 6-8, Sunny Industrial Centre, 1/F 610 Cho Kwo Ling Road, Kowloon Tel: 23489211-4 Fax: (852) 27272666				PROJECT	JOB NO.	DRAWING TITLE	FINISH	DRAWN	POST PAINT	PART	REV.
-	-	-	-	FACTORY	W/CENTRE	CUT ENDS	DATE	4/28/2023	40x40x5mm THK. GMS.SHS.	4/28/2023	YEUNG	SCALE	1:40	2 of 3	
				01	MARK/S&DA/FAB	N/A	4/28/2023	40x40x5mm THK. GMS.SHS.	40x40x5mm THK. GMS.SHS.	4/28/2023	YEUNG	1:40	2 of 3	3	