

工程指示 / 要求簡箋 ENGINEER INSTRUCTIONS(E.I.)

工程指示編號:	EI- 6085	修改版本:	-
	HK-0862		
工程編號:	J 853	工程名稱:	延坪道
收件人:	生統	發件人:	Joe Chan
工程項目:	平台天花項目 地盤用鋁板(T7) 第3批	日期:	25/04/2023

<input checked="" type="checkbox"/> 原合約工程包	<input type="checkbox"/> 原合約工程加 / 減賬 QT-	<input type="checkbox"/> 新工程報價 QT-
--	--	------------------------------------

信件批核號碼/圖紙參考編號:	批核模具圖紙編號:
客戶指示附件:	管理內部批簽署:

<input type="checkbox"/> 初步鋁料 B.M.	<input type="checkbox"/> 加工拆圖, 然後生產	<input type="checkbox"/> 尺寸表
<input type="checkbox"/> 正式鋁料 B.M.	<input type="checkbox"/> 技術上資料/指示	<input type="checkbox"/> 報價
<input type="checkbox"/> 配件 B.M.	<input type="checkbox"/> 樣辦或貨品說明書	<input type="checkbox"/> 分判合約
<input checked="" type="checkbox"/> 其他: 鋁板.		

內容: 請依附件資料, 生產鋁板, 送地盤.

完成上列要求日期: 20/5/2023 ASAP

國內

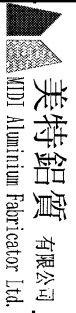
<input type="checkbox"/> 生產技術總監	<input type="checkbox"/> 連附件	<input type="checkbox"/> 技術部	<input type="checkbox"/> 連附件	<input type="checkbox"/> 生產部	<input type="checkbox"/> 連附件
<input type="checkbox"/> 採購部	<input type="checkbox"/> 連附件	<input checked="" type="checkbox"/> 生產統籌部	<input checked="" type="checkbox"/> 連附件	<input type="checkbox"/> 報關組	<input type="checkbox"/> 連附件
<input type="checkbox"/> 質檢部	<input type="checkbox"/> 連附件	<input type="checkbox"/> 會計部	<input type="checkbox"/> 連附件	<input type="checkbox"/> 機械設計部	<input type="checkbox"/> 連附件
<input type="checkbox"/> 香港辦	<input type="checkbox"/> 連附件	<input type="checkbox"/> 其他:			

香港

<input type="checkbox"/> 行政部	<input type="checkbox"/> 連附件	<input type="checkbox"/> 會計部	<input type="checkbox"/> 連附件	<input type="checkbox"/> 統籌部	<input type="checkbox"/> 連附件	<input type="checkbox"/> 工程部	<input type="checkbox"/> 連附件
<input type="checkbox"/> 採購部	<input type="checkbox"/> 連附件	<input type="checkbox"/> QS部	<input type="checkbox"/> 連附件	<input checked="" type="checkbox"/> 地盤管理	<input checked="" type="checkbox"/> 連附件	<input type="checkbox"/> 維修部	<input type="checkbox"/> 連附件

炳哥.

*發件人簽署:	*組別成員批核簽署:
傳遞編號: HK0862/23	項目經理簽署: P.P.



美特鋁質有限公司  
MTD Aluminum Fabricator Ltd.

工程號: J-853

計算: 劉旭

日期: 2023.04.24

送呈: JOE

地盤名稱: 延坪路

核對: 徐洋坤

日期: 2023.04.24

副本:

廠用鋁板B.M.表

項目類別: T7 6/F

批准: 林仁安

日期: 2023.04.24

B/M編號:

修改版本:

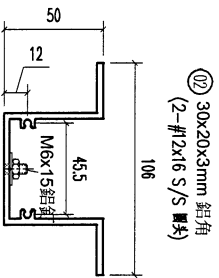
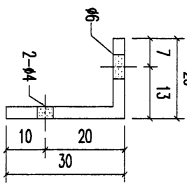
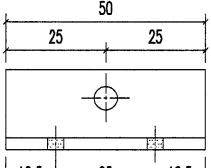
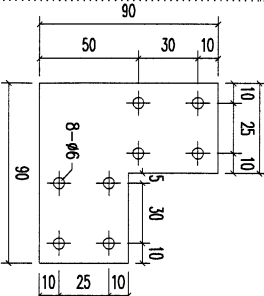
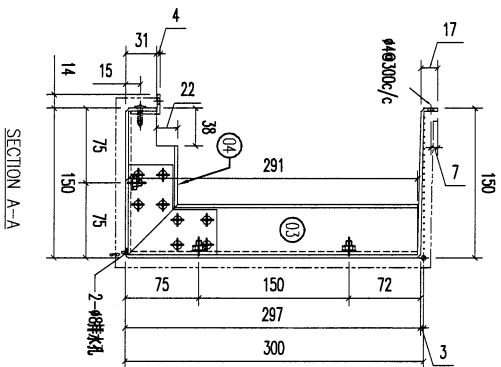
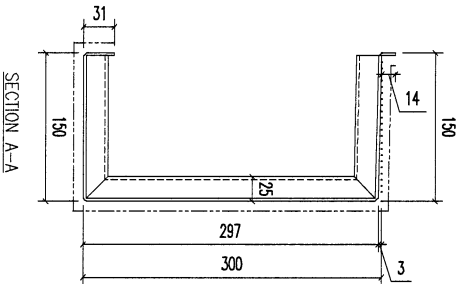
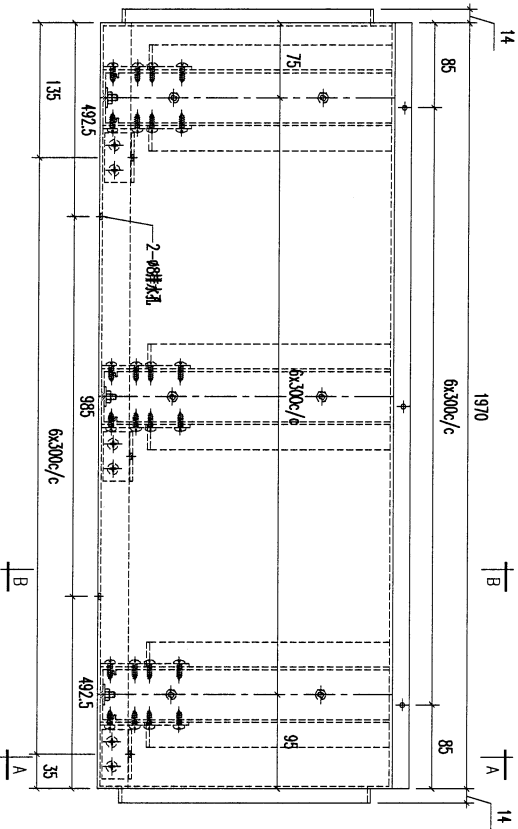
A/C Code:

總V.F.: 34.056

總重量: 276.88

序號	修改內容	鋁板圖號	鋁板名稱	顏色	實用	後備	總數	總重量	單件展開面積		單件V.F.	總V.F.	圖紙編號
									平方米	平方米			
1		T7-AP40-01	3mm厚鋁板	ECW3D97528S-ZD1 (AL2)	1	0	1	10.739	1.321	1.321	1.321	1.321	
2		T7-AP40-02	3mm厚鋁板	ECW3D97528S-ZD1 (AL2)	1	0	1	10.739	1.321	1.321	1.321	1.321	
3		T7-AP41-01	3mm厚鋁板	EC-DG-D334232-ZD1 (AL1)	1	0	1	6.444	0.793	0.793	0.793	0.793	
4		T7-AP41-02	3mm厚鋁板	EC-DG-D334232-ZD1 (AL1)	1	0	1	6.444	0.793	0.793	0.793	0.793	
5		T7-CE40-01	3mm厚鋁板	EC-DG-D334232-ZD1 (AL1)	1	0	1	16.369	2.013	2.013	2.013	2.013	
6		T7-CE40-02	3mm厚鋁板	EC-DG-D334232-ZD1 (AL1)	4	0	4	92.208	2.835	11.342	2.835	11.342	
7		T7-CE40-03	3mm厚鋁板	EC-DG-D334232-ZD1 (AL1)	1	0	1	22.963	2.824	2.824	2.824	2.824	
8		T7-CE41-01	3mm厚鋁板	EC-DG-D334232-ZD1 (AL1)	5	0	5	110.971	2.730	13.650	2.730	13.650	
					總計:		15	277	15	34	15	34	

REV.	CHECKED DATE BY	PART NUMBER	Dim. A	Dim. B	Dim. C	Dim. D	Dim. E	Dim. F	Dim. G	QTY	Inv. Code	ASSEMBLE ON PARTS	EXTR. DRAWING PART DRAWING
-		T7-AP40-01								1			



REV.	DATE	AMENDMENT	REVISED BY
04		A1鋁型材	143
03		A1鋁型材	290
02		30x20x3mm 鋁角	50
01		90x90x3mm 鋁片	-

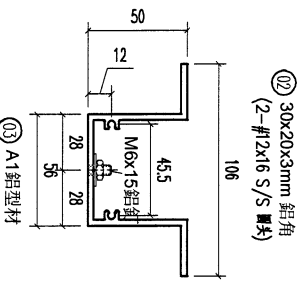
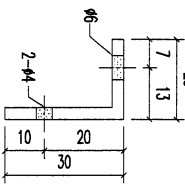
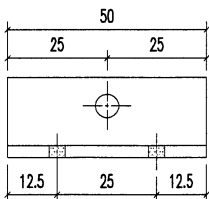
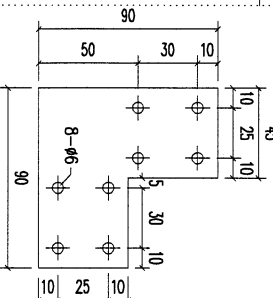
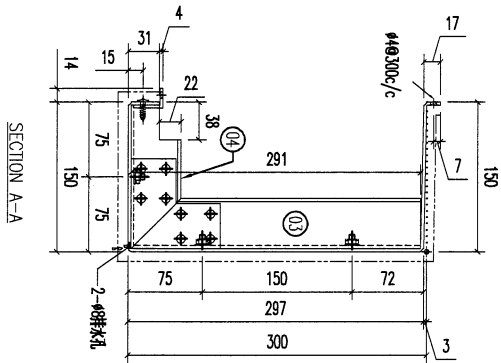
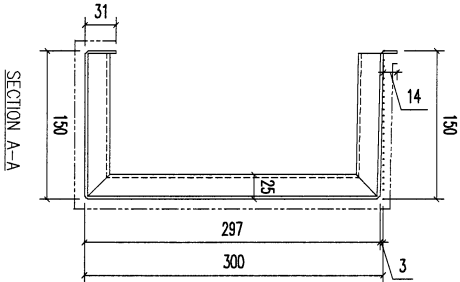
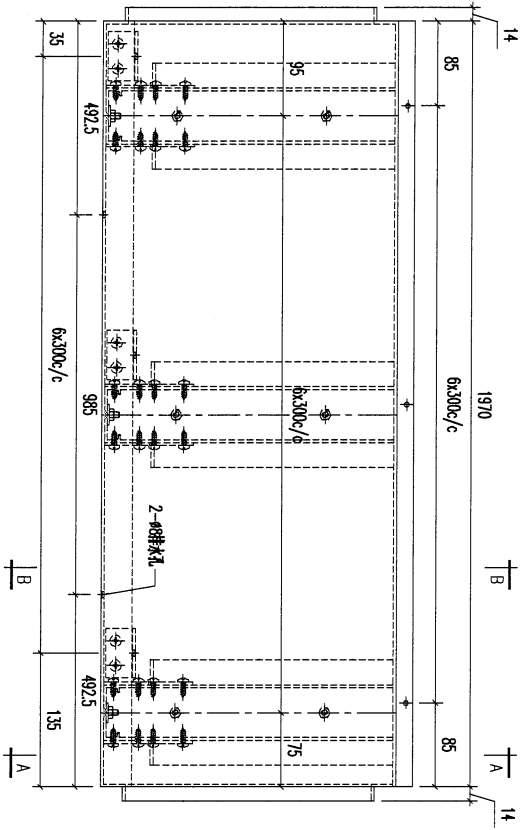
序號	材料規格	長度	配件描述	數量	备注

**美特鋁業有限公司**  
MIDI ALUMINIUM FABRICATOR LTD.  
Units 6-8, Sunray Industrial Centre, 1/F  
610, Cho Kwong Road, Kowloon  
Tel: 23489211-4 Fax: (852) 2727666

REV.	DATE	AMENDMENT	REVISED BY	JOB NO.
				J853

FACTORY	W/CENTRE	CUT ENDS	FINISH	DATE	DRAWN	SCALE	POST PAINT	TRACK TYPE	SHT.	REV.
01	M/DH/S/DH/FAB	Angle Squareness ±1°	EC-DG-0334232-201 (AL1)	4/24/2023	YEUNG	1:5	(2-#12x16 S/S 螺絲)	S....	-/-	-

REV.	CHECKED DATE	PART NUMBER	Dim. A	Dim. B	Dim. C	Dim. D	Dim. E	Dim. F	Dim. G	QTY	Inv. Code	ASSEMBLY ON PARTS	EXTR. DRAWING PART DRAWING
-		T7-AP40-02								1			



REV.	DATE	AMENDMENT	REVISED BY
04		A1 鋁型材	
03		A1 鋁型材	
02		30x20x3mm 鋁角	
01		90x90x3mm 鋁片	

材料規格

長度

配件描述

數量

备注

**美特鋁質有限公司**  
MIDI ALUMINIUM FABRICATOR LTD.

Units 6-8, Sunray Industrial Centre, 1/F  
610 Che Kwo Ling Road, Kowloon  
Tel: 23489211-4 Fax: (852) 27172766

Product J853-PODIUM ALUM. CEILING & FEATURE CLADDING T6 9/F

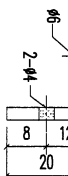
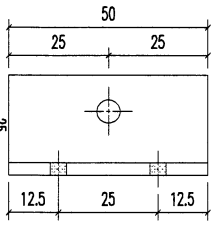
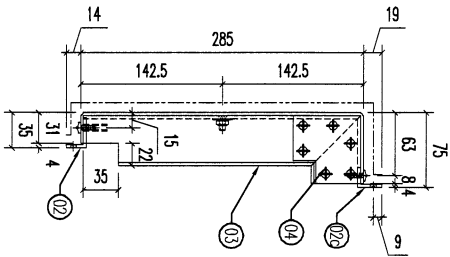
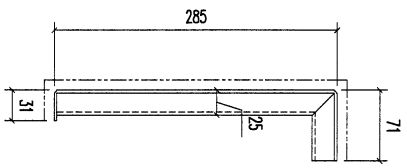
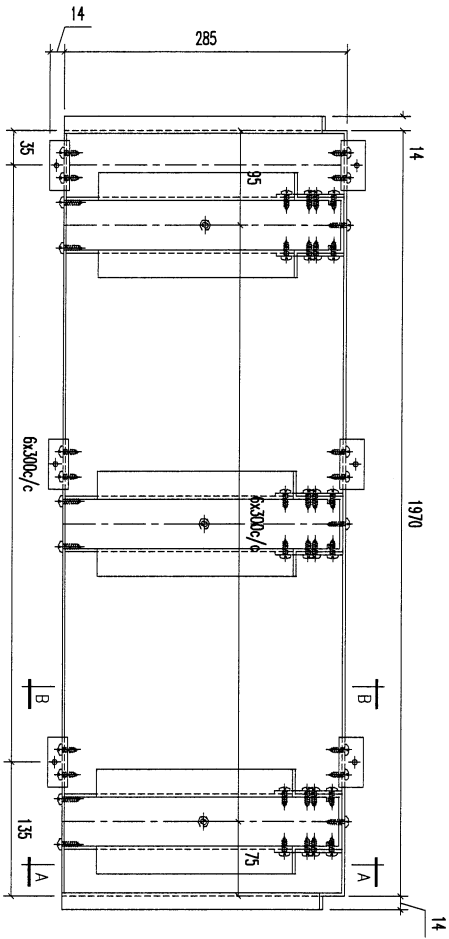
J853

FACTORY 01 W/CENTRE MOK/SDBA/FAB CUT ENDS FINISH EC-DC-0334232-Z01 (AL1) DATE 4/24/2023 DRAWN YEUNG

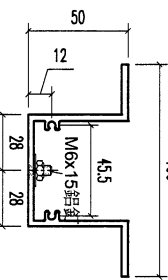
STANDARD TOLERANCES X X . X = ±1 SQUAREDNESS ±1

POST PAINT PRE PAINT SCALE 1:5 TRACK TYPE S..... SRT. REV.

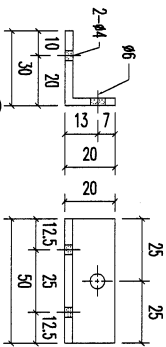
REV.	ORDERED BY	PART NUMBER	Dim. A	Dim. B	Dim. C	Dim. D	Dim. E	Dim. F	Dim. G	QTY	Inv. Code	ASSEMBLE ON PARTS	EXTR. DRAWING PART DRAWING
1		T7-AP41-01								1			



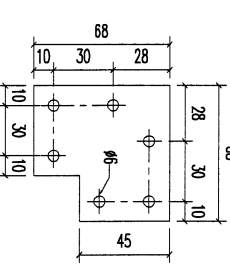
(17) 25x20x3mm 鋁角  
(2-#12x16 S/S 螺絲)



(19) A1 鋁型材  
(2-#12x19 S/S 螺絲)



(20) 30x20x3mm 鋁角  
(2-#12x16 S/S 螺絲)



(21) 68x68x3mm 鋁板

REV.	DATE	AMENDMENT	REVISED BY
04		A1 鋁型材	
03		A1 鋁型材	
02c		25x20x3mm 鋁角	
02		30x20x3mm 鋁角	
01b		68x68x3mm 鋁板	

序號	材料規格	長度	配件描述	數量	备注
04	A1 鋁型材	68	開梯	7	
03	A1 鋁型材	278	開梯	7	
02c	25x20x3mm 鋁角	50	開梯	7	
02	30x20x3mm 鋁角	50	開梯	7	
01b	68x68x3mm 鋁板	-	開梯	7	

**美特鋁業有限公司**  
MIDI ALUMINIUM FABRICATOR LTD.  
Units 6-8, Sunray Industrial Centre, 1/F  
610 Cho Kwo Ling Road, Kowloon  
Tel: 33489211-4 Fax: (852) 2727666

FACTORY	W/CENTRE	CUT ENDS	FINISH	POST PAINT
01	MACH/SUBA/FAB	Angle Squareness ±1'	EC-DG-0334232-ZD1 (A1)	噴塗 (2-#12x16 S/S 螺絲)

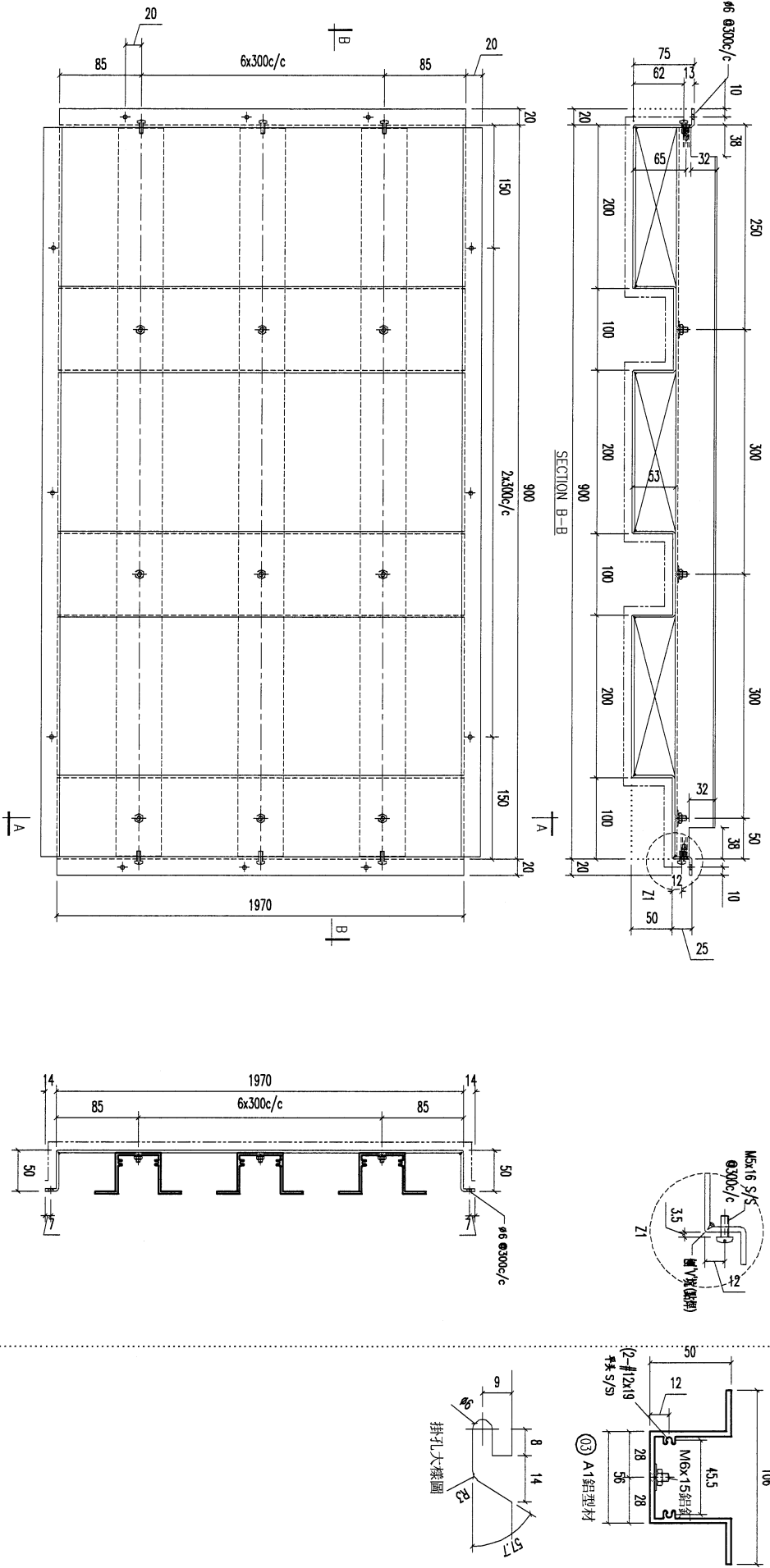
STANDARD	TOLERANCES	DATE	DRAWN	SCALE	TRACK TYPE	SHT.	REV.
X X . = ±1	X X . X = ±05	4/24/2023	YEUNG	1:5	S....	-/-	-

PROJECT J853-PODIUM ALUM CEILING & FEATURE CLADDING T6 9/F  
JOB NO. J853  
DRAWING TITLE 鋁板天花加工圖  
3mm THK. ALUM. PLATE  
DRAWING NO. T7-AP41-01





REV.	ORDERED PART BY	PART NUMBER	Dim. A	Dim. B	Dim. C	Dim. D	Dim. E	Dim. F	Dim. G	QTY	Inv. Code	ASSEMBLE ON PARTS	EXTR. DRAWING PART DRAWING
-	T7-CE40-02									4			



REV.	DATE	AMENDMENT	REVISED BY
03			

料号	材料规格	长度	开料	配件描述	数量	备注
03	A1 鋁型材	893			7	

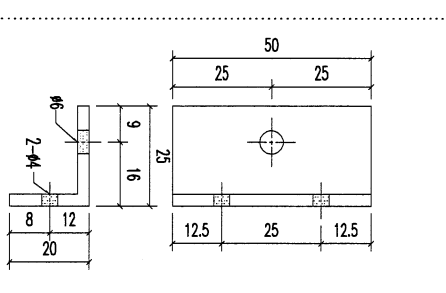
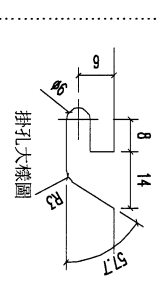
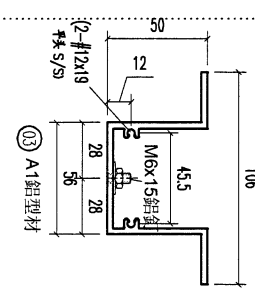
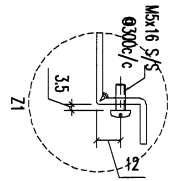
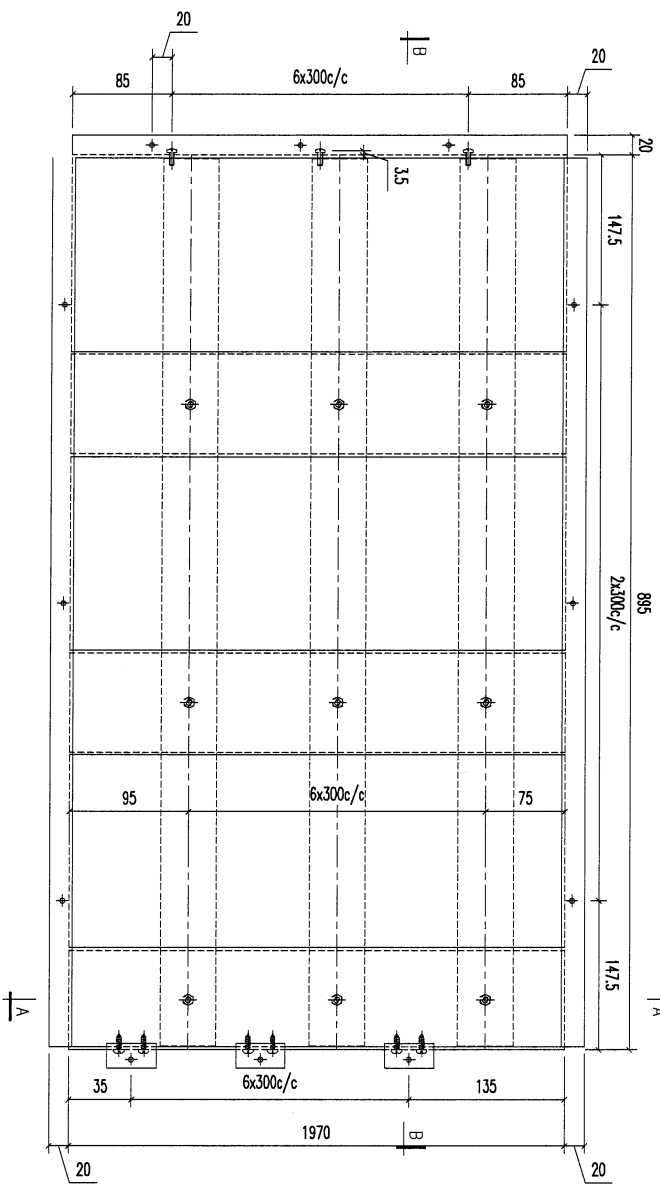
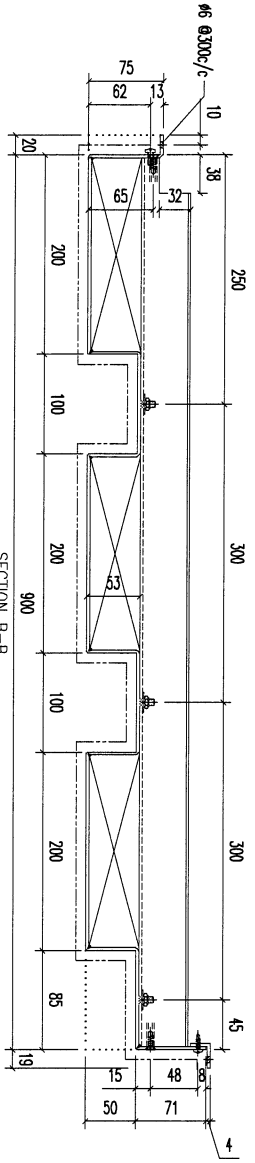
**美特鋁質有限公司**  
**MIDI ALUMINUM FABRICATOR LTD.**  
 Units 6-8, Sunray Industrial Centre, 1/F  
 610 Cha Kwo Ling Road, Kowloon  
 Tel: 23489211-4 Fax: (852) 2727666

REV.	DATE	AMENDMENT	REVISED BY	JOB NO.	DRAWING TITLE	DRAWING NO.	SHT.	REV.
				J853	鋁板天花加工圖 3mm THK. ALUM. PLATE	T7-CE40-02	-/-	-

**PROJECT J853-PODIUM ALUM CEILING & FEATURE CLADDING T7 7/F**

FACTORY	W/CENTRE	CUT ENDS	FINISH	POST PAINT	PART
01	M/CH/S/D/B/FAB	Angle Squareness ±1'	EC-DG-0334232-Z01 (AL)	噴漆	TRUCK TYPE S....

REV.	ORDERED BY	PART NUMBER	Dim. A	Dim. B	Dim. C	Dim. D	Dim. E	Dim. F	Dim. G	QTY	Inv. Code	ASSEMBLE ON PARTS	EXTR. DRAWING PART DRAWING
1		T7-CE40-03								1			



REV.	DATE	AMENDMENT	REVISED BY
03			
02c			

REV.	DATE	AMENDMENT	REVISED BY
03			
02c			

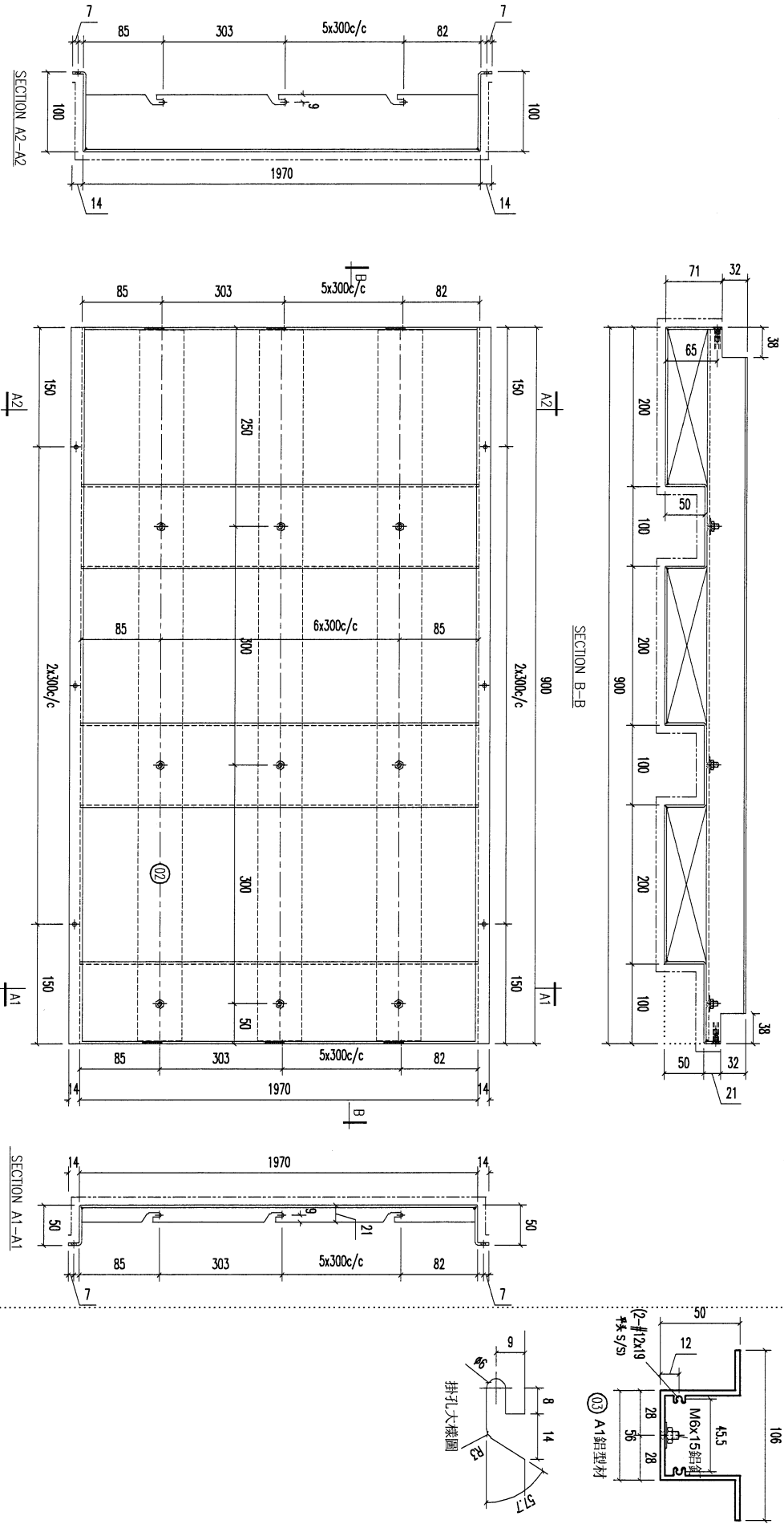
REV.	DATE	AMENDMENT	REVISED BY
03			
02c			

**美特鋁質有限公司**  
MIDI ALUMINIUM FABRICATOR LTD.  
Units 6-8, Sunray Industrial Centre, 1/F  
610 Cho Kwo Ling Road, Kowloon  
Tel: 23489211-4 Fax: (852) 2727666

REV.	DATE	AMENDMENT	REVISED BY
03			
02c			

REV.	DATE	AMENDMENT	REVISED BY	JOB NO.	DRAWING TITLE	DRAWING NO.	SHT.	REV.
03				J853	鋁板天花加工圖	17-CE40-03	-	-
02c				J853	鋁板天花加工圖	17-CE40-03	-	-

REV.	CHANGED BY	PART NUMBER	Dim. A	Dim. B	Dim. C	Dim. D	Dim. E	Dim. F	Dim. G	QTY	Inv. Code	ASSEMBLE ON PARTS	EXTR. DRAWING PART DRAWING
-		T7-CE41-01								5			



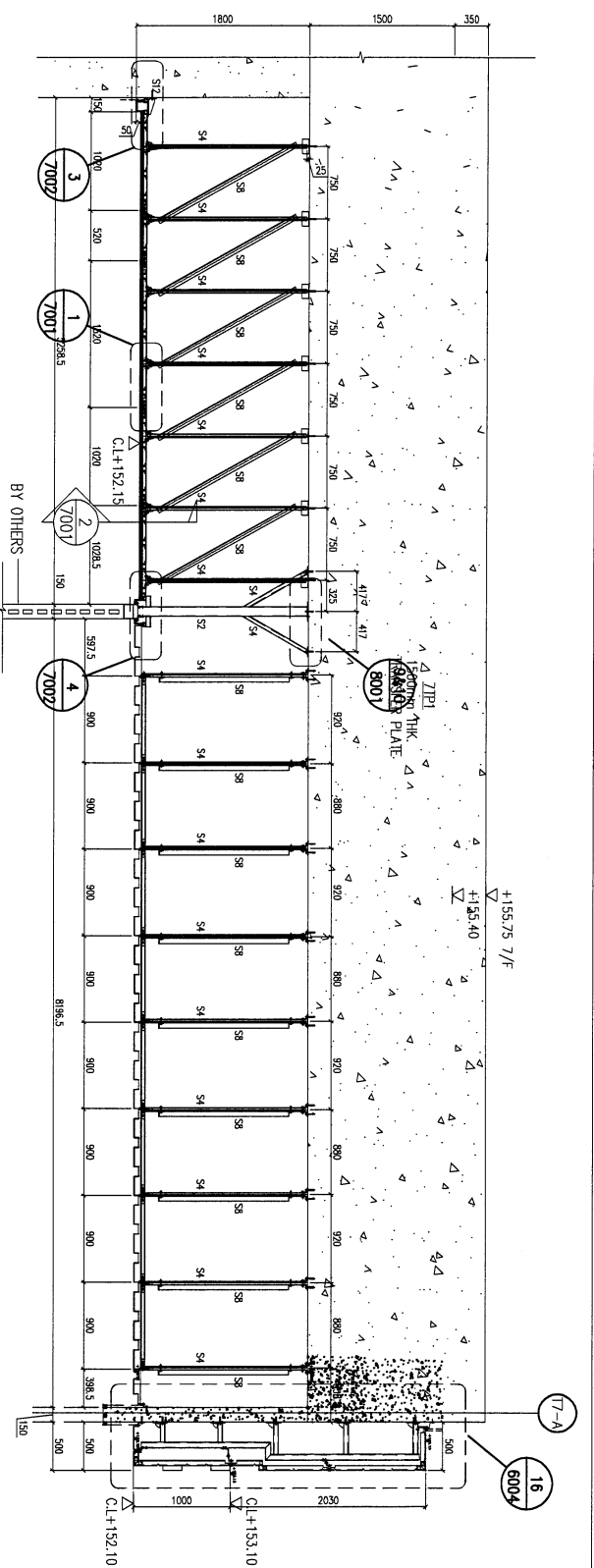
REV.	DATE	AMENDMENT	REVISED BY
03		A1 鋁型材	
		材料規格	
		長度	
		開料	
		配件描述	
		數量	
		备注	

**美特鋁業有限公司**  
MIDI ALUMINIUM FABRICATOR LTD.  
Units 6-8, Sunray Industrial Centre, 1/F  
610 Cha Kwo Ling Road, Kowloon  
Tel: 23489211-4 Fax: (852) 2727666

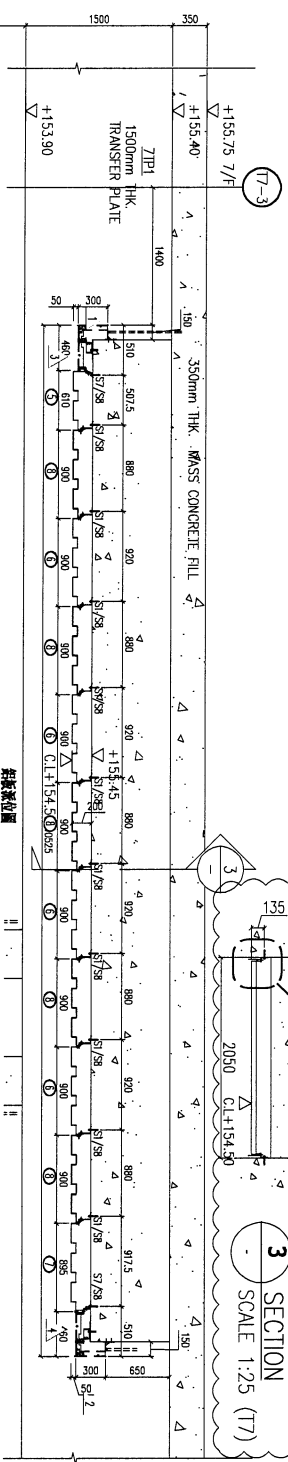
PROJECT J853-PODIUM ALUM CEILING & FEATURE CLADDING T7 7/F

REV.	DATE	AMENDMENT	REVISED BY	JOB NO.	J853	DRAWING TITLE	3mm THK. ALUM. PLATE	DRAWING NO.	T7-CE41-01	SMT.	REV.
						鋁板天花加工圖				-/-	-

FACTORY	W/CENTRE	CUT ENDS	FINISH	POST PAINT	PART
01	M/D/S/D/R/FAB	Angle Squareness ±1°	EC-DG-0334232-Z01 (A1)	噴塗	
Standard	X X . = ±1	Angle	DATE	PRE PAINT	SUB ASSEM.
Tolerances	X X . X = ±05	Squareness ±1°	4/24/2023	SCALE	TRACK TYPE
				1:5	S.....



1 SECTION  
SCALE 1:25 (T7)



2 SECTION  
SCALE 1:25 (T7)

材料表

ITEM	PART NO.	QTY
1	T7-AP40-01	1
2	T7-AP40-02	1
3	T7-AP41-01	1
4	T7-AP41-02	1
5	T7-CE40-01	1
6	T7-CE40-02	4
7	T7-CE40-03	1
8	T7-CE41-01	5
TOTAL		15

A ZOOM  
SCALE 1:25 (T7)

B.D. REF: 3/404/15

KEY PLAN

CLIENT: SHIMAO GROUP HOLDINGS LIMITED

ARCHITECT: WORK TIME & PARTNERS LIMITED

MAIN CONTRACTOR: 協興建築有限公司 HIP HING CONSTRUCTION CO LTD

STRUCTURAL ENGINEER: CMA C.M WONG & ASSOCIATES LTD 黃志輝建築工程師有限公司

FAÇADE CONSULTANT: JENNYROT

NOTE:

1. ALL DIMENSIONS ARE IN MM.
2. ALL DIMENSIONS ARE TAKEN FROM OUTSIDE.
3. ALL DIMENSIONS ARE TO BE TAKEN ON SITE BEFORE FABRICATION.

LEGEND:

- (X) DETAIL WORK NO.
- (S) FINISH SHEET NO.
- 1. F.F.L. -- FINISHED FLOOR LEVEL
- 2. S.F.L. -- STRUCTURAL FLOOR LEVEL
- 3. (R) -- REVERSED DETAIL

DATE: 20-MAY-212 SCALE: 1:25 (A)

DRAWN BY: C.M.W. CHECKED BY:

PROJECT: PROPOSED RESIDENTIAL DEVELOPMENT AT N.K.I.L. 6342 TAN PINE ROAD KOWLOON

TITLE: ALUMINUM CEILING & ALUMINUM CLADDING FEATURE SECTION AT 6/F (T7)

協興建築有限公司  
SHIMAO GROUP HOLDINGS LIMITED  
11/F, 810 Ono Kowloon Road, Kowloon  
Tel: 23488211-4 Fax: (852) 27777865

HWK NO.: JBS3-CE-6009 REV.: C