

工程指示 / 要求簡箋 ENGINEER INSTRUCTIONS(E.I.)

工程指示編號:	EI- 5849	修改版本:	-
	HK- 0463		
工程編號:	J 853	工程名稱:	延坪道
收件人:	生統 / 謝永林	發件人:	Joe Chan
工程項目:	T2, T3 & T5 幕牆室外鋁板生產 (橫向收口鋁板)	日期:	14/03/2023

<input checked="" type="checkbox"/> 原合約工程包	<input type="checkbox"/> 原合約工程加 / 減賬 QT-	<input type="checkbox"/> 新工程報價 QT-
--	--	------------------------------------

信件批核號碼/圖紙參考編號:	批核模具圖紙編號:
客戶指示附件:	管理內部批簽署:

<input type="checkbox"/> 初步鋁料 B.M.	<input type="checkbox"/> 加工拆圖, 然後生產	<input type="checkbox"/> 尺寸表
<input type="checkbox"/> 正式鋁料 B.M.	<input type="checkbox"/> 技術上資料 / 指示	<input type="checkbox"/> 報價
<input type="checkbox"/> 配件 B.M.	<input type="checkbox"/> 樣辦或貨品說明書	<input type="checkbox"/> 分判合約
<input type="checkbox"/> 其他:		

內容: 請依附件資料, 生產鋁板, 送地盤.  鋁板請分座分層包裝出貨.  (1430頁)
完成上列要求日期: 17/04/2023      ASAP

國內

<input type="checkbox"/> 生產技術總監	<input type="checkbox"/> 連附件	<input type="checkbox"/> 技術部	<input type="checkbox"/> 連附件	<input type="checkbox"/> 生產部	<input type="checkbox"/> 連附件
<input type="checkbox"/> 採購部	<input type="checkbox"/> 連附件	<input checked="" type="checkbox"/> 生產統籌部	<input checked="" type="checkbox"/> 連附件	<input type="checkbox"/> 報關組	<input type="checkbox"/> 連附件
<input type="checkbox"/> 質檢部	<input type="checkbox"/> 連附件	<input type="checkbox"/> 會計部	<input type="checkbox"/> 連附件	<input type="checkbox"/> 機械設計部	<input type="checkbox"/> 連附件
<input type="checkbox"/> 香港辦	<input type="checkbox"/> 連附件	<input type="checkbox"/> 其他:			

香港

<input type="checkbox"/> 行政部	<input type="checkbox"/> 連附件	<input type="checkbox"/> 會計部	<input type="checkbox"/> 連附件	<input type="checkbox"/> 統籌部	<input type="checkbox"/> 連附件	<input type="checkbox"/> 工程部	<input type="checkbox"/> 連附件
<input type="checkbox"/> 採購部	<input type="checkbox"/> 連附件	<input type="checkbox"/> QS部	<input type="checkbox"/> 連附件	<input checked="" type="checkbox"/> 地盤管理	<input checked="" type="checkbox"/> 連附件	<input type="checkbox"/> 維修部	<input type="checkbox"/> 連附件


*發件人簽署:	<i>JL</i>	*組別成員批核簽署:	<i>P.P. JL</i>
傳遞編號:	HK0463/23	項目經理簽署:	

①

圖則登記表  
DRAWING REGISTER

工程名稱 Project Title: 九龍延坪道		接收日期 Receiving Date (適用於客戶圖則)						
T2.T3.T5-地盤橫向收口鋁折件拆圖		年						
工程編號 Project No: J-853		月						
分發予 Distributed To		日						
		年	23					
		月	03					
		日	04					
圖則編號 Drg. No.	圖則名稱 Drawing Title	修訂編號 Revision No.						
T-AP101	橫向收口鋁板	1	-					
T-AP101(1)	橫向收口鋁板 (數據表)	2	-					
T-AP319	橫向收口鋁板	3	-					
T-AP320	橫向收口鋁板	4	-					
T-BP101	橫向收口鋁板	5	-					
T-BP101(1)	橫向收口鋁板 (數據表)	6	-					
T-CP203	橫向收口鋁板	7	-					
T-CP201	橫向收口鋁板	8	-					
T-DP202	橫向收口鋁板	9	-					
T-EP202	露台防水件	10	-					
J853-SD-CW-4201	位置圖	11	-					
J853-SD-CW-4202	位置圖	12	-					
J853-SD-CW-4203	位置圖	13	-					
J853-SD-CW-4204	位置圖	14	-					
J853-SD-CW-4204A	位置圖	15	-					
J853-SD-CW-4205	位置圖	16	-					
J853-SD-CW-4206	位置圖	17	-					
J853-SD-CW-4301	位置圖	18	-					
J853-SD-CW-4302	位置圖	19	-					
J853-SD-CW-4303	位置圖	20	-					
J853-SD-CW-4304	位置圖	21	-					
J853-SD-CW-4304A	位置圖	22	-					
J853-SD-CW-4305	位置圖	23	-					
J853-SD-CW-4306	位置圖	24	-					
J853-SD-CW-4501	位置圖	25	-					

2

 <b>美特鋁質</b> MIDI Aluminum Fabricator Ltd.	工程號: J-853	計算: 黃瓊玉	日期: 2023.02.27	送呈: 胡哥
	地盤名稱: 九龍延坪道	核對: 謝永林	日期: 2023.03.04	副本:
	項目類別: T2, T3, T5 單元件	批准:		
	修改版次:	A/C Code:	總V.F.: 23.83	總重量: 220.66

序號	修改內容	鋁板圖號	鋁板名稱	顏色	實用	後備	總數	總重量	單件展開面積		總展開面積		單件V.F.	總V.F.	備註	座數
									平方米	平方厘米	平方米	平方厘米				
1		T-AP201	橫向收口鋁板	EC-DG-D334232-ZD1 (閃粉古銅)	1		1	1.788	0.220	0.220	0.220	0.20	0.20			T2
2		T-AP201	橫向收口鋁板	EC-DG-D334232-ZD1 (閃粉古銅)	1		1	1.788	0.220	0.220	0.220	0.20	0.20			T2
3		T-AP202	橫向收口鋁板	EC-DG-D334232-ZD1 (閃粉古銅)	1		1	2.092	0.257	0.257	0.257	0.24	0.24			T2
4		T-AP203	橫向收口鋁板	EC-DG-D334232-ZD1 (閃粉古銅)	1		1	2.135	0.263	0.263	0.263	0.24	0.24			T2
5		T-AP203	橫向收口鋁板	EC-DG-D334232-ZD1 (閃粉古銅)	1		1	2.135	0.263	0.263	0.263	0.24	0.24			T2
6		T-AP203	橫向收口鋁板	EC-DG-D334232-ZD1 (閃粉古銅)	1		1	2.135	0.263	0.263	0.263	0.24	0.24			T2
7		T-AP203	橫向收口鋁板	EC-DG-D334232-ZD1 (閃粉古銅)	1		1	2.135	0.263	0.263	0.263	0.24	0.24			T2
8		T-AP204	橫向收口鋁板	EC-DG-D334232-ZD1 (閃粉古銅)	1		1	2.482	0.305	0.305	0.305	0.28	0.28			T2
9		T-AP205	橫向收口鋁板	EC-DG-D334232-ZD1 (閃粉古銅)	1		1	2.526	0.311	0.311	0.311	0.28	0.28			T2
10		T-AP206	橫向收口鋁板	EC-DG-D334232-ZD1 (閃粉古銅)	2		2	5.086	0.313	0.626	0.626	0.29	0.57			T2
11		T-AP209	橫向收口鋁板	EC-DG-D334232-ZD1 (閃粉古銅)	1		1	3.046	0.375	0.375	0.375	0.34	0.34			T2
12		T-AP210	橫向收口鋁板	EC-DG-D334232-ZD1 (閃粉古銅)	1		1	3.220	0.396	0.396	0.396	0.36	0.36			T2
13		T-AP210	橫向收口鋁板	EC-DG-D334232-ZD1 (閃粉古銅)	1		1	3.220	0.396	0.396	0.396	0.36	0.36			T2
14		T-AP211	橫向收口鋁板	EC-DG-D334232-ZD1 (閃粉古銅)	2		2	6.700	0.412	0.824	0.824	0.38	0.75			T2
15		T-AP213	橫向收口鋁板	EC-DG-D334232-ZD1 (閃粉古銅)	1		1	3.567	0.439	0.439	0.439	0.40	0.40			T2
16		T-AP215	橫向收口鋁板	EC-DG-D334232-ZD1 (閃粉古銅)	1		1	4.218	0.519	0.519	0.519	0.48	0.48			T2
17		T-AP215	橫向收口鋁板	EC-DG-D334232-ZD1 (閃粉古銅)	1		1	4.218	0.519	0.519	0.519	0.48	0.48			T2
18		T-AP217	橫向收口鋁板	EC-DG-D334232-ZD1 (閃粉古銅)	2		2	8.800	0.541	1.082	1.082	0.50	0.99			T2
19		T-AP301	橫向收口鋁板	EC-DG-D334232-ZD1 (閃粉古銅)	1		1	1.788	0.220	0.220	0.220	0.20	0.20			T3
20		T-AP301	橫向收口鋁板	EC-DG-D334232-ZD1 (閃粉古銅)	1		1	1.788	0.220	0.220	0.220	0.20	0.20			T3
21		T-AP303	橫向收口鋁板	EC-DG-D334232-ZD1 (閃粉古銅)	1		1	2.135	0.263	0.263	0.263	0.24	0.24			T3
22		T-AP303	橫向收口鋁板	EC-DG-D334232-ZD1 (閃粉古銅)	2		2	4.270	0.263	0.525	0.525	0.24	0.48			T3
23		T-AP303	橫向收口鋁板	EC-DG-D334232-ZD1 (閃粉古銅)	1		1	2.135	0.263	0.263	0.263	0.24	0.24			T3
24		T-AP303	橫向收口鋁板	EC-DG-D334232-ZD1 (閃粉古銅)	1		1	2.135	0.263	0.263	0.263	0.24	0.24			T3
25		T-AP304	橫向收口鋁板	EC-DG-D334232-ZD1 (閃粉古銅)	1		1	2.482	0.305	0.305	0.305	0.28	0.28			T3
26		T-AP306	橫向收口鋁板	EC-DG-D334232-ZD1 (閃粉古銅)	2		2	5.086	0.313	0.626	0.626	0.29	0.57			T3
27		T-AP308	橫向收口鋁板	EC-DG-D334232-ZD1 (閃粉古銅)	1		1	2.959	0.364	0.364	0.364	0.33	0.33			T3
28		T-AP310	橫向收口鋁板	EC-DG-D334232-ZD1 (閃粉古銅)	1		1	3.220	0.396	0.396	0.396	0.36	0.36			T3
29		T-AP311	橫向收口鋁板	EC-DG-D334232-ZD1 (閃粉古銅)	2		2	6.700	0.412	0.824	0.824	0.38	0.75			T3
30		T-AP312	橫向收口鋁板	EC-DG-D334232-ZD1 (閃粉古銅)	1		1	3.393	0.417	0.417	0.417	0.38	0.38			T3
31		T-AP313	橫向收口鋁板	EC-DG-D334232-ZD1 (閃粉古銅)	1		1	3.567	0.439	0.439	0.439	0.40	0.40			T3

此BM依據拆圖 資料計算

3

美特鋁質 MIDI Aluminium Fabricator Ltd.		工程號: J-853	計算: 黃瓊玉	日期: 2023.02.27	送呈: 胡哥								
地盤名稱: 九龍延坪道		核對: 謝永林	日期: 2023.03.04	副本:									
項目類別: T2, T3, T5 單元件		批准:	日期:										
修改版次:		A/C Code:	總V.F.: 23.83	總重量: 220.66	此BM依據拆圖 資料計算								
序號	修改內容	鋁板圖號	鋁板名稱	顏色	實用	後備	總數	總重量	總展開面積		備註	座數	
									單件展開面積	單件V.F.			單件V.F.
									平方米		平方米		
32		T-AP313	橫向收口鋁板	EC-DG-D334232-ZD1 (閃粉古銅)	1		1	3.567	0.439	0.439	0.40	0.40	T3
33		T-AP314	橫向收口鋁板	EC-DG-D334232-ZD1 (閃粉古銅)	1		1	3.827	0.471	0.471	0.43	0.43	T3
34		T-AP316	橫向收口鋁板	EC-DG-D334232-ZD1 (閃粉古銅)	1		1	4.305	0.529	0.529	0.48	0.48	T3
35		T-AP317	橫向收口鋁板	EC-DG-D334232-ZD1 (閃粉古銅)	2		2	8.800	0.541	1.082	0.50	0.99	T3
36		T-AP219	橫向收口鋁板	EC-DG-D334232-ZD1 (閃粉古銅)	1		1	4.902	0.603	0.603	0.55	0.55	T2
37		T-AP220	橫向收口鋁板	EC-DG-D334232-ZD1 (閃粉古銅)	1		1	2.871	0.353	0.353	0.32	0.32	T2
38		T-AP319	橫向收口鋁板	EC-DG-D334232-ZD1 (閃粉古銅)	1		1	4.902	0.603	0.603	0.55	0.55	T3
39		T-AP320	橫向收口鋁板	EC-DG-D334232-ZD1 (閃粉古銅)	1		1	2.871	0.353	0.353	0.32	0.32	T3
40		T-BP201	橫向收口鋁板	EC-DG-D334232-ZD1 (閃粉古銅)	2		2	4.082	0.251	0.502	0.23	0.46	T2
41		T-BP203	橫向收口鋁板	EC-DG-D334232-ZD1 (閃粉古銅)	1		1	2.923	0.360	0.360	0.33	0.33	T2
42		T-BP204	橫向收口鋁板	EC-DG-D334232-ZD1 (閃粉古銅)	1		1	3.691	0.454	0.454	0.41	0.41	T2
43		T-BP205	橫向收口鋁板	EC-DG-D334232-ZD1 (閃粉古銅)	1		1	3.729	0.459	0.459	0.42	0.42	T2
44		T-BP205	橫向收口鋁板	EC-DG-D334232-ZD1 (閃粉古銅)	1		1	3.729	0.459	0.459	0.42	0.42	T2
45		T-BP206	橫向收口鋁板	EC-DG-D334232-ZD1 (閃粉古銅)	1		1	6.069	0.747	0.747	0.68	0.68	T2
46		T-BP301	橫向收口鋁板	EC-DG-D334232-ZD1 (閃粉古銅)	2		2	4.082	0.251	0.502	0.23	0.46	T3
47		T-BP302	橫向收口鋁板	EC-DG-D334232-ZD1 (閃粉古銅)	1		1	2.847	0.350	0.350	0.32	0.32	T3
48		T-BP305	橫向收口鋁板	EC-DG-D334232-ZD1 (閃粉古銅)	1		1	3.729	0.459	0.459	0.42	0.42	T3
49		T-BP305	橫向收口鋁板	EC-DG-D334232-ZD1 (閃粉古銅)	1		1	3.729	0.459	0.459	0.42	0.42	T3
50		T-BP305	橫向收口鋁板	EC-DG-D334232-ZD1 (閃粉古銅)	1		1	3.729	0.459	0.459	0.42	0.42	T3
51		T-BP306	橫向收口鋁板	EC-DG-D334232-ZD1 (閃粉古銅)	1		1	6.069	0.747	0.747	0.68	0.68	T3
52		T-CP201	橫向收口鋁板	EC-DG-D334232-ZD1 (閃粉古銅)	1		1	2.594	0.319	0.319	0.30	0.30	T2
53		T-CP302	橫向收口鋁板	EC-DG-D334232-ZD1 (閃粉古銅)	1		1	4.907	0.604	0.604	0.56	0.56	T3
54		T-CP203	橫向收口鋁板	EC-DG-D334232-ZD1 (閃粉古銅)	1		1	5.017	0.617	0.617	0.57	0.57	T2
55		T-CP301	橫向收口鋁板	EC-DG-D334232-ZD1 (閃粉古銅)	1		1	2.594	0.319	0.319	0.30	0.30	T3
56		T-DP202	橫向收口鋁板	EC-DG-D334232-ZD1 (閃粉古銅)	1		1	4.819	0.593	0.593	0.54	0.54	T2
57		T-DP301	橫向收口鋁板	EC-DG-D334232-ZD1 (閃粉古銅)	1		1	4.536	0.558	0.558	0.51	0.51	T3
58		T-EP202	露台防水件	鍍化	1		1	2.056	0.506	0.506	0.00	0.00	T2
59		T-EP301	露台防水件	鍍化	1		1	2.022	0.497	0.497	0.00	0.00	T3
60		T-EP503	露台防水件	鍍化	1		1	2.358	0.580	0.580	0.00	0.00	T5
61		T-EP504	露台防水件	鍍化	1		1	2.359	0.580	0.580	0.00	0.00	T5
							合計:	70	220.661	28.223		23.83	

④

		T2地盤鋁折件/樓層/數量派位																			
位置	圖號	5F	6F	7F	8F	9F	10F	11F	12F	15F	16F	17F	18F	19F	20F	21F	22F	23F	25F	26F	合計
J853-SD-CW-4204	T-AP201	1																			1
J853-SD-CW-4205	T-AP201	1																			1
J853-SD-CW-4202	T-AP202	1																			1
J853-SD-CW-4201	T-AP203	1																			1
J853-SD-CW-4202	T-AP203	1																			1
J853-SD-CW-4204	T-AP203	1																			1
J853-SD-CW-4205	T-AP203	1																			1
J853-SD-CW-4201	T-AP204	1																			1
J853-SD-CW-4202	T-AP205	1																			1
J853-SD-CW-4204A	T-AP206	2																			2
J853-SD-CW-4204	T-AP209	1																			1
J853-SD-CW-4204	T-AP210	1																			1
J853-SD-CW-4205	T-AP210	1																			1
J853-SD-CW-4204A	T-AP211	2																			2
J853-SD-CW-4205	T-AP213	1																			1
J853-SD-CW-4201	T-AP215	1																			1
J853-SD-CW-4202	T-AP215	1																			1
J853-SD-CW-4204A	T-AP217	2																			2
J853-SD-CW-4203	T-AP219	1																			1
J853-SD-CW-4203	T-AP220	1																			1
J853-SD-CW-4206	T-BP201																			2	2
J853-SD-CW-4206	T-BP203																			1	1
J853-SD-CW-4202	T-BP204																	1			1
J853-SD-CW-4201	T-BP205											1									1
J853-SD-CW-4203	T-BP205											1									1
J853-SD-CW-4206	T-BP206																			1	1
J853-SD-CW-4205	T-CP201		1																		1
J853-SD-CW-4205	T-CP203		1																		1
J853-SD-CW-4206	T-DP202																		1		1
J853-SD-CW-4205	T-EP202										1										1
	合計:	23	2	0	0	0	0	0	0	0	1	2	0	0	0	0	0	0	2	4	34

(5)

		T3地盤鋁折件/樓層/數量派位																			
位置	圖號	5F	6F	7F	8F	9F	10F	11F	12F	15F	16F	17F	18F	19F	20F	21F	22F	23F	25F	26F	合計
J853-SD-CW-4304	T-AP301	1																			1
J853-SD-CW-4305	T-AP301	1																			1
J853-SD-CW-4302	T-AP303	1																			1
J853-SD-CW-4303	T-AP303	2																			2
J853-SD-CW-4304	T-AP303	1																			1
J853-SD-CW-4305	T-AP303	1																			1
J853-SD-CW-4302	T-AP304	1																			1
J853-SD-CW-4304A	T-AP306	2																			2
J853-SD-CW-4303	T-AP308	1																			1
J853-SD-CW-4304	T-AP310	1																			1
J853-SD-CW-4304A	T-AP311	2																			2
J853-SD-CW-4305	T-AP312	1																			1
J853-SD-CW-4304	T-AP313	1																			1
J853-SD-CW-4305	T-AP313	1																			1
J853-SD-CW-4303	T-AP314	1																			1
J853-SD-CW-4302	T-AP316	1																			1
J853-SD-CW-4304A	T-AP317	2																			2
J853-SD-CW-4301	T-AP319	1																			1
J853-SD-CW-4301	T-AP320	1																			1
J853-SD-CW-4306	T-BP301																			2	2
J853-SD-CW-4306	T-BP302																			1	1
J853-SD-CW-4301	T-BP305											1									1
J853-SD-CW-4302	T-BP305											1									1
J853-SD-CW-4303	T-BP305																		1		1
J853-SD-CW-4306	T-BP306																			1	1
J853-SD-CW-4305	T-CP301		1																		1
J853-SD-CW-4305	T-CP302		1																		1
J853-SD-CW-4306	T-DP301																		1		1
J853-SD-CW-4305	T-EP301										1										1
	合計:	23	2	0	0	0	0	0	0	0	1	2	0	0	0	0	0	0	2	4	34
		T5地盤鋁折件/樓層/數量派位																			
位置	圖號	5F	6F	7F	8F	9F	10F	11F	12F	15F	16F	17F	18F	19F	20F	21F	22F	23F	25F	26F	合計
J853-SD-CW-4501											1										1
J853-SD-CW-4501											1										1
	合計:	0	0	0	0	0	0	0	0	0	2	0	0	0	0	0	0	0	0	0	2

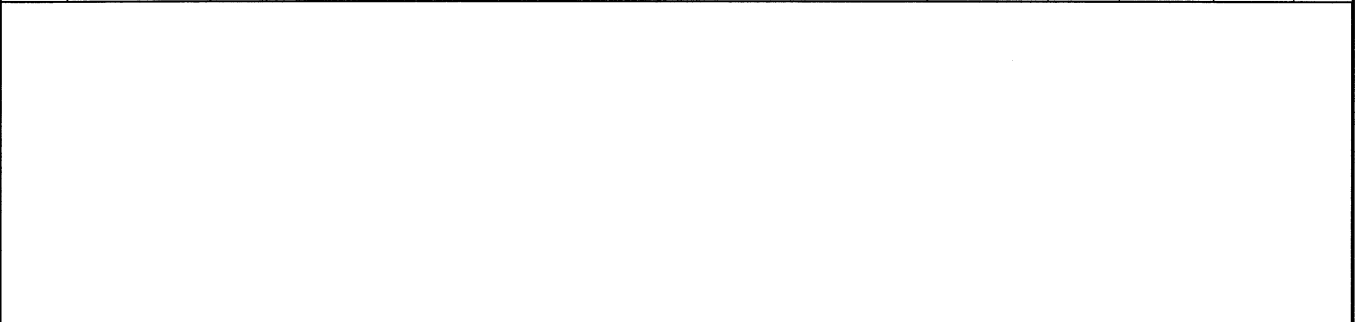




美特鋁質有限公司  
MIDI Aluminium Fabricator Ltd.

工程號 J-853 地盤 延坪道住宅

序號	物料編號	L	數量	EQ	M	x	N	位置	分格尺寸	樓層	樓層數	每層數量	座數
1	T-AP201	485	1	92.5	1	x	300	J853-SD-CW-4204	500	5/F	1	1	T2
2	T-AP201	485	1	92.5	1	x	300	J853-SD-CW-4205	500	5/F	1	1	T2
3	T-AP202	572.5	1	136.25	1	x	300	J853-SD-CW-4202	587.5	5/F	1	1	T2
4	T-AP203	585	1	142.5	1	x	300	J853-SD-CW-4201	600	5/F	1	1	T2
5	T-AP203	585	1	142.5	1	x	300	J853-SD-CW-4202	600	5/F	1	1	T2
6	T-AP203	585	1	142.5	1	x	300	J853-SD-CW-4204	600	5/F	1	1	T2
7	T-AP203	585	1	142.5	1	x	300	J853-SD-CW-4205	600	5/F	1	1	T2
8	T-AP204	685	1	42.5	2	x	300	J853-SD-CW-4201	700	5/F	1	1	T2
9	T-AP205	697.5	1	48.75	2	x	300	J853-SD-CW-4202	712.5	5/F	1	1	T2
10	T-AP206	702.5	2	51.25	2	x	300	J853-SD-CW-4204A	717.5	5/F	1	2	T2
11	T-AP209	847.5	1	123.75	2	x	300	J853-SD-CW-4204	862.5	5/F	1	1	T2
12	T-AP210	897.5	1	148.75	2	x	300	J853-SD-CW-4204	912.5	5/F	1	1	T2
13	T-AP210	897.5	1	148.75	2	x	300	J853-SD-CW-4205	912.5	5/F	1	1	T2
14	T-AP211	935	2	17.5	3	x	300	J853-SD-CW-4204A	950	5/F	1	2	T2
15	T-AP213	997.5	1	48.75	3	x	300	J853-SD-CW-4205	1012.5	5/F	1	1	T2
16	T-AP215	1185	1	142.5	3	x	300	J853-SD-CW-4201	1200	5/F	1	1	T2
17	T-AP215	1185	1	142.5	3	x	300	J853-SD-CW-4202	1200	5/F	1	1	T2
18	T-AP217	1237.5	2	18.75	4	x	300	J853-SD-CW-4204A	1252.5	5/F	1	2	T2
19											合計:	21	
20	T-AP301	485	1	92.5	1	x	300	J853-SD-CW-4304	500	5/F	1	1	T3
21	T-AP301	485	1	92.5	1	x	300	J853-SD-CW-4305	500	5/F	1	1	T3
22	T-AP303	585	1	142.5	1	x	300	J853-SD-CW-4302	600	5/F	1	1	T3
23	T-AP303	585	2	142.5	1	x	300	J853-SD-CW-4303	600	5/F	1	2	T3
24	T-AP303	585	1	142.5	1	x	300	J853-SD-CW-4304	600	5/F	1	1	T3
25	T-AP303	585	1	142.5	1	x	300	J853-SD-CW-4305	600	5/F	1	1	T3
26	T-AP304	685	1	42.5	2	x	300	J853-SD-CW-4302	700	5/F	1	1	T3
27	T-AP306	702.5	2	51.25	2	x	300	J853-SD-CW-4304A	717.5	5/F	1	2	T3
28	T-AP308	822.5	1	111.25	2	x	300	J853-SD-CW-4303	837.5	5/F	1	1	T3
29	T-AP310	897.5	1	148.75	2	x	300	J853-SD-CW-4304	912.5	5/F	1	1	T3
30	T-AP311	935	2	17.5	3	x	300	J853-SD-CW-4304A	950	5/F	1	2	T3
31	T-AP312	947.5	1	23.75	3	x	300	J853-SD-CW-4305	962.5	5/F	1	1	T3
32	T-AP313	997.5	1	48.75	3	x	300	J853-SD-CW-4304	1012.5	5/F	1	1	T3
33	T-AP313	997.5	1	48.75	3	x	300	J853-SD-CW-4305	1012.5	5/F	1	1	T3
34	T-AP314	1072.5	1	86.25	3	x	300	J853-SD-CW-4303	1087.5	5/F	1	1	T3
35	T-AP316	1210	1	25	4	x	290	J853-SD-CW-4302	1225	5/F	1	1	T3
36	T-AP317	1237.5	2	18.75	4	x	300	J853-SD-CW-4304A	1252.5	5/F	1	2	T3
											合計:	21	
											總計:	42	



名稱	橫向收口鋁板(數據表)	制圖	黃瓊玉	2023.02.26	修改			
材料	3mm鋁板	復核	謝永林	2023.03.02	日期			
顏色	EC-DG-D334232-ZD1(閃粉古銅)	批准	Daniel		圖號	T-AP101(1)		

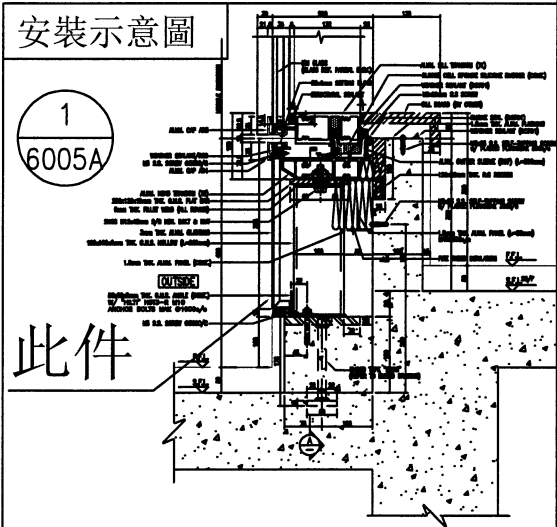
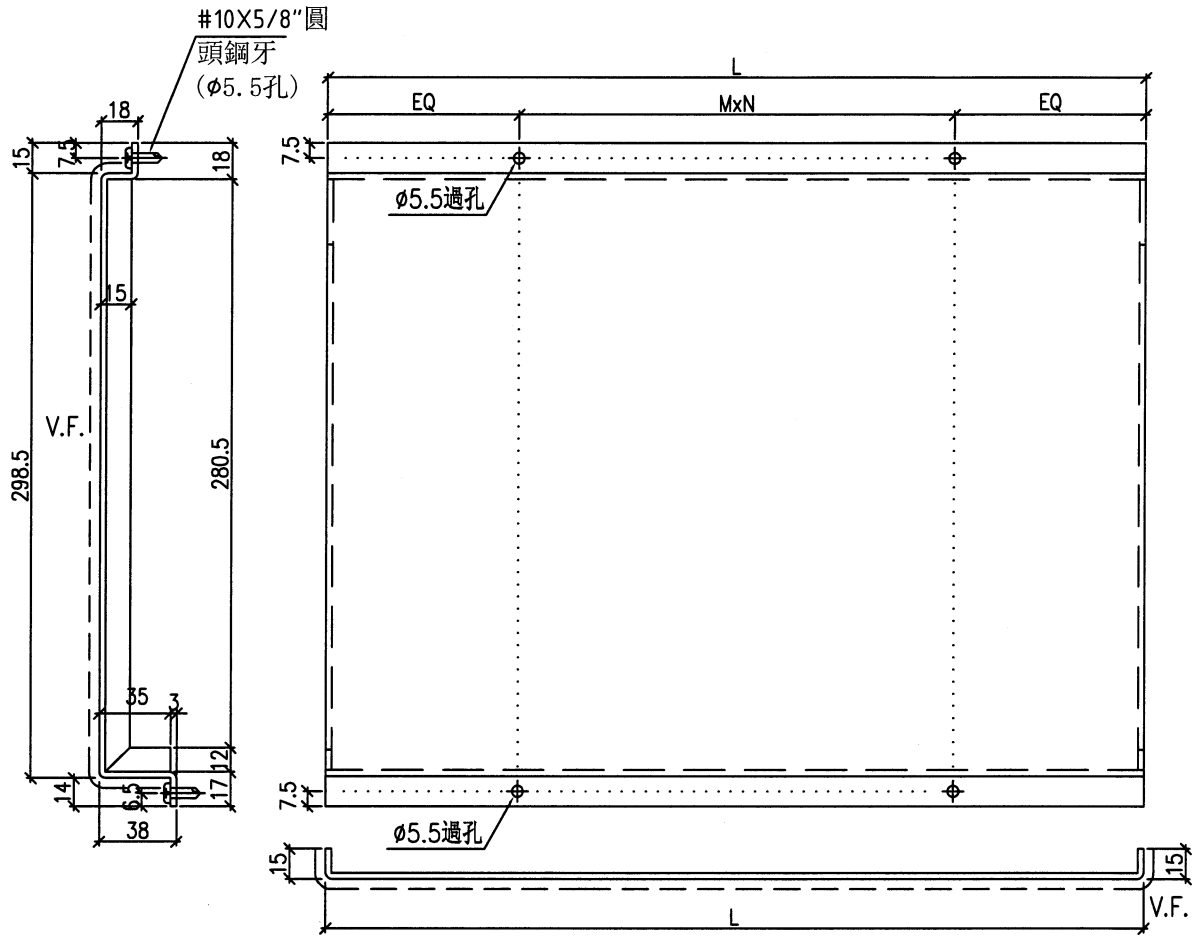






美特鋁質 有限公司  
MIDI Aluminium Fabricator Ltd.

工程號 J-853 地盤 延坪道住宅



名稱	橫向收口鋁板	制圖	黃瓊玉	2023.02.26	修改		
材料	3mm鋁板	復核	謝永林	2023.03.02	日期		
顏色	EC-DG-D334232-ZD1 (閃粉古銅)	批准	Daniel		圖號	T-BP101	

 <b>美特鋁質有限公司</b> MIDI Aluminium Fabricator Ltd.													
<b>工程號</b>		<b>J-853</b>		<b>地盤</b>		<b>延坪道住宅</b>							
序號	物料編號	L	數量	EQ	M	x	N	位置	分格尺寸	樓層	樓層數	每層數量	座數
1	T-BP201	635	2	17.5	2	x	300	J853-SD-CW-4206	650	26/F	1	2	T2
2	T-BP203	922.5	1	26.25	3	x	290	J853-SD-CW-4206	937.5	26/F	1	1	T2
3	T-BP204	1172.5	1	26.25	4	x	280	J853-SD-CW-4202	1187.5	25/F	1	1	T2
4	T-BP205	1185	1	142.5	3	x	300	J853-SD-CW-4201	1200	17/F	1	1	T2
5	T-BP205	1185	1	142.5	3	x	300	J853-SD-CW-4203	1200	17/F	1	1	T2
6	T-BP206	1947.5	1	73.75	6	x	300	J853-SD-CW-4206	1962.5	26/F	1	1	T2
7											合計:	7	
8	T-BP301	635	2	17.5	2	x	300	J853-SD-CW-4306	650	26/F	1	2	T3
9	T-BP302	897.5	1	148.75	2	x	300	J853-SD-CW-4306	912.5	26/F	1	1	T3
10	T-BP305	1185	1	142.5	3	x	300	J853-SD-CW-4301	1200	17/F	1	1	T3
11	T-BP305	1185	1	142.5	3	x	300	J853-SD-CW-4302	1200	17/F	1	1	T3
12	T-BP305	1185	1	142.5	3	x	300	J853-SD-CW-4303	1200	25/F	1	1	T3
13	T-BP306	1947.5	1	73.75	6	x	300	J853-SD-CW-4306	1962.5	26/F	1	1	T3
											合計:	7	
											總計:	14	

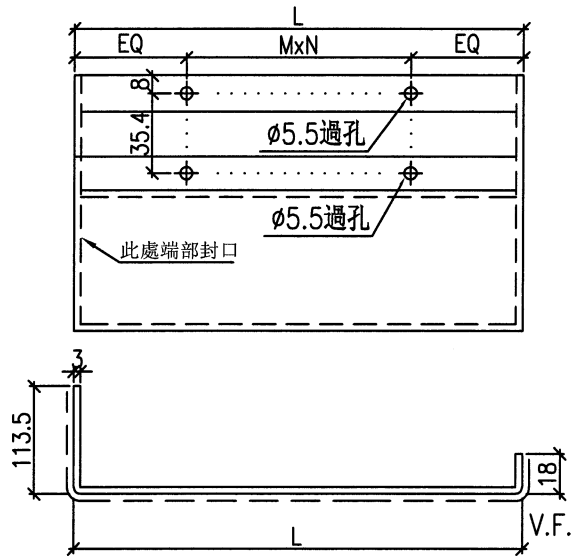
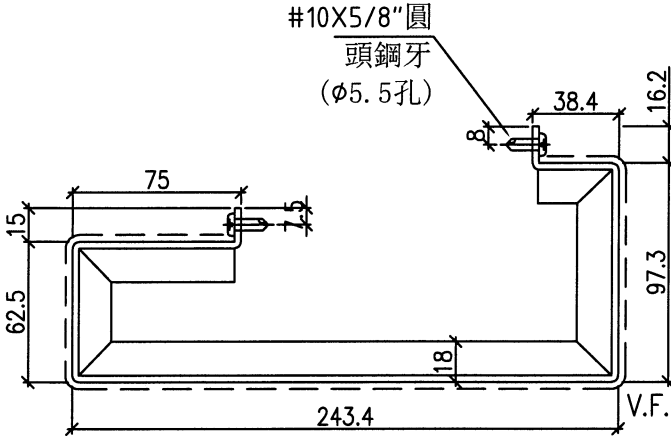
名稱	橫向收口鋁板(數據表)	制圖	黃瓊玉	2023.02.26	修改			
材料	3mm鋁板	復核	謝永林	2023.03.02	日期			
顏色	EC-DG-D334232-ZD1(閃粉古銅)	批准	Daniel		圖號	T-BP101(1)		



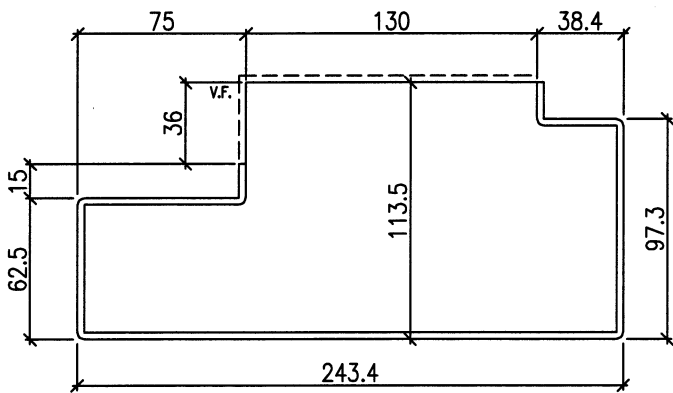
美特鋁質有限公司  
MIDI Aluminium Fabricator Ltd.

工程號 J-853 地盤 延坪道住宅

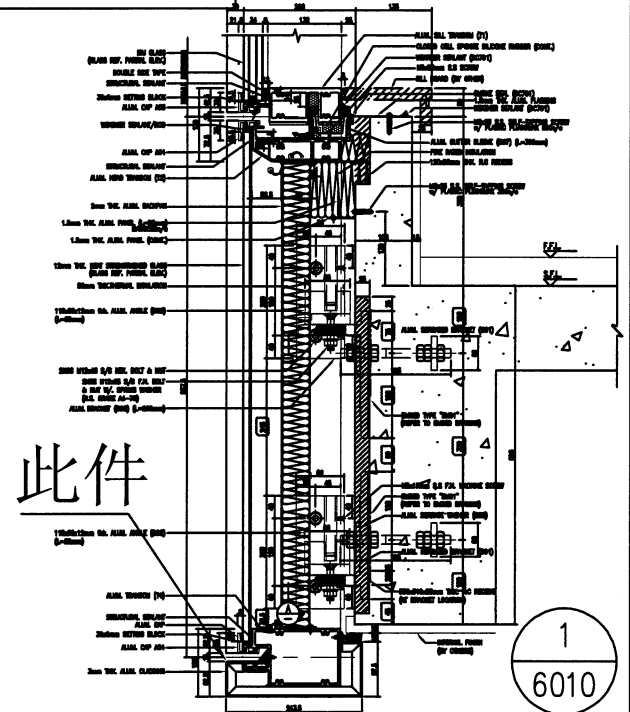
序號	物料編號	L	數量	EQ	M	x	N	位置	分格尺寸	樓層	樓層數	每層數量	座數
1	T-CP203	1007.5	1	53.75	3	x	300	J853-SD-CW-4205	950	6/F	1	1	T2
2	T-CP301	457.5	1	78.75	1	x	300	J853-SD-CW-1305	400	6/F	1	1	T3
											總計:	2	



端部封口示意圖



安裝示意圖



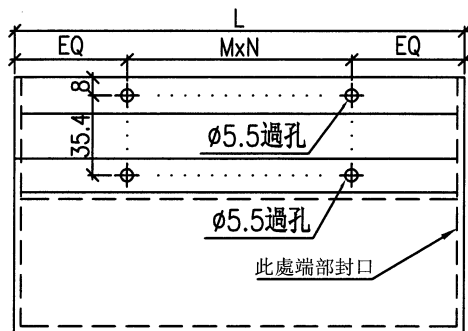
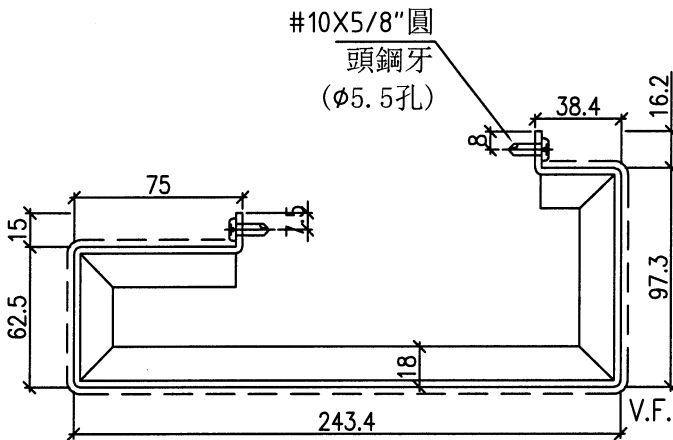
名稱	橫向收口鋁板	制圖	黃瓊玉	2023.02.26	修改		
材料	3mm鋁板	復核	謝永林	2023.03.02	日期		
顏色	EC-DG-D334232-ZD1(閃粉古銅)	批准	Daniel		圖號	T-CP203	



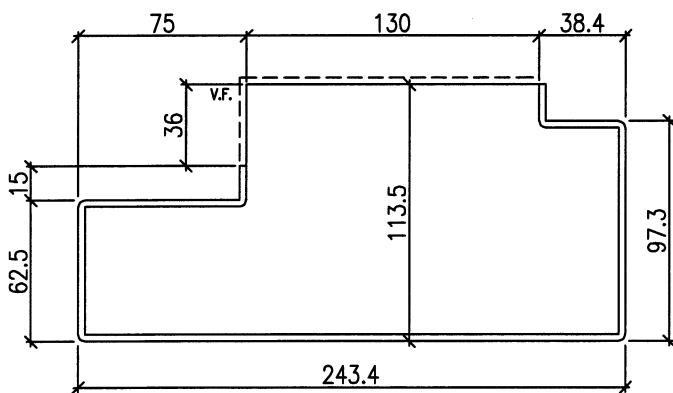
美特鋁質有限公司  
MIDI Aluminium Fabricator Ltd.

工程號 J-853 地盤 延坪道住宅

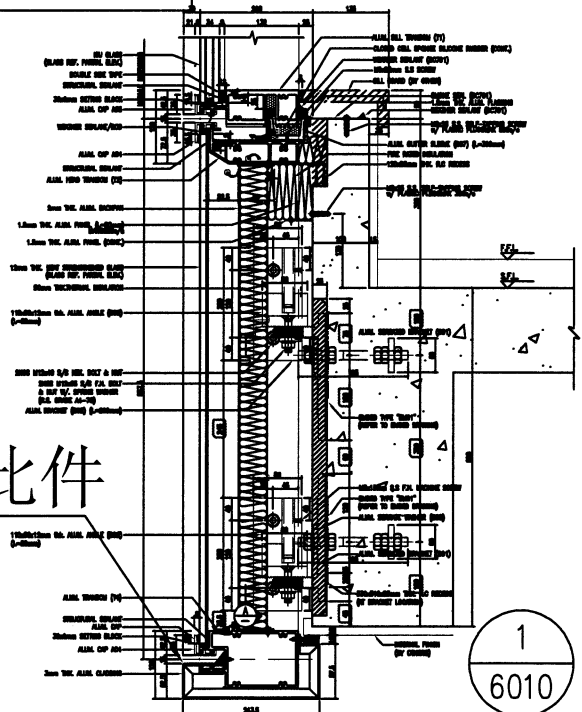
序號	物料編號	L	數量	EQ	M	x	N	位置	分格尺寸	樓層	樓層數	每層數量	座數
1	T-CP201	457.5	1	78.75	1	x	300	J853-SD-CW-4205	400	6/F	1	1	T2
2	T-CP302	982.5	1	41.25	3	x	300	J853-SD-CW-4305	925	6/F	1	1	T3
											總計:	2	



端部封口示意圖



安裝示意圖



名稱	橫向收口鋁板	制圖	黃瓊玉	2023.02.26	修改		
材料	3mm鋁板	復核	謝永林	2023.03.02	日期		
顏色	EC-DG-D334232-ZD1 (閃粉古銅)	批准	Daniel		圖號	T-CP201	

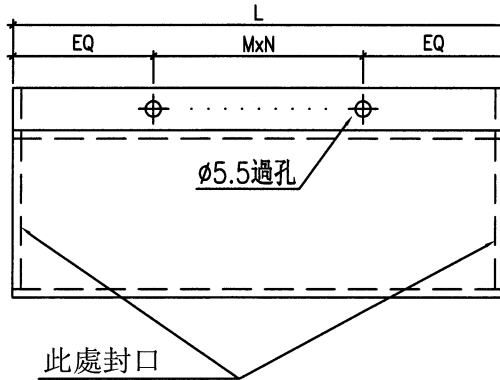
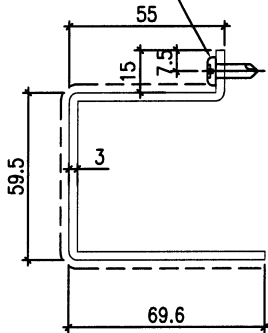


美特鋁質有限公司  
MIDI Aluminium Fabricator Ltd.

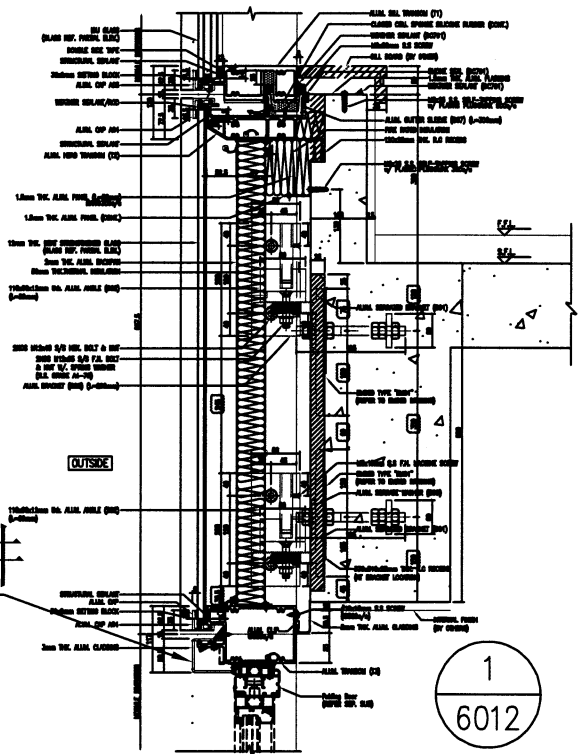
工程號 J-853 地盤 延坪道住宅

序號	物料編號	L	數量	EQ	M	x	N	位置	樓層	樓層數	每層數量	座數
1	T-DP202	3022.5	1	61.25	10	x	290	J853-SD-CW-4206	25/F	1	1	T2
2	T-DP301	2845	1	72.5	9	x	300	J853-SD-CW-4306	25/F	1	1	T3
總計:											2	

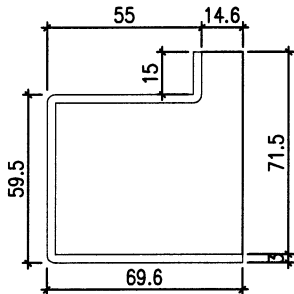
#10X5/8"圓  
頭鋼牙  
( $\phi 5.5$ 孔)



安裝示意圖



端部封口示意圖



此件

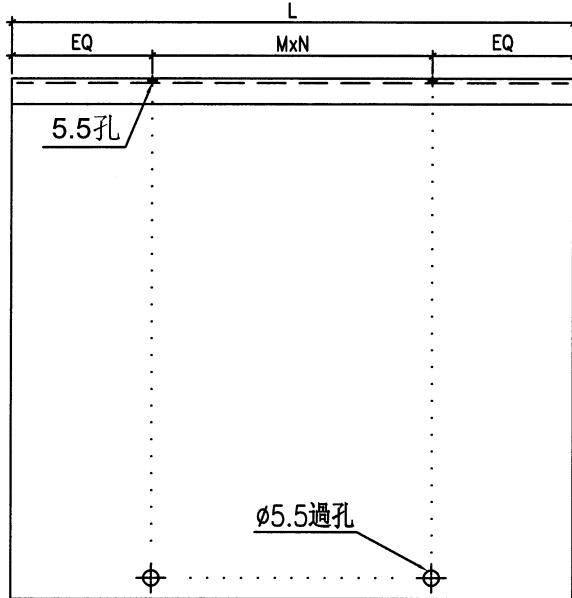
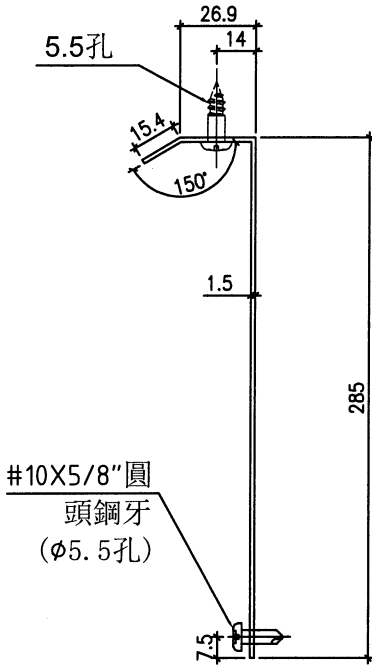
名稱	橫向收口鋁板	制圖	黃瓊玉	2023.02.26	修改		
材料	3mm鋁板	復核	謝永林	2023.03.02	日期		
顏色	EC-DG-D334232-ZD1(閃粉古銅)	批准	Daniel		圖號	T-DP202	



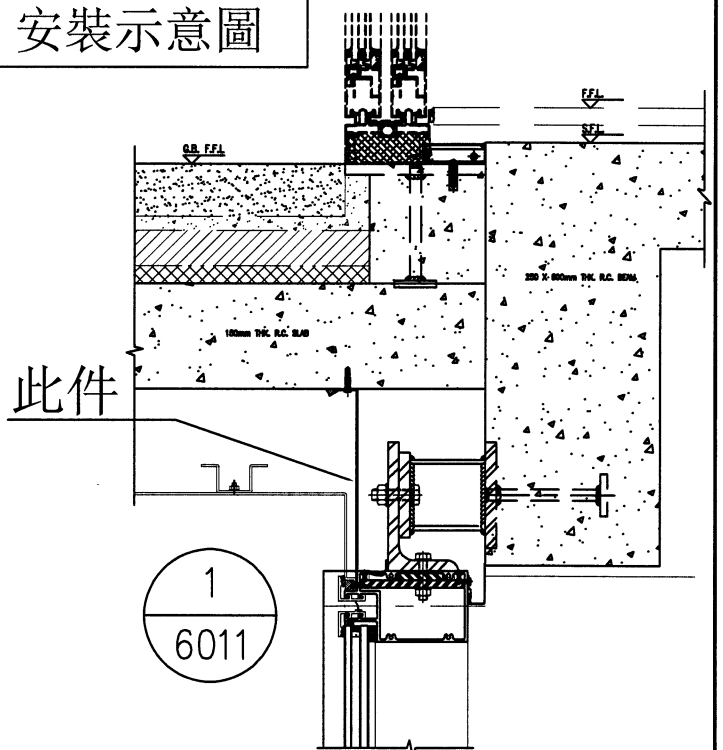
美特鋁質有限公司  
MIDI Aluminium Fabricator Ltd.

工程號 J-853 地盤 延坪道住宅

序號	物料編號	L	數量	EQ	M	x	N	位置	樓層	樓層數	每層數量	座數
1	T-EP202	1545	1	22.5	5	x	300	J853-SD-CW-4205	16/F	1	1	T2
2	T-EP301	1520	1	35	5	x	290	J853-SD-CW-4305	16/F	1	1	T3
3	T-EP503	1772	1	46	6	x	280	J853-SD-CW-4501	16/F	1	1	T5
4	T-EP504	1773	1	46.5	6	x	280	J853-SD-CW-4501	16/F	1	1	T5
總計:											4	



安裝示意圖

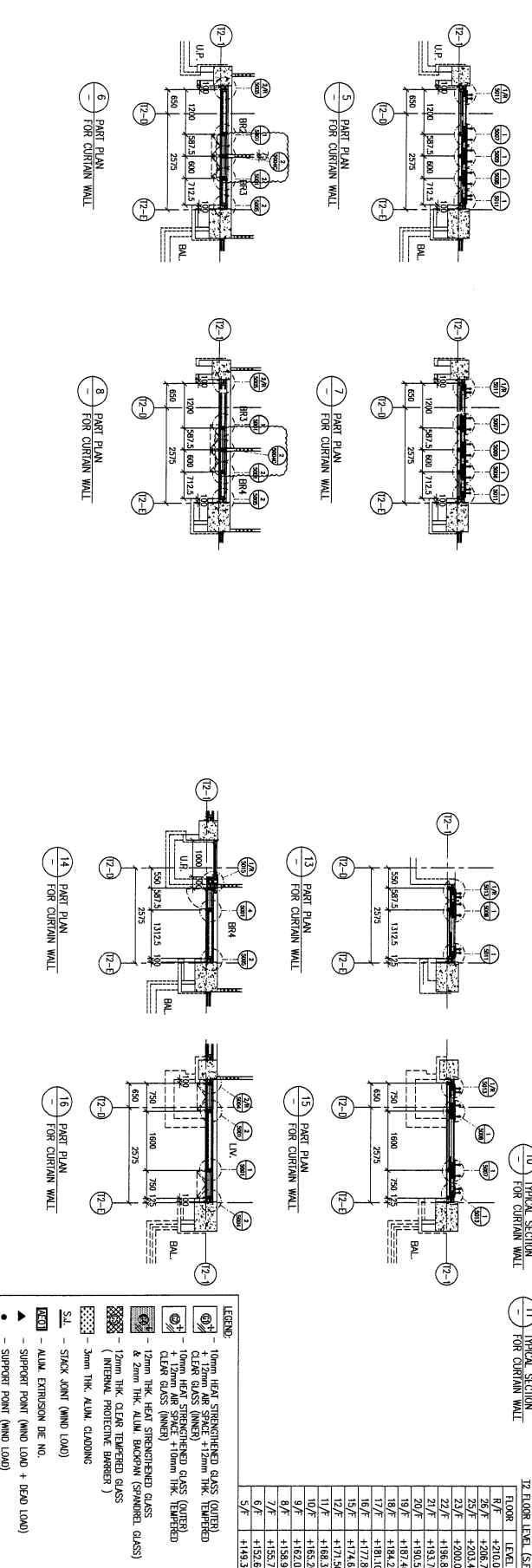
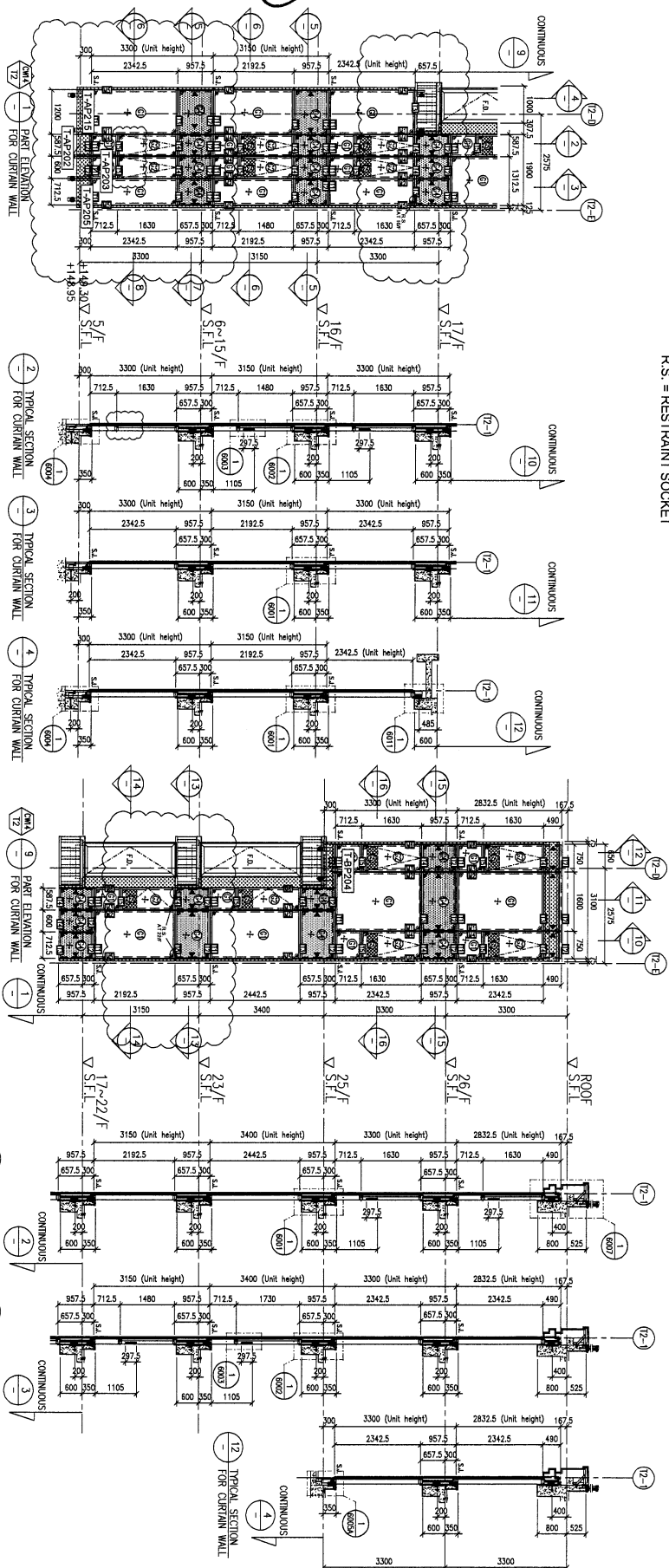


T2. T3. T5-16/F用露台  
防水件(特別位)

名稱	露台防水件	制圖	黃瓊玉	2023.02.26	修改		
材料	1.5mm鋁板	復核	謝永林	2023.03.02	日期		
顏色	鉻化	批准	Daniel		圖號	T-EP202	



LEGEND:  
RS. = RESTRAINT SOCKET



<p>BD. REF. :</p>		<p>CLIENT : <b>SHIMAO GROUP HOLDINGS LIMITED</b></p>		<p>ARCHITECT : <b>WTF</b> WONG TUNG FU ARCHITECTS &amp; PLANNERS LIMITED</p>		<p>MAIN CONTRACTOR : <b>HP HING CONSTRUCTION CO. LTD</b></p>		<p>STRUCTURAL ENGINEER : <b>CMA</b> CMA HONG &amp; ASSOCIATES LTD 黃志勳建築工程師有限公司</p>		<p>PACKAGE CONSULTANT: <b>WENHART</b></p>	
<p>DATE : 26-MAR-21</p>		<p>SCALE : 1:60 (A1)</p>		<p>DRAWN BY : LHR</p>		<p>CHECKED BY :</p>		<p>PROJECT : PROPOSED RESIDENTIAL DEVELOPMENT AT N.KILL 6542 YIN PING ROAD KOWLOON</p>		<p>JOB NO. : J-853</p>	
<p>DATE : 26-MAR-21</p>		<p>SCALE : 1:60 (A1)</p>		<p>DRAWN BY : LHR</p>		<p>CHECKED BY :</p>		<p>PROJECT : PROPOSED RESIDENTIAL DEVELOPMENT AT N.KILL 6542 YIN PING ROAD KOWLOON</p>		<p>JOB NO. : J-853</p>	
<p>DATE : 26-MAR-21</p>		<p>SCALE : 1:60 (A1)</p>		<p>DRAWN BY : LHR</p>		<p>CHECKED BY :</p>		<p>PROJECT : PROPOSED RESIDENTIAL DEVELOPMENT AT N.KILL 6542 YIN PING ROAD KOWLOON</p>		<p>JOB NO. : J-853</p>	
<p>DATE : 26-MAR-21</p>		<p>SCALE : 1:60 (A1)</p>		<p>DRAWN BY : LHR</p>		<p>CHECKED BY :</p>		<p>PROJECT : PROPOSED RESIDENTIAL DEVELOPMENT AT N.KILL 6542 YIN PING ROAD KOWLOON</p>		<p>JOB NO. : J-853</p>	

1. ALL DIMENSIONS ARE IN mm.  
2. ALL ELEVATIONS ARE VIEWED FROM OUTSIDE  
3. ALL DIMENSIONS ARE TO BE VERIFIED ON SITE BEFORE FABRICATION.

NOTE:  
1. FEEL - FINISHED FLOOR LEVEL  
2. S.F.L. - FINISHED FLOOR LEVEL  
3. --- FINISHED DETAIL

12th FLOOR LEVEL (S.E.L.)

FLOOR	LEVEL
12/F	+149.30
11/F	+148.30
10/F	+147.30
9/F	+146.30
8/F	+145.30
7/F	+144.30
6/F	+143.30
5/F	+142.30

LEGEND:  
 10mm HEAT STRENGTHENED GLASS (OUTER)  
 10mm HEAT STRENGTHENED GLASS (INNER)  
 12mm CLEAR TEMPERED GLASS  
 12mm CLEAR TEMPERED GLASS (OUTER) + 12mm AIR SPACE + 12mm CLEAR TEMPERED GLASS (INNER)  
 12mm CLEAR TEMPERED GLASS (OUTER) + 10mm AIR SPACE + 12mm CLEAR TEMPERED GLASS (INNER)  
 12mm CLEAR TEMPERED GLASS (OUTER) + 10mm AIR SPACE + 2mm INTERNAL PROTECTIVE BARRIER + 12mm CLEAR TEMPERED GLASS (INNER)  
 3mm THK. ALUM. CLADDING  
 STACK JOINT (WIND LOAD)  
 ALUM. EXTRUSION (DE NO.)  
 SUPPORT POINT (WIND LOAD + BEAD LOAD)  
 SUPPORT POINT (WIND LOAD)

1. ALL DIMENSIONS ARE IN mm.  
2. ALL ELEVATIONS ARE VIEWED FROM OUTSIDE  
3. ALL DIMENSIONS ARE TO BE VERIFIED ON SITE BEFORE FABRICATION.

NOTE:  
1. FEEL - FINISHED FLOOR LEVEL  
2. S.F.L. - FINISHED FLOOR LEVEL  
3. --- FINISHED DETAIL

12th FLOOR LEVEL (S.E.L.)

FLOOR	LEVEL
12/F	+149.30
11/F	+148.30
10/F	+147.30
9/F	+146.30
8/F	+145.30
7/F	+144.30
6/F	+143.30
5/F	+142.30

LEGEND:  
 10mm HEAT STRENGTHENED GLASS (OUTER)  
 10mm HEAT STRENGTHENED GLASS (INNER)  
 12mm CLEAR TEMPERED GLASS  
 12mm CLEAR TEMPERED GLASS (OUTER) + 12mm AIR SPACE + 12mm CLEAR TEMPERED GLASS (INNER)  
 12mm CLEAR TEMPERED GLASS (OUTER) + 10mm AIR SPACE + 12mm CLEAR TEMPERED GLASS (INNER)  
 12mm CLEAR TEMPERED GLASS (OUTER) + 10mm AIR SPACE + 2mm INTERNAL PROTECTIVE BARRIER + 12mm CLEAR TEMPERED GLASS (INNER)  
 3mm THK. ALUM. CLADDING  
 STACK JOINT (WIND LOAD)  
 ALUM. EXTRUSION (DE NO.)  
 SUPPORT POINT (WIND LOAD + BEAD LOAD)  
 SUPPORT POINT (WIND LOAD)

1. ALL DIMENSIONS ARE IN mm.  
2. ALL ELEVATIONS ARE VIEWED FROM OUTSIDE  
3. ALL DIMENSIONS ARE TO BE VERIFIED ON SITE BEFORE FABRICATION.

NOTE:  
1. FEEL - FINISHED FLOOR LEVEL  
2. S.F.L. - FINISHED FLOOR LEVEL  
3. --- FINISHED DETAIL

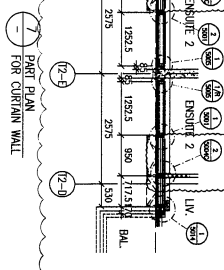
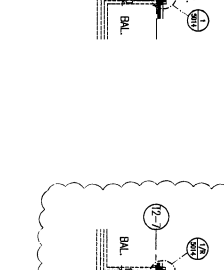
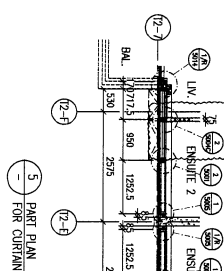
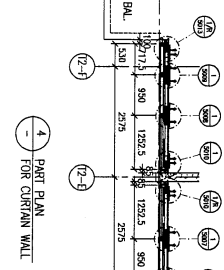
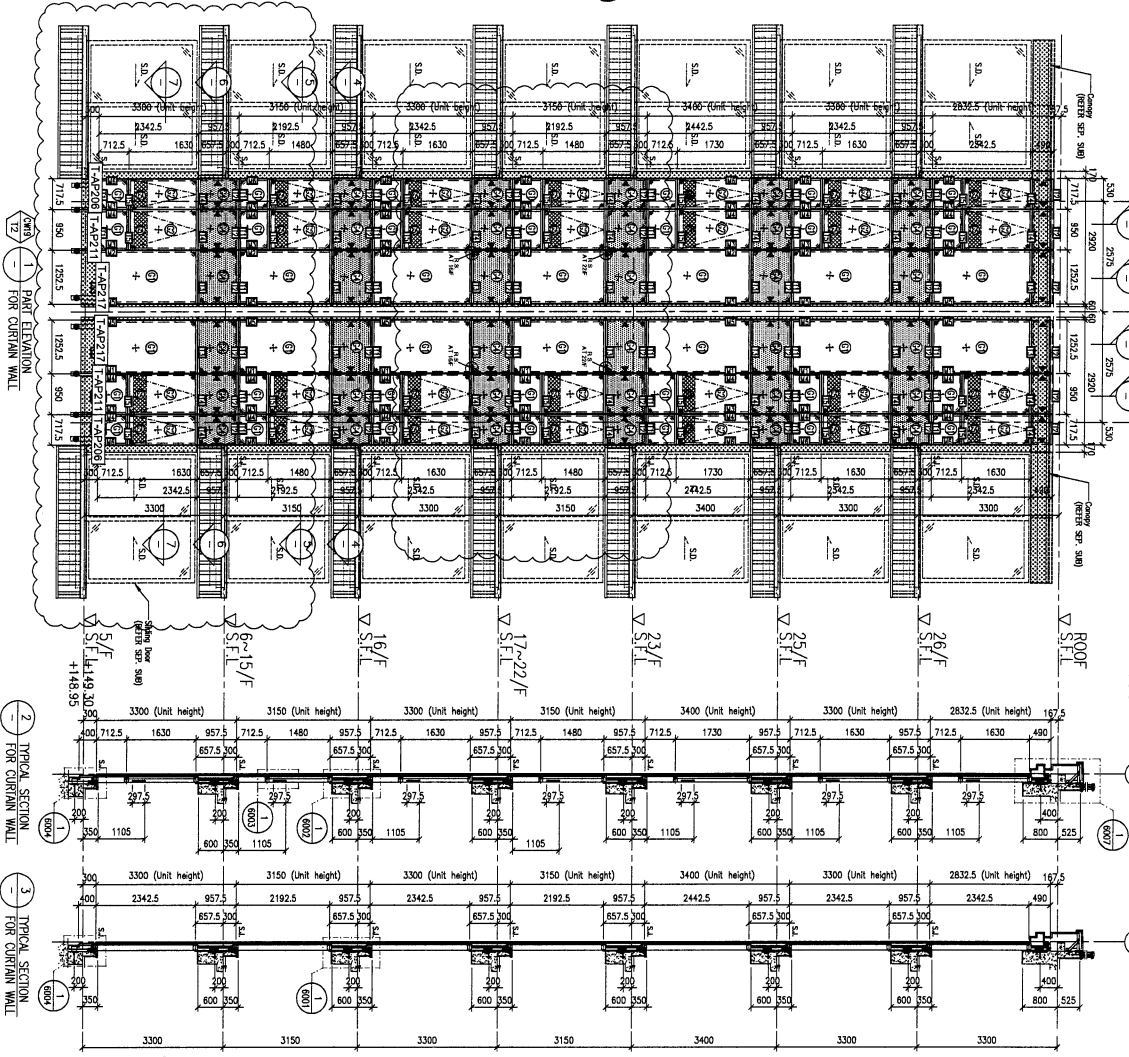
12th FLOOR LEVEL (S.E.L.)

FLOOR	LEVEL
12/F	+149.30
11/F	+148.30
10/F	+147.30
9/F	+146.30
8/F	+145.30
7/F	+144.30
6/F	+143.30
5/F	+142.30





LEGEND :  
R.S. = RESTRAINT SOCKET



1 TYPICAL SECTION FOR CURTAIN WALL

2 TYPICAL SECTION FOR CURTAIN WALL

3 TYPICAL SECTION FOR CURTAIN WALL

4 TYPICAL SECTION FOR CURTAIN WALL

5 TYPICAL SECTION FOR CURTAIN WALL

6 TYPICAL SECTION FOR CURTAIN WALL

FLOOR LEVEL (S.F.L.)

FLOOR	LEVEL
ROOF	+210.00
26/F	+206.70
25/F	+203.40
23/F	+200.00
22/F	+196.85
21/F	+193.70
20/F	+190.55
19/F	+187.40
18/F	+184.25
17/F	+181.10
16/F	+177.95
15/F	+174.80
12/F	+171.50
11/F	+168.35
10/F	+165.20
9/F	+162.05
8/F	+158.90
7/F	+155.75
6/F	+152.60
5/F	+149.50

LEGEND:

- 10mm HEAT STRENGTHENED GLASS (OUTER)
- 12mm HEAT STRENGTHENED GLASS (INNER)
- 10mm HEAT STRENGTHENED GLASS (OUTER) + 12mm AIR SPACE + 10mm HEAT STRENGTHENED GLASS (INNER)
- 12mm THK. CLEAR TEMPERED GLASS (SPANNING GLASS)
- 12mm THK. ALUM. BACKPAN (SPANNING GLASS)
- INTERNAL PROTECTIVE BARBER
- 3mm THK. ALUM. CLADDING
- STAIN JOINT (WIND LOAD)
- ALUM. EXTRUSION DET. NO.
- SUPPORT POINT (WIND LOAD + DEAD LOAD)
- SUPPORT POINT (WIND LOAD)

NOTE:

- ALL DIMENSIONS ARE IN mm.
- ALL ELEVATIONS ARE VIEWED FROM OUTSIDE.
- ALL DIMENSIONS TO BE VIEWED ON SITE BEFORE FABRICATION.

LEGEND:

- DETAIL MARK NO.
- REFERS SHEET NO.
- S.F.L. — STRUCTURAL FLOOR LEVEL
- REVERSED DETAIL

CLIENT : SHIMAO GROUP HOLDINGS LIMITED

ARCHITECT : YONG THING & PARTNERS LIMITED

MAIN CONTRACTOR : 瑞興建築有限公司  
HIP HING CONSTRUCTION CO LTD

STRUCTURAL ENGINEER : C.M.A. CHONG & ASSOCIATES LTD  
黃志輝建築工程師有限公司

FAÇADE CONSULTANT : MENYARD

DATE : 22-OCT-21

SCALE : 1:60 (A1)

TITLE : PART ELEVATION FOR CURTAIN WALL AT TOWER 2

DRAWN BY : LHR

CHECKED BY :

PROJECT : PROPOSED RESIDENTIAL DEVELOPMENT AT N.K.L.L. 6542 YIN PING ROAD HONGKONG

DATE : 22-OCT-21

SCALE : 1:60 (A1)

TITLE : PART ELEVATION FOR CURTAIN WALL AT TOWER 2

DRAWN BY : LHR

CHECKED BY :

JOB NO. : J-853

DATE : 22-OCT-21

SCALE : 1:60 (A1)

TITLE : PART ELEVATION FOR CURTAIN WALL AT TOWER 2

DRAWN BY : LHR

CHECKED BY :

DATE : 22-OCT-21

SCALE : 1:60 (A1)

TITLE : PART ELEVATION FOR CURTAIN WALL AT TOWER 2

DRAWN BY : LHR

CHECKED BY :

DATE : 22-OCT-21

SCALE : 1:60 (A1)

TITLE : PART ELEVATION FOR CURTAIN WALL AT TOWER 2

DRAWN BY : LHR

CHECKED BY :

DATE : 22-OCT-21

SCALE : 1:60 (A1)

TITLE : PART ELEVATION FOR CURTAIN WALL AT TOWER 2

DRAWN BY : LHR

CHECKED BY :

DATE : 22-OCT-21

SCALE : 1:60 (A1)

TITLE : PART ELEVATION FOR CURTAIN WALL AT TOWER 2

DRAWN BY : LHR

CHECKED BY :

DATE : 22-OCT-21

SCALE : 1:60 (A1)

TITLE : PART ELEVATION FOR CURTAIN WALL AT TOWER 2

DRAWN BY : LHR

CHECKED BY :

DATE : 22-OCT-21

SCALE : 1:60 (A1)

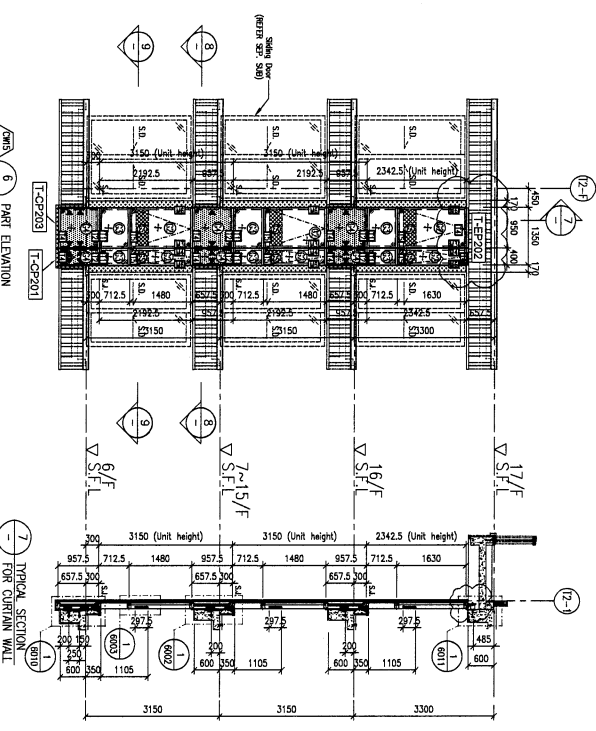
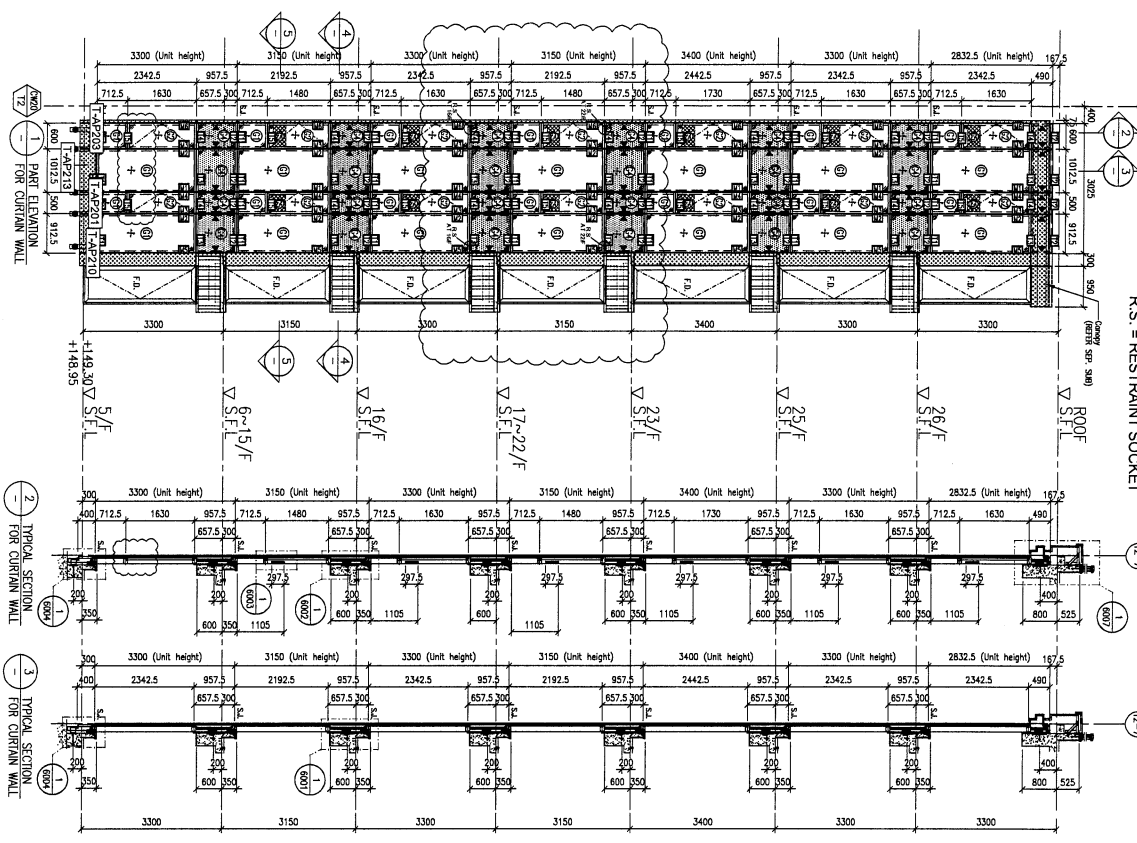
TITLE : PART ELEVATION FOR CURTAIN WALL AT TOWER 2

DRAWN BY : LHR

CHECKED BY :

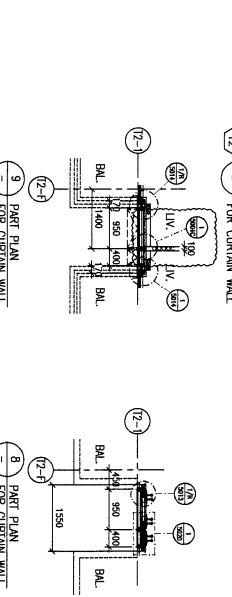
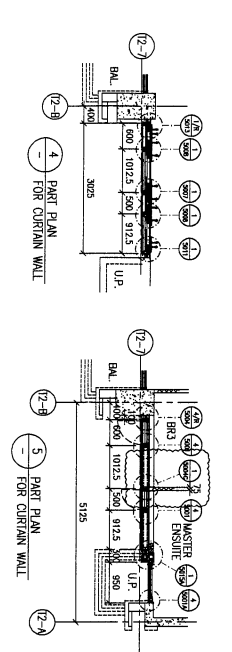
美特銘有限公司  
M.T.M. Architectural Firm  
610 Chee Kwoong Road, Kowloon  
Tel: 24189271-4 Fax: (852) 2777866  
DWG NO. : 853-SI-CW-4204A REV. : B

LEGEND:  
RS = RESTRAINT SOCKET



FLOOR LEVEL (SE.L)	FLOOR	LEVEL
1	ROOF	+149.30
2	25/F	+148.20
3	24/F	+147.10
4	23/F	+146.00
5	22/F	+144.90
6	21/F	+143.80
7	20/F	+142.70
8	19/F	+141.60
9	18/F	+140.50
10	17/F	+139.40
11	16/F	+138.30
12	15/F	+137.20
13	14/F	+136.10
14	13/F	+135.00
15	12/F	+133.90
16	11/F	+132.80
17	10/F	+131.70
18	9/F	+130.60
19	8/F	+129.50
20	7/F	+128.40
21	6/F	+127.30
22	5/F	+126.20

- LEGEND:
- ① 10mm HEAT STRENGTHENED GLASS (OUTER CLEAR GLASS (INNER)
  - ② 10mm HEAT STRENGTHENED GLASS (INNER) + 12mm AIR SPACE + 10mm THK. TEMPERED CLEAR GLASS (INNER)
  - ③ 12mm THK. HEAT STRENGTHENED GLASS & 3mm THK. ALUM. DRAPEN (SPANDREL GLASS) (INTERNAL PROTECTIVE BARRIER)
  - ④ 7mm THK. CLEAR TEMPERED GLASS
  - ⑤ 3mm THK. ALUM. CLADDING
  - ⑥ STACK JOINT (WIND LOAD)
  - ⑦ ALUM. EXTENSION DE. NO.
  - ⑧ SUPPORT POINT (WIND LOAD + DEAD LOAD)
  - ⑨ SUPPORT POINT (WIND LOAD)



**CLIENT :** SHIMAO GROUP HOLDINGS LIMITED

**ARCHITECT :** HOKU TUNG & PARTNERS LIMITED

**MAIN CONTRACTOR :** 協興建築有限公司  
HIP HING CONSTRUCTION CO. LTD.

**STRUCTURAL ENGINEER :** C.M. WONG & ASSOCIATES LTD.  
黃志輝建築工程師有限公司

**FAÇADE CONSULTANT :** MENYHARDT

**NOTE :**  
1. ALL DIMENSIONS ARE IN mm.  
2. ALL ELEVATIONS ARE VIEWED FROM OUTSIDE.  
3. ALL DIMENSIONS TO BE VERIFIED ON SITE BEFORE FABRICATION.

**LEGEND :**  
① DETAIL MARK NO.  
② REFER SHEET NO.

**1. F.F.L. --- FINISHED FLOOR LEVEL**  
**2. S.F.L. --- STRUCTURAL FLOOR LEVEL**  
**3. Ⓢ --- REVERSED DETAIL**

**DATE :** 06-10-2011  
**REVISION :** REVISION

**JOB NO. :** J-8533

**DRAWN BY :** LHR  
**CHECKED BY :**

**DWG. NO. :** 26-MAR-21  
**SCALE :** 1:80 (A1)

**TITLE :** PART ELEVATION FOR CURTAIN WALL AT TOWER 2

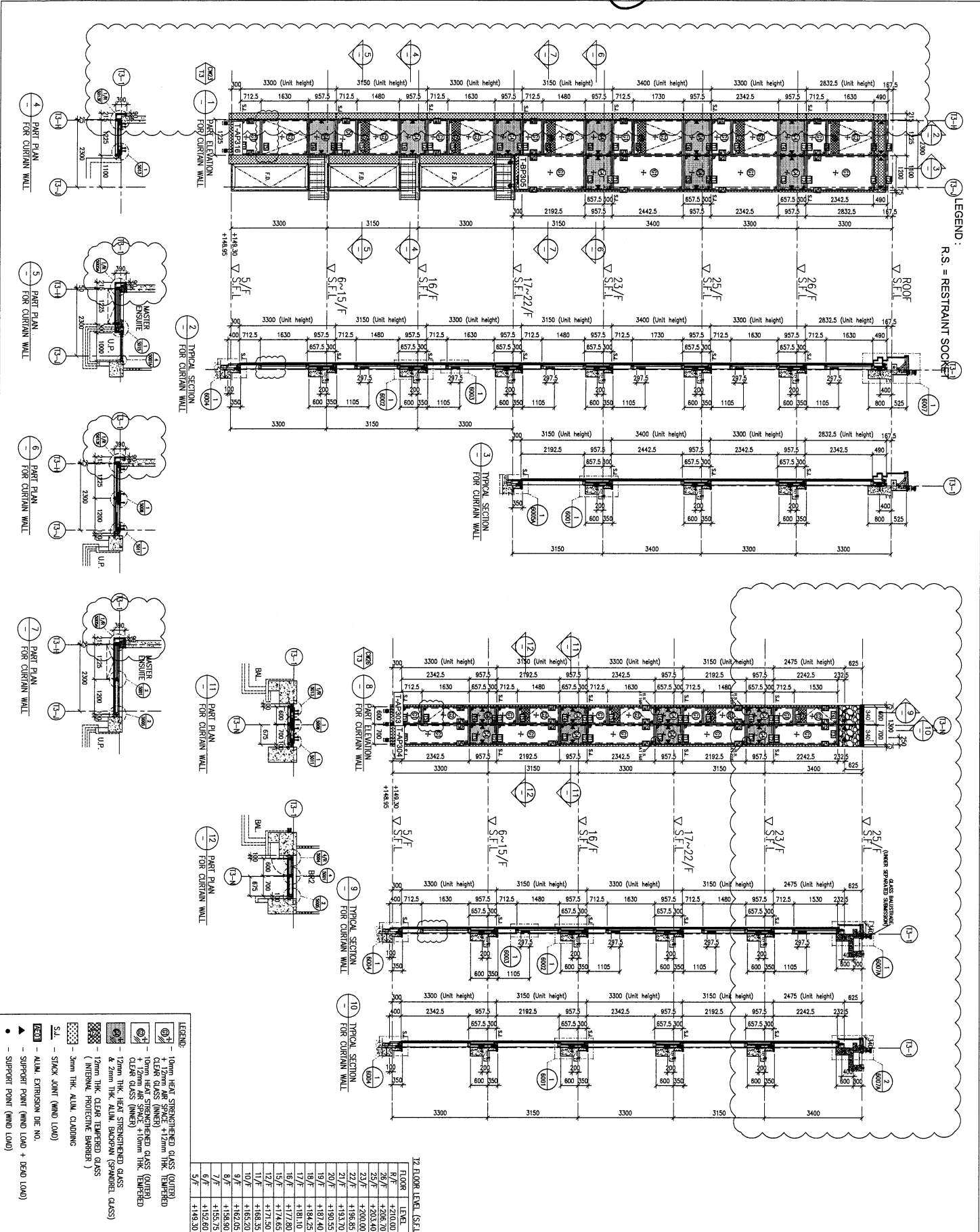
**PROJECT :** PROPOSED RESIDENTIAL DEVELOPMENT AT N.K.L.L. 6542 YIN PING ROAD KOWLOON

**DESIGNER :** 基特經貿有限公司  
HOKU TUNG & PARTNERS LIMITED  
610 Cheung Kuen Road, Kowloon, H.K.  
Tel: 24989111-4 Fax: (852) 2727866

**REV. :** B





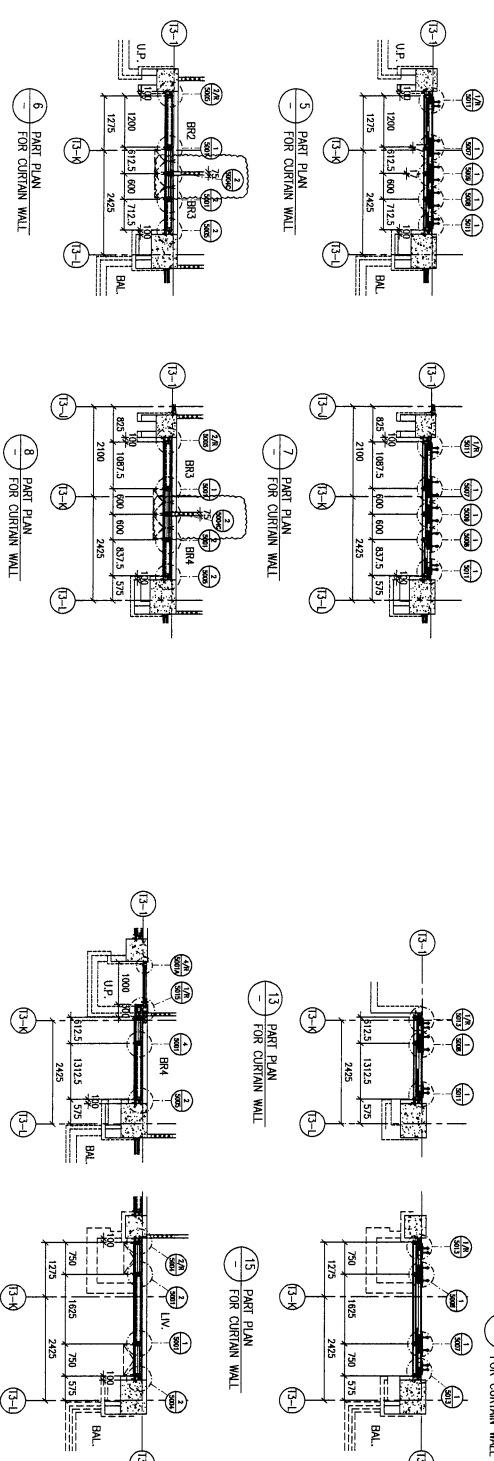
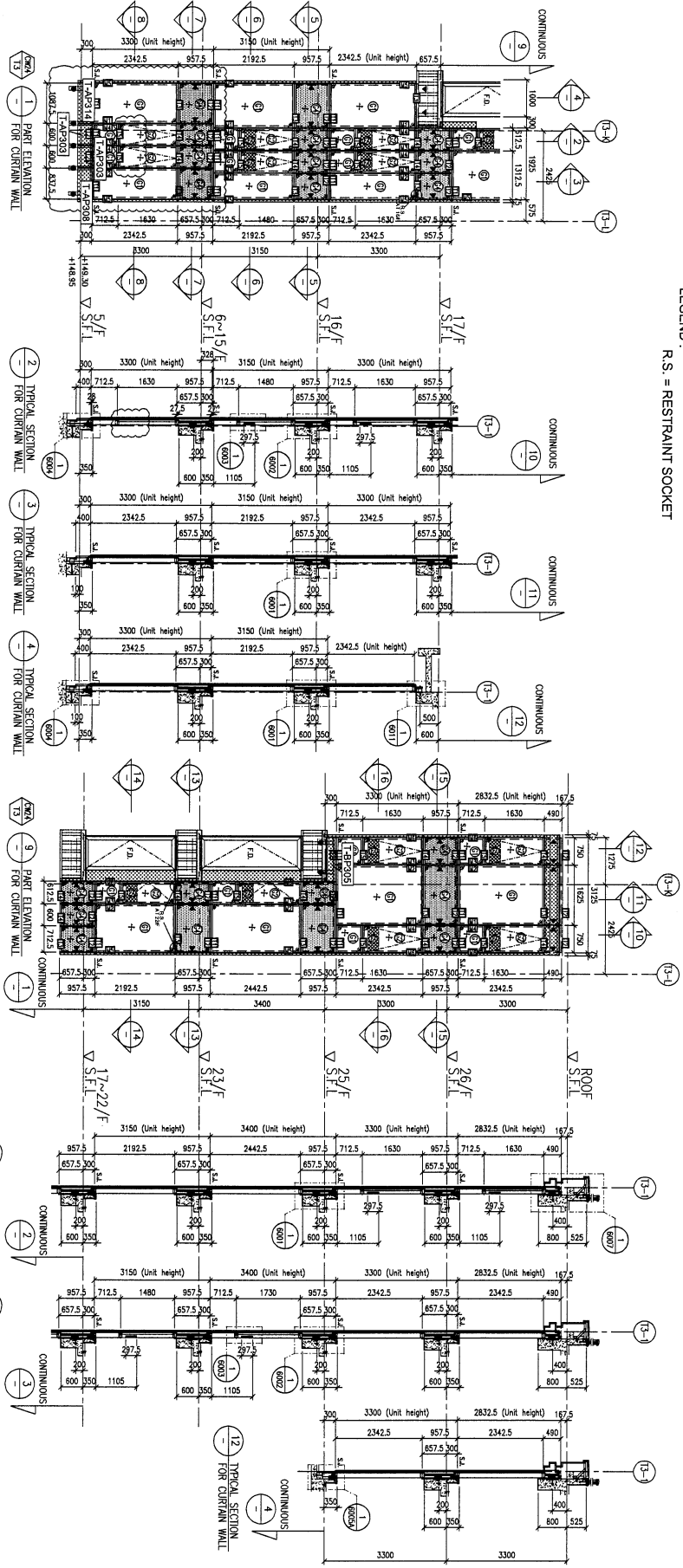


LEGEND:  
RS = RESTRAINT SOCKET

12. FLOOR LEVEL (S.F.L.)

FLOOR	LEVEL
12/F	+201.00
11/F	+203.40
10/F	+205.80
9/F	+208.20
8/F	+210.60
7/F	+213.00
6/F	+215.40
5/F	+217.80
4/F	+220.20
3/F	+222.60
2/F	+225.00
1/F	+227.40
0/F	+229.80
Basement	+232.20
Ground	+234.60
1/F	+237.00
2/F	+239.40
3/F	+241.80
4/F	+244.20
5/F	+246.60
6/F	+249.00
7/F	+251.40
8/F	+253.80
9/F	+256.20
10/F	+258.60
11/F	+261.00
12/F	+263.40
13/F	+265.80
14/F	+268.20
15/F	+270.60
16/F	+273.00
17/F	+275.40
18/F	+277.80
19/F	+280.20
20/F	+282.60
21/F	+285.00
22/F	+287.40
23/F	+289.80
24/F	+292.20
25/F	+294.60
26/F	+297.00
27/F	+299.40
28/F	+301.80
29/F	+304.20
30/F	+306.60
31/F	+309.00
32/F	+311.40
33/F	+313.80
34/F	+316.20
35/F	+318.60
36/F	+321.00
37/F	+323.40
38/F	+325.80
39/F	+328.20
40/F	+330.60
41/F	+333.00
42/F	+335.40
43/F	+337.80
44/F	+340.20
45/F	+342.60
46/F	+345.00
47/F	+347.40
48/F	+349.80
49/F	+352.20
50/F	+354.60
51/F	+357.00
52/F	+359.40
53/F	+361.80
54/F	+364.20
55/F	+366.60
56/F	+369.00
57/F	+371.40
58/F	+373.80
59/F	+376.20
60/F	+378.60
61/F	+381.00
62/F	+383.40
63/F	+385.80
64/F	+388.20
65/F	+390.60
66/F	+393.00
67/F	+395.40
68/F	+397.80
69/F	+400.20
70/F	+402.60
71/F	+405.00
72/F	+407.40
73/F	+409.80
74/F	+412.20
75/F	+414.60
76/F	+417.00
77/F	+419.40
78/F	+421.80
79/F	+424.20
80/F	+426.60
81/F	+429.00
82/F	+431.40
83/F	+433.80
84/F	+436.20
85/F	+438.60
86/F	+441.00
87/F	+443.40
88/F	+445.80
89/F	+448.20
90/F	+450.60
91/F	+453.00
92/F	+455.40
93/F	+457.80
94/F	+460.20
95/F	+462.60
96/F	+465.00
97/F	+467.40
98/F	+469.80
99/F	+472.20
100/F	+474.60
101/F	+477.00
102/F	+479.40
103/F	+481.80
104/F	+484.20
105/F	+486.60
106/F	+489.00
107/F	+491.40
108/F	+493.80
109/F	+496.20
110/F	+498.60
111/F	+501.00
112/F	+503.40
113/F	+505.80
114/F	+508.20
115/F	+510.60
116/F	+513.00
117/F	+515.40
118/F	+517.80
119/F	+520.20
120/F	+522.60
121/F	+525.00
122/F	+527.40
123/F	+529.80
124/F	+532.20
125/F	+534.60
126/F	+537.00
127/F	+539.40
128/F	+541.80
129/F	+544.20
130/F	+546.60
131/F	+549.00
132/F	+551.40
133/F	+553.80
134/F	+556.20
135/F	+558.60
136/F	+561.00
137/F	+563.40
138/F	+565.80
139/F	+568.20
140/F	+570.60
141/F	+573.00
142/F	+575.40
143/F	+577.80
144/F	+580.20
145/F	+582.60
146/F	+585.00
147/F	+587.40
148/F	+589.80
149/F	+592.20
150/F	+594.60
151/F	+597.00
152/F	+599.40
153/F	+601.80
154/F	+604.20
155/F	+606.60
156/F	+609.00
157/F	+611.40
158/F	+613.80
159/F	+616.20
160/F	+618.60
161/F	+621.00
162/F	+623.40
163/F	+625.80
164/F	+628.20
165/F	+630.60
166/F	+633.00
167/F	+635.40
168/F	+637.80
169/F	+640.20
170/F	+642.60
171/F	+645.00
172/F	+647.40
173/F	+649.80
174/F	+652.20
175/F	+654.60
176/F	+657.00
177/F	+659.40
178/F	+661.80
179/F	+664.20
180/F	+666.60
181/F	+669.00
182/F	+671.40
183/F	+673.80
184/F	+676.20
185/F	+678.60
186/F	+681.00
187/F	+683.40
188/F	+685.80
189/F	+688.20
190/F	+690.60
191/F	+693.00
192/F	+695.40
193/F	+697.80
194/F	+700.20
195/F	+702.60
196/F	+705.00
197/F	+707.40
198/F	+709.80
199/F	+712.20
200/F	+714.60
201/F	+717.00
202/F	+719.40
203/F	+721.80
204/F	+724.20
205/F	+726.60
206/F	+729.00
207/F	+731.40
208/F	+733.80
209/F	+736.20
210/F	+738.60
211/F	+741.00
212/F	+743.40
213/F	+745.80
214/F	+748.20
215/F	+750.60
216/F	+753.00
217/F	+755.40
218/F	+757.80
219/F	+760.20
220/F	+762.60
221/F	+765.00
222/F	+767.40
223/F	+769.80
224/F	+772.20
225/F	+774.60
226/F	+777.00
227/F	+779.40
228/F	+781.80
229/F	+784.20
230/F	+786.60
231/F	+789.00
232/F	+791.40
233/F	+793.80
234/F	+796.20
235/F	+798.60
236/F	+801.00
237/F	+803.40
238/F	+805.80
239/F	+808.20
240/F	+810.60
241/F	+813.00
242/F	+815.40
243/F	+817.80
244/F	+820.20
245/F	+822.60
246/F	+825.00
247/F	+827.40
248/F	+829.80
249/F	+832.20
250/F	+834.60
251/F	+837.00
252/F	+839.40
253/F	+841.80
254/F	+844.20
255/F	+846.60
256/F	+849.00
257/F	+851.40
258/F	+853.80
259/F	+856.20
260/F	+858.60
261/F	+861.00
262/F	+863.40
263/F	+865.80
264/F	+868.20
265/F	+870.60
266/F	+873.00
267/F	+875.40
268/F	+877.80
269/F	+880.20
270/F	+882.60
271/F	+885.00
272/F	+887.40
273/F	+889.80
274/F	+892.20
275/F	+894.60
276/F	+897.00
277/F	+899.40
278/F	+901.80
279/F	+904.20
280/F	+906.60
281/F	+909.00
282/F	+911.40
283/F	+913.80
284/F	+916.20
285/F	+918.60
286/F	+921.00
287/F	+923.40
288/F	+925.80
289/F	+928.20
290/F	+930.60
291/F	+933.00
292/F	+935.40
293/F	+937.80
294/F	+940.20
295/F	+942.60
296/F	+945.00
297/F	+947.40
298/F	+949.80
299/F	+952.20
300/F	+954.60
301/F	+957.00
302/F	+959.40
303/F	+961.80
304/F	+964.20
305/F	+966.60
306/F	+969.00
307/F	+971.40
308/F	+973.80
309/F	+976.20
310/F	+978.60
311/F	+981.00
312/F	+983.40
313/F	+985.80
314/F	+988.20
315/F	+990.60
316/F	+993.00
317/F	+995.40
318/F	+997.80
319/F	+1000.20
320/F	+1002.60
321/F	+1005.00
322/F	+1007.40
323/F	+1009.80
324/F	+1012.20
325/F	+1014.60
326/F	+1017.00
327/F	+1019.40
328/F	+1021.80
329/F	+1024.20
330/F	+1026.60
331/F	+1029.00
332/F	+1031.40
333/F	+1033.80
334/F	+1036.20
335/F	+1038.60
336/F	+1041.00
337/F	+1043.40
338/F	+1045.80
339/F	+1048.20
340/F	+1050.60
341/F	+1053.00
342/F	+1055.40
343/F	+1057.80
344/F	+1060.20
345/F	+1062.60
346/F	+1065.00
347/F	+1067.40
348/F	+1069.80
349/F	+1072.20
350/F	+1074.60
351/F	+1077.00
352/F	+1079.40
353/F	+1081.80
354/F	+1084.20
355/F	+1086.60
356/F	+1089.00
357/F	+1091.40
358/F	+1093.80
359/F	+1096.20
360/F	+1098.60
361/F	+1101.00
362/F	+1103.40
363/F	+1105.80
364/F	+1108.20
365/F	+1110.60
366/F	+1113.00
367/F	+1115.40
368/F	+1117.80
369/F	+1120.20
370/F	+1122.60
371/F	+1125.00
372/F	+1127.40
373/F	+1129.80
374/F	+1132.20
375/F	+1134.60
376/F	+1137.00
377/F	+1139.40
378/F	+1141.80
379/F	+1144.20
380/F	+1146.60
381/F	+1149.00
382/F	+1151.40
383/F	+1153.80
384/F	+1156.20
385/F	+1158.60
386/F	+1161.00
387/F	+1163.40
388/F	+1165.80
389/F	+1168.20
390/F	+1170.60
391/F	+1173.00
392/F	+1175.40
393/F	+1177.80
394/F	+1180.20
395/F	+1182.60
396/F	+1185.00
397/F	+1187.40
398/F	+1189.80
399/F	+1192.20
400/F	+1194.60
401/F	+1197.00
402/F	+1199.40
403/F	+1201.80
404/F	+1204.20
405/F	+1206.60
406/F	+1209.00
407/F	+1211.40
408/F	+1213.80
409/F	+1216.20
410/F	+1218.60
411/F	+1221.00
412/F	+1223.40
413/F	+1225.80
414/F	+1228.20
415/F	+1230.60
416/F	+1233.00
417/F	+1235.40
418/F	+1237.80
419/F	+1240.20
420/F	+1242.60
421/F	+1245.00
422/F	+1247.40
423/F	+1249.80
424/F	+1252.20
425/F	+1254.60
426/F	+1257.00
427/F	+1259.40
428/F	+1261.80
429/F	+1264.20
430/F	+1266.60
431/F	+1269.00
432/F	+1271.40
433/F	+1273.80
434/F	+1276.20
435/F	+1278.60
436/F	+1281.00
437/F	+1283.40
438/F	+1285.80
439/F	+1288.20
440/F	+1290.60
441/F	+1293.00
442/F	+1295.40
443/F	+1297.80
444/F	+1300.20
445/F	+1302.60
446/F	+1305.00
447/F	+1307.40
448/F	+1309.80
449/F	+1312.20
450/F	+1314.60
451/F	+1317.00
452/F	+1319.40
453/F	+1321.80
454/F	+1324.20
455/F	+1326.60
456/F	+1329.00
457/F	+1331.40
458/F	+1333.80
459/F	+1336.20
460/F	+1338.60
461/F	+1341.00
462/F	+1343.40
463/F	+1345.80
464/F	+1348.20
465/F	+1350.60
466/F	+1353.00
467/F	

LEGEND:  
RS = RESTRAINT SOCKET



12 FLOOR LEVEL (S.F.L.)

FLOOR	LEVEL
8/F	+200.60
7/F	+208.70
6/F	+203.40
5/F	+200.00
4/F	+196.85
3/F	+193.70
2/F	+190.55
1/F	+187.40
0/F	+184.25
17/F	+181.10
16/F	+177.80
15/F	+174.65
14/F	+171.50
13/F	+168.35
12/F	+165.20
11/F	+162.05
10/F	+158.90
9/F	+155.75
8/F	+152.60
7/F	+149.45
6/F	+146.30
5/F	+143.15

- LEGEND:
- ① Open HEAT STRENGTHENED GLASS (OUTER)
  - ② 12mm HEAT STRENGTHENED GLASS (MIDDLE)
  - ③ 12mm HEAT STRENGTHENED GLASS (INNER)
  - ④ 12mm HEAT STRENGTHENED GLASS (OUTER) CLEAR GLASS (INNER)
  - ⑤ 12mm HEAT STRENGTHENED GLASS (OUTER) CLEAR GLASS (INNER) & 2mm THK. ALUM. CLADDING (INTERNAL PROTECTIVE BARBER)
  - ⑥ 12mm THK. CLEAR TEMPERED GLASS
  - ⑦ 2mm THK. ALUM. CLADDING
  - ⑧ 12mm THK. ALUM. CLADDING
  - ⑨ 12mm THK. ALUM. CLADDING
  - ⑩ 12mm THK. ALUM. CLADDING
  - ⑪ 12mm THK. ALUM. CLADDING
  - ⑫ 12mm THK. ALUM. CLADDING
  - ⑬ 12mm THK. ALUM. CLADDING
  - ⑭ 12mm THK. ALUM. CLADDING
  - ⑮ 12mm THK. ALUM. CLADDING
  - ⑯ 12mm THK. ALUM. CLADDING
  - ⑰ 12mm THK. ALUM. CLADDING
  - ⑱ 12mm THK. ALUM. CLADDING
  - ⑲ 12mm THK. ALUM. CLADDING
  - ⑳ 12mm THK. ALUM. CLADDING
  - ㉑ 12mm THK. ALUM. CLADDING
  - ㉒ 12mm THK. ALUM. CLADDING
  - ㉓ 12mm THK. ALUM. CLADDING
  - ㉔ 12mm THK. ALUM. CLADDING
  - ㉕ 12mm THK. ALUM. CLADDING
  - ㉖ 12mm THK. ALUM. CLADDING
  - ㉗ 12mm THK. ALUM. CLADDING
  - ㉘ 12mm THK. ALUM. CLADDING
  - ㉙ 12mm THK. ALUM. CLADDING
  - ㉚ 12mm THK. ALUM. CLADDING
  - ㉛ 12mm THK. ALUM. CLADDING
  - ㉜ 12mm THK. ALUM. CLADDING
  - ㉝ 12mm THK. ALUM. CLADDING
  - ㉞ 12mm THK. ALUM. CLADDING
  - ㉟ 12mm THK. ALUM. CLADDING
  - Ⓜ STK - STACK JOINT (WIND LOAD)
  - Ⓝ ALUM. EXTRUSION (WIND LOAD)
  - Ⓞ SUPPORT POINT (WIND LOAD + DEAD LOAD)
  - Ⓟ SUPPORT POINT (WIND LOAD)

B.D. REF: \_\_\_\_\_

CLIENT: SHIMAO GROUP HOLDINGS LIMITED

ARCHITECT: SHIMAO GROUP HOLDINGS LIMITED

MAIN CONTRACTOR: 協興建築有限公司  
HIP HING CONSTRUCTION CO LTD

STRUCTURAL ENGINEER: 協興建築有限公司  
HIP HING CONSTRUCTION CO LTD

FACE CONSULTANT: 協興建築有限公司  
HIP HING CONSTRUCTION CO LTD

ENGINEER: 協興建築有限公司  
HIP HING CONSTRUCTION CO LTD

DATE: 25-MAR-21 SCALE: 1:50 (A1)

DRAWN BY: LHR CHECKED BY: \_\_\_\_\_

TITLE: PART ELEVATION FOR CURTAIN WALL AT TOWER 3

PROJECT: PROPOSED RESIDENTIAL DEVELOPMENT AT N.K.L.L. 6542 VIK PING ROAD KOWLOON

JOB NO.: J-853

REVISION:

1	06-15-2020	ISSUED SUBJECT TO MAIN CONTRACT	BY
2			
3			

NOTE:

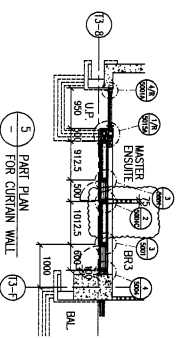
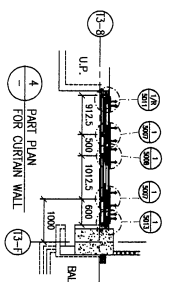
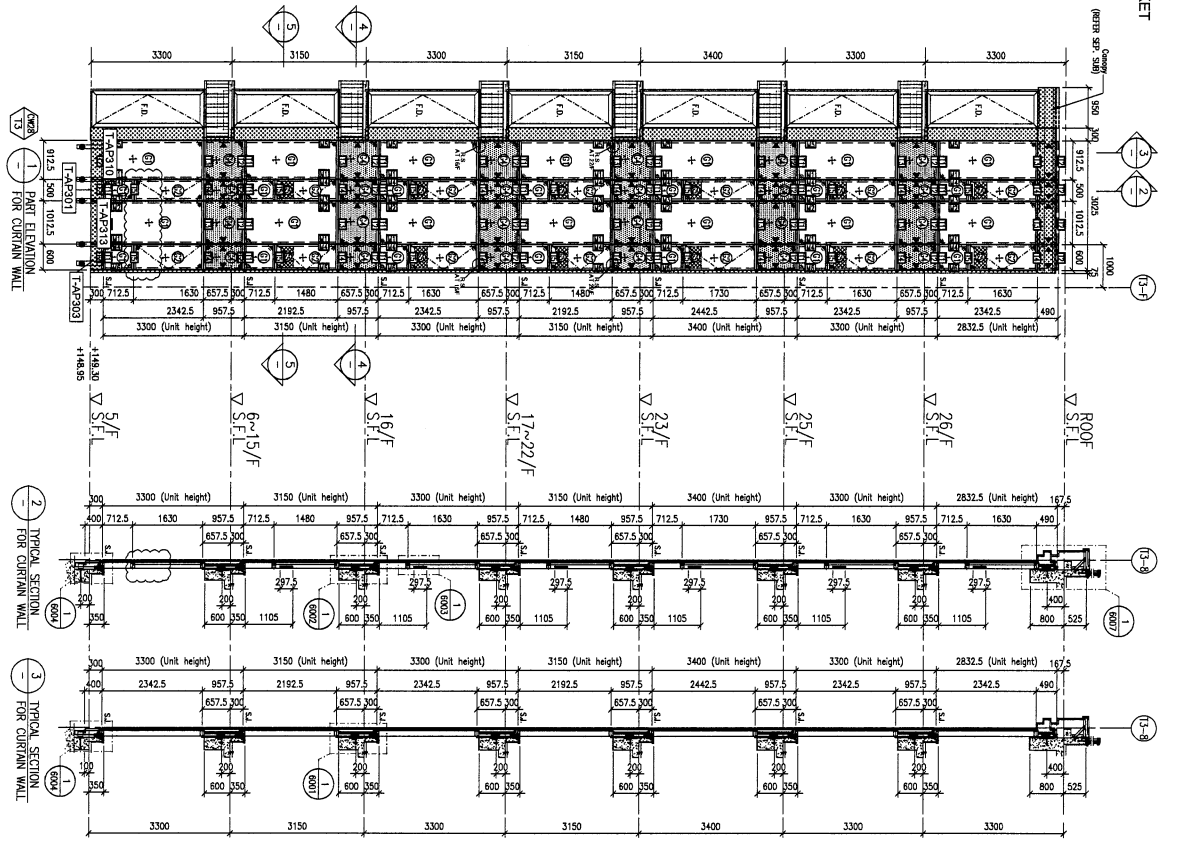
- ALL DIMENSIONS ARE IN mm.
- ALL ELEVATIONS ARE VIEWED FROM OUTSIDE.
- ALL DIMENSIONS TO BE VIEWED ON SITE.
- ALL DIMENSIONS TO BE VIEWED ON SITE.

LEGEND:

- ① DEWIL MARK NO.
- ② REFER SHEET NO.
- 1. F.F.L. - FINISHED FLOOR LEVEL
- 2. S.F.L. - STRUCTURAL FLOOR LEVEL
- 3. Ⓜ - REDUCED BEAM.

REV: B

LEGEND :  
R.S. = RESTRAINT SOCKET



1 TYPICAL SECTION FOR CURTAIN WALL  
2 TYPICAL SECTION FOR CURTAIN WALL  
3 TYPICAL SECTION FOR CURTAIN WALL

**LEGEND:**

- 10mm HEAT STRENGTHENED GLASS (OUTER GLASS) (INNER)
- 10mm HEAT STRENGTHENED GLASS (INNER GLASS) (INNER)
- 12mm HEAT STRENGTHENED GLASS (OUTER CLEAR GLASS) (INNER)
- 12mm HEAT STRENGTHENED GLASS (INNER CLEAR GLASS) (INNER)
- 12mm HEAT STRENGTHENED GLASS (OUTER CLEAR GLASS) & 2mm THK. ALUM. BACKSTOP (SPANDREL GLASS) (INTERNAL PROTECTIVE BARRIER)
- 3mm THK. ALUM. CLADDING
- S.J. - STACK JOINT (WIND LOAD)
- E.X. - ALUM. EXTENSION DE. NO.
- S.P. - SUPPORT POINT (WIND LOAD + DEAD LOAD)
- S.P. - SUPPORT POINT (WIND LOAD)

**FLOOR LEVEL (S.F.L.)**

FLOOR LEVEL	+210.00
ROOF	+208.70
26/F	+203.40
25/F	+200.00
24/F	+196.85
23/F	+193.70
22/F	+187.40
21/F	+184.25
20/F	+181.10
19/F	+177.80
18/F	+174.65
17/F	+171.50
16/F	+168.35
15/F	+162.05
14/F	+158.90
13/F	+155.75
5/F	+149.30

- NOTE:**
- ALL DIMENSIONS ARE IN mm.
  - ALL ELEVATIONS ARE VIEWED FROM OUTSIDE.
  - ALL DIMENSIONS TO BE VIEWED ON SITE BEFORE FABRICATION.
- LEGEND:**
- M - DETAIL MARK NO.
  - R - REFER SHEET NO.
  - F.F.L. - FINISHED FLOOR LEVEL
  - S.F.L. - STRUCTURAL FLOOR LEVEL
  - R.D. - REDUCED DETAIL

**CLIENT:** SHIMAO GROUP HOLDINGS LIMITED

**ARCHITECT:** HOPE YOUNG & PARTNERS LIMITED

**MAIN CONTRACTOR:** 協興建築有限公司  
HIP HING CONSTRUCTION CO. LTD

**STRUCTURAL ENGINEER:** CMA C.M. WONG & ASSOCIATES LTD  
黃志輝建築工程師有限公司

**FAÇADE CONSULTANT:** MENYHARDT

**PROJECT:** PROPOSED RESIDENTIAL DEVELOPMENT AT N.K.I.L. 6542 YIN HING ROAD KOWLOON

**JOB NO.:** J-953

**DATE:** 26-MAR-21

**SCALE:** 1:60 (A1)

**DRAWN BY:** LHR

**CHECKED BY:**

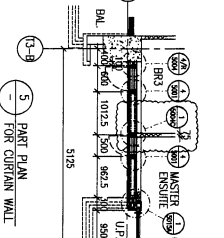
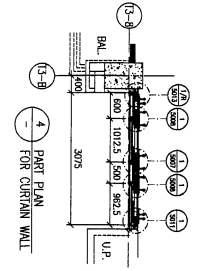
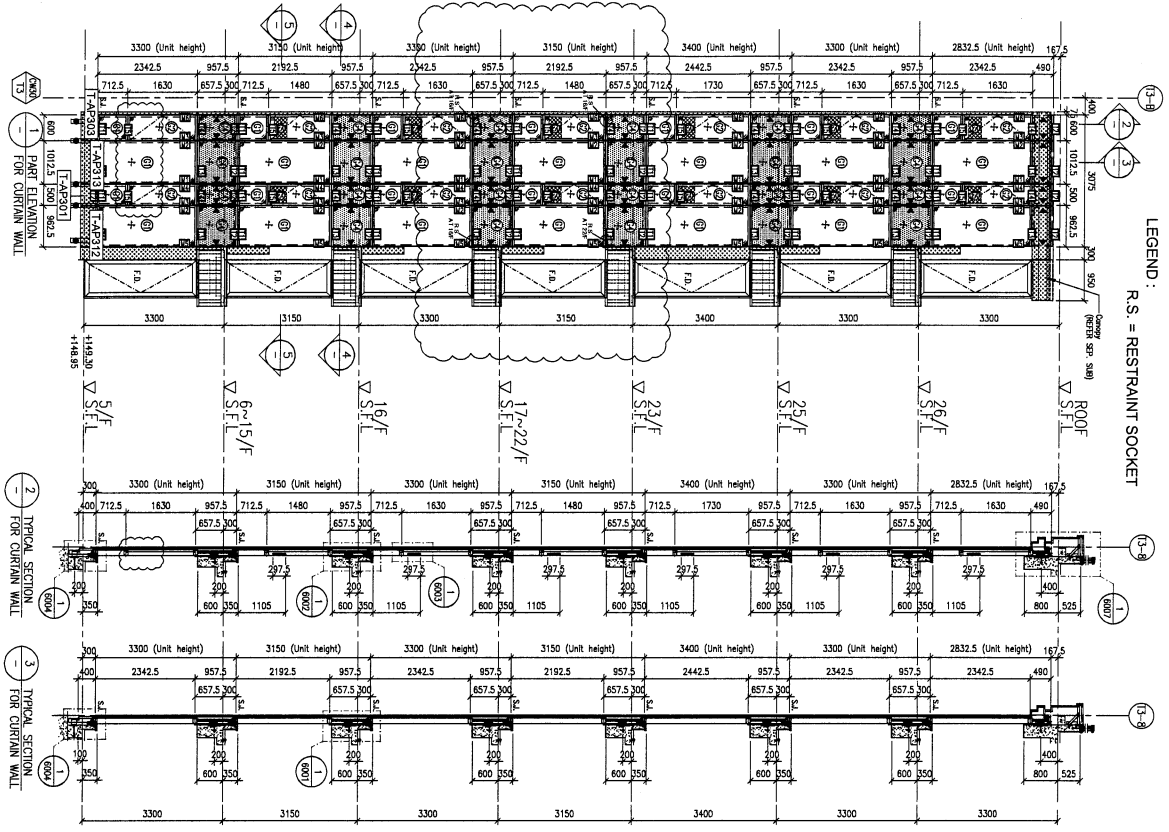
**DATE:** 26-MAR-21

**REV.:** B

NO.	DATE	REVISION	BY
1	26-MAR-2021	ISSUED SUBJECT TO MAIN CONTRACT	BY
2		REVISED	



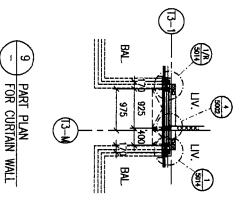
LEGEND :  
R.S. = RESTRAINT SOCKET



1 TYPICAL SECTION FOR CURTAIN WALL

2 TYPICAL SECTION FOR CURTAIN WALL

3 TYPICAL SECTION FOR CURTAIN WALL

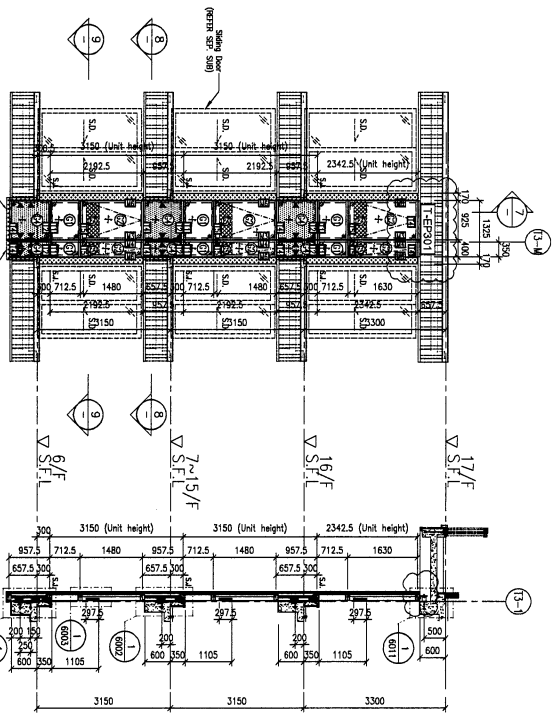


8 PART PLAN FOR CURTAIN WALL

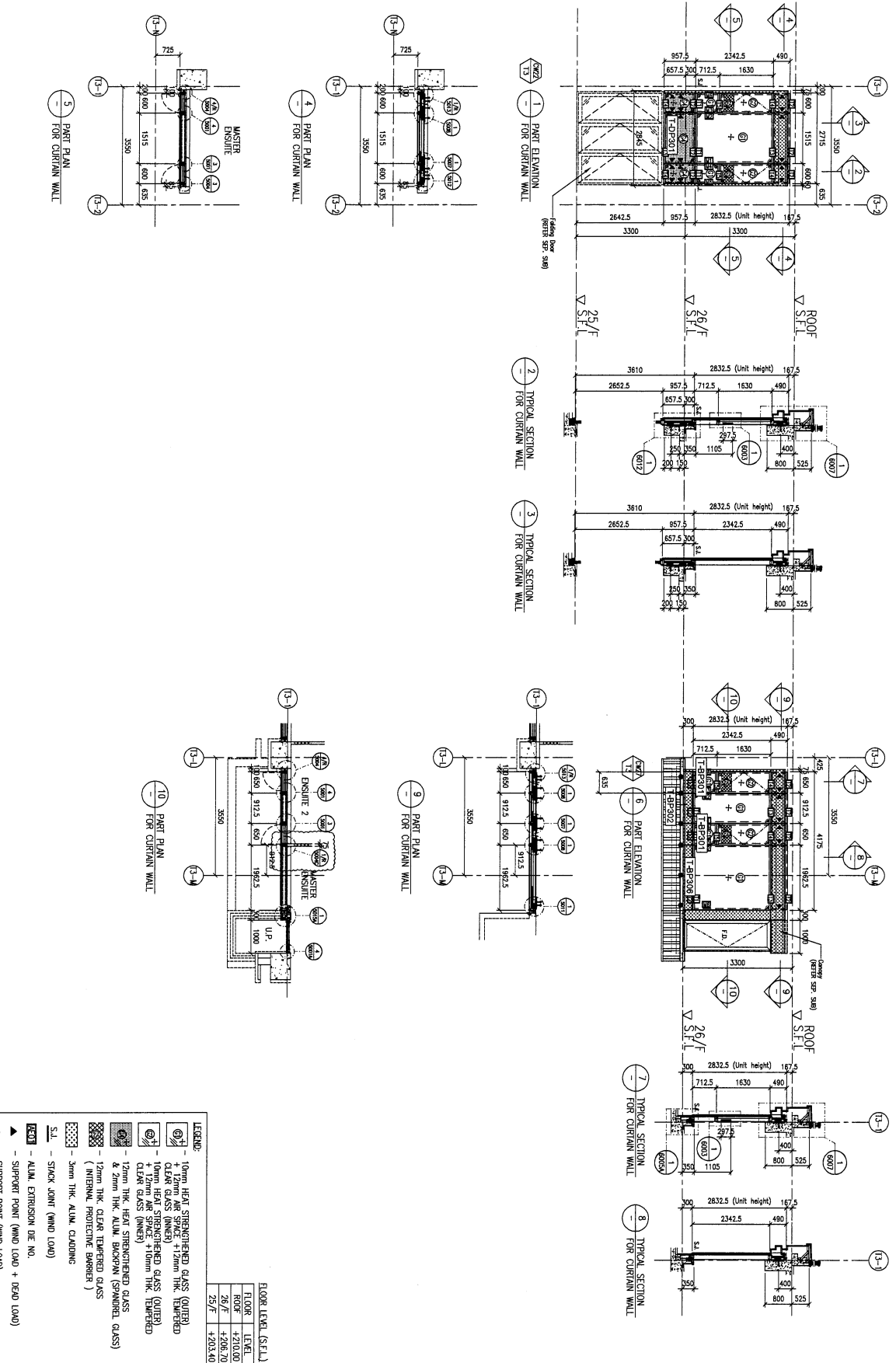
10 PART PLAN FOR CURTAIN WALL

6 PART ELEVATION FOR CURTAIN WALL

7 TYPICAL SECTION FOR CURTAIN WALL



FLOOR LEVEL (S.F.L.)	ELEV.
10/F	+126.00
9/F	+125.00
8/F	+124.00
7/F	+123.00
6/F	+122.00
5/F	+121.00
4/F	+120.00
3/F	+119.00
2/F	+118.00
1/F	+117.00
0/F	+116.00
1/F	+115.00
2/F	+114.00
3/F	+113.00
4/F	+112.00
5/F	+111.00
6/F	+110.00
7/F	+109.00
8/F	+108.00
9/F	+107.00
10/F	+106.00
11/F	+105.00
12/F	+104.00
13/F	+103.00
14/F	+102.00
15/F	+101.00
16/F	+100.00
17/F	+99.00
18/F	+98.00
19/F	+97.00
20/F	+96.00
21/F	+95.00
22/F	+94.00
23/F	+93.00
24/F	+92.00
25/F	+91.00
26/F	+90.00
27/F	+89.00
28/F	+88.00
29/F	+87.00
30/F	+86.00
31/F	+85.00
32/F	+84.00
33/F	+83.00
34/F	+82.00
35/F	+81.00
36/F	+80.00
37/F	+79.00
38/F	+78.00
39/F	+77.00
40/F	+76.00
41/F	+75.00
42/F	+74.00
43/F	+73.00
44/F	+72.00
45/F	+71.00
46/F	+70.00
47/F	+69.00
48/F	+68.00
49/F	+67.00
50/F	+66.00
51/F	+65.00
52/F	+64.00
53/F	+63.00
54/F	+62.00
55/F	+61.00
56/F	+60.00
57/F	+59.00
58/F	+58.00
59/F	+57.00
60/F	+56.00
61/F	+55.00
62/F	+54.00
63/F	+53.00
64/F	+52.00
65/F	+51.00
66/F	+50.00
67/F	+49.00
68/F	+48.00
69/F	+47.00
70/F	+46.00
71/F	+45.00
72/F	+44.00
73/F	+43.00
74/F	+42.00
75/F	+41.00
76/F	+40.00
77/F	+39.00
78/F	+38.00
79/F	+37.00
80/F	+36.00
81/F	+35.00
82/F	+34.00
83/F	+33.00
84/F	+32.00
85/F	+31.00
86/F	+30.00
87/F	+29.00
88/F	+28.00
89/F	+27.00
90/F	+26.00
91/F	+25.00
92/F	+24.00
93/F	+23.00
94/F	+22.00
95/F	+21.00
96/F	+20.00
97/F	+19.00
98/F	+18.00
99/F	+17.00
100/F	+16.00
101/F	+15.00
102/F	+14.00
103/F	+13.00
104/F	+12.00
105/F	+11.00
106/F	+10.00
107/F	+9.00
108/F	+8.00
109/F	+7.00
110/F	+6.00
111/F	+5.00
112/F	+4.00
113/F	+3.00
114/F	+2.00
115/F	+1.00
116/F	+0.00
117/F	-1.00
118/F	-2.00
119/F	-3.00
120/F	-4.00
121/F	-5.00
122/F	-6.00
123/F	-7.00
124/F	-8.00
125/F	-9.00
126/F	-10.00
127/F	-11.00
128/F	-12.00
129/F	-13.00
130/F	-14.00
131/F	-15.00
132/F	-16.00
133/F	-17.00
134/F	-18.00
135/F	-19.00
136/F	-20.00
137/F	-21.00
138/F	-22.00
139/F	-23.00
140/F	-24.00
141/F	-25.00
142/F	-26.00
143/F	-27.00
144/F	-28.00
145/F	-29.00
146/F	-30.00
147/F	-31.00
148/F	-32.00
149/F	-33.00
150/F	-34.00
151/F	-35.00
152/F	-36.00
153/F	-37.00
154/F	-38.00
155/F	-39.00
156/F	-40.00
157/F	-41.00
158/F	-42.00
159/F	-43.00
160/F	-44.00
161/F	-45.00
162/F	-46.00
163/F	-47.00
164/F	-48.00
165/F	-49.00
166/F	-50.00
167/F	-51.00
168/F	-52.00
169/F	-53.00
170/F	-54.00
171/F	-55.00
172/F	-56.00
173/F	-57.00
174/F	-58.00
175/F	-59.00
176/F	-60.00
177/F	-61.00
178/F	-62.00
179/F	-63.00
180/F	-64.00
181/F	-65.00
182/F	-66.00
183/F	-67.00
184/F	-68.00
185/F	-69.00
186/F	-70.00
187/F	-71.00
188/F	-72.00
189/F	-73.00
190/F	-74.00
191/F	-75.00
192/F	-76.00
193/F	-77.00
194/F	-78.00
195/F	-79.00
196/F	-80.00
197/F	-81.00
198/F	-82.00
199/F	-83.00
200/F	-84.00
201/F	-85.00
202/F	-86.00
203/F	-87.00
204/F	-88.00
205/F	-89.00
206/F	-90.00
207/F	-91.00
208/F	-92.00
209/F	-93.00
210/F	-94.00
211/F	-95.00
212/F	-96.00
213/F	-97.00
214/F	-98.00
215/F	-99.00
216/F	-100.00
217/F	-101.00
218/F	-102.00
219/F	-103.00
220/F	-104.00
221/F	-105.00
222/F	-106.00
223/F	-107.00
224/F	-108.00
225/F	-109.00
226/F	-110.00
227/F	-111.00
228/F	-112.00
229/F	-113.00
230/F	-114.00
231/F	-115.00
232/F	-116.00
233/F	-117.00
234/F	-118.00
235/F	-119.00
236/F	-120.00
237/F	-121.00
238/F	-122.00
239/F	-123.00
240/F	-124.00
241/F	-125.00
242/F	-126.00
243/F	-127.00
244/F	-128.00
245/F	-129.00
246/F	-130.00
247/F	-131.00
248/F	-132.00
249/F	-133.00
250/F	-134.00
251/F	-135.00
252/F	-136.00
253/F	-137.00
254/F	-138.00
255/F	-139.00
256/F	-140.00
257/F	-141.00
258/F	-142.00
259/F	-143.00
260/F	-144.00
261/F	-145.00
262/F	-146.00
263/F	-147.00
264/F	-148.00
265/F	-149.00
266/F	-150.00
267/F	-151.00
268/F	-152.00
269/F	-153.00
270/F	-154.00
271/F	-155.00
272/F	-156.00
273/F	-157.00
274/F	-158.00
275/F	-159.00
276/F	-160.00
277/F	-161.00
278/F	-162.00
279/F	-163.00
280/F	-164.00
281/F	-165.00
282/F	-166.00
283/F	-167.00
284/F	-168.00
285/F	-169.00
286/F	-170.00
287/F	-171.00
288/F	-172.00
289/F	-173.00
290/F	-174.00
291/F	-175.00
292/F	-176.00
293/F	-177.00
294/F	-178.00
295/F	-179.00
296/F	-180.00
297/F	-181.00
298/F	-182.00
299/F	-183.00
300/F	-184.00
301/F	-185.00
302/F	-186.00
303/F	-187.00
304/F	-188.00
305/F	-189.00
306/F	-190.00
307/F	-191.00
308/F	-192.00
309/F	-193.00
310/F	-194.00
311/F	-195.00
312/F	-196.00
313/F	-197.00
314/F	-198.00
315/F	-199.00
316/F	-200.00
317/F	-201.00
318/F	-202.00
319/F	-203.00
320/F	-204.00
321/F	-205.00
322/F	-206.00
323/F	-207.00
324/F	-208.00
325/F	-209.00
326/F	-210.00
327/F	-211.00
328/F	-212.00
329/F	-213.00
330/F	-214.00
331/F	-215.00
332/F	-216.00
333/F	-217.00
334/F	-218.00
335/F	-219.00
336/F	-220.00
337/F	-221.00
338/F	-222.00
339/F	-223.00
340/F	-224.00
341/F	-225.00
342/F	-226.00
343/F	-227.00
344/F	-228.00
345/F	-229.00
346/F	-230.00
347/F	-231.00
348/F	-232.00
349/F	-233.00
350/F	-234.00
351/F	-235.00
352/F	-236.00
353/F	-237.00
354/F	-238.00
355/F	-239.00
356/F	-240.00
357/F	-241.00
358/F	-242.00
359/F	-243.00
360/F	-244.00
361/F	-245.00
362/F	-246.00
363/F	-247.00
364/F	-248.00
365/F	-249.00
366/F	-250.00
367/F	-251.00
368/F	-252.00
369/F	-253.00
370/F	-254.00
371/F	-255.00
372/F	-256.00
373/F	-257.00
374/F	-258.00
375/F	-259.00
376/F	-260.00
377/F	-261.00
378/F	-262.00
379/F	-263.00
380/F	-264.00
381/F	-265.00
382/F	-266.00
383/F	-267.00
384/F	-268.00
385/F	-269.00
386/F	-270.00
387/F	-271.00
388/F	-272.00
389/F	-273.00
390/F	-274.00
391/F	-275.00
392/F	-276.00
393/F	-277.00
394/F	-278.00
395/F	-279.00
396/F	-280.00
397/F	-281.00
398/F	-282.00
399/F	-283.00
400/F	-284.00
401/F	-285.00
402/F	-286.00
403/F	-287.00
404/F	-288.00
405/F	-289.00
406/F	-290.00
407/F	-291.00
408/F	-292.00
409/F	-293.00
410/F	-294.00
411/F	-295.00
412/F	-296.00
413/F	-297.00
414/F	-298.00
415/F	-299.00
416/F	-300.00
417/F	-301.00
418/F	-302.00
419/F	-303.00
420/F	-304.00
421/F	-305.00
422/F	-306.00
423/F	-307.00
424/F	-308.00
425/F	-309.00
426/F	-310.00
427/F	-311.00
428/F	-312.00
429/F	-313.00
430/F	-314.00
431/F	-315.00
432/F	-316.00
433/F	-317.00
434/F	-318.00
435/F	-319.00
436/F	-320.00
437/F	-321.00
438/F	-322.00
439/F	-323.00
440/F	-324.00
441/F	-325.00
442/F	-326.00
443/F	-327.00
444/F	-328.00
445/F	-329.00
446/F	-330.00
447/F	-331.00
448/F	-332.00
449/F	-333.00
450/F	-334.00
451/F	-335.00
452/F	-336.00
453/F	-337.00
454/F	-338.00
455/F	-339.00
456/F	-340.00
457/F	-341.00
458/F	-342.00
459/F	-343.00
460/F	-344.00
461/F	-345.00
462/F	-346.00
463/F	-347.00
464/F	-348.00
465/F	-349.



- LEGEND:**
- ① 10mm HEAT STRENGTHENED GLASS (OUTER)
  - ② 12mm AIR SPACE +12mm THK. TEMPERED CLEAR GLASS (INNER)
  - ③ 10mm HEAT STRENGTHENED GLASS (OUTER)
  - ④ 12mm AIR SPACE +10mm THK. TEMPERED CLEAR GLASS (INNER)
  - ⑤ 12mm THK. HEAT STRENGTHENED GLASS & 21mm THK. CLEAR TEMPERED GLASS (INTERNAL PROTECTIVE BARRIER)
  - ⑥ 3mm THK. ALUM. CLADDING
  - ⑦ 3mm THK. ALUM. CLADDING
  - ⑧ 3mm THK. ALUM. CLADDING
  - ⑨ 3mm THK. ALUM. CLADDING
  - ⑩ 3mm THK. ALUM. CLADDING
  - ⑪ 3mm THK. ALUM. CLADDING
  - ⑫ 3mm THK. ALUM. CLADDING
  - ⑬ 3mm THK. ALUM. CLADDING
  - ⑭ 3mm THK. ALUM. CLADDING
  - ⑮ 3mm THK. ALUM. CLADDING
  - ⑯ 3mm THK. ALUM. CLADDING
  - ⑰ 3mm THK. ALUM. CLADDING
  - ⑱ 3mm THK. ALUM. CLADDING
  - ⑲ 3mm THK. ALUM. CLADDING
  - ⑳ 3mm THK. ALUM. CLADDING
  - ㉑ 3mm THK. ALUM. CLADDING
  - ㉒ 3mm THK. ALUM. CLADDING
  - ㉓ 3mm THK. ALUM. CLADDING
  - ㉔ 3mm THK. ALUM. CLADDING
  - ㉕ 3mm THK. ALUM. CLADDING
  - ㉖ 3mm THK. ALUM. CLADDING
  - ㉗ 3mm THK. ALUM. CLADDING
  - ㉘ 3mm THK. ALUM. CLADDING
  - ㉙ 3mm THK. ALUM. CLADDING
  - ㉚ 3mm THK. ALUM. CLADDING
  - ㉛ 3mm THK. ALUM. CLADDING
  - ㉜ 3mm THK. ALUM. CLADDING
  - ㉝ 3mm THK. ALUM. CLADDING
  - ㉞ 3mm THK. ALUM. CLADDING
  - ㉟ 3mm THK. ALUM. CLADDING
  - ㊱ 3mm THK. ALUM. CLADDING
  - ㊲ 3mm THK. ALUM. CLADDING
  - ㊳ 3mm THK. ALUM. CLADDING
  - ㊴ 3mm THK. ALUM. CLADDING
  - ㊵ 3mm THK. ALUM. CLADDING
  - ㊶ 3mm THK. ALUM. CLADDING
  - ㊷ 3mm THK. ALUM. CLADDING
  - ㊸ 3mm THK. ALUM. CLADDING
  - ㊹ 3mm THK. ALUM. CLADDING
  - ㊺ 3mm THK. ALUM. CLADDING
  - ㊻ 3mm THK. ALUM. CLADDING
  - ㊼ 3mm THK. ALUM. CLADDING
  - ㊽ 3mm THK. ALUM. CLADDING
  - ㊾ 3mm THK. ALUM. CLADDING
  - ㊿ 3mm THK. ALUM. CLADDING
- KEY:**
- ① - ALUM. EXTRUSION JOINT NO.
  - ② - SUPPORT POINT (WIND LOAD + DEAD LOAD)
  - ③ - SUPPORT POINT (WIND LOAD)

**CLIENT:** SHIMAO GROUP HOLDINGS LIMITED

**ARCHITECT:** WONG TUNG & PARTNERS LIMITED

**MAIN CONTRACTOR:** 協興建築有限公司  
HIP HING CONSTRUCTION CO LTD

**STRUCTURAL ENGINEER:** C.M. WONG & ASSOCIATES LTD

**FAÇADE CONSULTANT:** MENYHARDT

**DATE:** 05-OCT-21

**SOME:** 1:60 (A1)

**TITLE:** PART ELEVATION FOR CURTAIN WALL AT TOWER 3

**PROJECT:** PROPOSED RESIDENTIAL DEVELOPMENT AT N.K.I.L. 8542 YIN PING ROAD KOWLOON

**DRAWN BY:** LHR

**CHECKED BY:**

**DATE:** 05-OCT-21

**JOB NO.:** J-853

**PROPOSED RESIDENTIAL DEVELOPMENT AT N.K.I.L. 8542 YIN PING ROAD KOWLOON**

**LEGEND:**

- ① DETAIL MARK NO.
- ② REFER SHEET NO.
- ③ FINISHED FLOOR LEVEL
- ④ STRUCTURAL FLOOR LEVEL
- ⑤ REVERSED METAL

**NOTE:**

1. ALL DIMENSIONS ARE IN mm.
2. ALL ELEVATIONS ARE VIEWED FROM OUTSIDE.
3. ALL DIMENSIONS TO BE VIEWED ON SITE BEFORE FABRICATION.

**REV.:** B

**SHIMAO GROUP HOLDINGS LIMITED**

**WONG TUNG & PARTNERS LIMITED**

**協興建築有限公司**

**HIP HING CONSTRUCTION CO LTD**

**C.M. WONG & ASSOCIATES LTD**

**MENYHARDT**

**DATE:** 05-OCT-21

**SOME:** 1:60 (A1)

**TITLE:** PART ELEVATION FOR CURTAIN WALL AT TOWER 3

**PROJECT:** PROPOSED RESIDENTIAL DEVELOPMENT AT N.K.I.L. 8542 YIN PING ROAD KOWLOON

**DRAWN BY:** LHR

**CHECKED BY:**

**DATE:** 05-OCT-21

**JOB NO.:** J-853

**PROPOSED RESIDENTIAL DEVELOPMENT AT N.K.I.L. 8542 YIN PING ROAD KOWLOON**

**LEGEND:**

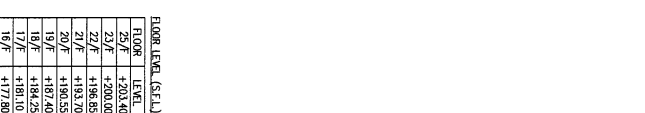
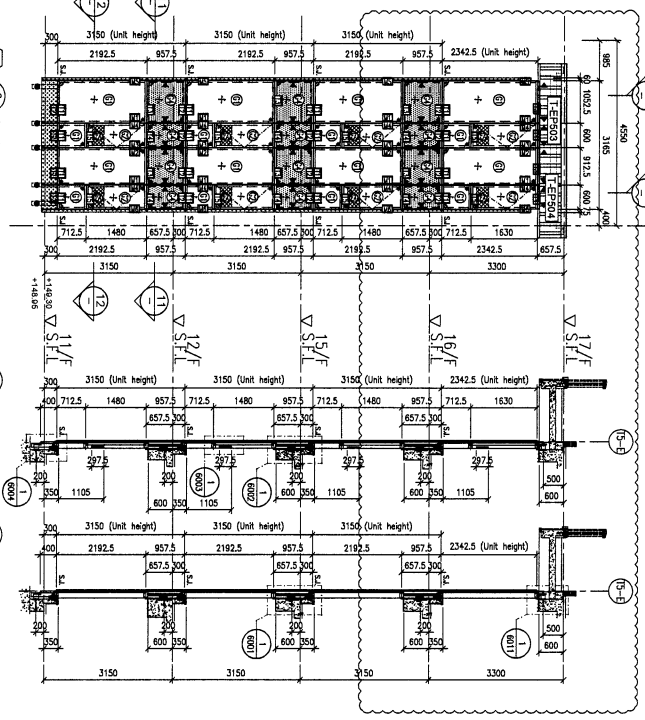
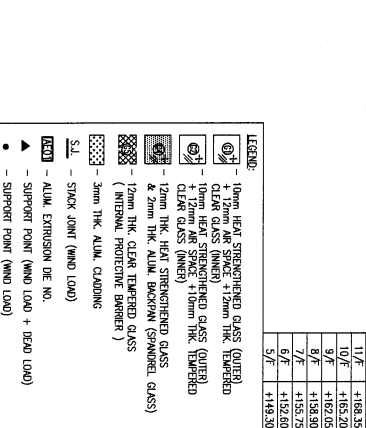
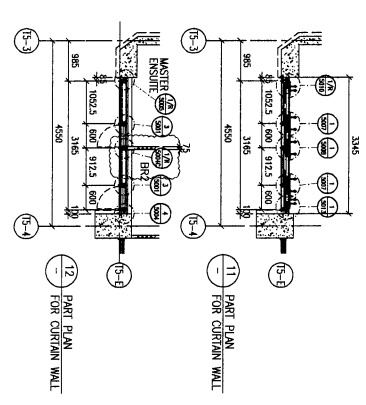
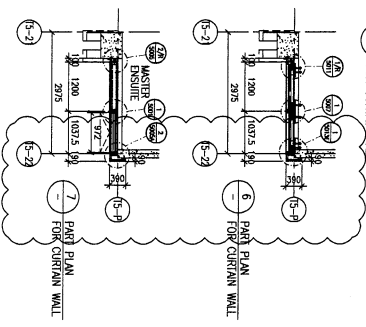
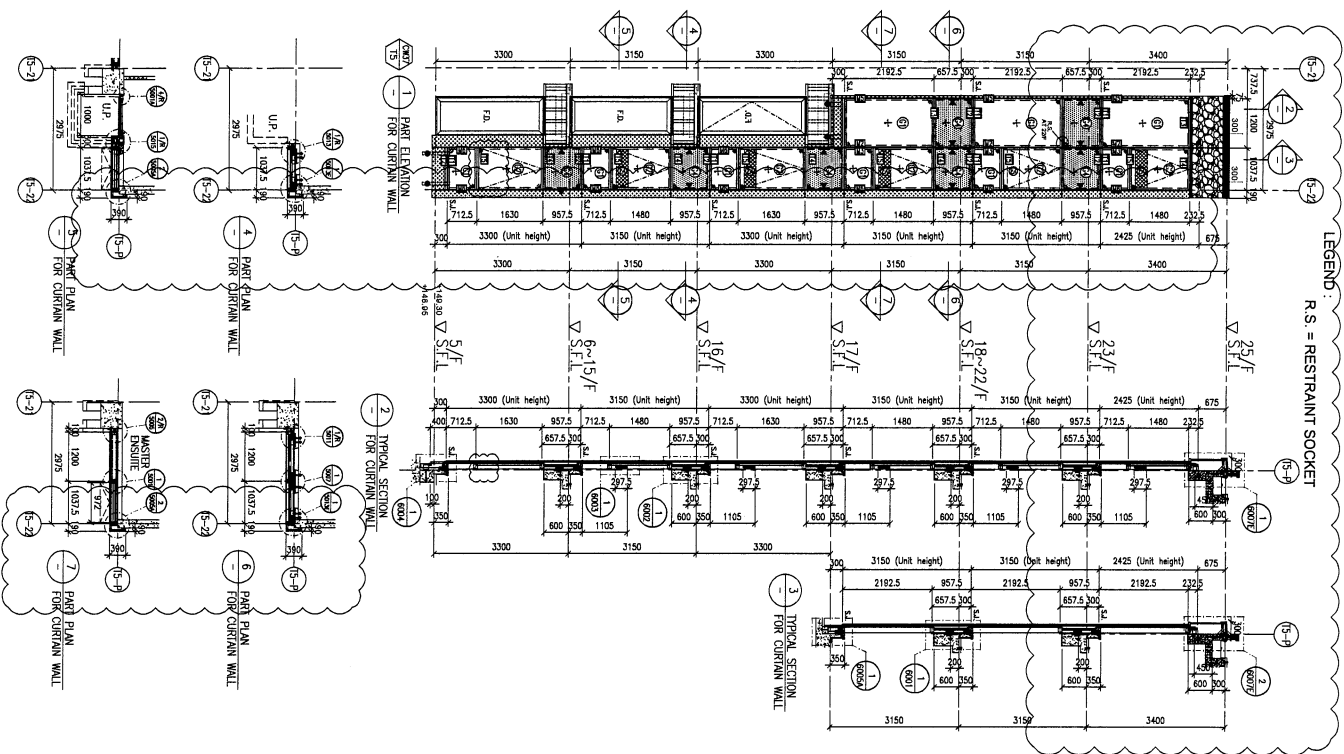
- ① DETAIL MARK NO.
- ② REFER SHEET NO.
- ③ FINISHED FLOOR LEVEL
- ④ STRUCTURAL FLOOR LEVEL
- ⑤ REVERSED METAL

**NOTE:**

1. ALL DIMENSIONS ARE IN mm.
2. ALL ELEVATIONS ARE VIEWED FROM OUTSIDE.
3. ALL DIMENSIONS TO BE VIEWED ON SITE BEFORE FABRICATION.

**REV.:** B

LEGEND:  
R.S. = RESTRAINT SOCKET



LEGEND:

- 12mm HEAT STRENGTHENED GLASS (OUTER)
- 12mm HEAT STRENGTHENED GLASS (INNER)
- 12mm HEAT STRENGTHENED GLASS (OUTER) CLEAR GLASS (INNER)
- 12mm HEAT STRENGTHENED GLASS (OUTER) CLEAR GLASS (INNER) & 2mm THK. ALUM. BARRIER (INTERNAL PROTECTIVE BARRIER)
- 12mm THK. HEAT STRENGTHENED GLASS & 2mm THK. ALUM. BARRIER (SPANDREL GLASS)
- 3mm THK. ALUM. CASING
- ALUM. EXTENSION BE NO.
- SUPPRT POINT (WIND LOAD)
- SUPPRT POINT (WIND LOAD)

FLOOR LEVEL (S.F.L.)	FLOOR LEVEL
25/F	+200.40
22/F	+200.00
21/F	+198.85
20/F	+198.70
19/F	+193.50
18/F	+182.45
17/F	+181.10
16/F	+177.80
15/F	+174.65
12/F	+171.50
11/F	+168.35
10/F	+165.20
9/F	+162.05
7/F	+158.90
6/F	+152.60
5/F	+148.30

DATE: 31-MAR-21  
SCALE: 1:60 (A1)  
DRAWN BY: LHR  
CHECKED BY:  
PROJECT: PROPOSED RESIDENTIAL DEVELOPMENT AT N.K.I.L. 6542 KOWLOON  
TITLE: PART ELEVATION FOR CURTAIN WALL AT TOWER 5  
DRAWN BY: LHR  
SCALE: 1:60 (A1)  
CHECKED BY:  
PROJECT: PROPOSED RESIDENTIAL DEVELOPMENT AT N.K.I.L. 6542 KOWLOON  
TITLE: PART ELEVATION FOR CURTAIN WALL AT TOWER 5

SHIMAO GROUP HOLDINGS LIMITED  
SHIMAO BUILDING GROUP LIMITED  
C.M. WONG & ASSOCIATES LTD  
HHP HING CONSTRUCTION CO LTD  
MWHARDT  
CMA  
ARCHITECT: SHIMAO GROUP HOLDINGS LIMITED  
STRUCTURAL ENGINEER: C.M. WONG & ASSOCIATES LTD  
CONTRACTOR: HHP HING CONSTRUCTION CO LTD  
CLIENT: SHIMAO GROUP HOLDINGS LIMITED  
E.O. REF:

NOTE:  
1. ALL DIMENSIONS ARE IN mm.  
2. ALL ELEVATIONS ARE REFERRED FROM OUTSIDE REFERENCE FABRICATION.  
3. ALL DIMENSIONS TO BE CHECKED ON SITE.  
LEGEND:  
1. DETAIL MARK NO.  
2. REEVE SHEET NO.  
3. 1. F.F.L. - FINISHED FLOOR LEVEL.  
2. S.F.L. - STRUCTURAL FLOOR LEVEL.  
3. (R) - REVERSED DETAIL.

DATE: 31-MAR-21  
SCALE: 1:60 (A1)  
DRAWN BY: LHR  
CHECKED BY:  
PROJECT: PROPOSED RESIDENTIAL DEVELOPMENT AT N.K.I.L. 6542 KOWLOON  
TITLE: PART ELEVATION FOR CURTAIN WALL AT TOWER 5  
DRAWN BY: LHR  
SCALE: 1:60 (A1)  
CHECKED BY:  
PROJECT: PROPOSED RESIDENTIAL DEVELOPMENT AT N.K.I.L. 6542 KOWLOON  
TITLE: PART ELEVATION FOR CURTAIN WALL AT TOWER 5