

工程指示 / 要求簡箋 ENGINEER INSTRUCTIONS(E.I.)

工程指示編號:	EI- 5800	修改版本:	-
	HK- /		
工程編號:	J 853	工程名稱:	延坪道
收件人:	Maggie Lor	發件人:	Joe Chan
工程項目:	Podium Ceiling Cladding Feature (Part 3) 第二批 鐵件生產	日期:	02/03/2023

<input checked="" type="checkbox"/> 原合約工程包	<input type="checkbox"/> 原合約工程加 / 減賬 QT-	<input type="checkbox"/> 新工程報價 QT-
--	--	------------------------------------

信件批核號碼/圖紙參考編號:	批核模具圖紙編號:
客戶指示附件:	管理內部批簽署:

<input type="checkbox"/> 初步鋁料 B.M.	<input type="checkbox"/> 加工拆圖, 然後生產	<input type="checkbox"/> 尺寸表
<input type="checkbox"/> 正式鋁料 B.M.	<input type="checkbox"/> 技術上資料/指示	<input type="checkbox"/> 報價
<input type="checkbox"/> 配件 B.M.	<input type="checkbox"/> 樣辦或貨品說明書	<input type="checkbox"/> 分判合約
<input type="checkbox"/> 其他:		

內容: 請依附件資料, 生產GMS鐵件, 送地盤. 部份構件需在鐵廠收螺絲, 安裝角碼, 鐵廠需按加工圖中所示, 收好螺絲出貨. 廠驗焊: 10%磁粉, 100%目測. 驗焊報告名稱: 待定.
完成上列要求日期: 31/03/2023 ASAP

國內

<input type="checkbox"/> 生產技術總監	<input type="checkbox"/> 連附件	<input type="checkbox"/> 技術部	<input type="checkbox"/> 連附件	<input type="checkbox"/> 生產部	<input type="checkbox"/> 連附件
<input type="checkbox"/> 採購部	<input type="checkbox"/> 連附件	<input type="checkbox"/> 生產統籌部	<input type="checkbox"/> 連附件	<input type="checkbox"/> 報關組	<input type="checkbox"/> 連附件
<input type="checkbox"/> 質檢部	<input type="checkbox"/> 連附件	<input type="checkbox"/> 會計部	<input type="checkbox"/> 連附件	<input type="checkbox"/> 機械設計部	<input type="checkbox"/> 連附件
<input type="checkbox"/> 香港辦	<input type="checkbox"/> 連附件	<input type="checkbox"/> 其他:			

香港

<input type="checkbox"/> 行政部	<input type="checkbox"/> 連附件	<input type="checkbox"/> 會計部	<input type="checkbox"/> 連附件	<input type="checkbox"/> 統籌部	<input type="checkbox"/> 連附件	<input type="checkbox"/> 工程部	<input type="checkbox"/> 連附件
<input type="checkbox"/> 採購部	<input type="checkbox"/> 連附件	<input type="checkbox"/> QS部	<input type="checkbox"/> 連附件	<input checked="" type="checkbox"/> 地盤管理	<input checked="" type="checkbox"/> 連附件	<input type="checkbox"/> 維修部	<input type="checkbox"/> 連附件

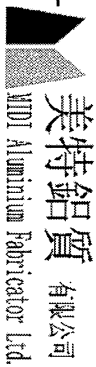
炳哥

*發件人簽署:		*組別成員批核簽署:	
傳遞編號:		項目經理簽署:	

①

美特鋁質有限公司 MOT Aluminium Fabricator Ltd		工程號:	J853 T6 3/F	計算:		日期:	1/3/2023	送呈:			
地盤鐵件BM表		地盤名稱	香港延坪道	核對:	陳松文	日期:	1/3/2023	副本:			
BM編號:		項目類別	天花 (Part 3) 第二批	批准:	陳梓豪	日期:	1/3/2023				
修改版次:		鐵件名稱		A/C Code:	2023/02/23 <th colspan="2">鐵件總重量KG:</th> <td>4111.45</td> <td></td>	鐵件總重量KG:		4111.45			
序號	修改內容	鐵件圖號	鐵件名稱	顏色	實用	後備	總數	單位	單件 (kg)	總重量 (kg)	備註
1		T6-3F-AK01-01	75x50x5mm THK. GMS.ANGLE.(S7)	熱浸鋅	21	0	21	件	1.12	23.52	
2		T6-3F-AK01-02	75x50x5mm THK. GMS.ANGLE.(S7)	熱浸鋅	2	0	2	件	16.80	33.60	
3		T6-3F-BK01-01	200x200x10mm THK. GMS.PLATE	熱浸鋅	53	0	53	件	3.14	166.42	
4		T6-3F-BK01-02	200x200x10mm THK. GMS.PLATE	熱浸鋅	1	0	1	件	3.14	3.14	
5		T6-3F-BK11-01	150x150x10mm THK. GMS.PLATE	熱浸鋅	10	0	10	件	1.77	17.66	
6		T6-3F-BK21-02	75x50x6mm THK. GMS.ANGEL (S7)	熱浸鋅	11	0	11	件	1.12	12.32	
7		T6-3F-BK31-01	200x100x10mm THK. GMS.ANGEL (S12)	熱浸鋅	25	0	25	件	4.54	113.40	
8		T6-3F-BK41-01	125x75x7mm THK. GMS.ANGLE.(S1)	熱浸鋅	66	0	66	件	1.58	104.54	
9		T6-3F-BK41-02	125x75x7mm THK. GMS.ANGLE.(S1)	熱浸鋅	80	0	80	件	2.11	168.96	
10		T6-3F-LA01-01	50x50x5mm THK. GMS.ANGLE.(S8)	熱浸鋅	1	0	1	件	7.48	7.48	
11		T6-3F-LA01-02	50x50x5mm THK. GMS.ANGLE.(S8)	熱浸鋅	1	0	1	件	9.49	9.49	
12		T6-3F-LA01-03	50x50x5mm THK. GMS.ANGLE.(S8)	熱浸鋅	1	0	1	件	12.05	12.05	
13		T6-3F-LA01-04	50x50x5mm THK. GMS.ANGLE.(S8)	熱浸鋅	4	0	4	件	11.19	44.76	
14		T6-3F-LA01-05	50x50x5mm THK. GMS.ANGLE.(S8)	熱浸鋅	1	0	1	件	7.44	7.44	
15		T6-3F-LA01-06	50x50x5mm THK. GMS.ANGLE.(S8)	熱浸鋅	1	0	1	件	8.15	8.15	
16		T6-3F-LA01-07	50x50x5mm THK. GMS.ANGLE.(S8)	熱浸鋅	1	0	1	件	10.11	10.11	
17		T6-3F-LA01-08	50x50x5mm THK. GMS.ANGLE.(S8)	熱浸鋅	1	0	1	件	9.92	9.92	
18		T6-3F-LA01-09	50x50x5mm THK. GMS.ANGLE.(S8)	熱浸鋅	1	0	1	件	11.10	11.10	
19		T6-3F-LA01-10	50x50x5mm THK. GMS.ANGLE.(S8)	熱浸鋅	1	0	1	件	9.01	9.01	

②



美特鋁質 有限公司
 MTDI Aluminium Fabricator Ltd.
 工程號: J853 T6 3/F
 地盤名稱: 香港延坪道
 項目類別: 天花 (Part 3) 第二批
 計算: 李傳鵬
 核對: 練松文
 批准: 陳梓豪
 日期: 1/3/2023
 日期: 1/3/2023
 日期: 1/3/2023
 送呈: _____
 副本: _____

BM編號: _____ 修改版次: _____ A/C Code : 2023/02/23 鐵件總重量KG: 4111.45

序號	修改內容	鐵件圖號	鐵件名稱	顏色	實用	後備	總數	單位	單件 (kg)	總重量 (kg)	備註
20		T6-3F-LA01-11	50X50X5mm THK. GMS.ANGLE.(S8)	熱浸鋅	1	0	1	件	7.44	7.44	
21		T6-3F-LA01-12	50X50X5mm THK. GMS.ANGLE.(S8)	熱浸鋅	1	0	1	件	10.75	10.75	
22		T6-3F-LA01-13	50X50X5mm THK. GMS.ANGLE.(S8)	熱浸鋅	1	0	1	件	10.24	10.24	
23		T6-3F-LA01-14	50X50X5mm THK. GMS.ANGLE.(S8)	熱浸鋅	1	0	1	件	7.19	7.19	
24		T6-3F-LA01-15	50X50X5mm THK. GMS.ANGLE.(S8)	熱浸鋅	1	0	1	件	7.44	7.44	
25		T6-3F-LA01-16	50X50X5mm THK. GMS.ANGLE.(S8)	熱浸鋅	1	0	1	件	4.03	4.03	
26		T6-3F-LA01-17	50X50X5mm THK. GMS.ANGLE.(S8)	熱浸鋅	1	0	1	件	5.02	5.02	
27		T6-3F-LA01-18	50X50X5mm THK. GMS.ANGLE.(S8)	熱浸鋅	2	0	2	件	9.07	18.14	
28		T6-3F-LA02-01	40X40X5mm THK. GMS.ANGLE.(S9)	熱浸鋅	11	0	11	件	8.81	96.86	
29		T6-3F-LA02-02	40X40X5mm THK. GMS.ANGLE.(S9)	熱浸鋅	1	0	1	件	7.50	7.50	
30		T6-3F-LA02-03	40X40X5mm THK. GMS.ANGLE.(S9)	熱浸鋅	1	0	1	件	7.50	7.50	
31		T6-3F-LA03-01	100X50X6mm THK. GMS.ANGLE.(S6)	熱浸鋅	5	0	5	件	16.17	80.83	
32		T6-3F-MS01-01	40X40X5mm THK. GMS.RHS.(S4)	熱浸鋅	30	0	30	件	4.68	140.45	
33		T6-3F-MS02-01	40X40X5mm THK. GMS.RHS.(S4)	熱浸鋅	12	0	12	件	15.96	191.52	
34		T6-3F-MS03-01	40X40X5mm THK. GMS.RHS.(S4)	熱浸鋅	4	0	4	件	19.55	78.20	
35		T6-3F-MS03-02	40X40X5mm THK. GMS.RHS.(S4)	熱浸鋅	4	0	4	件	17.59	70.35	
36		T6-3F-MS11-01	40X40X5mm THK. GMS.SHS.	熱浸鋅	1	0	1	件	22.19	22.19	
37		T6-3F-MS11-02	40X40X5mm THK. GMS.SHS.	熱浸鋅	1	0	1	件	26.49	26.49	
38		T6-3F-MS11-03	40X40X5mm THK. GMS.SHS.	熱浸鋅	1	0	1	件	115.55	115.55	

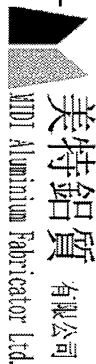
3

美特鋁質有限公司 MIDI Aluminium Fabricator Ltd		工程號:	J853 T6 3/F	計算:	李傳鵬	日期:	1/3/2023	送呈:			
地盤鐵件BM表		地盤名稱:	香港延坪道	核對:	繙松文	日期:	1/3/2023	副本:			
BM編號:		項目類別:	天花 (Part 3) 第二批	批准:	陳梓豪	日期:	1/3/2023				
		修改版次:		A/C Code:	2023/02/23	鐵件總重量KG:		4111.45			
序號	修改內容	鐵件圖號	鐵件名稱	顏色	實用	後備	總數	單位	單件重量 (kg)	總重量 (kg)	備註
39		T6-3F-MS11-04	40X40X5mm THK. GMS.SHS.	熱浸鋅	1	0	1	件	120.77	120.77	
40		T6-3F-MS12-01	40X40X5mm THK. GMS.SHS.	熱浸鋅	1	0	1	件	175.12	175.12	
41		T6-3F-MS12-02	40X40X5mm THK. GMS.SHS.	熱浸鋅	1	0	1	件	48.55	48.55	
42		T6-3F-MS12-03	40X40X5mm THK. GMS.SHS.	熱浸鋅	1	0	1	件	66.95	66.95	
43		T6-3F-MS12-04	40X40X5mm THK. GMS.SHS.	熱浸鋅	1	0	1	件	64.62	64.62	
44		T6-3F-ST01-01	S3+S5+S7	熱浸鋅	14	0	14	件	12.40	173.60	
45		T6-3F-ST02-01	S2+S3+S5+S7	熱浸鋅	23	0	23	件	35.80	823.40	
46		T6-3F-ST02-02	S2+S3+S5+S7	熱浸鋅	5	0	5	件	37.90	189.50	
47		T6-3F-ST03-01	S2+S3+S5+S7	熱浸鋅	5	0	5	件	34.50	172.50	
48		T6-3F-ST03-02	S2+S3+S5+S7	熱浸鋅	2	0	2	件	43.80	87.60	
49		T6-3F-TM01-01	40X40X5mm THK. GMS.SHS.	熱浸鋅	1	0	1	件	15.93	15.93	
50		T6-3F-TM01-02	40X40X5mm THK. GMS.SHS.	熱浸鋅	1	0	1	件	15.93	15.93	
51		T6-3F-TM01-03	40X40X5mm THK. GMS.SHS.	熱浸鋅	1	0	1	件	15.93	15.93	
52		T6-3F-TM02-01	40X40X5mm THK. GMS.SHS.	熱浸鋅	1	0	1	件	10.39	10.39	
53		T6-3F-TM02-02	40X40X5mm THK. GMS.SHS.	熱浸鋅	1	0	1	件	13.70	13.70	
54		T6-3F-TM02-03	40X40X5mm THK. GMS.SHS.	熱浸鋅	1	0	1	件	16.26	16.26	
55		T6-3F-TM02-04	40X40X5mm THK. GMS.SHS.	熱浸鋅	1	0	1	件	11.91	11.91	
56		T6-3F-TM02-05	40X40X5mm THK. GMS.SHS.	熱浸鋅	1	0	1	件	15.19	15.19	
57		T6-3F-TM02-06	40X40X5mm THK. GMS.SHS.	熱浸鋅	1	0	1	件	16.55	16.55	

④

美特鋁質 有限公司 MIDI Aluminium Fabricator Ltd.		工程號:	J853 T6 3/F	計算:	李傳鵬	日期:	1/3/2023	送呈:			
地盘鐵件B/M表		地盘名稱:	香港延坪道	核對:	練松文	日期:	1/3/2023	副本:			
B/M編號:		項目類別:	天花 (Part 3) 第二批	批准:	陳梓豪	日期:	1/3/2023				
修改版次:		修改版次:		A/C Code:	2023/02/23 <th colspan="2">鐵件總重量KG:</th> <td>4111.45</td> <td></td>	鐵件總重量KG:		4111.45			
序號	修改內容	鐵件圖號	鐵件名稱	顏色	實用	後備	總數	單位	單件 (kg)	總重量 (kg)	備注
58		T6-3F-TM02-07	40x40x5mm THK. GMS.SHS.	熱浸鋅	1	0	1	件	14.78	14.78	
59		T6-3F-TM02-08	40x40x5mm THK. GMS.SHS.	熱浸鋅	1	0	1	件	15.30	15.30	
60		T6-3F-TM02-09	40x40x5mm THK. GMS.SHS.	熱浸鋅	1	0	1	件	15.57	15.57	
61		T6-3F-TM02-10	40x40x5mm THK. GMS.SHS.	熱浸鋅	1	0	1	件	15.56	15.56	
62		T6-3F-TM02-11	40x40x5mm THK. GMS.SHS.	熱浸鋅	1	0	1	件	14.63	14.63	
63		T6-3F-TM02-12	40x40x5mm THK. GMS.SHS.	熱浸鋅	1	0	1	件	15.83	15.83	
64		T6-3F-TM02-13	40x40x5mm THK. GMS.SHS.	熱浸鋅	1	0	1	件	14.57	14.57	
65		T6-3F-TM02-14	40x40x5mm THK. GMS.SHS.	熱浸鋅	1	0	1	件	12.45	12.45	
66		T6-3F-TM02-15	40x40x5mm THK. GMS.SHS.	熱浸鋅	1	0	1	件	7.29	7.29	
67		T6-3F-TM11-01	40x40x5mm THK. GMS.SHS.	熱浸鋅	18	0	18	件	4.58	82.35	
68		T6-3F-TM11-02	40x40x5mm THK. GMS.SHS.	熱浸鋅	15	0	15	件	4.36	65.44	
69		T6-3F-TM12-01	40x40x5mm THK. GMS.SHS.	熱浸鋅	1	0	1	件	4.09	4.09	
70		T6-3F-TM12-02	40x40x5mm THK. GMS.SHS.	熱浸鋅	1	0	1	件	3.33	3.33	
71		T6-3F-TM12-03	40x40x5mm THK. GMS.SHS.	熱浸鋅	1	0	1	件	3.28	3.28	
72		T6-3F-TM12-04	40x40x5mm THK. GMS.SHS.	熱浸鋅	1	0	1	件	3.02	3.02	
73		T6-3F-TM12-05	40x40x5mm THK. GMS.SHS.	熱浸鋅	1	0	1	件	4.51	4.51	
74		T6-3F-TM12-06	40x40x5mm THK. GMS.SHS.	熱浸鋅	2	0	2	件	4.28	8.55	
75		T6-3F-TM12-07	40x40x5mm THK. GMS.SHS.	熱浸鋅	1	0	1	件	4.28	4.28	
76		T6-3F-TM12-08	40x40x5mm THK. GMS.SHS.	熱浸鋅	1	0	1	件	1.59	1.59	

5



美特鋁質有限公司
MTDI Aluminium Fabricator Ltd

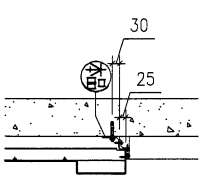
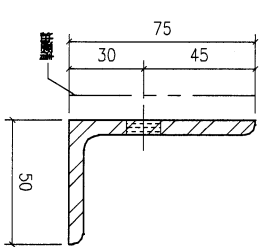
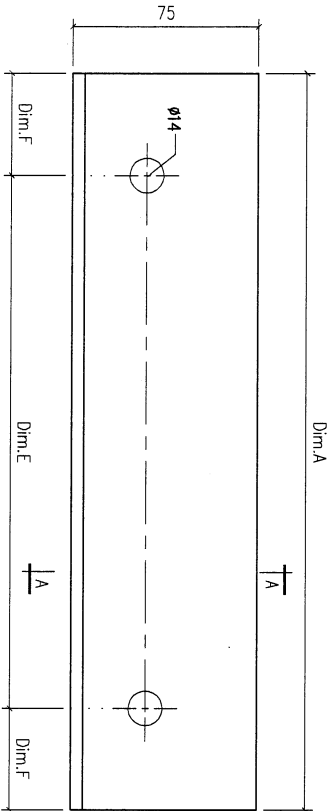
地盘鐵件BM表

工程號:	J853 T6 3/F	計算:	李傳鵬	日期:	1/3/2023	送呈:
地盘名稱:	香港延坪道	核對:	練松文	日期:	1/3/2023	副本:
項目類別:	天花 (Part 3) 第二批	批准:	陳梓豪	日期:	1/3/2023	
BM編號:		A/C Code :	2023/02/23	鐵件總重量KG:	4111.45	
修改版次:						

序號	修改內容	鐵件圖號	鐵件名稱	顏色	實用	後備	總數	單位	單件 (kg)	總重量 (kg)	備注
77		T6-3F-TM12-09	40x40x5mm THK. GMS.SHS.	熱浸鋅	1	0	1	件	3.98	3.98	
78		T6-3F-TM12-10	40x40x5mm THK. GMS.SHS.	熱浸鋅	1	0	1	件	3.53	3.53	
79		T6-3F-TM12-11	40x40x5mm THK. GMS.SHS.	熱浸鋅	1	0	1	件	4.22	4.22	
80		T6-3F-TM12-12	40x40x5mm THK. GMS.SHS.	熱浸鋅	6	0	6	件	4.52	27.13	
81		T6-3F-TM12-13	40x40x5mm THK. GMS.SHS.	熱浸鋅	1	0	1	件	4.24	4.24	
82		T6-3F-TM12-14	40x40x5mm THK. GMS.SHS.	熱浸鋅	1	0	1	件	5.06	5.06	
83		T6-3F-TM12-15	40x40x5mm THK. GMS.SHS.	熱浸鋅	4	0	4	件	4.21	16.85	
84		T6-3F-TM12-16	40x40x5mm THK. GMS.SHS.	熱浸鋅	1	0	1	件	4.81	4.81	
85											
86				TOATL:			492			4111.45	

6

REV. ORDERED PART NUMBER	Dim. A	Dim. B	Dim. C	Dim. D	Dim. E	Dim. F	Dim. G	QTY	Inv. Code	ASSEMBLY ON PARTS	EXTR. DRAWING PART DRAWING
16-3F-AK01-01	200.0				1x100c/450.0			21			

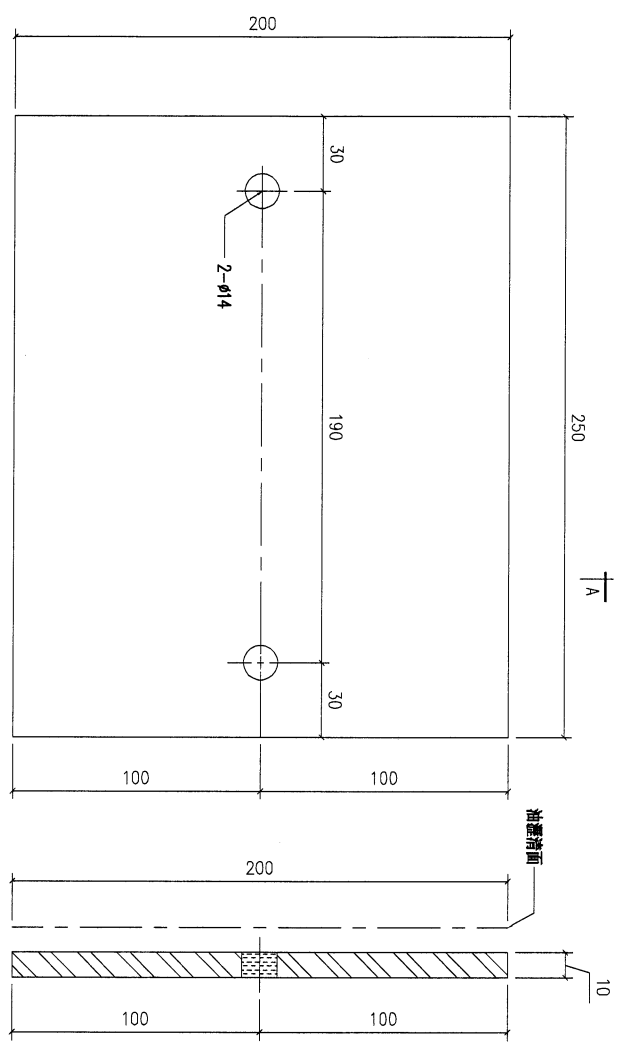
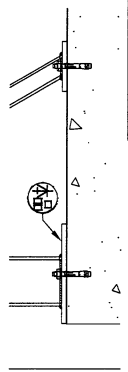


VS = VISIBLE SURFACE
ALL DIMENSIONS IN MILLIMETRES

REV.	DATE	AMENDMENT	REVISED BY	PROJECT	JOB NO.	DRAWING TITLE	W/CENTRE	CUT ENDS	FINISH	DRAWN	POST PAINT	PART	SHT.	REV.
-	-	-	-	Units 6-8, Sunray Industrial Centre, 1/F 610 Cha Kwo Ling Road, Kowloon Tel: 23489211-4 Fax: (852) 2727666	J853	鐵料加工圖 75x50x5mm THK. GMS. ANGLE. (S7)	M00/S00A/FAB	N/A		YEUING	SCALE 1:2	TRACK TYPE S.....	1 of 2	-
				美特鋁質有限公司 MIDI ALUMINIUM FABRICATOR LTD. 610 Cha Kwo Ling Road, Kowloon Tel: 23489211-4 Fax: (852) 2727666		FACTORY 01 Standard X X . = ±1 Tolerances X X . X = ±0.5		DATE 2/23/2023	DATE 2/23/2023	SCALE 1:2	TRACK TYPE S.....			

8

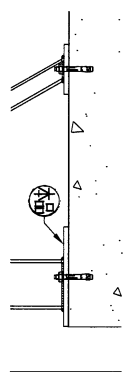
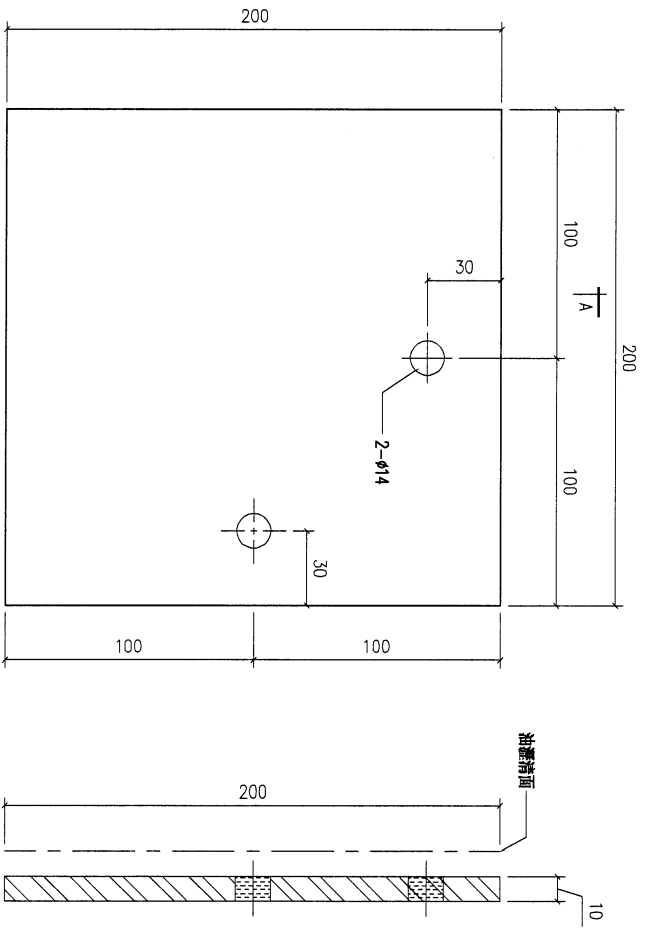
REV. ORIGINATED DRAW NO.	PART NUMBER	Dim. A	Dim. B	Dim. C	Dim. D	Dim. E	Dim. F	Dim. G	QTY	Inv. Code	ASSEMBLE ON PARTS	EXTR. DRAWING PART DRAWING
-	T6-3F-BK01-01								53			<input checked="" type="checkbox"/>



VS = VISIBLE SURFACE
ALL DIMENSIONS IN MILLIMETRES

REV.	DATE	AMENDMENT	REVISED BY	美特鋁質有限公司 MIDI ALUMINUM FABRICATOR LTD. Units 6-8, Sunray Industrial Centre, 1/F 610 Cha Kwo Ling Road, Kowloon Tel: 23489211-4 Fax: (852) 27727666				PROJECT	JOB NO.	DRAWING TITLE	FACTORY	W/ENGINE	CUT ENDS	FINISH	DRAWN	POST PAINT	PART	SHT.	REV.	
-	-	-	-					J853-PODIUM ALUM CEILING	J853	250x200x10mm THK. GMS. PLATE	01	M06/S06/FAB	N/A		YEUNG	<input checked="" type="checkbox"/>		1 of 2	-	
								& FEATURE CLADDING T6 3/F			Standard	X X . = ±1	Angle	±1°						
											Tolerances	X X . X = ±0.5	Squareness	±1°	DATE	2/23/2023	SCALE	1:2	TRACK TYPE	S.....

REV. SHEET NO.	PART NUMBER	Dim. A	Dim. B	Dim. C	Dim. D	Dim. E	Dim. F	Dim. G	QTY	Inv. Code	ASSEMBLY ON PARTS	EXTR. DRAWING PART DRAWING
-	T6-3F-BK01-02								1			

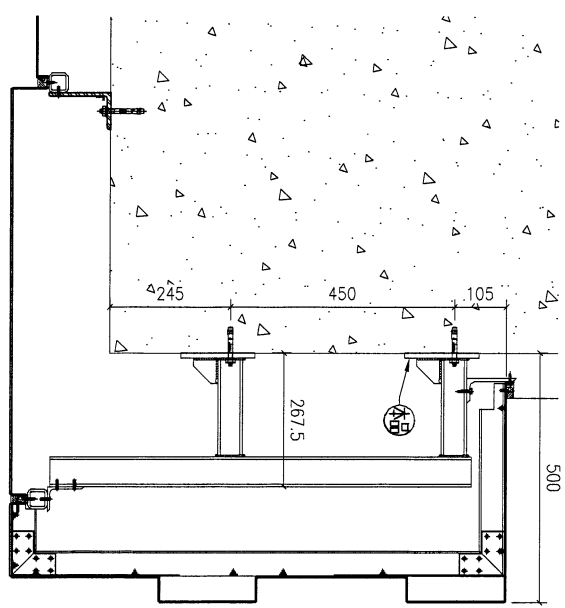
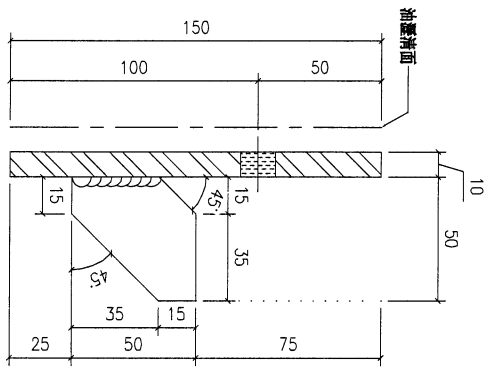
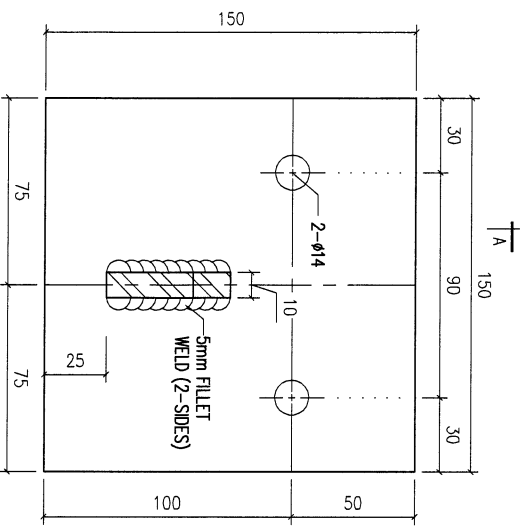


VS = VISIBLE SURFACE
ALL DIMENSIONS IN MILLIMETRES

REV.	DATE	AMENDMENT	REVISED BY	PROJECT	JOB NO.	FACTORY	W/CENTRE	CUT ENDS	FINISH	DRAWN	POST PAINT	PART	SHT.	REV.	
-	-	-	-	J853-PODIUM ALUM CEILING & FEATURE CLADDING T6 3/F	J853	01	MDF/SMA/FAB	N/A		YEUNG	SCALE 1:2	TRACK TYPE S.....	2 of 2	-	
				美特鋁質有限公司 MTDI ALUMINIUM FABRICATOR LTD. Units 6-8, Sunray Industrial Centre, 1/F 610 Cha Kwo Ling Road, Kowloon Tel: 23489211-4 Fax: (852) 27727666		Standard X X . = ±1 Tolerances X X . X = ±0.5		Angle ±1' Squariness ±1'		DATE 2/23/2023 DRAWING TITLE 鐵料加工圖 200x200x10mm THK. GMS. PLATE		熱浸 PRE PAINT <input checked="" type="checkbox"/> PART <input type="checkbox"/> SUB ASSEM.			

10

REV.	CHANGED BY	PART NUMBER	Dim. A	Dim. B	Dim. C	Dim. D	Dim. E	Dim. F	Dim. G	QTY	Inv. Code	ASSEMBLE ON PARTS	EXTR. DRAWING PART DRAWING
-		T6-3F-BK11-01								10			



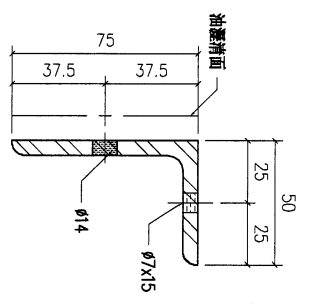
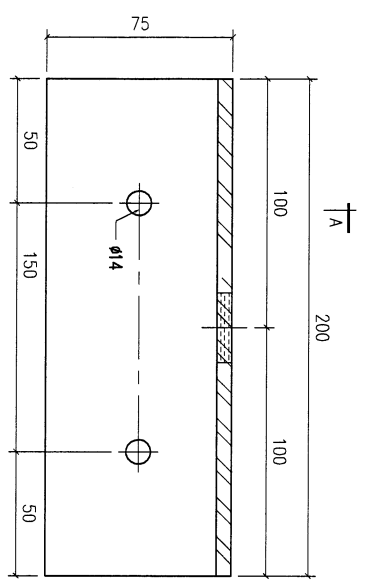
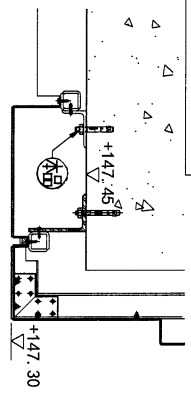
REF: 25/6006

VS = VISIBLE SURFACE
ALL DIMENSIONS IN MILLIMETRES

REV.		DATE	AMENDMENT	REVISED BY	美特鋁質有限公司 MIDI ALUMINUM FABRICATOR LTD. Units 6-8, Sunray Industrial Centre, 1/F 610 Cha Kwo Ling Road, Kowloon Tel: 23489211-4 Fax: (852) 27727666		PROJECT J853-PODIUM ALUM CEILING & FEATURE CLADDING T6 3/F		JOB NO. J853	FACTORY 01 W/CENTRE M02/S02A /FAB CUT ENDS N/A FINISH 熱浸 POST PAINT PRE PAINT <input checked="" type="checkbox"/> SCALE 1:2 PART SUB ASSEM. <input checked="" type="checkbox"/> TRACK TYPE S.....			
DRAWING TITLE					鐵料加工圖 150x150x10mm THK. GMS. PLATE		DRAWING NO.		T6-3F-BK11		SHT. 1 of 1		REV. -
Tolerances					X X . = ±1 X X . X = ±0.5 Angle ±1° Squareness ±1°		DATE		2/23/2023		DRAWN		YEUNG

11

REV.	CHECKED DATE BY	PART NUMBER	Dim. A	Dim. B	Dim. C	Dim. D	Dim. E	Dim. F	Dim. G	QTY	Inv. Code	ASSEMBLE ON PARTS	EXTR. DRAWING PART DRAWING
-		T6-3F-BK21-02								11			



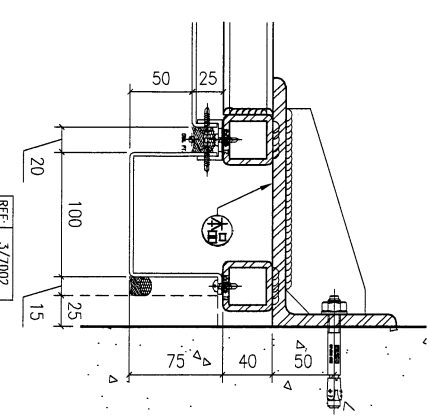
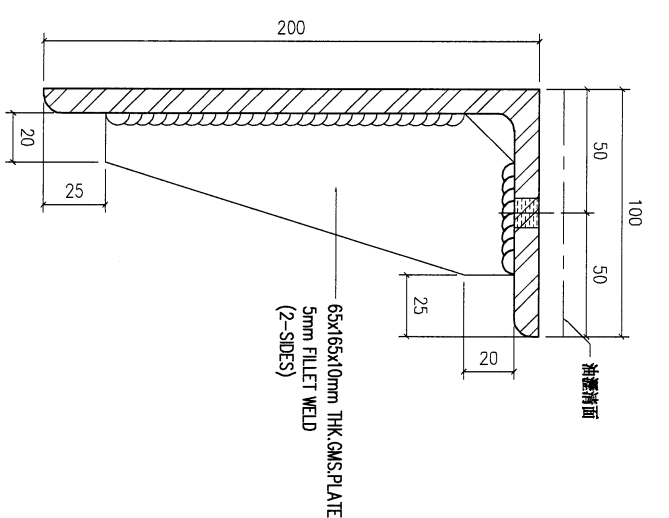
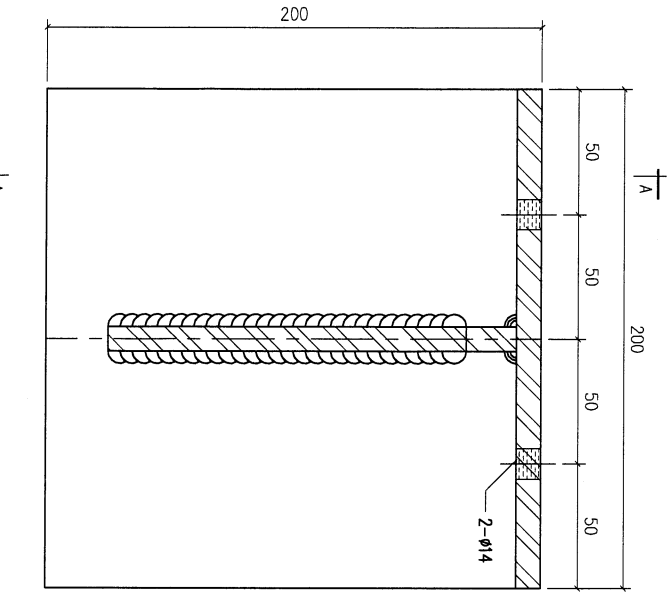
SECTION A-A

REF: 24/6006

VS = VISIBLE SURFACE
ALL DIMENSIONS IN MILLIMETRES

REV.	DATE	AMENDMENT	REVISED BY	<p>美特鋁質有限公司 MIDI ALUMINIUM FABRICATOR LTD. Units 6-8, Sunroy Industrial Centre, 1/F 610 Cha Kwo Ling Road, Kowloon Tel: 23489211-4 Fax: (852) 27727666</p>	JOB NO. J853	FACTORY 01	W/CENTRE M004/S006/FAB	CUT ENDS N/A	FINISH	DATE	DRAWN	POST PAINT	PART	SHEET	REV.
-	-	-	-	<p>PROJECT J853-PODIUM ALUM CEILING & FEATURE CLADDING T6 3/F</p>		Standard X X . = ±1 Tolerances X X . X = ±0.5	Angle ±1° Squareness ±1°	N/A	2/23/2023	YEUNG	SCALE 1:2	TRUCK TYPE S.....	2 of 2	-	
				DRAWING TITLE	DRAWING NO.										
				75x50x6mm THK. GMS. ANGEL (S7)	T6-3F-BK21										

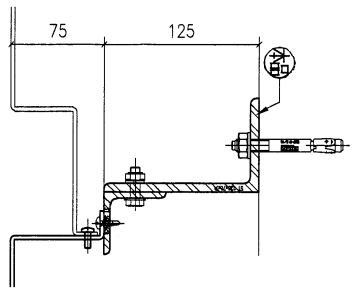
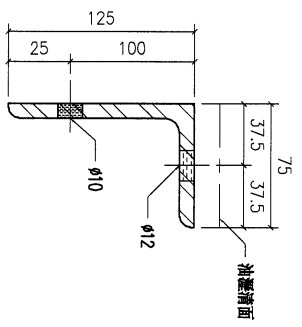
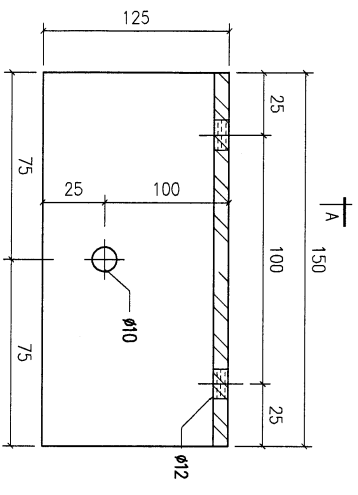
CHECKED DATE BY	PART NUMBER	Dim. A	Dim. B	Dim. C	Dim. D	Dim. E	Dim. F	Dim. G	QTY	Inv. Code	ASSEMBLE ON PARTS	EXTR. DRAWING PART DRAWING
-	T6-3F-BK31-01								25			



VS = VISIBLE SURFACE
ALL DIMENSIONS IN MILLIMETRES

REV.	DATE	AMENDMENT	REVISED BY	美特 鋁質 有限公司 MIDI ALUMINIUM FABRICATOR LTD. Units 6-8, Sunray Industrial Centre, 1/F 610 Cha Kwo Ling Road, Kowloon Tel: (2348)211-4 Fax: (852)2727666				PROJECT	J853-PODIUM ALUM CEILING & FEATURE CLADDING T6 3/F	JOB NO.	J853	DRAWING TITLE		200x100x10mm THK. GMS. ANGEL (S12)	DRAWING NO.	T6-3F-BK31	SHT.	1 of 1	REV.	-
				FACTORY	01	W/CENTRE	INCH/3004/FAB	CUT ENDS	N/A	FINISH		DRAWN	YEUNG	SCALE	1:2	TRACK TYPE	S.....			
				Standard	X X . = ±1	Angle	Squareness ±1'	DATE	2/23/2023			POST PAINT	PRE PAINT							
				Tolerances	X X . X = ±0.5	Squareness	±1'													

REV.	CHECKED DATE	PART NUMBER	Dim. A	Dim. B	Dim. C	Dim. D	Dim. E	Dim. F	Dim. G	QTY	Inv. Code	ASSEMBLE ON PARTS	EXTR. DRAWING PART DRAWING
-		T6-3F-BK41-01								66			



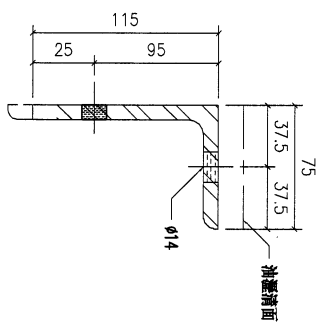
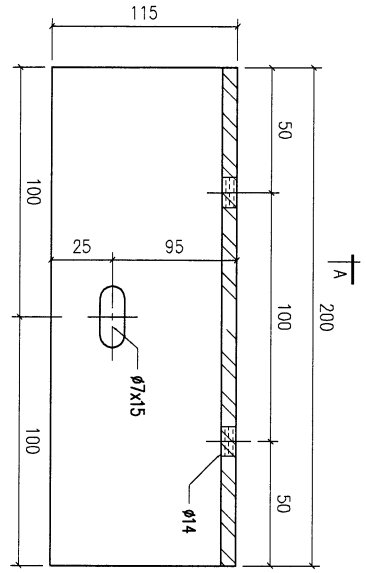
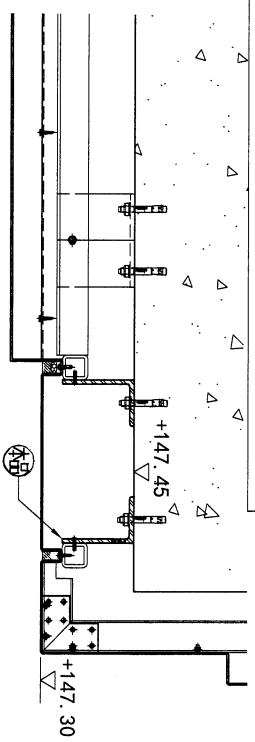
REF: 8/7002

SECTION A-A

VS = VISIBLE SURFACE
ALL DIMENSIONS IN MILLIMETRES

REV.	DATE	AMENDMENT	REVISED BY	美特鋁質有限公司 MIDI ALUMINIUM FABRICATOR LTD. Units 6-8, Sunray Industrial Centre, 1/F 610 Cha Kwo Ling Road, Kowloon Tel: 23489211-4 Fax: (852) 27276666				PROJECT	JOB NO.	DRAWING TITLE		DATE	DRAWN	POST PAINT	PART	SHT.	REV.
-	-	-	-	PROJECT J853-PODIUM ALUM CEILING & FEATURE CLADDING T6 3/F				J853	鐵料加工圖 125x75x7mm THK. GMS. ANGLE. (S1)		2/23/2023	YELUNG	SCALE 1:2	SUB ASSEM.	1 of 2	-	
				FACTORY	W/CENTRE	CUT ENDS	FINISH	POST PAINT	PART	SHT.	REV.						
				01	MOSE/SOBA/FAB	N/A											

REV.	CHECKED PART NO.	PART NUMBER	Dim. A	Dim. B	Dim. C	Dim. D	Dim. E	Dim. F	Dim. G	QTY	Inv. Code	ASSEMBLE ON PARTS	EXTR. DRAWING PART DRAWING
-		T6-3F-BK41-02								80			



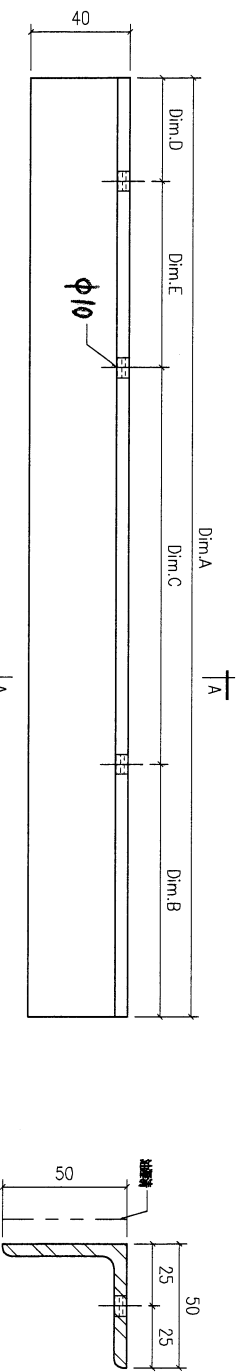
SECTION A-A

VS = VISIBLE SURFACE
ALL DIMENSIONS IN MILLIMETRES

REV.		DATE	AMENDMENT	REVISED BY	美特鋁質有限公司 MIDI ALUMINUM FABRICATOR LTD. Units 6-8, Sunray Industrial Centre, 1/F 610 Cha Kwo Ling Road, Kowloon Tel: 23489211-4 Fax: (852) 27727666		PROJECT	J853-PODIUM ALUM CEILING & FEATURE CLADDING T6 3/F	JOB NO.	J853	DRAWING TITLE	鐵料加工圖	125x75x7mm THK. GMS. ANGLE. (S1)	DRAWING NO.	T6-3F-BK41	SHEET	2 of 2	REV.	-
FACTORY		01	W/CENTRE	M001/S006 /FAB	CUT ENDS	N/A	FINISH	熱浸	POST PAINT	SCALE	1:2	PART	SUB ASSEM.						
Standard		X X .	= ±1	Angle	±1°	DATE	2/23/2023	DRAWN	YEUNG										
Tolerances		X X . X	= ±0.5	Squareness	±1°														

15

REV.	CHECKED DATE BY	PART NUMBER	Dim. A	Dim. B	Dim. C	Dim. D	Dim. E	Dim. F	Dim. G	QTY	Inv. Code	ASSEMBLE ON PARTS	EXTR. DRAWING PART DRAWING
-		T6-3F-LA01-01	2005.0	375	1*750c/c	280.0	600			1	如圖	有加長100	
-		T6-3F-LA01-02	2545.0	375	2*750c/c	170.0	500			1	相反		
-		T6-3F-LA01-03	3230.0	375	1*750c/c	175.0	350			1	如圖	有加長100	
-		T6-3F-LA01-04	3000.0	375	3*750c/c	375.0	0			4	如圖		
-		T6-3F-LA01-05	1995.0	375	1*750c/c	220.0	650			1	相反		
-		T6-3F-LA01-06	2184.0	375	1*750c/c	559.0	500			1	如圖	有加長100	
-		T6-3F-LA01-07	2711.0	375	2*750c/c	286.0	550			1	相反	有加長100	
-		T6-3F-LA01-08	2659.0	375	2*750c/c	284.0	500			1	如圖	有加長100	
-		T6-3F-LA01-09	2976.0	375	3*750c/c	351.0	0			1	相反	有加長100	
-		T6-3F-LA01-10	2415.0	375	2*750c/c	540.0	0			1	如圖	有加長100	
-		T6-3F-LA01-11	1995.0	375	2*750c/c	120.0	0			1	相反		
-		T6-3F-LA01-12	2883.0	375	3*750c/c	258.0	0			1	如圖	有加長100	
-		T6-3F-LA01-13	2745.0	375	3*750c/c	120.0	0			1	相反		
-		T6-3F-LA01-14	1928.0	375	2*750c/c	53.0	0			1	如圖	有加長100	
-		T6-3F-LA01-15	1995.0	375	2*750c/c	120.0	0			1	相反		



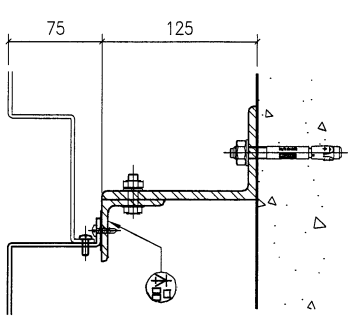
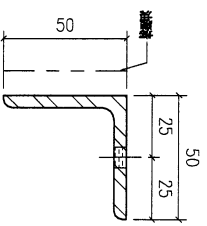
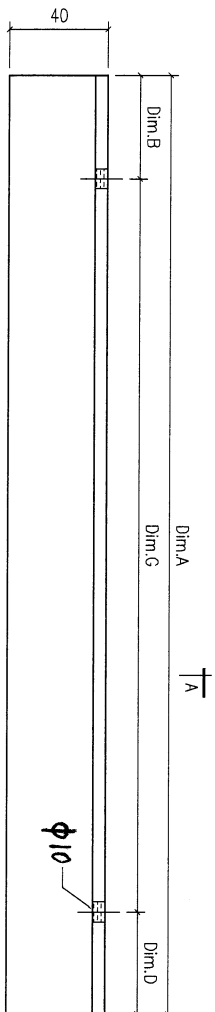
SECTION A-A

VS = VISIBLE SURFACE
ALL DIMENSIONS IN MILLIMETRES

MIDI 美特鋁質有限公司 ALUMINIUM FABRICATOR LTD. Units 6-8, Sunray Industrial Centre, 1/F 610 Cha Kwo Ling Road, Kowloon Tel:23489211-4 Fax:(852)27727666		FACTORY 01		W/CENTRE MOK/SOK/FAB		CUT ENDS N/A		FINISH		POST PAINT		PART	
PROJECT J853-PODIUM ALUM CEILING & FEATURE CLADDING T6 3/F		JOB NO. J853		Standard X X . = ±1		Angle Squaredness ±1'		DATE 2/23/2023		DRAWN YEUNG		SCALE 1:2	
DRAWING TITLE 50x50x5mm THK. GMS. ANGLE: (S8)		DRAWING NO. T6-3F-LA01		DATE		FINISH		POST PAINT		PART		SHT. REV.	
AMENDMENT		REVISED BY		DATE		SHT. 1 of 3		REV.					

(16)

REV.	CHECKED DATE BY	PART NUMBER	Dim. A	Dim. B	Dim. C	Dim. D	Dim. E	Dim. F	Dim. G	QTY	Inv. Code	ASSEMBLE ON PARTS	EXTR. DRAWING PART DRAWING
-		T6-3F-LA01-16	1081.0	411	1*550c/c	120.0			1			有加長100	
-		T6-3F-LA01-17	1346.0	476	1*750c/c	120.0			1			有加長100	

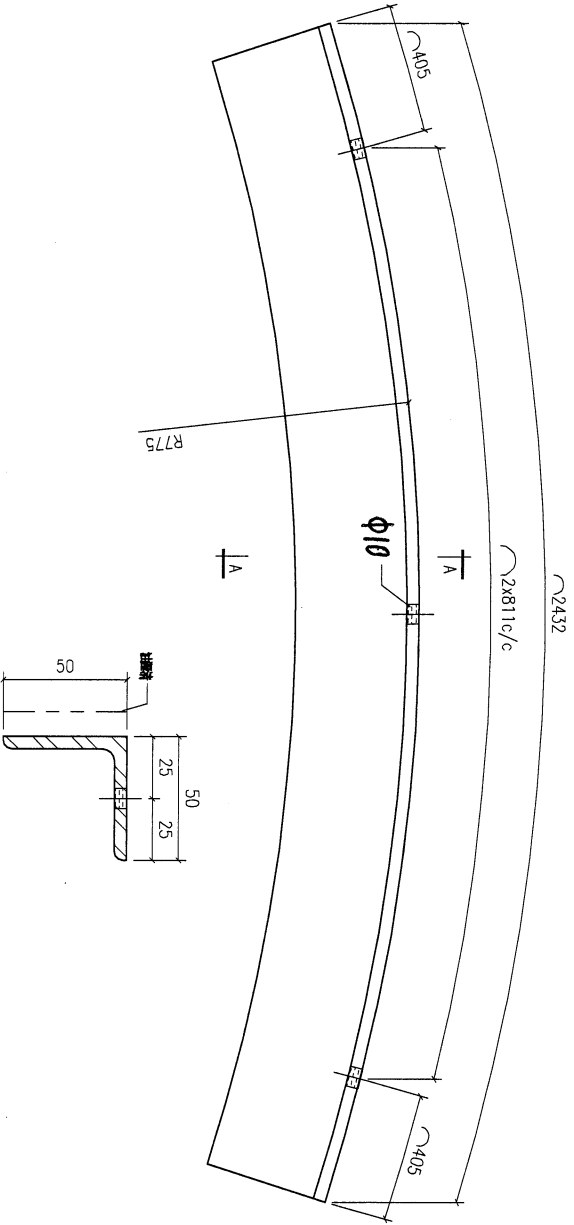


VS = VISIBLE SURFACE
ALL DIMENSIONS IN MILLIMETRES

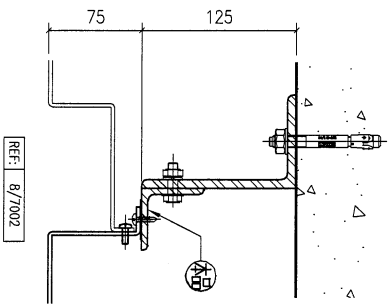
REV.	DATE	AMENDMENT	REVISED BY	美特鋁質有限公司 MIDI ALUMINIUM FABRICATOR LTD. Units 6-8, Sunray Industrial Centre, 1/F 610 Cho Kwo Ling Road, Kowloon Tel:23489211-4 Fax:(852)271727666				JOB NO.	PROJECT J853-PODIUM ALUM CEILING & FEATURE CLADDING T6 3/F		JOB NO.	FACTORY 01 W/CENTRE MOE/300A/FAB CUT ENDS N/A FINISH DATE 2/23/2023 DRAWN YEUNG POST PAINT <input checked="" type="checkbox"/> PRE PAINT SCALE 1:2 PART T6-3F-LA01 SUB ASSEM. TRACK TYPE S.....	
-	-	-	-	Standard X X . = ±1 Tolerances X X . X = ±0.5 Angle ±1' Squareness ±1'				JOB NO.	DRAWING TITLE 鐵料加工圖 50x50x5mm THK. GMS. ANGLE. (S8)		JOB NO.	DRAWING NO. T6-3F-LA01 SHI. 2 of 3 REV. -	

17

REV.	CHECKED DATE BY	PART NUMBER	Dim. A	Dim. B	Dim. C	Dim. D	Dim. E	Dim. F	Dim. G	QTY	Inv. Code	ASSEMBLE ON PARTS	EXTR. DRAWING PART DRAWING
-		T6-3F-LA01-18								2			



SECTION A-A



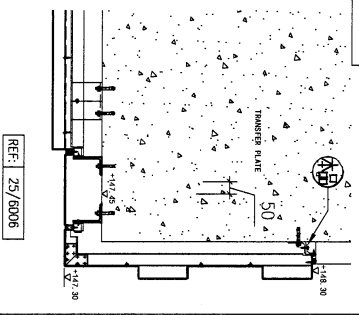
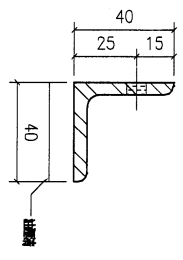
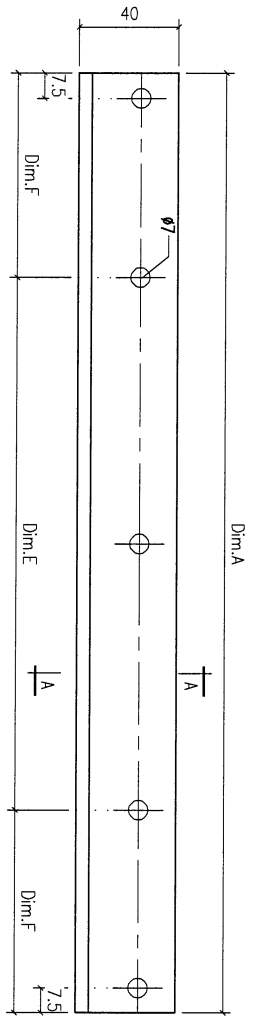
VS = VISIBLE SURFACE
ALL DIMENSIONS IN MILLIMETRES

REV.	DATE	AMENDMENT	REVISED BY	PROJECT	JOB NO.	DRAWING TITLE	FACTORY	W/CENTRE	CUT ENDS	FINISH	DRAWN	POST PAINT	PART	SHI.	REV.
-	-	-	-	Project J853-PODIUM ALUM CEILING & FEATURE CLADDING T6 3/F	J853	50x50x5mm THK. GMS. ANGLE. (S8)	01	MOE/SOA/FAB	N/A		YEUNG	SCALE 1:2	TRACK TYPE S.....	3	3

美特鋁質有限公司
MIDI ALUMINIUM FABRICATOR LTD.
Units 6-8 Sunray Industrial Centre, 1/F
610 Cho Kwo Ling Road, Kowloon
Tel:23489211-4 Fax:(852)271727666

18

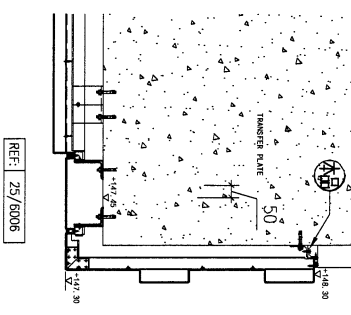
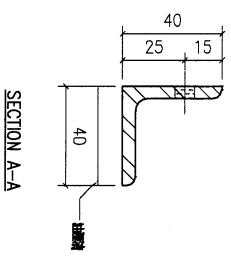
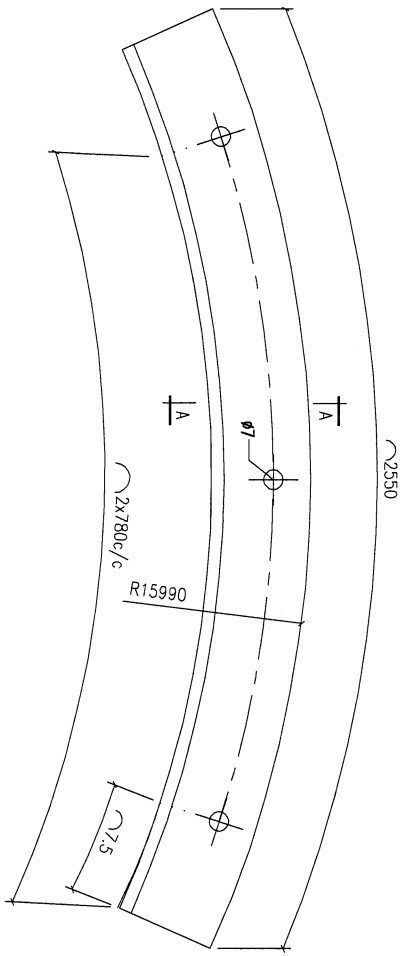
REV.	CHECKED DATE BY	PART NUMBER	Dim. A	Dim. B	Dim. C	Dim. D	Dim. E	Dim. F	Dim. G	QTY	Inv. Code	ASSEMBLY ON PARTS	EXTR. DRAWING PART DRAWING
-		T6-3F-LA02-01	2995.0				3x800c/t 297.5		11				



VS = VISIBLE SURFACE
ALL DIMENSIONS IN MILLIMETRES

<p>美特 鋁質 有限公司 MTDI ALUMINIUM FABRICATOR LTD.</p>		<p>Units 6-8, Sunroy Industrial Centre, 1/F 610 Cha Kwo Ling Road, Kowloon Tel: 23489211-4 Fax: (852) 27727866</p>		<p>PROJECT J853-PODIUM ALUM CEILING & FEATURE CLADDING T6 3/F</p>		<p>JOB NO. J853</p>		<p>FACTORY 01</p>		<p>W/CENTRE MODE/SODA/FAB</p>		<p>CUT ENDS N/A</p>		<p>FINISH 熱浸</p>		<p>POST PAINT <input checked="" type="checkbox"/> PRE PAINT</p>		<p>PART <input checked="" type="checkbox"/> SUB ASSEM.</p>	
<p>Standard X X . = ±1 Tolerances X X . X = ±0.5</p>		<p>Angle ±1° Squareness ±1°</p>		<p>DATE 2/23/2023</p>		<p>DRAWN YEUNG</p>		<p>SCALE 1:2</p>		<p>TRACK TYPE S.....</p>		<p>DRAWING NO. T6-3F-LA02</p>		<p>SHT 1 of 2</p>		<p>REV. -</p>			

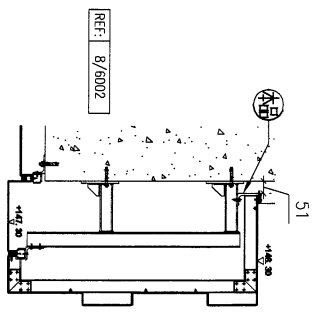
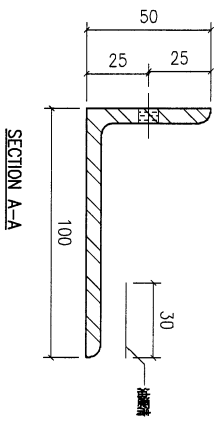
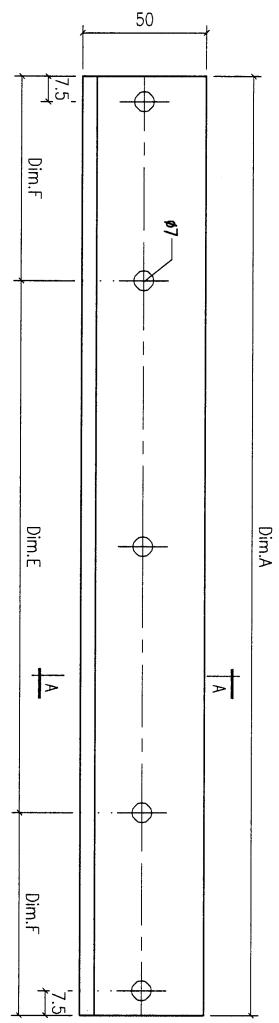
REV.	CHECKED DATE	PART NUMBER	Dim. A	Dim. B	Dim. C	Dim. D	Dim. E	Dim. F	Dim. G	QTY	Inv. Code	EXTR. DRAWING PART DRAWING
-		T6-3F-LA02-02								1	如圖	
-		T6-3F-LA02-03								1	相反	




VS = VISIBLE SURFACE
ALL DIMENSIONS IN MILLIMETRES

REV.	DATE	AMENDMENT	REVISED BY	PRODUCT	JOB NO.	DRAWING TITLE	FACTORY	W/CENTRE M/DK/S/DK/FAB	CUT ENDS	FINISH	DATE	DRAWN	POST PAINT	PART	SHT.	REV.
-	-	-	-	Project 853-Podium Alum Ceiling & FEATURE CLADDING T6 3/F	J853	鐵料加工圖 40x40x5mm THK. GMS. ANGLE. (S9)	01	M/DK/S/DK/FAB	N/A	熱浸	2/23/2023	YEUNG	SCALE 1:2	SCALE 1:2	2 of 2	-
				Units 6-8, Sunray Industrial Centre, 1/F 610 Cha Kwo Ling Road, Kowloon Tel: 23489211-4 Fax: (852) 27727666												
				美特鋁質有限公司 MIDI ALUMINIUM FABRICATOR LTD.												

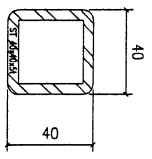
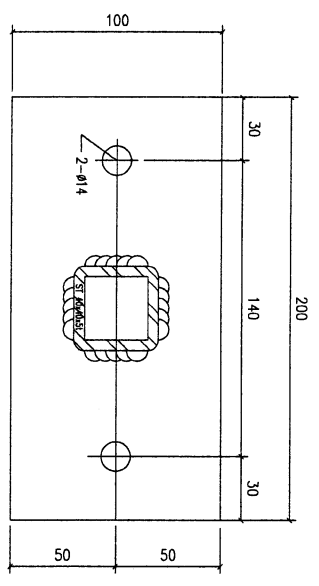
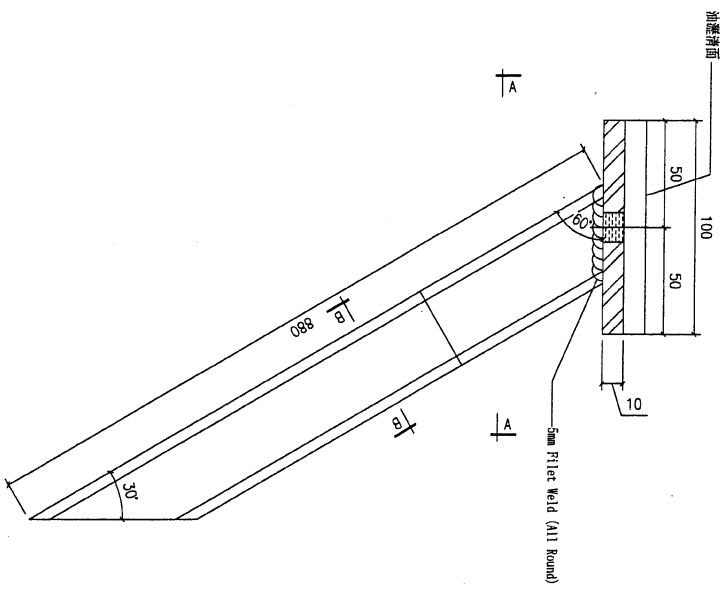
REV.	CHECKED DATE BY	PART NUMBER	Dim. A	Dim. B	Dim. C	Dim. D	Dim. E	Dim. F	Dim. G	QTY	Inv. Code	EXTR. DRAWING PART DRAWING
-		T6-3F-LA03-01	2395.0				1x800c/±797.5			5		



VS = VISIBLE SURFACE
ALL DIMENSIONS IN MILLIMETRES

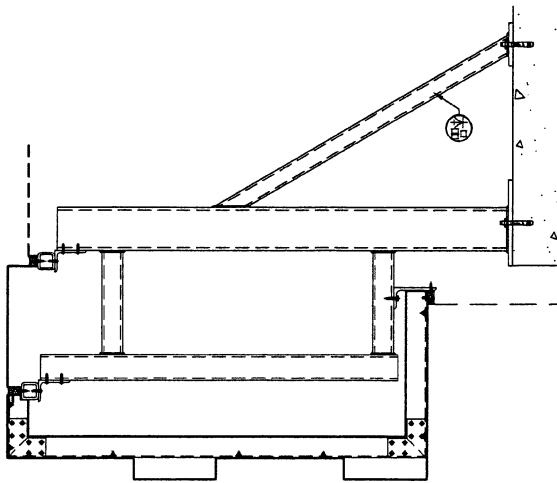
REV.	DATE	AMENDMENT	REVISED BY	 美特鋁質有限公司 MIDI ALUMINIUM FABRICATOR LTD. Units 6-8, Sunray Industrial Centre, 1/F 610 Cha Kwo Ling Road, Kowloon Tel: 23489211-4 Fax: (852) 27276666				PROJECT	JOB NO.	DRAWING TITLE		FINISH	POST PAINT	PART	
				& FEATURE CLADDING T6 9/F				J853	鐵料加工圖 100x50x6mm THK. GMS. ANGLE. (S6)		2/23/2023	熱浸	熱浸	1:2	SUB ASSEM.
				Standard X X . = ±1 Tolerances X X . X = ±0.5					W/CENTRE MAXI/SMA/FAB	CUT ENDS N/A	DATE	SCALE	TRACK TYPE	SFT.	REV.
				100x50x6mm THK. GMS. ANGLE. (S6)							2/23/2023	1:2	S.....	1 of 1	-

REV.	DESIGN OR DATE	PART NUMBER	Dim. A	Dim. B	Dim. C	Dim. D	Dim. E	Dim. F	Dim. G	QTY	Inv. Code	ASSEMBLE ON PARTS	EXTR. DRAWING PART DRAWING
-		T6-3F-MSd-01								30			



SECTION A-A

SECTION B-B



14號斜撐

VS = VISIBLE SURFACE
ALL DIMENSIONS IN MILLIMETRES

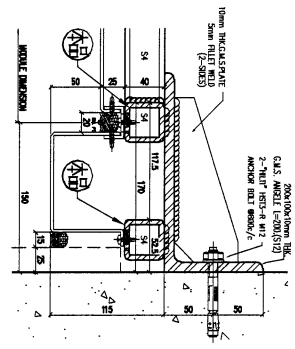
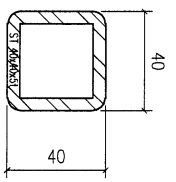
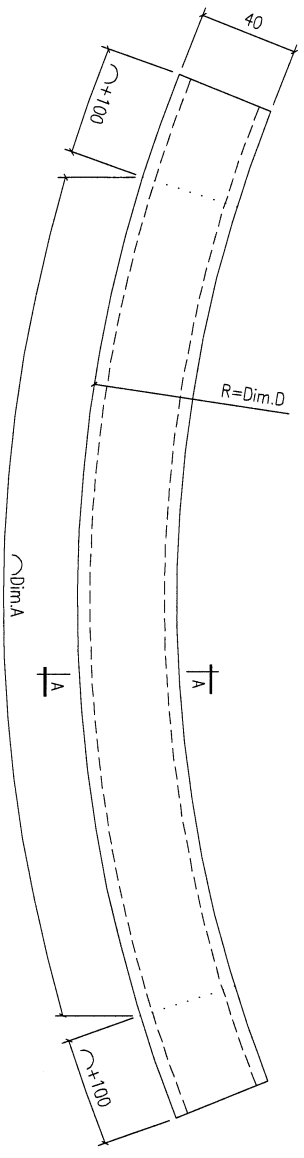
REV.	DATE	AMENDMENT	REVISED BY	PROJECT	JOB NO.	DRAWING TITLE	DRAWING NO.	SHT.	REV.
-	-	-	-	J853-PODIUM ALUM CEILING & FEATURE CLADDING T6 9/F	J853	鐵料加工圖 10mm THK. PLATE + 40*40*5 SHS	YEUNG	1 of 1	-

美特鋁質有限公司
MIDI ALUMINIUM FABRICATOR LTD.
Units 6-8, Sunray Industrial Centre, 1/F
610 Cho Kwo Ling Road, Kowloon
Tel: 23489211-4 Fax: (852) 27727666

FACTORY	W/CENTRE	CUT ENDS	FINISH	POST PAINT	PART
01	MOCK/SHOP/FAB	N/A		SCALE	SUB ASSEM.
Standard	X X . = ±1	Angle	±1°	DATE	TRACK TYPE
Tolerances	X X . X = ±0.5	Squareness	±1°	2/25/2023	S.....

REV.	DATE	AMENDMENT	REVISED BY	PROJECT	JOB NO.	DRAWING TITLE	DRAWING NO.	SHT.	REV.
-	-	-	-	J853-PODIUM ALUM CEILING & FEATURE CLADDING T6 9/F	J853	鐵料加工圖 10mm THK. PLATE + 40*40*5 SHS	YEUNG	1 of 1	-

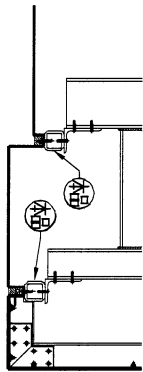
REV.	CHANGED BY	PART NUMBER	Dim. A	Dim. B	Dim. C	Dim. D	Dim. E	Dim. F	Dim. G	QTY	Inv. Code	ASSEMBLE ON PARTS	EXTR. DRAWING PART DRAWING
-		T6-3F-MS03-01	3675			1170				4			
-		T6-3F-MS03-02	3306			1053				4			



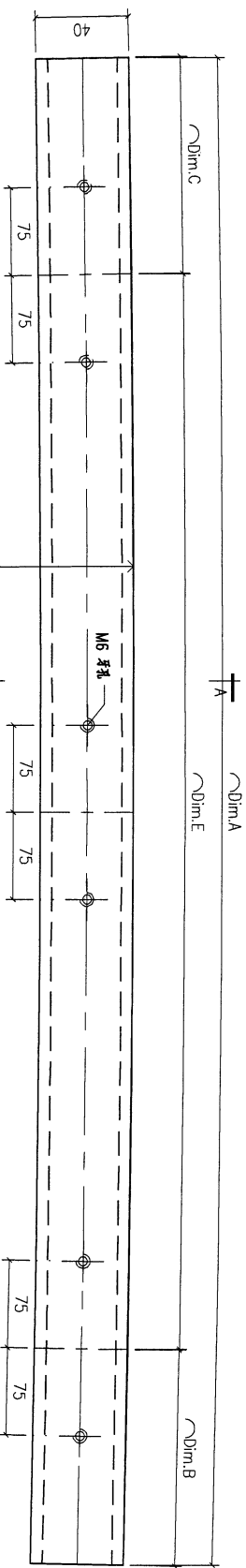
VS = VISIBLE SURFACE
ALL DIMENSIONS IN MILLIMETRES

REV.	DATE	AMENDMENT	REVISED BY	<p>Units 6-8, Sunray Industrial Centre, 1/F 610, Cha Kwo Ling Road, Kowloon Tel: 23489211-4 Fax: (852) 2727666</p>				<p>Project J853-PODIUM ALUM CEILING & FEATURE CLADDING T6 3/F</p>		JOB NO.	<p>FACTORY 01</p>		<p>W/CENTRE 1000/5000/FAB</p>		<p>CUT ENDS N/A</p>		<p>FINISH</p>		<p>POST PAINT</p>		<p>PART</p>	
				<p>Product J853-PODIUM ALUM CEILING & FEATURE CLADDING T6 3/F</p>				J853	<p>Standard X X . = ±1</p>		<p>Angle ±1'</p>		<p>DATE 2/23/2023</p>		<p>DRAWN YEUNG</p>		<p>SCALE 1:2</p>		<p>TRACK TYPE S.....</p>			
				<p>鐵料加工圖</p>				<p>40x40x5mm THK. GMS. RHS. (S4)</p>		<p>DRAWING NO. T6-3F-MS03</p>		<p>SHT. 1 of 1</p>		<p>REV. -</p>								

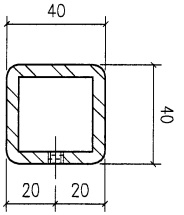
CHKD BY	PART NUMBER	Dim. A	Dim. B	Dim. C	Dim. D	Dim. E	Dim. F	Dim. G	QTY	Inv. Code	ASSEMBLE ON PARTS	EXTR. DRAWING PART DRAWING
-	T6-3F-MS11-01	4171.0	508.0	459	16380	4x801c/c			1		已兩端各加長100	
-	T6-3F-MS11-02	4980.0	1020.0	816	16380	4x786c/c			1		已兩端各加長100	



REF: 19/5004



R = Dim. D



SECTION A-A

VS = VISIBLE SURFACE
ALL DIMENSIONS IN MILLIMETRES

REV.	DATE	AMENDMENT	REVISED BY	美特鋁質有限公司 MIDI ALUMINIUM FABRICATOR LTD. Units 6-8, Sunray Industrial Centre, 1/F 610 Cha Kwo Ling Road, Kowloon Tel: 23489211-4 Fax: (852) 27727666				PROJECT	J853-PODIUM ALUM CEILING	JOB NO.	J853	DRAWING TITLE	鐵料加工圖	DRAWING NO.	T6-3F-MS11	SHT.	1 of 3				
				FACTORY	W/CENTRE	CUT ENDS	FINISH	熱浸	POST PAINT	PART		Standard	X X . = ±1	DATE	2/23/2023	DRAWN	YEUNG	SCALE	1:2	TRACK TYPE	S.....
				01	MOK/SOK/FAB	N/A						Tolerances	X X . X = ±0.5	Angle	Squareness ±1°						

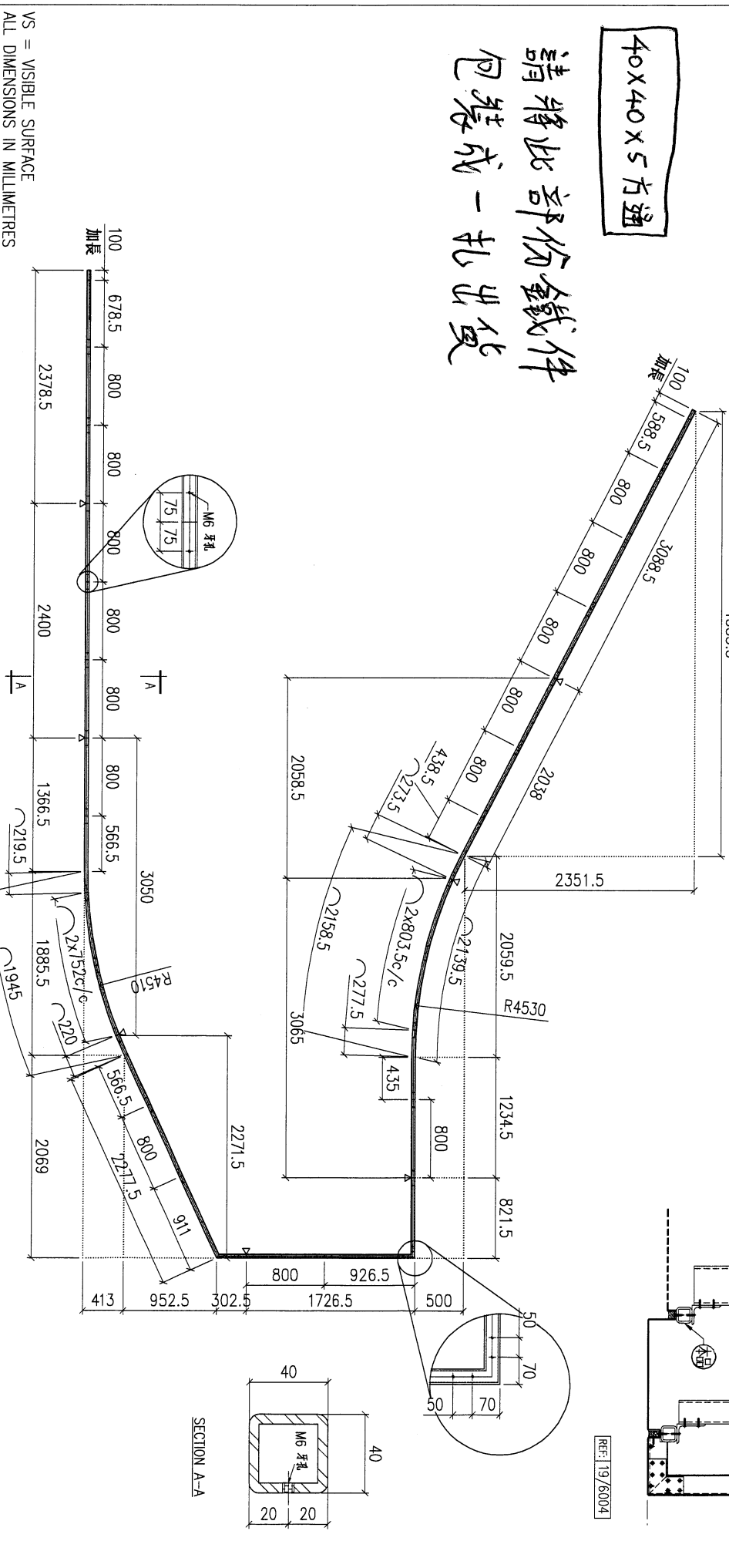
25

REV.	CHGNO BAR BY	PART NUMBER	Dim. A	Dim. B	Dim. C	Dim. D	Dim. E	Dim. F	Dim. G	QTY	Inv. Code	ASSEMBLE ON PARTS	EXTR. DRAWING PART DRAWING
-		T6-3F-MS11-03								1			

△ 分段處

40x40x5 方通

請將此部份鐵件
包裝成一扎出貨



VS = VISIBLE SURFACE
ALL DIMENSIONS IN MILLIMETRES

REV.	DATE	AMENDMENT	REVISED BY	PROJECT	JOB NO.	DRAWING TITLE	DRAWING NO.	SHF.	REV.
-	-	-	-	Project 853-Podium Alum Ceiling & Feature Cladding T6 3/F	J853	鐵料加工圖 40x40x5mm THK. GMS.SHS.	T6-3F-MS11	2 of 3	-

UNITED	ALUMINIUM FABRICATOR LTD.	W/CENTRE	CUT ENDS	FINISH	POST PAINT	PART
01	MMX/SX/FA/B	N/A				

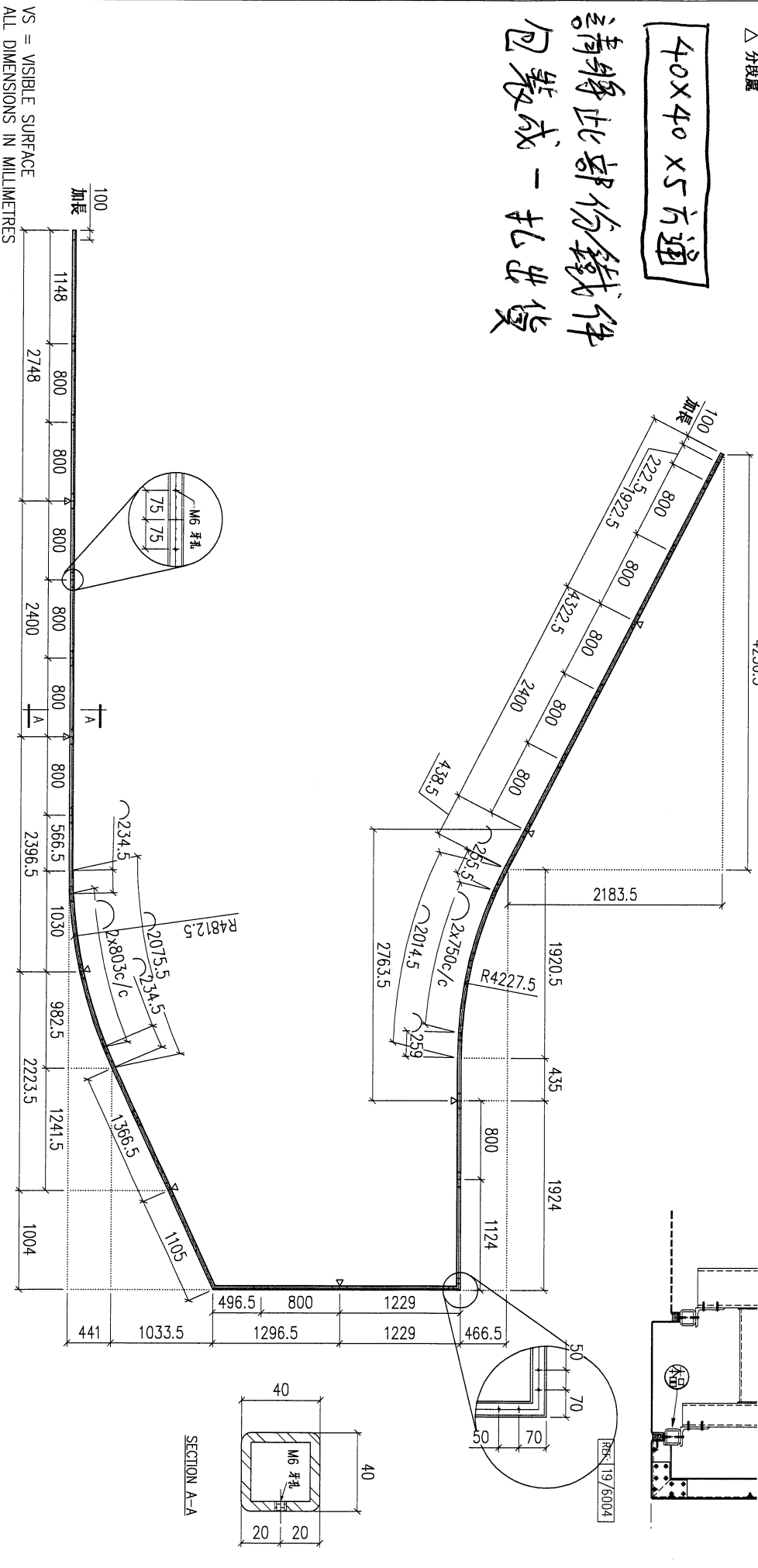
美特鋁有限公司
 MIDALUMINIUM FABRICATOR LTD.
 Units 6-8, Sunray Industrial Centre, 1/F
 610 Cha Kwo Ling Road, Kowloon
 Tel:23489211-4 Fax:(852)27727666

CHKD BY	PART NUMBER	Dim. A	Dim. B	Dim. C	Dim. D	Dim. E	Dim. F	Dim. G	QTY	Inv. Code	ASSEMBLE ON PARTS	EXTR. DRAWING PART DRAWING
-	T6-3F-MS11-04								1			

△分裝處

40x40x5方通

請將此部份鐵件
包裝成一扎出貨



REV.	DATE	AMENDMENT	REUSED BY	PROJECT	JOB NO.	DRAWING TITLE	DRAWING NO.	REV.
-	-	-	-	J853-PODIUM ALUM CEILING & FEATURE CLADDING T6 3/F	J853	鐵料加工圖 40x40x5mm THK. GMS.SHS.	T6-3F-MS11	3 of 3

美特鋁質有限公司
MIDI ALUMINIUM FABRICATOR LTD.
Units 6-8, Sunray Industrial Centre, 1/F
610 Cha Kwo Ling Road, Kowloon
Tel:23489211-4 Fax:(852)27727666

熱浸 PRE PAINT PART
SCALE 1:40 SUB ASSEM.
DRAWN YEUNG TRACK TYPE S.....
DATE 2/23/2023

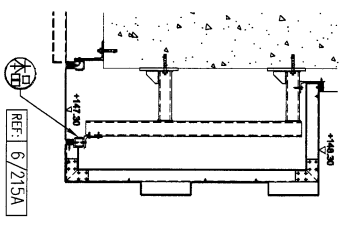
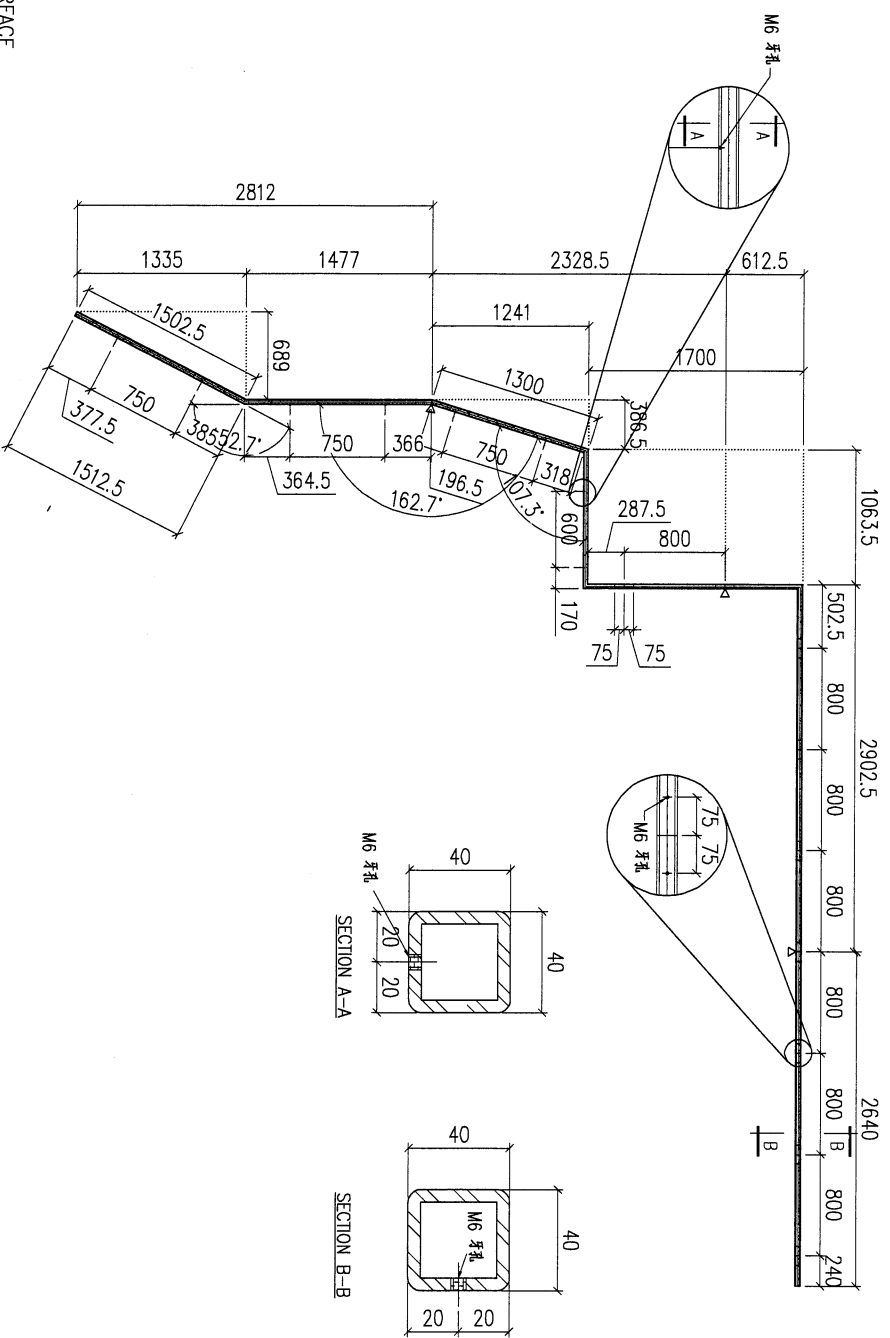
FACTORY 01 W/CENTRE MOK/SOK/FAB CUT ENDS N/A FINISH DATE 2/23/2023
Standard X X . = ±1 Angle ±1°
Tolerances X X . X = ±0.5 Squateness ±1°

REV.	DATE	AMENDMENT	REUSED BY	PROJECT	JOB NO.	DRAWING TITLE	DRAWING NO.	REV.
-	-	-	-	J853-PODIUM ALUM CEILING & FEATURE CLADDING T6 3/F	J853	鐵料加工圖 40x40x5mm THK. GMS.SHS.	T6-3F-MS11	3 of 3

29

REV. ORDER NO. PART NUMBER	Dim. A	Dim. B	Dim. C	Dim. D	Dim. E	Dim. F	Dim. G	QTY	Inv. Code	ASSEMBLE ON PARTS	EXTR. DRAWING PART DRAWING
- T6-3F-MS12-03								1			

△ 分段處

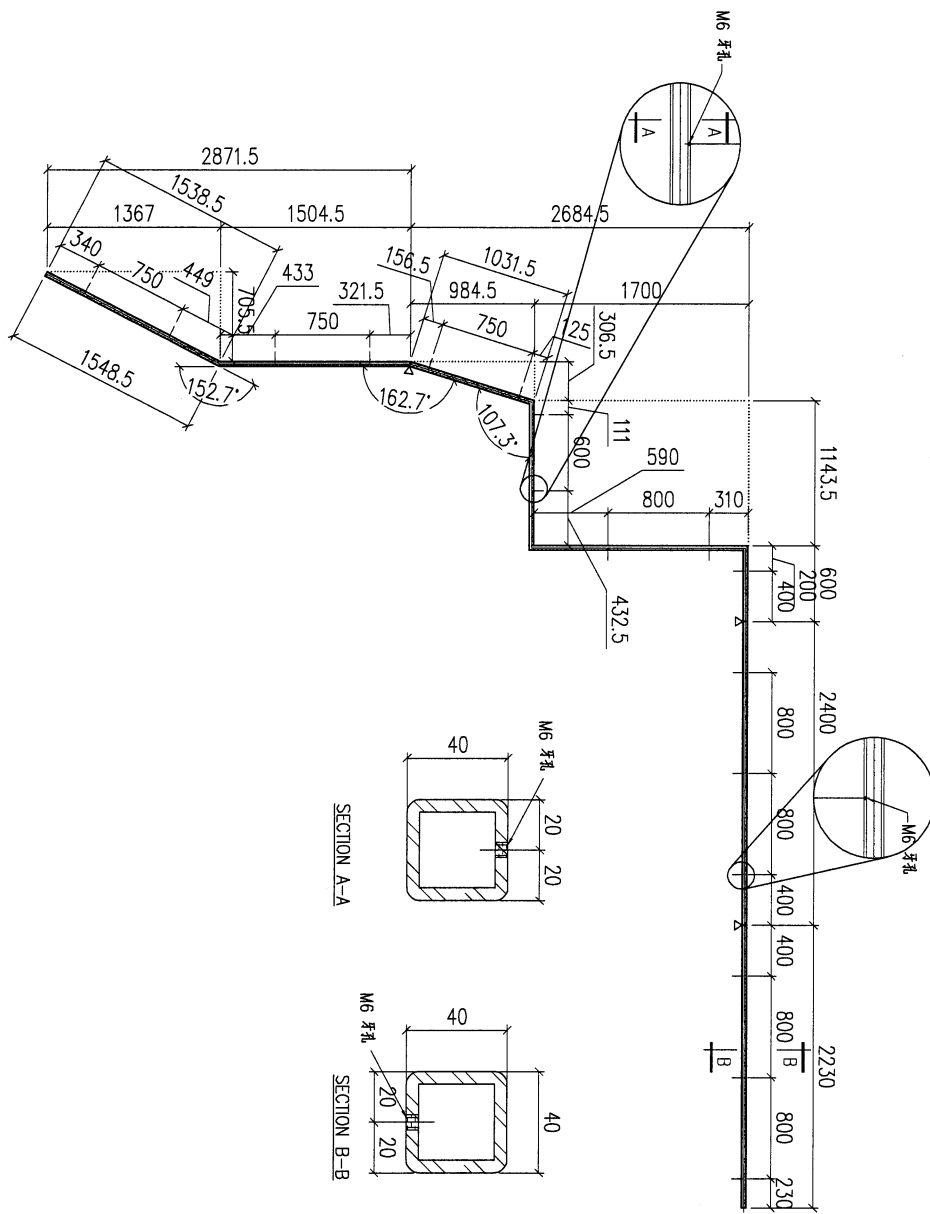


VS = VISIBLE SURFACE
ALL DIMENSIONS IN MILLIMETRES

REV.	DATE	AMENDMENT	REVISED BY	PROJECT	J853-PODIUM ALUM CEILING & FEATURE CLADDING T6 3/F	JOB NO.	J853	DRAWING TITLE	鐵料加工圖	40x40x5mm THK. GMS.SHS.	DRAWING NO.	T6-3F-MS12	SHT.	3 of 4	REV.	-									
				UNIT	Units 6-8, Sunray Industrial Centre, 1/F			FACTORY	01	W/CENTRE	XXX/XXX/FAB	CUT ENDS	N/A	FINISH	DATE	2/23/2023	DRAWN	YEUNG	SCALE	1:40	PART		TRACK TYPE	S....	
				COMPANY	美特鋁業有限公司 MIDI ALUMINIUM FABRICATOR LTD.			STANDARD	X X . = ±1	ANGLE	Squareness ±1°			POST PAINT	PRE PAINT										
				ADDRESS	610 Cha Kwo Ling Road, Kowloon Tel:23489211-4 Fax:(852)272727666			TOLERANCES	X X . X = ±0.5																

30

REV. CHECKED DATE BY	PART NUMBER	Dim. A	Dim. B	Dim. C	Dim. D	Dim. E	Dim. F	Dim. G	QTY	Inv. Code	ASSEMBLE ON PARTS	EXTR. DRAWING PART DRAWING
-	T6-3F-MS12-04								1			



VS = VISIBLE SURFACE
ALL DIMENSIONS IN MILLIMETRES

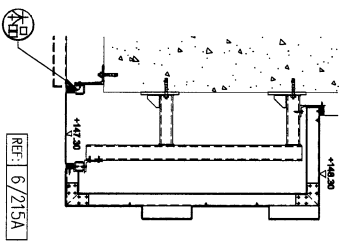
美特鋁質有限公司
MIDI ALUMINIUM FABRICATOR LTD.
Units 6-8, Sunroy Industrial Centre, 1/F
610 Cha Kwo Ling Road, Kowloon
Tel: 23348921-4 Fax: (852) 27727666

REV.	DATE	AMENDMENT	REVISED BY	PROJECT	JOB NO.	DRAWING TITLE	DRAWING NO.	SHT.	REV.
-	-	-	-	J853-PODIUM ALUM CEILING & FEATURE CLADDING T6 3/F	J853	40x40x5mm THK. GMS.SHS.	T6-3F-MS12	4 of 4	-

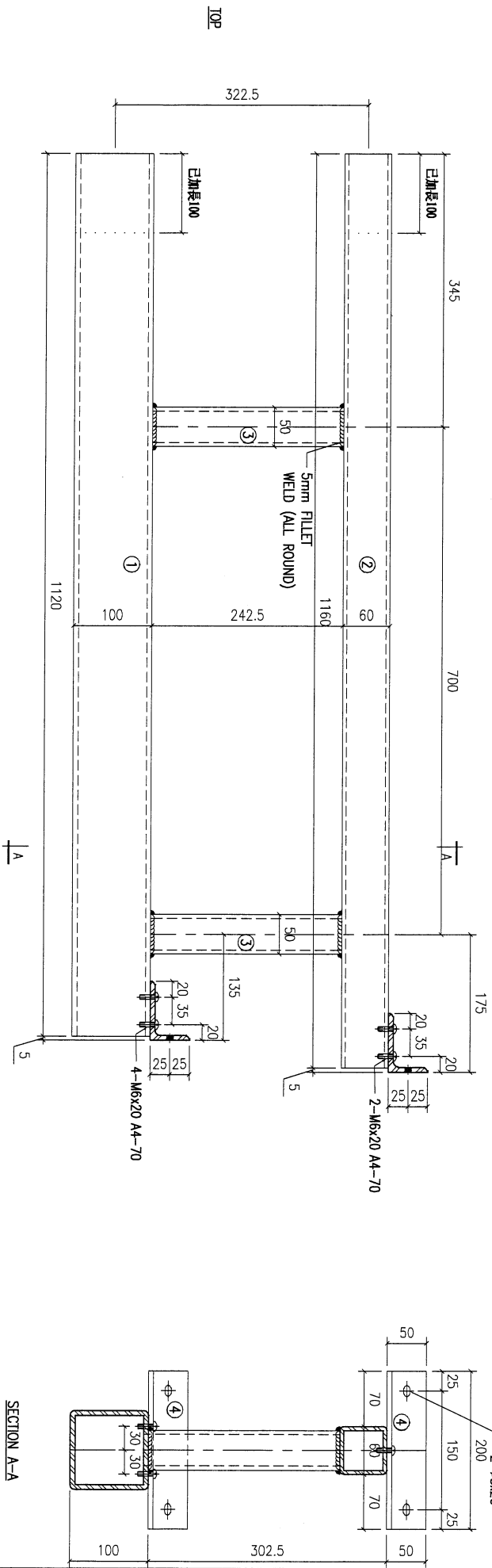
SECTION A-A

SECTION B-B

40x40x5 方通
請將此部份鐵件
包裝成一扎出貨



REV.	CHECKED DATE	PART NUMBER	Dim. A	Dim. B	Dim. C	Dim. D	Dim. E	Dim. F	Dim. G	QTY	Inv. Code	ASSEMBLE ON PARTS	EXTR. DRAWING PART DRAWING
-		T6-3F-ST02-01								23			



19號架

VS = VISIBLE SURFACE
ALL DIMENSIONS IN MILLIMETRES

美特鋁質有限公司
MIDI ALUMINIUM FABRICATOR LTD.
Units 6-8 Sunray Industrial Centre, 1/F
610 Cho Kwo Ling Road, Kowloon
Tel: 23489211-4 Fax: (852) 2727666

PROJECT: J853-PODIUM ALUM CEILING & FEATURE CLADDING (T6 3/F)
JOB NO. J853
REV. DATE AMENDMENT REVISION BY

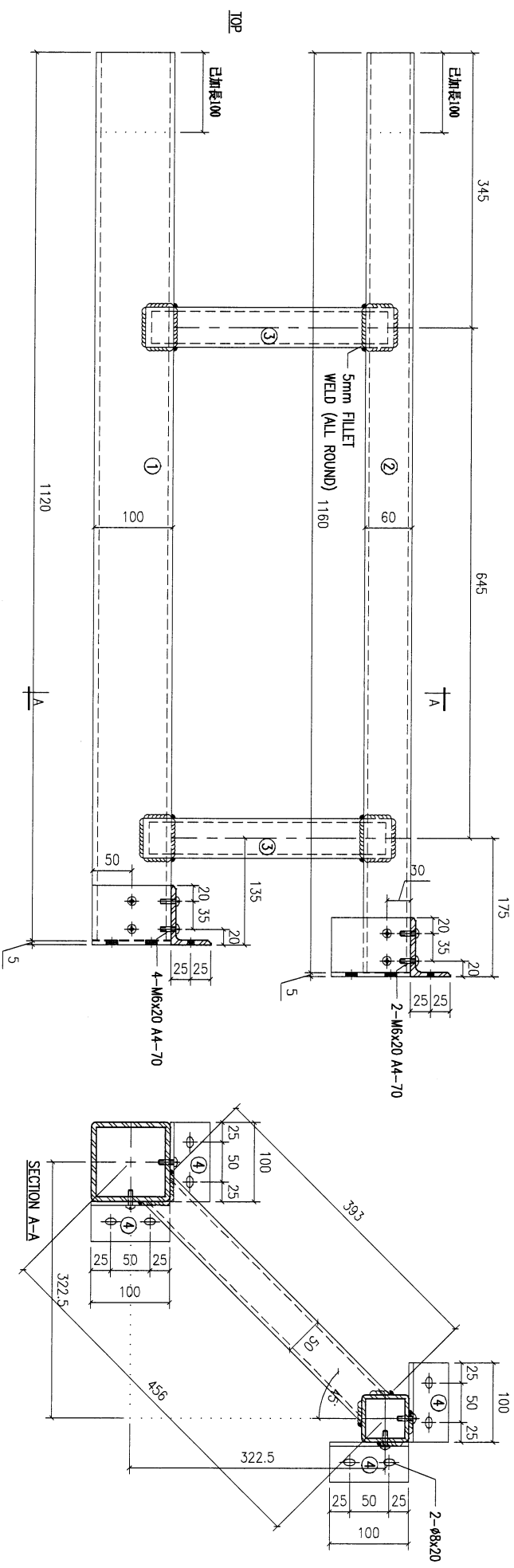
FACTORY	01	W/CENTRE	MOK/SOK/FAB	CUT ENDS	N/A	FINISH	N/S/O/A
Standard	X X . = ±1	Angle	±1'	DATE	2/23/2023		
Tolerances	X X . X = ±0.5	Squareness	±1'	DRAWN	YEUNG	SCALE	1:5
DRAWING TITLE: 鐵料加工圖				DRAWING NO. T6-3F-ST02		SHEET: 1 of 2	

序号	材料规格	长度	配件描述	数量	备注
4	75x50x6mm THK. GALV. STEEL	200	开料	2	S7
3	50x50x5mm THK. GALV. HOLLOW	242.5	开料	2	S5
2	80x80x5mm THK. GALV. HOLLOW	1160	开料	1	S3
1	100x100x5mm THK. GALV. HOLLOW	1120	开料	1	S2

33

REV.	CHECKED DATE BY	PART NUMBER	Dim. A	Dim. B	Dim. C	Dim. D	Dim. E	Dim. F	Dim. G	QTY	Inv. Code	ASSEMBLE ON PARTS	EXTR. DRAWING PART DRAWING
-		T6-3F-ST02-02								5			

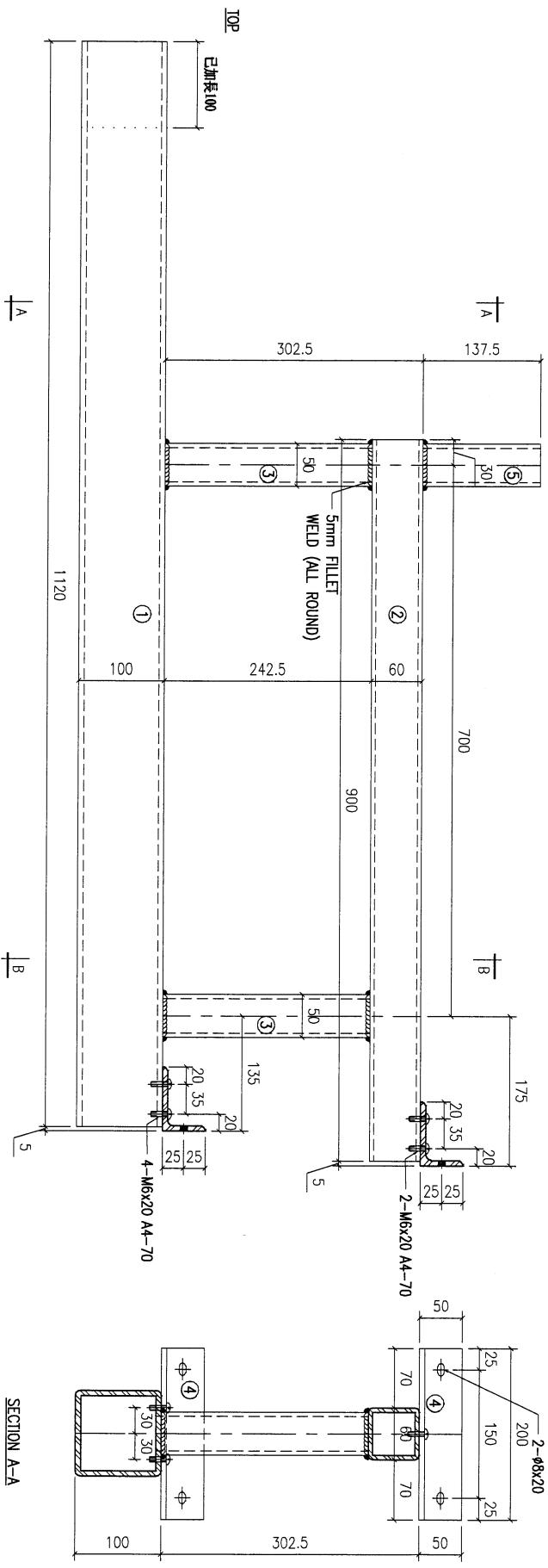
20號架



VS = VISIBLE SURFACE
ALL DIMENSIONS IN MILLIMETRES

REV.	DATE	AMENDMENT	REVISOR BY	美特鋁質有限公司 MIDI ALUMINIUM FABRICATOR LTD. Units 6-8, Sunray Industrial Centre, 1/F 610 Cha Kwo Ling Road, Kowloon Tel: 23489211-4 Fax: (852) 27727666				PROJECT	JOB NO.	DRAWING TITLE	DATE	DRAWN	SCALE	SHT.	
-	-	-	-	Project J853-PODIUM ALUM CEILING & FEATURE CLADDING (T6 3/F)				J853	J853	鐵料加工圖	2/23/2023	YEUNG	1:5	2 of 2	
				FACTORY	W/CENTRE	CUT ENDS	FINISH	POST PAINT	PART						
				01	MOK/SOK/FAB	N/A	A/S004	熱浸	本廠						
				Standard	X X .	±1	Angle	±1'	DATE						
				Tolerances	X X . X = ±0.5	Squareness	±1'	2/23/2023							
										4	75x50mm THK GALVANNE	100	開料	4	S7
										3	50x50x5mm THK GALV. HOLLOW	39.3	開料	2	S5
										2	60x60x5mm THK GALV. HOLLOW	1160	開料	1	S3
										1	100x100x6.3mm THK GALV. HOLLOW	1120	開料	1	S2
													零件描述	數量	備註

REV.	CHECKED DATE	PART NUMBER	Dim. A	Dim. B	Dim. C	Dim. D	Dim. E	Dim. F	Dim. G	QTY	Inv. Code	ASSEMBLE ON PARTS	EXTR. DRAWING PART DRAWING
-		T6-3F-ST03-01								5			



VS = VISIBLE SURFACE
ALL DIMENSIONS IN MILLIMETRES

21號架

REV.	DATE	AMENDMENT	REVISED BY
-	-	-	-

Units 6-8 Sunray Industrial Centre, 1/F
610 Cho Kwo Ling Road, Kowloon
Tel: 23489211-4 Fax: (852) 27172766

Project J853-PODIUM ALUM CEILING & FEATURE CLADDING (T6 3/F)

JOB NO. J853

FACTORY 01
Standard X X . = ±1
Tolerances X X . X = ±0.5

W/CENTRE / MAX / MIN / FAB
CUT ENDS N/A
Angle
Squareness ±1'

DATE 2/23/2023
DRAWING TITLE 鐵料加工圖

REV.	DATE	AMENDMENT	REVISED BY
-	-	-	-

REF: 19/8004
FINISH
DATE 2/23/2023

DRAWN YEUNG
SCALE 1:5
PART TRACK TYPE S.....

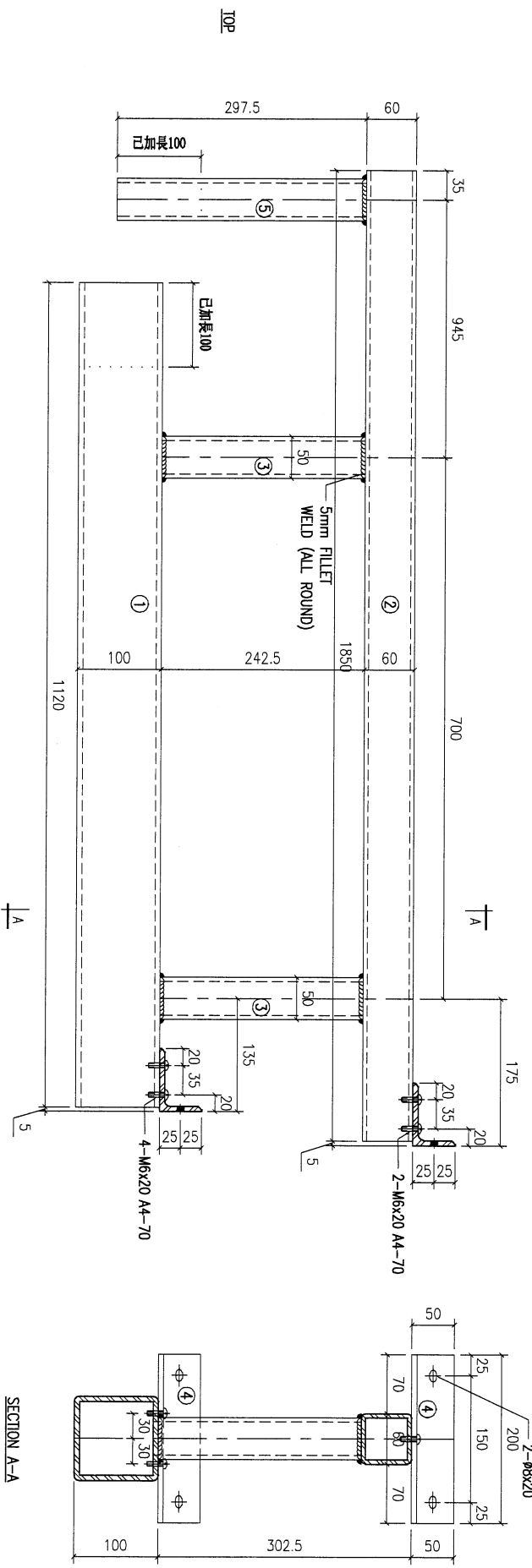
REV.	DATE	AMENDMENT	REVISED BY
-	-	-	-

POST PAINT
PRE PAINT
SCALE 1:5
PART TRACK TYPE S.....

DRAWING NO. T6-3F-ST03
SHIT. 1 of 2
REV. -

35

REV.	CHECKED DATE	PART NUMBER	Dim. A	Dim. B	Dim. C	Dim. D	Dim. E	Dim. F	Dim. G	QTY	Inv. Code	ASSEMBLE ON PARTS	EXTR. DRAWING PART DRAWING
-		T6-3F-ST03-02								2			



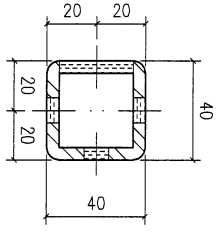
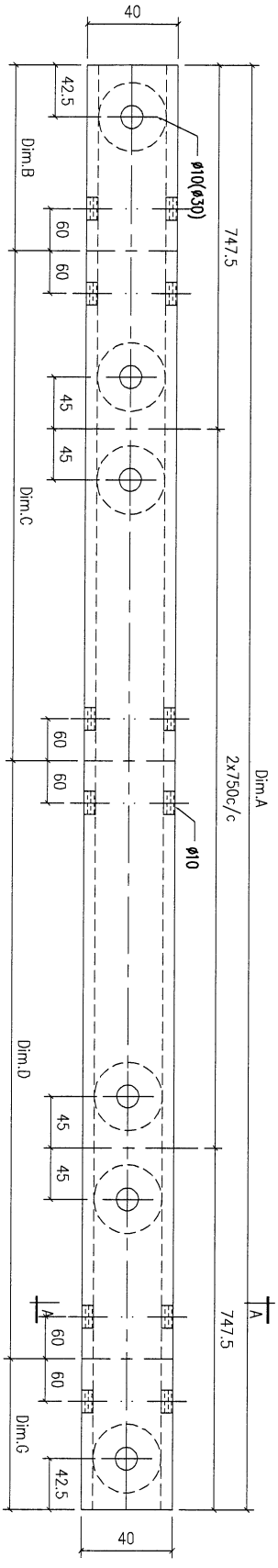
22號架

VS = VISIBLE SURFACE
ALL DIMENSIONS IN MILLIMETRES

REV.	DATE	AMENDMENT	REVISED BY	美特鋁質有限公司 MIDI ALUMINIUM FABRICATOR LTD. Units 6-8, Sunray Industrial Centre, 1/F 610 Cha Kwo Ling Road, Kowloon Tel: 23489211-4 Fax: (852) 2727666				PROJECT: J853-PODIUM ALUM CEILING & FEATURE CLADDING (T6 3/F)	JOB NO. J853	FACTORY 01 W/CENTRE MOK/SOK/FAB CUT ENDS N/A REF: 2/215 FINISH 材料標號 熱浸 PRE PAINT POST PAINT PART SUB ASSEM.	Standard X X . = ±1 Tolerances X X . X = ±0.5 Angle . ±1' Squareness ±1'	DATE 2/23/2023	DRAWN YEUNG SCALE 1:5	DRAWING NO. T6-3F-ST03	SHIT. 2 of 2	REV. -
------	------	-----------	------------	---	--	--	--	--	-----------------	--	---	-------------------	--------------------------------	---------------------------	-----------------	-----------

REV.	DATE	DESCRIPTION	QTY	REVISION
5		50x60x5mm THK. GAL.S. HOLLOW	297.5	开料
4		75x30x6mm THK. GAL.S. ANGLE	200	开料
3		50x50x5mm THK. GAL.S. HOLLOW	242.5	开料
2		60x60x5mm THK. GAL.S. HOLLOW	185.0	开料
1		100x100x6.3mm THK. GAL.S. HOLLOW	1120	开料
		长度		
		配件描述		
		数量		
		备注		

REV.	CHECKED DATE BY	PART NUMBER	Dim. A	Dim. B	Dim. C	Dim. D	Dim. E	Dim. F	Dim. G	QTY	Inv. Code	ASSEMBLE ON PARTS	EXTR. DRAWING PART DRAWING
-		T6-3F-TM01-01	2995	647.5	900	900				1			<input checked="" type="checkbox"/>
-		T6-3F-TM01-02	2995	347.5	900	900				1			<input checked="" type="checkbox"/>
-		T6-3F-TM01-03	2995	803	900	900				1			<input checked="" type="checkbox"/>



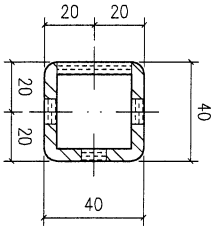
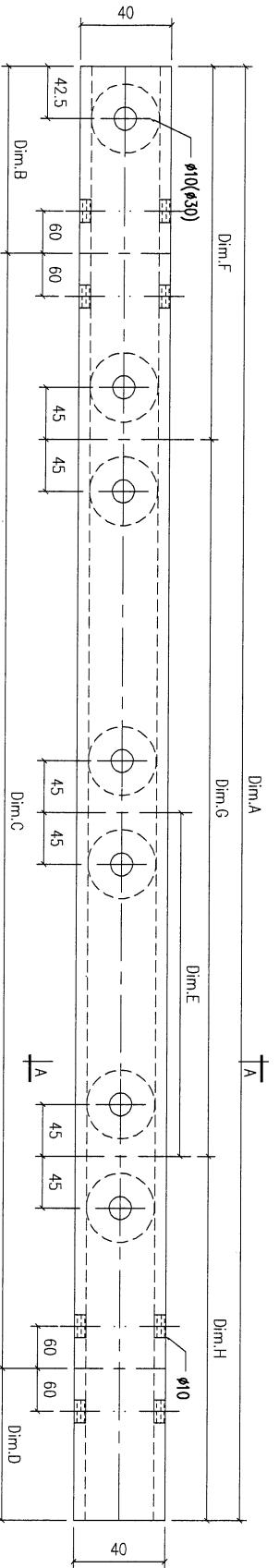
SECTION A-A

VS = VISIBLE SURFACE
ALL DIMENSIONS IN MILLIMETRES

REV.	DATE	AMENDMENT	REVISED BY	美特鋁質有限公司 MIDI ALUMINIUM FABRICATOR LTD. Units 6-8, Sunray Industrial Centre, 1/F 610, Cha Kwo Ling Road, Kowloon Tel: 23489211-4 Fax: (852) 27276666				PROJECT	JOB NO.	DRAWING TITLE	FINISH	DRAWN	POST PAINT	PART	SHT.
-	-	-	-	PROJECT J853-PODIUM ALUM CEILING & FEATURE CLADDING (T6 3/F)				J853	01 Standard X X . = ±1 Tolerances X X . X = ±0.5	CUT ENDS N/A	DATE 2/23/2023	YEUNG	<input checked="" type="checkbox"/> PRE PAINT <input checked="" type="checkbox"/> SUB ASSEM.	PART TRACK TYPE S.....	1 of 1

37

CHKD BY	PART NUMBER	Dim. A	Dim. B	Dim. C	Dim. D	Dim. E	Dim. F	Dim. G	Dim. H	QTY	Inv. Code	ASSEMBLE ON PARTS	EXTR. DRAWING PART DRAWING
-	T6-3F-TM02-01	1952.5	397.5	1*900c/c	655.0	750	747.5	1*750c/c	455.0	1	有加長100		
-	T6-3F-TM02-02	2575.5	497.5	2*900c/c	278.0		747.5	1*1250c/c	4578.0	1	有加長100		
-	T6-3F-TM02-03	3056.5	247.5	2*900c/c	1009.0		747.5	2*750c/c	809.0	1	有加長100		
-	T6-3F-TM02-04	2238.5	47.5	1*900c/c	1291.0		747.5	1*750c/c	741.0	1	有加長100		
-	T6-3F-TM02-05	2854.5	92	2*900c/c	962.5		747.5	2*750c/c	607.0	1	有加長100		
-	T6-3F-TM02-06	3111.5	500.5	2*900c/c	811.0		747.5	2*750c/c	864.0	1	有加長100		
-	T6-3F-TM02-07	2777.5	392	1*900c/c	1485.5		747.5	2*750c/c	530.0	1	有加長100		
-	T6-3F-TM02-08	2875.5	502	2*900c/c	573.5		747.5	2*750c/c	628.0	1	有加長100		
-	T6-3F-TM02-09	2926.5	242	2*900c/c	884.5		747.5	2*750c/c	679.0	1	有加長100		
-	T6-3F-TM02-10	2924.5	653	1*900c/c	1371.5		747.5	1*750c/c	1427.0	1	有加長100		

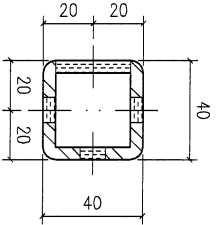
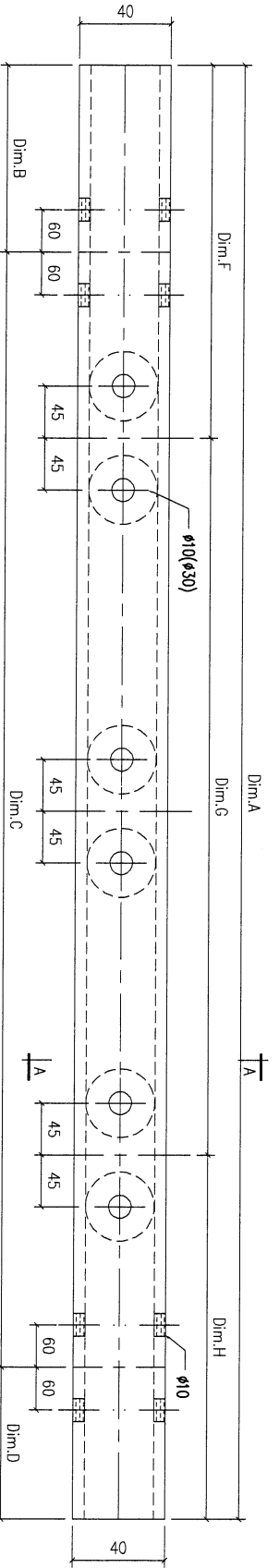


VS = VISIBLE SURFACE
ALL DIMENSIONS IN MILLIMETRES

REV.	DATE	AMENDMENT	REQUESTED BY	美特鋁質有限公司 MIDI ALUMINIUM FABRICATOR LTD. Units 6-8, Sunroy Industrial Centre, 1/F 610 Cha Kwo Ling Road, Kowloon Tel:23489211-4 Fax:(852)27727666				PROJECT	J853-PODIUM ALUM CEILING & FEATURE CLADDING T6 3/F	JOB NO.	J853	DRAWING TITLE	鐵料加工圖 (全通) 40x40x5mm THK. GMS. SHS.	DRAWING NO.	T6-3F-TM02	SHT.	1 of 2	REV.	-
				FACTORY	01	W/CENTRE	MOE/SOBA/FAB	CUT ENDS	N/A	FINISH		DRAWN	YEUNG	SCALE	1:2				
				Standard	X X .	= ±1	Angle	±1'	DATE	2/23/2023	POST PAINT	PRE PAINT	PART	SUB ASSEM.	TRACK TYPE	S.....			
				Tolerances	X X . X = ±0.5	Squareness	±1'												

38

REV.	CHECKED DATE BY	PART NUMBER	Dim. A	Dim. B	Dim. C	Dim. D	Dim. E	Dim. F	Dim. G	Dim. H	QTY	Inv. Code	ASSEMBLE ON PARTS	EXTR. DRAWING PART DRAWING
-		T6-3F-TM02-11	2750.0	655	2*900c/c	295.0		455	2*750c/c	795.0	1	有加長200		
-		T6-3F-TM02-12	2975.0	255	3*900c/c	20.0		505	2*750c/c	970.0	1	有加長200		
-		T6-3F-TM02-13	2739.0	919	1*900c/c	920.0		269	2*750c/c	970.0	1	有加長200		
-		T6-3F-TM02-14	2341.0	818.5	1*900c/c	622.5		693.5	1*750c/c	897.5	1	有加長200		
-		T6-3F-TM02-15	1370.0	184	1*900c/c	286.0		579	0c/c	791.0	1	有加長200		

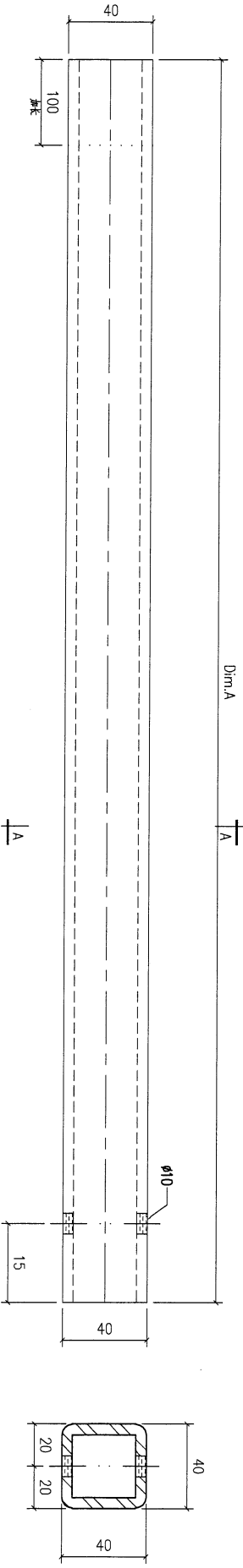


VS = VISIBLE SURFACE
ALL DIMENSIONS IN MILLIMETRES

REV.	DATE	AMENDMENT	REQUIS BY	美特鋁質有限公司 MIDI ALUMINIUM FABRICATOR LTD. Units 6-8, Sunray Industrial Centre, 1/F 610 Che Kwo Ling Road, Kowloon Tel: 23489211-4 Fax: (852) 27727666				PROJECT	JOB NO.	DRAWING TITLE		DRAWING NO.	POST PAINT	PART	SHT.	REV.
-	-	-	-	Project 1853-PODIUM ALUM CEILING & FEATURE CLADDING T6 3/F				J853	鐵料加工圖 (公通)		40X40X5mm THK. GMS. SHS.	T6-3F-TM02	PRE PAINT	SUB ASSEM.	2 of 2	-
				FACTORY	W/CENTRE	CUT ENDS	FINISH	DATE	SCALE	POST PAINT	PART					
				01	XXX/XXX/FAB	N/A		2/23/2023	1:2							
				Standard	X X . = ±1	Angle	±1'									
				Tolerances	X X . X = ±0.5	Squareness	±1'									

40

REV.	CHECKED DATE BY	PART NUMBER	Dim. A	Dim. B	Dim. C	Dim. D	Dim. E	Dim. F	Dim. G	QTY	Inv. Code	ASSEMBLE ON PARTS	EXTR. DRAWING PART DRAWING
-		T6-3F-TM12-01	769.0							1			
-		T6-3F-TM12-02	626.0							1			
-		T6-3F-TM12-03	617.0							1			
-		T6-3F-TM12-04	568.0							1			
-		T6-3F-TM12-05	848.0							1			
-		T6-3F-TM12-06	804.0							2			
-		T6-3F-TM12-07	805.0							1			
-		T6-3F-TM12-08	299.0							1			
-		T6-3F-TM12-09	748.0							1			
-		T6-3F-TM12-10	664.0							1			
-		T6-3F-TM12-11	794.0							1			
-		T6-3F-TM12-12	850.0							6			
-		T6-3F-TM12-13	797.0							1			
-		T6-3F-TM12-14	951.0							1			
-		T6-3F-TM12-15	792.0							4			

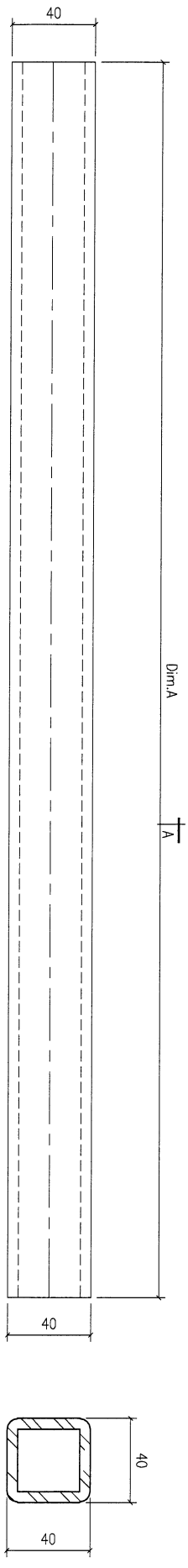


VS = VISIBLE SURFACE
ALL DIMENSIONS IN MILLIMETRES

REV.	DATE	AMENDMENT	REVISED BY	美特鋁質有限公司 MIDI ALUMINIUM FABRICATOR LTD. Units 6-8, Sunray Industrial Centre, 1/F 610, Cha Kwo Ling Road, Kowloon Tel: 23489211-4 Fax: (852) 2727666				JOB NO.	DRAWING TITLE		DATE	DRAWN	SCALE	POST PAINT	PART	SHT.	REV.
-	-	-	-	Project 1853-PODIUM ALUM CEILING & FEATURE CLADDING T6 3/F				J853	鐵料加工圖 (樣通)		2/23/2023	YEUNG	1:2	PRE PAINT	T6-3F-TM12	1 of 2	-
				FACTORY	W/CENTRE	CUT ENDS	FINISH	DRAWING NO.		熱浸		SCALE	POST PAINT	PART	SHT.	REV.	
				01	XXX/XXX/FAB	N/A		T6-3F-TM12		熱浸		1:2	PRE PAINT	T6-3F-TM12	1 of 2	-	
				Standard	X X . = ±1	Angle	±1'	DRAWING NO.		熱浸		SCALE	POST PAINT	PART	SHT.	REV.	
				Tolerances	X X . X = ±0.5	Squareness	±1'	T6-3F-TM12		熱浸		1:2	PRE PAINT	T6-3F-TM12	1 of 2	-	

41

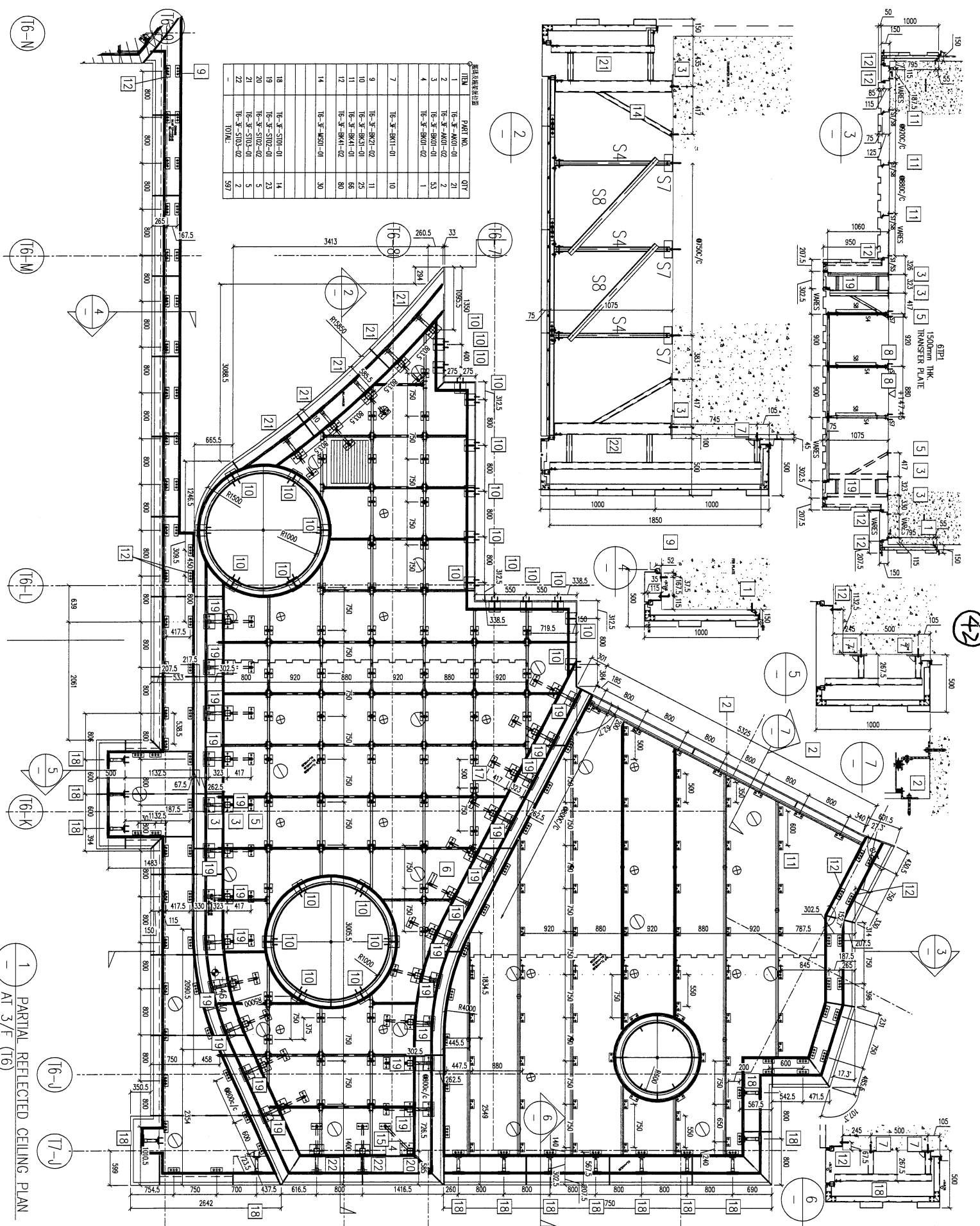
REV.	ORDER BAR NO.	PART NUMBER	Dim. A	Dim. B	Dim. C	Dim. D	Dim. E	Dim. F	Dim. G	QTY	Inv. Code	ASSEMBLE ON PARTS	EXTR. DRAWING PART DRAWING
-		T6-3F-TM12-16	905.0							1		有長200	



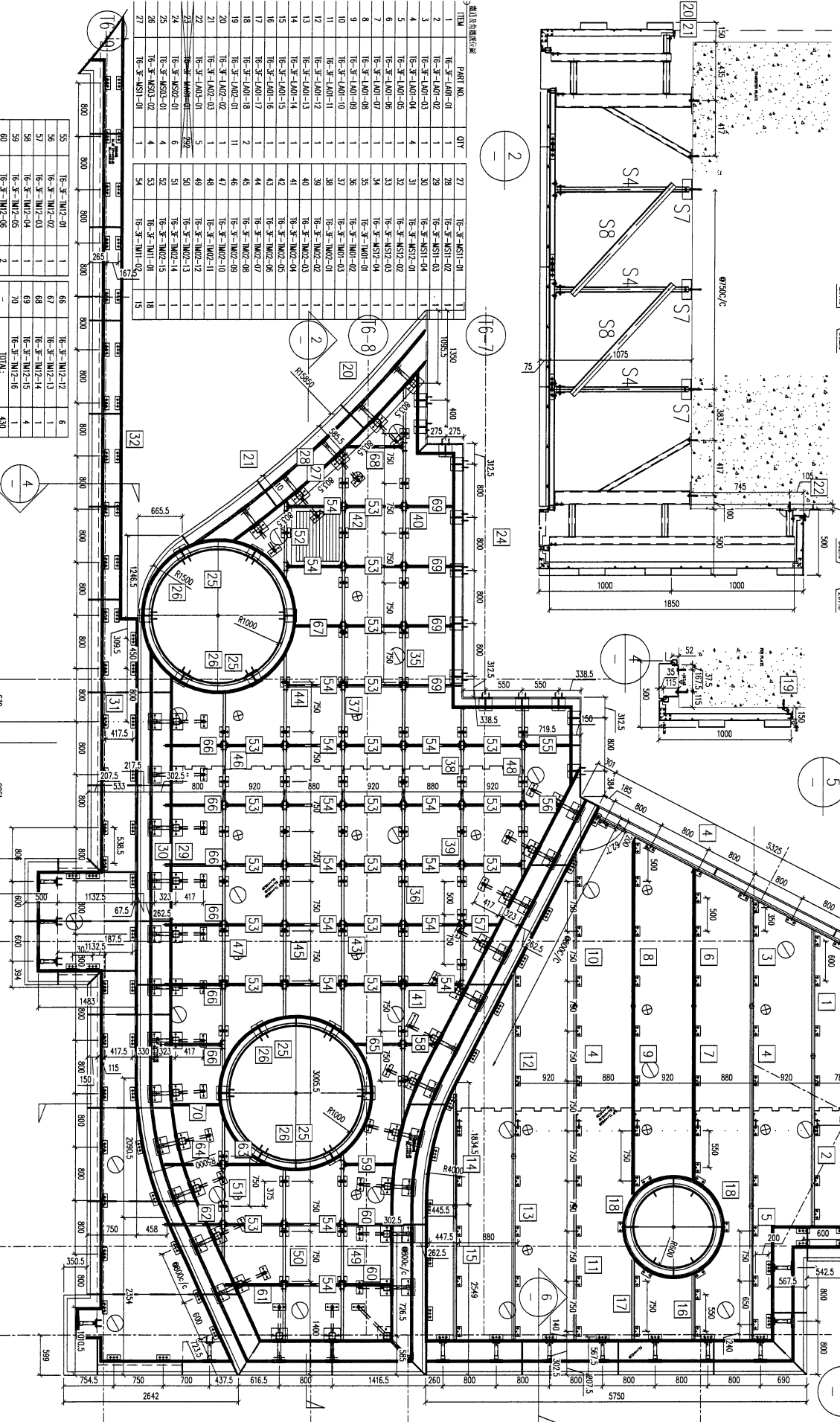
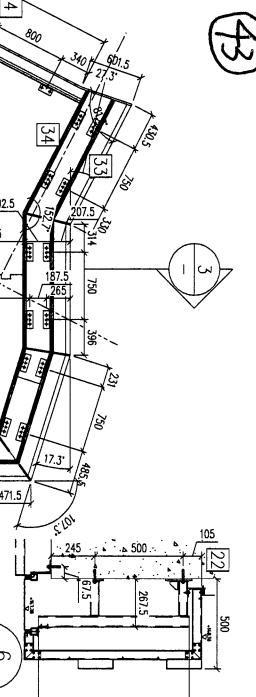
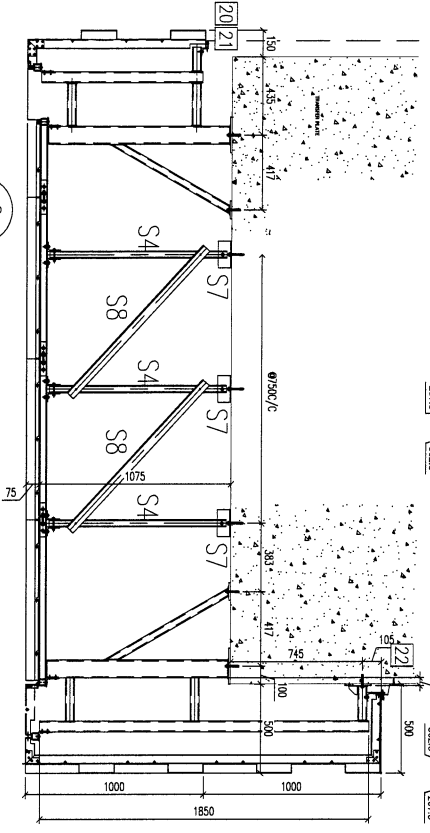
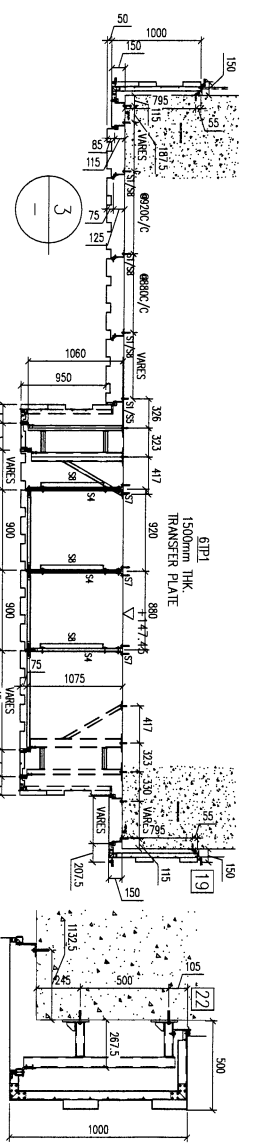
VS = VISIBLE SURFACE
ALL DIMENSIONS IN MILLIMETRES

REV.	DATE	AMENDMENT	REVISED BY	
美特鋁質有限公司 MIDI ALUMINIUM FABRICATOR LTD. Units 6-8, Sunray Industrial Centre, 1/F 610 Cha Kwo Ling Road, Kowloon Tel: 23489211-4 Fax: (852) 27272666				
PROJECT J853-PODIUM ALUM CEILING & FEATURE CLADDING T6 3/F				JOB NO. J853
FACTORY		W/CENTRE	CUT ENDS	FINISH
01		MOCK/5000/FAB	N/A	
Standard	X X .	= ±1	Angle	±1
Tolerances	X X . X = ±0.5	Squareness	±1	DATE
DRAWING TITLE				2/23/2023
鐵料加工圖 (樣通)				
40x40x5mm THK. GMS. SHS.				
DRAWING NO.		POST PAINT	PART	
T6-3F-TM12		PRE PAINT	SUB ASSEM.	
DRAWN		SCALE	TRACK TYPE	
YEUNG		1:2	S.....	
SHT.		REV.		
2 of 2				

圖號	PART NO.	QTY
1	16-3-4001-01	21
2	16-3-4001-02	2
3	16-3-4001-02	33
4	16-3-4001-02	1
7	16-3-4011-01	10
9	16-3-4021-02	11
10	16-3-4031-01	23
11	16-3-4041-01	66
12	16-3-4041-02	80
14	16-3-4051-01	30
18	16-3-5101-01	14
19	16-3-5102-01	23
20	16-3-5102-02	5
21	16-3-5103-01	5
22	16-3-5103-02	7
--	101M	597



1 PARTIAL REFLECTED CEILING PLAN
AT 3/F (16)



樓板及柱樑編號

樓層	樑編號	樑型	樑長	樑寬	樑高	樑深	樑底	樑頂	樑中	樑端	樑尾
1	16-3-NST-01	1	1580	100	100	100	1580	1580	1580	1580	1580
2	16-3-NST-02	1	1580	100	100	100	1580	1580	1580	1580	1580
3	16-3-NST-03	1	1580	100	100	100	1580	1580	1580	1580	1580
4	16-3-NST-04	1	1580	100	100	100	1580	1580	1580	1580	1580
5	16-3-NST-05	1	1580	100	100	100	1580	1580	1580	1580	1580
6	16-3-NST-06	1	1580	100	100	100	1580	1580	1580	1580	1580
7	16-3-NST-07	1	1580	100	100	100	1580	1580	1580	1580	1580
8	16-3-NST-08	1	1580	100	100	100	1580	1580	1580	1580	1580
9	16-3-NST-09	1	1580	100	100	100	1580	1580	1580	1580	1580
10	16-3-NST-10	1	1580	100	100	100	1580	1580	1580	1580	1580
11	16-3-NST-11	1	1580	100	100	100	1580	1580	1580	1580	1580
12	16-3-NST-12	1	1580	100	100	100	1580	1580	1580	1580	1580
13	16-3-NST-13	1	1580	100	100	100	1580	1580	1580	1580	1580
14	16-3-NST-14	1	1580	100	100	100	1580	1580	1580	1580	1580
15	16-3-NST-15	1	1580	100	100	100	1580	1580	1580	1580	1580
16	16-3-NST-16	1	1580	100	100	100	1580	1580	1580	1580	1580
17	16-3-NST-17	1	1580	100	100	100	1580	1580	1580	1580	1580
18	16-3-NST-18	1	1580	100	100	100	1580	1580	1580	1580	1580
19	16-3-NST-19	1	1580	100	100	100	1580	1580	1580	1580	1580
20	16-3-NST-20	1	1580	100	100	100	1580	1580	1580	1580	1580
21	16-3-NST-21	1	1580	100	100	100	1580	1580	1580	1580	1580
22	16-3-NST-22	1	1580	100	100	100	1580	1580	1580	1580	1580
23	16-3-NST-23	1	1580	100	100	100	1580	1580	1580	1580	1580
24	16-3-NST-24	1	1580	100	100	100	1580	1580	1580	1580	1580
25	16-3-NST-25	1	1580	100	100	100	1580	1580	1580	1580	1580
26	16-3-NST-26	1	1580	100	100	100	1580	1580	1580	1580	1580
27	16-3-NST-27	1	1580	100	100	100	1580	1580	1580	1580	1580

樑編號	樑型	樑長	樑寬	樑高	樑深	樑底	樑頂	樑中	樑端	樑尾
55	16-3-NM2-01	1	66	16-3-NM2-12	6					
56	16-3-NM2-02	1	67	16-3-NM2-13	6					
57	16-3-NM2-03	1	68	16-3-NM2-14	6					
58	16-3-NM2-04	1	69	16-3-NM2-15	4					
59	16-3-NM2-05	1	70	16-3-NM2-16	1					
60	16-3-NM2-06	2	-	-	-					
61	16-3-NM2-07	1	-	-	-					
62	16-3-NM2-08	1	-	-	-					
63	16-3-NM2-09	1	-	-	-					
64	16-3-NM2-10	1	-	-	-					
65	16-3-NM2-11	1	-	-	-					

樑編號	樑型	樑長	樑寬	樑高	樑深	樑底	樑頂	樑中	樑端	樑尾
66	16-3-NM2-12	6	-	-	-					
67	16-3-NM2-13	6	-	-	-					
68	16-3-NM2-14	4	-	-	-					
69	16-3-NM2-15	1	-	-	-					
70	16-3-NM2-16	1	-	-	-					
TOTAL		430	-	-	-					

16-N

16-M

16-L

16-K

16-J

17-J

1 PARTIAL REFLECTED CEILING PLAN AT 3/F (16)

43