

工程指示 / 要求簡箋 ENGINEER INSTRUCTIONS(E.I.)

工程指示編號:	EI- 8701	修改版本:	-
	HK-0022		
工程編號:	J 853	工程名稱:	延坪道
收件人:	生統	發件人:	Joe Chan
工程項目:	Feature Wall 裝飾鏤空 Panel 組裝 (House A圍牆位置)	日期:	6/1/2025

<input type="checkbox"/> 原合約工程包	<input type="checkbox"/> 原合約工程加 / 減賬 QT-	<input type="checkbox"/> 新工程報價 QT-
---------------------------------	--	------------------------------------

信件批核號碼/圖紙參考編號:	批核模具圖紙編號:
客戶指示附件:	管理內部批簽署:

<input type="checkbox"/> 初步鋁料 B.M.	<input type="checkbox"/> 加工拆圖, 然後生產	<input type="checkbox"/> 尺寸表
<input type="checkbox"/> 正式鋁料 B.M.	<input type="checkbox"/> 技術上資料/指示	<input type="checkbox"/> 報價
<input type="checkbox"/> 配件 B.M.	<input type="checkbox"/> 樣辦或貨品說明書	<input type="checkbox"/> 分判合約
<input type="checkbox"/> 其他:		

內容: 請依附件資料, 加工組裝鏤空 Panel, 送地盤。
(廠用鋁板: EI8700)

完成上列要求日期: 10/2/2025

國內

<input type="checkbox"/> 生產技術總監	<input type="checkbox"/> 連附件	<input type="checkbox"/> 技術部	<input type="checkbox"/> 連附件	<input type="checkbox"/> 生產部	<input type="checkbox"/> 連附件
<input type="checkbox"/> 採購部	<input type="checkbox"/> 連附件	<input checked="" type="checkbox"/> 生產統籌部	<input checked="" type="checkbox"/> 連附件	<input type="checkbox"/> 報關組	<input type="checkbox"/> 連附件
<input type="checkbox"/> 質檢部	<input type="checkbox"/> 連附件	<input type="checkbox"/> 會計部	<input type="checkbox"/> 連附件	<input type="checkbox"/> 機械設計部	<input type="checkbox"/> 連附件
<input type="checkbox"/> 香港辦	<input type="checkbox"/> 連附件	<input type="checkbox"/> 其他:			

香港

<input type="checkbox"/> 行政部	<input type="checkbox"/> 連附件	<input type="checkbox"/> 會計部	<input type="checkbox"/> 連附件	<input type="checkbox"/> 統籌部	<input type="checkbox"/> 連附件	<input type="checkbox"/> 工程部	<input type="checkbox"/> 連附件
<input type="checkbox"/> 採購部	<input type="checkbox"/> 連附件	<input type="checkbox"/> QS部	<input type="checkbox"/> 連附件	<input checked="" type="checkbox"/> 地盤管理	<input checked="" type="checkbox"/> 連附件	<input type="checkbox"/> 維修部	<input type="checkbox"/> 連附件

*發件人簽署:		*組別成員批核簽署:	
傳遞編號:	HK0022/25	項目經理簽署:	

项目名称: 张数: 1

设计单位: 张号: 1

***** 下料清单 *****

***** 型材两端去除总长度=100毫米, 刀具宽度=4毫米 *****

材料型号:JM1061 颜色:MILL
50x194 [WG-AL-N51;WG-AL-N50] 40x8 [WG-AL-N559]

使用定尺料 - 颜色:MILL, 去料头:100毫米

1) 1 支, 6 米::50x106 ;40x4 ;料头:0

2) 1 支, 6 米::50x88 ;40x4 ;料头:972

型材:JM1061 数量:2 颜色:MILL 定尺:6米 (6.6Kg/7.3Kg=90.23%)

需要型材重量=7.3Kg, 实际使用重量=6.6Kg, 实际材料总价=186.66元, 材料利用率=90.23%

设计: 校对: 标审: 审核: 工艺:

项目名称: 张数: 1

设计单位: 张号: 1

***** 下料清单 *****

***** 型材两端去除总长度=100毫米, 刀具宽度=4毫米 *****

材料型号:JMFG0089 颜色:JMQ218640(SS-03)
2080x6 [WG-AL-N54;WG-AL-N55] 980x8 [WG-AL-N52;WG-AL-N53]
580x6 [WG-AL-N57;WG-AL-N56]

使用定尺料 - 颜色:JMQ218640(SS-03), 去料头:100毫米

- 1) 3 支, 6 米::2080x2 ;980x1 ;580x1 ;料头:164
- 2) 1 支, 6 米::980x4 ;580x3 ;料头:212
- 3) 1 支, 6 米::980x1 ;料头:4916

型材:JMFG0089数量:5 颜色:JMQ218 定尺:6米 (31Kg/39Kg=79.6%)

需要型材重量=39Kg, 实际使用重量=31Kg, 实际材料总价=993.74元, 材料利用率=79.6%

设计: 校对: 标审: 审核: 工艺:

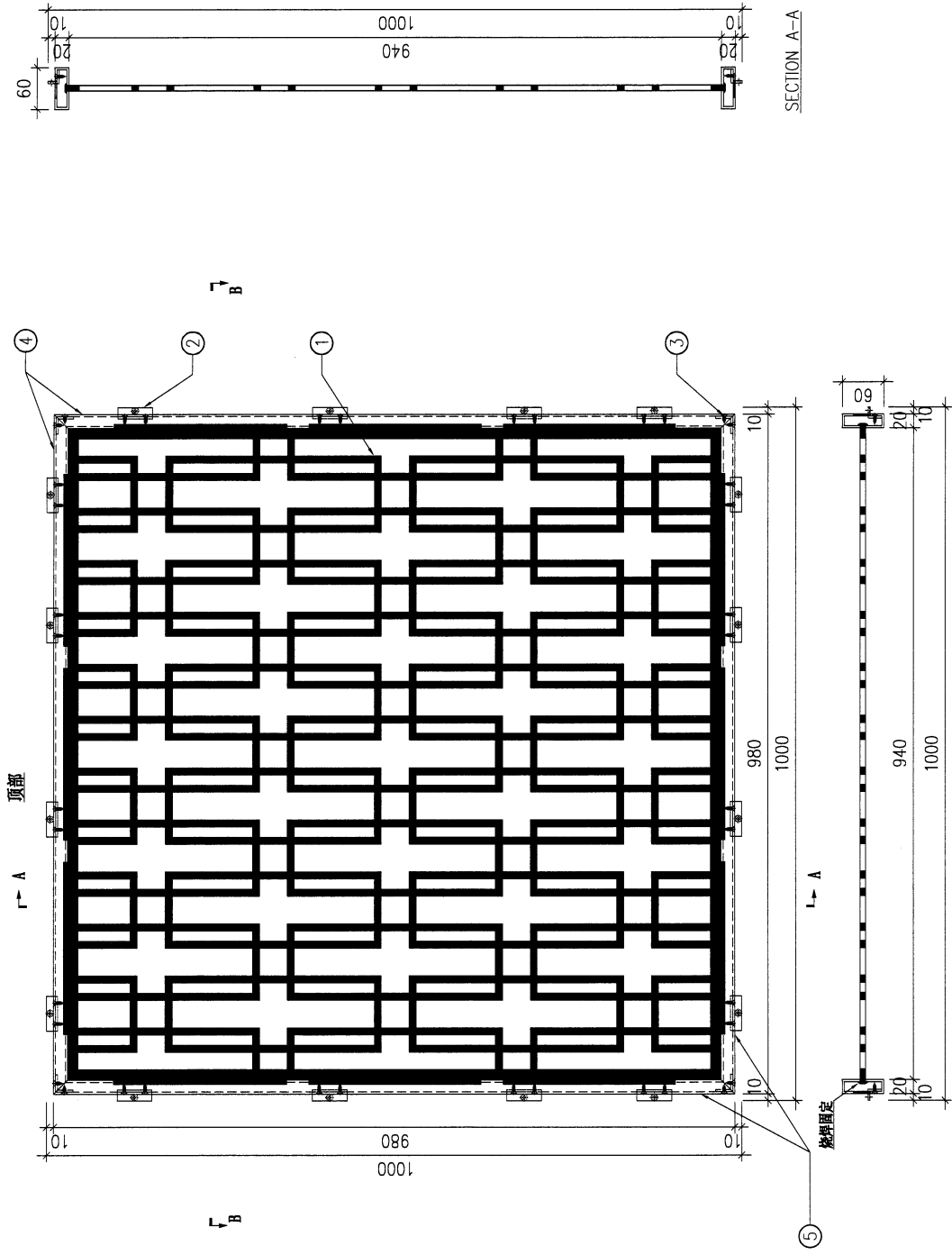
PROJECT: YIN PING ROAD KOWLOON ALUM FEATURE AT PHASE 2

REV.	CHANGED BY	PART NUMBER	Dim. A	Dim. B	Dim. C	Dim. D	Dim. E	Dim. F	Dim. G	Dim. H	QTY.	Inv. Code	COATING	COLOR	MARK. NO.	QTY.
-		WG-UN-N50	-	-	-	-	-	-	2	-	-	-	-	-	-	-

ASSEMBLE ON PARTS

[注: 地盤用]
注: 工地复尺
黑色保留; 白色建位

序号	物料编号	数量
①	WG-AP-N50	1
②	WG-AL-N50	16
③	WG-AL-N51	4
④	WG-AL-N52	2
⑤	WG-AL-N53	2

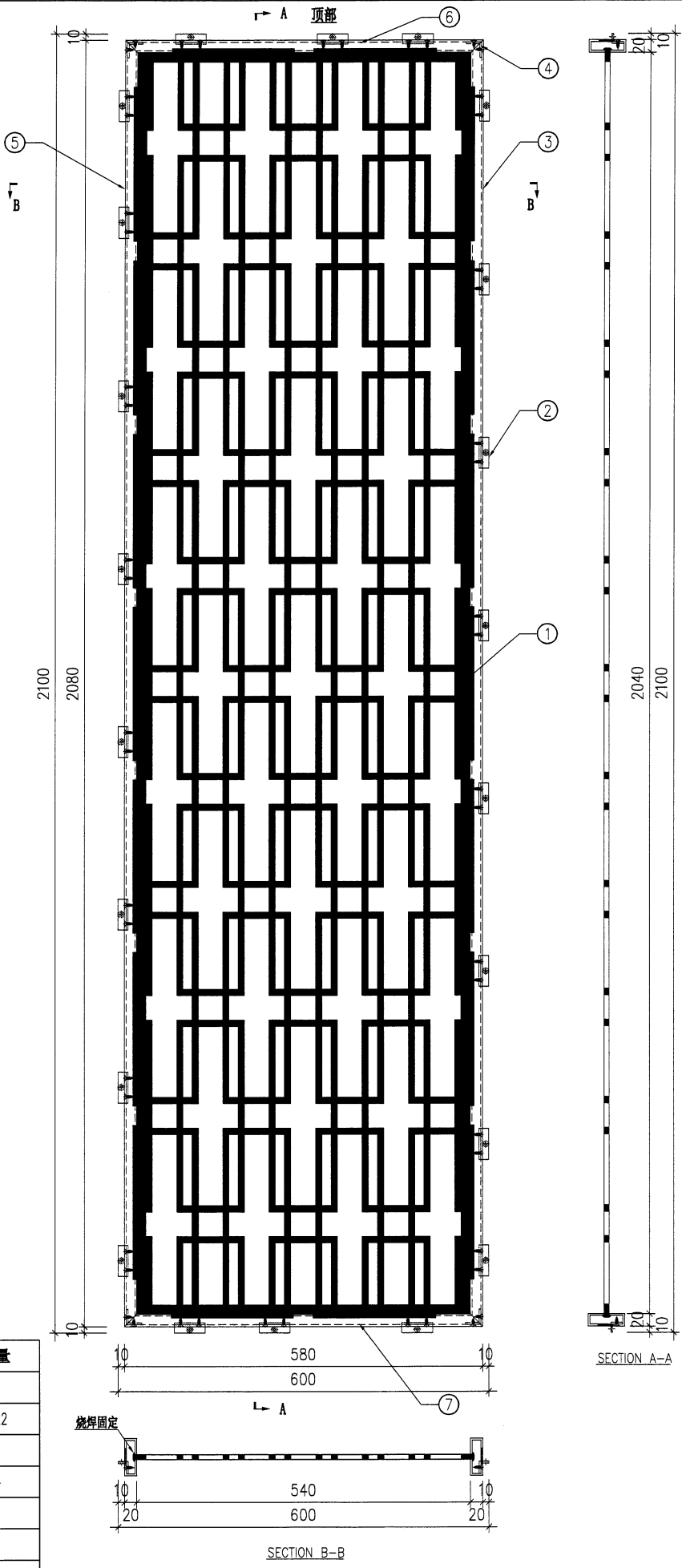


DWG. NO.	REV.	SCALE	DATE	DRAWN BY	APPROVED BY
WG-UN-N50	-	-	28-11-2024	-	-

PROJECT		YIN PING ROAD KOWLOON ALUM FEATURE AT PHASE 2										MATERIAL		COATING		COLOUR		MARK. NO.		QTY.	
REV.	CHECKED BY	PART NUMBER	Dim. A	Dim. B	Dim. C	Dim. D	Dim. E	Dim. F	Dim. G	Dim. H	QTY.	Inv. Code	ASSEMBLE ON PARTS								
-		WG-UN-N51	-	-	-	-	-	-	3												

注：地盘用
注：工地复尺
黑色保留；白色避让

序号	物料编号	数量
①	WG-AP-N51	1
②	WG-AL-N50	22
③	WG-AL-N54	1
④	WG-AL-N51	4
⑤	WG-AL-N55	1
⑥	WG-AL-N56	1
⑦	WG-AL-N57	1



DWG. NO.	WG-UN-N51	REV.	-	SCALE	-	DATE	28-11-2024	DRAWN BY	-	APPROVED BY	-
----------	-----------	------	---	-------	---	------	------------	----------	---	-------------	---

PROJECT: YIN PING ROAD KOWLOON ALUM FEATURE AT PHASE 2

MATERIAL: 网格组装图

COATING: -

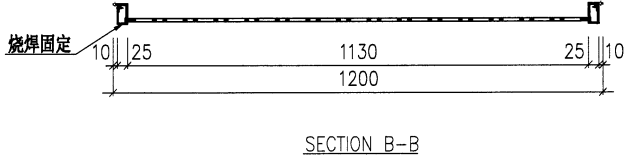
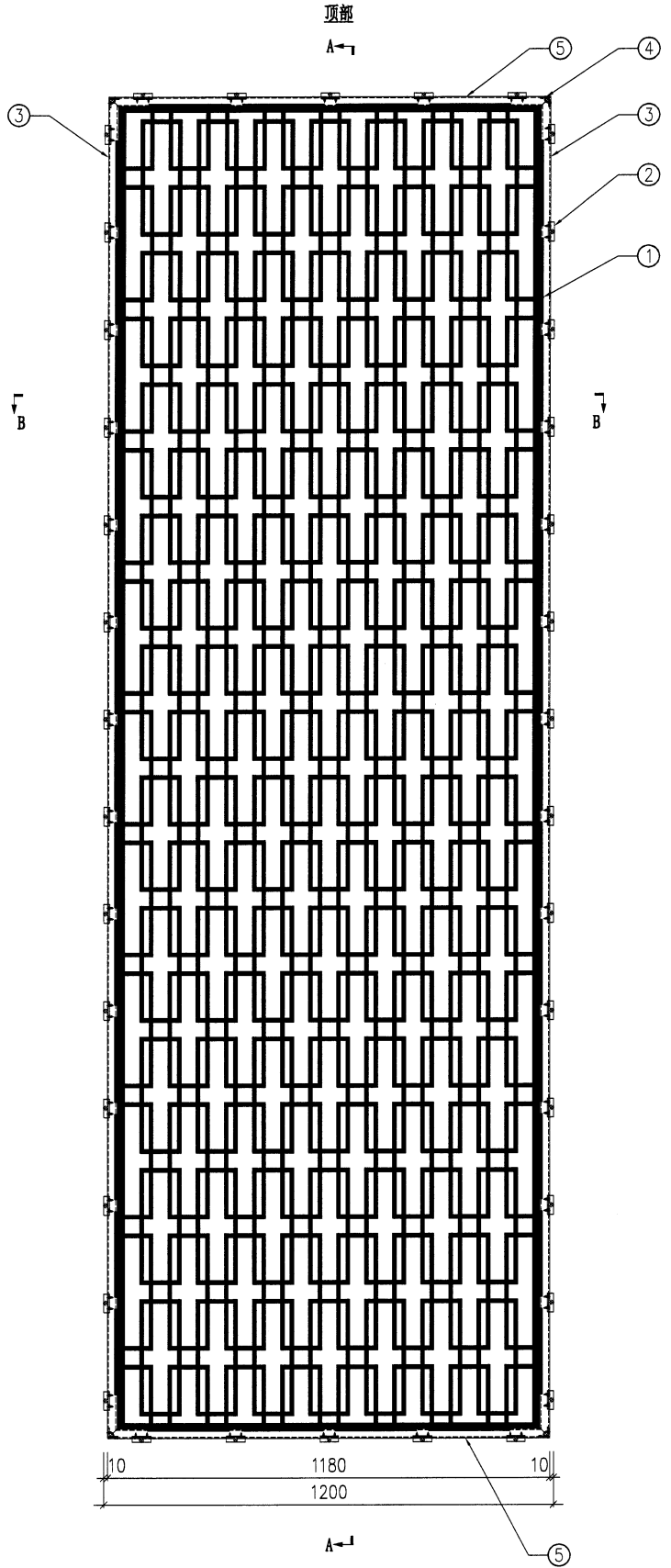
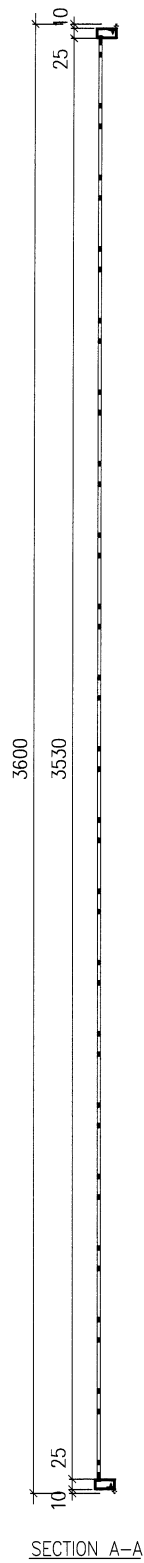
MARK. NO.:

QTY.:

REV.	CHECKED BY	PART NUMBER	Dim. A	Dim. B	Dim. C	Dim. D	Dim. E	Dim. F	Dim. G	Dim. H	QTY.	Inv. Code	ASSEMBLE ON PARTS
-	-	WG-UN-N52	-	-	-	-	-	-	-	-	2	-	-

序号	物料编号	数量
①	WG-AP-N52	1
②	WG-AL-N50	38
③	WG-AL-N58	2
④	WG-AL-N59	4
⑤	WG-AL-N60	2

注: 地盘用
注: 工地复尺
黑色保留; 白色避让



DWG. NO. WG-UN-N52

REV. -

SCALE -

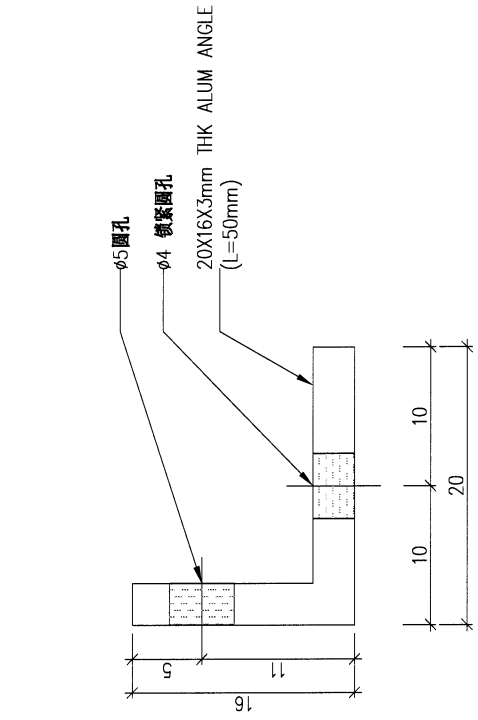
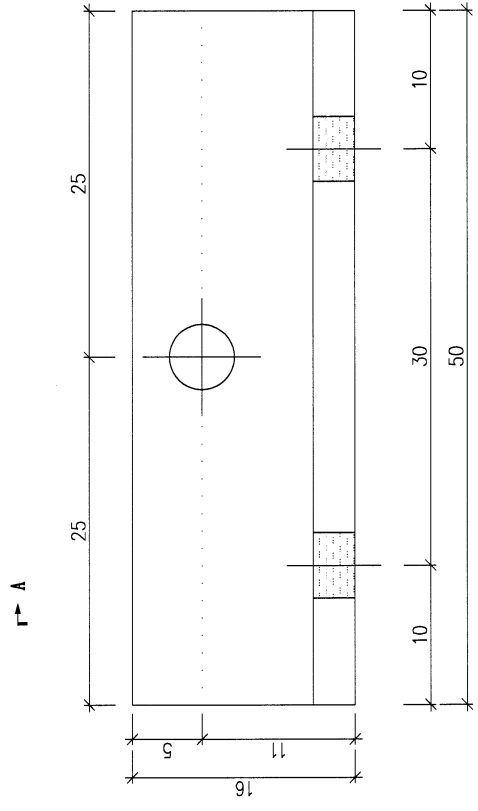
DATE 28-11-2024

DRAWN BY -

APPROVED BY -

PROJECT		YIN PING ROAD KOWLOON ALUM FEATURE AT PHASE 2										COLOUR		MARK. NO.		QTY.	
MATERIAL		JM1061										COATING		ASSEMBLE ON PARTS			
COATING		铬化		Inv. Code		QTY.		174									

REV.	CHECKED BY	PART NUMBER	Dim. A	Dim. B	Dim. C	Dim. D	Dim. E	Dim. F	Dim. G	Dim. H	QTY.	Inv. Code
-		WG-AL-N50	-	-	-	-	-	-	-	-	174	



SECTION A-A

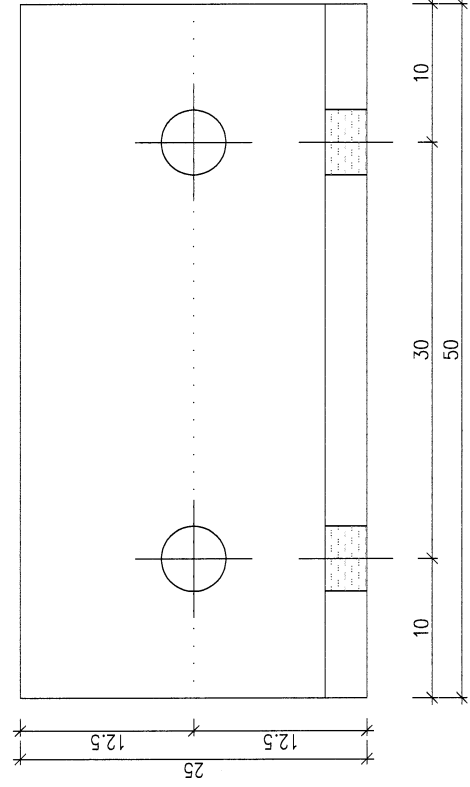
DWG. NO.	WG-AL-N50	REV.	-	SCALE	-	DATE	28-11-2024	DRAWN BY	-	APPROVED BY	-
----------	-----------	------	---	-------	---	------	------------	----------	---	-------------	---

PROJECT		YIN PING ROAD KOWLOON ALUM FEATURE AT PHASE 2										MATERIAL		COATING		COLOUR		MARK. NO.		QTY.	
		JM1061										阳极氧化		-		-		-		-	

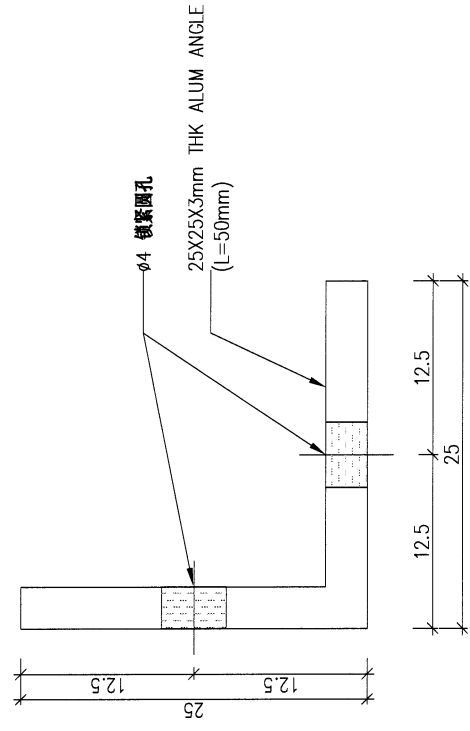
REV.	CHECKED BY	PART NUMBER	Dim. A	Dim. B	Dim. C	Dim. D	Dim. E	Dim. F	Dim. G	Dim. H	QTY.	Inv. Code
-		WG-AL-N51	-	-	-	-	-	-	-	-	20	



↑ A



↓ A

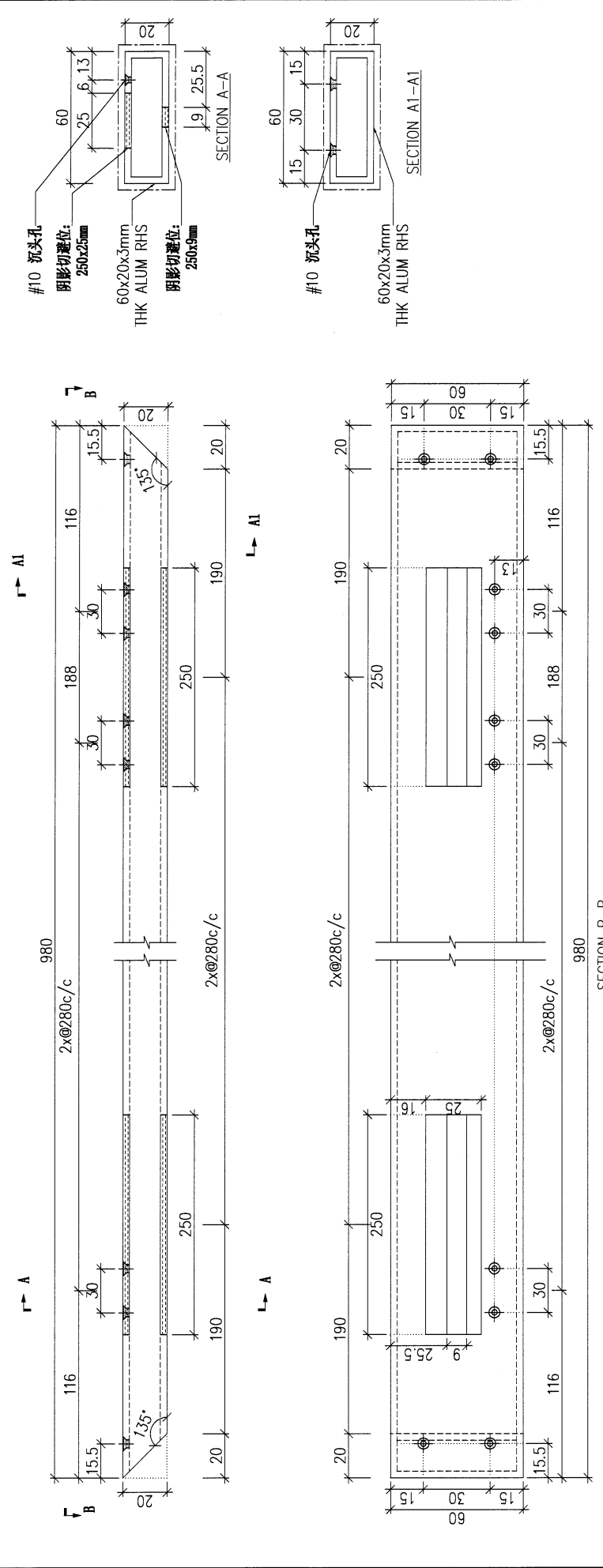


SECTION A-A

DWG. NO.	WG-AL-N51	REV.	-	SCALE	-	DATE	28-11-2024	DRAWN BY	-	APPROVED BY	-
----------	-----------	------	---	-------	---	------	------------	----------	---	-------------	---

PROJECT		YIN PING ROAD KOWLOON ALUM FEATURE AT PHASE 2										MATERIAL		COATING		COLOUR		MARK. NO.		QTY.	
		JMF0089										PVP2		JM0218640(SS-03)		-		-		-	
REV.	CHKD BY	PART NUMBER	Dim. A	Dim. B	Dim. C	Dim. D	Dim. E	Dim. F	Dim. G	Dim. H	QTY.	Inv. Code	ASSEMBLE ON PARTS								
-		WG-AL-N52	-	-	-	-	-	-	-	-	4										

注: 工地复尺												
---------	--	--	--	--	--	--	--	--	--	--	--	--

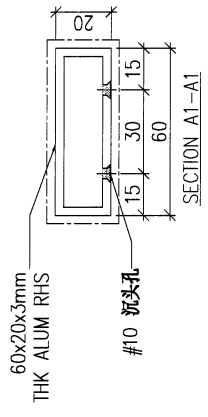
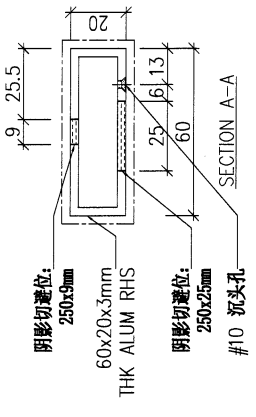
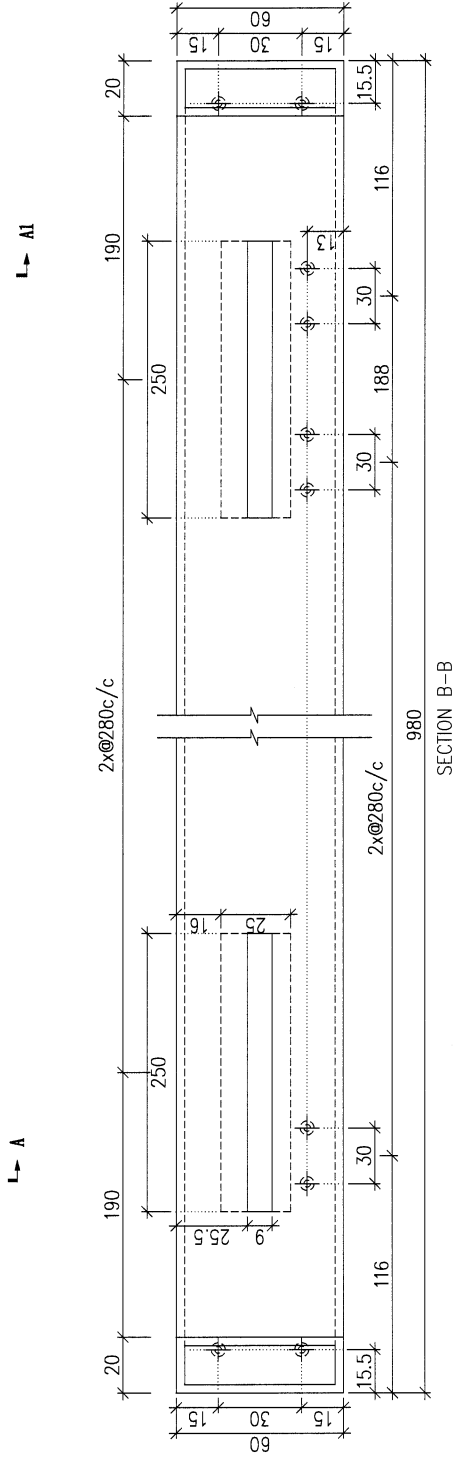
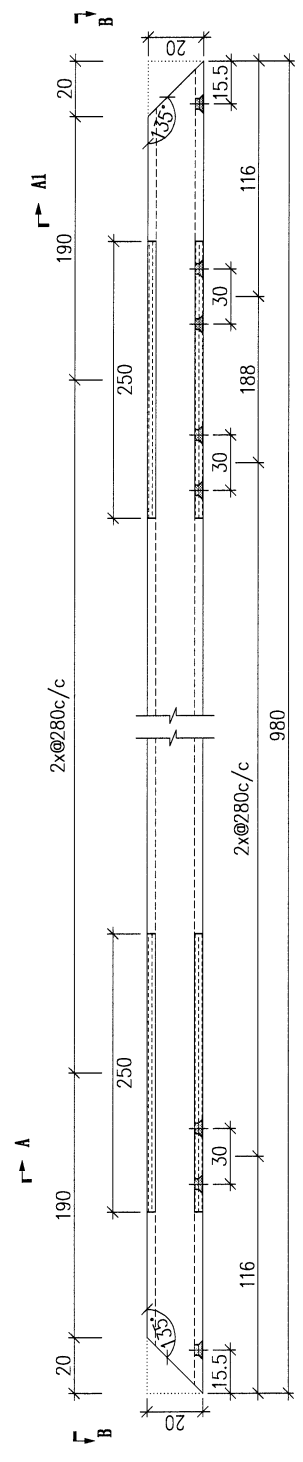


DWG. NO.	WG-AL-N52	REV.	-	SCALE	-	DATE	28-11-2024	DRAWN BY	-	APPROVED BY	-
----------	-----------	------	---	-------	---	------	------------	----------	---	-------------	---

PROJECT		YIN PING ROAD KOWLOON ALUM FEATURE AT PHASE 2									
MATERIAL		JMG0089									
COATING		PVF2									
COLOUR		JMQ218640(SS-03)									
MARK. NO.		-									
QTY.		-									

REV.	CHECKED BY	PART NUMBER	Dim. A	Dim. B	Dim. C	Dim. D	Dim. E	Dim. F	Dim. G	Dim. H	QTY.	Inv. Code
-		WG-AL-N53	-	-	-	-	-	-	-	-	4	ASSEMBLE ON PARTS

常用 注: 工地复尺



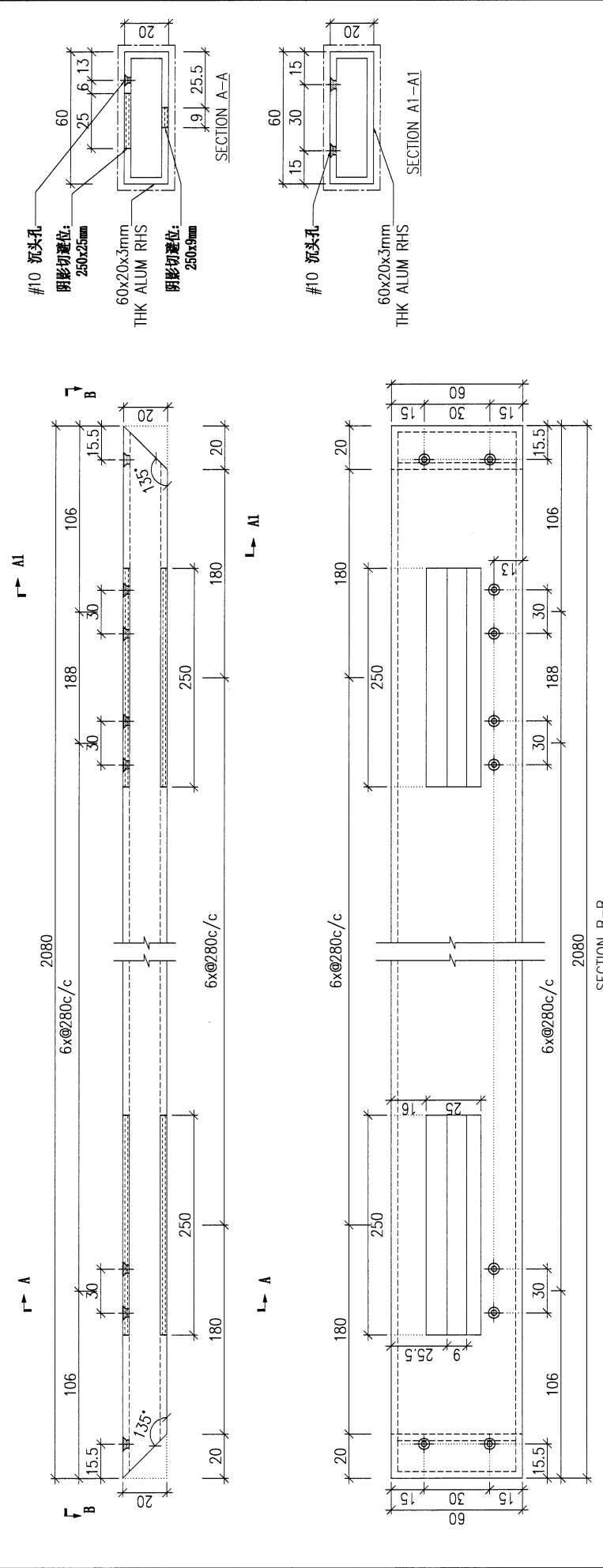
喷油面 (V.S):

DWG. NO.	WG-AL-N53	REV.	-	SCALE	-	DATE	28-11-2024	DRAWN BY	-	APPROVED BY	-
----------	-----------	------	---	-------	---	------	------------	----------	---	-------------	---

PROJECT		YIN PING ROAD KOWLOON ALUM FEATURE AT PHASE 2		MATERIAL		JMF0089		COATING		PVF2		COLOUR		JMQ218640(SS-03)		MARK. NO.		QTY.							
CHECKED DATE BY		PART NUMBER		Dim. A		Dim. B		Dim. C		Dim. D		Dim. E		Dim. F		Dim. G		Dim. H		QTY.		Inv. Code		ASSEMBLE ON PARTS	
--		WG-AL-N54		-		-		-		-		-		-		-		-		3		-		-	

REVISION		REV.		DATE		BY		DESCRIPTION	
-		-		-		-		-	

常用 注: 工地复尺

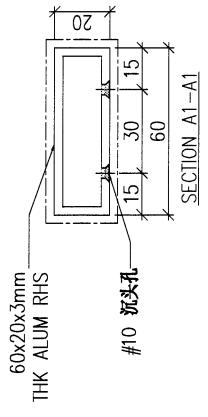
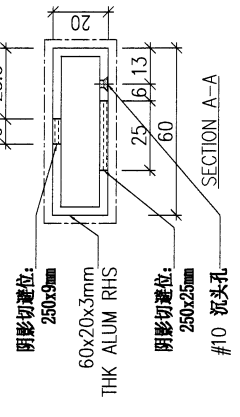
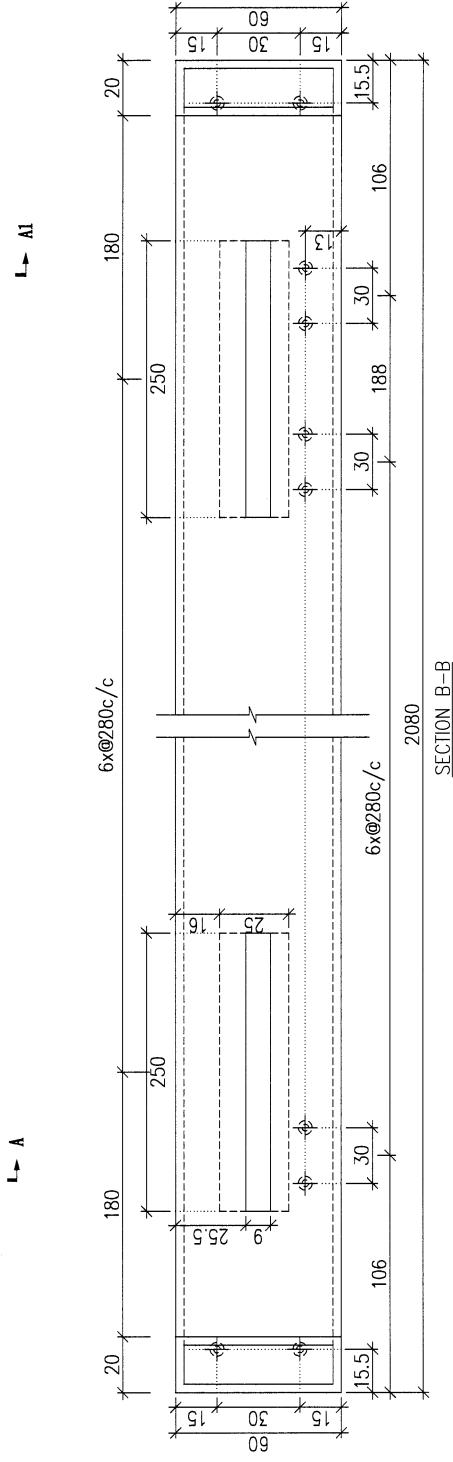
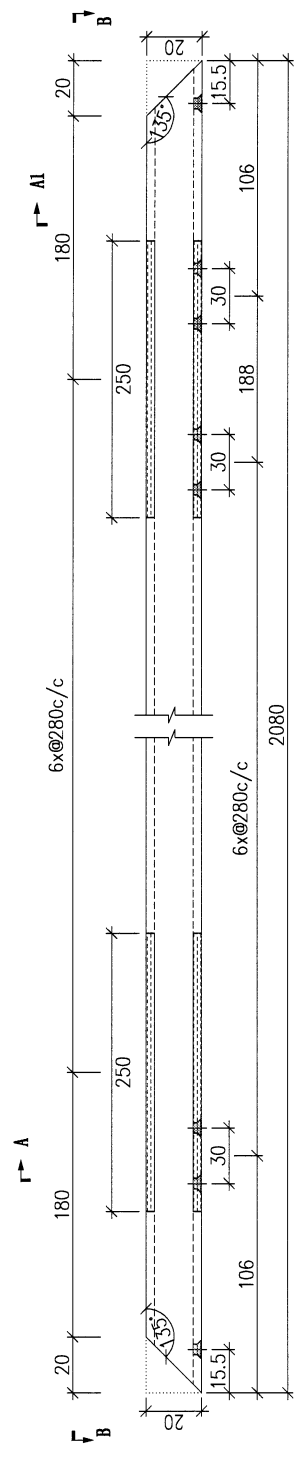


噴油面(V.S): -----

DWG. NO.		WG-AL-N54		REV.		-		SCALE		-		DATE		28-11-2024		DRAWN BY		-		APPROVED BY		-	
----------	--	-----------	--	------	--	---	--	-------	--	---	--	------	--	------------	--	----------	--	---	--	-------------	--	---	--

PROJECT		YIN PING ROAD KOWLOON ALUM FEATURE AT PHASE 2		MATERIAL		JMF00089		COATING		PVF2		COLOUR		JMQ218640(SS-03)		MARK. NO.		-		QTY.		-	
ORDERED DATE BY		PART NUMBER	WG-AL-N55	Dim. A	-	Dim. B	-	Dim. C	-	Dim. D	-	Dim. E	-	Dim. F	-	Dim. G	-	Dim. H	-	Inv. Code	ASSEMBLE ON PARTS		
REV.	-											3											

常用 注: 工地复尺



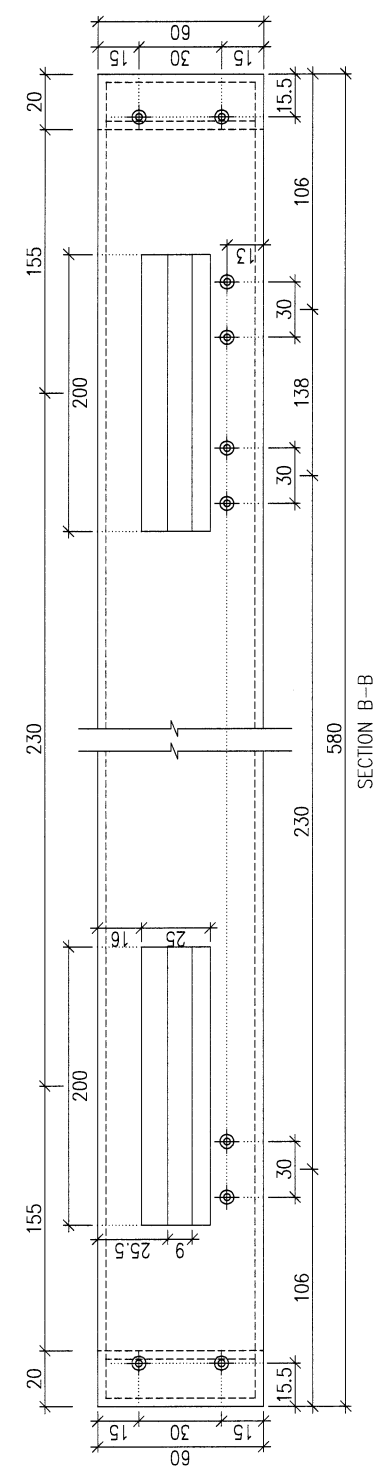
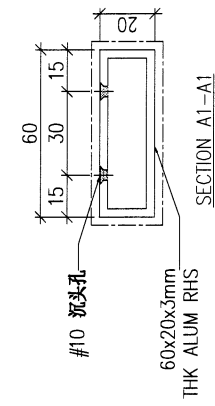
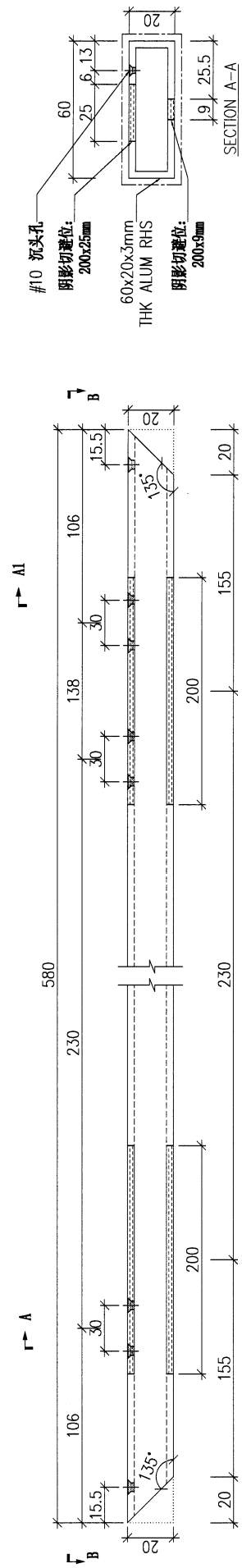
喷油面(V.S):

DWG. NO.	WG-AL-N55	REV.	-	SCALE	-	DATE	28-11-2024	DRAWN BY	-	APPROVED BY	-
----------	-----------	------	---	-------	---	------	------------	----------	---	-------------	---

PROJECT		MATERIAL										COATING		COLOUR		MARK. NO.		QTY.	
YIN PING ROAD KOWLOON ALUM FEATURE AT PHASE 2		JMPG0089										PVF2		JMQ218640(SS-03)		-		-	
REV.	CHANGED BY	Dim. A	Dim. B	Dim. C	Dim. D	Dim. E	Dim. F	Dim. G	Dim. H	QTY.	Inv. Code	ASSEMBLE ON PARTS							
-		-	-	-	-	-	-	-	-	3									

WG-AL-N56																			
-----------	--	--	--	--	--	--	--	--	--	--	--	--	--	--	--	--	--	--	--

常用 注: 工地复尺

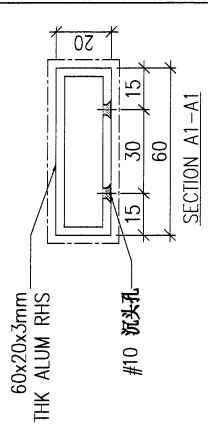
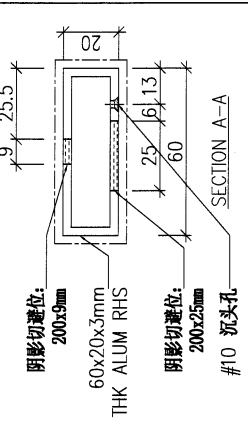
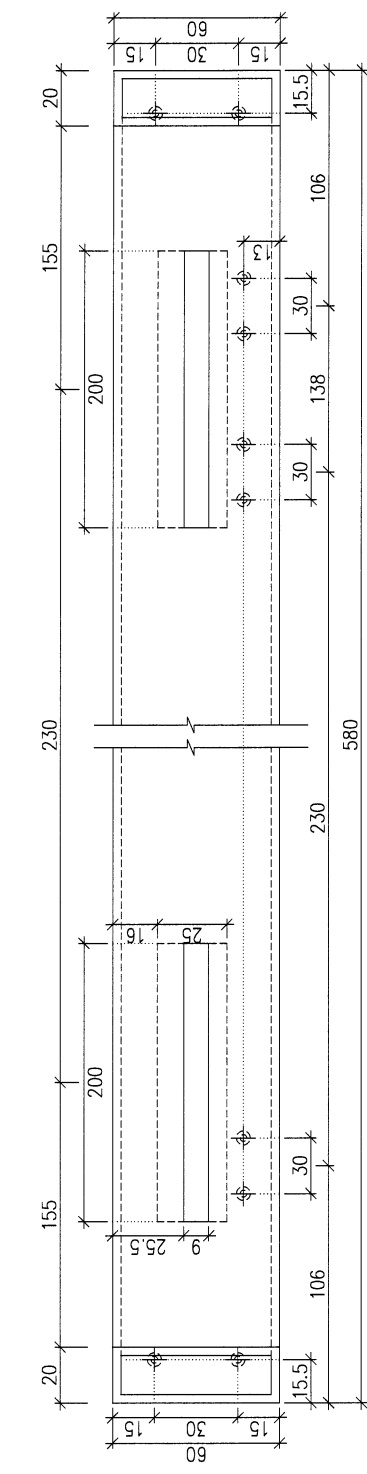
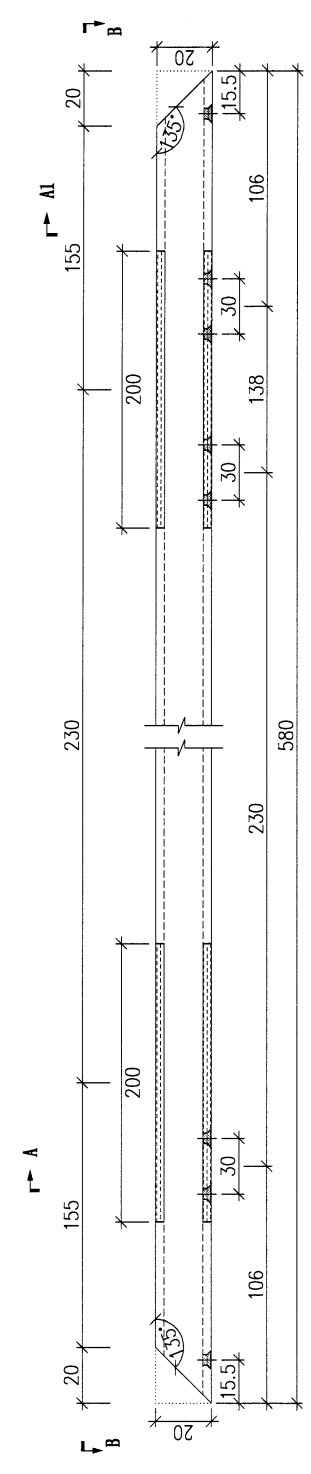


喷油面(V.S):

DWG. NO.	REV.	SCALE	DATE	DRAWN BY	APPROVED BY
WG-AL-N56	-	-	28-11-2024	-	-

PROJECT		YIN PING ROAD KOWLOON ALUM FEATURE AT PHASE 2		MATERIAL		JMF0089		COATING		PVP2		COLOUR		JMQ218640(SS-03)		MARK. NO.		QTY.		
REV.	CHKD BY	PART NUMBER	Dim. A	Dim. B	Dim. C	Dim. D	Dim. E	Dim. F	Dim. G	Dim. H	QTY.	Inv. Code	ASSEMBLE ON PARTS							
-		WG-AL-N57	-	-	-	-	-	-	-	-	3									


常用 注: 工地复尺

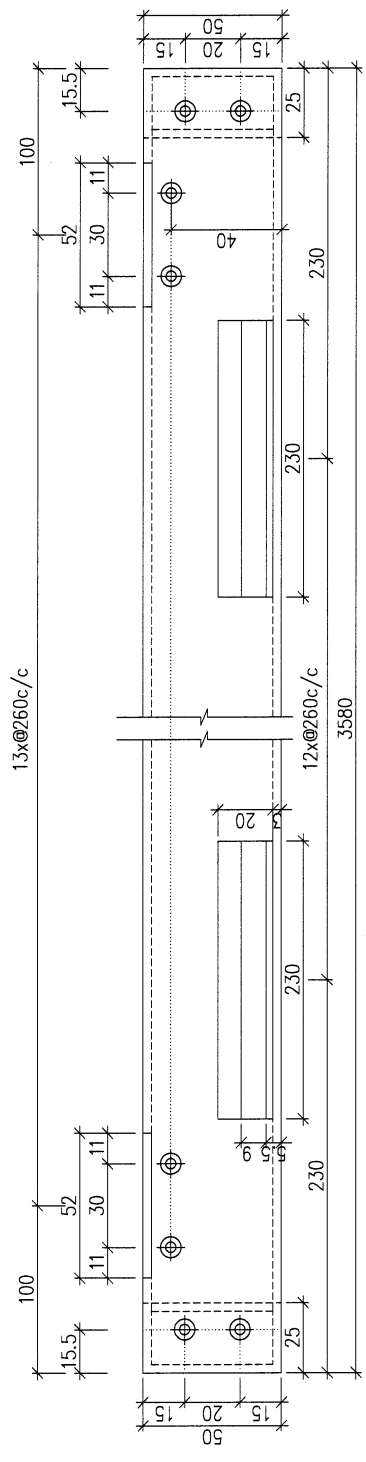
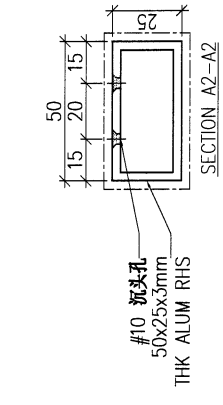
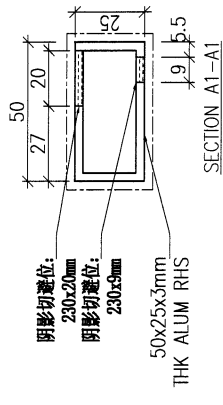
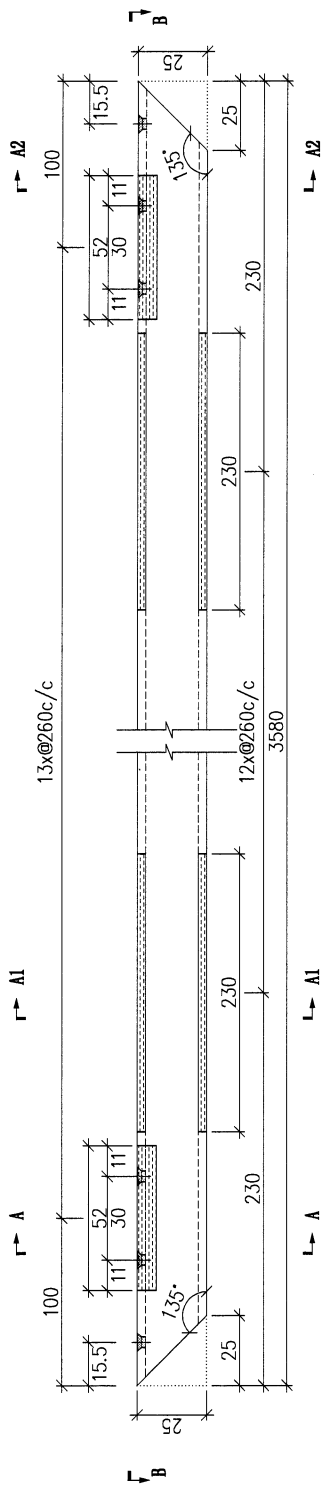


喷油面(V.S):

DWG. NO.		WG-AL-N57		REV.		SCALE		DATE		DRAWN BY		APPROVED BY	
				-		-		28-11-2024		-		-	

PROJECT		YIN PING ROAD KOWLOON ALUM FEATURE AT PHASE 2										MATERIAL		JM3010		COATING		PVF2		COLOUR		JMQ218640(SS-03)		MARK. NO.		-		QTY.		-	
REV.	CHECKED BY	PART NUMBER	Dim. A	Dim. B	Dim. C	Dim. D	Dim. E	Dim. F	Dim. G	Dim. H	QTY.	Inv. Code	ASSEMBLE ON PARTS																		
-		WG-AL-N58	-	-	-	-	-	-	-	-	4																				

 应用 注: 工地复尺	
--	--



噴油面 (V.S): -----

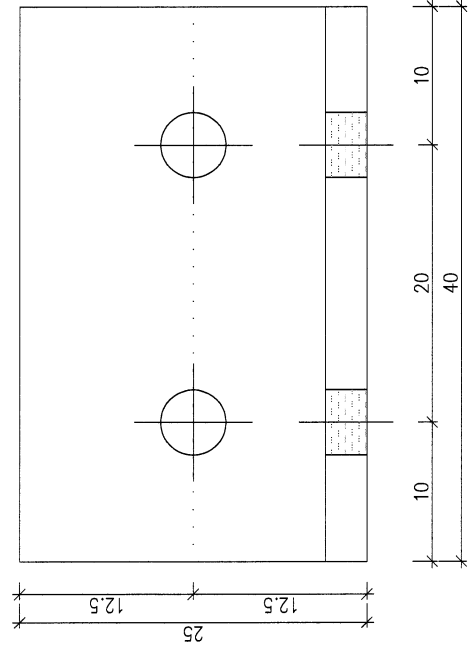
DWG. NO.	WG-AL-N58	REV.	-	SCALE	-	DATE	28-11-2024	DRAWN BY	-	APPROVED BY	-
----------	-----------	------	---	-------	---	------	------------	----------	---	-------------	---

PROJECT		YIN PING ROAD KOWLOON ALUM FEATURE AT PHASE 2										MATERIAL		COATING		COLOUR		MARK. NO.		QTY.	
		JMI061										鍍化		-		-		-		-	

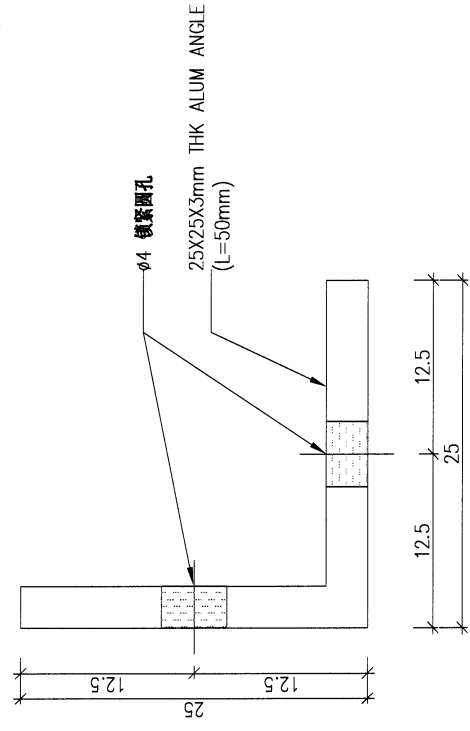
REV.	CHECKED DATE BY	PART NUMBER	Dim. A	Dim. B	Dim. C	Dim. D	Dim. E	Dim. F	Dim. G	Dim. H	QTY.	Inv. Code	ASSEMBLE ON PARTS								
-		WG-AL-N59	-	-	-	-	-	-	-	-	8										



Γ → A



L → A

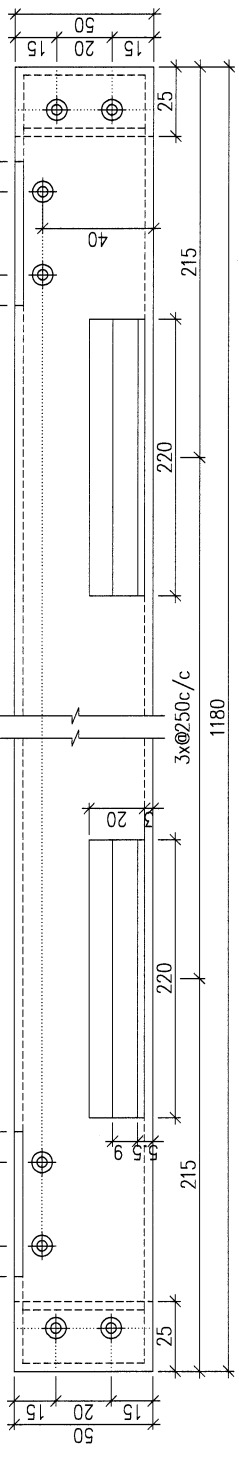
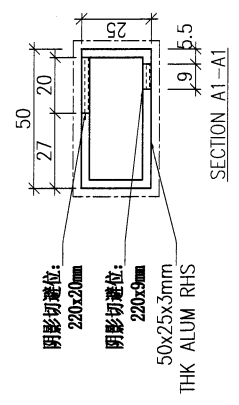
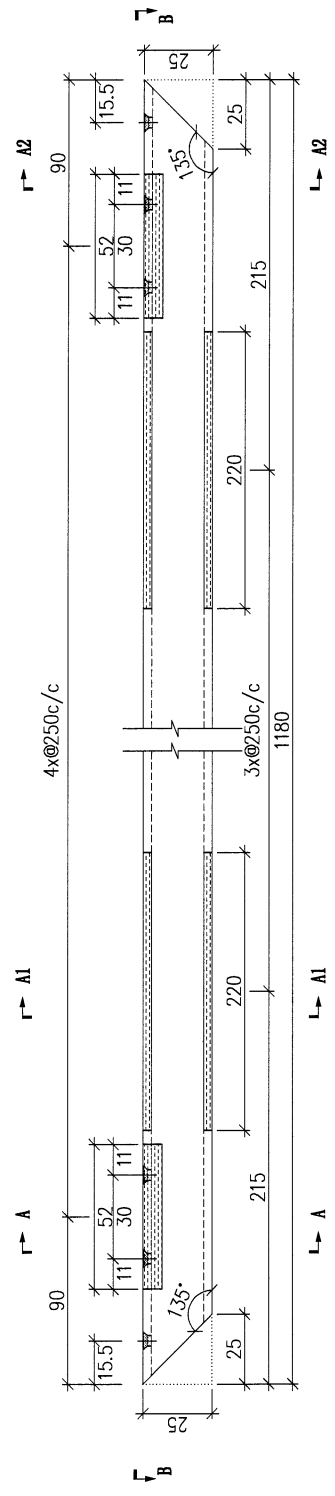


DWG. NO.	WG-AL-N59	REV.	-	SCALE	-	DATE	28-11-2024	DRAWN BY	-	APPROVED BY	-
----------	-----------	------	---	-------	---	------	------------	----------	---	-------------	---

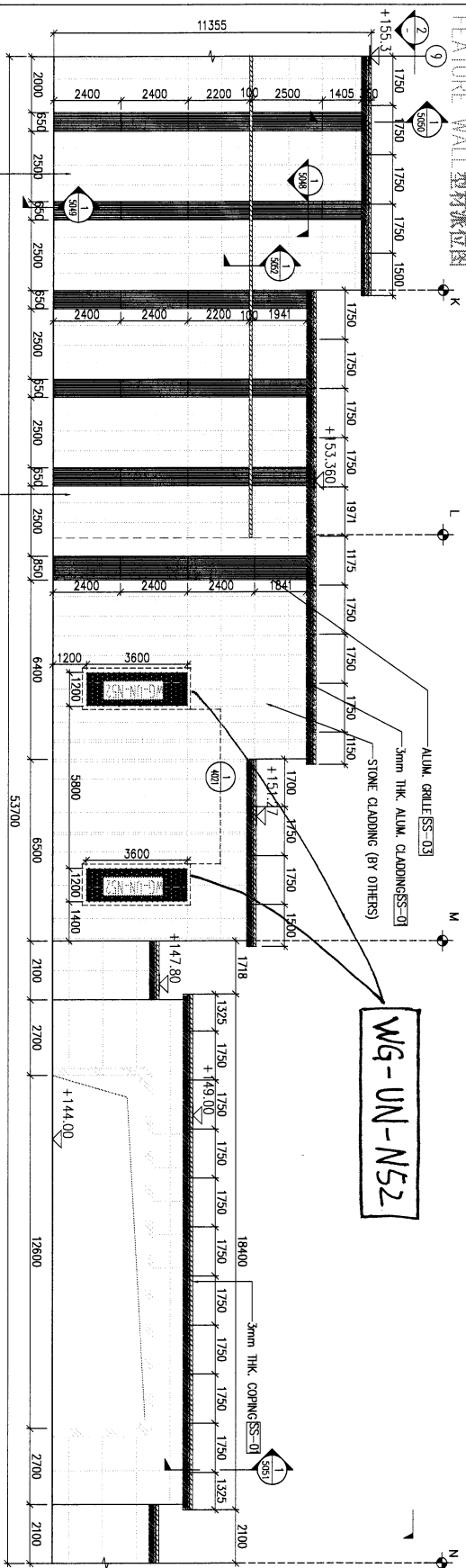
PROJECT		YIN PING ROAD KOWLOON ALUM FEATURE AT PHASE 2										MATERIAL		JM3010		COATING		PVF2		COLOUR		JMQ218640(SS-03)		MARK. NO.		-		QTY.		-	
REV.	CHECKED	PART NUMBER	Dim. A	Dim. B	Dim. C	Dim. D	Dim. E	Dim. F	Dim. G	Dim. H	QTY.	Inv. Code	ASSEMBLE ON PARTS																		
-		WG-AL-N60	-	-	-	-	-	-	-	-	4																				

DRAWN BY		DATE		SCALE		REV.		DWC. NO.		WG-AL-N60		APPROVED BY	
		28-11-2024		-		-							

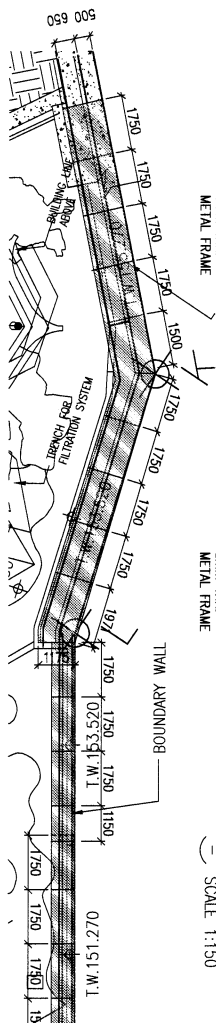
常用 注: 工地复尺



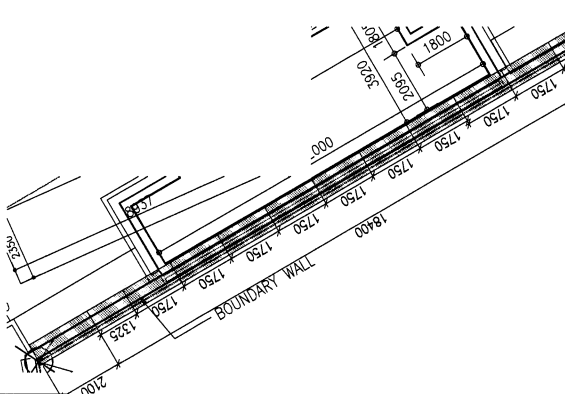
喷油面 (V.S):



1 ELEVATION
SCALE: 1:150

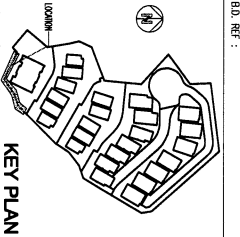


2 PLAN
SCALE: 1:150



LEGEND:

	3mm THK. METAL FRAME
	3mm THK. COPING
	ALUM. GRILLE
	3mm THK. ALUM. CLADDING



CLIENT : SHIMAO GROUP HOLDINGS LIMITED

ARCHITECT : WFT
WONG TUNG & PARTNERS LIMITED

MAIN CONTRACTOR : 協興建築有限公司
HIP HING CONSTRUCTION CO. LTD

STRUCTURAL ENGINEER : CMA
C M WONG & ASSOCIATES LTD
黃志輝建築工程師有限公司

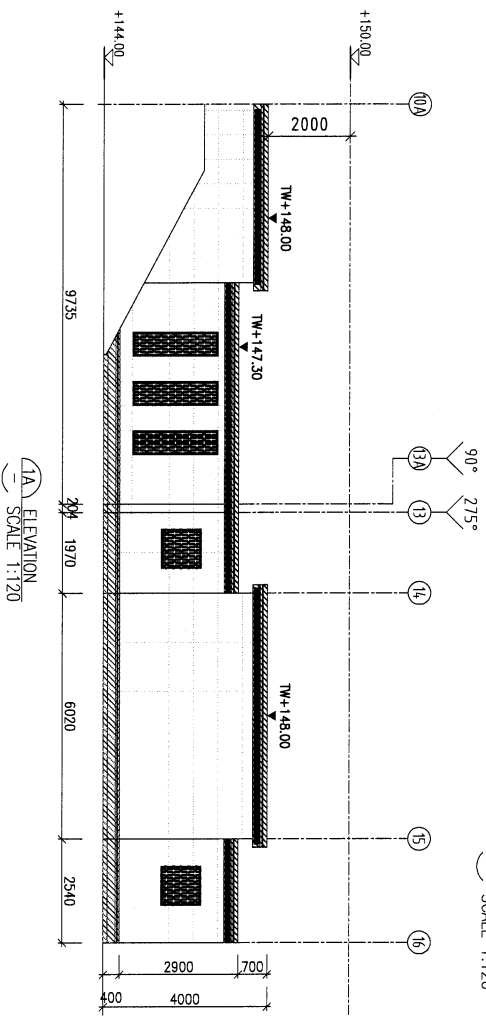
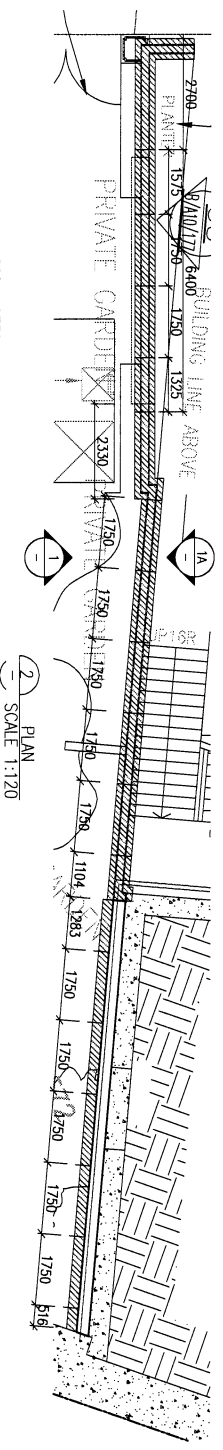
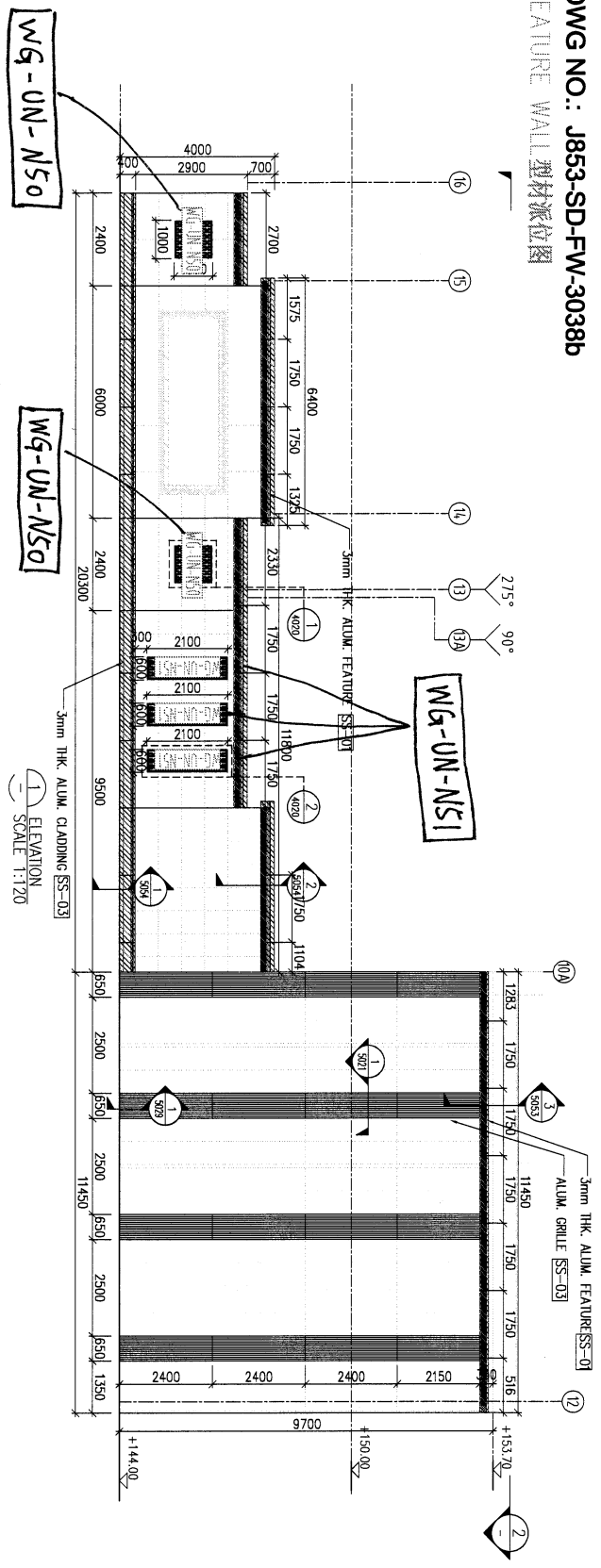
FAÇADE CONSULTANT : MENYARDT


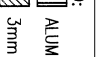
NOTE:
1. ALL DIMENSIONS ARE IN MM.
2. ALL ELEVATIONS ARE VIEWED FROM OUTSIDE.
3. ALL DIMENSIONS TO BE VERIFIED ON SITE BEFORE FABRICATION.
LEGEND:
1. F.F.L. -- FINISHED FLOOR LEVEL
2. S.F.L. -- STRUCTURAL FLOOR LEVEL
3. -- INVERTED DIMEN.

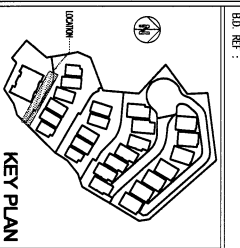
NO.	DATE	REVISION	BY
1			

JOB NO.: J-853
PROJECT: PROPOSED RESIDENTIAL DEVELOPMENT AT WING TAI LANE, 65-67 KOWLOON
TITLE: PARTIAL ELEVATION & PLAN OF FEATURE WALL (PHASE 2)

DWG NO.: J853-SD-FW-3037
DRAWN BY: LHR
CHECKED BY:
SCALE: 1:150 (AS)
DATE: 20-Sep-24
MTRD 美特經貿有限公司
11/F, 610 Chee Lee Road, Kowloon
Tel: 24248911-4 Fax: (852) 27271866



LEGEND:
 3mm THK. ALUM. CLADDING
 ALUM. GRILLE



BD. REF.:
 CLIENT: SHIMAO GROUP HOLDINGS LIMITED
 ARCHITECT: WATKINS TONG & PARTNERS LIMITED
 MAIN CONTRACTOR: 協興建築有限公司 HIP HING CONSTRUCTION CO. LTD
 STRUCTURAL ENGINEER: CMA C M WONG & ASSOCIATES LTD
 FACADE CONSULTANT: MENYHARDT

NOTE:
 1. DIMENSIONS ARE IN mm.
 2. ALL ELEVATIONS ARE VIEWED FROM OUTSIDE.
 3. ALL DIMENSIONS TO BE VERIFIED ON SITE BEFORE FABRICATION.
 LEGEND:
 (2A) - DETAIL MARK NO.
 (2B) - CENTER SHEET NO.
 1. F.F.L. - FINISHED FLOOR LEVEL
 2. S.F.L. - STRUCTURAL FLOOR LEVEL
 3. (R) - REVERSED DETAIL

JOB NO.: J-853
 PROJECT: PROPOSED RESIDENTIAL DEVELOPMENT OF NO.11, 17, 19, 21, 23, 25, 27, 29, 31, 33, 35, 37, 39, 41, 43, 45, 47, 49, 51, 53, 55, 57, 59, 61, 63, 65, 67, 69, 71, 73, 75, 77, 79, 81, 83, 85, 87, 89, 91, 93, 95, 97, 99, 101, 103, 105, 107, 109, 111, 113, 115, 117, 119, 121, 123, 125, 127, 129, 131, 133, 135, 137, 139, 141, 143, 145, 147, 149, 151, 153, 155, 157, 159, 161, 163, 165, 167, 169, 171, 173, 175, 177, 179, 181, 183, 185, 187, 189, 191, 193, 195, 197, 199, 201, 203, 205, 207, 209, 211, 213, 215, 217, 219, 221, 223, 225, 227, 229, 231, 233, 235, 237, 239, 241, 243, 245, 247, 249, 251, 253, 255, 257, 259, 261, 263, 265, 267, 269, 271, 273, 275, 277, 279, 281, 283, 285, 287, 289, 291, 293, 295, 297, 299, 301, 303, 305, 307, 309, 311, 313, 315, 317, 319, 321, 323, 325, 327, 329, 331, 333, 335, 337, 339, 341, 343, 345, 347, 349, 351, 353, 355, 357, 359, 361, 363, 365, 367, 369, 371, 373, 375, 377, 379, 381, 383, 385, 387, 389, 391, 393, 395, 397, 399, 401, 403, 405, 407, 409, 411, 413, 415, 417, 419, 421, 423, 425, 427, 429, 431, 433, 435, 437, 439, 441, 443, 445, 447, 449, 451, 453, 455, 457, 459, 461, 463, 465, 467, 469, 471, 473, 475, 477, 479, 481, 483, 485, 487, 489, 491, 493, 495, 497, 499, 501, 503, 505, 507, 509, 511, 513, 515, 517, 519, 521, 523, 525, 527, 529, 531, 533, 535, 537, 539, 541, 543, 545, 547, 549, 551, 553, 555, 557, 559, 561, 563, 565, 567, 569, 571, 573, 575, 577, 579, 581, 583, 585, 587, 589, 591, 593, 595, 597, 599, 601, 603, 605, 607, 609, 611, 613, 615, 617, 619, 621, 623, 625, 627, 629, 631, 633, 635, 637, 639, 641, 643, 645, 647, 649, 651, 653, 655, 657, 659, 661, 663, 665, 667, 669, 671, 673, 675, 677, 679, 681, 683, 685, 687, 689, 691, 693, 695, 697, 699, 701, 703, 705, 707, 709, 711, 713, 715, 717, 719, 721, 723, 725, 727, 729, 731, 733, 735, 737, 739, 741, 743, 745, 747, 749, 751, 753, 755, 757, 759, 761, 763, 765, 767, 769, 771, 773, 775, 777, 779, 781, 783, 785, 787, 789, 791, 793, 795, 797, 799, 801, 803, 805, 807, 809, 811, 813, 815, 817, 819, 821, 823, 825, 827, 829, 831, 833, 835, 837, 839, 841, 843, 845, 847, 849, 851, 853, 855, 857, 859, 861, 863, 865, 867, 869, 871, 873, 875, 877, 879, 881, 883, 885, 887, 889, 891, 893, 895, 897, 899, 901, 903, 905, 907, 909, 911, 913, 915, 917, 919, 921, 923, 925, 927, 929, 931, 933, 935, 937, 939, 941, 943, 945, 947, 949, 951, 953, 955, 957, 959, 961, 963, 965, 967, 969, 971, 973, 975, 977, 979, 981, 983, 985, 987, 989, 991, 993, 995, 997, 999, 1001, 1003, 1005, 1007, 1009, 1011, 1013, 1015, 1017, 1019, 1021, 1023, 1025, 1027, 1029, 1031, 1033, 1035, 1037, 1039, 1041, 1043, 1045, 1047, 1049, 1051, 1053, 1055, 1057, 1059, 1061, 1063, 1065, 1067, 1069, 1071, 1073, 1075, 1077, 1079, 1081, 1083, 1085, 1087, 1089, 1091, 1093, 1095, 1097, 1099, 1101, 1103, 1105, 1107, 1109, 1111, 1113, 1115, 1117, 1119, 1121, 1123, 1125, 1127, 1129, 1131, 1133, 1135, 1137, 1139, 1141, 1143, 1145, 1147, 1149, 1151, 1153, 1155, 1157, 1159, 1161, 1163, 1165, 1167, 1169, 1171, 1173, 1175, 1177, 1179, 1181, 1183, 1185, 1187, 1189, 1191, 1193, 1195, 1197, 1199, 1201, 1203, 1205, 1207, 1209, 1211, 1213, 1215, 1217, 1219, 1221, 1223, 1225, 1227, 1229, 1231, 1233, 1235, 1237, 1239, 1241, 1243, 1245, 1247, 1249, 1251, 1253, 1255, 1257, 1259, 1261, 1263, 1265, 1267, 1269, 1271, 1273, 1275, 1277, 1279, 1281, 1283, 1285, 1287, 1289, 1291, 1293, 1295, 1297, 1299, 1301, 1303, 1305, 1307, 1309, 1311, 1313, 1315, 1317, 1319, 1321, 1323, 1325, 1327, 1329, 1331, 1333, 1335, 1337, 1339, 1341, 1343, 1345, 1347, 1349, 1351, 1353, 1355, 1357, 1359, 1361, 1363, 1365, 1367, 1369, 1371, 1373, 1375, 1377, 1379, 1381, 1383, 1385, 1387, 1389, 1391, 1393, 1395, 1397, 1399, 1401, 1403, 1405, 1407, 1409, 1411, 1413, 1415, 1417, 1419, 1421, 1423, 1425, 1427, 1429, 1431, 1433, 1435, 1437, 1439, 1441, 1443, 1445, 1447, 1449, 1451, 1453, 1455, 1457, 1459, 1461, 1463, 1465, 1467, 1469, 1471, 1473, 1475, 1477, 1479, 1481, 1483, 1485, 1487, 1489, 1491, 1493, 1495, 1497, 1499, 1501, 1503, 1505, 1507, 1509, 1511, 1513, 1515, 1517, 1519, 1521, 1523, 1525, 1527, 1529, 1531, 1533, 1535, 1537, 1539, 1541, 1543, 1545, 1547, 1549, 1551, 1553, 1555, 1557, 1559, 1561, 1563, 1565, 1567, 1569, 1571, 1573, 1575, 1577, 1579, 1581, 1583, 1585, 1587, 1589, 1591, 1593, 1595, 1597, 1599, 1601, 1603, 1605, 1607, 1609, 1611, 1613, 1615, 1617, 1619, 1621, 1623, 1625, 1627, 1629, 1631, 1633, 1635, 1637, 1639, 1641, 1643, 1645, 1647, 1649, 1651, 1653, 1655, 1657, 1659, 1661, 1663, 1665, 1667, 1669, 1671, 1673, 1675, 1677, 1679, 1681, 1683, 1685, 1687, 1689, 1691, 1693, 1695, 1697, 1699, 1701, 1703, 1705, 1707, 1709, 1711, 1713, 1715, 1717, 1719, 1721, 1723, 1725, 1727, 1729, 1731, 1733, 1735, 1737, 1739, 1741, 1743, 1745, 1747, 1749, 1751, 1753, 1755, 1757, 1759, 1761, 1763, 1765, 1767, 1769, 1771, 1773, 1775, 1777, 1779, 1781, 1783, 1785, 1787, 1789, 1791, 1793, 1795, 1797, 1799, 1801, 1803, 1805, 1807, 1809, 1811, 1813, 1815, 1817, 1819, 1821, 1823, 1825, 1827, 1829, 1831, 1833, 1835, 1837, 1839, 1841, 1843, 1845, 1847, 1849, 1851, 1853, 1855, 1857, 1859, 1861, 1863, 1865, 1867, 1869, 1871, 1873, 1875, 1877, 1879, 1881, 1883, 1885, 1887, 1889, 1891, 1893, 1895, 1897, 1899, 1901, 1903, 1905, 1907, 1909, 1911, 1913, 1915, 1917, 1919, 1921, 1923, 1925, 1927, 1929, 1931, 1933, 1935, 1937, 1939, 1941, 1943, 1945, 1947, 1949, 1951, 1953, 1955, 1957, 1959, 1961, 1963, 1965, 1967, 1969, 1971, 1973, 1975, 1977, 1979, 1981, 1983, 1985, 1987, 1989, 1991, 1993, 1995, 1997, 1999, 2001, 2003, 2005, 2007, 2009, 2011, 2013, 2015, 2017, 2019, 2021, 2023, 2025, 2027, 2029, 2031, 2033, 2035, 2037, 2039, 2041, 2043, 2045, 2047, 2049, 2051, 2053, 2055, 2057, 2059, 2061, 2063, 2065, 2067, 2069, 2071, 2073, 2075, 2077, 2079, 2081, 2083, 2085, 2087, 2089, 2091, 2093, 2095, 2097, 2099, 2101, 2103, 2105, 2107, 2109, 2111, 2113, 2115, 2117, 2119, 2121, 2123, 2125, 2127, 2129, 2131, 2133, 2135, 2137, 2139, 2141, 2143, 2145, 2147, 2149, 2151, 2153, 2155, 2157, 2159, 2161, 2163, 2165, 2167, 2169, 2171, 2173, 2175, 2177, 2179, 2181, 2183, 2185, 2187, 2189, 2191, 2193, 2195, 2197, 2199, 2201, 2203, 2205, 2207, 2209, 2211, 2213, 2215, 2217, 2219, 2221, 2223, 2225, 2227, 2229, 2231, 2233, 2235, 2237, 2239, 2241, 2243, 2245, 2247, 2249, 2251, 2253, 2255, 2257, 2259, 2261, 2263, 2265, 2267, 2269, 2271, 2273, 2275, 2277, 2279, 2281, 2283, 2285, 2287, 2289, 2291, 2293, 2295, 2297, 2299, 2301, 2303, 2305, 2307, 2309, 2311, 2313, 2315, 2317, 2319, 2321, 2323, 2325, 2327, 2329, 2331, 2333, 2335, 2337, 2339, 2341, 2343, 2345, 2347, 2349, 2351, 2353, 2355, 2357, 2359, 2361, 2363, 2365, 2367, 2369, 2371, 2373, 2375, 2377, 2379, 2381, 2383, 2385, 2387, 2389, 2391, 2393, 2395, 2397, 2399, 2401, 2403, 2405, 2407, 2409, 2411, 2413, 2415, 2417, 2419, 2421, 2423, 2425, 2427, 2429, 2431, 2433, 2435, 2437, 2439, 2441, 2443, 2445, 2447, 2449, 2451, 2453, 2455, 2457, 2459, 2461, 2463, 2465, 2467, 2469, 2471, 2473, 2475, 2477, 2479, 2481, 2483, 2485, 2487, 2489, 2491, 2493, 2495, 2497, 2499, 2501, 2503, 2505, 2507, 2509, 2511, 2513, 2515, 2517, 2519, 2521, 2523, 2525, 2527, 2529, 2531, 2533, 2535, 2537, 2539, 2541, 2543, 2545, 2547, 2549, 2551, 2553, 2555, 2557, 2559, 2561, 2563, 2565, 2567, 2569, 2571, 2573, 2575, 2577, 2579, 2581, 2583, 2585, 2587, 2589, 2591, 2593, 2595, 2597, 2599, 2601, 2603, 2605, 2607, 2609, 2611, 2613, 2615, 2617, 2619, 2621, 2623, 2625, 2627, 2629, 2631, 2633, 2635, 2637, 2639, 2641, 2643, 2645, 2647, 2649, 2651, 2653, 2655, 2657, 2659, 2661, 2663, 2665, 2667, 2669, 2671, 2673, 2675, 2677, 2679, 2681, 2683, 2685, 2687, 2689, 2691, 2693, 2695, 2697, 2699, 2701, 2703, 2705, 2707, 2709, 2711, 2713, 2715, 2717, 2719, 2721, 2723, 2725, 2727, 2729, 2731, 2733, 2735, 2737, 2739, 2741, 2743, 2745, 2747, 2749, 2751, 2753, 2755, 2757, 2759, 2761, 2763, 2765, 2767, 2769, 2771, 2773, 2775, 2777, 2779, 2781, 2783, 2785, 2787, 2789, 2791, 2793, 2795, 2797, 2799, 2801, 2803, 2805, 2807, 2809, 2811, 2813, 2815, 2817, 2819, 2821, 2823, 2825, 2827, 2829, 2831, 2833, 2835, 2837, 2839, 2841, 2843, 2845, 2847, 2849, 2851, 2853, 2855, 2857, 2859, 2861, 2863, 2865, 2867, 2869, 2871, 2873, 2875, 2877, 2879, 2881, 2883, 2885, 2887, 2889, 2891, 2893, 2895, 2897, 2899, 2901, 2903, 2905, 2907, 2909, 2911, 2913, 2915, 2917, 2919, 2921, 2923, 2925, 2927, 2929, 2931, 2933, 2935, 2937, 2939, 2941, 2943, 2945, 2947, 2949, 2951, 2953, 2955, 2957, 2959, 2961, 2963, 2965, 2967, 2969, 2971, 2973, 2975, 2977, 2979, 2981, 2983, 2985, 2987, 2989, 2991, 2993, 2995, 2997, 2999, 3001, 3003, 3005, 3007, 3009, 3011, 3013, 3015, 3017, 3019, 3021, 3023, 3025, 3027, 3029, 3031, 3033, 3035, 3037, 3039, 3041, 3043, 3045, 3047, 3049, 3051, 3053, 3055, 3057, 3059, 3061, 3063, 3065, 3067, 3069, 3071, 3073, 3075, 3077, 3079, 3081, 3083, 3085, 3087, 3089, 3091, 3093, 3095, 3097, 3099, 3101, 3103, 3105, 3107, 3109, 3111, 3113, 3115, 3117, 3119, 3121, 3123, 3125, 3127, 3129, 3131, 3133, 3135, 3137, 3139, 3141, 3143, 3145, 3147, 3149, 3151, 3153, 3155, 3157, 3159, 3161, 3163, 3165, 3167, 3169, 3171, 3173, 3175, 3177, 3179, 3181, 3183, 3185, 3187, 3189, 3191, 3193, 3195, 3197, 3199, 3201, 3203, 3205, 3207, 3209, 3211, 3213, 3215, 3217, 3219, 3221, 3223, 3225, 3227, 3229, 3231, 3233, 3235, 3237, 3239, 3241, 3243, 3245, 3247, 3249, 3251, 3253, 3255, 3257, 3259, 3261, 3263, 3265, 3267, 3269, 3271, 3273, 3275, 3277, 3279, 3281, 3283, 3285, 3287, 3289, 3291, 3293, 3295, 3297, 3299, 3301, 3303, 3305, 3307, 3309, 3311, 3313, 3315, 3317, 3319, 3321, 3323, 3325, 3327, 3329, 3331, 3333, 3335, 3337, 3339, 3341, 3343, 3345, 3347, 3349, 3351, 3353, 3355, 3357, 3359, 3361, 3363, 3365, 3367, 3369, 3371, 3373, 3375, 3377, 3379, 3381, 3383, 3385, 3387, 3389, 3391, 3393, 3395, 3397, 3399, 3401, 3403, 3405, 3407, 3409, 3411, 3413, 3415, 3417, 3419, 3421, 3423, 3425, 3427, 3429, 3431, 3433, 3435, 3437, 3439, 3441, 3443, 3445, 3447, 3449, 3451, 3453, 3455, 3457, 3459, 3461, 3463, 3465, 3467, 3469, 3471, 3473, 3475, 3477, 3479, 3481, 3483, 3485, 3487, 3489, 3491, 3493, 3495, 3497, 3499, 3501, 3503, 3505, 3507, 3509, 3511, 3513, 3515, 3517, 3519, 3521, 3523, 3525, 3527, 3529, 3531, 3533, 3535, 3537, 3539, 3541, 3543, 3545, 3547, 3549, 3551, 3553, 3555, 3557, 3559, 3561, 3563, 3565, 3567, 3569, 3571, 3573, 3575, 3577, 3579, 3581, 3583, 3585, 3587, 3589, 3591, 3593, 3595, 3597, 3599, 3601, 3603, 3605, 3607, 3609, 3611, 3613, 3615, 3617, 3619, 3621, 3623, 3625, 3627, 3629, 3631, 3633, 3635, 3637, 3639, 3641, 3643, 3645, 3647, 3649, 3651, 3653, 3655, 3657, 3659, 3661, 3663, 3665, 3667, 3669, 3671, 3673, 3675, 3677, 3679, 3681, 3683, 3685, 3687, 3689, 3691, 3693, 3695, 3697, 3699, 3701, 3703, 3705, 3707, 3709, 3711, 3713, 3715, 3717, 3719, 3721, 3723, 3725, 3727, 3729, 3731, 3733, 3735, 3737, 3739, 3741, 3743, 3745, 3747, 3749, 3751, 3753, 3755, 3757, 3759, 3761, 3763, 3765, 3767, 3769, 3771, 3773, 3775, 3777, 3779, 3781, 3783, 3785, 3787, 3789, 3791, 3793, 3795, 3797, 3799, 3801, 3803, 3805, 3807, 3809, 3811, 3813, 3815, 3817, 3819, 3821, 3823, 3825, 3827, 3829, 3831, 3833, 3835, 3837, 3839, 3841, 3843, 3845, 3847, 3849, 3851, 3853, 3855, 3857, 3859, 3861, 3863, 3865, 3867, 3869, 3871, 3873, 3875, 3877, 3879, 3881, 3883, 3885, 3887, 3889, 3891, 3893, 3895, 3897, 3899, 3901, 3903, 3905, 3907, 3909, 3911, 3913, 3915, 3917, 3919, 3921, 3923, 3925, 3927, 3929, 3931, 3933, 3935, 3937, 3939, 3941, 3943, 3945, 3947, 3949