

工程指示 / 要求簡箋 ENGINEER INSTRUCTIONS (E.I.)

工程指示編號:	EI- 8691	修改版本:	-
	HK-0007		
工程編號:	J 853	工程名稱:	延坪道
收件人:	生統	發件人:	Joe Chan
工程項目:	Feature Wall (3032位置) 跌級位鋁板.	日期:	2/1/2025

<input type="checkbox"/> 原合約工程包	<input type="checkbox"/> 原合約工程加 / 減賬 QT-	<input type="checkbox"/> 新工程報價 QT-
---------------------------------	--	------------------------------------

信件批核號碼/圖紙參考編號:	批核模具圖紙編號:
客戶指示附件:	管理內部批簽署:

<input type="checkbox"/> 初步鋁料 B.M.	<input type="checkbox"/> 加工拆圖, 然後生產	<input type="checkbox"/> 尺寸表
<input type="checkbox"/> 正式鋁料 B.M.	<input type="checkbox"/> 技術上資料/指示	<input type="checkbox"/> 報價
<input type="checkbox"/> 配件 B.M.	<input type="checkbox"/> 樣辦或貨品說明書	<input type="checkbox"/> 分判合約
<input type="checkbox"/> 其他:		

內容: 請依附件資料, 生產鋁板, 送地盤.

完成上列要求日期: 農曆新年前

國內

<input type="checkbox"/> 生產技術總監	<input type="checkbox"/> 連附件	<input type="checkbox"/> 技術部	<input type="checkbox"/> 連附件	<input type="checkbox"/> 生產部	<input type="checkbox"/> 連附件
<input type="checkbox"/> 採購部	<input type="checkbox"/> 連附件	<input checked="" type="checkbox"/> 生產統籌部	<input checked="" type="checkbox"/> 連附件	<input type="checkbox"/> 報關組	<input type="checkbox"/> 連附件
<input type="checkbox"/> 質檢部	<input type="checkbox"/> 連附件	<input type="checkbox"/> 會計部	<input type="checkbox"/> 連附件	<input type="checkbox"/> 機械設計部	<input type="checkbox"/> 連附件
<input type="checkbox"/> 香港辦	<input type="checkbox"/> 連附件	<input type="checkbox"/> 其他:			

香港

<input type="checkbox"/> 行政部	<input type="checkbox"/> 連附件	<input type="checkbox"/> 會計部	<input type="checkbox"/> 連附件	<input checked="" type="checkbox"/> 統籌部	<input type="checkbox"/> 連附件	<input type="checkbox"/> 工程部	<input type="checkbox"/> 連附件
<input type="checkbox"/> 採購部	<input type="checkbox"/> 連附件	<input type="checkbox"/> QS部	<input type="checkbox"/> 連附件	<input checked="" type="checkbox"/> 地盤管理	<input checked="" type="checkbox"/> 連附件	<input type="checkbox"/> 維修部	<input type="checkbox"/> 連附件

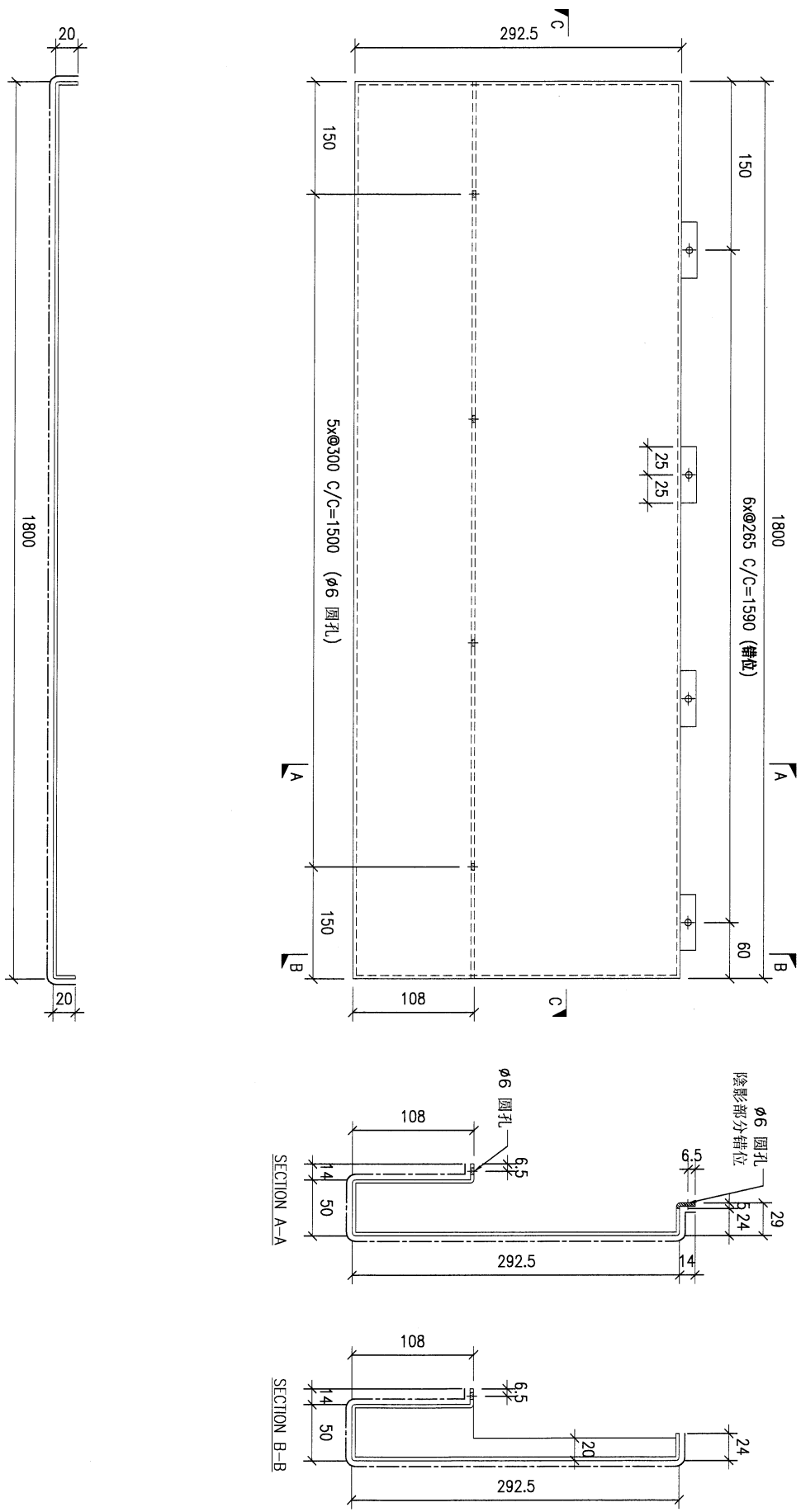
*發件人簽署:		*組別成員批核簽署:	
傳遞編號:	HK0007/25	項目經理簽署:	

工程號:	J-853	計算:	ming	日期:	2/1/2025	送呈:	JOE
地盤名稱:	延坪路	核對:		日期:		副本:	

地盤用鋁板B.M.表 (3032跌級位) 項目類別: 特征牆(2区) 批准: 日期: 總V.F.: 41.671 總重量: 338.79

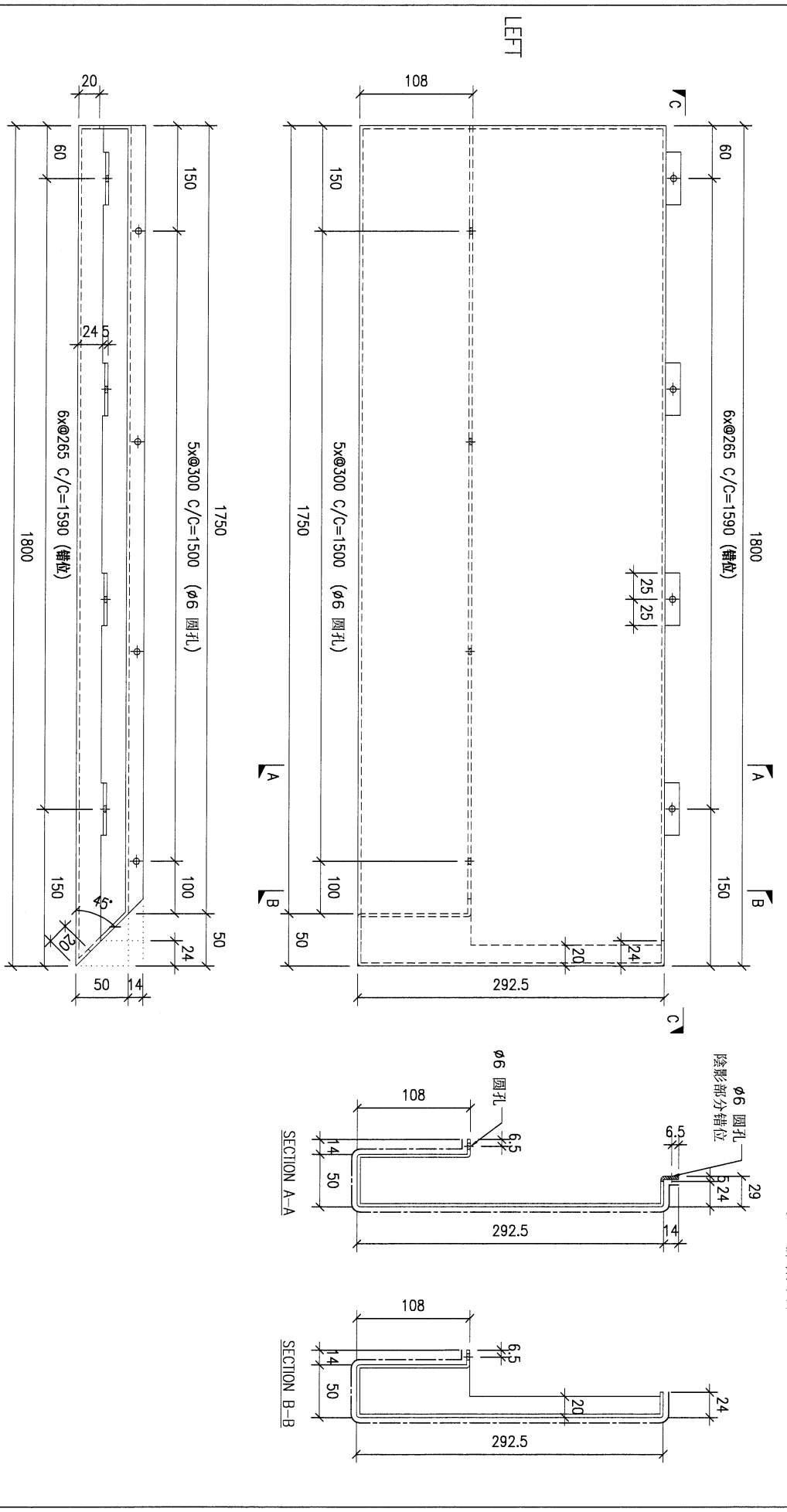
序號	修改內容	鋁板圖號	鋁板名稱	顏色	實用	後備	總數	總重量	41.671		總重量: 338.79		圖紙編號
									單件展開面積	總展開面積	單件V.F.	總V.F.	
1		FW-K124	3mm厚鋁板	EC-DG-D334232-ZD1 (SS-01)	12	0	12	91.191	0.935	11.217	0.935	11.217	
2		FW-K125	3mm厚鋁板	EC-DG-D334232-ZD1 (SS-01)	3	0	3	22.798	0.935	2.804	0.935	2.804	
3		FW-K126	3mm厚鋁板	EC-DG-D334232-ZD1 (SS-01)	3	0	3	22.798	0.935	2.804	0.935	2.804	
4		FW-K224	3mm厚鋁板	EC-DG-D334232-ZD1 (SS-01)	3	0	3	50.881	2.086	6.258	2.086	6.258	
5		FW-K225	3mm厚鋁板	EC-DG-D334232-ZD1 (SS-01)	2	0	2	33.920	2.086	4.172	2.086	4.172	
6		FW-K226	3mm厚鋁板	EC-DG-D334232-ZD1 (SS-01)	2	0	2	33.920	2.086	4.172	2.086	4.172	
7		FW-K227	3mm厚鋁板	EC-DG-D334232-ZD1 (SS-01)	2	0	2	33.920	2.086	4.172	2.086	4.172	
8		FW-K228	3mm厚鋁板	EC-DG-D334232-ZD1 (SS-01)	3	0	3	29.587	1.213	3.639	1.213	3.639	
9		FW-K229	3mm厚鋁板	EC-DG-D334232-ZD1 (SS-01)	1	0	1	9.877	1.215	1.215	1.215	1.215	
10		FW-K230	3mm厚鋁板	EC-DG-D334232-ZD1 (SS-01)	1	0	1	9.892	1.217	1.217	1.217	1.217	
總計:					32	0	32	339	15	42	15	42	

PROJECT				YIN PING ROAD KOWLOON FEATURE WALL (PHASE 2)				MATERIAL				3mm铝板				COATING				PVF2				COLOUR				EC-DG-D34232-ZD1(SS-01)				MARK. NO.				-				QTY.				-			
REV. OR BRI. BY		PART NUMBER		Dim. A		Dim. B		Dim. C		Dim. D		Dim. E		Dim. F		Dim. G		Dim. H		QTY.		Inv. Code		ASSEMBLE ON PARTS				注: 地盘用																			
-		FW-K124		-		-		-		-		-		-		-		-		12																											



DWG. NO.		FW-K124		REV.		-		SCALE		-		DATE		11-07-2024		DRAWN BY		-		APPROVED BY		-	
----------	--	---------	--	------	--	---	--	-------	--	---	--	------	--	------------	--	----------	--	---	--	-------------	--	---	--

PROJECT				YIN PING ROAD KOWLOON FEATURE WALL (PHASE 2)				MATERIAL				3mm铝板				COATING				PVF2				COLOUR				EC-DG-D334232-ZD1(SS-01)				MARK. NO.				-				QTY.				-			
REV.	CHANGED BY	PART NUMBER	Dim. A	Dim. B	Dim. C	Dim. D	Dim. E	Dim. F	Dim. G	Dim. H	QTY.	Inv. Code	ASSEMBLE ON PARTS				注: 地盘用																														
-		FW-K125	-	-	-	-	-	-	-	-	3																																				



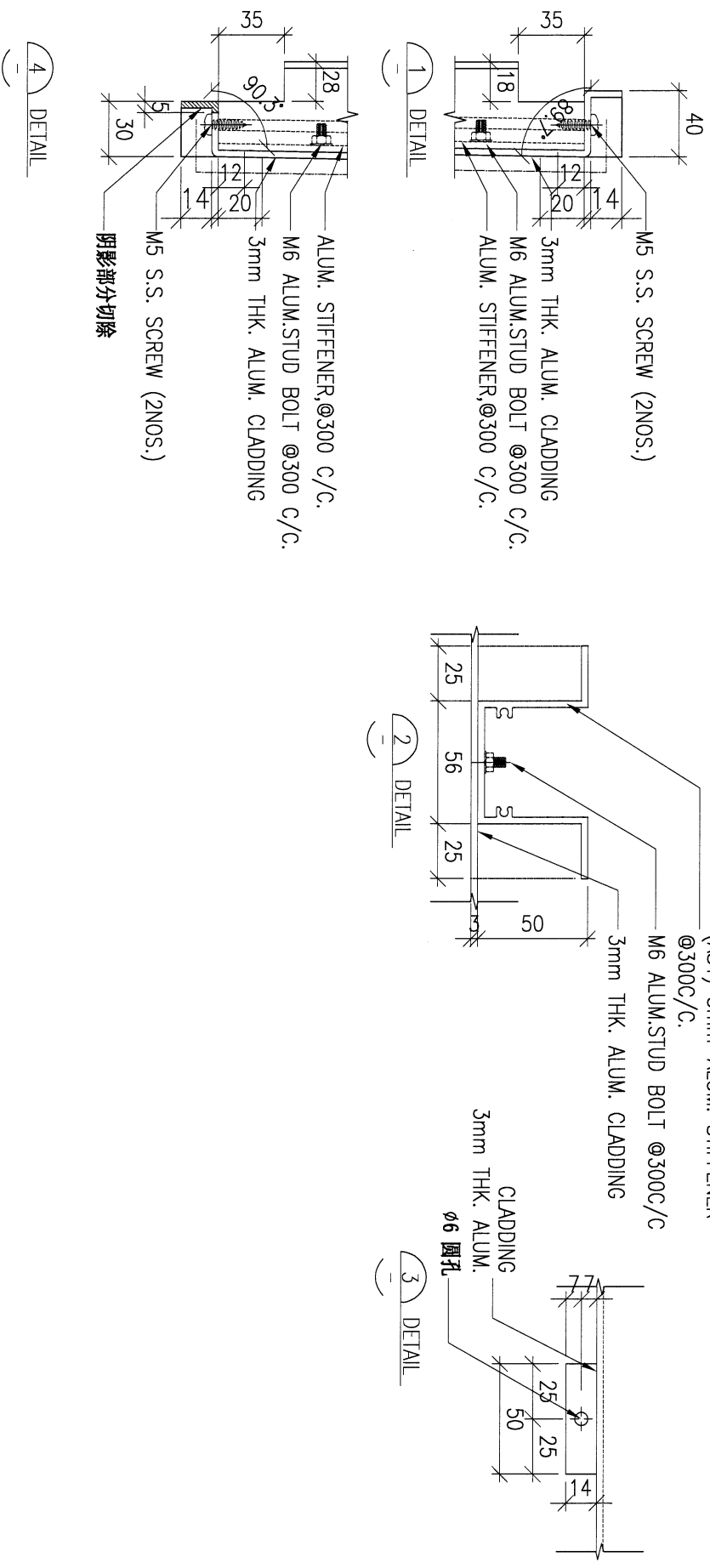
DWG. NO.		FW-K125		REV.		SCALE		DATE		DRAWN BY		APPROVED BY	
								11-07-2024					

PROJECT		YIN PING ROAD KOWLOON FEATURE WALL (PHASE 2)										MATERIAL			COATING			COLOUR		MARK. NO.		QTY.	
REV.	CHANGED BY	PART NUMBER	Dim. A	Dim. B	Dim. C	Dim. D	Dim. E	Dim. F	Dim. G	Dim. H	QTY.	Inv. Code	ASSEMBLE ON PARTS										

细节放大图

ASSEMBLE ON PARTS

注：新增图纸

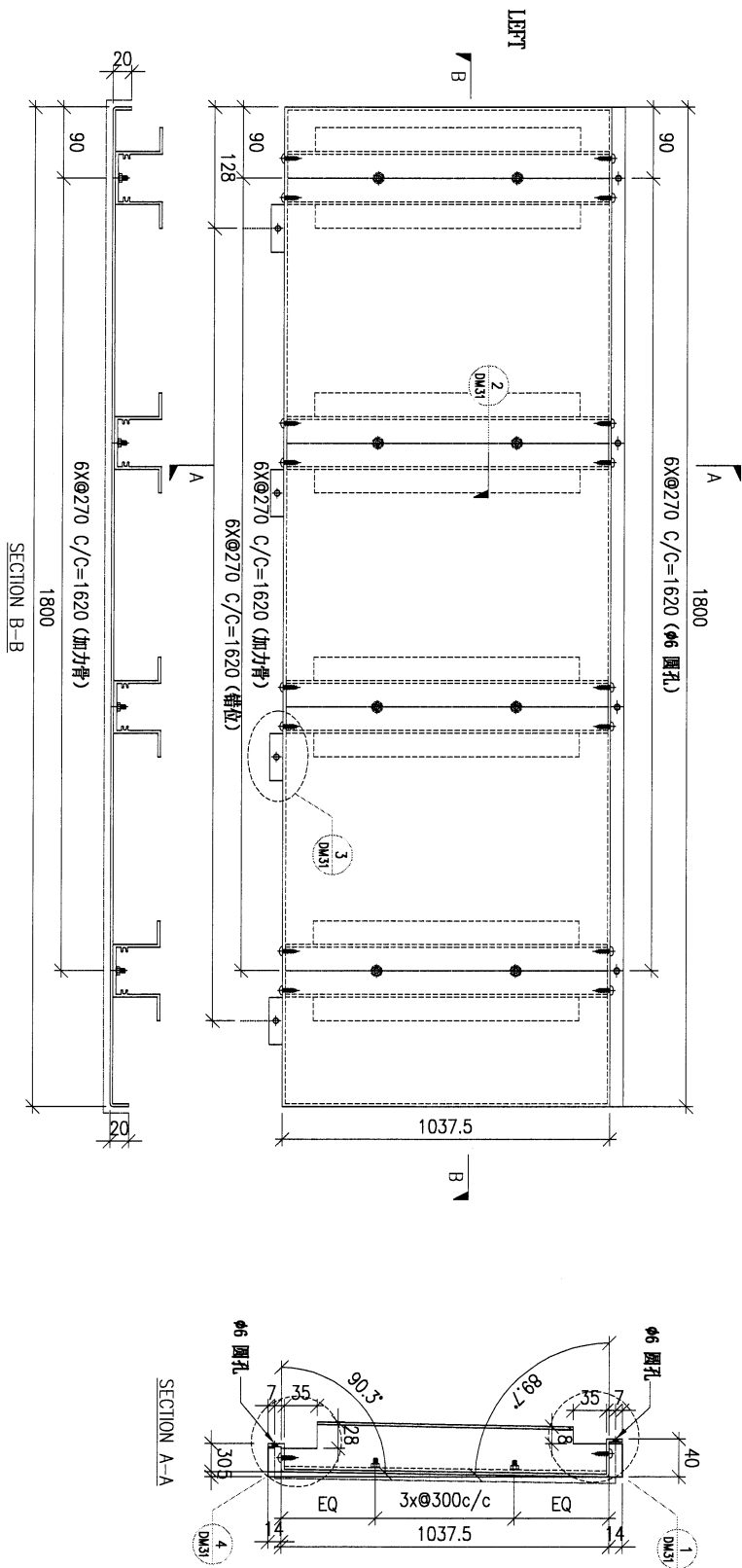


DWG. NO.	DM31	REV.	-	SCALE	-	DATE	15-06-2023	DRAWN BY	-	APPROVED BY	-
----------	------	------	---	-------	---	------	------------	----------	---	-------------	---

PROJECT				YIN PING ROAD KOWLOON FEATURE WALL (PHASE 2)				MATERIAL				3mm铝板				COATING				PVF2				COLOUR				EC-DG-D34232-ZD1(SS-01)				MARK. NO.				-				QTY.				-			
REV. / GEARED / SHEET NO.		PART NUMBER		Dim. A		Dim. B		Dim. C		Dim. D		Dim. E		Dim. F		Dim. G		Dim. H		QTY.		Inv. Code		ASSEMBLE ON PARTS				-				-															
-		FW-K224		-		-		-		-		-		-		-		-		3		-		-				-				-															

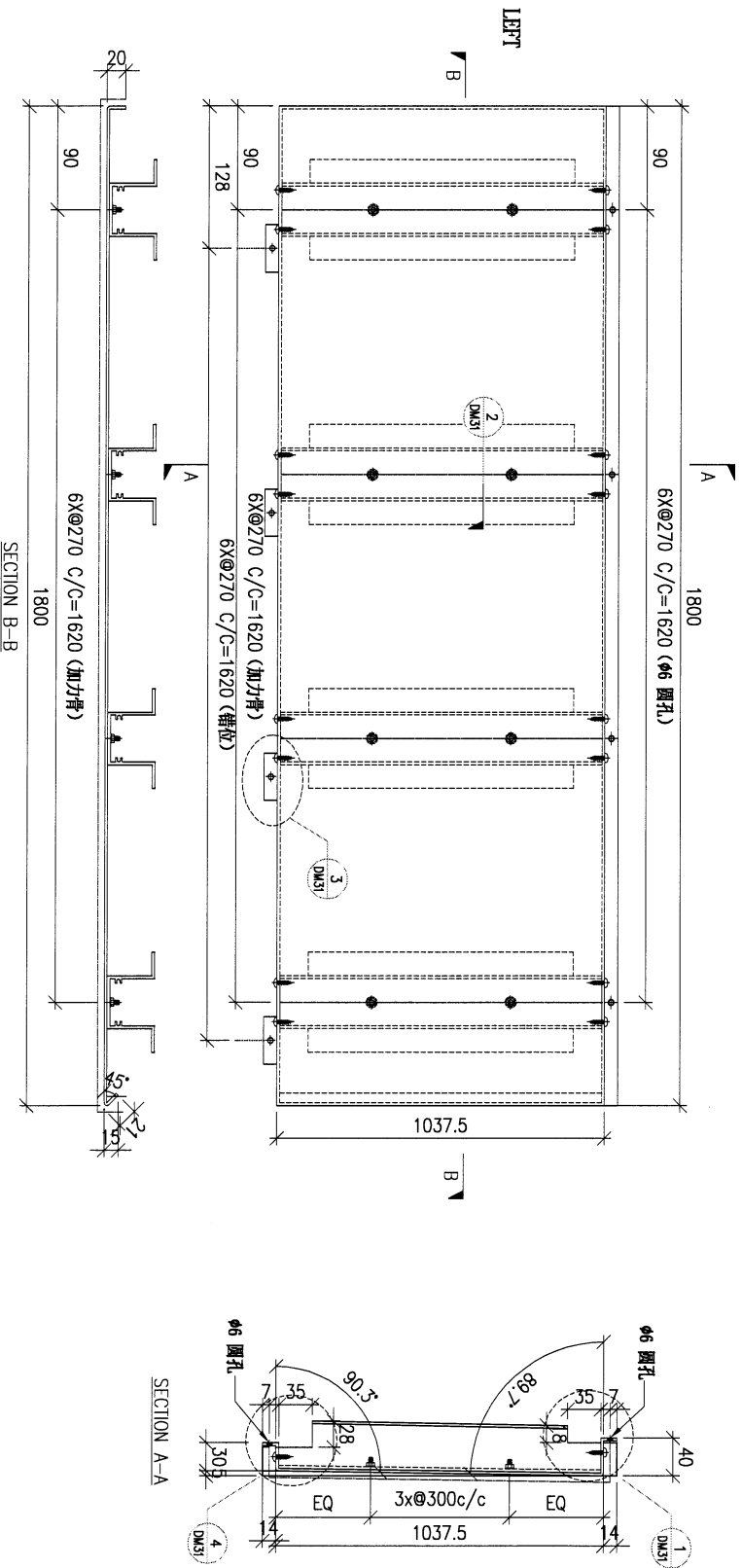
注：地盘用

注：新增图纸



DWG. NO.		FW-K224		REV.		-		SCALE		-		DATE		15-06-2023		DRAWN BY		-		APPROVED BY		-	
----------	--	---------	--	------	--	---	--	-------	--	---	--	------	--	------------	--	----------	--	---	--	-------------	--	---	--

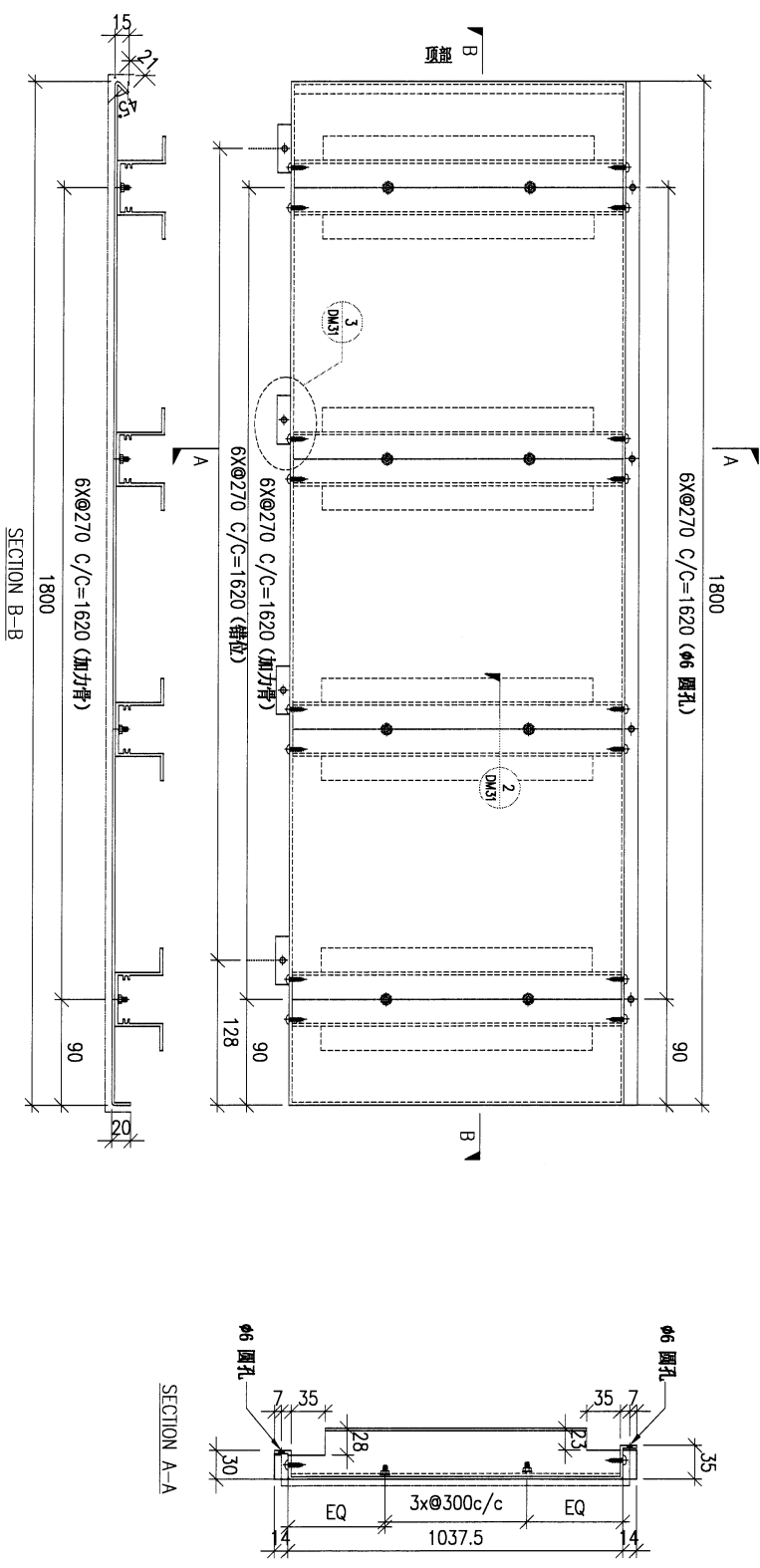
PROJECT				YIN PING ROAD KOWLOON FEATURE WALL (PHASE 2)				MATERIAL				3mm铝板		COATING		PVF2		COLOUR		EG-DG-D334232-ZD1(SS-01)		MARK. NO.		QTY.	
REV.	ORDERED	PART NUMBER	Dim. A	Dim. B	Dim. C	Dim. D	Dim. E	Dim. F	Dim. G	Dim. H	QTY.	Inv. Code	ASSEMBLE ON PARTS												
-	FW-K225	-	-	-	-	-	-	-	-	-	2														
													注: 地盘用												



注: 新增图纸

DWG. NO.		FW-K225		REV.		SCALE		DATE		DRAWN BY		APPROVED BY	
				-		-		15-06-2023		-		-	

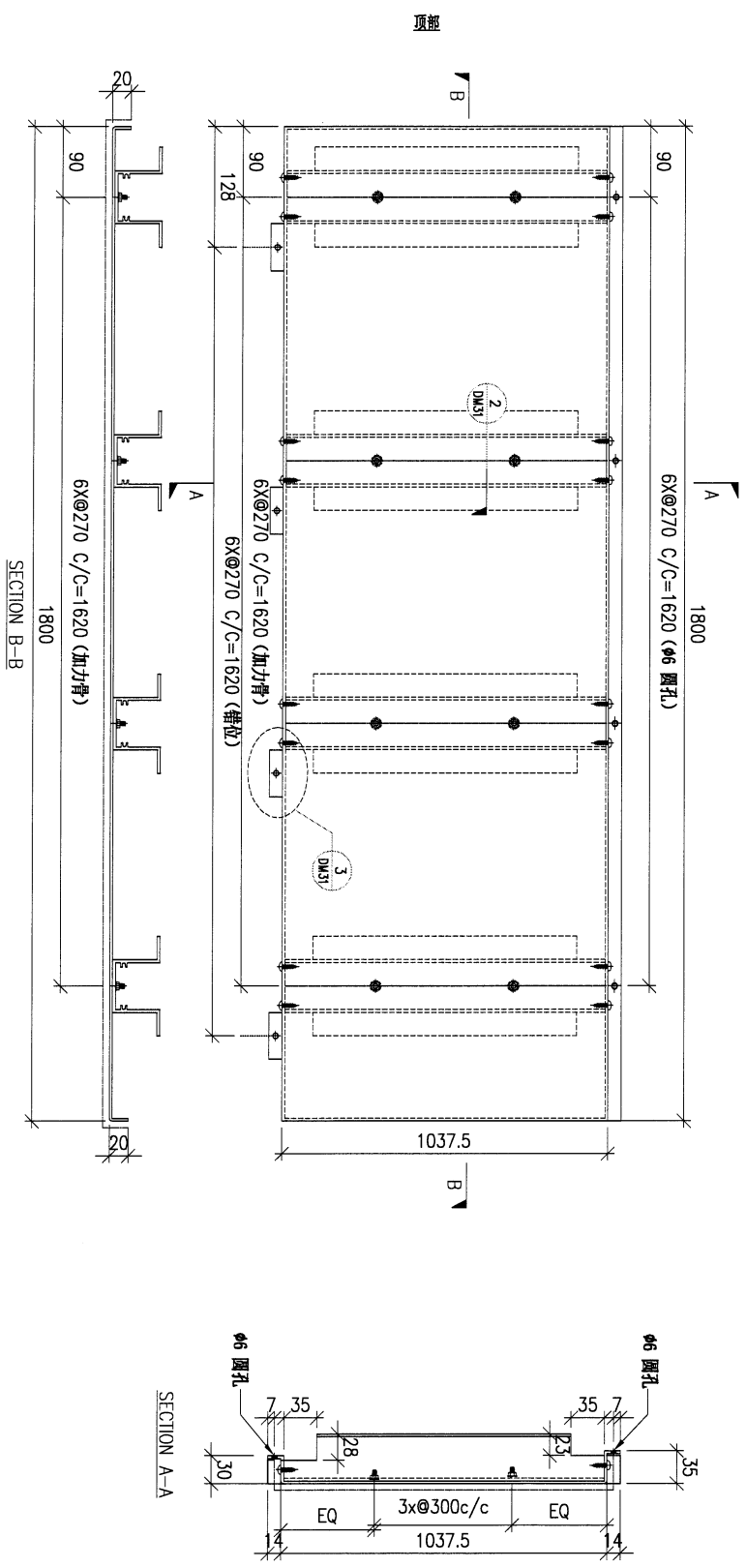
PROJECT				YIN PING ROAD KOWLOON FEATURE WALL (PHASE 2)				MATERIAL				3mm铝板		COATING		PVF2		COLOUR		EC-DG-D334232-ZD1(SS-01)		MARK. NO.		-		QTY.		-	
REV.	CHECKED BY	PART NUMBER	Dim. A	Dim. B	Dim. C	Dim. D	Dim. E	Dim. F	Dim. G	Dim. H	QTY.	Inv. Code	ASSEMBLE ON PARTS				注: 地盘用												
-		FW-K226	-	-	-	-	-	-	-	-	2																		



DWG. NO.		FW-K226		REV.		-		SCALE		-		DATE		15-06-2023		DRAWN BY		-		APPROVED BY		-	
----------	--	---------	--	------	--	---	--	-------	--	---	--	------	--	------------	--	----------	--	---	--	-------------	--	---	--

PROJECT				YIN PING ROAD KOWLOON FEATURE WALL (PHASE 2)				MATERIAL				3mm铝板		COATING		PVF2		COLOUR		EC-DG-D34232-ZD1(SS-01)		MARK. NO.		-		QTY.		-	
REV.	CHANGED BY	PART NUMBER	Dim. A	Dim. B	Dim. C	Dim. D	Dim. E	Dim. F	Dim. G	Dim. H	QTY.	Inv. Code	ASSEMBLE ON PARTS				注: 地盘用												
-		FW-K227	-	-	-	-	-	-	-	-	2																		

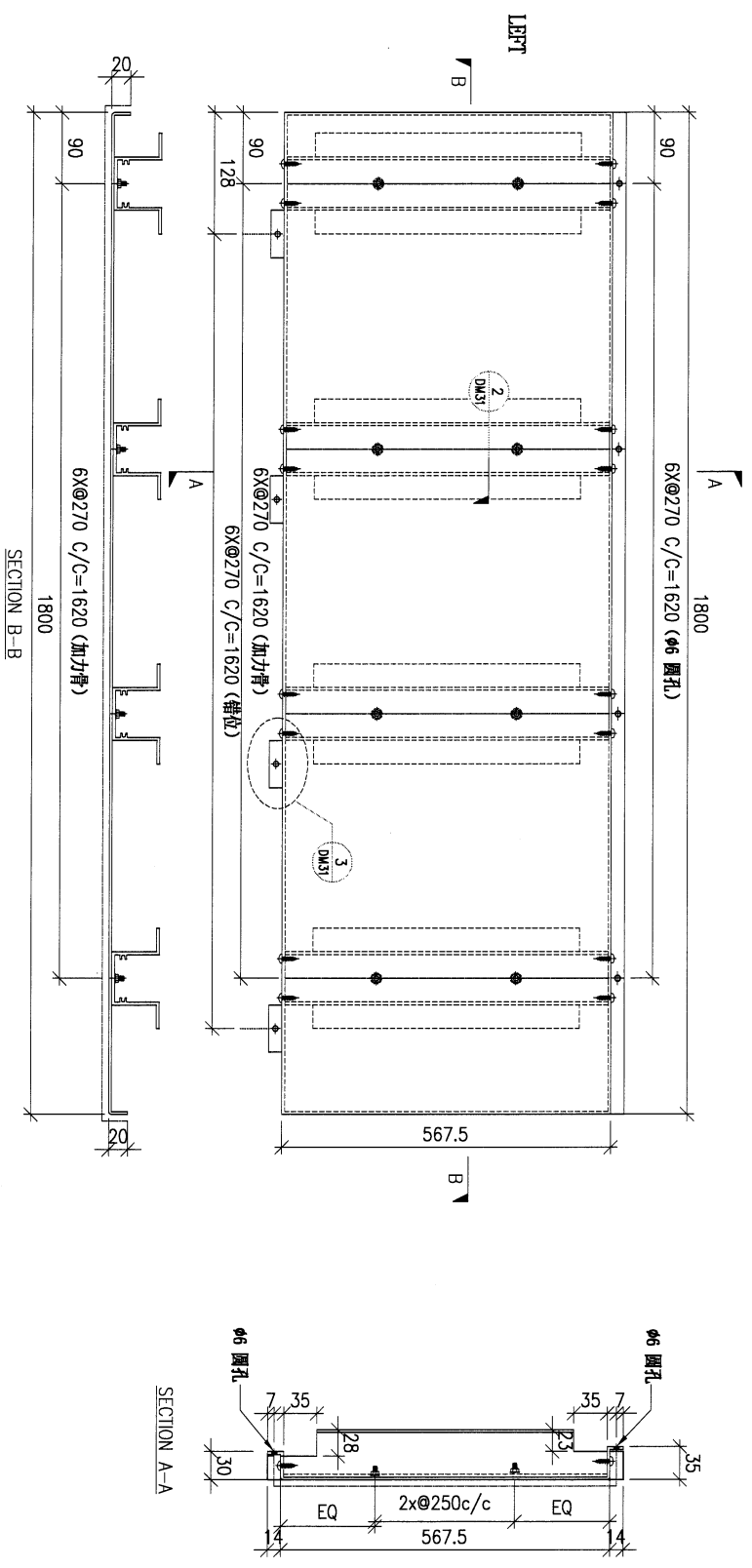
注: 新增图纸



DWG. NO.		FW-K227		REV.		-		SCALE		-		DATE		15-06-2023		DRAWN BY		-		APPROVED BY		-	
----------	--	---------	--	------	--	---	--	-------	--	---	--	------	--	------------	--	----------	--	---	--	-------------	--	---	--

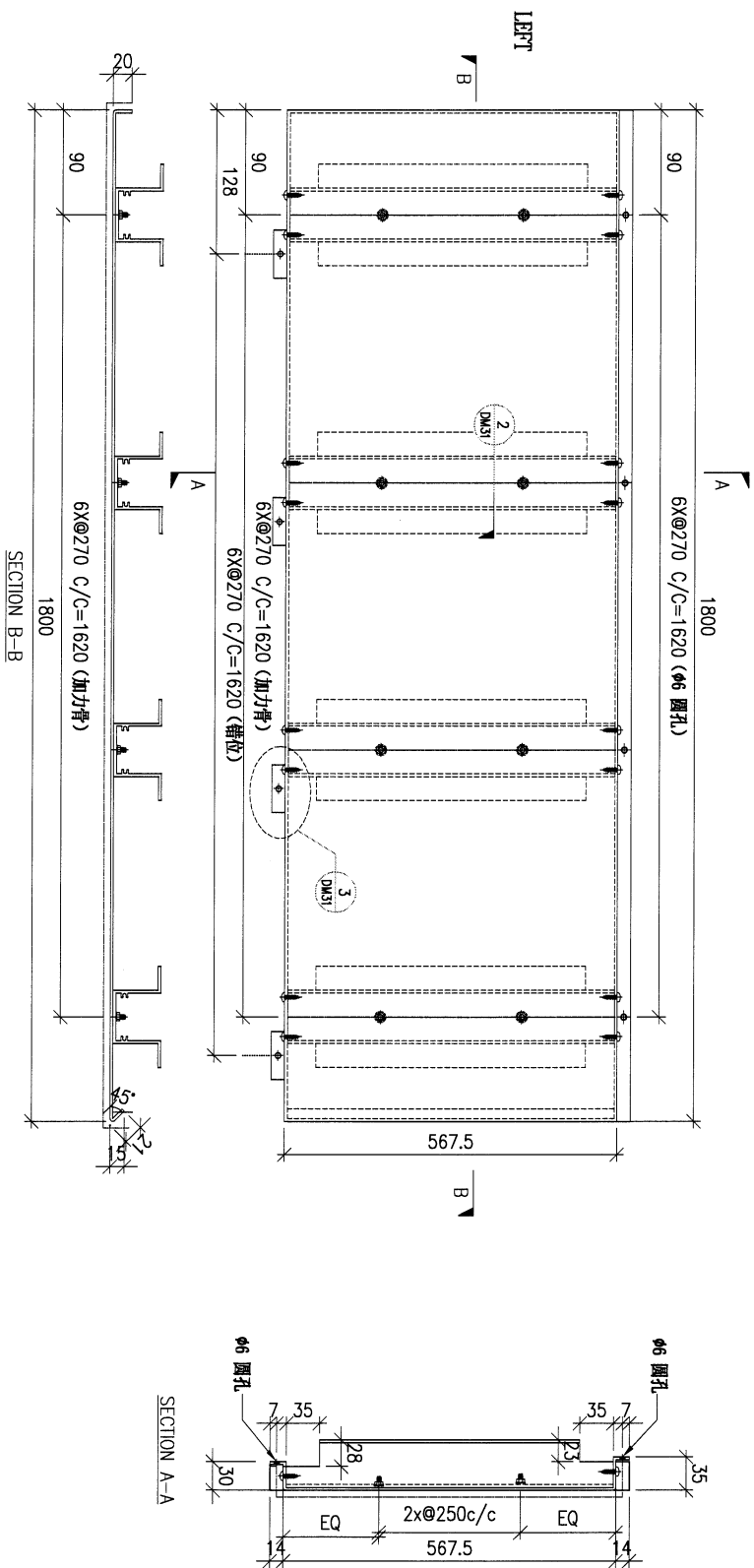
PROJECT				YIN PING ROAD KOWLOON FEATURE WALL (PHASE 2)				MATERIAL				3mm铝板				COATING				PVF2				COLOUR				EC-DG-D334232-ZD1(SS-01)				MARK. NO.				-				QTY.				-			
CHECKED BY		PART NUMBER		Dim. A		Dim. B		Dim. C		Dim. D		Dim. E		Dim. F		Dim. G		Dim. H		QTY.		Inv. Code		ASSEMBLE ON PARTS				注: 地盘用																			
-		FW-K228		-		-		-		-		-		-		-		-		3																											

注: 新增图纸



DWG. NO.		FW-K228		REV.		-		SCALE		-		DATE		15-06-2023		DRAWN BY		-		APPROVED BY		-	
----------	--	---------	--	------	--	---	--	-------	--	---	--	------	--	------------	--	----------	--	---	--	-------------	--	---	--

PROJECT				MATERIAL				COATING		COLOUR		MARK. NO.		QTY.	
YIN PING ROAD KOWLOON FEATURE WALL (PHASE 2)				3mm铝板				PVF2		EC-DG-D334232-ZD1(SS-01)		-		-	
REV.	CHECKED DATE	PART NUMBER	Dim. A	Dim. B	Dim. C	Dim. D	Dim. E	Dim. F	Dim. G	Dim. H	QTY.	Inv. Code	ASSEMBLE ON PARTS		
-		FW-K229	-	-	-	-	-	-	-	-	1		注: 地盘用		

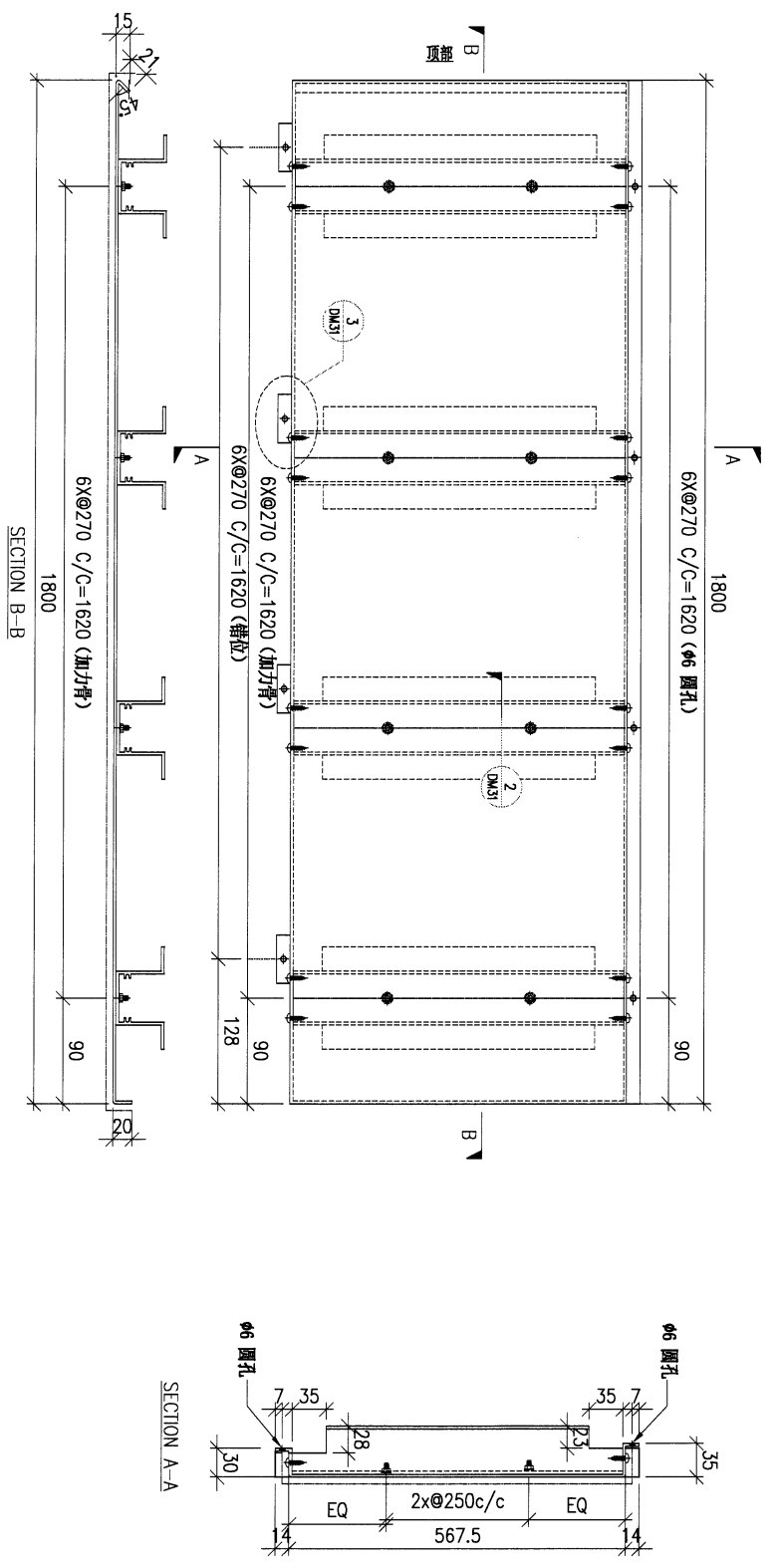


注: 新增图纸

DWG. NO.		REV.		SCALE		DATE		DRAWN BY		APPROVED BY	
FW-K229		-		-		15-06-2023		-		-	

PROJECT				MATERIAL				COATING				COLOUR		MARK. NO.		QTY.	
YIN PING ROAD KOWLOON FEATURE WALL (PHASE 2)				3mm铝板				PVF2				EC-DG-D334232-ZD1(SS-01)		-		-	
REV.	CHANGED BY	PART NUMBER	Dim. A	Dim. B	Dim. C	Dim. D	Dim. E	Dim. F	Dim. G	Dim. H	QTY.	Inv. Code	ASSEMBLE ON PARTS				
-		FW-K230	-	-	-	-	-	-	-	-	1						
													注: 地盘用				

注: 新增图纸



DWG. NO.		REV.		SCALE		DATE		DRAWN BY		APPROVED BY	
FW-K230		-		-		15-06-2023		-		-	